

# **Configuring Environment Components for Oracle® Java CAPS Database Adapters**

Copyright © 2008, 2011, Oracle and/or its affiliates. All rights reserved.

#### **License Restrictions Warranty/Consequential Damages Disclaimer**

This software and related documentation are provided under a license agreement containing restrictions on use and disclosure and are protected by intellectual property laws. Except as expressly permitted in your license agreement or allowed by law, you may not use, copy, reproduce, translate, broadcast, modify, license, transmit, distribute, exhibit, perform, publish or display any part, in any form, or by any means. Reverse engineering, disassembly, or decompilation of this software, unless required by law for interoperability, is prohibited.

#### **Warranty Disclaimer**

The information contained herein is subject to change without notice and is not warranted to be error-free. If you find any errors, please report them to us in writing.

#### **Restricted Rights Notice**

If this is software or related documentation that is delivered to the U.S. Government or anyone licensing it on behalf of the U.S. Government, the following notice is applicable:

##### **U.S. GOVERNMENT RIGHTS**

Programs, software, databases, and related documentation and technical data delivered to U.S. Government customers are "commercial computer software" or "commercial technical data" pursuant to the applicable Federal Acquisition Regulation and agency-specific supplemental regulations. As such, the use, duplication, disclosure, modification, and adaptation shall be subject to the restrictions and license terms set forth in the applicable Government contract, and, to the extent applicable by the terms of the Government contract, the additional rights set forth in FAR 52.227-19, Commercial Computer Software License (December 2007). Oracle America, Inc., 500 Oracle Parkway, Redwood City, CA 94065.

#### **Hazardous Applications Notice**

This software or hardware is developed for general use in a variety of information management applications. It is not developed or intended for use in any inherently dangerous applications, including applications that may create a risk of personal injury. If you use this software or hardware in dangerous applications, then you shall be responsible to take all appropriate fail-safe, backup, redundancy, and other measures to ensure its safe use. Oracle Corporation and its affiliates disclaim any liability for any damages caused by use of this software or hardware in dangerous applications.

#### **Trademark Notice**

Oracle and Java are registered trademarks of Oracle and/or its affiliates. Other names may be trademarks of their respective owners.

Intel and Intel Xeon are trademarks or registered trademarks of Intel Corporation. All SPARC trademarks are used under license and are trademarks or registered trademarks of SPARC International, Inc. AMD, Opteron, the AMD logo, and the AMD Opteron logo are trademarks or registered trademarks of Advanced Micro Devices. UNIX is a registered trademark of The Open Group in the United States and other countries.

#### **Third Party Content, Products, and Services Disclaimer**

This software or hardware and documentation may provide access to or information on content, products, and services from third parties. Oracle Corporation and its affiliates are not responsible for and expressly disclaim all warranties of any kind with respect to third-party content, products, and services. Oracle Corporation and its affiliates will not be responsible for any loss, costs, or damages incurred due to your access to or use of third-party content, products, or services.

# Contents

---

<b>Configuring Java CAPS Environment Components for Database Adapters</b> .....	5
Using the Environment Properties Editor .....	6
▼ To Add an External System to the Environment .....	6
▼ To Configure the Environment Properties .....	6
DB2 Adapter Environment Properties .....	7
Inbound DB2 Adapter Environment Properties .....	8
Outbound DB2 Adapter Environment Properties .....	9
eTL Environment Properties .....	25
DB2 Connect Adapter Environment Properties .....	26
Inbound DB2 Connect Adapter - Parameter Settings .....	26
Outbound DB2 Connect Adapter - JDBC Connector Settings .....	27
Outbound DB2 Connect Adapter - Connection Retry Settings .....	28
Outbound DB2 Connect non-Transactional Adapter - JDBC Connector Settings .....	29
Outbound DB2 Connect non-Transactional Adapter - Connection Retry Settings .....	30
Outbound DB2 Connect XA Adapter - JDBC Connector Settings .....	31
Outbound DB2 Connect XA Adapter - Connection Retry Settings .....	32
Inbound DB2 Connect Type 4 Adapter - Parameter Settings .....	33
Outbound DB2 Connect Type 4 Adapter - JDBC Connector Settings .....	34
Outbound DB2 Connect Type 4 Adapter - Connection Retry Settings .....	35
Outbound DB2 Connect non-Transactional Type 4 Adapter - JDBC Connector Settings .....	35
Outbound DB2 Connect non-Transactional Type 4 Adapter - Connection Retry Settings .....	37
Outbound DB2 Connect Type 4 XA Adapter - JDBC Connector Settings .....	37
Outbound DB2 Connect Type 4 XA Adapter - Connection Retry Settings .....	38
Informix Adapter Environment Properties .....	39
Informix Adapter External System Properties .....	39
Oracle Adapter Environment Properties .....	46
Inbound Oracle Adapter Environment Properties .....	46

Outbound Oracle Adapter Environment Properties .....	47
Outbound Oracle Adapter Environment Properties with XA support .....	50
SQL Server Adapter Environment Properties .....	53
Inbound SQL Server Adapter Properties .....	53
Outbound SQL Server Adapter Properties .....	53
Outbound SQL Server Non-Transactional Adapter Properties .....	56
Outbound SQL Server XA Adapter Properties .....	58
Sybase Adapter Environment Properties .....	61
Inbound Sybase Adapter .....	61
Outbound Sybase Adapter .....	62
Outbound XA Sybase Adapter .....	64
Outbound Sybase non-Transactional Adapter .....	66
JDBC/ODBC Adapter Environment Properties .....	69
Inbound JDBC Adapter Properties .....	69
Outbound JDBC Adapter Properties .....	70
Outbound non-Transactional JDBC Adapter Properties .....	72
Outbound XA JDBC Adapter Properties .....	75
VSAM Adapter Environment Properties .....	77
Inbound VSAM Adapter Properties .....	77
Outbound VSAM CP Adapter Properties .....	78
Outbound VSAM non-Transactional Adapter Properties .....	80

# Configuring Java CAPS Environment Components for Database Adapters

---

The adapter environment configuration properties contain parameters that define how the adapter connects to and interacts with other Java CAPS components within the environment. The environment properties are accessed from the NetBeans IDE Services window. The following sections provide instructions on how to configure Java CAPS component environment properties and lists the environment properties for the various database adapters.

## **What You Need to Do**

This topic provides instructions for configuring the Environment properties.

- [“Using the Environment Properties Editor” on page 6](#)

## **What You Need to Know**

These topics provide configuration information used to set the database adapter environment properties.

- [“DB2 Connect Adapter Environment Properties” on page 26](#)
- [“DB2 Adapter Environment Properties” on page 7](#)
- [“Informix Adapter Environment Properties” on page 39](#)
- [“JDBC/ODBC Adapter Environment Properties” on page 69](#)
- [“Oracle Adapter Environment Properties” on page 46](#)
- [“SQL Server Adapter Environment Properties” on page 53](#)
- [“Sybase Adapter Environment Properties” on page 61](#)
- [“VSAM Adapter Environment Properties” on page 77](#)

## Using the Environment Properties Editor

The Adapter Environment Configuration properties contain parameters that define how the adapter connects to and interacts with other Java CAPS components within the Environment. The Environment properties are accessed from the NetBeans IDE Services window.

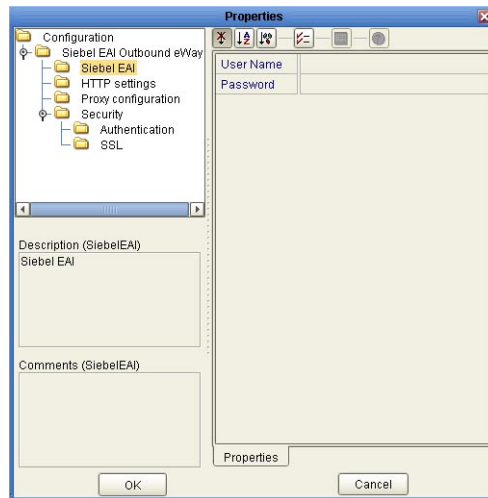
### ▼ To Add an External System to the Environment

- 1 Expand the CAPS Environments, and right-click the Environment to which you want to add an External System.
- 2 From the context menu, select the type of External System to add (for example, File External System or Oracle External System).
- 3 Enter a name for the External System and then click OK.

### ▼ To Configure the Environment Properties

- 1 From the NetBeans Services window, expand the CAPS Environment node.
- 2 Expand the Environment created for your project and locate the External System for your specific adapter.
- 3 Right-click the External System and select Properties from the popup menu. The Environment Configuration Properties window appears.

FIGURE 1 Adapter Environment Configuration Properties Editor



- 4 From the Properties Editor, click on any folder to display the default configuration properties for that section.
- 5 Click on any property field to make it editable.
- 6 If an ellipsis appears next to a field, you can click the ellipsis button to open an editor for the field.  
This is useful for long field values.
- 7 Once you have finished modifying the properties, click OK to save your changes and close the editor.

---

**Note** – The following sections describe the Environment properties for the Application Adapters.

---

## DB2 Adapter Environment Properties

The DB2 Adapter configuration parameters, accessed from the NetBeans Services window, are organized into the following sections:

- “Inbound DB2 Adapter Environment Properties” on page 8
- “Outbound DB2 Adapter Environment Properties” on page 9
- “eTL Environment Properties” on page 25

## Inbound DB2 Adapter Environment Properties

The Inbound DB2 Adapter properties, accessed from the NetBeans Services window, are organized into the following sections:

- “Inbound Environment Properties for Windows/UNIX” on page 8
- “Inbound Environment Properties for z/OS and AS/400” on page 8

### Inbound Environment Properties for Windows/UNIX

The **Parameter Settings** section of the Inbound Windows/UNIX Environment contains the top-level parameters displayed in the following table.

TABLE 1 Parameter Settings for the Inbound Environment

Name	Description	Required Value
Description	Enter a description for the database.	A valid string. The default is <b>DB2 DriverManager</b> .
ServerName	Specifies the host name of the external database server.	Any valid string.
PortNumber	Specifies the I/O port number on which the server is listening for connection requests.	A valid port number. The default is <b>50000</b> .
DatabaseName	Specifies the name of the database instance used on the Server.	Any valid string.
User	Specifies the user name that the Adapter uses to connect to the database.	Any valid string.
Password	Specifies the password used to access the database.	Any valid string.

### Inbound Environment Properties for z/OS and AS/400

The **Parameter Settings** section of the Inbound z/OS and AS/400 Environment contains the top-level parameters displayed in the following table.

TABLE 2 Parameter Settings for the Inbound Environment

Name	Description	Required Value
Description	Enter a description for the database.	A valid string. The default is <b>DB2 DriverManager</b> .
ServerName	Specifies the host name of the external database server.	Any valid string.



TABLE 2 Parameter Settings for the Inbound Environment (Continued)

Name	Description	Required Value
PortNumber	Specifies the I/O port number on which the server is listening for connection requests.	A valid port number. The default is <b>446</b> .
LocationName	Specifies the Location Name for the DB2 database that is being used on AS400/zOS. You can issue a “Select current service from sysibm.sysdummy1” to the database to find out its value.	Any valid String.
PackageCollection	Specifies the PackageCollection for the DB2 database that is being used on AS400/zOS. Use the same one you used in the Wizard Connection Panel.	Any valid String.
User	Specifies the user name that the Adapter uses to connect to the database.	Any valid string.
Password	Specifies the password used to access the database.	Any valid string.

## Outbound DB2 Adapter Environment Properties

The Outbound DB2 Adapter properties, accessed from the NetBeans Services window, are organized into the following sections:

- [“Outbound Environment Properties for Windows/UNIX” on page 9](#)
- [“Outbound Environment Properties for Non-Transactional Windows/UNIX” on page 13](#)
- [“Outbound Environment Properties for XA Windows/UNIX” on page 16](#)
- [“Outbound Environment Properties for z/OS and AS/400” on page 19](#)
- [“Outbound Environment Properties for Non-Transactional z/OS and AS/400” on page 22](#)

### Outbound Environment Properties for Windows/UNIX

The Outbound DB2 Adapter properties for Windows/UNIX, accessed from the NetBeans Services window, are organized into the following sections:

- [“JDBC Connector Settings for Windows/UNIX” on page 9](#)
- [“Connection Retry Settings for Windows/UNIX” on page 12](#)

### JDBC Connector Settings for Windows/UNIX

The **JDBC Connector Settings** section of the Outbound Windows/UNIX Environment contains the top-level parameters displayed in the following table.

**TABLE 3** Outbound Adapter Windows/UNIX Environment - JDBC Connector Settings

Name	Description	Required Value
Description	Enter a description for the database.	A valid string. The default value is <b>DB2 Connection Pool Datasource</b> .
ServerName	Specifies the host name of the external database server.	Any valid string.
PortNumber	Specifies the I/O port number on which the server is listening for connection requests.	A valid port number. The default is <b>50000</b> .
DatabaseName	Specifies the name of the database instance used on the Server.	Any valid string.
User	Specifies the user name that the Adapter uses to connect to the database.	Any valid string.
Password	Specifies the password used to access the database.	Any valid string.

TABLE 3 Outbound Adapter Windows/UNIX Environment - JDBC Connector Settings (Continued)

Name	Description	Required Value
DriverProperties	<p>Any additional settings that are not otherwise part of the external system properties can be set here.</p> <p>Typically, anything that you would pass to the driver through the connect string, in the form of “AProperty = AValue” can be set in Java by calling setAProperty (“AValue”) which becomes setAProperty #AValue##. Use the JDBC driver that is shipped with this Adapter.</p> <p><b>Example 1:</b></p> <p>To execute the method “setSpyAttributes” for the DataDirect driver, set the following string for the URL: “setSpyAttribute#&lt;url&gt;##”.</p> <p><b>Example 2:</b></p> <p>To set DataDirect’s Spy Log, the Driver properties entry requires the following string:</p> <pre>setURL#jdbc:Seebeyond:DB2://&lt;server&gt;:4100;DatabaseName=&lt;database&gt;## setSpyAttributes#log=(file) c:/temp/spy.log;logTName=yes##</pre> <p><b>Note</b> – Spy Log should be set for debugging purposes only.</p> <p><b>Example 3:</b></p> <p>For DB2 UDB, the Connect String parameter “SecurityMechanism=Encrypted Password” can be passed to the driver as “setSecurityMechanism# Encrypted Password##” This will call setSecurityMechanism (“Encrypted Password”) before the connection is established.</p>	<p>A delimited list of parametrized method calls.</p> <p>The valid format is (with no spaces):</p> <pre>&lt;method-name-1&gt;# &lt;param-1&gt;#&lt;param-2&gt;#... &lt;param-n&gt;## &lt;method-name-2&gt;# &lt;param-1&gt;#&lt;param-2&gt;#... &lt;param-n&gt;##</pre>
Delimiter	<p>This is the delimiter character to be used in the DriverProperties prompt.</p>	<p>The default is #. See the DriverProperties property above for more information on how the default value is used.</p>

**TABLE 3** Outbound Adapter Windows/UNIX Environment - JDBC Connector Settings *(Continued)*

Name	Description	Required Value
MinPoolSize	<p>Specifies the minimum number of physical connections the pool should keep available at all times. 0 (zero) indicates that there should be no physical connections in the pool and the new connections should be created as needed.</p> <p>If the pool size is too small, you may experience longer connection times due to the existing number of physical connections.</p> <p>A connection that stays in the pool allows transactions to use it via a logical connection which is faster.</p>	A valid numeric value. The default is <b>0</b> .
MaxPoolSize	<p>Specifies the maximum number of physical connections the pool should keep available at all times. 0 (zero) indicates that there is no maximum.</p> <p>The pool size depends on the transaction volume and response time. If the pool size is too big, you may end up with too many connections with the database.</p>	A valid numeric value. The default is <b>10</b> .
MaxIdleTime	The maximum number of seconds that a physical connection may remain unused before it is closed. 0 (zero) indicates that there is no limit.	A valid numeric value. The default is <b>0</b> .

## Connection Retry Settings for Windows/UNIX

The **Connection Retry Settings** section of the Outbound DB2 Adapter Environment contains the top-level parameters displayed in the following table.

**TABLE 4** Outbound Adapter Windows/UNIX Environment - Connection Retry Settings

Name	Description	Required Value
ConnectionRetries	Specifies the number of retries to establish a connection with the DB2 Adapter database upon a failure to acquire one.	An integer indicating the number of attempts allowed to establish a connection. The configured default is <b>0</b> .

**TABLE 4** Outbound Adapter Windows/UNIX Environment - Connection Retry Settings *(Continued)*

Name	Description	Required Value
ConnectionRetry Interval	<p>Specifies the milliseconds of pause before each attempt to access the database. This setting is used in conjunction with the 'Connection Retries' setting.</p> <p>For example: In the event that the Adapter cannot connect to the Database, the Adapter will try to reconnect to the database in 5 second intervals, a total of 10 times, when the Connection Retries property is set at 10 and the Connection Retry Interval property is 5000.</p>	An integer indicating the configured length of the time (in milliseconds) before each reattempt to access the destination file. The configured default is <b>1000</b> (1 second).

## Outbound Environment Properties for Non-Transactional Windows/UNIX

The Outbound DB2 Adapter properties for Non-Transactional Windows/UNIX, accessed from the NetBeans Services window, are organized into the following sections:

- [“JDBC Connector Settings for Non-Transactional Windows/UNIX” on page 13](#)
- [“Connection Retry Settings for Non-Transactional Windows/UNIX” on page 15](#)

## JDBC Connector Settings for Non-Transactional Windows/UNIX

The **JDBC Connector Settings** section of the Outbound Non-Transactional Windows/UNIX Environment contains the top-level parameters displayed in the following table.

**TABLE 5** Outbound Non-Transactional Adapter for Windows/UNIX - JDBC Connector Settings

Name	Description	Required Value
Description	Enter a description for the database.	A valid string. The default value is <b>DB2 non-Transactional Connection Pool Datasource</b> .
ServerName	Specifies the host name of the external database server.	Any valid string.
PortNumber	Specifies the I/O port number on which the server is listening for connection requests.	A valid port number. The default is <b>50000</b> .
DatabaseName	Specifies the name of the database instance used on the Server.	Any valid string.
User	Specifies the user name that the Adapter uses to connect to the database.	Any valid string.
Password	Specifies the password used to access the database.	Any valid string.

**TABLE 5** Outbound Non-Transactional Adapter for Windows/UNIX - JDBC Connector Settings  
(Continued)

Name	Description	Required Value
DriverProperties	<p>Any additional settings that are not otherwise part of the external system properties can be set here.</p> <p>Typically, anything that you would pass to the driver through the connect string, in the form of “AProperty = AValue” can be set in Java by calling setAProperty (“AValue”) which becomes setAProperty #AValue##. Use the JDBC driver that is shipped with this Adapter.</p> <p><b>Example 1:</b></p> <p>To execute the method “setSpyAttributes” for the DataDirect driver, set the following string for the URL: “setSpyAttribute#&lt;url&gt;##”.</p> <p><b>Example 2:</b></p> <p>To set DataDirect’s Spy Log, the Driver properties entry requires the following string:</p> <pre>setURL#jdbc:Seebeyond:DB2://&lt;server&gt;:4100;DatabaseName=&lt;database&gt;## setSpyAttributes#log=(file) c:/temp/spy.log;logTName=yes##</pre> <p><b>Note</b> – Spy Log should be set for debugging purposes only.</p> <p><b>Example 3:</b></p> <p>For DB2 UDB, the Connect String parameter “SecurityMechanism=Encrypted Password” can be passed to the driver as “setSecurityMechanism# Encrypted Password##” This will call setSecurityMechanism (“Encrypted Password”) before the connection is established.</p>	<p>A delimited list of parametrized method calls.</p> <p>The valid format is (with no spaces):</p> <pre>&lt;method-name-1&gt;# &lt;param-1&gt;#&lt;param-2&gt;#... &lt;param-n&gt;## &lt;method-name-2&gt;# &lt;param-1&gt;#&lt;param-2&gt;#... &lt;param-n&gt;##</pre>
Delimiter	<p>This is the delimiter character to be used in the DriverProperties prompt.</p>	<p>The default is #. See the DriverProperties property above for more information on how the default value is used.</p>

**TABLE 5** Outbound Non-Transactional Adapter for Windows/UNIX - JDBC Connector Settings  
(Continued)

Name	Description	Required Value
MinPoolSize	<p>Specifies the minimum number of physical connections the pool should keep available at all times. 0 (zero) indicates that there should be no physical connections in the pool and the new connections should be created as needed.</p> <p>If the pool size is too small, you may experience longer connection times due to the existing number of physical connections.</p> <p>A connection that stays in the pool allows transactions to use it via a logical connection which is faster.</p>	A valid numeric value. The default is <b>0</b> .
MaxPoolSize	<p>Specifies the maximum number of physical connections the pool should keep available at all times. 0 (zero) indicates that there is no maximum.</p> <p>The pool size depends on the transaction volume and response time. If the pool size is too big, you may end up with too many connections with the database.</p>	A valid numeric value. The default is <b>10</b> .
MaxIdleTime	The maximum number of seconds that a physical connection may remain unused before it is closed. 0 (zero) indicates that there is no limit.	A valid numeric value. The default is <b>0</b> .

## Connection Retry Settings for Non-Transactional Windows/UNIX

The **Connection Retry Settings** section of the Outbound DB2 Adapter Environment contains the top-level parameters displayed in the following table.

**TABLE 6** Outbound Non-Transactional Adapter Windows/UNIX - Connection Retry Settings

Name	Description	Required Value
ConnectionRetries	Specifies the number of retries to establish a connection with the DB2 database upon a failure to acquire one.	An integer indicating the number of attempts allowed to establish a connection. The configured default is <b>0</b> .

**TABLE 6** Outbound Non-Transactional Adapter Windows/UNIX - Connection Retry Settings  
(Continued)

Name	Description	Required Value
ConnectionRetry Interval	<p>Specifies the milliseconds of pause before each attempt to access the database. This setting is used in conjunction with the 'Connection Retries' setting.</p> <p>For example: In the event that the Adapter cannot connect to the Database, the Adapter will try to reconnect to the database in 5 second intervals, a total of 10 times, when the Connection Retries property is set at 10 and the Connection Retry Interval property is 5000.</p>	An integer indicating the configured length of the time (in milliseconds) before each reattempt to access the destination file. The configured default is <b>1000</b> (1 second).

## Outbound Environment Properties for XA Windows/UNIX

The Outbound DB2 Adapter properties for XA Windows/UNIX, accessed from the NetBeans Services window, are organized into the following sections:

- [“JDBC Connector Settings for XA Windows/UNIX” on page 16](#)
- [“Connection Retry Settings for XA Windows/UNIX” on page 18](#)

## JDBC Connector Settings for XA Windows/UNIX

The **JDBC Connector Settings** section of the Outbound XA Windows/UNIX Environment contains the top-level parameters displayed in the following table.

**TABLE 7** Outbound XA Adapter for Windows/UNIX - JDBC Connector Settings

Name	Description	Required Value
Description	Enter a description for the database.	A valid string. The default value is <b>DB2 XA Datasource</b> .
ServerName	Specifies the host name of the external database server.	Any valid string.
PortNumber	Specifies the I/O port number on which the server is listening for connection requests.	A valid port number. The default is <b>50000</b> .
DatabaseName	Specifies the name of the database instance used on the Server.	Any valid string.
User	Specifies the user name that the Adapter uses to connect to the database.	Any valid string.
Password	Specifies the password used to access the database.	Any valid string.



TABLE 7 Outbound XA Adapter for Windows/UNIX - JDBC Connector Settings (Continued)

Name	Description	Required Value
DriverProperties	<p>Any additional settings that are not otherwise part of the external system properties can be set here.</p> <p>Typically, anything that you would pass to the driver through the connect string, in the form of “AProperty = AValue” can be set in Java by calling setAProperty (“AValue”) which becomes setAProperty #AValue##. Use the JDBC driver that is shipped with this Adapter.</p> <p><b>Example 1:</b></p> <p>To execute the method setSpyAttributes for the DataDirect driver, set the following string for the URL: setSpyAttribute#&lt;url&gt;##.</p> <p><b>Example 2:</b></p> <p>To set DataDirect’s Spy Log, the Driver properties entry requires the following string:</p> <pre>setURL#jdbc:Seebeyond:DB2://&lt;server&gt;:4100;DatabaseName=&lt;database&gt;## setSpyAttributes#log=(file) c:/temp/spy.log;logTName=yes##</pre> <p><b>Note</b> – Spy Log should be set for debugging purposes only.</p> <p><b>Example 3:</b></p> <p>For DB2 UDB, the Connect String parameter “SecurityMechanism=Encrypted Password” can be passed to the driver as “setSecurityMechanism# Encrypted Password##” This will call setSecurityMechanism (“Encrypted Password”) before the connection is established.</p>	<p>A delimited list of parametrized method calls.</p> <p>The valid format is (with no spaces):</p> <pre>&lt;method-name-1&gt;# &lt;param-1&gt;#&lt;param-2&gt;#... &lt;param-n&gt;## &lt;method-name-2&gt;# &lt;param-1&gt;#&lt;param-2&gt;#... &lt;param-n&gt;##</pre>
Delimiter	<p>This is the delimiter character to be used in the DriverProperties prompt.</p>	<p>The default is #. See the DriverProperties property above for more information on how the default value is used.</p>

TABLE 7 Outbound XA Adapter for Windows/UNIX - JDBC Connector Settings *(Continued)*

Name	Description	Required Value
MinPoolSize	<p>Specifies the minimum number of physical connections the pool should keep available at all times. 0 (zero) indicates that there should be no physical connections in the pool and the new connections should be created as needed.</p> <p>If the pool size is too small, you may experience longer connection times due to the existing number of physical connections.</p> <p>A connection that stays in the pool allows transactions to use it via a logical connection which is faster.</p>	A valid numeric value. The default is <b>0</b> .
MaxPoolSize	<p>Specifies the maximum number of physical connections the pool should keep available at all times. 0 (zero) indicates that there is no maximum.</p> <p>The pool size depends on the transaction volume and response time. If the pool size is too big, you may end up with too many connections with the database.</p>	A valid numeric value. The default is <b>10</b> .
MaxIdleTime	The maximum number of seconds that a physical connection may remain unused before it is closed. 0 (zero) indicates that there is no limit.	A valid numeric value. The default is <b>0</b> .

## Connection Retry Settings for XA Windows/UNIX

The **Connection Retry Settings** section of the Outbound DB2 Adapter Environment contains the top-level parameters displayed in the following table.

TABLE 8 Outbound XA Adapter Windows/UNIX - Connection Retry Settings

Name	Description	Required Value
ConnectionRetries	Specifies the number of retries to establish a connection with the DB2 database upon a failure to acquire one.	An integer indicating the number of attempts allowed to establish a connection. The configured default is <b>0</b> .

TABLE 8 Outbound XA Adapter Windows/UNIX - Connection Retry Settings (Continued)

Name	Description	Required Value
ConnectionRetry Interval	<p>Specifies the milliseconds of pause before each attempt to access the database. This setting is used in conjunction with the 'Connection Retries' setting.</p> <p>For example: In the event that the Adapter cannot connect to the Database, the Adapter will try to reconnect to the database in 5 second intervals, a total of 10 times, when the Connection Retries property is set at 10 and the Connection Retry Interval property is 5000.</p>	An integer indicating the configured length of the time (in milliseconds) before each reattempt to access the destination file. The configured default is <b>1000</b> (1 second).

## Outbound Environment Properties for z/OS and AS/400

The Outbound z/OS and AS/400 properties, accessed from the NetBeans Services window, are organized into the following sections:

- “JDBC Connector Settings for z/OS and AS/400” on page 19
- “Connection Retry Settings for z/OS and AS/400” on page 21

### JDBC Connector Settings for z/OS and AS/400

The **JDBC Connector Settings** section of the Outbound z/OS and AS/400 Environment contains the top-level parameters displayed in the following table.

TABLE 9 Outbound Adapter z/OS and AS/400 Environment - JDBC Connector Settings

Name	Description	Required Value
Description	Enter a description for the database.	A valid string. The default value is <b>DB2 Datasource For AS400/zOS</b> .
ServerName	Specifies the host name of the external database server.	Any valid string.
LocationName	Specifies the Location Name for the DB2 database that is being used on AS400/zOS. You can issue a “Select current service from sysibm.sysdummy1” to the database to find out its value.	A valid port number. The default is <b>446</b> .
PackageCollection	Specifies the PackageCollection for the DB2 database that is being used on AS400/zOS. Use the same one you used in the Wizard Connection Panel.	Any valid String.

**TABLE 9** Outbound Adapter z/OS and AS/400 Environment - JDBC Connector Settings (Continued)

Name	Description	Required Value
User	Specifies the user name that the Adapter uses to connect to the database.	Any valid string.
Password	Specifies the password used to access the database.	Any valid string.
DriverProperties	<p>Any additional settings that are not otherwise part of the external system properties can be set here.</p> <p>Typically, anything that you would pass to the driver through the connect string, in the form of “AProperty = AValue” can be set in Java by calling setAProperty (“AValue”) which becomes setAProperty #AValue##. Use the JDBC driver that is shipped with this Adapter.</p> <p><b>Example 1:</b></p> <p>To execute the method “setSpyAttributes” for the DataDirect driver, set the following string for the URL: “setSpyAttribute#&lt;url&gt;##”.</p> <p><b>Example 2:</b></p> <p>To set DataDirect’s Spy Log, the Driver properties entry requires the following string:</p> <pre>setURL#jdbc:Seebeyond:DB2://&lt;server&gt;:4100;DatabaseName=&lt;database&gt;## setSpyAttributes#log=(file) c:/temp/spy.log;logTName=yes##"</pre> <p><b>Note</b> – Spy Log should be set for debugging purposes only.</p> <p><b>Example 3:</b></p> <p>For DB2 UDB, the Connect String parameter “SecurityMechanism=Encrypted Password” can be passed to the driver as “setSecurityMechanism# Encrypted Password##” This will call setSecurityMechanism (“Encrypted Password”) before the connection is established.</p>	<p>A delimited list of parametrized method calls.</p> <p>The valid format is (with no spaces):</p> <pre>&lt;method-name-1&gt;# &lt;param-1&gt;#&lt;param-2&gt;#... &lt;param-n&gt;## &lt;method-name-2&gt;# &lt;param-1&gt;#&lt;param-2&gt;#... &lt;param-n&gt;##</pre>
Delimiter	This is the delimiter character to be used in the DriverProperties prompt.	A valid delimiter. The default is #.

TABLE 9 Outbound Adapter z/OS and AS/400 Environment - JDBC Connector Settings (Continued)

Name	Description	Required Value
MinPoolSize	<p>Specifies the minimum number of physical connections the pool should keep available at all times. 0 (zero) indicates that there should be no physical connections in the pool and the new connections should be created as needed.</p> <p>If the pool size is too small, you may experience longer connection times due to the existing number of physical connections.</p> <p>A connection that stays in the pool allows transactions to use it via a logical connection which is faster.</p>	A valid numeric value. The default is <b>0</b> .
MaxPoolSize	<p>Specifies the maximum number of physical connections the pool should keep available at all times. 0 (zero) indicates that there is no maximum.</p> <p>The pool size depends on the transaction volume and response time. If the pool size is too big, you may end up with too many connections with the database.</p>	A valid numeric value. The default is <b>10</b> .
MaxIdleTime	The maximum number of seconds that a physical connection may remain unused before it is closed. 0 (zero) indicates that there is no limit.	A valid numeric value. The default is <b>0</b> .

## Connection Retry Settings for z/OS and AS/400

The **Connection Retry Settings** section of the Outbound z/OS and AS/400 Environment contains the top-level parameters displayed in the following table.

TABLE 10 Outbound Adapter z/OS and AS/400 Environment - Connection Retry Settings

Name	Description	Required Value
ConnectionRetries	Specifies the number of retries to establish a connection with the DB2 Adapter database upon a failure to acquire one.	An integer indicating the number of attempts allowed to establish a connection. The configured default is <b>0</b> .

TABLE 10 Outbound Adapter z/OS and AS/400 Environment - Connection Retry Settings (Continued)

Name	Description	Required Value
ConnectionRetry Interval	<p>Specifies the milliseconds of pause before each reattempt to access the database. This setting is used in conjunction with the 'Connection Retries' setting.</p> <p>For example: In the event that the Adapter cannot connect to the Database, the Adapter will try to reconnect to the database in 5 second intervals, a total of 10 times, when the Connection Retries property is set at 10 and the Connection Retry Interval property is 5000.</p>	An integer indicating the configured length of the time (in milliseconds) before each reattempt to access the destination file. The configured default is <b>1000</b> (1 second).

## Outbound Environment Properties for Non-Transactional z/OS and AS/400

The Outbound Non-Transactional z/OS and AS/400 properties, accessed from the NetBeans Services window, are organized into the following sections:

- [“JDBC Connector Settings for Non-Transactional z/OS and AS/400” on page 22](#)
- [“Connection Retry Settings for Non-Transactional z/OS and AS/400” on page 24](#)

## JDBC Connector Settings for Non-Transactional z/OS and AS/400

The **JDBC Connector Settings** section of the Outbound Non-Transactional z/OS and AS/400 Environment contains the top-level parameters displayed in the following table.

TABLE 11 Outbound Non-transactional Adapter for z/OS and AS/400 - JDBC Connector Settings

Name	Description	Required Value
Description	Enter a description for the database.	A valid string. The default value is <b>DB2 Datasource For AS400/zOS</b> .
ServerName	Specifies the host name of the external database server.	Any valid string.
LocationName	Specifies the Location Name for the DB2 database that is being used on AS400/zOS. You can issue a “Select current service from sysibm.sysdummy1” to the database to find out its value.	A valid port number. The default is <b>446</b> .

**TABLE 11** Outbound Non-transactional Adapter for z/OS and AS/400 - JDBC Connector Settings  
(Continued)

Name	Description	Required Value
PackageCollection	Specifies the PackageCollection for the DB2 database that is being used on AS400/zOS. Use the same one you used in the Wizard Connection Panel.	Any valid String.
User	Specifies the user name that the Adapter uses to connect to the database.	Any valid string.
Password	Specifies the password used to access the database.	Any valid string.
DriverProperties	<p>Any additional settings that are not otherwise part of the external system properties can be set here.</p> <p>Typically, anything that you would pass to the driver through the connect string, in the form of “AProperty = AValue” can be set in Java by calling setAProperty (“AValue”) which becomes setAProperty #AValue##. Use the JDBC driver that is shipped with this Adapter.</p> <p><b>Example 1:</b></p> <p>To execute the method “setSpyAttributes” for the DataDirect driver, set the following string for the URL: “setSpyAttribute#&lt;url&gt;##”.</p> <p><b>Example 2:</b></p> <p>To set DataDirect’s Spy Log, the Driver properties entry requires the following string:</p> <pre>setURL#jdbc:Seebeyond:DB2://&lt;server&gt;:4100;DatabaseName=&lt;database&gt;## setSpyAttributes#log=(file) c:/temp/spy.log;logTName=yes##</pre> <p><b>Note</b> – Spy Log should be set for debugging purposes only.</p> <p><b>Example 3:</b></p> <p>For DB2 UDB, the Connect String parameter “SecurityMechanism=Encrypted Password” can be passed to the driver as “setSecurityMechanism# Encrypted Password##” This will call setSecurityMechanism (“Encrypted Password”) before the connection is established.</p>	<p>A delimited list of parametrized method calls.</p> <p>The valid format is (with no spaces):</p> <pre>&lt;method-name-1&gt;# &lt;param-1&gt;#&lt;param-2&gt;#... &lt;param-n&gt;## &lt;method-name-2&gt;# &lt;param-1&gt;#&lt;param-2&gt;#... &lt;param-n&gt;##</pre>

**TABLE 11** Outbound Non-transactional Adapter for z/OS and AS/400 - JDBC Connector Settings  
(Continued)

Name	Description	Required Value
Delimiter	This is the delimiter character to be used in the DriverProperties prompt.	A valid delimiter. The default is #.
MinPoolSize	Specifies the minimum number of physical connections the pool should keep available at all times. 0 (zero) indicates that there should be no physical connections in the pool and the new connections should be created as needed.  If the pool size is too small, you may experience longer connection times due to the existing number of physical connections.  A connection that stays in the pool allows transactions to use it via a logical connection which is faster.	A valid numeric value. The default is 0.
MaxPoolSize	Specifies the maximum number of physical connections the pool should keep available at all times. 0 (zero) indicates that there is no maximum.  The pool size depends on the transaction volume and response time. If the pool size is too big, you may end up with too many connections with the database.	A valid numeric value. The default is 10.
MaxIdleTime	The maximum number of seconds that a physical connection may remain unused before it is closed. 0 (zero) indicates that there is no limit.	A valid numeric value. The default is 0.

## Connection Retry Settings for Non-Transactional z/OS and AS/400

The **Connection Retry Settings** section of the Outbound Non-Transactional z/OS and AS/400 Environment contains the top-level parameters displayed in the following table.

**TABLE 12** Outbound Non-Transactional Adapter for z/OS and AS/400 - Connection Retry Settings

Name	Description	Required Value
ConnectionRetries	Specifies the number of retries to establish a connection with the DB2 Adapter database upon a failure to acquire one.	An integer indicating the number of attempts allowed to establish a connection. The configured default is 0.



**TABLE 12** Outbound Non-Transactional Adapter for z/OS and AS/400 - Connection Retry Settings  
(Continued)

Name	Description	Required Value
ConnectionRetry Interval	<p>Specifies the milliseconds of pause before each reattempt to access the database. This setting is used in conjunction with the 'Connection Retries' setting.</p> <p>For example: In the event that the Adapter cannot connect to the Database, the Adapter will try to reconnect to the database in 5 second intervals, a total of 10 times, when the Connection Retries property is set at 10 and the Connection Retry Interval property is 5000.</p>	An integer indicating the configured length of the time (in milliseconds) before each reattempt to access the destination file. The configured default is <b>1000</b> (1 second).

## eTL Environment Properties

This section contains all the configuration properties needed for eTL collaborations.

### Alternate ID Properties

This section contains all the configuration properties that allow the user to override database catalogs and/or schema names used in the SQL statements generated by eTL collaborations. The **Alternate ID** section contains the top-level parameters displayed in the following table. The configuration properties specified in this section will not affect the functionality of DB2 Adapter.

**TABLE 13** eTL Environment - Alternate ID Settings

Name	Description	Required Value
OverwriteCatalog Name	Indicates whether or not to overwrite the database catalog name in the SQL statements generated by eTL collaboration.	A True or False value. If you select "True", the content of the "CatalogNameMap" property will be used. If "False" is selected, the catalog name will be overwritten. The default is <b>True</b> .
CatalogNameMap	Specifies the key-value pair(s) for catalog name overwrites. The correct format is: <code>&lt;oldCatalogName1&gt;=&lt;newCatalogName1&gt;;</code> <code>&lt;oldCatalogName2&gt;=&lt;newCatalogName2&gt;;...</code>	A semi-colon separated list that contains valid name overwrites.

TABLE 13 eTL Environment - Alternate ID Settings (Continued)

Name	Description	Required Value
OverwriteSchema Name	Indicates whether or not to overwrite the database schema name in the SQL statements generated by eTL collaboration.	A True or False value. If you select “True”, the content of next configuration property “SchemaNameMap” will be used. If “False” is selected, the schema name will be overwritten. The default is <b>True</b> .
SchemaNameMap	Specifies the key-value pair(s) for schema name overwrites. The correct format is: <oldSchemaName1>=<newSchemaName1>; <oldSchemaName2>=<newSchemaName2>; . . .	A semi-colon separated list that contains valid name overwrites.

## DB2 Connect Adapter Environment Properties

The DB2 Connect Adapter configuration parameters, accessed from the NetBeans Services window, are organized into the following sections:

- “Inbound DB2 Connect Adapter - Parameter Settings” on page 26
- “Outbound DB2 Connect Adapter - JDBC Connector Settings” on page 27
- “Outbound DB2 Connect Adapter - Connection Retry Settings” on page 28
- “Outbound DB2 Connect non-Transactional Adapter - JDBC Connector Settings” on page 29
- “Outbound DB2 Connect non-Transactional Adapter - Connection Retry Settings” on page 30
- “Outbound DB2 Connect XA Adapter - JDBC Connector Settings” on page 31
- “Outbound DB2 Connect XA Adapter - Connection Retry Settings” on page 32
- “Inbound DB2 Connect Type 4 Adapter - Parameter Settings” on page 33
- “Outbound DB2 Connect Type 4 Adapter - JDBC Connector Settings” on page 34
- “Outbound DB2 Connect Type 4 Adapter - Connection Retry Settings” on page 35
- “Outbound DB2 Connect non-Transactional Type 4 Adapter - JDBC Connector Settings” on page 35
- “Outbound DB2 Connect non-Transactional Type 4 Adapter - Connection Retry Settings” on page 37
- “Outbound DB2 Connect Type 4 XA Adapter - JDBC Connector Settings” on page 37
- “Outbound DB2 Connect Type 4 XA Adapter - Connection Retry Settings” on page 38

## Inbound DB2 Connect Adapter - Parameter Settings

The **Inbound DB2 Connect Adapter > Parameter Settings** section of the DB2 Connect Environment properties, contains the top-level parameters displayed in the following table.

TABLE 14 Inbound DB2 Connect Adapter - Parameter Settings.

Name	Description	Required Value
Description	Enter a description for the database.	A valid string. The default is <b>DB2 Connect DriverManager</b> .
DatabaseName	Specifies the name of the database instance used on the Server.	Any valid string.
User	Specifies the user name that the Adapter uses to connect to the database.	Any valid string.
Password	Specifies the password used to access the database.	Any valid string.

## Outbound DB2 Connect Adapter - JDBC Connector Settings

The **Outbound DB2 Connect Adapter > JDBC Connector Settings** section of the DB2 Connect Environment properties, contains the top-level parameters displayed in the following table.

TABLE 15 Outbound DB2 Connect Adapter - JDBC Connector Settings

Name	Description	Required Value
Description	Enter a description for the database.	A valid string. The default value is <b>DB2 Connect Connection Pool Datasource</b> .
DatabaseName	Specifies the name of the database instance used on the Server.	Any valid string.
User	Specifies the user name that the Adapter uses to connect to the database.	Any valid string.
Password	Specifies the password used to access the database.	Any valid string.

TABLE 15 Outbound DB2 Connect Adapter - JDBC Connector Settings

*(Continued)*

Name	Description	Required Value
DriverProperties	Use the JDBC driver that is shipped with this Adapter. Often times the DataSource implementation needs to execute additional methods to assure a connection. You must identify the additional methods in the Driver Properties.  For example: To obtain a DB2 Connect trace, give the method a string for the email: setTraceLevel#-1##setTraceFile#c:/temp/db2trace.txt##.	A list of properties and their parameters.  The format is (with no spaces): <method-name-1># <param-1>#<param-2>#... <param-n>## <method-name-2># <param-1>#<param-2>#... <param-n>##.
Delimiter	This is the delimiter character to be used in the DriverProperties prompt.	The default is #.
MinPoolSize	The minimum number of physical connections the pool keeps available at all times. 0 (zero) indicates that there are no physical connections in the pool and new connections are created as needed.	A valid numeric value. The default is 0.
MaxPoolSize	The maximum number of physical connections the pool keeps available at all times. 0 (zero) indicates that there is no maximum.	A valid numeric value. The default is 10.
MaxIdleTime	The maximum number of seconds that a physical connection may remain unused before it is closed. 0 (zero) indicates that there is no limit.	A valid numeric value. The default is 0.

## Outbound DB2 Connect Adapter - Connection Retry Settings

The **Outbound DB2 Connect Adapter > Connection Retry Settings** section of the DB2 Connect Environment properties, contains the top-level parameters displayed in the following table.

TABLE 16 Outbound DB2 Connect Adapter - Connection Retry Settings

Name	Description	Required Value
ConnectionRetries	Specifies the number of retries to establish a connection with the DB2 Connect database upon a failure to acquire one.	an integer indicating the number of attempts allowed to establish a connection. The configured default is 0.

TABLE 16 Outbound DB2 Connect Adapter - Connection Retry Settings *(Continued)*

Name	Description	Required Value
ConnectionRetry Interval	<p>Specifies the milliseconds of pause before each attempt to access the database. This setting is used in conjunction with the Connection Retries setting.</p> <p>For example: In the event that the Adapter cannot connect to the Database, the Adapter will try to reconnect to the database 10 times in 5 seconds intervals when the Connection Retries is 10 and the Connection Retry Interval is 5000.</p>	An integer indicating the configured length of the time (in milliseconds) before each reattempt to access the destination file. The configured default is <b>1000</b> (1 second).

## Outbound DB2 Connect non-Transactional Adapter - JDBC Connector Settings

The **Outbound DB2 Connect non-Transactional Adapter > JDBC Connector Settings** section of the DB2 Connect Environment properties, contains the top-level parameters displayed in the following table.

TABLE 17 Outbound DB2 Connect non-Transactional Adapter - JDBC Connector Settings

Name	Description	Required Value
Description	Enter a description for the database.	A valid string. The default value is <b>DB2 Connect non-Transactional Connection Pool Datasource</b> .
DatabaseName	Specifies the name of the database instance used on the Server.	Any valid string.
User	Specifies the user name that the Adapter uses to connect to the database.	Any valid string.
Password	Specifies the password used to access the database.	Any valid string.

**TABLE 17** Outbound DB2 Connect non-Transactional Adapter - JDBC Connector Settings  
(Continued)

Name	Description	Required Value
DriverProperties	Use the JDBC driver that is shipped with this Adapter. Often times the DataSource implementation needs to execute additional methods to assure a connection. You must identify the additional methods in the Driver Properties.  For example: To obtain a DB2 Connect trace, give the method a string for the email: setTraceLevel#-1##setTraceFile# c:/temp/db2trace.txt##	A list of properties and their parameters.  The format is (with no spaces): <method-name-1># <param-1>#<param-2>#... <param-n>## <method-name-2># <param-1>#<param-2>#... <param-n>##
Delimiter	This is the delimiter character to be used in the DriverProperties prompt.	The default is #.
MinPoolSize	The minimum number of physical connections the pool keeps available at all times. 0 (zero) indicates that there are no physical connections in the pool and new connections are created as needed.	A valid numeric value. The default is 0.
MaxPoolSize	The maximum number of physical connections the pool keeps available at all times. 0 (zero) indicates that there is no maximum.	A valid numeric value. The default is 10.
MaxIdleTime	The maximum number of seconds that a physical connection may remain unused before it is closed. 0 (zero) indicates that there is no limit.	A valid numeric value. The default is 0.

## Outbound DB2 Connect non-Transactional Adapter - Connection Retry Settings

The **Outbound DB2 Connect non-Transactional Adapter > Connection Retry Settings** section of the DB2 Connect Environment properties, contains the top-level parameters displayed in the following table.

**TABLE 18** Outbound DB2 Connect non-Transactional Adapter - Connection Retry Settings

Name	Description	Required Value
ConnectionRetries	Specifies the number of retries to establish a connection with the DB2 Connect database upon a failure to acquire one.	an integer indicating the number of attempts allowed to establish a connection. The configured default is 0.

**TABLE 18** Outbound DB2 Connect non-Transactional Adapter - Connection Retry Settings  
(Continued)

Name	Description	Required Value
ConnectionRetry Interval	<p>Specifies the milliseconds of pause before each attempt to access the database. This setting is used in conjunction with the Connection Retries setting.</p> <p>For example: In the event that the Adapter cannot connect to the Database, the Adapter will try to reconnect to the database 10 times in 5 seconds intervals when the Connection Retries is 10 and the Connection Retry Interval is 5000.</p>	An integer indicating the configured length of the time (in milliseconds) before each reattempt to access the destination file. The configured default is <b>1000</b> (1 second).

## Outbound DB2 Connect XA Adapter - JDBC Connector Settings

The **Outbound DB2 Connect XA Adapter > JDBC Connector Settings** section of the DB2 Connect Environment properties, contains the top-level parameters displayed in the following table.

**TABLE 19** Outbound DB2 Connect XA Adapter - JDBC Connector Settings

Name	Description	Required Value
Description	Enter a description for the database.	A valid string. The default value is <b>DB2 Connect XA Datasource</b> .
DatabaseName	Specifies the name of the database instance used on the Server.	Any valid string.
User	Specifies the user name that the Adapter uses to connect to the database.	Any valid string.
Password	Specifies the password used to access the database.	Any valid string.

TABLE 19 Outbound DB2 Connect XA Adapter - JDBC Connector Settings (Continued)

Name	Description	Required Value
DriverProperties	Use the JDBC driver that is shipped with this Adapter. Often times the DataSource implementation needs to execute additional methods to assure a connection. You must identify the additional methods in the Driver Properties.  For example: To obtain a DB2 Connect trace, give the method a string for the email: setTraceLevel#-1##setTraceFile# c:/temp/db2trace.txt##.	A list of properties with their parameters.  The format is (with no spaces):  <method-name-1># <param-1>#<param-2>#... <param-n>## <method-name-2># <param-1>#<param-2>#... <param-n>##
Delimiter	This is the delimiter character to be used in the DriverProperties prompt.	The default is #.
MinPoolSize	The minimum number of physical connections the pool keeps available at all times. 0 (zero) indicates that there are no physical connections in the pool and new connections are created as needed.	A valid numeric value. The default is 0.
MaxPoolSize	The maximum number of physical connections the pool keeps available at all times. 0 (zero) indicates that there is no maximum.	A valid numeric value. The default is 10.
MaxIdleTime	The maximum number of seconds that a physical connection may remain unused before it is closed. 0 (zero) indicates that there is no limit.	A valid numeric value. The default is 0.

## Outbound DB2 Connect XA Adapter - Connection Retry Settings

The **Outbound DB2 Connect XA Adapter > Connection Retry Settings** section of the DB2 Connect Environment properties, contains the top-level parameters displayed in the following table.

TABLE 20 Outbound DB2 Connect XA Adapter - Connection Retry Settings

Name	Description	Required Value
ConnectionRetries	Specifies the number of retries to establish a connection with the DB2 Connect database upon a failure to acquire one.	an integer indicating the number of attempts allowed to establish a connection. The configured default is 0.



TABLE 20 Outbound DB2 Connect XA Adapter - Connection Retry Settings *(Continued)*

Name	Description	Required Value
ConnectionRetry Interval	<p>Specifies the milliseconds of pause before each attempt to access the database. This setting is used in conjunction with the Connection Retries setting.</p> <p>For example: In the event that the Adapter cannot connect to the Database, the Adapter will try to reconnect to the database 10 times in 5 seconds intervals when the Connection Retries is 10 and the Connection Retry Interval is 5000.</p>	An integer indicating the configured length of the time (in milliseconds) before each reattempt to access the destination file. The configured default is <b>1000</b> (1 second).

## Inbound DB2 Connect Type 4 Adapter - Parameter Settings

The **Inbound DB2 Connect Type 4 Adapter > Parameter Settings** section of the DB2 Connect Environment properties, contains the top-level parameters displayed in the following table.

TABLE 21 Inbound DB2 Connect Type 4 Adapter - Parameter Settings

Name	Description	Required Value
Description	Enter a description for the database.	A valid string. The default is <b>DB2 Connect DriverManager</b> .
ServerName	Specifies the host name of the external database server.	Any valid string.
PortNumber	Specifies the I/O port number on which the server is listening for connection requests.	A valid port number. The default is 446.
DatabaseName	Specifies the name of the database instance used on the Server.	Any valid string.
User	Specifies the user name that the Adapter uses to connect to the database.	Any valid string.
Password	Specifies the password used to access the database.	Any valid string.

## Outbound DB2 Connect Type 4 Adapter - JDBC Connector Settings

The **Outbound DB2 Connect Type 4 Adapter > JDBC Connector Settings** section of the DB2 Connect Environment properties, contains the top-level parameters displayed in the following table.

**TABLE 22** Outbound DB2 Connect Type 4 Adapter - JDBC Connector Settings

Name	Description	Required Value
Description	Enter a description for the database.	A valid string. The default value is <b>DB2 Connect Type 4 Connection Pool Datasource</b> .
ServerName	Specifies the host name of the external database server.	Any valid string.
PortNumber	Specifies the I/O port number on which the server is listening for connection requests.	A valid port number. The default is <b>446</b> .
DatabaseName	Specifies the name of the database instance used on the Server.	Any valid string.
User	Specifies the user name that the Adapter uses to connect to the database.	Any valid string.
Password	Specifies the password used to access the database.	Any valid string.
DriverProperties	Use the JDBC driver that is shipped with this Adapter. Often times the DataSource implementation needs to execute additional methods to assure a connection. You must identify the additional methods in the Driver Properties.  For example: To obtain a DB2 Connect trace, give the method a string for the email: setTraceLevel#-1##setTraceFile# c:/temp/db2trace.txt##.	A list of properties with their parameters.  The format is (with no spaces):  <method-name-1># <param-1>#<param-2>#... <param-n>## <method-name-2># <param-1>#<param-2>#... <param-n>##
Delimiter	This is the delimiter character to be used in the DriverProperties prompt.	The default is #.
MinPoolSize	The minimum number of physical connections the pool keeps available at all times. 0 (zero) indicates that there are no physical connections in the pool and new connections are created as needed.	A valid numeric value. The default is 0.

**TABLE 22** Outbound DB2 Connect Type 4 Adapter - JDBC Connector Settings *(Continued)*

Name	Description	Required Value
MaxPoolSize	The maximum number of physical connections the pool keeps available at all times. 0 (zero) indicates that there is no maximum.	A valid numeric value. The default is 10.
MaxIdleTime	The maximum number of seconds that a physical connection may remain unused before it is closed. 0 (zero) indicates that there is no limit.	A valid numeric value. The default is 10.

## Outbound DB2 Connect Type 4 Adapter - Connection Retry Settings

The **Outbound DB2 Connect Type 4 Adapter > Connection Retry Settings** section of the DB2 Connect Environment properties, contains the top-level parameters displayed in the following table.

**TABLE 23** Outbound DB2 Connect Type 4 Adapter - Connection Retry Settings

Name	Description	Required Value
ConnectionRetries	Specifies the number of retries to establish a connection with the DB2 Connect database upon a failure to acquire one.	an integer indicating the number of attempts allowed to establish a connection. The configured default is <b>0</b> .
ConnectionRetry Interval	Specifies the milliseconds of pause before each attempt to access the database. This setting is used in conjunction with the Connection Retries setting.  For example: In the event that the Adapter cannot connect to the Database, the Adapter will try to reconnect to the database 10 times in 5 seconds intervals when the Connection Retries is 10 and the Connection Retry Interval is 5000.	An integer indicating the configured length of the time (in milliseconds) before each reattempt to access the destination file. The configured default is <b>1000</b> (1 second).

## Outbound DB2 Connect non-Transactional Type 4 Adapter - JDBC Connector Settings

The **Outbound DB2 Connect non-Transactional Type 4 Adapter > JDBC Connector Settings** section of the DB2 Connect Environment properties, contains the top-level parameters displayed in the following table.

TABLE 24 Outbound DB2 Connect non-Transactional Type 4 Adapter - JDBC Connector Settings

Name	Description	Required Value
Description	Enter a description for the database.	A valid string. The default value is <b>DB2 Connect Type 4 Connection Pool Datasource</b> .
ServerName	Specifies the host name of the external database server.	Any valid string.
PortNumber	Specifies the I/O port number on which the server is listening for connection requests.	A valid port number. The default is <b>446</b> .
DatabaseName	Specifies the name of the database instance used on the Server.	Any valid string.
User	Specifies the user name that the Adapter uses to connect to the database.	Any valid string.
Password	Specifies the password used to access the database.	Any valid string.
DriverProperties	Use the JDBC driver that is shipped with this Adapter. Often times the DataSource implementation needs to execute additional methods to assure a connection. You must identify the additional methods in the Driver Properties.  For example: To obtain a DB2 Connect trace, give the method a string for the email: setTraceLevel#-1##setTraceFile# c:/temp/db2trace.txt##.	A list of properties and their parameters.  The format is (with no spaces):  <method-name-1># <param-1>#<param-2>#... <param-n>## <method-name-2># <param-1>#<param-2>#... <param-n>##
Delimiter	This is the delimiter character to be used in the DriverProperties prompt.	The default is #.
MinPoolSize	The minimum number of physical connections the pool keeps available at all times. 0 (zero) indicates that there are no physical connections in the pool and new connections are created as needed.	A valid numeric value. The default is 0.
MaxPoolSize	The maximum number of physical connections the pool keeps available at all times. 0 (zero) indicates that there is no maximum.	A valid numeric value. The default is 10.
MaxIdleTime	The maximum number of seconds that a physical connection may remain unused before it is closed. 0 (zero) indicates that there is no limit.	A valid numeric value. The default is 0.

## Outbound DB2 Connect non-Transactional Type 4 Adapter - Connection Retry Settings

The **Outbound DB2 Connect non-Transactional Type 4 Adapter > Connection Retry Settings** section of the DB2 Connect Environment properties, contains the top-level parameters displayed in the following table.

**TABLE 25** Outbound DB2 Connect non-Transactional Type 4 Adapter - Connection Retry Settings

Name	Description	Required Value
ConnectionRetries	Specifies the number of retries to establish a connection with the DB2 Connect database upon a failure to acquire one.	an integer indicating the number of attempts allowed to establish a connection. The configured default is <b>0</b> .
ConnectionRetry Interval	Specifies the milliseconds of pause before each attempt to access the database. This setting is used in conjunction with the Connection Retries setting.  For example: In the event that the Adapter cannot connect to the Database, the Adapter will try to reconnect to the database 10 times in 5 seconds intervals when the Connection Retries is 10 and the Connection Retry Interval is 5000.	An integer indicating the configured length of the time (in milliseconds) before each reattempt to access the destination file. The configured default is <b>1000</b> (1 second).

## Outbound DB2 Connect Type 4 XA Adapter - JDBC Connector Settings

The **Outbound DB2 Connect Type 4 XA Adapter > JDBC Connector Settings** section of the DB2 Connect Environment properties, contains the top-level parameters displayed in the following table.

**TABLE 26** Outbound DB2 Connect Type 4 XA Adapter - JDBC Connector Settings

Name	Description	Required Value
Description	Enter a description for the database.	A valid string. The default value is <b>DB2 Connect Type 4 XA Datasource</b> .
ServerName	Specifies the host name of the external database server.	Any valid string.

**TABLE 26** Outbound DB2 Connect Type 4 XA Adapter - JDBC Connector Settings *(Continued)*

Name	Description	Required Value
PortNumber	Specifies the I/O port number on which the server is listening for connection requests.	A valid port number. The default is <b>446</b> .
DatabaseName	Specifies the name of the database instance used on the Server.	Any valid string.
User	Specifies the user name that the Adapter uses to connect to the database.	Any valid string.
Password	Specifies the password used to access the database.	Any valid string.
DriverProperties	Use the JDBC driver that is shipped with this Adapter. Often times the DataSource implementation needs to execute additional methods to assure a connection. You must identify the additional methods in the Driver Properties.  For example: To obtain a DB2 Connect trace, give the method a string for the email: setTraceLevel#-1##setTraceFile# c:/temp/db2trace.txt##.	A list of properties with their parameters.  The format is (with no spaces):  <method-name-1># <param-1>#<param-2>#... <param-n>## <method-name-2># <param-1>#<param-2>#... <param-n>##
Delimiter	This is the delimiter character to be used in the DriverProperties prompt.	The default is #.
MinPoolSize	The minimum number of physical connections the pool keeps available at all times. 0 (zero) indicates that there are no physical connections in the pool and new connections are created as needed.	A valid numeric value. The default is 0.
MaxPoolSize	The maximum number of physical connections the pool keeps available at all times. 0 (zero) indicates that there is no maximum.	A valid numeric value. The default is 10.
MaxIdleTime	The maximum number of seconds that a physical connection may remain unused before it is closed. 0 (zero) indicates that there is no limit.	A valid numeric value. The default is 0.

## Outbound DB2 Connect Type 4 XA Adapter - Connection Retry Settings

The **Outbound DB2 Connect Type 4 XA Adapter > Connection Retry Settings** section of the DB2 Connect Environment properties, contains the top-level parameters displayed in the following table.

TABLE 27 Outbound DB2 Connect Type 4 XA Adapter - Connection Retry Settings

Name	Description	Required Value
ConnectionRetries	Specifies the number of retries to establish a connection with the DB2 Connect database upon a failure to acquire one.	an integer indicating the number of attempts allowed to establish a connection. The configured default is <b>0</b> .
ConnectionRetry Interval	Specifies the milliseconds of pause before each attempt to access the database. This setting is used in conjunction with the Connection Retries setting.  For example: In the event that the Adapter cannot connect to the Database, the Adapter will try to reconnect to the database 10 times in 5 seconds intervals when the Connection Retries is 10 and the Connection Retry Interval is 5000.	An integer indicating the configured length of the time (in milliseconds) before each reattempt to access the destination file. The configured default is <b>1000</b> (1 second).

## Informix Adapter Environment Properties

The Adapter Environment Configuration properties contain parameters that define how the adapter connects to and interacts with other Enterprise Service Bus components within the Environment. When you create a new Informix External System, you may configure the type of External System required.

Available External System properties include:

- [“Informix Adapter External System Properties” on page 39](#)
- [“Outbound Informix Adapter External System Properties” on page 40](#)
- [“Outbound non-Transactional Informix Adapter External System Properties” on page 42](#)
- [“Outbound XA Informix Adapter External System Properties” on page 44](#)

## Informix Adapter External System Properties

Adapter External System properties must be configured from within the Environment. Until you have successfully configured all adapters for your Java CAPS project, your project cannot be properly executed. The following list identifies the Informix Adapter properties. There are four adapter connection types that the Informix Adapter implements.

- **Inbound Adapter**
  - [Table 28](#)
- **Outbound Adapter**
  - [Table 29](#)

- [Table 30](#)
- **Outbound non-Transactional Adapter**
  - [Table 31](#)
  - [Table 32](#)
- **Outbound XA Adapter**
  - [Table 33](#)
  - [Table 34](#)

## Inbound Informix Adapter External System Properties

Before deploying your adapter, you will need to set the Environment properties. This section describes the External System properties used by the Inbound Informix Adapter.

Details for the Inbound Informix Adapter Parameter Settings are listed in the following table.

**TABLE 28** Inbound Informix Adapter External System Parameter Settings

Name	Description	Required Value
Description	The description of the database.	Any valid string.
ServerName	Specifies the host name of the external database server.	Any valid string.
PortNumber	Specifies the I/O port number on which the server is listening for connection requests.	A valid port number. The default is <b>1526</b> .
InformixServer	Specifies the name of the Informix server being used.	Any valid string.
DatabaseName	Specifies the name of the database being used by the server.	Any valid string.
User	Specifies the user name the adapter uses to connect to the database.	Any valid string.
Password	Specifies the password used to access the database.	Any valid string.

## Outbound Informix Adapter External System Properties

Before deploying your adapter, you will need to set the Environment properties. This section describes the External System properties used by the Outbound Informix Adapter.



TABLE 29 Outbound Adapter External System JDBC Connector Settings

Name	Description	Required Value
Description	Enter a description for the database. The default is INFORMIX Connection Pool Datasource.	Any valid string.
ServerName	Specifies the host name of the external database server.	Any valid string.
PortNumber	Specifies the I/O port number on which the server is listening for connection requests.	A valid port number. The default is 1526.
InformixServer	Specifies the name of the Informix server being used.	Any valid string.
DatabaseName	Specifies the name of the database being used by the server.	Any valid string.
User	Specifies the user name the adapter uses to connect to the database.	Any valid string.
Password	Specifies the password used to access the database.	Any valid string.
DriverProperties	<p>Specifies the driver properties used for this adapter. If you choose not to use the JDBC driver that is shipped with this adapter, you will need to add the drivers properties to the adapter. Often times the DataSource implementation will need to execute additional properties to assure a connection. The additional methods will need to be identified in the Driver Properties.</p> <p>For example: to execute the method setURL, give the method a String for the URL "setURL#&lt;url&gt;##".</p> <p><b>Note</b> – The setSpyAttributes, contained in the following examples (between the last set of double octothorps [##] within each example), are used for debugging purposes and need not be used on every occasion.</p> <pre>setURL#jdbc:SeeBeyond:informix://&lt;host&gt;:1526;DatabaseName=&lt;database&gt;## setInformixServer#&lt;informixserver&gt; ##setSpyAttributes#log=(file) c:/temp/spy.log;logTName=yes#.</pre>	<p>A list of properties with their parameters.</p> <p>The format is (with no spaces):</p> <pre>&lt;method-name-1&gt;# &lt;param-1&gt;#&lt;param-2&gt;#... &lt;param-n&gt;## &lt;method-name-2&gt;# &lt;param-1&gt;#&lt;param-2&gt;#... &lt;param-n&gt;##</pre>
Delimiter	Specifies the delimiter character used in the DriverProperties prompt.	The default is #.

TABLE 29 Outbound Adapter External System JDBC Connector Settings (Continued)

Name	Description	Required Value
MinPoolSize	Specifies the minimum number of physical connections the pool should keep available at all times. 0 (zero) indicates that there should be no physical connections in the pool and the new connections should be created as needed.	A valid numeric value. The default is 0.
MaxPoolSize	Specifies the maximum number of physical connections the pool should keep available at all times. 0 (zero) indicates that there is no maximum.	A valid numeric value. The default is 10.
MaxIdleTime	Specifies the maximum number of seconds that a physical connection may remain unused before it is closed. 0 (zero) indicates that there is no limit.	A valid numeric value. The default is 0.

TABLE 30 Outbound Informix Adapter External System Connection Retry Settings

Name	Description	Required Value
ConnectionRetries	Specifies the number of retries to establish a connection upon initial failure.	A valid numeric value. The default is 0.
ConnectionRetry Interval	Specifies the number of milliseconds of pause before each reattempt to access the destination file. This property is used in conjunction with the Connection Retries setting.	A valid numeric value. The default is 1000.

## Outbound non-Transactional Informix Adapter External System Properties

Before deploying your adapter, you will need to set the Environment properties. This section describes the External System properties used by the Outbound Informix non-Transactional Adapter.

TABLE 31 Outbound non-Transactional Informix Adapter External System JDBC Connector Settings

Name	Description	Required Values
Description	Enter a description for the database. The default is INFORMIX non-Transactional Connection Pool Datasource.	Any valid string.
ServerName	Specifies the host name of the external database server.	Any valid string.

**TABLE 31** Outbound non-Transactional Informix Adapter External System JDBC Connector Settings  
(Continued)

Name	Description	Required Values
PortNumber	Specifies the I/O port number on which the server is listening for connection requests.	A valid port number. The default is <b>1526</b> .
InformixServer	Specifies the name of the Informix server being used.	Any valid string.
DatabaseName	Specifies the name of the database being used by the server.	Any valid string.
User	Specifies the user name the adapter uses to connect to the database.	Any valid string.
Password	Specifies the password used to access the database.	Any valid string.
DriverProperties	<p>Specifies the driver properties used for this adapter. If you choose not to use the JDBC driver that is shipped with this adapter, you will need to add the drivers properties to the adapter. Often times the DataSource implementation will need to execute additional properties to assure a connection. The additional methods will need to be identified in the Driver Properties.</p> <p>For example: to execute the method setURL, give the method a String for the URL “setURL#&lt;url&gt;##”.</p> <p><b>Note</b> – The setSpyAttributes, contained in the following examples (between the last set of double octothorps [#]) within each example), are used for debugging purposes and need not be used on every occasion.</p> <pre>setURL#jdbc:SeeBeyond:informix://&lt;host&gt;:1526;DatabaseName=&lt;database&gt;## setInformixServer#&lt;informixserver&gt;## setSpyAttributes#log=(file) c:/temp/spy.log;logTName=yes##.</pre>	<p>A list of properties with their parameters.</p> <p>The format is (with no spaces):</p> <pre>&lt;method-name-1&gt;# &lt;param-1&gt;#&lt;param-2&gt;#... &lt;param-n&gt;## &lt;method-name-2&gt;# &lt;param-1&gt;#&lt;param-2&gt;#... &lt;param-n&gt;##</pre>
Delimiter	Specifies the delimiter character used in the DriverProperties prompt.	The default is #.
MinPoolSize	Specifies the minimum number of physical connections the pool should keep available at all times. 0 (zero) indicates that there should be no physical connections in the pool and the new connections should be created as needed.	A valid numeric value. The default is 0.

**TABLE 31** Outbound non-Transactional Informix Adapter External System JDBC Connector Settings  
(Continued)

Name	Description	Required Values
MaxPoolSize	Specifies the maximum number of physical connections the pool should keep available at all times. 0 (zero) indicates that there is no maximum.	A valid numeric value. The default is <b>10</b> .
MaxIdleTime	Specifies the maximum number of seconds that a physical connection may remain unused before it is closed. 0 (zero) indicates that there is no limit.	A valid numeric value. The default is <b>0</b> .

**TABLE 32** Outbound non-Transactional Informix Adapter External System Connection Retry Settings

Name	Description	Required Value
ConnectionRetries	Specifies the number of retries to establish a connection upon initial failure.	A valid numeric value. The default is <b>0</b> .
ConnectionRetryInterval	Specifies the number of milliseconds of pause before each reattempt to access the destination file. This property is used in conjunction with the Connection Retries setting.	A valid numeric value. The default is <b>1000</b> .

## Outbound XA Informix Adapter External System Properties

Before deploying your adapter, you will need to set the Environment properties. This section describes the External System properties used by the Outbound Informix XA Adapter.

**TABLE 33** Outbound XA Informix Adapter External System JDBC Connector Settings

Name	Description	Required Value
Description	Enter a description for the database. The default is INFORMIX XA Connection Pool Datasource.	Any valid string.
ServerName	Specifies the host name of the external database server.	Any valid string.
PortNumber	Specifies the I/O port number on which the server is listening for connection requests.	A valid port number. The default is <b>1526</b> .
InformixServer	Specifies the name of the Informix server being used.	Any valid string.
DatabaseName	Specifies the name of the database being used by the server.	Any valid string.

TABLE 33 Outbound XA Informix Adapter External System JDBC Connector Settings (Continued)

Name	Description	Required Value
User	Specifies the user name the adapter uses to connect to the database.	Any valid string.
Password	Specifies the password used to access the database.	Any valid string.
DriverProperties	<p>Specifies the driver properties used for this adapter. If you choose not to use the JDBC driver that is shipped with this adapter, you will need to add the drivers properties to the adapter. Often times the DataSource implementation will need to execute additional properties to assure a connection. The additional methods will need to be identified in the Driver Properties.</p> <p>For example: to execute the method setURL, give the method a String for the URL “setURL#&lt;url&gt;##”.</p> <p><b>Note</b> – The setSpyAttributes, contained in the following examples (between the last set of double octothorps [#]) within each example), are used for debugging purposes and need not be used on every occasion.</p> <pre>setURL#jdbc:SeeBeyond:informix://&lt;host&gt; 1526;DatabaseName=&lt;database&gt;## setInformixServer#&lt;informixserver&gt;## setSpyAttributes#log=(file) c:/temp/spy.log;logTName=yes##</pre>	<p>A list of properties with their parameters.</p> <p>The format is (with no spaces):</p> <pre>&lt;method-name-1&gt;# &lt;param-1&gt;#&lt;param-2&gt;#... &lt;param-n&gt;## &lt;method-name-2&gt;# &lt;param-1&gt;#&lt;param-2&gt;#... &lt;param-n&gt;##</pre>
Delimiter	Specifies the delimiter character used in the DriverProperties prompt.	The default is #.
MinPoolSize	Specifies the minimum number of physical connections the pool should keep available at all times. 0 (zero) indicates that there should be no physical connections in the pool and the new connections should be created as needed.	A valid numeric value. The default is 0.
MaxPoolSize	Specifies the maximum number of physical connections the pool should keep available at all times. 0 (zero) indicates that there is no maximum.	A valid numeric value. The default is 10.

TABLE 33 Outbound XA Informix Adapter External System JDBC Connector Settings (Continued)

Name	Description	Required Value
MaxIdleTime	Specifies the maximum number of seconds that a physical connection may remain unused before it is closed. 0 (zero) indicates that there is no limit.	A valid numeric value. The default is 0.

TABLE 34 Outbound XA Informix Adapter External System Connection Retry Settings

Name	Description	Required Value
ConnectionRetries	Specifies the number of retries to establish a connection upon initial failure.	A valid numeric value. The default is 0.
ConnectionRetry Interval	Specifies the number of milliseconds of pause before each reattempt to access the destination file. This property is used in conjunction with the Connection Retries setting.	A valid numeric value. The default is 1000.

## Oracle Adapter Environment Properties

The Oracle Adapter configuration parameters, accessed from the NetBeans Services window, are organized into the following sections:

- [“Inbound Oracle Adapter Environment Properties” on page 46](#)
- [“Outbound Oracle Adapter Environment Properties” on page 47](#)
- [“Outbound Oracle Adapter Environment Properties with XA support” on page 50](#)

## Inbound Oracle Adapter Environment Properties

The **Parameter Settings** section of the Inbound Oracle Environment contains the top-level parameters displayed in the following table.

TABLE 35 Inbound Oracle Adapter Environment Properties

Name	Description	Required Value
Description	Enter a description for the database.	A valid string. The default is <b>Oracle DriverManager</b>
ServerName	Specifies the host name of the external database server.	Any valid string.
PortNumber	Specifies the I/O port number on which the server is listening for connection requests.	A valid port number. The default is 1521.
DatabaseName	Specifies the name of the Oracle SID.	Any valid string.

TABLE 35 Inbound Oracle Adapter Environment Properties (Continued)

Name	Description	Required Value
User	Specifies the user name that the Adapter uses to connect to the database.	Any valid string.
Password	Specifies the password used to access the database.	Any valid string.

## Outbound Oracle Adapter Environment Properties

The Outbound Oracle Adapter properties, accessed from the NetBeans Services window, are organized into the following sections:

- “JDBC Connector Settings” on page 47
- “Connection Retry Settings” on page 49

### JDBC Connector Settings

The **JDBC Connector Settings** section of the Outbound Oracle Environment contains the top-level parameters displayed in the following table.

TABLE 36 Outbound Adapter Environment JDBC Connector Settings

Name	Description	Required Value
Description	Enter a description for the database.	A valid string. The default is <b>Oracle Connection Pool Datasource</b>
ServerName	Specifies the host name of the external database server.	Any valid string.
PortNumber	Specifies the I/O port number on which the server is listening for connection requests.	A valid port number. The default is <b>1521</b> .
DatabaseName	Specifies the name of the Oracle SID.	Any valid string.
User	Specifies the user name that the Adapter uses to connect to the database.	Any valid string.
Password	Specifies the password used to access the database.	Any valid string.

TABLE 36 Outbound Adapter Environment JDBC Connector Settings (Continued)

Name	Description	Required Value
DriverProperties (Optional Setting)	<p>Use the JDBC driver that is shipped with this Adapter. The DataSource implementation may need to execute additional methods to assure a successful run. These additional methods need to be identified in the Driver Properties.</p> <p>A <code>java.util.Properties</code> parameter is represented by a comma-separated list of name and value pairs. For example:</p> <pre>setConnectionProperties# oracle.jdbc.ReadTimeout=30000,oracle.net. READ_TIMEOUT=30000,oracle.net. CONNECT_TIMEOUT=30000##</pre> <p>Note that white space is not trimmed; and if a comma, backslash, or equals character is included in any of the values, it needs to be preceded by a backslash (\) as an escape character.</p>	<p>A list of properties with their parameters.</p> <p>The format is (with no spaces):</p> <pre>&lt;method-name-1&gt;# &lt;param-1&gt;,&lt;param-2&gt;,... &lt;param-n&gt;## &lt;method-name-2&gt;# &lt;param-1&gt;,&lt;param-2&gt;,... &lt;param-n&gt;##</pre>
Delimiter	This is the delimiter character to be used in the DriverProperties prompt.	The default is #. See the DriverProperties property above for more information on how the default value is used.
TNSEntry	Specifies the TNS name for the Oracle instance specified in <code>TNSNAMES.ORA</code> . If a TNS name is specified, then the OCI driver is used, which further requires installation of the Oracle client. If a TNS name is not specified, then the thin driver is used.	A valid TNS name if using the OCI driver; otherwise do not enter any value.
MinPoolSize	<p>Specifies the minimum number of physical connections the pool should keep available at all times. 0 (zero) indicates that there should be no physical connections in the pool and the new connections should be created as needed.</p> <p>If the pool size is too small, you may experience longer connection times due to the existing number of physical connections.</p> <p>A connection that stays in the pool allows transactions to use it via a logical connection which is faster.</p>	A valid numeric value. The default is 0.



TABLE 36 Outbound Adapter Environment JDBC Connector Settings (Continued)

Name	Description	Required Value
MaxPoolSize	Specifies the maximum number of physical connections the pool should keep available at all times. 0 (zero) indicates that there is no maximum.  The pool size depends on the transaction volume and response time. If the pool size is too big, you may end up with too many connections with the database.	A valid numeric value. The default is <b>10</b> .
MaxIdleTime	The maximum number of seconds that a physical connection may remain unused before it is closed. 0 (zero) indicates that there is no limit.	A valid numeric value. The default is <b>0</b> .

## Connection Retry Settings

The **Connection Retry Settings** section of the Outbound Oracle Environment contains the top-level parameters displayed in the following table.

TABLE 37 Outbound Adapter Environment Connection Retry Settings

Name	Description	Required Value
ConnectionRetries	Specifies the number of retries to establish a connection with the Oracle database upon a failure to acquire one.	An integer indicating the number of attempts allowed to establish a connection. The configured default is <b>0</b> .
ConnectionRetry Interval	Specifies the milliseconds of pause before each attempt to access the database. This setting is used in conjunction with the 'Connection Retries' setting.  For example: In the event that the Adapter cannot connect to the Database, the Adapter will try to reconnect to the database in 5 second intervals, a total of 10 times, when the Connection Retries property is set at 10 and the Connection Retry Interval property is 5000.	An integer indicating the configured length of the time (in milliseconds) before each reattempt to access the destination file. The configured default is <b>1000</b> ( 1 second).

## Outbound Oracle Adapter Environment Properties with XA support

The Outbound Oracle Adapter properties with XA support, accessed from the NetBeans Services window, are organized into the following sections:

- “JDBC Connector Settings (with XA support)” on page 50
- “Connection Retry Settings (with XA support)” on page 52

### JDBC Connector Settings (with XA support)

The **JDBC Connector Settings** section of the Outbound XA Oracle Environment contains the top-level parameters displayed in the following table.

**TABLE 38** Outbound XA Adapter Environment JDBC Connector Settings

Name	Description	Required Value
Description	Enter a description for the database.	A valid string. The default is <b>Oracle XA Datasource</b>
ServerName	Specifies the host name of the external database server.	Any valid string.
PortNumber	Specifies the I/O port number on which the server is listening for connection requests.	A valid port number. The default is <b>1521</b> .
DatabaseName	Specifies the name of the Oracle SID.	Any valid string.
User	Specifies the user name that the Adapter uses to connect to the database.	Any valid string.
Password	Specifies the password used to access the database.	Any valid string.

TABLE 38 Outbound XA Adapter Environment JDBC Connector Settings (Continued)

Name	Description	Required Value
DriverProperties (Optional Setting)	<p>Use the JDBC driver that is shipped with this Adapter. The DataSource implementation may need to execute additional methods to assure a successful run. These additional methods need to be identified in the Driver Properties.</p> <p>A <code>java.util.Properties</code> parameter is represented by a comma-separated list of name and value pairs. For example:</p> <pre>setConnectionProperties#oracle.jdbc. ReadTimeout=30000,oracle.net.READ_TIMEOUT= 30000,oracle.net.CONNECT_TIMEOUT=30000##</pre> <p>Note that white space is not trimmed; and if a comma, backslash, or equals character is included in any of the values, it needs to be preceded by a backslash (\) as an escape character.</p>	<p>A list of properties with their parameters.</p> <p>The format is (with no spaces):</p> <pre>&lt;method-name-1&gt;# &lt;param-1&gt;,&lt;param-2&gt;,... &lt;param-n&gt;## &lt;method-name-2&gt;# &lt;param-1&gt;,&lt;param-2&gt;,... &lt;param-n&gt;##</pre>
Delimiter	This is the delimiter character to be used in the DriverProperties prompt.	The default is #. See the DriverProperties property above for more information on how the default value is used.
TNSEntry	Specifies the TNS name for the Oracle instance specified in <code>TNSNAMES.ORA</code> . If a TNS name is specified, then the OCI driver is used, which further requires installation of the Oracle client. If a TNS name is not specified, then the thin driver is used.	A valid TNS name if using the OCI driver; otherwise do not enter any value.
MinPoolSize	<p>Specifies the minimum number of physical connections the pool should keep available at all times. 0 (zero) indicates that there should be no physical connections in the pool and the new connections should be created as needed.</p> <p>If the pool size is too small, you may experience longer connection times due to the existing number of physical connections.</p> <p>A connection that stays in the pool allows transactions to use it via a logical connection which is faster.</p>	A valid numeric value. The default is 0.

TABLE 38 Outbound XA Adapter Environment JDBC Connector Settings (Continued)

Name	Description	Required Value
MaxPoolSize	Specifies the maximum number of physical connections the pool should keep available at all times. 0 (zero) indicates that there is no maximum.  The pool size depends on the transaction volume and response time. If the pool size is too big, you may end up with too many connections with the database.	A valid numeric value. The default is <b>10</b> .
MaxIdleTime	The maximum number of seconds that a physical connection may remain unused before it is closed. 0 (zero) indicates that there is no limit.	A valid numeric value. The default is <b>0</b> .

## Connection Retry Settings (with XA support)

The **Connection Retry Settings** section of the Outbound XA Oracle Environment contains the top-level parameters displayed in the following table.

TABLE 39 Outbound XA Adapter Environment Connection Retry Settings

Name	Description	Required Value
ConnectionRetries	Specifies the number of retries to establish a connection with the Oracle database upon a failure to acquire one.	an integer indicating the number of attempts allowed to establish a connection. The configured default is <b>0</b> .
ConnectionRetry Interval	Specifies the milliseconds of pause before each attempt to access the database. This setting is used in conjunction with the 'Connection Retries' setting.  For example: In the event that the Adapter cannot connect to the Database, the Adapter will try to reconnect to the database in 5 second intervals, a total of 10 times, when the Connection Retries property is set at 10 and the Connection Retry Interval property is 5000.	An integer indicating the configured length of the time (in milliseconds) before each reattempt to access the destination file. The configured default is <b>1000</b> ( 1 second).

## SQL Server Adapter Environment Properties

The SQL Server Adapter configuration parameters, accessed from the NetBeans Services window, are organized into the following sections:

- [“Inbound SQL Server Adapter Properties” on page 53](#)
- [“Outbound SQL Server Adapter Properties” on page 53](#)
- [“Outbound SQL Server Non-Transactional Adapter Properties” on page 56](#)
- [“Outbound SQL Server XA Adapter Properties” on page 58](#)

### Inbound SQL Server Adapter Properties

The **Parameter Settings** section of the Inbound SQL Server Environment contains the top-level parameters displayed in the following table.

**TABLE 40** Inbound SQL Server Adapter Environment Properties

Name	Description	Required Value
Description	Enter a description for the database.	A valid string. The default is <b>SQLServer DriverManager</b> .
ServerName	Specifies the host name of the external database server.	Any valid string.
PortNumber	Specifies the I/O port number on which the server is listening for connection requests.	A valid port number. The default is 1433.
DatabaseName	Specifies the name of the database instance used on the Server.	Any valid string.
User	Specifies the user name that the Adapter uses to connect to the database.	Any valid string.
Password	Specifies the password used to access the database.	Any valid string.

### Outbound SQL Server Adapter Properties

The Outbound SQL Server Adapter properties, accessed from the NetBeans Services window, are organized into the following sections:

- [“JDBC Connector Settings” on page 54](#)
- [“Connection Retry Settings” on page 55](#)

## JDBC Connector Settings

The **JDBC Connector Settings** section of the Outbound SQL Server Environment contains the top-level parameters displayed in the following table.

**TABLE 41** Outbound Adapter Environment JDBC Connector Settings

Name	Description	Required Value
Description	Enter a description for the database.	A valid string. The default is <b>SQLServer Connection Pool Datasource</b> .
ServerName	Specifies the host name of the external database server.	Any valid string.
PortNumber	Specifies the I/O port number on which the server is listening for connection requests.	A valid port number. The default is 1433.
DatabaseName	Specifies the name of the database instance used on the Server.	Any valid string.
User	Specifies the user name that the Adapter uses to connect to the database.	Any valid string.
Password	Specifies the password used to access the database.	Any valid string.
DriverProperties	<p>The DataSource implementation may need to execute additional methods to assure a successful run. The additional methods need to be identified in the Driver Properties.</p> <p>For example: to execute the method <code>setSpyAttributes</code>, give the method a String for the URL “<code>setSpyAttribute#&lt;url&gt;##</code>”.</p> <p><b>Note</b> – The <code>setSpyAttributes</code> (for Data Direct drivers) that are contained in the following examples (between the last set of double octothorps [##] within each example), are used for debugging purposes and need not be used on every occasion.</p> <p>Optional—if you are using Spy Log:</p> <pre>setURL#jdbc:Seebeyond:SQLServer:// &lt;server&gt;:4100;DatabaseName=&lt;database&gt;## setSpyAttributes#log=(file) c:/temp/spy.log;logTName=yes#</pre>	<p>A list of properties delimited by the delimiter specified. For more information, see the Delimiter property below.</p> <p>The format is as follows (with no spaces):</p> <pre>&lt;method-name-1&gt;# &lt;param-1&gt;#&lt;param-2&gt;#... &lt;param-n&gt;## &lt;method-name-2&gt;# &lt;param-1&gt;#&lt;param-2&gt;#... &lt;param-n&gt;##</pre>

TABLE 41 Outbound Adapter Environment JDBC Connector Settings (Continued)

Name	Description	Required Value
Delimiter	This is the delimiter character to be used in the DriverProperties prompt.	The default is #. See the DriverProperties property above for more information on how the default value is used.
MinPoolSize	Specifies the minimum number of physical connections the pool should keep available at all times. 0 (zero) indicates that there should be no physical connections in the pool and the new connections should be created as needed.  If the pool size is too small, you may experience longer connection times due to the existing number of physical connections.  A connection that stays in the pool allows transactions to use it via a logical connection which is faster.	A valid numeric value. The default is 0.
MaxPoolSize	Specifies the maximum number of physical connections the pool should keep available at all times. 0 (zero) indicates that there is no maximum.  The pool size depends on the transaction volume and response time. If the pool size is too big, you may end up with too many connections with the database.	A valid numeric value. The default is 10.
MaxIdleTime	The maximum number of seconds that a physical connection may remain unused before it is closed. 0 (zero) indicates that there is no limit.	A valid numeric value.

## Connection Retry Settings

The **Connection Retry Settings** section of the Outbound SQL Server Environment contains the top-level parameters displayed in the following table.

TABLE 42 Outbound Adapter Environment Connection Retry Settings

Name	Description	Required Value
ConnectionRetries	Specifies the number of retries to establish a connection with the SQL Server database upon a failure to acquire one.	an integer indicating the number of attempts allowed to establish a connection. The configured default is 0.

TABLE 42 Outbound Adapter Environment Connection Retry Settings

*(Continued)*

Name	Description	Required Value
ConnectionRetry Interval	<p>Specifies the milliseconds of pause before each attempt to access the database. This setting is used in conjunction with the 'Connection Retries' setting.</p> <p>For example: In the event that the Adapter cannot connect to the Database, the Adapter will try to reconnect to the database in 5 second intervals, a total of 10 times, when the Connection Retries property is set at 10 and the Connection Retry Interval property is 5000.</p>	A valid numeric value. The default is <b>1000</b> .

## Outbound SQL Server Non-Transactional Adapter Properties

The Outbound SQL Server Non-Transactional Adapter properties, accessed from the NetBeans Services window, are organized into the following sections:

- [“JDBC Connector Settings” on page 56](#)
- [“Connection Retry Settings” on page 58](#)

### JDBC Connector Settings

The **JDBC Connector Settings** section of the Outbound SQL Server Non-Transactional Environment contains the top-level parameters displayed in the following table.

TABLE 43 Outbound Adapter Environment JDBC Connector Settings

Name	Description	Required Value
Description	Enter a description for the database.	A valid string. The default is <b>SQLServer Connection Pool Datasource</b> .
ServerName	Specifies the host name of the external database server.	Any valid string.
PortNumber	Specifies the I/O port number on which the server is listening for connection requests.	A valid port number. The default is 1433.
DatabaseName	Specifies the name of the database instance used on the Server.	Any valid string.
User	Specifies the user name that the Adapter uses to connect to the database.	Any valid string.



Name	Description	<i>(Continued)</i> Required Value
Password	Specifies the password used to access the database.	Any valid string.
DriverProperties	<p>The DataSource implementation may need to execute additional methods to assure a successful run. The additional methods need to be identified in the Driver Properties.</p> <p>For example: to execute the method setSpyAttributes, give the method a String for the URL “setSpyAttribute#&lt;url&gt;##”.</p> <p><b>Note</b> – The setSpyAttributes (for Data Direct drivers) that are contained in the following examples (between the last set of double octothorps [##] within each example), are used for debugging purposes and need not be used on every occasion.</p> <p>Optional—if you are using Spy Log:</p> <pre>setURL#jdbc:Seebeyond:SQLServer:// &lt;server&gt;:4100;DatabaseName=&lt;database&gt;## setSpyAttributes#log= (file) c:/temp/spy.log;logTName=yes#</pre>	<p>A list of properties delimited by the delimiter specified. For more information, see the Delimiter property below.</p> <p>The format is (with no spaces):</p> <pre>&lt;method-name-1&gt;# &lt;param-1&gt;#&lt;param-2&gt;#... &lt;param-n&gt;## &lt;method-name-2&gt;# &lt;param-1&gt;#&lt;param-2&gt;#... &lt;param-n&gt;##</pre>
Delimiter	This is the delimiter character to be used in the DriverProperties prompt.	The default is #. See the DriverProperties property above for more information on how the default value is used.
MinPoolSize	<p>Specifies the minimum number of physical connections the pool should keep available at all times. 0 (zero) indicates that there should be no physical connections in the pool and the new connections should be created as needed.</p> <p>If the pool size is too small, you may experience longer connection times due to the existing number of physical connections.</p> <p>A connection that stays in the pool allows transactions to use it via a logical connection which is faster.</p>	A valid numeric value. The default is 0.

TABLE 43 Outbound Adapter Environment JDBC Connector Settings (Continued)

Name	Description	Required Value
MaxPoolSize	Specifies the maximum number of physical connections the pool should keep available at all times. 0 (zero) indicates that there is no maximum.  The pool size depends on the transaction volume and response time. If the pool size is too big, you may end up with too many connections with the database.	A valid numeric value. The default is 10.
MaxIdleTime	The maximum number of seconds that a physical connection may remain unused before it is closed. 0 (zero) indicates that there is no limit.	A valid numeric value.

## Connection Retry Settings

The **Connection Retry Settings** section of the Outbound SQL Server Environment contains the top-level parameters displayed in the following table.

TABLE 44 Outbound Adapter Environment Connection Retry Settings

Name	Description	Required Value
ConnectionRetries	Specifies the number of retries to establish a connection with the SQL Server database upon a failure to acquire one.	an integer indicating the number of attempts allowed to establish a connection. The configured default is 0.
ConnectionRetry Interval	Specifies the milliseconds of pause before each attempt to access the database. This setting is used in conjunction with the 'Connection Retries' setting.  For example: In the event that the Adapter cannot connect to the Database, the Adapter will try to reconnect to the database in 5 second intervals, a total of 10 times, when the Connection Retries property is set at 10 and the Connection Retry Interval property is 5000.	A valid numeric value. The default is 1000.

## Outbound SQL Server XA Adapter Properties

The Outbound SQL Server XA Adapter properties, accessed from the NetBeans Services window, are organized into the following sections:

- [“JDBC Connector Settings \(with XA support\)”](#) on page 59

- “Connection Retry Settings (with XA support)” on page 60

## JDBC Connector Settings (with XA support)

The **JDBC Connector Settings** section of the Outbound XA SQL Server Environment contains the top-level parameters displayed in the following table.

**TABLE 45** Outbound SQL Server XA Adapter Environment JDBC Connector Settings

Name	Description	Required Value
Description	Enter a description for the database.	A valid string. The default value is <b>SQLServer XA Datasource</b> .
ServerName	Specifies the host name of the external database server.	Any valid string.
PortNumber	Specifies the I/O port number on which the server is listening for connection requests.	A valid port number. The default is 1433.
DatabaseName	Specifies the name of the database instance used on the Server.	Any valid string.
User	Specifies the user name that the Adapter uses to connect to the database.	Any valid string.
Password	Specifies the password used to access the database.	Any valid string.
DriverProperties	<p>The DataSource implementation may need to execute additional methods to assure a successful run. The additional methods need to be identified in the Driver Properties.</p> <p>For example: to execute the method <code>setSpyAttributes</code>, give the method a String for the URL “<code>setSpyAttribute#&lt;url&gt;##</code>”.</p> <p><b>Note</b> – The <code>setSpyAttributes</code> (for Data Direct drivers) that are contained in the following examples (between the last set of double octothorps [##] within each example), are used for debugging purposes and need not be used on every occasion.</p> <p>Optional—if you are using Spy Log:</p> <pre>setURL#jdbc:Seebeyond:SQLServer://&lt;server&gt;:4100;DatabaseName=&lt;database&gt;## setSpyAttributes#log= (file) c:/temp/spy.log;logTName=yes#</pre>	<p>A list of properties delimited by the delimiter specified. For more information, see the Delimiter property below.</p> <p>The format is (with no spaces):</p> <pre>&lt;method-name-1&gt;# &lt;param-1&gt;#&lt;param-2&gt;#... &lt;param-n&gt;## &lt;method-name-2&gt;# &lt;param-1&gt;#&lt;param-2&gt;#... &lt;param-n&gt;##</pre>

**TABLE 45** Outbound SQL Server XA Adapter Environment JDBC Connector Settings *(Continued)*

Name	Description	Required Value
Delimiter	This is the delimiter character to be used in the DriverProperties prompt.	The default is #. See the DriverProperties property above for more information on how the default value is used.
MinPoolSize	Specifies the minimum number of physical connections the pool should keep available at all times. 0 (zero) indicates that there should be no physical connections in the pool and the new connections should be created as needed.  If the pool size is too small, you may experience longer connection times due to the existing number of physical connections.  A connection that stays in the pool allows transactions to use it via a logical connection which is faster.	A valid numeric value. The default is 0.
MaxPoolSize	Specifies the maximum number of physical connections the pool should keep available at all times. 0 (zero) indicates that there is no maximum.  The pool size depends on the transaction volume and response time. If the pool size is too big, you may end up with too many connections with the database.	A valid numeric value. The default is 10.
MaxIdleTime	The maximum number of seconds that a physical connection may remain unused before it is closed. 0 (zero) indicates that there is no limit.	A valid numeric value.

## Connection Retry Settings (with XA support)

The **Connection Retry Settings** section of the Outbound SQL Server XA Environment contains the top-level parameters displayed in the following table.

**TABLE 46** Outbound SQL Server XA Adapter Environment Connection Retry Settings

Name	Description	Required Value
ConnectionRetries	Specifies the number of retries to establish a connection with the SQL Server database upon a failure to acquire one.	an integer indicating the number of attempts allowed to establish a connection. The configured default is 0.

TABLE 46 Outbound SQL Server XA Adapter Environment Connection Retry Settings (Continued)

Name	Description	Required Value
ConnectionRetry Interval	<p>Specifies the milliseconds of pause before each reattempt to access the database. This setting is used in conjunction with the 'Connection Retries' setting.</p> <p>For example: In the event that the Adapter cannot connect to the Database, the Adapter will try to reconnect to the database in 5 second intervals, a total of 10 times, when the Connection Retries property is set at 10 and the Connection Retry Interval property is 5000.</p>	A valid numeric value. The default is <b>1000</b> .

## Sybase Adapter Environment Properties

The Adapter Environment Configuration properties contain parameters that define how the adapter connects to and interacts with other Enterprise Service Bus components within the Environment. When you create a new Sybase External System, you may configure the type of External System required.

Available External System properties include:

- “Inbound Sybase Adapter” on page 61
- “Outbound Sybase Adapter” on page 62
- “Outbound XA Sybase Adapter” on page 64
- “Outbound Sybase non-Transactional Adapter” on page 66

## Inbound Sybase Adapter

Details for the Inbound Sybase Adapter Parameter Settings are listed in the following table.

TABLE 47 Inbound Sybase Adapter—Parameter Settings

Name	Description	Required Value
Description	The description of the database.	A valid string.
ServerName	Specifies the host name of the external database server.	Any valid string. <b>Note</b> – The Sybase Adapter does not support using “localhost” as the server name.
PortNumber	Specifies the I/O port number on which the server is listening for connection requests.	A valid port number. The default is <b>4100</b> .

TABLE 47 Inbound Sybase Adapter—Parameter Settings (Continued)

Name	Description	Required Value
DatabaseName	Specifies the name of the database instance.	Any valid string.
User	Specifies the user name the adapter uses to connect to the database.	Any valid string.
Password	Specifies the password used to access the database.	Any valid string.

## Outbound Sybase Adapter

The Outbound Sybase Adapter includes the following configuration sections:

- “JDBC Connector Settings” on page 62
- “Connection Retry Settings” on page 64

### JDBC Connector Settings

The following Parameter Settings are used by the external database.

TABLE 48 Outbound Sybase Adapter—JDBC Connector Settings

Name	Description	Required Value
Description	The description of the database.	A valid string.
ServerName	This setting specifies the host name of the external database server.	Any valid string. <b>Note</b> – The Sybase Adapter does not support using “localhost” as the server name.
PortNumber	Specifies the I/O port number on which the server is listening for connection requests.	A valid port number. The default is <b>4100</b> .
DatabaseName	Specifies the name of the database instance.	Any valid string.
User	Specifies the user name the adapter uses to connect to the database.	Any valid string.
Password	Specifies the password used to access the database.	Any valid string.

TABLE 48 Outbound Sybase Adapter—JDBC Connector Settings (Continued)

Name	Description	Required Value
DriverProperties	<p>The DataSource implementation may need to execute additional methods to assure a successful run. The additional methods need to be identified in the Driver Properties.</p> <p>For example: to execute the method setSpyAttributes, give the method a String for the URL “setSpyAttribute#&lt;url&gt;##”.</p> <p><b>Note</b> – The setSpyAttributes (for Data Direct drivers) that are contained in the following examples (between the last set of double octothorps [##] within each example), are used for debugging purposes and need not be used on every occasion.</p> <p>Optional—if you are using Spy Log:</p> <pre>setURL#jdbc:Seebeyond:Sybase://&lt;server&gt;:4100;DatabaseName=&lt;database&gt;## setSpyAttributes#log=(file) c:/temp/spy.log;logTName=yes##</pre>	<p>A list of methods with their parameters. For more information, see the Delimiter property below.</p> <p>The default format is: (with no spaces):</p> <pre>&lt;method-name-1&gt;# &lt;param-1&gt;#&lt;param-2&gt;#... &lt;param-n&gt;## &lt;method-name-2&gt;# &lt;param-1&gt;#&lt;param-2&gt;#... &lt;param-n&gt;##</pre>
Delimiter	This is the delimiter character to be used in the DriverProperties prompt.	The default is #. See the DriverProperties property above for more information on how the default value is used.
MinPoolSize	<p>Specifies the minimum number of physical connections the pool should keep available at all times. 0 (zero) indicates that there should be no physical connections in the pool and the new connections should be created as needed.</p> <p>If the pool size is too small, you may experience a longer connection time due to the existing number of physical connections.</p> <p>A connection that stays in the pool allows transactions to use it via a logical connection which is faster.</p>	A valid numeric value. The default is 0.

TABLE 48 Outbound Sybase Adapter—JDBC Connector Settings (Continued)

Name	Description	Required Value
MaxPoolSize	<p>Specifies the maximum number of physical connections the pool should keep available at all times. 0 (zero) indicates that there is no maximum.</p> <p>The pool size you set depends on the transaction volume and response time of the application. If the pool size is too big, you may end up with too many connections with the database.</p>	A valid numeric value. The default is <b>10</b> .
MaxIdleTime	Specifies the maximum number of seconds that a physical connection may remain unused before it is closed. 0 (zero) indicates that there is no limit.	A valid numeric value. The default is <b>0</b> .

## Connection Retry Settings

The following Parameter Settings are used by the external database.

TABLE 49 Outbound Sybase Adapter—Connection Retry Settings

Name	Description	Required Value
ConnectionRetries	Specifies the number of retries to establish a connection upon failure to acquire one.	A valid numeric value. The default is <b>0</b> .
ConnectionRetry Interval	<p>Specifies the milliseconds of pause before each attempt to access the database. This setting is used in conjunction with the 'Connection Retries' setting.</p> <p>For example: In the event that the adapter cannot connect to the Database, the adapter will try to reconnect to the database 10 times in 5 seconds intervals when the Connection Retries is 10 and the Connection Retry Interval is 5000.</p>	A valid numeric value. The default is <b>1000</b> .

## Outbound XA Sybase Adapter

The Outbound XA Sybase Adapter includes the following configuration sections:

- “JDBC Connector Settings” on page 65
- “Connection Retry Settings” on page 66



## JDBC Connector Settings

The following Parameter Settings are used by the external database.

**TABLE 50** Outbound XA Sybase Adapter—JDBC Connector Settings

Name	Description	Required Value
Description	The description of the database.	Any valid string.
ServerName	Specifies the host name of the external database server.	Any valid string. <b>Note</b> – The Sybase Adapter does not support using “localhost” as the server name.
PortNumber	Specifies the I/O port number on which the server is listening for connection requests.	A valid port number. The default is <b>4100</b> .
DatabaseName	Specifies the name of the database instance.	Any valid string.
User	Specifies the user name the adapter uses to connect to the database.	Any valid string.
Password	Specifies the password used to access the database.	Any valid string.
DriverProperties	<p>The DataSource implementation may need to execute additional methods to assure a successful run. The additional methods need to be identified in the Driver Properties.</p> <p>For example: to execute the method <code>setSpyAttributes</code>, give the method a String for the URL “<code>setSpyAttribute#&lt;url&gt;##</code>”.</p> <p><b>Note</b> – The <code>setSpyAttributes</code> (for Data Direct drivers) that are contained in the following examples (between the last set of double octothorps <code>##</code> within each example), are used for debugging purposes and need not be used on every occasion.</p> <p>Optional—if you are using Spy Log:</p> <pre>setURL#jdbc:Seebeyond:Sybase://&lt;server&gt;:4100;DatabaseName=&lt;database&gt;## setSpyAttributes#log=(file) c:/temp/spy.log;logTName=yes##</pre>	<p>A list of methods with their parameters. For more information, see the Delimiter property below.</p> <p>The default format is (with no spaces):</p> <pre>&lt;method-name-1&gt;# &lt;param-1&gt;#&lt;param-2&gt;#... &lt;param-n&gt;## &lt;method-name-2&gt;# &lt;param-1&gt;#&lt;param-2&gt;#... &lt;param-n&gt;##</pre>
Delimiter	This is the delimiter character to be used in the DriverProperties prompt.	The default is #.

TABLE 50 Outbound XA Sybase Adapter—JDBC Connector Settings (Continued)

Name	Description	Required Value
MinPoolSize	Specifies the minimum number of physical connections the pool should keep available at all times. 0 (zero) indicates that there should be no physical connections in the pool and the new connections should be created as needed.	A valid numeric value. The default is <b>0</b> .
MaxPoolSize	Specifies the maximum number of physical connections the pool should keep available at all times. 0 (zero) indicates that there is no maximum.	A valid numeric value. The default is <b>10</b> .
MaxIdleTime	Specifies the number of seconds that a physical connection may remain unused before it is closed. 0 (zero) indicates that there is no limit.	A valid numeric value. The default is <b>0</b> .

## Connection Retry Settings

The following Parameter Settings are used by the external database.

TABLE 51 Outbound XA Sybase Adapter—Connection Retry Settings

Name	Description	Required Value
ConnectionRetries	Specifies the number of retries to establish a connection upon failure to acquire one.	A valid numeric value. The default is <b>0</b> .
ConnectionRetry Interval	Specifies the milliseconds of pause before each attempt to access the database. This setting is used in conjunction with the 'Connection Retries' setting.  For example: In the event that the adapter cannot connect to the Database, the adapter will try to reconnect to the database 10 times in 5 seconds intervals when the Connection Retries is 10 and the Connection Retry Interval is 5000.	A valid numeric value. The default is <b>1000</b> .

## Outbound Sybase non-Transactional Adapter

The Outbound Sybase non-Transactional Adapter includes the following configuration sections:

- [“JDBC Connector Settings” on page 67](#)
- [“Connection Retry Settings” on page 68](#)

## JDBC Connector Settings

The following Parameter Settings are used by the external database.

**TABLE 52** Outbound Sybase non-Transactional Adapter—JDBC Connector Settings

Name	Description	Required Value
Description	The description of the database.	Any valid string.
ServerName	Specifies the host name of the external database server.	Any valid string. <b>Note</b> – The Sybase Adapter does not support using “localhost” as the server name.
PortNumber	Specifies the I/O port number on which the server is listening for connection requests.	A valid port number. The default is <b>1521</b> . <b>Note</b> – The default port number displayed in this field is incorrect. The value should be <b>4100</b> .
DatabaseName	Specifies the name of the database instance.	Any valid string.
User	Specifies the user name the adapter uses to connect to the database.	Any valid string.
Password	Specifies the password used to access the database.	Any valid string.
DriverProperties	<p>The DataSource implementation may need to execute additional methods to assure a successful run. The additional methods need to be identified in the Driver Properties.</p> <p>For example: to execute the method <code>setSpyAttributes</code>, give the method a String for the URL “<code>setSpyAttribute#&lt;url&gt;##</code>”.</p> <p><b>Note</b> – The <code>setSpyAttributes</code> (for Data Direct drivers) that are contained in the following examples (between the last set of double octothorps [##] within each example), are used for debugging purposes and need not be used on every occasion.</p> <p>Optional—if you are using Spy Log:</p> <pre>setURL#jdbc:Seebeyond:Sybase://&lt;server&gt;:4100;DatabaseName=&lt;database&gt;## setSpyAttributes#log=(file) c:/temp/spy.log;logTName=yes##</pre>	<p>A list of methods with their parameters. For more information, see the Delimiter property below.</p> <p>The default format is (with no spaces):</p> <pre>&lt;method-name-1&gt;# &lt;param-1&gt;#&lt;param-2&gt;#... &lt;param-n&gt;## &lt;method-name-2&gt;# &lt;param-1&gt;#&lt;param-2&gt;#... &lt;param-n&gt;##</pre>

TABLE 52 Outbound Sybase non-Transactional Adapter—JDBC Connector Settings (Continued)

Name	Description	Required Value
Delimiter	This is the delimiter character to be used in the DriverProperties prompt.	The default is #.
MinPoolSize	Specifies the minimum number of physical connections the pool should keep available at all times. 0 (zero) indicates that there should be no physical connections in the pool and the new connections should be created as needed.	A valid numeric value. The default is 0.
MaxPoolSize	Specifies the maximum number of physical connections the pool should keep available at all times. 0 (zero) indicates that there is no maximum.	A valid numeric value. The default is 10.
MaxIdleTime	Specifies the number of seconds that a physical connection may remain unused before it is closed. 0 (zero) indicates that there is no limit.	A valid numeric value. The default is 0.

## Connection Retry Settings

The following Parameter Settings are used by the external database.

TABLE 53 Outbound Sybase non-Transactional Adapter Adapter—Connection Retry Settings

Name	Description	Required Value
ConnectionRetries	Specifies the number of retries to establish a connection upon failure to acquire one.	A valid numeric value. The default is 0.
ConnectionRetry Interval	Specifies the milliseconds of pause before each attempt to access the database. This setting is used in conjunction with the 'Connection Retries' setting.  For example: In the event that the adapter cannot connect to the Database, the adapter will try to reconnect to the database 10 times in 5 seconds intervals when the Connection Retries is 10 and the Connection Retry Interval is 5000.	A valid numeric value. The default is 1000.

# JDBC/ODBC Adapter Environment Properties

The Adapter Environment Configuration properties contain parameters that define how the adapter connects to and interacts with other Java CAPS components within the Environment. When you create a new JDBC External System, you may configure the type of External System required.

Adapter External System properties must be configured from within the Environment. Until you have successfully configured all adapters for your Java CAPS project, your project cannot be properly executed. The following list identifies the JDBC Adapter properties. There are four adapter connection types that the JDBC/ODBC Adapter implements.

- “Inbound JDBC Adapter Properties” on page 69
- “Outbound JDBC Adapter Properties” on page 70
- “Outbound non-Transactional JDBC Adapter Properties” on page 72
- “Outbound XA JDBC Adapter Properties” on page 75

## Inbound JDBC Adapter Properties

Before deploying your adapter, you will need to set the Environment properties.

Details for the Inbound JDBC Adapter Parameter Settings are listed in the following table.

TABLE 54 Inbound JDBC Adapter—Parameter Settings

Name	Description	Required Value
Description	The description of the database.	A valid string.
ClassName	Displays the Java class in the JDBC driver that is used to implement the Driver Manager interface. Change this as needed for your driver.	A valid class name.  See the JDBC/ODBC Drivers section for some of the popular drivers you can use with this adapter.
URL	This is the JDBC URL required to gain access to the database. The URL usually starts with <code>jdbc</code> followed by <code>&lt;subprotocol&gt;</code> and ends with information that identifies the data source, as follows:  <code>jdbc:&lt;driver&gt;:&lt;data-source-name&gt;</code> <code>[;&lt;attribute-name&gt;=&lt;attribute-value&gt;]</code>  If you do not select URL in the <b>connection method</b> this parameter is ignored. For more information on the JDBC URL, please consult the documentation of your specific driver.	The applicable JDBC URL.  See the JDBC/ODBC Drivers section for some of the popular drivers you can use with this adapter.

TABLE 54 Inbound JDBC Adapter—Parameter Settings (Continued)

Name	Description	Required Value
User	Specifies the user name the adapter uses to connect to the database.	Any valid string.
Password	Specifies the password used to access the database.	Any valid string.

## Outbound JDBC Adapter Properties

The Outbound JDBC Adapter includes the following configuration sections:

- “JDBC Connector Settings” on page 70
- “Connection Retry Settings” on page 72

### JDBC Connector Settings

Details for the JDBC Connector Settings used by the external database are detailed in the following table.

TABLE 55 Outbound JDBC Adapter—JDBC Connector Settings

Name	Description	Required Value
Description	The description of the database.	A valid string. The configured default is <b>JDBC Connection Pool DataSource</b> .
ClassName	Specifies the Java class in the JDBC driver that is used to implement the <b>ConnectionPoolDataSource</b> , <b>XADataSource</b> interface. Change as needed for your driver.	A valid class name. For example: <code>com.ibm.as400.access.AS400JDBCConnectionPoolDataSource</code> See the JDBC/ODBC Drivers section for some of the popular drivers you can use with this adapter.
ClassNamefor OtherInterfaces	For components such as eTL that do not use <b>ConnectionPoolDataSource</b> , use this entry to enter the name of the driver class. This entry is not used by the JDBC Adapter.	A valid class name.
ServerName	This setting specifies the host name of the external database server.	Any valid string.
PortNumber	Specifies the I/O port number on which the server is listening for connection requests.	A valid port number.

TABLE 55 Outbound JDBC Adapter—JDBC Connector Settings (Continued)

Name	Description	Required Value
DatabaseName	Specifies the name of the database instance.	Any valid string.
User	Specifies the user name the adapter uses to connect to the database.	Any valid string.
Password	Specifies the password used to access the database.	Any valid string.
DriverProperties	The Connection Pool DataSource implementation may need to execute additional methods to assure a successful run. The additional methods will need to be identified in the Driver Properties. You must ensure that the driver is installed on both the application server machine and Java CAPS IDE.	Set the driver properties according to driver vendor's instruction. For example:  setDefTdpName#DBSQL## setWorkspace#Navigator##
Delimiter	This is the delimiter character to be used in the DriverProperties prompt.	The default is #.
DataSource name	Specifies the name of the <b>XADDataSource</b> or <b>ConnectionPoolDataSource</b> implementation, to which the DataSource object delegates behind the scenes when there is connection pooling or distributed transaction management being done.	The name of the <b>XADDataSource</b> or <b>ConnectionPoolDataSource</b> implementation.  This property is Optional, in most cases, leave this box empty.
MinPoolSize	Specifies the minimum number of physical connections the pool should keep available at all times. 0 (zero) indicates that there is no maximum.  The pool size you set depends on the transaction volume and response time of the application. If the pool size is too big, you may end up with too many connections with the database.	A valid numeric value. The default is 0.
MaxPoolSize	Specifies the maximum number of physical connections the pool should keep available at all times. 0 (zero) indicates that there is no maximum.  If the pool size is too big, you may end up with too many connections with the database. The pool size depends on the transaction volume and response time.	A valid numeric value. The default is 10.

TABLE 55 Outbound JDBC Adapter—JDBC Connector Settings (Continued)

Name	Description	Required Value
MaxIdleTime	Specifies the maximum number of seconds that a physical connection may remain unused before it is closed. 0 (zero) indicates that there is no limit.	A valid numeric value. The default is 0.

## Connection Retry Settings

Details for the Connection Retry Settings used by the external database are detailed in the following table.

TABLE 56 Outbound JDBC Adapter—Connection Retry Settings

Name	Description	Required Value
ConnectionRetries	Specifies the number of retries to establish a connection upon failure to acquire one.	A valid numeric value. The default is 0.
ConnectionRetry Interval	Specifies the milliseconds of pause before each attempt to reaccess the database. This setting is used in conjunction with the 'Connection Retries' setting.  For example: In the event that the adapter cannot connect to the Database, the adapter will try to reconnect to the database 10 times in 5 seconds apart when the Connection Retries is 10 and the Connection Retry Interval is 5000	A valid numeric value. The default is 1000.

## Outbound non-Transactional JDBC Adapter Properties

The Outbound non-Transactional JDBC Adapter includes the following configuration sections:

- “JDBC Connector Settings” on page 72
- “Connection Retry Settings” on page 74

### JDBC Connector Settings

Details for the JDBC Connector Settings used by the external database are detailed in the following table.



TABLE 57 Outbound non-Transactional Adapter— JDBC Connector Settings

Name	Description	Required Value
Description	The description of the database.	A valid string. The configured default is <b>JDBC non-Transactional Connection Pool DataSource</b> .
ClassName	Specifies the Java class in the JDBC driver that is used to implement the <b>ConnectionPoolDataSource/XADataSource</b> interface. Change as needed for your driver.	A valid class name. For example: <b>com.ddtek.jdbcx.sequellink.SequelinkDataSource</b> .
ClassNamefor OtherInterfaces	For components that do not use <b>ConnectionPoolDataSource</b> , use this entry to enter the name of the driver class. This class will not be used by the adapter.	A valid class name.
ServerName	This setting specifies the host name of the external database server.	Any valid string.
PortNumber	Specifies the I/O port number on which the server is listening for connection requests.	A valid port number.
DatabaseName	Specifies the name of the database instance.	Any valid string.
User	Specifies the user name the adapter uses to connect to the database.	Any valid string.
Password	Specifies the password used to access the database.	Any valid string.
DriverProperties	The Connection Pool DataSource implementation may need to execute additional methods to assure a successful run. The additional methods will need to be identified in the Driver Properties. You must ensure that the driver is installed on both the application server machine and Java CAPS IDE.	Set the driver properties according to driver vendor's instruction. For example:  setDefTdpName#DBSQL## setWorkspace#Navigator##
Delimiter	This is the delimiter character to be used in the DriverProperties prompt.	The default is #.
DataSourcename	Specifies the name of the <b>XADataSource</b> or <b>ConnectionPoolDataSource</b> implementation, to which the DataSource object delegates behind the scenes when there is connection pooling or distributed transaction management being done.	The name of the <b>XADataSource</b> or <b>ConnectionPoolDataSource</b> implementation. This property is Optional. In most cases, leave this box empty.

TABLE 57 Outbound non-Transactional Adapter— JDBC Connector Settings *(Continued)*

Name	Description	Required Value
MinPoolSize	<p>Specifies the maximum number of physical connections the pool should keep available at all times. 0 (zero) indicates that there is no maximum.</p> <p>The pool size you set depends on the transaction volume and response time of the application. If the pool size is too big, you may end up with too many connections with the database.</p>	A valid numeric value. The default is <b>0</b> .
MaxPoolSize	<p>Specifies the maximum number of physical connections the pool should keep available at all times. 0 (zero) indicates that there is no maximum.</p> <p>If the pool size is too big, you may end up with too many connections with the database. The pool size depends on the transaction volume and response time.</p>	A valid numeric value. The default is <b>10</b> .
MaxIdleTime	Specifies the maximum number of seconds that a physical connection may remain unused before it is closed. 0 (zero) indicates that there is no limit.	A valid numeric value. The default is <b>0</b> .

## Connection Retry Settings

Details for the Connection Retry Settings used by the external database are detailed in the following table.

TABLE 58 Outbound non-Transactional Adapter—Connection Retry Settings

Name	Description	Required Value
ConnectionRetries	Specifies the number of retries to establish a connection upon failure to acquire one.	A valid numeric value. The default is <b>0</b> .
ConnectionRetryInterval	<p>Specifies the milliseconds of pause before each attempt to reaccess the database. This setting is used in conjunction with the 'Connection Retries' setting.</p> <p>For example: In the event that the adapter cannot connect to the Database, the adapter will try to reconnect to the database 10 times in 5 seconds apart when the Connection Retries is 10 and the Connection Retry Interval is 5000</p>	A valid numeric value. The default is <b>1000</b> .

## Outbound XA JDBC Adapter Properties

The Outbound XA JDBC Adapter includes the following configuration sections:

- “JDBC Connector Settings” on page 75
- “Connection Retry Settings” on page 76

### JDBC Connector Settings

Details for the JDBC Connector Settings used by the external database are detailed in the following table.

TABLE 59 Outbound XA JDBC Adapter—JDBC Connector Settings

Name	Description	Required Value
Description	The description of the database.	A valid string. The configured default is <b>JDBC XA DataSource</b> .
ClassName	Specifies the Java class in the JDBC driver that is used to implement the <b>ConnectionPoolDataSource</b> or <b>XADataSource</b> interface. Change as needed for your driver.	A valid class name. For example: <code>com.attunity.jdbc.NvXDataSource</code>
ClassNamefor OtherInterfaces	For components that do not use <b>ConnectionPoolDataSource</b> , use this entry to enter the name of the driver class. This class will not be used by the adapter.	A valid class name.
ServerName	This setting specifies the host name of the external database server.	Any valid string.
PortNumber	Specifies the I/O port number on which the server is listening for connection requests.	A valid port number.
DatabaseName	Specifies the name of the database instance.	Any valid string.
User	Specifies the user name the adapter uses to connect to the database.	Any valid string.
Password	Specifies the password used to access the database.	Any valid string.

TABLE 59 Outbound XA JDBC Adapter—JDBC Connector Settings (Continued)

Name	Description	Required Value
DriverProperties	The DataSource implementation may need to execute additional methods to assure a successful run. The additional methods will need to be identified in the Driver Properties. You must ensure that the driver is installed on both the application server machine and Java CAPS IDE.	Set the driver properties according to driver vendor's instruction. For example:  setDefTdpName#DBSQL## setWorkspace#Navigator##
Delimiter	This is the delimiter character to be used in the DriverProperties prompt.	The default is #.
DataSource name	Specifies the name of the XADDataSource implementation, to which the DataSource object delegates behind the scenes when there is connection pooling or distributed transaction management being done.	The name of the XADDataSource implementation. This property is Optional. In most cases, leave this box empty.
MinPoolSize	Specifies the maximum number of physical connections the pool should keep available at all times. 0 (zero) indicates that there is no maximum.  The pool size you set depends on the transaction volume and response time of the application. If the pool size is too big, you may end up with too many connections with the database.	A valid numeric value. The default is 0.
MaxPoolSize	Specifies the maximum number of physical connections the pool should keep available at all times. 0 (zero) indicates that there is no maximum.  If the pool size is too big, you may end up with too many connections with the database. The pool size depends on the transaction volume and response time.	A valid numeric value. The default is 10.
MaxIdleTime	Specifies the maximum number of seconds that a physical connection may remain unused before it is closed. 0 (zero) indicates that there is no limit.	A valid numeric value. The default is 0.

## Connection Retry Settings

Details for the Connection Retry Settings used by the external database are detailed in the following table.

TABLE 60 Outbound XA JDBC Adapter—Connection Retry Settings

Name	Description	Required Value
ConnectionRetries	Specifies the number of retries to establish a connection upon failure to acquire one.	A valid numeric value. The default is <b>0</b> .
ConnectionRetryInterval	Specifies the milliseconds of pause before each attempt to reaccess the database. This setting is used in conjunction with the 'Connection Retries' setting.  For example: In the event that the adapter cannot connect to the Database, the adapter will try to reconnect to the database 10 times in 5 seconds apart when the Connection Retries is 10 and the Connection Retry Interval is 5000	A valid numeric value. The default is <b>1000</b> .

## VSAM Adapter Environment Properties

Adapter External System properties must be configured from within the Environment. Until you have successfully configured all Adapters for your Java CAPS project, your project cannot be properly executed or deployed. The following list identifies the VSAM Adapter properties. There are two Environment Configuration categories that the VSAM Adapter implements.

- [“Inbound VSAM Adapter Properties” on page 77](#)
- [“Outbound VSAM CP Adapter Properties” on page 78](#)
- [“Outbound VSAM non-Transactional Adapter Properties” on page 80](#)

## Inbound VSAM Adapter Properties

Before deploying your Adapter, you will need to set the Environment properties.

Details for the Inbound VSAM Adapter Parameter Settings are listed in the following table.

TABLE 61 Inbound VSAM Adapter—Parameter Settings

Name	Description	Required Value
Description	The description of the database.	A valid string.
ServerName	This setting specifies the host name of the external database server.	Any valid string.
PortNumber	Specifies the I/O port number on which the server is listening for connection requests.	A valid port number.

**TABLE 61** Inbound VSAM Adapter—Parameter Settings *(Continued)*

Name	Description	Required Value
DatabaseName	Specifies the name of the database instance. This parameter is configured in conjunction with the Data Catalogue name you created in WebSphere Classic Federation's Data Mapper.	Any valid string.
User	Specifies the user name the Adapter uses to connect to the database.	Any valid string.
Password	Specifies the password used to access the database.	Any valid string.

## Outbound VSAM CP Adapter Properties

The Outbound VSAM CP Adapter includes the following configuration sections:

- [“JDBC Connector Settings” on page 78](#)
- [“Connection Retry Settings” on page 80](#)

### JDBC Connector Settings

Details for the VSAM CP Adapter JDBC Connector Settings used by the external database are detailed in the following table.

**TABLE 62** VSAM CP Adapter—JDBC Connector Settings

Name	Description	Required Value
Description	The description of the database.	A valid string. The configured default is <b>VSAM Connection Pool Datasource</b> .
ServerName	This setting specifies the host name of the external database server.	Any valid string.
PortNumber	Specifies the I/O port number on which the server is listening for connection requests.	A valid port number.
DatabaseName	Specifies the name of the database instance.	Any valid string.
User	Specifies the user name the Adapter uses to connect to the database.	Any valid string.
Password	Specifies the password used to access the database.	Any valid string.

TABLE 62 VSAM CP Adapter—JDBC Connector Settings (Continued)

Name	Description	Required Value
DriverProperties	<p>The Connection Pool DataSource implementation may need to execute additional methods to assure a successful run. The additional methods will need to be identified in the Driver Properties. You must ensure that the driver is installed on both the application server machine and Java CAPS IDE.</p> <p>For example: to execute the method <code>setSpyAttributes</code>, give the method a String for the URL “<code>setSpyAttribute#&lt;url&gt;##</code>”.</p> <p><b>Note</b> – The <code>setSpyAttributes</code> (for Data Direct drivers) that are contained in the following examples (between the last set of double octothorps [##] within each example), are used for debugging purposes and need not be used on every occasion.</p> <p>Optional—if you are using Spy Log:</p> <pre>setURL#jdbc:Seebeyond:VSAM://&lt;server&gt;:4100;DatabaseName=&lt;database&gt;## setSpyAttributes#log=(file) c:/temp/spy.log;logTName=yes##</pre>	<p>A list of properties, delimited by the specific character. For more information, see the Delimiter property below.</p> <p>The default format is:</p> <pre>&lt;method-name-1&gt;# &lt;param-1&gt;#&lt;param-2&gt;#... &lt;param-n&gt;## &lt;method-name-2&gt;# &lt;param-1&gt;#&lt;param-2&gt;#... &lt;param-n&gt;##</pre>
Delimiter	<p>This is the delimiter character to be used in the DriverProperties prompt.</p>	<p>The default is #. See the DriverProperties property above for more information on how the default value is used.</p>
MinPoolSize	<p>Specifies the minimum number of physical connections the pool should keep available at all times. <b>0</b> (zero) indicates that there should be no physical connections in the pool and the new connections should be created as needed.</p> <p>If the pool size is too small, you may experience a longer connection time due to the existing number of physical connections.</p> <p>A connection that stays in the pool allows transactions to use it via a logical connection (which is faster).</p>	<p>A valid numeric value. The default is <b>0</b>.</p>

TABLE 62 VSAM CP Adapter—JDBC Connector Settings (Continued)

Name	Description	Required Value
MaxPoolSize	Specifies the maximum number of physical connections the pool should keep available at all times. 0 (zero) indicates that there is no maximum.  If the pool size is too big, you may end up with too many connections with the database. The pool size depends on the transaction volume and response time.	A valid numeric value. The default is <b>10</b> .
MaxIdleTime	Specifies the maximum number of seconds that a physical connection may remain unused before it is closed. 0 (zero) indicates that there is no limit.	A valid numeric value. The default is <b>0</b> .

## Connection Retry Settings

Details for the VSAM CP Adapter Connection Retry Settings used by the external database are detailed in the following table.

TABLE 63 VSAM CP Adapter—Connection Retry Settings

Name	Description	Required Value
ConnectionRetries	Specifies the number of retries to establish a connection upon failure to acquire one.	A valid numeric value. The default is <b>0</b> .
ConnectionRetryInterval	Specifies the milliseconds of pause before each attempt to reaccess the database. This setting is used in conjunction with the 'Connection Retries' setting.  For example: In the event that the Adapter cannot connect to the Database, the Adapter will try to reconnect to the database 10 times in 5 seconds apart when the Connection Retries is 10 and the Connection Retry Interval is 5000.	A valid numeric value. The default is <b>1000</b> .

## Outbound VSAM non-Transactional Adapter Properties

The Outbound VSAM non-Transactional Adapter includes the following configuration sections:

- “JDBC Connector Settings” on page 81
- “Connection Retry Settings” on page 82



## JDBC Connector Settings

Details for the VSAM non-Transactional Adapter JDBC Connector Settings used by the external database are detailed in the following table.

**TABLE 64** VSAM non-Transactional Adapter—JDBC Connector Settings

Name	Description	Required Value
Description	The description of the database.	A valid string. The configured default is <b>VSAM non-Transactional Connection Pool DataSource</b> .
ServerName	This setting specifies the host name of the external database server.	Any valid string.
PortNumber	Specifies the I/O port number on which the server is listening for connection requests.	A valid port number.
DatabaseName	Specifies the name of the database instance.	Any valid string.
User	Specifies the user name the Adapter uses to connect to the database.	Any valid string.
Password	Specifies the password used to access the database.	Any valid string.
DriverProperties	<p>The Connection Pool DataSource implementation may need to execute additional methods to assure a successful run. The additional methods will need to be identified in the Driver Properties. You must ensure that the driver is installed on both the application server machine and Java CAPS IDE.</p> <p>For example: to execute the method <code>setSpyAttributes</code>, give the method a String for the URL <code>"setSpyAttribute#&lt;url&gt;##"</code>.</p> <p><b>Note</b> – The <code>setSpyAttributes</code> (for Data Direct drivers) that are contained in the following examples (between the last set of double octothorps <code>##</code>) within each example, are used for debugging purposes and need not be used on every occasion.</p> <p>Optional—if you are using Spy Log:</p> <pre>setURL#jdbc:Seebeyond:VSAM://&lt;server&gt;:4100;DatabaseName=&lt;database&gt;## setSpyAttributes#log=(file) c:/temp/spy.log;logTName=yes##</pre>	<p>A list of properties, delimited by the specific character. For more information, see the Delimiter property below.</p> <p>The default format is:</p> <pre>&lt;method-name-1&gt;# &lt;param-1&gt;#&lt;param-2&gt;#... &lt;param-n&gt;## &lt;method-name-2&gt;# &lt;param-1&gt;#&lt;param-2&gt;#... &lt;param-n&gt;##</pre>

Name	Description	Required Value
Delimiter	This is the delimiter character to be used in the DriverProperties prompt.	The default is #. See the DriverProperties property above for more information on how the default value is used.
MinPoolSize	Specifies the minimum number of physical connections the pool should keep available at all times. <b>0</b> (zero) indicates that there should be no physical connections in the pool and the new connections should be created as needed.  If the pool size is too small, you may experience a longer connection time due to the existing number of physical connections.  A connection that stays in the pool allows transactions to use it via a logical connection (which is faster).	A valid numeric value. The default is <b>0</b> .
MaxPoolSize	Specifies the maximum number of physical connections the pool should keep available at all times. <b>0</b> (zero) indicates that there is no maximum.  If the pool size is too big, you may end up with too many connections with the database. The pool size depends on the transaction volume and response time.	A valid numeric value. The default is <b>10</b> .
MaxIdleTime	Specifies the maximum number of seconds that a physical connection may remain unused before it is closed. <b>0</b> (zero) indicates that there is no limit.	A valid numeric value. The default is <b>0</b> .

## Connection Retry Settings

Details for the VSAM non-Transactional Adapter Connection Retry Settings used by the external database are detailed in the following table.

**TABLE 65** VSAM non-Transactional Adapter—Connection Retry Settings

Name	Description	Required Value
ConnectionRetries	Specifies the number of retries to establish a connection upon failure to acquire one.	A valid numeric value. The default is <b>0</b> .

TABLE 65 VSAM non-Transactional Adapter—Connection Retry Settings

*(Continued)*

Name	Description	Required Value
ConnectionRetryInterval	<p data-bbox="601 230 1041 343">Specifies the milliseconds of pause before each attempt to reaccess the database. This setting is used in conjunction with the 'Connection Retries' setting.</p> <p data-bbox="601 361 1041 498">For example: In the event that the Adapter cannot connect to the Database, the Adapter will try to reconnect to the database 10 times in 5 seconds apart when the Connection Retries is 10 and the Connection Retry Interval is 5000.</p>	A valid numeric value. The default is <b>1000</b> .

