

Configuring Environment Components for Oracle® Java CAPS Web Server Adapters

Copyright © 2008, 2011, Oracle and/or its affiliates. All rights reserved.

License Restrictions Warranty/Consequential Damages Disclaimer

This software and related documentation are provided under a license agreement containing restrictions on use and disclosure and are protected by intellectual property laws. Except as expressly permitted in your license agreement or allowed by law, you may not use, copy, reproduce, translate, broadcast, modify, license, transmit, distribute, exhibit, perform, publish or display any part, in any form, or by any means. Reverse engineering, disassembly, or decompilation of this software, unless required by law for interoperability, is prohibited.

Warranty Disclaimer

The information contained herein is subject to change without notice and is not warranted to be error-free. If you find any errors, please report them to us in writing.

Restricted Rights Notice

If this is software or related documentation that is delivered to the U.S. Government or anyone licensing it on behalf of the U.S. Government, the following notice is applicable:

U.S. GOVERNMENT RIGHTS

Programs, software, databases, and related documentation and technical data delivered to U.S. Government customers are "commercial computer software" or "commercial technical data" pursuant to the applicable Federal Acquisition Regulation and agency-specific supplemental regulations. As such, the use, duplication, disclosure, modification, and adaptation shall be subject to the restrictions and license terms set forth in the applicable Government contract, and, to the extent applicable by the terms of the Government contract, the additional rights set forth in FAR 52.227-19, Commercial Computer Software License (December 2007). Oracle America, Inc., 500 Oracle Parkway, Redwood City, CA 94065.

Hazardous Applications Notice

This software or hardware is developed for general use in a variety of information management applications. It is not developed or intended for use in any inherently dangerous applications, including applications that may create a risk of personal injury. If you use this software or hardware in dangerous applications, then you shall be responsible to take all appropriate fail-safe, backup, redundancy, and other measures to ensure its safe use. Oracle Corporation and its affiliates disclaim any liability for any damages caused by use of this software or hardware in dangerous applications.

Trademark Notice

Oracle and Java are registered trademarks of Oracle and/or its affiliates. Other names may be trademarks of their respective owners.

Intel and Intel Xeon are trademarks or registered trademarks of Intel Corporation. All SPARC trademarks are used under license and are trademarks or registered trademarks of SPARC International, Inc. AMD, Opteron, the AMD logo, and the AMD Opteron logo are trademarks or registered trademarks of Advanced Micro Devices. UNIX is a registered trademark of The Open Group in the United States and other countries.

Third Party Content, Products, and Services Disclaimer

This software or hardware and documentation may provide access to or information on content, products, and services from third parties. Oracle Corporation and its affiliates are not responsible for and expressly disclaim all warranties of any kind with respect to third-party content, products, and services. Oracle Corporation and its affiliates will not be responsible for any loss, costs, or damages incurred due to your access to or use of third-party content, products, or services.

Contents

Configuring Java CAPS Environment Components for Web Server Adapters	5
Configuring Adapter Environment Properties	5
▼ To Add an External System to the Environment	6
▼ To Configure the Environment Properties	6
Sun Application Server Adapter Environment Properties	7
WebLogic Adapter Environment Properties	7

Configuring Java CAPS Environment Components for Web Server Adapters

The adapter environment configuration properties contain parameters that define how the adapter connects to and interacts with other Java CAPS components within the environment. The environment properties are accessed from the NetBeans IDE Services window. The following sections provide instructions on how to configure Java CAPS component environment properties and lists the environment properties for the various web server adapters.

What You Need to Do

This topic provides information you should know to start configuring the environment properties.

- [“Configuring Adapter Environment Properties” on page 5](#)

What You Need to Know

These topics provide configuration information used to set the web server adapter environment properties.

- [“Sun Application Server Adapter Environment Properties” on page 7](#)
- [“WebLogic Adapter Environment Properties” on page 7](#)

Configuring Adapter Environment Properties

The Adapter Environment Configuration properties contain parameters that define how the adapter connects to and interacts with other Java CAPS components within the Environment. The Environment properties are accessed from the NetBeans IDE Services window.

▼ To Add an External System to the Environment

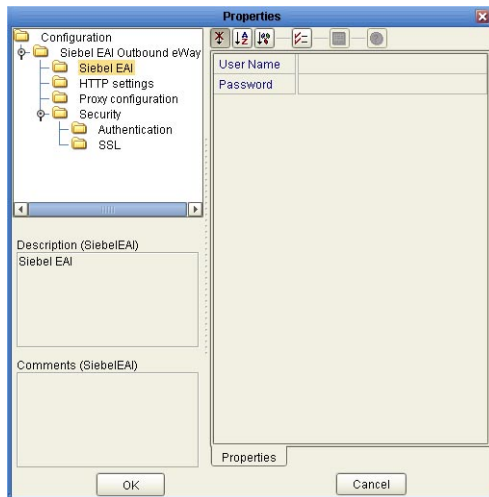
- 1 Expand the CAPS Environments, and right-click the Environment to which you want to add an External System.
- 2 From the context menu, select the type of External System to add (for example, File External System or Oracle External System).
- 3 Enter a name for the External System and then click OK.

▼ To Configure the Environment Properties

- 1 From the NetBeans Services window, expand the CAPS Environment node.
- 2 Expand the Environment created for your project and locate the External System for your specific adapter.
- 3 Right-click the External System and select Properties.

The Environment Configuration Properties window appears.

FIGURE 1 Adapter Environment Configuration Properties Editor



- 4 From the Properties Editor, click on any folder to display the default configuration properties for that section.

- 5 Click on any property field to make it editable.
- 6 If an ellipsis appears next to a field, you can click the ellipsis button to open an editor for the field.
This is useful for long field values.
- 7 Once you have finished modifying the properties, click OK to save your changes and close the editor.

Note – The following sections describe the Environment properties for the Application Adapters.

Sun Application Server Adapter Environment Properties

The adapter properties, accessed from the NetBeans Services window, are listed under parameter-settings. They include the properties described in the following table.

TABLE 1 Environment - parameter-settings

Name	Description	Required Value
ServerName	Specifies the name of the other application server. If a qualified JNDI name is specified in the Connectivity Map property, <code>EjbJndiName</code> , that value supersedes any values specified in the Environment properties: <code>ServerName</code> and <code>Port</code> .	A name of an application server. The configured default is localhost.
Port	Specifies the Corba Port of the other application server.	An integer indicating a port number. The configured default is 18002.

WebLogic Adapter Environment Properties

The adapter properties, accessed from the NetBeans Services window, appear under parameter-settings. They include the properties described in the following table.

TABLE 2 Environment - parameter-settings

Name	Description	Required Value
ServerName	Specifies the name of the other application server. If a qualified JNDI name is specified in the Connectivity Map property, EjbJndiName, that value supersedes any values specified in the Environment properties: ServerName and Port.	A name of an application server. The default is localhost.
Port	Specifies the Corba Port of the other application server.	An integer indicating a port number. The default is 18002.