

Oracle® Java CAPS Database Binding Component User's Guide

Copyright © 2009, 2011, Oracle and/or its affiliates. All rights reserved.

License Restrictions Warranty/Consequential Damages Disclaimer

This software and related documentation are provided under a license agreement containing restrictions on use and disclosure and are protected by intellectual property laws. Except as expressly permitted in your license agreement or allowed by law, you may not use, copy, reproduce, translate, broadcast, modify, license, transmit, distribute, exhibit, perform, publish or display any part, in any form, or by any means. Reverse engineering, disassembly, or decompilation of this software, unless required by law for interoperability, is prohibited.

Warranty Disclaimer

The information contained herein is subject to change without notice and is not warranted to be error-free. If you find any errors, please report them to us in writing.

Restricted Rights Notice

If this is software or related documentation that is delivered to the U.S. Government or anyone licensing it on behalf of the U.S. Government, the following notice is applicable:

U.S. GOVERNMENT RIGHTS

Programs, software, databases, and related documentation and technical data delivered to U.S. Government customers are "commercial computer software" or "commercial technical data" pursuant to the applicable Federal Acquisition Regulation and agency-specific supplemental regulations. As such, the use, duplication, disclosure, modification, and adaptation shall be subject to the restrictions and license terms set forth in the applicable Government contract, and, to the extent applicable by the terms of the Government contract, the additional rights set forth in FAR 52.227-19, Commercial Computer Software License (December 2007). Oracle America, Inc., 500 Oracle Parkway, Redwood City, CA 94065.

Hazardous Applications Notice

This software or hardware is developed for general use in a variety of information management applications. It is not developed or intended for use in any inherently dangerous applications, including applications that may create a risk of personal injury. If you use this software or hardware in dangerous applications, then you shall be responsible to take all appropriate fail-safe, backup, redundancy, and other measures to ensure its safe use. Oracle Corporation and its affiliates disclaim any liability for any damages caused by use of this software or hardware in dangerous applications.

Trademark Notice

Oracle and Java are registered trademarks of Oracle and/or its affiliates. Other names may be trademarks of their respective owners.

Intel and Intel Xeon are trademarks or registered trademarks of Intel Corporation. All SPARC trademarks are used under license and are trademarks or registered trademarks of SPARC International, Inc. AMD, Opteron, the AMD logo, and the AMD Opteron logo are trademarks or registered trademarks of Advanced Micro Devices. UNIX is a registered trademark of The Open Group in the United States and other countries.

Third Party Content, Products, and Services Disclaimer

This software or hardware and documentation may provide access to or information on content, products, and services from third parties. Oracle Corporation and its affiliates are not responsible for and expressly disclaim all warranties of any kind with respect to third-party content, products, and services. Oracle Corporation and its affiliates will not be responsible for any loss, costs, or damages incurred due to your access to or use of third-party content, products, or services.

Contents

Understanding the Database Binding Component	5
About the Database Binding Component	5
Components of the Database Binding Component	5
Features of the Database Binding Component	6
Packages that Make Up the Database Binding Component	9
Database Binding Component as Provider	10
Database Binding Component as Consumer	11
Database Binding Component WSDL Extensibility Elements	11
Functional Architecture of Database Binding Component	11
Functional Architecture of the JDBC Binding Component — Comparative Study	14

Understanding the Database Binding Component

The topics in this document provide information about Understanding the Database Binding Component.

What You Need to Know

These topics provide information about Database Binding Component.

- [“About the Database Binding Component” on page 5.](#)
- [“Features of the Database Binding Component” on page 6.](#)
- [“Features of the Database Binding Component” on page 6.](#)
- [“Functional Architecture of Database Binding Component” on page 11.](#)

About the Database Binding Component

The Database Binding Component (DB BC) provides a comprehensive solution for configuring and connecting to databases that support Java Database Connectivity (JDBC) from within a Java Business Integration (JBI) environment. Database BC is a JBI component that provides database operations as services. JBI components acting as consumers invoke these Web Services. The Database BC is an implementation in compliance with JBI Specification 1.0.

The Database BC supports the following database artifacts to be exposed as Services.

- Table
- Prepared Statements
- Procedures
- SQL File

Components of the Database Binding Component

The Database BC helps users to handle databases with flexibility. It also provide Web Services in conjunction with other OpenESB components.

The following components are part of the Database BC.

- The WSDL from Database wizard, which supports Table, Prepared Statements, Procedure, and SQL File (NetBeans plug-in).
- Custom WSDL extensions for configuring the Web Service (NetBeans plug-in).
- Database Binding Runtime component (JBI runtime component).

Features of the Database Binding Component

The Database BC has all the features of the JDBC Binding Component and subset of SQL Service Engine. The Database BC supports the listed database artifacts that are exposed as Services.

- **Database Objects**
 - Table
 - View
 - Prepared Statements
 - Procedures
 - SQL File
- **Database Operations (DDL)**
 - Table
 - Insert
 - Update
 - Delete
 - Select
 - Database Polling for Inbound
 - PollPostProcessing Delete
 - PollPostProcessing Mark Column
 - PollPostProcessing Copy
 - PollPostProcessing Move
 - Prepared Statements
 - Select
 - Insert
 - Update
 - Delete
 - Procedures
- **Database Connectivity**

Database connectivity through Java Naming and Directory Interface (JNDI) lookup.
- **XSD Creation and Editing**

- Creating XML Schema Definition (XSD) through a step-by-step wizard for the following:
 - Table
 - Prepared Statements
 - Procedure
 - SQL File
- **WSDL Creation and Editing**

Creating WSDL components through a wizard with relevant binding information, service, and port definitions.

 - Table
 - Prepared Statements
 - Procedures
 - SQL File
- **Other Features**
 - Transaction Control (including XA)
 - JDBC WSDL extension validations in the WSDL Editor
 - Fault Handling
- **Databases Supported**

For information about the database platforms and versions supported by the Database Binding Components, see [“Java CAPS 6.3 Components and Supported External Systems” in *Planning for Oracle Java CAPS 6.3 Installation*](#).
- **Driver Types Supported**

Drivers are uniquely different in what they do and the type of functions they support.

 - DataDirect 3.7 (Type 4)
 - Derby Network client driver for Derby 10.2
 - Oracle Database
 - Oracle Type 2 driver (thin) for Oracle 9i
 - Oracle Type 2 driver (thin) for Oracle 10g
 - Oracle Type 2 driver (thin) for Oracle 11g

ojdbc14.jar,ojdbc5.jar: This driver works with Table, Prepared Statements, and Procedures.
 - MySQL Native

mysql-connector-java-5.1.5-bin.jar: This driver works with Table, Prepared Statements, Procedures, and SQL File.
 - MySQL DataDirect Driver

This driver works with Table, Prepared Statements, Procedures, and SQL File.
 - Oracle Native

This driver works with Table, Prepared Statements (supports only during Runtime), Procedures, and SQL File (supports only during Runtime).

- Oracle DataDirect Driver

This driver works with Table, Prepared Statements, and SQL File.

- SQL SERVER 2005 Native

sqljdbc.jar: This driver works with Table, Prepared Statements, and SQL File.

- SQL SERVER 2005 DataDirect Driver

sqljdbc.jar: This driver works with Table, Prepared Statements, and SQL File.

- Sybase Native

jconn3.jar: This driver works with Table, Prepared Statements, and SQL File.

- DB2 Native

db2jcc.jar: This driver works with Table, Prepared Statements, Procedures, and SQL File.

Note – With this, both the JAR Files and the NBM files are installed together.

- **Systemic Qualities**

- Application Configuration and Variables

Provides support for application configuration at deployment time and runtime, that is, after an application has been packaged. Must allow for changing configuration without modifying the packaged application.

- Logging

Develop a consistent logging strategy across all runtime components.

- Monitoring and Management

Provides a shared model for instrumentation, aggregation, and presentation of monitoring data related to performance, activity, and status. Needs to allow for unified monitoring across Sierra. This includes the core platform as well as components.

- Recovery

XA recovery is a big part of this picture, but it's not everything. All components need to be able to recover gracefully from failure, including failure of other components internally and externally; and dealing with faults or errors in a manner that does not compromise message reliability.

- Dynamic Addressing

Extend the scope of an application dynamically through dynamic addressing or invocation.

- Retry

Qualities that can be added to an interaction with an endpoints.

- Throttling
Qualities that can be added to an interaction with an endpoints.
- Serial Processing and Message Ordering
Needs explicit support by all components; might benefit from conventions with respect to the status (DONE or ERROR) is sent back (that convention is related to TX and reliable messaging as well).
- Common Fault and Error Handling
Establishes a common fault or error framework for all components. This ensures consistency in fault behavior and content.
- Transaction Propagation
Provides a transferable construct for transaction information within the context of a given invocation (parent -> child).
- Configuration Usability
MBean and WSDL extensibility elements consistency or usability.

Packages that Make Up the Database Binding Component

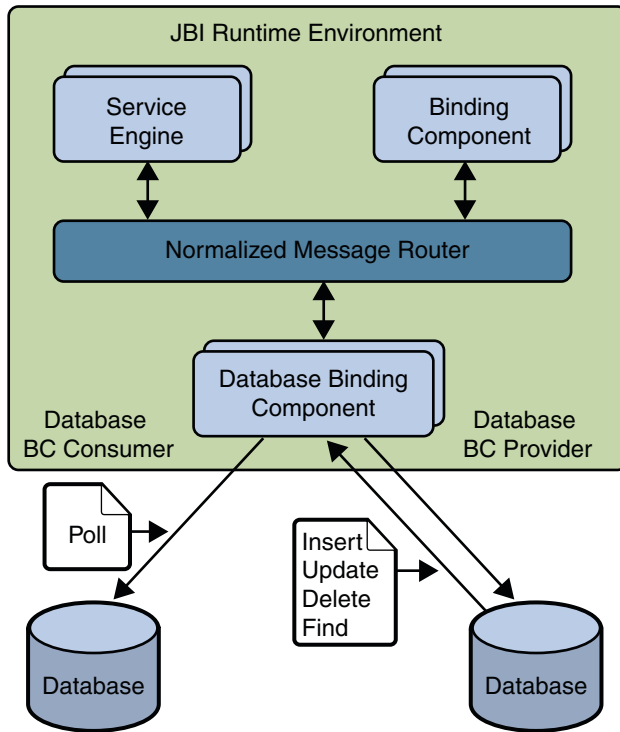
This runtime component is available as a **sun-database-binding** component. The design-time components still leverage the **org-netbeans-modules-wsdlexensions-jdbc.nbm**. NetBeans Modules help create artifacts for the **sun-database-binding**. The artifacts that the new version of these components generate are deployed to the Database BC instead of the JDBC Binding Component or SQL Service Engine.

Database BC (DB BC) is a Java Business Integration (JBI) runtime component that provides a comprehensive solution for configuring and connecting to databases. Database BC provides data operations as Services. It supports the JDBC from within a JBI environment. Other JBI components invoke these Web Services acting as consumers. Database BC considers both Data Manipulation Language (DML) and Data Definition Language (DDL) operations as Web Services.

The services that the Database BC exposes are actually SQL operations on Table, Prepared Statements, and Procedures. The Database BC supports the following database artifacts to be exposed as Services.

- Table
- Prepared Statements
- Procedures
- SQL File

The Database BC can assume the role of either a JBI consumer (polling inbound requests) or a JBI provider (sending outbound messages).



Once installed, the Database BC can be used to design, deploy, and run the Service Units. The most important part of a Service Unit is the WSDL that describes the Database services. Database BC provides a set of extension elements specific to Database BC for connecting to the Database.

Database Binding Component as Provider

Database BC acts as a provider in case of outbound message flow. Database BC acts as an external service provider when other engines and components 'invoke' it. In this role, when it receives a normalized message as part of the message exchange, it converts and extracts the SQL operation. The SQL operation is then executed on the specified database. In other words, when the Database BC acts as a JBI provider, it extracts the SQL query from a JBI message received from the JBI framework. It then executes the query on a specified database. It converts the reply from the database into a JBI message that other JBI components can service.

Database Binding Component as Consumer

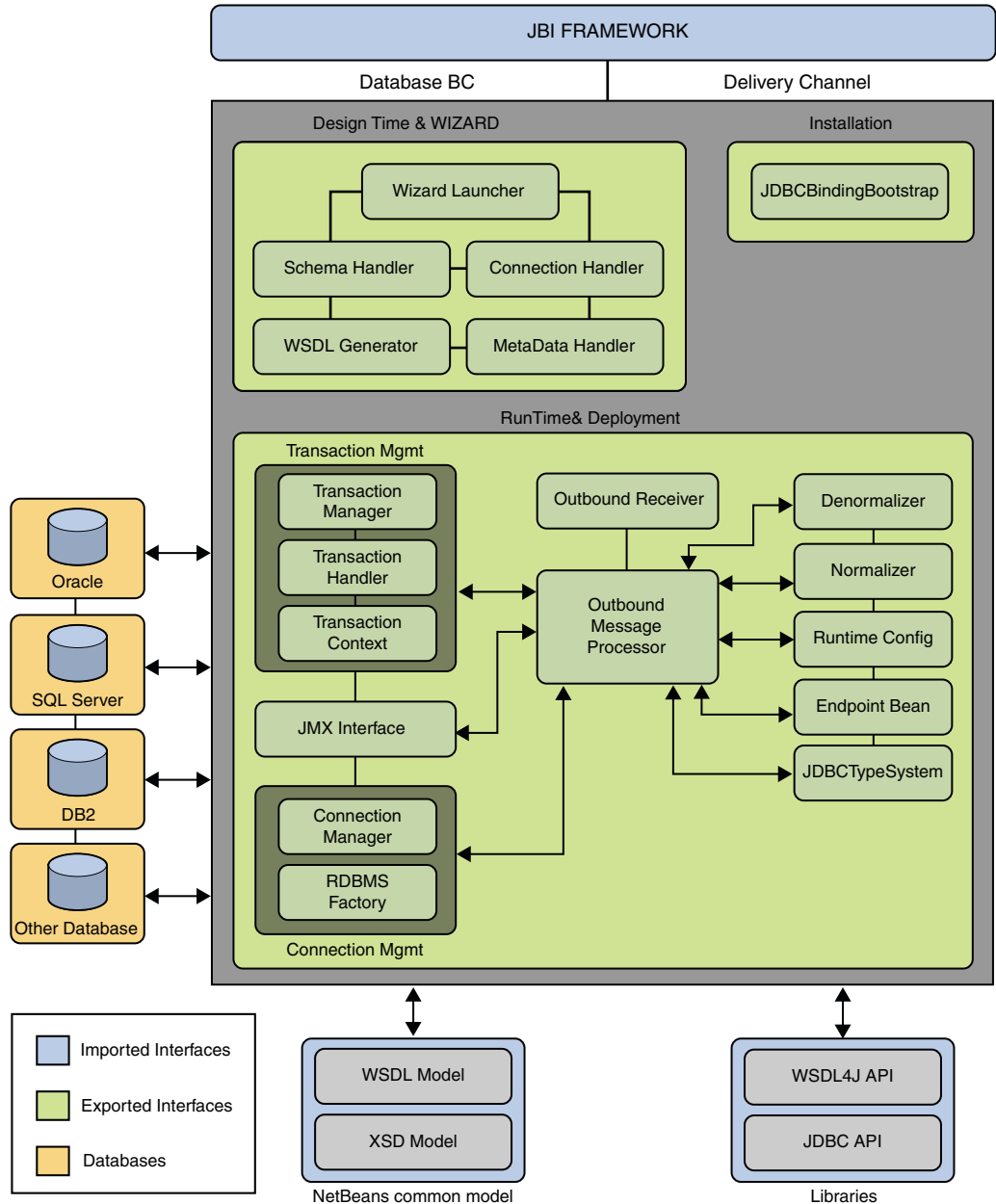
Database BC also acts as a consumer in case of inbound functionality where Database BC polls for records from a particular table, converts them into normalized message, and sends to the Normalized Message Router (NMR). This process is analogous to the inbound connections implemented in CAPS 6. In other words, When the Database BC acts as a JBI consumer, it polls a specified database for updates to a table in the database. When a new record is stored in the table, the database polls for the record for the specified time interval and the Database BC picks up that record, constructs a JBI message, and sends the message to the JBI framework so it can be serviced by other JBI components.

Database Binding Component WSDL Extensibility Elements

The Database BC WSDL extensibility element is a template used to construct an instance of a Database BC WSDL. The Database BC WSDL extensibility elements contains information for constructing the Database BC message. These messages are constructed using the message parts, message formats, properties mapping, and other message related information necessary for the Database BC to properly map message exchanges to Database BC messages and vice versa. The Database BC WSDL extensibility elements also contain information about the database to which it connects.

Functional Architecture of Database Binding Component

The following figure shows the functional architecture of Database Binding Component.



The following table briefly describes the functional operation of each module or wizard.

TABLE 1 Functional Description

Function	Description
Installation Module	Installs, uninstalls, and manages the lifecycle of the Database BC. This module is used to plug the Database BC into the JBI Framework and monitor the lifecycle of the Binding Component such as install, uninstall, start, stop, and so on.
Wizard Module	<p>Assists in interacting with the database.</p> <ul style="list-style-type: none"> ■ The Database Wizard create/edit interface queries the database to build WSDL from Database Table, Procedures, and Prepared SQL Statements. ■ XSDs are created based on the Table, Procedures, and Prepared Statements in the external data source. ■ Database Operations are added to provide the appropriate database functionality. ■ The wizard assists in interacting with the database using JDBC API specific calls and ensures that appropriate methods are called and the data is formatted appropriately when manipulating the database. ■ The Database Wizard can create XSDs based on any combination of Table, Procedures or Prepared Statements. ■ The Database Wizard uses imported interfaces like the WSDL Editor and XSD Editor.
Wizard Launcher	Launcher the Database Wizard. This interface basically plugged in into the existing WSDL Editor Wizard.
Schema Handler	Is responsible for creating an XML Schema for the corresponding table. The generated schema can be imported into the WSDL
MetaData Handler	Gets the MetaData from the database and displays the data to the user through the wizard. MetaData consists of the user-specific description of the table. MetaData handler gets the MetaData of the TableColumns, Prepared Statements, and Procedures. This data is supplied to the schema generator module to generate the schemas.
WSDL Generator	Generates the WSDL using imported APIs and the Schema Handler.
Database BC Runtime	Provides the functionality for the Database BC at runtime. The Database BC receives the normalized message it gets from the NMR, denormalizes the message, and gathers the required parameters (JNDI name, Operations, and so on) from the message. It processes the parameter, normalizes the output, and sends it back to the NMR.

TABLE 1 Functional Description	<i>(Continued)</i>
Function	Description
Connection Handler	Provides the functionality to get the connection from different databases. This module uses the JMX API to create a connection pool and the JNDI name to obtain the connection from the data source or Java Naming API. This information is used to create JDBC resource and bind it to the JDBC context of the JNDI tree. The Connection Handler uses two methods to get connected to the database. If the user has already created the JNDI name and wants to establish a connection to the database, then the Connection Handler looks up the JNDI name in the JNDI context and gets the connection. If the given JNDI Name does not exist the Connection Handler binds as a new JDBC context to the JNDI tree during deployment time. In the second method, the Connection Handler establishes a connection using the connection parameters. (driver class name, URL, username, and password).
Transaction Management	The Database BC implements the XAResource interface of JTA to be part of the global transaction and enlists the resource with the Transaction Manager. The Transaction Manager is responsible for starting and ending the XA Transaction. It implements the two-phase commit protocol to support the global transaction.
JMX Interface	Provides a method to bind the Database BC context to the JNDI tree of an application server context.
JBIFramework	Provides administration tools such as install, uninstall, deploy, and undeploy and normalized message router functionality to the Database BC.
NetBeans Common Model	The Database BC uses the WSDL Editor and XSD Editor imported models from the NetBeans as part of the enterprise pack.

Functional Architecture of the JDBC Binding Component — Comparative Study

The following figure depicts the functional architecture of the Database BC including various logical components and external systems. The diagram is centered around the external and internal interfaces provided by the binding component. The term interface is used in a generic sense to mean any piece of information going back and forth between components.

The architecture includes the following:

- Public Private (External to Alaska)
- Project Private (Internal to Alaska but External to JDBC BC)
- Imported Interfaces
- Exported Interfaces
- Core JDBC BC Functional Modules

