

# **Broadcasting Master Index Updates to External Systems**

Copyright © 2009, 2011, Oracle and/or its affiliates. All rights reserved.

#### **License Restrictions Warranty/Consequential Damages Disclaimer**

This software and related documentation are provided under a license agreement containing restrictions on use and disclosure and are protected by intellectual property laws. Except as expressly permitted in your license agreement or allowed by law, you may not use, copy, reproduce, translate, broadcast, modify, license, transmit, distribute, exhibit, perform, publish or display any part, in any form, or by any means. Reverse engineering, disassembly, or decompilation of this software, unless required by law for interoperability, is prohibited.

#### **Warranty Disclaimer**

The information contained herein is subject to change without notice and is not warranted to be error-free. If you find any errors, please report them to us in writing.

#### **Restricted Rights Notice**

If this is software or related documentation that is delivered to the U.S. Government or anyone licensing it on behalf of the U.S. Government, the following notice is applicable:

##### **U.S. GOVERNMENT RIGHTS**

Programs, software, databases, and related documentation and technical data delivered to U.S. Government customers are "commercial computer software" or "commercial technical data" pursuant to the applicable Federal Acquisition Regulation and agency-specific supplemental regulations. As such, the use, duplication, disclosure, modification, and adaptation shall be subject to the restrictions and license terms set forth in the applicable Government contract, and, to the extent applicable by the terms of the Government contract, the additional rights set forth in FAR 52.227-19, Commercial Computer Software License (December 2007). Oracle America, Inc., 500 Oracle Parkway, Redwood City, CA 94065.

#### **Hazardous Applications Notice**

This software or hardware is developed for general use in a variety of information management applications. It is not developed or intended for use in any inherently dangerous applications, including applications that may create a risk of personal injury. If you use this software or hardware in dangerous applications, then you shall be responsible to take all appropriate fail-safe, backup, redundancy, and other measures to ensure its safe use. Oracle Corporation and its affiliates disclaim any liability for any damages caused by use of this software or hardware in dangerous applications.

#### **Trademark Notice**

Oracle and Java are registered trademarks of Oracle and/or its affiliates. Other names may be trademarks of their respective owners.

Intel and Intel Xeon are trademarks or registered trademarks of Intel Corporation. All SPARC trademarks are used under license and are trademarks or registered trademarks of SPARC International, Inc. AMD, Opteron, the AMD logo, and the AMD Opteron logo are trademarks or registered trademarks of Advanced Micro Devices. UNIX is a registered trademark of The Open Group in the United States and other countries.

#### **Third Party Content, Products, and Services Disclaimer**

This software or hardware and documentation may provide access to or information on content, products, and services from third parties. Oracle Corporation and its affiliates are not responsible for and expressly disclaim all warranties of any kind with respect to third-party content, products, and services. Oracle Corporation and its affiliates will not be responsible for any loss, costs, or damages incurred due to your access to or use of third-party content, products, or services.

# Contents

---

<b>Broadcasting Master Index Updates to External Systems</b> .....	5
Related Topics .....	6
About Oracle Java CAPS Master Index Broadcasts .....	6
Creating a JMS Connection Factory .....	7
▼ To Create a JMS Connection Factory .....	7
Defining the Client Connection to the JMS Topic Using BPEL .....	8
Creating the BPEL Project for the Master Index Topic .....	9
Creating a Web Service Definition for the JMS Binding Component .....	10
Creating a Web Service Definition for the File Binding Component .....	12
Creating a BPEL Process to Access the Master Index Topic .....	13
Creating a Composite Application for Master Index Broadcasts .....	18
▼ To Create the Composite Application .....	18
Testing the Master Index Broadcast Configuration .....	19
▼ To Test the Master Index Broadcast Configuration .....	20
Sample Master Index Broadcast Message .....	20



# Broadcasting Master Index Updates to External Systems

---

The topics listed here provide procedures, conceptual information, and reference information for broadcasting Oracle Java CAPS Master Index updates to the external systems that share data with the master index application.

Note that Java CAPS includes two versions of Oracle Java CAPS Master Index. Oracle Java CAPS Master Index (Repository) is installed in the Java CAPS repository and provides all the functionality of previous versions in the new Java CAPS environment. Oracle Java CAPS Master Index is a service-enabled version of the master index that is installed directly into NetBeans. It includes all of the features of Oracle Java CAPS Master Index (Repository) plus several new features, like data analysis, data cleansing, data loading, and an improved Data Manager GUI. Both products are components of the Java CAPS Master Data Management (MDM) Suite. This document relates to Oracle Java CAPS Master Index only.

## **What You Need to Know**

These topics provide information you should know about broadcasting master index application update messages.

- [“About Oracle Java CAPS Master Index Broadcasts” on page 6](#)
- [“Sample Master Index Broadcast Message” on page 20](#)

## **What You Need to Do**

These topics provide instructions on how to configure a Topic to broadcast master index application updates, and how to create client projects that subscribe to the Topic.

- [“Creating a JMS Connection Factory” on page 7](#)
- [“Defining the Client Connection to the JMS Topic Using BPEL” on page 8](#)
- [“Creating a Composite Application for Master Index Broadcasts” on page 18](#)
- [“Testing the Master Index Broadcast Configuration” on page 19](#)

## Related Topics

Several topics provide information and instructions for implementing and using a master index application. For a complete list of topics related to working with Oracle Java CAPS Master Index, see “[Related Topics](#)” in *Oracle Java CAPS Master Index User’s Guide*.

## About Oracle Java CAPS Master Index Broadcasts

A master index application can be configured to broadcast any updates made to the database to the external systems that share data with the master index application. These updates can be a result of messages sent in from external systems or of changes made directly through the Master Index Data Manager (MIDM). Configuring the master index application to broadcast updates provides external systems with access to the most current and accurate information about the entities being indexed. Note that the external systems must be capable of accepting incoming messages in order to receive the broadcasts.

Oracle Java CAPS Master Index uses a JMS Topic to broadcast updates. A JMS Topic is a JMS provider that uses publish and subscribe messaging. This means that a single publisher broadcasts messages to multiple subscribers, ensuring that all subscribers receive the messages. The update message are created in XML format; the schema file that defines the structure of the message is generated when you generate the master index application files. It is located at `NetBeansProjects/ProjectName/files-generated/outbound.xsd`.

To set up a master index application to broadcast updates to external systems, you need to create a connection factory, which is used to connect to the Topic. Once the factory is created, you can define a BPEL process or other JMS client to subscribe to the Topic for each external system. This document provides instructions for using a BPEL process.

Follow these steps in the order given to configure a master index application to broadcast update messages:

- “[Creating a JMS Connection Factory](#)” on page 7
- “[Defining the Client Connection to the JMS Topic Using BPEL](#)” on page 8
- “[Creating a Composite Application for Master Index Broadcasts](#)” on page 18
- “[Testing the Master Index Broadcast Configuration](#)” on page 19

---

**Tip** – Before you begin these steps make sure the master index application has been generated and deployed, and make sure the application server and database are running.

---

# Creating a JMS Connection Factory

In order to use a Topic with a master index application, you need to create a JMS connection factory using the application server Admin Console. Creating the connection factory automatically creates a connector connection pool and resource for the factory. The connection factory must have the name `jms/ApplicationNameOutBoundSender`.

## ▼ To Create a JMS Connection Factory

**Before You Begin** Make sure the application server is running.

- 1 Launch the application server Admin Console.**
- 2 In the left panel of the Admin Console, expand Resources, expand JMS Resources, and then expand Connection Factories.**

The JMS Connection Factories page appears.

- 3 In the Connection Factories table, click New.**

The New JMS Connection Factory page appears.

- 4 Enter the JNDI name for the connection factory in the following format:**

`jms/ApplicationNameOutBoundSender`

Where *ApplicationName* is the name of the master index application whose updates are being broadcast. Note that this name is case sensitive. The application name must match the case of the actual master index application, and the suffix “OutBoundSender” must be capitalized as shown.

- 5 In the Resource Type field, select `javax.jms.TopicConnectionFactory`.**

## 6 Click OK.

Resources > JMS Resources > Connection Factories

### New JMS Connection Factory

The creation of a new Java Message Service (JMS) connection factory also creates a connector connection pool for the factory and a connector resource.

**General Settings**

JNDI Name:

Resource Type:

Description:

Status:  Enabled

---

**Pool Settings**

Initial and Minimum Pool Size:  Connections  
Minimum and initial number of connections maintained in the pool

Maximum Pool Size:  Connections  
Maximum number of connections that can be created to satisfy client requests

Pool Resize Quantity:  Connections  
Number of connections to be removed when pool idle timeout expires

Idle Timeout:  Seconds  
Maximum time that connection can remain idle in the pool

Max Wait Time:  Milliseconds  
Amount of time caller waits before connection timeout is sent

On Any Failure:  Close All Connections  
Close all connections and reconnect on failure, otherwise reconnect only when used

Transaction Support:

Level of transaction support. Overwrite the transaction support attribute in the Resource Adapter in a downward compatible way.

Connection Validation:  Required  
Validate connection before passing to container.

## 7 Continue to “Defining the Client Connection to the JMS Topic Using BPEL” on page 8.

## Defining the Client Connection to the JMS Topic Using BPEL

You can use a BPEL process or other JMS client (such as a Java client, JMS Binding Component, or message driven bean) to subscribe to the messages that the master index application sends to the JMS Topic. The BPEL process or JMS client can then forward the messages to the appropriate external systems. The instructions provided here describe how to send the messages to a flat file in XML format using a BPEL process. In a production environment, the File binding type would likely be replaced by HTTP or SOAP.

- “Creating the BPEL Project for the Master Index Topic” on page 9
- “Creating a Web Service Definition for the JMS Binding Component” on page 10
- “Creating a Web Service Definition for the File Binding Component” on page 12
- “Creating a BPEL Process to Access the Master Index Topic” on page 13

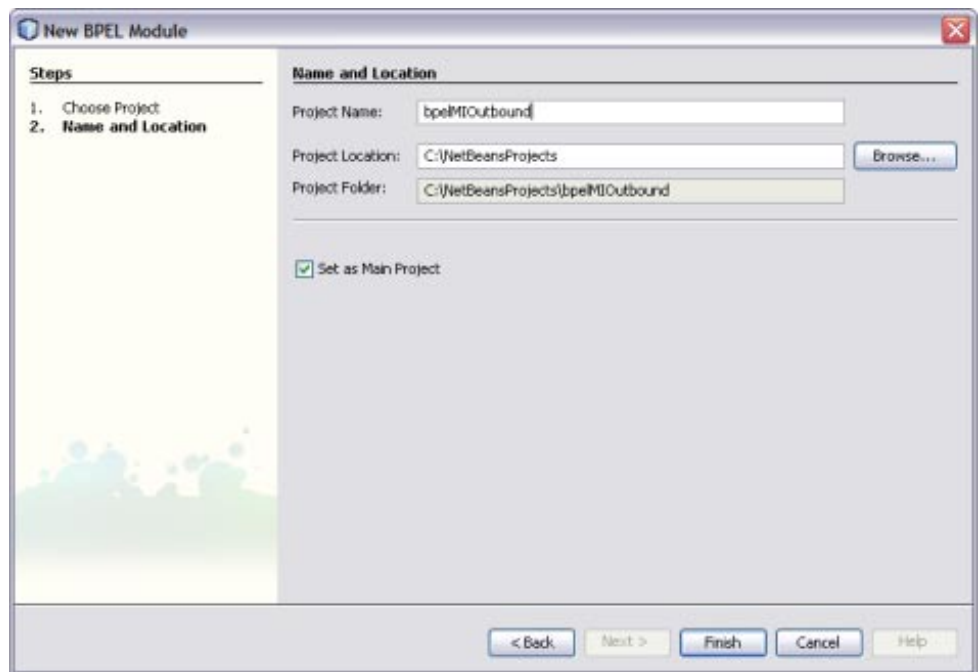


## Creating the BPEL Project for the Master Index Topic

The BPEL project contains the BPEL process and web service definitions that define how to process the messages published by the master index Topic.

### ▼ To Create the BPEL Project

- 1 Complete the procedure described in [“Creating a JMS Connection Factory” on page 7](#).
- 2 In the NetBeans toolbar, click New Project.  
The New Project Wizard appears.
- 3 In the Categories box, select SOA.
- 4 In the Projects box, select BPEL Module, and then click Next.
- 5 Enter the name and location of the new project, and then click Finish.



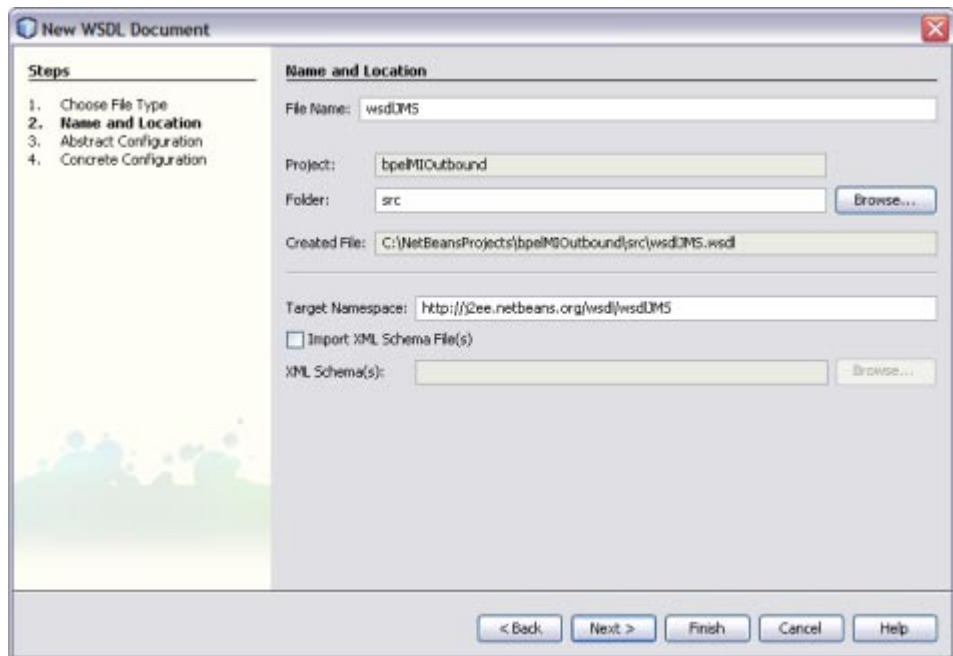
- 6 Continue to [“Creating a Web Service Definition for the JMS Binding Component” on page 10](#).

## Creating a Web Service Definition for the JMS Binding Component

A JMS BC provides the connection between the JMS Topic and the BPEL process. The web service definition configures this connection.

### ▼ To Create the JMS Web Service Definition

- 1 Complete the procedure described in [“Creating the BPEL Project for the Master Index Topic” on page 9](#).
- 2 Right-click the new BPEL project, point to New, and then select WSDL Document. The New WSDL Document Wizard appears.
- 3 In the upper portion of the window, enter a file name and folder name for the WSDL file.



- 4 In the lower portion of the window, do the following:
  - a. Select Concrete WSDL Document.
  - b. In the Binding Field, select JMS.

c. In the **Type** field, select **Receive**.

5 **Click Next.**

The Request Connection Configuration window appears.

6 **In the JMS Connection section, enter the following information:**

- **Connection URL** – The URL to connect to the message server. The format of the URL is `mq://host_name:port`. The default port is 7676.
- **User Name** – The user name to log on to the message server. The default user name is `admin`.
- **Password** – The password to log on to the message server. The default password is `admin`.

7 **(Optional) Configure the Payload Processing section according to your requirements.**

8 **Click Next.**

The Request Consumer Configuration window appears.

9 **Configure the Destination Properties as follows:**

- a. **For the Destination property, enter *Application\_Name*Topic, where *Application\_Name* is the name of the master index application.**
- b. **For the Destination Type, select Topic.**
- c. **For Subscription Durability, select Non-durable.**
- d. **Select XA Transaction if you are using XA transactions.**

10 **In the JMS Consumer Properties, you can leave the default or empty values.**

11 **Click Next.**

The Advanced Configuration window appears.

12 **You can enter any of the advanced options listed at the bottom of this window, or click Finish if you do not need advanced options.**

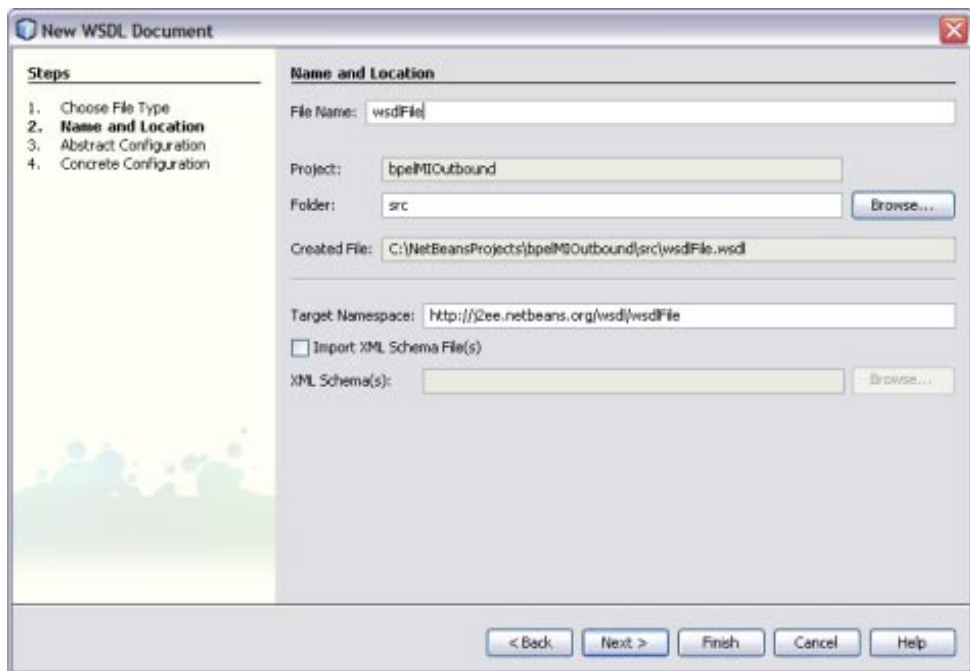
The contents of the WSDL file appears in the editor after you click Finish.

## Creating a Web Service Definition for the File Binding Component

For testing purposes, you can publish the master index broadcasts to a file using the File BC as described below. In a production environment, it is more likely that a SOAP or HTTP binding type would be used.

### ▼ To Create the File Web Service Definition

- 1 Complete the procedure described in “[Creating a Web Service Definition for the JMS Binding Component](#)” on page 10.
- 2 Right-click the BPEL project, point to New, and then select WSDL Document.  
The New WSDL Document Wizard appears.
- 3 In the upper portion of the window, enter a file name and folder for the WSDL file.



- 4 In the lower portion of the window, do the following:
  - a. Select Concrete WSDL Document.

- b. **In the Binding Field, select File.**
- c. **In the Type field, select Write.**
- 5 **Click Next.**  
The Request Configuration window appears.
- 6 **In the File Write section, enter the following information:**
  - **File Name** – The name of the file that output data will be written to.
  - **Path** – The absolute path to the directory where you want to store the output file.
- 7 **(Optional) Configure the Payload Processing section according to your requirements.**
- 8 **Click Finish.**  
The contents of the WSDL file appears in the editor.
- 9 **Continue to [“Creating a BPEL Process to Access the Master Index Topic”](#) on page 13.**

## Creating a BPEL Process to Access the Master Index Topic

The BPEL process defines the flow of data from the JMS Topic to the external systems that share data with the master index application using the web service definitions you created earlier. The BPEL process created below uses a File binding type. Your process might differ from this based on the binding type you use.

Perform the following steps to create and configure the BPEL process:

- [“To Create the BPEL Process”](#) on page 13
- [“To Create Partner Links”](#) on page 14
- [“To Create a Receive Activity”](#) on page 15
- [“To Create an Invoke Activity”](#) on page 16
- [“To Create an Assign Activity”](#) on page 17

### ▼ To Create the BPEL Process

- 1 **Complete the procedure described in [“Creating a Web Service Definition for the File Binding Component”](#) on page 12.**
- 2 **In the Projects window, right-click the BPEL project, point to New, and then select BPEL Process.**  
The New BPEL Process Wizard appears.

- 3 Enter a file name and location for the BPEL Process, and then click Finish.

The business process appears in the Business Process Editor.

- 4 Continue to [“To Create Partner Links” on page 14.](#)

## ▼ To Create Partner Links

- 1 Create a new Partner Link for the JMS web service definition by doing the following:

- a. In the BPEL Designer Palette, click Partner Link and drag it to the drop point on the left.

The Create New Partner Link window appears.

- b. Fill in the information for the Partner Link.

- Enter a unique name for the Partner Link.
- For the WSDL file, select the JMS Binding Component WSDL file you created in [“Creating a Web Service Definition for the JMS Binding Component” on page 10.](#)
- Select the option button next to Use Existing Partner Link Type.
- Accept the default values for the Partner Link Type, My Role, and Partner Role fields.



- c. Click OK.

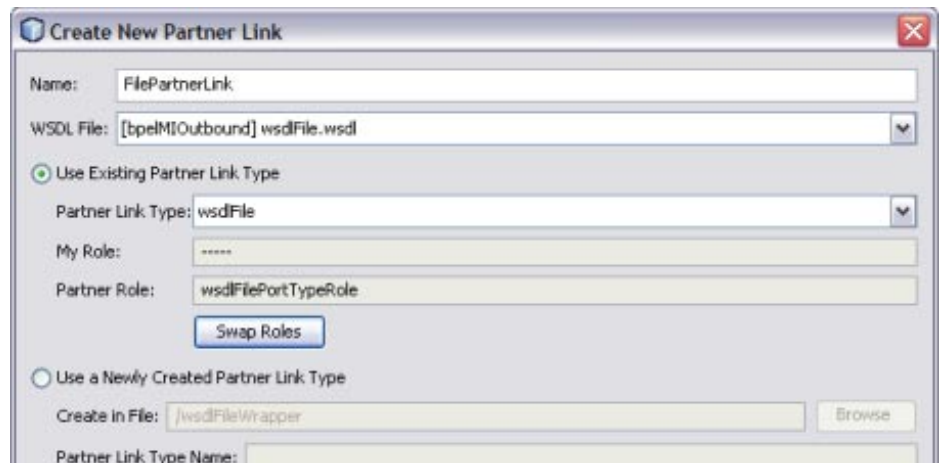
- 2 Create a new Partner Link for the File web service definition by doing the following:

- a. In the BPEL Designer Palette, click Partner Link and drag it to the drop point on the right.

The Create New Partner Link window appears.

b. Fill in the information for the Partner Link.

- Enter a unique name for the Partner Link.
- For the WSDL file, select the File Binding Component WSDL file you created in [“Creating a Web Service Definition for the File Binding Component” on page 12.](#)
- Select the option button next to Use Existing Partner Link Type.
- Accept the default value for the Partner Link Type, My Roles, and Partner Role fields.



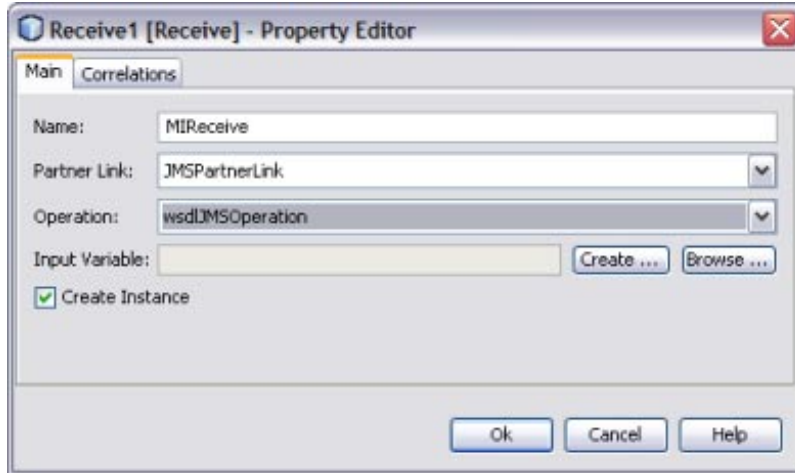
c. Click OK.

- 3 Continue to [“To Create a Receive Activity” on page 15.](#)

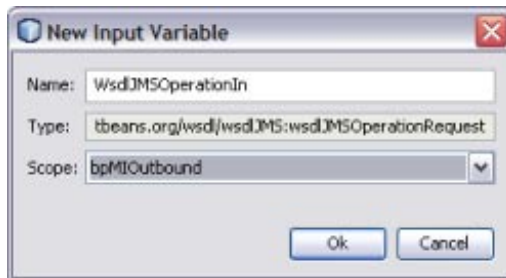
## ▼ To Create a Receive Activity

- 1 From the BPEL Designer Palette, drag a Receive activity to the drop point.
- 2 Click the Edit icon above the new Receive activity.
- 3 Enter a name for the activity.
- 4 In the Partner Link field, select the JMS Partner Link you created earlier.

- 5 In the Operation field, select the JMS subscriber operation.



- 6 Next to the Input Variable field, select Create.  
The New Input Variable dialog box appears.
- 7 Enter a name for the variable and select the current BPEL process as the Scope.



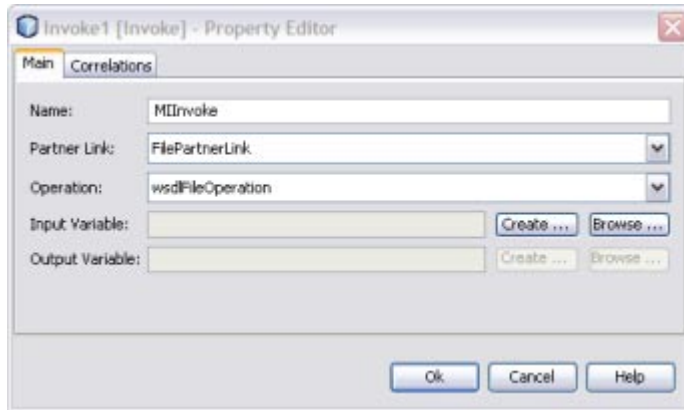
- 8 Click OK on both dialog boxes.
- 9 Continue to [“To Create an Invoke Activity”](#) on page 16.

## ▼ To Create an Invoke Activity

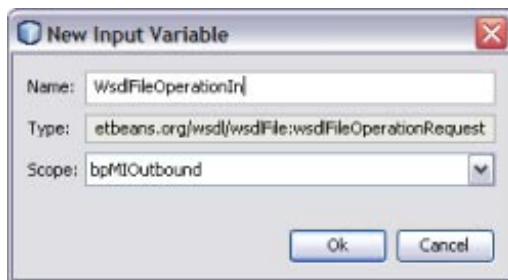
- 1 From the BPEL Designer Palette, drag an Invoke activity to the drop point beneath the Receive activity just created.
- 2 Click the Edit icon above the new Invoke activity.



- 3 Enter a name for the activity.
- 4 In the Partner Link field, select the File Partner Link you created earlier.



- 5 In the Operation field, select the File operation.
- 6 Next to the Input Variable field, select Create.  
The New Input Variable dialog box appears.
- 7 Enter a name for the variable and select the current BPEL process as the Scope.



- 8 Click OK on both dialog boxes.
- 9 Continue to ["To Create an Assign Activity" on page 17.](#)

## ▼ To Create an Assign Activity

- 1 From the BPEL Designer Palette, drag an Assign activity to the drop point between the Receive and Invoke activities.

---

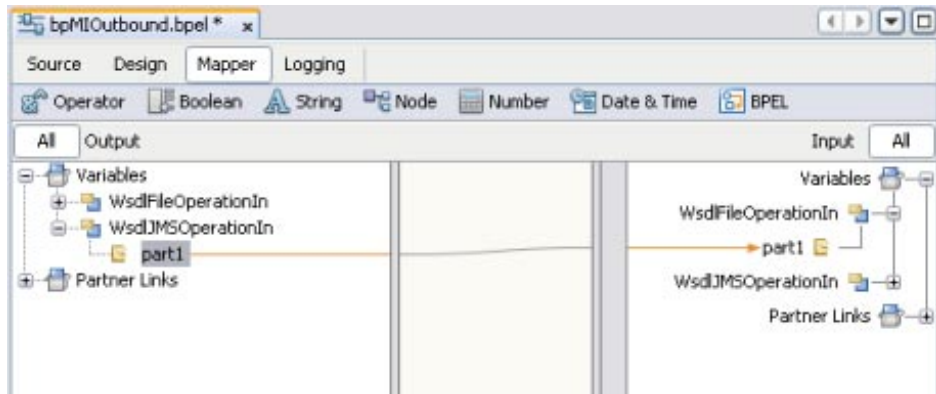
**Tip** – The Assign activity is listed under Basic Activities in the Palette.

---

**2 Double-click the Assign activity.**

The BPEL Mapper appears.

**3 Map the input value from the Receive activity's variable to the Invoke activity's variable.**



**4 Save and close the BPEL Process.**

**5 Continue to [“Creating a Composite Application for Master Index Broadcasts”](#) on page 18.**

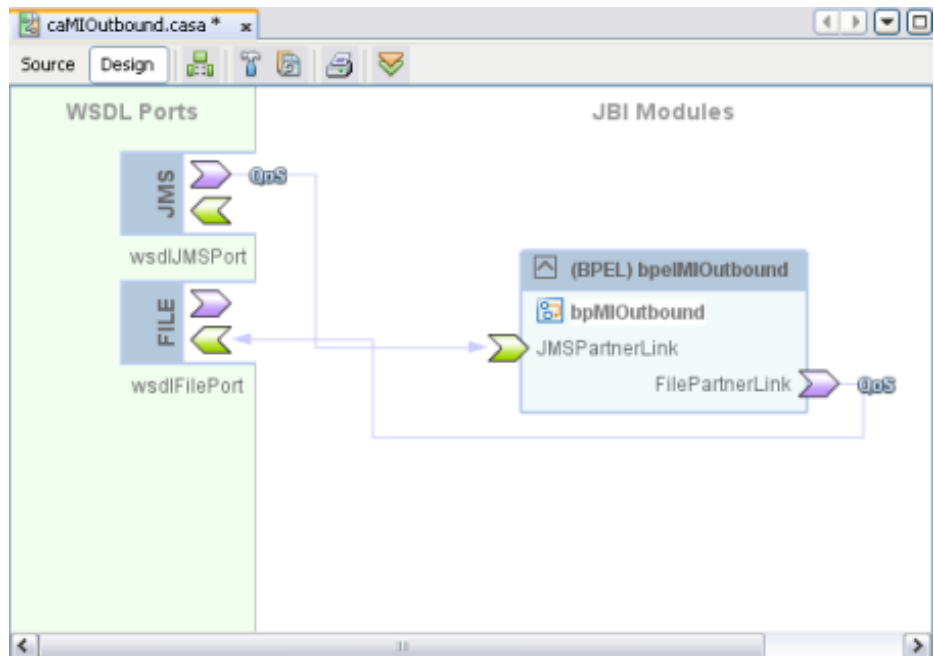
## Creating a Composite Application for Master Index Broadcasts

The Composite Application project creates a service assembly, which can then be deployed to the application server. This project assembles the BPEL process and web service definitions you created earlier into an application.

### ▼ To Create the Composite Application

- 1 Complete the procedures described in [“Creating a BPEL Process to Access the Master Index Topic”](#) on page 13**
- 2 Right-click in the NetBeans Projects window, point to New, and then select Project.**  
The New Project Wizard appears.
- 3 Under Categories, select SOA.**

- 4 Under Project, select Composite Application.
- 5 Enter a name and location for the project.
- 6 Click Finish.
- 7 Drag the BPEL project from the Projects window and drop it in the JBI Modules section of the CASA Editor canvas.
- 8 In the CASA Editor toolbar, click Build Project.



- 9 After the project builds successfully, click Deploy in the CASA Editor toolbar.
- 10 Continue to [“Testing the Master Index Broadcast Configuration”](#) on page 19.

## Testing the Master Index Broadcast Configuration

Once you have completed all the steps for configuring the master index application to broadcast updates, you can test the system to be sure it is working. You can view a sample broadcast message in [“Sample Master Index Broadcast Message”](#) on page 20

## ▼ To Test the Master Index Broadcast Configuration

**Before You Begin** Make sure the master index project is deployed and the database is running.

- 1 Complete the procedure described in [“Creating a Composite Application for Master Index Broadcasts” on page 18.](#)
- 2 Launch the MIDM.

---

**Tip** – The URL for the MIDM is `http://localhost:port/ApplicationNameMIDM`, where *port* is the HTTP port number of the application server (8080 by default) and *ApplicationName* is the name of the master index application. The application name and “MIDM” are case sensitive.

---

- 3 From the Source Records Add page, create a new record in the master index database.
- 4 On your computer, navigate to the location you specified for the File Binding Component web service definition in [“Creating a Web Service Definition for the File Binding Component” on page 12.](#)
- 5 Open the XML file and view the contents.

## Sample Master Index Broadcast Message

The outbound messages generated by updates to the master index application include several transactional fields, system and local ID information, and the record’s SBR. The SBR provides external systems with the single best data for a particular entity along with the EUID. Transactional fields include information such as the update function, system, user, and date; create function and user; and status. The local ID and system information provides a list of system and local ID pairs that are associated with the record, allowing you to easily identify which records in the external systems are affected by the update.

A unique schema definition file (XSD file) is generated for each master index application based on the object structure defined for that application. You can view the XSD file at `NetBeansProjects/ProjectName/files-generated/outbound.xsd`.

Below is a sample broadcast message for EUID 0000006501, which is associated with three different system records. The master index application is based on the Person template.

```
<?xml version="1.0" encoding="UTF-8"?>
<OutMsg Event="UPD" ID="000000000000000004010">
  <SBR EUID="0000006501" Status="active" CreateFunction="Add" ChildType="Customer"
    CreateSystem="System" UpdateFunction="Update" RevisionNumber="3" CreateUser="mdm"
    UpdateSystem="System" UpdateDate="" CreateDate="" UpdateUser="mdm">
    <SystemObject SystemCode="ORACLE" LID="2372385720" Status="active"></SystemObject>
  </SBR>
</OutMsg>
```

```
<SystemObject SystemCode="ORACLE" LID="2837482562" Status="active"></SystemObject>
<SystemObject SystemCode="SAP" LID="8327423434" Status="active"></SystemObject>
<Customer PersonCatCode="MEMBER" FirstName="ELIZABETH" FirstName_Std="ELIZABETH"
  FirstName_Phon="E421" MiddleName="ANN" LastName="WARNER" LastName_Std="WARNER"
  LastName_Phon="WARNAR" Suffix="" Title="DR" SSN="555999222"
  DOB="04/14/1964 00:00:00" Death="" Gender="F" MStatus="M" Race="C" Ethnic="31"
  Religion="AG" Language="EN" SpouseName="CRAIG" MotherName="JEN" MotherMN="SMITH"
  FatherName="MARK" Maiden="MILLER" PobCity="MILFORD" PobState="ONTARIO"
  PobCountry="CAN" VIPFlag="NONE" VetStatus="NONE" Status=""
  DriverLicense="CT12941284" DriverLicenseSt="CT" Dod="" DeathCertificate=""
  Nationality="CAN" Citizenship="CAN">
  <Alias FirstName="LIZ" MiddleName="" LastName="MILLER"></Alias>
  <Address AddressType="H" AddressLine1="1330 BLOSSOM ST."
    AddressLine1_HouseNo="1330" AddressLine1_StDir="" AddressLine1_StName="BLOSSOM"
    AddressLine1_StPhon="BLASAN" AddressLine1_StType="St" AddressLine2=""
    City="SHEFFIELD" StateCode="CT" PostalCode="09876" PostalCodeExt=""
    County="CAPE BURR" CountryCode="USA"></Address>
  <Phone PhoneType="CC" Phone="9894774477" PhoneExt=""></Phone>
</Customer>
</SBR>
</OutMsg>
```

