

; i ]UXY]bgHJU, ~c`Xc  
Gi b`FUm7 cbbYWtcf`Z:f`K ]bXck g`CG`&`f@bi | Ł

February 2011

ORACLE®

Ö ~ ää^Ä • çäë[ Ä[ ÄJ } Ää ÄÖ[ ] } ^&ç !Ä !Ä ä ä[ , • ÄÜÄGÄŠä ~ çD

Copyright © 2011, Oracle and/or its affiliates. All rights reserved.

This software and related documentation are provided under a license agreement containing restrictions on use and disclosure and are protected by intellectual property laws. Except as expressly permitted in your license agreement or allowed by law, you may not use, copy, reproduce, translate, broadcast, modify, license, transmit, distribute, exhibit, perform, publish, or display any part, in any form, or by any means. Reverse engineering, disassembly, or decompilation of this software, unless required by law for interoperability, is prohibited.

The information contained herein is subject to change without notice and is not warranted to be error-free. If you find any errors, please report them to us in writing.

If this software or related documentation is delivered to the U.S. Government or anyone licensing it on behalf of the U.S. Government, the following notice is applicable:

U.S. GOVERNMENT RIGHTS Programs, software, databases, and related documentation and technical data delivered to U.S. Government customers are "commercial computer software" or "commercial technical data" pursuant to the applicable Federal Acquisition Regulation and agency-specific supplemental regulations. As such, the use, duplication, disclosure, modification, and adaptation shall be subject to the restrictions and license terms set forth in the applicable Government contract, and, to the extent applicable by the terms of the Government contract, the additional rights set forth in FAR 52.227-19, Commercial Computer Software License (December 2007). Oracle USA, Inc., 500 Oracle Parkway, Redwood City, CA 94065.

This software is developed for general use in a variety of information management applications. It is not developed or intended for use in any inherently dangerous applications, including applications which may create a risk of personal injury. If you use this software in dangerous applications, then you shall be responsible to take all appropriate fail-safe, backup, redundancy, and other measures to ensure the safe use of this software. Oracle Corporation and its affiliates disclaim any liability for any damages caused by use of this software in dangerous applications.

Oracle is a registered trademark of Oracle Corporation and/or its affiliates. Other names may be trademarks of their respective owners.

This software and documentation may provide access to or information on content, products, and services from third parties. Oracle Corporation and its affiliates are not responsible for and expressly disclaim all warranties of any kind with respect to third-party content, products, and services. Oracle Corporation and its affiliates will not be responsible for any loss, costs, or damages incurred due to your access to or use of third-party content, products, or services.

# Guia de instalação do Sun Ray Connector for Windows OS 2.2 (Linux)

À

## Guia de instalação do Sun Ray Connector for Windows OS 2.2 (Linux)

---

### Conteúdo

- SRS 5 System Requirements
    - Sun Ray Server Operating System Requirements
    - SRWC 2.2 System Requirements for Components
    - Licensing
  - Portas e protocolos
    - Operações do SRWC
    - Redirecionamento de multimídia
  - Como instalar o SRWC (Linux)
  - How to Install the Sun Ray Connector Windows Components
    - Multimedia Redirection - Next Steps
    - Adobe Flash Acceleration - Next Steps
    - Sun Ray Audio Driver - Next Steps
    - USB Redirection - Next Steps
  - Como desinstalar o SRWC
- 

## Instalação no Linux (todos os tópicos)

### SRS 5 System Requirements

This page provides the product requirements for the SRS 5 release, which includes SRSS 4.2 and SRWC 2.2.

### Sun Ray Server Operating System Requirements

The following table provides the supported Sun Ray server operating systems for the SRSS 4.2 and SRWC 2.2 releases.

Platform	Releases
Solaris	<ul style="list-style-type: none"> <li>• Solaris 10 5/09 or later on SPARC and x86 platforms</li> <li>• Solaris 10 5/09 or later on SPARC and x86 platforms with Solaris Trusted Extensions</li> </ul>
Linux	<ul style="list-style-type: none"> <li>• Oracle Linux 5.4 and 5.5 (32-bit and 64-bit)</li> <li>• SuSE Linux Enterprise Server (SLES) 10 with Service Pack 2 (32-bit and 64-bit)</li> <li>• Red Hat Enterprise Linux 5 Update 3 server (32-bit and 64-bit)</li> </ul>

For additional operating system requirements, see [Additional Software Requirements](#).

### SRWC 2.2 System Requirements for Components

The following table provides a software support matrix for all the components of SRWC.

**Note**  
Windows 7 and Windows 2008 R2 support requires the [SRWC 2.2 patch](#), version -02 or greater.

	Windows XP SP 2 (64-bit)	Windows XP SP 3 (32-bit)	Windows 2003 R2 SP2 (32-bit/64-bit)	Windows Vista SP 2 (32-bit/64-bit)	Windows 2008 SP 2 (32-bit/64-bit)	Windows 7 (32-bit/64-bit)	Windows 2008 R2 (64-bit)
Windows Remote Desktop Connection Support	✓	✓	✓	✓	✓	✓	✓
<b>SRWC Component</b>							
Multimedia Redirection <ul style="list-style-type: none"> <li>Supported only with Windows Media Player 10 and 11</li> </ul>	✓	✓	✓				
Adobe Flash Acceleration <ul style="list-style-type: none"> <li>Supported only with Internet Explorer version 7 and 8, 32-bit</li> <li>Adobe Flash 9 content with all Adobe Flash Players from versions 9 and 10</li> </ul>	✓	✓	✓				
USB Redirection <ul style="list-style-type: none"> <li>Supported only with Sun Ray server running Solaris 10 5/09 or later</li> <li>Supported only in Full Screen Windows Kiosk Mode</li> </ul>	✓	✓					
Audio Input	✓	✓	✓				
Session Directory/Session Broker			✓		✓		✓
32-bit Color				✓	✓	✓	✓
	Windows XP SP 2 (64-bit)	Windows XP SP 3 (32-bit)	Windows 2003 R2 SP2 (32-bit/64-bit)	Windows Vista SP 2 (32-bit/64-bit)	Windows 2008 SP 2 (32-bit/64-bit)	Windows 7 (32-bit/64-bit)	Windows 2008 R2 (64-bit)

**Note**  
Multimedia redirection, Adobe Flash acceleration, and USB redirection require additional software to be installed on the Windows server. For detailed information, see [How to Install the Sun Ray Connector Windows Components](#).

## Licensing

The Sun Ray Software can be licensed as follows:

- Per Named User Plus - is defined as an individual authorized by the customer to use the programs which are installed on a single server or multiple servers, regardless of whether the individual is actively using the programs at any given time.
- Per Sun Ray Device - is defined as any licensed software or hardware device, whether from Oracle or a 3rd party, that accesses a Sun Ray Server environment using the ALP (Appliance Link Protocol), an Oracle Virtual Desktop Infrastructure server environment using ALP or RDP (Remote Desktop Protocol), or an Oracle Secure Global desktop environment using the AIP (Adaptive Internet Protocol).

Connecting to a Sun Ray Software environment via a Sun Ray client or the Oracle Virtual Desktop Access client without an appropriate software license is prohibited.

## Portas e protocolos

Esta página oferece os requisitos de protocolo e de porta do SRWC. Para obter os requisitos de porta e protocolo específicos do SRSS, consulte a página [Portas e protocolos do SRSS](#).

## Operações do SRWC

Em operações básicas do SRWC (acesso à porta RDP), o firewall do servidor Windows precisa que a porta TCP 3389 esteja aberta para conexões de entrada. O firewall do servidor Sun Ray (no qual o SRWC está em execução) precisa que a porta TCP 3389 esteja aberta para conexões de saída.

## Redirecionamento de multimídia

Para redirecionamento de multimídia, o firewall do servidor Windows deve ter a porta TCP 6000 aberta para conexões de entrada. O firewall do servidor Sun Ray (no qual o SRWC está em execução) deve ter a porta TCP 6000 aberta para conexões de saída.

## Como instalar o SRWC (Linux)

Este procedimento descreve como instalar o Sun Ray Connector for Windows (SRWC) em um servidor Sun Ray em execução no sistema operacional Linux.

### Etapas

1. Torne-se superusuário no servidor Sun Ray Linux.

Para evitar erros de script de instalação que poderão ocorrer se as configurações de ambiente do usuário forem mantidas, utilize o seguinte comando:

```
% su - root
```

2. Altere para o diretório da imagem de instalação do SRWC que contém o arquivo de instalação do SRWC.
3. Instale o software SRWC.

```
# ./installer
```

4. Após o término da instalação, execute o script de configuração automática.

```
# /opt/SUNWuttsc/sbin/uttsadm -c
```

O script `uttsadm` poderá solicitar o caminho de acesso às bibliotecas OpenSSL.

5. Aceite o caminho padrão para as bibliotecas OpenSSL ou forneça outro caminho, se aplicável.
6. Reinicie os serviços Sun Ray caso seja solicitado.

```
# /opt/SUNWut/sbin/utrestart
```

Se o script `uttsadm` não solicitar que os serviços Sun Ray sejam reiniciados, não é necessário reiniciá-los.

### Próximas etapas

Após a conclusão da instalação do SRWC, pode ser necessário realizar tarefas adicionais.

Tarefa	Descrição
<a href="#">Install the Sun Ray Connector Windows Components</a>	Oferece as etapas para a instalação dos componentes do SRWC em sistemas Windows, que inclui redirecionamento de multimídia, aceleração Adobe Flash, driver de áudio do Sun Ray e redirecionamento de USB.
<a href="#">Configurar o acesso à impressora</a>	Para as impressoras acessadas através do servidor Sun Ray (rede visível ou local), você precisa realizar algumas etapas iniciais de configuração para que as impressoras possam ser acessadas através do SRWC.
<a href="#">Configurar uma sessão Kiosk</a>	Se precisar configurar acesso personalizado ou restrito ao Windows, configure uma implementação Kiosk para o Sun Ray Windows Connector.

#### Tópicos relacionados

- [Como desinstalar o SRWC](#)

## How to Install the Sun Ray Connector Windows Components

This procedure provides the steps to install the following SRWC components on the Windows system:

- Multimedia redirection - Enhanced performance for Windows Media Player.
- Adobe Flash acceleration - Enhanced playback capabilities for Adobe Flash content.
- Sun Ray audio driver - Enhanced audio and video synchronization for multimedia content.
- USB redirection - Enables access to USB devices connected to a Sun Ray DTU from a Windows session.
- Audio input - Enables audio recording on a Sun Ray DTU from a Windows session.

#### Before You Begin

- For information about how to install and configure SRSS 4.2 and SRWC 2.2, see the [Sun Ray Server Software 4.2](#) and the [Sun Ray Connector for Windows OS Version 2.2](#) documentation.
- If you want to install the Sun Ray Connector Windows components by using the \*.msi files, you can use a 3rd-party tool to extract the \*.msi files from the `srs-winstaller.exe` file.



#### Note

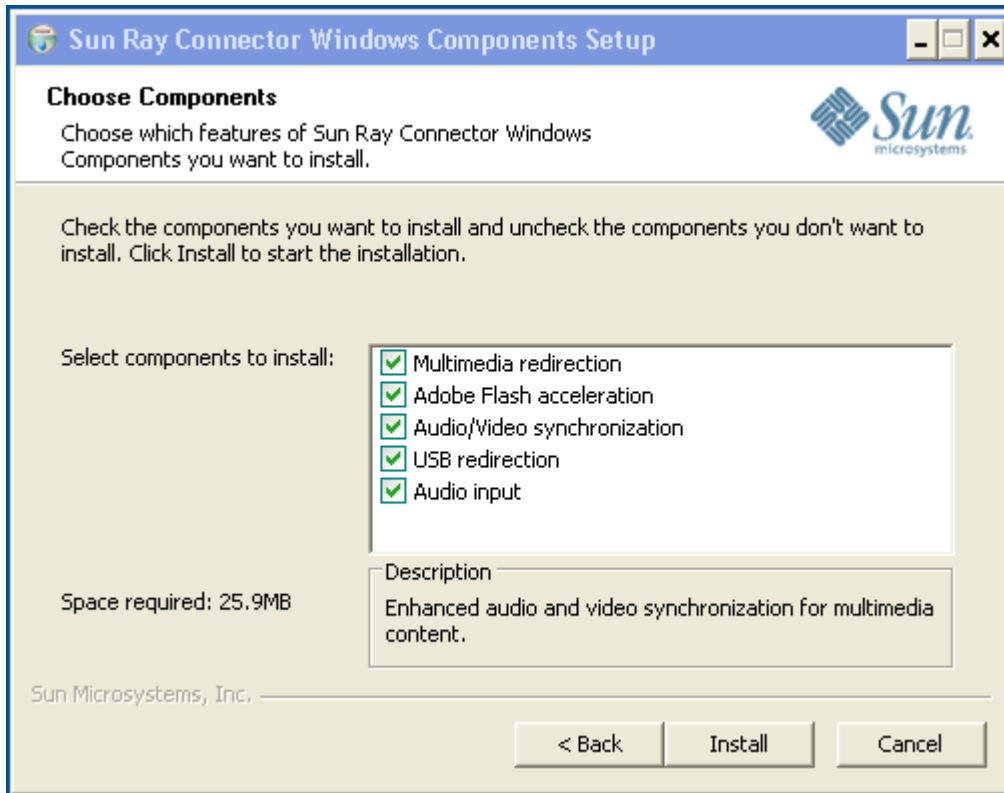
To bypass the installation UI, you can run `srs-winstaller /S` from the command line.

#### Steps

1. Log in to the Windows system as Administrator.
2. If you plan to install the USB Redirection component on a Virtual Machine (VM), you must add USB drivers on some VMs if they do not provide drivers by default. See [How to Add USB Drivers to a Virtual Machine](#) for details.
3. The Windows system must have access to the SRWC image.

```
<SRWC_image>/srtc2.2/Sun_Ray_Connector_Windows_Components_1.0
```

4. Copy the `srs-winstaller.exe` file from the SRWC image to the Windows system.
5. Double-click the `srs-winstaller` icon to start the Sun Ray Connector Windows Components Setup Wizard.
6. Review the License Agreement and click I Agree.
7. Choose which components you want to install and click Install.



8. Click Finish once the installation has finished.  
Restart the Windows system if instructed.
9. Go to the following sections (next steps) based on the features you installed.
  - [Multimedia Redirection - Next Steps](#)
  - [Adobe Flash Acceleration - Next Steps](#)
  - [Sun Ray Audio Driver - Next Steps](#)
  - [USB Redirection - Next Steps](#)

## Multimedia Redirection - Next Steps

### Additional Requirements for H.264 (MPEG-4)

The multimedia component does not include audio/video demux and decoders for H.264 (MPEG-4) streams. To ensure that MPEG-4 video streams are accelerated properly, you need to download some third-party or freeware solutions.

Consider the following freeware:

- MatroskaSplitter: <http://haali.cs.msu.ru/mkv/>
- ffdshow: [http://sourceforge.net/project/showfiles.php?group\\_id=173941](http://sourceforge.net/project/showfiles.php?group_id=173941)

Alternatively, you can use a third-party codec, such as the SDK codec from MainConcept: <http://www.mainconcept.com>

For the MainConcept codec, the following items are required:

- MPEG splitter
- MPEG decoder
- MP4 splitter
- MP4 decoder
- H.264 decoder

Many other solutions are possible. Not all solutions are listed here.

### Xinerama Limitation

H.264 and VC-1 support on the DTU is not available for Xinerama sessions. In Xinerama sessions, video windows may be dragged from one DTU to another or may span multiple DTUs. Audio/video synchronization of H.264 and VC-1 support is limited to the primary DTU, and the videos cannot be synchronized between DTUs. H.264 and VC-1 videos may still be rendered by the application in the same manner as they would be rendered on Sun Ray 1 DTUs.

For more information on Xinerama, see [About Multihead Configurations](#).

## Adobe Flash Acceleration - Next Steps

For Adobe Flash animations, users must enable "Third party browser extensions" in their browser's Internet Options.

## Sun Ray Audio Driver - Next Steps



### Caution

For audio to work properly, the Sun Ray audio driver must be set as the default. If users have changed their default audio driver, they must perform the following procedure to make the Sun Ray audio driver the default. # From the Windows Desktop, choose Settings->Control Panel.

1. Click Sounds & Audio Devices.
2. Click the Audio tab.
3. If the Sun Ray RDP Audio Driver is not the default, select it and click Apply.
4. Close your browser and reopen it.

## USB Redirection - Next Steps

Under MyComputer, right-click Properties > Hardware > DeviceManager, the `utSrSession` under the `System` devices entry should be displayed (Click image to enlarge).



See [How to Verify that USB Redirection is Active](#) for information about how to verify that USB redirection is working from a new session.

## Como desinstalar o SRWC

Este procedimento descreve como desinstalar o Sun Ray Connector for Windows (SRWC) de um servidor Sun Ray.

### Etapas

1. Como superusuário, abra uma janela do shell no servidor Sun Ray.  
Para evitar erros de script de desinstalação que poderão ocorrer se as configurações de ambiente do usuário forem mantidas, utilize o seguinte comando:

```
% su - root
```

2. Antes da desinstalação do software SRWC, desconfigure-o.

```
# /opt/SUNWuttsc/sbin/uttscadm -u
```

No sistema operacional Solaris, a entrada `uttscpd` é removida do arquivo `/etc/services` e o daemon proxy do SRWC é interrompido.



3. Remova o software SRWC.

```
# /opt/SUNWuttsc/sbin/uninstaller
```

## Atualização (todos os tópicos)

### Como atualizar o SRWC

Este procedimento descreve como atualizar com a versão mais recente do Sun Ray Connector for Windows (SRWC). Para atualizar uma versão anterior do Sun Ray Windows Connector, execute o instalador e o script de configuração `uttscadm`.

#### Etapas

1. Altere para o diretório de imagens do CD-ROM do Sun Ray Windows Connector.

Por exemplo:

```
# cd /cdrom/cdrom0
```

2. Instale o software Sun Ray Windows Connector.

```
# ./installer
```

O script do instalador indica qual software Sun Ray Windows Connector já está instalado no sistema.

Por exemplo:

```
Sun Ray Connector 2.1 is currently installed.
Do you want to uninstall it
and install Sun Ray Connector 2.2?
Accept (Y/N):
```

3. Responda Y ou N à pergunta Accept (Y/N).
  - a. Responda N para manter a instalação existente.
  - b. Responda Y para desinstalar a versão anterior do software Sun Ray Windows Connector e instalar a versão mais recente. O procedimento de atualização não remove nem altera o Sun Ray Data Store existente.
4. Execute o script de configuração automática novamente.

```
# /opt/SUNWuttsc/sbin/uttscadm -c
```

## Glossary

A B C D E F G H I J K L M N O P Q R S T U V W X Y Z

If you would like to add a term to the list, use the Add Comment link at the bottom of the page.

### A

Term	Description
AAC	Advanced Audio Coding, a "lossy" compression format capable of delivering relatively high quality at relatively low bit rates.
alias token	An alias token that enables a card owner to access the same Sun Ray session with more than one physical token. This token can be useful when a user needs a duplicate smart card.

ALP	The Sun Appliance Link Protocol, a suite of network protocols that enable communication between Sun Ray servers and DTUs.
AMGH	Automatic Multigroup Hotdesking. See regional hotdesking.
AH	Authentication headers used as part of an IPSec implementation.
authentication policy	The Authentication Manager uses the selected authentication module to determine what tokens are valid and which users, as token owners, have access to the system and sessions.
authentication token	Although all tokens are used by the Authentication Manager to grant or deny access to Sun Ray sessions, this term usually refers to a user's smart card token. See token.

## B

Term	Description
backplane bandwidth	Sometimes also referred to as "switch fabric." A switch's backplane is the pipe through which data flows from an input port to an output port. Backplane bandwidth usually refers to the aggregate bandwidth available among all ports within a switch.
barrier mechanism	To prevent clients from downloading firmware that is older than the firmware that is already installed, the administrator can set a barrier mechanism. The barrier mechanism symbol BarrierLevel is defined by default in the DHCP table of Sun Ray servers running version 2.0 or later of Sun Ray Server Software.
bpp	Bits per pixel.

## C

Term	Description
CABAC	Context-adaptive binary arithmetic coding, a "lossless" entropy coding technique used in H.264/MPEG-4 AVC video encoding.
CAM	Controlled Access Mode, also known as kiosk mode. As of SRSS 4.0, the CAM module was replaced by a rewritten Kiosk module.
card reader	See token reader.
category 5	The most common type of wiring used in LANs. It is approved for both voice and data at up to 100 Mhz. Also called "cat 5."
client-server	A common way to describe network services and the user processes (programs) of those services.
codec	A device or program capable of encoding or decoding a digital data stream or signal.
cold restart	Pressing the Cold Restart button terminates all sessions on a given server before restarting Sun Ray services. See restart.
cut-through switch	The switch begins forwarding the incoming frame onto the outbound port as soon as it reads the MAC address while continuing to receive the remainder of the frame.

## D

Term	Description
DHCP	Dynamic Host Configuration Protocol, a means of distributing IP addresses and initial parameters to the DTUs.
domain	A set of one or more system boards that acts as a separate system capable of booting the OS and running independently of any other board.
DTU	Desktop Terminal Units, the original name of Sun Ray desktop units. These units are also referred to as Sun Ray thin clients, Sun Ray ultra-thin clients, and Sun Ray virtual display terminals.

## E

Term	Description
ESP	Encapsulating Security Payloads, used as part of IPsec.
Ethernet	Physical and link-level communications mechanism defined by the IEEE 802.3 family of standards.
Ethernet address	The unique hardware address assigned to a computer system or interface board when it is manufactured. See MAC address.
Ethernet switch	A unit that redirects packets from input ports to output ports. It can be a component of the Sun Ray interconnect fabric.

## F

Term	Description
failover	The process of transferring processes from a failed server to a functional server.
failover group	Two or more Sun Ray servers configured to provide continuity of service in the event of a network or system failure. Sometimes abbreviated as FOG or HA (for high availability). The term high availability refers to the benefit of this type of configuration; the term failover group refers to the functionality.
filling station	Any private network configured for Sun Ray services or any shared network in which the Sun Ray DHCP server is the only DHCP server. When a DTU's firmware is downgraded to an earlier version because it connects to a server running the earlier version, it needs to be connected to a filling station so that it can download newer firmware.
firmware barrier	See barrier mechanism.
FOG	See failover group.
fps	Frames per second.
frame buffer	Video output device that drives the video display. See virtual frame buffer.

## G

Term	Description
GEM	Gigabit Ethernet.
group-wide	Across a failover group.

## H

Term	Description
H.264	A standard for video compression developed by MPEG and VCEG for a wide range of bit rates and resolutions. Also known as MPEG-4 AVC (Advanced Video Coding) and MPEG-4 Part 10.
HA	High availability. Sun Ray HA groups have traditionally been called failover groups.
head	Colloquial term for a screen, or display, or monitor, especially in a context where more than one is used in conjunction with the same keyboard and mouse, as in "multihead" feature.
high availability	See failover. The term high availability refers to a benefit of this type of configuration. The term failover group refers to the functionality.
hotdesking	The ability for a user to remove a smart card, insert it into any other DTU within a server group, and have the user's session available for instantaneous access to the user's windowing environment and current applications from multiple DTUs.
hot key	A predefined keyboard shortcut used to trigger certain activities either on the DTU or within the Sun Ray session running on the Sun Ray server. A hot key is used to bring up the Settings screen on the Sun Ray DTU.

hot-pluggable	A property of a hardware component that can be inserted into or removed from a system that is powered on. USB devices connected to Sun Ray DTUs are hot-pluggable.
---------------	--

## I

Term	Description
idle session	A session that is running on a Sun Ray server but to which no user (identified by a smart card token or a pseudo-token) is logged in.
IKE	Internet Key Exchange, a component of IPSec.
interconnect fabric	All the cabling and switches that connect a Sun Ray server's network interface cards to the Sun Ray DTUs.
intranet	A private network that uses internet protocols and is confined to an organization.
IP address	A unique number that identifies each host or other hardware system on a network. An IP address is composed of four integers separated by periods. Each decimal integer must be in the range 0-255 (for example, 129.144.0.0).
IP address lease	The assignment of an IP address to a computer system for a specified length of time, rather than permanently. IP address leasing is managed by the Dynamic Host Configuration Protocol (DHCP). The IP addresses of Sun Ray DTUs are leased.
IPSec	The Internet Protocol (Security) set of protocols seeks to secure IP communications by encoding data packets through authentication headers (AH) and encapsulating security payloads (ESP) and by providing a key exchange mechanism (IKE).

## K

Term	Description
kiosk mode	A facility to run sessions under an anonymous user account without a UNIX login. Kiosk sessions provide a preconfigured, usually restricted, software environment. The term kiosk mode was used interchangeably with CAM in earlier versions of SRSS. As of SRSS 4.0, this module was completely rewritten and is now officially called kiosk mode.

## L

Term	Description
LAN	Local Area Network. A group of computer systems in close proximity that can communicate with one another through connecting hardware and software.
layer 2	The data link layer. The OSI (Open Standards Interconnection) model contains seven layers. Layer 2 is concerned with procedures and protocols for operating the communication lines between networks as well as clients and servers. Layer 2 also has the ability to detect and correct message errors.
local host	The CPU or computer on which a software application is running.
local server	From the DTU's perspective, the most immediate server in the LAN.

## M

Term	Description
MAC address	Media Access Control. A MAC address is a 48-bit number programmed into each local area network interface card (NIC) at the time of manufacture. LAN packets contain destination and source MAC names and can be used by bridges to filter, process, and forward packets. 8:0:20:9e:51:cf is an example of a MAC address. See also Ethernet address
managed object	An object monitored by the Sun Management Center software.

mobile token	If mobile sessions are enabled, this pseudo-token enables a user to log in to an existing session from different locations without a smart card, in which case the user name is associated with the session. This type of pseudo-token is called a mobile token.
mobility	For the purposes of the Sun Ray Server Software, the property of a session that enables it to follow a user from one DTU to another within a server group. On the Sun Ray system, mobility requires the use of a smart card or other identifying mechanism.
modules	Authentication modules are used to implement various site-selectable authentication policies.
MPPC	Microsoft Point-to-Point Compression protocol.
MTU	Maximum Transmission Unit, used to specify the number of bytes in the largest packet a network can transmit.
multicasting	The process of enabling communication between Sun Ray servers over their Sun Ray network interfaces in a failover environment.
multihead	See head.
multiplexing	The process of transmitting multiple channels across one communications circuit.

## N

Term	Description
NAT	See network address translation.
namespace	A set of names in which a specified ID must be unique.
network address	The IP address used to specify a network.
network address translation	Network address translation (NAT) typically involves the mapping of port numbers to allow multiple machines (Sun Ray DTUs, but not Sun Ray servers) to share a single IP address.
network interface	An access point to a computer system on a network. Each interface is associated with a physical device. However, a physical device can have multiple network interfaces.
network interface card	Abbreviated as NIC. The hardware that links a workstation or server to a network device.
network latency	The time delay associated with moving information through a network. Interactive applications such as voice, video displays, and multimedia applications are sensitive to these delays.
network mask	A number used by software to separate the local subnet address from the rest of a given Internet protocol address. An example of a network mask for a class C network is 255 . 255 . 255 . 0.
network protocol stack	A network suite of protocols, organized in a hierarchy of layers called a stack. TCP/IP is an example of a Sun Ray protocol stack.
NIC	Network interface card.
non-smart card mobility	A mobile session on a Sun Ray DTU that does not rely on a smart card. NSCM requires a policy that allows pseudo-tokens.
NSCM	See non-smart card mobility.

## O

Term	Description
OSD	On-screen display. The Sun Ray DTU uses OSD icons to alert the user of potential start-up or connectivity problems.

## P

Term	Description
PAM	Pluggable Authentication Module. A set of dynamically loadable objects that gives system administrators the flexibility of choosing among available user authentication services.
PAM session	A single PAM handle and runtime state associated with all PAM items, data, and the like.
patch	A collection of files and directories that replace or update existing files and directories that prevent proper execution of the software on a computer system. The patch software is derived from a specified package format and can be installed only if the package it fixes is already present.
PCM	Pulse Code Modulation.
policy	See authentication policy.
Pop-up GUI	A mechanism that enables configuration parameters for a Sun Ray DTU to be entered from the attached keyboard.
port	(1) A location for passing data in and out of a computer system. (2) The abstraction used by Internet transport protocols to distinguish among multiple simultaneous connections to a single destination host.
POST	Power-on self test.
power cycling	Using the power cord to restart a DTU.
pseudo-session	A Sun Ray session associated with a pseudo-token rather than a smart card token.
pseudo-token	A user accessing a Sun Ray session without a smart card is identified by the DTU's built-in type and MAC address, known as a pseudo-token. See token.

## R

Term	Description
RDP	Microsoft Remote Desktop Protocol.
regional hotdesking	Originally known as Automatic Multigroup Hotdesking (AMGH), this SRSS feature enables users to access their sessions across wider domains and greater physical distances than was possible in earlier versions of SRSS. Administrators enable this feature by defining how user sessions are mapped to an expanded list of servers in multiple failover groups.
RDS	Remote Desktop Services. Formally known as Terminal Services. See Windows Terminal Services.
RHA	Remote Hotdesk Authentication, a security enhancement that requires SRSS authentication before users can reconnect to an existing session. RHA does not apply to Kiosk sessions, which are designed for anonymous access without authentication. RHA policy can be administered either through a GUI option or with the <code>utpolicy</code> command.
restart	Sun Ray services can be restarted either from the <code>utrestart</code> command or with the Warm Restart or Cold Restart options through the GUI. A cold restart terminates all Sun Ray sessions; a warm restart does not.

## S

screen flipping	The ability on a Sun Ray DTU with a single head to pan to individual screens that were originally created by a multihead group.
server	A computer system that supplies computing services or resources to one or more clients.
service	For the purposes of the Sun Ray Server Software, any application that can directly connect to the Sun Ray DTU. It can include audio, video, Xservers, access to other machines, and device control of the DTU.
session	A group of services associated with an authentication token. A session may be associated with a token embedded on a smart card. See token.
session mobility	The ability for a session to "follow" a user's login ID or a token embedded on a smart card.
smart card	Generically, a plastic card containing a microprocessor capable of making calculations. Smart cards that can be used to initiate or connect to Sun Ray sessions contain identifiers such as the card type and ID. Smart card tokens may also be registered in the Sun Ray Data Store, either by the Sun Ray administrator or, if the administrator chooses, by the user.

smart card token	An authentication token contained on a smart card. See token.
SNMP	Simple Network Management Protocol
spanning tree	An intelligent algorithm that enables bridges to map a redundant topology and eliminates packet looping in Local Area Networks (LANs).
store-and-forward switches	The switch reads and stores the entire incoming frame in a buffer, checks it for errors, reads and looks up the MAC addresses, and then forwards the complete good frame out onto the outbound port.
subnet	A working scheme that divides a single logical network into smaller physical networks to simplify routing.
system	The Sun Ray system consists of Sun Ray DTUs, servers, server software and the physical networks that connect them.

## T

TCP/IP	Transmission Control Protocol/Internet Protocol (TCP/IP) is a networking protocol that provides communication across interconnected networks between computers with diverse hardware architectures and operating systems.
thin client	Thin clients remotely access some resources of a computer server, such as compute power and large memory capacity. The Sun Ray DTUs rely on the server for all computing power and storage.
tick	The time interval since a specific network event. It is defined as 1/100th of a second, which is the usual SNMP convention.
timeout value	The maximum allowed time interval between communications from a DTU to the Authentication Manager.
token	The Sun Ray system requires each user to present a token, which the Authentication Manager uses to allow or deny access to the system and to sessions. A token consists of a type and an ID. If the user uses a smart card, the smart card's type and ID are used as the token. If the user is not using a smart card, the DTU's built-in type and ID (the unit's Ethernet, or MAC, address) are used instead as a pseudo-token. If mobile sessions are enabled, a user can log in to an existing session from different locations without a smart card, in which case the user name is associated with the session. A pseudo-token used for mobile sessions is called a mobile token. Alias tokens can also be created to enable users to access the same session with more than one physical token.
token reader	A Sun Ray DTU that is dedicated to reading smart cards and returning their identifiers, which can be associate with card owners (users).
trusted server	Servers in the same failover group that "trust" one another.

## U

URI	Uniform Resource Identifier, the generic term for all types of names and addresses that refer to objects on the World Wide Web.
user session	A session that is running on a Sun Ray server and to which a user (identified by a smart card token or a pseudotoken) is logged in.

## V

VC-1	Informal name of the SMPTE 421M video codec standard, now a supported standard for Blu-ray Discs and Windows Media Video 9.
virtual desktop	A virtual machine containing a desktop instance that is executed and managed within the virtual desktop infrastructure, usually a Windows XP or Vista desktop accessed through RDP.
virtual frame buffer	A region of memory on the Sun Ray server that contains the current state of a user's display.

## W

Term	Description
warm restart	See restart.
WMA	Windows Media Audio data compression file format and codec developed by Microsoft.
work group	A collection of associated users who exist in near proximity to one another. A set of Sun Ray DTUs that are connected to a Sun Ray server provides computing services to a work group.
Windows system	Throughout the SRWC documentation, "Windows system" indicates a Windows OS that can be accessed from a Sun Ray DTU using SRWC. A Windows Terminal Server is one example of a Windows system.
Windows Terminal Server	A server running Windows Server software with Windows Terminal Services enabled.
Windows Terminal Service	A Microsoft Windows component that makes Windows applications and desktops accessible to remote users and clients. Depending on the Windows release, this feature may be called Terminal Services, Remote Desktop Services, or Remote Desktop Connection.

## X

Term	Description
Xnewt	The new default Xserver for Sun Ray Server Software 4.1 and later on Solaris.
Xserver	A process which controls a bitmap display device in an X window system. It performs operations on request from client applications. Sun Ray Server Software contains two Xservers: Xsun, which was the default Xserver in previous versions of SRSS, and Xnewt, which is the default Xserver for SRSS 4.1 and later. Xnewt enables the latest multimedia capabilities.

## Y

Term	Description
YUV	Simple, lossless mechanism to store images or a sequence of images.