

**Oracle Insurance**

**Insbridge Rating and  
Underwriting**

**SoftRater for WebSphere  
Installation Guide**

Release 4.5

May 2011

Copyright © 2005, 2011, Oracle and/or its affiliates. All rights reserved.

Oracle Insurance Insbridge Rating and Underwriting SoftRater for WebSphere Installation Guide

Release 4.5

Part # E22926-01

Library # E22944-01

May 2011

Primary Author: Mary Elizabeth Wiger

This software and related documentation are provided under a license agreement containing restrictions on use and disclosure and are protected by intellectual property laws. Except as expressly permitted in your license agreement or allowed by law, you may not use, copy, reproduce, translate, broadcast, modify, license, transmit, distribute, exhibit, perform, publish, or display any part, in any form, or by any means. Reverse engineering, disassembly, or decompilation of this software, unless required by law for interoperability, is prohibited.

The information contained herein is subject to change without notice and is not warranted to be error-free. If you find any errors, please report them to us in writing.

If this software or related documentation is delivered to the U.S. Government or anyone licensing it on behalf of the U.S. Government, the following notice is applicable:

#### **U.S. GOVERNMENT RIGHTS**

Programs, software, databases, and related documentation and technical data delivered to U.S. Government customers are “commercial computer software” or “commercial technical data” pursuant to the applicable Federal Acquisition Regulation and agency-specific supplemental regulations. As such, the use, duplication, disclosure, modification, and adaptation shall be subject to the restrictions and license terms set forth in the applicable Government contract, and, to the extent applicable by the terms of the Government contract, the additional rights set forth in FAR 52.227-19, Commercial Computer Software License (December 2007). Oracle USA, Inc., 500 Oracle Parkway, Redwood City, CA 94065.

This software is developed for general use in a variety of information management applications. It is not developed or intended for use in any inherently dangerous applications, including applications which may create a risk of personal injury. If you use this software in dangerous applications, then you shall be responsible to take all appropriate fail-safe, backup, redundancy, and other measures to ensure the safe use of this software. Oracle Corporation and its affiliates disclaim any liability for any damages caused by use of this software in dangerous applications.

Oracle is a registered trademark of Oracle Corporation and/or its affiliates. Other names may be trademarks of their respective owners.

This software and documentation may provide access to or information on content, products, and services from third parties. Oracle Corporation and its affiliates are not responsible for and expressly disclaim all warranties of any kind with respect to third-party content, products, and services. Oracle Corporation and its affiliates will not be responsible for any loss, costs, or damages incurred due to your access to or use of third-party content, products, or services.

Where an Oracle offering includes third party content or software, we may be required to include related notices. For information on third party notices and the software and related documentation in connection with which they need to be included, please contact the attorney from the Development and Strategic Initiatives Legal Group that supports the development team for the Oracle offering. Contact information can be found on the Attorney Contact Chart.

The information contained in this document is for informational sharing purposes only and should be considered in your capacity as a customer advisory board member or pursuant to your beta trial agreement only. It is not a commitment to deliver any material, code, or functionality, and should not be relied upon in making purchasing decisions. The development, release, and timing of any features or functionality described in this document remains at the sole discretion of Oracle.

This document in any form, software or printed matter, contains proprietary information that is the exclusive property of Oracle. Your access to and use of this confidential material is subject to the terms and conditions of your Oracle Software License and Service Agreement, which has been executed and with which you agree to comply. This document and information contained herein may not be disclosed, copied, reproduced, or distributed to anyone outside Oracle without prior written consent of Oracle. This document is not part of your license agreement nor can it be incorporated into any contractual agreement with Oracle or its subsidiaries or affiliates.

# CONTENTS

PREFACE .....V  
Planning Your IBRU System..... v  
Types of Installation ..... v  
Definitions ..... vi  
Audience .....vii  
Related Documents .....vii  
Conventions .....vii  
Manual History .....viii

## CHAPTER 1

SYSTEM REQUIREMENTS ..... 9  
IBM WebSphere 6.1 ..... 9  
Locating the Configuration Files ..... 9  
Database User Roles and Permissions ..... 10  
Microsoft SQL Server ..... 11  
E-Delivery..... 11

## CHAPTER 2

INSTALLATION PROCEDURES – UTILIZING A SQL SERVER DATABASE.... 13  
Step 1: Create INSBRIDGE\_APP\_DIR in Name Space Bindings..... 14  
Create an Insbridge Shared Library for DB2 ..... 16  
Step 2: Installing the EAR File ..... 17  
Step 3: Setting up Insbridge.net.softrater.xml Config File ..... 20  
Step 4: Assigning the Shared Insbridge Libraries..... 20  
Step 5: Restoring IBRU Databases in SQL Server..... 22  
Step 6: Setting up a WebSphere Environment in IBSS..... 26  
Step 7: Entering your IBSS Instance in IBFA ..... 30

## CHAPTER 3

INSTALLATION PROCEDURES – UTILIZING AN ORACLE DATABASE ..... 33  
Step 1: Create INSBRIDGE\_APP\_DIR in Name Space Bindings..... 34  
Create an Insbridge Shared Library for DB2 ..... 36  
Step 2: Installing the EAR File ..... 37  
Step 3: Setting up Insbridge.net.softrater.xml Config File ..... 40  
Step 4: Assigning the Shared Insbridge Libraries..... 40  
Step 5: Creating an Oracle Database ..... 42  
Location of DDL Directory ..... 42  
Oracle Database Setup..... 43  
Step 6: Setting up a WebSphere Environment in IBSS ..... 44

	Step 7: Installation of Oracle Client.....	48
	Running the Oracle Client.....	48
	Using a DB2 Database .....	50
	Step 8: Entering your IBSS Instance in IBFA .....	51
<b>CHAPTER 4</b>		
	CREATING A SOFTRATER DATABASE .....	54
	Microsoft SQL Server.....	54
	ORACLE .....	54
	IBM DB2.....	55
<b>CHAPTER 5</b>		
	MANAGING SOFTRATER FOR WEBSPHERE .....	56
	SoftRater Server Web.....	56
	Update SOAP Services Configuration .....	57
<b>CHAPTER 6</b>		
	UPGRADING THE APPLICATION .....	59
	UPGRADE NOTICE.....	59
	Upgrading from a Previous Release.....	60
	SQL SERVER UPGRADE .....	61
<b>SUPPORT</b>		
	CONTACTING SUPPORT.....	62
	TTY Access to Oracle Support Services .....	62
<b>INDEX</b>		
	INDEX .....	63

# LIST OF FIGURES

- FIGURE 1 CHANGING SCOPE TO SERVER..... 14
- FIGURE 2 CREATING A NEW NAME SPACE ..... 14
- FIGURE 3 CREATE NAME SPACE BINDING ..... 15
- FIGURE 4 CREATING A SHARED LIBRARY ..... 16
- FIGURE 5 CREATING DB2 LIBRARY ..... 16
- FIGURE 6 INSTALLING THE EAR FILE ..... 17
- FIGURE 7 PROVIDING OPTIONS ..... 18
- FIGURE 8 MAPPING TO APPLICATION SERVERS..... 19
- FIGURE 9 SUMMARY ..... 19
- FIGURE 10 SHARED LIBRARY REFERENCES ..... 21
- FIGURE 11 ASSIGNING LIBRARY ..... 21
- FIGURE 12 RESTORING A DATABASE TO SQL SERVER ..... 23
- FIGURE 13 RIGHT CLICK TO RESTORE DATABASE ..... 23
- FIGURE 14 RESTORING A DATABASE ..... 24
- FIGURE 15 IBSS WEBSHERE MAIN PAGE ..... 26
- FIGURE 16 ENVIRONMENT SETUP..... 27
- FIGURE 17 RESETTING THE ENVIRONMENT ..... 29
- FIGURE 18 EDITING ENVIRONMENT ..... 31
- FIGURE 19 CHANGING SCOPE TO SERVER..... 34
- FIGURE 20 CREATING A NEW NAME SPACE ..... 34
- FIGURE 21 CREATE NAME SPACE BINDING ..... 35
- FIGURE 22 CREATING A SHARED LIBRARY ..... 36
- FIGURE 23 CREATING DB2 LIBRARY ..... 36
- FIGURE 24 INSTALLING THE EAR FILE ..... 37
- FIGURE 25 PROVIDING OPTIONS ..... 38
- FIGURE 26 MAPPING TO APPLICATION SERVERS..... 39
- FIGURE 27 SUMMARY ..... 39
- FIGURE 28 SHARED LIBRARY REFERENCES ..... 41
- FIGURE 29 ASSIGNING LIBRARY ..... 41
- FIGURE 30 IBSS WEBSHERE MAIN PAGE ..... 44
- FIGURE 31 ENVIRONMENT SETUP..... 45
- FIGURE 32 RESETTING THE ENVIRONMENT ..... 47
- FIGURE 33 LOCATING THE ORACLE CLIENT FOR 64-BIT INSTALLS ..... 48
- FIGURE 34 RUNNING THE ORACLE CLIENT ..... 49
- FIGURE 35 EDITING ENVIRONMENT ..... 52
- FIGURE 36 SOFTRATER SERVER WEB..... 56
- FIGURE 37 UPDATING SOAP SERVICES..... 57
- FIGURE 38 UPDATING SOAP ENDPOINT ..... 58

## PREFACE

Welcome to the *Oracle Insurance Insbridge Rating and Underwriting SoftRater for WebSphere Installation Guide*. SoftRater for WebSphere is an EJB application that can be installed on an IBM WebSphere Application Server. SoftRater is the multi-platform rating engine component within the Insbridge Rating and Underwriting System (IBRU) that executes the rating and underwriting instructions as defined by the user in RateManager.

The Insbridge SoftRater Server (IBSS) is the container for all Insbridge web components including the SoftRater Engine. All independent Insbridge components will be contained in the SoftRater Server.

## PLANNING YOUR IBRU SYSTEM

Prior to installation, you should have an idea of the type of setup you want to create. What kind of equipment do you have available and how many environments do you need? If you do not have everything completely planned out, you can still proceed. Environments can be removed or added later on. The Oracle Insurance Insbridge Rating and Underwriting system (IBRU) is expandable and can accommodate a few different configurations.

For more on planning your IBRU system, please see the Insbridge Planning Guide.

## TYPES OF INSTALLATION

There are various types of installations:

### Windows Environment

- **Full RateManager** – This installation will install RateManager and the Insbridge Framework Administrator (IBFA). This is for a Windows only environment, using a SQL Server database.
- **Full SoftRater for Windows Node** – This installation is for existing environments that want to add a SoftRater for Windows node to an environment. This is for a Windows only environment. This installation also includes incorporating an Oracle Database.

### Java Environment

- **Full SoftRater Installation on a Java Machine** – This installation will install SoftRater on a Java machine, using a SQL Server database.
- **Full SoftRater Installation on a Java Machine** – This installation will install SoftRater on a Java machine, using an Oracle database.

## Upgrading

- **Upgrade** – This installation is for existing customers and will take their current version of IBRU up to version 04.05.00.

**This guide is for a Full SoftRater Installation on a Java Machine.**

## Definitions

Some commonly used terms when installing or using the Oracle Insurance Insbridge Rating and Underwriting system:

- **IBRU** – Insbridge Rating and Underwriting System. This is the entire system.
- **IBFA** – Insbridge Framework Administrator. IBFA is an administrative tool used to configure Insbridge applications and setup RateManager database connections. IBFA will be located on a Windows Server machine. IBFA/SR-WIN is an Insbridge Framework Administrator/SoftRater for Windows.
- **IBSS** – Insbridge SoftRater Server. IBSS is the administrative tool for the SoftRater engine. The SoftRater engine is a multi-platform component within IBRU that executes the rules, rating and underwriting instructions as defined by the user in RateManager. IBSS is usually located on a Java machine. IBSS/SR-JAVA is an Insbridge SoftRater Server/SoftRater for Java.
- **SoftRater Node** – A SoftRater node is either an IBFA (without RateManager) or IBSS instance on a physical environment.
- **SoftRater Native** – SoftRater Native is a remote instance of SoftRater that can execute rules and rating logic in environments where access via the SoftRater web-services is not desired or possible.
- **RM** – RateManager. RateManager is a component within IBRU that enables users to manage the product definition and modification process, including rating and underwriting logic.
- **SR** – SoftRater. The engine that executes the rating, rules and underwriting instructions defined within RateManager. The rating environment for runtime execution and processing of business content. SoftRater can be further defined by the operating system where it has been loaded.
- **SR-WIN** – SoftRater for Windows. This is also another name for IBFA.
- **SR-JAVA** – SoftRater for Java. This is also another name for IBSS.
- **SRP** – SoftRater Packages. A package that holds all the RateManager logic for a specific program and version.
- **VFS** – Virtual File Servers. Virtual file server management allows you to access environments that are located on other machines in different locations where packages can be downloaded.
- **Package Location** – A pointer to a location where SoftRater Packages (SRP's) are stored.
- **Physical Environment** – A physical environment is generally referred to as a physical machine.
- **Authoring Environment** – The physical machine where RateManager is installed.

- **Rating Environment** – The physical machine(s) where SoftRater is installed. This is typically the same as a SoftRater node.
- **Logical Environment** – An environment created for a subscriber in IBFA. It defines package location, engine location and database location in addition to several other supporting data items. This environment is used for rating and/or SRP management. Each database connection will have a logical environment.

## AUDIENCE

This guide is intended for technical personal, such as installers, system administrators and others tasked with configuring SoftRater that would be involved in the maintenance and operation of SoftRater or RateManager. The audience for this guide should have a thorough knowledge of WebSphere.

## RELATED DOCUMENTS

For more information, refer to the following Oracle resources:

- The Oracle Insurance Insbridge Rating and Underwriting Framework Administrator.
- The Oracle Insurance Insbridge Rating and Underwriting SoftRater Server Guide.
- You can view these guides in-line at this address:

<http://www.oracle.com/technetwork/documentation/insurance-097481.html>

## CONVENTIONS

The following text conventions are used in this document:

Convention	Description
<b>bold</b>	Boldface type indicates graphical user interface elements associated with an action.
<i>italic</i>	Italic type indicates book titles, emphasis, or placeholder variables for which you supply particular values.
monospace	Monospace type indicates commands within a paragraph, URLs, code in examples, text that appears on the screen, or text that you enter.



## Manual History

New editions incorporate any updates issued since the previous edition.

<b>Edition</b>	<b>Publication Number</b>	<b>Product Version</b>	<b>Publication Date</b>	<b>Comment</b>
1 <sup>st</sup> Edition	P01-706-01			
2 <sup>nd</sup> Edition	P01-706-02	V 3.5		
3 <sup>rd</sup> Edition	P01-706-03	V 3.6	03/14/2006	Update 3.6
4 <sup>th</sup> Edition	P01-706-04	V 3.6	08/09/2006	Update logo
5 <sup>th</sup> Edition	P01-706-05	V 3.7	10/05/2006	Update to 3.7
6 <sup>th</sup> Edition	P01-706-06	V 3.8	7/19/2007	Update to 3.8
7 <sup>th</sup> Edition	P01-706-07	V 3.8.3	10/19/2007	Update to 3.8.3
8 <sup>th</sup> Edition	P01-706-08	V 3.8.5	November 2007	Update to 3.8.5
9 <sup>th</sup> Edition	P01-706-09	V 3.8.7	January 2008	Update to 3.8.7
10 <sup>th</sup> Edition	P01-706-10	V 3.8.8	March 2008	Update to 3.8.8
11 <sup>th</sup> Edition	P01-706-11	V 3.9	May 2008	Update to 3.9
12 <sup>th</sup> Edition	P01-706-12	V 3.10.0	September 2008	Update to 3.10
13 <sup>th</sup> Edition	P01-706-13	V 3.11	December 2008	Update to 3.11
14 <sup>th</sup> Edition	P01-706-14	V 3.12	July 2009	Update to 3.12
15 <sup>th</sup> Edition	P01-706-15	V 3.13	November 2009	Update to 3.13
16 <sup>th</sup> Edition	P01-706-16	R 4.0	April 2010	Update to 4.0
17 <sup>th</sup> Edition	P01-706-17	R 4.0.1	August 2010	Update Release
18 <sup>th</sup> Edition	P01-706-18	R 4.1	December 2010	Update Release
19 <sup>th</sup> Edition	P01-706-19	R 4.5	May 2011	Update Release

# SYSTEM REQUIREMENTS

For minimum operating system and hardware requirements, please see the Hardware Software requirements guide.

Prior to creating a new SoftRater environment, please have ready:

- **Full WebSphere installation**
- **Database name or Environment name**
- **Database login information**
- **Database server name, either IP or DNS**
- **Database DDL, updates or backup files for the database you want to utilize. These files are located in the 04.05.00 Insbridge IBRU folder.**
- **If utilizing Oracle or DB2, DB Catalog name**
- **If utilizing Oracle or DB2, DB Schema name**
- **Subscriber ID**
- **Access to the server where the IBRU system was installed**
- **URL of the current IBFA**
- **Package location where you want the packages stored**

These components will be needed at various times during the installation and implementation of SoftRater for WebSphere.

## IBM WEBSHERE 6.1

SoftRater for WebSphere has been installed and tested on IBM WebSphere Advanced Server version 6.1.

## LOCATING THE CONFIGURATION FILES

We suggest creating a C:\Insbridge\config folder but you may use any folder name you want and you can place the folder any where you want. This folder will hold the necessary files for the SoftRater for WebSphere installation. Take note of the location and make sure you have created this folder prior to running the installation.

---

**NOTE:** *For the purposes of this guide, the location will be referred to as C:\Insbridge\config.*

---

The SoftRater for WebSphere zip file contains an XML file and an .EAR file inside.

- **IBSS\_WS.ear**
- **Insbridge.net.softraterconfig.xml**

Place these files in the C:\Insbridge\config folder. Once you have these files in place, do not move them.

## **DATABASE USER ROLES AND PERMISSIONS**

If a more granular approach is required for management of security of the IBRU databases, then the following guidelines can be used to set permissions.

---

**NOTE:** *These are only guidelines. If not properly configured, certain processes within the Insbridge Rating and Underwriting System will fail. An experienced database administrator's expertise is highly recommended before making any security changes.*

---

### **Recommended SoftRater Permissions:**

The recommended permissions are required for new tables to be created in the SoftRater (IBSR) database dynamically when or if a new line of business SRP (SoftRater Package) is loaded to the SoftRater system. If the recommended permissions are not possible, manual steps will need to be performed that will allow for packages to be loaded.

SoftRater can utilize three database types, SQL Server, Oracle and DB2.

- **Insbridge SoftRater SQL Server Database.**

It is recommended that the Insbridge login be granted permission to connect to the database engine and be enabled. It is also recommended that the Insbridge login be mapped to the Insbridge database with the db\_owner role checked.

- **Insbridge SoftRater Oracle Database.**

It is recommended that the Insbridge user be granted, as defaults, the "CONNECT" and "RESOURCE" Roles.

- **Insbridge SoftRater DB2 Database.**

It is recommended that the Insbridge user be granted "Connect to database", "Create Tables", "Create packages" authorities.

Manual steps will be detailed out in the areas where they will be noticed.

## MICROSOFT SQL SERVER

Microsoft SQL Server should not be installed on the same machine where the Insbridge web applications reside. The SQL Server should reside on a separate host from the IBRU web front end with a properly configured network connection from the web server front end to SQL Server. Testing can be performed by using the Data Sources application in Administrative Tools to make a default connection to the database server.

---

**NOTE:** *All these settings are available during installation of SQL Server or by using SQL Server Enterprise Manager, and right clicking the server and selecting properties.*

*If any of these settings conflict with existing application's databases residing on the SQL Server, then a separate instance is required.*

---

Depending on the load expected, the databases can be placed on a separate SQL Server machines that can either be independent or shared as long as the following conditions are met.

- **Server Authentication:** Should be set to SQL Server and Windows Authentication mode.
- **Collation and Sort Order:** Currently supported is the default SQL Server collation using SQL\_Latin1\_General\_CP1\_CI\_AS and sort order plus case sensitivity using Latin1\_General\_BIN as the server collation. The security database (IB\_CLIENT) supports the default SQL Server collation using SQL\_Latin1\_General\_CP1\_CI\_AS. The RateManager and SoftRater databases can use either case sensitive or non-case sensitive. Please check with Oracle Insurance for any questions regarding database server sort orders or collations.

---

**NOTE:** *For SQL Server, please make sure the SQL Server Client is installed.*

---

## E-DELIVERY

Prior to installation, please make sure the source machine(s) where IBRU will be loaded has an unzip utility. An unzip utility for most platforms is available on the E-Delivery download page.

Documentation from E-Delivery is in PDF format. Prior to installation, please make sure the source machine(s) where IBRU documentation will be loaded has a PDF reader.

Files are downloaded with part numbers as file names. Please make note of the part numbers you have downloaded and the corresponding file name. You may be asked to provide the part numbers or the filename if you contact Oracle Insurance Support.

The installation downloads you can select are:

- **Insbridge IBRU Install** – This is required for all RateManager installations
- **SoftRater for WebSphere** – This is required if you are using WebSphere
- **SoftRater for WebLogic** – This is required if you are using WebLogic

- **SoftRater for Jboss** – This is required if you are using Jboss
- **Documentation** – It is recommended that you download the documentation. Installation guides and user guides are located here.

**The 04.05-Insbridge-IBRU folder contents:**

- **Databases**
  - ◆ DB2
    - SoftRater – IBSR
      - DDL
  - ◆ Oracle
    - SoftRater – IBSR
      - DDL
      - Update:Usp\_IBSR\_v04.05.00.oracle
  - ◆ SQL Server
    - RateManager – IBRM
      - Latin1\_General\_BIN
        - DATABASE\_BACKUP\_IBRM\_TEMPLATE\_CASE\_SENSITIVE.bak
      - SQL\_Latin1\_General\_CP1\_CI\_AS
        - DATABASE\_BACKUP\_IBRM\_TEMPLATE.bak
    - Security – IB\_CLIENT
      - SQL\_Latin1\_General\_CP1\_CI\_AS
        - DATABASE\_BACKUP\_IB\_CLIENT\_TEMPLATE.bak
    - SoftRater – IBSR
      - Latin1\_General\_BIN
        - DATABASE\_BACKUP\_IBSR\_TEMPLATE\_CASE\_SENSITIVE.bak
      - SQL\_Latin1\_General\_CP1\_CI\_AS
        - DATABASE\_BACKUP\_IBSR\_TEMPLATE.bak
      - Update:Usp\_IBSR\_v04.05.00.sql
  - **IE7\_IE8 Users**
    - ◆ Insbridge IE7 Active X Control Update PDF
    - ◆ RateManager\_IE7\_IE8.exe
  - **Oracle BI Publisher**
    - ◆ OBI\_PUBLISHER.exe
  - **Oracle Client**
    - ◆ Oracle\_client.exe
  - **Oracle Insurance – Insbridge Rating and Underwriting.exe**

The SoftRater for WebSphere version 04.05.00 zip file will contain:

- The 04.05.00-insbridge-was-eng Folder, which contains:
  - IBSS\_WS.ear file
  - Insbridge.net.sofraterconfig.xml

License files are no longer required.

SoftRater can be installed any time after the Insbridge Framework Administrator and RateManager have been installed. SoftRater must be installed prior to any users creating packages. Please note, all folders and files may not be needed, depending upon the kind of setup you want.

## **INSTALLATION PROCEDURES – UTILIZING A SQL SERVER DATABASE**

The following is a check list of the installation steps needed to perform a NEW SoftRater for WebSpheres Installation:

1. Create INSBRIDGE\_APP\_DIR in Name Space Bindings
2. Installing the EAR File
3. Setting up Insbridge.net.sofrater.xml Config File
4. Assigning the Shared Insbridge Libraries
5. Creation of the IBSR databases is next.
6. Create a WebSphere entry in IBSS.
7. Create a WebSphere entry in IBFA

## Step 1: Create INSBRIDGE\_APP\_DIR in Name Space Bindings

SoftRater uses an XML configuration (insbridge.net.softraterconfig.xml) file to store information in the configured rating environments. This file needs to be accessible to the Insbridge Rating and Underwriting SoftRater Server (IBSS) in order to operate. The location to define where the config file is located is stored using a Name Space Binding string in the WebSphere server configuration.

1. To create the INSBRIDGE\_APP\_DIR string, from the WebSphere Admin console, browse to the following location:

Environment → Naming → Name Space Bindings

2. Change the scope to the **Server** level by selecting it and click **Apply**.

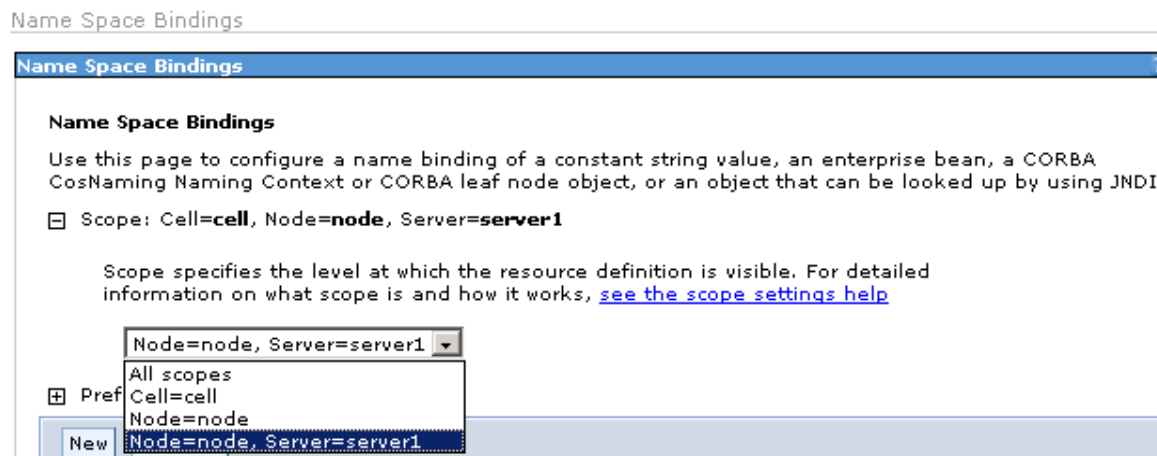


Figure 1 Changing Scope to Server

3. Once you have changed to the server level, click **New**.

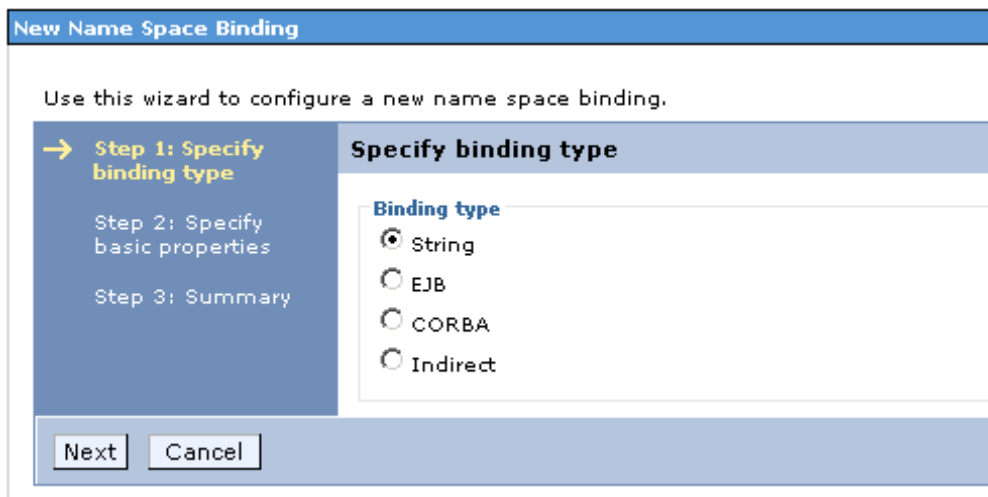


Figure 2 Creating a New Name Space

4. Select String and then click **Next**.

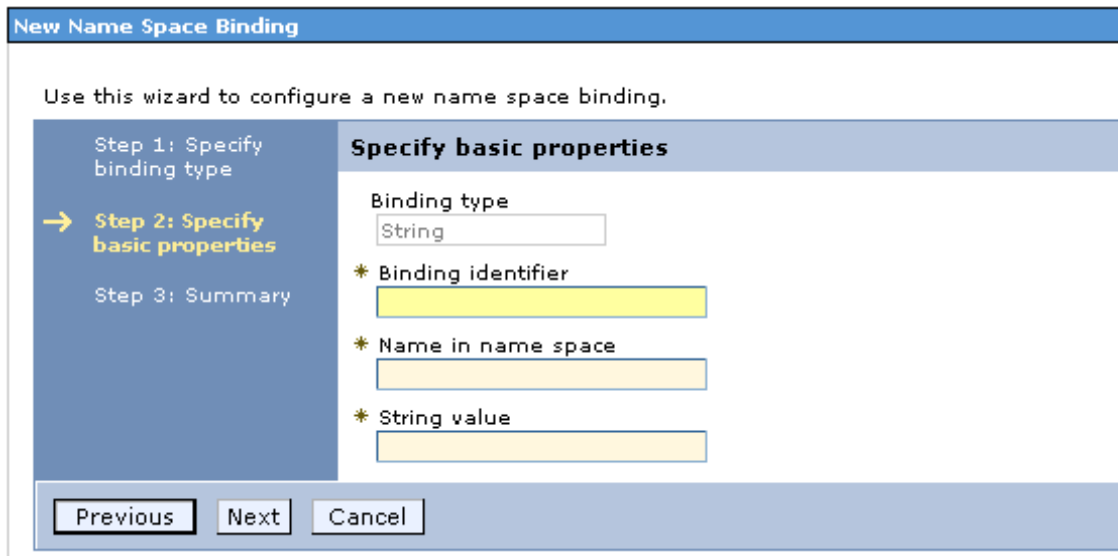


Figure 3 Create Name Space Binding

5. Create a Name Space Binding and Binding Identifier at the server level called INSBRIDGE\_APP\_DIR. The actual string value is the directory path location where the insbridge config file will be located relative to the WebSphere server.
6. Then select **Next** and **Finish**. Save to the master configuration.



## CREATE AN INSBRIDGE SHARED LIBRARY FOR DB2

If you are utilizing a DB2 database, you must create an Insbridge shared library. If you are not using DB2, you can proceed to Installing the EAR file (IBSS\_WS.ear).

The Insbridge SoftRater for WebSphere uses a shared library to contain the DB2 information. The JAR file must be copied to the WebSphere Application Server. The DB2 JAR file should be in your DB2 installation folder java directory. You may also download this file from IBM directly.

To create the shared library from the WebSphere Admin console, browse to the following location:

Environment → Shared Libraries

By default, it should be at the Node scope. Change the scope to Node = node, Server = server1 by selecting it and then click **Apply** so that the screen looks similar to:

### Shared Libraries

Use this page to define a container-wide shared library that can be used by deployed applications.

Scope: Cell=**cell**, Node=**node**, Server=**server1**

Scope specifies the level at which the resource definition is visible. For detailed information on what scope is and how it works, [see the scope settings help](#)

Node=node, Server=server1

Figure 4 Creating a Shared Library

Click **New** and fill out the information as shown below.

Configuration		
General Properties		
Name	* DB2_JAR_FILE	<input type="checkbox"/> The name of the shared library
Description	DB2 Jar file.	<input type="checkbox"/> An optional description for this shared library.
Classpath	P:\nsbridge\DB2\db2jcc.jar	<input type="checkbox"/> A classpath containing this library's jar(s). Classpath entries are separated by using the ENTER key and must not contain path separator characters (such as '/' or '.'). Classpaths may contain variable (symbolic) names which can be substituted using a variable map.
Native Library Path		<input type="checkbox"/> An optional path to any native libraries (.dll's, .so's) required by this shared library.
<input type="button" value="Apply"/> <input type="button" value="OK"/> <input type="button" value="Reset"/> <input type="button" value="Cancel"/>		

Figure 5 Creating DB2 Library

Click on **OK** and then **Save** to apply the changes to the master configuration.

**NOTE:** The classpath is the location of the Insbridge\DB2\db2jcc.jar file on the WebSphere server. The share directory has to be wherever the drive is located.

## Step 2: Installing the EAR File

1. Log on to the Administrative Console ex: [http://WAS\\_SERVER:9080/admin/](http://WAS_SERVER:9080/admin/).
2. Select Application → Install New Application.
3. Select the location from where to upload the EAR file (IBSS\_WS.ear) and select **Next**.

Preparing for the application installation

Specify the EAR, WAR, JAR, or SAR module to upload and install.

**Path to the new application**

Local file system

Full path  
C:\Documents and Settings Browse...

Remote file system

Full path  
Browse...

Context root  
Used only for standalone Web modules (.war files) and SIP modules (.sar files)

**How do you want to install the application?**

Prompt me only when additional information is required.

Show me all installation options and parameters.

Next Cancel

Figure 6 Installing the EAR File

4. Provide Options to suit your environment. We suggest selecting Pre-compile JSP for improved performance.

Install New Application

Specify options for installing enterprise applications and modules.

→ **Step 1: Select installation options**

[Step 2: Map modules to servers](#)

[Step 3: Summary](#)

### Select installation options

Specify the various options that are available to prepare and install your application.

Precompile JavaServer Pages files

Directory to install application

Distribute application

Use Binary Configuration

Deploy enterprise beans

Application name

Create MBeans for resources

Enable class reloading

Reload interval in seconds

Deploy Web services

Validate Input off/warn/fail

Process embedded configuration

**File Permission**

Allow all files to be read but not written to  
 Allow executables to execute  
 Allow HTML and image files to be read by everyone

Application Build ID

Allow dispatching includes to remote resources

Allow servicing includes from remote resources

Figure 7 Providing Options

- Click **Next** to continue.

---

**NOTE:** This screen will only be displayed if you selected “*Show all installation options and parameters*” on the first screen.

---

6. Map modules to application servers.

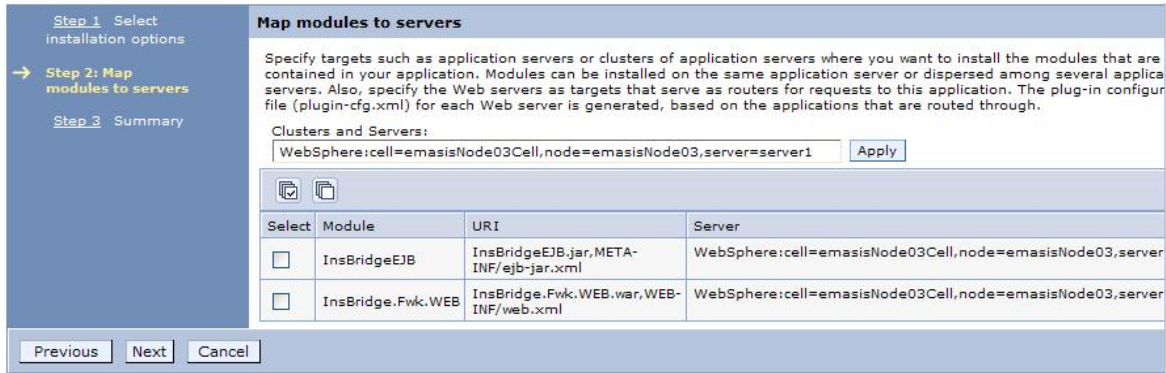


Figure 8 Mapping to Application Servers

7. Map Virtual Hosts.

8. Verify your selections on the Summary screen.

Specify options for installing enterprise applications and modules.

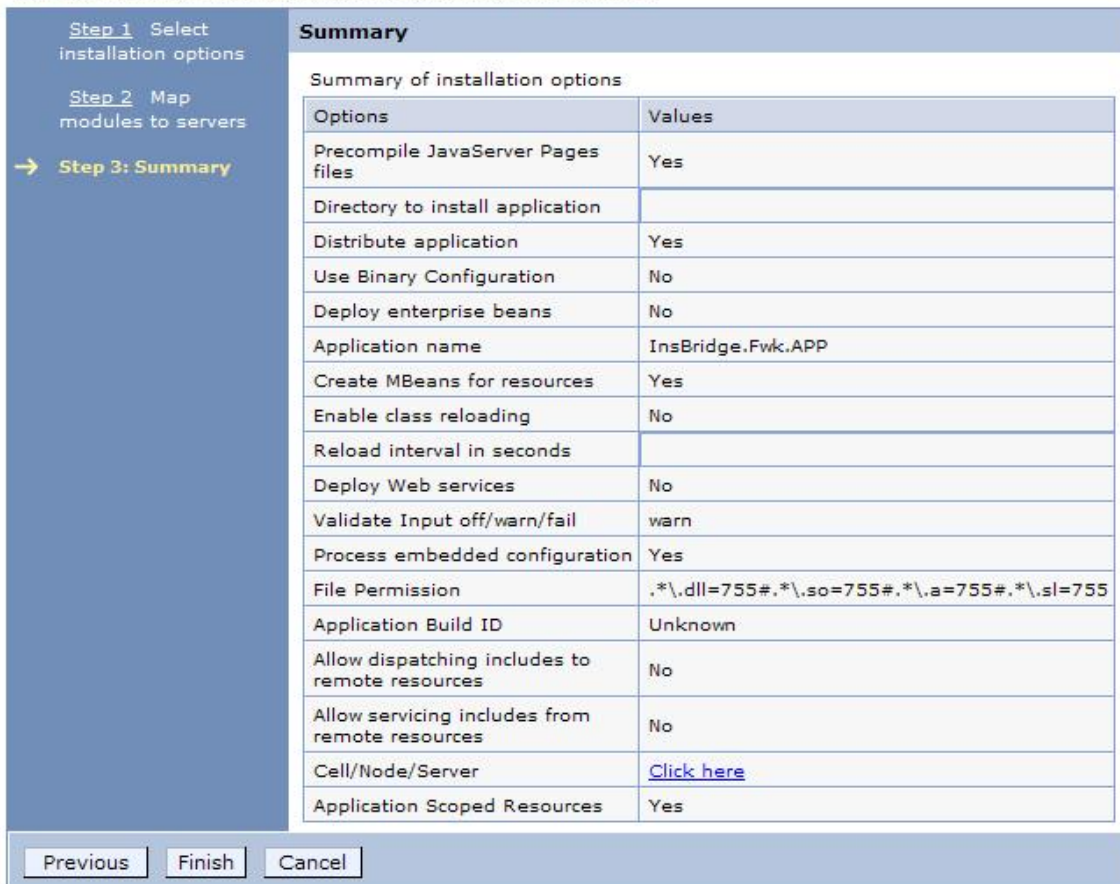


Figure 9 Summary

9. Select **Finish**. After installation, save to the master configuration.

### Step 3: Setting up Insbridge.net.softrater.xml Config File

SoftRater requires a single configuration file “insbridge.net.softraterconfig.xml”. After the EAR installation, a default setup copy of this file is in the “Insbridge.Fwk.APP” installation subdirectory. Before starting the configuration setup process, copy this default file to the following WebSphere setup folder to the INSBRIDGE\_APP\_DIR. All administrative setup options are saved in this file.

---

**NOTE:** *If the location is either not defined or not configured, then the SoftRater will default to the old legacy location of \$WSAS\_HOME\etc\insbridge folder to look for the configuration file.*

---

The location where the config file resides is defined by the INSBRIDGE\_APP\_DIR as created on page 14. This location can be anywhere on the server as long as the identity of the process running the WebSphere AppServer has access rights to the defined folder.

A default blank insbridge SoftRater config file is located under

\$WAS\_HOME/installedApps/NODENAME/IBSS\_WS.ear/config.

Copy the insbridge.net.softraterconfig.xml file to the INSBRIDGE\_APP\_DIR folder.

There is also an insbridge.net.softraterconfigcache.xml file in this location. You can copy this file as well; however, it is not required.

For added security, after all the SoftRater environments have been configured and tested, the config file can be made read-only. Thereby no modifications can be made from the IBSS interface until the server administrator makes the file writable.

### Step 4: Assigning the Shared Insbridge Libraries

1. From the WebSphere Admin console, browse to Applications → Enterprise Applications and select Insbridge.Fwk.APP to modify the extended properties.
2. At the bottom of the screen select the Shared Library references link to assign the libraries. Select Insbridge.Fwk.App and click Reference shared libraries

**Enterprise Applications** ?

**Enterprise Applications > InsBridge.Fwk.APP > Shared library references**

Shared Library Mapping for Modules

Specify shared libraries that the application or individual modules reference. These libraries must be defined in the configuration at the appropriate scope.

Reference shared libraries			
Select	Application	URI	Shared Libraries
<input checked="" type="checkbox"/>	InsBridge.Fwk.APP	META-INF/application.xml	
Select	Module	URI	Shared Libraries
<input type="checkbox"/>	InsBridge.Fwk.WEB	InsBridge.Fwk.WEB.war,WEB-INF/web.xml	

OK Cancel

Figure 10 Shared Library References

3. Select **JWLLib** and, if you are running DB2, the **DB2\_JAR\_FILE**, and add both to right hand side.
4. Click **OK**.

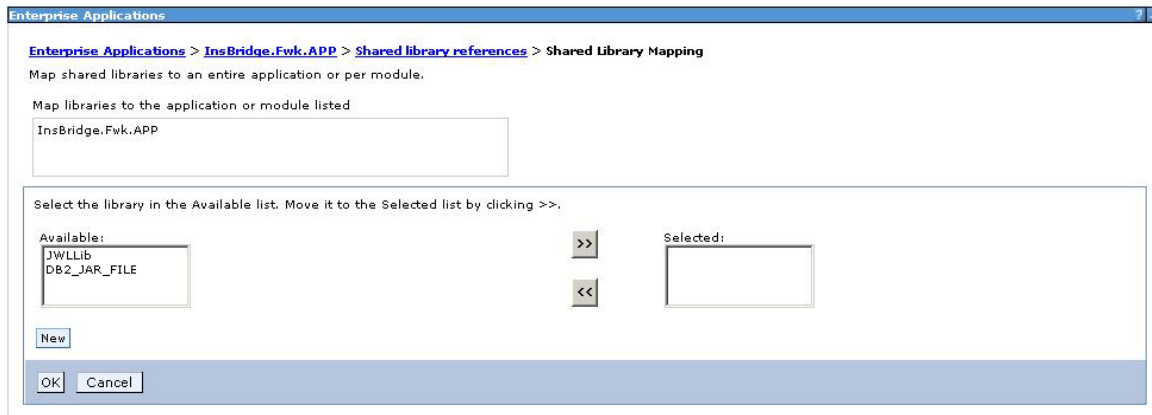


Figure 11 Assigning Library

5. Click **OK** and then save to the master configuration.

**NOTE:** *The DB2\_JAR\_FILE will be displayed if you are using a DB2 database. If you are not using a DB2 database, this option will not be available.*

The Insbridge SoftRater Server EAR may now be started from the WSAS Administrative Console.

## Step 5: Restoring IBRU Databases in SQL Server

Because many corporate environments have a separation between the system administrator and the database administrator, the following process may require both administrators' access and permissions. Make sure you have a SQL Server account called **ibru**.

---

**NOTE:** *If you do not have database permissions, you will not be able to perform the following database procedures.*

---

---

**NOTE:** *If you are unsure how to perform a database restore, please consult with your database administrator.*

---

Currently supported is the default SQL Server collation using SQL\_Latin1\_General\_CP1\_CI\_AS and sort order plus case sensitivity using Latin1\_General\_BIN as the server collation. The security database (IB\_CLIENT) supports the default SQL Server collation using SQL\_Latin1\_General\_CP1\_CI\_AS. The RateManager and SoftRater databases can use either case sensitive or non-case sensitive. Please check with Oracle Insurance for any questions regarding database server sort orders or collations.

1. Located in the Insbridge Installation Directory:
  - ◆ SoftRater – IBSR
    - Latin1\_General\_BIN
      - DATABASE\_BACKUP\_IBSR\_TEMPLATE\_CASE\_SENSITIVE.bak
    - SQL\_Latin1\_General\_CP1\_CI\_AS
      - DATABASE\_BACKUP\_IBSR\_TEMPLATE.bak
    - Update:Usp\_IBSR\_v04.05.00.sql
2. Select the SoftRater backup file you want to use, case sensitive or non-case sensitive.
3. **Copy the file** to an appropriate database folder on the machine where SQL Server is installed. For example, [Drive]:\Program Files\Insbridge\Databases. If you are unsure of a location, please consult with your database administrator.
4. **Rename the file.** It is not required but it is strongly suggested that the database file name be changed from TEMPLATE to something that defines the databases more accurately. At a minimum, it is recommended that you remove “\_TEMPLATE” from the name. You can change the name after it has been restored also.
5. **Open the SQL Server Management Studio** either on the server or remotely using either an administrative account with sa privileges or as the sa account.

---

**NOTE:** *If you do not have SQL Server Management Studio, check to see that the SQL Server Client has been installed. For a SQL Server install, you must have the SQL Server Client installed.*

---

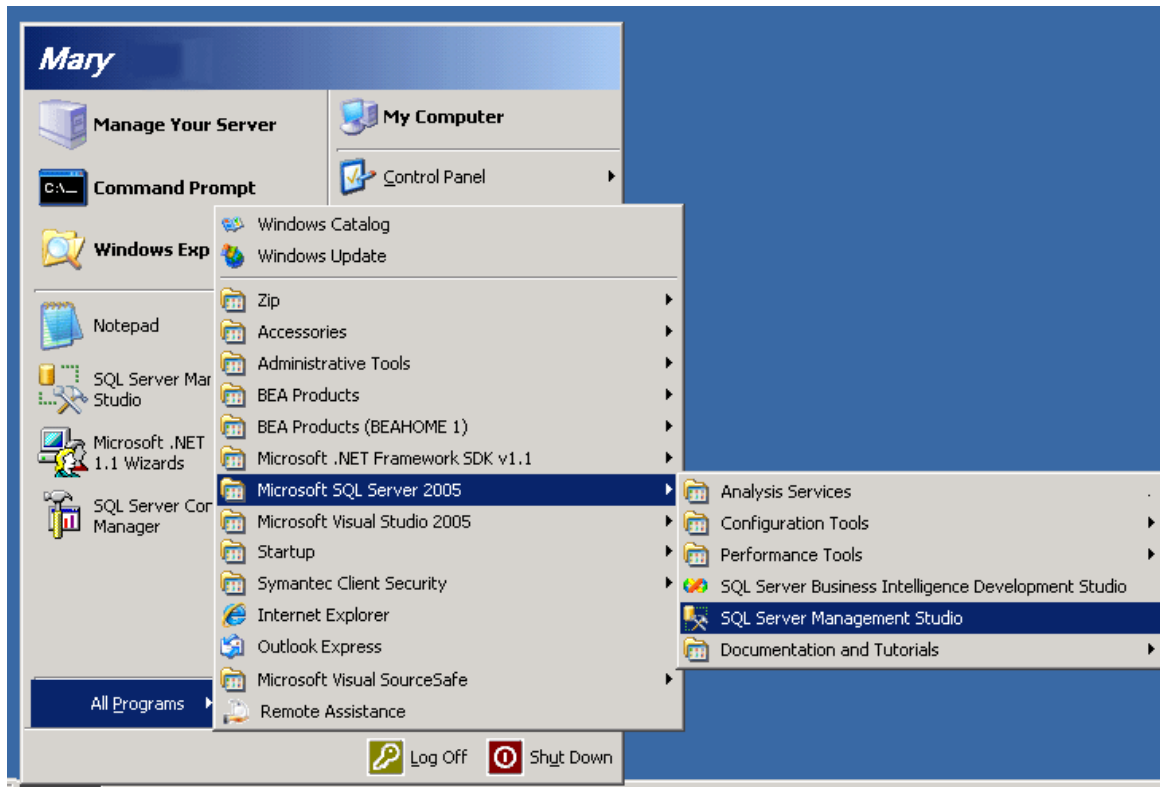


Figure 12 Restoring a Database to SQL Server

6. Go to **Databases**.

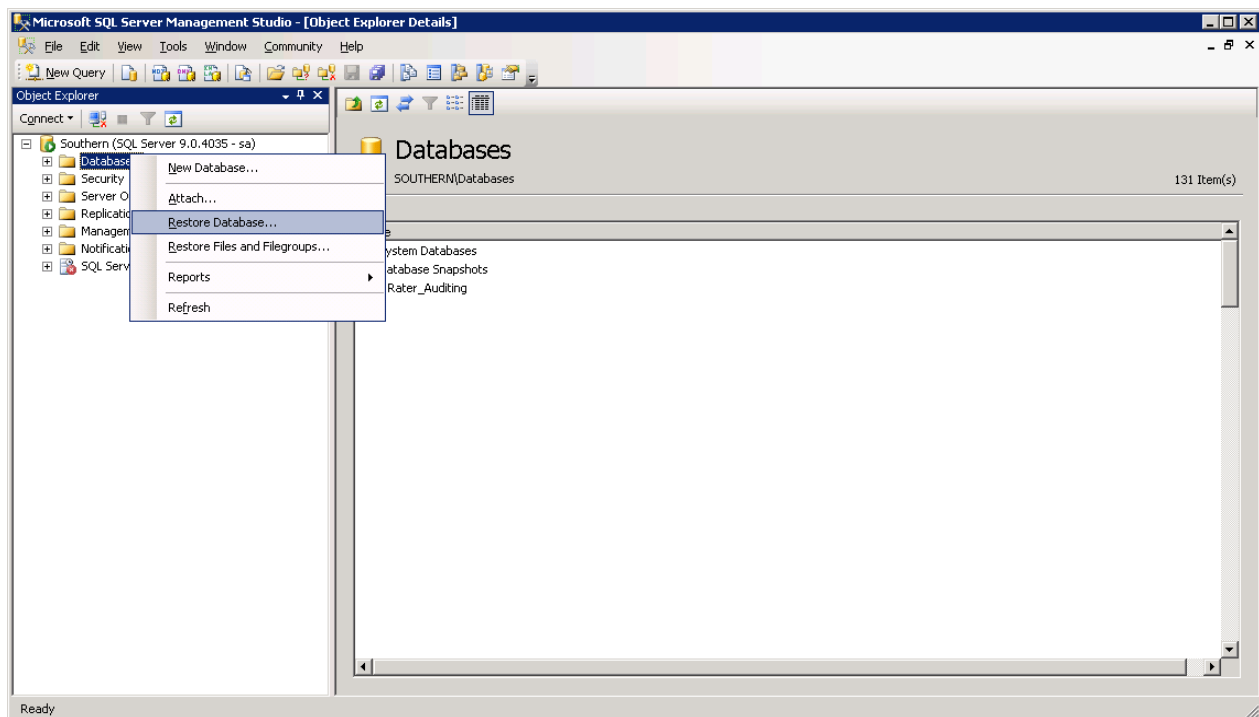


Figure 13 Right Click to Restore Database



7. Right click on **Databases**.
8. Select **Restore Database...** A separate screen will be displayed.

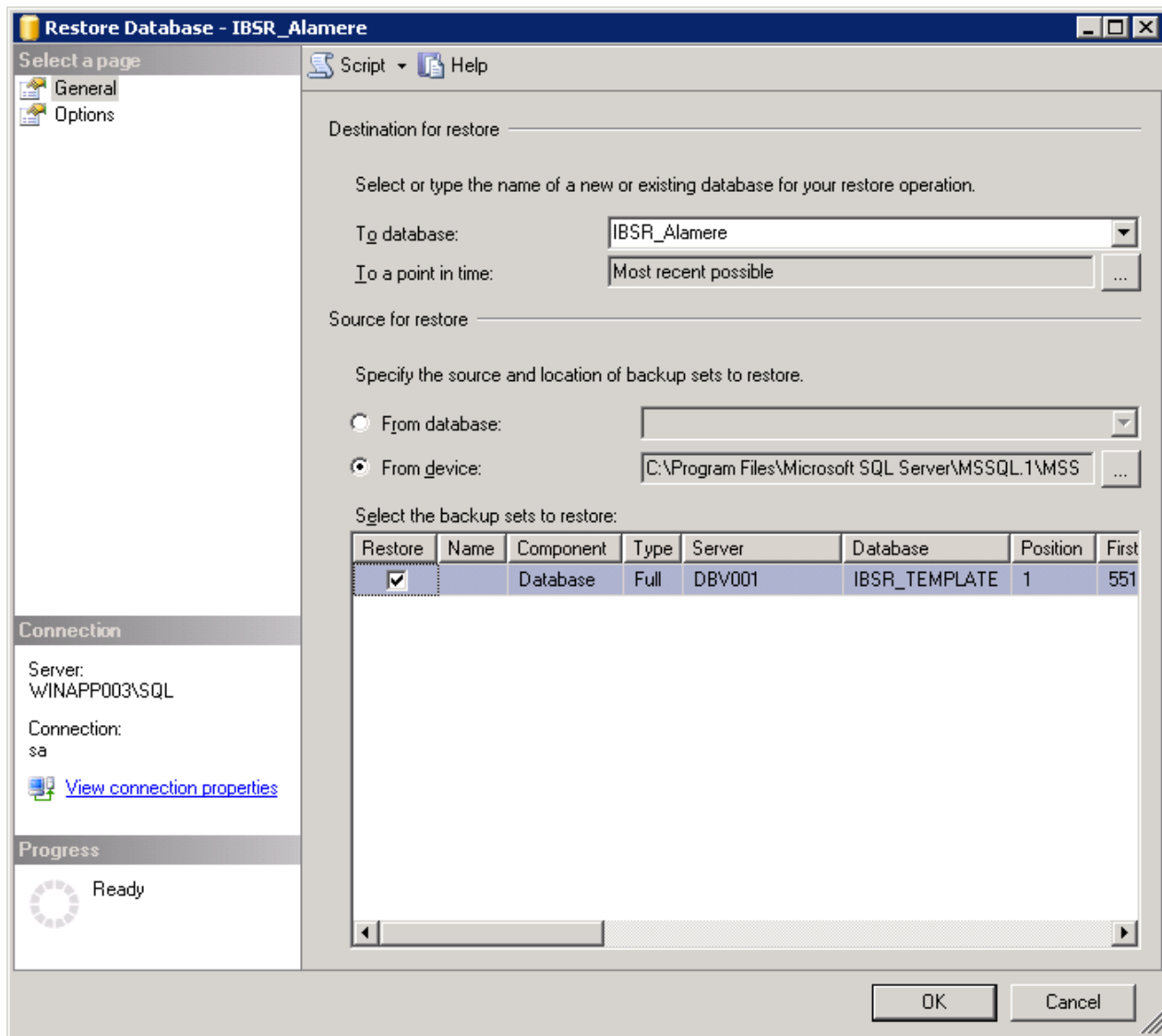


Figure 14 Restoring a Database

9. Enter your IBSR database name in **To Database:**.
10. Select **From Device**. Click ... to browse to the location where the database files were placed in step 3.
11. Select your database **IBSR\_ xxxx.BAK**, where **xxxx** equals the renamed file from step 4.
12. Click **OK**. Your database will be populated.
13. Verify your information. Check the **Restore** box.

14. Click **OK**.
15. If the database was restored successfully, it will be displayed in the database folder. If not, please correct any errors and try again.
16. Once the databases are restored to SQL Server, you will need to create or assign a SQL Server user account for the application. This user will be used for the connection to the databases when setting up the connections from the Insbridge Framework Administrator. Make note of the account you want to use. This information will be entered into the Insbridge Framework Administrator.

## Step 6: Setting up a WebSphere Environment in IBSS

You will be able to access the application by typing <http://<ServerName or IP Address>:9080/IBSS>

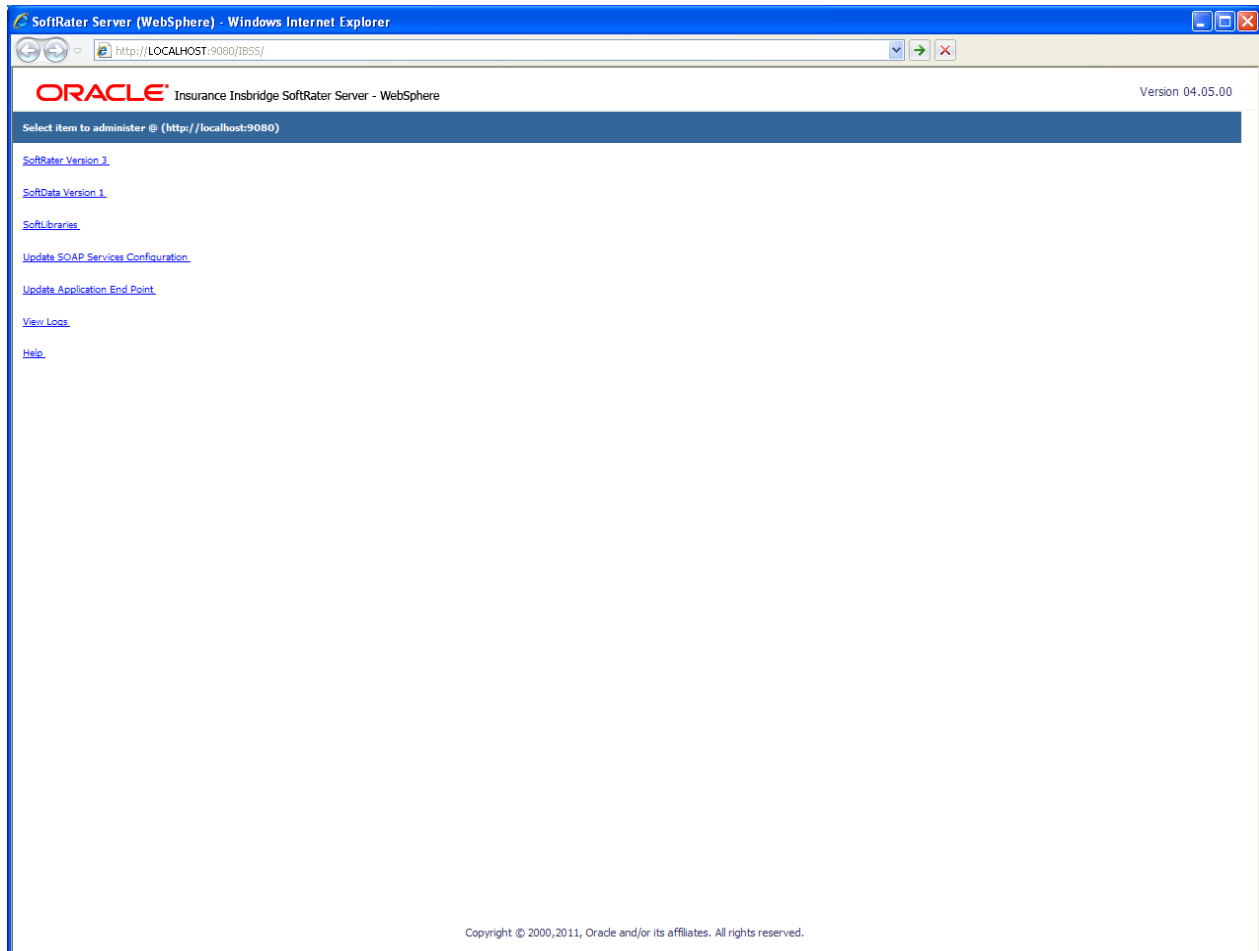


Figure 15 IBSS WebSphere Main Page

---

**NOTE:** If you changed the WebSphere default port (9080) during the Server creation, you should change the default application port on the "[Update Application End Point](#)" option located in the IBSS main page before accessing the application WebServices and methods.

---

---

**NOTE:** The IBSS parameter in the application URL must be capitalized.

---

## To Create/Edit an Environment

Prior to setting up an environment in IBSS you will need the Subscriber ID that you setup in IBFA.

1. Select **SoftRater Version 3** from the Main page. You will be placed on the SoftRater page.
2. Select the **Environment Setup** link.

The **Environment Setup** section allows you to configure rating environments. An environment is a pointer to a location where SoftRater Packages (SRP's) are stored and loaded. There is no limit to the number of environments you may have. Required fields will be marked with an asterisk (\*).

---

**\* Environment Setup**

Status:

---

**SELECT ENVIRONMENT** >> Add New Environment <<

Environment Name\*  Company Id\*

Database Server\*  Port\*  Query Block

Database Name\*  Schema name\*\*

Database User Id\*

Database Password\*

Provider Type

Database Type

Data Dir

\* Fields are required.  
\*\* Fields required for an Oracle DB connection.

---

Figure 16 Environment Setup

3. To create a new environment, use the drop down text box next to **SELECT ENVIRONMENT** and select >> **Add New Environment** <<. If the page does not automatically refresh, click **GO**.
4. When the page refreshes, enter the following information:

**Environment Name:** A name for the environment.

**Database Server:** The name of the server that houses the database that packages are loaded to.

**Database Name:** The name of the database that packages are loaded to.

**Database User Id:** The username to access the database.

**Database Password:** The password for the username entered.

**Provider Type:** The provider of the database. Options are **DB2**, **DB2(AS400)**, **ORACLE** and **MS SQL SERVER**.

**Database Type:** The type of database being accessed. Options are **SoftRater** and **RateManager**.

**Data Dir:** The location of the SoftRater Packages (SRP's).

**Company Id:** Your Company's subscriber ID. This must be the same ID number used in IBFA.

**Port:** Listening port to the target Database Management System.

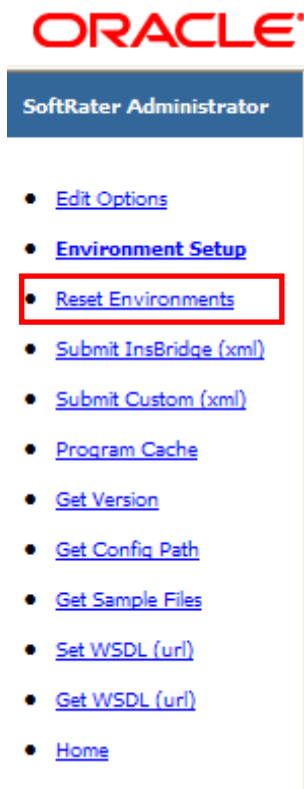
**Default values:**

SQL Server – 1433  
Oracle – 1521  
DB2 – 50000

**Query Block:** (Optional) For certain Database Management Systems (DBMS), system batch query optimization is required for performance and/or because of limits on/in the system. This value will control the maximum number of batch query operations that can be submitted to the target DBMS in any one transaction. It is known that for certain DB2 platform versions a value of 31 is required because of a hard software limit.

**Schema Name:** The schema name for the database.

5. When you are finished entering information, click **SAVE**. The environment will be saved and the **Status** field will update.
6. Before you can use the new environment for rating, you will need to reload the configuration XML file. This is done by resetting the environments. On the left hand side of the environment page, select the Reset Environments options. You will be placed on the environments page.



To activate changes to an environment, the SoftRater configuration XML file must be reloaded by clicking **EXECUTE**. The screen will refresh and the environment will be reset. Click **EXIT** to return to the SoftRater Administrator menu.

**\* Reset Environment Configuration**

Select this method to re-load the SoftRater configuration xml file making any changes to the environment settings now active. NOTE: If program caching is enabled the ALL items currently in the cache will be purged.

Note: Transactions currently in process could be made invalid.

Execute

---

Exit

Figure 17 Resetting the Environment

---

**NOTE:** All information in the cache will be purged and any transactions currently processing could be made invalid.

---

## Step 7: Entering your IBSS Instance in IBFA

IBFA will need to communicate with the IBSS environment. This will allow for packages to be loaded. There are two parts that will need to be completed:

1. Create an environment.
2. Configure the environment.

A SoftRater environment may be completed at installation or can be added at a later time. A SoftRater environment can be on a Windows machine or a Java machine running an application server, such as WebLogic. There is no limit to the number of SoftRater environments that you can have.

1. Enter IBFA.
2. Browse to **SoftRater**→**Explorer**→**Subscriber name**.
3. Click on **Add Environment**.
4. Enter a **Name** and select a **Type**. For example, you can create a Quality Control environment with a type of Quality Assurance.
5. Select the **Environments** link under the Configuration header on the left hand side to enter the configuration information for the newly created logical environment. You will be placed on the Environments screen. The environments you previously setup will be listed. If an environment is missing, you must return to the Configuration subtab and add it.

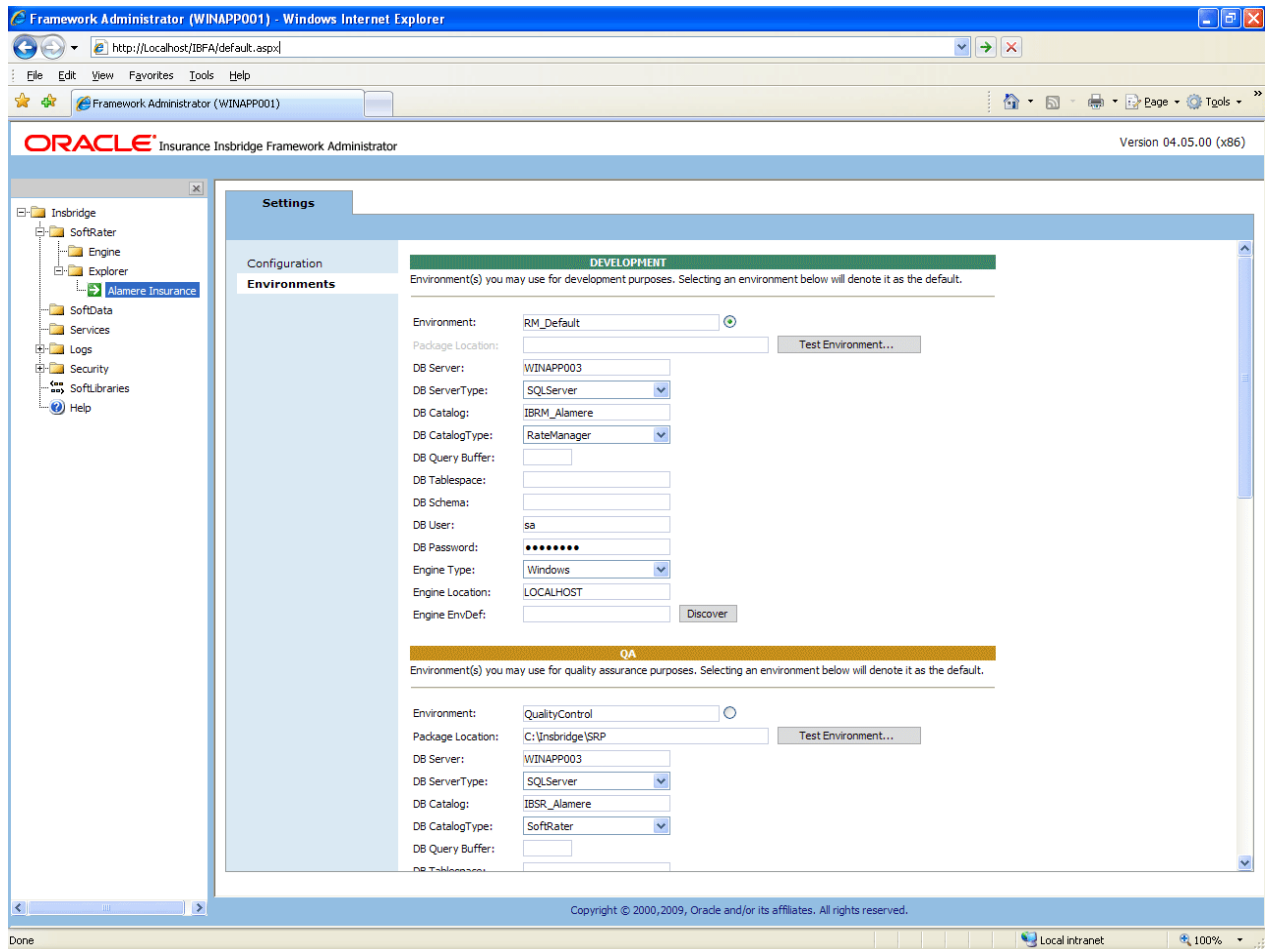


Figure 18 Editing Environment

6. The **Environment Name** will be complete. No changes are needed.
7. Enter in the file path where you want packages stored in the **Package Location**. Use the Test Environment option to have the location created for you.
8. Enter in the **DBServer** name or IP address. This is the database server where the SoftRater database was restored or created.
9. Select the **DB Server Type** that you are using.
10. The **DB Catalog** is the name of the SoftRater database restored in SQL Server. For example, IBSR\_QA.
11. The **DB Catalog Type** is **SoftRater**.
12. **DB Query Buffer** may be required. For certain Database Management Systems (DBMS), system batch query optimization is required for performance and/or because of limits on/in the system. This value will control the maximum number of batch query operations that can be submitted to the target DBMS in any one transaction. It is known that for certain DB2 platform versions a value of 31 is required because of a hard software limit.



13. **DB Tablespace** is not required for a SoftRater environment
14. The **DB Schema** is the name of the schema that defines the structure of the database. This information may be obtained from the DBA.
15. Enter the **DB User** name and **Password**.
16. Select the **Engine Type**.
17. The **Engine Location** is the location of where you installed the SoftRater engine. You can use the machine name or IP address. For WebSphere, WebLogic or JBoss, you must also include the port. For example, a WebLogic server may have “WBServerName:7001” as the entry.
18. The **Engine EnvDef** is the machine name if the engine is located on a different server. You can use the machine name or IP address.
19. Click **SAVE** to save your entries.

## **INSTALLATION PROCEDURES – UTILIZING AN ORACLE DATABASE**

The following is a check list of the installation steps needed to perform a NEW SoftRater for WebSphere Installation:

1. Create INSBRIDGE\_APP\_DIR in Name Space Bindings
2. Installing the EAR File
3. Setting up Insbridge.net.sofrater.xml Config File
4. Assigning the Shared Insbridge Libraries
5. Create Oracle database.
6. Create a WebSphere entry in IBSS.
7. Run the Oracle Client on the machine where the IBRU system was installed.
8. Create a WebSphere entry in IBFA

## Step 1: Create INSBRIDGE\_APP\_DIR in Name Space Bindings

SoftRater uses an XML configuration (insbridge.net.softraterconfig.xml) file to store information in the configured rating environments. This file needs to be accessible to the Insbridge Rating and Underwriting SoftRater Server (IBSS) in order to operate. The location to define where the config file is located is stored using a Name Space Binding string in the WebSphere server configuration.

- To create the INSBRIDGE\_APP\_DIR string, from the WebSphere Admin console, browse to the following location:

Environment → Naming → Name Space Bindings

- Change the scope to the **Server** level by selecting it and click **Apply**.

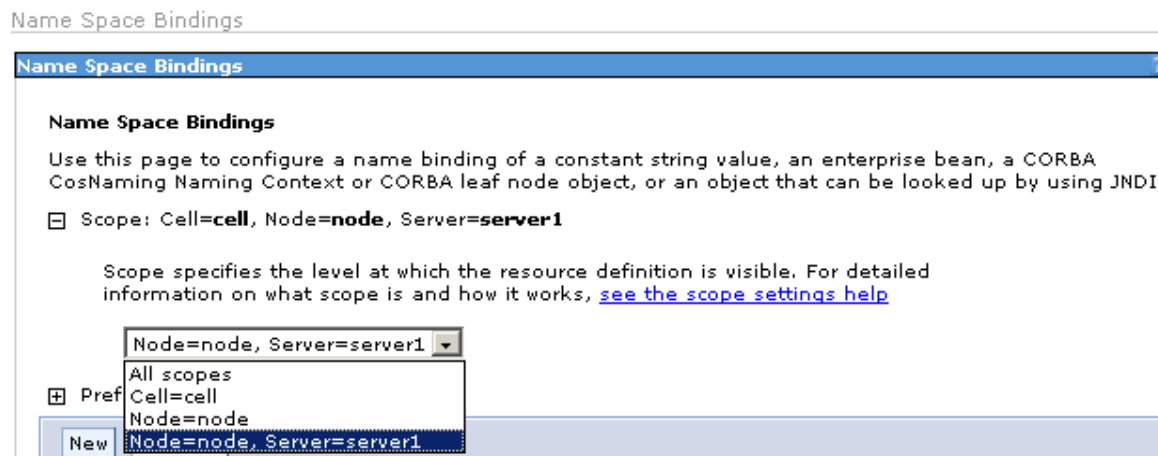


Figure 19 Changing Scope to Server

- Once you have changed to the server level, click **New**.

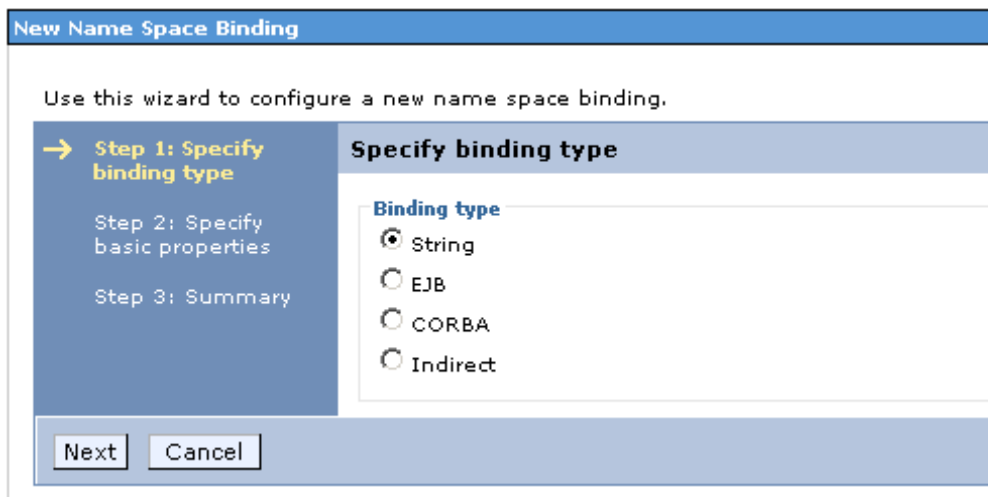


Figure 20 Creating a New Name Space

10. Select String and then click **Next**.

The screenshot shows a wizard window titled "New Name Space Binding". The main instruction is "Use this wizard to configure a new name space binding." On the left, a vertical pane shows three steps: "Step 1: Specify binding type", "Step 2: Specify basic properties" (highlighted with a yellow arrow), and "Step 3: Summary". The main area is titled "Specify basic properties" and contains four input fields: "Binding type" (with "String" selected), "\* Binding identifier" (highlighted in yellow), "\* Name in name space", and "\* String value". At the bottom, there are three buttons: "Previous", "Next", and "Cancel".

Figure 21 Create Name Space Binding

11. Create a Name Space Binding and Binding Identifier at the server level called INSBRIDGE\_APP\_DIR. The actual string value is the directory path location where the insbridge config file will be located relative to the WebSphere server.
12. Then select **Next** and **Finish**. Save to the master configuration.

## CREATE AN INSRIDGE SHARED LIBRARY FOR DB2

If you are utilizing a DB2 database, you must create an Insbridge shared library. If you are not using DB2, you can proceed to Installing the EAR file (IBSS\_WS.ear).

The Insbridge SoftRater for WebSphere uses a shared library to contain the DB2 information. The JAR file must be copied to the WebSphere Application Server. The DB2 JAR file should be in your DB2 installation folder java directory. You may also download this file from IBM directly.

To create the shared library from the WebSphere Admin console, browse to the following location:

Environment → Shared Libraries

By default, it should be at the Node scope. Change the scope to Node = node, Server = server1 by selecting it and then click **Apply** so that the screen looks similar to:

### Shared Libraries

Use this page to define a container-wide shared library that can be used by deployed applications.

Scope: Cell=**cell**, Node=**node**, Server=**server1**

Scope specifies the level at which the resource definition is visible. For detailed information on what scope is and how it works, [see the scope settings help](#)

Node=node, Server=server1

Figure 22 Creating a Shared Library

Click **New** and fill out the information as shown below.

Configuration		
General Properties		
Name	* DB2_JAR_FILE	<input type="checkbox"/> The name of the shared library
Description	DB2 Jar file.	<input type="checkbox"/> An optional description for this shared library.
Classpath	P:\nsbridge\DB2\db2jcc.jar	<input type="checkbox"/> A classpath containing this library's jar(s). Classpath entries are separated by using the ENTER key and must not contain path separator characters (such as '/' or '.'). Classpaths may contain variable (symbolic) names which can be substituted using a variable map.
Native Library Path		<input type="checkbox"/> An optional path to any native libraries (.dll's, .so's) required by this shared library.
<input type="button" value="Apply"/> <input type="button" value="OK"/> <input type="button" value="Reset"/> <input type="button" value="Cancel"/>		

Figure 23 Creating DB2 Library

Click on **OK** and then **Save** to apply the changes to the master configuration.

**NOTE:** The classpath is the location of the Insbridge\DB2\db2jcc.jar file on the WebSphere server. The share directory has to be wherever the drive is located.

## Step 2: Installing the EAR File

10. Log on to the Administrative Console ex: [http://WAS\\_SERVER:9080/admin/](http://WAS_SERVER:9080/admin/).
11. Select Application → Install New Application.
12. Select the location from where to upload the EAR file (IBSS\_WS.ear) and select **Next**.

Preparing for the application installation

Specify the EAR, WAR, JAR, or SAR module to upload and install.

**Path to the new application**

Local file system

Full path  
C:\Documents and Sett... Browse...

Remote file system

Full path  
Browse...

Context root  
Used only for standalone Web modules (.war files) and SIP modules (.sar files)

**How do you want to install the application?**

Prompt me only when additional information is required.

Show me all installation options and parameters.

Next Cancel

Figure 24 Installing the EAR File

13. Provide Options to suit your environment. We suggest selecting Pre-compile JSP for improved performance.

Install New Application

Specify options for installing enterprise applications and modules.

→ **Step 1: Select installation options**

[Step 2: Map modules to servers](#)

[Step 3: Summary](#)

**Select installation options**

Specify the various options that are available to prepare and install your application.

Precompile JavaServer Pages files

Directory to install application

Distribute application

Use Binary Configuration

Deploy enterprise beans

Application name

InsBridge.Fwk.APP

Create MBeans for resources

Enable class reloading

Reload interval in seconds

Deploy Web services

Validate Input off/warn/fail

warn

Process embedded configuration

**File Permission**

Allow all files to be read but not written to  
Allow executables to execute  
Allow HTML and image files to be read by everyone

Set file permissions

.\*\,dll=755#.\*\,so=755#.\*\,a=755#.\*\,sl=755

Application Build ID

Unknown

Allow dispatching includes to remote resources

Allow servicing includes from remote resources

Next Cancel

Figure 25 Providing Options

14. Click **Next** to continue.

**NOTE:** This screen will only be displayed if you selected “*Show all installation options and parameters*” on the first screen.

15. Map modules to application servers.

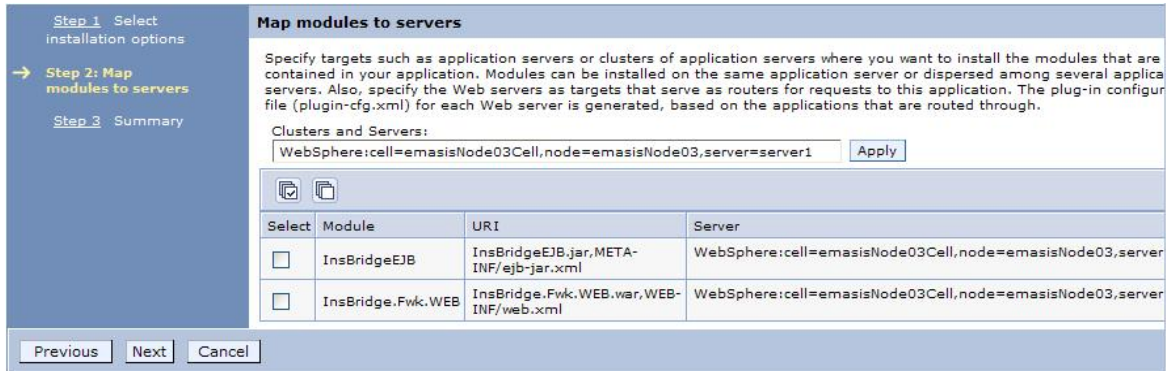


Figure 26 Mapping to Application Servers

16. Map Virtual Hosts.

17. Verify your selections on the Summary screen.

Specify options for installing enterprise applications and modules.

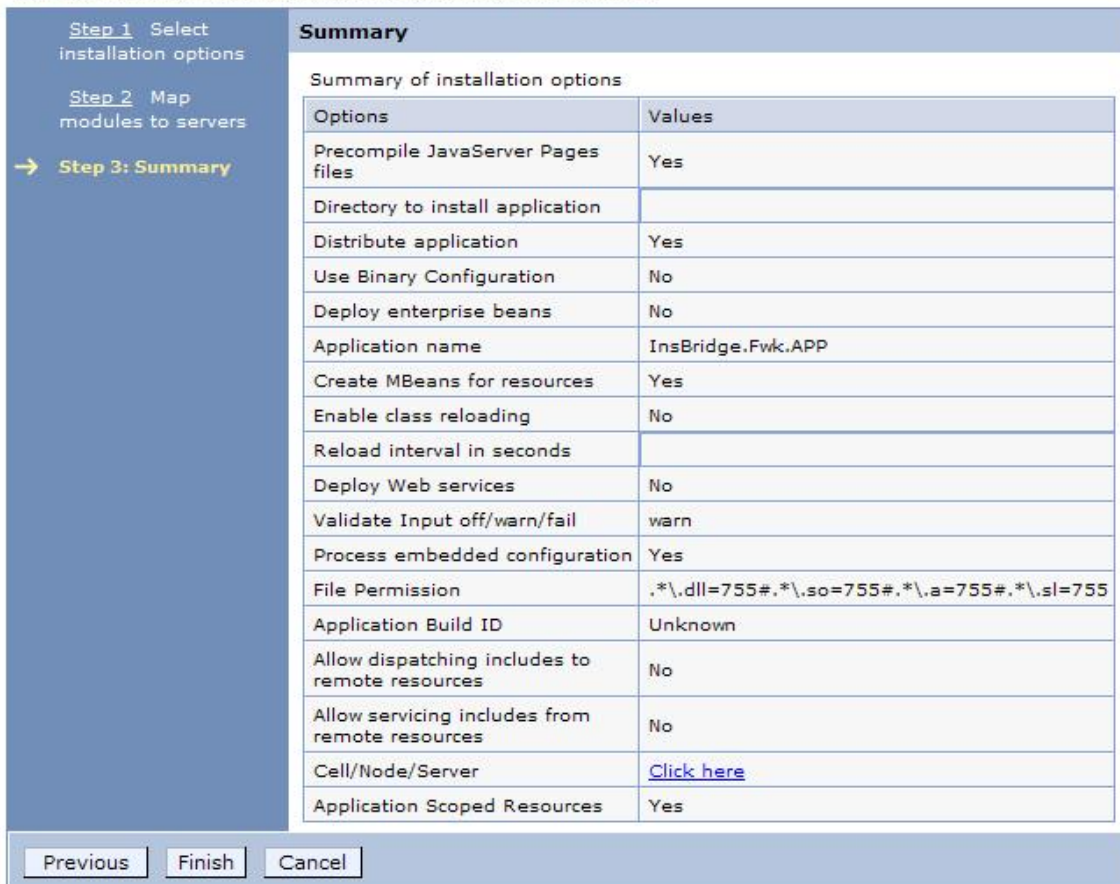


Figure 27 Summary

18. Select **Finish**. After installation, save to the master configuration.



### Step 3: Setting up Insbridge.net.softrater.xml Config File

SoftRater requires a single configuration file “insbridge.net.softraterconfig.xml”. After the EAR installation, a default setup copy of this file is in the “Insbridge.Fwk.APP” installation subdirectory. Before starting the configuration setup process, copy this default file to the following WebSphere setup folder to the INSBRIDGE\_APP\_DIR. All administrative setup options are saved in this file.

---

**NOTE:** *If the location is either not defined or not configured, then the SoftRater will default to the old legacy location of \$WSAS\_HOME\etc\insbridge folder to look for the configuration file.*

---

The location where the config file resides is defined by the INSBRIDGE\_APP\_DIR as created on page 14. This location can be anywhere on the server as long as the identity of the process running the WebSphere AppServer has access rights to the defined folder.

A default blank insbridge SoftRater config file is located under

\$WAS\_HOME/installedApps/NODENAME/IBSS\_WS.ear/config.

Copy the insbridge.net.softraterconfig.xml file to the INSBRIDGE\_APP\_DIR folder.

There is also an insbridge.net.softraterconfigcache.xml file in this location. You can copy this file as well; however, it is not required.

For added security, after all the SoftRater environments have been configured and tested, the config file can be made read-only. Thereby no modifications can be made from the IBSS interface until the server administrator makes the file writable.

### Step 4: Assigning the Shared Insbridge Libraries

6. From the WebSphere Admin console, browse to Applications → Enterprise Applications and select Insbridge.Fwk.APP to modify the extended properties.
7. At the bottom of the screen select the Shared Library references link to assign the libraries. Select Insbridge.Fwk.App and click Reference shared libraries

Enterprise Applications ?Enterprise Applications > [InsBridge.Fwk.APP](#) > Shared library references

## Shared Library Mapping for Modules

Specify shared libraries that the application or individual modules reference. These libraries must be defined in the configuration at the appropriate scope.

Reference shared libraries			
Select	Application	URI	Shared Libraries
<input checked="" type="checkbox"/>	InsBridge.Fwk.APP	META-INF/application.xml	
Select	Module	URI	Shared Libraries
<input type="checkbox"/>	InsBridge.Fwk.WEB	InsBridge.Fwk.WEB.war,WEB-INF/web.xml	

Figure 28 Shared Library References

8. Select **JWLLib** and, if you are running DB2, the **DB2\_JAR\_FILE**, and add both to right hand side.
9. Click **OK**.

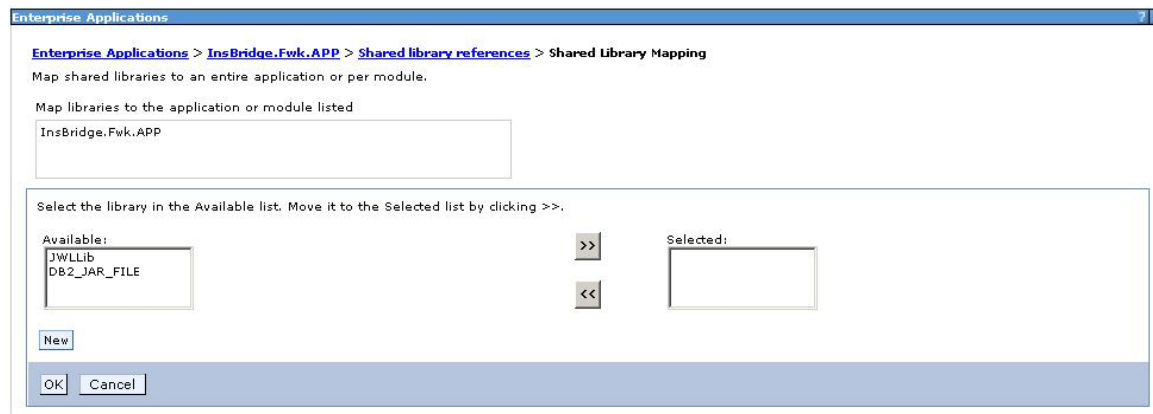


Figure 29 Assigning Library

10. Click **OK** and then save to the master configuration.

**NOTE:** The **DB2\_JAR\_FILE** will be displayed if you are using a DB2 database. If you are not using a DB2 database, this option will not be available.

The Insbridge SoftRater Server EAR may now be started from the WSAS Administrative Console.

## Step 5: Creating an Oracle Database

Because many corporate environments have a separation between the system administrator and the database administrator, the following process may require both administrators' access and permissions.

Before proceeding, please have ready:

- The LOBs you want to use.
- Your subscriber ID

---

**NOTE:** *If you do not have database permissions, you will not be able to perform the following database procedures.*

---

---

**NOTE:** *If you are unsure how to create an Oracle database, please consult with your database administrator.*

---

1. On your Oracle database, run all **DDLs**.
2. On your Oracle database, you will need to run a DT table for each LOB.
3. After all DT tables have been created, please make note of:
  - Schema
  - Instance
  - User name
  - Password

This information will need to be passed along to the IBRU installer. This information is needed to create a logical environment.

## Location of DDL Directory

If a database table needs to be added in SoftRater for Oracle, the DDLs are located in the IBFA Installation Directory under the SoftRater/DDL folder. I.e. [INSTALL\_DIR]/Insbridge/SoftRater/DDL. This information may be needed if you are attempting to add an LOB and receive missing table errors. Creating tables in Oracle should be performed by a qualified DBA.

## Oracle Database Setup

---

**IMPORTANT:** *It is **strongly recommended** that any database modification be performed by a qualified database administrator (DBA). The database setup procedures and tasks require the skill set of a database administrator. If you are not a database administrator, please stop. Improper setup may result in unwelcome changes to the database. Please consult with a qualified database administrator before proceeding.*

---

These instructions are high level and require that the setup person be a DBA.

1. You will need to **create the database**. Oracle Insurance does not have specific requirements, whatever requirements are deemed necessary by your company's internal standards will work. It is recommended that you included the version number or environment name if you are planning on creating more than one instance.

Have this information ready:

- The LOBs that your company uses. You will need the ID number for each LOB.
  - Your customer number.
  - Location of the Insbridge files.
- a) Create default tablespace for the Soft Rater database.
    - If a database table needs to be added, the DDLs are located in the IBFA Installation Directory under the SoftRater/DDDL folder. I.e. [INSTALL\_DIR]/Insbridge/SoftRater/DDDL. See **Error! Reference source not found.**
    - You will have to replace the TABLESPACE name in the scripts with the tablespace name you used when you created the database.
    - On the DT tables, you will need to create one for every LOB. An example of the format is in the comments of the script. It requires the LOB ID number and the customer number.
  - b) Create user IBSR and assign basic connect and resource grants.

## Step 6: Setting up a WebSphere Environment in IBSS

You will be able to access the application by typing <http://<ServerName or IP Address>:9080/IBSS>

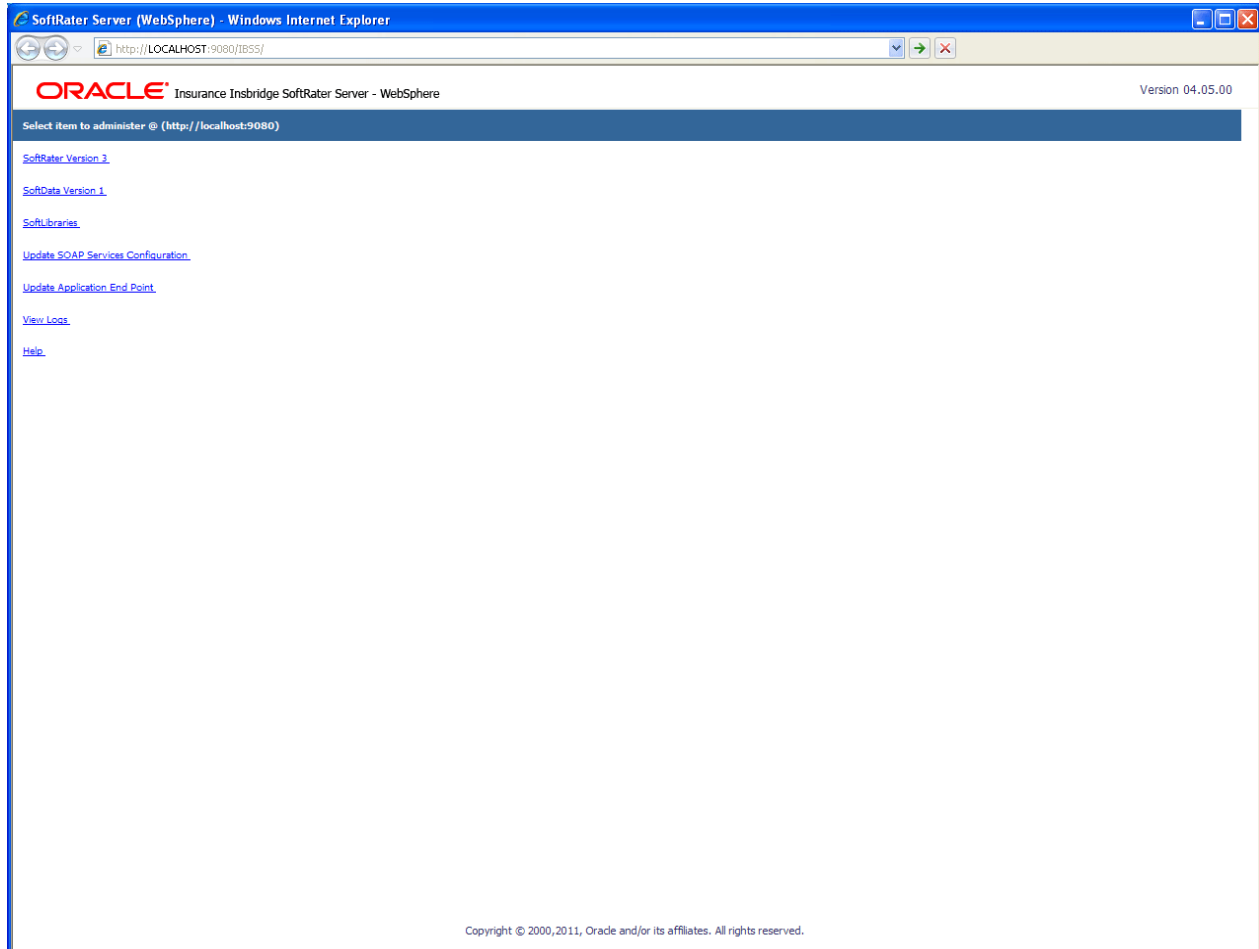


Figure 30 IBSS WebSphere Main Page

---

**NOTE:** If you changed the WebSphere default port (9080) during the Server creation, you should change the default application port on the "[Update Application End Point](#)" option located in the IBSS main page before accessing the application WebServices and methods.

---

---

**NOTE:** The IBSS parameter in the application URL must be capitalized.

---

## To Create/Edit an Environment

Prior to setting up an environment in IBSS you will need the Subscriber ID that you setup in IBFA.

1. Select **SoftRater Version 3** from the JBoss Main page. You will be placed on the SoftRater page.
2. Select the **Environment Setup** link.

The **Environment Setup** section allows you to configure rating environments. An environment is a pointer to a location where SoftRater Packages (SRP's) are stored and loaded. There is no limit to the number of environments you may have. Required fields will be marked with an asterisk (\*).

### \* Environment Setup

Status:

<b>SELECT ENVIRONMENT</b>		>> Add New Environment <<		Go!
Environment Name*	SR_WS	Company Id*	8659	
Database Server*	LINXAP002	Port*	1521	Query Block
Database Name*	IBSR_WS	Schema name**	QA_@	
Database User Id*	sa			
Database Password*	●●●●●●●●			
Provider Type	ORACLE			
Database Type	SoftRater			
Data Dir	C:\Insbridge\WS\Packages			

\* Fields are required.  
\*\* Fields required for an Oracle DB connection.

Save    Exit    Test Connection!    Delete!

Figure 31 Environment Setup

3. To create a new environment, use the drop down text box next to **SELECT ENVIRONMENT** and select **>> Add New Environment <<**. If the page does not automatically refresh, click **GO**.
4. When the page refreshes, enter the following information:

**Environment Name:** A name for the environment.

**Database Server:** The name of the server that houses the database that packages are loaded to.

**Database Name:** The name of the database that packages are loaded to.

**Database User Id:** The username to access the database.

**Database Password:** The password for the username entered.

**Provider Type:** The provider of the database. Options are **DB2, DB2(AS400), ORACLE** and **MS SQL SERVER**.

**Database Type:** The type of database being accessed. Options are **SoftRater** and **RateManager**.

**Data Dir:** The location of the SoftRater Packages (SRP's).

**Company Id:** Your Company's subscriber ID. This must be the same ID number used in IBFA.

**Port:** Listening port to the target Database Management System.

**Default values:**

SQL Server – 1433

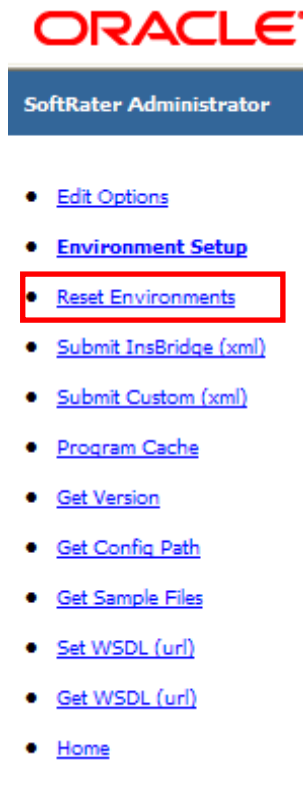
Oracle – 1521

DB2 – 50000

**Query Block:** (Optional) For certain Database Management Systems (DBMS), system batch query optimization is required for performance and/or because of limits on/in the system. This value will control the maximum number of batch query operations that can be submitted to the target DBMS in any one transaction. It is known that for certain DB2 platform versions a value of 31 is required because of a hard software limit.

**Schema Name:** The schema name for the database.

5. When you are finished entering information, click **SAVE**. The environment will be saved and the **Status** field will update.
6. Before you can use the new environment for rating, you will need to reload the configuration XML file. This is done by resetting the environments. On the left hand side of the environment page, select the Reset Environments options. You will be placed on the environments page.



To activate changes to an environment, the SoftRater configuration XML file must be reloaded by clicking **EXECUTE**. The screen will refresh and the environment will be reset. Click **EXIT** to return to the SoftRater Administrator menu.

**\* Reset Environment Configuration**

Select this method to re-load the SoftRater configuration xml file making any changes to the environment settings now active. NOTE: If program caching is enabled the ALL items currently in the cache will be purged.

Note: Transactions currently in process could be made invalid.

---

Execute

---

Exit

Figure 32 Resetting the Environment

---

**NOTE:** All information in the cache will be purged and any transactions currently processing could be made invalid.

---



## Step 7: Installation of Oracle Client

If the Oracle Client has already been installed and configured, you can skip this step. Return to the machine where the IBRU system was installed. One instance of the Oracle client is all that is required. If you have more than one Oracle environment that you want to connect, for example a QA environment and a Production environment, you will only need to run the Oracle client once.

## Running the Oracle Client

**Run the Oracle Client.** On the machine where the IBRU system was installed, you will need to run the Oracle client. This will allow IBFA to communicate with the Oracle database.

For a 64-bit environment, please make sure you have the 64-bit Oracle Client.

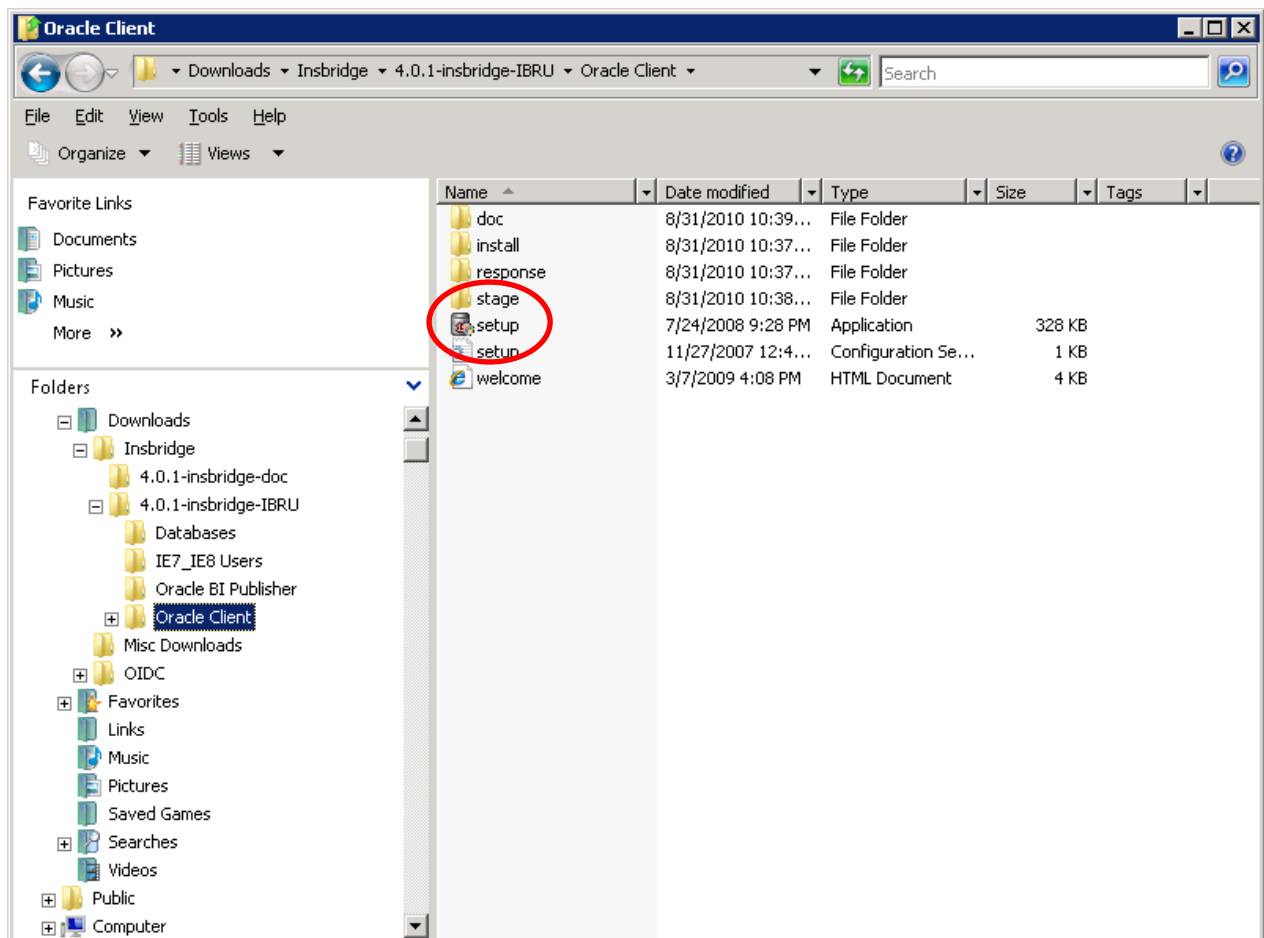


Figure 33 Locating the Oracle Client for 64-bit Installs

1. In the 04.05.00-insbridge-IBRU folder, locate the Oracle Client folder.
2. Select the setup application. The Oracle client installation will begin.

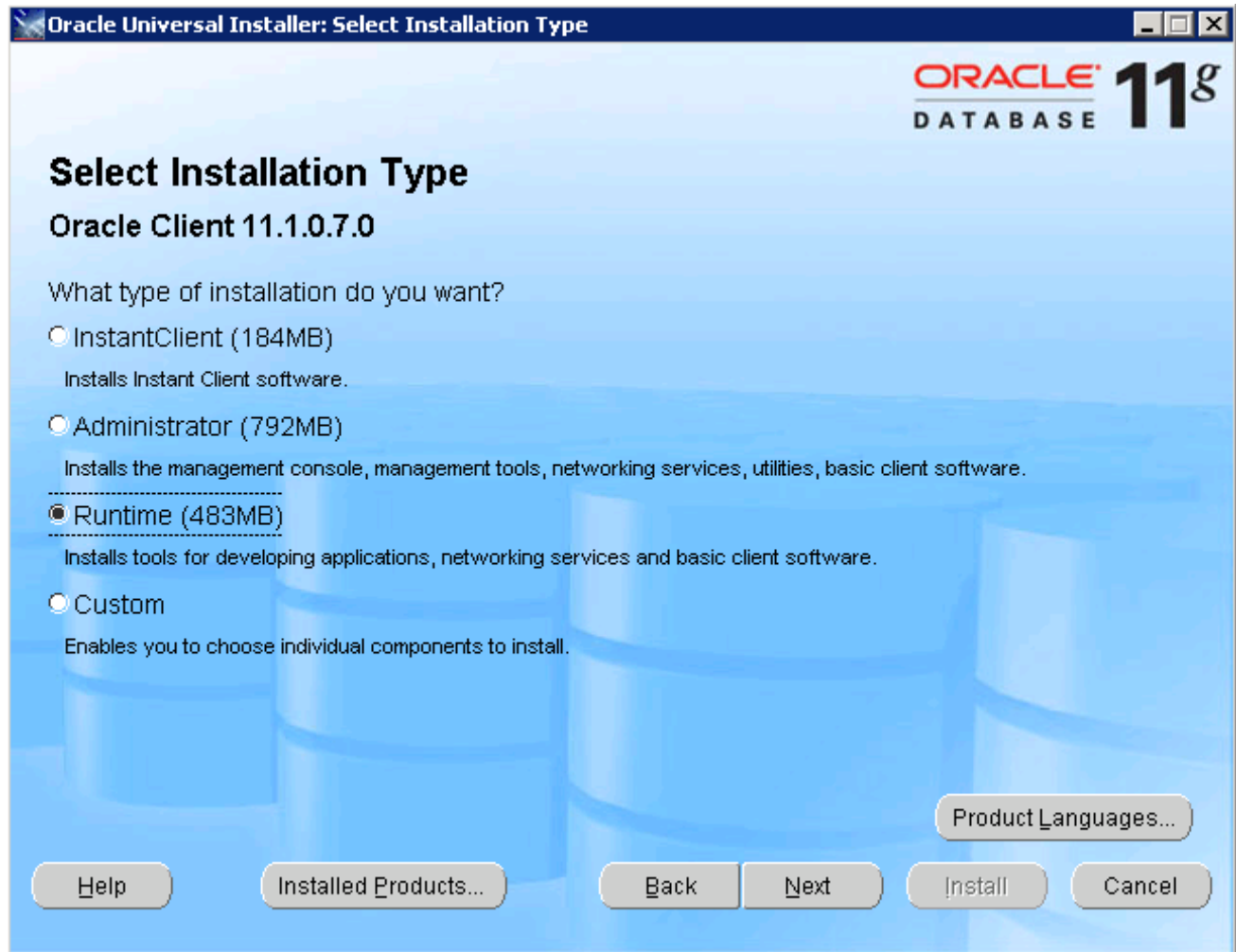


Figure 34 Running the Oracle Client

3. Select **RUNTIME** as the Installation Type.
4. Click **NEXT**.
5. For the Summary – Inside Oracle Providers for .NET, the Oracle Client, you must use a LOCAL DRIVE, i.e. C:\app\oracle-insbridge.
6. Click **NEXT**.
7. You can leave the defaults and **INSTALL**.

## Using a DB2 Database

A DB2 database may also be used. To obtain the DB2 client, please visit the IBM website and download the Client for the version you have.

If a database table needs to be added in SoftRater for DB2, the DDLs are located in the IBFA Installation Directory under the SoftRater/DDL folder. I.e. [INSTALL\_DIR]/Insbridge/SoftRater/DDL. This information may be needed if you are attempting to add an LOB and receive missing table errors. Creating tables in DB2 should be performed by a qualified DBA.

## Step 8: Entering your IBSS Instance in IBFA

IBFA will need to communicate with the IBSS environment. This will allow for packages to be loaded. There are two parts that will need to be completed:

1. Create an environment.
2. Configure the environment.

A SoftRater environment may be completed at installation or can be added at a later time. A SoftRater environment can be on a Windows machine or a Java machine running an application server, such as WebLogic. There is no limit to the number of SoftRater environments that you can have.

1. Enter IBFA.
2. Browse to **SoftRater**→**Explorer**→**Subscriber name**.
3. Click on **Add Environment**.
4. Enter a **Name** and select a **Type**. For example, you can create a Quality Control environment with a type of Quality Assurance.
5. Select the **Environments** link under the Configuration header on the left hand side to enter the configuration information for the newly created logical environment. You will be placed on the Environments screen. The environments you previously setup will be listed. If an environment is missing, you must return to the Configuration subtab and add it.

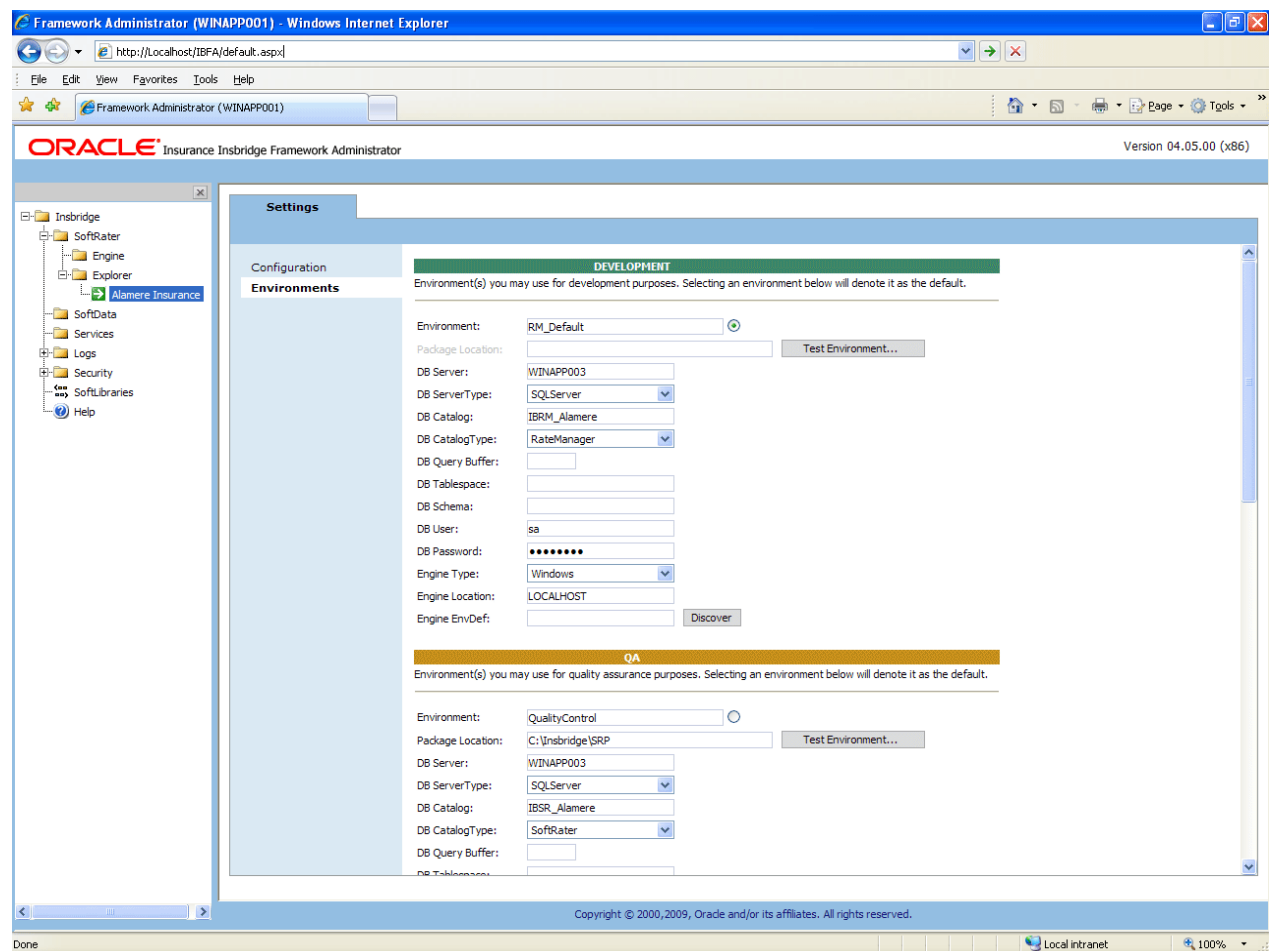


Figure 35 Editing Environment

6. The **Environment Name** will be complete. No changes are needed.
7. Enter in the file path where you want packages stored in the **Package Location**. Use the Test Environment option to have the location created for you.
8. Enter in the **DBServer** name or IP address. This is the database server where the SoftRater database was restored or created.
9. Select the **DB Server Type** that you are using.
10. The **DB Catalog** is the name of the SoftRater database restored in SQL Server. For example, IBSR\_QA.
11. The **DB Catalog Type** is **SoftRater**.
12. **DB Query Buffer** may be required. For certain Database Management Systems (DBMS), system batch query optimization is required for performance and/or because of limits on/in the system. This value will control the maximum number of batch query operations that can be submitted to the target DBMS in any one transaction. It is known that for certain DB2 platform versions a value of 31 is required because of a hard software limit.

13. **DB Tablespace** is not required for a SoftRater environment
14. The **DB Schema** is the name of the schema that defines the structure of the database. This information may be obtained from the DBA.
15. Enter the **DB User** name and **Password**.
16. Select the **Engine Type**.
17. The **Engine Location** is the location of where you installed the SoftRater engine. You can use the machine name or IP address. For WebSphere, WebLogic or JBoss, you must also include the port. For example, a WebLogic server may have “WBServerName:7001” as the entry.
18. The **Engine EnvDef** is the machine name if the engine is located on a different server. You can use the machine name or IP address.
19. Click **SAVE** to save your entries.

# CREATING A SOFTRATER DATABASE

The Insbridge Framework Application container for the SoftRater J2EE EJB contains the JDBC connection drivers that support operational connectivity to the DBMS system listed before. It also contains vendor specific DDLs for the SoftRater operations database schema creation which can be altered by DBA's for setup compliance for varying corporate environments, i.e. TABLESPACE and SCHEMA target definitions.

To obtain Database Definition Language (DDL) scripts for a target DBMS type view the "SoftRater\DDL" subdirectory in the Insbridge IBFA installation directory.

i.e. C:\Program Files\Oracle\IGBU\Insbridge\SoftRater\DDL

Please allow the DBA to review the scripts before attempting to create a SoftRater database schema.

The SoftRater EJB data access system contains all the required JDBC drivers for connectivity to the support DBMS's. TCP/IP connection visibility to the DB Platform is required along with the database server system configured connection PORT for operational use of the SoftRater system. No other supplemental drivers or libraries are needed to establish a connection.

---

**IMPORTANT:** *It is strongly recommended that any database modification be performed by a qualified database administrator (DBA). The database setup procedures and tasks require the skill set of a database administrator. If you are not a database administrator, please stop. Improper setup may result in unwelcome changes to the database. Please consult with a qualified database administrator before proceeding.*

---

## Microsoft SQL Server

### JDBC Driver Class

"com.microsoft.jdbc.sqlserver.SQLServerDriver"

### Supported Versions – 2005 SP/2 and 2008 SP/1

### User Account Requirements

Create Table  
Create Index  
Execute on the SoftRater User Defined Stored Procedures

## ORACLE

SoftRater database schema is support by all available ORACLE database platforms.

### JDBC Driver Class

"oracle.jdbc.driver.OracleDriver"  
Using prefix jdbc:oracle:thin:

## Supported Versions – 10g, 11g

### User Account Requirements

Create Table  
Create Index  
Query access to “SYS.OBJ\$”

## IBM DB2

SoftRater database schema is supported on all available DB2 database platforms.

### JDBC Driver Class

“com.ibm.db2.jcc.DB2Driver”  
For Native AS400 – “com.ibm.as400.access.AS400JDBCdriver”

### Supported Version – 9.1

### User Account Requirements

Create Table  
Create Index  
Query access to “SYSIBM.SYSTABLES”

### Configuration Settings

- **Required**  
The query dynamics of the SoftRater system requires some modification to Configuration settings. The following Performance Configurations parameters required to the target SoftRater database.  
Instance Level – ASLHEAPSZ >= 1024  
Instance Level – QUERY\_HEAP\_SZ => 10240  
Database Level – APPLHEAPSZ >= 1024
- **Recommended**  
The query dynamics of the SoftRater system will benefit from the following modification to Configuration settings.  
  
Instance Level – INTRA\_PARRALLEL (Yes) – For Symmetrical Processing Machines (CPU >=2)  
  
Database Level – DFT\_DEGREE (-1) – For Symmetrical Processing Machines (CPU >=2). Allow the optimizer to determine the degree of intra-partition parallelism based on the number of processors and the type of query.

### Native z/OS

Support for IBM DB2 for native z/OS requires a specific set of the DDL scripts. They are labeled in the `ddl\db2` directory with the ZOS DB2.ZOS prefix. DBA's should review these scripts, starting with the `DB2.ZOS.SETUP.sql` file that contains create templates for default; STORAGE GROUP, DATABASE, default TABLESPACE. All other table create scripts can be reviewed, altered and executed in any other to be consistent with chosen database standards.



## MANAGING SOFTRATER FOR WEBSPHERE

- All management functions should be performed by the IBSS admin interface available at: [http://WAS\\_SERVER:PORT/IBSS/](http://WAS_SERVER:PORT/IBSS/)
- On a default WebSphere installation, this location will be [http://WAS\\_SERVER:9080/IBSS/](http://WAS_SERVER:9080/IBSS/)

---

**NOTE:** *You may have to update the SOAP Services and Application End Point before being able to administer the SoftRater server. Please check with your local WebSphere Administrator to find the correct values required.*

---

- Most of the management functions are self-explanatory but further explanations can be found in the Oracle Insurance Insbridge Rating and Underwriting SoftRater Services (IBSS) guide.

### SoftRater Server Web

At the first screen of the Insbridge SoftRater Server the following will be displayed:



Figure 36 SoftRater Server Web

At this page, you can see the SoftRater Server web version, and be able to connect to the SoftRater, Update SOAP Services Configuration, or Update Application End Point. All of these options are discussed below in the Oracle Insurance Insbridge Rating and Underwriting SoftRater Server User Guide (IBSS).

## Update SOAP Services Configuration

The following settings will not have to be changed unless under the direction of an experienced WebSphere administrator. These settings should only be changed if using either WebSphere ND or the standard WebSphere install configuration has been modified from the default to suit your environment.

### ORACLE<sup>®</sup> Insurance Insbridge SoftRater Server - WebSphere

#### Edit SOAP Deployment Configuration Settings

Status: Select the Web Services fields to update.

##### SoftRater EJB

JNDIName	<input type="text" value="ejb/com/insbridge/sofrater/SoftRaterHome"/>
ContextProviderURL	<input type="text" value="iiop://localhost:28090"/>
FullHomeInterfaceName	<input type="text" value="com.insbridge.softater.SoftRaterHome"/>
FullContextFactoryName	<input type="text" value="com.ibm.websphere.naming.WsnInitialContextFactory"/>

##### SoftData EJB

JNDIName	<input type="text" value="ejb/com/insbridge/softdata/SoftDataHome"/>
ContextProviderURL	<input type="text" value="iiop://localhost:28090"/>
FullHomeInterfaceName	<input type="text" value="com.insbridge.softdata.SoftDataHome"/>
FullContextFactoryName	<input type="text" value="com.ibm.websphere.naming.WsnInitialContextFactory"/>

##### SoftServices Gateway EJB

JNDIName	<input type="text"/>
ContextProviderURL	<input type="text"/>
FullHomeInterfaceName	<input type="text"/>
FullContextFactoryName	<input type="text"/>



Figure 37 Updating SOAP Services

**IMPORTANT:** Oracle Insurance currently supports WebSphere 6.1 ND. The JNDIName on each cluster node will need to be modified to:

**clusters/CLUSTERNAME/ejb/insbridge/....**

---

A useful tool for discovering the JNDI Namespaces is available in the \$WSAS\_HOME\bin folder called dumpNameSpace.sh or dumpNameSpace.bat. The utility can be run without any command line arguments to retrieve all the available JNDI name spaces.

**WARNING:** If these settings are different from the default WebSphere installation, then you must contact your WebSphere support personnel to provide these settings to you.

---

### Update Application End Point

Configuration location for changing from the default SOAP endpoint to a custom setting as dictated by the WebSphere configuration. No changes are required unless specified by a WebSphere administrator.

Edit SOAP Endpoint Configuration Setting

Status: Update the SOAP Endpoint.

SOAP Endpoint

Save Exit

Figure 38 Updating SOAP Endpoint

**NOTE:** If this setting is different from the default WebSphere installation, then you must contact your WebSphere support personnel to provide this setting for you.

---

# UPGRADING THE APPLICATION

Oracle Insurance Insbridge Rating and Underwriting Release 4.1 has been tested and certified on WebSphere 6.0 and 6.1.

## UPGRADE NOTICE

This notice is for customers currently running a SoftRater for Java engine release 3.12 or previous. This includes:

- **SoftRater for WebLogic**
- **SoftRater for WebSphere**
- **SoftRater for JBoss**

Necessary updates have been made to the SoftRater for Java engines:

- **SoftRater for WebSphere has been updated to SOAP version 1.1.**
- **SoftRater for WebLogic has been updated to SOAP version 1.2.**
- **SoftRater for JBoss has been updated to SOAP version 1.2.**

These changes mean that the WSDLs for the SoftRater for Java engines have been modified. Updated WSDL documents will need to be incorporated into any client calling application that communicates with SoftRater. If upgrades are done to the SoftRater for Java engines without updating the calling applications, the calling application will fail.

**Please update a test environment prior to deploying to production.** Install the .EAR file in a test environment to obtain the WSDL. Update your calling application and then test again. When testing is complete, you can upgrade your other environments.

---

**NOTE:** *Customers running a Windows only environment, without a Java component, will not be affected.*

---

These updates are for the SoftRater for Java engines only.

## UPGRADING FROM A PREVIOUS RELEASE

Upgrading from Oracle Insurance Insbridge Rating and Underwriting **Release 3.12 or previous** to release 4.1 will require the previous .EAR and config files to be removed. The new .EAR file can then be deployed and the new config file must be implemented.

WSDLs have been updated in this release. Any application making a call to SoftRater will need to be updated with the new WSDL. If upgrades are done to SoftRater for WebSphere without updating the calling application, the calling application will fail.

---

**NOTE: UPGRADE YOUR TEST ENVIRONMENT PRIOR TO PRODUCTION.**

---

1. Make a back-up copy of the current config file. The configuration information will need to be re-entered in IBSS. The updated config file will not contain this information. This information cannot be directly imported but a copy of the original file may be helpful when re-entering.
2. Stop the WebSphere Service.
3. Uninstall the old .EAR file.
4. Install the new .EAR file. Please see Step 2: Installing the EAR File
5. Remove the old config file.
6. Install the new config file. Please see **Error! Reference source not found..**
7. Start the WebSphere Service.
8. Enter IBSS. You will need to re-enter the config information. Please see the Insbridge Rating and Underwriting SoftRater Server Guide.
9. If necessary, obtain any WSDL information from IBSS and update any calling application.
10. Test your configuration and updated calling applications before deploying to production.

---

**NOTE:** *You do not need to do an upgrade if you are running release 3.13.5, 4.0, or 4.1.*

---

## SQL SERVER UPGRADE

If you are utilizing SQL Server and want to keep your current Environment settings, you will need to edit the `insbridge.net.softraterconfig.xml` file.

1. Deploy the new .EAR file.
2. Open the `insbridge.net.softraterconfig.xml`. The `insbridge.net.softraterconfig.xml` file will be located in the folder you setup when you initially installed SoftRater for WebSphere. For example, `C:\Insbridge\config`.
3. Make a back-up copy of this file.
4. In the `insbridge.net.softraterconfig.xml` file, find this section:

```
<jdbcDriver provider="1" name="SQLSERVER">
  <jdbcDriverClassName>com.microsoft.jdbc.sqlserver.SQLServerDriver</jdbcDriverClassName>
  <jdbcUrlPrefix>jdbc:microsoft:sqlserver://</jdbcUrlPrefix>
  <jdbcFetchSize>25</jdbcFetchSize>
</jdbcDriver>
```

And replace it with this:

```
<jdbcDriver provider="1" name="SQLSERVER">
  <jdbcDriverClassName>com.microsoft.sqlserver.jdbc.SQLServerDriver</jdbcDriverClassName>
  <jdbcUrlPrefix>jdbc:sqlserver://</jdbcUrlPrefix>
  <jdbcFetchSize>25</jdbcFetchSize>
</jdbcDriver>
```

5. Restart the Application Server.

If you do not need your current environments:

1. Copy the existing `insbridge.net.softraterconfig.xml` and park it in a safe place. This is precautionary.
2. Copy the `insbridge.net.softraterconfig.xml` from the SoftRater for WebSphere 04.01.00 zip file.
3. Paste the new file over the current file. The `insbridge.net.softraterconfig.xml` file will be located in the folder you setup when you initially installed SoftRater for WebSphere. For example, `C:\Insbridge\config`.

If this is a new installation, you are not required to do any additional steps.

## CONTACTING SUPPORT

If you need assistance with an Oracle Insurance Insbridge Rating and Underwriting System product, please log a Service Request using My Oracle Support at <https://support.oracle.com/>.

### Address any additional inquiries to:

**Oracle Corporation**  
World Headquarters  
500 Oracle Parkway  
Redwood Shores, CA 94065  
U.S.A.

Worldwide Inquiries:  
Phone: +1.650.506.7000  
Fax: +1.650.506.7200  
[oracle.com](http://oracle.com)

## TTY ACCESS TO ORACLE SUPPORT SERVICES

Oracle provides dedicated Text Telephone (TTY) access to Oracle Support Services within the United States of America 24 hours a day, seven days a week. For TTY support, call 800.446.2398.

## INDEX

### \$

`$WSAS_HOME\etc\insbridge`, 20, 40

### A

Add New Environment  
  IBSS, 27, 45  
Application Servers  
  Mapping, 19, 39

### B

Bindings  
  Creating, 14, 34

### C

*Classpath*  
  *Insbridge\DB2\db2jcc.jar File*, 16, 36  
Collation and Sort Order  
  SQL Server, 11, 22  
Config File  
  Locating, 9, 10  
`config/ddl` subdirectory, 24  
Configuration Settings  
  DB2, 55  
  DB2 Modifications, 55  
Configure  
  Rating Environments, 27, 45  
Creating  
  Environment Setup, 27, 45  
  Name Space Binding, 15, 35

### D

Database  
  IBM DB2 Support, 55  
  MS SQL Support, 54  
  ORACLE Support, 54  
  Permissions, 10  
  Security, 10  
  SoftRater, 54  
Database Definition Language Scripts, 54  
Database Types  
  Environment Setup, 28, 46  
DB2  
  zOS, 55  
DB2 Database  
  Configuration Settings, 55  
  JDBC Driver Class, 55  
  Recommendations, 55  
  SoftRater Database Schema, 55  
  Supported Version, 55

  User Account Requirements, 55  
DB2 Platform  
  Query Block Limits, 28, 46  
DBA, 54  
DBMS, 54  
DDL, 54  
DDL scripts  
  zOS on DB2, 55  
`ddl\db2` Directory, 55  
Directory  
  `ddl\db2`, 55  
`dumpNameSpace.bat`, 58  
`dumpNameSpace.sh`, 58

### E

EAR  
  Started from WSAS Admin Console, 21, 41  
EAR File, 17, 37  
E-Delivery  
  IBRU, 11  
  Required Programs, 11  
Editing  
  Environment Setup, 27, 45  
Edition Notice, 2  
Endpoint  
  *Different from WebSphere*, 58  
  SOAP, Changing, 58  
Environment Setup  
  Creating, 27, 45  
  Database Types, 28, 46  
  Editing, 27, 45  
  IBSS, 27, 45  
  Provider Types, 28, 46  
  Query Block, 28, 46  
Extended Properties  
  Modifying, 20, 40

### F

*File*  
  EAR, 17, 37  
  *Insbridge\DB2\db2jcc.jar File*, 16, 36  
  Security on Config, 20, 40

### I

IBRU  
  E-Delivery, 11  
IBSS, v  
  Add New Environment, 27, 45  
  Environment Setup, 27, 45  
  Installing EAR File, 17, 37  
  Options, 17, 37  
Insbridge SoftRater Server, v



Insbridge.Fwk.APP, 20, 40  
InsBridge.Fwk.APP, 20, 40  
insbridge.net.softaterconfig.xml  
  Configuration File, 20, 40  
  Configuring, 20, 40  
INSBRIDGE\_APP\_DIR, 14, 15, 20, 34, 35, 40  
  Folder, 20, 40  
*Insbridge\DB2\db2jcc.jar File*  
  Classpath, 16, 36  
Installing  
  IBSS EAR, 17, 37  
  InsBridge.Fwk.APP, 20, 40

## J

JAR File  
  WebSphere Application Server, 16, 36  
JDBC Connection Drivers, 54

## L

Library  
  Assigning Shared Libraries, 20, 40  
  Shared, 16, 36

## M

Mapping  
  Modules, 19, 39  
  Virtual Hosts, 19, 39  
Microsoft SQL Server, 11  
Mixed Mode Authentication  
  Sql Server, 11  
Modules  
  Mapping, 19, 39

## N

Name Space Binding  
  Creating, 15, 35  
Name Space Binding String, 14, 34  
Node Scope  
  Shared Library, 16, 36

## O

Options  
  IBSS EAR, 17, 37  
ORACLE  
  SoftRater Database Schema, 54  
ORACLE Database  
  JDBC Driver Class, 54  
  Supported Version, 55  
  User Account Requirements, 54  
Overview  
  Package, vi

## P

Package  
  Environment, vi

  Overview, vi  
Part Numbers  
  E-Delivery, 11  
PDF Reader  
  E-Delivery, 11  
Performance Configurations Parameters  
  SoftRater Database, 55  
Pre-compile JSP  
  Options', 17, 37  
Provider Types  
  Environment Setup, 28, 46

## Q

Query Block  
  Environment Setup, 28, 46

## R

Reloading  
  SoftRater Page Environment, 29, 47  
Requirements, 10  
  DB2 Database, 55  
  ORACLE Database, 54  
  SoftRater EJB Data Access System, 54  
  SQL Server, 54  
  TCP/IP Connection, 54  
Reset Environments  
  SoftRater Page, 29, 47

## S

sa account  
  SQL Server Enterprise Manager, 22  
Scripts  
  Database Definition Language, 54  
Security  
  Database, 10  
Server Web Version  
  SoftRater, 56  
*Settings*  
  SQL Server, 11  
Shared Library  
  Creating, 16, 36  
SOAP  
  Endpoint, Changing, 58  
  Endpoint, Default, 58  
  *Services and Admin Endpoint*, 56  
SoftRater  
  *Default Config File*, 20, 40  
  IBSR, 10  
  Security on Config File, 20, 40  
  Server Web Version, 56  
  Supported Databases, 54, 55  
  System Requirements, 9  
  *Updating SOAP Endpoint*, 56  
SoftRater Database, 54  
SoftRater Packages  
  Environments, vi  
SoftRater Page  
  Reloading Environment, 29, 47  
  Reset Environment, 29, 47

- 
- SQL Server
    - Collation and Sort Order, 11, 22
    - JDBC Driver Class, 54
    - Mixed Mode Authentication, 11
    - Requirements, 11
    - Residing on Separate Host, 11
    - Settings*, 11
    - SoftRater Database Schema, 54
    - Supported Version, 54
    - User Account Requirements, 54
    - User Accounts, 25
  - SQL Server Account
    - ibru, 22
  - SQL Server Enterprise Manager
    - sa Privileges, 22
  - String
    - Name Space Binding, 14, 34
    - WebSphere, 14, 34
  - Subdirectory
    - Installation, 20, 40
  - Summary Screen, 19, 39
  - System Requirements
    - WebSphere, 9
  - T**
  - TCP/IP Connection
    - To DB Platform, 54
  - U**
  - Unzip Utility
    - E-Delivery, 11
  - Updating
    - SOAP Services, 57
  - User Accounts
    - SQL Server, 25
  - V**
  - VFS Definition, vi
  - Virtual File Server Definition, vi
  - Virtual Hosts
    - Mapping, 19, 39
  - W**
  - WebSphere
    - Creating String, 14, 34
    - Different Endpoint*, 58
    - Managing SoftRater, 56
    - System Requirements, 9
    - Updating SOAP, 57
    - Viewing in Installation Directory, 54
  - WebSphere Application Server
    - JAR File, 16, 36
  - WebSphere Port*
    - 9080, 26, 44
  - WSAS Administrative Console, 21, 41
  - X**
  - XML Configuration, 14, 34
  - Z**
  - z/OS
    - BD2, 55
  - ZOS DB2.ZOS, 55
-