



Oracle Knowledge Analytics

Installation Guide

Legacy Edition for MicroStrategy Migration

Version 8.4.2.2
December, 2011

COPYRIGHT INFORMATION

Copyright © 2002, 2011, Oracle and/or its affiliates. All rights reserved.

This software and related documentation are provided under a license agreement containing restrictions on use and disclosure and are protected by intellectual property laws. Except as expressly permitted in your license agreement or allowed by law, you may not use, copy, reproduce, translate, broadcast, modify, license, transmit, distribute, exhibit, perform, publish, or display any part, in any form, or by any means. Reverse engineering, disassembly, or decompilation of this software, unless required by law for interoperability, is prohibited.

The information contained herein is subject to change without notice and is not warranted to be error-free. If you find any errors, please report them to us in writing.

If this is software or related documentation that is delivered to the U.S. Government or anyone licensing it on behalf of the U.S. Government, the following notice is applicable:

U.S. GOVERNMENT RIGHTS

Programs, software, databases, and related documentation and technical data delivered to U.S. Government customers are “commercial computer software” or “commercial technical data” pursuant to the applicable Federal Acquisition Regulation and agency-specific supplemental regulations. As such, the use, duplication, disclosure, modification, and adaptation shall be subject to the restrictions and license terms set forth in the applicable Government contract, and, to the extent applicable by the terms of the Government contract, the additional rights set forth in FAR 52.227-19, Commercial Computer Software License (December 2007). Oracle America, Inc., 500 Oracle Parkway, Redwood City, CA 94065.

This software or hardware is developed for general use in a variety of information management applications. It is not developed or intended for use in any inherently dangerous applications, including applications that may create a risk of personal injury. If you use this software or hardware in dangerous applications, then you shall be responsible to take all appropriate fail-safe, backup, redundancy, and other measures to ensure its safe use. Oracle Corporation and its affiliates disclaim any liability for any damages caused by use of this software or hardware in dangerous applications.

Oracle and Java are registered trademarks of Oracle and/or its affiliates. Other names may be trademarks of their respective owners.

Intel and Intel Xeon are trademarks or registered trademarks of Intel Corporation. All SPARC trademarks are used under license and are trademarks or registered trademarks of SPARC International, Inc. AMD, Opteron, the AMD logo, and the AMD Opteron logo are trademarks or registered trademarks of Advanced Micro Devices. UNIX is a registered trademark of The Open Group. Other names may be trademarks of their respective owners.

This software or hardware and documentation may provide access to or information on content, products, and services from third parties. Oracle Corporation and its affiliates are not responsible for and expressly disclaim all warranties of any kind with respect to third-party content, products, and services. Oracle Corporation and its affiliates will not be responsible for any loss, costs, or damages incurred due to your access to or use of third-party content, products, or services.

Contents

Preface: About This Guide	1
In This Guide	1
Screen and Text Representations	2
References to External Web Content	2
 Chapter 1: Oracle Knowledge Analytics Overview	 3
The Analytics Application	3
Analytics Architecture	3
Analytics Reporting Process	4
Analytics Server and Processor Deployment	4
The Analytics Installation Process	4
Analytics Requirements and Dependencies	5
Data Warehouse Server Requirements	5
Data Warehouse Server Hardware Requirements	5
Data Warehouse Server Software Requirements	6
ETL Server Requirements	6
ETL Server Hardware Requirements	6
ETL Server Software Requirements	7
Report Server Requirements	7
Report Server Hardware Requirements	7
Report Server Software Requirements	8
Windows 2000 Platform Requirements	8
Windows Server 2003 Platform Requirements	8
Report Client Requirements	8
Report Client Hardware	8
Report Client Software	9

Chapter 2: Installing Oracle Knowledge Analytics	10
Chapter 3: Creating an ODBC DSN.....	20
Creating an ODBC DSN	20
Naming the Data Sources	20
Chapter 4: Creating the Analytics Metadata Database	22
Opening the Installation Configuration Environment	22
Running the Create Metadata Script	23
Chapter 5: Installing and Configuring the Analytics Report Server	26
Installing the MicroStrategy Components	26
Selecting the Language for the Installation	26
Installing the Selected Products	26
Accepting the MicroStrategy License Agreement	27
Specifying Customer Information	27
Selecting the Installation Type	27
Selecting the Installation Location	27
Selecting the Components to Install	27
Stopping Your Web Server	28
MicroStrategy Web (ASP.Net) Setting	28
Selecting the Program Folder	28
MicroStrategy Intelligence Server setting	28
Copying the Selected Component Files	28
Installing MicroStrategy Files	29
Activating MicroStrategy	29
Completing the Installation Process	30
Configuring the MicroStrategy Components	30
Creating a New Project Source	30
Configuring the Analytics Warehouse Instance	31
Configuring the IM Operational Warehouse Instance	34
Configuring the Web-based Analytics User Interface	36
Deploying the Project to the Web	36
Starting the MicroStrategy Configuration Wizard	36
Specifying the Data Source for the Metadata Repository	36
The Database Driver Certification Message	37
Specifying User Information for the Metadata Repository	37
Specifying the Server Definition	38
Specifying the Port Number	38
Registering the Analytics Project	38
Completing the Server Definition Process	39
Restarting the MicroStrategy Intelligence Server	39
Chapter 6: Configuring Report Generation	40

LEGACY

About This Guide

This guide is intended for technical staff who are responsible for installing and configuring Oracle Knowledge Analytics to report on Oracle Knowledge Intelligent Search and Oracle Knowledge Information Manager applications. It provides detailed information on installing and configuring Analytics components.

In This Guide

The *Oracle Knowledge Analytics Installation Guide* is divided into the following sections:

Chapter 1, Oracle Knowledge Analytics Overview

This chapter describes the general installation process, lists hardware and software requirements and dependencies, and provides product packaging and distribution information.

Chapter 2, Installing Analytics

This chapter describes using the automated installation program to install and configure either Intelligent Search Analytics, Information Manager Analytics, or both products.

Chapter 3, Creating an ODBC DSN

This chapter describes how to configure the ODBC DSNs used in Analytics.

Chapter 4, Creating the Analytics Metadata Database

This chapter describes how to create the metadata schema.

Chapter 5, Installing and Configuring the Analytics Report Server

This chapter describes using the packaged installation program to install and configure the MicroStrategy software that supports Analytics report creation and presentation.

Chapter 6, Configuring Report Generation

This chapter describes how configure Analytics to generate reports.

Screen and Text Representations

The product screens, screen text, and file contents depicted in the documentation are examples. We attempt to convey the product's appearance and functionality as accurately as possible; however, the actual product contents and displays may differ from the published examples.

References to External Web Content

For your convenience, we refer to Uniform Resource Locators (URLs) for resources published on the World Wide Web when appropriate. We attempt to provide accurate information; however, these resources are controlled by their respective owners and are therefore subject to change at any time.

LEGACY

Oracle Knowledge Analytics Overview

Oracle Knowledge Analytics is an enterprise-grade business intelligence application designed specifically to provide insight into the effectiveness and performance of Oracle Knowledge applications. The Oracle Knowledge Analytics solution features extensive dashboards, intuitive reporting, and ad hoc investigation tools that enable you to:

- assess answer quality, and whether users are finding the information they seek
- guard against escalations by identifying and filling knowledge gaps and determine whether important information is missing from your content
- understand user behavior, monitor customer satisfaction, and continually improve user experience
- keep pace with new product releases and evolving audience needs

The Analytics Application

An Oracle Knowledge Analytics application consists of multiple components configured to extract, store, and present data collected from one or more configured Intelligent Search and/or Information Manager instances. Analytics components include:

- the ETL server, which uses a configured Oracle Knowledge instance to execute the data extraction, transform, and load (ETL) processes
- the data warehouse, which stores the extracted Intelligent Search and Information Manager log data, repository data and additional metadata used to create the report
- the InQuira Analytics Report server, which hosts the report generation and presentation functions

Analytics Architecture

An Analytics application consists of multiple components configured to extract, store, and present data from one or more configured Intelligent Search and Information Manager instances. The Analytics components include:

- the ETL server, which uses a configured Oracle Knowledge instance to execute the data extraction and load (ETL) processes.
- the data warehouse, which stores the extracted Intelligent Search and Information Manager log and repository data and additional metadata used to create the reports
- the Analytics Report server, which hosts the report generation and presentation functions

Analytics Reporting Process

The ETL process loads data from Oracle Knowledge application log files to populate the data warehouse. The Report server uses that data to generate a set of standard reports that you can view, filter, print, and export using the web-based Analytics user interface.

Analytics Server and Processor Deployment

If your Oracle Knowledge application processes fewer than 3,000 questions per day, you can deploy Analytics on a single processor. For higher volume applications, we recommend separating the Report server from the server that hosts the database and ETL processes.

For applications processing over 30,000 questions per day, we recommend that the data warehouse, ETL, and Reports server be deployed on separate networked processors.

The Analytics Installation Process

The Analytics installation and configuration process consists of the following steps:

- Installing the Analytics software as described in [Chapter 2, Installing Analytics](#)
- Establishing three separate ODBC DSNs as described in [Chapter 3, Creating an ODBC DSN](#)
- Using the ICE prompt to create a metadata schema as described in [Chapter 4, Creating the Analytics Metadata Database](#)
- Installing and configuring MicroStrategy components for the report server as described in “Installing and Configuring the Analytics Report Server”
- Configuring the report server on which you will run the Analytics reporting application as described in [Chapter 5, Installing and Configuring the Analytics Report Server](#)
- Logging in to the Report server as described in [Chapter 6, Configuring Report Generation](#)
- Configuring the Intelligent Search and Information Manager instances that provide data to Analytics as described in the *Oracle Knowledge Intelligent Search Configuration and Administration Guide* and the *Oracle Knowledge Information Manager Administrator's Guide*.

Important! Before installing Analytics, make sure the requirements and prerequisites, as described in “InQuira Analytics Requirements and Dependencies” on page 4 are satisfied, and that appropriate personnel with access to the specified environments are available to perform the installation.

Important! The Analytics components are designed to operate only when the entire installation and configuration process is complete; do not install or use individual Oracle Knowledge product components separately from the configured product unless specifically instructed by Oracle Knowledge technical staff.

Analytics Requirements and Dependencies

Requirements for various Analytics servers are detailed in the following sections:

- “Data Warehouse Server Requirements” on page 5
- “ETL Server Requirements” on page 6
- “Report Server Requirements” on page 7
- “Report Client Requirements” on page 8

Note: The Analytics environment requires an installed and configured Oracle Knowledge application. See the Oracle Knowledge documentation for information on installing, configuring and deploying an Oracle Knowledge application.

Data Warehouse Server Requirements

This section describes the hardware and software requirements for the Analytics data warehouse.

Analytics requires a JDBC-compatible database for report data and report storage. The database must have a JDBC driver.

Note: You can use the same database that you allocate for the Oracle Knowledge Content Store as described in the section on databases in the *Oracle Knowledge Intelligent Search Installation Guide*.

Data Warehouse Server Hardware Requirements

The Analytics data warehouse requires the following levels of processor, memory, and storage.

Requirement	Minimum Required	Recommended
Processor	1 CPU at 600 MegaHertz MHz)	1 CPU at 1 GigaHertz (GHz) or greater
RAM	2 gigabytes (GB)	2 GB or greater
Available disk storage	2 GB	Dependent on data quantity

Data Warehouse Server Software Requirements

The Analytics data warehouse requires the following operating systems, databases, and supporting software.

Requirement	Supported	Recommended
Operating System	Any of the following: <ul style="list-style-type: none"> • Microsoft Windows 2000 Server • Microsoft Windows 2003 Server Standard Edition • Red Hat 3.1, 4.0 (64-bit) • Sun Solaris 9 	Either of the following: <ul style="list-style-type: none"> • Microsoft Windows 2000 Advanced Server (4GT enabled) • Red Hat 3.1, 4.0 (64-bit) • Solaris 9
DBMS	Either of the following: <ul style="list-style-type: none"> • Oracle 10g • SQL Server 2005 	Either of the following: <ul style="list-style-type: none"> • Oracle 10g • SQL Server 2005
Database Administration Application		Aqua Data Studio; SQL Plus, TOAD, or similar application

Note: 4GT RAM Tuning increases the amount of RAM available to programs in configured Microsoft Windows NT Server Enterprise Edition servers.

ETL Server Requirements

This section describes the hardware and software requirements for the Analytics ETL server.

ETL Server Hardware Requirements

The Analytics ETL server requires the following levels of processor, memory, and storage.

Requirement	Minimum Required	Recommended
Processor	1 CPU at 600 MHz or higher	1 CPU at 1 GHz or higher
RAM	512 MB	2 GB
Available disk storage	2 GB	Dependent on log data quantity.

ETL Server Software Requirements

The Analytics ETL server requires any of the following operating systems and Oracle Knowledge versions.

Requirement	Minimum Required	Recommended
Operating System	Any of the following: <ul style="list-style-type: none"> • Windows Server 2003 Standard Edition • Windows 2000 Server • RedHat 2.1 Linux (64 bit) • RedHat 3.1 Linux (64 bit) • Sun Solaris 9 	Any of the following: <ul style="list-style-type: none"> • Windows Server 2003 Enterprise Edition (4GT enabled) • Windows 2000 Advanced Server (4GT enabled) • RedHat 2.1 Linux (64 bit) • RedHat 3.1 Linux (64 bit) • Sun Solaris 9
Oracle Knowledge		
DBMS	Either of the following: <ul style="list-style-type: none"> • Oracle 10g • SQL Server 2005 	Either of the following: <ul style="list-style-type: none"> • Oracle 10g • SQL Server 2005

Report Server Requirements

This section describes the hardware and software requirements for the Analytics Report server.

Report Server Hardware Requirements

The Analytics Report server requires the following levels of processor, memory, and storage.

Requirement	Minimum Required	Recommended
Server	PC-compatible	PC-compatible
Processor	One Pentium-compatible CPU at 600 MHz or greater	One Pentium-compatible CPU at 1 GHz or higher
RAM	512 MB	2 GB
Available hard drive space	512 MB	2 GB

Report Server Software Requirements

The Analytics Report server requires any of the following operating systems and web servers.

Requirement	Minimum Required	Recommended
Operating System	Either of the following: <ul style="list-style-type: none">• Microsoft Windows Server 2003 Standard Edition• Microsoft Windows 2000 Server	Either of the following: <ul style="list-style-type: none">• Microsoft Windows Server 2003 Enterprise Edition (4GT enabled)• Microsoft Windows 2000 Advanced Server (4GT enabled)
Web Server	<ul style="list-style-type: none">• Apache Tomcat V5.0.3• Microsoft IIS V5.0	<ul style="list-style-type: none">• Apache Tomcat V5.0.3• Microsoft IIS V5.0

Windows 2000 Platform Requirements

- Windows 2000 Server SP3 or SP4
- Windows 2000 Advanced Server SP3 or SP4
- Internet Explorer 5.01 or higher

Windows Server 2003 Platform Requirements

- Windows Server 2003 Enterprise Edition
- Windows Server 2003 Standard Edition
- Internet Explorer 6.01 or higher

Report Client Requirements

This section describes the hardware and software requirements for client processors that access the Analytics Report server.

Report Client Hardware

The Analytics Report client requires the following levels of processor and memory.

Requirement	Minimum Required	Recommended
Processor	450 MHz	1 GHz or higher
RAM	128 MB	512 MB or higher

Report Client Software

The Analytics Report client requires the following software and capabilities.

- monitor resolution at 800 x 600 or higher, with 256 or greater color palette
- Microsoft Excel, or any spreadsheet application that supports the CSV file format
- Adobe Acrobat or a similar PDF creation and display program

LEGACY

Installing Analytics

Install the Analytics software on the processor that you have designated as the ETL server within your Analytics application. The ETL server must have an installed and configured Oracle Knowledge instance, including the Advanced Configuration Facility.

The Analytics installation process uses an automated installation program that copies the Analytics product files from the product distribution and installs Analytics into the existing Oracle Knowledge installed directory structure. The Oracle Knowledge installation program installs and configures the Oracle Knowledge Intelligent Search Analytics and Oracle Knowledge Information Manager Analytics products.

Important! Before installing Analytics, ensure that requirements and prerequisites are satisfied, and that appropriate personnel with access to the specified environments are available to perform the installation.

Starting the Installation Program

Important! We strongly recommend that you log out of all programs before proceeding with the installation.

- 1 Start the installation program by locating and executing the appropriate installation program for your environment.

To start the installation program in **Microsoft Windows** environments, run:

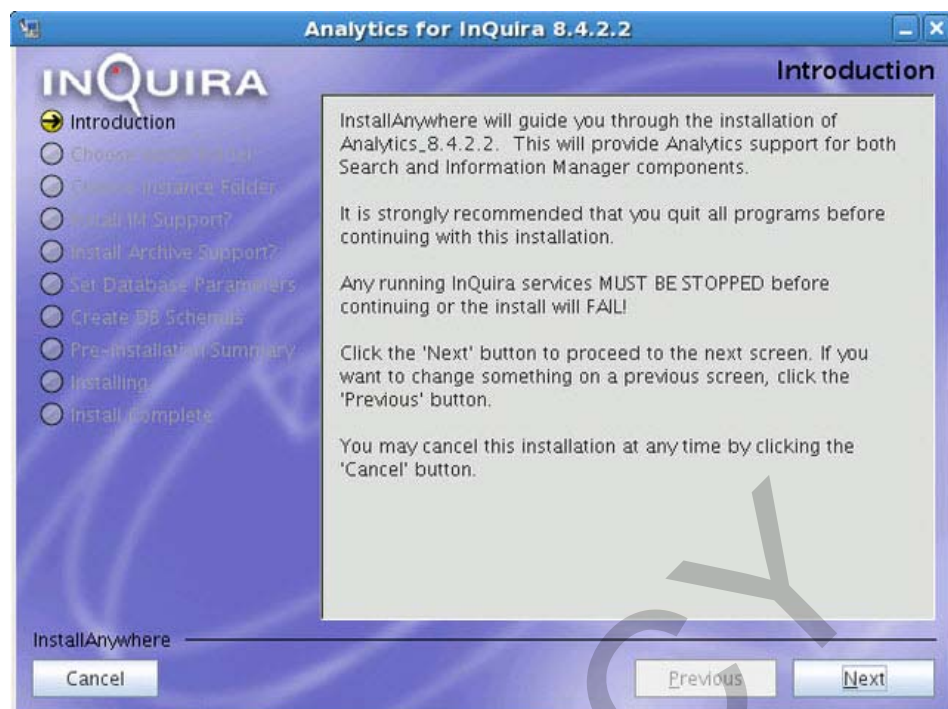
`install_analytics.exe`

To start the installation program in **Linux** environments, run:

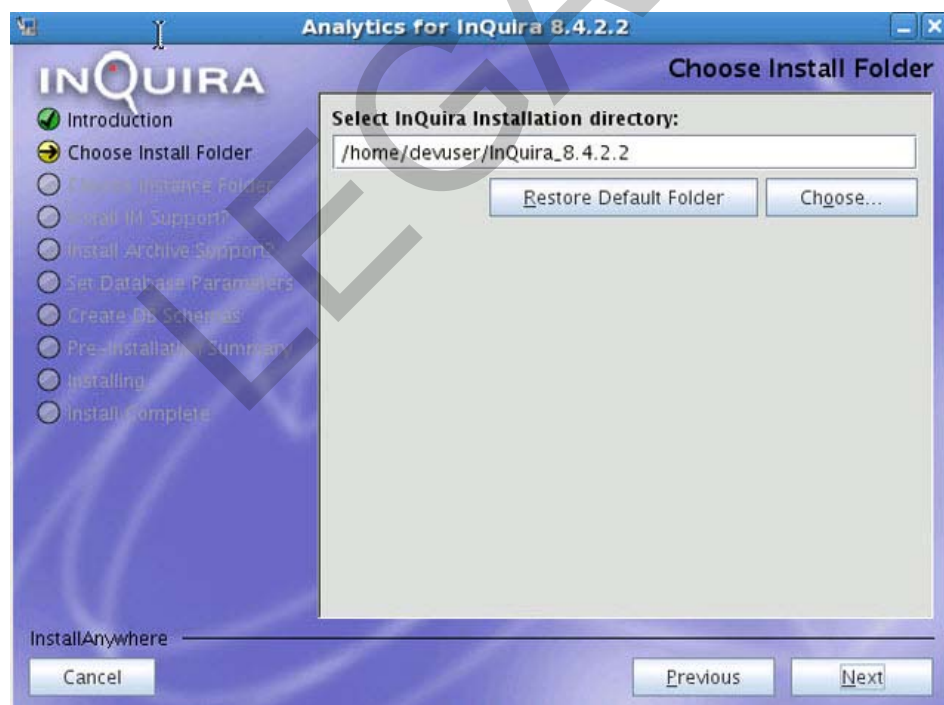
`install_analytics.bin`

The Analytics installation program starts and Introduction screen displays.

- 2 At the Introduction screen, click **Next**.



- 3 At the Choose Install Folder, select or enter the directory where Analytics will be installed.



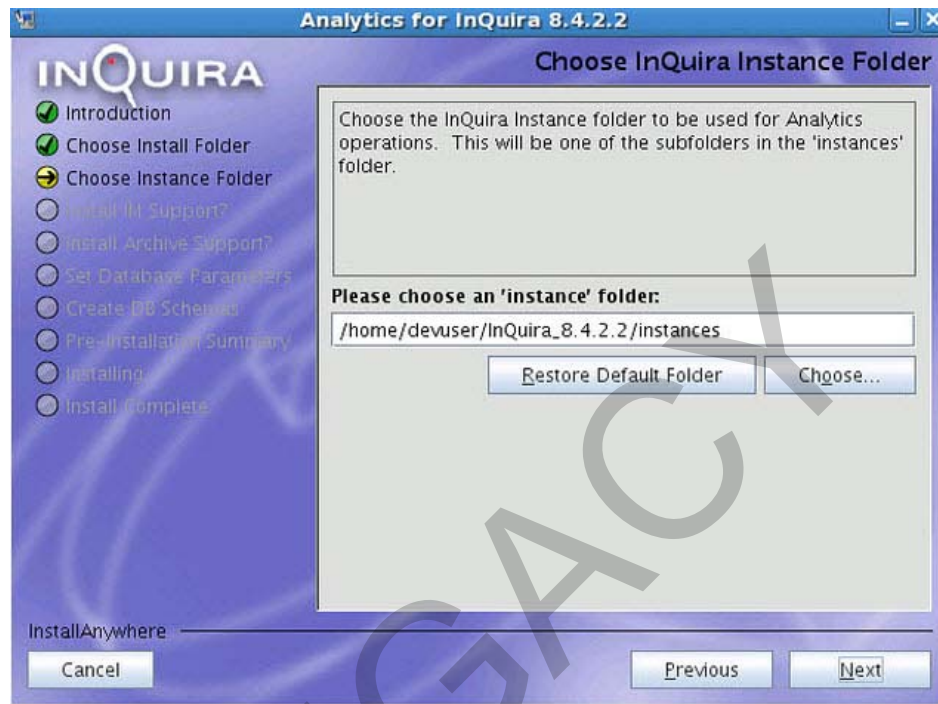
The installation program selects a default location:

- C:\InQuira_x.x in Windows environments or <user_home>/InQuira_x.x in Linux environments

You can click **Choose** to open a file explorer and select an alternate location. Click **Restore Default Folder** to reset the default installation directory, if necessary.

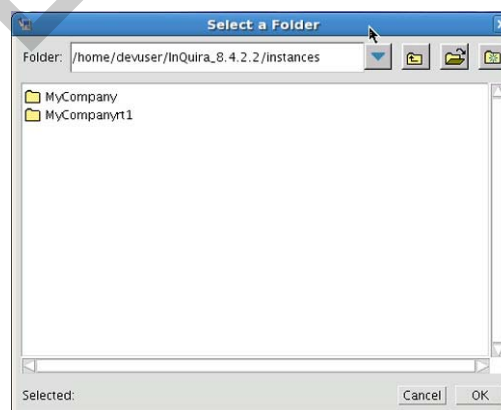
Note: The installation program checks to see that an Oracle Knowledge instance has been properly installed. If it does not find the folders and files it is expecting, an error message displays.

- 4 At the Choose InQuira Instance Folder screen, select the location of the Oracle Knowledge instance folder to be used for Analytics. The location needs to be one of the subfolders in the **instances** folder.



- The installation program selects a default location:
- C:\InQuira_x.x \instances\ in Windows environments or <user_home>/InQuira_x.x\instances in Linux environments.

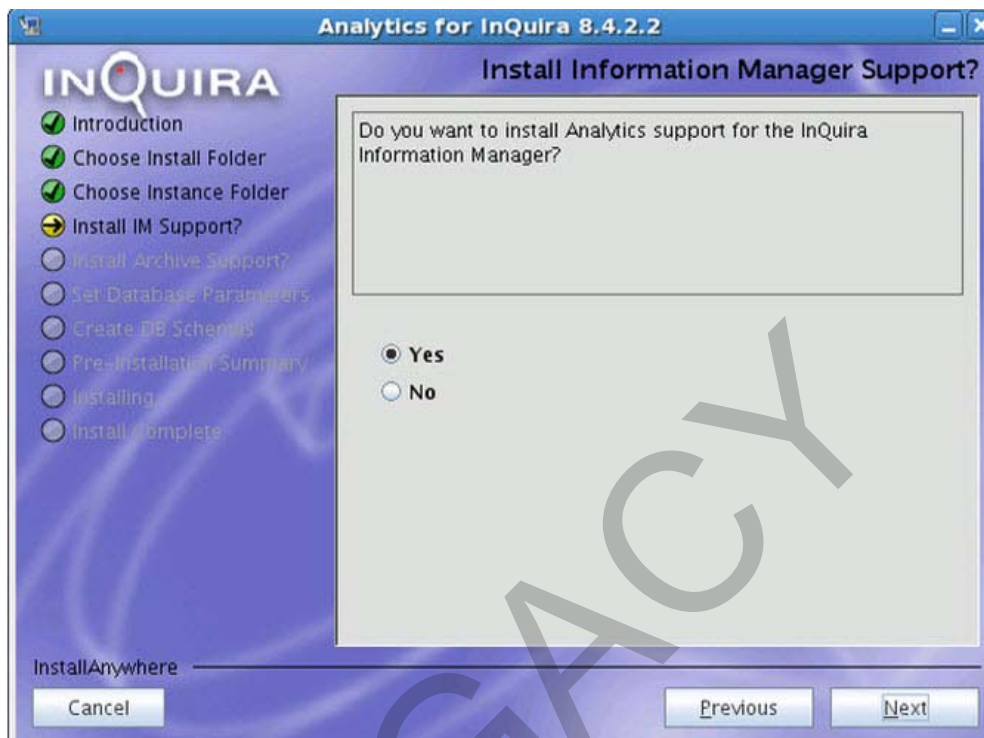
Click **Choose** to open a file explorer and select an alternate location.



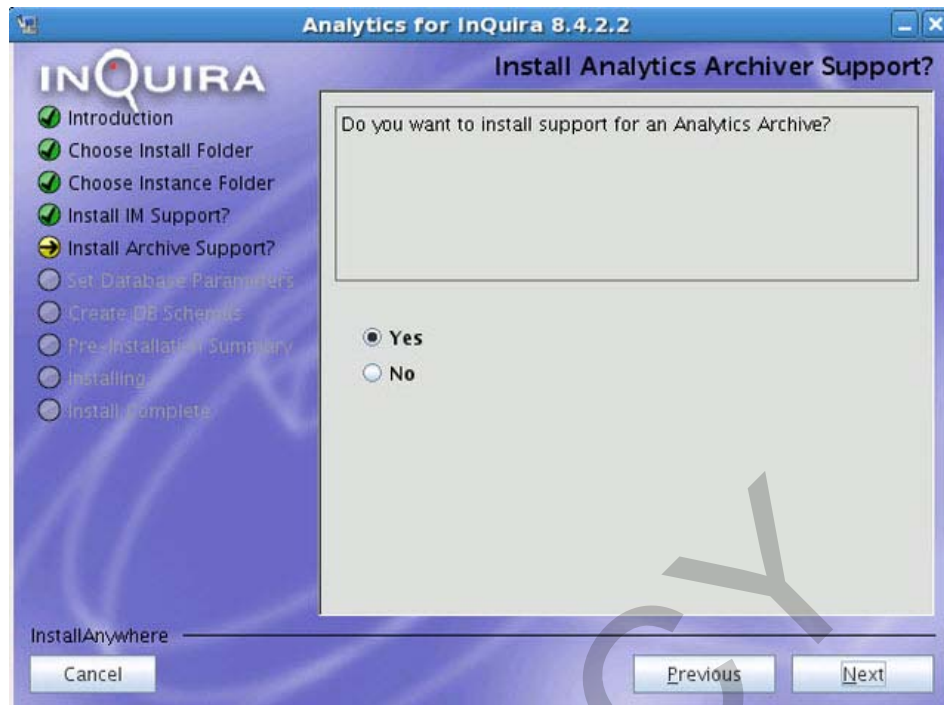
Click **Restore Default Folder** to reset the default installation directory, if necessary.

- 5 At the Install Information Manager Support screen, select **Yes** or **No**.

If you select **Yes**, Information Manager Analytics installs. You must have InQuira Information Manager already installed before selecting **Yes**. Click **Next**.

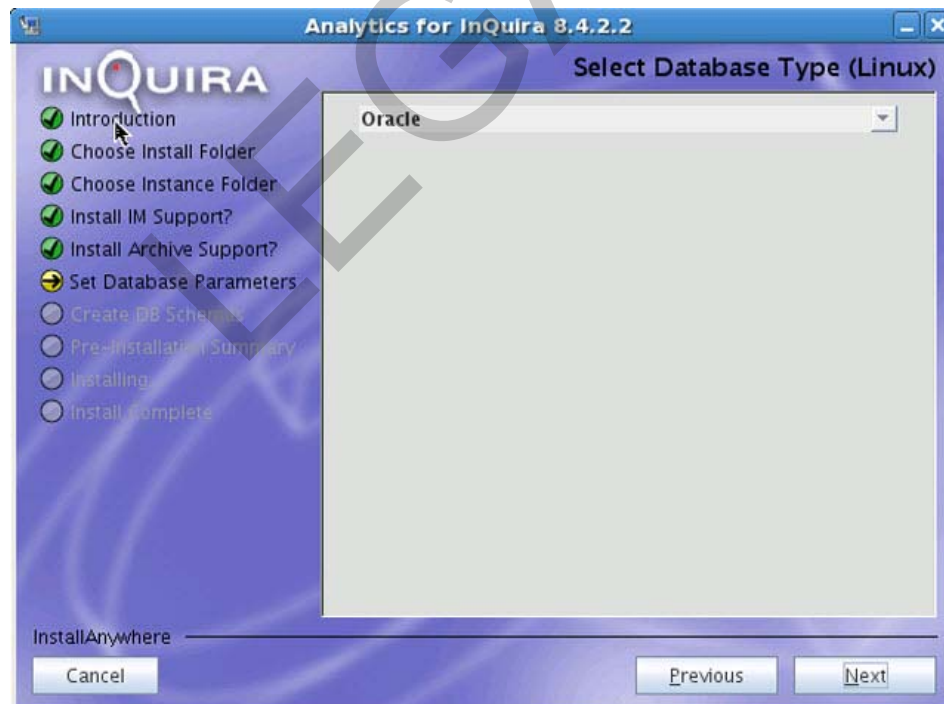


- 6 At the Install Analytics Archiver Support screen, select **Yes** or **No** and click **Next**.



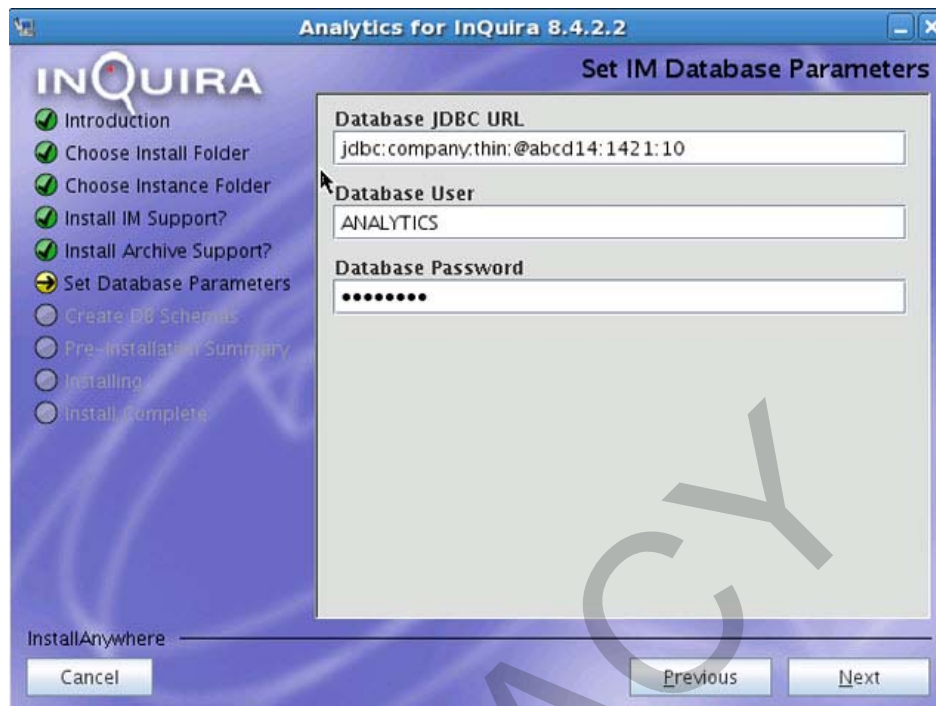
Selecting **Yes** will install an Analytics Archive.

- 7 At the Set Database Type screen, select an Oracle database or an SQL database and click **Next**.



- 8 If you selected **No** at the Install Information Manager Support screen, skip to step 10.

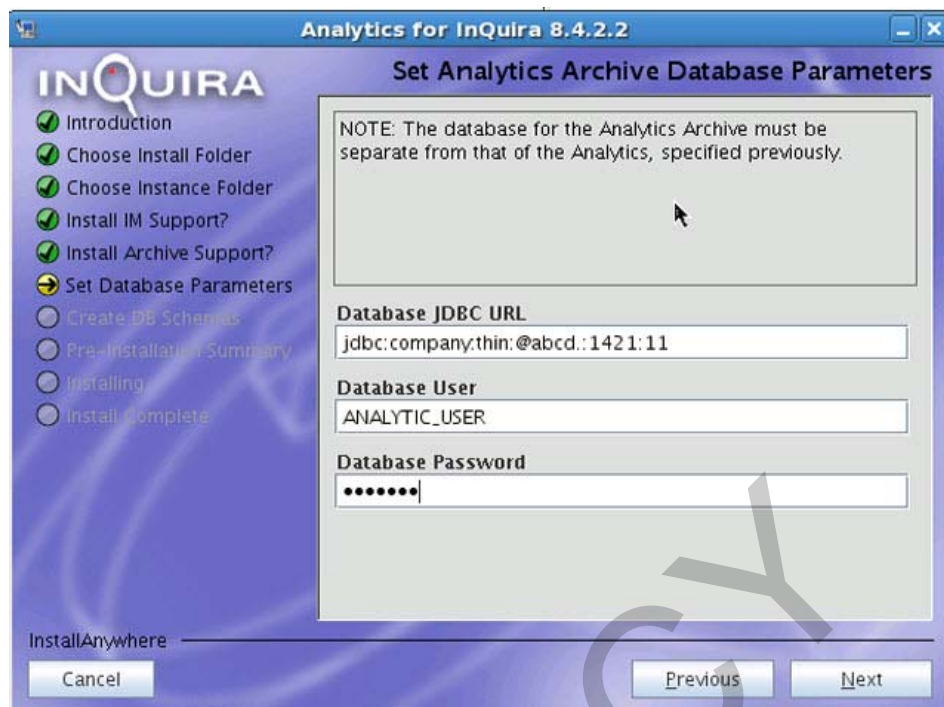
If you selected **Yes** to install Information Install Information Manager Support screen, the Set IM Database Parameters screen displays.



Set the database parameters for the Information Manager Analytics Database.

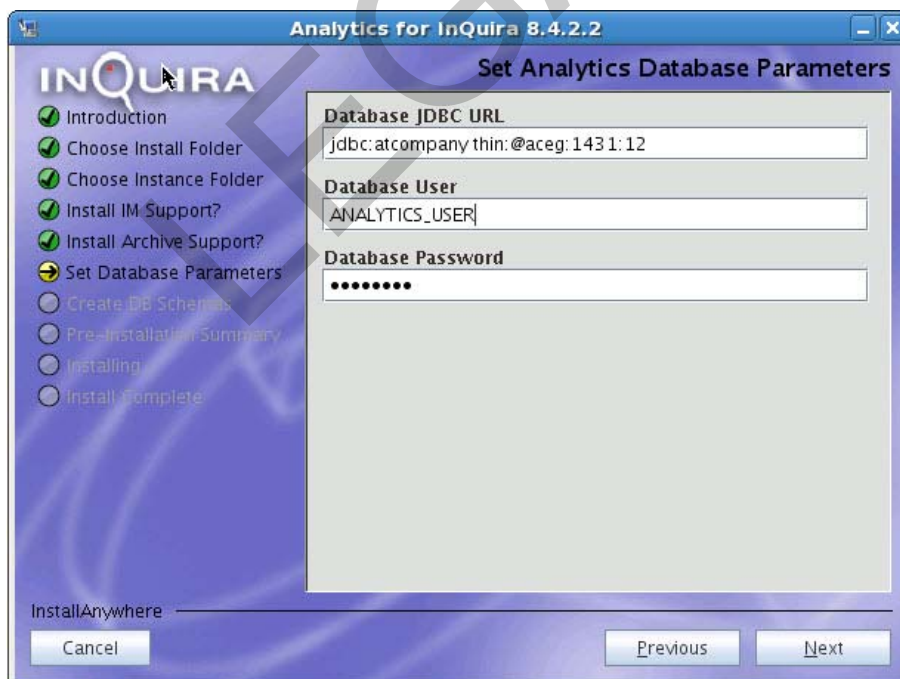
- 9** If you selected **No** at the Install Analytics Archive Support screen, skip to step 10.

If you selected **Yes** at the Install Analytics Archive Support screen, the Set Analytics Archive Database Parameters displays.



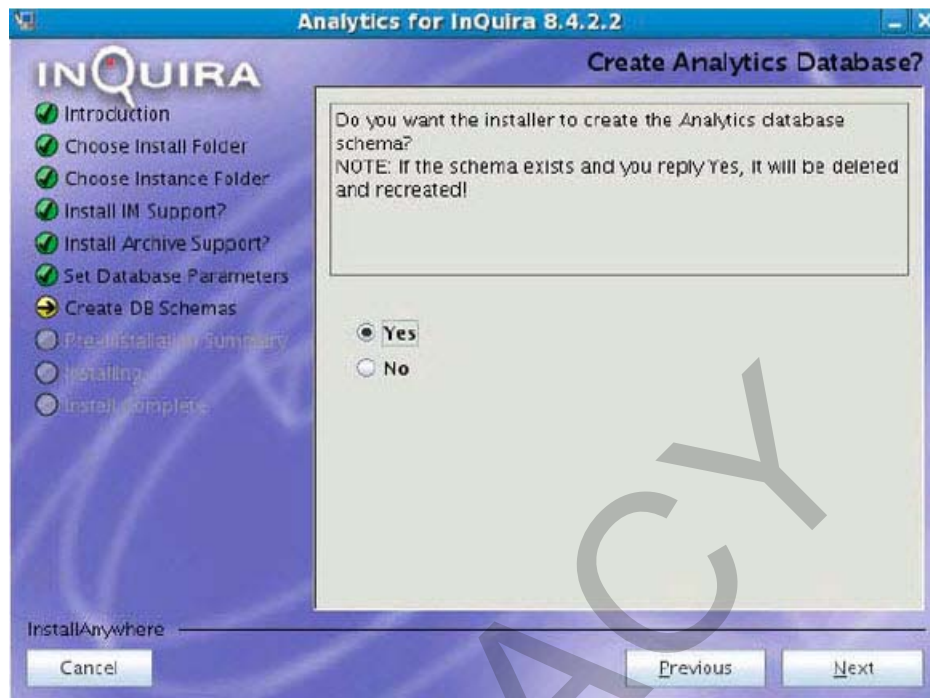
Set the database parameters for the Analytics Archive Databases.

- 10 At the Set Analytics Database Parameters screen, enter the Database JDBC URL (database location), Database User, and Data Password, and click **Next**.



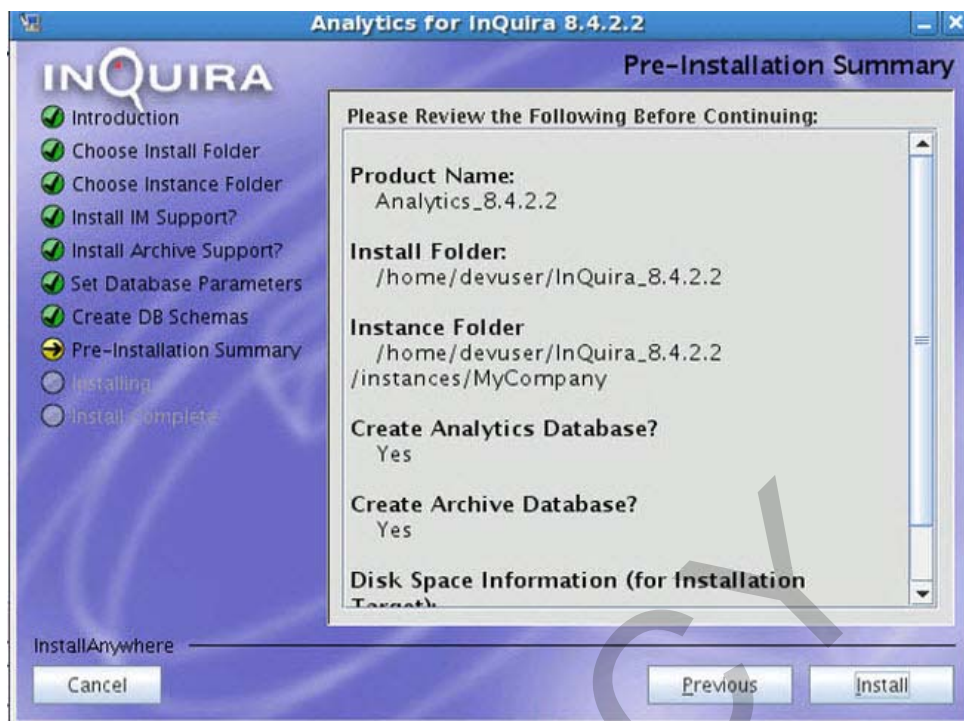
Important! The database for Analytics and the database for the Analytics Archive must be separate.

- 11 At the Create Analytics Database screen, select **Yes** or **No** and click **Next**.

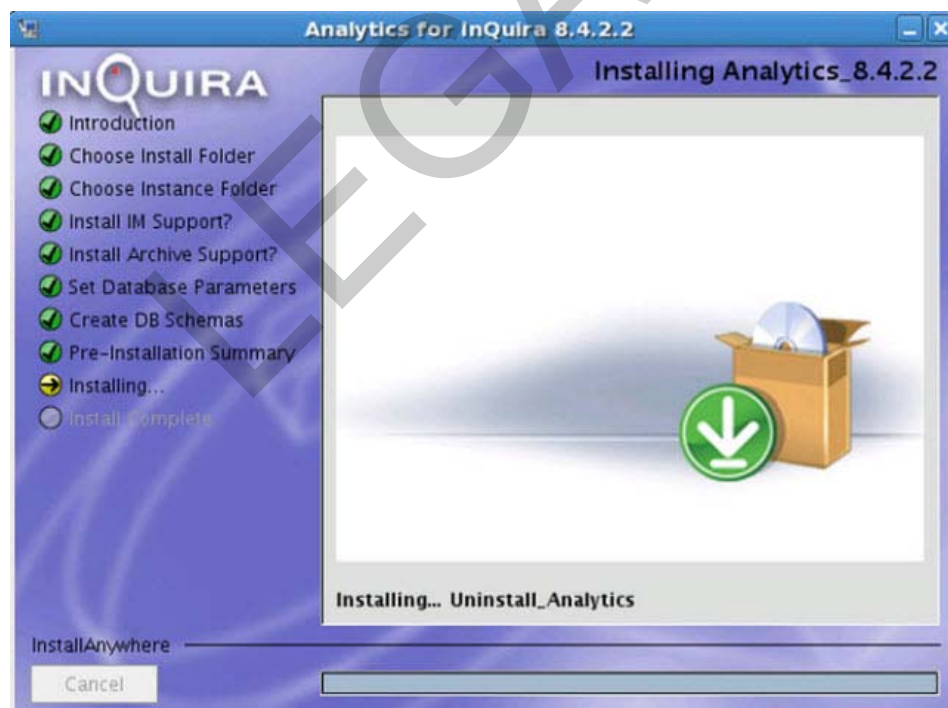


Important! If you select Yes and the schema already exists, it will be deleted and recreated.

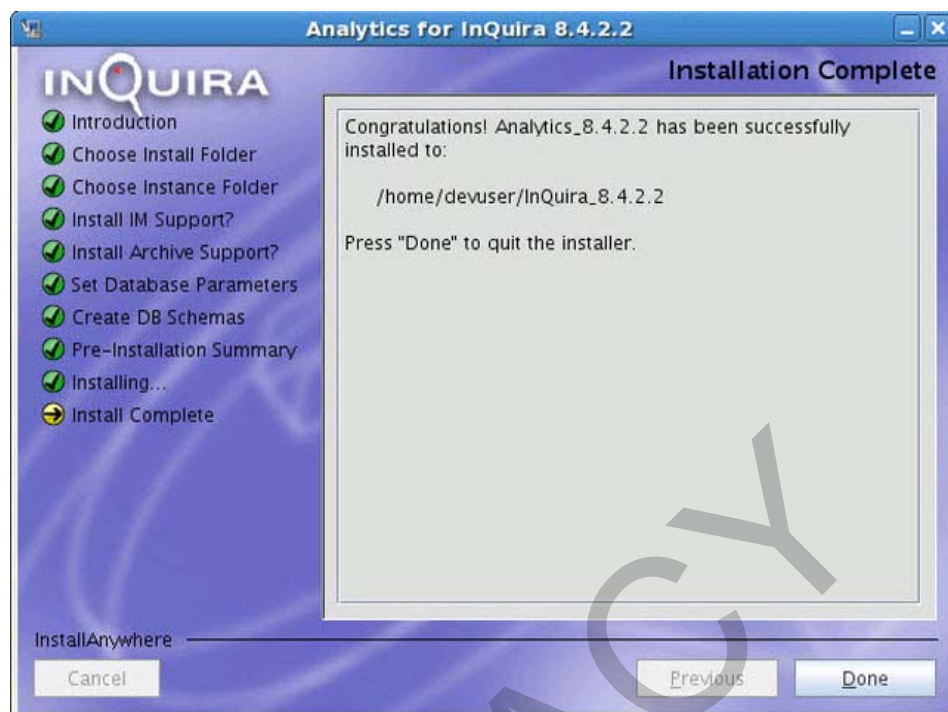
- 12 At the Pre-installation Summary screen, check your selections; to modify, click **Previous** until you get back to the screen on which you need to make a change. Click **Install** to start the installation process.



13 The Installing Analytics 8.4.2.2 screen displays the progress of the installation.



- 14 The completion screen summarizes the installation process. The InQuira Analytics component directories and files are now installed in the specified location.



Creating an ODBC DSN

After the installation program completes, you must create three separate ODBC DSNs.

Create data sources for each of the following:

- Oracle Knowledge Analytics Database
- Oracle Knowledge IM OLTP Database
- Oracle Knowledge Search Archive Database

Creating an ODBC DSN

To create an ODBC DSN for the necessary Analytics databases (three in total):

- 1 Select **Data Sources (ODBC)** from the Start menu (Start > Programs > Administrative Tools > Data Sources)
The ODBC Data Source Administrator displays.
- 2 Select the **System DSN** tab, and select **Add**.
The Create New Data Source window prompts you to select a driver from the list.
- 3 Select **SQL/Oracle Server** and select **Finish**.
 - a If using Linux, select **MicroStrategy ODBC Driver for Oracle Wire Protocol** and select **Finish**.
- 4 The Create New Data Source to SQL/Oracle Server prompts you to specify:
 - Name
 - Description
 - Server

Naming the Data Sources

Create separate data sources for each of the following:

- Oracle Knowledge Analytics Database
- Oracle Knowledge IM OLTP Database
- Oracle Knowledge Search Archive Database

LEGACY

Creating the Analytics Metadata Database

After you complete the InQira Analytics installation you must open the Installation Configuration Environment and run the following script to create a metadata database.

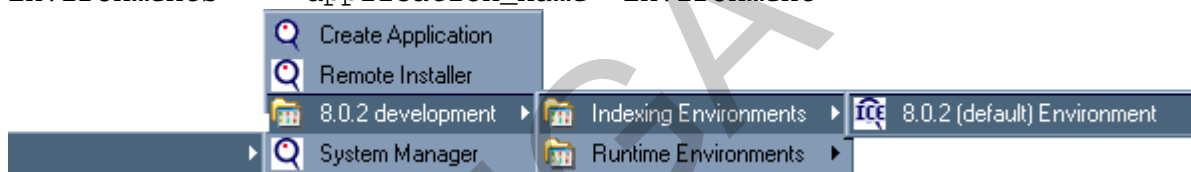
This metadata database schema is used to store information about report definitions and security.

Opening the Installation Configuration Environment

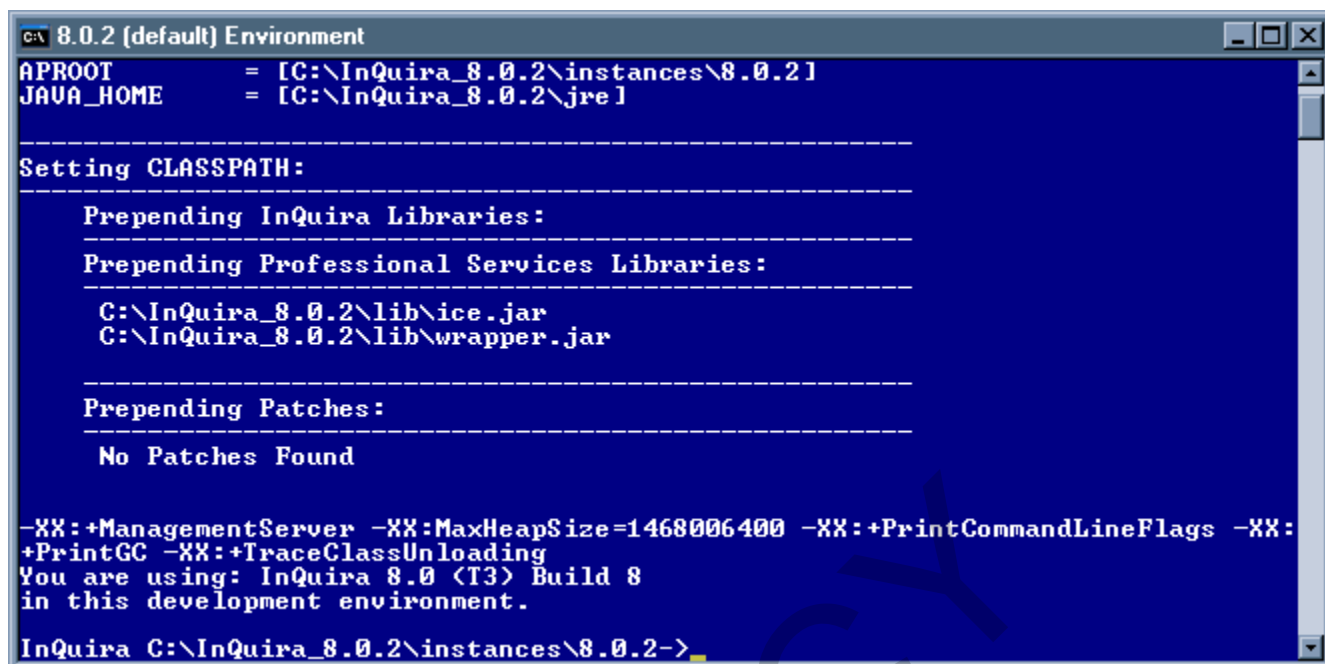
To start the Installation Configuration Environment:

- Select the Installation Configuration Environment item for the desired instance:

Start => Programs => InQira => <application_name> development=>Indexing
Environments => <application_name> Environment



The Installation Configuration Environment screen displays.



```
C:\ 8.0.2 (default) Environment
APROOT      = [C:\InQira_8.0.2\instances\8.0.2]
JAVA_HOME   = [C:\InQira_8.0.2\jre]

-----
Setting CLASSPATH:
-----
Prepending InQira Libraries:
-----
Prepending Professional Services Libraries:
-----
C:\InQira_8.0.2\lib\ice.jar
C:\InQira_8.0.2\lib\wrapper.jar

-----
Prepending Patches:
-----
No Patches Found

-XX:+ManagementServer -XX:MaxHeapSize=1468006400 -XX:+PrintCommandLineFlags -XX:
+PrintGC -XX:+TraceClassUnloading
You are using: InQira 8.0 (T3) Build 8
in this development environment.

InQira C:\InQira_8.0.2\instances\8.0.2->
```

Running the Create Metadata Script

- In a Windows environments, execute the following command in the Installation Configuration Environment on the InQira Analytics server:
scheduler run DBInterface -c metadata
- In Solaris environments, execute the following command in the Installation Configuration Environment on the InQira Analytics server:

`scheduler.sh run DBInterface -c metadata`

```

C:\ 8.0.2 (default) Environment
APROOT      = [C:\InQira_8.0.2\instances\8.0.2]
JAVA_HOME   = [C:\InQira_8.0.2\jre]

-----
Setting CLASSPATH:
-----
Prepending InQira Libraries:
-----
Prepending Professional Services Libraries:
-----
C:\InQira_8.0.2\lib\ice.jar
C:\InQira_8.0.2\lib\wrapper.jar
-----
Prepending Patches:
-----
No Patches Found

-XX:+ManagementServer -XX:MaxHeapSize=1468006400 -XX:+PrintCommandLineFlags -XX:
+PrintGC -XX:+TraceClassUnloading
You are using: InQira 8.0 (T3) Build 8
in this development environment.

InQira C:\InQira_8.0.2\instances\8.0.2->Scheduler run DBInterface -c metadata

```

When finished the Installation Configuration Environment will display:

```

C:\ 8.0.2 (default) Environment

Task succeeded: DBInterface
#####
Shutting down instance, please do not interrupt!
#####
Cleaning up instance temporary directory C:\InQira_8.0.2\tmp\c1d55af9-6099-11dc
-b567-fd44ee2fe7c0
#####
Shutting down complete.
#####
InQira C:\InQira_8.0.2\instances\8.0.2->

```

LEGACY

Installing and Configuring the Analytics Report Server

This section provides an overview of the MicroStrategy installation and configuration process to install and configure the MicroStrategy software that supports Analytics report creation and presentation.

Please consult the MicroStrategy installation and configuration documentation for more detailed information.

Installing the MicroStrategy Components

To install the MicroStrategy components:

- 1 Navigate to the Analytics installation location and locate the MicroStrategy folder and execute the Setup program.

After successful installation and reboot, MicroStrategy automatically starts the configuration process and the MicroStrategy installation page displays.

Note: If the configuration process does not start automatically, start it manually as described in “Configuring the MicroStrategy Components” on page 30.

- 2 Select **Install Software** from the installation page options.

The MicroStrategy product selection page displays.

Selecting the Language for the Installation

The installation language selection dialog prompts you to select a language for the installation process. The default is English.

- Select the desired language.

“Installing the Selected Products” on page 26 starts.

Installing the Selected Products

The product installation program informs you of the selected product. Verify that you are installing MicroStrategy and click **Next**.

“Accepting the MicroStrategy License Agreement” on page 27 displays.

Accepting the MicroStrategy License Agreement

The MicroStrategy license agreement specifies the legal terms of use. You must agree to these terms to install and use the software.

The installation program sets the license agreement to non-acceptance by default. To accept the license agreement and continue the installation:

- 1 Select the accept option.
The **Next >** button is available.
- 2 Select **Next >** to continue.

"Specifying Customer Information" on page 27 screen displays.

Specifying Customer Information

The Customer Information screen prompts you for the user information and a license key.

Note: Contact Oracle Knowledge Customer Support for license key information.

- Enter the appropriate user and license information and then click **Next**.

"Selecting the Installation Type" on page 27 screen displays.

Selecting the Installation Type

The installation type selection screen prompts you to select an installation. *Typical* is the default.

- Select **Typical** and then click **Next**.

"Selecting the Installation Location" on page 27 on page 55 screen displays.

Selecting the Installation Location

The installation location selection screen prompts you to select an installation folder. The default is C:\Program Files\MicroStrategy.

- Select the appropriate folder and then click **Next**.

"Selecting the Components to Install" on page 27 screen displays.

Selecting the Components to Install

The component selection screen displays the available MicroStrategy products for installation.

- In order to use Analytics, you must install the following products and click **Next**.
 - MicroStrategy Desktop (Desktop Designer, MicroStrategy Server Administration)
 - Intelligence Server
 - Web (Web Professional)

"Stopping Your Web Server" on page 28 displays.

Stopping Your Web Server

The installation program displays a message stating that it will stop and re-start the web server as required for the installation.

- Select **Yes** to have the installation program stop and re-start the web server
or
- Manually stop the web server
- Click **Next >** to continue.

“MicroStrategy Web (ASP.Net) Setting” on page 28 displays.

MicroStrategy Web (ASP.Net) Setting

The MicroStrategy Web (ASP.net) setting screen displays.

- Specify the name of the virtual directory used by MicroStrategy and click **Next**.
This name is part of the URL used to access analytics reports through the web.

“Selecting the Program Folder” on page 28 displays.

Selecting the Program Folder

The program folder selection screen prompts you to select the program folder. The default is MicroStrategy.

- Select an appropriate program folder and click **Next**.

“MicroStrategy Intelligence Server setting” on page 28 screen displays.

MicroStrategy Intelligence Server setting

The MicroStrategy Intelligence Server setting screen displays.

- Fill in the Login and Password used to access the Windows account that MicroStrategy will use to log onto the system and click **Next**.

“Copying the Selected Component Files” on page 28 summary screen displays.

Copying the Selected Component Files

The installation program provides a summary of your installation selections prior to copying the program files.

- Review your selections and click **Install**.

The installation program copies the selected program files to the specified location.

Installing MicroStrategy Files

The installation program displays the status of the installation process.

After the installation process is complete, you must activate MicroStrategy. See “Installing MicroStrategy Files” on page 29.

Activating MicroStrategy

After the installation process is complete, activate MicroStrategy. At the Server Activation screen:

- 1 Fill out the required information and click **Next**.
The Installer's Information screen displays.
- 2 Fill out required information and click **Next**.
The Request Activation Code screen displays.
- 3 Select to have activation code sent now, or later, and click **Next**.
- 4 When the installation is complete, the program prompts you to open the ReadMe file. Select either option as desired.

See “Completing the Installation Process” on page 30.

Completing the Installation Process

The installation program prompts you to restart the computer prior to performing the configuration process.

- Remove any disks from their drives. and click **Finish** to complete the installation process.

Note: The MicroStrategy configuration process will start automatically when the computer re-starts. Follow the configuration steps as described in “Configuring the MicroStrategy Components” on page 30.

Configuring the MicroStrategy Components

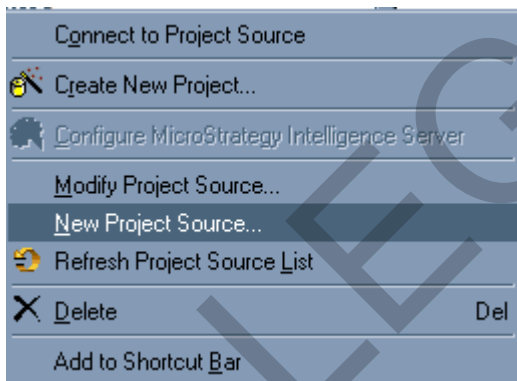
After Microstrategy is installed you must configure a new project source that will be used to access all Analytics reports stored in the databases configured.

Creating a New Project Source

NOTE: The Configuration Wizard opens automatically upon restarting. Exit this program.

To create a new project source:

- 1 Open Microstrategy Desktop.
The default login is *Administrator* with no password.
- 2 Right-click on an existing project and select **New Project Source**.



The Project Source Manager screen displays.

Project Source Manager

Project source: InQuira Analytics

Connection mode: Direct

Connection | Advanced | Caching | Metadata Table Prefix

Direct

ODBC DSN: InQuira Analytics Database

New...

Login id:

Password:

Description

This connection type connects directly to the metadata via an ODBC data source name.

OK Cancel Help

- 3 Enter a new project source name in the Project Source field.
- 4 Select **Direct** Connection mode.
- 5 Select Analytics Database as the ODBC DSN.
- 6 Enter the Login ID and password and click **OK**.

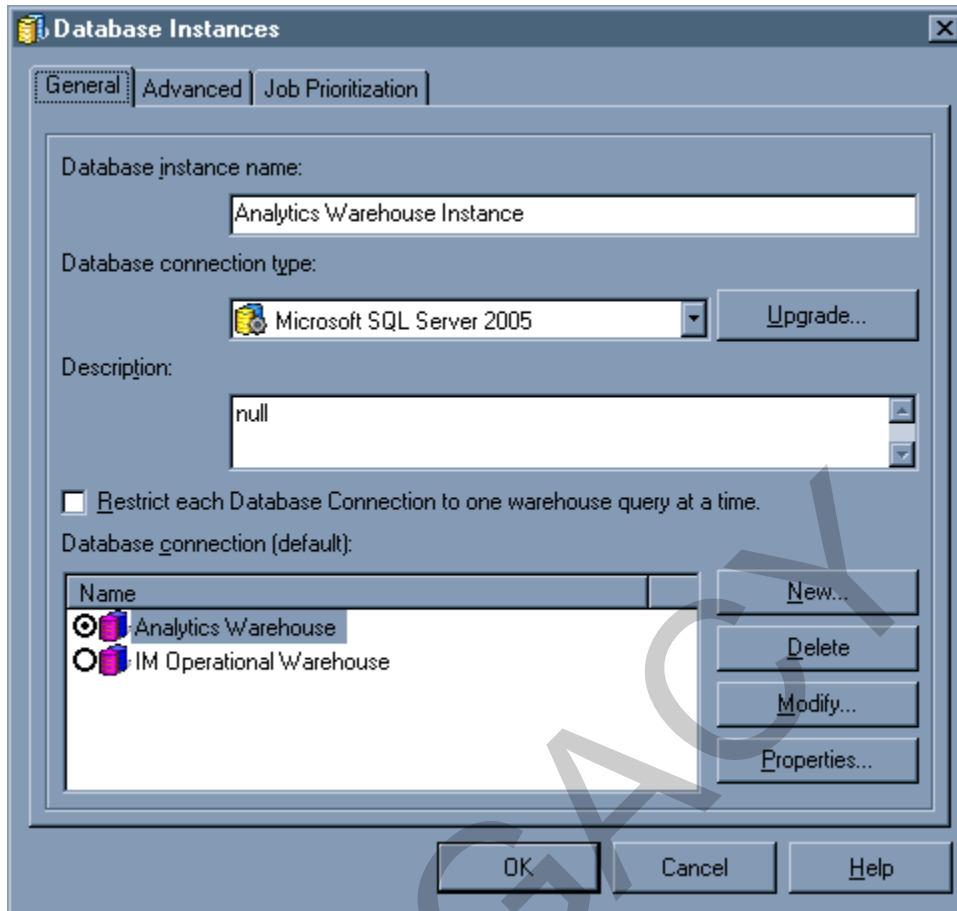
The newly created project source appears on the Microstrategy Desktop screen.

Configuring the Analytics Warehouse Instance

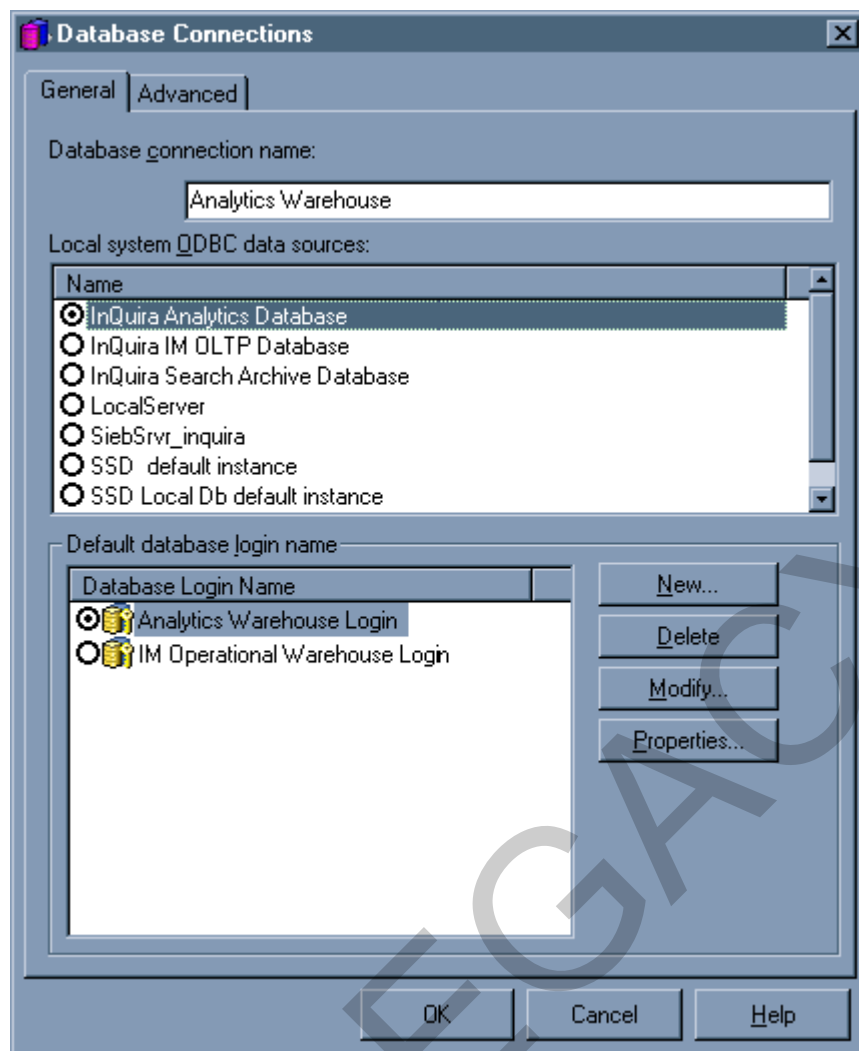
After creating a new project source you must configure the Intelligent Search Analytics ODS data source.

- 1 Open the newly created Project source.
- 2 Open **Administration**.
- 3 Open the **Database Instance Manager**.
- 4 Select IM Operational Warehouse Instance.

The Database Instance Screen displays.

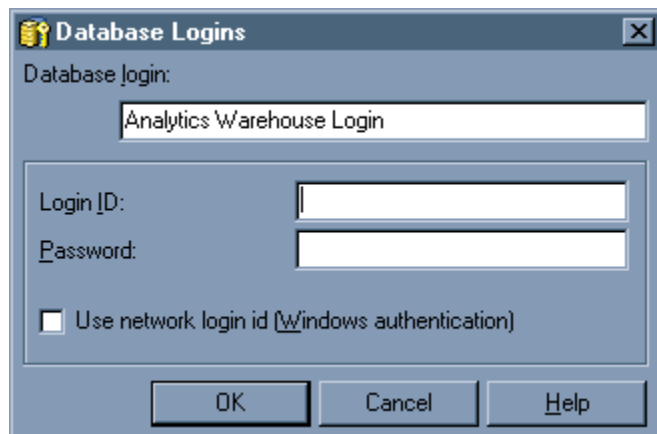


- 5 Select Analytics Warehouse Instance and click **Modify**.
The Database Connection screen displays.



- 6 Select Analytics Warehouse Instance and confirm the local system ODBC data source selected is the database created for Analytics Database. Click **Modify**.

The Database Logins screen displays.



7 Fill in the Login ID and password created for the Oracle Knowledge IM OLTP Database.

8 Click OK. three times

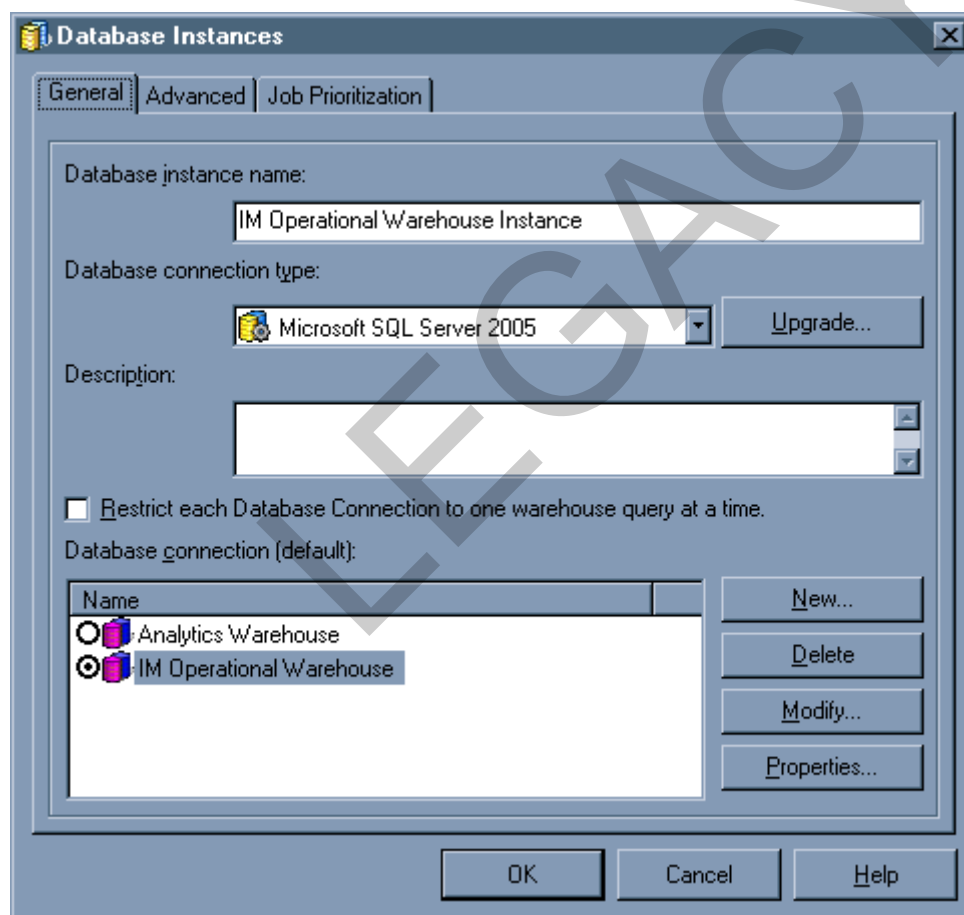
Repeat these steps to *configure the IM Operational Warehouse* see “Configuring the IM Operational Warehouse Instance” on page 34.

Configuring the IM Operational Warehouse Instance

After creating a new project source you must configure the Intelligent Search Analytics ODS datasource.

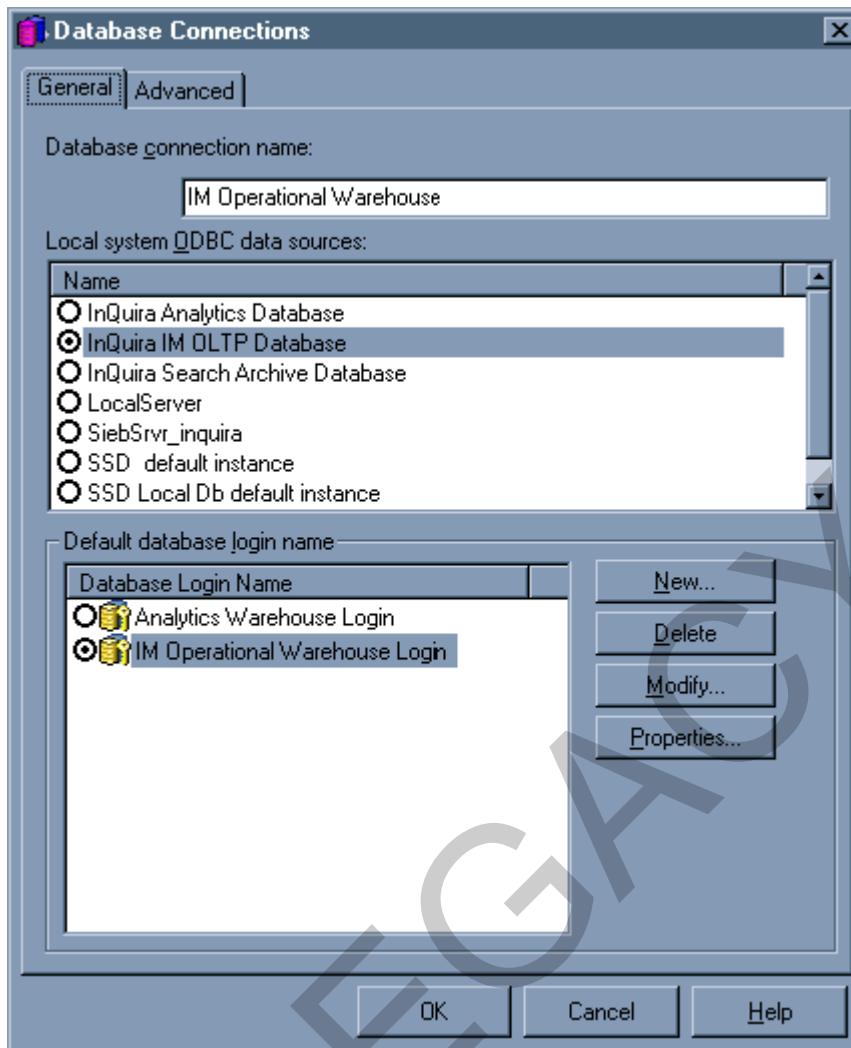
- 1 Open the newly created Project source.
- 2 Open **Administration**.
- 3 Open the **Database Instance Manager**.
- 4 Select IM Operational Warehouse Instance

The Database Instance Screen displays.



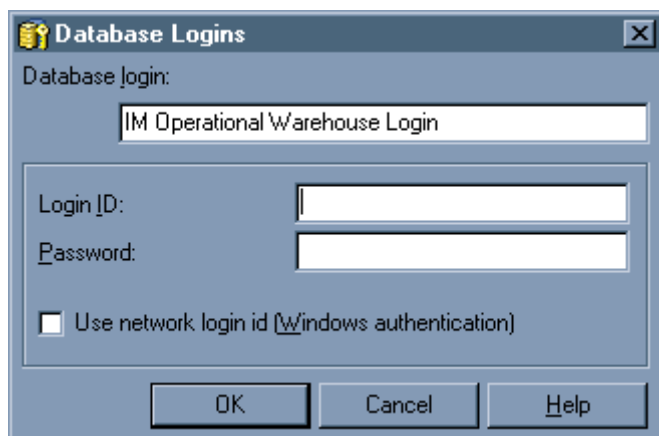
- 5 Select **IM Operational Warehouse Instance** and click **Modify**.

The Database Connection screen displays.



- 6 Select IM Operational Warehouse Instance and confirm the local system ODBC data source selected is the database created for Oracle Knowledge IM OLTP Database. Click **Modify**.

The Database Logins screen displays.



- 7 Fill in the Login ID and password created for the Oracle Knowledge IM OLTP Database.
- 8 Select **OK** three times
The configuration of the new project source is complete.

Configuring the Web-based Analytics User Interface

Execute the following to configure the web-based Analytics user interface:

- 1 Open the following directory: <Instance_Name>\analytics\common\MSTR_UI\Dotnet
- 2 Execute `InquireBrand.bat`.

Note: If you installed Analytics on a Linux server, refer to your Customer Support.

Deploying the Project to the Web

The following steps allow you to view Analytics reports from the web at <http://localhost/MicroStrategy/asp>.

Starting the MicroStrategy Configuration Wizard

To start the configuration process:

- 1 Open MicroStrategy Configuration Wizard.
- 2 Select **Set up MicroStrategy Intelligence Server** and click **Next**.

Specifying the Data Source for the Metadata Repository

The Connect to Metadata Repository screen displays.

- 3 Specify the configured ODBC Data Source Name from the drop list.
- 4 Enter the User Name and Password as assigned in ODBC LINK and click **Next**.

The Database Driver Certification Message

The Driver Certification Status for Analytics Database screen appears. Click **Close**.

Specifying User Information for the Metadata Repository

The User Authentication screen displays.

- Enter the MicroStrategy administrator name and click **Next**.
The Analytics recommended default is *Administrator*, with no password.

Specifying the Server Definition

The create, link, or delete a server definition screen displays.

- Select **Create a New Server Definition** and enter a Server Definition Name

OR

Select **Use Selected Server Definition** and select a server from the Existing Server Definition.

- Click **Next**.

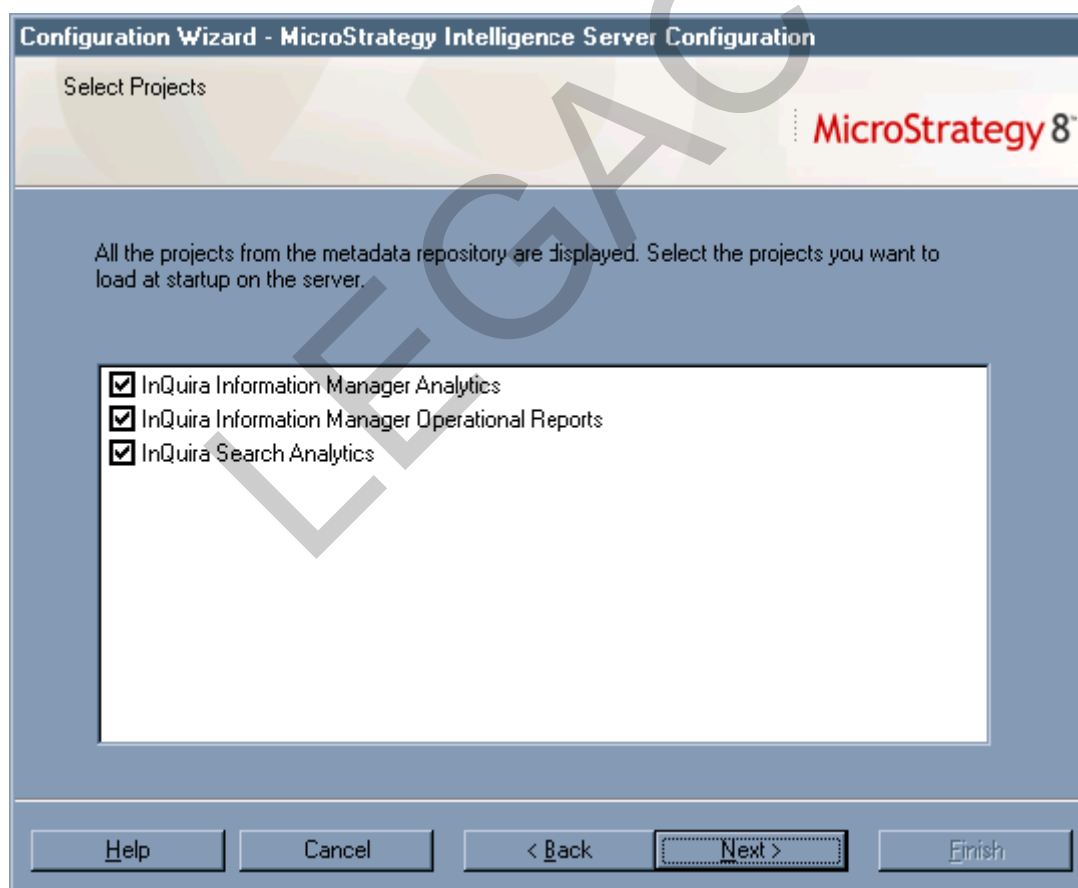
Specifying the Port Number

The Port Number screen displays.

- Enter a port number to be used by MicroStrategy Intelligence Server and click **Next**.

Registering the Analytics Project

The Select Projects screen displays.



- Select all three analytics projects. and click Next.

Completing the Server Definition Process

The summary screen displays information about the server configuration.

- Click **Finish** and then click **Exit**.

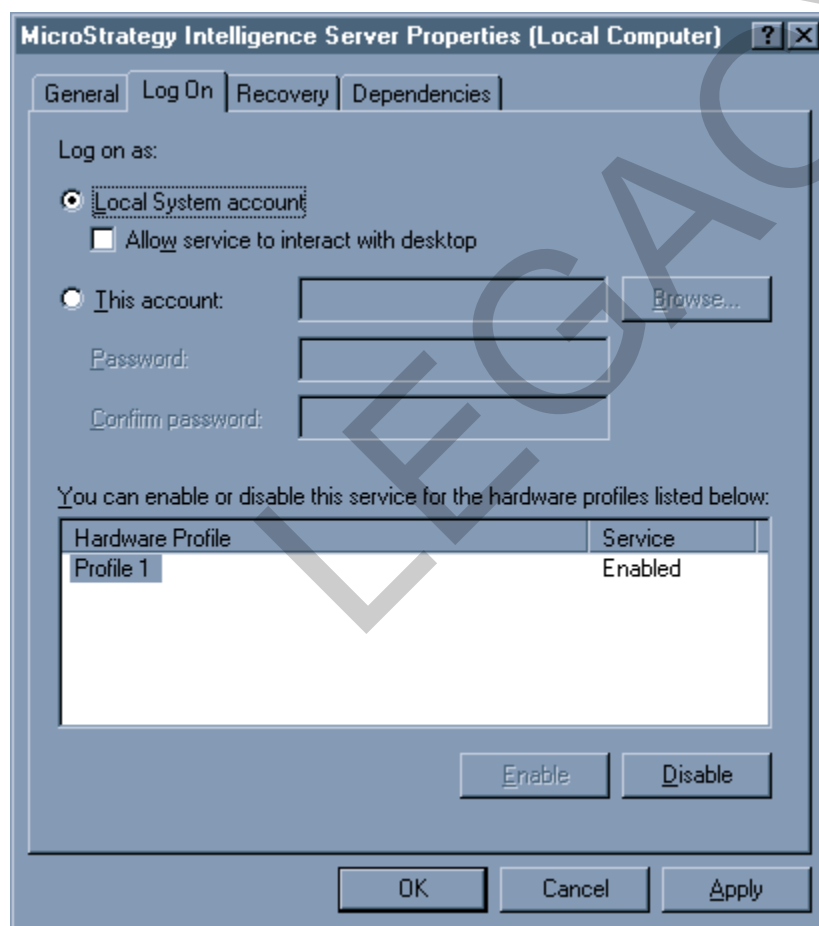
The MicroStrategy Configuration Process is complete. To see the changes you must restart the Intelligence Server.

Restarting the MicroStrategy Intelligence Server

In order for the configuration changes to take effect you must restart the MicroStrategy Intelligence Server.

You can do this automatically or through Administrative Tools>Services. If the MicroStrategy Intelligence Server returns an error and is unable to restart:

- 1 In **Administrative Tools>Services**, double click on **MicroStrategy Intelligence Server**.
- 2 Select the **Log On** Tab.



- 3 Select to log on as **Local System account**. and click **OK**.
- 4 Start the Service.

Configuring Report Generation

After you install Analytics and configure MicroStrategy, you can access Oracle Knowledge Analytics reports:

- 1 From the sever's Start menu and navigate to
Start->Programs->MicroStrategy->Web
or direct a browser to
`http://<servername>/MicroStrategy/asp`
- 2 Select the **Go to the Administrator Page** link.
- 3 Enter the name of server and select **Add**.
- 4 Select **Save** in the page that displays.
- 5 Select **Connect** next to the server name.
- 6 Select **Return to MicroStrategy Home**.
- 7 Select **Oracle Knowledge Analytics**.
- 8 Login as *Administrator* (the default password is blank).
 - a Select one of the folders that appear and then select a report.
The report runs with no errors (the no data message is acceptable).

For more information on configuring and using Oracle Knowledge Analytics, see *Oracle Knowledge Analytics Administrator's Guide*.