

Product Installation Manual  
Oracle Financial Services Profitability Management  
Version 6.1.1.0.0  
March 2015



---

## Document Control

Author: Niraj Ranjan Biswal	Group: OFSAA	
Created on : 01-Apr-14	Revision No : 1.1	
Updated by : Niraj Ranjan Biswal		
Updated on : March-15		

---

## Table of Contents

About this Manual .....	1
Audience .....	1
Scope .....	1
Organization of the Manual .....	1
Conventions Used in this Manual .....	1
Pre-Requisites .....	2
Environment.....	2
Front-End Access .....	2
Installing Oracle Financial Services Profitability Management v6.1.1.0.0Product .....	4
Pre-Installation Activities .....	4
Pre-Upgrade Activities .....	4
Oracle Financial Services Profitability Management v6.1.1.0.0 Product Installation .....	7
Machine A – Product App Layer .....	8
Machine B – Product Database Layer.....	21
Machine C – Product Web Layer.....	27
Silent Installation.....	33
Post Installation Activities .....	37
Configuration in WebSphere Application Server .....	39

## **About this Manual**

**Oracle Financial Services Profitability Management** (PFT) is typically measured by Account, Organization, and Product. Oracle Profitability as an Allocation Engine provides comprehensive and flexible cost, revenue and equity allocation mechanisms that help the Business users to analyze their Account, Product and Organization Profitability.

### **Audience**

This Manual is meant for use by the Oracle Financial Services Analytical Applications Infrastructure System Administrator. It provides step-by-step instructions necessary for installing the Oracle Financial Services Profitability Management v6.1.1.0.0 Product.

### **Scope**

This manual provides a step-wise instruction to install the Oracle Financial Services Profitability Management Product in an existing Oracle Financial Services Analytical Applications Infrastructure hosted in OEL/RHEL 5.3/5.5, Solaris 5.10 and AIX 5.3 (ML12) / AIX 6.1 (ML07), 64 bit - Oracle 11g R2 (11.2.0.2.0) environment. The supported web-servers are Tomcat 7.0.19, WebSphere 7.0.0.17 and WebLogic 10.3.5.0.

**Note:** Linux 6 is not supported for PFT v6.1.1 even though AAI supports it. PFT v6.1.1 is not qualified on Solaris 5.11.

### **Organization of the Manual**

The Installation Manual is organized into the following chapters.

**Pre Requisites** section identifies the hardware and base software environment that is required for a successful installation & functioning of the Oracle Financial Services Analytical Applications Infrastructure Solution.

**Installing Oracle Financial Services Profitability Management v6.1.1.0.0 Product** section details the pre-installation activities followed by a step-by-step instruction on the various installation options.

**Post installation Activities** section details the steps that are required to be performed after a successful installation of the Oracle Financial Services Profitability Management v6.1.1.0.0 Product.

### **Conventions Used in this Manual**

References to sections or chapters in the manual are displayed in *Italics*.

Screen names are displayed in the following manner:

**Introduction** screen

Options and buttons are displayed in **Bold**.

Notes are displayed as follows:

#### **Note**

- It is important that the password should be 6 characters long. If you do not adhere to this pre-requisite, you will see a system message that reads **Password must be at least 6 characters long**.

## **Pre-Requisites**

The installation process requires certain environmental variables to be set prior to starting the installation. You must ensure that these requirements are met before starting the installation. You are requested to refer to the OFSAA Technology Stack (Doc ID [1070591.1](#)) for the latest updates on hardware or software requirements and the OFSAAI Installation Manual for the environment variables.

### **Environment**

Installation of Oracle Financial Services Profitability Management v6.1.1.0.0 Product Oracle 11g R2 (RAC) (11.2.0.2.0) – OBIEE (11.1.1.6.1) of **Oracle Financial Services Analytical Applications Infrastructure v7.3.3.3.0 for OEL/RHEL 5.3/5.5, Solaris 5.10 and AIX 5.3 (ML12) / AIX 6.1 (ML07), 64 bit**, to be installed in either a single-tier or multi-tier environment. It is implicit that all base software versions and patch levels required by the OEL/RHEL 5.3/5.5, Solaris 5.10 and AIX 5.3 (ML12) / AIX 6.1 (ML07), 64 bit version of Oracle Financial Services Analytical Applications Infrastructure 7.3.3.3.0 are available and adhered to. The supported web-servers are Tomcat 7.0.19, WebSphere 7.0.0.17 and WebLogic 10.3.5.0.

### **Note**

- Linux 6 is not supported for PFT v6.1.1 even though AAI supports it. PFT v6.1.1 is not qualified on Solaris 5.11.
- The Oracle Financial Services Profitability Management v6.1.1.0.0 installer download contains only the ERwin XML file that is required for uploading the model. This file is sufficient to install the v6.1.1.0.0 product. However, this XML file cannot be opened in the ERwin Data modeler tool and hence cannot be used for any data model customization. ERwin file is delivered as a patch and needs to be downloaded separately. This ERwin file should be used for any customization of the data model. Reference bug / patch where ERwin file can be downloaded is **Bug 18702113 - PFT 6.1.1 DATA MODEL**.

The OEL/RHEL 5.3/5.5, Solaris 5.10 and AIX 5.3 (ML12) / AIX 6.1 (ML07), 64 bit - Oracle 11g R2 (RAC) (11.2.0.2.0) version of Oracle Financial Services Analytical Applications Infrastructure v7.3.3.3.0, once installed must be configured.

**Note:** If PFT is installed subsequent to BSP, then its model must be merged with that of BSP prior to uploading.

Please apply the following one-off patches before proceeding with PFT 6.1.1.0.0 installation:

**Note:** The one-off Patch 18157182 must be applied for all versions of OFSAAI. One-off Patch 18403050 is included in OFSAAI 7.3.4 and 7.3.5 versions.

- Bug 18403050 - MDB- OBJECT VIEW - DETAILS ARE NOT DISPLAYING  
Patch No. - 7.3.3.3.11
- Bug 18157182 - UPGRADE OF STRUTS VERSION TO 2.3.16  
Patch No. - 7.3.3.0.3

If you are upgrading PFT 6.1.0.3 to 6.1.1, a new column STRATEGY\_ID will be available in ledger leaf column in this version of PFT 6.1.1.

This column was added to the data model to support integration with BSP. This column is present but it will not be registered as a key dimension as long as BSP is not installed; installing BSP will register it as a key dimension. Until BSP is installed, PFT should continue to work as if this column never existed - the column in the out-of-the-box data model should already be having a default value of -1 to support such a scenario.

### **Front-End Access**

- Internet Explorer 8.0/9.0
- Java Plug-in 1.6.0\_21
- Acrobat Reader 8.0
- The screen resolutions supported are 1024\*768 and 1280\*1024

### **Note**

- Ensure that Java Plug-in is enabled in the browser settings.

# Installing Oracle Financial Services Profitability Management v6.1.1.0.0 Product

## Pre-Installation Activities

The following is the Pre Installation checklist to ensure the readiness to start installing Oracle Financial Services Profitability Management Product:

- Oracle Financial Services Analytical Applications Infrastructure v7.3.3.3.0 must be successfully installed on OEL/RHEL 5.3/5.5, Solaris 5.10 and AIX 5.3 (ML12) / AIX 6.1 (ML07), 64 bit - Oracle 11gR2 (RAC) (11.2.0.2.0).
- If Infrastructure installation is on multitier environment, execute the following commands in the DB Layer terminal

```
chmod -R 777 < ftpshare folder >
```

- Navigate to ftpshare folder and set the *umask* shown as below, this will make sure all the new files created will have 666 file permission.

```
cd < ftpshare folder >
```

```
umask 0000
```

- Execute `.profile` .
- The Config and Atomic schema should be two distinct Oracle database users.
- Please execute “privileges\_atomic\_user.sql” which is available in the Installer folder from DBA user. This will provide required privileges for Atomic schema.
- Please copy the entire PFT v6.1.1.0.0 installer download directory to the server location (Including the DataModel directory). Please give read, write and execute permission to all the files present in this directory.
- Please specify the log file path and name in the log4j.xml. Please update the “value” attribute marked in the following picture

```
<!DOCTYPE log4j:configuration SYSTEM "log4j.dtd">
<log4j:configuration xmlns:log4j="http://jakarta.apache.org/log4j/">
  <appender name="ConfigReveleusFileAppender" class="org.apache.log4j.RollingFileAppender">
    <param name="file" value="/u02/setupkit/ALM60/log/FTP60.log"/>
    <param name="Append" value="true"/>
  </appender>
</log4j:configuration>
```

Figure 1. Figure 1: Log4j.xml file configuration

- Please make sure the path given in the log4j.xml file has read/write/execute permission.
- Please execute the “config\_table\_privileges\_for\_atomic\_user.sql” script in configuration schema. This file will be present inside \$FIC\_HOME directory.
- Please make sure FICServer is up and running before proceeding for installation.

## Pre-Upgrade Activities

This section is applicable only for customers upgrading from v6.1/6.1.0.1/6.1.0.2/6.1.0.3 to 6.1.1.0.0.

Backup of Database schema and Files

Back up existing Config and Atomic schema of the Information Domain that is being upgraded. This can be used to restore back the application, in case of any failures during upgrade.

Back up FTPSHARE and \$FIC\_HOME folders of your existing environment.

### **Batch changes**

The batches do not allow a special character in the task description, and hence the existing batches that violate this rule have to be identified and the task description has to be changed.

Following special characters are allowed in batches:

**Batch Name:** Alpha Numeric with Underscore (\_) only.

**Batch Description:** Alpha Numeric with Underscore (\_), Hyphen (-), colon (:), Dot (.), and space ( ).

The same is applicable for task name and task description.

The query below, gives the list of tasks that violates the rule. The description of these tasks has to be changed manually before the upgrade, in order to avoid errors.

```
SELECT t1.v_batch_id,
       t1.v_task_description
FROM   batch_task_master T1
WHERE  Replace(Translate(Nvl(T1.v_task_description, ' '),
                        '~!@#$$%^&*()+=[]{}\|; "<>?,/','\#'), '#', '') <>
       Nvl(T1.v_task_description, '');
```

### **Datamodel changes**

If data model is customized:

- 1.) Open both the models using ERwin Data Modeler tool.
- 2.) Go to "Tools" and Select "Complete Compare"
- 3.) In the Compare window select your existing PFT\_Data\_Model on Left Model.
- 4.) Select extracted PFT\_Datamodel on Right Model
- 5.) In "Type Selection" check "Subject Area"
- 6.) In "Advanced" option un-check ALL except "Auto Close Database/Script Models"
- 7.) Click "Compare"
- 8.) Resolve Differences Screen by applying all the changes mentioned in the PFT Datamodel Changes 6.1-6.1.1.xls file for 6.1 to 6.1.1(6.1.1.0.0) upgrade.

The PFT Datamodel Changes 6.1-6.1.1.xls file contains the following sheets

- a. New Table
- b. New Columns
- c. Data Type Changes

These are the changes from 6.1 to 6.1.1 upgrade.

Click "Finish" and Close

- 9.) Save the file as XML in "AllFusion Repository Format" ex:- PFT\_Datamodel.xml
- 10.) Copy the modified existing into the location "ftpshare/\*INFODOM\*/erwin/erwinXML". (Replace \*INFODOM\* with the name of the information domain)



- 11.) Upgrade from PFT v 6.1 to 6.1.1
- 12.) Perform Incremental/Sliced Model Upload in the information domain where PFT application is installed.
- 13.) Incremental/Sliced model upload might give errors in case there are NOT NULL columns that are being added to a table that already has rows or if the columns that are being dropped have values. Check the data model changes excel file for any such cases. In such a case, take a backup of the table and truncate the table. Insert records back into the table with a default value for the NOT NULL column.

# **Oracle Financial Services Profitability Management v6.1.1.0.0 Product Installation**

The Oracle Financial Services Analytical Applications Infrastructure Product comprises of components that are installed in Web, Application & Database layer. Hence if you have installed Oracle Financial Services Analytical Applications Infrastructure 7.3.3.3.0 in a multi-tier architecture, the Oracle Financial Services Profitability Management Product installer must be invoked on each of the machines that host the Oracle Financial Services Analytical Applications Infrastructure tier.

For a Single-tier installation, the installer is required to be invoked only once on the machine that hosts all the Oracle Financial Services Analytical Applications Infrastructure tiers.

This section describes the installation process in which the three product setup components with the product are installed on separate machines as follows:

Machine A is used to install the product Application Layer components.

Machine B is used to install product Database Layer components.

Machine C is used to install product Web Layer components.

## **Note:**

This section holds applicable if Oracle Financial Services Analytical Applications Infrastructure v7.3.3.3.0 is installed on OEL/RHEL 5.3/5.5, Solaris 5.10 and AIX 5.3 (ML12) / AIX 6.1 (ML07), 64 bit - Oracle 11g (RAC) on separate machines A, B and C respectively.

Refer to section on "Silent Installation", if a silent installation is required.

## Machine A – Product App Layer

### Step 1

To begin Oracle Financial Services Profitability product installation, execute Setup.sh with the parameter GUI (GUI Installation) or SILENT (for Silent installation).



Figure 2. Installation Splash Screen

### Step 2

On loading the installer, the **Introduction** screen displays the pre-requisites for installation. Ensure that the pre-requisites are met before proceeding.

**Note:** OFSAAI 7.3.3.3.0 or any higher version than 7.3.3.3.0 needs to be installed before proceeding.

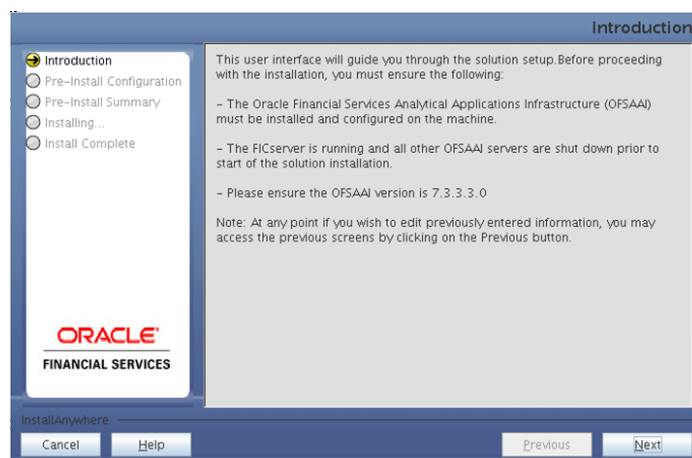


Figure 3. Introduction Screen

### Step 3

Select the log mode for this installer. If Debug is selected, then Passwords will be printed in the log file specified in the log4j.xml file of the installer.

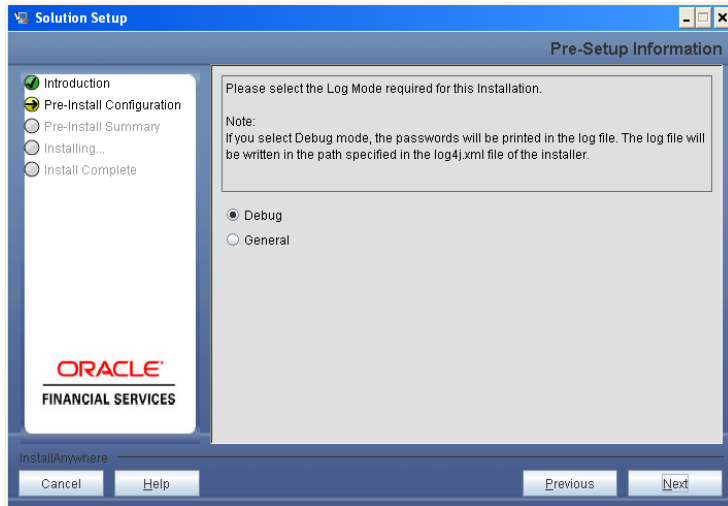


Figure 4. Log Mode Option Screen

#### Step 4

Enter 9 digit Customer Identification number and click **Next** to continue.

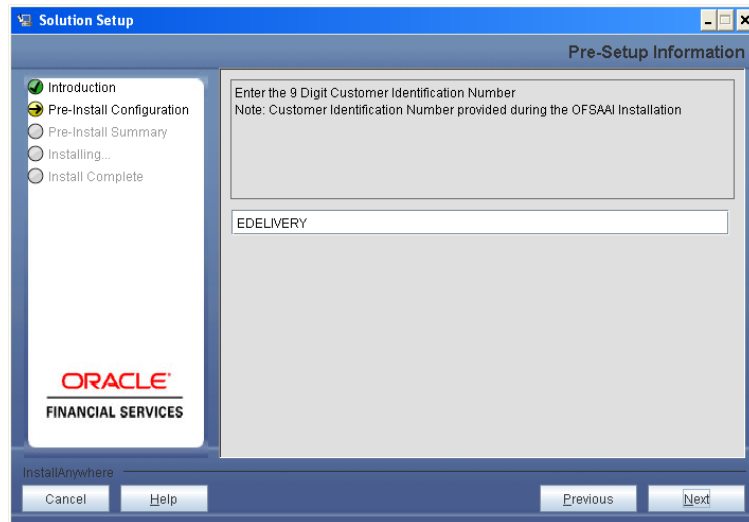


Figure 5. Customer ID Input Screen

## Step 5

The **Pre Setup Information** screen requests for setup information.

Select the appropriate Oracle Financial Services Analytical Applications Infrastructure layer that has been installed on the machine.

Example: **Application Layer**

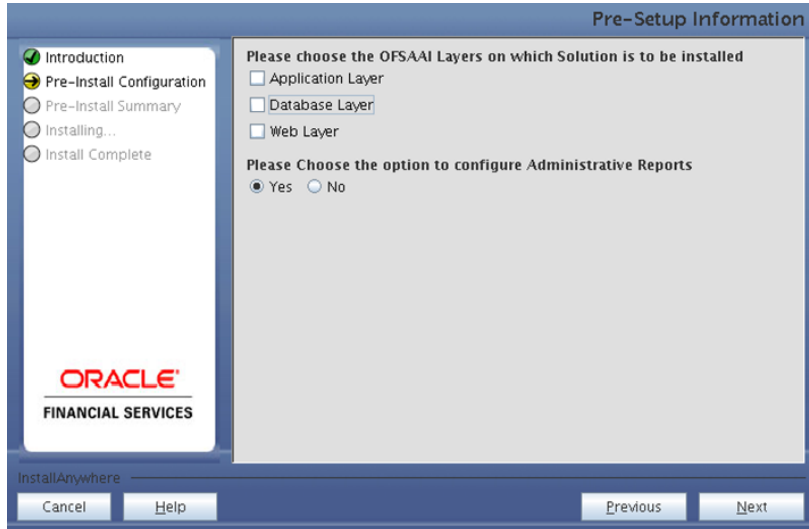


Figure 6. Pre Setup Information Screen – Choose Layer to Install

Along with appropriate Oracle Financial Services Analytical Applications Infrastructure layer, choose the Administrative Reports to configure the Administrative Reports application.

### NOTE

- For a single-tier Oracle Financial Services Analytical Applications Infrastructure v7.3.3.3.0 installation, you must select Application Layer, Database Layer and Web layer.
- For a multi-tier Oracle Financial Services Analytical Applications Infrastructure v7.3.3.3.0 installation, select the corresponding layer installed on the machine.
- In case Administrative Reports (Admin BI) is already configured through the previous product installation; the subsequent product installation without Administrative Reports (Admin BI) option may alter the existing Administrative Reports (Admin BI) configuration settings.

## Step 6

This window seeks information on whether a new infodom has to be created or the existing infodom is to be used for application installation. Choose the required option.

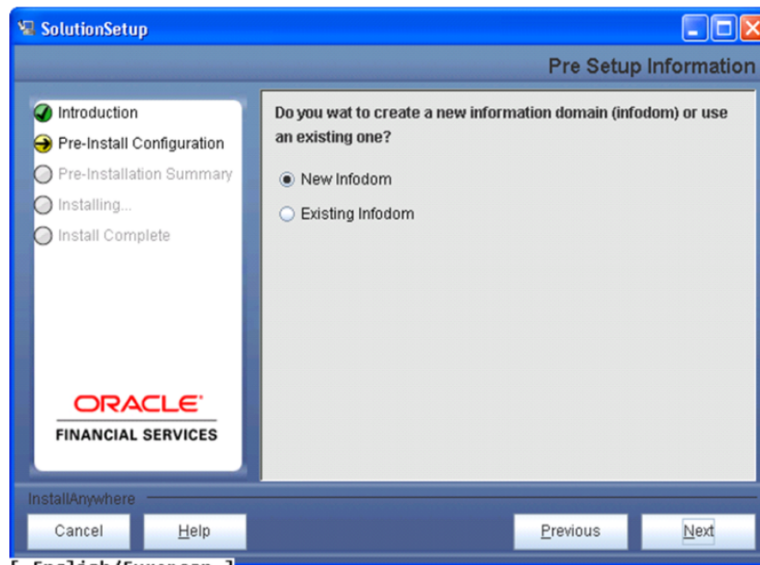


Figure 7. Pre Setup Information Screen – Infodom type

Click **Next** to continue. If **New Infodom** is selected, then go to **Step 7** or else go to **Step 8**.

## Step 7

If the option **New Infodom** is selected, then update the following to create Information Domain:

### Step 7-i

- Specify a DB name for the new infodom. Make a TNS entry with the DB name specified in the tnsname.ora file in the Oracle server.
- Enter the newly created Atomic schema user name, password, jdbc url in the relevant fields.

Click **Next** to continue

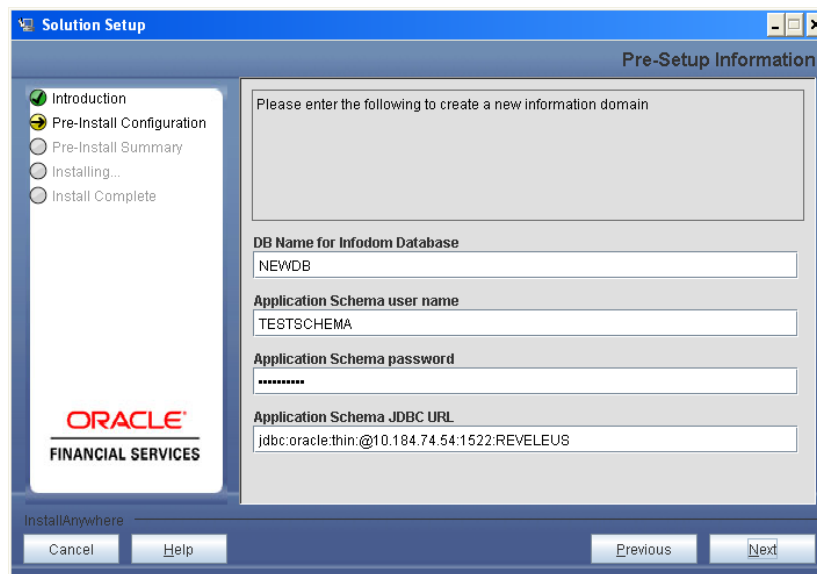


Figure 8. Database details for the new Infodom

**Step 7-ii**

In the next screen, enter the following details:

- Specify the name and description of the new Information Domain to be created.
- Specify a segment name to be created.

**Note:** Segment name should not exceed 10 Characters.

- Specify the application server and database server log path for Information Domain maintenance (to be created).

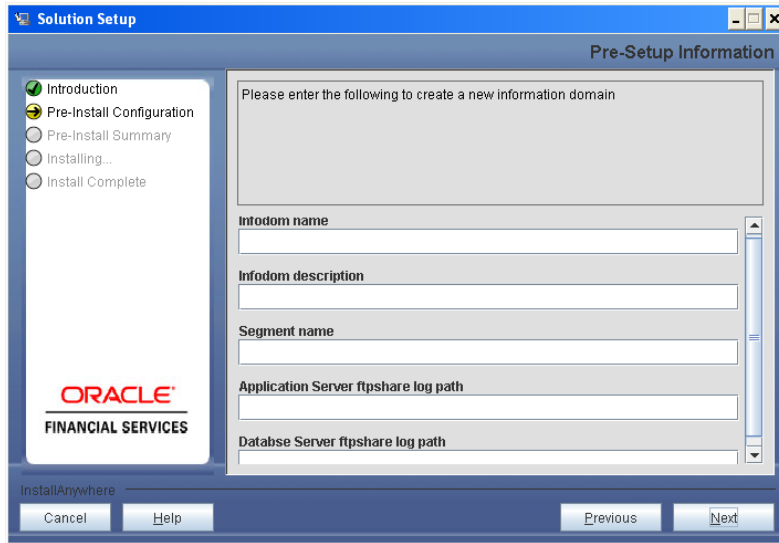


Figure 9. Infodom details for creation of new Infodom

**Note:** The OFSAAI user must have a role mapped to perform Add/Modify functions for PFT metadata.

Click **Next** to continue. Check and verify all the details before proceeding to Step 7- iii.

### Step 7-iii

Click **Next** to continue with the creation of Information Domain.

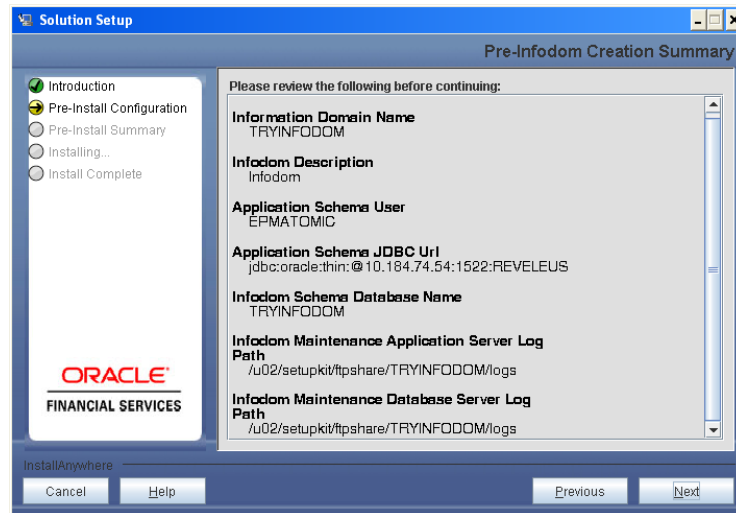


Figure 10. Pre Infodom Creation Summary

### Step 8

If the option **Existing Infodom** is selected, then update the following details in the screen prompts:

#### Step 8-i

- Select the Infodom Name present in the setup
- Enter segment code
- Enter the application schema's TNS name.

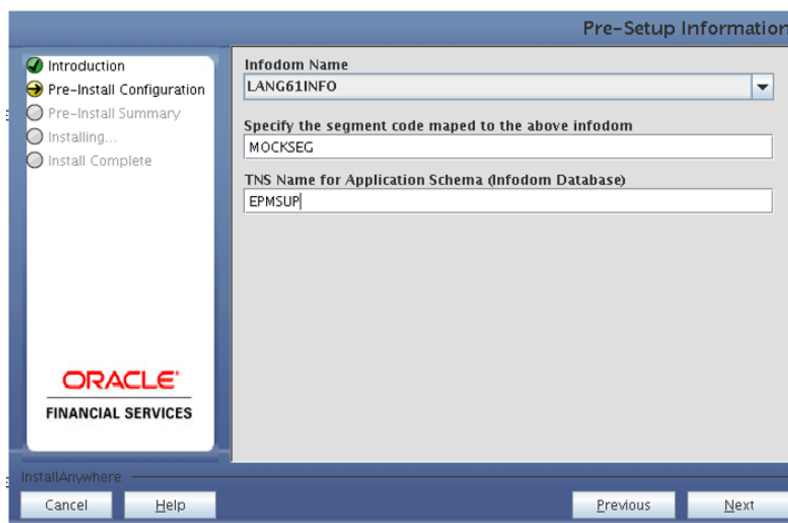


Figure 11. Existing Infodom Details



## Step 9

PFT 6.1.1.0.0 data model is packaged as part of PFT 6.1.1.0.0 product installer and is installed as part of the upcoming steps, if required.

The following screen option is for model upload process through the installer.

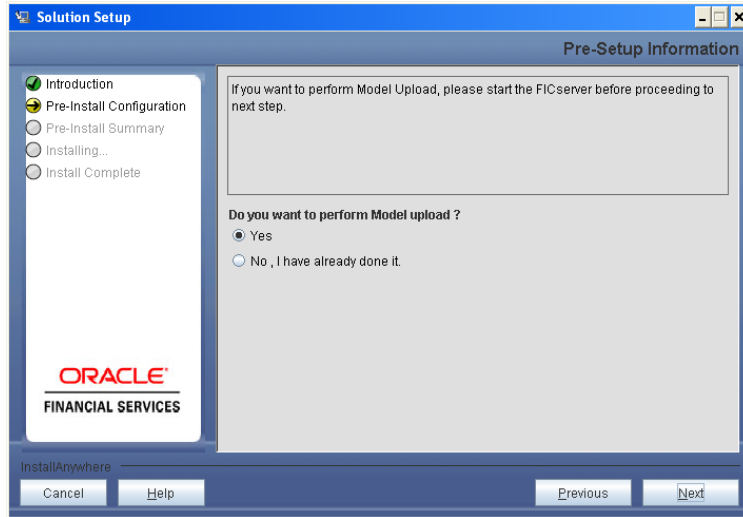


Figure 12. Pre-Setup Information

### Note:

Clicking **No** implies that PFT v6.1.1.0.0 model has been uploaded into Information Domain prior to this installation. Click **Next** to proceed further.

Clicking **Yes** will proceed with the PFT v6.1.1.0.0 model upload process as part of the installation. If **Yes** is selected for data model upload, then copy the .xml to a specific folder and rename the file.

If you select **No** go to [Step 12](#) or else go to **Step 10**.

Click **Next** to proceed.

## Step 10

In the following screen, select the **Released Data Model** or the **Customized Data Model** to be uploaded.

- If **Released Data Model** option is selected, then the installer uploads the PFT 6.1.1.0.0 data model that is packaged as part of the PFT 6.1.1.0.0 product. If **Released Data Model** is selected go to [Step 12](#) otherwise go to **Step 11** for Customized Data Model.
- If **Customized Data Model** option is selected, then the installer allows you to select the data model.

Click **Next** to proceed.

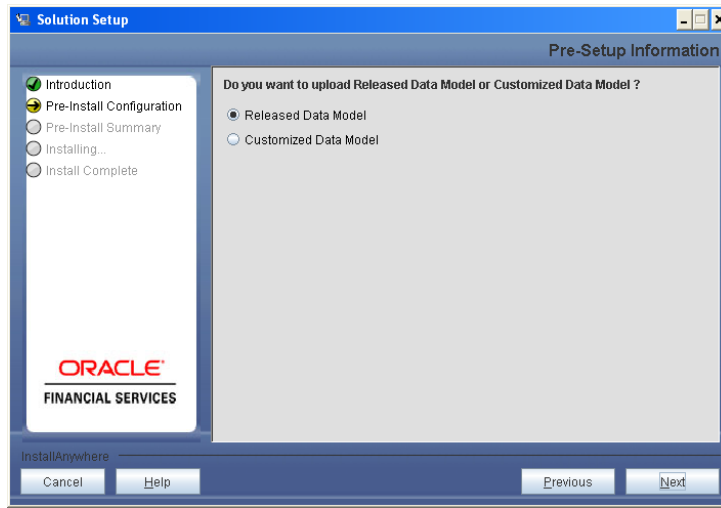


Figure 13. Pre – Setup information

### Step 11

If the **Customized Data Model** is selected, then the following screen is displayed where you can select the customized data model located in your machine.

Select the customized data model file from the server.

#### Note:

The data model .XML file should be available in the server. If the installation is being performed on an existing Information Domain, the data model selected in this screen should be merged with the data model that was previously uploaded in the Information Domain.

If the installation is performed on a new Information Domain, data model that is either customized or merged with other data models can be selected in this screen prompt.

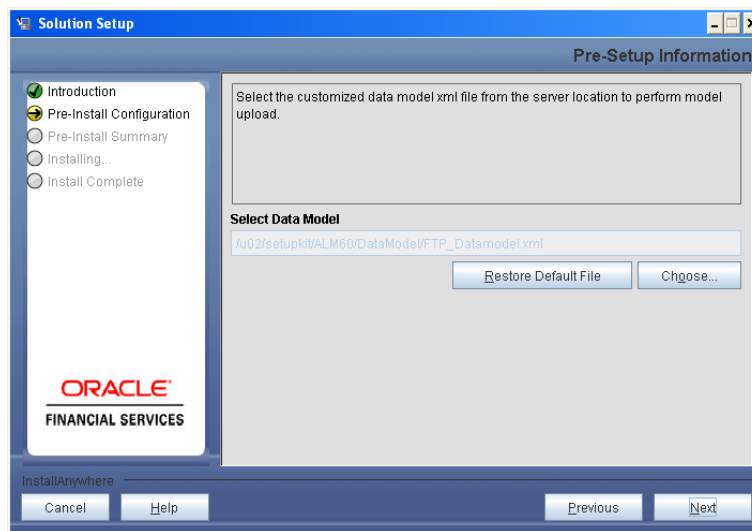


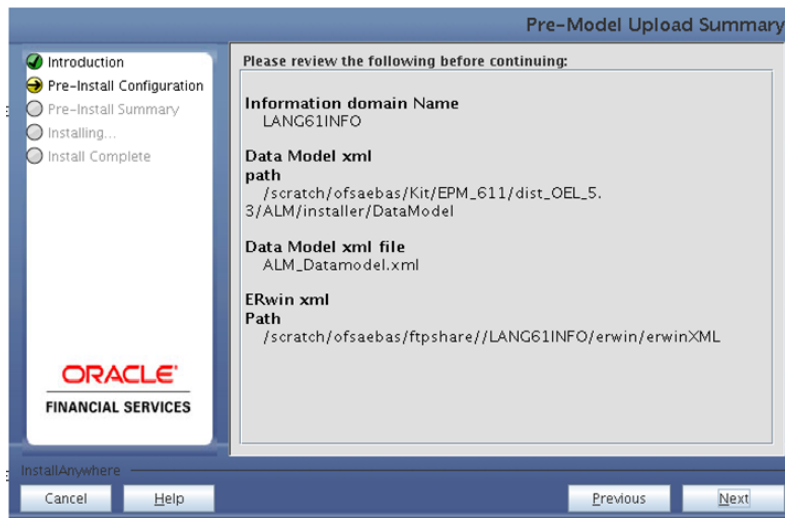
Figure 14. Pre – Setup information

### Step 12

The following screen displays the summary of the uploaded data model:

Verify the details before proceeding to the next step.

Click **Next** to proceed for model upload.



**Figure 15. Pre – Model Upload Summary**

The time taken to upload the data model is dependent on the size of the data model and available physical memory in the environment. You cannot proceed further without the successful completion of the data model upload. Also, this step cannot be rolled back.

If the model upload fails, then a pop-up message with relevant errors and the log file path is displayed. Review the errors and take relevant action. After resolution, navigate to the previous screen and proceed with the steps mentioned above.

**Note:**

Some of the common errors during model upload are listed below:

Insufficient heap memory on the client machine

Possible reason/resolution:

The java memory settings mentioned in .profile should be increased.

Error while getting the ERwin File path

Possible reason/resolution:

Restart the FICServer.

Error in Upload Operation :

“FAILED WHILE SUPER CATEGORY - SUB CATEGORY RELATIONS HANDLINGDELETING”

Possible reason/resolution:

Incorrect Erwin.xsl file version in \$FIC\_APP\_HOME/common/FICServer/conf directory.

Incremental/Sliced model upload might give errors in case there are NOT NULL columns that are being added to a table that already has rows or if the columns that are being dropped have values. Check the data model changes Excel file for any such cases. In such a case, take a backup of the table and truncate the table. Insert records back into the table with a default value for the NOT NULL column.

Navigate to the previous screen and proceed with the steps mentioned above.

### Step 13

In the following screen, select **New application/source pair** or select **Existing application/source pair**. If the option **Existing application/source pair** is selected then go to step 13-ii or else go to step 13-i.

In case of upgrade, if you select an **existing application/source pair**, then existing ETL definitions under the source will be overwritten with the packaged definitions. You can also choose to create a new application/source pair and then merge the changes between the packaged definition and your existing definitions offline.

Select the required option and click **Next** to continue

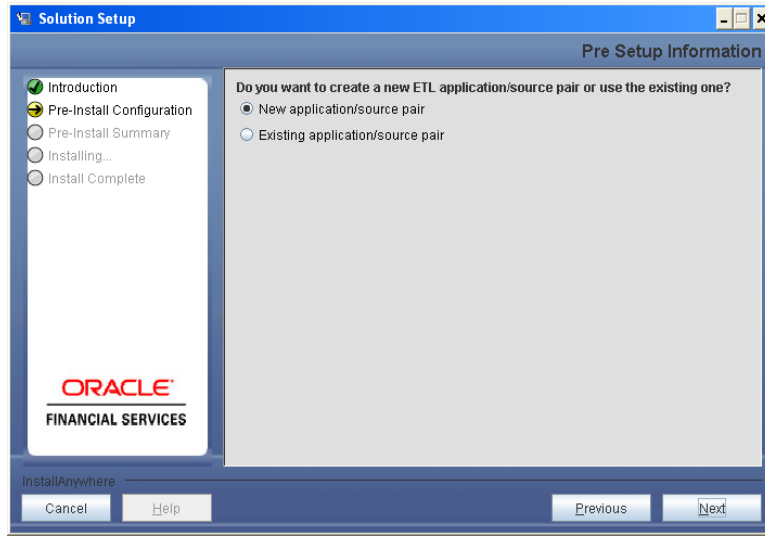


Figure 16. Pre – Setup Information

### Step 13-i

In the next screen, specify all the details required for application and source creation. Click **Next** to proceed. Clicking **Next** creates application and source within OFSAAI. Source model will also be generated. This process might take some time to process depending on the number of entities or attributes in the Atomic schema. This step cannot be rolled back.

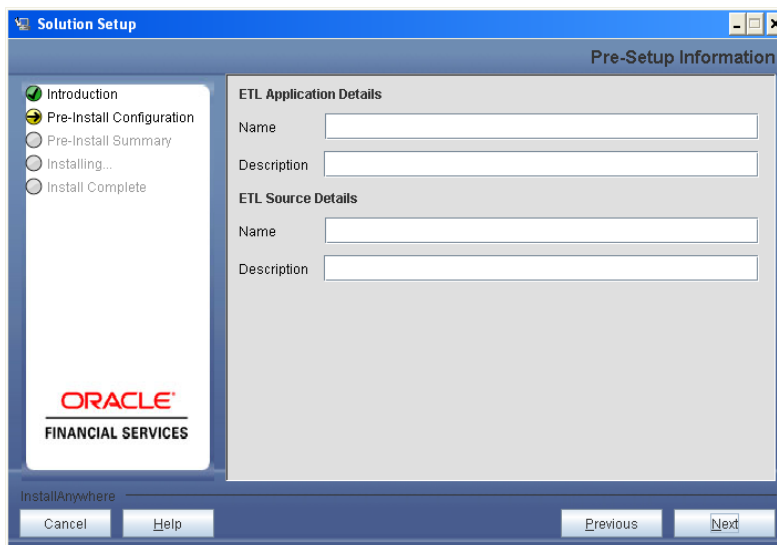


Figure 17. Pre – Setup Information

**Note:**

ETL Source will be created pointing to the Information Domain (Atomic schema) that is specified during the installation.

**Step 13-ii**

If **Existing application/source pair** is selected then the following panel is displayed prompting to select application/source pair from the list of pairs already present. Select the desired ETL application/source pair into which ETL definitions will be deployed. Click **Next** to Process.

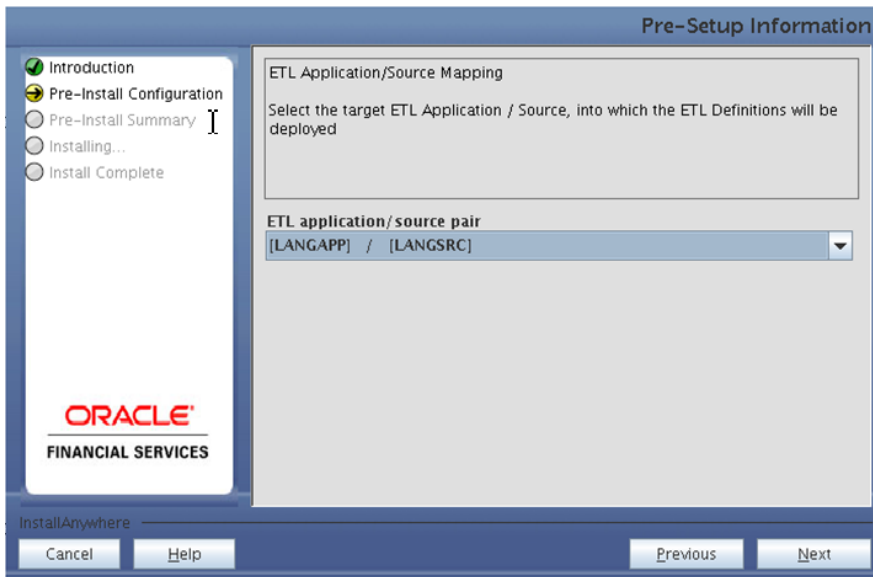


Figure 18. Pre – Setup Information

**Step 14**

Enter the OFSAAI User ID.

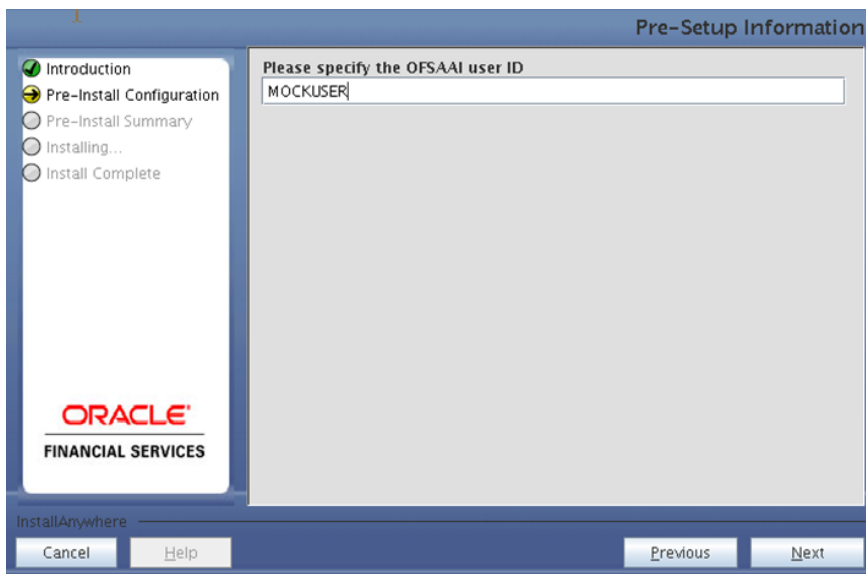


Figure 19. OFSAAI User ID

### Step 15

This screen displays the pre-installation summary. Verify all details and click **Install** to proceed

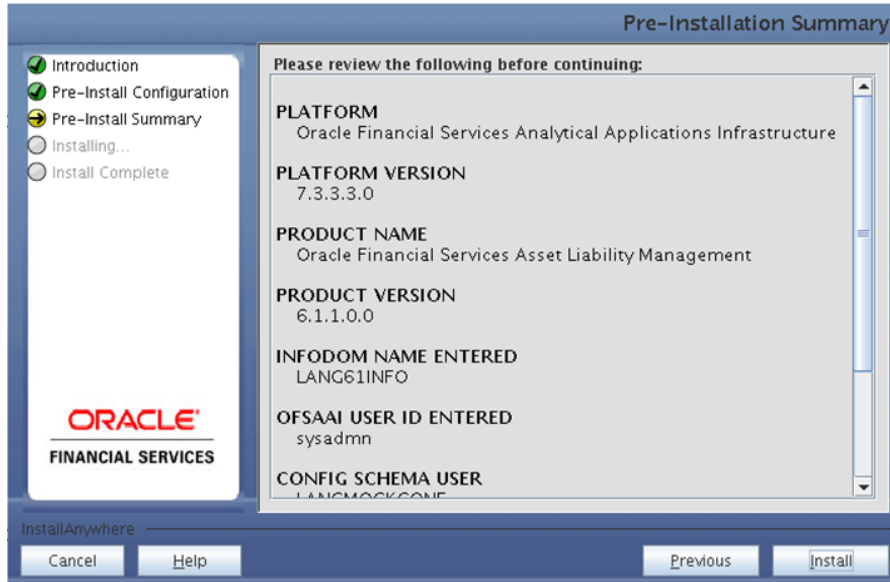


Figure 20. Pre – Installation Summary

### Step 16

This screen displays the installation process. The installation needs to be completed to proceed further.

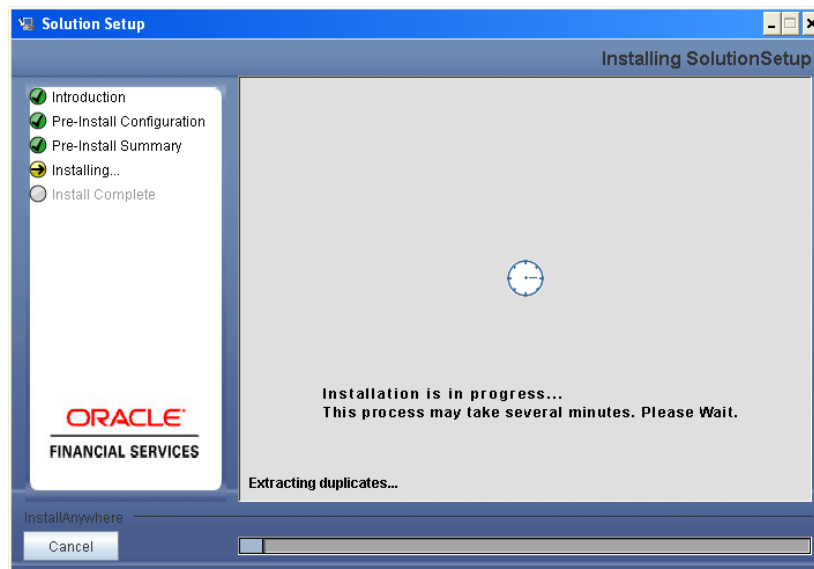


Figure 21. Installation is in progress

### Step 17

The following screen displays the completion of installation of the Oracle Financial Services Profitability Product Setup. Click **Done** to exit.

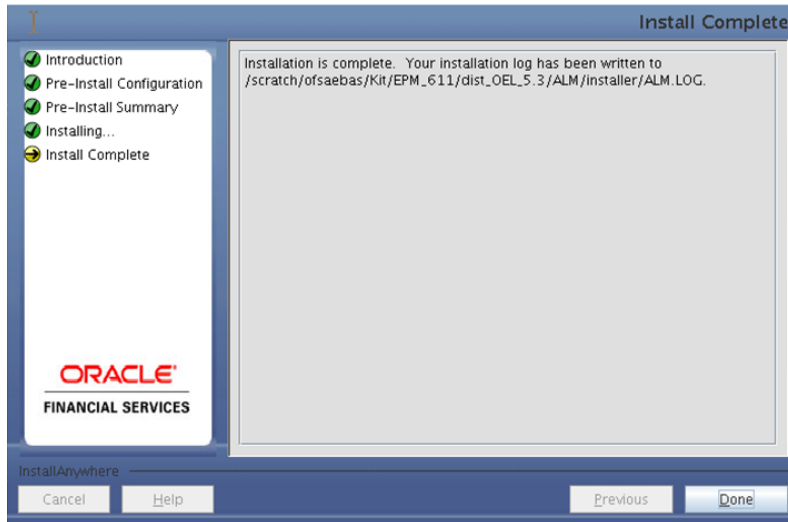


Figure 22. Installation Complete

## Machine B – Product Database Layer

### Step 1

To begin Oracle Financial Services Profitability product installation, execute Setup.sh with the parameter GUI (GUI Installation) or SILENT (for Silent installation).



Figure 23. Installation Splash Screen

### Step 2

On loading the installer, the **Introduction** screen displays the pre-requisites for installation. Ensure that the pre-requisites are met before proceeding.

**Note:** OFSAAI 7.3.3.3.0 or any higher version than 7.3.3.3.0 needs to be installed before proceeding.

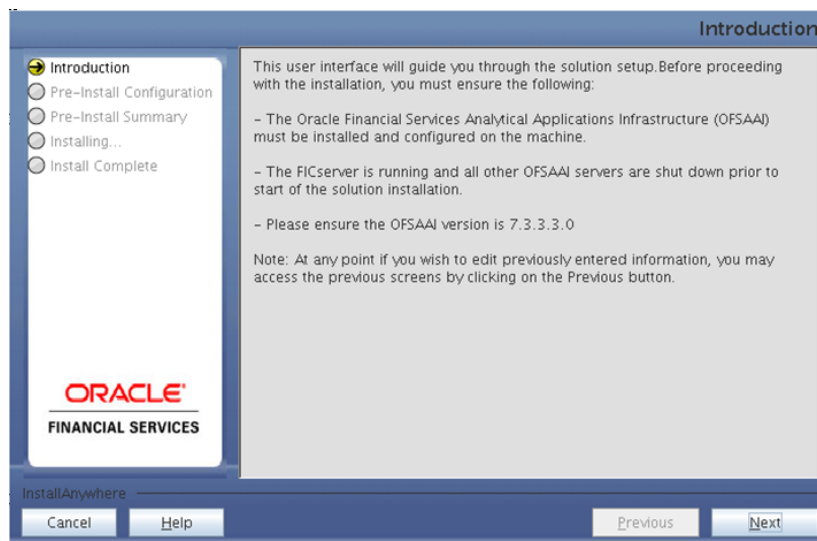


Figure 24. Introduction Screen

### Step 3

Select the log mode for this installer. If Debug is selected, the Passwords will be printed in the log file.

Click **Next** to proceed.



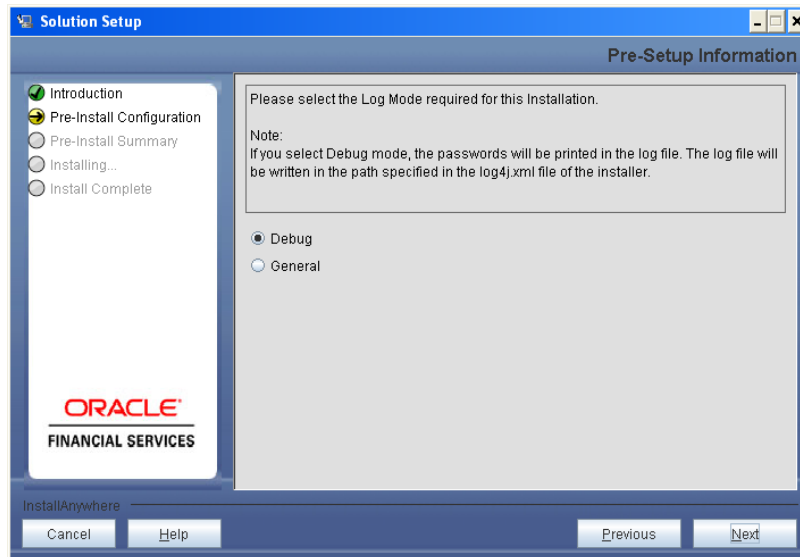


Figure 25. Log Mode Option Screen

#### Step 4

Enter 9 digit Customer Identification number and click **Next** to proceed.

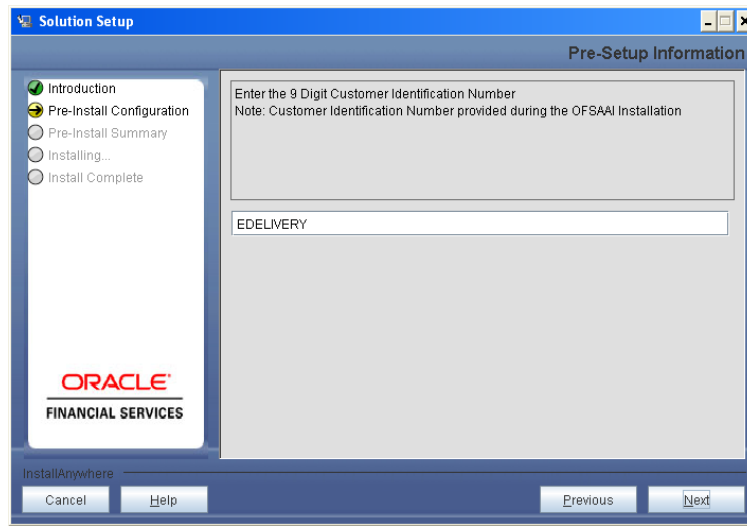


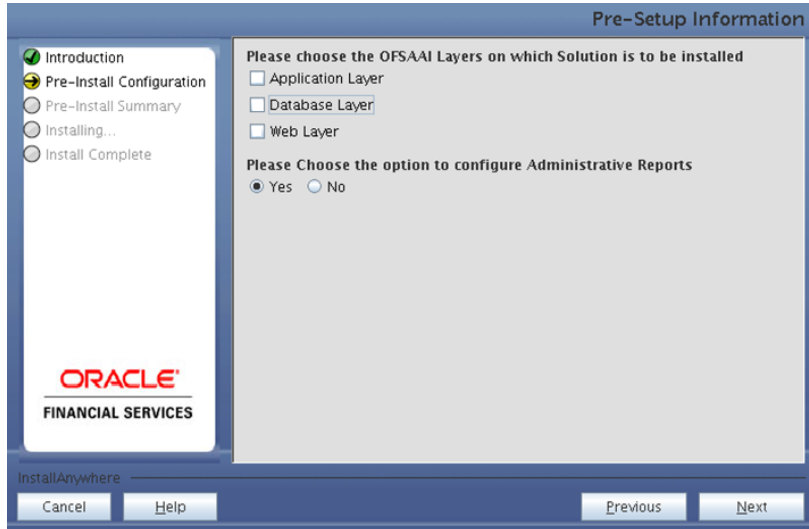
Figure 26. Customer ID Input Screen

## Step 5

The **Pre Setup Information** screen requests for setup information.

Select the appropriate Oracle Financial Services Analytical Applications Infrastructure layer that has been installed on the machine.

Example: **Database Layer**



**Figure 27. Pre Setup Information Screen – Choose Layer to Install**

Along with appropriate Oracle Financial Services Analytical Applications Infrastructure layer choose Administrative Reports to configure the Administrative Reports application.

### NOTE

- For a single-tier Oracle Financial Services Analytical Applications Infrastructure v7.3.3.3.0 installation, you must select Application Layer, Database Layer and Web layer.
- For a multi-tier Oracle Financial Services Analytical Applications Infrastructure v7.3.3.3.0 installation, select the corresponding layer installed on the machine.
- In case Administrative Reports (Admin BI) is already configured through the previous product installation; the subsequent product installation without Administrative Reports (Admin BI) option may alter the existing Administrative Reports (Admin BI) configuration settings.

## Step 6

Select the Information Domain from the drop down list present in the setup. Enter segment code and enter the application schema's TNS name in the following screen prompt.

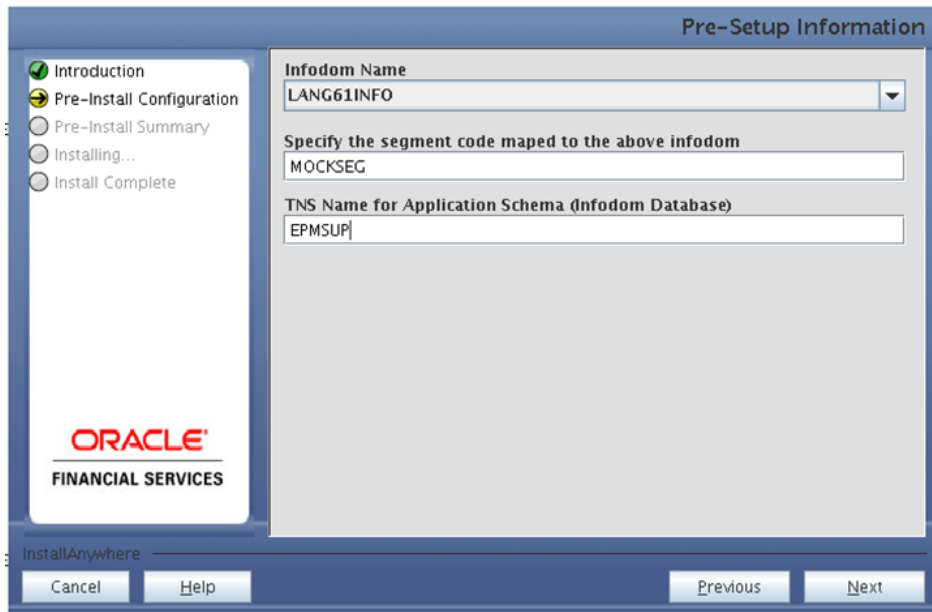


Figure 28. Pre Setup Information Screen

### Step 7

Please specify the Tablespace name (Infodom database), which is an allocation of space in the database that can contain schema objects (that is, actual data underlying database objects can be kept here).

Note: Select an existing Tablespace name.

Click **Next** to proceed.

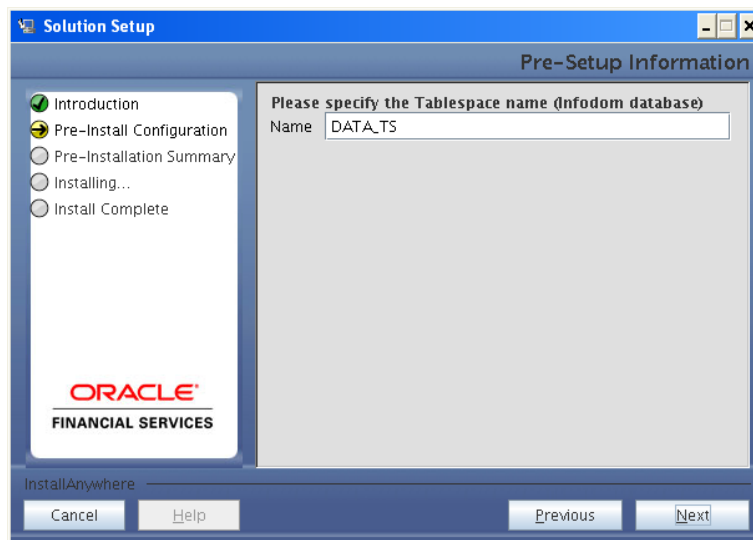


Figure 29. Pre Setup Information Screen

### Step 14

Enter the OFSAAI User ID.

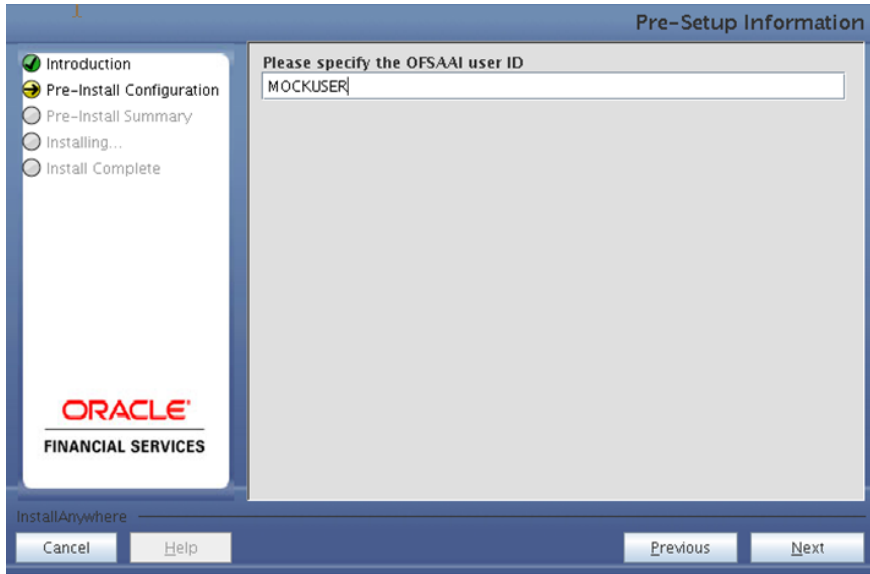


Figure 30. OFSAAI User ID

**Step 9**

The following screen displays all the pre-installation summary. Verify all the details and click **Install** to proceed.

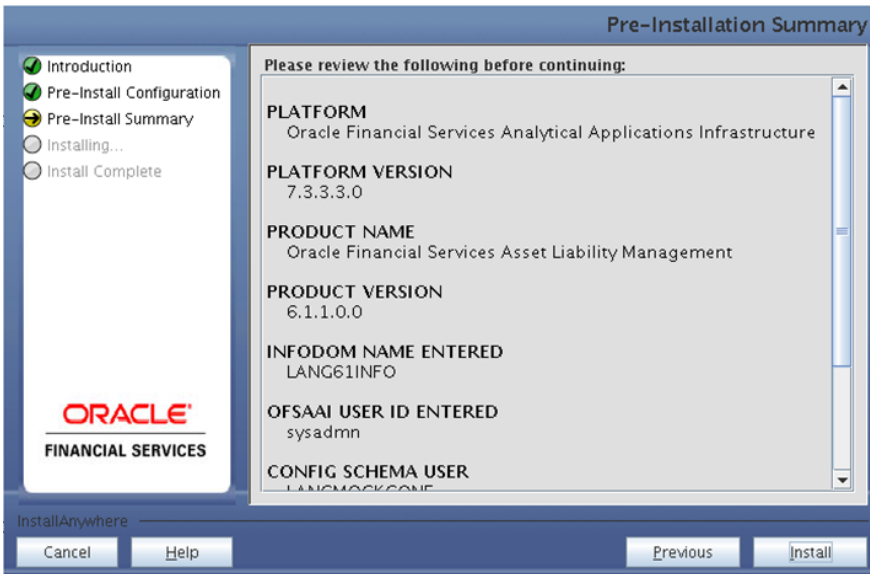


Figure 31. Pre – Installation Summary

**Step 10**

This panel displays the installation process. Wait till the installation is complete.

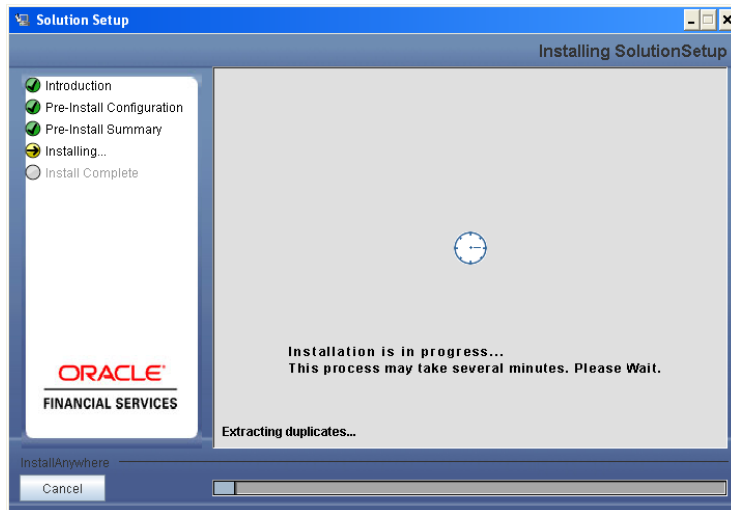


Figure 32. Installation is in progress

### Step 11

The following screen displays the completion of installation of the Oracle Financial Services Profitability Product Setup.

Click **Done** to exit.

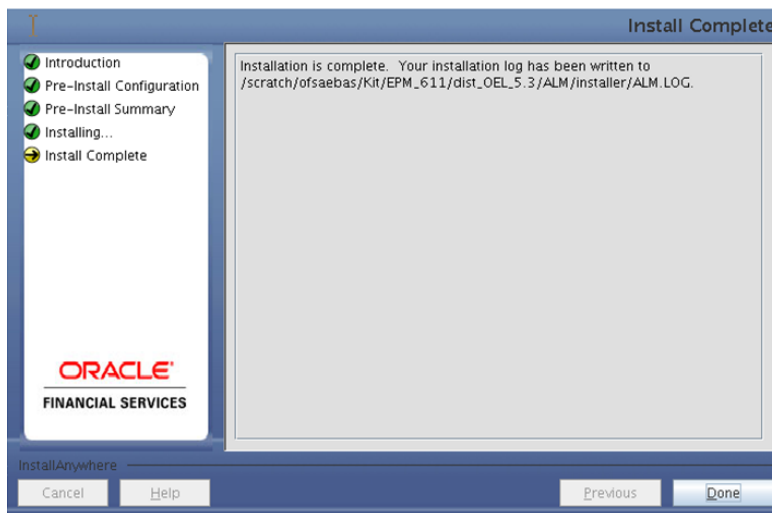


Figure 33. Installation Complete

## Machine C – Product Web Layer

### Step 1

To begin Oracle Financial Services Profitability product installation, execute Setup.sh with the parameter GUI (GUI Installation) or SILENT (for Silent installation).

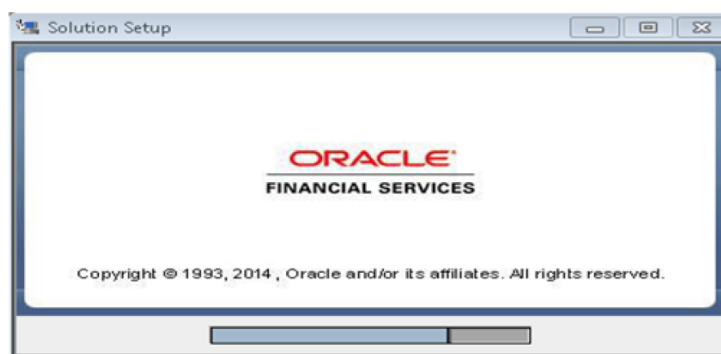


Figure 34. Installation Splash Screen

### Step 2

On loading the installer, the **Introduction** screen displays the pre-requisites for installation. Ensure that the pre-requisites are met before proceeding.

**Note:** OFSAAI 7.3.3.3.0 or any higher version than 7.3.3.3.0 needs to be installed before proceeding.

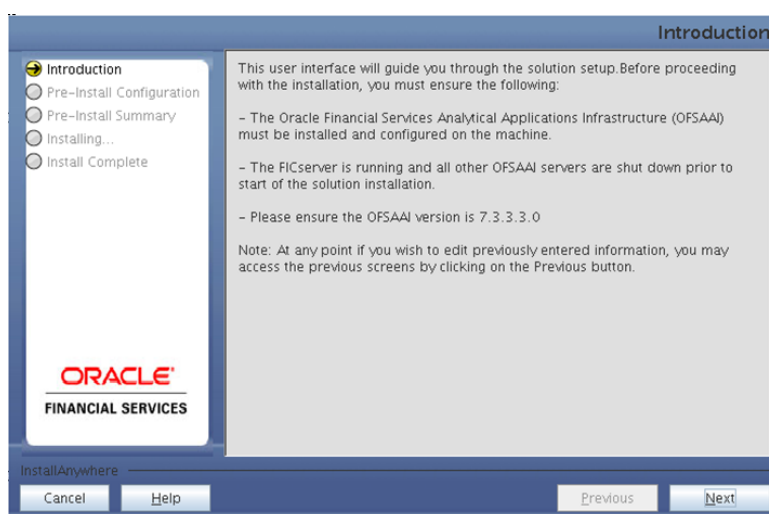


Figure 35. Introduction Screen

### Step 3

Select the log mode for this installer. If Debug is selected, the Passwords will be printed in the log file.

Click **Next** to proceed.

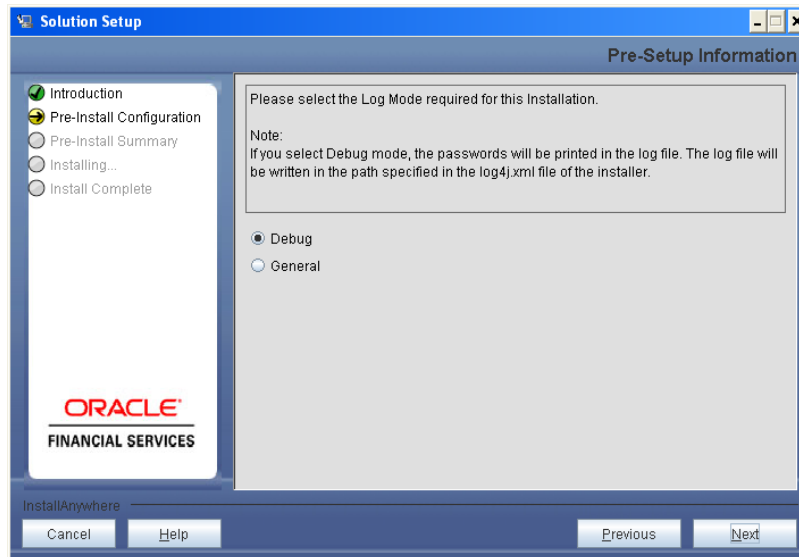


Figure 36. Log Mode Option Screen

#### Step 4

Enter 9 digit Customer Identification number and click **Next** to continue.

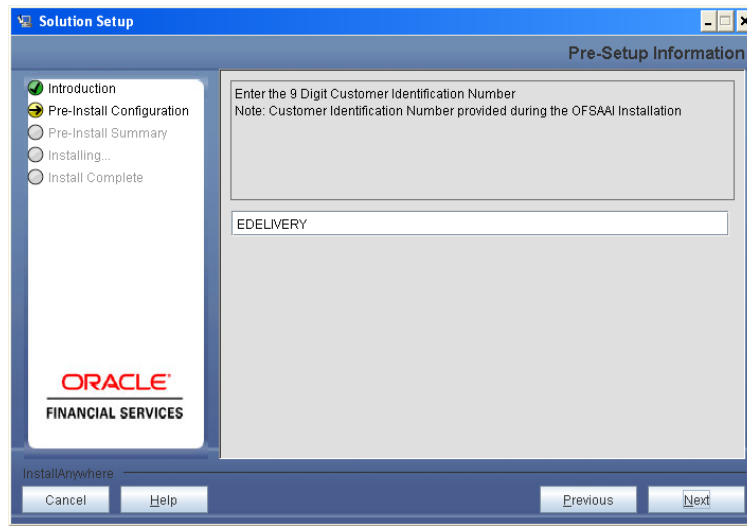


Figure 37. Customer ID Input Screen

#### Step 5

The **Pre Setup Information** screen requests for setup information.

Select the appropriate Oracle Financial Services Analytical Applications Infrastructure layer that has been installed on the machine.

Example: **Web Layer**

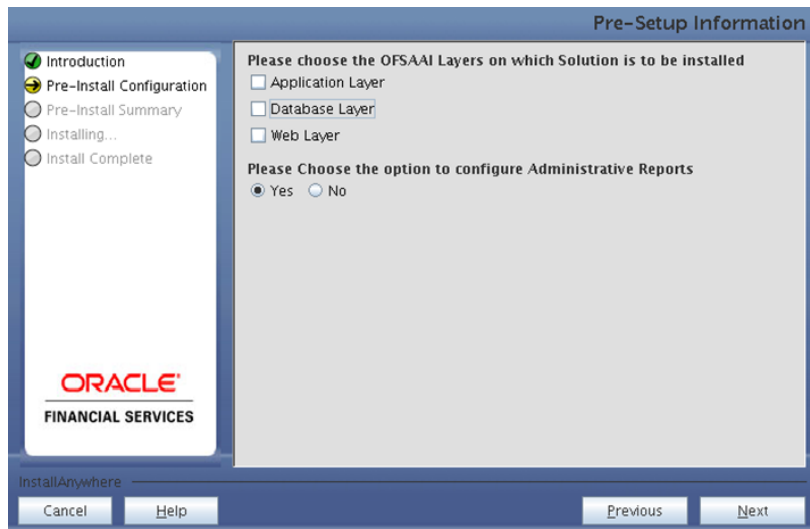


Figure 38. Pre Setup Information Screen – Choose Layer to Install

Along with appropriate Oracle Financial Services Analytical Applications Infrastructure layer choose Administrative Reports to configure the Administrative Reports application.

**NOTE**

- For a single-tier Oracle Financial Services Analytical Applications Infrastructure v7.3.3.3.0 installation, you must select Application Layer, Database Layer and Web layer.
- For a multi-tier Oracle Financial Services Analytical Applications Infrastructure v7.3.3.3.0 installation, select the corresponding layer installed on the machine.
- In case Administrative Reports (Admin BI) is already configured through the previous product installation; the subsequent product installation without Administrative Reports (Admin BI) option may alter the existing Administrative Reports (Admin BI) configuration settings.

**Step 6**

Select the Information Domain from the list of Information Domains present in the setup, enter segment code and enter the application schema's TNS name in the following screen prompt.



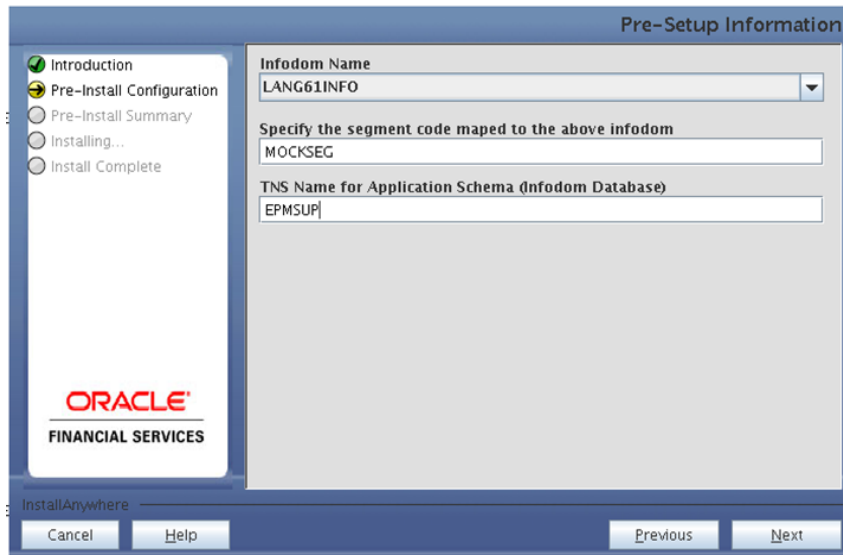


Figure 39. Pre Setup Information Screen

### Step 7

The Pre Setup Information screen requests for the Oracle Business Intelligence installed host machine IP, port-number and context name.

Click **Next** to continue.

### NOTE

- The Oracle Financial Services Analytical Applications Infrastructure user must have a role that is able to perform Add/Modify functions for PFT metadata

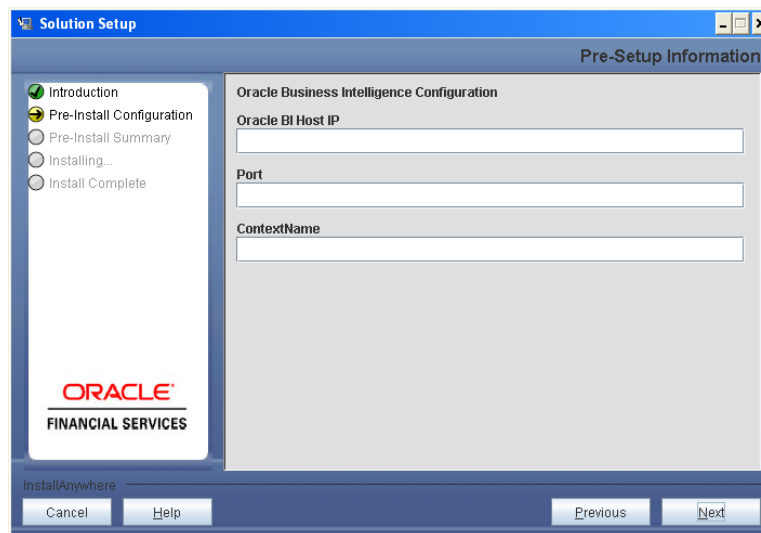


Figure 40. Pre Setup Information Screen

### Step 8

Enter the OFSAAI User ID.

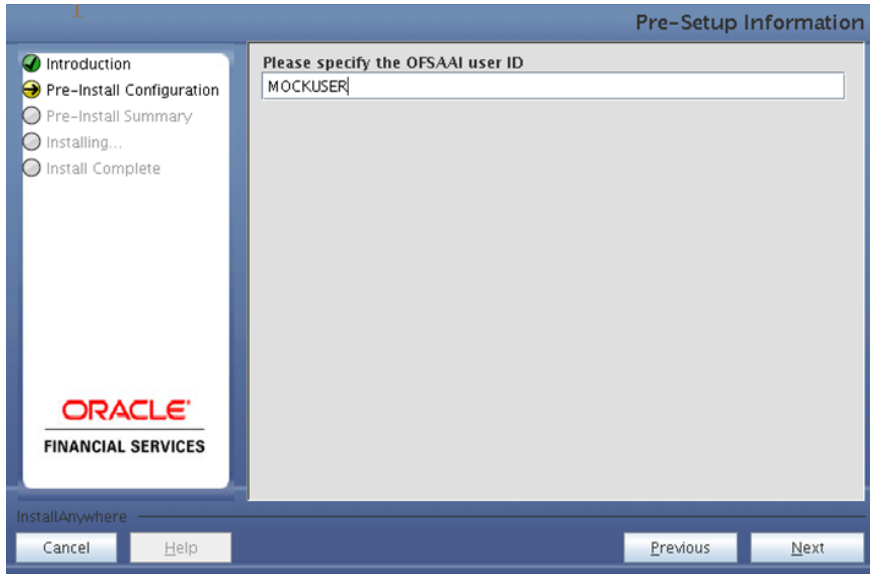


Figure 41. OFSAAI User ID

**Step 9**

This screen displays all the pre-installation summary. Verify all details and click **Install** to proceed.

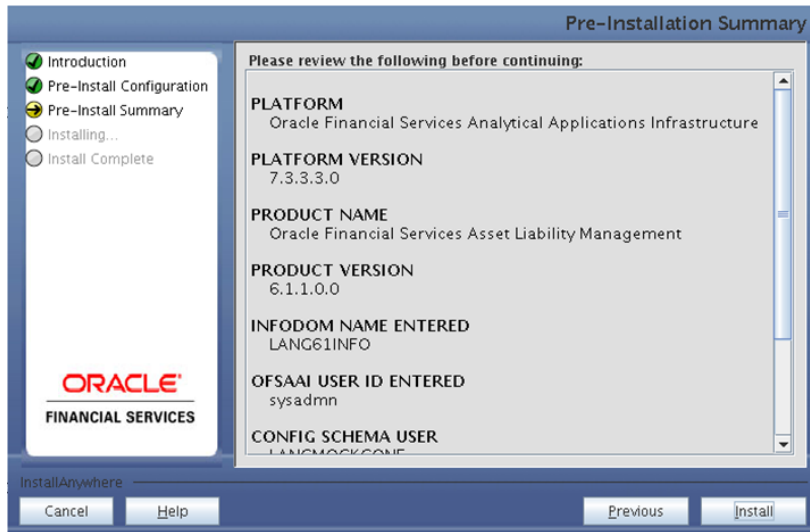


Figure 42. Pre – Installation Summary

**Step 10**

This screen displays the installation process. Wait till the installation is complete.



Figure 43. Installation is in progress

### Step 11

The following screen displays the completion of installation of the Oracle Financial Services Profitability Product Setup.

Click **Done** to exit.

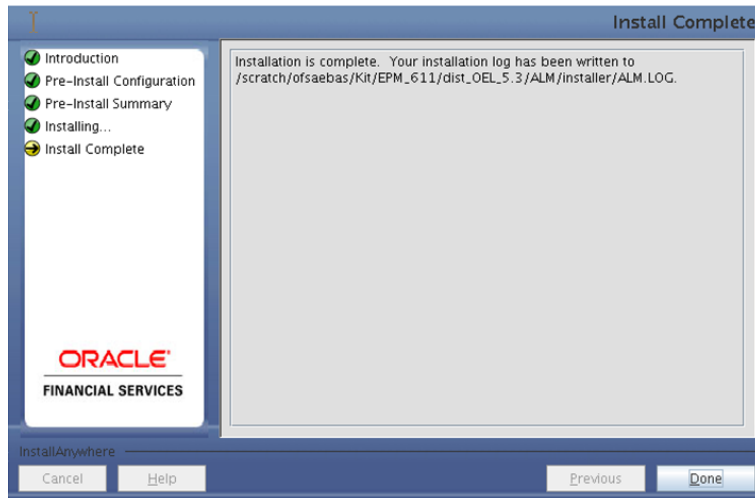


Figure 44. Installation Complete

## Silent Installation

Silent installation is achieved via a properties file [Silent.props] that must be updated with proper values, before attempting to install using the silent mode.

The following table lists all the properties that need to be specified:

Property Name	Description of Property	Permissible values	Comments
LOG_MODE	Mode for logging	0 = Debug 1 = General	Optional; Default : 0
CUSTOMER_ID	Customer ID specified while installing OFSAAI	Not Applicable	MANDATORY
INSTALL_WEB	Install web-tier components	0 = No 1 = Yes	Default : 0
INSTALL_DB	Install database-tier components	0 = No 1 = Yes	Default : 0
INSTALL_APP	Install Application-tier components be installed	0 = No 1 = Yes	Default : 0
INSTALL_ADMIN_BI	Install admin-BI components	0 = No 1 = Yes	Default : 0 Applicable only if INSTALL_WEB=1 OR INSTALL_DB=1
INFODOM_NAME	Information Domain (infodom)	Not Applicable	MANDATORY
SEGMENT_CODE	Segment Code	Not Applicable	MANDATORY
TABLESPACE	Tablespace name	Not Applicable	MANDATORY
INFODOM_TYPE	New Infodom or Existing Infodom	0 = New 1 = Existing	# Specify Infodom Type Mandatory if this an App Layer Installation i.e you have specified INSTALL_APP=1
APPL_TNS	TNS Name of the Infodom database	Not Applicable	MANDATORY

APPL_USER	User ID of the Database Schema for new Infodom	Not Applicable	# Mandatory if this an App Layer Installation and if you want to create a new infodom  # i.e you have specified INSTALL_APP=1 and INFODOM_TYPE=0
APPL_PWD	Password of the Database Schema for new Infodom	Not Applicable	# Mandatory if this an App Layer Installation and if you want to create a new infodom  # i.e you have specified INSTALL_APP=1 and INFODOM_TYPE=0
APPL_URL	JDBC Connection String of the the Database Schema for new Infodom	Not Applicable	# Mandatory if this an App Layer Installation and if you want to create a new infodom  # i.e you have specified INSTALL_APP=1 and INFODOM_TYPE=0
INFODOM_DESC	description for the Database Schema for new Infodom	Not Applicable	# Mandatory if this an App Layer Installation and if you want to create a new infodom  # i.e you have specified INSTALL_APP=1 and INFODOM_TYPE=0
APFTP P_LOG_PATH=	Infodom Maintenance log path (to be created) for the new Infodom for app layer	Not Applicable	# Mandatory if this an App Layer Installation and if you want to create a new infodom  # i.e you have specified INSTALL_APP=1 and INFODOM_TYPE=0
DBFTP_LOG_PATH	Infodom Maintenance log path (to be created) for the new Infodom for DB Layer	Not Applicable	# Mandatory if this an App Layer Installation and if you want to create a new infodom  # i.e you have specified INSTALL_APP=1 and

			INFODOM_TYPE=0
OBI_HOST	Host Name of the OBIEE Server	Not Applicable	Applicable if INSTALL_ADMIN_BI=1
OBI_PORT	Port Number of the OBIEE Server	Not Applicable	Applicable if INSTALL_ADMIN_BI=1
OBI_CONTEXT	Context Name of the OBIEE Server	Not Applicable	Applicable if INSTALL_ADMIN_BI=1
UPLOAD_MODEL	whether you want to perform Model Upload	0 = No 1 = yes	Mandatory if INSTALL_APP=1
MODEL_TYPE	Released data model or Customized data model	0 = released 1 = customized	Mandatory if INSTALL_APP=1
DATAMODEL	the path for the customized data model	Not Applicable	# Mandatory only if you want to upload the customized data model # i.e you have specified MODEL_TYPE=1
DM_DIRECTORY	the file name for the customized data model	Not Applicable	# Mandatory only if you want to upload the customized data model # i.e you have specified MODEL_TYPE=1
ETL_APP_NAME	The ETL application name	Not Applicable	# Mandatory if this an App Layer installation # i.e you have specified INSTALL_APP=1
ETL_SRC_NAME	The ETL Source into which the Table-2-Table ETL definitions on staging tables will be deployed.	Not Applicable	This Source must be mapped to the above ETL Application
ETL_APPSRC_TYPE	Create new ETL App/Source pair or use an existing one	0 = New 1 = Existing	# Mandatory if this an App Layer installation # i.e you have specified INSTALL_APP=1 # 0 = If you want to create a new ETL Application/Source pair # 1 = If you want to use

			an existing pair
ETL_APP_DESC	Please give description for the ETL Application	Not Applicable	# Mandatory if you want to create new ETL Application/Source pair #i.e you have specified ETL_APPSRC_TYPE=0
ETL_SRC_DESC	Please give description for the ETL Source	Not Applicable	# Mandatory if you want to create new ETL Application/Source pair #i.e you have specified ETL_APPSRC_TYPE=0

#### How to install in Silent Mode

- The installer folder contains a template file "Silent.template"
- Create a copy of this file and rename the copy as "Silent.props"
- Edit the file "Silent.props" and specify the parameters as per the requirements
- On the UNIX Command prompt, execute the following command
  - o "Setup.sh SILENT"
- Refer to the console log [or the file preinstall.log] for any error messages.

## **Post Installation Activities**

Oracle Financial Services Analytical Applications Infrastructure Server Memory Configuration

The Oracle Financial Services Analytical Applications Infrastructure Application Server is started using `reveleusstartup.sh`. Edit the `X_ARGS_APP` variable in the `.Profile` to customize memory settings, garbage collector settings depending on the available hardware configuration.

Refer to *OFSAA Infrastructure Installation and Configuration Guide* for more information on these settings.

Once the installation of Oracle Financial Services Profitability Management Product is completed, you must perform the following steps.

- Check the Log file (The path and file name specified in the `log4j.xml`).
- Add the below mentioned entries in `excludeURLList.cfg` file located in the path `$FIC_WEB_HOME/webroot/conf/`

- The following Common entries are required for Asset and Liability Management, Funds Transfer pricing, Profitability Management and Hedge Management / IFRS:

`/fsapps/common/batchCreate.action`

`/fsapps/common/batchEdit.action`

- The following entries are required for Profitability Management:

`/fsapps/common/AllocModelNew.action`

`/fsapps/common/AllocModelEdit.action`

`/fsapps/common/AllocModelView.action`

`/fsapps/common/AllocModelSave.action`

`/fsapps/common/AllocSpecsave.action`

`/fsapps/common/LookupTableIDEdit.action`

`/fsapps/common/tableIDHierSel.action`

`/fsapps/common/tblIDDisplaySelTab.action`

`/fsapps/common/tableIDHierSel.action`

`/fsapps/common/tblIDAddNewTab.action`

`/fsapps/common/tblIDDisplaySelTab.action`

`/fsapps/common/TableIDSave.action`

`/fsapps/common/TableIDEdit.action`

`/fsapps/common/TableIDEditSave.action`

`/fsapps/common/TableIDView.action`

`/fsapps/common/Lookupteditselect.action`

`/fsapps/common/LookupTable.action`

`/fsapps/common/LookupSourceTable.action`

`/fsapps/common/LookupTableID3.action`



```

/fsapps/common/LookupEdit.action
/fsapps/common/LookupTableEdit1.action
/fsapps/common/LookupTableEditID2.action
/fsapps/common/LookupTableIDEdit.action
/fsapps/common/LookupTableIDView.action
/fsapps/common/AllocSpecView.action
/fsapps/common/AllocSpec.action
/fsapps/common/AllocSpecEdit.action
/fsapps/common/getRuleTypes.action
/fsapps/common/getSearchTask.action

```

**Note:** Copy the above information into notepad, and then copy it from notepad into cfg file. Take extra care to avoid copying formatting characters into the cfg file.

- This post-installation step is applicable for upgrade from v6.0
  - Execute dm\_post\_common\_ddl\_6\_1.sql file which will restore the data into the following tables FSI\_IRC\_RATE\_HIST and FSI\_IRC\_VOLATILITY\_RATE\_HIST.
  - Few instrument tables and PFT transaction tables are truncated as a part of pre-installation activities. The customer can restore the data into these tables from the corresponding backup tables. Please refer the pre-install steps for details on backup tables.
- For Administrative Reports (Admin BI) configuration follow the steps mentioned in Oracle Financial Services Administrative Reports on OBIEE 11g - Configuration Note.docx under \$FIC\_HOME/adminb0069
- The web.xml under the path \$FIC\_WEB\_HOME \webroot\WEB-INF\ should have Resource tag, if not present add the tag and replace ORDEMO with the INFODOM name.

```

<resource-ref>
    <description>DB ConnectionORDEMO</description>
    <res-ref-name>jdbc/ORDEMO</res-ref-name>
    <res-type>javax.sql.DataSource</res-type>
    <res-auth>Container</res-auth>
</resource-ref>

```

**Note:** Copy the above information into notepad, and then copy it from notepad into xml file. Take extra care to avoid copying formatting characters into the xml file.

Following entries should be available in web.xml

```

<servlet xmlns="">
    <servlet-name>pftxmlfilepath</servlet-name>
    <servlet-class>com.ofs.fsapps.pft.util.ContextxmlPathLoader</servlet-class>
    <load-on-startup>1</load-on-startup>

```

</servlet>

- Execute MLS utility with below mentioned parameter to migrate the Metadata Master to new structures of objects compatible with 7.3.3.0.0 IR.

**Steps to execute:**

1. Navigate to \$FIC\_HOME/MLS\_ofsaai directory of OFSAAI APP tier.
2. Execute the MLS utility. <Command> <parameter>

**Command:**

./MLS\_ofsaai.sh MIG

For more information, refer to Multi Language Support (MLS) Utility section of [Oracle Financial Services Analytical Applications Infrastructure \(OFSAAI\) Administration Guide](#).

## **Configuration in WebSphere Application Server**

- Create JDBC Provider for the configuration of connection pool for the above created Infodom (Refer to: *chapter Creating the JDBC Provider of the Oracle Financial Services Analytical Applications Infrastructure 7.3 Installation Manual*).
- Create a data source to access the data from the database. (Refer to: *chapter Creating the Data Source of the Oracle Financial Services Analytical Applications Infrastructure 7.3 Installation Manual*)
- After creating a Data Source, click the newly created Data Source (\$DATA\_SOURCE\$) and navigate to the path

Data sources>\$DATA\_SOURCE\$>Connection pools

and set the values for Connection timeout to 0 seconds, Maximum connections to 100 connections, Minimum connections to 10 connections as shown in the below figure.

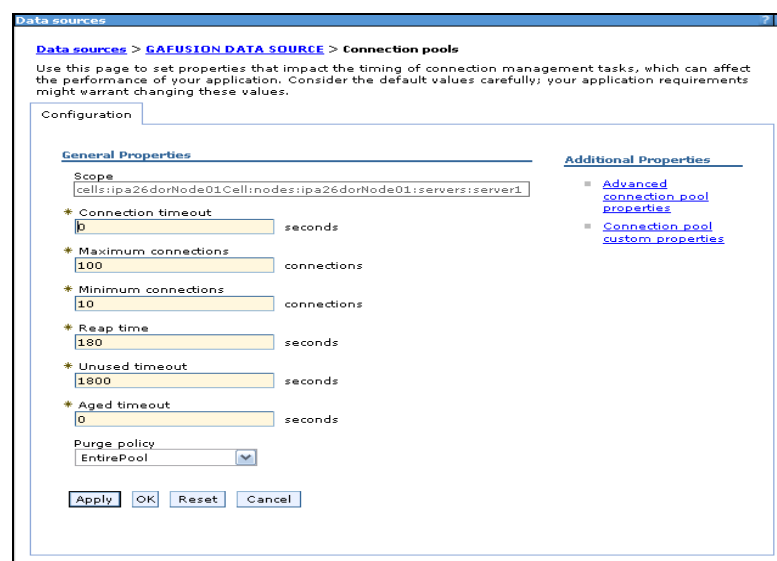


Figure 45.

- Expand the **Server Types** under **Servers** option in the LHS menu. Click on **WebSphere application servers** option. This will display the **Application Servers** page.

Navigate to the **Web Container** option of the application server, under **Custom properties**, add a new property **com.ibm.ws.webcontainer.invokefilterscompatibility** and set the value to **true**. Save the new property. Use below figure for reference.

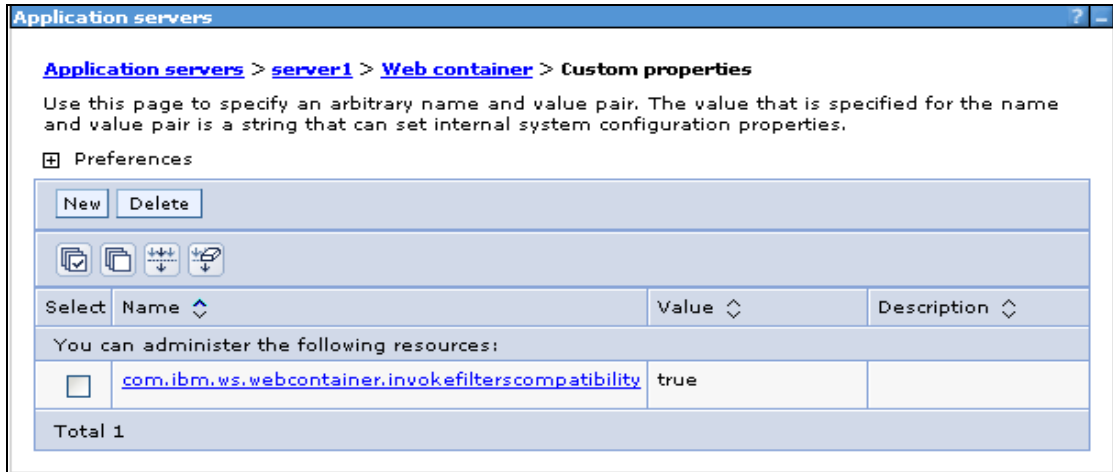


Figure 46.

### Configuration in Tomcat Application Server

- Copy \$ORACLE\_HOME/jdbc/lib/ojdbc6.jar to the path \$TOMCAT\_DIRECTORY/common/lib/
- Edit the server.xml present under the path \$TOMCAT\_DIRECTORY\conf\ with the below changes, which is required for connection pooling.

**Note:** Copy the following information into notepad, and then copy it from notepad into xml file. Take extra care to avoid copying formatting characters into the xml file.

```
<Context path="/" $CONTEXTNAME$ " docBase=" $APP_DEPLOYED_PATH$ "
debug="0" reloadable="true" crossContext="true">
```

```
  <Resource auth="Container"
    name="jdbc/ $INFODOM_NAME$"
    type="javax.sql.DataSource"
    driverClassName="Oracle.jdbc.driver.OracleDriver"
    username=" $ATOMICSCHEMA_USERNAME$"
    password=" $ATOMICSCHEMA_PASSWORD$"
    url=" $JDBC_CONNECTION_URL "
    maxActive="100"
    maxIdle="30"
    maxWait="10000"
    removeAbandoned="true" removeAbandonedTimeout="60"
    logAbandoned="true"/>
```

```
</Context>
```

NOTE;

- \$TOMCAT\_DIRECTORY\$ should be replaced by Tomcat application installed path
- \$CONTEXTNAME\$ should be replaced by Oracle Financial Services Analytical Applications Infrastructure context name
- \$APP\_DEPLOYED\_PATH\$ should be replaced by the Oracle Financial Services Analytical Applications Infrastructure application deployed path
- \$INFODOM\_NAME\$ should be replaced by Infodom Name
- \$ATOMICSCHEMA\_USERNAME\$ should be replaced by Atomic schema database user name
- \$ATOMICSCHEMA\_PASSWORD\$ should be replaced by Atomic schema database password
- \$JDBC\_CONNECTION\_URL should be replaced by JDBC connection string

Ex: jdbc:Oracle:thin:<IP>:<PORT>:<SID>

jdbc:Oracle:thin 10.80.50.53:1521:soluint

- Configuration in WebLogic Application Server
- Create JDBC Provider for the configuration of connection pool and a data source to access the data from the database for the above created Infodom (Refer to: *chapter Creating data Source – WebLogic of the Oracle Financial Services Analytical Applications Infrastructure 7.3 Installation Manual*).
- After creating a Data Source, click the newly created Data Source (\$DATA\_SOURCE\$) and navigate to the path

Home >Summary of Services: JDBC >Summary of JDBC Data Sources >JDBC Data Source-<INFODOM\_NAME>

and set the values for Initial Capacity to 10, Maximum capacity to 100, Capacity Increment by 1, Statement Cache Type to LRU and Statement Cache size to 10 as shown in the below figure.

Initial Capacity:	<input type="text" value="10"/>	The number of physical connections to create when creating the connection pool. <a href="#">More Info...</a>
Maximum Capacity:	<input type="text" value="100"/>	The maximum number of physical connections that this connection pool can contain. <a href="#">More Info...</a>
Capacity Increment:	<input type="text" value="1"/>	The number of connections created when new connections are added to the connection pool. <a href="#">More Info...</a>
Statement Cache Type:	<input type="text" value="LRU"/>	The algorithm used for maintaining the prepared statements stored in the statement cache. <a href="#">More Info...</a>
Statement Cache Size:	<input type="text" value="10"/>	The number of prepared and callable statements stored in the cache. (This may increase server performance.) <a href="#">More Info...</a>

[Advanced](#)

Figure 47.

All Oracle Financial Services Analytical Applications Infrastructure v7.3 Servers must be shut down.

Oracle 11g service must be running.

## Deploy the EAR or WAR file

- If the WebServer is Tomcat then recreate and redeploy the WAR file (OFSAAI WAR file). (Refer to: *Tomcat WAR Files Creation and Tomcat WAR Files Deployment of the Oracle Financial Services Analytical Applications Infrastructure 7.3 Installation Manual*). Ensure that the previously deployed applications in Tomcat are removed before starting the redeployment. Start all OFSAAI servers. All services should be directly started in the server.
- If the WebServer is WebSphere recreate and redeploy the WAR file (OFSAAI WAR file). (Refer to: *WebSphere WAR Files Creation and WebSphere WAR Files Deployment of the Oracle Financial Services Analytical Applications Infrastructure 7.3 Installation Manual*). Ensure that the previously deployed applications in WebSphere are removed before starting the redeployment. Start all OFSAAI servers. All services should be directly started in the server.
- If the WebServer is WebLogic recreate and redeploy the WAR file (OFSAAI WAR file). (Refer to: *WebLogic WAR Files Creation and WebLogic WAR Files Deployment of the Oracle Financial Services Analytical Applications Infrastructure 7.3 Installation Manual*). Ensure that the previously deployed applications in WebLogic are removed before starting the redeployment. Start all OFSAAI servers. All services should be directly started in the server.
- Start all Oracle Financial Services Analytical Applications Infrastructure v7.3 Servers.

## NOTE

If you need assistance in starting the servers, then refer to *Starting Oracle Reveleus Servers* in the Installation Guide of Oracle Financial Services Analytical Applications Infrastructure 7.3. `.profile` should be executed before starting any activity from the console.



**Installation Manual**

**March 2015**

**Oracle Financial Services Profitability Management v6.1.1.0.0 Product**

**Oracle Corporation**

**World Headquarters**

**500 Oracle Parkway**

**Redwood Shores, CA 94065**

**U.S.A.**

**Worldwide Inquiries:**

**Phone: +1.650.506.7000**

**Fax: +1.650.506.7200**

Oracle and Java are registered trademarks of Oracle and/or its affiliates. Other names may be trademarks of their respective owners.

Intel and Intel Xeon are trademarks or registered trademarks of Intel Corporation. All SPARC trademarks are used under license and are trademarks or registered trademarks of SPARC International, Inc. AMD, Opteron, the AMD logo, and the AMD Opteron logo are trademarks or registered trademarks of Advanced Micro Devices. UNIX is a registered trademark of The Open Group.

This software and related documentation are provided under a license agreement containing restrictions on use and disclosure and are protected by intellectual property laws. Except as expressly permitted in your license agreement or allowed by law, you may not use, copy, reproduce, translate, broadcast, modify, license, transmit, distribute, exhibit, perform, publish, or display any part, in any form, or by any means. Reverse engineering, disassembly, or decompilation of this software, unless required by law for interoperability, is prohibited.

The information contained herein is subject to change without notice and is not warranted to be error-free. If you find any errors, please report them to us in writing.

If this is software or related documentation that is delivered to the U.S. Government or anyone licensing it on behalf of the U.S. Government, the following notice is applicable:

U.S. GOVERNMENT END USERS: Oracle programs, including any operating system, integrated software, any programs installed on the hardware, and/or documentation, delivered to U.S. Government end users are "commercial computer software" pursuant to the applicable Federal Acquisition Regulation and agency-specific supplemental regulations. As such, use, duplication, disclosure, modification, and adaptation of the programs, including any operating system, integrated software, any programs installed on the hardware, and/or documentation, shall be subject to license terms and license restrictions applicable to the programs. No other rights are granted to the U.S. Government.

This software or hardware is developed for general use in a variety of information management applications. It is not developed or intended for use in any inherently dangerous applications, including applications that may create a risk of personal injury. If you use this software or hardware in dangerous applications, then you shall be responsible to take all appropriate fail-safe, backup, redundancy, and other measures to ensure its safe use. Oracle Corporation and its affiliates disclaim any liability for any damages caused by use of this software or hardware in dangerous applications.

This software or hardware and documentation may provide access to or information on content, products, and services from third parties. Oracle Corporation and its affiliates are not responsible for and expressly disclaim all warranties of any kind with respect to third-party content, products, and services. Oracle Corporation and its affiliates will not be responsible for any loss, costs, or damages incurred due to your access to or use of third-party content, products, or services.