

**Oracle® Fusion Middleware**  
Installation Guide for Oracle Data Integrator  
11g Release 1 (11.1.1.7.0)  
**E16453-06**

November 2013

Oracle Fusion Middleware Installation Guide for Oracle Data Integrator 11g Release 1 (11.1.1.7.0)

E16453-06

Copyright © 2013, Oracle and/or its affiliates. All rights reserved.

Primary Author: Kevin Hwang

This software and related documentation are provided under a license agreement containing restrictions on use and disclosure and are protected by intellectual property laws. Except as expressly permitted in your license agreement or allowed by law, you may not use, copy, reproduce, translate, broadcast, modify, license, transmit, distribute, exhibit, perform, publish, or display any part, in any form, or by any means. Reverse engineering, disassembly, or decompilation of this software, unless required by law for interoperability, is prohibited.

The information contained herein is subject to change without notice and is not warranted to be error-free. If you find any errors, please report them to us in writing.

If this is software or related documentation that is delivered to the U.S. Government or anyone licensing it on behalf of the U.S. Government, the following notice is applicable:

U.S. GOVERNMENT RIGHTS Programs, software, databases, and related documentation and technical data delivered to U.S. Government customers are "commercial computer software" or "commercial technical data" pursuant to the applicable Federal Acquisition Regulation and agency-specific supplemental regulations. As such, the use, duplication, disclosure, modification, and adaptation shall be subject to the restrictions and license terms set forth in the applicable Government contract, and, to the extent applicable by the terms of the Government contract, the additional rights set forth in FAR 52.227-19, Commercial Computer Software License (December 2007). Oracle USA, Inc., 500 Oracle Parkway, Redwood City, CA 94065.

This software or hardware is developed for general use in a variety of information management applications. It is not developed or intended for use in any inherently dangerous applications, including applications that may create a risk of personal injury. If you use this software or hardware in dangerous applications, then you shall be responsible to take all appropriate fail-safe, backup, redundancy, and other measures to ensure its safe use. Oracle Corporation and its affiliates disclaim any liability for any damages caused by use of this software or hardware in dangerous applications.

Oracle is a registered trademark of Oracle Corporation and/or its affiliates. Other names may be trademarks of their respective owners.

This software and documentation may provide access to or information on content, products, and services from third parties. Oracle Corporation and its affiliates are not responsible for and expressly disclaim all warranties of any kind with respect to third-party content, products, and services. Oracle Corporation and its affiliates will not be responsible for any loss, costs, or damages incurred due to your access to or use of third-party content, products, or services.

---

---

# Contents

<b>Preface</b> .....	vii
Audience .....	vii
Documentation Accessibility .....	vii
Related Documents .....	viii
Conventions .....	ix
<b>1 Installation Overview for Oracle Data Integrator</b>	
1.1 Oracle Data Integrator Applications .....	1-1
1.2 ODI Installation Types .....	1-2
1.3 Installation Roadmap .....	1-3
1.4 Topology Summary of ODI .....	1-6
1.4.1 Contents of the 11g Installation Directory .....	1-7
1.4.2 Scripts and Tools .....	1-7
<b>2 Installing Oracle Data Integrator</b>	
2.1 Verifying Your System and Network Environment .....	2-1
2.2 Installing a Database and Creating the ODI Database Schemas .....	2-2
2.2.1 Installing and Configuring a Database .....	2-2
2.2.2 Using RCU to Create the Database Schema .....	2-2
2.3 Installing an Application Server and Creating the Middleware Home .....	2-5
2.4 Installing Oracle Data Integrator .....	2-5
2.4.1 Obtaining the Installer .....	2-5
2.4.2 Starting the Installer .....	2-5
2.4.3 Following the Installation Instructions .....	2-6
2.4.4 Configuring a WebLogic Server Domain for Java EE Installations .....	2-8
2.5 Verifying the ODI Installation .....	2-8
2.5.1 Reviewing Installation Log Files .....	2-8
2.5.2 Checking the Directory Structure .....	2-8
<b>3 Configuring Oracle Data Integrator</b>	
3.1 Manual Steps for Configuring ODI Studio, Repositories, and the Standalone Agent .....	3-1
3.1.1 Adding Additional Drivers and Open Tools to the Standalone Agent and ODI Studio .....	3-1
3.1.2 Using ODI Studio to Manually Create and Connect to the Repositories .....	3-2
3.1.3 Changing the Language Used in ODI Studio .....	3-2

3.1.4	Manually Configuring and Starting the Standalone Agent .....	3-3
3.1.4.1	Manually Configuring the Standalone Agent .....	3-3
3.1.4.2	Manually Starting the Standalone Agent .....	3-5
3.2	Configuring Java EE Components .....	3-6
3.2.1	Configuring a WebLogic Domain or WebSphere Cell .....	3-6
3.2.1.1	Starting the Configuration Wizard .....	3-7
3.2.1.2	Configuring Your ODI Domain .....	3-7
3.2.2	Starting the Servers .....	3-12
3.2.2.1	Starting Node Manager .....	3-12
3.2.2.2	Starting the Administration Server .....	3-13
3.2.2.3	Starting the Managed Server .....	3-14
3.2.3	Adding Credential Store Entries .....	3-16
3.2.3.1	Adding Credential Store Entries for the Java EE Agent .....	3-16
3.2.3.2	Adding Credential Store Entries for the Oracle Enterprise Manager .....	3-17
3.2.3.3	Adding Credential Store Entries for IBM WebSphere Server .....	3-18
3.2.4	Declaring the Java EE Agent in Topology .....	3-18
3.2.5	Generating Java EE Agent Template .....	3-19
3.2.6	Configuring ODI Console Connections .....	3-19
3.2.7	Configuring Oracle Fusion Middleware Control with ODI Plugin .....	3-20
3.3	Integrating ODI with Oracle Access Manager 11g .....	3-22

## 4 Deinstalling Oracle Data Integrator

4.1	Performing Pre-Deinstallation Tasks .....	4-1
4.1.1	Stopping Oracle Fusion Middleware .....	4-1
4.1.2	Stopping a Standalone Agent .....	4-1
4.1.3	Removing the Oracle Data Integrator Schemas .....	4-2
4.2	Deinstalling Oracle Data Integrator .....	4-3
4.2.1	Starting the Deinstaller .....	4-3
4.2.2	Removing the ODI Home .....	4-3
4.2.3	Removing the Oracle Common Home .....	4-4
4.2.4	Manually Removing Your Oracle Home Directories .....	4-4
4.2.5	Removing the Program Groups (Windows Only) .....	4-5
4.3	Uninstalling Your Application Server .....	4-5
4.3.1	Removing Oracle WebLogic Server .....	4-5
4.3.2	Removing IBM WebSphere .....	4-5
4.4	Reinstallation .....	4-6

## A Installation Screens for Oracle Data Integrator

A.1	Flowchart of the Oracle Data Integrator Installation Screens .....	A-1
A.2	Descriptions of the Oracle Data Integrator Installation Screens .....	A-2
A.2.1	Welcome .....	A-3
A.2.2	Install Software Updates .....	A-4
A.2.3	Select Installation Type .....	A-5
A.2.4	Prerequisite Checks .....	A-6
A.2.5	Specify Installation Location .....	A-6
A.2.6	Application Server .....	A-8
A.2.7	Repository Configuration .....	A-9

A.2.8	Master Repository.....	A-10
A.2.9	Supervisor User Details .....	A-12
A.2.10	Specify Work Repository Details.....	A-13
A.2.11	Specify Agent Details .....	A-13
A.2.12	Installation Summary .....	A-14
A.2.13	Installation Progress .....	A-15
A.2.14	Configuration Progress .....	A-16
A.2.15	Installation Completed.....	A-17
<b>B</b>	<b>Deinstallation Screens for Oracle Data Integrator</b>	
B.1	Welcome .....	B-1
B.2	Deinstall Oracle Home .....	B-2
B.3	Deinstallation Progress .....	B-3
B.4	Deinstallation Complete .....	B-4
<b>C</b>	<b>Silent Installation and Deinstallation</b>	
C.1	Understanding Silent Installation and Deinstallation .....	C-1
C.2	Using the Oracle Data Integrator Response Files.....	C-1
C.3	Oracle Data Integrator Installation Response File Parameters.....	C-3
C.4	Oracle Data Integrator Deinstallation Response File Parameters.....	C-5
<b>D</b>	<b>Oracle Data Integrator Companion CD</b>	
D.1	Oracle Data Integrator Companion Disk Components.....	D-1
D.2	Manual Installation and Configuration Steps.....	D-2
D.2.1	Standalone Agent.....	D-2
D.2.2	ODI Studio and XML Reference .....	D-3
D.2.3	Demonstration Environment .....	D-3
D.3	Installing the Java Standalone Agent on iSeries.....	D-4
<b>E</b>	<b>Creating Repositories with Oracle Data Integrator Studio</b>	
E.1	Introduction to Oracle Data Integrator Repositories .....	E-1
E.2	Creating Repository Storage Spaces.....	E-2
E.3	Creating the Master Repository .....	E-4
E.4	Connecting to the Master Repository .....	E-6
E.5	Creating a Work Repository .....	E-7
E.6	Connecting to a Work Repository .....	E-8
<b>F</b>	<b>Customizing the ODI Credential Map Name</b>	
F.1	What is Stored in Credential Store? .....	F-1
F.2	Modifying the Credential Map Name .....	F-1
F.3	Updating WLST Scripts for Credential Map Creation .....	F-2
<b>G</b>	<b>OPMN Configuration for Standalone Agent</b>	
G.1	Adding a Standalone Agent to OPMN .....	G-1

G.2	Stopping the Agent.....	G-4
G.3	Starting the Agent and Agent Components.....	G-5
G.4	Determining the Status of Oracle HTTP Server .....	G-5
G.5	Deleting the Agent.....	G-5
G.6	Updating the Agent Setting Information .....	G-5

## **H Troubleshooting**

H.1	General Troubleshooting Tips .....	H-1
H.2	Installation and Configuration Log Files.....	H-2
H.2.1	Installation Log Files .....	H-2
H.2.2	Configuration Log Files .....	H-3
H.3	Keeping Track of Your JRE Location .....	H-3
H.4	ODI Client and Repository Compatibility .....	H-4
H.5	Need More Help? .....	H-4

---

---

# Preface

This guide provides information and instructions for installing, configuring, and troubleshooting a new instance of the latest version of Oracle Data Integrator 11g Release 1 (11.1.1.x.0).

If you are an existing Oracle Data Integrator user, your path to obtain the most recent version of the software will depend on the version of your existing software. For more information, refer to the *Oracle Fusion Middleware Download, Installation, and Configuration Readme Files* for the steps you need to take to update or upgrade your existing software.

The following topics are covered in this preface:

- [Audience](#)
- [Documentation Accessibility](#)
- [Related Documents](#)
- [Conventions](#)

## Audience

This guide is intended for administrators who are responsible for installing and configuring components of Oracle Data Integrator. It is assumed that readers are comfortable running some system administration operations, such as creating users and groups, adding users to groups, and installing operating system patches on the computer where your products will be installed. Users in UNIX systems who are installing need `root` access to run some scripts.

## Documentation Accessibility

For information about Oracle's commitment to accessibility, visit the Oracle Accessibility Program website at <http://www.oracle.com/pls/topic/lookup?ctx=acc&id=docacc>.

### Access to Oracle Support

Oracle customers have access to electronic support through My Oracle Support. For information, visit <http://www.oracle.com/pls/topic/lookup?ctx=acc&id=info> or visit <http://www.oracle.com/pls/topic/lookup?ctx=acc&id=trs> if you are hearing impaired.

## Related Documents

For important information about Oracle Fusion Middleware products, see the following manuals:

- *Oracle Fusion Middleware Installation Planning Guide*  
This book contains useful information you should read before installing any Oracle Fusion Middleware product.
- *Oracle Fusion Middleware Concepts*  
This book introduces the common terms and concepts in an Oracle Fusion Middleware environment.
- *Oracle Fusion Middleware Administrator's Guide*  
This book contains information for managing your Oracle Fusion Middleware environment after installation and configuration is complete.

For important information about updating or upgrading your existing Oracle Data Integrator software to the latest version, see the following manuals:

- *Oracle Fusion Middleware Patching Guide*  
This book provides information for updating your existing 11g version of Oracle Data Integrator to the latest available version.
- *Oracle Fusion Middleware Upgrade Guide for Oracle Data Integrator*  
This book provides information for upgrading your existing 10g version of Oracle Data Integrator to the latest available version.

For more information about related Oracle Data Integrator products and services, see the following manuals:

- *Oracle Fusion Middleware Developer's Guide for Oracle Data Integrator*  
This book provides guidelines for developers interested in using Oracle Data Integrator for integration projects.
- *Oracle Fusion Middleware Connectivity and Knowledge Modules Guide for Oracle Data Integrator*  
This document describes Oracle Data Integrator Knowledge Modules and technologies and how to use them in integration projects.
- *Oracle Fusion Middleware Knowledge Module Developer's Guide for Oracle Data Integrator*  
This book describes how to develop your own Knowledge Modules for Oracle Data Integrator.
- *Oracle Fusion Middleware Application Adapters Guide for Oracle Data Integrator*  
This book describes Oracle Data Integrator Application Adapters and how to use them in ODI integration projects.
- *Oracle Fusion Middleware Installation Guide for Oracle Data Profiling and Oracle Data Quality for ODI*  
This guide provides Oracle Data Profiling and Data Quality for Oracle Data Integrator installation information including pre-installation requirements and troubleshooting.
- *Oracle Fusion Middleware Upgrade Guide for Oracle Data Profiling and Oracle Data Quality for ODI*



# Conventions

The following text conventions are used in this document:

<b>Convention</b>	<b>Meaning</b>
<b>boldface</b>	Boldface type indicates graphical user interface elements associated with an action, or terms defined in text or the glossary.
<i>italic</i>	Italic type indicates book titles, emphasis, or placeholder variables for which you supply particular values.
monospace	Monospace type indicates commands within a paragraph, URLs, code in examples, text that appears on the screen, or text that you enter.



---

---

# Installation Overview for Oracle Data Integrator

This chapter provides an overview of the Oracle Data Integrator (ODI) installation process including a description of the installable components, pre and post-installation tasks, and process flow.

The chapter includes the following topics:

- [Section 1.1, "Oracle Data Integrator Applications"](#)
- [Section 1.2, "ODI Installation Types"](#)
- [Section 1.3, "Installation Roadmap"](#)
- [Section 1.4, "Topology Summary of ODI"](#)

## 1.1 Oracle Data Integrator Applications

Oracle Data Integrator includes the following applications:

- **Oracle Data Integrator Repository**

The Oracle Data Integrator Repository is composed of a Master Repository and one or more Work Repositories. Objects developed or configured through the user interfaces are stored in these repositories.

- **Oracle Data Integrator Studio**

Oracle Data Integrator Studio is used for administering the infrastructure (security and topology), reverse-engineering the metadata, developing projects, scheduling, operating and monitoring executions.

- **Oracle Data Integrator Standalone Agent**

The Standalone Agent is the run-time component of Oracle Data Integrator that executes the integration flows. It runs in a Java Virtual Machine and can be deployed where needed to run the flows.

---

---

**Note:** The ODI Standalone Agent includes command line scripts for managing scenarios and sessions and encoding passwords. For more information see [Section 1.4.2](#).

---

---

- **Java EE Components**

These components can be deployed in an application server. These include:

- Management Pack for Oracle Data Integrator

The Management Pack for Oracle Data Integrator leverages Oracle Enterprise Manager Cloud Control best-in-class application performance management, service level management and configuration management capabilities. It provides a centralized management solution for Oracle Data Integrator Enterprise Edition.

- Oracle Enterprise Manager Plugin for ODI and the Oracle Enterprise Manager Fusion Middleware Control

Oracle Enterprise Manager Fusion Middleware Control, with the Oracle Enterprise Manager plugin for ODI, can be used to monitor ODI resources (agents, repositories, ODI Console instances) and see their status, activities and notification. You must have both the Oracle Enterprise Manager Fusion Middleware Control and the Oracle Enterprise Manager Plugin for ODI deployed to monitor the ODI infrastructure.

- Public (SDK) Web Services

ODI comes with several run-time web services. These include the "Public Web Service" and the "Agent Web Service".

- \* The Public Web Service is used for web service calls that do not involve an agent (listing contexts). The Public Web Service connects to the repository to retrieve a list of context and scenarios. This web service is deployed on a Java EE application server.
- \* The Agent Web Service offers operations (or interface) for managing scenarios, loading plans, sessions and other functionality. Note that this web service is built into the Java EE or Standalone Agent.

- Oracle Data Integrator Console

This component is a web interface for run-time, monitoring and metadata browsing operations. It also contains an extension integrated into the Fusion Middleware Control. Oracle Data Integrator components can be monitored as a domain using this extension.

- Java EE Agent

Java EE Agent is the Java EE version of the run-time component of Oracle Data Integrator. The Java EE agent provides the same features as the standalone agent, but can also benefit from the features of an application server.

## 1.2 ODI Installation Types

The Oracle Data Integrator installer provides the following installation options; you can select any combination of these options during the installation:

- **Developer Installation**

This installation includes the ODI Studio and the Oracle Data Integrator Software Development Kit (SDK).

Note that this installation does not include the Standalone Agent or the scripts for managing sessions or scenarios from the command line. If a Standalone Agent will be needed, select **Standalone Installation** in addition to **Developer Installation**.

- **Standalone Installation**

This installation includes an Oracle Data Integrator standalone agent.

- **Java EE Installation**

This installation includes the Java EE agent, Oracle Data Integrator Console, and Public Web Services.

See [Section 2.4, "Installing Oracle Data Integrator"](#) for more information about installing the different ODI installation types.

## 1.3 Installation Roadmap

The process of installing and configuring Oracle Data Integrator includes these high-level tasks:

1. Preparing your system environment for installation
2. Creating schemas for applications
3. Installing an Application Server and Oracle Fusion Middleware
4. Installing Oracle Data Integrator
5. Configuring Oracle Data Integrator
6. Performing Postinstallation Configuration
7. Verifying the Configuration

[Figure 1–1](#) shows these steps in the installation process.

**Figure 1–1 Roadmap for Installing and Configuring Oracle Data Integrator**

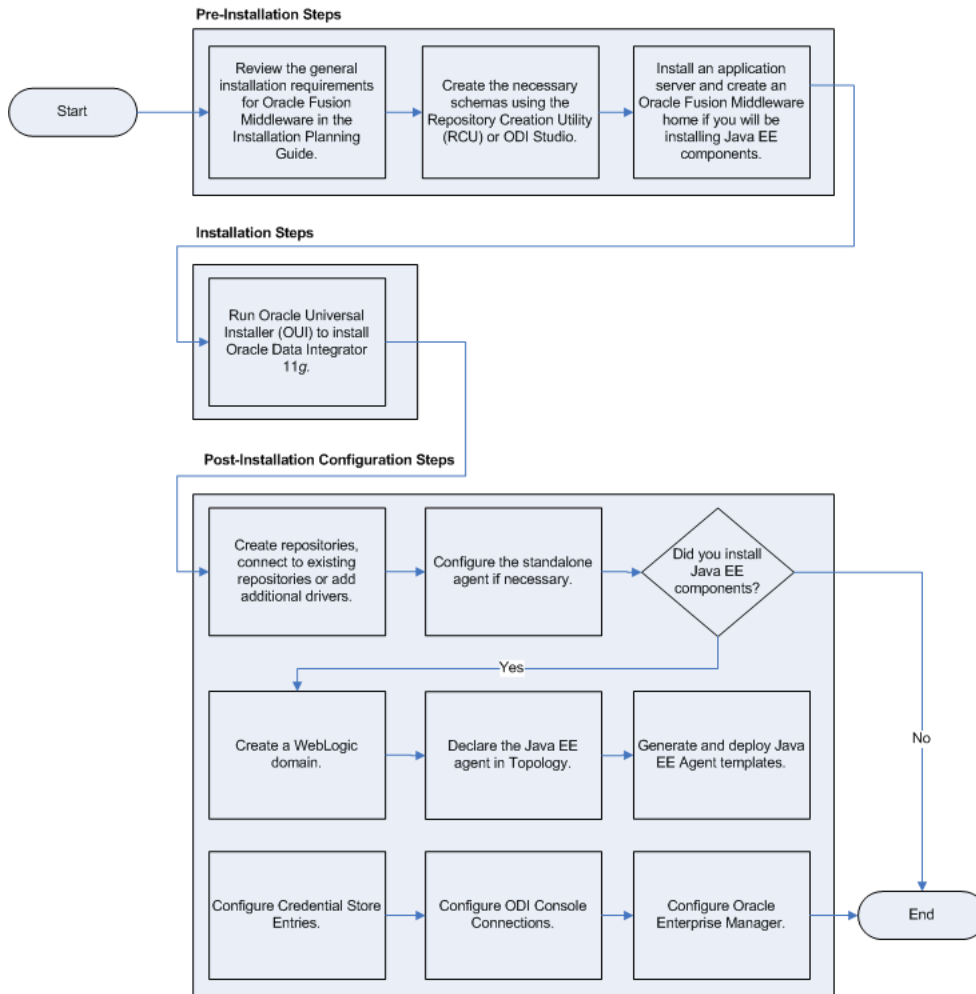


Table 1–1 describes the high-level tasks for installing and configuring Oracle Data Integrator. The table also provides information on where to get more details about each task.

**Table 1–1 Tasks in the Oracle Data Integrator Installation Procedure**

Task	Description	More Information
Complete the installation planning requirements	Prior to installation you must prepare your system environment for installation. Review the general installation requirements for Oracle Fusion Middleware, as well as any specific configuration requirements for Oracle Data Integrator.	<a href="#">Section 2.1, "Verifying Your System and Network Environment"</a>  For Oracle Data Integrator-specific information, see the <i>Oracle Fusion Middleware Developer's Guide for Oracle Data Integrator</i> .
Create the necessary schemas using the Repository Creation Utility (RCU) or ODI Studio.	The Oracle Repository Creation Utility (RCU) allows you to create and load a Master Repository and a Work Repository in a single database schema.  The Oracle Data Integrator Studio can also be used to manually create the repository after installation.	<a href="#">Section 2.2, "Installing a Database and Creating the ODI Database Schemas"</a>  Note that RCU supports only the Oracle, Microsoft SQL Server and DB2 technologies. RCU only supports a single schema containing both the Master Repository and one Work Repository. Other technologies and configurations are supported by manually creating the repositories using the Oracle Data Integrator Studio after the installation phase.  For more information, see <a href="#">Appendix E, "Creating Repositories with Oracle Data Integrator Studio"</a>
Install an application server and create an Oracle Fusion Middleware home if you will be installing the ODI Java EE components.	Installing Oracle WebLogic Server or the IBM WebSphere application server is not required to run ODI. The application server and Middleware home directory are prerequisites for using the Java EE components.	Oracle WebLogic Server installation instructions are provided in <a href="#">Section 2.3, "Installing an Application Server and Creating the Middleware Home"</a> ; detailed information is available in <i>Oracle Fusion Middleware Installation Guide for Oracle WebLogic Server</i> .  IBM WebSphere installation instructions are provided in <i>Oracle Fusion Middleware Third-Party Application Server Guide</i> .
Run Oracle Universal Installer (OUI) to install Oracle Data Integrator 11g.	The Oracle Universal Installer automates many of the ODI installation and configuration tasks.	<a href="#">Section 2.4, "Installing Oracle Data Integrator"</a>
Perform any post installation steps for ODI Studio, repositories and standalone agent.	After installing ODI you may need to manually create repositories, connect to repositories or add additional drivers. Depending on your installation type, you may also need to manually configure the standalone agent.	<a href="#">Section 3.1, "Manual Steps for Configuring ODI Studio, Repositories, and the Standalone Agent"</a>
Deploy Java EE components (if applicable).	If you installed Java EE components you will need to declare the Java EE agent in Topology. You may also need to create a WebLogic domain or generate and deploy Java EE Agent templates.	<a href="#">Section 3.2, "Configuring Java EE Components"</a>
Perform any post-deployment configuration tasks for Java EE agent, Oracle Data Integrator Console, and Enterprise Manager (if applicable).	The Java EE Agent, Oracle Data Integrator Console and Enterprise Manager require manual post-deployment configuration tasks.	<a href="#">Section 3.2, "Configuring Java EE Components"</a>

## 1.4 Topology Summary of ODI

The installation topology of ODI will vary based on the components you choose to install and configure. The installation of ODI requires a Middleware home directory:

- If, for example, you choose to install only the Standalone Agent, which does not require an application server, then you must manually create the Middleware home (*MW\_HOME*) directory. Your ODI software will be installed inside this Middleware home.
- Of you choose to install Java EE components, then you must first install an application server. If you choose WebLogic Server, then the Middleware home is automatically created for you. If you use WebSphere as the application server, you must still create a separate Middleware home directory which will contain the your ODI installation.

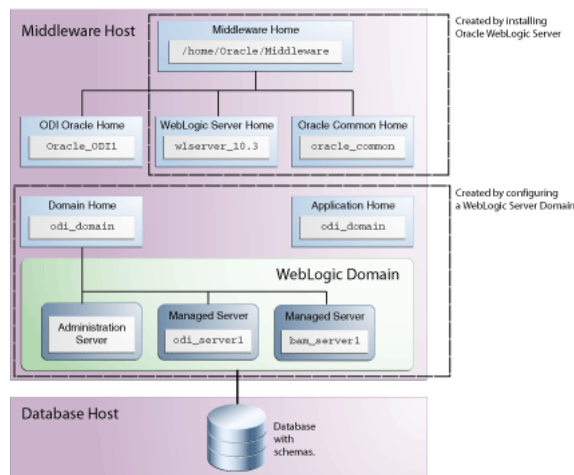
Installing WebLogic Server also creates the WebLogic Server home (*WL\_HOME*) directory and Oracle Common home (*oracle\_common*) directory, which contains the binary and library files required for Fusion Middleware Control and Java Required Files (JRF).

When you install Oracle Data Integrator, an ODI Oracle home directory for the suite (*ODI\_HOME*) is created under the Middleware home directory. The ODI Oracle home directory contains the binary and library files for Oracle Data Integrator.

When you configure your Java EE components and create an Oracle WebLogic Server domain, a Domain home directory (*DOMAIN\_HOME*) is created; this directory can reside anywhere on your system.

Figure 1–2 shows a typical ODI installation topology, with Java EE components configured in a domain and WebLogic Server as the application server. Note that the domain contains two Managed Servers: *odi\_server1* is the default Managed Server created during domain configuration for ODI, and *bam\_server1* is the default Managed Server created during domain configuration for Oracle BAM. It is common to have both of these in the same domain, as so it is illustrated here to show that other products can be configured in the same domain as ODI.

**Figure 1–2 Topology of an Oracle Data Integrator Installation with Oracle WebLogic Server**





## 1.4.1 Contents of the 11g Installation Directory

Table 1–2 provides a few of the important Oracle Data Integrator 11g installation directories and sub-directories. Note that the installation folders you see will vary depending on the components you have installed.

**Note:** See [Appendix D.1, "Oracle Data Integrator Companion Disk Components"](#) for the locations of additional program files and directories.

**Table 1–2** ODI 11g Installation Directory Contents

Directory	Description
/bin	This directory contains the Upgrade Assistant.
/cfgtoollogs	This directory contains configuration and installation log files.
/common	This directory contains the following important directories: <ul style="list-style-type: none"> <li>■ /bin (Configuration Wizard, pack and unpack, wlst, and other scripts for agent creation and credential mapping.)</li> <li>■ /templates/applications (Component template files for WebLogic Server domain creation or extension.)</li> <li>■ /templates/was (Component template files for IBM WebSphere cell creation or extension.)</li> </ul>
/odi_misc	This directory contains some core libraries shared by the Oracle Data Integrator components. Drivers shipped with the product are in this folder.
/oracledi	This directory contains the following important directories: <ul style="list-style-type: none"> <li>■ /agent (Oracle Data Integrator Standalone Agent.)</li> <li>■ /agent/bin (Command line scripts for managing the agent, scenarios and sessions. The scripts are listed in <a href="#">Section 1.4.2.</a>)</li> <li>■ /agent/drivers (drivers for the Oracle Data Integrator Standalone Agent.)</li> <li>■ /client (Oracle Data Integrator Studio)</li> <li>■ /xml-reference (Knowledge Modules, Topology and Security metadata export files.)</li> </ul>
/oracledi.common	This directory contains some of the libraries and files shared by Oracle Data Integrator components.
/oracledi.sdk	This directory contains the ODI Public API. Note that the libraries of this API are necessary for the run-time agent.
/oui	This directory contains a /bin directory, which in turns contains the ODI deinstaller.
/setup	This directory contains components that can be manually installed.

## 1.4.2 Scripts and Tools

Table 1–3 lists the scripts and tools provided in the `ODI_HOME/oracledi/agent/bin` directory. To launch a script from a command line, enter the name of the script to launch. Type `script_name -help` from the command line for the on-line help.

The extension for these scripts is `.bat` for Windows operating systems scripts and `.sh` for UNIX scripts.

**Table 1–3 Oracle Data Integrator Scripts and Tools**

<b>File</b>	<b>Description</b>
agent	Starts a standalone agent.
agent_agent_name	Starts the standalone agent <i>agent_name</i> . This is the agent that is automatically configured by the installer if you have selected this option.  Example: If you created an agent named <i>agt_007</i> , a file called <i>agent_agt_007</i> is created in this folder.
agentstop	Stops a standalone agent.
encode	Encodes a password.
getsessionstatusremote	Retrieves the status of session via an agent built-in web service.  This script is only available for UNIX operating systems. You must have <i>wget</i> version 1.12 or higher on your system.
odiparams	This configuration script contains the parameters for starting the other scripts. The parameters can be manually updated in the file.
odi_opmn_addagent	Add a standalone agent to OPMN.
odi_opmn_deleteagent	Removes a standalone agent from OPMN.
restartsession	Restarts a session.
startcmd	Starts an Oracle Data Integrator command.
startscen	Starts the execution of a scenario.
startscenremote	Starts a scenario on a remote agent on its web service.  This script is only available for UNIX operating systems. You must have <i>wget</i> version 1.12 or higher on your system.
restartloadplan	Restarts a load plan instance.
startloadplan	Starts a load plan.
stoploadplan	Stops a load plan instance execution.
stopsession	Stops a session execution.

---

---

# Installing Oracle Data Integrator

This chapter describes how to install and configure Oracle Data Integrator. Post-installation configuration parameters are also provided.

The following topics are covered:

- [Section 2.1, "Verifying Your System and Network Environment"](#)
- [Section 2.2, "Installing a Database and Creating the ODI Database Schemas"](#)
- [Section 2.3, "Installing an Application Server and Creating the Middleware Home"](#)
- [Section 2.4, "Installing Oracle Data Integrator"](#)
- [Section 2.5, "Verifying the ODI Installation"](#)

## 2.1 Verifying Your System and Network Environment

To verify that your system environment meets the minimum requirements for installation, refer to the following documents, available on Oracle Technology Network (OTN):

- [Oracle Fusion Middleware System Requirements and Specifications](#)

This document contains information related to hardware and software requirements, minimum disk space and memory requirements, database schema requirements, and required system libraries, packages, or patches.

If you are installing on a DHCP server, non-networked computer, or multihomed computer, there are additional configuration steps that are required. These steps are also available in the system requirements document in the "Oracle Fusion Middleware System Configuration Requirements" section.

If you are installing on a Windows operating system and want to install and configure Java Access Bridge for Section 508 Accessibility, read the "Installing and Configuring Java Access Bridge" section in this document.
- [Oracle Fusion Middleware Supported System Configurations](#)

This page contains various certification documents for current and previous product releases. The *System Requirements and Supported Platforms for Oracle Fusion Middleware 11gR1* document contains certification information related to supported 32-bit and 64-bit operating systems, databases, web servers, LDAP servers, adapters, IPv6, JDKs, and third-party products.
- [Oracle Fusion Middleware Interoperability and Compatibility Guide](#)

This document covers the compatibility and interoperability issues that may arise when installing or upgrading Oracle Fusion Middleware 11g products.

## 2.2 Installing a Database and Creating the ODI Database Schemas

This section provides a brief overview of using the Repository Creation Utility (RCU). For more information, for detailed information, see *Oracle Fusion Middleware Repository Creation Utility User's Guide*.

The following topics are covered:

- [Installing and Configuring a Database](#)
- [Using RCU to Create the Database Schema](#)

### 2.2.1 Installing and Configuring a Database

Oracle Data Integrator stores information in a repository that is stored in a database schema. The Repository Creation Utility (RCU) is able to create the schema and the repository in the database. RCU supports Oracle, Microsoft SQL Server and IBM DB2 databases and supports the installation of a Master Repository and Work Repositories into a single schema.

- The *System Requirements and Supported Platforms for Oracle Fusion Middleware 11gR1* document lists the databases that are certified for use with RCU and Oracle Fusion Middleware. This document is located on the Oracle Fusion Middleware Supported System Configurations page.
- Review the requirements for your specific database in the Oracle Fusion Middleware System Requirements and Specifications document to ensure that your database is properly configured before you run RCU.

You can also use ODI Studio to manually create repositories instead of using RCU. See [Appendix E, "Creating Repositories with Oracle Data Integrator Studio"](#).

---

---

**Caution:** Due to the intensive communication that exists between ODI components and the repositories, Oracle recommends that you co-locate the repositories and the other ODI components on the same LAN, and not on remote sites.

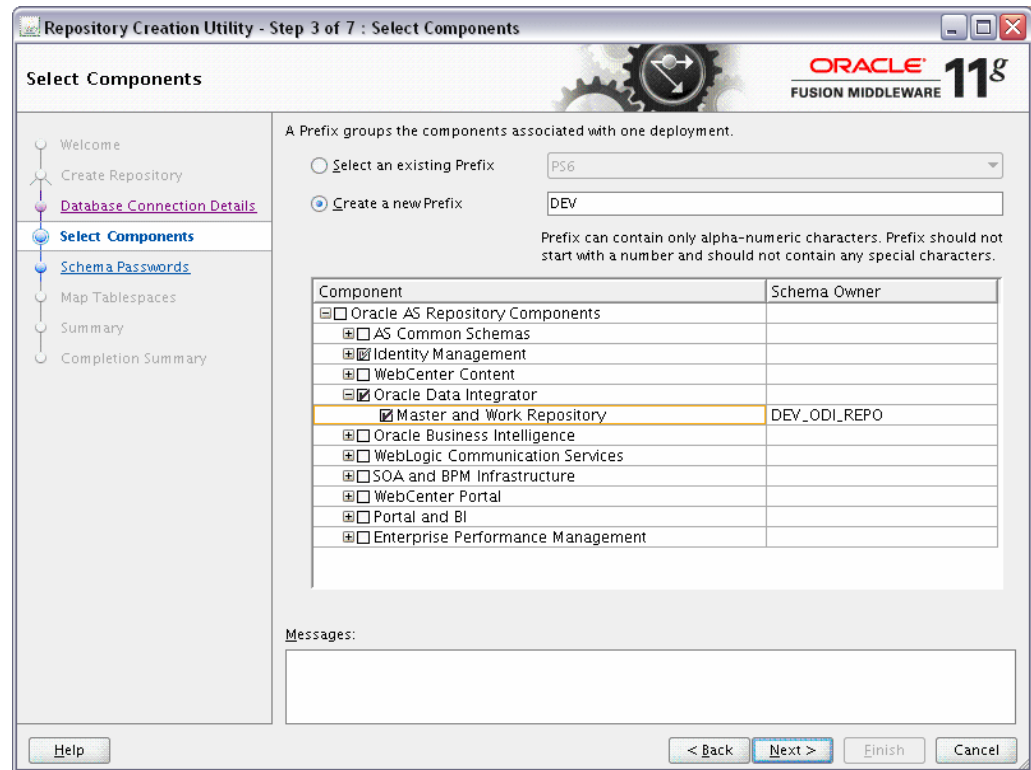
---

---

### 2.2.2 Using RCU to Create the Database Schema

Follow these instructions to create the schemas using RCU:

1. See "Obtaining RCU" in *Oracle Fusion Middleware Repository Creation Utility User's Guide* for instructions on how to obtain the latest version of RCU.
2. See "Starting RCU" in *Oracle Fusion Middleware Repository Creation Utility User's Guide* for instructions on how to start RCU.
3. Provide the required information on each of the screens as described in "Repository Creation Utility Screens" in the *Oracle Fusion Middleware Repository Creation Utility User's Guide*.
4. On the **Select Components** screen, select the components whose schemas you want to install. For Oracle Data Integrator, expand Oracle Data Integrator and select Master and Work Repository as shown in [Figure 2-1](#). The Select Components screen is described in detail in the *Oracle Fusion Middleware Repository Creation Utility User's Guide*.

**Figure 2–1 Repository Creation Utility Select Components Screen**

5. On the **Custom Variables** screen, provide the following information as described in [Table 2–1](#) and shown in [Figure 2–2](#):

**Table 2–1 RCU Custom Variables Screen Values**

Component Variable	Description
Master Repository ID	A specific ID for the new Master Repository. Master Repository ID values must be between 0 and 899. Default value is 001.
Supervisor Password	Password of the Supervisor user. You must confirm this password on the following line.
Work Repository Type	Specify how the Work Repository will be used: <ul style="list-style-type: none"> <li>Use <b>Development (D)</b> for creating a development repository. This type of repository allows management of design-time objects such as data models and projects (including interfaces, procedures, etc.) A development repository also includes the run-time objects (scenarios and sessions). This type of repository is suitable for development environments. D is the default work repository type.</li> <li>Use <b>Execution (E)</b> for creating an execution repository: This type of repository only includes run-time objects (scenarios, schedules and sessions). It allows launching and monitoring of data integration jobs in Operator Navigator. Such a repository cannot contain any design-time artifacts. Designer Navigator cannot be used with it. An execution repository is suitable for production environments.</li> </ul>
Work Repository ID	A specific ID for the new Work Repository. Default value is 001.

**Table 2-1 (Cont.) RCU Custom Variables Screen Values**

Component Variable	Description
Work Repository Name	A unique name for the Work Repository. Default is WORKREP.
Work Repository Password	Provide a password for the Work Repository.

**Note:** This version of Repository Creation Utility (RCU) does not perform extensive validation on the user entries of Repository ID and Repository Type.

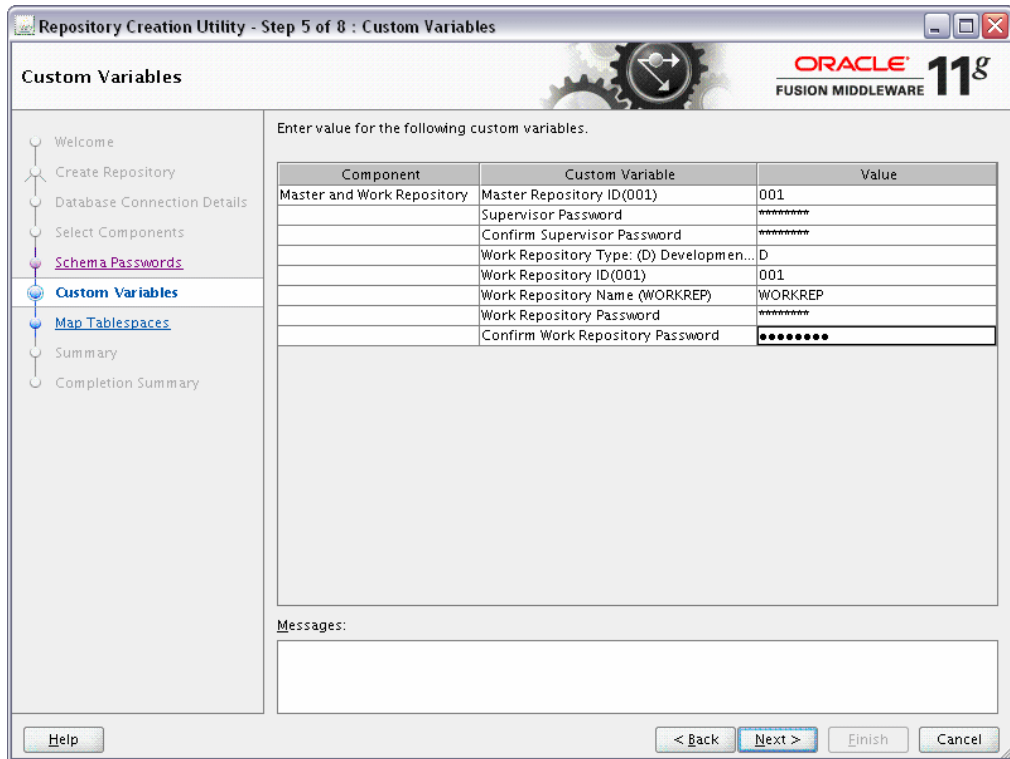
Master Repository ID values must be between 0 and 899 and Work Repository ID values must be between 0 and 899. Repository Type value must be either **D** (Development) or **E** Execution.

When incorrect values are entered for either of these, RCU fails during the repository creation process with the following error:

```
RCU-6135: Error while trying to execute Java action
```

If you receive this error, go back to the [RCU Custom Variables Screen for ODI](#) and provide the correct values.

**Figure 2-2 RCU Custom Variables Screen for ODI**



- Click **Next** to continue through the remaining screens as described in "Repository Creation Utility Screens" in the *Oracle Fusion Middleware Repository Creation Utility User's Guide*.

## 2.3 Installing an Application Server and Creating the Middleware Home

The Oracle Data Integrator Java EE components require an application server (either Oracle WebLogic Server or IBM WebSphere) and a Middleware home directory on your system. Note that you do not need to configure a domain (in the case of Oracle WebLogic Server) or a cell (in the case of IBM WebSphere) in order to install Oracle Data Integrator; you only need to install the application server and create the Middleware home directory.

Installing Oracle WebLogic Server automatically creates the Middleware home for you. For more information, see "Middleware Home and WebLogic Home Directories" in *Oracle Fusion Middleware Installation Planning Guide*. If you are installing Oracle WebLogic Server, see the following sections in *Oracle Fusion Middleware Installation Guide for Oracle WebLogic Server*:

- "Product Distribution" for instructions on how to download the latest version.
- "Running the Installation Program in Graphical Mode" for installation instructions.

If you are installing IBM WebSphere, you must create the Middleware home directory structure manually. The Middleware home has no dependency on the location of your IBM WebSphere installation. If you are installing IBM WebSphere, refer to "Installing and Configuring Oracle Fusion Middleware on IBM WebSphere" in *Oracle Fusion Middleware Third-Party Application Server Guide* for installation information.

## 2.4 Installing Oracle Data Integrator

This section contains information and instructions for installing Oracle Data Integrator:

- [Section 2.4.1, "Obtaining the Installer"](#)
- [Section 2.4.2, "Starting the Installer"](#)
- [Section 2.4.3, "Following the Installation Instructions"](#)

---

---

**Note:** If you are installing on a UNIX system for the first time, you may be asked to run the `ORACLE_HOME/oracleRoot.sh` script as root user to create all of the necessary installation directories.

---

---

### 2.4.1 Obtaining the Installer

Depending on your specific needs, there are multiple places where you can obtain Oracle Fusion Middleware software. For details, refer to the Oracle Fusion Middleware Download, Installation, and Configuration ReadMe Files page, where you can find the ReadMe file for your specific release.

Select one of the download locations and download "Oracle Data Integrator." This will be saved to your system as a .zip archive file.

After you download the archive file, unpack the archive file into a directory of your choice on the machine where you will be performing the installation.

### 2.4.2 Starting the Installer

To start the installer, go to the directory where you unpacked the archive file and switch to the `Disk1` directory.

On UNIX operating systems:

```
cd unpacked_archive_directory/Disk1
./runInstaller -jreLoc JRE_LOCATION
```

On Windows operating systems:

```
cd unpacked_archive_directory\Disk1
setup.exe -jreLoc JRE_LOCATION
```

The installer requires the full path to the location of a Java Runtime Environment (JRE) on your system, which must be specified using the `-jreLoc` parameter. If you installed Oracle WebLogic Server ([Section 2.3, "Installing an Application Server and Creating the Middleware Home"](#)), a JRE was installed on your system in the `jdk160_version` directory inside the Middleware home. You can use this location as the `JRE_LOCATION` to start the installer.

If you are using IBM WebSphere as your Application Server, you must provide the full path to a certified JRE installed on your system. Refer to the *System Requirements and Supported Platforms for Oracle Fusion Middleware 11gR1* document on the Oracle Fusion Middleware Supported System Configurations page for certified JRE versions.

For information about the log files that are created during installation, refer to [Section H.2, "Installation and Configuration Log Files"](#).

### 2.4.3 Following the Installation Instructions

Follow the instructions in [Table 2–2](#) to install and configure Oracle Data Integrator.

If you need additional help with any of the installation screens, refer to [Appendix A, "Installation Screens for Oracle Data Integrator"](#) or click **Help** to access the online help.

**Table 2–2 Oracle Data Integrator Installation Flow**

Screen	When This Screen Appears	Description
<a href="#">Welcome</a>	Always	This screen provides a link to the latest product release notes. Review this information before you begin the installation.
<a href="#">Install Software Updates</a>	Always	Select the method you want to use for obtaining software updates, or select <b>Skip Software Updates</b> if you do not want to get updates.  If updates are found, the installer will automatically apply them at this point. Some updates will require the installer to automatically be restarted; if this happens, the <a href="#">Install Software Updates</a> screen will not be seen the next time.
<a href="#">Select Installation Type</a>	Always	Select the type of installation you want to perform.  For more information about the installation types, see <a href="#">Section 1.2, "ODI Installation Types"</a> .
<a href="#">Prerequisite Checks</a>	Always	The installer checks for system prerequisites such as operating system certification, recommended operating system packages, and physical memory. If there is a problem, a short error message appears and you will have an opportunity to correct the issue before continuing the installation.



**Table 2–2 (Cont.) Oracle Data Integrator Installation Flow**

Screen	When This Screen Appears	Description
<a href="#">Specify Installation Location</a>	Always	<p>This screen allows you to specify the absolute path for the Oracle home location (referred to later in this guide as <i>ODI_HOME</i>).</p> <p><b>NOTE</b> - The specified Oracle home directory must be an empty directory or an existing Oracle Data Integrator home location.</p> <p>If you selected <b>Java EE Installation</b> on the <a href="#">Select Installation Type</a> screen, you will also be asked to provide the location of your Middleware home.</p>
<a href="#">Application Server</a>	Only if <b>Java EE Installation</b> is selected on the <a href="#">Select Installation Type</a> screen.	Select the application server you want to use for your Java EE components.
<a href="#">Repository Configuration</a>	Always	<p>This screen allows you to select whether you want to configure the Oracle Data Integrator Studio and the Standalone Agent with an existing Master and Work Repository pair.</p> <p><b>NOTE</b> - If you choose to <b>Skip Repository Configuration</b>, you will have to configure the Oracle Data Integrator Studio and Standalone Agent manually as described in <a href="#">Section 3.1, "Manual Steps for Configuring ODI Studio, Repositories, and the Standalone Agent"</a>.</p>
<a href="#">Master Repository</a>	Only if <b>Configure with existing Master and Work Repositories</b> is selected on the <a href="#">Repository Configuration</a> screen.	This screen allows you to specify the connection string to the database that hosts the Master Repository and the database user name and password
<a href="#">Supervisor User Details</a>	Only if <b>Configure with existing Master and Work Repositories</b> is selected on the <a href="#">Repository Configuration</a> screen.	This screen allows you to specify the password for the Supervisor user. This is the same password specified on the <b>Custom Variables</b> screen when you ran RCU to create the schemas. See <a href="#">Section 2.2.2, "Using RCU to Create the Database Schema"</a> .
<a href="#">Specify Work Repository Details</a>	Only if <b>Configure with existing Master and Work Repositories</b> is selected on the <a href="#">Repository Configuration</a> screen.	This screen allows you to select an existing Work Repository from the list.
<a href="#">Specify Agent Details</a>	Only if <b>Standalone Agent</b> is selected on the <a href="#">Select Installation Type</a> screen and <b>Configure with existing Master and Work Repositories</b> is selected on the <a href="#">Repository Configuration</a> screen.	<p>Enter the Agent Name and Agent Port number. The name cannot be the same as another agent already declared in the topology.</p> <p><b>NOTE</b> - Agent Name can be 5 to 30 characters long, must begin with an alphabetic character, and may contain only alphanumeric characters and underscores (_).</p>
<a href="#">Installation Summary</a>	Always	<p>This screen allows you to verify the installation options you selected.</p> <p>Click <b>Install</b> to begin the installation.</p>

**Table 2–2 (Cont.) Oracle Data Integrator Installation Flow**

Screen	When This Screen Appears	Description
<a href="#">Installation Progress</a>	Always	This screen allows you to see the progress of the installation.
<a href="#">Configuration Progress</a>	Only if <b>Developer Installation</b> or <b>Standalone Agent</b> are selected on the <a href="#">Select Installation Type</a> screen.	This screen allows you to see the progress of any post-installation configuration tasks you may have selected.
<a href="#">Installation Completed</a>	Always	Click <b>Save</b> to save your configuration information to a file. This information includes port numbers, installation directories, disk space usage, URLs, and component names which you may need to access at a later time.  After saving your configuration information, click <b>Finish</b> to dismiss the installer.

## 2.4.4 Configuring a WebLogic Server Domain for Java EE Installations

If you selected **Java EE Installation** on the [Select Installation Type](#) screen, you must do one of the following before you can use your components:

- If you are using WebLogic Server as your application server, refer to [Section 3.2.1, "Configuring a WebLogic Domain or WebSphere Cell"](#) to configure a WebLogic Server domain.
- If you are using IBM WebSphere as your application server, refer to "Configure Your Oracle Fusion Middleware Components in a New IBM WebSphere Cell" in *Oracle Fusion Middleware Third-Party Application Server Guide* to configure a WebSphere cell.

## 2.5 Verifying the ODI Installation

After you complete the installation, you can verify it by successfully completing the following tasks:

- [Reviewing Installation Log Files](#)
- [Checking the Directory Structure](#)

### 2.5.1 Reviewing Installation Log Files

Review the contents of the installation log files to make sure that no problems were encountered. For a description of the log files and where to find them, see [Section H.2, "Installation and Configuration Log Files"](#).

### 2.5.2 Checking the Directory Structure

The contents of your ODI installation vary based on the options you selected during the installation. The primary directories are listed in [Section 1.4.1, "Contents of the 11g Installation Directory"](#). Review the directories to ensure that all of the components were installed correctly.

---

---

## Configuring Oracle Data Integrator

After the installation is complete, you may need to configure one or more of the following components before using certain features of Oracle Data Integrator:

- [Section 3.1, "Manual Steps for Configuring ODI Studio, Repositories, and the Standalone Agent"](#)
- [Section 3.2, "Configuring Java EE Components"](#)
- [Section 3.3, "Integrating ODI with Oracle Access Manager 11g"](#)

### 3.1 Manual Steps for Configuring ODI Studio, Repositories, and the Standalone Agent

Depending on the specifics of your environment, the following manual steps may be required for specific component installations:

- [Section 3.1.1, "Adding Additional Drivers and Open Tools to the Standalone Agent and ODI Studio"](#)
- [Section 3.1.2, "Using ODI Studio to Manually Create and Connect to the Repositories"](#)
- [Section 3.1.3, "Changing the Language Used in ODI Studio"](#)
- [Section 3.1.4, "Manually Configuring and Starting the Standalone Agent"](#)

#### 3.1.1 Adding Additional Drivers and Open Tools to the Standalone Agent and ODI Studio

ODI installation includes a set of DataDirect drivers for the following technologies: Oracle, Hypersonic SQL, SQL Server, Sybase ASE, and DB2 UDB. If additional drivers and open tools are needed, they must be added to the Standalone Agent and the ODI Studio:

- On UNIX/Linux operating systems, go to the following directory (not created until after ODI Studio is launched for the first time):

```
$HOME/.odi/oracledi/userlib
```

This folder contains the `additional_path.txt` file that allows you to declare additional files or folders outside of the `/userlib` directory from which the ODI Studio acquires its libraries and drivers. In the `additional_path.txt` file, add the following path for the Standalone Agent:

```
ODI_HOME/oracledi/agent/drivers/
```

- On Windows operating systems, go to the following directory (not created until after ODI Studio is launched for the first time):

```
%APPDATA%\odi\oracledi\userlib
```

%APPDATA% is the Windows Application Data directory for the user (usually C:\Documents and Settings\user\Application Data). Add the following path to the `additional_path.txt` file for the Standalone Agent:

```
ODI_HOME\oracledi\agent\drivers
```

---

---

**Note:** The ODI 11g installation does not include JDBC drivers for the PostgreSQL database. To use PostgreSQL, you must download `postgresql-8.4-701.jdbc4.jar` from <http://jdbc.postgresql.org/download.html> and then follow the instructions above.

---

---

### 3.1.2 Using ODI Studio to Manually Create and Connect to the Repositories

If repository creation was not possible through RCU, due to unsupported technology or repository topology, use ODI Studio to create and configure repositories.

If the repository connections were not configured during installation, use ODI Studio to create the connections to the repositories.

For detailed instructions see [Appendix E, "Creating Repositories with Oracle Data Integrator Studio"](#).

### 3.1.3 Changing the Language Used in ODI Studio

You can change the language that is used by ODI Studio by editing the `odi.conf` file as described below:

---

---

**Note:** Make sure you have installed the appropriate system fonts to support your language change.

---

---

1. Open the `odi.conf` file for editing. The file is located in the following directory:

On UNIX operating systems:

```
ODI_HOME/oracledi/client/odi/bin
```

On Windows operating systems:

```
ODI_HOME\oracledi\client\odi\bin
```

2. Add the following lines to the `odi.conf` file (Note that this example shows the modification for US English):

```
AddVMOption -Duser.language=en
AddVMOption -Duser.region=US
```

---

---

**Note:** If you are changing the language to Japanese, use

```
AddVMOption -Duser.language=ja_JP.usjis
```

instead of

```
AddVMOption -Duser.language=ja_JP.utf8
```

to avoid issues with truncating text.

---

---

### 3.1.4 Manually Configuring and Starting the Standalone Agent

During the Standalone Agent installation, the agent is pre-configured to connect to the existing repository. If the **Skip Repository Configuration** option was selected on the [Repository Configuration](#) screen, then the agent is installed but not configured.

---

---

**See Also:** [Appendix G, "OPMN Configuration for Standalone Agent"](#).

---

---

This section contains instructions for:

- [Section 3.1.4.1, "Manually Configuring the Standalone Agent"](#)
- [Section 3.1.4.2, "Manually Starting the Standalone Agent"](#)

#### 3.1.4.1 Manually Configuring the Standalone Agent

To manually configure the Standalone Agent:

1. Connect to the Master Repository and define a physical agent in the topology for the standalone agent, with the following information:
  - **Name** - Name of the physical agent.
  - **Host** - Name of the host where the standalone agent will be started.
  - **Port** - Port on this host where the standalone agent will be started. Provide a port number between 1024 and 65535 that is not currently being used by any other Oracle home. This port defaults to 20910.
  - **Protocol** - Incoming listening protocol for the agent. Valid values are `http` or `https`.
  - **Web Application Context:** `oraclediagent` (This parameter cannot be changed for a standalone agent.)

---

---

**See Also:** For detailed instruction on declaring an agent in the topology, refer to "Creating a Physical Agent" in *Oracle Fusion Middleware Developer's Guide for Oracle Data Integrator*.

---

---

2. Configure the agent manually by editing the `odiparams.bat/sh` file to point to the correct repository. The `odiparams` file is pre-configured if you installed your standalone agent using Oracle Universal Installer and selected to configure a repository connection during installation. See [Table 3-1](#) for the list of these parameters.

**Table 3–1 Repository Connection Information**

Parameter	Description
ODI_MASTER_DRIVER	JDBC driver used to connect the Master Repository.
ODI_MASTER_URL	JDBC URL used to connect the Master Repository.
ODI_MASTER_USER	Database account used to connect the Master Repository.
ODI_MASTER_ENCODED_PASS	Database account password. The password must be encoded with the following command: On UNIX operating systems: <code>encode.sh password</code> On Windows operating systems: <code>encode.bat password</code>
ODI_SECU_WORK_REP	Name of the Work Repository to connect to. This Work Repository is the default repository into which the scenarios are started.
ODI_SUPERVISOR	Name of an ODI Supervisor user. This Supervisor user is used by the agent to connect the Master Repository. The Supervisor user name is case-sensitive.
ODI_SUPERVISOR_ENCODED_PASS	The password of the ODI_SUPERVISOR. The password must be encoded with the following command: On UNIX operating systems: <code>encode.sh password</code> On Windows operating systems: <code>encode.bat password</code>
ODI_USER	Name of an ODI user used to start scenarios. This user's credentials are used when starting a scenario from a command line.
ODI_ENCODED_PASS	The password of the ODI_USER.
ODI_CONNECTION_RETRY_COUNT	The number of retries to establish the connection in the event that a repository connection fails. If set to 0, no retry will be performed. Default is 10.  <b>NOTE:</b> The <code>RETRY</code> parameters allow the agent to continue sessions if the repository fails and is temporarily unavailable. This scenario applies primarily to Oracle RAC configurations.
ODI_CONNECTION_RETRY_DELAY	Time in milliseconds between repository connection retries. Default is 1000.

Table 3–1 lists the parameters if HTTPS is specified as the incoming listening protocol for the agent. All passwords must be encoded with the following command:

On UNIX operating systems:

```
encode.sh password
```

On Windows operating systems:

```
encode.bat password
```

**Table 3–2 HTTPS Repository Connection Information**

Parameter	Description
ODI_KEYSTORE_ENCODED_PASS	The keystore password. This value is mandatory.
ODI_KEY_ENCODED_PASS	The key password. This value is optional.
ODI_TRUSTSTORE_ENCODED_PASS	The truststore password. This value is optional.

Additionally, `-Djavax.net.ssl.keyStore`, `-Djavax.net.ssl.keyStoreType`, `-Djavax.net.ssl.trustStore` and `-Djavax.net.ssl.trustStoreType` may be configured by using the `ODI_JAVA_OPTIONS` variable.

The following example shows a modified `odiparams.bat/sh` file:

```
ODI_MASTER_DRIVER=oracle.jdbc.driver.OracleDriver
ODI_MASTER_URL=jdbc:oracle:thin:@ours:1521:ORA9
ODI_MASTER_USER=ODI_11G
ODI_MASTER_ENCODED_PASS=gxfpqkz074jeaCpL4XSEFzxoJ8E0p
ODI_SECU_WORK_REP=WORKREP
ODI_SUPERVISOR=SUPERVISOR
ODI_SUPERVISOR_ENCODED_PASS=fJya.vR5kvNcu9TtV,jVZEt
```

---

**See Also:** For more information on how to work with a standalone agent, a Java EE agent and how to handle load balancing, see "Managing Agents" in the *Oracle Fusion Middleware Developer's Guide for Oracle Data Integrator*.

---

### 3.1.4.2 Manually Starting the Standalone Agent

Once the standalone agent has been defined in Topology, it can be started and used to execute scenarios on predefined schedules or on demand.

To launch a standalone agent:

1. Change directory to the `/agent/bin` directory of the Oracle Data Integrator Agent.
2. Enter the following command to start the agent.

On UNIX operating systems:

```
./agent.sh
```

On Windows operating systems:

```
agent.bat
```

Table 3–3 lists the different parameters that allow the agent to be configured.

**Table 3–3 Agent Configuration Parameters**

Parameters	Description
<code>-PORT=port</code>	Port on which the agent is listening. Default value is <b>20910</b> . This port should exactly match the port specified in the physical agent definition in the topology.

**Table 3–3 (Cont.) Agent Configuration Parameters**

Parameters	Description
<code>-NAME=agent_name</code>	This is the name of the physical agent used. This name should match the name of the physical agent as defined in the topology. If this parameter is not specified, the agent starts with the default name <b>OracleDIAgent</b> .
<code>-JMXPORT=jmx_port</code>	JMX agent port number. The agent listens on this port for JMX request to provide its metrics. Default value is the listening port + 1000. For example, if <code>-PORT=20910</code> then <code>-JMXPORT=21910</code>
<code>-PROTOCOL=protocol</code>	Listening protocol for the agent. Specify <code>http</code> or <code>https</code> . The default is <code>http</code> .

The parameters are prefixed by the hyphen or dash (-) character and the possible values are preceded by the equals sign (=) character. When entering the command, consider the operating system specific syntax of the delimiters.

For example, on a UNIX operating system, the following command launches the standalone agent declared in the repository as `agent_001` on the port 20300 using HTTP as the listening protocol.

```
./agent.sh -PORT=20300 -NAME=agent_001 -PROTOCOL=http
```

On a Windows operating system, it is necessary to "delimit" the command arguments containing the equals sign (=) character or spaces by using double quotes. For example:

```
agent.bat "-PORT=20300" "-NAME=agent_001" "-PROTOCOL=http"
```

## 3.2 Configuring Java EE Components

This section provides configuration steps for Java EE Agent, Oracle Data Integrator Console and Oracle Enterprise Manager.

- [Section 3.2.1, "Configuring a WebLogic Domain or WebSphere Cell"](#)
- [Section 3.2.2, "Starting the Servers"](#)
- [Section 3.2.3, "Adding Credential Store Entries"](#)
- [Section 3.2.4, "Declaring the Java EE Agent in Topology"](#)
- [Section 3.2.5, "Generating Java EE Agent Template"](#)
- [Section 3.2.6, "Configuring ODI Console Connections"](#)
- [Section 3.2.7, "Configuring Oracle Fusion Middleware Control with ODI Plugin"](#)

### 3.2.1 Configuring a WebLogic Domain or WebSphere Cell

In order to use your Java EE components on IBM WebSphere, you must create and configure a WebSphere cell. See "Managing Oracle Data Integrator on IBM WebSphere" and "Configure Your Oracle Fusion Middleware Components in a New IBM WebSphere Cell" in *Oracle Fusion Middleware Third-Party Application Server Guide* for important information and instructions.



In order to use your Java EE components on WebLogic Server, you must create a WebLogic Server domain and then configure Managed Servers in that domain. The Oracle Fusion Middleware Configuration Wizard can be used to accomplish these tasks.

---

---

**Note:** If ODI will be used in a clustered or high availability configuration, see "High Availability for Oracle Data Integrator" in the *Oracle Fusion Middleware High Availability Guide* for additional configuration information.

---

---

Follow the instructions in this section to configure a WebLogic Server domain:

- [Section 3.2.1.1, "Starting the Configuration Wizard"](#)
- [Section 3.2.1.2, "Configuring Your ODI Domain"](#)

### 3.2.1.1 Starting the Configuration Wizard

The Configuration Wizard is located in the `common/bin` directory in your `ODI_HOME` directory.

Start the Configuration Wizard for WebLogic Server by running the `ODI_HOME/common/bin/config.sh` (on UNIX operating systems) or `ODI_HOME\common\bin\config.cmd` (on Windows operating systems).

To create a log file for your configuration session, see the instructions in [Section H.2.2, "Configuration Log Files"](#).

### 3.2.1.2 Configuring Your ODI Domain

After the Configuration Wizard is started, provide the required information on the screen as described in *Oracle Fusion Middleware Creating Domains Using the Configuration Wizard*.

This section contains important information for some of the screens during the domain configuration process:

- [Selecting Components on the Select Domain Source Screen](#)
- [Verifying the Listen Port of your ODI Managed Server](#)

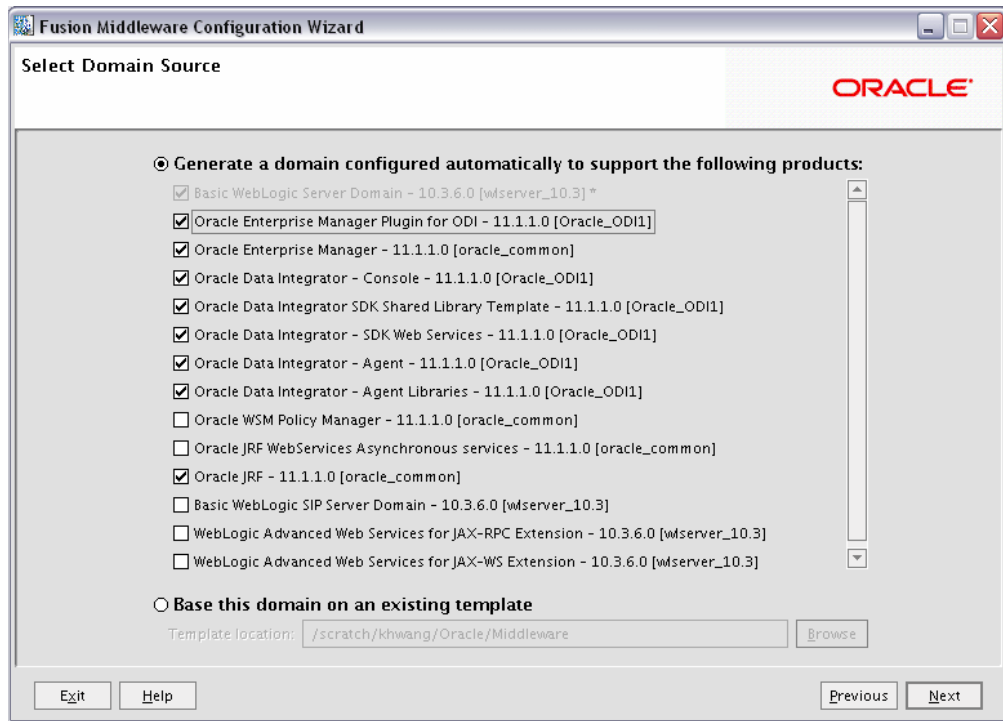
Make sure you follow the instructions carefully to successfully configure your domain for ODI.

#### Selecting Components on the Select Domain Source Screen

The **Select Domain Source** screen shown in [Figure 3–1](#) lists all components that are available for configuration (the products are all from the same Middleware home). In this example, ODI has been installed in its own Middleware home so only ODI-specific products are shown.

You may also choose to **Extend an Existing Domain** with Oracle Data Integrator components. When you extend an existing domain, only those products which have not already been configured in the domain will be available.

**Figure 3–1 Configuration Wizard Select Domain Source Screen with ODI Components**



Some components depend on other components to also be present. The Configuration Wizard automatically takes care of all dependencies; if you select a component then all of its dependencies are also automatically selected (Table 3–4).

**Table 3–4 ODI Components and Dependencies**

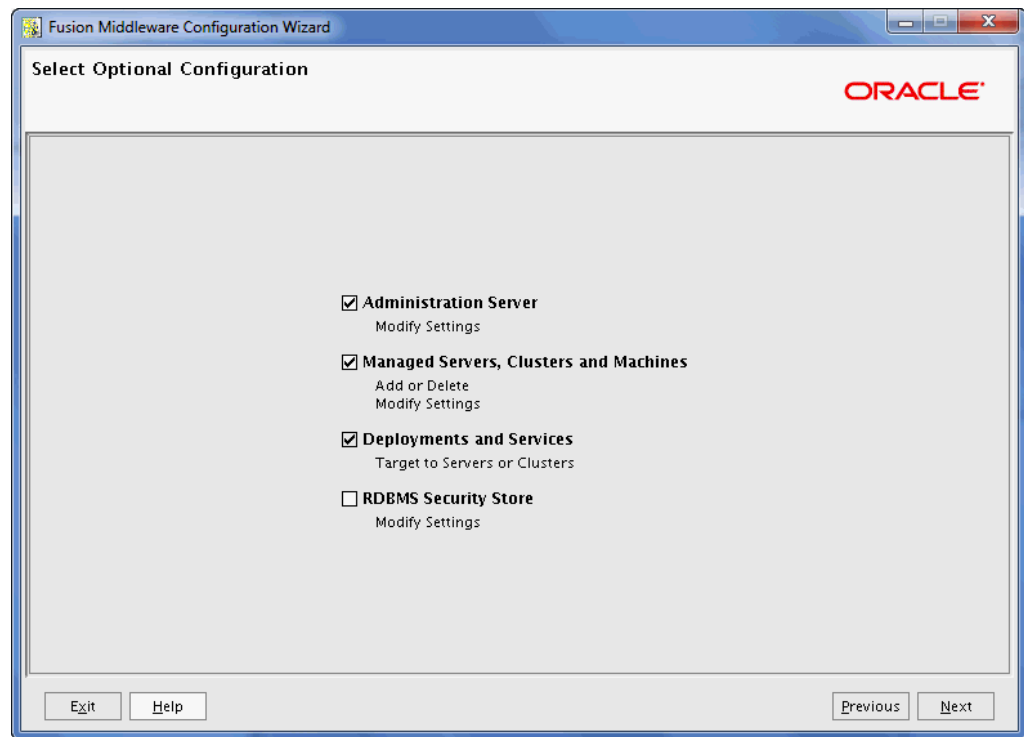
Component	Dependency
Oracle Enterprise Manager Plugin for ODI	Oracle Enterprise Manager Oracle JRF
Oracle Enterprise Manager	Oracle JRF
Oracle Data Integrator Console	Oracle Data Integrator SDK Shared Library Template Oracle JRF
Oracle Data Integrator SDK Shared Library Template	None <b>NOTE:</b> The version for the template is 11.1.1.0. The template version does not change for patchset releases.
Oracle Data Integrator - SDK Web Services	Oracle JRF
Oracle Data Integrator - Agent	Oracle Data Integrator - Agent Libraries Oracle JRF
Oracle Data Integrator - Agent Libraries	Oracle JRF

**Selecting Optional Configuration Options**

Some configuration options require you to select items on the **Select Optional Configuration** screen. You should select the **Administration Server, Managed**

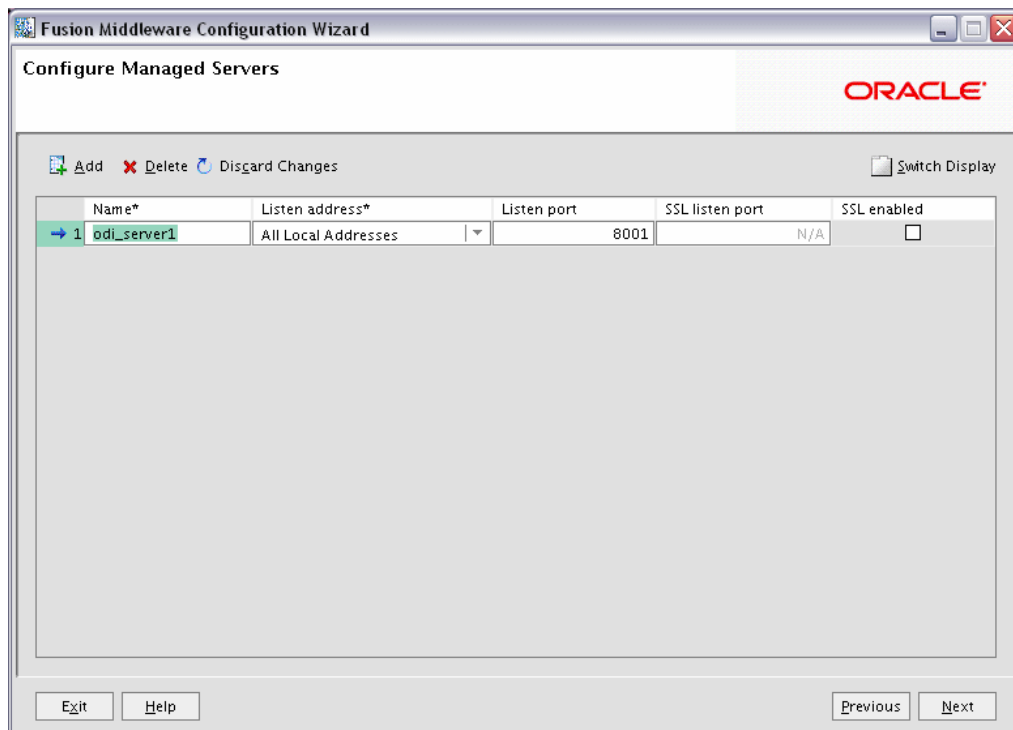
**Servers, Clusters, and Machines**, and **Deployments and Services** options, as shown in [Figure 3-2](#).

**Figure 3-2** *Select Optional Configuration Screen*



### Verifying the Listen Port of your ODI Managed Server

You must verify that the ODI Managed Server in your domain is configured correctly to work with the Oracle Data Integrator Java EE components, as shown in [Figure 3-3](#).

**Figure 3–3 ODI Managed Server Configuration**

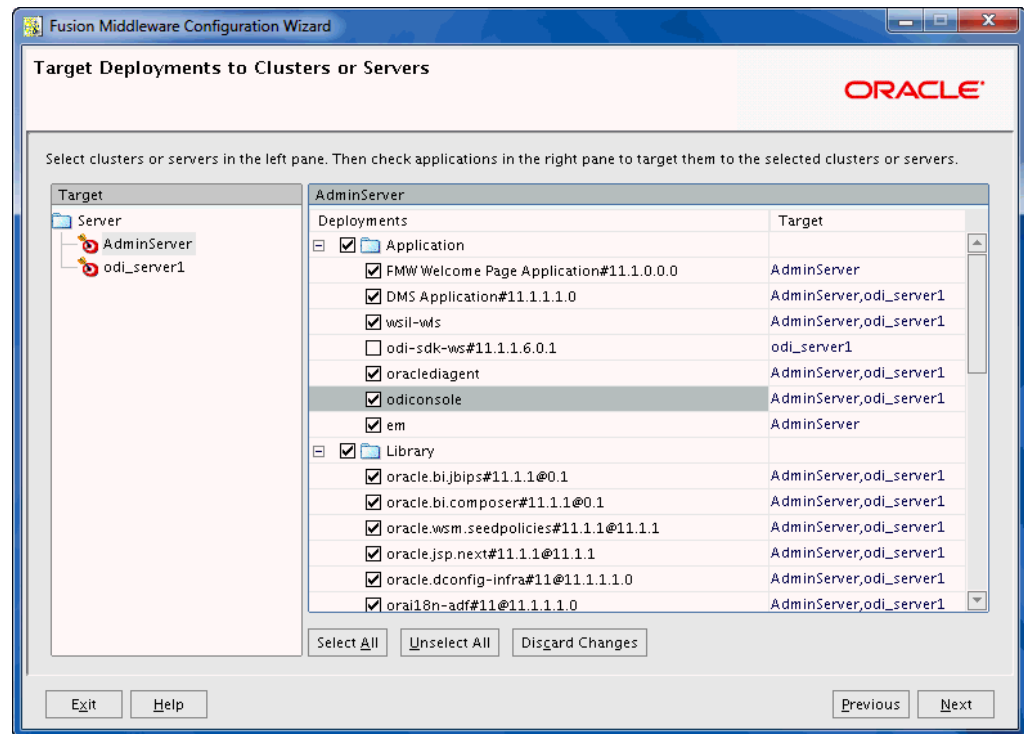
To get to this screen, you must first select **Managed Server, Clusters, and Machines** on the **Select Optional Configuration** screen.

If you plan to use Oracle Enterprise Manager console to manage your ODI domain, verify that the ODI Managed Server is using the default listening port of 8001. Listening ports other than 8001 will not load correctly from the Enterprise Manager Console.

#### **Deploying the odiconsole and oraclediagent to the Administration Server**

On the **Target Deployments to Clusters or Servers** screen, make sure **Admin Server** is selected in the Target pane, then select **odiconsole** and **oraclediagent** in the AdminServer pane on the right (Figure 3–4).

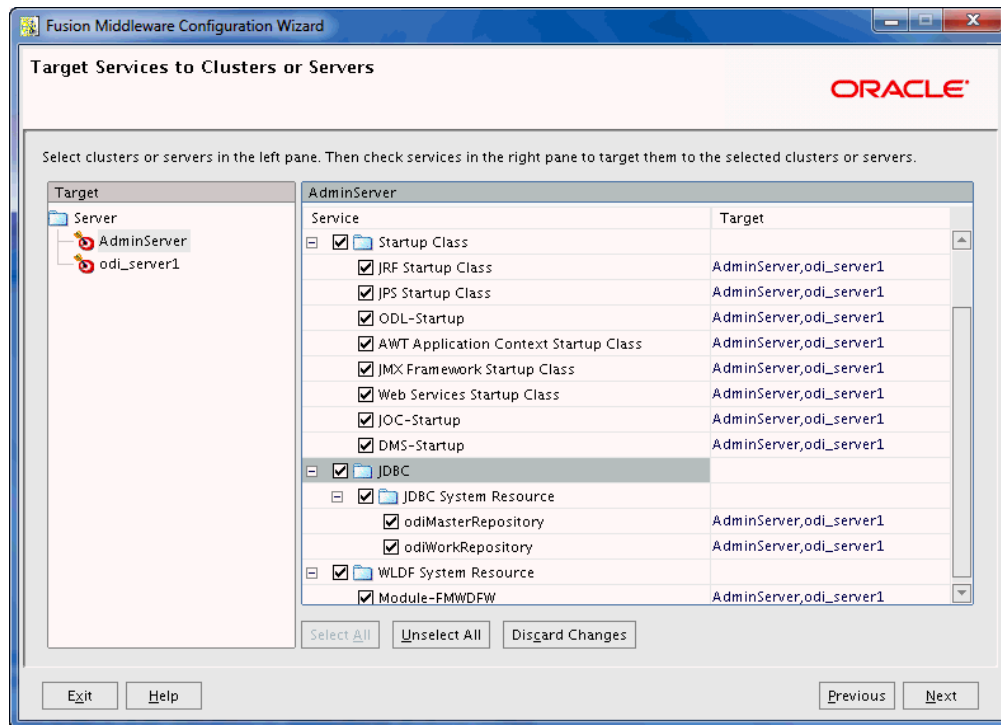
Figure 3–4 ODI Deployment Configuration



By default, product applications are automatically target to the Managed Server or the cluster to which the Managed Server is assigned. This screen is used target applications to additional servers or clusters.

### Targeting JDBC Services on the Administration Server

On the **Target Services to Clusters or Servers** screen, make sure **Admin Server** is selected in the **Target** pane, then select **JDBC** in the **AdminServer** pane on the right, making sure that **odiMasterRepository** and **odiWorkRepository** are also both selected. (Figure 3–5).

**Figure 3–5 ODI Services Configuration**

By default, product services are automatically target to the Managed Server or the cluster to which the Managed Server is assigned. This screen is used target services to additional servers or clusters.

### Creating the Domain

When you reach the **Configuration Summary** screen, verify that the domain configuration details on this screen are correct, then click **Create** to create your domain.

## 3.2.2 Starting the Servers

To start the servers in your IBM WebSphere cell, refer to "Start the IBM WebSphere Servers" in *Oracle Fusion Middleware Third-Party Application Server Guide* for instructions.

To start the servers in your WebLogic Server domain, follow the instructions in this section:

- [Section 3.2.2.1, "Starting Node Manager"](#)
- [Section 3.2.2.2, "Starting the Administration Server"](#)
- [Section 3.2.2.3, "Starting the Managed Server"](#)

### 3.2.2.1 Starting Node Manager

Node Manager is a WebLogic Server utility that enables you to start, shut down, and restart Administration Server and Managed Server instances from a remote location. Although Node Manager is optional, it is recommended if your WebLogic Server environment hosts applications with high availability requirements.

A Node Manager process is not associated with a specific WebLogic domain but with a machine. You can use the same Node Manager process to control server instances in any WebLogic Server domain, as long as the server instances reside on the same machine as the Node Manager process. Node Manager must run on each computer that hosts WebLogic Server instances—whether Administration Server or Managed Server—that you want to control with Node Manager.

Start Node Manager running the following script:

- On UNIX operating systems:

```
WL_HOME/server/bin/startNodeManager.sh
```

- On Windows operating systems:

```
WL_HOME\server\bin\startNodeManager.cmd
```

Replace *WL\_HOME* with the full path to your WebLogic Server home directory. More information about Node Manager can be found in *Oracle Fusion Middleware Node Manager Administrator's Guide for Oracle WebLogic Server*.

### 3.2.2.2 Starting the Administration Server

To begin managing your domain, start the Administration Server. To start an Administration Server that you have created, invoke the following:

- On UNIX operating systems:

```
DOMAIN_HOME/bin/startWebLogic.sh
```

- On Windows operating systems:

```
DOMAIN_HOME\bin\startWebLogic.cmd
```

Replace *DOMAIN\_HOME* with the full path to the directory where you created the domain. The default location is *MW\_HOME\user\_projects\domains\DOMAIN\_NAME*.

On Windows operating systems, the Configuration Wizard creates a shortcut on the Start menu to start the Administration Server that you created (for example, **User Projects > DOMAIN\_NAME > Start Admin Server for WebLogic Domain**).

If the server prompts you to enter a username and password, enter the name of a WebLogic Server user who has permission to start servers. For more information, see "Provide User Credentials to Start and Stop Servers" in *Oracle Fusion Middleware Managing Server Startup and Shutdown for Oracle WebLogic Server*.

---

**Note:** In a development environment, it is usually sufficient to start an Administration Server and deploy your applications directly on the Administration Server. In a production environment, you typically create Managed Servers to run applications.

---

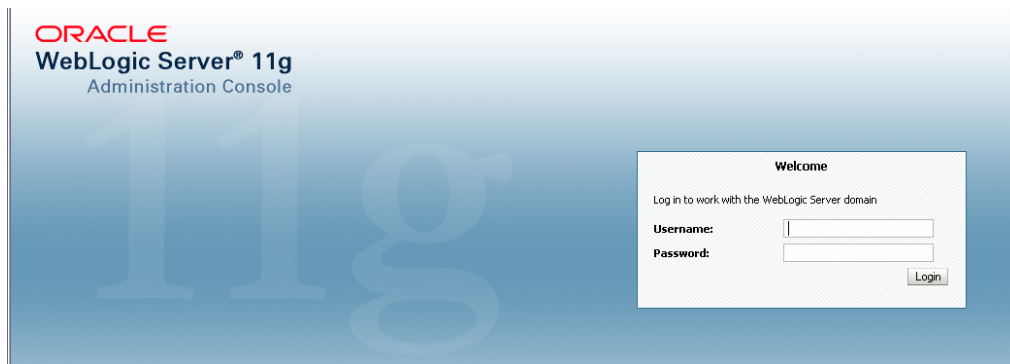
For more information on the various methods you can use to start the Administration Server, see "Starting and Stopping Servers" in *Oracle Fusion Middleware Managing Server Startup and Shutdown for Oracle WebLogic Server*.

To access the Administration Server Console, use the following URL:

```
http://administration_server_host:administration_server_port/console
```

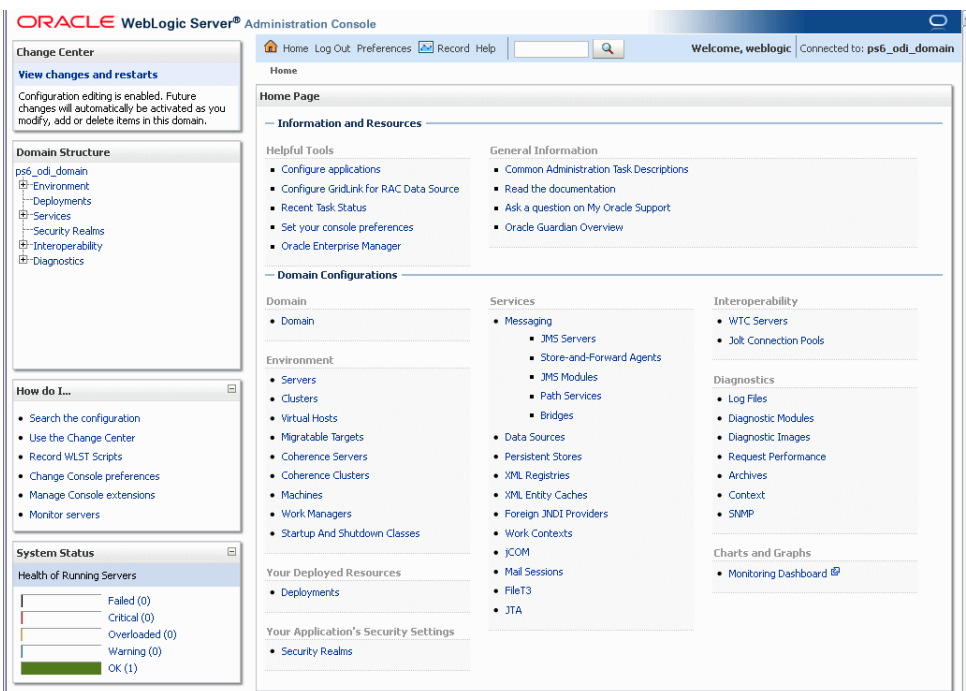
Provide the Administration Server login credentials when you see the following (Figure 3-6):

**Figure 3-6 Administration Console Login Screen**



After you log in, you should see something similar to Figure 3-7:

**Figure 3-7 Administration Server Console**



If you configured your Administration Server to accept SSL connection, use the following URL to access the Administration Server console in secure mode:

`https://administration_server_host:secure_administration_server_port/console`

### 3.2.2.3 Starting the Managed Server

To start the ODI Managed Server, run the following command:

- On UNIX operating systems:

`DOMAIN_HOME/bin/startManagedWebLogic.sh managed_server_name`





### 3.2.3 Adding Credential Store Entries

The Oracle Data Integrator user names and passwords required by the Java EE components to connect to the repositories are not stored in ODI Configuration files. This information is stored in the Application Server credential store. When they need to authenticate to the repository, the ODI Java EE components refer to credential store entries, identified by a map named by default `oracle.odi.credmap` and a key.

---

**CAUTION:** Modifications to the credential store entries are only required in the following situations:

- When the ODI Console is deployed in one domain and the ODI Agent is deployed in a different domain.
- When the ODI Console is deployed on one Managed Server (for example, `ms1`) and the ODI Agent is deployed on a different Managed Server (for example, `ms2`), and both Managed Servers are part of the same domain.

If neither case applies, then credential store entries are not required.

---

This section provides instructions for creating credential store entries as follows:

- [Section 3.2.3.1, "Adding Credential Store Entries for the Java EE Agent"](#)
- [Section 3.2.3.2, "Adding Credential Store Entries for the Oracle Enterprise Manager"](#)
- [Section 3.2.3.3, "Adding Credential Store Entries for IBM WebSphere Server"](#)

#### 3.2.3.1 Adding Credential Store Entries for the Java EE Agent

The Java EE agent requires a single key storing the login and password for a user that will be used to connect to the repositories. The key is the **Supervisor Key** value provided when creating the agent (this key is `SUPERVISOR` in the default agent template) and the user and password values must be a valid user name and password pair for a user with Supervisor privileges.

For example, if you use the default template and have created a repository with a `SUPERVISOR` user, you should create a key using the following WLST command:

1. Make sure the Administration Server is up and running.
2. Navigate to the `ODI_HOME/common/bin` directory.

Note that you must use WLST from this directory when using Oracle Data Integrator. The default WLST script provided with the Oracle WebLogic Server will not work. For more information on using WLST commands, see *Oracle Fusion Middleware WebLogic Scripting Tool Command Reference*.

3. Launch `wlst`.
  - On UNIX operating systems:
 

```
./wlst.sh
```
  - On Windows operating systems:
 

```
wlst.cmd
```

4. Execute the following WLST command substituting your user names and passwords:

```
connect('weblogic','welcome1','t3://localhost:7001')
createCred(map="oracle.odi.credmap", key="SUPERVISOR", user="SUPERVISOR",
password="supervisor1", desc="Key for Supervisor")
disconnect()
```

## 5. Restart the Administration Server.

### 3.2.3.2 Adding Credential Store Entries for the Oracle Enterprise Manager

Oracle Enterprise Manager requires an ODI Supervisor key to connect the agents deployed on a domain and manage them. This key is similar to the key created for the Java EE Agent.

In addition to this key, Oracle Enterprise Manager requires a second key containing the username and password of a WebLogic administrator for each domain into which ODI Java EE Agents are deployed and must to be managed.

The second key is named after the domain, and contains a valid WebLogic administrator username and password.

For example, if you use the default template and have it deployed within a domain called based domain with the WebLogic administrator called WebLogic, you can create the keys using the following WLST commands:

```
createCred(map="oracle.odi.credmap", key="SUPERVISOR", user="SUPERVISOR",
password="*****", desc="Key for Supervisor")
```

```
createCred(map="oracle.odi.credmap", key="base_domain", user="weblogic",
password="*****", desc="Username and password for base_domain")
```

#### Example Scenario:

1. Three agents OdiAgent1, OdiAgent2 and OdiAgent3 are defined as physical agents in the topology.
2. OdiAgent1 and OdiAgent2 are Java EE agents and OdiAgent3 is a Standalone agent.
3. OdiAgent1 is deployed on a WLS domain with the name agent\_1\_domain and OdiAgent2 is deployed on a WLS domain with the name agent\_2\_domain. Both domains use a WebLogic user as their administrator.
4. A user called SUPERVISOR is declared in the Master Repository, and SUPERVISOR is specified as the Supervisor Key value when creating the Java EE agent templates.

The following sequence of WLST commands creates the appropriate entries:

```
createCred(map="oracle.odi.credmap", key="SUPERVISOR", user="SUPERVISOR",
password="SUPERVISOR", desc="Key for Supervisor")
```

```
createCred(map="oracle.odi.credmap", key="agent_1_domain", user="weblogic",
password="*****", desc="Username and password for agent_1_domain")
```

```
createCred(map="oracle.odi.credmap", key="agent_2_domain", user="weblogic",
password="*****", desc="Username and password for agent_2_domain")
```

Once the credential maps are created, you can start the Java EE components. Agents are fully functional, but Oracle Data Integrator Console and Oracle Enterprise Manager may need extra configuration. See ["Configuring ODI Console Connections"](#) and ["Configuring Oracle Fusion Middleware Control with ODI Plugin"](#) for more information.

For more information on Oracle Data Integrator JEE configuration options, see "High Availability for Oracle Data Integrator" in the *Oracle Fusion Middleware High Availability Guide*.

### 3.2.3.3 Adding Credential Store Entries for IBM WebSphere Server

If you are configuring Oracle Data Integrator using IBM WebSphere as the application server, you can add credential store entries as described below.

1. Go to `ODI_HOME/common/bin` directory and start the `wsadmin` tool. Use the following command, substituting your own user names and passwords:

```
./wsadmin.sh -profileName $NODE_PROFILE -connType SOAP -user wasadmin -password
welcome1
```

2. Create the credential store entry for the Java EE agent:

```
Opss.createCred(map="oracle.odi.credmap", key="SUPERVISOR", user="SUPERVISOR",
password="SUNOPSIS", desc="ODI SUPERVISOR Credential")
```

3. Create the credential store entry for Oracle Enterprise Manager:

```
Opss.createCred(map="oracle.odi.credmap", key="xcell", user="wasadmin",
password="welcome1", desc="WAS credentials")
```

4. Type `exit` to exit from the `wsadmin` tool.

## 3.2.4 Declaring the Java EE Agent in Topology

All Java EE components are pre-configured in default templates. The default Java EE agent has a template, but the agent is not declared in the repository. Therefore, the agent must be configured in the repository.

1. Start the ODI Console.
- 2.
3. In Topology Navigator, connect to the Master Repository and declare the Java EE agent and provide the following:
  - **Name** - Name of the physical agent.

**Caution:** If you use the default Java EE agent, then you must create an agent called `OracleDIAgent` (case sensitive). In addition, if you use the default agent created during the Java EE install, you do not have to create a new template. See "Managing Agents" in the *Oracle Fusion Middleware Developer's Guide for Oracle Data Integrator* for more information.
  - **Host** - Name of the host where the Java EE agent will be started.
  - **Port**: Port number of the WLS Server where the Java EE agent is deployed.
  - **Protocol**: Protocol to use for the agent connection. Possible values are `http` or `https`. Default is `http`.
  - **Web Application Context**: Default value is `oraclediagent`. The web application context should match the name set when deploying the agent template.

For detailed instructions on declaring the Java EE agent in Topology, see "Managing Agents" in the *Oracle Fusion Middleware Developer's Guide for Oracle Data Integrator*.

### 3.2.5 Generating Java EE Agent Template

A Java EE agent template can be generated from the ODI Studio. This is required to bundle the agent code with extra drivers with the source or target and Work or Master datasources declared in the Topology. For more information on datasource declaration, deployment and template generation in ODI Studio, see "Java EE Agent" in the *Oracle Fusion Middleware Developer's Guide for Oracle Data Integrator*.

---

**Note:** Default templates contain the following datasources for connecting the repositories: `jdbc/odiMasterRepository` and `jdbc/odiWorkRepository`. These JNDI names are referred to in the default Run-time Agent or Oracle Data Integrator Console templates. If you use a generated agent template, the datasources included in this template will be those declared in the topology for this agent. This template will also optionally contain the driver files.

---

Java EE templates can also be generated through the following scripts, located in the `ODI_HOME/common/bin` directory:

For Oracle WebLogic Server:

```
generate_agent_wls_template.[sh|cmd]
```

For IBM WebSphere:

```
generate_agent_was_template.[sh|cmd]
```

### 3.2.6 Configuring ODI Console Connections

The Oracle Data Integrator Console template is created (by default) with two connections aliases:

- Work Repository connects a Work Repository after the two default datasources `jdbc/odiMasterRepository` and `jdbc/odiWorkRepository`.
- Master Repository connects a Master Repository after the default datasource `jdbc/odiMasterRepository`.

If more repository connections are required, either to access these repositories from ODI Console or to monitor them from Oracle Enterprise Manager, add the connections from the ODI Console interface.

To add new connections to ODI Console:

1. Start the Oracle Data Integrator Console application:

```
http://odi_host:port/odiconsole
```

2. Provide the login credentials (for example, `SUPERVISOR` as the User ID along with your password).
3. Open the **Management** tab.
 

If you have not yet configured a connection, a link to the **Management** tab appears at the top right corner of the login screen.
4. Expand the **Repository Connections** node.
5. Click the **Create** icon in the Navigation tab toolbar. A **Create Repository Connection** dialog for this object appears.
6. Provide the values for the repository connection:

- **Connection Alias:** Name of the connection that will appear on the Login page.
- **Master JNDI URL:** JNDI URL of the datasource to connect the master repository database.

For example: `jdbc/odiMasterRepository`

- **Supervisor User Name:** Name of the Oracle Data Integrator user with Supervisor privileges that Oracle Data Integrator Console will use to connect to the repository. This user name is case-sensitive.

This user's password must be declared in the WebLogic Server Credential Store.

- **Work JNDI URL:** JNDI URL of the datasource to connect the work repository database. If no value is given in this field, the repository connection will allow connection to the master only, and the Navigation will be limited to Topology information.

- **JNDI URL in JNDI Standard format?:** Check this option if you want to use the Environment Naming Context (ENC). When this option is checked, Oracle Data Integrator Console automatically prefixes the data source name with the string `java:comp/env/` to identify it in the application server's JNDI directory. Note that the JNDI Standard is not supported by Oracle WebLogic Server or for global data sources.

For example: `jdbc/odiWorkRepository`

- **Default:** Check this option if you want this Repository Connection to be selected by default on the login page.

7. Click **Save**. The new Repository Connection appears in the **Management** Navigation tab.

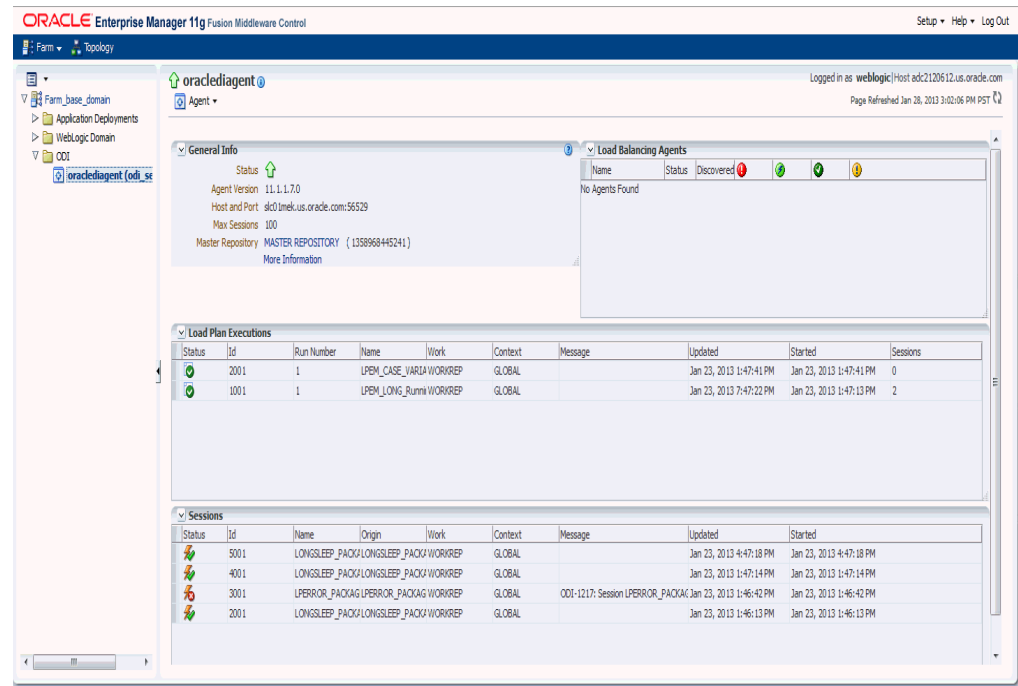
See "Performing Administrative Operations" in the *Oracle Fusion Middleware Developer's Guide for Oracle Data Integrator* for more information about creating repository connections.

### 3.2.7 Configuring Oracle Fusion Middleware Control with ODI Plugin

Oracle Fusion Middleware Control can be used in conjunction with ODI Console to obtain information about your ODI agents, repositories and sessions. From Oracle Fusion Middleware Control (see [Figure 3-9](#)), expand the ODI menu item and click on your agent name in the Deployments pane.

[Figure 3-10](#) shows detailed information about the ODI Console application.

Figure 3–10 ODI Console Within Oracle Fusion Middleware Control




---

**Note:** To use Oracle Enterprise Manager with Oracle Data Integrator Console, and your agent resides in a separate domain, you must first create the appropriate Credential Store Entries for Oracle Enterprise Manager as described in [Section 3.2.3, "Adding Credential Store Entries"](#).

---

Domain discovery is performed with the following process:

1. Oracle Enterprise Manager finds the Oracle Data Integrator Console configuration file storing the Repository Connection (`repositories.xml`) in the location specified in the configuration file `DOMAIN_HOME/config/oracledi/config.properties`.
2. Oracle Enterprise Manager parses the repository connections declared in Oracle Data Integrator Console, tries to connect all the masters and retrieves their status and list of agents. Even if an agent or repository is down, it will appear in the Oracle Enterprise Manager.
3. Any agent on the domain will appear in the domain with its status and will start posting notifications (if started).

---

**Note:** If you want Oracle Enterprise Manager to drill down into Oracle Data Integrator Console using a different URL than the one detected by Oracle Enterprise Manager, you will need to reconfigure this in Oracle Enterprise Manager. Reconfiguration is not mandatory but may be needed when using a firewall for HTTP load balancing to Oracle Data Integrator Console.

---

For more information on using Oracle Enterprise Manager, see the *Oracle Fusion Middleware Administrator's Guide*.

### 3.3 Integrating ODI with Oracle Access Manager 11g

To secure your Oracle Data Integrator with Oracle Access Manager 11g, follow the instructions in this section

1. Install and configure Oracle Access Manager (OAM), Oracle HTTP Server (OHS), and WebGate as described in "Installing the Oracle Identity Management 11g Software" in the *Oracle Fusion Middleware Installation Guide for Oracle Identity Management*.

---

---

**Note:** This and other related links in this section may take you to the latest version of *Oracle Fusion Middleware Installation Guide for Oracle Identity Management*, which may or may not be the same version as your Oracle Data Integrator.

---

---

2. Use the Oracle Access Manager remote registration tool (`oamreg`) to register an Oracle OAM Agent, specifying protected and public Oracle Data Integrator URIs. The protected URIs that should be specified are `/odiconsole`, `/em`, and all of their subdirectories.

For more information, see "Provisioning an OAM Agent with Oracle Access Manager 11g" in *Oracle Fusion Middleware Application Security Guide* and "Setting Up OAM Agents" in *Oracle Fusion Middleware Installation Guide for Oracle Identity Management*.

3. Append Oracle Data Integrator entries to `mod_wl_ohs.conf` file, adding the proxy URLs for ODI Console and Fusion Middleware Control. For example:

```
<Location /odiconsole>
    SetHandler weblogic-handler
    WebLogicHost hostname
    WebLogicPort portnumber
</Location>
```

Replace `hostname` with the name of the machine hosting the Oracle Data Integrator instance, and `portnumber` with the port of the Oracle WebLogic Server domain hosting Oracle Data Integrator.

4. Configure your Oracle Data Integrator domain by ensuring that the following tasks are performed. For more information, see "Deploying the Oracle Access Manager 11g SSO Solution" in the *Oracle Fusion Middleware Application Security Guide*.

- a. Configure the OAM Identity Asserter. The control flag for the OAM Identity Asserter must be set to `REQUIRED`, and both `OAM_REMOTE_USER` and `ObSSOCookie` must be selected as Active Types.

For more information, see "Identity Asserter for Single Sign-on Function," "About Using the Identity Asserter for SSO with OAM 11g and 11g WebGates," and "Configuring Identity Assertion for SSO with Oracle Access Manager 11g" in the *Oracle Fusion Middleware Application Security Guide*.

- b. Configure an Authentication provider. This is necessary to specify the user store, such as Oracle Internet Directory (OID) or another external LDAP



server. For example, if OAM is using OID, then an OID Authentication provider must be added to the Oracle Data Integrator domain.

For more information, see "Installing the Authentication Provider with Oracle Access Manager 11g" and "Setting Up Providers for Oracle Access Manager Identity Assertion" in *Oracle Fusion Middleware Application Security Guide*.

- c. Configure the OAM OPSS Single Sign-On provider.

For more information, see "Introduction to Single Sign-On in Oracle Fusion Middleware" in *Oracle Fusion Middleware Application Security Guide*.

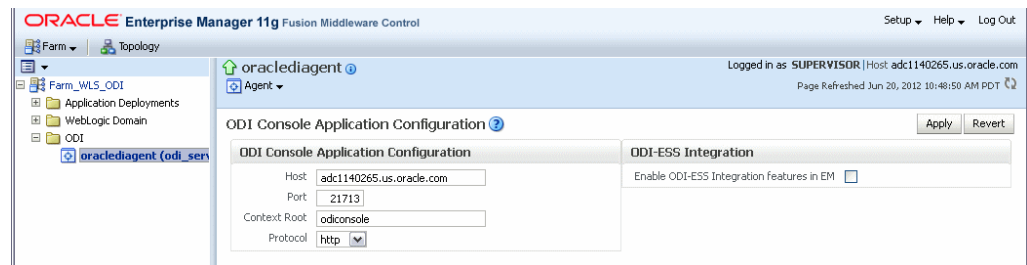
5. Configure `oraclediagent` in Fusion Middleware Control to use Oracle HTTP Server:
  - a. Login to Fusion Middleware Control.
  - b. In the navigation pane on the left, select **ODI > oraclediagent (odi\_server1)**.
  - c. In the **oraclediagent** window, select the **Agent** drop-down menu, then select **ODI Console Administration > Basic Configuration**.

- a. Login to Fusion Middleware Control.

- b. In the navigation pane on the left, select **ODI > oraclediagent (odi\_server1)**.

- c. In the **oraclediagent** window, select the **Agent** drop-down menu, then select **ODI Console Administration > Basic Configuration**.

You should see something like the following:



- d. In the **Host** field, specify the host name of your Oracle HTTP Server (this is the same Oracle HTTP Server that was installed in Step 1 in this section).

- e. In the **Port** field, specify the port number for your Oracle HTTP Server (this is the same Oracle HTTP Server that was installed in Step 1 in this section).

After installing and configuring OAM 11g, check that you can access Oracle Data Integrator Console via Fusion Middleware Control, and that the login is giving you access to all of your configured applications without prompting you to sign in again. Also test global logout where available and make sure you are logged out of all other related applications.

For more information, see *Oracle Fusion Middleware Administrator's Guide for Oracle Access Manager* and *Oracle Fusion Middleware Application Security Guide*.



---

# Deinstalling Oracle Data Integrator

This appendix describes how to remove Oracle Data Integrator products from your system.

You should always use the instructions provided in this chapter for removing the software. If you try to remove the software manually, you may experience problems when you try to reinstall the software again at a later time. Following the procedures in this chapter will ensure that the software is properly removed. See [Section 4.4, "Reinstallation"](#) for more information.

The following topics are covered:

- [Section 4.1, "Performing Pre-Deinstallation Tasks"](#)
- [Section 4.2, "Deinstalling Oracle Data Integrator"](#)
- [Section 4.3, "Uninstalling Your Application Server"](#)
- [Section 4.4, "Reinstallation"](#)

## 4.1 Performing Pre-Deinstallation Tasks

This section describes the tasks that should be performed prior to removing your Oracle Data Integrator software.

The following topics are covered:

- [Section 4.1.1, "Stopping Oracle Fusion Middleware"](#)
- [Section 4.1.2, "Stopping a Standalone Agent"](#)
- [Section 4.1.3, "Removing the Oracle Data Integrator Schemas"](#)

### 4.1.1 Stopping Oracle Fusion Middleware

Before deinstalling Oracle Fusion Middleware software components, you should stop all servers and processes.

For more information about starting and stopping Oracle Fusion Middleware, refer to "Starting and Stopping Oracle Fusion Middleware" in *Oracle Fusion Middleware Administrator's Guide*.

### 4.1.2 Stopping a Standalone Agent

You can stop a Standalone Agent by stopping the Java process of this agent. You can also stop a Standalone Agent remotely using the `agentstop` command.

To stop a Standalone Agent:

1. Go to the `ODI_HOME/oracledi/agent/bin` (on UNIX operating systems) or `ODI_HOME\oracledi\agent\bin` (on Windows operating systems) directory of the Oracle Data Integrator Agent.
2. Enter the following command to stop the agent.

On UNIX operating systems:

```
./agentstop.sh
```

On Windows operating systems:

```
agentstop.bat
```

For more information on stopping the agent with OPMN, see [Appendix G, "OPMN Configuration for Standalone Agent"](#).

---

**Note:** For security reasons, it is only possible to stop an agent from a command line launched on the same machine that the agent's process was started. It is not possible to stop a remote agent.

---

### AgentStop Command Parameters

[Table 4–1](#) lists the different parameters for the command to stop the agent. The parameters are preceded by the "-" character and the possible values are preceded by the "=" character. When entering the command, consider the operating system specific syntax of the delimiters.

**Table 4–1 AgentStop Command Parameters**

Parameter	Description
<code>-AGENT_URL=agent_url</code>	URL of the standalone agent to stop: <code>http://host:port/oraclediagent</code>
<code>-NAME=agent_name</code>	If this parameter is specified, the physical agent whose name is provided is killed. This agent may be a local or remote agent, and must be declared in the Master Repository.
<code>-IMMEDIATE=true   false</code>	If this parameter is set to <code>true</code> then the agent is killed without waiting for completion of its running sessions. If it is set to <code>false</code> then the agent is killed after all its running sessions reach completion or after the <code>MAX_WAIT</code> time-out is reached. Default value is <code>true</code> .
<code>-MAX_WAIT=stop_timeout_in_milliseconds</code>	This parameter can be used when <code>IMMEDIATE</code> is set to <code>false</code> . It defines a timeout in milliseconds after which the agent is killed regardless of the running sessions. Default is 0, meaning no timeout and the agent is killed after all its running sessions reach completion.

### 4.1.3 Removing the Oracle Data Integrator Schemas

Run the Repository Creation Utility (RCU) to drop the Oracle Data Integrator Master and Work Repositories from your database. For instructions, see "Dropping Schemas" in *Oracle Fusion Middleware Repository Creation Utility User's Guide*.

If you manually installed the repositories, use the database tools to remove the schemas storing the repositories. See your database administration documentation for more information.

## 4.2 Deinstalling Oracle Data Integrator

This section contains information and instructions for removing Oracle Data Integrator components. When you run the Oracle Data Integrator deinstaller, it removes everything under the Oracle home (referred to in this guide as *ODI\_HOME*) from which the deinstaller is started. Be sure that no system components are using the Oracle home you want to remove.

The following topics are covered in this section:

- [Section 4.2.1, "Starting the Deinstaller"](#)
- [Section 4.2.2, "Removing the ODI Home"](#)
- [Section 4.2.3, "Removing the Oracle Common Home"](#)
- [Section 4.2.4, "Manually Removing Your Oracle Home Directories"](#)
- [Section 4.2.5, "Removing the Program Groups \(Windows Only\)"](#)

### 4.2.1 Starting the Deinstaller

To start the Oracle Data Integrator deinstaller, go to the *ODI\_HOME/oui/bin* (on UNIX operating systems) or *ODI\_HOME\oui\bin* (on Windows operating systems) directory and start the deinstaller.

- On UNIX operating systems:  

```
./runInstaller.sh -deinstall
```
- On Windows operating systems:  

```
setup.exe -deinstall
```

On Windows operating systems, you can also start the Deinstaller from the Start menu by selecting **Programs > Oracle Home - ODI\_HOME > Uninstall**.

---



---

**Caution:** You must reboot your Windows operating system after running the Deinstaller. Failure to do so may result in an incomplete deinstallation.

---



---

Follow the instructions in [Table 4-2](#) to remove the *ODI\_HOME*.

### 4.2.2 Removing the ODI Home

After starting the Deinstaller, follow the instructions in [Table 4-2](#) to remove your *ODI\_HOME*.

**Table 4-2** *Removing Your Oracle Data Integrator Home*

Screen	Description and Action Required
<a href="#">Welcome</a>	The installer displays this screen when you are about to deinstall one or more Oracle Fusion Middleware software components.

**Table 4–2 (Cont.) Removing Your Oracle Data Integrator Home**

Screen	Description and Action Required
Deinstall Oracle Home	<p>Verify the Oracle home you are about to deinstall.</p> <p>Click <b>Deinstall</b> to continue.</p> <p>On the Warning screen, select whether or not you want the deinstaller to remove the Oracle home directory in addition to removing the software.</p> <p>Click <b>Yes</b> to have the deinstaller remove the software and Oracle home, <b>No</b> to remove only the software, or <b>Cancel</b> to return to the previous screen.</p> <p>If you select <b>No</b>, go to <a href="#">Section 4.2.4, "Manually Removing Your Oracle Home Directories"</a> for instructions on how to manually remove your Oracle home directory.</p>
Deinstallation Progress	This screen shows the progress and status of the deinstallation.
Deinstallation Complete	<p>This screen summarizes the deinstallation that was just completed.</p> <p>Click <b>Finish</b> to dismiss the screen.</p>

### 4.2.3 Removing the Oracle Common Home

This section describes how to remove the `oracle_common` directory in your Middleware home. This directory contains its own deinstaller in `MW_HOME/oracle_common/oui/bin` (on UNIX operating systems) or `MW_HOME\oracle_common\oui\bin` (on Windows operating systems), just like any other Oracle home directory.

The deinstaller requires the location of a Java Runtime Environment (JRE) on your system. When you installed Oracle WebLogic Server, a JRE was installed on your system. You can use this location (the location of the JRE directory) to start the installer. The default location for the JRE is `MW_HOME/jdk160_version` (on UNIX operating systems) or `MW_HOME\jdk160_version` (on Windows operating systems), where `MW_HOME` is the Middleware home directory.

On 64-bit platforms, the JRE location is the `JAVA_HOME` you used to install Oracle WebLogic Server.

On UNIX operating systems:

```
./runInstaller -deinstall -jreLoc [JRE_LOCATION]
```

On Windows operating systems:

```
setup.exe -deinstall -jreLoc [JRE_LOCATION]
```

You must specify the absolute path to your `JRE_LOCATION`; relative paths will not work.

After the deinstaller is started, follow the instructions in [Table 4–2](#) to remove the Oracle Common home.

### 4.2.4 Manually Removing Your Oracle Home Directories

If you selected **No** on the warning screen during deinstallation, you must manually remove your Oracle home directories and all sub-directories. For example, if your ODI Oracle home directory was `/home/Oracle/Middleware/Oracle_ODI1` on a UNIX operating system:

```
> cd /home/Oracle/Middleware
> rm -rf Oracle_ODI1
```

On a Windows operating system, if your ODI Oracle home directory was C:\Oracle\Middleware\Oracle\_ODI1, use a file manager window and navigate to the C:\Oracle\Middleware directory, then right-click on the Oracle\_ODI1 folder and select **Delete**.

The same procedure can be used to manually remove the Oracle Common home (oracle\_common) directory.

## 4.2.5 Removing the Program Groups (Windows Only)

On Windows operating systems, you must also manually remove the program groups from the Start Menu\Programs folder. As an example (the folder names and program group names on your system may be different), you might remove the following from C:\Documents and Settings\All Users\Start Menu\Programs:

- Oracle Fusion Middleware 11.1.1.n.n
- Oracle Data Integrator 11g - Home1
- Oracle WebLogic

---

---

**Note:** You should reboot your computer after you have finished removing all of your programs to ensure proper cleanup.

---

---

## 4.3 Uninstalling Your Application Server

After you have removed your Oracle Data Integrator software, you can choose to remove your application server from your system. Before doing so, make sure there are no other products using the application server; those products will no longer function once the application server is removed.

This section contains the following topics:

- [Section 4.3.1, "Removing Oracle WebLogic Server"](#)
- [Section 4.3.2, "Removing IBM WebSphere"](#)

### 4.3.1 Removing Oracle WebLogic Server

Refer to "Uninstalling the Software" in *Oracle Fusion Middleware Installation Guide for Oracle WebLogic Server* for instructions on how to remove Oracle WebLogic Server.

After you have removed the Oracle WebLogic Server, you must manually remove the Oracle Fusion Middleware home directory. For example, if your Oracle Fusion Middleware home directory was /home/Oracle/Middleware on a UNIX operating system:

```
> cd /home/Oracle
> rm -rf Middleware
```

On a Windows operating system, if your Middleware home directory was C:\Oracle\Middleware, use a file manager window and navigate to the C:\Oracle directory, then right-click the Oracle Fusion Middleware folder and select **Delete**.

### 4.3.2 Removing IBM WebSphere

Refer to your IBM WebSphere documentation for instructions on how to remove IBM WebSphere from your system.

## 4.4 Reinstallation

The installer does not allow reinstallation of Oracle Data Integrator in a directory that already contains an Oracle instance. To reinstall Oracle Data Integrator in the same directory as before, you must:

1. Follow the instructions in [Section 4.2, "Deinstalling Oracle Data Integrator"](#) to remove all Oracle Data Integrator components from the `ODI_HOME` directory.
2. Follow the instructions in [Chapter 2, "Installing Oracle Data Integrator"](#) to reinstall the software.



---

## Installation Screens for Oracle Data Integrator

This appendix contains images and descriptions for all of the Oracle Data Integrator installation and configuration screens.

The following topics are covered:

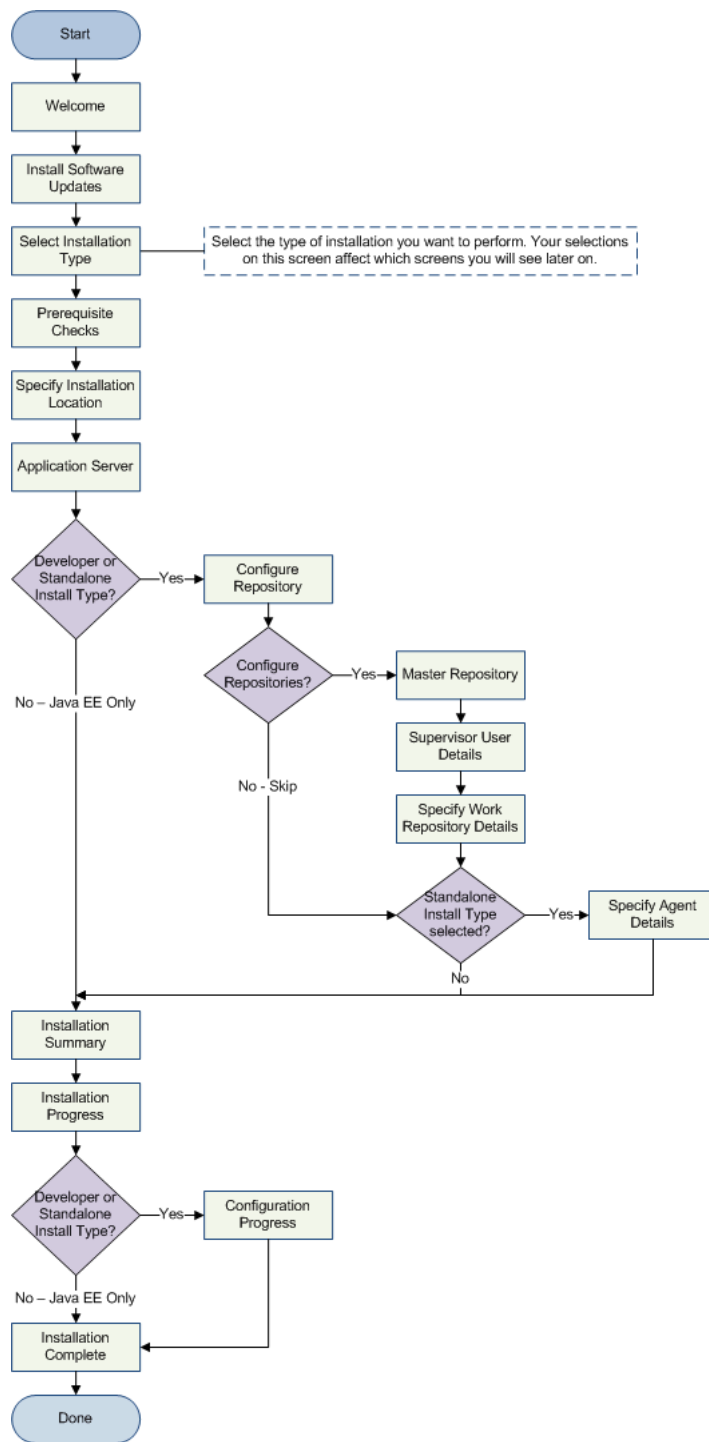
- [Section A.1, "Flowchart of the Oracle Data Integrator Installation Screens"](#)
- [Section A.2, "Descriptions of the Oracle Data Integrator Installation Screens"](#)

### A.1 Flowchart of the Oracle Data Integrator Installation Screens

[Figure A-1](#) shows the screens you will see during the Oracle Data Integrator installation based on the options you choose during the installation process.

Each screen is described in detail in [Section A.2, "Descriptions of the Oracle Data Integrator Installation Screens"](#).

**Figure A-1 Flowchart of the ODI Installation Screens**



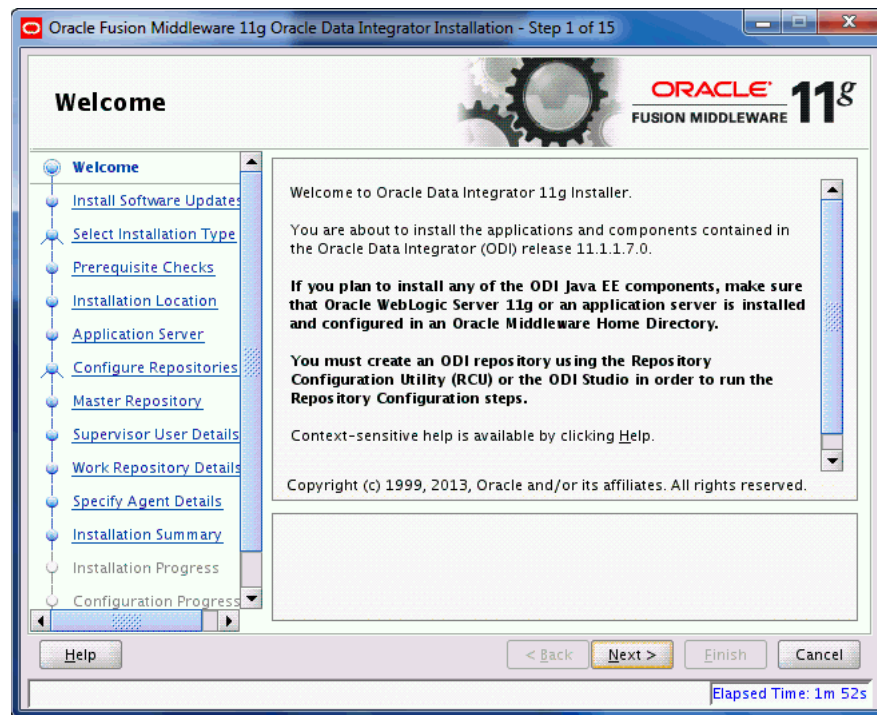
## A.2 Descriptions of the Oracle Data Integrator Installation Screens

The following topics are covered:

- [Section A.2.1, "Welcome"](#)
- [Section A.2.2, "Install Software Updates"](#)

- Section A.2.3, "Select Installation Type"
- Section A.2.4, "Prerequisite Checks"
- Section A.2.5, "Specify Installation Location"
- Section A.2.6, "Application Server"
- Section A.2.7, "Repository Configuration"
- Section A.2.8, "Master Repository"
- Section A.2.9, "Supervisor User Details"
- Section A.2.10, "Specify Work Repository Details"
- Section A.2.11, "Specify Agent Details"
- Section A.2.12, "Installation Summary"
- Section A.2.13, "Installation Progress"
- Section A.2.14, "Configuration Progress"
- Section A.2.15, "Installation Completed"

## A.2.1 Welcome



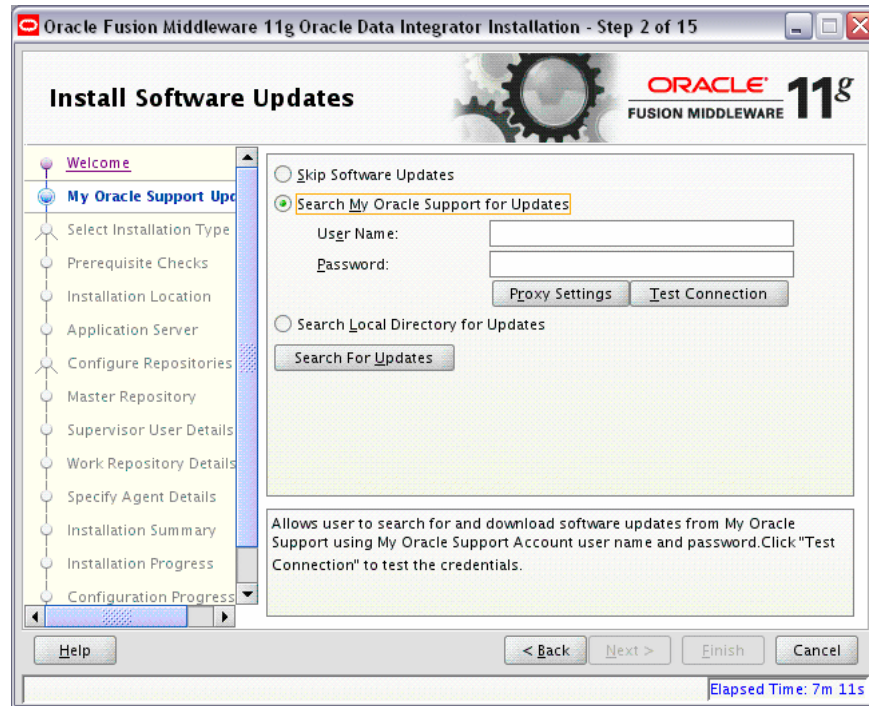
This page introduces you to the Oracle Fusion Middleware installer and provides two important pieces of information:

- A navigation pane on the left that summarizes the tasks the installer will help you complete. Each item in the navigation pane represents a specific installer screen that will prompt you for information required to install the software.
- Information about any prerequisites you might need to perform before continuing with the installation.

Review the information on this screen carefully to be sure you have performed all the necessary prerequisites.

If you are not sure about any of the prerequisite tasks, refer to the *Oracle Fusion Middleware Installation Planning Guide* or to [Section 2.1, "Verifying Your System and Network Environment"](#).

## A.2.2 Install Software Updates



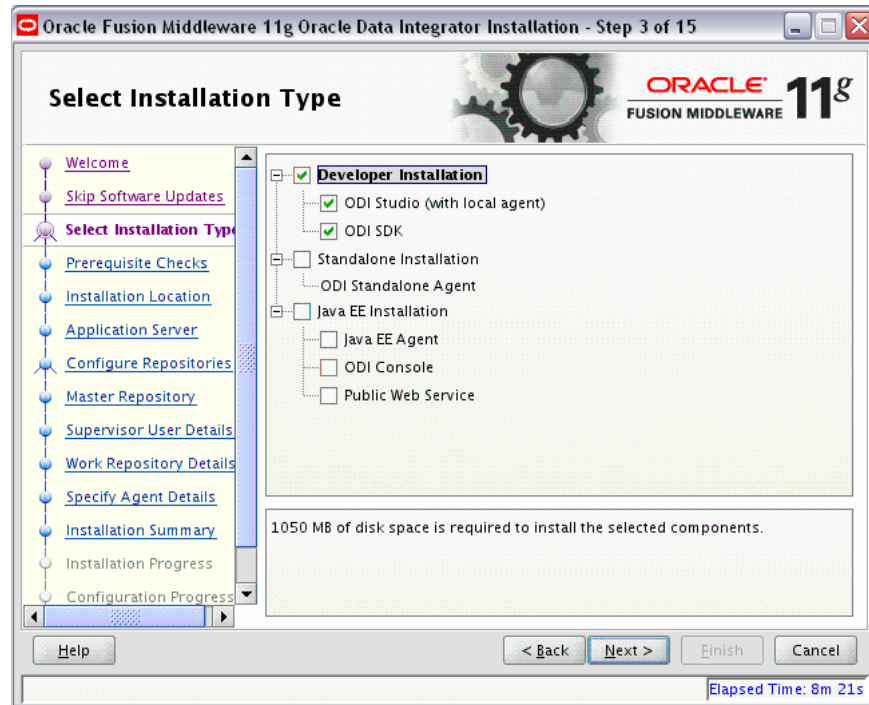
Use this screen to select how you want to receive software updates.

The following table describes the options on this screen.

Field	Description
Skip Software Updates	Select this option to skip this screen. The installer will not check for updates that might be applicable to the current product installation.
Search My Oracle Support for Updates	<p>If you have a My Oracle Support account, then select this option to have the installer automatically search My Oracle Support for software updates that apply to the software products are about to install.</p> <p>Enter your My Oracle Support account name and password, and then click Search For Updates. The installer automatically downloads applicable software updates from My Oracle Support.</p> <p>Before you search for update, you can test your login credentials and the connection to My Oracle Support by clicking <b>Test Connection</b>. Click <b>Proxy Settings</b> to configure a proxy server if one is required.</p>

Field	Description
Search Local Directory for Updates	Select this option if you already downloaded the latest software updates and you want the installer to search a local directory for updates applicable to the products you are about to install.

### A.2.3 Select Installation Type

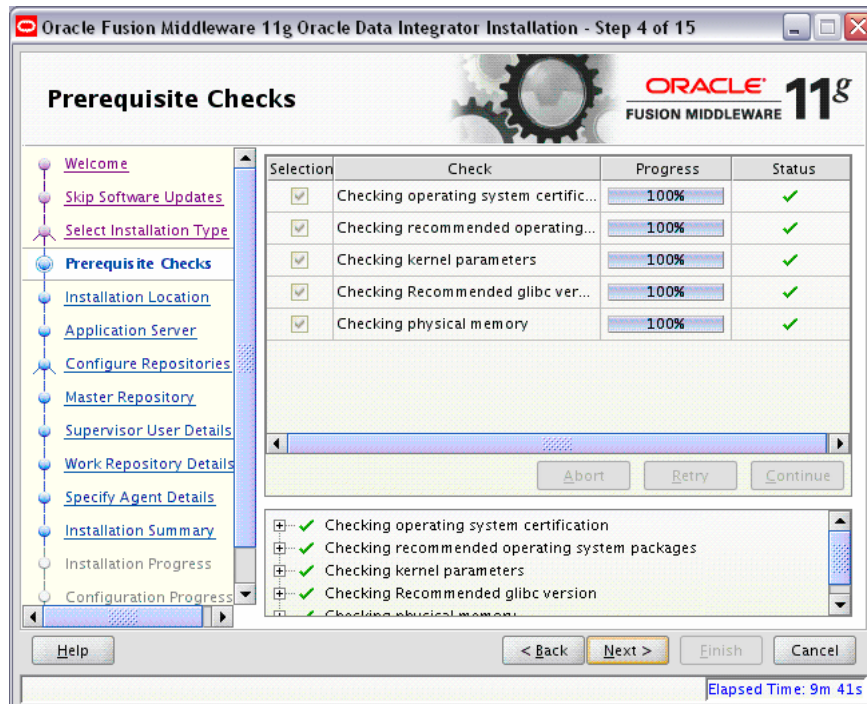


Use this screen to select the type of installation you want to perform.

The following table describes the fields on this screen:

Field	Description
Developer Installation	This installation type includes the ODI Studio (with a local agent) and the Oracle Data Integrator Software Development Kit (SDK).
Standalone Installation	This installation type includes an Oracle Data Integrator standalone agent.
Java EE Installation	This installation type includes the Java EE agent, Oracle Data Integrator Console, and Public Web Services.

## A.2.4 Prerequisite Checks



This screen analyzes the host computer to ensure that specific operating system prerequisites have been met.

If any of the prerequisite checks fail, then a short error message appears in the bottom portion of the screen. Fix the error and click **Retry** to try again. If you want to ignore the error or warning messages and continue with the installation, click **Continue**.

Click **Abort** to stop prerequisite checking for all components.

### More About System Requirements and Prerequisites

Note that before performing any installation you should read the system requirements and certification documentation to ensure that your environment meets the minimum installation requirements for the products you are installing. Both of these documents are available on Oracle Technology Network (OTN).

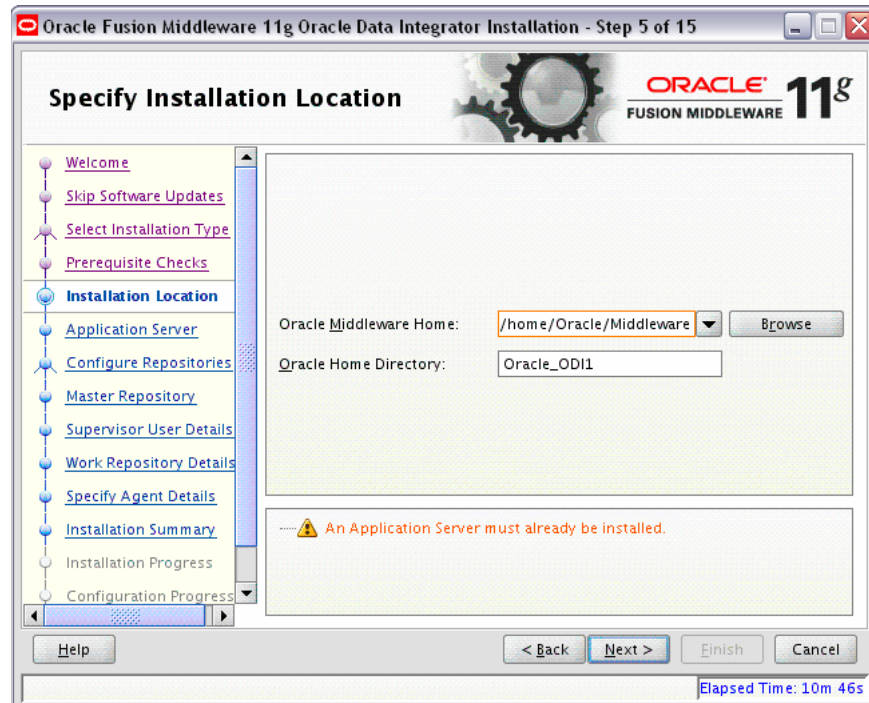
The *Oracle Fusion Middleware System Requirements and Specifications* document covers information such as hardware and software requirements, minimum disk space and memory requirements, and required system libraries, packages, or patches.

The Oracle Fusion Middleware certification document for this release can be found on the Oracle Fusion Middleware Supported System Configurations page. This document covers supported installation types, platforms, operating systems, databases, JDKs, and third-party products.

## A.2.5 Specify Installation Location

Below is the Specify Installation Location screen if you selected **Java EE Installation** on the [Select Installation Type](#) screen:

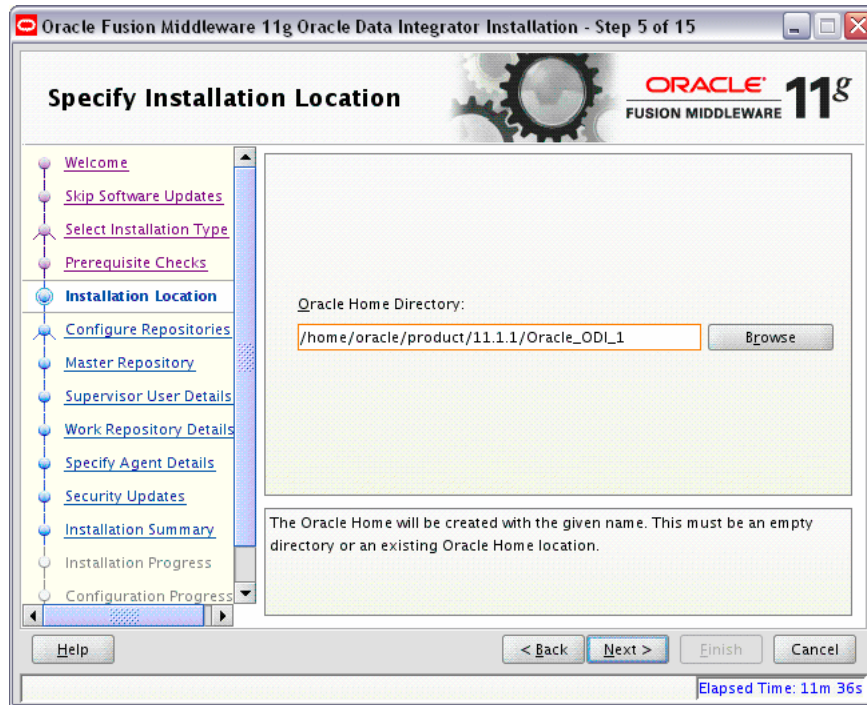




The following table describes the fields on this screen:

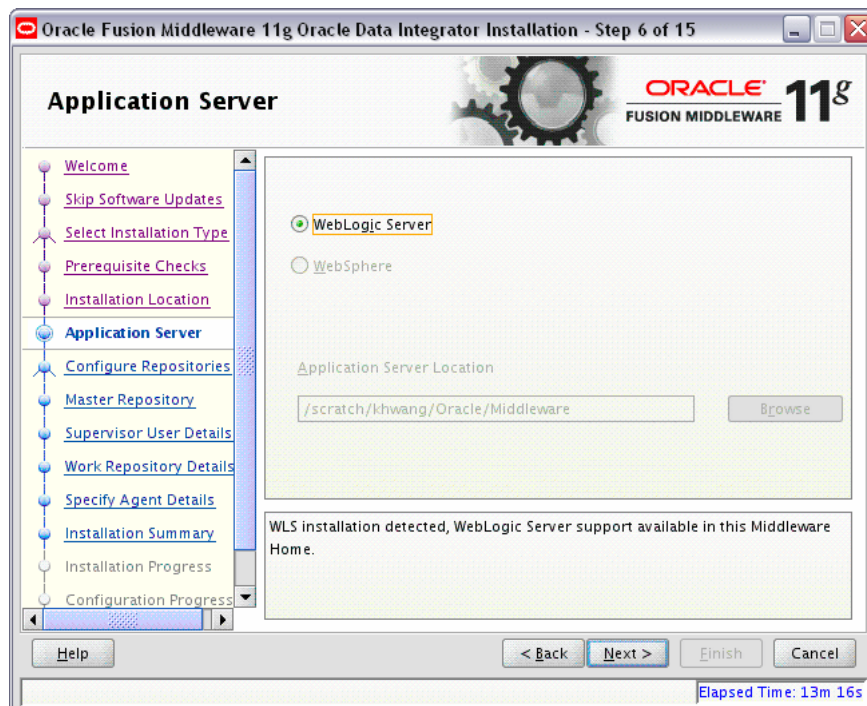
Field	Description
Oracle Middleware Home	Specify the absolute path to your existing Oracle Middleware Home directory; this is the directory that was created when you installed Oracle WebLogic Server. If you do not know the full path to your Middleware Home, you can click Browse to select an existing directory in your system.
Oracle Home Directory	<p>Specify a directory inside the Oracle Middleware Home. This Oracle Home Directory is the root directory where the ODI products will be installed. This is also known as the ODI_HOME directory.</p> <p>If you specify a directory that already exists, it must be either:</p> <ul style="list-style-type: none"> <li>An empty directory inside the Oracle Middleware Home (for example, you have created an empty directory inside the Middleware Home in advance of this installation and should specify the directory here).</li> <li>An existing Oracle home directory (for example, you are reinstalling ODI to an existing Oracle home because of an incomplete previous installation).</li> </ul> <p><b>NOTE:</b> If you specify a new directory, it will be created inside the Oracle Middleware Home.</p>

Below is the Specify Installation Location screen if you did not select **Java EE Installation** on the [Select Installation Type](#) screen:



In the Oracle Home Directory field, specify the absolute path for the Oracle home location.

## A.2.6 Application Server

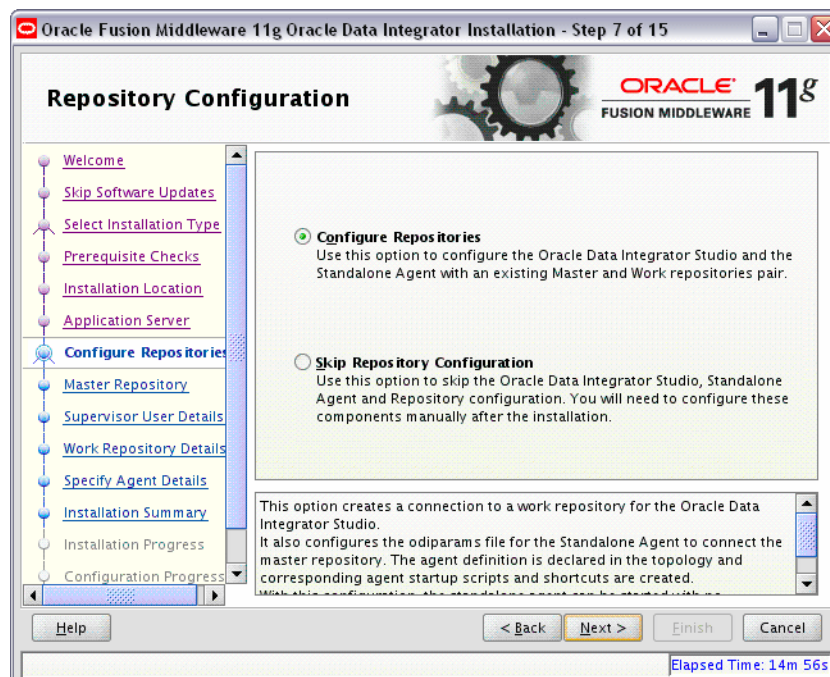


Use this screen to select the application server you want to use with your ODI components.



Field	Description
WebLogic Server	<p>This option is selected by default if the installer detects a Middleware home with Oracle WebLogic Server installed.</p> <p>If no WebLogic Server is detected in the Middleware home, you have the option to select either WebLogic Server or WebSphere as your application server.</p>
WebSphere	<p>Select this option if you installed an IBM WebSphere application server.</p> <p>This field is inactive when an Oracle WebLogic Server is installed in the Middleware home.</p>
Application Server Location	<p>Provide the location of your IBM WebSphere application server, if applicable.</p> <p>This field is inactive when an Oracle WebLogic Server is installed in the Middleware home.</p>

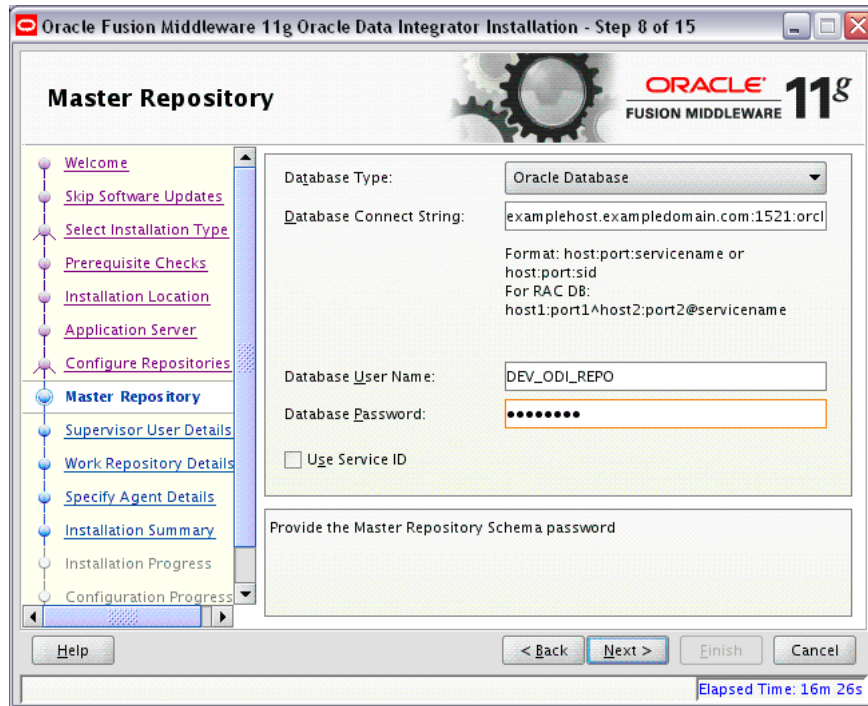
## A.2.7 Repository Configuration



Field	Description
Configure Repositories	<p>This option creates a connection to a work repository for the Oracle Data Integrator Studio. It also configures the odiparams file for the Standalone Agent to connect the master repository. The agent definition is declared in the topology and corresponding agent startup scripts and shortcuts are created. With this configuration, the standalone agent can be started with no additional configuration.</p> <p>Select this option if you have existing 11g Master and Work Repositories.</p>

Field	Description
Skip Repository Configuration	<p>Select this option to continue with the Oracle Data Integrator installation without configuring the repositories. Once installed, you can use the Oracle Data Integrator Studio JDev Gallery to create or configure the repositories.</p> <p><b>NOTE:</b> Select <b>Skip Repository Configuration</b> if:</p> <ul style="list-style-type: none"> <li>Your database is not supported by Oracle’s Repository Creation Utility (RCU). You will need to configure these components manually after the installation. For more information see <a href="#">Appendix E, "Creating Repositories with Oracle Data Integrator Studio"</a>.</li> <li>Your schemas have not yet been upgraded to the latest release.</li> </ul> <p>For a list of supported databases, see <a href="http://www.oracle.com/technology/software/products/ias/files/fusion_requirements.htm">http://www.oracle.com/technology/software/products/ias/files/fusion_requirements.htm</a>.</p>

## A.2.8 Master Repository

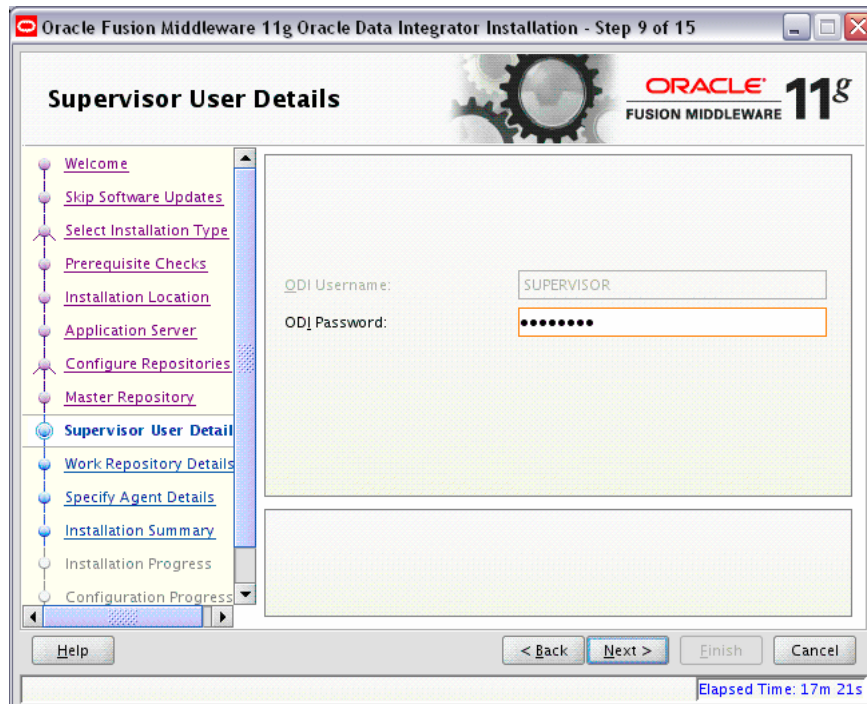


The following table describes the fields on this screen:

Field	Description
Database Type	Select the database type that hosts the Oracle Data Integrator Master Repository.

Field	Description
Database Connect String	<p>Enter the connect string for the database that contains the 11g ODI schemas.</p> <p><b>Oracle Database</b></p> <p>Use the following connect string for a single host instance:  <i>host:port:SID_or_servicename</i></p> <p>For example:                      odiHost:1521:odiDB</p> <p>Use the following connect string for an Oracle RAC instance:  <i>host1:port1^host2:port2@servicename</i></p> <p>For example:                      odiHost1:1521^odiHost2:1521@odiDB</p> <p><b>Microsoft SQL Server Database</b></p> <p>Use the following connect string:  <i>serverName:portNumber:instanceName:databaseName</i></p> <p>For example:                      odiHost:1443:exampleInstance:exampleDatabase</p> <p><b>IBM DB2 Database</b></p> <p><i>hostname:port:servicename</i></p> <p>For example:                      odiHost:1443:exampleServiceName</p> <p><b>MySQL Database</b></p> <p><i>host:port;DatabaseName=name</i></p> <p>For example:                      odiHost:1443;DatabaseName=odiDB</p> <p>NOTE: If your database is not supported by the Oracle Universal Installer, see <a href="#">Appendix D.2, "Manual Installation and Configuration Steps"</a>.</p>
Database User Name	Provide the Master Repository schema user name ( <i>prefix_ODI_REPO</i> ).
Database Password	Provide the Master Repository schema password.
Use Service ID	Select <b>Use Service ID</b> only if the Master Repository schema resides on an Oracle database and you want to use the Service ID instead of the Service Name for your Oracle database.

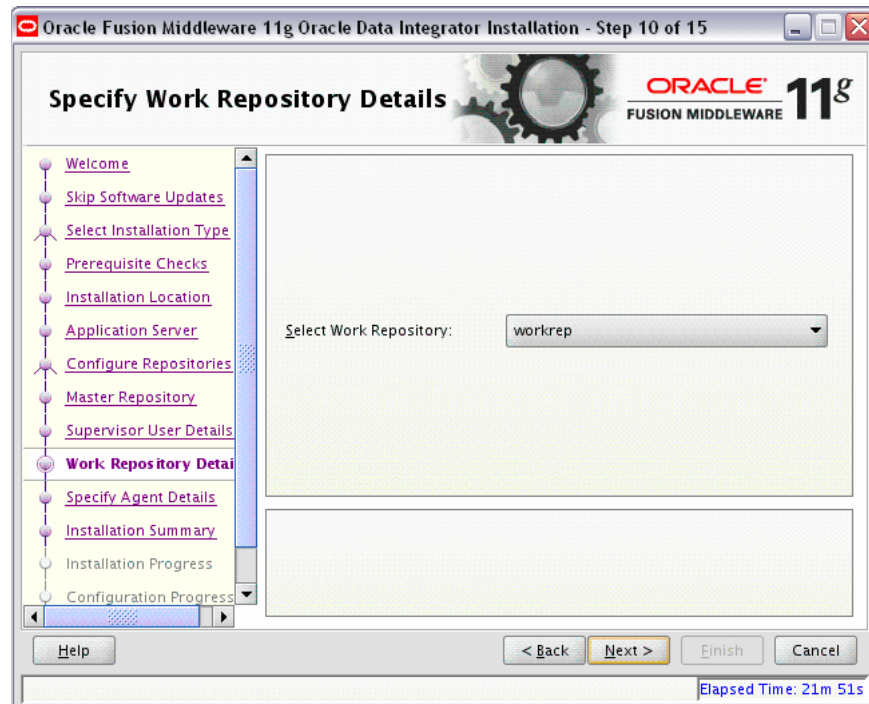
## A.2.9 Supervisor User Details



The following table describes the fields on this screen:

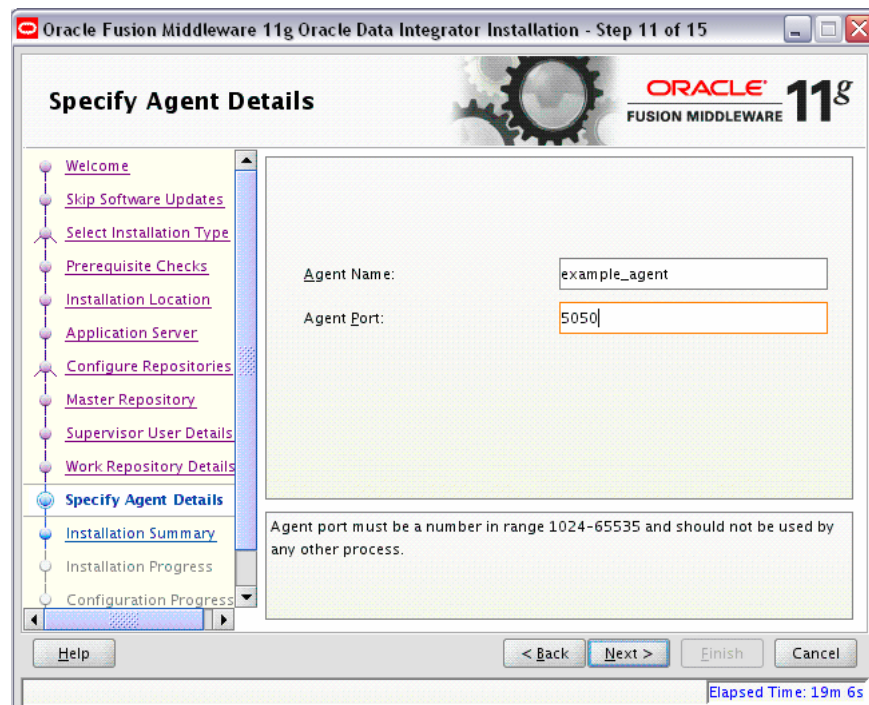
Field	Description
ODI Username	Displays the ODI username with Supervisor privileges. This field cannot be edited.  Note that the user name is SUPERVISOR (all CAPS) and ODI user names are case-sensitive. When you are asked to provide the Supervisor name later (for example, in ODI Studio), you must enter the name exactly as it appears here (SUPERVISOR), in all CAPS.
ODI Password	Provide the Supervisor user's password.

## A.2.10 Specify Work Repository Details



Use this screen to select the Oracle Data Integrator Work Repository from the drop-down list.

## A.2.11 Specify Agent Details

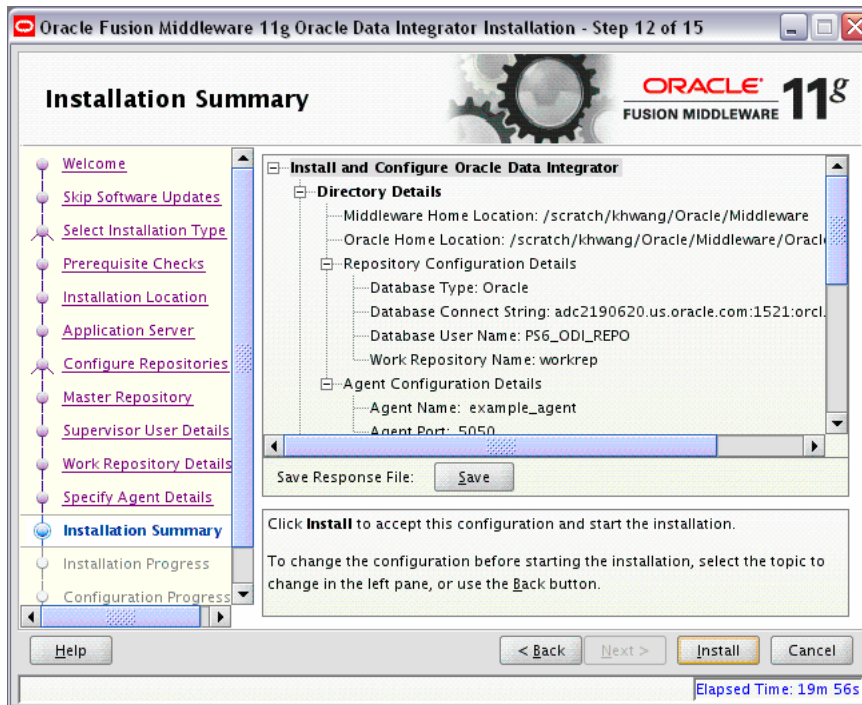




The following table describes the fields on this screen:

Field	Description
Agent Name	Provide a name for the standalone or local agent.
Agent Port	Provide a port number between 1024 and 65535 that is not currently being used by any other Oracle home. This port defaults to 20910.

## A.2.12 Installation Summary

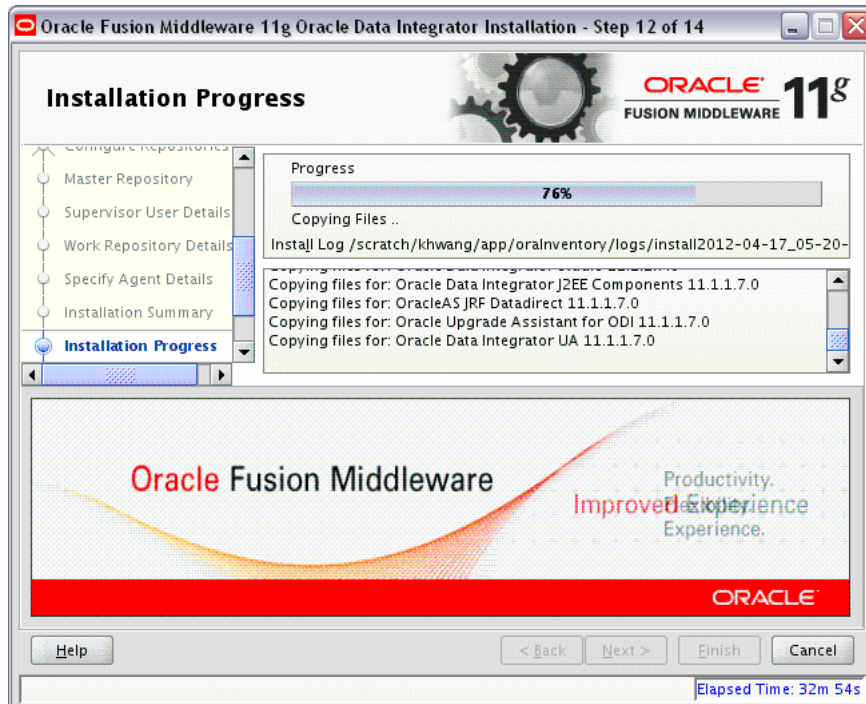


Review the information on this screen, and click **Install** to begin the installation. The operations summarized on this page will be performed when you click Install.

If you want to make any changes to the configuration before starting the installation, use the navigation pane and select the topic you want to edit.

If you want to save this configuration to a text file, click **Save**. This file can be used later if you choose to perform the same installation from the command line. See [Appendix C, "Silent Installation and Deinstallation"](#) for more information.

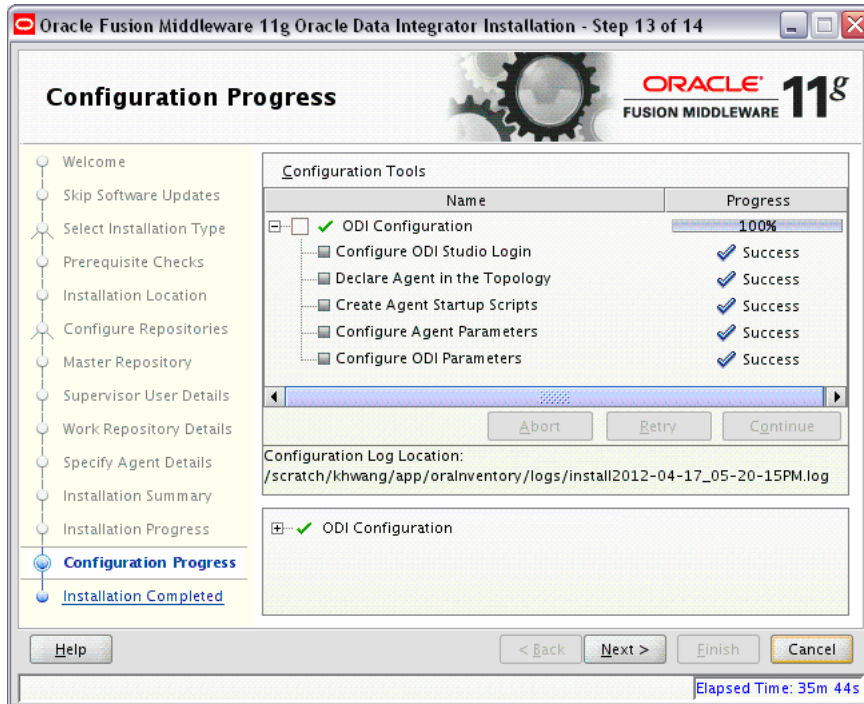
## A.2.13 Installation Progress



This screen shows you the progress of the installation.

If you want to quit before the installation is completed, click **Cancel**. Doing so will result in a partial installation; the portion of the software that was installed on your system before you click **Cancel** will remain on your system, and you will have to remove it manually.

## A.2.14 Configuration Progress



If you selected **Configure Repositories** on the [Repository Configuration](#) screen, this screen shows you the progress of the component configuration. This screen will not appear if you selected **Skip Repository Configuration**.

If there is a problem, a short error message appears in the bottom portion of the screen. Fix the error and click **Retry** to try again.

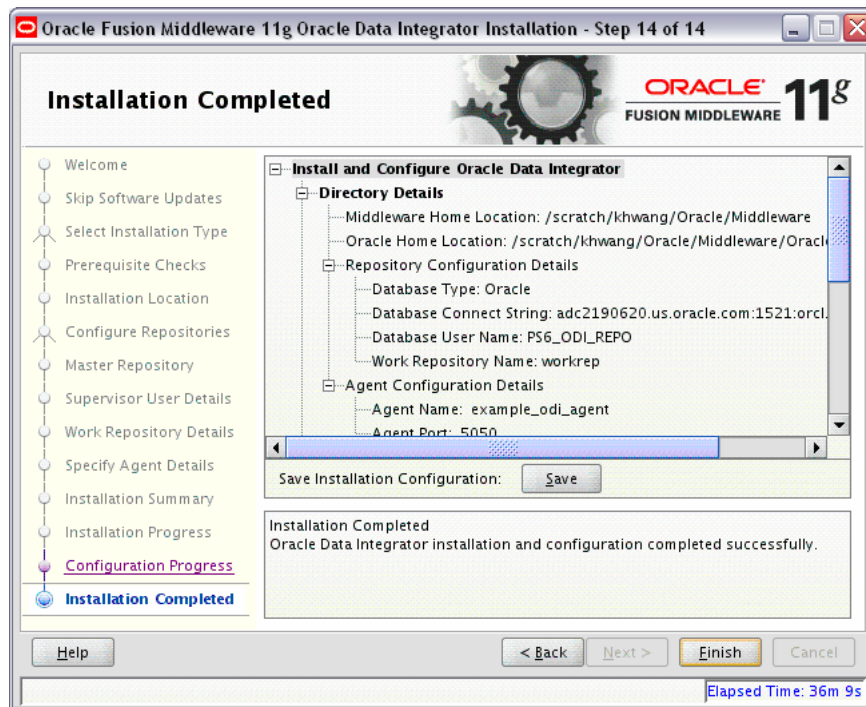
If you want to ignore the error and warning messages and continue with the installation, click **Continue**.

Click **Abort** to stop prerequisite checking for all components.

If you want to quit before the installation is completed, click **Cancel**.



## A.2.15 Installation Completed



This screen summarizes the installation that was just completed. The information that you provided appears in the Directory Details section.

Click **Save** to save your configuration information to a file. This information includes port numbers, installation directories, disk space usage, URLs, and component names which you may need at a later time.

Click **Finish** to dismiss the screen.



# B

---

## Deinstallation Screens for Oracle Data Integrator

This appendix contains images and descriptions for all of the Oracle Data Integrator deinstallation screens:

- Section B.1, "Welcome"
- Section B.2, "Deinstall Oracle Home"
- Section B.3, "Deinstallation Progress"
- Section B.4, "Deinstallation Complete"

### B.1 Welcome



The installer displays this screen when you are about to deinstall one or more Oracle Fusion Middleware software components.

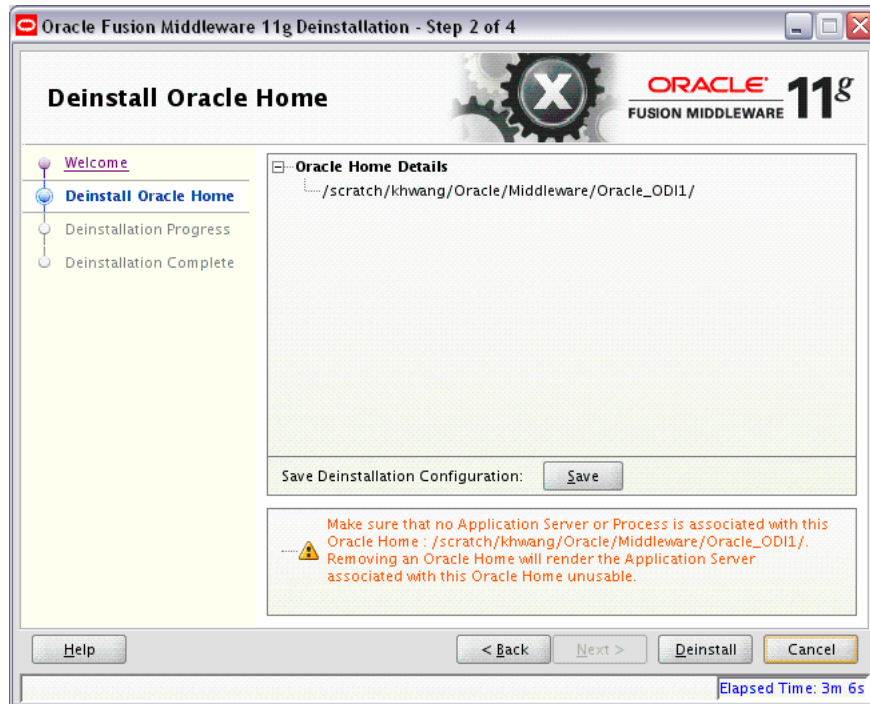
When you use the installer to deinstall your Oracle Fusion Middleware software, the installer removes the software files in the selected Oracle home from disk, updates the

Oracle inventory, and performs other operating-specific tasks to remove the components.

Like the Welcome screen that appears when you are about to install a product, the deinstallation Welcome screen contains a navigation pane on the left that summarizes the tasks the installer will help you complete.

Each item in the navigation pane represents a specific installer screen that will prompt you for information required to install the software.

## B.2 Deinstall Oracle Home



Use this screen to verify that you have selected the Oracle home that you want to deinstall.

If you want to save this configuration to a text file, click **Save**. This file can be used later if you choose to perform the same deinstallation from the command line. See [Appendix C, "Silent Installation and Deinstallation"](#) for more information.

When you click **Deinstall**, then the installer will begin the process of deinstalling the Oracle home shown on this screen.

---

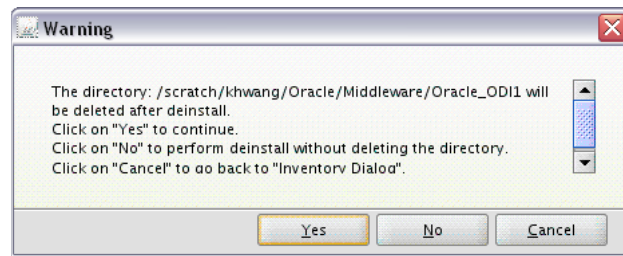
**Note:** Before you click **Deinstall**, ensure that all processes associated with the selected Oracle home have been stopped.

---

If you want to save this configuration to a text file (called a response file), click **Save**. The resulting response file can be used later if you choose to perform the same deinstallation procedure from the command line.

Verify that this is the correct directory, then click **Deinstall** to continue.

The following warning screen will appear:

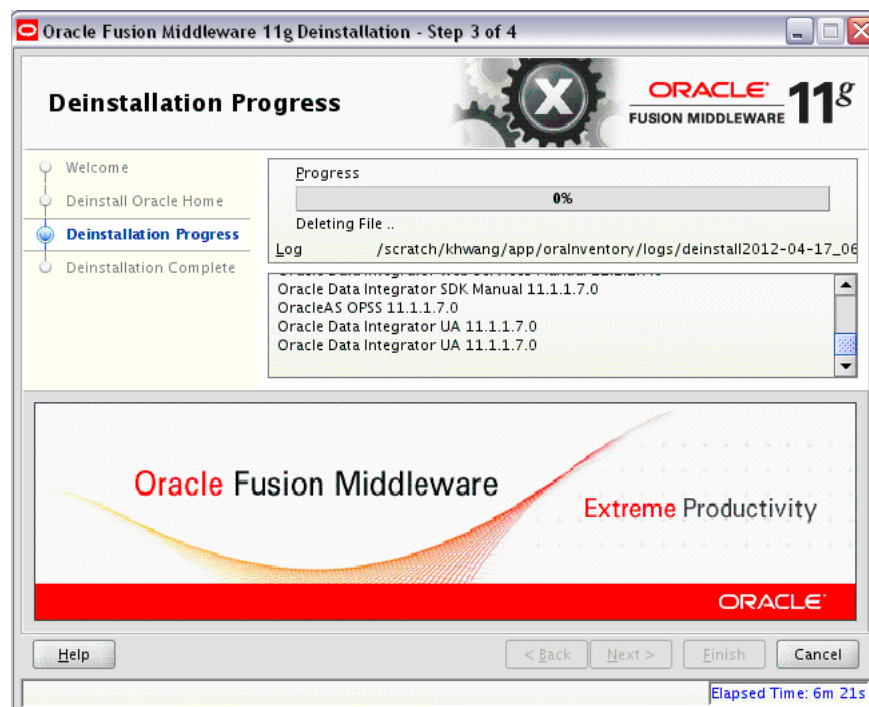


Click **Yes** to remove the software and the Oracle home directory from which the deinstaller was started.

Click **No** to remove the software but do not remove the Oracle home directory.

Click **Cancel** to return to the previous screen.

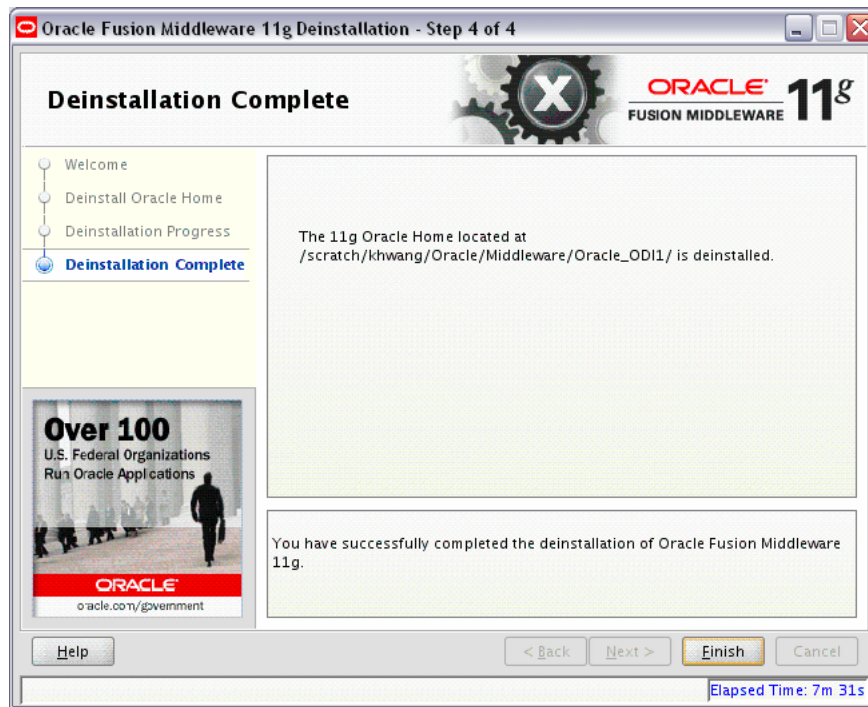
## B.3 Deinstallation Progress



Use this screen to monitor the progress of the deinstallation process.

Click **Cancel** to stop the deinstallation process.

## B.4 Deinstallation Complete



This screen summarizes the deinstallation that was just completed. When this screen appears, it indicates that the deinstallation is complete and the selected components have been cleared from the Oracle Inventory.

---

## Silent Installation and Deinstallation

This appendix describes how to perform a silent installation or deinstallation of Oracle Data Integrator.

- [Section C.1, "Understanding Silent Installation and Deinstallation"](#)
- [Section C.2, "Using the Oracle Data Integrator Response Files"](#)
- [Section C.3, "Oracle Data Integrator Installation Response File Parameters"](#)
- [Section C.4, "Oracle Data Integrator Deinstallation Response File Parameters"](#)

### C.1 Understanding Silent Installation and Deinstallation

You can use the Oracle Universal Installer's silent installation mode to bypass the graphical user interface and supply the necessary information in a response file. This method is most useful when installing the same product multiple times on multiple hosts. By using a response file, you can automate the installation of a product for which you know the installation parameters.

For information about silent installation and deinstallation and response files, refer to "Silent Installation and Deinstallation" in *Oracle Fusion Middleware Installation Planning Guide*.

### C.2 Using the Oracle Data Integrator Response Files

Before doing a silent installation or deinstallation, you must provide information specific to your installation or deinstallation in a response file. The installer will fail if you attempt an installation using a response file that is not configured correctly. Response files are text files that you can create or edit in a text editor.

Oracle recommends creating your installation response file by first running the install GUI, then clicking **Save** on the [Installation Summary](#) screen. Similarly, the deinstallation response file should be created by first running the deinstallation GUI, then clicking **Save** on the [Deinstall Oracle Home](#) screen. You will be prompted for a name and location where you want to create this response file. After it is created, you can use the response file exactly as-is to replicate the installation or deinstallation on other systems, or modify the response file as needed.

The installation response files can be used to install the Oracle Data Integrator software only. You will still need to run the Oracle Fusion Middleware Configuration Wizard separately to create or extend your WebLogic domain and configure Oracle Data Integrator products. For more information, see [Section 3.2.1, "Configuring a WebLogic Domain or WebSphere Cell"](#).



The response file templates in [Table C-1](#) are provided in the `Disk1/stage/Response` (on UNIX operating systems) or `Disk1\stage\Response` (on Windows operating systems) directory in the location where you unpacked the archive file ([Section 2.4.1, "Obtaining the Installer"](#)).

For more information about the parameters you may see in the response files, see [Section C.3, "Oracle Data Integrator Installation Response File Parameters"](#) and [Section C.4, "Oracle Data Integrator Deinstallation Response File Parameters"](#).

**Table C-1 ODI Response File Templates**

Response File Template	Description
<code>developerPlatformConfigureExistingRepository.rsp</code>	<p>This is the template response file that should be used if you are installing ODI Studio (with a local agent) or the Oracle Data Integrator Software Development Kit (SDK) and you want to configure existing Master and Work Repositories.</p> <p>This template provides the functional equivalent of using the GUI and selecting the <b>Developer Installation</b> option on the <a href="#">Specify Installation Location</a> screen and the <b>Configure with existing Master and Work Repositories</b> on the <a href="#">Repository Configuration</a> screen.</p>
<code>developerPlatformSkipRepository.rsp</code>	<p>This is the template response file that should be used if you are installing ODI Studio (with a local agent) or the Oracle Data Integrator Software Development Kit (SDK) and you do not want to the configure the ODI Master and Work Repositories.</p> <p>This template provides the functional equivalent of using the GUI and selecting the <b>Developer Installation</b> option on the <a href="#">Specify Installation Location</a> screen and the <b>Skip Repository Configuration</b> on the <a href="#">Repository Configuration</a> screen.</p>
<code>j2eePlatformConfigureExistingRepository_wls.rsp</code>	<p>This is the template response file that should be used if you are installing the Java EE components (which includes the Java EE agent, Oracle Data Integrator Console, and Public Web Services) on an Oracle WebLogic Server and you want to configure existing Master and Work Repositories.</p> <p>This template provides the functional equivalent of using the GUI and selecting the <b>Java EE Installation</b> option on the <a href="#">Specify Installation Location</a> screen and the <b>Configure with existing Master and Work Repositories</b> on the <a href="#">Repository Configuration</a> screen.</p>
<code>j2eePlatformConfigureExistingRepository_was.rsp</code>	<p>This is the template response file that should be used if you are installing the Java EE components (which includes the Java EE agent, Oracle Data Integrator Console, and Public Web Services) on an IBM WebSphere Server and you want to configure existing Master and Work Repositories.</p> <p>This template provides the functional equivalent of using the GUI and selecting the <b>Java EE Installation</b> option on the <a href="#">Specify Installation Location</a> screen and the <b>Configure with existing Master and Work Repositories</b> on the <a href="#">Repository Configuration</a> screen.</p>
<code>j2eePlatformSkipRepository_wls.rsp</code>	<p>This is the template response file that should be used if you are installing the Java EE components (which includes the Java EE agent, Oracle Data Integrator Console, and Public Web Services) on an Oracle WebLogic Server and you do not want to configure repositories.</p> <p>This template provides the functional equivalent of using the GUI and selecting the <b>Java EE Installation</b> option on the <a href="#">Specify Installation Location</a> screen and the <b>Skip Repository Configuration</b> on the <a href="#">Repository Configuration</a> screen.</p>



**Table C–1 (Cont.) ODI Response File Templates**

Response File Template	Description
j2eePlatformSkipRepository_was.rsp	<p>This is the template response file that should be used if you are installing the Java EE components (which includes the Java EE agent, Oracle Data Integrator Console, and Public Web Services) on an IBM WebSphere Server and you do not want to configure repositories.</p> <p>This template provides the functional equivalent of using the GUI and selecting the <b>Java EE Installation</b> option on the <a href="#">Specify Installation Location</a> screen and the <b>Skip Repository Configuration</b> on the <a href="#">Repository Configuration</a> screen.</p>
standalonePlatformConfigureExistingRepository.rsp	<p>This is the template response file that should be used if you are installing the ODI Standalone agent and you want to configure existing Master and Work Repositories.</p> <p>This template provides the functional equivalent of using the GUI and selecting the <b>Standalone Installation and Configure with existing Master and Work Repositories</b> on the <a href="#">Repository Configuration</a> screen.</p>
standalonePlatformSkipRepository.rsp	<p>This is the template response file that should be used if you are installing the ODI Standalone agent and you do not want to configure existing Master and Work Repositories.</p> <p>This template provides the functional equivalent of using the GUI and selecting the <b>Standalone Installation and Skip Repository Configuration</b> on the <a href="#">Repository Configuration</a> screen.</p>
deinstall_oh.rsp	<p>This is the template response file that should be used if you want to deinstall an existing Oracle home.</p>

### C.3 Oracle Data Integrator Installation Response File Parameters

[Table C–2](#) lists the parameters that you may see in your response files. Not all parameters will appear in all files; remember that the files can be customized for specific installation needs.

**Table C–2 Parameters for the Oracle Data Integrator Installation Response File Templates**

Installation Screen	Response File Parameter	Description
<a href="#">Install Software Updates</a>	SPECIFY_DOWNLOAD_LOCATION	Set the SPECIFY_DOWNLOAD_LOCATION parameter to true if you want to specify the location where software updates can be downloaded.
	SOFTWARE_UPDATES_DOWNLOAD_LOCATION	Then, specify the directory on your local system that contains the updates using the SOFTWARE_UPDATES_DOWNLOAD_LOCATION parameter.
	SKIP_SOFTWARE_UPDATES	Set this parameter to true if you do not want the installer to check for software updates.

**Table C-2 (Cont.) Parameters for the Oracle Data Integrator Installation Response File Templates**

<b>Installation Screen</b>	<b>Response File Parameter</b>	<b>Description</b>
Select Installation Type	ODI_STUDIO	Specify true if you want to install ODI Studio; if not, specify false.
	ODI_SDK	Specify true if you want to install ODI SDK; if not, specify false.
	STANDALONE_AGENT	Specify true if you want to install the ODI Standalone Agent; if not, specify false.
	ORACLE_DATA_INTEGRATOR_J2EE_AGENT	Specify true if you want to install the Java EE Agent; if not, specify false. After installation this component must be configured using the Configuration Wizard.
	ORACLE_DATA_INTEGRATOR_CONSOLE	Specify true if you want to install the ODI Console; if not, specify false. After installation this component must be configured using the Configuration Wizard.
	ORACLE_DATA_INTEGRATOR_PUBLIC_WEB_SERVICE	Specify true if you want to install the ODI Public Web Service; if not, specify false. After installation this component must be configured using the Configuration Wizard.
Specify Installation Location	ORACLE_HOME	Specify the full path to the location of your Oracle home directory.
	MIDDLEWARE_HOME	Specify the full path to the location of your Middleware home directory.
Application Server	APPSERVER_TYPE	Specify the type of Application Server you are using. Use WLS for WebLogic Server, or WAS for IBM WebSphere.
Repository Configuration	USE_EXISTING_REPOSITORY SKIP_REPOSITORY_CREATION	Set USE_EXISTING_REPOSITORY=true and SKIP_REPOSITORY_CREATION=false to configure an existing repository. Set USE_EXISTING_REPOSITORY=false and SKIP_REPOSITORY_CREATION=true to skip repository configuration.

**Table C-2 (Cont.) Parameters for the Oracle Data Integrator Installation Response File Templates**

Installation Screen	Response File Parameter	Description
Master Repository	MASTER_DATABASE_CONNECT_STRING	Specify the connection credentials to the database containing the ODI schemas.  For Oracle databases: <code>http://dbhost:dbport:SID-or-ServiceName</code> For Microsoft SQL Server or IBM DB2: <code>http://dbhost:dbport;DatabaseName=dbname</code>
	MASTER_DATABASE_USER_NAME	Specify the Master Repository schema user name ( <code>prefix_ODI_REPO</code> ).
	MASTER_DATABASE_USER_PASSWORD	Specify the Master Repository schema password.
	MASTER_DATABASE_TYPE	Specify the database type. Valid values are: <ul style="list-style-type: none"> <li>■ Oracle</li> <li>■ Microsoft</li> <li>■ DB2</li> </ul>
	MASTER_REPOSITORY_IS_SERVICE_ID_USED	Set this to <code>true</code> only if the Master Repository schema resides on an Oracle database and you want to use the Service ID instead of the Service Name for your Oracle database.
Supervisor User Details	ODI_SUPERVISOR_PASSWORD	Specify the ODI Supervisor's password.
Specify Work Repository Details	WORK_REPOSITORY_NAME	Specify the name of the Oracle Data Integrator Work Repository.
Specify Agent Details	AGENT_NAME	Specify a name for the standalone or local agent.
	AGENT_PORT	Specify a port number between 1024 and 65535 that is not currently being used by any other Oracle home. This port defaults to 20910.

## C.4 Oracle Data Integrator Deinstallation Response File Parameters

The `deinstall_oh.rsp` response file contains only a single parameter: `DEINSTALL_IN_ASINSTANCE_MODE=false`. This causes the deinstaller to not look for any Oracle instances to remove; instead, the deinstaller will remove the Oracle home from where it is started.



---



---

# Oracle Data Integrator Companion CD

This appendix describes the components that are provided on the Oracle Data Integrator Companion disk and instructions for manual installation.

- [Section D.1, "Oracle Data Integrator Companion Disk Components"](#)
- [Section D.2, "Manual Installation and Configuration Steps"](#)
- [Section D.3, "Installing the Java Standalone Agent on iSeries"](#)

## D.1 Oracle Data Integrator Companion Disk Components

[Table D-1](#) provides the location and description of the components that are provided on the Oracle Data Integrator companion disk. These components must be manually installed.

**Table D-1** Directory Structure of the Oracle Data Integrator Companion Installation Disk

Directory	Description
/agent_standalone	This folder contains the manual installation files for the ODI Standalone Agent in <code>oracledi-agent-standalone.zip</code> .
/demo	This folder contains demonstration files and samples in <code>oracledi-demo.zip</code> . <b>NOTE:</b> Demonstration files and samples are NOT installed with the Oracle Data Integrator GUI installer. To use the demonstration files, you must install them manually.
/misc/cdc-iseries	This folder contains the manual installation files for the ODI CDC for iSeries.
/misc/biee-lineage	This folder that contains the Oracle Business Intelligence Enterprise Edition (OBIEE) and Oracle Data Integrator (ODI) metadata to build report-to-source data lineage wizard.  For more information on this component's installation, see "Oracle Business Intelligence Enterprise Edition Data Lineage" in the <i>Oracle Fusion Middleware Connectivity and Knowledge Modules Guide for Oracle Data Integrator</i> .

**Table D-1 (Cont.) Directory Structure of the Oracle Data Integrator Companion Installation Disk**

Directory	Description
/misc/jde_world	This folder contains the following JD Edwards (JDE) World program files: <ul style="list-style-type: none"> <li>■ JDEWorldJDBC.jar This JDE World JDBC driver file must be in the userlib or driver folder.</li> <li>■ WorldBase.jar This jar file must be in the userlib or driver folder.</li> <li>■ config.xml This configuration file must be in the ODI_HOME/odi/bin folder.</li> <li>■ jdeworld_example.properties This properties file is a template that you can make use of if you are using the JDE_SECURITY_FILE option in the IKM JDE World Control Append.</li> </ul>
/sdk	This folder contains the manual installation files for ODI SDK Component in oracledi-sdk.zip.
/studio	This folder contains the manual installation files for ODI Studio in oracledi-studio.zip.
/xml-reference	This folder contains oracledi-xml-reference.zip which provides the technologies, actions and knowledge modules that can be imported into ODI.

## D.2 Manual Installation and Configuration Steps

This section provides information on manually installing and configuring the components provided on the Oracle Data Integrator Companion disk.

Before performing the manual installation of the ODI components, create a directory on your disk that will be the *ODI\_HOME*. For example, create a folder named `C:\oracle\odi11g\` on Windows operating systems.

---

**Note:** Oracle Data Integrator Components requires a Java Virtual Machine (JVM) to run. Make sure that a supported Java environment is set up on your machine prior to installing Oracle Data Integrator.

For a list of supported platforms, see the Oracle Fusion Middleware certification documents at [http://www.oracle.com/technology/software/products/ias/files/fusion\\_certification.html](http://www.oracle.com/technology/software/products/ias/files/fusion_certification.html).

---

### D.2.1 Standalone Agent

To manually install the ODI Standalone Agent, do the following:

1. Unzip the `oracledi-agent-standalone.zip` file located in the target *ODI\_HOME* directory.
2. Manually configure `odiparams.bat` (for Windows operating systems) or the `odiparams.sh` (for UNIX operating systems) as described in [Table 3-1, "Repository Connection Information"](#).
3. Set the *JAVA\_HOME* or *ODI\_JAVA\_HOME* environment to the path of the JVM directory where the `/bin` directory resides.

For example:

```
setenv JAVA_HOME /usr/local/java
```

**NOTE:** The JVM that you point to must be a supported version. For a list of certified JVM versions, see [http://www.oracle.com/technology/software/products/ias/files/fusion\\_certification.html](http://www.oracle.com/technology/software/products/ias/files/fusion_certification.html).

**Tip:** If you installed Oracle WebLogic Server, a JRE was installed on your system. You can use this location (the location of the JRE directory) to start the installer. The default location for the JRE is the `jdk160_version` directory inside your Middleware home.

On 64-bit platforms, the JRE location is the `JAVA_HOME` you used to install Oracle WebLogic Server.

For more information, refer to *Oracle Fusion Middleware Installation Guide for Oracle WebLogic Server*.

4. Configure the Standalone Agent in the topology as described in [Section 3.1.4](#).
5. Start the Standalone Agent as described in [Section 3.1.4.2](#).

## D.2.2 ODI Studio and XML Reference

To manually install the ODI Studio and XML Reference, do the following:

1. Unzip `oracledi-studio.zip` in the `ODI_HOME` directory.
2. Unzip `oracledi-xml-reference.zip` in the `ODI_HOME` directory.
3. Start ODI Studio.
  - On UNIX operating systems:
 

```
ODI_HOME/oracledi/client/odi.sh
```
  - On Windows operating systems:
 

```
ODI_HOME\oracledi\client\odi.exe
```
4. When ODI Studio starts for the first time, it prompts you for location of the Java Virtual Machine. Provide the location of the JVM. Once you have provided the JVM location, Oracle Data Integrator Studio starts.

## D.2.3 Demonstration Environment

The demonstration (demo) environment should be installed with an existing installation that includes the ODI Studio component.

To manually install the Demonstration environment, do the following:

1. Unzip `oracledi-demo.zip` in the `ODI_HOME` folder.
2. Set the `JAVA_HOME` or `ODI_JAVA_HOME` property to the path of the JVM directory where the `/bin` directory resides. For a list of certified JVM versions, see [http://www.oracle.com/technology/software/products/ias/files/fusion\\_certification.html](http://www.oracle.com/technology/software/products/ias/files/fusion_certification.html).

For example:

```
setenv JAVA_HOME /usr/local/java/bin
```

**Tip:** If you installed Oracle WebLogic Server, a JRE was installed on your system. You can use this location (the location of the JRE directory) to start the installer. The default location for the JRE is the `jdk160_version` directory inside your Middleware home.

On 64-bit platforms, the JRE location is the `JAVA_HOME` you used to install Oracle WebLogic Server.

For more information, refer to *Oracle Fusion Middleware Installation Guide for Oracle WebLogic Server*.

3. To start ODI Demonstration Environment:

- On UNIX operating systems launch the following script:

```
ODI_HOME/oracledi/demo/bin/startdemo.sh
```

- On Windows operating systems launch the following script:

```
ODI_HOME\oracledi\demo\bin\startdemo.bat
```

4. To stop ODI Demonstration Environment:

- On UNIX operating systems launch the following script:

```
ODI_HOME/oracledi/demo/bin/stopdemo.sh
```

- On Windows operating systems launch the following script:

```
ODI_HOME\oracledi\demo\bin\stopdemo.bat
```

The demonstration environment is described in the Oracle Data Integrator tutorials available on Oracle Technology Network.

## D.3 Installing the Java Standalone Agent on iSeries

The Standalone Agent can be deployed on iSeries systems. This deployment enables you to start run-time agents and manage sessions using the iSeries server machine.

To manually install the ODI Standalone Agent on iSeries, do the following:

1. Create a temporary `TEMP_ODI_HOME` directory on a client machine.
2. Unzip the `oracledi-agent-standalone.zip` file in this `TEMP_ODI_HOME` directory. Optionally, add additional drivers and open tools as described in [Section 3.1.1](#).
3. Manually configure `odiparams.sh` as described in [Table 3–1, "Repository Connection Information"](#).
4. Configure the agent in the topology as described in [Section 3.1.4](#).
5. Using QShell (QSH), create a folder for the Standalone Agent in your iSeries system. This folder will be your `ODI_HOME`.
6. Transfer the content of the `TEMP_ODI_HOME` folder to this `ODI_HOME` folder using FTP.
7. Use the UNIX operating system scripts located in the `ODI_HOME/oracledi/agent/bin` directory for starting your agents or managing your sessions. See [Table 1–3, "Oracle Data Integrator Scripts and Tools"](#) for a description of these scripts.



---

---

# Creating Repositories with Oracle Data Integrator Studio

This appendix describes how to create and administer Oracle Data Integrator repositories. An overview of the repositories used in Oracle Data Integrator is provided.

This appendix includes the following sections:

- [Section E.1, "Introduction to Oracle Data Integrator Repositories"](#)
- [Section E.2, "Creating Repository Storage Spaces"](#)
- [Section E.3, "Creating the Master Repository"](#)
- [Section E.4, "Connecting to the Master Repository"](#)
- [Section E.5, "Creating a Work Repository"](#)
- [Section E.6, "Connecting to a Work Repository"](#)

## E.1 Introduction to Oracle Data Integrator Repositories

There are two types of repositories in Oracle Data Integrator:

- **Master Repository:** This is a data structure containing information on the topology of the company's IT resources, on security and on version management of projects and data models. This repository is stored on a relational database accessible in client/server mode from the different Oracle Data Integrator modules. In general, you need only one Master Repository. However, it may be necessary to create several Master Repositories in one of the following cases:
  - Project construction over several sites not linked by a high-speed network (off-site development, for example).
  - Necessity to clearly separate the interfaces' operating environments (development, test, production), including on the database containing the Master Repository. This may be the case if these environments are on several sites.
- **Work Repository:** This is a data structure containing information on data models, projects, and their use. This repository is stored on a relational database accessible in client/server mode from the different Oracle Data Integrator modules. Several Work Repositories can be created with several Master Repositories if necessary. However, a Work Repository can be linked with only one Master Repository for version management purposes.

The standard method for creating repositories is using Repository Creation Utility (RCU). RCU automatically manages storage space as well as repository creation. However, if you want to create the repositories manually, it is possible to manually create and configure the repositories.

The steps needed to create and configure repositories are detailed in the following sections:

- [Section E.2, "Creating Repository Storage Spaces"](#)
- [Section E.3, "Creating the Master Repository"](#)
- [Section E.4, "Connecting to the Master Repository"](#)
- [Section E.5, "Creating a Work Repository"](#)
- [Section E.6, "Connecting to a Work Repository"](#)

---

---

**Note:** Oracle recommends that you regularly perform the following maintenance operations: purge the execution logs in order to reduce the Work Repository size, and back up the Oracle Data Integrator repositories on the database.

---

---

Advanced actions for administering repositories are detailed in "Advanced Actions for Administering Repositories" in the *Oracle Fusion Middleware Developer's Guide for Oracle Data Integrator*.

## E.2 Creating Repository Storage Spaces

Oracle Data Integrator repositories can be installed on database engines supported by Oracle Fusion Middleware 11g. For the latest list of supported databases versions as well as the requirements for each database, see:

[http://www.oracle.com/technology/software/products/ias/files/fusion\\_certification.html](http://www.oracle.com/technology/software/products/ias/files/fusion_certification.html)

For each database that will contain a repository, a storage space must be created.

---

---

**Caution:** Oracle recommends that you store repositories in a different space from where your application data is kept (for example in a different schema for an Oracle database, or in a different database for Sybase or Microsoft SQL Server).

---

---

Your Master Repository can be stored in the same schema as one of your Work Repositories. A schema can only have one Master Repository and you cannot create two different Work Repositories in the same schema.

The examples in the following table are supplied as a guide:

---

Technology	Steps to follow
Oracle	<p data-bbox="691 239 1442 289">Create a schema to host the Master Repository and a schema to host the Work Repository.</p> <p data-bbox="691 306 1442 357">The schemas are created by executing the following SQL commands for each of the <code>odim</code> and <code>odiw</code> schemas:</p> <p data-bbox="691 373 899 401"><b>Master Repository:</b></p> <pre data-bbox="691 415 1284 527">SQL&gt; create user MY_SCHEMA identified by MY_PASS       default tablespace MY_TBS       temporary tablespace MY_TEMP; SQL&gt; grant connect, resource to MY_SCHEMA;</pre> <p data-bbox="691 564 883 592"><b>Work Repository:</b></p> <pre data-bbox="691 606 1284 747">SQL&gt; create user MY_SCHEMA identified by MY_PASS       default tablespace MY_TBS       temporary tablespace MY_TEMP; SQL&gt; grant connect, resource to MY_SCHEMA; SQL&gt; grant execute on dbms_lock to MY_SCHEMA;</pre> <p data-bbox="691 785 769 812">Where:</p> <p data-bbox="691 827 1425 905"><i>MY_SCHEMA</i> corresponds to the name of the schema you want to create (for example, <code>odim</code> for the Master Repository and <code>odiw</code> for the Work Repository).</p> <p data-bbox="691 919 1442 997"><i>MY_PASS</i> corresponds to the password you have given to the default tablespace <i>MY_TBS</i>. This is the Oracle tablespace where the data will be stored.</p> <p data-bbox="691 1012 1192 1039"><i>MY_TEMP</i> is the temporary default tablespace.</p> <p data-bbox="691 1054 1409 1110"><b>NOTE:</b> The Work Repository database user requires the <code>grant execute</code> privilege on <code>dbms_lock</code> for the Work Repository schema.</p> <p data-bbox="691 1125 1425 1257">If you are creating the repository on Oracle Database 12c, you must assign a quota to allow the user to create objects. Choose the quota to accommodate the expected size of your repository. If you are not sure about the size of your repository, you can grant unlimited tablespace. For example:</p> <pre data-bbox="691 1272 1273 1299">GRANT UNLIMITED TABLESPACE TO odi_DB_repos_user</pre>

---

Technology	Steps to follow
Microsoft SQL Server or Sybase ASE	<p>Create a database <code>db_odim</code> to host the Master Repository and a database <code>db_odiw</code> to host the Work Repository. Create two logins, <code>odim</code> and <code>odiw</code>, that contain these databases by default.</p> <p>Use Enterprise Manager to create the two databases <code>db_odim</code> and <code>db_odiw</code>.</p> <p><b>NOTE:</b> It is recommended that you configure the Microsoft SQL Server databases storing repository information with a case-sensitive collation. This enables reverse-engineering and allows you to create multiples objects with the same name but a different case (for example: <code>tablename</code> and <code>TableName</code>).</p> <p>Use Query Analyzer or I-SQL to launch the following commands:</p> <pre>CREATE LOGIN mylogin     WITH PASSWORD = 'mypass',     DEFAULT_DATABASE = defaultbase,     DEFAULT_LANGUAGE = us_english; USE defaultbase; CREATE USER dbo FOR LOGIN mylogin; GO</pre> <p>Where:</p> <p><code>mylogin</code> corresponds to <code>odim</code> or <code>odiw</code>.</p> <p><code>mypass</code> corresponds to a password for these logins.</p> <p><code>defaultbase</code> corresponds to <code>db_odim</code> and <code>db_odiw</code> respectively.</p>
DB2/400	<p>Create a library <code>odim</code> to host the Master Repository and a library <code>odiw</code> to host the Work Repository. Create two users <code>odim</code> and <code>odiw</code> who have these libraries by default.</p> <p>Master and work repository users should be granted access to tablespaces with at least 16k pagesize. The database must have temporary tablespace of at least 16k.</p> <p>Use the following commands to se the pagesize:</p> <pre>CREATE LARGE TABLESPACE ODI16 PAGESIZE 16 K MANAGED BY AUTOMATIC STORAGE ;</pre> <pre>GRANT USE OF TABLESPACE ODI16 TO USER ODIREPOS;</pre> <p><b>Note:</b> The libraries must be created in the form of SQL collections.</p>
MySQL	<p>If you are using MySQL (release 5.5.14 or higher) to setup a repository, and the database charset is set to <code>utf8</code>, you will need to add the following parameters to the repository's jdbc URL to operate non-ASCII data correctly in Oracle Data Integrator Studio:</p> <pre>useUnicode=yes&amp;characterEncoding=UTF-8</pre>

## E.3 Creating the Master Repository

Creating the Master Repository creates an empty repository structure and seeds metadata (for example, technology definitions, or built-in security profiles) into this repository structure.

To create the Master Repository:

1. Open the New Gallery by choosing **File > New**.
2. In the New Gallery, in the Categories tree, select **ODI**.
3. Select from the Items list the **Master Repository Creation Wizard**.
4. Click **OK**.

The Master Repository Creation wizard opens.

5. Specify the **Database Connection** parameters as follows:

- **Technology:** From the list, select the technology that will host your Master Repository. Default is *Oracle*.
- **JDBC Driver:** The driver used to access the technology, that will host the repository.
- **JDBC URL:** The URL used to establish the JDBC connection to the database.  
Note that the parameters **JDBC Driver** and **URL** are synchronized and the default values are technology dependant.
- **User:** The user ID / login of the owner of the tables (for example, *odim*).
- **Password:** This user's password.
- **DBA User:** Enter the Database Administrator user ID.
- **DBA Password:** Enter the DBA's password.

6. Specify the **Repository Configuration** parameters as follows:

- **ID:** Enter a specific ID for the new repository, other than the default *0*.

---



---

**Note:** Oracle recommends that this ID is unique and not used for any other Master Repository, as it affects imports and exports between repositories. For more information, see "Exporting/Importing" in the *Oracle Fusion Middleware Developer's Guide for Oracle Data Integrator*.

---



---

7. Click **Test** to test the connection to your Master Repository.

The Information dialog opens and informs you whether the connection has been established. If the connection fails, fix the connection to your Master Repository before moving to next step.

8. Click **Next**.

9. Do one of the following:

- Select **Use ODI Authentication** to manage users using ODI's internal security system and enter the following Supervisor login information:

Properties	Description
Supervisor User	User name of the ODI supervisor. This name should be SUPERVISOR (all CAPS - in Oracle Data Integrator user names are case-sensitive).
Supervisor Password	This user's password
Confirm Password	This user's password

- Select **Use External Authentication** to use an external enterprise identity store, such as Oracle Internet Directory, to manage user authentication and enter the following supervisor login information:

Properties	Description
Supervisor User	User name of the ODI supervisor. This name should be SUPERVISOR (all CAPS - in Oracle Data Integrator user names are case-sensitive).
Supervisor Password	This user's password

---

**Note:** In order to use the external authentication option, ODI Studio has to be configured for external authentication. See "Setting Up External Authentication" in *Oracle Fusion Middleware Developer's Guide for Oracle Data Integrator* for more information and restart ODI Studio.

---

10. Click **Next**.

11. Specify the password storage details:

- Select **Internal Password Storage** if you want to store passwords in the Oracle Data Integrator Master Repository
- Select **External Password Storage** if you want to use JPS Credential Store Framework (CSF) to store the data server and context passwords in a remote credential store. Indicate the **MBean Server Parameters** to access the credential store. Refer to "Managing the Security in Oracle Data Integrator" in *Oracle Fusion Middleware Developer's Guide for Oracle Data Integrator* for more information.

12. In the Master Repository Creation Wizard click **Finish** to validate your entries.

Oracle Data Integrator begins creating your Master Repository. You can follow the procedure on your Messages – Log. To test your Master Repository, refer to [Section E.4, "Connecting to the Master Repository"](#).

## E.4 Connecting to the Master Repository

To connect to the Master repository:

1. Open the New Gallery by choosing **File > New**.
2. In the New Gallery, in the Categories tree, select **ODI**.
3. Select from the Items list **Create a New ODI Repository Login**.
4. Click **OK**.

The Repository Connection Information dialog appears.

5. Specify the Oracle Data Integrator connection details as follows:

- **Login name:** A connection alias (for example: Repository)

The connection alias is used to connect to the Master Repositories and then to create the Work Repository as described in [Section E.5](#).

- **User:** The ODI Supervisor user name you have defined when creating the Master Repository or an ODI user name you have defined in the Security Navigator after having created the Master Repository.

Note that the Supervisor user name is case-sensitive, and must be entered exactly as previously defined (for example, SUPERVISOR in all CAPS).

- **Password:** The ODI supervisor password you have defined when creating the Master Repository or an ODI user password you have defined in the Security Navigator after having created the Master Repository.
- 6. Specify the Database Connection (Master Repository) details as follows:
  - **User:** Database user ID/login of the schema (database, library) that contains the ODI Master Repository.
  - **Password:** This user's password.
  - **Driver List:** Select the driver required to connect to the DBMS supporting the Master Repository you have just created from the drop-down list.
  - **Driver Name:** The complete driver name.
  - **URL:** The URL used to establish the JDBC connection to the database hosting the repository.
- 7. Click **Test** to check that the connection is working.
- 8. Click **OK** to validate your entries.

## E.5 Creating a Work Repository

Several Work Repositories can be designated with several Master Repositories if necessary. However, a Work Repository can be linked with only one Master Repository for version management purposes.

To launch a Work Repository creation:

1. In the Topology Navigator, go to the **Repositories** panel.
2. Right-click the Work Repositories node and select **New Work Repository**.  
The **Create Work Repository** Wizard opens.
3. Specify the Oracle Data Integrator Work Repository connection details as follows:
  - **Technology:** Choose the technology of the server to host your Work Repository. Default is *Oracle*.
  - **JDBC Driver:** The driver used to access the technology, that will host the repository.
  - **JDBC URL:** The complete path of the data server to host the Work Repository.  
Note that the parameters **JDBC Driver** and **URL** are synchronized and the default values are technology dependant
  - **User:** User ID / login of the owner of the tables you are going to create and host of the Work Repository.
  - **Password:** This user's password.
4. Click **Test** to verify that the connection is working.
5. Click **Next**.

Oracle Data Integrator verifies whether a Work Repository already exists on the connection specified in Step 3:

- If an existing Work Repository is detected on this connection, the next steps will consist of attaching the Work Repository to the Master Repository. Refer to "Attaching and Deleting a Work Repository" in *Oracle Fusion Middleware Developer's Guide for Oracle Data Integrator* for further instructions.

- If no Work Repository is detected on this connection, a new Work Repository is created. Continue with the creation of a new Work Repository and provide the Work Repository details in following step.
6. Specify the Oracle Data Integrator Work Repository properties:
    - **ID:** A specific ID for the new repository, rather than the default 0.

---

**Note:** Oracle recommends that this ID is unique and not used for any other Master Repository, as it affects imports and exports between repositories. For more information, see "Exporting/Importing" in *Oracle Fusion Middleware Developer's Guide for Oracle Data Integrator*.

---

- **Name:** Give a unique name to your Work Repository (for example: *DEVWORKREPI*).
  - **Password:** Enter the password for the Work Repository.
  - **Type:** Select the type for the Work Repository:
    - **Development:** This type of repository allows management of design-time objects such as data models and projects (including interfaces, procedures, etc). A development repository includes also the run-time objects (scenarios and sessions). This type of repository is suitable for development environments.
    - **Execution:** This type of repository only includes run-time objects (scenarios, schedules and sessions). It allows launching and monitoring of data integration jobs in Operator Navigator. Such a repository cannot contain any design-time artifacts. Designer Navigator cannot be used with it. An execution repository is suitable for production environments.
7. Click **Finish**.
  8. The Create Work Repository login dialog opens. If you want to create a login for the Work Repository, click **Yes** and you will be asked to enter the **Login Name** in a new dialog. If you do not want to create a Work Repository login, click **No**.
  9. Click **Save** in the toolbar.

For more information, refer to [Section E.6, "Connecting to a Work Repository"](#).

## E.6 Connecting to a Work Repository

To connect to an existing Work Repository and launch Designer Navigator:

1. Open the New Gallery by choosing **File > New**.
2. In the New Gallery, in the Categories tree, select **ODI**.
3. Select from the Items list **Create a New ODI Repository Login**.
4. Click **OK**.

The Repository Connection Information dialog opens.

5. Specify the Oracle Data Integrator connection details as follows:
  - **Login name:** A connection alias (for example: *Repository*)  
The connection alias is used to connect to the Work Repositories and then to create the Master Repository as described in [Section E.4](#).



- **User:** The ODI supervisor user name you have defined when creating the Master Repository or an ODI user name you have defined in the Security Navigator after having created the Master Repository.  
Note that the Supervisor user name is case-sensitive, and must be entered exactly as previously defined (for example, SUPERVISOR in all CAPS).
  - **Password:** The ODI supervisor password you have defined when creating the Master Repository or an ODI user password you have defined in the Security Navigator after having created the Master Repository.
6. Specify the Database Connection (Master Repository) details as follows:
    - **User:** Database user ID/login of the schema (database, library) that contains the ODI Master Repository.
    - **Password:** This user's password.
    - **Driver List:** Select the driver required to connect to the DBMS supporting the Master Repository you have just created from the drop-down list.
    - **Driver Name:** The complete driver name.
    - **URL:** The URL used to establish the JDBC connection to the database hosting the repository.
  7. Click **Test** to verify that the connection is working.
  8. Select **Work Repository** and specify the Work Repository details as follows:
    - **Work repository name:** The name you gave your Work Repository in the previous step (*WorkRep1* in the example). You can display the list of Work Repositories available in your Master Repository by clicking on the button to the right of this field.
  9. Click **OK** to validate your entries.



---

## Customizing the ODI Credential Map Name

The Oracle Data Integrator Java EE Agent and Oracle Data Integrator Console use a credential map to store usernames and passwords. The default credential map name is `oracle.odi.credmap`. In rare situations, ODI users may need to change the default to a different credential map name for the ODI Java EE Agent and ODI Console.

### F.1 What is Stored in Credential Store?

ODI runtime uses credential store for the ODI Java EE Agent and ODI Console.

- ODI Java EE Agent boot AppId and Password
- ODI Console boot AppId and Password

In most usage scenarios, ODI uses the credential map name `oracle.odi.credmap`. In certain environments, however, the credential map name is decided at a global level and all components are required to use that credential map name. For example, an Oracle Fusion Middleware application may use the `oracle.apps.security` credential map name instead of the standard `oracle.odi.credmap`. In this case, the credential map name needs to be customized for the environment.

### F.2 Modifying the Credential Map Name

You can modify the credential map name specified in the Oracle Data Integrator templates by running the script `updateCredMapInEar`. [sh|bat] (for Oracle WebLogic Server) or `was_updateCredMapInEar`. [sh|bat] (for IBM WebSphere). If you execute the script with the `-EARFILE` parameter, you are able to modify a specific ear file and update the default credential map. You must execute this script before creating and deploying ODI Java EE Agent ear and before deploying ODI Console ear to a WebLogic Domain. After executing this script, all generated ODI Java EE Agent ears will carry the changed credential map name.

#### Usage for Oracle WebLogic Server:

```
updateCredMapInEar.sh -MAPNAME=credential_map_name -EARFILE=ear_file_to_update
```

#### Usage for IBM WebSphere:

```
was_updateCredMapInEar.sh -MAPNAME=credential_map_name -EARFILE=ear_file_to_update
```

#### Where:

- MAPNAME: User supplied credential map name.
- EARFILE: This is optional parameter. If specified, the credential map inside the specified ear file will be modified.

If not specified, the credential map name in the default templates for ODI Java EE Agent (`oraclediagent.ear`) and ODI Console (`odiconsole.ear`) will be modified.

Below is a sample command for Oracle WebLogic Server:

```
updateCredMapInEar.sh -MAPNAME=oracle.apps.security
updateCredMapInEar.sh -MAPNAME=oracle.apps.security -EARFILE=ODI_
HOME/setup/manual/oracledi-agent/oraclediagent.ear
```

### F.3 Updating WLST Scripts for Credential Map Creation

If you have updated the credential map name in a template and then deployed this template, make sure that the credential store entries created for this deployed application use this new credential map name. See [Section 3.2.3, "Adding Credential Store Entries"](#) for more information on creating credential store entries.

In the `createcred` command, the value provided for the `map` parameter should be the customized credential map name, as shown in the example below:

```
createCred(map="acme.security.credmap", key="SUPERVISOR", user="SUPERVISOR",
password="supervisor1", desc="Key for Supervisor")
```

---

# OPMN Configuration for Standalone Agent

Oracle Process Monitor and Notification server (OPMN) is used to stop, start and get process status information of system components. OPMN can be obtained by installing Oracle Web Tier; see Oracle Fusion Middleware Installation Guide for Oracle Web Tier for more information. Note that you do not need to configure Oracle Web Tier to obtain OPMN; you can select **Install Only - Do Not Configure** on the Select Installation Type screen.

The Standalone Agent is a standalone Java process started from a command line interface. This agent is typically deployed locally on the source or target machines for optimal integration flow performances. If you want to use Fusion Middleware Control to start, stop, and monitor the standalone agent, you need to add the Standalone Agent to OPMN and register the OPMN instance with the Administration Server.

This chapter contains the procedure for accomplishing this on WebLogic Server. If you are using IBM WebSphere as your application server, see the instructions in "Configuring OPMN on IBM WebSphere" in *Oracle Fusion Middleware Third-Party Application Server Guide*.

The following topics are covered:

- [Section G.1, "Adding a Standalone Agent to OPMN"](#)
- [Section G.2, "Stopping the Agent"](#)
- [Section G.3, "Starting the Agent and Agent Components"](#)
- [Section G.4, "Determining the Status of Oracle HTTP Server"](#)
- [Section G.5, "Deleting the Agent"](#)
- [Section G.6, "Updating the Agent Setting Information"](#)

## G.1 Adding a Standalone Agent to OPMN

Follow the instructions in this section to add the standalone agent to OPMN and register OPMN with the Administration Server:

1. Install Oracle Web Tier in order to get OPMN, and make sure:
  - a. Oracle Web Tier must be installed in the same Oracle home as Oracle Data Integrator.
  - b. When installing Oracle Web Tier, choose the **Install Software - Do Not Configure** option on the Select Installation Type screen.
  - c. The default instance name is `instance1`, which will be used in the examples below. If you choose a different instance name, remember to replace `instance1` with your own instance name.

2. In order to configure OPMN to manage a Standalone Agent, with or without registering the OPMN instance to an Administration Server, OPMN needs a properties file containing the properties defined in [Table G-1](#). Note that the values shown may differ from your system configuration.

The list of properties required are given in the `ODI_HOME/oracledi/agent/bin/agentcreate.properties` file. Create a copy of this file and provide values for these properties as applicable to your Standalone Agent.

For example, if you wish to manage two Standalone Agent processes using OPMN, create one copy of `agentcreate.properties` for each agent (perhaps `ODIAgent1.properties` and `ODIAgent2.properties`).

---

**Note:** The name of the file does not need to match the name of the agent.

---

**Table G-1 Parameters in `agentcreate.properties`**

Parameter	Description	Example (Your Configurations May Differ)
PORTNO	HTTP(S) port number that the Standalone Agent listens on.	PORTNO=9787
JMXPORTNO	JMX port of the ODI Standalone Agent.	JMXPORTNO=9787
PROXY_PORT	OPMN proxy port number.	PROXY_PORT=98767
JAVA_HOME	Location of the JVM used by the ODI Standalone Agent.	JAVA_HOME=/home/Oracle/Middleware/jdk6_35
ORACLE_OPMN_HOME	Oracle home directory for Oracle Web Tier.	ORACLE_OPMN_HOME=/home/Oracle/Middleware/Oracle_WT1
ORACLE_ODI_HOME	Oracle home directory for Oracle Data Integrator.	ORACLE_ODI_HOME=/home/Oracle/Middleware/Oracle_ODI1
INSTANCE_HOME	OPMN Instance home directory.	INSTANCE_HOME=/home/Oracle/Middleware/Oracle_WT1/instances/instance1
COMPONENT_TYPE	Set this property to <code>odiagent</code> .	COMPONENT_TYPE=odiagent
COMPONENT_NAME	Name of the agent you want to add. This will be its identification in OPMN.	COMPONENT_NAME=OracleDIAgent
ODI_MASTER_DRIVER	Name of the JDBC driver used to connect the Master Repository.	ODI_MASTER_DRIVER=oracle.jdbc.OracleDriver
ODI_MASTER_URL	JDBC URL used to connect the Master Repository. Use the format: <code>jdbc:oracle:thin:@db_host:port:sid</code>	ODI_MASTER_URL=jdbc:oracle:thin@examplehost.exampledomain:1521:orcl
ODI_MASTER_USER	Database account used to connect the Master Repository. This should be the prefix and schema name of the ODI schema created in the database using RCU.	ODI_MASTER_USER=DEV_ODI_REPO

**Table G-1 (Cont.) Parameters in agentcreate.properties**

Parameter	Description	Example (Your Configurations May Differ)
ODI_MASTER_ENCODED_PASS	Database account password. The password must be encoded with the <code>encode.[sh bat] password</code> command.	ODI_MASTER_ENCODED_PASS=hpfatLEoMR6zAK3T1PoP5LXDS
ODI_SECU_WORK_REPO	Name of the Work Repository to connect. This Work Repository must be attached to the master repository.	ODI_SECU_WORK_REPO=WORKREP
ODI_SUPERVISOR_ENCODED_PASS	OracleDI Supervisor user password. The password must be encoded with the <code>encode.[sh bat] password</code> command.	ODI_SUPERVISOR_ENCODED_PASS=hpfatLEoMR6zAK3T1PoP5LXDS
MASTER_REPO_EXTERNAL_ID	External ID of the ODI Master Repository. This can be obtained from the Master Repository editor in ODI Studio.	MASTER_REPO_EXTERNAL_ID=12345

3. Define the environment variables shown in [Table G-2](#):

**Table G-2 Environment Variables to Define for OPMN Configuration**

Variable	Description
<code>MW_HOME</code>	Path to the Middleware home directory.
<code>OPMN_HOME</code>	Path to the Web Tier Oracle home directory (For example, <code>MW_HOME/Oracle_WT1</code> ).
<code>ODI_AGENT_HOME</code>	Path to the Standalone Agent directory (for example, <code>ODI_HOME/oracledi/agent</code> ).

4. If you want to register your OPMN instance with the Administration Server, continue with the instructions in this section. If not, skip to [Creating an OPMN Instance Without Registering with the Administration Server](#) later in this section.
5. Create an OPMN instance using the `opmnctl createinstance` command. Before running this command ensure that the value of the `ODI_AGENT_HOME` environment variable is set correctly to the path to the Standalone Agent directory. This command must also be run in the same shell where the `ODI_AGENT_HOME` environment variable is defined.

Be sure to replace the variables with the actual values on your own system. The `instance_specified_in_properties_file` must be the instance you specified in your properties file in Step 2.

```
cd $WT_ORACLE_HOME/opmn/bin
./opmnctl createinstance
  -oracleInstance instance_specified_in_properties_file
  -oracleHome OPMN_HOME
  -adminHost administration_server_host
  -adminPort administration_server_port
```

When this command is executed, you will be prompted to enter the credentials to log in to the Administration Server. Provide the Administration Server user name and password to continue.

6. Create an OPMN component for the ODI Standalone Agent in the instance created above using the `opmnctl createcomponent` command. Be sure to replace the

variables with your own values. The *path\_to\_properties\_file* must be the absolute path to the properties file you created in Step 2.

```
cd $WT_ORACLE_HOME/instances/instance1/bin
./opmnctl createcomponent
  -componentType odiagent
  -componentName name_of_physical_agent
  -propertiesFile path_to_properties_file
```

**7. Start the ODI Standalone Agent:**

```
./opmnctl startall
```

**8. Login to Fusion Middleware Control and verify that the Standalone Agent has been discovered.**

**Creating an OPMN Instance Without Registering with the Administration Server**

Follow the instructions in this section to create an OPMN instance without registering with the Administration Server.

**1. Create an OPMN instance (if one does not already exist) in the Instance home specified in the *INSTANCE\_HOME* property in the properties file created in Step 2.**

Run the following commands and replace the variables with the values on your system. Replace *OPMN\_instance\_home\_directory* with the same value you specified for the *INSTANCE\_HOME* properties in the properties file created in Step 2.

```
cd $OPMN_HOME/opmn/bin
./opmnctl createinstance
  -oracleInstance $OPMN_instance_home_directory
  -oracleHome $OPMN_HOME
  -adminRegistration OFF
```

**2. Create an OPMN component for the ODI Standalone Agent in the instance created above using the `opmnctl createcomponent` command. This command must be run from the *OPMN\_instance\_home\_directory* specified in the previous command.**

```
cd $OPMN_instance_home_directory
./opmnctl createcomponent
  -componentType odiagent
  -componentName name_of_physical_agent
  -propertiesFile path_to_properties_file
```

Be sure to replace the variables with your own values. The *path\_to\_properties\_file* must be the absolute path to the properties file you created in Step 2.

## G.2 Stopping the Agent

To stop all agent components in an Oracle instance using `opmnctl`:

```
opmnctl stopproc process-type=odiagent
```

To stop a specific agent component (for example, `odiagent1`) using `opmnctl`:

```
opmnctl stopproc ias-component=odiagent1
```



## G.3 Starting the Agent and Agent Components

To start all agent components in an Oracle instance using `opmnctl`:

```
opmnctl startproc process-type=odiagent
```

To start a specific agent component (for example, `odiagent1`) using `opmnctl`:

```
opmnctl startproc ias-component=odiagent1
```

## G.4 Determining the Status of Oracle HTTP Server

You can determine the status of Oracle HTTP Server using `opmnctl`:

```
opmnctl status
```

## G.5 Deleting the Agent

Run the following command to delete an Standalone Agent component from an OPMN instance:

```
cd INSTANCE_HOME/bin
./opmnctl stopproc ias-component=physical_agent_name
./opmnctl deletecomponent -componentName physical_agent_name
```

## G.6 Updating the Agent Setting Information

Use the commands in this section to change/update the standalone Agent's settings after changing the properties in the `agentcreate.properties` file.

For Standalone Agent components registered to the Administration Server:

```
cd INSTANCE_HOME/bin
./opmnctl updatecomponentregistration
  -componentType odiagent
  -componentName physical_agent_name
  -propertiesFile path_to_properties_file
./opmnctl stopall
./opmnctl startall
```

For Standalone Agent components not registered to the Administration Server:

```
cd INSTANCE_HOME/bin
./opmnctl deletecomponent -componentName physical_agent_name
./opmnctl createcomponent
  -componentType odiagent
  -componentName physical_agent_name
  -propertiesFile path_to_properties_file
```



---

---

# Troubleshooting

This appendix describes solutions to common problems that you might encounter when installing Oracle Data Integrator. It contains the following sections:

- Section H.1, "General Troubleshooting Tips"
- Section H.2, "Installation and Configuration Log Files"
- Section H.3, "Keeping Track of Your JRE Location"
- Section H.4, "ODI Client and Repository Compatibility"
- Section H.5, "Need More Help?"

## H.1 General Troubleshooting Tips

If you encounter an error during installation:

- Read the *Oracle Fusion Middleware Release Notes* for the latest updates. The most current version of the release notes is available on Oracle Technology Network:  
<http://www.oracle.com/technetwork/documentation/index.html#middleware>
- Verify your system and configuration is certified. Refer to the *System Requirements and Supported Platforms for Oracle Fusion Middleware 11gR1* document on the Oracle Fusion Middleware Supported System Configurations page:  
<http://www.oracle.com/technetwork/middleware/ias/downloads/fusion-certification-100350.html>
- Verify your system meets the minimum system requirements. Refer to the *System Requirements and Specifications* document:  
<http://www.oracle.com/technetwork/middleware/ias/downloads/fusion-requirements-100147.html>
- If you entered incorrect information on one of the installation screens, return to that screen by clicking **Back** until you see the screen.
- If an error occurred while the installer is copying or linking files:
  1. Note the error and review the installation log files.
  2. Remove the failed installation by following the steps in Chapter 4, "Deinstalling Oracle Data Integrator".
  3. Correct the issue that caused the error.
  4. Restart the installation.

## H.2 Installation and Configuration Log Files

This section contains information about the log files that are created when running the Oracle Data Integrator installer and the Oracle Fusion Middleware Configuration Wizard. Log files contain information that can help you troubleshoot problems with your installation or configuration.

### H.2.1 Installation Log Files

The installer writes logs files to the *Oracle\_Inventory\_Location/log* (on UNIX operating systems) or *Oracle\_Inventory\_Location/logs* (on Windows operating systems) directory. On UNIX operating systems, if you do not know the location of your Oracle Inventory directory, you can find it in the *oraInst.loc* file in the following directories (default locations):

- Linux: */etc/oraInst.loc*
- HP-UX and Solaris: */var/opt/oracle/oraInst.loc*

On Windows operating systems, the location for the inventory directory is *C:\Program Files\Oracle\Inventory\logs*. If you are using a 32-bit installer on a 64-bit Windows machine, the inventory directory is *C:\Program Files (x86)\Oracle\Inventory\logs*.

The following install log files are written to the log directory:

- *installdate-time-stamp.log*  
This is the main log file.
- *installdate-time-stamp.out*  
This log file contains the output and error streams during the installation.
- *installActionsdate-time-stamp.log*  
This file is used by the installer GUI to keep track of internal information.
- *installProfiledate-time-stamp.log*  
This log file contains the overall statistics like time taken to complete the installation, as well as configuration, memory and CPU details.
- *oraInstalldate-time-stamp.log*  
This log file contains the output stream of the copy session.

If you start the installer with the *-printtime* parameter, the *timeTakedate-time-stamp.log* and *timedate-time-stamp.log* files are created in the same directory:

- *timeTakedate-time-stamp.log*  
This file contains information for the amount of time taken to move between screens (applicable for GUI installations only).
- *timedate-time-stamp.log*  
This file contains time information for the copy session.

If you start the installer with the *-printmemory* parameter, the *memorydate-time-stamp.log* file is created. This file contains memory usage information for the copy session.

## H.2.2 Configuration Log Files

To create a log file of your configuration session, start the Configuration Wizard with the `-log` option, as shown below:

On UNIX operating systems:

```
./config.sh -log=log_filename -log_priority=log_level
```

On Windows operating systems:

```
config.cmd -log=log_filename -log_priority=log_level
```

See Table H-1 for more details about the `-log` and `-log_priority` options.

**Table H-1 Configuration Wizard Log File Options**

Parameter	Description
<code>-log</code>	<p>Specify the location of your log file.</p> <p>If you specify an absolute path with your <code>log_filename</code> then your log file will be created there. If you only specify a file name with no path, then the log files are created in the <code>MW_HOME/logs</code> (on UNIX operating systems) or <code>MW_HOME\logs</code> (on Windows operating systems) directory.</p> <p>Other values that can be specified with <code>-log</code> are:</p> <ul style="list-style-type: none"> <li>▪ <code>stdout</code> This writes the error message to the standard output stream.</li> <li>▪ <code>stderr</code> This writes the error messages to the standard error stream.</li> <li>▪ <code>disable</code> This disables default logging so that no log files are generated in <code>MW_HOME/logs</code> (on UNIX operating systems) or <code>MW_HOME\logs</code> (on Windows operating systems).</li> </ul>
<code>-log_priority</code>	<p>Specify the level of detail you want included in your logs.</p> <p>The acceptable values are listed below, from most detailed to least detailed:</p> <ul style="list-style-type: none"> <li>▪ <code>debug</code></li> <li>▪ <code>info</code></li> <li>▪ <code>warning</code></li> <li>▪ <code>error</code></li> <li>▪ <code>fatal</code></li> </ul>

## H.3 Keeping Track of Your JRE Location

The JRE location used by the installer is stored in the `ODI_ORACLE_HOME/oui/oraparam.ini` (on UNIX operating systems) or `ODI_ORACLE_HOME\oui\oraparam.ini` (on Windows operating systems) file. This file is used by OPatch and Oracle Universal Installer (OUI) to determine the location of your preferred JRE.

It is possible to change the location of your JRE (for example, the JRE directory is moved out of the Middleware home). If this happens, you will get an error message when trying to run OPatch or OUI since the JRE location can no longer be found. If this happens, you can do one of the following:

- Edit the `ODI_ORACLE_HOME/oui/oraparam.ini` (on UNIX operating systems) or `ODI_ORACLE_HOME\oui\oraparam.ini` (on Windows operating systems) file to point to the new JRE location.
- Use the `-jreLoc` command line option to point to the new JRE location. See Section 2.4.2, "Starting the Installer" for more information.

## H.4 ODI Client and Repository Compatibility

If you are using Oracle Data Integrator with other Oracle Fusion Middleware products, make sure you have read the *Oracle Fusion Middleware Interoperability and Compatibility Guide*.

Oracle strongly recommends that you use identical versions of different ODI components such as ODI Studio, ODI Console, standalone and J2EE Agents, and executable scripts for a specific site or platform. In addition, you should make sure your Master and Work Repository versions are compatible with these components (Table H-2).

**Table H-2 ODI Component and Repository Compatibility**

Product	Component Version	Repository Version
Oracle Data Integrator	11.1.1.6.0 and 11.1.1.0.7	04.03.04.02
	11.1.1.5.0	04.03.03.08
	11.1.1.3.0	04.03.02.04
	10.1.3.6	4.2.03.01
	10.1.3.5	4.2.02.01
	10.1.3.4, 10.1.3.3, 10.1.3.2	4.2.01.01
Sunopsis	4.2	4.1.02.01
	4.1	4.1.01.01
	4.0	4.0.01.01
	3.2.0.3	3.2.03.01

## H.5 Need More Help?

If this appendix does not solve the problem you encountered, try looking for a solution on My Oracle Support (formerly Oracle*MetaLink*):

<https://support.oracle.com/>

If you are unable to find a solution for your problem, open a service request.