

Oracle® WebCenter Sites

Integrating with LDAP

11g Release 1 (11.1.1)

April 2012

Oracle® WebCenter Sites: Integrating with LDAP, 11g Release 1 (11.1.1)

Copyright © 2012 Oracle and/or its affiliates. All rights reserved.

This software and related documentation are provided under a license agreement containing restrictions on use and disclosure and are protected by intellectual property laws. Except as expressly permitted in your license agreement or allowed by law, you may not use, copy, reproduce, translate, broadcast, modify, license, transmit, distribute, exhibit, perform, publish, or display any part, in any form, or by any means. Reverse engineering, disassembly, or decompilation of this software, unless required by law for interoperability, is prohibited.

The information contained herein is subject to change without notice and is not warranted to be error-free. If you find any errors, please report them to us in writing.

If this is software or related documentation that is delivered to the U.S. Government or anyone licensing it on behalf of the U.S. Government, the following notice is applicable:

U.S. GOVERNMENT RIGHTS Programs, software, databases, and related documentation and technical data delivered to U.S. Government customers are "commercial computer software" or "commercial technical data" pursuant to the applicable Federal Acquisition Regulation and agency-specific supplemental regulations. As such, the use, duplication, disclosure, modification, and adaptation shall be subject to the restrictions and license terms set forth in the applicable Government contract, and, to the extent applicable by the terms of the Government contract, the additional rights set forth in FAR 52.227-19, Commercial Computer Software License (December 2007). Oracle America, Inc., 500 Oracle Parkway, Redwood City, CA 94065.

This software or hardware is developed for general use in a variety of information management applications. It is not developed or intended for use in any inherently dangerous applications, including applications that may create a risk of personal injury. If you use this software or hardware in dangerous applications, then you shall be responsible to take all appropriate fail-safe, backup, redundancy, and other measures to ensure its safe use. Oracle Corporation and its affiliates disclaim any liability for any damages caused by use of this software or hardware in dangerous applications.

Oracle and Java are registered trademarks of Oracle and/or its affiliates. Other names may be trademarks of their respective owners.

Intel and Intel Xeon are trademarks or registered trademarks of Intel Corporation. All SPARC trademarks are used under license and are trademarks or registered trademarks of SPARC International, Inc. AMD, Opteron, the AMD logo, and the AMD Opteron logo are trademarks or registered trademarks of Advanced Micro Devices. UNIX is a registered trademark of The Open Group.

This software or hardware and documentation may provide access to or information on content, products, and services from third parties. Oracle Corporation and its affiliates are not responsible for and expressly disclaim all warranties of any kind with respect to third-party content, products, and services. Oracle Corporation and its affiliates will not be responsible for any loss, costs, or damages incurred due to your access to or use of third-party content, products, or services.

Table of Contents

About This Guide	5
Audience	5
Related Documents	5
Conventions	5
Graphics Used in This Guide	5
Third-Party Libraries	6
1 Oracle WebCenter Sites-LDAP Integration Overview	7
Introduction	8
LDAP Integration Options	8
2 Integrating with Flat Schema LDAP Servers	11
WebCenter Sites-LDAP Integrator	12
Running the WebCenter Sites-LDAP Integrator	12
Prerequisites	12
Integration Steps	13
Completing the Integration	24
Post-Integration Steps When CM Sites Have Not Been Created	25
Testing the Integration	26
3 Integrating with Hierarchical Schema LDAP Servers	27
Integration Steps	28
Step 1. Configure the WebCenter Sites LDAP Connection Properties	28
A. Start the Property Editor	28
B. Configure Properties in futuretense.ini	28
C. Configure Properties in dir.ini	29
D. Configure Properties in futuretense_xcel.ini	31
Step 2. Configure the LDAP Server	32
Step 3. Check the mail Attribute	32
Step 4. Create LDAP User Groups (WebCenter Sites ACLs)	33
Default ACLs	33

Web Services ACLs	33
Custom ACLs	34
Step 5. Create Required Users and Assign Them to LDAP Groups	34
WebCenter Sites Default Users	34
Custom Users	34
Sample Site Users	35
Step 6. Create Sites and Roles in the LDAP Server	35
Step 7. If You Completed Step 6	37
Step 8. Post-Integration Steps When CM Sites Have Not Been Created	37
Testing the Integration	38
Appendix A. Sample LDIF for Hierarchical Schema LDAP	39
Sample ldif File	40

About This Guide

This guide contains procedures for integrating Oracle WebCenter Sites with supported LDAP servers.

The *Oracle WebCenter Sites* application, discussed in this guide, is a former FatWire product. *Oracle WebCenter Sites* is the current name of the application previously known as *FatWire Content Server*. In this guide, *Oracle WebCenter Sites* is also called *WebCenter Sites*.

Audience

This guide is intended for installation engineers with experience installing and configuring enterprise-level software, including LDAP servers and databases.

Related Documents

For more information, see the following documents:

- *Oracle WebCenter Sites: Configuring Supporting Software*
- *Oracle WebCenter Sites Administrator's Guide*

Conventions

The following text conventions are used in this guide:

- **Boldface** type indicates graphical user interface elements that you select.
- *Italic* type indicates book titles, emphasis, or variables for which you supply particular values.
- `Monospace` type indicates file names, URLs, sample code, or text that appears on the screen.
- `Monospace bold` type indicates a command.

Graphics Used in This Guide

Graphics in this guide are screen captures of dialog boxes and similar windows that you will interact with during the integration process. These graphics are presented to help you

follow the integration process. They are not intended to be sources of information such as parameter values, options to select, and product version numbers.

Third-Party Libraries

Oracle WebCenter Sites and its applications include third-party libraries. For additional information, see *Oracle WebCenter Sites 11gR1: Third-Party Libraries*.

Chapter 1

Oracle WebCenter Sites-LDAP Integration Overview

This chapter provides an overview of your options to integrate Oracle WebCenter Sites with an LDAP server.

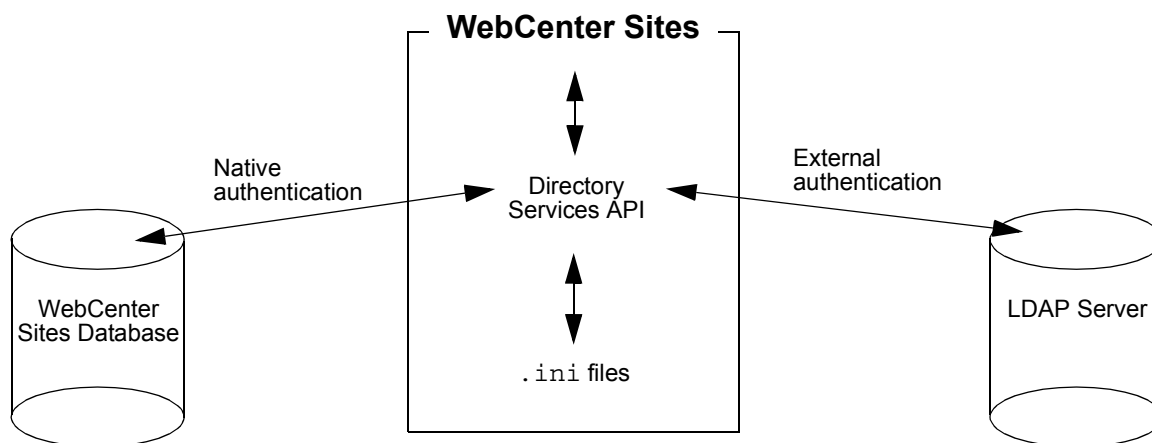
This chapter contains the following sections:

- [Introduction](#)
- [LDAP Integration Options](#)

Introduction

WebCenter Sites connects to an authentication system through the Directory Services API. This API provides out-of-the-box support for two types of authentication systems:

- The native authentication system, which validates WebCenter Sites users against the WebCenter Sites user management tables `SystemUsers` and `SystemUserAttrs`.
- External directory server (LDAP server), which must be integrated with WebCenter Sites in order to validate WebCenter Sites users against the users that are listed in the directory server's database.



Note

External user managers can also be integrated with WebCenter Sites, but must be customized to authenticate and/or authorize users.

LDAP Integration Options

The following types of external directory servers can be integrated with WebCenter Sites:

- Flat schema LDAP, which provides authentication and authorization services for web applications. LDAP schema is automatically configured when you run the WebCenter Sites-LDAP integrator (included with WebCenter Sites). The integrator requires you to first install a supported LDAP server (listed in the *Oracle WebCenter Sites Certification Matrix*).
- Hierarchical schema LDAP, which provides authentication and authorization services for web applications and requires manual integration with WebCenter Sites.

Both integration options involve connecting the LDAP server to the Directory Services API by setting connection properties in the WebCenter Sites `futuretense.ini`, `futuretense_xcel.ini`, and `dir.ini` files. Integration is complete when the

WebCenter Sites user data is written to the LDAP server. Which type of data must be written depends on LDAP schema:

- Flat schema LDAP requires authentication and authorization to be managed in the LDAP server, which means that WebCenter Sites users, ACLs, roles, and sites must be written to LDAP. Users include user accounts, user profiles, and user attributes.
- Hierarchical schema LDAP requires only authentication to be managed in the LDAP server, which means that only users and ACLs must be written to LDAP. (Again, users include user accounts, user profiles, and user attributes.)

Writing roles and sites is optional. Choosing this option requires you to create a site organizational unit in the LDAP server by subordinating the WebCenter Sites roles to their relevant sites.

[Table 1](#) summarizes LDAP schema and integration requirements.

Table 1: LDAP Integration Requirements

Integration Type / Method	Flat Schema LDAP		Hierarchical Schema LDAP	
	Authentication	Authorization	Authentication	Authorization
WebCenter Sites Web Application	Required	Required	Required	Optional
Method	Integrator writes WebCenter Sites users and ACLs to LDAP	Use integrator or manually write WebCenter Sites roles and sites to LDAP	Integrate manually	Integrate manually

- For procedures on integrating with flat schema LDAP, see [Chapter 2, “Integrating with Flat Schema LDAP Servers.”](#)
- For procedures on integrating with hierarchical schema LDAP, see [Chapter 3, “Integrating with Hierarchical Schema LDAP Servers.”](#)

Chapter 2

Integrating with Flat Schema LDAP Servers

This chapter provides instructions for using Oracle's integrator to automatically integrate WebCenter Sites with a supported LDAP server. The integrator configures a flat schema for authentication and authorization services for the WebCenter Sites web application.

This chapter contains the following sections:

- [WebCenter Sites-LDAP Integrator](#)
- [Running the WebCenter Sites-LDAP Integrator](#)
- [Completing the Integration](#)
- [Post-Integration Steps When CM Sites Have Not Been Created](#)
- [Testing the Integration](#)

WebCenter Sites-LDAP Integrator

Oracle's LDAP integrator requires a fully functional WebCenter Sites web application and a pre-installed, supported LDAP server.

The integrator works by first prompting you for parameters relating to your WebCenter Sites installation and LDAP server. When you provide the requested information and click **Install**, the integrator uses your inputs to perform the following steps:

1. The integrator sets LDAP connection properties in the WebCenter Sites `futuretense.ini`, `futuretense_xcel.ini`, and `dir.ini` files in order to:
 - Establish communication between the LDAP server and the WebCenter Sites Directory Services API.
 - Enable the LDAP server to recognize the user that WebCenter Sites will invoke to query the LDAP server.
 - Configure a flat schema.
 - Modify the LDAP database to use WebCenter Sites ACLs in LDAP format.

For a listing of the LDAP connection properties that are set by the integrator, see [Chapter 3, "Integrating with Hierarchical Schema LDAP Servers."](#) (Note that the properties for flat and hierarchical schema are identical; only the values differ.)

2. In its final steps, the integrator does one of the following, depending on the option you selected:
 - If you selected the **Automatic** option, the integrator loads the LDAP server with the WebCenter Sites information — users, ACLs, roles, and sites to which the roles apply.
 - If you selected **Manual**, the LDAP integrator requires an LDAP user with write permissions to manually write users, ACLs, and roles (including their relevant sites) to the LDAP server, either directly or via an `ldif` file. This information is written once the integrator completes its process.
3. Regardless of which option you selected (**Automatic** or **Manual**), you will have to complete the integration by resetting (in the LDAP server) the passwords of WebCenter Sites users.

Running the WebCenter Sites-LDAP Integrator

To integrate with flat schema LDAP, complete the steps in the following sections:

- [Prerequisites](#)
- [Integration Steps](#)

Prerequisites

Before integrating WebCenter Sites with LDAP, prepare your system:

1. The LDAP integrator can run only on a WebCenter Sites full product release. Perform LDAP integration before any hot-fixes or patches are installed.

2. Make sure WebCenter Sites is installed on one of the supported platforms and is fully functional. Currently supported platforms are listed in the *Oracle WebCenter Sites Certification Matrix*.

For WebCenter Sites installation instructions and verification tests, refer to the WebCenter Sites installation guide for your platform.

3. Back up the entire WebCenter Sites system. If the integration fails, you can recover the `ldif` file and import it manually to restore the WebCenter Sites users and permissions.
4. Make sure the LDAP server is ready for integration:
 - a. If a supported LDAP server is not installed, install it now. (For the list of currently supported LDAP servers, refer to the *Oracle WebCenter Sites Certification Matrix*.)
 - b. Note the following parameters. You will supply values for them during the integration process:
 - LDAP host name (or IP address)
 - LDAP port number
 - People parent DN
 - Group parent DN
 - Base DN, if you are using Sun JES Directory Server
 - c. Determine whether the user connecting to LDAP will be the same user that is logged in to WebCenter Sites. If the connecting user is *not* a WebCenter Sites user, you will need to provide a user name and password.
5. During the integration process, you will be prompted to select either the **Automatic** or **Manual** integration option.
 - If you have write permissions to the LDAP server, select **Automatic**. The integrator will write the WebCenter Sites users, ACLs, roles, and sites to the LDAP server.
 - If you do not have write permissions to the LDAP server, you will select **Manual** and continue to run the integrator. When the integrator completes its process, an LDAP user with write permissions must be available to complete the integration.

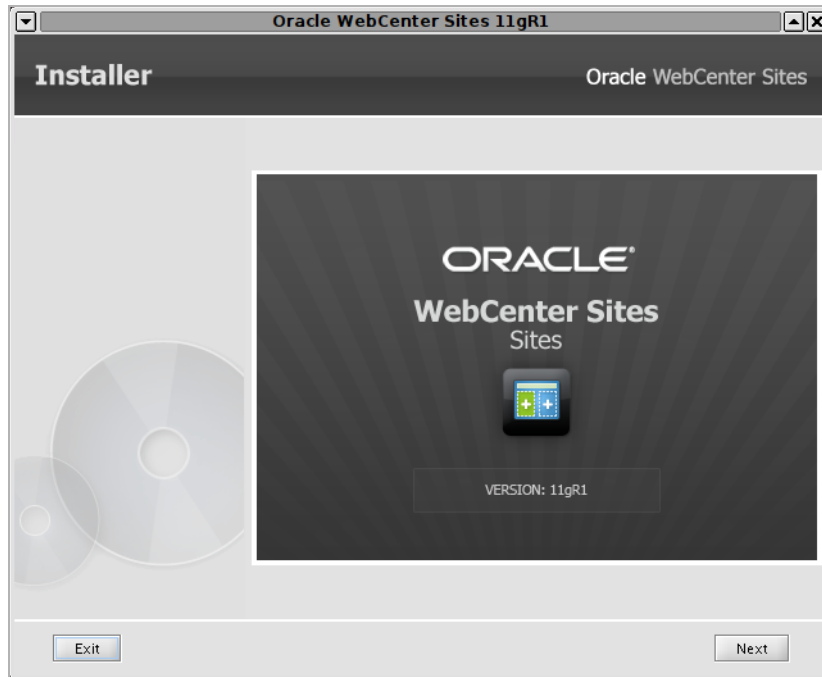
Integration Steps

In this section you will run the WebCenter Sites-LDAP integrator (included on the WebCenter Sites CD) to integrate WebCenter Sites with a supported LDAP server of your choice.

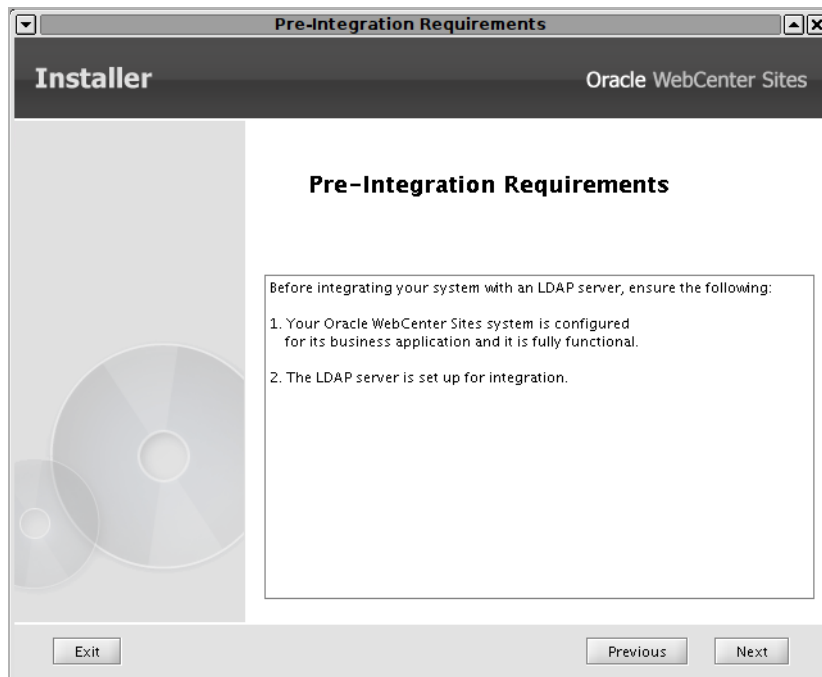
To integrate WebCenter Sites with LDAP

1. If you have not already done so, decompress the WebCenter Sites installation archive to a temporary directory and change to that directory.

2. Run the WebCenter Sites integrator by executing the following command:
 - On Windows: `configureLDAP.bat`
 - On Unix: `./configureLDAP.sh`



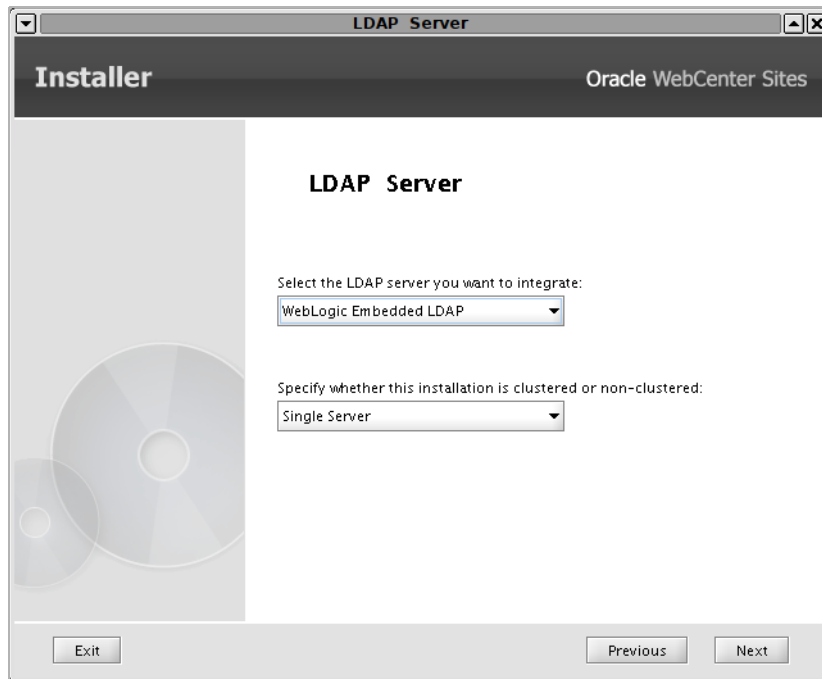
3. In the "Pre-Installation Requirements" screen, make sure you have satisfied the requirements shown, then click **Next**.



4. In the “Sites Information” screen, enter the location of the directory in which WebCenter Sites has been installed.



5. In the “LDAP Server” screen, do the following:
 - a. Select the LDAP server you are using.
 - b. Specify whether you are integrating with a standalone instance of WebCenter Sites, or a member of a WebCenter Sites cluster.
 - c. Click **Next**.



6. In the “LDAP Parameter” screen, enter the following information:

The screenshot shows a window titled "LDAP Parameters" from the "Oracle WebCenter Sites" installer. The window contains a form with the following fields and values:

- LDAP host: wcsload05.us.oracle.com
- LDAP port: 7001
- User name: cn=Manager,dc=us,dc=oracle,dc=com
- JNDI password: (masked with dots)
- People parent DN: ou=People,dc=us,dc=oracle,dc=com
- Group parent DN: ou=Groups,dc=us,dc=oracle,dc=com

At the bottom of the window, there are three buttons: "Exit", "Previous", and "Next".

- LDAP Host** — host name or IP address of your LDAP server.
- LDAP Port** — port number on which your LDAP server is listening for connections. The default port, 389, is displayed in the field. Do **not** change this default value unless you are creating a specialized integration.
- User name** — name of the LDAP user used to access your LDAP server. (This field does not appear if you selected **WebLogic Embedded LDAP** in [step 5 on page 16](#).)

The value you enter determines whether WebCenter Sites accesses the LDAP server through a WebCenter Sites user or an independent user. Do one of the following:

- Leave this field blank if you want the LDAP user to be the same user that is logged into WebCenter Sites. The integrator will set the value of the `jndi.connectAsUser` property (in `dir.ini`) to `true`.
- Enter a value if you want the LDAP user to be a user that you specified within your LDAP server. Your value must be a fully qualified, fully distinguished LDAP user name. The integrator will assign the user name to the `jndi.login` property (in `dir.ini`). It will also set `jndi.connectAsUser` to `false`.

Valid entry: `cn=<username>,dc=<domain>,dc=<extension>`

Example: `cn=Manager,dc=fatwire,dc=com`

- d. **JNDI Password** — password of the LDAP user who will access the LDAP server. Enter a value only if you provided a user name in the preceding field.

Note

If you selected **WebLogic Embedded LDAP** in [step 5 on page 16](#), enter the password you provided when you enabled the WebLogic Embedded LDAP Server.

The integrator will assign this password in an encrypted form to the `jndi.password` property (in `dir.ini`).

- e. **People parent DN** — DN of the **People** parent node in your LDAP server. WebCenter Sites users will be stored under this node. (This field does not appear if you selected **WebLogic Embedded LDAP** in [step 5 on page 16](#).)

Valid entry: `ou=People,dc=<domain>,dc=<extension>`

Example: `ou=People,dc=fatwire,dc=com`

- f. **Group parent DN** — DN of the **Groups** parent node in your LDAP server. WebCenter Sites ACLs will be stored under this node. (This field does not appear if you selected **WebLogic Embedded LDAP** in [step 5 on page 16](#).)

Valid entry: `ou=Groups,dc=<domain>,dc=<extension>`

Example: `ou=Groups,dc=fatwire,dc=com`

- g. Click **Next**.

7. In the “Existing Sites Password” screen, enter the user name and password for your installation’s WebCenter Sites System Administrator account. (The default values are ContentServer/password.) Re-enter the password for verification, then click **Next**.

Existing Oracle WebCenter Sites Password

Installer Oracle WebCenter Sites

Existing Sites Password

Please enter the EXISTING Username which was used for Sites administration:

Please enter the EXISTING password:

Verify the password entered:

The existing user name has been detected as: ContentServer

Exit Previous Next

Note

Make sure the information you enter here exactly matches the information used in your WebCenter Sites system. If you enter incorrect information, your WebCenter Sites system will not function properly.

8. In the “Sites Configuration” screen enter the user name and password of your installation’s WebCenter Sites Application Administrator account. (The default values are `fwadmin/xceladmin`). Re-enter the password for verification, then click **Next**.

Oracle WebCenter Sites Configuration

Installer Oracle WebCenter Sites

Sites Configuration

Please Enter EXISTING Username to be used for Application administration:

Password to be used for the Sites administrator.
Default password is 'xceladmin':

(Must be at least 8 characters)

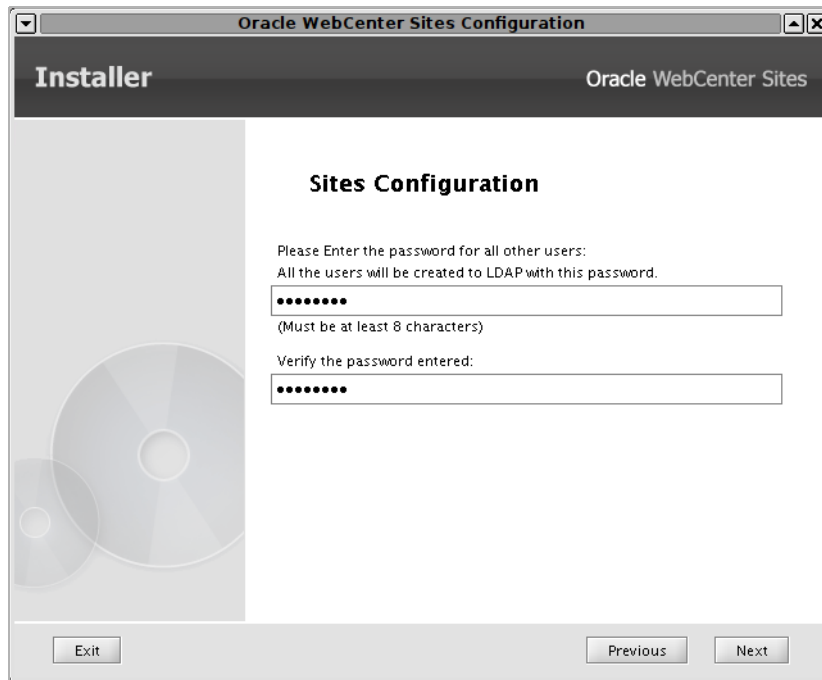
Verify the password entered:

Exit Previous Next

Note

Make sure that the information you enter here exactly matches the information used in your WebCenter Sites system. If you enter incorrect information, your WebCenter Sites system will not function properly.

9. In the next “Sites Configuration” screen, enter the password that will be assigned to all users on your WebCenter Sites system (except the WebCenter Sites System Administrator, WebCenter Sites Application Administrator, and DefaultReader accounts).



Note

For added security, WebCenter Sites passwords are one-way encrypted, which means they cannot be decrypted and duplicated in the LDAP server.

The password that you provide in this screen is a dummy password that will be assigned to all WebCenter Sites users (except the WebCenter Sites System Administrator, WebCenter Sites Application Administrator, and DefaultReader). At the end of the integration process, the users' original passwords must be re-assigned to them. Special instructions also apply to OpenLDAP with encrypted passwords. (Instructions for re-assigning passwords are given in [“Completing the Integration,” on page 24.](#))

Re-enter the password for verification, then click **Next**.

10. In the “LDAP Integration Option” screen, do one of the following and click **Next**:
- If you have write permissions to the LDAP server, select **Automatic**.
The integrator will write WebCenter Sites users, ACLs, roles, and sites to the LDAP server. (All users will be assigned the password you specified in [step 9 on page 21](#).)
 - If you do not have write permissions to the LDAP server, select **Manual**.

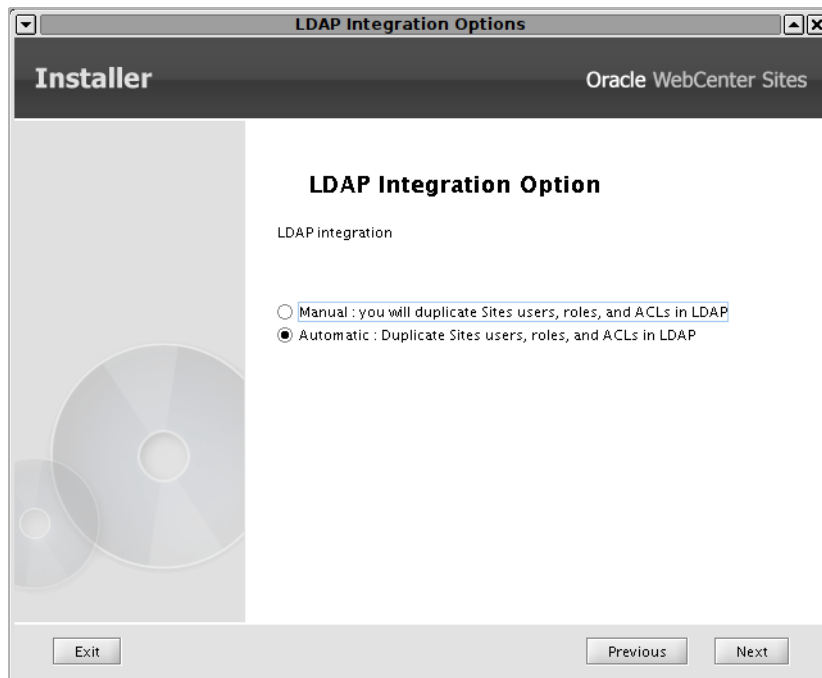
Note

If you chose the **WebLogic** option and the WebCenter Sites application is not running on the same domain as the LDAP server, select **Manual**.

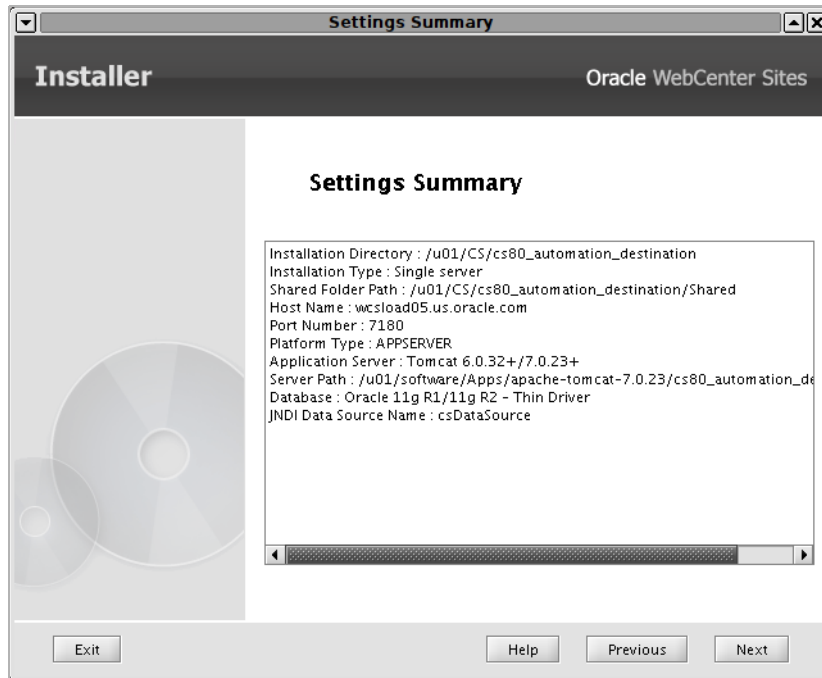
When the integrator completes its task, an LDAP user with write permissions will have to write the WebCenter Sites users, ACLs, roles, and sites to the LDAP server, either directly or via an `ldif` file.

Note

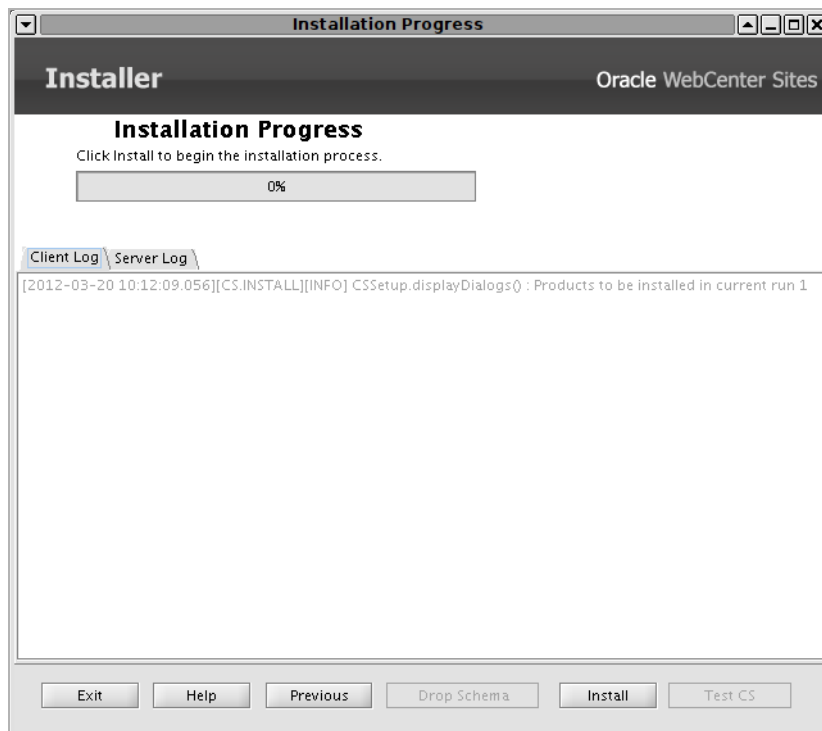
If you chose the **WebLogic** or **OpenLDAP** option, the integrator will create an `ldif` file in the `<cs_install_dir>/ldif` directory.



11. In the “Settings Summary” screen, review the choices you have made. If you need to make changes, click the **Back** button to return to the appropriate screen. Otherwise, click **Next** to proceed with the integration.



12. In the “Installation Progress” screen, click **Install** and wait for the integration process to complete.



When the “Successful” pop-up dialog appears, the integrator’s process is complete.

13. Test your LDAP integration by logging in to WebCenter Sites, then continue with the next step.

Completing the Integration

Note

To complete the steps in this section, you must have write permissions to the LDAP server.

If you chose the **Manual** integration option in the previous section, you will now load the LDAP server with WebCenter Sites users, ACLs, roles, and sites. Regardless of your choice, you will also reset the passwords of WebCenter Sites users.

To complete the WebCenter Sites-LDAP integration

1. If the LDAP integrator's **Automatic** option was chosen (in [step 10 on page 22](#)), skip to [step 3](#). Otherwise, continue with the next step.
2. If the LDAP integrator's **Manual** option was chosen (in [step 10 on page 22](#)), load the LDAP server with WebCenter Sites users, ACLs, roles, and sites, using one of the following options:
 - Import an `ldif` file.

Note

If you are integrating with WebLogic or OpenLDAP, an `ldif` file was created in the `<cs_install_dir>/ldif` directory by the integrator. If you chose the **WebLogic** option, and the WebCenter Sites application is not running on the same domain as the LDAP server, edit the `ldif` file and replace any instances of your CS WebLogic domain (`Variables.CSInstallAdminDomainName`) with your LDAP server domain.

For any other LDAP server, you must create your own `ldif` file.

- Write users, ACLs, roles, and sites directly to the LDAP server. For information about which users, ACLs, roles, and sites to write, see the following steps in [Chapter 3](#):
 - [“Step 3. Check the mail Attribute,” on page 32](#)
 - [“Step 4. Create LDAP User Groups \(WebCenter Sites ACLs\),” on page 33](#)
 - [“Step 5. Create Required Users and Assign Them to LDAP Groups,” on page 34](#)
 - [“Step 6. Create Sites and Roles in the LDAP Server,” on page 35](#)
- 3. In the LDAP server, reset the passwords for all WebCenter Sites users as follows:
 - **All LDAP servers:**
Set the users' passwords to their original values, **except for** the WebCenter Sites

System Administrator, WebCenter Sites Application Administrator, and DefaultReader accounts.

If you do not change the passwords users will not be able to log in to WebCenter Sites with their originally assigned passwords.

- **OpenLDAP with encrypted passwords:**

If you are using OpenLDAP *and* have configured it to use encrypted passwords, you **must** change the passwords for all WebCenter Sites users **including** passwords for the WebCenter Sites System Administrator, WebCenter Sites Application Administrator, and DefaultReader accounts.

This step is required because the LDAP integrator writes user passwords to the LDAP directory as plaintext, whereas OpenLDAP expects password hashes when password type is configured as SSHA. If you fail to complete this step, your WebCenter Sites system will not function properly.

For instructions on changing user passwords on supported LDAP servers, see *Oracle WebCenter Sites: Configuring Supporting Software*.

Post-Integration Steps When CM Sites Have Not Been Created

If CM sites were not created on the given system, then after integrating WebCenter Sites with LDAP you will be unable to log in. The solution is to manually create the following new group entries in your LDAP server and assign fwadmin to each of these groups:

```
Management Site-SiteAdmin
Management Site-GeneralAdmin
Management Site-WorkflowAdmin
Management Site-AdvancedUser
```

In addition, create the SitesUser group only for installations running in content management mode. This group enables the fwadmin user to access the WebCenter Sites Contributor interface:

```
Management Site-SitesUser
```

Example LDIF

```
dn: cn=Management Site-SiteAdmin,ou=Groups,dc=fatwire,dc=com
objectClass: top
objectClass: groupOfUniqueNames
uniqueMember: cn=fwadmin,ou=People,dc=fatwire,dc=com
```

```
dn: cn=Management Site-GeneralAdmin,ou=Groups,dc=fatwire,dc=com
objectClass: top
objectClass: groupOfUniqueNames
uniqueMember: cn=fwadmin,ou=People,dc=fatwire,dc=com
```

```
dn: cn=Management Site-WorkflowAdmin,ou=Groups,dc=fatwire,dc=com
objectClass: top
objectClass: groupOfUniqueNames
uniqueMember: cn=fwadmin,ou=People,dc=fatwire,dc=com
```

```
dn: cn=Management Site-AdvancedUser,ou=Groups,dc=fatwire,dc=com
objectClass: top
objectClass: groupOfUniqueNames
uniqueMember: cn=fwadmin,ou=People,dc=fatwire,dc=com
```

```
dn: cn=Management Site-SitesUser,ou=Groups,dc=fatwire,dc=com
objectClass: top
objectClass: groupOfUniqueNames
uniqueMember: cn=fwadmin,ou=People,dc=fatwire,dc=com
```

Testing the Integration

Test your LDAP-integrated system by opening a browser and entering the following URL:

```
http://<servername>:<port>/servlet/CatalogManager?ftcmd
    =login&<username>=ContentServer&<password>=password
```

where

<servername> is the name of the machine that is hosting the WebCenter Sites system

<port> is the port number of that server

<username> is user-defined (WebCenter Sites, in this example)

<password> is user-defined (password, in this example)

- If your browser displays a “Login Successful” message, you have integrated your LDAP plug-in correctly.
- If you do not see the “Login Successful” message, verify that you created the ContentServer user in the LDAP server, and that all properties are set to the correct values.

Chapter 3

Integrating with Hierarchical Schema LDAP Servers

This chapter provides instructions for integrating WebCenter Sites with hierarchical schema LDAP servers.

This chapter contains the following section:

- [Integration Steps](#)
- [Testing the Integration](#)

Integration Steps

To integrate with hierarchical schema LDAP, you will complete the following steps:

- Step 1. [Configure the WebCenter Sites LDAP Connection Properties \(page 28\)](#)
- Step 2. [Configure the LDAP Server \(page 32\)](#)
- Step 3. [Check the mail Attribute \(page 32\)](#)
- Step 4. [Create LDAP User Groups \(WebCenter Sites ACLs\) \(page 33\)](#)
- Step 5. [Create Required Users and Assign Them to LDAP Groups \(page 34\)](#)
- Step 6. [Create Sites and Roles in the LDAP Server \(page 35\)](#)
- Step 7. [If You Completed Step 6 \(page 37\)](#)
- Step 8. [Post-Integration Steps When CM Sites Have Not Been Created \(page 37\)](#)

Note

In hierarchical schema LDAP, management of users and ACLs is required. Management of sites and roles is optional.

Step 1. Configure the WebCenter Sites LDAP Connection Properties

In this step, you will configure several properties in the WebCenter Sites `.ini` files to establish communication with LDAP. The files are:

- `futuretense.ini`
- `dir.ini`
- `futuretense_xcel.ini` (optional, if you wish to manage sites and roles directly in the LDAP server).

A. Start the Property Editor

Execute the following scripts at the MS DOS prompt or in a UNIX shell:

- Windows: `propeditor.bat`, which is usually located in `<cs_install_dir/>`
- Unix: `propeditor.sh`, which is usually located in `<$HOME/cs_install_dir>`

If you need detailed instructions on starting the Property Editor or you would like more information on the properties to be modified, see the *Oracle WebCenter Sites Property Files Reference*.

B. Configure Properties in `futuretense.ini`

1. Open `futuretense.ini` in the Property Editor.
2. Select the **Authentication** tab.

- Set the following properties as shown in the table below:

Property (In futuretense.ini)	Value
cs.manageproperty	dir.ini
cs.manageUser	com.openmarket.directory.jndi.auth.JNDILogin

- Select **File > Save** to save the values.
- Select **File > Close**.

C. Configure Properties in dir.ini

- Open `dir.ini` in the Property Editor.
- Select the **Attribute Names** tab and set the following values for the following properties:

Property (in dir.ini)	Value
cn	OpenLDAP: cn
loginattribute	OpenLDAP: cn
password	OpenLDAP: userPassword
uniquemember	OpenLDAP: uniquemember
username	OpenLDAP: uid

- Select the **Global Data** tab and set the following values for the following properties:

Property (in dir.ini)	Value
groupparent	OpenLDAP: ou=groups, dc=companyname, dc=com
peopleparent	OpenLDAP: cn=People, dc=companyname, dc=com

- Select the **Interface Implementations** tab and specify the following values for the following properties:

Property (in dir.ini)	Value
className.IDir	com.openmarket.directory.jndi.JNDIDir
className.IName	com.openmarket.directory.jndi.NameWrapper
className.IUserDir	com.openmarket.directory.jndi.LDAPUserDir

5. Select the **JNDI SPI Env** tab and specify the following values for the following properties:

Property (in dir.ini)	Value
jndi.baseurl	ldap://<servername:port>
jndi.connectAsUser	<p>If WebCenter Sites can query the LDAP server for information as the user who is logged in to the WebCenter Sites interface and is making the query, set this property to <code>true</code>. (The same user must be defined in the LDAP server.)</p> <p>If WebCenter Sites must query the LDAP server as a specific user other than the user who is logged in to the WebCenter Sites interface, set this property to <code>false</code>. Then specify a valid <code>user name/password</code> combination with the <code>jndi.login</code> and <code>jndi.password</code> properties.</p> <p>OpenLDAP: <code>false</code></p>
jndi.custom	(leave this value blank)
jndi.login	<p>If the <code>jndi.connectAsUser</code> property is set to <code>false</code>, specify the fully qualified, fully distinguished name of the user account that WebCenter Sites will use to query the LDAP server. (The same user must be defined in the LDAP server.)</p> <p>OpenLDAP: <code>cn=Manager,dc=companyname,dc=com</code></p> <p>Note: <code>jndi.connectAsUser</code> determines how a WebCenter Sites user is connected to the LDAP server, and therefore defines the LDAP user to be either administrative or non-administrative.</p> <ul style="list-style-type: none"> • If <code>jndi.connectAsUser=true</code>, then WebCenter Sites defines the LDAP user to be the same one that is logged in to WebCenter Sites and connects that user to the LDAP server. For example, <code>jndi.connectAsUser=true</code> connects a WebCenter Sites administrator to LDAP as an administrator of the LDAP system. • If <code>jndi.connectAsUser=false</code>, then WebCenter Sites defines the LDAP user to be the one that is specified in the <code>jndi.login</code> property (in <code>dir.ini</code>) and connects that user to the LDAP server.
jndi.password	<p>If the <code>jndi.connectAsUser</code> property is set to <code>false</code>, specify the password for the user account that WebCenter Sites will use to query the LDAP server.</p> <p>This value is encrypted.</p>

6. Select the **Schema Defaults** tab and specify the following values for the following properties:

Property (in dir.ini)	Value
defaultGroupAttrs	OpenLDAP: objectclass\=top&objectclass \=groupOfUniqueNames
defaultPeopleAttrs	OpenLDAP: objectclass\=top&objectclass\ =Person& objectclass\ =organizationalPerson
objectclassGroup	OpenLDAP: groupOfUniqueNames
objectclassPerson	OpenLDAP: organizationalPerson
requiredGroupAttrs	(leave this value blank)
requiredPeopleAttrs	Specify all the required user attributes for this LDAP server. For example: sn=Last Name&cn=Full Name

7. Select **File > Save**.
8. Select **File > Close**.

D. Configure Properties in futuretense_xcel.ini

Note

If you do not wish to manage sites or roles in the LDAP server, skip the steps in this section.

1. Open `futuretense_xcel.ini` in the Property Editor.
2. Select the **Xcelerate** tab.
3. Set values for the following properties:

Property (in futuretense_xcel.ini)	Value
<code>xcelerate.usermanagerclass</code>	The value depends on the type of deployment you are using. Example value: <code>com.openmarket.xcelerate.user. UserManager</code>
<code>xcelerate.rolemanagerclass</code>	Example value: <code>com.openmarket.xcelerate.roles. RoleManager</code>

4. Select the **User Management** tab.
5. Set values for the following properties:

Property (in <code>futuretense_xcel.ini</code>)	Value
<code>xcelerate.sitesroot</code>	Example value: <code>ou=sites.dc=<domainname>.dc=com</code>
<code>xcelerate.sitenameattr</code>	Example value: <code>ou</code>
<code>xcelerate.displayablenameattr</code>	The name of the user attribute describing the display name, if different from the login name.

6. Select **File > Save**.
7. Select **File > Close**.
8. Stop and restart the application server for your changes to take effect.

Step 2. Configure the LDAP Server

1. Configure the LDAP server to recognize the user that is specified in the `jndi.connectAsUser` and `jndi.login` properties (given on [page 30](#)).
2. Assign the same user correct permissions to connect to LDAP, to look up groups, to look up user attributes, and so on.

Note

Assign permissions judiciously. Once WebCenter Sites is LDAP-integrated, any WebCenter Sites administrator who connects to the LDAP server as a user with write permissions can still manage ACLs, users, sites, and roles from the WebCenter Sites interface. Some of the operations will propagate to the LDAP server, while other operations might result in errors.

For information about management operations in the WebCenter Sites interface and their effect on the LDAP server, see the appendix “Managing Users, Sites, and Roles in LDAP-Integrated WebCenter Sites Systems” in the *Oracle WebCenter Sites Administrator’s Guide*.

Step 3. Check the `mail` Attribute

Each WebCenter Sites user must have a `mail` attribute (an attribute that stores an e-mail address). Before proceeding, check that the LDAP server’s user entries have a `mail` attribute. For information about the WebCenter Sites `mail` attribute, see the *Oracle WebCenter Sites Administrator’s Guide*.

Step 4. Create LDAP User Groups (WebCenter Sites ACLs)

Use the tools provided by your LDAP server to create groups that correspond to WebCenter Sites ACLs. The required ACLs are listed in this section.

Note

- **Using Idif.** You can create groups in the LDAP server by writing an `ldif` file that contains the groups specified in this step, and the user and group memberships in “[Step 5. Create Required Users and Assign Them to LDAP Groups](#),” on page 34. You can then import the `ldif` file into your user directory.

The method for importing the `ldif` file varies for each directory, but the structure of the file is standardized among LDAP servers. For a sample `ldif` file, see [Appendix A](#).

- **Naming conventions.** In the steps that follow, you will be duplicating WebCenter Sites users and ACLs (optionally, sites and roles) in the LDAP server. All names must be duplicated *exactly*, including case, spaces, and special characters.

Default ACLs

The following list names the WebCenter Sites system default ACLs. You must create groups in the LDAP server whose names exactly match the ACL names below. For information about the access privileges that are granted by these ACLs, see the “System Defaults” appendix in the *Oracle WebCenter Sites Administrator’s Guide*.

- Browser
- ContentEditor
- ContentReader
- ElementEditor
- ElementReader
- PageEditor
- PageReader
- RemoteClient
- SiteGod
- TableEditor
- TableReader
- UserEditor
- UserReader
- Visitor
- VisitorAdmin
- xceladmin
- xceleeditor
- xcelpublish

Web Services ACLs

If you are using web services, create an LDAP group for each of the following ACLs. A group name must *exactly* match the ACL name:

- WSAdmin
- WSEditor
- WSUser

For information about the access privileges granted by these ACLs (groups), see the “System Defaults” appendix in the *Oracle WebCenter Sites Administrator’s Guide*.

Custom ACLs

If any custom ACLs have been created in WebCenter Sites since its installation, duplicate the ACLs as groups in the LDAP server. Group names must *exactly* match the names of the ACLs.

Step 5. Create Required Users and Assign Them to LDAP Groups

In this step, you will duplicate the following users and their group memberships in the LDAP server:

- [WebCenter Sites Default Users](#)
- [Sample Site Users](#)
- [Custom Users](#)

WebCenter Sites Default Users

1. [Table 2](#) lists default users of the WebCenter Sites application. Duplicate the default users in the LDAP server, making sure to name them *exactly* as shown in [Table 2](#).
2. Make the duplicated users members of the groups shown in [Table 2](#):

Table 2: Default Users and Group Memberships

Default User	Group Memberships (ACLs)
<i>ContentServer</i> (user that is created in the database during the WebCenter Sites installation)	Browser, ContentEditor, ElementEditor, ElementReader, PageEditor, PageReader, SiteGod, TableEditor, TableReader, UserEditor, UserReader
fwadmin	Browser, ElementEditor, PageEditor, RemoteClient, TableEditor, UserEditor, UserReader, Visitor, VisitorAdmin, xceladmin, xceleeditor
DefaultReader	Browser, Visitor

Custom Users

1. Duplicate in the LDAP server all of the WebCenter Sites active custom users (all users who are assigned to active WebCenter Sites CM sites). Name the users exactly as they are named in WebCenter Sites.
2. Assign each custom user to the LDAP groups (created in “[Custom ACLs](#),” on [page 34](#)) that correspond to the user’s ACLs in WebCenter Sites.

Sample Site Users

If you installed sample sites, create the associated sample users in the LDAP server. (Procedures are identical to those for custom users.) For information about sample users and sample sites, see the *Oracle WebCenter Sites Administrator's Guide*.

Step 6. Create Sites and Roles in the LDAP Server

Note

If you do not wish to manage sites and roles in the LDAP server, then you have completed the WebCenter Sites-LDAP integration. To verify the integrated system, continue with “[Testing the Integration](#),” on page 38.

If you plan to use LDAP attribute mapping to manage sites and roles in your LDAP server, you will need to hierarchically order the sites and roles, as shown by the example in [Figure 1](#) (system-defined roles are listed in [Table 3](#), on page 36). Continue with the steps in this section.

Figure 1: LDAP Hierarchies

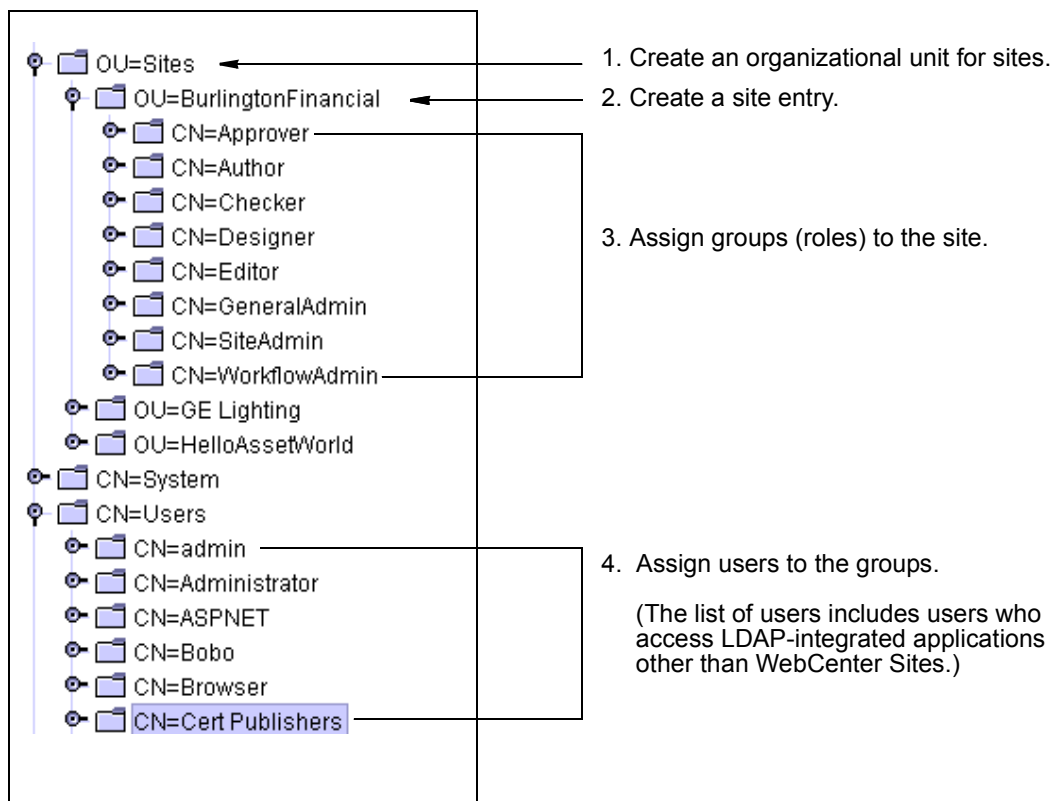


Table 3: System-Defined Roles

Role	Description
GeneralAdmin	Default system role for global WebCenter Sites administrators. Required for users who need access to the Admin tab (and all other possible functions) in the tree. Note: A user with the GeneralAdmin role must also have the <code>xceladmin</code> ACL in order to use any of the functions in the Admin tab.
SiteAdmin	Default system role for site administrators. Required for users who are administrators of selected sites and therefore need access to the Site Admin tab (which displays a subset of the functions in the Admin tab). Assign the SiteAdmin role to users who will manage, but not create, other site users. Note: A site user with the SiteAdmin role must also have the <code>xceladmin</code> ACL in order to use functions on the Site Admin tab.
WorkflowAdmin	Default system role for workflow administrators. Required for users who need access to the Workflow tab in the tree. Note: A user with the WorkflowAdmin role must also have the <code>xceladmin</code> ACL in order to use functions on the Workflow tab.
AdvancedUser	Grants WebCenter Sites users access to the WebCenter Sites Admin interface.
SitesUser	Grants WebCenter Sites users access to the WebCenter Sites Contributor interface.

To create a hierarchical schema, complete the following steps in the LDAP server:

1. Create an organizational unit for sites. For an example, see step 1 in [Figure 1, on page 35](#).
2. Create a site entry under the site's organizational unit:
Complete this step by duplicating the names of active WebCenter Sites CM sites *exactly* as they are named in the WebCenter Sites interface (**Admin** tab). For an example, see step 2 in [Figure 1, on page 35](#).

Note

If the sites you plan to use do not yet exist in WebCenter Sites, you can first create them in the LDAP server, then duplicate them (*with identical names, including case*) in WebCenter Sites.

3. Assign groups to each site:
Complete this step for each site by *exactly* duplicating the names of the WebCenter Sites roles that are assigned to the site. For an example, see step 3 in [Figure 1](#).
When creating a group for a system default role, name the group to exactly match the role names listed here:
 - GeneralAdmin (**always assign this group to a site**)

- SiteAdmin
- WorkFlowAdmin
- AdvancedUser
- SitesUser

Note

If the roles you plan to use do not yet exist in WebCenter Sites, you can first create them as groups in the LDAP server, then duplicate them as roles (*with identical names, including case*) in WebCenter Sites. For the list of system-defined roles, see [Table 3, on page 36](#).

4. Assign users to the groups. Name the users exactly as they are named in WebCenter Sites. For an example, see step 4 in [Figure 1](#).

Note

If you are completing the flat schema manual integration process ([Chapter 2](#)), reset WebCenter Sites users' passwords. For instructions, see [step 3 on page 24](#).

Step 7. If You Completed Step 6

1. If in the previous step you created sites and roles in the LDAP server, but they do not exist in the WebCenter Sites database, create the same sites and roles in WebCenter Sites, naming them exactly as in the LDAP server. For instructions on creating sites and roles in the WebCenter Sites database, see the following section and chapter in the *Oracle WebCenter Sites Administrator's Guide*:
 - "Creating a Role"
 - Chapter 7, "Assembling and Organizing CM Sites"
2. Assign the users to their relevant sites. For instructions, see "Granting Users Access to a Site" in the *Oracle WebCenter Sites Administrator's Guide*.

Step 8. Post-Integration Steps When CM Sites Have Not Been Created

If CM sites were not created on the given system, then after integrating WebCenter Sites with LDAP you will be unable to log in. The solution is to manually create the following new group entries in your LDAP server and assign `fwadmin` to each of these groups:

```
Management Site-SiteAdmin
Management Site-GeneralAdmin
Management Site-WorkflowAdmin
```

In addition, create the `SitesUser` group only for installations running in content management mode. This group enables the `fwadmin` user to access the WebCenter Sites Contributor interface:

```
Management Site-SitesUser
```

Example LDIF

```
dn: cn=Management Site-SiteAdmin,ou=Groups,dc=fatwire,dc=com
objectClass: top
objectClass: groupOfUniqueNames
uniqueMember: cn=fwadmin,ou=People,dc=fatwire,dc=com
```

```
dn: cn=Management Site-GeneralAdmin,ou=Groups,dc=fatwire,dc=com
objectClass: top
objectClass: groupOfUniqueNames
uniqueMember: cn=fwadmin,ou=People,dc=fatwire,dc=com
```

```
dn: cn=Management Site-WorkflowAdmin,ou=Groups,dc=fatwire,dc=com
objectClass: top
objectClass: groupOfUniqueNames
uniqueMember: cn=fwadmin,ou=People,dc=fatwire,dc=com
```

```
dn: cn=Management Site-SitesUser,ou=Groups,dc=fatwire,dc=com
objectClass: top
objectClass: groupOfUniqueNames
uniqueMember: cn=fwadmin,ou=People,dc=fatwire,dc=com
```

Testing the Integration

Test your LDAP-integrated system by opening a browser and entering the following URL:

```
http://<servername>:<port>/servlet/CatalogManager?ftcmd
    =login&<username>=ContentServer&<password>=password
```

where

<servername> is the name of the machine hosting the WebCenter Sites system

<port> is the port number of that server

<username> is user-defined (ContentServer, in this example)

<password> is user-defined (password, in this example)

- If the browser displays a “Login Successful” message, you have integrated your LDAP plug-in correctly.
- If you do not see the “Login Successful” message, verify that you created the ContentServer user in the LDAP server, and that all properties are set to the correct values.

Appendix A

Sample LDIF for Hierarchical Schema LDAP

This appendix contains a sample `ldif` file for LDAP servers configured with a hierarchical schema.

Sample Idif File

The sample ldif file below defines users and groups for WebCenter Sites sample sites HelloAsetWorld, Burlington Financial, and GE Lighting. The file re-creates the system default users, sample site users, their ACLs, and their roles.

Note

The structure of the sample file below applies to any LDAP server using a hierarchical schema.

```
1 dn: dc=fatwire,dc=com
2 dc: fatwire
3 objectClass: dcObject
4 objectClass: organization
5 description: OpenLDAP test pre_cs_setup
6 o: Fatwire Software
7
8 dn: cn=Manager, dc=fatwire,dc=com
9 objectClass: organizationalRole
10 cn: Manager
11
12 dn: ou=People, dc=fatwire,dc=com
13 ou: People
14 objectClass: organizationalUnit
15 objectClass: top
16
17 dn: ou=Groups, dc=fatwire,dc=com
18 ou: Groups
19 objectClass: organizationalUnit
20 objectClass: top
21
22 dn: cn=fwadmin_mine,ou=People, dc=fatwire,dc=com
23 telephoneNumber: (123) 123-4567
24 userPassword::
25 e1NTSEF9endxNDRoUStuUlNrOU84clJuTU5RSzBxTF1PdEN3azQ=
26 objectClass: organizationalPerson
27 objectClass: top
28 description: admin user mine
29 sn: fwadmin_nime
30 cn: fwadmin_mine
31
32 dn: cn=newgroupOfUniqueNames,ou=Groups, dc=fatwire,dc=com
33 objectClass: groupOfUniqueNames
34 objectClass: top
35 uniqueMember: cn=fwadmin_mine,ou=People,dc=fatwire,dc=com
36 cn: newgroupOfUniqueNames
37
38 dn: cn=Browser,ou=Groups, dc=fatwire,dc=com
39 objectClass: top
```



```
39 objectClass: groupOfUniqueNames
40 uniqueMember:
   cn=ContentServer,ou=People,dc=fatwire,dc=com
41 uniqueMember:
   cn=DefaultReader,ou=People,dc=fatwire,dc=com
42 uniqueMember: cn=fwadmin,ou=People,dc=fatwire,dc=com
43 uniqueMember: cn=Coco,ou=People,dc=fatwire,dc=com
44 uniqueMember: cn=Bobo,ou=People,dc=fatwire,dc=com
45 uniqueMember: cn=Flo,ou=People,dc=fatwire,dc=com
46 uniqueMember: cn=Joe,ou=People,dc=fatwire,dc=com
47 uniqueMember: cn=Moe,ou=People,dc=fatwire,dc=com
48 uniqueMember:
   cn=user_designer,ou=People,dc=fatwire,dc=com
49 uniqueMember: cn=user_author,ou=People,dc=fatwire,dc=com
50 uniqueMember:
   cn=user_approver,ou=People,dc=fatwire,dc=com
51 uniqueMember: cn=user_checker,ou=People,dc=fatwire,dc=com
52 uniqueMember: cn=user_editor,ou=People,dc=fatwire,dc=com
53 uniqueMember: cn=editor,ou=People,dc=fatwire,dc=com
54 uniqueMember: cn=mirroruser,ou=People,dc=fatwire,dc=com
55 uniqueMember:
   cn=user_marketer,ou=People,dc=fatwire,dc=com
56 uniqueMember: cn=user_pricer,ou=People,dc=fatwire,dc=com
57 uniqueMember: cn=user_analyst,ou=People,dc=fatwire,dc=com
58 uniqueMember: cn=user_expert,ou=People,dc=fatwire,dc=com
59 uniqueMember: cn=HelloAssetWorld-
   SparkAdmin,ou=Groups,dc=fatwire,dc=com
60 uniqueMember: cn=BurlingtonFinancial-
   SparkAdmin,ou=Groups,dc=fatwire,dc=com
61 uniqueMember: cn=GE Lighting-
   SparkAdmin,ou=Groups,dc=fatwire,dc=com
62 uniqueMember: cn=Spark-
   SparkAdmin,ou=Groups,dc=fatwire,dc=com
63 uniqueMember: cn=HelloAssetWorld-
   SparkContentUser,ou=Groups,dc=fatwire,dc=com
64 uniqueMember: cn=BurlingtonFinancial-
   SparkContentUser,ou=Groups,dc=fatwire,dc=com
65 uniqueMember: cn=GE Lighting-
   SparkContentUser,ou=Groups,dc=fatwire,dc=com
66 uniqueMember: cn=Spark-
   SparkContentUser,ou=Groups,dc=fatwire,dc=com
67 uniqueMember: cn=HelloAssetWorld-
   SparkDocumentUser,ou=Groups,dc=fatwire,dc=com
68 uniqueMember: cn=BurlingtonFinancial-
   SparkDocumentUser,ou=Groups,dc=fatwire,dc=com
69 uniqueMember: cn=GE Lighting-
   SparkDocumentUser,ou=Groups,dc=fatwire,dc=com
70 uniqueMember: cn=Spark-
   SparkDocumentUser,ou=Groups,dc=fatwire,dc=com
71 uniqueMember: cn=firstsite,ou=People,dc=fatwire,dc=com
72 uniqueMember: cn=Connie,ou=People,dc=fatwire,dc=com
73 uniqueMember: cn=Conrad,ou=People,dc=fatwire,dc=com
```

```
74 uniqueMember: cn=Desiree,ou=People,dc=fatwire,dc=com
75 uniqueMember: cn=Napoleon,ou=People,dc=fatwire,dc=com
76 uniqueMember: cn=Arthur,ou=People,dc=fatwire,dc=com
77 uniqueMember: cn=Martha,ou=People,dc=fatwire,dc=com
78 uniqueMember: cn=Rose,ou=People,dc=fatwire,dc=com
79 uniqueMember: cn=Mark,ou=People,dc=fatwire,dc=com
80 uniqueMember: cn=Mary,ou=People,dc=fatwire,dc=com
81 cn: Browser
82
83 dn: cn=SiteGod,ou=Groups, dc=fatwire,dc=com
84 objectClass: top
85 objectClass: groupOfUniqueNames
86 uniqueMember:
87   cn=ContentServer,ou=People,dc=fatwire,dc=com
88   cn: SiteGod
89 dn: cn=ElementReader,ou=Groups, dc=fatwire,dc=com
90 objectClass: top
91 objectClass: groupOfUniqueNames
92 uniqueMember:
93   cn=ContentServer,ou=People,dc=fatwire,dc=com
94   uniqueMember: cn=Coco,ou=People,dc=fatwire,dc=com
95   uniqueMember: cn=Bobo,ou=People,dc=fatwire,dc=com
96   uniqueMember: cn=Flo,ou=People,dc=fatwire,dc=com
97   uniqueMember: cn=Joe,ou=People,dc=fatwire,dc=com
98   uniqueMember: cn=Moe,ou=People,dc=fatwire,dc=com
99   uniqueMember: cn=user_author,ou=People,dc=fatwire,dc=com
100  uniqueMember: cn=user_approver,ou=People,dc=fatwire,dc=com
101  uniqueMember: cn=user_checker,ou=People,dc=fatwire,dc=com
102  uniqueMember: cn=user_editor,ou=People,dc=fatwire,dc=com
103  uniqueMember: cn=user_marketer,ou=People,dc=fatwire,dc=com
104  uniqueMember: cn=user_pricer,ou=People,dc=fatwire,dc=com
105  uniqueMember: cn=user_analyst,ou=People,dc=fatwire,dc=com
106  uniqueMember: cn=user_expert,ou=People,dc=fatwire,dc=com
107  uniqueMember: cn>HelloAssetWorld-
108  SparkContentUser,ou=Groups,dc=fatwire,dc=com
109  uniqueMember: cn=BurlingtonFinancial-
110  SparkContentUser,ou=Groups,dc=fatwire,dc=com
111  uniqueMember: cn=GE Lighting-
112  SparkContentUser,ou=Groups,dc=fatwire,dc=com
113  uniqueMember: cn=Spark-
114  SparkContentUser,ou=Groups,dc=fatwire,dc=com
115  uniqueMember: cn>HelloAssetWorld-
116  SparkDocumentUser,ou=Groups,dc=fatwire,dc=com
117  uniqueMember: cn=BurlingtonFinancial-
118  SparkDocumentUser,ou=Groups,dc=fatwire,dc=com
119  uniqueMember: cn=GE Lighting-
120  SparkDocumentUser,ou=Groups,dc=fatwire,dc=com
121  uniqueMember: cn=Spark-
122  SparkDocumentUser,ou=Groups,dc=fatwire,dc=com
```

```
114 uniqueMember: cn=firstsite,ou=People,dc=fatwire,dc=com
115 uniqueMember: cn=Connie,ou=People,dc=fatwire,dc=com
116 uniqueMember: cn=Conrad,ou=People,dc=fatwire,dc=com
117 uniqueMember: cn=Desiree,ou=People,dc=fatwire,dc=com
118 uniqueMember: cn=Napoleon,ou=People,dc=fatwire,dc=com
119 uniqueMember: cn=Arthur,ou=People,dc=fatwire,dc=com
120 uniqueMember: cn=Martha,ou=People,dc=fatwire,dc=com
121 uniqueMember: cn=Rose,ou=People,dc=fatwire,dc=com
122 uniqueMember: cn=Mark,ou=People,dc=fatwire,dc=com
123 uniqueMember: cn=Mary,ou=People,dc=fatwire,dc=com
124 cn: ElementReader
125
126 dn: cn=ElementEditor,ou=Groups, dc=fatwire,dc=com
127 objectClass: top
128 objectClass: groupOfUniqueNames
129 uniqueMember:
130   cn=ContentServer,ou=People,dc=fatwire,dc=com
131 uniqueMember: cn=fwadmin,ou=People,dc=fatwire,dc=com
132 uniqueMember: cn=Coco,ou=People,dc=fatwire,dc=com
133 uniqueMember:
134   cn=user_designer,ou=People,dc=fatwire,dc=com
135 uniqueMember: cn=editor,ou=People,dc=fatwire,dc=com
136 uniqueMember: cn=mirroruser,ou=People,dc=fatwire,dc=com
137 uniqueMember: cn>HelloAssetWorld-
138   SparkAdmin,ou=Groups,dc=fatwire,dc=com
139 uniqueMember: cn=BurlingtonFinancial-
140   SparkAdmin,ou=Groups,dc=fatwire,dc=com
141 uniqueMember: cn=GE Lighting-
142   SparkAdmin,ou=Groups,dc=fatwire,dc=com
143 uniqueMember: cn=Spark-
144   SparkAdmin,ou=Groups,dc=fatwire,dc=com
145 uniqueMember: cn=firstsite,ou=People,dc=fatwire,dc=com
146 cn: ElementEditor
147
148 dn: cn=PageReader,ou=Groups, dc=fatwire,dc=com
149 objectClass: top
150 objectClass: groupOfUniqueNames
151 uniqueMember:
152   cn=ContentServer,ou=People,dc=fatwire,dc=com
153 uniqueMember: cn=Coco,ou=People,dc=fatwire,dc=com
154 uniqueMember: cn=Bobo,ou=People,dc=fatwire,dc=com
155 uniqueMember: cn=Flo,ou=People,dc=fatwire,dc=com
156 uniqueMember: cn=Joe,ou=People,dc=fatwire,dc=com
157 uniqueMember: cn=Moe,ou=People,dc=fatwire,dc=com
158 uniqueMember: cn=user_author,ou=People,dc=fatwire,dc=com
159 uniqueMember:
160   cn=user_approver,ou=People,dc=fatwire,dc=com
161 uniqueMember: cn=user_checker,ou=People,dc=fatwire,dc=com
162 uniqueMember: cn=user_editor,ou=People,dc=fatwire,dc=com
163 uniqueMember:
164   cn=user_marketer,ou=People,dc=fatwire,dc=com
165 uniqueMember: cn=user_pricer,ou=People,dc=fatwire,dc=com
```

```
157 uniqueMember: cn=user_analyst,ou=People,dc=fatwire,dc=com
158 uniqueMember: cn=user_expert,ou=People,dc=fatwire,dc=com
159 uniqueMember: cn=HelloAssetWorld-
SparkContentUser,ou=Groups,dc=fatwire,dc=com
160 uniqueMember: cn=BurlingtonFinancial-
SparkContentUser,ou=Groups,dc=fatwire,dc=com
161 uniqueMember: cn=GE Lighting-
SparkContentUser,ou=Groups,dc=fatwire,dc=com
162 uniqueMember: cn=Spark-
SparkContentUser,ou=Groups,dc=fatwire,dc=com
163 uniqueMember: cn=HelloAssetWorld-
SparkDocumentUser,ou=Groups,dc=fatwire,dc=com
164 uniqueMember: cn=BurlingtonFinancial-
SparkDocumentUser,ou=Groups,dc=fatwire,dc=com
165 uniqueMember: cn=GE Lighting-
SparkDocumentUser,ou=Groups,dc=fatwire,dc=com
166 uniqueMember: cn=Spark-
SparkDocumentUser,ou=Groups,dc=fatwire,dc=com
167 uniqueMember: cn=firstsite,ou=People,dc=fatwire,dc=com
168 uniqueMember: cn=Connie,ou=People,dc=fatwire,dc=com
169 uniqueMember: cn=Conrad,ou=People,dc=fatwire,dc=com
170 uniqueMember: cn=Desiree,ou=People,dc=fatwire,dc=com
171 uniqueMember: cn=Napoleon,ou=People,dc=fatwire,dc=com
172 uniqueMember: cn=Arthur,ou=People,dc=fatwire,dc=com
173 uniqueMember: cn=Martha,ou=People,dc=fatwire,dc=com
174 uniqueMember: cn=Rose,ou=People,dc=fatwire,dc=com
175 uniqueMember: cn=Mark,ou=People,dc=fatwire,dc=com
176 uniqueMember: cn=Mary,ou=People,dc=fatwire,dc=com
177 cn: PageReader
178
179 dn: cn=PageEditor,ou=Groups,dc=fatwire,dc=com
180 objectClass: top
181 objectClass: groupOfUniqueNames
182 uniqueMember:
cn=ContentServer,ou=People,dc=fatwire,dc=com
183 uniqueMember: cn=fwadmin,ou=People,dc=fatwire,dc=com
184 uniqueMember: cn=Coco,ou=People,dc=fatwire,dc=com
185 uniqueMember:
cn=user_designer,ou=People,dc=fatwire,dc=com
186 uniqueMember: cn=editor,ou=People,dc=fatwire,dc=com
187 uniqueMember: cn=mirroruser,ou=People,dc=fatwire,dc=com
188 uniqueMember: cn=HelloAssetWorld-
SparkAdmin,ou=Groups,dc=fatwire,dc=com
189 uniqueMember: cn=BurlingtonFinancial-
SparkAdmin,ou=Groups,dc=fatwire,dc=com
190 uniqueMember: cn=GE Lighting-
SparkAdmin,ou=Groups,dc=fatwire,dc=com
191 uniqueMember: cn=Spark-
SparkAdmin,ou=Groups,dc=fatwire,dc=com
192 uniqueMember: cn=firstsite,ou=People,dc=fatwire,dc=com
193 cn: PageEditor
194
```

```
195 dn: cn=UserReader,ou=Groups, dc=fatwire,dc=com
196 objectClass: top
197 objectClass: groupOfUniqueNames
198 uniqueMember:
   cn=ContentServer,ou=People,dc=fatwire,dc=com
199 uniqueMember: cn=fwadmin,ou=People,dc=fatwire,dc=com
200 uniqueMember: cn=Coco,ou=People,dc=fatwire,dc=com
201 uniqueMember: cn=Bobo,ou=People,dc=fatwire,dc=com
202 uniqueMember: cn=Flo,ou=People,dc=fatwire,dc=com
203 uniqueMember: cn=Joe,ou=People,dc=fatwire,dc=com
204 uniqueMember: cn=Moe,ou=People,dc=fatwire,dc=com
205 uniqueMember:
   cn=user_designer,ou=People,dc=fatwire,dc=com
206 uniqueMember: cn=user_author,ou=People,dc=fatwire,dc=com
207 uniqueMember:
   cn=user_approver,ou=People,dc=fatwire,dc=com
208 uniqueMember: cn=user_checker,ou=People,dc=fatwire,dc=com
209 uniqueMember: cn=user_editor,ou=People,dc=fatwire,dc=com
210 uniqueMember: cn=editor,ou=People,dc=fatwire,dc=com
211 uniqueMember: cn=mirroruser,ou=People,dc=fatwire,dc=com
212 uniqueMember:
   cn=user_marketer,ou=People,dc=fatwire,dc=com
213 uniqueMember: cn=user_pricer,ou=People,dc=fatwire,dc=com
214 uniqueMember: cn=user_analyst,ou=People,dc=fatwire,dc=com
215 uniqueMember: cn=user_expert,ou=People,dc=fatwire,dc=com
216 uniqueMember: cn=HelloAssetWorld-
   SparkAdmin,ou=Groups,dc=fatwire,dc=com
217 uniqueMember: cn=BurlingtonFinancial-
   SparkAdmin,ou=Groups,dc=fatwire,dc=com
218 uniqueMember: cn=GE Lighting-
   SparkAdmin,ou=Groups,dc=fatwire,dc=com
219 uniqueMember: cn=Spark-
   SparkAdmin,ou=Groups,dc=fatwire,dc=com
220 uniqueMember: cn=HelloAssetWorld-
   SparkContentUser,ou=Groups,dc=fatwire,dc=com
221 uniqueMember: cn=BurlingtonFinancial-
   SparkContentUser,ou=Groups,dc=fatwire,dc=com
222 uniqueMember: cn=GE Lighting-
   SparkContentUser,ou=Groups,dc=fatwire,dc=com
223 uniqueMember: cn=Spark-
   SparkContentUser,ou=Groups,dc=fatwire,dc=com
224 uniqueMember: cn=HelloAssetWorld-
   SparkDocumentUser,ou=Groups,dc=fatwire,dc=com
225 uniqueMember: cn=BurlingtonFinancial-
   SparkDocumentUser,ou=Groups,dc=fatwire,dc=com
226 uniqueMember: cn=GE Lighting-
   SparkDocumentUser,ou=Groups,dc=fatwire,dc=com
227 uniqueMember: cn=Spark-
   SparkDocumentUser,ou=Groups,dc=fatwire,dc=com
228 uniqueMember: cn=firstsite,ou=People,dc=fatwire,dc=com
229 uniqueMember: cn=Connie,ou=People,dc=fatwire,dc=com
230 uniqueMember: cn=Conrad,ou=People,dc=fatwire,dc=com
```

```
231 uniqueMember: cn=Desiree,ou=People,dc=fatwire,dc=com
232 uniqueMember: cn=Napoleon,ou=People,dc=fatwire,dc=com
233 uniqueMember: cn=Arthur,ou=People,dc=fatwire,dc=com
234 uniqueMember: cn=Martha,ou=People,dc=fatwire,dc=com
235 uniqueMember: cn=Rose,ou=People,dc=fatwire,dc=com
236 uniqueMember: cn=Mark,ou=People,dc=fatwire,dc=com
237 uniqueMember: cn=Mary,ou=People,dc=fatwire,dc=com
238 cn: UserReader
239
240 dn: cn=UserEditor,ou=Groups, dc=fatwire,dc=com
241 objectClass: top
242 objectClass: groupOfUniqueNames
243 uniqueMember:
244   cn=ContentServer,ou=People,dc=fatwire,dc=com
245 uniqueMember: cn=fwadmin,ou=People,dc=fatwire,dc=com
246 uniqueMember: cn=Bobo,ou=People,dc=fatwire,dc=com
247 uniqueMember: cn>HelloAssetWorld-
248   SparkAdmin,ou=Groups,dc=fatwire,dc=com
249 uniqueMember: cn=BurlingtonFinancial-
250   SparkAdmin,ou=Groups,dc=fatwire,dc=com
251 uniqueMember: cn=GE Lighting-
252   SparkAdmin,ou=Groups,dc=fatwire,dc=com
253 uniqueMember: cn=Spark-
254   SparkAdmin,ou=Groups,dc=fatwire,dc=com
255 uniqueMember: cn=firstsite,ou=People,dc=fatwire,dc=com
256 uniqueMember: cn=Napoleon,ou=People,dc=fatwire,dc=com
257 cn: UserEditor
258
259 dn: cn=TableEditor,ou=Groups, dc=fatwire,dc=com
260 objectClass: top
261 objectClass: groupOfUniqueNames
262 uniqueMember:
263   cn=ContentServer,ou=People,dc=fatwire,dc=com
264 uniqueMember: cn=fwadmin,ou=People,dc=fatwire,dc=com
265 uniqueMember: cn=Coco,ou=People,dc=fatwire,dc=com
266 uniqueMember:
267   cn=user_designer,ou=People,dc=fatwire,dc=com
268 uniqueMember: cn=mirroruser,ou=People,dc=fatwire,dc=com
269 uniqueMember: cn>HelloAssetWorld-
270   SparkAdmin,ou=Groups,dc=fatwire,dc=com
271 uniqueMember: cn=BurlingtonFinancial-
272   SparkAdmin,ou=Groups,dc=fatwire,dc=com
273 uniqueMember: cn=GE Lighting-
274   SparkAdmin,ou=Groups,dc=fatwire,dc=com
275 uniqueMember: cn=Spark-
276   SparkAdmin,ou=Groups,dc=fatwire,dc=com
277 uniqueMember: cn=firstsite,ou=People,dc=fatwire,dc=com
278 uniqueMember: cn=Connie,ou=People,dc=fatwire,dc=com
279 uniqueMember: cn=Conrad,ou=People,dc=fatwire,dc=com
280 uniqueMember: cn=Desiree,ou=People,dc=fatwire,dc=com
281 uniqueMember: cn=Napoleon,ou=People,dc=fatwire,dc=com
282 uniqueMember: cn=Arthur,ou=People,dc=fatwire,dc=com
```

```
272 uniqueMember: cn=Martha,ou=People,dc=fatwire,dc=com
273 uniqueMember: cn=Rose,ou=People,dc=fatwire,dc=com
274 uniqueMember: cn=Mark,ou=People,dc=fatwire,dc=com
275 uniqueMember: cn=Mary,ou=People,dc=fatwire,dc=com
276 cn: TableEditor
277
278 dn: cn=ContentServer,ou=People, dc=fatwire,dc=com
279 userPassword:: cGFzc3dvcmQ=
280 objectClass: top
281 objectClass: person
282 objectClass: organizationalPerson
283 sn: ContentServer
284 cn: ContentServer
285
286 dn: cn=DefaultReader,ou=People, dc=fatwire,dc=com
287 userPassword:: U29tZVJlYWVlYWRlcg==
288 objectClass: top
289 objectClass: person
290 objectClass: organizationalPerson
291 sn: DefaultReader
292 cn: DefaultReader
293
294 dn: cn=xceleditor,ou=Groups, dc=fatwire,dc=com
295 objectClass: top
296 objectClass: groupOfUniqueNames
297 uniqueMember: cn=fwadmin,ou=People,dc=fatwire,dc=com
298 uniqueMember: cn=Coco,ou=People,dc=fatwire,dc=com
299 uniqueMember: cn=Bobo,ou=People,dc=fatwire,dc=com
300 uniqueMember: cn=Flo,ou=People,dc=fatwire,dc=com
301 uniqueMember: cn=Joe,ou=People,dc=fatwire,dc=com
302 uniqueMember: cn=Moe,ou=People,dc=fatwire,dc=com
303 uniqueMember:
cn=user_designer,ou=People,dc=fatwire,dc=com
304 uniqueMember: cn=user_author,ou=People,dc=fatwire,dc=com
305 uniqueMember:
cn=user_approver,ou=People,dc=fatwire,dc=com
306 uniqueMember: cn=user_checker,ou=People,dc=fatwire,dc=com
307 uniqueMember: cn=user_editor,ou=People,dc=fatwire,dc=com
308 uniqueMember: cn=editor,ou=People,dc=fatwire,dc=com
309 uniqueMember: cn=mirroruser,ou=People,dc=fatwire,dc=com
310 uniqueMember:
cn=user_marketer,ou=People,dc=fatwire,dc=com
311 uniqueMember: cn=user_pricer,ou=People,dc=fatwire,dc=com
312 uniqueMember: cn=user_analyst,ou=People,dc=fatwire,dc=com
313 uniqueMember: cn=user_expert,ou=People,dc=fatwire,dc=com
314 uniqueMember: cn=HelloAssetWorld-
SparkAdmin,ou=Groups,dc=fatwire,dc=com
315 uniqueMember: cn=BurlingtonFinancial-
SparkAdmin,ou=Groups,dc=fatwire,dc=com
316 uniqueMember: cn=GE Lighting-
SparkAdmin,ou=Groups,dc=fatwire,dc=com
```

```
317 uniqueMember: cn=Spark-
SparkAdmin,ou=Groups,dc=fatwire,dc=com
318 uniqueMember: cn=HelloAssetWorld-
SparkContentUser,ou=Groups,dc=fatwire,dc=com
319 uniqueMember: cn=BurlingtonFinancial-
SparkContentUser,ou=Groups,dc=fatwire,dc=com
320 uniqueMember: cn=GE Lighting-
SparkContentUser,ou=Groups,dc=fatwire,dc=com
321 uniqueMember: cn=Spark-
SparkContentUser,ou=Groups,dc=fatwire,dc=com
322 uniqueMember: cn=HelloAssetWorld-
SparkDocumentUser,ou=Groups,dc=fatwire,dc=com
323 uniqueMember: cn=BurlingtonFinancial-
SparkDocumentUser,ou=Groups,dc=fatwire,dc=com
324 uniqueMember: cn=GE Lighting-
SparkDocumentUser,ou=Groups,dc=fatwire,dc=com
325 uniqueMember: cn=Spark-
SparkDocumentUser,ou=Groups,dc=fatwire,dc=com
326 uniqueMember: cn=firstsite,ou=People,dc=fatwire,dc=com
327 uniqueMember: cn=Connie,ou=People,dc=fatwire,dc=com
328 uniqueMember: cn=Conrad,ou=People,dc=fatwire,dc=com
329 uniqueMember: cn=Desiree,ou=People,dc=fatwire,dc=com
330 uniqueMember: cn=Napoleon,ou=People,dc=fatwire,dc=com
331 uniqueMember: cn=Arthur,ou=People,dc=fatwire,dc=com
332 uniqueMember: cn=Martha,ou=People,dc=fatwire,dc=com
333 uniqueMember: cn=Rose,ou=People,dc=fatwire,dc=com
334 uniqueMember: cn=Mark,ou=People,dc=fatwire,dc=com
335 uniqueMember: cn=Mary,ou=People,dc=fatwire,dc=com
336 cn: xceleditor
337
338 dn: cn=xceladmin,ou=Groups,dc=fatwire,dc=com
339 objectClass: top
340 objectClass: groupOfUniqueNames
341 uniqueMember: cn=fwadmin,ou=People,dc=fatwire,dc=com
342 uniqueMember: cn=Coco,ou=People,dc=fatwire,dc=com
343 uniqueMember: cn=Bobo,ou=People,dc=fatwire,dc=com
344 uniqueMember: cn=mirroruser,ou=People,dc=fatwire,dc=com
345 uniqueMember: cn=HelloAssetWorld-
SparkAdmin,ou=Groups,dc=fatwire,dc=com
346 uniqueMember: cn=BurlingtonFinancial-
SparkAdmin,ou=Groups,dc=fatwire,dc=com
347 uniqueMember: cn=GE Lighting-
SparkAdmin,ou=Groups,dc=fatwire,dc=com
348 uniqueMember: cn=Spark-
SparkAdmin,ou=Groups,dc=fatwire,dc=com
349 uniqueMember: cn=firstsite,ou=People,dc=fatwire,dc=com
350 uniqueMember: cn=Napoleon,ou=People,dc=fatwire,dc=com
351 cn: xceladmin
352
353 dn: cn=xcelpublish,ou=Groups,dc=fatwire,dc=com
354 objectClass: top
355 objectClass: groupOfUniqueNames
```



```
356 uniqueMember: cn=fwadmin,ou=People,dc=fatwire,dc=com
357 uniqueMember: cn=Coco,ou=People,dc=fatwire,dc=com
358 uniqueMember: cn=Bobo,ou=People,dc=fatwire,dc=com
359 uniqueMember: cn=Flo,ou=People,dc=fatwire,dc=com
360 uniqueMember: cn=Joe,ou=People,dc=fatwire,dc=com
361 uniqueMember: cn=Moe,ou=People,dc=fatwire,dc=com
362 uniqueMember:
  cn=user_designer,ou=People,dc=fatwire,dc=com
363 uniqueMember: cn=user_author,ou=People,dc=fatwire,dc=com
364 uniqueMember:
  cn=user_approver,ou=People,dc=fatwire,dc=com
365 uniqueMember: cn=user_checker,ou=People,dc=fatwire,dc=com
366 uniqueMember: cn=user_editor,ou=People,dc=fatwire,dc=com
367 uniqueMember: cn=editor,ou=People,dc=fatwire,dc=com
368 uniqueMember: cn=mirroruser,ou=People,dc=fatwire,dc=com
369 uniqueMember:
  cn=user_marketer,ou=People,dc=fatwire,dc=com
370 uniqueMember: cn=user_pricer,ou=People,dc=fatwire,dc=com
371 uniqueMember: cn=user_analyst,ou=People,dc=fatwire,dc=com
372 uniqueMember: cn=user_expert,ou=People,dc=fatwire,dc=com
373 uniqueMember: cn=HelloAssetWorld-
  SparkAdmin,ou=Groups,dc=fatwire,dc=com
374 uniqueMember: cn=BurlingtonFinancial-
  SparkAdmin,ou=Groups,dc=fatwire,dc=com
375 uniqueMember: cn=GE Lighting-
  SparkAdmin,ou=Groups,dc=fatwire,dc=com
376 uniqueMember: cn=Spark-
  SparkAdmin,ou=Groups,dc=fatwire,dc=com
377 uniqueMember: cn=HelloAssetWorld-
  SparkContentUser,ou=Groups,dc=fatwire,dc=com
378 uniqueMember: cn=BurlingtonFinancial-
  SparkContentUser,ou=Groups,dc=fatwire,dc=com
379 uniqueMember: cn=GE Lighting-
  SparkContentUser,ou=Groups,dc=fatwire,dc=com
380 uniqueMember: cn=Spark-
  SparkContentUser,ou=Groups,dc=fatwire,dc=com
381 uniqueMember: cn=HelloAssetWorld-
  SparkDocumentUser,ou=Groups,dc=fatwire,dc=com
382 uniqueMember: cn=BurlingtonFinancial-
  SparkDocumentUser,ou=Groups,dc=fatwire,dc=com
383 uniqueMember: cn=GE Lighting-
  SparkDocumentUser,ou=Groups,dc=fatwire,dc=com
384 uniqueMember: cn=Spark-
  SparkDocumentUser,ou=Groups,dc=fatwire,dc=com
385 uniqueMember: cn=firstsite,ou=People,dc=fatwire,dc=com
386 uniqueMember: cn=Napoleon,ou=People,dc=fatwire,dc=com
387 cn: xcelpublish
388
389 dn: cn=Visitor,ou=Groups,dc=fatwire,dc=com
390 objectClass: top
391 objectClass: groupOfUniqueNames
```

```
392 uniqueMember:
   cn=DefaultReader, ou=People, dc=fatwire, dc=com
393 uniqueMember: cn=fwadmin, ou=People, dc=fatwire, dc=com
394 uniqueMember:
   cn=user_designer, ou=People, dc=fatwire, dc=com
395 uniqueMember: cn=user_author, ou=People, dc=fatwire, dc=com
396 uniqueMember:
   cn=user_approver, ou=People, dc=fatwire, dc=com
397 uniqueMember: cn=user_checker, ou=People, dc=fatwire, dc=com
398 uniqueMember: cn=user_editor, ou=People, dc=fatwire, dc=com
399 uniqueMember: cn=editor, ou=People, dc=fatwire, dc=com
400 uniqueMember:
   cn=user_marketer, ou=People, dc=fatwire, dc=com
401 uniqueMember: cn=user_pricer, ou=People, dc=fatwire, dc=com
402 uniqueMember: cn=mirroruser, ou=People, dc=fatwire, dc=com
403 uniqueMember: cn=user_analyst, ou=People, dc=fatwire, dc=com
404 uniqueMember: cn=user_expert, ou=People, dc=fatwire, dc=com
405 uniqueMember: cn=HelloAssetWorld-
   SparkAdmin, ou=Groups, dc=fatwire, dc=com
406 uniqueMember: cn=BurlingtonFinancial-
   SparkAdmin, ou=Groups, dc=fatwire, dc=com
407 uniqueMember: cn=GE Lighting-
   SparkAdmin, ou=Groups, dc=fatwire, dc=com
408 uniqueMember: cn=Spark-
   SparkAdmin, ou=Groups, dc=fatwire, dc=com
409 uniqueMember: cn=HelloAssetWorld-
   SparkContentUser, ou=Groups, dc=fatwire, dc=com
410 uniqueMember: cn=BurlingtonFinancial-
   SparkContentUser, ou=Groups, dc=fatwire, dc =com
411 uniqueMember: cn=GE Lighting-
   SparkContentUser, ou=Groups, dc=fatwire, dc=com
412 uniqueMember: cn=Spark-
   SparkContentUser, ou=Groups, dc=fatwire, dc=com
413 uniqueMember: cn=HelloAssetWorld-
   SparkDocumentUser, ou=Groups, dc=fatwire, dc=com
414 uniqueMember: cn=BurlingtonFinancial-
   SparkDocumentUser, ou=Groups, dc=fatwire, dc=com
415 uniqueMember: cn=GE Lighting-
   SparkDocumentUser, ou=Groups, dc=fatwire, dc=com
416 uniqueMember: cn=Spark-
   SparkDocumentUser, ou=Groups, dc=fatwire, dc=com
417 uniqueMember: cn=firstsite, ou=People, dc=fatwire, dc=com
418 uniqueMember: cn=Connie, ou=People, dc=fatwire, dc=com
419 uniqueMember: cn=Conrad, ou=People, dc=fatwire, dc=com
420 uniqueMember: cn=Desiree, ou=People, dc=fatwire, dc=com
421 uniqueMember: cn=Napoleon, ou=People, dc=fatwire, dc=com
422 uniqueMember: cn=Arthur, ou=People, dc=fatwire, dc=com
423 uniqueMember: cn=Martha, ou=People, dc=fatwire, dc=com
424 uniqueMember: cn=Rose, ou=People, dc=fatwire, dc=com
425 uniqueMember: cn=Mark, ou=People, dc=fatwire, dc=com
426 uniqueMember: cn=Mary, ou=People, dc=fatwire, dc=com
427 cn: Visitor
```

```
428
429 dn: cn=VisitorAdmin,ou=Groups, dc=fatwire,dc=com
430 objectClass: top
431 objectClass: groupOfUniqueNames
432 uniqueMember: cn=fwadmin,ou=People,dc=fatwire,dc=com
433 uniqueMember:
434   cn=user_designer,ou=People,dc=fatwire,dc=com
435 uniqueMember: cn=mirroruser,ou=People,dc=fatwire,dc=com
436 uniqueMember: cn>HelloAssetWorld-
437   SparkAdmin,ou=Groups,dc=fatwire,dc=com
438 uniqueMember: cn=BurlingtonFinancial-
439   SparkAdmin,ou=Groups,dc=fatwire,dc=com
440 uniqueMember: cn=GE Lighting-
441   SparkAdmin,ou=Groups,dc=fatwire,dc=com
442 uniqueMember: cn=Spark-
443   SparkAdmin,ou=Groups,dc=fatwire,dc=com
444 uniqueMember: cn=firstsite,ou=People,dc=fatwire,dc=com
445 cn: VisitorAdmin
446
447 dn: cn=RemoteClient,ou=Groups, dc=fatwire,dc=com
448 objectClass: top
449 objectClass: groupOfUniqueNames
450 uniqueMember:
451   cn=user_designer,ou=People,dc=fatwire,dc=com
452 uniqueMember: cn=user_author,ou=People,dc=fatwire,dc=com
453 uniqueMember:
454   cn=user_approver,ou=People,dc=fatwire,dc=com
455 uniqueMember: cn=user_checker,ou=People,dc=fatwire,dc=com
456 uniqueMember: cn=user_editor,ou=People,dc=fatwire,dc=com
457 uniqueMember: cn=fwadmin,ou=People,dc=fatwire,dc=com
458 uniqueMember:
459   cn=user_marketer,ou=People,dc=fatwire,dc=com
460 uniqueMember: cn=user_pricer,ou=People,dc=fatwire,dc=com
461 uniqueMember: cn=user_analyst,ou=People,dc=fatwire,dc=com
462 uniqueMember: cn=user_expert,ou=People,dc=fatwire,dc=com
463 uniqueMember: cn>HelloAssetWorld-
464   SparkAdmin,ou=Groups,dc=fatwire,dc=com
465 uniqueMember: cn=BurlingtonFinancial-
466   SparkAdmin,ou=Groups,dc=fatwire,dc=com
467 uniqueMember: cn=GE Lighting-
468   SparkAdmin,ou=Groups,dc=fatwire,dc=com
469 uniqueMember: cn=Spark-
470   SparkAdmin,ou=Groups,dc=fatwire,dc=com
471 uniqueMember: cn>HelloAssetWorld-
472   SparkContentUser,ou=Groups,dc=fatwire,dc=com
473 uniqueMember: cn=BurlingtonFinancial-
474   SparkContentUser,ou=Groups,dc=fatwire,dc=com
475 uniqueMember: cn=GE Lighting-
476   SparkContentUser,ou=Groups,dc=fatwire,dc=com
477 uniqueMember: cn=Spark-
478   SparkContentUser,ou=Groups,dc=fatwire,dc=com
```

```
463 uniqueMember: cn=HelloAssetWorld-  
SparkDocumentUser,ou=Groups,dc=fatwire,dc=com  
464 uniqueMember: cn=BurlingtonFinancial-  
SparkDocumentUser,ou=Groups,dc=fatwire,dc=com  
465 uniqueMember: cn=GE Lighting-  
SparkDocumentUser,ou=Groups,dc=fatwire,dc=com  
466 uniqueMember: cn=Spark-  
SparkDocumentUser,ou=Groups,dc=fatwire,dc=com  
467 uniqueMember: cn=firstsite,ou=People,dc=fatwire,dc=com  
468 uniqueMember: cn=Connie,ou=People,dc=fatwire,dc=com  
469 uniqueMember: cn=Conrad,ou=People,dc=fatwire,dc=com  
470 uniqueMember: cn=Desiree,ou=People,dc=fatwire,dc=com  
471 uniqueMember: cn=Napoleon,ou=People,dc=fatwire,dc=com  
472 uniqueMember: cn=Arthur,ou=People,dc=fatwire,dc=com  
473 uniqueMember: cn=Martha,ou=People,dc=fatwire,dc=com  
474 uniqueMember: cn=Rose,ou=People,dc=fatwire,dc=com  
475 uniqueMember: cn=Mark,ou=People,dc=fatwire,dc=com  
476 uniqueMember: cn=Mary,ou=People,dc=fatwire,dc=com  
477 cn: RemoteClient  
478  
479 dn: cn=WSUser,ou=Groups, dc=fatwire,dc=com  
480 objectClass: top  
481 objectClass: groupOfUniqueNames  
482 uniqueMember:  
cn=user_designer,ou=People,dc=fatwire,dc=com  
483 uniqueMember: cn=user_author,ou=People,dc=fatwire,dc=com  
484 uniqueMember:  
cn=user_approver,ou=People,dc=fatwire,dc=com  
485 uniqueMember: cn=user_checker,ou=People,dc=fatwire,dc=com  
486 uniqueMember: cn=user_editor,ou=People,dc=fatwire,dc=com  
487 uniqueMember: cn=fwadmin,ou=People,dc=fatwire,dc=com  
488 uniqueMember:  
cn=user_marketer,ou=People,dc=fatwire,dc=com  
489 uniqueMember: cn=user_pricer,ou=People,dc=fatwire,dc=com  
490 uniqueMember: cn=user_analyst,ou=People,dc=fatwire,dc=com  
491 uniqueMember: cn=user_expert,ou=People,dc=fatwire,dc=com  
492 uniqueMember: cn=HelloAssetWorld-  
SparkAdmin,ou=Groups,dc=fatwire,dc=com  
493 uniqueMember: cn=BurlingtonFinancial-  
SparkAdmin,ou=Groups,dc=fatwire,dc=com  
494 uniqueMember: cn=GE Lighting-  
SparkAdmin,ou=Groups,dc=fatwire,dc=com  
495 uniqueMember: cn=Spark-  
SparkAdmin,ou=Groups,dc=fatwire,dc=com  
496 uniqueMember: cn=HelloAssetWorld-  
SparkContentUser,ou=Groups,dc=fatwire,dc=com  
497 uniqueMember: cn=BurlingtonFinancial-  
SparkContentUser,ou=Groups,dc=fatwire,dc=com  
498 uniqueMember: cn=GE Lighting-  
SparkContentUser,ou=Groups,dc=fatwire,dc=com  
499 uniqueMember: cn=Spark-  
SparkContentUser,ou=Groups,dc=fatwire,dc=com
```

```
500 uniqueMember: cn=HelloAssetWorld-
SparkDocumentUser,ou=Groups,dc=fatwire,dc=com
501 uniqueMember: cn=BurlingtonFinancial-
SparkDocumentUser,ou=Groups,dc=fatwire,dc=com
502 uniqueMember: cn=GE Lighting-
SparkDocumentUser,ou=Groups,dc=fatwire,dc=com
503 uniqueMember: cn=Spark-
SparkDocumentUser,ou=Groups,dc=fatwire,dc=com
504 uniqueMember: cn=firstsite,ou=People,dc=fatwire,dc=com
505 uniqueMember: cn=Connie,ou=People,dc=fatwire,dc=com
506 uniqueMember: cn=Conrad,ou=People,dc=fatwire,dc=com
507 uniqueMember: cn=Desiree,ou=People,dc=fatwire,dc=com
508 uniqueMember: cn=Napoleon,ou=People,dc=fatwire,dc=com
509 uniqueMember: cn=Arthur,ou=People,dc=fatwire,dc=com
510 uniqueMember: cn=Martha,ou=People,dc=fatwire,dc=com
511 uniqueMember: cn=Rose,ou=People,dc=fatwire,dc=com
512 uniqueMember: cn=Mark,ou=People,dc=fatwire,dc=com
513 uniqueMember: cn=Mary,ou=People,dc=fatwire,dc=com
514 cn: WSUser
515
516 dn: cn=WSEditor,ou=Groups, dc=fatwire,dc=com
517 objectClass: top
518 objectClass: groupOfUniqueNames
519 uniqueMember:
cn=user_designer,ou=People,dc=fatwire,dc=com
520 uniqueMember: cn=user_author,ou=People,dc=fatwire,dc=com
521 uniqueMember:
cn=user_approver,ou=People,dc=fatwire,dc=com
522 uniqueMember: cn=user_checker,ou=People,dc=fatwire,dc=com
523 uniqueMember: cn=user_editor,ou=People,dc=fatwire,dc=com
524 uniqueMember: cn=fwadmin,ou=People,dc=fatwire,dc=com
525 uniqueMember:
cn=user_marketer,ou=People,dc=fatwire,dc=com
526 uniqueMember: cn=user_pricer,ou=People,dc=fatwire,dc=com
527 uniqueMember: cn=user_analyst,ou=People,dc=fatwire,dc=com
528 uniqueMember: cn=user_expert,ou=People,dc=fatwire,dc=com
529 uniqueMember: cn=HelloAssetWorld-
SparkAdmin,ou=Groups,dc=fatwire,dc=com
530 uniqueMember: cn=BurlingtonFinancial-
SparkAdmin,ou=Groups,dc=fatwire,dc=com
531 uniqueMember: cn=GE Lighting-
SparkAdmin,ou=Groups,dc=fatwire,dc=com
532 uniqueMember: cn=Spark-
SparkAdmin,ou=Groups,dc=fatwire,dc=com
533 uniqueMember: cn=HelloAssetWorld-
SparkContentUser,ou=Groups,dc=fatwire,dc=com
534 uniqueMember: cn=BurlingtonFinancial-
SparkContentUser,ou=Groups,dc=fatwire,dc=com
535 uniqueMember: cn=GE Lighting-
SparkContentUser,ou=Groups,dc=fatwire,dc=com
536 uniqueMember: cn=Spark-
SparkContentUser,ou=Groups,dc=fatwire,dc=com
```

```
537 uniqueMember: cn=HelloAssetWorld-  
SparkDocumentUser,ou=Groups,dc=fatwire,dc=com  
538 uniqueMember: cn=BurlingtonFinancial-  
SparkDocumentUser,ou=Groups,dc=fatwire,dc=com  
539 uniqueMember: cn=GE Lighting-  
SparkDocumentUser,ou=Groups,dc=fatwire,dc=com  
540 uniqueMember: cn=Spark-  
SparkDocumentUser,ou=Groups,dc=fatwire,dc=com  
541 uniqueMember: cn=firstsite,ou=People,dc=fatwire,dc=com  
542 uniqueMember: cn=Connie,ou=People,dc=fatwire,dc=com  
543 uniqueMember: cn=Conrad,ou=People,dc=fatwire,dc=com  
544 uniqueMember: cn=Desiree,ou=People,dc=fatwire,dc=com  
545 uniqueMember: cn=Napoleon,ou=People,dc=fatwire,dc=com  
546 uniqueMember: cn=Arthur,ou=People,dc=fatwire,dc=com  
547 uniqueMember: cn=Martha,ou=People,dc=fatwire,dc=com  
548 uniqueMember: cn=Rose,ou=People,dc=fatwire,dc=com  
549 uniqueMember: cn=Mark,ou=People,dc=fatwire,dc=com  
550 uniqueMember: cn=Mary,ou=People,dc=fatwire,dc=com  
551 cn: WSEditor  
552  
553 dn: cn=WSAdmin,ou=Groups, dc=fatwire,dc=com  
554 objectClass: top  
555 objectClass: groupOfUniqueNames  
556 uniqueMember: cn=fwadmin,ou=People,dc=fatwire,dc=com  
557 uniqueMember: cn=HelloAssetWorld-  
SparkAdmin,ou=Groups,dc=fatwire,dc=com  
558 uniqueMember: cn=BurlingtonFinancial-  
SparkAdmin,ou=Groups,dc=fatwire,dc=com  
559 uniqueMember: cn=GE Lighting-  
SparkAdmin,ou=Groups,dc=fatwire,dc=com  
560 uniqueMember: cn=Spark-  
SparkAdmin,ou=Groups,dc=fatwire,dc=com  
561 uniqueMember: cn=firstsite,ou=People,dc=fatwire,dc=com  
562 cn: WSAdmin  
563  
564 dn: cn=fwadmin,ou=People, dc=fatwire,dc=com  
565 userPassword:: eGNlbGFkbWlu  
566 objectClass: top  
567 objectClass: person  
568 objectClass: organizationalPerson  
569 sn: fwadmin  
570 cn: fwadmin  
571  
572 dn: cn=Analyzer,ou=Groups, dc=fatwire,dc=com  
573 objectClass: top  
574 objectClass: groupOfUniqueNames  
575 uniqueMember: cn=fwadmin,ou=People,dc=fatwire,dc=com  
576 cn: Analyzer  
577  
578 dn: cn=HelloAssetWorld-HelloAuthor,ou=Groups,  
dc=fatwire,dc=com  
579 objectClass: top
```

```
580 objectClass: groupOfUniqueNames
581 uniqueMember: cn=Joe,ou=People,dc=fatwire,dc=com
582 uniqueMember: cn=Moe,ou=People,dc=fatwire,dc=com
583 cn: HelloAssetWorld-HelloAuthor
584
585 dn: cn=HelloAssetWorld-HelloDesigner,ou=Groups,
    dc=fatwire,dc=com
586 objectClass: top
587 objectClass: groupOfUniqueNames
588 uniqueMember: cn=Coco,ou=People,dc=fatwire,dc=com
589 cn: HelloAssetWorld-HelloDesigner
590
591 dn: cn=HelloAssetWorld-HelloEditor,ou=Groups,
    dc=fatwire,dc=com
592 objectClass: top
593 objectClass: groupOfUniqueNames
594 uniqueMember: cn=Flo,ou=People,dc=fatwire,dc=com
595 cn: HelloAssetWorld-HelloEditor
596
597 dn: cn=Coco,ou=People, dc=fatwire,dc=com
598 userPassword:: aGVsbG8=
599 objectClass: top
600 objectClass: person
601 objectClass: organizationalPerson
602 sn: Coco
603 cn: Coco
604
605 dn: cn=HelloAssetWorld-GeneralAdmin,ou=Groups,
    dc=fatwire,dc=com
606 objectClass: top
607 objectClass: groupOfUniqueNames
608 uniqueMember: cn=Coco,ou=People,dc=fatwire,dc=com
609 uniqueMember: cn=Bobo,ou=People,dc=fatwire,dc=com
610 uniqueMember: cn=fwadmin,ou=People,dc=fatwire,dc=com
611 cn: HelloAssetWorld-GeneralAdmin
612
613 dn: cn=Bobo,ou=People, dc=fatwire,dc=com
614 userPassword:: aGVsbG8=
615 objectClass: top
616 objectClass: person
617 objectClass: organizationalPerson
618 sn: Bobo
619 cn: Bobo
620
621 dn: cn=HelloAssetWorld-WorkflowAdmin,ou=Groups,
    dc=fatwire,dc=com
622 objectClass: top
623 objectClass: groupOfUniqueNames
624 uniqueMember: cn=Bobo,ou=People,dc=fatwire,dc=com
625 uniqueMember: cn=fwadmin,ou=People,dc=fatwire,dc=com
626 cn: HelloAssetWorld-WorkflowAdmin
627
```

```
628 dn: cn=Flo,ou=People, dc=fatwire,dc=com
629 userPassword:: aGVsbG8=
630 objectClass: top
631 objectClass: person
632 objectClass: organizationalPerson
633 sn: Flo
634 cn: Flo
635
636 dn: cn=Joe,ou=People, dc=fatwire,dc=com
637 userPassword:: aGVsbG8=
638 objectClass: top
639 objectClass: person
640 objectClass: organizationalPerson
641 sn: Joe
642 cn: Joe
643
644 dn: cn=Moe,ou=People, dc=fatwire,dc=com
645 userPassword:: aGVsbG8=
646 objectClass: top
647 objectClass: person
648 objectClass: organizationalPerson
649 sn: Moe
650 cn: Moe
651
652 dn: cn=HelloAssetWorld-Designer,ou=Groups,
dc=fatwire,dc=com
653 objectClass: top
654 objectClass: groupOfUniqueNames
655 cn: HelloAssetWorld-Designer
656
657 dn: cn=HelloAssetWorld-Author,ou=Groups,
dc=fatwire,dc=com
658 objectClass: top
659 objectClass: groupOfUniqueNames
660 cn: HelloAssetWorld-Author
661
662 dn: cn=HelloAssetWorld-Editor,ou=Groups,
dc=fatwire,dc=com
663 objectClass: top
664 objectClass: groupOfUniqueNames
665 cn: HelloAssetWorld-Editor
666
667 dn: cn=HelloAssetWorld-Approver,ou=Groups,
dc=fatwire,dc=com
668 objectClass: top
669 objectClass: groupOfUniqueNames
670 cn: HelloAssetWorld-Approver
671
672 dn: cn=HelloAssetWorld-Checker,ou=Groups,
dc=fatwire,dc=com
673 objectClass: top
674 objectClass: groupOfUniqueNames
```



```
721
722 dn: cn=user_checker,ou=People, dc=fatwire,dc=com
723 userPassword:: dXNlcmg==
724 objectClass: top
725 objectClass: person
726 objectClass: organizationalPerson
727 sn: user_checker
728 cn: user_checker
729
730 dn: cn=BurlingtonFinancial-Checker,ou=Groups,
dc=fatwire,dc=com
731 objectClass: top
732 objectClass: groupOfUniqueNames
733 uniqueMember: cn=user_checker,ou=People,dc=fatwire,dc=com
734 uniqueMember: cn=editor,ou=People,dc=fatwire,dc=com
735 cn: BurlingtonFinancial-Checker
736
737 dn: cn=user_editor,ou=People, dc=fatwire,dc=com
738 userPassword:: dXNlcmg==
739 objectClass: top
740 objectClass: person
741 objectClass: organizationalPerson
742 sn: user_editor
743 cn: user_editor
744
745 dn: cn=BurlingtonFinancial-Editor,ou=Groups,
dc=fatwire,dc=com
746 objectClass: top
747 objectClass: groupOfUniqueNames
748 uniqueMember: cn=user_editor,ou=People,dc=fatwire,dc=com
749 uniqueMember: cn=editor,ou=People,dc=fatwire,dc=com
750 cn: BurlingtonFinancial-Editor
751
752 dn: cn=BurlingtonFinancial-SiteAdmin,ou=Groups,
dc=fatwire,dc=com
753 objectClass: top
754 objectClass: groupOfUniqueNames
755 uniqueMember: cn=fwadmin,ou=People,dc=fatwire,dc=com
756 cn: BurlingtonFinancial-SiteAdmin
757
758 dn: cn=BurlingtonFinancial-WorkflowAdmin,ou=Groups,
dc=fatwire,dc=com
759 objectClass: top
760 objectClass: groupOfUniqueNames
761 uniqueMember: cn=fwadmin,ou=People,dc=fatwire,dc=com
762 cn: BurlingtonFinancial-WorkflowAdmin
763
764 dn: cn=BurlingtonFinancial-GeneralAdmin,ou=Groups,
dc=fatwire,dc=com
765 objectClass: top
766 objectClass: groupOfUniqueNames
767 uniqueMember: cn=fwadmin,ou=People,dc=fatwire,dc=com
```

```
768 cn: BurlingtonFinancial-GeneralAdmin
769
770 dn: cn=editor,ou=People, dc=fatwire,dc=com
771 userPassword:: eGNlbGVkaXRvcg==
772 objectClass: top
773 objectClass: person
774 objectClass: organizationalPerson
775 sn: editor
776 cn: editor
777
778 dn: cn=mirroruser,ou=People, dc=fatwire,dc=com
779 userPassword:: bWlycm9ydXNlcg==
780 objectClass: top
781 objectClass: person
782 objectClass: organizationalPerson
783 sn: mirroruser
784 cn: mirroruser
785
786 dn: cn=GE Lighting-Designer,ou=Groups, dc=fatwire,dc=com
787 objectClass: top
788 objectClass: groupOfUniqueNames
789 uniqueMember: cn=fwadmin,ou=People,dc=fatwire,dc=com
790 uniqueMember:
791 cn=user_designer,ou=People,dc=fatwire,dc=com
792 uniqueMember:
793 cn=user_marketer,ou=People,dc=fatwire,dc=com
794 uniqueMember: cn=editor,ou=People,dc=fatwire,dc=com
795 cn: GE Lighting-Designer
796
797 dn: cn=GE Lighting-SiteAdmin,ou=Groups, dc=fatwire,dc=com
798 objectClass: top
799 objectClass: groupOfUniqueNames
800 uniqueMember: cn=fwadmin,ou=People,dc=fatwire,dc=com
801 cn: GE Lighting-SiteAdmin
802
803 dn: cn=GE Lighting-WorkflowAdmin,ou=Groups,
804 dc=fatwire,dc=com
805 objectClass: top
806 objectClass: groupOfUniqueNames
807 uniqueMember: cn=fwadmin,ou=People,dc=fatwire,dc=com
808 cn: GE Lighting-WorkflowAdmin
809
810 dn: cn=GE Lighting-GeneralAdmin,ou=Groups,
811 dc=fatwire,dc=com
812 objectClass: top
813 objectClass: groupOfUniqueNames
814 uniqueMember: cn=fwadmin,ou=People,dc=fatwire,dc=com
815 cn: GE Lighting-GeneralAdmin
816
817 dn: cn=GE Lighting-Checker,ou=Groups, dc=fatwire,dc=com
818 objectClass: top
819 objectClass: groupOfUniqueNames
```

```
816 uniqueMember: cn=editor,ou=People,dc=fatwire,dc=com
817 uniqueMember: cn=user_checker,ou=People,dc=fatwire,dc=com
818 cn: GE Lighting-Checker
819
820 dn: cn=GE Lighting-Editor,ou=Groups, dc=fatwire,dc=com
821 objectClass: top
822 objectClass: groupOfUniqueNames
823 uniqueMember: cn=editor,ou=People,dc=fatwire,dc=com
824 uniqueMember: cn=user_editor,ou=People,dc=fatwire,dc=com
825 cn: GE Lighting-Editor
826
827 dn: cn=GE Lighting-Author,ou=Groups, dc=fatwire,dc=com
828 objectClass: top
829 objectClass: groupOfUniqueNames
830 uniqueMember: cn=editor,ou=People,dc=fatwire,dc=com
831 uniqueMember: cn=user_author,ou=People,dc=fatwire,dc=com
832 cn: GE Lighting-Author
833
834 dn: cn=GE Lighting-Approver,ou=Groups, dc=fatwire,dc=com
835 objectClass: top
836 objectClass: groupOfUniqueNames
837 uniqueMember: cn=editor,ou=People,dc=fatwire,dc=com
838 uniqueMember:
839   cn=user_approver,ou=People,dc=fatwire,dc=com
840 cn: GE Lighting-Approver
841
841 dn: cn=HelloAssetWorld-Pricer,ou=Groups,
842   dc=fatwire,dc=com
843 objectClass: top
844 objectClass: groupOfUniqueNames
845 cn: HelloAssetWorld-Pricer
846
846 dn: cn=BurlingtonFinancial-Pricer,ou=Groups,
847   dc=fatwire,dc=com
848 objectClass: top
849 objectClass: groupOfUniqueNames
850 cn: BurlingtonFinancial-Pricer
851
851 dn: cn=GE Lighting-Pricer,ou=Groups, dc=fatwire,dc=com
852 objectClass: top
853 objectClass: groupOfUniqueNames
854 uniqueMember: cn=user_pricer,ou=People,dc=fatwire,dc=com
855 uniqueMember: cn=editor,ou=People,dc=fatwire,dc=com
856 cn: GE Lighting-Pricer
857
858 dn: cn=user_marketer,ou=People, dc=fatwire,dc=com
859 userPassword:: dXNlY2g==
860 objectClass: top
861 objectClass: person
862 objectClass: organizationalPerson
863 sn: user_marketer
864 cn: user_marketer
```

```
865
866 dn: cn=user_pricer,ou=People, dc=fatwire,dc=com
867 userPassword:: dXNlcmg==
868 objectClass: top
869 objectClass: person
870 objectClass: organizationalPerson
871 sn: user_pricer
872 cn: user_pricer
873
874 dn: cn=HelloAssetWorld-Marketer,ou=Groups,
      dc=fatwire,dc=com
875 objectClass: top
876 objectClass: groupOfUniqueNames
877 cn: HelloAssetWorld-Marketer
878
879 dn: cn=BurlingtonFinancial-Marketer,ou=Groups,
      dc=fatwire,dc=com
880 objectClass: top
881 objectClass: groupOfUniqueNames
882 uniqueMember:
      cn=user_marketer,ou=People,dc=fatwire,dc=com
883 cn: BurlingtonFinancial-Marketer
884
885 dn: cn=GE Lighting-Marketer,ou=Groups, dc=fatwire,dc=com
886 objectClass: top
887 objectClass: groupOfUniqueNames
888 uniqueMember: cn=editor,ou=People,dc=fatwire,dc=com
889 uniqueMember:
      cn=user_marketer,ou=People,dc=fatwire,dc=com
890 cn: GE Lighting-Marketer
891
892 dn: cn=HelloAssetWorld-Analyst,ou=Groups,
      dc=fatwire,dc=com
893 objectClass: top
894 objectClass: groupOfUniqueNames
895 cn: HelloAssetWorld-Analyst
896
897 dn: cn=BurlingtonFinancial-Analyst,ou=Groups,
      dc=fatwire,dc=com
898 objectClass: top
899 objectClass: groupOfUniqueNames
900 uniqueMember: cn=user_analyst,ou=People,dc=fatwire,dc=com
901 cn: BurlingtonFinancial-Analyst
902
903 dn: cn=GE Lighting-Analyst,ou=Groups, dc=fatwire,dc=com
904 objectClass: top
905 objectClass: groupOfUniqueNames
906 cn: GE Lighting-Analyst
907
908 dn: cn=HelloAssetWorld-Expert,ou=Groups,
      dc=fatwire,dc=com
909 objectClass: top
```

```
910 objectClass: groupOfUniqueNames
911 cn: HelloAssetWorld-Expert
912
913 dn: cn=BurlingtonFinancial-Expert,ou=Groups,
    dc=fatwire,dc=com
914 objectClass: top
915 objectClass: groupOfUniqueNames
916 uniqueMember: cn=user_expert,ou=People,dc=fatwire,dc=com
917 cn: BurlingtonFinancial-Expert
918
919 dn: cn=GE Lighting-Expert,ou=Groups, dc=fatwire,dc=com
920 objectClass: top
921 objectClass: groupOfUniqueNames
922 cn: GE Lighting-Expert
923
924 dn: cn=user_analyst,ou=People, dc=fatwire,dc=com
925 userPassword:: dXNlcmg==
926 objectClass: top
927 objectClass: person
928 objectClass: organizationalPerson
929 sn: user_analyst
930 cn: user_analyst
931
932 dn: cn=user_expert,ou=People, dc=fatwire,dc=com
933 userPassword:: dXNlcmg==
934 objectClass: top
935 objectClass: person
936 objectClass: organizationalPerson
937 sn: user_expert
938 cn: user_expert
939
940 dn: cn=HelloAssetWorld-SparkAdmin,ou=Groups,
    dc=fatwire,dc=com
941 objectClass: top
942 objectClass: groupOfUniqueNames
943 cn: HelloAssetWorld-SparkAdmin
944
945 dn: cn=BurlingtonFinancial-SparkAdmin,ou=Groups,
    dc=fatwire,dc=com
946 objectClass: top
947 objectClass: groupOfUniqueNames
948 cn: BurlingtonFinancial-SparkAdmin
949
950 dn: cn=GE Lighting-SparkAdmin,ou=Groups,
    dc=fatwire,dc=com
951 objectClass: top
952 objectClass: groupOfUniqueNames
953 cn: GE Lighting-SparkAdmin
954
955 dn: cn=Spark-SparkAdmin,ou=Groups, dc=fatwire,dc=com
956 objectClass: top
957 objectClass: groupOfUniqueNames
```

```
958 uniqueMember: cn=fwadmin,ou=People,dc=fatwire,dc=com
959 cn: Spark-SparkAdmin
960
961 dn: cn=HelloAssetWorld-SparkContentUser,ou=Groups,
    dc=fatwire,dc=com
962 objectClass: top
963 objectClass: groupOfUniqueNames
964 cn: HelloAssetWorld-SparkContentUser
965
966 dn: cn=BurlingtonFinancial-SparkContentUser,ou=Groups,
    dc=fatwire,dc=com
967 objectClass: top
968 objectClass: groupOfUniqueNames
969 cn: BurlingtonFinancial-SparkContentUser
970
971 dn: cn=GE Lighting-SparkContentUser,ou=Groups,
    dc=fatwire,dc=com
972 objectClass: top
973 objectClass: groupOfUniqueNames
974 cn: GE Lighting-SparkContentUser
975
976 dn: cn=Spark-SparkContentUser,ou=Groups,
    dc=fatwire,dc=com
977 objectClass: top
978 objectClass: groupOfUniqueNames
979 uniqueMember: cn=fwadmin,ou=People,dc=fatwire,dc=com
980 cn: Spark-SparkContentUser
981
982 dn: cn=HelloAssetWorld-SparkDocumentUser,ou=Groups,
    dc=fatwire,dc=com
983 objectClass: top
984 objectClass: groupOfUniqueNames
985 cn: HelloAssetWorld-SparkDocumentUser
986
987 dn: cn=BurlingtonFinancial-SparkDocumentUser,ou=Groups,
    dc=fatwire,dc=com
988 objectClass: top
989 objectClass: groupOfUniqueNames
990 cn: BurlingtonFinancial-SparkDocumentUser
991
992 dn: cn=GE Lighting-SparkDocumentUser,ou=Groups,
    dc=fatwire,dc=com
993 objectClass: top
994 objectClass: groupOfUniqueNames
995 cn: GE Lighting-SparkDocumentUser
996
997 dn: cn=Spark-SparkDocumentUser,ou=Groups,
    dc=fatwire,dc=com
998 objectClass: top
999 objectClass: groupOfUniqueNames
1000 uniqueMember: cn=fwadmin,ou=People,dc=fatwire,dc=com
1001 cn: Spark-SparkDocumentUser
```

```
1002
1003 dn: cn=Spark-WorkflowAdmin,ou=Groups, dc=fatwire,dc=com
1004 objectClass: top
1005 objectClass: groupOfUniqueNames
1006 uniqueMember: cn=fwadmin,ou=People,dc=fatwire,dc=com
1007 cn: Spark-WorkflowAdmin
1008
1009 dn: cn=Spark-SiteAdmin,ou=Groups, dc=fatwire,dc=com
1010 objectClass: top
1011 objectClass: groupOfUniqueNames
1012 uniqueMember: cn=fwadmin,ou=People,dc=fatwire,dc=com
1013 cn: Spark-SiteAdmin
1014
1015 dn: cn=Spark-GeneralAdmin,ou=Groups, dc=fatwire,dc=com
1016 objectClass: top
1017 objectClass: groupOfUniqueNames
1018 uniqueMember: cn=fwadmin,ou=People,dc=fatwire,dc=com
1019 cn: Spark-GeneralAdmin
1020
1021 dn: cn=ContentEditor,ou=Groups, dc=fatwire,dc=com
1022 objectClass: top
1023 objectClass: groupOfUniqueNames
1024 uniqueMember: cn=firstsite,ou=People,dc=fatwire,dc=com
1025 uniqueMember: cn=Connie,ou=People,dc=fatwire,dc=com
1026 uniqueMember: cn=Conrad,ou=People,dc=fatwire,dc=com
1027 uniqueMember: cn=Desiree,ou=People,dc=fatwire,dc=com
1028 uniqueMember: cn=Napoleon,ou=People,dc=fatwire,dc=com
1029 uniqueMember: cn=Arthur,ou=People,dc=fatwire,dc=com
1030 uniqueMember: cn=Martha,ou=People,dc=fatwire,dc=com
1031 uniqueMember: cn=Rose,ou=People,dc=fatwire,dc=com
1032 uniqueMember: cn=Mark,ou=People,dc=fatwire,dc=com
1033 uniqueMember: cn=Mary,ou=People,dc=fatwire,dc=com
1034 cn: ContentEditor
1035
1036 dn: cn=firstsite,ou=People, dc=fatwire,dc=com
1037 userPassword:: Zmlyc3RzaXRl
1038 objectClass: top
1039 objectClass: person
1040 objectClass: organizationalPerson
1041 sn: firstsite
1042 cn: firstsite
1043
1044 dn: cn=FirstSiteII-Approver,ou=Groups, dc=fatwire,dc=com
1045 objectClass: top
1046 objectClass: groupOfUniqueNames
1047 uniqueMember: cn=firstsite,ou=People,dc=fatwire,dc=com
1048 uniqueMember: cn=Napoleon,ou=People,dc=fatwire,dc=com
1049 cn: FirstSiteII-Approver
1050
1051 dn: cn=FirstSiteII-Designer,ou=Groups, dc=fatwire,dc=com
1052 objectClass: top
1053 objectClass: groupOfUniqueNames
```



```
1054 uniqueMember: cn=firstsite,ou=People,dc=fatwire,dc=com
1055 uniqueMember: cn=Desiree,ou=People,dc=fatwire,dc=com
1056 cn: FirstSiteII-Designer
1057
1058 dn: cn=FirstSiteII-WorkflowAdmin,ou=Groups,
dc=fatwire,dc=com
1059 objectClass: top
1060 objectClass: groupOfUniqueNames
1061 uniqueMember: cn=firstsite,ou=People,dc=fatwire,dc=com
1062 uniqueMember: cn=Napoleon,ou=People,dc=fatwire,dc=com
1063 cn: FirstSiteII-WorkflowAdmin
1064
1065 dn: cn=FirstSiteII-SiteAdmin,ou=Groups, dc=fatwire,dc=com
1066 objectClass: top
1067 objectClass: groupOfUniqueNames
1068 uniqueMember: cn=firstsite,ou=People,dc=fatwire,dc=com
1069 uniqueMember: cn=Napoleon,ou=People,dc=fatwire,dc=com
1070 cn: FirstSiteII-SiteAdmin
1071
1072 dn: cn=FirstSiteII-GeneralAdmin,ou=Groups,
dc=fatwire,dc=com
1073 objectClass: top
1074 objectClass: groupOfUniqueNames
1075 uniqueMember: cn=firstsite,ou=People,dc=fatwire,dc=com
1076 uniqueMember: cn=fwadmin,ou=People,dc=fatwire,dc=com
1077 cn: FirstSiteII-GeneralAdmin
1078
1079 dn: cn=HelloAssetWorld-MarketingAuthor,ou=Groups,
dc=fatwire,dc=com
1080 objectClass: top
1081 objectClass: groupOfUniqueNames
1082 cn: HelloAssetWorld-MarketingAuthor
1083
1084 dn: cn=BurlingtonFinancial-MarketingAuthor,ou=Groups,
dc=fatwire,dc=com
1085 objectClass: top
1086 objectClass: groupOfUniqueNames
1087 cn: BurlingtonFinancial-MarketingAuthor
1088
1089 dn: cn=GE Lighting-MarketingAuthor,ou=Groups,
dc=fatwire,dc=com
1090 objectClass: top
1091 objectClass: groupOfUniqueNames
1092 cn: GE Lighting-MarketingAuthor
1093
1094 dn: cn=Spark-MarketingAuthor,ou=Groups, dc=fatwire,dc=com
1095 objectClass: top
1096 objectClass: groupOfUniqueNames
1097 cn: Spark-MarketingAuthor
1098
1099 dn: cn=FirstSiteII-MarketingAuthor,ou=Groups,
dc=fatwire,dc=com
```

```
1100 objectClass: top
1101 objectClass: groupOfUniqueNames
1102 uniqueMember: cn=firstsite,ou=People,dc=fatwire,dc=com
1103 uniqueMember: cn=Mark,ou=People,dc=fatwire,dc=com
1104 cn: FirstSiteII-MarketingAuthor
1105
1106 dn: cn=HelloAssetWorld-MarketingEditor,ou=Groups,
dc=fatwire,dc=com
1107 objectClass: top
1108 objectClass: groupOfUniqueNames
1109 cn: HelloAssetWorld-MarketingEditor
1110
1111 dn: cn=BurlingtonFinancial-MarketingEditor,ou=Groups,
dc=fatwire,dc=com
1112 objectClass: top
1113 objectClass: groupOfUniqueNames
1114 cn: BurlingtonFinancial-MarketingEditor
1115
1116 dn: cn=GE Lighting-MarketingEditor,ou=Groups,
dc=fatwire,dc=com
1117 objectClass: top
1118 objectClass: groupOfUniqueNames
1119 cn: GE Lighting-MarketingEditor
1120
1121 dn: cn=Spark-MarketingEditor,ou=Groups, dc=fatwire,dc=com
1122 objectClass: top
1123 objectClass: groupOfUniqueNames
1124 cn: Spark-MarketingEditor
1125
1126 dn: cn=FirstSiteII-MarketingEditor,ou=Groups,
dc=fatwire,dc=com
1127 objectClass: top
1128 objectClass: groupOfUniqueNames
1129 uniqueMember: cn=firstsite,ou=People,dc=fatwire,dc=com
1130 uniqueMember: cn=Mary,ou=People,dc=fatwire,dc=com
1131 cn: FirstSiteII-MarketingEditor
1132
1133 dn: cn=HelloAssetWorld-ArtworkAuthor,ou=Groups,
dc=fatwire,dc=com
1134 objectClass: top
1135 objectClass: groupOfUniqueNames
1136 cn: HelloAssetWorld-ArtworkAuthor
1137
1138 dn: cn=BurlingtonFinancial-ArtworkAuthor,ou=Groups,
dc=fatwire,dc=com
1139 objectClass: top
1140 objectClass: groupOfUniqueNames
1141 cn: BurlingtonFinancial-ArtworkAuthor
1142
1143 dn: cn=GE Lighting-ArtworkAuthor,ou=Groups,
dc=fatwire,dc=com
1144 objectClass: top
```

```
1145 objectClass: groupOfUniqueNames
1146 cn: GE Lighting-ArtworkAuthor
1147
1148 dn: cn=Spark-ArtworkAuthor,ou=Groups, dc=fatwire,dc=com
1149 objectClass: top
1150 objectClass: groupOfUniqueNames
1151 cn: Spark-ArtworkAuthor
1152
1153 dn: cn=FirstSiteII-ArtworkAuthor,ou=Groups,
dc=fatwire,dc=com
1154 objectClass: top
1155 objectClass: groupOfUniqueNames
1156 uniqueMember: cn=firstsite,ou=People,dc=fatwire,dc=com
1157 uniqueMember: cn=Desiree,ou=People,dc=fatwire,dc=com
1158 uniqueMember: cn=Arthur,ou=People,dc=fatwire,dc=com
1159 cn: FirstSiteII-ArtworkAuthor
1160
1161 dn: cn=HelloAssetWorld-ArtworkEditor,ou=Groups,
dc=fatwire,dc=com
1162 objectClass: top
1163 objectClass: groupOfUniqueNames
1164 cn: HelloAssetWorld-ArtworkEditor
1165
1166 dn: cn=BurlingtonFinancial-ArtworkEditor,ou=Groups,
dc=fatwire,dc=com
1167 objectClass: top
1168 objectClass: groupOfUniqueNames
1169 cn: BurlingtonFinancial-ArtworkEditor
1170
1171 dn: cn=GE Lighting-ArtworkEditor,ou=Groups,
dc=fatwire,dc=com
1172 objectClass: top
1173 objectClass: groupOfUniqueNames
1174 cn: GE Lighting-ArtworkEditor
1175
1176 dn: cn=Spark-ArtworkEditor,ou=Groups, dc=fatwire,dc=com
1177 objectClass: top
1178 objectClass: groupOfUniqueNames
1179 cn: Spark-ArtworkEditor
1180
1181 dn: cn=FirstSiteII-ArtworkEditor,ou=Groups,
dc=fatwire,dc=com
1182 objectClass: top
1183 objectClass: groupOfUniqueNames
1184 uniqueMember: cn=firstsite,ou=People,dc=fatwire,dc=com
1185 uniqueMember: cn=Martha,ou=People,dc=fatwire,dc=com
1186 cn: FirstSiteII-ArtworkEditor
1187
1188 dn: cn=HelloAssetWorld-ContentAuthor,ou=Groups,
dc=fatwire,dc=com
1189 objectClass: top
1190 objectClass: groupOfUniqueNames
```

```
1191 cn: HelloAssetWorld-ContentAuthor
1192
1193 dn: cn=BurlingtonFinancial-ContentAuthor,ou=Groups,
dc=fatwire,dc=com
1194 objectClass: top
1195 objectClass: groupOfUniqueNames
1196 cn: BurlingtonFinancial-ContentAuthor
1197
1198 dn: cn=GE Lighting-ContentAuthor,ou=Groups,
dc=fatwire,dc=com
1199 objectClass: top
1200 objectClass: groupOfUniqueNames
1201 cn: GE Lighting-ContentAuthor
1202
1203 dn: cn=Spark-ContentAuthor,ou=Groups, dc=fatwire,dc=com
1204 objectClass: top
1205 objectClass: groupOfUniqueNames
1206 cn: Spark-ContentAuthor
1207
1208 dn: cn=FirstSiteII-ContentAuthor,ou=Groups,
dc=fatwire,dc=com
1209 objectClass: top
1210 objectClass: groupOfUniqueNames
1211 uniqueMember: cn=firstsite,ou=People,dc=fatwire,dc=com
1212 uniqueMember: cn=Conrad,ou=People,dc=fatwire,dc=com
1213 cn: FirstSiteII-ContentAuthor
1214
1215 dn: cn=HelloAssetWorld-ContentEditor,ou=Groups,
dc=fatwire,dc=com
1216 objectClass: top
1217 objectClass: groupOfUniqueNames
1218 cn: HelloAssetWorld-ContentEditor
1219
1220 dn: cn=BurlingtonFinancial-ContentEditor,ou=Groups,
dc=fatwire,dc=com
1221 objectClass: top
1222 objectClass: groupOfUniqueNames
1223 cn: BurlingtonFinancial-ContentEditor
1224
1225 dn: cn=GE Lighting-ContentEditor,ou=Groups,
dc=fatwire,dc=com
1226 objectClass: top
1227 objectClass: groupOfUniqueNames
1228 cn: GE Lighting-ContentEditor
1229
1230 dn: cn=Spark-ContentEditor,ou=Groups, dc=fatwire,dc=com
1231 objectClass: top
1232 objectClass: groupOfUniqueNames
1233 cn: Spark-ContentEditor
1234
1235 dn: cn=FirstSiteII-ContentEditor,ou=Groups,
dc=fatwire,dc=com
```

```
1236 objectClass: top
1237 objectClass: groupOfUniqueNames
1238 uniqueMember: cn=firstsite,ou=People,dc=fatwire,dc=com
1239 uniqueMember: cn=Connie,ou=People,dc=fatwire,dc=com
1240 cn: FirstSiteII-ContentEditor
1241
1242 dn: cn=HelloAssetWorld-ProductAuthor,ou=Groups,
dc=fatwire,dc=com
1243 objectClass: top
1244 objectClass: groupOfUniqueNames
1245 cn: HelloAssetWorld-ProductAuthor
1246
1247 dn: cn=BurlingtonFinancial-ProductAuthor,ou=Groups,
dc=fatwire,dc=com
1248 objectClass: top
1249 objectClass: groupOfUniqueNames
1250 cn: BurlingtonFinancial-ProductAuthor
1251
1252 dn: cn=GE Lighting-ProductAuthor,ou=Groups,
dc=fatwire,dc=com
1253 objectClass: top
1254 objectClass: groupOfUniqueNames
1255 cn: GE Lighting-ProductAuthor
1256
1257 dn: cn=Spark-ProductAuthor,ou=Groups, dc=fatwire,dc=com
1258 objectClass: top
1259 objectClass: groupOfUniqueNames
1260 cn: Spark-ProductAuthor
1261
1262 dn: cn=FirstSiteII-ProductAuthor,ou=Groups,
dc=fatwire,dc=com
1263 objectClass: top
1264 objectClass: groupOfUniqueNames
1265 uniqueMember: cn=firstsite,ou=People,dc=fatwire,dc=com
1266 uniqueMember: cn=Mark,ou=People,dc=fatwire,dc=com
1267 cn: FirstSiteII-ProductAuthor
1268
1269 dn: cn=HelloAssetWorld-ProductEditor,ou=Groups,
dc=fatwire,dc=com
1270 objectClass: top
1271 objectClass: groupOfUniqueNames
1272 cn: HelloAssetWorld-ProductEditor
1273
1274 dn: cn=BurlingtonFinancial-ProductEditor,ou=Groups,
dc=fatwire,dc=com
1275 objectClass: top
1276 objectClass: groupOfUniqueNames
1277 cn: BurlingtonFinancial-ProductEditor
1278
1279 dn: cn=GE Lighting-ProductEditor,ou=Groups,
dc=fatwire,dc=com
1280 objectClass: top
```

```
1281 objectClass: groupOfUniqueNames
1282 cn: GE Lighting-ProductEditor
1283
1284 dn: cn=Spark-ProductEditor,ou=Groups, dc=fatwire,dc=com
1285 objectClass: top
1286 objectClass: groupOfUniqueNames
1287 cn: Spark-ProductEditor
1288
1289 dn: cn=FirstSiteII-ProductEditor,ou=Groups,
    dc=fatwire,dc=com
1290 objectClass: top
1291 objectClass: groupOfUniqueNames
1292 uniqueMember: cn=firstsite,ou=People,dc=fatwire,dc=com
1293 uniqueMember: cn=Rose,ou=People,dc=fatwire,dc=com
1294 uniqueMember: cn=Mary,ou=People,dc=fatwire,dc=com
1295 cn: FirstSiteII-ProductEditor
1296
1297 dn: cn=HelloAssetWorld-DocumentAuthor,ou=Groups,
    dc=fatwire,dc=com
1298 objectClass: top
1299 objectClass: groupOfUniqueNames
1300 cn: HelloAssetWorld-DocumentAuthor
1301
1302 dn: cn=BurlingtonFinancial-DocumentAuthor,ou=Groups,
    dc=fatwire,dc=com
1303 objectClass: top
1304 objectClass: groupOfUniqueNames
1305 cn: BurlingtonFinancial-DocumentAuthor
1306
1307 dn: cn=GE Lighting-DocumentAuthor,ou=Groups,
    dc=fatwire,dc=com
1308 objectClass: top
1309 objectClass: groupOfUniqueNames
1310 cn: GE Lighting-DocumentAuthor
1311
1312 dn: cn=Spark-DocumentAuthor,ou=Groups, dc=fatwire,dc=com
1313 objectClass: top
1314 objectClass: groupOfUniqueNames
1315 cn: Spark-DocumentAuthor
1316
1317 dn: cn=FirstSiteII-DocumentAuthor,ou=Groups,
    dc=fatwire,dc=com
1318 objectClass: top
1319 objectClass: groupOfUniqueNames
1320 uniqueMember: cn=firstsite,ou=People,dc=fatwire,dc=com
1321 uniqueMember: cn=Conrad,ou=People,dc=fatwire,dc=com
1322 cn: FirstSiteII-DocumentAuthor
1323
1324 dn: cn=HelloAssetWorld-DocumentEditor,ou=Groups,
    dc=fatwire,dc=com
1325 objectClass: top
1326 objectClass: groupOfUniqueNames
```

```
1327 cn: HelloAssetWorld-DocumentEditor
1328
1329 dn: cn=BurlingtonFinancial-DocumentEditor,ou=Groups,
dc=fatwire,dc=com
1330 objectClass: top
1331 objectClass: groupOfUniqueNames
1332 cn: BurlingtonFinancial-DocumentEditor
1333
1334 dn: cn=GE Lighting-DocumentEditor,ou=Groups,
dc=fatwire,dc=com
1335 objectClass: top
1336 objectClass: groupOfUniqueNames
1337 cn: GE Lighting-DocumentEditor
1338
1339 dn: cn=Spark-DocumentEditor,ou=Groups, dc=fatwire,dc=com
1340 objectClass: top
1341 objectClass: groupOfUniqueNames
1342 cn: Spark-DocumentEditor
1343
1344 dn: cn=FirstSiteII-DocumentEditor,ou=Groups,
dc=fatwire,dc=com
1345 objectClass: top
1346 objectClass: groupOfUniqueNames
1347 uniqueMember: cn=firstsite,ou=People,dc=fatwire,dc=com
1348 uniqueMember: cn=Connie,ou=People,dc=fatwire,dc=com
1349 cn: FirstSiteII-DocumentEditor
1350
1351 dn: cn=Connie,ou=People, dc=fatwire,dc=com
1352 userPassword:: Zmlyc3RzaXRl
1353 objectClass: top
1354 objectClass: person
1355 objectClass: organizationalPerson
1356 sn: Connie
1357 cn: Connie
1358
1359 dn: cn=Conrad,ou=People, dc=fatwire,dc=com
1360 userPassword:: Zmlyc3RzaXRl
1361 objectClass: top
1362 objectClass: person
1363 objectClass: organizationalPerson
1364 sn: Conrad
1365 cn: Conrad
1366
1367 dn: cn=Desiree,ou=People, dc=fatwire,dc=com
1368 userPassword:: Zmlyc3RzaXRl
1369 objectClass: top
1370 objectClass: person
1371 objectClass: organizationalPerson
1372 sn: Desiree
1373 cn: Desiree
1374
1375 dn: cn=Napoleon,ou=People, dc=fatwire,dc=com
```

```
1376 userPassword:: Zmlyc3RzaXRl
1377 objectClass: top
1378 objectClass: person
1379 objectClass: organizationalPerson
1380 sn: Napoleon
1381 cn: Napoleon
1382
1383 dn: cn=Arthur,ou=People, dc=fatwire,dc=com
1384 userPassword:: Zmlyc3RzaXRl
1385 objectClass: top
1386 objectClass: person
1387 objectClass: organizationalPerson
1388 sn: Arthur
1389 cn: Arthur
1390
1391 dn: cn=Martha,ou=People, dc=fatwire,dc=com
1392 userPassword:: Zmlyc3RzaXRl
1393 objectClass: top
1394 objectClass: person
1395 objectClass: organizationalPerson
1396 sn: Martha
1397 cn: Martha
1398
1399 dn: cn=Rose,ou=People, dc=fatwire,dc=com
1400 userPassword:: Zmlyc3RzaXRl
1401 objectClass: top
1402 objectClass: person
1403 objectClass: organizationalPerson
1404 sn: Rose
1405 cn: Rose
1406
1407 dn: cn=Mark,ou=People, dc=fatwire,dc=com
1408 userPassword:: Zmlyc3RzaXRl
1409 objectClass: top
1410 objectClass: person
1411 objectClass: organizationalPerson
1412 sn: Mark
1413 cn: Mark
1414
1415 dn: cn=Mary,ou=People, dc=fatwire,dc=com
1416 userPassword:: Zmlyc3RzaXRl
1417 objectClass: top
1418 objectClass: person
1419 objectClass: organizationalPerson
1420 sn: Mary
1421 cn: Mary
```