

# Oracle® Fusion Middleware

Quick Installation Guide for Oracle WebCenter Portal

11g Release 1 (11.1.1.8.0)

E10146-08

July 2013

---

The following topics are covered in this guide:

- [Section 1, "Preface"](#)
- [Section 2, "Installation Overview"](#)
- [Section 3, "Verifying Your System and Network Environment"](#)
- [Section 4, "Installing and Configuring a Database"](#)
- [Section 5, "Creating Schemas for Oracle WebCenter Portal"](#)
- [Section 6, "Installing Oracle WebLogic Server and Creating the Middleware Home"](#)
- [Section 7, "Installing Oracle WebCenter Portal"](#)
- [Section 8, "Configuring Oracle WebCenter Portal"](#)
- [Section 9, "Post-Configuration Tasks"](#)
- [Section 10, "Deinstalling Oracle WebCenter Portal"](#)
- [Section 11, "Documentation Accessibility"](#)

## 1 Preface

This section contains important information about how to use this guide.

### 1.1 Contents of this Guide

This guide contains instructions for installing and configuring Oracle WebCenter Portal on a single host, using mostly default values. This document is not intended as a replacement for the *Oracle Fusion Middleware Installation Guide for Oracle WebCenter Portal*, which contains instructions for installing Oracle WebCenter Portal in a variety of environments.

### 1.2 Intended Audience

This guide is intended for users who are installing Oracle WebCenter Portal for the first time in development mode for a test or demo system.

## 2 Installation Overview

[Figure 1](#) shows the order of the procedures you will need to follow:

**Figure 1 Oracle WebCenter PortalQuick Installation Flowchart**

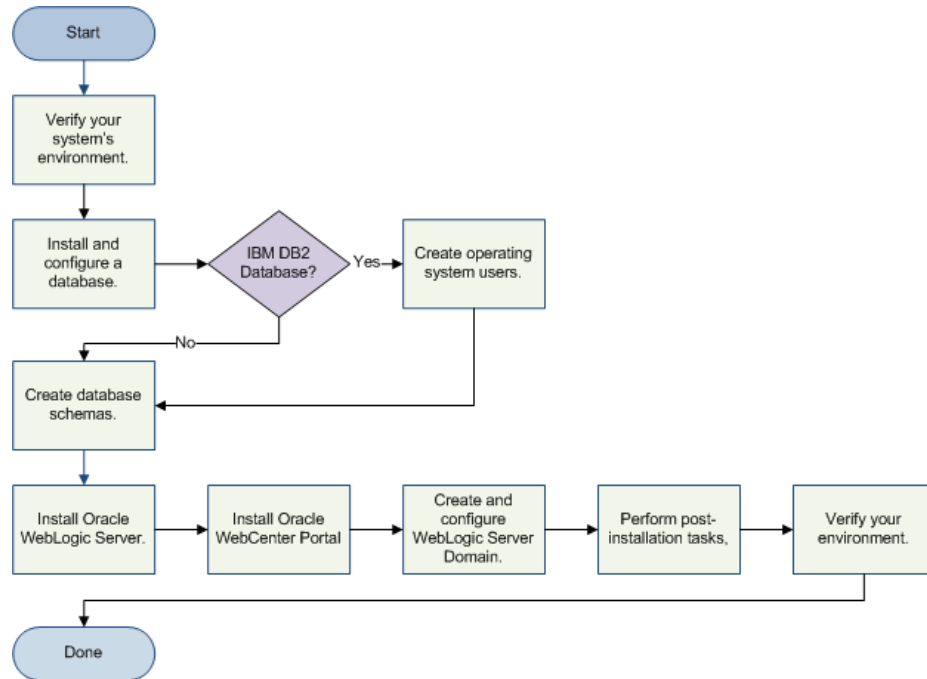


Table 1 provides additional information and links to specific documentation for each task in the flowchart.

**Table 1 Oracle WebCenter PortalQuick Installation Tasks and Descriptions**

Tasks	Details and Documentation
Verify your system and network environment.	To verify that your system and network meet the minimum necessary requirements, see <a href="#">Section 3, "Verifying Your System and Network Environment"</a> .
Install and configure a database.	See <a href="#">Section 4, "Installing and Configuring a Database"</a> .
IBM DB2 database?	If you are using an IBM DB2 database, you must create operating system users for your schemas. See <a href="#">Section 4.1, "Creating Operating System Users for IBM DB2 Databases"</a> .
Create database schemas.	Before Oracle WebCenter Portal products can be configured, the necessary database schemas must be created. See <a href="#">Section 5, "Creating Schemas for Oracle WebCenter Portal"</a> .
Install Oracle WebLogic Server.	Oracle WebCenter Portal requires an application server; the instructions provided in this document are for installing Oracle WebLogic Server. See <a href="#">Section 6, "Installing Oracle WebLogic Server and Creating the Middleware Home"</a> .
Install Oracle WebCenter Portal.	Install Oracle WebCenter Portal. See <a href="#">Section 7, "Installing Oracle WebCenter Portal"</a> .
Create and configure Oracle WebLogic Server Domain.	Run the Configuration Wizard to create a WebLogic Server Domain and configure your Oracle WebCenter Portal components. See <a href="#">Section 8, "Configuring Oracle WebCenter Portal"</a> .

**Table 1 (Cont.) Oracle WebCenter PortalQuick Installation Tasks and Descriptions**

Tasks	Details and Documentation
Perform post-installation tasks.	<p>Perform the following tasks after you have successfully installed and configured your software:</p> <ul style="list-style-type: none"> <li>■ Start Node Manager to enable management of your servers from the Administration Console. See <a href="#">Section 9.1, "Starting Node Manager"</a>.</li> <li>■ Start the Administration Server and Managed Servers in your domain. See <a href="#">Section 9.2, "Starting the Administration Server"</a>.</li> <li>■ If you want to manage your servers from the Administration Console, see <a href="#">Section 9.3, "Starting Managed Servers from Oracle Enterprise Manager"</a>.</li> </ul>
Verify your environment.	See <a href="#">Section 8, "Configuring Oracle WebCenter Portal"</a> .

[Table 2](#) lists the servers that will get created during this domain configuration.

**Table 2 Servers Created During Domain Configuration**

Server	Components or Applications Hosted	Description
Administration Server	Administration Console Oracle Enterprise Manager (Fusion Middleware Control) Console	This is the WebLogic Administration Server, which provides a central point for managing a WebLogic Server domain.
WC_Spaces	WebCenter Portal	This Managed Server is created when you configure WebCenter Portal during domain creation.
WC_Portlet	WebCenter Portal Portlets Pagelet Producer Oracle WebCenter Services Producer	This Managed Server is created when you select any of the components in this table row during domain creation.
WC_Collaboration	Oracle WebCenter Portal's Discussion Server	This Managed Server is created when you configure Oracle WebCenter Portal's Discussion Server during domain creation.
WC_Uilities	Oracle WebCenter Analytics Collector Oracle WebCenter Activity Graph Engines Oracle WebCenter Personalization	This Managed Server is created when you select any of the components in this table row during domain creation.

In addition, the following Managed Servers may be created after your initial domain configuration; you must extend your Oracle WebCenter Portal domain to do so:

- WC\_CustomPortal

This is a custom portal managed server that hosts Framework applications. For deploying your Framework applications, you must create this custom managed server by extending your domain with the `oracle.wc_custom_portal_template_11.1.1.jar` template.

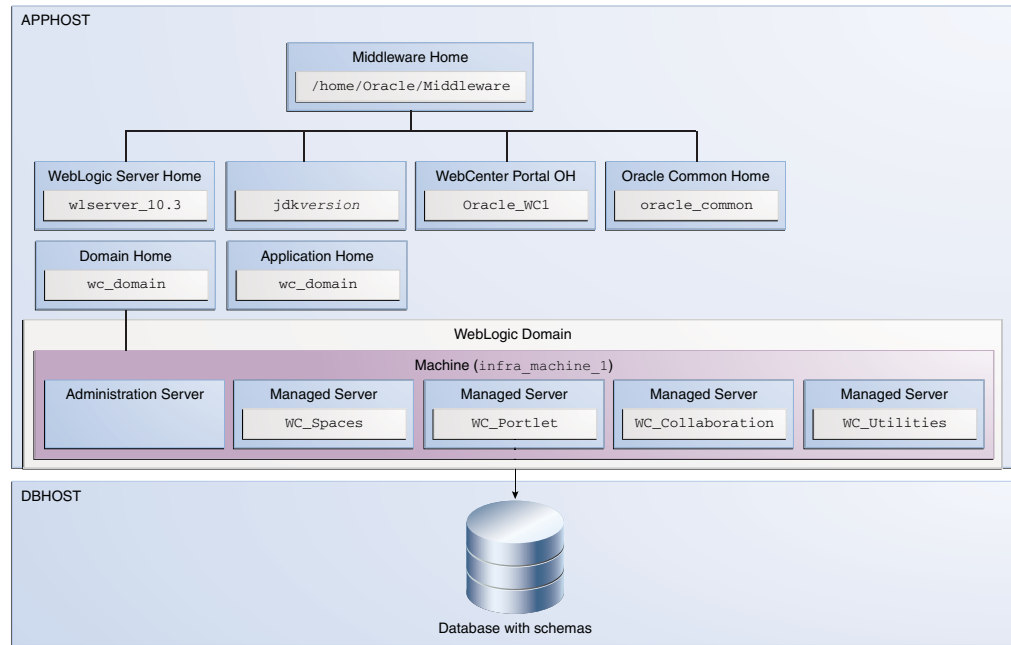
- WC\_CustomServicesProducer

This is a custom services producer managed server that hosts Portlet Producer applications. For deploying your Portlet Producer applications, you must create this custom managed server by extending your domain with the `oracle.wc_custom_services_producer_template_11.1.1.jar` template.

Domain extension is not covered in the scope of this document; refer to the *Oracle Fusion Middleware Creating Domains Using the Configuration Wizard* for instructions.

Figure 2 illustrates the topology that will be created on your system at the conclusion of this procedure:

**Figure 2 Completed Installation and Configuration Topology**



### 3 Verifying Your System and Network Environment

To verify that your system environment meets the minimum requirements for installation, refer to the following documents, available on Oracle Technology Network (OTN):

- Oracle Fusion Middleware Supported System Configurations

This page contains various certification documents for current and previous product releases. The *System Requirements and Supported Platforms for Oracle Fusion Middleware 11gR1* document is the certification document for this release. Oracle has tested and verified the performance of your product on all certified systems and environments; whenever new certifications occur, they are added to the proper certification document right away. New certifications can occur at any time, and for this reason the certification documents are kept outside of the documentation libraries and are available on Oracle Technology Network.

- Oracle Fusion Middleware System Requirements and Specifications

This document should be used to verify that the requirements of the certification are met. For example, if the certification document indicates that your product is

certified for installation on Oracle Linux 5, this document should be used to verify that your Oracle Linux 5 system has met the required minimum specifications, like disk space, available memory, specific platform packages and patches, and other operating system-specific items. This document is updated as needed and therefore also resides outside of the documentation libraries and is available on Oracle Technology Network.

- *Oracle Fusion Middleware Interoperability and Compatibility Guide*

This document covers the compatibility and interoperability issues that may arise when installing or upgrading Oracle Fusion Middleware 11g products.

## 4 Installing and Configuring a Database

Installation of Oracle WebCenter Portal requires the availability of a database. This database must be up and running, and does not have to be on the same system where you are installing the components. The database must also be compatible with Repository Creation Utility (RCU), which is used to create the schemas necessary for WebCenter Portal components.

For the latest information about certified databases, visit the *System Requirements and Supported Platforms for Oracle Fusion Middleware 11gR1* document on the Oracle Fusion Middleware Supported System Configurations page.

For Oracle database installation instructions, find the appropriate installation guide for your database version and operating system at the following URL:

<http://www.oracle.com/technetwork/documentation/index.html#database>

If you are installing a non-Oracle database, refer to your database documentation for installation instructions.

After you have installed a database, make sure that it is configured correctly by referring to the "RCU Requirements for Oracle Databases" section in the Oracle Fusion Middleware System Requirements and Specifications document.

Before running Repository Creation Utility to create your schema, verify that your database is up and running. The database does not have to be on the same system where you are installing the products.

### 4.1 Creating Operating System Users for IBM DB2 Databases

If you are not using an IBM DB2 database, you can skip this section.

IBM DB2 databases authenticates its database users using equivalent operating system users. Therefore, prior to running RCU, one operating system user must be created for each schema. The operating system user name must match the schema owner name and must contain only lowercase letters; no all-uppercase or mixed-case names are allowed. For example, if you plan to create a schema named `DEV_PT` using RCU, then the operating system user must be named `dev_pt` (all lowercase letters).

Table 4 in Section 5, "Creating Schemas for Oracle WebCenter Portal" shows the operating system users that should be created for Oracle WebCenter Portal. Refer to your system documentation for information about how to create operating system users.

## 5 Creating Schemas for Oracle WebCenter Portal

Oracle WebCenter Portal requires that certain schemas exist in the database prior to installation. You must run Repository Creation Utility (RCU) to create the schemas in the database.

Follow the instructions in this section to obtain RCU and create the schemas:

- [Section 5.1, "Downloading and Starting RCU"](#)
- [Section 5.2, "Following the RCU Screens for Schema Creation"](#)

To see the platforms on which you can run RCU, review the "RCU Supported Platforms" section in Oracle Fusion Middleware System Requirements and Specifications.

For more information about Repository Creation Utility, refer to *Oracle Fusion Middleware Repository Creation Utility User's Guide*.

### 5.1 Downloading and Starting RCU

To obtain the latest version of RCU:

1. Go to the Oracle WebCenter Portal 11gR1 Software Download page on Oracle Technology Network:

<http://www.oracle.com/technetwork/middleware/webcenter/portal/downloads/index.html>

2. Read and accept the license agreement. You must accept the license agreement before you can download RCU.
3. Find your release of Oracle WebCenter Portal and expand the **Prerequisites & Recommended Install Process** section.
4. Look for "Repository Creation Utility" for your operating system and click **Download**. After downloading the .zip file, extract the contents to a directory of your choice; this directory will be referred to as the *RCU\_HOME* directory.

---

---

**Note:** On Windows operating systems, make sure that you do not unzip the RCU .zip file to a directory name containing spaces.

---

---

Start RCU from the `bin` directory inside the *RCU\_HOME* directory.

On Linux operating systems:

```
cd RCU_HOME/bin
./rcu
```

On Windows operating systems:

```
cd RCU_HOME\bin
rcu.bat
```

### 5.2 Following the RCU Screens for Schema Creation

Follow the instructions provided on the RCU screens, as described in this section. Unless otherwise noted, click **Next** to advance to the next screen.

1. Welcome Screen

This screen introduces you to RCU.

## 2. Create Repository Screen

Select **Create**.

## 3. Database Connection Details Screen

If you are using an Oracle database, provide the following credentials:

- **Host Name:** Specify the name of the machine on which your database resides in the format *host.domain.com*. For Oracle RAC databases, specify the Virtual IP name or one of the node names as the host name.
- **Port:** Specify the database listen port number. The default port number for Oracle databases is 1521.
- **Database Name:** Specify the service name for the database. Typically, the service name is the same as the global database name.

If you are unsure what the service name for your database is, you can obtain it from the `SERVICE_NAMES` parameter in the database's initialization parameter file. If the initialization parameter file does not contain the `SERVICE_NAMES` parameter, then the service name is the same as the global database name, which is specified in the `DB_NAME` and `DB_DOMAIN` parameters.

For Oracle RAC databases, specify the service name of one of the nodes in this field. For example: `examplehost.exampledomain.com`.

- **Username:** Specify the name of a user with DBA or SYSDBA privileges. The default user name with SYSDBA privileges is `SYS`.
- **Password:** Specify the password for your database user.
- **Role:** Select the database user's role from the drop-down list. The `SYS` user requires the SYSDBA role.

If you are using a Microsoft SQL Server database, provide the following credentials:

- **Unicode Support:** Select Yes or No from the drop-down list.
- **Server Name:** Enter the host name, IP address, or complete server name in `host\server` format of the server where your database is running.
- **Port:** Specify the database listener port number.
- **Database Name:** Specify the name of your database.
- **Username:** Specify the name of a user with DBA or SYSDBA privileges.
- **Password:** Specify the password for your database user.

If you are using an IBM DB2 database, provide the following credentials:

- **Server Name:** Enter the host name, IP address, or complete server name in `host\server` format of the server where your database is running.
- **Port:** Specify the database listener port number.
- **Database Name:** Specify the name of your database.
- **Username:** Specify the name of a user with DB Owner privileges.
- **Password:** Specify the password for your database user.

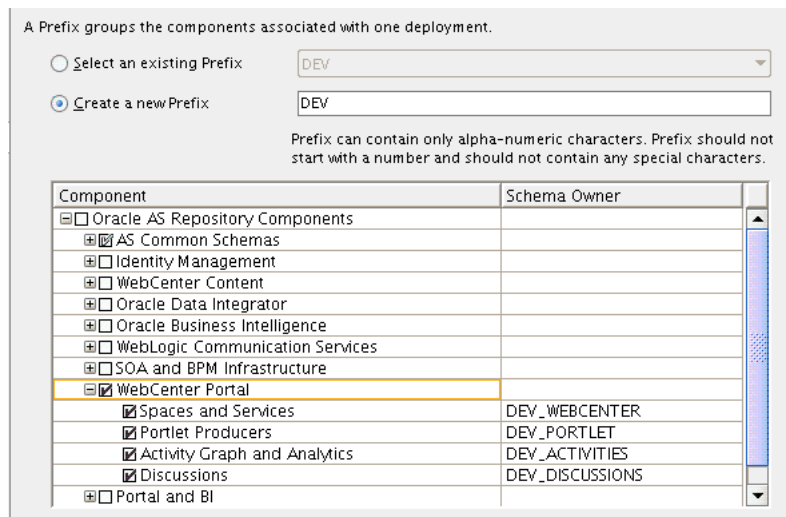
Click **Next**. A "Checking Prerequisites" screen will appear. If there are errors, some details about the error will be displayed on the Database Connection Details Screen. Fix the error messages and click **Next** again.

After the checking is complete with no errors, click **OK** to dismiss the screen.

#### 4. Select Components Screen

Near the top of the screen, select **Create a New Prefix**. If you are the only user of the database instance, you may use the default prefix `DEV`. If you are sharing the database instance with other Oracle Fusion Middleware users, refer to "Creating Custom Schemas and Tablespaces" in *Oracle Fusion Middleware Repository Creation Utility User's Guide* for more information about creating and using custom prefixes.

In the table that lists the available components, select **WebCenter Portal**. All of the product schemas within this component, including all the dependent schemas, are automatically selected.



[Table 3](#) lists the required schemas for Oracle WebCenter Portal components for Oracle and Microsoft SQL Server databases:

**Table 3 Required Schemas for WebCenter Portal Components on Oracle and Microsoft SQL Server Databases**

Component	Schema Owner	Dependencies
Spaces and Services	<code>prefix_WEBCENTER</code>	<code>prefix_MDS</code> (Metadata Services)
Portlet Producers	<code>prefix_PORTLET</code>	None.
Discussions	<code>prefix_DISCUSSIONS</code>	None.
Activity Graph and Analytics	<code>prefix_ACTIVITIES</code>	None.

[Table 4](#) lists the required schemas for Oracle WebCenter Portal components for IBM DB2 databases:



**Table 4 Required Schemas for WebCenter Portal Components on IBM DB2 Databases**

Component	Schema Owner	Dependencies	Required Operating System Users
Spaces and Services	<i>prefix_WC</i>	<i>prefix_MDS</i> (Metadata Services)	<i>prefix_wc</i> <i>prefix_mds</i>
Portlet Producers	<i>prefix_PT</i>	None.	<i>prefix_pt</i>
Discussions	<i>prefix_DS</i>	None.	<i>prefix_ds</i>
Activity Graph and Analytics	<i>prefix_AG</i>	None.	<i>prefix_ag</i>

---

---

**Note:** You must remember or make a note of these schema names and the prefix value from this screen; you will need them later when you are configuring your components. You will need to provide the schema name in the format *prefix\_schemaname*.

---

---

Click **Next**. A "Checking Prerequisites" screen will appear. If there are errors, some details about the error will be displayed on the Select Components Screen. Fix the error messages and click **Next** again.

After the checking is complete with no errors, click **OK** to dismiss the screen.

**5. Schema Passwords Screen**

Use this screen to specify your schema passwords.

**Tip:** For more information about the options on this screen, see "Schema Passwords" in *Oracle Fusion Middleware Repository Creation Utility User's Guide*.

---

---

**Note:** You must remember or make a note of the schema passwords from this screen; you will need them later when you are configuring your components.

---

---

**6. Custom Variables Screen**

Activity Graph and Analytics can be customized to enable database partitioning. Specify **Y** if you want to install Activity Graph and Analytics with database partitioning enabled, or **N** if you do not want to enable database partitioning.

**7. Map Tablespaces Screen**

Click **Next**. A "Creating Tablespaces" screen will appear. If there are errors, some details about the error will be displayed on the Map Tablespaces Screen. Fix the error messages and click **Next** again.

After the tablespaces are created with no errors, click **OK** to dismiss the screen.

**8. Summary Screen**

Click **Create**. A "CREATE" screen will appear. If there are errors, some details about the error will be displayed on the Summary Screen. Fix the error messages and click **Next** again.

After the schemas are created with no errors, click **OK** to dismiss the screen.

## 9. Completion Summary Screen

Click **Close** to dismiss RCU.

# 6 Installing Oracle WebLogic Server and Creating the Middleware Home

Oracle WebCenter Portal requires an Oracle WebLogic Server on your system. If you do not already have one, follow the instructions in this section to install Oracle WebLogic Server:

- [Section 6.1, "Downloading the WebLogic Server Installer"](#)
- [Section 6.2, "Starting the WebLogic Server Installer"](#)
- [Section 6.3, "Following the WebLogic Server Installation Screens and Instructions"](#)
- [Section 6.4, "Verifying Your WebLogic Server Installation"](#)

For more information about installing WebLogic Server, refer to *Oracle Fusion Middleware Installation Guide for Oracle WebLogic Server*.

## 6.1 Downloading the WebLogic Server Installer

Download the latest version of the Oracle WebLogic Server installer from Oracle Technology Network:

1. Go to Oracle WebLogic Server Downloads page on Oracle Technology Network:

<http://www.oracle.com/technetwork/middleware/ias/downloads/wls-main-097127.html>

2. Read and accept the license agreement. You must accept the license agreement before you can download the installer.
3. Go to the "Oracle WebLogic Server Previous Releases" section on the page and click **See all files** for Oracle WebLogic Server 10.3.6.
4. After you see the list of available installers for release 10.3.6, find download the appropriate installer for your operating system.

The installation program requires a Java run-time environment (JRE) to run. A JRE is bundled in the Windows 32-bit and Linux x86 installation programs, as well as in some UNIX installation programs (those with file names ending in `.bin`).

For other platforms, the installation program does not install a JDK. File names for these installation programs end in `.jar`. To run the `.jar` installation programs, you must have the appropriate version of the JDK installed on your system, and include the `bin` directory of the JDK at the beginning of the `PATH` variable definition. Refer to the *System Requirements and Supported Platforms for Oracle Fusion Middleware 11gR1* document on the Oracle Fusion Middleware Supported System Configurations page for a list of supported JDKs for your platform.

## 6.2 Starting the WebLogic Server Installer

Before starting the WebLogic Server installer, set the `DISPLAY` environment variable on your system.

To start the Oracle WebLogic Server installer in graphical mode, follow the instructions in the section that corresponds to your operating system:

- [Section 6.2.1, "Starting the Installer on Windows Operating Systems"](#)
- [Section 6.2.2, "Starting the Installer on UNIX Operating Systems"](#)
- [Section 6.2.3, "Starting the .jar Installer on UNIX Operating Systems"](#)
- [Section 6.2.4, "Starting the Installer on 64-Bit Operating Systems Using 64-Bit JDK"](#)

### 6.2.1 Starting the Installer on Windows Operating Systems

To start the installer on a Windows operating system, go to the directory that contains the installation program and double-click the installation file. For example, for WebLogic Server 10.3.6, the name of the installation program for 32-bit Windows is `wls1036_win32.exe`.

### 6.2.2 Starting the Installer on UNIX Operating Systems

To start the installer on a UNIX operating system, go to the directory that contains the installation program, then launch the installation by entering the following commands:

```
chmod a+x file_name
./file_name
```

Replace `file_name` with the name of your installation file. For example, for WebLogic Server 10.3.6, the name of the installer file for 32-bit Linux is `wls1036_linux32.bin`:

```
chmod a+x wls1036_linux32.bin
./wls1036_linux32.bin
```

### 6.2.3 Starting the .jar Installer on UNIX Operating Systems

To start the installer for installation files with names ending in `.jar`, perform the following steps:

1. Add the `bin` directory of the appropriate JDK to the beginning of the `PATH` variable definition on the target system. For example:

```
PATH=$JAVA_HOME/bin:$PATH
export PATH
```

2. Go to the directory where you downloaded the installation program.
3. Launch the installation program by entering the following command:

```
java -jar wlsversion_generic.jar
```

For example, for WebLogic Server 10.3.6:

```
java -jar wls1036_generic.jar
```

### 6.2.4 Starting the Installer on 64-Bit Operating Systems Using 64-Bit JDK

If you are installing WebLogic Server on a 64-bit platform using a `.jar` installation program:

1. Run the `JAVA_HOME/bin/java -version` (or `JAVA_HOME/bin/java -d64 -version` on 32/64-bit hybrid JDKs) command to ensure that your `JAVA_HOME` refers to a 64-bit JDK.

2. Include the `-d64` flag in the installation command when using a 32/64-bit hybrid JDK (such as for the HP-PA, HPIA, and Solaris64 platforms):

```
java -d64 -jar wlsversion_generic.jar
```

For example, for WebLogic Server 10.3.6:

```
java -d64 -jar wls1036_generic.jar
```

## 6.3 Following the WebLogic Server Installation Screens and Instructions

Follow the instructions provided on the WebLogic Server installation screens, as described in this section. Unless otherwise noted, click **Next** to advance to the next screen.

1. Welcome Screen

This screen introduces you to the installer.

2. Choose Middleware Home Directory Screen

Select **Create a new Middleware Home**.

Specify the desired location of your new Middleware home directory. If this directory already exists on your system, it must be an empty directory. If this directory does not already exist, then it will be created for you.

---

---

**Note:** You must remember or make a note of this location; you will be asked for it later when you are installing WebCenter Portal.

---

---

For more information about the Middleware home directory, refer to "Middleware Home and WebLogic Server Home Directories" in *Oracle Fusion Middleware Installation Planning Guide*.

3. Register for Security Updates Screen

Select whether or not you want to receive the latest product and security updates:

- If you choose to receive updates, leave **I wish to receive security updates via My Oracle Support** selected, and enter your My Oracle Support email address or user name and password.
- If you choose not to receive any updates, de-select **I wish to receive security updates via My Oracle Support**. You will be asked to verify your selection before you are allowed to continue.

4. Choose Install Type Screen

Select **Typical**.

5. Choose Product Installation Directories Screen

Specify the desired location for your WebLogic Server home directory.

For more information about the WebLogic home directory, refer to "Middleware Home and WebLogic Server Home Directories" in *Oracle Fusion Middleware Installation Planning Guide*.

6. Choose Shortcut Location (Windows only)

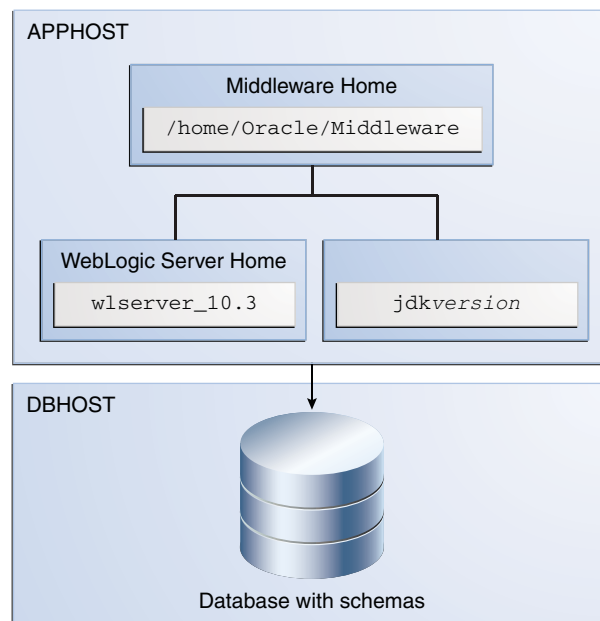
If you are installing on a Windows system, you will be asked to specify a location where you would like Windows to create a shortcut to Oracle products.

7. Installation Summary Screen  
Click **Next** to begin the installation.
8. Installation Progress Screen  
No action is required on this screen.
9. Installation Complete Screen  
De-select **Run Quickstart**.  
Click **Done**.

## 6.4 Verifying Your WebLogic Server Installation

At this point, after your database and Oracle WebLogic Server have both been installed, you should see the directory structure shown in [Figure 3](#) (refer back to [Figure 2](#) to see the complete system topology).

**Figure 3** Directory Structure After WebLogic Server (and Database) Installation



Note that not all of the directories in the Middleware home are illustrated, just the ones that you will need later on in this procedure.

## 7 Installing Oracle WebCenter Portal

The Oracle WebCenter Portal components (WebCenter Portal, WebCenter Portal: Framework, and WebCenter Portal's Portlet Producers) are installed onto your system by default. After the components are installed, you can run the Configuration Wizard to configure the components of your choice.

---

---

**Note:** Make sure you are not logged in to the WebLogic Server Administration Console before you install Oracle WebCenter Portal.

---

---

Follow the instructions in this section to install Oracle WebCenter Portal:

- [Section 7.1, "Obtaining the Software"](#)
- [Section 7.2, "Starting the Installer"](#)
- [Section 7.3, "Following the Installation Screens and Instructions"](#)

## 7.1 Obtaining the Software

[Table 5](#) describes the Oracle Web sites where you can download the latest Oracle Fusion Middleware software.

**Table 5** *Where to Download Oracle Fusion Middleware Software*

Oracle Website	Purpose and Location
Oracle Technology Network	<p>If you are a developer, go to the Oracle Technology Network (OTN) to download Oracle software under the terms of the OTN Developer License:</p> <p><a href="http://www.oracle.com/technetwork/indexes/downloads/index.html">http://www.oracle.com/technetwork/indexes/downloads/index.html</a></p> <p>For more information, refer to the <i>Download and Certification Frequently Asked Questions</i> document, which is available by clicking the FAQ icon on the main Middleware download page.</p> <p><b>Note:</b> Oracle Technology Network requires free registration.</p>
My Oracle Support	<p>If you are a customer with a valid support agreement with Oracle and you want to download software updates and fixes, then go to My Oracle Support:</p> <p><a href="http://support.oracle.com/">http://support.oracle.com/</a></p> <p>To obtain the specific patch set numbers for your installation, as well as additional information about maintaining your software, refer to My Oracle Support document ID 1073776.1.</p>
Oracle E-Delivery	<p>If you have purchased an Oracle software license and you want to download software under the terms of that license, or if you want to download Oracle software under the terms of the Oracle Electronic Delivery Trial License then go to Oracle E-Delivery:</p> <p><a href="http://edelivery.oracle.com/">http://edelivery.oracle.com/</a></p> <p><b>NOTE:</b> For convenience, most of the links provided in this document are to the OTN download pages, but if you have purchased a license, Oracle recommends you register with Oracle Software Delivery Cloud and use the Software Delivery Cloud as your primary location for obtaining your purchased software.</p>

After you download the archive file, unpack the archive file into a directory of your choice on the machine where you will be performing the installation.

## 7.2 Starting the Installer

To start the installer, go to the directory where you unpacked the archive file and switch to the `Disk1` directory.

On UNIX operating systems:

```
cd unpacked_archive_directory/Disk1
./runInstaller -jreLoc JRE_LOCATION
```

---

---

**Note:** Starting the installer as `root` user is not supported.

---

---

On Windows operating systems:

```
cd unpacked_archive_directory\Disk1
setup.exe -jreLoc JRE_LOCATION
```

The installer requires the full path to the location of a Java Runtime Environment (JRE) on your system. When you installed Oracle WebLogic Server, [Section 6, "Installing Oracle WebLogic Server and Creating the Middleware Home"](#), a JRE was installed on your system. You can use this location (the location of the `jre` directory) to start the installer. The default location for the JRE is inside the `jdk160_version` directory in the Middleware home.

On 64-bit platforms, the JRE location is the `JAVA_HOME` you used to install Oracle WebLogic Server. Refer to [Section 6, "Installing Oracle WebLogic Server and Creating the Middleware Home"](#) for more information.

### 7.3 Following the Installation Screens and Instructions

Follow the instructions provided on the installation screens, as described in this section. Unless otherwise noted, click **Next** to advance to the next screen.

#### 1. Welcome Screen

This screen introduces you to the installer.

#### 2. Install Software Updates Screen

Select the method you want to use for installing software updates.

- Skip Software Updates

You can choose to skip this option for now.

- Search My Oracle Support for Updates.

If you have a My Oracle Support account, you can specify your account name and password to have the installer automatically download applicable software updates from My Oracle Support. After entering your credentials, you can test the connection by clicking **Test Connection**. Click **Proxy Settings** if you need to configure a proxy server in order to have the installer access My Oracle Support.

- Search Local Directory for Updates.

If you have software updates available locally, you can specify the location by using this option. When you select **Search Local Directory for Updates** an additional "Location" field will appear; specify the location where your updates are located in this field.

#### 3. Prerequisite Checks Screen

Verify that the prerequisite checking is completed with no errors.

#### 4. Specify Installation Location Screen

**Oracle Middleware Home:** Specify the location where WebLogic Server was installed.

**Oracle Home Directory:** Specify the location where you want to install the software:

- If you specify a directory that already exists, it must be an empty directory and it must be inside the Middleware home.
- If you specify a new directory, it will be created inside the Middleware home.

This will be your Oracle home directory. Runtime components cannot write to this directory.

---

---

**Note:** For the remainder of this document, this directory will be referred to as your Oracle WebCenter Portal Oracle home or `WCP_ORACLE_HOME` to avoid any confusion with the Oracle home directories of other Oracle Fusion Middleware products.

---

---

For more information about the Middleware home and Oracle home directories, refer to "Oracle Fusion Middleware Directory Structure" in *Oracle Fusion Middleware Installation Planning Guide*.

**5. Application Server Screen**

Select **WebLogic Server** as the application server you want to use for this installation.

**6. Installation Summary Screen**

Click **Install** to begin the installation.

**7. Installation Progress Screen**

Click **Next** when the installation is 100% complete.

**8. Installation Complete Screen**

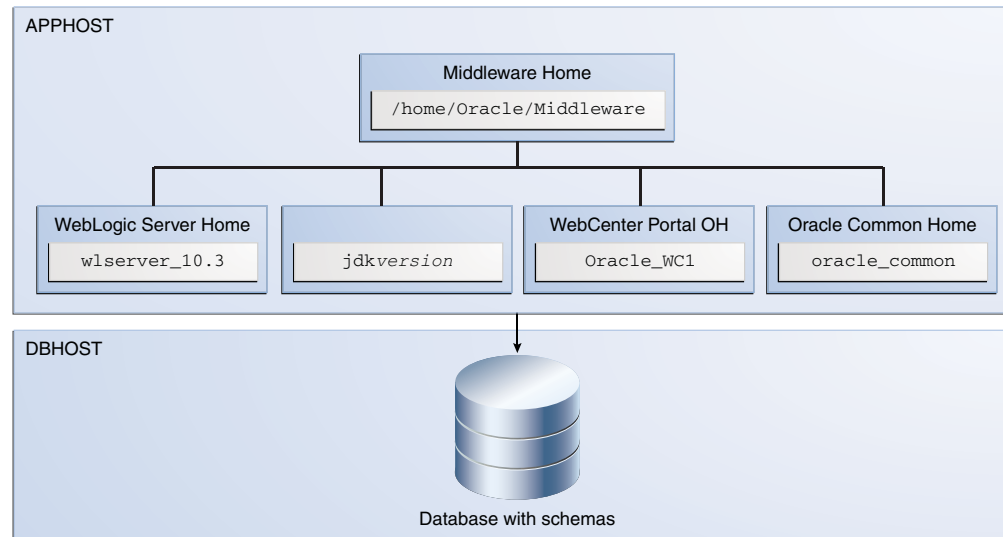
Click **Finish** to dismiss the installer.

## 7.4 Verifying the Installation

At this point, you should see the directory structure shown in [Figure 4](#) (refer back to [Figure 2](#) to see the complete system topology).



**Figure 4 Directory Structure After Oracle WebCenter Portal Installation**



## 8 Configuring Oracle WebCenter Portal

After you have successfully run the installer, you can configure your Oracle WebCenter Portal components by running the Oracle Fusion Middleware Configuration Wizard.

For more information about configuring WebLogic domains, refer to *Oracle Fusion Middleware Creating Domains Using the Configuration Wizard*.

### 8.1 Starting the Configuration Wizard

The Configuration Wizard is located in the `WCP_ORACLE_HOME` directory.

On UNIX operating systems:

```
cd WCP_ORACLE_HOME/common/bin
./config.sh
```

On Windows operating systems:

```
cd WCP_ORACLE_HOME\common\bin
config.cmd
```

On Windows operating systems, you can also start the Configuration Wizard from the Start menu by selecting **All Programs**, then selecting **Oracle WebCenter Portal 11g - Home1**, then selecting **Configure Application Server**.

If you are using a 32-bit operating system, Oracle JRockit SDK is installed as part of the Oracle WebLogic installation (see [Section 6, "Installing Oracle WebLogic Server and Creating the Middleware Home"](#)). This is the JDK that the Configuration Wizard will use by default. If you want to invoke the Configuration Wizard with the Sun JDK, do the following prior to starting the Configuration Wizard:

1. Set the `JAVA_HOME` environment variable to the location of the Sun JDK. For example, you can set it to the Sun JDK that was installed with Oracle WebLogic Server in `jdk160_version` inside the Middleware home.
2. Set the `JAVA_VENDOR` environment variable to "Sun."

## 8.2 Configuration Your WebLogic Domain

Follow the instructions in this section to configure a WebLogic domain for Oracle WebCenter Portal. Unless otherwise noted, click **Next** to advance to the next screen.

### 1. Welcome Screen

Select **Create a New WebLogic Domain**.

### 2. Select Domain Source Screen

Select **Generate a domain configured automatically to support the following products**, then select the products that should be configured in this domain. For a complete Oracle WebCenter Portal installation, select all of the following:

- Oracle WebCenter Spaces - 11.1.1.0 [WCP\_ORACLE\_HOME]

This will automatically select the following products as dependencies:

- Oracle Enterprise Manager - 11.1.1.0 [oracle\_common]
- Oracle WSM Policy Manager - 11.1.1.0 [oracle\_common]
- Oracle JRF - 11.1.1.0 [oracle\_common]

- Oracle WebCenter Services Portlets - 11.1.1.0 [WCP\_ORACLE\_HOME]

- Oracle WebCenter Pagelet Producer - 11.1.1.0 [WCP\_ORACLE\_HOME]

- Oracle Portlet Producers - 11.1.1.0 [WCP\_ORACLE\_HOME]

- Oracle WebCenter Discussion Server - 11.1.1.0 [WCP\_ORACLE\_HOME]

- Oracle WebCenter ActivityGraph Engines - 11.1.1.0 [WCP\_ORACLE\_HOME]

This will automatically select Oracle WebCenter Analytics Collector - 11.1.1.0 [WCP\_ORACLE\_HOME] as a dependency.

- Oracle WebCenter Personalization - 11.1.1.0 [WCP\_ORACLE\_HOME]

Select Domain Source

ORACLE

**Generate a domain configured automatically to support the following products:**

- Basic WebLogic Server Domain - 10.3.6.0 [wlsrserver\_10.3] \*
- Oracle WebCenter Spaces - 11.1.1.0 [Oracle\_WC1]
- Oracle WebCenter Services Portlets - 11.1.1.6.0 [Oracle\_WC1]
- Oracle WebCenter Pagelet Producer - 11.1.1.0 [Oracle\_WC1]
- Oracle Enterprise Manager - 11.1.1.0 [oracle\_common]
- Oracle Portlet Producers - 11.1.1.0 [Oracle\_WC1]
- Oracle WebCenter Discussion Server - 11.1.1.0 [Oracle\_WC1]
- Oracle WebCenter ActivityGraph Engines - 11.1.1.0 [Oracle\_WC1]
- Oracle WebCenter Personalization - 11.1.1.0 [Oracle\_WC1]
- Oracle WebCenter Analytics Collector - 11.1.1.0 [Oracle\_WC1]
- Oracle WSM Policy Manager - 11.1.1.0 [oracle\_common]
- Oracle JRF WebServices Asynchronous services - 11.1.1.0 [oracle\_common]
- Oracle JRF - 11.1.1.0 [oracle\_common]
- Basic WebLogic SIP Server Domain - 10.3.6.0 [wlsrserver\_10.3]

If you have previously installed Oracle Fusion Middleware products on your system, you may see duplicate products on this screen; select only those products associated with your *WCP\_ORACLE\_HOME*.

### 3. Specify Domain Name and Location Screen

Specify the following domain information:

- **Domain name:** The name of the domain you want to create. The default name is `base_domain`.
- **Domain location:** The absolute path to the directory where this domain should be created. For the remainder of this document, the specified domain name and domain location will be referred to as the domain home directory (*DOMAIN\_HOME*). This directory can be located anywhere on your system.
- **Application location:** The absolute path to the directory where applications created in this domain should reside. For the remainder of this document, the specified application location and domain name will be referred to as the application home directory (*APPLICATION\_HOME*). This directory can be located anywhere on your system.

See "WebLogic Server Domain" in *Oracle Fusion Middleware Installation Planning Guide* for more information about the domain name and location.

#### 4. Configure Administrator Username and Password Screen

Specify the following credentials for your administrator:

- **User name:** The name of the administrator for this domain. The default name is `weblogic`.

---



---

**Note:** By default, Oracle WebLogic Server grants the domain administrative privileges to the default user, `weblogic`. If you want to grant the domain administrative rights to a different user, then after creating the domain you must grant the administrator role to that user for WebCenter Portal and Oracle WebCenter Discussions Server. For more information, see "Granting Administrator Privileges to a Non-Default User" in *Oracle Fusion Middleware Installation Guide for Oracle WebCenter Portal*.

---



---

- **User password:** The administrator's password.
- **Confirm user password:** Re-enter the administrator's password.
- **Description:** Enter a description for this user, or leave the default description as is. This field is optional.

#### 5. Configure Server Start Mode and JDK Screen

In the "WebLogic Domain Startup Mode" portion of the screen, Select **Development Mode**.

In the "JDK Selection" portion of the screen, select the JDK that is recommended for your platform in Development Mode. This text can be found immediately underneath **Development Mode** in the "WebLogic Domain Startup Mode" section. For example, on a Linux system, you would be asked to select "Sun SDK 1.6.0\_ version" from the list of available JDKs.

#### 6. Configure JDBC Component Schema Screen

Configure the schema information for each data source listed on this screen. When you make changes to any field on this screen, the changes are applied to selected data sources only. For fields that are common with all data sources (for example, all data sources reside on the same database), you should select all of the data sources and make your changes. The changes are saved automatically as you type.

After all of the information that is common to all data sources has been specified, then you will need to select individual or smaller groups of data sources and enter information that is specific to them (for example, the schema owner).

Review the table on this screen and identify which fields you need to modify:

- **Vendor:** Select the vendor for your database from the drop-down list.
- **Driver:** Select the driver type from the drop-down list.
- **Schema Owner:** Specify the schema owner for the schema; this is the name of the schema for this component in the following format:

*prefix\_schema\_name*

This information was specified on the [Select Components Screen](#) when the schemas were created using RCU. For more information, refer to [Section 5, "Creating Schemas for Oracle WebCenter Portal"](#).

- **Password:** Specify the password for the schema. You specified this password on the [Schema Passwords Screen](#) when creating the schemas using RCU. For more information, refer to [Section 5, "Creating Schemas for Oracle WebCenter Portal"](#).
- **DBMS/Service:** Specify the service name for your database. This is the database on which the schema resides.
- **Host Name:** Specify the name of the machine where your database is running.
- **Port:** Specify the database listen port number.

#### 7. Test Component Schema Screen

Verify that the connections to your data sources are successful.

#### 8. Select Optional Configuration Screen

Select **Managed Servers, Clusters and Machines**. This option will cause additional screens to be displayed in the Configuration Wizard which will allow you to configure a machine and then assign your Managed Servers and Administration Server to that machine. This enables you to use Node Manager to start and stop your servers using Oracle Enterprise Manager Fusion Middleware Control.

After you click **Next**, the following screens will appear:

##### a. Configure Managed Servers Screen

This screen lists the Managed Servers that will be created in this domain. You should make a note of the port numbers for each of the Managed Servers; you will need them in [Section 9.4, "Accessing Oracle WebCenter Portal Products"](#).

Configure Managed Servers						ORACLE
Add            Delete            Disgard Changes <span style="float: right;"> Switch Display</span>						
	Name*	Listen address*	Listen port	SSL listen port	SSL enabled	
→ 1	WC_Uilities	All Local Addresses	8891	N/A	<input type="checkbox"/>	
2	WC_Collaboration	All Local Addresses	8890	N/A	<input type="checkbox"/>	
3	WC_Portlet	All Local Addresses	8889	N/A	<input type="checkbox"/>	
4	WC_Spaces	All Local Addresses	8888	N/A	<input type="checkbox"/>	

**b. Configure Clusters Screen**

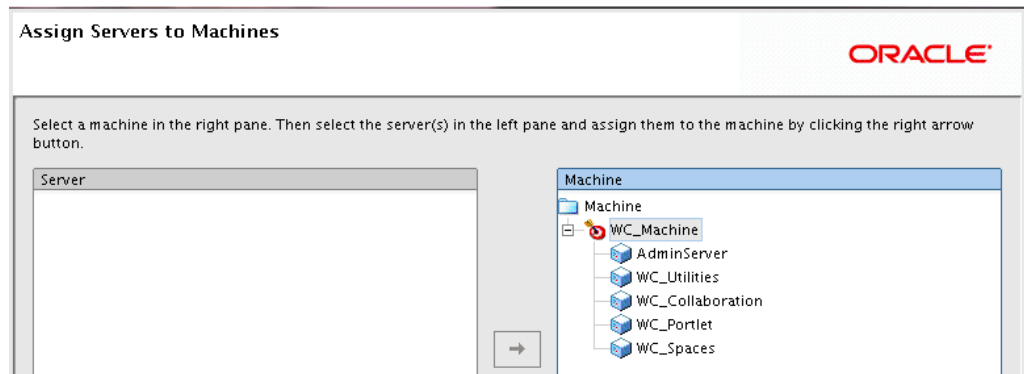
You do not need to select anything on this screen.

**c. Configure Machines Screen**

Click the **Add** icon to create a new machine. In the Name field, specify the name of your new machine. In the Node Manager Listen Address field, select the IP address of the host on which your machine is being created.

**d. Assign Servers to Machines Screen**

In the Machine pane, click the name of the machine you just created. Then, click on the server in the Server pane and click on the right arrow to add the server to the machine. Add all five servers (the Administration Server and four Managed Servers) to the new machine.



**9. Configuration Summary**

Verify the information on this screen. Use the navigation pane on the left or the **Previous** button if you want to return to a previous screen to alter some portion of the configuration.

If everything is correct, click **Create** to create the domain.

**10. Creating Domain Screen**

This screen summarizes the domain creation, and shows the Domain Location and Administration Server URL. You should write both of these down as you will need them later; the Domain Location to start the Administration Server, and the URL to access the Administration Server console.

Click **Done** to dismiss the Configuration Wizard.

### **8.3 Verifying Your Configuration**

At this point, your topology should match the one shown in [Figure 2](#); installation and configuration of Oracle WebCenter Portal is now complete.

For more information about configuring WebLogic Server domains, refer to *Oracle Fusion Middleware Creating Domains Using the Configuration Wizard*.

## **9 Post-Configuration Tasks**

This section contains general information that will help you verify your installation and configuration. Some components may require custom or manual configuration, and this information is also included in this section:

- [Starting Node Manager](#)
- [Starting the Administration Server](#)
- [Starting Managed Servers from Oracle Enterprise Manager](#)
- [Accessing Oracle WebCenter Portal Products](#)

## 9.1 Starting Node Manager

Starting Node Manager on a machine that hosts Managed Servers allows you to start and stop the Managed Servers remotely using the Oracle Enterprise Manager Fusion Middleware Control or the command line. Node Manager can also automatically restart a Managed Server after an unexpected failure.

To start Node Manager:

1. On UNIX operating systems, run the `MW_HOME/oracle_common/common/bin/setNMProps.sh` script.

On Windows operating systems, run the `MW_HOME\oracle_common\common\bin\setNMProps.cmd` script.

This script appends the required properties to the `nodemanager.properties` file. These properties can also be appended manually, or provided as command-line arguments.

---

---

**Note:** The `StartScriptEnabled=true` property is required for Managed Servers to receive proper classpath and command-line arguments.

The file containing the properties is `nm.required.properties`.

---

---

2. On UNIX operating systems, start Node Manager by running the `WebLogic_Home/server/bin/startNodeManager.sh` script.

On Windows operating systems, start Node Manager by running the `WebLogic_Home\server\bin\startNodeManager.cmd` script.

For more information about Node Manager, refer to *Oracle Fusion Middleware Node Manager Administrator's Guide for Oracle WebLogic Server*.

## 9.2 Starting the Administration Server

To start the Administration Server, run the `startWebLogic.sh` (on UNIX operating systems) or `startWebLogic.cmd` (on Windows operating systems) script in the directory where you created your new domain (you specified your domain location on the [Specify Domain Name and Location Screen](#) in the Configuration Wizard).

On UNIX operating systems:

```
DOMAIN_HOME/startWebLogic.sh
```

On Windows operating systems:

```
DOMAIN_HOME\startWebLogic.cmd
```

To verify that the Administration Server is up and running, access the Administration Console:

`http://administration_server_host:administration_server_port/console`

The Administration host and port was visible as part of the domain creation summary on the [Creating Domain Screen](#) (the last screen of the Configuration Wizard).

You will be prompted for the username and password credentials that you specified on the [Configure Administrator Username and Password Screen](#) of the Configuration Wizard.

### 9.3 Starting Managed Servers from Oracle Enterprise Manager

During the configuration process, you created a machine and associated the Managed Servers with that machine. This enables you to start the Managed Servers from Oracle Enterprise Manager.

---

---

**Note:** Node Manager (see [Section 9.1, "Starting Node Manager"](#)) must be up and running in order to start Managed Servers from Enterprise Manager.

---

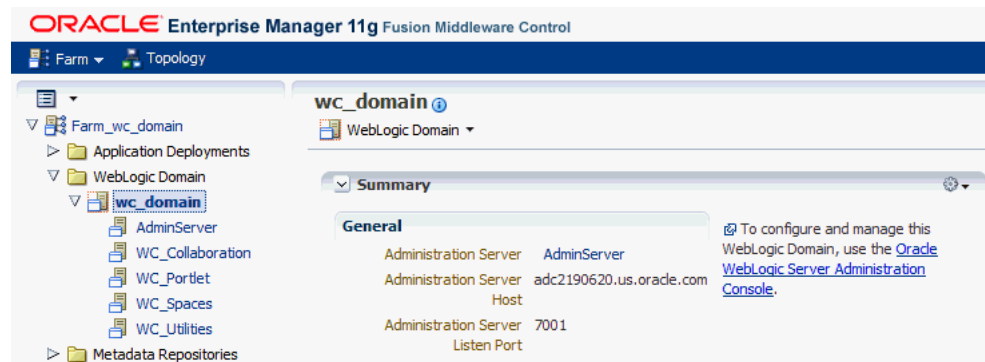
---

1. Log in to Enterprise Manager:

`http://administration_server_host:administration_server_port/em`

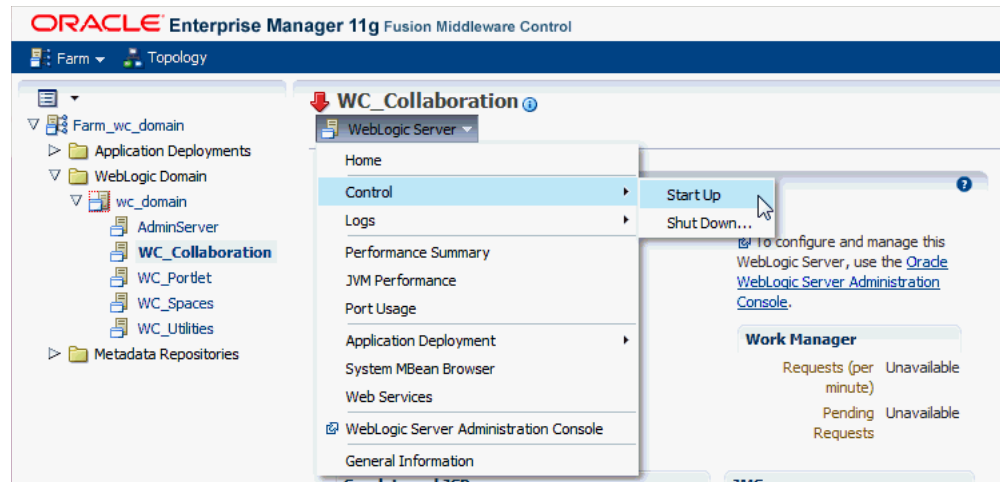
You will be asked to provide your Administrator credentials (the same credentials you used to log in to the Administration Console).

2. Answer the question in the Accessibility Preference dialog window, then click **Continue**.
3. In the navigation pane on the left side of the page, expand the WebLogic Domain node until the Administration Server and Managed Servers are visible.

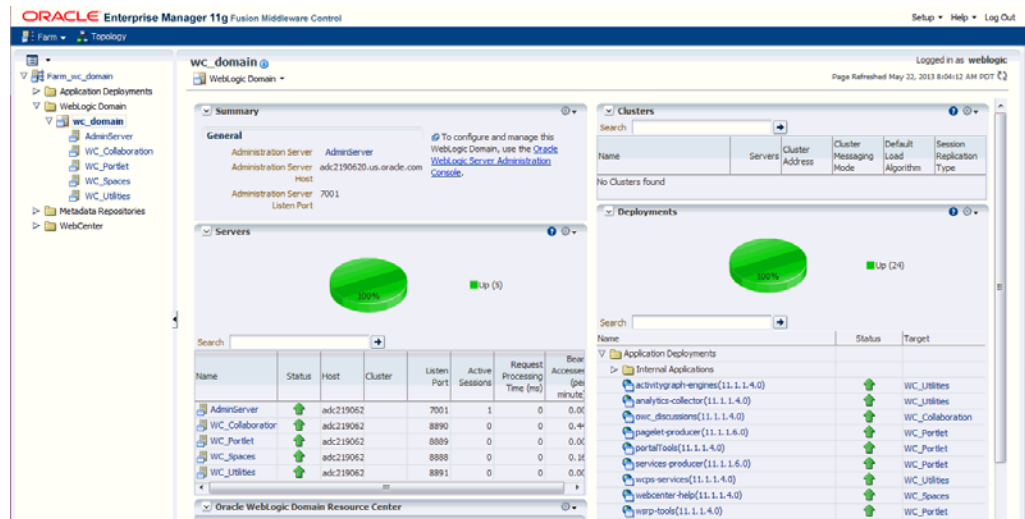


4. Select the first Managed Server in the list (WC\_Collaboration). The main portion of the page changes to show the name of the Managed Server at the top, and a drop-down menu labeled WebLogic Server immediately beneath it.

Form the drop-down menu, select **Control**, the select **Start Up**.



5. Repeat this step until all of the Managed Servers are up and running.
6. Select **WebLogic Domain** in the navigation pane to verify that all of the servers in the domain are up and running.



## 9.4 Accessing Oracle WebCenter Portal Products

Oracle WebCenter Portal products can be accessed as described in this section.

When you are asked to provide login credentials, you should use your domain Administrator credentials to login.

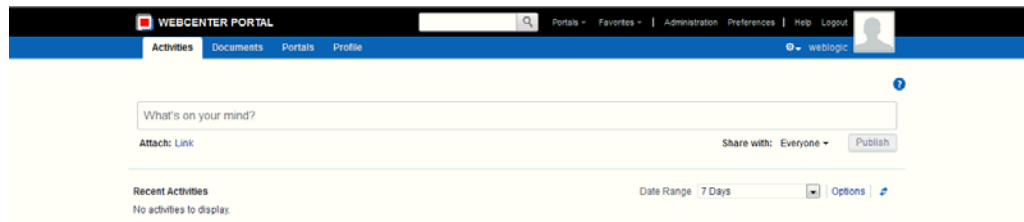
### Task 1 Access WebCenter Portal

To access WebCenter Portal, use the following URL:

`http://WC_Spaces_server_host:WC_Spaces_server_port/webcenter`

The default port number for WebCenter Portal is 8888.





## Task 2 Accessing Pagelet Producer

To access the Pagelet Producer, use the following URLs:

`http://WC_Portlet_server_host:WC_Portlet_server_port/pagelets`

The default port number for Pagelet Producer is 8889.

### ORACLE WebCenter Portal: Pagelet Producer

#### Welcome to Oracle WebCenter Portal: Pagelet Producer

If you are able to view this page through the Pagelet Producer proxy, then your Pagelet Producer installation is functioning correctly.

To access the Pagelet Producer console:

`http://WC_Portlet_server_host:WC_Portlet_server_port/pagelets/admin`

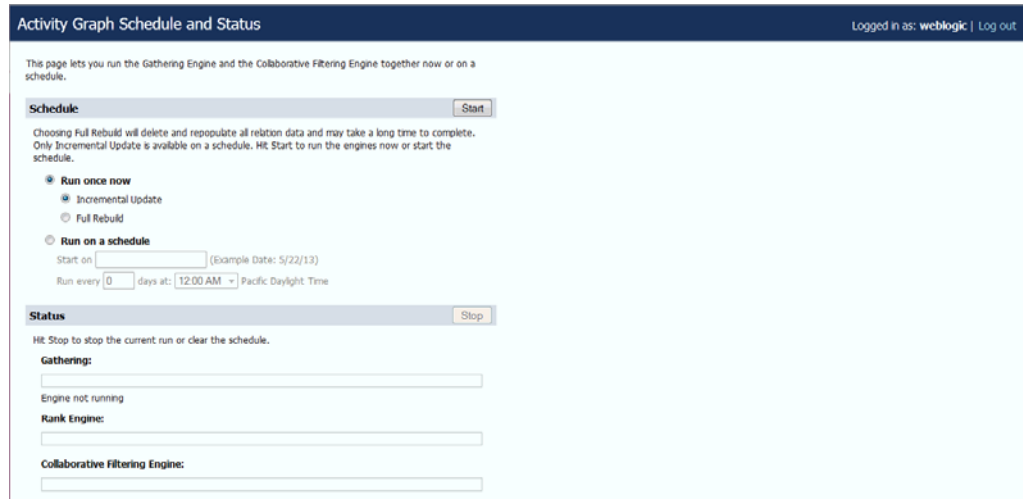


## Task 3 Accessing Oracle WebCenter Activity Graph Engines and Oracle WebCenter Personalization

To access Oracle WebCenter Analytics Collector and Oracle WebCenter Activity Graph Engines, use the following URL:

- To access Oracle WebCenter Activity Graph Engines:

`http://WC_Utility_server_host:WC_Utility_server_port/activitygraph-engines/Login.jsp`



- To access Oracle WebCenter Personalization:

`http://WC_Uilities_server_host:WC_Uilities_server_port/wcps/api/property/resourceIndex`

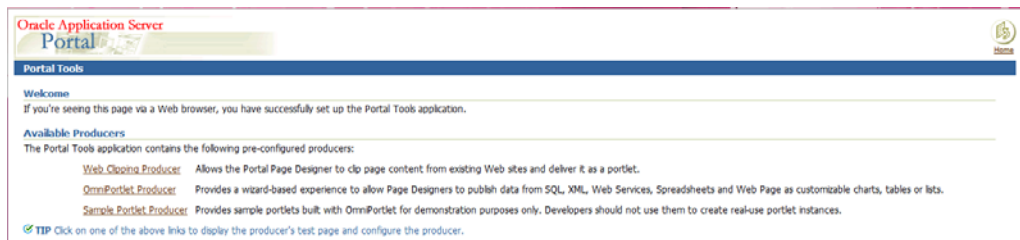
The default port number for the WC\_Uilities server is 8891.

#### Task 4 Accessing WebCenter OmniPortlet and Web Clipping Portlets

To access WebCenter OmniPortlet and Web Clipping Portlets:

`http://WC_Portlet_server_host:WC_Portlet_server_port/portalTools/`

The default port number for WebCenter Portlets is 8889.

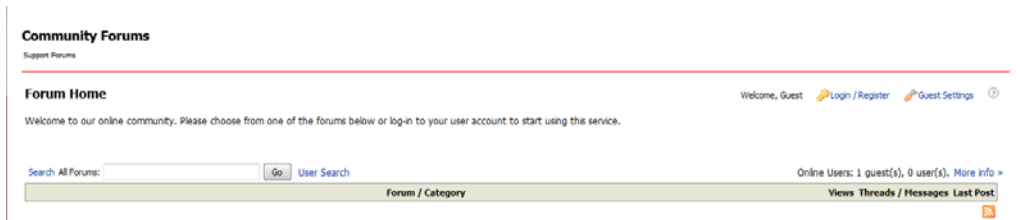


#### Task 5 Accessing Oracle WebCenter Portal's Discussion Server

To access Oracle WebCenter Portal's Discussion Server:

`http://WC_Collaboration_server_host:WC_Collaboration_server_port/owc_discussions`

The default port number for Oracle WebCenter Portal's Discussion Server is 8890.



## 10 Deinstalling Oracle WebCenter Portal

Deinstalling Oracle WebCenter Portal from your system involves the following:

- [Stopping Oracle Fusion Middleware](#)
- [Removing the Oracle WebCenter Portal Schemas](#)
- [Deinstalling Oracle WebCenter Portal](#)
- [Deinstalling Oracle WebLogic Server](#)
- [Performing Post-Deinstallation Tasks for on Windows Operating Systems](#)

You should always use the instructions provided in this section for removing the software. If you try to remove the software manually, you may experience problems when you try to reinstall the software again at a later time. Following the procedures in this section will ensure that the software is properly removed.

### 10.1 Stopping Oracle Fusion Middleware

Before deinstalling Oracle Fusion Middleware software components, you should stop all servers and processes.

1. Stop the WebLogic Managed Servers.

On UNIX operating systems:

```
DOMAIN_HOME/bin/stopManagedWeblogic.sh managed_server_name administration_
server_url administration_server_username administration_server_password
```

On Windows operating systems:

```
DOMAIN_HOME\bin\stopManagedWeblogic.cmd managed_server_name administration_
server_url administration_server_username administration_server_password
```

2. Stop WebLogic Administration Server.

On UNIX operating systems:

```
DOMAIN_HOME/bin/stopWeblogic.sh administration_server_url administration_
server_username administration_server_password
```

On Windows operating systems:

```
DOMAIN_HOME\bin\stopWeblogic.cmd administration_server_url administration_
server_username administration_server_password
```

For both commands, specify the *administration\_server\_url* using the following format:

```
http://administration_server_host.administration_server_domain:administration_
server_port
```

For more information about starting and stopping Oracle Fusion Middleware, refer to "Starting and Stopping Oracle Fusion Middleware" in *Oracle Fusion Middleware Administrator's Guide*.

For more information about starting and stopping servers, see "Starting and Stopping Servers" in *Oracle Fusion Middleware Managing Server Startup and Shutdown for Oracle WebLogic Server*.

## 10.2 Removing the Oracle WebCenter Portal Schemas

Run the Repository Creation Utility (RCU) to drop the WebCenter Portal schemas from your database. Each set of schemas can only be used by the domain to which it is assigned; sharing schemas across multiple domains is not allowed. Since we are removing the product software and domain data, we should also remove the database schemas.

### 10.2.1 Starting RCU

Start RCU as described in [Section 5.1, "Downloading and Starting RCU"](#).

### 10.2.2 Following the RCU Screens for Dropping the Oracle WebCenter Portal Schemas

Follow the instructions below to drop the Oracle WebCenter Portal schemas:

1. Welcome Screen

Click **Next**.

2. Create Repository Screen

Select **Drop**.

Click **Next**.

3. Database Connection Details Screen

Provide the following credentials to connect to your database. These are the same credentials you provided on this screen when you created the WebCenter Portal schemas. See [Section 5.2, "Following the RCU Screens for Schema Creation"](#) for more information.

Click **Next**. A "Checking Prerequisites" screen will appear. If there are errors, some details about the error will be displayed on the Database Connection Details Screen. Fix the error messages and click **Next** again.

After the checking is complete with no errors, click **OK** to dismiss the screen.

4. Select Components Screen

Select the prefix and schemas you want to drop from the repository.

Click **Next**, then confirm that you want to drop the schemas in the dialog box by clicking **OK**.

Next, a "Checking Prerequisites" screen will appear. If there are errors, some details about the error will be displayed on the Select Components Screen. Fix the error messages and click **Next** again.

After the checking is complete with no errors, click **OK** to dismiss the screen.

5. Summary Screen

Click **Drop**. A "DROP" screen will appear. If there are errors, some details about the error will be displayed on the Summary Screen. Fix the error messages and click **Next** again.

After the schemas are dropped with no errors, click **OK** to dismiss the screen.

6. Completion Summary Screen

Click **Close**.

## 10.3 Deinstalling Oracle WebCenter Portal

Deinstalling Oracle WebCenter Portal involves removing the Oracle home and the Oracle Common home directories.

The deinstaller will attempt to remove the Oracle home from which it was started. This procedure will not remove any WebLogic domains that you have created - it only removes the software in the Oracle home.

Before you choose to remove any Oracle home, make sure that it is not in use by an existing domain, and also make sure you stop all running processes that use this Oracle home. After you remove the software, you will no longer be able to use your WebLogic domain.

### 10.3.1 Removing the Oracle WebCenter Portal Oracle Home

Removing the Oracle WebCenter Portal Oracle home involves the following:

- [Starting the Oracle WebCenter Portal Oracle Home Deinstaller](#)
- [Following the Oracle WebCenter Portal Oracle Home Deinstaller Screens and Instructions](#)

**10.3.1.1 Starting the Oracle WebCenter Portal Oracle Home Deinstaller** To start the deinstaller, navigate to the *WCP\_ORACLE\_HOME/oui/bin* (on UNIX operating systems) or *WCP\_ORACLE\_HOME\oui\bin* (on Windows operating systems) directory and start the deinstaller.

On UNIX operating systems:

```
./runInstaller -deinstall
```

On Windows operating systems:

```
setup.exe -deinstall
```

On Windows systems, you can also start the deinstaller from the Start menu by selecting **All Programs**, then selecting **Oracle WebCenter Portal 11g - Home1**, then selecting **Uninstall**.

**10.3.1.2 Following the Oracle WebCenter Portal Oracle Home Deinstaller Screens and Instructions** Follow the instructions below to remove the installed software.

1. Welcome Screen

Click **Next**.

2. Deinstall Oracle Home Screen

Verify the Oracle home you are about to deinstall.

Click **Deinstall** to continue.

A warning dialog box will appear. Click **Yes** to confirm that you want to proceed with the deinstallation and remove the Oracle home directory.

3. Deinstallation Progress Screen

This screen shows the progress and status of the deinstallation. No action is required; the installer will automatically advance to the next screen when deinstallation is complete.

4. Deinstallation Complete Screen

Click **Finish**.

5. On Windows operating systems, manually remove the Oracle home directory (even if you answer **Yes** in the warning dialog box).

For example, if your Oracle home directory is

C:\Oracle\Middleware\Oracle\_WC1, then you should navigate to the

C:\Oracle\Middleware directory, right-click on the Oracle\_WC1 folder, and select **Delete**.

### 10.3.2 Deinstalling the Oracle Common Home

Repeat the instructions in [Section 10.3.1, "Removing the Oracle WebCenter Portal Oracle Home"](#) to remove the Oracle Common home. Be sure to start the deinstaller from the *MW\_HOME/oracle\_common/oui/bin* (on UNIX operating systems) or *MW\_HOME\oracle\_common\oui\bin* (on Windows operating systems)

## 10.4 Deinstalling Oracle WebLogic Server

Deinstalling Oracle WebLogic Server involves the following:

- [Starting the Oracle WebLogic Server Deinstaller](#)
- [Following the Oracle WebLogic Server Deinstaller Screens and Instructions](#)

### 10.4.1 Starting the Oracle WebLogic Server Deinstaller

Start the deinstaller from the `uninstall` directory inside your *WebLogic\_Home*. You specified the location of the WebLogic home directory on the [Choose Product Installation Directories Screen](#) in [Section 6, "Installing Oracle WebLogic Server and Creating the Middleware Home"](#).

On UNIX operating systems:

```
./uninstall.sh
```

On Windows operating systems:

```
uninstall.cmd
```

On Windows systems, you can also start the deinstaller from the Start menu by selecting **All Programs**, then selecting **Oracle WebLogic**, then selecting **Uninstall Oracle WebLogic**.

### 10.4.2 Following the Oracle WebLogic Server Deinstaller Screens and Instructions

Follow the instructions in this section to remove Oracle WebLogic Server.

1. Welcome Screen  
Click **Next**.
2. Choose Components Screen  
By default, all components are selected.  
Click **Next**.
3. Uninstalling WebLogic Platform Screen  
Click **Done**.
4. Manually remove the Middleware home directory.

For example, if your Middleware home directory was  
/home/Oracle/Middleware on a UNIX operating system:

```
cd /home/Oracle  
rm -rf Middleware
```

On a Windows operating system, if your Middleware home directory was  
C:\Oracle\Middleware, use a file manager window and navigate to the  
C:\Oracle directory, then right-click on the Middleware folder and select  
**Delete**.

## 10.5 Performing Post-Deinstallation Tasks for on Windows Operating Systems

If you are using a Microsoft Windows operating system, the following tasks should be performed after your software is removed:

- [Removing the Program Groups](#)
- [Rebooting Your System](#)

### 10.5.1 Removing the Program Groups

On Windows systems, you must also manually remove the program groups from the Start menu. You can do this by either:

- Selecting the item in the Start menu, then right-click and select **Delete** to remove the selected item.
- Removing the folder from the directory on your system (for example, the C:\Program Data\Microsoft\Windows\Start Menu\Programs folder).

The following program groups should be removed:

- Oracle Common Home 11g - Home1
- Oracle WebCenter Portal 11g - Home1
- Oracle WebLogic

### 10.5.2 Rebooting Your System

On Windows operating systems, you should reboot your computer after you have finished removing all your programs to ensure proper cleanup.

## 11 Documentation Accessibility

For information about Oracle's commitment to accessibility, visit the Oracle Accessibility Program website at  
<http://www.oracle.com/pls/topic/lookup?ctx=acc&id=docacc>.

### Access to Oracle Support

Oracle customers have access to electronic support through My Oracle Support. For information, visit

<http://www.oracle.com/pls/topic/lookup?ctx=acc&id=info> or visit  
<http://www.oracle.com/pls/topic/lookup?ctx=acc&id=trs> if you are hearing impaired.

Copyright © 2013, Oracle and/or its affiliates. All rights reserved.

This software and related documentation are provided under a license agreement containing restrictions on use and disclosure and are protected by intellectual property laws. Except as expressly permitted in your license agreement or allowed by law, you may not use, copy, reproduce, translate, broadcast, modify, license, transmit, distribute, exhibit, perform, publish, or display any part, in any form, or by any means. Reverse engineering, disassembly, or decompilation of this software, unless required by law for interoperability, is prohibited.

The information contained herein is subject to change without notice and is not warranted to be error-free. If you find any errors, please report them to us in writing.

If this is software or related documentation that is delivered to the U.S. Government or anyone licensing it on behalf of the U.S. Government, the following notice is applicable:

U.S. GOVERNMENT RIGHTS Programs, software, databases, and related documentation and technical data delivered to U.S. Government customers are "commercial computer software" or "commercial technical data" pursuant to the applicable Federal Acquisition Regulation and agency-specific supplemental regulations. As such, the use, duplication, disclosure, modification, and adaptation shall be subject to the restrictions and license terms set forth in the applicable Government contract, and, to the extent applicable by the terms of the Government contract, the additional rights set forth in FAR 52.227-19, Commercial Computer Software License (December 2007). Oracle America, Inc., 500 Oracle Parkway, Redwood City, CA 94065.

This software or hardware is developed for general use in a variety of information management applications. It is not developed or intended for use in any inherently dangerous applications, including applications that may create a risk of personal injury. If you use this software or hardware in dangerous applications, then you shall be responsible to take all appropriate fail-safe, backup, redundancy, and other measures to ensure its safe use. Oracle Corporation and its affiliates disclaim any liability for any damages caused by use of this software or hardware in dangerous applications.

Oracle and Java are registered trademarks of Oracle and/or its affiliates. Other names may be trademarks of their respective owners.

Intel and Intel Xeon are trademarks or registered trademarks of Intel Corporation. All SPARC trademarks are used under license and are trademarks or registered trademarks of SPARC International, Inc. AMD, Opteron, the AMD logo, and the AMD Opteron logo are trademarks or registered trademarks of Advanced Micro Devices. UNIX is a registered trademark of The Open Group.

This software or hardware and documentation may provide access to or information on content, products, and services from third parties. Oracle Corporation and its affiliates are not responsible for and expressly disclaim all warranties of any kind with respect to third-party content, products, and services. Oracle Corporation and its affiliates will not be responsible for any loss, costs, or damages incurred due to your access to or use of third-party content, products, or services.