

# **SPARC T5-1B Server Module Service Manual**



**Part No: E35203-07**  
February 2019



**Part No: E35203-07**

Copyright © 2013, 2019, Oracle and/or its affiliates. All rights reserved.

This software and related documentation are provided under a license agreement containing restrictions on use and disclosure and are protected by intellectual property laws. Except as expressly permitted in your license agreement or allowed by law, you may not use, copy, reproduce, translate, broadcast, modify, license, transmit, distribute, exhibit, perform, publish, or display any part, in any form, or by any means. Reverse engineering, disassembly, or decompilation of this software, unless required by law for interoperability, is prohibited.

The information contained herein is subject to change without notice and is not warranted to be error-free. If you find any errors, please report them to us in writing.

If this is software or related documentation that is delivered to the U.S. Government or anyone licensing it on behalf of the U.S. Government, then the following notice is applicable:

U.S. GOVERNMENT END USERS: Oracle programs, including any operating system, integrated software, any programs installed on the hardware, and/or documentation, delivered to U.S. Government end users are "commercial computer software" pursuant to the applicable Federal Acquisition Regulation and agency-specific supplemental regulations. As such, use, duplication, disclosure, modification, and adaptation of the programs, including any operating system, integrated software, any programs installed on the hardware, and/or documentation, shall be subject to license terms and license restrictions applicable to the programs. No other rights are granted to the U.S. Government.

This software or hardware is developed for general use in a variety of information management applications. It is not developed or intended for use in any inherently dangerous applications, including applications that may create a risk of personal injury. If you use this software or hardware in dangerous applications, then you shall be responsible to take all appropriate fail-safe, backup, redundancy, and other measures to ensure its safe use. Oracle Corporation and its affiliates disclaim any liability for any damages caused by use of this software or hardware in dangerous applications.

Oracle and Java are registered trademarks of Oracle and/or its affiliates. Other names may be trademarks of their respective owners.

Intel and Intel Xeon are trademarks or registered trademarks of Intel Corporation. All SPARC trademarks are used under license and are trademarks or registered trademarks of SPARC International, Inc. AMD, Opteron, the AMD logo, and the AMD Opteron logo are trademarks or registered trademarks of Advanced Micro Devices. UNIX is a registered trademark of The Open Group.

This software or hardware and documentation may provide access to or information about content, products, and services from third parties. Oracle Corporation and its affiliates are not responsible for and expressly disclaim all warranties of any kind with respect to third-party content, products, and services unless otherwise set forth in an applicable agreement between you and Oracle. Oracle Corporation and its affiliates will not be responsible for any loss, costs, or damages incurred due to your access to or use of third-party content, products, or services, except as set forth in an applicable agreement between you and Oracle.

**Access to Oracle Support**

Oracle customers that have purchased support have access to electronic support through My Oracle Support. For information, visit <http://www.oracle.com/pls/topic/lookup?ctx=acc&id=info> or visit <http://www.oracle.com/pls/topic/lookup?ctx=acc&id=trs> if you are hearing impaired.

**Référence: E35203-07**

Copyright © 2013, 2019, Oracle et/ou ses affiliés. Tous droits réservés.

Ce logiciel et la documentation qui l'accompagne sont protégés par les lois sur la propriété intellectuelle. Ils sont concédés sous licence et soumis à des restrictions d'utilisation et de divulgation. Sauf stipulation expresse de votre contrat de licence ou de la loi, vous ne pouvez pas copier, reproduire, traduire, diffuser, modifier, accorder de licence, transmettre, distribuer, exposer, exécuter, publier ou afficher le logiciel, même partiellement, sous quelque forme et par quelque procédé que ce soit. Par ailleurs, il est interdit de procéder à toute ingénierie inverse du logiciel, de le désassembler ou de le décompiler, excepté à des fins d'interopérabilité avec des logiciels tiers ou tel que prescrit par la loi.

Les informations fournies dans ce document sont susceptibles de modification sans préavis. Par ailleurs, Oracle Corporation ne garantit pas qu'elles soient exemptes d'erreurs et vous invite, le cas échéant, à lui en faire part par écrit.

Si ce logiciel, ou la documentation qui l'accompagne, est livré sous licence au Gouvernement des Etats-Unis, ou à quiconque qui aurait souscrit la licence de ce logiciel pour le compte du Gouvernement des Etats-Unis, la notice suivante s'applique :

U.S. GOVERNMENT END USERS: Oracle programs, including any operating system, integrated software, any programs installed on the hardware, and/or documentation, delivered to U.S. Government end users are "commercial computer software" pursuant to the applicable Federal Acquisition Regulation and agency-specific supplemental regulations. As such, use, duplication, disclosure, modification, and adaptation of the programs, including any operating system, integrated software, any programs installed on the hardware, and/or documentation, shall be subject to license terms and license restrictions applicable to the programs. No other rights are granted to the U.S. Government.

Ce logiciel ou matériel a été développé pour un usage général dans le cadre d'applications de gestion des informations. Ce logiciel ou matériel n'est pas conçu ni n'est destiné à être utilisé dans des applications à risque, notamment dans des applications pouvant causer un risque de dommages corporels. Si vous utilisez ce logiciel ou ce matériel dans le cadre d'applications dangereuses, il est de votre responsabilité de prendre toutes les mesures de secours, de sauvegarde, de redondance et autres mesures nécessaires à son utilisation dans des conditions optimales de sécurité. Oracle Corporation et ses affiliés déclinent toute responsabilité quant aux dommages causés par l'utilisation de ce logiciel ou matériel pour des applications dangereuses.

Oracle et Java sont des marques déposées d'Oracle Corporation et/ou de ses affiliés. Tout autre nom mentionné peut correspondre à des marques appartenant à d'autres propriétaires qu'Oracle.

Intel et Intel Xeon sont des marques ou des marques déposées d'Intel Corporation. Toutes les marques SPARC sont utilisées sous licence et sont des marques ou des marques déposées de SPARC International, Inc. AMD, Opteron, le logo AMD et le logo AMD Opteron sont des marques ou des marques déposées d'Advanced Micro Devices. UNIX est une marque déposée de The Open Group.

Ce logiciel ou matériel et la documentation qui l'accompagne peuvent fournir des informations ou des liens donnant accès à des contenus, des produits et des services émanant de tiers. Oracle Corporation et ses affiliés déclinent toute responsabilité ou garantie expresse quant aux contenus, produits ou services émanant de tiers, sauf mention contraire stipulée dans un contrat entre vous et Oracle. En aucun cas, Oracle Corporation et ses affiliés ne sauraient être tenus pour responsables des pertes subies, des coûts occasionnés ou des dommages causés par l'accès à des contenus, produits ou services tiers, ou à leur utilisation, sauf mention contraire stipulée dans un contrat entre vous et Oracle.

**Accès aux services de support Oracle**

Les clients Oracle qui ont souscrit un contrat de support ont accès au support électronique via My Oracle Support. Pour plus d'informations, visitez le site <http://www.oracle.com/pls/topic/lookup?ctx=acc&id=info> ou le site <http://www.oracle.com/pls/topic/lookup?ctx=acc&id=trs> si vous êtes malentendant.



# Contents

---

<b>Using This Documentation .....</b>	<b>9</b>
Product Documentation Library .....	9
Feedback .....	9
 <b>Identifying Components .....</b>	 <b>11</b>
Front and Rear Panel (Service) .....	12
Component Locations .....	13
Component Task Reference .....	15
 <b>Detecting and Managing Faults .....</b>	 <b>17</b>
Understanding Diagnostics and Tools .....	17
Diagnostics Process .....	18
Tool Availability .....	20
▼ Log Into Oracle ILOM (Service) .....	21
Oracle ILOM Service-Related Commands .....	22
Interpreting LEDs .....	23
Front Panel Controls and LEDs .....	24
Configuring POST .....	26
POST Overview .....	26
Oracle ILOM Properties That Affect POST Behavior .....	27
▼ Configure POST .....	29
▼ Run POST With Maximum Testing .....	31
Managing Faults .....	32
PSH Overview .....	32
▼ Check for Faults .....	33
▼ Clear a Fault .....	35
Viewing Log Files and System Messages .....	36
▼ Check the Message Buffer .....	37

▼ View Log Files (Oracle Solaris) .....	37
▼ View Log Files (Oracle ILOM) .....	38
<b>Preparing for Service .....</b>	<b>39</b>
Safety Information .....	39
Safety Symbols .....	40
ESD Measures .....	40
Antistatic Wrist Strap Use .....	40
Antistatic Mat .....	41
Tools Needed for Service .....	41
▼ Find the Modular System Chassis Serial Number .....	41
▼ Find the Server Module Serial Number .....	42
▼ Locate the Server Module .....	43
Preparing the Server Module for Removal .....	44
▼ Shut Down the OS and Host (Commands) .....	44
▼ Shut Down the OS and Host (Power Button – Graceful) .....	45
▼ Shut Down the OS and Host (Emergency Shutdown) .....	46
▼ Set the Server Module to a Ready-to-Remove State .....	47
▼ Remove the Server Module From the Modular System .....	48
Accessing Internal Components .....	50
▼ Prevent ESD Damage .....	50
▼ Remove the Cover .....	51
<b>Servicing Drives .....</b>	<b>53</b>
Drive Configuration .....	54
Drive LEDs .....	56
Drive Hot-Plugging Guidelines .....	57
▼ Determine Which Drive Is Faulty .....	57
▼ Remove a Drive or Drive Filler .....	58
▼ Install a Drive or Drive Filler .....	60
▼ Verify a Drive .....	61
<b>Servicing DIMMs .....</b>	<b>63</b>
DIMM Configuration .....	63
DIMM FRU Names .....	64
DIMM LEDs .....	66

---

▼ Determine Which DIMM Is Faulty .....	67
▼ Remove a DIMM .....	68
▼ Install a DIMM .....	69
▼ Verify a DIMM .....	70
<b>Servicing the FEM .....</b>	<b>73</b>
FEM Configuration .....	73
▼ Remove a FEM .....	75
▼ Install a FEM .....	75
<b>Servicing the SP Card .....</b>	<b>77</b>
▼ Remove the SP Card .....	77
▼ Install the SP Card .....	78
<b>Servicing the ID PROM .....</b>	<b>81</b>
▼ Remove the ID PROM .....	81
▼ Install the ID PROM .....	83
▼ Verify the ID PROM .....	85
<b>Servicing the USB Drive .....</b>	<b>87</b>
▼ Remove the USB Drive .....	87
▼ Install a USB Drive .....	89
<b>Servicing the Battery .....</b>	<b>91</b>
▼ Remove the Battery .....	91
▼ Install the Battery .....	92
<b>Servicing the Enclosure Assembly (Motherboard) .....</b>	<b>95</b>
▼ Transfer Components to the New Enclosure Assembly .....	95
<b>Returning the Server Module to Operation .....</b>	<b>99</b>
▼ Replace the Cover .....	99
▼ Install the Server Module Into the Modular System .....	100
Powering On the Host .....	102
▼ Power On the Host (Oracle ILOM) .....	102

▼ Power On the Host (Power Button) ..... 103

**Glossary** ..... 105

**Index** ..... 111

## Using This Documentation

---

- **Overview** – Describes how to troubleshoot and maintain the server
- **Audience** – Technicians, system administrators, and authorized service providers
- **Required knowledge** – This guide is intended for trained technicians and authorized service personnel who have been instructed on the hazards within the equipment and are qualified to remove and replace hardware

## Product Documentation Library

Documentation and resources for this product and related products are available at <http://www.oracle.com/goto/t5-1b/docs>.

## Feedback

Provide feedback about this documentation at <http://www.oracle.com/goto/docfeedback>.



# Identifying Components

---

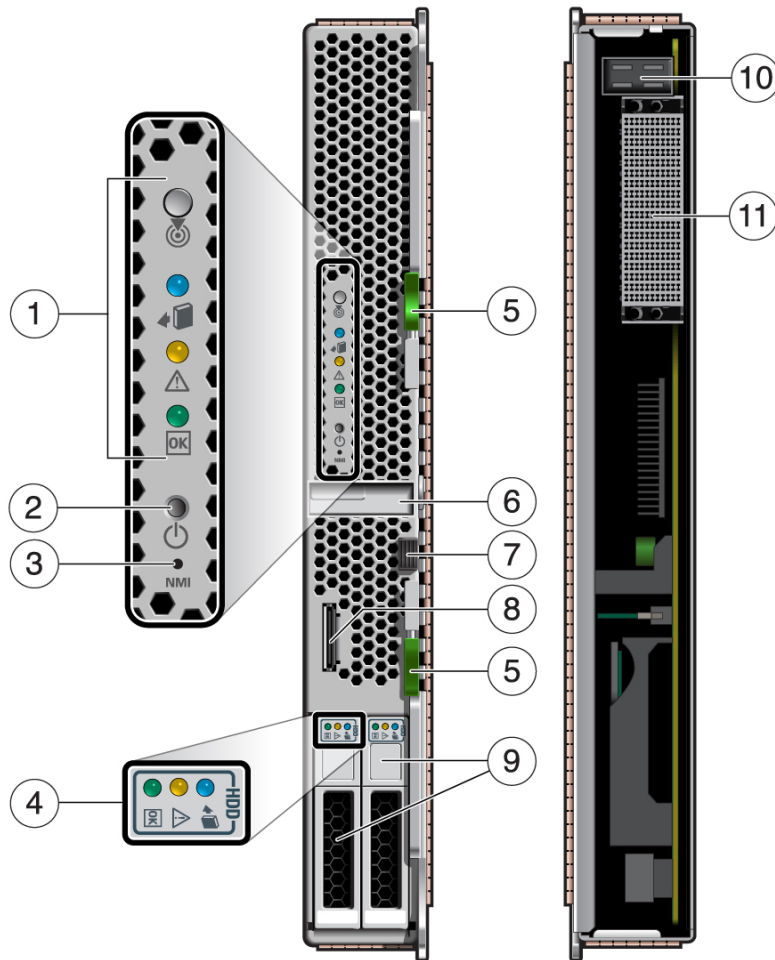
These topics explain the components of the server module, focusing on the components that can be removed and replaced for service.

- [“Front and Rear Panel \(Service\)” on page 12](#)
- [“Component Locations” on page 13](#)
- [“Component Task Reference” on page 15](#)

## **Related Information**

- [“Detecting and Managing Faults” on page 17](#)
- [“Servicing the Enclosure Assembly \(Motherboard\)” on page 95](#)

## Front and Rear Panel (Service)



No.	Description	Links
1	System LEDs	<a href="#">“Interpreting LEDs” on page 23</a>
2	Power button	<a href="#">“Shut Down the OS and Host (Power Button – Graceful)” on page 45</a>
3	Reset button: NMI (for service use only)	



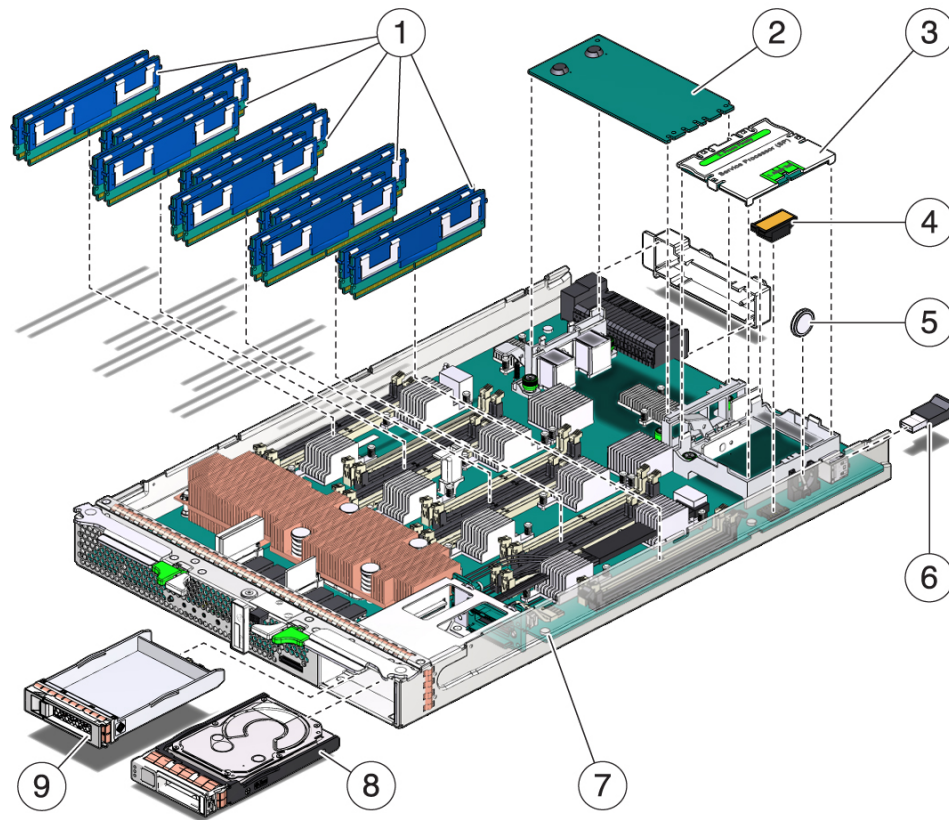
No.	Description	Links
4	Drive LEDs	<a href="#">“Servicing Drives” on page 53</a>
5	Ejector arm latch	<a href="#">“Remove the Server Module From the Modular System” on page 48</a>
6	RFID tag (provides the serial number of the server module)	<a href="#">“Find the Server Module Serial Number” on page 42</a>
7	Top cover release button	<a href="#">“Remove the Cover” on page 51</a>
8	UCP connector	<i>Server Module Installation</i> , USB ports
9	Drive slots	<a href="#">“Servicing Drives” on page 53</a>
10	Rear chassis power connector	
11	Rear chassis data connection	

### Related Information

- [“Interpreting LEDs” on page 23](#)
- [“Component Locations” on page 13](#)

## Component Locations

This topic identifies components in the server module that you can install, remove, or replace.



No.	Component	Oracle ILOM Target	Links
1	DIMMs	/SYS/MB/CM0/CMP/BOBn/CHn/Dn	<a href="#">“Servicing DIMMs” on page 63</a>
2	FEM	/SYS/MB/FEM0	<a href="#">“Servicing the FEM” on page 73</a>
3	SP	/SYS/MB/SP	<a href="#">“Servicing the SP Card” on page 77</a>
4	ID PROM	/SYS/MB/SCC	<a href="#">“Servicing the ID PROM” on page 81</a>
5	Battery	/SYS/MB/BAT	<a href="#">“Servicing the Battery” on page 91</a>
6	USB drive		<a href="#">“Servicing the USB Drive” on page 87</a>
7	Enclosure assembly (motherboard)	/SYS/MB	<a href="#">“Servicing the Enclosure Assembly (Motherboard)” on page 95</a>
8	Drive (HD or SSD)	/SYS/HDDn	<a href="#">“Servicing Drives” on page 53</a>
9	Drive filler		<a href="#">“Servicing Drives” on page 53</a>

### Related Information

- [“Front and Rear Panel \(Service\)” on page 12](#)
- [“Detecting and Managing Faults” on page 17](#)
- [“Servicing the Enclosure Assembly \(Motherboard\)” on page 95](#)
- [“Component Task Reference” on page 15](#)

## Component Task Reference

This table identifies the server components that are replaceable or must be removed as part of a service operation.

Component	Oracle ILOM Target	Service Links
Battery	/SYS/MB/BAT	<a href="#">“Servicing the Battery” on page 91</a>
DIMM	/SYS/MB/CMP0/CMP/BOBn/CHn/Dn	<a href="#">“Servicing DIMMs” on page 63</a>
Drives	/SYS/HDDn	<a href="#">“Servicing Drives” on page 53</a>
FEM	/SYS/MB/FEM	<a href="#">“Servicing the FEM” on page 73</a>
ID PROM	/SYS/MB/SCC	<a href="#">“Servicing the ID PROM” on page 81</a>
Motherboard	/SYS/MB	<a href="#">“Servicing the Enclosure Assembly (Motherboard)” on page 95</a>
SP	/SYS/MB/SP	<a href="#">“Servicing the SP Card” on page 77</a>
USB drive		<a href="#">“Servicing the USB Drive” on page 87</a>

### Related Information

- [“Front and Rear Panel \(Service\)” on page 12](#)
- [“Detecting and Managing Faults” on page 17](#)
- [“Servicing the Enclosure Assembly \(Motherboard\)” on page 95](#)
- [“Component Locations” on page 13](#)



## Detecting and Managing Faults

---

These topics explain how to use various diagnostic tools to monitor server module status and troubleshoot faults.

- [“Understanding Diagnostics and Tools” on page 17](#)
- [“Interpreting LEDs” on page 23](#)
- [“Configuring POST” on page 26](#)
- [“Managing Faults” on page 32](#)
- [“Viewing Log Files and System Messages” on page 36](#)

### Related Information

- [“Identifying Components” on page 11](#)
- [“Preparing for Service” on page 39](#)
- [“Returning the Server Module to Operation” on page 99](#)

## Understanding Diagnostics and Tools

When a problem arises, use these topics to find the source of the problem and to select a course of action.

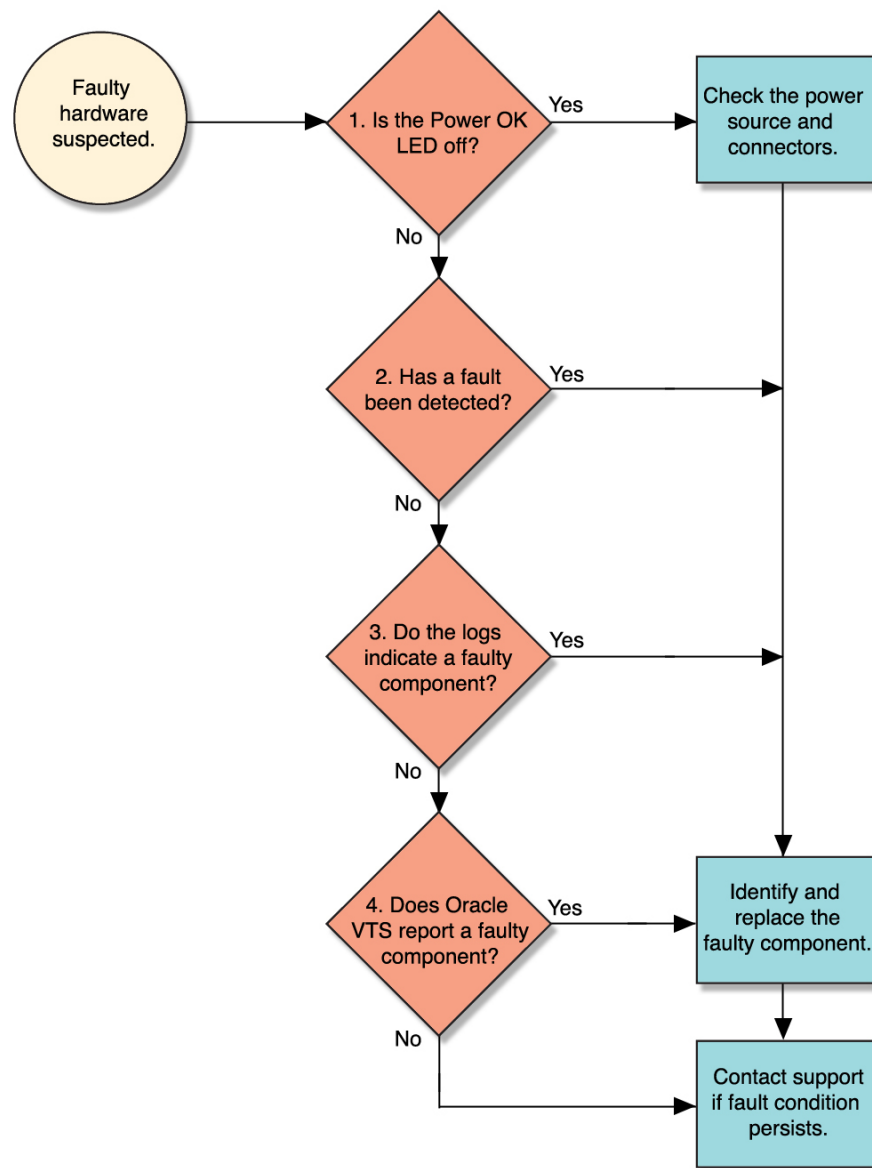
- [“Diagnostics Process” on page 18](#)
- [“Tool Availability” on page 20](#)
- [“Log Into Oracle ILOM \(Service\)” on page 21](#)
- [“Oracle ILOM Service-Related Commands” on page 22](#)

### Related Information

- [“Component Task Reference” on page 15](#)

## **Diagnostics Process**

Depending on the fault, you might need to perform all of the steps or just some of them. You also might have to run diagnostic software that needs to be installed or enabled.



This table provides descriptions of the troubleshooting actions that you should take to identify a faulty component, along with links to topics with additional information on each diagnostic action.

**Note** - The diagnostic tools you use, and the order in which you use them, depend on the nature of the problem you are troubleshooting.

Step	Diagnostic Action	Possible Outcome	Links
1.	Confirm that the Power OK LED is illuminated.	If these LEDs are not illuminated, check the power source and power connections to the modular system.	■ <a href="#">“Interpreting LEDs” on page 23</a>
2.	Check the server for detected faults.	Use these tools to check for faults: <ul style="list-style-type: none"> <li>■ Service Action Required LED.</li> <li>■ <code>fmadm faulty</code> from the Oracle Solaris prompt or through the Oracle ILOM fault management shell.</li> <li>■ <code>show faulty</code> from the Oracle ILOM. prompt or through the Open Problems BUI</li> <li>■ Datacenter management tools, such as Oracle Enterprise Manager Ops Center.</li> </ul>	<a href="#">“Check for Faults” on page 33</a>
3.	Check the log files for fault information.	If system messages indicate a faulty component, replace it.	<a href="#">“Viewing Log Files and System Messages” on page 36</a>
4.	Run Oracle VTS software.	To run Oracle VTS, the server must be running the Oracle Solaris OS. <ul style="list-style-type: none"> <li>■ If Oracle VTS reports a faulty component, replace it.</li> <li>■ If Oracle VTS does not report a faulty component, run POST.</li> </ul>	<ul style="list-style-type: none"> <li>■ Refer to the Oracle VTS software documentation.</li> <li>■ <a href="#">“Configuring POST” on page 26</a></li> <li>■ Contact technical support if the problem persists.</li> </ul>

## Related Information

- [“Understanding Diagnostics and Tools” on page 17](#)
- [“Log Into Oracle ILOM \(Service\)” on page 21](#)

## Tool Availability

This table describes what tools are available at the different states in which the server module operates.

Tool	Standby Power	OpenBoot Prompt	Oracle Solaris Prompt
Status LEDs	Yes	Yes	Yes
PSH commands	Yes	No	Yes
Oracle ILOM logs and commands	Yes	No	No
OpenBoot commands	No	Yes	No



Tool	Standby Power	OpenBoot Prompt	Oracle Solaris Prompt
Oracle Solaris logs and commands	No	No	Yes
Oracle VTS	No	No	Yes (if installed)
Third-party software	No	No	Yes (if installed)

## Related Information

- [“Diagnostics Process” on page 18](#)
- [“Log Into Oracle ILOM \(Service\)” on page 21](#)
- [“Oracle ILOM Service-Related Commands” on page 22](#)

## ▼ Log Into Oracle ILOM (Service)

Use this procedure to log into Oracle ILOM through one of these modular system components:

- **CMM** – Through a terminal window on a system that is on the same network as the CMM.

---

**Note** - Different versions of Oracle ILOM might be running on the CMM. These instructions use CMM Oracle ILOM 3.2.1. If you need instructions for a different version, refer to the Oracle ILOM documentation.

---

- **Server module SP** – Through a terminal window on a system that is on the same network as the server module SP's NET MGT port.

For more information about the various ways you can access Oracle ILOM, refer to the topic called plan communication with the server module during installation in *server module Installation*.

### 1. At the terminal prompt, type:

```
% ssh root@xxx.xxx.xxx.xxx
Password: password
```

```
Oracle (R) Integrated Lights Out Manager
Version 3.2.1
Copyright (c) 2013, Oracle and/or its affiliates, Inc. All rights reserved.
->
```

Replace xxx.xxx.xxx.xxx with either the IP address of the CMM or server module's SP.

2. If you logged into the CMM, navigate to the server module.

```
-> cd /Servers/Blades/Blade_n
```

Replace *n* with a number that identifies the chassis slot in the modular system where the target server module is installed.

3. (Optional) Enable the Oracle ILOM legacy target names.

In current versions of Oracle ILOM, the target names for /SYS, /SP, and /CH are not displayed by default. Even though the names are not displayed, you can use these target names in commands at any time. You can also set a property that displays these target names.

Example:

```
-> set SP/cli legacy_targets=enabled
Set 'legacy_targets' to 'enabled'
```

---

**Note** - In this manual, the legacy targets (/SYS and /SP) are sometimes used in the command examples and shown in the output examples. For more information, refer to the Oracle ILOM documentation.

---

### Related Information

- [“Diagnostics Process” on page 18](#)
- [“Tool Availability” on page 20](#)
- [“Oracle ILOM Service-Related Commands” on page 22](#)

## Oracle ILOM Service-Related Commands

You can use these Oracle ILOM shell commands when performing service-related tasks.

Oracle ILOM Command	Description
<code>fmadm acquit <i>message_ID</i></code>	Manually clears PSH faults. <b>Note</b> - To run this command in Oracle ILOM, you must start the fault management shell. See <a href="#">“Clear a Fault” on page 35</a> .
<code>fmadm faulty</code>	Displays the list of faults detected by PSH. <b>Note</b> - To run this command in Oracle ILOM, you must start the fault management shell. See <a href="#">“Check for Faults” on page 33</a> .
<code>help [<i>command</i>]</code>	Displays a list of all available commands with syntax and descriptions. Specifying a command name as an option displays help for that command.

Oracle ILOM Command	Description
<code>reset /SP</code>	Reboots the SP.
<code>reset /System</code>	Generates a hardware reset on the host server module.
<code>set /HOST send_break_action=break</code>	Takes the host server module from the OS to either kmdb or OBP (equivalent to a Stop-A), depending on the mode Oracle Solaris software was booted.
<code>set /HOST/bootmode property=value</code>	Controls the host server module OBP firmware method of booting. <i>property</i> is state, config, or script.
<code>set /HOST keyswitch_state=value</code>	Sets the virtual keyswitch. <i>value</i> is normal, standby, diag, or locked.
<code>set /System locator_indicator=value</code>	Turns the Locator LED on the server module on or off. <i>value</i> is on or off.
<code>show /HOST</code>	Displays information about the host firmware version and configuration.
<code>show /HOST/console/history</code>	Displays the contents of the host's console buffer.
<code>show /SP/logs/event/list</code>	Displays the history of all events logged in the SP event buffers (in RAM or the persistent buffers).
<code>show /SYS</code>	Displays information about the server module, including the serial number.
<code>show /HOST keyswitch_state</code>	Displays the status of the virtual keyswitch.
<code>show /System</code>	Displays information about the operating state of the host, serial numbers, network addresses, and whether the hardware is providing service.
<code>show /System locator_indicator</code>	Displays the current state of the Locator LED.
<code>show faulty</code>	Displays current server module faults.
<code>start /HOST/console</code>	Connects to the host console.
<code>start /System</code>	Powers on the host server module.
<code>stop /System</code>	Powers off the host server module.

## Related Information

- [“Tool Availability” on page 20](#)

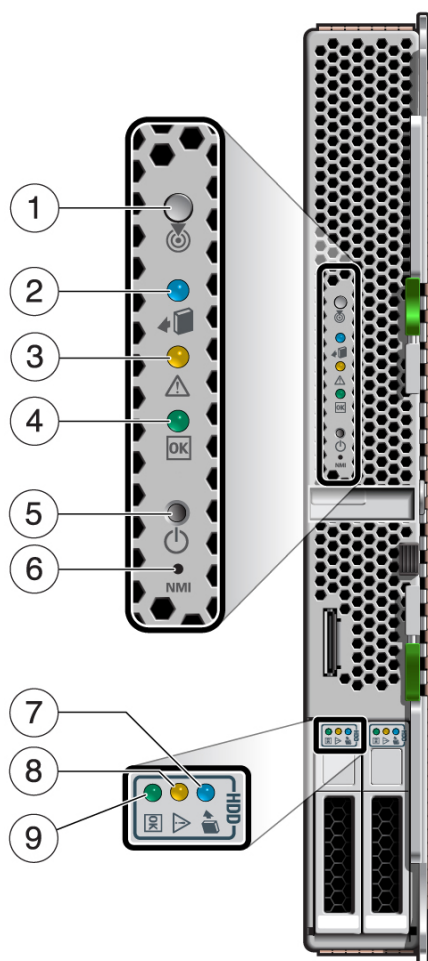
## Interpreting LEDs









Use these steps to determine if an LED indicates that a component has failed in the server module.

Steps	Description	Links
1.	Check the LEDs on the front and rear of the server module.	■ <a href="#">“Front Panel Controls and LEDs” on page 24</a>
2.	Check the LEDs on the individual components.	■ <a href="#">“Determine Which Drive Is Faulty” on page 57</a> ■ <a href="#">“Determine Which DIMM Is Faulty” on page 67</a>

- “Understanding Diagnostics and Tools” on page 17
- “Configuring POST” on page 26
- “Managing Faults” on page 32
- “Viewing Log Files and System Messages” on page 36

## Front Panel Controls and LEDs



No.	LED or Button	Label	Description
1	Locator LED (white) and button		<p>You can turn on the Locator LED to identify a particular server module. When on, the LED blinks rapidly.</p> <p>See <a href="#">“Locate the Server Module” on page 43</a></p> <p>The Locator LED also functions as the Physical Presence switch.</p>
2	Ready to Remove LED (blue)		<p>Indicates whether or not the server module is safe to remove from the chassis:</p> <ul style="list-style-type: none"> <li>■ <b>Steady on</b> – The server module is in a state that is safe to remove from the chassis.</li> <li>■ <b>Off</b> – The server module is not in a state that is safe to remove from the chassis.</li> </ul> <p>See <a href="#">“Preparing the Server Module for Removal” on page 44</a>.</p>
3	Service Action Required LED (amber)		<p>Indicates these conditions:</p> <ul style="list-style-type: none"> <li>■ <b>Off</b> – No faults detected.</li> <li>■ <b>Steady on</b> – One or more fault conditions occurred and the server module requires service.</li> </ul> <p>The <code>fmadm faulty</code> command provides details about any faults that cause this indicator to light. See <a href="#">“Managing Faults” on page 32</a>.</p> <p>Under some fault conditions, individual component fault LEDs are turned on in addition to the Service Action Required LED. See <a href="#">“Drive LEDs” on page 56</a> and <a href="#">“DIMM FRU Names” on page 64</a>.</p>
4	Power OK LED (green)		<p>Indicates these conditions:</p> <ul style="list-style-type: none"> <li>■ <b>Off</b> – Host is not running in its normal state. Host power might be off. The SP might be running.</li> <li>■ <b>Steady on</b> – Host is powered on and is running in its normal operating state. No service actions are required.</li> <li>■ <b>Fast blink</b> – Host is running in standby mode and can be quickly returned to full function.</li> <li>■ <b>Slow blink</b> – A normal, but transitory activity is taking place. Slow blinking might indicate that diagnostics are running, or the host is booting.</li> </ul>
5	On/Standby button		<p>The recessed Power button toggles the host on or off.</p> <p>See <a href="#">“Shut Down the OS and Host (Power Button – Graceful)” on page 45</a>.</p>
6	Reset button	NMI	For authorized Oracle service use only.
7	Drive Ready to Remove LED (blue)		<p>Indicates that the drive can be removed during a hot-plug operation.</p> <p>See <a href="#">“Remove a Drive or Drive Filler” on page 58</a>.</p>
8	Drive Service Action Required LED (amber)		<p>Indicates that the drive has experienced a fault condition.</p> <p>See <a href="#">“Determine Which Drive Is Faulty” on page 57</a>.</p>
9	Drive OK/Activity LED (green)		<p>Indicates this drive status:</p> <ul style="list-style-type: none"> <li>■ <b>On</b> – Drive is idle and available for use.</li> <li>■ <b>Off</b> – Read or write activity is in progress.</li> </ul>

No.	LED or Button	Label	Description
			<a href="#">“Verify a Drive” on page 61.</a>

### Related Information

- [“Understanding Diagnostics and Tools” on page 17](#)

## Configuring POST

These topics explain how to configure POST as a diagnostic tool.

- [“POST Overview” on page 26](#)
- [“Oracle ILOM Properties That Affect POST Behavior” on page 27](#)
- [“Configure POST” on page 29](#)
- [“Run POST With Maximum Testing” on page 31](#)

### Related Information

- [“Understanding Diagnostics and Tools” on page 17](#)
- [“Interpreting LEDs” on page 23](#)
- [“Managing Faults” on page 32](#)
- [“Viewing Log Files and System Messages” on page 36](#)

## POST Overview

POST is a group of PROM-based tests that run when the server module is powered on or when it is reset. POST checks the basic integrity of the critical hardware components in the server module.

You can set Oracle ILOM properties to control various aspects of POST operations. For example, you can specify the events that cause POST to run, the level of testing POST performs, and the amount of diagnostic information POST displays. These properties are described in [“Oracle ILOM Properties That Affect POST Behavior” on page 27](#).

If POST detects a faulty component, the component is disabled automatically. If the server is able to run without the disabled component, the server module boots when POST completes

its tests. For example, if POST detects a faulty processor core, the core is disabled, POST completes its test sequence, and the server module boots using the remaining cores.

### Related Information

- [“Oracle ILOM Properties That Affect POST Behavior” on page 27](#)
- [“Configure POST” on page 29](#)
- [“Run POST With Maximum Testing” on page 31](#)

## Oracle ILOM Properties That Affect POST Behavior

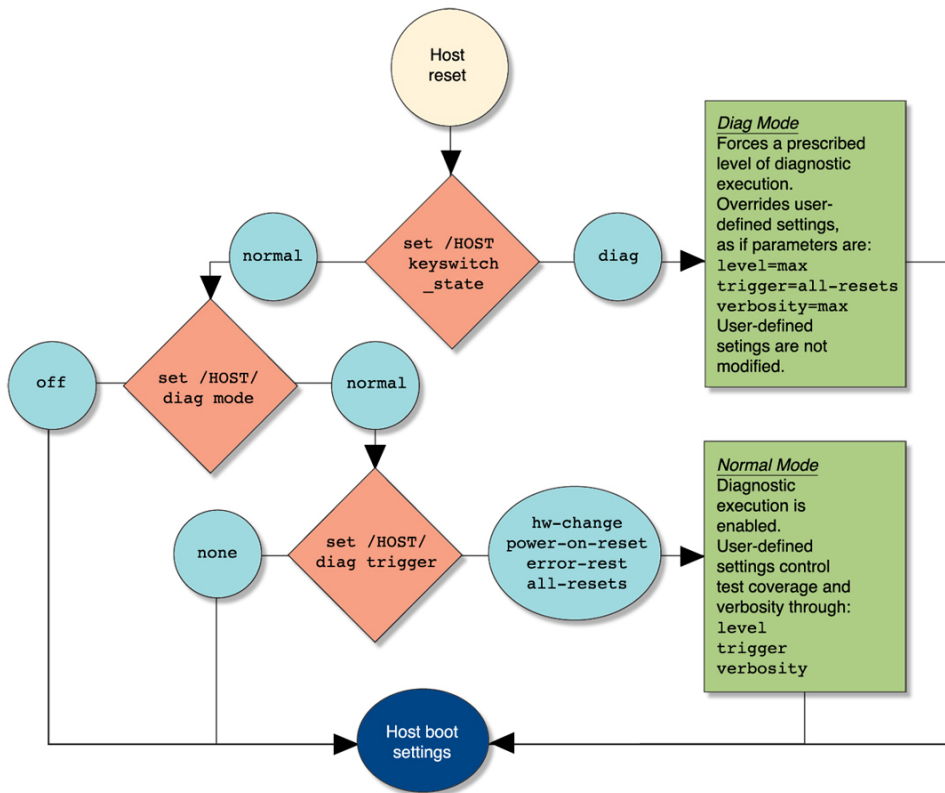
**Note** - The value of `keyswitch_state` must be `normal` when individual POST parameters are changed.

Parameter	Values	Description
/HOST/keys witch_state	normal	The server can power on and run POST (based on the other parameter settings). This parameter overrides all other commands.
	diag	The server runs POST based on predetermined settings.
	standby	The server cannot power on.
	locked	The server can power on and run POST, but no flash updates can be made.
/HOST/diag mode	none	POST does not run.
	normal	POST runs according to diag level value.
/HOST/diag level	max	If diag mode=normal, runs all the minimum tests plus extensive processor and memory tests.
	min	If diag mode=normal, runs minimum set of tests.
/HOST/diag trigger	none	Does not run POST on reset.
	hw-change	(Default) Runs POST following a FRU replacement or an AC power cycle.
	hw_change_level	<ul style="list-style-type: none"> <li>■ max (default) — Runs the maximum set of tests.</li> <li>■ min -- Runs the minimum set of tests.</li> </ul>
	hw_change_verbosity	<ul style="list-style-type: none"> <li>■ min (default) — Displays the minimum level of output.</li> <li>■ max — Displays information for each step.</li> <li>■ normal — Displays a moderate amount of information, including component names and test results.</li> </ul>

Parameter	Values	Description
	power-on-reset	<ul style="list-style-type: none"> <li>■ debug — Displays extensive debugging information.</li> <li>■ none — Disables the output.</li> </ul>
		Runs POST on every power on.
	power_on_level	<ul style="list-style-type: none"> <li>■ max (default) — Runs the maximum set of tests.</li> <li>■ min — Runs the minimum set of tests.</li> </ul>
	power_on_verbosity	<ul style="list-style-type: none"> <li>■ min (default) — Displays the minimum level of output.</li> <li>■ max — Displays information for each step.</li> <li>■ normal — Displays a moderate amount of information, including component names and test results.</li> <li>■ debug — Displays extensive debugging information.</li> <li>■ none — Disables the output.</li> </ul>
		(Default) Runs POST if fatal errors are detected.
	error-reset	
	error_reset_level	<ul style="list-style-type: none"> <li>■ max (default) — Runs the maximum set of tests.</li> <li>■ min — Runs a minimum set of tests.</li> </ul>
	error_reset_verbosity	<ul style="list-style-type: none"> <li>■ min (default) — Displays the minimum level of output.</li> <li>■ max — Displays information for each step.</li> <li>■ normal — Displays a moderate amount of information, including component names and test results.</li> <li>■ debug — Displays extensive debugging information.</li> <li>■ none — Disables the output.</li> </ul>
/HOST/diag verbosity	all-resets	Runs POST after any reset.
	normal	Displays all test and informational messages in POST output.
	min	Displays functional tests with a banner and pinwheel in POST output.
	max	Displays all test, informational, and some debugging messages in POST output.
	debug	Displays extensive debugging information.
	none	Does not display POST output.

This flowchart illustrates the same set of Oracle ILOM set command variables.





### Related Information

- [“POST Overview” on page 26](#)
- [“Configure POST” on page 29](#)
- [“Run POST With Maximum Testing” on page 31](#)

## ▼ Configure POST

If you are accessing the server module through the CMM, prepend each target path with /Servers/Blades/Blade\_*n*, where *n* is the slot in which the server module is installed.

1. **Log into Oracle ILOM.**

See [“Log Into Oracle ILOM \(Service\)” on page 21](#).

**2. Set the virtual keyswitch to the value that corresponds to the POST configuration you want to run.**

This example sets the virtual keyswitch to `normal`, which configures POST to run according to other parameter values.

```
-> set /HOST keyswitch_state=normal
Set keyswitch_state to 'Normal'
```

For possible values for the `keyswitch_state` parameter, see [“Oracle ILOM Properties That Affect POST Behavior” on page 27](#).

**3. If the virtual keyswitch is set to `normal`, and you want to define the `mode`, `level`, `verbosity`, or `trigger`, set the respective parameters.**

Syntax:

```
set /HOST/diag property=value
```

See [“Oracle ILOM Properties That Affect POST Behavior” on page 27](#) for a list of parameters and values.

Examples:

```
-> set /HOST/diag mode=normal
-> set /HOST/diag verbosity=max
```

**4. View the POST settings.**

Example:

```
-> show /HOST/diag

/HOST/diag
Targets:

Properties:
  level = min
  mode = normal
  trigger = power-on-reset error-reset
  verbosity = normal

Commands:
  cd
  set
```

```
show
->
```

### Related Information

- [“POST Overview” on page 26](#)
- [“Oracle ILOM Properties That Affect POST Behavior” on page 27](#)
- [“Run POST With Maximum Testing” on page 31](#)

## ▼ Run POST With Maximum Testing

Use this procedure to configure the server module to run the maximum level of POST.

If you are accessing the server module through the CMM, prepend each target path with `/Servers/Blades/Blade_n`, where *n* is the slot in which the server module is installed. For example, set `/HOST keyswitch_state=diag` should be entered as set `/Servers/Blades/Blade_n/HOST keyswitch_state=diag`.

### 1. Log into Oracle ILOM.

See [“Log Into Oracle ILOM \(Service\)” on page 21](#).

### 2. Set the virtual keyswitch to diag so that POST runs in service mode.

```
-> set /HOST keyswitch_state=diag
Set keyswitch_state to 'Diag'
```

### 3. Reset the server so that POST runs.

There are several ways to initiate a reset. This example shows a reset using the `reset` command.

```
-> reset /System
Are you sure you want to reset /System (y/n)? y
Resetting /System
```

### Related Information

- [“POST Overview” on page 26](#)
- [“Oracle ILOM Properties That Affect POST Behavior” on page 27](#)
- [“Configure POST” on page 29](#)

## Managing Faults

These topics describe the PSH feature.

- [“PSH Overview” on page 32](#)
- [“Check for Faults” on page 33](#)
- [“Clear a Fault” on page 35](#)

### Related Information

- [“Understanding Diagnostics and Tools” on page 17](#)
- [“Interpreting LEDs” on page 23](#)
- [“Configuring POST” on page 26](#)
- [“Viewing Log Files and System Messages” on page 36](#)

## PSH Overview

PSH provides problem diagnosis on the SP and the host. Regardless of where a fault occurs, you can view and manage the fault diagnosis from the SP or the host.

When possible, PSH initiates steps to take the component offline. PSH also logs the fault to the `syslogd` daemon and provides a fault notification with a message ID. You can use the message ID to get additional information about the problem from the knowledge article database.

A PSH console message provides this information about each detected fault:

- Type
- Severity
- Description
- Automated response
- Impact
- Suggested actions for system administrator

If PSH detects a faulty component, use the `fmadm faulty` command to display information about the fault. See [“Check for Faults” on page 33](#).

### Related Information

- [“Check for Faults” on page 33](#)

- [“Clear a Fault” on page 35](#)

## ▼ Check for Faults

The `fmadm faulty` command displays the list of faults detected by PSH. You can run this command from either the Oracle Solaris OS or through the Oracle ILOM fault management shell.

The example used in this procedure checks for faults through Oracle ILOM.

If you are accessing the server module from the CMM, prepend each target path with `/Servers/Blades/Blade_n`, where *n* is the slot in which the server module is installed. For example, `start /SP/faultmgmt/shell` should be entered as `start /Servers/Blades/Blade_n/SP/faultmgmt/shell`.

- 1. Access Oracle ILOM or log into the Oracle Solaris OS.**

See [“Log Into Oracle ILOM \(Service\)” on page 21](#).

- 2. (Oracle ILOM) Start the Oracle ILOM fault management shell.**

Skip this step if you are checking for faults through the Oracle Solaris OS.

```
-> start /SP/faultmgmt/shell
Are you sure you want to start /SP/faultmgmt/shell
(y/n)? y

faultmgmtsp>
```

- 3. Check for PSH-diagnosed faults.**

This example shows how to check for faults through the Oracle ILOM fault management shell.

```
faultmgmtsp> fmadm faulty
```

Time	UUID	msgid	Severity
2013-01-08/12:13:42	59b2d926-4896-e979-e85c-cfedb5daedf5	SPSUN4V-8000-F2	Major

```

Problem Status      : solved
Diag Engine         : fdd 1.0
System
System Component
```

Manufacturer : Oracle Corporation  
 Name : SPARC T5-1B  
 Part\_Number : 7023631-04  
 Serial\_Number : 465769T+1219EK001X

-----  
 Suspect 1 of 1

Fault class : fault.memory.dimm-ue  
 Certainty : 100%  
 Affects : /SYS/MB/CM0/CMP/BOB6/CH1/D0  
 Status : faulted but still in service

FRU

Status : faulty  
 Location : /SYS/MB/CM0/CMP/BOB6/CH1/D0  
 Manufacturer : Samsung  
 Name : 8192MB DDR3 SDRAM DIMM  
 Part\_Number : 07042208,M393B1K70DH0-YK0  
 Revision : 02  
 Serial\_Number : 00CE0212133341DB80  
 Chassis

Description : Description associated with fault.memory.dimm-ue

Response : Response associated with fault.memory.dimm-ue

Impact : Impact associated with fault.memory.dimm-ue

Action : Use 'fmdm faulty' to provide a more detailed view of this event. Action associated with fault.memory.dimm-ue Please refer to the associated reference document at <http://support.oracle.com/msg/SPSUN4V-8000-F2> for the latest service procedures and policies regarding this diagnosis.

In this example, a fault is displayed, indicating these details:

- **Date and time of the fault (2013-01-08/12:13:42).**
- **UUID (59b2d926-4896-e979-e85c-cfedb5daedf5), which is unique for every fault. This is sometimes identified as an Event ID.**
- **Message identifier (SPSUN4V-8000-F2), which can be used to obtain additional fault information.**
- **Faulted component, including these details:**

- Component name (/SYS/MB/CM0/CMP/BOB6/CH1/D0)
- Part number (07042208,M393B1K70DH0-YK0)
- Serial number (00CE0212133341DB80)

4. **Use the message ID to obtain more information about this type of fault:**
  - a. Obtain the message ID from console output.
  - b. Log into My Oracle Support at: <https://support.oracle.com>
  - c. Search on the message ID.
5. Follow the suggested actions to repair the fault.
6. If necessary, clear the fault manually.  
See “Clear a Fault” on page 35.

#### Related Information

- “PSH Overview” on page 32
- “Clear a Fault” on page 35

## ▼ Clear a Fault

When PSH detects faults, the faults are logged and displayed on the console. In most cases, after the fault is repaired, the corrected state is detected by the server module, and the fault condition is repaired automatically. However, this repair should be verified. In cases where the fault condition is not automatically cleared, you must clear the fault manually.

1. **After replacing a faulty FRU, power on the server module.**
2. **Determine whether the replaced FRU still shows a faulty state.**  
See “Check for Faults” on page 33.
  - If no fault is reported, you do not need to do anything else. Do not perform the subsequent steps.
  - If a fault is reported, continue to [Step 3](#).

**3. Clear the fault from all persistent fault records.**

In some cases, even though the fault is cleared, some persistent fault information remains and results in erroneous fault messages at boot time. To ensure that these messages are not displayed, clear the fault. See [“Clear a Fault” on page 35](#).

**4. If required, reset the server module.**

In some cases, the output of the `fmadm faulty` command might include this message for the faulty component:

faulted and taken out of service

If this message appears in the output, you must reset the server module after you manually repair the fault.

```
faultmgmtsp> exit
-> reset /System
Are you sure you want to reset /System? y
Resetting /System ...
```

**Related Information**

- [“PSH Overview” on page 32](#)
- [“Check for Faults” on page 33](#)

## Viewing Log Files and System Messages

With the OS running on the server, you have the full complement of Oracle Solaris OS files and commands available for collecting information and for troubleshooting.

If PSH does not indicate the source of a fault, check the message buffer and log files for notifications for faults. Drive faults are usually captured by the Oracle Solaris message files.

These topics explain how to view the log files and system messages.

- [“Check the Message Buffer” on page 37](#)
- [“View Log Files \(Oracle Solaris\)” on page 37](#)
- [“View Log Files \(Oracle ILOM\)” on page 38](#)

**Related Information**

- [“Understanding Diagnostics and Tools” on page 17](#)



- [“Interpreting LEDs” on page 23](#)
- [“Configuring POST” on page 26](#)
- [“Managing Faults” on page 32](#)

## ▼ Check the Message Buffer

The `dmesg` command checks the system buffer for recent diagnostic messages and displays them.

1. **Log in as superuser.**
2. **Type:**

```
# dmesg
```

### Related Information

- [“View Log Files \(Oracle Solaris\)” on page 37](#)
- [“View Log Files \(Oracle ILOM\)” on page 38](#)

## ▼ View Log Files (Oracle Solaris)

The error logging daemon, `syslogd`, automatically records various system warnings, errors, and faults in message files. These messages can alert you to system problems such as a device that is about to fail.

The `/var/adm` directory contains several message files. The most recent messages are in the `/var/adm/messages` file. After a period of time (usually every week), a new messages file is automatically created. The original contents of the messages file are rotated to a file named `messages.1`. Over a period of time, the messages are further rotated to `messages.2` and `messages.3`, and then deleted.

1. **Log in as superuser.**
2. **Type:**

```
# more /var/adm/messages
```

3. To view all logged messages, type:

```
# more /var/adm/messages*
```

#### Related Information

- [“Check the Message Buffer” on page 37](#)
- [“View Log Files \(Oracle Solaris\)” on page 37](#)

## ▼ View Log Files (Oracle ILOM)

1. View the event log.

```
# show /SP/logs/event/list
```

2. View the audit log.

```
# show /SP/logs/audit/list
```

#### Related Information

- [“Check the Message Buffer” on page 37](#)
- [“View Log Files \(Oracle Solaris\)” on page 37](#)

## Preparing for Service

---

These topics explain how to prepare the server module for servicing.

Step	Description	Links
1.	Review safety and handling information.	<a href="#">“Safety Information” on page 39</a>
2.	Gather the tools for service.	<a href="#">“Tools Needed for Service” on page 41</a>
3.	Find serial numbers for the modular system and the server module.	<a href="#">“Find the Modular System Chassis Serial Number” on page 41</a> <a href="#">“Find the Server Module Serial Number” on page 42</a>
4.	Identify the server module to be serviced.	<a href="#">“Locate the Server Module” on page 43</a>
5.	Shut down the OS and host, and place the server module in a ready-to-remove state.	<a href="#">“Preparing the Server Module for Removal” on page 44</a>
6.	Remove the server module from the modular system chassis.	<a href="#">“Remove the Server Module From the Modular System” on page 48</a>
7.	Remove the server module cover.	<a href="#">“Remove the Cover” on page 51</a>

### Related Information

- [“Identifying Components” on page 11](#)
- [“Returning the Server Module to Operation” on page 99](#)

## Safety Information

For your protection, observe these safety precautions when setting up your equipment:

- Follow all cautions and instructions marked on the equipment.
- Follow all cautions and instructions described in the documentation that shipped with your server module and in the *SPARC T5-1B Server Module Safety and Compliance Guide*.

- Ensure that the voltage and frequency of your power source match the voltage and frequency inscribed on the equipment's electrical rating label.
- Follow the ESD safety practices as described in this section.

## Safety Symbols

You might see these symbols in various places in the server module documentation. Note the explanations provided next to each symbol.



---

**Caution** - There is a risk of personal injury or equipment damage. To avoid personal injury and equipment damage, follow the instructions.

---



---

**Caution** - Components inside the server module might be hot. Use caution when servicing components inside the server module.

---



---

**Caution - Hazardous voltages are present.** To reduce the risk of electric shock and danger to personal health, follow the instructions.

---

## ESD Measures

ESD sensitive devices, such as the motherboard, cards, drives, and DIMMs require special handling.



---

**Caution** - Circuit boards and drives contain electronic components that are extremely sensitive to static electricity. Ordinary amounts of static electricity from clothing or the work environment can destroy the components located on these boards. Do not touch the components along their connector edges.

---

## Antistatic Wrist Strap Use

Wear an antistatic wrist strap and use an antistatic mat when handling components such as drive assemblies, circuit boards, or PCI cards. When servicing or removing server module components, attach an antistatic strap to your wrist and then to a metal area on the chassis. Following this practice equalizes the electrical potentials between you and the server module.

## Antistatic Mat

Place ESD-sensitive components such as cards and DIMMs on an antistatic mat.

### Related Information

- [“Tools Needed for Service” on page 41](#)

## Tools Needed for Service

These tools are required for service procedures:

- Antistatic wrist strap
- Antistatic mat
- Stylus or pencil (to operate the Power button)
- UCP-3 dongle (UCP-4 dongle can be used, but refer to instructions in *Server Module Installation*)
- Blade filler panel

### Related Information

- [“Safety Information” on page 39](#)
- [“Find the Modular System Chassis Serial Number” on page 41](#)

## ▼ Find the Modular System Chassis Serial Number

To obtain support for your server module, you need the serial number of the Sun Blade 6000 modular system in which the server module is located, not the serial number of the server module.

The serial number of the modular system is provided on a label on the upper left edge of the front bezel. You can also type an Oracle ILOM command to display the number.

- 1. Log into Oracle ILOM on the CMM.**

See [“Log Into Oracle ILOM \(Service\)” on page 21](#).

**2. Display the modular system's serial number:**

```
-> show /System serial_number

/System
Properties:
  serial_number = 1114BD0A6E
```

**Related Information**

- [“Find the Server Module Serial Number” on page 42](#)
- [“Locate the Server Module” on page 43](#)

## ▼ Find the Server Module Serial Number

---

**Note** - To obtain support for your server module, you need the serial number of the Sun Blade 6000 modular system in which the server module is located, not the serial number of the server module. See [“Find the Modular System Chassis Serial Number” on page 41](#).

---

The serial number of the server module is located on a sticker on the RFID tag that is mounted in the center of the front panel. See [“Front and Rear Panel \(Service\)” on page 12](#). However, this label is not present on a server module that has been moved into a new enclosure assembly. You also can type the Oracle ILOM commands to display the number.

**1. Log into Oracle ILOM.**

See [“Log Into Oracle ILOM \(Service\)” on page 21](#).

**2. Display the server module's serial number.**

- Through the CMM, type.

```
-> show /CH/BL9/System component_serial_number

/CH/BL9/System
Properties:
  component_serial_number = 1214NN0304
```

- Through the server module, type.

```
-> show /SYS product_serial_number
```

```
/SYS
Properties:
  product_serial_number = 1219NN3024
```

### Related Information

- [“Locate the Server Module” on page 43](#)
- [“Find the Modular System Chassis Serial Number” on page 41](#)

## ▼ Locate the Server Module

Use this procedure to illuminate the server module's Locator LED so that you can locate the server.

1. **Log into Oracle ILOM.**  
See [“Log Into Oracle ILOM \(Service\)” on page 21](#).
2. **Perform one of these commands according to the way that you logged into Oracle ILOM:**

- Through the CMM, type.

```
-> set /Servers/Blades/Blade_5/System locator_indicator=on
Set 'locator_indicator' to 'on'
```

- Through the server module, type.

```
-> set /System locator_indicator=on
Set 'locator_indicator' to 'on'
```

The Locator LED on the server module blinks.

3. **Identify the server module with a blinking white LED.**
4. **Once you locate the server module, press the Locator LED to turn it off.**

---

**Note** - Alternatively, you can turn off the Locator LED by typing the Oracle ILOM `set /System locator_indicator=off` command.

---

### Related Information

- [“Remove the Server Module From the Modular System” on page 48](#)

## Preparing the Server Module for Removal

There are several ways to shut down the server module before you remove it from the chassis.

Description	Links
Perform a graceful shutdown using commands.	<a href="#">“Shut Down the OS and Host (Commands)” on page 44</a> <a href="#">“Set the Server Module to a Ready-to-Remove State” on page 47</a>
Perform a graceful shutdown using the Power button and commands.	<a href="#">“Shut Down the OS and Host (Power Button – Graceful)” on page 45</a> <a href="#">“Set the Server Module to a Ready-to-Remove State” on page 47</a>
Perform a nongraceful shutdown (as a last resort or in emergency situations).	<a href="#">“Shut Down the OS and Host (Emergency Shutdown)” on page 46</a> <a href="#">“Set the Server Module to a Ready-to-Remove State” on page 47</a>

### Related Information

- [“Remove the Server Module From the Modular System” on page 48](#)

## ▼ Shut Down the OS and Host (Commands)

This topic describes one method for shutting down the Oracle Solaris OS. For information on other ways to shut down the Oracle Solaris OS, refer to the Oracle Solaris OS documentation.

### 1. Log in as superuser or equivalent.

Depending on the type of problem, you might want to view server module status or log files. You also might want to run diagnostics before you shut down the server module. See [“Diagnostics Process” on page 18](#).

### 2. Notify affected users that the server module will be shut down.

Refer to the Oracle Solaris system administration documentation for additional information.

### 3. Save any open files and quit all running programs.

Refer to the application documentation for specific information on these processes.



**4. (If applicable) Shut down all logical domains.**

Refer to the Oracle Solaris system administration and Oracle VM Server for SPARC documentation for additional information.

**5. Shut down the Oracle Solaris OS.**

This example uses the Oracle Solaris shutdown command:

```
# shutdown -g0 -i0 -y
```

```
Shutdown started.      Tue Jun 28 13:06:20 PDT 2011
```

```
Changing to init state 0 - please wait
Broadcast Message from root (console) on server1 Tue Jun 28 13:06:20...
THE SYSTEM server1 IS BEING SHUT DOWN NOW ! ! !
Log off now or risk your files being damaged
# svc.startd: The system is coming down. Please wait.
svc.startd: 100 system services are now being stopped.
Jun 28 13:06:34 dt90-366 syslogd: going down on signal 15
svc.startd: The system is down.
syncing file systems... done
Program terminated
```

```
SPARC T5-1B, No Keyboard
OpenBoot 4.30, 16256 MB memory available, Serial # 87305111.
Ethernet address 0:21:28:34:2b:90, Host ID: 85342b90.
{0} ok
```

**6. Prepare the server module for removal.**

See [“Set the Server Module to a Ready-to-Remove State” on page 47](#).

**Related Information**

- [“Shut Down the OS and Host \(Power Button – Graceful\)” on page 45](#)
- [“Shut Down the OS and Host \(Emergency Shutdown\)” on page 46](#)
- [“Set the Server Module to a Ready-to-Remove State” on page 47](#)

## ▼ Shut Down the OS and Host (Power Button – Graceful)

This procedure gracefully shuts down the OS and places the server module in the power standby mode. In this mode, the Power OK LED blinks rapidly.

**1. Press and release the recessed Power button.**

Use a stylus or the tip of a pen to operate this button. See [“Front and Rear Panel \(Service\)” on page 12](#).

---

**Note** - This button is recessed to prevent accidental server module power-off. Use the tip of a pen or other stylus to operate this button.

---

**2. Prepare the server module for removal.**

See [“Set the Server Module to a Ready-to-Remove State” on page 47](#).

**Related Information**

- [“Shut Down the OS and Host \(Commands\)” on page 44](#)
- [“Shut Down the OS and Host \(Emergency Shutdown\)” on page 46](#)
- [“Set the Server Module to a Ready-to-Remove State” on page 47](#)

## ▼ Shut Down the OS and Host (Emergency Shutdown)



---

**Caution** - All applications and files will be closed abruptly without saving changes. File system corruption might occur.

---

**1. Press and hold the Power button for four seconds.**

Use a stylus or the tip of a pen to operate this button. See [“Front and Rear Panel \(Service\)” on page 12](#).

**2. Prepare the server module for removal.**

See [“Set the Server Module to a Ready-to-Remove State” on page 47](#).

**Related Information**

- [“Shut Down the OS and Host \(Commands\)” on page 44](#)
- [“Shut Down the OS and Host \(Power Button – Graceful\)” on page 45](#)
- [“Set the Server Module to a Ready-to-Remove State” on page 47](#)

## ▼ Set the Server Module to a Ready-to-Remove State

Perform this task before you remove the server module from the modular system.

### 1. Log into Oracle ILOM.

See [“Log Into Oracle ILOM \(Service\)”](#) on page 21.

### 2. Ensure that the host is powered off.

Perform one of these commands according to the way that you logged into Oracle ILOM:

- From the CMM, type.

```
-> show /Servers/Blades/Blade_n/System power_state
/Servers/Blades/Blade_5/System
Properties:
    power_state = Off
```

- From the server module, type.

```
-> show /System power_state
/System
properties:
    power_state = Off
```

### 3. If the host is not powered off, power the host off.

- From the CMM, type.

```
-> stop /Servers/Blades/Blade_n/System
```

- From the server module, type.

```
-> stop /System
```

### 4. Prepare the server module for removal.

Perform one of these commands according to the way that you logged into Oracle ILOM:

- From the CMM, type.

```
-> set /Servers/Blades/Blade_n/SYS prepare_to_remove_action=true
```

Set 'prepare\_to\_remove\_action' to 'true'

- From the server module, type.

```
-> set /SYS prepare_to_remove_action=true
```

Set 'prepare\_to\_remove\_action' to 'true'

5. **Confirm that the server module is in standby mode by viewing the blue Ready to Remove LED on the front of the server module.**

See [“Front and Rear Panel \(Service\)” on page 12](#) to locate this LED. If the Ready to Remove LED is on, the server module is ready for removal from the modular system chassis.

6. **Remove the server module from the chassis.**

See [“Remove the Server Module From the Modular System” on page 48](#).

### Related Information

- [“Remove the Server Module From the Modular System” on page 48](#)
- [“Shut Down the OS and Host \(Commands\)” on page 44](#)
- [“Shut Down the OS and Host \(Power Button – Graceful\)” on page 45](#)
- [“Shut Down the OS and Host \(Emergency Shutdown\)” on page 46](#)

## ▼ Remove the Server Module From the Modular System

1. **Review the safety and handling precautions.**

See [“Safety Information” on page 39](#).



---

**Caution** - When the modular system is operating, you must fill every slot with a filler panel or a server module within 60 seconds.

---

2. **Prepare the server module for removal.**

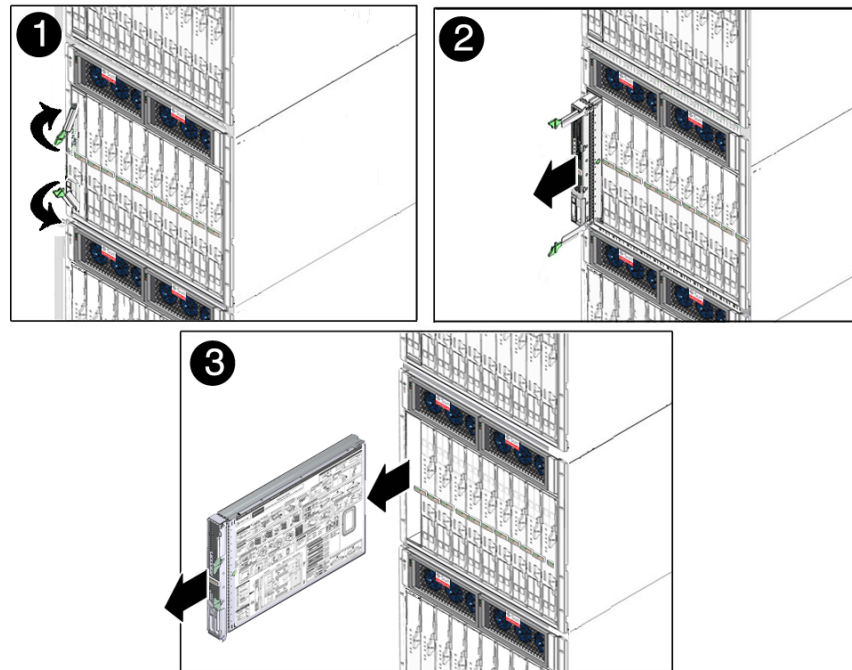
See [“Preparing the Server Module for Removal” on page 44](#).

3. **If a cable is connected to the front of the server module, disconnect it.**

Press the buttons on either side of the UCP to release the connector.

4. **Open both ejector arms (panel 1).**

Squeeze both latches on each of the two ejector arms.



5. **Pull the server module out (panel 2 and panel 3).**
6. **Close the ejector arms.**
7. **Remove the server module from the modular system (panel 3).**  
Lift the server module with two hands.
8. **Place the server module on an antistatic mat or surface.**
9. **Insert a filler panel into the empty chassis slot.**



**Caution** - When the modular system is operating, you must fill every slot with a filler panel or a server module within 60 seconds.

10. **Access internal server module components.**  
See [“Accessing Internal Components” on page 50.](#)

**Related Information**

- [“Remove the Cover” on page 51](#)
- [“Install the Server Module Into the Modular System” on page 100](#)

## Accessing Internal Components

These topics provide procedures for accessing internal components.

Step	Description	Link
1.	Take antistatic precautions now.	<a href="#">“Prevent ESD Damage” on page 50</a>
2.	Remove the cover to gain access to the internal components.	<a href="#">“Remove the Cover” on page 51</a>

**Related Information**

- [“Safety Information” on page 39](#)
- [“Remove the Cover” on page 51](#)

### ▼ Prevent ESD Damage



---

**Caution** - To protect electronic components from ESD, which can permanently damage electronics, place components on an antistatic surface, such as an antistatic discharge mat, or an antistatic bag. Wear an antistatic grounding strap connected to a metal surface on the chassis when you work on server components.

---

1. **Prepare an antistatic surface to set parts on during the removal, installation, or replacement process.**  
Place ESD-sensitive components such as printed circuit boards on an antistatic mat.
2. **Attach an antistatic wrist strap.**  
When handling components, attach an antistatic strap to your wrist and then to a metal area on the enclosure.

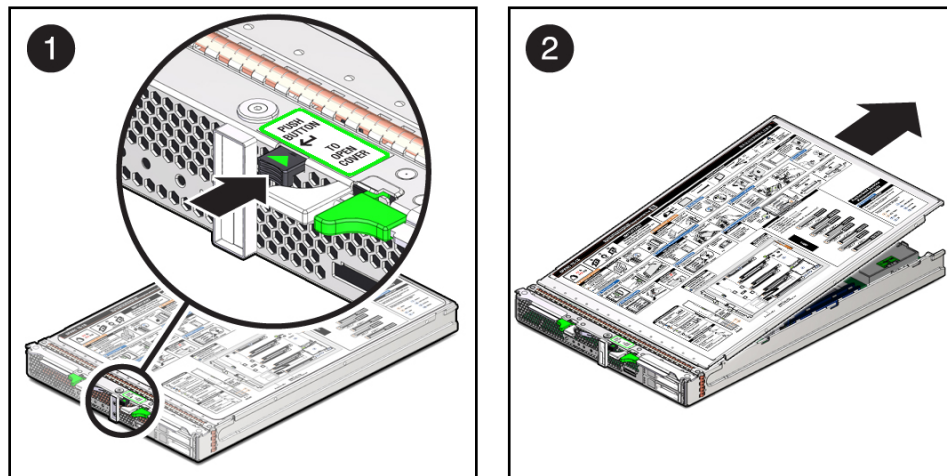
**Related Information**

- [“Safety Information” on page 39](#)

- [“Remove the Cover” on page 51](#)

## ▼ Remove the Cover

1. **(If needed) Remove the server module from the modular system.**  
See [“Remove the Server Module From the Modular System” on page 48.](#)
2. **(If needed) Attach an antistatic strap to your wrist and then to a metal area on the server module.**  
See [“Prevent ESD Damage” on page 50.](#)
3. **While pressing the cover release button (panel 1), slide the cover toward the rear of the server module about 1/2 inch (1 cm).**



4. **Lift the cover off the server module chassis (panel 2).**
5. **Service the faulty component.**  
See [“Component Locations” on page 13](#) and [“Component Task Reference” on page 15.](#)

### Related Information

- [“Component Locations” on page 13](#)

- [“Replace the Cover” on page 99](#)



# Servicing Drives

These topics apply to hard drives and solid state drives installed in the front slots of the server module.

**Note** - The term *drive* applies to either a hard drive or a solid state drive.

Description	Links
Replace a faulty drive.	<a href="#">“Drive Hot-Plugging Guidelines” on page 57</a> <a href="#">“Drive Configuration” on page 54</a> <a href="#">“Drive LEDs” on page 56</a> <a href="#">“Determine Which Drive Is Faulty” on page 57</a> <a href="#">“Remove a Drive or Drive Filler” on page 58</a> <a href="#">“Install a Drive or Drive Filler” on page 60</a> <a href="#">“Verify a Drive” on page 61</a>
Add an additional drive.	<a href="#">“Drive Configuration” on page 54</a> <a href="#">“Drive LEDs” on page 56</a> <a href="#">“Remove a Drive or Drive Filler” on page 58</a> <a href="#">“Install a Drive or Drive Filler” on page 60</a> <a href="#">“Verify a Drive” on page 61</a>
Remove a drive without replacing it.	<a href="#">“Drive Configuration” on page 54</a> <a href="#">“Determine Which Drive Is Faulty” on page 57</a> <a href="#">“Install a Drive or Drive Filler” on page 60</a>
Identify drive LEDs.	<a href="#">“Drive LEDs” on page 56</a>

## Related Information

- [“Detecting and Managing Faults” on page 17](#)

- [“Preparing for Service” on page 39](#)

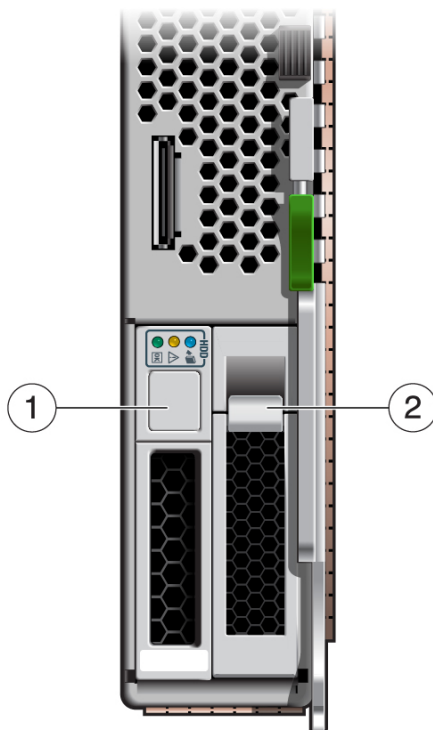
## Drive Configuration

This figure and table describe the physical addresses assigned to the drives installed when the drive is installed into a particular slot.

---

**Note** - The Oracle Solaris OS now uses the *WWN* syntax in place of the unique *tn* (target ID) field in logical device names. This change affects how a target storage device is identified. Refer to *Servers Administration* for details.

---



No.	Description
1	Drive slot 0 (drive installed)

No.	Description
2	Drive slot 1 (filler installed)

### Related Information

- [“Drive LEDs” on page 56](#)
- [“Drive Hot-Plugging Guidelines” on page 57](#)
- [“Determine Which Drive Is Faulty” on page 57](#)
- [“Remove a Drive or Drive Filler” on page 58](#)
- [“Install a Drive or Drive Filler” on page 60](#)
- [“Verify a Drive” on page 61](#)

# Drive LEDs



No.	LED or Button	Icon	Description
1	Drive OK/Activity LED		Indicates the drive status: <ul style="list-style-type: none"><li>■ On (green) – Drive is idle and available for use.</li><li>■ Blinking – Read or write activity is in progress.</li><li>■ Off – Host is powered off.</li></ul>
3	Drive Service Action Required LED		When on (amber), indicates that the drive has experienced a fault condition.
2	Drive Ready to Remove LED		Indicates if a drive can be removed during a hot-plug operation.

No.	LED or Button	Icon	Description
			<ul style="list-style-type: none"> <li>■ On (blue) – Drive was taken offline using the <code>cfgadm</code> or an equivalent command.</li> <li>■ Off – Drive is not ready to remove or is taken offline by shutting down the OS.</li> </ul>

### Related Information

- [“Drive Configuration” on page 54](#)
- [“Drive Hot-Plugging Guidelines” on page 57](#)
- [“Determine Which Drive Is Faulty” on page 57](#)
- [“Remove a Drive or Drive Filler” on page 58](#)
- [“Install a Drive or Drive Filler” on page 60](#)
- [“Verify a Drive” on page 61](#)

## Drive Hot-Plugging Guidelines

To safely remove a drive, you must:

- Prevent any applications from accessing the drive.
- Remove the logical software links.

Drives cannot be hot-plugged if:

- The drive provides the OS, and the OS is not mirrored on another drive.
- The drive cannot be logically isolated from the online operations of the server module.

If your drive falls into these conditions, you must shut down the Oracle Solaris OS before you replace the drive. See [“Shut Down the OS and Host \(Commands\)” on page 44](#).

### Related Information

- [“Remove a Drive or Drive Filler” on page 58](#)
- [“Install a Drive or Drive Filler” on page 60](#)

## ▼ Determine Which Drive Is Faulty

This procedure describes how to identify a faulty drive using the fault LEDs on the drive.

You can also use the `diskinfo(1M)` command to identify the slot in which a particular drive is installed. Refer to *Servers Administration* and to the *SPARC T5-1B Server Module Product Notes* for more information.

**1. View the drive LEDs to determine the status of the drive.**

When the amber drive Service Required LED on the front of a drive is lit, a fault has occurred on that drive.

See [“Drive LEDs” on page 56](#).

**2. Remove the faulty drive.**

See [“Remove a Drive or Drive Filler” on page 58](#).

**Related Information**

- [“Detecting and Managing Faults” on page 17](#)
- [“Remove a Drive or Drive Filler” on page 58](#)
- [“Install a Drive or Drive Filler” on page 60](#)

## ▼ Remove a Drive or Drive Filler

**1. Identify the drive you plan to remove.**

See [“Determine Which Drive Is Faulty” on page 57](#).

**2. Prepare the drive for removal by performing one of these steps:**

- Take the drive offline.

The exact commands required to take the drive offline depend on the configuration of your drives. For example, you might need to unmount file systems or perform certain RAID commands.

One command that is commonly used to take a drive offline is the `cfgadm` command. For more information, refer to the Oracle Solaris `cfgadm` man page.

- Shut down the Oracle Solaris OS.

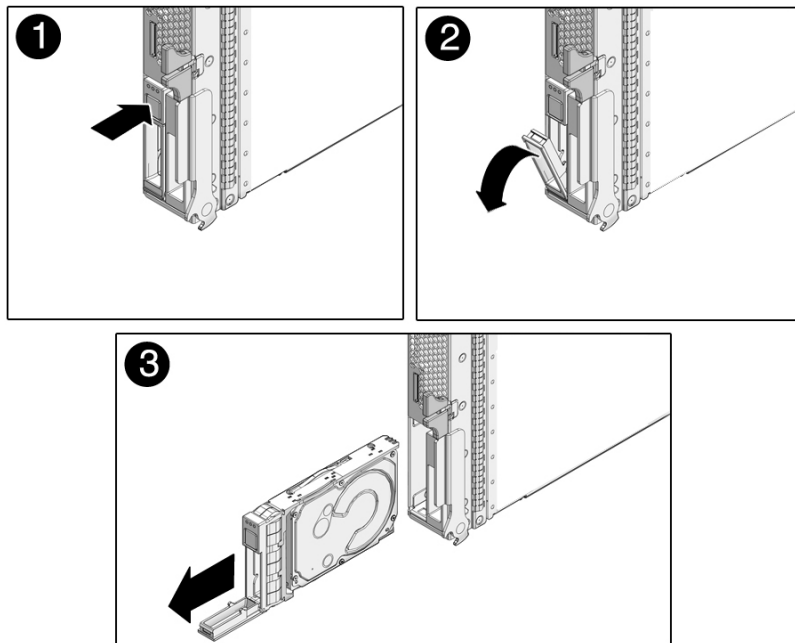
If the drive cannot be taken offline, shut down the Oracle Solaris OS on the server module. See [“Shut Down the OS and Host \(Commands\)” on page 44](#).

**3. Verify whether the blue drive Ready to Remove LED is illuminated on the front of the drive.**

See [“Drive LEDs” on page 56](#). The blue LED will be illuminated only if the drive was taken offline using `cfgadm` or an equivalent command. The LED will not be illuminated if Oracle Solaris was shut down.

**4. Remove the drive.**

- a. Push the latch release button on the drive (panels 1 and 2).



- b. Grasp the latch and pull the drive out of the drive slot (panel 3).

**5. Install a drive or drive filler.**

See [“Install a Drive or Drive Filler” on page 60](#).

**Related Information**

- [“Install a Drive or Drive Filler” on page 60](#)

## ▼ Install a Drive or Drive Filler

The physical address of a drive is based the slot in which it is installed. See [“Drive Configuration” on page 54](#).

---

**Note** - All drive bays must be populated with a drive or drive filler.

---

**1. (If needed) Remove a drive.**

See [“Remove a Drive or Drive Filler” on page 58](#).

**2. Identify the slot in which to install the drive.**

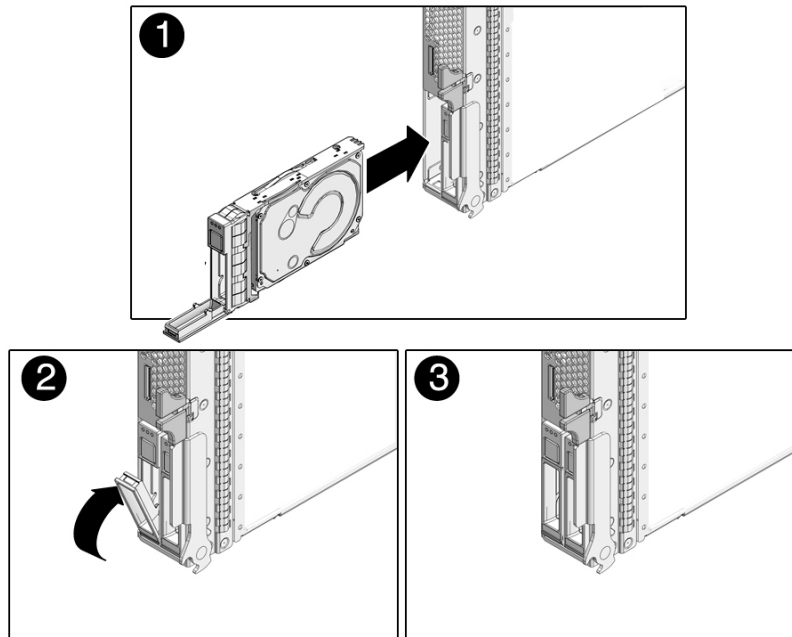
- If you are replacing a drive, ensure that you install the replacement drive in the same slot as the drive you removed.
- If you are adding an additional drive, install the drive in the next available drive slot.

**3. (If needed) Remove the drive filler from this slot.**

See [“Remove a Drive or Drive Filler” on page 58](#).



4. Slide the drive into the bay until it is fully seated (panel 1).



5. Close the latch to lock the drive in place (panels 2 and 3).

6. Consider your next step:

- [“Verify a Drive” on page 61](#)
- [“Returning the Server Module to Operation” on page 99](#)

#### Related Information

- [“Remove a Drive or Drive Filler” on page 58](#)

## ▼ Verify a Drive

1. If the OS is shut down, and the drive you replaced was not the boot device, boot the OS.

Depending on the nature of the replaced drive, you might need to perform administrative tasks to reinstall software before the server can boot. Refer to the Oracle Solaris OS administration documentation for more information.

**2. Verify that the drive's blue Ready to Remove LED is no longer illuminated on the drive that you installed.**

See [“Drive LEDs” on page 56](#).

If the fault LED is not lit, the drive is ready to be configured according to your requirements. Go to [Step 3](#).

If the fault LED is lit, see [“Detecting and Managing Faults” on page 17](#).

**3. Perform administrative tasks to reconfigure the drive.**

The procedures that you perform at this point depend on how your data is configured. You might need to partition the drive, create file systems, load data from backups, or have data updated from a RAID configuration.

These commands might apply to your circumstances:

- You can use the Oracle Solaris command `cfgadm -al` to list all drives in the device tree, including unconfigured drives. Refer to the `cfgadm` man page for details.
- If the drive is not in the list, such as with a newly installed drive, you can use `devfsadm` to configure it into the tree. See the `devfsadm` man page for details.

**4. Consider your next step.**

- If you are finished servicing components, see [“Returning the Server Module to Operation” on page 99](#).
- If you are servicing additional components, see [“Component Task Reference” on page 15](#).

**Related Information**

- [“Detecting and Managing Faults” on page 17](#)
- [“Determine Which Drive Is Faulty” on page 57](#)
- [“Remove a Drive or Drive Filler” on page 58](#)
- [“Install a Drive or Drive Filler” on page 60](#)

# Servicing DIMMs

---

These topics describe how to determine which DIMMs are faulty, how to remove, install, and verify DIMMs, and how to increase memory by adding additional DIMMs.

Description	Links
Replace a faulty DIMM.	<a href="#">“Determine Which DIMM Is Faulty” on page 67</a>
	<a href="#">“DIMM FRU Names” on page 64</a>
	<a href="#">“DIMM LEDs” on page 66</a>
	<a href="#">“Remove a DIMM” on page 68</a>
	<a href="#">“Install a DIMM” on page 69</a>
Upgrade or configure memory.	<a href="#">“Verify a DIMM” on page 70</a>
	<a href="#">“DIMM Configuration” on page 63</a>
	<a href="#">“Install a DIMM” on page 69</a>
	<a href="#">“Verify a DIMM” on page 70</a>

## Related Information

- [“Detecting and Managing Faults” on page 17](#)
- [“Preparing for Service” on page 39](#)

## DIMM Configuration

Use these guidelines when installing, upgrading, or replacing DIMMs:

- Use only supported industry-standard DDR-3 DIMMs of these capacities:
  - 8 Gbytes

- 16 Gbytes

Refer to the *SPARC T5-1B Server Module Product Notes* for possible updates to supported capacities.

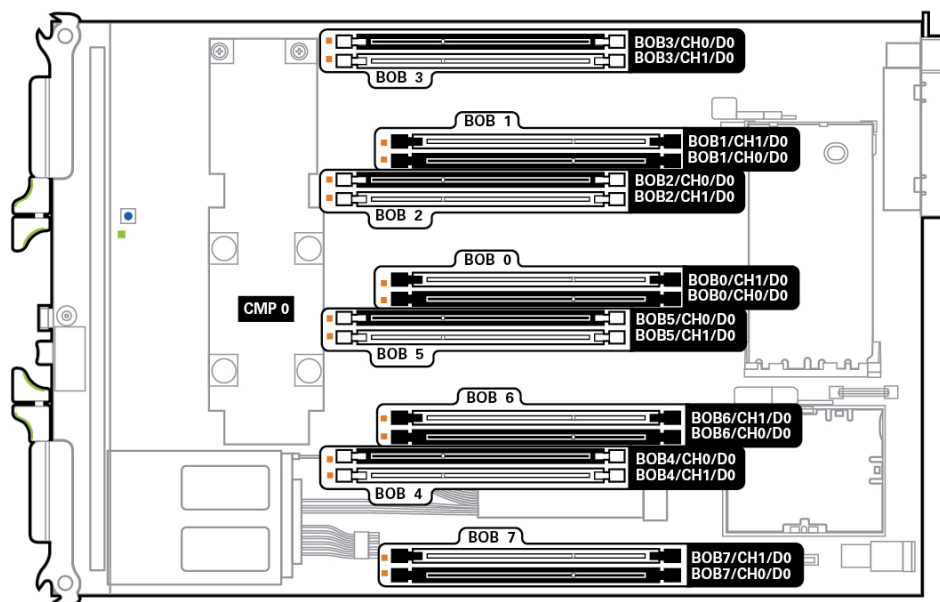
- Install quantities of 16 DIMMs.
- Ensure that all DIMMs are the same capacity and rank classification.

### Related Information

- [“DIMM FRU Names” on page 64](#)
- [“DIMM LEDs” on page 66](#)
- [“Determine Which DIMM Is Faulty” on page 67](#)
- [“Remove a DIMM” on page 68](#)
- [“Install a DIMM” on page 69](#)
- [“Verify a DIMM” on page 70](#)

## DIMM FRU Names

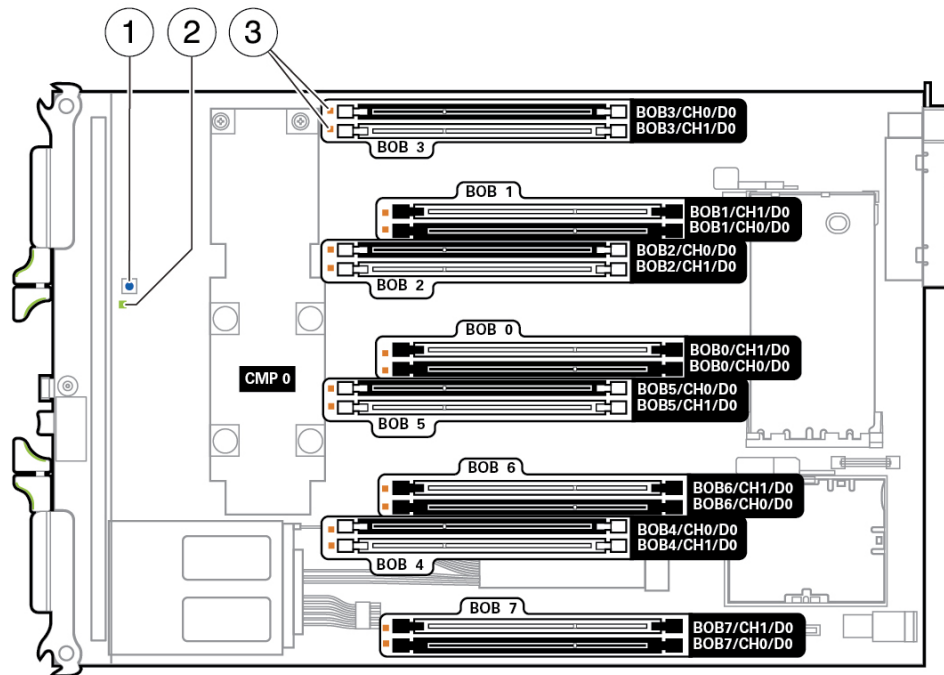
Use this illustration to identify the location of DIMM when you know the DIMM name.



### Related Information

- [“DIMM Configuration” on page 63](#)
- [“Determine Which DIMM Is Faulty” on page 67](#)
- [“Remove a DIMM” on page 68](#)
- [“Install a DIMM” on page 69](#)
- [“Verify a DIMM” on page 70](#)

## DIMM LEDs



No.	Description
1	Fault Remind button
2	Fault Remind Power LED
3	DIMM Fault LEDs

### Related Information

- [“DIMM Configuration” on page 63](#)
- [“Determine Which DIMM Is Faulty” on page 67](#)
- [“Remove a DIMM” on page 68](#)
- [“Install a DIMM” on page 69](#)
- [“Verify a DIMM” on page 70](#)

## ▼ Determine Which DIMM Is Faulty

This procedure describes how to use the DIMM LEDs on the motherboard to pinpoint the physical location of a faulty DIMM.

---

**Note** - You can also obtain the location of the faulty DIMM using the `fmadm faulty` command. This command displays the FRU name. See [“Managing Faults” on page 32](#) and [“DIMM FRU Names” on page 64](#).

---




---

**Caution** - Components inside the chassis might be hot. Use caution when servicing components inside the chassis.

---

### 1. Check the front panel Fault LED.

See [“Interpreting LEDs” on page 23](#).

When a faulty DIMM is detected, the front panel Fault LED is illuminated. Before opening the server module to check the DIMM Fault LEDs, verify that the Fault LED is lit.

- If the Fault LED is not lit, and you suspect there is a problem, see [“Diagnostics Process” on page 18](#).
- If the Fault LED is lit, go to the next step.

### 2. (If needed) Prepare for service.

See [“Preparing for Service” on page 39](#).

### 3. Press the Fault Remind button on the motherboard.

While the Remind button is pressed, an LED next to the faulty DIMM lights, enabling you to identify the faulty DIMM. See [“DIMM LEDs” on page 66](#).

---

**Tip** - The DIMM Fault LEDs are small and difficult to identify when they are not lit. If you do not see any illuminated LEDs in the area of the DIMM LEDs, use the `fmadm faulty` command and the DIMM layout table to locate the faulty DIMM.

---

### 4. Remove the faulty DIMM.

See [“Remove a DIMM” on page 68](#).

### Related Information

- [“DIMM FRU Names” on page 64](#)

- [“Remove a DIMM” on page 68](#)

## ▼ Remove a DIMM



**Caution** - This procedure involves handling circuit boards that are extremely sensitive to static electricity. Ensure that you follow ESD preventative practices to avoid damaging the circuit boards. See [“Prevent ESD Damage” on page 50](#).

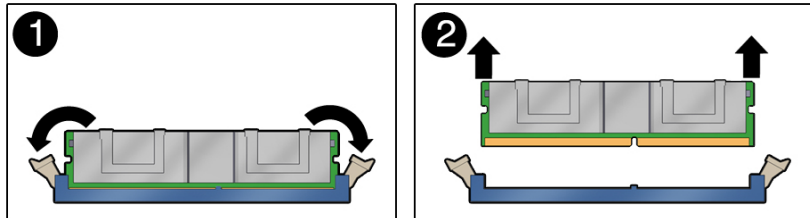
---



**Caution** - Components inside the chassis might be hot. Use caution when servicing components inside the chassis.

---

1. **(If needed) Prepare for service.**  
See [“Preparing for Service” on page 39](#).
2. **(If needed) Locate the faulty DIMM.**  
See [“Determine Which DIMM Is Faulty” on page 67](#).
3. **Remove the DIMM from the motherboard.**



- a. **Push down on the ejector tabs at the same time until the DIMM is released (panel 1).**
  - b. **Grasp the top corners of the DIMM, and lift and remove it from the server module (panel 2).**
  - c. **Place the DIMM on an antistatic mat.**
4. **Install a replacement DIMM.**



See [“Install a DIMM” on page 69](#).

### Related Information

- [“Install a DIMM” on page 69](#)
- [“DIMM FRU Names” on page 64](#)

## ▼ Install a DIMM

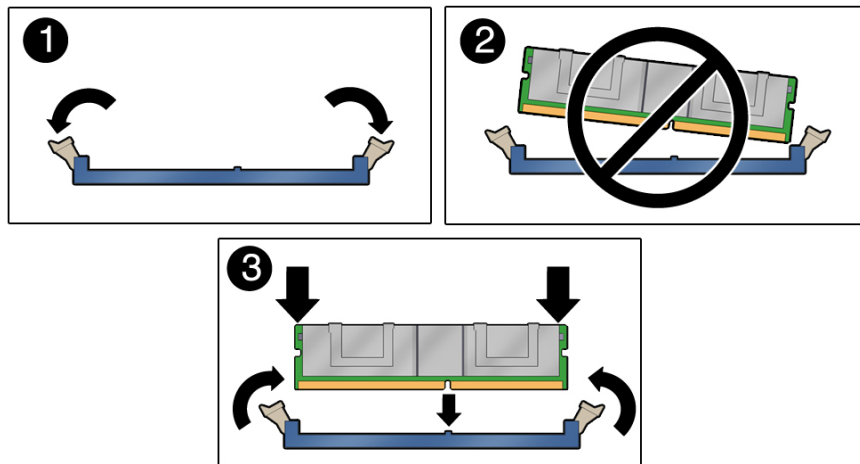


**Caution** - This procedure involves handling circuit boards that are extremely sensitive to static electricity. Ensure that you follow ESD preventative practices to avoid damaging the circuit boards. See [“Prevent ESD Damage” on page 50](#).



**Caution** - Components inside the chassis might be hot. Use caution when servicing components inside the chassis.

1. **(If needed) Prepare the server module for service and remove the faulty DIMM.**  
See [“Preparing for Service” on page 39](#) and [“Remove a DIMM” on page 68](#).
2. **Unpack the replacement DIMM and set it on an antistatic mat.**
3. **Ensure that the DIMM ejector tabs are in the open position (panel 1).**



**4. Line up the replacement DIMM with the connector.**

Align the DIMM notch with the key in the connector, as in panel 3. This action ensures that the DIMM is oriented correctly. Panel 2 shows an incorrect alignment.

**5. Push the DIMM into the connector until the ejector tabs lock the DIMM in place.**

If the DIMM does not easily seat into the connector, verify that the orientation of the DIMM is correct. Never apply excessive force.

**6. Return the server module to operation.**

See [“Returning the Server Module to Operation” on page 99.](#)

**7. Verify the DIMM.**

See [“Verify a DIMM” on page 70.](#)

**Related Information**

- [“Remove a DIMM” on page 68](#)
- [“DIMM FRU Names” on page 64](#)
- [“DIMM Configuration” on page 63](#)

## ▼ Verify a DIMM

**1. Access Oracle ILOM.**

See [“Log Into Oracle ILOM \(Service\)” on page 21.](#)

**2. Set the virtual keyswitch to diag so that POST will run in Service mode.**

```
-> set /SYS keyswitch_state=Diag
Set 'keyswitch_state' to 'Diag'
```

**3. Reset the host so that POST runs.**

```
-> reset /System
Are you sure you want to reset /System (y/n)? y
```

**4. Return the virtual keyswitch to Normal mode.**

```
-> set /SYS keyswitch_state=Normal
```

Set 'keyswitch\_state' to 'Normal'

## 5. Start the Oracle ILOM fault management shell.

```
-> start /SP/faultmgmt/shell
Are you sure you want to start /SP/faultmgmt/shell
(y/n)? y

faultmgmtsp>
```

## 6. Check the event log.

This example shows a faulty DIMM.

```
faultmgmtsp> fmadm faulty
-----
Time                UUID                                msgid              Severity
-----
2012-10-08/12:13:42 59b2d926-4896-e979-e85c-cfedb5daedf5 SPSUN4V-8000-F2 Major

Problem Status      : solved
Diag Engine         : fdd 1.0
System

System Component
Manufacturer        : Oracle Corporation
Name                : SPARC T5-1B
Part_Number         : 7023631-04
Serial_Number       : 465769T+1219EK001X
-----
Suspect 1 of 1
Fault class         : fault.memory.dimm-ue
Certainty           : 100%
Affects             : /SYS/MB/CM0/CMP/BOB6/CH1/D0
Status              : faulted but still in service

FRU
Status              : faulty
Location            : /SYS/MB/CM0/CMP/BOB6/CH1/D0
Manufacturer        : Samsung
Name                : 8192MB DDR3 SDRAM DIMM
Part_Number         : 07042208,M393B1K70DH0-YK0
Revision            : 02
Serial_Number       : 00CE0212133341DB80
Chassis
```

Description : Uncorrectable errors have occurred while accessing memory.

Response : An attempt will be made to remove the affected memory from service.  
Host HW may restart.

Impact : Total system memory capacity has been reduced and some applications may have been terminated.

Action : Use 'fmadm faulty' to provide a more detailed view of this event. Action associated with fault.memory.dimm-ue Please refer to the associated reference document at <http://support.oracle.com/msg/SPSUN4V-8000-F2> for the latest service procedures and policies regarding this diagnosis.

### 7. (If needed) Clear the fault.

Only perform this command if the previous steps did not clear the fault.

For more information about clearing faults, see [“Clear a Fault” on page 35](#).

```
faultmgmtsp> fmadm acquit 3aa7c854-9667-e176-efe5-e487e5207a8a
```

### 8. Consider your next step.

- If you are finished servicing components, see [“Returning the Server Module to Operation” on page 99](#).
- If you are servicing additional components, see [“Component Task Reference” on page 15](#).

### Related Information

- [“Install a DIMM” on page 69](#)
- [“Verify a DIMM” on page 70](#)

# Servicing the FEM

---

The server module supports the installation of one FEM. To see a list of supported FEMs for this server module, refer to the *SPARC T5-1B Server Module Product Notes*.

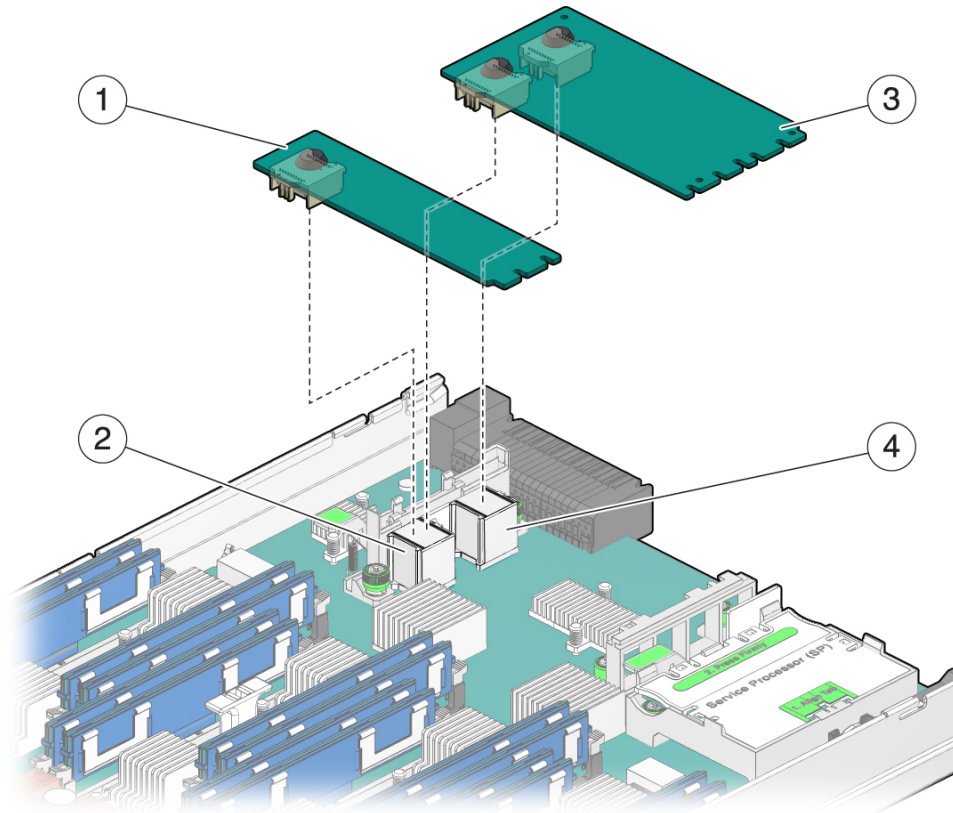
Description	Links
Replace a FEM.	<a href="#">“Remove a FEM” on page 75</a>
	<a href="#">“Install a FEM” on page 75</a>
Install a FEM.	<a href="#">“FEM Configuration” on page 73</a>
	<a href="#">“Install a FEM” on page 75</a>

## Related Information

- [“Detecting and Managing Faults” on page 17](#)
- [“Preparing for Service” on page 39](#)

## FEM Configuration

You can install one single- or double-wide FEM in the server module. For a list of supported FEMs, refer to the *SPARC T5-1B Server Module Product Notes*.



No.	Description	Notes
1	Single-wide FEM	Installs in FEM 0 connector.
2	FEM 0 connector	
3	Double-wide FEM	Installs in both FEM connectors.
4	FEM 1 connector	

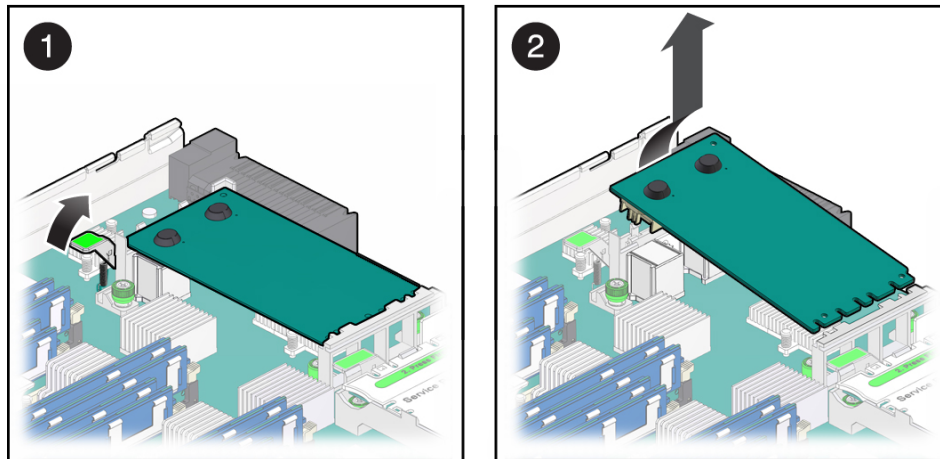
## Related Information

- [“Remove a FEM” on page 75](#)
- [“Install a FEM” on page 75](#)

## ▼ Remove a FEM

FEMs are available in single and double widths. Figures in this procedure depict a double-wide FEM, but the procedure applies to both types of FEMs.

1. **Prepare for service.**  
See [“Preparing for Service” on page 39](#).
2. **Lift the lever to eject the FEM (panel 1).**



3. **Tilt the FEM up and remove the FEM (panel 2).**
4. **(If needed) Install a FEM.**  
See [“Install a FEM” on page 75](#).

### Related Information

- [“Install a FEM” on page 75](#)

## ▼ Install a FEM

This procedure applies to any of the form factors of FEM cards that are supported by this server module.

**1. Prepare for service.**

See [“Preparing for Service” on page 39.](#)

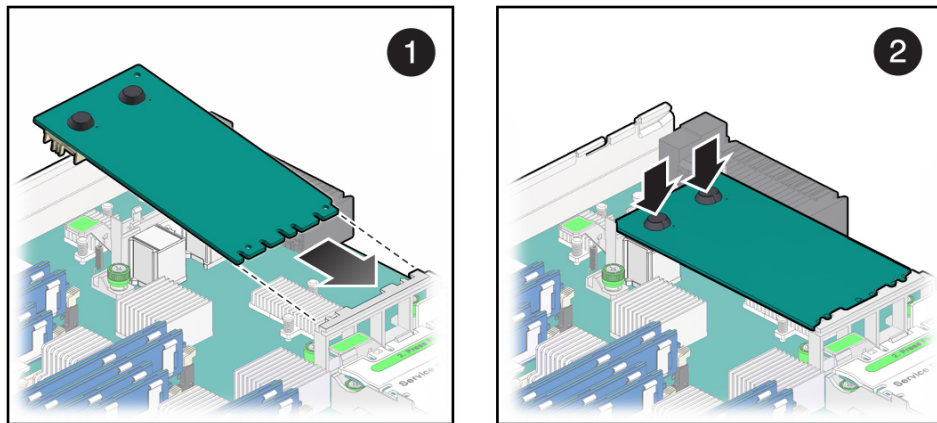
**2. (If needed) Remove a FEM.**

See [“Remove a FEM” on page 75.](#)

**3. Determine the correct set of motherboard FEM connectors for your FEM.**

See [“FEM Configuration” on page 73.](#)

**4. Insert the FEM edge into the bracket and carefully align the FEM so that the card connects with the correct motherboard connectors (panels 1).**



**5. Lower the card and press the card into place (Panel 2).**

If the card has rubber bumpers you can press directly on them to seat the card into the connectors.

**6. Consider your next step.**

- If you are finished servicing components, see [“Returning the Server Module to Operation” on page 99.](#)
- If you are servicing additional components, see [“Component Task Reference” on page 15.](#)

**Related Information**

- [“Remove a FEM” on page 75](#)



## Servicing the SP Card

---

The server module has an SP card with firmware that provides Oracle ILOM.

- [“Remove the SP Card” on page 77](#)
- [“Install the SP Card” on page 78](#)

### Related Information

- [“Detecting and Managing Faults” on page 17](#)
- [“Preparing for Service” on page 39](#)

## ▼ Remove the SP Card

The SP contains firmware. The motherboard also contains firmware. The firmware on the SP and motherboard must be compatible.

When you replace the SP, you must update the system firmware which updates the SP and motherboard firmware to compatible versions. See [“Install the SP Card” on page 78](#).

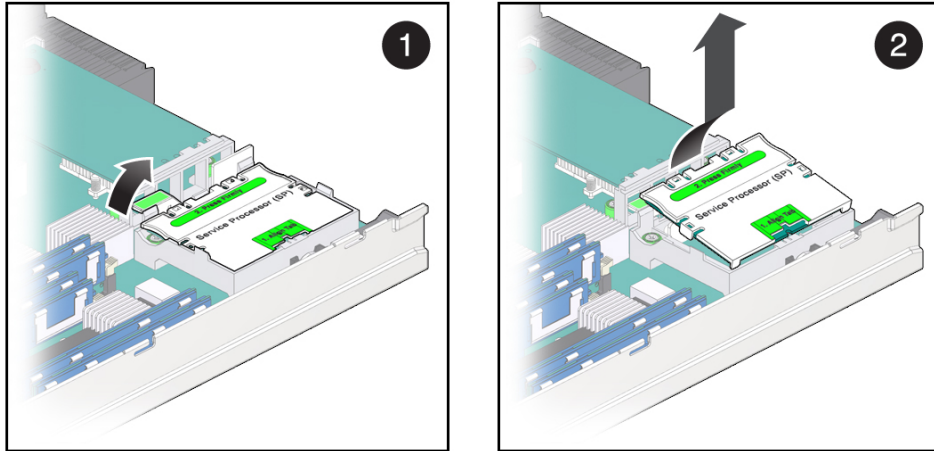
- 1. If possible, save the configuration information for the SP.**

Refer to the related procedures using Oracle ILOM in the *Servers Administration*.

- 2. Prepare for service.**

See [“Preparing for Service” on page 39](#).

3. **Lift the lever to eject the SP (panel 1).**



4. **Tilt the SP up and away from the retainer (panel 2).**

Set the card on an antistatic mat.

5. **Install the new card.**

See [“Install the SP Card” on page 78](#).

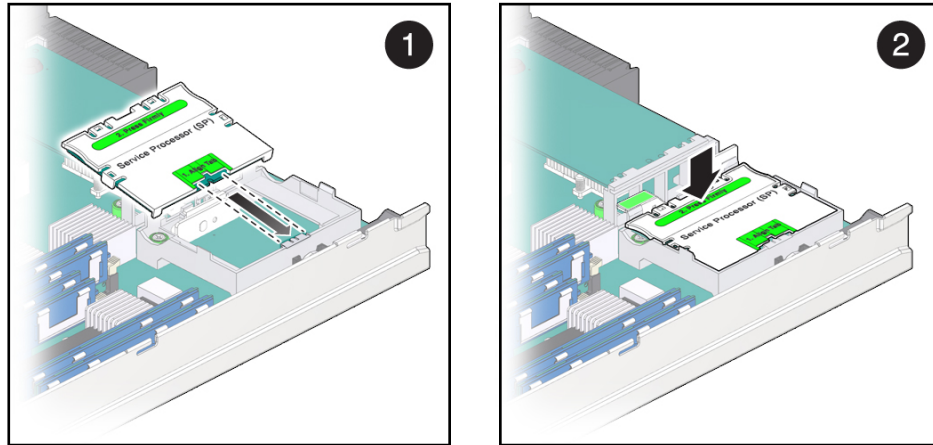
#### **Related Information**

- [“Install the SP Card” on page 78](#)

## **▼ Install the SP Card**

1. **(If needed) Remove the SP card.**  
See [“Remove the SP Card” on page 77](#).
2. **Insert the replacement SP card into the retainer (panel 1).**

Ensure that the tab is aligned with the key.



3. **Seat the SP card into the connector by pressing the card toward the tabs while pressing down (panel 3).**

When the SP card is in place, the lever will close.

4. **Return the server module to the chassis.**

See [“Returning the Server Module to Operation”](#) on page 99.

5. **Access Oracle ILOM on the SP.**

See [“Log Into Oracle ILOM \(Service\)”](#) on page 21.

This message might be displayed:

Unrecognized Chassis: This module is installed in an unknown or unsupported chassis. You must upgrade the firmware to a newer version that supports this chassis.

6. **Download the system firmware.**

Refer to *Servers Administration* and to Oracle ILOM documentation for instructions.

7. **Set the clock's day and time.**

Enter the datetime value in the form MMDDHHMMYYYY.

For example:

```
-> set /SP/clock datetime=091214052012
```

```
-> show /SP/clock
```

```
/SP/clock
```

```
Targets:
```

```
Properties:
```

```
datetime = Wed Sep 12 14:05:20 2012
```

```
timezone = PDT (PST8PDT)
```

```
uptime = 15 days, 02:36:54
```

```
usentpserver = disabled
```

8. **If you created a backup of the SP configuration, use the Oracle ILOM restore utility to restore the configuration.**
9. **Consider your next step.**
  - If you are finished servicing components, see [“Returning the Server Module to Operation” on page 99.](#)
  - If you are servicing additional components, see [“Component Task Reference” on page 15.](#)

### **Related Information**

- [“Remove the SP Card” on page 77](#)

## Servicing the ID PROM

---

The ID PROM, sometimes referred to as the SCC, provides the server module with the host ID, MAC addresses, and some Oracle ILOM configuration information.

The ID PROM does not typically require replacement. However, if you replace the ID PROM, be aware that the host ID and MAC address will change.

When you replace the enclosure assembly, swap the ID PROM from the original enclosure assembly to the replacement enclosure assembly. This action ensures that your server module will maintain the same host ID and MAC address. See [“Servicing the Enclosure Assembly \(Motherboard\)” on page 95](#).

- [“Remove the ID PROM” on page 81](#)
- [“Install the ID PROM” on page 83](#)
- [“Verify the ID PROM” on page 85](#)

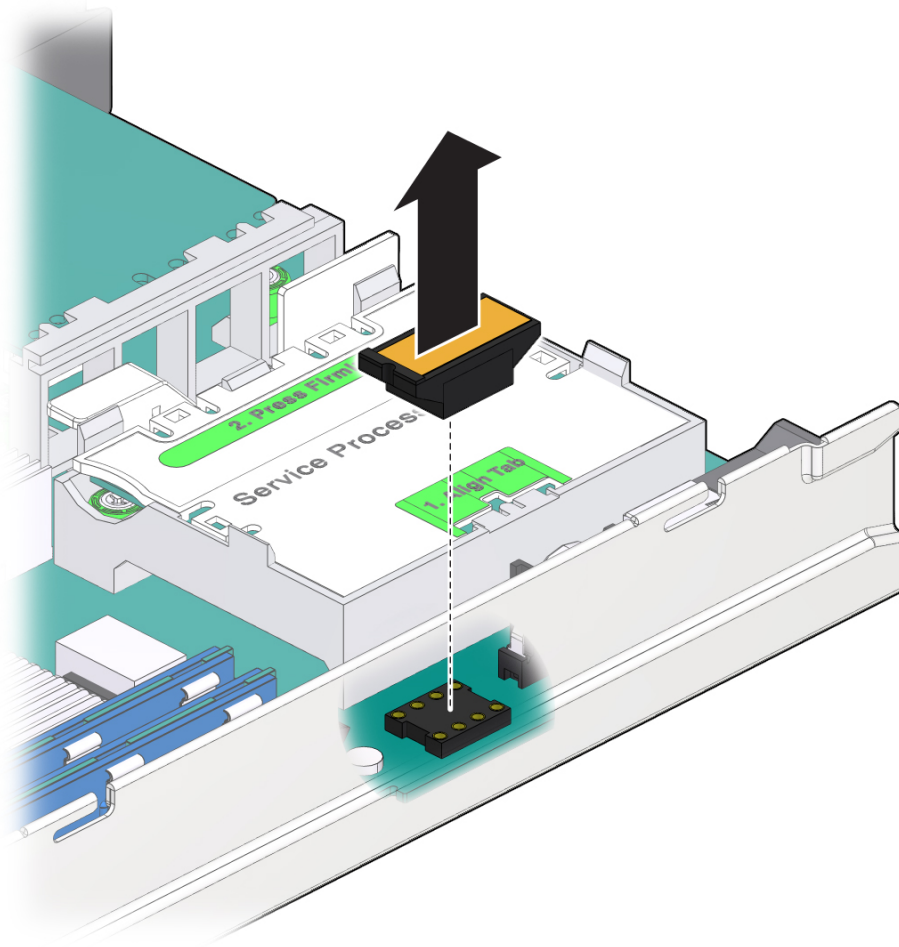
### Related Information

- [“Detecting and Managing Faults” on page 17](#)
- [“Preparing for Service” on page 39](#)

## ▼ Remove the ID PROM

1. **Prepare for service.**  
See [“Preparing for Service” on page 39](#).
2. **Locate the ID PROM on the motherboard.**  
See [“Component Locations” on page 13](#).

3. Lift the ID PROM straight up from its socket.



Place the ID PROM on an antistatic mat.

4. **Install an ID PROM.**  
See [“Install the ID PROM” on page 83.](#)

### Related Information

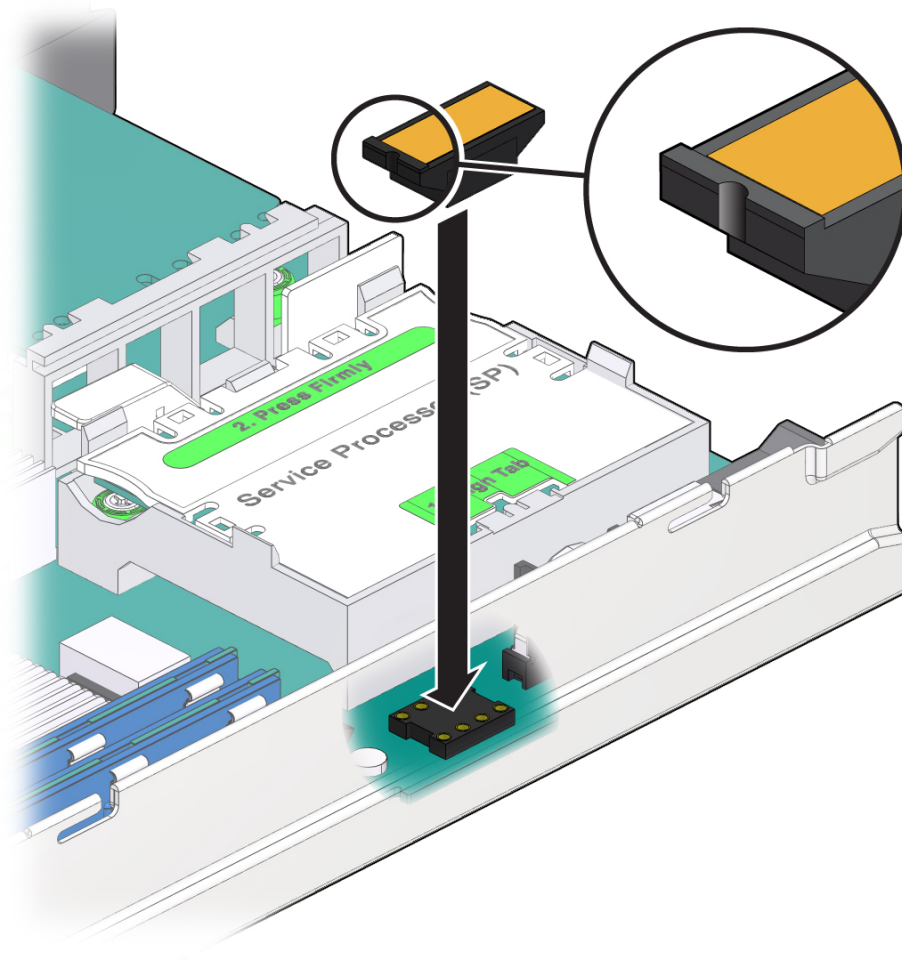
- [“Install the ID PROM” on page 83](#)

- [“Verify the ID PROM” on page 85](#)

## ▼ **Install the ID PROM**

1. **(If needed) Remove the ID PROM.**  
See [“Remove the ID PROM” on page 81.](#)

2. **Align the ID PROM notched end with the notched end on the motherboard socket and press in place.**



3. **Return the server module to operation.**  
See [“Returning the Server Module to Operation”](#) on page 99.
4. **Verify the ID PROM.**  
See [“Verify the ID PROM”](#) on page 85.



## Related Information

- [“Remove the ID PROM” on page 81](#)
- [“Verify the ID PROM” on page 85](#)

## ▼ Verify the ID PROM

The host MAC address and the host ID values are stored in the ID PROM. This procedure describes ways to display these values.

### 1. Display the MAC address that is stored in the ID PROM using one of these methods:

- Using Oracle ILOM:

```
-> show /HOST macaddress
/HOST
Properties:
macaddress = 00:21:28:fa:26:96
```

- Using Oracle Solaris and you are logged in with superuser privileges:

```
# ifconfig -a | grep ether
ether 0:21:28:fa:26:96
ether 0:21:28:fa:26:97
ether 0:21:28:fa:26:96
ether 0:21:28:fa:26:97
```

- When you are at the ok prompt:

```
ok banner
SUN BLADE 6000 MODULAR SYSTEM / SPARC T5-1B, No Keyboard
Copyright (c) 1998, 2013, Oracle and/or its affiliates. All rights reserved.
OpenBoot 4.35.0.build_28, 255.0000 GB memory available, Serial #102795976.
Ethernet address 0:21:28:fa:26:96, Host ID: 85fa2696.
```

### 2. Consider your next step.

- If you are finished servicing components, see [“Returning the Server Module to Operation” on page 99](#).
- If you are servicing additional components, see [“Component Task Reference” on page 15](#).

### **Related Information**

- [“Remove the ID PROM” on page 81](#)
- [“Install the ID PROM” on page 83](#)

# Servicing the USB Drive

---

You can install one USB drive in the server module.

Description	Links
Replace the USB drive.	<a href="#">“Remove the USB Drive” on page 87</a>
	<a href="#">“Install a USB Drive” on page 89</a>
Add a USB drive.	<a href="#">“Install a USB Drive” on page 89</a>

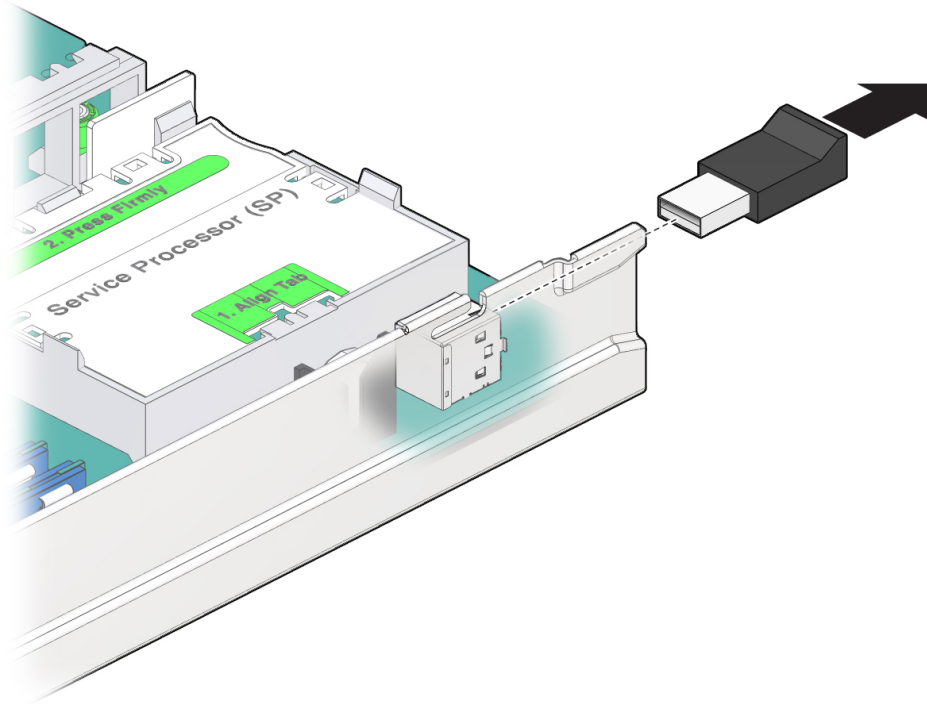
## Related Information

- [“Detecting and Managing Faults” on page 17](#)
- [“Preparing for Service” on page 39](#)

## ▼ Remove the USB Drive

1. **Prepare for service.**  
See [“Preparing for Service” on page 39](#).
2. **Locate the USB drive at the rear of the server module.**  
See [“Component Locations” on page 13](#).

**3. Pull the drive out.**



- 4. (If needed) Install a USB drive.**  
See [“Install a USB Drive” on page 89](#).

**Related Information**

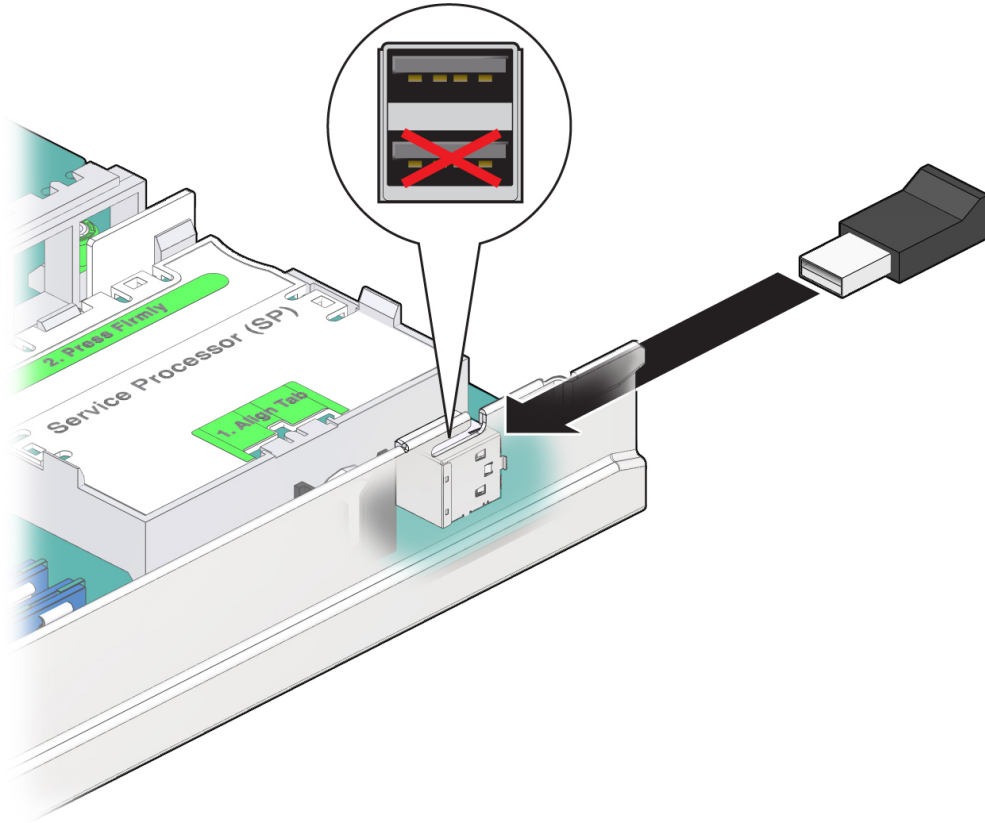
- [“Install a USB Drive” on page 89](#)

## ▼ Install a USB Drive

The server module has a USB port on the motherboard. The USB port accepts USB drives that do not exceed a length of 45 mm.

1. **Prepare for service.**  
See [“Preparing for Service” on page 39.](#)
2. **(If needed) Remove a USB drive.**  
See [“Remove the USB Drive” on page 87.](#)
3. **Locate the USB connector on the motherboard.**  
See [“Component Locations” on page 13.](#)
4. **Plug your USB drive into the upper port of the USB connector.**

Do not use the lower port of this connector.



**5. Return the server module to operation.**

See [“Returning the Server Module to Operation” on page 99.](#)

**Related Information**

- [“Remove the USB Drive” on page 87](#)

## Servicing the Battery

---

The battery maintains server module time when the server module is powered off. If the server module fails to maintain the proper time when it is powered off, replace the battery.

- [“Remove the Battery” on page 91](#)
- [“Install the Battery” on page 92](#)

### Related Information

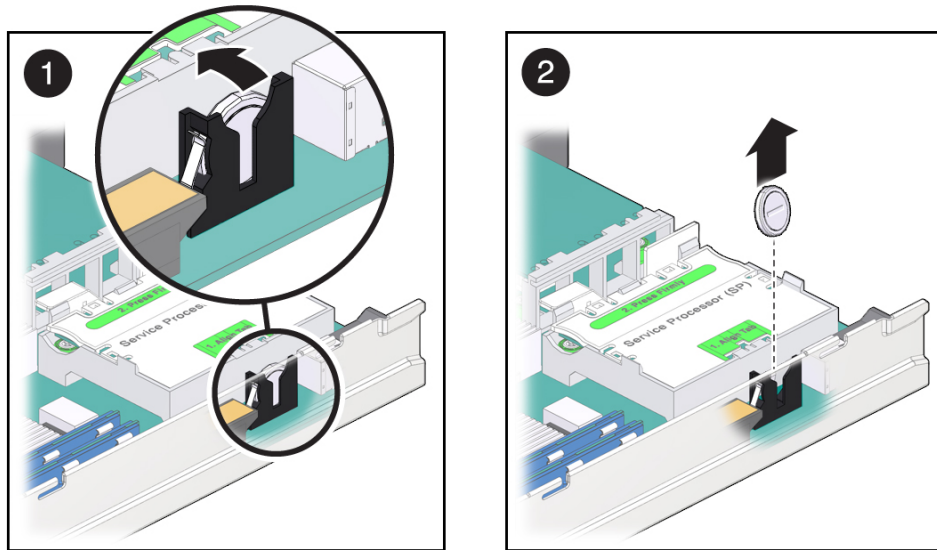
- [“Detecting and Managing Faults” on page 17](#)
- [“Preparing for Service” on page 39](#)

## ▼ Remove the Battery

1. **Prepare for service.**

See [“Preparing for Service” on page 39](#).

2. Gently push the battery toward the service processor to release it from the retention clip.



3. Install a new battery.  
See [“Install the Battery” on page 92](#).

#### Related Information

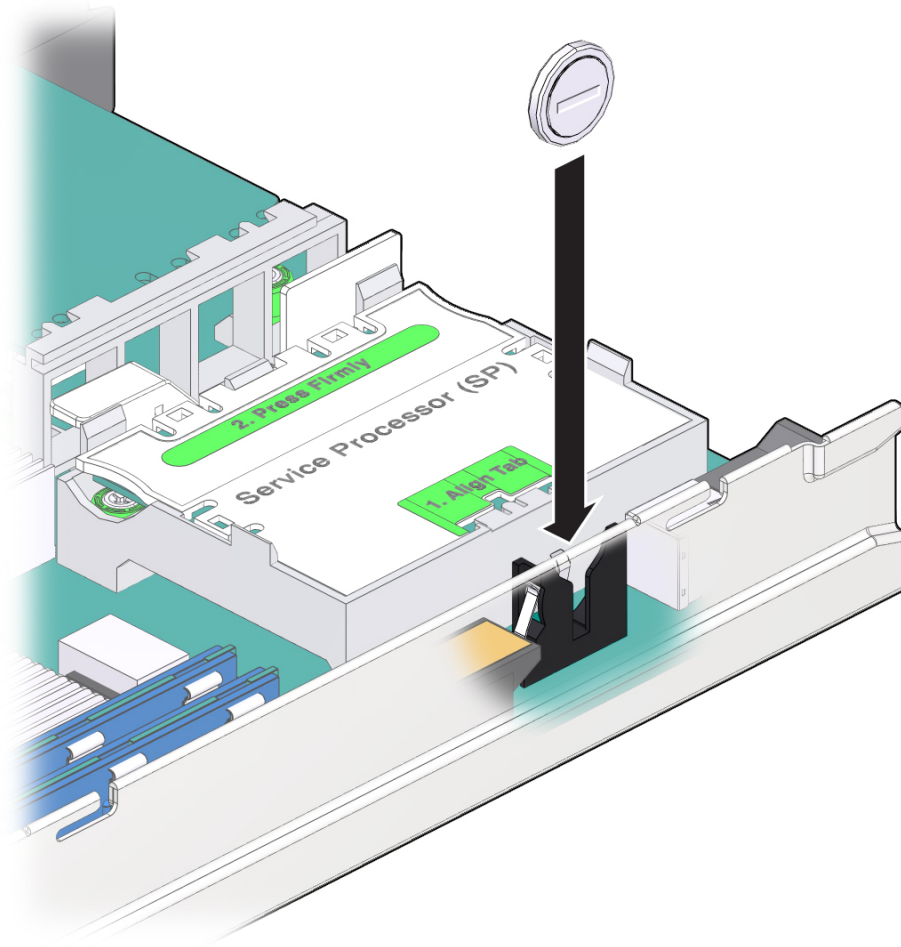
- [“Servicing the SP Card” on page 77](#)
- [“Returning the Server Module to Operation” on page 99](#)

## ▼ Install the Battery

Use a CR2032 replacement battery.



1. Install the replacement battery with the positive (+) side facing the nearby SP.



2. Return the server module to operation.  
See [“Returning the Server Module to Operation”](#) on page 99.
3. Access the Oracle ILOM prompt.  
See [“Log Into Oracle ILOM \(Service\)”](#) on page 21.
4. Set the clock's day and time.

Enter the datetime value in the form MMDDHHMMYYYY.

For example:

```
-> set /SP/clock datetime=091214052012  
-> show /SP/clock
```

```
/SP/clock  
Targets:
```

```
Properties:  
  datetime = Wed Sep 12 14:05:20 2012  
  timezone = PDT (PST8PDT)  
  uptime = 15 days, 02:36:54  
  usentpserver = disabled
```

### Related Information

- [“Install the Battery” on page 92](#)
- [“Servicing the Enclosure Assembly \(Motherboard\)” on page 95](#)

## Servicing the Enclosure Assembly (Motherboard)

---

When certain components in the server module, such as the motherboard, require replacing, you must replace a high-level assembly called the *enclosure assembly*. The enclosure assembly includes a new server module chassis with the motherboard and many other components already installed.

If you determine that a faulty component is not one of the replaceable components described in this document, the enclosure assembly must be replaced.

---

**Note** - This procedure must be performed by an Oracle field service representative.

---

- [“Transfer Components to the New Enclosure Assembly” on page 95](#)

### Related Information

- [“Identifying Components” on page 11](#)
- [“Detecting and Managing Faults” on page 17](#)
- [“Preparing for Service” on page 39](#)

## ▼ Transfer Components to the New Enclosure Assembly

When you replace an enclosure assembly, you must move a number of FRUs from the original server module to the same locations in the replacement assembly. See [“Component Locations” on page 13](#).

When you transfer the SP and ID PROM from the old board to the new you preserve system-specific information that is stored on these modules.

When you replace the motherboard, the firmware on the new motherboard might be incompatible with the firmware on the SP. In this case, you must update the system firmware, which updates the SP and motherboard firmware to compatible versions.

1. **Prepare to take all ESD precautions when working with both the original server module and the new enclosure assembly.**  
Prepare to place all components on an antistatic mat unless you install each component immediately in the new enclosure assembly.  
Follow the precautions explained in [“Preparing for Service” on page 39](#).
2. **Remove the top cover from the original server module and the new enclosure assembly.**  
See [“Remove the Cover” on page 51](#).
3. **Transfer the drives and driver fillers from the original server module to the enclosure assembly.**  
See [“Servicing Drives” on page 53](#).
4. **Transfer the FEM (if present) from the original server module to the enclosure assembly.**  
Install the FEM in the same connectors in the enclosure assembly. See [“Servicing the FEM” on page 73](#).
5. **Transfer the SP card from the original server module to the enclosure assembly.**  
See [“Servicing the SP Card” on page 77](#).
6. **Transfer the ID PROM from the original server module to the enclosure assembly.**  
See [“Servicing the ID PROM” on page 81](#).
7. **Transfer the USB drive (if present) from the original server module to the enclosure assembly.**  
Ensure that you install a USB drive only in the top slot of the connector. See [“Servicing the USB Drive” on page 87](#).
8. **(If needed) Transfer the battery to the enclosure assembly.**  
If a battery is present in the new enclosure assembly, do not transfer the original battery.  
See [“Servicing the Battery” on page 91](#).
9. **Transfer the DIMMs from the original server module to the enclosure assembly.**  
Move each DIMM to the same slot in the enclosure assembly. See [“Servicing DIMMs” on page 63](#).
10. **Attach the original cover to the enclosure assembly.**

See [“Returning the Server Module to Operation” on page 99.](#)

11. **Insert the completed enclosure assembly in the same slot as the original server module.**

See [“Returning the Server Module to Operation” on page 99.](#)

12. **Start the server module host.**

See [“Powering On the Host” on page 102.](#)

13. **Access Oracle ILOM on the SP.**

See [“Log Into Oracle ILOM \(Service\)” on page 21.](#)

If the replacement SP detects that the SP firmware is not compatible with the existing host firmware, further action is suspended and this message is displayed:

Unrecognized Chassis: This module is installed in an unknown or unsupported chassis. You must upgrade the firmware to a newer version that supports this chassis.

If you see this message, go to [Step 14](#). Otherwise, go to [Step 15](#).

14. **Download the system firmware.**

Refer to *Servers Administration*, Updating Firmware and to Oracle ILOM documentation for instructions.

15. **Perform diagnostics to verify the proper operation of the server module.**

See [“Detecting and Managing Faults” on page 17.](#)

16. **Transfer the serial number and product number to the FRUID of the new enclosure assembly.**

This must be done in a special service mode by trained service personnel.

---

**Note** - The replacement enclosure assembly does not have a label with the serial number on the front of the server module, as was present on the original server module.

---

17. **(Optional) Update any customer database that contains RFID data.**

Use the values from the RFID on the new enclosure assembly.

The RFID on the original server module contains different values.

18. **Consider your next step:**

- Power on the host – See [“Powering On the Host” on page 102](#).
- Run POST or Oracle VTS to verify the server module --- See [“Understanding Diagnostics and Tools” on page 17](#).

### **Related Information**

- [“Detecting and Managing Faults” on page 17](#)
- [“Identifying Components” on page 11](#)

# Returning the Server Module to Operation

---

These topics describe how to return Oracle's SPARC T5-1B server module to operation after removing it from Oracle's Sun Blade 6000 modular system for service.

Step	Description	Links
1.	Replace the server module cover.	<a href="#">“Replace the Cover” on page 99</a>
2.	Install the server module into the modular system.	<a href="#">“Install the Server Module Into the Modular System” on page 100</a>
3.	Power on the server module host using Oracle ILOM or the Power button.	<a href="#">“Powering On the Host” on page 102</a>

## Related Information

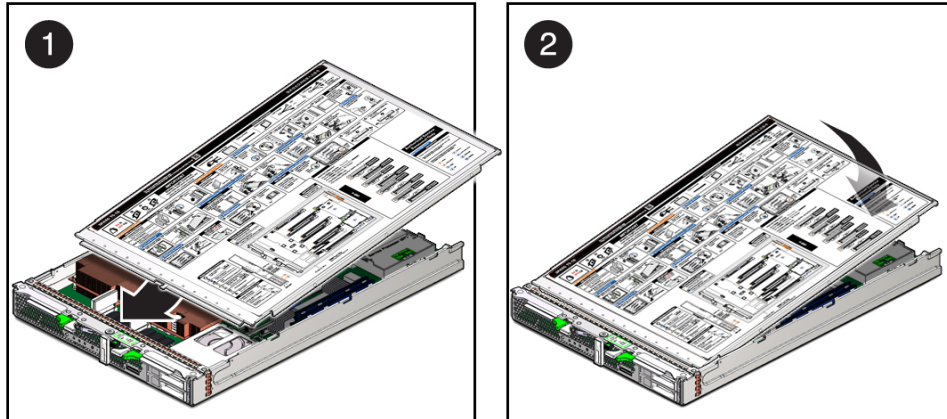
- [“Identifying Components” on page 11](#)
- [“Detecting and Managing Faults” on page 17](#)
- [“Preparing for Service” on page 39](#)

## ▼ Replace the Cover

Perform this procedure after completing installation or servicing of components inside the server module.

1. **Set the cover on the server module (panel 1).**

The cover edge hangs over the rear of the server module by about .5 in. (1 cm).



2. **Slide the cover forward until it latches into place (panel 2).**
3. **Install the server module into the modular system chassis.**  
See [“Install the Server Module Into the Modular System” on page 100](#).

#### Related Information

- [“Install the Server Module Into the Modular System” on page 100](#)
- [“Remove the Cover” on page 51](#)

## ▼ Install the Server Module Into the Modular System



---

**Caution** - Insert a filler panel into an empty modular system slot within 60 seconds of server module removal to ensure proper chassis cooling.

---



---

**Caution** - Hold the server module firmly with both hands so that you do not drop it. The server module can weigh as much as 20 pounds (9.0 kg).

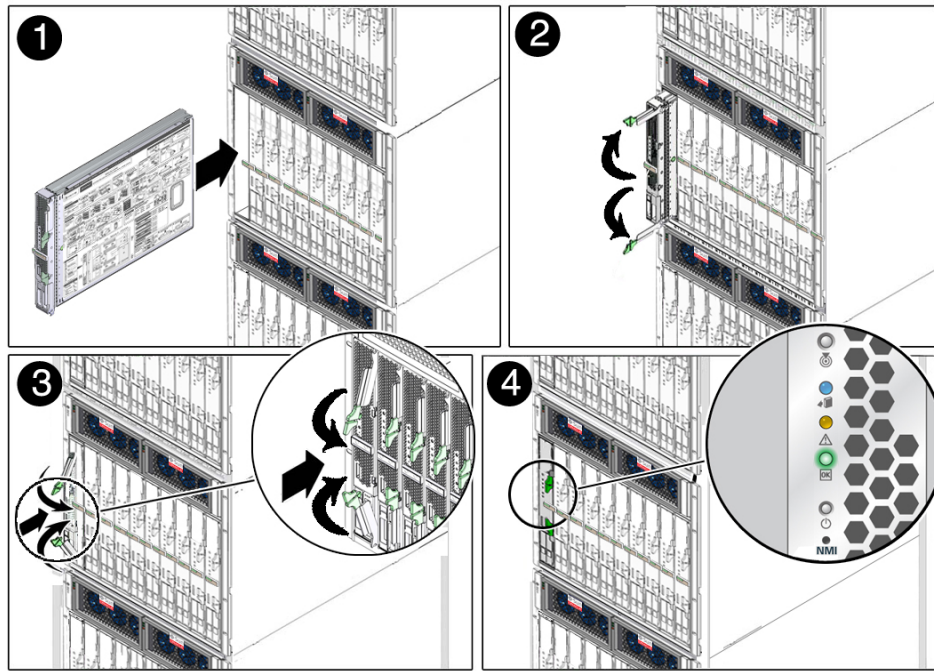
---

1. **(If needed) Replace the cover.**  
See [“Replace the Cover” on page 99](#).



2. **(If needed) Remove the rear connector cover from the server module before inserting it in the modular system.**
3. **Remove a filler panel from the modular system chassis slot that you intend to use.**

When the modular system is operating, you must fill every slot with a filler panel or a server module within 60 seconds.
4. **Hold the server module in a vertical position so that both ejector levers are on the right (panel 1).**



5. **Slide the server module into the chassis and extend the ejector levers (panel 2).**
6. **Close both levers simultaneously, locking the server module in the modular system chassis (panel 3).**

Once installed, these server module activities take place:

- Standby power is applied.

- The front panel LEDs blink three times, then the green OK LED on the front panel blinks for a few minutes.
- Oracle ILOM is initialized on the server module SP and is ready to use, but the server module host is not started.

**7. Start the server module host.**

See [“Powering On the Host” on page 102](#).

**Related Information**

- [“Powering On the Host” on page 102](#)
- [“Remove the Server Module From the Modular System” on page 48](#)

## Powering On the Host

Use one of these tasks to power on the host:

- [“Power On the Host \(Oracle ILOM\)” on page 102](#)
- [“Power On the Host \(Power Button\)” on page 103](#)

**Related Information**

- [“Install the Server Module Into the Modular System” on page 100](#)

### ▼ Power On the Host (Oracle ILOM)

**1. (If needed) Install the server module into the modular system.**

See [“Install the Server Module Into the Modular System” on page 100](#).

**2. Log into Oracle ILOM.**

See [“Log Into Oracle ILOM \(Service\)” on page 21](#).

---

**Note** - The server module power-on process can take several minutes to complete, depending on the amount of installed memory and the configured diagnostic level.

---

By default, the server module boots the Oracle Solaris OS.

**3. Start the host using one of these commands:**

- From the CMM, type.

-> `start /Servers/Blades/Blade_n/System`

- From the server module, type.

-> `start /System`

**4. Perform any diagnostics that verify the results of servicing the server module.**

See [“Understanding Diagnostics and Tools” on page 17](#).

**Related Information**

- [“Detecting and Managing Faults” on page 17](#)
- [“Power On the Host \(Power Button\)” on page 103](#)

## ▼ Power On the Host (Power Button)

Perform this step after you install the server module in a powered modular system.

**1. Press the Power button on the front of the server module.**

See [“Front and Rear Panel \(Service\)” on page 12](#) to locate the Power button.

---

**Note** - The server module power-on process can take several minutes to complete, depending on the amount of installed memory and the configured diagnostic level.

---

By default, the server module boots the Oracle Solaris OS.

**2. Perform any diagnostics that verify the results of servicing the server module.**

See [“Understanding Diagnostics and Tools” on page 17](#).

**Related Information**

- [“Detecting and Managing Faults” on page 17](#)
- [“Power On the Host \(Oracle ILOM\)” on page 102](#)



# Glossary

---

## A

<b>ANSI SIS</b>	American National Standards Institute Status Indicator Standard.
<b>ASF</b>	Alert standard format (Netra products only).
<b>AWG</b>	American wire gauge.

## B

<b>blade</b>	Generic term for server modules and storage modules. <i>See</i> <a href="#">server module</a> <i>and</i> <a href="#">storage module</a> .
<b>blade server</b>	Server module. <i>See</i> <a href="#">server module</a> .
<b>BMC</b>	Baseboard management controller.
<b>BOB</b>	Memory buffer on board.

## C

<b>chassis</b>	For servers, refers to the server enclosure. For server modules, refers to the modular system enclosure.
<b>CMA</b>	Cable management assembly.
<b>CMM</b>	Chassis monitoring module (server modules only). The CMM is the service processor in the modular system that contains server modules. Oracle ILOM runs on the CMM, providing lights out management of the components in the modular system chassis. <i>See</i> <a href="#">modular system</a> <i>and</i> <a href="#">Oracle ILOM</a> .
<b>CMP</b>	Chip multiprocessor.

**D**

**DHCP** Dynamic Host Configuration Protocol.

**disk module or disk blade** Interchangeable terms for storage module. See [storage module](#).

**DTE** Data terminal equipment.

**E**

**EIA** Electronics Industries Alliance.

**ESD** Electrostatic discharge.

**F**

**FEM** Fabric expansion module (server modules only). FEMs enable server modules to use the 10GbE connections provided by certain NEMs. See [NEM](#).

**FRU** Field-replaceable unit.

**H**

**HBA** Host bus adapter.

**host** The part of the server or server module with the CPU and other hardware that runs the Oracle Solaris OS and other applications. The term *host* is used to distinguish the primary computer from the SP. See [SP](#).

**hot-pluggable** Describes a component that can be replaced with power applied, but the component must be prepared for removal.

**hot-swappable** Describes a component that can be replaced with power applied, and no preparation is required.

**I**

**ID PROM** Chip that contains system information for the server or server module.

---

**IP** Internet Protocol.

## K

**KVM** Keyboard, video, mouse. Refers to using a switch to enable sharing of one keyboard, one display, and one mouse with more than one computer.

## L

**LwA** Sound power level.

## M

**MAC** Machine access code.

**MAC address** Media access controller address.

**modular system** The rackmountable chassis that holds server modules, storage modules, NEMs, and PCI EMs (server modules only). The modular system provides Oracle ILOM through its CMM.

**MSGID** Message identifier.

## N

**name space** Top-level Oracle ILOM target.

**NEBS** Network Equipment-Building System (Netra products only).

**NEM** Network express module (server modules only). NEMs provide Ethernet and SAS connectivity to storage modules.

**NET MGT** Network management port. An Ethernet port on the server SP, the server module SP, and the CMM.

**NIC** Network interface card or controller.

**NMI** Nonmaskable interrupt.

**O**

<b>OBP</b>	OpenBoot PROM. Sometimes OBP is used in file names and messages to indicate a relationship to OpenBoot.
<b>Oracle ILOM</b>	Oracle Integrated Lights Out Manager. Oracle ILOM firmware is preinstalled on a variety of Oracle systems. Oracle ILOM enables you to remotely manage your Oracle servers regardless of the state of the host system.
<b>Oracle ILOM CMM</b>	Oracle ILOM that runs on the CMM (server modules only). See <a href="#">Oracle ILOM</a> .
<b>Oracle Solaris OS</b>	Oracle Solaris operating system.

**P**

<b>PCI</b>	Peripheral component interconnect.
<b>PEM</b>	PCIe ExpressModule (server modules only). Modular components that are based on the PCI Express industry-standard form factor and offer I/O features such as Gigabit Ethernet and Fibre Channel.
<b>POST</b>	Power-on self-test.
<b>PROM</b>	Programmable read-only memory.
<b>PSH</b>	Predictive self healing.

**R**

<b>REM</b>	RAID expansion module (server modules only). Sometimes referred to as an HBA See <a href="#">HBA</a> . Supports the creation of RAID volumes on drives.
------------	---

**S**

<b>SAS</b>	Serial attached SCSI.
<b>SCC</b>	System configuration chip.



**SER MGT** Serial management port. A serial port on the server SP, the server module SP, and the CMM.

**server module** Modular component that provides the main compute resources (CPU and memory) in a modular system. Server modules also might have on-board storage and connectors that hold FEMs.

**SP** Service processor. In the server or server module, the SP is a card with its own OS. The SP processes Oracle ILOM commands providing lights out management control of the host. *See* [host](#).

**SSD** Solid-state drive.

**SSH** Secure shell.

**storage module** Modular component that provides computing storage to the server modules.

## T

**TIA** Telecommunications Industry Association (Netra products only).

**Tma** Maximum ambient temperature.

## U

**U.S. NEC** United States National Electrical Code.

**UCP** Universal connector port.

**UI** User interface.

**UL** Underwriters Laboratory Inc.

**UTC** Coordinated Universal Time.

**UUID** Universal unique identifier.

## W

**WWN** World wide name. A unique number that identifies a SAS target.



# Index

---

## A

antistatic  
    mat and wrist strap (Service), 41

## B

battery  
    installing, 92  
    removing, 91  
    verifying, 91  
button  
    Power, 45  
    Remind, 64, 66, 67

## C

cfgadm command, 61  
clearing faults  
    memory faults, 70  
    PSH-detected faults, 35  
clock battery, 91  
components  
    front and panel, 12  
    identifying, 11  
    location, 13  
    location of, 13  
configuring how POST runs, 29  
cover  
    installing, 99  
    removing, 51

## D

detecting faults, 17  
diag\_level parameter, 27  
diag\_mode parameter, 27  
diag\_verbosity parameter, 28  
diagnostics  
    low-level, 26  
    process, 18  
    understanding, 17  
DIMM fault LEDs, 64, 66  
DIMMs  
    configuration, 64, 66  
    installation order, 64, 66  
    installing, 69  
    LEDs, 67  
    locating faulty, 67  
    names, 64, 66  
    removing, 68  
    servicing, 63  
    verifying, 70  
dmesg command, 37  
drives  
    installing, 60  
    LEDs, 56  
    locating faulty, 57  
    removing, 58  
    servicing, 53  
    verifying functionality, 61

## E

ejector tabs, DIMM, 68  
emergency shutdown, 46

enclosure assembly, 95, 95  
ESD prevention, 40

## F

faults  
    detecting, 17  
    managing, 32  
    PSH-detected, 33  
FEM  
    installing, 75  
    removing, 75  
    servicing, 73  
flowchart  
    diagnostic, 18  
    POST, 27  
fmadm command, 35, 70  
fmadm faulty command, 35, 70  
fmdump command, 33  
front panel system controls and LEDs, 24

## H

hot-plugging drives, 57

## I

ID PROM  
    installing, 83  
    removing, 81  
    servicing, 81  
    verifying, 85  
identifying components, 11  
illustrated parts breakdown, 13  
installation order of DIMMs, 64, 66  
installing  
    battery, 92  
    cover, 99  
    DIMMs, 69  
    drives, 60  
    enclosure assembly, 95

FEM, 75  
ID PROM, 83  
server module, 100  
service processor card, 78  
USB drive, 89

## L

LEDs  
    DIMMs, 67  
    drive, 56  
    front panel, 24  
    front panel (Service), 12  
    Power OK, 24  
    Remind, 67  
    Service Required, 24  
    System Locator, 24  
    System Overtemp, 24  
locating  
    faulty DIMMs, 67  
    server module to be serviced, 43  
log files  
    Oracle ILOM, 38  
    Oracle Solaris, 37  
    viewing, 36  
logging into Oracle ILOM, 21

## M

managing faults, 17, 32  
maximum testing with POST, 31  
memory  
    servicing, 63  
message buffer, checking, 37  
message identifier, 33  
motherboard, 95

## O

ok prompt, 44  
Oracle ILOM

- log files, 38
- logging into, 21
- service-related commands, 22, 22
- Oracle ILOM commands
  - help, 22
  - reset, 22
  - set, 22
  - show, 22
  - show faulty, 23
  - start, 22
  - stop, 22
- Oracle Solaris
  - log files, 37
  - shutting down, 44
- Oracle Solaris PSH
  - checking for faults, 33
  - clearing faults, 35
  - overview, 32
- Oracle VTS, 20

## P

- POST
  - about, 26
  - configuration examples, 29
  - configuring, 29
  - Oracle ILOM properties, 27
  - running in Diag Mode, 31
- Power button, 24, 45, 46
- Power OK LED, 24
- powering on, 102, 103
- preparing for service, 39
- PSH Knowledge article web site, 33

## R

- Rear Fan Module Fault LED, 24
- Remind
  - button, 67
  - Power LED, 67
- removing
  - battery, 91, 91

- cover, 51
- DIMMs, 68
- drives, 58
- FEM, 75
- ID PROM, 81
- server module, 44, 48
- SP card, 77
- USB drive, 87
- returning to operation, 99
- running POST in Diag Mode, 31

## S

- safety information, 39
- SCC, 81
- serial number, 42, 97
- server module, 103
  - host, 102, 103
  - installing, 100
  - powering on, 102
- Service Required LED, 24
- show faulty command, 23
- shutdown command, 44
- slot assignments, DIMM, 66
- slot assignments, DIMMs, 64
- SP
  - installing, 78
  - removing, 77
  - servicing, 77
- standby mode, 45, 47
- system controls, front panel, 24
- System Locator LED, 24
- System Overtemp LED, 24

## T

- time setting, 91
- tools
  - availability, 20
  - for service, 41
- troubleshooting
  - using Oracle VTS, 20

## **U**

understanding diagnostics, 17

USB drive, 87

    installing, 89

    removing, 87

    servicing, 87

UUID, 33

## **V**

verifying

    DIMMs, 70

    drives, 61

    ID PROM, 85

viewing log files, 36