

Oracle Insurance

**Insbridge Rating and
Underwriting**

**SoftRater for WebSphere
Installation Guide**

Release 4.6

May 2012

Copyright © 2005, 2012, Oracle and/or its affiliates. All rights reserved.

Oracle Insurance Insbridge Rating and Underwriting SoftRater for WebSphere Installation Guide

Release 4.6

Part # E35534-01

Library # E35552-01

May 2011

Primary Author: Mary Elizabeth Wiger

This software and related documentation are provided under a license agreement containing restrictions on use and disclosure and are protected by intellectual property laws. Except as expressly permitted in your license agreement or allowed by law, you may not use, copy, reproduce, translate, broadcast, modify, license, transmit, distribute, exhibit, perform, publish, or display any part, in any form, or by any means. Reverse engineering, disassembly, or decompilation of this software, unless required by law for interoperability, is prohibited.

The information contained herein is subject to change without notice and is not warranted to be error-free. If you find any errors, please report them to us in writing.

If this software or related documentation is delivered to the U.S. Government or anyone licensing it on behalf of the U.S. Government, the following notice is applicable:

U.S. GOVERNMENT RIGHTS

Programs, software, databases, and related documentation and technical data delivered to U.S. Government customers are "commercial computer software" or "commercial technical data" pursuant to the applicable Federal Acquisition Regulation and agency-specific supplemental regulations. As such, the use, duplication, disclosure, modification, and adaptation shall be subject to the restrictions and license terms set forth in the applicable Government contract, and, to the extent applicable by the terms of the Government contract, the additional rights set forth in FAR 52.227-19, Commercial Computer Software License (December 2007). Oracle USA, Inc., 500 Oracle Parkway, Redwood City, CA 94065.

This software is developed for general use in a variety of information management applications. It is not developed or intended for use in any inherently dangerous applications, including applications which may create a risk of personal injury. If you use this software in dangerous applications, then you shall be responsible to take all appropriate fail-safe, backup, redundancy, and other measures to ensure the safe use of this software. Oracle Corporation and its affiliates disclaim any liability for any damages caused by use of this software in dangerous applications.

Oracle is a registered trademark of Oracle Corporation and/or its affiliates. Other names may be trademarks of their respective owners.

This software and documentation may provide access to or information on content, products, and services from third parties. Oracle Corporation and its affiliates are not responsible for and expressly disclaim all warranties of any kind with respect to third-party content, products, and services. Oracle Corporation and its affiliates will not be responsible for any loss, costs, or damages incurred due to your access to or use of third-party content, products, or services.

Where an Oracle offering includes third party content or software, we may be required to include related notices. For information on third party notices and the software and related documentation in connection with which they need to be included, please contact the attorney from the Development and Strategic Initiatives Legal Group that supports the development team for the Oracle offering. Contact information can be found on the Attorney Contact Chart.

The information contained in this document is for informational sharing purposes only and should be considered in your capacity as a customer advisory board member or pursuant to your beta trial agreement only. It is not a commitment to deliver any material, code, or functionality, and should not be relied upon in making purchasing decisions. The development, release, and timing of any features or functionality described in this document remains at the sole discretion of Oracle.

This document in any form, software or printed matter, contains proprietary information that is the exclusive property of Oracle. Your access to and use of this confidential material is subject to the terms and conditions of your Oracle Software License and Service Agreement, which has been executed and with which you agree to comply. This document and information contained herein may not be disclosed, copied, reproduced, or distributed to anyone outside Oracle without prior written consent of Oracle. This document is not part of your license agreement nor can it be incorporated into any contractual agreement with Oracle or its subsidiaries or affiliates.

CONTENTS

| | | |
|-------------------|--|------|
| | PREFACE | V |
| | Audience | v |
| | Planning Your IBRU System..... | v |
| | Types of Installation | v |
| | Definitions | vi |
| | Related Documents | vii |
| | Conventions | vii |
| | Manual History | viii |
| CHAPTER 1 | | |
| | SYSTEM REQUIREMENTS | 9 |
| | Oracle Software Delivery Cloud..... | 9 |
| QUICK VIEW | | |
| | SOFRATER FOR WEBSHERE INSTALLATION..... | 12 |
| CHAPTER 2 | | |
| | SETTING UP WEBSHERE | 13 |
| | Step 1: Placing the Configuration Files..... | 13 |
| | Step 2: Create INSBRIDGE_APP_DIR in Name Space Bindings..... | 14 |
| | Step 3: Installation of the .EAR File | 16 |
| | Step 4: Setting up Insbridge.net.softrater.xml Config File | 19 |
| | Step 5: Assigning the Shared Insbridge Libraries..... | 20 |
| CHAPTER 3 | | |
| | INSTALLATION PROCEDURES – UTILIZING A SQL SERVER DATABASE.... | 21 |
| | Step 1: Restoring IBRU Databases in SQL Server..... | 21 |
| | Step 2: Setting up a WebSphere Environment in IBSS | 24 |
| | Step 3: Entering your IBSS Instance in IBFA | 28 |
| CHAPTER 4 | | |
| | INSTALLATION PROCEDURES – UTILIZING AN ORACLE DATABASE | 30 |
| | Step 1: Creating an Oracle Database | 30 |
| | Location of Oracle DDL Directory | 31 |
| | Step 2: Setting up a WebSphere Environment in IBSS | 32 |
| | Step 3: Installation of Oracle Client | 36 |
| | Running the Oracle Client..... | 36 |
| | Step 4: Entering your IBSS Instance in IBFA | 38 |

CHAPTER 5

| | |
|--|----|
| INSTALLATION PROCEDURES – UTILIZING AN IBM DB2 DATABASE..... | 40 |
| Required DB2 Client | 40 |
| Step 1: Creating a DB2 Database..... | 40 |
| Location of DB2 DDL Directory | 42 |
| Step 2: Setting up a WebSphere Environment in IBSS | 43 |
| Step 3: Installation of DB2 Client | 47 |
| Running the DB Client | 47 |
| Step 4: Entering your IBSS Instance in IBFA | 49 |

CHAPTER 6

| | |
|---|----|
| SOFRATER DATABASE REQUIREMENTS..... | 51 |
| Database User Roles and Permissions | 51 |
| Microsoft SQL Server..... | 52 |
| Oracle..... | 52 |
| IBM DB2..... | 53 |

SUPPORT

| | |
|---|----|
| CONTACTING SUPPORT | 54 |
| TTY Access to Oracle Support Services | 54 |

INDEX

| | |
|-------------|----|
| INDEX | 55 |
|-------------|----|

LIST OF FIGURES

| | |
|--|----|
| FIGURE 1 CHANGING SCOPE TO SERVER..... | 14 |
| FIGURE 2 CREATING A NEW NAME SPACE | 14 |
| FIGURE 3 CREATE NAME SPACE BINDING | 15 |
| FIGURE 4 INSTALLING THE EAR FILE | 16 |
| FIGURE 5 PROVIDING OPTIONS..... | 17 |
| FIGURE 6 MAPPING TO APPLICATION SERVERS..... | 18 |
| FIGURE 7 SUMMARY | 18 |
| FIGURE 8 SHARED LIBRARY REFERENCES | 20 |
| FIGURE 9 ASSIGNING LIBRARY | 20 |
| FIGURE 10 RIGHT CLICK TO RESTORE DATABASE..... | 22 |
| FIGURE 11 RESTORING A DATABASE | 23 |
| FIGURE 12 IBSS WEBSPHERE MAIN PAGE | 24 |
| FIGURE 13 ENVIRONMENT SETUP..... | 25 |
| FIGURE 14 RESETTING THE ENVIRONMENT | 27 |
| FIGURE 15 EDITING ENVIRONMENT | 28 |
| FIGURE 16 IBSS WEBSPHERE MAIN PAGE | 32 |
| FIGURE 17 ENVIRONMENT SETUP..... | 33 |
| FIGURE 18 RESETTING THE ENVIRONMENT | 35 |
| FIGURE 19 LOCATING THE ORACLE CLIENT FOR 64-BIT INSTALLS | 36 |
| FIGURE 20 RUNNING THE ORACLE CLIENT..... | 37 |
| FIGURE 21 EDITING ENVIRONMENT | 38 |
| FIGURE 22 IBSS WEBSPHERE MAIN PAGE | 43 |
| FIGURE 23 ENVIRONMENT SETUP..... | 44 |
| FIGURE 24 RESETTING THE ENVIRONMENT | 46 |
| FIGURE 25 INSTALLING DB2 CLIENT AND FIX PACK | 47 |
| FIGURE 26 EDITING ENVIRONMENT | 49 |

PREFACE

Welcome to the *Oracle Insurance Insbridge Rating and Underwriting SoftRater for WebSphere Installation Guide*. SoftRater for WebSphere is an EJB application that can be installed on an IBM WebSphere Application Server. SoftRater is the multi-platform rating engine component within the Insbridge Rating and Underwriting System (IBRU) that executes the rating and underwriting instructions as defined by the user in RateManager.

The Insbridge SoftRater Server (IBSS) is the container for all Insbridge web components including the SoftRater Engine. All independent Insbridge components will be contained in the SoftRater Server.

NOTE: *SoftRater for WebSphere has been tested and certified on WebSphere 7.0 utilizing Windows 2008 64-bit.*

AUDIENCE

This guide is intended for technical personnel, such as installers, system administrators and others tasked with configuring SoftRater that would be involved in the maintenance and operation of SoftRater or RateManager. The audience for this guide should have a thorough knowledge of WebSphere.

PLANNING YOUR IBRU SYSTEM

Prior to installation, you should have an idea of the type of setup you want to create. What kind of equipment do you have available and how many environments do you need? If you do not have everything completely planned out, you can still proceed. Environments can be removed or added later on. The Oracle Insurance Insbridge Rating and Underwriting system (IBRU) is expandable and can accommodate a few different configurations.

For more on planning your IBRU system, please see the Insbridge Planning Guide.

TYPES OF INSTALLATION

There are various types of installations:

RateManager Installation

- **Full RateManager** – This installation will install RateManager and the Insbridge Framework Administrator (IBFA). This is for a Windows only environment using a SQL Server database.

SoftRater Installation

- **Full SoftRater for Java Installation** – This installation will deploy SoftRater to an application server; WebLogic, WebSphere or JBoss, using a SQL Server database or an Oracle database.
- **Full SoftRater for Windows Node** – This installation is for existing environments that want to add a SoftRater for Windows node to an environment. This is for a Windows only environment using a SQL Server database, or an Oracle database.

Upgrading a Current Installation

- **Upgrade** – This installation is for existing customers and will take their current version of IBRU up to version 04.06.00.

This guide is for a **Full SoftRater for Java Installation utilizing WebSphere**.

Definitions

Some commonly used terms when installing or using the Oracle Insurance Insbridge Rating and Underwriting system:

- **IBRU** – Insbridge Rating and Underwriting System. This is the entire system.
- **IBFA** – Insbridge Framework Administrator. IBFA is an administrative tool used to configure Insbridge applications and setup RateManager database connections. IBFA will be located on a Windows Server machine. IBFA/SR-WIN is an Insbridge Framework Administrator/SoftRater for Windows.
- **IBSS** – Insbridge SoftRater Server. IBSS is the administrative tool for the SoftRater engine. The SoftRater engine is a multi-platform component within IBRU that executes the rules, rating and underwriting instructions as defined by the user in RateManager. IBSS is usually located on a Java machine. IBSS/SR-JAVA is an Insbridge SoftRater Server/SoftRater for Java.
- **SoftRater Node** – A SoftRater node is either an IBFA (without RateManager) or IBSS instance on a physical environment.
- **SoftRater Native** – SoftRater Native is a remote instance of SoftRater that can execute rules and rating logic in environments where access via the SoftRater web-services is not desired or possible.
- **RM** – RateManager. RateManager is a component within IBRU that enables users to manage the product definition and modification process, including rating and underwriting logic.
- **SR** – SoftRater. The engine that executes the rating, rules and underwriting instructions defined within RateManager. The rating environment for runtime execution and processing of business content. SoftRater can be further defined by the operating system where it has been loaded.
- **SR-WIN** – SoftRater for Windows. This is also another name for IBFA.
- **SR-JAVA** – SoftRater for Java. This is also another name for IBSS.

- **SRP** – SoftRater Packages. A package that holds all the RateManager logic for a specific program and version.
- **VFS** – Virtual File Servers. Virtual file server management allows you to access environments that are located on other machines in different locations where packages can be downloaded.
- **Package Location** – A pointer to a location where SoftRater Packages (SRP's) are stored.
- **Physical Environment** – A physical environment is generally referred to as a physical machine.
- **Authoring Environment** – The physical machine where RateManager is installed.
- **Rating Environment** – The physical machine(s) where SoftRater is installed. This is typically the same as a SoftRater node.
- **Logical Environment** – An environment created for a subscriber in IBFA. It defines package location, engine location and database location in addition to several other supporting data items. This environment is used for rating and/or SRP management. Each database connection will have a logical environment.

RELATED DOCUMENTS

For more information, refer to the following Oracle resources:

- The Oracle Insurance Insbridge Rating and Underwriting Framework Administrator.
- The Oracle Insurance Insbridge Rating and Underwriting SoftRater Server Guide.
- You can view these guides in-line at this address:

<http://www.oracle.com/technetwork/documentation/insurance-097481.html>

CONVENTIONS

The following text conventions are used in this document:

| Convention | Description |
|------------------------|--|
| bold | Boldface type indicates graphical user interface elements associated with an action. |
| <i>italic</i> | Italic type indicates book titles, emphasis, or placeholder variables for which you supply particular values. |
| <code>monospace</code> | Monospace type indicates commands within a paragraph, URLs, code in examples, text that appears on the screen, or text that you enter. |

Manual History

New editions incorporate any updates issued since the previous edition.

| Edition | Publication Number | Product Version | Publication Date | Comment |
|--------------------------|---------------------------|------------------------|-------------------------|-----------------|
| 1 st Edition | P01-706-01 | | | |
| 2 nd Edition | P01-706-02 | V 3.5 | | |
| 3 rd Edition | P01-706-03 | V 3.6 | 03/14/2006 | Update 3.6 |
| 4 th Edition | P01-706-04 | V 3.6 | 08/09/2006 | Update logo |
| 5 th Edition | P01-706-05 | V 3.7 | 10/05/2006 | Update to 3.7 |
| 6 th Edition | P01-706-06 | V 3.8 | 7/19/2007 | Update to 3.8 |
| 7 th Edition | P01-706-07 | V 3.8.3 | 10/19/2007 | Update to 3.8.3 |
| 8 th Edition | P01-706-08 | V 3.8.5 | November 2007 | Update to 3.8.5 |
| 9 th Edition | P01-706-09 | V 3.8.7 | January 2008 | Update to 3.8.7 |
| 10 th Edition | P01-706-10 | V 3.8.8 | March 2008 | Update to 3.8.8 |
| 11 th Edition | P01-706-11 | V 3.9 | May 2008 | Update to 3.9 |
| 12 th Edition | P01-706-12 | V 3.10.0 | September 2008 | Update to 3.10 |
| 13 th Edition | P01-706-13 | V 3.11 | December 2008 | Update to 3.11 |
| 14 th Edition | P01-706-14 | V 3.12 | July 2009 | Update to 3.12 |
| 15 th Edition | P01-706-15 | V 3.13 | November 2009 | Update to 3.13 |
| 16 th Edition | P01-706-16 | R 4.0 | April 2010 | Update to 4.0 |
| 17 th Edition | P01-706-17 | R 4.0.1 | August 2010 | Update Release |
| 18 th Edition | P01-706-18 | R 4.1 | December 2010 | Update Release |
| 19 th Edition | P01-706-19 | R 4.5 | May 2011 | Update Release |
| 20 th Edition | P01-706-20 | R 4.5.1 | September 2011 | Update Release |
| 21 st Edition | P01-706-21 | R 4.6 | May 2012 | Update Release |

SYSTEM REQUIREMENTS

For minimum operating system and hardware requirements, please see the Hardware Software requirements guide.

Prior to creating a new SoftRater environment, please have ready:

- **Full WebSphere installation**
- **Database name or Environment name**
- **Database login information**
- **Database server name, either IP or DNS**
- **Database DDL, updates or backup files for the database you want to utilize. These files are located in the 04.06.00 Insbridge IBRU folder.**
- **If utilizing Oracle, you need: DB Catalog name, port number, DB Schema name**
- **If utilizing DB2, you need: DB Catalog name, port number, query block size (heap), DB Schema name**
- **Subscriber ID created in IBFA**
- **Access to the server where the IBRU system was installed**
- **URL of the current IBFA**
- **Package location where you want the packages stored**

These components will be needed at various times during the installation and implementation of SoftRater for WebSphere.

ORACLE SOFTWARE DELIVERY CLOUD

Prior to installation, please make sure the source machine(s) where IBRU will be loaded has an unzip utility. An unzip utility for most platforms is available on the Oracle Software Delivery Cloud download page.

Documentation from Oracle Software Delivery Cloud is in PDF format. Prior to installation, please make sure the source machine(s) where IBRU documentation will be loaded has a PDF reader.

Files are downloaded with part numbers as file names. Please make note of the part numbers you have downloaded and the corresponding file name. You may be asked to provide the part numbers or the filename if you contact Oracle Insurance Support.

The installation downloads you can select are:

- **Insbridge IBRU Install** – This is required for all RateManager installations
- **SoftRater for WebSphere** – This is required if you are using WebSphere
- **SoftRater for WebLogic** – This is required if you are using WebLogic
- **SoftRater for Jboss** – This is required if you are using Jboss
- **Documentation** – It is recommended that you download the documentation. Installation guides and user guides are located here.

The 04.06.00-Insbridge-IBRU folder contents:

- **Databases**
 - ♦ DB2
 - SoftRater – IBSR
 - DDL
 - ♦ Oracle
 - SoftRater – IBSR
 - DDL
 - Update:Usp_IBSR_v04.05.00.oracle
 - ♦ SQL Server
 - RateManager – IBRM
 - Latin1_General_BIN
 - DATABASE_BACKUP_IBRM_TEMPLATE_CASE_SENSITIVE.bak
 - SQL_Latin1_General_CP1_CI_AS
 - DATABASE_BACKUP_IBRM_TEMPLATE.bak
 - Security – IB_CLIENT
 - SQL_Latin1_General_CP1_CI_AS
 - DATABASE_BACKUP_IB_CLIENT_TEMPLATE.bak
 - SoftRater – IBSR
 - Latin1_General_BIN
 - DATABASE_BACKUP_IBSR_TEMPLATE_CASE_SENSITIVE.bak
 - SQL_Latin1_General_CP1_CI_AS
 - DATABASE_BACKUP_IBSR_TEMPLATE.bak
 - Update:Usp_IBSR_v04.05.01.sql
- **IE7_IE8 Users**
 - ♦ Insbridge IE7 Active X Control Update PDF
 - ♦ RateManager_IE7_IE8.exe
- **Oracle BI Publisher**
 - ♦ OBI_PUBLISHER.exe
- **Oracle Client**
 - ♦ Oracle_client.exe
- **Oracle Insurance – Insbridge Rating and Underwriting.exe**

The SoftRater for WebSphere version 04.06.00 zip file will contain:

- The 04.06.00-insbridge-was-eng Folder, which contains:
 - IBSS_WS_v7.ear file
 - IBSS_WS_v61.ear file
 - Insbridge.net.softmaterconfig.xml

License files are no longer required.

SoftRater can be installed any time after the Insbridge Framework Administrator and RateManager have been installed. SoftRater must be installed prior to any users creating packages. Please note, all folders and files may not be needed, depending upon the kind of setup you want.

Internet Explorer

IBSS and IBFA are accessed via web browser. Please verify that you are using Internet Explorer 7.0 or 8.0 (32-bit). As of release 4.6, Internet Explorer 8.0 (64-bit) is not supported.

SOFTRATER FOR WEBSPHERE INSTALLATION

Installing SoftRater for WebSphere will require that you:

1. Set up WebSphere and deploy the SoftRater for WebSphere .EAR file and config file. There are five steps in setting up WebSphere and deploying SoftRater.
2. Implement the database and enter the configuration information in IBSS and IBFA.
 - a. Oracle Database
 - b. SQL Server Database
 - c. IBM DB2

SoftRater for WebSphere can utilize either database. The installation procedures are similar, but there are different procedures for each database type. Please follow the implementation for your database type.

Setting up and Deploying in WebSphere

Step 1: Placing the Configuration Files

Step 2: Create INSBRIDGE_APP_DIR in Name Space Bindings

Step 3: Installing the EAR File

Step 4: Setting up Insbridge.net.softrater.xml Config File

Step 5: Assigning the Shared Insbridge Libraries

Implementing a SQL Server Database

Step 1: Restoring IBRU Databases in SQL Server

Step 2: Setting up a WebSphere Environment in IBSS

Step 3: Entering your IBSS Instance in IBFA

Implementing an Oracle Database

Step 1: Creating an Oracle Database

Step 2: Setting up a WebSphere Environment in IBSS

Step 3: Installation of Oracle Client

Step 4: Entering your IBSS Instance in IBFA

Implementing an IBM DB2 Database

Step 1: Creating a DB2 Database

Step 2: Setting up a WebSphere Environment in IBSS

Step 3: Installation of DB2 Client

Step 4: Entering your IBSS Instance in IBFA

SETTING UP WEBSphere

WebSphere 7.0 should be up and running prior to deploying the .EAR file. There are five steps that should be performed in WebSphere prior to implementing the database. All steps are required.

- **Step 1:** The Configuration Files must be placed in a static location
- **Step 2:** Create INSBRIDGE_APP_DIR in Name Space Bindings
- **Step 3:** Installing the EAR File
- **Step 4:** Setting up Insbridge.net.softrater.xml Config File
- **Step 5:** Assigning the Shared Insbridge Libraries

STEP 1: PLACING THE CONFIGURATION FILES

We suggest creating an Insbridgeconfig folder but you may use any folder name you want and you can place the folder anywhere you want. This folder will hold the necessary files for the SoftRater for WebSphere installation. Take note of the location and make sure you have created this folder prior to running the installation.

- For a Windows environment, C:\Insbridge\config
- For a Linux environment, home/Insbridge/config

NOTE: For the purposes of this guide, the location will be referred to as C:\Insbridge\config.

The SoftRater for WebSphere zip file should be downloaded to the WebSphere server prior to configuration. Unzip the file. There will be an XML file and two .EAR files inside. Please use the .ear file for the version of WebSphere you have.

- **IBSS_WS_v7.ear**
- **IBSS_WS_v61.ear**
- **Insbridge.net.softraterconfig.xml**

Place these files in the C:\Insbridge\config folder.

Once you have these files in place, do not move them.

STEP 2: CREATE INSBRIDGE_APP_DIR IN NAME SPACE BINDINGS

SoftRater uses an XML configuration (insbridge.net.softraterconfig.xml) file to store information in the configured rating environments. This file needs to be accessible to the Insbridge Rating and Underwriting SoftRater Server (IBSS) in order to operate. The location to define where the config file is located is stored using a Name Space Binding string in the WebSphere server configuration.

1. To create the INSBRIDGE_APP_DIR string, from the WebSphere Admin console, browse to the following location:

Environment → Naming → Name Space Bindings

2. Change the scope to the **Server** level by selecting it and click **Apply**.

Name Space Bindings

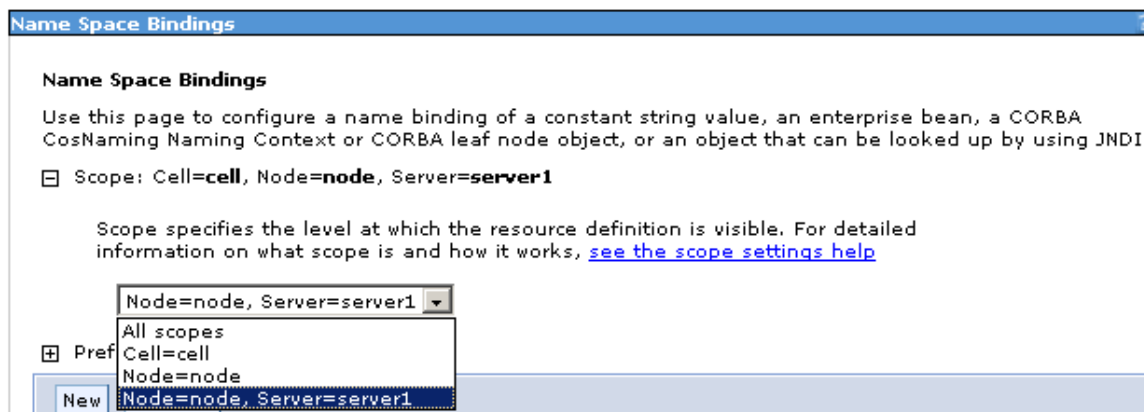


Figure 1 Changing Scope to Server

3. Once you have changed to the server level, click **New**.

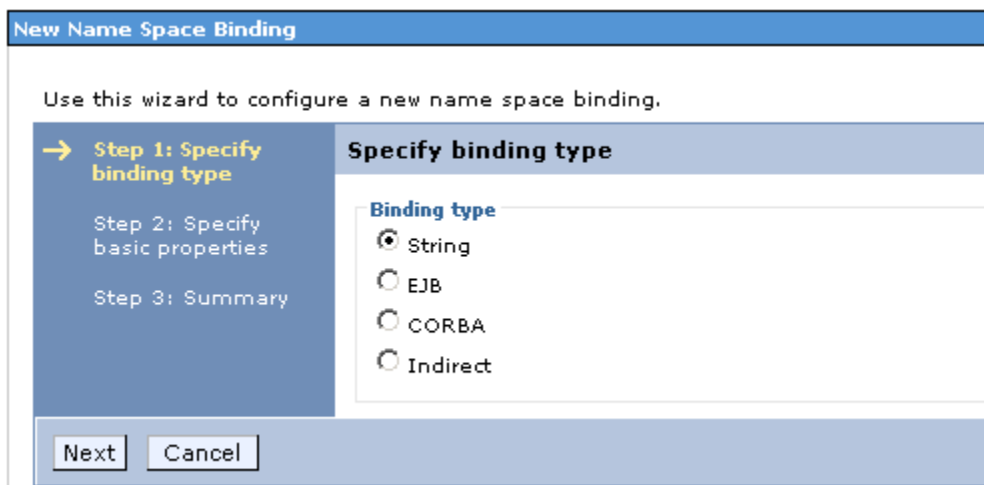


Figure 2 Creating a New Name Space

4. Select String and then click **Next**.

The screenshot shows a wizard titled "New Name Space Binding". Below the title bar, it says "Use this wizard to configure a new name space binding." On the left, a vertical pane shows three steps: "Step 1: Specify binding type", "Step 2: Specify basic properties" (which is highlighted with a yellow arrow and bold text), and "Step 3: Summary". The main area is titled "Specify basic properties" and contains four fields: "Binding type" with a dropdown menu showing "String", and three required fields marked with an asterisk: "Binding identifier", "Name in name space", and "String value". At the bottom, there are three buttons: "Previous", "Next", and "Cancel".

Figure 3 Create Name Space Binding

5. Create a Name Space Binding and Binding Identifier at the server level called `INSBRIDGE_APP_DIR`. The actual string value is the directory path location where the insbridge config file will be located relative to the WebSphere server.
6. Then select **Next** and **Finish**. Save to the master configuration.

STEP 3: INSTALLATION OF THE .EAR FILE

1. Log on to the Administrative Console, for example: http://WAS_SERVER:9080/admin/.
2. Select Application → Install New Application.
3. Select the location where you placed the .EAR file (IBSS_WS_v7.ear or IBSS_WS_v61.ear) and select **Next**.

The screenshot shows a dialog box titled "Preparing for the application installation". It contains the following elements:

- A header bar with the title and a help icon.
- Text: "Specify the EAR, WAR, JAR, or SAR module to upload and install."
- A section titled "Path to the new application" with two radio buttons:
 - ☒ Local file system: Includes a "Full path" text box containing "C:\Documents and Settings" and a "Browse..." button.
 - ☐ Remote file system: Includes a "Full path" text box and a "Browse..." button.
- A "Context root" text box with a note: "Used only for standalone Web modules (.war files) and SIP modules (.sar files)".
- A section titled "How do you want to install the application?" with two radio buttons:
 - ☐ Prompt me only when additional information is required.
 - ☒ Show me all installation options and parameters.
- At the bottom, "Next" and "Cancel" buttons.

Figure 4 Installing the EAR File

4. Provide Options to suit your environment. You may want to select Pre-compile JSP for improved performance – this is optional.

Install New Application ?

Specify options for installing enterprise applications and modules.

→ **Step 1: Select installation options**
[Step 2: Map modules to servers](#)
[Step 3: Summary](#)

Select installation options

Specify the various options that are available to prepare and install your application.

☒ Precompile JavaServer Pages files

Directory to install application

☒ Distribute application

☐ Use Binary Configuration

☐ Deploy enterprise beans

Application name

☒ Create MBeans for resources

☐ Enable class reloading

Reload interval in seconds

☐ Deploy Web services

Validate Input off/warn/fail

☒ Process embedded configuration

File Permission

Allow all files to be read but not written to
 Allow executables to execute
 Allow HTML and image files to be read by everyone

Application Build ID

☐ Allow dispatching includes to remote resources

☐ Allow servicing includes from remote resources

Figure 5 Providing Options

5. Click **Next** to continue.

NOTE: This screen will only be displayed if you selected “Show all installation options and parameters” on the first screen.

6. Map modules to application servers.

Map modules to servers

Specify targets such as application servers or clusters of application servers where you want to install the modules that are contained in your application. Modules can be installed on the same application server or dispersed among several application servers. Also, specify the Web servers as targets that serve as routers for requests to this application. The plug-in configuration file (plugin-cfg.xml) for each Web server is generated, based on the applications that are routed through.

Clusters and Servers:

WebSphere:cell=emasisNode03Cell,node=emasisNode03,server=server1

| Select | Module | URI | Server |
|--------------------------|-------------------|---------------------------------------|--|
| <input type="checkbox"/> | InsBridgeEJB | InsBridgeEJB.jar,META-INF/ejb-jar.xml | WebSphere:cell=emasisNode03Cell,node=emasisNode03,server=server1 |
| <input type="checkbox"/> | InsBridge.Fwk.WEB | InsBridge.Fwk.WEB.war,WEB-INF/web.xml | WebSphere:cell=emasisNode03Cell,node=emasisNode03,server=server1 |

Figure 6 Mapping to Application Servers

7. Map Virtual Hosts.

8. Verify your selections on the Summary screen.

Specify options for installing enterprise applications and modules.

Summary

Summary of installation options

| Options | Values |
|--|---|
| Precompile JavaServer Pages files | Yes |
| Directory to install application | |
| Distribute application | Yes |
| Use Binary Configuration | No |
| Deploy enterprise beans | No |
| Application name | InsBridge.Fwk.APP |
| Create MBeans for resources | Yes |
| Enable class reloading | No |
| Reload interval in seconds | |
| Deploy Web services | No |
| Validate Input off/warn/fail | warn |
| Process embedded configuration | Yes |
| File Permission | .*\.*.dll=755#.*\.*.so=755#.*\.*.a=755#.*\.*.sl=755 |
| Application Build ID | Unknown |
| Allow dispatching includes to remote resources | No |
| Allow servicing includes from remote resources | No |
| Cell/Node/Server | Click here |
| Application Scoped Resources | Yes |

Figure 7 Summary

9. Select **Finish**. After installation, save to the master configuration.

STEP 4: SETTING UP INSBRIDGE.NET.SOFTRATER.XML CONFIG FILE

SoftRater requires a single configuration file “insbridge.net.softraterconfig.xml”. A default setup copy of this file is in the SoftRater for WebSphere download. Before starting the configuration setup process, copy this default file to the following WebSphere setup folder: INSBRIDGE_APP_DIR. All administrative setup options are saved in this file.

For example:

APPSERVER/profiles/APPSERVERNODE/InstalledApps/SERVERNAME/InsBridge.Fwk.APP.ear/config

NOTE: *If the location is either not defined or not configured, then the SoftRater will default to the old legacy location of \$WSAS_HOME/oracle/igbu/insbridge/files folder to look for the configuration file.*

The location where the config file resides is defined by the INSBRIDGE_APP_DIR as created on page 13. This location can be anywhere on the server as long as the identity of the process running the WebSphere AppServer has access rights to the defined folder.

Step 1: Copy the insbridge.net.softraterconfig.xml file to the INSBRIDGE_APP_DIR folder.

For added security, after all the SoftRater environments have been configured and tested, the config file can be made read-only. Thereby no modifications can be made from the IBSS interface until the server administrator makes the file writable.

STEP 5: ASSIGNING THE SHARED INSBRIDGE LIBRARIES

1. From the WebSphere Admin console, browse to Applications → Enterprise Applications and select Insbridge.Fwk.APP to modify the extended properties.
2. At the bottom of the screen select the Shared Library references link to assign the libraries. Select Insbridge.Fwk.App and click Reference shared libraries

Enterprise Applications ?

[Enterprise Applications](#) > [InsBridge.Fwk.APP](#) > **Shared library references**

Shared Library Mapping for Modules

Specify shared libraries that the application or individual modules reference. These libraries must be defined in the configuration at the appropriate scope.

| Select | Application | URI | Shared Libraries |
|-------------------------------------|-------------------|---------------------------------------|------------------|
| <input checked="" type="checkbox"/> | InsBridge.Fwk.APP | META-INF/application.xml | |
| Select | Module | URI | Shared Libraries |
| <input type="checkbox"/> | InsBridge.Fwk.WEB | InsBridge.Fwk.WEB.war,WEB-INF/web.xml | |

Figure 8 Shared Library References

3. If the **JWLLib** is present, select it and add to the right hand side. If it is not listed, click cancel to return to the previous screen.
4. Click **OK**.

Enterprise Applications ?

[Enterprise Applications](#) > [InsBridge.Fwk.APP](#) > [Shared library references](#) > **Shared Library Mapping**

Map shared libraries to an entire application or per module.

Map libraries to the application or module listed

InsBridge.Fwk.APP

Select the library in the Available list. Move it to the Selected list by clicking >>.

| Available: | | Selected: |
|--------------|----|-----------|
| JWLLib | >> | |
| DB2_JAR_FILE | << | |

Figure 9 Assigning Library

5. Click **OK** and then save to the master configuration.

The Insbridge SoftRater Server EAR may now be started from the WSAS Administrative Console.

INSTALLATION PROCEDURES – UTILIZING A SQL SERVER DATABASE

The following is a check list of the installation steps needed to perform a NEW SoftRater for WebSphere Installation:

1. Creation of the IBSR databases.
2. Create a WebSphere entry in IBSS.
3. Create a WebSphere entry in IBFA.

For the Insbridge 4.6 release:

- The IBSR database has been tested and certified on MS SQL Server 2008 R2 on MS Windows 2008 64-bit.

STEP 1: RESTORING IBRU DATABASES IN SQL SERVER

Because many corporate environments have a separation between the system administrator and the database administrator, the following process may require both administrators' access and permissions. Make sure you have a SQL Server account called **ibru**.

NOTE: *If you do not have database permissions, you will not be able to perform the following database procedures.*

NOTE: *If you are unsure how to perform a database restore, please consult with your database administrator.*

Currently supported is the default SQL Server collation using SQL_Latin1_General_CP1_CI_AS and sort order plus case sensitivity using Latin1_General_BIN as the server collation. The security database (IB_CLIENT) supports the default SQL Server collation using SQL_Latin1_General_CP1_CI_AS. The RateManager and SoftRater databases can use either case sensitive or non-case sensitive. Please check with Oracle Insurance for any questions regarding database server sort orders or collations.

1. Located in the Insbridge Installation Directory:
 - ♦ SoftRater – IBSR
 - Latin1_General_BIN
 - DATABASE_BACKUP_IBSR_TEMPLATE_CASE_SENSITIVE.bak
 - SQL_Latin1_General_CP1_CI_AS
 - DATABASE_BACKUP_IBSR_TEMPLATE.bak
 - Update:Usp_IBSR_v04.05.01.sql

2. Select the SoftRater backup file you want to use, case sensitive or non-case sensitive.
3. **Copy the file** to an appropriate database folder on the machine where SQL Server is installed. For example, [Drive]:\Program Files\Insbridge\Databases. If you are unsure of a location, please consult with your database administrator.
4. **Rename the file.** It is not required but it is strongly suggested that the database file name be changed from TEMPLATE to something that defines the databases more accurately. At a minimum, it is recommended that you remove “_TEMPLATE” from the name. You can change the name after it has been restored also.
5. **Open the SQL Server Management Studio** either on the server or remotely using either an administrative account with sa privileges or as the sa account.

NOTE: *If you do not have SQL Server Management Studio, check to see that the SQL Server Client has been installed. For a SQL Server install, you must have the SQL Server Client installed.*

6. Go to **Databases**.

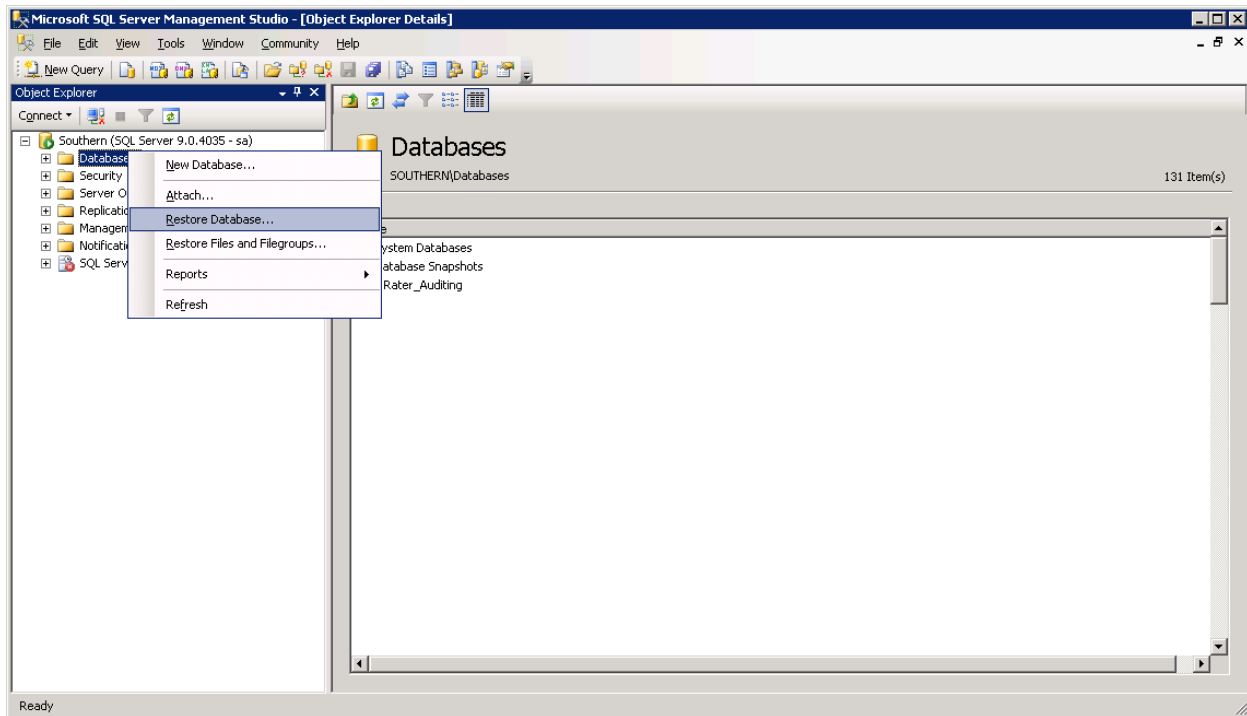


Figure 10 Right Click to Restore Database

7. Right click on **Databases**.
8. Select **Restore Database...** A separate screen will be displayed.

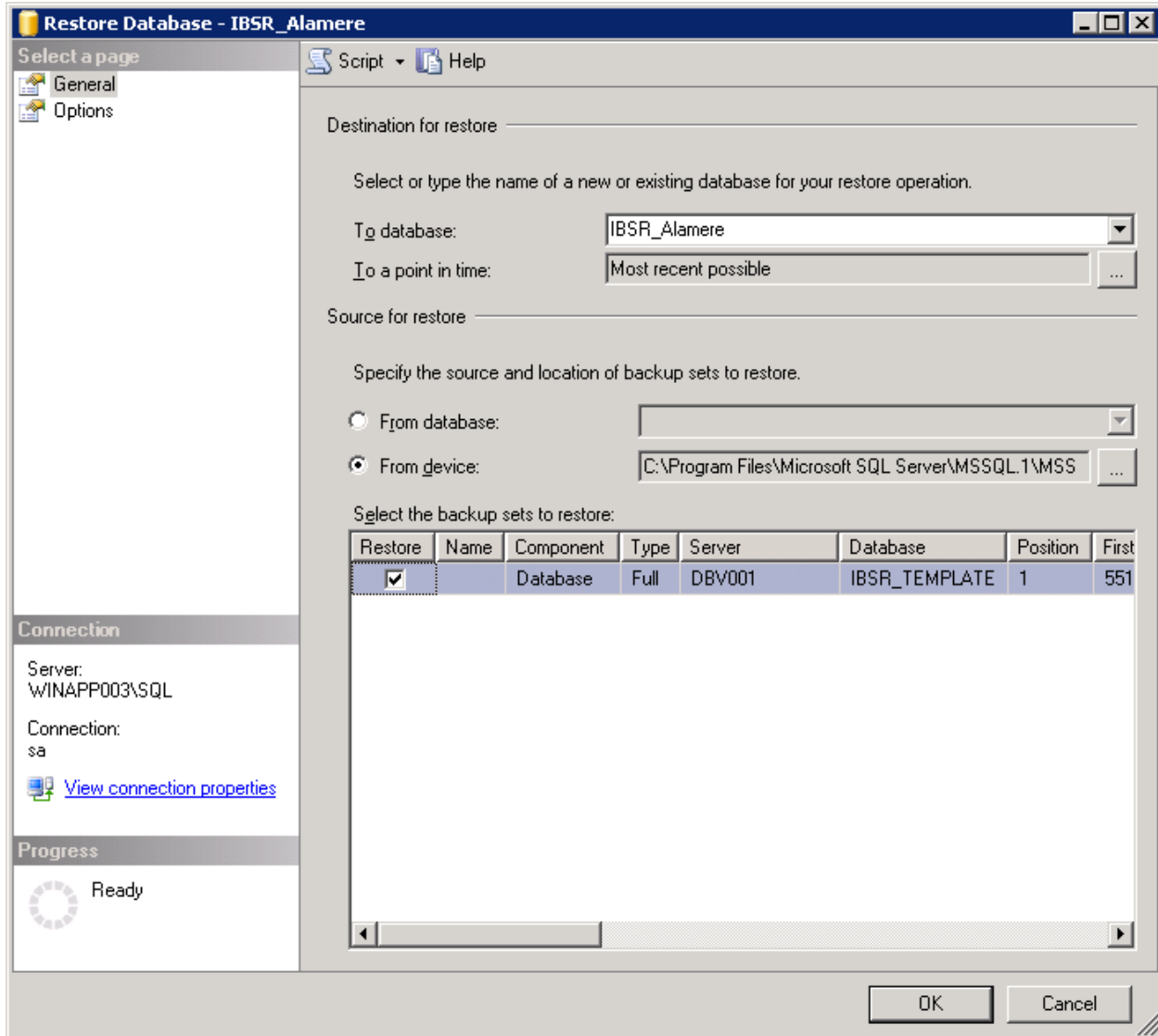


Figure 11 Restoring a Database

9. Enter your IBSR database name in **To Database:**.
10. Select **From Device**. Click ... to browse to the location where the database files were placed in step 3.
11. Select your database **IBSR_ xxxx.BAK**, where **xxxx** equals the renamed file from step 4.
12. Click **OK**. Your database will be populated.
13. Verify your information. Check the **Restore** box.
14. Click **OK**.
15. If the database was restored successfully, it will be displayed in the database folder. If not, please correct any errors and try again.

16. Once the databases are restored to SQL Server, you will need to create or assign a SQL Server user account for the application. This user will be used for the connection to the databases when setting up the connections from the Insbridge Framework Administrator. Make note of the account you want to use. This information will be entered into the Insbridge Framework Administrator.

STEP 2: SETTING UP A WEBSHERE ENVIRONMENT IN IBSS

You will be able to access the application by typing <http://<ServerName or IP Address>:9080/IBSS>

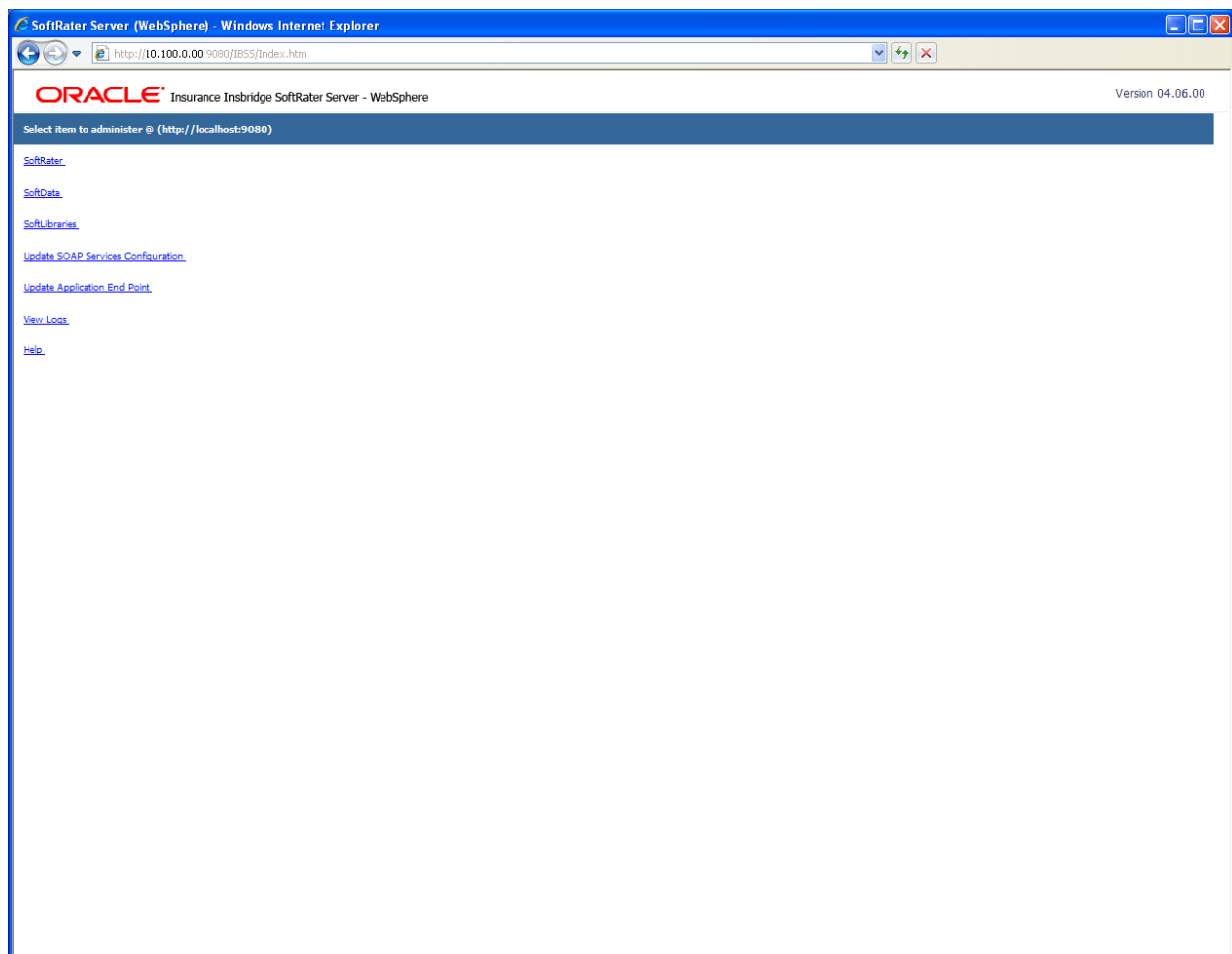


Figure 12 IBSS WebSphere Main Page

NOTE: If you changed the WebSphere default port (9080) during the Server creation, you should change the default application port on the "[Update Application End Point](#)" option located in the IBSS main page before accessing the application WebServices and methods.

NOTE: The IBSS parameter in the application URL must be capitalized.

To Create/Edit an Environment

1. Select **SoftRater** from the Main page. You will be placed on the SoftRater page.
2. Select the **Environment Setup** link.

The **Environment Setup** section allows you to configure rating environments. An environment is a pointer to a location where SoftRater Packages (SRP's) are stored and loaded. There is no limit to the number of environments you may have. Required fields will be marked with an asterisk (*).

* Environment Setup

Status:

| | | | |
|---------------------------|--|---|--|
| SELECT ENVIRONMENT | >> Add New Environment << ▼ | | <input data-bbox="911 688 956 726" type="button" value="Go!"/> |
| Environment Name* | <input type="text" value="SR_WS"/> | | |
| Database Server* | <input type="text" value="APP003"/> | Port* <input type="text" value="1433"/> | Query Block <input type="text"/> |
| Database Name* | <input type="text" value="IBSR_WS"/> | Schema name** | <input type="text"/> |
| Database User Id* | <input type="text" value="sa"/> | | |
| Database Password* | <input type="password" value="●●●●●●●●"/> | | |
| Provider Type | <input data-bbox="464 1052 685 1089" type="text" value="MS SQL Server"/> | | |
| Database Type | <input data-bbox="464 1115 664 1152" type="text" value="SoftRater"/> | | |
| Data Dir | <input type="text" value="C:\Insbridge\SR_Packages\"/> | | |

* Fields are required.

** Fields required for an Oracle DB connection.

| | | | |
|-------------------------------------|-------------------------------------|--|--|
| <input type="button" value="Save"/> | <input type="button" value="Exit"/> | <input data-bbox="953 1419 1188 1451" type="button" value="Test Connection!"/> | <input data-bbox="1211 1419 1305 1451" type="button" value="Delete!"/> |
|-------------------------------------|-------------------------------------|--|--|

Figure 13 Environment Setup

3. To create a new environment, use the drop down text box next to **SELECT ENVIRONMENT** and select >> **Add New Environment** <<. If the page does not automatically refresh, click **GO**.
4. When the page refreshes, enter the following information:

Environment Name: A name for the environment.

Database Server: The name of the server that houses the database that packages are loaded to.

Database Name: The name of the database that packages are loaded to.

Database User Id: The username to access the database.

Database Password: The password for the username entered.

Provider Type: The provider of the database. Options are **DB2**, **DB2(AS400)**, **ORACLE** and **MS SQL SERVER**.

Database Type: The type of database being accessed. Options are **SoftRater** and **RateManager**.

Data Dir: The location of the SoftRater Packages (SRP's).

Port: Listening port to the target Database Management System.

Default port numbers:

SQL Server – 1433

Oracle – 1521

DB2 – 50000

Query Block: For certain Database Management Systems (DBMS), system batch query optimization is required for performance and/or because of limits on/in the system. This value will control the maximum number of batch query operations that can be submitted to the target DBMS in any one transaction.

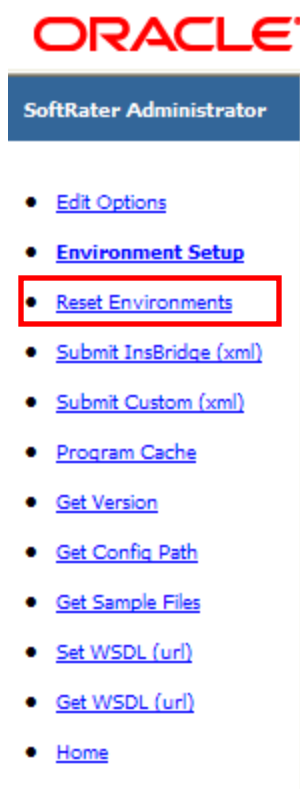
For DB2, enter a query size that is relative to the SQL statement heap size. For example, if your SQL statement heap size is 2048, you may want to enter a query size of 5. The larger the heap size, the larger the query size can be.

You may also need to increase the application heap size.

Query block is not needed for SQL Server or Oracle databases.

Schema Name: The schema name for the database.

5. When you are finished entering information, click **SAVE**. The environment will be saved and the **Status** field will update.
6. Before you can use the new environment for rating, you will need to reload the configuration XML file. This is done by resetting the environments. On the left hand side of the environment page, select the Reset Environments options. You will be placed on the environments page.



To activate changes to an environment, the SoftRater configuration XML file must be reloaded by clicking **EXECUTE**. The screen will refresh and the environment will be reset. Click **EXIT** to return to the SoftRater Administrator menu.

*** Reset Environment Configuration**

Select this method to re-load the SoftRater configuration xml file making any changes to the environment settings now active. NOTE: If program caching is enabled the ALL items currently in the cache will be purged.

Note: Transactions currently in process could be made invalid.

Execute

Exit

Figure 14 Resetting the Environment

NOTE: All information in the cache will be purged and any transactions currently processing could be made invalid.

STEP 3: ENTERING YOUR IBSS INSTANCE IN IBFA

IBFA will need to communicate with the IBSS environment. This will allow for packages to be loaded. There are two parts that will need to be completed:

1. Create an environment.
2. Configure the environment.

A SoftRater environment may be completed at installation or can be added at a later time. A SoftRater environment can be on a Windows machine or a Java machine running an application server, such as WebSphere. There is no limit to the number of SoftRater environments that you can have.

1. Enter IBFA.
2. Browse to **SoftRater→Explorer→Subscriber name**.
3. Click on **Add Environment**.
4. Enter a **Name** and select a **Type**. For example, you can create a Quality Control environment with a type of Quality Assurance.
5. Select the **Environments** link under the Configuration header on the left hand side to enter the configuration information for the newly created logical environment. You will be placed on the Environments screen. The environments you previously setup will be listed. If an environment is missing, you must return to the Configuration subtab and add it.

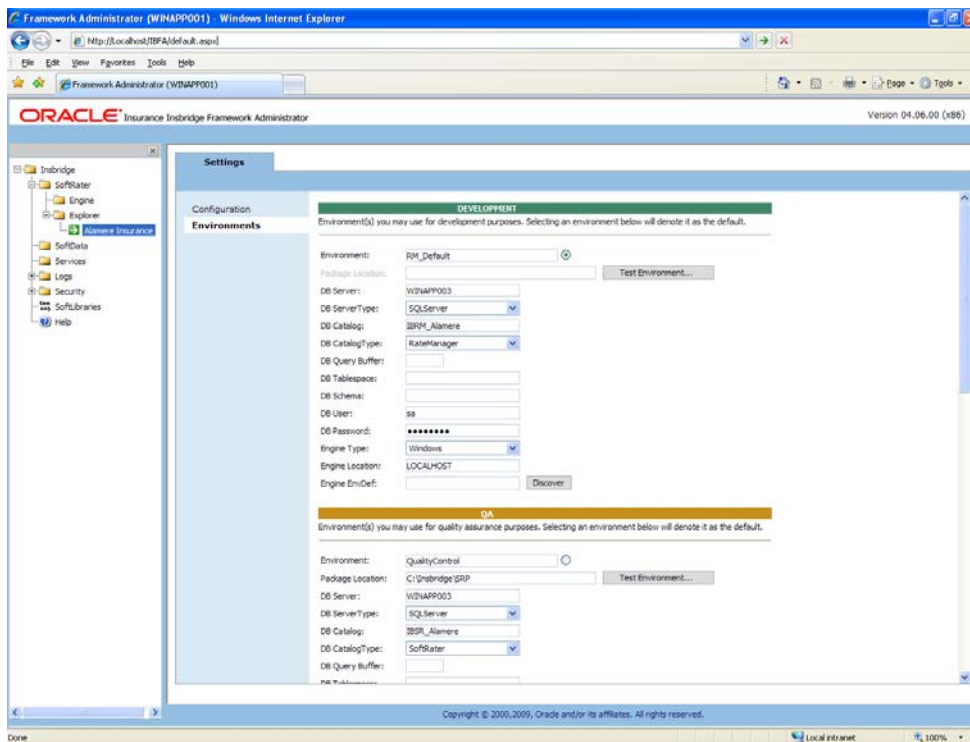


Figure 15 Editing Environment

6. The **Environment Name** will be complete. No changes are needed.
7. Enter in the file path where you want packages stored in the **Package Location**. Use the Test Environment option to have the location created for you.
8. Enter in the **DBServer** name or IP address. This is the database server where the SoftRater database was restored or created.
9. Select the **DB Server Type** that you are using.
10. The **DB Catalog** is the name of the SoftRater database restored in SQL Server. For example, IBSR_QA.
11. The **DB Catalog Type** is **SoftRater**.
12. **DB Query Buffer** is the Query Block entry from IBSS. An entry is required if you are using a DB2 database. For SQL or Oracle, no entry is needed.
13. **DB Tablespace** is not required for a SoftRater environment.
14. The **DB Schema** is the name of the schema that defines the structure of the database. This information may be obtained from the DBA.
15. Enter the **DB User** name and **Password**.
16. Select the **Engine Type**.
17. The **Engine Location** is the location of where you installed the SoftRater engine. You can use the machine name or IP address. For WebSphere, WebLogic or JBoss, you must also include the port. For example, a WebSphere server may have "WBServerName:9080" as the entry.
18. The **Engine EnvDef** is the machine name if the engine is located on a different server. You can use the machine name or IP address.
19. Click **SAVE** to save your entries.

INSTALLATION PROCEDURES – UTILIZING AN ORACLE DATABASE

The following is a check list of the installation steps needed to perform a NEW SoftRater for WebSphere Installation:

1. Create Oracle database.
2. Create a WebSphere entry in IBSS.
3. Run the Oracle Client on the machine where the IBRU system was installed.
4. Create a WebSphere entry in IBFA.

For the Insbridge 4.6 release:

- The IBRU application has tested and certified Oracle 11g Release 2 (11.2.0.1.0) utilizing Oracle Enterprise Linux 5.3.

STEP 1: CREATING AN ORACLE DATABASE

Because many corporate environments have a separation between the system administrator and the database administrator, the following process may require both administrators' access and permissions.

Before proceeding, please have ready:

- The LOBs you want to use.
- Your subscriber ID
- Location of the Insbridge files.

IMPORTANT: *It is **strongly recommended** that any database modification be performed by a qualified database administrator (DBA). The database setup procedures and tasks require the skill set of a database administrator. If you are not a database administrator, please stop. Improper setup may result in unwelcome changes to the database. Please consult with a qualified database administrator before proceeding.*

Creating an Oracle Database

Oracle Insurance does not have specific requirements, whatever requirements are deemed necessary by your company's internal standards will work. It is recommended that you included the version number or environment name if you are planning on creating more than one instance.

These instructions are high level and require that the setup person be a DBA.

1. On your Oracle database, run all **DDLs**.

NOTE: *If you do not have database permissions, you will not be able to perform the following database procedures.*

- a) Create default tablespace for the Soft Rater database.
 - If a database table needs to be added, the DDLs are located in the IBFA Installation Directory under the SoftRater/DDL folder. I.e. [INSTALL_DIR]/Insbridge/SoftRater/DDL.
 - You will have to replace the TABLESPACE name in the scripts with the tablespace name you used when you created the database.
 - On the DT tables, you will need to create one for every LOB. An example of the format is in the comments of the script. It requires the LOB ID number and the customer number.
 - b) Create user IBSR and assign basic connect and resource grants.
2. On your Oracle database, you will need to run a DT table script for each LOB.
 3. After all DT tables have been created, please make note of:
 - Schema
 - Instance
 - User name
 - Password

This information will need to be passed along to the IBRU installer. This information is needed to create a logical environment.

Location of Oracle DDL Directory

If a database table needs to be added in SoftRater, the DDLs are located in the IBFA Installation Directory under the SoftRater/DDL folder. I.e. [INSTALL_DIR]/Insbridge/SoftRater/DDL.

```
oracle.create.dt.template.sql.txt
oracle.create.packages.sql.txt
oracle.create.packages_lk.sql.txt
oracle.create.packages_rl.sql.txt
oracle.create.packages_si.sql.txt
oracle.create.packages_so.sql.txt
```

This information may be needed if you are attempting to add an LOB and receive missing table errors. Creating tables in Oracle should be performed by a qualified DBA.

STEP 2: SETTING UP A WEBSPHERE ENVIRONMENT IN IBSS

You will be able to access the application by typing <http://<ServerName or IP Address>:9080/IBSS>

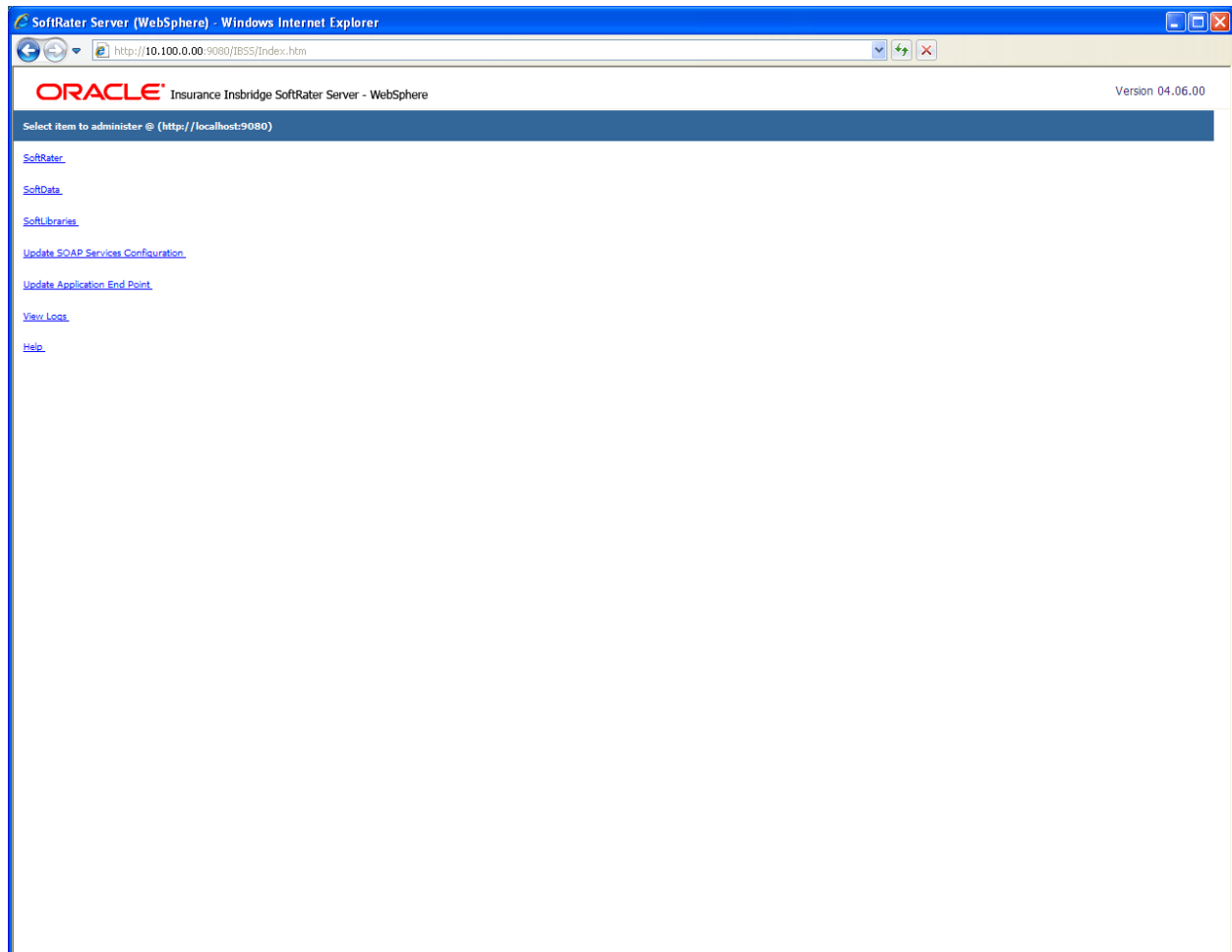


Figure 16 IBSS WebSphere Main Page

NOTE: If you changed the WebSphere default port (9080) during the Server creation, you should change the default application port on the [“Update Application End Point”](#) option located in the IBSS main page before accessing the application WebServices and methods.

NOTE: The IBSS parameter in the application URL must be capitalized.

To Create/Edit an Environment

Prior to setting up an environment in IBSS you will need the Subscriber ID that you setup in IBFA.

1. Select **SoftRater** from the Main page. You will be placed on the SoftRater page.
2. Select the **Environment Setup** link.

The **Environment Setup** section allows you to configure rating environments. An environment is a pointer to a location where SoftRater Packages (SRP's) are stored and loaded. There is no limit to the number of environments you may have. Required fields will be marked with an asterisk (*).

* Environment Setup

Status:

SELECT ENVIRONMENT >> Add New Environment <<

Environment Name*

Database Server* Port* Query Block

Database Name* Schema name**

Database User Id*

Database Password*

Provider Type

Database Type

Data Dir

* Fields are required.

** Fields required for an Oracle DB connection.

Figure 17 Environment Setup

3. To create a new environment, use the drop down text box next to **SELECT ENVIRONMENT** and select >> **Add New Environment** <<. If the page does not automatically refresh, click **GO**.
4. When the page refreshes, enter the following information:

Environment Name: A name for the environment.

Database Server: The name of the server that houses the database that packages are loaded to.

Database Name: The name of the database that packages are loaded to.

Database User Id: The username to access the database.

Database Password: The password for the username entered.

Provider Type: The provider of the database. Options are **DB2**, **DB2(AS400)**, **ORACLE** and **MS SQL SERVER**.

Database Type: The type of database being accessed. Options are **SoftRater** and **RateManager**.

Data Dir: The location of the SoftRater Packages (SRP's).

Port: Listening port to the target Database Management System.

Default port numbers:

SQL Server – 1433

Oracle – 1521

DB2 – 50000

Query Block: (Optional) For certain Database Management Systems (DBMS), system batch query optimization is required for performance and/or because of limits on/in the system. This value will control the maximum number of batch query operations that can be submitted to the target DBMS in any one transaction.

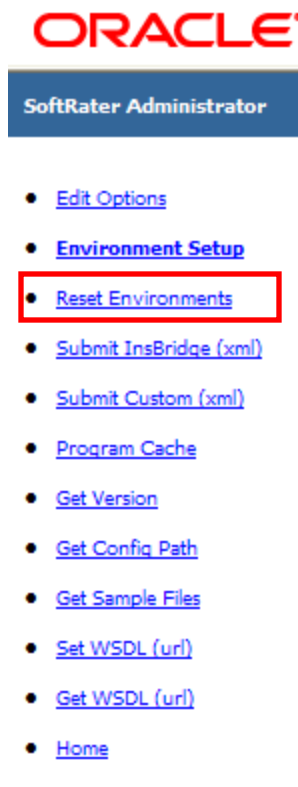
For DB2, enter a query size that is relative to the SQL statement heap size. For example, if your SQL statement heap size is 2048, you may want to enter a query size of 5. The larger the heap size, the larger the query size can be.

You may also need to increase the application heap size.

Query block is not needed for SQL Server or Oracle databases.

Schema Name: The schema name for the database.

5. When you are finished entering information, click **SAVE**. The environment will be saved and the **Status** field will update.
6. Before you can use the new environment for rating, you will need to reload the configuration XML file. This is done by resetting the environments. On the left hand side of the environment page, select the Reset Environments options. You will be placed on the environments page.



To activate changes to an environment, the SoftRater configuration XML file must be reloaded by clicking **EXECUTE**. The screen will refresh and the environment will be reset. Click **EXIT** to return to the SoftRater Administrator menu.

*** Reset Environment Configuration**

Select this method to re-load the SoftRater configuration xml file making any changes to the environment settings now active. NOTE: If program caching is enabled the ALL items currently in the cache will be purged.

Note: Transactions currently in process could be made invalid.

Execute

Exit

Figure 18 Resetting the Environment

NOTE: All information in the cache will be purged and any transactions currently processing could be made invalid.

STEP 3: INSTALLATION OF ORACLE CLIENT

If the Oracle Client has already been installed and configured, you can skip this step. Return to the machine where the IBRU system was installed. One instance of the Oracle client is all that is required. If you have more than one Oracle environment that you want to connect, for example a QA environment and a Production environment, you will only need to run the Oracle client once.

Running the Oracle Client

Run the Oracle Client. On the machine where the IBRU system was installed, you will need to run the Oracle client. This will allow IBFA to communicate with the Oracle database.

For a 64-bit environment, please make sure you have the 64-bit Oracle Client.

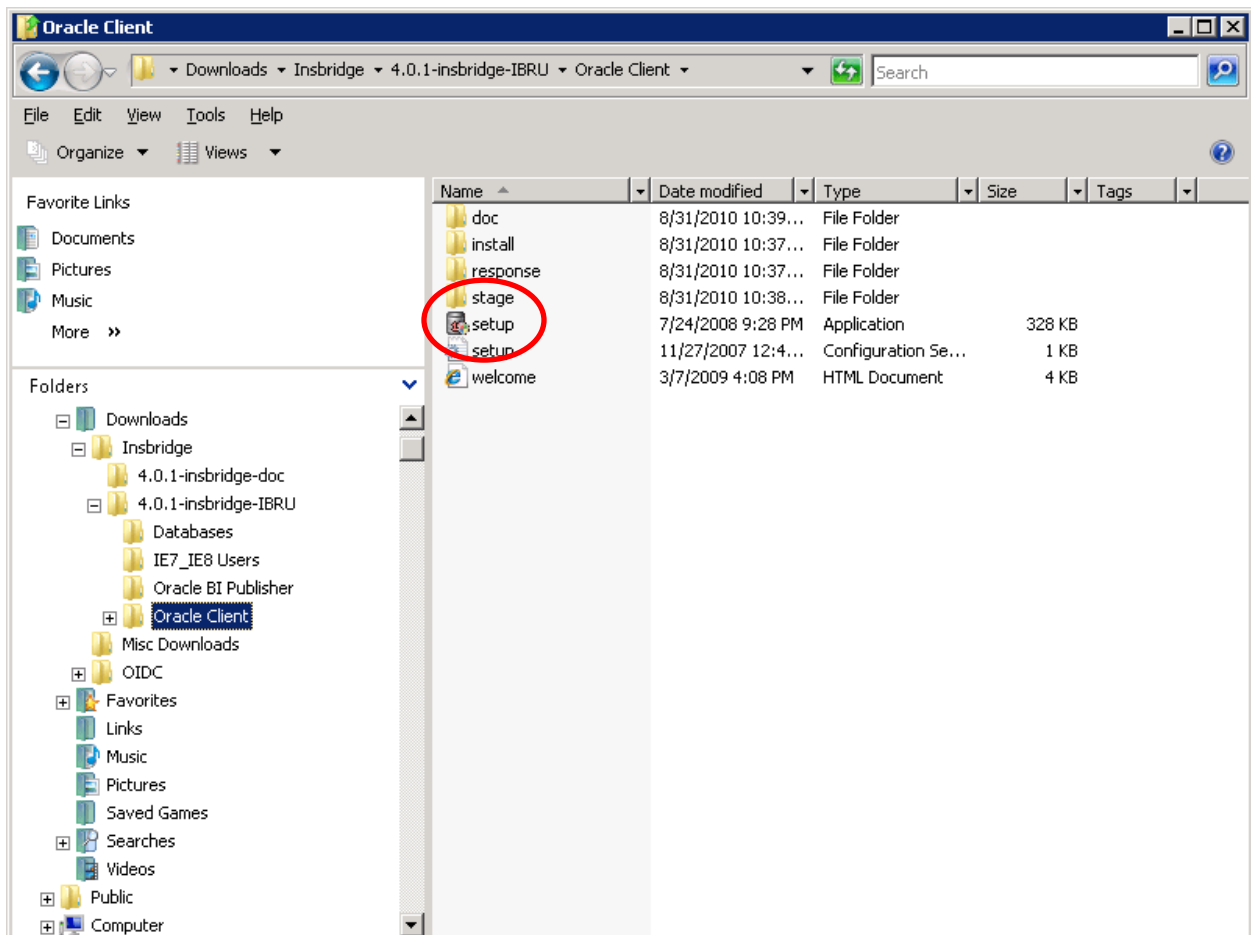


Figure 19 Locating the Oracle Client for 64-bit Installs

1. In the 04.06.00-insbridge-IBRU folder, locate the Oracle Client folder.
2. Select the setup application. The Oracle client installation will begin.

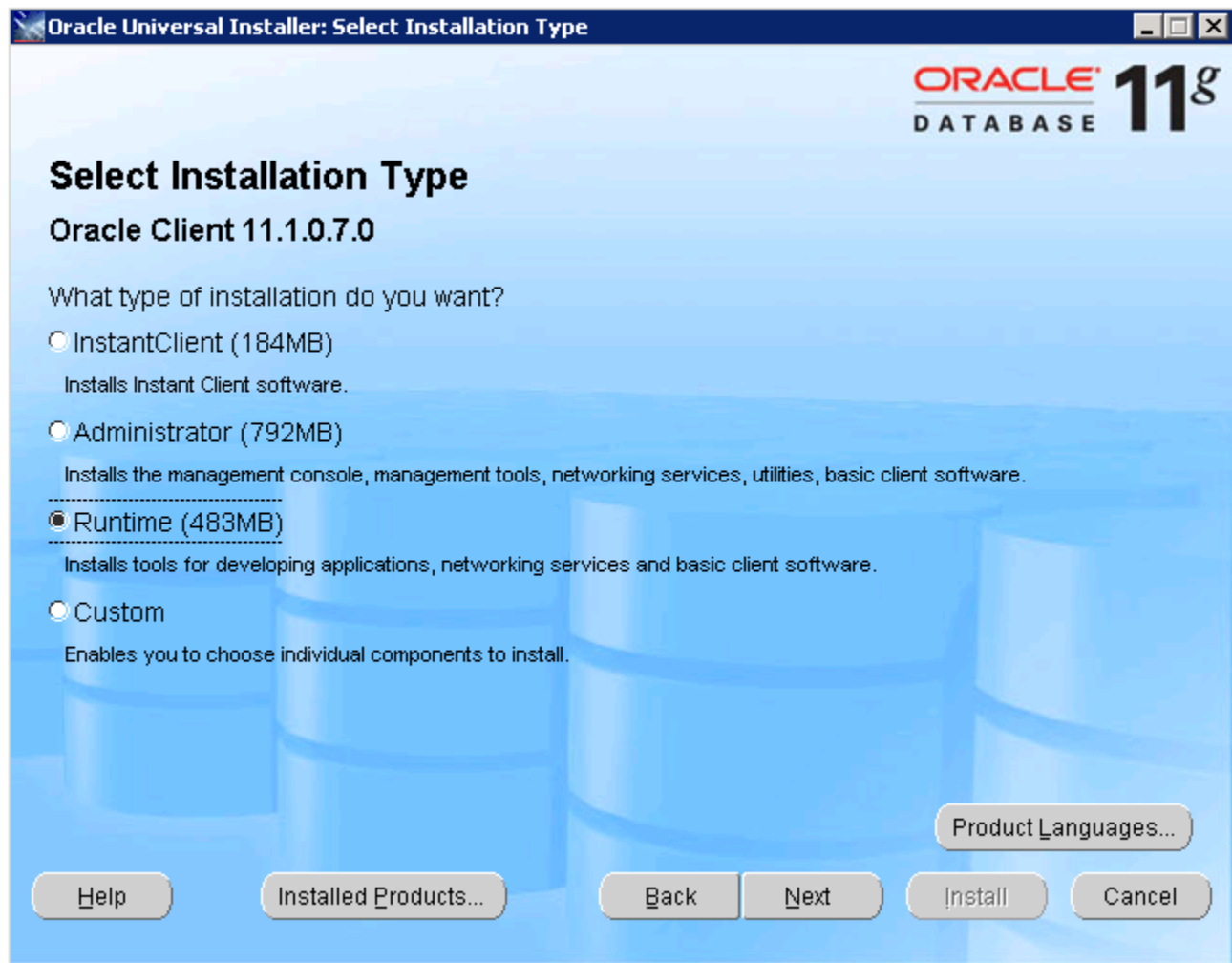


Figure 20 Running the Oracle Client

3. Select **RUNTIME** as the Installation Type.
4. Click **NEXT**.
5. For the Summary – Inside Oracle Providers for .NET, the Oracle Client, you must use a LOCAL DRIVE, i.e. C:\app\oracle-insbridge.
6. Click **NEXT**.
7. You can leave the defaults and **INSTALL**.

STEP 4: ENTERING YOUR IBSS INSTANCE IN IBFA

IBFA will need to communicate with the IBSS environment. This will allow for packages to be loaded. There are two parts that will need to be completed:

1. Create an environment.
2. Configure the environment.

A SoftRater environment may be completed at installation or can be added at a later time. A SoftRater environment can be on a Windows machine or a Java machine running an application server, such as WebSphere. There is no limit to the number of SoftRater environments that you can have.

1. Enter IBFA.
2. Browse to **SoftRater→Explorer→Subscriber name**.
3. Click on **Add Environment**.
4. Enter a **Name** and select a **Type**. For example, you can create a Quality Control environment with a type of Quality Assurance.
5. Select the **Environments** link under the Configuration header on the left hand side to enter the configuration information for the newly created logical environment. You will be placed on the Environments screen. The environments you previously setup will be listed. If an environment is missing, you must return to the Configuration subtab and add it.

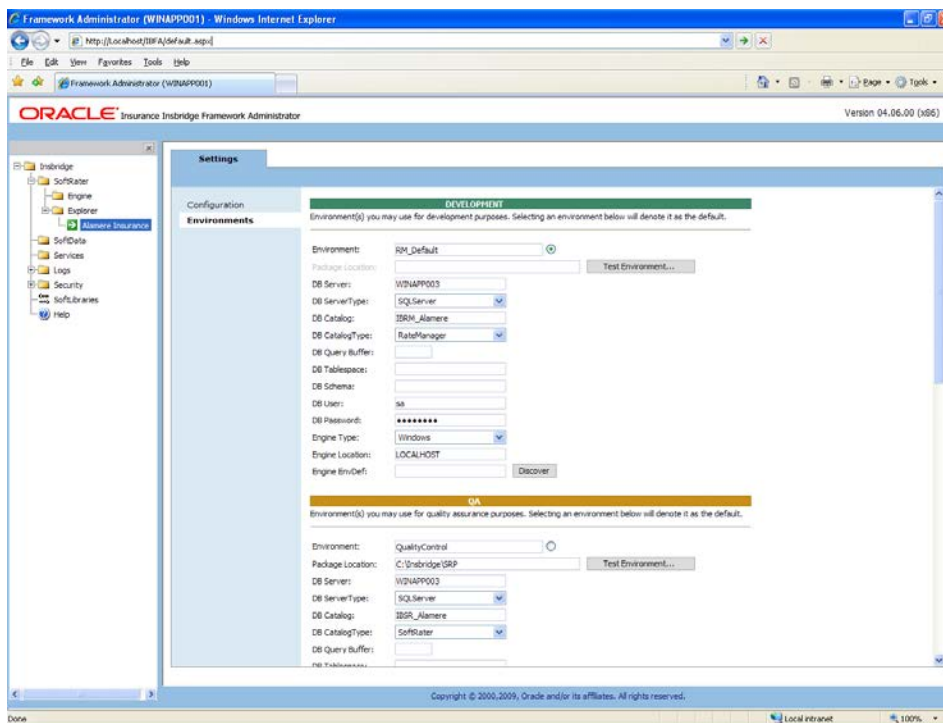


Figure 21 Editing Environment

6. The **Environment Name** will be complete. No changes are needed.
7. Enter in the file path where you want packages stored in the **Package Location**. Use the Test Environment option to have the location created for you.
8. Enter in the **DBServer** name or IP address. This is the database server where the SoftRater database was restored or created.
9. Select the **DB Server Type** that you are using.
10. The **DB Catalog** is the name of the SoftRater database restored in SQL Server. For example, IBSR_QA.
11. The **DB Catalog Type** is **SoftRater**.
12. **DB Query Buffer** is the name of the schema that defines the structure of the database. This information may be obtained from the DBA.
13. **DB Tablespace** is not required for a SoftRater environment.
14. The **DB Schema** is the name of the schema that defines the structure of the database. This information may be obtained from the DBA.
15. Enter the **DB User** name and **Password**.
16. Select the **Engine Type**.
17. The **Engine Location** is the location of where you installed the SoftRater engine. You can use the machine name or IP address. For WebSphere, WebLogic or JBoss, you must also include the port. For example, a WebSphere server may have "WBServerName:9080" as the entry.
18. The **Engine EnvDef** is the machine name if the engine is located on a different server. You can use the machine name or IP address.
19. Click **SAVE** to save your entries.

INSTALLATION PROCEDURES – UTILIZING AN IBM DB2 DATABASE

The following is a check list of the installation steps needed to perform a NEW SoftRater for WebSphere Installation utilizing an IBM DB2 (DB2) database:

1. Create a DB2 database.
2. Create a WebSphere entry in IBSS.
3. Run the DB2 Client on the machine where the IBRU system was installed.
4. Create a WebSphere entry in IBFA

Required DB2 Client

To obtain the DB2 client, please visit the IBM website and download the Client for IBM Data Server Runtime Client, Version 9.5 with fix pack 8.

You also can perform a search for “IBM Data Server Runtime Client, Version 9.5 with fix pack 8”

NOTE: You may need to create a free user account to download materials.

NOTE: Release 4.6 was tested on IBM DB2 v9.5.

STEP 1: CREATING A DB2 DATABASE

Because many corporate environments have a separation between the system administrator and the database administrator, the following process may require both administrators' access and permissions.

IMPORTANT: It is **strongly recommended** that any database modification be performed by a qualified database administrator (DBA). The database setup procedures and tasks require the skill set of a database administrator. If you are not a database administrator, please stop. Improper setup may result in unwelcome changes to the database. Please consult with a qualified database administrator before proceeding.

Before proceeding, please have ready:

- The LOBs that your company uses. You will need the ID number for each LOB.
- Your subscriber number.
- Location of the Insbridge files.

Oracle Insurance does not have specific requirements, whatever requirements are deemed necessary by your company's internal standards will work. It is recommended that you included the version number or environment name if you are planning on creating more than one instance.

These instructions are high level and require that the setup person be a DBA.

1. On your DB2 database, run all **DDLs**.

NOTE: *If you do not have database permissions, you will not be able to perform the following database procedures. The Insbridge user must be granted "Connect to database", "Create Tables", and "Create packages" authorities.*

- a) Create default tablespace for the Soft Rater database.
 - If a database table needs to be added, the DDLs are located in the IBFA Installation Directory under the SoftRater/DDDL folder. I.e. [INSTALL_DIR]/Insbridge/SoftRater/DDDL.
 - You will have to replace the TABLESPACE name in the scripts with the tablespace name you used when you created the database.
 - On the DT tables, you will need to create one for every LOB. An example of the format is in the comments of the script. It requires the LOB ID number and the customer number.
 - b) Create user IBSR and assign Connect to database, Create Tables and Create packages authorities.
2. On your Oracle database, you will need to run a DT table script for each LOB.
 3. After all DT tables have been created, please make note of:
 - Schema
 - Instance
 - User name
 - Password

This information will need to be passed along to the IBRU installer. This information is needed to create a logical environment.

Location of DB2 DDL Directory

If a database table needs to be added in SoftRater, the DDLs are located in the IBFA Installation Directory under the SoftRater/DDL folder. I.e. [INSTALL_DIR]/Insbridge/SoftRater/DDL.

```
db2.create.dt.template.sql.txt
db2.create.packages.sql.txt
db2.create.packages_lk.sql.txt
db2.create.packages_rl.sql.txt
db2.create.packages_si.sql.txt
db2.create.packages_so.sql.txt
```

This information may be needed if you are attempting to add an LOB and receive missing table errors. Creating tables in DB2 should be performed by a qualified DBA.

STEP 2: SETTING UP A WEBSPHERE ENVIRONMENT IN IBSS

You will be able to access the application by typing <http://<ServerName or IP Address>:9080/IBSS>

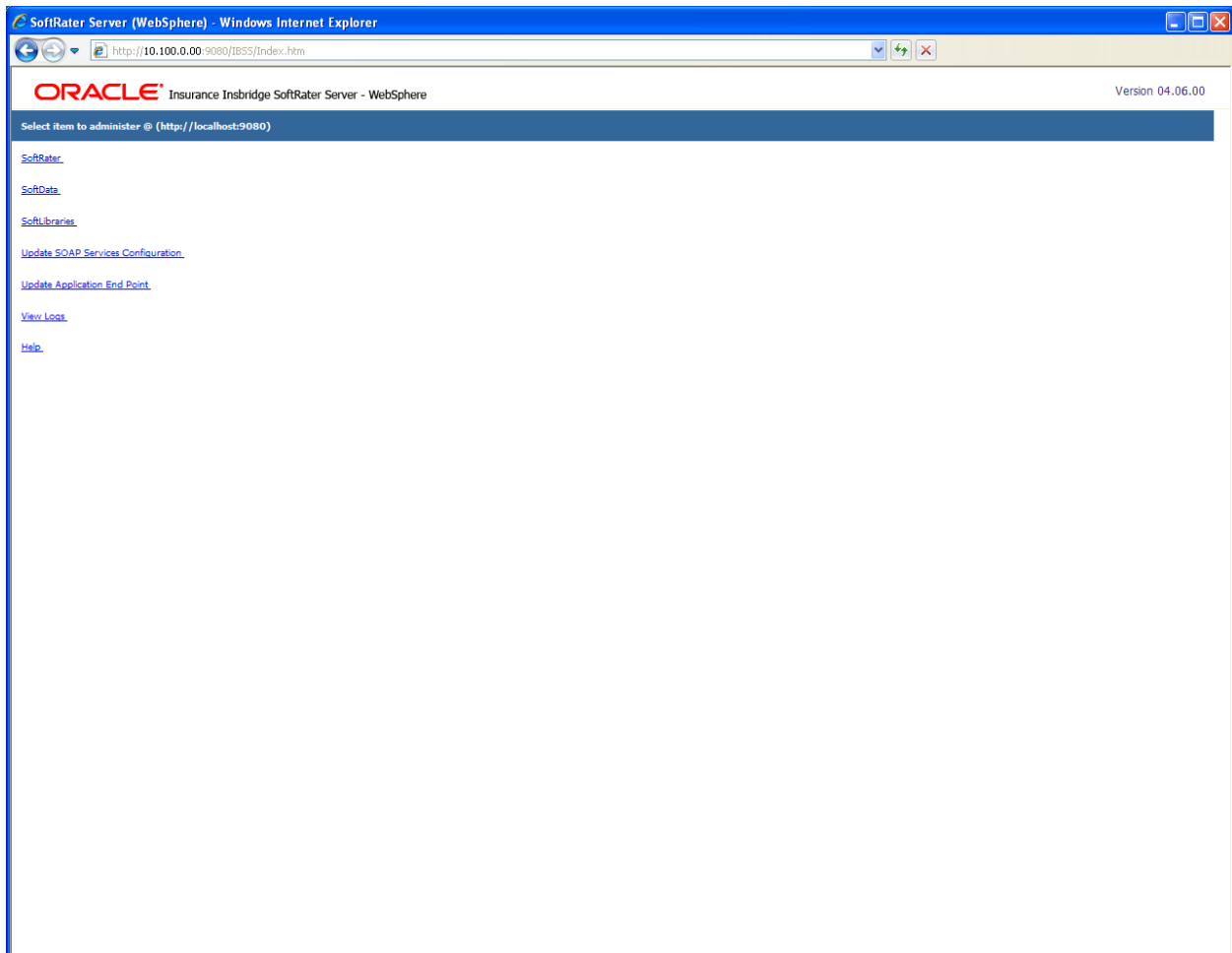


Figure 22 IBSS WebSphere Main Page

NOTE: If you changed the WebSphere default port (9080) during the Server creation, you should change the default application port on the "[Update Application End Point](#)" option located in the IBSS main page before accessing the application WebServices and methods.

NOTE: The IBSS parameter in the application URL must be capitalized.

To Create/Edit an Environment

1. Select **SoftRater** from the WebSphere Main page. You will be placed on the SoftRater page.
2. Select the **Environment Setup** link.

The **Environment Setup** section allows you to configure rating environments. An environment is a pointer to a location where SoftRater Packages (SRP's) are stored and loaded. There is no limit to the number of environments you may have. Required fields will be marked with an asterisk (*).

* Environment Setup

Status:

| | | | | |
|---------------------------|---|---------------------------|-------------------------------------|--|
| SELECT ENVIRONMENT | | >> Add New Environment << | | Go! |
| Environment Name* | <input type="text" value="SR_JBOSS"/> | | | |
| Database Server* | <input type="text" value="APP004"/> | Port* | <input type="text" value="50000"/> | Query Block <input type="text" value="5"/> |
| Database Name* | <input type="text" value="IBSR_AlamerJB"/> | Schema name** | <input type="text" value="prod_1"/> | |
| Database User Id* | <input type="text" value="sa"/> | | | |
| Database Password* | <input type="password" value="••••••••"/> | | | |
| Provider Type | <input type="text" value="DB2"/> | | | |
| Database Type | <input type="text" value="SoftRater"/> | | | |
| Data Dir | <input type="text" value="home/insbridge/sr_packages"/> | | | |

* Fields are required.

** Fields required for an Oracle DB connection.

| | | | |
|-------------------------------------|-------------------------------------|---|--|
| <input type="button" value="Save"/> | <input type="button" value="Exit"/> | <input type="button" value="Test Connection!"/> | <input type="button" value="Delete!"/> |
|-------------------------------------|-------------------------------------|---|--|

Figure 23 Environment Setup

3. To create a new environment, use the drop down text box next to **SELECT ENVIRONMENT** and select >> **Add New Environment** <<. If the page does not automatically refresh, click **GO**.
4. When the page refreshes, enter the following information:

Environment Name: A name for the environment.

Database Server: The name of the server that houses the database that packages are loaded to.

Database Name: The name of the database that packages are loaded to.

Database User Id: The username to access the database.

Database Password: The password for the username entered.

Provider Type: The provider of the database. Options are **DB2**, **DB2(AS400)**, **ORACLE** and **MS SQL SERVER**.

Database Type: The type of database being accessed. Options are **SoftRater** and **RateManager**.

Data Dir: The location of the SoftRater Packages (SRP's).

Port: Listening port to the target Database Management System.

Default port numbers:

SQL Server – 1433

Oracle – 1521

DB2 – 50000

Query Block: (Optional) For certain Database Management Systems (DBMS), system batch query optimization is required for performance and/or because of limits on/in the system. This value will control the maximum number of batch query operations that can be submitted to the target DBMS in any one transaction.

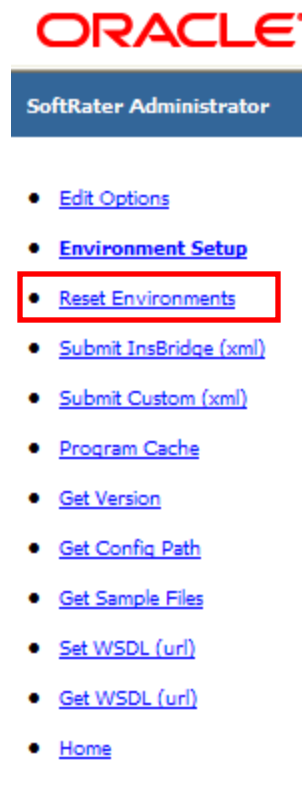
For DB2, enter a query size that is relative to the SQL statement heap size. For example, if your SQL statement heap size is 2048, you may want to enter a query size of 5. The larger the heap size, the larger the query size can be.

You may also need to increase the application heap size.

Query block is not needed for SQL Server or Oracle databases.

Schema Name: The schema name for the database.

5. When you are finished entering information, click **SAVE**. The environment will be saved and the **Status** field will update.
6. Before you can use the new environment for rating, you will need to reload the configuration XML file. This is done by resetting the environments. On the left hand side of the environment page, select the Reset Environments options. You will be placed on the environments page.



To activate changes to an environment, the SoftRater configuration XML file must be reloaded by clicking **EXECUTE**. The screen will refresh and the environment will be reset. Click **EXIT** to return to the SoftRater Administrator menu.

*** Reset Environment Configuration**

Select this method to re-load the SoftRater configuration xml file making any changes to the environment settings now active. NOTE: If program caching is enabled the ALL items currently in the cache will be purged.

Note: Transactions currently in process could be made invalid.

Execute

Exit

Figure 24 Resetting the Environment

NOTE: All information in the cache will be purged and any transactions currently processing could be made invalid.

STEP 3: INSTALLATION OF DB2 CLIENT

If the DB2 Client has already been installed and configured, you can skip this step. Return to the machine where the IBRU system was installed. One instance of the DB2 client is all that is required. If you have more than one DB2 environment that you want to connect, for example a QA environment and a Production environment, you will only need to run the DB2 client once.

Running the DB Client

Run the DB2 Client. On the machine where the IBRU system was installed, you will need to run the DB2 client for the version you have. This will allow IBFA to communicate with the DB2 database.

For a 64-bit environment, please make sure you have the 64-bit DB2 Client.

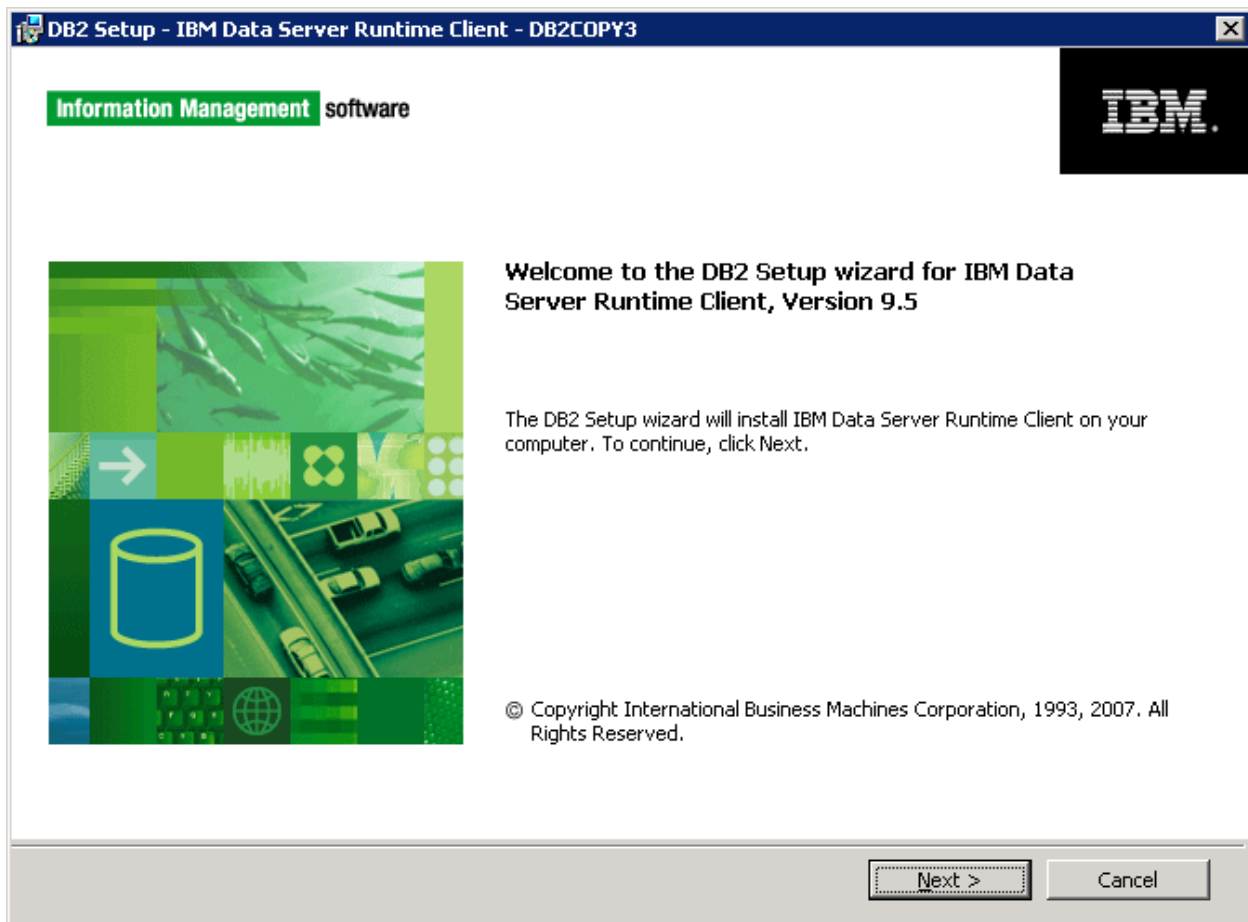


Figure 25 Installing DB2 Client and Fix Pack

1. Select the setup application. The DB2 client installation will begin.

2. Leave all the defaults and click **NEXT**. The installation will begin.
3. Click **NEXT** as the installation continues.
4. Click **Finish** to complete the installation.

STEP 4: ENTERING YOUR IBSS INSTANCE IN IBFA

IBFA will need to communicate with the IBSS environment. This will allow for packages to be loaded. There are two parts that need to be completed:

1. Create an environment.
2. Configure the environment.

A SoftRater environment may be completed at installation or can be added at a later time. A SoftRater environment can be on a Windows machine or a Java machine running an application server, such as WebSphere. There is no limit to the number of SoftRater environments that you can have.

1. Enter IBFA.
2. Browse to **SoftRater→Explorer→Subscriber name**.
3. Click on **Add Environment**.
4. Enter a **Name** and select a **Type**. For example, you can create a Quality Control environment with a type of Quality Assurance.
5. Select the **Environments** link under the Configuration header on the left hand side to enter the configuration information for the newly created logical environment. You will be placed on the Environments screen. The environments you previously setup will be listed. If an environment is missing, you must return to the Configuration subtab and add it.

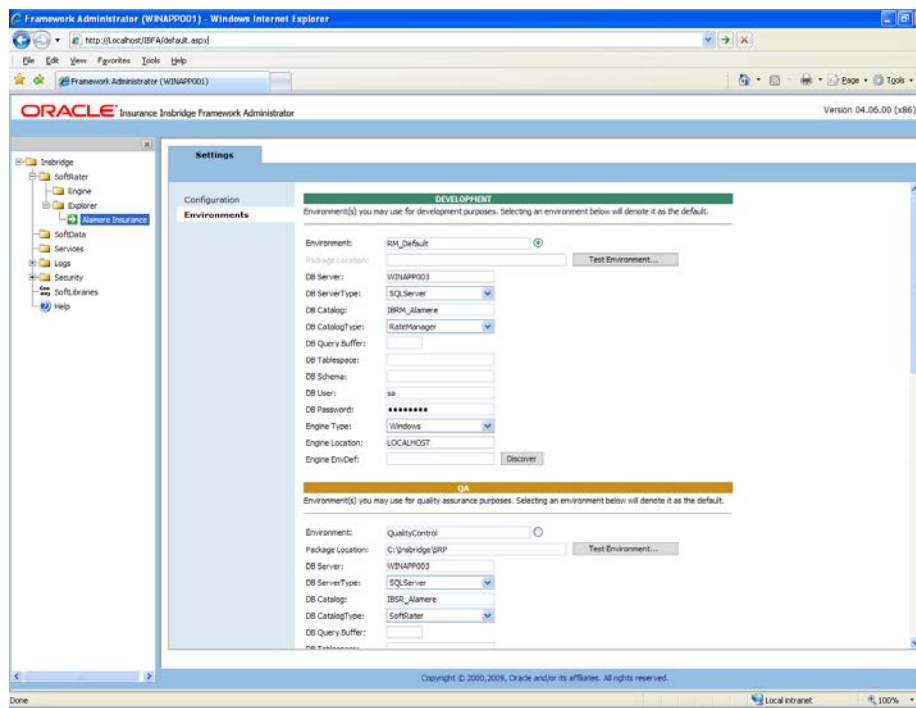


Figure 26 Editing Environment

6. The **Environment Name** will be complete. No changes are needed.
7. Enter in the file path where you want packages stored in the **Package Location**. Use the Test Environment option to have the location created for you.
8. Enter in the **DBServer** name or IP address. This is the database server where the SoftRater database was restored or created.
9. Select the **DB Server Type** that you are using.
10. The **DB Catalog** is the name of the SoftRater database restored in SQL Server. For example, IBSR_QA.
11. The **DB Catalog Type** is **SoftRater**.
12. **DB Query Buffer** is the Query Block entry from IBSS. An entry is required if you are using a DB2 database. For SQL or Oracle, no entry is needed.
13. **DB Tablespace** is not required for a SoftRater environment
14. The **DB Schema** is the name of the schema that defines the structure of the database. This information may be obtained from the DBA.
15. Enter the **DB User** name and **Password**.
16. Select the **Engine Type**.
17. The **Engine Location** is the location of where you installed the SoftRater engine. You can use the machine name or IP address. For WebSphere, WebLogic or JBoss, you must also include the port. For example, a WebSphere server may have "WBServerName:9080" as the entry.
18. The **Engine EnvDef** is the machine name if the engine is located on a different server. You can use the machine name or IP address.
19. Click **SAVE** to save your entries.

NOTE: *If the WebSphere environment is not responding, you may need to stop and start the WebSphere service.*

For more information on setting up environments, please see the Insbridge Framework Administrator User Guide.

SOFTRATER DATABASE REQUIREMENTS

The Insbridge Framework Application container for the SoftRater J2EE EJB contains the JDBC connection drivers that support operational connectivity to the DBMS system listed before. It also contains vendor specific DDLs for the SoftRater operations database schema creation which can be altered by DBA's for setup compliance for varying corporate environments, i.e. TABLESPACE and SCHEMA target definitions.

To obtain Database Definition Language (DDL) scripts for a target DBMS type view the "SoftRater\DDL" subdirectory in the Insbridge IBFA installation directory.

i.e. C:\Program Files\Oracle\IGBU\Insbridge\SoftRater\DDL

Please allow the DBA to review the scripts before attempting to create a SoftRater database schema.

The SoftRater EJB data access system contains all the required JDBC drivers for connectivity to the support DBMS's. TCP/IP connection visibility to the DB Platform is required along with the database server system configured connection PORT for operational use of the SoftRater system. No other supplemental drivers or libraries are needed to establish a connection.

IMPORTANT: *It is strongly recommended that any database modification be performed by a qualified database administrator (DBA). The database setup procedures and tasks require the skill set of a database administrator. If you are not a database administrator, please stop. Improper setup may result in unwelcome changes to the database. Please consult with a qualified database administrator before proceeding.*

DATABASE USER ROLES AND PERMISSIONS

If a more granular approach is required for management of security of the IBRU databases, then the following guidelines can be used to set permissions.

NOTE: *These are only guidelines. If not properly configured, certain processes within the Insbridge Rating and Underwriting System will fail. An experienced database administrator's expertise is highly recommended before making any security changes.*

Recommended SoftRater Permissions:

The recommended permissions are required for new tables to be created in the SoftRater (IBSR) database dynamically when or if a new line of business SRP (SoftRater Package) is loaded to the SoftRater system. If the recommended permissions are not possible, manual steps will need to be performed that will allow for packages to be loaded.

SoftRater can utilize three database types, SQL Server, DB2 and Oracle.

- **Insbridge SoftRater SQL Server Database.**

It is recommended that the Insbridge login be granted permission to connect to the database engine and be enabled. It is also recommended that the Insbridge login be mapped to the Insbridge database with the db_owner role checked.

- **Insbridge SoftRater Oracle Database.**

It is recommended that the Insbridge user be granted, as defaults, the “CONNECT” and “RESOURCE” Roles.

- **Insbridge SoftRater DB2 Database.**

It is recommended that the Insbridge user be granted, as defaults, the “Connect to database”, “Create Tables”, and “Create packages” authorities.

It is recommended that the databases be on separate machines from the applications due to performance and security issues. The IBRU applications and databases can be tenants in a larger setup. No known conflicts exist between IBRU and other applications or required server settings.

It is recommended that db_owner permissions be given to the Insbridge user. This will allow scripts to be run automatically when a new package is loaded for a new line of business. If this is not possible, DT scripts for each new line will have to be run manually before the package can be loaded.

Microsoft SQL Server

JDBC Driver Class

“com.microsoft.jdbc.sqlserver.SQLServerDriver”

Supported Versions – 2005 SP/2 and 2008 R2

User Account Requirements

Create Table
Create Index
Execute on the SoftRater User Defined Stored Procedures

Oracle

SoftRater database schema is support by all available ORACLE database platforms.

JDBC Driver Class

“oracle.jdbc.driver.OracleDriver”
Using prefix jdbc:oracle:thin:

Supported Versions – 10g, 11g

User Account Requirements

Create Table
Create Index
Query access to “SYS.OBJ\$”

IBM DB2

SoftRater database schema is supported on all available DB2 database platforms.

JDBC Driver Class

“com.ibm.db2.jcc.DB2Driver”
For Native AS400 – “com.ibm.as400.access.AS400JDBCDriver”

Supported Version – 9.1

User Account Requirements

Connect to database
Create Table
Create Index
Query access to “SYSIBM.SYSTABLES”

Configuration Settings

- **Required**
The query dynamics of the SoftRater system requires some modification to Configuration settings. The following Performance Configurations parameters required to the target SoftRater database.
Instance Level – ASLHEAPSZ >= 1024
Instance Level – QUERY_HEAP_SZ => 10240
Database Level – APPLHEAPSZ >= 1024
- **Recommended**
The query dynamics of the SoftRater system will benefit from the following modification to Configuration settings.

Instance Level – INTRA_PARRALLEL (Yes) – For Symmetrical Processing Machines (CPU >=2)

Database Level – DFT_DEGREE (-1) – For Symmetrical Processing Machines (CPU >=2). Allow the optimizer to determine the degree of intra-partition parallelism based on the number of processors and the type of query.

Native z/OS

Support for IBM DB2 for native z/OS requires a specific set of the DDL scripts. They are labeled in the `ddl\db2` directory with the ZOS DB2.ZOS prefix. DBA's should review these scripts, starting with the `DB2.ZOS.SETUP.sql` file that contains create templates for default; STORAGE GROUP, DATABASE, default TABLESPACE. All other table create scripts can be reviewed, altered and executed in any other to be consistent with chosen database standards.

CONTACTING SUPPORT

If you need assistance with an Oracle Insurance Insbridge Rating and Underwriting System product, please log a Service Request using My Oracle Support at <https://support.oracle.com/>.

Address any additional inquiries to:

Oracle Corporation
World Headquarters
500 Oracle Parkway
Redwood Shores, CA 94065
U.S.A.

Worldwide Inquiries:
Phone: +1.650.506.7000
Fax: +1.650.506.7200
oracle.com

TTY ACCESS TO ORACLE SUPPORT SERVICES

Oracle provides dedicated Text Telephone (TTY) access to Oracle Support Services within the United States of America 24 hours a day, seven days a week. For TTY support, call 800.446.2398.

INDEX

\$

`$WSAS_HOME\etc\insbridge`, 19

A

Add New Environment
 IBSS, 25, 33, 44
Application Servers
 Mapping, 18

B

Bindings
 Creating, 14

C

Collation and Sort Order
 SQL Server, 21
Config File
 Locating, 13
config/ddl subdirectory, 51
Configuration Settings
 DB2, 53
 DB2 Modifications, 53
Configure
 Rating Environments, 25, 33, 44
Creating
 Environment Setup, 25, 33, 44
 Name Space Binding, 15

D

Database
 IBM DB2 Support, 53
 MS SQL Support, 52
 ORACLE Support, 52
 Permissions, 51
 Security, 51
 SoftRater, 51
Database Definition Language Scripts, 51
Database Types
 Environment Setup, 26, 34, 45
DB2
 zOS, 53
DB2 Database
 Configuration Settings, 53
 JDBC Driver Class, 53
 Recommendations, 53
 SoftRater Database Schema, 53
 Supported Version, 53
 User Account Requirements, 53
DBA, 51

DBMS, 51
DDL, 51
DDL scripts
 zOS on DB2, 53
ddl\db2 Directory, 53
Directory
 ddl\db2, 53

E

EAR
 Started from WSAS Admin Console, 20
EAR File, 16
Editing
 Environment Setup, 25, 33, 44
Edition Notice, 2
Environment Setup
 Creating, 25, 33, 44
 Database Types, 26, 34, 45
 Editing, 25, 33, 44
 IBSS, 25, 33, 44
 Provider Types, 26, 34, 45
 Query Block, 26, 34, 45
Extended Properties
 Modifying, 20

F

File
 EAR, 16
 Security on Config, 19

I

IBRU
 Oracle Software Delivery Cloud, 9
IBSS, v
 Add New Environment, 25, 33, 44
 Environment Setup, 25, 33, 44
 Installing EAR File, 16
 Options, 16
Insbridge SoftRater Server, v
Insbridge.Fwk.APP, 20
InsBridge.Fwk.APP, 19
insbridge.net.softmaterconfig.xml
 Configuration File, 19
 Configuring, 19
INSBRIDGE_APP_DIR, 14, 15, 19
 Folder, 19
Installing
 IBSS EAR, 16
 InsBridge.Fwk.APP, 19

J

JDBC Connection Drivers, 51

L

Library

Assigning Shared Libraries, 20

M

Mapping

Modules, 18

Virtual Hosts, 18

Modules

Mapping, 18

N

Name Space Binding

Creating, 15

Name Space Binding String, 14

O

Options

IBSS EAR, 16

ORACLE

SoftRater Database Schema, 52

ORACLE Database

JDBC Driver Class, 52

Supported Version, 52

User Account Requirements, 52

Oracle Software Delivery Cloud

IBRU, 9

Required Programs, 9

Overview

Package, vii

P

Package

Environment, vii

Overview, vii

Part Numbers

Oracle Software Delivery Cloud, 9

PDF Reader

Oracle Software Delivery Cloud, 9

Performance Configurations Parameters

SoftRater Database, 53

Pre-compile JSP

Options', 16

Provider Types

Environment Setup, 26, 34, 45

Q

Query Block

Environment Setup, 26, 34, 45

Quick List, 40

R

Reloading

SoftRater Page Environment, 27, 35, 46

Requirements

DB2 Database, 53

ORACLE Database, 52

SoftRater EJB Data Access System, 51

SQL Server, 52

TCP/IP Connection, 51

Reset Environments

SoftRater Page, 27, 35, 46

S

sa account

SQL Server Enterprise Manager, 22

Scripts

Database Definition Language, 51

Security

Database, 51

SoftRater

Default Config File, 19

IBSR, 51

Security on Config File, 19

Supported Databases, 52, 53

SoftRater Database, 51

SoftRater Packages

Environments, vii

SoftRater Page

Reloading Environment, 27, 35, 46

Reset Environment, 27, 35, 46

SQL Server

Collation and Sort Order, 21

JDBC Driver Class, 52

SoftRater Database Schema, 52

Supported Version, 52

User Account Requirements, 52

User Accounts, 24

SQL Server Account

ibru, 21

SQL Server Enterprise Manager

sa Privileges, 22

String

Name Space Binding, 14

WebSphere, 14

Subdirectory

Installation, 19

Summary Screen, 18

T

TCP/IP Connection

To DB Platform, 51

U

Unzip Utility

Oracle Software Delivery Cloud, 9

User Accounts

SQL Server, 24

V

VFS Definition, vii
Virtual File Server Definition, vii
Virtual Hosts
 Mapping, 18

W

WebSphere
 Creating String, 14
 Viewing in Installation Directory, 51
WebSphere Port

9080, 24, 32, 43
WSAS Administrative Console, 20

X

XML Configuration, 14

Z

z/OS
 BD2, 53
Zip Contents, 13
ZOS DB2.ZOS, 53