

Oracle Insurance

**Insbridge Rating and
Underwriting**

**SoftRater for WebLogic
Installation Guide**

Release 4.6

May 2012

Copyright © 2005, 2012, Oracle and/or its affiliates. All rights reserved.

Oracle Insurance Insbridge Rating and Underwriting SoftRater for WebLogic Installation Guide

Release 4.6

Part # E35535-01

Library # E35552-01

May 2012

Primary Authors: Mary Elizabeth Wiger

This software and related documentation are provided under a license agreement containing restrictions on use and disclosure and are protected by intellectual property laws. Except as expressly permitted in your license agreement or allowed by law, you may not use, copy, reproduce, translate, broadcast, modify, license, transmit, distribute, exhibit, perform, publish, or display any part, in any form, or by any means. Reverse engineering, disassembly, or decompilation of this software, unless required by law for interoperability, is prohibited.

The information contained herein is subject to change without notice and is not warranted to be error-free. If you find any errors, please report them to us in writing.

If this software or related documentation is delivered to the U.S. Government or anyone licensing it on behalf of the U.S. Government, the following notice is applicable:

U.S. GOVERNMENT RIGHTS

Programs, software, databases, and related documentation and technical data delivered to U.S. Government customers are "commercial computer software" or "commercial technical data" pursuant to the applicable Federal Acquisition Regulation and agency-specific supplemental regulations. As such, the use, duplication, disclosure, modification, and adaptation shall be subject to the restrictions and license terms set forth in the applicable Government contract, and, to the extent applicable by the terms of the Government contract, the additional rights set forth in FAR 52.227-19, Commercial Computer Software License (December 2007). Oracle USA, Inc., 500 Oracle Parkway, Redwood City, CA 94065.

This software is developed for general use in a variety of information management applications. It is not developed or intended for use in any inherently dangerous applications, including applications which may create a risk of personal injury. If you use this software in dangerous applications, then you shall be responsible to take all appropriate fail-safe, backup, redundancy, and other measures to ensure the safe use of this software. Oracle Corporation and its affiliates disclaim any liability for any damages caused by use of this software in dangerous applications.

Oracle is a registered trademark of Oracle Corporation and/or its affiliates. Other names may be trademarks of their respective owners.

This software and documentation may provide access to or information on content, products, and services from third parties. Oracle Corporation and its affiliates are not responsible for and expressly disclaim all warranties of any kind with respect to third-party content, products, and services. Oracle Corporation and its affiliates will not be responsible for any loss, costs, or damages incurred due to your access to or use of third-party content, products, or services.

Where an Oracle offering includes third party content or software, we may be required to include related notices. For information on third party notices and the software and related documentation in connection with which they need to be included, please contact the attorney from the Development and Strategic Initiatives Legal Group that supports the development team for the Oracle offering. Contact information can be found on the Attorney Contact Chart.

The information contained in this document is for informational sharing purposes only and should be considered in your capacity as a customer advisory board member or pursuant to your beta trial agreement only. It is not a commitment to deliver any material, code, or functionality, and should not be relied upon in making purchasing decisions. The development, release, and timing of any features or functionality described in this document remains at the sole discretion of Oracle.

This document in any form, software or printed matter, contains proprietary information that is the exclusive property of Oracle. Your access to and use of this confidential material is subject to the terms and conditions of your Oracle Software License and Service Agreement, which has been executed and with which you agree to comply. This document and information contained herein may not be disclosed, copied, reproduced, or distributed to anyone outside Oracle without prior written consent of Oracle. This document is not part of your license agreement nor can it be incorporated into any contractual agreement with Oracle or its subsidiaries or affiliates.

CONTENTS

	PREFACE	v
	Audience	v
	Planning Your IBRU System.....	v
	Types of Installation	v
	Definitions	vi
	Relate Documents	vii
	Conventions	vii
	Manual History	viii
CHAPTER 1		
	SYSTEM REQUIREMENTS	9
	Oracle Software Delivery Cloud.....	9
QUICK VIEW		
	SOFRATER FOR WEBLOGIC INSTALLATION	12
CHAPTER 2		
	SETTING UP WEBLOGIC	13
	Step 1: Creating a New Server Domain.....	13
	Configuration Wizard	14
	Step 2: Placing the Configuration Files.....	22
	Step 3: Adding a System Property to WL Server.....	23
	Adding to the WebLogic Server – Windows	23
	Adding to the WebLogic Server – Linux	24
	Step 4: Starting the WebLogic Server	25
	Accessing the WebLogic Main Console	25
	Step 5: Installation of Required Library.....	26
	Step 6: Adding Libraries.....	26
	Step 7: Installation of the .EAR File	29
CHAPTER 3		
	INSTALLATION PROCEDURES – UTILIZING A SQL SERVER DATABASE....	31
	Step 1: Restoring IBRU Databases in SQL Server.....	31
	Step 2: Setting up a WebLogic Environment in IBSS	34
	Step 3: Entering your IBSS Instance in IBFA	38
CHAPTER 4		
	INSTALLATION PROCEDURES – UTILIZING AN ORACLE DATABASE	40
	Step 1: Creating an Oracle Database	40

Location of Oracle DDL Directory 41
 Step 2: Setting up a WebLogic Environment in IBSS 42
 Step 3: Installation of Oracle Client 46
 Running the Oracle Client 46
 Step 4: Entering your IBSS Instance in IBFA 48

CHAPTER 5

INSTALLATION PROCEDURES – UTILIZING AN IBM DB2 DATABASE..... 50
 Required DB2 Client 50
 Step 1: Creating a DB2 Database..... 50
 Location of DB2 DDL Directory 52
 Step 2: Setting up a WebLogics Environment in IBSS 53
 Step 3: Installation of DB2 Client 57
 Running the DB Client 57
 Step 4: Entering your IBSS Instance in IBFA 59

CHAPTER 6

SOFTRATER DATABASE REQUIREMENTS..... 61
 Database User Roles and Permissions 61
 Microsoft SQL Server..... 62
 Oracle..... 62
 IBM DB2..... 63

SUPPORT

CONTACTING SUPPORT 64
 TTY Access to Oracle Support Services 64

INDEX

INDEX 65

LIST OF FIGURES

FIGURE 1 CREATING A NEW SERVER DOMAIN IN WINDOWS.....	13
FIGURE 2 CREATING NEW WEBLOGIC DOMAIN	14
FIGURE 3 SELECTING DOMAIN SOURCE	15
FIGURE 4 SPECIFYING DOMAIN NAME AND LOCATION.....	16
FIGURE 5 CREATING USER NAME AND PASSWORD.....	17
FIGURE 6 CONFIGURING SERVER START MODE AND JDK.....	18
FIGURE 7 CUSTOMIZING ENVIRONMENT AND SERVICE SETTINGS.....	19
FIGURE 8 CREATING WEBLOGIC DOMAIN.....	20
FIGURE 9 START MENU	21
FIGURE 10 STARTWEBLOGIC.CMD FILE	23
FIGURE 11 – EDITING STARTWEBLOGIC.CMD FILE.....	24
FIGURE 12 – EDITED STARTWEBLOGIC.CMD FILE	24
FIGURE 13 LOGGING INTO WEBLOGIC SERVER.....	25
FIGURE 14 ORACLE JSP LIBRARY.....	26
FIGURE 15 WEBLOGIC CONSOLE	26
FIGURE 16 DEPLOYMENTS PAGE	27
FIGURE 17 LIST OF LIBRARIES	27
FIGURE 18 SELECTING DEFAULTS	28
FIGURE 19 SELECT THE APPLICATION .EAR.....	29
FIGURE 20 – VERIFY APPLICATION INSTALLATION.....	29
FIGURE 21 – SUCCESSFUL INSTALLATION.....	30
FIGURE 22 RIGHT CLICK TO RESTORE DATABASE.....	32
FIGURE 23 RESTORING A DATABASE	33
FIGURE 24 IBSS WEBLOGIC MAIN PAGE.....	34
FIGURE 25 ENVIRONMENT SETUP.....	35
FIGURE 26 RESETTING THE ENVIRONMENT	37
FIGURE 27 EDITING ENVIRONMENT	38
FIGURE 28 IBSS WEBLOGIC MAIN PAGE.....	42
FIGURE 29 ENVIRONMENT SETUP.....	43
FIGURE 30 RESETTING THE ENVIRONMENT	45
FIGURE 31 LOCATING THE ORACLE CLIENT FOR 64-BIT INSTALLS	46
FIGURE 32 RUNNING THE ORACLE CLIENT	47
FIGURE 33 EDITING ENVIRONMENT	48
FIGURE 34 IBSS WEBLOGIC MAIN PAGE.....	53
FIGURE 35 ENVIRONMENT SETUP.....	54
FIGURE 36 RESETTING THE ENVIRONMENT	56
FIGURE 37 INSTALLING DB2 CLIENT AND FIX PACK	57
FIGURE 38 EDITING ENVIRONMENT	59

PREFACE

Welcome to *Oracle Insurance Insbridge Rating and Underwriting SoftRater for WebLogic Installation Guide*. This guide describes how to install and configure SoftRater for WebLogic Server 10.3.1. SoftRater may be used in conjunction with the Oracle Insurance Insbridge Rating and Underwriting RateManager (RateManager) system to process rating requests or it may stand alone.

The Insbridge SoftRater Server (IBSS) is the container for all Insbridge web components including the SoftRater Engine. All independent Insbridge components will be contained in the IBSS.

NOTE: *SoftRater for WebLogic has been tested and certified on WebLogic 11gR1 (10.3.1) utilizing MS Windows 2008 64-bit.*

AUDIENCE

This guide is intended for technical personnel, such as installers, system administrators and others tasked with configuring SoftRater that would be involved in the maintenance and operation of SoftRater or RateManager. The audience for this guide should have a thorough knowledge of WebLogic.

PLANNING YOUR IBRU SYSTEM

Prior to installation, you should have an idea of the type of setup you want to create. What kind of equipment do you have available and how many environments do you need? If you do not have everything completely planned out, you can still proceed. Environments can be removed or added later on. The Oracle Insurance Insbridge Rating and Underwriting system (IBRU) is expandable and can accommodate a few different configurations.

For more on planning your IBRU system, please see the Insbridge Implementation Guide.

TYPES OF INSTALLATION

There are various types of installations:

RateManager Installation

- **Full RateManager** – This installation will install RateManager and the Insbridge Framework Administrator (IBFA). This is for a Windows only environment using a SQL Server database.

SoftRater Installation

- **Full SoftRater for Java Installation** – This installation will deploy SoftRater to an application server; WebLogic, WebSphere or JBoss, using a SQL Server database or an Oracle database.
- **Full SoftRater for Windows Node** – This installation is for existing environments that want to add a SoftRater for Windows node to an environment. This is for a Windows only environment using a SQL Server database, or an Oracle database.

Upgrading a Current Installation

- **Upgrade** – This installation is for existing customers and will take their current version of IBRU up to version 04.06.00.

This guide is for a **Full SoftRater for Java Installation utilizing WebLogic**.

Definitions

Some commonly used terms when installing or using the Oracle Insurance Insbridge Rating and Underwriting system:

- **IBRU** – Insbridge Rating and Underwriting System. This is the entire system.
- **IBFA** – Insbridge Framework Administrator. IBFA is an administrative tool used to configure Insbridge applications and setup RateManager database connections. IBFA will be located on a Windows Server machine. IBFA/SR-WIN is an Insbridge Framework Administrator/SoftRater for Windows.
- **IBSS** – Insbridge SoftRater Server. IBSS is the administrative tool for the SoftRater engine. The SoftRater engine is a multi-platform component within IBRU that executes the rules, rating and underwriting instructions as defined by the user in RateManager. IBSS is usually located on a Java machine. IBSS/SR-JAVA is an Insbridge SoftRater Server/SoftRater for Java.
- **SoftRater Node** – A SoftRater node is either an IBFA (without RateManager) or IBSS instance on a physical environment.
- **SoftRater Native** – SoftRater Native is a remote instance of SoftRater that can execute rules and rating logic in environments where access via the SoftRater web-services is not desired or possible.
- **RM** – RateManager. RateManager is a component within IBRU that enables users to manage the product definition and modification process, including rating and underwriting logic.
- **SR** – SoftRater. The engine that executes the rating, rules and underwriting instructions defined within RateManager. The rating environment for runtime execution and processing of business content. SoftRater can be further defined by the operating system where it has been loaded.
- **SR-WIN** – SoftRater for Windows. This is also another name for IBFA.
- **SR-JAVA** – SoftRater for Java. This is also another name for IBSS.

- **SRP** – SoftRater Packages. A package that holds all the RateManager logic for a specific program and version.
- **VFS** – Virtual File Servers. Virtual file server management allows you to access environments that are located on other machines in different locations where packages can be downloaded.
- **Package Location** – A pointer to a location where SoftRater Packages (SRP's) are stored.
- **Physical Environment** – A physical environment is generally referred to as a physical machine.
- **Authoring Environment** – The physical machine where RateManager is installed.
- **Rating Environment** – The physical machine(s) where SoftRater is installed. This is typically the same as a SoftRater node.
- **Logical Environment** – An environment created for a subscriber in IBFA. It defines package location, engine location and database location in addition to several other supporting data items. This environment is used for rating and/or SRP management. Each database connection will have a logical environment.

RELATE DOCUMENTS

For more information, refer to the following Oracle resources:

- The Oracle Insurance Insbridge Rating and Underwriting Framework Administrator.
- The Oracle Insurance Insbridge Rating and Underwriting SoftRater Server Guide.
- You can view these guides in-line at this address:

<http://www.oracle.com/technetwork/documentation/insurance-097481.html>

CONVENTIONS

This document may reference the following abbreviations:

- **WL**: WebLogic Server
- **JNDI**: Java Naming and Directory Interface

The following text conventions are used in this document:

Convention	Description
bold	Boldface type indicates graphical user interface elements associated with an action.

<i>italic</i>	Italic type indicates book titles, emphasis, or placeholder variables for which you supply particular values.
<code>monospace</code>	Monospace type indicates commands within a paragraph, URLs, code in examples, text that appears on the screen, or text that you enter.

Manual History

New editions incorporate any updates issued since the previous edition.

Edition	Publication Number	Product Release	Publication Date	Comment
1 st Edition	P01-762-01	V 3.8.9	April 2008	WebLogic 9.2
2 nd Edition	P01-762-02	V 3.9.0	May 2008	WebLogic 9.2
3 rd Edition	P01-762-03	V 3.10	September 2008	WebLogic 9.2
4 th Edition	P01-762-04	V 3.11	December 2008	WebLogic 9.2
5 th Edition	P01-762-05	V 3.12	July 2009	WebLogic 9.2
6 th Edition	P01-762-06	V 3.13	December 2009	WebLogic 10.3
7 th Edition	P01-762-07	R 4.0	April 2010	WebLogic 10.3
8 th Edition	P01-762-08	R 4.0.1	August 2010	WebLogic 10.3
9 th Edition	P01-762-09	R 4.1	December 2010	WebLogic 10.3
10 th Edition	P01-762-10	R 4.5	May 2011	WebLogic 10.3
11 th Edition	P01-762-11	R 4.5.1	September 2011	WebLogic 10.3
12 th Edition	P01-762-12	R 4.6	May 2012	WebLogic 10.3

SYSTEM REQUIREMENTS

For minimum operating system and hardware requirements, please see the Hardware Software requirements guide.

Prior to creating a new SoftRater environment, please have ready:

- **Full WebLogic installation**
- **Database name or Environment name**
- **Database login information**
- **Database server name, either IP or DNS**
- **Database DDL, updates or backup files for the database you want to utilize. These files are located in the 04.06.00 Insbridge IBRU folder.**
- **If utilizing Oracle, you need: DB Catalog name, port number, DB Schema name**
- **If utilizing DB2, you need: DB Catalog name, port number, query block size (heap), DB Schema name**
- **Subscriber ID created in IBFA**
- **Access to the server where the IBRU system was installed**
- **URL of the current IBFA**
- **Package location where you want the packages stored**

These components will be needed at various times during the installation and implementation of SoftRater for WebLogic.

ORACLE SOFTWARE DELIVERY CLOUD

Prior to installation, please make sure the source machine(s) where IBRU will be loaded has an unzip utility. An unzip utility for most platforms is available on the Oracle Software Delivery Cloud download page.

Documentation from Oracle Software Delivery Cloud is in PDF format. Prior to installation, please make sure the source machine(s) where IBRU documentation will be loaded has a PDF reader.

Files are downloaded with part numbers as file names. Please make note of the part numbers you have downloaded and the corresponding file name. You may be asked to provide the part numbers or the filename if you contact Oracle Insurance Support.

The installation downloads you can select are:

- **Insbridge IBRU Install** – This is required for all RateManager installations
- **SoftRater for WebSphere** – This is required if you are using WebSphere
- **SoftRater for WebLogic** – This is required if you are using WebLogic
- **SoftRater for Jboss** – This is required if you are using Jboss
- **Documentation** – It is recommended that you download the documentation. Installation guides and user guides are located here.

The 04.06.00-Insbridge-IBRU folder contents:

- **Databases**
 - ◆ DB2
 - SoftRater – IBSR
 - DDL
 - ◆ Oracle
 - SoftRater – IBSR
 - DDL
 - Update:Usp_IBSR_v04.05.00oracle
 - ◆ SQL Server
 - RateManager – IBRM
 - Latin1_General_BIN
 - DATABASE_BACKUP_IBRM_TEMPLATE_CASE_SENSITIVE.bak
 - SQL_Latin1_General_CP1_CI_AS
 - DATABASE_BACKUP_IBRM_TEMPLATE.bak
 - Security – IB_CLIENT
 - SQL_Latin1_General_CP1_CI_AS
 - DATABASE_BACKUP_IB_CLIENT_TEMPLATE.bak
 - SoftRater – IBSR
 - Latin1_General_BIN
 - DATABASE_BACKUP_IBSR_TEMPLATE_CASE_SENSITIVE.bak
 - SQL_Latin1_General_CP1_CI_AS
 - DATABASE_BACKUP_IBSR_TEMPLATE.bak
 - Update:Usp_IBSR_v04.05.01.sql- **IE7_IE8 Users**
 - ◆ Insbridge IE7 Active X Control Update PDF
 - ◆ RateManager_IE7_IE8.exe
- **Oracle BI Publisher**
 - ◆ OBI_PUBLISHER.exe
- **Oracle Client**
 - ◆ Oracle_client.exe
- **Oracle Insurance – Insbridge Rating and Underwriting.exe**

The SoftRater for WebLogic 04.06.00 zip file will contain:

- The 04.06.00-insbridge-wbl-eng Folder
 - insbridge.net.softraterconfig.xml
 - IBSS_WL.ear
 - ojsp.jar

No license file is required.

SoftRater can be installed any time after the Insbridge Framework Administrator and RateManager have been installed. SoftRater must be installed prior to any users creating packages. Please note, all folders and files may not be needed, depending upon the kind of setup you want.

Internet Explorer

IBSS and IBFA are accessed via web browser. Please verify that you are using Internet Explorer 7.0 or 8.0 (32-bit). As of release 4.6, Internet Explorer 8.0 (64-bit) is not supported.

SOFTRATER FOR WEBLOGIC INSTALLATION

Installing SoftRater for WebLogic will require that you:

1. Set up WebLogic and deploy the SoftRater for WebLogic .EAR file and config file. There are seven steps in setting up WebLogic and deploying SoftRater.
2. Implement the database and enter the configuration information in IBSS and IBFA.
 - a. SQL Server Database
 - b. Oracle Database
 - c. IBM DB2

SoftRater for WebLogic can utilize either database. The installation procedures are similar, but there are different procedures for each database type. Please follow the implementation for your database type.

Setting up and Deploying in WebLogic

Step 1: Creating a New Server Domain – Optional

Step 2: Placing the Configuration Files

Step 3: Adding a System Property to WL Server

Step 4: Starting the WebLogic Server

Step 5: Installation of Required Library

Step 6: Adding Libraries

Step 7: Installation of the .EAR File

Implementing a SQL Server Database

Step 1: Restoring IBRU Databases in SQL Server

Step 2: Setting up a WebLogic Environment in IBSS

Step 3: Entering your IBSS Instance in IBFA

Implementing an Oracle Database

Step 1: Creating an Oracle Database

Step 2: Setting up a WebLogic Environment in IBSS

Step 3: Installation of Oracle Client

Step 4: Entering your IBSS Instance in IBFA

Implementing an IBM DB2 Database

Step 1: Creating a DB2 Database

Step 2: Setting up a WebLogic Environment in IBSS

Step 3: Installation of DB2 Client

Step 4: Entering your IBSS Instance in IBFA

SETTING UP WEBLOGIC

WebLogic 10.3 should be up and running prior to deploying the .EAR file. There are seven steps that should be performed in WebLogic prior to implementing the database.

- **Step 1:** This is an optional step; however if needed, you can create a domain for Insbridge.
- **Step 2:** The Configuration Files must be placed in a static location. **This is a required step.**
- **Step 3:** A System Property must be added to the WebLogic Server. **This is a required step.**
- **Step 4:** Starting the WebLogic Server. **This is a required step.**
- **Step 5:** Installation of Required Library. **This is a required step.**
- **Step 6:** Adding Libraries. **This is a required step.**
- **Step 7:** Installation of the .EAR File. **This is a required step.**

STEP 1: CREATING A NEW SERVER DOMAIN

In Windows

To create a new server domain:

Start Menu → Oracle WebLogic → WebLogic Server 11gR1 → Tools → Configuration Wizard

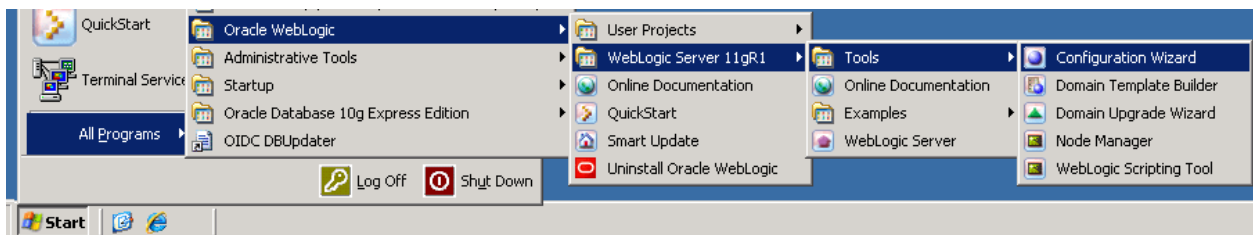


Figure 1 Creating a New Server Domain in Windows

In Linux

To create a new server domain:

Log in as any non-root installer and launch the Domain Creation Wizard for WebLogic. For example:

```
cd /home/INSTALLER/Oracle/Middleware/utils/quickstart/quickstart.sh
```

Follow the wizard according to your company standards. In most cases, for the Insbridge application, a default basic configuration could be used.

NOTE: *This is a suggested domain setup. Your setup may vary.*

It is not required that you set up a separate domain. If you do create a separate Insbridge domain, please verify that there are no port issues. The Insbridge .EAR file can be installed on an already existing domain.

CONFIGURATION WIZARD

On the Welcome screen, you will want to create a new WebLogic domain.

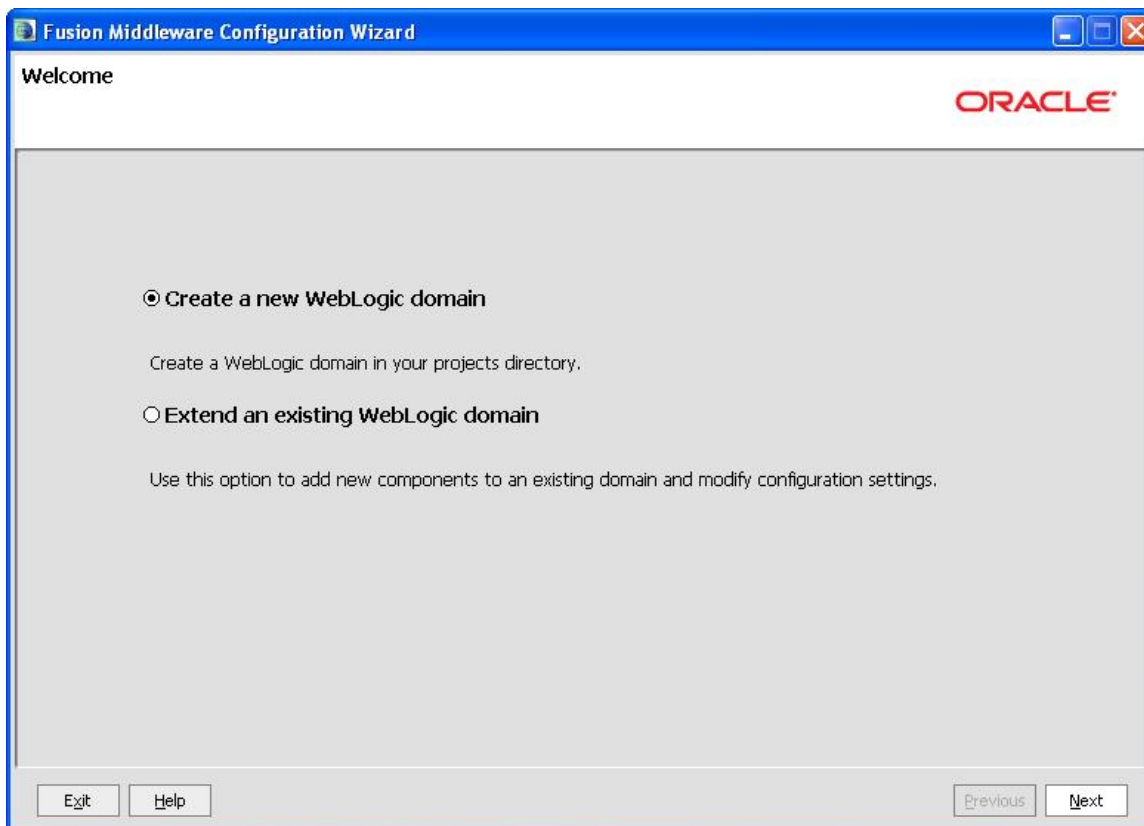


Figure 2 Creating New WebLogic Domain

1. Select **Create a New WebLogic domain**.
2. Click **Next** to advance to the next screen.

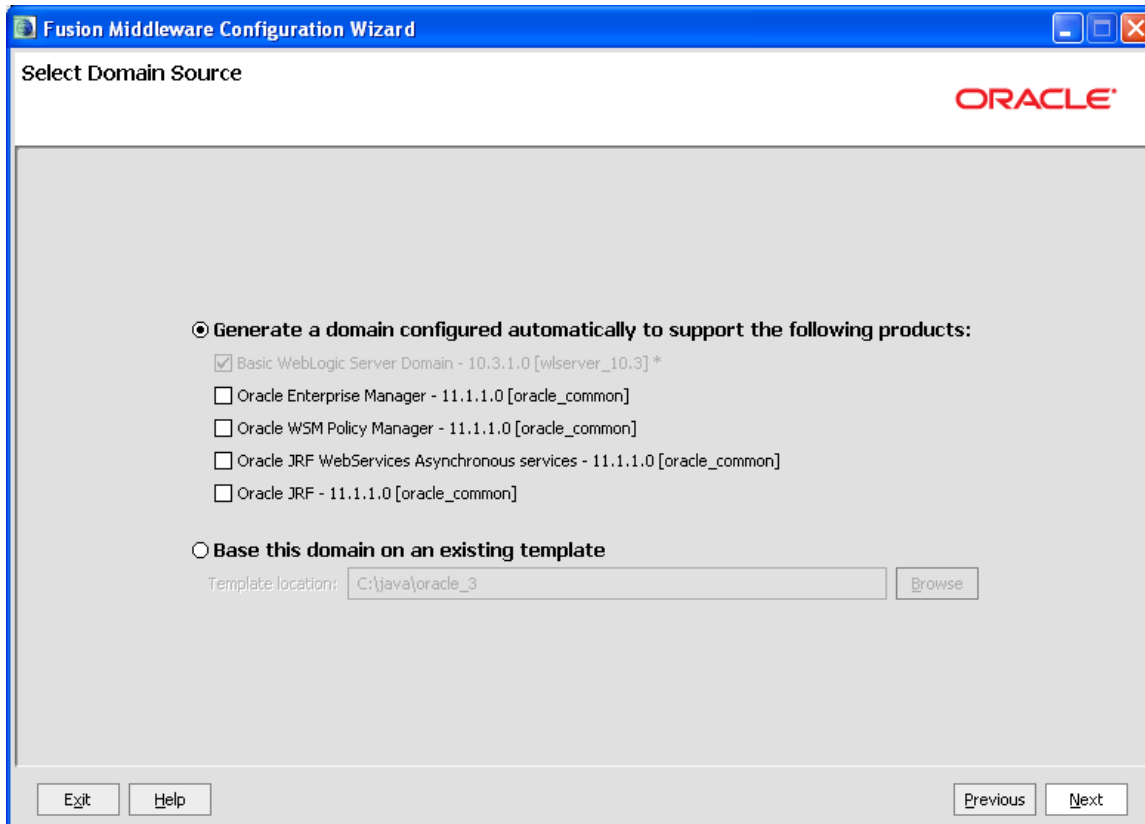


Figure 3 Selecting Domain Source

3. For a basic installation, select **Generate a domain configured automatically to support the following products:** The **WebLogic Server** option is the only option you will need to select.
4. Click **Next** to continue.

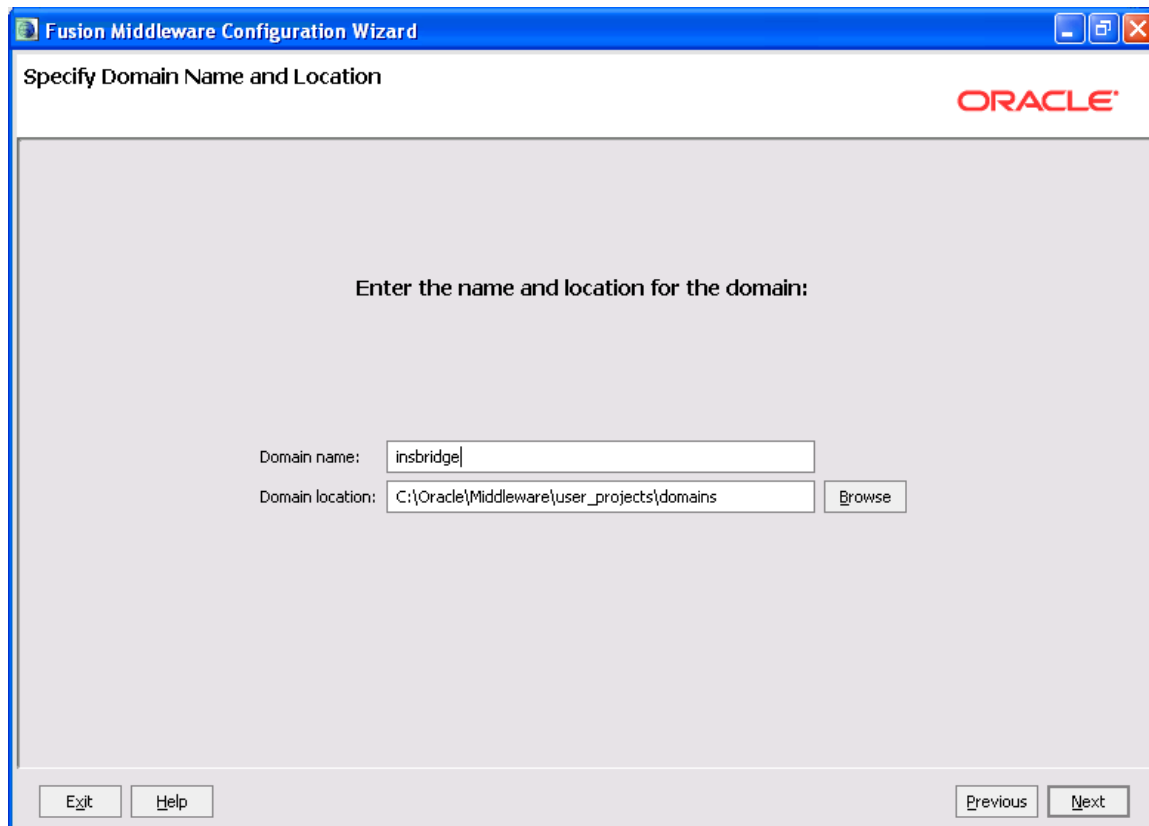


Figure 4 Specifying Domain Name and Location

5. Specify the **Domain Name** and **Location**. The domain name can be anything that meets your company standards.
6. Click **Next** to continue.

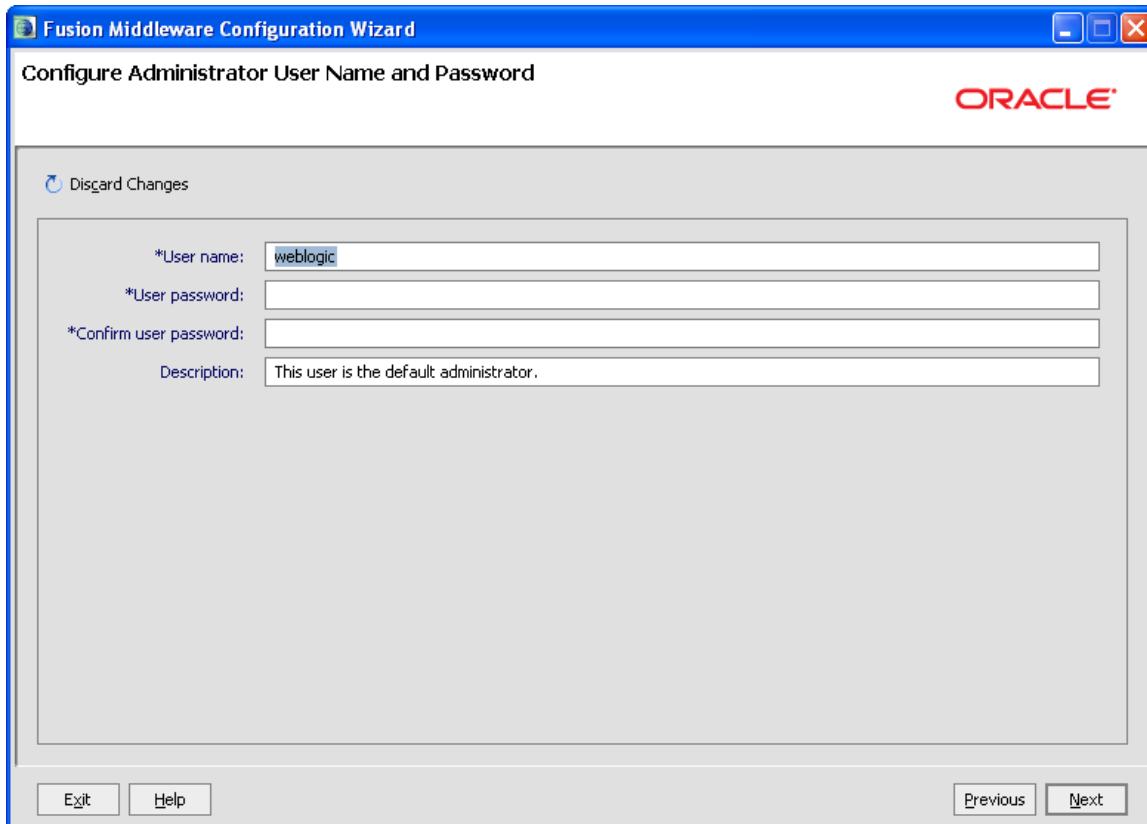


Figure 5 Creating User Name and Password

7. Next, configure the Administrator User name and password. The **User name** and **password** are WebLogic, unless otherwise specified.
8. The **Description** is optional.
9. Click **Next** to continue.

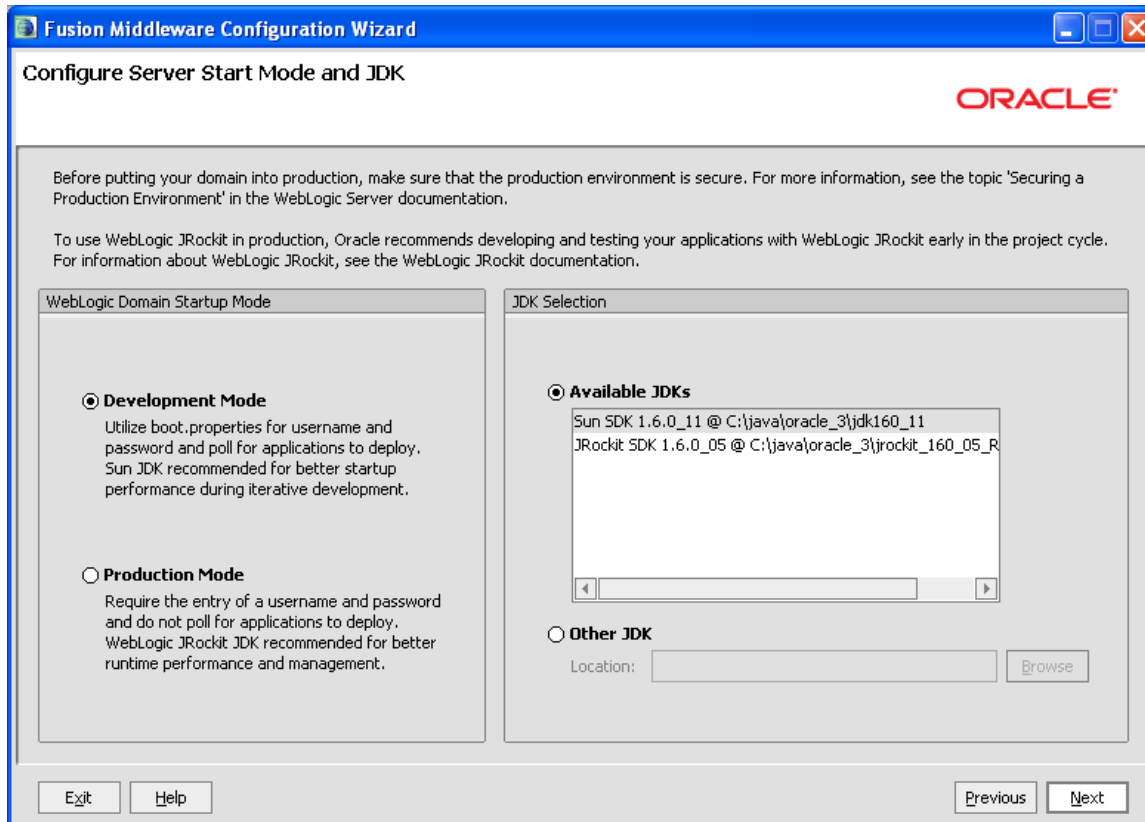


Figure 6 Configuring Server Start Mode and JDK

10. Select **Development Mode** for the Startup Mode.
11. Select the supplied **Sun SDK** in the **Available JDKs** area.
12. Click **Next** to continue.

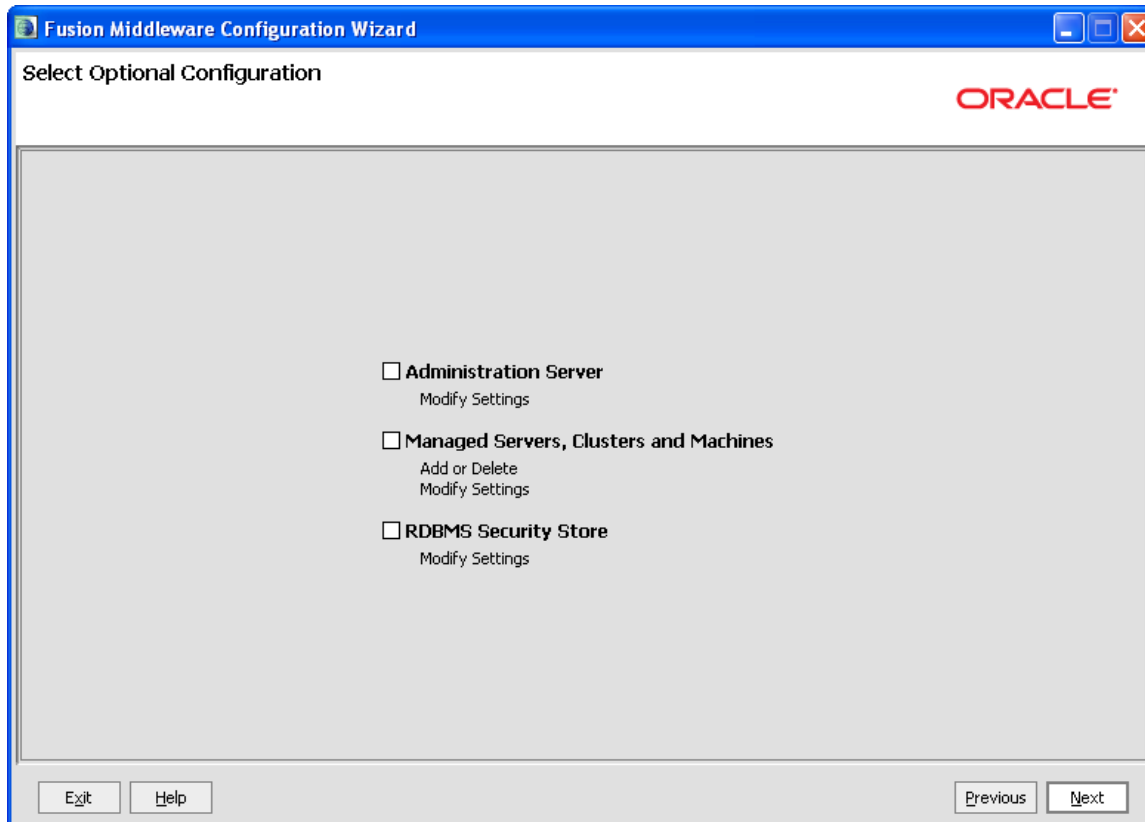


Figure 7 Customizing Environment and Service Settings

13. These modifications are not required for basic installation. If you want to create a dedicated port for Insbridge, select Administration Server and set the port that you want to use. Make note of the port number you choose. The port number will be required for further installation instructions.
14. Click **Next**.

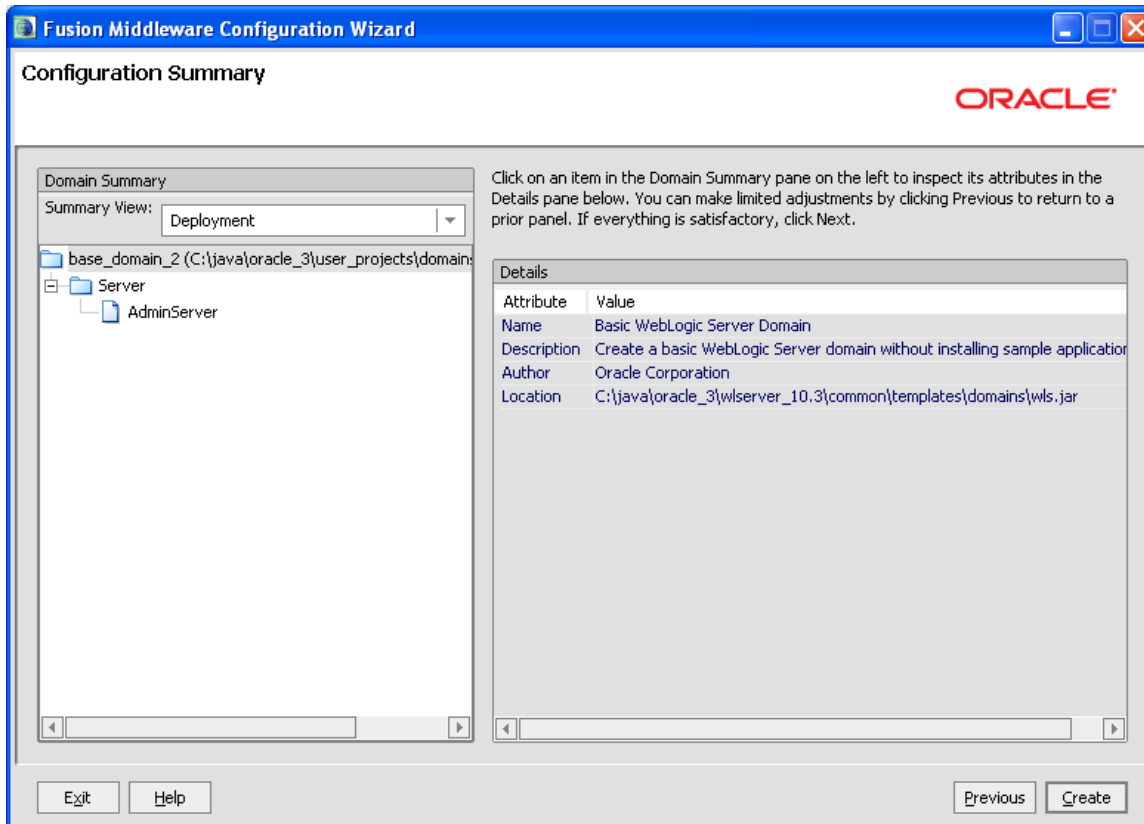


Figure 8 Creating WebLogic Domain

15. No other changes are necessary. Click **Create**.

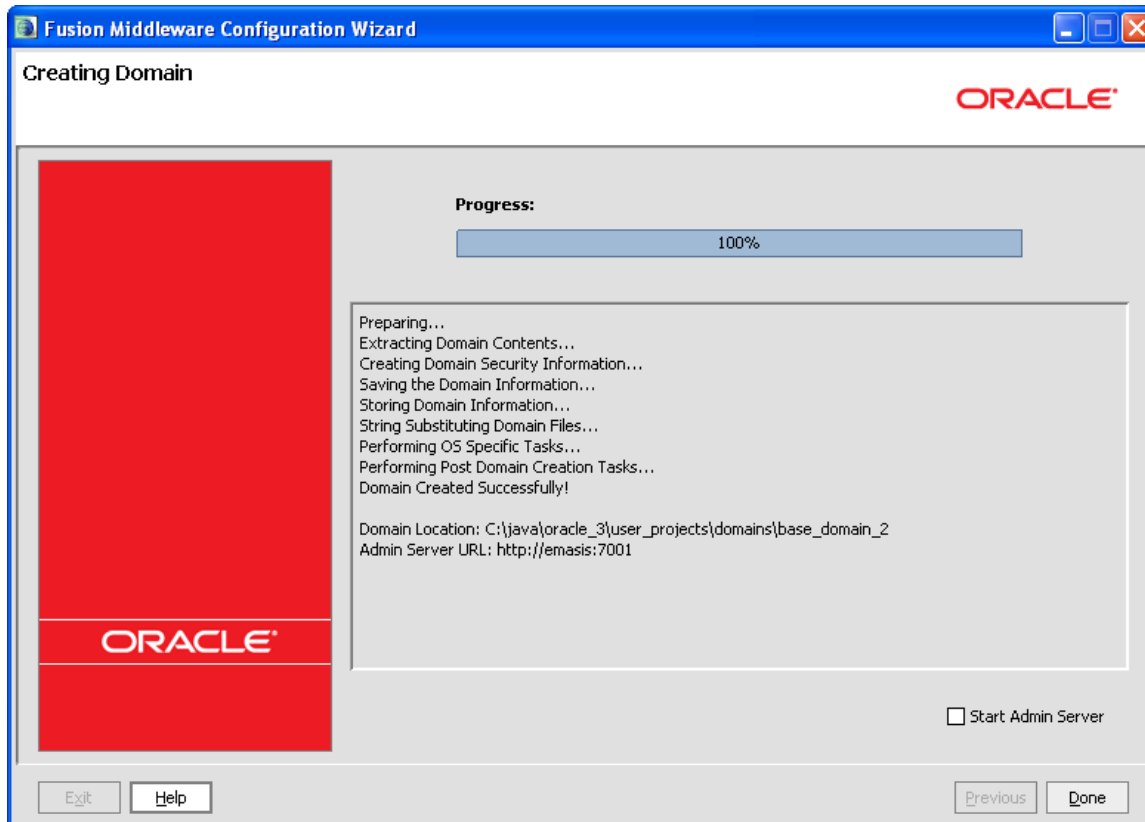


Figure 9 Start Menu

16. WebLogic will begin the creation of the Domain. The progress bar will display 100% when complete.
17. Click **Done** to close the Wizard. The domain is ready to use.

STEP 2: PLACING THE CONFIGURATION FILES

This is a required step. The configuration files must be in place prior to the SoftRater installation.

We suggest creating an Insbridge config folder but you may use any folder name you want and you can place the folder anywhere you want. This folder will hold the necessary files for the SoftRater for WebLogic installation. Take note of the location and make sure you have created this folder prior to running the installation.

- For a Windows environment, `C:\Insbridge\config`
- For a Linux environment, `home/Insbridge/config`

NOTE: *For the purposes of this guide, the location will be referred to as `C:\Insbridge\config`.*

The SoftRater for WebLogic zip file should be downloaded to the WebLogic server prior to configuration. Unzip the file. There will be an XML file, a .JAR file and an .EAR file inside.

- **ojsp.jar**
- **IBSS_WL.ear**
- **Insbridge.net.softraterconfig.xml**

Place these files in the `C:\Insbridge\config` folder.

NOTE: *It is important that the configuration path specified in the Adding a System Property to WL Server section of this document contain both the application and configuration files. These files need to be placed where you specify in the `startWebLogic.cmd` file.*

Once you have these files in place, do not move them.

STEP 3: ADDING A SYSTEM PROPERTY TO WL SERVER

This is a required step. The system properties must be configured prior to SoftRater being installed.

The Inbridge application requires a shared variable on the WebLogic Server that points to the location of the configuration files.

In WebLogic, it is not possible to define variables as part of the Server JNDI. For this reason, you must create a Java System property in the server initialization that can be used by the application to retrieve the path that accesses the system configuration files.

NOTE: *If the server domain was running during these modifications, you will need to restart the server before proceeding.*

Adding to the WebLogic Server – Windows

1. In a Windows Explorer window, enter the server domain location, i.e. %Domain=Home%.

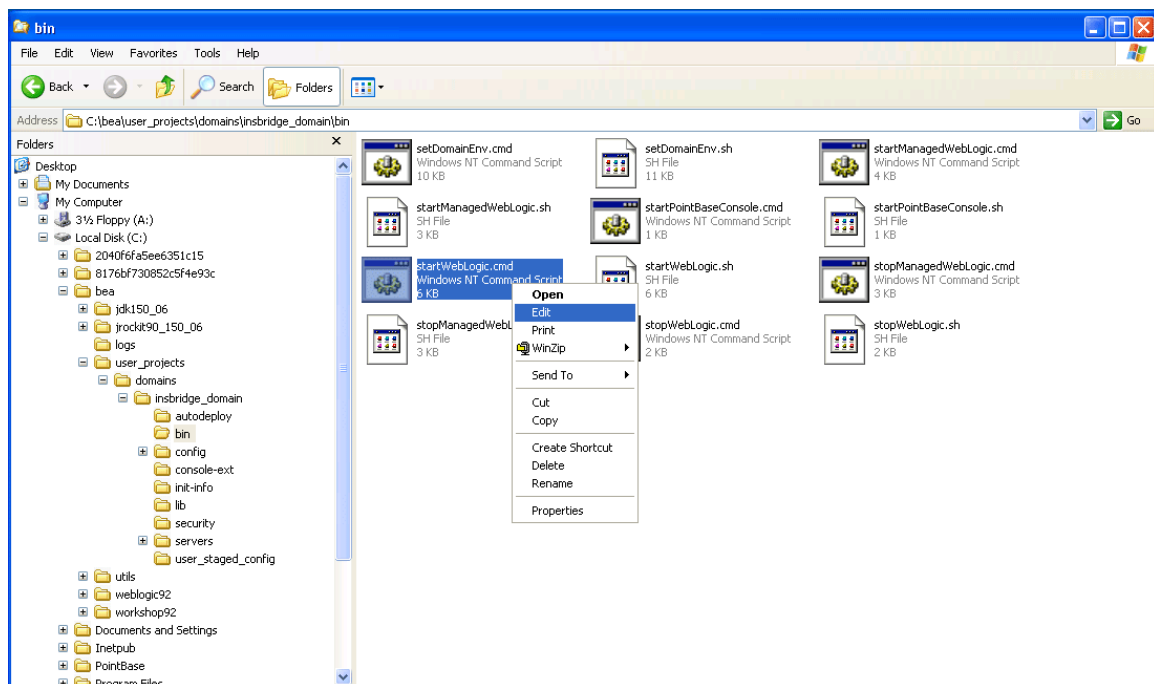


Figure 10 startWebLogic.cmd File

2. In the “bin” folder locate the “startWebLogic.cmd” file. Make a backup of the “startWebLogic.cmd” file.
3. Open the “startWebLogic.cmd”file and right click to **Edit**. Scroll towards the end of the file.


```

if "%WLS_REDIRECT_LOG%"=="" (
%JAVA_HOME%\bin\java %JAVA_VM% %MEM_ARGS% %JAVA_OPTIONS% -Dweblogic.Name=%SERVER_NAME% -
Djava.security.policy=%WL_HOME%\server\lib\weblogic.policy %PROXY_SETTINGS% %SERVER_CLASS%
) else (
%JAVA_HOME%\bin\java %JAVA_VM% %MEM_ARGS% %JAVA_OPTIONS% -Dweblogic.Name=%SERVER_NAME% -
Djava.security.policy=%WL_HOME%\server\lib\weblogic.policy %PROXY_SETTINGS% %SERVER_CLASS%
>"%WLS_REDIRECT_LOG%" 2>&1
)

```

Figure 11 – Editing startWebLogic.cmd File

4. Locate the **DOS if instruction** that looks similar to the one in Figure 11. Your exact file may have slight variations.
5. In both conditions of this instruction you will need to insert the following system property declaration:

- `-DINSBRIDGE_APP_DIR="C:\Insbridge\config"`. If you copy, please verify valid characters have been entered.

In this declaration, add a system property to the Java Virtual Machine using the **“-D”** parameter, then specify **“INSBRIDGE_APP_DIR”** as the name of the new variable.

You must also specify the path where the configuration file will be located. i.e. **“C:\Insbridge\Config”**. Where **C:\Insbridge\config** is the folder you created earlier.

6. **Save** your changes.

```

if "%WLS_REDIRECT_LOG%"=="" (
%JAVA_HOME%\bin\java %JAVA_VM% %MEM_ARGS% %JAVA_OPTIONS% -Dweblogic.Name=%SERVER_NAME% -
Djava.security.policy=%WL_HOME%\server\lib\weblogic.policy -DINSBRIDGE_APP_DIR= "C:\Insbridge\Config"
%PROXY_SETTINGS% %SERVER_CLASS%
) else (
%JAVA_HOME%\bin\java %JAVA_VM% %MEM_ARGS% %JAVA_OPTIONS% -Dweblogic.Name=%SERVER_NAME% -
Djava.security.policy=%WL_HOME%\server\lib\weblogic.policy -DINSBRIDGE_APP_DIR= "C:\Insbridge\Config"
%PROXY_SETTINGS% %SERVER_CLASS% >"%WLS_REDIRECT_LOG%" 2>&1
)

```

Figure 12 – Edited startWebLogic.cmd File

7. The variable will be added to the Server the next time it is started.

Adding to the WebLogic Server – Linux

The procedure is similar in Linux. Locate the **“startWebLogic.sh”** file. In many instances, the file will be located in: `../Oracle/Middleware/user_projects/domains/insbridge/bin`. Open the file and right click to **Edit**. Scroll towards the end of the file and make the necessary changes.

STEP 4: STARTING THE WEBLOGIC SERVER

In Windows

To start the WebLogic server:

Start Menu → Oracle WebLogic → User Projects → <Your Server Domain> → Start Admin Server for WebLogic Server Domain.

In Linux

To start the WebLogic server, open up a Terminal and navigate to the WebLogic installation directory, for example:

```
cd /home/INSTALLDIR/Oracle/Middleware/user_projects/domains/xxxx nohup
./startWeblogic.sh &
```

Where xxxx equals the domain name

NOTE: Please do not close the command prompt window that starts the service. Closing the command prompt window will stop the webserver instance.

Accessing the WebLogic Main Console

The WebLogic Main Console can be accessed once the WebLogic server domain is running by typing <http://<ServerName or IP Address>:<Port>/console> on your browser. i.e. <http://localhost:7001/console>

You will need the administrator username and password for the server domain where you want to install SoftRater.



Figure 13 Logging into WebLogic Server

STEP 5: INSTALLATION OF REQUIRED LIBRARY

The WebLogic Insbridge application requires one WebLogic library to be deployed on to the server prior to the application installation itself. This library will be shipped with the SoftRater for WebLogic application. Place this library anywhere on your disk and then proceed with the installation.

Library	Description
oracle.jsp.next (ojsp.jar)	Oracle Jsp library for ADF applications

Figure 14 Oracle jsp library

STEP 6: ADDING LIBRARIES

The WebLogic administration console offers multiple configuration options. This guide will focus on the deployments features that can be accessed by clicking the highlighted **Deployments** link on the left hand of the console.

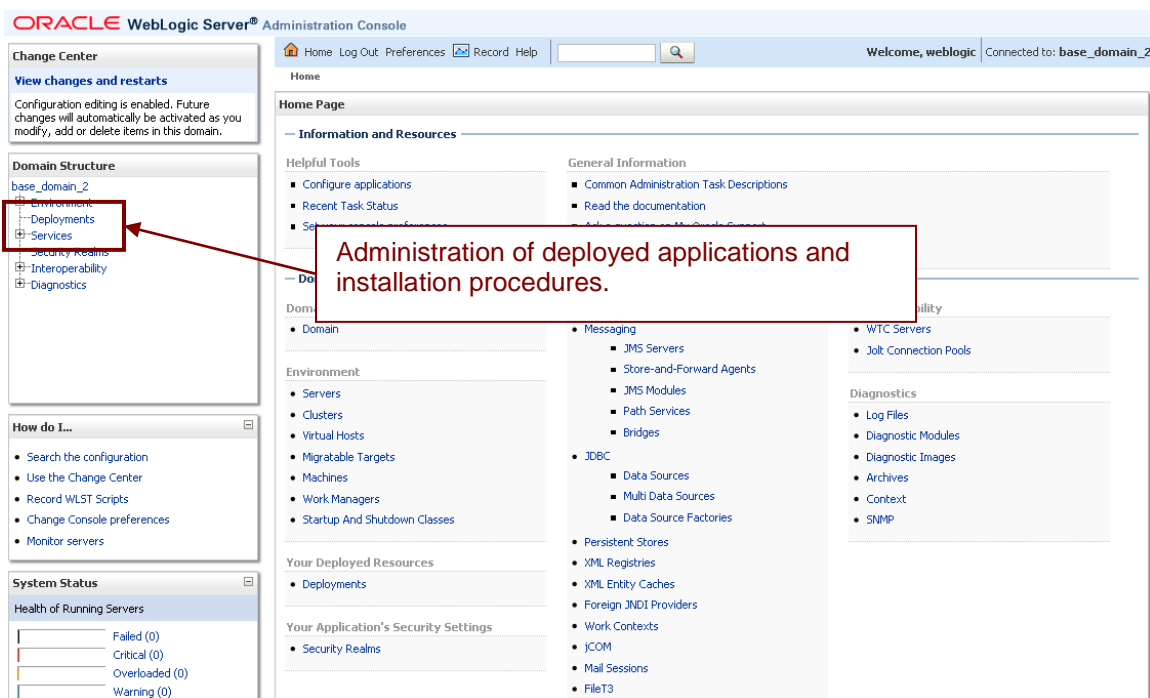


Figure 15 WebLogic Console

1. Click the **Deployments** link. The screen will refresh with the Deployments Page.

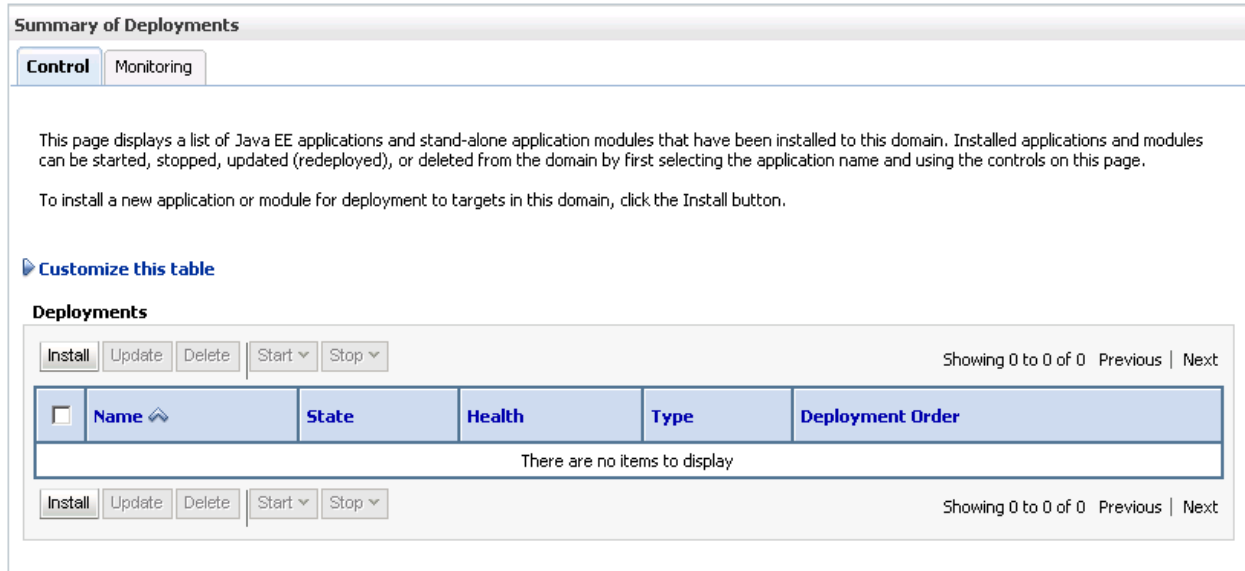


Figure 16 Deployments Page

2. From the Summary of Deployments Page, click the **Install** button. The screen will refresh to the Install Application Assistant page.
3. The list of Locations will be displayed. Select the location where you placed the “ojsp.jar” file.
4. Select the “ojsp.jar” library.

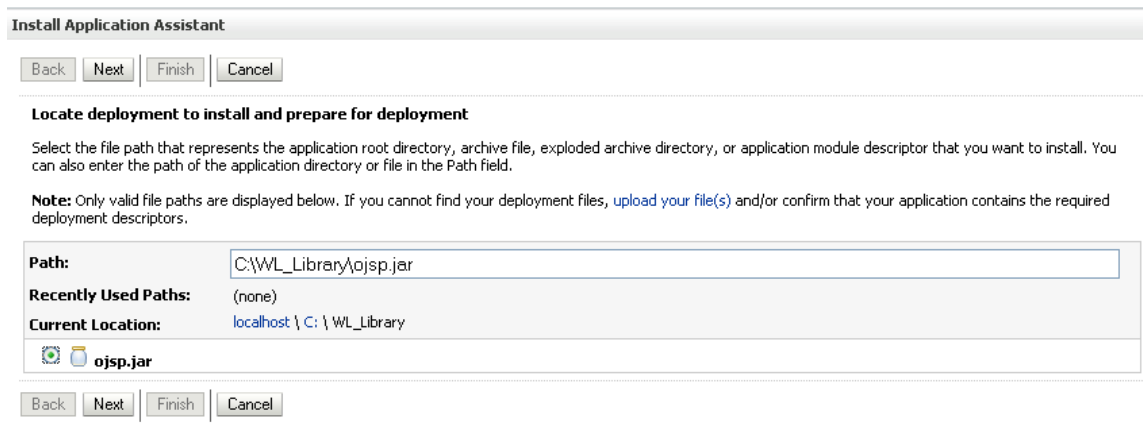


Figure 17 List of Libraries

5. Click the **Next** button.
6. On the **Optional Settings** page, you will need to change the library name to “oracle.jsp.next”. Everything else can be set to the default values click **Finish**.

NOTE: You can navigate back to the previous folder by clicking the hyperlinks in the **Current Location:** path.

Install Application Assistant

Back Next Finish Cancel

Optional Settings
You can modify these settings or accept the defaults

General

What do you want to name this deployment?

Name:

Security

What security model do you want to use with this application?

DD Only: Use only roles and policies that are defined in the deployment descriptors.

Custom Roles: Use roles that are defined in the Administration Console; use policies that are defined in the deployment descriptor.

Custom Roles and Policies: Use only roles and policies that are defined in the Administration Console.

Advanced: Use a custom model that you have configured on the realm's configuration page.

Source accessibility

How should the source files be made accessible?

Use the defaults defined by the deployment's targets

Recommended selection.

Copy this application onto every target for me

During deployment, the files will be copied automatically to the managed servers to which the application is targeted.

I will make the deployment accessible from the following location

Location:

Provide the location from where all targets will access this application's files. This is often a shared directory. You must ensure the application files exist in this location and that each target can reach the location.

Back Next Finish Cancel

Figure 18 Selecting Defaults

7. After the library has been added, you will be placed on the Summary of Deployments page. The library you added will be listed. Read the messages at the top of the screen and correct any error messages.
8. The library will be active.

STEP 7: INSTALLATION OF THE .EAR FILE

The installation of the Insbridge .EAR File begins in the same way as the installation of the WebLogic library.

1. From the Summary of Deployments Page, click the **Install** button. The screen will refresh to the Install Application Assistant page.
2. The list of Locations will be displayed. Click the location you need to reach the .EAR file.
3. Select the **.EAR** file.

Install Application Assistant

Back Next Finish Cancel

Locate deployment to install and prepare for deployment

Select the file path that represents the application root directory, archive file, exploded archive directory, or application module descriptor that you want to install. You can also enter the path of the application directory or file in the Path field.

Note: Only valid file paths are displayed below. If you cannot find your deployment files, [upload your file\(s\)](#) and/or confirm that your application contains the required deployment descriptors.

Path: C:\Insbridge\Config\IBSS_WL.ear

Recently Used Paths: C:\Insbridge\Config

Current Location: app003 \ C: \ Insbridge \ Config

- IBSS_WL.ear
- ojsp.jar

Back Next Finish Cancel

Figure 19 Select the Application .EAR

4. Click **Next**.
5. On the **Install Application Assistant** page, select to **Install this deployment as an application**. Click **Next**.

Back Next Finish Cancel

Choose targeting style

Targets are the servers, clusters, and virtual hosts on which this deployment will run. There are several ways you can target an application.

Install this deployment as an application

The application and its components will be targeted to the same locations. This is the most common usage.

Install this deployment as a library

Application libraries are deployments that are available for other deployments to share. Libraries should be available on all of the targets running their referencing applications.

Back Next Finish Cancel

Figure 20 – Verify Application Installation

6. On the **Optional Settings** page, it is recommended that you keep the default values. The deployment name should appear as IBSS_WL.
7. Click **Finish**.
8. After the .EAR File has been added, you will be placed on the Summary of Deployments page. The .EAR File you added will be listed. Read the messages at the top of the screen and correct any error messages.

The screenshot shows the 'Summary of Deployments' page in the WebLogic console. At the top, there is a navigation bar with 'Home', 'Log Out', 'Preferences', 'Record', and 'Help'. The user is logged in as 'weblogic' and connected to 'base_domain'. Below the navigation bar, there are two green messages: 'All changes have been activated. No restarts are necessary.' and 'The deployment has been successfully installed.'

The main content area is titled 'Summary of Deployments' and has two tabs: 'Control' (selected) and 'Monitoring'. Below the tabs, there is a paragraph explaining that the page displays a list of Java EE applications and stand-alone application modules that have been installed to this domain. It also provides instructions on how to start, stop, update, or delete applications.

Below the text, there is a section titled 'Customize this table' and a table titled 'Deployments'. The table has columns for 'Name', 'State', 'Health', 'Type', and 'Deployment Order'. There are two rows of data:

<input type="checkbox"/>	Name	State	Health	Type	Deployment Order
<input type="checkbox"/>	IBSS_WL	Active	OK	Enterprise Application	100
<input type="checkbox"/>	oracle.jsp.next	Active		Library	100

At the bottom of the table, there are buttons for 'Install', 'Update', 'Delete', 'Start', and 'Stop', along with a 'Showing 1 to 2 of 2' indicator and 'Previous' and 'Next' links.

Figure 21 – Successful Installation

INSTALLATION PROCEDURES – UTILIZING A SQL SERVER DATABASE

The following is a check list of the installation steps needed to perform a NEW SoftRater for WebLogic Installation:

1. Creation of the IBSR databases is next.
2. Create a WebLogic entry in IBSS.
3. Create a WebLogic entry in IBFA.

For the Insbridge 4.6 release:

- The IBSR database has been tested and certified on MS SQL Server 2008 R2 on MS Windows 2008 64-bit.

STEP 1: RESTORING IBRU DATABASES IN SQL SERVER

Because many corporate environments have a separation between the system administrator and the database administrator, the following process may require both administrators' access and permissions. Make sure you have a SQL Server account called **ibru**.

NOTE: *If you do not have database permissions, you will not be able to perform the following database procedures.*

NOTE: *If you are unsure how to perform a database restore, please consult with your database administrator.*

Currently supported is the default SQL Server collation using SQL_Latin1_General_CP1_CI_AS and sort order plus case sensitivity using Latin1_General_BIN as the server collation. The security database (IB_CLIENT) supports the default SQL Server collation using SQL_Latin1_General_CP1_CI_AS. The RateManager and SoftRater databases can use either case sensitive or non-case sensitive. Please check with Oracle Insurance for any questions regarding database server sort orders or collations.

1. Located in the Insbridge Installation Directory:
 - ◆ SoftRater – IBSR
 - Latin1_General_BIN
 - DATABASE_BACKUP_IBSR_TEMPLATE_CASE_SENSITIVE.bak
 - SQL_Latin1_General_CP1_CI_AS
 - DATABASE_BACKUP_IBSR_TEMPLATE.bak
 - Update:Usp_IBSR_v04.05.01.sql

2. Select the SoftRater backup file you want to use, case sensitive or non-case sensitive.
3. **Copy the file** to an appropriate database folder on the machine where SQL Server is installed. For example, [Drive]:\Program Files\Inbridge\Databases. If you are unsure of a location, please consult with your database administrator.
4. **Rename the file.** It is not required but it is strongly suggested that the database file name be changed from TEMPLATE to something that defines the databases more accurately. At a minimum, it is recommended that you remove “_TEMPLATE” from the name. You can change the name after it has been restored also.
5. **Open the SQL Server Management Studio** either on the server or remotely using either an administrative account with sa privileges or as the sa account.

NOTE: *If you do not have SQL Server Management Studio, check to see that the SQL Server Client has been installed. For a SQL Server install, you must have the SQL Server Client installed.*

6. Go to **Databases**.

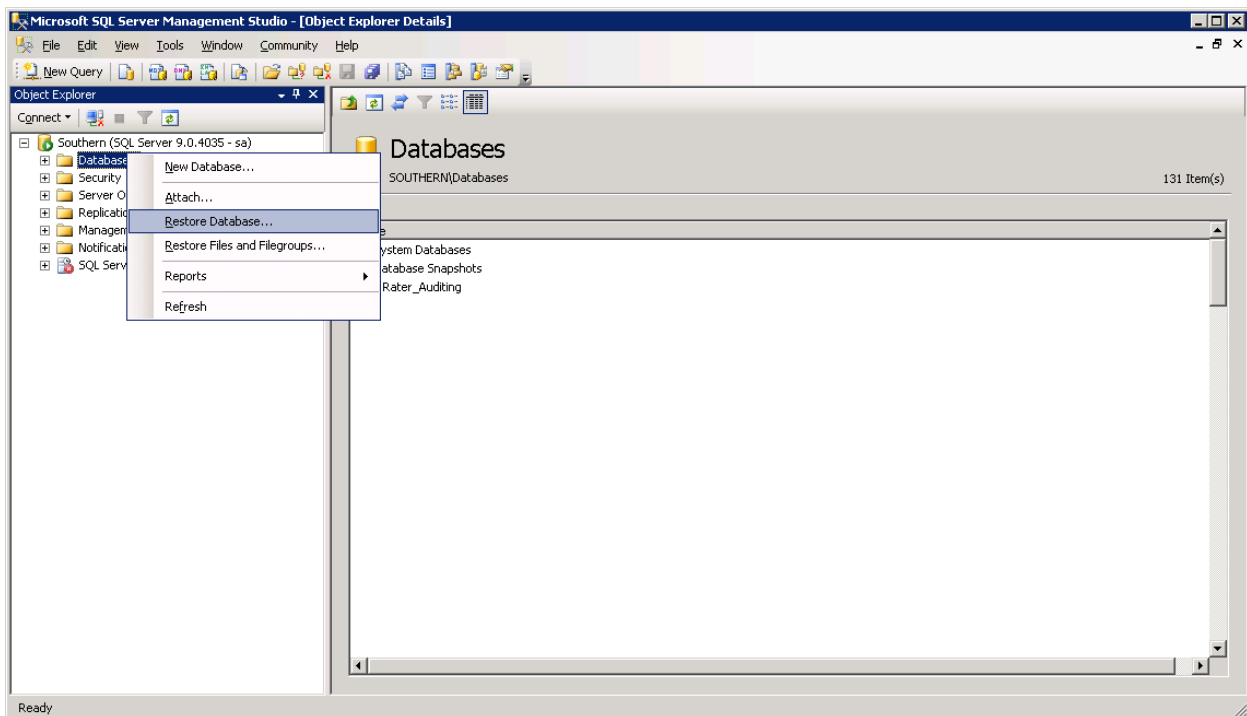


Figure 22 Right Click to Restore Database

7. Right click on **Databases**.
8. Select **Restore Database...** A separate screen will be displayed.

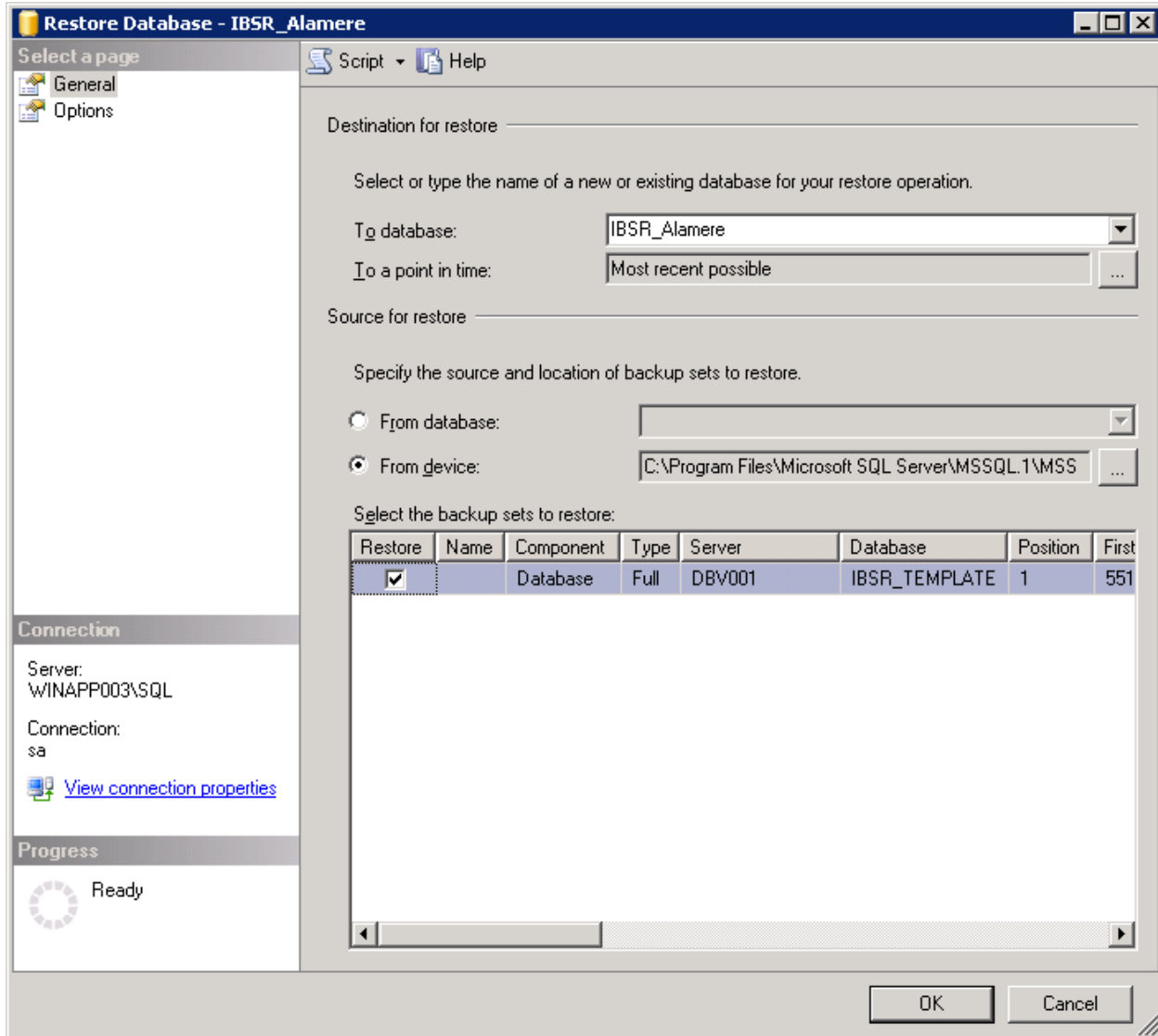


Figure 23 Restoring a Database

9. Enter your IBSR database name in **To Database:**.
10. Select **From Device**. Click ... to browse to the location where the database files were placed in step 3.
11. Select your database **IBSR_ xxxx.BAK**, where **xxxx** equals the renamed file from step 4.
12. Click **OK**. Your database will be populated.
13. Verify your information. Check the **Restore** box.
14. Click **OK**.
15. If the database was restored successfully, it will be displayed in the database folder. If not, please correct any errors and try again.

16. Once the databases are restored to SQL Server, you will need to create or assign a SQL Server user account for the application. This user will be used for the connection to the databases when setting up the connections from the Insbridge Framework Administrator. Make note of the account you want to use. This information will be entered into the Insbridge Framework Administrator.

STEP 2: SETTING UP A WEBLOGIC ENVIRONMENT IN IBSS

You will be able to access the application by typing <http://<ServerName or IP Address>:7001/IBSS>

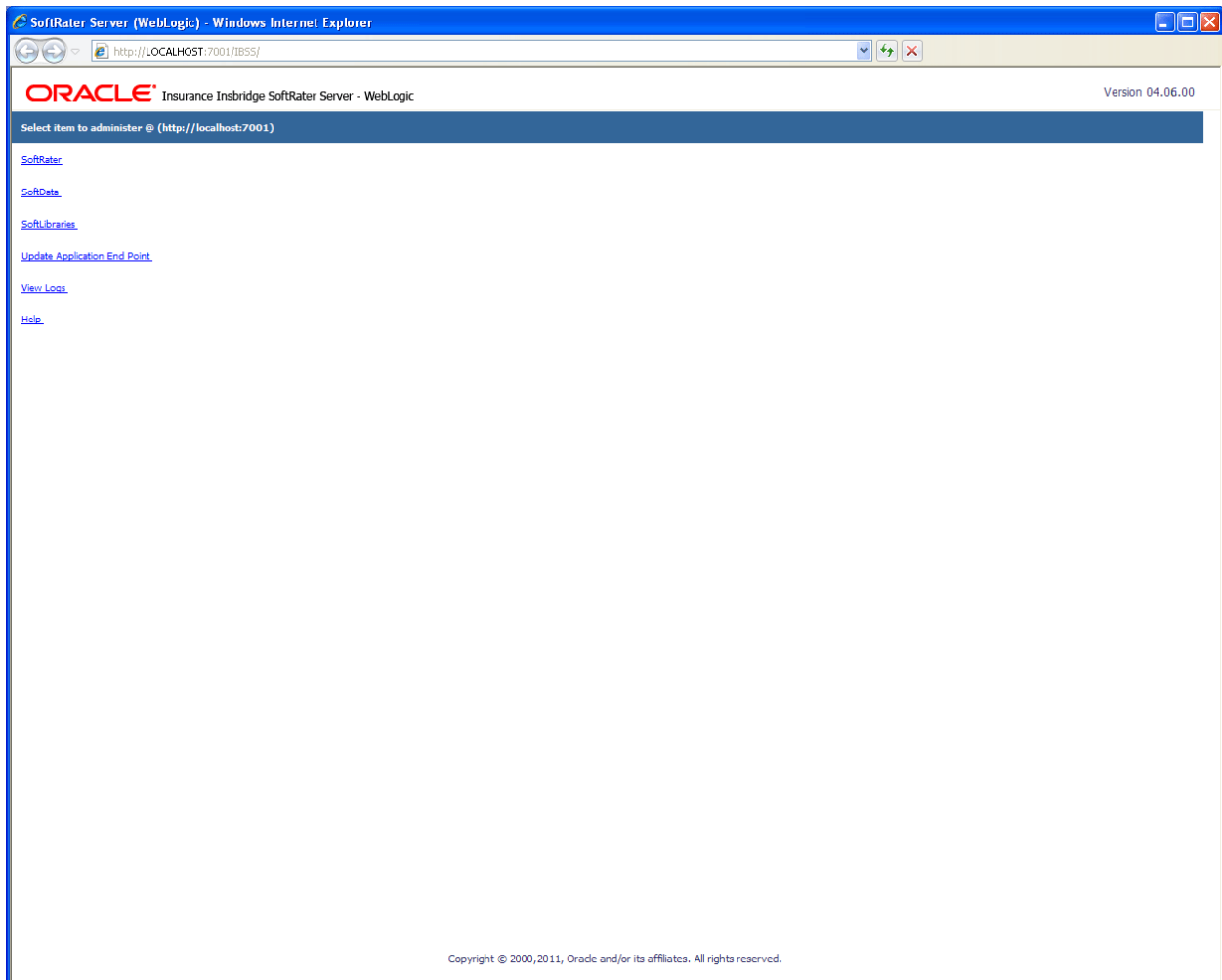


Figure 24 IBSS WebLogic Main Page

NOTE: Notice that if you changed the WebLogic default port (7001) during the Server Domain creation, you should change the default application port on the "[Update Application End Point](#)" option located in the IBSS main page before accessing the application WebServices and methods.

NOTE: The IBSS parameter in the application URL must be capitalized.

To Create/Edit an Environment

1. Select **SoftRater** from the Main page. You will be placed on the SoftRater page.
2. Select the **Environment Setup** link.

The **Environment Setup** section allows you to configure rating environments. An environment is a pointer to a location where SoftRater Packages (SRP's) are stored and loaded. There is no limit to the number of environments you may have. Required fields will be marked with an asterisk (*).

* Environment Setup

Status:

SELECT ENVIRONMENT >> Add New Environment <<

Environment Name*

Database Server* Port* Query Block

Database Name* Schema name**

Database User Id*

Database Password*

Provider Type

Database Type

Data Dir

* Fields are required.

** Fields required for an Oracle DB connection.

Figure 25 Environment Setup

3. To create a new environment, use the drop down text box next to **SELECT ENVIRONMENT** and select >> **Add New Environment** <<. If the page does not automatically refresh, click **GO**.
4. When the page refreshes, enter the following information:

Environment Name: A name for the environment.

Database Server: The name of the server that houses the database that packages are loaded to.

Database Name: The name of the database that packages are loaded to.

Database User Id: The username to access the database.

Database Password: The password for the username entered.

Provider Type: The provider of the database. Options are **DB2**, **DB2(AS400)**, **ORACLE** and **MS SQL SERVER**.

Database Type: The type of database being accessed. Options are **SoftRater** and **RateManager**.

Data Dir: The location of the SoftRater Packages (SRP's).

Port: Listening port to the target Database Management System.

Default port numbers:

SQL Server – 1433

Oracle – 1521

DB2 – 50000

Query Block: For certain Database Management Systems (DBMS), system batch query optimization is required for performance and/or because of limits on/in the system. This value will control the maximum number of batch query operations that can be submitted to the target DBMS in any one transaction.

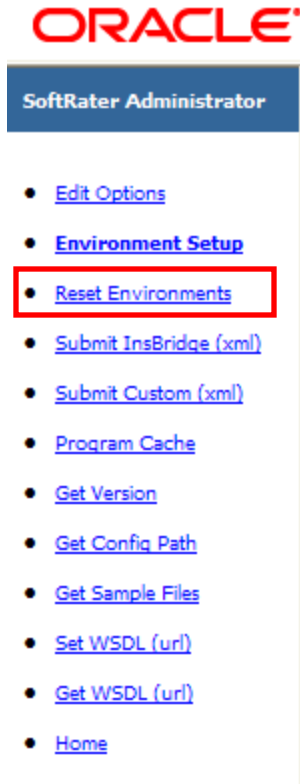
For DB2, enter a query size that is relative to the SQL statement heap size. For example, if your SQL statement heap size is 2048, you may want to enter a query size of 5. The larger the heap size, the larger the query size can be.

You may also need to increase the application heap size.

Query block is not needed for SQL Server or Oracle databases.

Schema Name: The schema name for the database.

5. When you are finished entering information, click **SAVE**. The environment will be saved and the **Status** field will update.
6. Before you can use the new environment for rating, you will need to reload the configuration XML file. This is done by resetting the environments. On the left hand side of the environment page, select the Reset Environments options. You will be placed on the environments page.



To activate changes to an environment, the SoftRater configuration XML file must be reloaded by clicking **EXECUTE**. The screen will refresh and the environment will be reset. Click **EXIT** to return to the SoftRater Administrator menu.

*** Reset Environment Configuration**

Select this method to re-load the SoftRater configuration xml file making any changes to the environment settings now active. NOTE: If program caching is enabled the ALL items currently in the cache will be purged.

Note: Transactions currently in process could be made invalid.

Execute

Exit

Figure 26 Resetting the Environment

NOTE: All information in the cache will be purged and any transactions currently processing could be made invalid.

STEP 3: ENTERING YOUR IBSS INSTANCE IN IBFA

IBFA will need to communicate with the IBSS environment. This will allow for packages to be loaded. There are two parts that will need to be completed:

1. Create an environment.
2. Configure the environment.

A SoftRater environment may be completed at installation or can be added at a later time. A SoftRater environment can be on a Windows machine or a Java machine running an application server, such as WebLogic. There is no limit to the number of SoftRater environments that you can have.

1. Enter IBFA.
2. Browse to **SoftRater**→**Explorer**→**Subscriber name**.
3. Click on **Add Environment**.
4. Enter a **Name** and select a **Type**. For example, you can create a Quality Control environment with a type of Quality Assurance.
5. Select the **Environments** link under the Configuration header on the left hand side to enter the configuration information for the newly created logical environment. You will be placed on the Environments screen. The environments you previously setup will be listed. If an environment is missing, you must return to the Configuration subtab and add it.

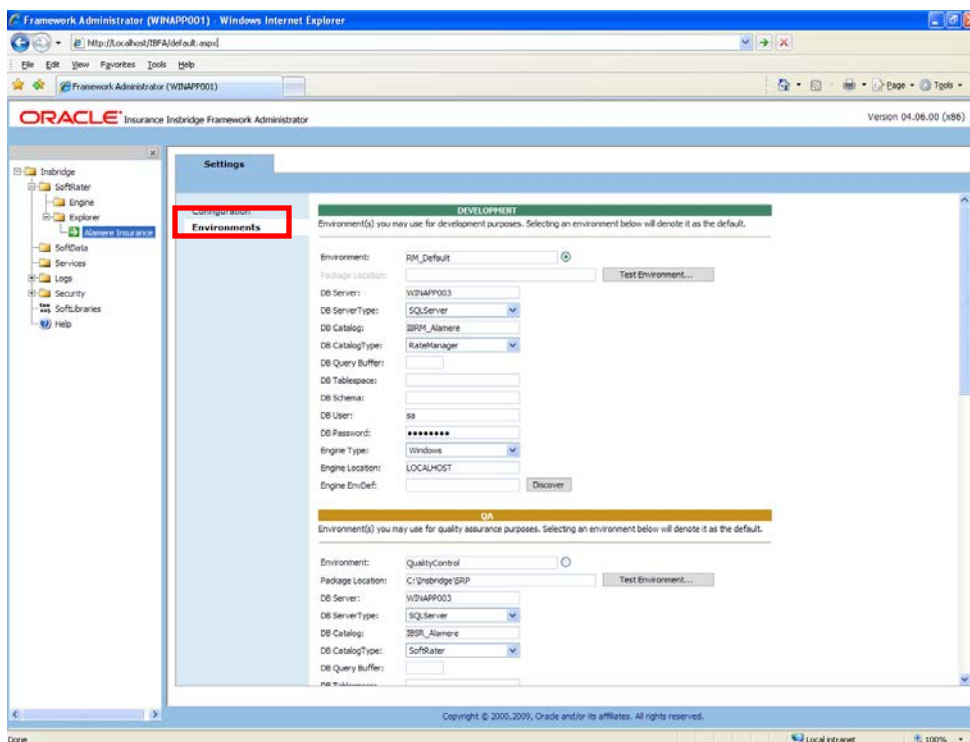


Figure 27 Editing Environment

6. The **Environment Name** will be complete. No changes are needed.
7. Enter in the file path where you want packages stored in the **Package Location**. Use the Test Environment option to have the location created for you.
8. Enter in the **DBServer** name or IP address. This is the database server where the SoftRater database was restored or created.
9. Select the **DB Server Type** that you are using.
10. The **DB Catalog** is the name of the SoftRater database restored in SQL Server. For example, IBSR_QA.
11. The **DB Catalog Type** is **SoftRater**.
12. **DB Query Buffer** is the Query Block entry from IBSS. An entry is required if you are using a DB2 database. For SQL or Oracle, no entry is needed.
13. **DB Tablespace** is not required for a SoftRater environment.
14. The **DB Schema** is the name of the schema that defines the structure of the database. This information may be obtained from the DBA.
15. Enter the **DB User** name and **Password**.
16. Select the **Engine Type**.
17. The **Engine Location** is the location of where you installed the SoftRater engine. You can use the machine name or IP address. For WebSphere, WebLogic or JBoss, you must also include the port. For example, a WebLogic server may have "WBServerName:7001" as the entry.
18. The **Engine EnvDef** is the machine name if the engine is located on a different server. You can use the machine name or IP address.
19. Click **SAVE** to save your entries.

INSTALLATION PROCEDURES – UTILIZING AN ORACLE DATABASE

The following is a check list of the installation steps needed to perform a NEW SoftRater for WebLogic Installation:

1. Create the Oracle database.
2. Create a WebLogic entry in IBSS.
3. Run the Oracle Client on the machine where the IBRU system was installed.
4. Create a WebLogic entry in IBFA.

For the Insbridge 4.6 release:

- The IBRU application has tested and certified Oracle 11g Release 2 (11.2.0.1.0) utilizing Oracle Enterprise Linux 5.3.

STEP 1: CREATING AN ORACLE DATABASE

Because many corporate environments have a separation between the system administrator and the database administrator, the following process may require both administrators' access and permissions.

Before proceeding, please have ready:

- The LOBs that your company uses. You will need the ID number for each LOB.
- Your customer or subscriber number.
- Location of the Insbridge files.

IMPORTANT: *It is **strongly recommended** that any database modification be performed by a qualified database administrator (DBA). The database setup procedures and tasks require the skill set of a database administrator. If you are not a database administrator, please stop. Improper setup may result in unwelcome changes to the database. Please consult with a qualified database administrator before proceeding.*

Creating an Oracle Database

Oracle Insurance does not have specific requirements, whatever requirements are deemed necessary by your company's internal standards will work. It is recommended that you included the version number or environment name if you are planning on creating more than one instance.

These instructions are high level and require that the setup person be a DBA.

1. On your Oracle database, run all **DDLs**.

NOTE: *If you do not have database permissions, you will not be able to perform the following database procedures.*

- a) Create default tablespace for the Soft Rater database.
 - If a database table needs to be added, the DDLs are located in the IBFA Installation Directory under the SoftRater/DDL folder. I.e. [INSTALL_DIR]/Insbridge/SoftRater/DDL.
 - You will have to replace the TABLESPACE name in the scripts with the tablespace name you used when you created the database.
 - On the DT tables, you will need to create one for every LOB. An example of the format is in the comments of the script. It requires the LOB ID number and the customer number.
 - b) Create user IBSR and assign basic connect and resource grants.
2. On your Oracle database, you will need to run a DT table script for each LOB.
 3. After all DT tables have been created, please make note of:
 - Schema
 - Instance
 - User name
 - Password

This information will need to be passed along to the IBRU installer. This information is needed to create a logical environment.

Location of Oracle DDL Directory

If a database table needs to be added in SoftRater, the DDLs are located in the IBFA Installation Directory under the SoftRater/DDL folder. I.e. [INSTALL_DIR]/Insbridge/SoftRater/DDL.

```
oracle.create.dt.template.sql.txt
oracle.create.packages.sql.txt
oracle.create.packages_lk.sql.txt
oracle.create.packages_rl.sql.txt
oracle.create.packages_si.sql.txt
oracle.create.packages_so.sql.txt
```

This information may be needed if you are attempting to add an LOB and receive missing table errors. Creating tables in Oracle should be performed by a qualified DBA.

STEP 2: SETTING UP A WEBLOGIC ENVIRONMENT IN IBSS

You will be able to access the application by typing <http://<ServerName or IP Address>:7001/IBSS>

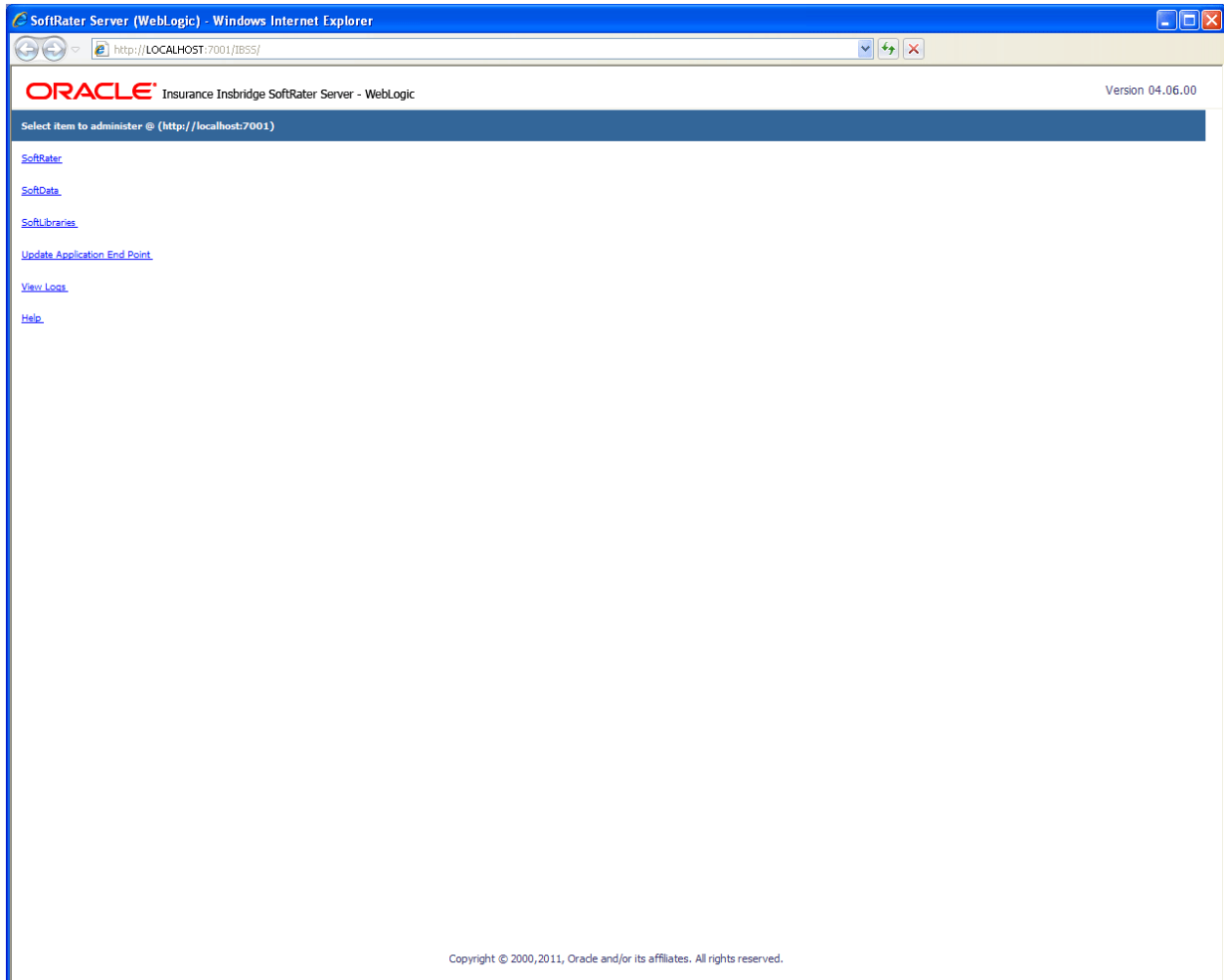


Figure 28 IBSS WebLogic Main Page

NOTE: Notice that if you changed the WebLogic default port (7001) during the Server Domain creation, you should change the default application port on the ["Update Application End Point"](#) option located in the IBSS main page before accessing the application WebServices and methods.

NOTE: The IBSS parameter in the application URL must be capitalized.

To Create/Edit an Environment

Prior to setting up an environment in IBSS you will need the Subscriber ID that you setup in IBFA.

1. Select **SoftRater** from the Main page. You will be placed on the SoftRater page.
2. Select the **Environment Setup** link.

The **Environment Setup** section allows you to configure rating environments. An environment is a pointer to a location where SoftRater Packages (SRP's) are stored and loaded. There is no limit to the number of environments you may have. Required fields will be marked with an asterisk (*).

* Environment Setup

Status:

SELECT ENVIRONMENT	>> Add New Environment <<	<input type="button" value="Go!"/>
Environment Name*	<input type="text" value="SR_WEBLOGIC"/>	
Database Server*	<input type="text" value="LINUXAP001"/>	Port* <input type="text" value="1521"/>
Database Name*	<input type="text" value="IBSR_Alamere"/>	Query Block <input type="text"/>
Database User Id*	<input type="text" value="sa"/>	Schema name** <input type="text" value="QA_01"/>
Database Password*	<input type="password" value="●●●●●●●●"/>	
Provider Type	<input type="text" value="ORACLE"/>	
Database Type	<input type="text" value="SoftRater"/>	
Data Dir	<input type="text" value="/home/Insbridge_Package"/>	

* Fields are required.

** Fields required for an Oracle DB connection.

<input type="button" value="Save"/>	<input type="button" value="Exit"/>	<input type="button" value="Test Connection!"/>	<input type="button" value="Delete!"/>
-------------------------------------	-------------------------------------	---	--

Figure 29 Environment Setup

3. To create a new environment, use the drop down text box next to **SELECT ENVIRONMENT** and select >> **Add New Environment** <<. If the page does not automatically refresh, click **GO**.
4. When the page refreshes, enter the following information:

Environment Name: A name for the environment.

Database Server: The name of the server that houses the database that packages are loaded to.

Database Name: The name of the database that packages are loaded to.

Database User Id: The username to access the database.

Database Password: The password for the username entered.

Provider Type: The provider of the database. Options are **DB2**, **DB2(AS400)**, **ORACLE** and **MS SQL SERVER**.

Database Type: The type of database being accessed. Options are **SoftRater** and **RateManager**.

Data Dir: The location of the SoftRater Packages (SRP's).

Port: Listening port to the target Database Management System.

Default port numbers:

SQL Server – 1433

Oracle – 1521

DB2 – 50000

Query Block: (Optional) For certain Database Management Systems (DBMS), system batch query optimization is required for performance and/or because of limits on/in the system. This value will control the maximum number of batch query operations that can be submitted to the target DBMS in any one transaction.

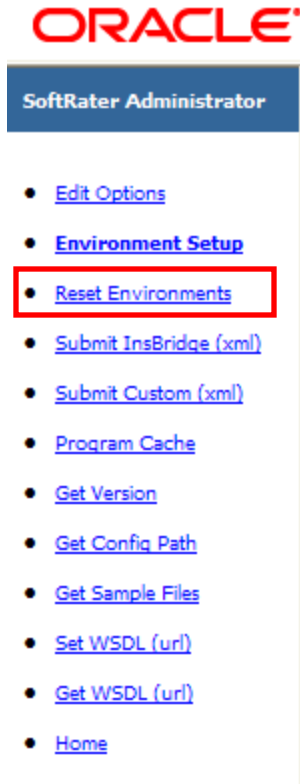
For DB2, enter a query size that is relative to the SQL statement heap size. For example, if your SQL statement heap size is 2048, you may want to enter a query size of 5. The larger the heap size, the larger the query size can be.

You may also need to increase the application heap size.

Query block is not needed for SQL Server or Oracle databases.

Schema Name: The schema name for the database.

5. When you are finished entering information, click **SAVE**. The environment will be saved and the **Status** field will update.
6. Before you can use the new environment for rating, you will need to reload the configuration XML file. This is done by resetting the environments. On the left hand side of the environment page, select the Reset Environments options. You will be placed on the environments page.



To activate changes to an environment, the SoftRater configuration XML file must be reloaded by clicking **EXECUTE**. The screen will refresh and the environment will be reset. Click **EXIT** to return to the SoftRater Administrator menu.

*** Reset Environment Configuration**

Select this method to re-load the SoftRater configuration xml file making any changes to the environment settings now active. NOTE: If program caching is enabled the ALL items currently in the cache will be purged.

Note: Transactions currently in process could be made invalid.

Execute

Exit

Figure 30 Resetting the Environment

NOTE: All information in the cache will be purged and any transactions currently processing could be made invalid.

STEP 3: INSTALLATION OF ORACLE CLIENT

If the Oracle Client has already been installed and configured, you can skip this step. Return to the machine where the IBRU system was installed. One instance of the Oracle client is all that is required. If you have more than one Oracle environment that you want to connect, for example a QA environment and a Production environment, you will only need to run the Oracle client once.

Running the Oracle Client

Run the Oracle Client. On the machine where the IBRU system was installed, you will need to run the Oracle client. This will allow IBFA to communicate with the Oracle database.

For a 64-bit environment, please make sure you have the 64-bit Oracle Client.

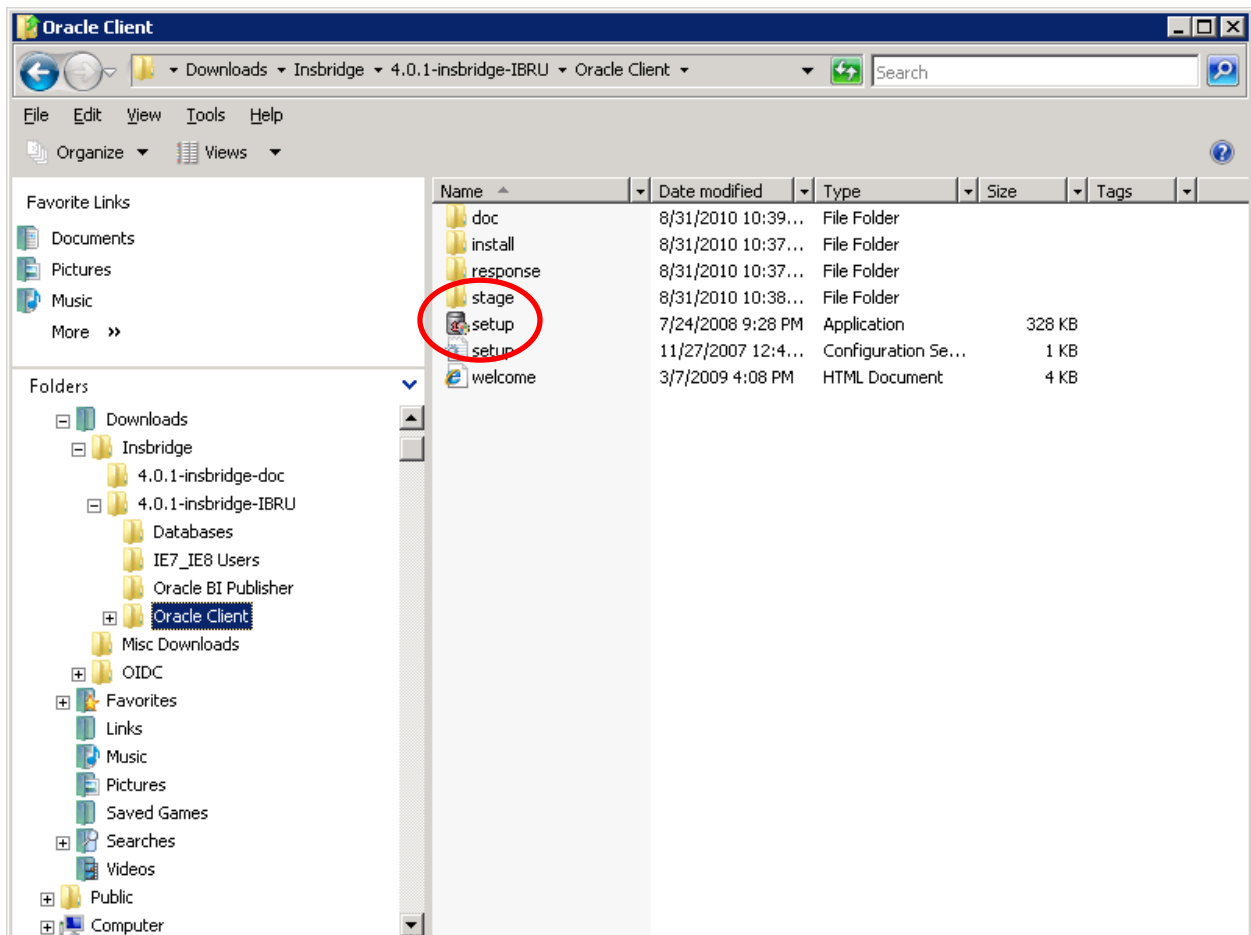


Figure 31 Locating the Oracle Client for 64-bit Installs

1. In the 04.06.00-insbridge-IBRU folder, locate the Oracle Client folder.
2. Select the setup application. The Oracle client installation will begin.

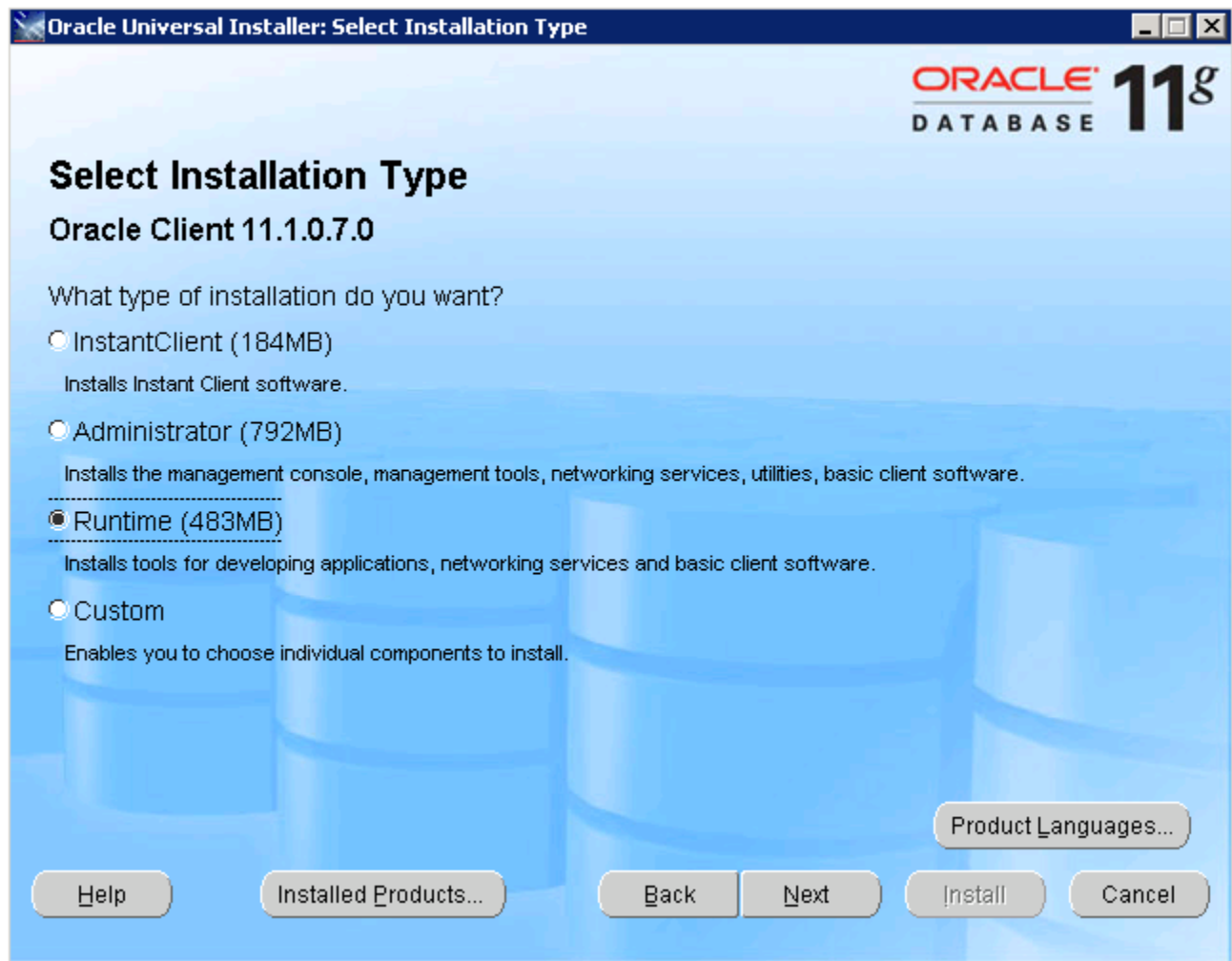


Figure 32 Running the Oracle Client

3. Select **RUNTIME** as the Installation Type.
4. Click **NEXT**.
5. For the Summary – Inside Oracle Providers for .NET, the Oracle Client, you must use a LOCAL DRIVE, i.e. C:\app\oracle-insbridge.
6. Click **NEXT**.
7. You can leave the defaults and **INSTALL**.

STEP 4: ENTERING YOUR IBSS INSTANCE IN IBFA

IBFA will need to communicate with the IBSS environment. This will allow for packages to be loaded. There are two parts that will need to be completed:

1. Create an environment.
2. Configure the environment.

A SoftRater environment may be completed at installation or can be added at a later time. A SoftRater environment can be on a Windows machine or a Java machine running an application server, such as WebLogic. There is no limit to the number of SoftRater environments that you can have.

1. Enter IBFA.
2. Browse to **SoftRater**→**Explorer**→**Subscriber name**.
3. Click on **Add Environment**.
4. Enter a **Name** and select a **Type**. For example, you can create a Quality Control environment with a type of Quality Assurance.
5. Select the **Environments** link under the Configuration header on the left hand side to enter the configuration information for the newly created logical environment. You will be placed on the Environments screen. The environments you previously setup will be listed. If an environment is missing, you must return to the Configuration subtab and add it.

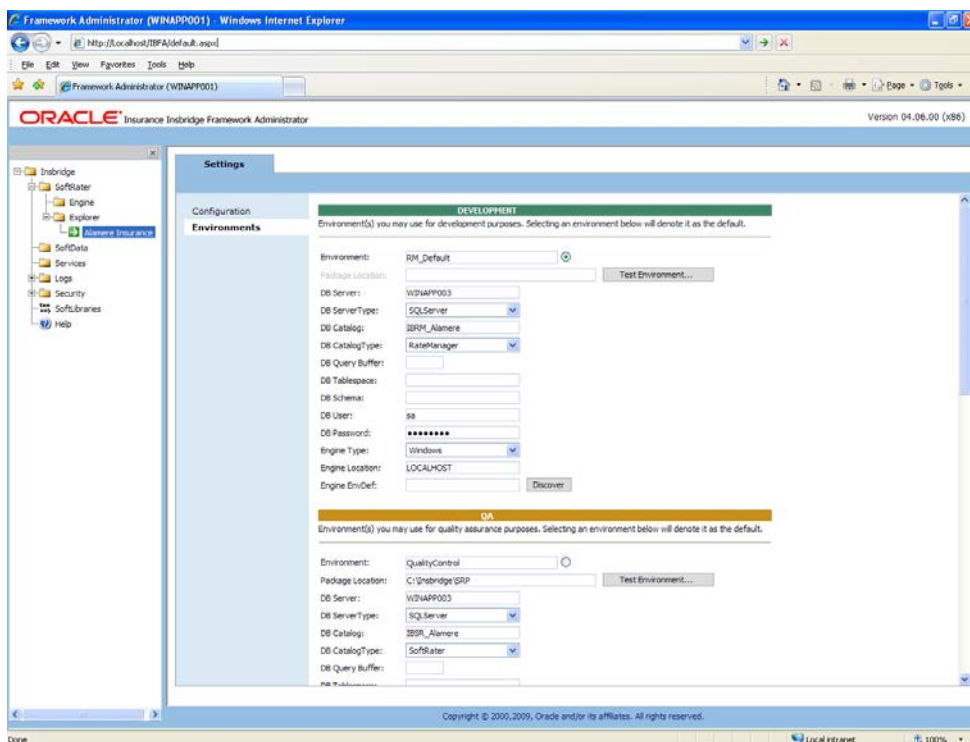


Figure 33 Editing Environment

6. The **Environment Name** will be complete. No changes are needed.
7. Enter in the file path where you want packages stored in the **Package Location**. Use the Test Environment option to have the location created for you.
8. Enter in the **DBServer** name or IP address. This is the database server where the SoftRater database was restored or created.
9. Select the **DB Server Type** that you are using.
10. The **DB Catalog** is the name of the SoftRater database restored in SQL Server. For example, IBSR_QA.
11. The **DB Catalog Type** is **SoftRater**.
12. **DB Query Buffer** is the Query Block entry from IBSS. An entry is required if you are using a DB2 database. For SQL or Oracle, no entry is needed.
13. **DB Tablespace** is not required for a SoftRater environment.
14. The **DB Schema** is the name of the schema that defines the structure of the database. This information may be obtained from the DBA.
15. Enter the **DB User** name and **Password**.
16. Select the **Engine Type**.
17. The **Engine Location** is the location of where you installed the SoftRater engine. You can use the machine name or IP address. For WebSphere, WebLogic or JBoss, you must also include the port. For example, a WebLogic server may have "WBServerName:7001" as the entry.
18. The **Engine EnvDef** is the machine name if the engine is located on a different server. You can use the machine name or IP address.
19. Click **SAVE** to save your entries.

INSTALLATION PROCEDURES – UTILIZING AN IBM DB2 DATABASE

The following is a check list of the installation steps needed to perform a NEW SoftRater for WebLogic Installation utilizing an IBM DB2 (DB2) database:

1. Create a DB2 database.
2. Create a WebLogic entry in IBSS.
3. Run the DB2 Client on the machine where the IBRU system was installed.
4. Create a WebLogic entry in IBFA

Required DB2 Client

To obtain the DB2 client, please visit the IBM website and download the Client for IBM Data Server Runtime Client, Version 9.5 with fix pack 8.

You also can perform a search for “IBM Data Server Runtime Client, Version 9.5 with fix pack 8”

NOTE: You may need to create a free user account to download materials.

NOTE: Release 4.6 was tested on IBM DB2 v9.5.

STEP 1: CREATING A DB2 DATABASE

Because many corporate environments have a separation between the system administrator and the database administrator, the following process may require both administrators’ access and permissions.

IMPORTANT: *It is **strongly recommended** that any database modification be performed by a qualified database administrator (DBA). The database setup procedures and tasks require the skill set of a database administrator. If you are not a database administrator, please stop. Improper setup may result in unwelcome changes to the database. Please consult with a qualified database administrator before proceeding.*

Before proceeding, please have ready:

- The LOBs that your company uses. You will need the ID number for each LOB.
- Your subscriber number.
- Location of the Insbridge files.

Oracle Insurance does not have specific requirements, whatever requirements are deemed necessary by your company's internal standards will work. It is recommended that you included the version number or environment name if you are planning on creating more than one instance.

These instructions are high level and require that the setup person be a DBA.

1. On your DB2 database, run all **DDLs**.

NOTE: *If you do not have database permissions, you will not be able to perform the following database procedures. The Insbridge user must be granted "Connect to database", "Create Tables", and "Create packages" authorities.*

- a) Create default tablespace for the Soft Rater database.
 - If a database table needs to be added, the DDLs are located in the IBFA Installation Directory under the SoftRater/DDDL folder. I.e. [INSTALL_DIR]/Insbridge/SoftRater/DDDL.
 - You will have to replace the TABLESPACE name in the scripts with the tablespace name you used when you created the database.
 - On the DT tables, you will need to create one for every LOB. An example of the format is in the comments of the script. It requires the LOB ID number and the customer number.
 - b) Create user IBSR and assign Connect to database, Create Tables and Create packages authorities.
2. On your Oracle database, you will need to run a DT table script for each LOB.
 3. After all DT tables have been created, please make note of:
 - Schema
 - Instance
 - User name
 - Password

This information will need to be passed along to the IBRU installer. This information is needed to create a logical environment.

Location of DB2 DDL Directory

If a database table needs to be added in SoftRater, the DDLs are located in the IBFA Installation Directory under the SoftRater/DDL folder. I.e. [INSTALL_DIR]/Insbridge/SoftRater/DDL.

```
db2.create.dt.template.sql.txt
db2.create.packages.sql.txt
db2.create.packages_lk.sql.txt
db2.create.packages_rl.sql.txt
db2.create.packages_si.sql.txt
db2.create.packages_so.sql.txt
```

This information may be needed if you are attempting to add an LOB and receive missing table errors. Creating tables in DB2 should be performed by a qualified DBA.

STEP 2: SETTING UP A WEBLOGICS ENVIRONMENT IN IBSS

You will be able to access the application by typing <http://<ServerName or IP Address>:7001/IBSS>

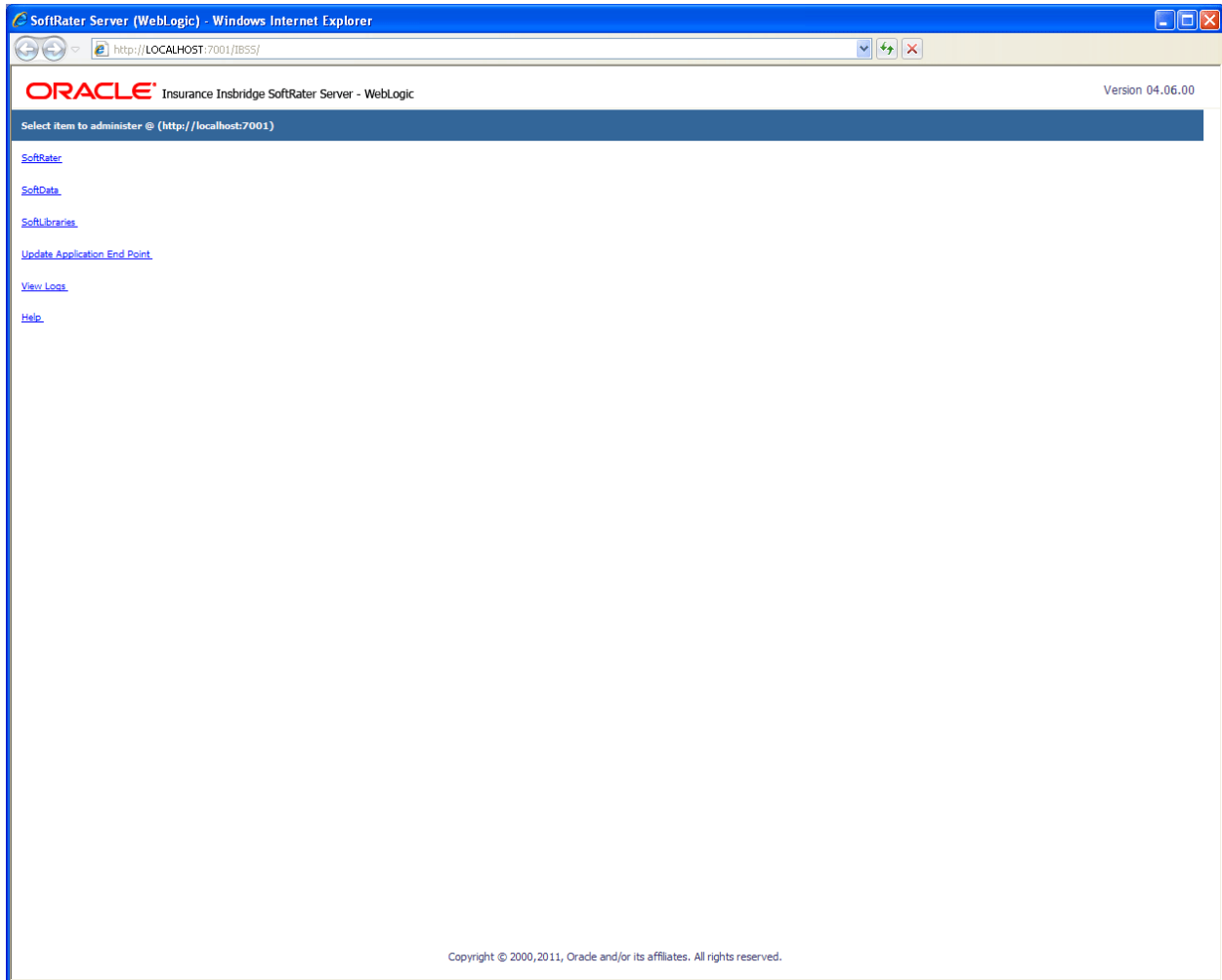


Figure 34 IBSS WebLogic Main Page

NOTE: If you changed the WebLogic default port (7001) during the Server creation, you should change the default application port on the "[Update Application End Point](#)" option located in the IBSS main page before accessing the application WebServices and methods.

NOTE: The IBSS parameter in the application URL must be capitalized.

To Create/Edit an Environment

1. Select **SoftRater** from the WebLogic Main page. You will be placed on the SoftRater page.
2. Select the **Environment Setup** link.

The **Environment Setup** section allows you to configure rating environments. An environment is a pointer to a location where SoftRater Packages (SRP's) are stored and loaded. There is no limit to the number of environments you may have. Required fields will be marked with an asterisk (*).

* Environment Setup

Status:

SELECT ENVIRONMENT >> Add New Environment <<

Environment Name*

Database Server* Port* Query Block

Database Name* Schema name**

Database User Id*

Database Password*

Provider Type

Database Type

Data Dir

* Fields are required.
** Fields required for an Oracle DB connection.

Figure 35 Environment Setup

3. To create a new environment, use the drop down text box next to **SELECT ENVIRONMENT** and select >> **Add New Environment** <<. If the page does not automatically refresh, click **GO**.
4. When the page refreshes, enter the following information:

Environment Name: A name for the environment.

Database Server: The name of the server that houses the database that packages are loaded to.

Database Name: The name of the database that packages are loaded to.

Database User Id: The username to access the database.

Database Password: The password for the username entered.

Provider Type: The provider of the database. Options are **DB2**, **DB2(AS400)**, **ORACLE** and **MS SQL SERVER**.

Database Type: The type of database being accessed. Options are **SoftRater** and **RateManager**.

Data Dir: The location of the SoftRater Packages (SRP's).

Port: Listening port to the target Database Management System.

Default port numbers:

SQL Server – 1433

Oracle – 1521

DB2 – 50000

Query Block: (Optional) For certain Database Management Systems (DBMS), system batch query optimization is required for performance and/or because of limits on/in the system. This value will control the maximum number of batch query operations that can be submitted to the target DBMS in any one transaction.

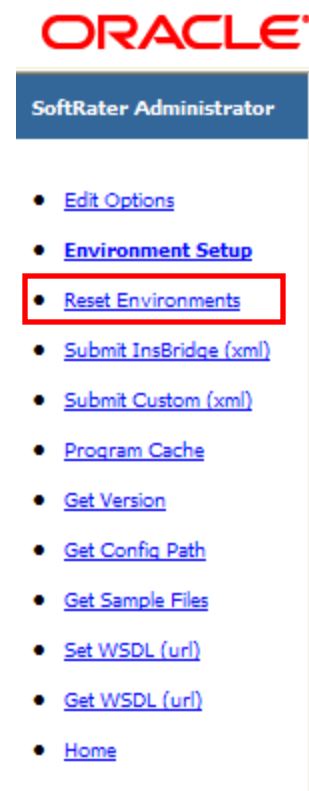
For DB2, enter a query size that is relative to the SQL statement heap size. For example, if your SQL statement heap size is 2048, you may want to enter a query size of 5. The larger the heap size, the larger the query size can be.

You may also need to increase the application heap size.

Query block is not needed for SQL Server or Oracle databases.

Schema Name: The schema name for the database.

5. When you are finished entering information, click **SAVE**. The environment will be saved and the **Status** field will update.
6. Before you can use the new environment for rating, you will need to reload the configuration XML file. This is done by resetting the environments. On the left hand side of the environment page, select the Reset Environments options. You will be placed on the environments page.



To activate changes to an environment, the SoftRater configuration XML file must be reloaded by clicking **EXECUTE**. The screen will refresh and the environment will be reset. Click **EXIT** to return to the SoftRater Administrator menu.

*** Reset Environment Configuration**

Select this method to re-load the SoftRater configuration xml file making any changes to the environment settings now active. NOTE: If program caching is enabled the ALL items currently in the cache will be purged.

Note: Transactions currently in process could be made invalid.

Execute

Exit

Figure 36 Resetting the Environment

NOTE: All information in the cache will be purged and any transactions currently processing could be made invalid.

STEP 3: INSTALLATION OF DB2 CLIENT

If the DB2 Client has already been installed and configured, you can skip this step. Return to the machine where the IBRU system was installed. One instance of the DB2 client is all that is required. If you have more than one DB2 environment that you want to connect, for example a QA environment and a Production environment, you will only need to run the DB2 client once.

Running the DB Client

Run the DB2 Client. On the machine where the IBRU system was installed, you will need to run the DB2 client for the version you have. This will allow IBFA to communicate with the DB2 database.

For a 64-bit environment, please make sure you have the 64-bit DB2 Client.

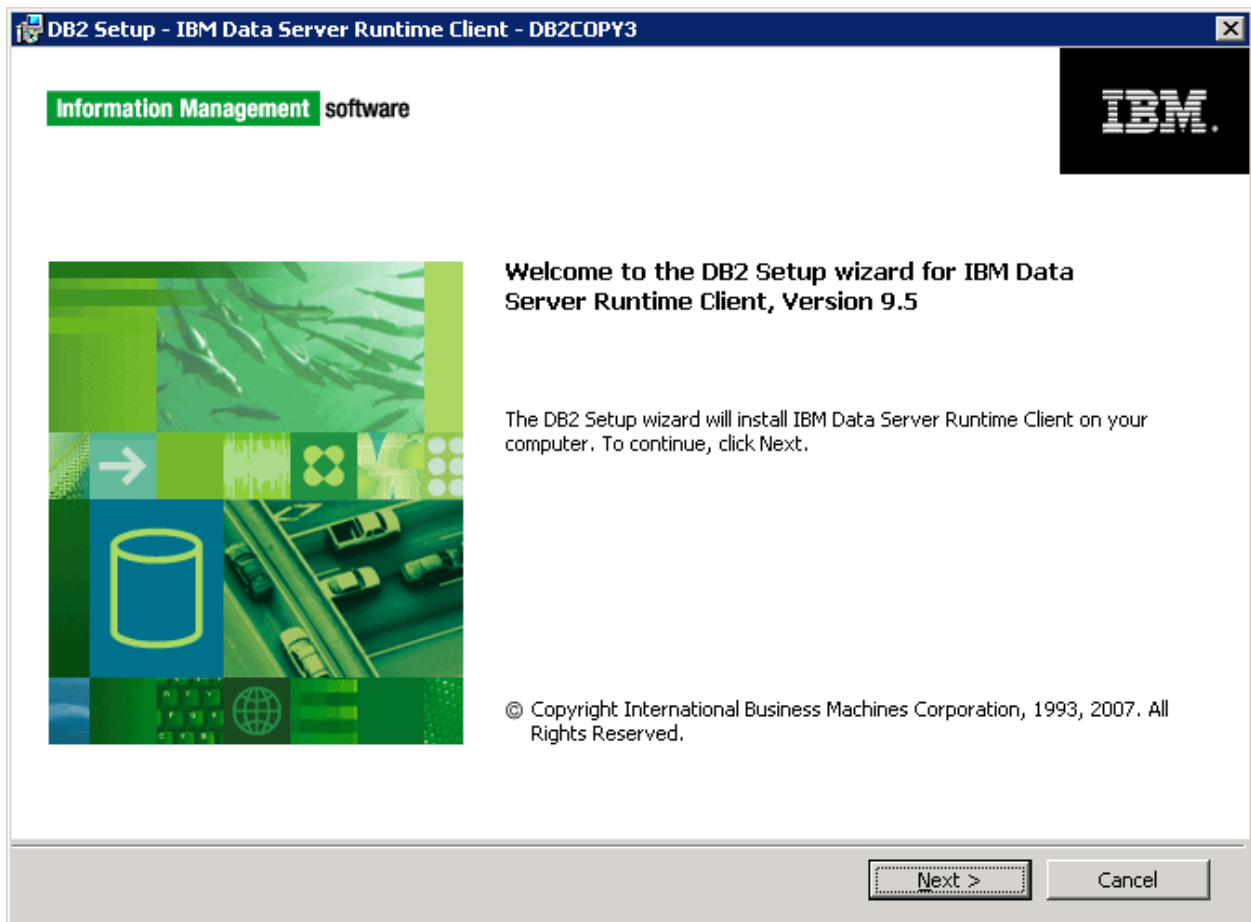


Figure 37 Installing DB2 Client and Fix Pack

1. Select the setup application. The DB2 client installation will begin.

2. Leave all the defaults and click **NEXT**. The installation will begin.
3. Click **NEXT** as the installation continues.
4. Click **Finish** to complete the installation.

STEP 4: ENTERING YOUR IBSS INSTANCE IN IBFA

IBFA will need to communicate with the IBSS environment. This will allow for packages to be loaded. There are two parts that need to be completed:

1. Create an environment.
2. Configure the environment.

A SoftRater environment may be completed at installation or can be added at a later time. A SoftRater environment can be on a Windows machine or a Java machine running an application server, such as WebLogic. There is no limit to the number of SoftRater environments that you can have.

1. Enter IBFA.
2. Browse to **SoftRater**→**Explorer**→**Subscriber name**.
3. Click on **Add Environment**.
4. Enter a **Name** and select a **Type**. For example, you can create a Quality Control environment with a type of Quality Assurance.
5. Select the **Environments** link under the Configuration header on the left hand side to enter the configuration information for the newly created logical environment. You will be placed on the Environments screen. The environments you previously setup will be listed. If an environment is missing, you must return to the Configuration subtab and add it.

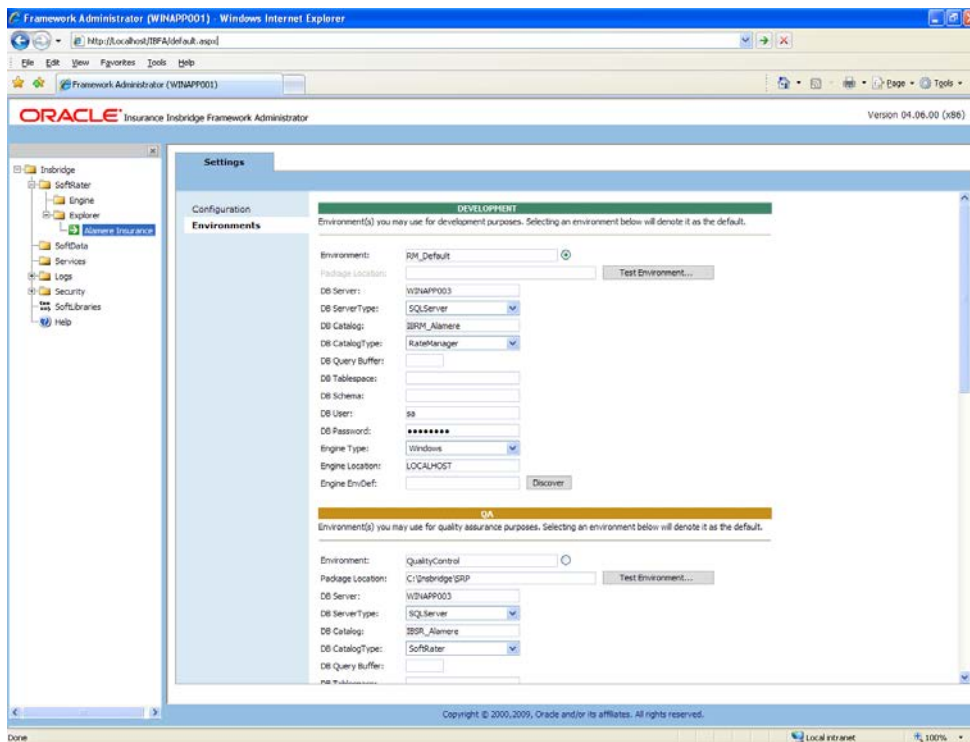


Figure 38 Editing Environment

6. The **Environment Name** will be complete. No changes are needed.
7. Enter in the file path where you want packages stored in the **Package Location**. Use the Test Environment option to have the location created for you.
8. Enter in the **DBServer** name or IP address. This is the database server where the SoftRater database was restored or created.
9. Select the **DB Server Type** that you are using.
10. The **DB Catalog** is the name of the SoftRater database restored in SQL Server. For example, IBSR_QA.
11. The **DB Catalog Type** is **SoftRater**.
12. **DB Query Buffer** is the Query Block entry from IBSS. An entry is required if you are using a DB2 database. For SQL or Oracle, no entry is needed.
13. **DB Tablespace** is not required for a SoftRater environment
14. The **DB Schema** is the name of the schema that defines the structure of the database. This information may be obtained from the DBA.
15. Enter the **DB User** name and **Password**.
16. Select the **Engine Type**.
17. The **Engine Location** is the location of where you installed the SoftRater engine. You can use the machine name or IP address. For WebSphere, WebLogic or JBoss, you must also include the port. For example, a WebLogic server may have "WBServerName:7001" as the entry.
18. The **Engine EnvDef** is the machine name if the engine is located on a different server. You can use the machine name or IP address.
19. Click **SAVE** to save your entries.

NOTE: *If the WebLogic environment is not responding, you may need to stop and start the WebLogic service.*

For more information on setting up environments, please see the Insbridge Framework Administrator User Guide.

SOFTRATER DATABASE REQUIREMENTS

The Insbridge Framework Application container for the SoftRater J2EE EJB contains the JDBC connection drivers that support operational connectivity to the DBMS system listed before. It also contains vendor specific DDLs for the SoftRater operations database schema creation which can be altered by DBA's for setup compliance for varying corporate environments, i.e. TABLESPACE and SCHEMA target definitions.

To obtain Database Definition Language (DDL) scripts for a target DBMS type view the "SoftRater\DDL" subdirectory in the Insbridge IBFA installation directory.

i.e. C:\Program Files\Oracle\IGBU\Insbridge\SoftRater\DDL

Please allow the DBA to review the scripts before attempting to create a SoftRater database schema.

The SoftRater EJB data access system contains all the required JDBC drivers for connectivity to the support DBMS's. TCP/IP connection visibility to the DB Platform is required along with the database server system configured connection PORT for operational use of the SoftRater system. No other supplemental drivers or libraries are needed to establish a connection.

IMPORTANT: *It is strongly recommended that any database modification be performed by a qualified database administrator (DBA). The database setup procedures and tasks require the skill set of a database administrator. If you are not a database administrator, please stop. Improper setup may result in unwelcome changes to the database. Please consult with a qualified database administrator before proceeding.*

DATABASE USER ROLES AND PERMISSIONS

If a more granular approach is required for management of security of the IBRU databases, then the following guidelines can be used to set permissions.

NOTE: *These are only guidelines. If not properly configured, certain processes within the Insbridge Rating and Underwriting System will fail. An experienced database administrator's expertise is highly recommended before making any security changes.*

Recommended SoftRater Permissions:

The recommended permissions are required for new tables to be created in the SoftRater (IBSR) database dynamically when or if a new line of business SRP (SoftRater Package) is loaded to the SoftRater system. If the recommended permissions are not possible, manual steps will need to be performed that will allow for packages to be loaded.

SoftRater can utilize three database types, SQL Server, DB2 and Oracle.

- **Insbridge SoftRater SQL Server Database.**

It is recommended that the Insbridge login be granted permission to connect to the database engine and be enabled. It is also recommended that the Insbridge login be mapped to the Insbridge database with the db_owner role checked.

- **Insbridge SoftRater Oracle Database.**

It is recommended that the Insbridge user be granted, as defaults, the “CONNECT” and “RESOURCE” Roles.

- **Insbridge SoftRater DB2 Database.**

It is recommended that the Insbridge user be granted, as defaults, the “Connect to database”, “Create Tables”, and “Create packages” authorities.

It is recommended that the databases be on separate machines from the applications due to performance and security issues. The IBRU applications and databases can be tenants in a larger setup. No known conflicts exist between IBRU and other applications or required server settings.

It is recommended that db_owner permissions be given to the Insbridge user. This will allow scripts to be run automatically when a new package is loaded for a new line of business. If this is not possible, DT scripts for each new line will have to be run manually before the package can be loaded.

Microsoft SQL Server

JDBC Driver Class

“com.microsoft.jdbc.sqlserver.SQLServerDriver”

Supported Versions – 2005 SP/2 and 2008 R2

User Account Requirements

Create Table

Create Index

Execute on the SoftRater User Defined Stored Procedures

Oracle

SoftRater database schema is support by all available ORACLE database platforms.

JDBC Driver Class

“oracle.jdbc.driver.OracleDriver”

Using prefix jdbc:oracle:thin:

Supported Versions – 10g, 11g

User Account Requirements

Create Table
Create Index
Query access to “SYS.OBJ\$”

IBM DB2

SoftRater database schema is supported on all available DB2 database platforms.

JDBC Driver Class

“com.ibm.db2.jcc.DB2Driver”
For Native AS400 – “com.ibm.as400.access.AS400JDBCdriver”

Supported Version – 9.1

User Account Requirements

Connect to database
Create Table
Create Packages
Query access to “SYSIBM.SYSTABLES”

Configuration Settings

- **Required**
The query dynamics of the SoftRater system requires some modification to Configuration settings. The following Performance Configurations parameters required to the target SoftRater database.
Instance Level – ASLHEAPSZ >= 1024
Instance Level – QUERY_HEAP_SZ => 10240
Database Level – APPLHEAPSZ >= 1024
- **Recommended**
The query dynamics of the SoftRater system will benefit from the following modification to Configuration settings.

Instance Level – INTRA_PARRALLEL (Yes) – For Symmetrical Processing Machines (CPU >=2)

Database Level – DFT_DEGREE (-1) – For Symmetrical Processing Machines (CPU >=2). Allow the optimizer to determine the degree of intra-partition parallelism based on the number of processors and the type of query.

Native z/OS

Support for IBM DB2 for native z/OS requires a specific set of the DDL scripts. They are labeled in the `ddl\db2` directory with the ZOS DB2.ZOS prefix. DBA's should review these scripts, starting with the `DB2.ZOS.SETUP.sql` file that contains create templates for default; STORAGE GROUP, DATABASE, default TABLESPACE. All other table create scripts can be reviewed, altered and executed in any other to be consistent with chosen database standards.

CONTACTING SUPPORT

If you need assistance with an Oracle Insurance Insbridge Rating and Underwriting System product, please log a Service Request using My Oracle Support at <https://support.oracle.com/>.

Address any additional inquiries to:

Oracle Corporation
World Headquarters
500 Oracle Parkway
Redwood Shores, CA 94065
U.S.A.

Worldwide Inquiries:
Phone: +1.650.506.7000
Fax: +1.650.506.7200
oracle.com

TTY ACCESS TO ORACLE SUPPORT SERVICES

Oracle provides dedicated Text Telephone (TTY) access to Oracle Support Services within the United States of America 24 hours a day, seven days a week. For TTY support, call 800.446.2398.

INDEX

A

- Accessing
 - WebLogic Console, 25
- Add New Environment
 - IBSS, 35, 43, 54
- Adding
 - System Property, 23

C

- Collation and Sort Order
 - SQL Server, 31
- Command Prompt Window
 - Closing, 25
- Config File
 - Locating, 22
- config/ddl subdirectory, 61
- Configuration Settings
 - DB2, 63
 - DB2 Modifications, 63
- Configure
 - Rating Environments, 35, 43, 54
- Creating
 - Environment Setup, 35, 43, 54

D

- Database
 - IBM DB2 Support, 63
 - MS SQL Support, 62
 - ORACLE Support, 62
 - Permissions, 61
 - Security, 61
 - SoftRater, 61
- Database Definition Language Scripts, 61
- Database Types
 - Environment Setup, 36, 44, 55
- DB2
 - zOS, 63
- DB2 Database
 - Configuration Settings, 63
 - JDBC Driver Class, 63
 - Recommendations, 63
 - SoftRater Database Schema, 63
 - Supported Version, 63
 - User Account Requirements, 63
- DBA, 61
- DBMS, 61
- DDL, 61
- DDL scripts
 - zOS on DB2, 63
- ddl\db2 Directory, 63
- Deployment

- Optional Settings, 30
- Deployments
 - WebLogic Console, 26
- DINSBRIDGE_APP_DIR
 - Adding, 23
- Directory
 - ddl\db2, 63

E

- Editing
 - Environment Setup, 35, 43, 54
 - WebLogic Console, 26
 - WebLogic Server, 23
- Edition Notice, 2
- Environment Setup
 - Creating, 35, 43, 54
 - Database Types, 36, 44, 55
 - Editing, 35, 43, 54
 - IBSS, 35, 43, 54
 - Provider Types, 36, 44, 55
 - Query Block, 36, 44, 55

I

- IBRU
 - Oracle Software Delivery Cloud, 9
- IBSS, v
 - Add New Environment, 35, 43, 54
 - Environment Setup, 35, 43, 54
- Insbridge SoftRater Server, v

J

- JDBC Connection Drivers, 61

O

- Optional Settings
 - Deployment, 30
- ORACLE
 - SoftRater Database Schema, 62
- ORACLE Database
 - Supported Version, 62
 - User Account Requirements, 62
- Oracle Software Delivery Cloud
 - IBRU, 9
 - Required Programs, 9
- Overview
 - Package, vii

P

- Package
 - Environment, vii

- Overview, vii
- Part Numbers
 - Oracle Software Delivery Cloud, 9
- PDF Reader
 - Oracle Software Delivery Cloud, 9
- Performance Configurations Parameters
 - SoftRater Database, 63
- Provider Types
 - Environment Setup, 36, 44, 55

Q

- Query Block
 - Environment Setup, 36, 44, 55
- Quick List, 31, 40, 50

R

- Reloading
 - SoftRater Page Environment, 37, 45, 56
- Requirements, 22
 - DB2 Database, 63
 - ORACLE Database, 62
 - SoftRater EJB Data Access System, 61
 - SQL Server, 62
 - TCP/IP Connection, 61
- Reset Environments
 - SoftRater Page, 37, 45, 56

S

- sa account
 - SQL Server Enterprise Manager, 32
- Scripts
 - Database Definition Language, 61
- Security
 - Database, 61
- SoftRater
 - IBSR, 61
 - Supported Databases, 62, 63
- SoftRater Database, 61
- SoftRater Packages
 - Environments, vii
- SoftRater Page
 - Reloading Environment, 37, 45, 56

- Reset Environment, 37, 45, 56
- SQL Server
 - Collation and Sort Order, 31
 - JDBC Driver Class, 62
 - SoftRater Database Schema, 62
 - Supported Version, 62
 - User Account Requirements, 62
 - User Accounts, 34
- SQL Server Account
 - ibru, 31
- SQL Server Enterprise Manager
 - sa Privileges, 32
- Starting
 - WebLogic Server, 25
- System
 - Adding Property, 23

T

- TCP/IP Connection
 - To DB Platform, 61

U

- Unzip Utility
 - Oracle Software Delivery Cloud, 9
- User Accounts
 - SQL Server, 34

V

- VFS Definition, vii
- Virtual File Server Definition, vii

W

- WebLogic Port*
 - 7001, 34, 42, 53

Z

- z/OS
 - BD2, 63
- ZOS DB2.ZOS, 63