

Oracle Insurance

**Insbridge Rating and
Underwriting
SoftRater Node for
Windows Installation**

For 64-bit

Release 4.6

May 2012

Copyright © 2005, 2012, Oracle and/or its affiliates. All rights reserved.

Oracle Insurance Insbridge Rating and Underwriting SoftRater Node for Windows 64-bit Installation Guide

Release 4.6

Part # E35587-01

Library # E35552-01

May 2012

Primary Authors: Mary Elizabeth Wiger

This software and related documentation are provided under a license agreement containing restrictions on use and disclosure and are protected by intellectual property laws. Except as expressly permitted in your license agreement or allowed by law, you may not use, copy, reproduce, translate, broadcast, modify, license, transmit, distribute, exhibit, perform, publish, or display any part, in any form, or by any means. Reverse engineering, disassembly, or decompilation of this software, unless required by law for interoperability, is prohibited.

The information contained herein is subject to change without notice and is not warranted to be error-free. If you find any errors, please report them to us in writing.

If this software or related documentation is delivered to the U.S. Government or anyone licensing it on behalf of the U.S. Government, the following notice is applicable:

U.S. GOVERNMENT RIGHTS

Programs, software, databases, and related documentation and technical data delivered to U.S. Government customers are "commercial computer software" or "commercial technical data" pursuant to the applicable Federal Acquisition Regulation and agency-specific supplemental regulations. As such, the use, duplication, disclosure, modification, and adaptation shall be subject to the restrictions and license terms set forth in the applicable Government contract, and, to the extent applicable by the terms of the Government contract, the additional rights set forth in FAR 52.227-19, Commercial Computer Software License (December 2007). Oracle USA, Inc., 500 Oracle Parkway, Redwood City, CA 94065.

This software is developed for general use in a variety of information management applications. It is not developed or intended for use in any inherently dangerous applications, including applications which may create a risk of personal injury. If you use this software in dangerous applications, then you shall be responsible to take all appropriate fail-safe, backup, redundancy, and other measures to ensure the safe use of this software. Oracle Corporation and its affiliates disclaim any liability for any damages caused by use of this software in dangerous applications.

Oracle is a registered trademark of Oracle Corporation and/or its affiliates. Other names may be trademarks of their respective owners.

This software and documentation may provide access to or information on content, products, and services from third parties. Oracle Corporation and its affiliates are not responsible for and expressly disclaim all warranties of any kind with respect to third-party content, products, and services. Oracle Corporation and its affiliates will not be responsible for any loss, costs, or damages incurred due to your access to or use of third-party content, products, or services.

Where an Oracle offering includes third party content or software, we may be required to include related notices. For information on third party notices and the software and related documentation in connection with which they need to be included, please contact the attorney from the Development and Strategic Initiatives Legal Group that supports the development team for the Oracle offering. Contact information can be found on the Attorney Contact Chart.

The information contained in this document is for informational sharing purposes only and should be considered in your capacity as a customer advisory board member or pursuant to your beta trial agreement only. It is not a commitment to deliver any material, code, or functionality, and should not be relied upon in making purchasing decisions. The development, release, and timing of any features or functionality described in this document remains at the sole discretion of Oracle.

This document in any form, software or printed matter, contains proprietary information that is the exclusive property of Oracle. Your access to and use of this confidential material is subject to the terms and conditions of your Oracle Software License and Service Agreement, which has been executed and with which you agree to comply. This document and information contained herein may not be disclosed, copied, reproduced, or distributed to anyone outside Oracle without prior written consent of Oracle. This document is not part of your license agreement nor can it be incorporated into any contractual agreement with Oracle or its subsidiaries or affiliates.

CONTENTS

PREFACE	6
SOFRATER NODE.....	6
AUDIENCE	6
PLANNING YOUR IBRU SYSTEM	6
TYPES OF INSTALLATION	7
<i>Definitions</i>	<i>7</i>
RELATE DOCUMENTS	8
CONVENTIONS	9
<i>Manual History.....</i>	<i>9</i>
CHAPTER 1.....	10
SYSTEM REQUIREMENTS.....	10
<i>Required Components</i>	<i>10</i>
<i>Oracle Software Delivery Cloud</i>	<i>11</i>
QUICK VIEW.....	13
SOFRATER FOR WINDOWS INSTALLATION	13
CHAPTER 2.....	14
SETTING UP WINDOWS.....	14
STEP 1: INSBRIDGE LOCAL USER ACCOUNT SETUP	14
<i>Insbridge User Password</i>	<i>16</i>
STEP 2: WINDOWS 2008 PERMISSIONS	18
<i>Extended Permission Required by the Insbridge User</i>	<i>19</i>
CHAPTER 3.....	20
SOFRATER FOR WINDOWS NODE INSTALLATION.....	20
STEP 1 – INSTALL INSBRIDGE RATING AND UNDERWRITING	21
STEP 2 – CONFIGURING REGISTRY ACCESS.....	27
<i>Assigning Permissions for the Registry Access</i>	<i>27</i>
STEP 3 – ASSIGNING PERMISSIONS – WINDOWS TEMP FOLDER	30
STEP 4 – ASSIGNING PERMISSIONS – INSBRIDGE FOLDER.....	33
STEP 5 – RESTORING A SOFRATER DATABASE.....	35
STEP 6 – CONFIGURING INSBRIDGE FRAMEWORK ADMINISTRATOR.....	39
STEP 7 – VERIFYING THE COMPONENT SERVICES	46
STEP 8 – ALLOWING FOR WCF ACTIVATION.....	48
STEP 9 – INSTALLING THE OBI PUBLISHER.....	49
STEP 10 – STARTING INSBRIDGE SERVICES	50
STEP 11 – IMPORT INSBRIDGE REGISTRY KEY.....	51
STEP 12 – CONNECTING SR-WIN TO THE IBFA.....	52

CHAPTER 4.....	54
SOFTRATER DATABASE REQUIREMENTS	54
DATABASE USER ROLES AND PERMISSIONS.....	54
<i>Microsoft SQL Server</i>	<i>55</i>
CHAPTER 5.....	56
CREATING AN INSBRIDGE APPLICATION POOL.....	56
SUPPORT.....	61
CONTACTING SUPPORT	61
TTY ACCESS TO ORACLE SUPPORT SERVICES	61
INDEX	62

LIST OF FIGURES

Figure 1 Creating New User	15
Figure 2 Adding User information.....	16
Figure 4 Windows 2008 Permissions	18
Figure 5 Adding IIS 6 Metabase Compatibility	19
Figure 6 Installing Insbridge	21
Figure 7 Entering the Destination Folder for Insbridge.....	22
Figure 8 Logon Information	23
Figure 9 Selecting Features for Installation	24
Figure 10 Ready to Install.....	25
Figure 11 Installation Progress.....	25
Figure 12 Install ReadMe Screen	26
Figure 13 Configure Registry Access Windows Server.....	27
Figure 14 Entering the User	28
Figure 15 Applying Permissions	29
Figure 16 Verifying Application Pool Settings	30
Figure 17 Assigning Permissions for the Insbridge User on Windows Temp	31
Figure 18 Temp File Properties	32
Figure 19 Assigning Permissions for the Insbridge User on Insbridge	33
Figure 20 Insbridge Folder Properties	34
Figure 21 Restoring a Database to SQL Server.....	36
Figure 22 Right Click to Restore Database	36
Figure 23 Restoring a Database.....	37
Figure 24 IBFA Home	39
Figure 25 Enter ID	40
Figure 26 Create a Rating Environment.....	41
Figure 27 Entering Name and Environment	42
Figure 28 Obtaining Environment Information.....	42
Figure 29 Editing Environment	43
Figure 30 Virtual File Server Management Screen	44
Figure 31 Virtual File Server Management Window.....	45
Figure 32 Component Services	46
Figure 33 Selecting WCF Activation.....	48
Figure 34 Installing OBI Publisher	49
Figure 35 Insbridge Services Screen	50
Figure 36 Create a Rating Environment.....	52
Figure 37 Entering Name and Environment	53
Figure 41 Enabling Static Content.....	56
Figure 42 Navigating to Application Pool	57
Figure 43 Creating a New Application Pool.....	57
Figure 44 Selecting Application Pool Properties	58
Figure 45 Adding Application to Virtual Directory.....	59
Figure 46 Selecting the OIDC Application Pool.....	59
Figure 47 Restarting IIS.....	60

PREFACE

Welcome to the *Oracle Insurance Insbridge Rating and Underwriting SoftRater Node for Windows 64-bit Installation Guide*. This guide describes how to install and configure a SoftRater for Windows Node in a 64-bit machine. SoftRater may be used in conjunction with the Oracle Insurance Insbridge Rating and Underwriting RateManager (RateManager) system to process rating requests or it may stand alone.

NOTE: *SoftRater for Windows Node has been tested and certified on MS Windows 2008 64-bit.*

SOFTRATER NODE

A SoftRater for Windows installation is also called a SoftRater node installation. A SoftRater node is an IBFA instance on a machine that allows for packages to be copied and loaded from environment to environment. A SoftRater node installation is done on a Windows machine and utilizes a SQL Server database.

This type of install is like a Full RateManager Installation with the RateManager option set to not install. Also, a Virtual File Server will be set up to allow this machine to communicate with the RateManager machine.

This installation will be the same for the Production environment with a Virtual File Server set up to allow it to communicate with the QA machine.

SoftRater Nodes can be added any time after RateManager has been installed.

AUDIENCE

This guide is intended for technical personnel, such as installers, system administrators and others tasked with configuring SoftRater that would be involved in the maintenance and operation of SoftRater or RateManager. The audience for this guide should have a thorough knowledge of Windows.

PLANNING YOUR IBRU SYSTEM

Prior to installation, you should have an idea of the type of setup you want to create. What kind of equipment do you have available and how many environments do you need? If you do not have everything completely planned out, you can still proceed. Environments can be removed or added later on. The Oracle Insurance Insbridge Rating and Underwriting system (IBRU) is expandable and can accommodate a few different configurations.

For more on planning your IBRU system, please see the Insbridge Implementation Guide.

TYPES OF INSTALLATION

There are various types of installations:

RateManager Installation

- **Full RateManager** – This installation will install RateManager and the Insbridge Framework Administrator (IBFA). This is for a Windows only environment using a SQL Server database.

SoftRater Installation

- **Full SoftRater for Java Installation** – This installation will deploy SoftRater to an application server; WebLogic, WebSphere or JBoss, using a SQL Server database or an Oracle database.
- **Full SoftRater for Windows Node** – This installation is for existing environments that want to add a SoftRater for Windows node to an environment. This is for a Windows only environment using a SQL Server database.

Upgrading a Current Installation

- **Upgrade** – This installation is for existing customers and will take their current version of IBRU up to version 04.05.01.

This guide is for a Full SoftRater for Windows Node.

Definitions

Some commonly used terms when installing or using the Oracle Insurance Insbridge Rating and Underwriting system:

- **IBRU** – Insbridge Rating and Underwriting System. This is the entire system.
- **IBFA** – Insbridge Framework Administrator. IBFA is an administrative tool used to configure Insbridge applications and setup RateManager database connections. IBFA will be located on a Windows Server machine. IBFA/SR-WIN is an Insbridge Framework Administrator/SoftRater for Windows.
- **IBSS** – Insbridge SoftRater Server. IBSS is the administrative tool for the SoftRater engine. The SoftRater engine is a multi-platform component within IBRU that executes the rules, rating and underwriting instructions as defined by the user in RateManager. IBSS is usually located on a Java machine. IBSS/SR-JAVA is an Insbridge SoftRater Server/SoftRater for Java.
- **SoftRater Node** – A SoftRater node is either an IBFA (without RateManager) or IBSS instance on a physical environment.

- **SoftRater Native** – SoftRater Native is a remote instance of SoftRater that can execute rules and rating logic in environments where access via the SoftRater web-services is not desired or possible.
- **RM** – RateManager. RateManager is a component within IBRU that enables users to manage the product definition and modification process, including rating and underwriting logic.
- **SR** – SoftRater. The engine that executes the rating, rules and underwriting instructions defined within RateManager. The rating environment for runtime execution and processing of business content. SoftRater can be further defined by the operating system where it has been loaded.
- **SR-WIN** – SoftRater for Windows. This is also another name for IBFA.
- **SR-JAVA** – SoftRater for Java. This is also another name for IBSS.
- **SRP** – SoftRater Packages. A package that holds all the RateManager logic for a specific program and version.
- **VFS** – Virtual File Servers. Virtual file server management allows you to access environments that are located on other machines in different locations where packages can be downloaded.
- **Package Location** – A pointer to a location where SoftRater Packages (SRP's) are stored.
- **Physical Environment** – A physical environment is generally referred to as a physical machine.
- **Authoring Environment** – The physical machine where RateManager is installed.
- **Rating Environment** – The physical machine(s) where SoftRater is installed. This is typically the same as a SoftRater node.
- **Logical Environment** – An environment created for a subscriber in IBFA. It defines package location, engine location and database location in addition to several other supporting data items. This environment is used for rating and/or SRP management. Each database connection will have a logical environment.

RELATE DOCUMENTS

For more information, refer to the following Oracle resources:

- The Oracle Insurance Insbridge Rating and Underwriting Framework Administrator.
- The Oracle Insurance Insbridge Rating and Underwriting SoftRater Server Guide.
- You can view these guides in-line at this address:

<http://www.oracle.com/technetwork/documentation/insurance-097481.html>

CONVENTIONS

The following text conventions are used in this document:

Convention	Description
bold	Boldface type indicates graphical user interface elements associated with an action.
<i>italic</i>	Italic type indicates book titles, emphasis, or placeholder variables for which you supply particular values.
<code>monospace</code>	Monospace type indicates commands within a paragraph, URLs, code in examples, text that appears on the screen, or text that you enter.

Manual History

New editions incorporate any updates issued since the previous edition.

Edition	Publication Number	Product Version	Publication Date	Comment
1 st Edition	P01-702-01		May 2011	Initial Release
2 nd Edition	P01-702-02	R 4.5.1	September 2011	Update Release
3 rd Edition	P01-702-03	R 4.6	May 2012	Update Release

SYSTEM REQUIREMENTS

Prior to installing a SoftRater for Windows node (SR-WIN), a full installation of RateManager should be installed and running. You will need to enter the properties of the SR-WIN in the IBFA associated with RateManager.

IBRU installers should be familiar with managing a Windows server.

Required Components

The following components are required:

- **A full installation of Microsoft Windows Server 2008 for 64-bit is required**
- **Microsoft .NET Framework version 3.5**
- **IIS – Internet Information Services version 6.0 or 7.0**
- **For Windows 2008 Server – IIS 6 Metabase Compatibility**
- **For Windows 2008 Server – Web Server (IIS) – Static Content is required**
- **For Windows 2008 Server – WCF http activation needs to be enabled**
- **For Windows 2008 Server – The ASP.NET roll must be installed**
- **MSMQ – Microsoft Message Queuing Services – basic functionality only**
- **Insbridge User Account**
- **Database name or Environment name**
- **Database login information**
- **Database server name, either IP or DNS**
- **Database backup file, IBSR_Template for SQL Server. This file is located in the 04.06.00 Insbridge IBRU folder.**
- **Access to the server where the IBRU system was installed**
- **URL of the current IBFA**
- **Subscriber ID**
- **Package location where you want the packages stored**

These components will be needed at various times during the installation and implementation of SoftRater for Windows Nodes.

Oracle Software Delivery Cloud

Prior to installation, please make sure the source machine(s) where IBRU will be loaded has an unzip utility. An unzip utility for most platforms is available on the Oracle Software Delivery Cloud download page.

Documentation from Oracle Software Delivery Cloud is in PDF format. Prior to installation, please make sure the source machine(s) where IBRU documentation will be loaded has a PDF reader.

Files are downloaded with part numbers as file names. Please make note of the part numbers you have downloaded and the corresponding file name. You may be asked to provide the part numbers or the filename if you contact Oracle Insurance Support.

The installation downloads you can select are:

- **Insbridge IBRU Install** – This is required for all RateManager installations
- **SoftRater for WebSphere** – This is required if you are using WebSphere
- **SoftRater for WebLogic** – This is required if you are using WebLogic
- **SoftRater for Jboss** – This is required if you are using Jboss
- **Documentation** – It is recommended that you download the documentation. Installation guides and user guides are located here.

The 04.06.00-Insbridge-IBRU folder contents:

- **Databases**
 - ♦ DB2
 - SoftRater – IBSR
 - DDL
 - ♦ Oracle
 - SoftRater – IBSR
 - DDL
 - Update:Usp_IBSR_v04.05.00.oracle
 - ♦ SQL Server
 - RateManager – IBRM
 - Latin1_General_BIN
 - DATABASE_BACKUP_IBRM_TEMPLATE_CASE_SENSITIVE.bak
 - SQL_Latin1_General_CP1_CI_AS
 - DATABASE_BACKUP_IBRM_TEMPLATE.bak
 - Security – IB_CLIENT
 - SQL_Latin1_General_CP1_CI_AS
 - DATABASE_BACKUP_IB_CLIENT_TEMPLATE.bak
 - SoftRater – IBSR
 - Latin1_General_BIN
 - DATABASE_BACKUP_IBSR_TEMPLATE_CASE_SENSITIVE.bak
 - SQL_Latin1_General_CP1_CI_AS
 - DATABASE_BACKUP_IBSR_TEMPLATE.bak
 - Update:Usp_IBSR_v04.05.01.sql
 - **IE7_IE8 Users**

- ◆ Insbridge IE7 Active X Control Update PDF
- ◆ RateManager_IE7_IE8.exe
- **Oracle BI Publisher**
 - ◆ OBI_PUBLISHER.exe
- **Oracle Client**
 - ◆ Oracle_client.exe
- **Oracle Insurance – Insbridge Rating and Underwriting.exe**

The SoftRater for Windows 04.06.00 requires:

- Oracle Insurance – Insbridge Rating and Underwriting.exe
- SQL Server
 - SoftRater – IBSR
 - ◆ Latin1_General_BIN
 - DATABASE_BACKUP_IBSR_TEMPLATE_CASE_SENSITIVE.bak
 - ◆ SQL_Latin1_General_CP1_CI_AS
 - DATABASE_BACKUP_IBSR_TEMPLATE.bak
 - ◆ Update:Usp_IBSR_v04.05.01.sql

No license file is required.

SoftRater for Windows can be installed any time after the Insbridge Framework Administrator and RateManager have been installed. SoftRater must be installed prior to any users creating packages.

The folders and files that you download will depend upon the kind of setup you want. Everything for an SR-WIN installation is in the **04.06.00-Insbridge-IBRU** folder. If you want to incorporate a Java environment, please download the corresponding SoftRater file.

SOFTRATER FOR WINDOWS INSTALLATION

Installing SoftRater for Windows will require that you:

1. Set up Windows. There are two steps in setting up Windows for a SoftRater deployment.
2. Install IBFA (SoftRater for Windows) using a SQL Server Database.

Setting up Windows

Step 1: Set up an Insbridge User

Step 2: For Windows 2008, allow permissions

Installation Procedures – SoftRater for Windows

Step 1: Install Insbridge Rating and Underwriting

Step 2: Configuring Registry Access

Step 3: Assigning Permissions – Windows Temp Folder

Step 4: Assigning Permissions – Insbridge Folder

Step 5: Restoring IBRU Databases in SQL Server

Step 6: Configuring Insbridge Framework Administrator

Step 7: Verifying the Component Services

Step 8: Allowing for WCF Activation

Step 9: Installing the OBI Publisher

Step 10: Starting Insbridge Services

Step 11: Import the RateManager/IBFA Registry Key

Step 12: Enter SoftRater information in IBFA

SETTING UP WINDOWS

IBRU installers should be familiar with managing a Windows server. For a 32-bit machine, please see the SoftRater Node for Windows Installation Guide.

Windows Server should be up and running prior to RateManager being installed. There are two steps that should be performed prior to the install:

- **Step 1:** Set up an Insbridge User. **This is a required step.**
- **Step 2:** For Windows 2008, allow permissions.

STEP 1: INSBRIDGE LOCAL USER ACCOUNT SETUP

Before starting the installation, create a local user account where the Insbridge Framework is being installed. This user needs to be a member of the User group and requires certain privileges in order to fully control the entire IBRU environment. For ease of installation and if the server is dedicated to the Insbridge Rating and Underwriting System, it is suggested that this user be added to the local machine Administrators group.

If the installer has permissions, an Insbridge user can be created during the installation.

To Create a New User:

1. Select Start→Administrative Tools→Server Manager.
2. Select Configuration→Local Users and Groups.
3. Select Users.
4. Right click and select **New User**.

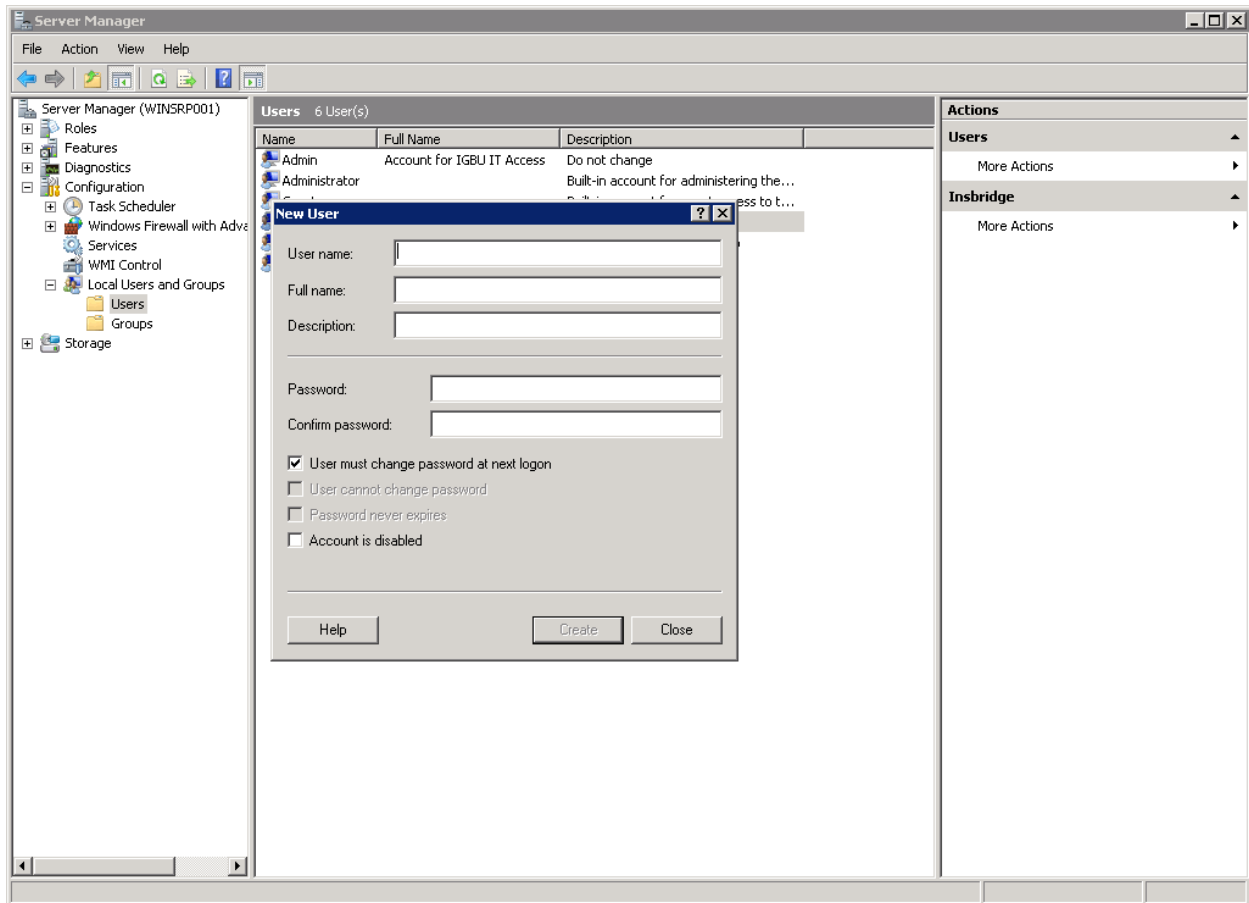


Figure 1 Creating New User

5. Add a new Insbridge user. Enter user name and password information. Uncheck *User must change password at next logon*. Check *User cannot change password* and *Password never expires*.
6. Click **Create**.
7. Close the Add New User screen and select the Insbridge user. Right click and select Properties.
8. The Insbridge User should be assigned to the local Users group and have the same permissions as the internet guest account.

Ideally, the Insbridge user should be added to the local Administrators group. If the Insbridge user cannot be a part of the local administrators groups, please make sure that the Insbridge user has permissions on the Insbridge Messaging Service and the Insbridge Task Manager Service.

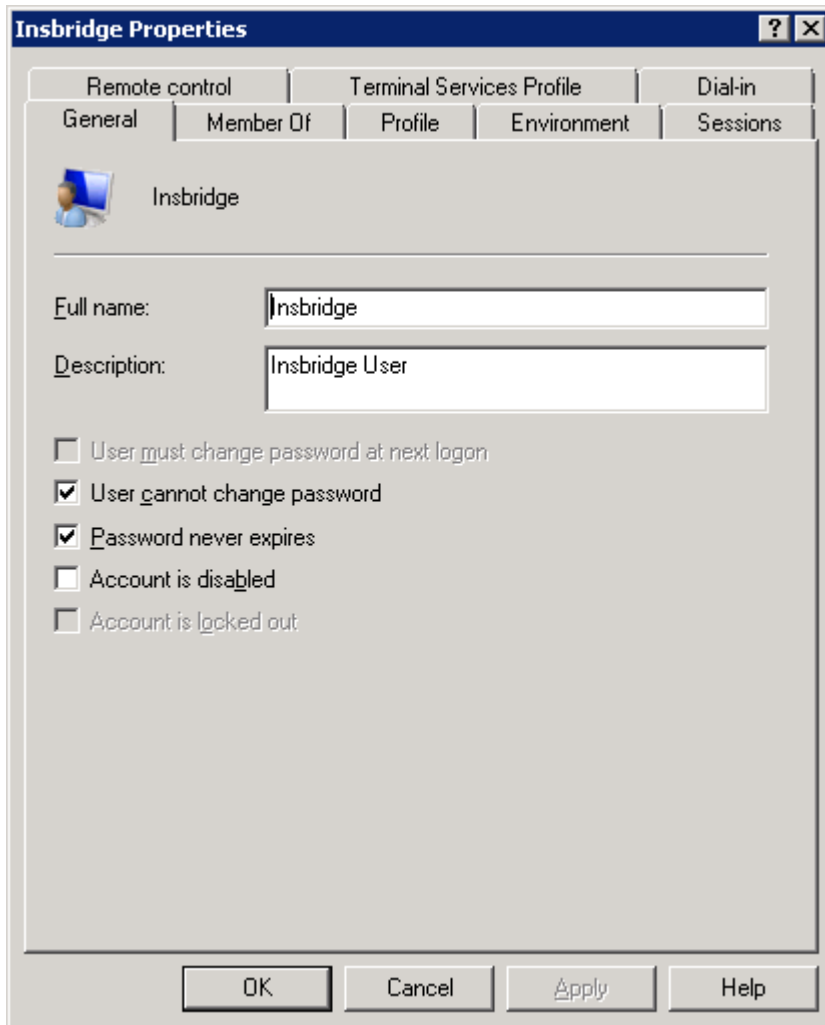


Figure 2 Adding User information

9. Click **OK**. Please keep the Insbridge user information close at hand. You will need it for the installation.

NOTE: You also can create the Insbridge User from within the install. If you create an Insbridge user from the install, you may not be able to set the permissions you need. Please be sure to verify the proper permissions are in place before continuing.

Insbridge User Password

The password can be set to any password that meets your company standards. The IBRU administrator must make note of the password for future configuration.

For ease of maintenance, the IBRU user should not have to change the password and the password should never expire.

The installation will automatically apply the Insbridge user name and password to the necessary libraries, virtual directories and, if used, Internet Proxy settings in IBFA. If you change the Insbridge user password, you will have to change the password in all three of the Insbridge Com+ libraries, all three of the Insbridge virtual directories and, if you are using it, the Internet Proxy settings in IBFA.

NOTE: Please note that if your company requires passwords to be re-set, you will have to make changes to the COM+ Application libraries, virtual directories and if you are using it, the Internet Proxy settings in IBFA after you change your password. You also may re-install the application. This will recreate the COM+ applications, virtual directories and IBFA instance with the updated Insbridge user password. Be aware that re-installing the application will also reset security settings in IBFA as well.

STEP 2: WINDOWS 2008 PERMISSIONS

Windows 2008 requires certain permissions be in place prior to running the install.

- For Windows 2008 Server – IIS 6 Metabase Compatibility
- For Windows 2008 Server – Web Server (IIS) – Static Content is required
- For Windows 2008 Server – WCF http activation needs to be enabled
- For Windows 2008 Server – The ASP.NET roll must be installed

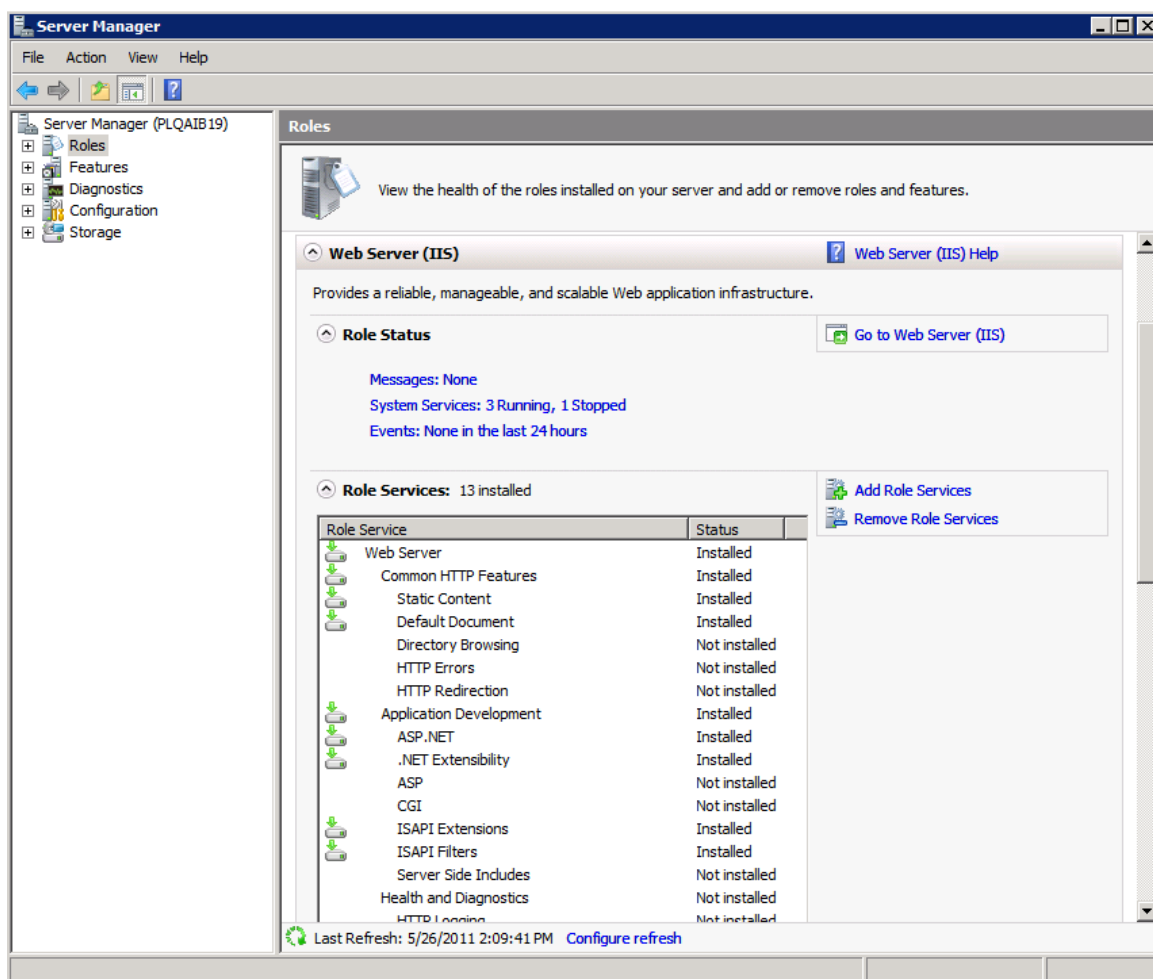


Figure 3 Windows 2008 Permissions

To Add a Role:

1. Start→ Administrative Tools→ Server Manager→ Roles→ Web Server (IIS)→ Add Role Services.

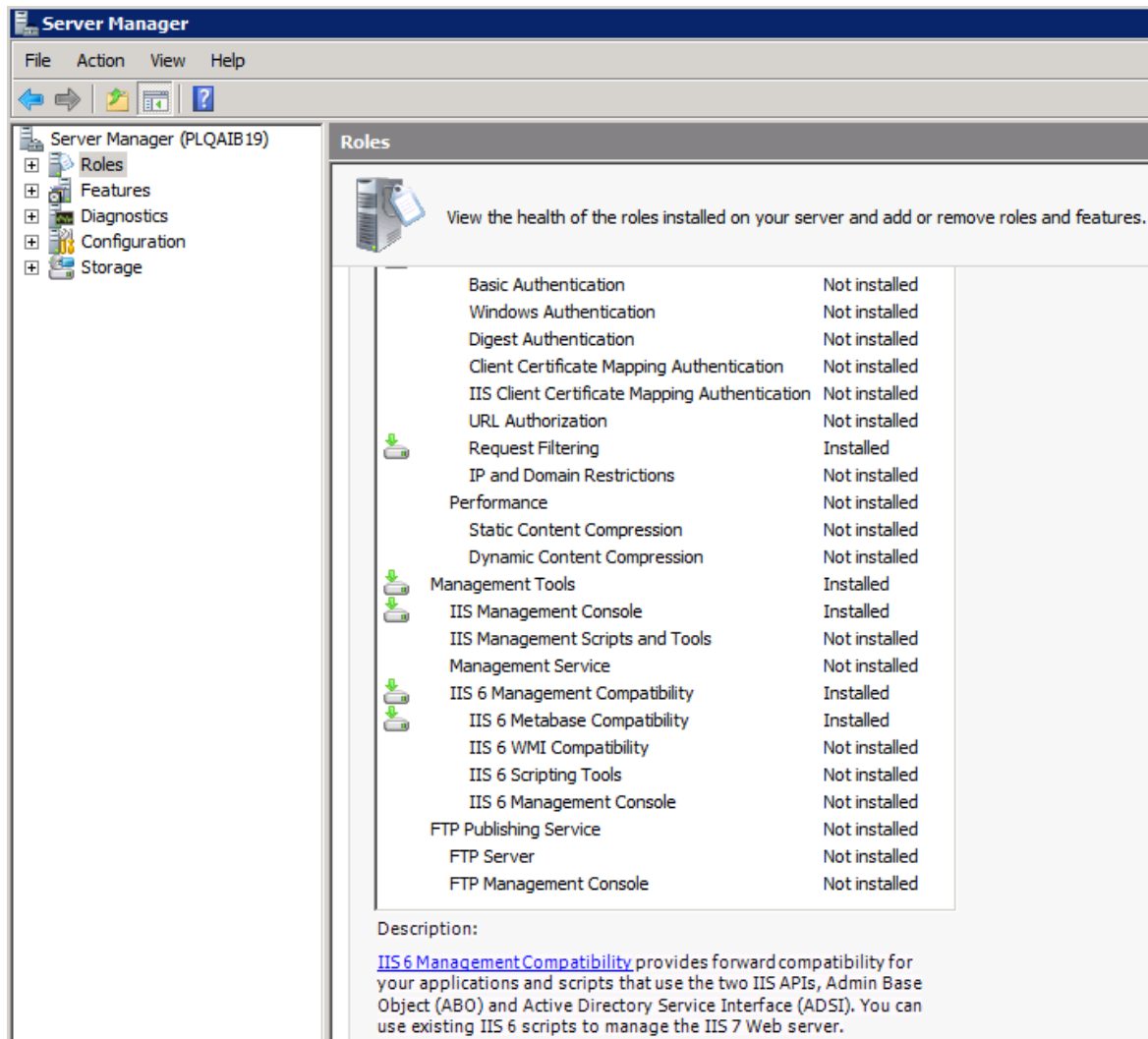


Figure 4 Adding IIS 6 Metabase Compatibility

2. Install IIS 6 Metabase Compatibility.

Extended Permission Required by the Insbridge User

In order to start the Insbridge services from IBFA, the Insbridge user must be given full access to both the Insbridge Message Service and the Insbridge Task Manager Service. If the Insbridge user account will not have full administrative permissions on the server where the Insbridge Framework is installed, then certain operations from IBFA will not be available. A system administrator may be required to start the Insbridge services from the server.

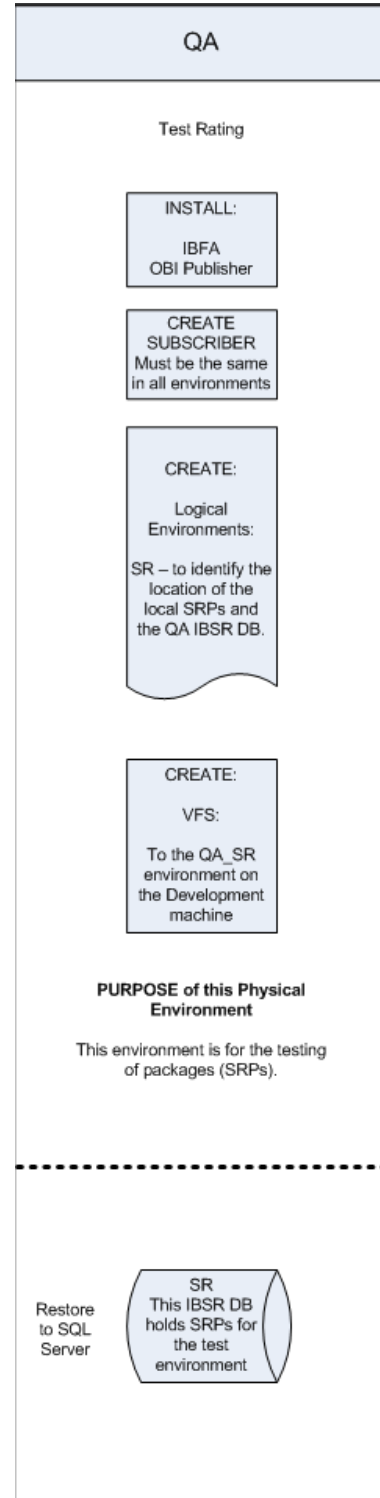
SOFTRATER FOR WINDOWS NODE INSTALLATION

Before installing, please verify that the requirements are in place.

The installation should be performed in the following order:

1. Install the IBRU application without RateManager.
2. Registry Access.
 - a. Assigning Insbridge Access.
 - b. Exporting Key for safe keeping.
3. Assigning permissions to the Insbridge User for the Windows Temp Folder. This is necessary for MSMQ.
4. Assigning permissions to the Insbridge User for the Insbridge Folder
5. Creation of the IBSR databases is next.
6. Open the IBFA instance and Configure:
 - a. Create your subscriber.
 - b. Create your logical environments.
 - c. Create a Virtual File Server.
7. Verifying Component Services.
8. Allowing for WCF Activation and Static Content.
9. Install OBI Publisher.
10. Start Insbridge Message Service
11. Import Backup of RateManager/IBFA Registry Key.
12. Enter the IBFA instance on the original IBRU install- the one where RateManager was installed.

For a Windows 2008 Server installation, you must run as Administrator.



STEP 1 – INSTALL INSBRIDGE RATING AND UNDERWRITING

1. Begin with the **Oracle Insurance - Insbridge Rating and Underwriting Install file**.

NOTE: *The installation program requires that the installer have administrator rights on the machine where the install is occurring.*

NOTE: *Please close all open applications before running the Oracle Insurance – Insbridge Rating and Underwriting file.*

2. Open the Oracle Insurance – Insbridge Rating and Underwriting file. A Welcome screen will be displayed.

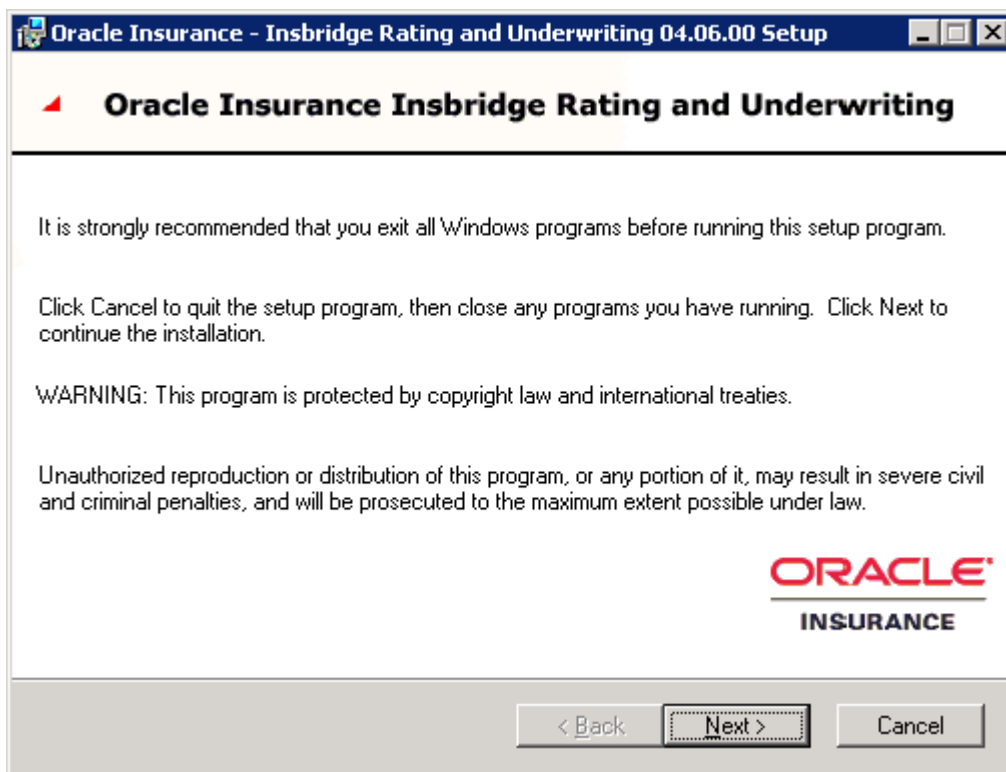


Figure 5 Installing Insbridge

3. Click **Next** to continue.

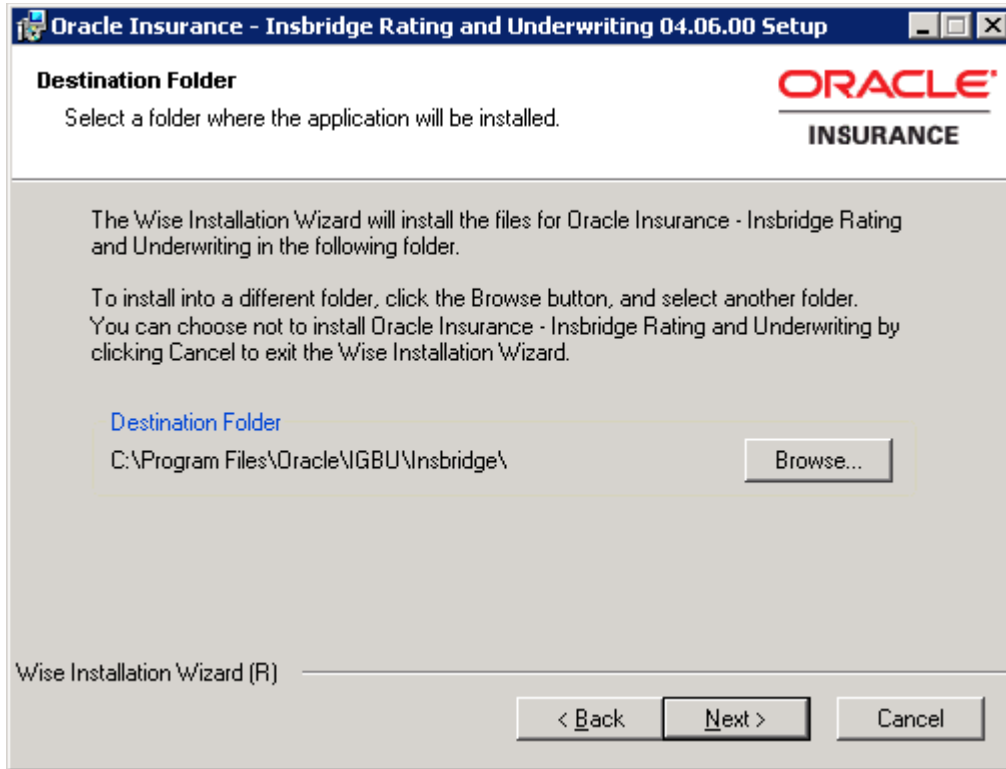


Figure 6 Entering the Destination Folder for Insbridge

4. Choose the location where the Insbridge installation will be installed. A default installation folder will be created for all new installs. This will be the location for all future installations for Insbridge applications. Select **Browse** if you want to install in a different location. After selecting a location, click **Next** to continue.

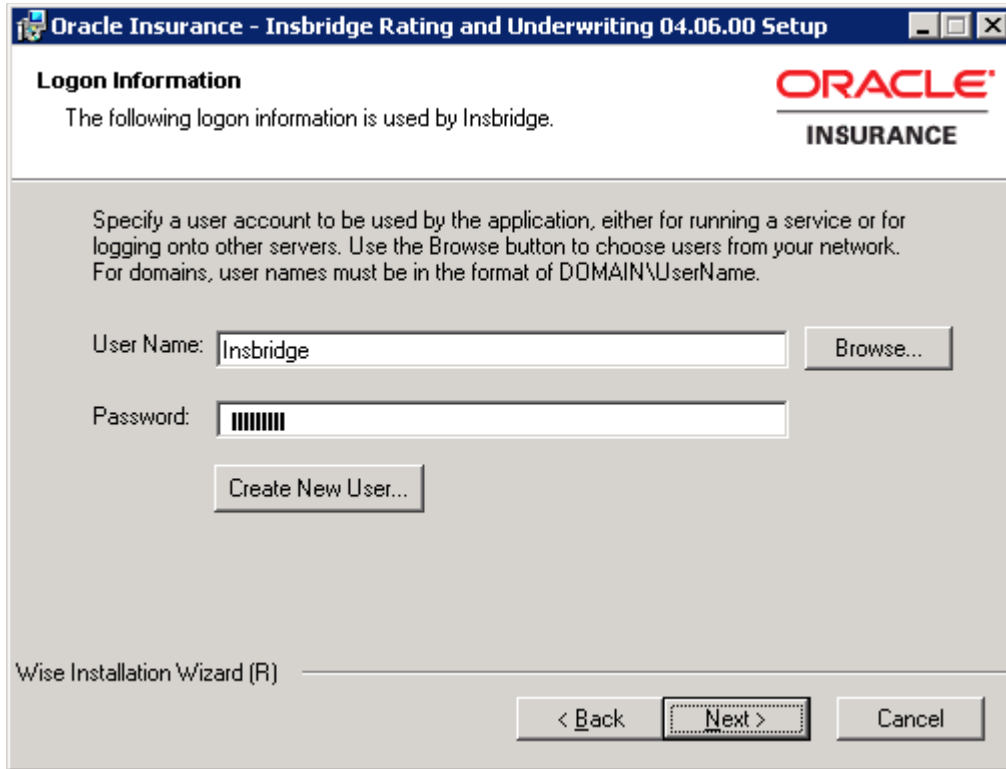


Figure 7 Logon Information

5. Enter the **Insbridge user name and password** for the local user account you set up earlier. The logon information screen will be displayed. You must specify a user account to be used by the application. Please use the Insbridge user account that you set up on page 14.

NOTE: You can Create a New user at this point, if needed. Click the Create New User button to be placed on New User screen to setup an Insbridge user.

6. Click **Next** to continue.

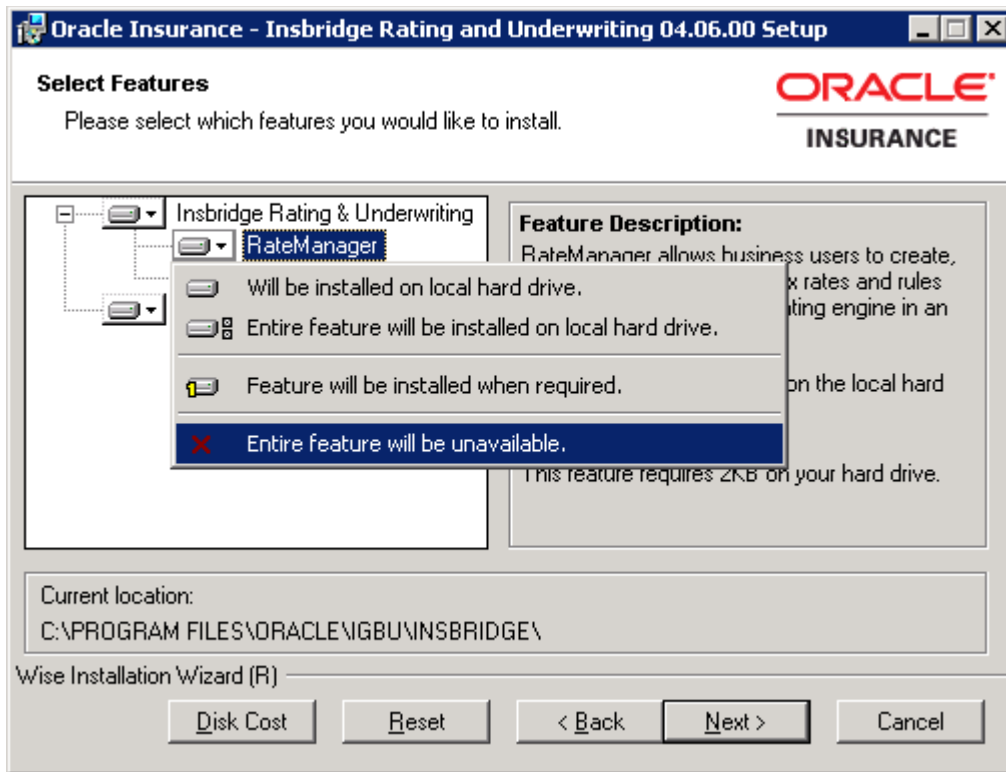


Figure 8 Selecting Features for Installation

7. The next screen lists the applications to be installed. To expand the options and view details, click on the downward arrow. All features are checked for installation. RateManager is the only one that you will be allowed to not install. Check **Entire feature will be unavailable**. Click **Next** to continue.

Options are:

- **Insbridge Rating and Underwriting:**
 - The default option is: Entire feature will be installed on local hard drive. This includes IBFA.
 - You will not be able to opt out of this selection.
- **RateManager:**
 - The default option is: Entire feature will be installed on local hard drive.
 - You will be able to opt out of this option. **Select Entire Feature will be unavailable.** RateManager will not be installed. **You do not need to install RateManager.**
- **IBFA:**
 - The default option is: Entire feature will be installed on local hard drive.
 - You will not be able to opt out of this selection.
- **Oracle BI Publisher:**
 - The default option is: Entire feature will be installed on local hard drive.
 - You will not be able to opt out of this selection.
 - This option does not install the OBI Publisher. Only the templates required by the IBRU application will be installed on local hard drive.

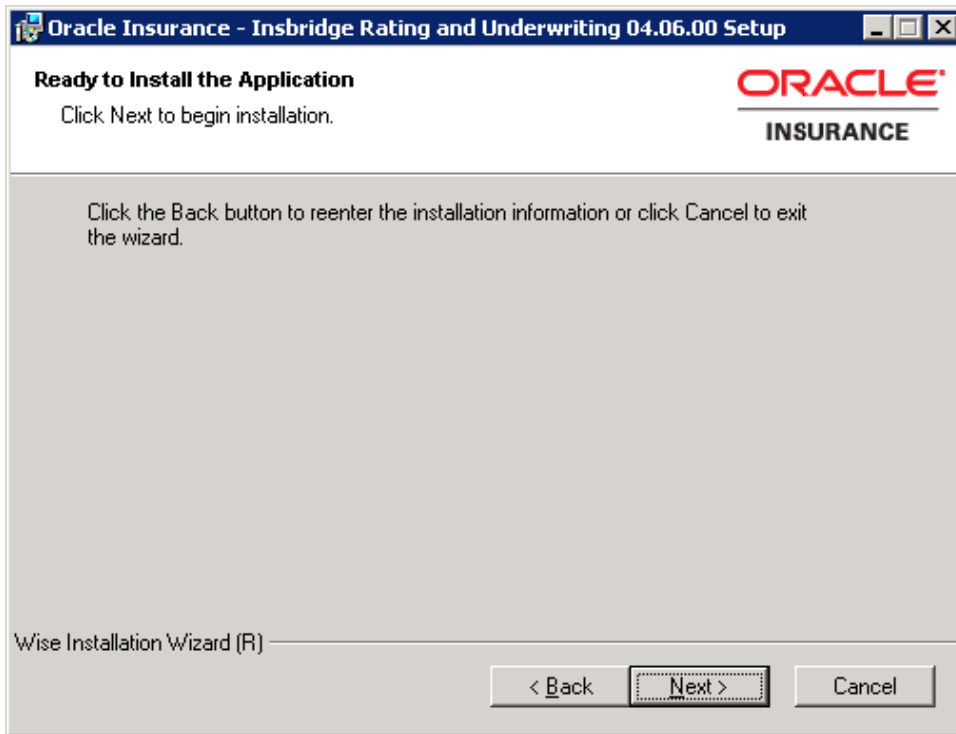


Figure 9 Ready to Install

8. A Ready to Install screen will be displayed. If you are ready, click **Next**. Otherwise click Back to check the options you want to install.

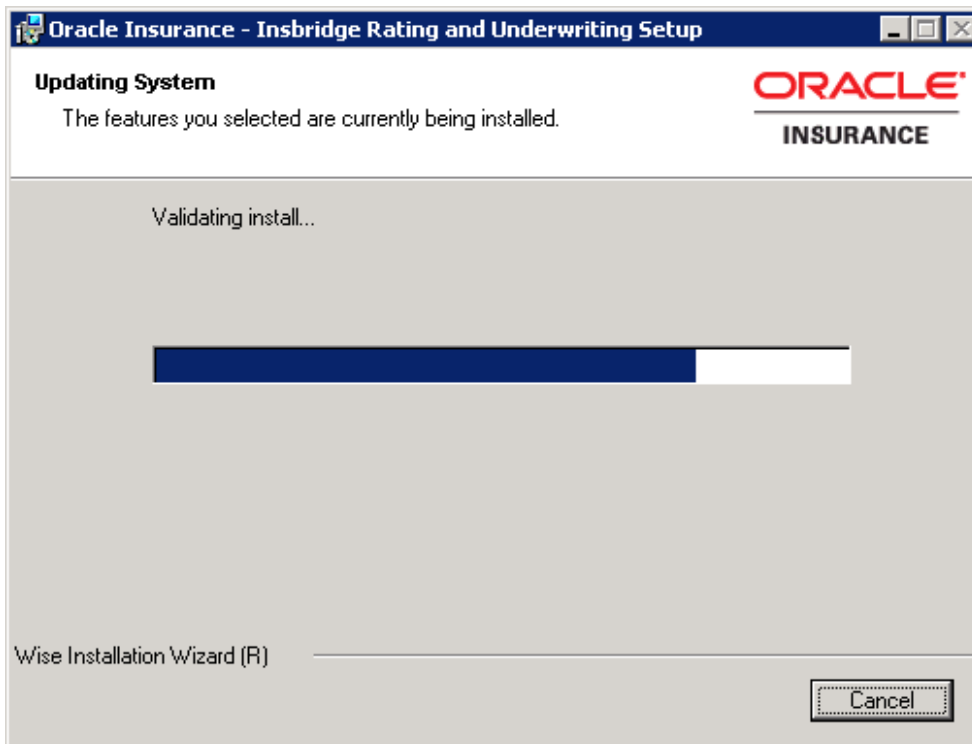


Figure 10 Installation Progress

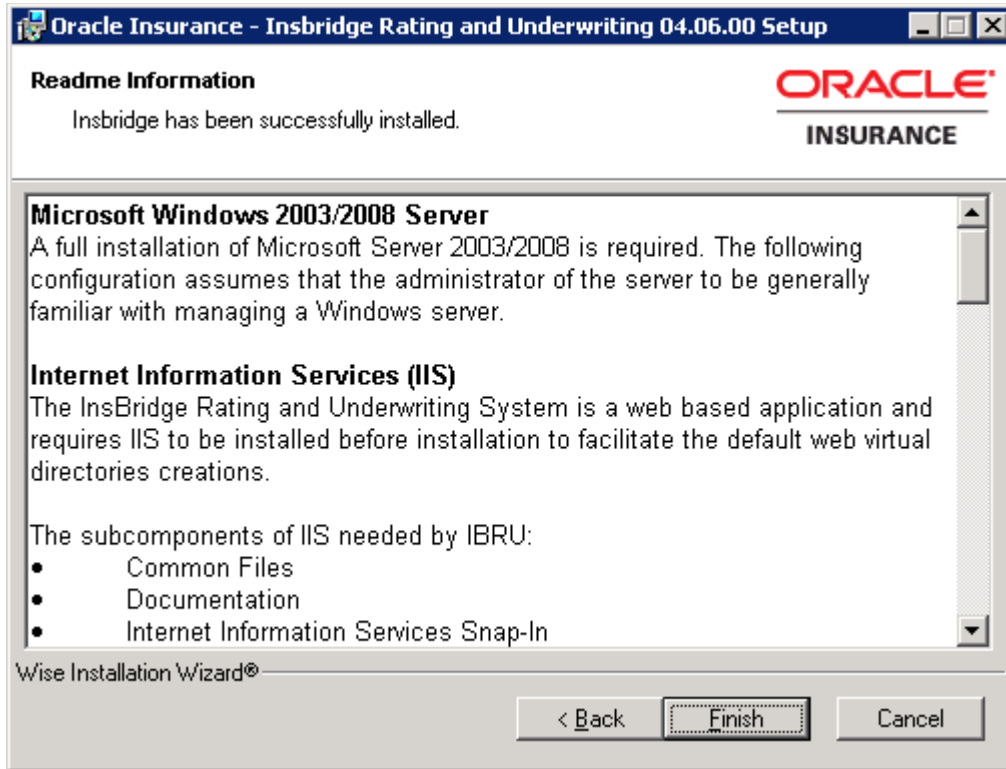


Figure 11 Install ReadMe Screen

9. Click **Finish** to finish the installation. The installation should complete successfully.

STEP 2 – CONFIGURING REGISTRY ACCESS

NOTE: *If you use Registry Editor incorrectly, you may cause serious problems to the operating system. These problems may require you to reinstall your operating system. Insbridge cannot guarantee that you can solve problems that result from using Registry Editor incorrectly.*

By default, only administrative and power user accounts have full permissions over this key. The insbridge user must also be given **full control** over the following registry key:

HKEY_LOCAL_MACHINE/SOFTWARE/Insbridge

Assigning Permissions for the Registry Access

1. Selecting Run from the Start Menu.
2. Type **regedt32**. Click **OK**. The Registry Editor will open.
3. Browse to HKEY_LOCAL_MACHINE. Select SOFTWARE→Insbridge.

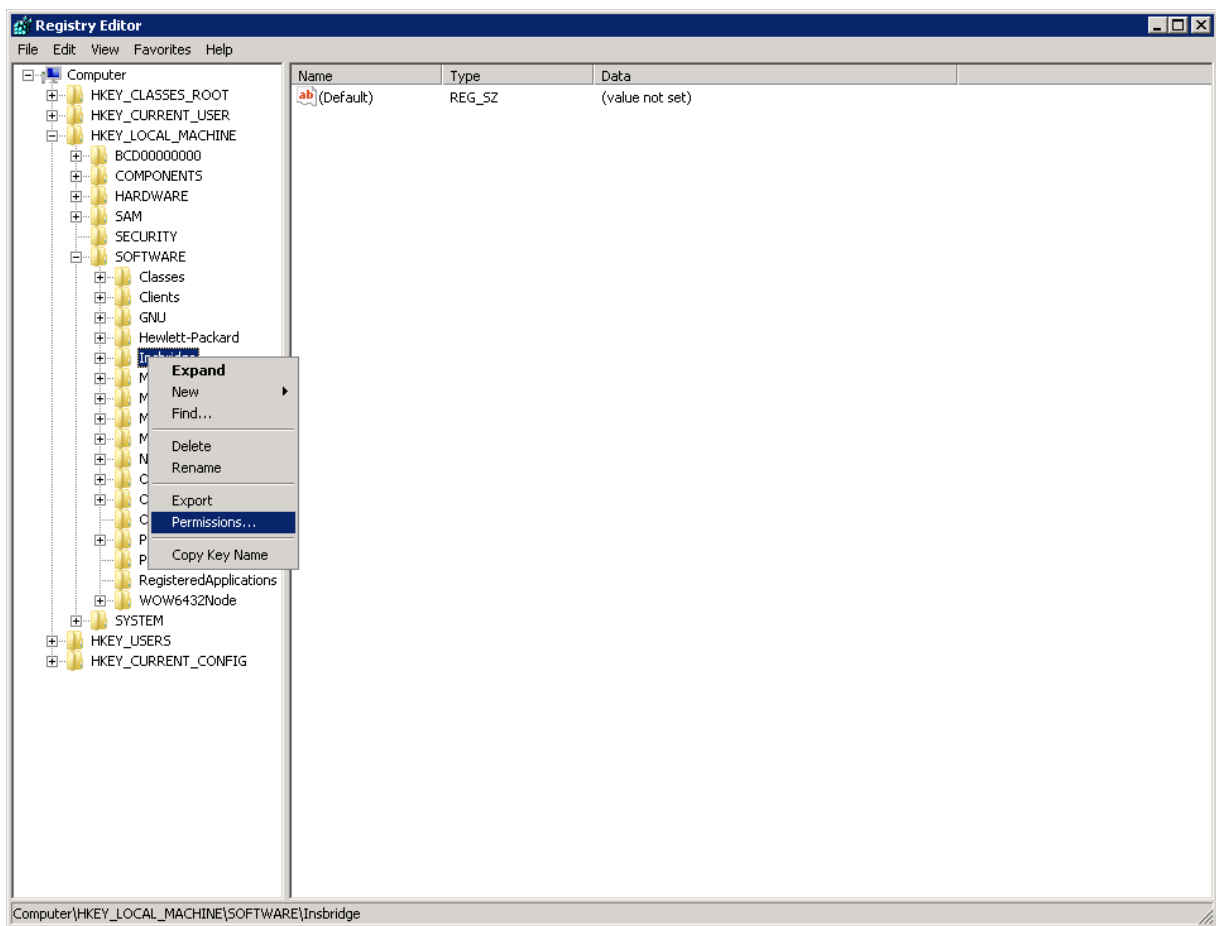


Figure 12 Configure Registry Access Windows Server

4. Right click and select **Permissions**.
5. Scroll through the users. Select the **Insbridge** user.
6. Verify that the Insbridge user has **Full Control**.
7. If the Insbridge user does have Full Control, cancel out of the registry and continue with the installation.
8. If the Insbridge user does **not** have Full Control, change permissions to allow for Full Control. Save your entry and close out the registry. Continue with the installation.
9. If the Insbridge user is not listed, follow the step to add the Insbridge user.

Adding the Insbridge User:

10. From the Permissions screen, click **Add**.
11. On the Select Users or Groups popup, you can leave the defaults for the **Object Types** and **Locations** or enter the values you require.

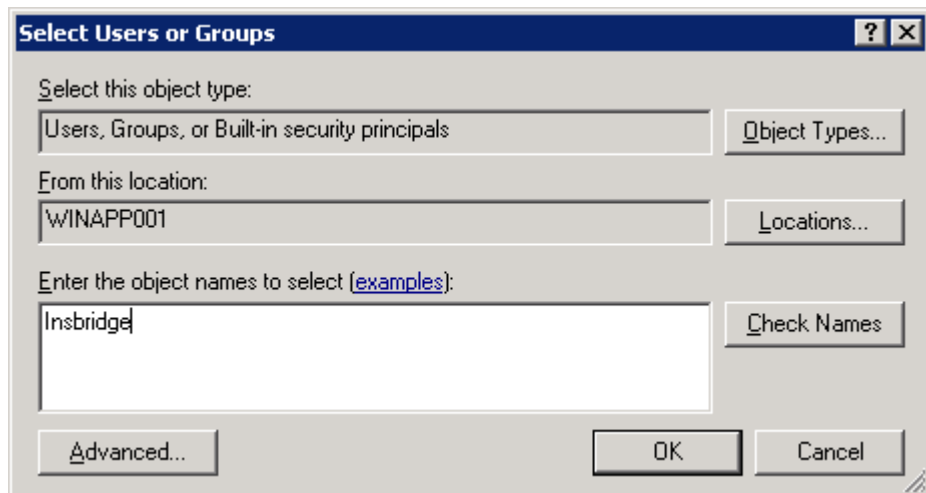


Figure 13 Entering the User

12. Enter in the user name (insbridge) and click **Check Names**. If the user name is found, it will be listed. If the name is not found, an error screen will be displayed. Cancel out and to return to the Select Users or Groups popup. Click **Advanced** to search. To search the directory, click Find Now and scroll through the list until you find the user name you need. If the user name is not listed, return to User Accounts and verify the user name was created.
13. Once the name is listed, click **OK**.

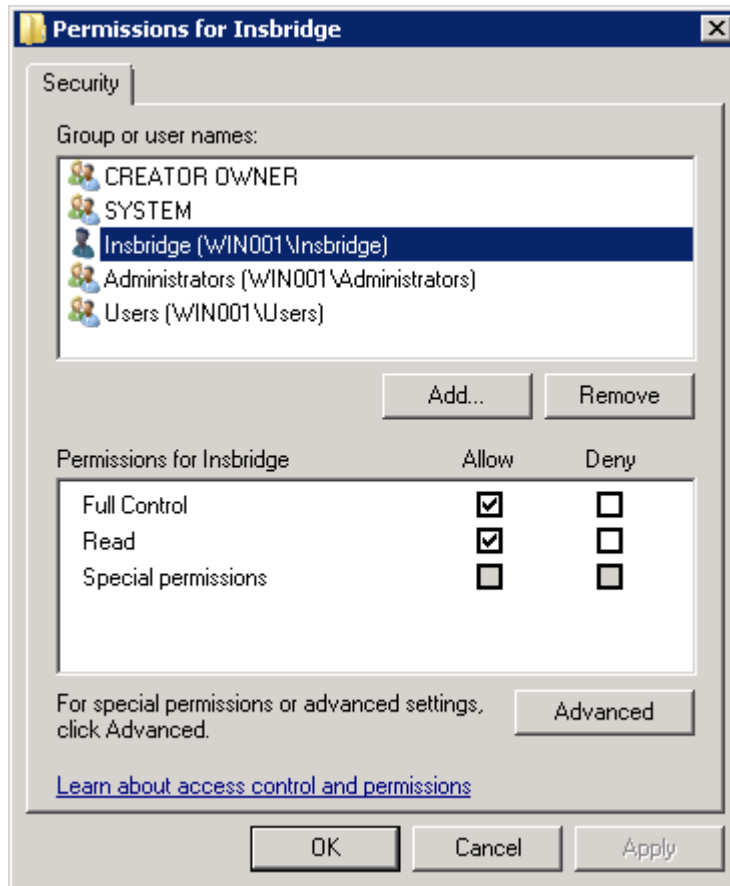


Figure 14 Applying Permissions

14. On the Permissions screen, make sure the insbridge user is highlighted and check to give **Full Control** to the entire Insbridge key.
15. Click **OK**.
16. Close the registry and continue with the install.

STEP 3 – ASSIGNING PERMISSIONS – WINDOWS TEMP FOLDER

Permissions must be assigned for the Windows Temp Folder for MSMQ and for Windows 2008, the application pool default identity. Prior to assigning permissions, please verify the default application pool identity.

Identifying the Application Pool Default Identity:

1. Open IIS. Start→Administrative Tools→IIS Manager.
2. Expand the server and select **Application Pools**.
3. Select the **DefaultAppPool**.
4. Right click and select **Advanced Settings**.
5. Take note of the **Identity** under Process Model. This user will need to be added to the Windows Temp file. In this example, the Identity is NetworkService.

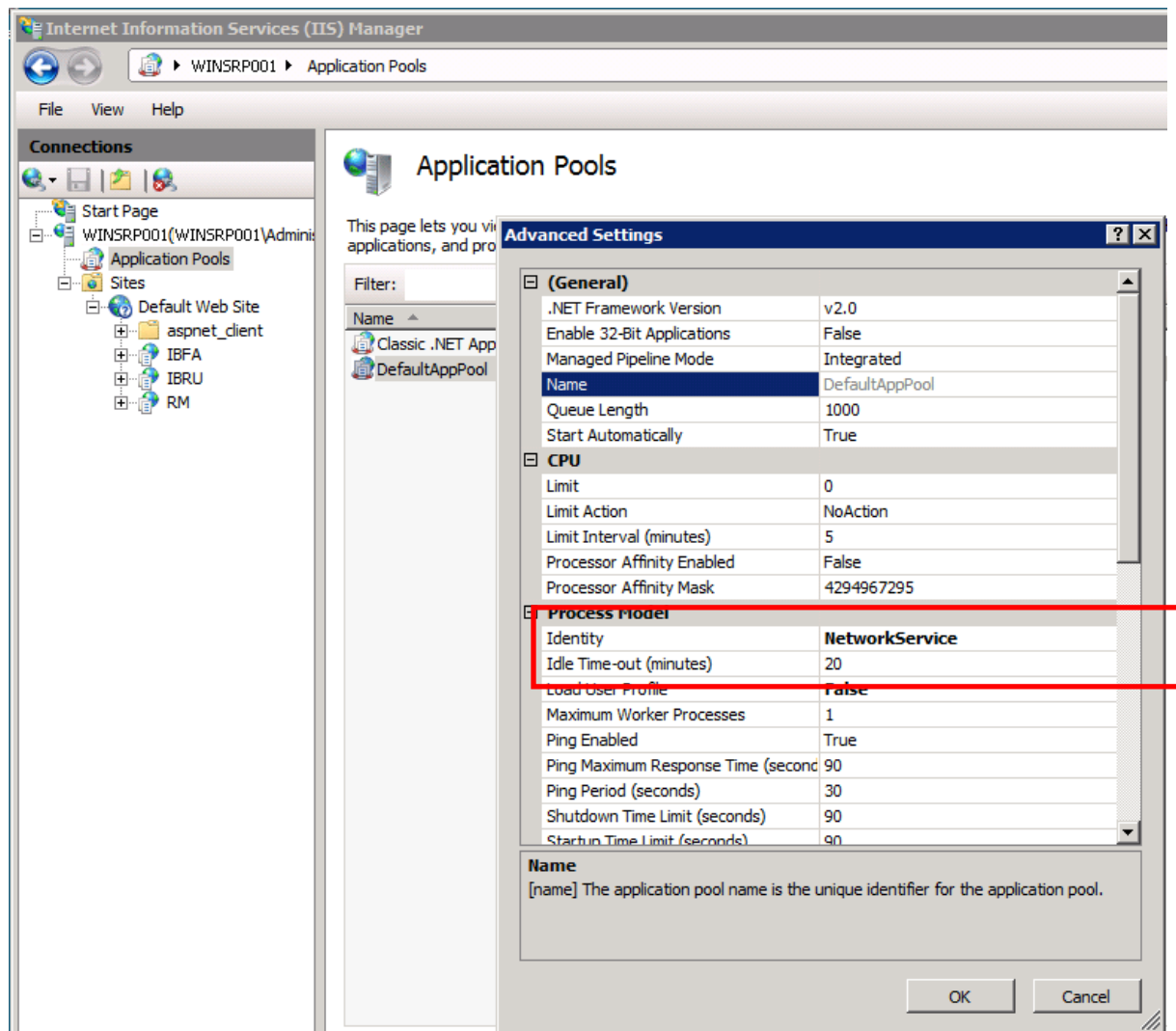


Figure 15 Verifying Application Pool Settings

6. Click **OK** to close the Advanced Settings screen.
7. Close IIS. No more information is needed from the Application Pool.

Assigning Permissions in the Windows Temp Directory:

1. Open **Documents**. Find the WINDOWS folder, most likely on your C drive.
2. Right click the **Windows→Temp** folder.

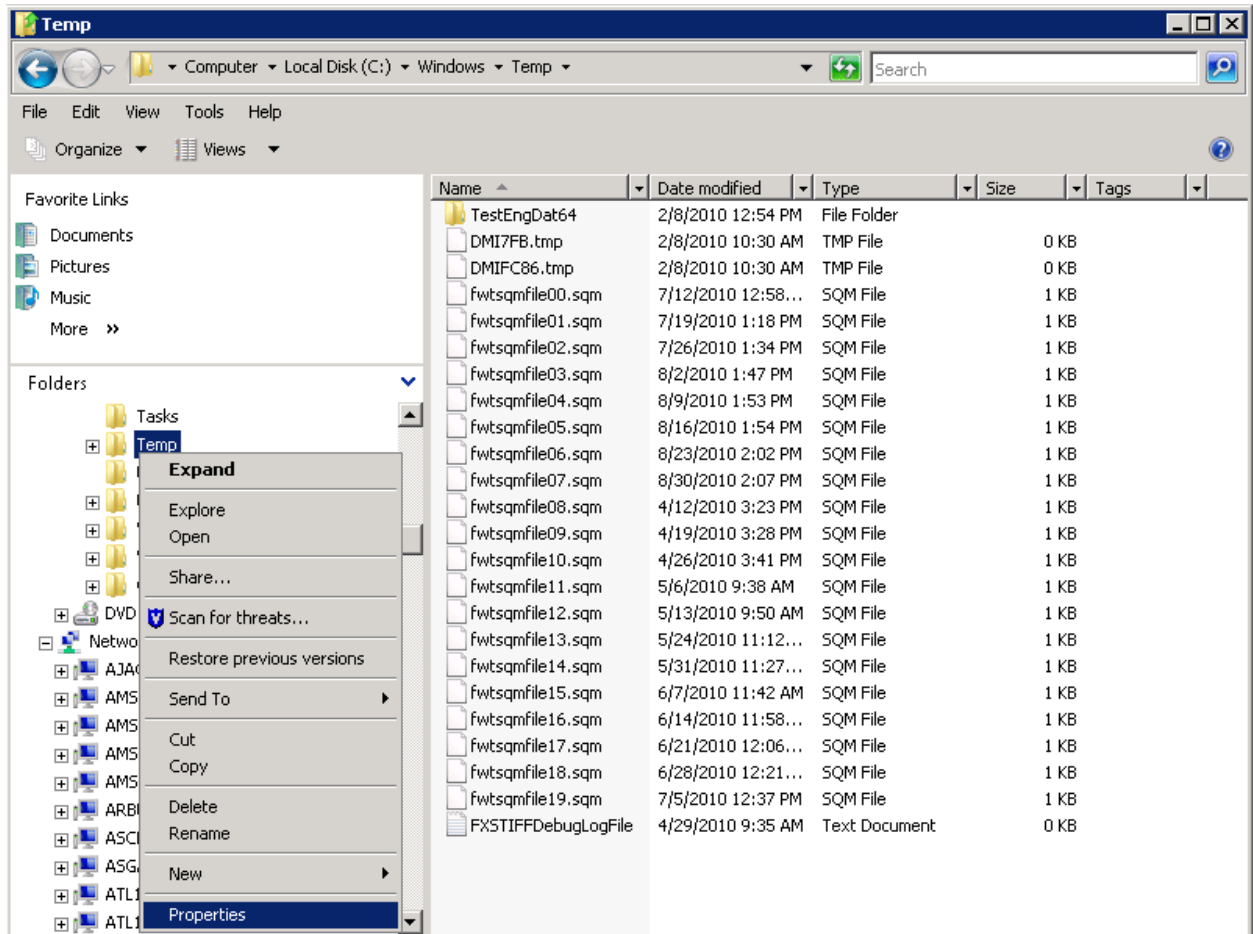


Figure 16 Assigning Permissions for the Insbridge User on Windows Temp

3. Select **Properties**. The Temp Properties screen will open.
4. Select the **Security** tab.
5. Click **Edit**.
6. On the Permissions for Temp screen, select the Insbridge user and click **Add**. If the Insbridge user is not found, cancel out and return to the Local Users and Groups area in Server Manager and verify the Insbridge user was created.
7. Update the permissions. The Insbridge user requires **Full Control**.

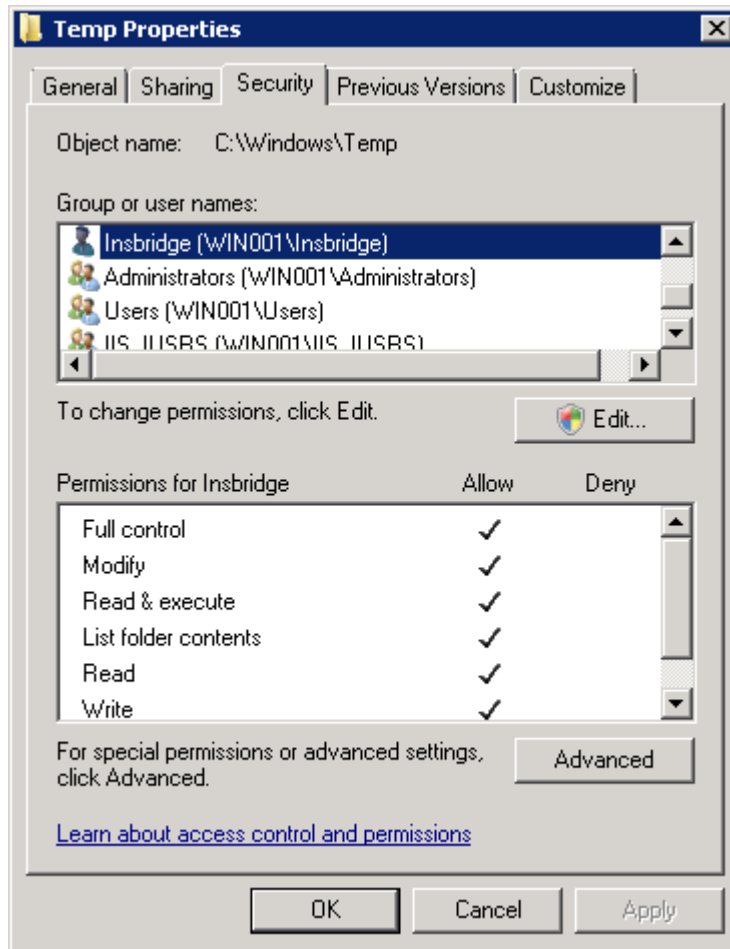


Figure 17 Temp File Properties

8. Next add the **Application Pool identity**.
9. Update the permissions. The Application Pool identity requires the default permissions plus **WRITE**.
10. Click **OK** to close the Permissions for Temp screen.
11. Click **OK** to close the Temp Properties screen.

STEP 4 – ASSIGNING PERMISSIONS – INSBRIDGE FOLDER

Assigning Permissions for an Insbridge Folder Location

1. Open **Documents**. Locate the INSBRIDGE folder, most often the Insbridge folder is located at: C:\Program Files\Oracle\IGBU\Insbridge.
2. Right click the **Insbridge** folder.

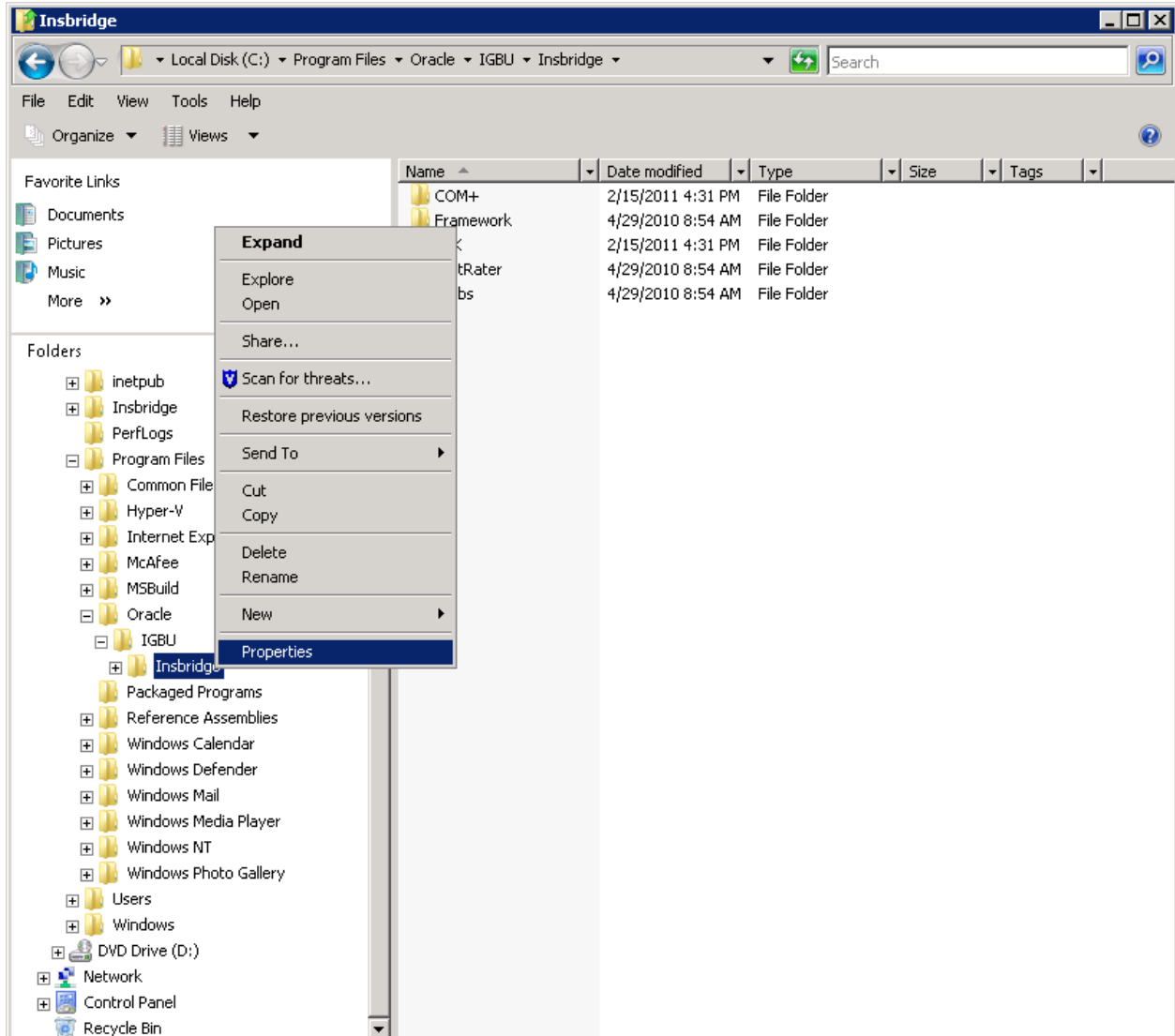


Figure 18 Assigning Permissions for the Insbridge User on Insbridge

3. Select **Properties**. The INSBRIDGE Properties screen will open
4. Select the **Security** tab.
5. Click **Edit**.

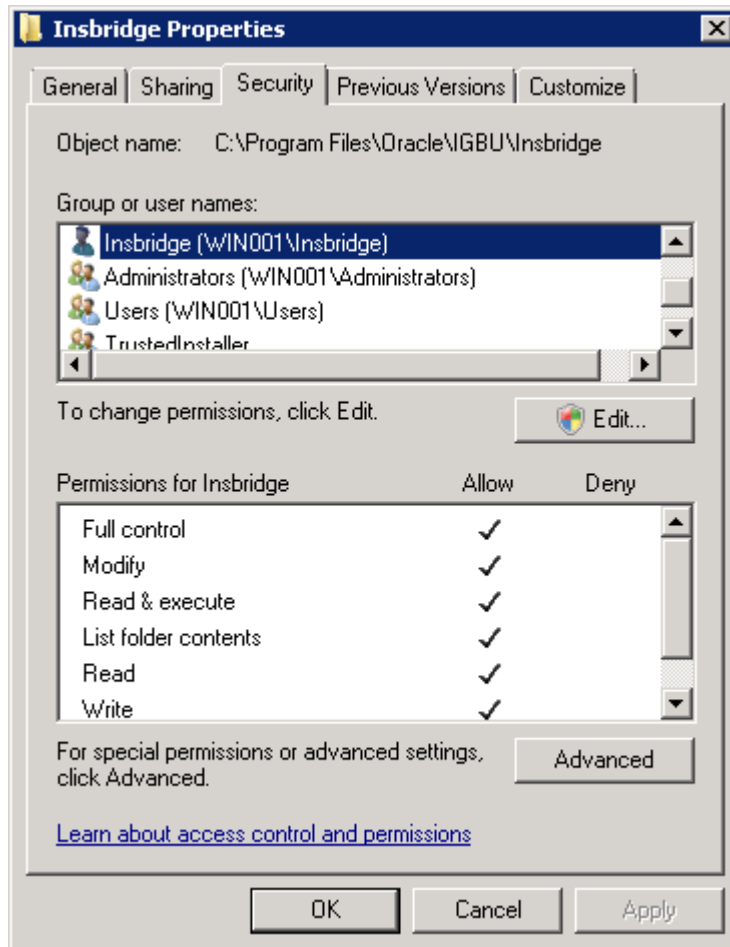


Figure 19 Insbridge Folder Properties

- On the Permissions for INSBRIDGE screen, select the Insbridge user and click **Add**. If the Insbridge user is not found, cancel out and return to the Local Users and Groups area in Server Manager and verify the Insbridge user was created.
- Update the permissions. The Insbridge user requires **Full Control**.
- Click **OK** to close the Permissions for INSBRIDGE screen.
- Click **OK** to close the Temp Properties screen.

STEP 5 – RESTORING A SOFTRATER DATABASE

Because many corporate environments have a separation between the system administrator and the database administrator, the following process may require both administrators' access and permissions. Make sure you have a SQL Server account called **ibru**.

NOTE: *If you do not have database permissions, you will not be able to perform the following database procedures.*

NOTE: *If you are unsure how to perform a database restore, please consult with your database administrator.*

Currently supported is the default SQL Server collation using SQL_Latin1_General_CP1_CI_AS and sort order plus case sensitivity using Latin1_General_BIN as the server collation. The security database (IB_CLIENT) supports the default SQL Server collation using SQL_Latin1_General_CP1_CI_AS. The RateManager and SoftRater databases can use either case sensitive or non-case sensitive. Please check with Oracle Insurance for any questions regarding database server sort orders or collations.

1. Located in the Insbridge Installation Directory:
 - ◆ SQL Server
 - SoftRater – IBSR
 - Latin1_General_BIN
 - DATABASE_BACKUP_IBSR_TEMPLATE_CASE_SENSITIVE.bak
 - SQL_Latin1_General_CP1_CI_AS
 - DATABASE_BACKUP_IBSR_TEMPLATE.bak
 - Usp_IBSR_v04.05.01.sql
2. Select the SoftRater backup file you want to use, case sensitive or non-case sensitive.
3. **Copy the file** to an appropriate database folder on the machine where SQL Server is installed. For example, [Drive]:\Program Files\Insbridge\Databases. If you are unsure of a location, please consult with your database administrator.
4. **Rename the file.** It is not required but it is strongly suggested that the database file name be changed from TEMPLATE to something that defines the database more accurately. At a minimum, it is recommended that you remove “_TEMPLATE” from the name. You can change the names after they have been restored also.
5. **Open the SQL Server Management Studio** either on the server or remotely using either an administrative account with sa privileges or as the sa account.

NOTE: *If you do not have SQL Server Management Studio, check to see that the SQL Server Client has been installed. For a SQL Server install, you must have the SQL Server Client installed.*

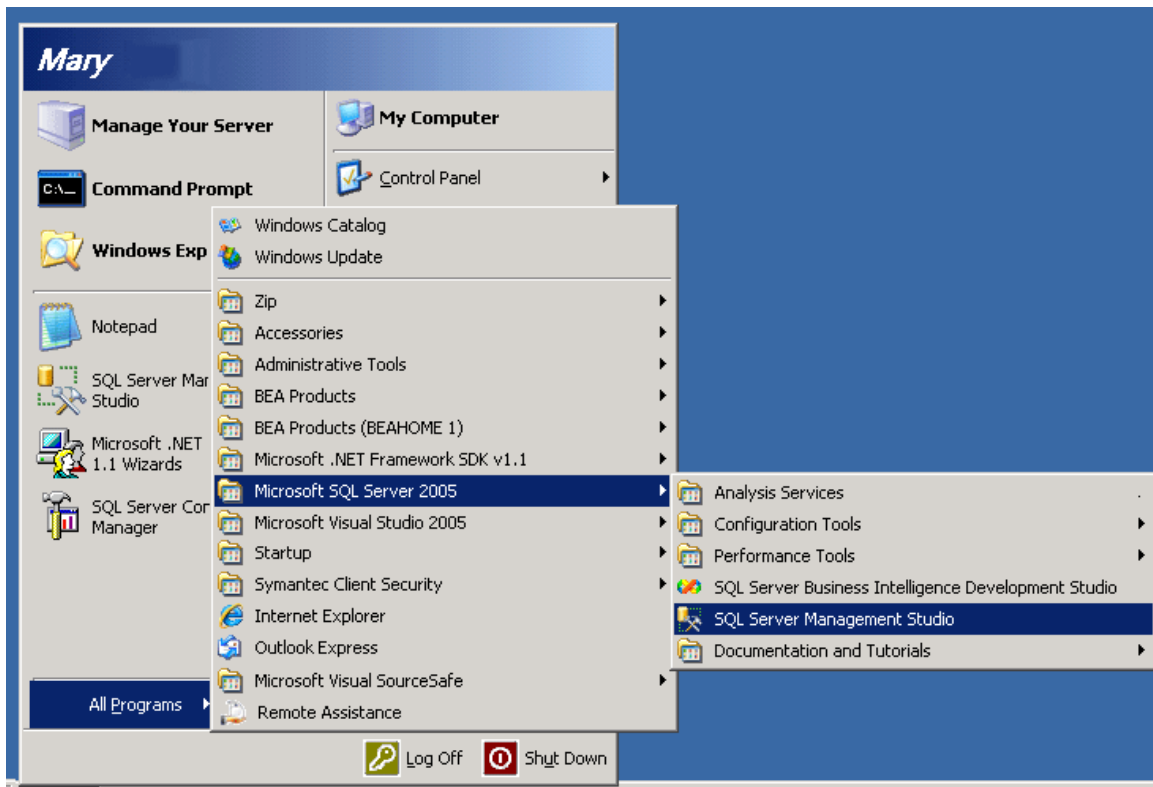


Figure 20 Restoring a Database to SQL Server

6. Go to **Databases**.

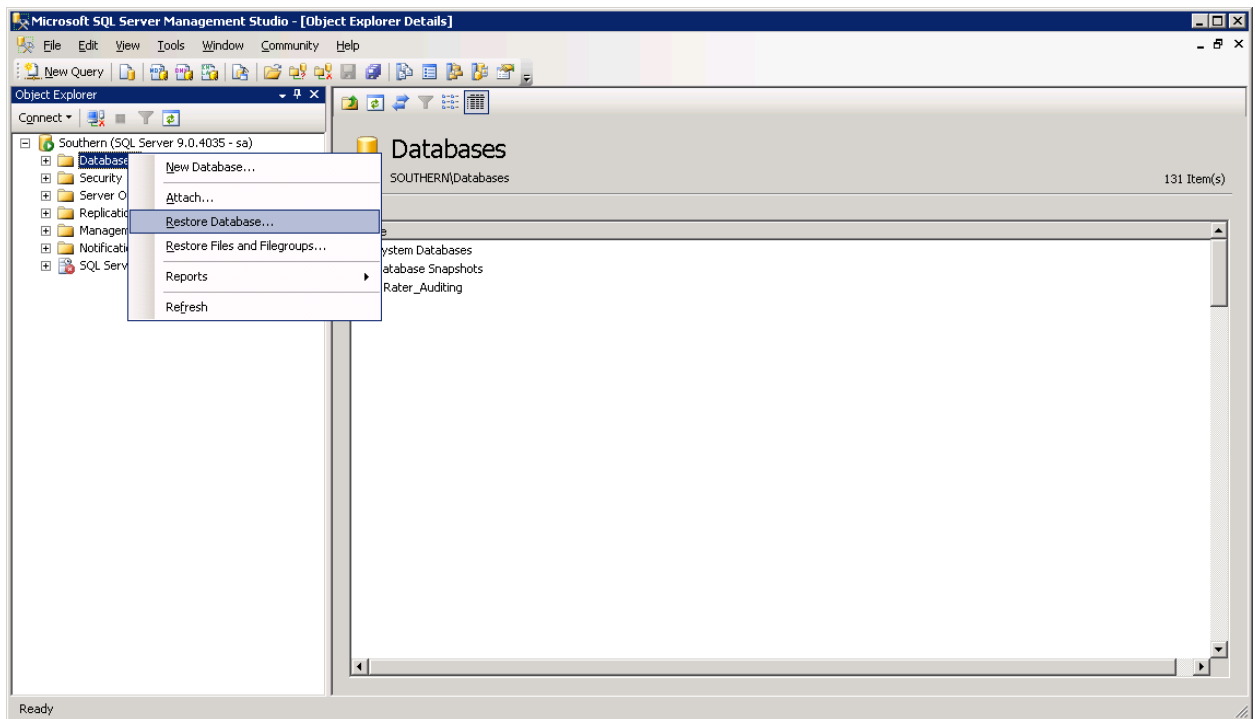


Figure 21 Right Click to Restore Database

7. Right click on **Databases**.
8. Select **Restore Database...** A separate screen will be displayed.

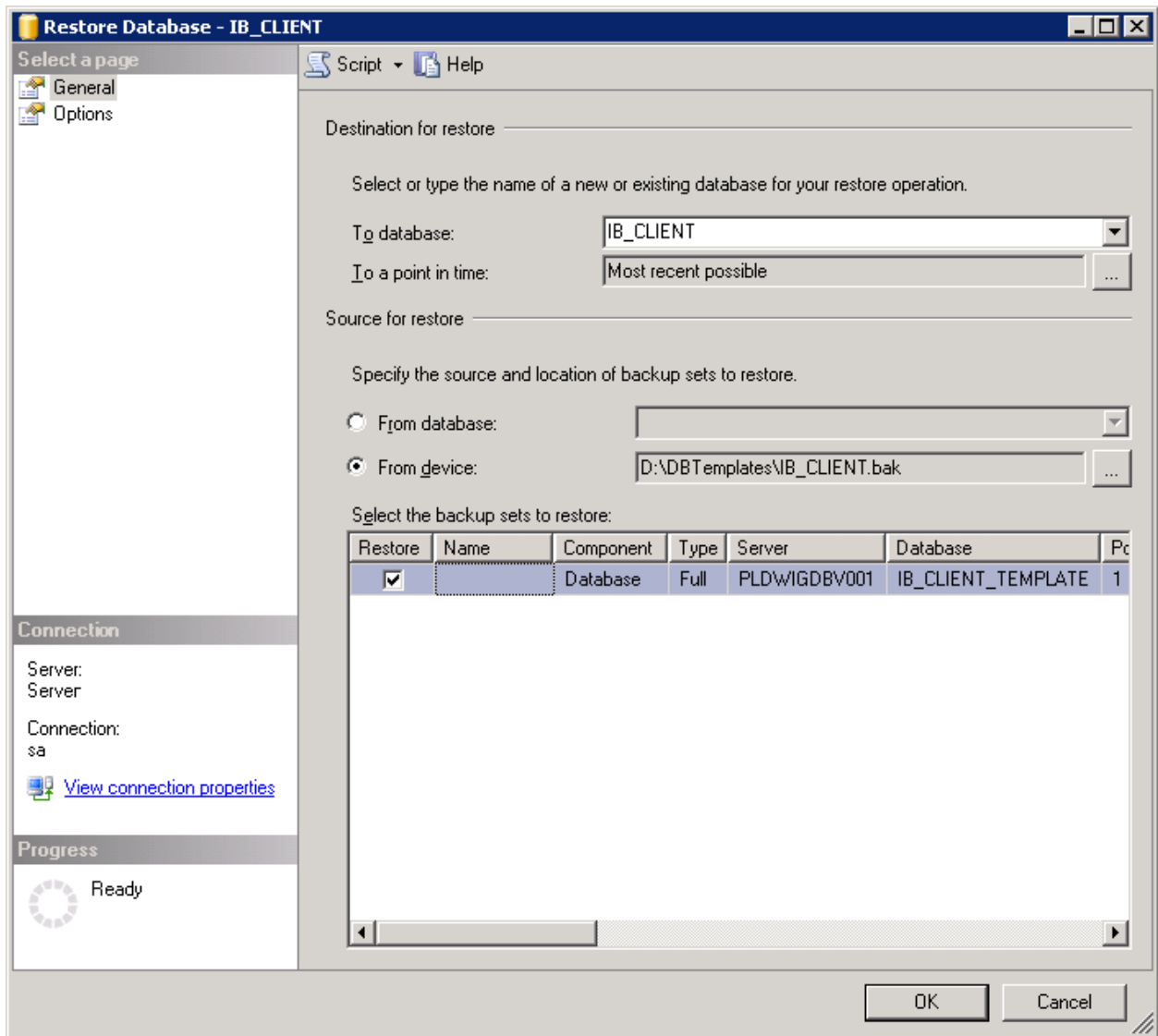


Figure 22 Restoring a Database

9. Enter your IBSR database name in **To Database:**.
10. Select **From Device**. Click ... to browse to the location where the database files were placed in step 2.
11. Select your database **IBSR_ xxxx.BAK**, where **xxxx** equals the renamed file from step 3.
12. Click **OK**. Your database will be populated.
13. Verify your information. Check the **Restore** box.

14. Click **OK**.
15. If the database was restored successfully, it will be displayed in the database folder. If not, please correct any errors and try again.
16. Once the database is restored to SQL Server, you will need to create or assign a SQL Server user account for the application. This user will be used for the connection to the databases when setting up the connections from the Insbridge Framework Administrator. Make note of the account you want to use. This information will be entered into the Insbridge Framework Administrator.

For ease of administration, the database user should have **db_owner** permissions on the IBSR_XXXX database.

STEP 6 – CONFIGURING INSBRIDGE FRAMEWORK ADMINISTRATOR

Open an Internet Explorer web browser either remotely on the local IBRU web server and browse to the following location, replacing SERVERNAME with the actual server name:

http://SERVERNAME/ibfa/

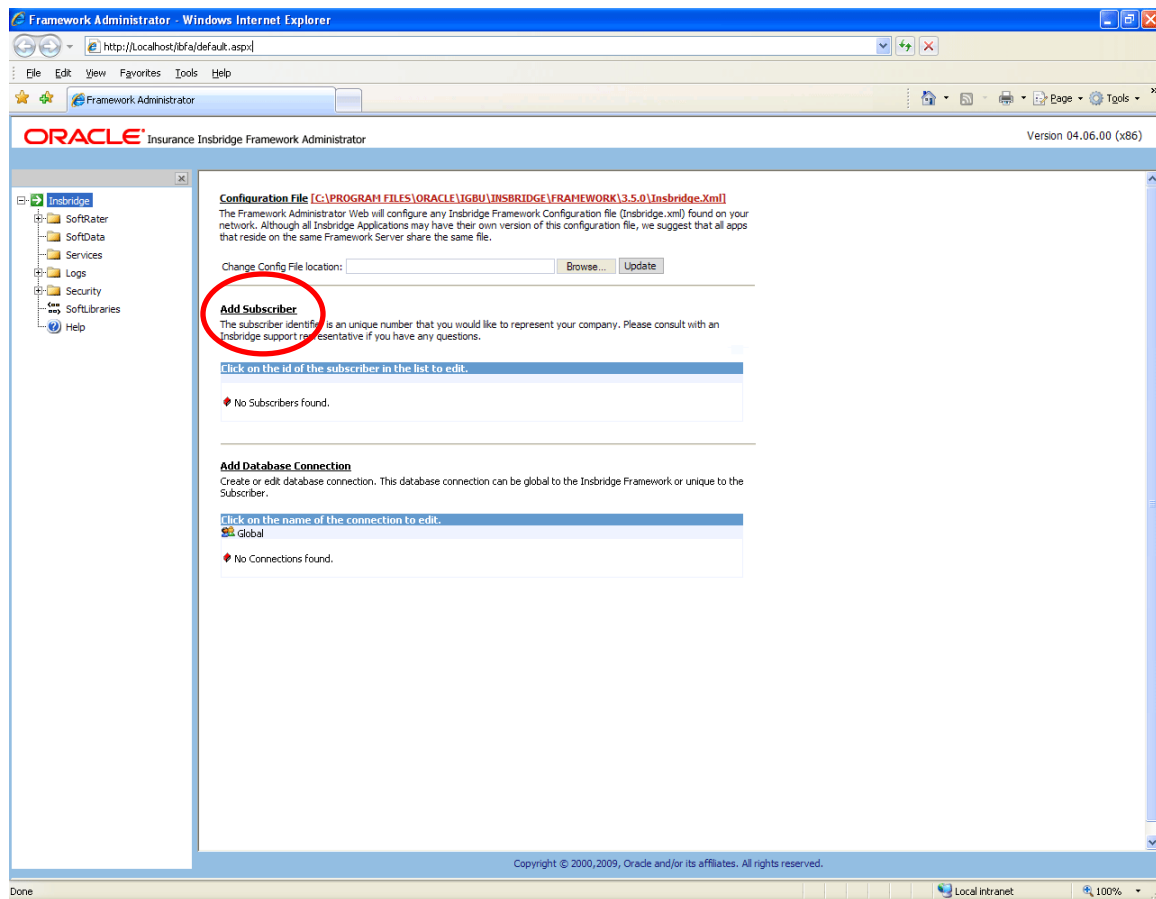


Figure 23 IBFA Home

NOTE: If you receive an access denied error message, please verify that you have given the Insbridge user full control of the Insbridge folder.

NOTE: If you receive an IDNX denied error message, please verify that the Insbridge user has full control over the Insbridge directory. Regedt->Insbridge Directory-> Security.

NOTE: If you receive an error regarding MCSiMenuCtl, please verify that you are using Internet Explorer 7.0 or 8.0 (32-bit). Release 4.6 does not support Internet Explorer 8.0 (64-bit).

To continue, you will need to exact names of the databases you restored in Step 5, IBSR database.

There are three steps that will need to be done in IBFA:

- **Step 1 – Creating a Subscriber**
- **Step 2 – Creating a RateManager Environment**
- **Step 3 – Creating a Virtual File Server**

Step 1 – Creating a Subscriber:

For this step you will need the subscriber information from the RateManager IBFA instance that you created previously. The subscriber created here must match that subscriber.

The ID and Name are fixed after the first time you save. These entries cannot be edited. Only the description can be edited. If you have made a mistake, you will have to create another subscriber and delete the incorrect entry.

1. Click on **Add Subscriber** on the Main IBFA screen. A separate screen will be displayed.
2. Enter the **ID**, **Name** and **Description** for your subscriber.
3. When you finish entering the information, click **Save**. The new subscriber will now be displayed in the list of subscribers.

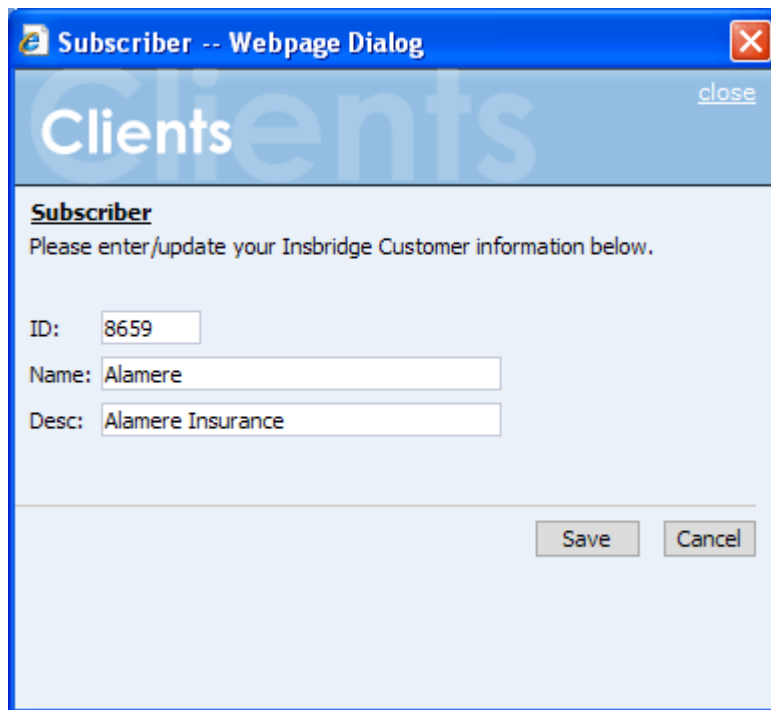


Figure 24 Enter ID

If you require assistance or are unsure of what action to take, please log a Service Request using My Oracle Support at <https://support.oracle.com/>.

Troubleshooting Subscriber Entries:

If you receive an error message or have difficulty creating a subscriber, you may need to add the Insbridge user to the Windows Machine Keys.

1. Go to C:\Documents and Settings\All Users\Application Data\Microsoft\Crypto\RSA\MachineKeys.
2. Right click and select Sharing and Security. Select the Security tab.
3. Add the Insbridge user.

Step 2 – Creating a SoftRater Environment:

Next, create the default rating environment for the SoftRater node.

It is recommended that you create one logical environment:

- SR – to identify the location of the local SRPs and the IBSR DB.

1. Browse to **SoftRater→Explorer→Subscriber name**.

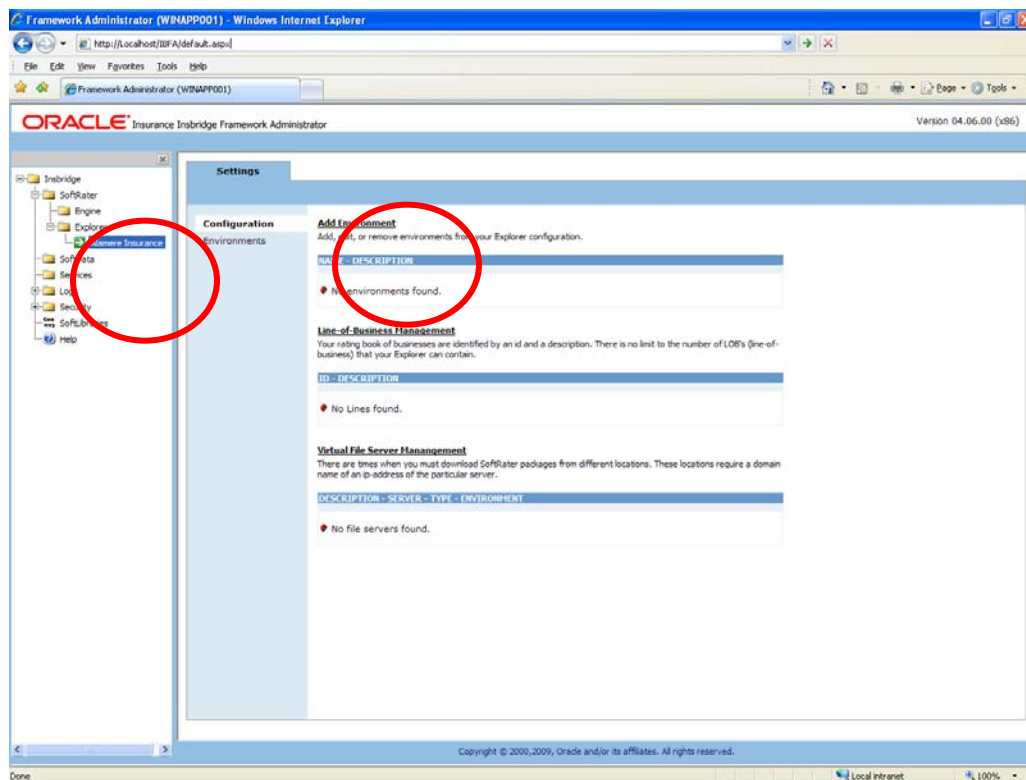


Figure 25 Create a Rating Environment

2. Click on **Add Environment**.

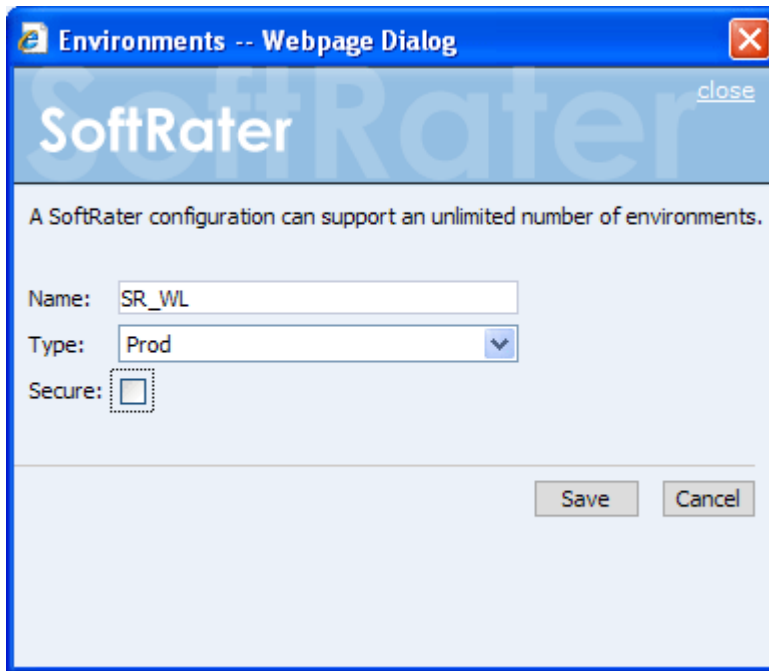


Figure 26 Entering Name and Environment

3. Enter a Name and select a Type. The name and type are totally dependent on how your IBRU system is designed.

There are three types of Logical Environments:

- **Development**
- **Quality Assurance**
- **Production**

After you have entered your logical environment, you must define it.

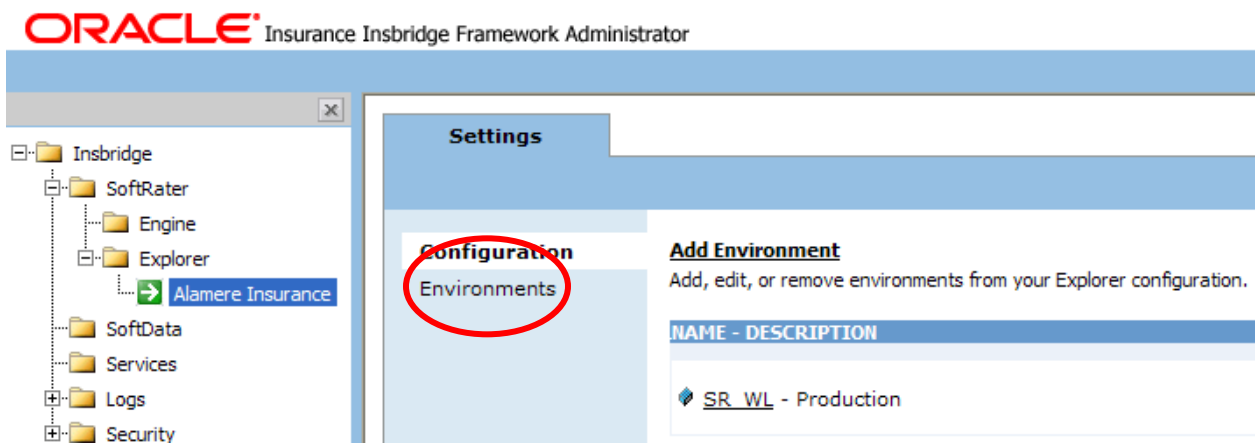


Figure 27 Obtaining Environment Information

4. Select the Environments link under the Config header on the left hand side to enter the configuration information for the newly created logical environment. You will be placed on the Environments screen.

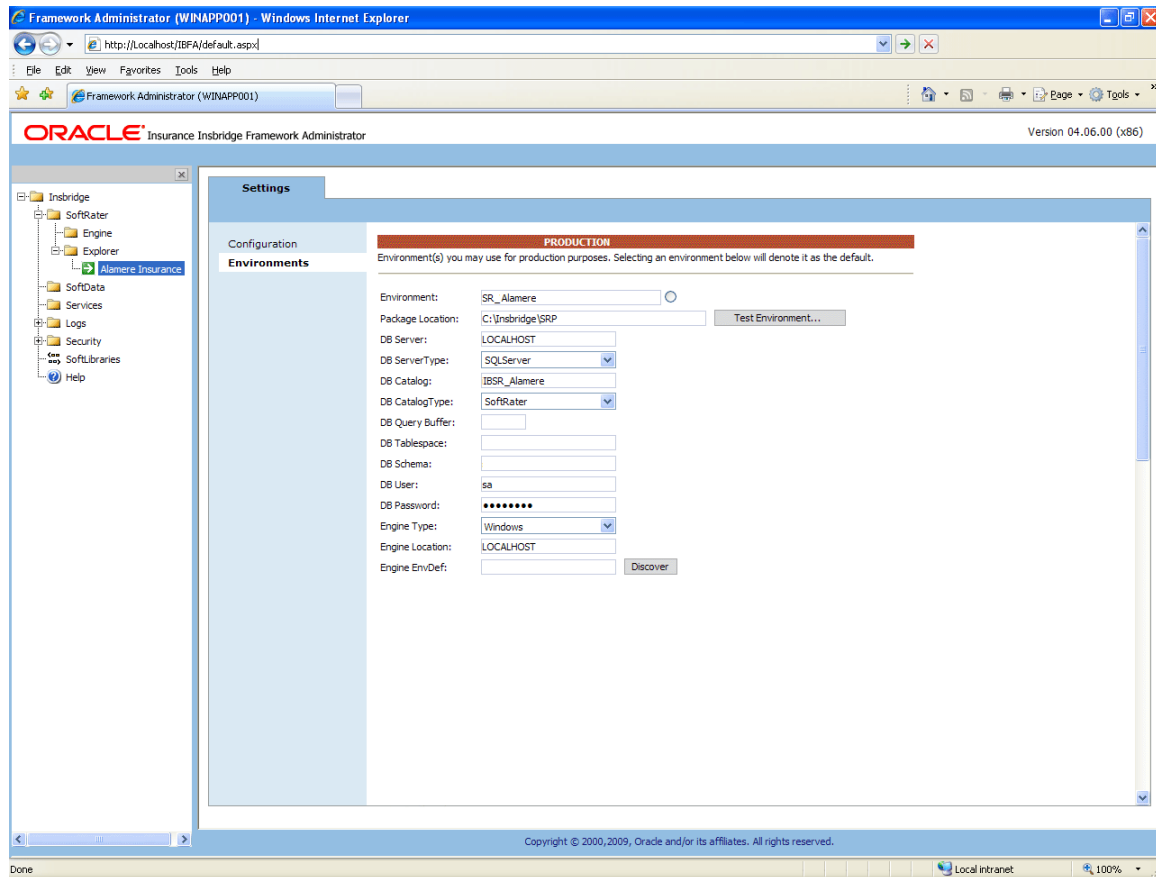


Figure 28 Editing Environment

Creating a SoftRater Environment

A SoftRater environment may be completed at installation or can be added at a later time. A SoftRater environment can only be on a Windows machine. There is no limit to the number of SoftRater environments that you can have.

1. The **Environment Name** will be complete. No changes are needed.
2. Enter in the file path where you want packages stored in the **Package Location**. Use the Test Environment option to have the location created for you.
3. Enter in the **DBServer** name or IP address. This is the database server where the SoftRater database was restored or created.
4. The **DB Server Type** will be **SQL Server**.
5. The **DB Catalog** is the name of the SoftRater database restored in SQL Server.

6. The **DB Catalog Type** is **SoftRater**.
7. **DB Query Buffer**, **DB Tablespace** and **DB Schema** are not required for a SoftRater for Windows (SoftRater Node) environment.
8. Enter the **DB User** name and **Password**.
9. The **Engine Type** is **Windows**.
10. The **Engine Location** is the location of where you installed the SoftRater engine. You can use the machine name or IP address. Most SoftRater installations have a local engine location. If the engine location is not on the local machine, enter the server name or IP address where the IBFA engine is located. Do not change LOCALHOST to the name or IP address of the local machine.
11. The **Engine EnvDef** is the machine name if the engine is located on a different server. You can use the machine name or IP address.
12. Click **SAVE** to save your entries.

Step 3 – Adding a Virtual File Server

Virtual file server management allows you to set up a link to servers that are in different locations where packages can be downloaded. In a typical QA environment, you will set up a Virtual File Server to point back to the QA logical environment that you created in your RateManager Development environment.

This step is necessary if you want to copy and load packages from environment to environment, however, if you do not have the information ready. You can do this at a later time.

1. From the Configuration Page, click the **Virtual File Server Management** link.

Virtual File Server Manangement

There are times when you must download SoftRater packages from different locations. These locations require a domain name or an ip-address of the particular server.


DESCRIPTION - SERVER - TYPE - ENVIRONMENT
 No file servers found.

Figure 29 Virtual File Server Management Screen

2. This will open the **Virtual File Server Management** window.

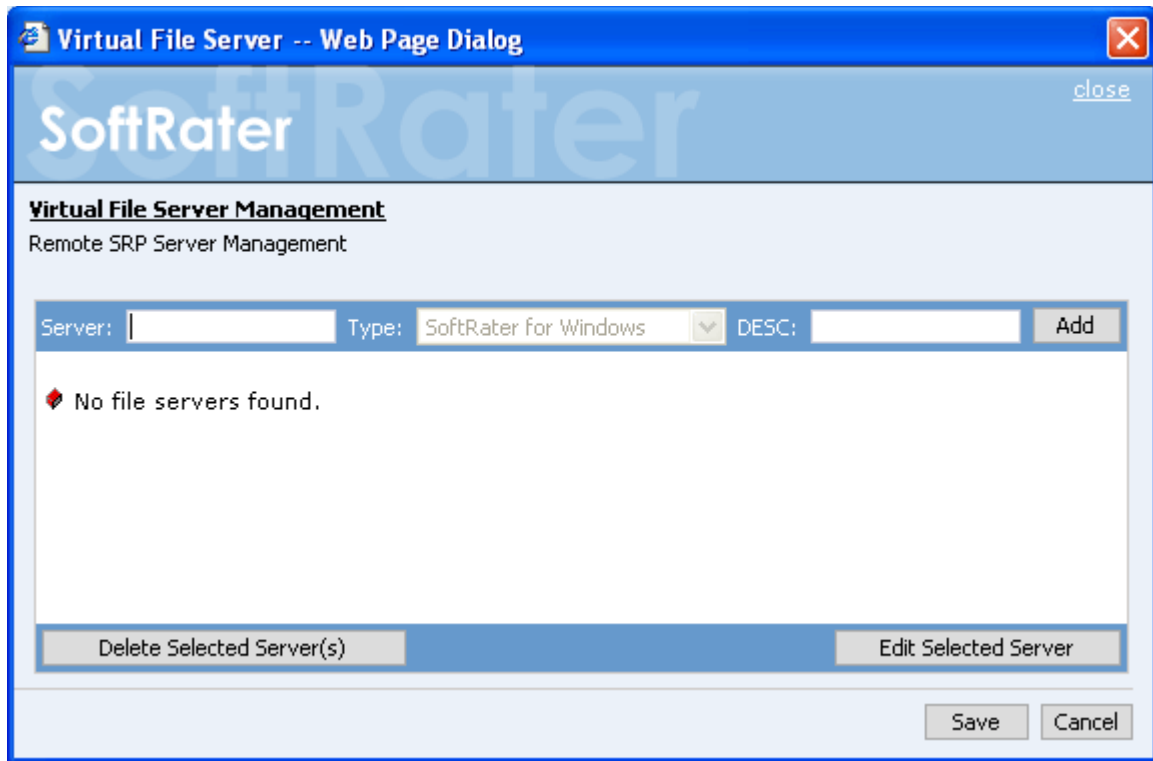


Figure 30 Virtual File Server Management Window

3. Enter the name of the server and a description. Take care when entering the server name. This field cannot be edited. If you have made a mistake, you must delete and re-enter.
4. Click **Add** to add the server to the list. Enter in as many servers as you need.
5. When you are finished, click **Save** to save your work and return to the previous screen.

STEP 7 – VERIFYING THE COMPONENT SERVICES

Next, you should verify the component services.

1. Click **Start→Administrative Tools→Component Services**.
2. Expand the **Component Services** option under console Root.
3. Expand **Computers→My Computer→COM+ Applications**.
4. Expand each Insbridge **COM+ library** to make sure there are components listed underneath each compartment.

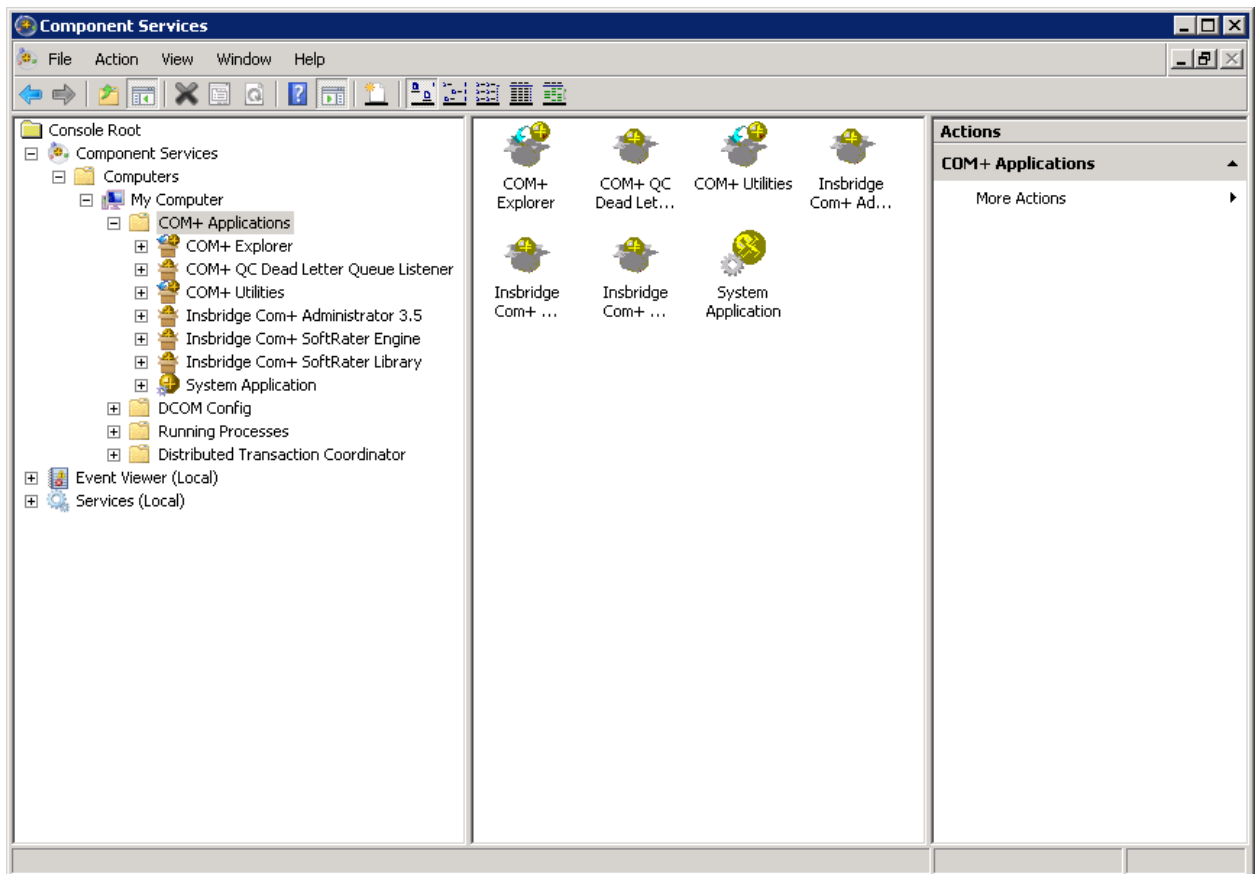


Figure 31 Component Services

There should be 3 Insbridge Com+ Applications libraries:

- Insbridge Com+ Administrator 3.5
- Insbridge Com+ SoftRater Engine
- Insbridge Com+ SoftRater Library

Please note that you will not have to make any changes to any COM+ Application library. The installation will automatically apply the Insbridge user name and password that you created earlier to the necessary libraries. If you change the password, you will have to change the password in all three of the Insbridge Com+ libraries. On each library, right click, select Properties, select the Identity tab, enter in the new password.

NOTE: *If any COM+ library is missing, run the IBRU install again from the msi file and choose uninstall. Then rerun the IBFA install. Uncheck the RateManager Install. Then check again to see if all the libraries are listed. If they are still not listed, please log a Service Request using My Oracle Support at <https://support.oracle.com/>.*

STEP 8 – ALLOWING FOR WCF ACTIVATION

WCF Activation is required for web services. RateManager makes call using IBFA web services. If this is not activated, users will experience errors. WCF Activation can be found under Features.

1. Select Start→Administrative Tools→Server Manager.
2. Select Features Summary. Scroll through the list to verify WCF Activation has been activated.
3. If not, select Add Features. The Add Features Wizard will be displayed.

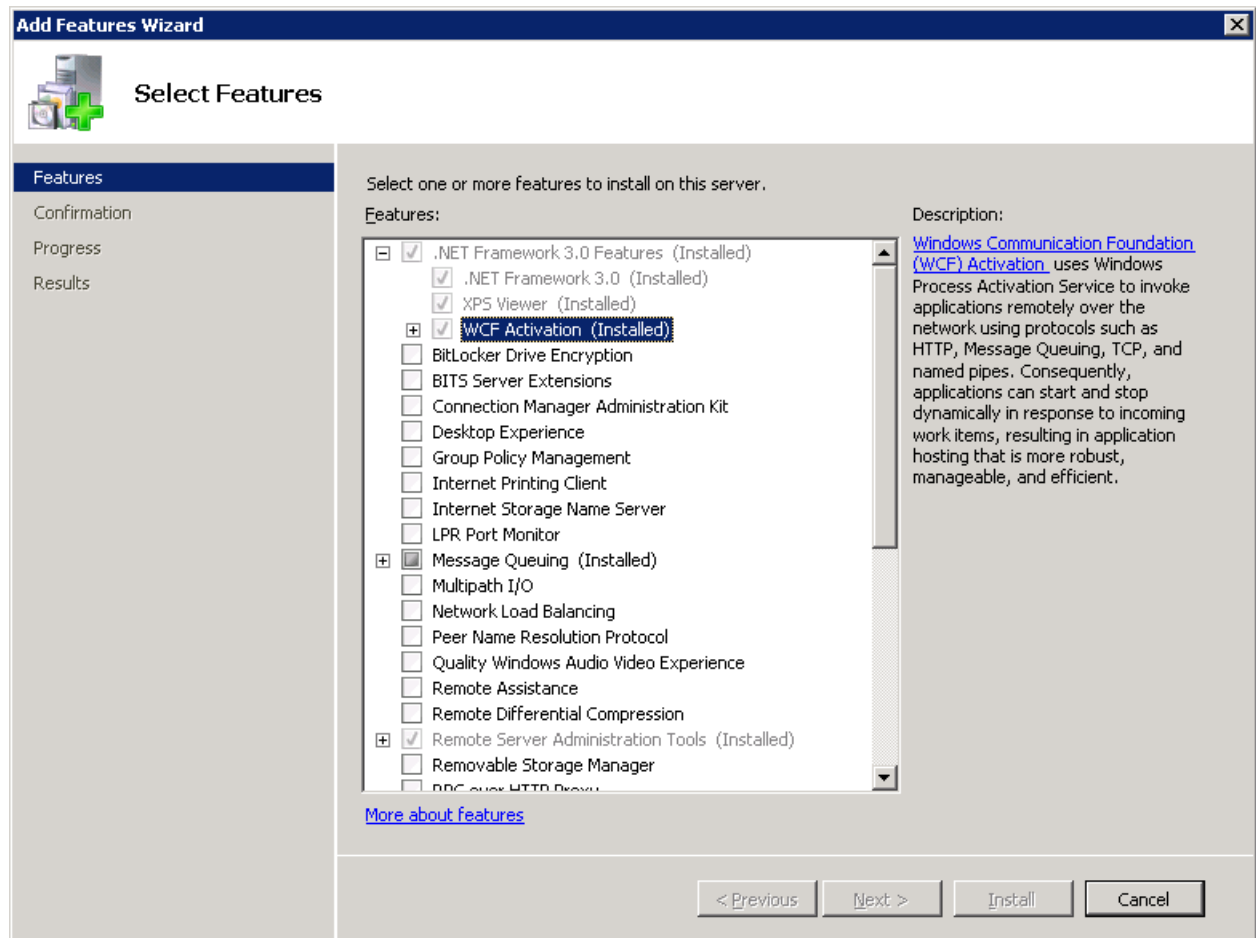


Figure 32 Selecting WCF Activation

4. Select WCF Activation. Click NEXT.
5. Confirm your selection and click INSTALL. The installation will proceed.
6. You can close out when complete.

STEP 9 – INSTALLING THE OBI PUBLISHER

OBI Publisher is necessary for reports. If you do not plan on using reports in IBFA, you do not need to install this program.

1. Unzip the OBI_PUBLISHER

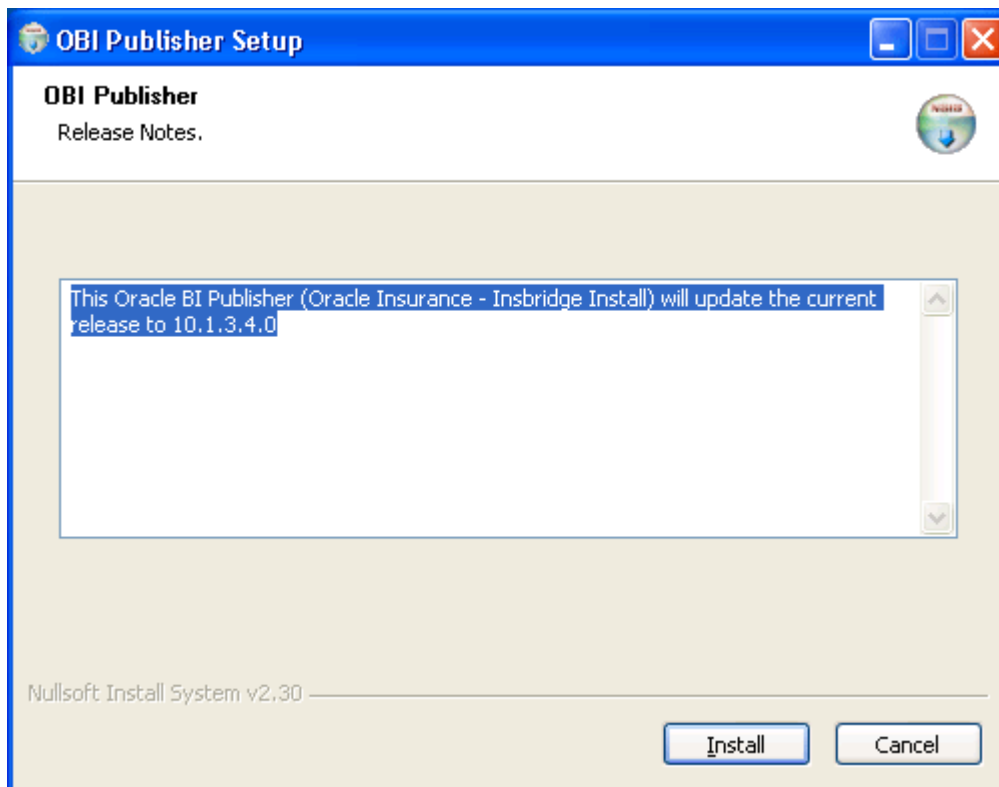


Figure 33 Installing OBI Publisher

2. Click **Install**. A progress screen will be displayed.
3. When complete, click **Close**.
4. In order for OBI Publisher to be available to users, you must start the **Insbridge Message Service**. The Insbridge Message Service can be started from IBFA or from the Server Manager in Windows 2008.

It is also recommended that you start the **Insbridge Task Manager** as well. The Insbridge Task Manager is a task queue that lists the tasks that are scheduled to be performed as well as the last time the task was run and the status.

STEP 10 – STARTING INSBRIDGE SERVICES

It is also recommended that you start the Insbridge Task Manager as well. The Insbridge Task Manager is a task queue that lists the tasks that are scheduled to be performed as well as the last time the task was run and the status.

Insbridge Message Service

The Insbridge Message Service is a Message Queue Listener that will route all batched messages to an assembly (process) for execution. These processes may take resources and time to execute. Please consult with you system admin before configuring the number of listeners per process.

Message Process

Batch Rating

If you see this message, you have not requested a listing from the selected spoke client. Clicking View Messages will provide you with a list view of the first in - first out messages that are waiting to execute.

Insbridge Task Manager

The Insbridge Task Manager gives you the ability to execute daily, weekly, hourly, or by the minute.

(This process may take a while to execute)

TASK	LAST RUN-DATE	START-TIME	STATUS
------	---------------	------------	--------

Figure 34 Insbridge Services Screen

1. In **IBFA**, navigate to the **Services** page.
2. Next to Insbridge Message Service, click **Start**. After a few seconds, the buttons will refresh to indicate that the service is started.
3. Next to Insbridge Task Manager, click **Start**. After a few seconds, the buttons will refresh to indicate that the service is started.

NOTE: The location and port for OBI Publisher is <http://localhost:9704/xmlpserver/>. This information may be needed if you have to make a request to your company's infrastructure and request the security team to open the ports used by Publisher.

STEP 11 – IMPORT INSBRIDGE REGISTRY KEY

The registry key from the RateManager/IBFA instance must be imported into the machine where the SoftRater for Windows is located. This will allow packages to be loaded and rated.

On the RateManager/IBFA Machine:

The Insbridge registry key located in HKEY_LOCAL_MACHINE→SOFTWARE→Insbridge is used to store all information for proper encryption of the SoftRater Packages (SRPs). This registry key should be exported to a text file and then imported into the SoftRater for Windows machine.

1. Select the Insbridge key: HKEY_LOCAL_MACHINE→SOFTWARE→Insbridge.
2. Right click and select **Export**.
3. Select a storage location for the file and **Save**.
4. Close out of Registry Editor.

On the SoftRater for Windows Machine:

1. Place the file you exported anywhere on the machine.
2. Click the file to start the import.
3. If the import fails, please correct any errors and try again.

STEP 12 – CONNECTING SR-WIN TO THE IBFA

The new instance of SoftRater for Windows will now need to be connected to the original installation of RateManager/IBFA. This will allow packages and SRPs to be loaded and unloaded from development to QA or Production environments.

Open an Internet Explorer web browser and browse to the location of the original RateManager/IBFA.

`http://SERVERNAME/ibfa/`

Creating Environments

Next, you will need to create the same rating environment of the SoftRater for Windows.

1. Browse to **SoftRater→Explorer→Subscriber name**.

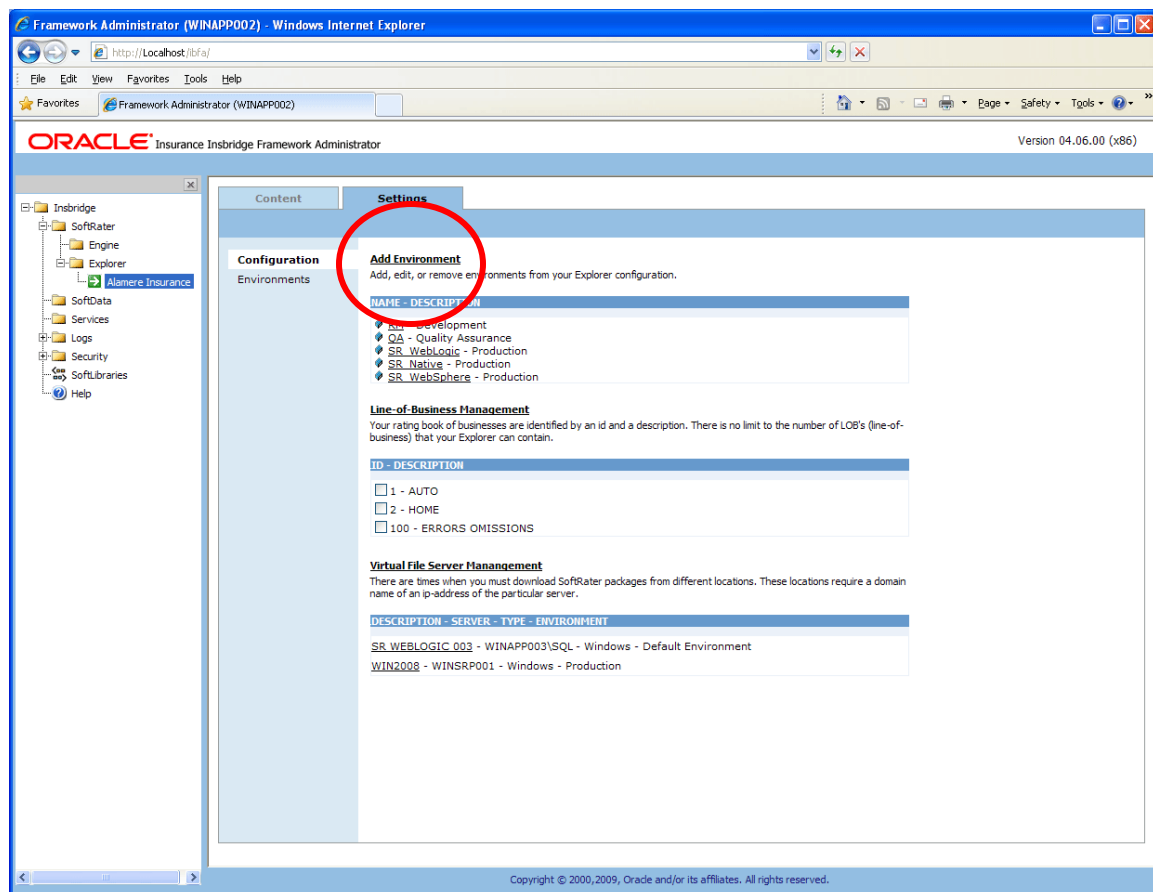


Figure 35 Create a Rating Environment

2. Click on **Add Environment**.

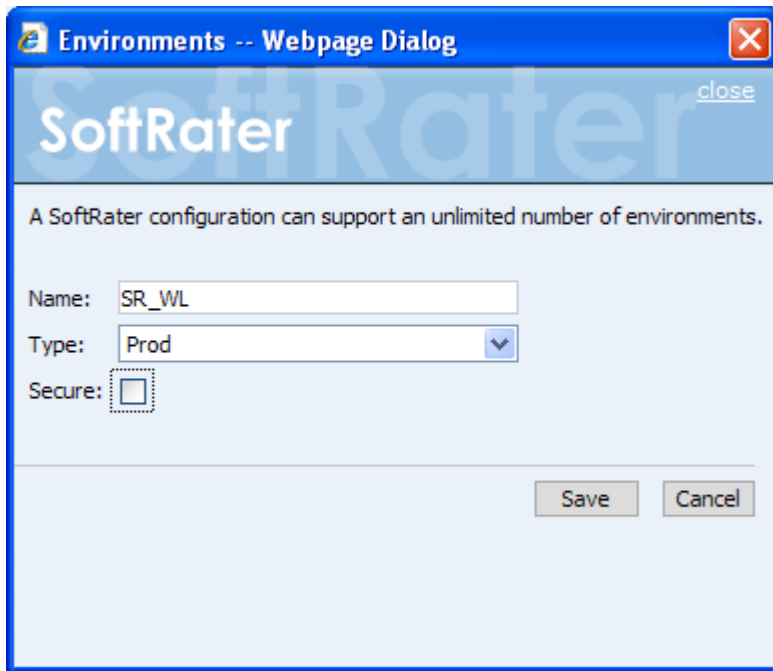


Figure 36 Entering Name and Environment

3. Enter the same Name and Type as the SoftRater for Windows instance.
4. After you have entered your logical environment, you must define it. Select the Environments link under the Config header on the left hand side to enter the configuration information for the newly created logical environment. You will be placed on the Environments screen.
5. Enter the exact same information as the SoftRater for Windows.
6. Click **Save** to save your information.

You can test connections and verify that you can load and unload packages.

SOFTRATER DATABASE REQUIREMENTS

For the Insbridge 4.6 release:

- The IBSR database has been tested and certified on MS SQL Server 2008 R2 on MS Windows 2008 64-bit.

IMPORTANT: *It is strongly recommended that any database modification be performed by a qualified database administrator (DBA). The database setup procedures and tasks require the skill set of a database administrator. If you are not a database administrator, please stop. Improper setup may result in unwelcome changes to the database. Please consult with a qualified database administrator before proceeding.*

DATABASE USER ROLES AND PERMISSIONS

If a more granular approach is required for management of security of the IBRU databases, then the following guidelines can be used to set the required permissions.

NOTE: *These are only guidelines. If not properly configured, certain processes within the Insbridge Rating and Underwriting System will fail. An experienced database administrator's expertise is highly recommended before making any security changes.*

Recommended SoftRater for Windows Permissions:

The recommended permissions are required for new tables to be created in the SoftRater (IBSR) database dynamically when or if a new line of business SRP (SoftRater Package) is loaded to the SoftRater system. If the recommended permissions are not possible, manual steps will need to be performed that will allow for packages to be loaded.

SoftRater can utilize SQL Server.

- **Insbridge SoftRater SQL Server Database.**

It is recommended that the Insbridge login be granted permission to connect to the database engine and be enabled. It is also recommended that the Insbridge login be mapped to the Insbridge database with the db_owner role checked.

It is recommended that the databases be on separate machines from the applications due to performance and security issues. The IBRU applications and databases can be tenants in a larger setup. No known conflicts exist between IBRU and other applications or required server settings.

It is recommended that db_owner permissions be given to the Insbridge user. This will allow scripts to be run automatically when a new package is loaded for a new line of business. If this is not possible, DT scripts for each new line will have to be run manually before the package can be loaded.

Microsoft SQL Server

Microsoft SQL Server should not be installed on the same machine where the Insbridge web applications reside. The SQL Server should reside on a separate host from the IBRU web front end with a properly configured network connection from the web server front end to SQL Server. Testing can be performed by using the Data Sources application in Administrative Tools to make a default connection to the database server.

NOTE: *All these settings are available during installation of SQL Server or by using SQL Server Enterprise Manager, and right clicking the server and selecting properties.*

If any of these settings conflict with existing application's databases residing on the SQL Server, then a separate instance is required.

Depending on the load expected, the databases can be placed on a separate SQL Server machines that can either be independent or shared as long as the following conditions are met.

- **Server Authentication:** Should be set to SQL Server and Windows Authentication mode.
- **Collation and Sort Order:** Currently supported is the default SQL Server collation using SQL_Latin1_General_CP1_CI_AS and sort order plus case sensitivity using Latin1_General_BIN as the server collation. The security database (IB_CLIENT) supports the default SQL Server collation using SQL_Latin1_General_CP1_CI_AS. The RateManager and SoftRater databases can use either case sensitive or non-case sensitive. Please check with Oracle Insurance for any questions regarding database server sort orders or collations.

NOTE: *For SQL Server, please make sure the SQL Server Client is installed.*

JDBC Driver Class

"com.microsoft.jdbc.sqlserver.SQLServerDriver"

Supported Versions – 2005 SP/2 and 2008 R2

User Account Requirements

Create Table

Create Index

Execute on the SoftRater User Defined Stored Procedures

CREATING AN INSBRIDGE APPLICATION POOL

Insbridge currently uses the default application pool and requires .NET framework setting of v2.0. This may present conflicts with other applications in the default pool that require a higher setting. Or if after a new install you receive an error when accessing IBFA:

```
CS0016: Could not write to output file  
'c:\Windows\Microsoft.NET\Framework64\v2.0.50727\Temporary ASP.NET  
Files\ibfa\783d6267\bcca0b3e\App_global.asax.zf-kqiii.dll' - 'Access is denied.'
```

You may need to create a separate Insbridge Application Pool.

There are three steps to creating an Insbridge application pool and then assigning the virtual directories.

- **Step 1:** Complete the RateManager installation. Make sure that Static Content is enabled in the Server Manager Roles.
- **Step 2:** Create a new Application pool in IIS called Insbridge. Be sure to configure the application pool to use the Insbridge user.
- **Step 3:** Associate the Insbridge application pool with virtual directories IBFA, IBRU, RM

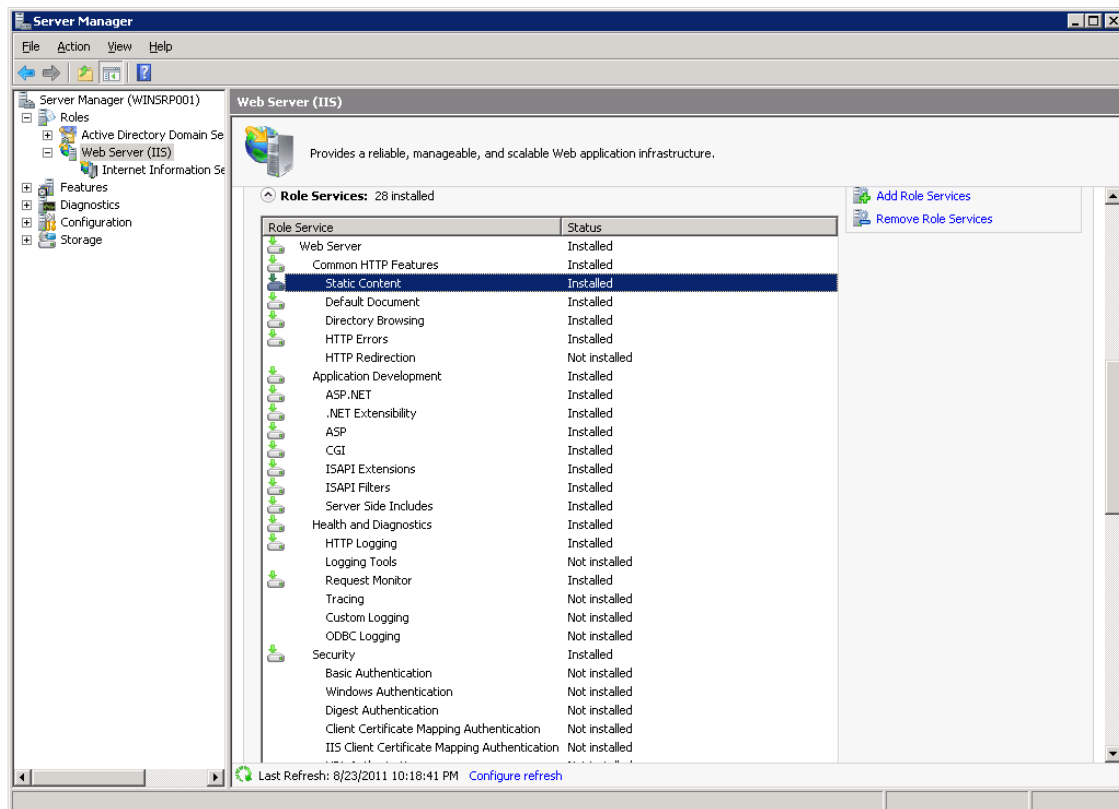


Figure 37 Enabling Static Content

Step 2 – Updating the Insbridge Application Pool

The Insbridge installation must be complete prior to creating an application pool.

1. Click **Start** → **Administrative Tools** → select **IIS Manager**.
2. Expand the **Local Computer** and select **Application Pools**. Right click and select **Add Application Pool**.

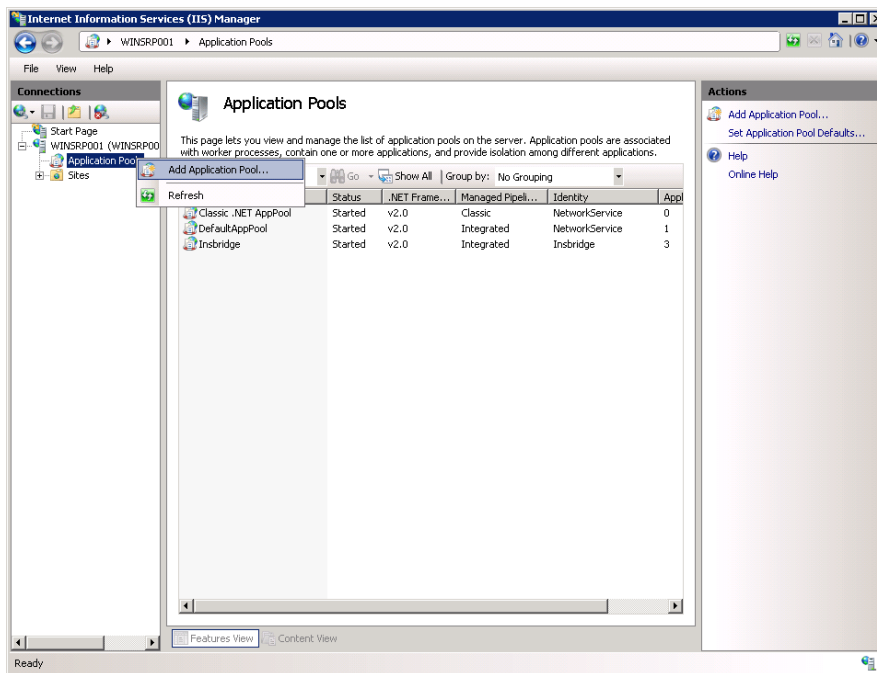


Figure 38 Navigating to Application Pool

3. Enter **“Insbridge”** for the Application pool Name. Select the **v2.0 for the .NET Framework version**. Click **OK**. You will be returned to the IIS screen. Your new application pool will be listed.

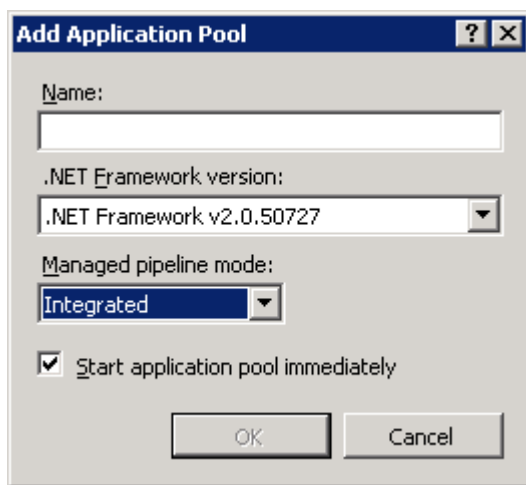


Figure 39 Creating a New Application Pool

- Right click the Insbridge Application Pool you created and select **Advanced Settings**.

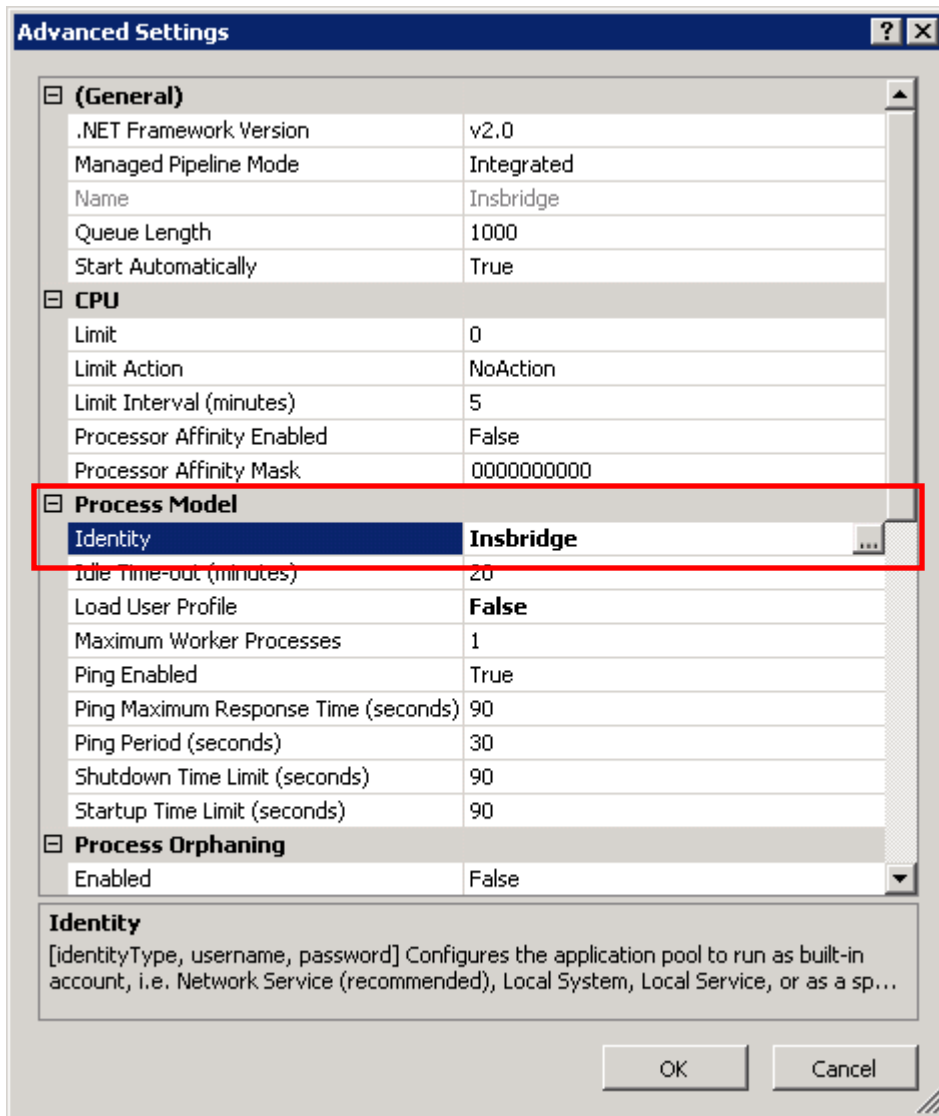


Figure 40 Selecting Application Pool Properties

- Verify that the .NET Framework Version is v2.0.
- For the Identity select **Insbridge**.
- Click **OK** to save your changes.

Step 2 – Associate the Virtual Directories with the Insbridge Application Pool

Next, you will need to association the Insbridge virtual directories with the new Insbridge application pool.

8. Stay in IIS Manager. Under **Local Server** → **Sites** → **Default Web Site**, select **IBFA**. Right click and select **Add Application**.

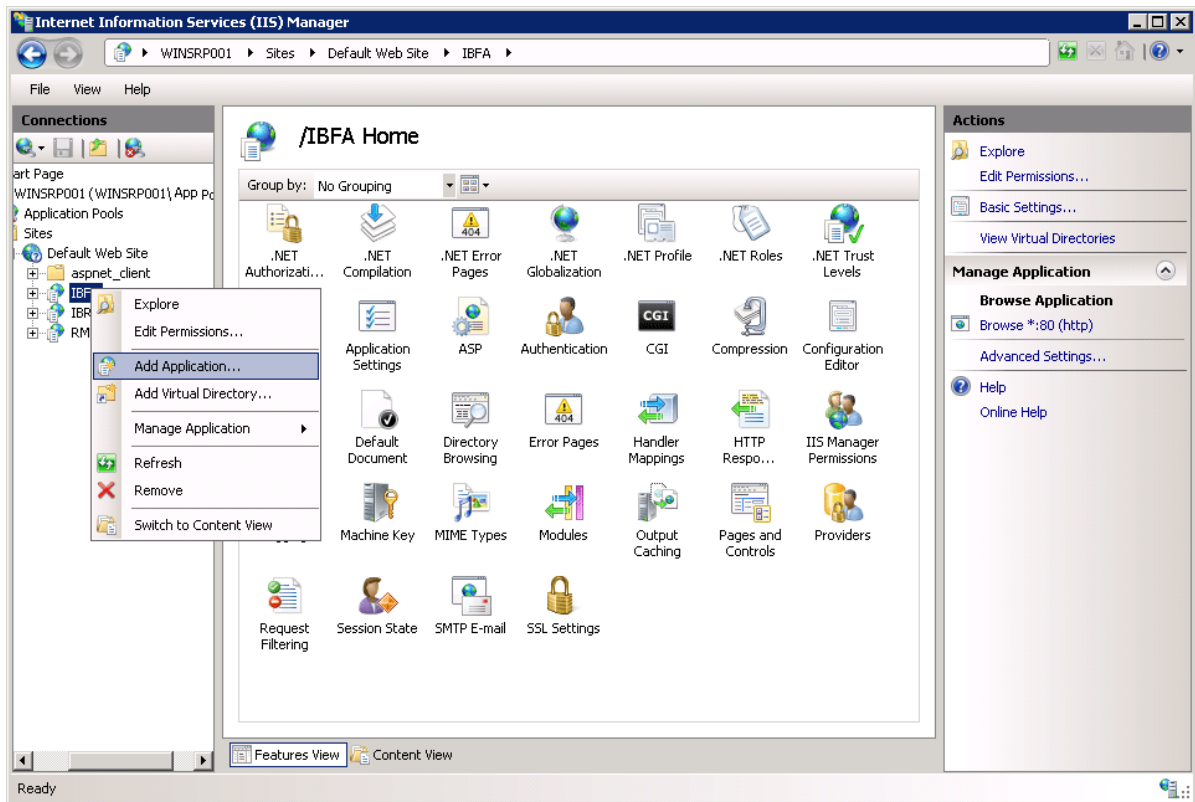


Figure 41 Adding Application to Virtual Directory

9. A separate window will be displayed. Select the **Insbridge Application Pool**.

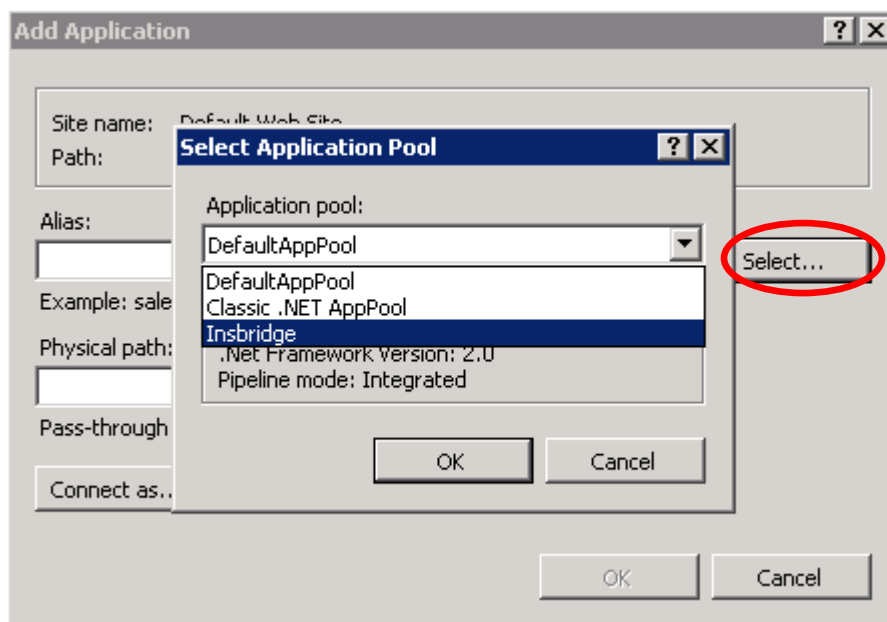


Figure 42 Selecting the OIDC Application Pool

10. Click **OK** to save your selections.
11. Repeat the process for **IBRU and RM** of selecting the Insbridge Application Pool.
12. Restart IIS. On the IIS screen, **Actions → Restart IIS**.

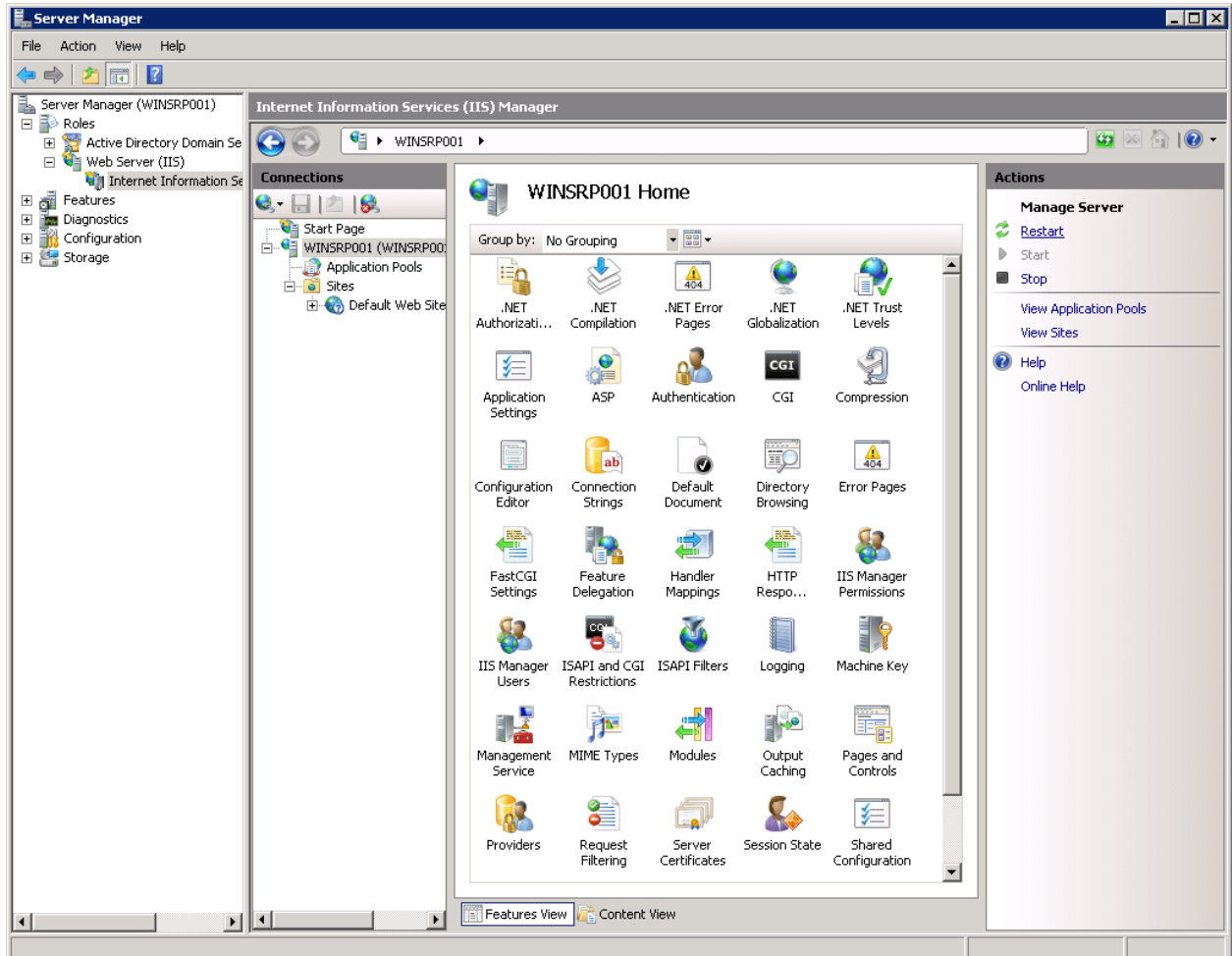


Figure 43 Restarting IIS

This issue may be more prevalent on a Windows 2008 64-bit machine. If you are not experiencing issues, you do not need to create an Insbridge application pool.

CONTACTING SUPPORT

If you need assistance with an Oracle Insurance Insbridge Rating and Underwriting System product, please log a Service Request using My Oracle Support at <https://support.oracle.com/>.

Address any additional inquiries to:

Oracle Corporation
World Headquarters
500 Oracle Parkway
Redwood Shores, CA 94065
U.S.A.

Worldwide Inquiries:
Phone: +1.650.506.7000
Fax: +1.650.506.7200
oracle.com

TTY ACCESS TO ORACLE SUPPORT SERVICES

Oracle provides dedicated Text Telephone (TTY) access to Oracle Support Services within the United States of America 24 hours a day, seven days a week. For TTY support, call 800.446.2398.

Index

A

- Adding
 - Local Machine Administrators Group 14, 15
 - Virtual File Server Management 44
- Administrative Permissions 19
- Application Pool
 - ID 57
 - Updating 57

B

- Backup
 - Registry Key 51

C

- Collation and Sort Order
 - SQL Server 35, 55
- COM+ Library 47
- Configuration Page
 - Virtual File Server Management 44
- Configuring
 - Insbridge Framework Administrator . 39, 52
 - Registry Editor 27
- Creating
 - Default Rating Environment 41, 52
 - Local User Account 14

D

- Database
 - IBSR Permissions 38
 - MS SQL Support 55
 - Permissions 54
 - Security 54
- db_owner Permissions 38
- Default Rating Environment
 - Creating 41, 52
- Description
 - Subscriber 40

E

- Edition Notice 2
- Encryption

- SoftRater Package 51
- Environment Types 42
- Export
 - Registry Key 51

H

- HKEY_LOCAL_MACHINE/SOFTWARE/Insbridge 27, 51
- http://SERVERNAME/ibfa/ 39, 52

I

- IBFA
 - Rerun 47
 - Start Insbridge 19
 - Uninstall 47
- IBRM_xxxx
 - db_owner Permissions 38, 40
- IBRU
 - Oracle Software Delivery Cloud 11
- IBRU Web Server
 - SERVERNAME 39
- IBRU_INSTALL_DIR 22
- IBSR Database
 - db_owner Permissions 38
- ID
 - Application Pool 57
 - Subscriber 40
- Insbridge Framework
 - Installing 14
 - Local User Account 14
- Insbridge Framework Administrator
 - Configuring 39, 52
 - Extended Permission 19
- Insbridge Key 29
- Insbridge Message Service 19, 50
- Insbridge Permissions 34
- Insbridge Properties 31
- Insbridge Task Manager Service 19
- insbridge user
 - Registry Key 27
- Installation
 - Starting 22
- Installation Order 20
- Installation Program
 - Requirements 21
- Installer
 - Admin Rights for Installation 21
- Installing
 - Insbridge Framework 14

L		insbridge user 27
	Local Machine Administrators Group	<i>Requirements</i>
	Adding User 14, 15	<i>Installation Program</i> 21
	Local User Account	SQL Server..... 55
	Insbridge Framework 14	<i>Rerun</i>
		IBFA 47
M		
	Microsoft SQL Server 55	
	<i>Missing</i>	
	COM+ Library..... 47	
	Mixed Mode Authentication	
	Sql Server 55	
N		
	Name	
	Subscriber 40	
O		
	Oracle Software Delivery Cloud	
	IBRU..... 11	
	Required Programs 11	
	Overview	
	Package 8	
	Virtual File Server Management 44	
P		
	Package	
	Environment..... 8	
	Overview 8	
	Part Numbers	
	Oracle Software Delivery Cloud 11	
	Password	
	Errors to COM+ Apps..... 17	
	Local User Account..... 16	
	PDF Reader	
	Oracle Software Delivery Cloud 11	
	Permissions	
	db_owner 38	
	Extended 19	
	Insbridge Key 27	
	Windows 2008..... 18	
R		
	<i>Registry Editor</i>	
	<i>Configuring</i> 27	
	Registry Key 51	
S		
	sa account	
	SQL Server Enterprise Manager..... 35	
	Security	
	Database 54	
	Server	
	Admin Permissions..... 19	
	Server Setup	
	Downloadable Packages..... 44	
	SERVERNAME	
	Replacing 39, 52	
	Service	
	Insbridge Task Manager 19	
	<i>Settings</i>	
	SQL Server..... 55	
	Shared	
	IBRU System..... 15	
	SoftRater	
	IBSR 54	
	Supported Databases 55	
	SoftRater Package	
	Encryption 51	
	SoftRater Packages	
	Environments 8	
	SQL Server	
	Collation and Sort Order 35, 55	
	JDBC Driver Class 55	
	Mixed Mode Authentication 55	
	Requirements 55	
	Residing on Separate Host 55	
	<i>Settings</i> 55	
	SoftRater Database Schema 55	
	Supported Version..... 55	
	User Account Requirements 55	
	User Accounts 38	
	SQL Server Account	
	ibru 35	
	SQL Server Enterprise Manager	
	sa Privileges 35	
	Subscriber	
	Information 40	
T		
	Type	
	Subscriber 40	

Types	
Environment	42

U

<i>Uninstall</i>	
<i>IBFA</i>	47
Unzip Utility	
Oracle Software Delivery Cloud	11
Updating	
Application Pool	57
User	
Access to Services	19
Local User Account	14
User Accounts	
SQL Server	38

V

Validating	
COM+ Library	46
VFS Definition	8
Virtual File Server Definition	8
Virtual File Server Management	44
Adding	44
Overview	44

W

Windows 2008	
Permissions	18