

**Oracle Insurance**

**Insbridge Rating and  
Underwriting  
SoftRater Node for  
Windows Installation**

Release 4.6

May 2012

Copyright © 2005, 2012, Oracle and/or its affiliates. All rights reserved.

Oracle Insurance Insbridge Rating and Underwriting SoftRater Node for Windows Installation Guide

Release 4.6

Part # E35588-01

Library # E35552-01

May 2012

Primary Authors: Mary Elizabeth Wiger

This software and related documentation are provided under a license agreement containing restrictions on use and disclosure and are protected by intellectual property laws. Except as expressly permitted in your license agreement or allowed by law, you may not use, copy, reproduce, translate, broadcast, modify, license, transmit, distribute, exhibit, perform, publish, or display any part, in any form, or by any means. Reverse engineering, disassembly, or decompilation of this software, unless required by law for interoperability, is prohibited.

The information contained herein is subject to change without notice and is not warranted to be error-free. If you find any errors, please report them to us in writing.

If this software or related documentation is delivered to the U.S. Government or anyone licensing it on behalf of the U.S. Government, the following notice is applicable:

#### **U.S. GOVERNMENT RIGHTS**

Programs, software, databases, and related documentation and technical data delivered to U.S. Government customers are "commercial computer software" or "commercial technical data" pursuant to the applicable Federal Acquisition Regulation and agency-specific supplemental regulations. As such, the use, duplication, disclosure, modification, and adaptation shall be subject to the restrictions and license terms set forth in the applicable Government contract, and, to the extent applicable by the terms of the Government contract, the additional rights set forth in FAR 52.227-19, Commercial Computer Software License (December 2007). Oracle USA, Inc., 500 Oracle Parkway, Redwood City, CA 94065.

This software is developed for general use in a variety of information management applications. It is not developed or intended for use in any inherently dangerous applications, including applications which may create a risk of personal injury. If you use this software in dangerous applications, then you shall be responsible to take all appropriate fail-safe, backup, redundancy, and other measures to ensure the safe use of this software. Oracle Corporation and its affiliates disclaim any liability for any damages caused by use of this software in dangerous applications.

Oracle is a registered trademark of Oracle Corporation and/or its affiliates. Other names may be trademarks of their respective owners.

This software and documentation may provide access to or information on content, products, and services from third parties. Oracle Corporation and its affiliates are not responsible for and expressly disclaim all warranties of any kind with respect to third-party content, products, and services. Oracle Corporation and its affiliates will not be responsible for any loss, costs, or damages incurred due to your access to or use of third-party content, products, or services.

Where an Oracle offering includes third party content or software, we may be required to include related notices. For information on third party notices and the software and related documentation in connection with which they need to be included, please contact the attorney from the Development and Strategic Initiatives Legal Group that supports the development team for the Oracle offering. Contact information can be found on the Attorney Contact Chart.

The information contained in this document is for informational sharing purposes only and should be considered in your capacity as a customer advisory board member or pursuant to your beta trial agreement only. It is not a commitment to deliver any material, code, or functionality, and should not be relied upon in making purchasing decisions. The development, release, and timing of any features or functionality described in this document remains at the sole discretion of Oracle.

This document in any form, software or printed matter, contains proprietary information that is the exclusive property of Oracle. Your access to and use of this confidential material is subject to the terms and conditions of your Oracle Software License and Service Agreement, which has been executed and with which you agree to comply. This document and information contained herein may not be disclosed, copied, reproduced, or distributed to anyone outside Oracle without prior written consent of Oracle. This document is not part of your license agreement nor can it be incorporated into any contractual agreement with Oracle or its subsidiaries or affiliates.

# CONTENTS

<b>PREFACE .....</b>	<b>6</b>
SOFRATER NODE.....	6
AUDIENCE .....	6
PLANNING YOUR IBRU SYSTEM .....	6
TYPES OF INSTALLATION .....	7
<i>Definitions .....</i>	<i>7</i>
RELATE DOCUMENTS .....	8
CONVENTIONS .....	9
<i>Manual History.....</i>	<i>9</i>
<b>CHAPTER 1.....</b>	<b>10</b>
<b>SYSTEM REQUIREMENTS.....</b>	<b>10</b>
<i>Required Components .....</i>	<i>10</i>
<i>Oracle Software Delivery Cloud .....</i>	<i>11</i>
<b>QUICK VIEW.....</b>	<b>13</b>
<b>SOFRATER FOR WINDOWS INSTALLATION .....</b>	<b>13</b>
<b>CHAPTER 2.....</b>	<b>14</b>
<b>SETTING UP WINDOWS.....</b>	<b>14</b>
STEP 1: INSBRIDGE LOCAL USER ACCOUNT SETUP .....	14
<i>Insbridge User Password .....</i>	<i>17</i>
STEP 2: WINDOWS 2008 PERMISSIONS .....	19
<i>Extended Permission Required by the Insbridge User .....</i>	<i>20</i>
<b>CHAPTER 3.....</b>	<b>21</b>
<b>SOFRATER FOR WINDOWS NODE INSTALLATION.....</b>	<b>21</b>
STEP 1 – INSTALL INSBRIDGE RATING AND UNDERWRITING .....	22
STEP 2 – CONFIGURING REGISTRY ACCESS.....	28
<i>Assigning Permissions for the Registry Access .....</i>	<i>28</i>
STEP 3 – ASSIGNING PERMISSIONS – WINDOWS TEMP FOLDER .....	31
STEP 4 – ASSIGNING PERMISSIONS – INSBRIDGE FOLDER.....	35
STEP 5 – RESTORING A SOFRATER DATABASE.....	38
STEP 6 – CONFIGURING INSBRIDGE FRAMEWORK ADMINISTRATOR.....	42
STEP 7 – VERIFYING THE COMPONENT SERVICES .....	49
STEP 8 – ALLOWING FOR WCF ACTIVATION.....	51
STEP 9 – INSTALLING THE OBI PUBLISHER.....	52
STEP 10 – STARTING INSBRIDGE SERVICES .....	53
STEP 11 – IMPORT INSBRIDGE REGISTRY KEY.....	54
STEP 12 – CONNECTING SR-WIN TO THE IBFA.....	55

<b>CHAPTER 4.....</b>	<b>57</b>
<b>SOFTRATER DATABASE REQUIREMENTS .....</b>	<b>57</b>
DATABASE USER ROLES AND PERMISSIONS.....	57
<i>Microsoft SQL Server .....</i>	<i>58</i>
<b>CHAPTER 5.....</b>	<b>59</b>
<b>WINDOWS 2003 SETTINGS AND PERMISSION NOTES .....</b>	<b>59</b>
<i>Microsoft .NET Framework.....</i>	<i>59</i>
<i>Internet Information Services (IIS) 6.0.....</i>	<i>60</i>
<i>Message Queuing Services .....</i>	<i>61</i>
<i>Installing Java Runtime Environment for PDF creation.....</i>	<i>62</i>
MDAC 2.8.....	62
<i>Special Considerations for Windows Server 2003.....</i>	<i>62</i>
<b>CHAPTER 6.....</b>	<b>64</b>
<b>CREATING AN INSBRIDGE APPLICATION POOL.....</b>	<b>64</b>
<b>SUPPORT.....</b>	<b>69</b>
<b>CONTACTING SUPPORT .....</b>	<b>69</b>
TTY ACCESS TO ORACLE SUPPORT SERVICES .....	69
<b>INDEX.....</b>	<b>70</b>

## LIST OF FIGURES

Figure 1 Creating New User .....	15
Figure 2 Adding User information.....	16
Figure 3 Adding User information.....	17
Figure 4 Windows 2008 Permissions .....	19
Figure 5 Adding IIS 6 Metabase Compatibility .....	20
Figure 6 Installing Insbridge .....	22
Figure 7 Entering the Destination Folder for Insbridge.....	23
Figure 8 Logon Information .....	24
Figure 9 Selecting Features for Installation .....	25
Figure 10 Ready to Install.....	26
Figure 11 Installation Progress.....	26
Figure 12 Install ReadMe Screen .....	27
Figure 13 Configure Registry Access Windows Server.....	28
Figure 14 Entering the User .....	29
Figure 15 Applying Permissions .....	30
Figure 16 Verifying Application Pool Settings .....	31
Figure 17 Assigning Permissions for the Insbridge User on Windows Temp .....	32
Figure 18 Temp File Properties .....	33
Figure 19 Assigning Permissions for the Insbridge User on Insbridge .....	35
Figure 20 Insbridge Folder Properties .....	36
Figure 21 Restoring a Database to SQL Server.....	39
Figure 22 Right Click to Restore Database .....	39
Figure 23 Restoring a Database.....	40
Figure 24 IBFA Home .....	42
Figure 25 Enter ID .....	43
Figure 26 Create a Rating Environment.....	44
Figure 27 Entering Name and Environment .....	45
Figure 28 Obtaining Environment Information.....	45
Figure 29 Editing Environment .....	46
Figure 30 Virtual File Server Management Screen .....	47
Figure 31 Virtual File Server Management Window.....	48
Figure 32 Component Services .....	49
Figure 33 Selecting WCF Activation.....	51
Figure 34 Installing OBI Publisher .....	52
Figure 35 Insbridge Services Screen .....	53
Figure 36 Create a Rating Environment.....	55
Figure 37 Entering Name and Environment .....	56
Figure 38 Installing .NET Framework .....	59
Figure 39 Enabling Active Server Pages and ASP.NET v2.0 .....	61
Figure 40 Message Queuing Type .....	61
Figure 41 Enabling Static Content.....	64
Figure 42 Navigating to Application Pool .....	65
Figure 43 Creating a New Application Pool.....	65
Figure 44 Selecting Application Pool Properties .....	66
Figure 45 Adding Application to Virtual Directory.....	67
Figure 46 Selecting the OIDC Application Pool.....	67
Figure 47 Restarting IIS.....	68

## PREFACE

Welcome to the *Oracle Insurance Insbridge Rating and Underwriting SoftRater for Windows Node Installation Guide*. This guide describes how to install and configure a SoftRater for Windows Node. SoftRater may be used in conjunction with the Oracle Insurance Insbridge Rating and Underwriting RateManager (RateManager) system to process rating requests or it may stand alone.

---

**NOTE:** *SoftRater for Windows Node has been tested and certified on MS Windows 2008 64-bit.*

---

## SOFTRATER NODE

A SoftRater for Windows installation is also called a SoftRater node installation. A SoftRater node is an IBFA instance on a machine that allows for packages to be copied and loaded from environment to environment. A SoftRater node installation is done on a Windows machine and utilizes a SQL Server database.

This type of install is like a Full RateManager Installation with the RateManager option set to not install. Also, a Virtual File Server will be set up to allow this machine to communicate with the RateManager machine.

This installation will be the same for the Production environment with a Virtual File Server set up to allow it to communicate with the QA machine.

SoftRater Nodes can be added any time after RateManager has been installed.

## AUDIENCE

This guide is intended for technical personnel, such as installers, system administrators and others tasked with configuring SoftRater that would be involved in the maintenance and operation of SoftRater or RateManager. The audience for this guide should have a thorough knowledge of Windows.

## PLANNING YOUR IBRU SYSTEM

Prior to installation, you should have an idea of the type of setup you want to create. What kind of equipment do you have available and how many environments do you need? If you do not have everything completely planned out, you can still proceed. Environments can be removed or added later on. The Oracle Insurance Insbridge Rating and Underwriting system (IBRU) is expandable and can accommodate a few different configurations.

For more on planning your IBRU system, please see the Insbridge Implementation Guide.

## TYPES OF INSTALLATION

There are various types of installations:

### RateManager Installation

- **Full RateManager** – This installation will install RateManager and the Insbridge Framework Administrator (IBFA). This is for a Windows only environment using a SQL Server database.

### SoftRater Installation

- **Full SoftRater for Java Installation** – This installation will deploy SoftRater to an application server; WebLogic, WebSphere or JBoss, using a SQL Server database or an Oracle database.
- **Full SoftRater for Windows Node** – This installation is for existing environments that want to add a SoftRater for Windows node to an environment. This is for a Windows only environment using a SQL Server database.

### Upgrading a Current Installation

- **Upgrade** – This installation is for existing customers and will take their current version of IBRU up to version 04.05.01.

**This guide is for a Full SoftRater for Windows Node.**

## Definitions

Some commonly used terms when installing or using the Oracle Insurance Insbridge Rating and Underwriting system:

- **IBRU** – Insbridge Rating and Underwriting System. This is the entire system.
- **IBFA** – Insbridge Framework Administrator. IBFA is an administrative tool used to configure Insbridge applications and setup RateManager database connections. IBFA will be located on a Windows Server machine. IBFA/SR-WIN is an Insbridge Framework Administrator/SoftRater for Windows.
- **IBSS** – Insbridge SoftRater Server. IBSS is the administrative tool for the SoftRater engine. The SoftRater engine is a multi-platform component within IBRU that executes the rules, rating and underwriting instructions as defined by the user in RateManager. IBSS is usually located on a Java machine. IBSS/SR-JAVA is an Insbridge SoftRater Server/SoftRater for Java.
- **SoftRater Node** – A SoftRater node is either an IBFA (without RateManager) or IBSS instance on a physical environment.

- **SoftRater Native** – SoftRater Native is a remote instance of SoftRater that can execute rules and rating logic in environments where access via the SoftRater web-services is not desired or possible.
- **RM** – RateManager. RateManager is a component within IBRU that enables users to manage the product definition and modification process, including rating and underwriting logic.
- **SR** – SoftRater. The engine that executes the rating, rules and underwriting instructions defined within RateManager. The rating environment for runtime execution and processing of business content. SoftRater can be further defined by the operating system where it has been loaded.
- **SR-WIN** – SoftRater for Windows. This is also another name for IBFA.
- **SR-JAVA** – SoftRater for Java. This is also another name for IBSS.
- **SRP** – SoftRater Packages. A package that holds all the RateManager logic for a specific program and version.
- **VFS** – Virtual File Servers. Virtual file server management allows you to access environments that are located on other machines in different locations where packages can be downloaded.
- **Package Location** – A pointer to a location where SoftRater Packages (SRP's) are stored.
- **Physical Environment** – A physical environment is generally referred to as a physical machine.
- **Authoring Environment** – The physical machine where RateManager is installed.
- **Rating Environment** – The physical machine(s) where SoftRater is installed. This is typically the same as a SoftRater node.
- **Logical Environment** – An environment created for a subscriber in IBFA. It defines package location, engine location and database location in addition to several other supporting data items. This environment is used for rating and/or SRP management. Each database connection will have a logical environment.

## RELATE DOCUMENTS

For more information, refer to the following Oracle resources:

- The Oracle Insurance Insbridge Rating and Underwriting Framework Administrator.
- The Oracle Insurance Insbridge Rating and Underwriting SoftRater Server Guide.
- You can view these guides in-line at this address:

<http://www.oracle.com/technetwork/documentation/insurance-097481.html>



## CONVENTIONS

The following text conventions are used in this document:

Convention	Description
<b>bold</b>	Boldface type indicates graphical user interface elements associated with an action.
<i>italic</i>	Italic type indicates book titles, emphasis, or placeholder variables for which you supply particular values.
<code>monospace</code>	Monospace type indicates commands within a paragraph, URLs, code in examples, text that appears on the screen, or text that you enter.

## Manual History

New editions incorporate any updates issued since the previous edition.

Edition	Publication Number	Product Version	Publication Date	Comment
1 <sup>st</sup> Edition	P01-702-01		May 2011	Initial Release
2 <sup>nd</sup> Edition	P01-702-02	R 4.5.1	September 2011	Update Release
3 <sup>rd</sup> Edition	P01-702-03	R 4.6	May 2012	Update Release

# SYSTEM REQUIREMENTS

Prior to installing a SoftRater for Windows node (SR-WIN), a full installation of RateManager should be installed and running. You will need to enter the properties of the SR-WIN in the IBFA associated with RateManager.

IBRU installers should be familiar with managing a Windows server. For help with verifying or installing required components for Windows 2003, please see Windows 2003 Settings and Permission Notes on page 59. For a 64-bit machine, please see Insbridge Installation for 64-bit.

## Required Components

The following components are required:

- **A full installation of Microsoft Windows Server 2008 or Windows Server 2003**
- **Microsoft .NET Framework version 3.5**
- **IIS – Internet Information Services version 6.0 or 7.0**
- **For Windows 2008 Server – IIS 6 Metabase Compatibility**
- **For Windows 2008 Server – Web Server (IIS) – Static Content is required**
- **For Windows 2008 Server – WCF http activation needs to be enabled**
- **For Windows 2008 Server – The ASP.NET roll must be installed**
- **MSMQ – Microsoft Message Queuing Services – basic functionality only**
- **Insbridge User Account**
- **Database name or Environment name**
- **Database login information**
- **Database server name, either IP or DNS**
- **Database backup file, IBSR\_Template for SQL Server. This file is located in the 04.06.00 Insbridge IBRU folder.**
- **Access to the server where the IBRU system was installed**
- **URL of the current IBFA**
- **Subscriber ID**
- **Package location where you want the packages stored**

These components will be needed at various times during the installation and implementation of SoftRater for Windows Nodes.

## Oracle Software Delivery Cloud

Prior to installation, please make sure the source machine(s) where IBRU will be loaded has an unzip utility. An unzip utility for most platforms is available on the Oracle Software Delivery Cloud download page.

Documentation from Oracle Software Delivery Cloud is in PDF format. Prior to installation, please make sure the source machine(s) where IBRU documentation will be loaded has a PDF reader.

Files are downloaded with part numbers as file names. Please make note of the part numbers you have downloaded and the corresponding file name. You may be asked to provide the part numbers or the filename if you contact Oracle Insurance Support.

The installation downloads you can select are:

- **Insbridge IBRU Install** – This is required for all RateManager installations
- **SoftRater for WebSphere** – This is required if you are using WebSphere
- **SoftRater for WebLogic** – This is required if you are using WebLogic
- **SoftRater for Jboss** – This is required if you are using Jboss
- **Documentation** – It is recommended that you download the documentation. Installation guides and user guides are located here.

### The 04.06.00-Insbridge-IBRU folder contents:

- **Databases**
  - ♦ DB2
    - SoftRater – IBSR
      - DDL
  - ♦ Oracle
    - SoftRater – IBSR
      - DDL
      - Update:Usp\_IBSR\_v04.05.00.oracle
  - ♦ SQL Server
    - RateManager – IBRM
      - Latin1\_General\_BIN
        - DATABASE\_BACKUP\_IBRM\_TEMPLATE\_CASE\_SENSITIVE.bak
      - SQL\_Latin1\_General\_CP1\_CI\_AS
        - DATABASE\_BACKUP\_IBRM\_TEMPLATE.bak
    - Security – IB\_CLIENT
      - SQL\_Latin1\_General\_CP1\_CI\_AS
        - DATABASE\_BACKUP\_IB\_CLIENT\_TEMPLATE.bak
    - SoftRater – IBSR
      - Latin1\_General\_BIN
        - DATABASE\_BACKUP\_IBSR\_TEMPLATE\_CASE\_SENSITIVE.bak
      - SQL\_Latin1\_General\_CP1\_CI\_AS
        - DATABASE\_BACKUP\_IBSR\_TEMPLATE.bak

- Update:Usp\_IBSR\_v04.05.01.sql
- **IE7\_IE8 Users**
  - ◆ Insbridge IE7 Active X Control Update PDF
  - ◆ RateManager\_IE7\_IE8.exe
- **Oracle BI Publisher**
  - ◆ OBI\_PUBLISHER.exe
- **Oracle Client**
  - ◆ Oracle\_client.exe
- **Oracle Insurance – Insbridge Rating and Underwriting.exe**

**The SoftRater for Windows 04.06.00 requires:**

- Oracle Insurance – Insbridge Rating and Underwriting.exe
- SQL Server
  - SoftRater – IBSR
    - ◆ Latin1\_General\_BIN
      - DATABASE\_BACKUP\_IBSR\_TEMPLATE\_CASE\_SENSITIVE.bak
    - ◆ SQL\_Latin1\_General\_CP1\_CI\_AS
      - DATABASE\_BACKUP\_IBSR\_TEMPLATE.bak
    - ◆ Update:Usp\_IBSR\_v04.05.01.sql

No license file is required.

SoftRater for Windows can be installed any time after the Insbridge Framework Administrator and RateManager have been installed. SoftRater must be installed prior to any users creating packages.

The folders and files that you download will depend upon the kind of setup you want. Everything for an SR-WIN installation is in the **04.06.00-Insbridge-IBRU** folder. If you want to incorporate a Java environment, please download the corresponding SoftRater file.

# SOFTRATER FOR WINDOWS INSTALLATION

Installing SoftRater for Windows will require that you:

1. Set up Windows. There are two steps in setting up Windows for a SoftRater deployment.
2. Install IBFA (SoftRater for Windows) using a SQL Server Database.

## Setting up Windows

**Step 1:** Set up an Insbridge User

**Step 2:** For Windows 2008, allow permissions

## Installation Procedures – SoftRater for Windows

**Step 1:** Install Insbridge Rating and Underwriting

**Step 2:** Configuring Registry Access

**Step 3:** Assigning Permissions – Windows Temp Folder

**Step 4:** Assigning Permissions – Insbridge Folder

**Step 5:** Restoring IBRU Databases in SQL Server

**Step 6:** Configuring Insbridge Framework Administrator

**Step 7:** Verifying the Component Services

**Step 8:** Allowing for WCF Activation

**Step 9:** Installing the OBI Publisher

**Step 10:** Starting Insbridge Services

**Step 11:** Import the RateManager/IBFA Registry Key

**Step 12:** Enter SoftRater information in IBFA

# SETTING UP WINDOWS

IBRU installers should be familiar with managing a Windows server. For help with verifying or installing required components for Windows 2003, please see Windows 2003 Settings and Permission Notes on page 59. For a 64-bit machine, please see Insbridge Installation for 64-bit.

Windows Server should be up and running prior to RateManager being installed. There are two steps that should be performed prior to the install:

- **Step 1:** Set up an Insbridge User. **This is a required step.**
- **Step 2:** For Windows 2008, allow permissions.

## STEP 1: INSBRIDGE LOCAL USER ACCOUNT SETUP

**Before starting the installation**, create a local user account where the Insbridge Framework is being installed. This user needs to be a member of the User group and requires certain privileges in order to fully control the entire IBRU environment. For ease of installation and if the server is dedicated to the Insbridge Rating and Underwriting System, it is suggested that this user be added to the local machine Administrators group.

If the installer has permissions, an Insbridge user can be created during the installation.

### To Create a New User in Windows Server 2008:

1. Select Start→Administrative Tools→Server Manager.
2. Select Configuration→Local Users and Groups.
3. Select Users.
4. Right click and select **New User**.

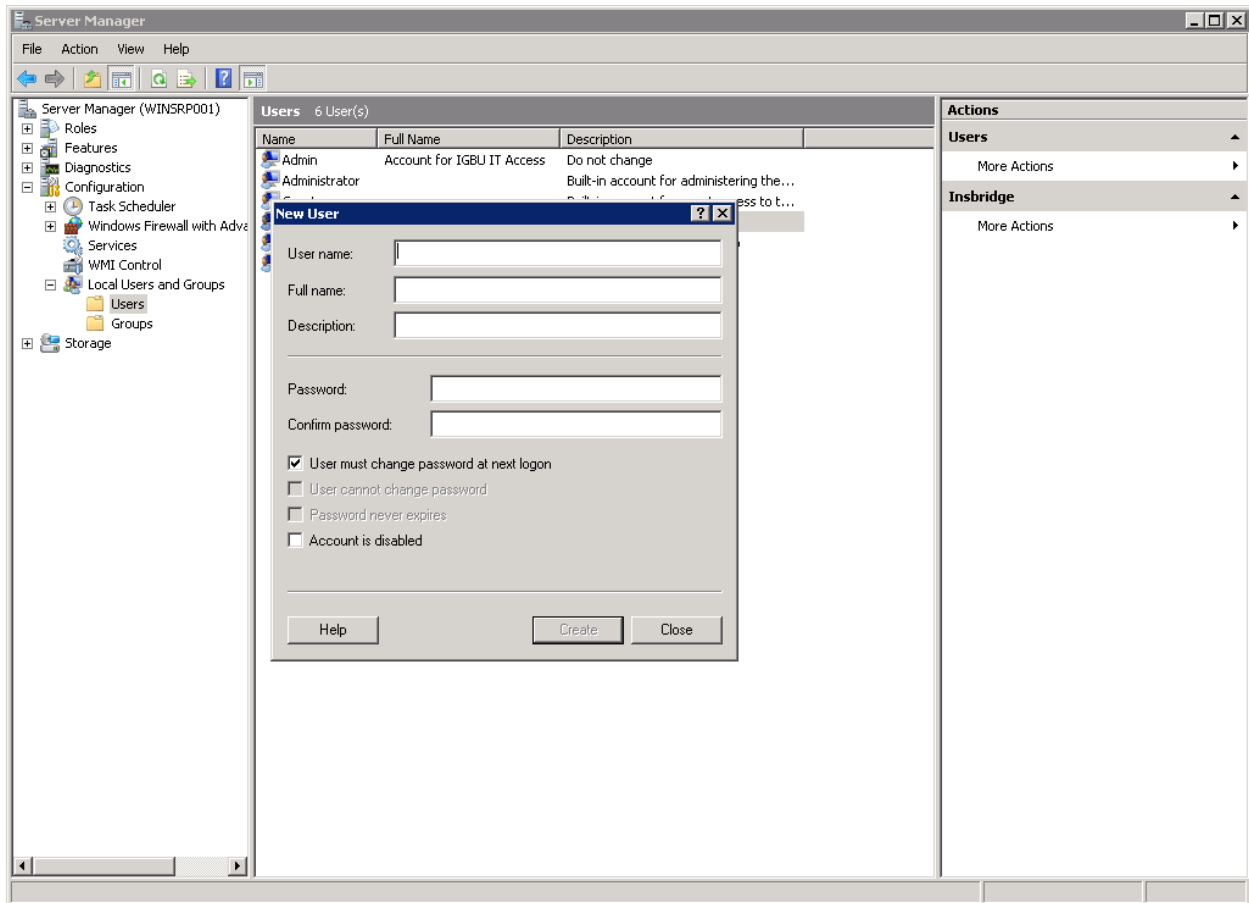


Figure 1 Creating New User

5. Add a new Insbridge user. Enter user name and password information. Uncheck *User must change password at next logon*. Check *User cannot change password* and *Password never expires*.
6. Click **Create**.
7. Close the Add New User screen and select the Insbridge user. Right click and select Properties.
8. The Insbridge User should be assigned to the local Users group and have the same permissions as the internet guest account.

Ideally, the Insbridge user should be added to the local Administrators group. If the Insbridge user cannot be a part of the local administrators groups, please make sure that the Insbridge user has permissions on the Insbridge Messaging Service and the Insbridge Task Manager Service.

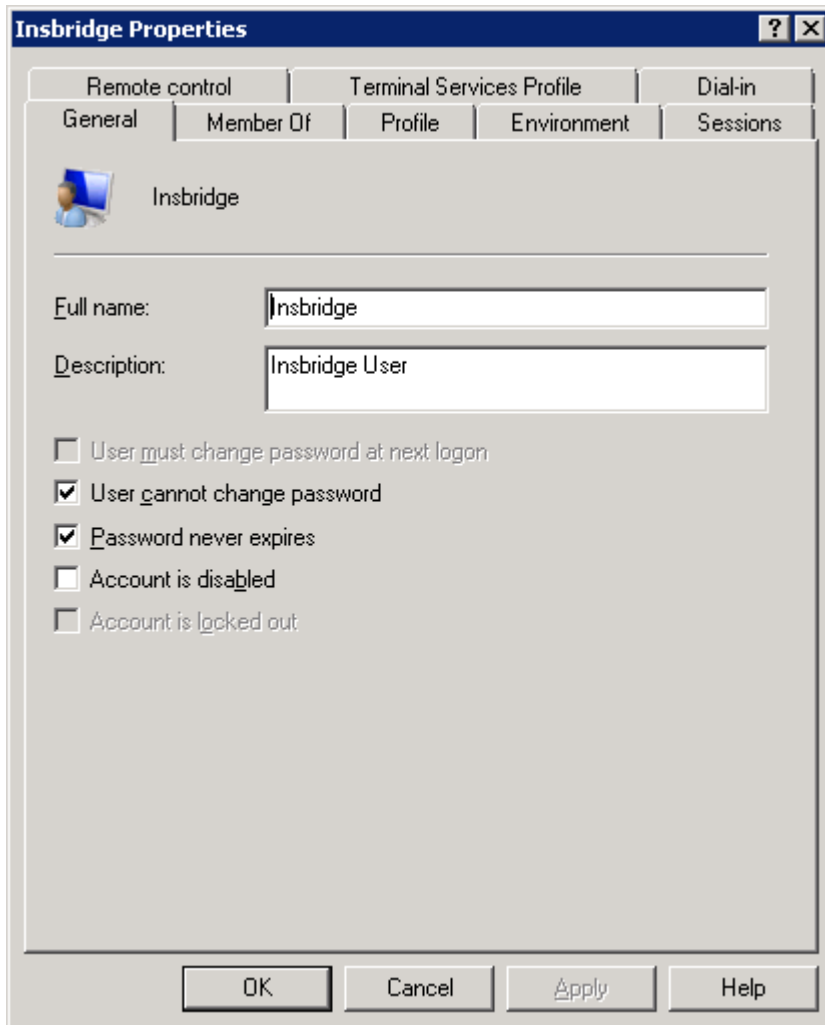


Figure 2 Adding User information

9. Click **OK**. Please keep the Insbridge user information close at hand. You will need it for the installation.

---

**NOTE:** You also can create the Insbridge User from within the install. If you create an Insbridge user from the install, you may not be able to set the permissions you need. Please be sure to verify the proper permissions are in place before continuing.

---

### To Create a New User in Windows 2003:

1. Right click the My Computer icon on the desktop and select Manage.
2. Under System Tools, Select Local Users and Groups.
3. Select Users and right click.
4. Select New User.



5. Add a new Insbridge user. Enter user name and password information. Uncheck *User must change password at next logon*. Check *User cannot change password* and *Password never expires*.

Figure 3 Adding User information

6. Click **Create**.
7. Close the Add New User screen and select the Insbridge user. Right click and select Properties.
8. The Insbridge User should be assigned to the local Users group and have the same permissions as the internet guest account.

Ideally, the Insbridge user should be added to the local Administrators group. If the Insbridge user cannot be a part of the local administrators groups, please make sure that the Insbridge user has permissions on the Insbridge Messaging Service and the Insbridge Task Manager Service.

9. Click **OK**. You can close out computer management. Please keep this information close at hand. You will need it for the installation

## Insbridge User Password

The password can be set to any password that meets your company standards. The IBRU administrator must make note of the password for future configuration.

For ease of maintenance, the IBRU user should not have to change the password and the password should never expire.

The installation will automatically apply the Insbridge user name and password to the necessary libraries, virtual directories and, if used, Internet Proxy settings in IBFA. If you change the Insbridge user password, you will have to change the password in all three of the Insbridge Com+ libraries, all three of the Insbridge virtual directories and, if you are using it, the Internet Proxy settings in IBFA.

---

**NOTE:** Please note that if your company requires passwords to be re-set, you will have to make changes to the COM+ Application libraries, virtual directories and if you are using it, the Internet Proxy settings in IBFA after you change your password. You also may re-install the application. This will recreate the COM+ applications, virtual directories and IBFA instance with the updated Insbridge user password. Be aware that re-installing the application will also reset security settings in IBFA as well.

---

## STEP 2: WINDOWS 2008 PERMISSIONS

Windows 2008 requires certain permissions be in place prior to running the install.

- For Windows 2008 Server – IIS 6 Metabase Compatibility
- For Windows 2008 Server – Web Server (IIS) – Static Content is required
- For Windows 2008 Server – WCF http activation needs to be enabled
- For Windows 2008 Server – The ASP.NET roll must be installed

**NOTE:** *If you are running Windows 2003, you will not need to set these permissions.*

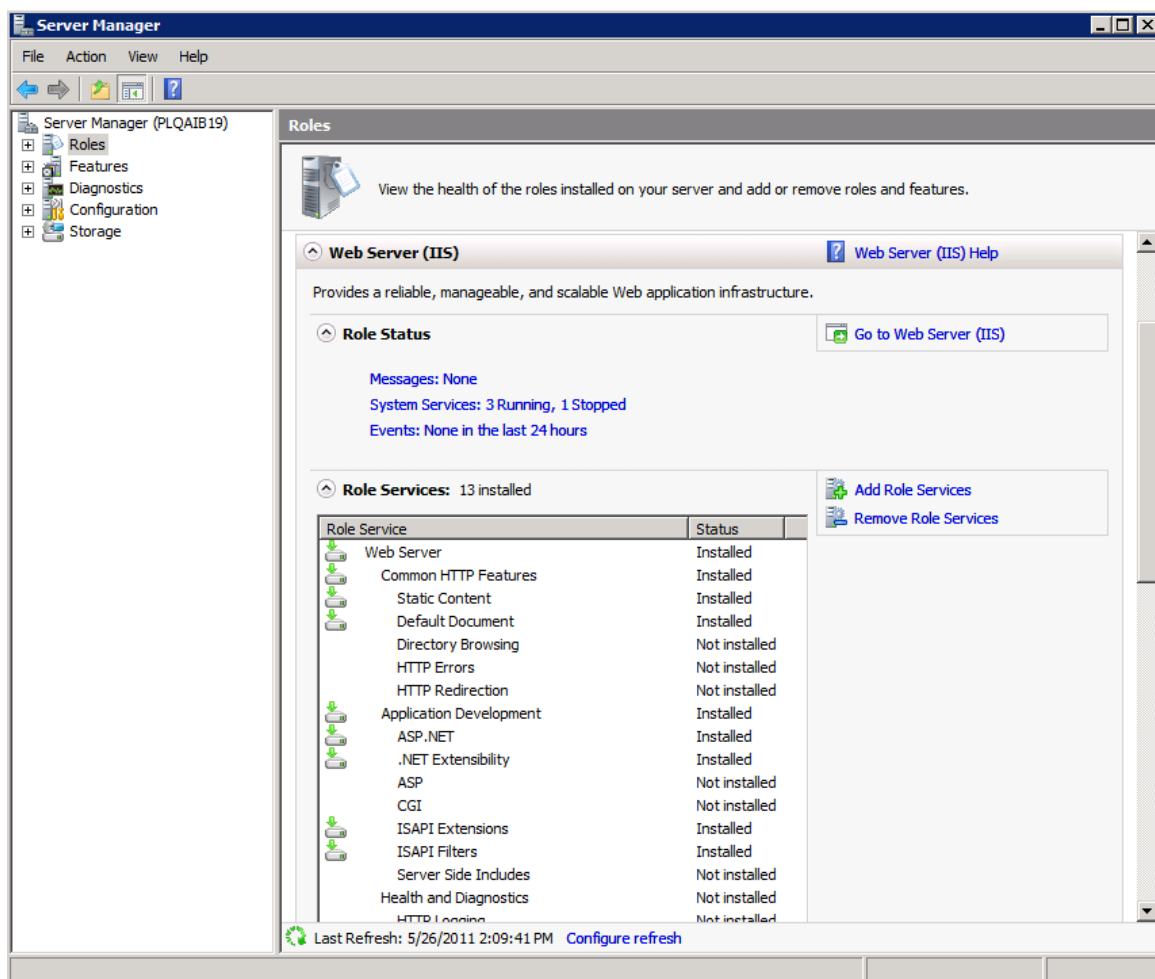


Figure 4 Windows 2008 Permissions

## To Add a Role:

1. Start→ Administrative Tools→ Server Manager→ Roles→ Web Server (IIS)→ Add Role Services.

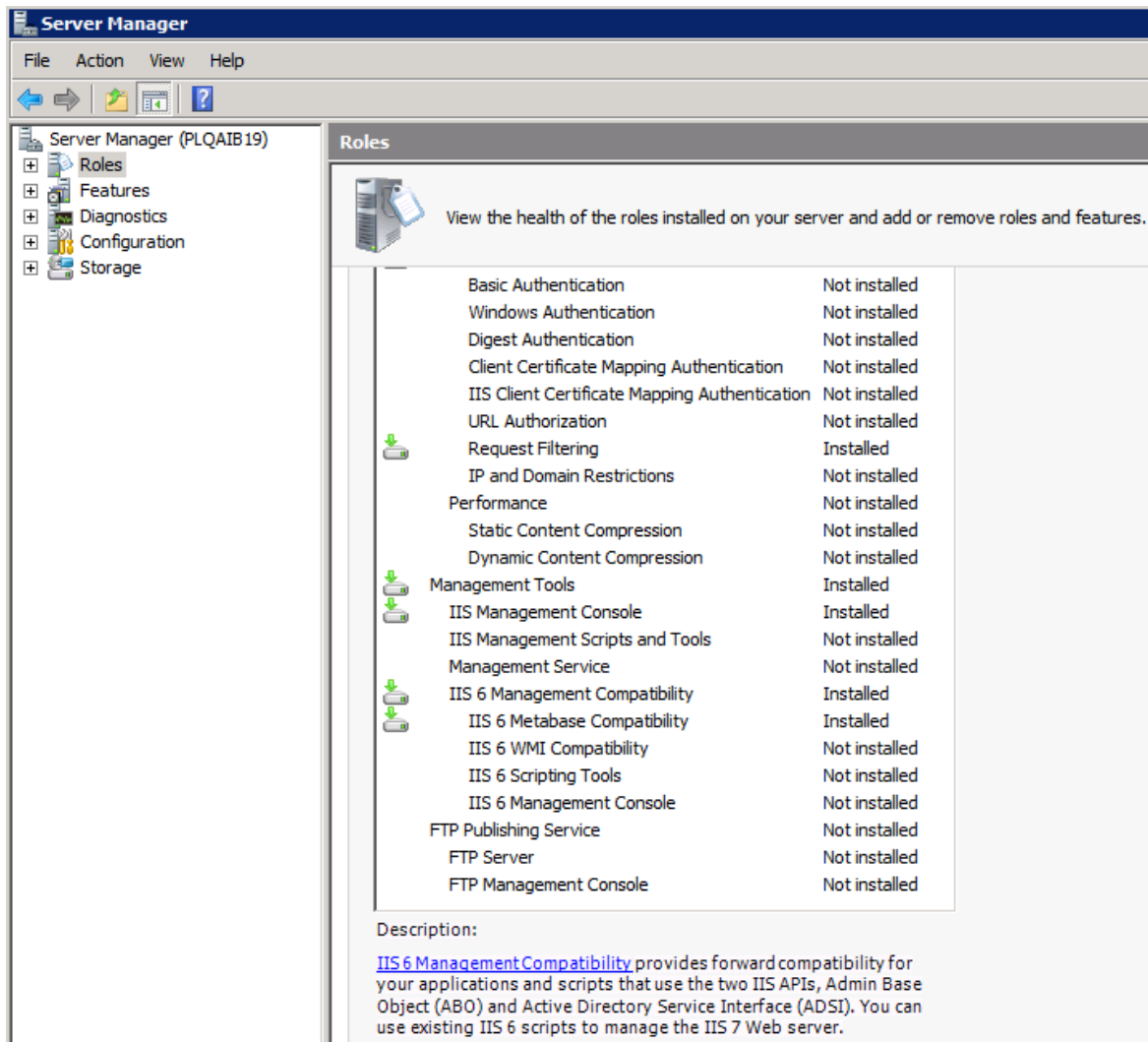


Figure 5 Adding IIS 6 Metabase Compatibility

2. Install IIS 6 Metabase Compatibility.

## Extended Permission Required by the Insbridge User

In order to start the Insbridge services from IBFA, the Insbridge user must be given full access to both the Insbridge Message Service and the Insbridge Task Manager Service. If the Insbridge user account will not have full administrative permissions on the server where the Insbridge Framework is installed, then certain operations from IBFA will not be available. A system administrator may be required to start the Insbridge services from the server.

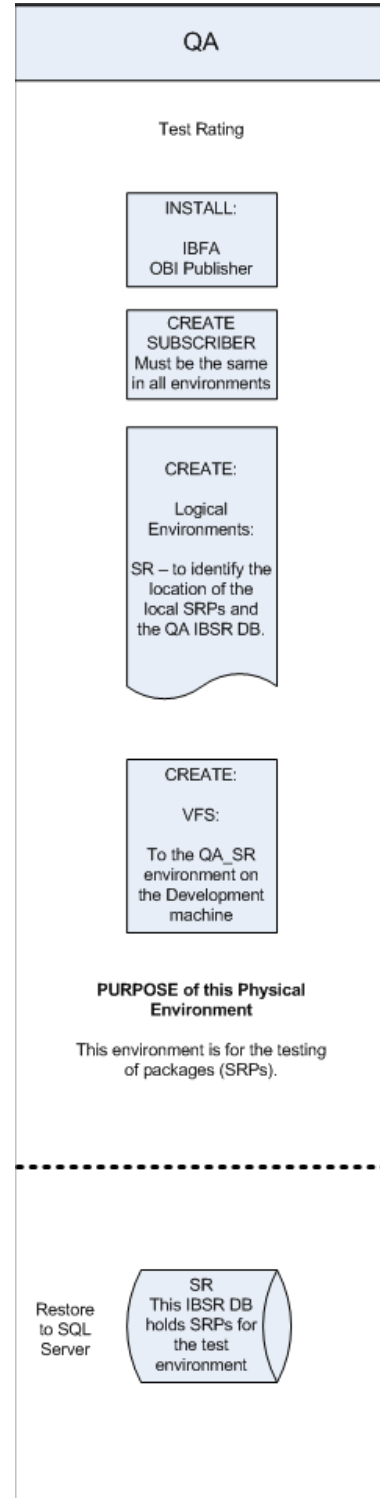
## SOFTRATER FOR WINDOWS NODE INSTALLATION

Before installing, please verify that the requirements are in place.

The installation should be performed in the following order:

1. Install the IBRU application without RateManager.
2. Registry Access.
  - a. Assigning Insbridge Access.
  - b. Exporting Key for safe keeping.
3. Assigning permissions to the Insbridge User for the Windows Temp Folder. This is necessary for MSMQ.
4. Assigning permissions to the Insbridge User for the Insbridge Folder
5. Creation of the IBSR databases is next.
6. Open the IBFA instance and Configure:
  - a. Create your subscriber.
  - b. Create your logical environments.
  - c. Create a Virtual File Server.
7. Verifying Component Services.
8. **FOR WIN 2008 ONLY.** Allowing for WCF Activation and Static Content.
9. Install OBI Publisher.
10. Start Insbridge Message Service
11. Import Backup of RateManager/IBFA Registry Key.
12. Enter the IBFA instance on the original IBRU install- the one where RateManager was installed.

**For a Windows 2008 Server installation, you must run as Administrator.**



## STEP 1 – INSTALL INSBRIDGE RATING AND UNDERWRITING

1. Begin with the **Oracle Insurance - Insbridge Rating and Underwriting Install file**.

---

**NOTE:** *The installation program requires that the installer have administrator rights on the machine where the install is occurring.*

---

---

**NOTE:** *Please close all open applications before running the Oracle Insurance – Insbridge Rating and Underwriting file.*

---

2. Open the Oracle Insurance – Insbridge Rating and Underwriting file. A Welcome screen will be displayed.

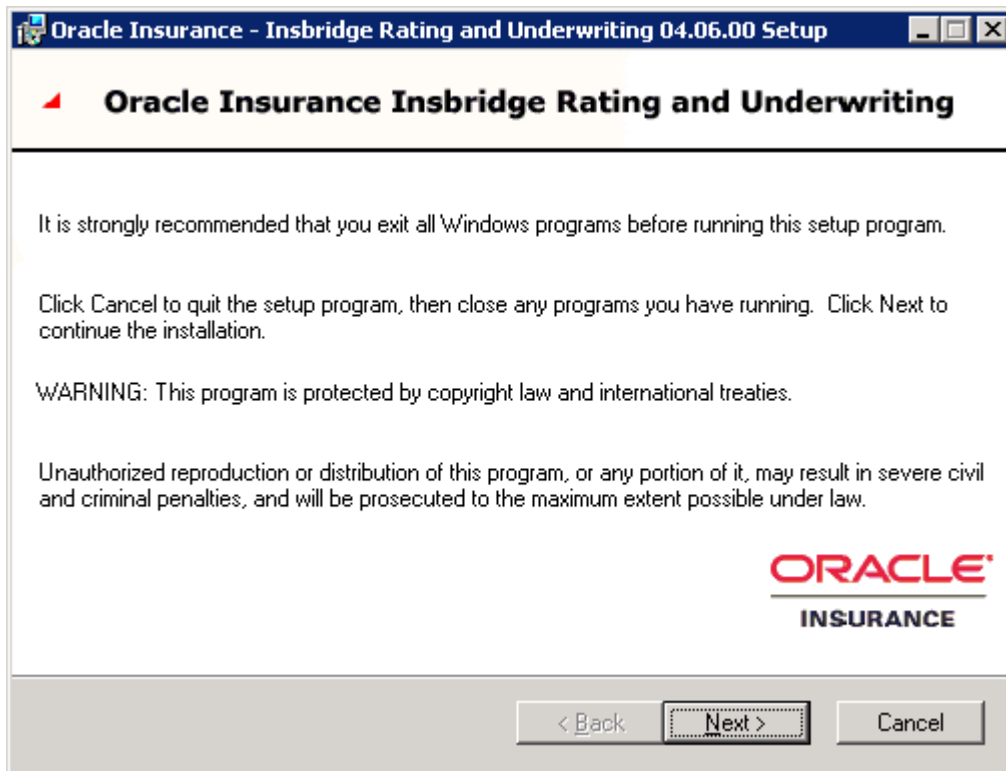


Figure 6 Installing Insbridge

3. Click **Next** to continue.

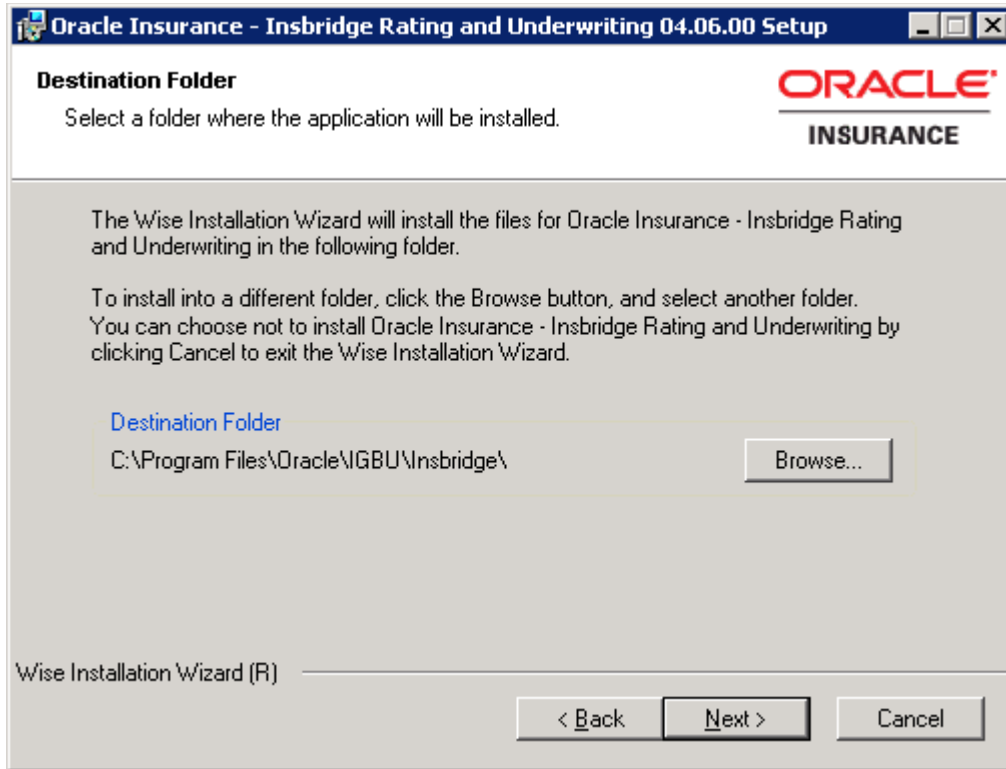


Figure 7 Entering the Destination Folder for Insbridge

4. Choose the location where the Insbridge installation will be installed. A default installation folder will be created for all new installs. This will be the location for all future installations for Insbridge applications. Select **Browse** if you want to install in a different location. After selecting a location, click **Next** to continue.

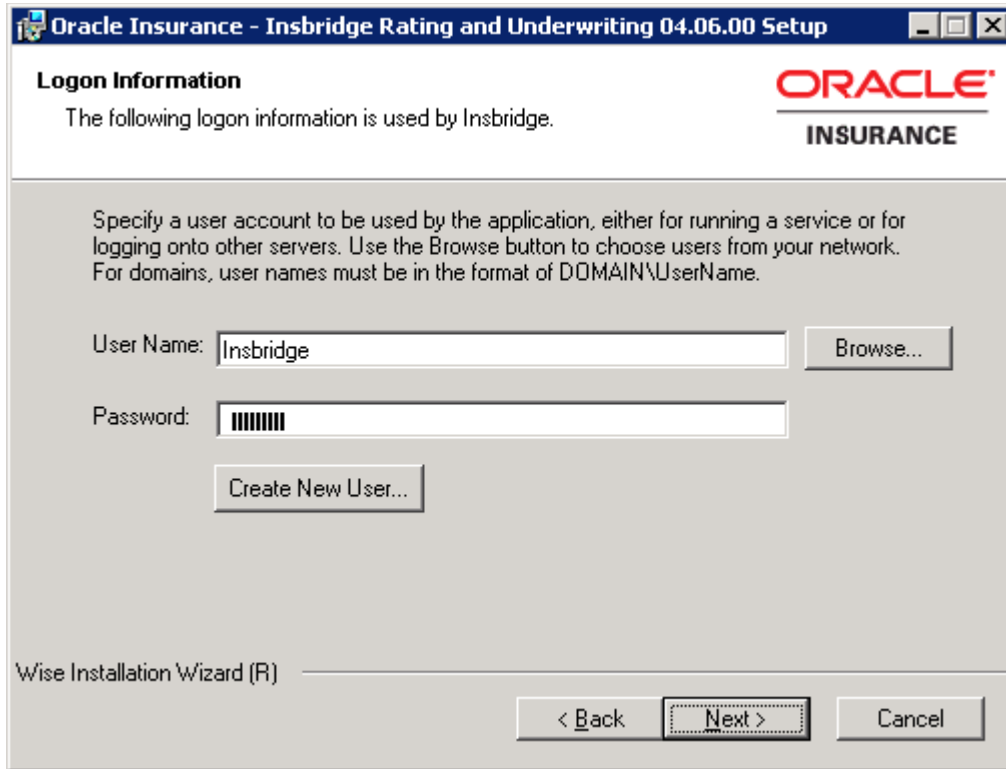


Figure 8 Logon Information

5. Enter the **Insbridge user name and password** for the local user account you set up earlier. The logon information screen will be displayed. You must specify a user account to be used by the application. Please use the Insbridge user account that you set up on page 14.

---

**NOTE:** *You can Create a New user at this point, if needed. Click the Create New User button to be placed on New User screen to setup an Insbridge user.*

---

6. Click **Next** to continue.



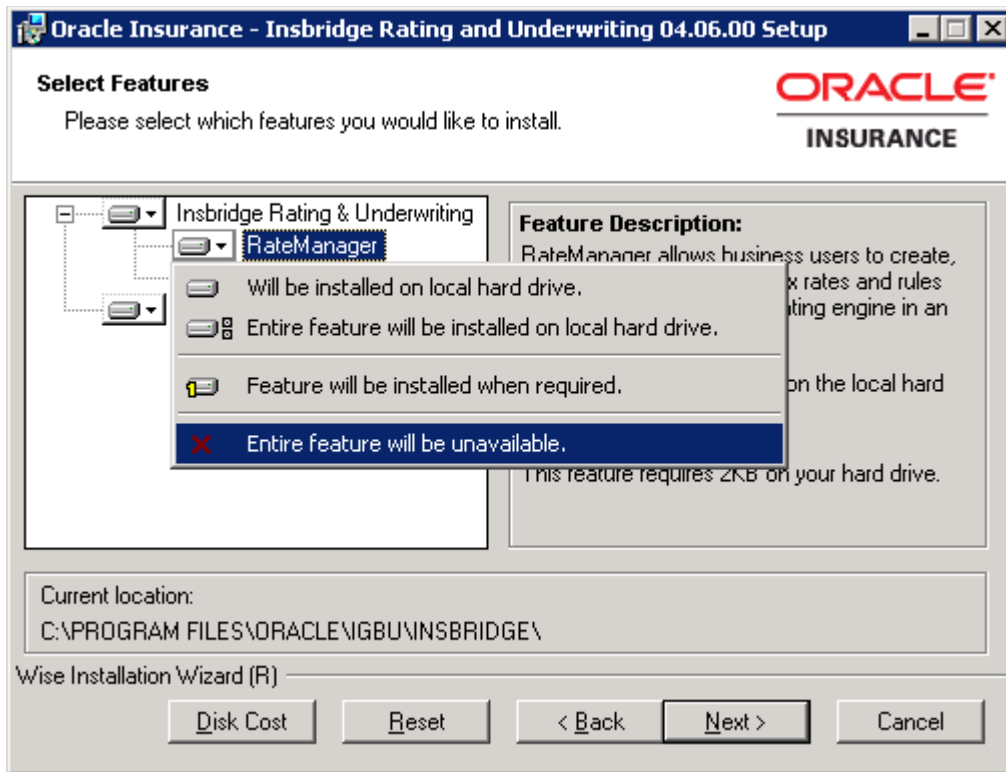


Figure 9 Selecting Features for Installation

7. The next screen will list the applications to be installed. To expand the options and view details, click on the downward arrow. All features are checked for installation. RateManager is the only one that you will be allowed to not install. Check **Entire feature will be unavailable**. Click **Next** to continue.

Options are:

- **Insbridge Rating and Underwriting:**
  - The default option is: Entire feature will be installed on local hard drive. This includes IBFA.
  - You will not be able to opt out of this selection.
- **RateManager:**
  - The default option is: Entire feature will be installed on local hard drive.
  - You will be able to opt out of this option. **Select Entire Feature will be unavailable.** RateManager will not be installed. **You do not need to install RateManager.**
- **IBFA:**
  - The default option is: Entire feature will be installed on local hard drive.
  - You will not be able to opt out of this selection.
- **Oracle BI Publisher:**
  - The default option is: Entire feature will be installed on local hard drive.
  - You will not be able to opt out of this selection.
  - This option does not install the OBI Publisher. Only the templates required by the IBRU application will be installed on local hard drive.

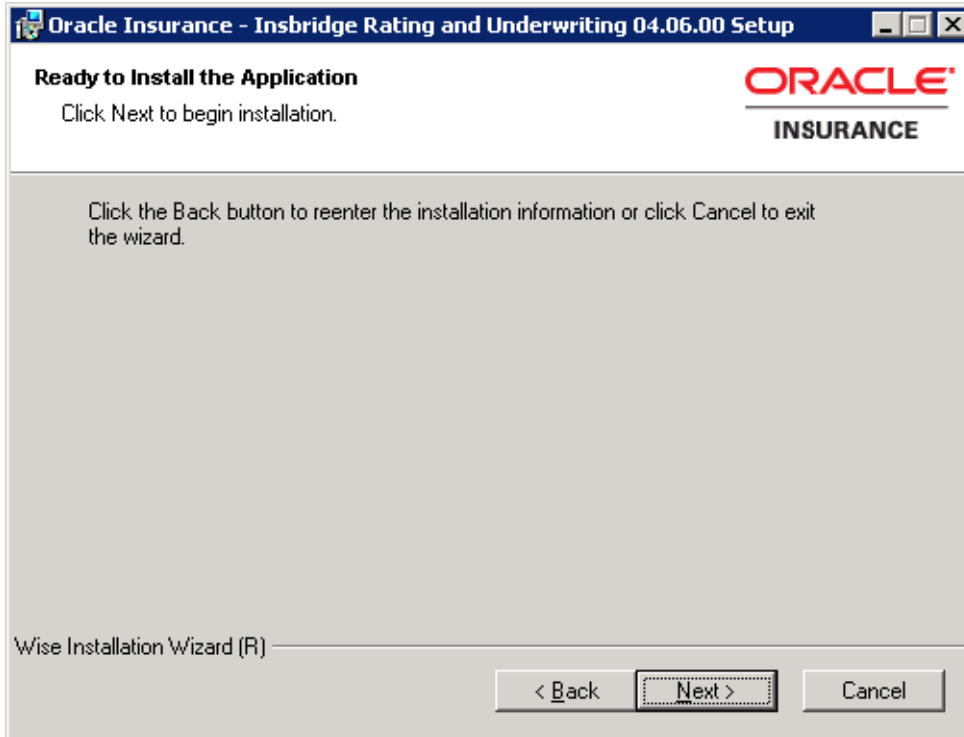


Figure 10 Ready to Install

8. A Ready to Install screen will be displayed. If you are ready, click **Next**. Otherwise click Back to check the options you want to install.

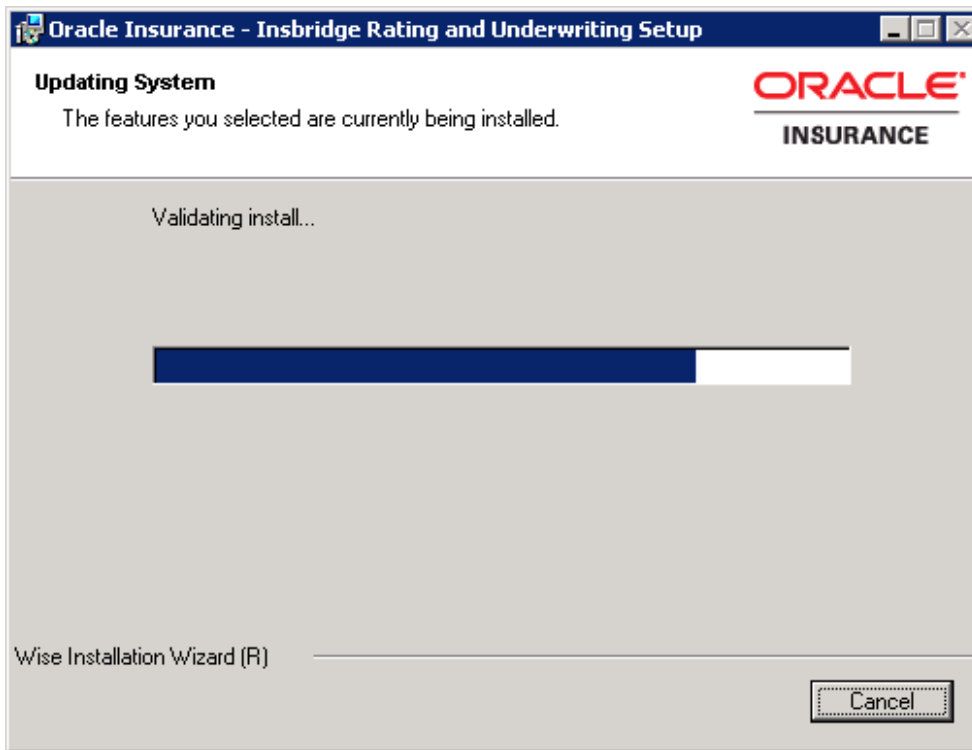


Figure 11 Installation Progress

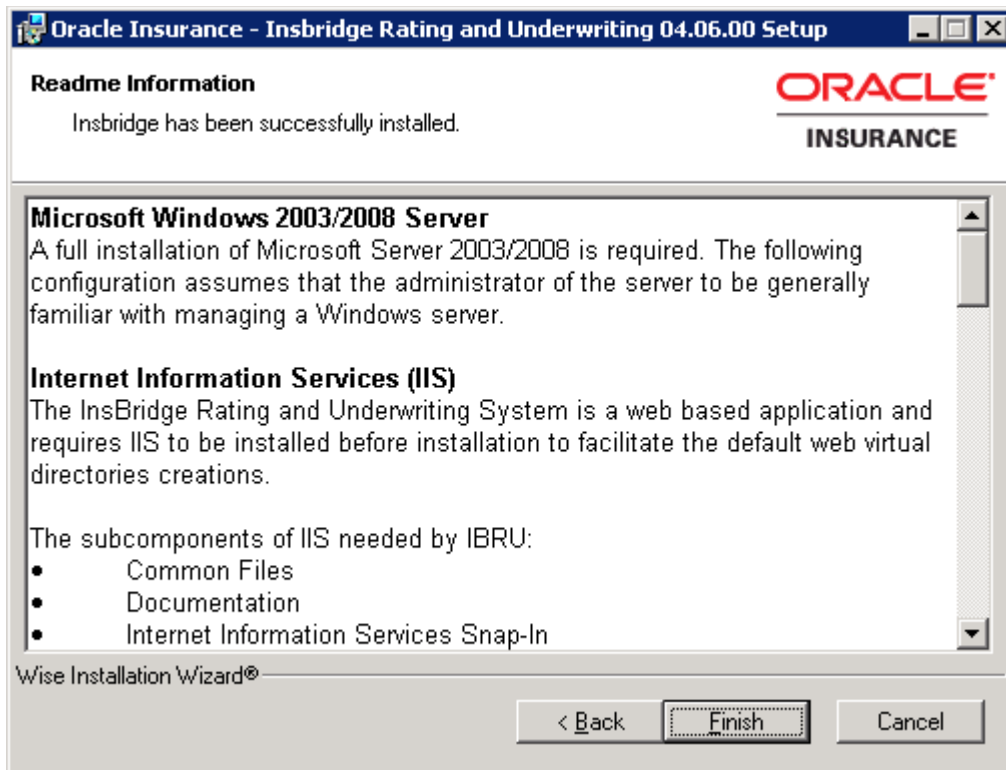


Figure 12 Install ReadMe Screen

9. Click **Finish** to finish the installation. The installation should complete successfully.

## STEP 2 – CONFIGURING REGISTRY ACCESS

**NOTE:** *If you use Registry Editor incorrectly, you may cause serious problems to the operating system. These problems may require you to reinstall your operating system. Insbridge cannot guarantee that you can solve problems that result from using Registry Editor incorrectly.*

By default, only administrative and power user accounts have full permissions over this key. The insbridge user must also be given **full control** over the following registry key:

HKEY\_LOCAL\_MACHINE/SOFTWARE/Insbridge

### Assigning Permissions for the Registry Access

1. Selecting Run from the Start Menu.
2. Type **regedt32**. Click **OK**. The Registry Editor will open.
3. Browse to HKEY\_LOCAL\_MACHINE. Select SOFTWARE→Insbridge.

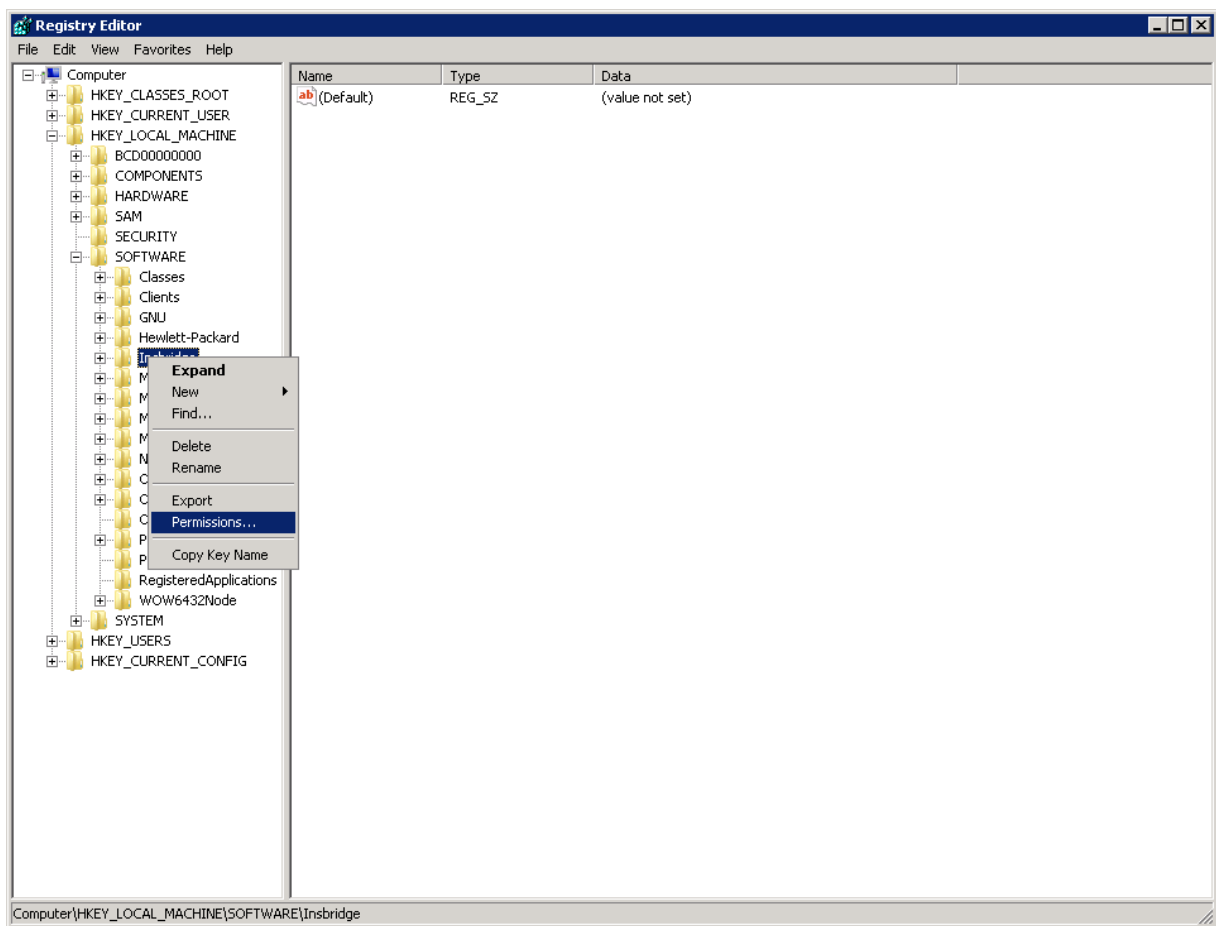


Figure 13 Configure Registry Access Windows Server

4. Right click and select **Permissions**.
5. Scroll through the users. Select the **Insbridge** user.
6. Verify that the Insbridge user has **Full Control**.
7. If the Insbridge user does have Full Control, cancel out of the registry and continue with the installation.
8. If the Insbridge user does **not** have Full Control, change permissions to allow for Full Control. Save your entry and close out the registry. Continue with the installation.
9. If the Insbridge user is not listed, follow the step to add the Insbridge user.

### Adding the Insbridge User:

10. From the Permissions screen, click **Add**.
11. On the Select Users or Groups popup, you can leave the defaults for the **Object Types** and **Locations** or enter the values you require.

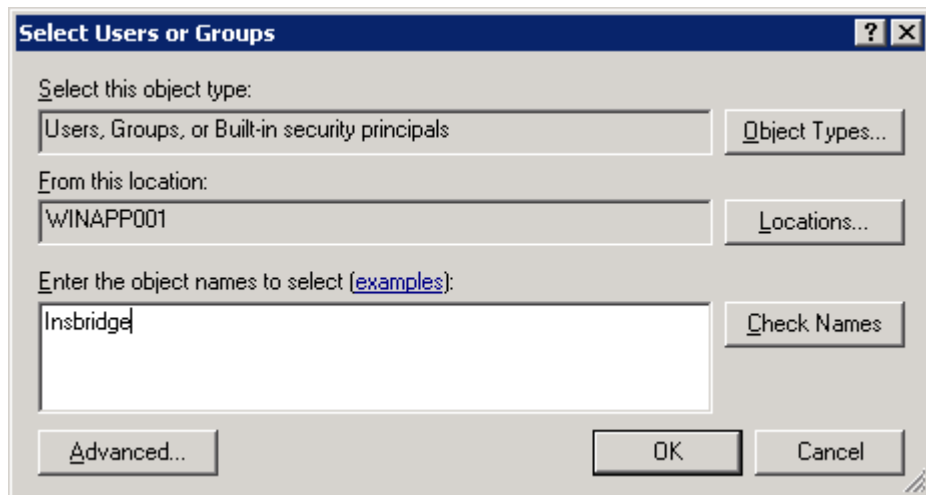


Figure 14 Entering the User

12. Enter in the user name (insbridge) and click **Check Names**. If the user name is found, it will be listed. If the name is not found, an error screen will be displayed. Cancel out and to return to the Select Users or Groups popup. Click **Advanced** to search. To search the directory, click Find Now and scroll through the list until you find the user name you need. If the user name is not listed, return to User Accounts and verify the user name was created.
13. Once the name is listed, click **OK**.

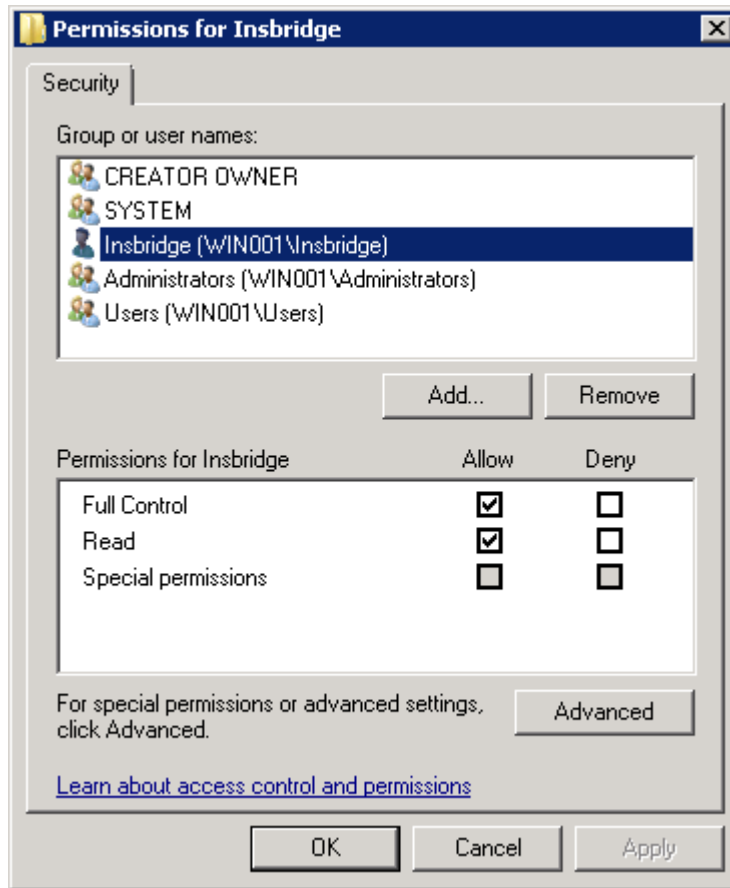


Figure 15 Applying Permissions

14. On the Permissions screen, make sure the insbridge user is highlighted and check to give **Full Control** to the entire Insbridge key.
15. Click **OK**.
16. Close the registry and continue with the install.

## STEP 3 – ASSIGNING PERMISSIONS – WINDOWS TEMP FOLDER

Permissions must be assigned for the Windows Temp Folder for MSMQ and for Windows 2008, the application pool default identity. Prior to assigning permissions, please verify the default application pool identity.

### Identifying the Application Pool Default Identity:

1. Open IIS. Start→Administrative Tools→IIS Manager.
2. Expand the server and select **Application Pools**.
3. Select the **DefaultAppPool**.
4. Right click and select **Advanced Settings**.
5. Take note of the **Identity** under Process Model. This user will need to be added to the Windows Temp file. In this example, the Identity is NetworkService.

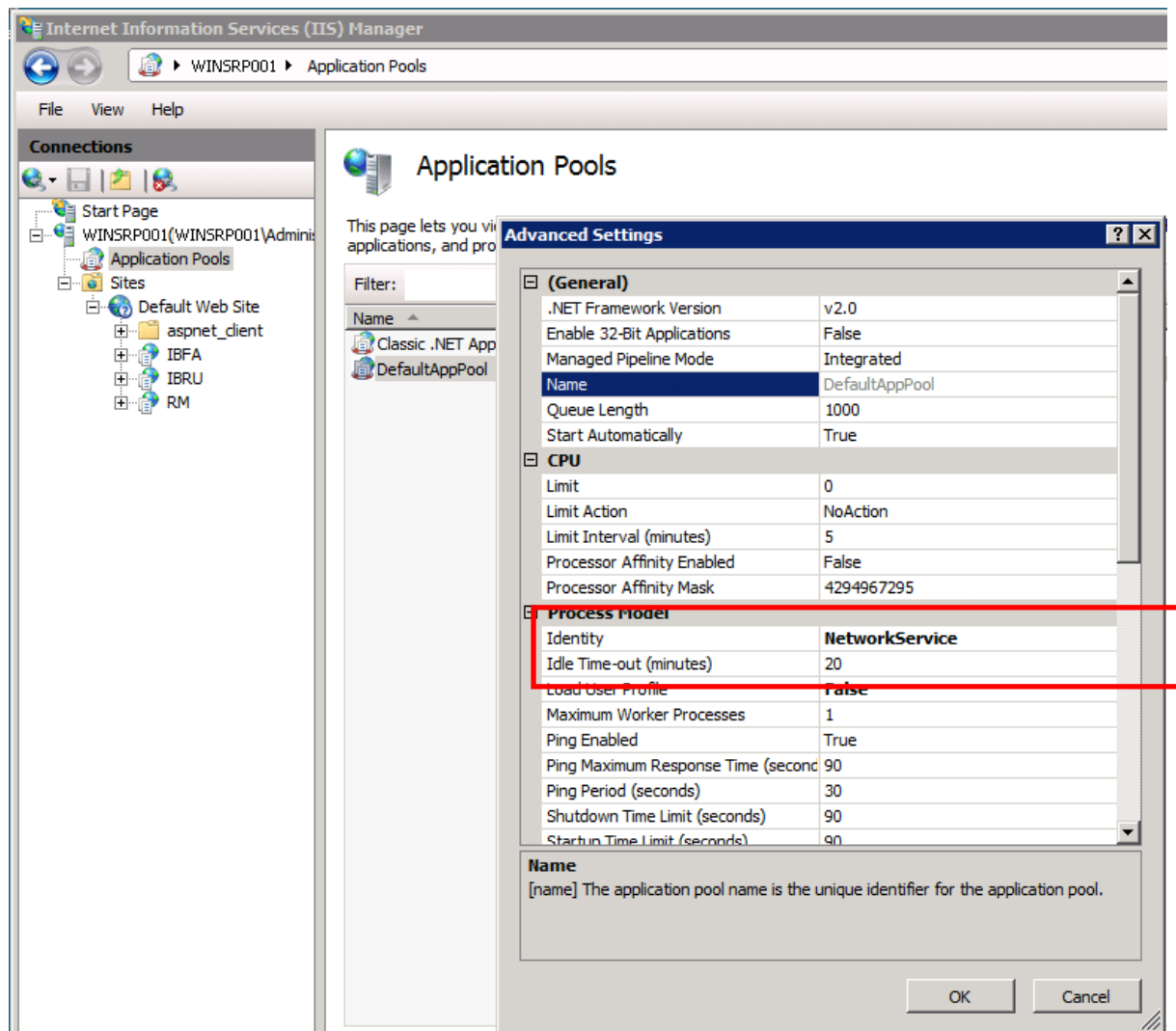


Figure 16 Verifying Application Pool Settings

6. Click **OK** to close the Advanced Settings screen.
7. Close IIS. No more information is needed from the Application Pool.

---

**NOTE:** *This step is for Windows 2008 only.*

---

### Assigning Permissions in the Windows Temp Directory:

1. Open **Documents**. Find the WINDOWS folder, most likely on your C drive.
2. Right click the **Windows→Temp** folder.

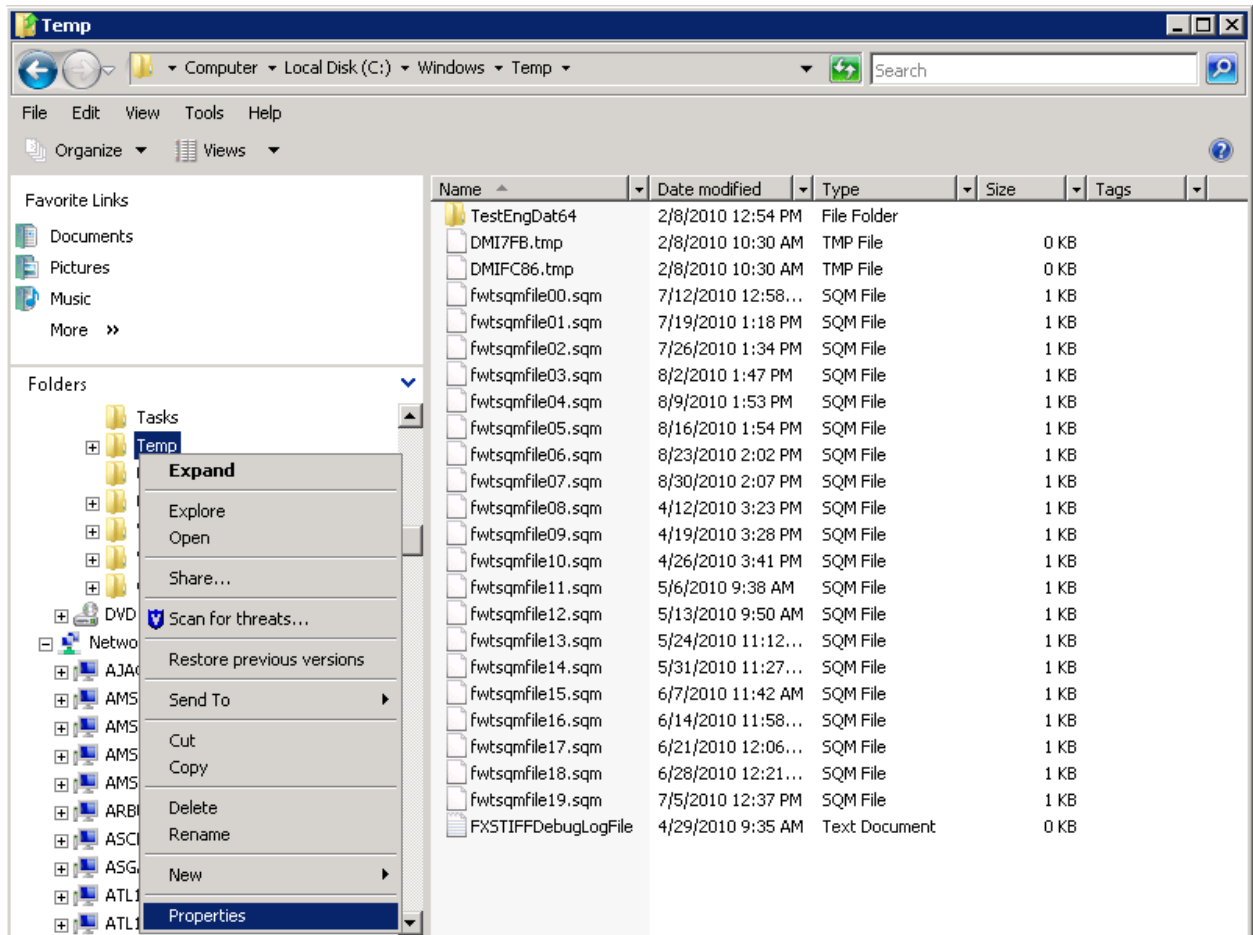


Figure 17 Assigning Permissions for the Insbridge User on Windows Temp

3. Select **Properties**. The Temp Properties screen will open.
4. Select the **Security** tab.
5. Click **Edit**.
6. On the Permissions for Temp screen, select the Insbridge user and click **Add**. If the Insbridge user is not found, cancel out and return to the Local Users and Groups area in Server Manager and verify the Insbridge user was created.
7. Update the permissions. The Insbridge user requires **Full Control**.



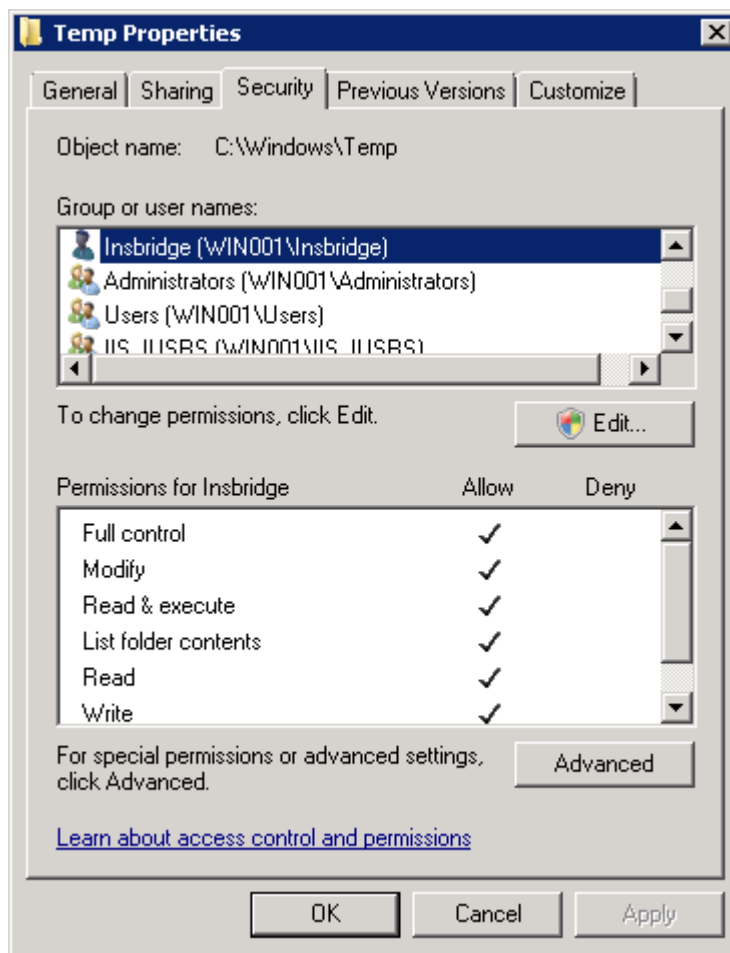


Figure 18 Temp File Properties

8. Next add the **Application Pool identity**.
9. Update the permissions. The Application Pool identity requires the default permissions plus **WRITE**.
10. Click **OK** to close the Permissions for Temp screen.
11. Click **OK** to close the Temp Properties screen.

### For Windows 2003:

1. Open Windows Explorer. Find the WINDOWS folder, most likely on your C drive.
2. Right click the **Windows→Temp** folder.
3. Select **Properties**.
4. Change to the **Security** tab.
5. Click **Add**.
6. On the Select Users or Groups popup, enter in the user name (insbridge) and click **Check Names**. If the user name is found, it will be listed. If the name is not found, an error screen will be displayed. Cancel out and return to the Select Users or Groups popup. Click **Advanced** to search. To search the directory, click Find Now and scroll through the list until you find the user name you need. If the user name is not listed, return to User Accounts and verify the user name was created.

7. Once the name is listed, click **OK**.
8. On the Temp Properties screen, make sure the insbridge user is highlighted and check to give **Full Control**.
9. Click **OK**.

## STEP 4 – ASSIGNING PERMISSIONS – INSBRIDGE FOLDER

Assigning Permissions for an Insbridge Folder Location

1. Open **Documents**. Locate the INSBRIDGE folder, most often the Insbridge folder is located at: C:\Program Files\Oracle\IGBU\Insbridge.
2. Right click the **Insbridge** folder.

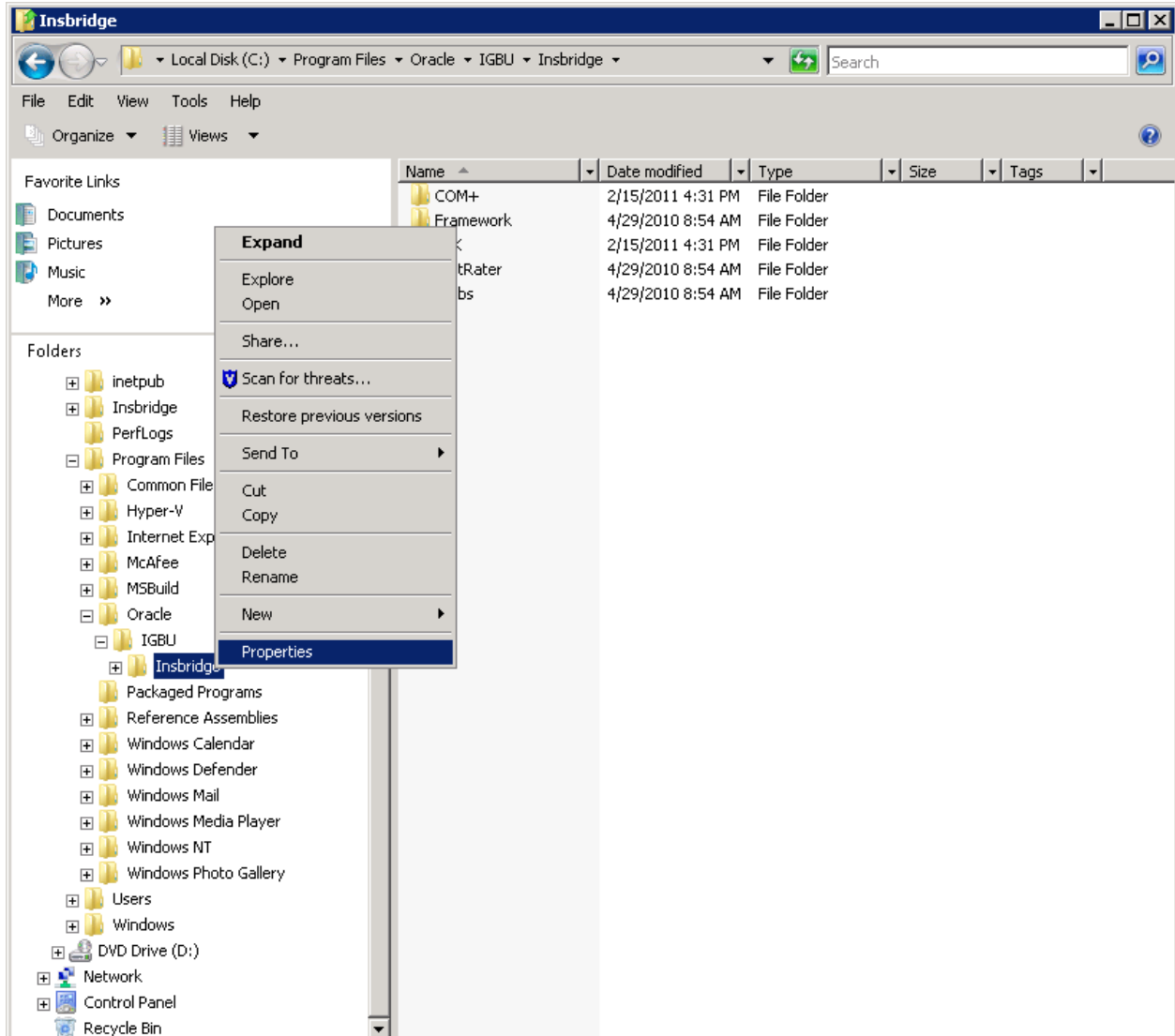


Figure 19 Assigning Permissions for the Insbridge User on Insbridge

3. Select **Properties**. The INSBRIDGE Properties screen will open
4. Select the **Security** tab.
5. Click **Edit**.

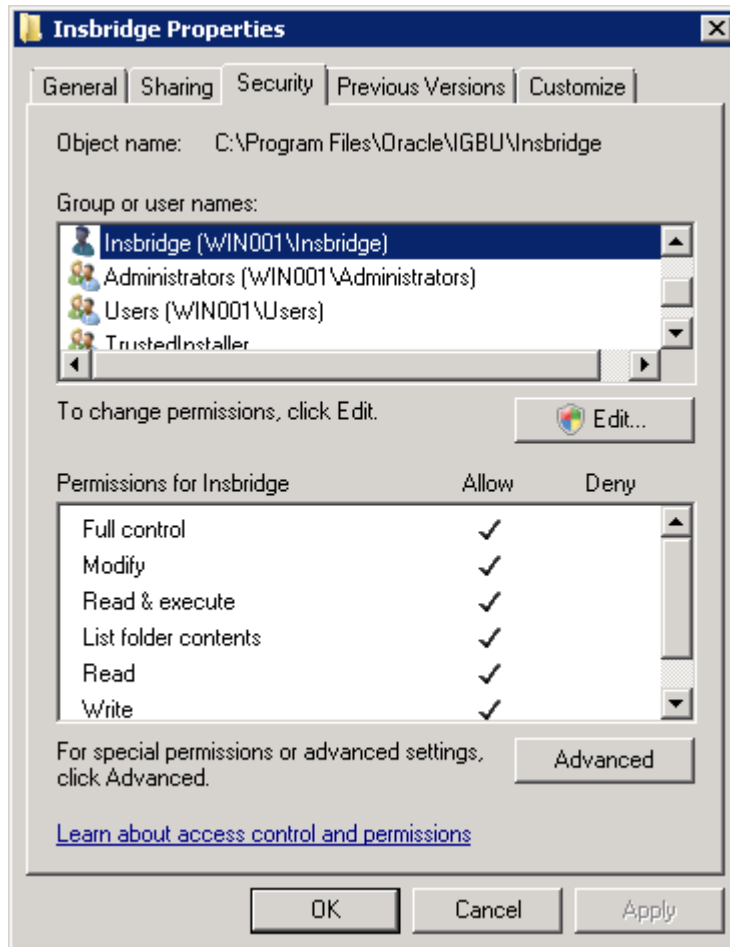


Figure 20 Insbridge Folder Properties

6. On the Permissions for INSBRIDGE screen, select the Insbridge user and click **Add**. If the Insbridge user is not found, cancel out and return to the Local Users and Groups area in Server Manager and verify the Insbridge user was created.
7. Update the permissions. The Insbridge user requires **Full Control**.
8. Click **OK** to close the Permissions for INSBRIDGE screen.
9. Click **OK** to close the Temp Properties screen.

**For Windows 2003:**

1. Open Windows Explorer. Locate the INSBRIDGE folder, most often the Insbridge folder is located at: C:\Program Files\Oracle\IGBU\Insbridge.
2. Right click the **Insbridge** folder.
3. Select **Properties**.
4. Change to the **Security** tab.
5. Click **Add**.
6. On the Select Users or Groups popup, enter in the user name (insbridge) and click **Check Names**. If the user name is found, it will be listed. If the name is not found, an error screen will be displayed. Cancel out and return to the Select Users or Groups popup. Click **Advanced** to search. To search the directory, click Find Now and scroll

through the list until you find the user name you need. If the user name is not listed, return to User Accounts and verify the user name was created.

7. Once the name is listed, click **OK**.
8. On the Insbridge Properties screen, make sure the insbridge user is highlighted and check to give **Full Control**.
9. Click **OK**. You can close out Windows Explorer.

## STEP 5 – RESTORING A SOFTRATER DATABASE

Because many corporate environments have a separation between the system administrator and the database administrator, the following process may require both administrators' access and permissions. Make sure you have a SQL Server account called **ibru**.

---

**NOTE:** *If you do not have database permissions, you will not be able to perform the following database procedures.*

---

---

**NOTE:** *If you are unsure how to perform a database restore, please consult with your database administrator.*

---

Currently supported is the default SQL Server collation using SQL\_Latin1\_General\_CP1\_CI\_AS and sort order plus case sensitivity using Latin1\_General\_BIN as the server collation. The security database (IB\_CLIENT) supports the default SQL Server collation using SQL\_Latin1\_General\_CP1\_CI\_AS. The RateManager and SoftRater databases can use either case sensitive or non-case sensitive. Please check with Oracle Insurance for any questions regarding database server sort orders or collations.

1. Located in the Insbridge Installation Directory:
  - ♦ SQL Server
    - SoftRater – IBSR
      - Latin1\_General\_BIN
        - DATABASE\_BACKUP\_IBSR\_TEMPLATE\_CASE\_SENSITIVE.bak
      - SQL\_Latin1\_General\_CP1\_CI\_AS
        - DATABASE\_BACKUP\_IBSR\_TEMPLATE.bak
      - Usp\_IBSR\_v04.05.01.sql
2. Select the SoftRater backup file you want to use, case sensitive or non-case sensitive.
3. **Copy the file** to an appropriate database folder on the machine where SQL Server is installed. For example, [Drive]:\Program Files\Insbridge\Databases. If you are unsure of a location, please consult with your database administrator.
4. **Rename the file.** It is not required but it is strongly suggested that the database file name be changed from TEMPLATE to something that defines the database more accurately. At a minimum, it is recommended that you remove “\_TEMPLATE” from the name. You can change the names after they have been restored also.
5. **Open the SQL Server Management Studio** either on the server or remotely using either an administrative account with sa privileges or as the sa account.

---

**NOTE:** *If you do not have SQL Server Management Studio, check to see that the SQL Server Client has been installed. For a SQL Server install, you must have the SQL Server Client installed.*

---

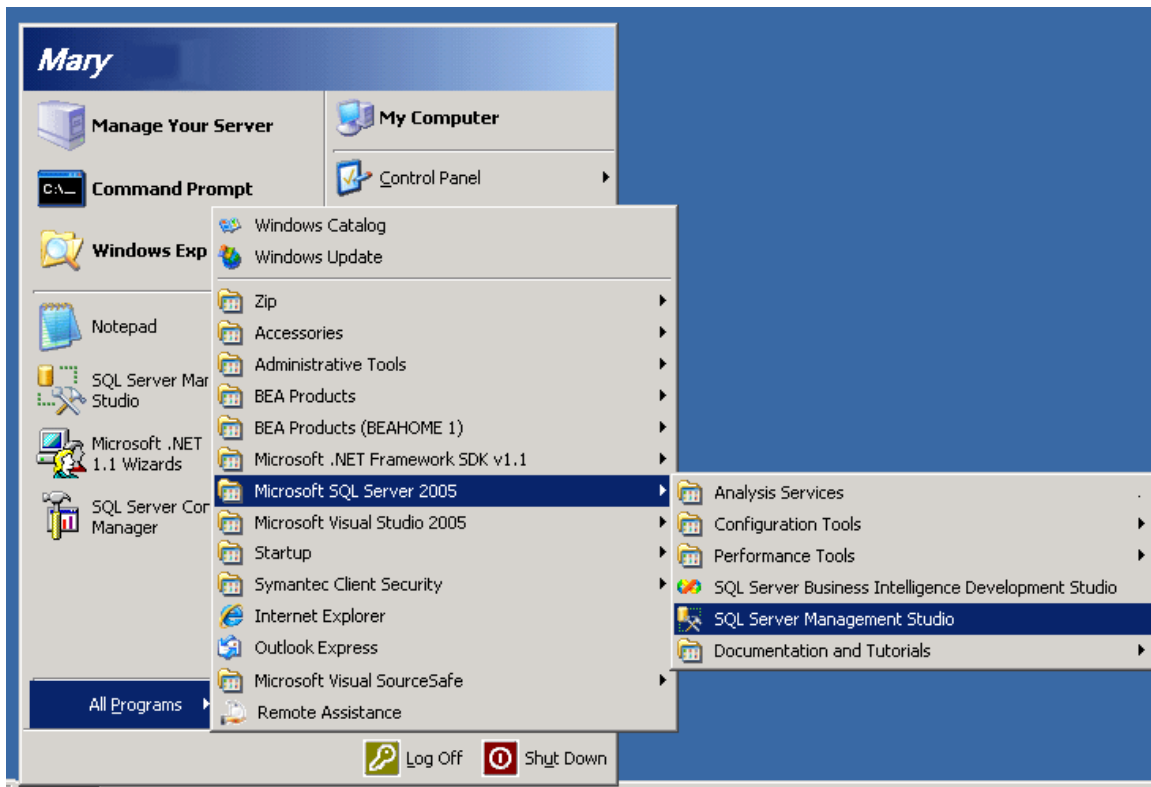


Figure 21 Restoring a Database to SQL Server

## 6. Go to **Databases**.

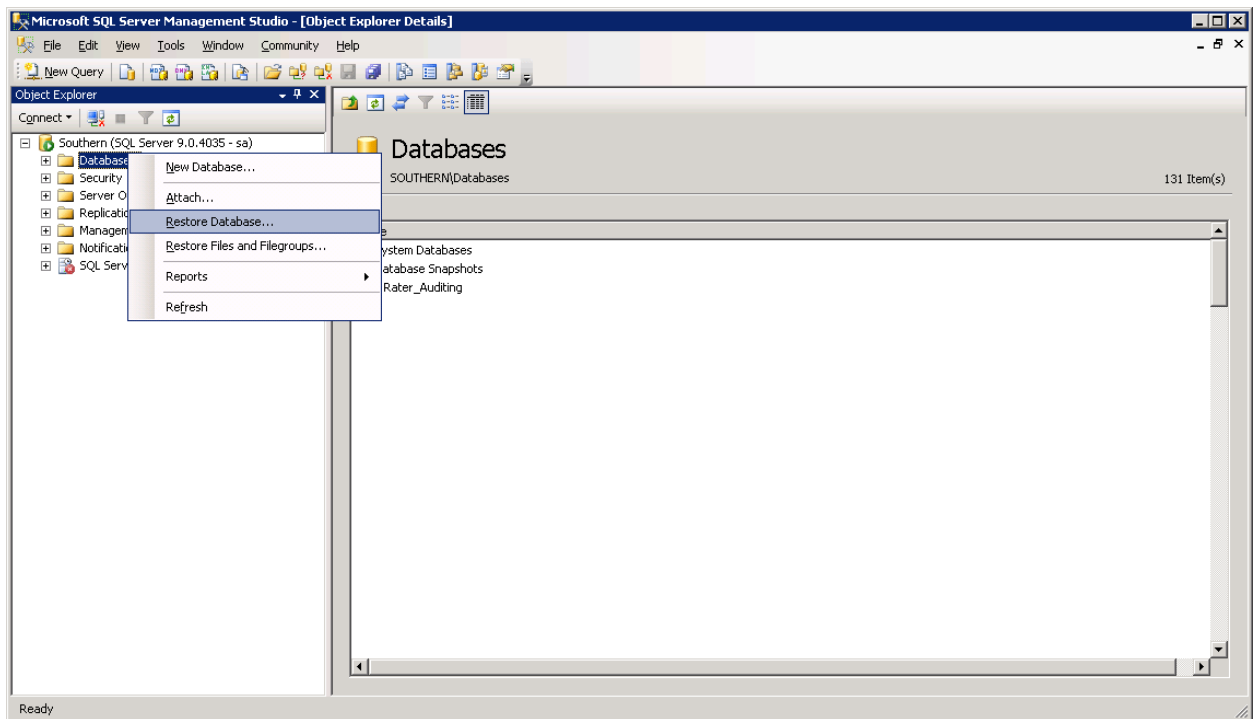


Figure 22 Right Click to Restore Database

7. Right click on **Databases**.
8. Select **Restore Database...** A separate screen will be displayed.

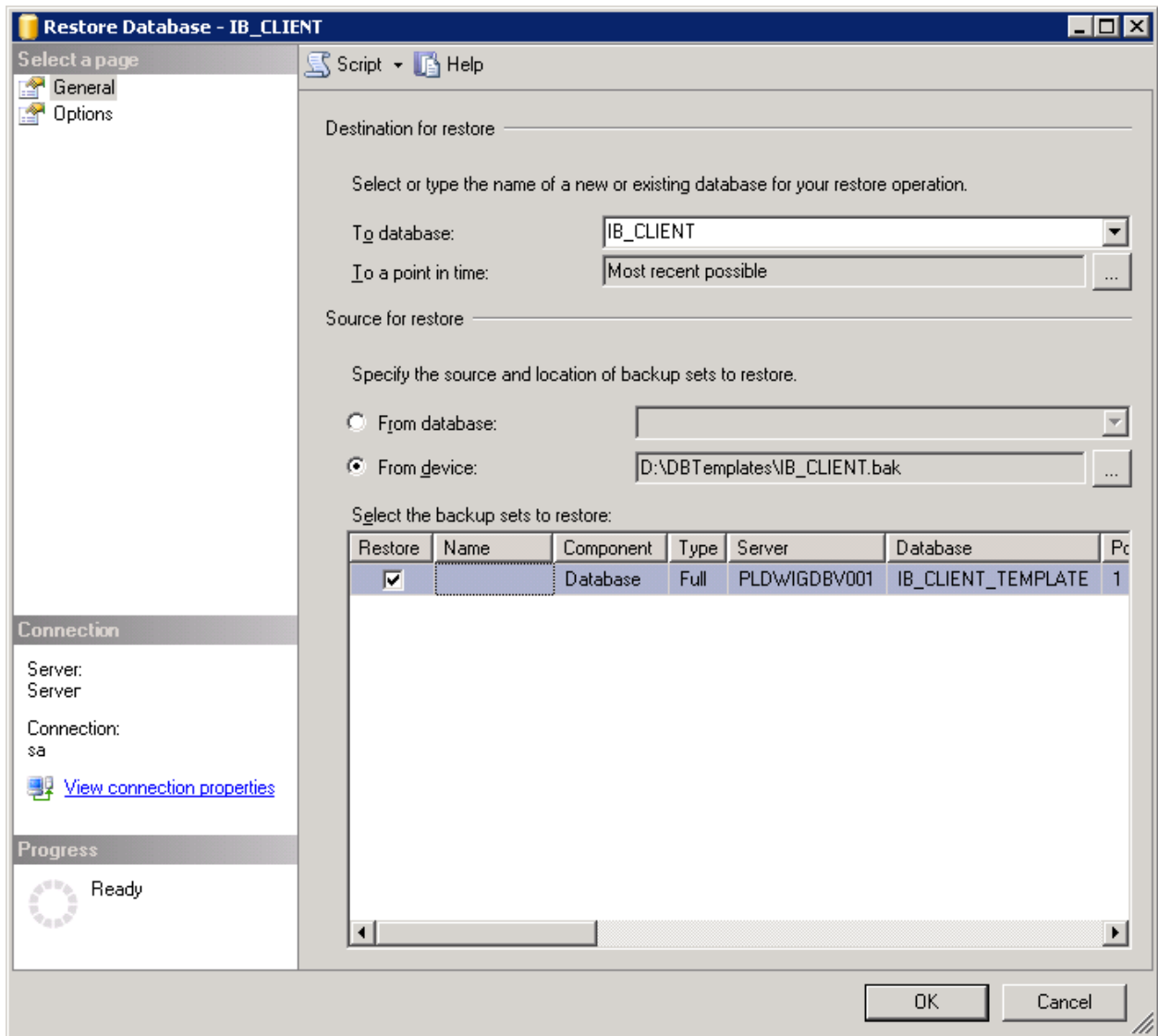


Figure 23 Restoring a Database

9. Enter your IBSR database name in **To Database:**.
10. Select **From Device**. Click ... to browse to the location where the database files were placed in step 2.
11. Select your database **IBSR\_ xxxx.BAK**, where **xxxx** equals the renamed file from step 3.
12. Click **OK**. Your database will be populated.
13. Verify your information. Check the **Restore** box.



14. Click **OK**.
15. If the database was restored successfully, it will be displayed in the database folder. If not, please correct any errors and try again.
16. Once the database is restored to SQL Server, you will need to create or assign a SQL Server user account for the application. This user will be used for the connection to the databases when setting up the connections from the Insbridge Framework Administrator. Make note of the account you want to use. This information will be entered into the Insbridge Framework Administrator.

For ease of administration, the database user should have **db\_owner** permissions on the IBSR\_XXXX database.

## STEP 6 – CONFIGURING INSBRIDGE FRAMEWORK ADMINISTRATOR

Open an Internet Explorer web browser either remotely on the local IBRU web server and browse to the following location, replacing SERVERNAME with the actual server name:

http://SERVERNAME/ibfa/

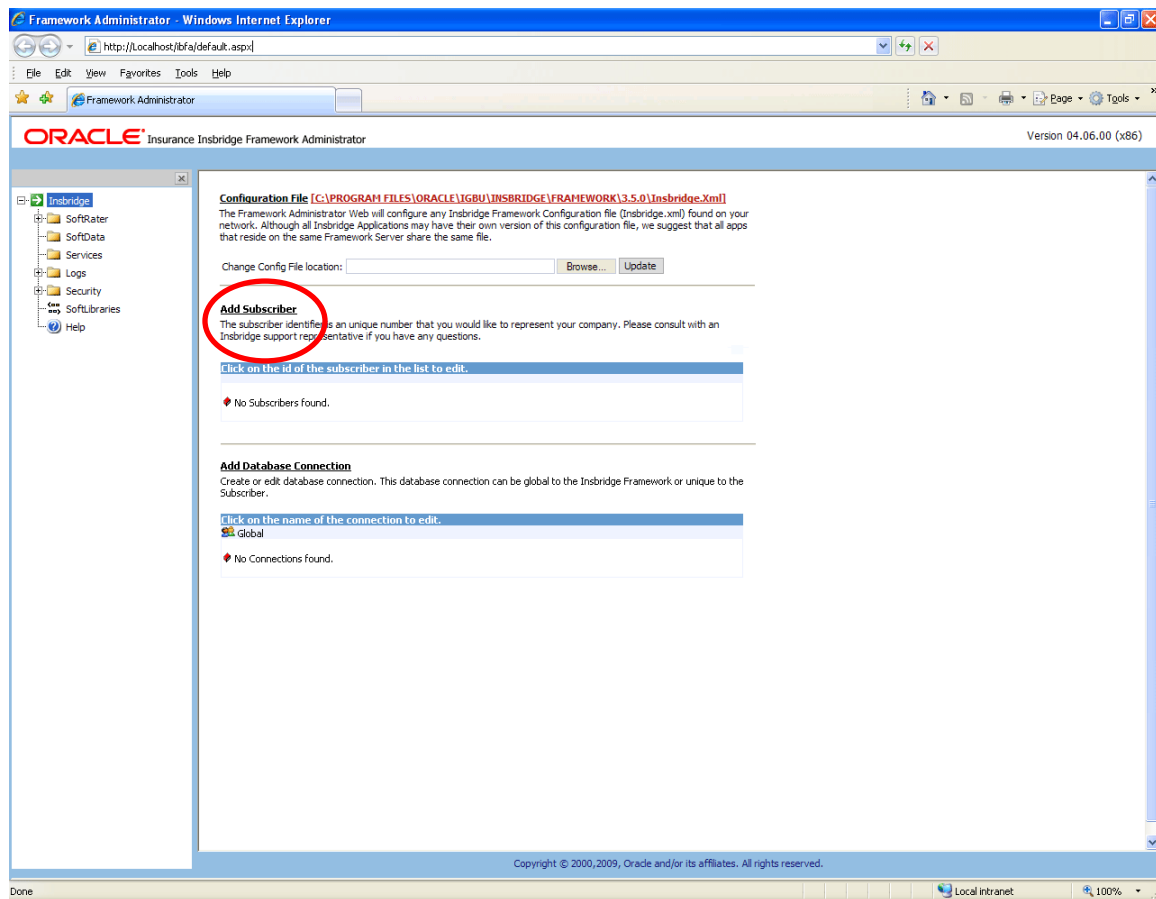


Figure 24 IBFA Home

---

**NOTE:** If you receive an access denied error message, please verify that you have given the Insbridge user full control of the Insbridge folder.

---

---

**NOTE:** If you receive an IDNX denied error message, please verify that the Insbridge user has full control over the Insbridge directory. Regedt->Insbridge Directory-> Security.

---

---

**NOTE:** If you receive an error regarding MCSiMenuCtl, please verify that you are using Internet Explorer 7.0 or 8.0 (32-bit). Release 4.6 does not support Internet Explorer 8.0 (64-bit).

---

To continue, you will need to exact names of the databases you restored in Step 5, IBSR database.

There are three steps that will need to be done in IBFA:

- **Step 1 – Creating a Subscriber**
- **Step 2 – Creating a RateManager Environment**
- **Step 3 – Creating a Virtual File Server**

### Step 1 – Creating a Subscriber:

For this step you will need the subscriber information from the RateManager IBFA instance that you created previously. The subscriber created here must match that subscriber.

The ID and Name are fixed after the first time you save. These entries cannot be edited. Only the description can be edited. If you have made a mistake, you will have to create another subscriber and delete the incorrect entry.

1. Click on **Add Subscriber** on the Main IBFA screen. A separate screen will be displayed.
2. Enter the **ID**, **Name** and **Description** for your subscriber.
3. When you finish entering the information, click **Save**. The new subscriber will now be displayed in the list of subscribers.

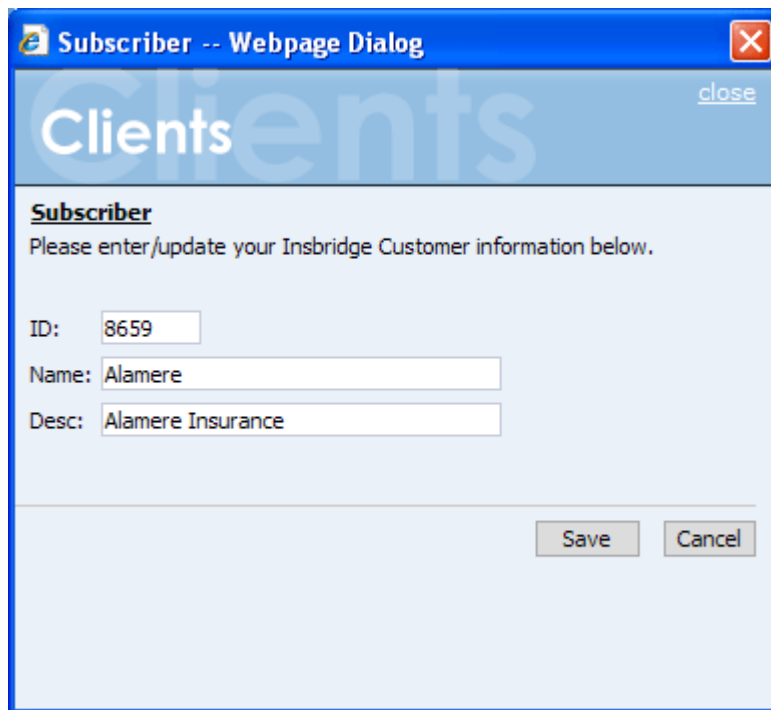


Figure 25 Enter ID

If you require assistance or are unsure of what action to take, please log a Service Request using My Oracle Support at <https://support.oracle.com/>.

### Troubleshooting Subscriber Entries:

If you receive an error message or have difficulty creating a subscriber, you may need to add the Insbridge user to the Windows Machine Keys.

1. Go to C:\Documents and Settings\All Users\Application Data\Microsoft\Crypto\RSA\MachineKeys.
2. Right click and select Sharing and Security. Select the Security tab.
3. Add the Insbridge user.

### Step 2 – Creating a SoftRater Environment:

Next, create the default rating environment for the SoftRater node.

It is recommended that you create one logical environment:

- SR – to identify the location of the local SRPs and the IBSR DB.

1. Browse to **SoftRater→Explorer→Subscriber name**.

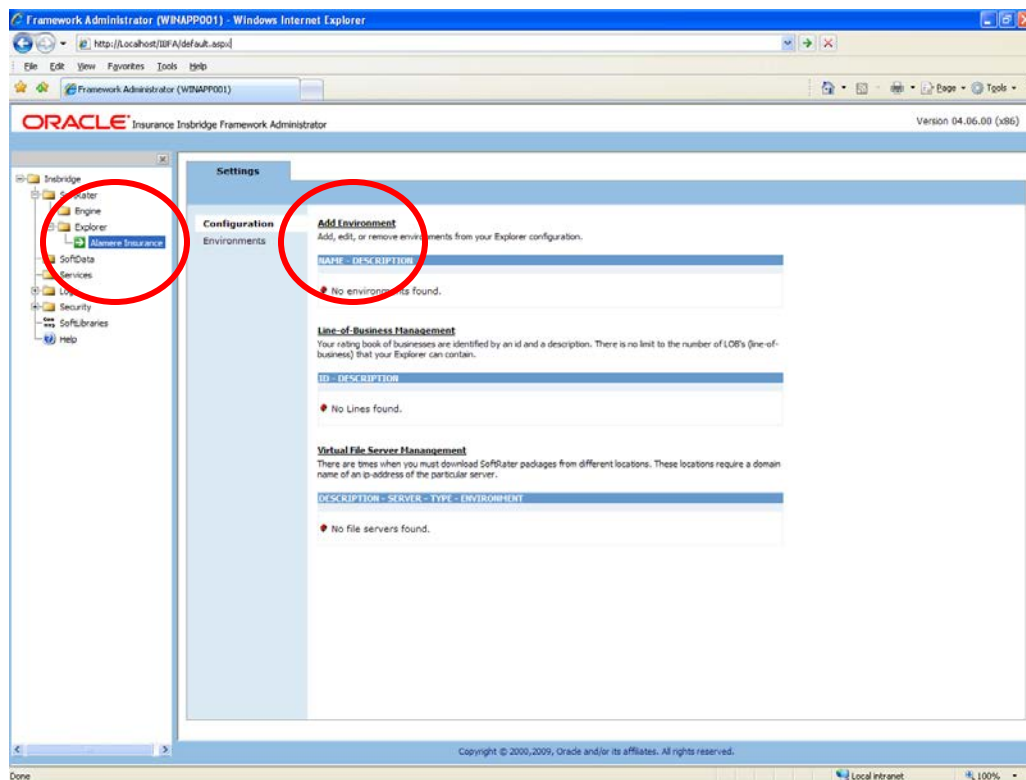


Figure 26 Create a Rating Environment

2. Click on **Add Environment**.

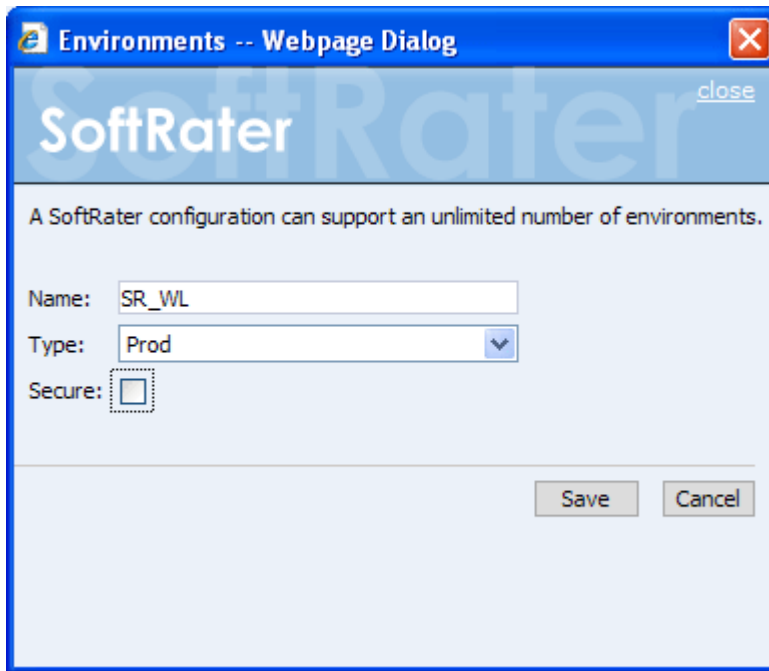


Figure 27 Entering Name and Environment

3. Enter a Name and select a Type. The name and type are totally dependent on how your IBRU system is designed.

There are three types of Logical Environments:

- **Development**
- **Quality Assurance**
- **Production**

After you have entered your logical environment, you must define it.

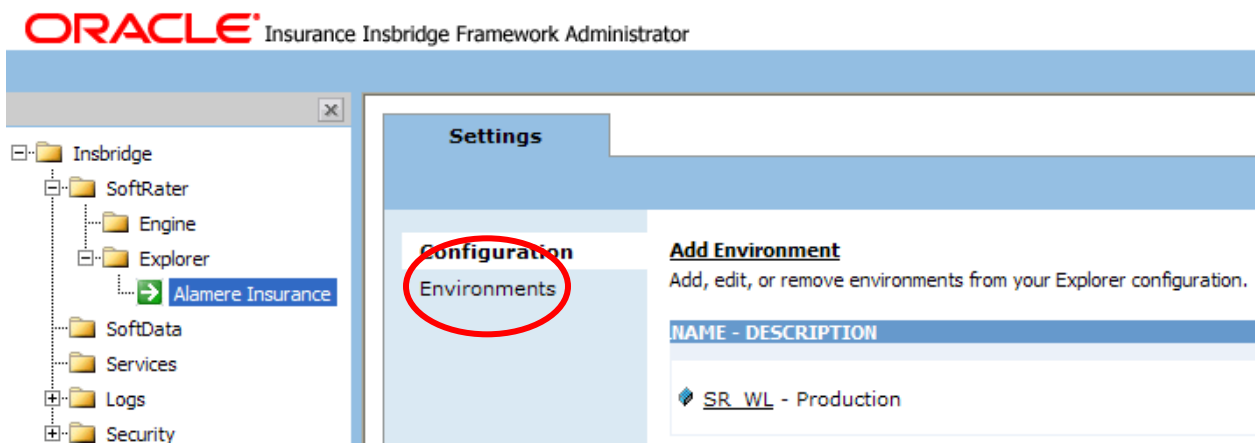


Figure 28 Obtaining Environment Information

4. Select the Environments link under the Config header on the left hand side to enter the configuration information for the newly created logical environment. You will be placed on the Environments screen.

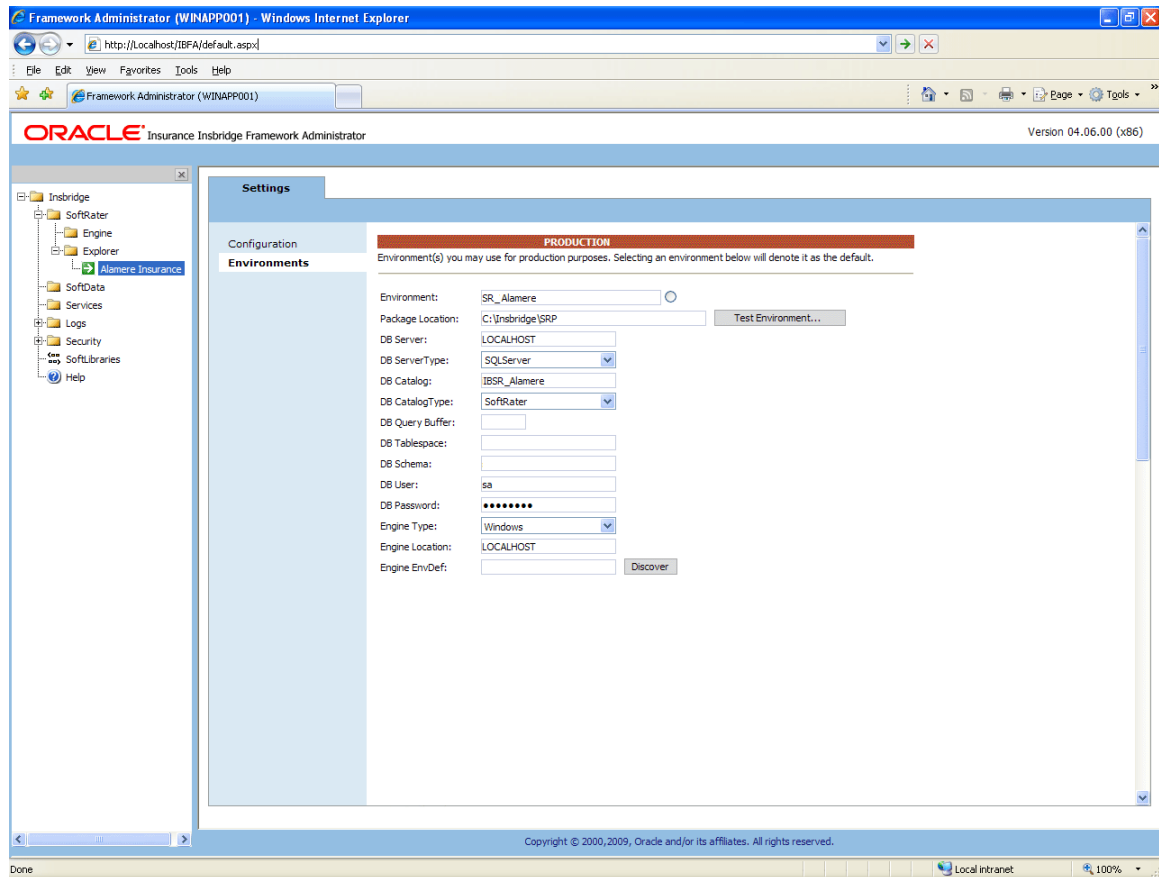


Figure 29 Editing Environment

## Creating a SoftRater Environment

A SoftRater environment may be completed at installation or can be added at a later time. A SoftRater environment can only be on a Windows. There is no limit to the number of SoftRater environments that you can have.

1. The **Environment Name** will be complete. No changes are needed.
2. Enter in the file path where you want packages stored in the **Package Location**. Use the Test Environment option to have the location created for you.
3. Enter in the **DBServer** name or IP address. This is the database server where the SoftRater database was restored or created.
4. The **DB Server Type** will be **SQL Server**.
5. The **DB Catalog** is the name of the SoftRater database restored in SQL Server.

6. The **DB Catalog Type** is **SoftRater**.
7. **DB Query Buffer**, **DB Tablespace** and **DB Schema** are not required for a SoftRater for Windows (SoftRater Node) environment.
8. Enter the **DB User** name and **Password**.
9. The **Engine Type** is **Windows**.
10. The **Engine Location** is the location of where you installed the SoftRater engine. You can use the machine name or IP address. Most SoftRater installations have a local engine location. If the engine location is not on the local machine, enter the server name or IP address where the IBFA engine is located. Do not change LOCALHOST to the name or IP address of the local machine.
11. The **Engine EnvDef** is the machine name if the engine is located on a different server. You can use the machine name or IP address.
12. Click **SAVE** to save your entries.

### Step 3 – Adding a Virtual File Server

Virtual file server management allows you to set up a link to servers that are in different locations where packages can be downloaded. In a typical QA environment, you will set up a Virtual File Server to point back to the QA logical environment that you created in your RateManager Development environment.

This step is necessary if you want to copy and load packages from environment to environment, however, if you do not have the information ready. You can do this at a later time.

1. From the Configuration Page, click the **Virtual File Server Management** link.

#### **Virtual File Server Manangement**

There are times when you must download SoftRater packages from different locations. These locations require a domain name or an ip-address of the particular server.


DESCRIPTION - SERVER - TYPE - ENVIRONMENT
 No file servers found.

Figure 30 Virtual File Server Management Screen

2. This will open the **Virtual File Server Management** window.

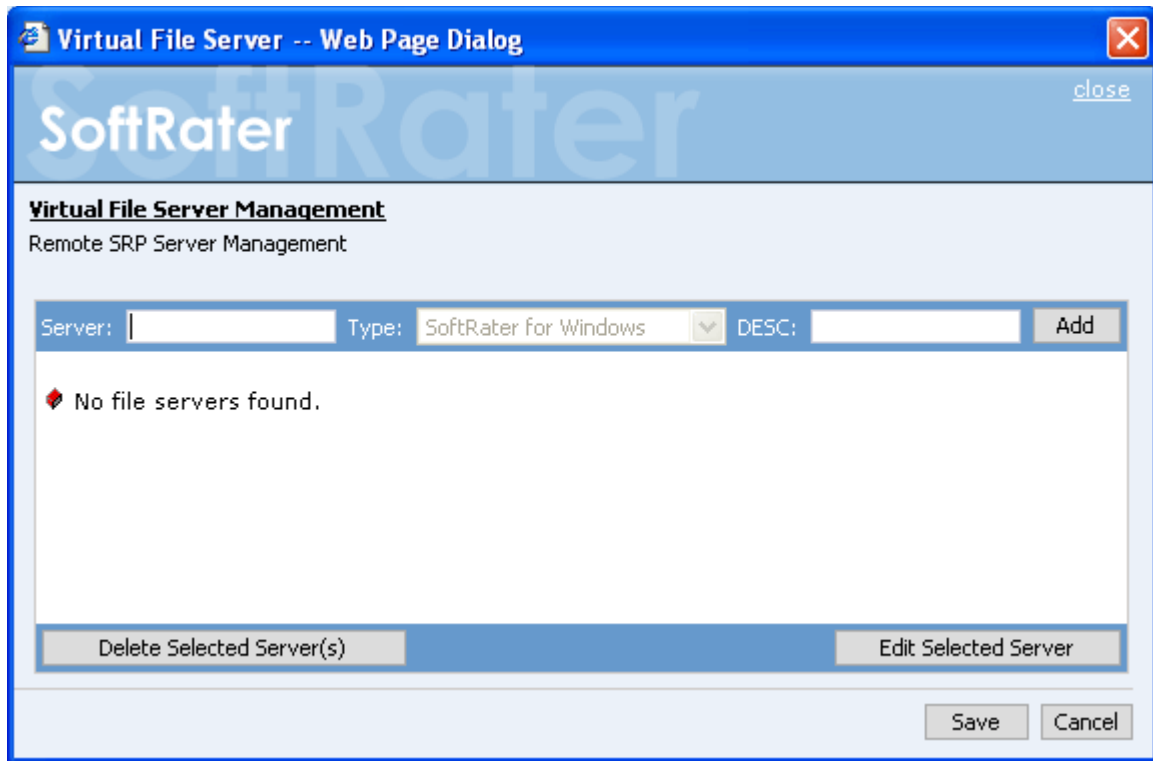


Figure 31 Virtual File Server Management Window

3. Enter the name of the server and a description. Take care when entering the server name. This field cannot be edited. If you have made a mistake, you must delete and re-enter.
4. Click **Add** to add the server to the list. Enter in as many servers as you need.
5. When you are finished, click **Save** to save your work and return to the previous screen.



## STEP 7 – VERIFYING THE COMPONENT SERVICES

Next, you should verify the component services.

### For Windows Server 2008:

1. Click **Start→Administrative Tools→Component Services**.
2. Expand the **Component Services** option under console Root.
3. Expand **Computers→My Computer→COM+ Applications**.
4. Expand each Insbridge **COM+ library** to make sure there are components listed underneath each compartment.

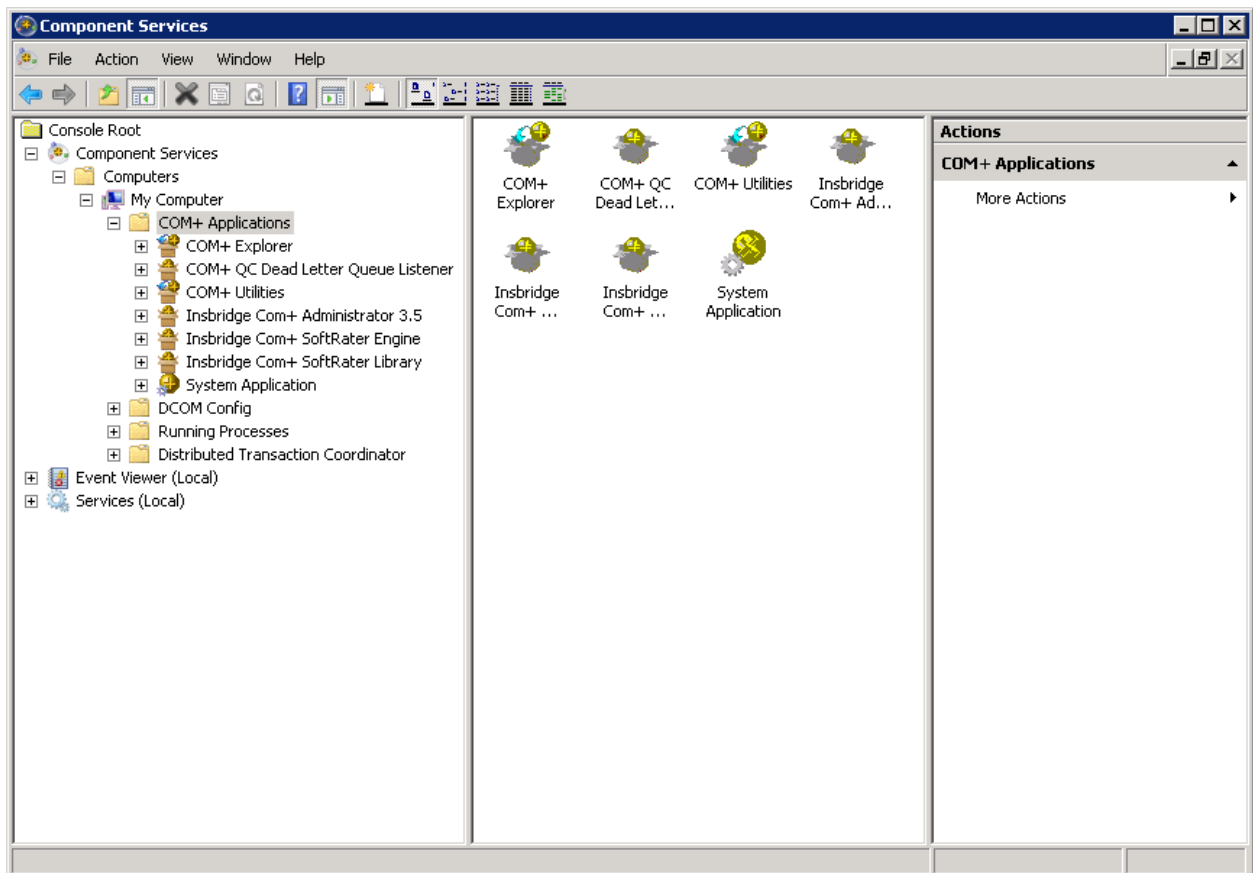


Figure 32 Component Services

There should be 3 Insbridge Com+ Applications libraries:

- Insbridge Com+ Administrator 3.5
- Insbridge Com+ SoftRater Engine

- Insbridge Com+ SoftRater Library

Please note that you will not have to make any changes to any COM+ Application library. The installation will automatically apply the Insbridge user name and password that you created earlier to the necessary libraries. If you change the password, you will have to change the password in all three of the Insbridge Com+ libraries. On each library, right click, select Properties, select the Identity tab, enter in the new password.

---

**NOTE:** *If any COM+ library is missing, run the IBRU install again from the msi file and choose uninstall. Then rerun the IBFA install. Uncheck the RateManager Install. Then check again to see if all the libraries are listed. If they are still not listed, please log a Service Request using My Oracle Support at <https://support.oracle.com/>.*

---

### For Windows Server 2003

1. Click **Start→Administrative Tools→Component Services**.
2. Expand the **Component Services** option under console Root.
3. Expand **Computers→My Computer→COM+ Applications**.
4. Expand each Insbridge **COM+ library** to make sure there are components listed underneath each compartment.

## STEP 8 – ALLOWING FOR WCF ACTIVATION

**FOR WINDOWS SERVER 2008 ONLY. Windows Server 2003 can skip this step.**

WCF Activation is required for web services. RateManager makes call using IBFA web services. If this is not activated, users will experience errors.

1. Select Start→Administrative Tools→Server Manager.
2. Select Features Summary. Scroll through the list to verify WCF Activation has been activated.
3. If not, select Add Features. The Add Features Wizard will be displayed.

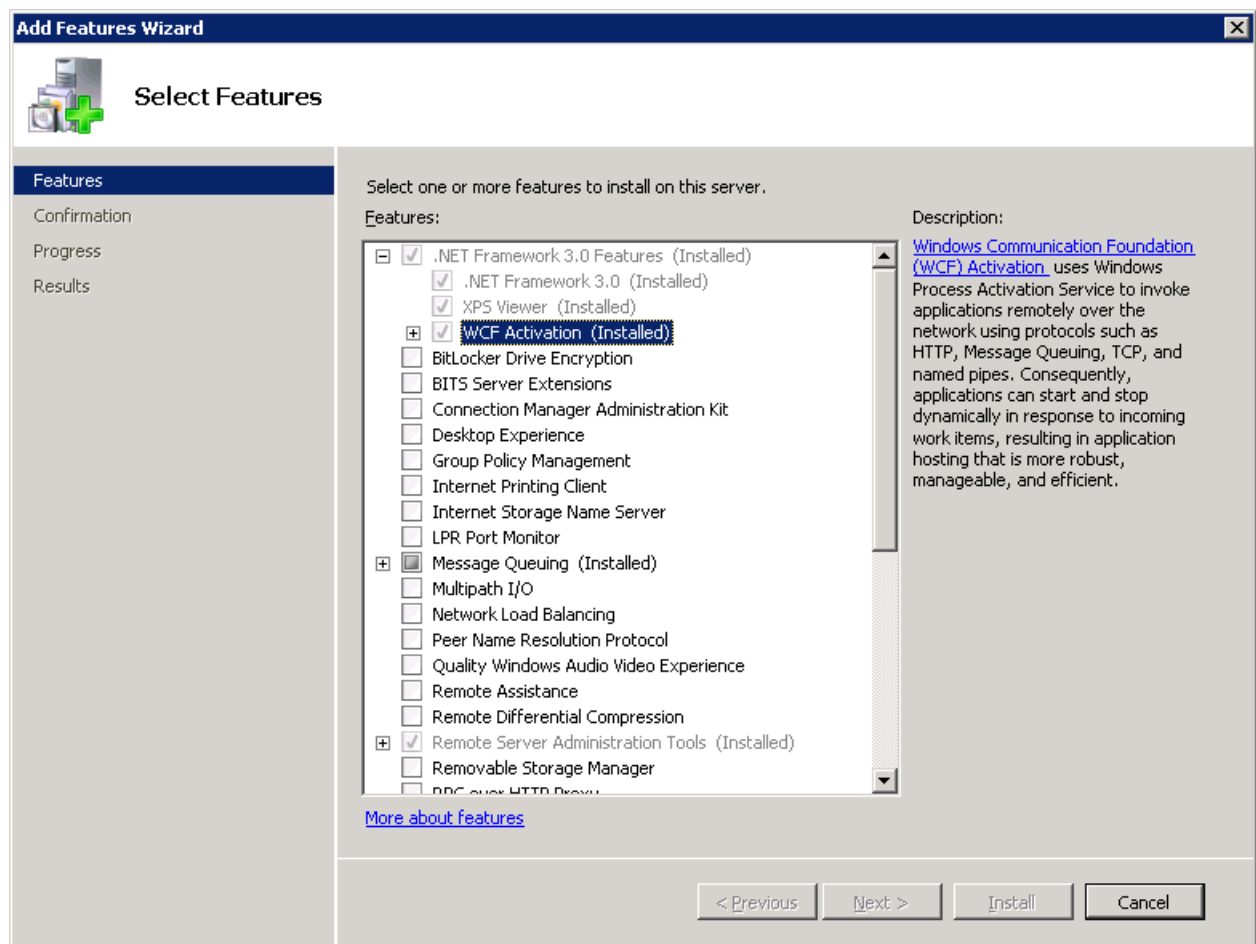


Figure 33 Selecting WCF Activation

4. Select WCF Activation. Click NEXT.
5. Confirm your selection and click INSTALL. The installation will proceed.
6. You can close out when complete.

## STEP 9 – INSTALLING THE OBI PUBLISHER

OBI Publisher is necessary for reports. If you do not plan on using reports in IBFA, you do not need to install this program.

1. Unzip the OBI\_PUBLISHER

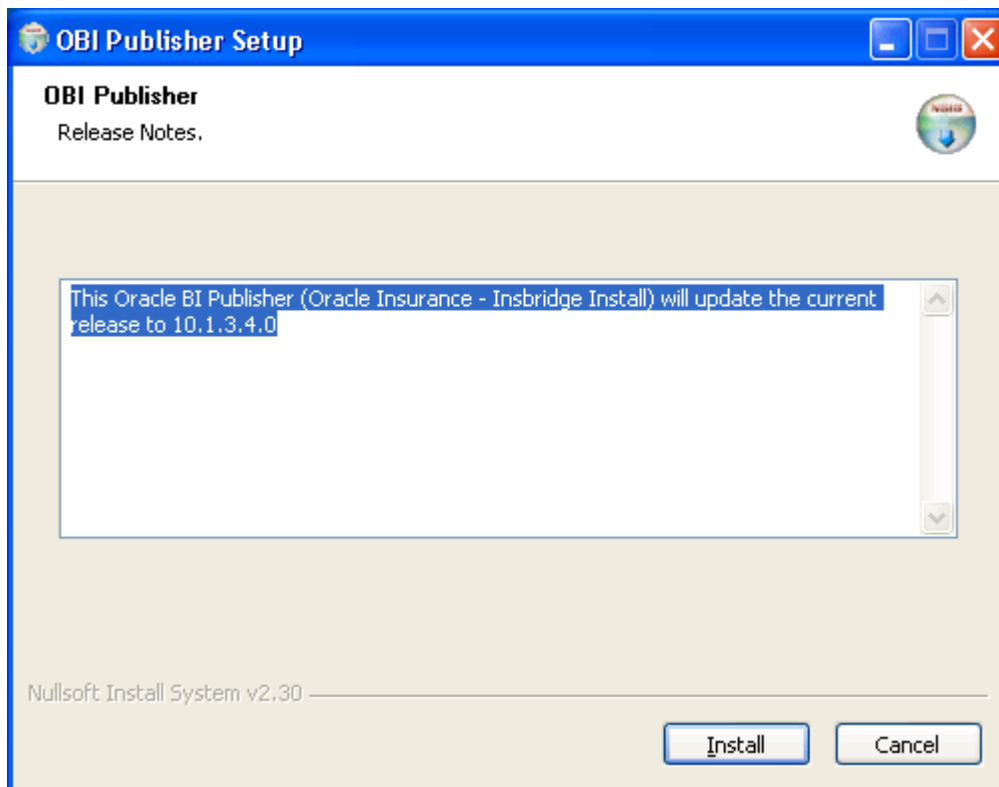


Figure 34 Installing OBI Publisher

2. Click **Install**. A progress screen will be displayed.
3. When complete, click **Close**.
4. In order for OBI Publisher to be available to users, you must start the **Insbridge Message Service**. The Insbridge Message Service can be started from IBFA or from Services in Windows 2003 or the Server Manager in Windows 2008.

It is also recommended that you start the **Insbridge Task Manager** as well. The Insbridge Task Manager is a task queue that lists the tasks that are scheduled to be performed as well as the last time the task was run and the status.

## STEP 10 – STARTING INSBRIDGE SERVICES

It is also recommended that you start the Insbridge Task Manager as well. The Insbridge Task Manager is a task queue that lists the tasks that are scheduled to be performed as well as the last time the task was run and the status.

**Insbridge Message Service**

The Insbridge Message Service is a Message Queue Listener that will route all batched messages to an assembly (process) for execution. These processes may take resources and time to execute. Please consult with you system admin before configuring the number of listeners per process.

---

**Message Process**

Batch Rating

If you see this message, you have not requested a listing from the selected spoke client. Clicking View Messages will provide you with a list view of the first in - first out messages that are waiting to execute.

---

**Insbridge Task Manager**

The Insbridge Task Manager gives you the ability to execute daily, weekly, hourly, or by the minute.

(This process may take a while to execute)

TASK	LAST RUN-DATE	START-TIME	STATUS

Figure 35 Insbridge Services Screen

1. In **IBFA**, navigate to the **Services** page.
2. Next to Insbridge Message Service, click **Start**. After a few seconds, the buttons will refresh to indicate that the service is started.
3. Next to Insbridge Task Manager, click **Start**. After a few seconds, the buttons will refresh to indicate that the service is started.

---

**NOTE:** The location and port for OBI Publisher is <http://localhost:9704/xmlpserver/>. This information may be needed if you have to make a request to your company's infrastructure and request the security team to open the ports used by Publisher.

---

## STEP 11 – IMPORT INSBRIDGE REGISTRY KEY

The registry key from the RateManager/IBFA instance must be imported into the machine where the SoftRater for Windows is located. This will allow packages to be loaded and rated.

### On the RateManager/IBFA Machine:

The Insbridge registry key located in HKEY\_LOCAL\_MACHINE→SOFTWARE→Insbridge is used to store all information for proper encryption of the SoftRater Packages (SRPs). This registry key should be exported to a text file and then imported into the SoftRater for Windows machine.

1. Select the Insbridge key: HKEY\_LOCAL\_MACHINE→SOFTWARE→Insbridge.
2. Right click and select **Export**.
3. Select a storage location for the file and **Save**.
4. Close out of Registry Editor.

### On the SoftRater for Windows Machine:

1. Place the file you exported anywhere on the machine.
2. Click the file to start the import.
3. If the import fails, please correct any errors and try again.

## STEP 12 – CONNECTING SR-WIN TO THE IBFA

The new instance of SoftRater for Windows will now need to be connected to the original installation of RateManager/IBFA. This will allow packages and SRPs to be loaded and unloaded from development to QA or Production environments.

Open an Internet Explorer web browser and browse to the location of the original RateManager/IBFA.

`http://SERVERNAME/ibfa/`

### Creating Environments

Next, you will need to create the same rating environment of the SoftRater for Windows.

1. Browse to **SoftRater→Explorer→Subscriber name**.

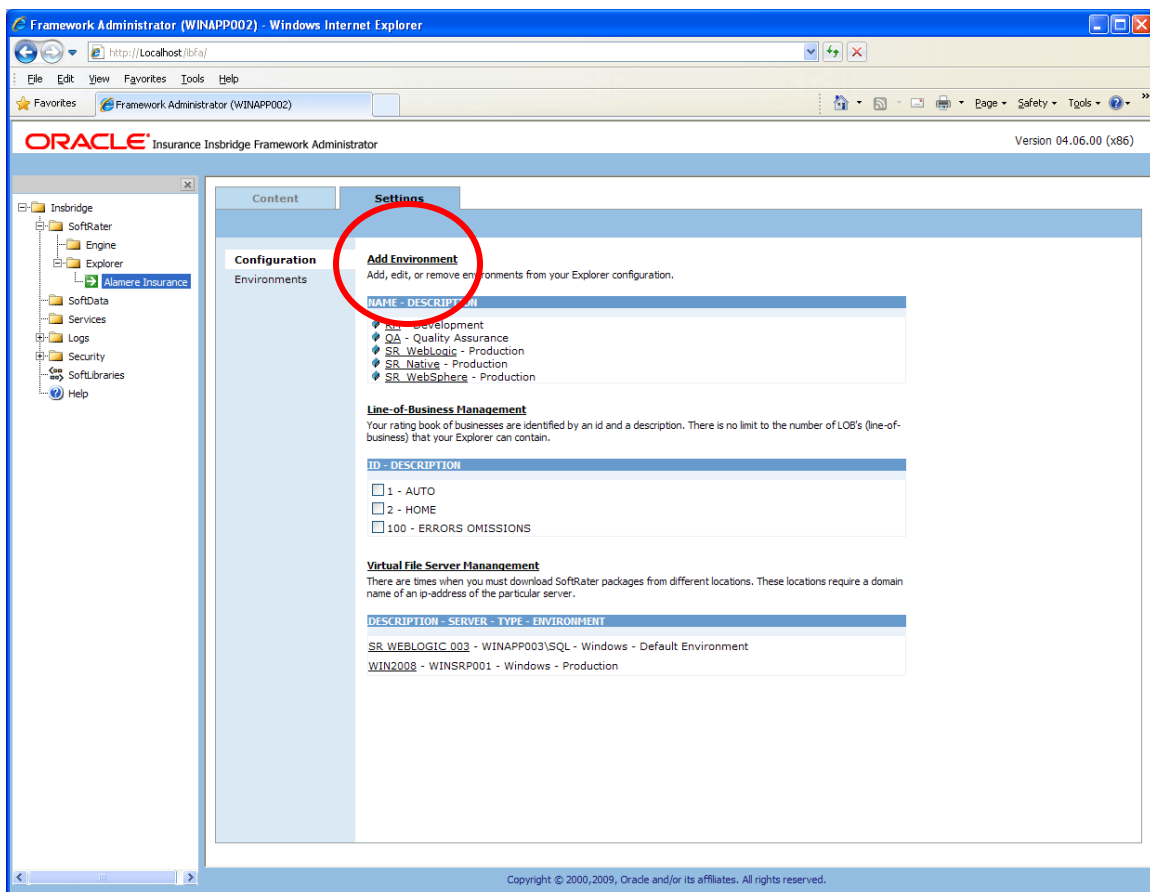


Figure 36 Create a Rating Environment

2. Click on **Add Environment**.

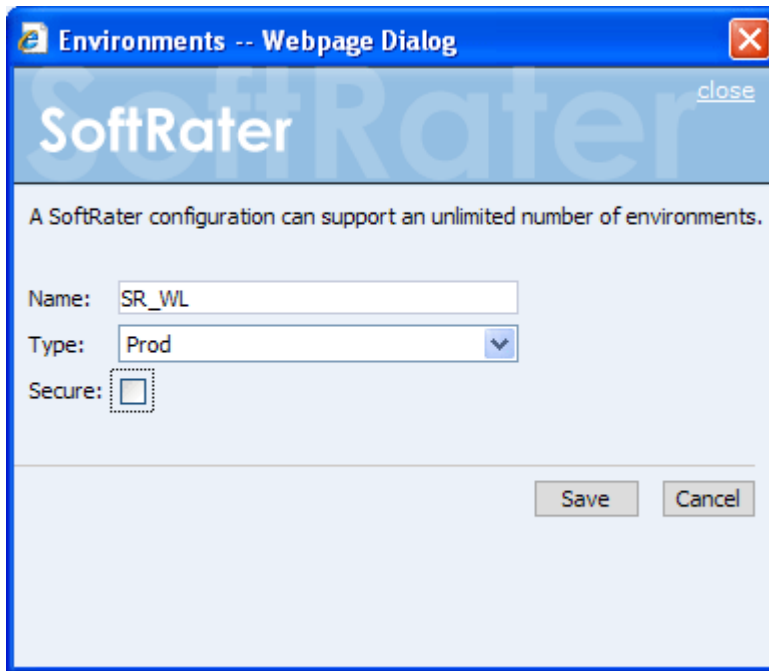


Figure 37 Entering Name and Environment

3. Enter the same Name and Type as the SoftRater for Windows instance.
4. After you have entered your logical environment, you must define it. Select the Environments link under the Config header on the left hand side to enter the configuration information for the newly created logical environment. You will be placed on the Environments screen.
5. Enter the exact same information as the SoftRater for Windows.
6. Click **Save** to save your information.

You can test connections and verify that you can load and unload packages.



# SOFTRATER DATABASE REQUIREMENTS

For the Insbridge 4.6 release:

- The IBSR database has been tested and certified on MS SQL Server 2008 R2 on MS Windows 2008 64-bit.

---

**IMPORTANT:** *It is strongly recommended that any database modification be performed by a qualified database administrator (DBA). The database setup procedures and tasks require the skill set of a database administrator. If you are not a database administrator, please stop. Improper setup may result in unwelcome changes to the database. Please consult with a qualified database administrator before proceeding.*

---

## DATABASE USER ROLES AND PERMISSIONS

If a more granular approach is required for management of security of the IBRU databases, then the following guidelines can be used to set the required permissions.

---

**NOTE:** *These are only guidelines. If not properly configured, certain processes within the Insbridge Rating and Underwriting System will fail. An experienced database administrator's expertise is highly recommended before making any security changes.*

---

### Recommended SoftRater for Windows Permissions:

The recommended permissions are required for new tables to be created in the SoftRater (IBSR) database dynamically when or if a new line of business SRP (SoftRater Package) is loaded to the SoftRater system. If the recommended permissions are not possible, manual steps will need to be performed that will allow for packages to be loaded.

SoftRater can utilize SQL Server.

- **Insbridge SoftRater SQL Server Database.**

It is recommended that the Insbridge login be granted permission to connect to the database engine and be enabled. It is also recommended that the Insbridge login be mapped to the Insbridge database with the db\_owner role checked.

It is recommended that the databases be on separate machines from the applications due to performance and security issues. The IBRU applications and databases can be tenants in a larger setup. No known conflicts exist between IBRU and other applications or required server settings.

It is recommended that db\_owner permissions be given to the Insbridge user. This will allow scripts to be run automatically when a new package is loaded for a new line of business. If this is not possible, DT scripts for each new line will have to be run manually before the package can be loaded.

## Microsoft SQL Server

Microsoft SQL Server should not be installed on the same machine where the Insbridge web applications reside. The SQL Server should reside on a separate host from the IBRU web front end with a properly configured network connection from the web server front end to SQL Server. Testing can be performed by using the Data Sources application in Administrative Tools to make a default connection to the database server.

---

**NOTE:** *All these settings are available during installation of SQL Server or by using SQL Server Enterprise Manager, and right clicking the server and selecting properties.*

*If any of these settings conflict with existing application's databases residing on the SQL Server, then a separate instance is required.*

---

Depending on the load expected, the databases can be placed on a separate SQL Server machines that can either be independent or shared as long as the following conditions are met.

- **Server Authentication:** Should be set to SQL Server and Windows Authentication mode.
- **Collation and Sort Order:** Currently supported is the default SQL Server collation using SQL\_Latin1\_General\_CP1\_CI\_AS and sort order plus case sensitivity using Latin1\_General\_BIN as the server collation. The security database (IB\_CLIENT) supports the default SQL Server collation using SQL\_Latin1\_General\_CP1\_CI\_AS. The RateManager and SoftRater databases can use either case sensitive or non-case sensitive. Please check with Oracle Insurance for any questions regarding database server sort orders or collations.

---

**NOTE:** *For SQL Server, please make sure the SQL Server Client is installed.*

---

## JDBC Driver Class

"com.microsoft.jdbc.sqlserver.SQLServerDriver"

## Supported Versions – 2005 SP/2 and 2008 R2

## User Account Requirements

Create Table

Create Index

Execute on the SoftRater User Defined Stored Procedures

# WINDOWS 2003 SETTINGS AND PERMISSION NOTES

## Microsoft .NET Framework

It is suggested that the Microsoft .NET Framework version 3.5 be installed prior to the Insbridge Rating and Underwriting System install. .NET Framework version 3.5 can be obtained from Microsoft's website or from using Microsoft's Windows Update.

We also highly recommend installing the .NET Framework after installing IIS in order to update all the web applications to utilize the ASPNET system.

This can be doubled checked by:

1. Open **Internet Service Manager** and right click the **Default Web Site**.
2. Select **Properties**.
3. Select the **Home Directory** tab.
4. Click **Configuration....**
5. Scroll until you find the **ASPNET extensions** (.asax, aspx, .asmx, etc.).
6. To get a detailed look, select an extension and click **Edit**.

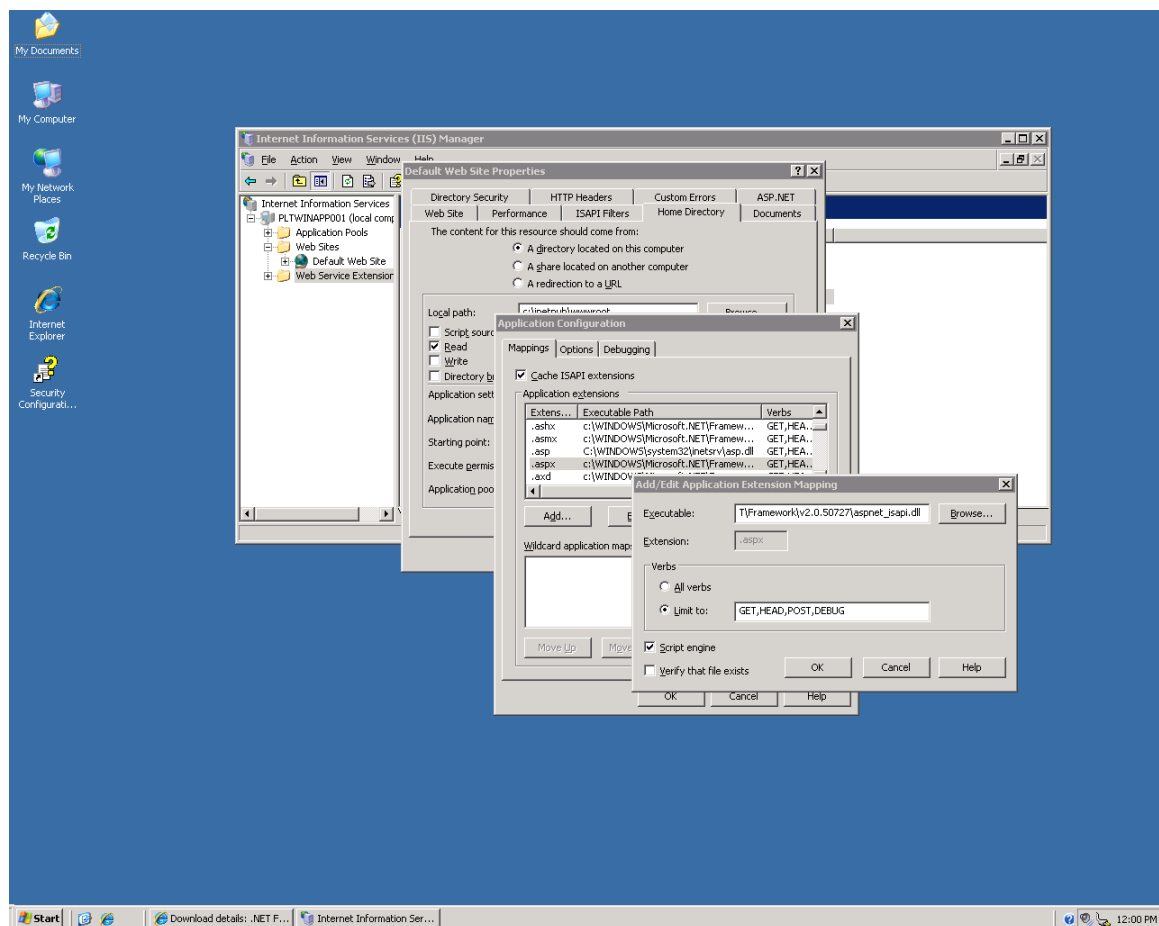


Figure 38 Installing .NET Framework

If you don't see any of the ASPNET extensions (.asax, aspx, .asmx, etc.) pointing to %WINDIR%\Microsoft.NET\Framework\v2.0.50727\aspnet\_isapi.dll, then the .NET framework was probably installed prior to installation of IIS.

To install the ASPNET ISAPI extensions, use the aspnet\_regiis.exe located in the Framework\v2.0.50727 folder. If you want to upgrade all default web applications under IIS to use the 2.0 framework ASPNET ISAPI, use the following syntax:

```
C:\WINNT\Microsoft.NET\Framework\v2.0.50727>aspnet_regiis.exe
```

Install this version of ASP.NET and update script maps at the IIS metabase root and for all script maps below the root. Existing script maps of lower version are upgraded to this version.

Please see page 10 in regards to the permissions required by the local ASPNET user account.

## Internet Information Services (IIS) 6.0

The Insbridge Rating and Underwriting System is a web based application and requires IIS to be installed before the Insbridge Rating and Underwriting System installation to facilitate the default web virtual directories creations.

The subcomponents of Application Server needed by the Insbridge Rating and Underwriting System:

- Application Server Console
- ASP.NET
- Enable network COM+ access
- Internet Information Services (IIS)
  - Common Files (default)
  - SMTP Service – Although not required, the SMTP service will allow the Insbridge Rating and Underwriting System to notify users via email when extended jobs have been completed. If the SMTP service is located on a corporate network, then the service must be properly configured for authorization to relay mail internally to a smart host. Please check with your information services support group for proper configuration.
  - World Wide Web Service
    - Active Server Pages
    - World Wide Web Service
- Message Queuing
  - Active Directory Integration (default)
  - Common (default)

**After installing IIS and .NET 3.5, Active Server Pages and ASP.NET v2.0.xxxx must be enabled in order for the IBRU applications to work.**

1. Open Internet Information Services (IIS) Manager in the administration tools.
2. Select the Web Service Extensions on the left hand side and make sure they are **Allowed** as shown below:

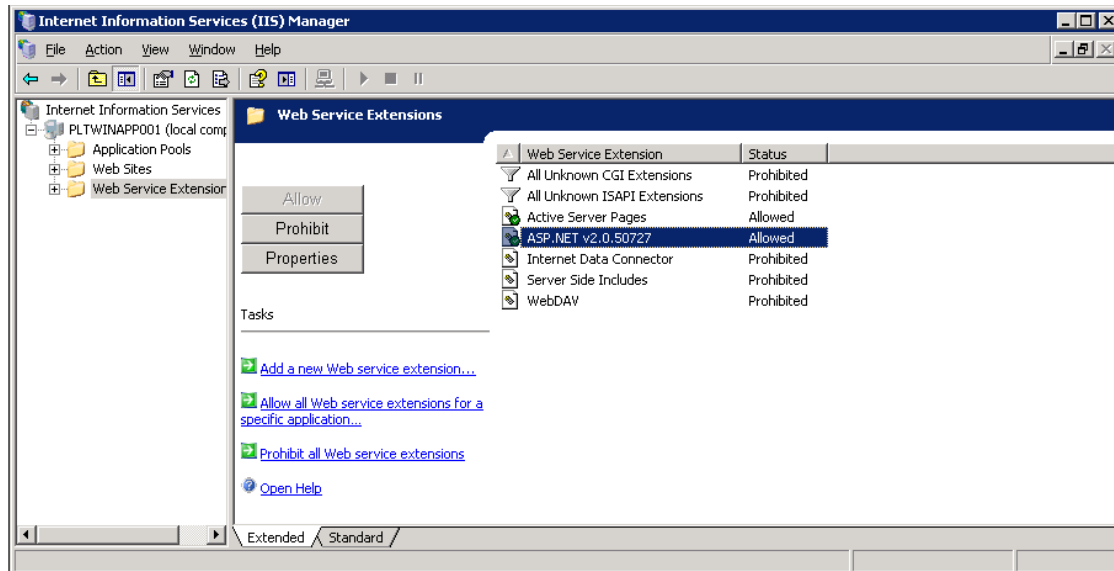


Figure 39 Enabling Active Server Pages and ASP.NET v2.0

## Message Queuing Services

The Insbridge Rating and Underwriting system utilizes the Microsoft Message Queuing Service (MSMQ) for batching jobs and other types of extended functions. The Microsoft Messaging Queuing Service can be configured for stand-alone operation without need to access any Active Directory unless specified by your information support services. The Insbridge Rating and Underwriting System utilizes by default private message queues that have no need for routing.

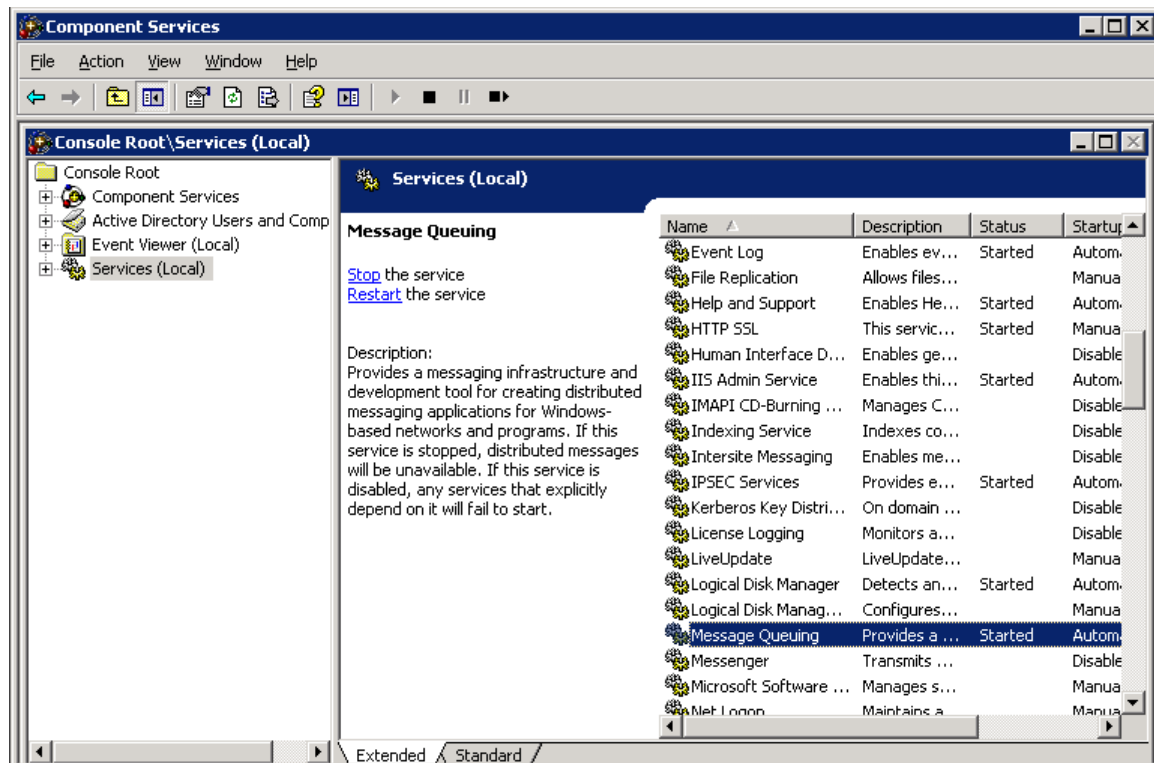


Figure 40 Message Queuing Type

## Installing Java Runtime Environment for PDF creation

In order to create reports as PDF files from the RateManager web interface, the Java Runtime Environment version 1.4 or above must be installed on the web server. The JRE can be downloaded from the <http://java.com/en/download/manual.jsp>.

## MDAC 2.8

If the Insbridge Rating and Underwriting application is split between a web server and a database server, then Microsoft's Data access component version 2.8 needs to be installed on the web front-end server. MDAC version 2.8 is included with Windows Server 2003.

## Special Considerations for Windows Server 2003

Microsoft has identified some known issues with Windows Server 2003. Oracle Insurance is aware that these issues may surface during the installation of Insbridge Rating and Underwriting System, depending upon your network setup and choice of operating system. Oracle Insurance offers the following solutions for known issues. Please discuss and involve your System Administration Group or IT Department prior to making any change. The suggestions listed below will allow the Insbridge Rating and Underwriting System to function in most environments. Oracle Insurance makes no claim to knowing what effects these changes may have on other areas of your network.

Prior to making any changes, please consult with your System Administration Group or IT Department and Insbridge support.

### FIPS Encryption

**PROBLEM:** A Windows Server 2003 server with an encryption level set to FIPS Compliant will not allow Remote Assistance connections from a Windows XP box. When you try to connect, you will receive an error message.

**SUGGESTED SOLUTION:** Disable the FIPS encryption.

There are two ways to enable the FIPS encryption level. If you have to disable the FIPS encryption level for Terminal Services, you must do this by using the same method that you originally used to enable the FIPS encryption level. <sup>1</sup>

#### Method 1

To disable the FIPS encryption level by changing the **Encryption level** setting in the **RDP-Tcp Properties** dialog box, follow these steps:

1. Click **Start**, click **Run**, type **tscc.msc** in the **Open** box, and then click **OK**.
2. Click **Connections**, and then double-click **RDP-Tcp** in the right pane.

---

<sup>1</sup> From Microsoft Knowledge Base Article #811770.

3. In the **Encryption level** box, click to select a level of encryption other than **FIPS Compliant**.

**Note** If the **Encryption level** setting is disabled when you try to change it, the system-wide setting for **System cryptography: Use FIPS compliant algorithms for encryption, hashing, and signing** has been enabled, and you must disable this system-wide setting by using method 2.

## Method 2

To use the Group Policy Object to disable FIPS data encryption system-wide, follow these steps:

1. Click **Start**, click **Run**, type **gpedit.msc** in the **Open** box, and then click **OK**.
2. Expand **Computer Configuration**, expand **Windows Settings**, expand **Security Settings**, expand **Local Policies**, and then click **Security Options**.
3. In the right pane, double-click **System cryptography: Use FIPS compliant algorithms for encryption, hashing, and signing**, click **Disable**, and then click **OK**.

**Note** Encryption level settings in Terminal Server are unavailable when FIPS is enabled.

For more information, please visit <http://support.microsoft.com/kb/811770>.

## Distributed Transaction Coordinator (DTC)

**PROBLEM:** Network DTC access is disabled by default in Windows Server 2003 server. If network DTC access is not enabled, applications can only use transactions that are located on the same box. If you want a client to access the server, you will receive an error message.

**SUGGESTED SOLUTION:** Enable DTC Access.

Please note that you must restart the server. <sup>2</sup>

### Steps to enable network DTC access

1. Click **Start**, point to **Control Panel**, and then click **Add or Remove Programs**.
2. Click **Add/Remove Windows Components**.
3. Select **Application Server**, and then click **Details**.
4. Select **Enable network DTC access**, and then click **OK**.
5. Click **Next**.
6. Click **Finish**.
7. Restart the computer.

If you are running Windows Server 2003 SP1, there are additional steps that must be taken. Please see <http://support.microsoft.com/kb/817064/en-us> for more information.

---

<sup>2</sup> From Microsoft Knowledge Base Article #817064.

# CREATING AN INSBRIDGE APPLICATION POOL

Insbridge currently uses the default application pool and requires .NET framework setting of v2.0. This may present conflicts with other applications in the default pool that require a higher setting. Or if after a new install you receive an error when accessing IBFA:

```
CS0016: Could not write to output file  
'c:\Windows\Microsoft.NET\Framework64\v2.0.50727\Temporary ASP.NET  
Files\ibfa\783d6267\bcca0b3e\App_global.asax.zf-kqiii.dll' - 'Access is denied.'
```

You may need to create a separate Insbridge Application Pool.

There are three steps to creating an Insbridge application pool and then assigning the virtual directories.

- **Step 1:** Complete the RateManager installation. Make sure that Static Content is enabled in the Server Manager Roles.
- **Step 2:** Create a new Application pool in IIS called Insbridge. Be sure to configure the application pool to use the Insbridge user.
- **Step 3:** Associate the Insbridge application pool with virtual directories IBFA, IBRU, RM

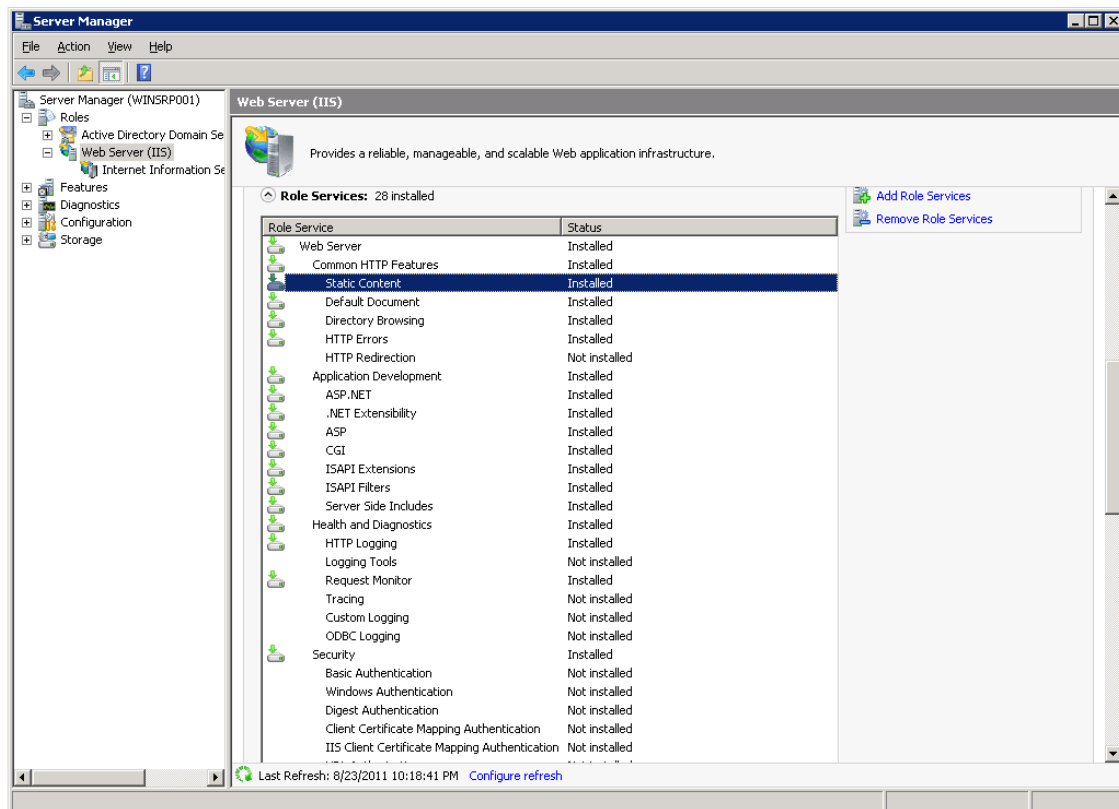


Figure 41 Enabling Static Content



## Step 2 – Updating the Insbridge Application Pool

The Insbridge installation must be complete prior to creating an application pool.

1. Click **Start** → **Administrative Tools** → select **IIS Manager**.
2. Expand the **Local Computer** and select **Application Pools**. Right click and select **Add Application Pool**.

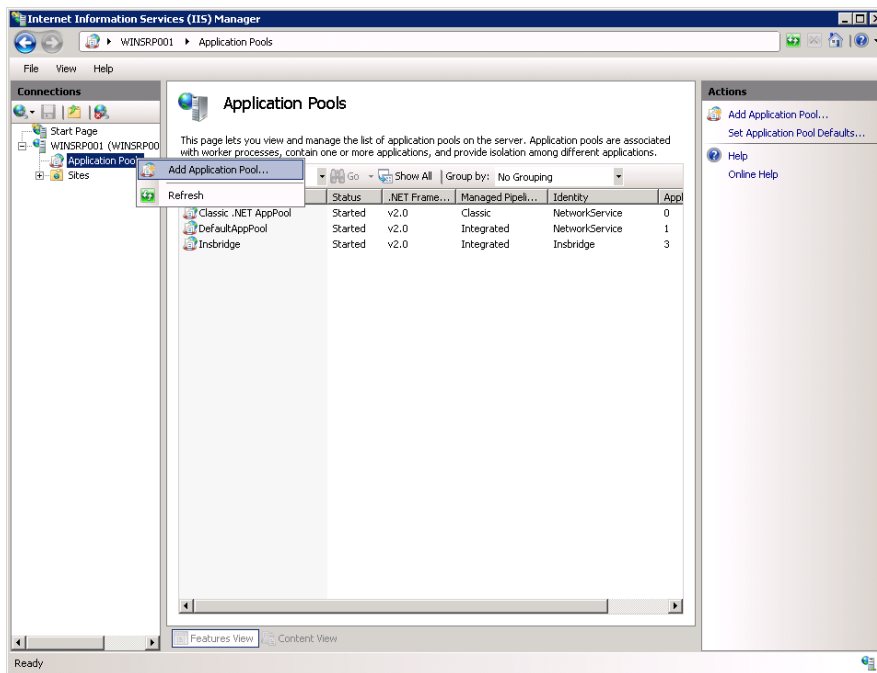


Figure 42 Navigating to Application Pool

3. Enter **“Insbridge”** for the Application pool Name. Select the **v2.0 for the .NET Framework version**. Click **OK**. You will be returned to the IIS screen. Your new application pool will be listed.

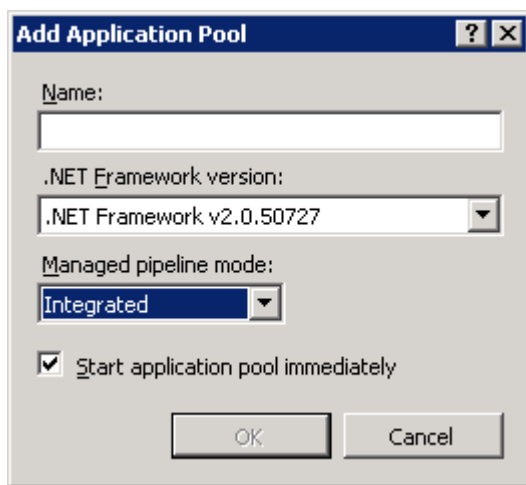


Figure 43 Creating a New Application Pool

- Right click the Insbridge Application Pool you created and select **Advanced Settings**.

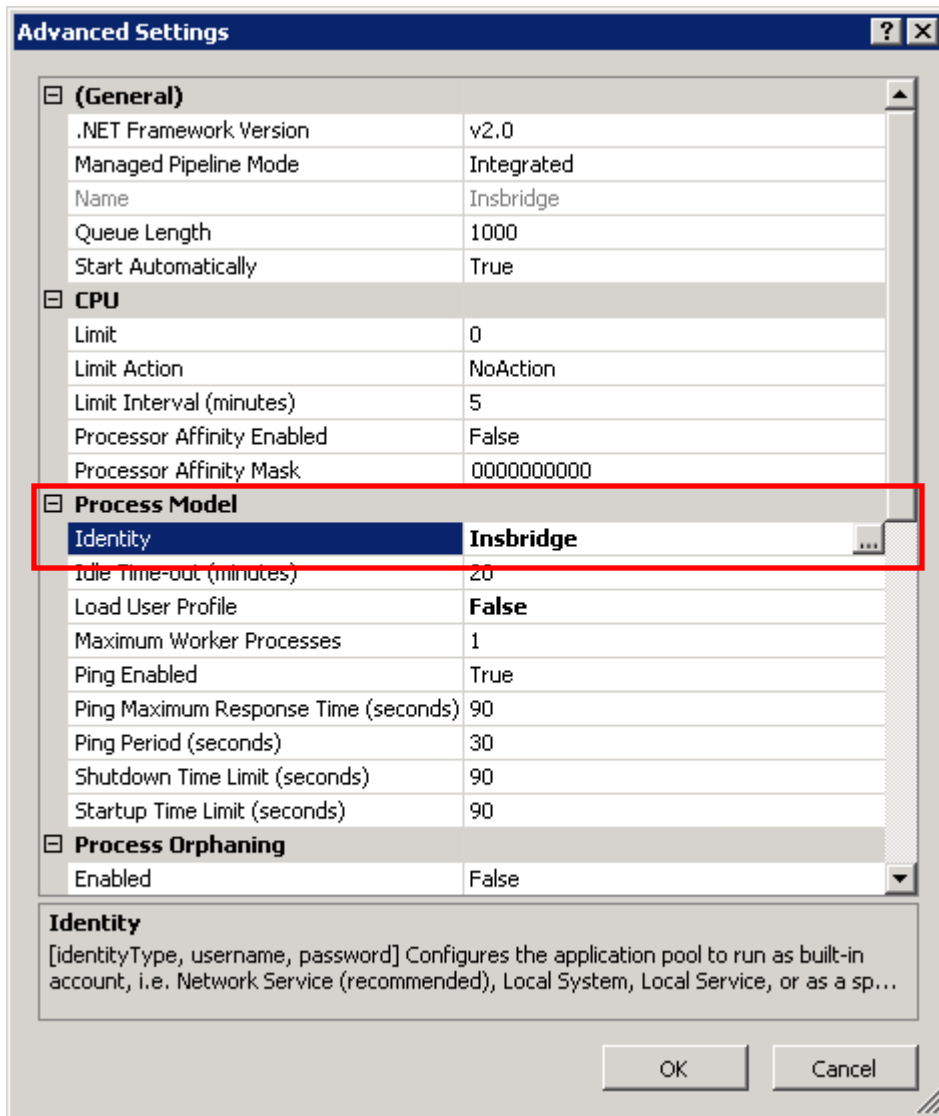


Figure 44 Selecting Application Pool Properties

- Verify that the .NET Framework Version is v2.0.
- For the Identity select **Insbridge**.
- Click **OK** to save your changes.

## Step 2 – Associate the Virtual Directories with the Insbridge Application Pool

Next, you will need to association the Insbridge virtual directories with the new Insbridge application pool.

8. Stay in IIS Manager. Under **Local Server** → **Sites** → **Default Web Site**, select **IBFA**. Right click and select **Add Application**.

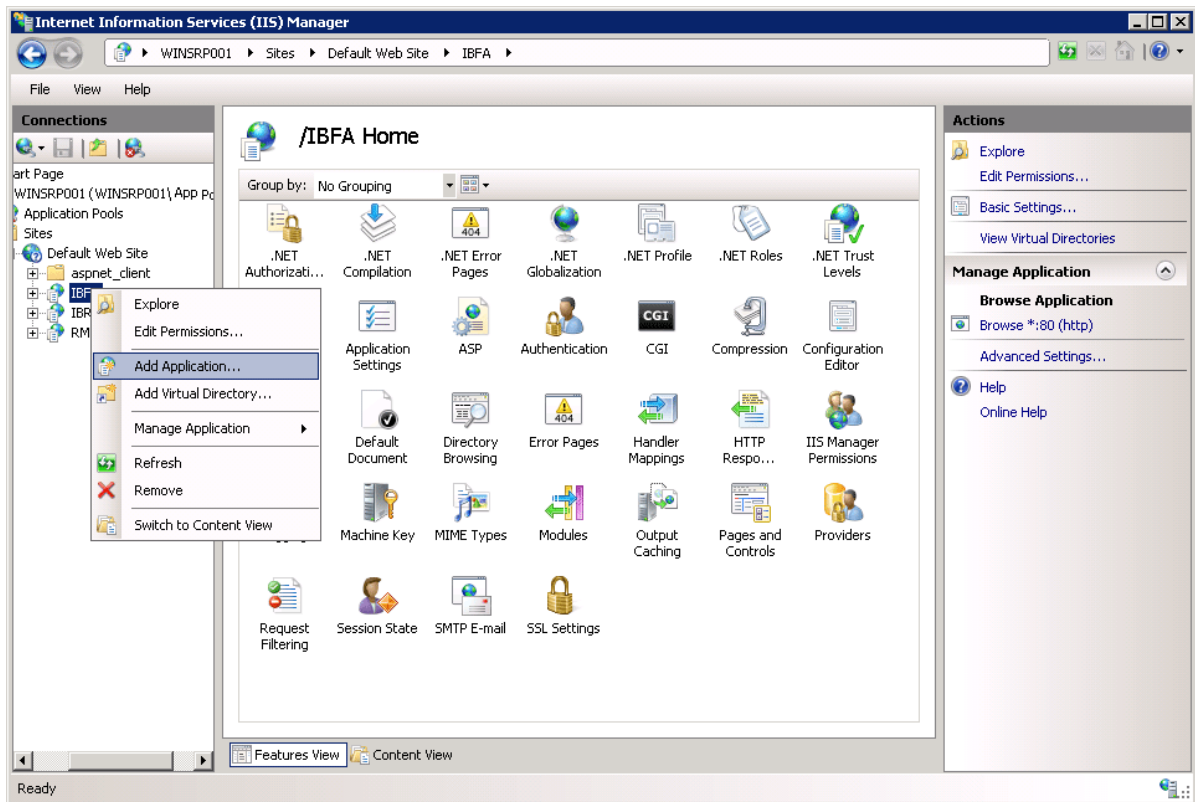


Figure 45 Adding Application to Virtual Directory

9. A separate window will be displayed. Select the **Insbridge Application Pool**.

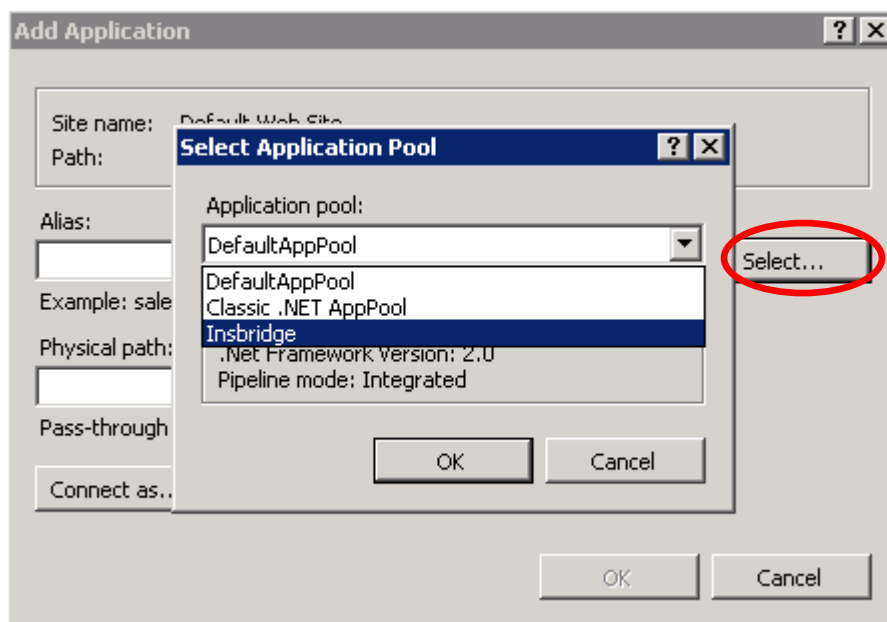


Figure 46 Selecting the OIDC Application Pool

10. Click **OK** to save your selections.
11. Repeat the process for **IBRU and RM** of selecting the Insbridge Application Pool.
12. Restart IIS. On the IIS screen, **Actions → Restart IIS**.

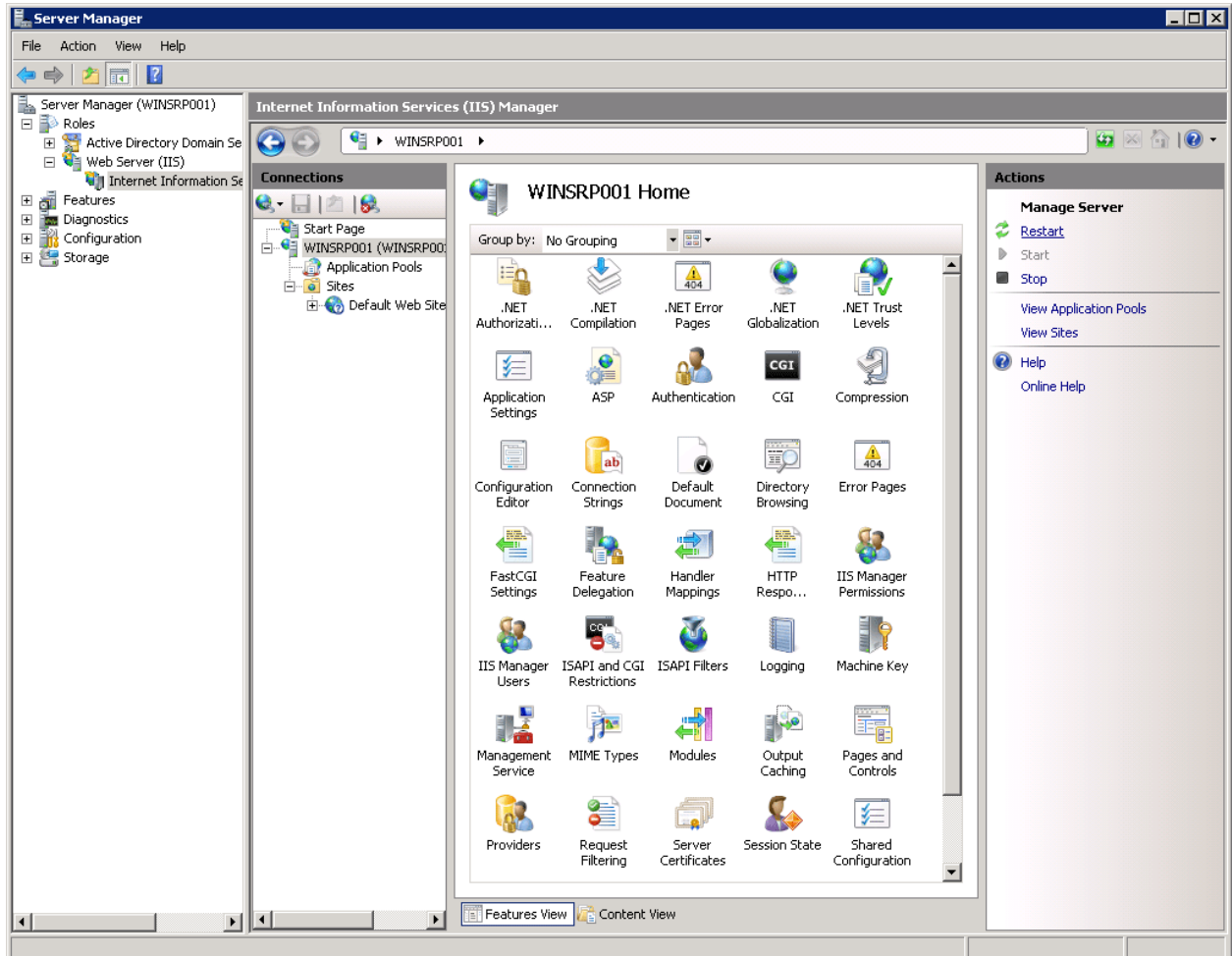


Figure 47 Restarting IIS

This issue may be more prevalent on a Windows 2008 64-bit machine. If you are not experiencing issues, you do not need to create an Insbridge application pool.

## CONTACTING SUPPORT

If you need assistance with an Oracle Insurance Insbridge Rating and Underwriting System product, please log a Service Request using My Oracle Support at <https://support.oracle.com/>.

### Address any additional inquiries to:

**Oracle Corporation**  
World Headquarters  
500 Oracle Parkway  
Redwood Shores, CA 94065  
U.S.A.

Worldwide Inquiries:  
Phone: +1.650.506.7000  
Fax: +1.650.506.7200  
[oracle.com](http://oracle.com)

## TTY ACCESS TO ORACLE SUPPORT SERVICES

Oracle provides dedicated Text Telephone (TTY) access to Oracle Support Services within the United States of America 24 hours a day, seven days a week. For TTY support, call 800.446.2398.

## Index

---

---

### A

- Active Server Pages
  - Enabling .....60
- Adding
  - Local Machine Administrators Group.... 14, 15, 17
  - Virtual File Server Management .....47
- Administrative Permissions .....20
- Application Pool
  - ID.....65
  - Updating.....65
- Application Server
  - Subcomponents .....60
- ASP.NET v2.0.xxxx
  - Enabling .....60
- ASPNET Extensions
  - Microsoft .NET 2.0 Framework .....59
  - Microsoft .NET 3.5 Framework .....60
- ASPNET ISAPI Extensions
  - Microsoft .NET 3.5 Framework .....60

---

### B

- Backup
  - Registry Key .....54

---

### C

- Collation and Sort Order
  - SQL Server .....38, 58
- COM+ Library .....50
- Configuration Page
  - Virtual File Server Management .....47
- Configuring
  - Insbridge Framework Administrator .42, 55
  - Registry Editor.....28
- Creating
  - Default Rating Environment .....44, 55
  - Local User Account..... 14

---

### D

- Database
  - IBSR Permissions .....41
  - MS SQL Support .....58
  - Permissions.....57
  - Security .....57

- Server, MDAC ..... 62
- db\_owner Permissions ..... 41
- Default Rating Environment
  - Creating..... 44, 55
- Description
  - Subscriber ..... 43

---

### E

- Edition Notice ..... 2
- Encryption
  - SoftRater Package ..... 54
- Environment Types ..... 45
- Export
  - Registry Key ..... 54
- Extensions
  - ASPNET ..... 59, 60
  - ASPNET ISAP..... 60

---

### F

- Files
  - Creating PDF..... 62
- FIPS Encryption
  - Windows 2003 Server Issues..... 62

---

### H

- HKEY\_LOCAL\_MACHINE/SOFTWARE/Insbridge ..... 28, 54
- http://SERVERNAME/ibfa/ ..... 42, 55

---

### I

- IBFA
  - Rerun..... 50
  - Start Insbridge ..... 20
  - Uninstall..... 50
- IBRM\_xxxx
  - db\_owner Permissions..... 41, 43
- IBRU
  - Installing .NET 3.5 Framework Prior ..... 59
  - Oracle Software Delivery Cloud ..... 11
- IBRU Web Server
  - SERVERNAME ..... 42
- IBRU\_INSTALL\_DIR..... 23
- IBSR Database
  - db\_owner Permissions..... 41
- ID

Application Pool .....	65
Subscriber .....	43
<b>IIS</b>	
Enabling .....	60
Installing Microsoft .NET 3.5 Framework	
After .....	59
Required.....	60
<b>Insbridge</b>	
Split over Servers.....	62
<b>Insbridge Framework</b>	
Installing .....	14
Local User Account.....	14
<b>Insbridge Framework Administrator</b>	
Configuring.....	42, 55
Extended Permission .....	20
Insbridge Key.....	30
Insbridge Message Service .....	20, 53
Insbridge Permissions .....	36, 37
Insbridge Properties .....	32, 34
Insbridge Task Manager Service.....	20
<b>insbridge user</b>	
Registry Key.....	28
<b>Installation</b>	
Starting.....	23
Installation Order .....	21
<i>Installation Program</i>	
Requirements.....	22
<i>Installer</i>	
Admin Rights for Installation .....	22
<b>Installing</b>	
Insbridge Framework .....	14

---

## **J**

Java Runtime Environment .....	62
JRE .....	62

---

## **K**

<b>Known Issues</b>	
Windows 2003 Server .....	62

---

## **L**

<b>Local Machine Administrators Group</b>	
Adding User .....	14, 15, 17
<b>Local User Account</b>	
Insbridge Framework .....	14

---

## **M**

Microsoft Message Queuing Service.....	61
Microsoft SQL Server .....	58

<i>Missing</i>	
COM+ Library.....	50
<b>Mixed Mode Authentication</b>	
Sql Server.....	58

---

## **N**

<b>Name</b>	
Subscriber .....	43
<b>Network DTC</b>	
Windows 2003 Server Issues.....	63

---

## **O**

<b>Oracle Software Delivery Cloud</b>	
IBRU .....	11
Required Programs .....	11
<b>Overview</b>	
Package .....	8
Virtual File Server Management.....	47

---

## **P**

<b>Package</b>	
Environment .....	8
Overview .....	8
<b>Part Numbers</b>	
Oracle Software Delivery Cloud .....	11
<b>Password</b>	
Errors to COM+ Apps.....	18
Local User Account .....	17
<b>PDF Files</b>	
Creating.....	62
<b>PDF Reader</b>	
Oracle Software Delivery Cloud .....	11
<b>Permissions</b>	
db_owner.....	41
Extended .....	20
Insbridge Key .....	28
Windows 2008.....	19

---

## **R**

<b>RateManager</b>	
PDF Files.....	62
<i>Registry Editor</i>	
Configuring.....	28
Registry Key.....	54
insbridge user.....	28
<i>Requirements</i>	
Installation Program .....	22
Internet Information Services .....	60
Microsoft Message Queuing Service ....	61

SQL Server .....	58
Rerun	
IBFA .....	50

---

## S

sa account	
SQL Server Enterprise Manager.....	38
Security	
Database .....	57
Server	
Admin Permissions .....	20
Server Setup	
Downloadable Packages .....	47
SERVERNAME	
Replacing .....	42, 55
Servers	
Insbridge Split Over .....	62
Service	
Insbridge Task Manager .....	20
Settings	
SQL Server .....	58
Shared	
IBRU System.....	15, 17
SMTP Service	
IIS Requirement .....	60
SoftRater	
IBSR.....	57
Supported Databases .....	58
SoftRater Package	
Encryption .....	54
SoftRater Packages	
Environments .....	8
SQL Server	
Collation and Sort Order .....	38, 58
JDBC Driver Class .....	58
Mixed Mode Authentication.....	58
Requirements.....	58
Residing on Separate Host .....	58
Settings .....	58
SoftRater Database Schema .....	58
Supported Version .....	58
User Account Requirements.....	58
User Accounts.....	41
SQL Server Account	
ibru .....	38
SQL Server Enterprise Manager	

sa Privileges .....	38
Subscriber	
Information .....	43

---

## T

Type	
Subscriber .....	43
Types	
Environment .....	45

---

## U

Uninstall	
IBFA .....	50
Unzip Utility	
Oracle Software Delivery Cloud .....	11
Updating	
Application Pool.....	65
User	
Access to Services .....	20
Local User Account .....	14
User Accounts	
SQL Server.....	41

---

## V

Validating	
COM+ Library .....	49, 50
VFS Definition .....	8
Virtual File Server Definition .....	8
Virtual File Server Management .....	47
Adding .....	47
Overview .....	47

---

## W

Web Server	
Java Runtime Environment .....	62
MDAC .....	62
Windows 2003 Server Known Issues .....	62
Windows 2008	
Permissions.....	19