

**Oracle® Hyperion Enterprise Performance Management
Architect, Fusion Edition**

File Generator User's Guide

RELEASE 11.1.2.1

Performance Management Architect File Generator User's Guide, 11.1.2.1

Copyright © 2006, 2011, Oracle and/or its affiliates. All rights reserved.

Authors: EPM Information Development Team

This software and related documentation are provided under a license agreement containing restrictions on use and disclosure and are protected by intellectual property laws. Except as expressly permitted in your license agreement or allowed by law, you may not use, copy, reproduce, translate, broadcast, modify, license, transmit, distribute, exhibit, perform, publish, or display any part, in any form, or by any means. Reverse engineering, disassembly, or decompilation of this software, unless required by law for interoperability, is prohibited. The information contained herein is subject to change without notice and is not warranted to be error-free. If you find any errors, please report them to us in writing.

If this software or related documentation is delivered to the U.S. Government or anyone licensing it on behalf of the U.S. Government, the following notice is applicable:

U.S. GOVERNMENT RIGHTS:

Programs, software, databases, and related documentation and technical data delivered to U.S. Government customers are "commercial computer software" or "commercial technical data" pursuant to the applicable Federal Acquisition Regulation and agency-specific supplemental regulations. As such, the use, duplication, disclosure, modification, and adaptation shall be subject to the restrictions and license terms set forth in the applicable Government contract, and, to the extent applicable by the terms of the Government contract, the additional rights set forth in FAR 52.227-19, Commercial Computer Software License (December 2007). Oracle USA, Inc., 500 Oracle Parkway, Redwood City, CA 94065.

This software is developed for general use in a variety of information management applications. It is not developed or intended for use in any inherently dangerous applications, including applications which may create a risk of personal injury. If you use this software in dangerous applications, then you shall be responsible to take all appropriate fail-safe, backup, redundancy, and other measures to ensure the safe use of this software. Oracle Corporation and its affiliates disclaim any liability for any damages caused by use of this software in dangerous applications.

Oracle is a registered trademark of Oracle Corporation and/or its affiliates. Other names may be trademarks of their respective owners.

This software and documentation may provide access to or information on content, products, and services from third parties. Oracle Corporation and its affiliates are not responsible for and expressly disclaim all warranties of any kind with respect to third-party content, products, and services. Oracle Corporation and its affiliates will not be responsible for any loss, costs, or damages incurred due to your access to or use of third-party content, products, or services.

Contents

Documentation Accessibility	5
Chapter 1. Installing Performance Management Architect File Generator	7
Chapter 2. Generating Performance Management Architect Import Files	9
From Financial Management Files	9
From Financial Management Applications	10
From Planning Applications	11
From Performance Management Architect, Profitability and Cost Management, Essbase (ASO) and Essbase (BSO) Applications	12
Generating From Microsoft Excel	13
Financial Management Dimension Associations	17
Deleting Dimensions	18
Closing the File Generator	18
Index	19

Documentation Accessibility

Our goal is to make Oracle products, services, and supporting documentation accessible, with good usability, to the disabled community. To that end, our documentation includes features that make information available to users of assistive technology. This documentation is available in HTML format, and contains markup to facilitate access by the disabled community. Accessibility standards will continue to evolve over time, and Oracle is actively engaged with other market-leading technology vendors to address technical obstacles so that our documentation can be accessible to all of our customers. For more information, visit the Oracle Accessibility Program Web site at <http://www.oracle.com/accessibility/>.

Accessibility of Code Examples in Documentation

Screen readers may not always correctly read the code examples in this document. The conventions for writing code require that closing braces should appear on an otherwise empty line; however, some screen readers may not always read a line of text that consists solely of a bracket or brace.

Accessibility of Links to External Web Sites in Documentation

This documentation may contain links to Web sites of other companies or organizations that Oracle does not own or control. Oracle neither evaluates nor makes any representations regarding the accessibility of these Web sites.

Access to Oracle Support for Hearing-Impaired Customers

Oracle customers have access to electronic support through My Oracle Support or by calling Oracle Support at 1.800.223.1711. Hearing-impaired customers in the U.S. who wish to speak to an Oracle Support representative may use a telecommunications relay service (TRS). Information about the TRS is available at <http://www.fcc.gov/cgb/consumerfacts/trs.html/>, and a list of telephone numbers is available at <http://www.fcc.gov/cgb/dro/trsphonebk.html>. International hearing-impaired customers should use the TRS at +1.605.224.1837. An Oracle Support engineer will respond to technical issues according to the standard service request process.

1

Installing Performance Management Architect File Generator

The Oracle Hyperion EPM Architect, Fusion Edition File Generator can create import files from the following sources:

- Existing Oracle Hyperion Financial Management, Fusion Edition files such as .PER, .SEC and .XML metadata files

Note: Only Financial Management .XML format metadata files are supported. The .APP format is not directly supported but users can extract metadata from the system in the XML format to use the converter.

- Existing Financial Management applications — Version 11.1.1 or later
- Existing Oracle Hyperion Planning, Fusion Edition applications — Version 11.1.1 or later
- Existing Oracle Hyperion Profitability and Cost Management, Fusion Edition applications — Version 11.1.1 or later
- Existing Performance Management Architect applications (Consolidation, Planning, Essbase (ASO), Essbase (BSO), and Generic application types) — Version 11.1.1 or later
- Microsoft Excel files

The Microsoft .NET Framework version 2.0 is required to use the Performance Management Architect File Generator. It can be downloaded from <http://msdn.microsoft.com/downloads>.

➤ To install Performance Management Architect File Generator, use the EPM System Installer.

See the *Oracle Hyperion Enterprise Performance Management System Installation and Configuration Guide*.

2

Generating Performance Management Architect Import Files

In This Chapter

From Financial Management Files.....	9
From Financial Management Applications.....	10
From Planning Applications	11
From Performance Management Architect, Profitability and Cost Management, Essbase (ASO) and Essbase (BSO) Applications	12
Generating From Microsoft Excel	13
Financial Management Dimension Associations.....	17
Deleting Dimensions.....	18
Closing the File Generator.....	18

- To open the Performance Management Architect File Generator utility, select **Start, Programs, Oracle EPM System, Foundation Services, Performance Management Architect, Start EPMA File Generator**.

Tip: Click Help to access the *Oracle Hyperion Enterprise Performance Management Architect File Generator User's Guide*.

From Financial Management Files

The following Financial Management file types are required to create an import profile:

- Application profile file (.PER)
- Security file (.SEC)
- Metadata file (.XML)

- To create an import file from existing Financial Management files:

- 1 Click **From HFM Files**.

EPMA File Options | From HFM Files | From HFM Application | From Planning Application | From EPMA Application | From Excel File

Please select the HFM Profile file:

Please select the HFM Security file: View

Please select the HFM Metadata file: View

Please specify the EPMA import file: View

Dimension prefix (optional):

Help Save metadata file ☒ Execute Close

- 2 Browse to select a profile file (.PER), security file (.SEC), and metadata (.XML) file.
- 3 Specify the name for the EPMA import file or browse to find an existing file to over write.
- 4 **Optional:** To view the import file in a text editor, click **View**.
- 5 **Optional:** Enter a prefix for the dimensions.
- 6 **Optional:** Select **Save metadata file**.

When Performance Management Architect imports an application, it is imported as an .xml file (metadata.xml). Performance Management Architect runs the transformation and creates an .ads file from the metadata.xml file. Typically, this file is used for troubleshooting purposes. For extremely large applications, we recommend that you do *not* select this option.

- 7 Click **Execute**.

From Financial Management Applications

You can create an import file from an existing Financial Management application.

- To create an import file from an existing Financial Management application:

- 1 Click **From HFM Application**.

EPMA File Options | From HFM Files | From HFM Application | From Planning Application | From EPMA Application | From Excel File

Please enter the User Name: Password:

Please enter the Workspace URL:

Please enter the HFM Web URL:

Please enter the HFM Application name: Cluster Name:

Please specify the EPMA import file: View

Dimension prefix (optional):

Help Save metadata file ☒ Execute Close

2 Enter the following information:

- User name and password
- Workspace URL
- Financial Management Web URL
- Financial Management application name
- Cluster name

3 Specify the name for the EPMA import file or browse to find an existing file to overwrite.

4 **Optional:** To view the import file in a text editor, click **View**.

5 **Optional:** Enter a prefix for the dimensions.

6 **Optional:** Select **Save metadata file**.

When Performance Management Architect imports an application, it is imported as an .xml file (metadata.xml). Performance Management Architect runs the transformation and creates an .ads file from the metadata.xml file. Typically, this file is used for troubleshooting purposes. For extremely large applications, we recommend that you do *not* select this option.

7 Click **Execute**.

From Planning Applications

You can create an import file from an existing Oracle Hyperion Planning, Fusion Edition application.

➤ To create an import file from an existing Planning application:

1 Click **From Planning Application**.

The screenshot shows a dialog box titled 'From Planning Application' with several tabs: 'EPMA File Options', 'From HFM Files', 'From HFM Application', 'From Planning Application' (selected), 'From EPMA Application', and 'From Excel File'. The dialog contains the following fields and controls:

- Please enter the User Name:** Text box with 'admin' entered.
- Password:** Password field with masked characters.
- Please enter the Workspace URL:** Text box with 'http://localhost:19000/workspace' entered.
- Please enter the Planning Web URL:** Text box with 'http://localhost:8300/HyperionPlanning' entered.
- Please enter the Planning Application name:** Text box with 'PL1' entered.
- Application Server:** Text box with 'MyPLApps' entered.
- Please specify the EPMA import file:** Text box with 'C:\Documents and Settings\Administrator\Desktop\ADS\Talleyrand_SP1\' entered. To the right of the text box is a file icon and a 'View' button.
- Dimension prefix (optional):** Text box with 'DEMO_PL_' entered.
- Buttons:** 'Help' (bottom left), 'Save metadata file' (checkbox, checked) (bottom center), 'Execute' (bottom right), and 'Close' (bottom right).

2 Enter the following information:

- User name and password
- Workspace URL

- Planning Web URL
- Planning application name
- Application server name (The Application server name is the cluster name.)

3 Specify the name for the EPMA import file or browse to find an existing file to over write.

4 Optional: To view the import file in a text editor, click **View**.

5 Optional: Enter a prefix for the dimensions.

6 Optional: Select **Save metadata file**.

When Performance Management Architect imports an application, it is imported as an .xml file (metadata.xml). Performance Management Architect runs the transformation and creates an .ads file from the metadata.xml file. Typically, this file is used for troubleshooting purposes. For extremely large applications, we recommend that you do *not* select this option.

7 Click **Execute**.

From Performance Management Architect, Profitability and Cost Management, Essbase (ASO) and Essbase (BSO) Applications

You can create an import file from existing Performance Management Architect, Profitability and Cost Management, Essbase (ASO), or Essbase (BSO) applications.

► To create an import file for existing Performance Management Architect, Profitability and Cost Management, Essbase (ASO), or Essbase (BSO) applications:

1 Click **From EPMA Application**.

EPMA File Options | From HFM Files | From HFM Application | From Planning Application | **From EPMA Application** | From EXCEL File

Please enter the User Name: Password:

Please enter the EPMA Web Services URL:

Please enter the EPMA Application name:

Please specify the EPMA import file:

Dimension prefix (optional):

☒ Save metadata file

Status

Step	Status	Processing Item	Details
1		Generating EPMA file	Generating the EPMA import file completed!

2 Enter the following information:

- User name and password to log in to Oracle Enterprise Performance Management Workspace, Fusion Edition
- Performance Management Architect Web Services URL
- Performance Management Architect, Oracle Hyperion Profitability and Cost Management, Fusion Edition, Essbase (ASO), or Essbase (BSO) application name

Note: You can enter a specific application to extract, or you can extract the entire Shared Library. To extract the entire Shared Library, enter "Master" in the field where you specify the application name.

3 Specify the name for the EPMA import file or browse to find an existing file to over write.

4 Optional: Enter a prefix for the dimensions.

5 Optional: To view the import file in a text editor, click **View**.

6 Optional: Select **Save metadata file**.

When Performance Management Architect imports an application, it is imported as an .xml file (metadata.xml). Performance Management Architect runs the transformation and creates an .ads file from the metadata.xml file. Typically, this file is used for troubleshooting purposes. For extremely large applications, we recommend that you do *not* select this option.

7 Click **Execute**.

The .ads file is created, using the application as the source. A successful message is displayed under Status.

Generating From Microsoft Excel

You can create an import file from a Microsoft Excel file. In the Excel file, you can create new dimensions and edit dimension and member properties

► To create an import file from a Microsoft Excel file:

1 Select **From Excel File**.

2 Click , enter a location and file name for the Excel file to create, and click **Save**.

3 Optional: Select **Save metadata file**.

When Performance Management Architect imports an application, it is imported as an .xml file (metadata.xml). Oracle Hyperion EPM Architect, Fusion Edition runs the transformation and creates an .ads file from the metadata.xml file. Typically, this file is used for troubleshooting purposes. For extremely large applications, we recommend that you do *not* select this option.

4 Click **Execute** to launch Excel and open the file.

Note: When you open the file, you must enable macros.

The Excel workbook is created with two existing sheets – Alias and Dimension Association. For each workbook there can be only one sheet for Alias and one sheet for Dimension Association.

5 On the Alias sheet, enter the language aliases to be used.

Name	DimensionClass
Alias	Alias
Parent	Name
#root	English
#root	French
#root	Spanish
#root	German
#root	Japanese

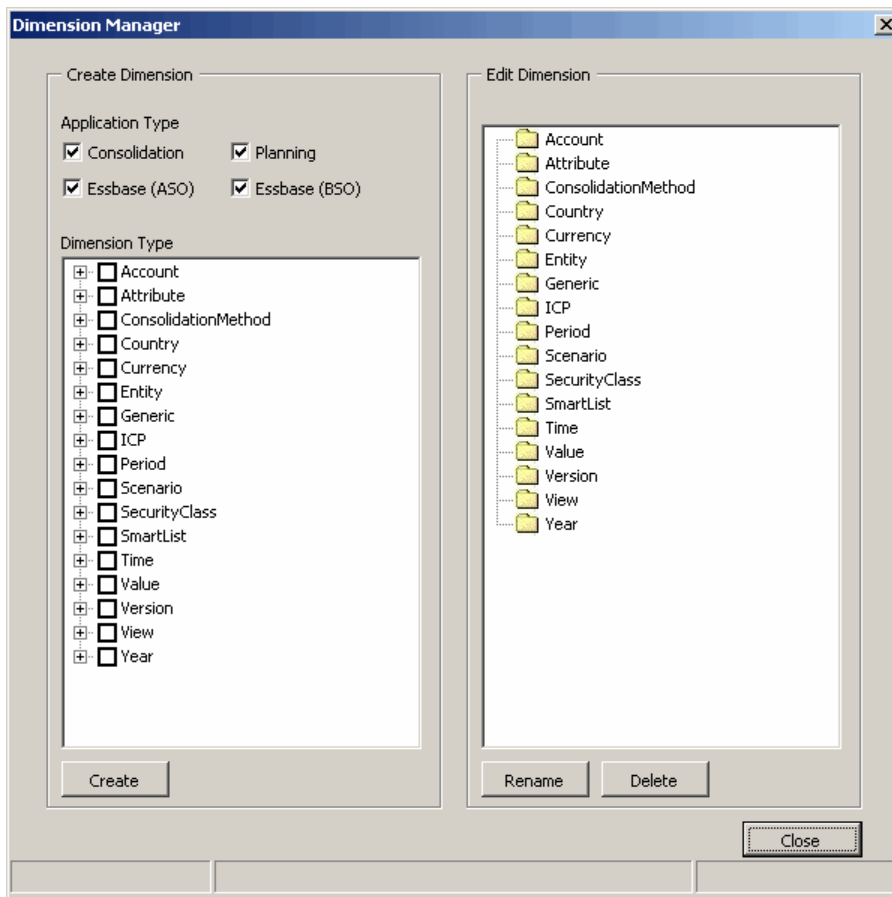
Note: It is important to enter the languages in the Alias sheet before creating dimensions in the workbook because the utility automatically creates extra columns in the dimension sheet so you can enter the aliases for members in the same row. If you add languages after creating dimensions, you will need to manually add extra columns for member aliases.

Tip: To generate an *.ads file with aliases, for each dimension sheet, change the Alias column header from "Alias" to "Default" (do not include quotes). Then, modify any additional aliases at the end of the columns by adding new ones in the format Alias=English, Alias=French (each in a separate column). It is important that all aliases are referenced in the Alias sheet. After the members have been entered for each dimension and association entered, use the File Generator to generate the *.ads flat file. Once generated, make sure that all aliases are represented as entered in the Excel worksheet.

6 Select EPMA Utilities, Manage Dimensions.

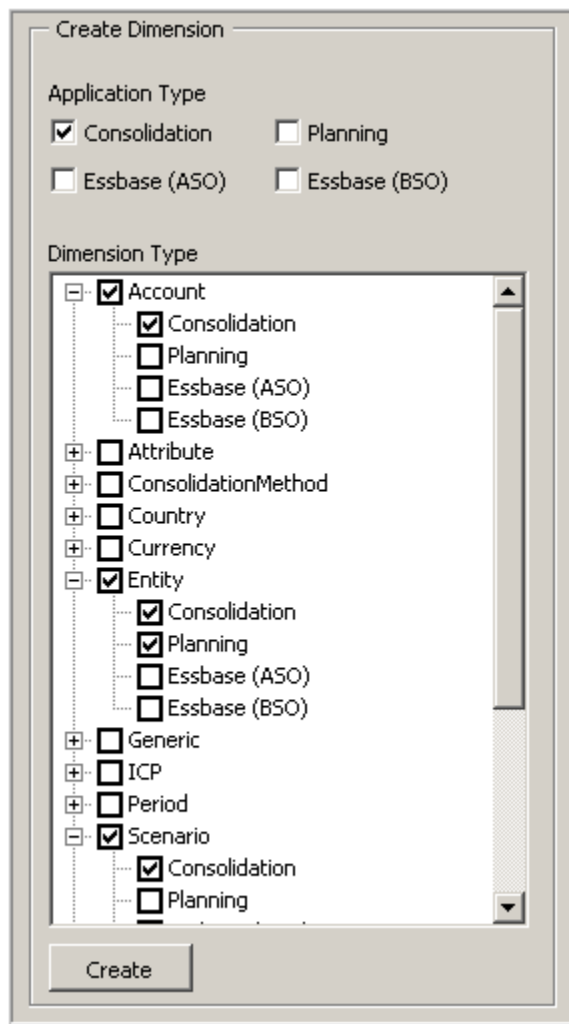
Tip: In Excel 2007, you may need to click Add-Ins to access EPMA Utilities.

7 In the Dimension Manager, select one or more application types for which to create dimensions.



Note: Selecting the application type determines what member properties display in the columns of the dimension sheet. If you select Consolidation, only member properties from the consolidation category display. If you select all application types, all member properties from all categories display.

8 Select the dimensions that you want to create.



Note: You can add application types on a dimension by dimension basis.

9 Click **Create**.

For each dimension that you create, a sheet is added to the Excel workbook.

For each dimension sheet, column headers in Row 1 of the sheet are dimension properties. Column headers in Row 4 of the sheet are member properties.

1	Name	DimensionClass	DimensionAlias	AllowDuplicatesInDimension	CommentDuplicate	ConsolidationDuplicate	DataStorageDuplicate
2	Scenario	Scenario					
3	Parent	Name	Description	Alias	ConsolidateYTD	DefaultFrequency	DefaultParent
4	#root	Actual	Actual		N	MTD	#root
5	#root	Budget	Budget		N	MTD	#root

10 Enter dimension members and member properties for each dimension.

You enter dimension members in the parent and name columns. For the top-level member of a dimension, enter #root in the parent column.

To modify properties, click in the cell to display a drop-down list from which you can select a property value or enter information in the cell.

ConsolidateYTD	DefaultFrequency
N	MTD
N	TD
Y	
N	

11 Select EPMA Utilities, Dimension Association.

Note: For information on dimension associations, see [“Financial Management Dimension Associations” on page 17.](#)

12 In the Target Dimension column, select the cell, and from the drop-down list, select the dimension.

13 Select EPMA Utilities, Generate Flat File.

14 Select the type of file delimiter to use in the file.

15 Click Generate Flat File.

16 Click Save Flat File to save the file in .ADS format.

Financial Management Dimension Associations

In Oracle Hyperion Financial Management, Fusion Edition you must associate some dimensions with other dimensions. The following table shows the source dimension, property name and the target dimension with which it is associated.

Table 1 Financial Management Associations

Dimension (Source)	Property Name	Dimension (Target)
Account	Plug Account	Account
	Alias	Alias
	Custom1–Custom4 Top Member	Custom1–Custom4
	Security Class	Security Class
	ICP Top member	ICP
Consolidation Method	Alias	Alias
Currency	Alias	Alias
Custom1–Custom4	Alias	Alias
	Security Class	Security Class

Dimension (Source)	Property Name	Dimension (Target)
Entity	Alias	Alias
	Currency	Currency
	Holding Company	Entity
	Security Class	Security Class
	Security As Partner	Security Class
ICP	Alias	Alias
	Security Class	Security Class
Period	Alias	Alias
Scenario	Alias	Alias
	Security Class	Security Class
	Default Frequency	View
	Default Frequency For IC Transactions	View
Value	Alias	Alias
View	Alias	Alias
Year	Alias	Alias

Deleting Dimensions

► To delete dimensions:

- 1 Select the dimension worksheet in Excel and select **EPMA Utilities, Delete Dimension**.
- 2 Select the dimension to delete.
- 3 Click **Delete** to delete the dimension.

Note: You cannot delete the Alias or Dimension Association worksheets.

Closing the File Generator

► To close the EPMA File Generator, click the Close button.

Index

D

- deleting
 - dimensions, [18](#)
- dimension associations
 - Financial Management, [17](#)

F

- File Generator
 - installing, [7](#)
- Financial Management
 - dimension associations, [17](#)

G

- generating
 - import files, [9](#)
 - import files from Financial Management, [9](#)
- generating from Financial Management applications
 - import files, [10](#), [11](#)

I

- import files
 - from Microsoft Excel, [13](#)
 - generating, [9](#)
 - generating from Financial Management, [9](#)
 - generating from Financial Management applications, [10](#), [11](#), [12](#)
 - generating from Essbase (ASO) applications, [12](#)
 - generating from Essbase (BSO) applications, [12](#)
- installing
 - File Generator, [7](#)

M

- Microsoft Excel
 - generating from, [13](#)

