

ORACLE® HYPERION SMART VIEW FOR OFFICE, FUSION EDITION

RELEASE 11.1.2.1.102

NEW FEATURES

ORACLE®
ENTERPRISE PERFORMANCE
MANAGEMENT SYSTEM

CONTENTS IN BRIEF

Features Introduced in Release 11.1.2.1.102	2
Features Introduced in Release 11.1.2.1	5
Features Introduced in Release 11.1.2	9

Features Introduced in Release 11.1.2.1.102

This document describes the new features introduced in Oracle Hyperion Smart View for Office, Fusion Edition Release 11.1.2.1.102

Note: Unless otherwise noted, the features described here are available only in Smart View 11.1.2.1.102 connected to Oracle Essbase 11.1.2.1.102 through Oracle Hyperion Provider Services 11.1.2.1.102. They are not available in other releases of Smart View, Essbase, or Provider Services. They are not available in data providers other than Essbase.

Ad Hoc Operations in Multiple Cells

Previously, it was possible to perform ad hoc operations on one cell at a time. In this release, you can select a range of cells for these ad hoc operations: Zoom In, Zoom Out, Keep Only, and Remove Only.

Member Information

By selecting the new Member Information button on the **Essbase** ribbon, you can view the following properties if applicable about any member in the grid:

- General information such as dimension, level, and generation
- Alias tables and corresponding aliases
- Dimensions, members, and types of attributes
- Formulas
- Comments
- User defined attributes

Linked Objects

From the new **Linked Objects** dialog box, you can access the following objects in Excel:

- **Linked Reporting Objects**

A *linked reporting object* is a cell note, external file, or URL that is linked to a data cell in an Essbase database. From Smart View, you can view, attach, edit, and delete linked reporting objects associated with cells.

- **Linked Partitions**

A *linked partition* connects two databases by means of a data cell. Using a data cell associated with a linked partition, you can navigate from the database connected to the current grid to a second database. Because the two databases may have different dimensions, you can see the data in different contexts. When you launch a linked partition, a new spreadsheet that displays the dimensions from the linked database opens. From there, you can drill down into the dimensions of the linked database.

Aliases and Alias Tables

- You can display member names and their aliases from the currently selected alias table together in the same row.
- If you enter a name from an alias table that is not associated with the current grid, its corresponding alias from the alias table that is associated with the current grid is displayed after you refresh.

Sheet Level Options

Previously, all options specified in the Smart View **Options** dialog box were global options; they applied to the current workbook and all new workbooks and worksheets. In this release, some options are specific to the worksheet for which they are set. They are also the default option settings for *new* worksheets in the current workbook and for any new workbook. Changes to sheet level option settings do not affect existing worksheets or workbooks.

In the **Options** dialog box, these options are sheet level options:

- Member options
- Data options
- Formatting options

Advanced options, extensions, and cell styles remain global options, which apply to the entire current workbook and to any workbooks and worksheets that are created henceforth.

POV Toggle Button

In this release, you can choose to display all dimensions on the grid rather than using the POV toolbar to select and move members to and from the grid. The POV toggle button introduced in Release 11.1.2.1 has been modified for Essbase connections; now it toggles between displaying the POV toolbar and displaying all dimensions with the POV toolbar hidden.

Multiple Grids

In Essbase, you can create multiple independent grids on one worksheet. These grids can be connected to the same data source or to different Essbase data sources, and you can change the connection of a grid from Smart View.

Worksheets that support multiple grids can be created from blank worksheets or by converting existing ad hoc worksheets.

Butterfly Reports

You can design report layouts other than the standard report with members above and to the left of the data grid. For example, you can create “butterfly” reports with a column of members between two columns of data cells.

New Zoom Options

There are four new options for zooming in to data. As with existing zoom options, you can select any of these levels when you zoom, and you can set any of them as the default zoom level.

- **Same Level** to retrieve data for all members at the same level as the selected member .
- **Sibling Level** to retrieve data for the siblings of the selected members .
- **Same Generation** to retrieve data for all members of the same generation as the selected members .
- **Formulas** to retrieve data for all members that are defined by the formula of the selected member. The formula can be a member equation or a consolidation to the parent.

Formula Preservation

In this release, you can choose to preserve formulas associated with members in the grid when you refresh and during ad hoc operations such as zooming.

Formula/Format Fill

If member cells are associated with formulas, you can use the new **Formula/Format Fill** option to propagate these formulas to the members retrieved as a result of zooming in. For example, if member `Qtr1` is associated with a formula, then the formula can be propagated to `Jan`, `Feb`, and `Mar` when you zoom in on `Qtr1`.

In the same way, you can use **Format/Formula Fill** to propagate formatting during zooming.

Use Excel Formatting Improvements

Improvements have been made to the **Use Excel Formatting** option to increase reliability and stability.

Submit Data Without Refreshing

In this release, the requirement that you refresh the grid before submitting data in free-form mode has been eliminated.

New Smart View and VBA Functions

This release features the following new functions.

Smart View Functions

HsGetVariable: For Essbase, retrieves the associated values of substitution variables.

VBA Functions

HypAddLRO: For Essbase, adds linked reporting objects to specified cells.

HypDeleteLROs: For Essbase, deletes one or more linked reporting objects from specified cells.

HypDeleteAllLROs: For Essbase, deletes all linked reporting objects from the specified cells.

HypListLRO: For Essbase, lists all linked reporting objects associated with specified cells.

HypRetrieveLRO: For Essbase, retrieves linked reporting objects associated with specified cells.

HypUpdateLRO: For Essbase, updates linked reporting objects associated with specified cells.

HypSetOption: For Essbase, enables you to set Smart View options as both default and sheet specific so you do not need separate VBAs for the two types of options.

HypGetOption: For Essbase, enables you to get Smart View options that are both default and sheet specific so you do not need separate VBAs for the two types of options.

HypGetMemberInformation: For Essbase, returns the properties for a selected member.

HypExecuteDrillThrough: For Essbase, executes the specified drill-through report.

HypGetDrillThrough: For Essbase, retrieves a list of drill-through reports.

HypGetNameRangeList: For Essbase, returns a list of named grids for a given connection.

HypRetrieveNameRange: For Essbase, refreshes the grid created by HypRetrieveRange.

HypShowPOV determines whether the POV toolbar is to be displayed or hidden.

HypMenuVLRO: For Essbase, opens the Linked Objects dialog box where you select cells to edit linked objects.

HypMenuVMemberInformation: For Essbase, opens the Member Information dialog box where you view detailed information about members.

Features Introduced in Release 11.1.2.1

Overview

This document describes the new features introduced in Smart View Release 11.1.2.1

It is our goal to make Oracle products, services, and supporting documentation accessible to the disabled community. Smart View Release 11.1.2.1 supports accessibility features, which are described in Appendix A of the *Smart View for Office User's Guide*.

Financial Close Management Integration with Outlook

Oracle Hyperion Financial Close Management task lists are now integrated into Outlook, so Oracle Hyperion Financial Close Management users can integrate their tasks into Outlook tasks and perform these tasks from within Outlook.

Planning Features

This release of Smart View supports the following new features for Oracle Hyperion Planning, Fusion Edition connections.

Direct Connections Between Smart View and Planning



Planning no longer relies on Oracle Hyperion Provider Services for ad hoc connections. Direct connections between Smart View and Planning enable Planning grids to function the same in Smart View as in the Web.

Save Ad Hoc Grids as Data Forms

Using the new **Save Ad Hoc Grid** button on the Planning Ad Hoc ribbon, planners assigned the ad hoc grid creator role can save and store ad hoc grids as data forms. This behavior replaces Smart Slice functionality for Planning in this release.

Redesigned Member Selection Dialog Box

The Member Selection dialog box has been redesigned to improve ease-of-use and provide more options for selecting members for the grid. The following enhancements have been made to the Member Selection dialog box:

- **Find button** : When you enter a name in the member name entry field, the Find button is enabled. This button enables you to find and select one or more members with options to find next, find previous, check all found members, or clear the entry field.
- **View button** : This button enables you to select whether to display members in the member list as a hierarchy or as dynamic time series members. For dimensions that contain attribute members, you can also select attributes and subsets of attributes based on conditions that you set.


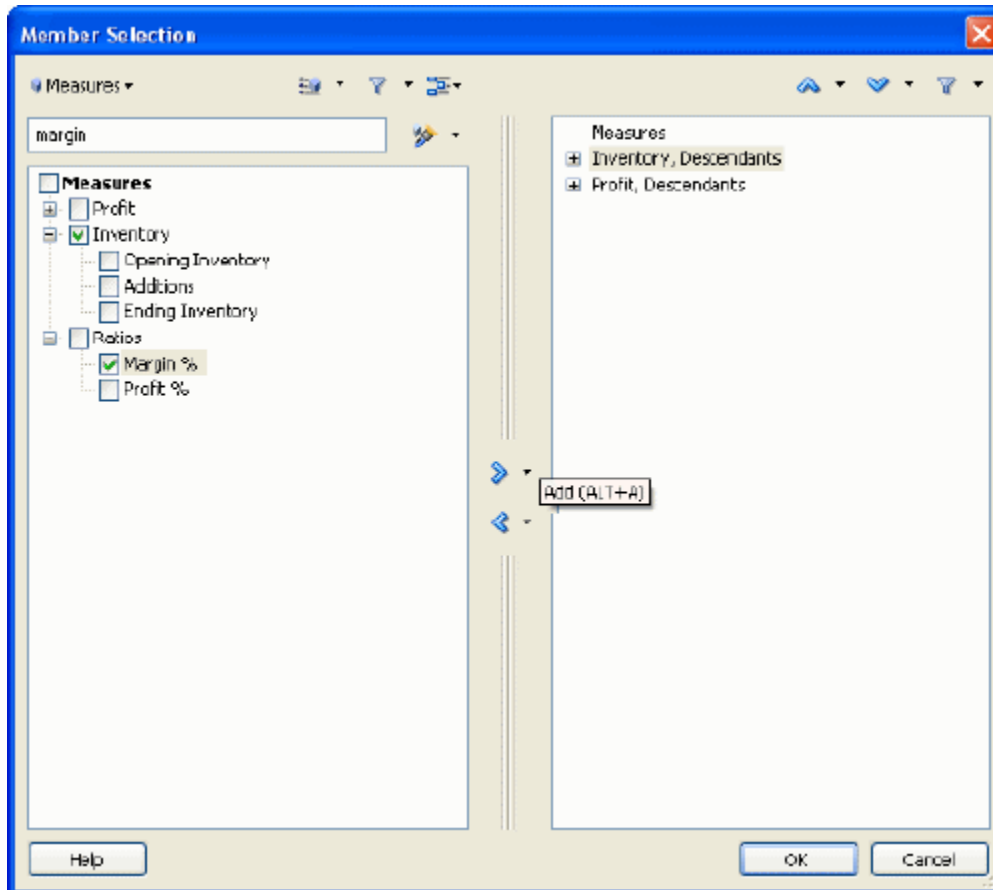
- **Options button** : This button provides options for displaying and selecting children, descendants, or base members in member tree list. Essbase and Planning users can also change alias tables here.
- **Drop-down menus in the Add and Remove buttons:** Instead of selecting members individually, you can choose to move checked items along with their children, descendants, level, generation, or user-defined attributes (UDA), if applicable, between the member list and selection list. These menus are available only if the View selection is **Hierarchy**.

Figure 1 Member Selection Dialog Box



POV Enhancements

In this release, the Point of View (POV) has been made easier to use with the following new features:

- **POV toggle button:** You can easily hide or display the POV as needed by clicking on the new **POV** toggle button available from all data source ribbons.
- **Type member names in the POV:** If you know the name of a member that you want to add to the grid, you can simply enter the name over its corresponding dimension in the POV,

then drag it to the grid. In previous releases, you had to open and navigate through the Member Selection dialog box to find and select members.

- **Simplified drag and drop:** It was possible to drag and drop members to and from the grid in previous releases, but the process is simpler now. To add a member to the grid, click the down arrow next to the member name in the POV and drag it to the grid. To move a member from the grid to the POV, right-click its cell and drag it to the POV.
- **Docking enhancements:** If you dock the POV, the docked position is retained when you open Smart View in the future. In addition, POV controls are reoriented based on the docked position.

Smart View Options Enhancements

The following new options are available from the Options dialog box:

- **Adjust Column Width:** Enable Smart View to adjust grid column widths automatically to fit cell contents.
- **Enhanced Query Performance:** Enable faster performance during queries by directing Smart View not to maintain comments and formulas when you perform such operations as zooming. When you select this option, comments and formulas are not deleted from the original worksheet, but they are not carried through operations on the sheet.
- **Disable options that are not valid for the active connection:** Disable options on the Options dialog box if they are invalid for the active connection.
- **Use Excel Formatting and Retain Numerical Formatting** are now mutually exclusive options.

Support for Office 2010

With this release, you can use Smart View with Microsoft Office 2010 (32-bit only) in addition to Office 2003 and 2007.

New Smart View and VBA Functions

This release features the following new functions.

Smart View Functions

HsDescription: For data sources Essbase, Oracle Hyperion Financial Management, Fusion Edition, and Oracle's Hyperion® Enterprise®, you can use the new function HsDescription to display the description of the selected member.

VBA Functions

HypIsAncestor: For Essbase, checks whether the specified member is the ancestor of another specified member.

HypIsChild: For Essbase, checks whether the specified child member is the child of a specified parent member. HypIsChild checks only for children, not for all descendants.

HypIsDataModified: For Essbase, Planning, Financial Management, and Hyperion Enterprise, checks to see whether any data cells have been modified but not yet submitted.

HypRetrieveAllWorkbooks: For Essbase, Planning, Financial Management, and Hyperion Enterprise, refreshes all open workbooks from the same instance of Excel.

Alias Tables

You can select an alias table for the current worksheet or for a connection.

- **Current worksheet:** An alias table selected for the current worksheet applies only to the current worksheet and not to future connections. Changing the alias table automatically refreshes the grid with the new alias table.
- **Connection:** An alias table selected for a connection is permanent until changed and will be used each time you use this connection. Setting a connection alias table does not refresh the grid even if you click Refresh.

New Languages

Smart View is now available in the following languages:

- Arabic
- Polish
- Norwegian

Note: In this release, the online help and documentation for Arabic and Norwegian versions of Smart View is in English. Arabic and Norwegian help and documentation will be available in a future release.

Right-Click Data Provider Preferences

In this release, you can open the User Preferences dialog box for data providers by simply right-clicking the provider node in the Smart View Panel and selecting **User Preferences**. Previously, you had to select preferences in the Options dialog box.

Features Introduced in Release 11.1.2

This document describes the new features introduced in Smart View Release 11.1.2.

It is our goal to make Oracle products, services, and supporting documentation accessible to the disabled community. Smart View Release 11.1.2 supports accessibility features, which are described in Appendix A of the *Smart View for Office User's Guide*.

Smart View Panel

From the Smart View Panel, you can manage data source connections, access data and task lists, create reports, and open Oracle Crystal Ball Enterprise Performance Management, Fusion Edition workbooks if you are licensed for Crystal Ball EPM.

The Smart View Panel, opened from the Smart View ribbon, is displayed by default on the right side of the Microsoft Office application. You can move, re-size, or close the Smart View Panel from the down arrow in the title bar.

The Smart View Panel contains the following panes:

- **Home:** A panel that displays links to shared connections and private connections as well as a list of recently used items - ad hoc grids, data forms, and tasks - which you can click to establish a connection.
- **Shared Connections:** A drop-down menu of available connections from Oracle's Hyperion® Shared Services and a tree view of the contents of the currently selected connection.
- **Private Connections:** A drop-down menu of available connections saved on the local computer and a tree view of the contents of the currently selected connection. You can also enter a URL to connect directly to a data source here.
- **Task Lists:** A tree list of tasks from which you can manage your tasks. This pane opens only when you select a task list from shared connections or private connections.
- **Simulation Workbook:** (only if you are licensed for Crystal Ball EPM) A tree list of available Oracle Crystal Ball Enterprise Performance Management, Fusion Edition workbooks that you can open in Smart View.
- **Action Panel:** A list of operations available based on the selection in the shared connection, private connection, or task list tree list.

Context-Sensitive Ribbons

Smart View operations in Microsoft Office applications are available through ribbon commands. The Smart View ribbon, which contains commands for common Smart View operations, is always present. When you connect to a data source (other than Oracle's Hyperion Reporting and Analysis), the corresponding data source ribbon is also displayed. For Planning, Financial Management, and Hyperion Enterprise, when you enter ad hoc analysis, the data source ribbon is automatically replaced by its ad hoc version. Each ribbon displays only the commands permitted for that data source, mode, and Office application.

These are the new ribbons:

- **Smart View**
- **Essbase**

- Planning
- Planning Ad Hoc
- HFM (Financial Management)
- HFM Ad Hoc
- Enterprise (Oracle's Hyperion® Enterprise®)
- Enterprise Ad Hoc
- OBIEE (Oracle Business Intelligence Enterprise Edition)

Note: Microsoft Office 2003 users can still access Smart View operations via menus.

Integration with Outlook

Planning and Financial Management task lists are now integrated into Outlook, so users can integrate their tasks into Outlook tasks and perform these tasks from within Outlook. Data form tasks are seamlessly launched from Outlook into the familiar Excel interface.

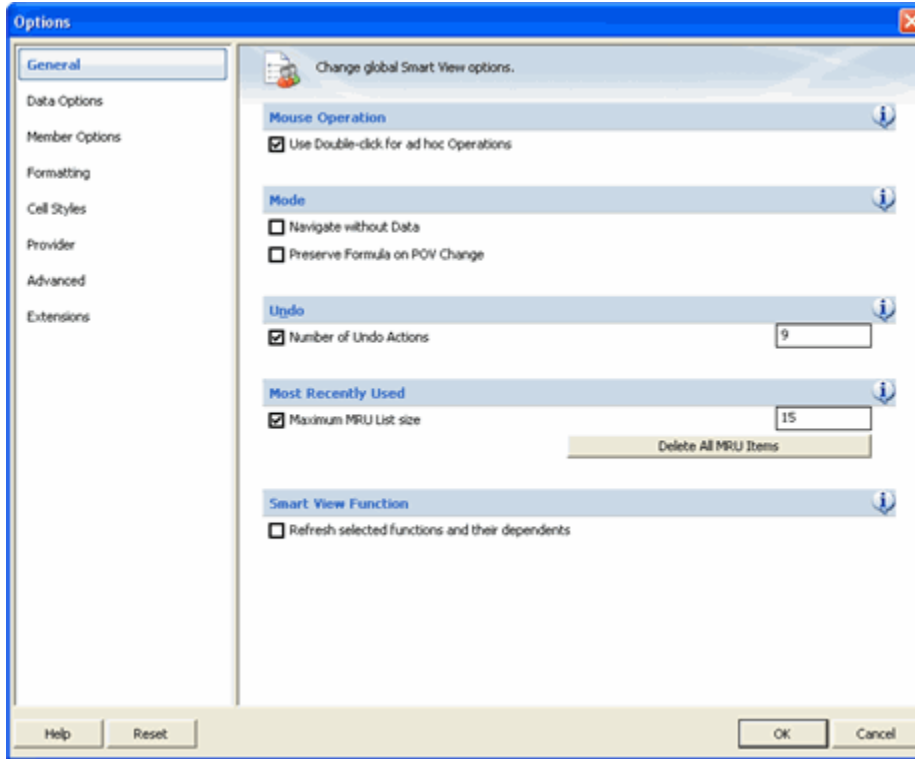
Redesigned Options Dialog Box

The Smart View Options dialog box has been redesigned to make options more easily accessible. Options are organized into categories to provide better user experience and accommodate provider-specific options. Like other components of Smart View in this release, options are available to users only if they are supported by the currently connected data source.

The following new options are available from the Options dialog box:

- Change the language in which Smart View is displayed without having to re-install Smart View
- In shortcut menus, choose whether to display Smart View and Microsoft items or only Smart View items
- Reset all options to default setting with a click of the Reset button

Figure 2 Options Dialog Box



Planning Features

This release of Smart View supports a greatly expanded set of Planning functionality.

- Planning task lists are now integrated into Outlook, so planners can integrate their tasks into Outlook tasks, and can perform these tasks from within Outlook. Planning data form tasks are seamlessly launched from Outlook into the familiar Excel interface
- Planning task lists are available in Office, including task status and task reports; users can perform tasks in Excel, and have them automatically synchronized with the Web
- All process management end-user functionality can be accessed from Outlook and Excel
- Data validation, including validation indicators and messages
- The ability to monitor the status of Planning jobs in the Job Console
- Composite data forms in Microsoft Office with shared dimensions that are automatically synchronized across multiple data forms
- Mass Allocate and Grid Spread for spreading values
- Copy data across versions for scenario-entity combinations
- Dynamic user variables that allow end users to select and change user variable values directly in data forms
- Custom right-click menus for data and metadata
- Member formula display

- Setting Planning user preferences within Smart View
- Data forms enabled for ad hoc allow users to slice data and save a slice to create reports or share with other users

For information about Planning, see the *Oracle Hyperion Planning New Features* and *Oracle Hyperion Planning User's Guide*.

Financial Management Features

In this release, Smart Slices are available to Financial Management users who connect to Smart View. Using Smart Slices, Financial Management users can create and save reports from the Report Designer and cascade reports across a selected dimension.

Smart View and Disclosure Management Integration

Customers who use Smart View in Excel or Word to assemble financial reports can also use Oracle Hyperion Disclosure Management, which allows you to assemble a reporting package for submission to a regulatory agency that includes financial statements, as well as supporting schedules and commentary which may exist in Excel, Word, or an Oracle Hyperion Financial Reporting, Fusion Edition report.

The first release of Oracle Hyperion Disclosure Management offers a complete XBRL creation and management solution with Enterprise level XBRL mapping; XBRL Taxonomy management, editing and viewing; and Instance document creation, validation and viewing. While viewing Smart View queries in Word or Excel, users can perform data source level mapping with the XBRL Taxonomy Mapping Tool, that allows for re-usable taxonomy element mapping within Oracle Hyperion Financial Management, Fusion Edition, Oracle Hyperion Planning, Fusion Edition, and Oracle Essbase.

New VBA Functions

This release features the following new VBA functions.

- **HypFindMemberEx** retrieves member information like dimension, alias, generation and level names.
- **HypSetAsDefault** creates a connection default.
- **HypOpenForm** opens a data form.
- **HypSetPages** sets page members for the selected sheet.
- **HypGetPagePOVChoices** returns the available member names and member description for a given dimension.
- **HypDeleteMetaData** deletes Smart View metadata from the workbook.
- **HypGetSharedConnectionsURL** returns the Shared Connections URL to be used (also shown in the Options dialog box).

- **HypSetSharedConnectionsURL** sets the Shared Connections URL in the config file and Options dialog box.
- **HypIsConnectedToSharedConnections** checks whether Oracle Hyperion Smart View for Office, Fusion Edition is connected to Shared Connections.

EPM System New Features

- Most Oracle Hyperion Enterprise Performance Management System products have adopted Oracle Diagnostic Logging (ODL) as the logging mechanism. The ODL framework provides uniform support for managing log files, including log file rotation, maximum log file size, and the maximum log directory size. For more information, see the “Using EPM System Logs” chapter of the *Oracle Hyperion Enterprise Performance Management System Installation and Configuration Troubleshooting Guide*.
- Oracle Configuration Manager (OCM) integrates with My Oracle Support and provides configuration information for Oracle software. It assists in the troubleshooting, maintenance, and diagnostics of your EPM System deployment. For more information about Oracle Configuration Manager see the *Oracle Hyperion Enterprise Performance Management System Installation and Configuration Guide*.
- With this release, many EPM System products support hostnames that resolve to IPv6 addresses. See the *Oracle Hyperion Enterprise Performance Management System Certification Matrix*. IPv4 support (both hostname and IP address) remains unchanged from earlier releases.
- Oracle Hyperion Enterprise Performance Management System supports the following types of SSL configurations:
 - Full SSL Deployment (including data access)
 - SSL Terminating at the Web Server
 - SSL Accelerators (Off-loading)
 - Two-way SSL

For more information on the SSL configurations, see the *Oracle Hyperion Enterprise Performance Management System Security Administration Guide*.

COPYRIGHT NOTICE

Smart View New Features, 11.1.2.1.102

Copyright © 2004, 2011, Oracle and/or its affiliates. All rights reserved.

Authors: EPM Information Development Team

Oracle and Java are registered trademarks of Oracle and/or its affiliates. Other names may be trademarks of their respective owners

This software and related documentation are provided under a license agreement containing restrictions on use and disclosure and are protected by intellectual property laws. Except as expressly permitted in your license agreement or allowed by law, you may not use, copy, reproduce, translate, broadcast, modify, license, transmit, distribute, exhibit, perform, publish, or display any part, in any form, or by any means. Reverse engineering, disassembly, or decompilation of this software, unless required by law for interoperability, is prohibited.

The information contained herein is subject to change without notice and is not warranted to be error-free. If you find any errors, please report them to us in writing.

If this is software or related documentation that is delivered to the U.S. Government or anyone licensing it on behalf of the U.S. Government, the following notice is applicable:

U.S. GOVERNMENT RIGHTS:

Programs, software, databases, and related documentation and technical data delivered to U.S. Government customers are "commercial computer software" or "commercial technical data" pursuant to the applicable Federal Acquisition Regulation and agency-specific supplemental regulations. As such, the use, duplication, disclosure, modification, and adaptation shall be subject to the restrictions and license terms set forth in the applicable Government contract, and, to the extent applicable by the terms of the Government contract, the additional rights set forth in FAR 52.227-19, Commercial Computer Software License (December 2007). Oracle America, Inc., 500 Oracle Parkway, Redwood City, CA 94065.

This software or hardware is developed for general use in a variety of information management applications. It is not developed or intended for use in any inherently dangerous applications, including applications that may create a risk of personal injury. If you use this software or hardware in dangerous applications, then you shall be responsible to take all appropriate fail-safe, backup, redundancy, and other measures to ensure its safe use. Oracle Corporation and its affiliates disclaim any liability for any damages caused by use of this software or hardware in dangerous applications.

This software or hardware and documentation may provide access to or information on content, products, and services from third parties. Oracle Corporation and its affiliates are not responsible for and expressly disclaim all warranties of any kind with respect to third-party content, products, and services. Oracle Corporation and its affiliates will not be responsible for any loss, costs, or damages incurred due to your access to or use of third-party content, products, or services.