

**Oracle Insurance**

**Insbridge Rating and  
Underwriting  
SoftRater Native  
Implementation Guide**

Release 4.6.1

November 2012

Copyright © 2005, 2012, Oracle and/or its affiliates. All rights reserved.

Oracle Insurance Insbridge Rating and Underwriting SoftRater Native Implementation Guide

Release 4.6.1

Part # E36926-01

Library # E36936-01

November 2012

Primary Author: Mary Elizabeth Wiger

This software and related documentation are provided under a license agreement containing restrictions on use and disclosure and are protected by intellectual property laws. Except as expressly permitted in your license agreement or allowed by law, you may not use, copy, reproduce, translate, broadcast, modify, license, transmit, distribute, exhibit, perform, publish, or display any part, in any form, or by any means. Reverse engineering, disassembly, or decompilation of this software, unless required by law for interoperability, is prohibited.

The information contained herein is subject to change without notice and is not warranted to be error-free. If you find any errors, please report them to us in writing.

If this software or related documentation is delivered to the U.S. Government or anyone licensing it on behalf of the U.S. Government, the following notice is applicable:

#### **U.S. GOVERNMENT RIGHTS**

Programs, software, databases, and related documentation and technical data delivered to U.S. Government customers are "commercial computer software" or "commercial technical data" pursuant to the applicable Federal Acquisition Regulation and agency-specific supplemental regulations. As such, the use, duplication, disclosure, modification, and adaptation shall be subject to the restrictions and license terms set forth in the applicable Government contract, and, to the extent applicable by the terms of the Government contract, the additional rights set forth in FAR 52.227-19, Commercial Computer Software License (December 2007). Oracle USA, Inc., 500 Oracle Parkway, Redwood City, CA 94065.

This software is developed for general use in a variety of information management applications. It is not developed or intended for use in any inherently dangerous applications, including applications which may create a risk of personal injury. If you use this software in dangerous applications, then you shall be responsible to take all appropriate fail-safe, backup, redundancy, and other measures to ensure the safe use of this software. Oracle Corporation and its affiliates disclaim any liability for any damages caused by use of this software in dangerous applications.

Oracle is a registered trademark of Oracle Corporation and/or its affiliates. Other names may be trademarks of their respective owners.

This software and documentation may provide access to or information on content, products, and services from third parties. Oracle Corporation and its affiliates are not responsible for and expressly disclaim all warranties of any kind with respect to third-party content, products, and services. Oracle Corporation and its affiliates will not be responsible for any loss, costs, or damages incurred due to your access to or use of third-party content, products, or services.

Where an Oracle offering includes third party content or software, we may be required to include related notices. For information on third party notices and the software and related documentation in connection with which they need to be included, please contact the attorney from the Development and Strategic Initiatives Legal Group that supports the development team for the Oracle offering. Contact information can be found on the Attorney Contact Chart.

The information contained in this document is for informational sharing purposes only and should be considered in your capacity as a customer advisory board member or pursuant to your beta trial agreement only. It is not a commitment to deliver any material, code, or functionality, and should not be relied upon in making purchasing decisions. The development, release, and timing of any features or functionality described in this document remains at the sole discretion of Oracle.

This document in any form, software or printed matter, contains proprietary information that is the exclusive property of Oracle. Your access to and use of this confidential material is subject to the terms and conditions of your Oracle Software License and Service Agreement, which has been executed and with which you agree to comply. This document and information contained herein may not be disclosed, copied, reproduced, or distributed to anyone outside Oracle without prior written consent of Oracle. This document is not part of your license agreement nor can it be incorporated into any contractual agreement with Oracle or its subsidiaries or affiliates.

# CONTENTS

	PREFACE .....	V
	Audience .....	v
	Related Documents .....	v
	Conventions .....	v
	System Requirements.....	vi
	Manual History .....	vi
<b>CHAPTER 1</b>		
	INTRODUCTION TO SOFTRATER NATIVE .....	7
<b>CHAPTER 2</b>		
	SOFTRATER NATIVE IN IBFA.....	9
	IBFA Setup Requirements .....	9
	Managing SoftRater Native in IBFA.....	13
	SoftRater Native Deployment .....	21
<b>CHAPTER 3</b>		
	SOFTRATER PROXY CLASS.....	22
	Class SoftRaterProxy.....	22
	Use Case Summary.....	24
<b>CHAPTER 4</b>		
	SOFTRATER NATIVE ADMIN CONSOLE .....	26
	Load Environment.....	28
	Execute Insbridge XML.....	29
	Custom XML Request.....	30
	View Cache .....	30
	Get Version .....	31
	View Existing Environments.....	31
	Activate Environment .....	32
	Deactivate Environment.....	33
	Update Logging Option .....	34
	Unload Environment .....	35
	Add a SoftLibrary .....	36
	Remove a SoftLibrary .....	38
	Exit .....	38
<b>SUPPORT</b>		
	CONTACTING SUPPORT .....	39
	TTY Access to Oracle Support Services .....	39

**INDEX**

INDEX ..... 40

## LIST OF FIGURES

FIGURE 1 SOFTRATER NATIVE OVERVIEW .....	7
FIGURE 2 ENVIRONMENT LISTING SUBTAB .....	9
FIGURE 3 ADDING AN ENVIRONMENT .....	10
FIGURE 4 CONFIGURING AN ENVIRONMENT .....	11
FIGURE 5 ORACLE XE MESSAGE .....	11
FIGURE 6 SELECTING PACKAGES .....	13
FIGURE 7 LOADING A PACKAGE .....	14
FIGURE 8 LOAD PACKAGES RESULTS .....	15
FIGURE 9 ENVIRONMENT WITH LOADED PACKAGES .....	15
FIGURE 10 CREATING A BACKUP .....	16
FIGURE 11 SELECTING OPTIONS WHEN CREATING A BACKUP .....	17
FIGURE 12 SAVE TO FILE SELECT .....	18
FIGURE 13 CREATING A BACKUP ZIP .....	19
FIGURE 14 SAVING A BACKUP ZIP FILE .....	19
FIGURE 15 BACKUP FILE CONTENTS .....	20
FIGURE 16 STARTING ADMIN CONSOLE .....	26
FIGURE 17 CONSOLE MAIN .....	27
FIGURE 18 LOADING AN ENVIRONMENT .....	28
FIGURE 19 EXECUTE INSBRIDGE XML .....	29
FIGURE 20 VIEW CACHE .....	30
FIGURE 21 GET VERSION .....	31
FIGURE 22 VIEW EXISTING ENVIRONMENTS .....	31
FIGURE 23 ACTIVATE ENVIRONMENTS .....	32
FIGURE 24 DEACTIVATE ENVIRONMENTS .....	33
FIGURE 25 UPDATE LOGGING INFORMATION .....	34
FIGURE 26 UNLOADING AN ENVIRONMENT .....	35
FIGURE 27 ADDING A SOFTLIBRARY USING THE CONSOLE .....	36
FIGURE 28 DELETING A SOFTLIBRARY .....	38

## PREFACE

Welcome to the *Oracle Insurance Insbridge Rating and Underwriting SoftRater Native Guide*. This guide describes how you can integrate and use Insbridge SoftRater Native (SoftRater Native).

## AUDIENCE

This guide is intended for application developers, programmers and others tasked with configuring the SoftRater Native interface. Users should be familiar with Java IDE.

## RELATED DOCUMENTS

For more information, refer to the following Oracle resources:

- The Oracle Insurance Insbridge Rating and Underwriting SR\_Native\_Help File.
- The Oracle Insurance Insbridge Rating and Underwriting Framework Administrator User Guide.
- You can view these guides in-line at this address:

<http://www.oracle.com/technetwork/documentation/insurance-097481.html>

## CONVENTIONS

The following text conventions are used in this document:

Convention	Description
<b>bold</b>	Boldface type indicates graphical user interface elements associated with an action.
<i>italic</i>	Italic type indicates book titles, emphasis, or placeholder variables for which you supply particular values.
monospace	Monospace type indicates commands within a paragraph, URLs, code in examples, text that appears on the screen, or text that you enter.

## SYSTEM REQUIREMENTS

For minimum operating system and hardware requirements, please see the Hardware Software requirements guide.

Oracle Insurance recommends the following system requirements for client workstations for optimal performance. Currently, Insbridge SoftRater Native only supports US English.

### *Insbridge SoftRater Native Client:*

- Operating System – Windows XP, Windows 7
- Oracle Database 10g Express Edition ( Oracle XE)
- Java Runtime 1.6

## Manual History

New editions incorporate any updates issued since the previous edition.

<b>Edition</b>	<b>Publication Number</b>	<b>Product Version</b>	<b>Publication Date</b>	<b>Comment</b>
1 <sup>st</sup> Edition	P01-786-01	R 4.1	December 2010	Initial release
2 <sup>nd</sup> Edition	P01-786-02	R 4.5	May 2011	Update
3 <sup>rd</sup> Edition	P01-786-03	R 4.5.1	September 2011	Update
4 <sup>th</sup> Edition	P01-786-04	R 4.6	May 2012	Update
5 <sup>th</sup> Edition	P01-786-05	R 4.6.1	November 2012	Update Release

## INTRODUCTION TO SOFTRATER NATIVE

Oracle Insurance Insbridge Rating and Underwriting SoftRater Native provides the ability to execute rules and rating logic in environments where access via the SoftRater web-services is not desired or possible. For example, an agent's laptop that is not connected to the web, a network, or a legacy non-web enabled system.

SoftRater Native utilizes components from the Insbridge SDK and content produced through the Insbridge applications. These components and content are then integrated with a customer's application, such as an Agent desktop quoting application.

Figure 1 shows a typical use of SoftRater Native to provide quoting to an agent in the field who is not connected to the web. RateManager programs are deployed and promoted through the various SoftRater engine environments. An Environment Backup is created in the IBFA and included in a deployment kit along with the required SoftRater Native components. Finally, the SoftRater Native components are integrated with the customer's data capture user application to produce a stand-alone client environment for agents in the field.

SoftRater Native components can be found in the SDK directory on the system where IBFA has been installed. The components can be integrated into a customer supplied application interface layer. Once deployed, SoftRater Native can accept backup files from IBFA and act as a local rating engine.

SoftRater Native itself is not a web service. You reference it in your applications and **consume it natively** as a Java Library.

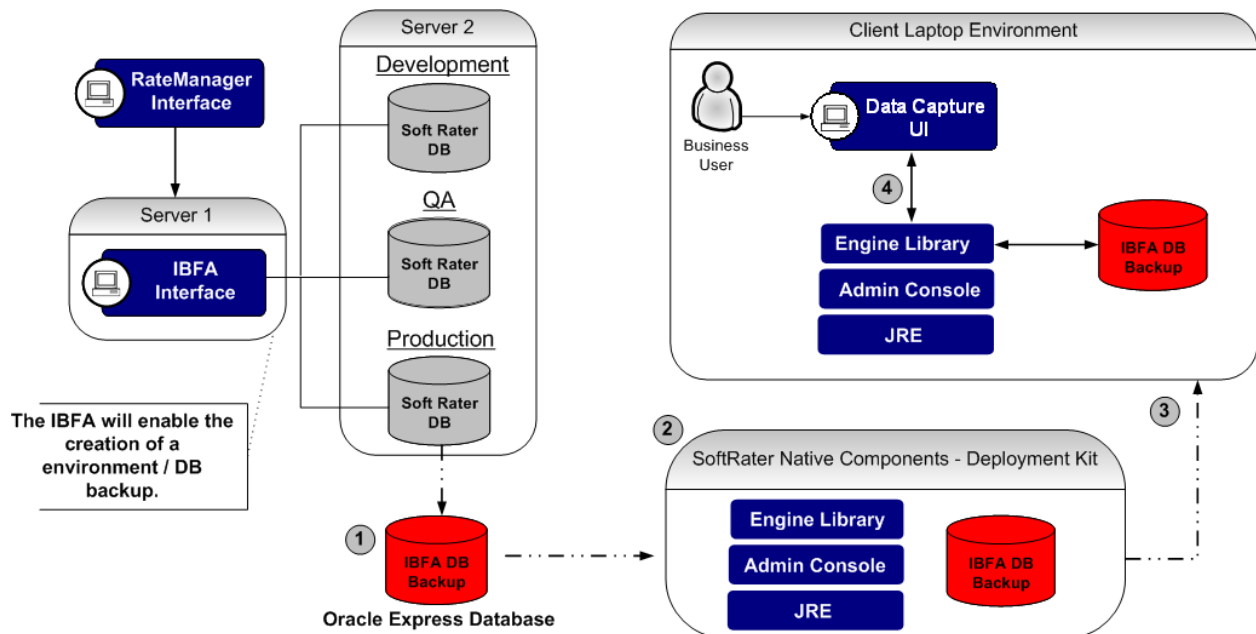


Figure 1 SoftRater Native Overview



SoftRater Native supports:

- Environment Management
- Processing Insbridge and custom XML requests
- Logging Activity
- Implementing SoftLibraries
- Accessing general engine information

Also included is a console application for the SoftRater Native allows for testing against the engine, such as:

- Loading and unloading environments
- Activate and deactivate environments
- View current environment information
- Execute Insbridge and custom XML requests
- Get the latest version information
- View the elements currently in cache
- Update logging
- Add and remove SoftLibraries

## Functionality Highlights

- SoftRater Native is available on Insbridge Rating and Underwriting release 4.1 or later.
- An Oracle XE database is required. Oracle XE has a 4GB limit and allows for only 1 instance.
- When implementing SoftRater Native, an Oracle XE environment must be setup in IBFA. When you select an Oracle XE database server type the schema for the environment is changed to match the name of the environment. The schema information is needed to load environments. If unchanged, the default localhost may be used.
- Naming conventions must remain consistent. The environment name is the DBSchema name from IBFA. Entries are case sensitive.
- The SDK containing SoftRater Native is loaded in the installation directory. To locate SoftRater Native, look under the Insbridge directory for the SDK/SoftRater Native file; [INSTALL\_DIR]\Insbridge\SDK\SoftRater Native. Open zip file, SoftRater\_Native\_v04.05.00.zip. This file contains three items:
  - javadoc folder (the API help file)
  - lib folder (all the libraries needed to run the Admin Console and develop application for SoftRater Native)
  - SoftRaterNativeAdminConsole.jar file (the SoftRater Native Admin Console)

---

**NOTE:** For further details, please see the *SoftRater Native javadoc folder*.

---

# SOFTRATER NATIVE IN IBFA

SoftRater Native requires a setup in IBFA prior to implementing a client application. All setups can be done in the SoftRater Explorer Subscriber page. There are two tabs:

- **Settings:** This is where you set up and configure environments. You must complete this information prior to working on the Content tab. You only need to set up the environment once. You can have as many XE environments as you want.
- **Content:** Once configured, SoftRater Explorer is where you download, load, unload, move and delete packages to/from your SoftRater environments. This tab also is where you create backups for remote SoftRater environments.
  - An Oracle XE environment must be on the same server as IBFA. Oracle XE cannot be run through an application server, such as WebLogic.
  - Naming must be consistent. The names used in IBFA must be used in SoftRater Native. Oracle XE is case sensitive.

## IBFA SETUP REQUIREMENTS

These steps must be performed in IBFA.

1. Set up an Oracle XE environment for use with SoftRater Native.
2. Configure the Oracle XE environment.

### Step 1 Setting up an Environment for Use with SoftRater Native

1. To add an Oracle XE environment, click the **Add Environment** link on the Configuration subtab.

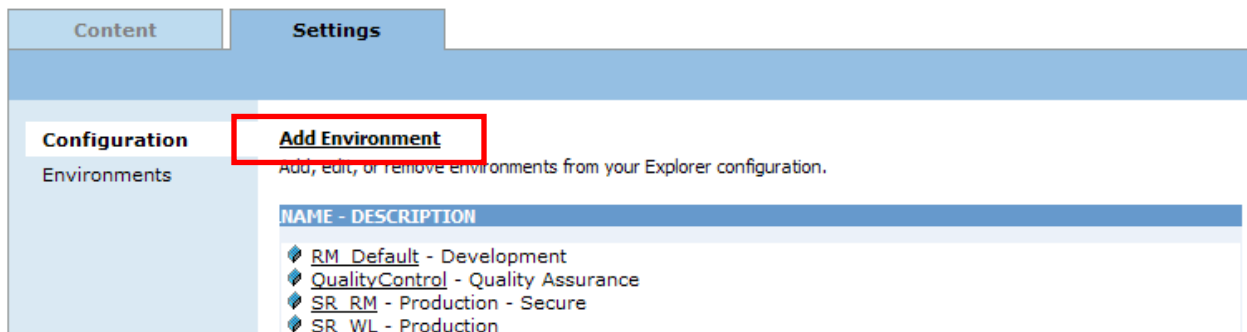


Figure 2 Environment Listing Subtab

2. This opens the **Add Environments** window.

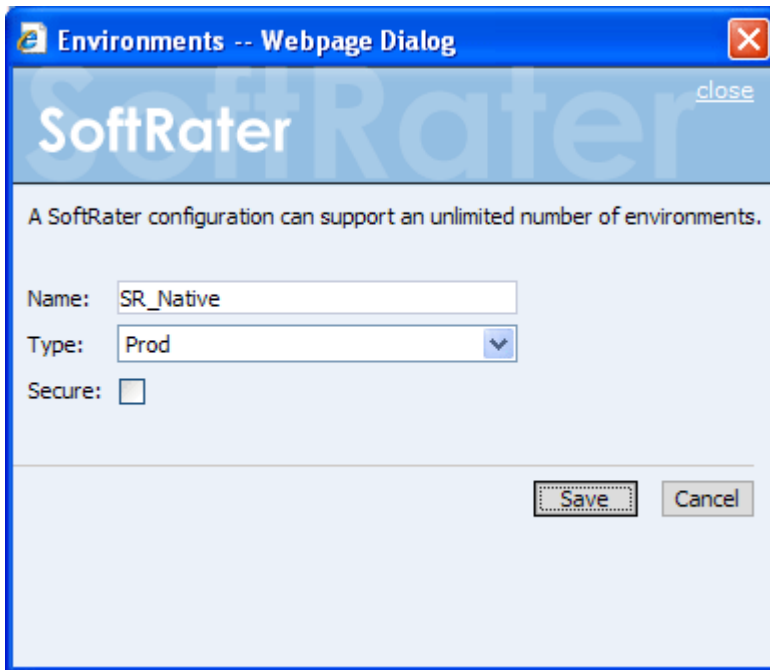


Figure 3 Adding an Environment

3. Type in a name for your environment and select one of the three predefined types:
  - Development
  - Quality Assurance
  - Production
4. If you want to make the new environment secure, check the box next to **Secure**. A secure environment is available to users who are logged into the Framework Administrator only.
5. Once you have entered the information, click **Save** to update the configuration file and return to the Configuration subtab.

## Step 2 Configure the SoftRater Native Environment

1. On the Settings tab, select **Environments**.
2. This opens up the Environments subtab. The environments you previously setup are listed. If your environment is missing, you must return to the Configuration subtab and add it.
3. Scroll to find the environment you created for SoftRater Native.

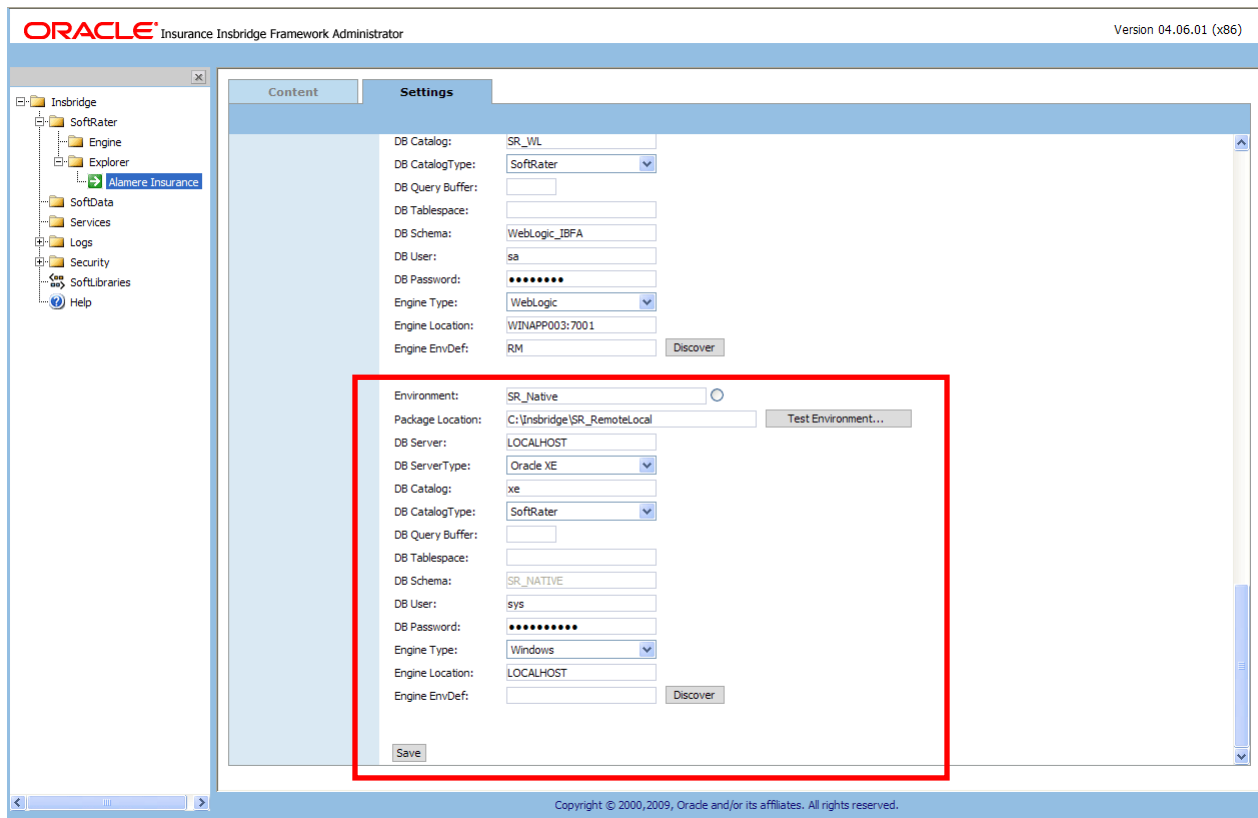


Figure 4 Configuring an Environment

4. The **Environment Name** is complete. No changes are needed.
5. Enter in the file path where you want packages stored in the **Package Location**. The package location must be on the server where IBFA is located. Use the Test Environment option to have the location created for you. If you have not loaded a package to the XE environment, you may receive an error message instructing you to run the DDLs. DDLs are run against an XE environment the first time you load a package. You do not need to run the DDLs prior to loading any packages.
6. Oracle XE must be on the same server as IBFA. The **DBServer** is **LOCALHOST**.
7. The **DB Server Type** is **Oracle XE**. When you select an Oracle XE database server, an information screen is displayed. The schema is changed to match the name of the environment.
8. Click **OK**.

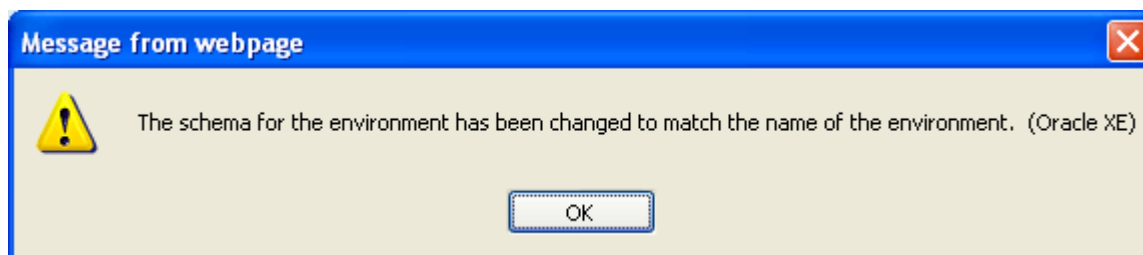


Figure 5 Oracle XE Message

9. The **DB Catalog** is the database name. If you are unsure of the name, you can view this information on the Oracle XE database Home Page. Home→Administration→About Database, select settings and click GO. The name is listed in the database information window.
10. The **DB Catalog Type** is **SoftRater**.
11. **DB Query Buffer** and **DB Tablespace** are not required for an Oracle XE environment.
12. The **DB Schema** was set when you selected the DB Server Type. This information can only be changed if a different DB Server Type is selected.
13. Enter the **DB User** name and **Password**.
14. The **Engine Type** is **Windows**.
15. The **Engine Location** default is **LOCALHOST**. Oracle XE must be on the same machine as IBFA. If the IBFA engine location is not on the local machine, enter the server name or IP address where the IBFA engine is located. Do not change LOCALHOST to the name or IP address of the local machine.
16. The **Engine EnvDef** default is a blank field. Oracle XE must be on the same machine as IBFA. If the IBFA engine location is not on the local machine, enter the server name or IP address where the IBFA engine is located.
17. Click **SAVE** to save your entries.

## MANAGING SOFTRATER NATIVE IN IBFA

Once your environments are set up, you manage packages and backups from IBFA. These are the reoccurring steps that you will do each time you want to update your SoftRater Native environment.

1. Load packages to the SoftRater Native environment.
2. Create a Backup.
3. Save the backup to zip file.

### Step 1 Loading Packages

Loading a package takes the logic stored in the package and places it in the database so that it can be rated against. Packages can be loaded from any SoftRater environment into the SoftRater Native environment you created in IBFA. Any packages that you want to load to the remote SoftRater Native environment needs to be loaded into the SoftRater Native environment you created in IBFA first.

1. On **SoftRater Explorer**, select the appropriate subscriber.
2. The Packages subtab automatically loads the list of packages for the default environment. Select the SoftRater Native environment and click **Get Listing!** to update the list of packages.

The screenshot shows the Oracle Insurance InSbridge Framework Administrator interface. The main content area displays the 'Packages' subtab with a table of packages. The 'Load' button is highlighted with a red box. The table contains the following data:

DESCRIPTION	LOB	RELEASE DATE	SIZE
<input checked="" type="checkbox"/> Program: 1 Version: 1 Version Name:	Auto	10/19/2012 4:25:24 PM	5 KB
<input checked="" type="checkbox"/> Virginia Home Program: 33 Version: 1 Version Name:	Home	10/6/2012 2:19:21 PM	223 KB
<input checked="" type="checkbox"/> Kentucky Home Program: 6 Version: 2 Version Name:	Home	10/6/2012 2:17:47 PM	307 KB
<input checked="" type="checkbox"/> Kentucky Home Program: 6 Version: 1 Version Name:	Home	10/6/2012 2:15:58 PM	305 KB
<input checked="" type="checkbox"/> E01 Program: 1 Version: 1 Version Name:	ErrorsOmissions	10/6/2012 2:14:22 PM	5 KB

At the bottom of the interface, the status bar indicates '5 Package(s) - 0 remote'.

Figure 6 Selecting Packages

3. Select the package(s) you would like to load and click **LOAD** or right click and select LOAD.
4. This opens the **Load Packages** window where you can select options for loading the package(s).

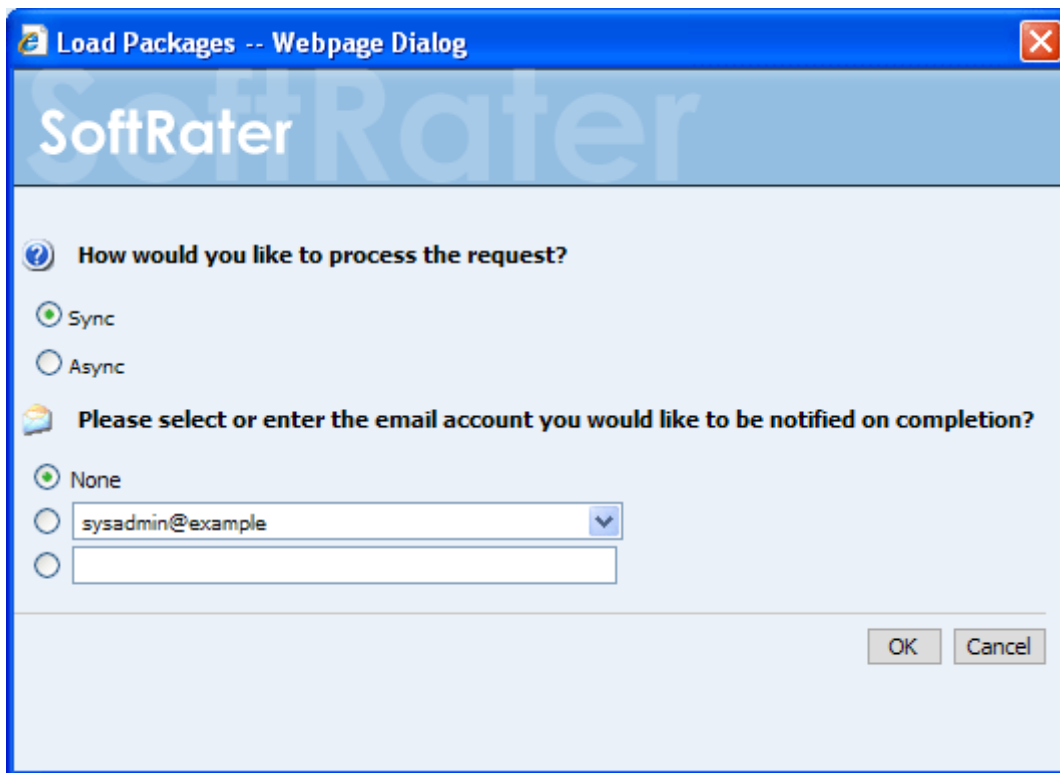


Figure 7 Loading a Package

5. When you have finished choosing your options, click **OK**.
  - If you chose the Sync load option, the package listing should refresh and an icon (📁) appears next to the loaded package.
  - If you chose the Async load option, you should receive a message that the request was successful.

When the process finishes, if you elected to receive an email, you should receive an email with the results. If you elected not to receive an email, nothing will be sent to you.

If you receive error messages, check your configuration settings and try again.

To verify that the load request has or has not been processed, enter the Services page. Under the Insbridge Message Service → Message Process, select SoftRater – Package. Click View Messages. Any outstanding requests will be listed.

---

**NOTE:** Please make sure that the Insbridge Message Service is running. If the message service is not running, a message will be displayed at the top of the screen.

---

---

**NOTE:** If you load a package for a program that already has a package loaded, the original package is unloaded and the new package is loaded in its place. The old package remains on disk until deleted and can be reloaded at any time.

---

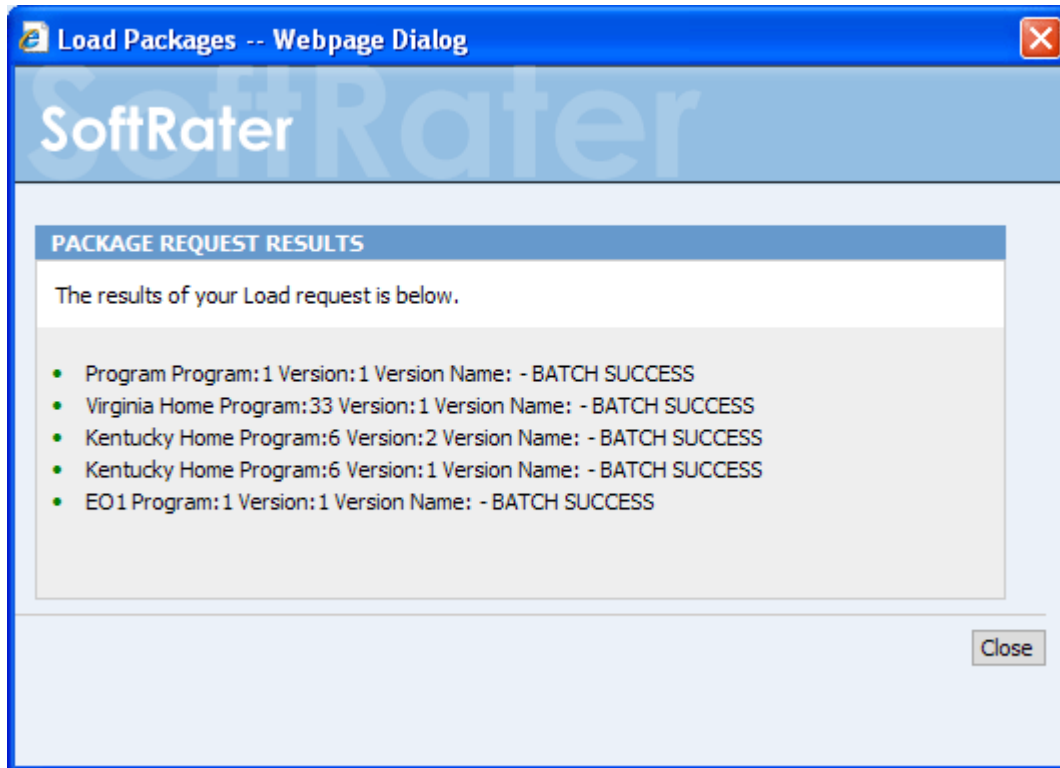


Figure 8 Load Packages Results

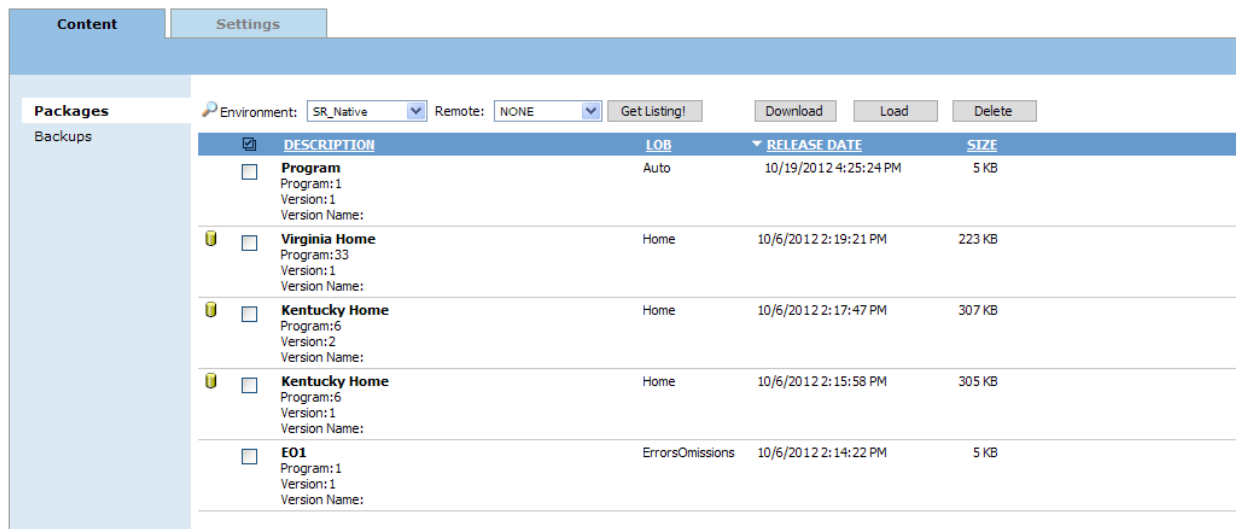


Figure 9 Environment with Loaded Packages

Refresh the listing and an icon (📁) appears next to the loaded packages.

## Step 2 Creating an Environment Backup Zip File

An Insbridge Environment Backup zip file holds the current SRP information for the selected environment. For Oracle XE environments, a database dump file is also included. The Backups subtab is where you manage environment backups.



When a backup is created, a file is created in the package location where SRPs are located on disk. Once a backup is saved to disk, it becomes a SoftRater Desktop .SRB file. Each environment has a folder where the backups for that environment are placed. Each backup file on disk is identified by the ID number of the backup. Backup IDs are no duplicated.

Backups can be done against an environment that contains packages or does not contain packages. To verify package content, look at the environment report issued for the backup. An invalid database connection does not allow for a backup to be created. If you experience trouble creating a backup, please look in Logs→Error to see if an error has been recorded.

1. On **SoftRater Explorer**, select the appropriate subscriber.
2. Select the **Backups** subtab.
3. Select the **SoftRater Native environment** where you want to create a backup and click **GETLISTING!** The screen refreshes. Any backups are listed. If no backups are found, a message is displayed.

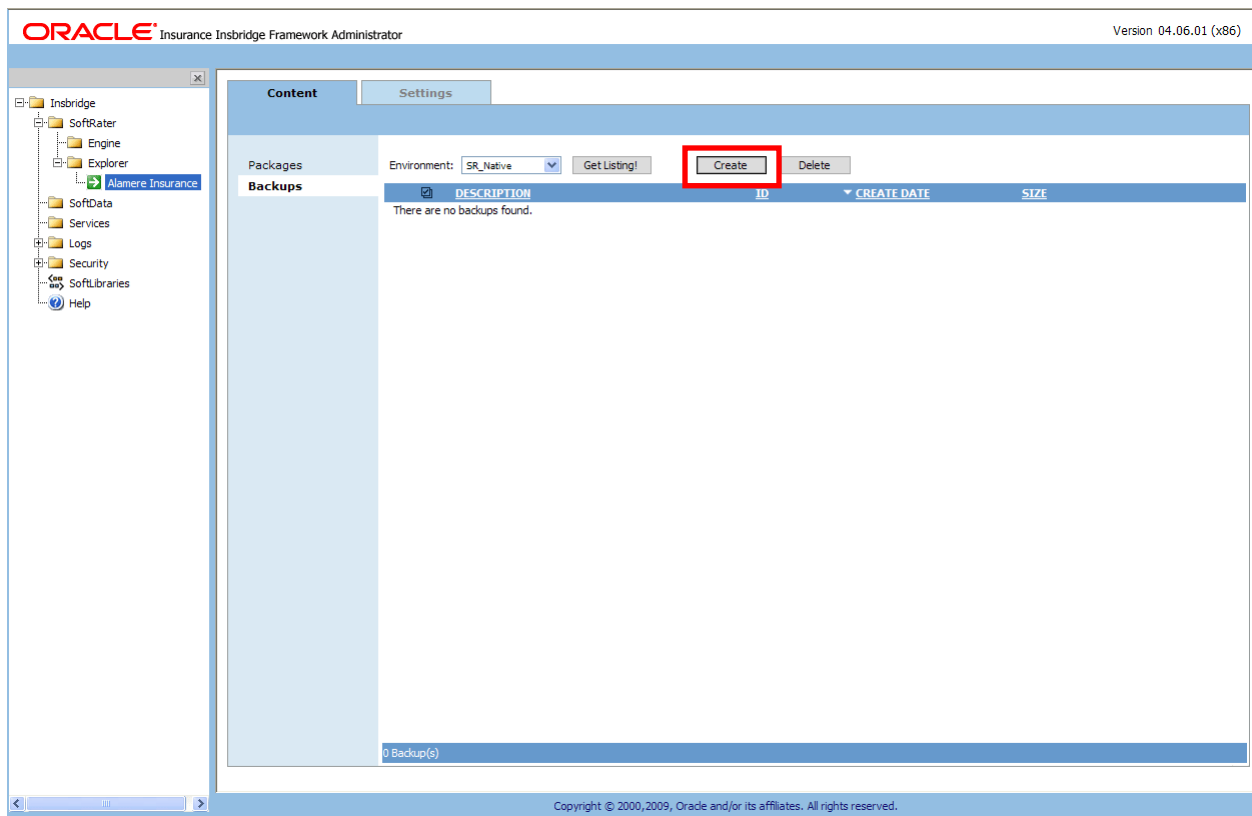


Figure 10 Creating a Backup

4. Click **CREATE**. The create backup screen is displayed.

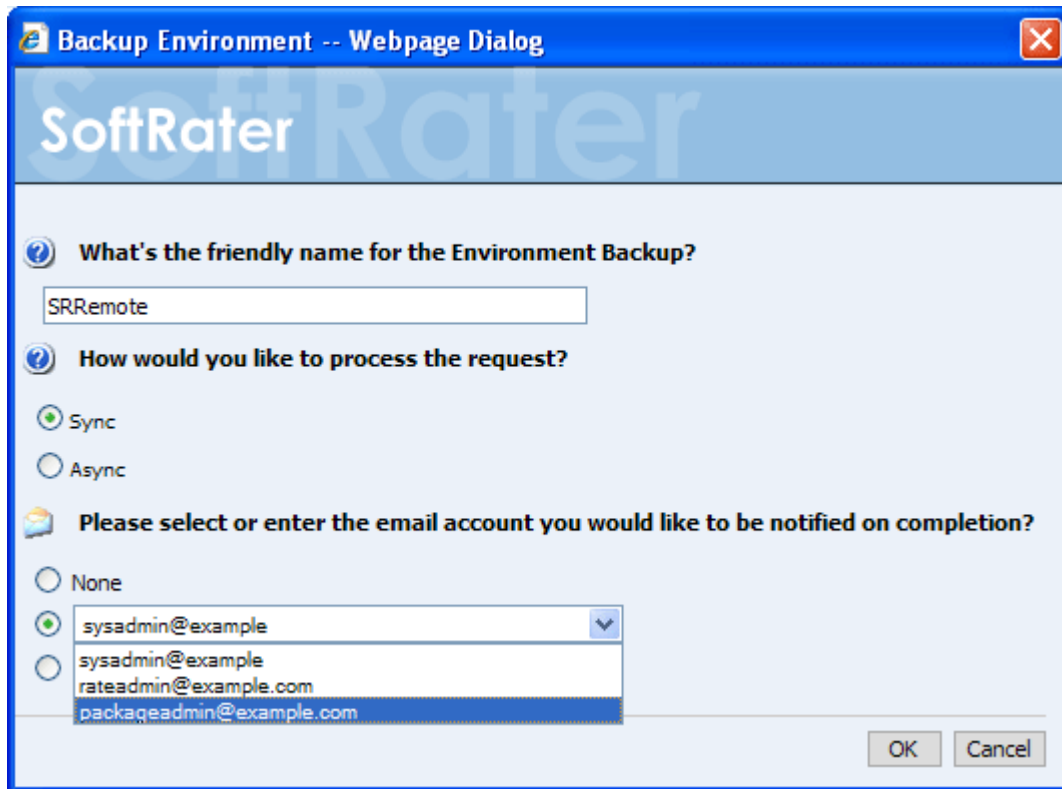


Figure 11 Selecting Options when Creating a Backup

5. Enter in a **Friendly name**. This is for identification purposes.
6. Select how you would like to process the request.
  - If you chose the Sync option, the backup is performed immediately and the backup listing should refresh with the backup.
  - If you chose the Async option, the backup is performed in batch and if requested, you should receive a message that the request was successful.

When the process finishes, if you elected to receive an email, you should receive an email with the results. If you elected not to receive an email, nothing will be sent to you. Refresh the listing and the backup will be listed.

If you receive error messages, check your configuration settings and try again.

To verify that the backup request has or has not been processed, enter the Services page. Under the Insbridge Message Service→Message Process, select SoftRater – Package. Click View Messages. Any outstanding requests will be listed.

---

**NOTE:** Please make sure that the Insbridge Message Service is running. If the message service is not running, a message will be displayed at the top of the screen.

---

7. Select or enter the email address to be notified when the request is processed. If you elect to enter an email address, this is the Created By name.
8. Click **OK**. The request is processed.

The process request is displayed with successful or not.

### Step 3 Save to Zip File

Backup zip files are the only file type that can be used in a SoftRater Native instance.

The Save to File option is a right click menu choice that creates a backup zip file on your local hard drive or network. The zip file is named using the friendly name. The file name cannot be changed at the time of creation but the zip file can be edited at any time.

### Creating a Backup Zip File

1. On **SoftRater Explorer** select the appropriate subscriber.
2. Select the **Backups** subtab.
3. Select the **SoftRater Native environment** where you want to create a backup and click **Get Listing!** The screen refreshes. Any backups are listed. If no backups are found, a message is displayed.
4. Select the **backup** you want to save and right click.

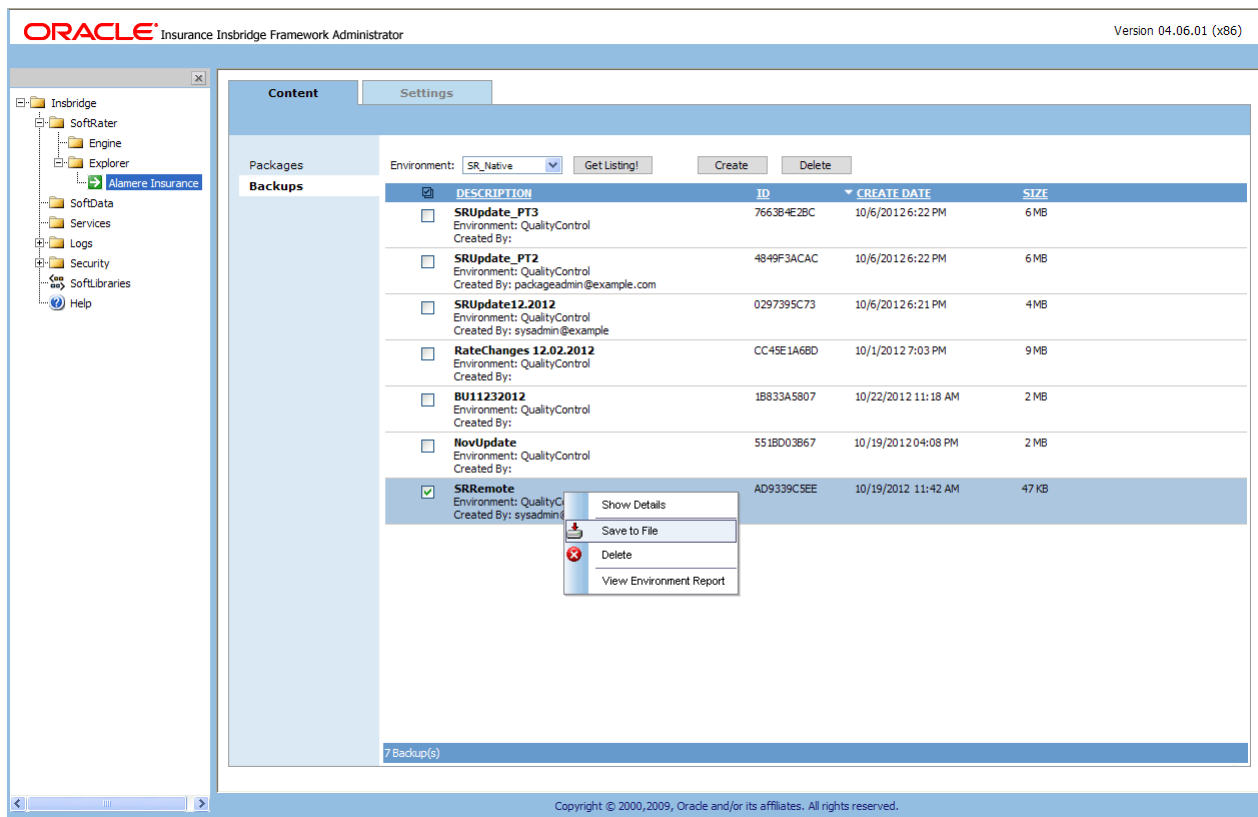


Figure 12 Save To File Select

5. Select **Save to File** from the menu. The File Download dialog is displayed.

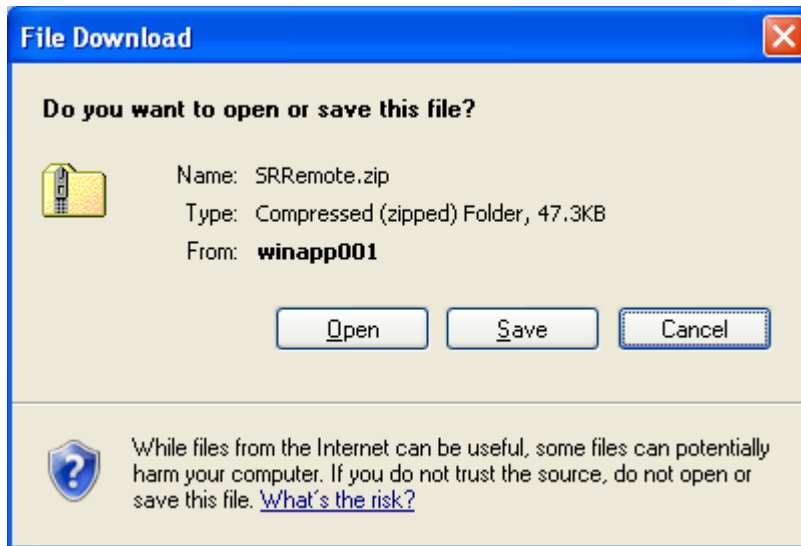


Figure 13 Creating a Backup Zip

6. Elect to **Save**. The Save As dialog box is displayed.

**Open** – opens the zip file in a separate window.

**Cancel** – cancels the process, the dialog closes and no file is created or saved.

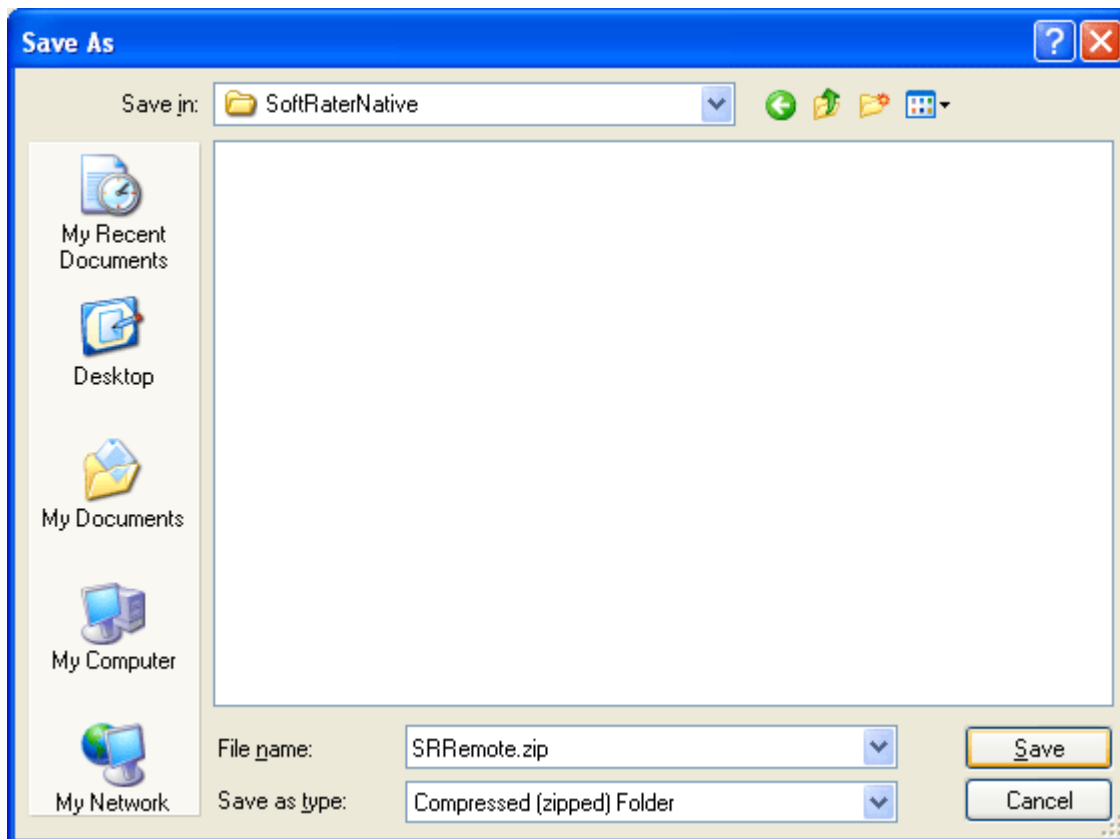


Figure 14 Saving a Backup Zip File

7. Select the location where you want to save the file. The name defaults to the friendly name entered. You can change this name if needed.
8. Click **SAVE**. This saves the file to your local hard drive or network.

## Backup Zip File Contents

A database backup contains:

- An Environment Report
- Header XML information with what is contained in the backup
- The SRPs that are to be loaded or unloaded
- If included, custom XML and XSL mappings
- Database backup for the XE environments in 200mg increments

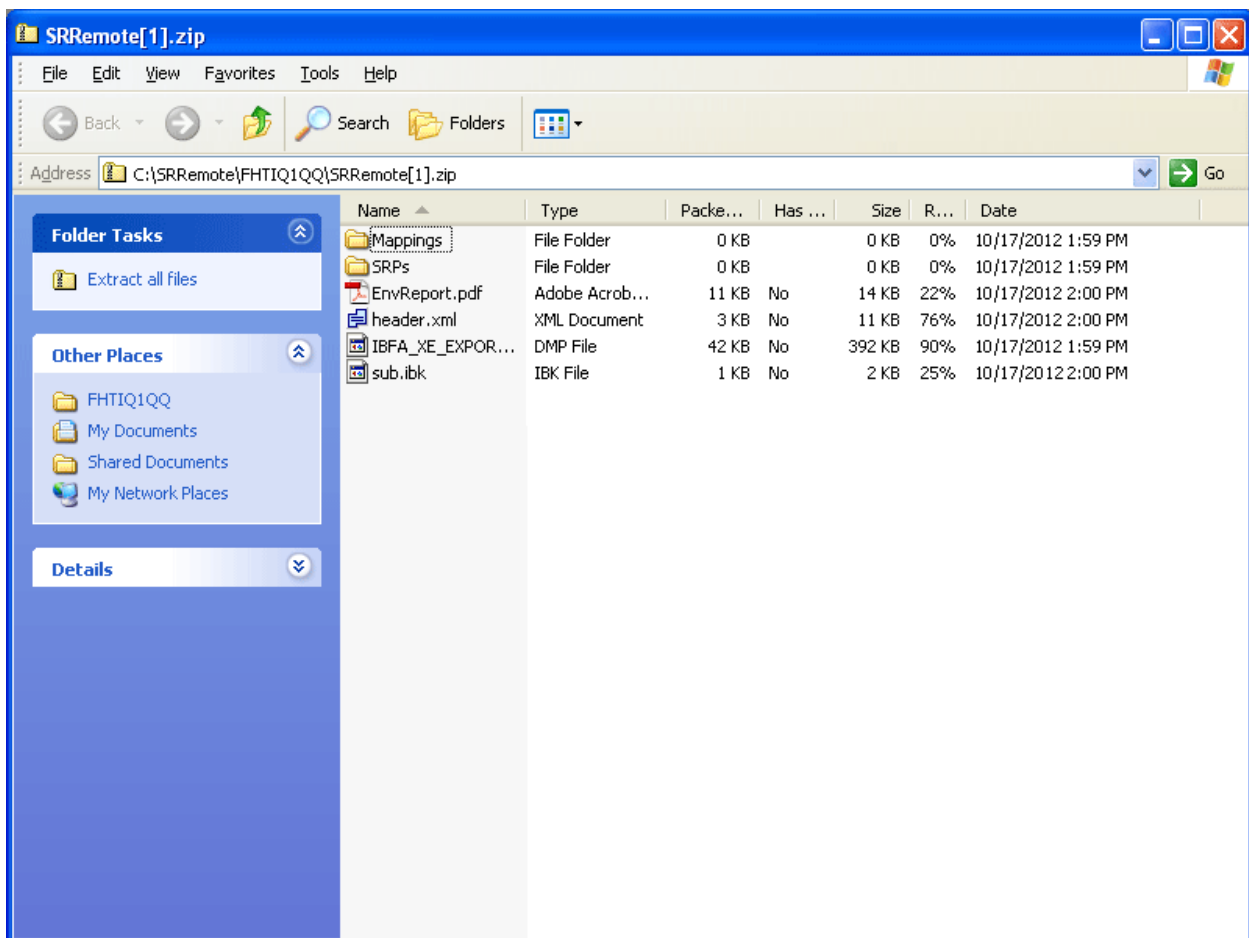


Figure 15 Backup File Contents

## SOFTRATER NATIVE DEPLOYMENT

The environment backup zip file created in IBFA can be deployed to the remote Oracle XE database. Only a zip file can be used. Take note of the file path where you place the zip file. This information is needed when you load the zip file.

Check to see if there are any SoftLibrary calls in the packages by looking over the program version report. SoftLibraries are not automatically loaded and must be added separately.

### SoftRater Native Environments

A SoftRater Native environment is the rating environment that the local instance of SoftRater Native uses. This is the local engine that executes the rating, rules and underwriting instructions defined within RateManager. Multiple environments can be loaded. Only one default environment is allowed. The default environment is the environment that is used to rate unless another environment is specified in the request XML.

The default environment can be changed by loading another environment as default or by activating another environment. If you want to utilize a different environment other than the default when rating, you will need to define the environment name in the Request XML.

Environments must be activated in order to be used. Deactivated environments are unavailable for use but not removed. To remove an environment, use the “Unload Environment” option in the Admin Console or call unload Environment() API method in your application.

## Chapter 3

# SOFRATER PROXY CLASS

SoftRater Native uses SoftRater Proxy classes. The SoftRater Proxy class is in StdSRProject.jar.

All the libraries in lib folder need to be added in your application's classpath. All of the other libraries are used by the SoftRater engine.

## CLASS SOFRATERPROXY

```
java.lang.Object
└─oracle.igbu.insbridge.softraternative.SoftRaterProxy
```

```
public class SoftRaterProxy
extends java.lang.Object
```

### Constructor Summary

<a href="#">SoftRaterProxy</a> () Constructor for SoftRaterProxy
---

### Method Summary

boolean	<a href="#">activateEnvironment</a> (java.lang.String aEnv, Boolean isDefaultEnv, java.lang.String aUser, java.lang.String aPassword)  This method activates a deactivated environment so that the user can process request xml against it.
boolean	<a href="#">deactivateEnvironment</a> (java.lang.String aEnv)  This method deactivates an activated environment so that the user cannot process request against it.
java.lang.String[]	<a href="#">getCacheList</a> ()  This method gets a list of cached programs.
java.lang.String	<a href="#">getDefaultPath</a> ()  This method gets the default application path.
java.lang.String	<a href="#">getExistingEnvironments</a> ()  This method gets a list of existing environments.
java.lang.String[]	<a href="#">getSoftLibraryList</a> ()

	This method gets a list of existing softlibraries.
java.lang.String	<a href="#">getVersion()</a> This method gets the SoftRater Native version.
boolean	<a href="#">isLoggingOn()</a> This method checks if the system logging is turned on or not.
int	<a href="#">loadEnvironment</a> (java.lang.String aFile, java.lang.String aServer, java.lang.String aPort, java.lang.String aUser, java.lang.String aPassword, boolean isDefaultEnv)  This method creates a database schema in the database, loads an environment backup file to the database and create the environment on the local machine.
java.lang.String	<a href="#">processCustom</a> (java.lang.String aXMLInput, Boolean aAddRoot, boolean aAddInputs, boolean aAddHeading, boolean aAddResultDesc, boolean aAddResultThatAreEmpty, boolean aDoDebugOutput, java.lang.String aTargetEnvironment, int aLOB, int aCompanyId, int aProgramId, float aProgramVersion, int aUseResultEncoding, java.lang.String aUseResultDefinition, short aInputMappingType, java.lang.String aInputMappingIdentifier, short aOutputMappingType, java.lang.String aOutputMappingIdentifier)  This method processes a custom request xml.
java.lang.String	<a href="#">processIB</a> (java.lang.String aXMLInput, boolean aAddRoot, boolean aAddInputs, boolean aAddHeading, boolean aAddResultDesc, boolean aAddResultThatAreEmpty, boolean aDoDebugOutput)  This method processes an Insbridge request xml.
java.lang.String	<a href="#">removeSoftLibrary</a> (java.lang.String aName)  This method removes a softlibrary.
java.lang.String	<a href="#">saveSoftLibrary</a> (java.lang.String aName, java.lang.String aClassName, java.lang.String aLogging, java.lang.String aActive, java.util.HashMap aArguments, java.lang.String aDateLastMod)  This method adds a softlibrary.
void	<a href="#">unloadEnviornment</a> (java.lang.String aEnv)  This method deletes the schema from the database and remove the environment setting in the config xml.
void	<a href="#">updateLoggingOption</a> (java.lang.String aOption)  This method updates the logging option in the Insbridge SoftRater config xml.





## USE CASE SUMMARY

The following table is a quick guide to the function available for SoftRater Native.

Business Use Case	Methods to Use	Result
<b>Environments</b>		
Activates an environment	<a href="#"><u>activateEnvironment</u></a>	Method activates a deactivated environment so that the user can process request XML against it.
Deactivates an environment	<a href="#"><u>deactivateEnvironment</u></a>	Method deactivates an environment. Users cannot process requests against it.
Returns a list of existing environments	<a href="#"><u>getExistingEnvironments</u></a>	Gets a list of existing environments.
Loads an environment backup	<a href="#"><u>loadEnvironment</u></a>	Creates a database schema in the database, loads an environment backup file to the database and creates the environment on the local machine.
Unload an environment	<a href="#"><u>unloadEnviornment</u></a>	Deletes the schema from the database and removes the environment setting in the config.xml.
<b>Programs/Requests</b>		
List cached programs	<a href="#"><u>getCacheList</u></a>	Gets a list of cached programs.
Process a custom request XML	<a href="#"><u>processCustom</u></a>	Processes a custom request XML.
Process an Insbridge request XML	<a href="#"><u>processIB</u></a>	Processes an Insbridge request XML.
<b>Logging</b>		
Checks if logging is on.	<a href="#"><u>isLoggingOn</u></a>	Checks if the system logging is turned on or not.
Updates the logging option	<a href="#"><u>updateLoggingOption</u></a>	Updates the logging option in the Insbridge SoftRater config XML.

<b>SoftLibraries</b>		
Returns a list of SoftLibraries	<a href="#"><u>getSoftLibraryList</u></a>	Gets a list of existing SoftLibraries.
Removes a SoftLibrary	<a href="#"><u>removeSoftLibrary</u></a>	Removes a SoftLibrary.
Adds a SoftLibrary	<a href="#"><u>saveSoftLibrary</u></a>	Adds a SoftLibrary.
<b>General Application</b>		
Returns the default application path	<a href="#"><u>getDefaultPath</u></a>	Gets the default application path.
Returns the current SoftRater Native version	<a href="#"><u>getVersion</u></a>	Gets the SoftRater Native version.

## Chapter 4

---

# SOFRATER NATIVE ADMIN CONSOLE

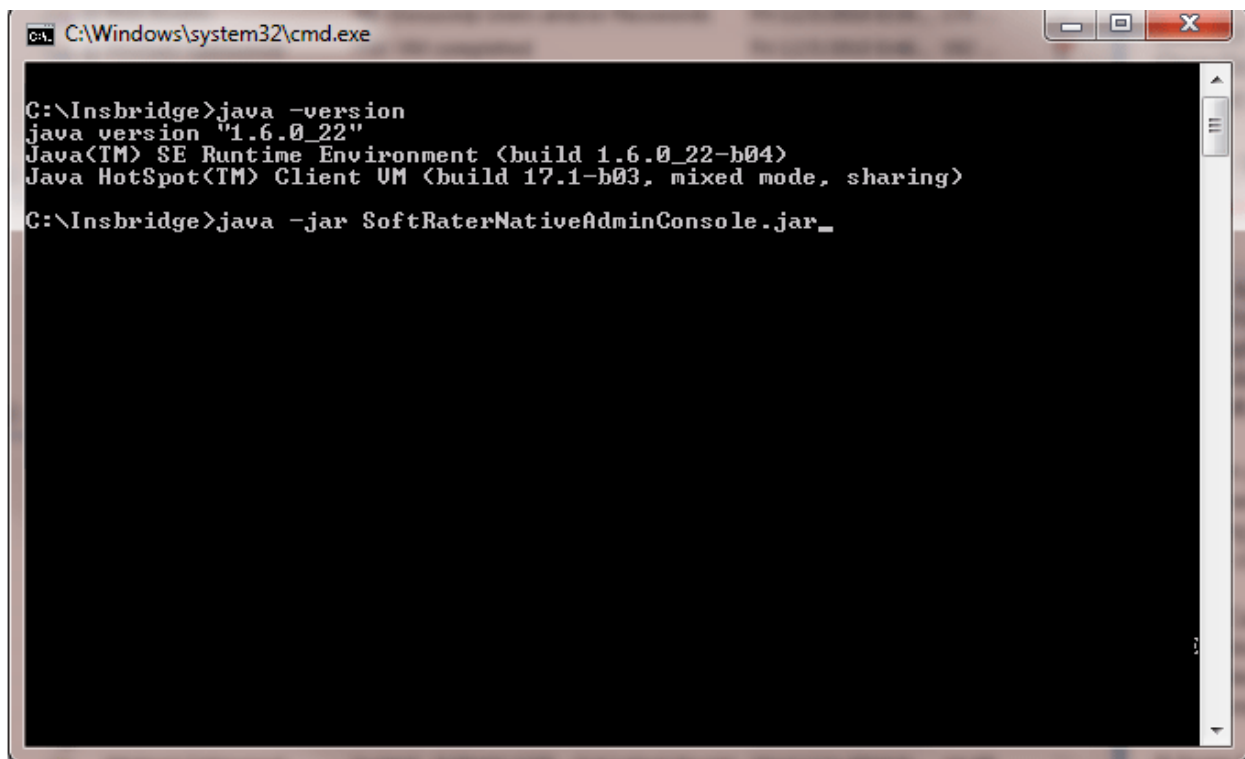
An admin console is included in the SoftRater Native zip file that can assist with configuration and testing of the SoftRater Native engine.

Prior to running the console:

- JRE6 must be installed. Verify the version with `Java -version`.
- Oracle XE must be installed and started on the local machine where you want to run the Console.

### Running the Console

1. SoftRater Native is loaded with the IBFA installation. To locate SoftRater Native, look under the Insbridge directory for the SDK\SoftRater Native file; [INSTALL\_DIR]\Insbridge\SDK\SoftRater Native. Locate zip file `SoftRater_Native_v04.01.00.zip`.
2. Unzip the zip file to a location on your local machine.
3. In a command prompt, change directories to the unzip location.
4. Enter: `Java -jar SoftRaterNativeAdminConsole.jar`



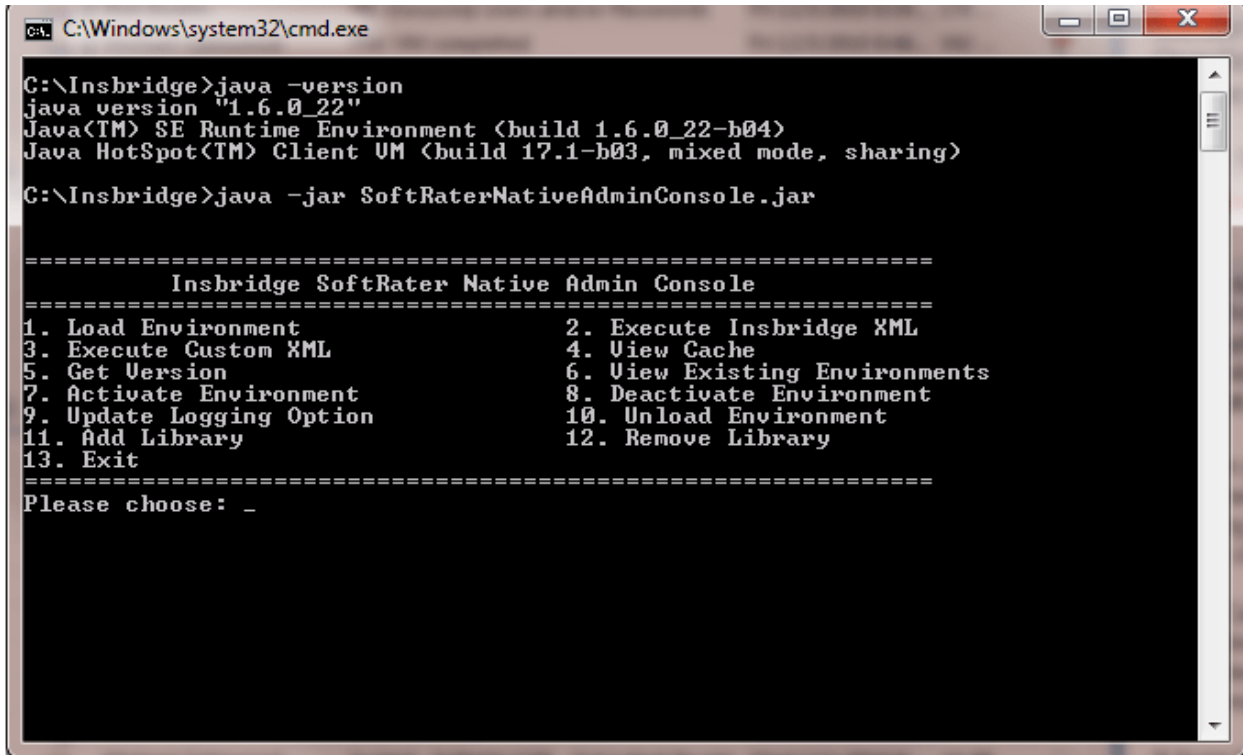
```
C:\Windows\system32\cmd.exe

C:\Insbridge>java -version
java version "1.6.0_22"
Java(TM) SE Runtime Environment (build 1.6.0_22-b04)
Java HotSpot(TM) Client VM (build 17.1-b03, mixed mode, sharing)

C:\Insbridge>java -jar SoftRaterNativeAdminConsole.jar_
```

Figure 16 Starting Admin Console

5. This opens the console.



```
C:\Windows\system32\cmd.exe

C:\Insbridge>java -version
java version "1.6.0_22"
Java(TM) SE Runtime Environment (build 1.6.0_22-b04)
Java HotSpot(TM) Client VM (build 17.1-b03, mixed mode, sharing)

C:\Insbridge>java -jar SoftRaterNativeAdminConsole.jar

=====
                Insbridge SoftRater Native Admin Console
=====
1. Load Environment                2. Execute Insbridge XML
3. Execute Custom XML              4. View Cache
5. Get Version                     6. View Existing Environments
7. Activate Environment            8. Deactivate Environment
9. Update Logging Option           10. Unload Environment
11. Add Library                    12. Remove Library
13. Exit
=====
Please choose: _
```

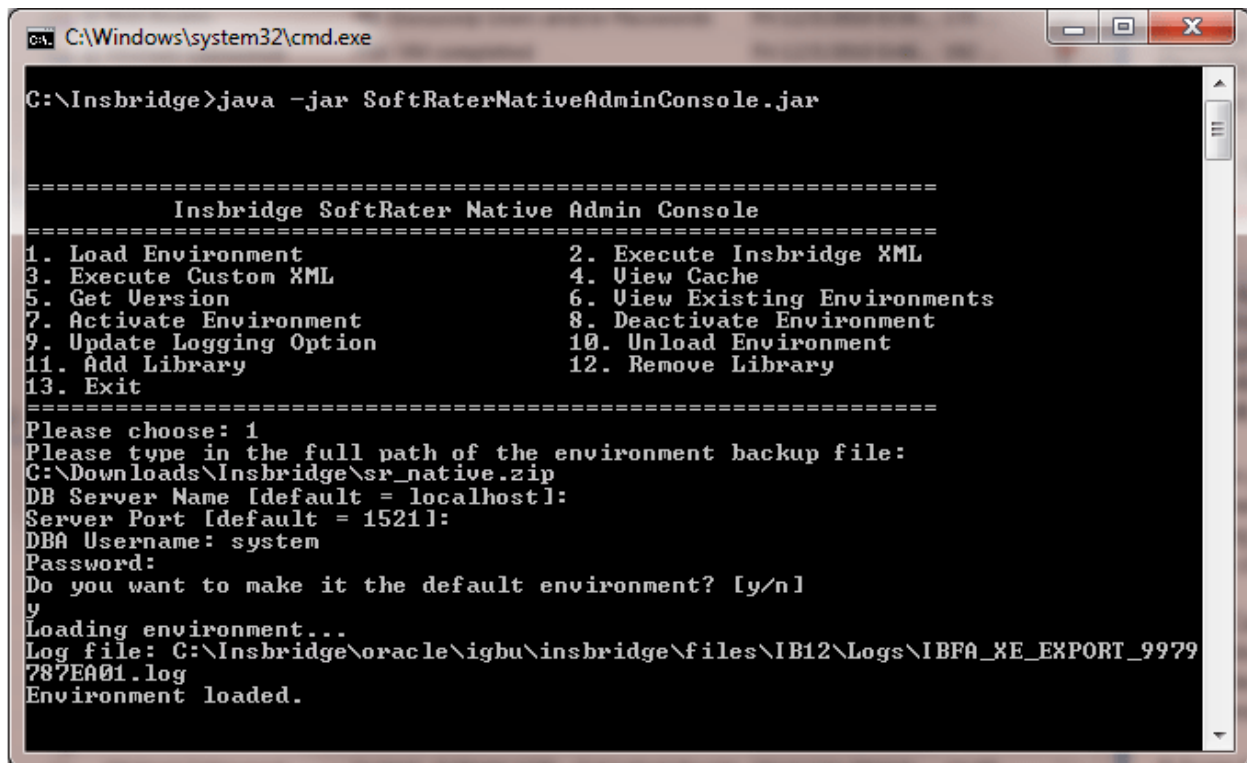
Figure 17 Console Main

There are 13 options:

1. **Load Environment** – Loads an environment to the local Oracle XE.
2. **Execute Insbridge XML** – Executes Insbridge XML.
3. **Execute Custom XML** – Executes custom XML.
4. **View Cache** – Displays the programs in cache.
5. **Get Version** – Get the SoftRater Native version that is currently installed.
6. **View Existing Environments** – Lists the environments.
7. **Activate Environment** – Activates an environment.
8. **Deactivate Environment** – Deactivates an environment.
9. **Update Logging Option** – Displays the current logging status.
10. **Unload Environment** – Unloads an environment.
11. **Add Library** – Displays the current SoftLibraries.
12. **Remove Library** – Displays the current SoftLibraries.
13. **Exit** – Exits the console.

## Load Environment

Use the Load Environment option when you want to load the SoftRater Native zip file in to the local Oracle XE. Oracle XE must be started. No configuration of XE is required. DDLs are run when you load an environment. SoftRater Native loops through a load using a single thread.



```

C:\Windows\system32\cmd.exe

C:\Insbridge>java -jar SoftRaterNativeAdminConsole.jar

=====
                Insbridge SoftRater Native Admin Console
=====
1. Load Environment                2. Execute Insbridge XML
3. Execute Custom XML              4. Uiew Cache
5. Get Uersion                      6. View Existing Environments
7. Activate Environment            8. Deactivate Environment
9. Update Logging Option           10. Unload Environment
11. Add Library                    12. Remove Library
13. Exit
=====
Please choose: 1
Please type in the full path of the environment backup file:
C:\Downloads\Insbridge\sr_native.zip
DB Server Name [default = localhost]:
Server Port [default = 1521]:
DBA Username: system
Password:
Do you want to make it the default environment? [y/n]
y
Loading environment...
Log file: C:\Insbridge\oracle\igbu\insbridge\files\IB12\Logs\IBFA_XE_EXPORT_9979
787EA01.log
Environment loaded.

```

Figure 18 Loading an Environment

**Prior to running this option:** Place the SoftRater Native zip file from IBFA in a location on your local machine. You need to enter the exact path.

1. To load an environment, enter 1 and complete the requested information.
2. Enter in the full path of the environment backup file.
3. It is recommended that you use the defaults for the DB Server and Server Port. The default Server Name is localhost. The default server port is 1521. If you have change the DB Server name or Server Port, you need to enter that information.
4. The load command requires the XE database user name and password. The database user must have dba rights.
5. Select if this is to be the default environment. The default environment is the environment that is used for rating.

Loading an environment creates a log in the same location as the SoftRater Native file. [unzip location]\Oracle\IGBU\Insbridge\files\[Environment]\Logs.

When you load the XE backup file, it overwrites any previous file for the same environment.

## Execute Insbridge XML

Use this option, which functions like SoftRater Test Interface, when you want to test Insbridge XML.

```

C:\Windows\system32\cmd.exe

=====
                Insbridge SoftRater Native Admin Console
=====
1. Load Environment                2. Execute Insbridge XML
3. Execute Custom XML             4. View Cache
5. Get Version                    6. View Existing Environments
7. Activate Environment           8. Deactivate Environment
9. Update Logging Option          10. Unload Environment
11. Add Library                   12. Remove Library
13. Exit

=====
Please choose: 2
Please paste the request XML:
<rate lob="1" ><heading><program parent_id="200" program_id="6" program_ver="1
" /></heading><c i="0" desc="Policy" ><m i="20" n="effectivedate" v="02/12/20
10" /><m i="32" n="1" v="" /><m i="35" n="Int" v="" /></c><c i="1" desc="Dr
iver" ><m i="21" n="birthdate" v="07/18/1980" /><m i="27" n="drivingrecord"
v="G" /><m i="299" n="VehPrincipallyDriven" v="" /><m i="367" n="DriverId" v
="" /><m i="9" n="DrvUsePctOnVeh1" v="" /><m i="10" n="DrvUsePctOnVeh2" v=""
/ ><m i="11" n="DrvUsePctOnVeh3" v="" /><m i="12" n="DrvUsePctOnVeh4" v="" /
><m i="13" n="DrvUsePctOnVeh5" v="" /><m i="14" n="DrvUsePctOnVeh6" v="" />
<m i="15" n="DrvUsePctOnVeh7" v="" /><m i="16" n="DrvUsePctOnVeh8" v="" /><m
i="50" n="DrvUsePctOnVeh9" v="" /><m i="1" n="DrvUsePctOnVeh10" v="" /><m i=
"2" n="DrvUsePctOnVeh11" v="" /><m i="3" n="DrvUsePctOnVeh12" v="" /><m i="4
" n="DrvUsePctOnVeh13" v="" /><m i="5" n="DrvUsePctOnVeh14" v="" /><m i="6"
n="DrvUsePctOnVeh15" v="" /><m i="7" n="DrvUsePctOnVeh16" v="" /><m i="8" n
="DrvUsePctOnVeh17" v="" /><m i="700" n="DrvUsePctOnVeh18" v="" /><c i="4" d
esc="Violations" ><m i="22" n="violationpts" v="" /><m i="29" n="ViolationDat
es" v="" /><m i="30" n="ViolationCode" v="" /><m i="66" n="Violation1Info"
v="" /></c></c><c i="2" desc="Vehicle" ><m i="18" n="Model Year" v="2009" />
<m i="19" n="territorycode" v="12" /><m i="23" n="generallimits" v="50000" />
</c></rate>

Add Root?[y/n]: n
Return Input XML?[y/n]: n
Add Heading?[y/n]: y
Add Result Description?[y/n]: y
Include Empty Results?[y/n]: y
Add Debug Output?[y/n]: n

Response XML:
<result lob='1' env_def='IB12' gen_date='12/03/2010 12:14:54 PM' ibdoc_version='
3.1' engine_type='Native' site_location='' ><program parent_id='200' program_id='
6' program_ver='1' package_date='12/02/2010 09:35:49 AM' status='PASS' gen_type=
'0' company_nm='SR_DA_Test' program_nm='Assign 1st Ranked Veh to Flag Dm' versi
on_nm='Version1' from_cache='true' ><c i='0' d='Policy' ><m i='Policy_1' d='TOTAL
POLICY PREMIUM' v='2080.5600585937' /><m i='Policy_2' d='effectivedate' v='02/1
2/2010' /></c><c i='3' d='Driver-Vehicle' ><m i='Vehicle_1' d='BI PREMIUM1' v='143
.00' /><m i='Vehicle_2' d='COLL PREMIUM' v='676.28' /><m i='Vehicle_3' d='COMP PRE
MIUM' v='676.28' /><m i='Vehicle_4' d='CSL PREMIUM' v='400.00' /><m i='Vehicle_5'
d='MP PREMIUM' v='34.00' /><m i='Vehicle_6' d='PD PREMIUM' v='151.00' /><m i='Driv
er_1' d='DriverId' v='' /><m i='Driver-Vehicle_1' d='LOADED VEHICLE PREMIUM' v=''
/ ><m i='Vehicle_7' d='BASE PREMIUM' v='2080.56' /><c i='4' d='Violations' ><m i=
Violations_1' d='ViolationDates' v='' /><m i='Violations_2' d='ViolationCode' v=
' /><m i='Violations_3' d='Violation1Info' v='' /><m i='Violations_4' d='Test' v=
' /></c><m i='Policy_2' d='CV1_Delete' v='' /><m i='Driver_2' d='DrvUsePctOnVeh1'
v='12/03/2010 12:14:54:0662 PM' /></c></program><stats><start_time
>12/03/2010 12:14:54:0662 PM</start_time><stop_time>12/03/2010 12:14:55:0031 PM<
/stop_time><running_time>369</running_time><xml_walking>255</xml_walking></stats
></result>

```

Figure 19 Execute Insbridge XML

## Custom XML Request

Use this option when you want to test custom XML. This option also accepts Insbridge XML.

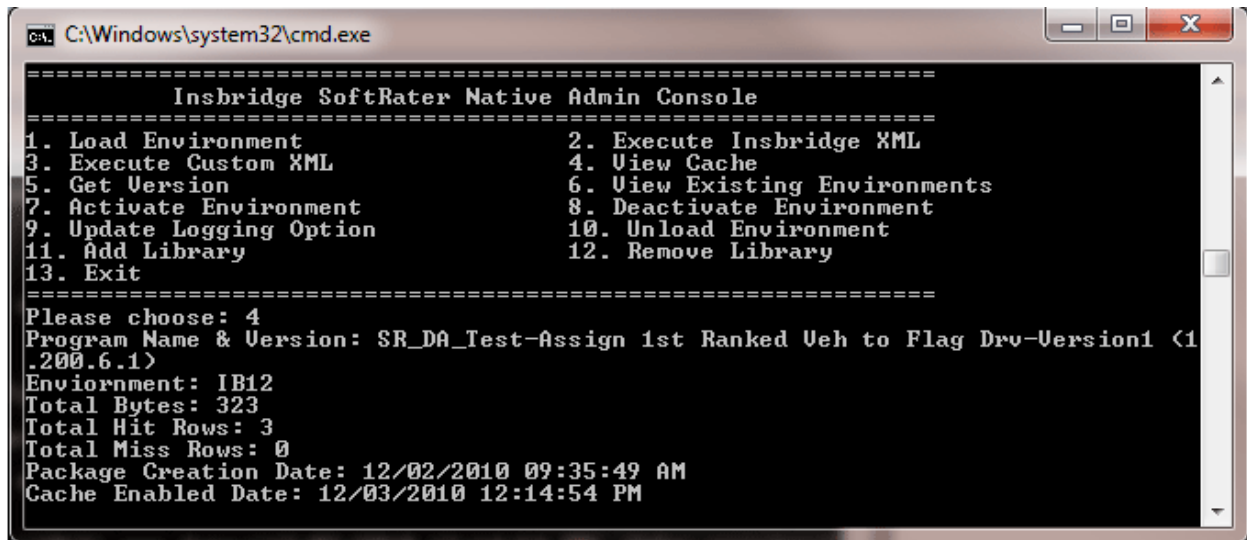
1. To test Insbridge or Custom XML, enter 2 for Insbridge or 3 for custom.
2. Copy and paste the request XML.
3. Complete the requested information.

A response XML is returned.

For more information on using Insbridge XML and Custom XML Requests, please see the IBFA User Guide, SoftRater Test Interface.

## View Cache

Use this option when you want to see the cache programs.



```
C:\Windows\system32\cmd.exe
=====
                Insbridge SoftRater Native Admin Console
=====
1. Load Environment                2. Execute Insbridge XML
3. Execute Custom XML              4. View Cache
5. Get Version                     6. View Existing Environments
7. Activate Environment            8. Deactivate Environment
9. Update Logging Option           10. Unload Environment
11. Add Library                    12. Remove Library
13. Exit
=====
Please choose: 4
Program Name & Version: SR_DA_Test-Assign 1st Ranked Veh to Flag Drv-Version1 <1
.200.6.1>
Environment: IB12
Total Bytes: 323
Total Hit Rows: 3
Total Miss Rows: 0
Package Creation Date: 12/02/2010 09:35:49 AM
Cache Enabled Date: 12/03/2010 12:14:54 PM
```

Figure 20 View Cache

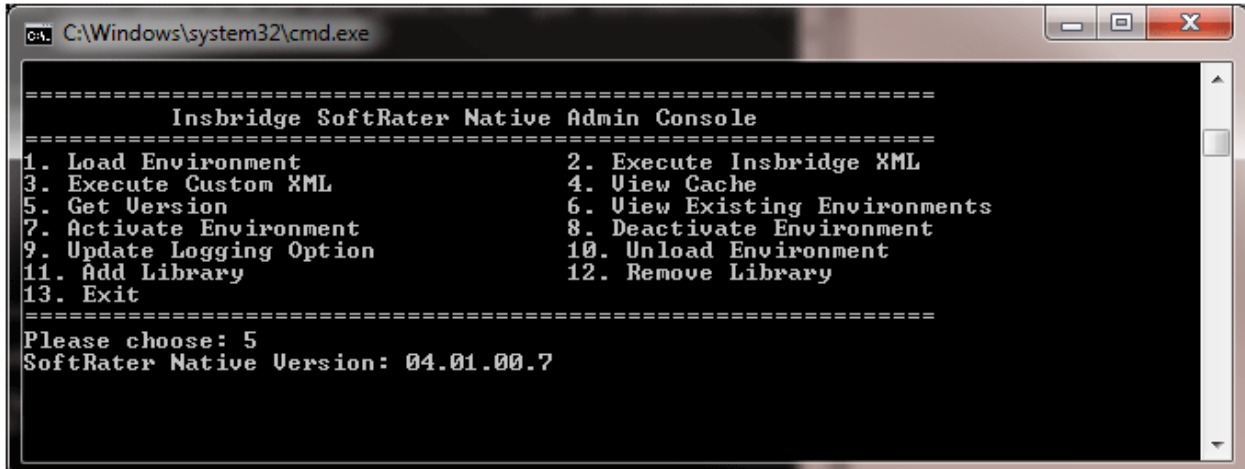
1. To view cache, enter 4.
2. Complete the requested information.

Cached program information is returned.



## Get Version

Use this option when you want to see the SoftRater Native version currently being used.



```

C:\Windows\system32\cmd.exe

=====
                Insbridge SoftRater Native Admin Console
=====
1. Load Environment          2. Execute Insbridge XML
3. Execute Custom XML       4. View Cache
5. Get Version               6. View Existing Environments
7. Activate Environment     8. Deactivate Environment
9. Update Logging Option    10. Unload Environment
11. Add Library             12. Remove Library
13. Exit

Please choose: 5
SoftRater Native Version: 04.01.00.7

```

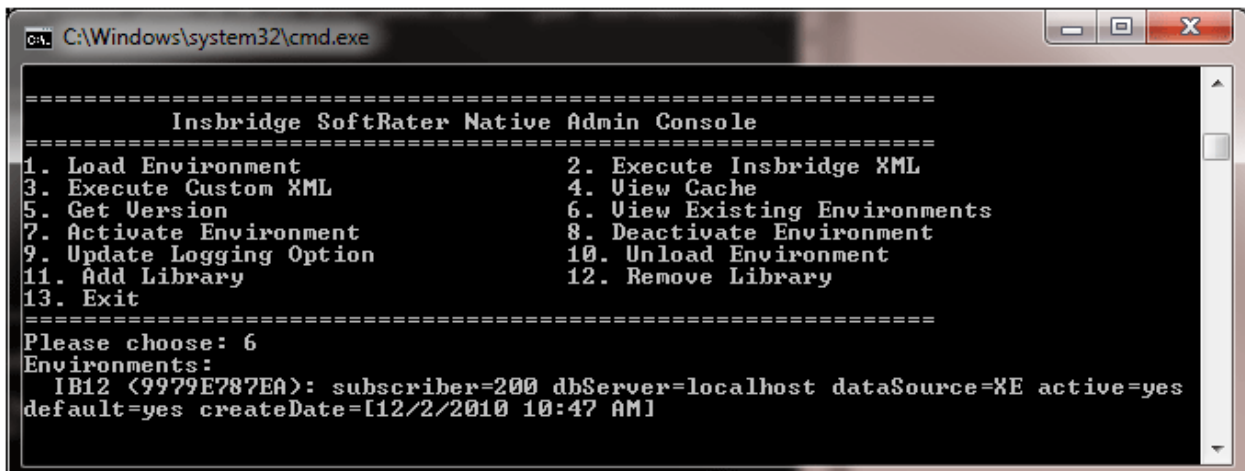
Figure 21 Get Version

1. To get the current version, enter 5.

Version information is returned.

## View Existing Environments

Use this option when you want to view the current environments.



```

C:\Windows\system32\cmd.exe

=====
                Insbridge SoftRater Native Admin Console
=====
1. Load Environment          2. Execute Insbridge XML
3. Execute Custom XML       4. View Cache
5. Get Version               6. View Existing Environments
7. Activate Environment     8. Deactivate Environment
9. Update Logging Option    10. Unload Environment
11. Add Library             12. Remove Library
13. Exit

Please choose: 6
Environments:
IB12 <9979E787EA>: subscriber=200 dbServer=localhost dataSource=XE active=yes
default=yes createDate=[12/2/2010 10:47 AM]

```

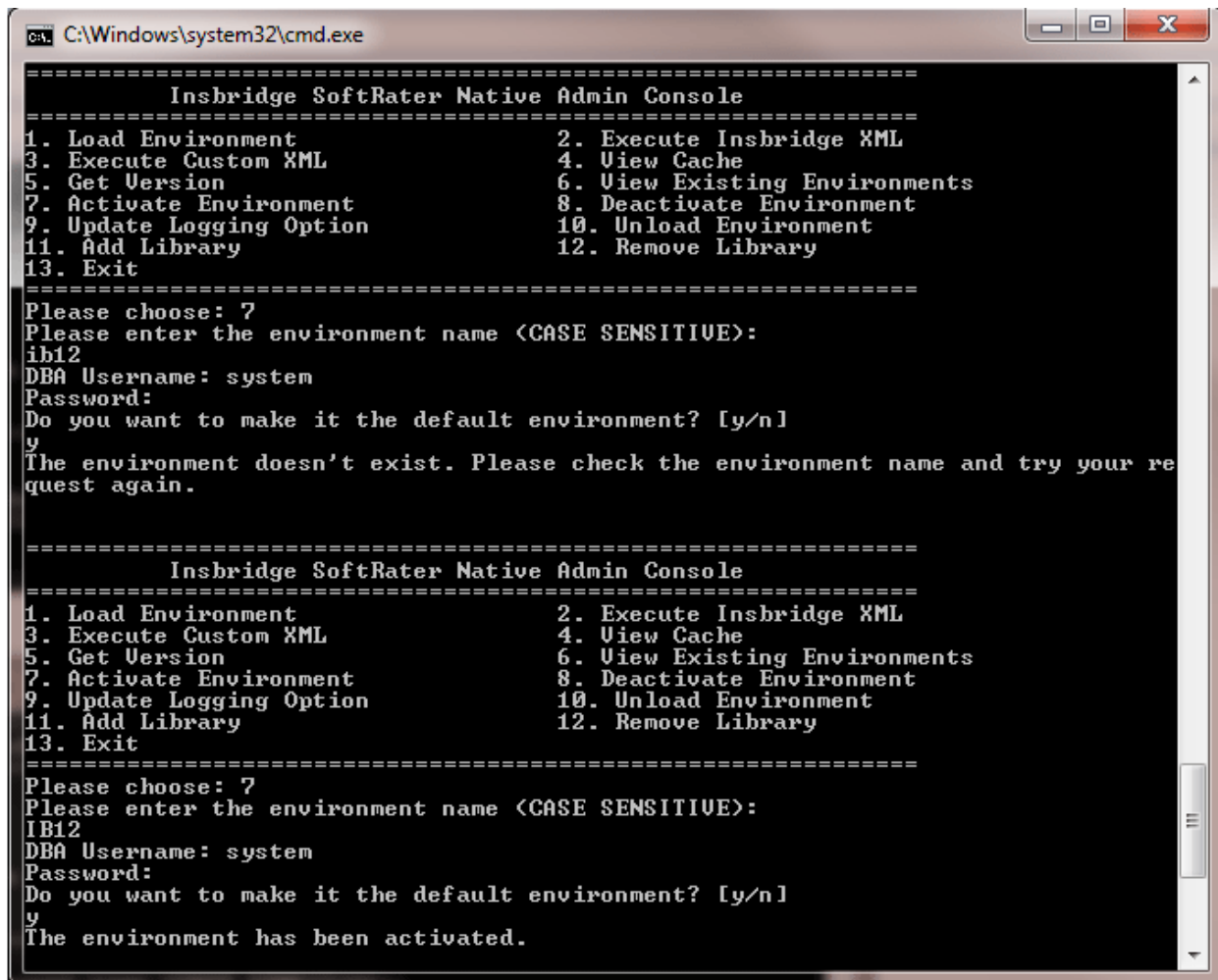
Figure 22 View Existing Environments

1. To get a list of the existing environments, enter 6.

A list of environments is returned. Each environment has detailed information.

## Activate Environment

Use this option to activate an environment. An environment must be activated before users can rate against it.



```
C:\Windows\system32\cmd.exe

=====
Insbridge SoftRater Native Admin Console
=====
1. Load Environment                2. Execute Insbridge XML
3. Execute Custom XML             4. View Cache
5. Get Version                    6. View Existing Environments
7. Activate Environment            8. Deactivate Environment
9. Update Logging Option          10. Unload Environment
11. Add Library                   12. Remove Library
13. Exit
=====
Please choose: 7
Please enter the environment name <CASE SENSITIVE>:
ib12
DBA Username: system
Password:
Do you want to make it the default environment? [y/n]
y
The environment doesn't exist. Please check the environment name and try your request again.

=====
Insbridge SoftRater Native Admin Console
=====
1. Load Environment                2. Execute Insbridge XML
3. Execute Custom XML             4. View Cache
5. Get Version                    6. View Existing Environments
7. Activate Environment            8. Deactivate Environment
9. Update Logging Option          10. Unload Environment
11. Add Library                   12. Remove Library
13. Exit
=====
Please choose: 7
Please enter the environment name <CASE SENSITIVE>:
IB12
DBA Username: system
Password:
Do you want to make it the default environment? [y/n]
y
The environment has been activated.
```

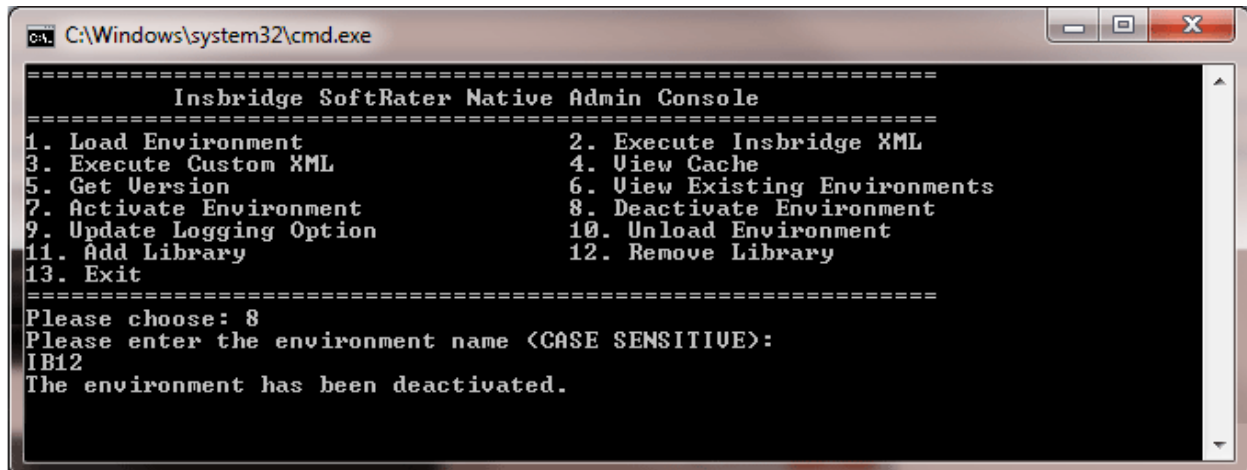
Figure 23 Activate Environments

1. To activate an environment, enter 7.
2. Enter in the environment name. The environment name is case sensitive.
3. The activate command requires the XE database user name and password. The database user must have dba rights.
4. Select if this is to be the default environment. The default environment is the environment that is used for rating.

A success or failure message is returned.

## Deactivate Environment

Use this option to deactivate an environment. Deactivating an environment makes the environment unavailable for users to rate against. It does not remove an environment.



```
cmd C:\Windows\system32\cmd.exe
=====
                Insbridge SoftRater Native Admin Console
=====
1. Load Environment                2. Execute Insbridge XML
3. Execute Custom XML             4. View Cache
5. Get Uersion                    6. View Existing Environments
7. Activate Environment           8. Deactivate Environment
9. Update Logging Option          10. Unload Environment
11. Add Library                   12. Remove Library
13. Exit
=====
Please choose: 8
Please enter the environment name <CASE SENSITIVE>:
IB12
The environment has been deactivated.
```

Figure 24 Deactivate Environments

1. To deactivate an environment, enter 8.
2. Enter in the environment name. The environment name is case sensitive.

A success or failure message is returned.

## Update Logging Option

Use this option to turn logging on or off. Logging on creates logs for all actions.

Log files are located in %ADMIN\_CONSOLE\_LOCATION%\ oracle\igbu\insbridge\files.

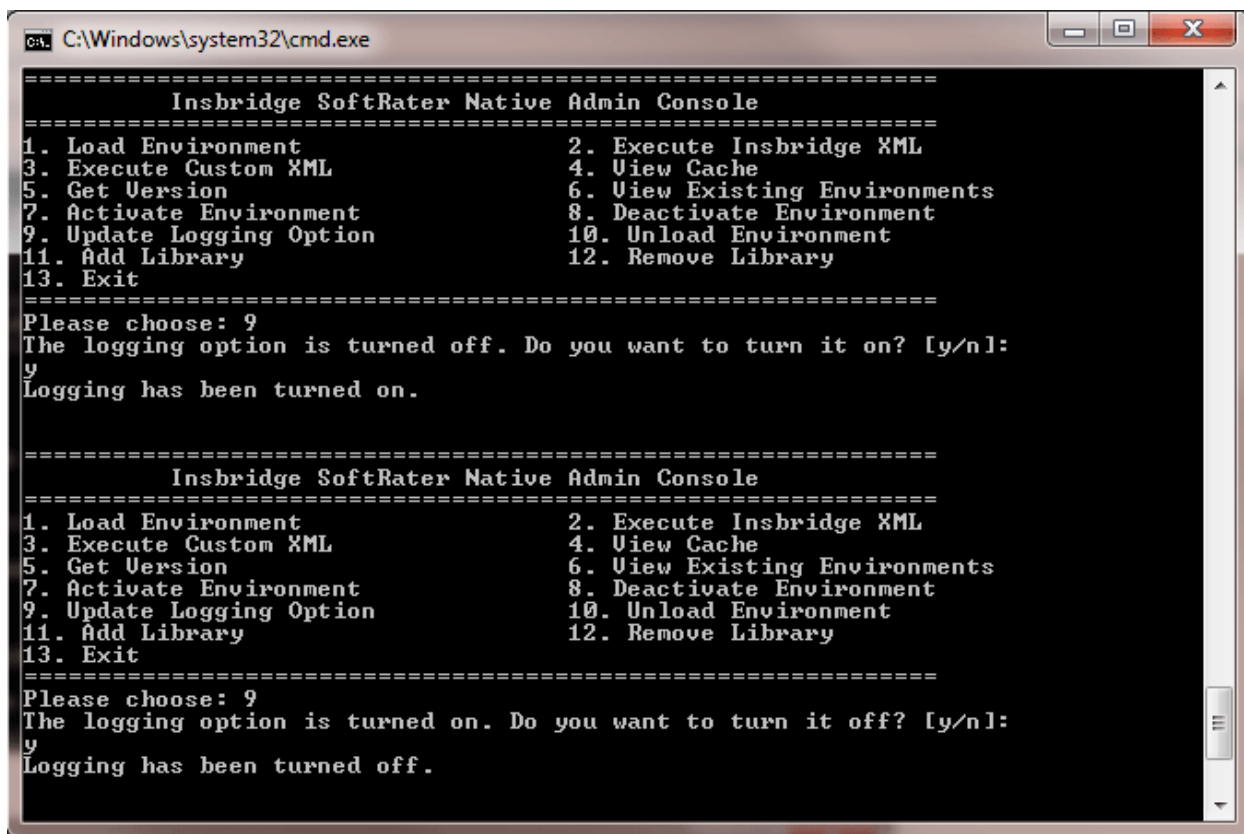


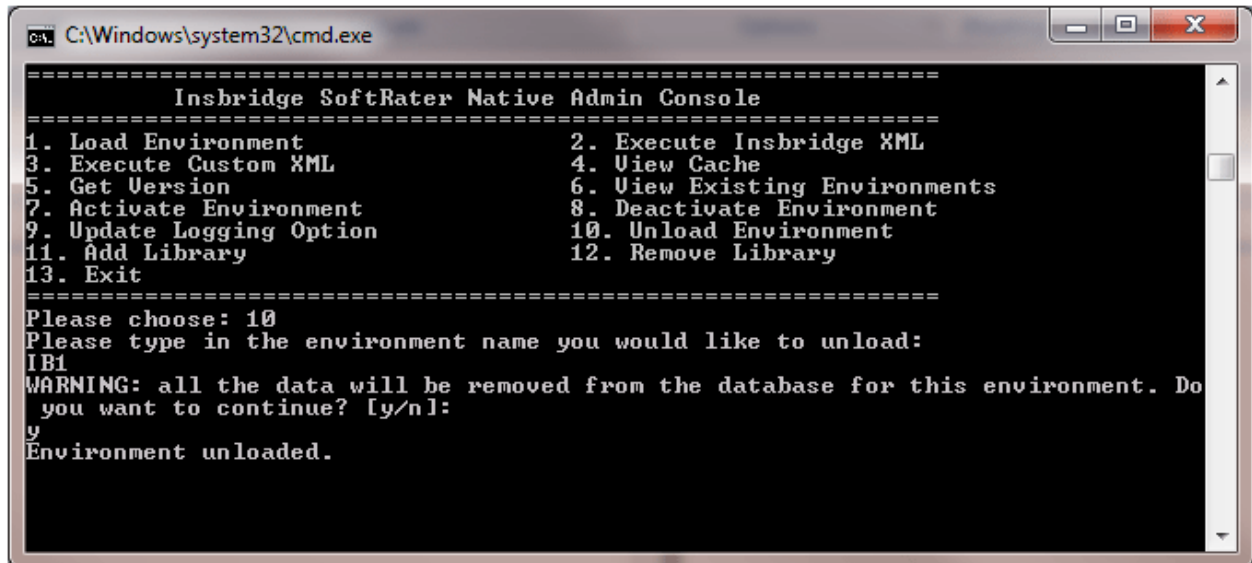
Figure 25 Update Logging Information

1. To turn logging on or off, enter 9.
2. Enter “y” for logging on or “n” for logging off.

A status message is returned.

## Unload Environment

Use this option when you want to remove an environment. The schema is removed from the database and the environment settings are removed from the config.xml file.



```
ca. C:\Windows\system32\cmd.exe
=====
                Insbridge SoftRater Native Admin Console
=====
1. Load Environment                2. Execute Insbridge XML
3. Execute Custom XML              4. View Cache
5. Get Version                      6. View Existing Environments
7. Activate Environment            8. Deactivate Environment
9. Update Logging Option          10. Unload Environment
11. Add Library                   12. Remove Library
13. Exit
=====
Please choose: 10
Please type in the environment name you would like to unload:
IB1
WARNING: all the data will be removed from the database for this environment. Do
you want to continue? [y/n]:
y
Environment unloaded.
```

Figure 26 Unloading an Environment

1. To unload an environment, enter 10.
2. Enter in the environment name. The environment name is case sensitive.
3. A warning message asks if this is the action you want to take. Enter “y” or “n.”

A success or failure message is returned.

## Add a SoftLibrary

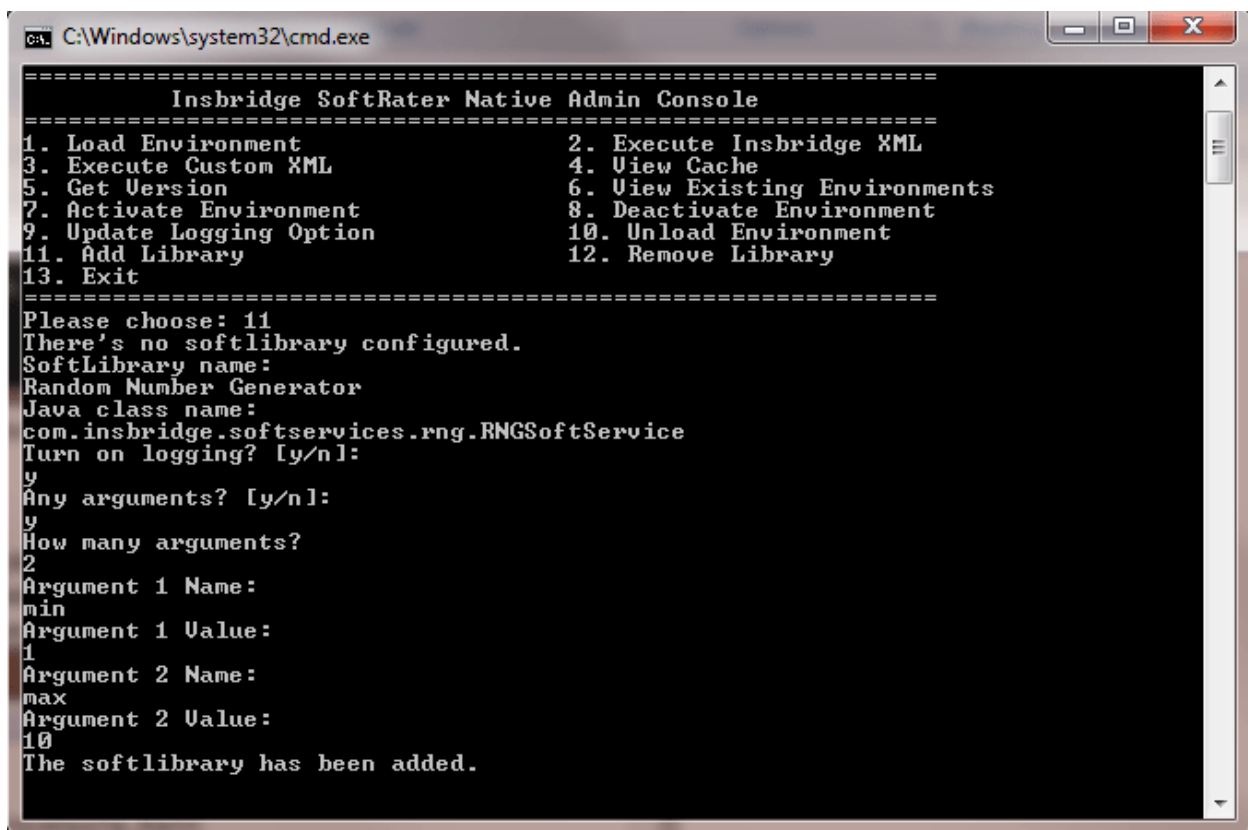
Use this option to add a SoftLibrary. A SoftLibrary is a specially developed program that performs a specific task. SoftLibraries may run their own code or call upon other systems to obtain information outside of the rating program, for example, obtaining a credit score.

SoftRater Native can use .jar files for SoftLibraries. Prior to working in the console you must place the .jar file and add to the class path.

```
java -classpath SoftRaterNativeAdminConsole.jar;lib\softlib\xxx.jar
oracle.igbu.insbridge.softaternative.adminconsole.Main
```

Append all the softlibraries after SoftRaterNativeAdminConsole.jar in the command.

1. Open the console.

A screenshot of a Windows command prompt window titled "C:\Windows\system32\cmd.exe". The console displays the "Insbridge SoftRater Native Admin Console" menu with 13 options. Option 11, "Add Library", is selected. The user is prompted to enter the SoftLibrary name, Java class name, and logging options. The user enters "Random Number Generator" as the name, "com.insbridge.softservices.rng.RNGSoftService" as the class name, and "y" for logging. The user also enters "2" for the number of arguments, "min" and "1" for the first argument, and "max" and "10" for the second argument. The console concludes with "The softlibrary has been added."

```
=====  
Insbridge SoftRater Native Admin Console  
=====  
1. Load Environment                2. Execute Insbridge XML  
3. Execute Custom XML             4. View Cache  
5. Get Version                    6. View Existing Environments  
7. Activate Environment            8. Deactivate Environment  
9. Update Logging Option          10. Unload Environment  
11. Add Library                   12. Remove Library  
13. Exit  
=====  
Please choose: 11  
There's no softlibrary configured.  
SoftLibrary name:  
Random Number Generator  
Java class name:  
com.insbridge.softservices.rng.RNGSoftService  
Turn on logging? [y/n]:  
y  
Any arguments? [y/n]:  
y  
How many arguments?  
2  
Argument 1 Name:  
min  
Argument 1 Value:  
1  
Argument 2 Name:  
max  
Argument 2 Value:  
10  
The softlibrary has been added.
```

Figure 27 Adding a SoftLibrary Using the Console

2. To add a SoftLibrary, enter 11.
3. Complete the requested information.
4. Enter SoftLibrary Name.
5. Enter Java Class Name.

6. Turn on logging? Enter “**y**” or “**n**.”
7. Any Arguments? Enter “**y**” or “**n**.”
8. For YES, enter how many arguments.
9. Enter argument name.
10. Enter argument value.

A success or failure message is returned.

## Remove a SoftLibrary

Use this option to remove a SoftLibrary. This only removes the configuration. It does not delete the JAR file.

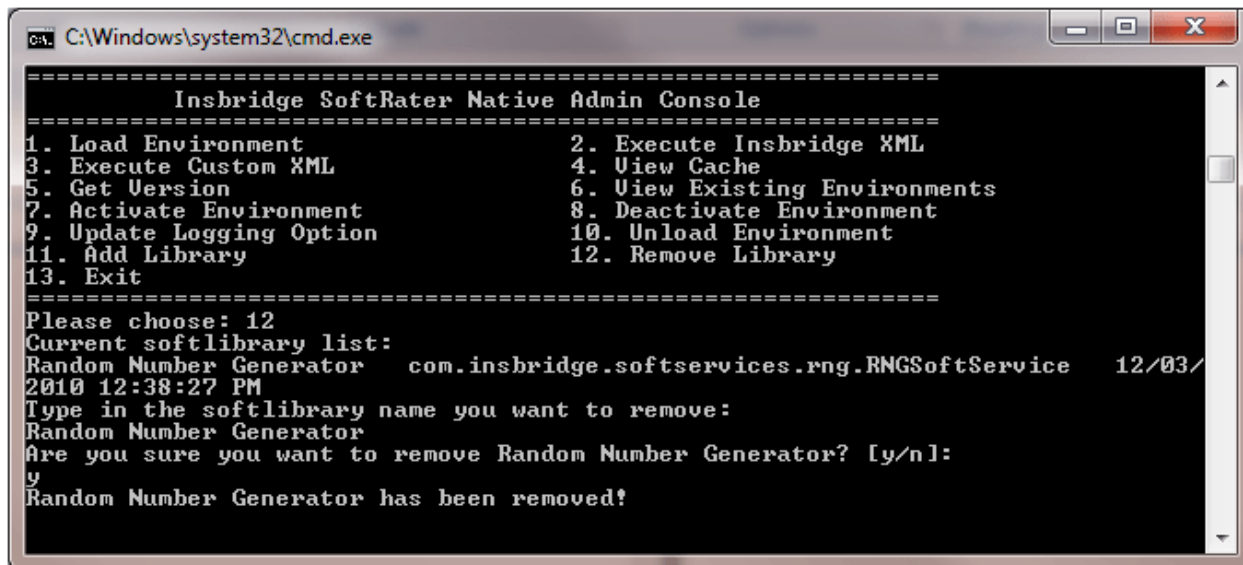


Figure 28 Deleting a SoftLibrary

1. To remove a SoftLibrary, enter 12.
2. Enter in the SoftLibrary name. The name is case sensitive.
3. A warning message asks if this is the action you want to take. Enter “y” or “n.”

A success or failure message is returned.

## Exit

Enter in 13.

The console closes.



### **CONTACTING SUPPORT**

If you need assistance with an Oracle Insurance Insbridge Rating and Underwriting System product, please log a Service Request using My Oracle Support at <https://support.oracle.com/>.

**Address any additional inquiries to:**

**Oracle Corporation**  
World Headquarters  
500 Oracle Parkway  
Redwood Shores, CA 94065  
U.S.A.

Worldwide Inquiries:  
Phone: +1.650.506.7000  
Fax: +1.650.506.7200  
oracle.com

### **TTY ACCESS TO ORACLE SUPPORT SERVICES**

Oracle provides dedicated Text Telephone (TTY) access to Oracle Support Services within the United States of America 24 hours a day, seven days a week. For TTY support, call 800.446.2398.

## Index

---

### INDEX

#### A

Add Environment, 9  
Adding  
  Environment, 9

#### B

Backups  
  Error Messages, 17  
  Save to File, 18  
  Success Messages, 17  
  Zip Files, 20  
Business Use Case, 24

#### E

Edition Notice, 2  
Environment  
  Adding, 9  
  Secure, 10  
Errors  
  Messages, Backups, 17  
  Messages, Package, 14  
Example  
  Business Use Case, 24

#### F

Framework Administrator  
  Secure Environments, 10

#### G

Get Listing!, 13

#### L

Load Packages, 14  
Loading  
  Package, 13

#### O

Overview  
  SoftRater Explorer, 9  
  SoftRater Native, 7

#### P

Package  
  Error Messages, 14  
  Listing, 13  
  Loading, 13  
  Reloading, 14  
  Success Messages, 14  
  Unloaded, 14

#### R

Reloading  
  Package, 14  
Rules  
  SoftRater Native, 8

#### S

Save to File  
  Backups, 18  
Secure  
  Environment, 10  
SoftRater Explorer  
  Load Packages, 14  
  Loading Packages, 13  
  Overview, 9  
  Save to File, 18  
SoftRater Native  
  Overview, 7  
  Rules, 8  
Success  
  Messages, Backups, 17  
  Messages, Package, 14  
System Requirements, vi

#### U

Unload  
  Package, 14

#### Z

Zip Files  
  Backups, 20