

Oracle AutoVue Web Services
Release 20.2.1
Overview

ORACLE

September 2012

Copyright © 2008, 2012, Oracle and/or its affiliates. All rights reserved.

Portions of this software Copyright 1996-2007 Glyph & Cog, LLC.

Portions of this software Copyright Unisearch Ltd, Australia.

Portions of this software are owned by Siemens PLM © 1986-2012. All rights reserved.

This software uses ACIS® software by Spatial Technology Inc. ACIS® Copyright © 1994-2008 Spatial Technology Inc. All rights reserved.

Oracle is a registered trademark of Oracle Corporation and/or its affiliates. Other names may be trademarks of their respective owners.

This software and related documentation are provided under a license agreement containing restrictions on use and disclosure and are protected by intellectual property laws. Except as expressly permitted in your license agreement or allowed by law, you may not use, copy, reproduce, translate, broadcast, modify, license, transmit, distribute, exhibit, perform, publish or display any part, in any form, or by any means. Reverse engineering, disassembly, or decompilation of this software, unless required by law for interoperability, is prohibited.

The information contained herein is subject to change without notice and is not warranted to be error-free. If you find any errors, please report them to us in writing.

If this software or related documentation is delivered to the U.S. Government or anyone licensing it on behalf of the U.S.

Government, the following notice is applicable:

U.S. GOVERNMENT RIGHTS

Programs, software, databases, and related documentation and technical data delivered to U.S. Government customers are "commercial computer software" or "commercial technical data" pursuant to the applicable Federal Acquisition Regulation and agency-specific supplemental regulations. As such, the use, duplication, disclosure, modification, and adaptation shall be subject to the restrictions and license terms set forth in the applicable Government contract, and, to the extent applicable by the terms of the Government contract, the additional rights set forth in FAR 52.227-19, Commercial Computer Software License (December 2007). Oracle USA, Inc., 500 Oracle Parkway, Redwood City, CA 94065.

This software is developed for general use in a variety of information management applications. It is not developed or intended for use in any inherently dangerous applications, including applications which may create a risk of personal injury. If you use this software in dangerous applications, then you shall be responsible to take all appropriate fail-safe, backup, redundancy and other measures to ensure the safe use of this software. Oracle Corporation and its affiliates disclaim any liability for any damages caused by use of this software in dangerous applications.

This software and documentation may provide access to or information on content, products and services from third parties. Oracle Corporation and its affiliates are not responsible for and expressly disclaim all warranties of any kind with respect to third party content, products and services. Oracle Corporation and its affiliates will not be responsible for any loss, costs, or damages incurred due to your access to or use of third party content, products or services.

Contents

PREFACE	4
Audience	4
Related Documents	4
Conventions	4
INTRODUCTION	5
GETTING STARTED	6
DMS INTEGRATION	8
OVERVIEW OF COMPONENTS	9
Documentation	9
AutoVue Web Services Module	9
AutoVueWS.jar	9
AutoVue Components	9
Third-Party Libraries	9
Batch Utility	10
LIST OF AUTOVUE WEB SERVICES	10
FEEDBACK	11
General AutoVue Information	11
Oracle Customer Support	11
My Oracle Support AutoVue Community	11
Sales Inquiries	11

Preface

The *AutoVue Web Services Overview* provides an introduction to AutoVue Web Services.

For the most up-to-date version of this document, go to the AutoVue Documentation Web site on the Oracle Technology Network (OTN) at <http://www.oracle.com/technetwork/documentation/autovue-091442.html>.

Audience

The *AutoVue Web Services Overview* is intended for third-party developers (for example, integrators) who want to integrate Oracle AutoVue with other application suites and legacy systems.

Related Documents

For more information, refer to the following documents:

- *Oracle AutoVue Web Services Developer's Guide*
- *Oracle AutoVue Document Print Service Deployment Guide*
- *Oracle AutoVue Web Services Installation and Configuration Manual*
- *Oracle AutoVue Web Services Release Notes*

Conventions

The following text conventions are used in this document:

Convention	Meaning
boldface	Boldface type indicates graphical user interface elements associated with an action, or terms defined in the text.
<i>italic</i>	Italic type indicates book titles, emphasis, or placeholder variables for which you supply particular values.
monospace	Monospace type indicates commands within a paragraph, URLs, code in examples, text that appears on the screen, or text that you enter.

Introduction

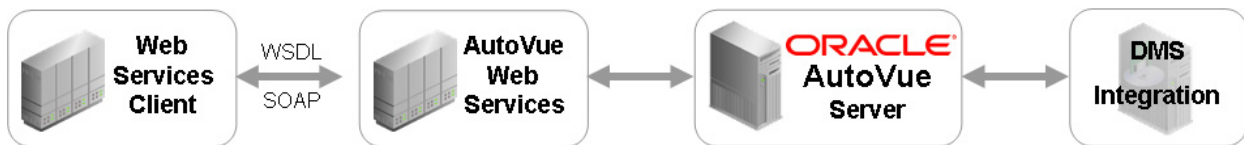
Oracle AutoVue Web Services provides a standard interface that allows for easy integration of Oracle AutoVue with other application suites and legacy systems. With AutoVue Web Services, developers can easily integrate AutoVue's best-in-class enterprise visualization capabilities where they are most needed in the enterprise, regardless of platforms or programming languages. Organizations can leverage the power of AutoVue Enterprise Visualization solutions, in whole or in part, in ways that are most effective for their bottom line. Teams can use AutoVue functionality in a completely transparent way to view and collaborate on business and technical information directly from other applications and enterprise systems, and perform their tasks in a more efficient manner.

AutoVue Web Services can also invoke operations on files inside Document Management Systems (DMS)¹ repositories. To access the DMS repository, a DMS integration interface is required between the DMS server, AutoVue Web Services, and Oracle AutoVue. This interface enables you to add powerful viewing and markup capabilities to your DMS via a Web browser in an intranet or the Internet.

For information on how to configure AutoVue Web Services for DMS integration, refer to the *Oracle AutoVue Web Services Installation and Configuration Manual*.

AutoVue Web Services is intended for system integrators or developers who want to integrate Oracle AutoVue with their applications. AutoVue Web Services is written in Java and based on Java API for XML Web Services (JAX-WS). Clients that consume AutoVue Web Services can be written in any language such as Java or .NET as long as they understand Web Services Description Language (WSDL) and communicate using Simple Object Access Protocol (SOAP).

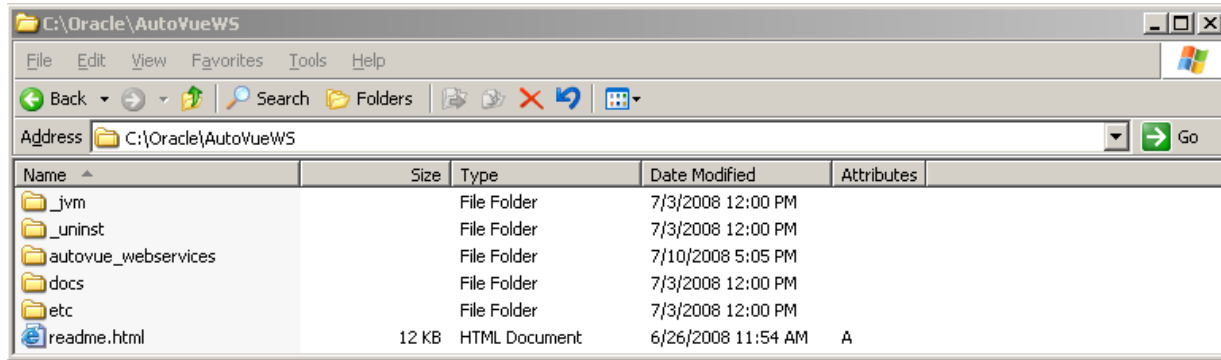
The following image displays the relationship between Web Services client, AutoVue Web Services, and AutoVue Server:



1. In this document, a DMS/PLM/ERP/UCM systems is referred to as DMS.

Getting Started

After you run the installer for AutoVue Web Services on your machine, several folders are created. The following screenshot displays the folder structure that is created when installed in the default installation directory (C:\Oracle\AutoVueWS) on Windows:



The **readme.html** file acts as an entry point to the remaining documentation for AutoVue Web Services. To view the contents of the file, open it from a Web browser.

Following is a brief description of what is contained in each folder after the installation of AutoVue Web Services:

- The **/docs** folder contains documentation (Installation and Configuration Manual, Developer's Guide, Acknowledgements, Overview, and JavaDocs).
- The **/autovue_webservices** folder contains files required to generate AutoVueWS.war for deployment into your J2EE 5 Application Server:
 - **AutoVueWS**: Staging folder for generating AutoVueWS.war.
 - **sample_config**: Contains configuration files used by AutoVueWS.war.
 - **createWARfile.bat**: Batch file which generates AutoVueWS.war and VueServlet.war on Windows.
 - **createWARfile.sh**: Shell scripting which generates AutoVueWS.war and VueServlet.war on Linux.
 - **sample_client**: Contains sample AutoVue Web Services client code which demonstrates a persistent retry as long as the server is busy or when there is not enough memory.
 - **VueServlet**: Staging folder for generating VueServlet.war.
- The **/etc** folder contains release notes, version information, and licenses for third-party software used by AutoVue Web Services.
- The **/_jvm** and **/_uninst** folders are used for uninstalling AutoVue Web Services.

Initially, you must generate the AutoVueWS.war Web application module and deploy it into your J2EE 5 Application Server. To do so, follow the steps outlined in the *Oracle AutoVue Web Services Installation and Configuration Manual*.

Note: AutoVue Web Services use Java annotation and other features introduced in Java EE 5. As a result, AutoVue Web Services can only be deployed on a Java EE 5 certified application server.

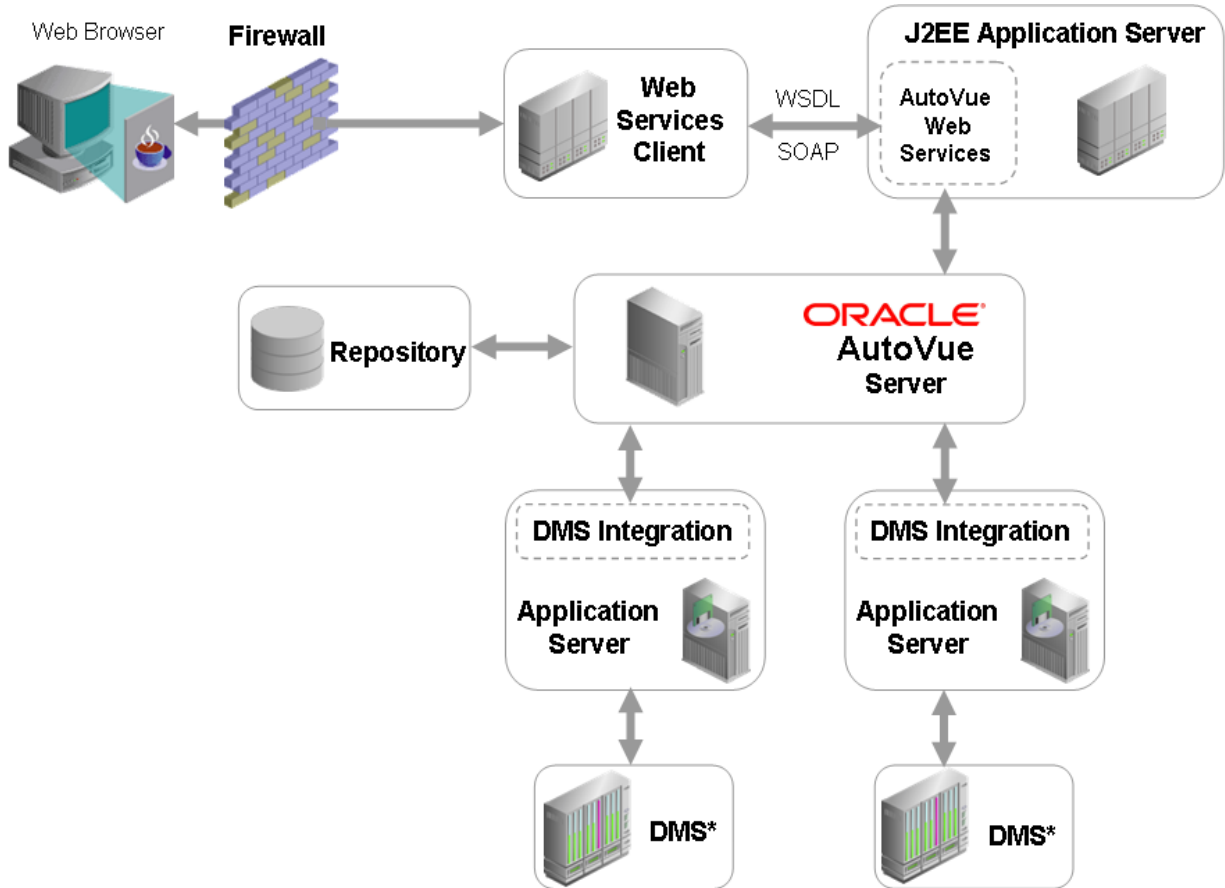
You also need to ensure that you have all prerequisite software installed before you start deployment. For a complete list specific to your platform, refer to the "System Requirements" chapter of the *Oracle AutoVue Web Services Installation and Configuration Manual*.

Once you have successfully deployed the AutoVueWS.war Web application, you should familiarize yourself with the available Web services. For more information on the features and functionalities provided by each Web service, refer to the *Oracle AutoVue Web Services Developer's Guide*.

To test AutoVue Web Services without writing any code, you can use Oracle Web Services Manager 10.1.3 (either standalone or part of SOA 10.1.3), soapUI 2.0.2, or Oracle JDeveloper 11 TP4 (which has built-in tools for testing Web services).

You can also create your own Web services proxy client that consumes AutoVue Web Services. For technical details and instructions for developing your own proxy clients, refer to the *Oracle AutoVue Web Services Developer's Guide*.

The following high level architectural diagram shows how AutoVue Web Services is related to other components in your environment. For a detailed description of this diagram, refer to the *Oracle AutoVue Web Services Developer's Guide*. The next section contains a brief description of each component included in AutoVue Web Services.



* Document Management System

DMS Integration

Through a document management system (DMS) integration, AutoVue Web Services can invoke operations on files located in DMS repositories (such as Oracle WCC¹, third-party integrations, and so on). Each DMS integration is associated to a connection properties file that manages the interaction between AutoVue Web Services and the DMS integration.

Note that each DMS integration has an associated properties file. For example:

- VueLink for Oracle UCM is assigned **vumlinkUCM.properties**
- VueLink for Documentum is assigned **vumlinkDCMT.properties**
- A third-party application is assigned **vumlinkTHIRD_PARTY.properties**

For more information on DMS integration and configuring connection properties files, refer to the *Oracle AutoVue Web Services Installation and Configuration Manual*.

1. Oracle UCM has been renamed as Oracle WebCenter Content (WCC)

Overview of Components

AutoVue Web Services contains two main components: Documentation and AutoVue Web Services Module.

Documentation

The documentation included in this product is found under the **/docs** folder and includes the following:

Oracle AutoVue Web Services Overview	Contains an overview of Oracle AutoVue Web Services.
Oracle AutoVue Web Services Installation and Configuration Manual	Contains information related to the installation, configuration, and deployment of Oracle AutoVue Web Services.
Oracle AutoVue Web Services Developer's Guide	Contains technical information about Oracle AutoVue Web Services and describes how to implement your own clients that consume AutoVue Web Services.
Acknowledgments	Lists third-party components used in Oracle AutoVue Web Services.
JavaDocs	Contains the JavaDocs for Oracle AutoVue Web Services.

AutoVue Web Services Module

AutoVue Web Services Module consists of the following components: AutoVueWS.jar, AutoVue components, third-party libraries, and batch utility.

AutoVueWS.jar

This is the main library that is used as the end point for AutoVue Web Services. It is responsible for processing all incoming Simple Object Access Protocol (SOAP) messages and building responses to AutoVue Web Services clients.

Note: AutoVue Web Services uses standard Web descriptor file (web.xml) for storing configuration parameters and log4j for logging messages into an output log file.

AutoVue Components

AutoVue Web Services is built as a wrapper around the AutoVue client. The following component of Oracle AutoVue is bundled with AutoVue Web Services:

- AutoVue Applet Client (jvue.jar)

Note: AutoVue Web Services does not bundle the AutoVue server. As a result, you must download and it separately. For more details, refer to the *Oracle AutoVue Web Services Installation and Configuration Manual*.

Third-Party Libraries

AutoVue Web Services bundles the following third-party open source libraries:

- Commons-pool-1.5.4.jar
- Log4j-1.2.15.jar
- Jogl.jar
- Gluegen-rt.jar

Batch Utility

CreateWARfile.bat/createWARfile.sh is a batch utility file that generates a Web Archive (WAR) file for easy deployment into your J2EE 5 Application Server. Before running this utility, ensure that your settings inside various configuration files (web.xml, log4j.properties, and so on) are correct. For more details, refer to the *Oracle AutoVue Web Services Installation and Configuration Manual*.

List of AutoVue Web Services

The following is a summary of methods provided by AutoVue Web Services. For a detailed description, refer to the *Oracle AutoVue Web Services Developer's Guide*.

Web Services	Description
getText	This text extraction Web method returns text contained in a given file.
getProperties	This file level metadata extraction Web method returns metadata and properties for a given file.
getXRefs	This External References (XRefs) Web method returns a list of XRefs associated to a given file.
getPartTree	This part tree extraction Web method returns a list of parts contained in a given file. For example, in the case of a 3D assembly, this Web service returns a list of parts and sub-assemblies referenced by the 3D assembly.
getPartProperties	This part level metadata extraction Web method returns metadata for a given part in a given file. For example, in the case of a 3D assembly, this Web service returns properties of a particular part referenced by the 3D assembly.
print	This printing Web method sends a given file to a printer for printing.
packetPrint	Prints a group of documents (known as packet) one at a time, along with the auto-generated cover page and summary page.
convert	This conversion Web method converts a given file into another format such as JPEG, PNG, PDF, BMP, or TIFF.
getLayerInfo	This Web service returns a list of pages and a list of layers for each page.
getPrinterNameList	This utility Web method returns a list of available printers.
getPaperList	This utility Web method returns each printer's available paper size in Oracle AutoVue.

Feedback

If you have any questions or require support for AutoVue please contact your system administrator.

If at any time you have questions or concerns regarding AutoVue, please contact us.

General AutoVue Information

Telephone +1.514.905.8434 or 1.800.363.5805

Web Site: <http://www.oracle.com/us/products/applications/autovue/index.html>

Blog: <http://blogs.oracle.com/enterprisevisualization/>

Oracle Customer Support

Web Site: <http://www.oracle.com/support/index.html>

My Oracle Support AutoVue Community

Web Site: <https://communities.oracle.com/portal/server.pt>

Sales Inquiries

E-mail: autovuesales_ww@oracle.com

