

Pillar Axiom



Rack Unpacking Instructions

ORACLE®

PILLAR AXIOM

Part Number: 4420-00036-0300
Pillar Axiom release 3.1
2011 October

Copyright © 2011, Oracle and/or its affiliates. All rights reserved.

This software and related documentation are provided under a license agreement containing restrictions on use and disclosure and are protected by intellectual property laws. Except as expressly permitted in your license agreement or allowed by law, you may not use, copy, reproduce, translate, broadcast, modify, license, transmit, distribute, exhibit, perform, publish or display any part, in any form, or by any means. Reverse engineering, disassembly, or decompilation of this software, unless required by law for interoperability, is prohibited.

The information contained herein is subject to change without notice and is not warranted to be error-free. If you find any errors, please report them to us in writing.

If this is software or related documentation that is delivered to the U.S. Government or anyone licensing it on behalf of the U.S. Government, the following notice is applicable:

U.S. GOVERNMENT RIGHTS Programs, software, databases, and related documentation and technical data delivered to U.S. Government customers are "commercial computer software" or "commercial technical data" pursuant to the applicable Federal Acquisition Regulation and agency-specific supplemental regulations. As such, the use, duplication, disclosure, modification, and adaptation shall be subject to the restrictions and license terms set forth in the applicable Government contract, and, to the extent applicable by the terms of the Government contract, the additional rights set forth in FAR 52.227-19, Commercial Computer Software License (December 2007). Oracle USA, Inc., 500 Oracle Parkway, Redwood City, CA 94065.

This software or hardware is developed for general use in a variety of information management applications. It is not developed or intended for use in any inherently dangerous applications, including applications that may create a risk of personal injury. If you use this software or hardware in dangerous applications, then you shall be responsible to take all appropriate fail-safe, backup, redundancy, and other measures to ensure its safe use. Oracle Corporation and its affiliates disclaim any liability for any damages caused by use of this software or hardware in dangerous applications.

Oracle and Java are registered trademarks of Oracle and/or its affiliates. Other names may be trademarks of their respective owners.

This software or hardware and documentation may provide access to or information on content, products and services from third parties. Oracle Corporation and its affiliates are not responsible for and expressly disclaim all warranties of any kind with respect to third-party content, products, and services. Oracle Corporation and its affiliates will not be responsible for any loss, costs, or damages incurred due to your access to or use of third-party content, products, or services.

Copyright © 2011, Oracle et/ou ses affiliés. Tous droits réservés.

Ce logiciel et la documentation qui l'accompagne sont protégés par les lois sur la propriété intellectuelle. Ils sont concédés sous licence et soumis à des restrictions d'utilisation et de divulgation. Sauf disposition de votre contrat de licence ou de la loi, vous ne pouvez pas copier, reproduire, traduire, diffuser, modifier, breveter, transmettre, distribuer, exposer, exécuter, publier ou afficher le logiciel, même partiellement, sous quelque forme et par quelque procédé que ce soit. Par ailleurs, il est interdit de procéder à toute ingénierie inverse du logiciel, de le désassembler ou de le décompiler, excepté à des fins d'interopérabilité avec des logiciels tiers ou tel que prescrit par la loi.

Les informations fournies dans ce document sont susceptibles de modification sans préavis. Par ailleurs, Oracle Corporation ne garantit pas qu'elles soient exemptes d'erreurs et vous invite, le cas échéant, à lui en faire part par écrit.

Si ce logiciel, ou la documentation qui l'accompagne, est concédé sous licence au Gouvernement des Etats-Unis, ou à toute entité qui délivre la licence de ce logiciel ou l'utilise pour le compte du Gouvernement des Etats-Unis, la notice suivante s'applique :

U.S. GOVERNMENT RIGHTS. Programs, software, databases, and related documentation and technical data delivered to U.S. Government customers are "commercial computer software" or "commercial technical data" pursuant to the applicable Federal Acquisition Regulation and agency-specific supplemental regulations. As such, the use, duplication, disclosure, modification, and adaptation shall be subject to the restrictions and license terms set forth in the applicable Government contract, and, to the extent applicable by the terms of the Government contract, the additional rights set forth in FAR 52.227-19, Commercial Computer Software License (December 2007). Oracle America, Inc., 500 Oracle Parkway, Redwood City, CA 94065.

Ce logiciel ou matériel a été développé pour un usage général dans le cadre d'applications de gestion des informations. Ce logiciel ou matériel n'est pas conçu ni n'est destiné à être utilisé dans des applications à risque, notamment dans des applications pouvant causer des dommages corporels. Si vous utilisez ce logiciel ou matériel dans le cadre d'applications dangereuses, il est de votre responsabilité de prendre toutes les mesures de secours, de sauvegarde, de redondance et autres mesures nécessaires à son utilisation dans des conditions optimales de sécurité. Oracle Corporation et ses affiliés déclinent toute responsabilité quant aux dommages causés par l'utilisation de ce logiciel ou matériel pour ce type d'applications.

Oracle et Java sont des marques déposées d'Oracle Corporation et/ou de ses affiliés. Tout autre nom mentionné peut correspondre à des marques appartenant à d'autres propriétaires qu'Oracle.

Ce logiciel ou matériel et la documentation qui l'accompagne peuvent fournir des informations ou des liens donnant accès à des contenus, des produits et des services émanant de tiers. Oracle Corporation et ses affiliés déclinent toute responsabilité ou garantie expresse quant aux contenus, produits ou services émanant de tiers. En aucun cas, Oracle Corporation et ses affiliés ne sauraient être tenus pour responsables des pertes subies, des coûts occasionnés ou des dommages causés par l'accès à des contenus, produits ou services tiers, ou à leur utilisation.

Step 1–Remove the Crate From the Truck

- 1 Keep the crate as upright as possible.
 - For raised docks, use a pallet jack or fork lift.
 - For on-grade docks, use a pallet jack or fork lift and the lift gate.
Important! The lift gate must have a minimum rating of 900 lb (408 kg).
- 2 Remove the crate from the truck.

Step 2–Check and Receive the Crate

- 1 Check the shock and tilt indicators on the side of the crate.

Figure 1 Shock and tilt indicators



Legend

-
- 1 Shock indicator registers red when handled roughly.
 - 2 Tilt indicator registers red when tipped 90°.
-

- 2 (Optional) Note on the Bill of Lading any problems.

Possible problems:

- Shock or tilt indicator is missing or is red.
- The shipping crate is damaged.

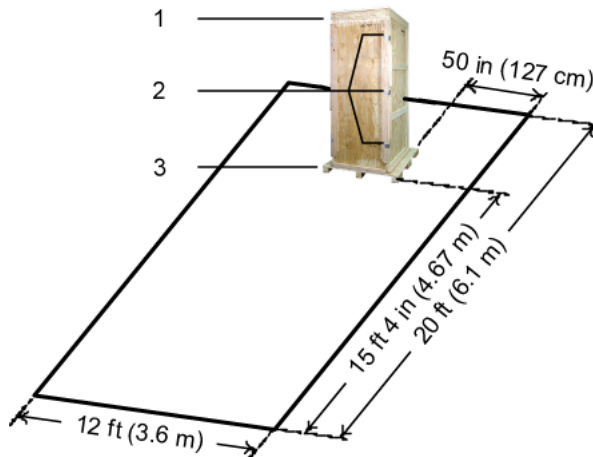
Important! Notify the carrier of freight damage within 72 hours. Check your Terms of Sale for who notifies the carrier. Record all damage. Call the Pillar World Wide Customer Support Center at 1-877-4PILLAR (1-877-474-5527) to open a service request for future insurance claims.

- 3 If the crate passes inspection, accept delivery.

Step 3—Open the Shipping Crate

Important! Open the shipping crate on a hard, level surface in an unobstructed area that is at least 12 ft x 20 ft (3.6 m x 6.1 m).

Figure 2 Floor plan for unpacking a rack



Legend

1 Crate

3 Pallet

2 Ramp cam locks (3 each side)

- 1 Open the three cam locks on each side of the ramp.

Figure 3 Cam lock in the open position



- 2 Remove the ramp.
- 3 Remove the foam protectors from the ramp.
- 4 Remove the battery and anti-tip bracket packages and Installation Kit.
System installers will need these items later.
- 5 Remove the wing nuts from the rack restraint board and set them and the restraint board aside.

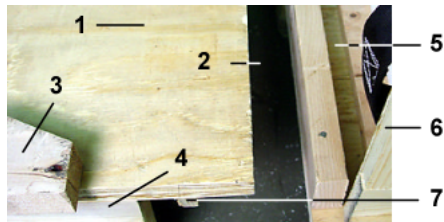
Figure 4 Rack restraint board



Legend	1 Wing nuts / hanger bolts	3 Shock absorber foam
	2 Rack restraint board	4 Pallet

- 6 Put the ramp on the floor with the ramp support down.

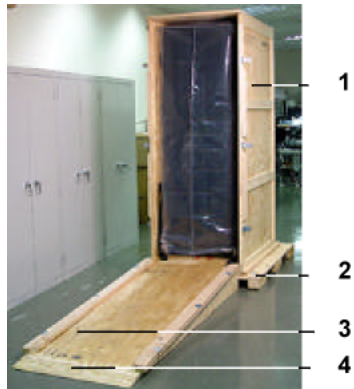
Figure 5 Ramp components (top view)



Legend	1 Ramp	5 Interlock groove
	2 Floor	6 Crate side wall
	3 Guide rail	7 Interlock key
	4 Ramp support	

- 7 Set the ramp onto the crate base so that the interlock key drops into the crate's interlock groove.

Figure 6 Ramp attached to the crate



Legend

1 Crate	3 Ramp
2 Pallet	4 Tapered edge

Step 4–Remove the Rack

Danger Catching a fully loaded rack that tips over can result in death or serious injury. If the rack begins to tip, do not catch it.

Warning A fully populated Pillar 42 U rack without any Bricks installed weighs about 600 lb (272 kg). Material handling systems (such as levers, slings, lifts, and so on) must be used. When such systems are not practical, use specially trained persons or services to lift or move a fully populated rack.

Caution The pallet base and the ramp's tapered edge must be at the same elevation; otherwise, the tapered edge will fail when the rack rolls down the ramp. Components inside the rack can be damaged.

- 1 Use a quick, sharp pull to detach the extraction straps from the crate.

Figure 7 Rack extraction straps



Legend

- | |
|---------------------|
| 1 Polyvinyl bag |
| 2 Extraction straps |

- 2 Pull the extraction straps to start the rack onto the ramp.
- 3 With several persons, carefully and slowly roll the rack down the ramp.
- 4 Remove the polyvinyl bag from the rack and discard.
- 5 Inspect the rack and its components for damage.

Tip:

Place the extraction strap and polyvinyl bag inside the crate. Reattach the ramp to the crate. Store the crate upright. If you need to ship the racked system back to Pillar Data Systems on a Return Materials Authorization (RMA), use this crate with the shock and tilt indicators attached and in good order.

Step 5–Move the Rack Into the Data Center

Important! Do not use a fork lift to move an uncrated, populated rack. Lifting a rack with a fork lift damages it and possibly the hardware components.

Be aware of the following when you move the rack:

- The center of gravity of a populated 42 U rack is closer to the front of the rack than to the back.
- Do not move a loaded rack over steep ramps. Use an elevator instead.



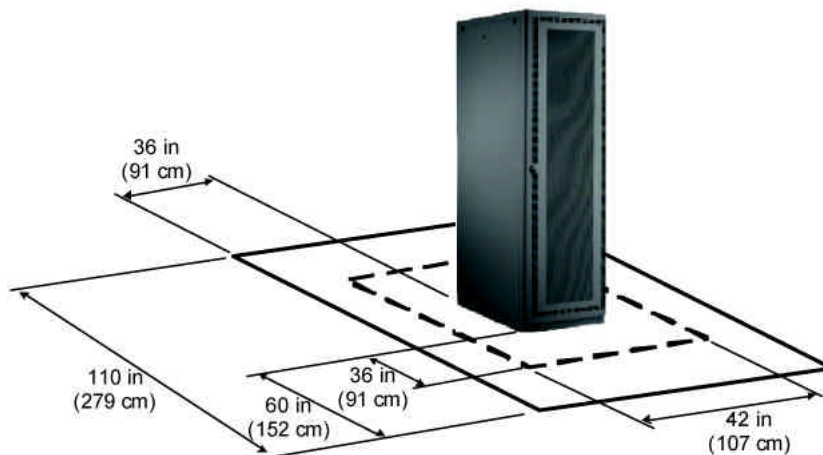
Warning

When you move a rack, keep its back in the lead. However, on a ramp, the rack's front should always face up the ramp. Be sure the slope is less than 2° to keep the rack from toppling.

- Do not exceed elevator load ratings when moving Pillar racks. Pillar racks with everything installed except for Brick storage enclosures weigh about 600 lb (272 kg).
- The dimensions of a Pillar rack are:
 - Height: 83 in (211 cm)
 - Width: 24 in (61 cm)
 - Depth: 43 in (110 cm)

The following illustration shows the minimum clearance for system installation.

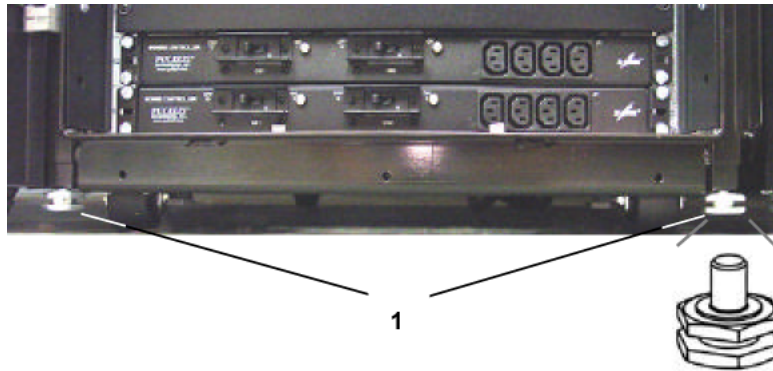
Figure 8 Clearance for rack installation



-
- 1 Unscrew the four anchor bolts and set them aside.

Important! Keep the anchor bolts in a safe place. Installers will need them to attach the anti-tip brackets later.

Figure 9 Anchor bolts screwed into the rack frame



Legend 1 Anchor bolts

- 2 Plan the path that you will take to move the rack into the data center.
- 3 Carefully move the rack to the data center.

For details about the remainder of the installation, refer to the *Hardware Installation Guide*.

Note: Pillar Data Systems reserves the right to change the specifications and content in this guide at any time.