

Oracle® Endeca Information Discovery Integrator

Integrator ETL Installation Guide

Version 3.1.1 Rev. A • December 2013

Copyright and disclaimer

Copyright © 2003, 2014, Oracle and/or its affiliates. All rights reserved.

Oracle and Java are registered trademarks of Oracle and/or its affiliates. Other names may be trademarks of their respective owners. UNIX is a registered trademark of The Open Group.

This software and related documentation are provided under a license agreement containing restrictions on use and disclosure and are protected by intellectual property laws. Except as expressly permitted in your license agreement or allowed by law, you may not use, copy, reproduce, translate, broadcast, modify, license, transmit, distribute, exhibit, perform, publish or display any part, in any form, or by any means. Reverse engineering, disassembly, or decompilation of this software, unless required by law for interoperability, is prohibited.

The information contained herein is subject to change without notice and is not warranted to be error-free. If you find any errors, please report them to us in writing.

If this is software or related documentation that is delivered to the U.S. Government or anyone licensing it on behalf of the U.S. Government, the following notice is applicable:

U.S. GOVERNMENT END USERS: Oracle programs, including any operating system, integrated software, any programs installed on the hardware, and/or documentation, delivered to U.S. Government end users are "commercial computer software" pursuant to the applicable Federal Acquisition Regulation and agency-specific supplemental regulations. As such, use, duplication, disclosure, modification, and adaptation of the programs, including any operating system, integrated software, any programs installed on the hardware, and/or documentation, shall be subject to license terms and license restrictions applicable to the programs. No other rights are granted to the U.S. Government.

This software or hardware is developed for general use in a variety of information management applications. It is not developed or intended for use in any inherently dangerous applications, including applications that may create a risk of personal injury. If you use this software or hardware in dangerous applications, then you shall be responsible to take all appropriate fail-safe, backup, redundancy, and other measures to ensure its safe use. Oracle Corporation and its affiliates disclaim any liability for any damages caused by use of this software or hardware in dangerous applications.

This software or hardware and documentation may provide access to or information on content, products and services from third parties. Oracle Corporation and its affiliates are not responsible for and expressly disclaim all warranties of any kind with respect to third-party content, products, and services. Oracle Corporation and its affiliates will not be responsible for any loss, costs, or damages incurred due to your access to or use of third-party content, products, or services.

Table of Contents

Copyright and disclaimer	2
Preface	4
About this guide	4
Who should use this guide	4
Conventions used in this guide	4
Contacting Oracle Customer Support	5
Chapter 1: Oracle Endeca Information Discovery Integrator ETL Installation Overview	6
About Integrator ETL	6
Integrator ETL system requirements	6
Hardware requirements	8
Supported operating systems	8
Chapter 2: Downloading Integrator ETL	10
Chapter 3: Installing Integrator ETL	12
Integrator ETL installation packages	12
Installing Integrator ETL on Windows	13
Installing Integrator ETL on Linux	14
Chapter 4: Installing Integrator ETL Server	15
Installing Integrator ETL Server on Tomcat	15
Tomcat configuration recommendations	16
Installing Integrator ETL Server on WebLogic Server	17
Downloading and installing the Sun JDK	18
Downloading and installing WebLogic Server	21
Creating and configuring a WebLogic domain for Integrator ETL Server	27
Creating a Windows Service for the Integrator ETL Server	34
Installing Integrator ETL Server into a WebLogic domain	35
Configuring the Integrator ETL Server license	37
Chapter 5: Installing Oracle Language Technology (OLT)	39
Configuring Integrator ETL to use Oracle Language Technology	39
Chapter 6: Uninstalling Integrator ETL	41
Uninstalling Integrator ETL	41
Uninstalling Integrator ETL on Windows	41
Uninstalling Integrator ETL on Linux	41
Uninstalling Integrator ETL Server	42
Uninstalling Integrator ETL Server from Tomcat	42
Uninstalling Integrator ETL Server from WebLogic Server	42
Uninstalling Oracle Language Technology (OLT)	42

Preface

Oracle® Endeca Information Discovery Integrator is a powerful visual data integration environment that includes:

The Information Acquisition System (IAS) for gathering content from delimited files, file systems, JDBC databases, and Web sites.

Integrator ETL, an out-of-the-box ETL purpose-built for incorporating data from a wide array of sources, including Oracle BI Server.

In addition, Oracle Endeca Web Acquisition Toolkit is a Web-based graphical ETL tool, sold as an add-on module. Text Enrichment and Text Enrichment with Sentiment Analysis are also sold as add-on modules. Connectivity to data is also available through Oracle Data Integrator (ODI).

About this guide

This guide contains installation instructions for setting up Oracle Endeca Information Discovery Integrator ETL on Windows and Linux.

Who should use this guide

This guide is intended for system administrators installing Oracle Endeca Information Discovery Integrator ETL on Windows or Linux.

Conventions used in this guide

The following conventions are used in this document.

Typographic conventions

The following table describes the typographic conventions used in this document.

Typographic conventions

Typeface	Meaning
User Interface Elements	This formatting is used for graphical user interface elements such as pages, dialog boxes, buttons, and fields.
Code Sample	This formatting is used for sample code phrases within a paragraph.
<Variable Name>	This formatting is used for variable values, such as <install path>.
File Path	This formatting is used for file names and paths.

Symbol conventions

The following table describes symbol conventions used in this document.

Symbol conventions

Symbol	Description	Example	Meaning
>	The right angle bracket, or greater-than sign, indicates menu item selections in a graphic user interface.	File > New > Project	From the File menu, choose New, then from the New submenu, choose Project.

Contacting Oracle Customer Support

Oracle Customer Support provides registered users with important information regarding Oracle software, implementation questions, product and solution help, as well as overall news and updates from Oracle.

You can contact Oracle Customer Support through Oracle's Support portal, My Oracle Support at <https://support.oracle.com>.



Chapter 1

Oracle Endeca Information Discovery Integrator ETL Installation Overview

Here is a brief overview of Oracle Endeca Information Discovery Integrator ETL and the installation process.

[About Integrator ETL](#)

[Integrator ETL system requirements](#)

About Integrator ETL

Oracle Endeca Information Discovery Integrator ETL is a high-performance data integration platform that lets you extract source records from a variety of source types (from flat files to databases).

Integrator ETL then loads that data into an Endeca data domain via the Data Ingest Web Service or the Bulk Load Interface.

From a high level, the Integrator suite consists of:

- **Integrator ETL.** With its powerful graphical interface, you can use the Integrator ETL client to build graphs that can load source data into an Endeca data domain, as well as the schema for your attributes and the index configuration documents for various Endeca features.
- **Information Discovery connectors.** Developed by Endeca, these connectors are Integrator ETL components that are easily configured to perform various data integration operations on Endeca data domains.
- **Integrator ETL Server.** The Server is used to run graphs in an enterprise-wide environment. In this environment, different users and user groups can access and run the graphs.
- **Integrator Acquisition System.** Optional component. The Integrator Acquisition System, or IAS, is a set of components that crawl source data stored in a variety of formats including: file systems, delimited files, JDBC databases, Web servers, and custom data sources. IAS transforms the data, if necessary, and outputs the data to an XML file or a Record Store that can be accessed by Integrator ETL for use in the Endeca Server. The installation procedure for IAS is documented in the *Integrator Acquisition System Installation Guide*.

Integrator ETL system requirements

The Integrator ETL components have the following installation requirements.

The 3.1.x version of the Integrator ETL is compatible only with the 7.6.x version of the Oracle Endeca Server.

Software requirements

- Integrator ETL Designer:
 - Eclipse IDE for Java Developers Version Indigo (3.7), 64-bit version

The Eclipse IDE can be downloaded from the eclipse.org Web site: <http://eclipse.org>. The graphic below illustrates the correct version of the Eclipse IDE to download:



You do not need to extract the Eclipse package or install the Eclipse IDE. The Integrator ETL installation script installs Eclipse during the installation processing.

- The Eclipse Remote System Explorer (RSE) plugin.

The RSE plugin can be downloaded from the Target Management Project Downloads page: <http://download.eclipse.org/tm/downloads/>. The recommended version is 3.2.

- Sun Java version 7 (also called 1.7) JDK, which is included in the Integrator ETL Designer installation package.
- Integrator ETL Server:
 - Sun Java version 6 JDK
 - Integrator ETL Server can be installed on WebLogic Server Version 10.3.6 or on a standalone Apache Tomcat, version 6.0.x. You should not install Integrator ETL Server in a container that hosts another application, such as Studio or the Provisioning Service.

Hardware requirements

Supported operating systems

Hardware requirements

Integrator ETL has the following hardware requirements.



Note: In this guide, the term "x64" refers to any processor compatible with the AMD64/EM64T architecture. You might need to upgrade your hardware, depending on the data you are processing. All run-time code must fit entirely in RAM. Likewise, hard disk capacity must be sufficient based on the size of your data set. Please contact your Oracle representative if you need more information on sizing your hardware.

Windows and Linux on x64

Minimum hardware requirements:

- x64 processor, minimum 1.8 GHz
- At least 3 GB of RAM, depending on the size of the application data set
- 1 GB available hard drive space (the installed size of Integrator Designer on disk)

Recommended hardware requirements:

- x64 3.0+ GHz processor
- 8 GB of RAM or more, depending on the size of the application data set
- Gigabit Ethernet

Supported operating systems

Integrator ETL supports the following 64-bit operating systems running on servers with x64 capabilities:

Operating System	Description
Oracle Linux	<ul style="list-style-type: none">• Oracle Linux Release 6 for x64• Oracle Linux Release 5 for x64 Only the Red Hat Compatible Kernel is supported.
Linux RHEL	<ul style="list-style-type: none">• Red Hat Enterprise Linux Server (version 6 for x64) running on x64 processors.• Red Hat Enterprise Linux Advanced Platform (version 6 for x64) running on x64 processors.• Red Hat Enterprise Linux Server (version 5 for x64) running on x64 processors.• Red Hat Enterprise Linux Advanced Platform (version 5 for x64) running on x64 processors. For best performance on Red Hat Linux version 5 (Server and Advanced), Endeca recommends the latest version of RHEL 5.
Windows 2008	Windows Server 2008 R2 Enterprise running on x64 processors.



Note: The *Oracle Endeca Information Discovery Integrator ETL Designer Guide* lists other supported operating systems. However, that list is superseded by the list above.

Notes

Windows 7 is not supported for production deployment, but operates sufficiently to enable training and small-scale development work.

Windows XP is not supported.



Chapter 2

Downloading Integrator ETL

Integrator ETL is downloaded from the Oracle Software Delivery Cloud.

To download Integrator ETL:

1. Log in to <https://edelivery.oracle.com>.
2. Accept the terms and restrictions.
3. On the **Media Pack Search** page:
 - (a) From the **Select a Product Pack** drop-down list, select **Oracle Endeca**.
 - (b) From the **Platform** drop-down list, select the platform you are installing on.
 - (c) Click **Go**.

The list of media packs for the selected product and platform is displayed.

For the Windows platform, the media pack is **Oracle Endeca Information Discovery Integrator ETL (3.1) Media Pack v1 for Microsoft Windows x64 (64-bit)**.

For the Linux platform, the media pack is **Oracle Endeca Information Discovery Integrator ETL (3.1) Media Pack v1 for Linux x86-64**.

4. In the media pack list, click the name of the media pack.

The **Download** page displays, listing the downloads for the selected media pack.

5. For Windows, download **Oracle Endeca Information Discovery Integrator ETL (3.1) Media Pack v1 for Microsoft Windows x64 (64-bit)**.

The downloaded file, `EID_IETL31_Win.zip`, contains:

- `EID_3.1_IntegratorETL.zip`

This file is the Integrator ETL Designer package.

- `EID_3.1_OLT.zip`

This file is the Oracle Language Technology package, to support the Language Detector component.

- `EID_3.1_IntegratorETL_server_tomcat.zip`

This file is the Integrator ETL Server package for Tomcat.

- `EID_3.1_IntegratorETL_server_weblogic.zip`

This file is the Integrator ETL Server package for WebLogic Server.

For Linux, download **Oracle Endeca Information Discovery Integrator ETL (3.1) Media Pack v1 for Linux x86-64**.

The downloaded file, `EID_IETL31_Linux.zip`, contains:

- `EID_3.1_IntegratorETL.tar.gz`

This file is the Integrator ETL Designer package.

- `EID_3.1_OLT.zip`

This file is the Oracle Language Technology package, to support the Language Detector component.

- `EID_3.1_IntegratorETL_server_tomcat.zip`

This file is the Integrator ETL Server package for Tomcat.

- `EID_3.1_IntegratorETL_server_weblogic.zip`

This file is the Integrator ETL Server package for WebLogic Server.

You can also download the **Oracle Endeca Information Discovery Integrator ETL (3.1) Documentation**. This .zip file contains the Integrator release notes and documentation.



Chapter 3

Installing Integrator ETL

This section describes how to install Integrator ETL on Linux and Windows platforms.

[*Integrator ETL installation packages*](#)

[*Installing Integrator ETL on Windows*](#)

[*Installing Integrator ETL on Linux*](#)

Integrator ETL installation packages

Installation packages are provided for Integrator ETL Designer and Integrator ETL Server on both Windows and Linux.

Integrator ETL Designer packages

The Linux Integrator ETL Designer installation package is named `EID_3.1_IntegratorETL.tar.gz`. This file contains:

- `install.sh`

This file is the installation script for Integrator ETL.

- `IntegratorETL`

This directory contains the installation files and data for Integrator ETL.

The Windows Integrator ETL Designer installation package is named `EID_3.1_IntegratorETL.zip`. This file contains:

- `install.bat`

This file is the installation script for Integrator ETL.

- `IntegratorETL`

This directory contains the installation files and data for Integrator ETL.

Integrator ETL Server installation package

The Integrator ETL Server package for Tomcat for both Windows and Linux is named `EID_3.1_IntegratorETL_server_tomcat.zip`. This file contains:

- `clover.war`

This file is the server version of the Integrator ETL, including the Information Discovery connectors.

- `clover-license.war`

This file is the license for the Integrator ETL Server.

The Integrator ETL Server package for WebLogic Server for both Windows and Linux is named `EID_3.1_Integrator_server_weblogic.zip`. This file contains:

- `clover.war`

This file is the server version of the Integrator ETL, including the Information Discovery connectors.

- `license.dat`

This file is the license for the Integrator ETL Server.

Installing Integrator ETL on Windows

This topic describes how to install Integrator ETL on a Windows client machine.

This procedure assumes that you have downloaded the Integrator ETL installer for Windows.

The procedure also assumes you have downloaded the Eclipse IDE for Java Developers version 3.7 (Indigo). Confirm that you have downloaded the correct Eclipse. The correct file is named `eclipse-java-indigo-SR2-win32-x86_64.zip`.

The procedure also assumes you have downloaded the Remote System Explorer (RSE) plugin. The recommended version of the plugin is 3.2.

To install Integrator ETL on a Windows client:

1. Extract the Integrator ETL Designer installation package for Windows (`EID_3.1.1_IntegratorETL.zip`) to a convenient location.
2. Change to the directory where you unzipped the Integrator ETL installation package and run `install.bat`.

The installation script starts.

3. The default installation directory is `C:\Oracle\Endeca\Discovery\3.1.1\IntegratorETL`. At the Do you want to use the default directory prompt:
 - If you want to install to the default directory, press the return key or enter `y` and press the return key.
 - If you want to install to a different directory, enter `n` and press the return key. At the Specify IntegratorETL installation directory prompt, enter the absolute path to the directory where you want to install Integrator ETL.



Note: Recommended practice is to specify a directory that does not exist. The directory will be created during the installation. If you specify a directory that exists, you will be asked to confirm the directory you specified. The existing directory will be overwritten during the installation. Alternatively, specify a different directory.

4. At the Enter the full path of Eclipse zip file prompt, enter the fully-qualified path to the Eclipse .zip file you downloaded from <http://eclipse.org>. The path must include the name of the .zip file itself.
5. At the Enter the full path of RSE file prompt, enter the fully-qualified path to the RSE plugin .zip file you downloaded from <http://download.eclipse.org/tm/downloads/>. The path must include the name of the .zip file itself.

When you press the return key after entering the path to the Eclipse .zip file, the installation processing begins.

Integrator ETL is installed to the location you specified.

You may want to create a desktop shortcut to the Integrator ETL executable.

Installing Integrator ETL on Linux

This topic describes how to install Integrator ETL on a Linux client machine.

This procedure assumes that you have downloaded the Integrator ETL installer for Linux.

The procedure also assumes you have downloaded the Eclipse IDE for Java Developers version 3.7 (Indigo). Confirm that you have downloaded the correct Eclipse. The correct file is named `eclipse-java-indigo-SR2-linux-gtk-x86_64.tar.gz`.

The procedure also assumes you have downloaded the Remote System Explorer (RSE) plugin. The recommended version of the plugin is 3.2.

To install Integrator ETL on a Windows client:

1. Extract the Integrator ETL Designer installation package for Linux (`EID_3.1_IntegratorETL.tar.gz`) to a convenient location.
2. Change to the directory where you unzipped the Integrator ETL installation package and run `install.sh`.

The installation script starts.

3. The default installation directory is `~/Oracle/Endeca/Discovery/3.1.1/IntegratorETL`. At the **Do you want to use the default directory** prompt:
 - If you want to install to the default directory, press the return key or enter `y` and press the return key.
 - If you want to install to a different directory, enter `n` and press the return key. At the **Specify IntegratorETL installation directory** prompt, enter the absolute path to the directory where you want to install Integrator ETL.



Note: Recommended practice is to specify a directory that does not exist. The directory will be created during the installation. If you specify a directory that exists, you will be asked to confirm the directory you specified. The existing directory will be overwritten during the installation. Alternatively, specify a different directory.

4. At the **Enter the full path of the Eclipse zip file** prompt, enter the fully-qualified path to the Eclipse `.tar.gz` file you downloaded from <http://eclipse.org>. The path must include the name of the `.tar.gz` file itself.
5. At the **Enter the full path of RSE file** prompt, enter the fully-qualified path to the RSE plugin `.zip` file you downloaded from <http://download.eclipse.org/tm/downloads/>. The path must include the name of the `.zip` file itself.

When you press the return key after entering the path to the Eclipse `.zip` file, the installation processing begins.

Integrator ETL is installed to the location you specified.



Chapter 4

Installing Integrator ETL Server

You can install Integrator ETL Server on Tomcat and Oracle WebLogic Server Web application servers.

For details about the installation package, see [Integrator ETL Installation packages on page 12](#).

[Installing Integrator ETL Server on Tomcat](#)

[Installing Integrator ETL Server on WebLogic Server](#)

Installing Integrator ETL Server on Tomcat

Integrator ETL Server is supported on Apache Tomcat version 6.0.x.

Integrator ETL Server must be installed on a standalone Apache Tomcat. Do not install Integrator ETL Server on a Tomcat server that is being used to host other applications. For example, do not install Integrator ETL Server on the Tomcat that is hosting Studio.

Sun Java SDK Version 1.6.x is required.

Set the following environment variables:

- JAVA_HOME
- JRE_HOME



Note: If JRE_HOME is not set, the value defaults to the value of the JAVA_HOME environment variable.

Download the Oracle Endeca Integrator ETL Server for Tomcat package from the [Oracle Software Delivery Cloud](#).

To install Integrator ETL Server:

1. If you have not already installed Apache Tomcat 6.0.x:
 - (a) Download the binary distribution from: <http://tomcat.apache.org/download-60.cgi>.
 - (b) Unpack the ZIP file to a directory of your choosing.
 - (c) By default, Tomcat starts up on HTTP connector 8080. If another application on the install machine is already using port 8080 (for example, if you have another instance of Tomcat on the machine), then change the default startup port by modifying the `conf/server.xml` file.
 - (d) Run Tomcat with the `startup.sh` (for Linux) or `startup.bat` (for Windows) program file in the Tomcat `bin` directory.

- (e) Use a browser to check whether Tomcat is running on URL `http://localhost:8080`, where 8080 is the Tomcat port specified in `conf/server.xml`.

If Tomcat is running properly and you specified the correct port, the browser displays the Tomcat homepage.

For more detailed installation instructions, go to: <http://tomcat.apache.org/tomcat-6.0-doc/setup.html>

For instructions on installing Tomcat as a Windows service, go to: <http://tomcat.apache.org/tomcat-6.0-doc/windows-service-howto.html>

2. Shut down Tomcat.
3. Copy the `clover-license.war` and `clover.war` files to the Tomcat webapps directory.
4. Create a `setenv` file and configure the Tomcat memory settings appropriate for your needs.

For details on creating this file, see [Creating a setenv file on page 17](#).

5. Restart Tomcat.
6. To verify that the Integrator ETL Server license was successfully deployed, start a browser and enter the URL `http://localhost:8080/clover-license`, where 8080 is the Tomcat port specified in `conf/server.xml`.

The browser should show this light-weight page:

```
This webapp runs on context /clover-license, which is correct.
```

7. Start a browser, and then enter the Integrator ETL Server home page URL: `http://localhost:8080/clover`.

The browser should return the Integrator ETL Server home page.

8. To log in to the Integrator ETL Server:
 - (a) Click **Log in to Server Administration**.
 - (b) At the Access Server GUI page, enter `clover` as both the **Username** and **Password**, and then click the **Login** button.

When the Integrator ETL Server is running, you can access the *Reference Manual* from either the Integrator ETL Server home page or via this URL:

```
http://localhost:8080/clover/docs/index.html
```

where 8080 is the Tomcat port specified in `conf/server.xml`.

The *Integrator ETL Server Guide* provides comprehensive documentation on the operations available in Integrator ETL Server.

[Tomcat configuration recommendations](#)

Tomcat configuration recommendations

This topic provides some configuration tips for getting started with your Tomcat application server.

Keep in mind that complete documentation on configuring and using the Tomcat server is available at this URL for the server: `http://localhost:8080/docs/`

This topic provides some configuration tips that are specific to the Integrator ETL Server application.

Creating a setenv file

It is recommended that you create a file named `setenv.bat` (Windows) or `setenv.sh` (Linux) and place it in the Tomcat `bin` directory. With this file (which is run by the `catalina.bat` and `catalina.sh` scripts), you can change the following Tomcat environment settings with the `JAVA_OPTS` variable:

- You can set the minimum and maximum memory heap size with the JVM `-Xms` and `-Xmx` parameters. The best limits depend on many conditions, such as transformations that Integrator ETL should execute. For Information Discovery transformations, a maximum of 1 GB is recommended. For example, to set the minimum heap size to 128 MB and the maximum heap size to 1024 MB, use:

```
JAVA_OPTS="-Xms128m -Xmx1024m"
```

- You should set the maximum limit of the PermGen (Permanent Generation) memory space to a size larger than the default. The default of 64 MB is not enough for enterprise applications. A suitable memory limit depends on various criteria, but 256 MB would make a good choice in most cases. If the PermGen space maximum is too low, `OutOfMemoryError: PermGen space` errors may occur. You can set the PermGen maximum limit with the following JVM parameter:

```
-XX:MaxPermSize=256m
```

- For performance reasons, it is recommended that the application is run in Server mode. Apache Tomcat does not run in Server mode by default. You can set the Server mode by using the JVM `-server` parameter. You can set the JVM parameter in the `JAVA_OPTS` variable in the environment variable in the `setenv` file.

The following is an example of a `setenv.bat` file:

```
set "JAVA_OPTS=%JAVA_OPTS% -Xms128m -Xmx1024m -XX:MaxPermSize=256m -server"
```

About database connections

By default, Integrator ETL Server uses an embedded Apache Derby database. This database is suitable for testing and evaluation environments. In these environments, no additional configuration is necessary.

In production environments, use of the embedded Derby database is not recommended. In these environments, you should use a robust, production-quality database, such as an Oracle or MySQL database. For details about configuring these databases, see the *Integrator ETL Server Guide*.

Installing Integrator ETL Server on WebLogic Server

Oracle Endeca Integrator ETL Server is supported on WebLogic Server 10.3.6.

You must install Integrator ETL Server to its own WebLogic domain. The following process assumes you are installing Integrator ETL Server into a new WebLogic Server for production. For demonstration, evaluation, training, and development, you can install Integrator ETL Server on the same WebLogic Server as Endeca Server, Studio, and the Provisioning Service.

To install Integrator ETL Server:

1. Download and install the Sun Java 6 JDK.

For details about installing the Sun Java JDK, see [Downloading and installing the Sun JDK on page 18](#).

2. Download and install WebLogic Server.

For details about installing WebLogic Server, see [Downloading and installing WebLogic Server on page 21](#).

3. Create and configure a WebLogic domain.

For details about creating and configuring a WebLogic domain, see [Creating and configuring a WebLogic domain for Integrator ETL Server on page 27](#).

4. Install Integrator ETL Server into the WebLogic domain.

For details, see [Installing Integrator ETL Server into a WebLogic domain on page 35](#).

5. Configure the license for Integrator ETL Server.

For details, see [Configuring the Integrator ETL Server license on page 37](#).

[Downloading and installing the Sun JDK](#)

[Downloading and installing WebLogic Server](#)

[Creating and configuring a WebLogic domain for Integrator ETL Server](#)

[Installing Integrator ETL Server into a WebLogic domain](#)

[Configuring the Integrator ETL Server license](#)

Downloading and installing the Sun JDK

Integrator ETL Server requires the Sun Java 6 JDK.

To download and install the Sun JDK:

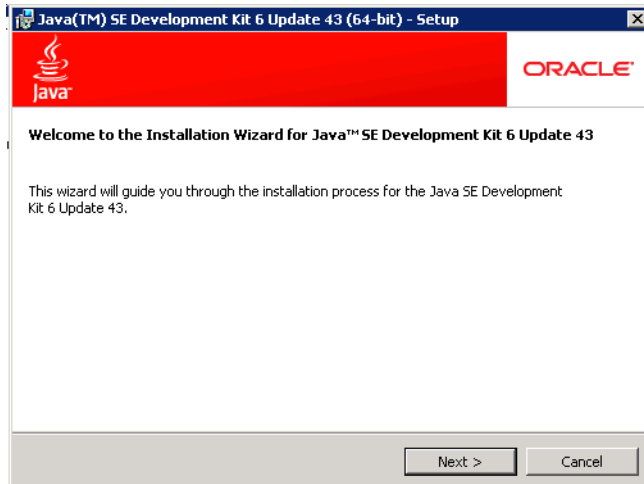
1. To download Sun Java 6:
 - (a) Go to <http://www.oracle.com/technetwork/java/javase/downloads/index.html>.
 - (b) On the **Downloads** tab, click **Previous Releases**.
 - (c) On the **Oracle Java Archive** page, click **Java SE 6**.
 - (d) On the **Java SE 6 Downloads** page, click the link for the most recent version of the Java SE Development Kit.

The page scrolls to the list of downloads for that version of the JDK.
 - (e) At the top of the list, click the **Accept License Agreement** radio button.
 - (f) In the list, click the **Download** link for Windows x64 or Linux x64.
 - (g) Save the file (`jdk-6u43-windows-x64.exe` or `jdk-6u43-linux-x64.bin`) to your machine.

2. To install the JDK on Windows:

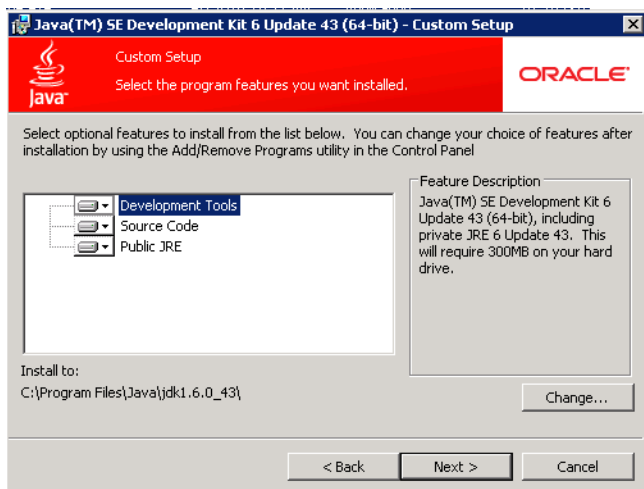
(a) Double-click the JDK installer file.

The welcome page of the installation wizard is displayed.

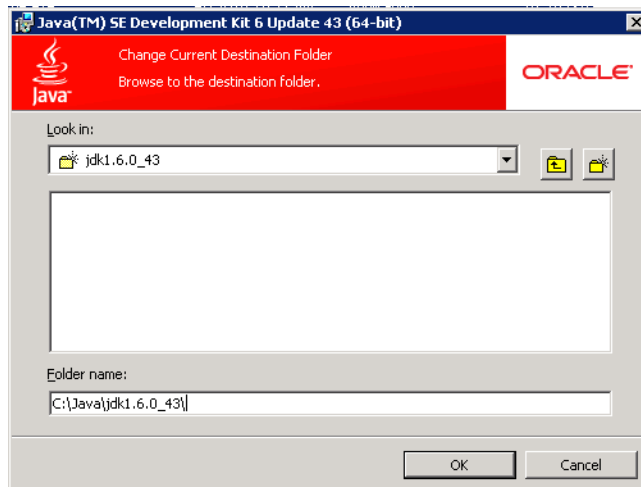


(b) On the welcome page, click **Next**.

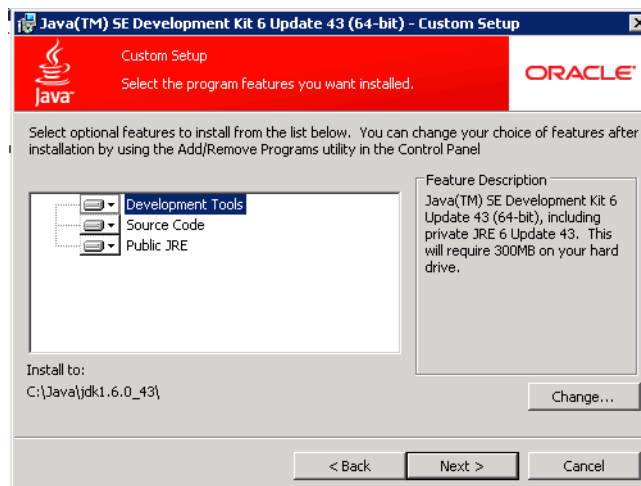
(c) Because the default installation location (under Program Files) has a space, you must change it. On the **Custom Setup** page, click the **Change** button.



- (d) In the **Folder name** field, remove the Program Files directory, to change the location to:
C:\Java\jdk1.6.0_43\



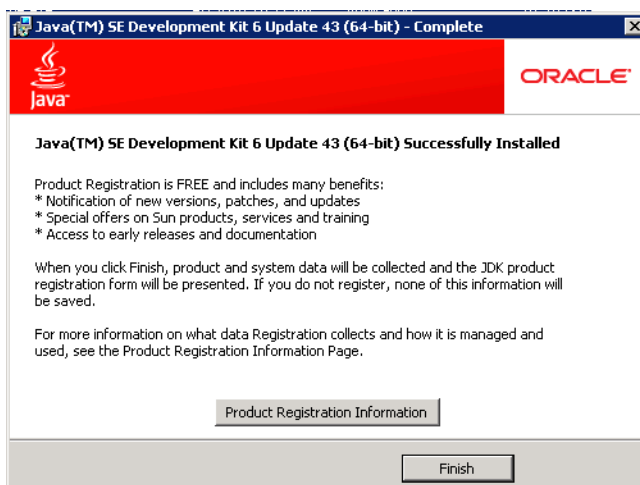
- (e) Click **OK**.
- (f) On the **Custom Setup** page, verify that the installation location has been updated, then click **Next**.



- (g) On the **Destination Folder** page, change the location of the JRE to also remove the Program Files directory, then click **Next**.

The installation process begins.

- (h) When the installation is completed, click **Finish**.



3. To install the JDK on Linux:
 - (a) Select a location for installation. For example, `$HOME/Oracle/Endeca`.
 - (b) Place the JDK .bin file (`jdk-6u43-linux-x64.bin`) into `$HOME/Oracle/Endeca`, and ensure that it has execute permissions,
 - (c) Execute the file.

The JDK is extracted into the directory. For example, `$HOME/Oracle/Endeca/jdk1.6.0_43`.

Downloading and installing WebLogic Server

If you are not installing Integrator ETL Server on the same WebLogic Server instance as other Endeca Information Discovery components, then you need to download and install WebLogic Server.

To download and install WebLogic Server:

1. To download the WebLogic Server installation package:
 - (a) Go to <http://www.oracle.com/technetwork/middleware/weblogic/downloads/wls-for-dev-1703574.html>.
 - (b) Under **Oracle WebLogic Server Previous Releases**, expand the list for Oracle WebLogic Server 10.3.6.
 - (c) Download the **Generic** version of the installer (`wls1036_generic.jar`).

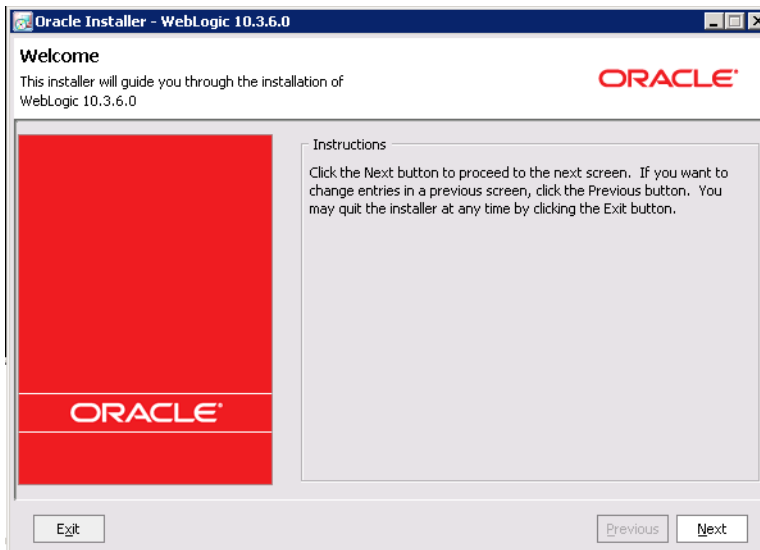
	Microsoft Windows (32-bit JVM)	Linux (32-bit JVM)	Solaris (32-bit JVM)	Additional Platforms (For 64-bit JVM Support, See Note Above)
Oracle WebLogic Server 10.3.6	See all files			
Oracle WebLogic Server 11gR1 (10.3.6) + Coherence + OEPE - Package Installer	x86: 1.5 GB File 1	x86: 1.5 GB File 1		Mac OS X: 1.7 GB File 1
Oracle WebLogic Server 11gR1 (10.3.6) + Coherence - Package Installer	x86: 820 MB File 1	x86: 831 MB File 1	SPARC: 783 MB File 1	Generic: 1 GB File 1
Oracle WebLogic Server 11gR1 (10.3.6) 7003 File Distribution	x86: 330 MB File 1	x86: 330 MB File 1		Mac OS X: 330 MB File 1

2. From a command prompt, navigate to the directory where you placed `wls1036_generic.jar`.

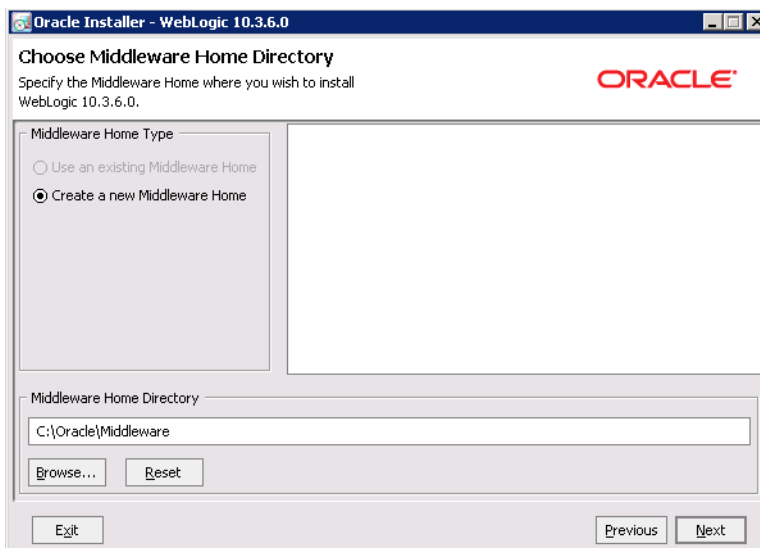
3. To launch the installer, issue the following command:

```
java -jar wls1036_generic.jar
```

The **Welcome** page of the installation wizard is displayed.

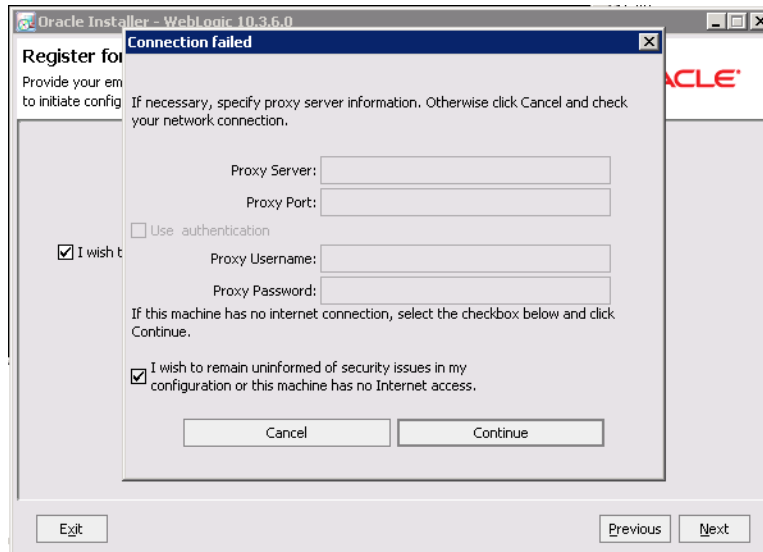


4. On the **Welcome** page, click **Next**.
5. On the **Choose Middleware Home Directory** page:
 - (a) Click the **Create a new Middleware Home** radio button.
 - (b) Accept the default location for the Middleware Home Directory.
 - (c) Click **Next**.

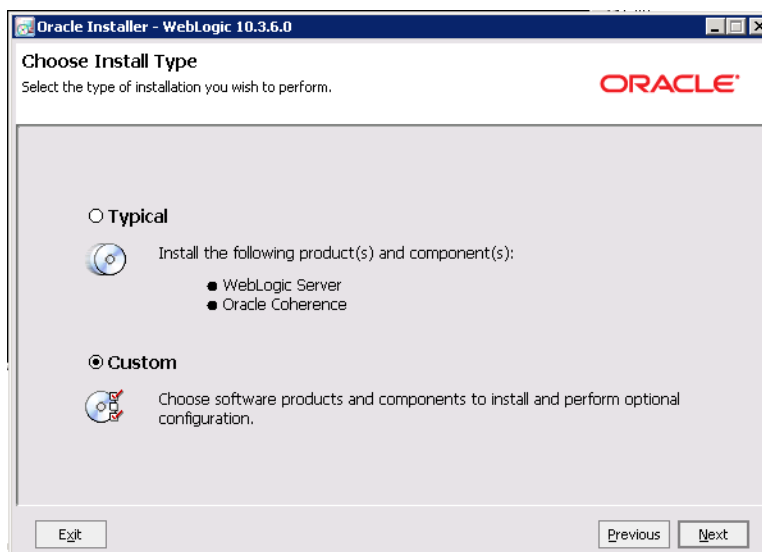


6. To bypass the **Register for Security Updates** page:
 - (a) Click **Next** without entering an email address.
 - (b) On the **Email Address Not Specified** dialog, click **Yes**.

- (c) On the **Are You Sure?** dialog, click **Yes**.
- (d) On the **Connection failed** dialog, check the **I wish to remain uninformed of security issues in my configuration or the machine has no Internet access** checkbox, then click **Continue**.

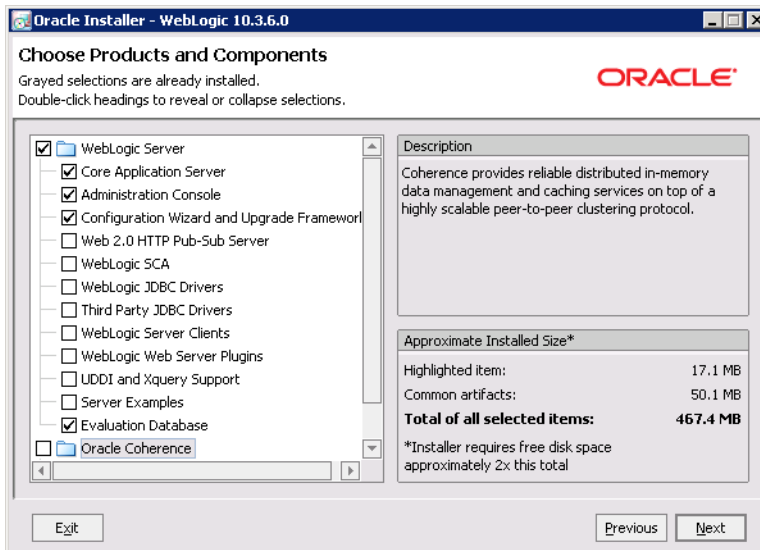


7. On the **Choose Install Type** page, click the **Custom** radio button, then click **Next**.



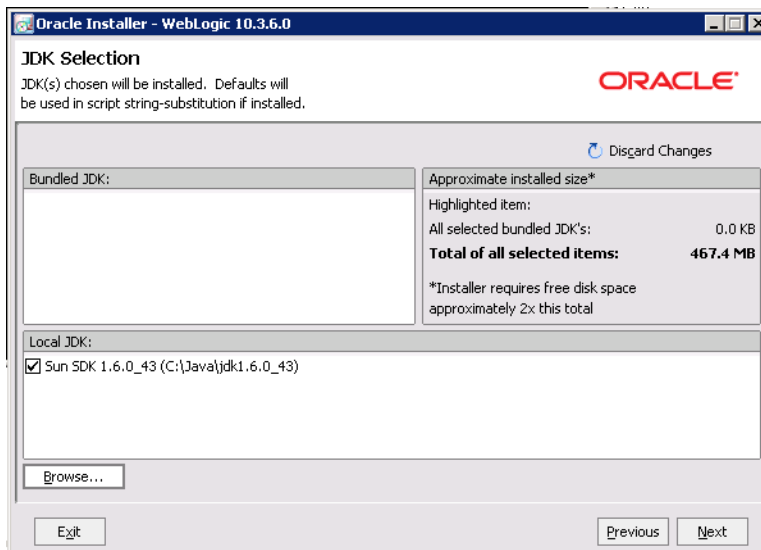
8. On the **Choose Products and Components** page, check the following products, then click **Next**:
- **Core Application Server**
 - **Administration Console**
 - **Configuration Wizard and Upgrade Framework**

• Evaluation Database



9. On the **JDK Selection** page, verify that the JDK you installed is selected. If it is, click **Next**. If that version of the JDK is not selected:
 - (a) Under **Local JDK**, click the **Browse** button.
 - (b) Browse to and select the directory that contains the JDK (C:\Java\jdk1.6.0_43\ or %HOME%/Oracle/Endeca/jdk1.6.0_43)

The **Local JDK** section is updated to display the selected JDK with a checked box next to it.

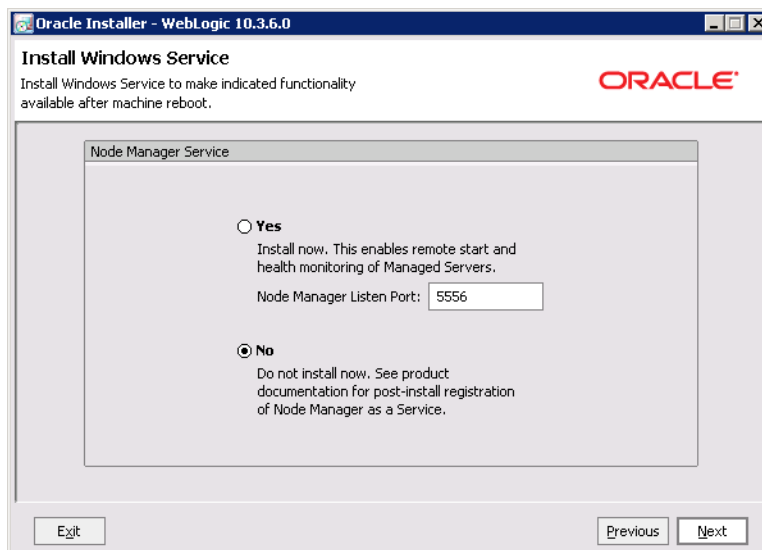


- (c) Click **Next**.

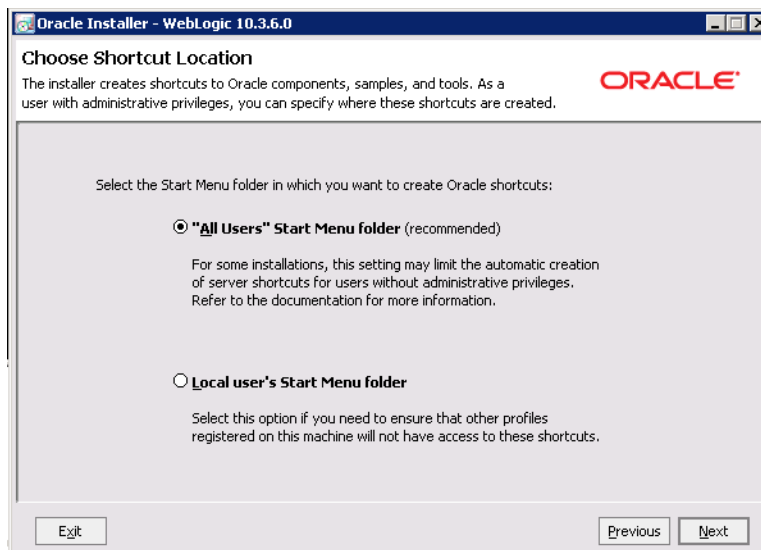
10. On the **Choose Product Installation Directories** page, accept the default installation directory, then click **Next**.



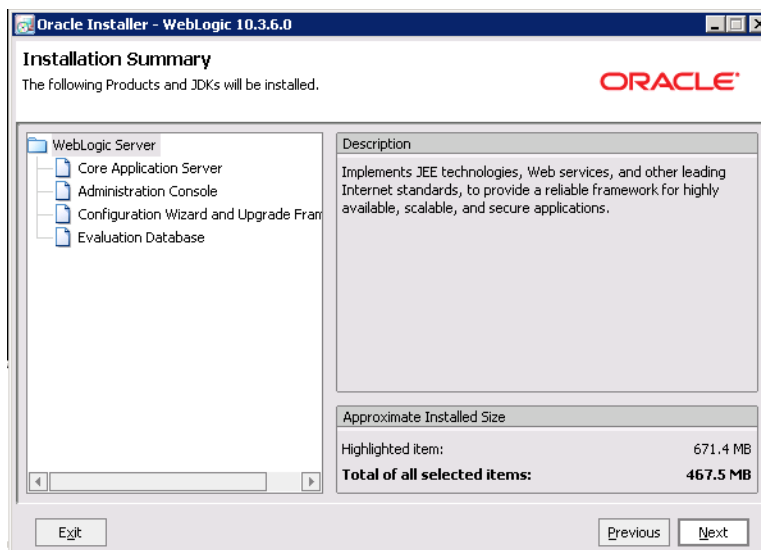
11. If the **Install Windows Service** page is displayed, click the **No** radio button, then click **Next**.



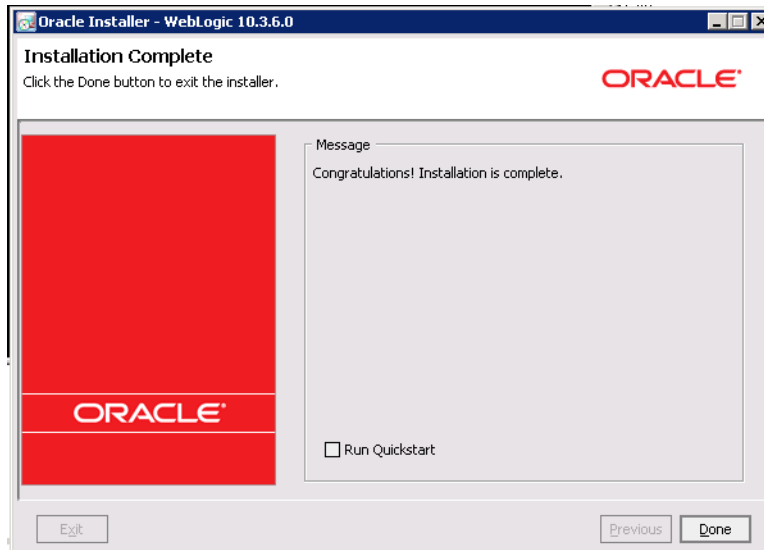
12. If the **Choose Shortcut Location** page is displayed, click a radio button to select the location of the Windows shortcut, then click **Next**.



13. On the **Installation Summary** page, verify that you are installing the correct products, then click **Next**.



14. On the **Installation Complete** page, uncheck the **Run Quickstart** checkbox, then click **Done**.



For Windows, an **Oracle WebLogic** shortcut is created in the **Start Menu**.

Creating and configuring a WebLogic domain for Integrator ETL Server

Integrator ETL Server must be installed in its own WebLogic domain. To avoid any conflicts, the domain cannot contain any other applications. Even if you are installing Integrator ETL Server on the same instance of WebLogic Server as other Oracle Endeca Information Discovery components, you must create a separate domain for Integrator ETL Server.

To create and configure the WebLogic domain, and verify that the domain is not already in use:

1. From a command prompt, change to the directory that contains the Configuration Wizard start-up program.

For example, for Windows:

```
C:\Oracle\Middleware\wlserver_10.3\common\bin
```

For Linux:

```
$MW_HOME/wlserver_10.3/common/bin
```

2. To start the Configuration Wizard, run the following command:

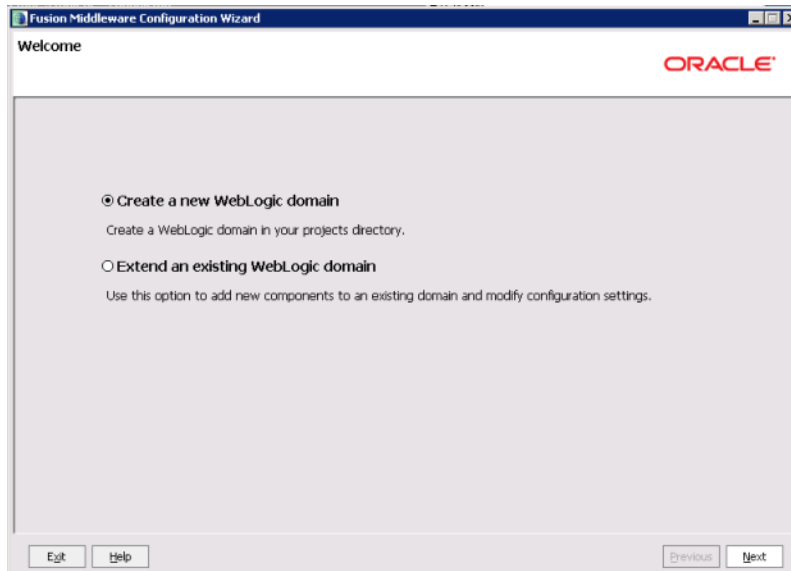
For Windows:

```
config.cmd
```

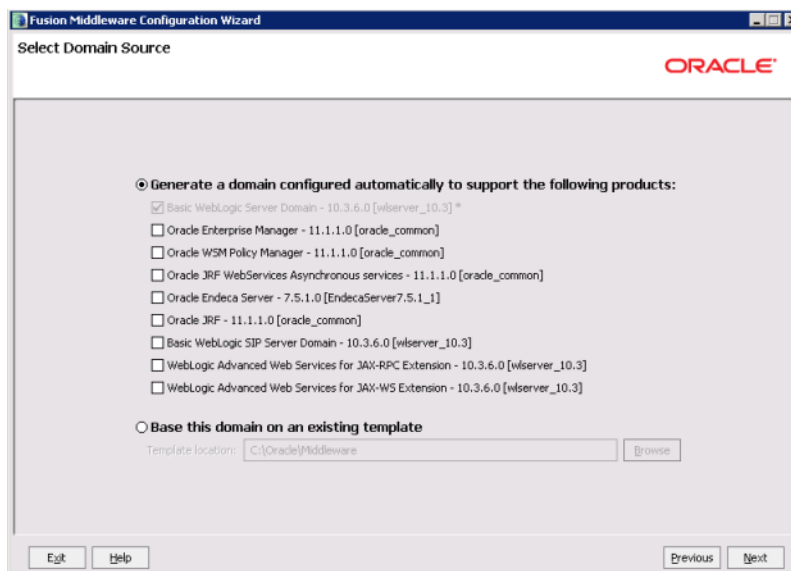
For Linux:

```
./config.sh
```

The Configuration Wizard **Welcome** page is displayed.



3. On the **Welcome** page, click the **Create a new WebLogic domain** radio button, then click **Next**.
4. On the **Select Domain Source** page, the **Basic WebLogic Server Domain** checkbox is checked by default. Click **Next**.



5. On the **Specify Domain Name and Location** page:
 - (a) Set the domain name to `endeca_integrator_server_domain`
 - (b) Keep the default domain location.

(c) Click **Next**.

The screenshot shows a window titled "Fusion Middleware Configuration Wizard" with the Oracle logo in the top right corner. The main heading is "Specify Domain Name and Location". Below this, it says "Enter the name and location for the domain:". There are two input fields: "Domain name:" with the text "endeca_integrator_server_domain" and "Domain location:" with the text "C:\Oracle\Middleware\user_projects\domains". A "Browse" button is next to the domain location field. At the bottom, there are "Exit", "Help", "Previous", and "Next" buttons. A mouse cursor is pointing at the "Next" button.

6. On the **Configure Administrator User Name and Password** page, to create the administrator credentials for starting the Studio domain:

- (a) In the **Name** field, type the name for the administrator user.
- (b) In the **User password** field, type the user password.

The password must be at least eight characters long.

- (c) In the **Confirm user password** field, retype the password.
- (d) Optionally, in the **Description** field, type a description for the user account.

(e) Click **Next**.

Fusion Middleware Configuration Wizard

Configure Administrator User Name and Password

ORACLE

Discard Changes

*Name: integrator_server_admin

*User password: *****

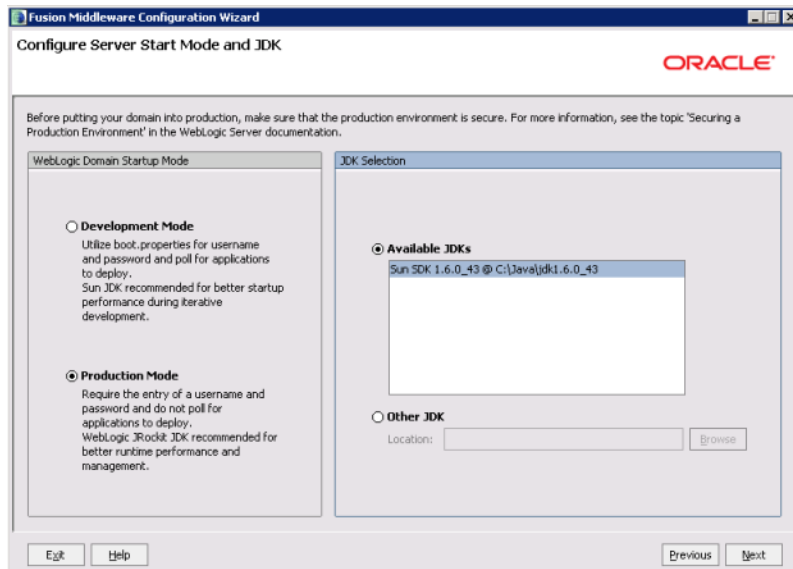
*Confirm user password: *****

Description: This user is the default administrator.

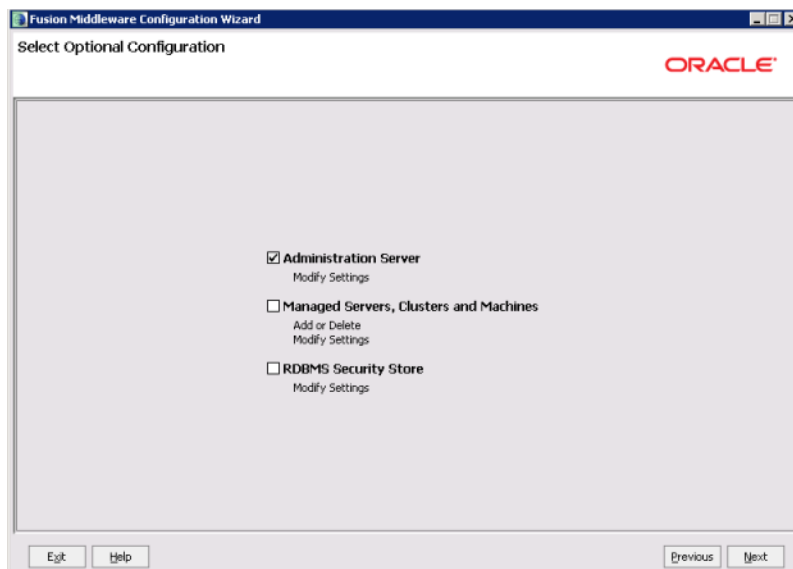
Exit Help Previous Next

7. On the **Configure Server Start Mode and JDK** page:
 - (a) Under **WebLogic Domain Startup Mode**, click the **Production Mode** radio button.
 - (b) Under **JDK Selection**, click the **Available JDKs** radio button.
 - (c) In the JDK list, click the Sun Java JDK that you installed earlier. If the JDK is not displayed, click the **Other JDK** button, and then browse to it.

(d) Click **Next**.



8. On the **Select Optional Configuration** page, check the **Administration Server** checkbox, then click **Next**.



9. On the **Configure the Administration Server** page:
 (a) Use the default values for the **Name** and **Listen address** fields.

- (b) In the **Listen port** field, type 8301.

Fusion Middleware Configuration Wizard

Configure the Administration Server

ORACLE

Disard Changes

*Name: AdminServer

*Listen address: All Local Addresses

Listen port: 8301

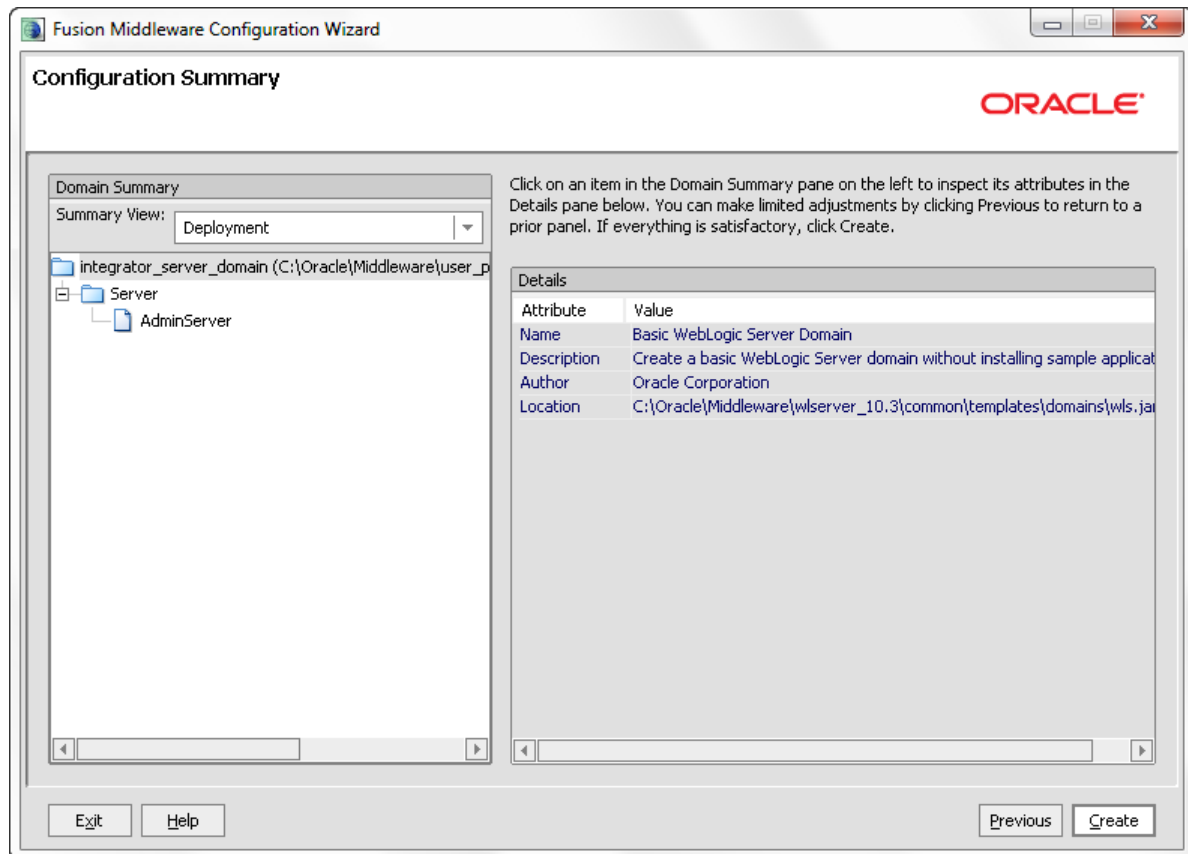
SSL listen port: 8302

SSL enabled: ☒

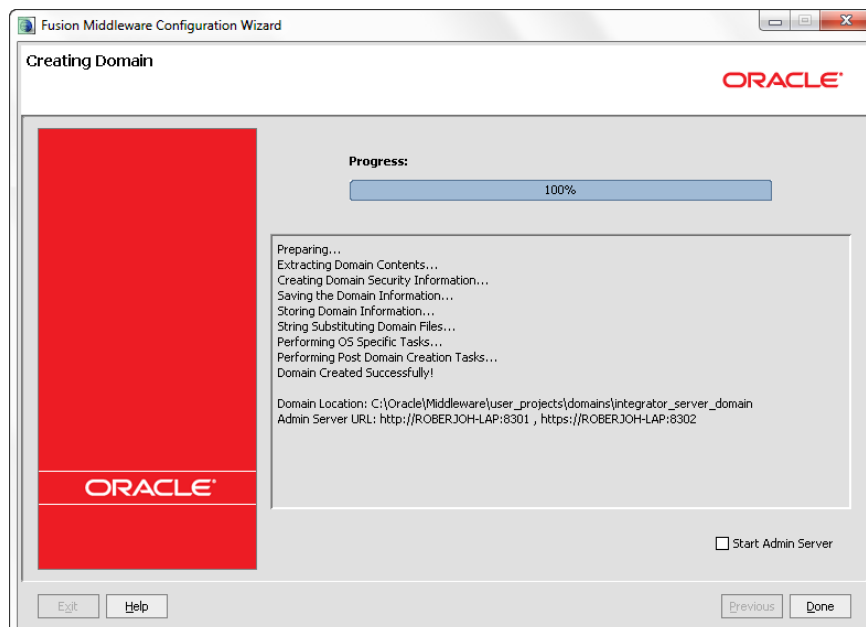
Exit Help Previous Next

- (c) If you want to enable SSL, then check the **SSL enabled** checkbox, and in the **SSL listen port** field, type 8302.
- (d) Click **Next**.

10. On the **Configuration Summary** page, to create the domain, click **Create**.



On the **Creating Domain** page, the message "Domain Created Successfully!" signifies the end of the domain creation process.



11. To exit the Configuration Wizard, click **Done**.
12. Default JVM memory settings are not high enough to run the Web Logic server when Oracle Endeca Integrator ETL Server is installed. Required memory settings depend on a variety of factors, including the number and complexity of transformations performed during processing. Exceeding the specified memory settings results in failed processing and reports of OutOfMemory errors in server logs and console output. To modify maximum memory, add the `USER_MEM_ARGS` environment variable to the domain `setDomainEnv` scripts.

- In Linux, add the following code to `$DOMAIN_HOME/bin/setDomainEnv.sh` (modify the memory sizes to meet your needs):

```
export USER_MEM_ARGS="-Xms128m -Xmx2048m -XX:MaxPermSize=512m"
```

- In Windows, add the following code to `$DOMAIN_HOME\bin\setDomainEnv.cmd` (modify the memory sizes to meet your needs):

```
set USER_MEM_ARGS=-Xms128m -Xmx2048m -XX:MaxPermSize=512m
```



Important: The minimum recommended permgen space for Web Logic when running Integrator ETL Server is 512 MB.



Note: You must restart the domain after modifying memory sizes.

13. Change HTTP Basic Authentication configuration to allow the Oracle Endeca Integrator ETL Server to authenticate users. Add the following XML element to the configuration file (`[domainHome]/config/config.xml`) just before the end tag of the `<security-configuration>` element:

```
<enforce-valid-basic-auth-credentials>false</enforce-valid-basic-auth-credentials>
```

After you create the WebLogic domain for Integrator ETL Server, then you can deploy the Integrator ETL Server and its license application. See [Installing Integrator ETL Server into a WebLogic domain on page 35](#).



Note: If the server fails after you enter the admin user name during startup, create a boot identity file for the admin server. For details, see "Creating a Boot Identity File for an Administration Server" on this page: http://docs.oracle.com/cd/E23943_01/web.1111/e13708/overview.htm#i1068520

Creating a Windows Service for the Integrator ETL Server

After installing the domain for Integrator ETL Server, you can create a Windows Service for the domain.

For details about creating a Windows Service for a WebLogic domain, see the WebLogic guide titled *Managing Server Startup and Shutdown* at http://docs.oracle.com/cd/E23943_01/web.1111/e13708/winservice.htm#i1186180

Installing Integrator ETL Server into a WebLogic domain

Use the WebLogic Administration Console to deploy the Integrator ETL Server web application to the WebLogic domain.

To deploy Integrator ETL Server to the Weblogic domain:

1. Download the Oracle Endeca Integrator ETL Server package for your operating system from the [Oracle Software Delivery Cloud](#).
 - (a) Start a browser and go to `https://edelivery.oracle.com`.
 - (b) Log in and accept the licensing and export agreements.

The Media Pack Search page is returned.
 - (c) In the **Select a Product Pack** field, choose `Oracle Endeca`,
 - (d) In the **Platform** field, choose the platform to which you want to install Integrator ETL Server.
 - (e) Click **Go**

A list of available Media Packs is returned.
 - (f) select the radio button for **Oracle Endeca Information Discovery Integrator ETL (3.1) Media Pack**. Click **Continue**.

The Oracle Endeca Information Discovery Integrator ETL (3.1) Media Pack page is returned.
 - (g) Click the **Download** button next to Oracle Endeca Information Discovery Integrator ETL (3.0).

The Integrator ETL media package is downloaded to your computer.
2. Unzip the package to a convenient location on the machine that runs WebLogic.
3. If your WebLogic domain is not already running, start it.
4. Start a browser. In the address field, enter `http://<machine_name>:8301/console`.
5. Log in to the WebLogic domain as the domain administrator, or another user with administration privileges.

WebLogic Server displays the Administration Console.
6. Click **Deployments**.

WebLogic Server displays the Summary of Deployments page.
7. Click **Install**.

WebLogic Server displays the Install Application Assistant page.
8. Enter the **Path** to the location where you unzipped the Integrator ETL package. Include the `\Integrator ETL Server Weblogic WAR` directory in the path.

The page is refreshed and the contents of the current location are displayed. The contents of the `\Integrator ETL Server Weblogic WAR` directory include `clover.war`.
9. Click the radio button for `clover.war`.
10. Click **Next**.

The Choose targeting style page is returned.
11. Select the **Install this deployment as an application** radio button. Click **Next**.

The Optional Settings page is returned.

12. Click **Finish**.

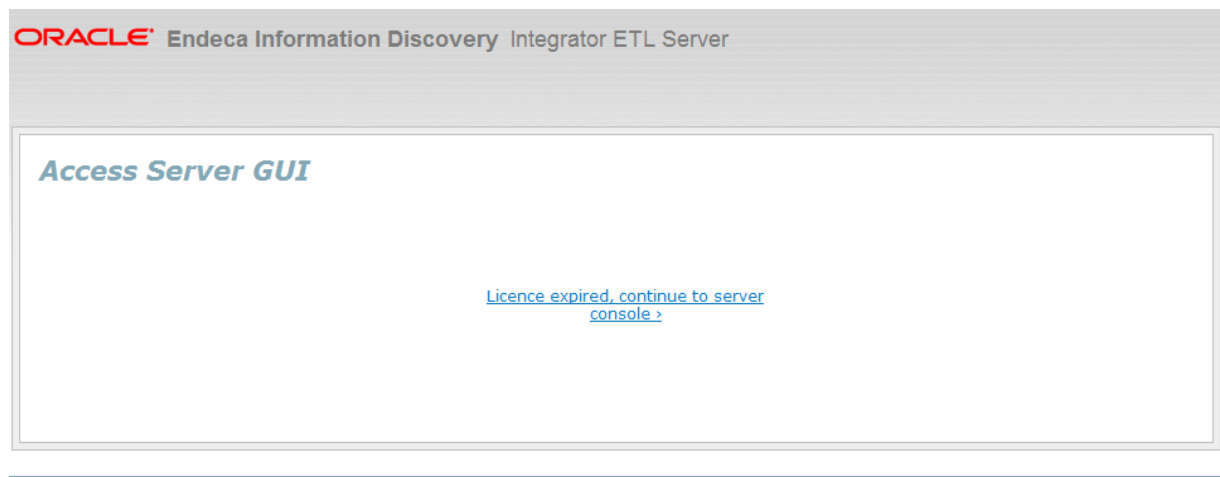
The Integrator ETL Server Web application (`clover.war`) is deployed. When the deployment is complete, the Summary of Deployments page is returned.



Note: If the deployment takes an extended period of time, and a blank page is returned, deployment of the Integrator ETL Server has probably exceeded available memory and deployment of the Web application has failed. Stop the server and configure the JVM memory settings. For more information, see Step 12 in [Creating and configuring a WebLogic domain for Integrator ETL Server on page 27](#).

13. WebLogic Server starts Web applications immediately after deployment. To validate that the Oracle Endeca Integrator ETL Server is functioning correctly, start a browser and enter the URL `http://localhost:8301/clover`.

The browser displays Oracle Endeca Integrator ETL Server GUI page with a "license expired" message.



Next, you need to:

- Configure the license for Integrator ETL Server. For details, see [Configuring the Integrator ETL Server license on page 37](#).
- Configure Integrator ETL Server. For details, see "Configuration of CloverETL Server on WebLogic" in the *Integrator ETL Server Guide*.

By default, Integrator ETL Server uses an embedded Apache Derby database. This database is suitable for testing and evaluation environments. In these environments, no additional configuration is necessary.

In production environments, use of the embedded Derby database is not recommended. In these environments, you should use a robust, production-quality database, such as an Oracle or MySQL database. For details about configuring these databases, see the *Integrator ETL Server Guide*



Note: If a 503 error occurs when you connect your browser to the Integrator ETL Server, you may need to create a boot identity file for the admin server. For details, see "Creating a Boot Identity File for an Administration Server" on this page: http://docs.oracle.com/cd/E23943_01/web.1111/e13708/overview.htm#i1068520

Configuring the Integrator ETL Server license

After installing the Integrator ETL Server web application into the WebLogic domain, you must configure the license.

Before configuring the license, create the WebLogic Server domain to which you want to install Integrator ETL Server.

You can configure the license either before or after installing the Integrator ETL Server web application.

You may want to stop the Integrator ETL Server domain before starting the license configuration.

The license for Integrator ETL Server is a file named `license.dat`, which is included in the Integrator ETL Server package for WebLogic. After unzipping the package, you may want to copy the file `license.dat` to a permanent location.

To configure the Integrator ETL Server license.

1. Using a simple text editor, create a file named `cloverServer.properties`.
2. In the file `cloverServer.properties`, add the property *license.file*. The value of this property is the path to the file `license.dat`. Save `cloverServer.properties`.



Note: Use slashes to specify the path to this file, regardless of the operating system to which you have installed WebLogic Server and Integrator ETL Server.

For example, in a Windows installation you placed `license.dat` in the Integrator ETL Server domain home directory, the value of the *license.file* property would be
`C:/Oracle/Middleware/user_projects/domains/endeca_integrator_server_domain/license.dat` :

```
license.file=C:/Oracle/Middleware/user_projects/domains/endeca_integrator_server_domain
/license.dat
```

3. In your domain home directory, edit the domain start file (`startWebLogic.sh` in Linux or `startWebLogic.cmd` in Windows). Add the path to the `cloverServer.properties` file to the Java options using the `-Dclover_config_file` property.

- In Linux:

```
export JAVA_OPTIONS="$JAVA_OPTIONS
-Dclover_config_file=Oracle/Middleware/user_projects/domains
/endeca_integrator_server_domain/cloverServer.properties"
```

- In Windows:

```
set JAVA_OPTIONS=%JAVA_OPTIONS%
-Dclover_config_file=C:/Oracle/Middleware/user_projects/domains
/endeca_integrator_server_domain/cloverServer.properties
```

4. Restart your WebLogic Server domain.
5. Start a browser and enter the URL `http://localhost:8301/clover`

Integrator ETL Server returns the login page.



The screenshot shows the login page for the Oracle Endeca Information Discovery Integrator ETL Server. The page has a grey header bar with the text "ORACLE® Endeca Information Discovery Integrator ETL Server". Below the header, the main content area is white and contains the title "Access Server GUI" in blue. In the center, there are two input fields labeled "Username" and "Password", followed by a "login" button. Below the input fields, there is a message: "Enter your credentials to access Integrator ETL Server Console. Please contact your system administrator in case you forgot your username or password." At the bottom of the page, there is a copyright notice: "Copyright © 2003,2013 Integrator ETL Server created by Oracle and/or its affiliates. All rights reserved."

To log in to Integrator ETL Server, enter `clover` in the **Username** field and `clover` in the **password** field.



Chapter 5

Installing Oracle Language Technology (OLT)

If you want to use the Language Detector component, you must install Oracle Language Technology.

The Oracle Language Technology package is included in the Integrator ETL package you download from Oracle eDelivery.

To install OLT, extract the package to a location on the machine where you install Integrator ETL Designer or Integrator ETL Server. The location must be accessible to Integrator ETL Designer or Integrator ETL Server.

Configuring Integrator ETL to use Oracle Language Technology

Configuring Integrator ETL to use Oracle Language Technology

After installing Oracle Language Technology, you must configure Integrator ETL to use it.

Configuring OLT in Integrator ETL Designer

To configure OLT for Integrator ETL Designer:

- Add the environment variable `OLT_HOME`. The value of this environment variable is the root directory of the OLT installation.
 - In Windows, add the Environment Variable to the System Properties.
 - In Linux, add the `OLT_HOME` variable to your `.bash_profile`.
- Add the `OLT/bin` directory to the path.
 - In Windows, go to System Properties and edit the Path environment variable. Add `%OLT_HOME%\bin` to the end of the Path. Remember to use semicolons to separate the new item in the Path.
 - In Linux, add `$OLT_HOME/bin` to the `LD_LIBRARY_PATH` environment variable in your `.bash_profile`.

Configuring OLT for Integrator ETL Server on WebLogic on Windows

Add the following code to the file `$MW_HOME\user_projects\domains\<integrator-server-domain>\bin\setDomainEnv.cmd`:

```
set OLT_HOME=<%OLT_HOME%>
set path=%path%;%OLT_HOME%\bin
```

For example, if you install OLT to the root of your C:\ drive, you would add

```
set OLT_HOME=C:\OLT
set path=%path%;%OLT_HOME%\bin
```

to `setDomainEnv.cmd`.

Configuring OLT for Integrator ETL Service on Weblogic on Linux

Add the following code to the file `$MW_HOME/user_projects/domains/<integrator-server-domain>/bin/setDomainEnv.sh`

```
export OLT_HOME=<%OLT_HOME%>
export LD_LIBRARY_PATH=$OLT_HOME/bin:$LD_LIBRARY_PATH
```

Configuring OLT for Integrator ETL Server on Tomcat on Windows

Add the following code to the file `$TOMCAT_ROOT\bin\setenv.cmd`:

```
set OLT_HOME=<%OLT_HOME%>
set path=%path%;%OLT_HOME%\bin
```

For example, if you install OLT to the root of your C:\ drive, you would add

```
set OLT_HOME=C:\OLT
set path=%path%;%OLT_HOME%\bin
```

to `setenv.cmd`.

Configuring OLT for Integrator ETL Server on Tomcat on Linux

Add the following code to the file `$TOMCAT_ROOT\bin\setenv.sh`:

```
export OLT_HOME=<%OLT_HOME%>
export LD_LIBRARY_PATH=$OLT_HOME/bin:$LD_LIBRARY_PATH
```




Chapter 6

Uninstalling Integrator ETL

This chapter describes how to uninstall Integrator ETL.

[Uninstalling Integrator ETL](#)

[Uninstalling Integrator ETL Server](#)

[Uninstalling Oracle Language Technology \(OLT\)](#)

Uninstalling Integrator ETL

This section contains the procedures for uninstalling the Integrator ETL package.

[Uninstalling Integrator ETL on Windows](#)

[Uninstalling Integrator ETL on Linux](#)

Uninstalling Integrator ETL on Windows

Follow these steps to uninstall Integrator ETL from your Windows client machine.

Although the uninstall procedure does not delete the workspace folder used by Integrator ETL, it is a good practice to back up your Integrator ETL projects before uninstalling.

If Integrator ETL is running, stop it before attempting to uninstall it.

To uninstall Integrator ETL from your Windows machine:

1. Change to the parent directory of the Integrator ETL installation directory.

If you install to the recommended location, the parent directory is
C:\Oracle\Endeca\Discovery\3.1.0.

2. Delete the Integrator ETL directory.

As mentioned above, the Integrator ETL workspace folder is not deleted after Step 2. If you do not delete the workspace directory, you can reuse it if you reinstall Integrator ETL.

Uninstalling Integrator ETL on Linux

Follow these steps to uninstall Integrator ETL from your Linux client machine.

Although the uninstall procedure does not delete the workspace directory for Integrator ETL, it is a good practice to back up your Integrator ETL projects before uninstalling.

To uninstall Integrator ETL from your Linux machine:

1. Change to the parent directory of the Integrator ETL install directory.
The default parent directory is `Oracle/Endeca/Discovery/3.1.0`.
2. Issue an `rm` command as in this example:

```
rm -rf IntegratorETL
```

As mentioned above, the Integrator ETL workspace folder is not deleted after Step 2. If you do not delete the workspace directory, you can reuse it if you reinstall Integrator ETL.

Uninstalling Integrator ETL Server

Uninstallation procedures are different on Tomcat and WebLogic Server.

[*Uninstalling Integrator ETL Server from Tomcat*](#)

[*Uninstalling Integrator ETL Server from WebLogic Server*](#)

Uninstalling Integrator ETL Server from Tomcat

Follow these steps to uninstall Integrator ETL Server from Tomcat.

To uninstall Integrator ETL Server from your Windows or Linux machine:

1. Shut down Tomcat.
2. Delete the Tomcat install directory.

Uninstalling Integrator ETL Server from WebLogic Server

Use the standard WebLogic Server procedure for uninstalling web applications to uninstall Integrator ETL Server from WebLogic Server.

For details, see "Delete Web applications" in the Oracle WebLogic Server Administration Console Online Help.

Uninstalling Oracle Language Technology (OLT)

To uninstall Oracle Language Technology, delete the OLT root directory and all of its contents.

You should also remove references to OLT from your environment variables and Path, or from your `.bash_profile` in Linux.

Index

I

- installation
 - Integrator ETL Linux client 14
 - Integrator ETL packages 12
 - Integrator ETL Windows client 13
 - requirements for Integrator ETL 6
- Integrator ETL
 - about 6
 - downloading 10
 - installing on Linux client 14
 - installing on Windows client 13
 - Integrator ETL Server 15
 - uninstalling from Linux 41
 - uninstalling from Windows 41
- Integrator ETL Server
 - Tomcat installation 15
 - uninstalling from Tomcat 42
 - uninstalling from WebLogic Server 42
 - Weblogic Server installation 35, 37
 - Windows Service 34

L

- license, configuring for WebLogic Server 37

O

- OLT
 - See Oracle Language Technology
- Oracle Language Technology 39
 - configuring 39

P

- prerequisites
 - Integrator ETL 6

S

- Sun JDK
 - downloading and installing for WebLogic Server 18
- system requirements
 - Integrator ETL 6
 - Integrator ETL hardware 8
 - Integrator ETL operating systems 8

U

- uninstalling
 - Integrator ETL on Linux 41
 - Integrator ETL on Windows 41
 - Integrator ETL Server from Tomcat 42
 - Integrator ETL Server from WebLogic Server 42

W

- WebLogic Server
 - creating a domain for Integrator ETL Server 27
 - downloading and installing 21
 - installing Integrator ETL Server 35, 37
 - installing the Sun JDK 18
- Windows Service
 - Integrator RTL Server 34