

Oracle® Documaker

iPPS Installation Guide

version 3.12.8

Part number: E41180-01

October 2013

Copyright © 2009, 2013, Oracle and/or its affiliates. All rights reserved.

The Programs (which include both the software and documentation) contain proprietary information; they are provided under a license agreement containing restrictions on use and disclosure and are also protected by copyright, patent, and other intellectual and industrial property laws. Reverse engineering, disassembly, or decompilation of the Programs, except to the extent required to obtain interoperability with other independently created software or as specified by law, is prohibited.

The information contained in this document is subject to change without notice. If you find any problems in the documentation, please report them to us in writing. This document is not warranted to be error-free. Except as may be expressly permitted in your license agreement for these Programs, no part of these Programs may be reproduced or transmitted in any form or by any means, electronic or mechanical, for any purpose.

If the Programs are delivered to the United States Government or anyone licensing or using the Programs on behalf of the United States Government, the following notice is applicable:

U.S. GOVERNMENT RIGHTS

Programs, software, databases, and related documentation and technical data delivered to U.S. Government customers are "commercial computer software" or "commercial technical data" pursuant to the applicable Federal Acquisition Regulation and agency-specific supplemental regulations. As such, use, duplication, disclosure, modification, and adaptation of the Programs, including documentation and technical data, shall be subject to the licensing restrictions set forth in the applicable Oracle license agreement, and, to the extent applicable, the additional rights set forth in FAR 52.227-19, Commercial Computer Software--Restricted Rights (June 1987). Oracle USA, Inc., 500 Oracle Parkway, Redwood City, CA 94065.

The Programs are not intended for use in any nuclear, aviation, mass transit, medical, or other inherently dangerous applications. It shall be the licensee's responsibility to take all appropriate fail-safe, backup, redundancy and other measures to ensure the safe use of such applications if the Programs are used for such purposes, and we disclaim liability for any damages caused by such use of the Programs.

The Programs may provide links to Web sites and access to content, products, and services from third parties. Oracle is not responsible for the availability of, or any content provided on, third-party Web sites. You bear all risks associated with the use of such content. If you choose to purchase any products or services from a third party, the relationship is directly between you and the third party. Oracle is not responsible for: (a) the quality of third-party products or services; or (b) fulfilling any of the terms of the agreement with the third party, including delivery of products or services and warranty obligations related to purchased products or services. Oracle is not responsible for any loss or damage of any sort that you may incur from dealing with any third party.

Oracle, JD Edwards, and PeopleSoft are registered trademarks of Oracle Corporation and/or its affiliates. Other names may be trademarks of their respective owners.

THIRD PARTY SOFTWARE NOTICES

This product includes software developed by Apache Software Foundation (<http://www.apache.org/>).

THIS SOFTWARE IS PROVIDED "AS IS" AND ANY EXPRESS OR IMPLIED WARRANTIES, INCLUDING, BUT NOT LIMITED TO, THE IMPLIED WARRANTIES OF MERCHANTABILITY AND FITNESS FOR A PARTICULAR PURPOSE ARE DISCLAIMED. IN NO EVENT SHALL THE AUTHOR OR CONTRIBUTORS BE LIABLE FOR ANY DIRECT, INDIRECT, INCIDENTAL, SPECIAL, EXEMPLARY, OR CONSEQUENTIAL DAMAGES (INCLUDING, BUT NOT LIMITED TO, PROCUREMENT OF SUBSTITUTE GOODS OR SERVICES; LOSS OF USE, DATA, OR PROFITS; OR BUSINESS INTERRUPTION) HOWEVER CAUSED AND ON ANY THEORY OF LIABILITY, WHETHER IN CONTRACT, STRICT LIABILITY, OR TORT (INCLUDING NEGLIGENCE OR OTHERWISE) ARISING IN ANY WAY OUT OF THE USE OF THIS SOFTWARE, EVEN IF ADVISED OF THE POSSIBILITY OF SUCH DAMAGE.

Copyright © 2000-2009 The Apache Software Foundation. All rights reserved.

This product includes software distributed via the Berkeley Software Distribution (BSD) and licensed for binary distribution under the Generic BSD license.

THIS SOFTWARE IS PROVIDED BY THE COPYRIGHT HOLDERS AND CONTRIBUTORS "AS IS" AND ANY EXPRESS OR IMPLIED WARRANTIES, INCLUDING, BUT NOT LIMITED TO, THE IMPLIED WARRANTIES OF MERCHANTABILITY AND FITNESS FOR A PARTICULAR PURPOSE ARE DISCLAIMED. IN NO EVENT SHALL THE COPYRIGHT OWNER OR CONTRIBUTORS BE LIABLE FOR ANY DIRECT, INDIRECT, INCIDENTAL, SPECIAL, EXEMPLARY, OR CONSEQUENTIAL DAMAGES (INCLUDING, BUT NOT LIMITED TO, PROCUREMENT OF SUBSTITUTE GOODS OR SERVICES; LOSS OF USE, DATA, OR PROFITS; OR BUSINESS INTERRUPTION) HOWEVER CAUSED AND ON ANY THEORY OF LIABILITY, WHETHER IN CONTRACT, STRICT LIABILITY, OR TORT (INCLUDING NEGLIGENCE OR OTHERWISE) ARISING IN ANY WAY OUT OF THE USE OF THIS SOFTWARE, EVEN IF ADVISED OF THE POSSIBILITY OF SUCH DAMAGE.

Copyright © 2009, Berkeley Software Distribution (BSD)

This product includes software developed by the JDOM Project (<http://www.jdom.org/>).

THIS SOFTWARE IS PROVIDED "AS IS" AND ANY EXPRESSED OR IMPLIED WARRANTIES, INCLUDING, BUT NOT LIMITED TO, THE IMPLIED WARRANTIES OF MERCHANTABILITY AND FITNESS FOR A PARTICULAR PURPOSE ARE DISCLAIMED. IN NO EVENT SHALL THE JDOM AUTHORS OR THE PROJECT CONTRIBUTORS BE LIABLE FOR ANY DIRECT, INDIRECT, INCIDENTAL, SPECIAL, EXEMPLARY, OR CONSEQUENTIAL DAMAGES (INCLUDING, BUT NOT LIMITED TO, PROCUREMENT OF SUBSTITUTE GOODS OR SERVICES; LOSS OF USE, DATA, OR PROFITS; OR BUSINESS INTERRUPTION) HOWEVER CAUSED AND ON ANY THEORY OF LIABILITY, WHETHER IN CONTRACT, STRICT LIABILITY, OR TORT (INCLUDING NEGLIGENCE OR OTHERWISE) ARISING IN ANY WAY OUT OF THE USE OF THIS SOFTWARE, EVEN IF ADVISED OF THE POSSIBILITY OF SUCH DAMAGE.

Copyright (C) 2000-2004 Jason Hunter & Brett McLaughlin. All rights reserved.

This product includes software developed by the Massachusetts Institute of Technology (MIT).

THE SOFTWARE IS PROVIDED "AS IS", WITHOUT WARRANTY OF ANY KIND, EXPRESS OR IMPLIED, INCLUDING BUT NOT LIMITED TO THE WARRANTIES OF MERCHANTABILITY, FITNESS FOR A PARTICULAR PURPOSE AND NONINFRINGEMENT. IN NO EVENT SHALL THE AUTHORS OR COPYRIGHT HOLDERS BE LIABLE FOR ANY CLAIM, DAMAGES OR OTHER LIABILITY, WHETHER IN AN ACTION OF CONTRACT, TORT OR OTHERWISE, ARISING FROM, OUT OF OR IN CONNECTION WITH THE SOFTWARE OR THE USE OR OTHER DEALINGS IN THE SOFTWARE.

Copyright © 2009 MIT

This product includes software developed by Jean-loup Gailly and Mark Adler. This software is provided 'as-is', without any express or implied warranty. In no event will the authors be held liable for any damages arising from the use of this software.

Copyright (c) 1995-2005 Jean-loup Gailly and Mark Adler

This software is based in part on the work of the Independent JPEG Group (<http://www.ijg.org/>).

This product includes software developed by the Dojo Foundation (<http://dojotoolkit.org>).

THIS SOFTWARE IS PROVIDED BY THE COPYRIGHT HOLDERS AND CONTRIBUTORS "AS IS" AND ANY EXPRESS OR IMPLIED WARRANTIES, INCLUDING, BUT NOT LIMITED TO, THE IMPLIED WARRANTIES OF MERCHANTABILITY AND FITNESS FOR A PARTICULAR PURPOSE ARE DISCLAIMED. IN NO EVENT SHALL THE COPYRIGHT OWNER OR CONTRIBUTORS BE LIABLE FOR ANY DIRECT, INDIRECT, INCIDENTAL, SPECIAL, EXEMPLARY, OR CONSEQUENTIAL DAMAGES (INCLUDING, BUT NOT LIMITED TO, PROCUREMENT OF SUBSTITUTE GOODS OR SERVICES; LOSS OF USE, DATA, OR PROFITS; OR BUSINESS INTERRUPTION) HOWEVER CAUSED AND ON ANY THEORY OF LIABILITY, WHETHER IN CONTRACT, STRICT LIABILITY, OR TORT (INCLUDING NEGLIGENCE OR OTHERWISE) ARISING IN ANY WAY OUT OF THE USE OF THIS SOFTWARE, EVEN IF ADVISED OF THE POSSIBILITY OF SUCH DAMAGE.

Copyright (c) 2005-2009, The Dojo Foundation. All rights reserved.

This product includes software developed by W3C.

Copyright © 2009 World Wide Web Consortium, (Massachusetts Institute of Technology, Institut National de Recherche en Informatique et en Automatique, Keio University). All Rights Reserved. (<http://www.w3.org/Consortium/Legal/>)

This product includes software developed by Mathew R. Miller (<http://www.bluecreststudios.com>).

Copyright (c) 1999-2002 ComputerSmarts. All rights reserved.

This product includes software developed by Shaun Wilde and distributed via Code Project Open License (<http://www.codeproject.com>).

THIS WORK IS PROVIDED "AS IS", "WHERE IS" AND "AS AVAILABLE", WITHOUT ANY EXPRESS OR IMPLIED WARRANTIES OR CONDITIONS OR GUARANTEES. YOU, THE USER, ASSUME ALL RISK IN ITS USE, INCLUDING COPYRIGHT INFRINGEMENT, PATENT INFRINGEMENT, SUITABILITY, ETC. AUTHOR EXPRESSLY DISCLAIMS ALL EXPRESS, IMPLIED OR STATUTORY WARRANTIES OR CONDITIONS, INCLUDING WITHOUT LIMITATION, WARRANTIES OR CONDITIONS OF MERCHANTABILITY, MERCHANTABLE QUALITY OR FITNESS FOR A PARTICULAR PURPOSE, OR ANY WARRANTY OF TITLE OR NON-INFRINGEMENT, OR THAT THE WORK (OR ANY PORTION THEREOF) IS CORRECT, USEFUL, BUG-FREE OR FREE OF VIRUSES. YOU MUST PASS THIS DISCLAIMER ON WHENEVER YOU DISTRIBUTE THE WORK OR DERIVATIVE WORKS.

This product includes software developed by Chris Maunder and distributed via Code Project Open License (<http://www.codeproject.com>).

THIS WORK IS PROVIDED "AS IS", "WHERE IS" AND "AS AVAILABLE", WITHOUT ANY EXPRESS OR IMPLIED WARRANTIES OR CONDITIONS OR GUARANTEES. YOU, THE USER, ASSUME ALL RISK IN ITS USE, INCLUDING COPYRIGHT INFRINGEMENT, PATENT INFRINGEMENT, SUITABILITY, ETC. AUTHOR EXPRESSLY DISCLAIMS ALL EXPRESS, IMPLIED OR STATUTORY WARRANTIES OR CONDITIONS, INCLUDING WITHOUT LIMITATION, WARRANTIES OR CONDITIONS OF MERCHANTABILITY, MERCHANTABLE QUALITY OR FITNESS FOR A PARTICULAR PURPOSE, OR ANY WARRANTY OF TITLE OR NON-INFRINGEMENT, OR THAT THE WORK (OR ANY PORTION THEREOF) IS CORRECT, USEFUL, BUG-FREE OR FREE OF VIRUSES. YOU MUST PASS THIS DISCLAIMER ON WHENEVER YOU DISTRIBUTE THE WORK OR DERIVATIVE WORKS.

This product includes software developed by PJ Arends and distributed via Code Project Open License (<http://www.codeproject.com>).

THIS WORK IS PROVIDED "AS IS", "WHERE IS" AND "AS AVAILABLE", WITHOUT ANY EXPRESS OR IMPLIED WARRANTIES OR CONDITIONS OR GUARANTEES. YOU, THE USER, ASSUME ALL RISK IN ITS USE, INCLUDING COPYRIGHT INFRINGEMENT, PATENT INFRINGEMENT, SUITABILITY, ETC. AUTHOR EXPRESSLY DISCLAIMS ALL EXPRESS, IMPLIED OR STATUTORY WARRANTIES OR CONDITIONS, INCLUDING WITHOUT LIMITATION, WARRANTIES OR CONDITIONS OF MERCHANTABILITY, MERCHANTABLE QUALITY OR FITNESS FOR A PARTICULAR PURPOSE, OR ANY WARRANTY OF TITLE OR NON-INFRINGEMENT, OR THAT THE WORK (OR ANY PORTION THEREOF) IS CORRECT, USEFUL, BUG-FREE OR FREE OF VIRUSES. YOU MUST PASS THIS DISCLAIMER ON WHENEVER YOU DISTRIBUTE THE WORK OR DERIVATIVE WORKS.

This product includes software developed by Erwin Tratar. This source code and all accompanying material is copyright (c) 1998-1999 Erwin Tratar. All rights reserved.

THIS SOFTWARE IS PROVIDED "AS IS" WITHOUT EXPRESS OR IMPLIED WARRANTY. USE IT AT YOUR OWN RISK! THE AUTHOR ACCEPTS NO LIABILITY FOR ANY DAMAGE/LOSS OF BUSINESS THAT THIS PRODUCT MAY CAUSE.

This product includes software developed by Sam Leffler of Silicon Graphics.

THE SOFTWARE IS PROVIDED "AS-IS" AND WITHOUT WARRANTY OF ANY KIND, EXPRESS, IMPLIED OR OTHERWISE, INCLUDING WITHOUT LIMITATION, ANY WARRANTY OF MERCHANTABILITY OR FITNESS FOR A PARTICULAR PURPOSE.

IN NO EVENT SHALL SAM LEFFLER OR SILICON GRAPHICS BE LIABLE FOR ANY SPECIAL, INCIDENTAL, INDIRECT OR CONSEQUENTIAL DAMAGES OF ANY KIND, OR ANY DAMAGES WHATSOEVER RESULTING FROM LOSS OF USE, DATA OR PROFITS, WHETHER OR NOT ADVISED OF THE POSSIBILITY OF DAMAGE, AND ON ANY THEORY OF LIABILITY, ARISING OUT OF OR IN CONNECTION WITH THE USE OR PERFORMANCE OF THIS SOFTWARE

Copyright (c) 1988-1997 Sam Leffler
Copyright (c) 1991-1997 Silicon Graphics, Inc.

This product includes software developed by Guy Eric Schalnat, Andreas Dilger, Glenn Randers-Pehrson (current maintainer), and others. (<http://www.libpng.org>)

The PNG Reference Library is supplied "AS IS". The Contributing Authors and Group 42, Inc. disclaim all warranties, expressed or implied, including, without limitation, the warranties of merchantability and of fitness for any purpose. The Contributing Authors and Group 42, Inc. assume no liability for direct, indirect, incidental, special, exemplary, or consequential damages, which may result from the use of the PNG Reference Library, even if advised of the possibility of such damage.

This product includes software components distributed by the Cryptix Foundation.

THIS SOFTWARE IS PROVIDED BY THE CRYPTIX FOUNDATION LIMITED AND CONTRIBUTORS "AS IS" AND ANY EXPRESS OR IMPLIED WARRANTIES, INCLUDING, BUT NOT LIMITED TO, THE IMPLIED WARRANTIES OF MERCHANTABILITY AND FITNESS FOR A PARTICULAR PURPOSE ARE DISCLAIMED. IN NO EVENT SHALL THE CRYPTIX FOUNDATION LIMITED OR CONTRIBUTORS BE LIABLE FOR ANY DIRECT, INDIRECT, INCIDENTAL, SPECIAL, EXEMPLARY, OR CONSEQUENTIAL DAMAGES (INCLUDING, BUT NOT LIMITED TO, PROCUREMENT OF SUBSTITUTE GOODS OR SERVICES; LOSS OF USE, DATA, OR PROFITS; OR BUSINESS INTERRUPTION) HOWEVER CAUSED AND ON ANY THEORY OF LIABILITY, WHETHER IN CONTRACT, STRICT LIABILITY, OR TORT (INCLUDING NEGLIGENCE OR OTHERWISE) ARISING IN ANY WAY OUT OF THE USE OF THIS SOFTWARE, EVEN IF ADVISED OF THE POSSIBILITY OF SUCH DAMAGE

Copyright © 1995-2005 The Cryptix Foundation Limited. All rights reserved.

This product includes software components distributed by Sun Microsystems.

This software is provided "AS IS," without a warranty of any kind. ALLEXPRESS OR IMPLIED CONDITIONS, REPRESENTATIONS AND WARRANTIES, INCLUDING ANY IMPLIED WARRANTY OF MERCHANTABILITY, FITNESS FOR A PARTICULAR PURPOSE OR NON-INFRINGEMENT, ARE HEREBY EXCLUDED. SUN AND ITS LICENSORS SHALL NOT BE LIABLE FOR ANY DAMAGES SUFFERED BY LICENSEE AS A RESULT OF USING, MODIFYING OR DISTRIBUTING THE SOFTWARE OR ITS DERIVATIVES. IN NO EVENT WILL SUN OR ITS LICENSORS BE LIABLE FOR ANY LOST REVENUE, PROFIT OR DATA, OR FOR DIRECT, INDIRECT, SPECIAL, CONSEQUENTIAL, INCIDENTAL OR PUNITIVE DAMAGES, HOWEVER CAUSED AND REGARDLESS OF THE THEORY OF LIABILITY, ARISING OUT OF THE USE OF OR INABILITY TO USE SOFTWARE, EVEN IF SUN HAS BEEN ADVISED OF THE POSSIBILITY OF SUCH DAMAGES.

Copyright (c) 1998 Sun Microsystems, Inc. All Rights Reserved.

This product includes software components distributed by Dennis M. Sosnoski.

THIS SOFTWARE IS PROVIDED BY THE COPYRIGHT HOLDERS AND CONTRIBUTORS "AS IS" AND ANY EXPRESS OR IMPLIED WARRANTIES, INCLUDING, BUT NOT LIMITED TO, THE IMPLIED WARRANTIES OF MERCHANTABILITY AND FITNESS FOR A PARTICULAR PURPOSE ARE DISCLAIMED. IN NO EVENT SHALL THE COPYRIGHT OWNER OR CONTRIBUTORS BE LIABLE FOR ANY DIRECT, INDIRECT, INCIDENTAL, SPECIAL, EXEMPLARY, OR CONSEQUENTIAL DAMAGES (INCLUDING, BUT NOT LIMITED TO, PROCUREMENT OF SUBSTITUTE GOODS OR SERVICES; LOSS OF USE, DATA, OR PROFITS; OR BUSINESS INTERRUPTION) HOWEVER CAUSED AND ON ANY THEORY OF LIABILITY, WHETHER IN CONTRACT, STRICT LIABILITY, OR TORT (INCLUDING NEGLIGENCE OR OTHERWISE) ARISING IN ANY WAY OUT OF THE USE OF THIS SOFTWARE, EVEN IF ADVISED OF THE POSSIBILITY OF SUCH DAMAGE.

Copyright © 2003-2007 Dennis M. Sosnoski. All Rights Reserved

It also includes materials licensed under Apache 1.1 and the following XPP3 license

THIS SOFTWARE IS PROVIDED "AS IS" AND ANY EXPRESSED OR IMPLIED WARRANTIES, INCLUDING, BUT NOT LIMITED TO, THE IMPLIED WARRANTIES OF MERCHANTABILITY AND FITNESS FOR A PARTICULAR PURPOSE ARE DISCLAIMED. IN NO EVENT SHALL THE COPYRIGHT OWNER OR CONTRIBUTORS BE LIABLE FOR ANY DIRECT, INDIRECT, INCIDENTAL, SPECIAL, EXEMPLARY, OR CONSEQUENTIAL DAMAGES (INCLUDING, BUT NOT LIMITED TO, PROCUREMENT OF SUBSTITUTE GOODS OR SERVICES; LOSS OF USE, DATA, OR PROFITS; OR BUSINESS INTERRUPTION) HOWEVER CAUSED AND ON ANY THEORY OF LIABILITY, WHETHER IN CONTRACT, STRICT LIABILITY, OR TORT (INCLUDING NEGLIGENCE OR OTHERWISE) ARISING IN ANY WAY OUT OF THE USE OF THIS SOFTWARE, EVEN IF ADVISED OF THE POSSIBILITY OF SUCH DAMAGE.

Copyright © 2002 Extreme! Lab, Indiana University. All Rights Reserved

This product includes software components distributed by CodeProject. This software contains material that is © 1994-2005 The Ultimate Toolbox, all rights reserved.

This product includes software components distributed by Geir Landro.

Copyright © 2001-2003 Geir Landro (drop@destroydrop.com) JavaScript Tree - www.destroydrop.com/hjavadscripts/tree/version 0.96

This product includes software components distributed by the Hypersonic SQL Group.

THIS SOFTWARE IS PROVIDED BY THE COPYRIGHT HOLDERS AND CONTRIBUTORS "AS IS" AND ANY EXPRESS OR IMPLIED WARRANTIES, INCLUDING, BUT NOT LIMITED TO, THE IMPLIED WARRANTIES OF MERCHANTABILITY AND FITNESS FOR A PARTICULAR PURPOSE ARE DISCLAIMED. IN NO EVENT SHALL THE COPYRIGHT OWNER OR CONTRIBUTORS BE LIABLE FOR ANY DIRECT, INDIRECT, INCIDENTAL, SPECIAL, EXEMPLARY, OR CONSEQUENTIAL DAMAGES (INCLUDING, BUT NOT LIMITED TO, PROCUREMENT OF SUBSTITUTE GOODS OR SERVICES; LOSS OF USE, DATA, OR PROFITS; OR BUSINESS INTERRUPTION) HOWEVER CAUSED AND ON ANY THEORY OF LIABILITY, WHETHER IN CONTRACT, STRICT LIABILITY, OR TORT (INCLUDING NEGLIGENCE OR OTHERWISE) ARISING IN ANY WAY OUT OF THE USE OF THIS SOFTWARE, EVEN IF ADVISED OF THE POSSIBILITY OF SUCH DAMAGE

Copyright © 1995-2000 by the Hypersonic SQL Group. All Rights Reserved

This product includes software components distributed by the International Business Machines Corporation and others.

THE SOFTWARE IS PROVIDED "AS IS", WITHOUT WARRANTY OF ANY KIND, EXPRESS OR IMPLIED, INCLUDING BUT NOT LIMITED TO THE WARRANTIES OF MERCHANTABILITY, FITNESS FOR A PARTICULAR PURPOSE AND NONINFRINGEMENT. IN NO EVENT SHALL THE AUTHORS OR COPYRIGHT HOLDERS BE LIABLE FOR ANY CLAIM, DAMAGES OR OTHER LIABILITY, WHETHER IN AN ACTION OF CONTRACT, TORT OR OTHERWISE, ARISING FROM, OUT OF OR IN CONNECTION WITH THE SOFTWARE OR THE USE OR OTHER DEALINGS IN THE SOFTWARE.

Copyright (c) 1995-2009 International Business Machines Corporation and others. All rights reserved.

This product includes software components distributed by the University of Coimbra.

University of Coimbra distributes this software in the hope that it will be useful but DISCLAIMS ALL WARRANTIES WITH REGARD TO IT, including all implied warranties of MERCHANTABILITY or FITNESS FOR A PARTICULAR PURPOSE. In no event shall University of Coimbra be liable for any special, indirect or consequential damages (or any damages whatsoever) resulting from loss of use, data or profits, whether in an action of contract, negligence or other tortious action, arising out of or in connection with the use or performance of this software.

Copyright (c) 2000 University of Coimbra, Portugal. All Rights Reserved.

This product includes software components distributed by Steve Souza.

THIS SOFTWARE IS PROVIDED BY THE AUTHOR AND CONTRIBUTORS "AS IS" AND ANY EXPRESS OR IMPLIED WARRANTIES, INCLUDING, BUT NOT LIMITED TO, THE IMPLIED WARRANTIES OF MERCHANTABILITY AND FITNESS FOR A PARTICULAR PURPOSE ARE DISCLAIMED. IN NO EVENT SHALL THE COPYRIGHT OWNER OR CONTRIBUTORS BE LIABLE FOR ANY DIRECT, INDIRECT, INCIDENTAL, SPECIAL, EXEMPLARY, OR CONSEQUENTIAL DAMAGES (INCLUDING, BUT NOT LIMITED TO, PROCUREMENT OF SUBSTITUTE GOODS OR SERVICES; LOSS OF USE, DATA, OR PROFITS; OR BUSINESS INTERRUPTION) HOWEVER CAUSED AND ON ANY THEORY OF LIABILITY, WHETHER IN CONTRACT, STRICT LIABILITY, OR TORT (INCLUDING NEGLIGENCE OR OTHERWISE) ARISING IN ANY WAY OUT OF THE USE OF THIS SOFTWARE, EVEN IF ADVISED OF THE POSSIBILITY OF SUCH DAMAGE.

Copyright © 2002, Steve Souza (admin@jamonapi.com). All Rights Reserved.

This product includes software developed by the OpenSymphony Group (<http://www.opensymphony.com/>.)"

Copyright © 2001-2004 The OpenSymphony Group. All Rights Reserved.

PANTONE (R) Colors displayed in the software application or in the user documentation may not match PANTONE-identified standards. Consult current PANTONE Color Publications for accurate color. PANTONE(R) and other Pantone LLC trademarks are the property of Pantone LLC. (C) Pantone LLC, 2011.

Pantone LLC is the copyright owner of color data and/or software which are licensed to Oracle to distribute for use only in combination with Oracle Documaker. PANTONE Color Data and/or Software shall not be copied onto another disk or into memory unless part of the execution of Oracle Documaker.

Contents

Setting Up iPPS 10

Requirements 11

 Add iPPS User to the system 12

 Installing Docupresentment and iPPS version 3.12 13

Setting Up Windows 2003 Server 14

Web Site Tuning for Windows 2003 16

Tuning Component Services 17

Troubleshooting 20

Chapter 1

Setting Up iPPS

This document outlines the requirements for running iPPS version 3.12. Also included are installation instructions for Docupresentment and iPPS plus steps for setting up Windows 2003 Server to run iPPS.

- [Requirements on page 12](#)
- [Installing Docupresentment and iPPS version 3.12 on page 14](#)
- [Setting Up Windows 2003 Server on page 15](#)

REQUIREMENTS

Your computer must have certain software and hardware components to run iPPS. This table outlines those requirements:

Basic requirements

	Requirements
CPU	Pentium III or higher
Operating systems	Windows XP, Windows 7, Windows 2003 or Windows 2008 Server
Memory*	256MB RAM
Hard disk**	400 MB free
Other components	Keyboard and mouse or compatible pointing device
Monitor	Color SVGA monitor

* Additional memory, while not required, will improve system performance.

** The amount of hard disk space you will need depends mainly on the volume of data you must process.

Client requirements

In addition to the basic requirements, each client should have the following:

- WIP Edit, version 11.3, patch 05 or higher
- Windows XP Professional or Windows 7
- Adobe Acrobat Reader 7.0 or higher
- Microsoft Internet Explorer 6.0 or higher with these Internet security options enabled:
 - Run ActiveX controls and plug-ins
 - Script ActiveX controls safe for scripting
 - Allow cookies that are stored on your computer
 - Allow per-session cookies (not stored)
 - Active Scripting

Server requirements

In addition to the basic and client requirements, the computer you will use as a server should be configured with the following:

- Internet Information Services (IIS) with World Wide Web Server and File Transfer Protocol (FTP) Server
- A database such as Microsoft Access (Access 97 or higher), xBase, or SQL
- Visual Basic runtimes
- Microsoft XML Core Services 4.0 SP2 (msxml4) for iPPS 3.11 and below
- Microsoft XML Core Services 6.0 (msxml6) for iPPS 3.12 and higher
- ADO 2.6 or later
- A static IP address

- Web server** For the web server, you should have:
- Minimum Pentium III with 512MB of RAM
 - Windows 2003 Server
 - Component Services or Microsoft Transaction Server
 - Microsoft Visual Basic 6 Runtimes (included/installed with iPPS version 3.1 or higher)
 - Microsoft Active Data Objects 2.6 or higher (included/installed with iPPS version 3.1 or higher)
 - IBM WebSphere MQ (formerly MQSeries) or Microsoft Message Queue client
 - ODBC-compliant database (Oracle, SQL Server, or DB2 recommended for production)
 - Microsoft's XML parser:
 - MSXML 4.0 sp2 for iPPS version 3.11 and below
 - MSXML 6.0 for iPPS version 3.12 and higher
 - Docupresentment version 10.2 (IDS version 1.8) or higher

Additional recommendations

We also recommend these additional products for your iPPS implementation:

Product	Description
Documaker	Use for rules publishing.

ADD IPPS USER TO THE SYSTEM

You need to add a user to the system, before installing the Installing Docupresentment and iPPS version 3.12. to add a user, follow these steps below:

- 1** Start the Server Manager and click Start<<Administrative Tools <<Computer Management<<Local Users and Groups.
- 2** Right click on Users, point to “New” to Add a new iPPSUser.
- 3** Right Click on iPPSUser and select the option “Properties”.
- 4** In the propoerties dialog box, add Member of IIS_USRS/IIS_WPG and Distributed COM User.

The created iPPSUser will be used as an owner of processes related to iPPS COM+.

INSTALLING DOCUPRESENTM ENT AND IPPS VERSION 3.12

Make sure your system meets or exceeds all of the software and hardware requirements listed in [Requirements on page 12](#), then follow these steps to install Docupresentment and iPPS version 3.12:

- 1 Install Java Runtime Environment (JRE) version 5.0 or higher.
- 2 Install Docupresentment version 2.2 in the docserv directory (Server, Shared Objects, and Client).
- 3 Install Amergen.exe from iPPSp_{xx} directory. When prompted, point to the docserv\mstrres directory.

NOTE: Where _{xx} equals the patch number.

- 4 Install iPPS Resources version 3.12 (iPPSResources3.12p_{xx}.exe) in the default directory.
- 5 Install iPPSDLL3.12p_{xx}.exe in the default directory.
- 6 Install msxml.msi to the default directory. You can download this file from Microsoft MSXML6.
- 7 Install the WipEdit version corresponding to Shared Objects.

NOTE: Refer to *Using Oracle Insurance's Web-Enabled Solutions* for special considerations on Windows 2003 Server.

- 8 Reboot your computer.
- 9 Start Docupresentment for testing:
 - At a command prompt, go to the docserv directory.
 - Enter **docserver.bat** to start Docupresentment.
- 10 Test your ability to communicate with Docupresentment:
 - Go to the docserv directory, then run the dsicotb.exe program.
 - Click the Execute button. You should see a list of libraries on the right panel if successful.
- 11 To see the item in iPPS, go to this URL:
<http://localhost/IPPS312/>
and log in as *demo1*. No password is required.

SETTING UP WINDOWS 2003 SERVER

If the required applications were not installed with Windows 2003 Server, follow these steps to set up the applications you need to run iPPS:

- 1** From Control Panel, choose the Add or Remove Programs option. Then select the Add/Remove Windows Components option.
- 2** Install the following under Application Server:
 - *Internet Information Services (IIS)*
 - *ASP.net*
 - *Application Server Console*
 - *Enable Network COM+ Access*
 - *Message Queuing*
- 3** Install the following under IIS:
 - Common Files
 - File Transfer Protocol
 - World Wide Web Service
 - IIS Service Manager
- 4** Install the following under World Wide Web Service.
 - Active Server Pages
 - Server Side Includes
 - World Wide Web Service

Configuring Internet Information Services

- 1** Open “Internet Information Services (IIS) Manager”. Right Click on “Application Pools”, point to New and select “Application Pool” to add application pool.
- 2** In the New Add Application Pool dialog, enter “iPPSAppPool” as the Application Pool ID and Select the application pool option to “Use default settings for new application pool”.
- 3** Click Ok..
- 4** In the Internet Information Services (IIS) Manager window, right click on the newly created “iPPSAppPool” and select the Properties option.
- 5** In the iPPSAppPool window, go to Identity tab, select the configurable option and enter the iPPS user name and password or click Browse to choose the ipps user name..

Note

The user name and password is of the newly created iPPSUser that we have created. Refer to Add iPPS User to the system on page 13.

- 6** Click Apply to implement the settings.

- 7** Click Ok.
- 8** Go to Administrative tools>Component Services. Expand the Component services and click My Computer and select the COM+ Applications option.
- 9** Right Click on the COM+ component for iPPS, go to the properties and select identity tab and choose or browse for iPPS user.
- 10** Create 2 directories i.e.:- import and spool under “C:\Inetpub\wwwroot_iPPS312”.
- 11** Right Click on _iPPS312and _iPPS312_Services folder in C:\Inetpub\wwwroot\ and give full permission to the iPPSUser.
- 12** Right click on docserv directory in C:\ and select the full permission option for the iPPSUser.
- 13** Go to Docupresenment Watchdog Service, right click and go to the properties Logon tab and select Logon from the account and browse for iPPSUser, enter the password and click apply.
- 14** Restart the service to implement the changes.
- 15** Modify “C:\Inetpub\wwwroot_iPPS312\global.xml” to match your setup.
 - In global.xml, the LOGLOCATION must have a valid value.
 - The entry iMRLDB should point to the valid mrl.mdb file.
 - The PUTURL value should have the IP address of the installed machine.
- 16** Go back to Internet Information Services(IIS) Manager,click on Default Web Site link and expand the node to view the iPPS312 and iPPS312Service.
- 17** Right click on iPPS312 and iPPS312 Service and slect Properties.
- 18** In the iPPS31 and iPS312 Service Properties box, select the Application pool as Switch pool and click Ok..
- 19** In the iPPS312 and iPPS312 Service Properties box, go to Directory Security tab and click Edit. The Authentication Methods box is displayed.
- 20** In the Authentication Methods box, Enter/change the user to iPPSUser and click Ok..
- 21** In the iPPS312 and iPPS312 Service Properties box, go to the Virtual Directory tab,click the configuration button. In the Application Configuration box, click Option tab and select the Enable Parents Paths option.
- 22** Click Ok.
- 23** Go back to Internet Information Services(IIS) Manager, and right click on iPPS312 and iPPS312 Service and select Edit Permission.
- 24** Add iPPSUser and set “Permission for iPPSUser” to “Full control” and Click Apply.
- 25** Restart IIS by issuing the command iisreset.

WEB SITE TUNING FOR WINDOWS 2003

After you install iPPS on Windows 2003 Server, you must do the following steps:

- 1** From IIS Manager, turn on ASP. Then click the Web Service Extensions.
- 2** Enable Active Server Pages. Then enable Server Side Includes and click Ok.

TUNING COMPONENT SERVICES

For better performance, follow these steps to tune Component Services:

NOTE: You may also want to read this KnowledgeBase article:

<http://support.microsoft.com/kb/810153>

- 1** From Component Services MMC, disable security checks by first clicking the Component Services option and then choosing the Computers, My Computer, COM+ Applications option.
- 2** Right-click on *Oracle_iPPS312 Package*, click the Properties tab, then click the Security tab.
- 3** Uncheck the Enforce Access Checks for this Application option and click Ok.

You can run IIS as either a library or server application. Running as a server application is the default. If you are using IIS version 6.0 or higher, running as a library application is recommended. For more information, see [Running as a Server Application on page 18](#).

Running as a Server Application

If you decide to run as a server application instead of a Library application, follow these steps:

- 1** From Component Services MMC, set the identity for the Server Application option by first clicking the Component Services and then choosing the Computers, My Computer, COM+ Applications option.
- 2** Right-click on *Oracle_iPPS312 Package*, click the Properties tab, then click the Identity tab.
- 3** Click This User and then add the user as iPPSUser who has Admin rights. You can change this later, but this user will need access to the queuing system (MSMQ, MQSeries). When you finish, click Ok.

Running as a Library Application

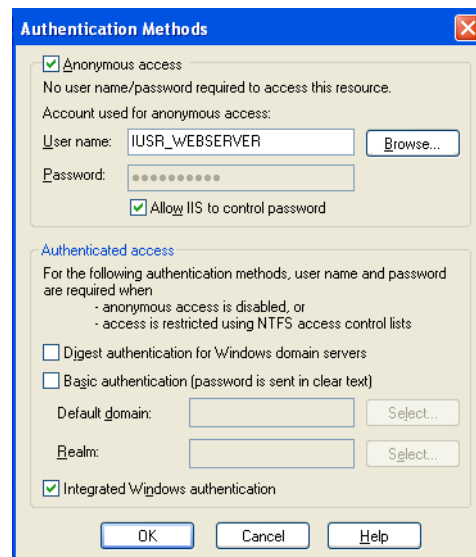
If you are using IIS version 6.0 or higher, you may want to reconsider some of COM+ guidelines. For instance, before Windows Server 2003, COM+ application components were by default configured to run out-of-processes from the caller. The default for COM+ applications is to run as server applications, executing in a DLLHost.exe process called into from the object instantiate or over DCOM.

This means that for every method call there are extra threads running on the system and every call to a method must be marshaled across process boundaries. While the effect on performance is not noticeable on implementations with low request/transaction rates, on a high volume, large multi-processor implementation, this kind of overhead can greatly affect performance.

If you are using Windows Server 2003, it is best to change the default configuration for a COM+ server application to *Library application*. When running as a library application, the user's context is the identity being used.

You can change the identity for the web site by changing the authentication methods on the virtual directory, as shown here:

Change the identity for the web site on the Authentication Methods window



The user defined for anonymous or authenticated access must have...

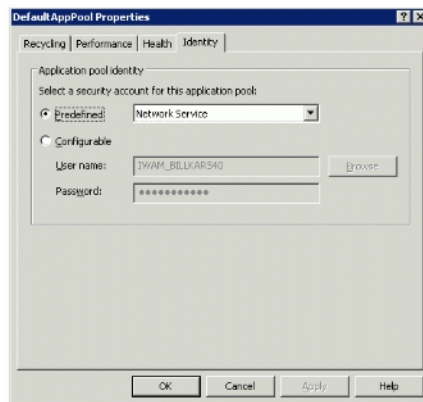
- Write access to the <STATEMGT> location from the global.xml
- Write access the <LOGLOCATION> from the global.xml
- Full control access to the MSMQ queues (request and resultq)

All Application Pools Running with Unique Identity

Another benefit of IIS 6.0 is that the administrator gets to assign the base identity of a worker process. This does not mean custom code running in the worker process runs with this identity. IIS still impersonates the caller when it calls custom code (ASP, ASP.NET, ISAPI) if the caller is authenticated.

If the caller is anonymous, IIS runs the custom code under the IUSR_<computername> identity. The application pool identity is used when the IIS code runs in the worker process.

The default identity is the account Network Service, which has rights approximating a member of the users group of a server. You can, however, set this identity on a per application pool basis.



When running as a library application, the application pool identity must have...

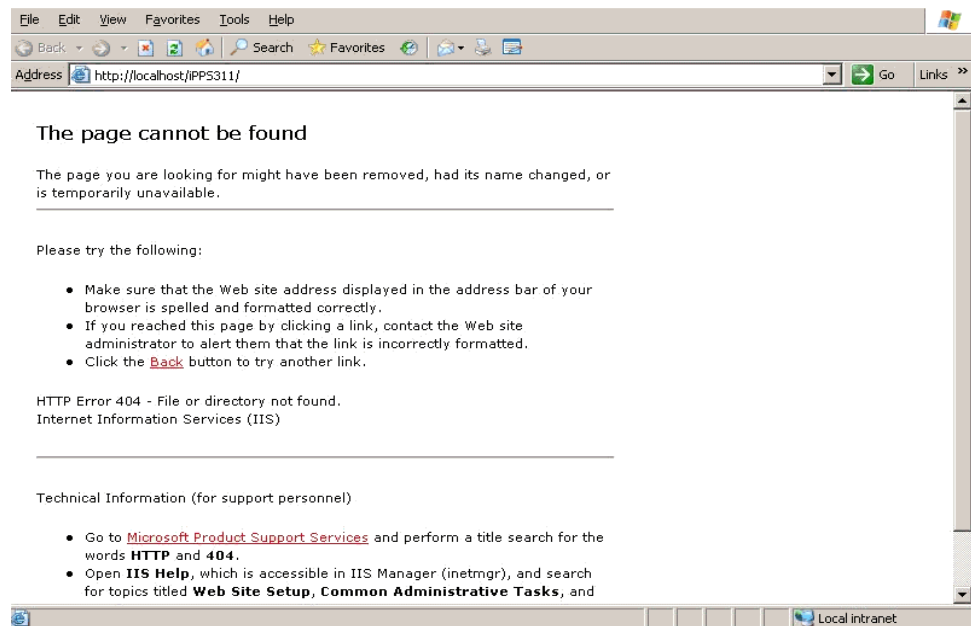
- Read access to the iUserDB definition. The default install uses an Microsoft Access database located in the \iPPS\user folder.
- Read access to the docserv directory.

For more information, see:

<http://www.microsoft.com/technet/prodtechnol/windowsserver2003/technologies/webapp/iis/iis6perf.msp>

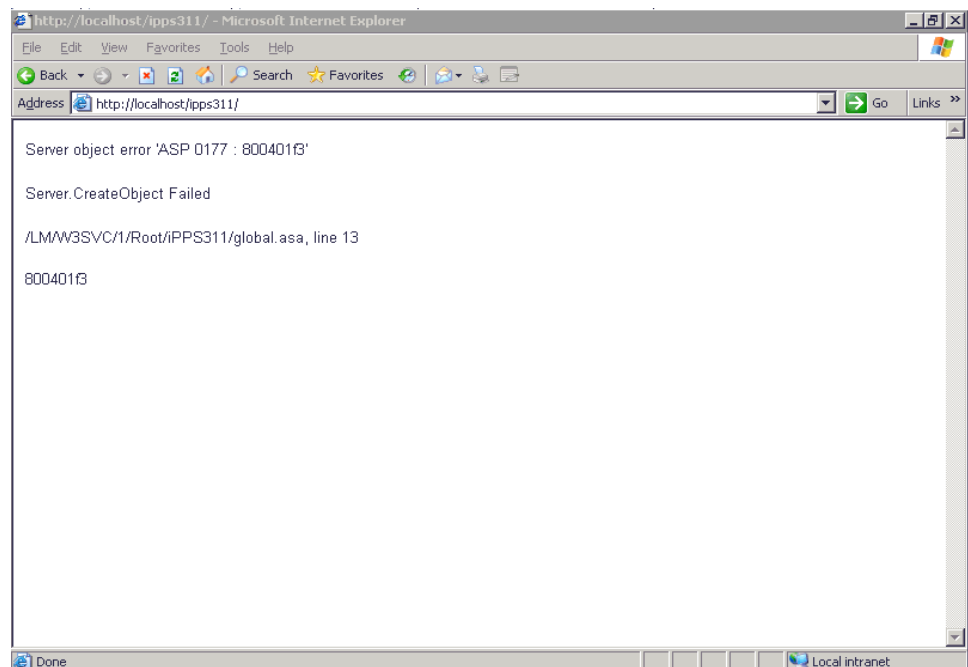
TROUBLESHOOTING

If you get a page cannot be found error, such as the one shown here:



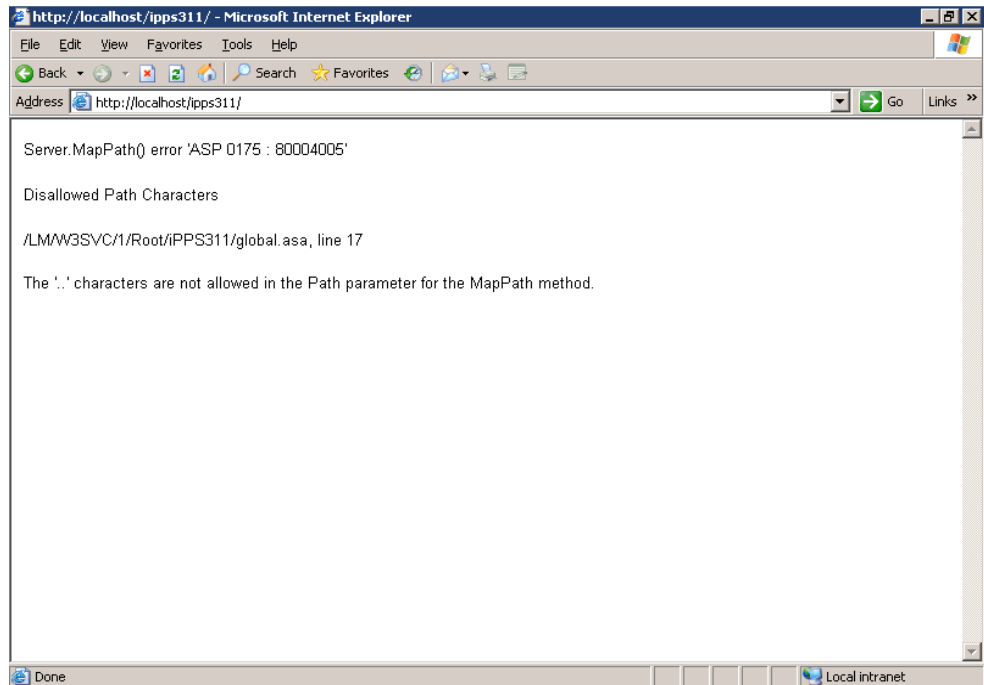
See [Web Site Tuning for Windows 2003 on page 17](#) for more information on tuning IIS.

Once you enable ASP and Server Side Includes, you may get this error:



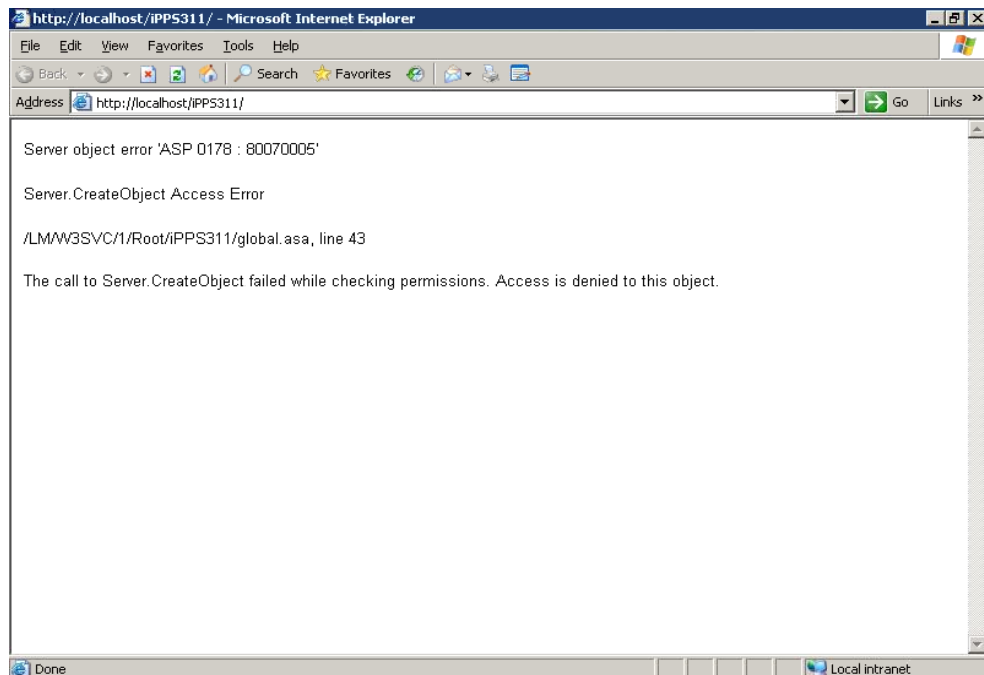
If so, install MSXML 4.0 SP2 from Microsoft.

If you get this error:



See [Web Site Tuning for Windows 2003 on page 17](#) for more information on tuning IIS.

If you get this error next:



See [Tuning Component Services on page 18](#) for more information.