

Installation Manual
Oracle Financial Services Basel Regulatory Capital Internal
Ratings Based Approach
Release 6.0.0.0.0

April 2013



Table of Contents

1. GETTING STARTED	2
1.1 ORACLE FINANCIAL SERVICES ANALYTICAL APPLICATIONS INFRASTRUCTURE OVERVIEW	2
1.2 ANALYTICAL APPLICATIONS OVERVIEW	2
1.3 AUDIENCE	2
1.4 SCOPE	2
1.5 ORGANIZATION OF THE MANUAL	2
1.6 CONVENTIONS USED IN THIS MANUAL	3
2. PREINSTALLATION CONFIGURATION	4
2.1 ENVIRONMENT	4
2.2 GENERIC SOFTWARE	5
2.3 PREINSTALLATION ACTIVITIES	5
3. INSTALLING THE APPLICATION	10
3.1 OFS BASEL REGULATORY CAPITAL IRB APPROACH RELEASE 6.0.0.0.0 INSTALLATION	10
3.1.1 <i>Machine A – Product Application Layer</i>	10
3.1.2 <i>Machine B – Product Database Layer</i>	25
3.1.3 <i>Machine C – Product Web Layer</i>	29
3.2 OFS BASEL REGULATORY CAPITAL IRB APPROACH RELEASE 6.0.0.0.0 INSTALLATION- SILENT MODE	32
3.3 POSTINSTALLATION ACTIVITIES	35

1. Getting Started

1.1 Oracle Financial Services Analytical Applications Infrastructure Overview

Oracle Financial Services Analytical Application Infrastructure (OFSAAI) is an analytical application platform which has been architected to be multi-tiered and open-systems compliant. OFSAAI is fully web-enabled. It's a 100% thin-client, browser-based interface with zero foot print which dramatically reduces the cost of application deployment. All OFSAAI processes, including those related to business, are metadata-driven, thereby providing a high degree of operational and usage flexibility, and a single consistent view of information to all users.

OFSAAI product suite includes a rules-framework designer engine, Unified Metadata Manager which has a semantic layer of metadata abstraction that is common over both relational and OLAP repositories.

1.2 Analytical Applications Overview

Analytical Applications like Oracle Financial Services Basel Regulatory Capital Internal Ratings Based (IRB) Approach are pre-packaged on OFSAAI and are ready to install. With Oracle Financial Services Basel Regulatory Capital IRB Approach application, Release 6.0.0.0.0, banks can now meet the requirements as stated in the Basel accord, by catering to multiple jurisdictions with a single application, thereby eliminating the need for multiple point applications from multiple software vendors.

1.3 Audience

This manual is meant for the OFSAAI Application System Administrator as they play an integral part in installing the Oracle Financial Services Analytical Applications.

1.4 Scope

The information contained in this document is intended to give you a quick exposure and an understanding of the installation procedures to install the Oracle Financial Services Basel Regulatory Capital IRB Approach. The document also deals with the information related to the OFS Basel Regulatory Capital IRB Approach installation process and the topics are designed in the order of priority with related procedures to assist, configure, and manage the administrative tasks effectively.

1.5 Organization of the Manual

The Installation Manual is organized into the following chapters:

- **Preinstallation Configuration** section consists of the pre-configuration activities that are to be completed successfully for proper installation and functioning of the application.
- **Installing the Analytical Application** section details the steps to be followed during the installation.

- **Postinstallation Activities** section details the steps that are required to be performed after the successful installation of the Oracle Financial Services Basel Regulatory Capital IRB Approach Release 6.0.0.0.0.

1.6 Conventions Used in this Manual

- References to sections or chapters in the manual are displayed in *Italics*.
- Screen names are displayed in the following manner:

Introduction Screen

- Notes are displayed as follows:

Note:

It is important that the password should be 6 characters long. If you do not adhere to this prerequisite, you will see a system message that reads **Password must be at least 6 characters long**.

2. Preinstallation Configuration

The list of pre-configurations required to install and run the OFSAAI 7.3.2.1.0 Infrastructure is stated in this section. Further, the installation process requires certain environmental variables to be set prior to starting the installation. Ensure the following requirements are met before installation.

- [Environment](#)
- [Generic Software](#)
- [Preinstallation Activities](#)

2.1 Environment

Type	Description
OS	Oracle Solaris v5.10 Update 9 (9/10 s10s_u9wos_14a) SPARC sun4v - 64 bit
Infrastructure Web Server	Web logic 10.3.5.0 with JDK Standard Edition 1.6.0_25 -64 bit Oracle 11g R2 (11.2.0.2.0) JDBC driver (Oracle thin driver) Sun JRE Standard Edition 1.6.0_25 - 64 bit Sun JDK Standard Edition 1.6.0_25 - 64 bit
Infrastructure Application Server	Oracle Client 11g R2 (11.2.0.2.0) - 64 bit Sun JRE Standard Edition 1.6.0_25 - 64 bit
Infrastructure Database Server	Oracle Database Enterprise Edition Release 11.2.0.2.0 - 64 bit Sun JRE Standard Edition 1.6.0_25 - 64 bit Sun JDK Standard Edition 1.6.0_25 - 64 bit
Infrastructure Release version	OFSAAI 7.3.2.1.0
Patch details (if any)	On base OFSAAI platform version 7.3, apply the latest patch set to upgrade to release 7.3.2.1.0. For more information regarding patches, refer to Preinstallation and Postinstallation Activities sections.

2.2 Generic Software

Type	Description
<p>Other Software</p>	<p>OFSAAI is certified on both OPEN LDAP 2.2.29+ and Oracle Internet Directory v11.1.1.3.0. Ensure that you have installed any one of the following for OFSAAI authentication purposes.</p> <p>Note:</p> <p>OPEN LDAP needs to be installed on Microsoft Windows machine only.</p> <p>Hummingbird Exceed 7.0 has to be installed on a Microsoft Windows machine as a simulator for remote installation.</p> <p>Note:</p> <p>Hummingbird Exceed is required for GUI Mode of installation.</p>
<p>Front End Access</p>	<p>Microsoft Internet Explorer 8/9</p> <p>Microsoft Office 2003/2007</p> <p>Client Machines – Windows XP SP3/Windows 7</p> <p>The screen resolutions supported are 1024*768 and 1280*1024</p> <p>Adobe Reader 8.0</p> <p>Java Plug-in 1.6.0_25</p> <p>Note:</p> <ul style="list-style-type: none"> • Ensure that Java Plug-in is enabled in the browser settings. • Enable caching of static content (static files, images, CSS, etc) for browser client. • Cookies should be disabled.

2.3 Preinstallation Activities

The following is the preinstallation checklist to ensure the readiness to start installing OFS Basel Regulatory Capital IRB Approach Application:

- Customer should have an OFSAAI login user other than sysadmin or sysauth.
- If the infrastructure is installed on a multitier environment, then execute the following commands in the DB Layer terminal:

```
chmod -R 777 < ftpshare folder >
```

- Navigate to the ftpshare folder and set the umask shown as follows to ensure that all the

new files created have 666 file permissions.

```
cd < ftpshare folder >
umask 0000
```

- Apply the one-off patches for the following bugs:
 - BUG 16529213 - NEW FIELD (V_APP_ID) TO BE ADDED TO INFODOM_PATCHES TABLE.
One-Off Patch: - 16529213_GENERIC.zip
Version - 7.3.2.1.2
 - Bug 16449264 - F2T WITH DATA FILE NAME OVERRIDDEN IS FAILING WHEN EXECUTED THROUGH PR2/RRF.
One-Off Patch: - 16449264_GENERIC.zip
Version - 7.3.2.1.3
 - Bug 16525575 - ERROR WHILE OPENING THE RULE IN VIEW/EDIT MODE.
One-Off Patch: - 16525575_GENERIC.zip
Version - 7.3.2.1.4

- The config and atomic schema should be of two distinct oracle database users.

Note:

To create a new Information Domain and Atomic schema needs to be created manually.

- The Information Domain schema makes use of the tables from the configuration schema. To create a new information domain, execute the file **<Infrastructure Database Layer Install Directory>/config_table_privileges_for_atomic_user.sql** from the Infrastructure config database before creating the new information domain. These Privileges should be given to the Production Schema (essentially all the Atomic schemas).
- Add an Atomic schema TNS entry to TNSNames.ora.
- The following grants must be given to atomic schema user:
 - grant create session to ATOMIC_USER
 - grant create synonym to ATOMIC_USER
 - grant create view to ATOMIC_USER
 - grant create sequence to ATOMIC_USER
 - grant create any table to ATOMIC_USER
 - grant create procedure to ATOMIC_USER
 - grant create trigger to ATOMIC_USER
 - grant debug connect session to ATOMIC_USER
 - grant create any index to ATOMIC_USER
 - grant create type to ATOMIC_USER

- grant unlimited tablespace to ATOMIC_USER
- The following grants must be given to Config User:
 - grant select on PR2_MAP_ITEMS to ATOMIC_USER
 - grant select on PR2_MASTER to ATOMIC_USER
 - grant select on PR2_RUN_REQUEST to ATOMIC_USER
 - grant select on PR2_TASK_FILTER_DETAIL to ATOMIC_USER
 - grant select on PR2_OBJECT_TYPES to ATOMIC_USER
 - grant select on BG_MASTER to ATOMIC_USER
 - grant select on BG_LIST_RUN to ATOMIC_USER
 - grant select on BATCH_MONITOR to ATOMIC_USER
 - grant select on Batch_run to ATOMIC_USER
 - grant select on PR2_FILTERS to ATOMIC_USER
 - grant select on PR2_FIRERUN_FILTER to ATOMIC_USER
 - grant select on PR2_FIRERUN_PARAMETER to ATOMIC_USER
 - grant select on PR2_MAP_ITEMS to ATOMIC_USER
 - grant select on PR2_MASTER to ATOMIC_USER
 - grant select on PR2_OBJECT_COMMENT to ATOMIC_USER
 - grant select on PR2_OBJECT_TL to ATOMIC_USER
 - grant select on PR2_OBJECT_TRACE to ATOMIC_USER
 - grant select on PR2_OBJECT_TYPES to ATOMIC_USER
 - grant select on PR2_PROCESS_B to ATOMIC_USER
 - grant select on PR2_PROCESS_PARAMETERS to ATOMIC_USER
 - grant select on PR2_PROCESS_TASK to ATOMIC_USER
 - grant select on PR2_PROCESS_TASK_PARAMETER to ATOMIC_USER
 - grant select on PR2_PROCESS_TASK_PRECEDENCE to ATOMIC_USER
 - grant select on PR2_PROCESS_TREE to ATOMIC_USER
 - grant select on PR2_RTP_ITEMS to ATOMIC_USER
 - grant select on PR2_RULEGROUP to ATOMIC_USER
 - grant select on PR2_RULE_B to ATOMIC_USER
 - grant select on PR2_RULE_MAP to ATOMIC_USER
 - grant select on PR2_RULE_MAP_EXCLUDE to ATOMIC_USER
 - grant select on PR2_RULE_MAP_EXCLUDE_PR to ATOMIC_USER
 - grant select on PR2_RULE_MAP_EXCLUDE_PR_TMP to ATOMIC_USER
 - grant select on PR2_RULE_MAP_PR to ATOMIC_USER
 - grant select on PR2_RULE_MAP_PR_TMP to ATOMIC_USER
 - grant select on PR2_RULE_OBJECT to ATOMIC_USER
 - grant select on PR2_RULE_OBJECT_MEMBER to ATOMIC_USER
 - grant select on PR2_RULE_QUERY to ATOMIC_USER

- grant select on PR2_RULE_SQL to ATOMIC_USER
 - grant select on PR2_RUN_B to ATOMIC_USER
 - grant select on PR2_RUN_EXECUTION_B to ATOMIC_USER
 - grant select on PR2_RUN_EXECUTION_FILTER to ATOMIC_USER
 - grant select on PR2_RUN_MAP to ATOMIC_USER
 - grant select on PR2_RUN_OBJECT to ATOMIC_USER
 - grant select on PR2_RUN_OBJECT_MEMBER to ATOMIC_USER
 - grant select on PR2_RUN_OBJECT_PARAMETER to ATOMIC_USER
 - grant select on PR2_RUN_REQUEST to ATOMIC_USER
 - grant select on PR2_TASK_FILTER to ATOMIC_USER
 - grant select on PR2_TASK_FILTER_DETAIL to ATOMIC_USER
- Update the server details if you are installing an OFSAAI product for the first time. Click **Server Details** under **System Configuration** in the LHS menu of the OFSAAI User Interface and update the Database Server, Application Server, and Web Server.
 - Copy all the contents of the Oracle Financial Services Basel Regulatory Capital IRB Approach Release 6.0.0.0.0 installer download directory to the server location (including the Data Model directory). Provide read, write and execute permission to all the files present in this directory.
 - Specify the log file path and name in the log4j.xml. Update the value attribute highlighted in the following figure:

```
<?xml version="1.0" encoding="UTF-8" ?>
<log4j:configuration
xmlns:log4j="http://jakarta.apache.org/log4j/">
<appender name="ConfigReveleusFileAppender"
class="org.apache.log4j.RollingFileAppender">
  <param name="file" value="/<installer components copied
directory>/installer.log"/>
  <param name="Append" value="true"/>
</appender>
</log4j:configuration>
```
 - Ensure the path given in the log4j.xml file has read, write or execute permission.
 - Ensure FICServer is up and running before proceeding for installation.
 - Insert jurisdiction related information in ofsaai_setup_appln_dtls table to upgrade the Basel application to its current version of 6.0.0.0.0 (this is not applicable if you are installing the Basel application for the first time.)
 - From SYS DBA grant select permission to config and atomic user for 'V_\$PARAMETER' table.

```
grant select on V_$PARAMETER to &config_db_user;
grant select on V_$PARAMETER to &atomic_db_user;
```
 - Check for **export LDR_CNTRL=MAXDATA=0x40000000** in the .profile. If present then comment it, execute the .profile and then trigger the Setup.sh.

- For a multitier installation, check whether **Reveleus.SEC** file is present in **\$FIC_HOME/conf in web layer**. If this file is not present in this path, then copy the file from **\$FIC_HOME/conf in app layer** to **\$FIC_HOME/conf in web layer**.
- For a single tier installation, the installer is required to be loaded only once on the machine that hosts all the OFSAAI tiers.

3. Installing the Application

3.1 OFS Basel Regulatory Capital IRB Approach Release 6.0.0.0.0 Installation

The OFSAAI comprises of components that are installed in Web, Application and Database layer. Hence, if you have installed OFSAAI Release 7.3.2.1.0 in a multitier architecture, the Oracle Financial Services Basel Regulatory Capital IRB Approach Release 6.0.0.0.0 installer must be loaded on each of the machines that host the Oracle Financial Services Analytical Applications Infrastructure tier.

This section describes the installation process in which the three product setup components with the product are installed on separate machines as follows:

- Machine A is used to install the product Application Layer components
- Machine B is used to install product Database Layer components
- Machine C is used to install product Web Layer components

Note:

This section holds applicable if OFSAAI Release 7.3.2.1.0 is installed on Oracle Solaris 5.10 server- Oracle 11g R2 on separate machines A, B, and C respectively.

For Silent Installation, refer to the section [Silent Mode](#).

3.1.1 Machine A – Product Application Layer

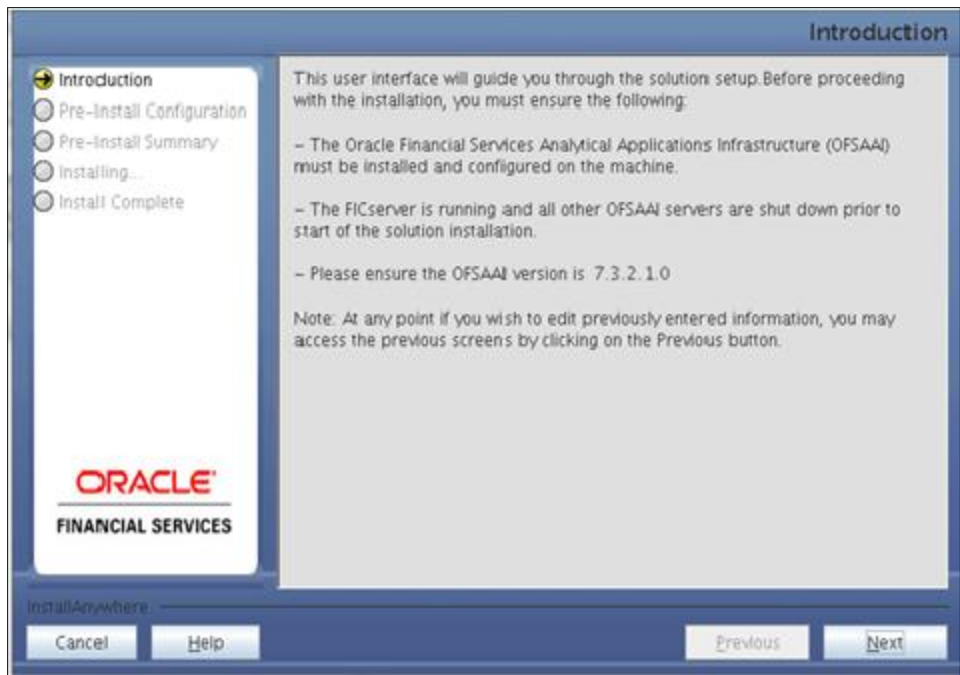
Step 1

To begin with the OFS Basel Regulatory Capital IRB Approach Release 6.0.0.0.0 installation, execute **Setup.sh** with the parameter GUI (GUI Installation) or SILENT (for Silent installation).



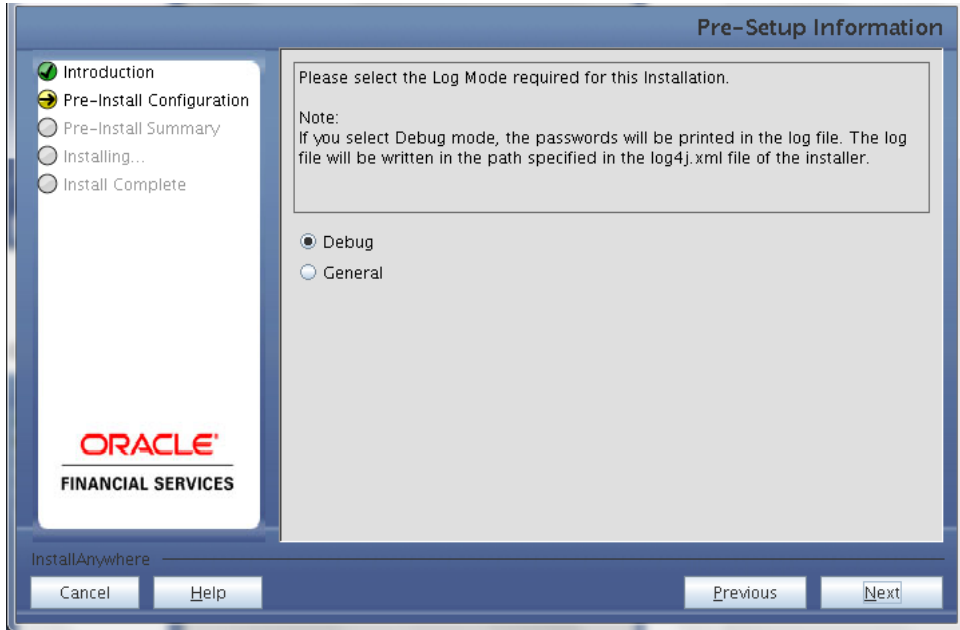
Step 2

On loading the installer, the **Introduction** screen displays the prerequisites for installation. Ensure that these prerequisites are met before proceeding.



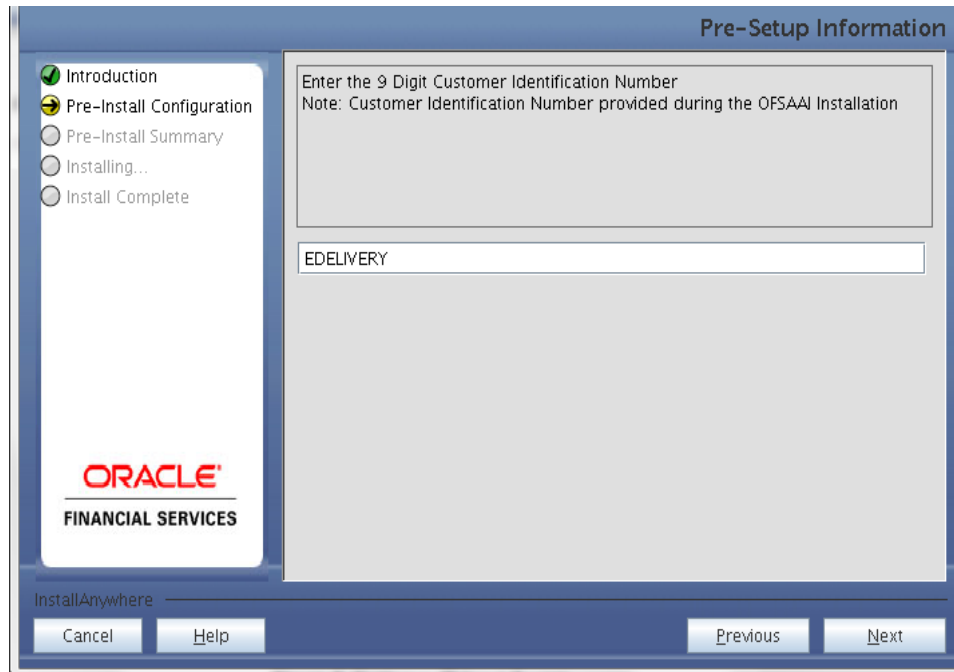
Step 3

Choose the log mode for this installer. The **Debug** and **General** mode information will be printed in the log file specified in the log4j.xml file of the installer.



Step 4

Enter the Customer Identification Number and click **Next** to continue.

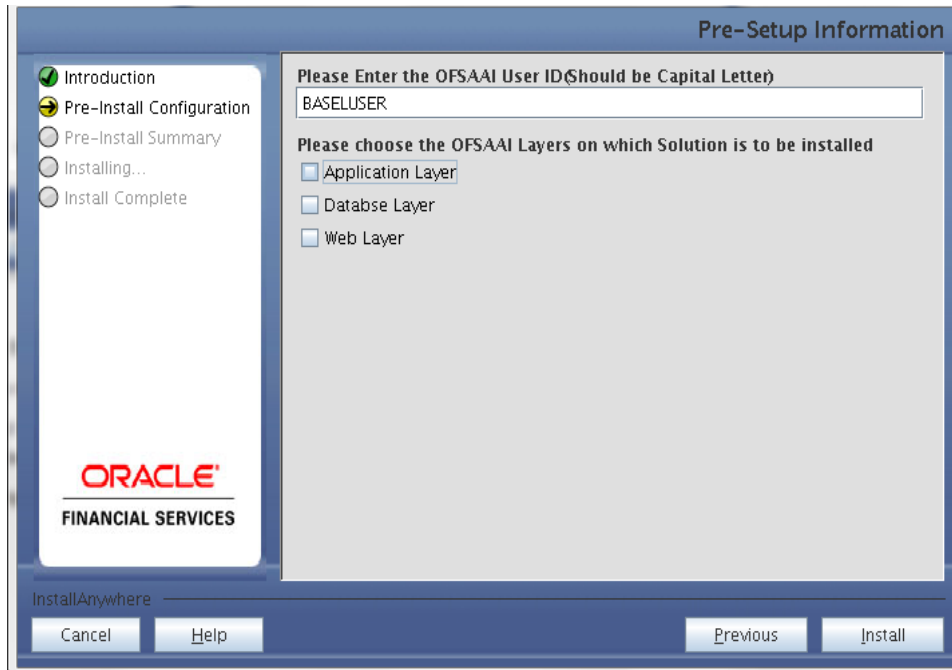


Step 5

In the next screen enter the OFSAAI User ID.

Select the appropriate Oracle Financial Services Analytical Applications Infrastructure layer that has been installed on the machine.

Example: **Application Layer**



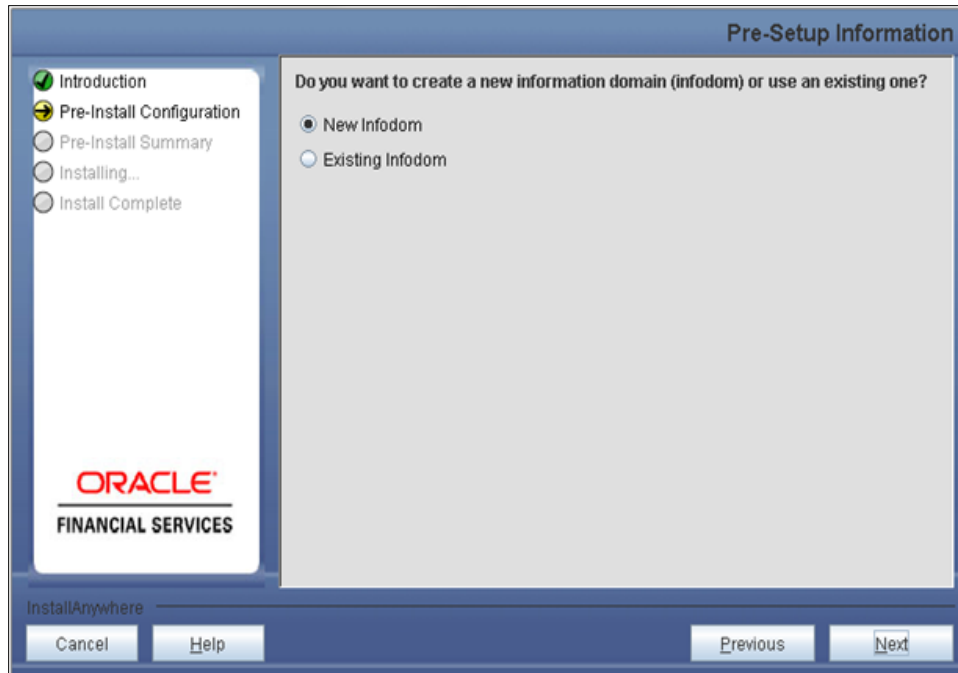
Note:

For a single-tier OFSAAI Release 7.3.2.1.0 installation, you must select Application Layer, Database Layer and Web layer.

For a multitier OFSAAI Release 7.3.2.1.0 installation, select the corresponding layer installed on the machine.

Step 6

This screen seeks information on whether a new Information Domain has to be created or the existing Information Domain is to be used for installation. Choose the required option.



Click **Next** to continue. If **New Information Domain** is selected then go to **Step 7** or else go to [Step 8](#).

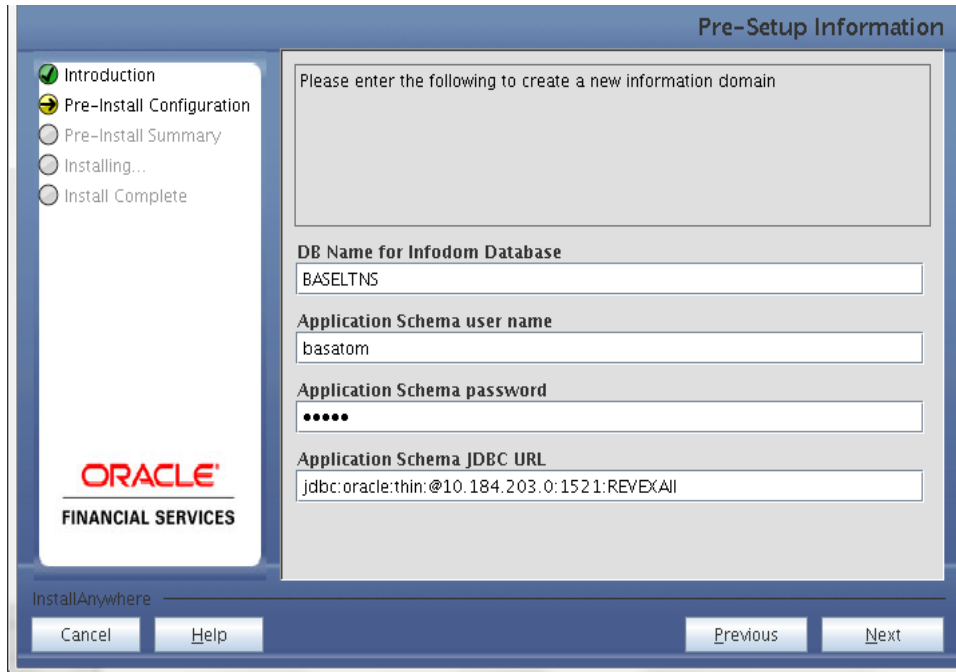
Step 7

If the option **New Information Domain** is selected then update the following to create information domain:

Step 7-i:

- Specify a Database Name for the new information domain. Make a TNS entry with the Database Name specified in the tnsname.ora file in the oracle server.
- Enter the newly created application schema user name, password, and JDBC URL in the relevant fields.

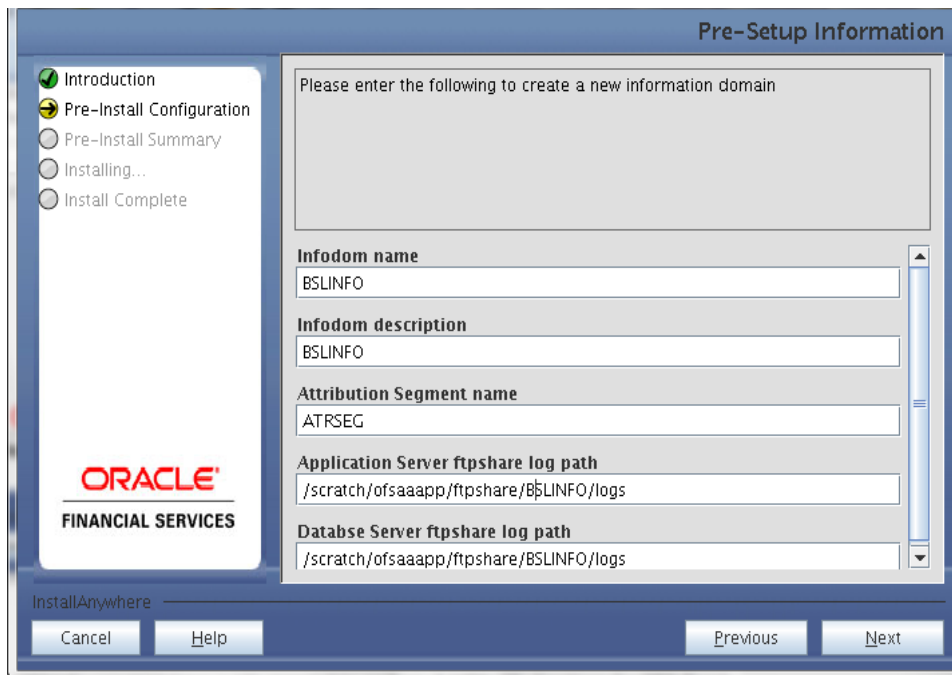
Click **Next** to continue.



Step 7-ii

In the next screen enter the following details:

- Specify the name and description of the new information domain to be created.
- Specify a segment name to be created.
- Specify the application server and database server log path for information domain maintenance (to be created).



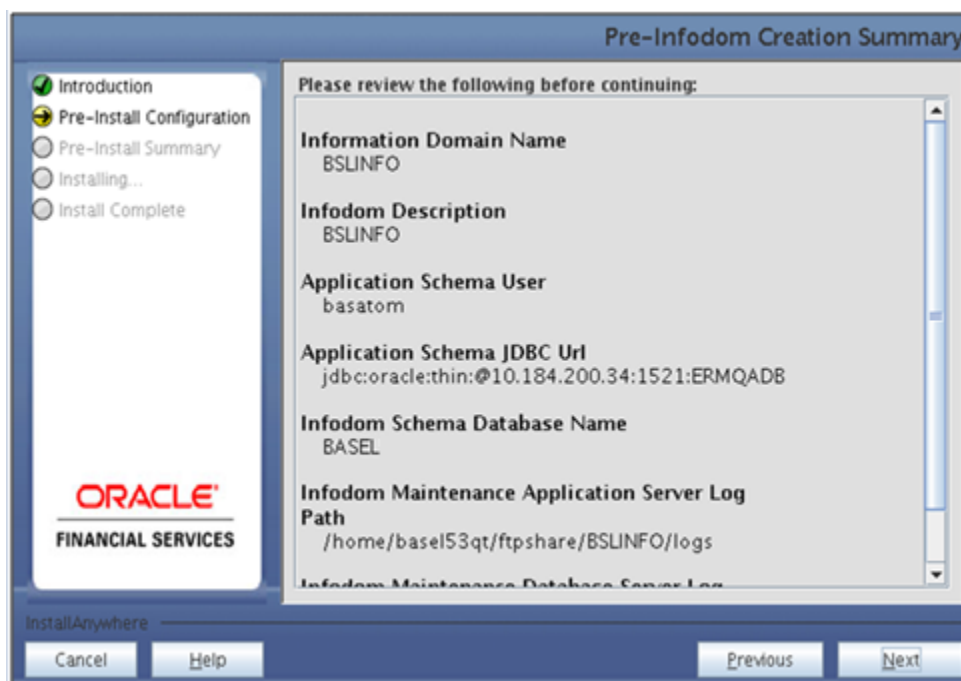
Note:

The OFSAAI user must have a role mapped to perform Add/Modify functions for OFS Basel Regulatory Capital IRB Approach metadata.

Click **Next** to continue. Check and verify all the details before proceeding to Step 7- iii.

Step 7-iii

Click **Next** to continue with the creation of information domain.

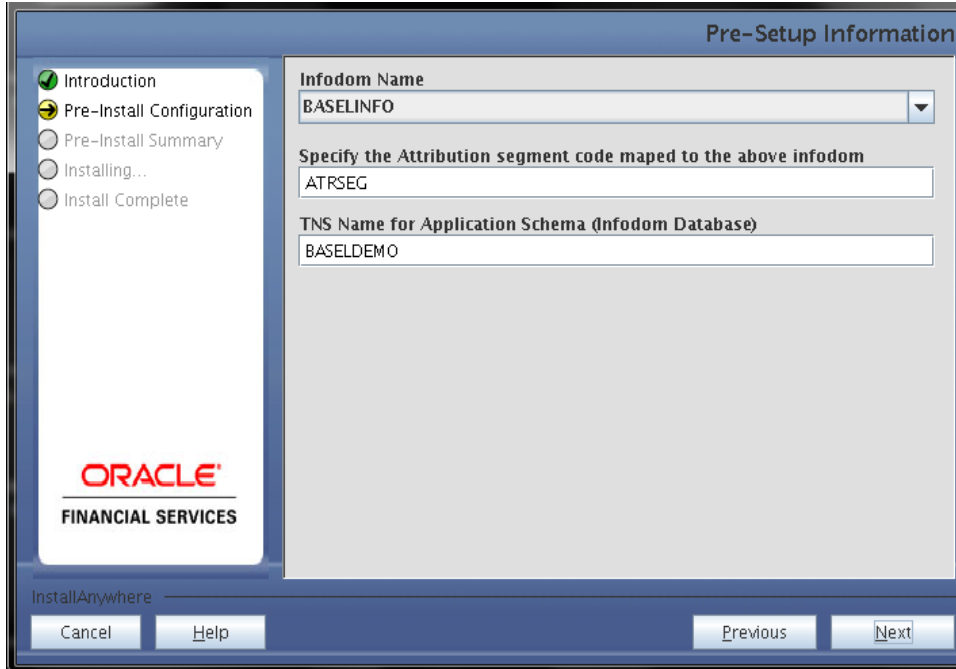


Step 8

If the option Existing Information Domain was selected then update the following details in the screen prompt that is displayed:

Step 8-i

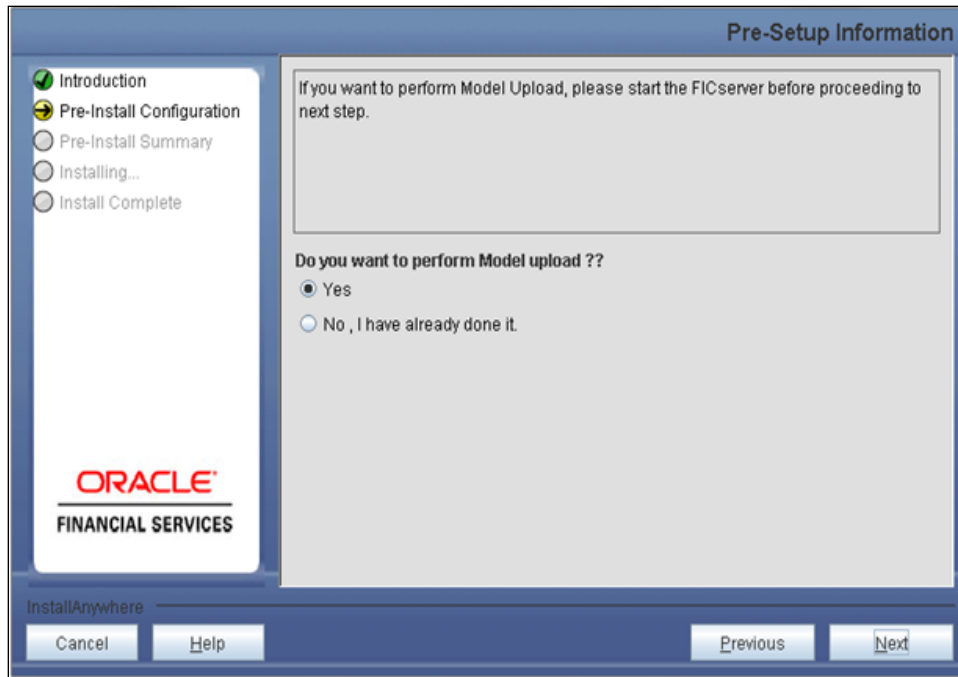
- Select the Information Domain name
- Enter segment code.
- For additional segments click the checkbox.
- Enter the application schema's TNS name.



Step 9

Oracle Financial Services Basel Regulatory Capital IRB Approach Release 6.0.0.0 IRB data model is packaged as part of the application installer and is installed as a part of the following steps, if required.

In the the following screen opt for Model Upload process through the installer.



Note:

If **Yes** is selected for data model upload, then copy the .xml to a specific folder and rename

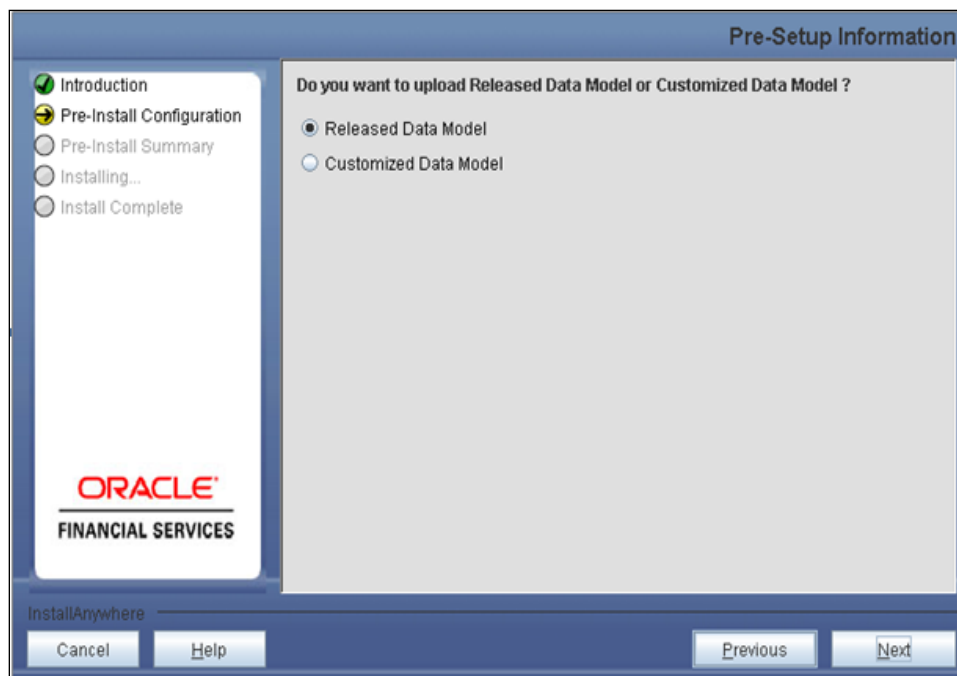
the file.

Clicking **No** implies that the OFS Basel Regulatory Capital IRB Approach model is already uploaded. Click **Next** to proceed further.

If you select **No** go to [Step 12](#) or else go to **Step 10**.

Step – 10

In the following screen choose the **Released Datamodel** or the **Customized Datamodel** to be uploaded.



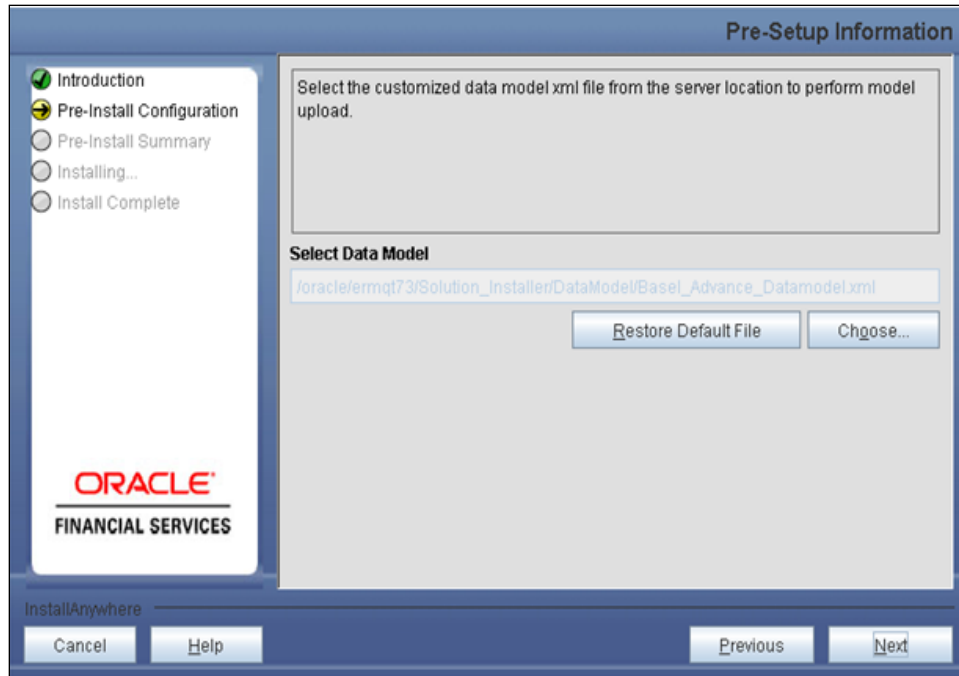
If **Released Data Model** option is selected, then the installer uploads the Oracle Financial Services Basel Regulatory Capital IRB Approach Release 6.0.0.0.0 IRB data model. If **Released Data Model** is selected go to [Step 12](#) or else go to **Step 11**.

If **Customized Data Model** option is selected, then the installer allows you to select the data model.

Click **Next** to proceed.

Step – 11

If the **Customized Data Model** is selected then the following screen is displayed where you can select the customized data model located in your machine.



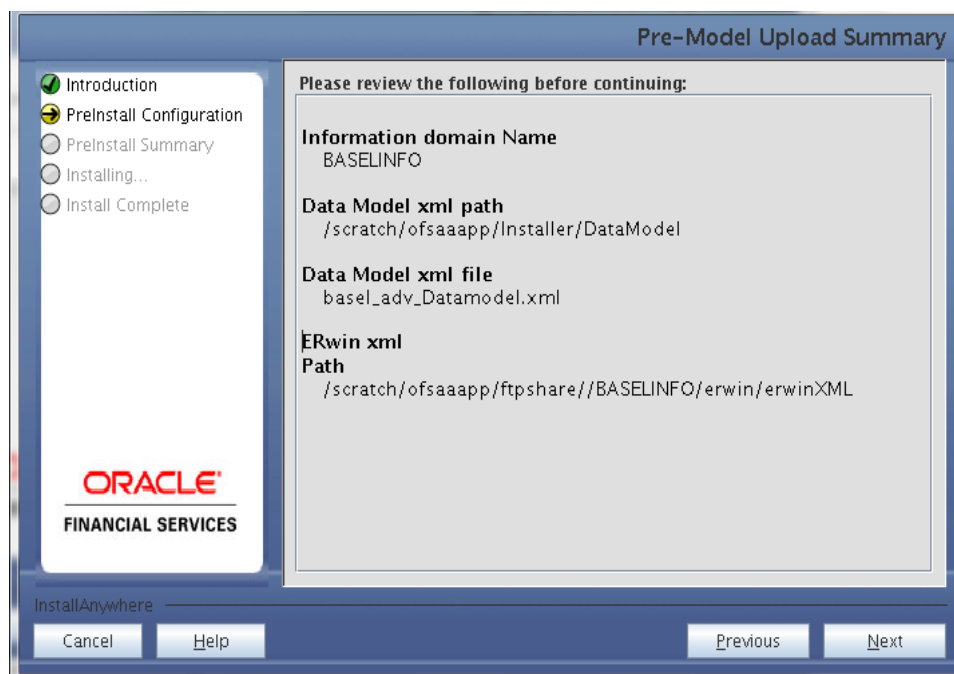
Note:

The data model .XML file should be available in the server. If the installation is being performed on an existing information domain, the data model selected in this screen should be merged with the data model that was previously uploaded in the information domain.

If the installation is performed on a new information domain, data model that is either customized or merged with other data models can be selected in this screen prompt.

Step – 12

The following screen displays the summary of the uploaded data model:



1. Verify the details before proceeding to the next step.
2. Click **Next** to proceed with model upload.

The time taken to upload the data model is dependent on the size of the data model and available physical memory in the environment. You cannot proceed further without the successful completion of the data model upload. Also, this step cannot be rolled back.

If the model upload fails, then a pop-up message with relevant errors and the log file path is displayed. Review the errors and take relevant action. After resolution, navigate to the previous screen and proceed with the steps mentioned above.

Note:

Some of the common errors are:

- Insufficient heap memory on the client machine.

Possible reason/resolution:

The java memory settings mentioned in .profile should be increased.

- Error while getting the Erwin File path.

Possible reason/resolution:

Restart the FICServer.

- Error in Upload Operation

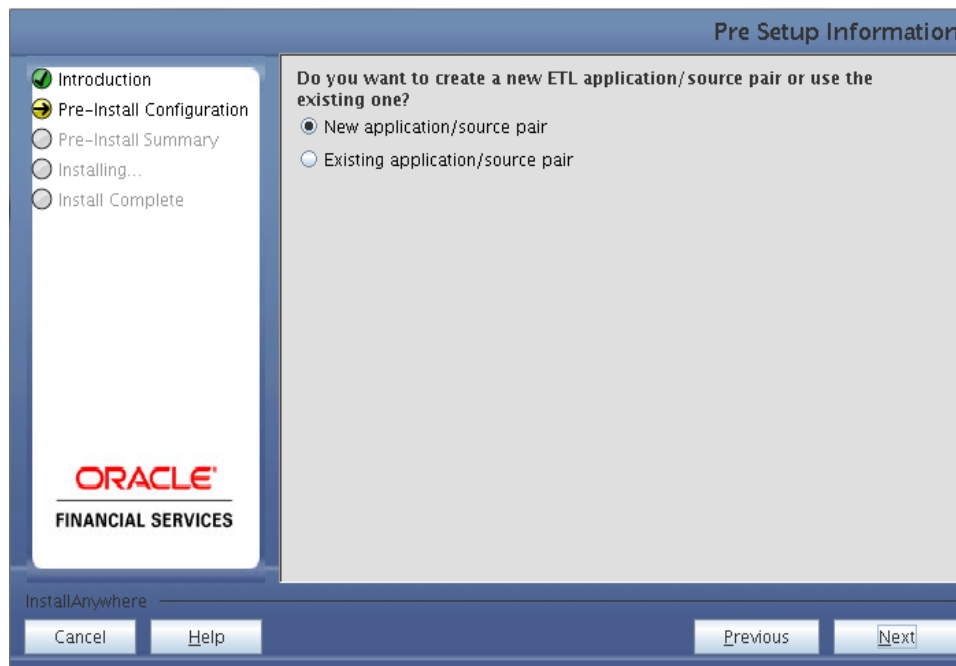
Possible reason/resolution:

FAILED WHILE SUPER CATEGORY - SUB CATEGORY RELATIONS HANDLINGDELETING.

Incorrect Erwin.xsl file version in \$FIC_APP_HOME/common/FICServer/conf directory.

Step 13

In the following screen select New application/source pair or select Existing application/source pair. If the option Existing application/source pair is selected then goto step [13-ii](#) or else goto step [13-i](#).



Step 13-i

In the next screen specify all the details required for application and source creation. Click **Next** to proceed. Clicking **Next** creates application and source within OFSAAI. Source model will also be generated. This process might take some time to process depending on the number of entities or attributes in the atomic schema. This step cannot be rolled back.

Creation of the ETL applications

ETL Application 1 mapped to BASELSOL

ETL Application 2 mapped to Attribution_Analysis

ETL Application 3 mapped to Common

Creation of ETL data sources

ETL Source 1 mapped to BASEL_SRC

ETL Source 2 mapped to Attribution_SRC

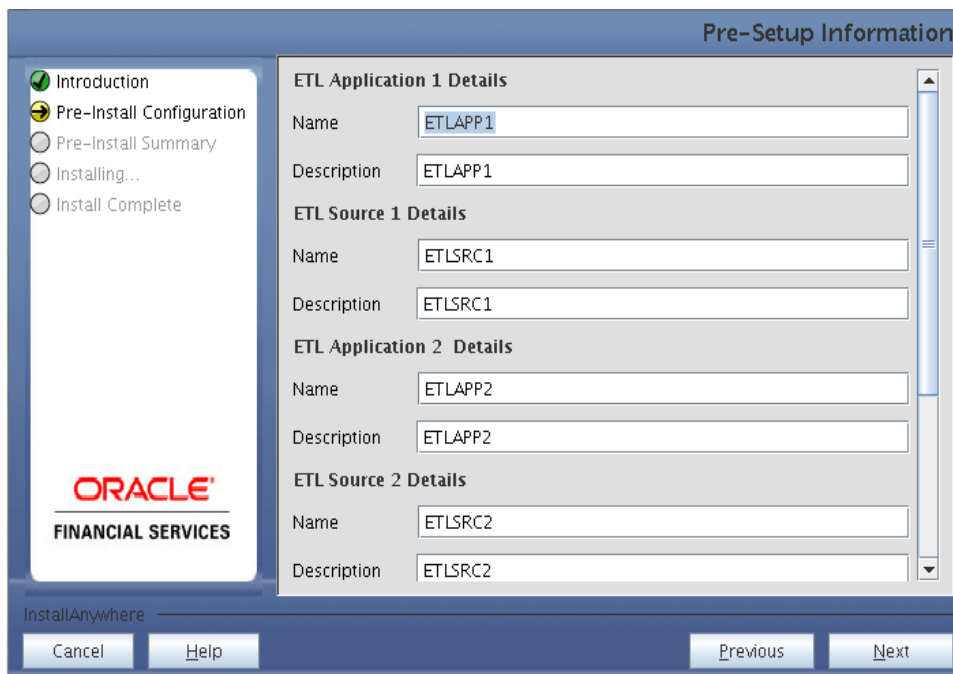
ETL Source 3 mapped to Common

Mapping of the data sources

ETL Application 1 mapped to ETL Source 1

ETL Application 2 mapped to ETL Source 2

ETL Application 3 mapped to ETL Source 3

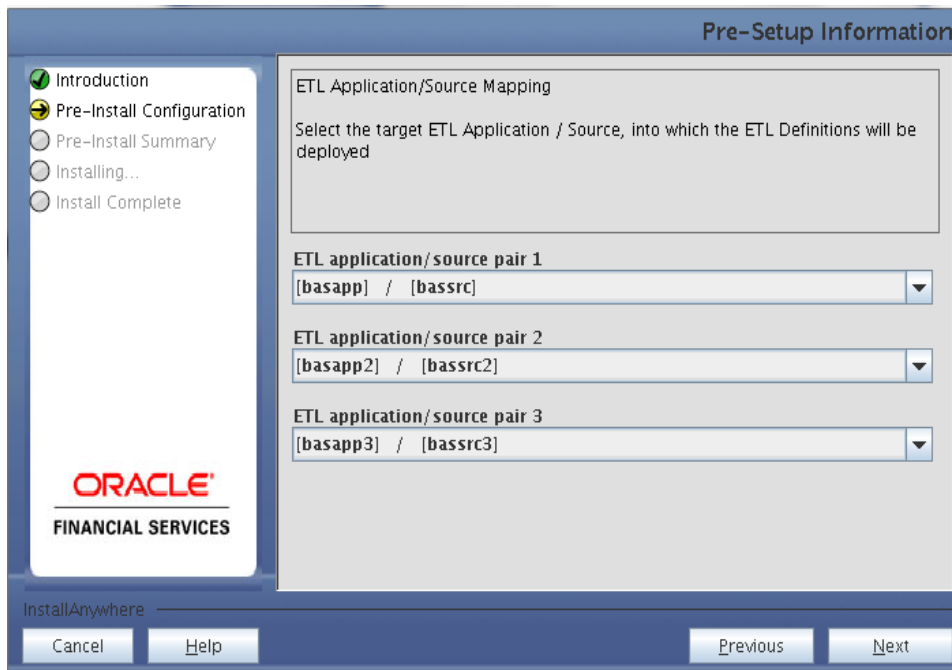


Note:

ETL Source is created pointing to the information domain (atomic schema) that is specified during the installation

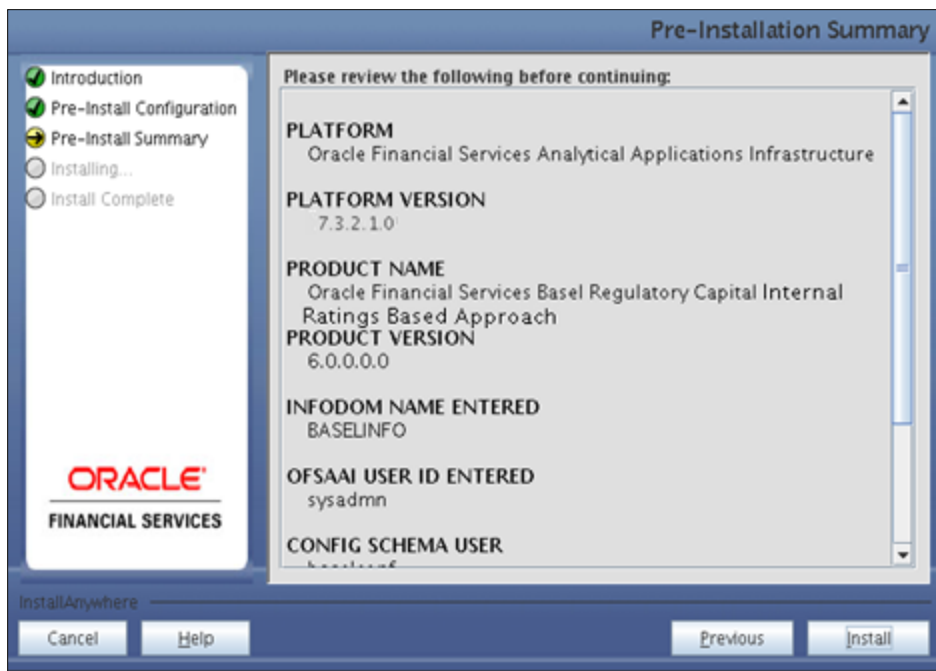
Step 13-ii

If Existing application/source pair is selected then the following panel is displayed prompting to select app/source pair from the list of pairs already present. Select the desired ETL application/source pair into which ETL definitions will be deployed. Click **Next** to Process



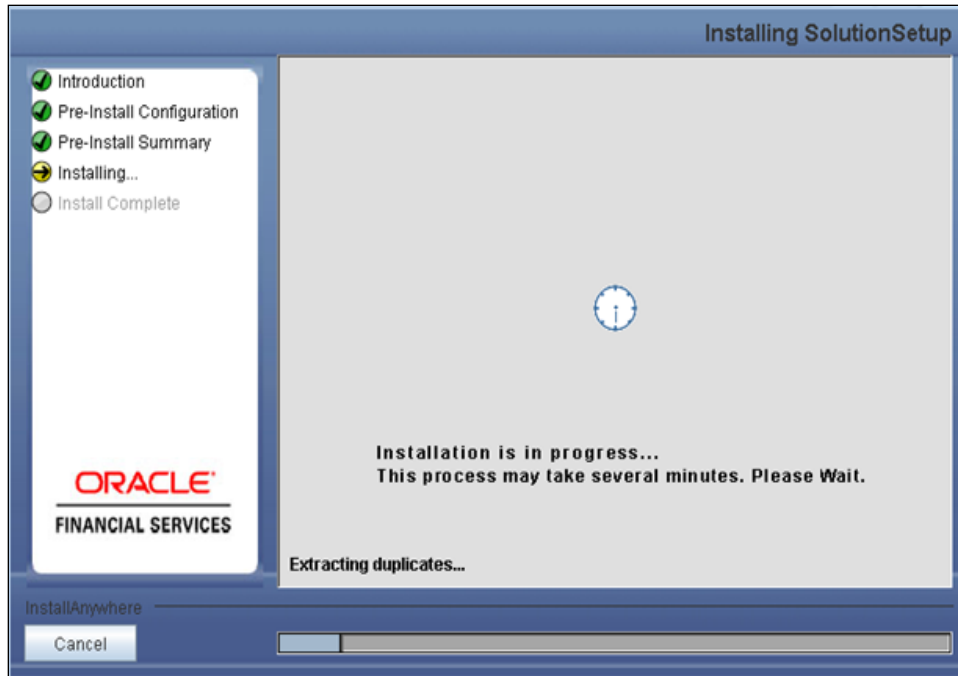
Step 14

This screen displays all a preinstallation summary. Verify all details and click **Install** to proceed.



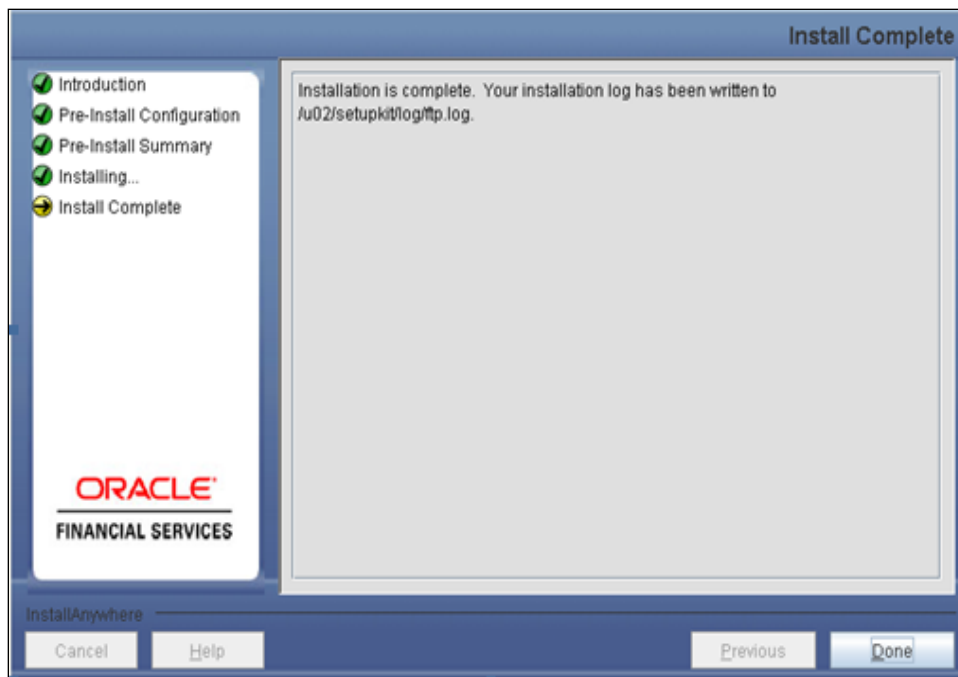
Step 15

This screen displays the installation process. The installation needs to be completed to proceed further.



Step 16

The following screen displays the completion of installation of the OFS Basel Regulatory Capital IRB Approach Release 6.0.0.0.0 Setup. Click **Done** to exit.



3.1.2 **Machine B – Product Database Layer**

Step 1

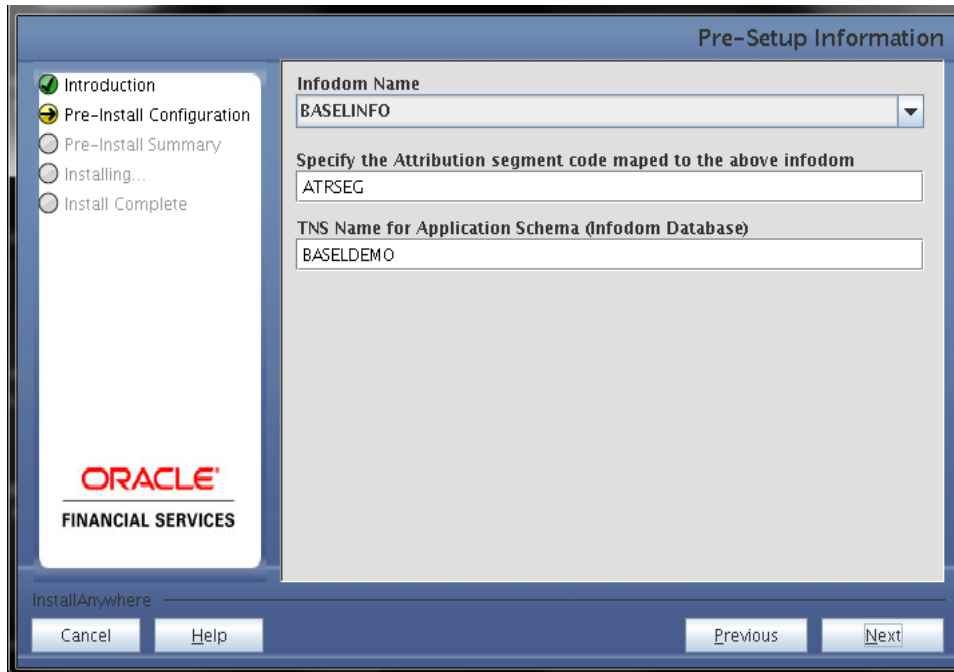
To begin with the Oracle Financial Services Basel Regulatory Capital IRB approach Release 6.0.0.0.0 installation, execute **Setup.sh** with the parameter GUI (GUI Installation) or SILENT (for Silent installation).



Repeat [Step 2 - Step 5](#) as mentioned in Machine A – Product Application Layer.

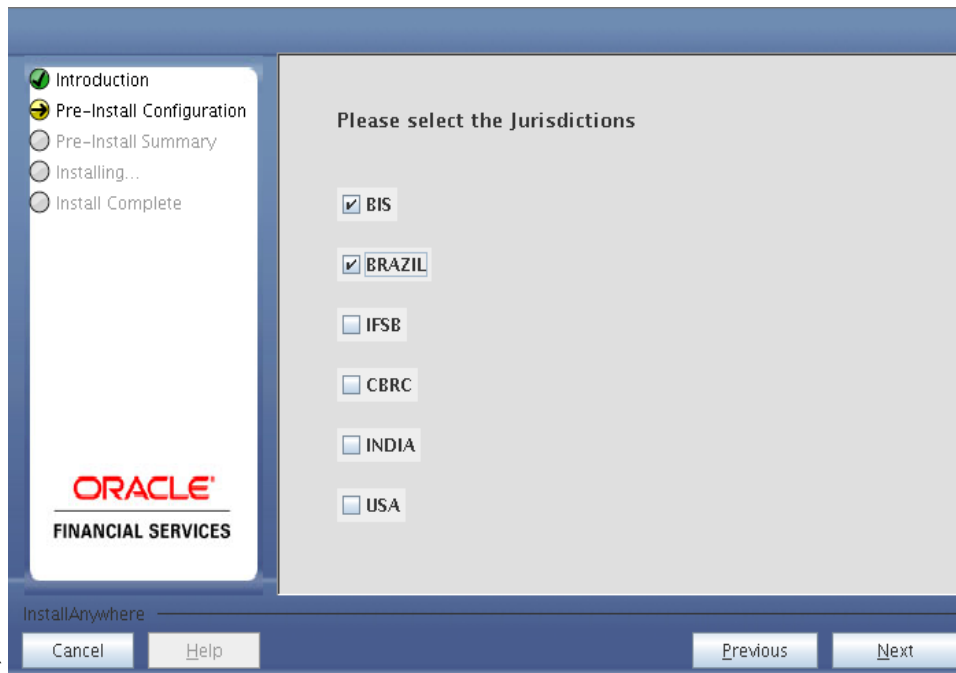
Step 6

Select the information domain from the drop down list present in the setup. Enter segment code and enter the application schema's TNS name in the following screen prompt.



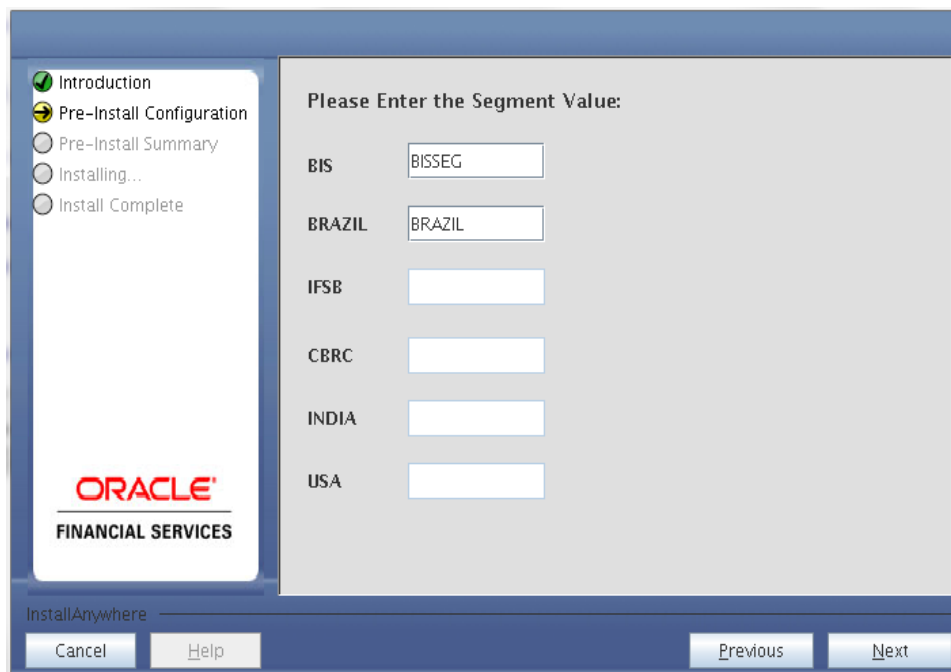
Step 7

Select the relevant jurisdiction in the next screen.



Step 7-i

Enter the additional required segments.



Refer to the following cases to gain more clarity on updating of jurisdictions.

- Case i: User has selected one or more jurisdiction(s) except BIS.

You have to specify segments for selected jurisdiction(s) and BIS as well, even though BIS was not selected. However, scripts will be executed for the selected jurisdiction(s) from the scripts list in fsapps-scripts.xml under the tag <for-infodom> with attribute “jurisdiction” value selected for installation (not for BIS).
- Case ii : User has selected jurisdiction BIS only

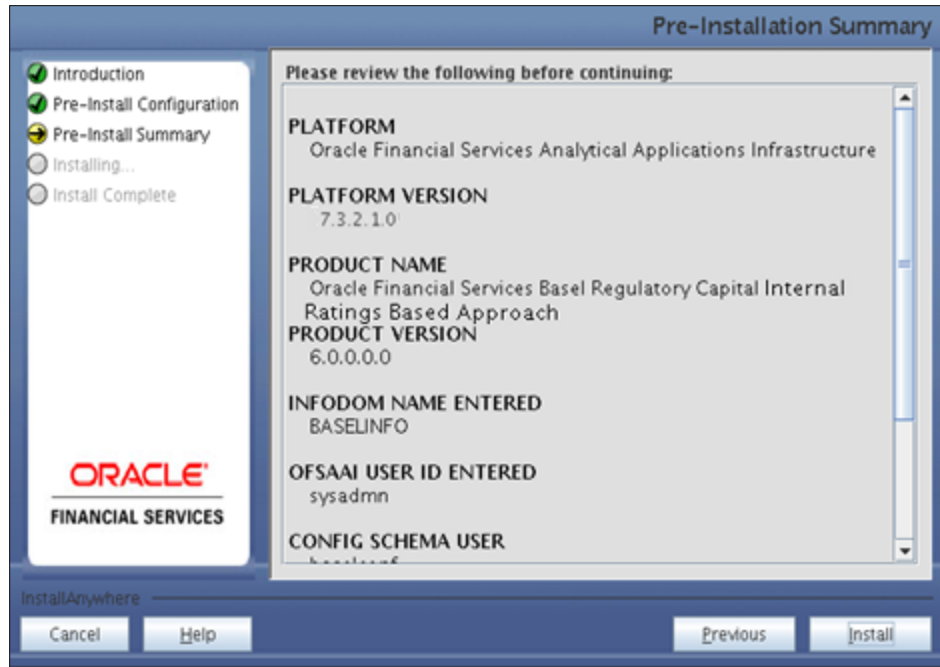
In this case you have to specify segments under BIS only. Scripts will be executed only for BIS jurisdiction from the scripts list in fsapps-scripts.xml under the tag <for-infodom> with attribute “jurisdiction” value BIS.
- Case iii: User goes for re-installation for different jurisdiction(s)

The installer will display the panel with installed jurisdiction(s) segment already mapped as following.

Step 8

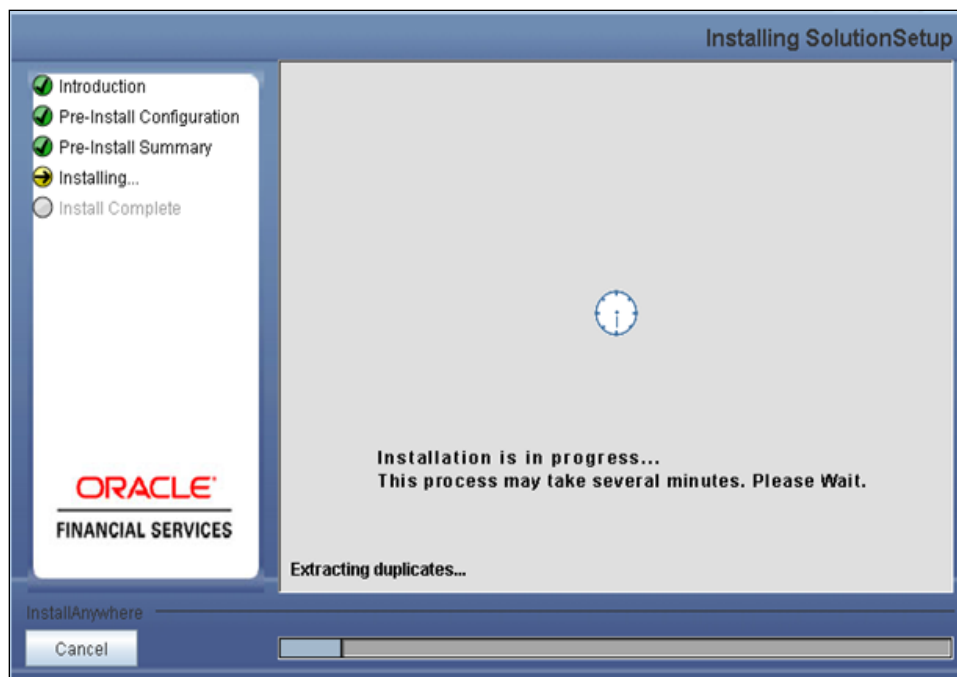
This screen summarizes the preinstallation details. Verify all the details and proceed.

Click **Install** to proceed.



Step 9

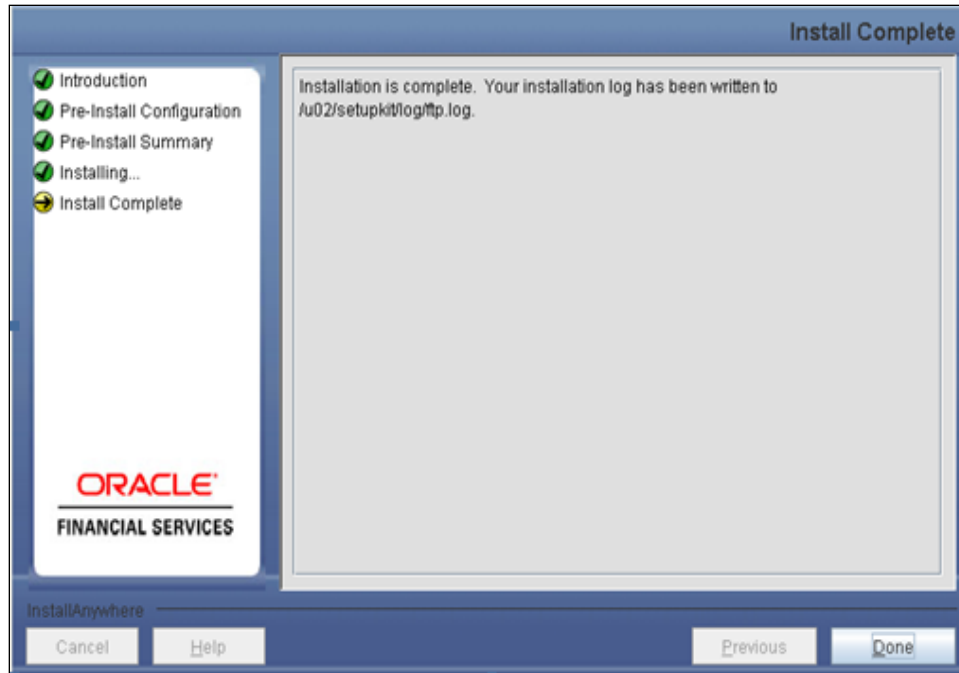
This screen prompt displays the installation process. Wait till the installation is complete.



Step 10

The following screen prompt displays the completion of installation of the Oracle Financial Services Basel Regulatory Capital IRB Approach Release 6.0.0.0.0 setup.

Click **Done** to exit.



3.1.3 Machine C – Product Web Layer

Step 1

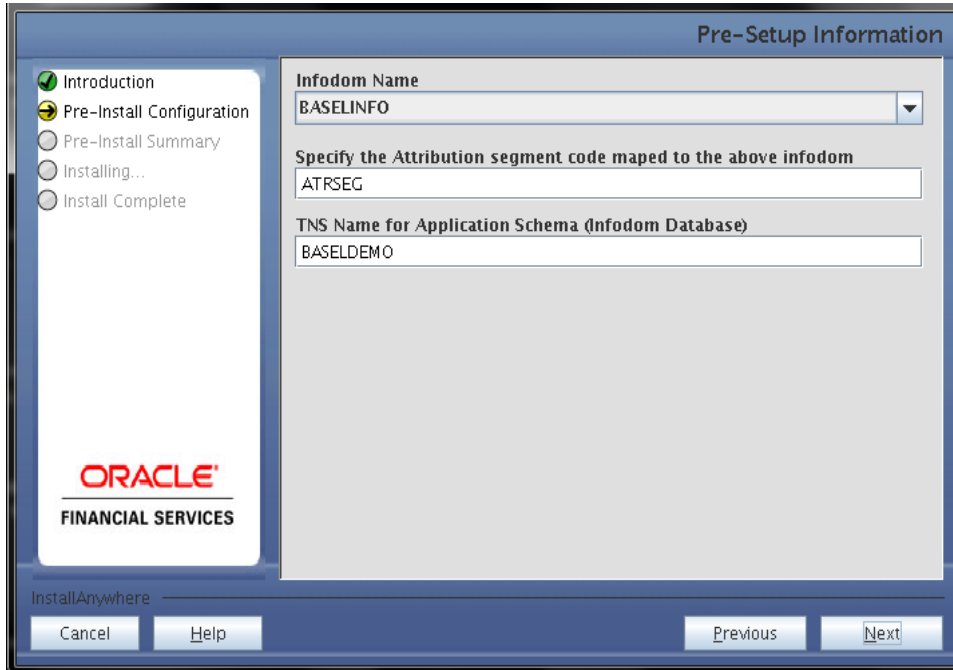
To begin with the Oracle Financial Services Basel Regulatory Capital IRB Approach Release 6.0.0.0.0 installation, execute **Setup.sh** with the parameter GUI (GUI Installation) or SILENT (for Silent installation).



Repeat [Step 2 - Step 5](#) as mentioned in Machine A – Product Application Layer

Step 6

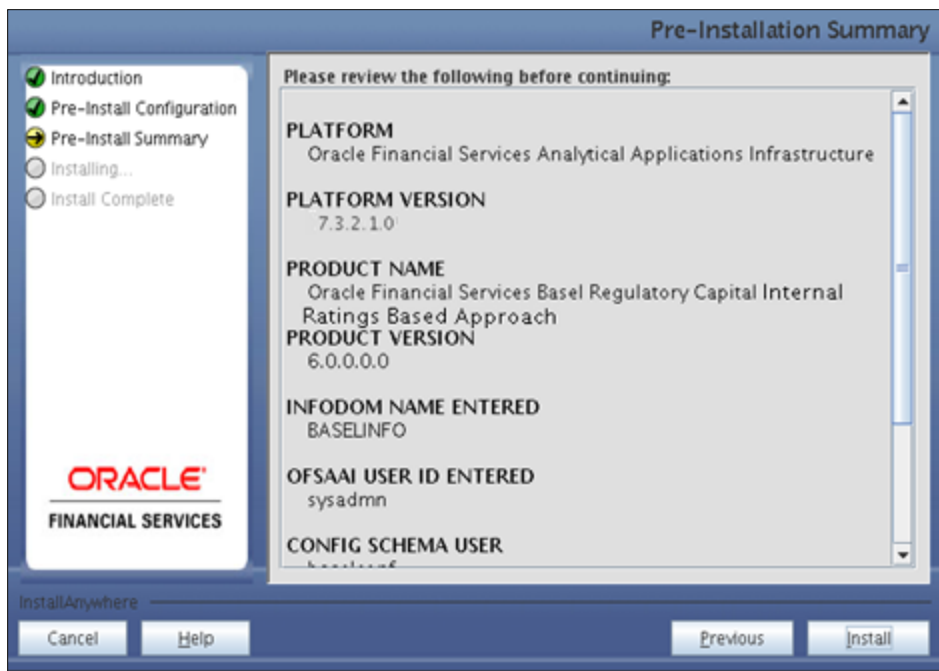
Select the Information Domain from list of Information Domains present in the setup, enter segment code and enter the application schema's TNS name in the following screen prompt.



Step 7

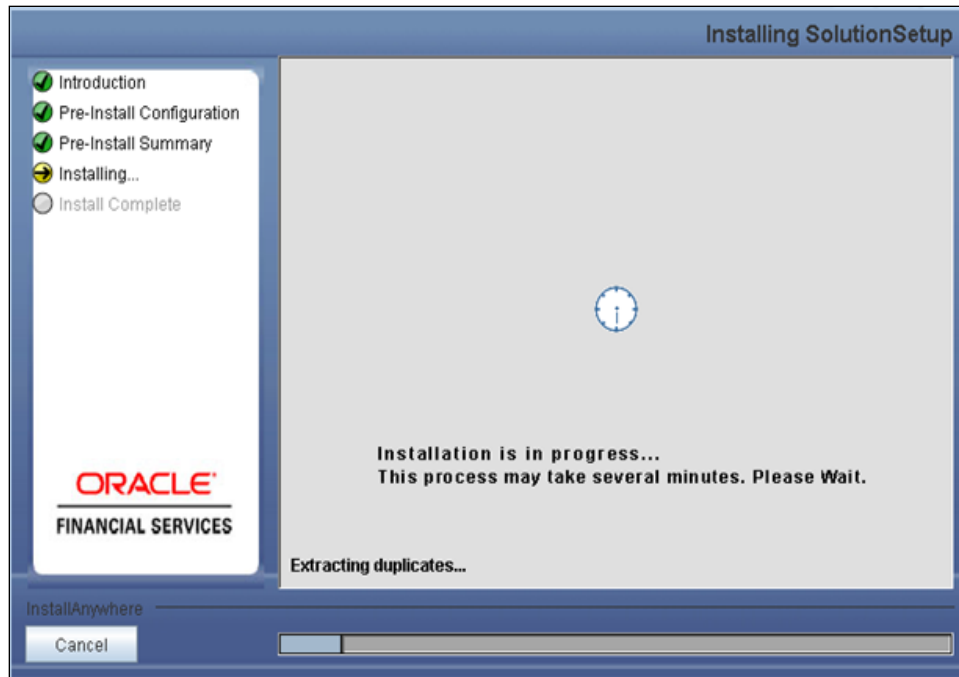
This screen prompt summarizes the preinstallation details. Verify all the details and proceed.

Click **Install** to proceed.



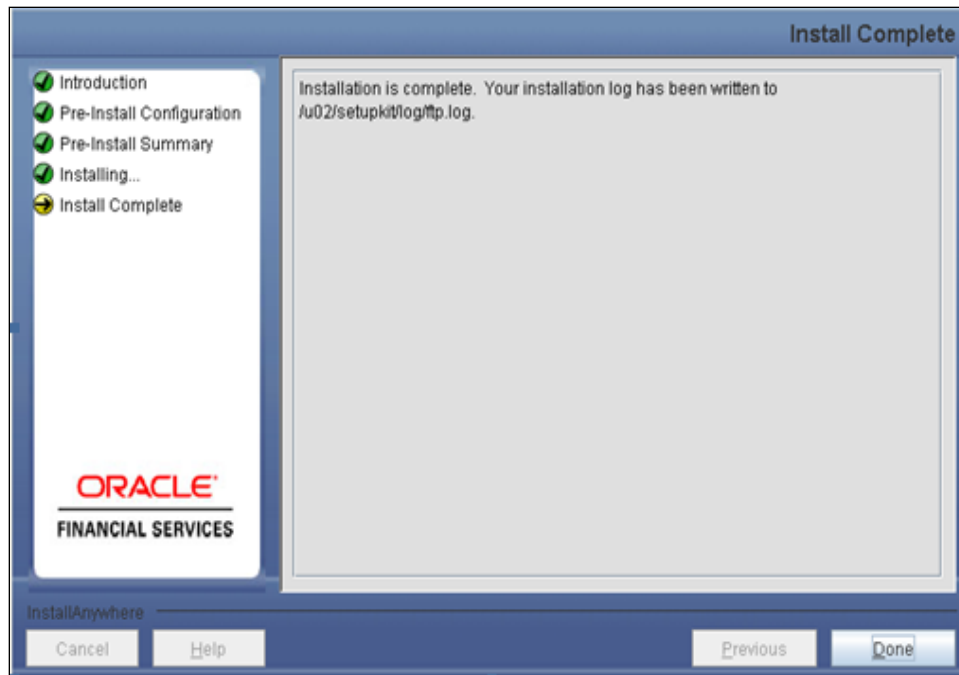
Step 8

This screen prompt displays the installation process. Wait till the installation is complete.



Step 9

The following screen prompt displays the completion of installation of the Oracle Financial Services Basel Regulatory Capital IRB Approach, Release 6.0.0.0.0 setup. Click **Done** to exit.



3.2 OFS Basel Regulatory Capital IRB Approach Release 6.0.0.0.0 Installation- Silent Mode

Silent installation is achieved through a properties file [silent.props] that must be updated with proper values, before attempting to install using the silent mode.

- Copy the setup.sh, setup.bin, and silent.props to the layer(s) in which the installation has to be done.
- Edit the file silent.props and specify the parameters as per the requirements.
- Execute Setup.sh with command line argument as SILENT, that is, **Setup.sh SILENT**, to start the installer

The following table lists all the properties that need to be specified:

Property Name	Description of Property	Permissible values	Comments
LOG_MODE	Mode for logging	1 = Debug, 0= General	Optional; Default 0
CUSTOMER_ID	Customer id specified while installing OFSAAI	Not Applicable	MANDATORY
BATCH_USER	OFSAAI User ID, the ID we used to execute the batches or runs.	Not Applicable	MANDATORY
INSTALL_APP	Install Application-tier components be installed	0 = No, 1= Yes	Default : 0
INSTALL_DB	Install database-tier components	0 = No, 1= Yes	Default : 0
INSTALL_WEB	Install web-tier components	0 = No, 1= Yes	Default : 0
INFODOM_TYPE	New Infodom or Existing Infodom	1 = New, 0=Existing	# Specify Infodom Type. Mandatory if this an App Layer Installation i.e you have specified INSTALL_APP=1
INFODOM_NAME	Name of Infodom	Not Applicable	MANDATORY
INFODOM_DESC	description for the Database Schema for new Infodom	Not Applicable	# Mandatory if this is an App Layer Installation and if you want to create a new infodom.
SEGMENT_CODE	Name of Segment	Not Applicable	MANDATORY
BIS_TO_BE_INSTALLED	If you want to install BIS	0 = No, 1= Yes	MANDATORY
BRAZIL_TO_BE_INSTALLED	If you want to install BRAZIL	0 = No, 1= Yes	MANDATORY
IFSB_TO_BE_INSTALLED	If you want to install IFSB	0 = No, 1= Yes	MANDATORY
CBRC_TO_BE_INSTALLED	If you want to install CBRC	0 = No, 1= Yes	MANDATORY
INDIA_TO_	If you want to install INDIA	0 = No, 1=	MANDATORY

Property Name	Description of Property	Permissible values	Comments
BE_INSTALLED		Yes	
USA_TO_BE_INSTALLED	If you want to install USA	0 = No, 1= Yes	MANDATORY
BIS_SEGMENT_CODE	Name of BIS Segment	0 = No, 1= Yes	# Mandatory,If BIS_TO_BE_INSTALLED value is 1
BRAZIL_SEGMENT_CODE	Name of BRAZIL Segment	Not Applicable	# Mandatory,If BRAZIL_TO_BE_INSTALLED value is 1
IFSB_SEGMENT_CODE	Name of IFSBC Segment	Not Applicable	# Mandatory,If IFSB_TO_BE_INSTALLED value is 1
CBRC_SEGMENT_CODE	Name of CBRC Segment	Not Applicable	# Mandatory,If CBRC_TO_BE_INSTALLED value is 1
INDIA_SEGMENT_CODE	Name of INDIA Segment	Not Applicable	# Mandatory,If INDIA_TO_BE_INSTALLED value is 1
USA_SEGMENT_CODE	Name of USA Segment	Not Applicable	# Mandatory,If USA_TO_BE_INSTALLED value is 1
APPL_TNS	TNS Name of the Infodom database	Not Applicable	MANDATORY
APPL_USER	User-id of the Database Schema for new Infodom	Not Applicable	# Mandatory if this an App Layer Installation and if you want to create a new infodom # i.e you have specified INSTALL_APP=1 and INFODOM_TYPE=0.
APPL_PASSWORD	Password of the Database Schema for new Infodom	Not Applicable	# Mandatory if this an App Layer Installation and if you want to create a new infodom i.e you have specified INSTALL_APP=1 and INFODOM_TYPE=0
APPL_URL	JDBC Connection String of the Database Schema for new Infodom	Not Applicable	# Mandatory if this an App Layer Installation and if you want to create a new infodom i.e you have specified INSTALL_APP=1 and INFODOM_TYPE=0
APPFTP_LOG_PATH	Infodom Maintenance log path(to be created) for the new Infodom for applayer	Not Applicable	# Mandatory if this an App Layer Installation and if you want to create a new infodom i.e you have specified INSTALL_APP=1 and INFODOM_TYPE=0
DBFTP_LOG_PATH	Infodom Maintenance log path(to be created) for the new Infodom for DBLayer	Not Applicable	# Mandatory if this an App Layer Installation and if you want to create a new infodom i.e you have specified INSTALL_APP=1 and INFODOM_TYPE=0
UPLOAD_MODEL	If you want to perform Model Upload	0 = No, 1= Yes	Mandatory if INSTALL_APP=1
MODEL_TY	Released datamodel or	0 = released,	Mandatory if INSTALL_APP=1

Property Name	Description of Property	Permissible values	Comments
PE	customized datamodel	1= customized	
DM_DIRECTORY	The filename for customized data model	Not applicable	# Mandatory only if you want to upload the customized datamodel i.e you have specified MODEL_TYPE=1
DATAMODEL	The path for the customized data model	Not applicable	# Mandatory only if you want to upload the customized datamodel i.e you have specified MODEL_TYPE=1
ETL_APP_1_NAME	Specify the ETL APP name	Not applicable	# Mandatory if this an App Layer Installation
ETL_APP_2_NAME	Specify the ETL APP name	Not applicable	# Mandatory if this an App Layer Installation
ETL_APP_3_NAME	Specify the ETL APP name	Not applicable	# Mandatory if this an App Layer Installation
ETL_SRC_1_1_NAME	Specify the ETL SRC name	Not applicable	# Mandatory if this an App Layer Installation
ETL_SRC_2_1_NAME	Specify the ETL SRC name	Not applicable	# Mandatory if this an App Layer Installation
ETL_SRC_3_1_NAME	Specify the ETL SRC name	Not applicable	# Mandatory if this an App Layer Installation
ETL_APP_1_DESC	Specify the ETL APP Desc	Not applicable	# Mandatory if this an App Layer Installation
ETL_APP_2_DESC	Specify the ETL APP Desc	Not applicable	# Mandatory if this an App Layer Installation
ETL_APP_3_DESC	Specify the ETL APP Desc	Not applicable	# Mandatory if this an App Layer Installation
ETL_SRC_1_1_DESC	Specify the ETL SRC Desc	Not applicable	# Mandatory if this an App Layer Installation
ETL_SRC_2_1_DESC	Specify the ETL SRC Desc	Not applicable	# Mandatory if this an App Layer Installation
ETL_SRC_3_1_DESC	Specify the ETL SRC Desc	Not applicable	# Mandatory if this an App Layer Installation

3.3 Postinstallation Activities

OFSAAI Server Memory Configuration

The OFSAAI Application Server is started using `reveleusstartup.sh`. This file can be edited for setting customized memory settings, garbage collector settings depending on the available hardware configuration. You are requested to contact OFSAAI Support at <https://flexsupp.iflexsolutions.com/> for guidance in altering the memory settings.

Once the installation of Oracle Financial Services Basel Regulatory Capital IRB Approach Release 6.0.0.0.0 Application is completed, refer to the following activities:

- The following tag should be added manually in `web.xml` if not already present in `web.xml`:

```
<resource-ref>
  <description>DB Connection <Infodom_Name></description>
  <res-ref-name>jdbc/<infodom_name></res-ref-name>
  <res-type>javax.sql.DataSource</res-type>
  <res-auth>Container</res-auth>
</resource-ref>
```

- Create a connection pool in the Information Domain. *For more information refer to the OFSAAI 7.3.2.1.0 platform installation manual.*
- Map the following Roles to the User Group in the Front End manually. *For more information refer to OFS Basel Regulatory Capital IRB Approach Admin Guide.*
- Map the domain segment names to a User Group manually. To do so, click **Security Management** from the LHS of the OFSAAI front end, then click **User Group Domain Map** option and map the required Information Domain – segment to the User Group. Check for `export LDR_CNTRL=MAXDATA=0x40000000` in the `.profile`. If already commented as per pre-installation activity then uncomment it.
- Add the below mentioned entry in AAI db layer `.profile` file and execute it.
`LD_LIBRARY_PATH=$LD_LIBRARY_PATH:$FIC_DB_HOME/lib/libSTLPORTON`
`export LD_LIBRARY_PATH`
- Do the following in `$FIC_WEB_HOME/webroot/WEB-INF/web.xml`:
 - Add the tag `<url-pattern>/basel/*</url-pattern>` to filter-mapping tag corresponding to the filter `struts2` and `struts-cleanup`.
- Apply the one-off patch for bug 14102073 - SEC-CRM PROCESS IS NOT HANDLED CORRECTLY IN BASEL II APPLICATION

One-Off Patch: - 14102073_GENERIC_BASEL_ADV.zip

Version - 6.0.0.0.1
- Create and deploy the `war/ear` file into webserver. For more information on deploying the `war` file refer to the OFSAAI v7.3.2.1.0 *Installation manual*.
- Start all OFSAAI Servers.
 - FICAPP
 - Weblogic

- Iccserver
- Router
- AM
- Messageserver
- Start the web server after deployment.
- Refer *Starting OFSAAI Servers* in the Installation Guide for assistance in starting the servers.
- Re-save all the Hierarchies and the other metadata in OFSAAI.
- Recompile all the functions, procedures and views.
- The log for resaving hierarchies can be found under `$FIC_APP_HOME/common/FICServer/logs/ResaveLog.log`

Note:

- Ignore the following errors in the log:
 - *ORA-00942: table or view does not exist*
 - *ORA-00001: unique constraint (ERMATOM.PK_REV_BIHIER) violated*
 - *ORA-00955 name is already used by an existing object*

The Oracle Financial Services Basel Regulatory Capital IRB Approach Release 6.0.0.0.0 application is now ready to be used.

If you encounter any problems during setup, please contact OFSAA Support at <https://flexsupp.iflexsolutions.com/>

Installation Manual



Installation Manual
April 2013
Oracle Financial Services Basel Regulatory Capital IRB Approach V6.0.0.0.0

Oracle Corporation
World Headquarters
500 Oracle Parkway
Redwood Shores, CA 94065
U.S.A.

Worldwide Inquiries:
Phone: +1.650.506.7000
Fax: +1.650.506.7200
<http://www.oracle.com/us/industries/financial-services/index.html>
Copyright © 2013 Oracle Financial Services Software Limited. All rights reserved.

No part of this work may be reproduced, stored in a retrieval system, adopted or transmitted in any form or by any means, electronic, mechanical, photographic, graphic, optic recording or otherwise, translated in any language or computer language, without the prior written permission of Oracle Financial Services Software Limited.

Due care has been taken to make this Installation Manual and accompanying software package as accurate as possible. However, Oracle Financial Services Software Limited makes no representation or warranties with respect to the contents hereof and shall not be responsible for any loss or damage caused to the user by the direct or indirect use of this Installation Manual and the accompanying Software System. Furthermore, Oracle Financial Services Software Limited reserves the right to alter, modify or otherwise change in any manner the content hereof, without obligation of Oracle Financial Services Software Limited to notify any person of such revision or changes.

All company and product names are trademarks of the respective companies with which they are associated.