

# Oracle® Enterprise Manager Ops Center

Creating Server Pool for Zones

12c Release 1 (12.1.0.0.0)

E27351-02

December 2012

---

This guide provides an end-to-end example for how to use Oracle Enterprise Manager Ops Center.

## Introduction to Server Pools

Oracle Enterprise Manager Ops Center provides the facility to pool your like resources for maximum efficiency and performance. Server pool is a group of one or more homogenous virtualization servers that have access to the same storage and network resources. A server pool provides load balancing and high availability capabilities for all the members of the pool.

You can create a zones server pool in Oracle Enterprise Manager Ops Center. In this example, you will create a zones server pool of the following configuration:

- Two virtualization servers provisioned with Oracle Solaris 11 OS are added to the server pool.
- The server pool uses the default network domain. The server pool is attached to network accessible to both virtualization servers.
- The server pool is associated with file system and static storage library for the use of storing zone metadata and zone storage.
- Set the server pool policy to place the zones on the global zones that have lowest relative load.
- Enable automatic load balancing to migrate the zones automatically whenever the threshold is exceeded.
- Administrator approval is required to migrate the zones.
- Automatic recovery of the zone is not enabled.

See [Related Resources](#) for more detailed information about server pool policies.

## What You Will Need

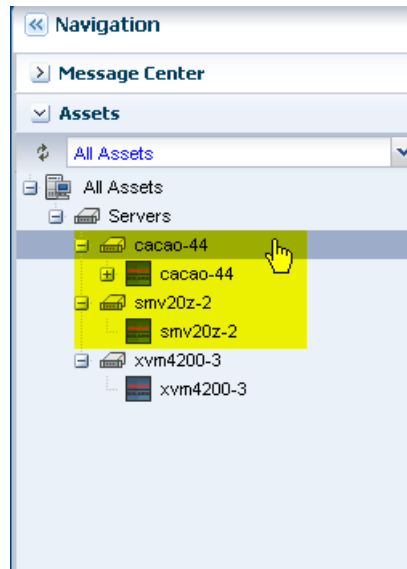
In this example, you will need the following to create an Oracle Solaris Zones server pool:

- Two global zones that are running Oracle Solaris 11 OS of x86 architecture.
- The two servers are discovered and managed in Oracle Enterprise Manager Ops Center. Refer to *Oracle Enterprise Manager Ops Center Feature Reference Guide*.
- The two servers are in healthy state and not placed in maintenance mode.

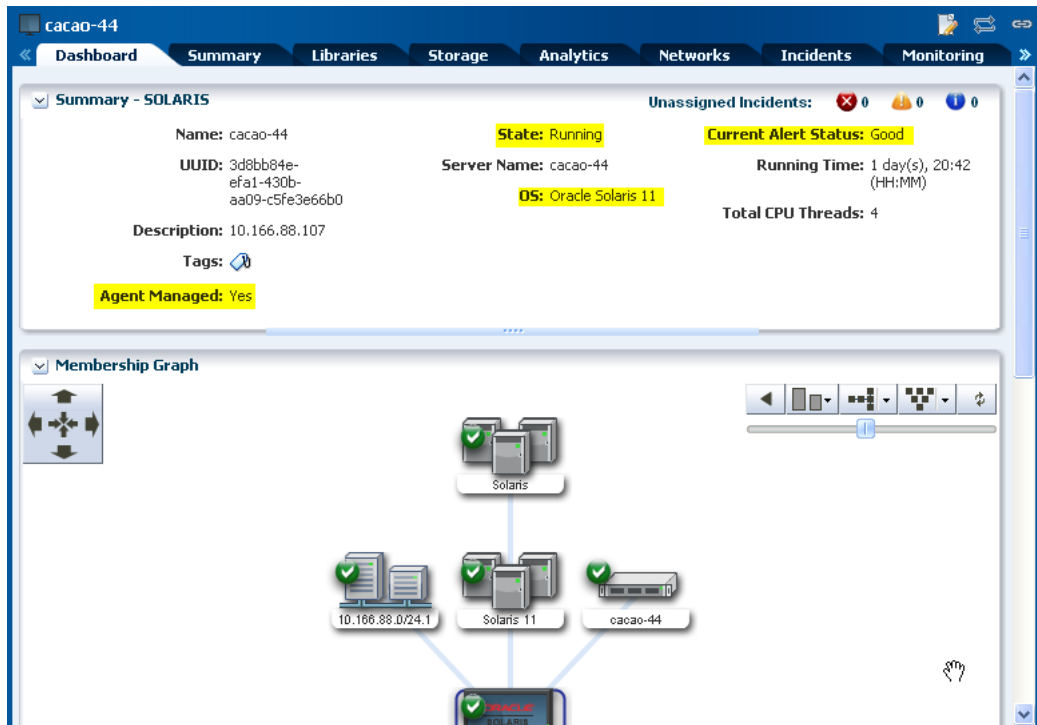
- The servers are not associated with any server pool.
- File system and Static block storage library accessible from both the virtualization servers. There must be no unmanaged file system attached to the global zones. NAS library is required to store zone metadata and SAN library is required for zone storage.
- The networks to be attached to the server pool are in the default network domain.

## Hardware and Software Configuration

The global zones of Oracle Solaris 11 OS that are discovered and managed in Oracle Enterprise Manager Ops Center appear as shown in the following figure:



You can view the status of the global zone as shown in the following figure:



## Creating a Zones Server Pool

Oracle Enterprise Manager Ops Center launches a wizard to capture all the requirements of a server pool. This procedure describes how to select and enter the details for creating a zones server pool.

1. Select Server Pools in the Resource Management Views.



2. Click Create Server Pool in the Actions pane.  
The Create Server Pool wizard is displayed.

3. Enter the following details in the server pool identification:
  - A name and description for the server pool.
  - It is optional to enter tags for the server pool. In this example, do not enter the tags.
  - Select Oracle Solaris Zones - x86 in the list of Virtualization Technology.
 Click Next to continue.

**Identify Server Pool** \* Indicates Required Field

\* **Server Pool Name:**

**Description:**

**Tags:** + -  x 🔍

Tag Name	Value

\* **Virtualization Technology:**

4. From the list of compatible global zones available in Oracle Enterprise Manager Ops Center, select the two global zones to add to the server pool and click Next.

**Select Members**

Select one or more assets to add to the server pool.

Note - Select assets that are compatible with each other to allow migration of guests within the server pool.

Search  x 🔍

Member Name ▲	CPU Architecture	OS Release
cacao-44	X86	Oracle Solaris 11 11.11 X86
smv20z-2	X86	Oracle Solaris 11 11.11 X86
xvm4200-3	X86	Oracle Solaris 11 11.11 X86

5. Select the default network domain to associate with the server pool.

**Associate Network Domain**

Select the network domain to associate with the server pool. Select the physical interfaces for each asset used to connect to each fabric in the network domain.

Network Domain:

For default network domain, you do not require to establish the connection between the server and the network fabrics. You can directly proceed to attach the networks and configure the interfaces of the servers. Click Next.

6. Select the networks from the list to attach to all the selected global zones of the server pool.

For Oracle Solaris 11 OS, the network is always attached to it in exclusive IP mode. This is because the zones that will be created on Oracle Solaris 11 OS are exclusive IP zones by default. You can connect to multiple networks and make multiple connections to each network for Oracle Solaris 11 OS. You must have sufficient NICs to cater to the number of network connections. In this example, the server pool is connected to the management network of the global zones and the number of network connection is also limited to 1.

Click Next.

**Associate Networks**

Select the networks to associate with all of the global zones in the server pool.

Network Domain: default

Network Name	P-Key / VLAN ID	Current Connections	Total Connections
10.166.88.0/24.1	-	0	1

7. The selected network in the previous step is already connected to the selected global zones, therefore the configuration settings for the network connection are not displayed.

Click Next to continue.

## Configure Interfaces

Specify the configuration settings for each network connection. If no rows are displayed in the table below, the selected network connections have already been correctly configured.

Server Pool Name: zones\_server\_pool

### Specify Configuration Settings for each Network Connection

Global Zone	Network	NIC	Address Allocation Method	IP Address
-------------	---------	-----	---------------------------	------------

No data

8. The storage libraries that are accessible from the selected global zones are listed. Select the storage libraries that you want to associate with the server pool.

In this example, select the SAN and NAS storage library, and click Next.

## Associate Libraries

The storage libraries that are reachable from all the selected virtualization hosts are listed. Select the storage libraries to associate with the server pool.

Search

Library Type	Library Name	Description
SAN	SANLib-iscsi	fc://bd437275-e3dd-4690-ba25-91381f927...
NAS	metadata	nfs://10.166.88.116/export/oclib/Aurent_me...

Upload script to manage file systems on unmanaged storage in the server pool.

9. Set the server pool policy as follows:

- Select the Placement Policy to place the zone on the global zone with lowest relative load.

Set the CPU Utilization threshold value to be 85% for 10 minutes.

- Select the Automatic balancing of the server pool option.

Set the balancing to occur everyday at 12.00 a.m.

Select Approval required, send notification option. This will ensure that the zones are migrated with your approval.

- Deselect the automatic recovery option.

Click Next to view the summary.

**Specify Policies**

**Placement Policy:**  Place zone on global zone with lowest relative load  
 Place zone on global zone with lowest allocated CPU and memory  
 Place zone on global zone minimizing overall power consumption  
A Server is over-utilized when the following values are exceeded:  
CPU Utilization exceeds:  % for:  minutes

---

**Auto-Balancing Policy:**  Do not auto-balance the server pool  
 Automatic balancing of the server pool  
Note: The date and time are in the Enterprise Controller's time zone.  
Every:  Days at

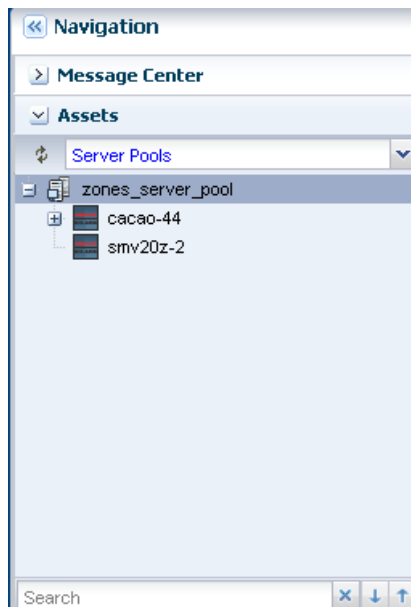
**Approval Policy**  
 Approval not required, automatically move the zones  
 Approval required, send notification

---

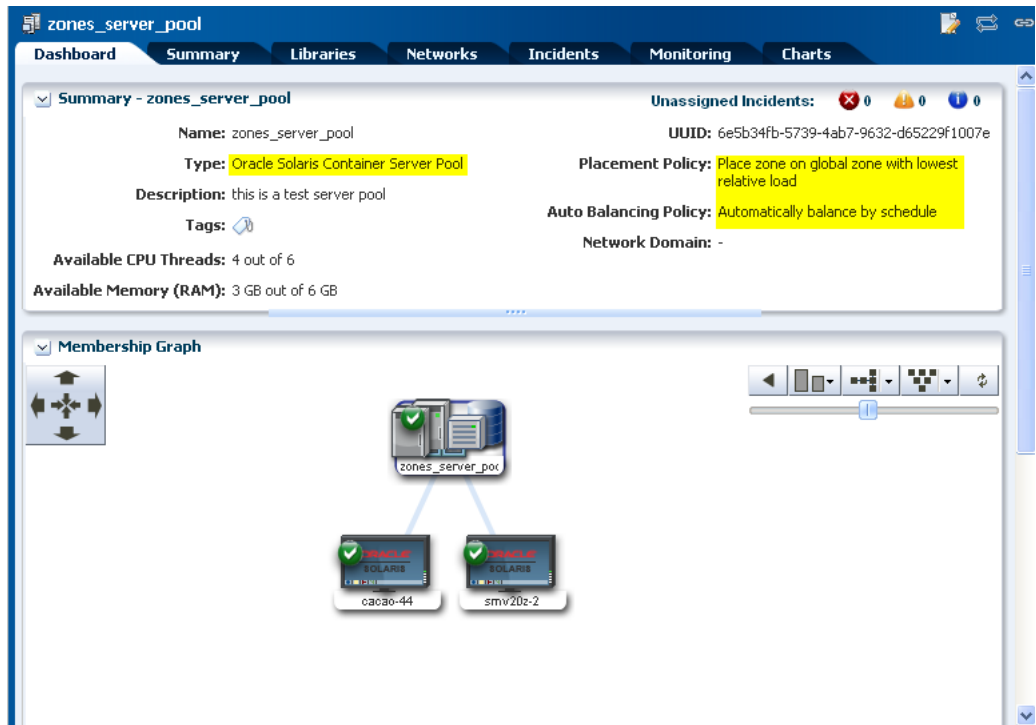
**Automatic Recovery:**  Power off a failed server when the capabilities are available before the automatic recovery of its zones

10. Review the information and click Finish to create the server pool.

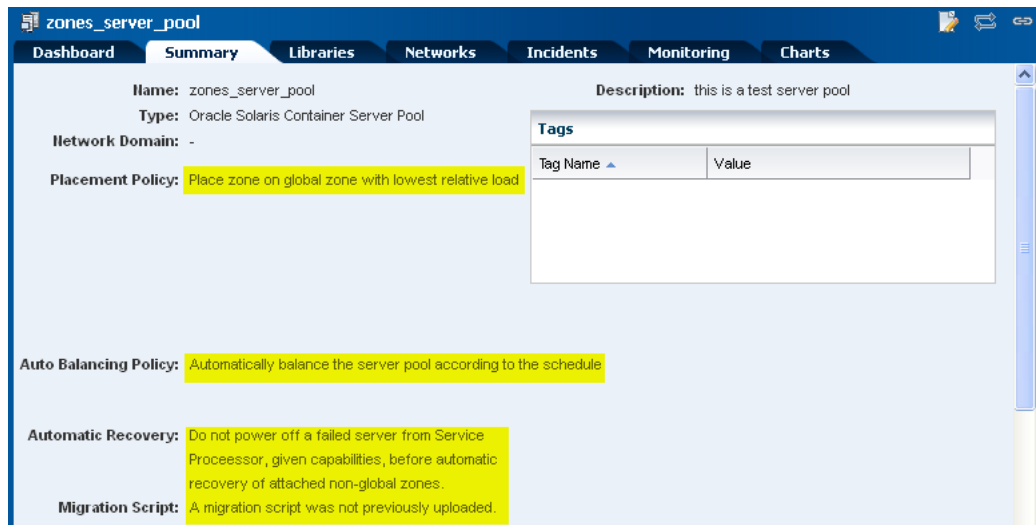
The new server pool appears in the Server Pools list.



You can view the server pool dashboard for the policies selected as shown in the following figure:

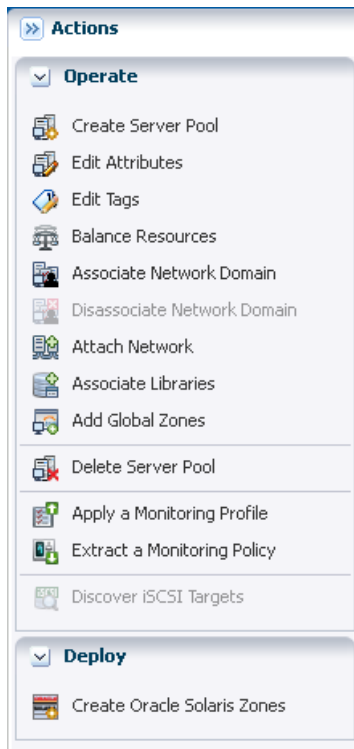


Select the server pool Summary page to view the settings as seen in the Dashboard. From here, you can also edit the server pool configuration.



The following options are available in the Actions pane for managing the server pool:





## What Next?

You can manage the server pools and create zones in the server pool. Oracle Enterprise Manager Ops Center provides the following options to manage the server pool configuration and state:

- Associate Network Domain
- Attach Network
- Associate Libraries
- Add Global Zones
- Balance Resources
- Apply Monitoring Profile
- Create Oracle Solaris Zones

## Creating Zones in the Server Pool

In this server pool, you can create zones using the option Create Oracle Solaris Zones. According to the placement policy of the server pool, the zones are placed in a global zone with lowest relative load. Refer to *Oracle Enterprise Manager Ops Center Creating Oracle Solaris 11 Zones* for an example of how to create zones.

In Oracle Enterprise Manager Ops Center, the average load on each server for the last 10 minutes are obtained by default for CPU, memory, and system load usage. For each server, a quadratic average of these values are calculated. The server with the lowest value is selected and the zone is placed on that server.

## Related Resources

Refer to the following documentation resources for more information:

- *Oracle Enterprise Manager Ops Center Feature Reference Guide*
- *Oracle Enterprise Manager Ops Center Creating Oracle Solaris 11 Zones*
- Oracle Enterprise Manager Ops Center documentation at [http://docs.oracle.com/cd/E27363\\_01/index.htm](http://docs.oracle.com/cd/E27363_01/index.htm)

## Documentation Accessibility

For information about Oracle's commitment to accessibility, visit the Oracle Accessibility Program website at

<http://www.oracle.com/pls/topic/lookup?ctx=acc&id=docacc>.

## Access to Oracle Support

Oracle customers have access to electronic support through My Oracle Support. For information, visit

<http://www.oracle.com/pls/topic/lookup?ctx=acc&id=info> or visit

<http://www.oracle.com/pls/topic/lookup?ctx=acc&id=trs> if you are hearing impaired.

---

Oracle Enterprise Manager Ops Center Creating Server Pool for Zones, 12c Release 1 (12.1.0.0.0)  
E27351-02

Copyright © 2007, 2012, Oracle and/or its affiliates. All rights reserved.

This software and related documentation are provided under a license agreement containing restrictions on use and disclosure and are protected by intellectual property laws. Except as expressly permitted in your license agreement or allowed by law, you may not use, copy, reproduce, translate, broadcast, modify, license, transmit, distribute, exhibit, perform, publish, or display any part, in any form, or by any means. Reverse engineering, disassembly, or decompilation of this software, unless required by law for interoperability, is prohibited.

The information contained herein is subject to change without notice and is not warranted to be error-free. If you find any errors, please report them to us in writing.

If this is software or related documentation that is delivered to the U.S. Government or anyone licensing it on behalf of the U.S. Government, the following notice is applicable:

U.S. GOVERNMENT END USERS: Oracle programs, including any operating system, integrated software, any programs installed on the hardware, and/or documentation, delivered to U.S. Government end users are "commercial computer software" pursuant to the applicable Federal Acquisition Regulation and agency-specific supplemental regulations. As such, use, duplication, disclosure, modification, and adaptation of the programs, including any operating system, integrated software, any programs installed on the hardware, and/or documentation, shall be subject to license terms and license restrictions applicable to the programs. No other rights are granted to the U.S. Government.

This software or hardware is developed for general use in a variety of information management applications. It is not developed or intended for use in any inherently dangerous applications, including applications that may create a risk of personal injury. If you use this software or hardware in dangerous applications, then you shall be responsible to take all appropriate fail-safe, backup, redundancy, and other measures to ensure its safe use. Oracle Corporation and its affiliates disclaim any liability for any damages caused by use of this software or hardware in dangerous applications.

Oracle and Java are registered trademarks of Oracle and/or its affiliates. Other names may be trademarks of their respective owners.

Intel and Intel Xeon are trademarks or registered trademarks of Intel Corporation. All SPARC trademarks are used under license and are trademarks or registered trademarks of SPARC International, Inc. AMD, Opteron, the AMD logo, and the AMD Opteron logo are trademarks or registered trademarks of Advanced Micro Devices. UNIX is a registered trademark of The Open Group.

This software or hardware and documentation may provide access to or information on content, products, and services from third parties. Oracle Corporation and its affiliates are not responsible for and expressly disclaim all warranties of any kind with respect to third-party content, products, and services. Oracle Corporation and its affiliates will not be responsible for any loss, costs, or damages incurred due to your access to or use of third-party content, products, or services.