

Oracle FLEXCUBE Universal Banking ® 12.0.2 Development Workbench – Getting Started

August 2013



Contents

1	Preface	3
1.1	Audience	3
1.2	Related Documents	3
2	Introduction	3
3	Explanation of Some Basic Icons and Jargons.....	4
4	Client Browser Settings	4
4.1	IE Specific Settings.....	5
5	Login.....	10
6	Browser.....	11
7	Windows	12
8	Launch FCUBS	13
9	User Preferences.....	13
10	Change Password.....	15
11	Sign Out.....	16
12	About	17

1 Preface

This document describes helps developer to familiarize with ORACLE FLEXCUBE Development Workbench for Universal Banking.

1.1 Audience

This document is intended for FLEXCUBE Application developers/users that use Development Workbench to develop various FLEXCUBE components.

To Use this manual, you need conceptual and working knowledge of the below:

<i>Proficiency</i>	<i>Resources</i>
FLEXCUBE Functional Architecture	Training programs from Oracle Financial Software Services.
FLEXCUBE Object Naming conventions	Development Overview Guide
Working knowledge of Web based applications	Self Acquired
Working knowledge of XML files	Self Acquired

1.2 Related Documents

[01_ODT_Installation.pdf](#)

[02-Development WorkBench Administration.pdf](#)












2 Introduction

This document contains information about the following topics:

- [Chapter 2 , "Introduction"](#)
- [Chapter 3 , "Explanation of Some Basic Icons"](#)
- [Chapter 4 , "Login"](#)
- [Chapter 5 , "Browser"](#)
- [Chapter 6 , "Windows"](#)
- [Chapter 7 , "Launch FCUBS"](#)
- [Chapter 8 , "User Preferences"](#)
- [Chapter 9 , "Change Password"](#)
- [Chapter 10 , "Sign Out"](#)

- [Chapter 11 , "About"](#)

3 Explanation of Some Basic Icons and Jargons

Icons	Function
	New Button used to add new User, Environment, Release etc
	Save button used to save the work done by user.
	Close button clears all the data in the screen and all buttons will be reset to initial position.
	Enter query button to retrieve existing data from the screen. Primary key field will be get enabled.
	Execute query button. This gets enabled on click of enter query button. On click of this button it will retrieve the required data and displays on the screen.
	Unlock button used to modify the existing record. On click of this , all fields except primary key fields gets enabled.
	List Of Values
	To add New labels or modify existing labels in FLEXCUBE schema
	Generate Files.
	Deploy Files.
	Release Files.

Radxml: Workbench saves all the activities carried out by the developer in an xml file referred to as radxml

Rad/RadTool/ODT: These terms also refers to FLEXCUBE Development Workbench for Universal Banking

4 Client Browser Settings

➤ **Recommended Browsers:**

- Microsoft Internet Explorer 8.0
The version of Microsoft Internet Explorer 8.0 should not be a Beta version, Partner Build or a Release Candidate. It should be the Final build of Microsoft Internet Explorer 8 or later. The minimum version of Microsoft Internet Explorer 8 should be **8.0.6001.18702**. This can be verified by visiting the 'About Internet Explorer' dialog in the Help menu as shown below.



- Mozilla Firefox
- Google Chrome

➤ **Recommended Screen Resolution:**

1280*1024 pixels

4.1 IE Specific Settings

ActiveX Scripting has to be enabled to read and write files in Client Machine.

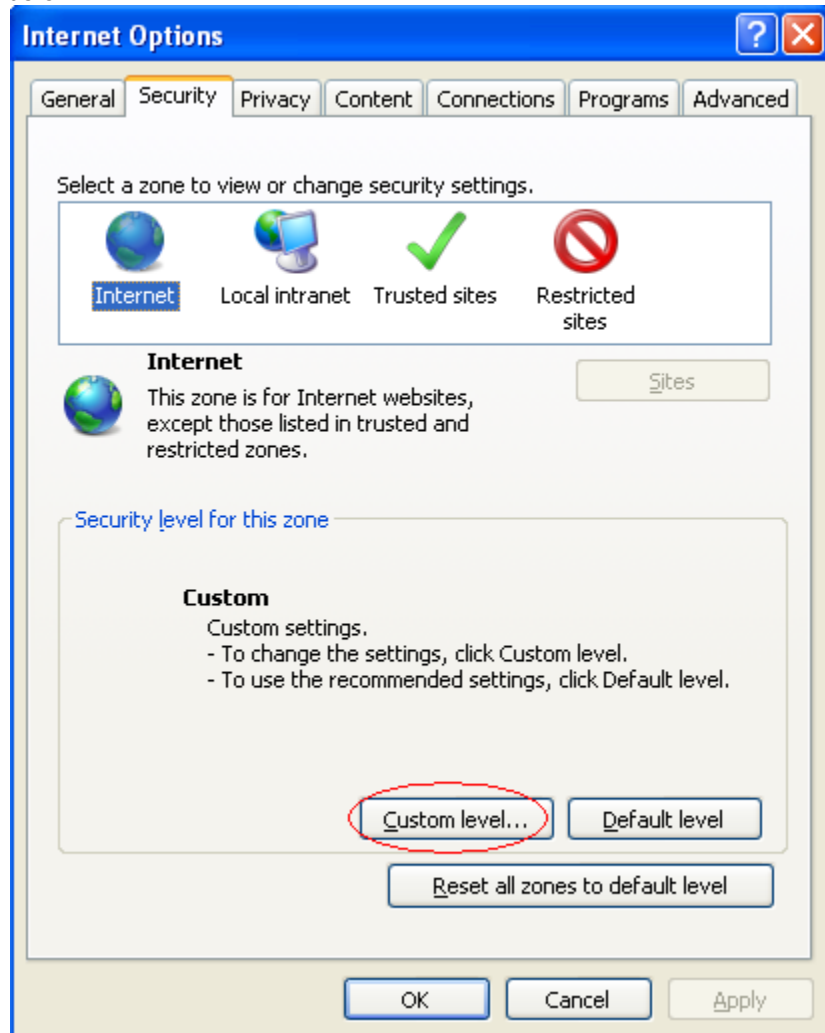
Therefore, if you have to generate the files in client machine (instead of downloading as zip from server); certain settings has to be done in the browser. Client Mode is supported only in Internet Explorer. Settings required in IE for enabling writing to Client Machines is explained below

MSXML 6.0 :

Microsoft Core XML Services (MSXML 6.0) needs to be installed in the system. It can be downloaded from,
<http://www.microsoft.com/en-us/download/details.aspx?id=3988>

The following IE settings need to be done to launch the Workbench Login page

- 1) Go to Internet Explorer → Tools → Internet options
- 2) Click on Security tab, select Internet and click on Custom level button as shown below:

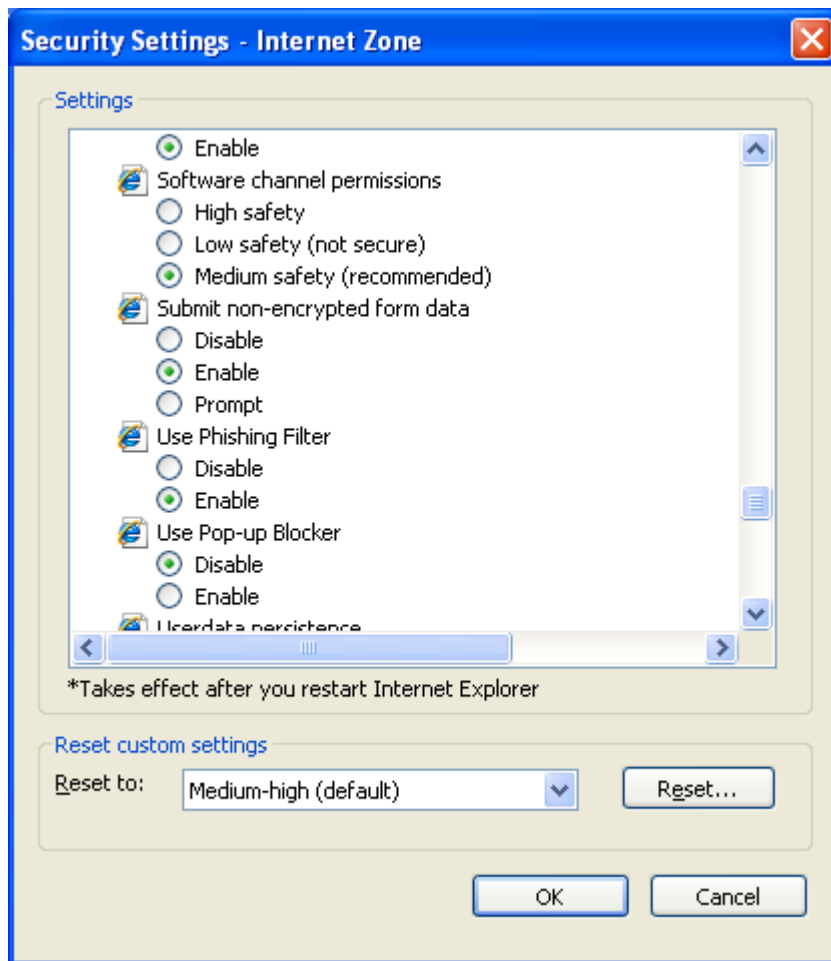


- 3) As security settings make all settings as enabled except **use Pop-up Blocker** as shown below

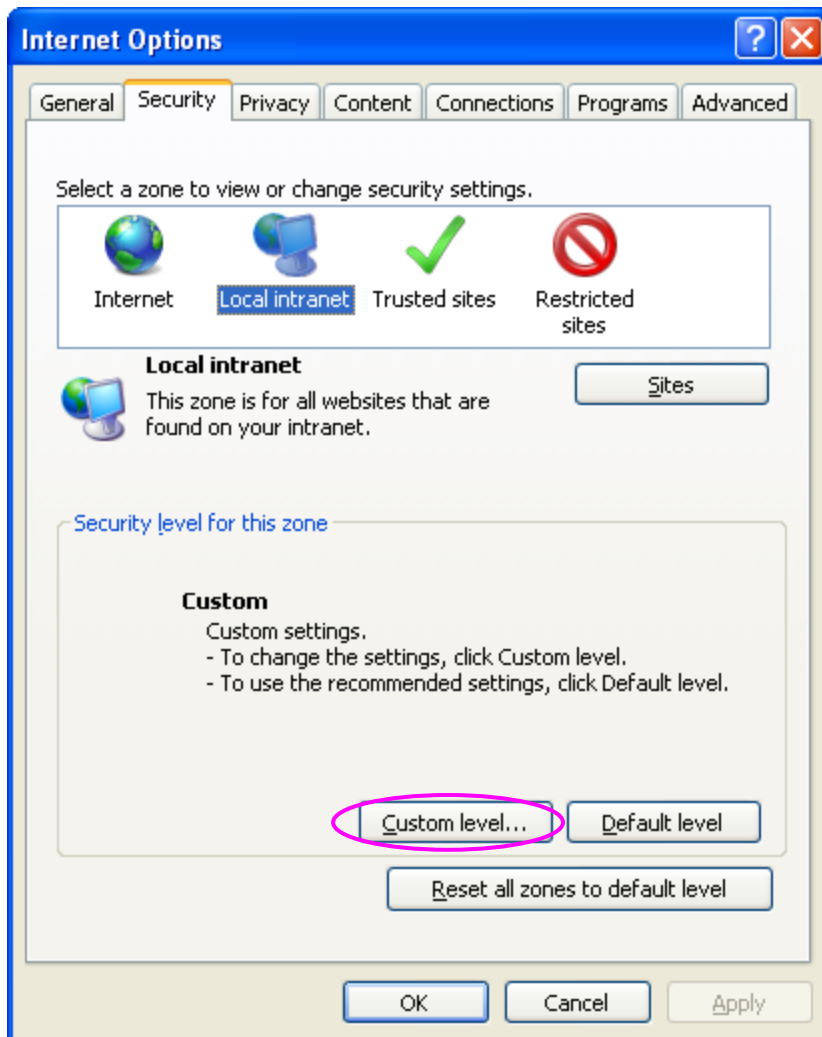
Make sure following things are enabled

- .Allow previously unused active controls to run
- Allow script lets
- Automatic prompting for active control
- Binary and script behaviors.
- Only allow approved domains to use active control without prompting.

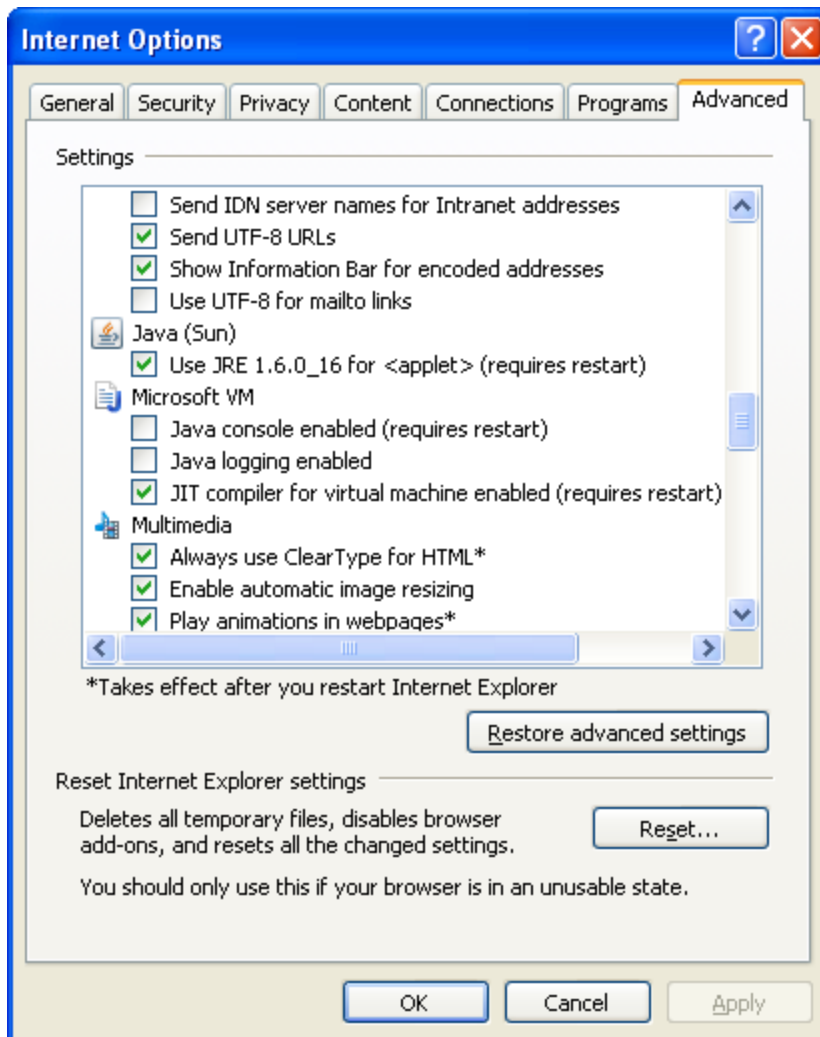
- Run active controls and plug-ins.
- Script active controls marked for saving.



- 4) Repeat the same steps for Local Intranet by selecting the same as shown below :



- 5) After all these settings are done, go to **Advanced** tab and check whether the checkbox 'Use JRE (Version) for <applet>(requires restart)' is checked or not. If its nnot checked, then it has to be checked as shown below.



5 Login

Developers will be provided with Login credentials for Workbench which has to be used for accessing the Tool

Initial login credentials, after installation, will be RADTOOL/RADTOOL. Using this credential; developer has to create release, environment and users. Refer [02-Development WorkBench Administration.pdf](#) for further details.

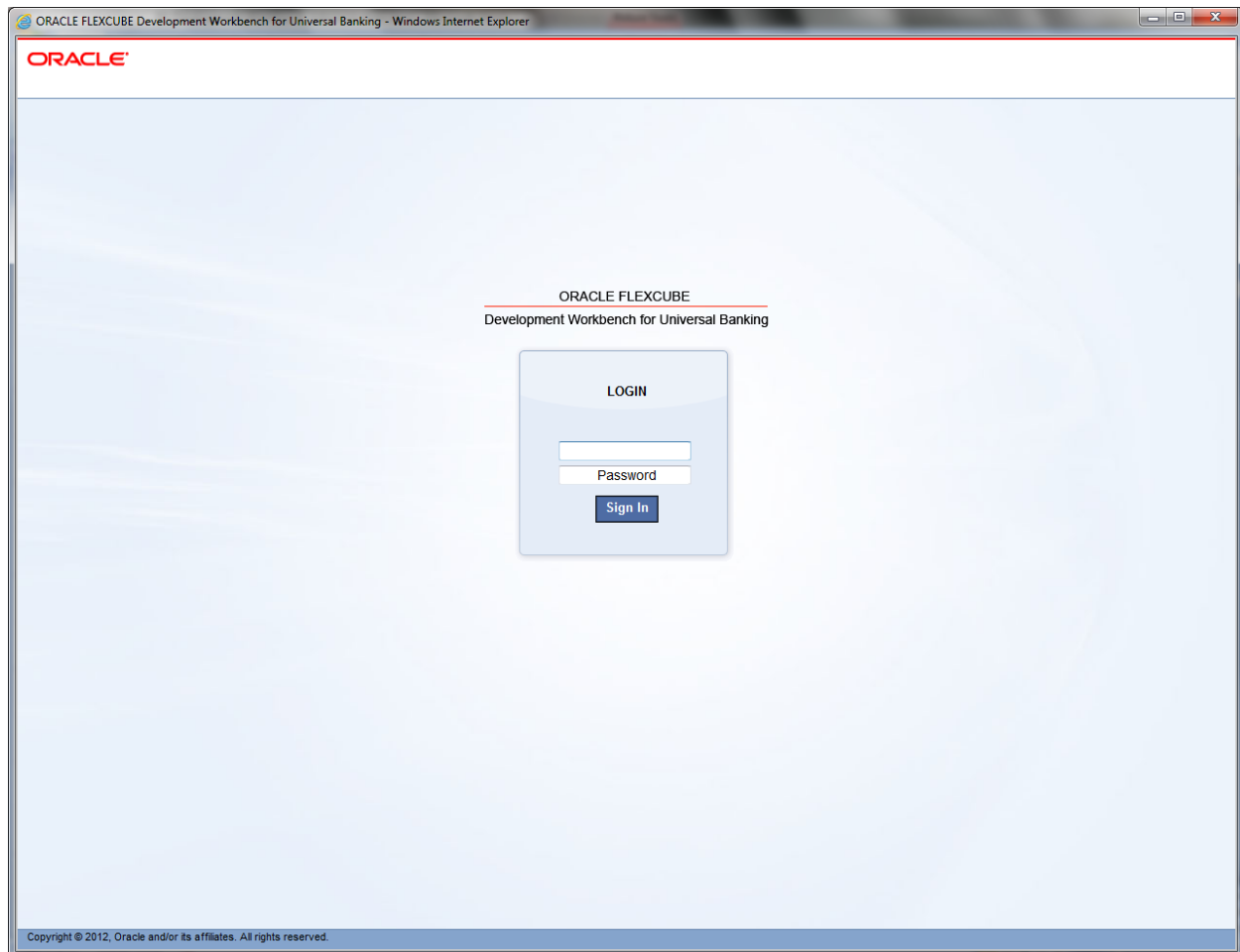


Fig 4.1: ODT login Screen

On successful login Workbench landing page will be displayed as shown below. Browser will display the available options to user in tree view based on role.

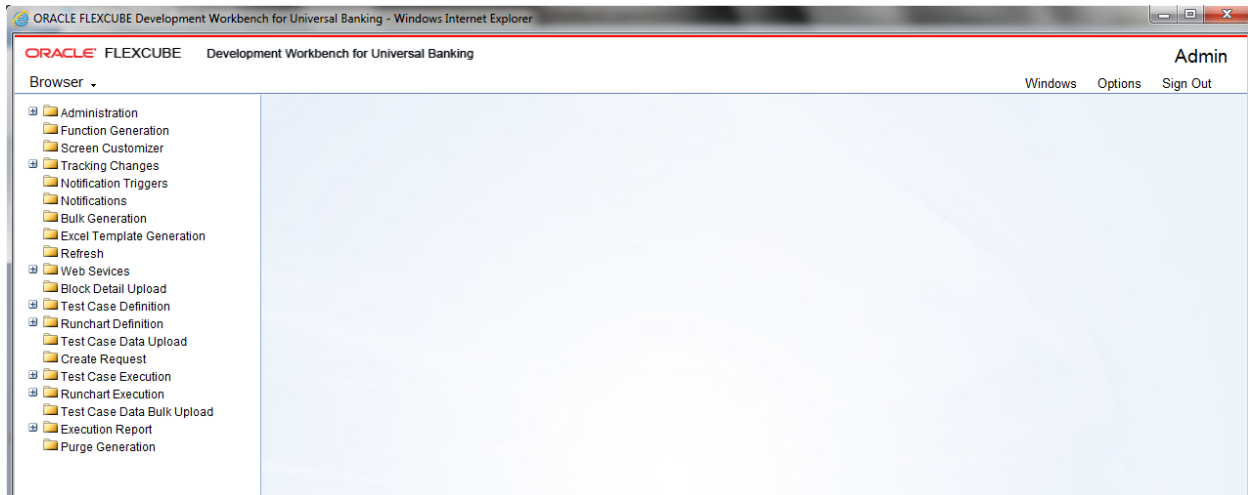


Fig 4.2: The landing page

Below options are available in landing page.

6 Browser

It is drop down tree menu. Based on role of the user, Workbench displays the options in tree.

- **Administration:** This is used to add releases, environments and users.
- **Function Generation:** This is used to design FLEXCUBE screens.
- **Screen Customizer:** This is used to design FLEXCUBE screens. Main Difference between function generation and screen customizer is in screen customizer user can just modify the screen lay out. No additions and deletions allowed.
- **Tracking Changes:** This module helps in tracking the changes done in a particular release. A Change Report can be generated OR the changes can be viewed
- **Notification Triggers:** This will be used to create notification triggers.
- **Notification:** This will be used to create notification xml.
- **Bulk Generation:** This option used to generate all output files for a set of radxmls at one time.
- **Excel Template Generation:** This option will be used to generate excel template out of radxml which can be used to upload data into FLEXCUBE.

- **Refresh:** This option will be used to upgrade Radxml from lower version to higher version and to update child RADxml with parent changes.
- **Web Services:** Artifacts required for creation of a Web service can be generated using this feature.
- **Block Detail Upload:** This option will be used to upload block detailed information into schema from a set of radxml at one time.
- **Test Case Definition:** This option will be used to define new test case and modify existing test cases.
- **Run Chart Definition:** This option will be used to define run charts for test cases.
- **Test Case Data Upload:** This option will be used to upload test case data for the defined test cases. Data has to be uploaded in the standard excel formats.
- **Create Request:** This option will be used to create request xml (compatible with FLEXCUBE) for a test case data set.
- **Test Case Execution:** This option is used to execute test case on FLEXCUBE environment
- **Run Chart Execution:** This option will be used to execute run chart on FLEXCUBE environment
- **Test Case Data Bulk Upload:** This option will be used to upload multiple test case data at one time.
- **Execution Report:** This option generates report for the executed test cases and run charts

7 Windows

It will display all opened windows in drop down menu. User can select the required window to show on top of the tool.

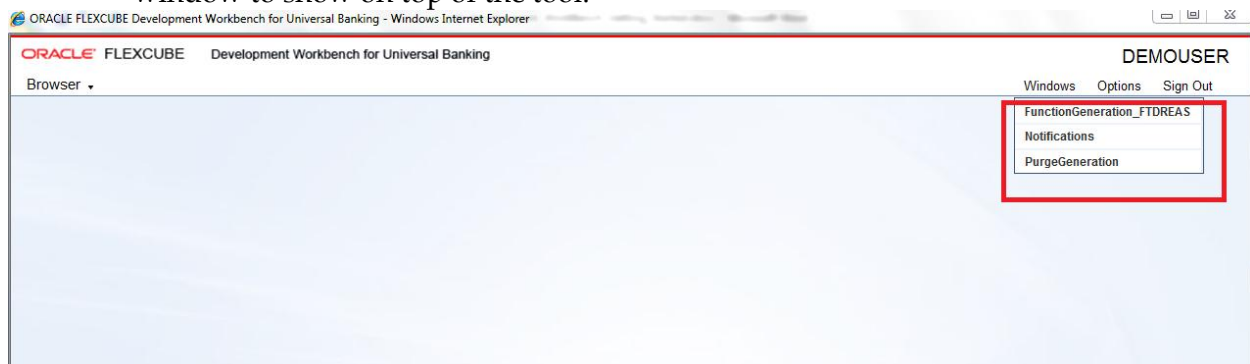


Fig 6.1: The Windows opened

8 Launch FCUBS

This will be used to launch FLEXCUBE link directly from Workbench. User has to maintain correct FLEXCUBE url while adding environment. Refer [02-Development WorkBench Administration.pdf](#) details on environment creation.

The screenshot shows the 'Environment Master' window with the following details:

Environment Details	Application Details
Environment Code * FCUBS_12.0.2_DEV12	Application URL https://10.184.132.129:7
Release Code * FCUBS_12.0.2	Application IP Address 10.184.132.129
Language Code * ENG	Application Name FCUBS 12.0.2
Description 12.0.2 DEV	Application OS Unix
JNDI name	Application Transfer Type File Manager
JNDI Name * jdbc/DEV1202	JS Directory Path /scratch/app/wl1032/us
Database Details	UI XML Directory Path /scratch/app/wl1032/us
Database Instance FCUBSDEV	Server User Name tpani
Database Port 1521	Server Password
Database IP Address 10.184.132.131	Server Filemanager URL https://10.184.132.129:7
Database Host Name 10.184.132.131	File Manager User Name
Database Name DEV1202	File Manager Password
Database Password	
Modification Number 5	Test Environment
Maker Id RADTOOL	
Maker Date Stamp 2013-09-04 11:31:52	

Close

Fig 7.1: Launch FCUBS Screen

9 User Preferences

This option will be used to set user preferences. By default user will be mapped to a release code and its corresponding environment.

If developer wants to change the working release or environment, he has to set it in this screen.

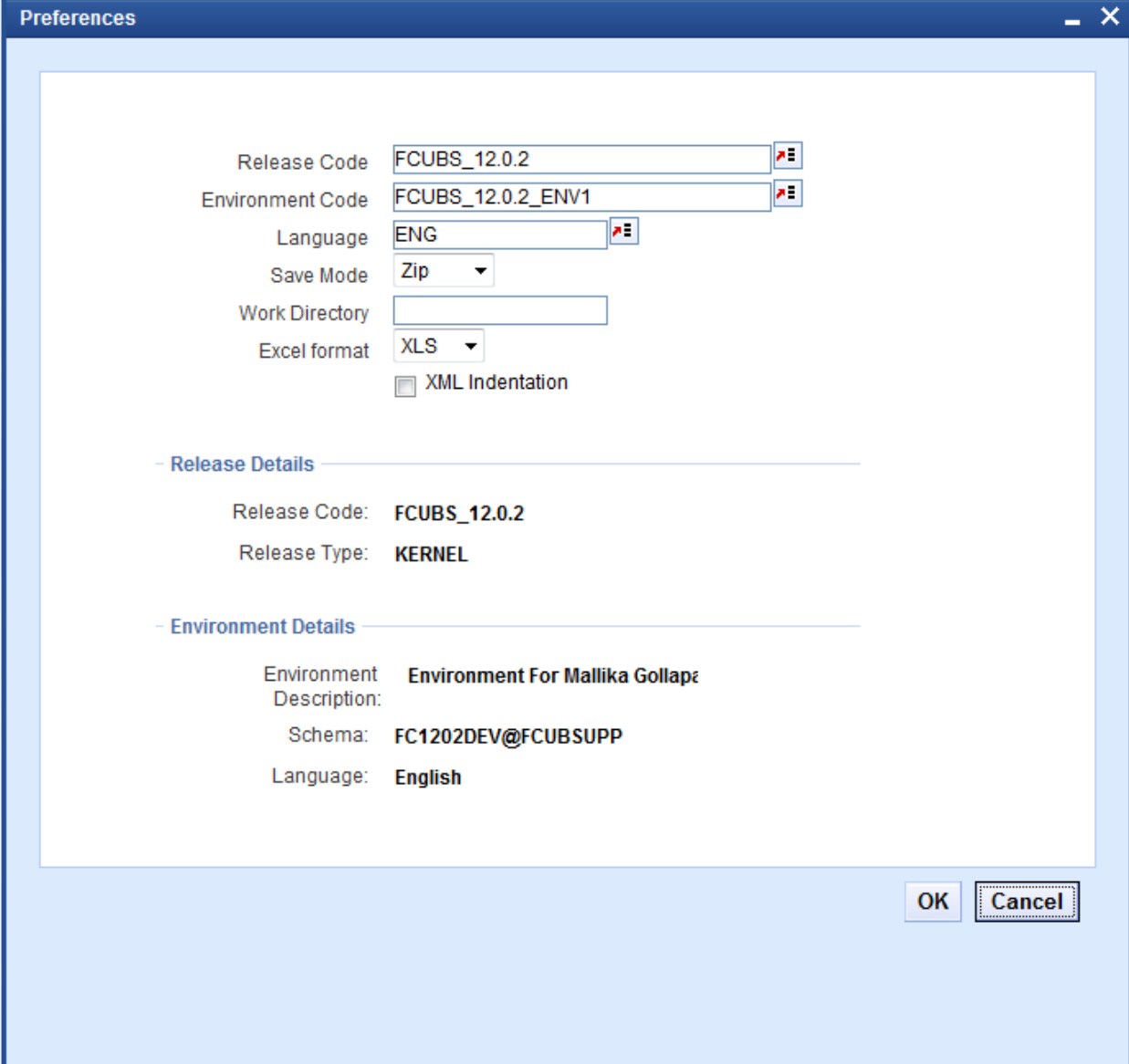
Language Code: Default Language of the environment can be changed if required

Save Mode: Default Save Mode of the user would be displayed here. This can be changed if required

Work Directory: Work Directory can be modified if the Save Mode.

Excel Format: Excel Format can be changed from the value defined at User Definition screen

XML Indentation: If the generated Xmls has to intended, this option can be checked. Note that XML indentation feature won't be available if Save Mode ids Client



The image shows a 'Preferences' dialog box with a blue title bar and standard window controls. The main area is white and contains several configuration fields. At the top, there are text boxes for 'Release Code' (FCUBS_12.0.2) and 'Environment Code' (FCUBS_12.0.2_ENV1), each with a small icon to its right. Below these is a 'Language' dropdown set to 'ENG' with a small icon. The 'Save Mode' is a dropdown set to 'Zip'. The 'Work Directory' is an empty text box. The 'Excel format' is a dropdown set to 'XLS'. Below this is a checkbox for 'XML Indentation' which is currently unchecked. A horizontal line separates the top section from the 'Release Details' section. Under 'Release Details', 'Release Code' is FCUBS_12.0.2 and 'Release Type' is KERNEL. Another horizontal line separates this from the 'Environment Details' section. Under 'Environment Details', 'Environment Description' is Environment For Mallika Gollap, 'Schema' is FC1202DEV@FCUBSUPP, and 'Language' is English. At the bottom right of the dialog are 'OK' and 'Cancel' buttons.

Release Code	FCUBS_12.0.2
Environment Code	FCUBS_12.0.2_ENV1
Language	ENG
Save Mode	Zip
Work Directory	
Excel format	XLS
<input type="checkbox"/> XML Indentation	
- Release Details -	
Release Code:	FCUBS_12.0.2
Release Type:	KERNEL
- Environment Details -	
Environment Description:	Environment For Mallika Gollap
Schema:	FC1202DEV@FCUBSUPP
Language:	English

OK Cancel

Fig 8.1: User Preferences Screen

After changing required fields click on **Set button** for changing the details

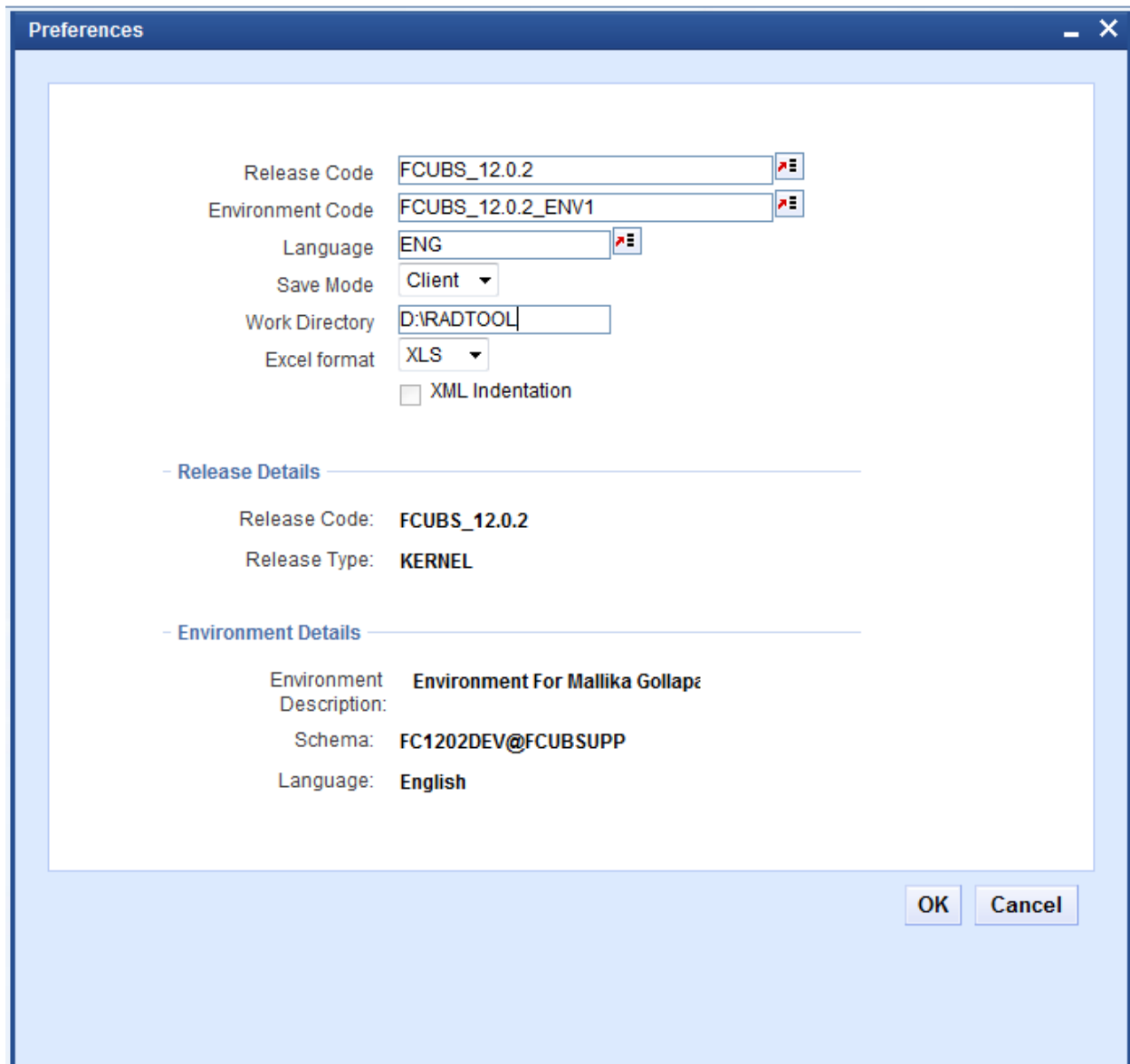
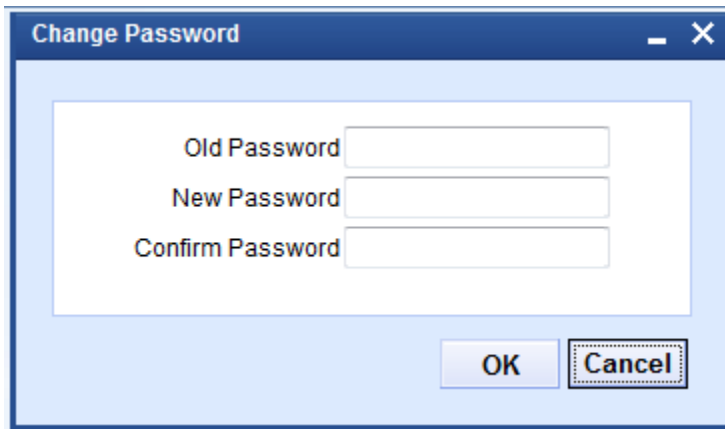


Fig 8.2: The screen to change preferences

Changes done in user preferences on release, environment or work directory will effect only to the current session. On sign out and re-login, default release details will be assigned again. If developer wishes to change default settings for the user, same can be done by modifying the default options for the User in Administration section

10 Change Password

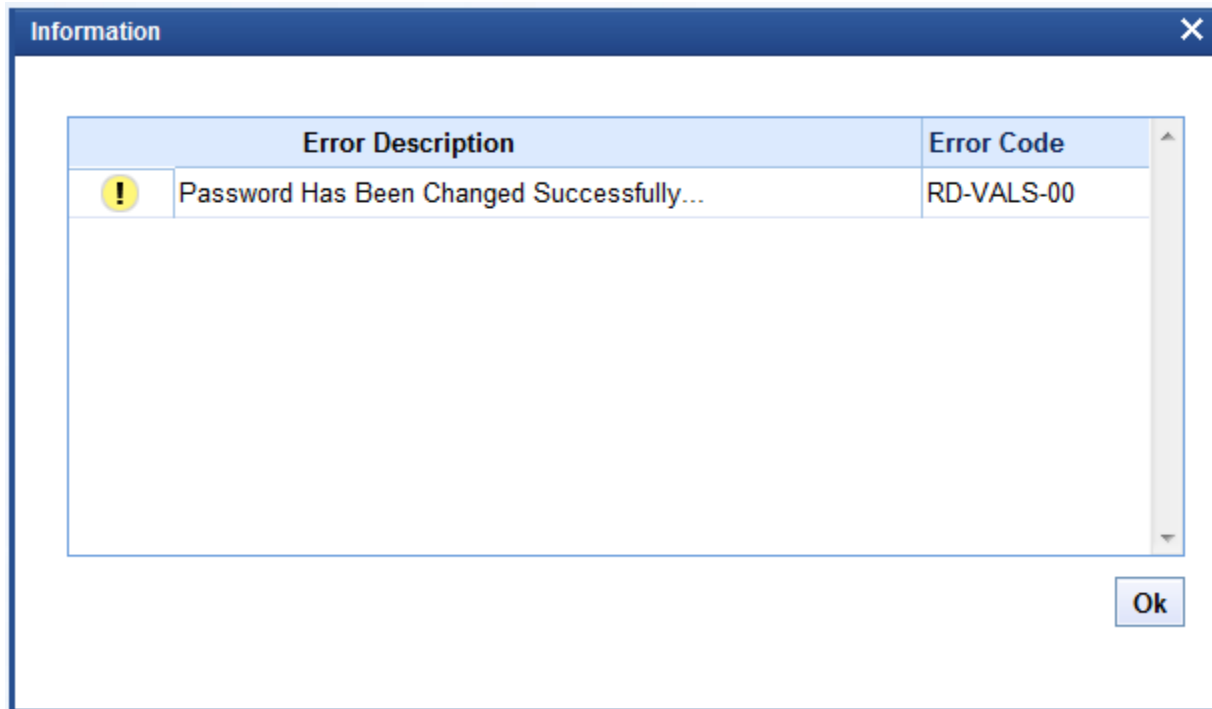
This option can be used to change User Password. Enter old password and new password and confirm password.



A dialog box titled "Change Password" with a blue header bar containing a minus sign and a close button. The dialog has a light blue background. Inside, there is a white rectangular area containing three text input fields labeled "Old Password", "New Password", and "Confirm Password". Below these fields are two buttons: "OK" and "Cancel". The "Cancel" button is highlighted with a dashed border.

Fig 9.1: Screen to change password

Click on change button. On successful change it will display message.



An "Information" dialog box with a blue header bar and a close button. It contains a table with two columns: "Error Description" and "Error Code". The first row shows a yellow warning icon, the text "Password Has Been Changed Successfully...", and the code "RD-VALS-00". Below the table is an "Ok" button.

	Error Description	Error Code
!	Password Has Been Changed Successfully...	RD-VALS-00

Fig 9.2: Message on password change

11 Sign Out

On click of sign out button user will logout from FLEXCUBE Development Workbench. All opened windows will get closed automatically. It will redirect to login page.

12 About

On click of this , Development Workbench version information popup window will get displayed.

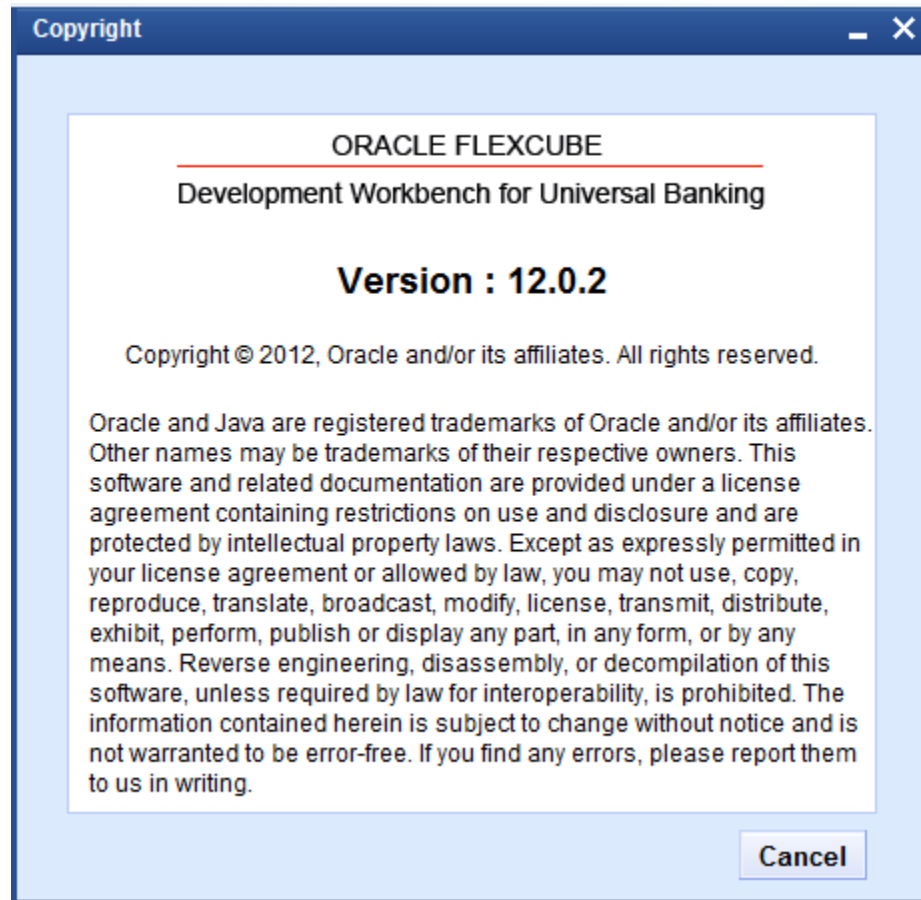


Fig 11.1: 'About' Screen that gives details of ODT



03-Development Workbench - Getting Started
August 2013

Oracle Corporation
World Headquarters
500 Oracle Parkway
Redwood Shores, CA 94065
U.S.A.

Worldwide Inquiries:
Phone: +1.650.506.7000
Fax: +1.650.506.7200
[www.oracle.com/ financial_services/](http://www.oracle.com/financial_services/)

Copyright © 2012-2013 Oracle Financial Services Software Limited. All rights reserved.

No part of this work may be reproduced, stored in a retrieval system, adopted or transmitted in any form or by any means, electronic, mechanical, photographic, graphic, optic recording or otherwise, translated in any language or computer language, without the prior written permission of Oracle Financial Services Software Limited.

Due care has been taken to make this document *03-Development Workbench-Getting Started* and accompanying software package as accurate as possible. However, Oracle Financial Services Software Limited makes no representation or warranties with respect to the contents hereof and shall not be responsible for any loss or damage caused to the user by the direct or indirect use of this *03-Development Workbench-Getting Started* and the accompanying Software System. Furthermore, Oracle Financial Services Software Limited reserves the right to alter, modify or otherwise change in any manner the content hereof, without obligation of Oracle Financial Services Software Limited to notify any person of such revision or changes.

All company and product names are trademarks of the respective companies with which they are associated.