

Oracle® Endeca Information Discovery Integrator

Integrator ETL Installation Guide

Version 3.2.0 • January 2016

Copyright and disclaimer

Copyright © 2003, 2016, Oracle and/or its affiliates. All rights reserved.

Oracle and Java are registered trademarks of Oracle and/or its affiliates. Other names may be trademarks of their respective owners. UNIX is a registered trademark of The Open Group.

This software and related documentation are provided under a license agreement containing restrictions on use and disclosure and are protected by intellectual property laws. Except as expressly permitted in your license agreement or allowed by law, you may not use, copy, reproduce, translate, broadcast, modify, license, transmit, distribute, exhibit, perform, publish or display any part, in any form, or by any means. Reverse engineering, disassembly, or decompilation of this software, unless required by law for interoperability, is prohibited.

The information contained herein is subject to change without notice and is not warranted to be error-free. If you find any errors, please report them to us in writing.

If this is software or related documentation that is delivered to the U.S. Government or anyone licensing it on behalf of the U.S. Government, the following notice is applicable:

U.S. GOVERNMENT END USERS: Oracle programs, including any operating system, integrated software, any programs installed on the hardware, and/or documentation, delivered to U.S. Government end users are "commercial computer software" pursuant to the applicable Federal Acquisition Regulation and agency-specific supplemental regulations. As such, use, duplication, disclosure, modification, and adaptation of the programs, including any operating system, integrated software, any programs installed on the hardware, and/or documentation, shall be subject to license terms and license restrictions applicable to the programs. No other rights are granted to the U.S. Government.

This software or hardware is developed for general use in a variety of information management applications. It is not developed or intended for use in any inherently dangerous applications, including applications that may create a risk of personal injury. If you use this software or hardware in dangerous applications, then you shall be responsible to take all appropriate fail-safe, backup, redundancy, and other measures to ensure its safe use. Oracle Corporation and its affiliates disclaim any liability for any damages caused by use of this software or hardware in dangerous applications.

This software or hardware and documentation may provide access to or information on content, products and services from third parties. Oracle Corporation and its affiliates are not responsible for and expressly disclaim all warranties of any kind with respect to third-party content, products, and services. Oracle Corporation and its affiliates will not be responsible for any loss, costs, or damages incurred due to your access to or use of third-party content, products, or services.

Table of Contents

Copyright and disclaimer	2
Preface	4
About this guide	4
Who should use this guide	4
Conventions used in this guide	4
Contacting Oracle Customer Support	5
Chapter 1: Introduction	6
About Integrator ETL	6
Chapter 2: Integrator ETL System Requirements	7
Hardware requirements	7
Supported operating systems	8
Software requirements	9
Chapter 3: Installing Integrator ETL	10
Downloading Integrator ETL	10
Integrator ETL installation packages	11
Installing Integrator ETL	11
Installing on Windows	12
Installing on Linux	12
Installing Integrator ETL Server	13
Installing on Tomcat	13
Tomcat configuration recommendations	15
Installing on WebLogic Server	15
Installing WebLogic Server	16
Creating a WebLogic domain for Integrator ETL Server	24
Creating a Windows Service for the Integrator ETL Server	34
Installing Integrator ETL Server on the WebLogic domain	34
Configuring the Integrator ETL Server license	36
Installing Oracle Language Technology (OLT)	37
Configuring Integrator ETL to use OLT	37
Chapter 4: Uninstalling Integrator ETL	39
Uninstalling Integrator ETL	39
Uninstalling Integrator ETL on Windows	39
Uninstalling Integrator ETL on Linux	39
Uninstalling Integrator ETL Server	40
Uninstalling Integrator ETL Server from Tomcat	40
Uninstalling Integrator ETL Server from WebLogic Server	40
Uninstalling Oracle Language Technology (OLT)	40

Preface

Oracle® Endeca Information Discovery Integrator is a powerful visual data integration environment that includes:

The Integrator Acquisition System (IAS) for gathering content from delimited files, file systems, JDBC databases, and Web sites.

Integrator ETL, an out-of-the-box ETL purpose-built for incorporating data from a wide array of sources, including Oracle BI Server.

In addition, Oracle Endeca Web Acquisition Toolkit is a Web-based graphical ETL tool, sold as an add-on module. Text Enrichment and Text Enrichment with Sentiment Analysis are also sold as add-on modules. Connectivity to data is also available through Oracle Data Integrator (ODI).

About this guide

This guide contains installation instructions for setting up Oracle Endeca Information Discovery Integrator ETL on Windows and Linux.

Who should use this guide

This guide is intended for system administrators installing Oracle Endeca Information Discovery Integrator ETL on Windows or Linux.

Conventions used in this guide

The following conventions are used in this document.

Typographic conventions

The following table describes the typographic conventions used in this document.

Typographic conventions

Typeface	Meaning
User Interface Elements	This formatting is used for graphical user interface elements such as pages, dialog boxes, buttons, and fields.
Code Sample	This formatting is used for sample code phrases within a paragraph.
<Variable Name>	This formatting is used for variable values, such as <install path>.
File Path	This formatting is used for file names and paths.

Symbol conventions

The following table describes symbol conventions used in this document.

Symbol conventions

Symbol	Description	Example	Meaning
>	The right angle bracket, or greater-than sign, indicates menu item selections in a graphic user interface.	File > New > Project	From the File menu, choose New, then from the New submenu, choose Project.

Contacting Oracle Customer Support

Oracle Customer Support provides registered users with important information regarding Oracle software, implementation questions, product and solution help, as well as overall news and updates from Oracle.

You can contact Oracle Customer Support through Oracle's Support portal, My Oracle Support at <https://support.oracle.com>.



Here is a brief overview of Oracle Endeca Information Discovery Integrator ETL and the installation process.

[About Integrator ETL](#)

About Integrator ETL

Oracle Endeca Information Discovery Integrator ETL is a high-performance data integration platform that lets you extract source records from a variety of source types (from flat files to databases).

Integrator ETL then loads that data into an Endeca data domain via the Data Ingest Web Service or the Bulk Load Interface.

From a high level, the Integrator suite consists of:

- **Integrator ETL.** With its powerful graphical interface, you can use the Integrator ETL client to build graphs that can load source data into an Endeca data domain, as well as the schema for your attributes and the index configuration documents for various Endeca features.
- **Information Discovery connectors.** Developed by Endeca, these connectors are Integrator ETL components that are easily configured to perform various data integration operations on Endeca data domains.
- **Integrator ETL Server.** The Server is used to run graphs in an enterprise-wide environment. In this environment, different users and user groups can access and run the graphs.
- **Integrator Acquisition System.** Optional component. The Integrator Acquisition System, or IAS, is a set of components that crawl source data stored in a variety of formats including: file systems, delimited files, JDBC databases, Web servers, and custom data sources. IAS transforms the data, if necessary, and outputs the data to an XML file or a Record Store that can be accessed by Integrator ETL for use in the Endeca Server. The installation procedure for IAS is documented in the *Integrator Acquisition System Installation Guide*.



Note: If you open any graphs in Integrator ETL that use an obsolete format, they will automatically be converted to the currently-supported format when you save them. Be aware that when you do this, the graphs, and any others that reference them, won't work with older versions of Integrator ETL.



Chapter 2

Integrator ETL System Requirements

The Integrator ETL components have the following installation requirements.



Note: The 3.2.0 version of the Integrator ETL is compatible only with the 7.7.x version of the Oracle Endeca Server.

[Hardware requirements](#)

[Supported operating systems](#)

[Software requirements](#)

Hardware requirements

Integrator ETL has the following hardware requirements.



Note: In this guide, the term "x64" refers to any processor compatible with the AMD64/EM64T architecture. You might need to upgrade your hardware, depending on the data you are processing. All run-time code must fit entirely in RAM. Likewise, hard disk capacity must be sufficient based on the size of your data set. Please contact your Oracle representative if you need more information on sizing your hardware.

Windows and Linux on x64

Minimum hardware requirements:


- x64 processor, minimum 1.8 GHz
- At least 3 GB of RAM, depending on the size of the application data set
- 1 GB available hard drive space (the installed size of Integrator Designer on disk)

Recommended hardware requirements:

- x64 3.0+ GHz processor
- 8 GB of RAM or more, depending on the size of the application data set
- Gigabit Ethernet

Supported operating systems

Integrator ETL supports the following 64-bit operating systems running on servers with x64 capabilities:

Operating System	Description
Oracle Enterprise Linux	OEL 6 for x64 Both the Oracle Unbreakable Enterprise Kernel and the Red Hat Compatible Kernel are supported.
Red Hat Enterprise Linux	<ul style="list-style-type: none"> • RHEL Server (version 6 for x64) running on x64 processors. • RHEL Advanced Platform (version 6 for x64) running on x64 processors.
Windows Server 2012	Windows Server 2012 R2 Enterprise running on x64 processors.  Note: Windows 7 isn't supported for a production deployment, but can be used for training and small-scale development work. Windows XP isn't supported at all.



Note: The *Oracle Endeca Information Discovery Integrator ETL Designer Guide* lists other supported operating systems. However, that list is superseded by the list above.

Software requirements

Integrator ETL has the following software requirements.

- Eclipse IDE for Java Developers Version Indigo (3.7) Sr2, 64-bit version. You can download this from eclipse.org. Be sure to download the correct version as illustrated here:



Don't extract the Eclipse package or install the Eclipse IDE, as the Integrator ETL installer will do this automatically.

- The Eclipse Remote System Explorer (RSE) plugin. You can download this from the [Target Management Project Downloads page](#). The recommended version is 3.5.
- Java 7 or 8 (also called 1.7 or 1.8) JDK. You can download this from the [Oracle Technology Network](#). For Windows, be sure to install both the JDK and the JRE in C:\Java\jdk1.x.x_xx\. For Linux, be sure that the install location doesn't include spaces. You must also set the JAVA_HOME environment variable before installing.

The Integrator ETL Server requires the following:

- Java 7 or 8 JDK. See above.
- Integrator ETL Server can be installed on WebLogic Server Version 12.1.3 or on a standalone Apache Tomcat, version 6.0.x. You should not install Integrator ETL Server in a container that hosts another application, such as Studio or the Provisioning Service.



Chapter 3

Installing Integrator ETL

The following sections describe how to install Integrator ETL, Integrator ETL Server, and the Oracle Language Technology.

[Integrator ETL installation packages](#)

[Installing Integrator ETL](#)

Downloading Integrator ETL

You download Integrator ETL from the Oracle Software Delivery Cloud.

If you want to install Integrator ETL Server on WebLogic Server, you should also download WebLogic Server at this time. This is included in the instructions below.

To download Integrator ETL:

1. Go to the [Oracle Software Delivery Cloud](#) and sign in.
2. Accept the Export Restrictions.
3. Check **Programs** if it isn't selected already.
4. In the **Product** text box, type `Oracle Endeca Information Discovery Integrator`.
5. Click **Select Platform**, check the appropriate platform for your environment, and click **Select**.
Oracle Endeca Information Discovery Integrator displays in the **Selected Products** table.
6. If you want to install Integrator ETL Server on WebLogic Server, type `Oracle Endeca Server` in the **Product** text box, and again select the appropriate platform for your environment.
Oracle Endeca Server also appears in the **Selected Products** table.
7. Click **Continue**.
8. Verify that **Available Release** and **Oracle Endeca Information Discovery Integrator...** are both checked, then click **Continue**.
If you're installing WebLogic Server, also verify that **Oracle Endeca Server 7.7...** is checked.
9. Review and accept the Oracle Standard Terms and Restrictions and click **Continue**.
10. In the **File Download** popup, click the .zip file for **Oracle Endeca Information Discovery Integrator ETL (3.2.0) for Microsoft Windows x64 (64-bit)**.
You should also make a note of the part number: you will need this information to identify it.
11. If you're installing WebLogic Server, also click the **Oracle Weblogic Server 12cR1 (12.1.3) Generic and Coherence** .zip file.

Integrator ETL installation packages

Installation packages are provided for Integrator ETL Designer and Integrator ETL Server on both Windows and Linux.

Integrator ETL Designer packages

The Linux Integrator ETL Designer installation package is named `EID_3.2.0_IntegratorETL.tar.gz`. This file contains:

- `install.sh`

This file is the installation script for Integrator ETL.

- `IntegratorETL`

This directory contains the installation files and data for Integrator ETL.

The Windows Integrator ETL Designer installation package is named `EID_3.2.0_IntegratorETL.zip`. This file contains:

- `install.bat`

This file is the installation script for Integrator ETL.

- `IntegratorETL`

This directory contains the installation files and data for Integrator ETL.

Integrator ETL Server installation package

The Integrator ETL Server package for Tomcat for both Windows and Linux is named `EID_3.2.0_IntegratorETL_server_tomcat.zip`. This file contains:

- `clover.war`

This file is the server version of the Integrator ETL, including the Information Discovery connectors.

- `clover-license.war`

This file is the license for the Integrator ETL Server.

The Integrator ETL Server package for WebLogic Server for both Windows and Linux is named `EID_3.2.0_Integrator_server_weblogic.zip`. This file contains:

- `clover.war`

This file is the server version of the Integrator ETL, including the Information Discovery connectors.

- `license.dat`

This file is the license for the Integrator ETL Server.

Installing Integrator ETL

This section describes how to install Integrator ETL on Linux and Windows platforms.

[Installing on Windows](#)

Installing on Linux

Installing on Windows

This topic describes how to install Integrator ETL on Windows.

This procedure assumes you've downloaded the following:

- The Integrator ETL installer for Windows.
- The Eclipse IDE for Java Developers version 3.7 (Indigo). Be sure you downloaded the correct version.
- The RSE plugin.

When the installer runs, it automatically installs both Eclipse and the RSE plugin along with Integrator ETL.

To install Integrator ETL on Windows:

1. Extract the Integrator ETL Designer installation package for Windows (EID_3.2.0_IntegratorETL.zip) to a convenient location.
2. Change to the directory where you unzipped the Integrator ETL installation package and run `install.bat`.
3. Select the installation directory when prompted.
You can either accept the default (C:\Oracle\Endeca\Discovery\3.2.0\IntegratorETL), or choose a new one. If you specify a directory that doesn't exist, the installer will create it automatically.
Oracle recommends that you specify a directory that doesn't exist, as the installer will overwrite an existing one.
4. Enter the absolute paths to the Eclipse and RSE .zip files when prompted.

When the installer finishes, Integrator ETL is installed in the specified location.

You may want to create a desktop shortcut to the Integrator ETL executable.

Installing on Linux

This topic describes how to install Integrator ETL on Linux.

This procedure assumes you've downloaded the following:

- The Integrator ETL installer for Linux.
- The Eclipse IDE for Java Developers version 3.7 (Indigo). Be sure that you downloaded the correct version.
- The RSE plugin.

When the installer runs, it automatically installs both Eclipse and the RSE plugin along with Integrator ETL.

To install Integrator ETL on Linux:

1. Extract the Integrator ETL Designer installation package for Linux (EID_3.2.0_IntegratorETL.tar.gz) to a convenient location.
2. Change to the directory where you extracted the Integrator ETL installation package and run `install.sh`.

3. Select the installation directory when prompted.

You can either accept the default (`~/Oracle/Endeca/Discovery/3.2.0/IntegratorETL`), or choose a new one. If you specify a directory that doesn't exist, the installer will create it automatically.

Oracle recommends that you specify a directory that doesn't exist, as the installer will overwrite an existing one.

4. Enter the absolute paths to the Eclipse and RSE packages when prompted.

When the installer finishes, Integrator ETL is installed in the specified location.

Installing Integrator ETL Server

You can install Integrator ETL Server on Tomcat and Oracle WebLogic Server Web application servers.

[Installing on Tomcat](#)

[Installing on WebLogic Server](#)

Installing on Tomcat

Integrator ETL Server is supported on Apache Tomcat version 6.0.x.

Integrator ETL Server must be installed on a standalone Apache Tomcat. Do not install Integrator ETL Server on a Tomcat server that is being used to host other applications. For example, do not install Integrator ETL Server on the Tomcat that is hosting Studio.

Java SDK version 7 or 8 is required.

Set the following environment variables:

- `JAVA_HOME`
- `JRE_HOME`



Note: If `JRE_HOME` is not set, the value defaults to the value of the `JAVA_HOME` environment variable.

To install Integrator ETL Server:

1. If you have not already installed Apache Tomcat 6.0.x:
 - (a) Download the binary distribution from: <http://tomcat.apache.org/download-60.cgi>.
 - (b) Unpack the ZIP file to a directory of your choosing.
 - (c) By default, Tomcat starts up on HTTP connector 8080. If another application on the install machine is already using port 8080 (for example, if you have another instance of Tomcat on the machine), then change the default startup port by modifying the `conf/server.xml` file.
 - (d) Run Tomcat with the `startup.sh` (for Linux) or `startup.bat` (for Windows) program file in the Tomcat `bin` directory.

- (e) Use a browser to check whether Tomcat is running on URL `http://localhost:8080`, where 8080 is the Tomcat port specified in `conf/server.xml`.

If Tomcat is running properly and you specified the correct port, the browser displays the Tomcat homepage.

For more detailed installation instructions, go to: <http://tomcat.apache.org/tomcat-6.0-doc/setup.html>

For instructions on installing Tomcat as a Windows service, go to: <http://tomcat.apache.org/tomcat-6.0-doc/windows-service-howto.html>

2. Shut down Tomcat.
3. Extract the Integrator ETL installation package for Tomcat (`EID_3.2.0_IntegratorETL_server_tomcat.zip`) to a convenient location.
4. Go to the directory you extracted the installation package to and copy the `clover-license.war` and `clover.war` files to the Tomcat `webapps` directory.
5. Create a `setenv` file and configure the Tomcat memory settings appropriate for your needs.
For details on creating this file, see [Creating a setenv file on page 15](#).
6. Restart Tomcat.
7. To verify that the Integrator ETL Server license was successfully deployed, start a browser and enter the URL `http://localhost:8080/clover-license`, where 8080 is the Tomcat port specified in `conf/server.xml`.

The browser should show this light-weight page:

```
This webapp runs on context /clover-license, which is correct.
```

8. Start a browser, and then enter the Integrator ETL Server home page URL:
`http://localhost:8080/clover`.
The browser should return the Integrator ETL Server home page.
9. To log in to the Integrator ETL Server:
 - (a) Click **Log in to Server Administration**.
 - (b) At the Access Server GUI page, enter `clover` as both the **Username** and **Password**, and then click the **Login** button.

When the Integrator ETL Server is running, you can access the *Reference Manual* from either the Integrator ETL Server home page or via this URL:

```
http://localhost:8080/clover/docs/index.html
```

where 8080 is the Tomcat port specified in `conf/server.xml`.

The *Integrator ETL Server Guide* provides comprehensive documentation on the operations available in Integrator ETL Server.

[Tomcat configuration recommendations](#)

Tomcat configuration recommendations

This topic provides some configuration tips for getting started with your Tomcat application server.

The complete documentation on configuring and using the Tomcat server is available at this URL for the server: <http://localhost:8080/docs/>

Creating a setenv file

It is recommended that you create a file named `setenv.bat` (Windows) or `setenv.sh` (Linux) and place it in the Tomcat `bin` directory. With this file (which is run by the `catalina.bat` and `catalina.sh` scripts), you can change the following Tomcat environment settings with the `JAVA_OPTS` variable:

- You can set the minimum and maximum memory heap size with the JVM `-Xms` and `-Xmx` parameters. The best limits depend on many conditions, such as transformations that Integrator ETL should execute. For Information Discovery transformations, a maximum of 1 GB is recommended. For example, to set the minimum heap size to 128 MB and the maximum heap size to 1024 MB, use:

```
JAVA_OPTS="-Xms128m -Xmx1024m"
```

- You should set the maximum limit of the PermGen (Permanent Generation) memory space to a size larger than the default. The default of 64 MB is not enough for enterprise applications. A suitable memory limit depends on various criteria, but 256 MB would make a good choice in most cases. If the PermGen space maximum is too low, `OutOfMemoryError: PermGen space` errors may occur. You can set the PermGen maximum limit with the following JVM parameter:

```
-XX:MaxPermSize=256m
```

- For performance reasons, it is recommended that the application is run in Server mode. Apache Tomcat does not run in Server mode by default. You can set the Server mode by using the JVM `-server` parameter. You can set the JVM parameter in the `JAVA_OPTS` variable in the environment variable in the `setenv` file.

The following is an example of a `setenv.bat` file:

```
set "JAVA_OPTS=%JAVA_OPTS% -Xms128m -Xmx1024m -XX:MaxPermSize=256m -server"
```

About database connections

By default, Integrator ETL Server uses an embedded Apache Derby database. This database is suitable for testing and evaluation environments. In these environments, no additional configuration is necessary.

In production environments, use of the embedded Derby database is not recommended. In these environments, you should use a robust, production-quality database, such as an Oracle or MySQL database. For details about configuring these databases, see the *Integrator ETL Server Guide*.

Installing on WebLogic Server

You can install Endeca Integrator ETL Server on WebLogic Server 12.1.3.

You must install Integrator ETL Server in its own WebLogic domain. The following process assumes you are installing Integrator ETL Server into a new WebLogic Server for production.



Note: For demonstration, evaluation, training, and development, you can install Integrator ETL Server on the same WebLogic Server as Endeca Server, Studio, and the Provisioning Service.

At a high level, installing Integrator ETL Server on WebLogic Server involves the following steps:

1. Install WebLogic Server.
2. Create and configure a WebLogic domain for Integrator ETL Server.
3. Install Integrator ETL Server into the WebLogic domain.
4. Configure the license for Integrator ETL Server.

These steps are described in the following sections.

[Installing WebLogic Server](#)

[Creating a WebLogic domain for Integrator ETL Server](#)

[Installing Integrator ETL Server on the WebLogic domain](#)

[Configuring the Integrator ETL Server license](#)

Installing WebLogic Server

If you don't want to install Integrator ETL on the same WebLogic Server instance as other Endeca Information Discovery components, you must install the WebLogic Server.

Before you install, verify that you properly installed the JDK. For more information, see [Integrator ETL System Requirements on page 6](#).

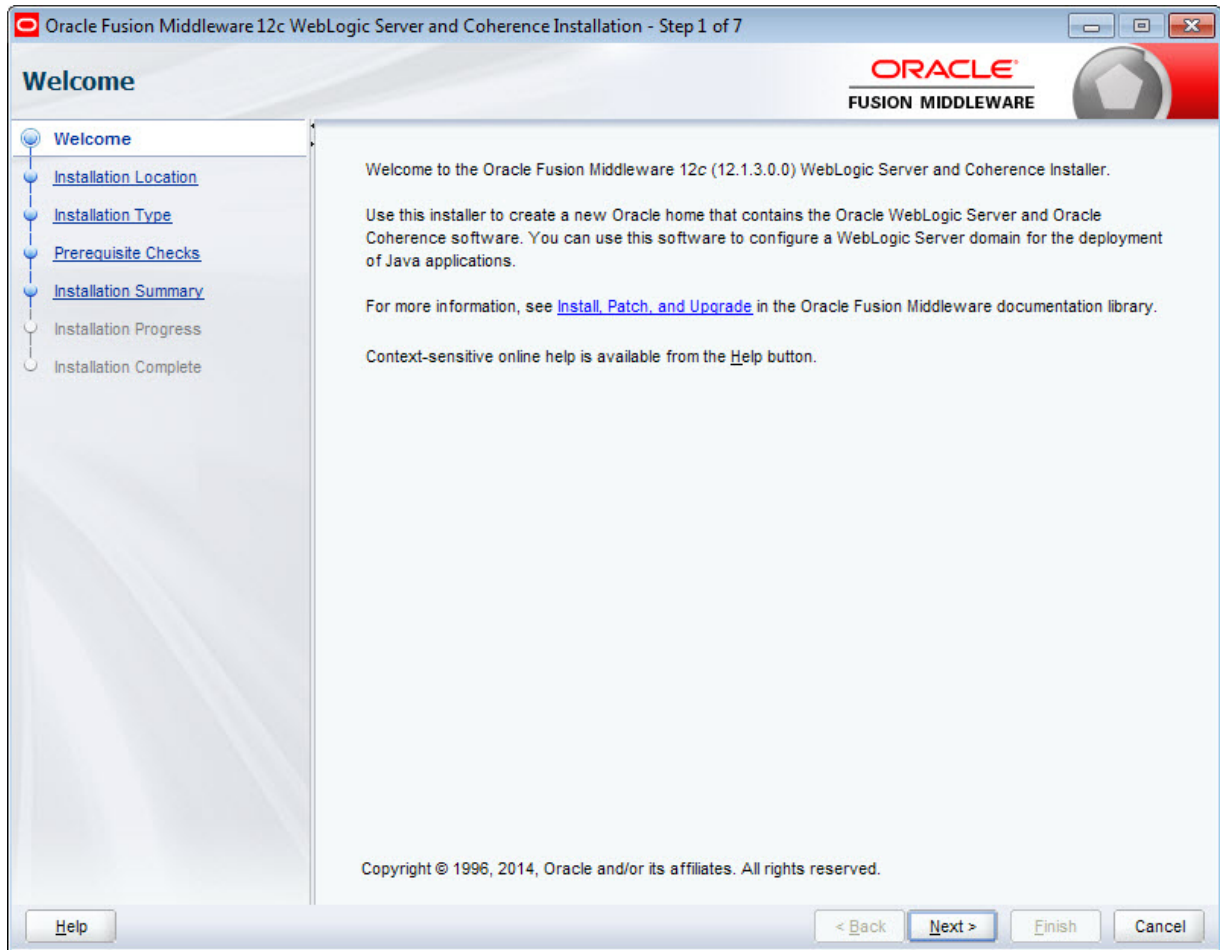
To install WebLogic Server:

1. Extract the WebLogic Server installation package to a convenient location.
This adds the `wls1213_generic.jar` file to the selected directory.
2. From a command prompt, navigate to the directory you extracted `wls1213_generic.jar` to.
When installing WebLogic Server on Linux, do not run the installation program as the root user.
3. Launch the installer in Graphical Mode by running:

```
java -jar wls1213_generic.jar
```

When the installer runs, it displays the installation wizard's **Welcome** screen.

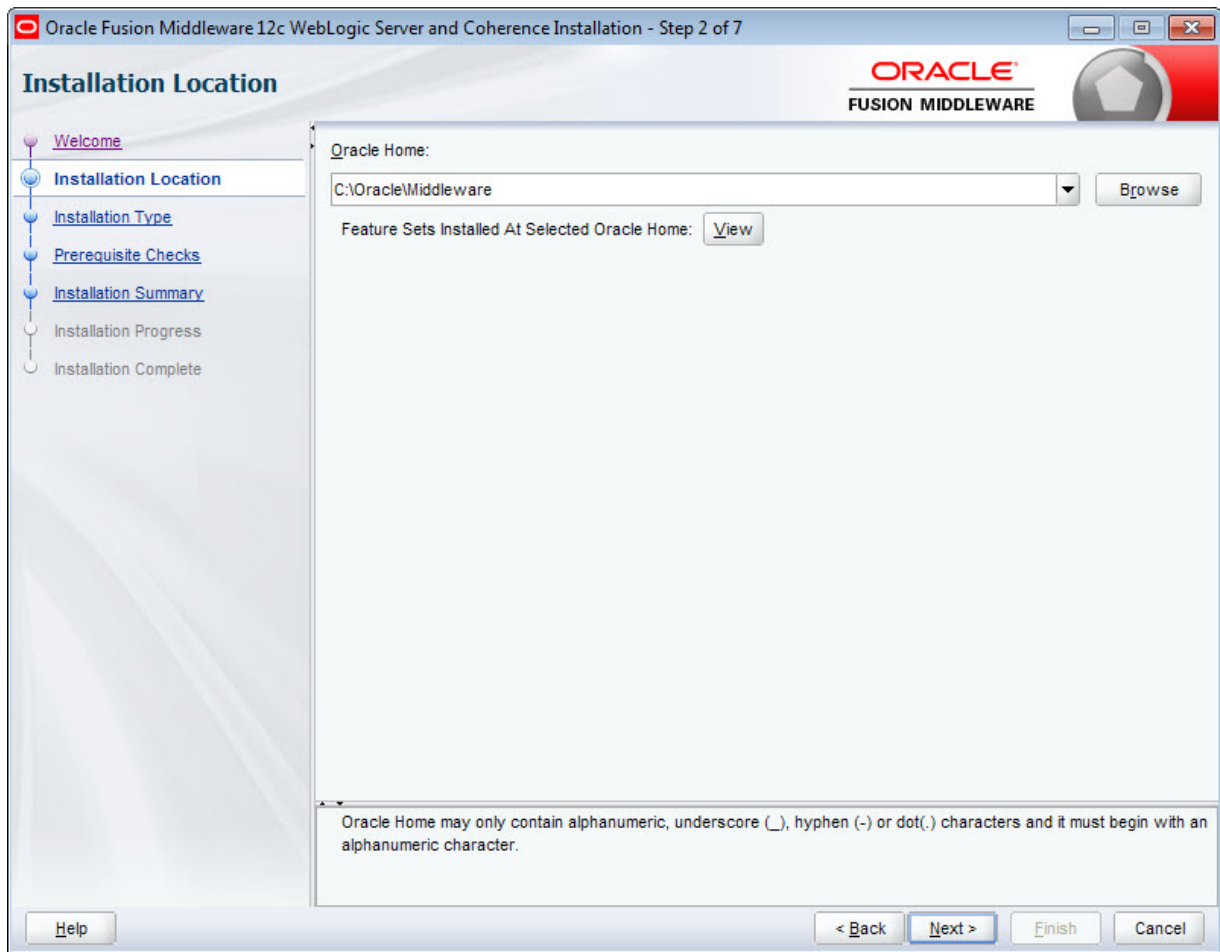
4. At the **Welcome** screen, click **Next**.



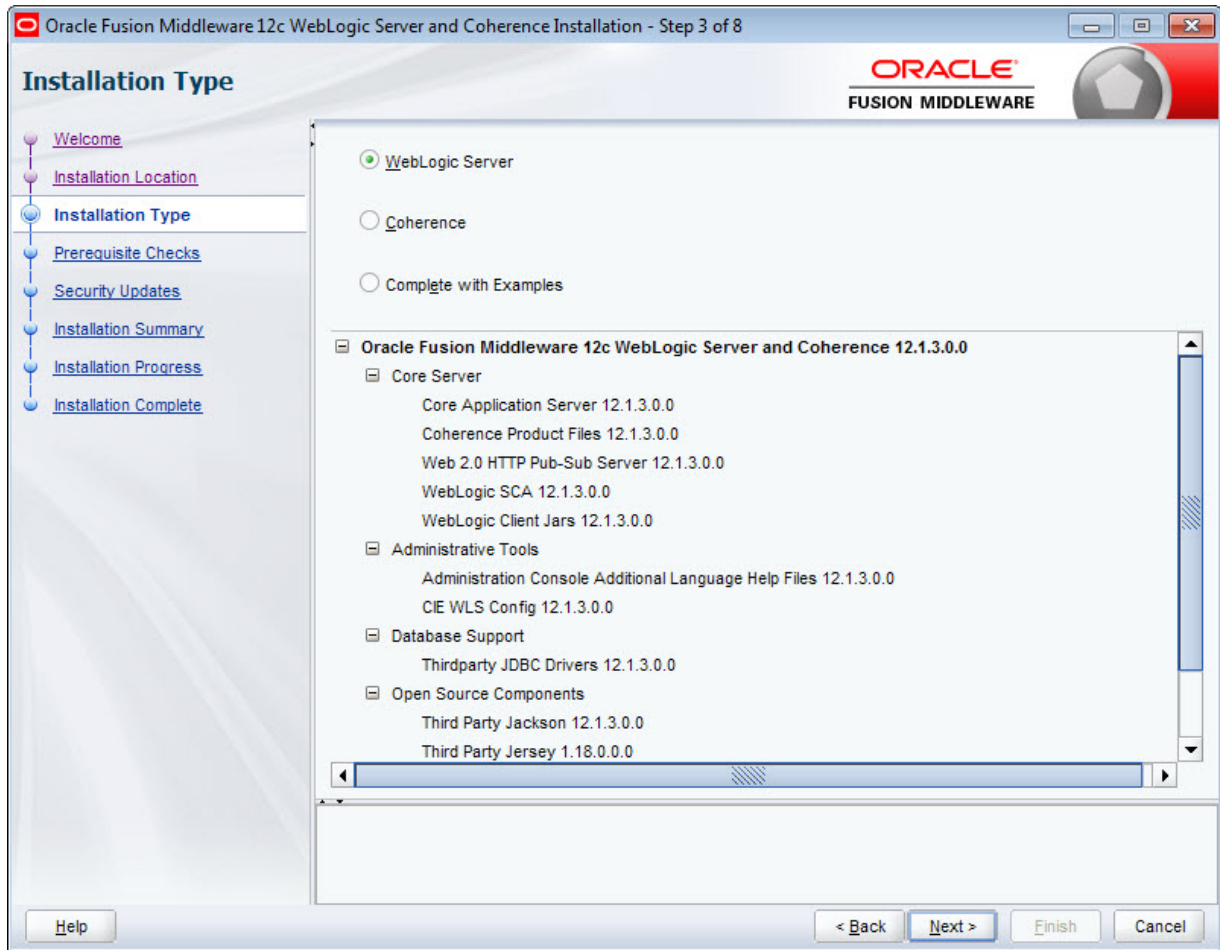
5. At the **Installation Location** screen, enter the name of the Middleware home directory in the **Oracle Home** field.

This will be the \$MW_HOME directory of your installation. You can either accept the default location or enter a new one. The directory name may only contain alphanumeric, hyphen (-), dot (.), and underscore (_) characters, and must begin with an alphanumeric character.

Click **Next** when you're done.

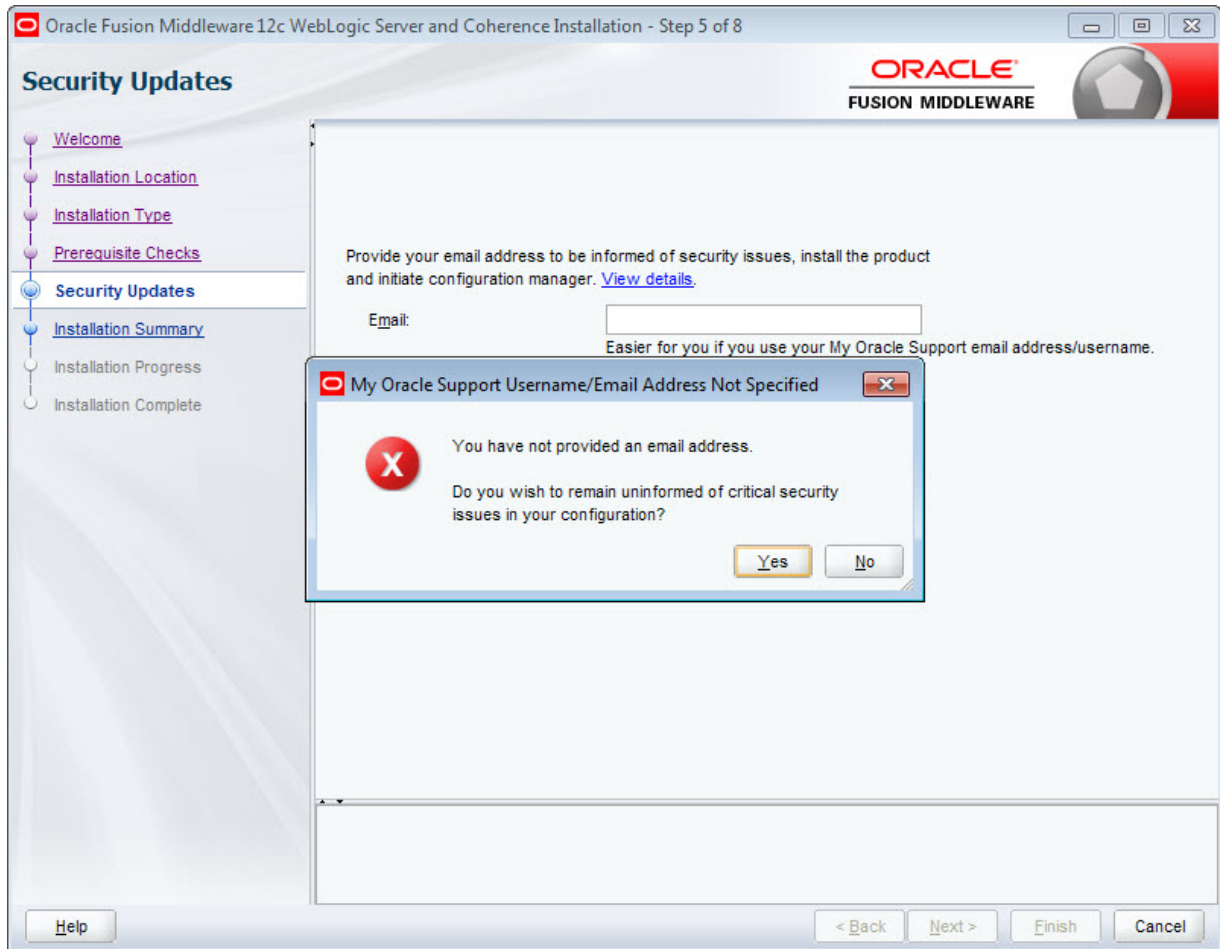


6. At the **Installation Type** screen, leave **WebLogic Server** selected and click **Next**.

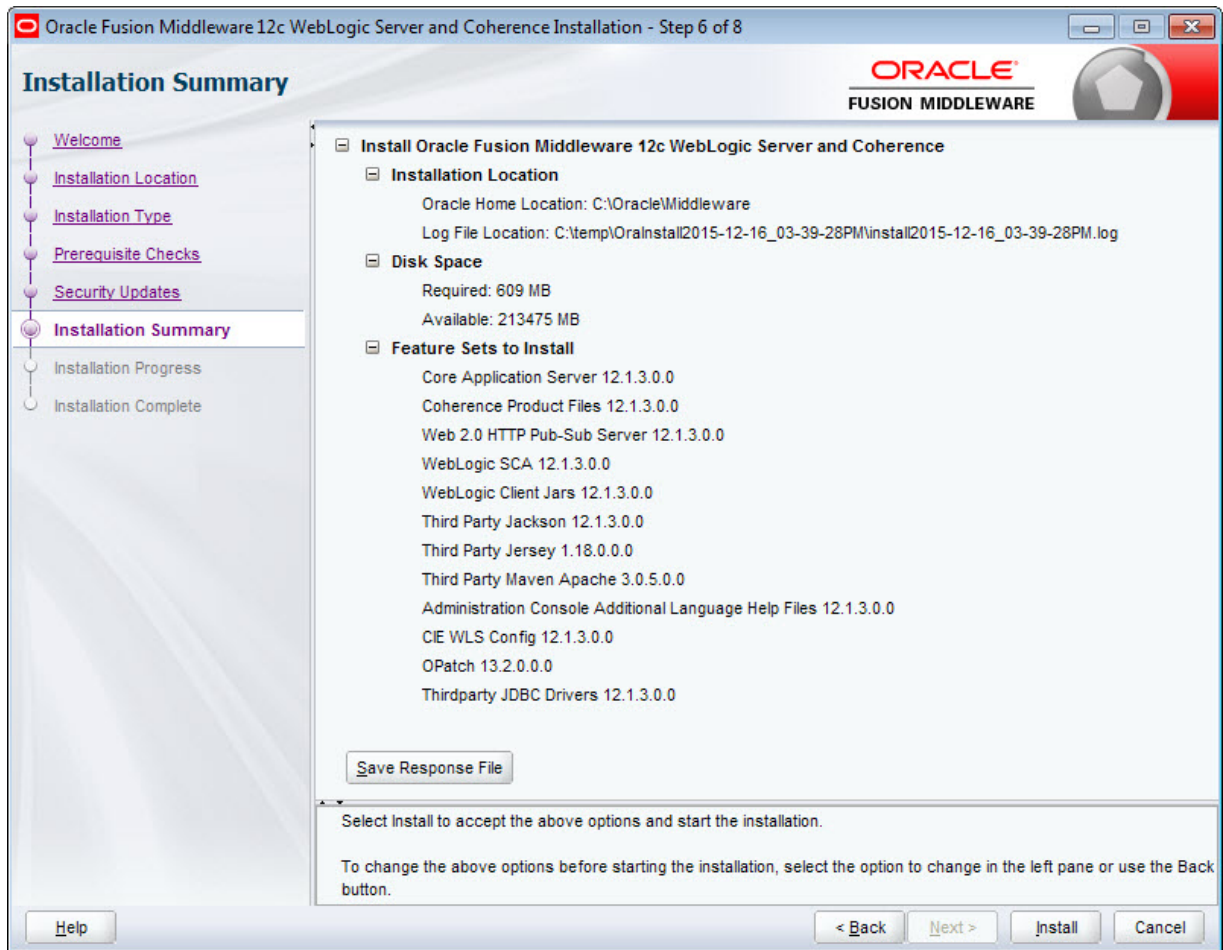


- At the **Security Updates** screen, if you want to receive security updates, enter your support details and click **Next**.

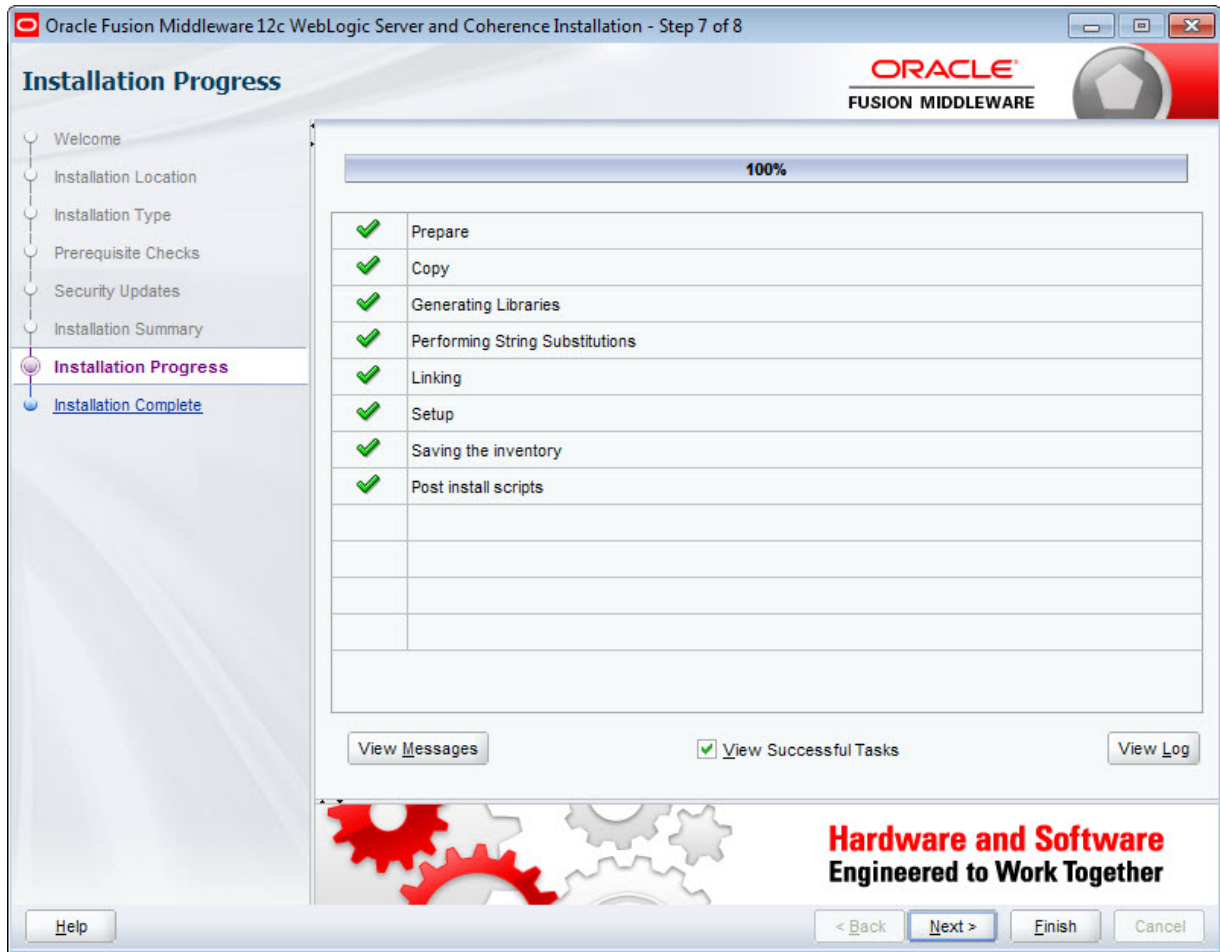
If you don't want to receive updates, uncheck **I wish to receive security updates via My Oracle Support**, click **Next**, then click **Yes** in the pop-up.



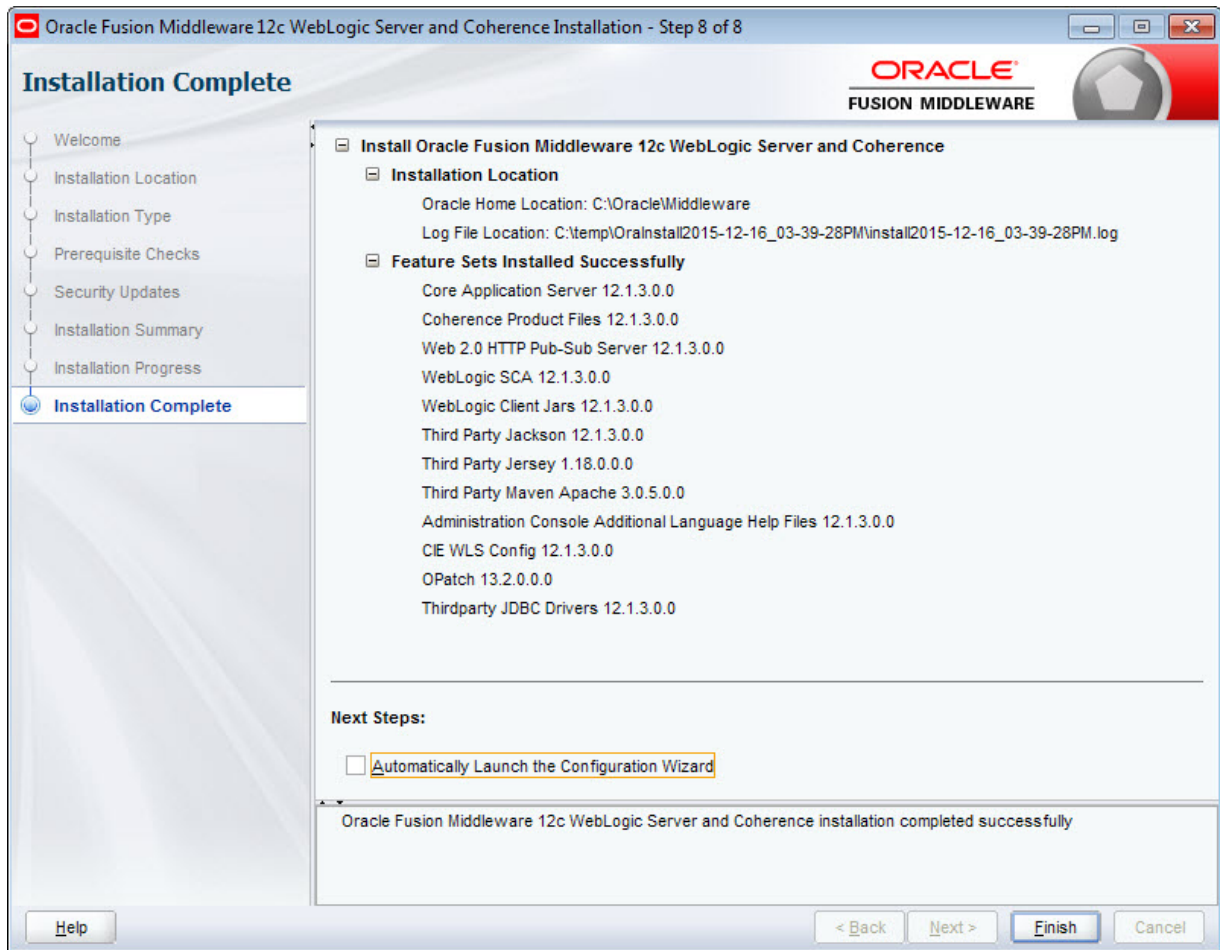
- At the **Installation Summary** screen, verify that you're installing the correct products, then click **Install**.



10. At the **Installation Progress** screen, wait for the installation to complete, then click **Next**.



- At the **Installation Complete** screen, uncheck **Automatically Launch the Configuration Wizard**, then click **Finish** to exit the installer.



Creating a WebLogic domain for Integrator ETL Server

Integrator ETL Server must be installed in its own WebLogic domain; it's can't share one with other applications. Even if you are installing Integrator ETL Server on the same instance of WebLogic Server as other Oracle Endeca Information Discovery components, you must create a separate domain for Integrator ETL Server.

To create a WebLogic domain for Integrator ETL Server:

- Open a command prompt and go to the directory that contains the Configuration Wizard start-up program.

For example, for Windows:

```
C:\Oracle\Middleware\wlserver\common\bin
```

For Linux:

```
$MW_HOME/wlserver/common/bin
```


2. Start the Configuration Wizard:

In Windows, run:

```
config.cmd
```

In Linux, run:

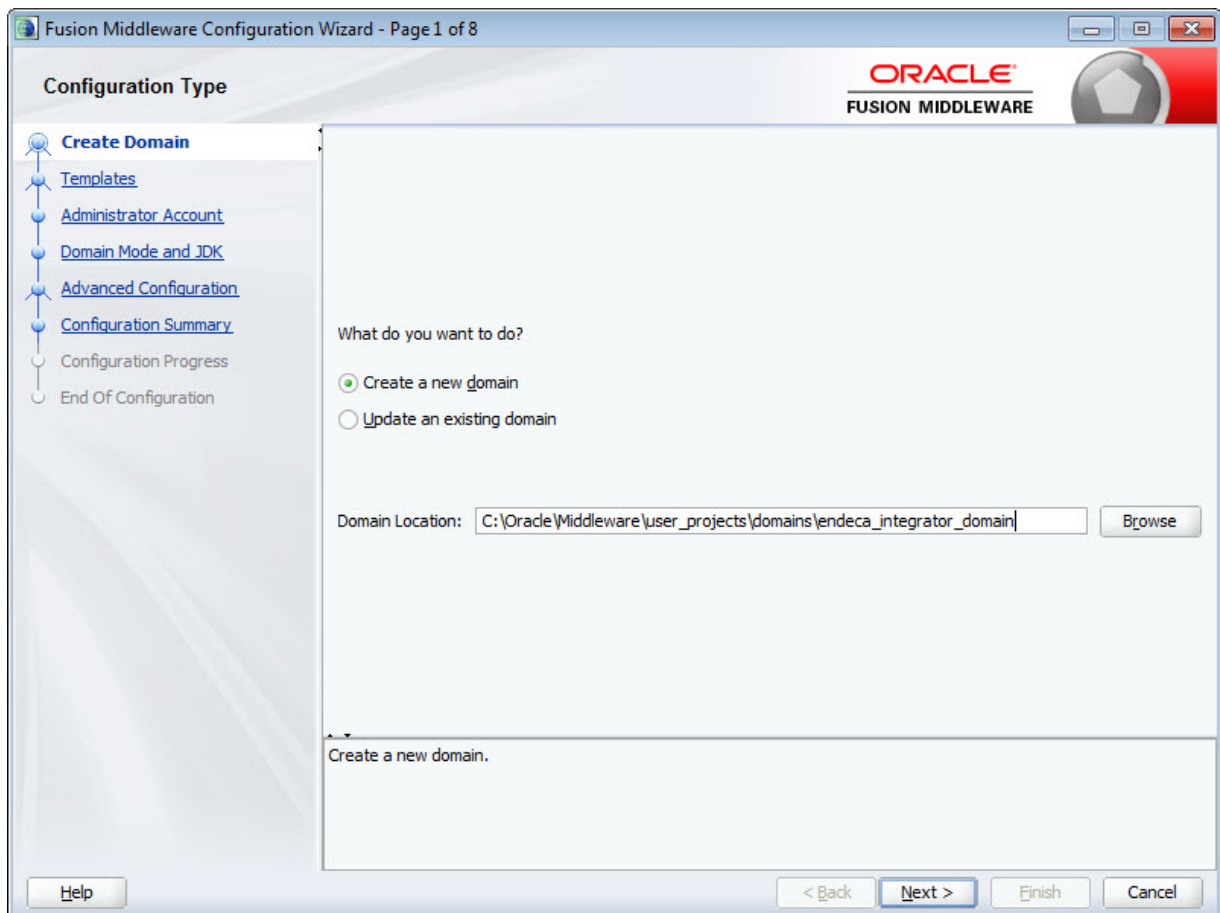
```
./config.sh
```

The Configuration Wizard **Welcome** page displays.

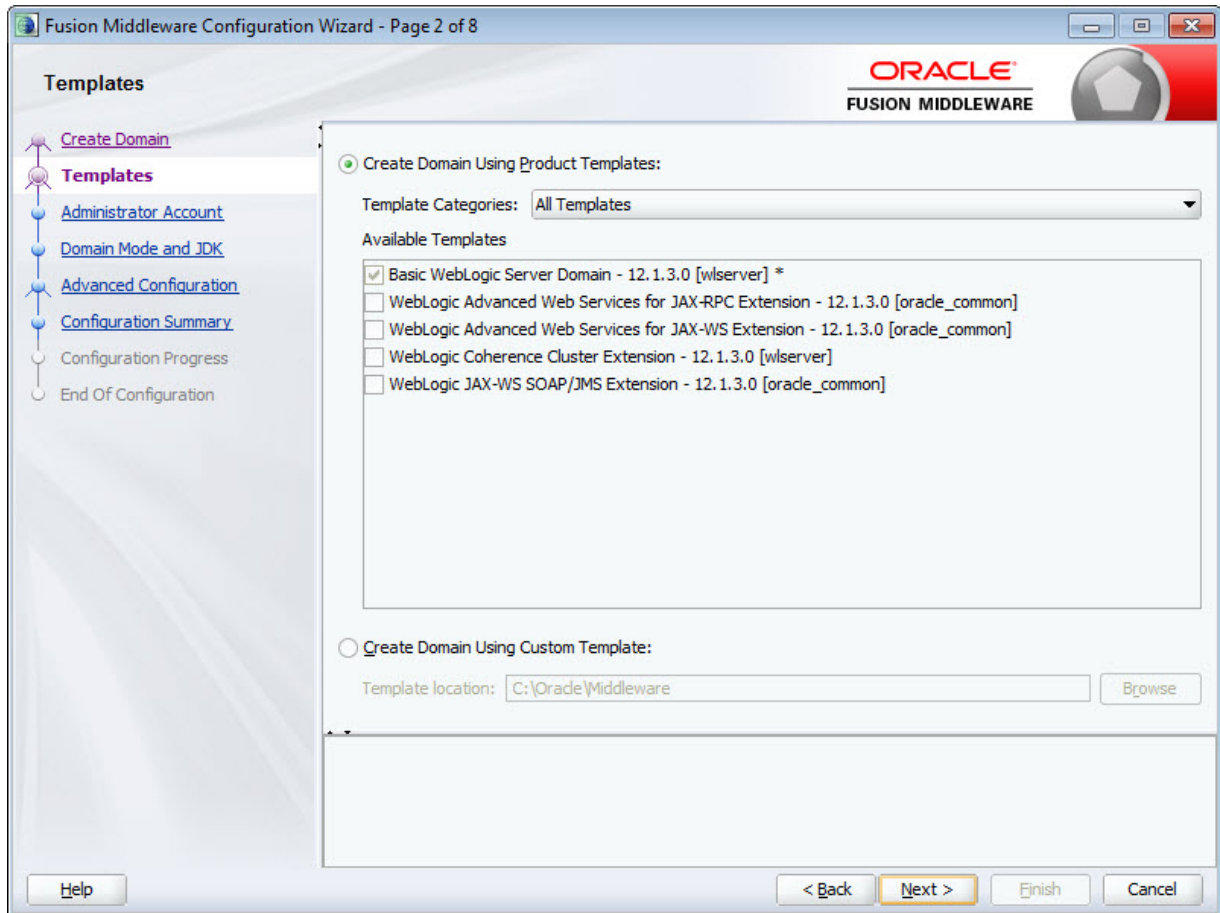
3. At the Configuration Wizard's **Configuration Type** screen, select **Create a new domain** and either accept the default domain location or enter a new one.

This document assumes the domain is called `endeca_integrator_server_domain`.

Click **Next** when you're done.



4. At the **Templates** screen, leave **Create Domain Using Product Templates** selected and click **Next**.



5. At the **Administrator Account** screen, enter a name and password for the domain administrator, then click **Next**.

The password must contain at least eight characters, including one special character or number.

Fusion Middleware Configuration Wizard - Page 3 of 8

Administrator Account

ORACLE
FUSION MIDDLEWARE

Create Domain
Templates
Administrator Account
Domain Mode and JDK
Advanced Configuration
Configuration Summary
Configuration Progress
End Of Configuration

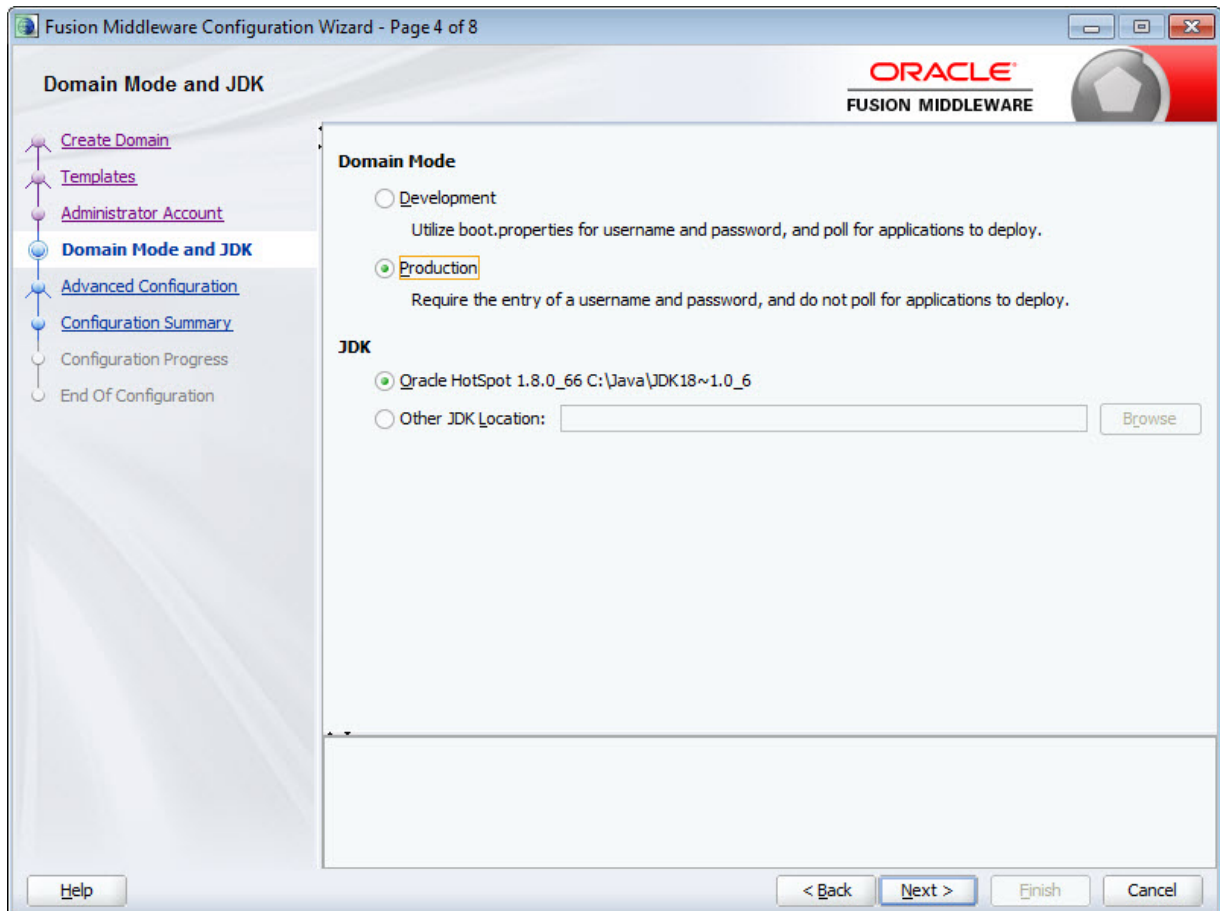
Name:

Password:

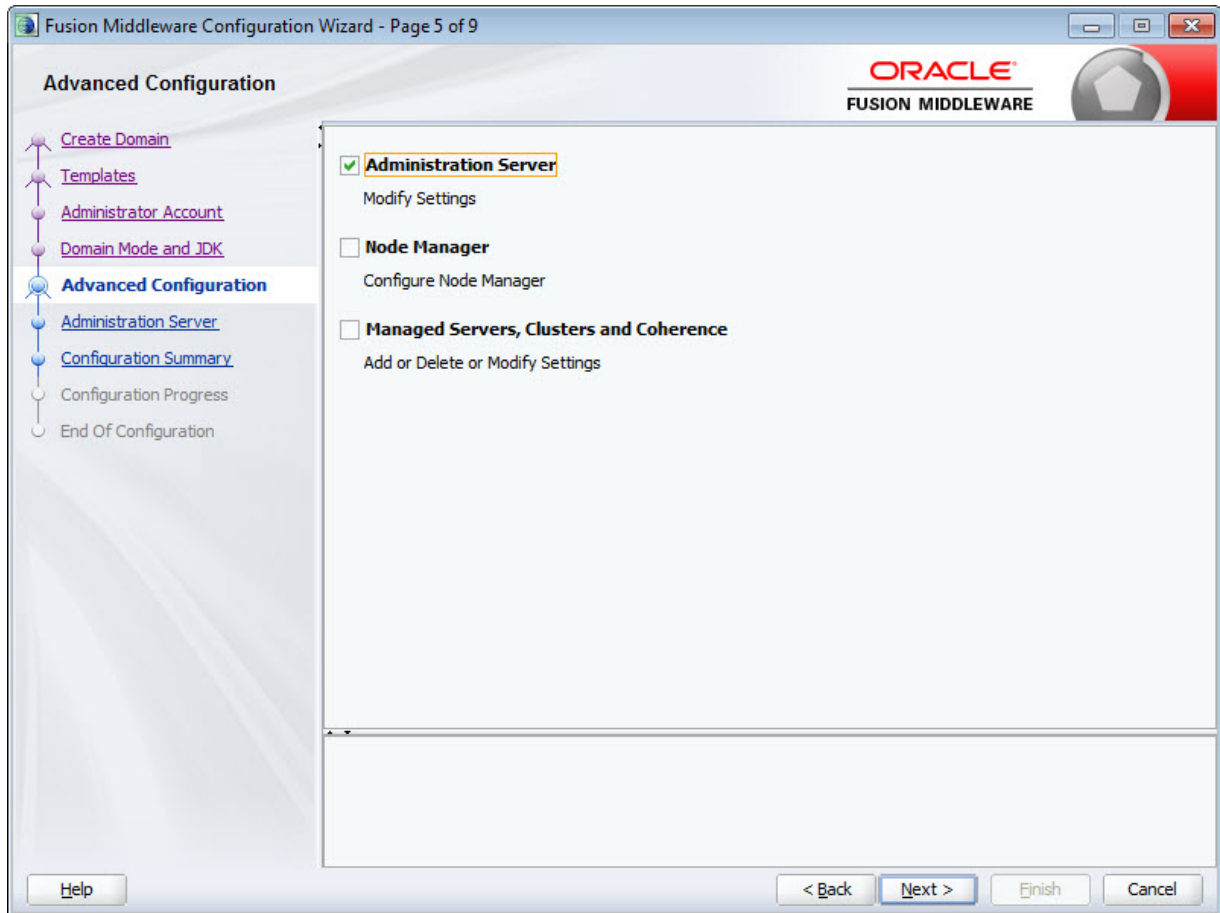
Confirm Password:

Help < Back Next > Finish Cancel

- At the **Domain Mode and JDK** screen, select **Production** and make sure the correct JDK is selected. If the default JDK is incorrect, select **Other JDK Location** and browse to the correct one. Click **Next** when you're done.

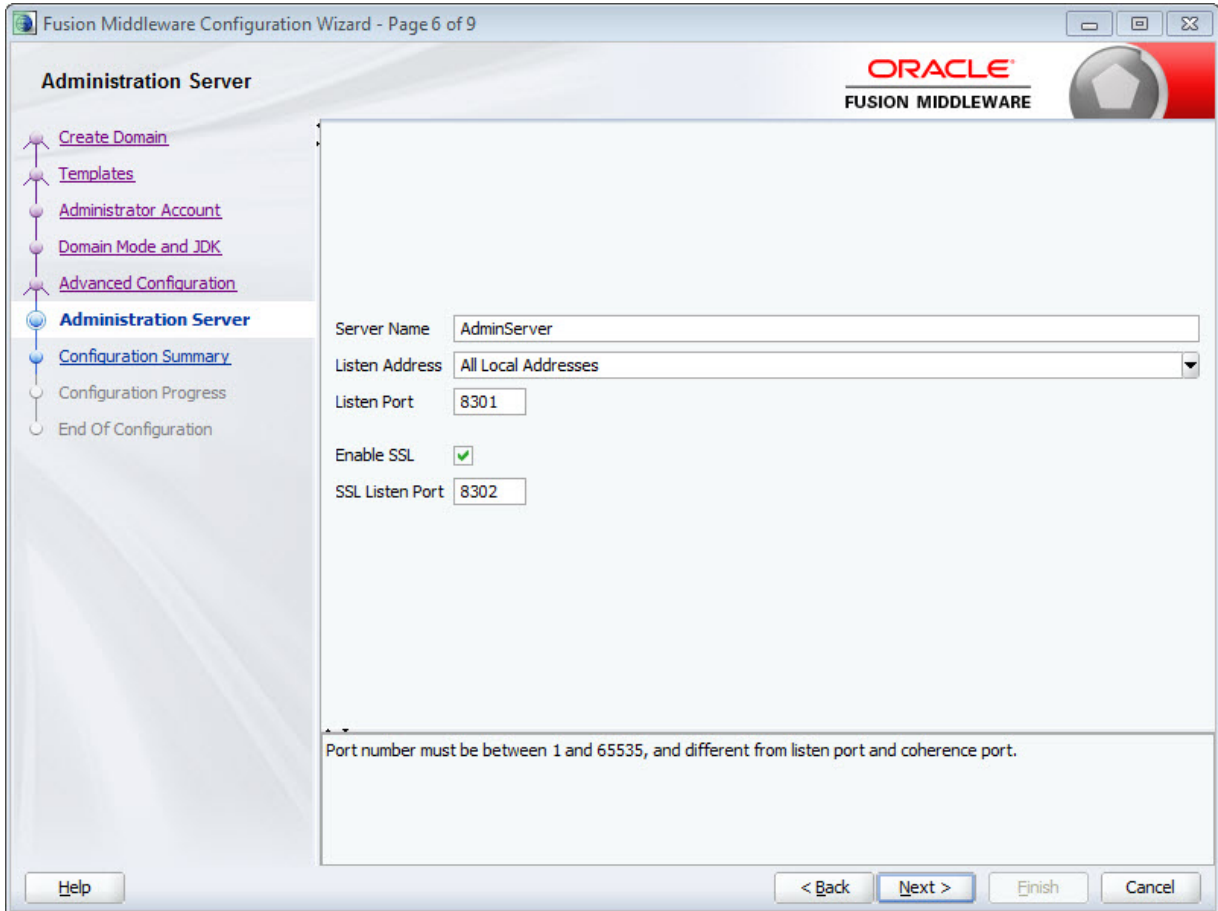


7. At the **Advanced Configuration** screen, select **Administration Server** and click **Next**.

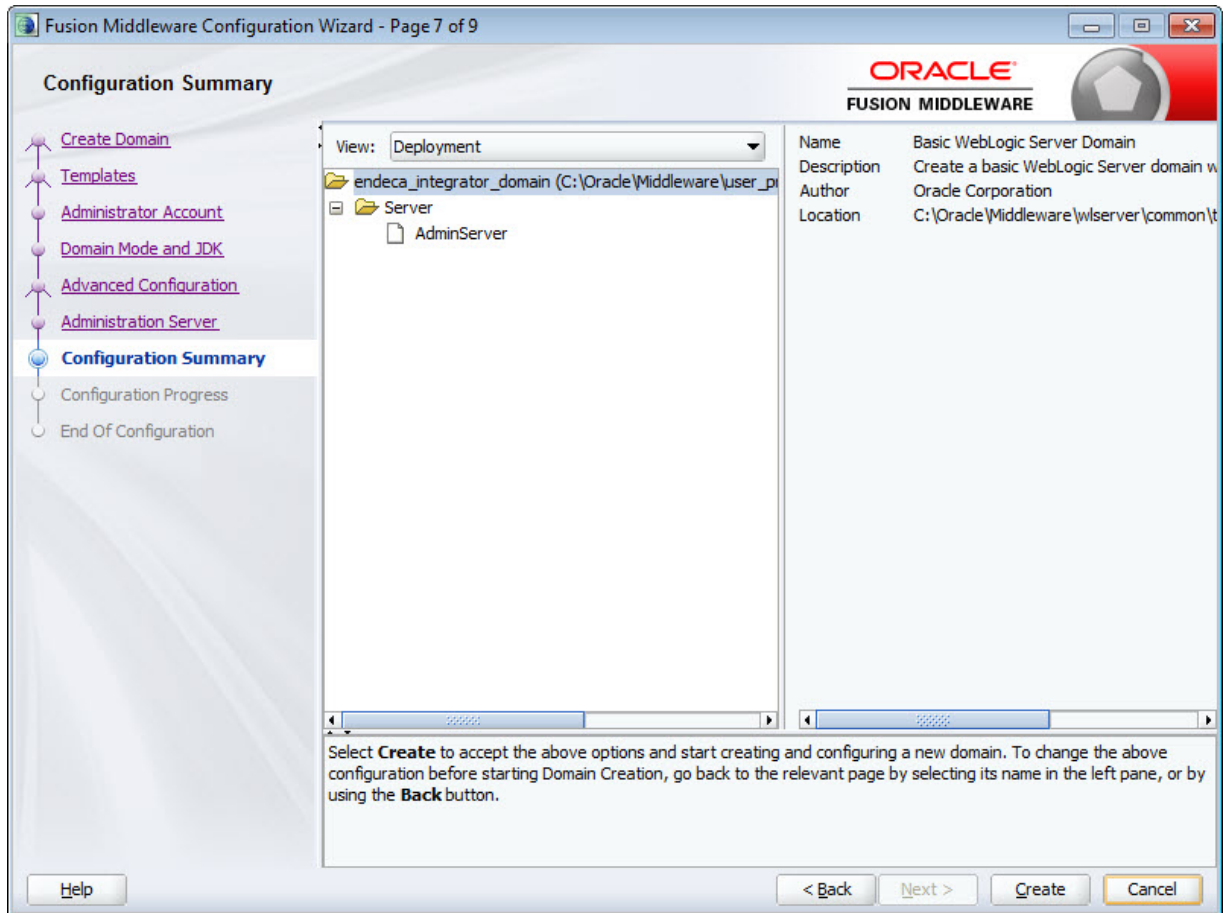


8. At the **Administration Server** screen:
- Leave the default values for the **Server Name** and **Listen Address** fields.
 - In the **Listen port** field, enter 8301.
 - If you want to enable SSL, check the **SSL enabled** checkbox and enter 8302 in the **SSL listen port** field.

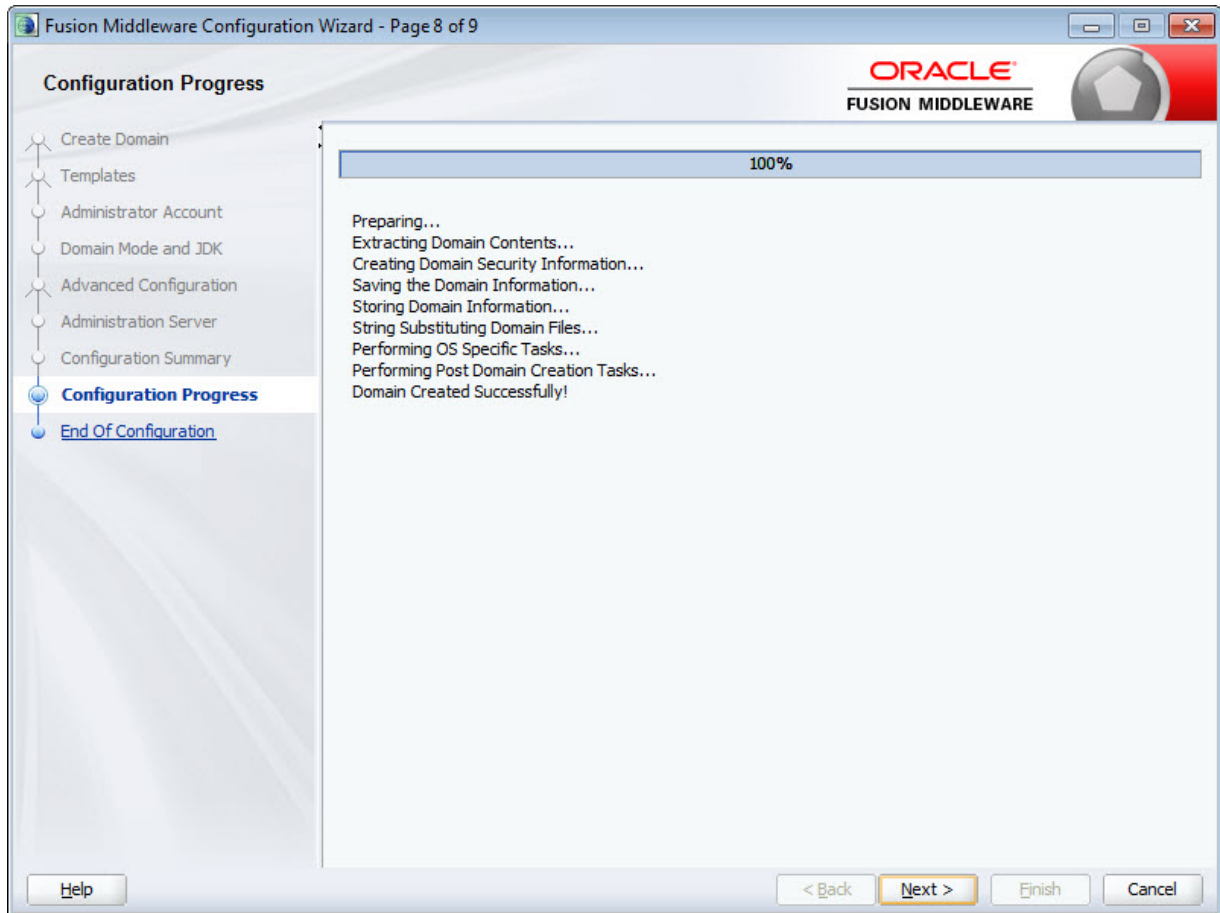
(d) Click **Next**.



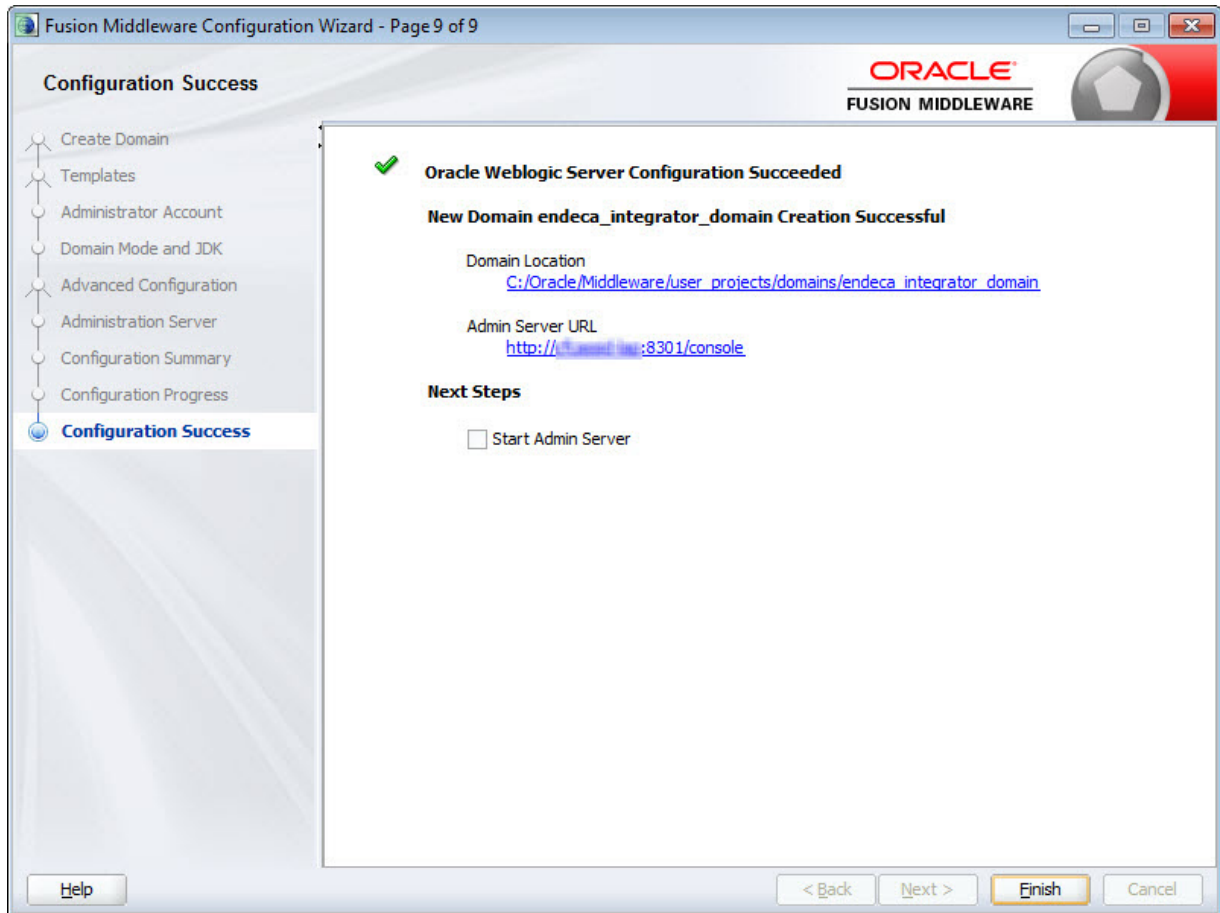
9. At the **Configuration Summary** screen, click **Create** to create the domain.



- At the **Configuration Progress** screen, wait for the domain to be created, then click **Next**.



11. At the **Configuration Success** screen, review the domain information and click **Finish**.



12. Default JVM memory settings are not high enough to run the WebLogic server when Integrator ETL Server is installed. Required memory settings depend on a variety of factors, including the number and complexity of transformations performed during processing. Exceeding the specified memory settings results in failed processing and reports of `OutOfMemory` errors in server logs and console output. To modify maximum memory:

- (a) Add the `USER_MEM_ARGS` environment variable to the domain start scripts:

- In Windows, add the following code to `startWebLogic.cmd` (modify the memory sizes to meet your needs):

```
set USER_MEM_ARGS=-Xms128m -Xmx2048m -XX:MaxPermSize=512m
```

- In Linux, add the following code to `startWebLogic.sh` (modify the memory sizes to meet your needs):

```
export USER_MEM_ARGS="-Xms128m -Xmx2048m -XX:MaxPermSize=512m"
```



Important: The minimum recommended permgen space for WebLogic when running Integrator ETL Server is 512 MB.

- (b) Restart the domain.

This is required after modifying memory sizes.

13. Change HTTP Basic Authentication configuration to allow the Oracle Endeca Integrator ETL Server to authenticate users. Add the following XML element to the configuration file ([domainHome]/config/config.xml) just before the end tag of the <security-configuration> element:

```
<enforce-valid-basic-auth-credentials>false</enforce-valid-basic-auth-credentials>
```

After you create the WebLogic domain for Integrator ETL Server, you can deploy the Integrator ETL Server and its license application. See [Installing Integrator ETL Server into a WebLogic domain on page 34](#).



Note: If the server fails after you enter the admin user name during startup, create a boot identity file for the admin server. For details, see [Creating a Boot Identity file for an Administration Server](#).

Creating a Windows Service for the Integrator ETL Server

After installing the domain for Integrator ETL Server, you can create a Windows Service for the domain.

For details about creating a Windows Service for a WebLogic domain, see [Managing Server Startup and Shutdown for Oracle WebLogic Server](#).

Installing Integrator ETL Server on the WebLogic domain

Use the WebLogic Administration Console to install the Integrator ETL Server web application on the WebLogic domain you just created.

To deploy Integrator ETL Server to the Weblogic domain:

1. Extract the Integrator ETL Server installation package (EID_3.2.0_Integrator_server_weblogic.zip) to a convenient location on the machine that runs WebLogic.
2. If your WebLogic domain is not already running, start it.
3. Open your browser and go to `http://<machine_name>:8301/console`.
4. Log in to the WebLogic domain as the domain administrator, or another user with administration privileges.

The Administration Console opens.

5. Click **Lock & Edit**, then click **Deployments**.

The **Summary of Deployments** page displays.

6. Click **Install**.

The **Install Application Assistant** page displays.

7. In the **Path** field, enter the absolute path to the location where you unzipped the Integrator ETL package.

Be sure to include the \Integrator ETL Server Weblogic WAR directory in the path.

8. Click the radio button for `clover.war`.
9. Click **Next**.

10. Select the **Install this deployment as an application** radio button, then click **Next**.
11. Click **Finish** to deploy the Integrator ETL Server Web application (`clover.war`).

When the deployment finishes, the Summary of Deployments page displays.



Note: If the deployment takes an extended period of time and only a blank page displays, deployment of the Integrator ETL Server has probably exceeded available memory and deployment of the Web application has failed. Stop the server and configure the JVM memory settings. For more information, see Step 12 in [Creating and configuring a WebLogic domain for Integrator ETL Server on page 24](#).

12. Click **Activate Changes**.
13. Select Integrator ETL Server in the **Deployments** table, click **Start > Servicing all requests**, then click **Yes**.

Integrator ETL Server's state should now be **Active**.

14. To validate that the Oracle Endeca Integrator ETL Server is functioning correctly, go to `http://localhost:8301/clover`.

The browser displays Oracle Endeca Integrator ETL Server GUI page with an **Activate server** link.

Welcome

Activate server >

Username

Password

Next, you need to:

- Configure the license for Integrator ETL Server. For details, see [Configuring the Integrator ETL Server license on page 36](#).
- Configure Integrator ETL Server. For details, see "Configuration of CloverETL Server on WebLogic" in the *Integrator ETL Server Guide*.

By default, Integrator ETL Server uses an embedded Apache Derby database. This database is suitable for testing and evaluation environments. In these environments, no additional configuration is necessary.

In production environments, use of the embedded Derby database is not recommended. In these environments, you should use a robust, production-quality database, such as an Oracle or MySQL database. For details about configuring these databases, see the *Integrator ETL Server Guide*



Note: If a 503 error occurs when you connect your browser to the Integrator ETL Server, you may need to create a boot identity file for the admin server. For details, see [Creating a Boot Identity file for an Administration Server](#).

Configuring the Integrator ETL Server license

After installing the Integrator ETL Server web application into the WebLogic domain, you must configure the license.

The license for Integrator ETL Server is a file named `license.dat`, which is included in the Integrator ETL Server package for WebLogic. After unzipping the package, you may want to copy this file to a permanent location.



Note: You may want to stop the Integrator ETL Server domain before starting the license configuration.

To configure the Integrator ETL Server license:

1. In your browser, go to `http://localhost:8301/clover` and click **Activate server**.

The screenshot shows a web page with the word "Welcome" in a large, light gray font at the top. Below it, the text "Activate server" is displayed in a bold blue font with a right-pointing arrow. Underneath, there are two input fields: "Username" and "Password". To the right of the "Password" field is a button labeled "Login".

2. Click **Browse** and browse to the `license.dat` file included in the installation package, then click **Open**.
The selected license is displayed.
3. Click **Add**.
The login page displays with a message saying "Clover license uploaded".
4. To log in to Integrator ETL Server, enter `clover` in the **Username** field and `clover` in the **password** field.

Installing Oracle Language Technology (OLT)

If you want to use the Language Detector component, you must install Oracle Language Technology.

The Oracle Language Technology package is included in the Integrator ETL package you download from the Oracle Software Delivery Cloud.

To install OLT, extract the package to a location on the machine where you install Integrator ETL Designer or Integrator ETL Server. The location must be accessible to Integrator ETL Designer or Integrator ETL Server.

[Configuring Integrator ETL to use OLT](#)

Configuring Integrator ETL to use OLT

After installing OLT, you must configure Integrator ETL to use it.

Configuring OLT in Integrator ETL Designer

To configure OLT for Integrator ETL Designer:

1. Add the environment variable `OLT_HOME`. The value of this environment variable is the root directory of the OLT installation.
 - In Windows, add the Environment Variable to the System Properties.
 - In Linux, add the `OLT_HOME` variable to your `.bash_profile`.
2. Add the `OLT/bin` directory to the path.
 - In Windows, go to System Properties and edit the Path environment variable. Add `%OLT_HOME%\bin` to the end of the Path. Remember to use semicolons to separate the new item in the Path.
 - In Linux, add `$OLT_HOME/bin` to the `LD_LIBRARY_PATH` environment variable in your `.bash_profile`.

Configuring OLT for Integrator ETL Server on WebLogic on Windows

Add the following lines to `$MW_HOME\user_projects\domains\<integrator-server-domain>\bin\setDomainEnv.cmd`:

```
set OLT_HOME=<%OLT_HOME%>
set path=%path%;%OLT_HOME%\bin
```

For example, if you install OLT to the root of your `C:\` drive, you would add:

```
set OLT_HOME=C:\OLT
set path=%path%;%OLT_HOME%\bin
```

Configuring OLT for Integrator ETL Service on WebLogic on Linux

Add the following lines to `$MW_HOME/user_projects/domains/<integrator-server-domain>/bin/setDomainEnv.sh`:

```
export OLT_HOME=<%OLT_HOME%>
export LD_LIBRARY_PATH=$OLT_HOME/bin:$LD_LIBRARY_PATH
```

Configuring OLT for Integrator ETL Server on Tomcat on Windows

Add the following lines to `$TOMCAT_ROOT\bin\setenv.cmd`:

```
set OLT_HOME=<%OLT_HOME%>
set path=%path%;%OLT_HOME%\bin
```

For example, if you install OLT to the root of your `C:\` drive, you would add:

```
set OLT_HOME=C:\OLT
set path=%path%;%OLT_HOME%\bin
```

Configuring OLT for Integrator ETL Server on Tomcat on Linux

Add the following lines `$TOMCAT_ROOT\bin\setenv.sh`:

```
export OLT_HOME=<%OLT_HOME%>
export LD_LIBRARY_PATH=$OLT_HOME/bin:$LD_LIBRARY_PATH
```



Chapter 4

Uninstalling Integrator ETL

This chapter describes how to uninstall Integrator ETL.

[Uninstalling Integrator ETL](#)

[Uninstalling Integrator ETL Server](#)

[Uninstalling Oracle Language Technology \(OLT\)](#)

Uninstalling Integrator ETL

This section contains the procedures for uninstalling the Integrator ETL package.

[Uninstalling Integrator ETL on Windows](#)

[Uninstalling Integrator ETL on Linux](#)

Uninstalling Integrator ETL on Windows

Follow these steps to uninstall Integrator ETL from your Windows client machine.

Although the uninstall procedure does not delete the workspace folder used by Integrator ETL, it is a good practice to back up your Integrator ETL projects before uninstalling.

If Integrator ETL is running, stop it before attempting to uninstall it.

To uninstall Integrator ETL from your Windows machine:

1. Change to the parent directory of the Integrator ETL installation directory.

If you install to the recommended location, the parent directory is
C:\Oracle\Endeca\Discovery\3.2.0.

2. Delete the Integrator ETL directory.

As mentioned above, the Integrator ETL workspace folder is not deleted after Step 2. If you do not delete the workspace directory, you can reuse it if you reinstall Integrator ETL.

Uninstalling Integrator ETL on Linux

Follow these steps to uninstall Integrator ETL from your Linux client machine.

Although the uninstall procedure does not delete the workspace directory for Integrator ETL, it is a good practice to back up your Integrator ETL projects before uninstalling.

To uninstall Integrator ETL from your Linux machine:

1. Change to the parent directory of the Integrator ETL install directory.
The default parent directory is `Oracle/Endeca/Discovery/3.2.0`.
2. Issue an `rm` command as in this example:

```
rm -rf IntegratorETL
```

As mentioned above, the Integrator ETL workspace folder is not deleted after Step 2. If you do not delete the workspace directory, you can reuse it if you reinstall Integrator ETL.

Uninstalling Integrator ETL Server

Uninstallation procedures are different on Tomcat and WebLogic Server.

[Uninstalling Integrator ETL Server from Tomcat](#)

[Uninstalling Integrator ETL Server from WebLogic Server](#)

Uninstalling Integrator ETL Server from Tomcat

Follow these steps to uninstall Integrator ETL Server from Tomcat.

To uninstall Integrator ETL Server from your Windows or Linux machine:

1. Shut down Tomcat.
2. Delete the Tomcat install directory.

Uninstalling Integrator ETL Server from WebLogic Server

Use the standard WebLogic Server procedure for uninstalling web applications to uninstall Integrator ETL Server from WebLogic Server.

For details, see "Delete Web applications" in the Oracle WebLogic Server Administration Console Online Help.

Uninstalling Oracle Language Technology (OLT)

To uninstall Oracle Language Technology, delete the OLT root directory and all of its contents.

You should also remove references to OLT from your environment variables and Path, or from your `.bash_profile` in Linux.

Index

I

- installation
 - Integrator ETL Linux 12
 - Integrator ETL packages 11
 - Integrator ETL Windows 12
 - requirements for Integrator ETL 7
- Integrator ETL
 - about 6
 - downloading 10
 - installing on Linux 12
 - installing on Windows 12
 - Integrator ETL Server 13
 - uninstalling from Linux 39
 - uninstalling from Windows 39
- Integrator ETL Server
 - Tomcat installation 13
 - uninstalling from Tomcat 40
 - uninstalling from WebLogic Server 40
 - Weblogic Server installation 34, 36
 - Windows Service 34

L

- license, configuring for WebLogic Server 36

O

- OLT
 - See Oracle Language Technology
- Oracle Language Technology 37
 - configuring 37

P

- prerequisites
 - Integrator ETL 7

S

- system requirements
 - Integrator ETL 7
 - Integrator ETL hardware 7
 - Integrator ETL operating systems 8
 - Integrator ETL software 9

U

- uninstalling
 - Integrator ETL on Linux 39
 - Integrator ETL on Windows 39
 - Integrator ETL Server from Tomcat 40
 - Integrator ETL Server from WebLogic Server 40

W

- WebLogic Server
 - creating a domain for Integrator ETL Server 24
 - deploying Integrator ETL Server 34
 - installing 16
 - installing Integrator ETL Server 36
- Windows Service
 - Integrator RTL Server 34