

# **Oracle FLEXCUBE Direct Banking**

Upgrade Installer User Guide

Release 12.0.2.0.0

**Part No. E50108-01**

September 2013

**ORACLE®**

Oracle Financial Services Software Limited

Oracle Park

Off Western Express Highway  
Goregaon (East)  
Mumbai, Maharashtra 400 063  
India

Worldwide Inquiries:

Phone: +91 22 6718 3000

Fax: +91 22 6718 3001

[www.oracle.com/financialservices/](http://www.oracle.com/financialservices/)

Copyright © [2008], [2013], Oracle and/or its affiliates. All rights reserved.

Oracle and Java are registered trademarks of Oracle and/or its affiliates. Other names may be trademarks of their respective owners.

U.S. GOVERNMENT END USERS: Oracle programs, including any operating system, integrated software, any programs installed on the hardware, and/or documentation, delivered to U.S. Government end users are "commercial computer software" pursuant to the applicable Federal Acquisition Regulation and agency-specific supplemental regulations. As such, use, duplication, disclosure, modification, and adaptation of the programs, including any operating system, integrated software, any programs installed on the hardware, and/or documentation, shall be subject to license terms and license restrictions applicable to the programs. No other rights are granted to the U.S. Government.

This software or hardware is developed for general use in a variety of information management applications. It is not developed or intended for use in any inherently dangerous applications, including applications that may create a risk of personal injury. If you use this software or hardware in dangerous applications, then you shall be responsible to take all appropriate failsafe, backup, redundancy, and other measures to ensure its safe use. Oracle Corporation and its affiliates disclaim any liability for any damages caused by use of this software or hardware in dangerous applications.

This software and related documentation are provided under a license agreement containing restrictions on use and disclosure and are protected by intellectual property laws. Except as expressly permitted in your license agreement or allowed by law, you may not use, copy, reproduce, translate, broadcast, modify, license, transmit, distribute, exhibit, perform, publish or display any part, in any form, or by any means. Reverse engineering, disassembly, or decompilation of this software, unless required by law for interoperability, is prohibited.

The information contained herein is subject to change without notice and is not warranted to be error-free. If you find any errors, please report them to us in writing.

This software or hardware and documentation may provide access to or information on content, products and services from third parties. Oracle Corporation and its affiliates are not responsible for and expressly disclaim all warranties of any kind with respect to third-party content, products, and services. Oracle Corporation and its affiliates will not be responsible for any loss, costs, or damages incurred due to your access to or use of third-party content, products, or services.

---

# Contents

1. Preface.....	4
1.1. Intended Audience.....	4
1.2. Documentation Accessibility.....	4
1.3. Access to OFSS Support.....	4
1.4. Structure.....	4
1.5. Related Information Sources.....	4
2. Overview.....	5
3. Pre-requisites .....	7
4. FCDB Upgrade Installer Overview .....	8
5. FCDB Upgrade Installer execution steps .....	9
<b>a. Command input mode</b> .....	9
<b>b. Swing input mode</b> .....	10
6. Conclusion and Next Steps .....	335

# Preface

## 1.1 Intended Audience

This document is primarily targeted at

- Oracle FLEXCUBE Direct Banking Development Teams
- Oracle FLEXCUBE Direct Banking Implementation Teams
- Oracle FLEXCUBE Direct Banking Implementation Partners

## 1.2 Documentation Accessibility

For information about Oracle's commitment to accessibility, visit the Oracle Accessibility Program website at <http://www.oracle.com/pls/topic/lookup?ctx=acc&id=docacc>.

## 1.3 Access to OFSS Support

<https://flexsupp.oracle.com/>

## 1.4 Structure

This manual is organized into the following categories:

Preface gives information on the intended audience. It also describes the overall structure of the User Manual

Introduction and steps explains installation for upgrade mode .

## 1.5 Related Information Sources

For more information on Oracle FLEXCUBE Direct Banking Release 12.0.2.0.0, refer to the following documents:

Oracle FLEXCUBE Direct Banking Licensing Guide

## 2. Overview

This document discusses the usage steps and basic inputs required for FCDB Upgrade Installer execution.

Successful execution of all the steps provided in the FCDB Installer along with the complete steps provided in the supporting documentation installs or upgrades the FCDB product to the appropriate version intended.

This document discussed following topics

### Chapter 2, "Audience"

This chapter defines the audience for this document.

### Chapter 3, "Pre-requisites"

This chapter discusses the necessary installations/requirements prior to execution of Oracle FCDB Installer.

### Chapter 4, "FCDB Upgrade Installer overview"

This chapter discusses the tasks and capabilities of the Oracle FLEXCUBE Direct Banking Installer in brief.

### Chapter 5, "FCDB Upgrade Installer execution steps"

This chapter discusses the execution of Oracle FLEXCUBE Direct Banking Installer and the detailed step-by-step installation guide.

### Chapter 6, "Conclusion and Next Steps"

This chapter discusses the result of Oracle FLEXCUBE Direct Banking Upgrade Installer and the activities which are required post installation using Oracle FLEXCUBE Direct Banking Upgrade Installer.

- **Abbreviations**

The abbreviations used by the document are as follows:

FCDB	Oracle FLEXCUBE Direct Banking
CD	FCDB Installer deliverable
FCDB BASE DIR	FCDB Base Working Directory

### 3. Pre-requisites

1. Previous version of FCDB Should be installed (Ex:-FCDB 12.0.1).
2. Java is installed and JAVA\_HOME is set adequately.
3. Adequate administrative rights for Application product installation directory creation, modification and deletion need to be present for the FCDB Installer user before execution of installation.
4. The installer assumes that the application server is installed on the system intended to be used, with adequate rights for deployment and management.
5. The server on which the FCDB installation is running should have following :---
  - a. Oracle client
  - b. Sqlplus should be accessible from the same environment.
  - c. TNSNAMES.ORA should have the latest entries of IP address, Listener and Port number.
6. Following information should be ready in hand before starting the installation.

Data required during Installation	Description
Database Server hostname/IP address	This should be the hostname/IP of the database server on which FCDB schema will reside.
Database Server listener port	listener for above Database server
Database Service Name	Database service name to be used.
DBA Schema Login UserID and Password	A DB user to be used to create FCDB DB users and objects. The DB user should preferably have DBA role.
Database Table Space location on DB Server	Location on database Server where datafiles of the FCDB tablespaces will be created.
Application Server hostname/IP address	Hostname/IP of the Application server which will host FCDB applications.
Application Server Bootstrap Port	Bootstrap port of above application server. Please refer Server documentation for details on the same.

## 4. FCDB UpgradeInstaller Overview

Oracle FLEXCUBE Direct Banking Installer is Java based software which is used to perform complete or partial setup for Oracle FLEXCUBE Direct Banking products. The installer consists of product archive and configuration files and is shipped to the client as a single deliverable CD.

Oracle FLEXCUBE Direct Banking Installer is OS independent software which can be executed on Windows as well as UNIX based environments.

On invocation, the installer performs the tasks based on the build configurations provided as encrypted property files. Some activities and features performed by the toolkit are explained here. More details about each task are explained in detail in following sections.

### *a. Verification of the shipped archive :*

This task verifies whether the delivered archive is tampered and audits the same. In case of any mismatch found the toolkit abort itself and logs the details.

### *b. Auto backup :*

Before initiation of installer activities, a complete backup of the existing setup is performed and placed in backup location relative to application home. Review the location matrix at the end of this document for the location details of the new as well as backed up sources.

### *c. Application setup :*

1. This task copies deliverable application folders to location relative to the application home. During complete setup all the application folders (including documents and javadocs) is copied to root relative locations.
2. Property files update is performed based on build configuration. The properties key-values to be updated is taken as input from the toolkit user, as explained in later chapters.

### *d. DB setup :*

In case of complete setup with DB Install option selected this activity performs the creation of application DB users, application related database entities. Please refer “FLEXCUBE Direct Banking Database Setup” for additional information on DB activity details, steps for performing this activity manually and actions required post this activity.

### *e. Auditing and logging action:*

All the user entries as well toolkit activities are logged on screen as well as user defined log location. The verification screen allows the user to verify the inputs post which the progress of the installer is displayed to end user appropriately.

## 5. FCDB Upgrade Installer execution steps

This chapter provides detailed information about the installer workflow and the result entities created in the process. User needs to follow the step by step details to successfully install the delivered FCDB setup.

1. Copy the installation content from the deliverable (CD) to a temporary installation location on the server where FCDB product is required to be deployed. This location can be purged after successful execution of the installation.(This process can be skipped if the executable batch files are executed from the CD.)
2. The Installer provides two GUI modes of execution based on invocation parameters. Both the execution modes are identical in their requirements and result output.

### ***a.*** Command input mode :

Command input mode accepts the input on system command prompt. This mode can be used in cases where graphic GUI cannot be invoked. In order to run the executable Please go to the directory where the executable resides and then invoke it.

- To invoke this mode execute the install batch with following parameter.

OS	Command query
Windows	<Installer CD>/install.bat c
Unix	sh install.sh c

This option invokes the installer in command prompt. All inputs are sequentially asked by command line prompts. This mode ignores the dayzero DB setup, if present.

- If dayzero Db setup is required, then to invoke this mode execute the installwithDB batch with following parameter.

OS	Command query
Windows	<Installer CD>/installwithDB.bat c
Unix	sh installwithDB.sh c

This option invokes the installer in command prompt. All inputs are sequentially asked by command line prompts. The input asked mainly is the path where log files would be generated.

Please note that DB dayzero are invoked only in case of Full setup. It is not called for other setup modes (e.g. Patch setup).



Note: In case of FCDB application installation and setup on horizontal cluster using FCDB Installer where manual synchronization is required on cloned file systems (i.e. ), use DB Dayzero setup option only for one of the cluster members.

Please refer section '[Steps to follow in command mode](#)' to run the installer in Command input mode.

### *b. Swing input mode*

Swing input mode is an interactive installer interface used for installation of FCDB. In order to run the executable Please go to the directory where the executable resides and then invoke it.

- To invoke this mode run the install batch without any additional parameters.

OS	Command query
Windows	<Installer CD>/install.bat
Unix	sh install.sh

This option invokes a java based interactive swing user interface. This option ignores the dayzero DB setup, if present.

- If dayzero Db setup is required, then to invoke this mode run the installwithDB batch without any additional parameters. This option invokes a java based interactive user interface.

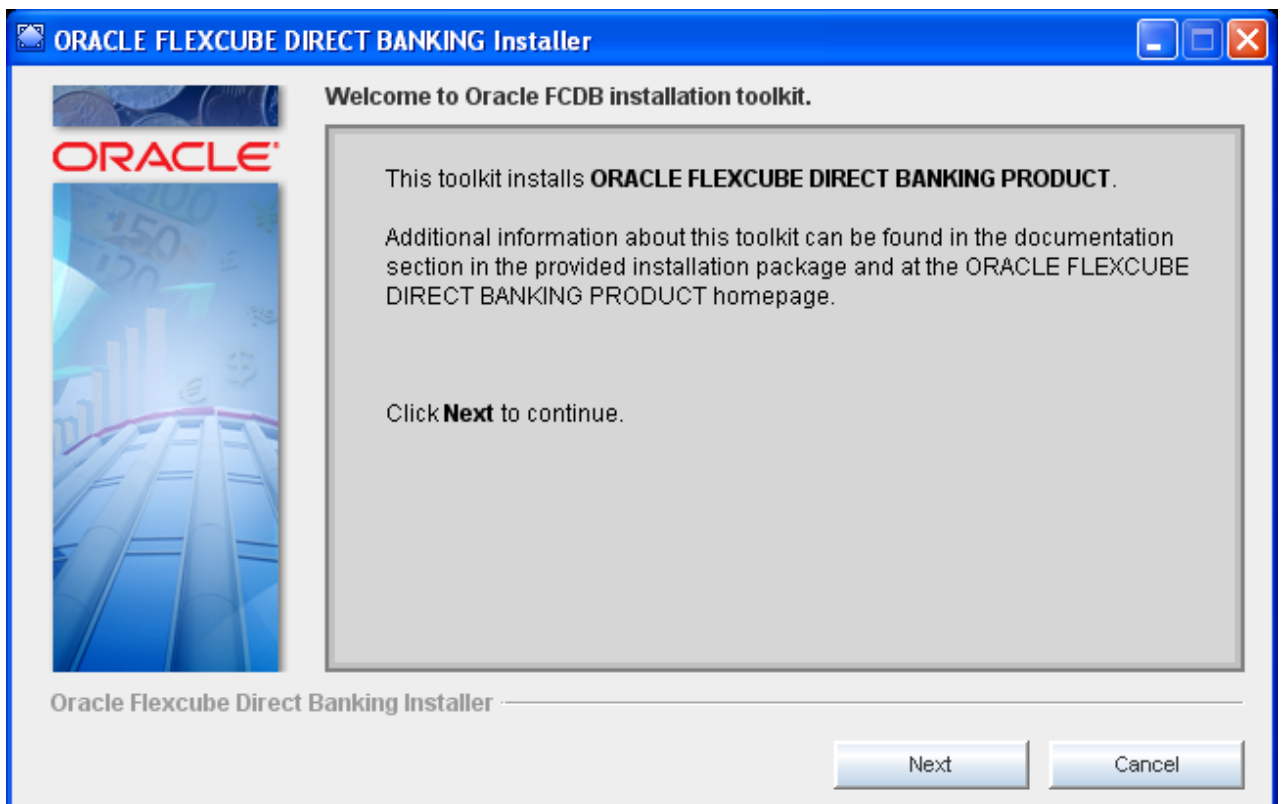
OS	Command query
Windows	<Installer CD>/installwithDB.bat
Unix	sh installwithDB.sh

Identical information is collected is for both the modes (command mode/ swing mode) and is further used for installation and managing configurations.

**NOTE:** In case where DB Installation step is skipped it is assumed that the DB installation is done completely along with FCDB Database users created. Although DB installation can be performed at a later stage manually (refer: "Oracle FLEXCUBE Direct Banking Database Setup") the DB login details (Database Administrator User Credentials etc.) should be present at the time of FCDB installer execution.

- After run the installwithDB.bat/installwithDB.sh select the log path in your base location.  
(E.g. - \usr\FCDB\logs – UNIX systems)

3. On internal verification of the required components being present, the following welcome screen is displayed to the user. Click Next to continue. In case of welcome screen not able to display, please refer the log location for error messages.

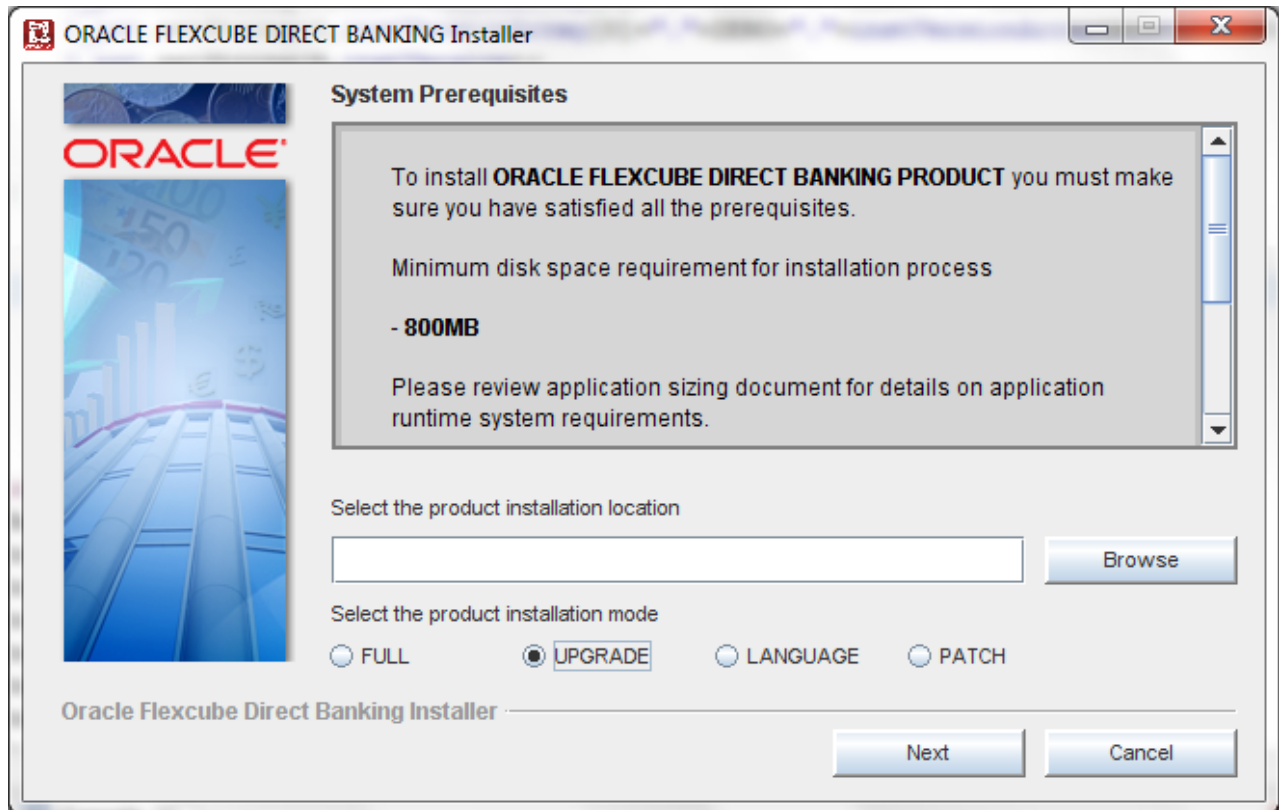


4. On Next, Oracle Copyrights screen is displayed



Read Oracle Copyrights. Click Next to proceed.

5. On Next, System Prerequisite screen is displayed



Enter the Product Installation location. The product installation location is specific to the operation system. (E.g. - \usr\FCDB – UNIX systems)

This location is used by the installer for all the installation related activities including backup. This location is treated as “application home” by the application servers. (Refer application server installation document for additional details)

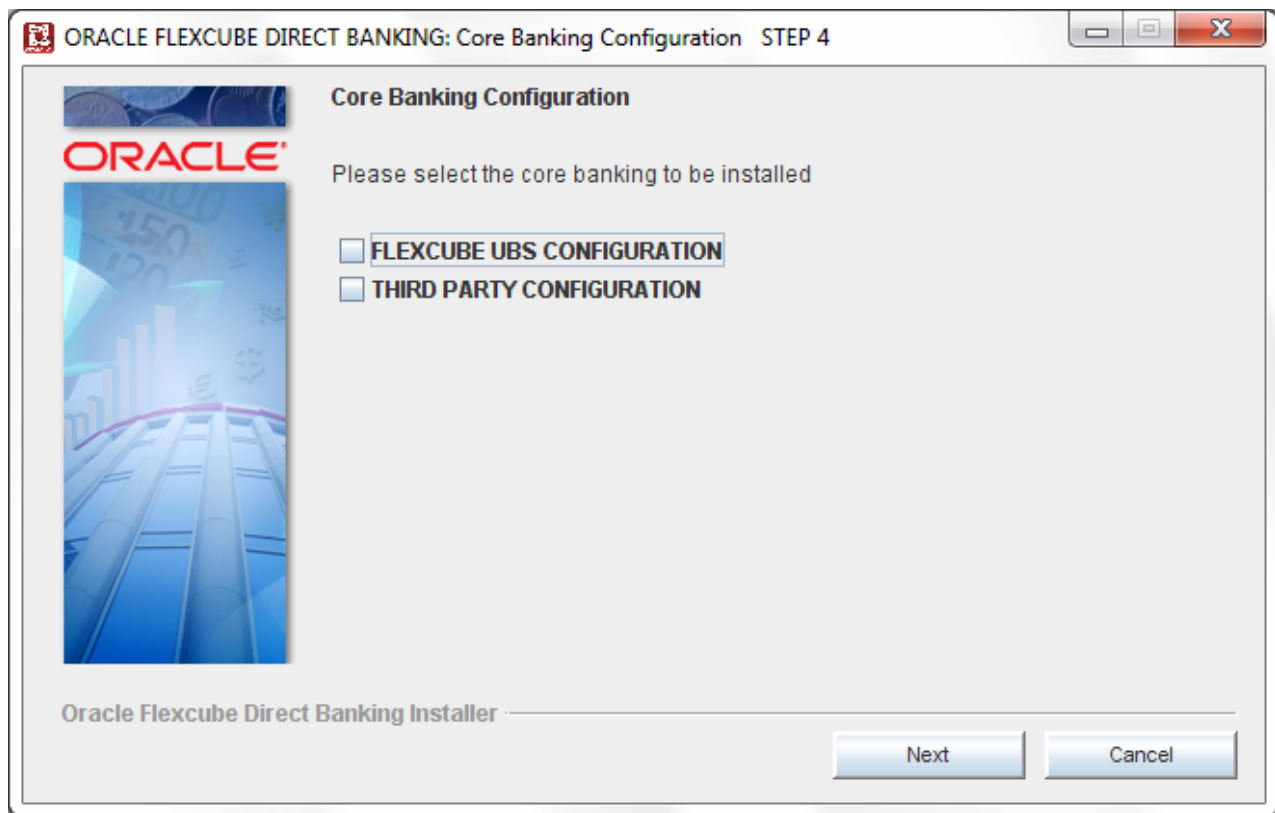
The installation location is created on the given location if not already present. Adequate administrative rights for directory creation, modification and deletion need to be present for the installation user before execution of installation.

Select the Product Installation mode Upgrade.

**Note :** -Product needs to be installed in the FCDB 12.0.1 installed folder location

6. On next, Core Banking Configuration Screen is displayed.

This screen has two options: *Flexcube UBS Configuration* and the *Third Party Configuration*. On selecting, the respective configuration will be configured



**Note:** For installations involving only Third Party System (non-FLEXCUBE), the steps mentioned below are not to be followed , please follow steps from ..Page 16

7 .On next, Data Base Server Setting is displayed.

Here the user have to enter the DB details.

Input field	Description	Example
DB hostname	Please provide the host or ip of DB	10.180.00.00
DB Listener Port	Please provide the port number	1521
Service Name	Please provide the Service Name	FCDB
Schema User	Please provide the admin user schema name	FCDBADMINTEST17
Password	Please provide the password	PASSWORD

Note: In case of RAC Schema, refer fig.1 below

Provide RAC url , schema user and password.

Rest of steps are same as single DB

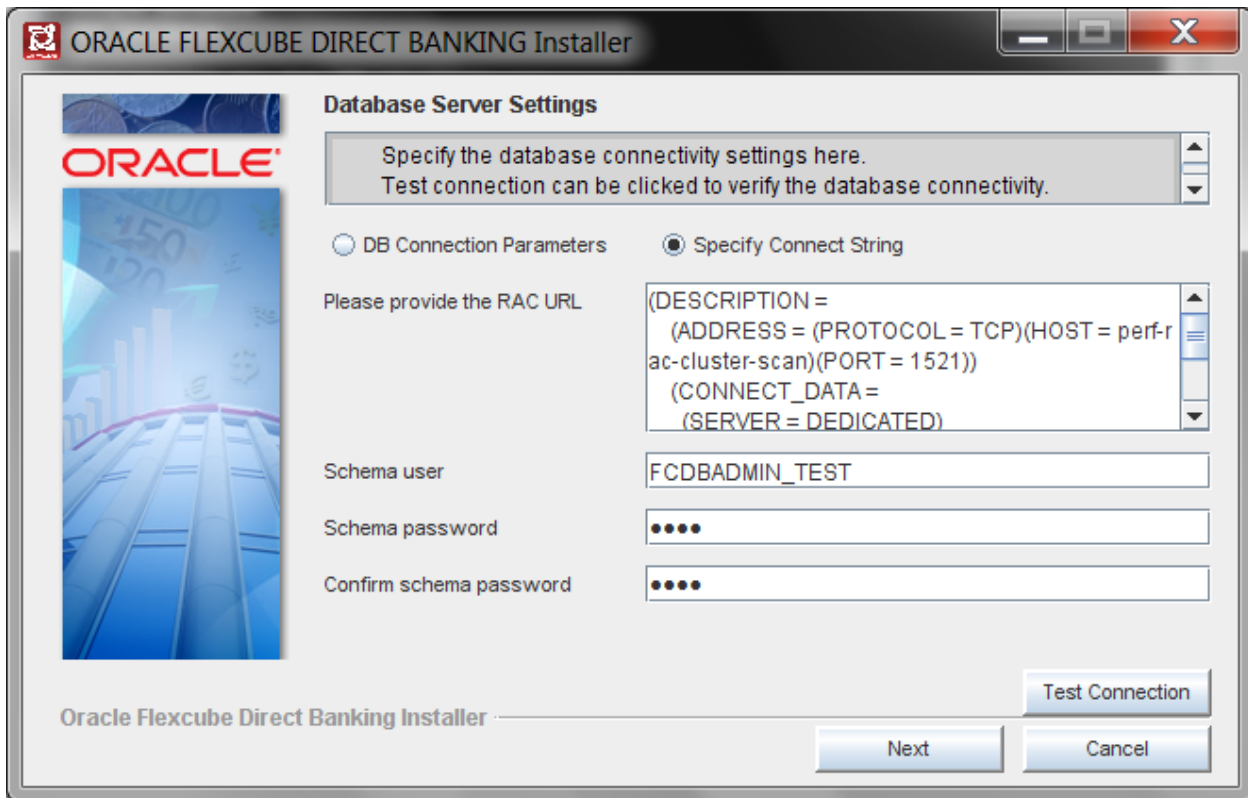




Fig.1

8. On next, Multi Entity Schema Setting is displayed.

Database link option selection should be same as previously installed version.

**ORACLE FLEXCUBE DIRECT BANKING Installer**

### Run the Multi Entity Schema

Run the MultiEntity Schema  
To access the UBS Schema

Do you want to create Database Link ☒ Yes

Enter entity Identifier

Enter timezone region

Enter the environment identifier

Enter EHMS without identifier

Enter password for Entity User

Enter value for UBS schema

Enter target FCC username

Enter target FCC password

Enter target FCC database host

Enter target FCC database port

Enter target FCC database SID

Oracle Flexcube Direct Banking Installer

Next Cancel

Input field	Description	Example
Identity	Enter entity identifier	B001
TimeZone	Enter timezone	Asia/Calcutta



Environment	Enter the environment identifier	_DEV, _SIT
EHMS User Name	Enter EHMS without identifier	FCDBB001
Entity Password	Enter password for Entity User	FCDBB001
UBS Schema Name	Enter value for UBS schema	FCUBS12R2
FCC UserName	Enter target FCC username	FC12DBDEV
FCC Password	Enter target FCC password	FC12DBDEV
FCC Host	Enter target FCC database host	10.180.23.60
FCC Port	Enter target FCC database port	1521
FCC SID	Enter target FCC database SID	KD12NEW

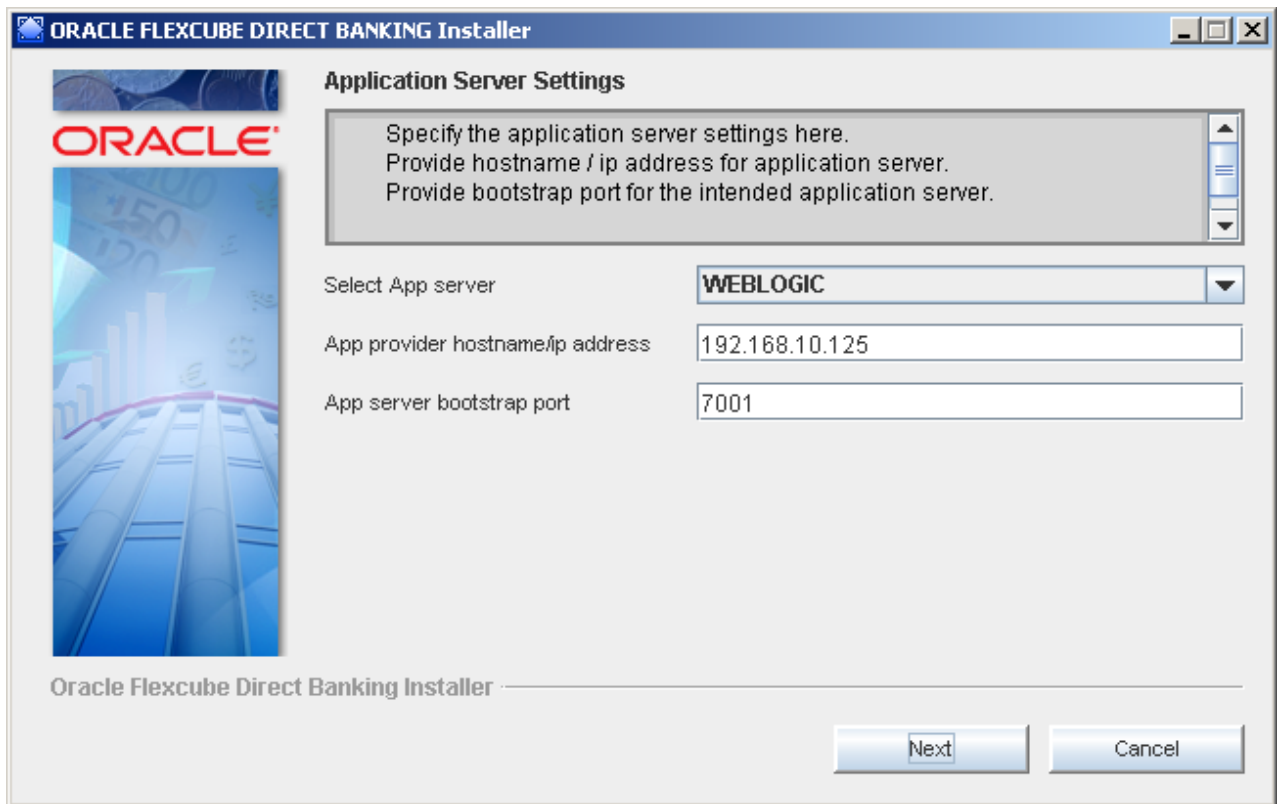
**Note :** In case of **Third Party Configuration**.

10.On next, Data Base Server Setting is displayed.

Here the user have to enter the DB details

Input field	Description	Example
DB hostname	Please provide the host or ip of DB	10.180.00.00
DB Listener Port	Please provide the port number	1521
Service Name	Please provide the Service Name	FCDB
Schema User	Please provide the admin user schema name	FCDBADMINTST17
Password	Please provide the password	
Environment postfix	Please provide db environment postfix	_DEV

11 .On Next Screen Application Server Setting screen is displayed

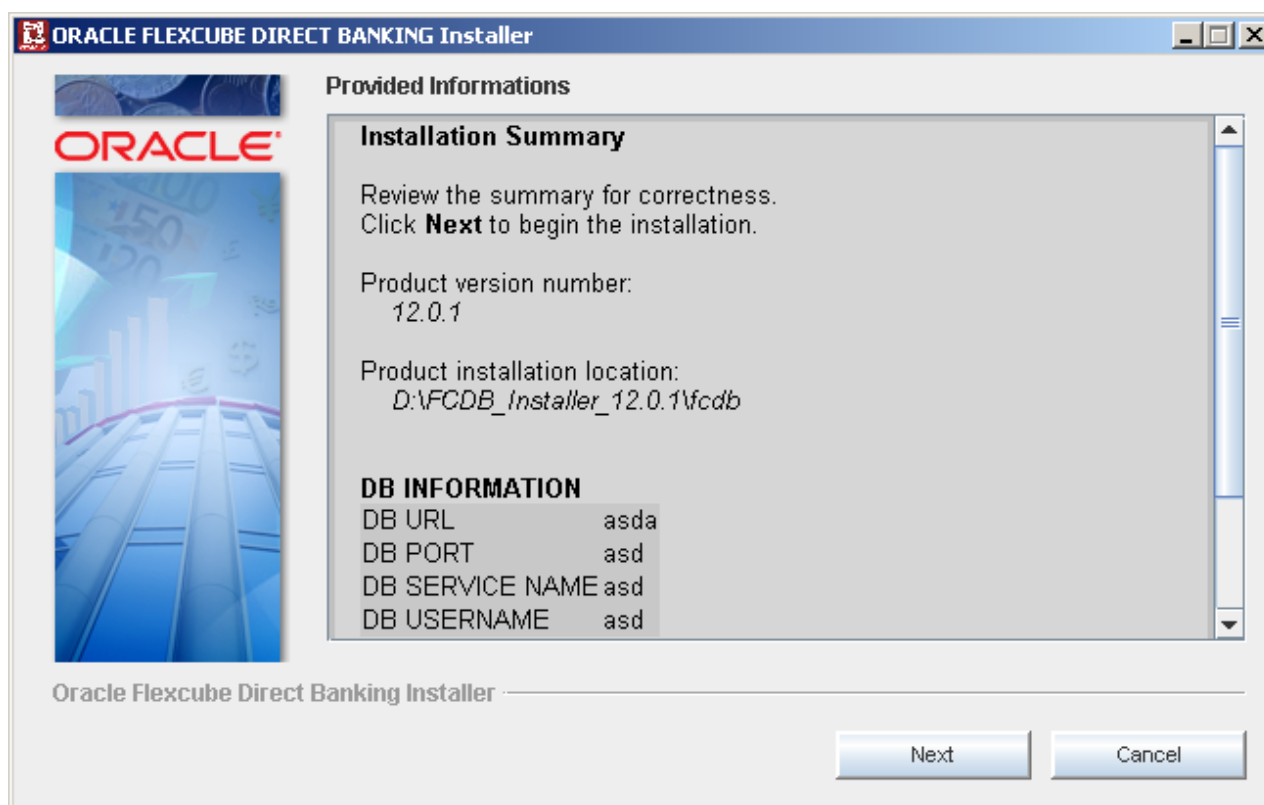


This screen takes inputs for the FCDB application server details. (This screen is only displayed in case the deliverable contains application server related changes or properties related changes. If this screen does not appear, proceed to the next screen information.)

List of supported servers appears as a dropdown on the screen. Provide appropriate details as provided in Application server console.

Click next to continue.

12. On next, Verification screen is displayed.

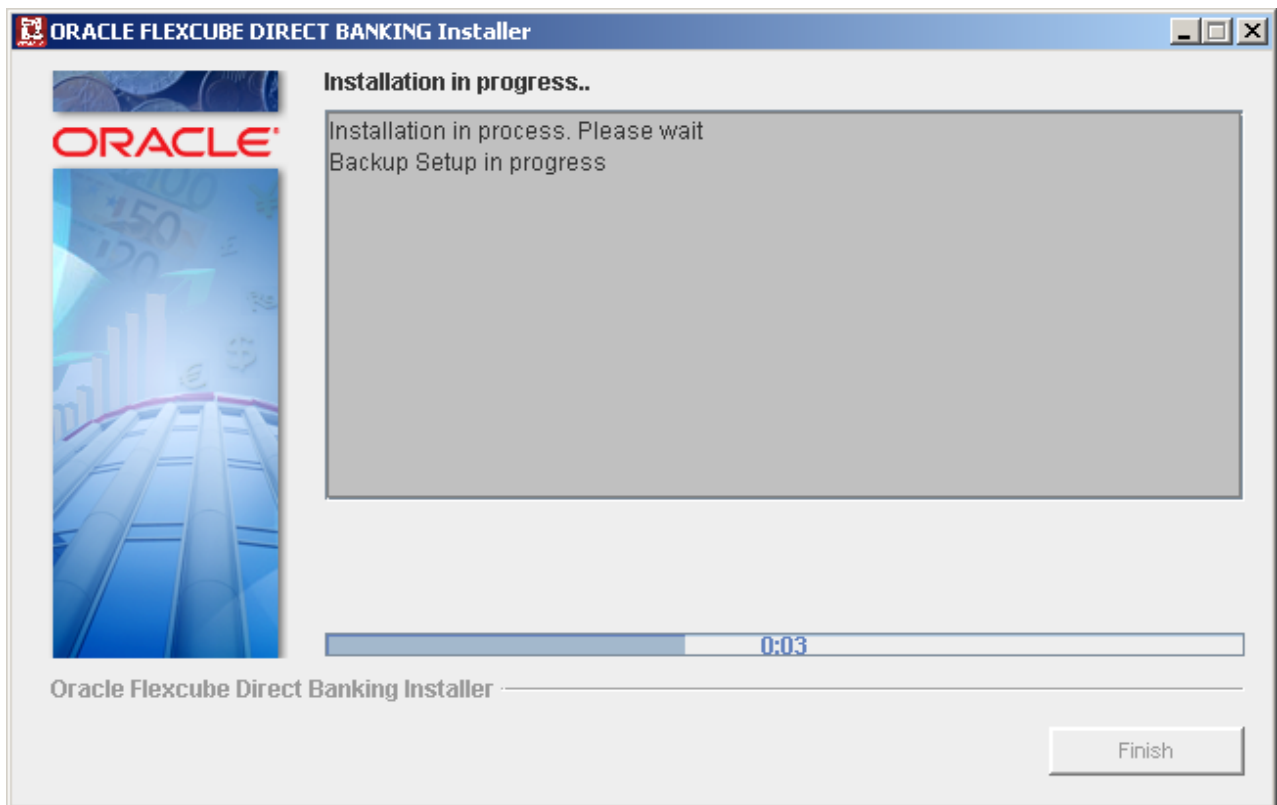


This screen allows user to verify all the details that have been input on this screen. This screen also displays details about the deliverable version and installation location.

Post complete confirmation. Click next to proceed with the installation. In case of incorrect entries click cancel to abort the setup and exit the installer.

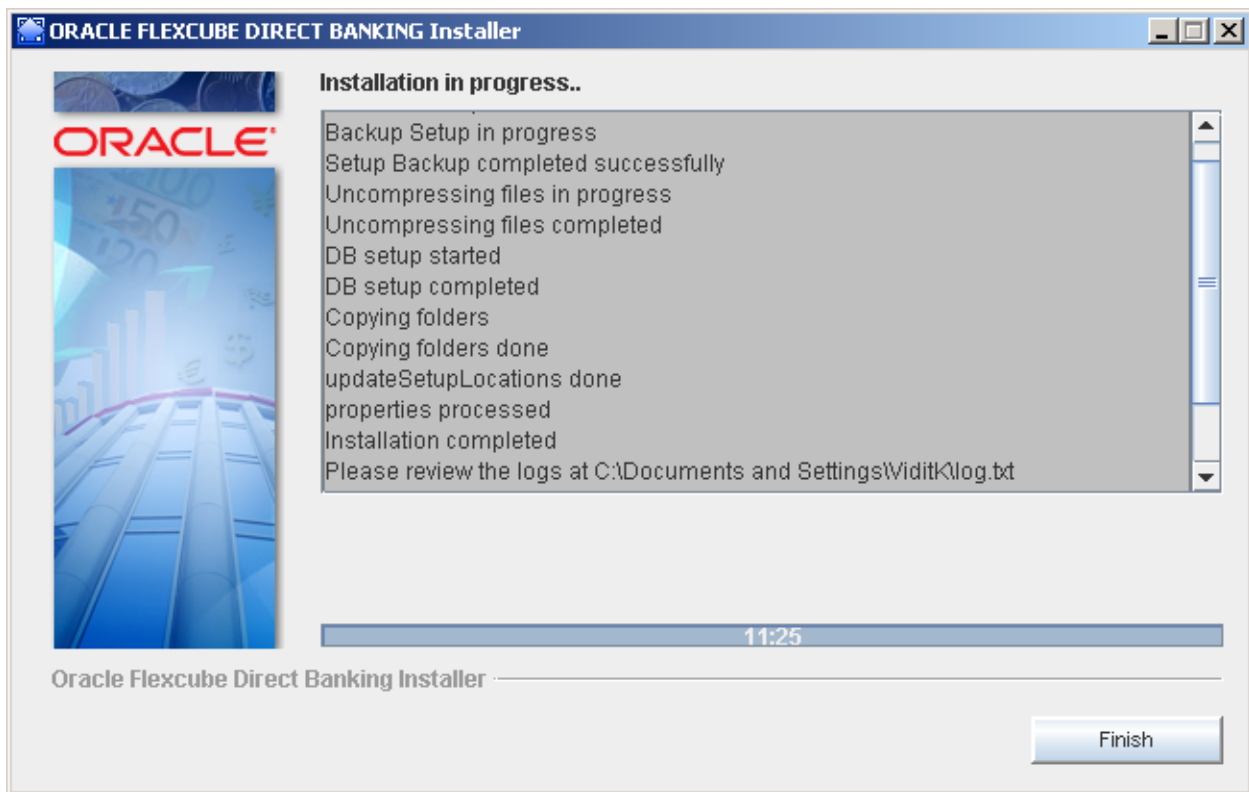
**NOTE:** The FCDB Installer needs to be aborted with Cancel button and restarted in case of any detail missing or incorrect.

13. On next, the Installation progress screen is displayed.



This screen displays the activities performed by the installer and the time elapsed for the same. This screen also logs all the activities and errors.

On complete successful installation, the Finish button is displayed along with the location details of the log files logged.



Click Finish to complete the installation steps and close the installer.

14 .Login into SQLPLUS using sys user and run <FCDB BASE DIR>/dbsetup/Misc/FCDB\_GR\_PRIV\_UPGRADE.sql file.

Input field	Description	Example
Admin Schema	Enter the value of admin Schema	FCDBADMIN_PATCHSET01
EHMS Schema	Enter the value of EHMS Schema	FCDBB001_PATCHSET01

```
C:\WINDOWS\system32\cmd.exe - sqlplus FCDBADMIN_PATCHTEST01/FCDB@FC1201INST
Microsoft Windows XP [Version 5.1.2600]
(C) Copyright 1985-2001 Microsoft Corp.

C:\Documents and Settings\DeepakKuma>d:
D:\>cd D:\Yaserr_Installer\fcdb_patch\dbsetup\Misc
D:\Yaserr_Installer\fcdb_patch\dbsetup\Misc>sqlplus FCDBADMIN_PATCHTEST01/FCDB@FC1201INST
SQL*Plus: Release 11.1.0.6.0 - Production on Thu Jan 10 18:49:39 2013
Copyright (c) 1982, 2007, Oracle. All rights reserved.

Connected to:
Oracle Database 11g Enterprise Edition Release 11.2.0.3.0 - 64bit Production
With the Partitioning, OLAP, Data Mining and Real Application Testing options

SQL> @FCDB_GR_PRIU_PATCH.sql
Enter value for adminschema: FCDBADMIN_PATCHTEST01
Enter value for ehmschema: FCDBB001_PATCHTEST01
```

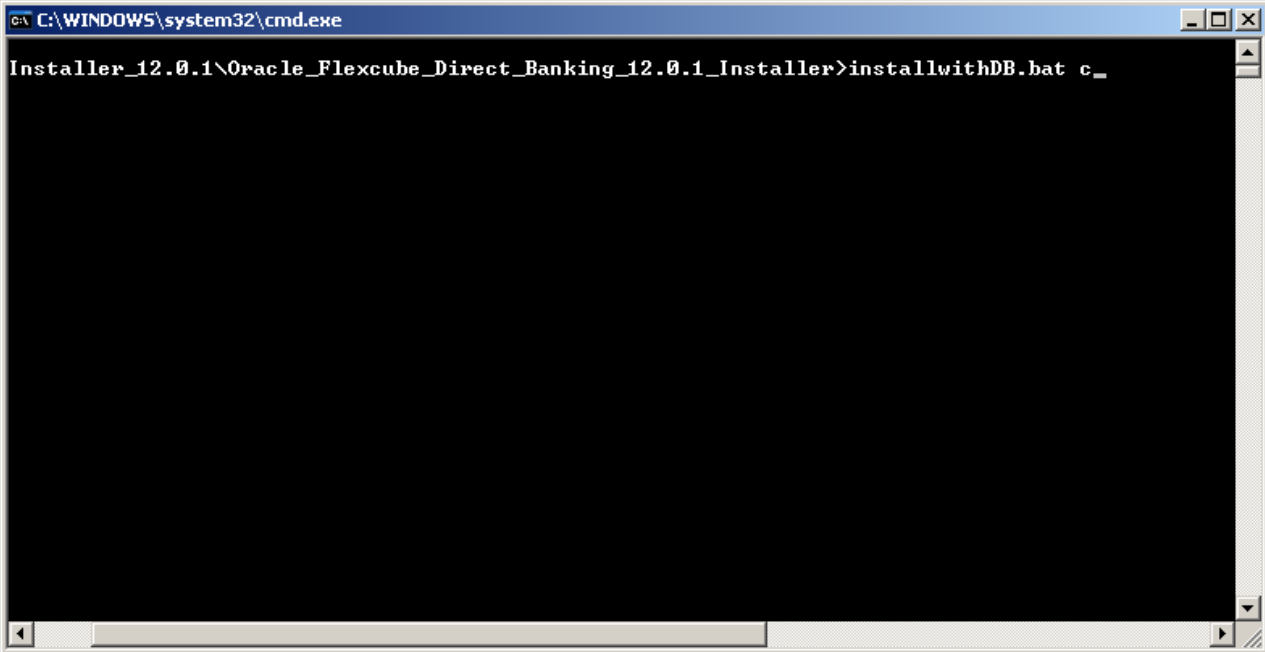
Log location is displayed as a part of the progress screen, at the completion of installation. Please review the logs to check for any exceptions logged and preserve this file for any further error resolution if required.

### Steps to follow in command mode

1. Open command prompt and execute following commands and enter.

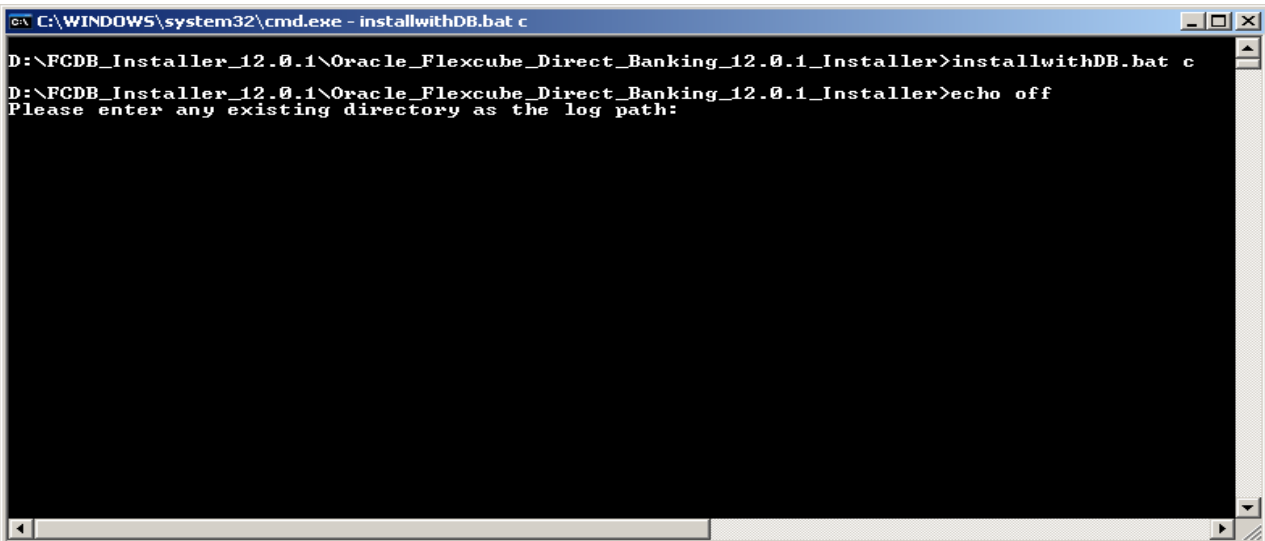
For windows : <Installer CD>/installwithDB.bat c

For Linux : <Installer CD>/installwithDB.sh c



```
C:\WINDOWS\system32\cmd.exe
Installer_12.0.1\Oracle_Flexcube_Direct_Banking_12.0.1_Installer>installwithDB.bat c_
```

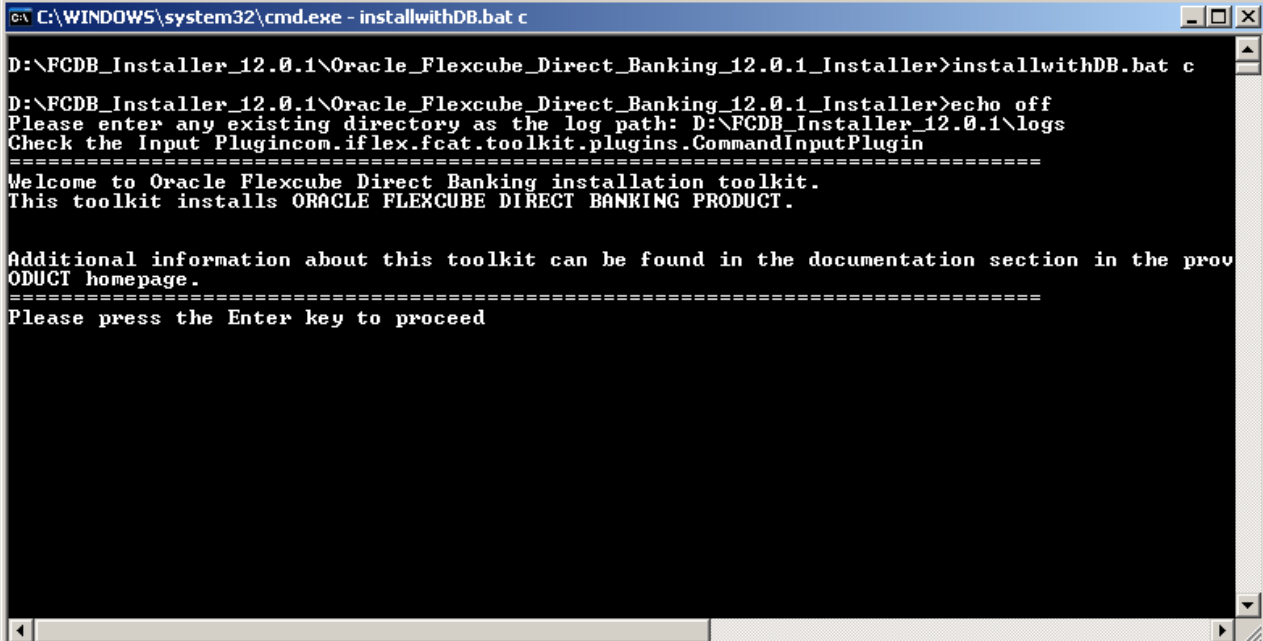
2. Enter any existing directory path to store logs and enter.



```
C:\WINDOWS\system32\cmd.exe - installwithDB.bat c
D:\FCDB_Installer_12.0.1\Oracle_Flexcube_Direct_Banking_12.0.1_Installer>installwithDB.bat c
D:\FCDB_Installer_12.0.1\Oracle_Flexcube_Direct_Banking_12.0.1_Installer>echo off
Please enter any existing directory as the log path:
```



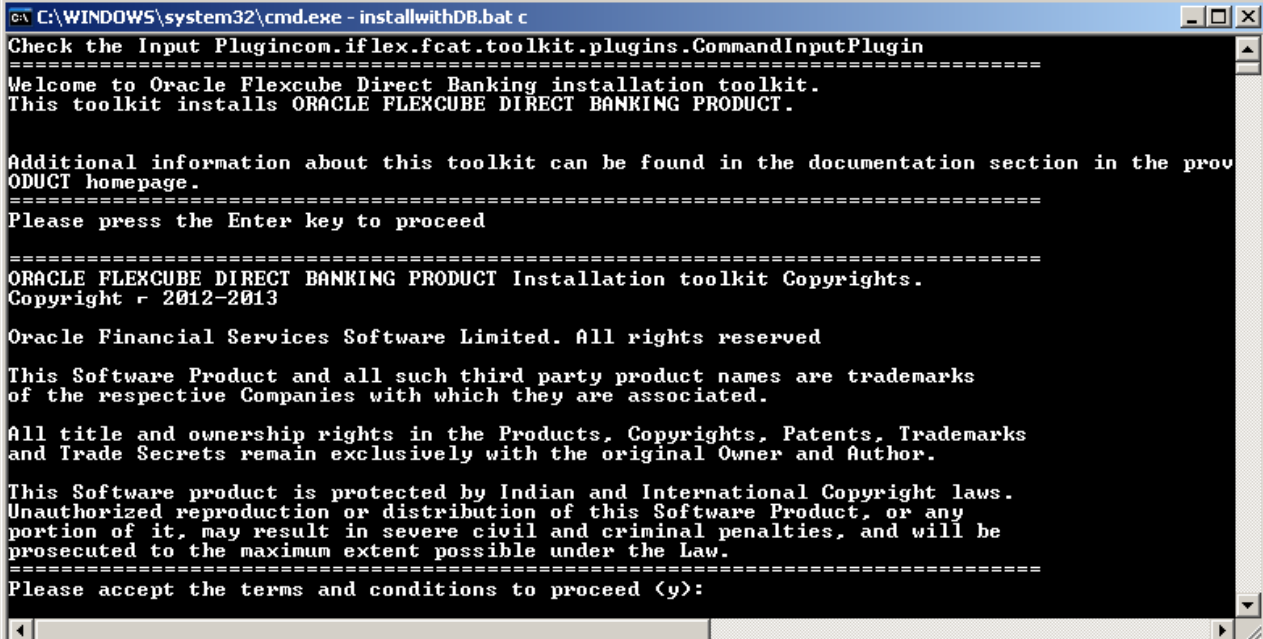
3. Welcome message will appear, Press Enter to proceed.



```
C:\WINDOWS\system32\cmd.exe - installwithDB.bat c
D:\FCDB_Installer_12.0.1\Oracle_Flexcube_Direct_Banking_12.0.1_Installer>installwithDB.bat c
D:\FCDB_Installer_12.0.1\Oracle_Flexcube_Direct_Banking_12.0.1_Installer>echo off
Please enter any existing directory as the log path: D:\FCDB_Installer_12.0.1\logs
Check the Input Plugincom.iflex.fcat.toolkit.plugins.CommandInputPlugin
=====
Welcome to Oracle Flexcube Direct Banking installation toolkit.
This toolkit installs ORACLE FLEXCUBE DIRECT BANKING PRODUCT.

Additional information about this toolkit can be found in the documentation section in the prov
ODUCT homepage.
=====
Please press the Enter key to proceed
```

4. Terms and Conditions will be displayed. To proceed press <Y> and <Enter>.



```
C:\WINDOWS\system32\cmd.exe - installwithDB.bat c
Check the Input Plugincom.iflex.fcat.toolkit.plugins.CommandInputPlugin
=====
Welcome to Oracle Flexcube Direct Banking installation toolkit.
This toolkit installs ORACLE FLEXCUBE DIRECT BANKING PRODUCT.

Additional information about this toolkit can be found in the documentation section in the prov
ODUCT homepage.
=====
Please press the Enter key to proceed
=====
ORACLE FLEXCUBE DIRECT BANKING PRODUCT Installation toolkit Copyrights.
Copyright © 2012-2013

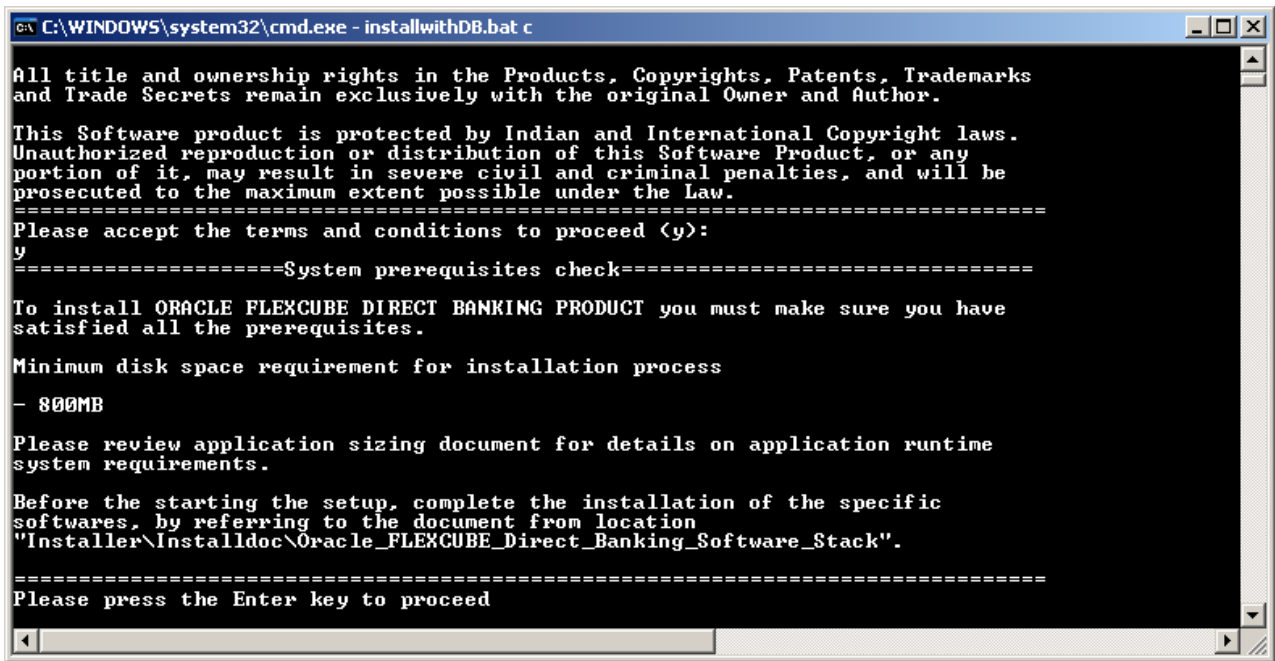
Oracle Financial Services Software Limited. All rights reserved

This Software Product and all such third party product names are trademarks
of the respective Companies with which they are associated.

All title and ownership rights in the Products, Copyrights, Patents, Trademarks
and Trade Secrets remain exclusively with the original Owner and Author.

This Software product is protected by Indian and International Copyright laws.
Unauthorized reproduction or distribution of this Software Product, or any
portion of it, may result in severe civil and criminal penalties, and will be
prosecuted to the maximum extent possible under the Law.
=====
Please accept the terms and conditions to proceed (y):
```

5. Information regarding space requirements will be displayed. Press <Enter> to continue.



```
C:\WINDOWS\system32\cmd.exe - installwithDB.bat c

All title and ownership rights in the Products, Copyrights, Patents, Trademarks
and Trade Secrets remain exclusively with the original Owner and Author.

This Software product is protected by Indian and International Copyright laws.
Unauthorized reproduction or distribution of this Software Product, or any
portion of it, may result in severe civil and criminal penalties, and will be
prosecuted to the maximum extent possible under the Law.
=====
Please accept the terms and conditions to proceed (y):
y
=====System prerequisites check=====

To install ORACLE FLEXCUBE DIRECT BANKING PRODUCT you must make sure you have
satisfied all the prerequisites.

Minimum disk space requirement for installation process

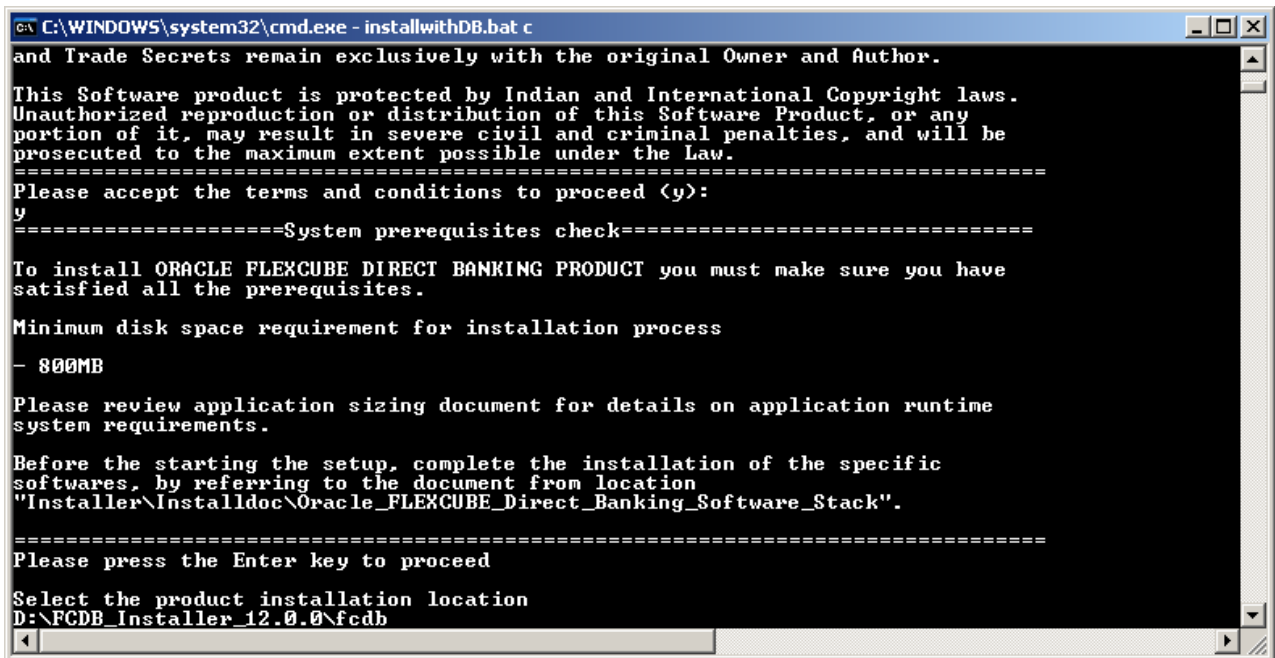
- 800MB

Please review application sizing document for details on application runtime
system requirements.

Before the starting the setup, complete the installation of the specific
softwares, by referring to the document from location
"Installer\Installdoc\Oracle_FLEXCUBE_Direct_Banking_Software_Stack".
=====
Please press the Enter key to proceed
```

- 6 Enter the path of location where product is to be installed and press <Enter>.

**Note :** -Product needs to be installed in the FCDB 12.0.1 installed folder location



```
C:\WINDOWS\system32\cmd.exe - installwithDB.bat c

and Trade Secrets remain exclusively with the original Owner and Author.

This Software product is protected by Indian and International Copyright laws.
Unauthorized reproduction or distribution of this Software Product, or any
portion of it, may result in severe civil and criminal penalties, and will be
prosecuted to the maximum extent possible under the Law.
=====
Please accept the terms and conditions to proceed (y):
y
=====System prerequisites check=====

To install ORACLE FLEXCUBE DIRECT BANKING PRODUCT you must make sure you have
satisfied all the prerequisites.

Minimum disk space requirement for installation process

- 800MB

Please review application sizing document for details on application runtime
system requirements.

Before the starting the setup, complete the installation of the specific
softwares, by referring to the document from location
"Installer\Installdoc\Oracle_FLEXCUBE_Direct_Banking_Software_Stack".
=====
Please press the Enter key to proceed

Select the product installation location
D:\FCDB_Installer_12.0.0\fcdb
```

## 7. Select the Mode

1. FULL 2.UPGRADE 3.LANG PACK 4.PATCH

→ Press '1' or Press '2' or Press '3' or Press '4' → <Enter>

A screenshot of a Windows command prompt window titled "C:\windows\system32\cmd.exe - installwithDB.bat c". The window displays the Oracle FLEXCUBE Direct Banking Upgrade Installer 12.0.2.0.0. The text in the window includes a license agreement, a system prerequisites check, and a mode selection screen. The mode selection screen lists four options: 1 : FULL MODE, 2 : UPGRADE MODE, 3 : LANGUAGE PACK MODE, and 4 : PATCH MODE. The user is prompted to provide a set up mode.

```
C:\windows\system32\cmd.exe - installwithDB.bat c
integrated software, any programs installed on the hardware, and/or
documentation, shall be subject to license terms and license restrictions applicable
to the programs. No other rights are granted to the U.S. Government.

This software or hardware is developed for general use in a variety of information
management applications. It is not developed or intended for use in any
inherently dangerous applications, including applications that may create a risk of
personal injury. If you use this software or hardware in dangerous applications,
then you shall be responsible to take all appropriate failsafe, backup, redundancy,
and other measures to ensure its safe use. Oracle Corporation and its affiliates
disclaim any liability for any damages caused by use of this software or hardware
in dangerous applications.

This software or hardware and documentation may provide access to or
information on content, products and services from third parties. Oracle
Corporation and its affiliates are not responsible for and expressly disclaim all
warranties of any kind with respect to third-party content, products, and services.
Oracle Corporation and its affiliates will not be responsible for any loss, costs,
or damages incurred due to your access to or use of third-party content, products,
or services.
=====
Please accept the terms and conditions to proceed <y>:
y
=====System prerequisites check=====
To install ORACLE FLEXCUBE DIRECT BANKING PRODUCT you must make sure you have
satisfied all the prerequisites.

Minimum disk space requirement for installation process
- 800MB

Please review application sizing document for details on application runtime
system requirements.

Before the starting the setup, complete the installation of the specific
softwares, by referring to the document from location
"Installer\Installdoc\Oracle_FLEXCUBE_Direct_Banking_Software_Stack".
=====
Please press the Enter key to proceed

Select the product installation location
ds/
=====
Mode Selection
=====
1 : FULL MODE
2 : UPGRADE MODE
3 : LANGUAGE PACK MODE
4 : PATCH MODE
Please provide set up mode:
```

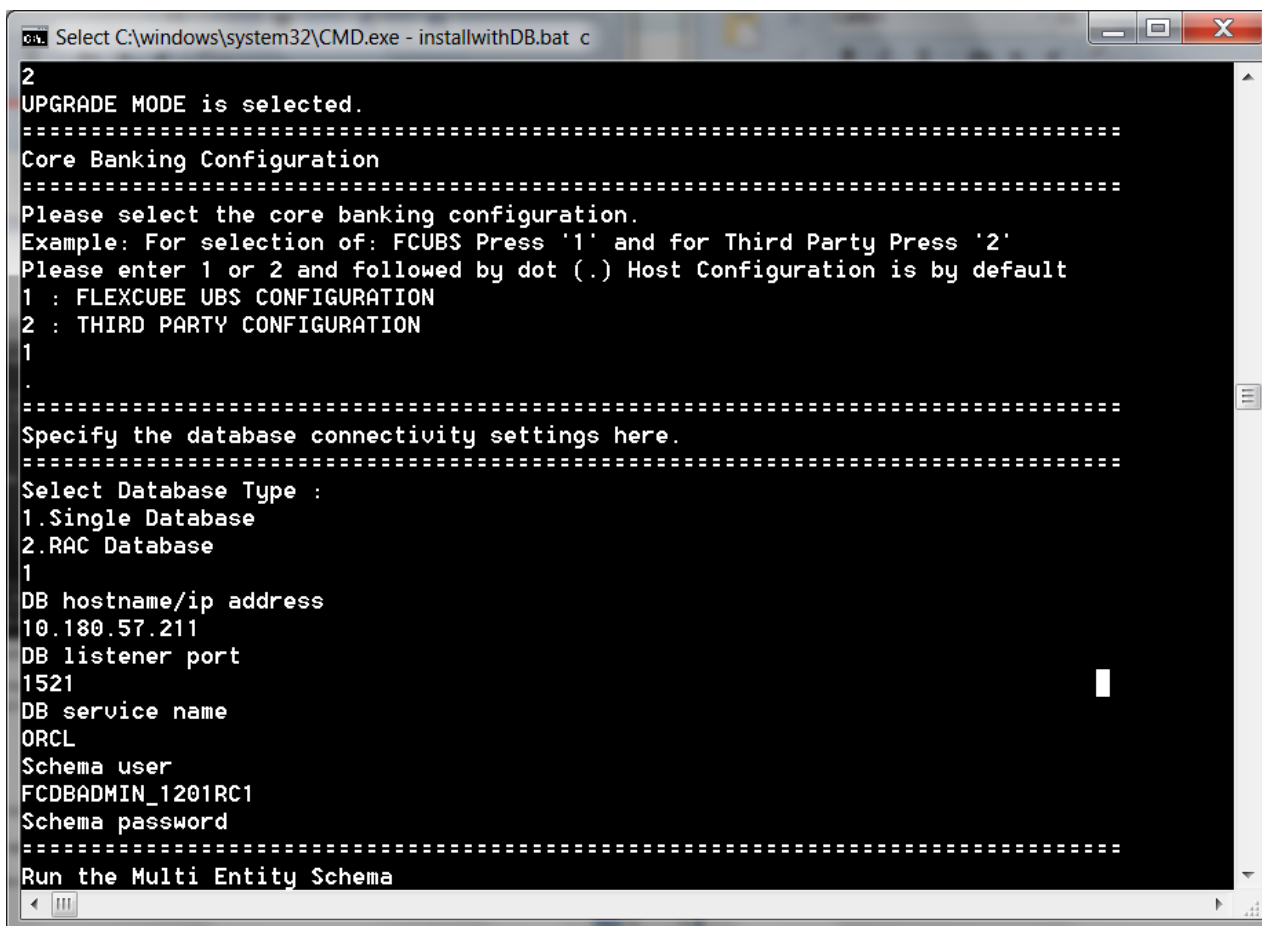
8. Select the core banking option



```
C:\windows\system32\CMD.exe - installwithDB.bat c
Please provide set up mode:
2
UPGRADE MODE is selected.
=====
Core Banking Configuration
=====
Please select the core banking configuration.
Example: For selection of: FCUBS Press '1' and for Third Party Press '2'
Please enter 1 or 2 and followed by dot (.) Host Configuration is by default
1 : FLEXCUBE UBS CONFIGURATION
2 : THIRD PARTY CONFIGURATION
1
.
=====
Specify the database connectivity settings here.
=====
```

**Note:** For installations involving only Third Party System (non-FLEXCUBE), the steps mentioned below are not to be followed, please follow steps from ..Page 30

9. Enter the database server setting same as in GUI Mode settings and press <Enter>.



```
Select C:\windows\system32\CMD.exe - installwithDB.bat c
2
UPGRADE MODE is selected.
=====
Core Banking Configuration
=====
Please select the core banking configuration.
Example: For selection of: FCUBS Press '1' and for Third Party Press '2'
Please enter 1 or 2 and followed by dot (.) Host Configuration is by default
1 : FLEXCUBE UBS CONFIGURATION
2 : THIRD PARTY CONFIGURATION
1
.
=====
Specify the database connectivity settings here.
=====
Select Database Type :
1.Single Database
2.RAC Database
1
DB hostname/ip address
10.180.57.211
DB listener port
1521
DB service name
ORCL
Schema user
FCDBADMIN_1201RC1
Schema password
=====
Run the Multi Entity Schema
```

Installer will ask to input JDBC connectivity settings. The required input for the JDBC connectivity settings is same as GUI Mode

Note: In case of RAC Schema, refer fig.2 below

Provide RAC url in single Line, schema user and password.

Rest of steps are same as single DB.

```
C:\windows\system32\CMD.exe - installwithDB.bat C
Mode Selection
=====
1 : FULL MODE
2 : UPGRADE MODE
3 : LANGUAGE PACK MODE
4 : PATCH MODE
Please provide set up mode:
2
UPGRADE MODE is selected.
=====
Core Banking Configuration
=====
Please select the core banking configuration.
Example: For selection of: FCUBS Press '1' and for Third Party Press '2'
Please enter 1 or 2 and followed by dot (.) Host Configuration is by default
1 : FLEXCUBE UBS CONFIGURATION
2 : THIRD PARTY CONFIGURATION
1
.
=====
Specify the database connectivity settings here.
=====
Select Database Type :
1.Single Database
2.RAC Database
2
Please provide the RAC URL in single row :
(DESCRIPTION =(ADDRESS = (PROTOCOL = TCP)(HOST = perf-rac-cluster-scan)(PORT = 1521))(CONNECT_DATA =(SERVER = DEDICAT
Schema user
FCDBADMIN_1201RC1
Schema password
=====
Run the Multi Entity Schema
=====
Do you want to create Database Link. Please Enter Y/N
Y
Enter entity Identifier
B001
Enter timezone region
Asia/Calcutta
Enter the environment identifier
```

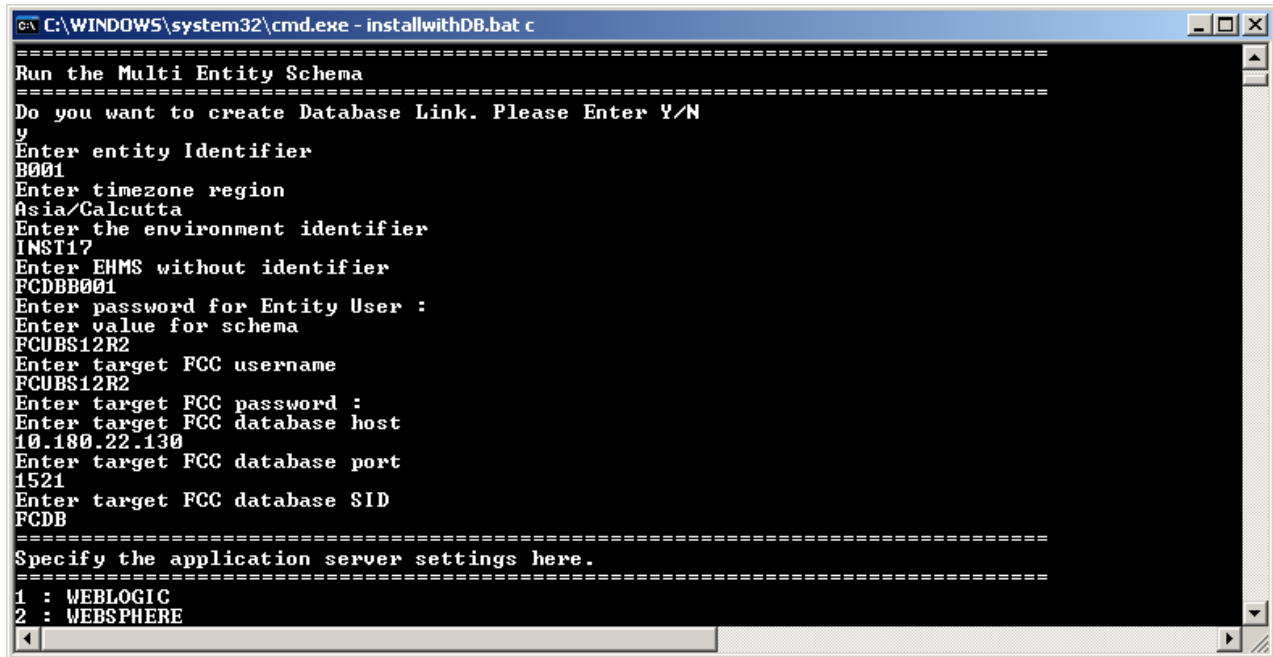
10. Selected Entity Schema script will be displayed and Installer will ask to enter Multi Entity Schema settings. The required input for the Multi Entity Schema setting is same as GUI Mode.

This screen will provide two option:-

1. Schema to dblink(different Schema)

## 2. Dblink to Schema(Schema to Schema)

Note : Selection of Dblink should be same as previously installed version.



```
C:\WINDOWS\system32\cmd.exe - installwithDB.bat c
=====
Run the Multi Entity Schema
=====
Do you want to create Database Link. Please Enter Y/N
y
Enter entity Identifier
B001
Enter timezone region
Asia/Calcutta
Enter the environment identifier
INST17
Enter EHMS without identifier
FCDBB001
Enter password for Entity User :
Enter value for schema
FCUBS12R2
Enter target FCC username
FCUBS12R2
Enter target FCC password :
FCUBS12R2
Enter target FCC database host
10.180.22.130
Enter target FCC database port
1521
Enter target FCC database SID
FCDB
=====
Specify the application server settings here.
=====
1 : WEBLOGIC
2 : WEBSPPHERE
```

**Note :** In case of **Third Party Configuration**.

11. Enter the database server setting same as in GUI Mode settings and press <Enter>.

```

C:\windows\system32\cmd.exe - installwithDB.bat C
1 : FLEXCUBE UBS CONFIGURATION
2 : THIRD PARTY CONFIGURATION
2
-
=====
Specify the database connectivity settings here.
=====
DB hostname/ip address
10.180.57.211
DB listener port
1521
DB service name
ORCL
Schema user
sys as sysdba
Schema password
Enter environment identifier
_DEU
=====
Specify the application server settings here.
=====
1 : WEBLOGIC
2 : WEBSPHERE
Select App server
-

```

Note: For RAC db and third party Configuration, please refer fig. 3

Ex: fig .3

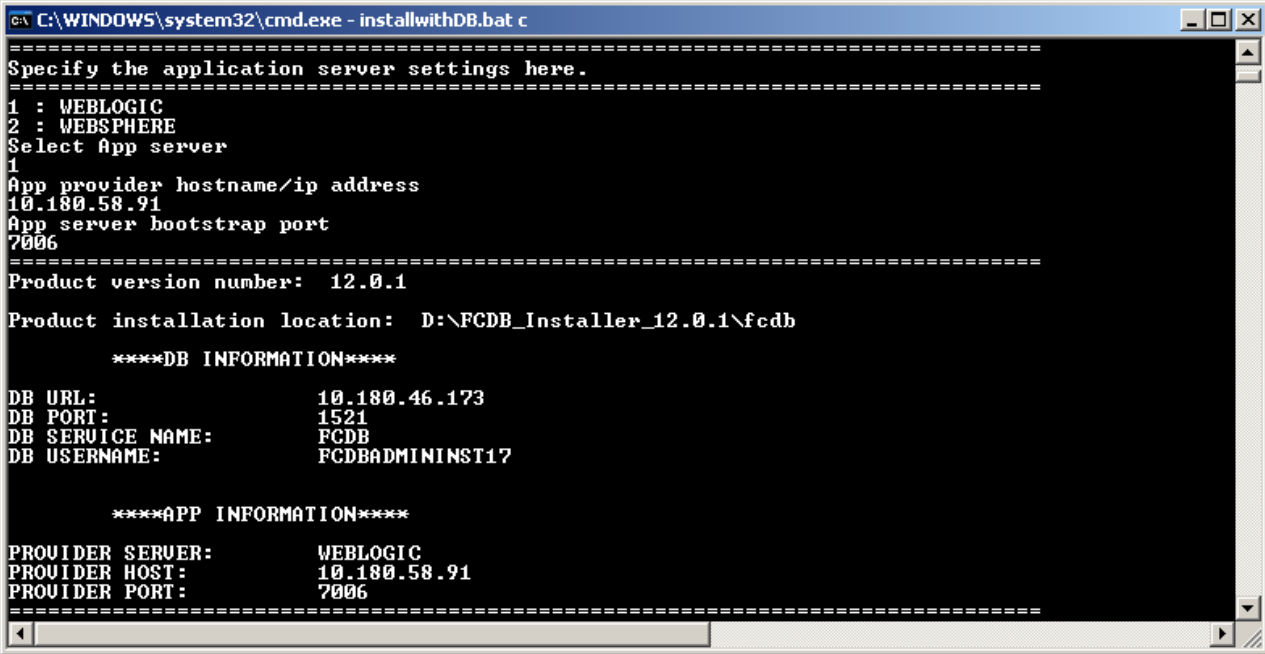
```

C:\windows\system32\CMD.exe - installwithDB.bat C
=====
Select Database Type :
1 Single Database
2 RAC Database
2
Please provide the RAC URL in single row :
(DESCRIPTION =(ADDRESS = (PROTOCOL = TCP)(HOST = perf-rac-cluster-scan)(PORT = 1521))(CONNECT_DATA =(SERVER = DEDICATED)(
Schema user
sys as sysdba
Schema password
=====
Specify the JDBC connectivity setting here
=====
Provide db environment postfix
_1201TPT
Provide db Table Space Location
+APPDATA/perf/datafile
Provide db App User Prefix
FCDB
Provide the App user password :
=====
Specify Admin Schema settings here
=====
Enter timezone region
Asia/Calcutta
Provide the Environment Identifier
_1201TPT
Provide the Admin user
FCDBADMIN
Provide the Admin password
=====
Specify the application server settings here.
=====
1 : WEBLOGIC
2 : WEBSPHERE
Select App server
1
App provider hostname/ip address
1
App server bootstrap port
1
=====

```



12. Installer will ask Application server details. Enter the code of the application server to be selected and press <Enter>.

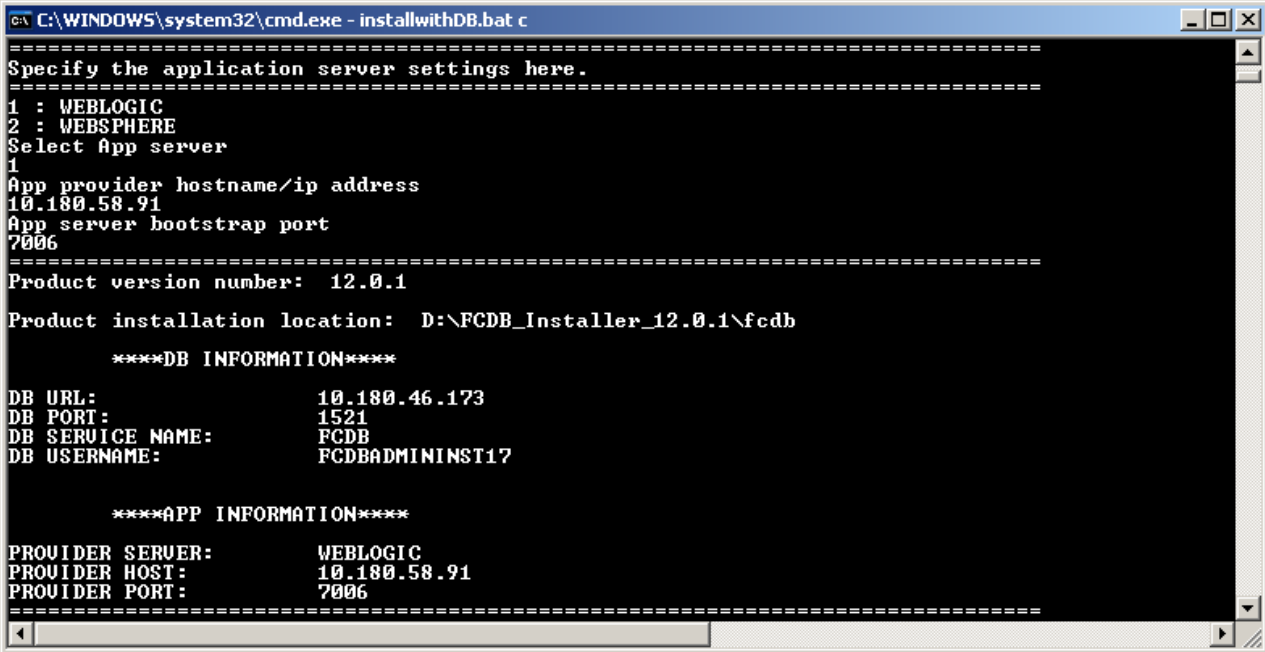


```
C:\WINDOWS\system32\cmd.exe - installwithDB.bat c
=====
Specify the application server settings here.
=====
1 : WEBLOGIC
2 : WEBSPHERE
Select App server
1
App provider hostname/ip address
10.180.58.91
App server bootstrap port
7006
=====
Product version number: 12.0.1
Product installation location: D:\FCDB_Installer_12.0.1\fcdb

****DB INFORMATION****
DB URL: 10.180.46.173
DB PORT: 1521
DB SERVICE NAME: FCDB
DB USERNAME: FCDBADMININST17

****APP INFORMATION****
PROVIDER SERVER: WEBLOGIC
PROVIDER HOST: 10.180.58.91
PROVIDER PORT: 7006
=====
```

13. Provide the Application Server details and press <Enter>. All the entered details will be shown for verification.



```
C:\WINDOWS\system32\cmd.exe - installwithDB.bat c
=====
Specify the application server settings here.
=====
1 : WEBLOGIC
2 : WEBSPPHERE
Select App server
1
App provider hostname/ip address
10.180.58.91
App server bootstrap port
7006
=====
Product version number: 12.0.1
Product installation location: D:\FCDB_Installer_12.0.1\fcdb

****DB INFORMATION****
DB URL: 10.180.46.173
DB PORT: 1521
DB SERVICE NAME: FCDB
DB USERNAME: FCDBADMININST17

****APP INFORMATION****
PROVIDER SERVER: WEBLOGIC
PROVIDER HOST: 10.180.58.91
PROVIDER PORT: 7006
=====
```

14. Review the details and input 'Y'. Press <Enter> to begin installation. If you want to modify the settings please stop the installation and start again.

```
C:\WINDOWS\system32\cmd.exe - installwithDB.bat c
=====
Product version number: 12.0.1
Product installation location: D:\FCDB_Installer_12.0.1\fcdb

****DB INFORMATION****
DB URL: 10.180.46.173
DB PORT: 1521
DB SERVICE NAME: FCDB
DB USERNAME: FCDBADMININST17

****APP INFORMATION****
PROVIDER SERVER: WEBLOGIC
PROVIDER HOST: 10.180.58.91
PROVIDER PORT: 7006
=====
Review the summary for correctness.Press <y> to begin the installation.
y
Installation in process. Please wait
. . . . .
```

15.Login into SQLPLUS using sys user and run <FCDB BASE DIR>/dbsetup /Misc/FCDB\_GR\_PRIV\_UPGRADE.sql file.

Input field	Description	Example
Admin Schema	Enter the value of admin Schema	FCDBADMIN_PATCHSET01
EHMS Schema	Enter the value of EHMS Schema	FCDBB001_PATCHSET01

```
C:\WINDOWS\system32\cmd.exe - sqlplus FCDBADMIN_PATCHTEST01/FCDB@FC1201INST
Microsoft Windows XP [Version 5.1.2600]
(C) Copyright 1985-2001 Microsoft Corp.

C:\Documents and Settings\DeepakKuma>d:
D:\>cd D:\Yaserr_Installer\fcdb_patch\dbsetup\Misc
D:\Yaserr_Installer\fcdb_patch\dbsetup\Misc>sqlplus FCDBADMIN_PATCHTEST01/FCDB@FC1201INST
SQL*Plus: Release 11.1.0.6.0 - Production on Thu Jan 10 18:49:39 2013
Copyright (c) 1982, 2007, Oracle. All rights reserved.

Connected to:
Oracle Database 11g Enterprise Edition Release 11.2.0.3.0 - 64bit Production
With the Partitioning, OLAP, Data Mining and Real Application Testing options

SQL> @FCDB_GR_PRIU_PATCH.sql
Enter value for adminschema: FCDBADMIN_PATCHTEST01
Enter value for ehmschema: FCDBB001_PATCHTEST01
```

6 .Conclusion and Next Steps

A successful installation FCDB product through Installer can be confirmed through following steps.

- b. Review the log file specified during installation, after completion.
- c. Review the created/updated folders as per the given folder matrix. Details of some folders is as follows

Folder name	Description
<FCDB BASE DIR>/documents	Installation documents.

<FCDB BASE DIR>/system/home	Application home folder for properties.
<FCDB BASE DIR>/deploy	Application deployable location.
<FCDB BASE DIR> /system/build/extclasses	External classes' location.

- d. Login to the DB using the details you entered during installation. Please refer “Oracle FLEXCUBE Direct Banking Database Setup” for additional information on the Database Users and Database Objects.
- e. Properties file needs to be reviewed as per the document “Oracle FLEXCUBE Direct Banking Parameter Sheet” and the required user dependant properties need to be updated. Location of the property files can be found in the “Help” sheet in the same document.

After verification of above steps it can be concluded that FCDB is installed successfully.

**NOTE:** On completion of setup using installer, external host related entities are required to be installed at appropriate location as per the installation documentation provided by the host systems. For creation of multi entity Database setup please refer “Oracle FLEXCUBE Direct Banking Database Setup”.

For the appropriate application server setup refer to the document provided within the reference document section for deployments and other Application server management details.