

Oracle FLEXCUBE Direct Banking

Oracle Real-Time Decisions Installation and

Configuration Guide

Release 12.0.2.0.0

Part No. E50108-01

September 2013

Oracle Financial Services Software Limited

Oracle Park

Off Western Express Highway

Goregaon (East)

Mumbai, Maharashtra 400 063

India

Worldwide Inquiries:

Phone: +91 22 6718 3000

Fax: +91 22 6718 3001

www.oracle.com/financialservices/

Copyright © [2008], [2013], Oracle and/or its affiliates. All rights reserved.

Oracle and Java are registered trademarks of Oracle and/or its affiliates. Other names may be trademarks of their respective owners.

U.S. GOVERNMENT END USERS: Oracle programs, including any operating system, integrated software, any programs installed on the hardware, and/or documentation, delivered to U.S. Government end users are “commercial computer software” pursuant to the applicable Federal Acquisition Regulation and agency-specific supplemental regulations. As such, use, duplication, disclosure, modification, and adaptation of the programs, including any operating system, integrated software, any programs installed on the hardware, and/or documentation, shall be subject to license terms and license restrictions applicable to the programs. No other rights are granted to the U.S. Government.

This software or hardware is developed for general use in a variety of information management applications. It is not developed or intended for use in any inherently dangerous applications, including applications that may create a risk of personal injury. If you use this software or hardware in dangerous applications, then you shall be responsible to take all appropriate failsafe, backup, redundancy, and other measures to ensure its safe use. Oracle Corporation and its affiliates disclaim any liability for any damages caused by use of this software or hardware in dangerous applications.

This software and related documentation are provided under a license agreement containing restrictions on use and disclosure and are protected by intellectual property laws. Except as expressly permitted in your license agreement or allowed by law, you may not use, copy, reproduce, translate, broadcast, modify, license, transmit, distribute, exhibit, perform, publish or display any part, in any form, or by any means. Reverse engineering, disassembly, or decompilation of this software, unless required by law for interoperability, is prohibited.

Oracle FLEXCUBE Direct Banking - Oracle RTD Installation and Configuration Guide

The information contained herein is subject to change without notice and is not warranted to be error-free. If you find any errors, please report them to us in writing.

This software or hardware and documentation may provide access to or information on content, products and services from third parties. Oracle Corporation and its affiliates are not responsible for and expressly disclaim all warranties of any kind with respect to third-party content, products, and services. Oracle Corporation and its affiliates will not be responsible for any loss, costs, or damages incurred due to your access to or use of third-party content, products, or services.

Contents

1. Preface.....	4
1.1. Intended Audience	4
1.2. Documentation Accessibility	4
1.3. Access to OFSS Support.....	4
1.4. Structure.....	4
1.5. Related Information Sources.....	5
2. <i>Overview</i>	6
3. <i>Introduction</i>	7
4. <i>System Requirements</i>	8
5. <i>RTD Installer Overview</i>	9
6. <i>RTD Installation Steps</i>	10
7. <i>Offer Creation for Oracle FLEXCUBE Direct Banking</i>	22
8. <i>Installing Oracle Real-Time Decisions Client-Side Files</i>	23
9. <i>Configuring RTDAdaptor</i>	25

Preface

1.1 Intended Audience

Oracle FLEXCUBE Direct Banking Database setup document in particular is targeted toward the following groups of users with good knowledge of Oracle database administration.

- Database administrator performing database setup for Oracle FLEXCUBE Direct Banking.
- Oracle FLEXCUBE Direct Banking Development Teams
- Oracle FLEXCUBE Direct Banking Implementation Teams
- Oracle FLEXCUBE Direct Banking Implementation Partners

1.2 Documentation Accessibility

For information about Oracle's commitment to accessibility, visit the Oracle Accessibility Program website at <http://www.oracle.com/pls/topic/lookup?ctx=acc&id=docacc>.

1.3 Access to OFSS Support

<https://flexsupp.oracle.com/>

1.4 Structure

This manual is organized into the following categories:

Preface gives information on the intended audience. It also describes the overall structure of the User Manual

This document covers the installation steps for installing Oracle Real Time Decisions software.

1.5 Related Information Sources

For more information on Oracle FLEXCUBE Direct Banking Release 12.0.2.0.0, refer to the following documents:

Oracle FLEXCUBE Direct Banking Licensing Guide

2. Overview

This document covers the installation steps for installing Oracle Real Time Decisions software. The document covers only the steps required to do a SIMPLE install of the software. This might not be applicable for production scenarios and it is recommended that this be done in consultation with Oracle RTD engineers.

This document discussed following topics

Chapter 4, "System Requirements"

This chapter defines the system requirement for Oracle Real Time Decisions.

Chapter 5, "RTD Installer overview"

This chapter discusses the necessary installations/requirements

Chapter 6, "RTD Installation Steps"

This chapter discusses the steps to be followed for Installation of Oracle Real Time Decisions.

Chapter 7, "Offer Creation for Oracle FLEXCUBE Direct Banking"

This chapter discusses the details of creation of the default out-of-the-box offers for Oracle FLEXCUBE Direct Banking on Oracle Real Time Decisions.

Chapter 8, "Installing Oracle Real-Time Decisions Client-Side Files"

This chapter discusses the details of creation of the default out-of-the-box offers for Oracle FLEXCUBE Direct Banking on Oracle Real Time Decisions.

Chapter 9, "Configuring RTDAdaptor"

This chapter details the post installation configurations required for the adaptor that would be used as an interface between Oracle FLEXCUBE Direct Banking and Oracle Real Time Decisions.

- **Abbreviations**

The abbreviations used by the document are as follows:

RTD	Oracle Real Time Decisions
FCDB	Oracle FLEXCUBE Direct Banking

3. Introduction

This document covers the installation steps for installing Oracle Real Time Decisions software. The document covers only the steps required to do a SIMPLE install of the software. This might not be applicable for production scenarios and it is recommended that this be done in consultation with Oracle RTD engineers

4. *System Requirements*

The following is the summary of the system requirement for RTD. For the detailed requirement, please refer to the document attached in the Appendix. Hardware requirements for dedicated Real-Time Decision Server - Application Server:-

- RAM: 4 GB RAM (to be on the safer side)
- Disk Space: 20 GB of hard disk space, plus appropriate disk space for cache storage and log files.
- Temporary Disk Space: No minimum required.

5. RTD Installer Overview

The following installable are required for completing the installation

- Oracle Business Intelligence - RTD is a module within this middleware.
- Oracle Repository Creation Utility (RCU) – required for creating database users and schemas

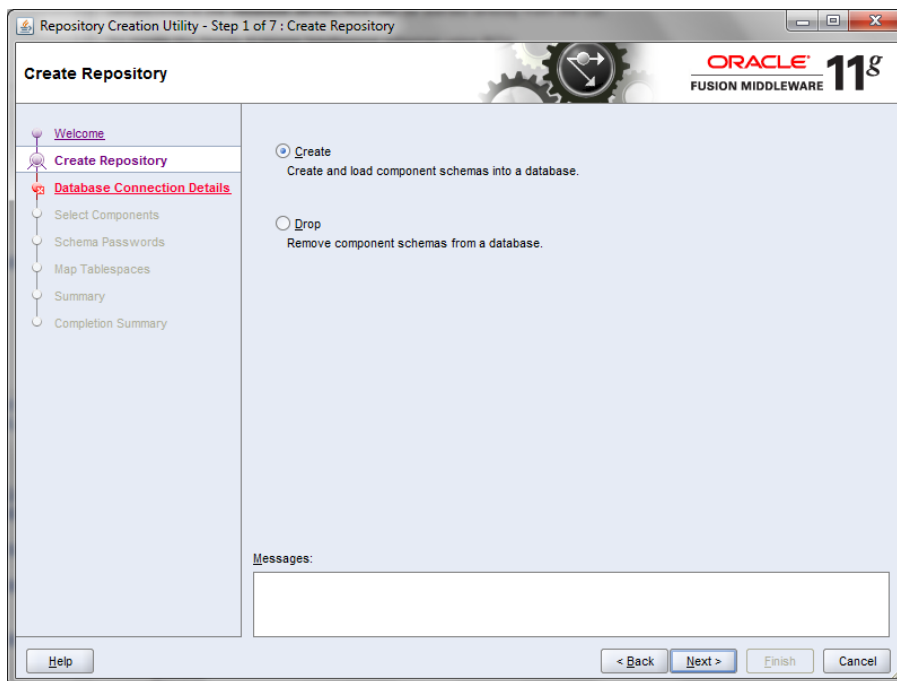
6. RTD Installation Steps

Schema Creation

Step 1: Creating the Schema

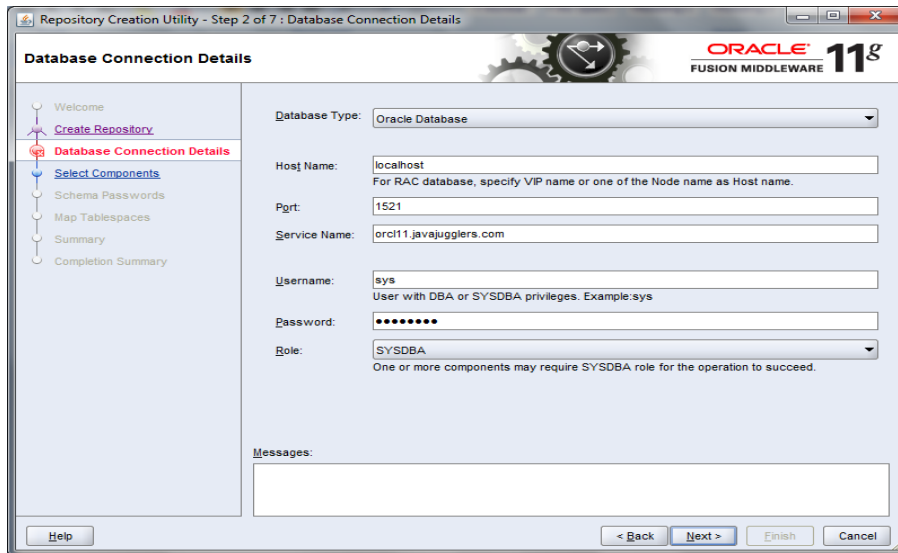
In order to create the schema, the RCU utility is used. The points below describe the steps to be followed for the schema creation.

- Extract the RCU utility to a folder.
- Run rcu.bat from the BIN folder under rcuHome
- Select “Create” from the window that pops up and click “Next”.



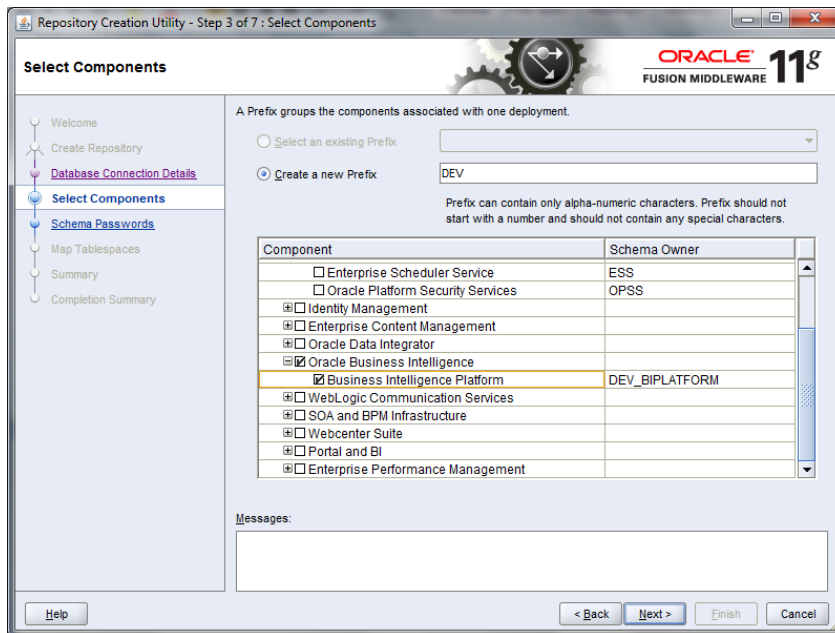
Step 2:

Enter the database connection details on the next screen



Step 3:

Select the component(s) for which the schemas have to be created. For our case, select Business Intelligence Platform. Select only “Business Intelligence Platform” under “Oracle Business Intelligence”



- Set the passwords for the schemas created.

Schema Passwords

Please enter the passwords for the main and additional (auxiliary) schema users. Password can contain alphabets, numbers and the following special characters: \$, #, _ . Password should not start with a number or a special character.

☒ Use same passwords for all schemas

Password:

Confirm Password:

☐ Use main schema passwords for auxiliary schemas

☐ Specify different passwords for all schemas

Component	Schema Owner	Schema Password	Confirm Password
Metadata Services	DEV_MDS		
Business Intelligence Platform	DEV_BIPLATFORM		

Messages:

Help < Back Next > Finish Cancel

Step 4:

The next screen shows the schema owner and tablespaces information. From here, you can manage the tablespace size. For now, we will go ahead with the defaults.

Map Tablespaces

Choose tablespaces for the selected components. The default and temporary tablespaces are specified in the table below.

To create new tablespaces or modify existing tablespaces click the 'Manage Tablespaces' button.

Component	Schema Owner	Default Tablespace	Temp Tablespace
Metadata Services	DEV_MDS	*DEV_MDS	*DEV_IAS_TEMP
Business Intelligence ...	DEV_BIPLATFORM	*DEV_BIPLATFORM	*DEV_IAS_TEMP

* Default tablespaces (specified in the configuration files) are to be created upon confirmation.

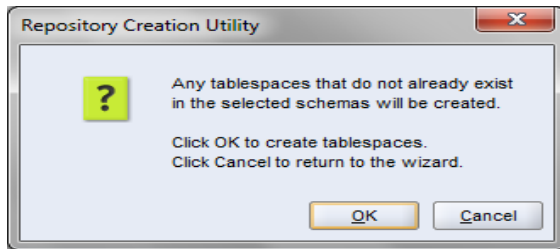
Manage Tablespaces

Messages:

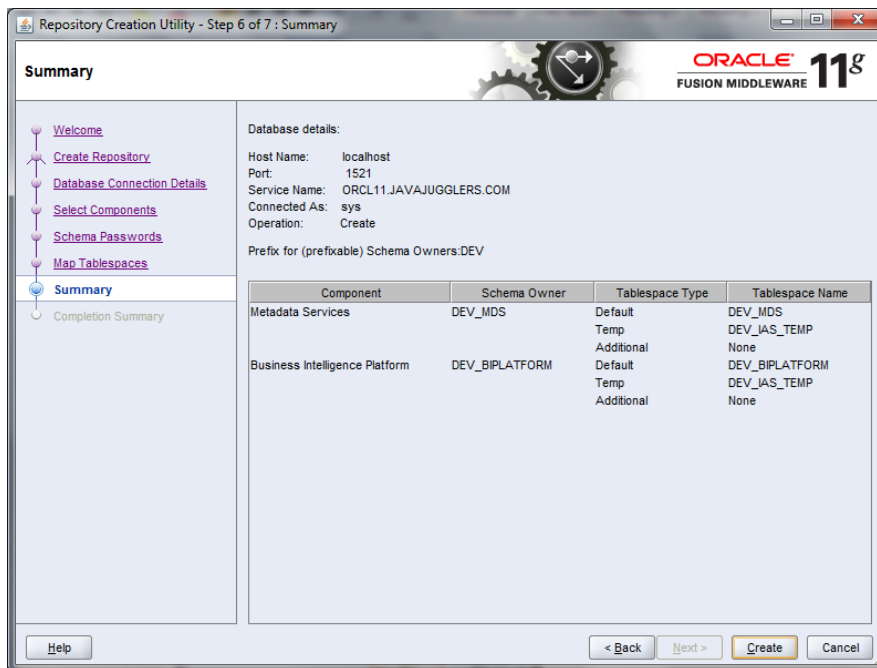
Help < Back Next > Finish Cancel

Step 5:

Since the tablespaces are not already created, the following prompt will come. Click “OK” to continue

**Step 6:**

After the tablespaces are created, the summary screen for the schemas that will be created is shown. After confirming all the details, click on “Create”

**Step 7:**

After creating the schemas, the completion summary screen will be shown as below



Step 8: Exit the RCU

Click on “Close” to exit the RCU.

RTD Installation

The below steps are to be followed for installing RTD :

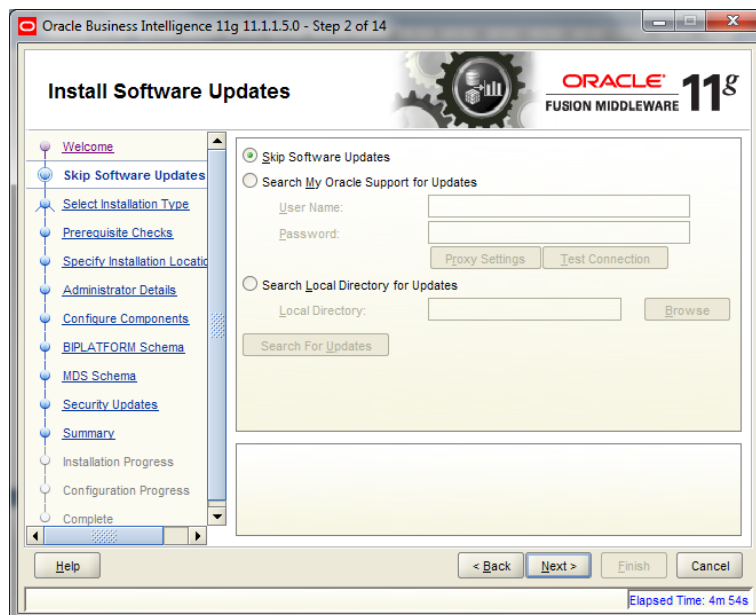
Step 1:

- Extract all the zips in the folder “bishiphome”
- Run “setup.exe” from the location bishiphome/Disk1 folder
- Welcome screens will pop-up. Click “Next”



Step 2:

On the next screen where you will be prompted for software updates, select “Skip Software Updates” and click “Next”.



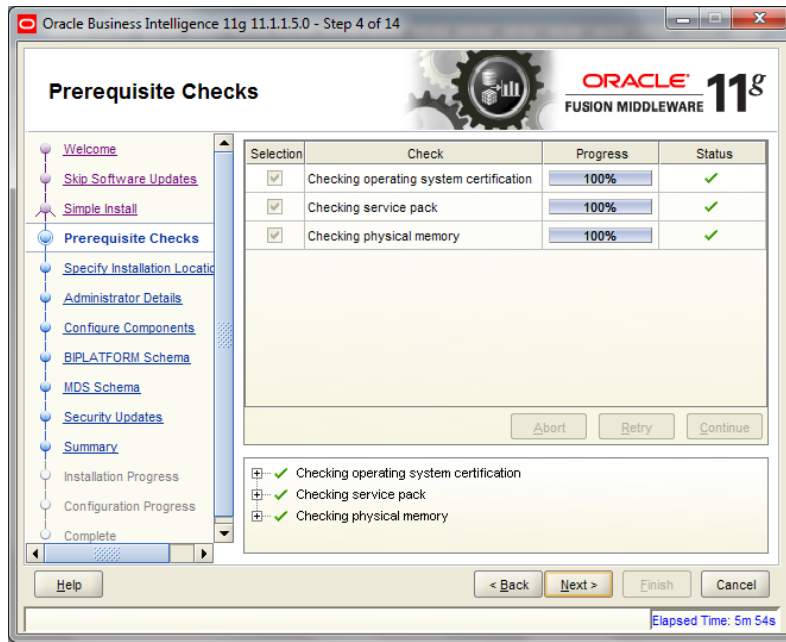
Step 3:

For the install type, select “Simple” for the current installation and click “Next”.



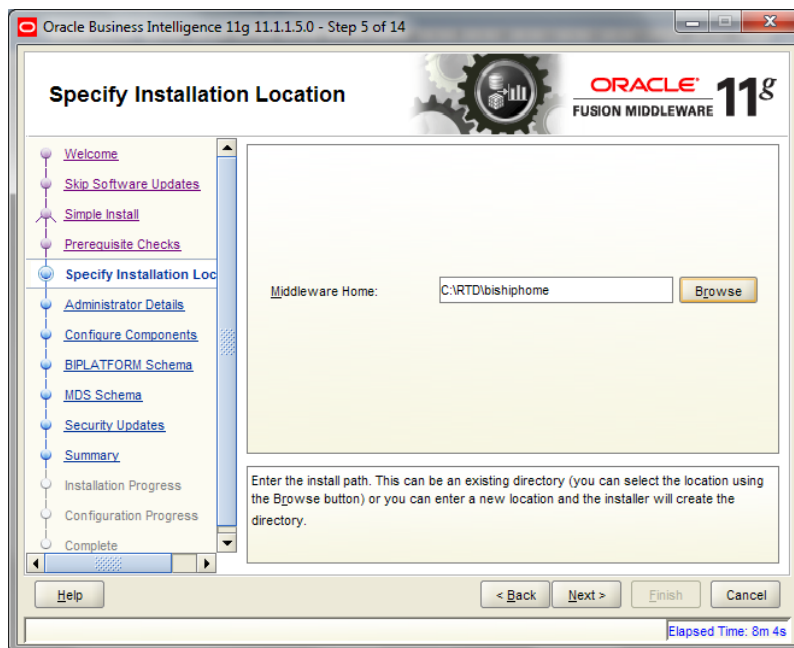
Step 4:

After confirming successful results of the “prerequisites check”, click “Next”.



Step 5:

Specify the home location of Oracle RTD. The installation requires nearly 11 GB of disk space. So, please ensure this is available on your machines.



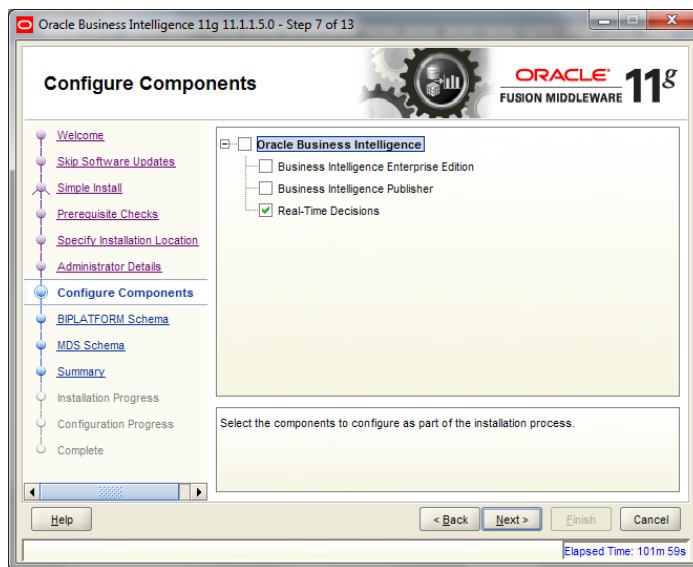
Step 6:

Specify weblogic admin details. Password is set to “juggling11”



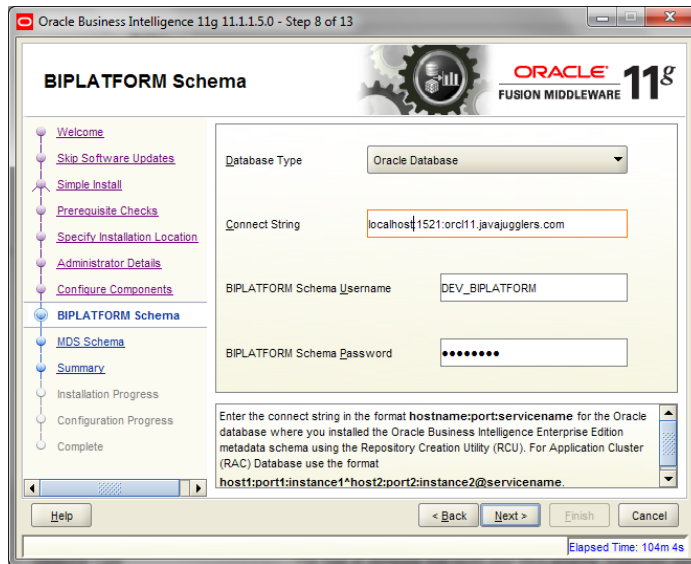
Step 7:

From the components listed, choose only Real-Time Decisions since this is the only component we need.



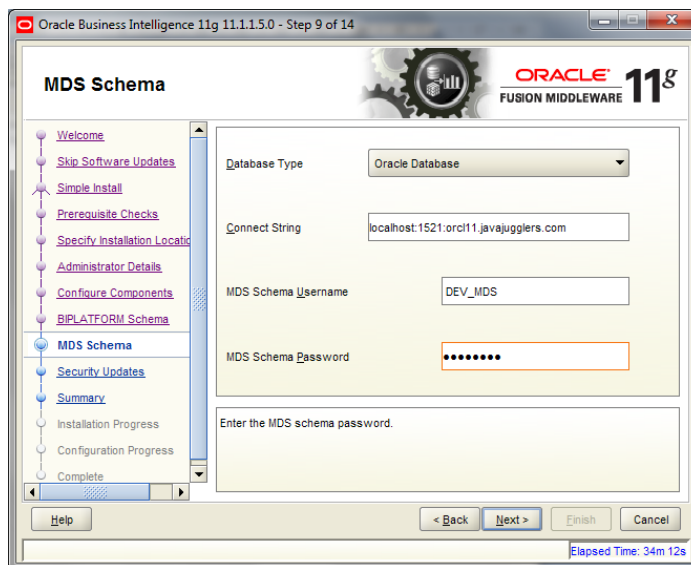
Step 8:

Enter the BIPLATFORM schema details and click “Next”.



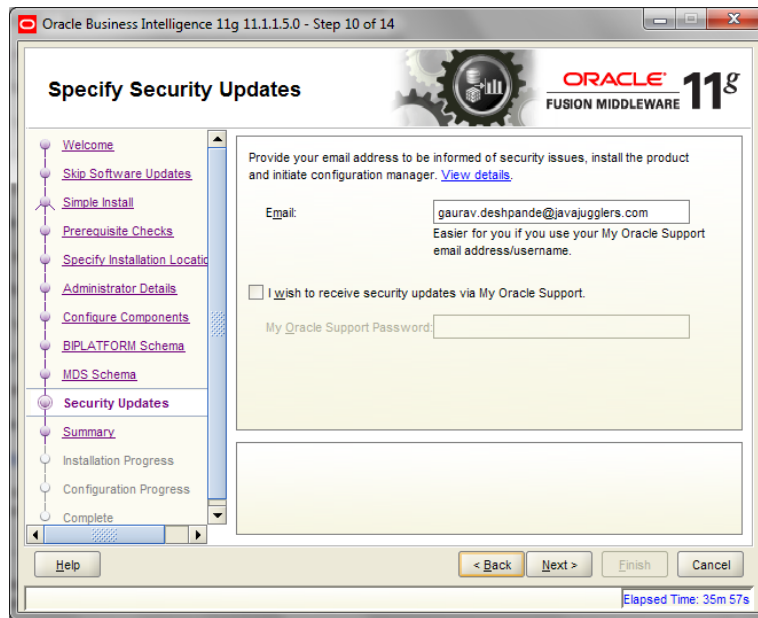
Step 9:

Enter the MDS schema details and click “Next”.



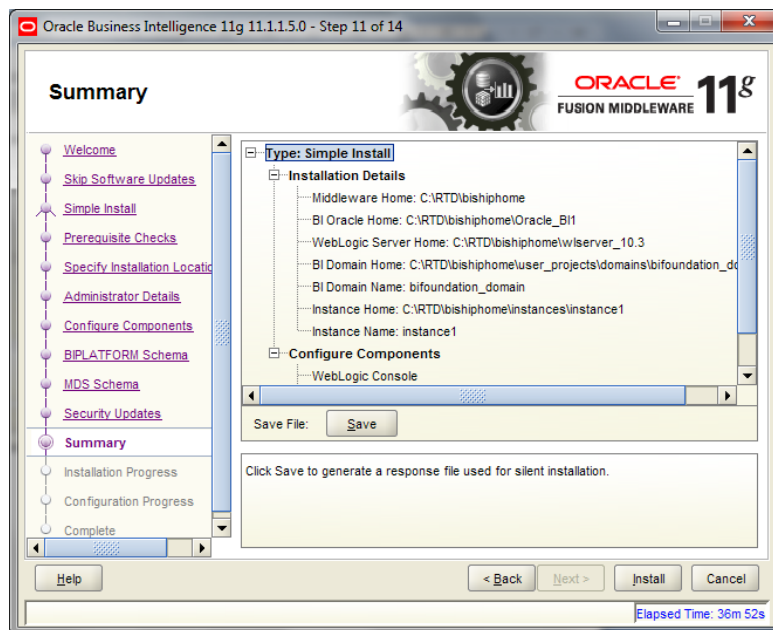
Step 10:

Provide your e-mail id in the next screen



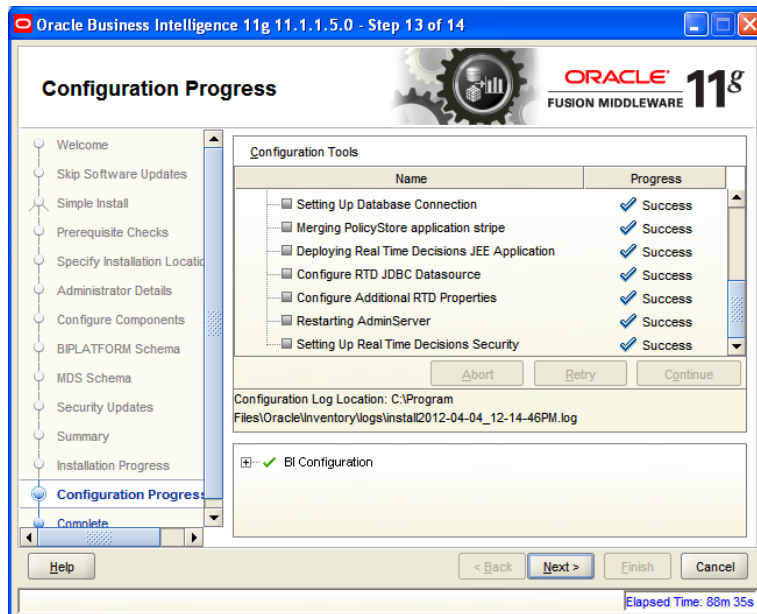
Step 11:

Click “Install” to start the installation



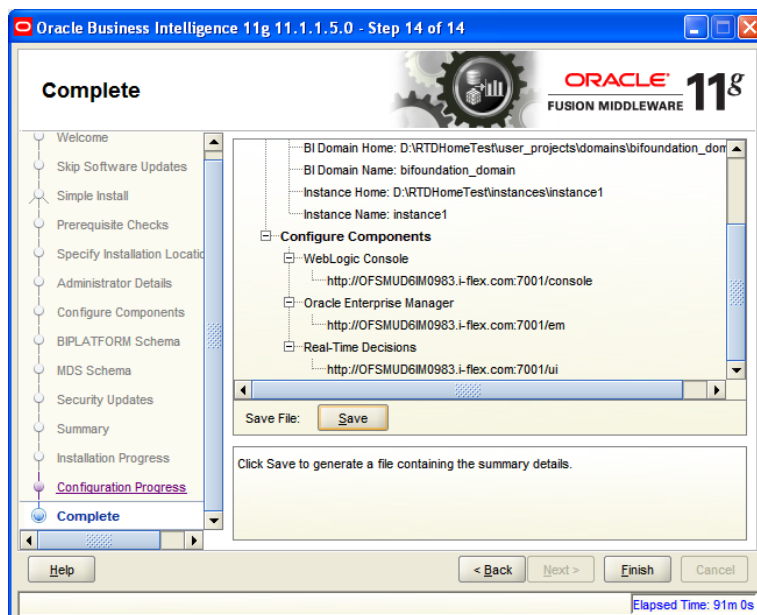
Step 12:

Post Installation Configuration Steps



Step 13:

Click on Finish to complete the installation.



7. Offer Creation for Oracle FLEXCUBE Direct Banking

This section mentions the steps to be followed for setting up the tables required for defining offers and their parameters. In order to run the scripts for creating the database objects, the below steps need to be followed:

- Login using a database user with SYSDBA privileges on the database server on which the Oracle RTD and Oracle FCDB database schemas have been setup.
- Navigate to the folder “<FCDB BASE DIR>/schema/rtdsetup” and execute script “RTD_DBSETUP.sql”. Follow the onscreen instructions to complete setting up the database for offer creation.
- Confirm that there are no errors in the script execution.
- Import the initial offer data from the file “<FCDB BASE DIR>/deploy/rtd/OffersDataStructureTable.xls”, to populate initial offers. Follow the order below for importing the data.
 - Import MSTOFFER sheet’s data into MSTOFFER Table.
 - Import MSTPARAM sheet’s data into MSTPARAM Table.
 - Import OFFERPARAMREL sheet’s data into OFFERPARAMREL Table.
 - Import OFFERPARAMVALUE sheet’s data into OFFERPARAMVALUE Table.

8. Installing Oracle Real-Time Decisions Client-Side Files

The Oracle RTD client tools, such as Decision Studio and Load Generator can only run on Windows. The process of installing the Oracle RTD client tools is unzipping the client tools zip file on a Windows machine - no further procedures are required.

If you installed Oracle RTD on to a Windows platform, unzip the client tools zip file located in the server-side directory <Oracle_BI_directory>/clients/rtd/ into any directory that you choose.

If you did not install Oracle RTD on to a Windows platform, you must perform the two-stage process

- Copy the client tools zip file from the server-side directory <Oracle_BI_directory>/clients/rtd/ to the Windows client machine where you want to use the client tools
- Unzip the client tools zip file on the Windows client machine into any directory that you choose. This directory would be henceforth referred as <RTD_TOOLS_DIR> for the purpose of this document.

Step 1

To use the Oracle RTD client-side tools after installation, ensure that you have the same version of the Java Development Kit (JDK) as you have on the server machine where you installed Oracle RTD. The server-side JDK typically resides in a directory directly under the <middleware_home> directory.

Step 2

Inline Services are built as projects within Decision Studio. The inline service available out-of-box is available at the location “<FCDB_BASE_DIR>/deploy/rtd/OMS.zip”

Step 3

To deploy the Inline Service, perform the following steps:

- Extract the contents of the ZIP archive <RTD_TOOLS_DIR>/client/CommandLineDeploy to a directory of your choice. This directory would be henceforth referred as <RTD_DEPLOY_TOOL_DIR>.
- Navigate to the directory <RTD_DEPLOY_TOOL_DIR>/OracleBI/RTD/deploytool.
- Execute the below command

```
java -jar deploytool.jar -deploy -server <RTD server host name or IP> -port <RTD server port> <FCDB_BASE_DIR>/deploy/rtd/OMS.zip
```

- Enter the administrator user id of the Application Server on which Oracle RTD has been installed when prompted.

- Enter the password for the administrator user id of the Application Server on which Oracle RTD has been installed when prompted.

9. *Configuring RTDAdaptor*

Perform the following steps to configure RTDAdaptor settings,

- Navigate to the folder “<FCDB BASE DIR>/system/build/extclasses/rtd”.
- Edit the file “SDClient.txt” available in the folder as per below
 - <hostname/ip address> : The host name or the IP Address of the Weblogic application server on which Oracle RTD has been installed.
 - <port> : The port of the Weblogic application server on which Oracle RTD has been installed.
 - <weblogic user> : The user name of a user belonging to the “BIconsumers” group on the Weblogic application server on which Oracle RTD has been installed.
 - <weblogic password> : The password for the above mentioned user on the Weblogic application server on which Oracle RTD has been installed.
- Save the “SDClient.txt”.
- Open command prompt and navigate to “<FCDB BASE DIR>/system/build/extclasses/rtd” and execute the batch file “UpdatePropertyFile.bat” for Windows Family Operating System or “UpdatePropertyFile.sh” for Linux/UNIX Family Operating System.