

# **Oracle® E-Business Suite Multiple Organizations**

Implementation Guide

Release 12.2

**Part No. E48833-01**

September 2013

Oracle E-Business Suite Multiple Organizations Implementation Guide, Release 12.2

Part No. E48833-01

Copyright © 2002, 2013, Oracle and/or its affiliates. All rights reserved.

Primary Author: Mathew Daniel

Contributing Author: Ramasubramanian Balasundaram, Christopher Andrews, Gail D'Aloisio, Melanie Heisler, Theresa Hickman, Sanjay Mall, Julianna Litwin, Jason Liu, Dylan Wan

Contributor: Mizuru Asada, Craig Brennan, Carol Chow, Uma Maheswari

Oracle and Java are registered trademarks of Oracle and/or its affiliates. Other names may be trademarks of their respective owners.

Intel and Intel Xeon are trademarks or registered trademarks of Intel Corporation. All SPARC trademarks are used under license and are trademarks or registered trademarks of SPARC International, Inc. AMD, Opteron, the AMD logo, and the AMD Opteron logo are trademarks or registered trademarks of Advanced Micro Devices. UNIX is a registered trademark of The Open Group.

This software and related documentation are provided under a license agreement containing restrictions on use and disclosure and are protected by intellectual property laws. Except as expressly permitted in your license agreement or allowed by law, you may not use, copy, reproduce, translate, broadcast, modify, license, transmit, distribute, exhibit, perform, publish, or display any part, in any form, or by any means. Reverse engineering, disassembly, or decompilation of this software, unless required by law for interoperability, is prohibited.

The information contained herein is subject to change without notice and is not warranted to be error-free. If you find any errors, please report them to us in writing.

If this is software or related documentation that is delivered to the U.S. Government or anyone licensing it on behalf of the U.S. Government, the following notice is applicable:

U.S. GOVERNMENT END USERS: Oracle programs, including any operating system, integrated software, any programs installed on the hardware, and/or documentation, delivered to U.S. Government end users are "commercial computer software" pursuant to the applicable Federal Acquisition Regulation and agency-specific supplemental regulations. As such, use, duplication, disclosure, modification, and adaptation of the programs, including any operating system, integrated software, any programs installed on the hardware, and/or documentation, shall be subject to license terms and license restrictions applicable to the programs. No other rights are granted to the U.S. Government.

This software or hardware is developed for general use in a variety of information management applications. It is not developed or intended for use in any inherently dangerous applications, including applications that may create a risk of personal injury. If you use this software or hardware in dangerous applications, then you shall be responsible to take all appropriate fail-safe, backup, redundancy, and other measures to ensure its safe use. Oracle Corporation and its affiliates disclaim any liability for any damages caused by use of this software or hardware in dangerous applications.

This software or hardware and documentation may provide access to or information on content, products, and services from third parties. Oracle Corporation and its affiliates are not responsible for and expressly disclaim all warranties of any kind with respect to third-party content, products, and services. Oracle Corporation and its affiliates will not be responsible for any loss, costs, or damages incurred due to your access to or use of third-party content, products, or services.

---

# Contents

**Send Us Your Comments**

**Preface**

## **1 Overview**

<b>Multiple Organizations Overview</b> .....	1-1
Basic Business Needs.....	1-1
Major Features.....	1-2
Types of Organizations.....	1-4
Information Shared Across Organizations.....	1-6

## **2 Setup and Implementation**

<b>Prerequisites</b> .....	2-1
<b>Setting Up a Multiple Organization Enterprise</b> .....	2-1
Implementing Multiple Organization Support.....	2-2
<b>Changing the Organization Structure</b> .....	2-28
<b>Multiple Organization Setup Validation Report</b> .....	2-28
Report Parameters.....	2-28
Report Sections.....	2-29

## **3 Reporting**

<b>Overview of Multiple Organizations Reporting</b> .....	3-1
Running Reports.....	3-2
Example.....	3-3
Reports.....	3-4
Concurrent Programs.....	3-6

## **A Navigation Paths**

Multiple Organization Navigation Paths.....	A-1
---------------------------------------------	-----

## **Index**

---

# Send Us Your Comments

## **Oracle E-Business Suite Multiple Organizations Implementation Guide, Release 12.2**

### **Part No. E48833-01**

Oracle welcomes customers' comments and suggestions on the quality and usefulness of this document. Your feedback is important, and helps us to best meet your needs as a user of our products. For example:

- Are the implementation steps correct and complete?
- Did you understand the context of the procedures?
- Did you find any errors in the information?
- Does the structure of the information help you with your tasks?
- Do you need different information or graphics? If so, where, and in what format?
- Are the examples correct? Do you need more examples?

If you find any errors or have any other suggestions for improvement, then please tell us your name, the name of the company who has licensed our products, the title and part number of the documentation and the chapter, section, and page number (if available).

Note: Before sending us your comments, you might like to check that you have the latest version of the document and if any concerns are already addressed. To do this, access the new Oracle E-Business Suite Release Online Documentation CD available on My Oracle Support and [www.oracle.com](http://www.oracle.com). It contains the most current Documentation Library plus all documents revised or released recently.

Send your comments to us using the electronic mail address: [appsdoc\\_us@oracle.com](mailto:appsdoc_us@oracle.com)

Please give your name, address, electronic mail address, and telephone number (optional).

If you need assistance with Oracle software, then please contact your support representative or Oracle Support Services.

If you require training or instruction in using Oracle software, then please contact your Oracle local office and inquire about our Oracle University offerings. A list of Oracle offices is available on our Web site at [www.oracle.com](http://www.oracle.com).



---

# Preface

## Intended Audience

Welcome to Release 12.2 of the *Oracle E-Business Suite Multiple Organizations Implementation Guide*.

This guide assumes you have a working knowledge of the following:

- The principles and customary practices of your business area.
- Computer desktop application usage and terminology

If you have never used Oracle E-Business Suite, we suggest you attend one or more of the Oracle E-Business Suite training classes available through Oracle University.

See Related Information Sources on page viii for more Oracle E-Business Suite product information.

## Documentation Accessibility

For information about Oracle's commitment to accessibility, visit the Oracle Accessibility Program website at <http://www.oracle.com/pls/topic/lookup?ctx=acc&id=docacc>.

## Access to Oracle Support

Oracle customers have access to electronic support through My Oracle Support. For information, visit <http://www.oracle.com/pls/topic/lookup?ctx=acc&id=info> or visit <http://www.oracle.com/pls/topic/lookup?ctx=acc&id=trs> if you are hearing impaired.

## Structure

- 1 Overview
- 2 Setup and Implementation

## Related Information Sources

This book is included in the Oracle E-Business Suite Documentation Library, which is supplied in the Release 12.2 Media Pack. If this guide refers you to other Oracle E-Business Suite documentation, use only the latest Release 12.2 versions of those guides.

### Online Documentation

All Oracle E-Business Suite documentation is available online (HTML or PDF).

- **PDF** - See the Oracle E-Business Suite Documentation Library for current PDF documentation for your product with each release.
- **Online Help** - Online help patches (HTML) are available on My Oracle Support.
- **Release Notes** - For information about changes in this release, including new features, known issues, and other details, see the release notes for the relevant product, available on My Oracle Support.
- **Oracle Electronic Technical Reference Manuals** - The Oracle Electronic Technical Reference Manual (eTRM) contains database diagrams and a detailed description of database tables, forms, reports, and programs for each Oracle E-Business Suite product. This information helps you convert data from your existing applications and integrate Oracle E-Business Suite data with non-Oracle applications, and write custom reports for Oracle E-Business Suite products. The Oracle eTRM is available on My Oracle Support.

### Related Guides

You should have the following related books on hand. Depending on the requirements of your particular installation, you may also need additional manuals or guides.

#### Oracle Alert User's Guide:

This guide explains how to define periodic and event alerts to monitor the status of your Oracle E-Business Suite data.

#### Oracle Application Framework Developer's Guide:

This guide contains the coding standards followed by the Oracle E- Business Suite development staff to produce applications built with Oracle Application Framework. This guide is available in PDF format on My Oracle Support and as online documentation in JDeveloper 10g with Oracle Application Extension.

#### Oracle Application Framework Personalization Guide:

This guide covers the design-time and run-time aspects of personalizing applications built with Oracle Application Framework.



**Oracle Fusion Middleware Adapter for Oracle Applications User's Guide (Oracle Application Server Adapter for Oracle Applications User's Guide):**

This guide covers the use of Adapter for Oracle Applications in developing integrations between Oracle E-Business Suite and trading partners.

Please note that the user's guide can be found in the following documentation libraries:

- As part of the Oracle Fusion Middleware and SOA Suite in 11g, *Oracle Fusion Middleware Adapter for Oracle Applications User's Guide* is available in the Oracle Fusion Middleware 11g Documentation Library.
- As part of the Oracle Application Server in 10g, *Oracle Application Server Adapter for Oracle Applications User's Guide* is available in the Oracle Application Server 10g Documentation Library.

**Oracle Diagnostics Framework User's Guide:**

This manual contains information on implementing and administering diagnostics tests for Oracle E-Business Suite using the Oracle Diagnostics Framework.

**Oracle E-Business Suite Concepts:**

This book is intended for all those planning to deploy Oracle E- Business Suite Release 12.2, or contemplating significant changes to a configuration. After describing the Oracle E-Business Suite architecture and technology stack, it focuses on strategic topics, giving a broad outline of the actions needed to achieve a particular goal, plus the installation and configuration choices that may be available.

**Oracle E-Business Suite CRM System Administrator's Guide:**

This manual describes how to implement the CRM Technology Foundation (JTT) and use its System Administrator Console.

**Oracle E-Business Suite Desktop Integration Framework Developer's Guide:**

Oracle E-Business Suite Desktop Integration Framework is a development tool that lets you define custom integrators for use with Oracle Web Applications Desktop Integrator. This guide describes how to define and manage integrators and all associated supporting objects, as well as how to download and upload integrator definitions.

**Oracle E-Business Suite Developer's Guide:**

This guide contains the coding standards followed by the Oracle E- Business Suite development staff. It describes the Oracle Application Object Library components needed to implement the Oracle E-Business Suite user interface described in the *Oracle E-Business Suite User Interface Standards for Forms-Based Products*. It provides information to help you build your custom Oracle Forms Developer forms so that they integrate with Oracle E-Business Suite. In addition, this guide has information for customizations in features such as concurrent programs, flexfields, messages, and logging.

**Oracle E-Business Suite Flexfields Guide:**

This guide provides flexfields planning, setup, and reference information for the Oracle E-Business Suite implementation team, as well as for users responsible for the ongoing maintenance of Oracle E-Business Suite product data. This guide also provides information on creating custom reports on flexfields data.

**Oracle E-Business Suite Installation Guide: Using Rapid Install:**

This book is intended for use by anyone who is responsible for installing or upgrading Oracle E-Business Suite. It provides instructions for running Rapid Install either to carry out a fresh installation of Oracle E-Business Suite Release 12.2, or as part of an upgrade to Release 12.2.

**Oracle E-Business Suite Integrated SOA Gateway User's Guide:**

This guide describes the high level service enablement process, explaining how users can browse and view the integration interface definitions and services residing in Oracle Integration Repository.

**Oracle E-Business Suite Integrated SOA Gateway Implementation Guide:**

This guide explains how integration repository administrators can manage and administer the Web service activities for integration interfaces including native packaged integration interfaces, composite services (BPEL type), and custom integration interfaces. It also describes how to invoke Web services from Oracle E-Business Suite by employing the Oracle Workflow Business Event System, and how to manage Web service security, configure logs, and monitor SOAP messages.

**Oracle E-Business Suite Integrated SOA Gateway Developer's Guide:**

This guide describes how system integration developers can perform end-to-end service integration activities. These include orchestrating discrete Web services into meaningful end-to-end business processes using business process execution language (BPEL), and deploying BPEL processes at run time.

This guide also explains how to invoke Web services using the Service Invocation Framework. This includes defining Web service invocation metadata, invoking Web services, and testing the Web service invocation.

**Oracle E-Business Suite Maintenance Guide:**

This guide contains information about the strategies, tasks, and troubleshooting activities that can be used to help ensure an Oracle E-Business Suite system keeps running smoothly, together with a comprehensive description of the relevant tools and utilities. It also describes how to patch a system, with recommendations for optimizing typical patching operations and reducing downtime.

**Oracle E-Business Suite Security Guide:**

This guide contains information on a comprehensive range of security-related topics, including access control, user management, function security, data security, and auditing. It also describes how Oracle E-Business Suite can be integrated into a single sign-on environment.

**Oracle E-Business Suite Setup Guide:**

This guide contains information on system configuration tasks that are carried out either after installation or whenever there is a significant change to the system. The activities described include defining concurrent programs and managers, enabling Oracle Applications Manager features, and setting up printers and online help.

**Oracle E-Business Suite User's Guide:**

This guide explains how to navigate, enter data, query, and run reports using the user interface (UI) of Oracle E-Business Suite. This guide also includes information on setting user profiles, as well as running and reviewing concurrent requests.

**Oracle E-Business Suite User Interface Standards for Forms-Based Products:**

This guide contains the user interface (UI) standards followed by the Oracle E-Business Suite development staff. It describes the UI for the Oracle E-Business Suite products and how to apply this UI to the design of an application built by using Oracle Forms.

**Oracle e-Commerce Gateway User's Guide:**

This guide describes the functionality of Oracle e-Commerce Gateway and the necessary setup steps in order for Oracle E-Business Suite to conduct business with trading partners through Electronic Data Interchange (EDI). It also describes how to run extract programs for outbound transactions, import programs for inbound transactions, and the relevant reports.

**Oracle e-Commerce Gateway Implementation Guide:**

This guide describes implementation details, highlighting additional setup steps needed for trading partners, code conversion, and Oracle E-Business Suite. It also provides architecture guidelines for transaction interface files, troubleshooting information, and a description of how to customize EDI transactions.

**Oracle iSetup Developer's Guide:**

This manual describes how to build, test, and deploy Oracle iSetup Framework interfaces.

**Oracle iSetup User's Guide:**

This guide describes how to use Oracle iSetup to migrate data between different instances of the Oracle E-Business Suite and generate reports. It also includes configuration information, instance mapping, and seeded templates used for data migration.

**Oracle Report Manager User's Guide:**

Oracle Report Manager is an online report distribution system that provides a secure and centralized location to produce and manage point-in-time reports. Oracle Report Manager users can be either report producers or report consumers. Use this guide for information on setting up and using Oracle Report Manager.

**Oracle Web Applications Desktop Integrator Implementation and Administration Guide:**

Oracle Web Applications Desktop Integrator brings Oracle E-Business Suite

functionality to a spreadsheet, where familiar data entry and modeling techniques can be used to complete Oracle E-Business Suite tasks. You can create formatted spreadsheets on your desktop that allow you to download, view, edit, and create Oracle E-Business Suite data, which you can then upload. This guide describes how to implement Oracle Web Applications Desktop Integrator and how to define mappings, layouts, style sheets, and other setup options.

#### **Oracle Workflow Administrator's Guide:**

This guide explains how to complete the setup steps necessary for any product that includes workflow-enabled processes. It also describes how to manage workflow processes and business events using Oracle Applications Manager, how to monitor the progress of runtime workflow processes, and how to administer notifications sent to workflow users.

#### **Oracle Workflow API Reference:**

This guide describes the APIs provided for developers and administrators to access Oracle Workflow.

#### **Oracle Workflow Client Installation Guide**

This guide describes how to install the Oracle Workflow Builder and Oracle XML Gateway Message Designer client components for Oracle E-Business Suite.

#### **Oracle Workflow Developer's Guide:**

This guide explains how to define new workflow business processes and customize existing Oracle E-Business Suite-embedded workflow processes. It also describes how to define and customize business events and event subscriptions.

#### **Oracle Workflow User's Guide:**

This guide describes how users can view and respond to workflow notifications and monitor the progress of their workflow processes.

#### **Oracle XML Gateway User's Guide:**

This guide describes Oracle XML Gateway functionality and each component of the Oracle XML Gateway architecture, including Message Designer, Oracle XML Gateway Setup, Execution Engine, Message Queues, and Oracle Transport Agent. It also explains how to use Collaboration History that records all business transactions and messages exchanged with trading partners.

The integrations with Oracle Workflow Business Event System, and the Business-to-Business transactions are also addressed in this guide.

#### **Oracle XML Publisher Report Designer's Guide:**

Oracle XML Publisher is a template-based reporting solution that merges XML data with templates in RTF or PDF format to produce a variety of outputs to meet a variety of business needs. Using Microsoft Word or Adobe Acrobat as the design tool, you can create pixel-perfect reports from the Oracle E-Business Suite. Use this guide to design your report layouts.

This guide is available through the Oracle E-Business Suite online help.

**Oracle XML Publisher Administration and Developer's Guide:**

Oracle XML Publisher is a template-based reporting solution that merges XML data with templates in RTF or PDF format to produce a variety of outputs to meet a variety of business needs. Outputs include: PDF, HTML, Excel, RTF, and eText (for EDI and EFT transactions). Oracle XML Publisher can be used to generate reports based on existing Oracle E-Business Suite report data, or you can use Oracle XML Publisher's data extraction engine to build your own queries. Oracle XML Publisher also provides a robust set of APIs to manage delivery of your reports via e-mail, fax, secure FTP, printer, WebDav, and more. This guide describes how to set up and administer Oracle XML Publisher as well as how to use the Application Programming Interface to build custom solutions.

This guide is available through the Oracle E-Business Suite online help.

**Oracle E-Business Suite Upgrade Guide: Release 12.0 and 12.1 to 12.2:**

This guide provides information for DBAs and Applications Specialists who are responsible for upgrading Release 12.0 and 12.1 Oracle E-Business Suite system (techstack and products) to Release 12.2. In addition to information about applying the upgrade driver, it outlines pre-upgrade steps and post-upgrade steps, and provides descriptions of product-specific functional changes and suggestions for verifying the upgrade and reducing downtime.

**Oracle E-Business Suite Multiple Organizations Implementation Guide:**

This guide describes the multiple organizations concepts in Oracle E-Business Suite. It describes in detail on setting up and working effectively with multiple organizations in Oracle E-Business Suite.

**Oracle Financials and Oracle Procurement Functional Upgrade Guide: Release 11i to Release 12:**

This guides provides detailed information about the functional impacts of upgrading Oracle Financials and Oracle Procurement products from Release 11i to Release 12. This guide supplements the *Oracle E-Business Suite Upgrade Guide: Release 12.0 and 12.1 to 12.2*.

**Oracle Financials Concepts Guide:**

This guide describes the fundamental concepts of Oracle Financials. The guide is intended to introduce readers to the concepts used in the applications, and help them compare their real world business, organization, and processes to those used in the applications.

**Oracle Financials Glossary:**

The glossary includes definitions of common terms that are shared by all Oracle Financials products. In some cases, there may be different definitions of the same term for different Financials products. If you are unsure of the meaning of a term you see in an Oracle Financials guide, please refer to the glossary for clarification. You can find the

glossary in the online help or in the *Oracle Financials Implementation Guide*.

**Oracle Financials Implementation Guide:**

This guide provides information on how to implement the Oracle Financials E-Business Suite. It guides you through setting up your organizations, including legal entities, and their accounting, using the Accounting Setup Manager. It covers intercompany accounting and sequencing of accounting entries, and it provides examples.

**Oracle Advanced Global Intercompany System User's Guide:**

This guide describes the self service application pages available for Intercompany users. It includes information on setting up intercompany, entering intercompany transactions, importing transactions from external sources and generating reports.

**Oracle Advanced Collections User Guide:**

This guide describes how to use the features of Oracle Advanced Collections to manage your collections activities. It describes how collections agents and managers can use Oracle Advanced Collections to identify delinquent customers, review payment history and aging data, process payments, use strategies and dunning plans to automate the collections process, manage work assignments, and handle later-stage delinquencies.

**Oracle Advanced Collections Implementation Guide:**

This guide describes how to configure Oracle Advanced Collections and its integrated products. It contains the steps required to set up and verify your implementation of Oracle Advanced Collections.

**Oracle Assets User Guide:**

This guide provides you with information on how to implement and use Oracle Assets. Use this guide to understand the implementation steps required for application use, including defining depreciation books, depreciation method, and asset categories. It also contains information on setting up assets in the system, maintaining assets, retiring and reinstating assets, depreciation, group depreciation, accounting and tax accounting, budgeting, online inquiries, impairment processing, and Oracle Assets reporting. The guide explains using Oracle Assets with Multiple Reporting Currencies (MRC). This guide also includes a comprehensive list of profile options that you can set to customize application behavior.

**Oracle Bill Presentment Architecture User's Guide:**

This guide provides you information on using Oracle Bill Presentment Architecture. Consult this guide to create and customize billing templates, assign a template to a rule and submit print requests. This guide also provides detailed information on page references, seeded content items and template assignment attributes.

**Oracle Cash Management User Guide:**

This guide describes how to use Oracle Cash Management to clear your receipts, as well as reconcile bank statements with your outstanding balances and transactions. This manual also explains how to effectively manage and control your cash cycle. It provides comprehensive bank reconciliation and flexible cash forecasting.

**Oracle Credit Management User Guide:**

This guide provides you with information on how to use Oracle Credit Management. This guide includes implementation steps, such as how to set up credit policies, as well as details on how to use the credit review process to derive credit recommendations that comply with your credit policies. This guide also includes detailed information about the public application programming interfaces (APIs) that you can use to extend Oracle Credit Management functionality.

**Oracle Customer Data Librarian User Guide:**

This guide describes how to use Oracle Customer Data Librarian to establish and maintain the quality of the Trading Community Architecture Registry, focusing on consolidation, cleanliness, and completeness. Oracle Customer Data Librarian has all of the features in Oracle Customers Online, and is also part of the Oracle Customer Data Management product family.

**Oracle Customer Data Librarian Implementation Guide:**

This guide describes how to implement Oracle Customer Data Librarian. As part of implementing Oracle Customer Data Librarian, you must also complete all the implementation steps for Oracle Customers Online.

**Oracle Customers Online User Guide:**

This guide describes how to use Oracle Customers Online to view, create, and maintain your customer information. Oracle Customers Online is based on Oracle Trading Community Architecture data model and functionality, and is also part of the Oracle Customer Data Management product family.

**Oracle Customers Online Implementation Guide:**

This guide describes how to implement Oracle Customers Online.

**Oracle E-Business Tax User Guide:**

This guide describes the entire process of setting up and maintaining tax configuration data, as well as applying tax data to the transaction line. It describes the entire regime-to-rate setup flow of tax regimes, taxes, statuses, rates, recovery rates, tax jurisdictions, and tax rules. It also describes setting up and maintaining tax reporting codes, fiscal classifications, tax profiles, tax registrations, configuration options, and third party service provider subscriptions. You also use this manual to maintain migrated tax data for use with E-Business Tax.

**Oracle E-Business Tax Implementation Guide:**

This guide provides a conceptual overview of the E-Business Tax tax engine, and describes the prerequisite implementation steps to complete in other applications in order to set up and use E-Business Tax. The guide also includes extensive examples of setting up country-specific tax requirements.

**Oracle E-Business Tax Reporting Guide:**

This guide explains how to run all tax reports that make use of the E-Business Tax data extract. This includes the Tax Reporting Ledger and other core tax reports,

country-specific VAT reports, and Latin Tax Engine reports.

**Oracle E-Business Tax: Vertex Q-Series and Taxware Sales/Use Tax System Implementation Guide:**

This guide explains how to setup and use the services of third party tax service providers for US Sales and Use tax. The tax service providers are Vertex Q-Series and Taxware Sales/Use Tax System. When implemented, the Oracle E-Business Tax service subscription calls one of these tax service providers to return a tax rate or amount whenever US Sales and Use tax is calculated by the Oracle E-Business Tax tax engine. This guide provides setup steps, information about day-to-day business processes, and a technical reference section.

**Oracle Embedded Data Warehouse User Guide:**

This guide describes how to use Embedded Data Warehouse reports and workbooks to analyze performance.

**Oracle Embedded Data Warehouse Implementation Guide:**

This guide describes how to implement Embedded Data Warehouse, including how to set up the intelligence areas.

**Oracle Embedded Data Warehouse Install Guide:**

This guide describes how to install Embedded Data Warehouse, including how to create database links and create the end user layer (EUL).

**Oracle Financial Accounting Hub Implementation Guide:**

This guide provides detailed implementation information that leverages the features of Oracle Subledger Accounting to generate accounting.

**Oracle Financial Services Reference Guide:**

This guide provides reference material for Oracle Financial Services applications in Release 12, such as Oracle Transfer Pricing, and includes technical details about application use as well as general concepts, equations, and calculations.

**Oracle Financial Services Implementation Guide:**

This guide describes how to set up Oracle Financial Services applications in Release 12.

**Oracle Financial Services Reporting Administration Guide:**

This guide describes the reporting architecture of Oracle Financial Services applications in Release 12, and provides information on how to view these reports.

**Oracle Financials Country-Specific Installation Supplement:**

This guide provides general country information, such as responsibilities and report security groups, as well as any post-install steps required by some countries.

**Oracle Financials for the Americas User Guide:**

This guide describes functionality developed to meet specific business practices in countries belonging to the Americas region. Consult this user guide along with your



financial product user guides to effectively use Oracle Financials in your country.

**Oracle Financials for Asia/Pacific User Guide:**

This guide describes functionality developed to meet specific business practices in countries belonging to the Asia/Pacific region. Consult this user guide along with your financial product user guides to effectively use Oracle Financials in your country.

**Oracle Financials for Europe User Guide:**

This guide describes functionality developed to meet specific business practices in countries belonging to the European region. Consult this user guide along with your financial product user guides to effectively use Oracle Financials in your country.

**Oracle Financials for India User's Guide:**

This guide provides information on how to use Oracle Financials for India. Use this guide to learn how to create and maintain setup related to India taxes, defaulting and calculation of taxes on transactions. This guide also includes information about accounting and reporting of taxes related to India.

**Oracle Financials for India Implementation Guide:**

This guide provides information on how to implement Oracle Financials for India. Use this guide to understand the implementation steps required for application use, including how to set up taxes, tax defaulting hierarchies, set up different tax regimes, organization and transactions.

**Oracle Financials RXi Reports Administration Tool User Guide:**

This guide describes how to use the RXi reports administration tool to design the content and layout of RXi reports. RXi reports let you order, edit, and present report information to better meet your company's reporting needs.

**Oracle General Ledger Implementation Guide:**

This guide provides information on how to implement Oracle General Ledger. Use this guide to understand the implementation steps required for application use, including how to set up Accounting Flexfields, Accounts, and Calendars.

**Oracle General Ledger Reference Guide**

This guide provides detailed information about setting up General Ledger Profile Options and Applications Desktop Integrator (ADI) Profile Options.

**Oracle General Ledger User's Guide:**

This guide provides information on how to use Oracle General Ledger. Use this guide to learn how to create and maintain ledgers, ledger currencies, budgets, and journal entries. This guide also includes information about running financial reports.

**Oracle Incentive Compensation Implementation Guide:**

This guide provides Compensation Administrators with guidance during implementation of Oracle Incentive Compensation. The procedures are presented in the recommended order that they should be performed for successful implementation.

Appendixes are included that describe system profiles, lookups, and other useful information.

**Oracle Incentive Compensation User Guide:**

This guide helps Compensation Managers, Compensation Analysts, and Plan administrators to manage Oracle Incentive Compensation on a day-to-day basis. Learn how to create and manage rules hierarchies, create compensation plans, collect transactions, calculate and pay commission, and use Sales Credit Allocation.

**Oracle Internet Expenses Implementation and Administration Guide:**

This book explains in detail how to configure Oracle Internet Expenses and describes its integration with other applications in the E-Business Suite, such as Oracle Payables and Oracle Projects. Use this guide to understand the implementation steps required for application use, including how to set up policy and rate schedules, credit card policies, audit automation, and the expenses spreadsheet. This guide also includes detailed information about the client extensions that you can use to extend Oracle Internet Expenses functionality.

**Oracle iAssets User Guide:**

This guide provides information on how to implement and use Oracle iAssets. Use this guide to understand the implementation steps required for application use, including setting up Oracle iAssets rules and related product setup steps. It explains how to define approval rules to facilitate the approval process. It also includes information on using the Oracle iAssets user interface to search for assets, create self-service transfer requests and view notifications.

**Oracle iProcurement Implementation and Administration Guide:**

This manual describes how to set up and administer Oracle iProcurement. Oracle iProcurement enables employees to requisition items through a self-service, Web interface.

**Oracle iReceivables Implementation Guide:**

This guide provides information on how to implement Oracle iReceivables. Use this guide to understand the implementation steps required for application use, including how to set up and configure iReceivables, and how to set up the Credit Memo Request workflow. There is also a chapter that provides an overview of major features available in iReceivables.

**Oracle iSupplier Portal User Guide:**

This guide contains information on how to use Oracle iSupplier Portal to enable secure transactions between buyers and suppliers using the Internet. Using Oracle iSupplier Portal, suppliers can monitor and respond to events in the procure-to-pay cycle.

**Oracle iSupplier Portal Implementation Guide:**

This guide contains information on how to implement Oracle iSupplier Portal and enable secure transactions between buyers and suppliers using the Internet.

**Oracle Loans User Guide:**

This guide describes how to set up and use Oracle Loans. It includes information on how to create, approve, fund, amortize, bill, and service extended repayment plan and direct loans.

#### **Oracle Partner Management Implementation and Administration Guide:**

This guide helps Vendor administrators to set up and maintain relationships and programs in the Partner Management application. The main areas include setting up the partner and channel manager dashboards, partner setup, partner programs and enrollment, opportunity and referral management, deal registration, special pricing management, and partner fund management.

#### **Oracle Partner Management Vendor User Guide:**

This guide assists vendor users in using Partner Management on a daily basis. This includes interaction with the partner and channel manager dashboards, working with partners and partner programs, managing opportunities and referrals, registering deals, and working with special pricing and partner funds.

#### **Oracle Payables User's Guide:**

This guide describes how to use Oracle Payables to create invoices and make payments. In addition, it describes how to enter and manage suppliers, import invoices using the Payables open interface, manage purchase order and receipt matching, apply holds to invoices, and validate invoices. It contains information on managing expense reporting, procurement cards, and credit cards. This guide also explains the accounting for Payables transactions.

#### **Oracle Payables Implementation Guide:**

This guide provides you with information on how to implement Oracle Payables. Use this guide to understand the implementation steps required for how to set up suppliers, payments, accounting, and tax.

#### **Oracle Payables Reference Guide:**

This guide provides you with detailed information about the Oracle Payables open interfaces, such as the Invoice open interface, which lets you import invoices. It also includes reference information on purchase order matching and purging purchasing information.

#### **Oracle Payments Implementation Guide:**

This guide describes how Oracle Payments, as the central payment engine for the Oracle E-Business Suite, processes transactions, such as invoice payments from Oracle Payables, bank account transfers from Oracle Cash Management, and settlements against credit cards and bank accounts from Oracle Receivables. This guide also describes how Oracle Payments is integrated with financial institutions and payment systems for receipt and payment processing, known as funds capture and funds disbursement, respectively. Additionally, the guide explains to the implementer how to plan the implementation of Oracle Payments, how to configure it, set it up, test transactions, and how use it with external payment systems.

**Oracle Payments User's Guide:**

This guide describes how Oracle Payments, as the central payment engine for the Oracle E-Business Suite, processes transactions, such as invoice payments from Oracle Payables, bank account transfers from Oracle Cash Management, and settlements against credit cards and bank accounts from Oracle Receivables. This guide also describes to the Payment Administrator how to monitor the funds capture and funds disbursement processes, as well as how to remedy any errors that may arise.

**Oracle Procurement Buyer's Guide to Punchout and Transparent Punchout:**

This guide contains necessary information for customers implementing remote catalog content on a supplier's Web site or on Oracle Exchange.

**Oracle Procurement Contracts Online Help:**

This guide is provided as online help only from the Oracle Procurement Contracts application and includes information about creating and managing your contract terms library.

**Oracle Procurement Contracts Implementation and Administration Guide:**

This guide describes how to set up and administer Oracle Procurement Contracts. Oracle Procurement Contracts enables employees to author and maintain complex contracts through a self-service, Web interface.

**Oracle Public Sector Financials User Guide:**

This guide describes how to set up and administer Oracle Public Sector Advanced Features. It describes Encumbrance Reconciliation Reports, GASB 34/35 Asset Accounting, and Funds Available Enhancements.

**Oracle Purchasing User's Guide:**

This guide describes how to create and approve purchasing documents, including requisitions, different types of purchase orders, quotations, RFQs, and receipts. This guide also describes how to manage your supply base through agreements, sourcing rules, and approved supplier lists. In addition, this guide explains how you can automatically create purchasing documents based on business rules through integration with Oracle Workflow technology, which automates many of the key procurement processes.

**Oracle Receivables User Guide:**

This guide provides you with information on how to use Oracle Receivables. Use this guide to learn how to create and maintain transactions and bills receivable, enter and apply receipts, enter customer information, and manage revenue. This guide also includes information about accounting in Receivables. Use the Standard Navigation Paths appendix to find out how to access each Receivables window.

**Oracle Receivables Implementation Guide:**

This guide provides you with information on how to implement Oracle Receivables. Use this guide to understand the implementation steps required for application use, including how to set up customers, transactions, receipts, accounting, tax, and

collections. This guide also includes a comprehensive list of profile options that you can set to customize application behavior.

#### **Oracle Receivables Reference Guide:**

This guide provides you with detailed information about all public application programming interfaces (APIs) that you can use to extend Oracle Receivables functionality. This guide also describes the Oracle Receivables open interfaces, such as AutoLockbox which lets you create and apply receipts and AutoInvoice which you can use to import and validate transactions from other systems. Archiving and purging Receivables data is also discussed in this guide.

#### **Oracle Sourcing Implementation and Administration Guide:**

This guide contains information on how to implement Oracle Sourcing to enable participants from multiple organizations to exchange information, conduct bid and auction processes, and create and implement buying agreements. This allows professional buyers, business experts, and suppliers to participate in a more agile and accurate sourcing process.

#### **Oracle Subledger Accounting Implementation Guide:**

This guide provides setup information for Oracle Subledger Accounting features, including the Accounting Methods Builder. You can use the Accounting Methods Builder to create and modify the setup for subledger journal lines and application accounting definitions for Oracle subledger applications. This guide also discusses the reports available in Oracle Subledger Accounting and describes how to inquire on subledger journal entries.

#### **Oracle Supplier Scheduling User's Guide:**

This guide describes how you can use Oracle Supplier Scheduling to calculate and maintain planning and shipping schedules and communicate them to your suppliers.

#### **Oracle iProcurement Implementation and Administration Guide:**

This manual describes how to set up and administer Oracle iProcurement. Oracle iProcurement enables employees to requisition items through a self-service, Web interface.

#### **Oracle Procurement Contracts Implementation and Administration Guide:**

This manual describes how to set up and administer Oracle Procurement Contracts. Oracle Procurement Contracts enables employees to author and maintain complex contracts through a self-service, Web interface.

#### **Oracle Trading Community Architecture User Guide:**

This guide describes the Oracle Trading Community Architecture (TCA) and how to use features from the Trading Community Manager responsibility to create, update, enrich, and cleanse the data in the TCA Registry. It also describes how to use Resource Manager to define and manage resources.

#### **Oracle Trading Community Architecture Administration Guide:**

This guide describes how to administer and implement Oracle Trading Community Architecture (TCA). You set up, control, and manage functionality that affects data in the TCA Registry. It also describes how to set up and use Resource Manager to manage resources.

**Oracle Trading Community Architecture Reference Guide:**

This guide contains seeded relationship types, seeded Data Quality Management data, D&B data elements, Bulk Import interface table fields and validations, and a comprehensive glossary. This guide supplements the documentation for Oracle Trading Community Architecture and all products in the Oracle Customer Data Management family.

**Oracle Trading Community Architecture Technical Implementation Guide:**

This guide explains how to use the public Oracle Trading Community Architecture application programming interfaces (APIs) and develop callouts based on Oracle Workflow Business Events System (BES). For each API, this guide provides a description of the API, the PL/SQL procedure, and the Java method, as well as a table of the parameter descriptions and validations. For each BES callout, this guide provides the name of the logical entity, its description, and the ID parameter name. Also included are setup instructions and sample code.

**Oracle U.S. Federal Financials User's Guide:**

This guide describes the common concepts for an integrated financial management solution for federal agencies to comply with the requirements of the U.S. Federal government. It describes the product architecture and provides information on Budget Execution, Prompt Payment, Treasury payments, Third party payments, Interagency transactions, Receivables management, Federal reports, CCR Integration, and Year End Closing.

**Oracle U.S. Federal Financials Implementation Guide:**

This guide describes the common concepts for an integrated financial management solution for federal agencies. It includes a consolidated setup checklist by page and provides detailed information on how to set up, maintain, and troubleshoot the Federal Financial application for the following functional areas: Sub Ledger Accounting, Budget Execution, Prompt Payment, Treasury payments, Third party payments, Interagency transactions, Receivables management, Federal reports, CCR Integration, and Year End Closing.

**Oracle HRMS Documentation Set:**

This documentation set includes these books:

- **Oracle HRMS Compensation and Benefits Management Guide:**

Learn how to use Oracle HRMS to manage your total compensation package. For example, read how to administer salaries and benefits, set up automated grade/step progression, and allocate salary budgets. You can also learn about setting up earnings and deductions for payroll processing, managing leave and absences, and

reporting on compensation across your enterprise.

- **Oracle HRMS Configuring, Reporting, and System Administration Guide:**

Learn about extending and configuring Oracle HRMS, managing security, auditing, information access, and letter generation.

- **Oracle HRMS Enterprise and Workforce Management Guide:**

Learn how to use Oracle HRMS to represent your enterprise. This includes setting up your organization hierarchy, recording details about jobs and positions within your enterprise, defining person types to represent your workforce, and also how to manage your budgets and costs.

- **Oracle HRMS Implementation Guide:**

Learn about the setup procedures you need to carry out in order to successfully implement Oracle HRMS in your enterprise.

- **Oracle HRMS Payroll Processing Management Guide:**

Learn about wage attachments, taxes and social insurance, the payroll run, and other processes.

- **Oracle HRMS Workforce Sourcing, Deployment, and Talent Management Guide:**

Learn how to use Oracle HRMS to represent your workforce. This includes recruiting new workers, developing their careers, managing contingent workers, and reporting on your workforce.

**Oracle Order Management Documentation Set:**

Use the *Oracle Order Management User's Guide* and *Oracle Order Management Implementation Manual* to learn about credit checking and credit usage rule sets.

## Integration Repository

The Oracle Integration Repository is a compilation of information about the service endpoints exposed by the Oracle E-Business Suite of applications. It provides a complete catalog of Oracle E-Business Suite's business service interfaces. The tool lets users easily discover and deploy the appropriate business service interface for integration with any system, application, or business partner.

The Oracle Integration Repository is shipped as part of the E-Business Suite. As your instance is patched, the repository is automatically updated with content appropriate for the precise revisions of interfaces in your environment.

You can navigate to the Oracle Integration Repository through Oracle E-Business Suite Integrated SOA Gateway.

## Do Not Use Database Tools to Modify Oracle E-Business Suite Data

Oracle STRONGLY RECOMMENDS that you never use SQL\*Plus, Oracle Data Browser, database triggers, or any other tool to modify Oracle E-Business Suite data unless otherwise instructed.

Oracle provides powerful tools you can use to create, store, change, retrieve, and maintain information in an Oracle database. But if you use Oracle tools such as SQL\*Plus to modify Oracle E-Business Suite data, you risk destroying the integrity of your data and you lose the ability to audit changes to your data.

Because Oracle E-Business Suite tables are interrelated, any change you make using an Oracle E-Business Suite form can update many tables at once. But when you modify Oracle E-Business Suite data using anything other than Oracle E-Business Suite, you may change a row in one table without making corresponding changes in related tables. If your tables get out of synchronization with each other, you risk retrieving erroneous information and you risk unpredictable results throughout Oracle E-Business Suite.

When you use Oracle E-Business Suite to modify your data, Oracle E-Business Suite automatically checks that your changes are valid. Oracle E-Business Suite also keeps track of who changes information. If you enter information into database tables using database tools, you may store invalid information. You also lose the ability to track who has changed your information because SQL\*Plus and other database tools do not keep a record of changes.



---

## Overview

### Multiple Organizations Overview

The Oracle Applications organization model defines organizations and the relationships among them in arbitrarily complex enterprises. This organization model serves as the cornerstone for all of the Oracle Applications products. It dictates how transactions flow through different organizations and how those organizations interact with each other.

Generally, a complex enterprise has several organization structures, such as Internal, Accounting, and Human Resources. You are able to define different structures to customize Oracle Applications according to your business needs.

### Basic Business Needs

Oracle Applications provides you with the features you need to satisfy the following basic business needs:

- Use a single installation of any Oracle Applications product to support any number of organizations, even if those organizations use different ledgers.
- Support flexible organizational models.
- Secure access to data so that users can only access relevant information.
- Access one or more operating units using a single responsibility.

See: Define Security Profile and Multiple Organizations (MO) Profile Options, page 2-12.

- Enhanced reporting capability using the Reporting Level parameter.

See: Multiple Organizations Reporting, page 3-1.

## Major Features

### Multiple Organizations in a Single Installation

You can define multiple organizations and the relationships among them in a single installation of Oracle Applications. These organizations can be ledgers, business groups, legal entities, operating units, or inventory organizations.

### Secure Access

You can assign operating units to a security profile and then assign the security profile to responsibilities or users. If multiple operating units are assigned to the security profile, then a user can access data for multiple operating units from a single responsibility.

For information on the security profile, see *Define Security Profile and Multiple Organizations (MO) Profile Options*, page 2-12.

With the ability to access multiple operating units from a single application responsibility, you can enter setup and transaction data and run concurrent programs for the operating units without switching responsibilities. All multiple organizations enabled setup and transaction data user interface, except some interfaces, include the Operating Unit field. The Operating Unit field in the setup and transaction data user interface allows the user to:

- Select the operating unit context for a transaction from a list of values, which displays the operating units the user can access.

**Note:** The Operating Unit field is displayed across products in Oracle E-Business Suite, such as Receivables, Payables, Purchasing, Order Management, etc. Refer to your product documentation for information on the user interfaces where the operating unit is displayed.

- Query setup and transaction data for one or all operating units that the user can access.

**Note:** If you do not partition the setup data for multiple organizations, then the operating unit does not appear when you access the setup step.

- Enable faster data setup or transaction entry by copying a record from one operating unit to a different operating unit.
- Default or derive the operating unit context from another operating unit sensitive

attribute.

### **Data Security**

You can limit users to information relevant to their organization. For example, you can limit access for order administration clerks to sales orders associated exclusively with their sales office.

### **Inventory Organization Security by Responsibility**

You can specify the inventory organizations that are available to users in each responsibility. The Choose Inventory Organization window automatically limits available inventory organizations to those authorized for the current responsibility.

See: Overview of Inventory Structure, *Oracle Inventory User's Guide*.

### **Access to Operating Units**

Your responsibility determines which operating units you can access when you use Oracle Applications. If you want a responsibility to access only one operating unit, then set the profile option called MO: Operating Unit. If you want a responsibility to access multiple operating units, then define a security profile with multiple operating units assigned and assign it to the MO: Security Profile profile option. Additionally, if using the MO: Security Profile profile option, you can also set the MO: Default Operating Unit profile option to specify a default operating unit that will default in transaction entry pages.

See: Defining a Responsibility, *Oracle E-Business Suite Security Guide*.

### **Receive Goods Into Any Inventory Organization**

You can enter purchase orders and assign for receipt any inventory organization. Your purchase order operating unit and receiving inventory organization can be in different ledgers to receive against a purchase order.

### **Automatic Accounting for Internal Requisitions**

You can create an internal requisition (sales order) in one organization, then ship from another organization, with correct Intercompany invoicing.

### **Multiple Organizations Reporting**

You can run your reports at the ledger level, or operating unit level. If you run reports at the ledger level, then the report will submit data for all operating units assigned to that ledger that you have access to as defined by the MO: Security Profile profile option.

### **Related Topics**

Using the Multiple Organization Support Feature in Receivables, *Oracle Receivables Implementation Guide*

Using the Multiple Organization Support Feature in Payables, *Oracle Payables Implementation Guide*

Profile Options for Multiple Organization Support in Payables, *Oracle Payables Implementation Guide*

## Types of Organizations

You can define organizations and the relationships among them. You can define security for either an organization hierarchy or list of organizations.

### Business Group

The business group represents the highest level in the organization structure, such as the consolidated enterprise, a major division, or an operation company. The business group secures human resources information. For example, when you request a list of employees, you see all employees assigned to the business group of which your organization is a part.

**Note:** This is true in all applications except the HR applications, which support more granular security by a lower-level organization unit, the security profile.

Multiple ledgers can share the same business group if they share the same business group attributes, including HR flexfield structures.

### Legal Entity

A legal company for which you prepare fiscal or tax reports. You assign tax identifiers and other legal entity information to this type of organization.

You can define legal entities using Legal Entity Configurator or Accounting Setup Manager in General Ledger.

See *Using the Legal Entity Configurator, Oracle Financials Implementation Guide*.

### Operating Unit

An organization that uses Oracle subledgers, such as Oracle Cash Management, Order Management and Shipping Execution, Oracle Payables, Oracle Purchasing, Oracle Receivables, and related products. It may be a sales office, a division, or a department. Operating units are not associated with legal entities. Operating units are assigned to ledgers and a default legal context. Information is secured by operating unit for these applications using responsibilities. Each user can access, process, and report on data only for the operating units assigned to the MO: Operating Unit or MO: Security Profile profile option. The MO: Operating Unit profile option only provides access to one operating unit. The MO: Security Profile provides access to multiple operating units from a single responsibility.

You can define operating units from the Define Organization window in Oracle HRMS or from Accounting Setup Manager in General Ledger.

### **Inventory Organization**

An organization for which you track inventory transactions and balances, and/or an organization that manufactures or distributes products. Examples include (but are not limited to) manufacturing plants, warehouses, distribution centers, and sales offices. The following applications secure information by inventory organization: Oracle Inventory, Bills of Material, Engineering, Work in Process, Master Scheduling/MRP, Capacity, and Purchasing receiving functions. To run any of these applications, you must choose an organization that has been classified as an inventory organization.

You can create ledgers using the Accounting Setup Manager in Oracle General Ledger and define organizations using the Define Organization window.

### **HR Organization**

HR organizations represent the basic work structure of any enterprise. They usually represent the functional management, or reporting groups that exist within a business group. In addition to these internal organizations, you can define other organizations for tax and government reporting purposes, or for third party payments.

### **Organizations in Oracle Projects**

Oracle Projects allows you to define organization hierarchies to reflect your company's organizations structure. You can add Oracle Projects-specific organization types to the organization hierarchy (for example, projects organizations or Expenditure organizations) to help you manage your project control requirements. You assign project and expenditure hierarchies to operating units.

### **Asset Organizations**

An asset organization is an organization that allows you to perform asset-related activities for a specific Oracle Assets corporate book. Oracle Assets uses only organizations designated as asset organizations

### **Related Topics**

Creating Accounting Setups, *Oracle Financials Implementation Guide*

Operating Units, *Oracle Financials Implementation Guide*

Setting Up Organizations, *Oracle Human Resources Management Systems Enterprise and Workforce Management Guide*

Creating an Organization, *Oracle Human Resources Management Systems Enterprise and Workforce Management Guide*

Defining Organizations, *Oracle Projects Fundamentals*

## **Information Shared Across Organizations**

The following information is global. It must be set up once for the enterprise:

- Flexfield definitions
- Customer Header (customer site is at the operating unit level)
- Supplier Header (supplier site is at the operating unit level)

---

## Setup and Implementation

### Prerequisites

Before beginning the setup, check that you have the following:

- Access to the Define Organizations and Define Legal Entity Configurator pages, or the Accounting Setup Manager page.

**Note:** Accounting Setup Manager is seeded in Oracle General Ledger's Setup menu.

- Access to the Define Security Profile and/or Define Global Security Profile windows that are seeded in Oracle HRMS responsibilities
- Access to the Security List Maintenance program, the Human Resources concurrent program.

### Setting Up a Multiple Organization Enterprise

This chapter describes how to implement your organizational structure within the Oracle Applications Multiple Organization model. Before beginning the implementation, be sure you are familiar with the terminology Oracle uses for its business organization model. For more information, see Overview, page 1-1.

These are the steps to follow when implementing the Multiple Organization support feature in Oracle Applications.

1. Develop the Organization Structure, page 2-2
2. Define Accounting Setups, page 2-4
3. Assign Balancing Segment Values by Legal Entity (optional), page 2-5

4. Define Locations, page 2-6
5. Define Business Groups (optional), page 2-7
6. Define Organizations, page 2-8
7. Define Organization Relationships, page 2-9
8. Define Responsibilities, page 2-11
9. Associate Responsibilities with Business Groups, page 2-11
10. Define Security Profile and Multiple Organizations (MO) Profile Options, page 2-12
11. Run the Replicate Seed Data program, page 2-15
12. Verify Order Management System Parameter Settings, page 2-15
13. Set Application-Specific Profile Options Specific to Operating Units, page 2-15
14. Define Inventory Organization Security (optional), page 2-16
15. Implement the Applications Products, page 2-16
16. Run the Multiple Organizations Setup Validation Report (recommended), page 2-26
17. Implement Document Sequencing (optional), page 2-26
18. Set Conflict Domains (optional), page 2-26
19. Specify User-Level Multiple Organizations Preferences (optional), page 2-27

## **Implementing Multiple Organization Support**

This section describes the steps to implement Oracle E-Business Suite Multiple Organizations.

### **Step 1: Develop the Organization Structure**

A successful implementation of Multiple Organization support in Oracle Applications depends primarily on defining your organizational structure in the multi-level hierarchy used by Oracle Applications. The levels are:

- Business groups
- Primary ledgers (as defined in Accounting Setup Manager)



- Legal entities
- Operating units
- Inventory organizations

The Organization Structure Example in the figure below illustrates the organization structure.

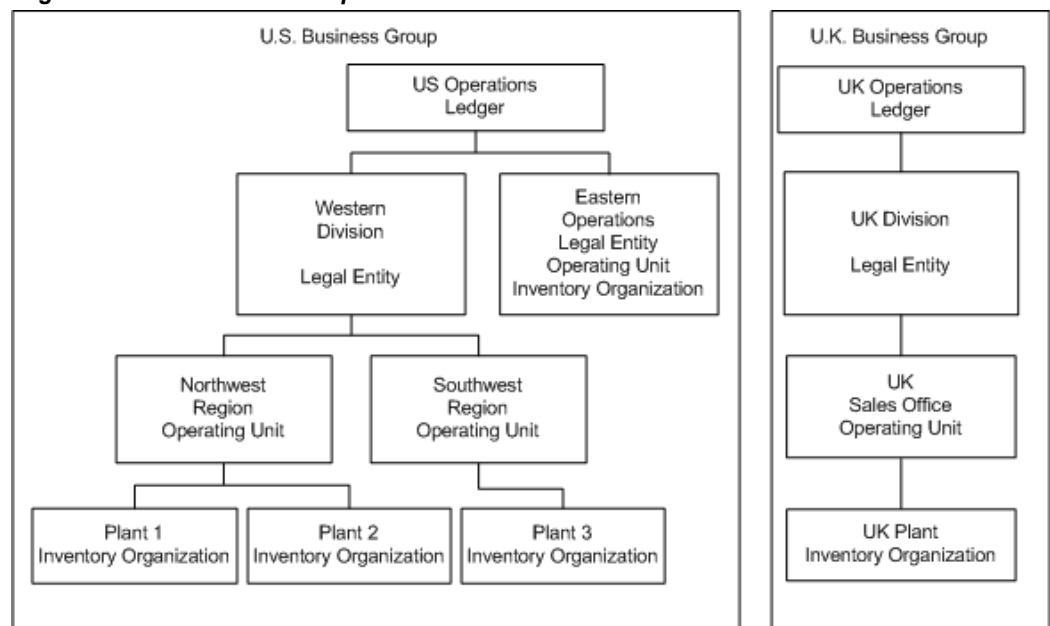
For more information, see Overview, page 1-1.

For more information, see Organization Hierarchies, *Oracle Human Resources Management Systems Enterprise and Workforce Management Guide*.

### Deciding on the Organization Structure

First, you need to decide on the organizations you will use in your multiple organizations implementation. The figure below shows a corporation with two business groups, three legal entities, four operating units, and five inventory organizations. This example organization structure is used throughout most of this chapter.

#### Organization Structure Example



The business groups are U.S. and U.K. The U.S. business group consists of two legal entities - Western Division and Eastern Operations. These legal entities are assigned to the same ledger (US Operations) because they share the same ledger currency, accounting flexfield structure, and calendar. The U.K. legal entity - UK Division - is assigned to a separate ledger (UK Operations) because its ledger currency is different from that of the U.S. legal entities.

The US Western Division legal entity consists of two operating units - Northwest

Region and Southwest Region. The Northwest Region consists of two inventory organizations - Plant 1 and Plant 2. The Southwest Region has one inventory organization, named Plant 3. The US Eastern Operations legal entity is also an operating unit and inventory organization.

The UK Division legal entity has one operating unit, named UK Sales Office. The operating unit has one inventory organization, named UK Plant.

## Step 2: Define Accounting Setups

Use the Accounting Setup Manager in Oracle General Ledger to define accounting setups that include the following common financial components:

- One or more legal entities (optional)
- Primary ledger
- Reporting Currencies (optional)
- Balancing segment value assignments (optional)
- Subledger Accounting Options
- Operating Units (available if legal entities are assigned)
- Intercompany Accounts (available if legal entities are assigned)
- Intracompany Balancing Rules (optional)
- Sequencing (optional)
- Secondary Ledger (optional)

To use multiple organizations, you must define an accounting setup with at least one legal entity, a primary ledger that will record the accounting for the legal entity, and an operating unit that is assigned to the primary ledger and a default legal context (legal entity). It is also recommended that balancing segment values be assigned to the legal entity to help you identify legal entity transactions during transaction processing and reporting and to take advantage of Intercompany Accounting.

**Note:** If your enterprise structure requires that you define a business group, you should define accounting setups before business groups.

The following table explains the ledger parameters for our example.

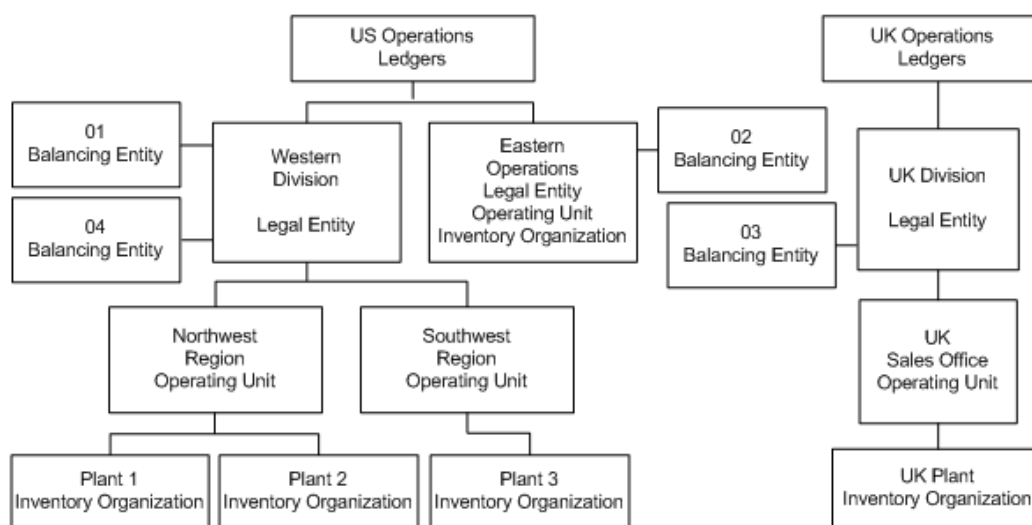
Ledger Name	Ledger Short Name	Ledger Currency	Chart of Accounts	Calendar	Subledger Accounting Method
U.S. Operations	US_Op	USD	Standard	Standard	Standard Accrual
U.K. Operations	UK_Op	GBP	Standard	Standard	Standard Accrual

For more information, see Using Accounting Setup Manager, *Oracle Financials Implementation Guide*.

### Step 3: Assign Balancing Segment Values by Legal Entity (optional)

Assign specific balancing segment values to legal entities using Accounting Setup Manager. This allows users to identify and secure transactions by legal entity. It also allows you to use Advanced Global Intercompany System to enter intercompany transactions between legal entities.

#### Organization Structure with Balancing Entity Example



The figure depicts a corporation with two business groups, three legal entities, four operating units, and five inventory organizations. Balancing entities are also shown. The business groups are U.S. and U.K. The U.S. business group consists of two legal entities - Western Division and Eastern Operations. These legal entities are assigned to the same ledger (US Operations). The Western Division is balancing entity 01 and balancing entity 04. Eastern Operations is balancing entity 02. The U.K. legal entity - UK Division - is assigned to a separate ledger (UK Operations) because its ledger currency

is different from that of the U.S. legal entities. The UK Division is balancing entity 03. The US Western Division legal entity consists of two operating units - Northwest Region and Southwest Region. The Northwest Region consists of two inventory organizations - Plant 1 and Plant 2. The Southwest Region has one inventory organization, named Plant 3. The US Eastern Operations legal entity is also an operating unit and inventory organization. The UK Division legal entity has one operating unit, named UK Sales Office. The operating unit has one inventory organization, named UK Plant.

If you need to further secure balancing segment values for each operating unit of a legal entity, you can define segment value security rules and assign them to all responsibilities associated with the relevant operating units. If, for example, you need to restrict the Northwest Region operating unit to balancing segment value 01 and the Southwest Region to balancing segment value 04, because you have two sets of users who process data for each of the legal entities, you can add rules as described in the following table.

Value Set	Security Rule	Type Element	Low Element	High Element
Division	Northwest	Include	01	01
Division	Southwest	Include	04	04

In addition to the previous rule assignments, you can assign the new rules to all responsibilities associated with the two operating units, as illustrated in the table below. When you assign multiple rules to the same responsibility, only the overlapping values of the rules are available to users of the responsibility.

Responsibilities	Value Set	Security Rule
All responsibilities for Northwest Region operating unit	Division	Northwest
All responsibilities for Southwest Region operating unit	Division	Southwest

## Step 4: Define Locations

Use the Define Location window to define names and addresses for the locations you use within your enterprise. You define each location once only. This saves you time if you have multiple organizations with the same location. You should define locations for your legal entities and inventory organizations. Oracle Applications products use

locations for requisitions, receiving, shipping, billing, and employee assignments.

## Step 5: Define Business Groups (optional)

**Note:** This section applies to you if you have more than one business group, or if you do not choose to use the predefined business group provided by Oracle Applications.

Oracle Applications secures human resources information, including organization definition, by business group.

You must have at least one business group. For a fresh installation, Oracle Applications provides a predefined business group, Setup Business Group. You can define additional business groups as required for your enterprise. We recommend that you modify the predefined business group rather than defining a new one. If you define a new business group instead of modifying the predefined business group, you need to set the Business Group profile option at the responsibility level for the new business group. Oracle Human Resources automatically creates a security profile with the business group name when you define a new business group.

You should define all your business groups before defining any other type of organization.

**Note:** If you plan to implement HRMS, you should consider its organization requirements when defining the organization structure. When considering multiple business groups, employee data will have to be entered and maintained for every business group using responsibilities linked to each business group. Consult your HR specialist for more information on HR organization considerations.

### To define additional business groups:

1. Set the responsibility from which you define the organizations in the profile option HR: User Type to HR User, to get access to the Define Organizations window. This profile must be set for all responsibilities that use tables from Oracle Human Resources (for example, responsibilities used to define employees and organizations).
2. Define all of your business groups at this step from a responsibility. Do not define any new organizations or organization hierarchies until you have associated each business group with a responsibility. You do this by setting the HR: Security Profile profile option for each responsibility.

For more information, see Security Profiles, *Oracle Human Resources Management Systems Configuring, Reporting, and System Administration Guide*.

3. After you have correctly associated your business groups with a responsibility, sign

off and sign on again using the correct responsibility for the business group you want to define. For example, if you have a U.S. business group and a U.K. business group, select the responsibility attached to the U.S. business group to define the U.S. organization structure.

**Note:** Oracle Human Resources automatically creates a view all security profile with the business group name. This enables you to view all records for your business group.

Oracle Human Resources allows you to use a single responsibility security model by enabling the Security Group. This allows you to access more than one business group from a responsibility. You should not use the single responsibility model in Multiple Organization products.

## Step 6: Define Organizations

Use the Define Organization window to define organizations, such as operating units and inventory organizations. You can also define operating units and assign them to a primary ledger and default legal context using Accounting Setup Manager in General Ledger.

**Note:** If you choose to define operating units using the Define Organization window, you can still view them in Accounting Setup Manager by querying the primary ledger of the operating unit.

You can perform this step and the next step (Define Organization Relationships) at the same time. The steps are presented separately to emphasize the difference between the organizational entity and the role it plays in your organizational structure.

### To define operating units and inventory organizations:

1. Log in using the responsibility associated with the business group.
2. Define operating units.
3. Define inventory organizations for each operating unit that will have an inventory organization.

**Note:** Do not define the inventory parameters at this point.

If you have responsibilities for different business groups, switch responsibilities and define the organization structure.

The following table summarizes information about the different organizations for our example hierarchy.

Organization Name	Operating Unit	Inventory Organization?
Western Division		
Eastern Operations	Yes	Yes
U.K. Division		
Northwest Region	Yes	
Southwest Region	Yes	
U.K. Sales Office	Yes	
Plant 1		Yes
Plant 2		Yes
Plant 3		Yes
U.K. Plant		Yes

For more information, see *Define Organization*, *Oracle Human Resources Management Systems Enterprise and Workforce Management Guide*.

## Step 7: Define Organization Relationships

Use the Define Organization window to define organization relationships by assigning classifications to each organization. The attributes of certain classifications relate organizations and the roles they play. You can classify an organization as any combination of legal entity, operating unit, and inventory organization. Specify your organization classifications in the following order:

### 1. Operating units

Attach the operating units to the correct ledger and a default legal context (legal entity).

### 2. Inventory organizations

Attach the inventory organizations to the correct operating unit, legal entity, and ledger.

If you have more than one business group, change to the responsibility associated with the other business group and continue defining your organization classification.

The table below shows the information you must enter for each organization classification.

Classification	Information Type	Required Attributes
Business Group	Business group information if Human Resources is installed. Otherwise, None.	Short Name, Employee/Applicant Numbering, Key Flexfield Structures, Default Legislation Code, and Currency
Operating Unit	Operating Unit Information	Primary Ledger, Default Legal Context
Inventory Organization	Accounting Information	Primary Ledger, Legal Entity, Operating Unit

#### Special Considerations for Inventory Organizations

All the inventory organizations in the above chart have been set up with the minimal amount of information to enable them in the Multiple Organizations environment. This minimal amount is detailed in the table below.

If you plan to implement Oracle Inventory, you must follow the setup procedures for that product.

For more information, see *Overview of Setting Up, Oracle Inventory User's Guide*.

For a standalone Oracle Purchasing installation (without Oracle Inventory), specify the information shown in the following table:

Sequence	Additional Organization Information	Required Information
1	Accounting information	Primary Ledger, legal entity, operating unit
2	Receiving information	Three-character organization code, prefix serial (no dummy)
3	Inventory information	All required accounts

**Location:** You must specify a location for an organization classified as an inventory organization. You can assign any location that is not assigned to a different inventory



organization, or you can assign a location that is linked to the current inventory organization.

**Receiving Information:** When you select the Receiving Information type, you navigate to the Receiving Options window. Use the Receiving Options window to define options that govern receipts in your system. You cannot receive items into an inventory organization until you specify receiving options for the organization.

**Inventory Information:** When you select the Inventory Information type, you navigate to the Organization Parameter window. You must define the control options and account defaults for one inventory organization, the item master organization. Then you can easily assign items to other inventory organizations without recreating all the item information. Use the Organization Parameter window to assign inventory organizations to the item master. The item master organization uses itself as the item master.

There is no functional or technical difference between the item master organization and other inventory organizations. However, we recommend that you limit the item master to just an item definition organization. If you set up new inventory organizations in the future, you can assign the new items to only the item master and the new inventory organization.

**Note:** You can navigate to the Receiving Options window and Organization Parameter window from the Define Organization window if you use one of the following predefined responsibilities: Purchasing Super User, Inventory, Inventory Item, Project Billing User, Project Costing Super User, Sales and Marketing Super User, and Territory Administrator.

## Step 8: Define Responsibilities

Use the Define Responsibility window to define responsibilities for each operating unit by application. When you sign on to Oracle Applications, the responsibility you choose determines the data, forms, menus, reports, and concurrent programs you can access.

You should consider using naming conventions for the responsibility names in a Multiple Organization environment. It is a good idea to use abbreviations of the business function and the organization name to uniquely identify the purpose of the responsibility, for example, Payables Manager Northwest or Western Receivables Super User.

For more information, see *Defining a Responsibility, Oracle E-Business Suite Security Guide*.

## Step 9: Associate Responsibilities with Business Groups (optional)

If you have multiple business groups, you must associate each responsibility to one and only one business group. You associate a business group with a responsibility using the HR: Business Group system profile option. If you are upgrading to Multiple

Organizations, you must also associate previously created responsibilities to the appropriate business group.

**Note:** This section applies to you if you have multiple business groups, or if you do not choose to use the default business group provided by Oracle Applications.

## Step 10: Define Security Profile and Multiple Organizations (MO) Profile Options

Multiple Organizations provides the following security profiles which enables users to access, process, and report data in multiple operating units from a single responsibility:

- **Security Profile:** Allows you to assign multiple operating units for the same business group.
- **Global Security Profile:** Allows you to assign multiple operating units across business groups.

The decision to use the Security Profile or the Global Security Profile depends on your HR implementation and how you want to partition the data. If you want users to access operating units across business groups, then define Global Security Profiles. Otherwise, use the standard Security Profile.

After you define your security profiles and run the Security List Maintenance program, you can assign them to responsibilities or users using the MO: Security Profile profile option. If you set the MO: Security Profile profile option, you can also set the MO: Default Operating Unit profile option to specify a default operating unit.

**Note:** If the MO: Security Profile is set, then the MO: Operating Unit profile is ignored.

**Note:** If you are using Journal Tax in General Ledger to enter taxable journal entries, you must set the MO: Operating Unit profile option for General Ledger responsibilities. General Ledger derives the correct tax codes based on the tax setup for the operating unit that is specified in the MO: Operating Unit profile option.

You must set either the MO: Operating Unit or MO: Security Profile profile option for each application responsibility to use Multiple Organizations context sensitive applications.

When you connect to the Oracle Applications, you sign on by entering your user name and password. Then, you choose a responsibility that is available to your user. After you choose your responsibility, there is an initialization routine that reads the values for all profile options assigned to that responsibility. Oracle Applications allows you to see only the information for those operating units that are assigned to your responsibility.

When drilling down on balances from Oracle General Ledger, General Ledger ignores the operating unit profile setting to allow you to drill down to your subledger details, regardless of which operating unit originated the transaction.

**Note:** If you upgraded from Release 11i to Release 12 and you plan to have a single responsibility access multiple operating units, you may need to modify existing segment value security rules. This only applies to companies that use a single, global chart of accounts where different ranges of values, such as accounts or departments, are reserved for specific operating units. For example, if you have departments 100-300 reserved for Operating Unit 1 and departments 500-800 reserved for Operating Unit 2, users may need to modify segment value security rules if a single application responsibility will now be entering data for both Operating Unit 1 and Operating Unit 2.

For more information, see Define Multiple Organization Security Profile, page 2-23.

### Multiple Organizations Profile Options

When implementing multiple organizations for Oracle Applications, you must set values for each profile option to specify how each product in Oracle Applications controls access to and processes data.

See: Overview of Setting User Profiles, *Oracle E-Business Suite Setup Guide*.

The following are the Oracle Applications multiple organizations profile options and are grouped under the Access Control profile option category:

- MO: Default Operating Unit, page 2-14
- MO: Operating Unit, page 2-14
- MO: Security Profile, page 2-15

### Profile Option Category and Profile Options Descriptions

This section describes profile options by category.

The table in this section provides profile option information as follows:

- The Default column displays either the default profile option value in italics, or No Default if none exists.
- The User Access column indicates whether the user can view or update the profile option.
- The System Administration: Site, Application, Responsibility, and User columns indicate at which levels the system administrator can update these profile options.

The key for the each table is:

- Update: The user can update the profile option .
- View Only: The user can view the profile option but cannot change it.
- No Access: The user cannot view or change the profile option.

#### Access Control Category

The table below lists the profile options that controls the access to the various organizations, across products in Oracle Applications.

#### Access Control

Profile Option	Default	User Access	System Administration: Site	System Administration: Application	System Administration: Responsibility	System Administration: User
MO: Default Operating Unit, page 2-14		Update	Update	Update	Update	Update
MO: Operating Unit, page 2-14		No Access	Update	Update	Update	Update
MO: Security Profile, page 2-15		No Access	Update	Update	Update	Update

#### MO: Default Operating Unit

Use this profile option to specify a default operating unit from the list of operating units assigned to your application responsibility through the MO: Operating Unit or MO: Security Profile.

**Note:** If the MO: Operating Unit is set or you are assigned only one operating unit in the MO: Security Profile profile option, then the single operating unit becomes your default operating unit.

For more information, see Step 19: Specify User-Level Multiple Organizations Preferences, page 2-27.

#### MO: Operating Unit

Assign this profile option to an application responsibility to provide a user with this responsibility access to one operating unit.

For more information, see Step 15: Implement the Applications Products, page 2-16.

#### **MO: Security Profile**

Assign this profile option to an application responsibility to provide a user with this responsibility access to multiple operating units.

For more information, see Step 15: Implement the Applications Products, page 2-16.

### **Step 11: Run the Replicate Seed Data Program**

A multiple organizations enterprise requires the ability to replicate the seed data to multiple operating units. Use the Replicate Seed Data program to replicate the seed data. The seed data is replicated in the following events:

- Install or upgrade to multiple organizations: The seed data replication program is executed by AutoUpgrade when converting to Multiple Organizations architecture.
- Submit the Replicate Seed Data program: Run this program after you add new operating units and before you implement the application products. You can submit the Replicate Seed Data concurrent program using the system administrator responsibility.

The seed data replication program operates in two modes:

- Single organization: This mode applies when the seed data replication program is executed within the context of a particular operating unit.
- All organizations: This mode applies when the seed data replication program is executed without an operating unit context. The seed data replication program performs different functions depending on the mode in which it is operating, and the value of each operating unit.

### **Step 12: Verify Order Management System Parameter Settings**

If you have different item validation organizations for each operating unit, verify the correct setting for each operating unit in the Order Management system parameter window.

For more information, see Enabling Parameters, *Oracle Order Management User's Guide*.

### **Step 13: Set Application-Specific Profile Options Specific to Operating Units**

Some profile options, including AR: Receipt Batch Source and AR: Transaction Batch Source, reference data that is secured by operating unit. You must set these profile options at the responsibility level. You should choose a value corresponding to the operating unit of the responsibility.

The following profile options need to be set for each responsibility for each operating unit wherever applicable:

- HR: Business Group (all responsibilities)

- HR: User Type

The HR: User Type profile option limits field access on windows shared between Oracle Human Resources and other applications. If you do not use Oracle Payroll, you must assign the HR User for all responsibilities that use tables from Oracle Human Resources (for example, responsibilities used to define employees and organizations).

- GL: Data Access Set

Oracle General Ledger uses the GL: Data Access Set profile option to determine the ledgers you have access to. If you want users to access different ledgers for different operating units from the same responsibility, you should define a data access set and then assign it to the GL: Data Access Set profile option for each General Ledger responsibility. You can group multiple ledgers that share the same chart of accounts, calendar, and period type in a data access set or a ledger set.

- INV: Intercompany Currency Conversion
- Tax: Allow Override of Tax Code
- Tax: Invoice Freight as Revenue
- Tax: Inventory Item for Freight
- Sequential Numbering

#### **Step 14: Define Inventory Organization Security (optional)**

With inventory organization security you can restrict inventory organization access to specific responsibilities. You may want to restrict your manufacturing users to certain organizations according to your organizational hierarchy. This feature has the following characteristics:

- Until you assign an organization to a responsibility in this window, all responsibilities have access to all organizations. Once you have restricted any responsibilities to certain organizations, you must then explicitly define the organizations that all responsibilities can access.
- This feature does not restrict access once the user is in the product. Users with access to functions that cross multiple organizations (such as ATP, Inter-Organization Transfers, Item Search, Multi Organizations Quantity Report, and so forth) can still specify any valid organization when running these functions.

#### **Step 15: Implement the Applications Products**

After the steps above are complete, go into each operating unit and set up the Oracle Applications products. The following products must be set up for each operating unit:

- Oracle Cash Management
- Oracle Order Management and Shipping Execution
- Oracle Payables
- Oracle Projects
- Oracle Property Manager
- Oracle Advanced Collections
- Oracle Purchasing
- Oracle Property Manager
- Oracle Receivables
- Oracle Release Accounting
- Oracle Release Management Integration Kit
- Oracle Release Management
- Oracle Sales Compensation
- Oracle Sales and Marketing
- Oracle Service
- Oracle Financials for Europe
- Oracle Financials for the Americas
- Oracle Financials for Asia/Pacific

**Note:** This list is not a complete list. Please refer to the product-specific guides if operating unit setup is required.

Oracle Assets, Oracle General Ledger, Oracle Inventory, and Oracle Manufacturing products are set up once for the installation only, not for each operating unit. To setup the products, follow the instructions in the specific user guides.

### **Define Operating Units**

The following setup data must be set up for each operating unit:

#### **Cash Management**

- Bank accounts

### **Order Management**

- System parameters
- Hold sources
- Transaction types
- Payment types

### **Payables**

- Supplier sites
- Withholding tax certificates and exceptions
- Distribution sets
- Withholding tax codes and groups
- Payables options
- Reporting entities
- Financial options
- Expense report templates
- Signing limits
- Procurement and credit card
  - Card programs
  - Card profiles
  - GL account sets
  - Code sets

**Note:** The procurement and credit card setup is a shared setup for both Internet Expenses and Payables.

### **Projects**

- Maintain PA Period Statuses



- GL Periods for Projects
- Project Templates
- Create Projects
- Search Project
- Personalize Region - Create View
- Current Reporting Period
- Grants - Award Template, Award
- Grants - Implementation Options
- Implementation options
- Bill rate schedules
- Project types
- Project templates
- AutoAccounting

**Note:** Expenditure types are not operating unit specific but if the expenditure type requires a cost rate, then the rate is operating unit specific.

### **Purchasing**

- Document approval controls
- Change order controls
- Supplier sites
- Financial options
- Control rules/groups
- Purchasing options
- Job/position controls
- Freight carriers

- Document controls

### **Receivables**

- AutoAccounting
- Contact phones
- Customer address
- Customer relationships
- Customer bank accounts
- Distribution sets
- Transaction sources
- Lockbox definitions
- Memo lines
- Receipt sources
- Receivables activities
- Remit to address
- Remittance bank accounts
- Salesperson, sales territories assigned to salespersons
- System options
- Transaction types

### **Sales and Marketing**

- Territories
- Territory types
- Territory groups
- Territory qualifiers
- Territory Accesses
- Interest category sets

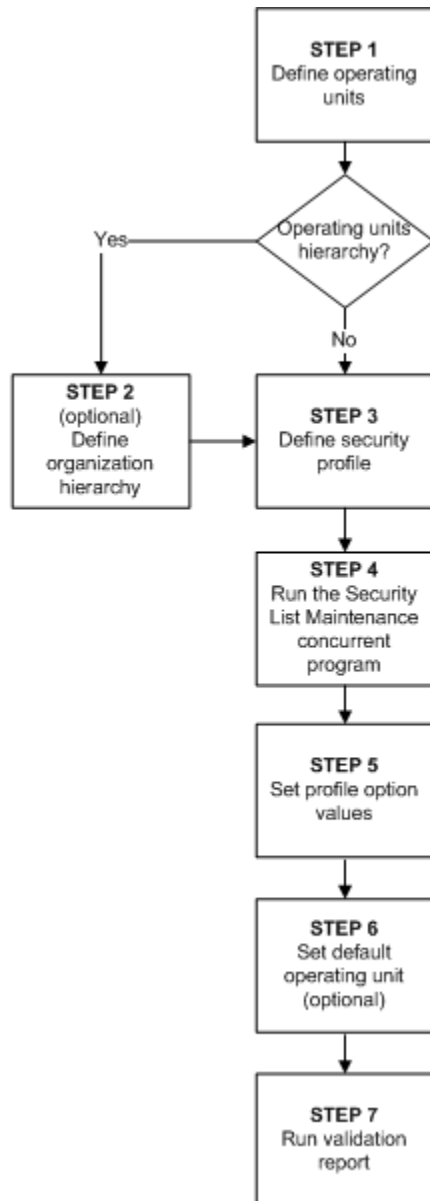
- Promotion word processors
- Collateral categories

#### **Services**

- Service parameters
- Access control templates

For more information, see the Setup chapter for your product.

The MO: Security Profile allows access to one, many or all multiple organization operating units through a single responsibility. The following diagram illustrates the setup steps for setting up the multiple organization access control.



The first step is defining an operating unit following which you must decide if your business requirement needs an operating units hierarchy. If your business requires an operating units hierarchy, define the hierarchy first and then define the security profile. If your business does not require an operating unit hierarchy, you can directly define the Security Profile. After defining the security profile you must run the Security List Maintenance concurrent program. Next, you must set the defined system profile options to the responsibilities and optionally set the default operating unit. Finally, run the Multiple Organizations Setup Validation Report.

#### **Step 1 - Define Organization**

Use the HRMS Define Organization window or Accounting Setup Manager in General

Ledger to define operating units and assign operating units to a primary ledger and a default legal context.

### **Step 2 - Define Organization Hierarchy (Optional)**

You can also define an organization hierarchy. You can set up a simple, non-hierarchical list of operating units to include in a Security Profile.

Defining an operating unit hierarchy is dependent on your business requirement. Organization Hierarchies represent the hierarchical relationships between the organizations in the enterprise.

#### **To set up an organization hierarchy:**

1. Enter the Name, Version Number and Date From for the hierarchy.
2. Query the top Organization Name in the Organization block.
3. In the Subordinates block, select the immediate subordinates for the top organization.
4. To add subordinates to the organizations listed in the Organization block, click Down. The Organization block now displays the next organization You can add subordinates to this organization. To return to the previous organization, click Up.

**Note:** The Define Organization Hierarchy form will open up only if you have a Global Security Profile attached to HR.

For more information, see Security Profiles by Organization and Organization Hierarchy, *Oracle Human Resources Management Systems Configuring, Reporting, and System Administration Guide*.

## **Define Multiple Organization Security Profile**

### **Step 3 - Define Security Profile**

You can define Security Profiles based on an organization hierarchy or a list of organizations. Both methods are illustrated with the help of examples.

#### **Security Profile based on Organization Hierarchy:**

Creating a Security Profile based on list of organizations is useful when you want to provide access to operating units that exist in an exclusive node together.

#### **To create a Security Profile based on Organization Hierarchy:**

1. Enter a unique Name for the Security Profile.
2. Select Secure organizations by organization hierarchy and/or organization list for the Security Type to restrict access by organization hierarchy.
3. Select an existing organization hierarchy (as created in Step 1).

4. Select a top organization. The top organization can be any organization included in the organization hierarchy. Select Include Top Organization to allow access to the top organization. If you don't select this option, users can only access the subordinate organizations of the top organization.
5. Select Exclude Business Group to remove the business group in the list of organizations.
6. Run the Security List Maintenance Program from the standard request submission form.

#### **Security Profile based on List of Organizations:**

Creating a Security Profile based on list of organizations is useful when you want to provide access to operating units that do not exist in an exclusive node together.

#### **To create a Security Profile based on List of Organizations:**

1. Enter a unique Name for the Security Profile.
2. Select Secure organizations by organization hierarchy and/or organization list for the Security Type to restrict access by list of organizations.
3. Select Exclude Business Group to remove the business group in the list of organizations.
4. To limit the list of to specific organization classification, such as Operating Units, select Operating Unit in the Classification field.
5. In the Organization Name field, select the Operating Unit for which you want access. Repeat this step until you have included all organizations that you need access.
6. Run the Security List Maintenance Program from the standard request submission form.

For more information, see *Running the Security List Maintenance Process, Oracle Human Resources Management Systems Configuring, Reporting, and System Administration Guide*.

#### **Access to All**

There are a several options when creating a Security Profile to gain access to operating units. A seeded Security Profile called Setup Business Group is available for this. Each time you create a new business group; HR automatically creates a view all Security Profile with the same name as the business group. The View All Records option is selected for these Security Profiles, which gives access to all organizations within that business group.

You can also define a Global View All Security Profile to access all organizations across business groups. There is a seeded Global View All security profile to create this

security profile. However, you can only have one Global View All Security Profile for one instance. You can create your own View All security profile by selecting the View All Records option or by listing all organizations. The View All in business group and Global Security Profiles are not based on an organization hierarchy.

### **Set System Profile Options**

After defining the Security profile and running the Security List Maintenance program, you must assign it to the MO: Security Profile profile option. The profile option can be set at the responsibility, and site levels.

#### **To set the profile option:**

1. Choose System Administrator Responsibility.
2. Navigate to the System Profile Values form and assign the Security Profile to the responsibility.

Make sure that the HR: Business Group profile option matches the assigned Security Profile, else application pages that are activated with multiple organizations will not be accessible. For example, if ABC Corp. is the Business Group for a User's responsibility, then make sure that ABC Corp. is assigned as an operating unit in the Security Profile in step 3.

#### **Default Operating Unit**

If you set the MO: Security Profile profile option, you can also set an operating unit as the default operating unit using the MO: Default Operating Unit profile option. This is useful when you transact in multiple operating unit but frequently transact in one operating unit.

You can override the default operating unit values for a transaction, but the values will revert for the next transaction. For example, in the Payables Invoice Workbench the default operating unit will default as well as the relevant values, such as GL Date, Terms, and Payment Method. The operating unit can be overridden, however, when entering the next invoice the values will revert to the default operating unit.

This profile option can be set at responsibility and user levels. Setting this option at the responsibility level is useful when a user wants to work on an operating unit different from the organization to which he is given the responsibility access. Setting this option at a user level is useful when a user wants an operating unit as the default for all responsibilities assigned to the user.

**Note:** Users can define their own User Preferences to restrict their own list of operating units to a subset of those assigned to the MO: Security Profile. By defining User Preferences, users can specify a different default operating than the one assigned to the MO: Default Operating Unit profile option. For more information on defining user preferences, see Step 19: Specify User-Level Multiple Organizations Preferences (optional), page 2-27.

### Step 16: Run the Multiple Organizations Setup Validation Report (recommended)

After you have implemented Multiple Organizations, run the Setup Validation Report to identify any setup problems. Some of the errors that the report finds may be deleted optionally by running this report, while others require that you change your setup. All suggested changes can be confirmed optionally so that you may retain your implementation even if it fails validation.

For more information, see Multiple Organizations Setup Validation Report, page 2-28.

### Step 17: Implement Document Sequencing (Optional)

After you have implemented Multiple Organizations and run the Multiple Organization Setup Validation Report, you have the option to set up document sequencing (a common requirement for European countries) for each application that supports document sequencing. Sequence assignments are controlled at the ledger level.

For more information, see Defining a Document Sequence, *Oracle E-Business Suite Setup Guide*.

### Step 18: Set Up Conflict Domains (optional)

A conflict domain is an abstract representation of the groupings used to partition your data. When a program is listed as incompatible with another, the two programs cannot run simultaneously in the same conflict domain. Two incompatible concurrent programs may run simultaneously if they are submitted in different conflict domains. To maximize the concurrency in a multiple organization environment, you can set up conflict domains for your operating units.

All programs are assigned a conflict domain when they are submitted. The following determines the conflicts domain you use when you submit a concurrent request:

- The value of the concurrent program parameter which is defined as Conflict Domain parameter
- The value of the Concurrent: Conflicts Domain profile option

If you do not define any conflict domain, the Standard conflict domain is used.

#### To define a profile option conflict domain:

##### 1. Define Concurrent Conflict Domains

Any alphanumeric string can be used as a Conflicts Domain name. You can use an operating unit name, a legal entity name, or a ledger name as the domain name. You are allowed to define as many as domains as you need. Since you cannot delete conflicts domains, you should keep the domains to a necessary minimum.

##### 2. Set the Concurrent: Conflicts Domain profile option

The profile can be set at Site, Application, Responsibility and User levels.



**To define a concurrent program parameter as the conflicts domain parameter:**

1. Navigate to the Concurrent Program window. Query up the program you want to define conflict domain.
2. Click on the Parameters. Use the Concurrent Program Parameter window to define the conflict domain parameter. You can choose one of the concurrent program parameters as the conflict domain parameter.

For more information, see *Concurrent Conflict Domains, Oracle E-Business Suite Setup Guide*.

**Step 19: Specify User-Level Multiple Organizations Preferences (optional)**

The MO: Security Profile controls the list of operating units a user with a specific responsibility can access and the MO: Default Operating Unit controls the default operating unit that defaults in all pages that display the operating unit field. Users can further tailor the number of operating units they want to work with and specify a different default operating unit by using the Multi-Org Preferences page. This allows users to have complete control over their work environment to help them process data more efficiently.

This page can be accessed using the menu function called User Preferences.

Note: If you do not see the User Preferences function from your application, inform your system administrator to add the user preferences function called FNDMOPREFS to your product's submenu. The default operating unit set on the Multi-Org Preferences page will be saved to the MO: Default Operating Unit profile option at the user level.

**To define a user preference:**

1. Open the Multi-Org Preferences page.  
The following information appears at the header level:
  - **User Name:** The user name of the user
  - **Responsibility Name:** The name of the responsibility that accessed the page.
  - **Security Profile:** The name of the security profile assigned to the MO: Security Profile for the responsibility/user.
2. You can specify a default operating unit. The list of operating units will be limited to those assigned to the Security Profile.
3. You can select one or more operating units and then set them as preferred operating units by clicking the Set as Preferred button.

## Changing the Organization Structure

At some point, your company may need to make organization changes. Companies usually make organization changes to better adapt themselves to the new business needs and challenges of the market.

One type of organization change you can make is to discontinue one organization. You can use the Define Organizations window to discontinue one organization by putting an end date in its definition.

You can perform other organization changes by enabling or disabling organization classifications, or changing the classification attributes. When you do that, you must consider the following:

- The Define Organizations window does not re-validate the relationships among legal entities, operating units, and inventory organizations.
- You should not try to move one ledger or legal entity to another because your data may not be valid for the new ledger or legal entity. Instead, you should disable the old organization and create a new one for the appropriate ledger or legal entity. The new organization will contain your new data, and the disabled organization will act as an old or history entity that stores past transactions.
- If you create a new organization, you can still access your historical transactions by logging to the responsibility tied to the disabled organization. To enter new transactions, you must log into the responsibility tied to the new organization. The data for each of the two organizations are kept separate from one another, and must be accessed separately.

## Multiple Organization Setup Validation Report

Use the Multiple Organization Setup Validation Report to identify problems in your Multiple Organization setup. If you detect setup problems, you can use the report to help you correct them.

To submit the Multiple Organization Setup Validation Report, use the Submit Request window in the System Administrator responsibility.

### Report Parameters

You must enter a value for each of the following parameters:

**Active Responsibilities Only:** Enter Yes or No to indicate whether you want to validate only the active responsibilities on the report. The default value is Yes.

**Correct Customer Attributes:** Enter Yes or No to indicate whether you want to correct the customer attributes. If you choose Yes, the report deletes the operating unit-specific data from the Customer records. The default value is No.

**Correct Supplier Attributes:** Enter Yes or No to indicate whether you want to correct the supplier attributes. If you choose Yes, the report deletes the operating unit-specific data from the supplier records. The default value is no.

## Report Sections

The report consists of the following sections:

- Active Responsibilities
- Customers with Operating Unit Specific Attributes
- Suppliers with Operating Unit Specific Attributes
- Profile Option Errors and Warnings

### Active Responsibilities Only

The report prints the value of the Active Responsibility Only parameter you specified in the first page of the report.

### Customers with Operating Unit Specific Attributes

This section of the report indicates that you have data defined at the customer level that is allowed only at the customer site level. This generally occurs when you convert to Multiple Organization support from a non-Multiple Organization implementation. The report indicates if any data has been entered at the customer level in the following fields by printing an asterisk (\*) in the column for a particular customer:

- Salesperson (report data appears under the Primary Salesrep column)
- Order Type
- Dunning Site
- Statement Site
- Tax Code
- Carrier (report data appears under the Ship Via column)

The report warns you that this data exists in the database. If you choose Yes for the Correct Customer Attributes report parameter, the report deletes the operating unit-specific data from the customer records.

### Suppliers with Operating Unit Specific Attributes

This section of the report indicates that you have data defined at the supplier level that is allowed only at the supplier site level. This generally occurs when you convert to

Multiple Organization support from a non-Multiple Organization implementation. The report indicates if any data has been entered at the supplier level in the following fields by printing an asterisk (\*) in the column for a particular supplier:

- Liability Account
- Prepayment Account
- Distribution Set
- Statement Site
- Invoice Tax Name
- Offset Tax Name

The report warns you that this data exists in the database. If you choose Yes for the Correct Supplier Attributes report parameter, the report deletes the operating unit specific data from the customer records.

### **Profile Option Errors and Warnings**

This section provides information on profile options that may be invalid. All profile option values in question are listed for your review. You need to correct the profile options manually. The report may list any combination of the following violations:

#### **Not all responsibilities in current operating unit have the same option value**

All responsibilities in one operating unit must share the same values for the following profile options:

- HR: Business Group
- Tax: Allow Override of Tax Code
- Tax: Invoice Freight as Revenue
- Tax: Inventory Item for Freight

The Validation Report indicates a violation for the operating units with inconsistent profile option values and lists the values, which are set at the responsibility level, or are defaulted from the site or application level.

#### **Sequential Numbering option differs among responsibilities**

All responsibilities in one operating unit must share the same sequence numbering option. The Multi-Org Setup Validation Report indicates a violation for the operating units with inconsistent profile option values and lists the values, which are set at the responsibility level, or which are defaulted from the site or application level.

---

# Reporting

## Overview of Multiple Organizations Reporting

Multiple Organizations Reporting enhances the reporting capabilities of Oracle Applications products by allowing you to report at the following levels:

- Ledger
- Operating unit

The Multiple Organizations Reporting feature includes the following components:

- Reporting Parameters
- Report Types

## Reporting Parameters

Two new parameters have been added to the reports that are enabled for Multiple Organizations Reporting: Reporting Level and Reporting Context.

- **Reporting Level:** Allows users to choose the level at which they want to report. The valid options are Ledger, and Operating Unit. If the user chooses Ledger as the reporting level, then the report displays data for the operating units assigned to the ledger that the user can access. If the user chooses Operating Unit, the operating units that can be selected depends on the operating units assigned to the MO: Operating Unit or the MO: Security Profile profile option. If the MO: Security Profile profile option is set, the MO: Operating Unit profile option is ignored.
- **Reporting Context:** Allows users to choose an entity within the reporting level they have selected. Valid options are ledger names, or operating unit names, depending on the reporting level value.

## Report Types

Reports can be classified into the following categories:

- Cross Organization Reports
- Multiple Organization Reports

### Cross Organization Reports

Cross Organization Reports report data for one or more Operating Units.

MO: Security Profile profile option controls the operating units a user can submit a report for. The Reporting Level and Reporting Context determine the level a user can submit a report for. The possible reporting levels are:

- **Operating Unit:** Report for a single operating unit.
- **Ledger:** Operating units in a ledger.

Cross Organization reports have two possible values: Ledger and Operating Unit. The available value for context is validated against user's access privilege. If the user chooses Ledger as the context level, a report is generated based on data from all operating units assigned to that ledger that the user has access to. If the user does not have access to all operating units that make up a Ledger, then the report output indicates the set of operating unit data that was used for report generation.

### Multiple Organization Reports

Multiple Organization Reports report data for one or more multiple operating units from a single responsibility.

With multiple organizations access control, a responsibility could have access to multiple operating units from a single responsibility. Even though the user can access one or more Operating Units, the user can only report data for one operating unit at a time. For example, if the Profile option MO: Security Profile gives access to three Operating Units, the user can choose one of the three operating units when submitting the report.

### Multiple Organizations Reporting API

Multiple Organizations Reporting-enabled reports use the Multiple Organizations Reporting API to determine at runtime the operating units for which the report will be run.

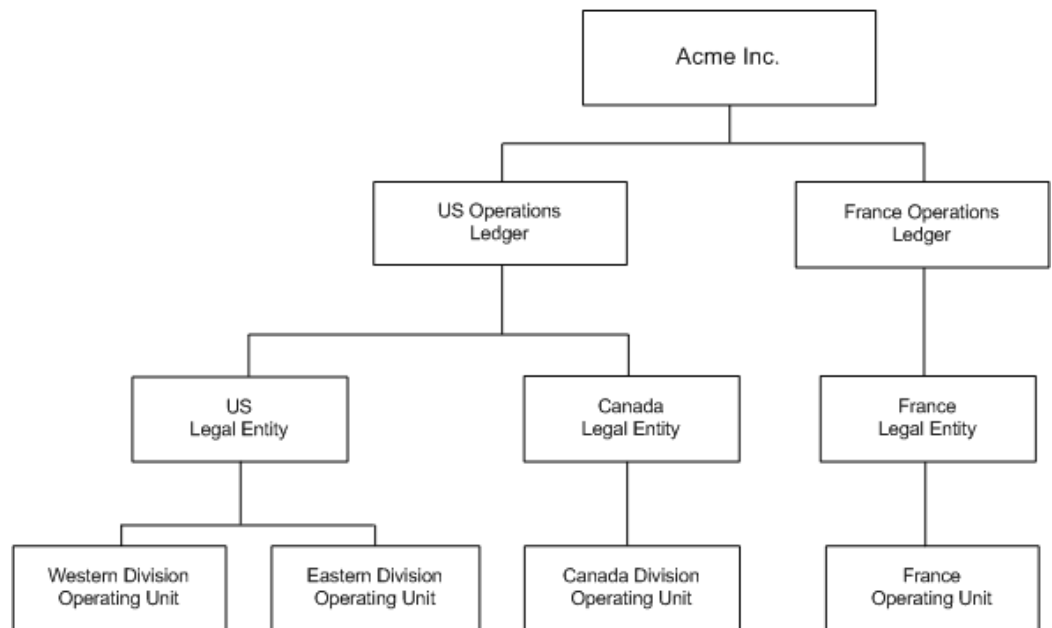
## Running Reports

**To run reports at different reporting levels:**

1. Navigate to the Submit Request window.
2. At the Submit Request window, choose the report you want to run.
3. At the Parameters window, choose the reporting level (Ledger, or Operating Unit).
4. Choose the reporting entity.

## Example

Assume Acme Inc. has Multiple Organization architecture set up as shown in the figure below. You are an Oracle Applications user connecting to a responsibility that is linked to the Western Division operating unit.



The figure depicts an organization structure that is used as an ongoing example in the Reports chapter of the Multi-Org publication. The top-level box of the organization chart represents the entire organization, and is labeled Acme, Inc. This box splits out into US Operations (ledger) and France (ledger). The France ledger drills down to the transactions entered by the France (operating unit) in the context of the French legal entity.

The US Operations ledger drills down to the transactions entered for the US (legal entity) and Canada (legal entity). US (legal entity) drills down to Western Division (operating unit) and Eastern Division (operating unit). The Canada legal entity drills down to the Canada Division (operating unit).

## Reports

You can run the following reports at the ledger, or operating unit level:

### Oracle Payables

All standard Payables and Subledger reports can be run for an operating unit.

The following Payables reports can also be run for a ledger or ledger set to report on balances across all operating units assigned to a given ledger or ledger set:

- Payables Posted Invoice Register
- Payables Posted Payments Register for a Ledger or Ledger Set
- Open Account Balances Listing

### Oracle Receivables

- Adjustment Register
- Adjustments Journal Report
- Aging - 4 Buckets Report
- Aging - 7 Buckets Report
- Aging - 7 Buckets - By Salesperson Report
- Aging - 7 Buckets - By Collector Report
- Aging - 7 Buckets - By Account Report
- Applied Receipts Journal
- Applied Receipts Register
- AR Reconciliation Report
- AR: Journal Entries Report
- Credit Hold Report
- Cumulative Activity Balance Report
- Customer Credit Snapshot
- Invoice Exception Report



- Miscellaneous Receipts Register
- On Account Credit Memo Gain and Loss Journal
- Other Receipt Applications Report
- Receipt Journal Report
- Receipt Register
- Sales Journal By Customer
- Sales Journal by GL Account Report
- Transaction Register
- Unapplied Receipts Journal
- Unapplied and Unresolved Receipts Register

#### **Oracle E-Business Tax**

- Tax Audit Trail
- Tax Register
- Use Tax Liability
- Intra-EU VAT Audit Trail
- U.S. Sales Tax Report
- Tax Reconciliation Report
- Financial Tax Register
- Canadian GST/PST Tax Report

#### **Oracle Financials for Asia/Pacific**

- Singaporean GST F5 Report
- Taiwanese Output VAT Report
- Taiwanese Receivables Government Uniform Invoice Report
- Taiwanese Receivables Zero Rate Tax Report

- Taiwanese Payables Sales/Purchase Return and Discount Certificate Report
- Taiwanese Pro Forma 401 Report
- Taiwanese Purchase Return and Discount Report
- Taiwanese Sales Return and Discount Report
- Taiwanese Input VAT Report
- Taiwanese EDI Government Uniform Invoice

## Concurrent Programs

A new field Operating Unit Mode is included to the Define Concurrent Programs window which allows users to specify the concurrent programs for multiple organizations. The concurrent programs can be categorized into Single, Multiple or Null. The default value is Null. The concurrent program is used to execute the multiple organizations initialization and also determine when to display Operating Unit field in the Submit Requests window and Schedule Requests window.

There are two categories of Concurrent programs:

1. Single Organization Concurrent Programs
2. Multiple Organization Concurrent Programs

### Single Organization Concurrent Programs

Single Organization concurrent programs are non-report programs that report or process data for one Operating Unit only. These programs show data for the Operating Unit specified by MO: Operating Unit profile option. These programs are flagged as Single for Operating Unit mode in the Define Concurrent Programs window.

### Multiple Organization Concurrent Programs

The Multiple Organization Concurrent Programs process or report data for multiple operating units specified by the profile option MO: Security Profile. These programs display the operating unit as an optional parameter. The user selects an operating unit and submits the program or leaves it blank. If the parameter is left blank, the concurrent program processes or reports data for the operating units specified in the MO: Security Profile.

The figure below shows an Submit Request window with the operating unit parameter added for the Payables Open Interface Import program. Users may either choose to enter a value for the Operating Unit or leave it blank and submit the request. If you specify the operating units invoices are processed for the respective operating units else invoices are processed for all the operating units in the security profile.

Parameters

Operating Unit	
Source	
Group	
Batch Name	N/A
Hold Name	
Hold Reason	
GL Date	
Purge	No
Summarize Report	No

OK Cancel Clear Help



---

## Navigation Paths

### Multiple Organization Navigation Paths

This section shows the default navigation paths for most of the windows used for Multiple Organizations in Oracle Applications as they are supplied. In addition, the table below provides a page number reference for the description of each window in this manual.

The responsibility that you use determines which of these windows you can use and how you access them. Your system administrator sets up navigation menus and task flows for your responsibility. The system administrator may also create customized versions of some of these windows using different window titles.

Window Name	Navigator Path
Assign Security Rules, page 2-5	Oracle General Ledger: Setup > Financials > Flexfields > Descriptive > Security > Assign
Define Organizations, page 2-8	Oracle HRMS: Setup > Organizations > Organizations  or  Accounting Setup Manager > Accounting Setups> Accounting Options> Operating Units > Open Organization Form
Define Responsibilities, page 2-11	System Administrator: Security > Responsibility > Define

Window Name	Navigator Path
Define Security Rules, page 2-5	Oracle General Ledger: Setup > Financials > Flexfields > Descriptive > Security > Define or Setup > Financials > Flexfields > Key > Security > Define or Setup > Financials > Flexfields > Validation > Security > Define
Define Security Profile, page 2-12	Oracle HRMS: Security > Profile
Define Global Security Profile, page 2-12	Oracle HRMS: Security > Global Profile
Multi-Org Preferences, page 2-27	User Operating Unit Preferences  <b>Note:</b> If you do not find the function called User Operating Unit Preferences or User Preferences, ask your system administrator to add the function "User Preferences" FNDMOPREFS to your application menu.
Define Accounting Setups, page 2-4	Oracle General Ledger: Setup > Financials > Accounting Setup Manager > Accounting Setups
Operating Units, page 2-2	Oracle General Ledger: Setup > Financials > Accounting Setup Manager > Accounting Setups> Accounting Options > Operating Units  <b>Note:</b> The Operating Units step will only appear if legal entities are assigned to an accounting setup.
Update Profile Options, page 2-12	System Administrator: Profile > System

---

# Index

## A

---

Applications products  
    implementing, 2-16  
asset organizations, 1-5

## B

---

business groups, 1-4  
    multiple, 2-11

## C

---

conflict domains  
    setting up, 2-26

## D

---

Define Accounting Setups window, 2-4  
Define Organization window, 2-8  
Define Responsibility window, 2-11  
Define Security Rule window, 2-5  
document sequencing, 2-26

## H

---

HR organizations, 1-5

## I

---

implementing multiple organization support, 2-2  
inventory organizations, 1-5

## L

---

ledgers

    defining, 2-4  
legal entities  
    definition, 1-4  
    securing balancing segment values, 2-5

## M

---

Multi-Org Setup Validation Report, 2-28  
    parameters, 2-28  
    report sections, 2-29  
multiple organizations  
    basic business needs, 1-1  
    implementing, 2-1  
    overview, 1-1

## N

---

navigation paths, A-1

## O

---

operating units, 1-4  
Oracle Projects  
    organizations, 1-5  
Organization classifications  
    required information, 2-10  
organization relationships  
    defining, 2-9  
organizations  
    defining, 2-8  
    defining inventory organization security, 2-16  
    defining the structure, 2-2  
    implementing products, 2-16  
    legal entities and balancing segments, 2-5  
    types, 1-4

- organization structure
  - changing, 2-28
- organization types
  - asset organization, 1-5
  - business groups, 1-4
  - HR organizations, 1-5
  - in Oracle Projects, 1-5
  - inventory organizations, 1-5
  - legal entities, 1-4
  - operating units, 1-4

## **P**

---

- profile option categories
  - Access Control, 2-14
  - description, 2-13
- profile options
  - descriptions, 2-13
  - MO: Default Operating Unit, 2-12
  - MO: Operating Unit, 2-12
  - MO: Security Profile, 2-12
  - multiple organizations, 2-13

## **R**

---

- reporting, 3-1
  - example, 3-3
  - running reports, 3-2
- reports, 3-4
  - running, 3-2
- responsibilities
  - defining, 2-11

## **S**

---

- security
  - data, 1-3
  - inventory organization, 1-3
  - operating unit, 1-3
- Setup Validation Report, 2-26