

**Oracle FLEXCUBE Private Banking
March 2012**

**FCPB-FCDB SSO INTEGRATION MANUAL
9PW004-FCPB Release 12.0**

Oracle Part Number E51529-01



COPYRIGHT (C) 2010 Oracle Financial Services Software Pvt Limited All rights reserved. No part of this work may be reproduced, stored in a retrieval system, adopted or transmitted in any form or by any means, electronic, mechanical, photographic, graphic, optic recording or otherwise, translated in any language or computer language, without the prior written permission of Oracle Financial Services Software. Due care has been taken to make this Application Installation Manual as accurate as possible. Oracle Financial Services Software Pvt Ltd makes no representation or warranties with respect to the contents hereof and shall not be responsible for any loss or damage caused to the user by the direct or indirect use of this Application Installation Manual. Furthermore Oracle Financial Software Services Limited reserves the right to alter, modify or otherwise change in any manner the content hereof, without obligation of Oracle Financial Services Software Pvt Ltd to notify any person of such revision or changes. All company and product names are trademarks of the respective companies with which they are associated.

Revision History

| Date | Version | Description | Author |
|------------|---------|----------------|--------|
| 02-03-2012 | 1.0 | Initial Design | |

TABLE OF CONTENTS

1. INTRODUCTION 5

1.1 ABBREVIATIONS AND ACRONYMS 5

1.2 SINGLE-SIGN-ON RULES 5

2 STEPS FOR INTEGRATING FCPBSSOADAPTER PROJECT WITH FCPB CORE APPLICATION 8

1. Introduction

FCPB 12.0 will be integrated with FCDB as part of the 12.0 release. This integrated system will provide for a single-sign-on to users for accessing Oracle FLEXCUBE Private Wealth management screens. There would be some link from FCDB which will allow a customer to access the FCPB application.

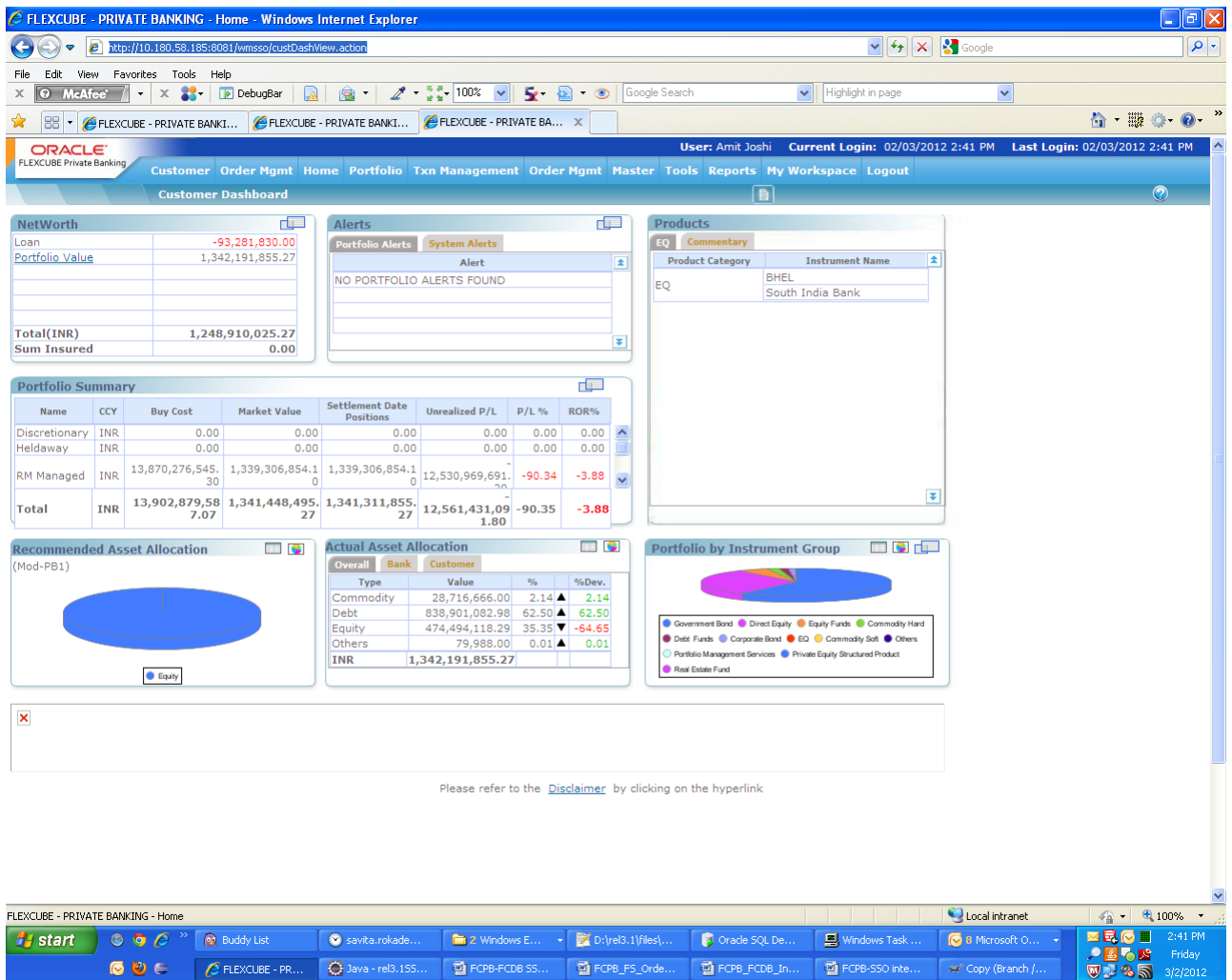
1.1 Abbreviations and Acronyms

| Abbreviation | Description |
|--------------|--------------------------|
| FCPB | FLEXCUBE Private Banking |
| FCDB | FLEXCUBE Direct Banking |

1.2 Single-sign-on rules

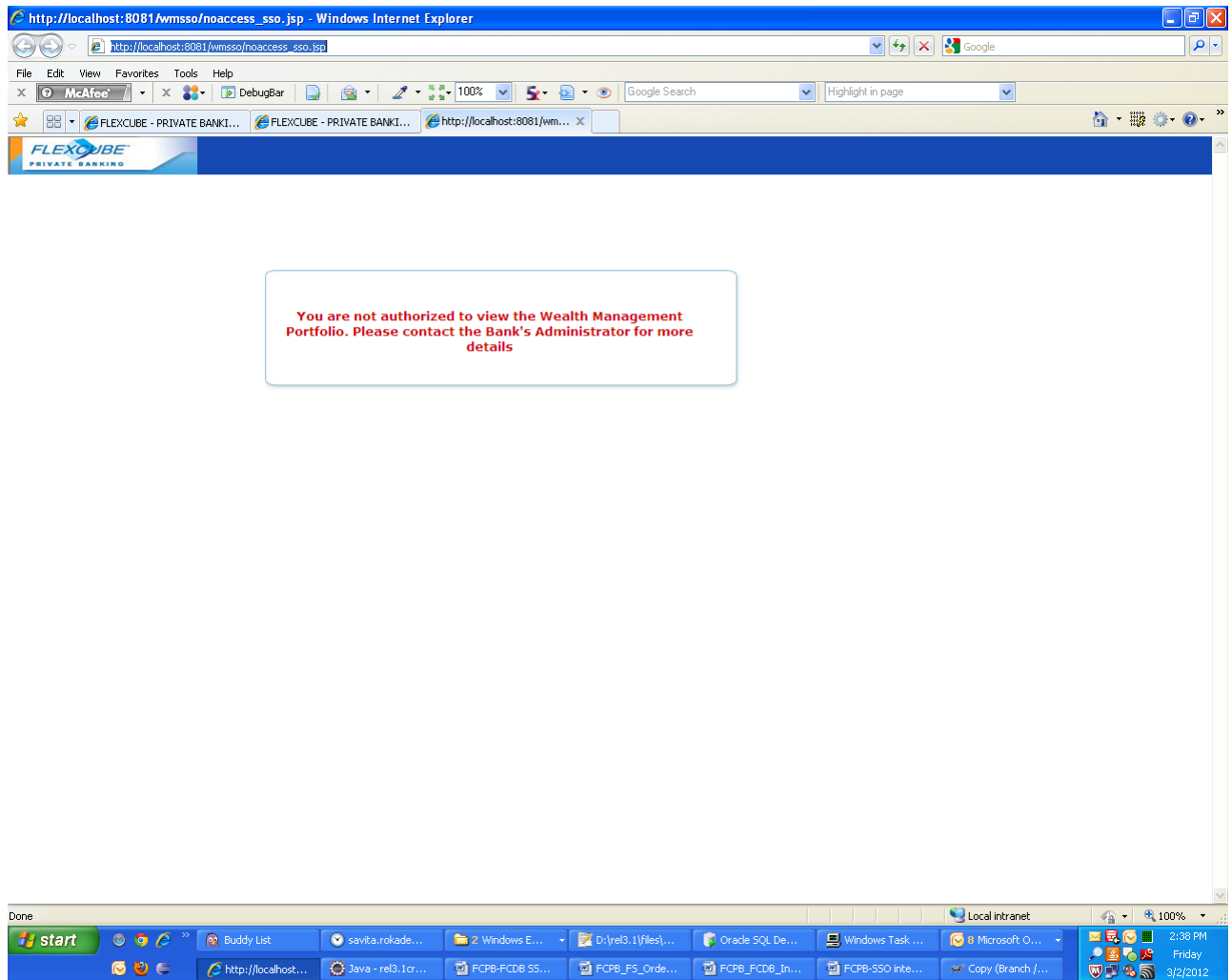
1. Session Management will remain independent between FCPB and FCDB .When a user goes from FCDB system to FCPB system, FCPB session will be created and managed by FCPB. If the session/jsession details passed by FCDB are validated through the service call to FCDB from FCPB, and if the user trying to access the FCPB is valid user, user will get the FCPB dashboard

Below is the screenshot of the FCPB dashboard:-



- There is no reverse process for the customers to visit FCDB from FCPB.
- If user tries to access the FCPB menu via FCDB and if due to any reason the session passed by FCDB is not validated by FCDB, in that case FCDB will give failure response to FCPB and the control will be forwarded to FCPB and FCPB will display the page with the following error messages :
"You are not authorized to view the Wealth Management Portfolio. Please contact the Bank's Administrator for more details".

Below is the screenshot of this screen:-



4. FCDB will be using **External Customer ID** for interacting with FCPB.

2 Steps for integrating FCPBSSOADAPTER project with FCPB core application

****important*** The steps 1 to 3 are already taken care during fcpb build process. So we can skip those steps

- 1) Make following changes in **web.xml** of the FCPB Core Application-

Comment the “**WmSpringWebSecurity.xml**” being used in the core, and instead load the **WmSSOSpringSecurity.xml** present in the FCPBSSOADAPTER project.

→ **classpath*:/WmSSOSpringWebSecurity.xml**

- 2) Configure the **oamLogin** mapping in **wmStruts-sms.xml** of FCPB Core Application.
To do so add below entry into **wmStruts-sms.xml**

```
<action name="oamLogin" class="oamLoginAction">
    <interceptor-ref name="exception"/>
    <interceptor-ref name="alias"/>
    <interceptor-ref name="servlet-config"/>
    <interceptor-ref name="prepare"/>
    <interceptor-ref name="i18n"/>
    <interceptor-ref name="chain"/>
    <interceptor-ref name="wmRole"/>
    <interceptor-ref name="wmRoleFunction"/>
    <interceptor-ref name="debugging"/>
    <interceptor-ref name="profiling"/>
    <interceptor-ref name="scoped-model-driven"/>
    <interceptor-ref name="model-driven"/>
    <interceptor-ref name="checkbox"/>
    <interceptor-ref name="static-params"/>
    <interceptor-ref name="params">
        <param name="excludeParams">dojo\..*</param>
    </interceptor-ref>
    <interceptor-ref name="conversionError"/>
    <interceptor-ref name="validation">
        <param
name="excludeMethods">input,back,cancel,browse</param>
    </interceptor-ref>
    <interceptor-ref name="workflow">
        <param
name="excludeMethods">input,back,cancel,browse</param>
    </interceptor-ref>
    <interceptor-ref name="pbs-token-session"/>
    <interceptor-ref name="xss-injection"/>

    <result name="next" type="redirect-
action">${nextAction}</result>
</action>
```


- 3) After doing the above build the FCPB Core Application
- 4) Open the file fcpbOamSSOadapter-3.1.jar which is inside the given fcpbear.ear file under the path fcpbear.ear/app-inf/lib.
- 5) Update **IntegrationParams.properties** of the fcpbOamSSOadapter-3.1.jar has the IPAdress of the host machine where the FCDB application is running..

Below is the entry done in the **IntegrationParams.properties** file

ServerHostIpAddress = 10.10.10.10

- 6) Save the ear file and deploy the application

http:// <ipAddress>:<port number>/<context path>/oamLogin.action

The screenshot displays the Oracle FLEXCUBE Private Banking Customer Dashboard. The user is logged in as Amit Joshi. The dashboard includes several sections:

- NetWorth:** Shows Loan (-93,281,830.00), Portfolio Value (1,342,191,855.27), Total(INR) (1,248,910,025.27), and Sum Insured (0.00).
- Alerts:** Displays Portfolio Alerts and System Alerts. A message states "NO PORTFOLIO ALERTS FOUND".
- Products:** Lists EQ (Equity) products, including BHEL and South India Bank.
- Portfolio Summary:** A table showing portfolio details for Discretionary, Heldaway, and RM Managed accounts.
- Recommended Asset Allocation:** A pie chart showing the asset allocation for the Mod-PB1 portfolio, with a legend indicating Equity.
- Actual Asset Allocation:** A table showing the actual asset allocation by type (Commodity, Debt, Equity, Others) and value.
- Portfolio by Instrument Group:** A pie chart showing the portfolio distribution by instrument group, with a legend including Government Bond, Direct Equity, Equity Funds, Commodity Hard, Debt Funds, Corporate Bond, EQ, Commodity Soft, Others, Portfolio Management Services, Private Equity Structured Product, and Real Estate Fund.

At the bottom of the dashboard, there is a disclaimer link: "Please refer to the [Disclaimer](#) by clicking on the hyperlink".

All the parameters required for validating and logging will be present in the request header which FCPB gets from the FCDB.