

BI Publisher Installation Guide
Oracle Financial Services Lending and Leasing
Release 14.0.0.0.0
[April] [2013]
Oracle Part Number E51531-01



Table of Contents

1. Preface	1-1
1.1 Prerequisites.....	1-1
1.2 Audience.....	1-1
2. Installing BI Publisher	2-1
2.1 Installing BI Publisher	2-1
3. Configuring BI Publisher	3-1
4. Creating Unique BI Publisher User	4-1
5. Creating BI Publisher Datasource	5-1
6. Importing Reports to BI Publisher Server	6-1

1. Preface

For recommendations on security configuration, refer Security Configuration Guide.

This document contains notes and installation steps needed to install and Configure Oracle BI Publisher. Oracle Financial Services Lending and Leasing relies on this software to configure reports and this document is in no way meant to replace Oracle documentation supplied with this Oracle product or available via Oracle technical support. The purpose of this document is only meant to supplement the Oracle documentation and to provide Oracle Financial Services Lending and Leasing specific installation instructions.

BI Publisher installation is a four step process.

1. [Installing BI Publisher](#)
2. [Configuring BI Publisher](#)
3. [Creating Unique BI Publisher User](#)
4. [Creating BI Publisher Datasource](#)
5. [Importing Reports to BI Publisher Server](#)

1.1 Prerequisites

The following software are required to install Oracle Financial Services Lending and Leasing application.

1. Sun JDK Version 1.6 update 31 or above (<http://www.oracle.com/technetwork/java/javase/downloads/index.html>)
OR
Oracle JRockit JDK Version 1.6 update 22 or above
<http://www.oracle.com/technetwork/middleware/jrockit/downloads/index.html>
2. Oracle WebLogic Server 11gR1 Version 10.3.5
<http://www.oracle.com/technetwork/middleware/weblogic/downloads/wls-main-097127.html>)
3. Oracle BI Publisher Version BI 11.1.1.6.0
<http://www.oracle.com/technetwork/middleware/bi-publisher/downloads/index.html>
4. Download RCU for the respective platform from the "Required Additional Software" section of
<http://www.oracle.com/technetwork/middleware/bi-publisher/downloads/index.html>

Note

Please use all 64-bit software's for machine hosted with 64-bit O/S.

1.2 Audience

This document is intended for system administrators or application developers who are installing Oracle Financial Services Lending and Leasing Application.

Conventions Used

Term	Refers to
Application	Oracle Financial Services Lending and Leasing

2. Installing BI Publisher

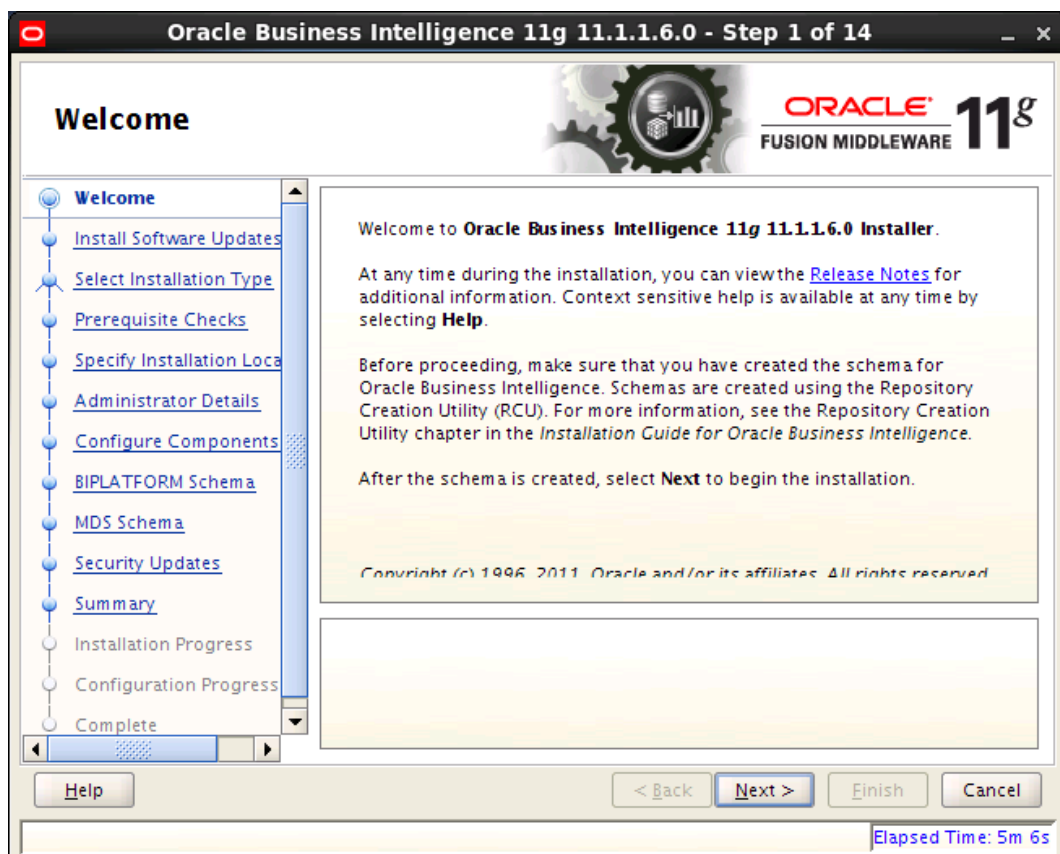
2.1 Installing BI Publisher

Follow the below steps to install BI publisher:

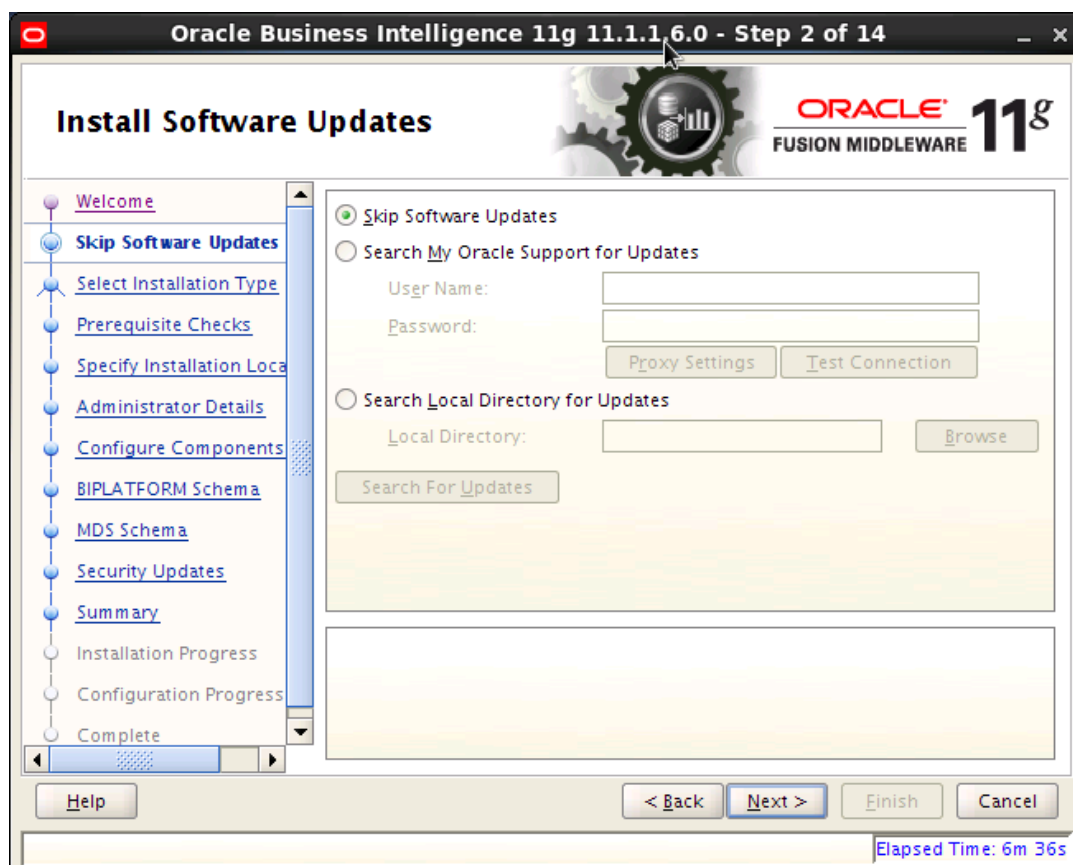
1. Download and unzip all the software related to OBIEE (5 zip files).

bi_linux_x86_111160_64_disk1_1of2, bi_linux_x86_111160_64_disk1_2of2,
bi_linux_x86_111160_64_disk2_1of2, bi_linux_x86_111160_64_disk2_2of2,
bi_linux_x86_111160_64_disk3

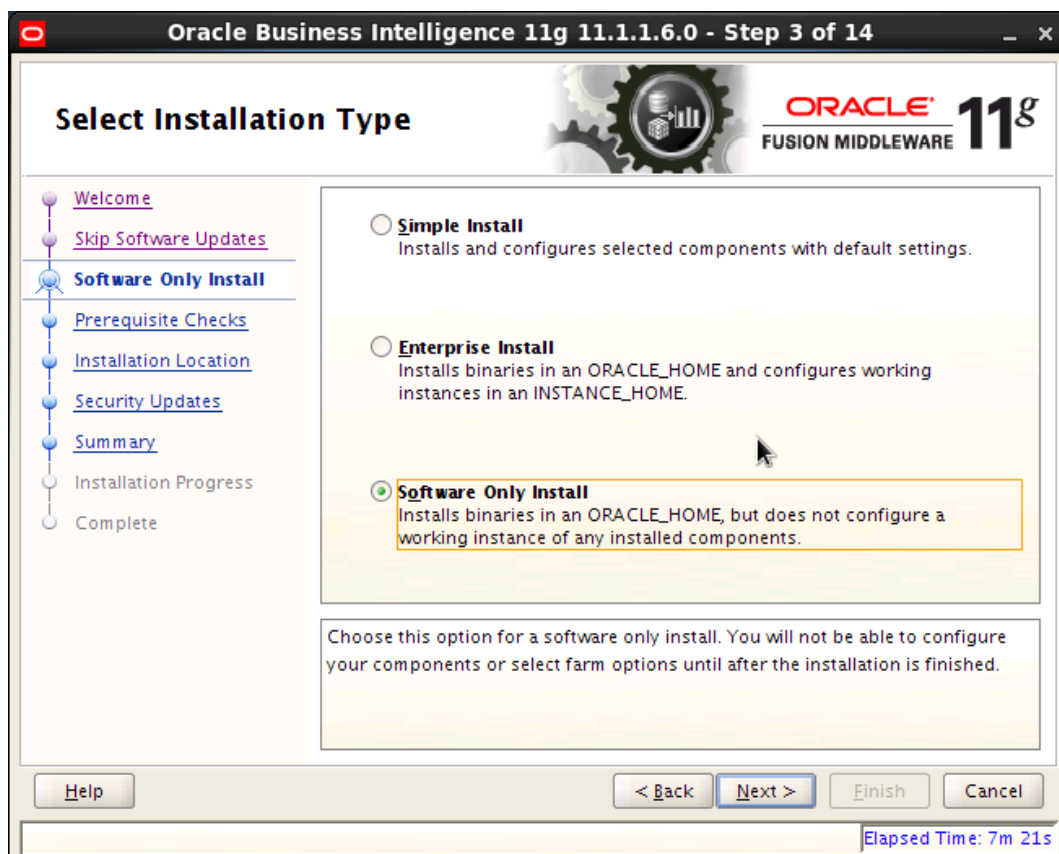
2. When prompted, navigate to /bishiphome/Disk1
3. Run **./runInstaller**.
4. The following window is displayed.



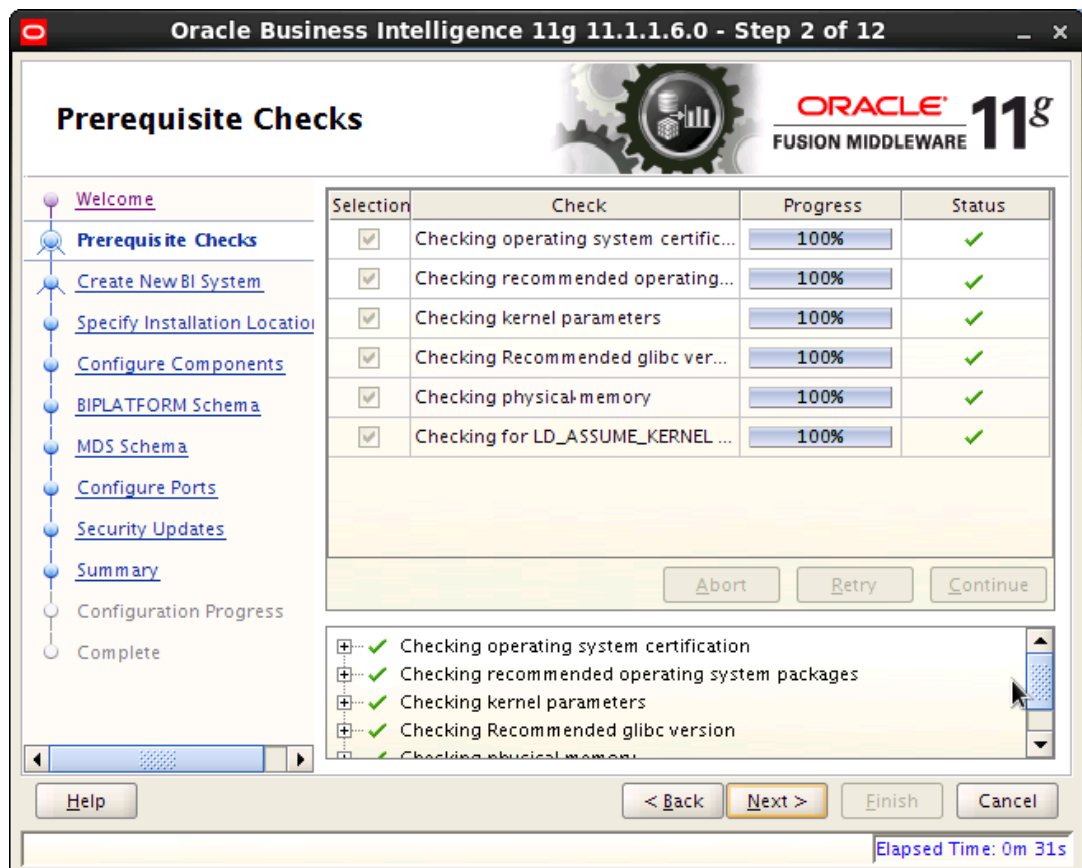
5. Click **Next**. The following window is displayed.



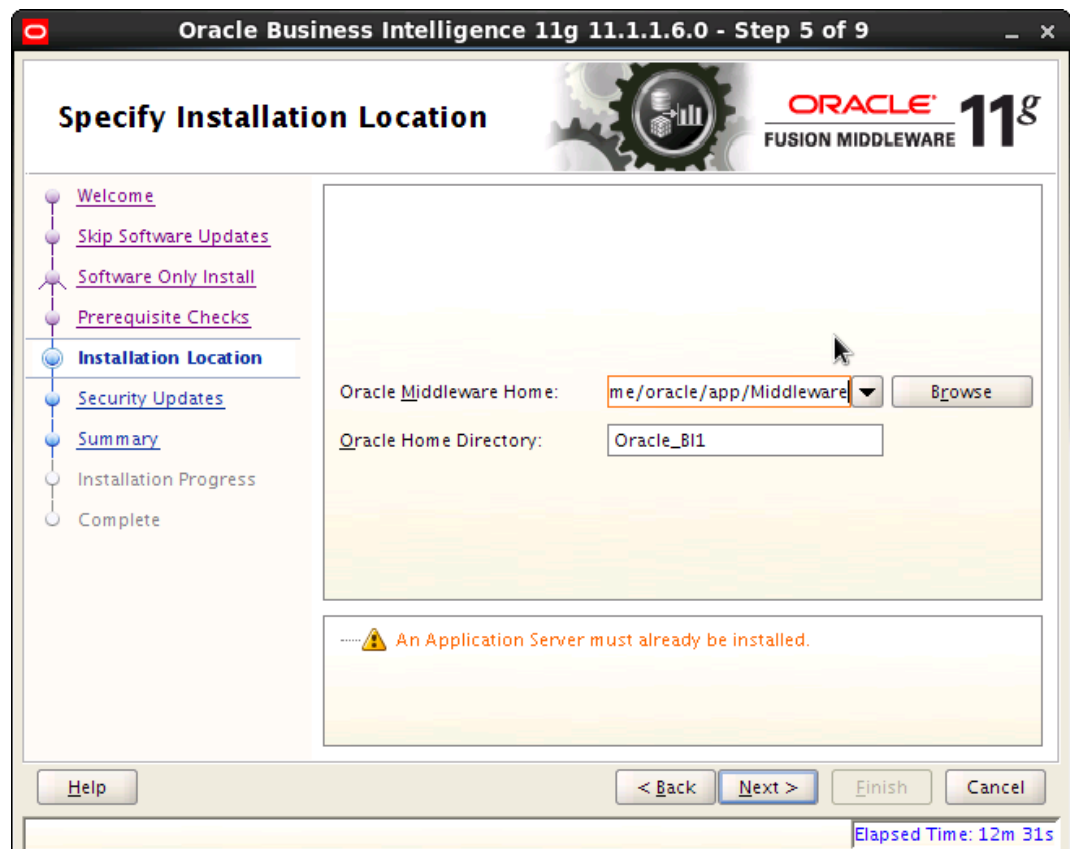
6. Select **Skip Software Updates** and click **Next**. The following window is displayed.



7. Select Software **Only Install** and click **Next**. The following window is displayed.



8. Click Next. The following window is displayed.



9. Browse Oracle Middleware Home path as /home/oracle/app/Middleware
10. Provide Oracle_BI1 as Oracle Home Directory for BI Publisher.
11. Click **Next**. The following window is displayed.

Oracle Business Intelligence 11g 11.1.1.6.0 - Step 6 of 9

Specify Security Updates

Provide your email address to be informed of security issues, install the product and initiate configuration manager. [View details.](#)

Email:

Easier for you if you use your My Oracle Support email address/username.

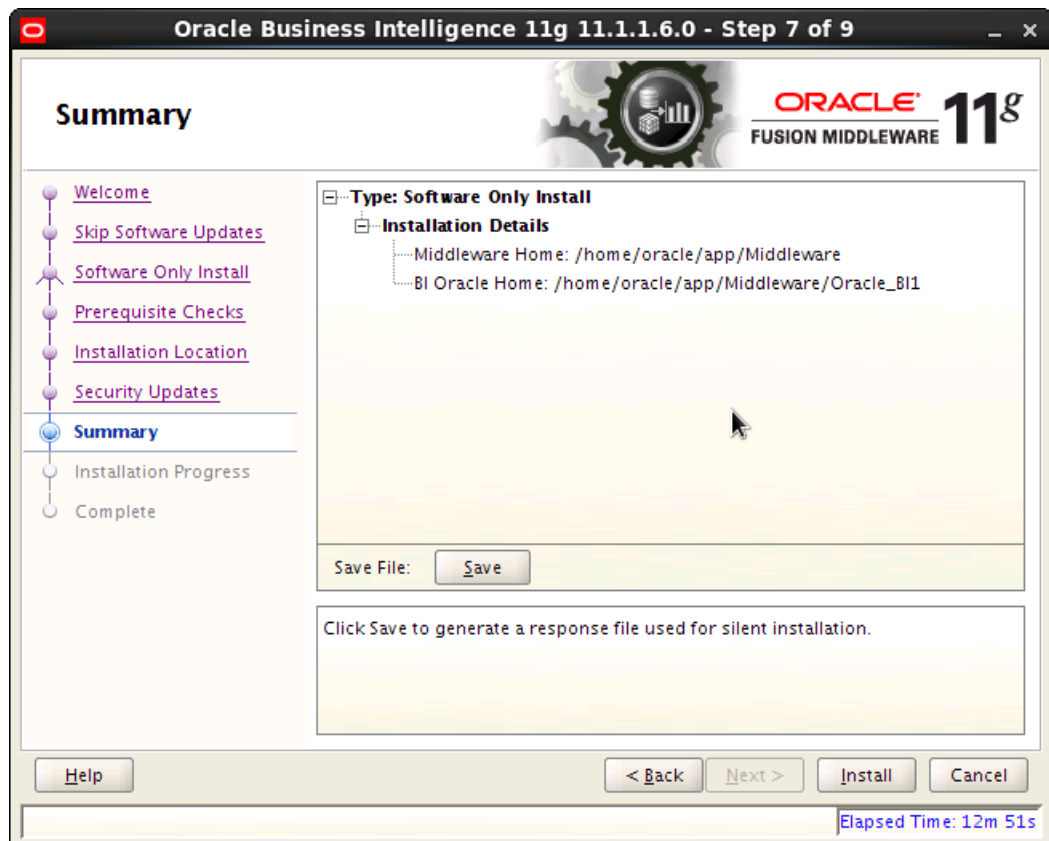
☐ I wish to receive security updates via My Oracle Support.

My Oracle Support Password:

[Help](#) [< Back](#) [Next >](#) [Finish](#) [Cancel](#)

Elapsed Time: 12m 41s

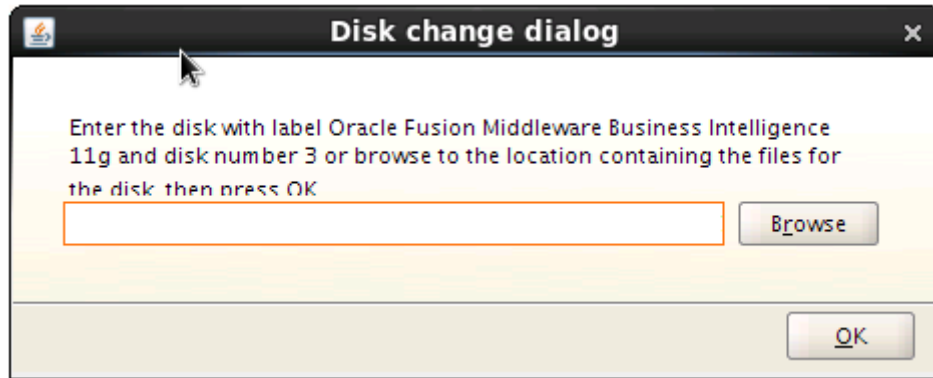
12. Uncheck the highlighted check box in above screen and click **Next**. The following window is displayed.



13. Click Install. The following window is displayed.



14. While progressing, installer prompts for the next disk location as shown below.



15. For our assumption, select /oracle/OBIEE/bi_linux_x86_111160_64_disk1_2of2/
bishiphome/Disk2/stage, /oracle/OBIEE/bi_linux_x86_111160_64_disk2_1of2/
bishiphome/Disk3/stage, oracle/OBIEE/bi_linux_x86_111160_64_disk2_2of2/
bishiphome/Disk4/stage and /oracle/OBIEE/bi_linux_x86_111160_64_disk3/
bishiphome/Disk5/stage.
16. The following window is displayed.



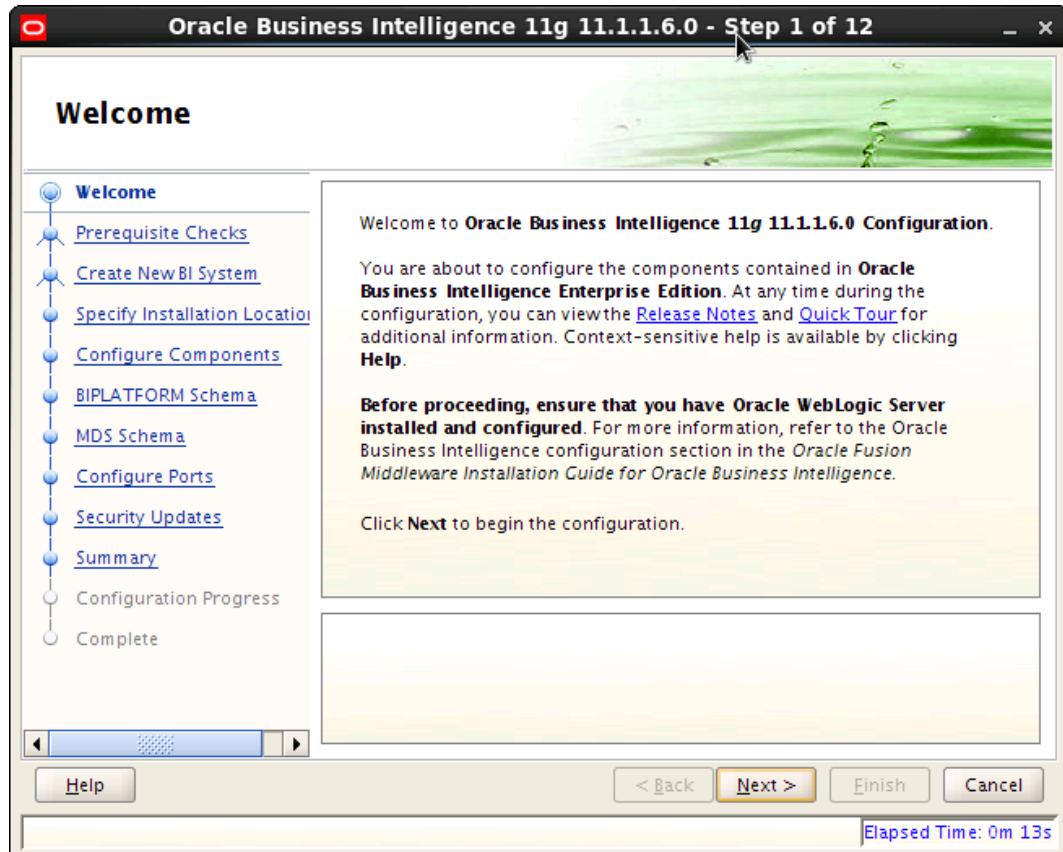
17. Once the installation is complete click Next and Finish to close.

3. Configuring BI Publisher

After installing BI Publisher, the next step is to configure BIP.

To configure BIP:

1. Launch configuration window and browse to \$BI_HOME\bin (BI_HOME is /home/oracle/app/Middleware/Oracle_BI1).
2. Run `./config.sh`
3. The following window is displayed.



4. Click **Next**. The following window is displayed.

The screenshot shows the 'Prerequisite Checks' window in the Oracle Business Intelligence 11g 11.1.1.6.0 installer. The window title is 'Oracle Business Intelligence 11g 11.1.1.6.0 - Step 2 of 12'. The left sidebar contains a navigation tree with the following items: Welcome, Prerequisite Checks (selected), Create New BI System, Specify Installation Location, Configure Components, BIPLATFORM Schema, MDS Schema, Configure Ports, Security Updates, Summary, Configuration Progress, and Complete. The main area displays a table of prerequisite checks:

Selection	Check	Progress	Status
<input checked="" type="checkbox"/>	Checking operating system certific...	100%	✓
<input checked="" type="checkbox"/>	Checking recommended operating...	100%	✓
<input checked="" type="checkbox"/>	Checking kernel parameters	100%	✓
<input checked="" type="checkbox"/>	Checking Recommended glibc ver...	100%	✓
<input checked="" type="checkbox"/>	Checking physical memory	100%	✓
<input checked="" type="checkbox"/>	Checking for LD_ASSUME_KERNEL ...	100%	✓

Below the table are buttons for 'Abort', 'Retry', and 'Continue'. At the bottom, there are buttons for '< Back', 'Next >', 'Finish', and 'Cancel'. A status bar at the bottom right shows 'Elapsed Time: 0m 31s'.

5. Click **Next**. The following window is displayed.

The screenshot shows the 'Create, Scale Out or Extend' window in the Oracle Business Intelligence 11g 11.1.1.6.0 installer. The window title is 'Oracle Business Intelligence 11g 11.1.1.6.0 - Step 3 of 12'. The left sidebar contains a navigation tree with the following items: Welcome, Prerequisite Checks, Create New BI System (selected), Specify Installation Location, Configure Components, BIPLATFORM Schema, MDS Schema, Configure Ports, Security Updates, Summary, Configuration Progress, and Complete. The main area displays the 'Create New BI System' section with the following fields:

- User Name: weblogic
- User Password: [masked]
- Confirm Password: [masked]
- Domain Name: bip11g_domain

Below these fields are two radio buttons: 'Scale Out BI System' and 'Extend BI System'. At the bottom, there are buttons for '< Back', 'Next >', 'Finish', and 'Cancel'. A status bar at the bottom right shows 'Elapsed Time: 1m 13s'.

6. Enter the User Name, Password and Domain Name for BI Publisher domain as mentioned above. Click Next. The following window is displayed.

Oracle Business Intelligence 11g 11.1.1.6.0 - Step 4 of 12

Specify Installation Location

ORACLE 11g
FUSION MIDDLEWARE

Navigation:

- Welcome
- Prerequisite Checks
- Create New BI System
- Specify Installation Location**
- Configure Components
- BIPLATFORM Schema
- MDS Schema
- Configure Ports
- Security Updates
- Summary
- Configuration Progress
- Complete

Fields:

- Middleware Home: /home/oracle/app/Middleware
- Oracle Home: /home/oracle/app/Middleware/C
- WebLogic Server Home: /home/oracle/app/Middleware/v
- Domain Home: /home/oracle/app/Middleware/u
- Instance Home: /home/oracle/app/Middleware/i
- Instance Name: instance1

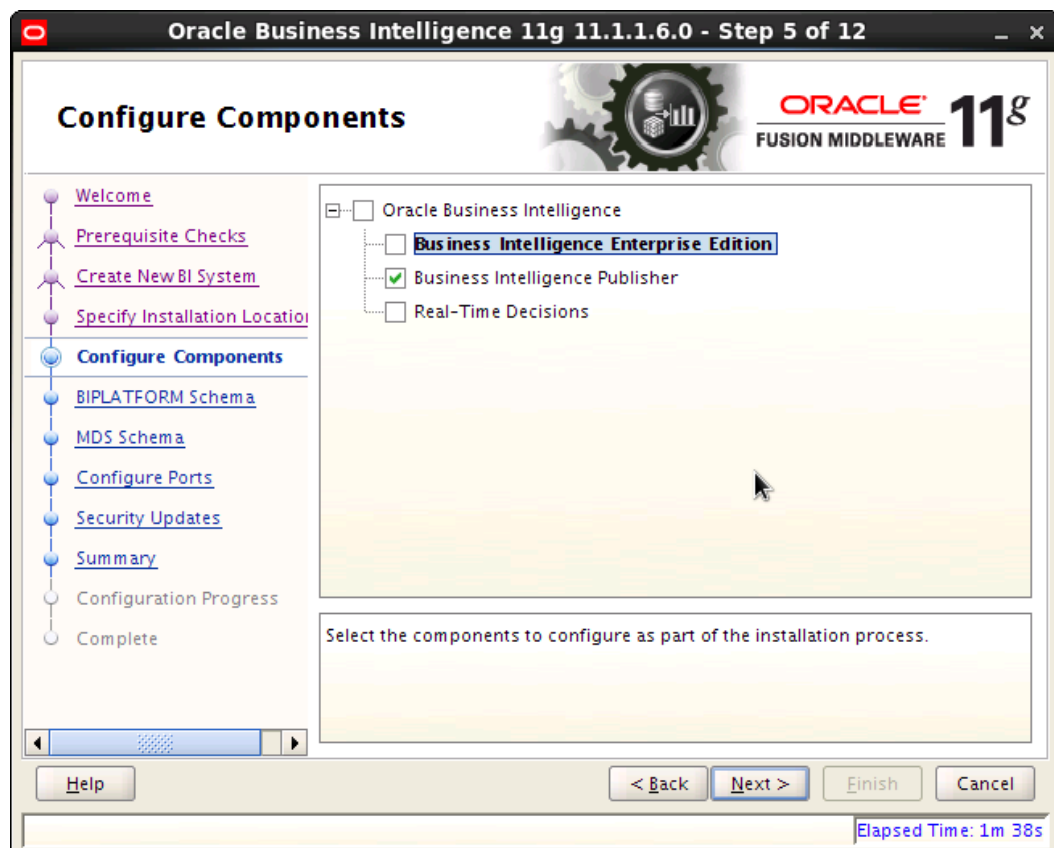
The Instance Name location for creating new BI system on this machine.

Buttons: Help, < Back, Next >, Finish, Cancel

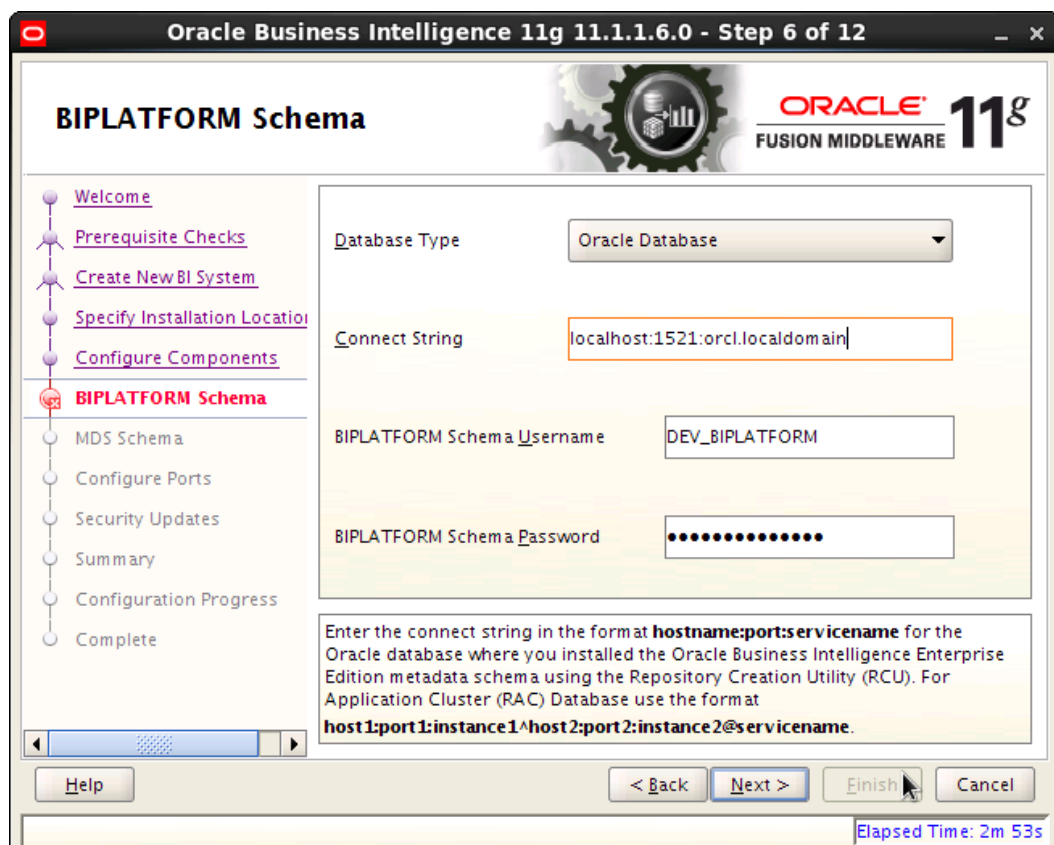
Elapsed Time: 1m 28s

7. The default values are added as highlighted above.

8. Click Next. The following window is displayed.



9. Select **Business Intelligence Publisher** and click **Next**. The following window is displayed.



10. Provide the schema details of BIPLATFORM, i.e. DEV_BIPLATFORM, which was created using Repository Creation Utility. *For further details on Repository Creation Utility, refer 'Creating Schemas using Repository Creation Utility' chapter of 'Application Installation Guide'.*
11. Click **Next**. The following window is displayed.

Oracle Business Intelligence 11g 11.1.1.6.0 - Step 7 of 12

MDS Schema

Database Type: Oracle Database

Connect String: localhost:1521:orcl.localdomain

MDS Schema Username: DEV_MDS

MDS Schema Password:

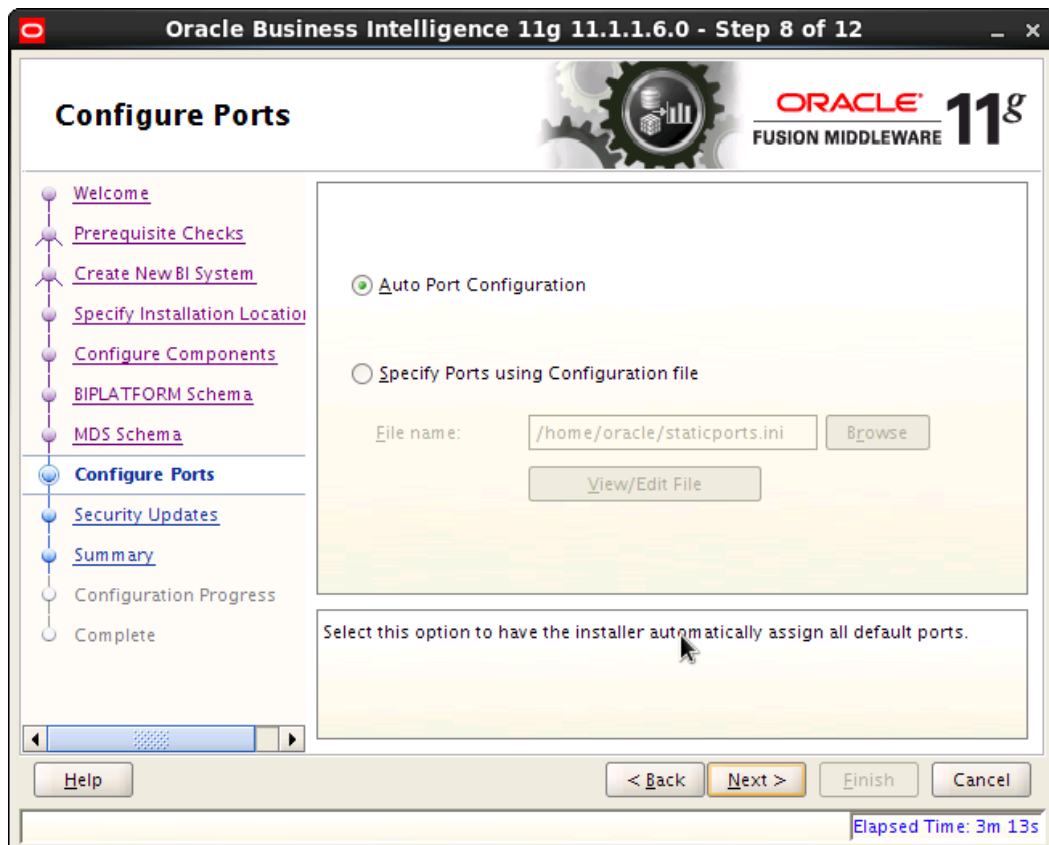
Enter the MDS schema password.

Help < Back Next > Finish Cancel

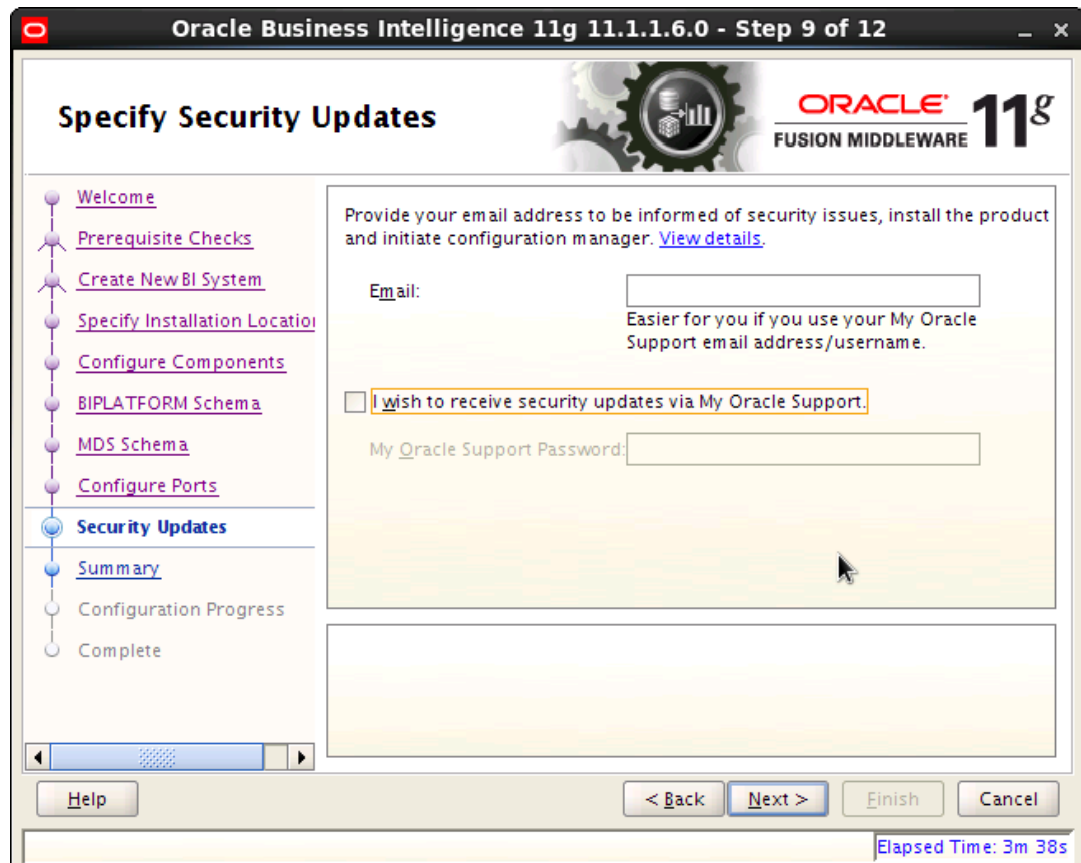
Elapsed Time: 3m 8s

12. Provide the schema details of MDS, i.e. DEV_MDS, which was created using Repository Creation Utility. *For further details on Repository Creation Utility, refer 'Creating Schemas using Repository Creation Utility' chapter of 'Application Installation Guide'.*

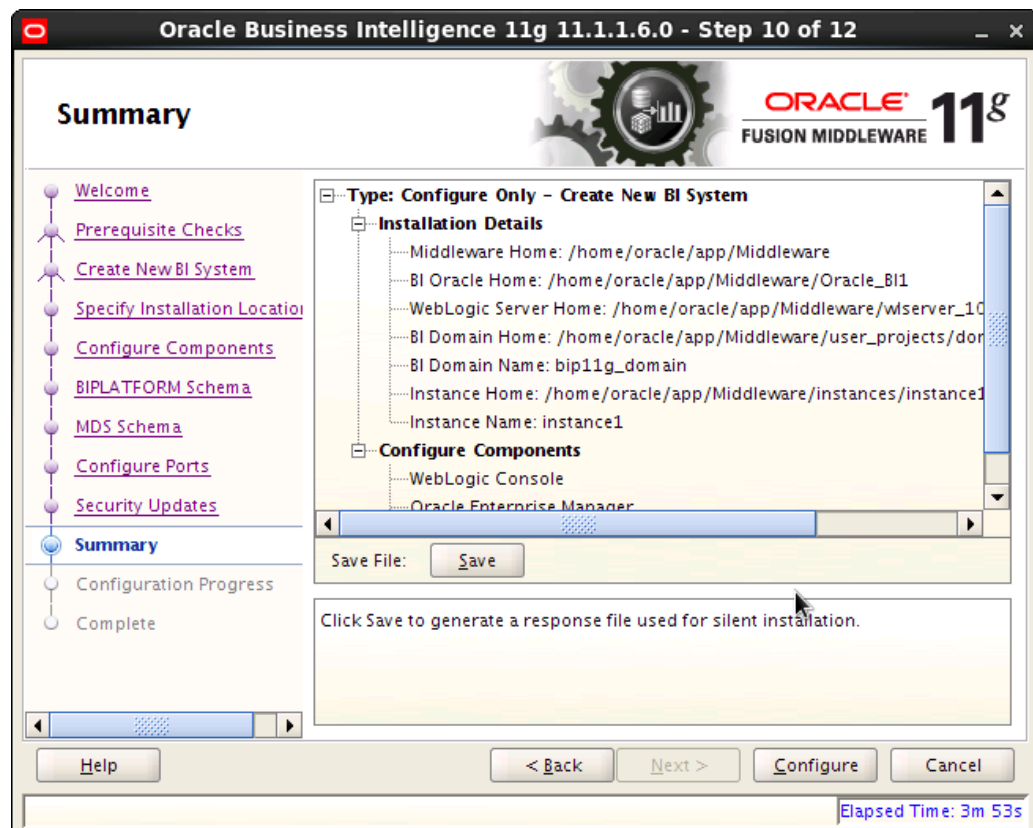
13. Click **Next**. The following window is displayed.



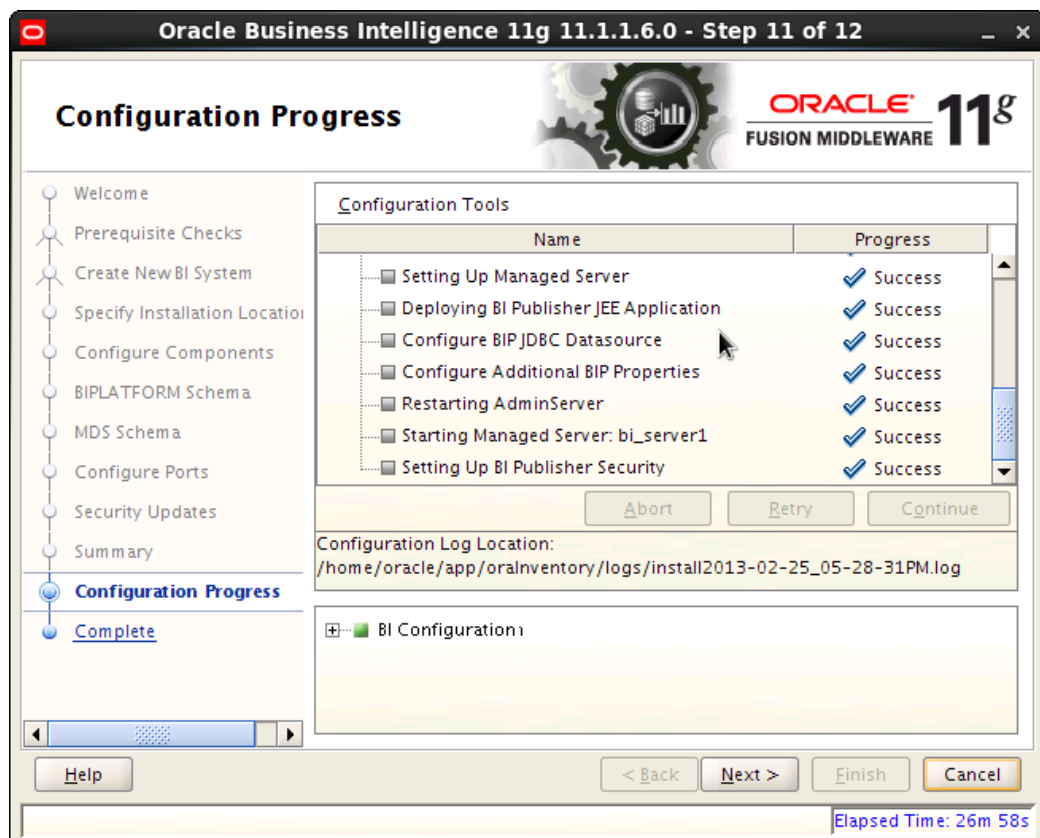
14. Select **Auto Port Configuration** and click **Next**. The following window is displayed.



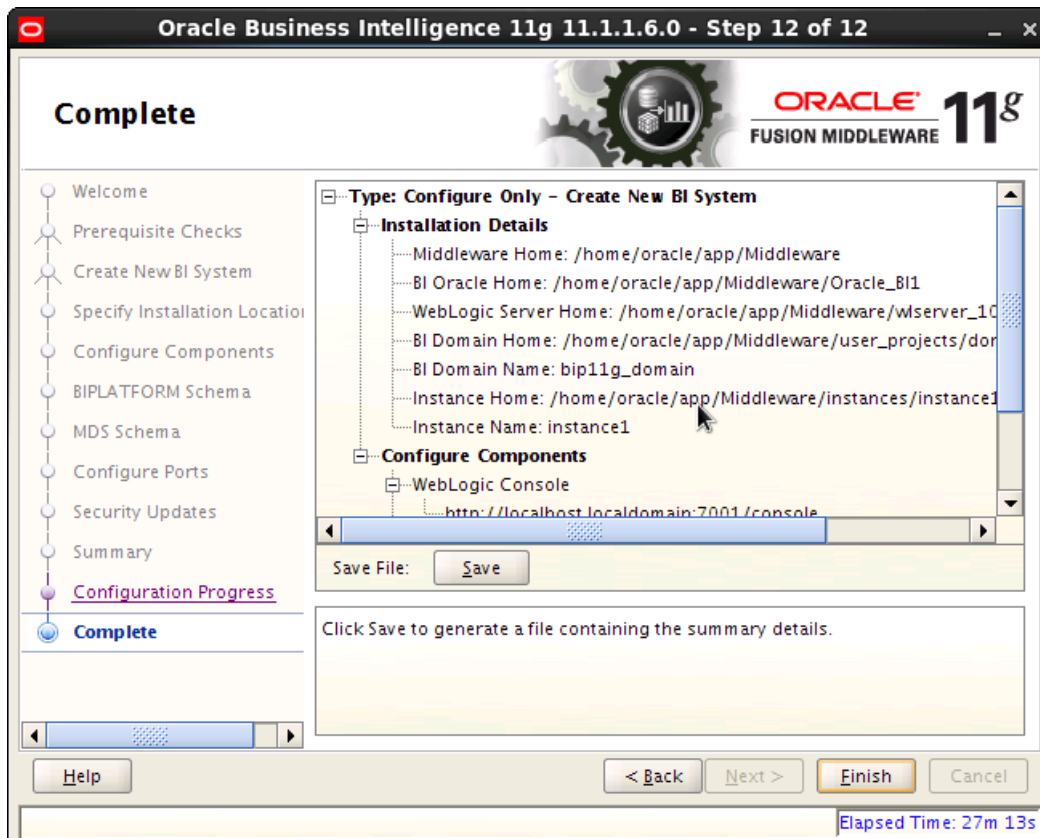
15. Uncheck the check highlighted above, if you do not wish to receive any mails for security updates.
16. Click **Next**. The following window is displayed.



17. Click **Configure**. The following window is displayed.



18. Click **Next**. The following window is displayed.



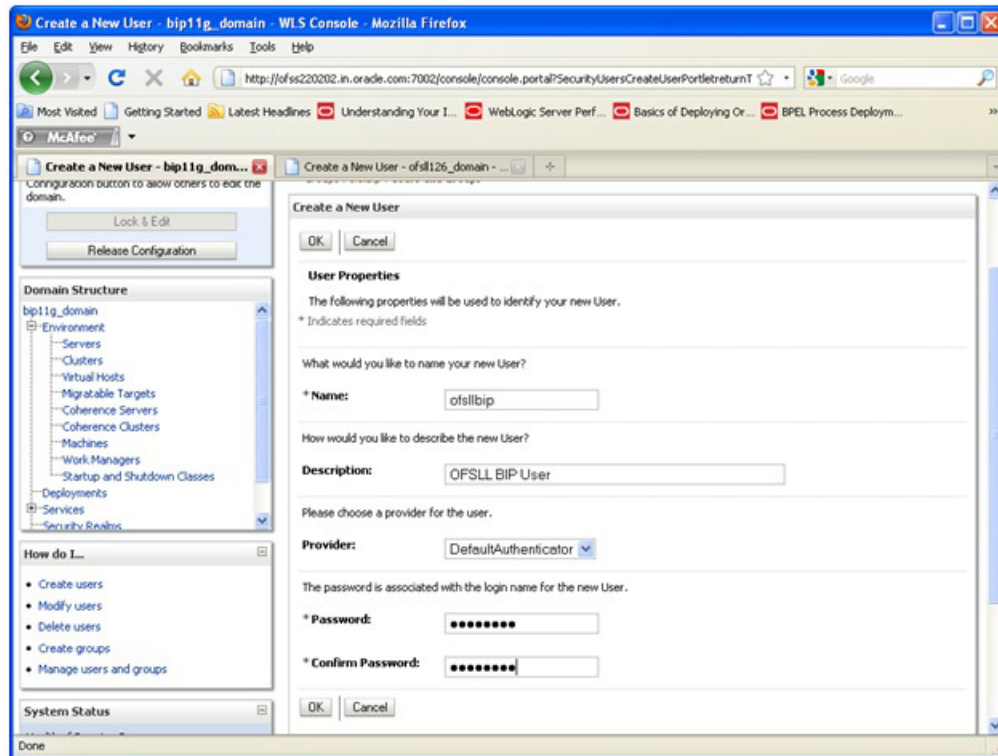
19. Click Finish.
20. The application will create a new domain for BI Publisher with the details as highlighted in the above screen.
21. The domain bip11g_domain is created on admin port 7001 and the managed server bi_server1 on port 9704.
22. Launching URL for BI Publisher is <http://hostname:port9704/xmlpserver>

4. Creating Unique BI Publisher User

After configuring BI publisher, you must create a unique User ID.

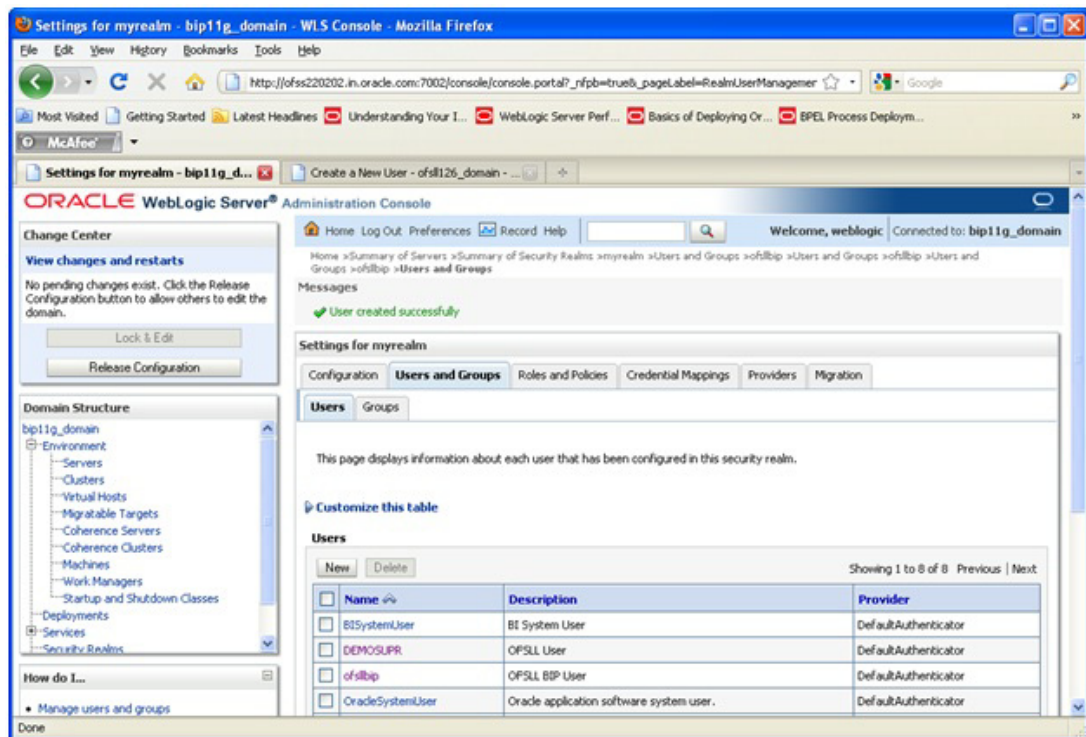
To create User ID:

1. Login to BIP Domain (<http://hostname:port/console>).
2. Click **Security Realms** and then select **myrealm**.
3. Select **Users** under **Users and Groups**.
4. Click **New**. The following window is displayed.

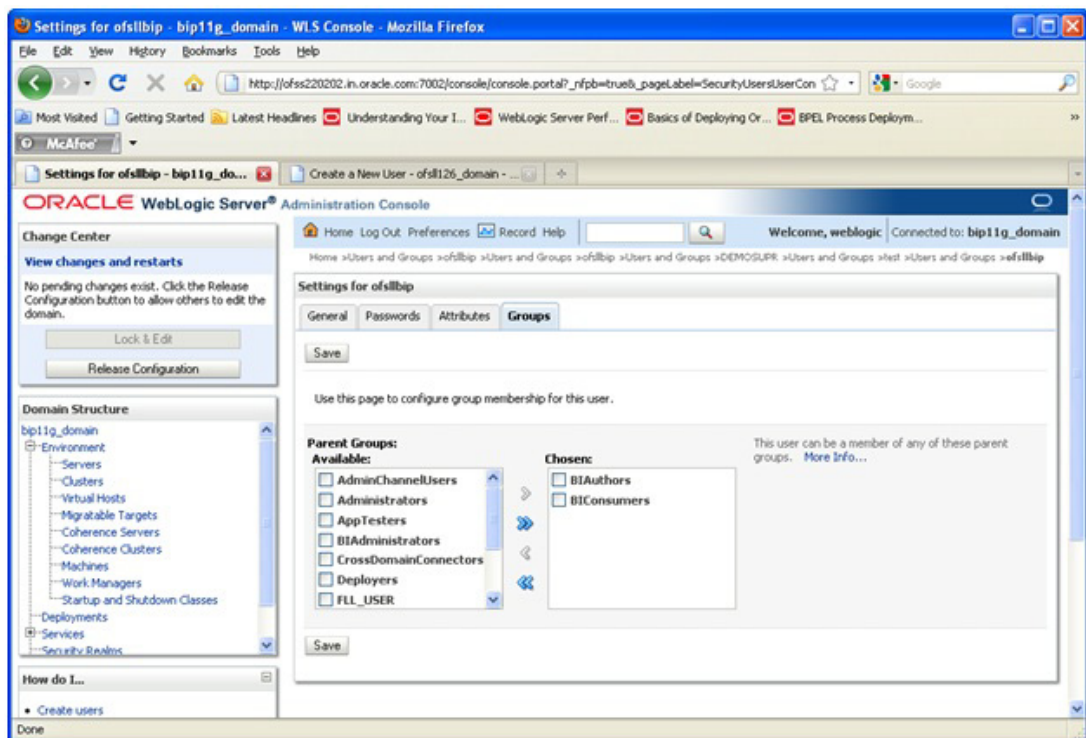


Field	Action
Name	Specify a valid name you need to maintain as User
Description	Provide description to the specified user
Provider	Select a provider for the user, from drop-down list.
Password	Specify a valid password you need to assign to the specified user.
Confirm Password	Retype the password to confirm it.

5. Click OK. The following window is displays the new User ID, which was created.



6. Click on the User you created and click **Groups** tab. The following window is displayed



7. Select the Group to which you wish to assign the User, from the list provided under **Parent Groups Available**. Select the following options and click the right arrow.

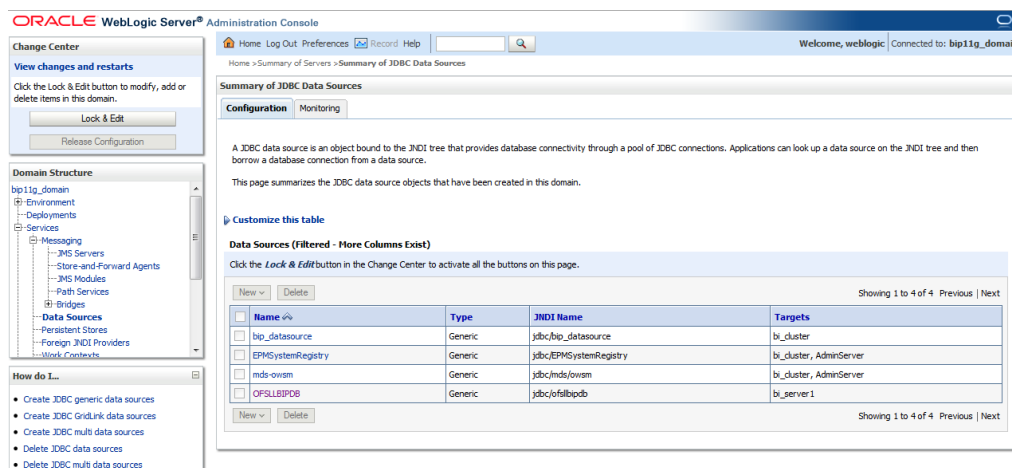
- BIAuthors
- B1Consumers

8. Click **Save**. The User is now mapped to the Group.

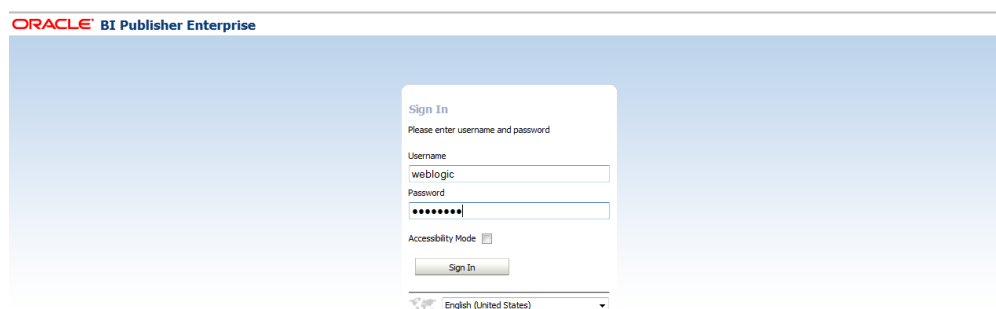
5. Creating BI Publisher Datasource

Create Data Source with JNDI as `jdbc/ofsllbipdb` on BI Publisher Domain i.e. `bp11g_domain` as discussed in 'Data Source Creation' chapter of 'Application Installation Guide'. Target the datasources to `bi_server1`.

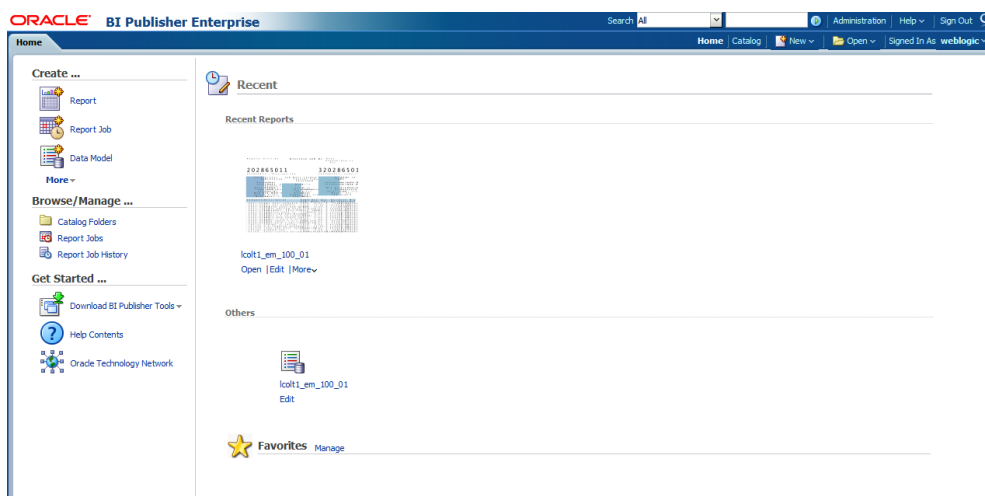
1. The console URL is <http://hostname:port/console>.



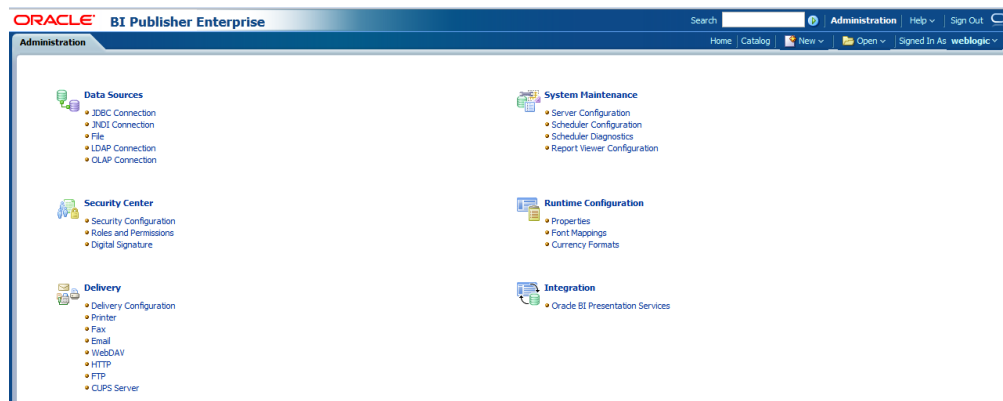
2. Then launch <http://hostname:port/xmlpserver>. The following window is displayed.



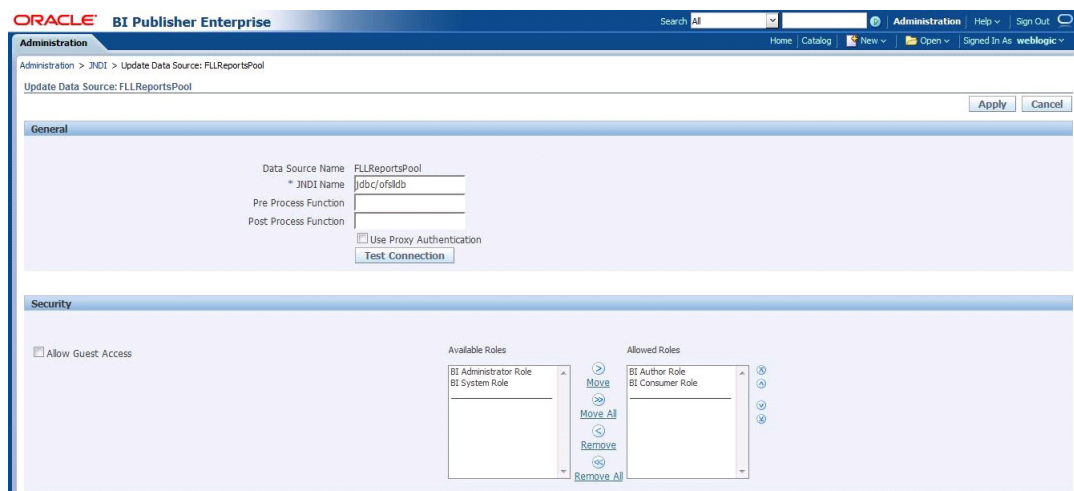
3. Login using the same credentials as WebLogic administration console to login.
4. The following window is displayed.



5. Click **Administration** in the header section. The following window is displayed.



6. Click **JNDI Connection**. The following window is displayed



7. Add Data Source **FLLReportsPool** with JNDI as **jdbc/ofsllbipdb**.
8. Under **Security** section, select **BI Author Role** and **BI Consumer Role** from **Available Roles** and assign them as **Allowed Roles**.

6. Importing Reports to BI Publisher Server

To import reports to BI Publisher Server:

1. Copy and extract the OFSLLReports.zip file to local area.
Assume you have extracted to /oracle/app/OFSLLReports
It extracts two folders datamodels and reports to /home/oracle/app/OFSLLReports
2. Extract the /oracle/app/Middleware/Oracle_BI1/clients/bipublisher/BIPCatalogUtil.zip to /oracle/app
Run following command
unzip /oracle/app/Middleware/Oracle_BI1/clients/bipublisher/BIPCatalogUtil.zip to /oracle/app
It creates the folder structure as follows.
/home/oracle/app/BIPCatalogUtil/bin
/home/oracle/app/BIPCatalogUtil/config
/home/oracle/app/BIPCatalogUtil/lib
3. Set the environment variables as below.

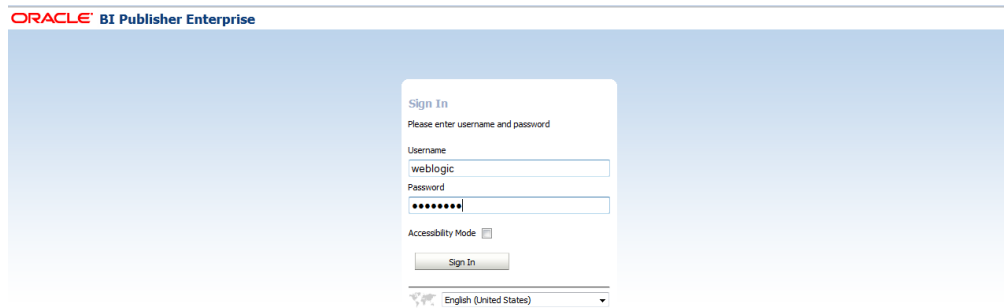
export BI_HOME	/oracle/app/Middleware/Oracle_BI1 (where we have installed BI Publisher)
export BI_UTIL_HOME	/home/oracle/app/BIPCatalogUtil (Path where BIPCatalogUtil.zip is extracted)
export path	\$BI_UTIL_HOME/bin:\$path
export BIP_LIB_DIR	\$ BI_UTIL_HOME/lib
export BIP_CLIENT_CONFIG	\$BI_UTIL_HOME/config
export JAVA_HOME	\$BI_HOME/jdk/bin

4. Edit \$ BIP_CLIENT_CONFIG/xmlp-client-config.xml
set your bip instance URL, username and password.
Sample xmlp-client-config.xml

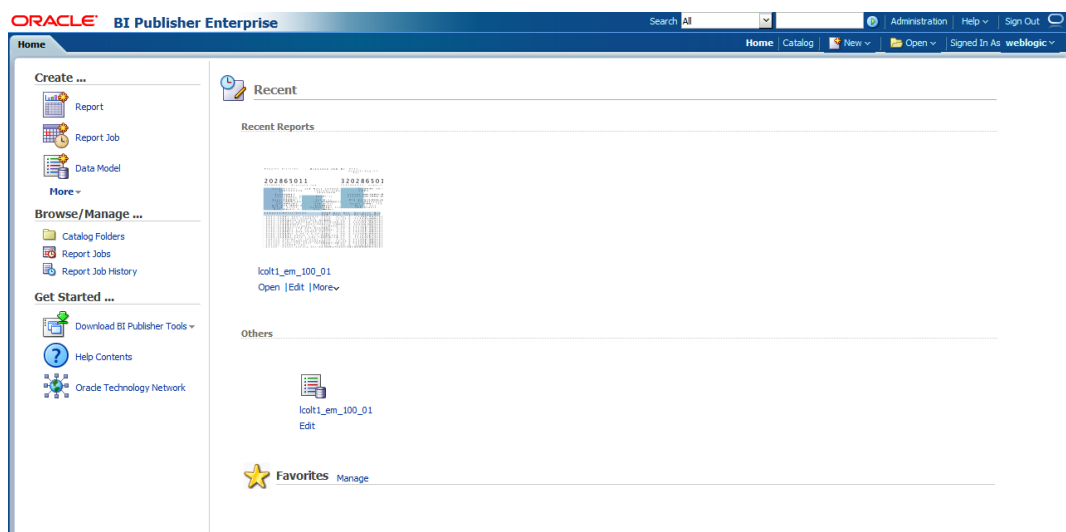
```
<?xml version="1.0" encoding="UTF-8"?>
<!DOCTYPE properties SYSTEM "http://java.sun.com/dtd/properties.dtd">
<properties>
    <comment>BIP Server Information</comment>
    <entry key="bipuri">http://localhost:9704/xmlpservlet/</entry>
    <entry key="username">weblogic</entry>
    <entry key="password">welcome1</entry>
</properties>
```

5. Run following command.
\$BI_UTIL_HOME/bin/BIPCatalogUtil.sh -import basedir=<folder where files are extracted> subfolders=true overwrite=true
Example: \$BI_UTIL_HOME/bin/BIPCatalogUtil.sh -import basedir=/home/oracle/app/OFSLLReports subfolders=true overwrite=true

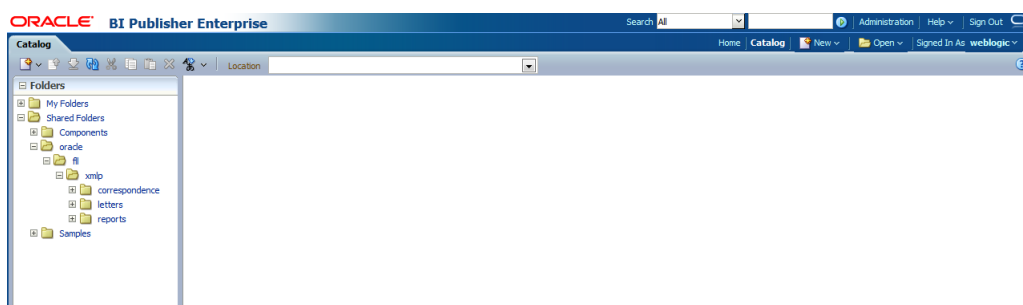
6. To verify whether the import is successful, launch report using <http://hostname:port/xmlpserver>



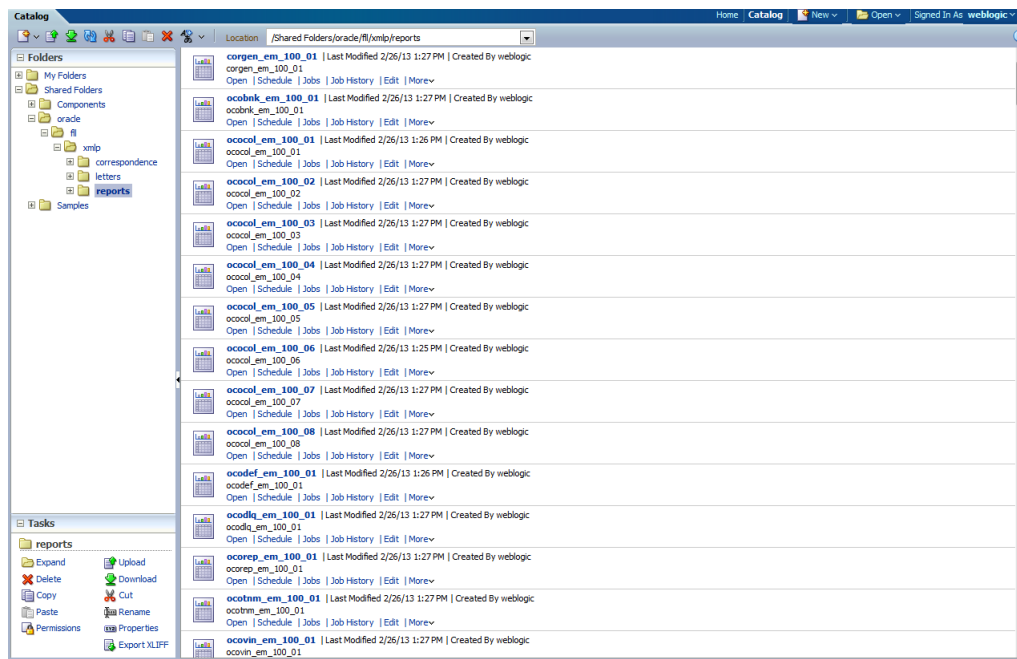
7. Login using the same credentials as WebLogic administration console.
8. The following window is displayed.



9. Click Catalog on the header. The following window is displayed with the directory structure on the left pane.



10. Click any folder to see the list of reports under the directory. The following window is displayed.





BI Publisher Installation Guide
April [2013]
Version 14.0.0.0.0

Oracle Financial Services Software Limited
Oracle Park
Off Western Express Highway
Goregaon (East)
Mumbai, Maharashtra 400 063
India

Worldwide Inquiries:
Phone: +91 22 6718 3000
Fax: +91 22 6718 3001
www.oracle.com/financialservices/

Copyright © [1998], [2013], Oracle and/or its affiliates. All rights reserved.

Oracle and Java are registered trademarks of Oracle and/or its affiliates. Other names may be trademarks of their respective owners.

U.S. GOVERNMENT END USERS: Oracle programs, including any operating system, integrated software, any programs installed on the hardware, and/or documentation, delivered to U.S. Government end users are "commercial computer software" pursuant to the applicable Federal Acquisition Regulation and agency-specific supplemental regulations. As such, use, duplication, disclosure, modification, and adaptation of the programs, including any operating system, integrated software, any programs installed on the hardware, and/or documentation, shall be subject to license terms and license restrictions applicable to the programs. No other rights are granted to the U.S. Government.

This software or hardware is developed for general use in a variety of information management applications. It is not developed or intended for use in any inherently dangerous applications, including applications that may create a risk of personal injury. If you use this software or hardware in dangerous applications, then you shall be responsible to take all appropriate failsafe, backup, redundancy, and other measures to ensure its safe use. Oracle Corporation and its affiliates disclaim any liability for any damages caused by use of this software or hardware in dangerous applications.

This software and related documentation are provided under a license agreement containing restrictions on use and disclosure and are protected by intellectual property laws. Except as expressly permitted in your license agreement or allowed by law, you may not use, copy, reproduce, translate, broadcast, modify, license, transmit, distribute, exhibit, perform, publish or display any part, in any form, or by any means. Reverse engineering, disassembly, or decompilation of this software, unless required by law for interoperability, is prohibited.

The information contained herein is subject to change without notice and is not warranted to be error-free. If you find any errors, please report them to us in writing.

This software or hardware and documentation may provide access to or information on content, products and services from third parties. Oracle Corporation and its affiliates are not responsible for and expressly disclaim all warranties of any kind with respect to third-party content, products, and services. Oracle Corporation and its affiliates will not be responsible for any loss, costs, or damages incurred due to your access to or use of third-party content, products, or services.