

Net-Net® 2610/2620 Quick Installation

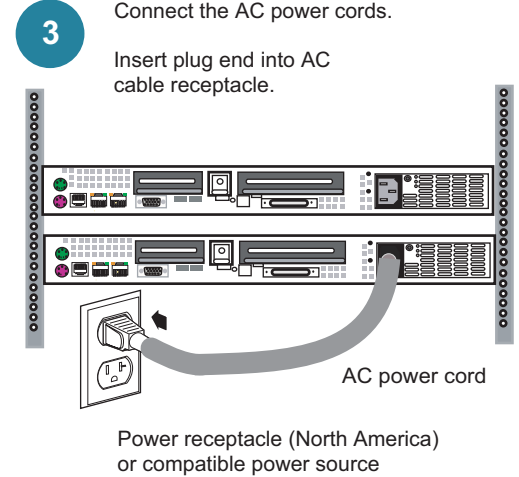
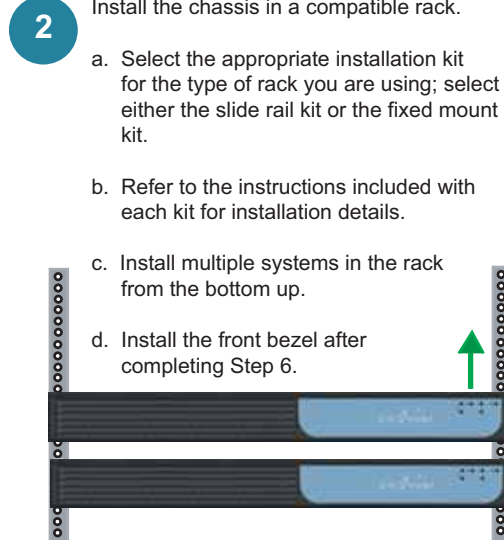
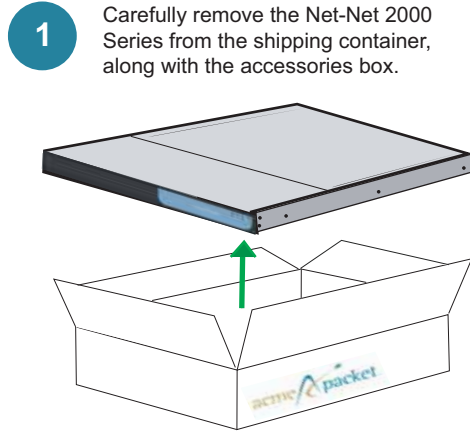


What's inside the box?

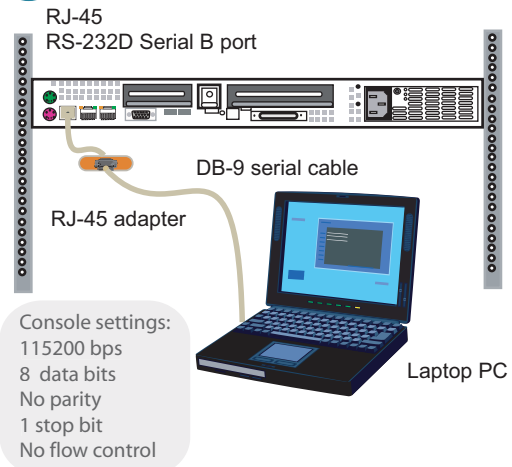
- Net-Net 2610 or 2620
- Power, console cables and related hardware, rack mounting kits

Net-Net OS-E and 2610/2620 installation references

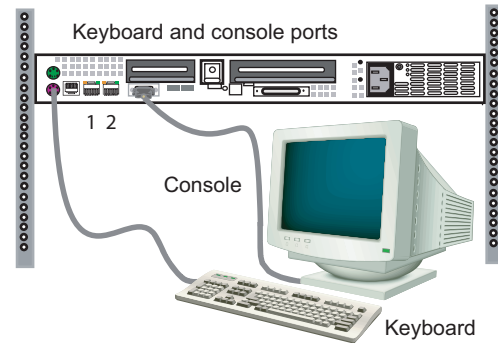
- *USB Creation and Commissioning Instructions*
- *Release Notes*
- *System Installation and Commissioning Guide*
- *Slide Rail Kit Installation*



4a Connect PC or terminal to serial port (ttyS1), or go to step 4b.



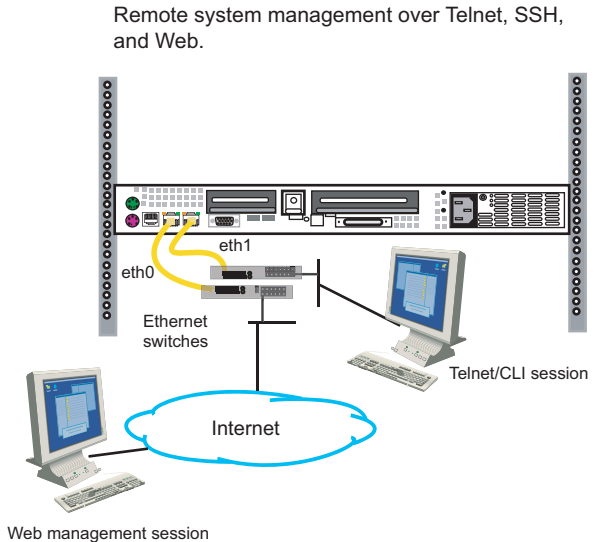
4b Connect VGA console and keyboard for local management.



Ethernet port mapping -- Left to right, top to bottom

1 = eth0	5 = eth4
2 = eth1	6 = eth5
3 = eth2	7 = eth6
4 = eth3	8 = eth7

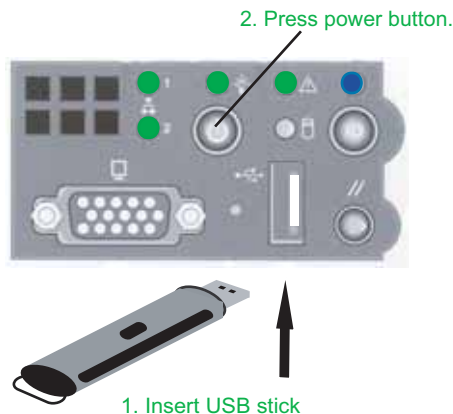
5 Install network cables for connectivity to communications servers and the external network.



6

Follow the steps covered in the *USB Creation and Commissioning Instructions* for information on creating a USB stick from the Acme Packet Net-Net OS-E software download. Included with the software download in PDF format, you will need these instructions to commission the system.

Remove the front bezel (if installed), insert the USB stick that you created, then turn on the system power. Check system LEDs.



Warning: DO NOT remove the USB stick until the system has completed the bootup sequence, which may take up to ten minutes.

See the *System Installation and Commissioning Guide* for LED information.

Replace the bezel and secure with the supplied locking key, if desired.

Acme Packet, Inc.
100 Crosby Drive
Bedford, MA 01730 USA
t 781-328-4400
f 781-275-8800
<http://www.acmepacket.com>

Last Updated: December 2010
Document Number: 400-1003-36

7

Start the CLI and run the setup script to enable and configure the management interface, establish an IP route (if setting up remotely), enable Web management access, and customize the CLI prompt. Every Net-Net 2000 Series system has a minimum of two Ethernet interfaces.

Any Ethernet interface can be used for management traffic. However, Acme Packet recommends the use of eth1, as eth0 is reserved for fault-tolerant clustering with other Net-Net 2000 Series platforms. Management traffic is also supported on any interface that is carrying private or public network traffic. This means that it would be possible to use eth1 to carry SIP traffic and management traffic.

```
NN-OS-E> config setup
set box\hostname: local
config box\interface: eth1
set box\interface eth1\ip a\ip-address: <ipAddress/mask>
config box\interface eth1\ip a\ssh (y or n)? y
config box\interface eth1\ip a\web (y or n)? y
config box\interface eth1\ip a\routing\route: <routeName>
set box\interface eth1\ip a\routing\route <routeName>\gateway:
<ipAddress>
set box\cli\prompt: NN-OS-E 2620>
Do you want to commit this setup script (y or n) y
Do you want to update the startup configuration (y or n)? y
NN-OS-E 2620>
```

8

Configure the Net-Net OS-E software, SIP servers and phones, sessions and policies.

Refer to the following Net-Net OS-E documents, available as downloads in PDF format:

- [Release Notes](#)
- [USB Creation and Commissioning Instructions](#)
- [System Installation and Commissioning Guide](#)
- [Using the Net-Net OS-E Management Tools](#)
- [System Administration Guide](#)
- [Session Services Configuration Guide](#)
- [Objects and Properties Reference](#)
- [Network Interface Card Installation](#)
- [System Operations and Troubleshooting](#)

NN2600
Net-Net 2610/2620 Quick Installation

2010 Acme Packet, Inc.
All rights reserved