

**Oracle Utilities Analytics**

**Quick Installation Guide**

Release 2.5.0.0.1

**E49000-02**

February 2014

Copyright © 2014, Oracle and/or its affiliates. All rights reserved.

This software and related documentation are provided under a license agreement containing restrictions on use and disclosure and are protected by intellectual property laws. Except as expressly permitted in your license agreement or allowed by law, you may not use, copy, reproduce, translate, broadcast, modify, license, transmit, distribute, exhibit, perform, publish, or display any part, in any form, or by any means. Reverse engineering, disassembly, or decompilation of this software, unless required by law for interoperability, is prohibited.

The information contained herein is subject to change without notice and is not warranted to be error-free. If you find any errors, please report them to us in writing.

If this is software or related documentation that is delivered to the U.S. Government or anyone licensing it on behalf of the U.S. Government, the following notice is applicable:

U.S. GOVERNMENT END USERS: Oracle programs, including any operating system, integrated software, any programs installed on the hardware, and/or documentation, delivered to U.S. Government end users are “commercial computer software” pursuant to the applicable Federal Acquisition Regulation and agency-specific supplemental regulations. As such, use, duplication, disclosure, modification, and adaptation of the programs, including any operating system, integrated software, any programs installed on the hardware, and/or documentation, shall be subject to license terms and license restrictions applicable to the programs. No other rights are granted to the U.S. Government.

This software or hardware is developed for general use in a variety of information management applications. It is not developed or intended for use in any inherently dangerous applications, including applications that may create a risk of personal injury. If you use this software or hardware in dangerous applications, then you shall be responsible to take all appropriate fail-safe, backup, redundancy, and other measures to ensure its safe use. Oracle Corporation and its affiliates disclaim any liability for any damages caused by use of this software or hardware in dangerous applications.

Oracle and Java are registered trademarks of Oracle and/or its affiliates. Other names may be trademarks of their respective owners.

Intel and Intel Xeon are trademarks or registered trademarks of Intel Corporation. All SPARC trademarks are used under license and are trademarks or registered trademarks of SPARC International, Inc. AMD, Opteron, the AMD logo, and the AMD Opteron logo are trademarks or registered trademarks of Advanced Micro Devices. UNIX is a registered trademark of The Open Group.

This software or hardware and documentation may provide access to or information on content, products, and services from third parties. Oracle Corporation and its affiliates are not responsible for and expressly disclaim all warranties of any kind with respect to third-party content, products, and services. Oracle Corporation and its affiliates will not be responsible for any loss, costs, or damages incurred due to your access to or use of third-party content, products, or services.

# Contents

---

---

<b>Preface</b> .....	<b>i-i</b>
Audience .....	i-i
Prerequisite Knowledge.....	i-i
Related Documents .....	i-ii
Conventions.....	i-ii
Acronyms .....	i-iii
<b>Chapter 1</b>	
<b>About Oracle Utilities Analytics</b> .....	<b>1-1</b>
About Oracle Utilities Extractors and Schema and Oracle Utilities Analytics Dashboards.....	1-1
About Oracle Utilities Analytics Installation.....	1-2
What's New in Oracle Utilities Analytics v2.5.0.0.1? .....	1-2
<b>Chapter 2</b>	
<b>Oracle Utilities Analytics Installation Overview</b> .....	<b>2-3</b>
Application Architecture .....	2-4
Installation Types.....	2-5
Initial Installation.....	2-5
Upgrade.....	2-5
Demo Installation.....	2-6
Installation Components .....	2-6
Installation Scenarios .....	2-7
Media Pack Components.....	2-12
Documentation Packages.....	2-12
Installation Packages.....	2-13
Supported Source Application Versions .....	2-13
<b>Chapter 3</b>	
<b>System Requirement and Supported Platforms</b> .....	<b>3-15</b>
Operating Systems and Application Servers.....	3-16
Additional Notes on Supported Platforms.....	3-17
Oracle Unbreakable Enterprise Kernel .....	3-17
Oracle Database Server .....	3-17
Oracle VM Support.....	3-17
Oracle Support Policy on VMWare .....	3-17
<b>Chapter 4</b>	
<b>Planning the Oracle Utilities Analytics Installation</b> .....	<b>4-16</b>
Prerequisite Software.....	4-16
Prerequisite Software for Oracle Utilities Analytics Database Component.....	4-17
Prerequisite Software for Oracle Utilities Analytics ELT Component based on Oracle Data Integrator.....	4-17
Prerequisite Software for Oracle Utilities Analytics ETL Component based on Oracle Warehouse Builder..	4-17
Prerequisite Software for Oracle Utilities Analytics Dashboard Component .....	4-17
Prerequisite Software for Oracle Utilities Analytics Admin Tool Component .....	4-18
Installation Checklist.....	4-18

---

<b>Chapter 5</b>	
Oracle Utilities Analytics Initial Installation .....	5-19
<b>Chapter 6</b>	
Upgrading Oracle Utilities Analytics .....	6-20
<b>Chapter 7</b>	
Installing Demo Database .....	7-21
Oracle Utilities Analytics Demo Database Component Installation .....	7-21
Oracle Utilities Analytics Dashboard Component Installation .....	7-21
<b>Appendix A</b>	
Additional Resources .....	A-1
Contacting Oracle Support .....	A-1
Supported Knowledge Articles .....	A-1
<b>Appendix B</b>	
License and Copyright Notices .....	B-1
Oracle Database Licensing and Optional Features .....	B-1
Oracle Warehouse Builder Licensing and Optional Features .....	B-1
Disabling the Optional Features in Oracle Warehouse Builder .....	B-2
Oracle GoldenGate Licensing .....	B-3

---

---

# Preface

This guide describes how to install and configure Oracle Utilities Extractors and Schema and Oracle Utilities Analytics Dashboards v2.5.0.0.1, including:

- **Audience**
- **Prerequisite Knowledge**
- **Related Documents**
- **Conventions**
- **Acronyms**

## Audience

This guide is intended for anyone interested in the process of installing, upgrading or configuring Oracle Utilities Extractors and Schema and Oracle Utilities Analytics Dashboards v2.5.0.0.1.

## Prerequisite Knowledge

Oracle Utilities Extractors and Schema and Oracle Utilities Analytics Dashboards use several technologies. You should have knowledge of the following before configuring and administering Oracle Utilities Analytics:

- Oracle Data Warehouse concepts:  
[http://docs.oracle.com/cd/E11882\\_01/server.112/e25554/toc.htm](http://docs.oracle.com/cd/E11882_01/server.112/e25554/toc.htm)
- Oracle Warehouse Builder:  
[http://docs.oracle.com/cd/E11882\\_01/owb.112/e10581/toc.htm](http://docs.oracle.com/cd/E11882_01/owb.112/e10581/toc.htm)
- Oracle Data Integrator:  
[http://docs.oracle.com/cd/E21764\\_01/integrate.1111/e12641/overview.htm](http://docs.oracle.com/cd/E21764_01/integrate.1111/e12641/overview.htm)
- Oracle GoldenGate:  
[http://docs.oracle.com/cd/E35209\\_01/doc.1121/e29397.pdf](http://docs.oracle.com/cd/E35209_01/doc.1121/e29397.pdf)
- Oracle WebLogic Server:  
[http://docs.oracle.com/cd/E15051\\_01/wls/docs103/pdf.html](http://docs.oracle.com/cd/E15051_01/wls/docs103/pdf.html)
- Oracle Business Intelligence Enterprise Edition:  
[http://docs.oracle.com/cd/E28280\\_01/bi.1111/e10544/toc.htm](http://docs.oracle.com/cd/E28280_01/bi.1111/e10544/toc.htm)

---

## Related Documents

For more information, refer to the following documents in the Oracle Utilities Analytics documentation library:

- *Oracle Utilities Analytics for Oracle Utilities Extractors and Schema and Oracle Utilities Analytics Dashboards User's Guide*
- *Oracle Utilities Analytics for Oracle Utilities Extractors and Schema and Oracle Utilities Analytics Dashboards Administration Guide*
- *Oracle Utilities Analytics for Oracle Utilities Extractors and Schema and Oracle Utilities Analytics Dashboards Installation Guide*
- *Oracle Utilities Analytics for Oracle Utilities Extractors and Schema and Oracle Utilities Analytics Dashboards Quick Install Guide*
- *Oracle Utilities Analytics for Oracle Utilities Extractors and Schema and Oracle Utilities Analytics Dashboards Release Notes*
- *Oracle Utilities Analytics Dashboards for Oracle Utilities Meter Data Analytics Metric Reference Guide*
- *Oracle Utilities Analytics Dashboards for Oracle Utilities Customer Analytics, Revenue Analytics, and Credit & Collections Analytics Metric Reference Guide*
- *Oracle Utilities Analytics Dashboards for Oracle Utilities Exception Analytics Metric Reference Guide*
- *Oracle Utilities Analytics Dashboards for Oracle Utilities Mobile Workforce Analytics Metric Reference Guide*
- *Oracle Utilities Analytics Dashboards for Oracle Utilities Distribution Analytics and Outage Analytics Metric Reference Guide*
- *Oracle Utilities Analytics Dashboards for Oracle Utilities Work and Asset Analytics Metric Reference Guide*
- *Oracle Utilities Analytics Dashboards for Oracle Utilities Operational Device Analytics Metric Reference Guide*
- *Oracle Utilities Extractors and Schema for Oracle Utilities Customer Care and Billing Data Mapping Guide*
- *Oracle Utilities Extractors and Schema for Oracle Utilities Meter Data Management Data Mapping Guide*
- *Oracle Utilities Extractors and Schema for Oracle Utilities Mobile Workforce Management Data Mapping Guide*
- *Oracle Utilities Extractors and Schema for Oracle Utilities Network Management System Data Mapping Guide*
- *Oracle Utilities Extractors and Schema for Oracle Utilities Operational Device Management Data Mapping Guide*
- *Oracle Utilities Extractors and Schema for Oracle Utilities Work & Asset Management Data Mapping Guide*

## Conventions

The following text conventions are used in this document:

<b>Convention</b>	<b>Meaning</b>
<b>boldface</b>	Boldface type indicates graphical user interface elements associated with an action, or terms defined in text or the glossary.

---

Convention	Meaning
<i>italic</i>	Italic type indicates book titles, emphasis, or placeholder variables for which you supply particular values.
monospace	Monospace type indicates commands within a paragraph, URLs, code in examples, text that appears on the screen, or text that you enter.

## Acronyms

The list of acronyms used in this guide is as explained below:

- **APEX**: Oracle Application Express
- **CC&B**: Oracle Utilities Customer Care and Billing
- **CDC**: Changed Data Capture
- **ELT**: Extraction, Loading and Transformation
- **ETL**: Extraction, Transformation, and Loading
- **MDM**: Oracle Utilities Meter Data Management
- **MWM**: Oracle Utilities Mobile Workforce Management
- **NMS**: Oracle Utilities Network Management System
- **OBIEE**: Oracle Business Intelligence Enterprise Edition
- **ODI**: Oracle Data Integrator
- **ODM**: Oracle Utilities Operational Device Management
- **OGG**: Oracle GoldenGate
- **OUA**: Oracle Utilities Analytics
- **OWB**: Oracle Warehouse Builder
- **WAM**: Oracle Utilities Work and Asset Management

# Chapter 1

---

## About Oracle Utilities Analytics

This chapter provides an overview of the installation of Oracle Utilities Analytics. This includes:

- **About Oracle Utilities Extractors and Schema and Oracle Utilities Analytics Dashboards**
- **About Oracle Utilities Analytics Installation**
- **What's New in Oracle Utilities Analytics v2.5.0.0.1?**

### About Oracle Utilities Extractors and Schema and Oracle Utilities Analytics Dashboards

Oracle Utilities Extractors and Schema provides the out of the box extraction and transformation, and loads data from the source application to the data warehouse. Oracle Warehouse Builder is used to validate and load the data to the data warehouse.

With Oracle Utilities Analytics v2.5.0.0.1, the extraction, transformation and load processes have started to move to Oracle GoldenGate (OGG) and Oracle Data Integrator (ODI). Over next few releases, all the old extractors will move from Oracle Warehouse Builder to Oracle Data Integrator.

In release 2.5.0.0.1, the following products support Oracle GoldenGate and Oracle Data Integrator based Extract, Load and Transform (ELT):

- Oracle Utilities Customer Care & Billing (CCB)
- Oracle Utilities Operational Device Management (ODM)

The following products will continue to use Oracle Warehouse Builder based Extract, Transform and Load (ETL) in the release 2.5.0.0.1:

- Oracle Utilities Network Management System (NMS)
- Oracle Utilities Work and Asset Management (WAM)
- Oracle Utilities Meter Data Management (MDM)
- Oracle Utilities Mobile Workforce Management (MWM)

Oracle Utilities Analytics Dashboards provides the out of the box reports based on Oracle Business Intelligence Enterprise Edition.

**Note:** Refer to **Oracle Utilities Analytics Metric Reference Guides** for comprehensive list of all the reports.

This guide helps you install, upgrade, configure Oracle Utilities Extractors and Schema v2.5.0.0.1, and Oracle Utilities Analytics Dashboards v2.5.0.0.1. Unless otherwise stated, this guide would



---

refer to these two products together as Oracle Utilities Analytics. If any topic is specific to only one of the products, then it would be specifically mentioned.

## About Oracle Utilities Analytics Installation

Oracle Utilities Analytics (OUA) v2.5.0.0.1 installation consists of the following components, each of which needs to be installed for a successful installation:

- Star schema definitions
- Extract, Load and Transform (ELT) process built on Oracle Data Integrator (ODI)
  - Note 1:** In this release of Oracle Utilities Analytics v2.5.0.0.1, Oracle Data Integrator based ELT component is only supported for Oracle Utilities Operational Device Management (ODM) and Oracle Utilities Customer Care and Billing (CC&B) source applications.
  - Note 2:** Oracle GoldenGate (OGG) is utilized to capture the data and this is required only for Oracle Data Integrator based ELT.
- Extract, Transform and Load (ETL) process built on Oracle Warehouse Builder (OWB)
  - Note:** In this release of Oracle Utilities Analytics v2.5.0.0.1, Oracle Warehouse Builder based ETL component is supported for Oracle Utilities Network Management System (NMS), Oracle Utilities Work and Asset Management (WAM), Oracle Utilities Meter Data Management (MDM) and Oracle Utilities Mobile Workforce Management (MWM) source applications.
- Pre-built analytics' dashboards based on Oracle Business Intelligence Enterprise Edition (OBIEE)
- Admin tool

## What's New in Oracle Utilities Analytics v2.5.0.0.1?

Oracle Utilities Analytics is a set of star schemas, graphic templates, and data processing programs that allows you to build a Business Intelligence (BI) solution to meet your organization's analytic requirements.

With this new release of Oracle Utilities Analytics v2.5.0.0.1, the product has started the process of migrating from Oracle Warehouse Builder (OWB) based ETL to Oracle Data Integrator (ODI) based ELT. This migration is planned in a phased manner, spanning across several releases over a period of time. During this migration cycle, ETL for some of the source applications will continue to use Oracle Warehouse Builder, while others will use Oracle Data Integrator.

**Note:** For information about the new and enhanced products, see *Oracle Utilities Analytics for Oracle Utilities Extractors and Schema and Oracle Utilities Analytics Dashboards Release Notes*.

Visit My Oracle Support (<http://support.oracle.com>) for the most recent service packs and patches for this release to ensure you have the most current version of this product.

# Chapter 2

---

## Oracle Utilities Analytics Installation Overview

This chapter gives a detailed overview of Oracle Utilities Analytics installation. It includes the following sections:

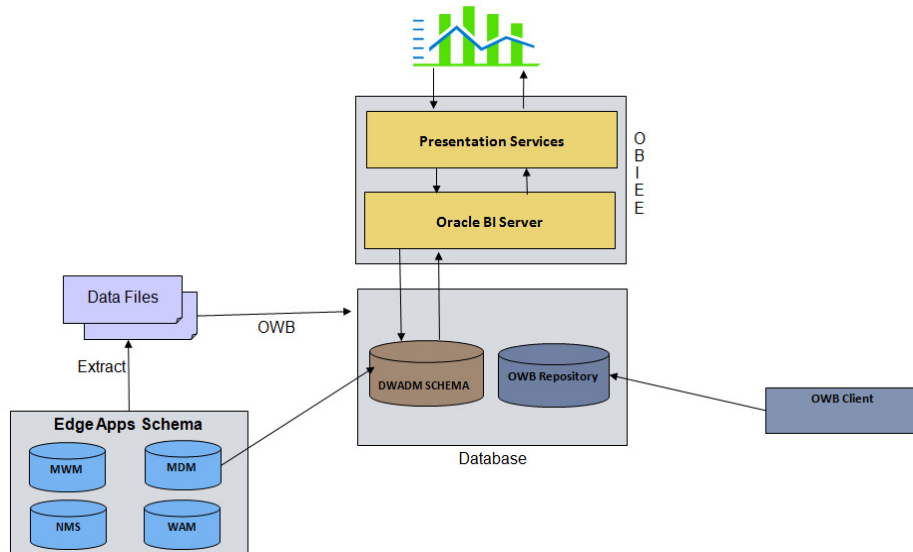
- **Application Architecture**
- **Installation Types**
- **Installation Components**
- **Installation Scenarios**
- **Media Pack Components**
- **Supported Source Application Versions**

# Application Architecture

The following diagram shows the architecture of the Oracle Utilities Analytics product when using Extract, Transform and Load (ETL) based on Oracle Warehouse Builder.

**Note:** Applicable only if you have installed any one of the edge applications such as, Oracle Utilities Network Management System, Oracle Utilities Work and Asset Management, Oracle Utilities Mobile Workforce Management, or Oracle Utilities Meter Data Management.

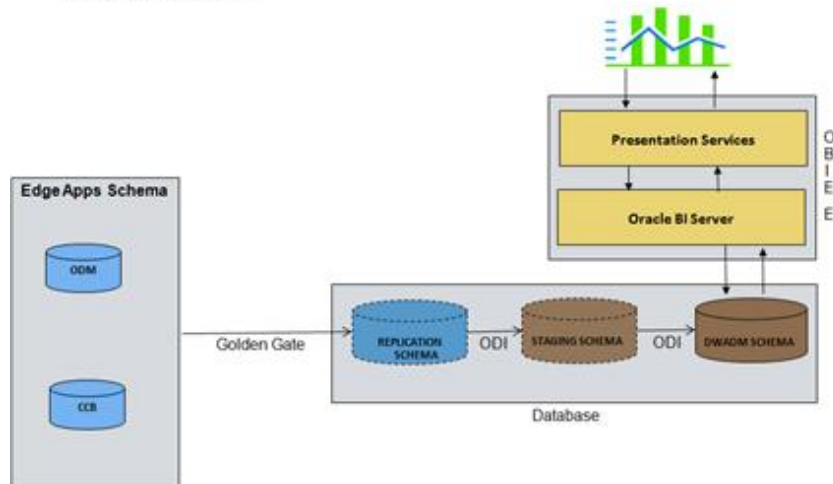
## Architecture Overview OWB based ETL



The following diagram shows the architecture of the Oracle Utilities Analytics product when using Extract, Load and Transform (ELT) based on Oracle Data Integrator.

**Note:** Applicable only if you have installed Oracle Utilities Operational Device Management, or Oracle Utilities Customer Care and Billing.

## Architecture Overview ODI based ETL



---

## Installation Types

The first step in the installation procedure is to determine the installation type based on the installation scenario. The following are the possible installation types:

- **Initial Installation**, an installation from scratch
- **Upgrade**, an upgrade from an earlier version to Oracle Utilities Analytics v2.5.0.0.1
- **Demo Installation**, an installation with pre-populated demo data

The following sections describe each of these installations in detail:

### Initial Installation

This installation type is applicable when installing Oracle Utilities Analytics for the first time or from the scratch. Each of the following components should be installed during an initial installation:

- Oracle Utilities Analytics Database component.
- Oracle Utilities Analytics ELT component based on Oracle Data Integrator (applicable only if you have installed Oracle Utilities Operational Device Management, or Oracle Utilities Customer Care and Billing).
- Oracle Utilities Analytics ETL component based on Oracle Warehouse Builder (applicable only if you have installed any one of the edge applications such as, Oracle Utilities Network Management System, Oracle Utilities Work and Asset Management, Oracle Utilities Mobile Workforce Management, or Oracle Utilities Meter Data Management).
- Oracle Utilities Analytics Dashboard component
- Oracle Utilities Analytics Admin tool component (applicable only if you use Oracle Data Integrator based ELT).

**Note:** Refer to the chapter **Oracle Utilities Analytics Initial Installation** in *Oracle Utilities Analytics for Oracle Utilities Extractors and Schema and Oracle Utilities Analytics Dashboards Installation Guide* for the steps involved in installing each of the above components.

### Upgrade

This installation type is applicable when upgrading to Oracle Utilities Analytics v2.5.0.0.1 from an earlier version.

**Note:** Refer to the section **Supported Upgrade Paths** in *Oracle Utilities Analytics for Oracle Utilities Extractors and Schema and Oracle Utilities Analytics Dashboards Installation Guide* to find out how to upgrade of your particular version is supported.

Each of the following components should be installed during an upgrade installation.

- Oracle Utilities Analytics Database component.
- Oracle Utilities Analytics ELT component based on Oracle Data Integrator (applicable only if you have installed Oracle Utilities Operational Device Management, or Oracle Utilities Customer Care and Billing).
- Oracle Utilities Analytics ETL component based on Oracle Warehouse Builder (applicable only if you have installed any one of the edge applications such as, Oracle Utilities Network Management System, Oracle Utilities Work and Asset Management, Oracle Utilities Mobile Workforce Management, or Oracle Utilities Meter Data Management).
- Oracle Utilities Analytics Dashboard component

- 
- Oracle Utilities Analytics Admin tool component (applicable only if you use Oracle Data Integrator based ELT).

**Note:** Refer to the chapter **Upgrading Oracle Utilities Analytics for Oracle Utilities Extractors and Schema and Oracle Utilities Analytics Dashboards** in *Oracle Utilities Analytics for Oracle Utilities Extractors and Schema and Oracle Utilities Analytics Dashboards Installation Guide* for the steps involved in upgrading each of the required components.

## Demo Installation

This installation type is applicable when installing the demo database component of Oracle Utilities Analytics Dashboards for demonstration, or training purposes. The following components should be installed for a demo installation:

- Oracle Utilities Analytics Demo Database component
- Oracle Utilities Analytics Dashboard components

**Note:** Refer to the chapter **Demo Installation Procedure** in *Oracle Utilities Analytics for Oracle Utilities Extractors and Schema and Oracle Utilities Analytics Dashboards Installation Guide* for the steps involved in installing each of the required components.

## Installation Components

The Oracle Utilities Extractors and Schema v2.5.0.0.1 product installation consists of the following components:

**Note:** Each of the components listed below has to be installed to complete the Oracle Utilities Analytics installation.

- Oracle Utilities Analytics Database component containing star schemas and product metadata
- Oracle Utilities Analytics ELT component based on Oracle Data Integrator (ODI)

**Note:** Oracle Utilities Analytics ELT component based on Oracle Data Integrator should be installed on the database server. This installation is required only if you are installing Oracle Utilities Operational Device Extractor and Schema, or Oracle Utilities Customer Care and Billing Extractor and Schema.

- Oracle Utilities Analytics ETL components based on Oracle Warehouse Builder

**Note:** Oracle Utilities Analytics ETL component based on Oracle Warehouse Builder should be installed on a database server. This is applicable if you have installed extractor and schema for edge application products other than Oracle Utilities Operational Device Management (ODM) and Oracle Utilities Customer Care and Billing (CC&B).

- Oracle Utilities Analytics Admin tool component installation

The Oracle Utilities Analytics Dashboards v2.5.0.0.1 product installation consists of the following components:

**Note:** Each of the components listed below has to be installed to complete the Oracle Utilities Analytics installation.

- Oracle Utilities Analytics Dashboards components and answers based on Oracle Business Intelligence Enterprise Edition

**Note:** Oracle Utilities Analytics Dashboard components should be installed where Oracle Business Intelligence Enterprise Edition is installed on the server.

---

Oracle Utilities Analytics Dashboards also include the demo database with pre-populated data that can be used for training or demonstration purposes. Refer to the chapter **Demo Installation Procedure** in *Oracle Utilities Analytics for Oracle Utilities Extractors and Schema and Oracle Utilities Analytics Dashboards Installation Guide* for the details.

## Installation Scenarios

The following installation scenarios are discussed with the respective flow chart diagrams:

- **Installation Scenario 1: Oracle Warehouse Builder based on ETL**

In this scenario, initial installation of ETL component is based on Oracle Warehouse Builder. This is supported for the following source applications:

- Oracle Utilities Network Management System (NMS)
- Oracle Utilities Work and Asset Management (WAM)
- Oracle Utilities Meter Data Management (MDM)
- Oracle Utilities Mobile Workforce Management (MWM)

- **Installation Scenario 2: Oracle Data Integrator based on ELT**

In this scenario, initial installation of ELT component is based on Oracle Data Integrator and Oracle GoldenGate. This is supported for the following source applications:

- Oracle Utilities Operational Device Management (ODM)
- Oracle Utilities Customer Care and Billing (CC&B)

- **Installation Scenario 3: ETL based on Oracle Warehouse Builder and Oracle Data Integrator:**

Both Oracle Warehouse Builder based ETL and Oracle Data Integrator based ELT are needed. This scenario is applicable when you have edge applications from both the scenarios mentioned above.

- **Installation Scenario 4: Upgrade**

This scenario is applicable to the users who are upgrading to Oracle Utilities Analytics v2.5.0.0.1 from an earlier released version.

**Note:** See **Media Pack Components** for the list of components comprising the Oracle Utilities Analytics product.

**Note:** See **Supported Source Application Versions** for the supported source application versions. Certain prerequisite software may need to be installed before installing each of these components.

**Note:** See **Prerequisite Software** for the list of prerequisite software necessary for installing each component.

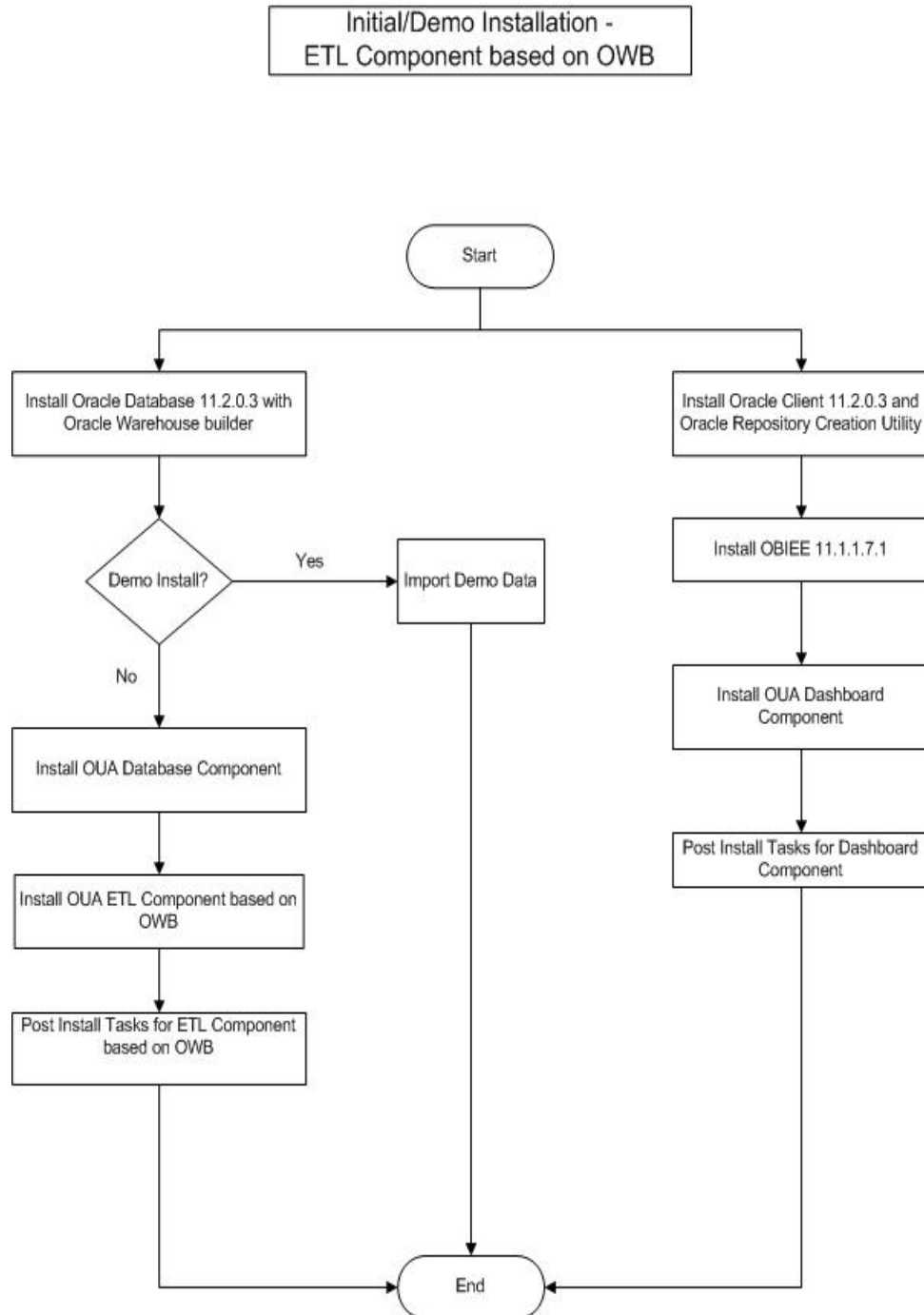
### **Installation Scenario 1: Oracle Warehouse Builder based on ETL**

This scenario provides an overview of the installation steps required if you are installing products those use Oracle Warehouse Builder based ETL:

- Oracle Utilities Network Management System (NMS)
- Oracle Utilities Work and Asset Management (WAM)
- Oracle Utilities Meter Data Management (MDM)
- Oracle Utilities Mobile Workforce Management (MWM)

If you are using any other edge applications, refer to the installation scenario 2 or 3, as the case may be.

The following diagram shows the workflow for the initial installation for ETL components based on Oracle Warehouse Builder:



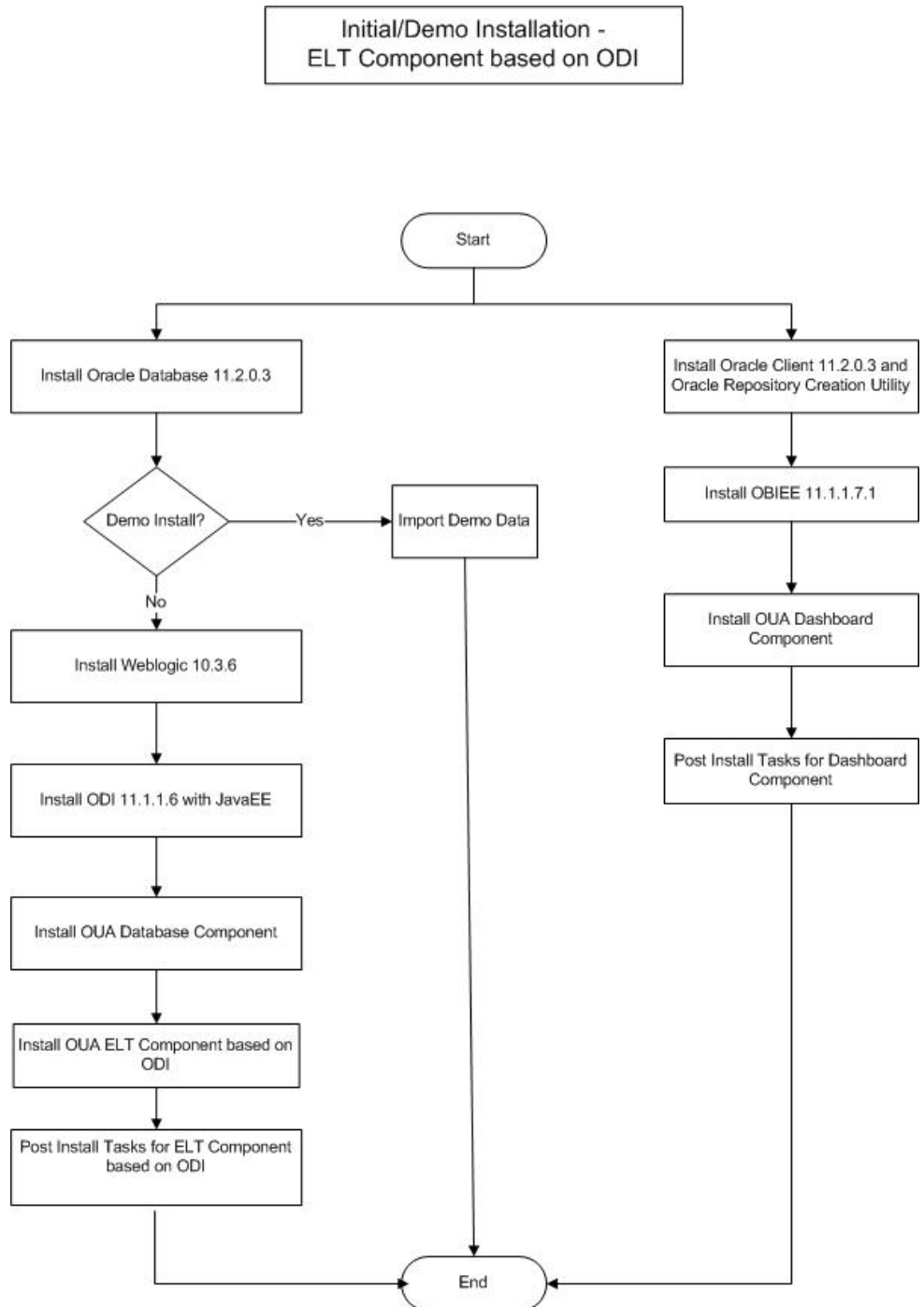
## Installation Scenario 2: Oracle Data Integrator based on ELT

This scenario provides an overview of the installation steps required if you are installing products those use Oracle Data Integrator based ELT:

- Oracle Utilities Operational Device Management (ODM)
- Oracle Utilities Customer Care and Billing (CC&B)

If you are using any other edge applications, refer to Installation Scenario 1 or 3, as the case may be.

The following diagram shows the workflow for the initial installation process for the ELT component based on Oracle Data Integrator:





---

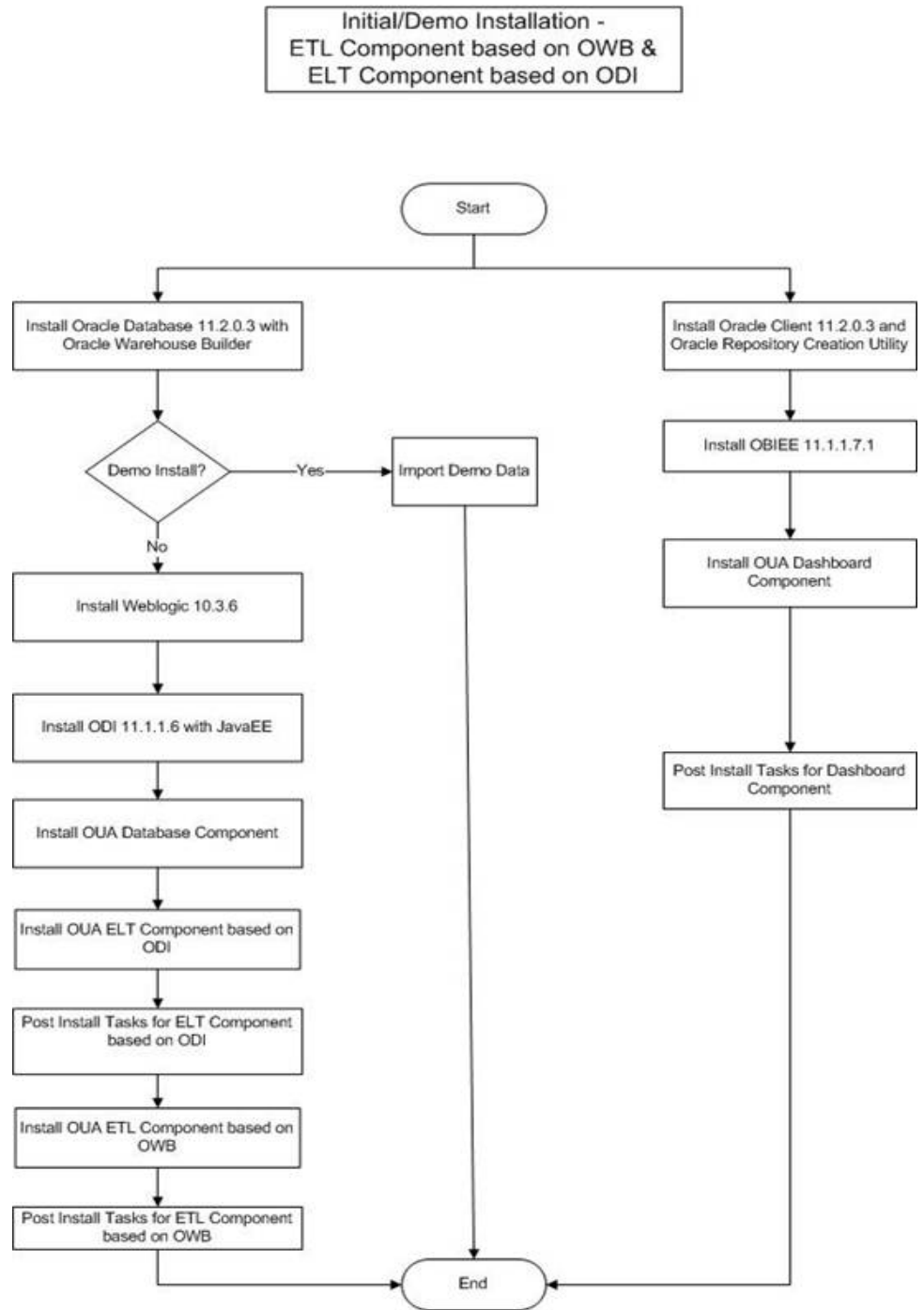
### **Installation Scenario 3: ETL based on Oracle Warehouse Builder and Oracle Data Integrator**

- This scenario provides an overview of the installation steps required if you are installing ETL for the combination of edge applications mentioned in scenario 1 and 2, i.e., one or more edge applications from:
  - Oracle Utilities Network Management System (NMS)
  - Oracle Utilities Work and Asset Management (WAM)
  - Oracle Utilities Meter Data Management (MDM)
  - Oracle Utilities Mobile Workforce Management (MWM)

As well as one or more from:

- Oracle Utilities Operational Device Management (ODM)
- Oracle Utilities Customer Care and Billing (CC&B)

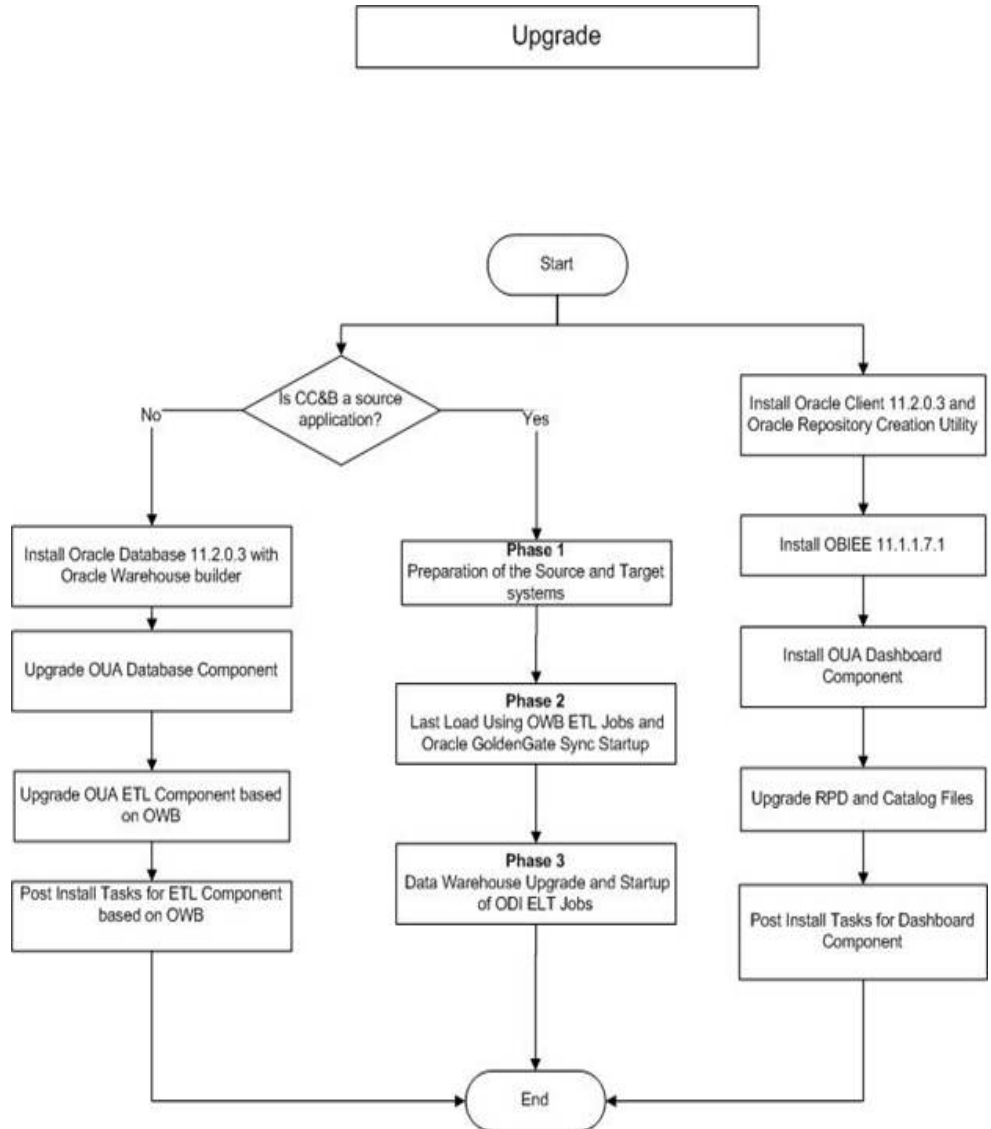
The following diagram shows the workflow for the initial installation process for the ETL components based on Oracle Warehouse Builder as well as Oracle Data Integrator:



## Installation Scenario 4: Upgrade

This installation type is for the users who are upgrading from an earlier version of Oracle Utilities Analytics to Oracle Utilities Analytics v2.5.0.0.1.

The following figure shows the workflow for the upgrade process:



## Media Pack Components

Oracle Utilities Analytics v2.5.0.0.1 media pack consists of the following documentation and installation packages:

### Documentation Packages

- *Oracle Utilities Analytics v2.5.0.0.1 Release Notes*
- *Oracle Utilities Analytics v2.5.0.0.1 Quick Install Guide*
- *Oracle Utilities Analytics v2.5.0.0.1 Installation Guide and Configuration Guide*
- *Oracle Utilities Analytics v2.5.0.0.1 User's Guide*

---

## Installation Packages

- *Oracle Utilities Analytics V2.5.0.0.1 Dashboard Component Multiplatform*
- *Oracle Utilities Analytics V2.5.0.0.1 ETL Component Based on OWB Multiplatform*
- *Oracle Utilities Analytics V2.5.0.0.1 ETL Component Based on ODI Multiplatform*
- *Oracle Utilities Analytics V2.5.0.0.1 Oracle Database Multiplatform*
- *Oracle Utilities Analytics V2.5.0.0.1 Demo Data*

## Supported Source Application Versions

The following are the supported source application versions:

<b>Source Application</b>	<b>Version</b>
Oracle Utilities Customer Care and Billing	2.4.0.1 + Single fix patch 17711271
Oracle Utilities Network Management System	1.9.1 1.10.0.3.1 1.11.0.1 1.12
Oracle Utilities Work and Asset Management	1.9.1
Oracle Utilities Meter Data Management	2.0.1 SP8 + Single fix patches 14741869, 15983267 + Framework patch 14741833  2.0.1 SP9  2.1.0
Oracle Utilities Mobile Workforce Management	2.1.0 SP 4 +Single Fix patch 14791886 + Framework patch 14741833
Oracle Utilities Operational Device Management	2.0.1.1

# Chapter 3

---

## System Requirement and Supported Platforms

This section gives an overview of the tiers on which the product is implemented and shows each of the operating system/server combinations that the product is certified for. It includes:

- **Operating Systems and Application Servers**
- **Additional Notes on Supported Platforms**

# Operating Systems and Application Servers

Oracle Utilities Analytics v2.5.0.0.1 installation is certified to operate on many operating system, application server, and database server combinations.

The following table details the minimum versions of the browser, operating system, and application server combinations on which Oracle Utilities Analytics v2.5.0.0.1 has been tested and certified:

Browser	Operating System (Client)	Operating System (Server)	Chipset	Application Server	Oracle Business Intelligence Enterprise Edition (OBIEE)	Oracle Data Integrator (ODI)	Oracle GoldenGate	Database
IE 9.x Firefox 17+	Windows 7 (64 bit)	AIX 7.1 (64-bit)	Power 64-bit	WebLogic 10.3.6	11.1.1.7.1	11.1.1.6	11.2.1.0.5_2	Oracle 11.2.0.3
		Oracle Enterprise Linux 6.3 (64-bit) / Red Hat Enterprise Linux 6.3 (64-bit)	x86_64	WebLogic 10.3.6	11.1.1.7.1	11.1.1.6	11.2.1.0.5_2	Oracle 11.2.0.3
		Oracle Enterprise Linux 6.4 (64-bit) / Red Hat Enterprise Linux 6.4 (64-bit)	x86_64	WebLogic 10.3.6	11.1.1.7.1	11.1.1.6	11.2.1.0.5_2	Oracle 11.2.0.3
		Oracle Solaris 11 (64-bit)	SPARC	WebLogic 10.3.6	11.1.1.7.1	11.1.1.6	11.2.1.0.5_2	Oracle 11.2.0.3
		Windows Server 2008 R2 (64-bit)	x86_64	WebLogic 10.3.6	11.1.1.7.1	11.1.1.6	11.2.1.0.5_2	Oracle 11.2.0.3

**Note:** Every new release of Oracle Utilities Analytics is certified against the latest versions of the required software, such as Oracle Business Intelligence Enterprise Edition, Oracle Data Integrator, Oracle GoldenGate, etc. However, any fourth digit change in these software versions is generally backward compatible, and is supported by the product.

You must have the following software listed out below:

**Note:** Oracle Warehouse Builder is installed as part of Oracle Database Enterprise Edition Server 11.2.0.3.

- Oracle Business Intelligence Enterprise Edition (OBIEE) is required for Oracle Utilities Analytics Dashboard.
- Oracle Data Integrator, Oracle GoldenGate, Oracle WebLogic and Oracle Application Express are required for Oracle Utilities Analytics ELT component based on Oracle Data Integrator.

---

## Additional Notes on Supported Platforms

The following topics are discussed in this section:

- **Oracle Unbreakable Enterprise Kernel**
- **Oracle Database Server**
- **Oracle VM Support**
- **Oracle Support Policy on VMWare**

### Oracle Unbreakable Enterprise Kernel

Oracle Utilities Analytics v2.5.0.0.1 is supported on Oracle Unbreakable Enterprise Kernel.

### Oracle Database Server

Oracle Utilities Analytics v2.5.0.0.1 is supported on Oracle Database Enterprise Edition Server 11.2.0.3 on any of the operating systems listed above.

**Note: Oracle Utilities Analytics v2.5.0.0.1 is supported on Oracle Database Server Standard Edition 11.2.0.3 only when using ELT component based on Oracle Data Integrator.**

### Oracle VM Support

Oracle Utilities Analytics v2.5.0.0.1 is supported on Oracle VM 2.2.2 for supported releases of Oracle Linux and Microsoft Windows operating systems.

### Oracle Support Policy on VMWare

Refer to knowledge base article ID 249212.1 on My Oracle Support for Oracle's support policy on VMWare.

<https://support.oracle.com>

# Chapter 4

---

## Planning the Oracle Utilities Analytics Installation

This chapter provides information about planning Oracle Utilities Analytics (OUA) installation v2.5.0.0.1, including:

- **Prerequisite Software**
- **Installation Checklist**

**Note:** In order to perform successful installation of the product, you must have experience of working on, or installing the following products:

- Oracle Database Server
- Oracle Business Intelligence Enterprise Edition
- Oracle Warehouse Builder
- Oracle Data Integrator
- Oracle GoldenGate
- Application Express feature of Oracle Database

**Note:** Refer to the corresponding installation guide of these products before installing Oracle Utilities Analytics.

### Prerequisite Software

For installing Oracle Utilities Analytics v2.5.0.0.1, a few prerequisite software products need to be downloaded and installed. Download and install these software products as per the instructions provided in the respective installation documents.

**Note:** Ensure that the same Operating System (OS) user is used to install all software prerequisites and Oracle Utilities Analytics components.

The following sections describe the prerequisite software requirement Oracle Utilities Analytics:

- **Prerequisite Software for Oracle Utilities Analytics Database Component**
- **Prerequisite Software for Oracle Utilities Analytics ELT Component based on Oracle Data Integrator**
- **Prerequisite Software for Oracle Utilities Analytics ETL Component based on Oracle Warehouse Builder**
- **Prerequisite Software for Oracle Utilities Analytics Dashboard Component**
- **Prerequisite Software for Oracle Utilities Analytics Admin Tool Component**



---

## Prerequisite Software for Oracle Utilities Analytics Database Component

The prerequisite software for Oracle Utilities Analytics Database component is as described below:

- **Oracle Database Server Enterprise Edition 11.2.0.3:** This is required for installing the database component of Oracle Utilities Analytics product.

**Note: Oracle Utilities Analytics v2.5.0.0.1 is supported on Oracle Database Server Standard Edition 11.2.0.3 only when using ELT component based on Oracle Data Integrator.**

## Prerequisite Software for Oracle Utilities Analytics ELT Component based on Oracle Data Integrator

**Note:** Applicable only if you have installed Oracle Utilities Operational Device Management or Oracle Utilities Customer Care and Billing.

The prerequisite software products for Oracle Utilities Analytics ELT component based on Oracle Data Integrator (ODI) are listed below. These software products should be installed on the database server:

- JDK 1.6.0 (20 or above)
- Oracle Database Server Enterprise Edition 11.2.0.3, or Oracle Database Server Standard Edition 11.2.0.3
- Oracle WebLogic 10.3.6
- Oracle Data Integrator 11.1.1.6 with Java EE

**Note:** While installing Oracle Data Integrator, do not create any repositories. Select **Skip Repository Configuration** option.

- Oracle GoldenGate 11.2.1.0.5\_2 on the source application database server and the target database server  
This can be downloaded from My Oracle Support (<https://support.oracle.com/>).

## Prerequisite Software for Oracle Utilities Analytics ETL Component based on Oracle Warehouse Builder

**Note:** Applicable only if you have installed any one of the edge applications such as, Oracle Utilities Network Management System, Oracle Utilities Work and Asset Management, Oracle Utilities Mobile Workforce Management, or Oracle Utilities Meter Data Management.

The prerequisite software products for Oracle Utilities Analytics ETL based on Oracle Warehouse Builder component are as follows:

- JDK 1.6.0 (20 or above) is required for running the File Processor daemon
- Oracle Database Server Enterprise Edition 11.2.0.3 with Oracle Warehouse Builder 11.2.0.3

## Prerequisite Software for Oracle Utilities Analytics Dashboard Component

The prerequisite software for Oracle Utilities Analytics Dashboard component is as follows:

- Oracle Business Intelligence Enterprise Edition 11.1.1.7.1 with **Enterprise Install** option

**Note: Install the Oracle 11.2.0.3 client if Oracle Business Intelligence Enterprise Edition software is not installed on the database server. If Oracle Business Intelligence Enterprise Edition software is installed, then there is no need to install Oracle client.**

---

**Note:** After Oracle Business Intelligence Enterprise Edition installation, save a snapshot of the last page of Oracle Business Intelligence Enterprise Edition installation having details of BI Oracle Home, Instance Home, etc. These values will be used during the Oracle Utilities Analytics installation.

## Prerequisite Software for Oracle Utilities Analytics Admin Tool Component

**Note:** Applicable only if you use Oracle Data Integrator based ELT.

The prerequisite software products for the Oracle Utilities Analytics Admin tool component are as follows:

- Oracle Database Server Enterprise Edition 11.2.0.3, or Oracle Database Server Standard Edition 11.2.0.3
- Oracle Apex 4.2

## Installation Checklist

The following checklist guides you through the installation process for the Oracle Utilities Analytics v2.5.0.0.1:

The details are provided in subsequent chapters for each of the below-listed step:

1. Determine the installation type and installation scenario. See **Media Pack Components** to determine the installation type for your scenario. Perform the installation steps as applicable to your installation type.
2. Install the prerequisite software.  
See **Prerequisite Software** for more details.
3. Ensure that you have downloaded the Oracle Utilities Analytics components.

**Note:** Refer to chapter **Oracle Utilities Analytics Initial Installation** in *Oracle Utilities Analytics for Oracle Utilities Extractors and Schema and Oracle Utilities Analytics Dashboards Installation Guide* for instructions regarding initial installation.

**Note:** For upgrading from an earlier version of Oracle Utilities Analytics to Oracle Utilities Analytics v2.5.0.0.1, refer to the chapter **Upgrading Oracle Utilities Analytics for Oracle Utilities Extractors and Schema and Oracle Utilities Analytics Dashboards** in *Oracle Utilities Analytics for Oracle Utilities Extractors and Schema and Oracle Utilities Analytics Dashboards Installation Guide*.

**Note:** Refer to the chapter **Demo Installation Procedure** in *Oracle Utilities Analytics for Oracle Utilities Extractors and Schema and Oracle Utilities Analytics Dashboards Installation Guide* for instructions about demo installation.

4. Perform the post-installation tasks and configure the application.

**Note:** The out-of-the-box Oracle GoldenGate scripts are utilized to do the initial sync for tables having more than 10 million records. For more information about this process, refer to the section **Appendix C: Install and Upgrade Process** of *Oracle Utilities Analytics for Oracle Utilities Extractors and Schema and Oracle Utilities Analytics Dashboards Administration Guide*.

# Chapter 5

---

## Oracle Utilities Analytics Initial Installation

This chapter describes the components installed during an initial installation of the Oracle Utilities Analytics (OUA) product v2.5.0.0.1.

The following components are installed during an initial installation:

- **Oracle Utilities Analytics Database Component Installation**
- **Oracle Utilities Analytics ELT Component Installation based on Oracle Data Integrator Installation**  
(applicable only if you have installed Oracle Utilities Operational Device Management, or Oracle Utilities Customer Care and Billing).
- **Oracle Utilities Analytics ETL Component based on Oracle Warehouse Builder Installation**  
(applicable only if you have installed any one of the edge applications such as, Oracle Utilities Network Management System, Oracle Utilities Work and Asset Management, Oracle Utilities Mobile Workforce Management, or Oracle Utilities Meter Data Management).
- **Oracle Utilities Analytics Dashboard Component Installation**
- **Oracle Utilities Analytics Admin Tool Component**  
(applicable only if you use Oracle Data Integrator based ELT).

**Note:** Refer to *Oracle Utilities Analytics for Oracle Utilities Extractors and Schema and Oracle Utilities Analytics Dashboards Installation Guide* for complete details and steps involved in installing each of the above components.

# Chapter 6

---

## Upgrading Oracle Utilities Analytics

This chapter provides an overview of upgrading Oracle Utilities Analytics v2.5.0.0.1 from an earlier version.

**Note:** Refer to the chapter **Supported Upgrade Paths** in *Oracle Utilities Analytics for Oracle Utilities Extractors and Schema and Oracle Utilities Analytics Dashboards Installation Guide* to find out how the upgrade of your particular product version is supported.

This installation type is applicable when upgrading to Oracle Utilities Analytics v2.5.0.0.1 from an earlier version.

Each of the following components should be upgraded for upgrading to Oracle Utilities Analytics v2.5.0.0.1.

Each of the following components should be installed during an upgrade installation.

- **Oracle Utilities Analytics Database component**
- **Oracle Utilities Analytics ETL component based on Oracle Data Integrator** (applicable only if you have installed Oracle Utilities Operational Device Management, or Oracle Utilities Customer Care and Billing).

**Note:** If Oracle Utilities Customer Care and Billing (CC&B) is one of the source systems, refer to the section **Upgrading Oracle Utilities Analytics for Oracle Utilities Customer Care and Billing** of the chapter **Upgrading Oracle Utilities Analytics** in *Oracle Utilities Analytics for Oracle Utilities Extractors and Schema and Oracle Utilities Analytics Dashboards Installation Guide*.

- **Oracle Utilities Analytics ETL component based on Oracle Warehouse Builder** (applicable only if you have installed any one of the edge applications such as, Oracle Utilities Network Management System, Oracle Utilities Work and Asset Management, Oracle Utilities Mobile Workforce Management, or Oracle Utilities Meter Data Management).
- **Oracle Utilities Analytics Dashboard component**
- **Oracle Utilities Analytics Administration tool component** (applicable only if you use Oracle Data Integrator based ELT)

**Note:** For complete details and upgrade steps, refer to *Oracle Utilities Analytics for Oracle Utilities Extractors and Schema and Oracle Utilities Analytics Dashboards Installation Guide*.

# Chapter 7

---

---

## Installing Demo Database

This chapter provides instructions for installing the demo database.

**Note:** The demo installation does not support ETL functionality. The **ETL Job Control Dashboard** accesses the Oracle Warehouse Builder tables and the demo dump does not have Oracle Warehouse Builder objects; hence, ETL dashboard is not supported in the demo installation. This chapter provides an overview of the steps involved in installing a demo database.

- **Oracle Utilities Analytics Demo Database Component Installation**
- **Oracle Utilities Analytics Dashboard Component Installation**

### Oracle Utilities Analytics Demo Database Component Installation

A fresh Oracle database 11.2.0.3 should be created, followed by a demo dump import.

**Note:** During the demo database import, there may be some warnings related to the external table creation if Oracle Utilities Analytics ETL component setup is not done. These can be ignored since Oracle Utilities Analytics ETL component setup is not a required step for Oracle Utilities Analytics demo database component installation.

**Note:** Refer to the chapter **Demo Installation Procedure** in *Oracle Utilities Analytics for Oracle Utilities Extractors and Schema and Oracle Utilities Analytics Dashboards Installation Guide* that specifies database creation and demo dump import steps.

### Oracle Utilities Analytics Dashboard Component Installation

After installing the Oracle Utilities Analytics demo database component, install the Oracle Utilities Analytics dashboard component. It is assumed that Oracle Business Intelligence Enterprise Edition is installed and available before proceeding with this installation step.

**Note:** Refer to the section **Prerequisite Software** in *Oracle Utilities Analytics for Oracle Utilities Extractors and Schema and Oracle Utilities Analytics Dashboards Installation Guide* for the list of pre-requisite software necessary for installing the Oracle Utilities Analytics dashboard component.

The installation steps for the dashboard component are the same as that for an initial install.

**Note:** Refer to the section **Oracle Utilities Analytics Dashboard Component Installation** in *Oracle Utilities Analytics for Oracle Utilities Extractors and Schema and Oracle Utilities Analytics Dashboards Installation Guide* for the steps

---

to install and deploy the Oracle Utilities Analytics Dashboard component on Oracle Business Intelligence Enterprise Edition.

# Appendix A

---

## Additional Resources

### Contacting Oracle Support

To contact Oracle support, visit the Oracle Support website at:

<http://www.oracle.com/support/index.html>

### Supported Knowledge Articles

You can also search for product documentation, release notes, and white paper by using the **Oracle Utilities Analytics Service Packs Doc ID 1421341.1**.

# Appendix B

---

---

## License and Copyright Notices

This chapter describes about licensing and optional features, including:

- **Oracle Database Licensing and Optional Features**
- **Oracle Warehouse Builder Licensing and Optional Features**
- **Disabling the Optional Features in Oracle Warehouse Builder**
- **Oracle GoldenGate Licensing**

### Oracle Database Licensing and Optional Features

With Oracle Utilities Analytics v2.5.0.0.1, the **Standard Edition** of Oracle database is now supported. Currently, this support is only for the customers using those Extractors and Schema products, which are based on Oracle Data Integrator (ODI) based extraction, and includes:

- Oracle Utilities Operational Device Management Extractors and Schema
- Oracle Utilities Customer Care and Billing Extractors and Schema

However, Oracle recommends to use the **Enterprise Edition** of Oracle database for performance and scalability reasons, as the Oracle Utilities Analytics data warehouse is expected to handle large volumes of data. Oracle Utilities Analytics also supports the **Oracle Partitioning** feature, which is an extra cost option on the top of the Oracle Database Enterprise Edition. Using this feature, it is also recommended for the efficient data storage and retrieval by the Oracle Utilities Analytics product.

By default, the **Enterprise Edition** and the **Partitioning** features are turned off in the Oracle Utilities Analytics product. Once the appropriate licenses have been purchased, these features can be turned on in the **Global Configuration** settings using the Oracle Utilities Analytics Administration tool described in **Appendix B** of *Oracle Utilities Analytics for Oracle Utilities Extractors and Schema and Oracle Utilities Analytics Dashboards Administration Guide*.

### Oracle Warehouse Builder Licensing and Optional Features

Oracle Warehouse Builder (OWB) provides various optional features, which are not included in the basic Extraction, Transformation, and Loading (ETL) feature group. The basic ETL feature group is included in the Oracle Database Enterprise Edition license. Hence, there is no additional license cost required to use, or install the basic features. The standard ETL processes included in Oracle Utilities Analytics (OUA) uses only the features that are included in the basic ETL feature group.

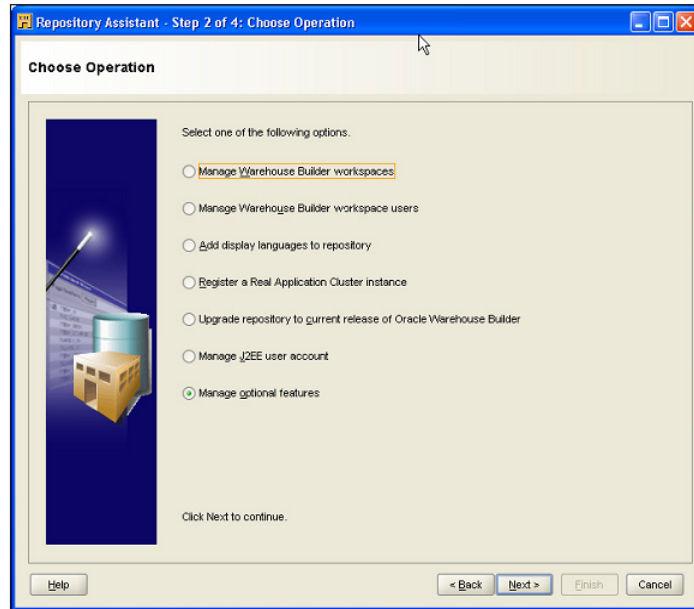
In addition, the Oracle Warehouse Builder Code Generator does not create any code that requires the use of optional Oracle Warehouse Builder features. Hence, any additional Extraction, Transformation, and Loading (ETL) code created by an implementation using the Oracle



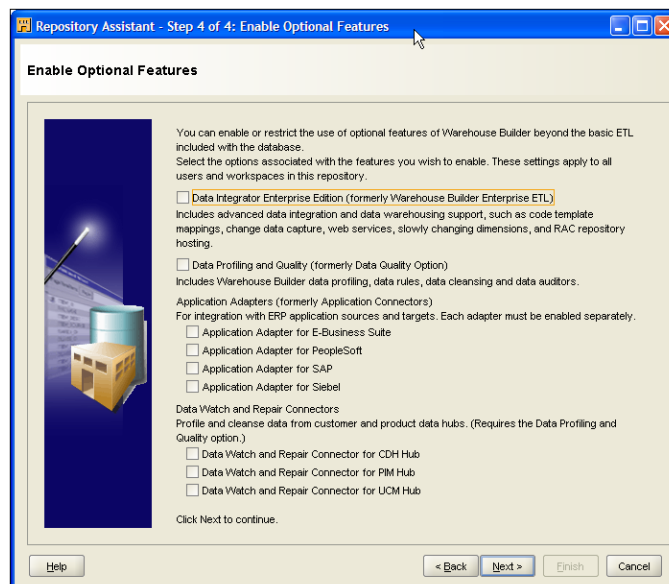
Warehouse Builder Code Generator does not require any additional Oracle Warehouse Builder license costs. However, if Oracle Warehouse Builder is used to create other ETL code outside of the Oracle Warehouse Builder Code Generator, then using some of these optional features may require additional Oracle Warehouse Builder licenses.

## Disabling the Optional Features in Oracle Warehouse Builder

In order to ensure that optional features are not used, Oracle Warehouse Builder (OWB) provides a means to disable the use of optional features. After starting the Warehouse Builder Repository Assistant, choose the “**Manage optional features**” operation, as shown in the following image.



After entering the password for the OWBSYS user, deselect all of the licensed option names on the **Enable Optional Features** page.



---

Once the options are deselected, the new selections will take effect for any new connections to Oracle Warehouse Builder, and if options are used that are not available, an error dialog is displayed.

**Note:** For further details regarding the feature groups and licensing of Oracle Warehouse Builder, visit the Oracle Warehouse Builder page on the Oracle Technology Network (OTN) at this location:

<http://www.oracle.com/technetwork/developer-tools/warehouse>.

## Oracle GoldenGate Licensing

The GoldenGate license purchased along with Oracle Utilities Analytics v2.5.0.0.1, can be used to replicate additional tables from the any of the source systems products whose ELT processes are based on Oracle Data Integrator (ODI), which includes:

- Oracle Utilities Operational Device Management
- Oracle Utilities Customer Care and Billing

For any other usage of the Oracle Golden Gate product, you need to purchase a full license of the Oracle GoldenGate product. Please contact Oracle Support for the details.