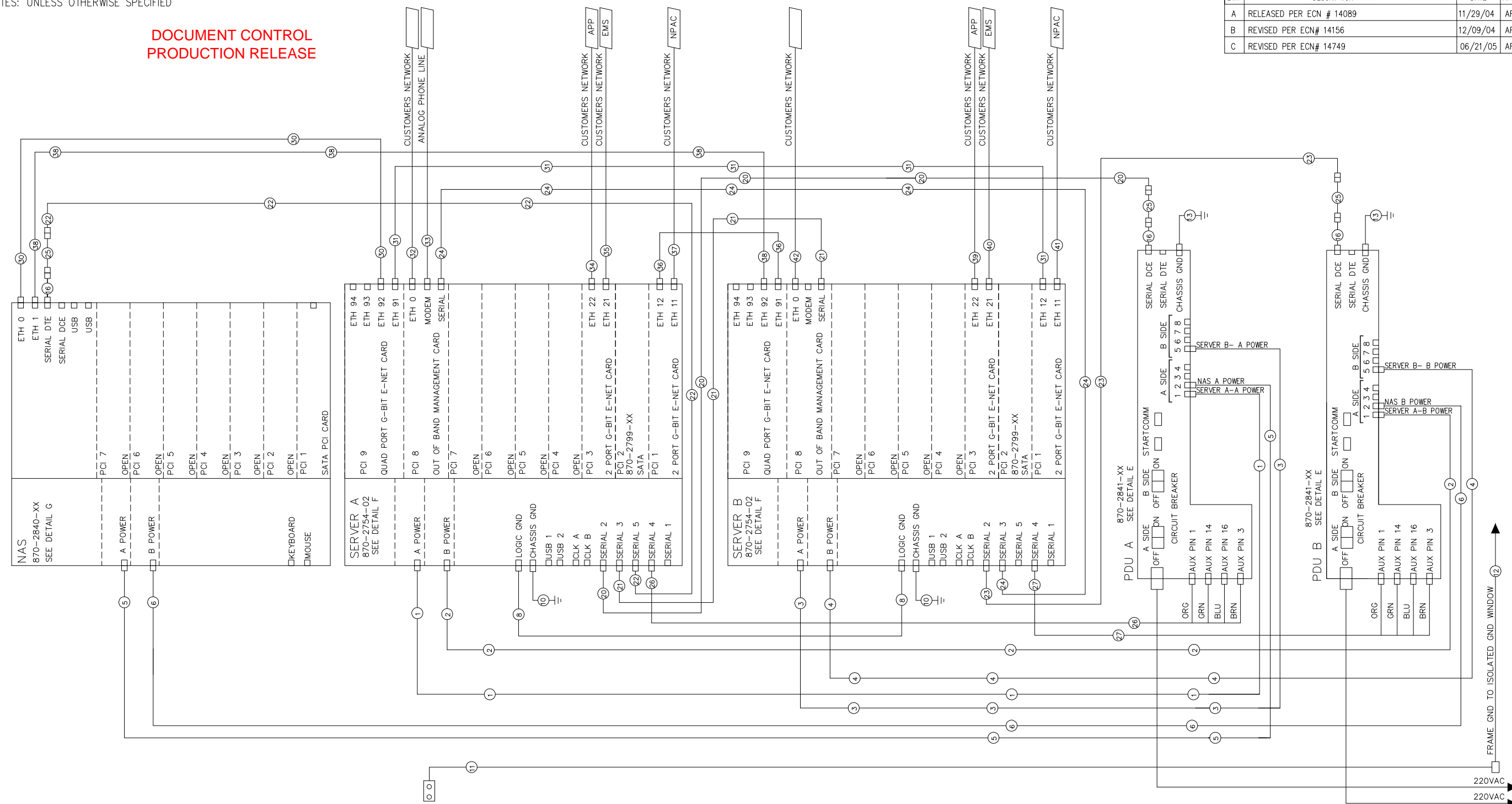


NOTES: UNLESS OTHERWISE SPECIFIED

DOCUMENT CONTROL
PRODUCTION RELEASE

REVISIONS			
LTR	DESCRIPTION	DATE	APPROVED
A	RELEASED PER ECN # 14089	11/29/04	ARMSTRONG
B	REVISED PER ECN# 14156	12/09/04	ARMSTRONG
C	REVISED PER ECN# 14749	06/21/05	ARMSTRONG



- 1) INSTALL ALL CABLE ASSEMBLIES WITH DRESSED BEND RADII IN ACCORDANCE WITH TEKELEC CABLE BEND RADIUS SPECIFICATION 906-0020-01.
- 2) ALL INTERCONNECTION POINTS SHALL BE STRAIN RELIEVED BY POSITIVE MECHANICAL FEATURES OR FASTENERS FOR LENGTH CONFIGURATIONS.
- 3) THIS DIAGRAM AND ALL PART NUMBERS SHOWN ARE FOR REFERENCE ONLY. REFERENCE CABLE PART NUMBERS WITH XX FOR THE DASH NUMBER ARE LENGTHS THAT ARE SITE SPECIFIC.
- 4) NO ADDITIONS, DELETIONS, SUBSTITUTIONS OR MODIFICATIONS WITHOUT PRIOR WRITTEN TEKELEC APPROVAL.

5) USE LABEL PN 617-0009-01 TO MAKE LABEL SET FOR FROM AND TO ON CABLES INDICATED IN TABLE A. EACH CABLE INDICATED WILL REQUIRE 2 LABELS ONE AS SHOWN IN THE TABLES AND ONE WITH FROM AND TWO REVERSED AS SHOWN IN DETAIL D. PERMANENTLY PRINT LABELS WITH .09 HIGH BLACK CHARACTERS. CENTER TEXT APPROXIMATELY AS SHOWN. MAX 23 CHARACTERS PER LINE. CABLES IDENTIFIED AS FIELD LABEL WILL BE LABELED AT INSTALLATION.

THIS DOCUMENT AND THE DATA DISCLOSED HEREIN OR HEREWITH IS PROPRIETARY AND IS NOT TO BE REPRODUCED, USED OR DISCLOSED IN WHOLE OR PART TO ANYONE WITHOUT THE WRITTEN PERMISSION OF TEKELEC. COPYRIGHT, TEKELEC 1996.

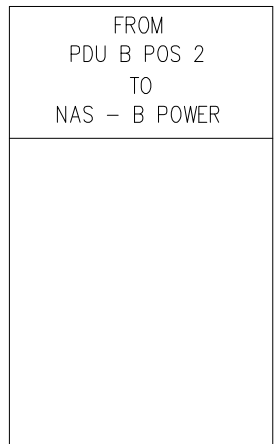
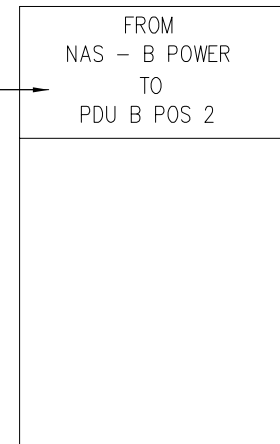
UNLESS OTHERWISE SPECIFIED, DO NOT SCALE DRAWING. DIMENSIONS ARE IN INCHES. INTERPRET DIMENSIONS IN ACCORDANCE WITH ANSI Y14.5M-82. DEBURR AND BREAK SHARP EDGES .005-.015. MACHINED SURFACE FINISH $1R_{xx}$. TOLERANCES: .XX = ±.03, .XXX = ±0.10.		CONTRACT NO.		TEKELEC 26580 W. Agoura Road, Calabasas, California 91302	
STANDARD HOLE TOLERANCES:		APPROVALS		DATE	
HOLE DIA	TOLERANCES	DRAWN M.BRYAN		11/12/04	
.013 THRU .125	+ .004 - .001	CHECKED BEAUCHAMP		11/24/04	
.126 THRU .250	+ .005 - .001	APPROVED ARMSTRONG		11/24/04	
.251 THRU .500	+ .006 - .001	APPLICATION		APPROVED --	
.501 THRU .750	+ .008 - .001	FINISH		MATERIAL	
.751 THRU 1.000	+ .010 - .001				
1.001 THRU 2.000	+ .012 - .001				
		INTERCONNECT DIAGRAM_ SYSTEM_LSMS_ AC FRAME ASSY		SIZE CAGE CODE DRAWING NO. REV.	
		SCALE: NONE FILE NAME: 892-0060-01_REV_C.dwg SHEET 1 OF 3		D 892-0060-01 C	

8 7 6 5 4 3 2 1

TABLE A - POWER CABLE PART NUMBERS

ITEM NO.	TEKELEC P/N	QTY	LENGTH	RUN LIST AND LABEL INFORMATION FOR FROM AND TO	LABEL REQUIRED
1	830-1903-01	1	98.00 INCHES	FROM: SERVER A - A POWER / TO: PDU A POS 1	YES
2	830-1903-01	1	98.00 INCHES	FROM: SERVER A - B POWER / TO: PDU B POS 1	YES
3	830-1903-01	1	98.00 INCHES	FROM: SERVER B - A POWER / TO: PDU A POS 5	YES
4	830-1903-01	1	98.00 INCHES	FROM: SERVER B - B POWER / TO: PDU B POS 5	YES
5	830-1903-01	1	98.00 INCHES	FROM: NAS - A POWER / TO: PDU A POS 2	YES
6	830-1903-01	1	98.00 INCHES	FROM: NAS - B POWER / TO: PDU B POS 2	YES
7					
8	830-1075-01	1	72.00 INCHES	FROM: SERVER A LOGIC GND / TO: SERVER B LOGIC GND	YES
9					YES
10	830-0927-01	2	24.00 INCHES	FROM: SERVER CHASSIS GND / TO: FRAME	YES
11	830-0715-03	1	84.00 INCHES	FROM: FRAME GROUND FROM: ENCLOSURE TO: ISOLATED GROUND WINDOW	YES
12	FRAME GROUND	AR	SEE TABLE F	FROM: SERVER CHASSIS GND / TO: FRAME	NO
13	830-0822-01	2	18.00 INCHES	FROM: PDU CHASSIS / TO: FRAME GND	YES
14					
15					
16	804-1929-01	3	NA	OPT-ISOLATOR RJ45-DB9M NAS SERIAL OPT-ISOLATOR RJ45-DB9M PDU A SERIAL DCE OPT-ISOLATOR RJ45-DB9M PDU B SERIAL DCE	NO NO NO
17					
18					
19					
20	830-0723-04	1	120.00 INCHES	FROM: SERVER A SERIAL 2 / TO: PDU A SERIAL DCE	YES
21	830-1074-07	1	84.00 INCHES	FROM: SERVER A SERIAL 3 / TO: SERVER B SLOT 8 SERIAL	YES
22	830-0723-64	1	84.00 INCHES	FROM: SERVER A SERIAL 5 / TO: NAS SERIAL	YES
23	830-0723-04	1	120.00 INCHES	FROM: SERVER B SERIAL 2 / TO: PDU B SERIAL DCE	YES
24	830-1074-08	1	96.00 INCHES	FROM: SERVER B SERIAL 3 / TO: SERVER A SLOT 8 SERIAL	YES
25	830-1073-01	3	NA	ADAPTER RJ45-DB9F NAS SERIAL ADAPTER RJ45-DB9F PDU A SERIAL DTE ADAPTER RJ45-DB9F PDU B SERIAL DTE	NO NO NO
26	830-1905-02	1	120.00 INCHES	FROM: SERVER A SERIAL 4 / TO: PDU A AUX ALARMS	YES
27	830-1905-02	1	120.00 INCHES	FROM: SERVER B SERIAL 4 / TO: PDU B AUX ALARMS	YES
28					
29					
30	830-0723-64	1	84.00 INCHES	FROM: SERVER A SLOT 9 ETH 92 / TO: NAS ETH 0	YES
31	830-0723-65	1	72.00 INCHES	FROM: SERVER A SLOT 9 ETH 91 / TO: SERVER B SLOT 1 ETH 12	YES
32	830-0723-XX	1	SITE SPECIFIC	FROM: SERVER A SLOT 8 ETH 0 / TO: CUSTOMER NETWORK	FIELD LABEL
33	830-0680-01	1	25.00 FEET	FROM: SERVER A SLOT 8 MODEM / TO: CUSTOMER PROVIDED PHONE LINE	FIELD LABEL
34	830-0724-XX	1	SITE SPECIFIC	FROM: SERVER A SLOT 2 ETH 22 / TO: CUSTOMER NETWORK APP	FIELD LABEL
35	830-0724-XX	1	SITE SPECIFIC	FROM: SERVER A SLOT 2 ETH 21 / TO: CUSTOMER NETWORK EMS	FIELD LABEL
36	830-0723-64	1	84.00 INCHES	FROM: SERVER A SLOT 1 ETH 12 / TO: SERVER B SLOT 9 ETH 91	YES
37	830-0723-XX	1	SITE SPECIFIC	FROM: SERVER A SLOT 1 ETH 11 / TO: CUSTOMER NETWORK NPAC	FIELD LABEL
38	830-0723-64	1	84.00 INCHES	FROM: SERVER B SLOT 9 ETH 92 / TO: NAS ETH 1	YES
39	830-0723-XX	1	SITE SPECIFIC	FROM: SERVER B SLOT 2 ETH 22 / TO: CUSTOMER NETWORK APP	FIELD LABEL
40	830-0723-XX	1	SITE SPECIFIC	FROM: SERVER B SLOT 2 ETH 21 / TO: CUSTOMER NETWORK EMS	FIELD LABEL
41	830-0723-XX	1	SITE SPECIFIC	FROM: SERVER B SLOT 1 ETH 11 / TO: CUSTOMER NETWORK NPAC	FIELD LABEL
42	830-0723-XX	1	SITE SPECIFIC	FROM: SERVER B SLOT 8 ETH 0 / TO: CUSTOMER NETWORK	FIELD LABEL

REVISIONS			
LTR	DESCRIPTION	DATE	APPROVED



EXAMPLE OF TEXT SHOWN IN TABLES

EXAMPLE WITH TEXT REVERSED FROM FIRST LABEL

DETAIL D [5]
CABLE LABEL EXAMPLE USING CABLE ITEM NO. 6

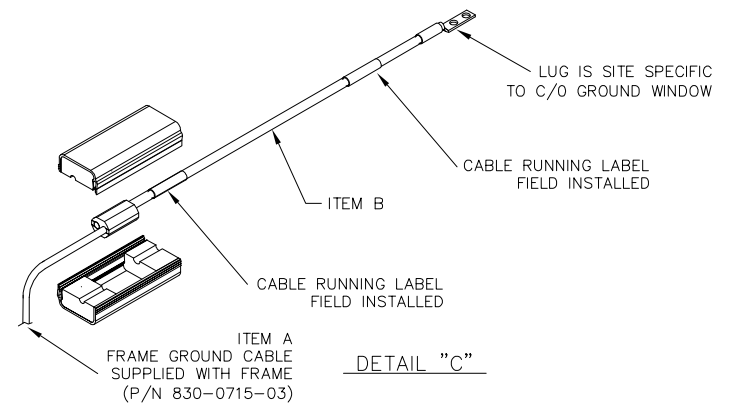
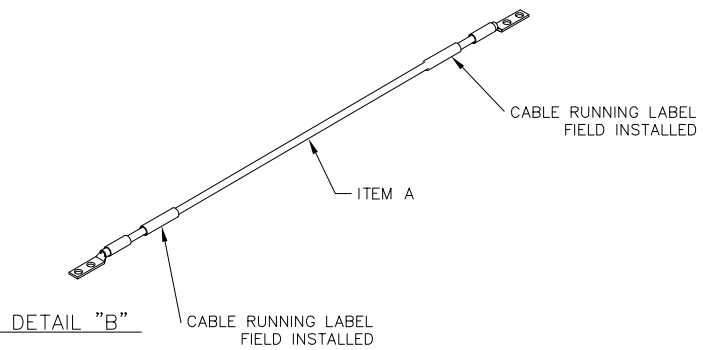
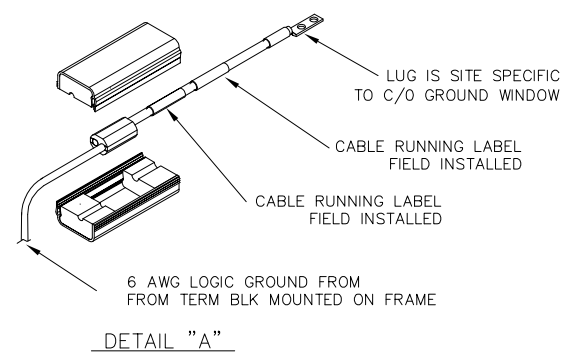
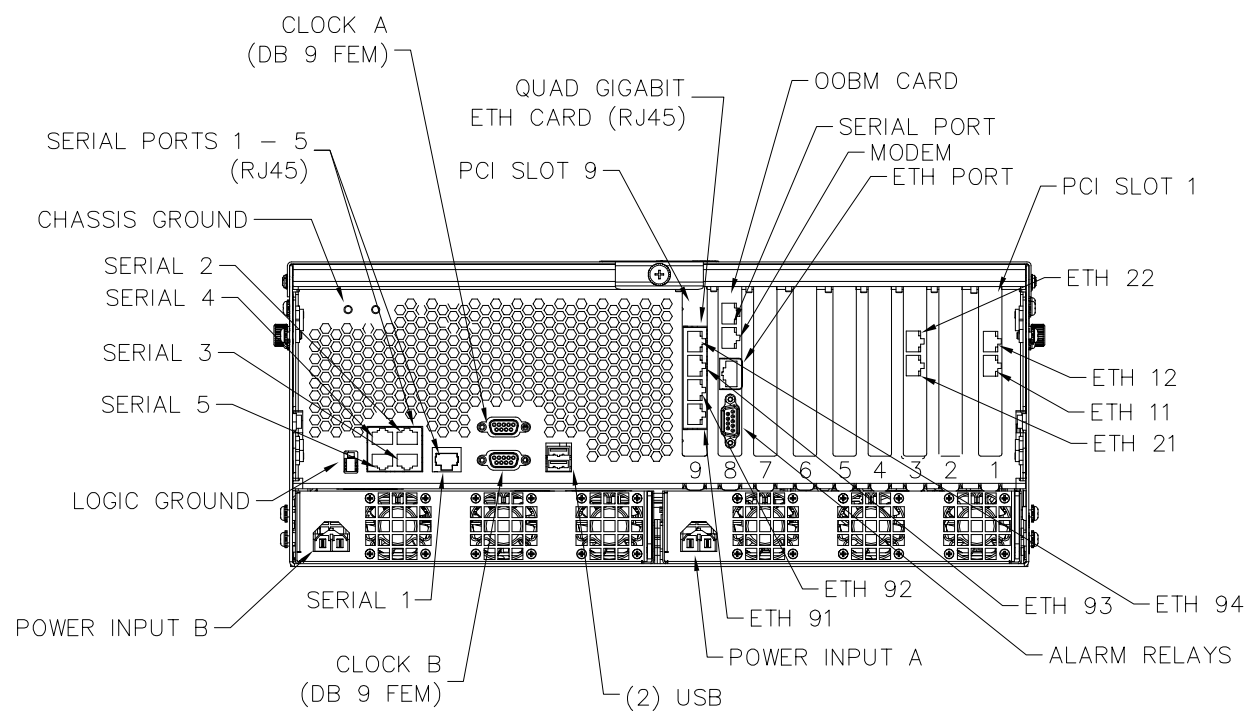


TABLE F - SYSTEM FRAME GROUND CABLING

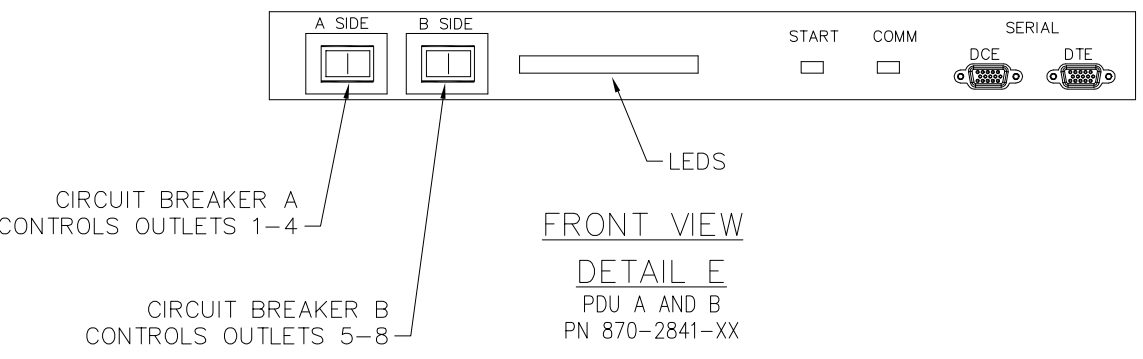
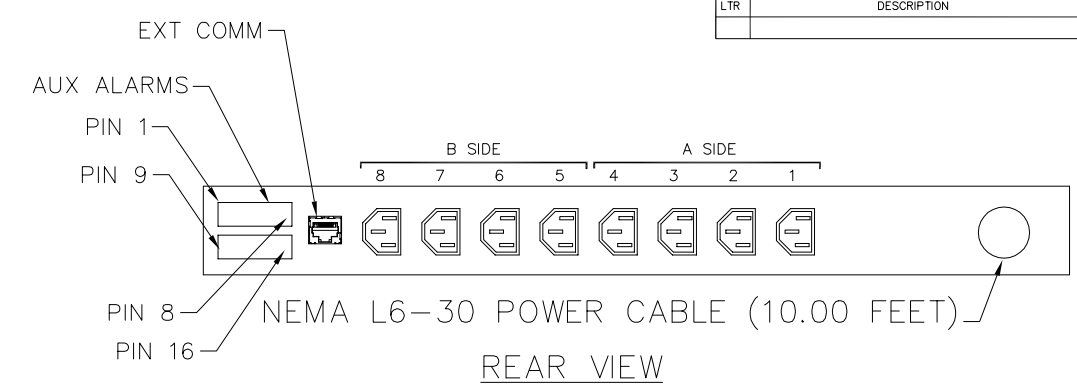
DISTANCE	CABLE P/N	CABLE AWG	ITEM A (830-0715-XX SUPPLIED WITH FRAME)		ITEM B		HTAP (A TO B CONNECTION) H TAP P/N	COMMENT	REF. DETAIL
			TERMINAL LUG P/N	HEAT SHRINK P/N	CABLE P/N	CABLE AWG			
0' - 40'	690-0131-01	6	502-0085-01	804-0228-01	690-0131-01	6	804-0865-01	CABLE LENGTH IS SITE-SPECIFIC	C
40' - 160'	690-0108-01	6	502-0085-01	804-0228-01	690-0108-07	1/0	804-0865-01	CABLE LENGTH IS SITE-SPECIFIC	C

8 7 6 5 4 3 2 1

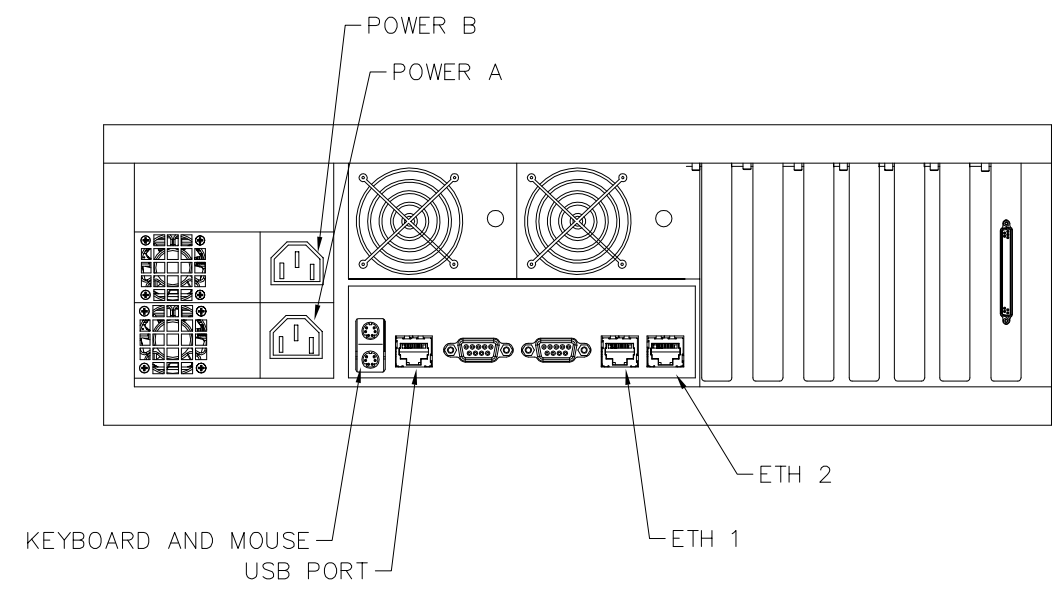
REVISIONS			
LTR	DESCRIPTION	DATE	APPROVED



DETAIL F
 SERVER A AND B (REAR VIEW)
 870-2754-02 W/ PCI CARDS:
 SLOT 1 -870-2706-XX
 SLOT 2 -870-2799-XX
 SLOT 3 -870-2706-XX
 SLOT 8 -870-2798-XX
 SLOT 9 -870-2790-XX



FRONT VIEW
DETAIL E
 PDU A AND B
 PN 870-2841-XX



DETAIL G (REAR VIEW)
 NAS
 PN 870-2840-XX

THIS DOCUMENT AND THE DATA DISCLOSED HEREIN OR HEREWITH IS PROPRIETARY AND IS NOT TO BE REPRODUCED, USED OR DISCLOSED IN WHOLE OR PART TO ANYONE WITHOUT THE WRITTEN PERMISSION OF TEKLEEC. COPYRIGHT, TEKLEEC 1996.

SIZE	CAGE CODE	DRAWING NO.	REV.
D		892-0060-01	C
SCALE: NONE		FILE NAME: 892-0060-01_REV_C.DWG	SHEET 3 OF 3