

Oracle Public Sector Revenue Management Self Service

Installation Guide

Release 1.1.0

E53302-01

June 2014

Oracle Public Sector Revenue Management Self Service Installation Guide

Release 1.1.0

E53302-01

June 2014

Documentation build: 6.22.2014 9:42:53 [TS_1403455373000]

Copyright © 2012, 2014, Oracle and/or its affiliates. All rights reserved.

This software and related documentation are provided under a license agreement containing restrictions on use and disclosure and are protected by intellectual property laws. Except as expressly permitted in your license agreement or allowed by law, you may not use, copy, reproduce, translate, broadcast, modify, license, transmit, distribute, exhibit, perform, publish, or display any part, in any form, or by any means. Reverse engineering, disassembly, or decompilation of this software, unless required by law for interoperability, is prohibited.

If this is software or related documentation that is delivered to the U.S. Government or anyone licensing it on behalf of the U.S. Government, the following notice is applicable:

U.S. GOVERNMENT END USERS: Oracle programs, including any operating system, integrated software, any programs installed on the hardware, and/or documentation, delivered to U.S. Government end users are "commercial computer software" pursuant to the applicable Federal Acquisition Regulation and agency-specific supplemental regulations. As such, use, duplication, disclosure, modification, and adaptation of the programs, including any operating system, integrated software, any programs installed on the hardware, and/or documentation, shall be subject to license terms and license restrictions applicable to the programs. No other rights are granted to the U.S. Government.

This software or hardware is developed for general use in a variety of information management applications. It is not developed or intended for use in any inherently dangerous applications, including applications that may create a risk of personal injury. If you use this software or hardware in dangerous applications, then you shall be responsible to take all appropriate fail-safe, backup, redundancy, and other measures to ensure its safe use. Oracle Corporation and its affiliates disclaim any liability for any damages caused by use of this software or hardware in dangerous applications.

Oracle and Java are registered trademarks of Oracle and/or its affiliates. Other names may be trademarks of their respective owners. Intel and Intel Xeon are trademarks or registered trademarks of Intel Corporation. All SPARC trademarks are used under license and are trademarks or registered trademarks of SPARC International, Inc. AMD, Opteron, the AMD logo, and the AMD Opteron logo are trademarks or registered trademarks of Advanced Micro Devices. UNIX is a registered trademark of The Open Group.

This software or hardware and documentation may provide access to or information on content, products, and services from third parties. Oracle Corporation and its affiliates are not responsible for and expressly disclaim all warranties of any kind with respect to third-party content, products, and services. Oracle Corporation and its affiliates will not be responsible for any loss, costs, or damages incurred due to your access to or use of third-party content, products, or services.

Contents

Installation Overview.....	5
Additional Resources.....	5
Abbreviations.....	6
PSRMSS Installation and Configuration Flowchart.....	7
Software Requirements.....	8
PSRMSS Installation.....	9
Types of Installation Packages.....	9
Pre-Installation Tasks.....	9
Installing Integrations.....	11
Integration Pre-Installation Tasks.....	11
Integrated Flows Installation Directory Structure.....	11
Completing the Integration Installation.....	12
Post-Integration Configuration Tasks.....	14
Updating the Worklist Application.....	15
Post-Integration Checklist.....	16
Verifying Creation of the OTSS-SOADS and OTSS-USRACS Data Sources.....	16
Verifying Creation of the JMS Modules.....	17
Verifying Creation of the Outbound Connection Pools.....	18
Verifying the Composites in Enterprise Manager.....	19
Verifying Worklist Applications Deployment.....	22
Verifying Creation of Keys.....	22
Accessing the Worklist Application.....	24
PSRMSS Installation Directory Structure.....	24
PSRMSS Product Installation.....	25
Post-Installation Tasks.....	26
Verifying the Installation.....	26
Verifying ADF Connections for the PSRMSS Application.....	27
Verifying the PSRMSS Schema Tables.....	29
Verifying Creation of the PSRMSS Server.....	30
Verifying the WSSDS Data Source.....	31
Verifying the mds-PSRMSS_MDS Data Source.....	31
Verifying the PSRMSSFormsAdmin Group.....	32
Verifying wasadmin User Creation.....	33
Verifying Successful Application Deployment.....	33
Verifying Successful Key Creation.....	34
Accessing the PSRMSS Application.....	35
Configuring UCM for PSRMSS.....	35
UCM Configuration: Part 1.....	35
UCM Configuration: Part 2.....	36
Configuring SSL for a PSRMSS Server.....	37
Appendix A.....	38
BPEL/SOA installProperties.xml.....	38
Appendix B.....	45
RCU Database Creation (Sample).....	45
Appendix C.....	49
PSRMSS Sample Domain Creation.....	49
Appendix D.....	52
Sample Oracle WebLogic Data Sources.....	52

Appendix E.....	54
Sample Summary of Servers.....	54
Appendix F.....	55
Installation Properties.....	55
Appendix G.....	59
Installer Utility Overview.....	59
Appendix H.....	61
URL Examples.....	61
Appendix I.....	62
Integration Environment Settings Example.....	62
Appendix J.....	63
PSRMSS Environment Settings Example.....	63
Appendix K.....	64
Security Notes.....	64
Appendix L.....	65
Sample: Reassociating the Identity Store with an External LDAP (OUD).....	65
Appendix M.....	72
Updating BPEL/SOA Configuration Settings (ConfigurationProperties.xml).....	72
Appendix N.....	74
UCM and Configuration.Properties.....	74
Appendix O.....	79
Configuring WebLogic storeUserConfig.....	79
Appendix P.....	80
Oracle Policy Automation.....	80
Appendix Q.....	81
Installation Troubleshooting.....	81

Chapter 1

Installation Overview

This guide describes the installation steps that must be completed in order to use Public Sector Revenue Management Self Service (PSRMSS) integrated with Oracle Public Sector Revenue Management (PSRM).

Note: This document is subject to revision and updating. For the most recent version of this document and related documentation check BUG 18601054.

Additional Resources

For more information on products related to PSRMSS installation, see the following documents:

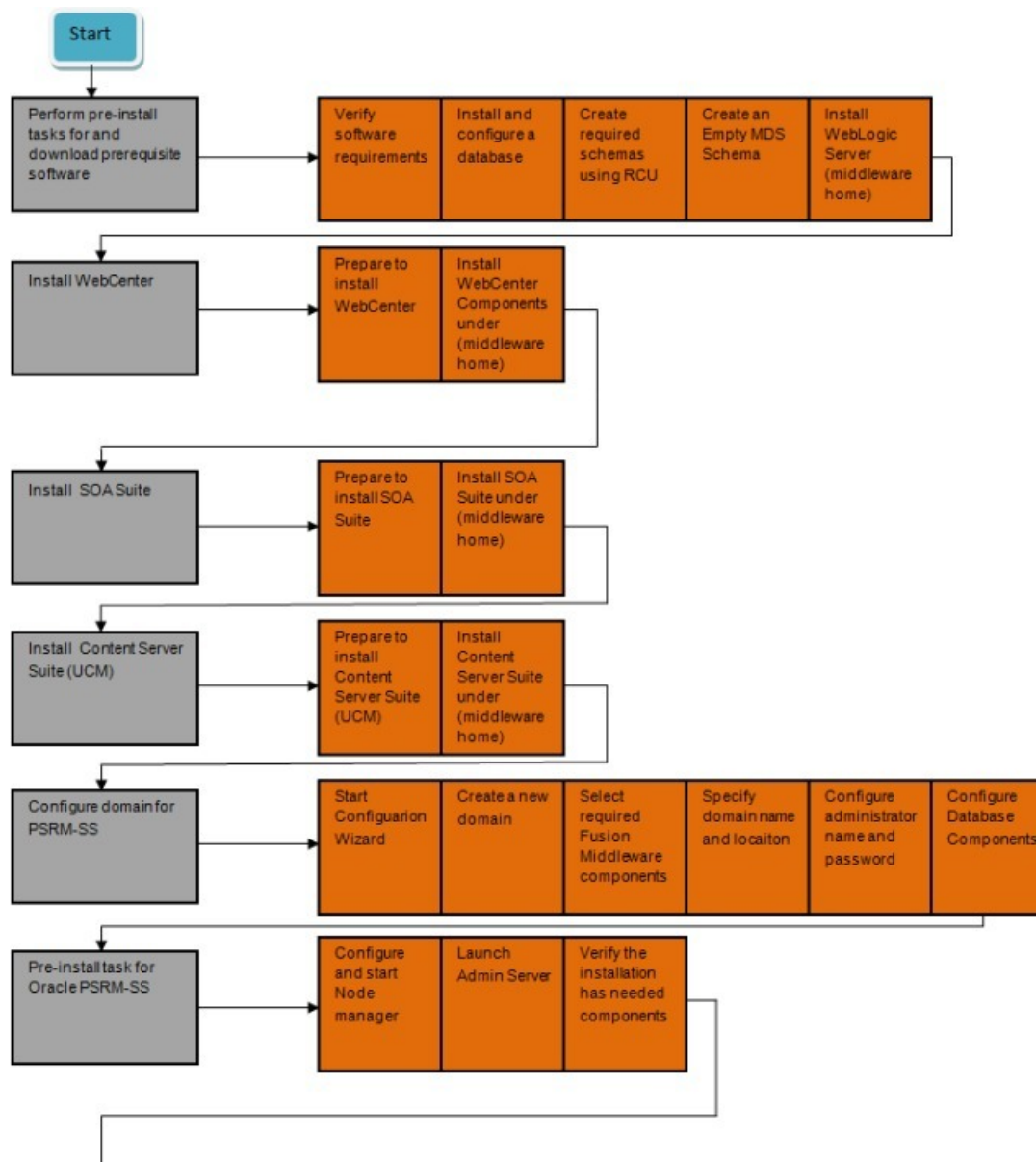
Resource	Location
Oracle WebCenter documentation	http://www.oracle.com/technetwork/middleware/webcenter/portal/documentation/index.html
Oracle Java Sun JDK	http://www.oracle.com/technetwork/indexes/documentation/index.html
Oracle JRockit	http://www.oracle.com/technetwork/middleware/jrockit/documentation/index.html
Oracle SOA Suite documentation	http://www.oracle.com/technetwork/middleware/soasuite/documentation/index.html
Oracle UCM Documentation	http://www.oracle.com/technetwork/middleware/webcenter/content/documentation/index.html
Oracle Fusion Middleware Requirements	http://docs.oracle.com/cd/E12839_01/install.1111/e12001/overview.htm#BABDFJAB
Oracle WebLogic Documentation	http://www.oracle.com/technetwork/middleware/weblogic/documentation/index.html
Oracle Policy Automation	http://www.oracle.com/technetwork/apps-tech/policy-automation/downloads/index.html

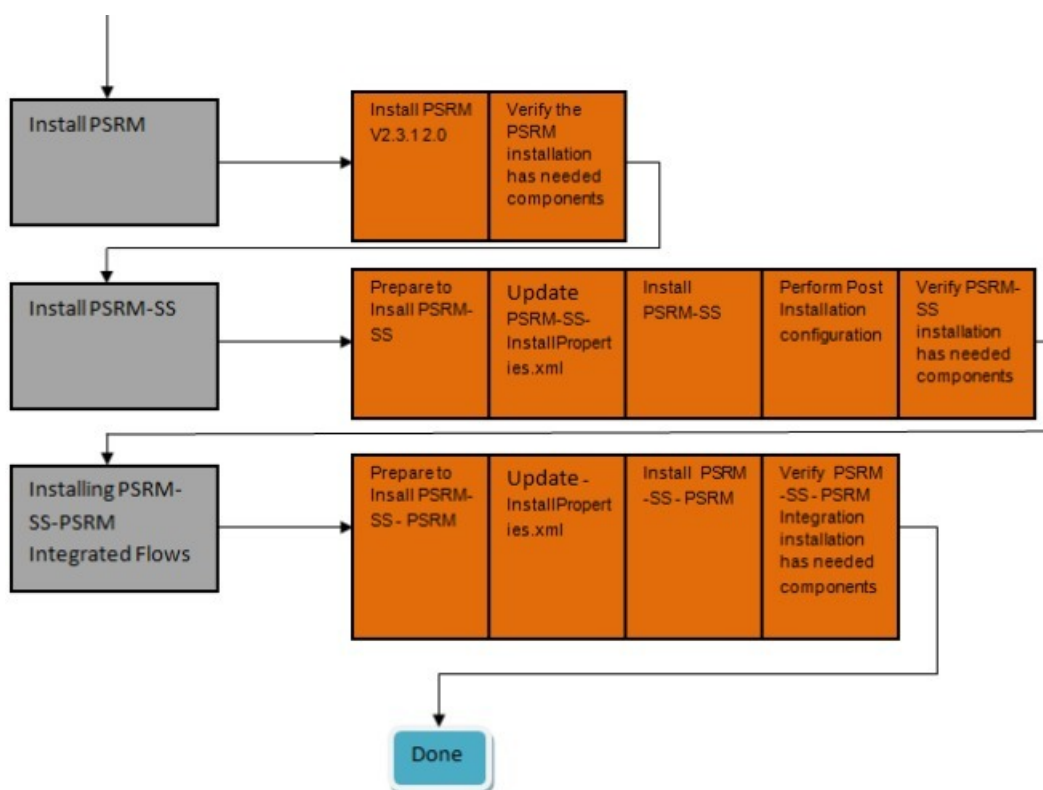
Resource	Location
Oracle OIM Overview	http://www.oracle.com/technetwork/middleware/id-mgmt/overview/index-098451.html
Oracle OUD Overview	http://www.oracle.com/technetwork/middleware/id-mgmt/overview/oud-433568.html
Oracle Public Sector Revenue Management Documentation Library	http://www.oracle.com/technetwork/documentation/pubsectrevmgt-154608.html

Abbreviations

ADF	Application Development Framework
BPEL	Business Process Execution Language
DDL	Data Definition Language
EAR	Enterprise Archive
EM/OEM	Oracle Enterprise Manager
MDS	Metadata Services
OIM	Oracle Identity Management
OPA	Oracle Policy Automation
OUD	Oracle Unified Directory
OUI	Oracle Universal Installer
OWSM	Oracle Web Services Manager
PSRMSS	Oracle Public Sector Revenue Management Self Service
PSRM	Oracle Public Sector Revenue Management
RCU	Repository Creation Utility
SOA	Service Oriented Architecture
WC	Oracle WebCenter
WLS	Oracle WebLogic Server

PSRMSS Installation and Configuration Flowchart





Software Requirements

The following software must be installed and configured prior to installation of Oracle PSRM Self Service:

- Oracle RCU Database 11.1.1.6.0
- Oracle WebLogic Server 10.3.6
- Oracle WebCenter Release 11.1.1.6.0
- Oracle Content Server (UCM) 11.1.1.6.0
- Oracle SOA 11.1.1.6.0

Optional installations:

- Oracle BI Publisher 11.1.1.7.0
- Oracle OIM 11.1.2.x
- Oracle OUD 11.1.2.x
- Oracle OPA 10.4.4.21

When using PSRM as your back-end data management system:

- Oracle Public Sector Revenue Management Release 2.3.1.2.0
 - PSRM Service Pack 2 - BUG 18845734
 - Oracle Documaker 12.0.x

Chapter 2

PSRMSS Installation

Types of Installation Packages

Installation Type	Description
Demo installation	Refer to PSRMSS Bug 18978475 for the latest demo download installation for PSRMSS and the demo components available for PSRM.
Pre-integrated with PSRM 2.3.1.2.	This type of installation renders PSRMSS 1.1 integrated with PSRM 2.3.1.2.
Standalone installation (PSRMSS and PSRMSS-<EDGE-PROD> Integration)	This type of installation renders a standalone PSRMSS 1.1 instance.

Note: Each package has the same basic installation procedure.

Pre-Installation Tasks

The following applications, scripts, and utilities must be installed or run in the recommended order prior to installing PSRMSS:

1. Install Oracle RCU database components (see *Appendix B* for additional details).

Note: This installation requires that you create an additional empty MDS schema for PSRMSS.

2. Install Oracle WebLogic 11.1.1.6
3. Install Oracle WebCenter 11.1.1.6
4. Install Oracle UCM 11.1.1.6

5. Install Oracle SOA 11.1.1.6
6. Create and configure a new Oracle WebLogic domain for Oracle WebCenter, Oracle UCM, and Oracle SOA (see *Appendix C* for additional details).
7. Ensure that Oracle WebLogic Admin Server 11.1.1.6 is running.

Note: The following servers should be installed prior to installing PSRMSS (all should be installed and configured through the installations noted above). See *Appendix E* for additional details.

- UCM_server1
- WC_Portlet
- WC_Spaces
- WC_Uutilities
- soa_server1

8. Ensure that the Node Manager is running to start and stop servers.

When starting Node Manager for the first time you will need to run the *setNMProps* script to set `StartScriptEnabled=true` in the *nodemanager.properties* file:

On UNIX/Linux:

```
MW_HOME/oracle_common/common/bin/setNMProps.sh
```

On Windows:

```
MW_HOME \ORACLE_COMMON\common\bin\setNMProps.cmd
```

Note: `MW_HOME` is set after initializing the *setWLSEnv* script for either OS.

For subsequent Node Manager starts, navigate to `WL_HOME/server/bin` and enter:

On UNIX/Linux:

```
./startNodeManager.sh
```

On Windows:

```
startNodeManager.cmd
```

When Node Manager starts, it reads the *nodemanager.properties* file with the `StartScriptEnabled=true` property, and uses the start scripts when it subsequently starts the managed servers.

The script *setNMProps* only needs to be executed once.

9. Verify that the Oracle WebLogic Admin Server is running, and you are able to access the WebLogic console:

```
http://<administration_server_host>:<administration_server_port>/console
```

Chapter 3

Installing Integrations

Integration Pre-Installation Tasks

The following tasks should be completed before you install PSRMSS-PSRM integrated flows:

- Extract the PSRMSS BPEL integration package to a local destination. This destination will be referred to as the PRODUCT_HOME for this installation.
- Ensure that the Oracle SOA Suite is installed and running.

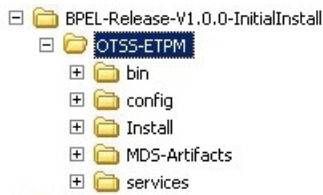
Note: For additional information on SOA, see <http://www.oracle.com/technetwork/middleware/soasuite/documentation/index.html#111130>

- Log in to the WebLogic console to confirm there are no changes in **Pending Activation** status.
- Restart the Enterprise Manager and the WebLogic Administration servers.
- Ensure that the WebLogic Admin server, SOA server, and Node Manager are running.
- Ensure that PSRM V2.3.1.2.0 is properly installed and configured.

Integrated Flows Installation Directory Structure

This folder includes a subfolder hierarchy as shown in the following image:

Note: If any of the folders are read-only, remove the read-only attribute from the folder.



- **bin** contains the scripts to launch the installation utility (one script each for Linux and for Windows):

File	Description
InstallBuild.xml	This is the deployment and installation driver file.
DeployUndeployUtility.xml	This is the deployment driver file for the MDS repository.
install.sh	Install script for Linux.

- **config** contains the installation configuration file. This file must be updated with the environment configuration prior running the installer (see *Appendix A* for details on SOA InstallProperties.)

File	Description
InstallProperties.xml	Install parameters file.

- **Install** contains the work file for the application, installation property files, and installation utilities.
- **MDS-Artifacts** contains the artifacts that will be uploaded into the MDS repository.
- **services** contains the services that will be compiled and deployed to the soa-server.

Completing the Integration Installation

1. Download the installation from the Oracle Software Delivery Cloud (edelivery.oracle.com) and unjar into a target installation directory:

Example:

```
jar -xvf BPEL-Release-V1.1.0.0.0-<<Install-Type>>.jar
```

Note: You must have the platform-appropriate Java JDK installed on the machine on which the Integration Installation package is unzipped.

2. Set the following environment variables (see *Appendix I* for a PSRMSS-PSRM Integration environment settings example):

Variable	Example
SOA_HOME	<BEA_HOME>Oracle_SOA1
ORACLE_HOME	<BEA_HOME>Oracle_SOA1
MW_HOME	<WebLogic_HOME>/Middleware
WL_HOME	<BEA_HOME>/wlserver_10.3
PRODUCT_HOME	This is the BPEL PSRMSS-PSRM product installation home.

Linux Example:

Variable	Example
	PRODUCT_HOME=/psrmss/PSRM-SS/ BPEL-Release-V1.1.0.0.0-Release- InitialInstall/OTSS-ETPM
	Windows Example:
	PRODUCT_HOME=D:\psrmss\PSRM-SS \BPEL-Release-V1.1.0.0.0-Release- InitialInstall\OTSS-ETPM

- Update the <PRODUCT_HOME>/config/InstallProperties.xml file with values appropriate to your environment (see *Appendix A, BPEL/SOA* for a sample InstallProperties.xml file and an explanation of the properties and elements available in the file).

- Run the *setWLSEnv* script to set the environment variables for executing the installation scripts.

On UNIX/Linux:

```
source "${WL_HOME}/wlserver_10.3/server/bin/setWLSEnv.sh"
```

On Windows:

```
cd %WL_HOME%\wlserver_10.3\server\bin\  
setWLSEnv.cmd
```

- Execute the following installation scripts for your OS to copy the files from the downloaded directory (PRODUCT_HOME) to the appropriate locations in MW_HOME
- Change (cd) to the <PRODUCT_HOME>/bin directory.

Note: The following ant command should be entered on one line. No output will be echoed to the screen; refer to the log file to check progress.

On UNIX/Linux:

```
cd $PRODUCT_HOME/bin  
./install.sh -install
```

On Windows:

Note: The following ant command should be entered on one line.

```
cd %PRODUCT_HOME%\bin  
ant -f InstallBuild.xml -DInstallProperties=%PRODUCT_HOME%\config\InstallProperties.xml -  
l installBPEL-PSRMSS.log
```

When running the command, examine InstallBPEL_<DATE_TIME> for any build errors. If "BUILD SUCCESSFUL" does not appear at the end of the file, fix any errors listed in the log before proceeding.

- Execute the following installation scripts in a command window for your OS to deploy MDS.

On UNIX/Linux:

```
cd $PRODUCT_HOME/bin  
./install.sh -deployMDS
```

On Windows:

Note: The following ant command should be entered on one line.

```
cd %PRODUCT_HOME%\bin  
ant -f %PRODUCT_HOME%\bin\DeployUndeployUtility.xml
```

-DInstallProperties==%PRODUCT_HOME%\config\InstallProperties.xml DeployMDS

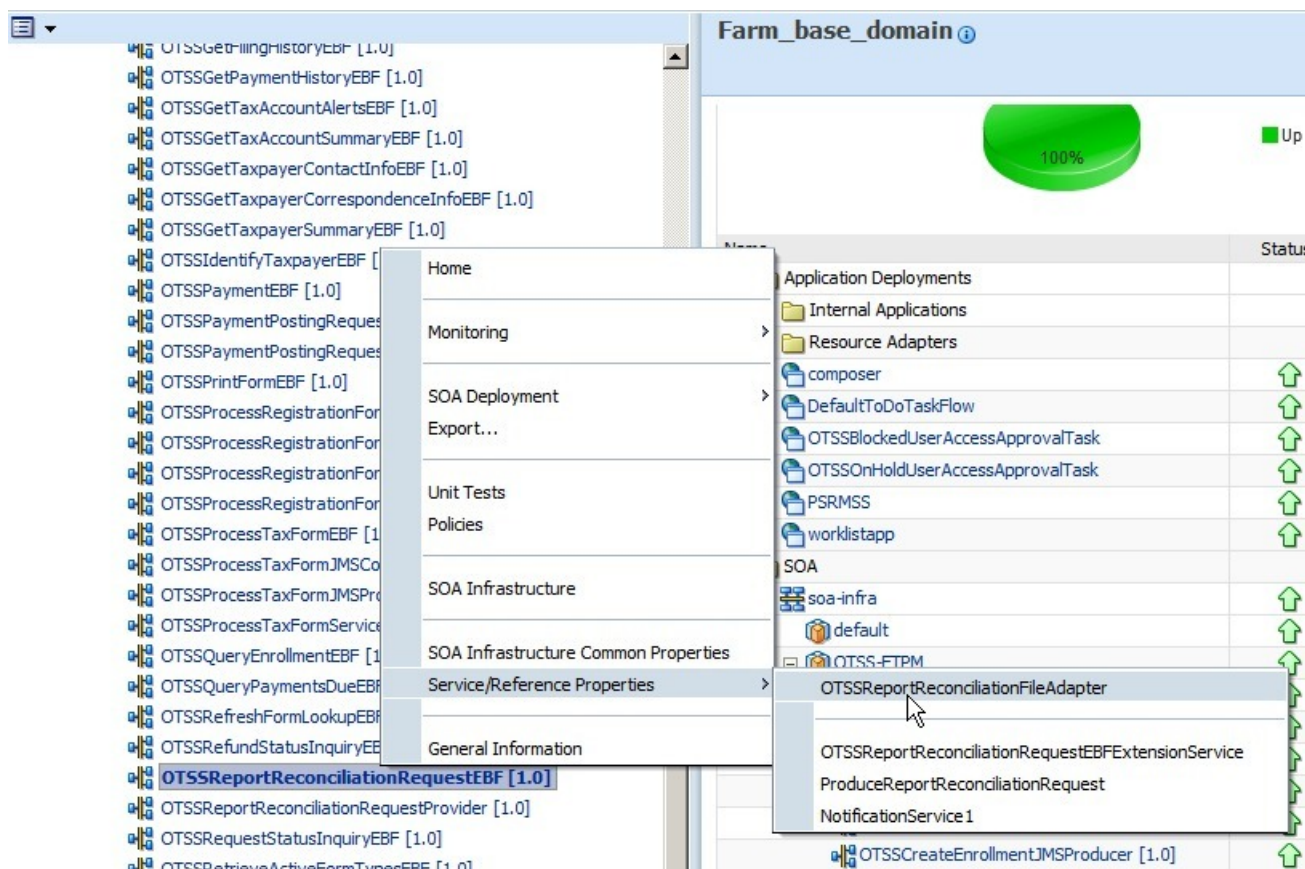
Note: Once the installation has been completed successfully, it is recommended that you copy the installation log file produced into a secure location.

- Restart both the WebLogic Admin server and the SOA server to activate the installation, then perform the tasks listed in the [Post-Integration Configuration Tasks](#) section of this document.

Post-Integration Configuration Tasks

The following describes items that must be configured after a successful installation of the BPEL Integration.

- Log in into the Oracle Enterprise Manager console at <http://WLSAdminHost:WLSAdminServerPort/em> with your wlsadminuser/wlsadminpasswd credentials
- Expand the Farm_soa_domain > soa > soa-infra OTSS-ETPM partition.
- Navigate to the **OTSSReportReconciliationRequestEBF** Composite. Right-click and select Service/Reference > OTSSReportReconciliationFileAdapter:



- On the **Properties** tab, enter a value in the **FilePath** field:

OTSSReportReconciliationRequestEBF [1.0] > Service Home

OTSSReportReconciliationFileAdapter (File Adapter)

Dashboard Policies Faults and Rejected Messages **Properties**

You can edit or delete the following binding properties. Click Add to add additional properties. Apply Revert

View + Add Revert...

Name (Operation)	Value
DeleteFile (Read)	true
PollingFrequency (Read)	60
UseHeaders (Read)	false
IncludeFiles (Read)	.*\,txt
MinimumAge (Read)	0
PublishSize (Read)	1
Recursive (Read)	false
FilePath	

Note: This FilePath will be the location where the OPC reconciliation reports will be placed, so this directory must be readable and accessible.

5. Click **Apply**.

Updating the Worklist Application

1. Log in into the Oracle Enterprise Manager console at <http://WLSAdminHost:WLSAdminServerPort/em> with your wlsadminuser/wlsadminpasswd credentials
2. Expand the Farm_soa_domain > soa > soa-infra OTSS-ETPM partition.
3. Navigate to the **OTSSUserAccessApprovalService** Composite.
4. On the **Dashboard** tab, navigate to the **BlockedUserAccessApprovalTask** and **OnHoldUserAccessApprovalTask** components. Configure each component using the details provided in the next step.

Name	Component Type	Total Instances	Running Instances	Faulted Instances	
				Recoverable	Non Recoverable
OTSSUserAccessApprovalService	BPEL	0	0	0	0
OnHoldUserAccessApprovalTask	Human Workflow	0	0	0	0
BlockedUserAccessApprovalTask	Human Workflow	0	0	0	0

5. On the **Administration** tab, add the URI configuration for the task details for each component:

Add URI

* Application Name

* Host Name

* HTTP Port

HTTPS Port

* URI

OK Cancel

For the BlockedUserAccessApprovalTask:

- Application Name: worklist
- Host Name: The server host name on which the worklist application is deployed (e.g., the soa_host)
- HTTP Port: The port number for the worklist application (e.g., the soa port number)
- HTTPS Port:
- URI: /workflow/OTSSBlockedUserAccessApprovalTask/faces/adf.task-flow?_id=BlockedUserAccessApprovalTask_TaskFlow&_document=WEB-INF/BlockedUserAccessApprovalTask_TaskFlow.xml

Click **Apply** after providing the URI details for the changes to take effect.

For the OnHoldUserAccessApprovalTask:

- Application Name: worklist
- Host Name: The server host name on which the worklist application is deployed.
- HTTP Port: The port number for the worklist application (e.g., 8001).
- HTTPS Port:
- URI: /workflow/OTSSOnHoldUserAccessApprovalTask/faces/adf.task-flow?_id=OnHoldUserAccessApprovalTask_TaskFlow&_document=WEB-INF/OnHoldUserAccessApprovalTask_TaskFlow.xml

Click **Apply** after providing the URI details for the changes to take effect.

Post-Integration Checklist

This section describes procedures to verify integration of the PSRMSS-PSRM flows.

Verifying Creation of the OTSS-SOADS and OTSS-USRACS Data Sources

1. Log in to the Oracle WebLogic Server console at `http://WLSHostName:WLSAdminServerPort/console` with your `weblogicAdminUser/weblogicAdminPassword` credentials.
2. Select the `<soa-domain>`, then expand **Services**, and click **Data Sources**.

The list of data sources should include **OTSS-SOADS** and **OTSS-USRACS**, as shown in the following image:

Summary of JDBC Data Sources

Configuration | Monitoring

A JDBC data source is an object bound to the JNDI tree that provides database connectivity through a pool of JDBC connections. Applications can look up a data source on the JNDI tree and then borrow a database connection from a data source.

This page summarizes the JDBC data source objects that have been created in this domain.

[Customize this table](#)

Data Sources (Filtered - More Columns Exist)

Click the **Lock & Edit** button in the Change Center to activate all the buttons on this page.

Name	Type	JNDI Name	Targets
CSDS	Generic	CSDS	UCM_server1
EDNDataSource	Generic	jdbc/EDNDataSource	soa_server1
EDNLocalTxDataSource	Generic	jdbc/EDNLocalTxDataSource	soa_server1
mds-ovism	Generic	jdbc/mds/ovism	AdminServer, WC_Portlet, soa_server1, WC_Spaces
mds-PSRMSS_MDS	Generic	jdbc/mds/PSRMSS_MDS	AdminServer, psrmss_server1
mds-soa	Generic	jdbc/mds/MDS_LocalTxDataSource	AdminServer, soa_server1
mds-SpacesDS	Generic	jdbc/mds/SpacesDS	AdminServer, WC_Spaces
OraSDPMDDataSource	Generic	jdbc/OraSDPMDDataSource	soa_server1
OTSS-SOADS	Generic	jdbc/OTSS-SOADS	soa_server1
OTSS-USRACS	Generic	jdbc/OTSS-USRACS	soa_server1

Verifying Creation of the JMS Modules

1. Log in to the Oracle WebLogic Server console at `http://WLSTHostName:WLSAdminServerPort/console` with your `weblogicAdminUser/weblogicAdminPassword` credentials.
2. Select the `<soa_domain>`, expand **Messaging**, and click **JMS Modules**.

The list of JMS Modules should include **OTSSETPMJMSModule**, as shown in the following image:

JMS Modules

JMS system resources are configured and stored as modules similar to standard J2EE modules. Such resources include queues, topics, connection factories, templates, destination keys, quota, distributed queues, distributed topics, foreign servers, and JMS store-and-forward (SAF) parameters. You can administratively configure and manage JMS system modules as global system resources.

This page summarizes the JMS system modules that have been created for this domain.

[Customize this table](#)

JMS Modules

Click the **Lock & Edit** button in the Change Center to activate all the buttons on this page.

Name	Type
BPMJMSModule	System
OTSSETPMJMSModule	System
SOAJMSModule	System
UMSJMSModule	System

3. Click **OTSSETPMJMSModule**.

The Summary of Resources is displayed:

Settings for OTSSETPMModule

Configuration Subdeployments Targets Security Notes

This page displays general information about a JMS system module and its resources. It also allows you to configure new resources and access existing resources.

Name: OTSSETPMModule The name of this JMS system module. [More Info...](#)

Descriptor File Name: jms/otssetpmmodule-jms.xml The name of the JMS module descriptor file. [More Info...](#)

This page summarizes the JMS resources that have been created for this JMS system module, including queue and topic destinations, connection factories, JMS templates, destination sort keys, destination quota, distributed destinations, foreign servers, and store-and-forward parameters.

[Customize this table](#)

Summary of Resources

Click the **Lock & Edit** button in the Change Center to activate all the buttons on this page.

New Delete Showing 1 to 10 of 10 Previous | Next

Name	Type	JNDI Name	Subdeployment	Targets
OTSSCreateEnrollment	Queue	.jms/OTSSCreateEnrollment	OTSSETPMSubDeployment	OTSSETPMJMServer
OTSSETPMConnectionFactory	Connection Factory	.jms/OTSSETPMConnectionFactory	OTSSETPMSubDeployment	OTSSETPMJMServer
OTSSPaymentPosting	Queue	.jms/OTSSPaymentPosting	OTSSETPMSubDeployment	OTSSETPMJMServer
OTSSPaymentPostingError	Queue	.jms/OTSSPaymentPostingError	OTSSETPMSubDeployment	OTSSETPMJMServer
OTSSPaymentReport	Queue	.jms/OTSSPaymentReport	OTSSETPMSubDeployment	OTSSETPMJMServer
OTSSPaymentReportError	Queue	.jms/OTSSPaymentReportError	OTSSETPMSubDeployment	OTSSETPMJMServer
OTSSProcessRegistrationForm	Queue	.jms/OTSSProcessRegistrationForm	OTSSETPMSubDeployment	OTSSETPMJMServer
OTSSProcessTaxForm	Queue	.jms/OTSSProcessTaxForm	OTSSETPMSubDeployment	OTSSETPMJMServer
OTSSServiceRequest	Queue	.jms/OTSSServiceRequest	OTSSETPMSubDeployment	OTSSETPMJMServer
OTSSServiceRequestError	Queue	.jms/OTSSServiceRequestError	OTSSETPMSubDeployment	OTSSETPMJMServer

New Delete Showing 1 to 10 of 10 Previous | Next

The list of resources should include the following:

- OTSSCreateEnrollment
- OTSSSRMConnectionFactory
- OTSSPaymentPosting
- OTSSPaymentPostingError
- OTSSPaymentReport
- OTSSPaymentReportError
- OTSSProcessRegistrationForm
- OTSSProcessTaxForm
- OTSSServiceRequest
- OTSSServiceRequestError

Verifying Creation of the Outbound Connection Pools

1. Log in to the Oracle WebLogic Server console at <http://WLSHostName:WLSAdminServerPort/console> with your *weblogicAdminUser/weblogicAdminPassword* credentials.
2. Select the <soa-domain>, then click on **Deployments**, and click the deployment for **DbAdapter**, as shown in the following image:

<input type="checkbox"/>	DbAdapter	Active	OK	Resource Adapter	322
--------------------------	-----------	--------	----	------------------	-----

- Click **Configuration – Outbound Connection Pools**, with a **Group and Instance** of **eis/DB/OTSS-SOADS1** and **eis/DB/OTSS-USRACS**, as shown in the following image:

Settings for DbAdapter

Overview Deployment Plan **Configuration** Security Targets Control Testing Monitoring Notes

General Properties **Outbound Connection Pools** Admin Objects Workload Instrumentation

This page displays a table of Outbound Connection Pool groups and instances for this resource adapter. The top level entries in the table represent Outbound Connection Pool groups. Groups are listed by connection factory interface and the instances are listed by their JNDI names. Expand a group to obtain configuration information for a Connection Pool instance within an Outbound Connection Pool group. Click the name of a group or instance to configure it. Automatically generated Connection Pools are not displayed in the table below.

Outbound Connection Pool Configuration Table

Click the **Lock & Edit** button in the Change Center to activate all the buttons on this page.

New Delete Showing 1 to 1 of 1 Previous | Next

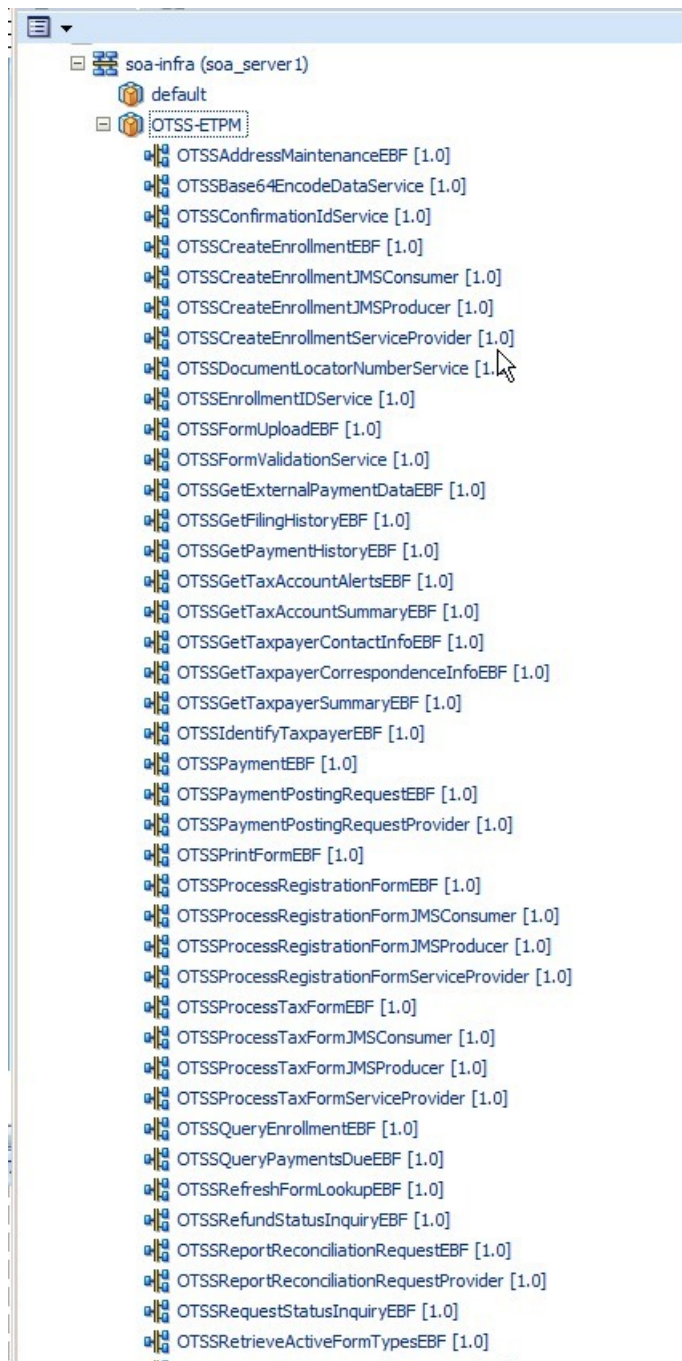
Groups and Instances	Connection Factory Interface
javafx.resource.cd.ConnectionFactory	javafx.resource.cd.ConnectionFactory
eis/DB/OTSS-SOADS1	javafx.resource.cd.ConnectionFactory
eis/DB/OTSS-USRACS	javafx.resource.cd.ConnectionFactory
eis/DB/SOAdemo	javafx.resource.cd.ConnectionFactory
eis/DB/SOAdemoLocalTx	javafx.resource.cd.ConnectionFactory

New Delete Showing 1 to 1 of 1 Previous | Next

Verifying the Composites in Enterprise Manager

To verify that the OTSS-ETPM partition was created with all composites deployed:

- Log in into the Oracle Enterprise Manager console at `http://WLSAdminHost:WLSAdminServerPort/em` with your `wlsadminuser/wlsadminpasswd` credentials.
- Expand the **Farm_<domain-name>_domain > soa > soa-infra** OTSS-PSRM partition.



3. Verify that following composites are deployed (there should be a total of 48):

- OTSSProcessTaxFormServiceProvider [1.0]
- OTSSCreateEnrollmentJMSPProducer [1.0]
- OTSSRequestStatusInquiryEBF [1.0]
- OTSSPaymentPostingRequestProvider [1.0]
- OTSSRefundStatusInquiryEBF [1.0]
- OTSSGetTaxAccountAlertsEBF [1.0]

- OTSSServiceRequestJMSConsumer [1.0]
- OTSSRefreshFormLookupEBF [1.0]
- OTSSProcessRegistrationFormJMSProducer [1.0]
- OTSSCreateEnrollmentServiceProvider [1.0]
- OTSSProcessRegistrationFormJMSConsumer [1.0]
- OTSSProcessRegistrationFormEBF [1.0]
- OTSSAddressMaintenanceEBF [1.0]
- OTSSPaymentPostingRequestEBF [1.0]
- OTSSTaxpayerServiceRequestProvider [1.0]
- OTSSGetTaxpayerContactInfoEBF [1.0]
- OTSSProcessRegistrationFormServiceProvider [1.0]
- OTSSFormValidationService [1.0]
- OTSSSummaryEnrollmentEBF [1.0]
- OTSSGetFilingHistoryEBF [1.0]
- OTSSIdentifyTaxpayerEBF [1.0]
- OTSSGetTaxpayerCorrespondenceInfoEBF [1.0]
- OTSSUserAccessService [1.0]
- OTSSRetrieveFormTypeDefinitionsEBF [1.0]
- OTSSReportReconciliationRequestProvider [1.0]
- OTSSPrintFormEBF [1.0]
- OTSSGetPaymentHistoryEBF [1.0]
- OTSSBase64EncodeDataService [1.0]
- OTSSFormUploadEBF [1.0]
- OTSSEnrollmentIDService [1.0]
- OTSSRetrieveActiveFormTypesEBF [1.0]
- OTSSTaxpayerServiceRequestEBF [1.0]
- OTSSUserAccessApprovalService [1.0]
- OTSSProcessTaxFormEBF [1.0]
- OTSSQueryPaymentsDueEBF [1.0]
- OTSSDocumentLocatorNumberService [1.0]
- OTSSCreateEnrollmentEBF [1.0]
- OTSSCreateEnrollmentJMSConsumer [1.0]
- OTSSGetExternalPaymentDataEBF [1.0]
- OTSSReportReconciliationRequestEBF [1.0]
- OTSSProcessTaxFormJMSConsumer [1.0]
- OTSSQueryEnrollmentEBF [1.0]
- OTSSGetTaxpayerSummaryEBF [1.0]
- OTSSProcessTaxFormJMSProducer [1.0]

- OTSSGetTaxAccountSummaryEBF [1.0]
- OTSSConfirmationIdService [1.0]
- OTSSPaymentEBF [1.0]
- OTSSServiceRequestJMSProducer [1.0]

Verifying Worklist Applications Deployment

1. Log in to the Oracle WebLogic Server console at `http://WLSHostName:WLSAdminServerPort/console` with your *weblogicAdminUser/weblogicAdminPassword* credentials.
2. Expand the **Farm_<domain-name>_domain > Application Deployments**.

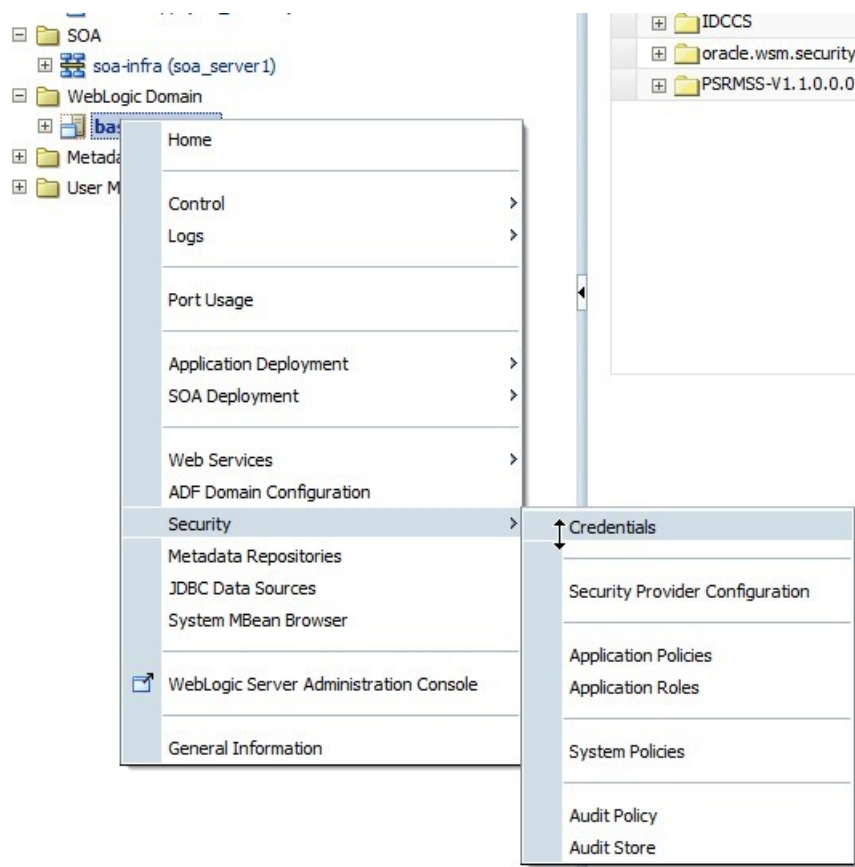


3. Verify that following two Applications are displayed:
 - OTSSBlockedUserAccessApprovalTask
 - OTSSOnHoldUserAccessApprovalTask

Verifying Creation of Keys

To verify that the PSRMSS_RMSYS and PSRMSS_EXTUCM keys have been created:

1. Log in to the Oracle WebLogic Server console at `http://WLSHostName:WLSAdminServerPort/console` with your *weblogicAdminUser/weblogicAdminPassword* credentials.
2. Expand the **Farm_<domain-name>_domain > WebLogic Domain > Domain Name > Security > Credentials**.



3. Expand **oracle.wsm.security**

base_domain WebLogic Domain

Credentials

A credential store is the repository of security data that certify the authority of entities used by Java 2, J2EE, and ADF applications. Applications can

Credential Store Provider

[+ Create Map](#) [+ Create Key](#) [Edit...](#) [Delete...](#) [▶](#)

Credential	Type	Description
+ BPM-CRYPTO		
+ IDCCS		
- oracle.wsm.security		
PSRMSS_EXTUCM	Password	UCM Credentials
PSRMSS_RMSYS	Password	Edge Product Service Credentials

Two keys should be listed:

- PSRMSS_EXTUCM
- PSRMSS_RMSYS

Accessing the Worklist Application

To access the Worklist application after a successful installation:

User	<code>http/s://<soa-server>:<soa-port>/integration/worklistapp/faces/login.jspx</code>
------	--

PSRMSS Installation Directory Structure

The product installation directory contains the following hierarchy:



- **bin** contains the scripts to launch the installation utility. Two scripts are provided (one each for Windows and for Linux):

File	Description
install.sh	Install script for Linux
install.cmd	Install script for Windows

- **config** contains the installation configuration file. This file must be updated with the environment configuration prior running the installer (for details, see *Appendix F*).

File	Description
PSRM-SS-InstallProperties.xml	Installation parameters file.

- **Install** contains the PSRMSS application, installation property files, and installation utilities.
- **Log** contains the log for the installation utility.

If any of the folders are read-only, remove the read-only attribute from the folder.

Chapter 4

PSRMSS Product Installation

This topic describes the basic installation procedure for PSRMSS.

1. Download PSRMSS-Release-V1.1.0.0.0<<Install-Type>>.jar from the Oracle Software Delivery Cloud (edelivery.oracle.com) and unjar into a target installation directory:

Example: `jar -xvf PSRMSS-Release-V1.1.0.0.0<<Install-Type>>.jar`

Linux example:

```
/PSRM-SS/PSRM-SS-ProductInstall
```

Windows example:

```
D:\PSRM-SS\PSRM-SS-ProductInstall
```

You must have the platform-appropriate Java JDK installed on the machine on which the PSRMSS package is unjarred.

2. Set the PRODUCT_HOME environment variable to point to PSRM-SS-Product-Install:

Linux example:

```
export PRODUCT_HOME=/PSRMSS/PSRM-SS-Release-V1.1.0.0.0
```

```
echo $PRODUCT_HOME
```

echo should return PRODUCT_HOME as the location of the top-level directory of the installation media, e.g., /PSRMSS/PSRM-SS-Release-V1.1.0.0.0.

Windows example:

```
SET PRODUCT_HOME=D:\PSRMSS\PSRM-SS-Release-V1.1.0.0.0
```

```
echo %PRODUCT_HOME%
```

echo should return PRODUCT_HOME as location of the top level directory of the installation media, e.g., D:\PSRMSS\PSRM-SS-Release-V1.1.0.0.0.

See *Appendix J* for a PSRMSS environment settings example.

3. Set the WebLogic server environment by running the *setWLSEnv* script. The scripts are located in <WEBLOGIC_HOME>\wlserver_10.3\server\bin.

Linux example:

```
source /PSRMSS/weblogic-10.3.6/wlserver_10.3/server/bin/setWLSEnv.sh
```

Windows example:

```
run D:\weblogic-10.3.6\wlserver_10.3\server\bin\setWLSEnv.cmd
```

After running the script, verify that the *wlserver* environment is set in your classpath and path environment variables.

4. Update the <PRODUCT_HOME>/config/PSRM-SS-InstallProperties.xml file with values appropriate to your environment (see *Appendix F* for a sample PSRM-SS-InstallProperties.xml file and an explanation of the properties and elements available in the file).
5. Execute following command to change to PRODUCT_HOME/bin:

On Linux:

```
source /PSRMSS/weblogic-10.3.6/wlserver_10.3/server/bin/setWLSEnv.sh
```

On Windows:

```
cd %PRODUCT_HOME%\bin
```

Important: Before proceeding to the final step, ensure that both the Admin server and Node Manager are up and running.

6. Run the installation script to install PSRMSS.

On Linux:

```
./install.sh -i
```

Note: You must change the access permissions on install.sh using the command `chmod 755`.

On Windows:

```
install.cmd -i
```

The following message is displayed on a successful installation of PSRMSS:

```
-----  
Installation of PSRM-SS V1.1.0.0.0 is Successful  
-----
```

If any message appears that indicates an unsuccessful installation after executing the installation utility, see *Appendix G, Installer Utility Overview*.

Post-Installation Tasks

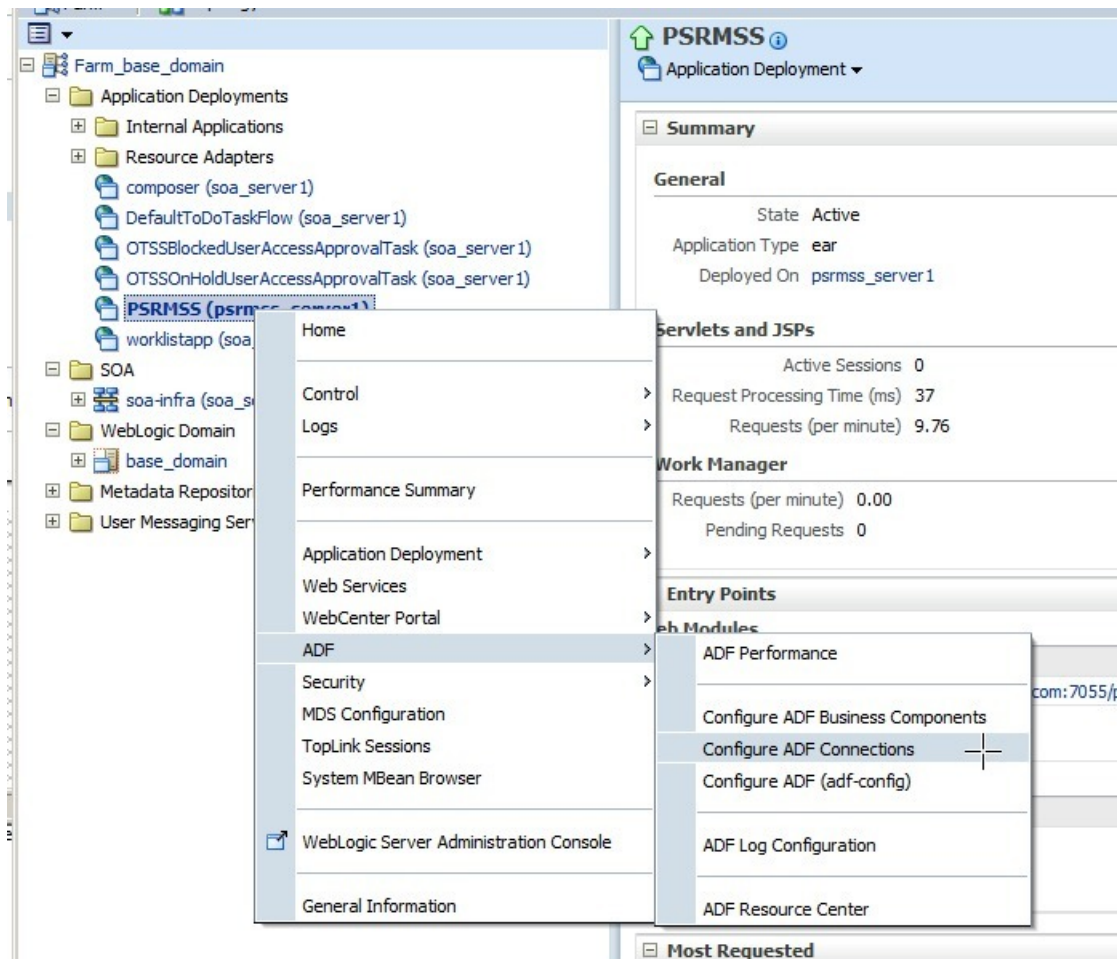
Verifying the Installation

The following topics comprise a verification checklist for the PSRMSS installation.

Verifying ADF Connections for the PSRMSS Application

To configure and verify that the PSRMSS application WSDLs are correctly tokenized and OWSM Policies are correctly set:

1. Log in into the Oracle Enterprise Manager console at <http://WLSAdminHost:WLSAdminServerPort/em> with your *wlsadminuser/wlsadminpasswd* credentials.
2. Select **Application Deployments**, choose **PSRMSS**, then right-click and choose **ADF > Configure ADF Connections** from the context menu as shown in the following image:



3. Select a Connection Name, then right-click Advanced Connection Configuration:

PSRMSS Application Deployment

Logged in as weblogic | Host 2606:b400:2010:504a:216:3eff:fe0f:956b
Page Refreshed Jun 16, 2014 10:20:04 AM PDT

ADF Connections Configuration

Use this page to view, modify or add new ADF connections.
To create a new connection, select a Connection Type from the list below and enter a Connection Name. The Connection Configurations page updates with fields for configuring the selected connection type.

Create Connection

Connection Type:

Connection Name:

Create Connection

Web Service Connections

Edit Delete Advanced Connection Configuration

Connection Name	ExternalPaymentService	ActiveFormTypeService	ProcessTaxFormService	GetTaxpayerContactService	GetTaxpayerCorrespondenceService
TSPrepareExtPaymentDataService - TSPrepareExtPaymentDataPort	{http://ouaf.oracle.com/spl/XAIXap file:/TSPrepareExtPaymentData.wsdl	{http://ouaf.oracle.com/spl/XAIXap file:/TSRetrieveActiveFormTypes.wsdl	{http://ouaf.oracle.com/spl/XAIXap file:/TSProcessTaxForm.wsdl	{http://ouaf.oracle.com/spl/XAIXap file:/TSGetTaxpayerContactInformation.wsdl	{http://ouaf.oracle.com/spl/XAIXap file:/TSGetTaxpayerCorrespondenceInformation.wsdl

- Click on the **OWSM** tab. Check that the Directly Attached Policies section contains the correct policy and that the value of **csf-key** is **PSRMSS_BPTEL** in the Security Configuration Details section.

PSRMSS Application Deployment

Logged in as weblogic | Host 2606:b400:2010:504a:216:3eff:fe0f:956b
Page Refreshed Jun 16, 2014 10:20:45 AM PDT

ADF Connections Configuration > Configure Web Service

TSPrepareExtPaymentDataPort (Web Service Client)

OWSM Policies Configuration

Subject's Overall Policy Configuration Status: Valid ✓ Secured ✓

Globally Attached Policies

Name	Category	Policy Set	Status
No rows yet			

Directly Attached Policies

Attach/Detach Disable

Name	Category	Effective	Status
oracle/wss_http_token_client_policy	Security	True	Enabled

Security Configuration Details Apply Revert

Name	Current Value	Original Value
reference.priority		
csf-key	PSRMSS_BPTEL	basic.credentials
reference.priority		
reference.priority		

Note: If the correct policies are not properly attached to the Web Service Connection, see the troubleshooting section in this document on this subject under the heading, "ADF Connection strings are not properly updated".

- Click on the **Configuration** tab. Check that the **Endpoint Address** has been properly updated to the correct endpoint address for your implementation.

ADF Connections Configuration > Configure Web Service
TSPPrepareExtPaymentDataPort (Web Service Client)

OWSM Policies **Configuration** Apply Revert

General

Endpoint Address

Maintain Session

HTTP Chunking

Stop Chunking

Chunking Size(bytes)

HTTP Timeout

HTTP Read Timeout (ms)

HTTP Connection Timeout (ms)

HTTP Basic Authentication

HTTP User Name

HTTP User Password

Preemptive

HTTP Proxy

Proxy Host

Proxy Port

Proxy User Name

Proxy User Password

Proxy Realm

Proxy Authentication Type

Verifying the PSRMSS Schema Tables

1. Log in into the database with the PSRMSS dbuser/passwd credentials that you created during the installation process.
2. Verify that the following tables exist by executing the following query:

```
select table_name from user_tables order by table_name;
```

Results should be:

```
"PS_TXN"
"TS_ACCESS_TYPE"
"TS_ACCESS_TYPE_L"
"TS_ACCESS_TYPE_SUMMARY"
"TS_ADDRESS_CONFIG"
"TS_ADDRESS_CONFIG_FIELD"
"TS_ALERT_TYPE"
"TS_ALERT_TYPE_L"
"TS_CONFIGURATION"
"TS_EMAIL_DEFINITION"
"TS_EMAIL_DEFINITION_L"
"TS_FIELD"
"TS_FIELD_L"
"TS_FORM_ACTION"
"TS_FORM_COLUMN_WORK"
"TS_FORM_CUSTOM_PROPERTY"
"TS_FORM_DATATYPE"
"TS_FORM_DEFINITION"
"TS_FORM_DEFINITION_L"
"TS_FORM_LINE_WORK"
"TS_FORM_PROCESS_CONTROL"
"TS_FORM_SECTION_WORK"
"TS_FORM_VAL_RULE"
"TS_FORM_VERSION"
"TS_FORM_WORK"
```

```

"TS_INTERVIEW"
"TS_INTERVIEW_L"
"TS_INTERVIEW_SET"
"TS_INTERVIEW_SET_L"
"TS_LANGUAGE"
"TS_LINE_OF_BUSINESS"
"TS_LINE_OF_BUSINESS_L"
"TS_LOOKUP"
"TS_LOOKUP_L"
"TS_LOOKUP_VAL"
"TS_LOOKUP_VAL_L"
"TS_MESSAGE"
"TS_MESSAGE_L"
"TS_MESSAGE_PARAMETER"
"TS_PATCH_LOG"
"TS_PAYDEST_CUSTOM_PROPERTY"
"TS_PAYMENT_DESTINATION"
"TS_PAYMENT_DESTINATION_FIELD"
"TS_PAYMENT_DESTINATION_FIELD_L"
"TS_PAYMENT_DESTINATION_L"
"TS_PAYMENT_METHOD"
"TS_PAYMENT_PROVIDER"
"TS_PAYMENT_PROVIDER_L"
"TS_PROPERTY"
"TS_PROPERTY_L"
"TS_SERVICE_REQUEST_DEFN"
"TS_SERVICE_REQUEST_DEFN_L"
"TS_SERVICE_REQUEST_FIELD"
"TS_SERVICE_REQUEST_FIELD_L"
"TS_SVC_REQ_CUSTOM_PROPERTY"
"TS_VALIDATION_RULE"
"TS_VALIDATION_RULE_L"

```

Verifying Creation of the PSRMSS Server

1. Log in to the Oracle WebLogic Server console at `http://WLSHostName:WLSAdminServerPort/console` with your `weblogicAdminUser/weblogicAdminPassword` credentials.
2. Select the `<PSRMSS-domainname>`, then expand **Environment**, and click **Server**.

The server list should include the server name from your installation (as indicated by "psrmss_server1" in this example).

[Customize this table](#)

Servers (Filtered - More Columns Exist)

Click the **Lock & Edit** button in the Change Center to activate all the buttons on this page.

New Clone Delete Showing 1 to 6 of 6 Previous | Next

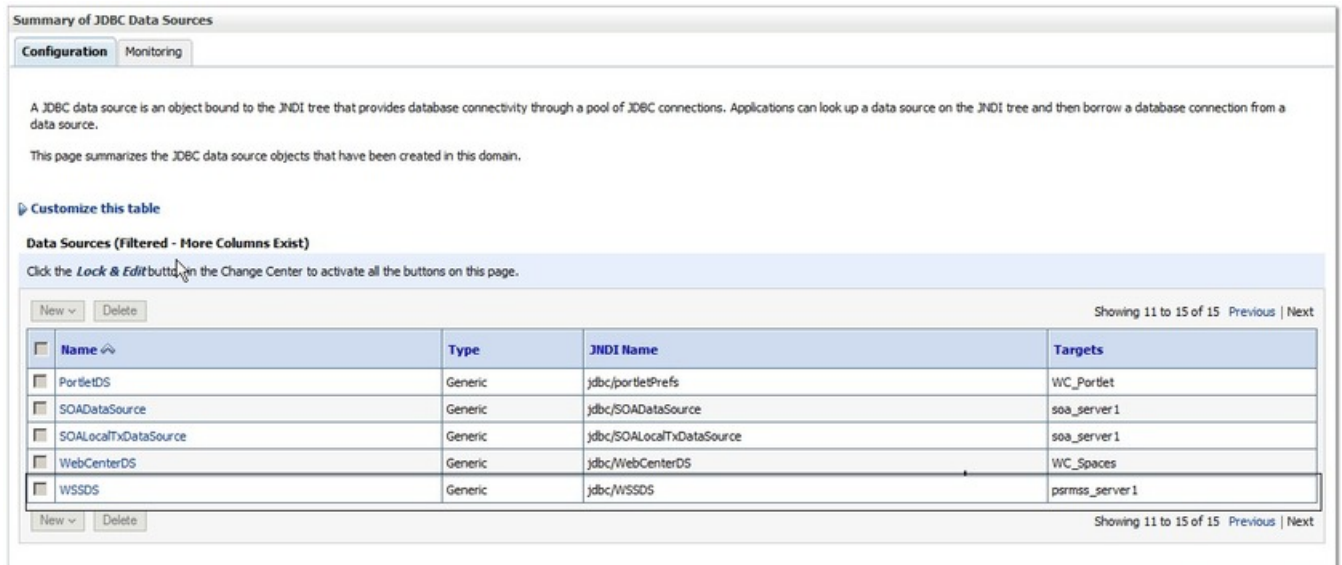
Name	Cluster	Machine	State	Health	Listen Port
AdminServer(admin)		SF	RUNNING	OK	9001
psrmss_server1		SF	RUNNING	OK	9055
soa_server1		SF	RUNNING	OK	9005
UCM_server1		SF	SHUTDOWN		16500
WC_Portlet		SF	SHUTDOWN		8889
WC_Spaces		SF	SHUTDOWN		8888

New Clone Delete Showing 1 to 6 of 6 Previous | Next

Verifying the WSSDS Data Source

1. Log in to the Oracle WebLogic Server console at `http://WLHostName:WLSAdminServerPort/console` with your `weblogicAdminUser/weblogicAdminPassword` credentials.
2. Select the `<PSRMSS-domainname>`, then expand **Services**, and click **Data Sources**.

The list of data sources should include **WSSDS**, targeted to your server, as shown in the following image:



Summary of JDBC Data Sources

Configuration | Monitoring

A JDBC data source is an object bound to the JNDI tree that provides database connectivity through a pool of JDBC connections. Applications can look up a data source on the JNDI tree and then borrow a database connection from a data source.

This page summarizes the JDBC data source objects that have been created in this domain.

[Customize this table](#)

Data Sources (Filtered - More Columns Exist)

Click the **Lock & Edit** button in the Change Center to activate all the buttons on this page.

Name	Type	JNDI Name	Targets
PortletDS	Generic	jdbc/portletPrefs	WC_Portlet
SOADDataSource	Generic	jdbc/SOADDataSource	soa_server1
SOALocalTxDataSource	Generic	jdbc/SOALocalTxDataSource	soa_server1
WebCenterDS	Generic	jdbc/WebCenterDS	WC_Spaces
WSSDS	Generic	jdbc/WSSDS	psrmss_server1

Verifying the mds-PSRMSS_MDS Data Source

1. Log in to the Oracle WebLogic Server console at `http://WLHostName:WLSAdminServerPort/console` with your `weblogicAdminUser/weblogicAdminPassword` credentials.
2. Select the `<PSRMSS_domain >`, then expand **Services**, and click **Data Sources**.

The list of data sources should include **mds-PSRMSS_MDS**, targeted to your server, as shown in the following image:

Summary of JDBC Data Sources

Configuration Monitoring

A JDBC data source is an object bound to the JNDI tree that provides database connectivity through a pool of JDBC connections. Applications can look up a data source on the JNDI tree and then borrow a database connection from a data source.

This page summarizes the JDBC data source objects that have been created in this domain.

[Customize this table](#)

Data Sources (Filtered - More Columns Exist)

Click the **Lock & Edit** button in the Change Center to activate all the buttons on this page.

New Delete Showing 1 to 10 of 15 Previous Next

Name	Type	JNDI Name	Targets
CSDS	Generic	CSDS	UCM_server1
EDNDataSource	Generic	jdbc/EDNDataSource	soa_server1
EDNLocalTxDataSource	Generic	jdbc/EDNLocalTxDataSource	soa_server1
mds-owsm	Generic	jdbc/mds/owsm	AdminServer, WCC_Portlet, soa_server1, WCC_Spaces
mds-PSRMSS_MDS	Generic	jdbc/mds/PSRMSS_MDS	AdminServer, psrmss_server1
mds-soa	Generic	jdbc/mds/MDS_LocalTxDataSource	AdminServer, soa_server1
mds-SpacesDS	Generic	jdbc/mds/SpacesDS	AdminServer, WCC_Spaces
OraSDPMDDataSource	Generic	jdbc/OraSDPMDDataSource	soa_server1
OTSS-SOADS	Generic	jdbc/OTSS-SOADS	soa_server1
OTSS-USRACS	Generic	jdbc/OTSS-USRACS	soa_server1

New Delete Showing 1 to 10 of 15 Previous Next

Verifying the PSRMSSFormsAdmin Group

1. Log in to the Oracle WebLogic Server console at <http://WLSHostName:WLSAdminServerPort/console> with your `weblogicAdminUser/weblogicAdminPassword` credentials.
2. Select **PSRMSS_domain > Security Realms > myrealm > Users and Groups**.

The list of groups should include **PSRMSSFormsAdmin** and be part of the **Administrators** group, as shown in the following image:

Users **Groups**

This page displays information about each group that has been configured in this security realm.

[Customize this table](#)

Groups

New Delete Showing 1 to 9 of 9 Previous Next

Name	Description	Provider
AdminChannelUsers	AdminChannelUsers can access the admin channel.	DefaultAuthenticator
Administrators	Administrators can view and modify all resource attributes and start and stop servers.	DefaultAuthenticator
AppTesters	AppTesters group.	DefaultAuthenticator
CrossDomainConnectors	CrossDomainConnectors can make inter-domain calls from foreign domains.	DefaultAuthenticator
Deployers	Deployers can view all resource attributes and deploy applications.	DefaultAuthenticator
Monitors	Monitors can view and modify all resource attributes and perform operations not restricted by roles.	DefaultAuthenticator
Operators	Operators can view and modify all resource attributes and perform server lifecycle operations.	DefaultAuthenticator
OracleSystemGroup	Oracle application software system group.	DefaultAuthenticator
PSRMSSFormsAdmin	Role is required for actions Re-Import Lock Unlock	DefaultAuthenticator

New Delete Showing 1 to 9 of 9 Previous Next

Verifying wasadmin User Creation

1. Log in to the Oracle WebLogic Server console at `http://WLSHostName:WLSAdminServerPort/console` with your `weblogicAdminUser/weblogicAdminPassword` credentials.
2. Select **PSRMSS_domain > Security Realms > myrealm > Users and Groups**.

The list of users should include **wasadmin** and be part of the **Administrators** and **PSRMSSFormsAdmin** groups, as shown in the following images:

New

Delete

<input type="checkbox"/> Name ↕	Description
<input type="checkbox"/> wasadmin	PSRM-SS Added via Installation
<input type="checkbox"/> weblogic	This user is the default administrator.

New

Delete

Settings for wasadmin

General

Passwords

Attributes

Groups

Save

Use this page to configure group membership for this user.

Parent Groups:

Available:

☐ AdminChannelUsers
 ☐ AppTesters
 ☐ CrossDomainConnectors
 ☐ Deployers
 ☐ Monitors
 ☐ Operators
 ☐ OracleSystemGroup

Chosen:

☐ Administrators
 ☐ PSRMSSFormsAdmin

Save

Verifying Successful Application Deployment

1. Log in to the Oracle WebLogic Server console at `http://WLShostName:WLSAdminServerPort/console` with your `weblogicAdminUser/weblogicAdminPassword` credentials.
2. Select the **<PSRMSS domain>**, then expand **Summary of Deployments**.

The list of deployments should include a `oracle.psmss.extension(1.0,1.0)` shared library, as shown in the following image:

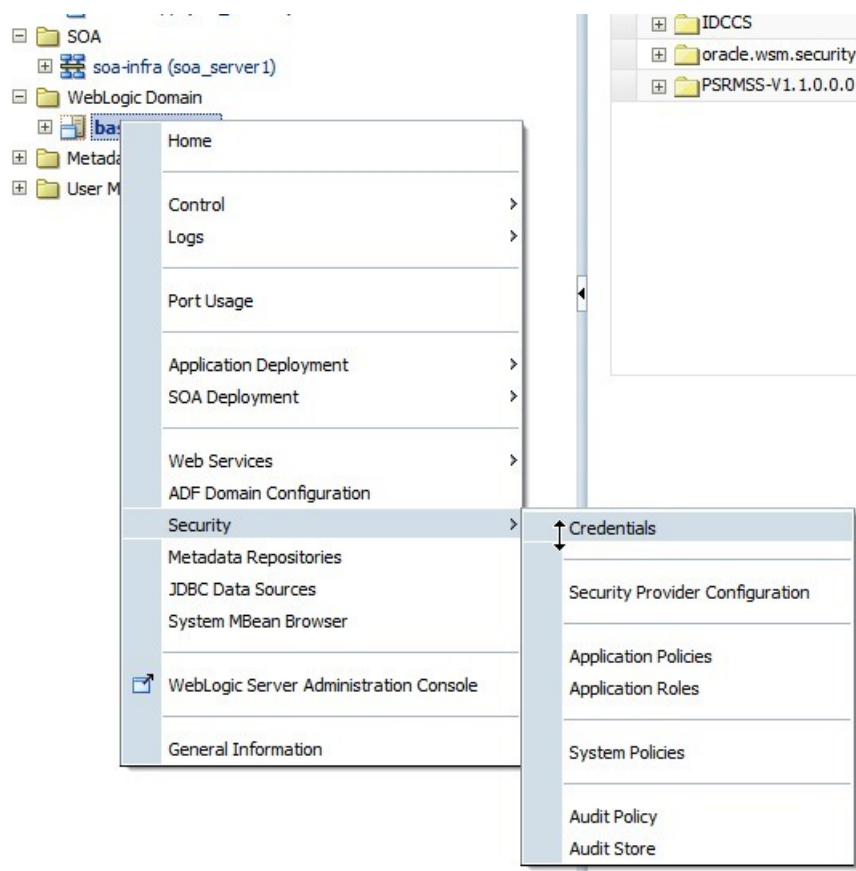
	oracle.psmss.extension(1.0,1.0)
--	---------------------------------

In addition, the list of deployments should include the PSRMSS application, as shown in the following image:

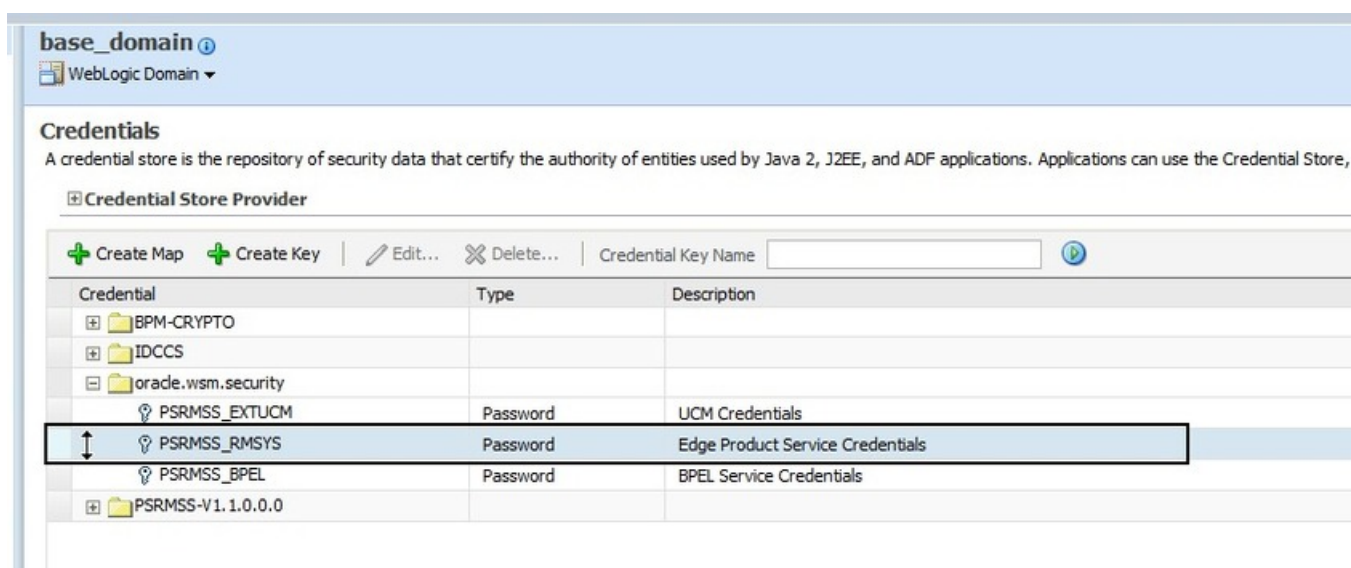


Verifying Successful Key Creation

1. Log in to the Oracle WebLogic Server console at `http://WLSHostName:WLSAdminServerPort/console` with your `weblogicAdminUser/weblogicAdminPassword` credentials.
2. Expand the **Farm_<PSRMSS_domain> > WebLogic Domain > Security > Credentials**.



3. Expand `oracle.wsm.security` and verify that the **PSRMSS_RMSYS** key is listed:



Accessing the PSRMSS Application

To access the PSRMSS application after a successful installation:

User	<code>http://<weblogic-Server>:<PSRM-ss-server-port>/PSRMss/faces/pages_home</code>
Admin login page	<code>http://<weblogic-Server>:<PSRM-ss-server-port>/PSRMss/faces/oracle/webcenter/portalapp/pages/login.jspx</code>
Main landing page	<code>http://<weblogic-Server>:<PSRM-ss-server-port>/PSRMss/faces/oracle/webcenter/portalapp/pages/WSSHome.jspx</code>

Configuring UCM for PSRMSS

UCM Configuration: Part 1

When the installation process is complete there are a few recommended configuration options that should be set in the UCM server in order to support the ability to include UCM content in the PSRMSS portal pages.

1. Log in to the Oracle UCM at `http://WLSAdminHost:UCMServerPortNumber/cs` with `wlsadminuser/wlsadminpasswd`. When this is the first login to the UCM server you will be asked to confirm the settings in order to finalize the installation of UCM. You need only confirm all settings—there is no need to change anything at this point—and proceed according to the instructions on the screen.
2. Restart the UCM Server after settings are confirmed.
3. Login to the UCM server again using the same credentials you used in the previous step. Expand the **Administration** category in the navigation area, then select the **Admin Server** option. A new window opens for the admin server.
4. Perform the following configuration steps:
 - a) Log in to the Oracle UCM cs-admin console using the following URL:

`http://ucm_host:ucm_port/cs/idcplg/cs-admin/pxs?IdcService=GET_COMPONENT_DATA`

b) In **Disabled Components**, select:

- folders_g
- FolderStructureArchive

c) Click **Enable**, then **Save**.

d) In the Admin Server window, select the **Component Manager** category in the navigation area, then select the **All Features** option. Browse down the list of components and ensure that the following are checked:

- WebcenterConfigure
- InboundRefinerySupport
- DynamicConverter

5. Restart the UCM Server.

UCM Configuration: Part 2

Use the following procedure to configure a socket connection for PSRMSS.

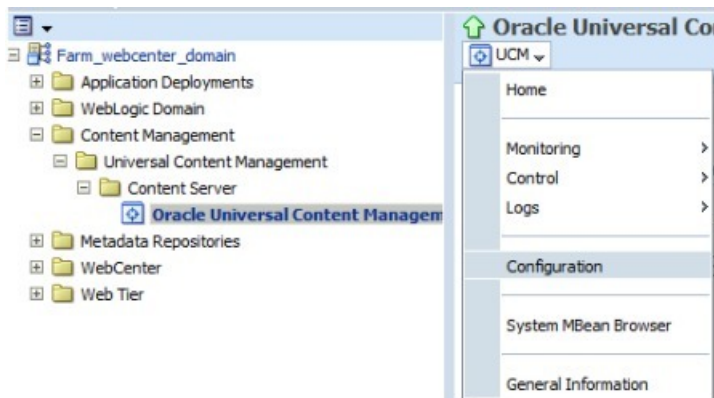
Note: The UCM server must be up and running.

1. Log in into the Oracle Enterprise Manager console at `http://WLSAdminHost:WLSAdminServerPort/em` with `wlsadminuser/wlsadminpasswd`.

2. Perform the following configuration steps:

a) Choose **WebCenter > Content > Content Server**, then select **Oracle WebCenter Content - Content Server (UCM Server 1)**.

b) Right-click and select **Configuration**.



c) Enter the following in the **Server Configuration** section:

- Set the **Intradoc ServerPort** to 4444
- Modify the **IP Address Filter** list to add either a specific IP address or *. *.*.*.*

3. Restart the UCM Server.

Configuring SSL for a PSRMSS Server

For details on configuring SSL on a WebLogic server, see [Configuring SSL](http://docs.oracle.com/cd/E23943_01/web.1111/e13707/ssl.htm) (http://docs.oracle.com/cd/E23943_01/web.1111/e13707/ssl.htm) in the *Oracle Fusion Middleware Securing Oracle WebLogic Server* documentation.

Note: Implementing SSL is recommended for production environments.

Appendix A

BPEL/SOA installProperties.xml

The following listing shows the structure and sample data contained in installProperties.xml.

Security Note : After a successful installation it is recommended that the installProperties.xml file is moved to a secured location. It is also recommended that passwords supplied in the installProperties.xml file be changed after the installation.

```
<?xml version="1.0" standalone="yes"?>
<config>
<OTSS-ETPM>
<modulename>OTSS-ETPM</modulename>
<ETPM>
<ApplicationUsername></ApplicationUsername>
<ApplicationPassword></ApplicationPassword>
<AdminServer>
<protocol>http</protocol>
<hostname></hostname>
<portnumber> </portnumber>
<servername> </servername>
<appcontextroot> </appcontextroot>
<username> </username>
<password> </password>
</AdminServer>
<ManagedServer>
<hostname> </hostname>
<portnumber> </portnumber>
<servername> </servername>
<username> <username>
<password> </password>
</ManagedServer>
</ETPM>
<Workflow.Notification>
<from.emailid> </from.emailid>
</Workflow.Notification>
</OTSS-ETPM>
<SOA>
<AdminServer>
<protocol> </protocol>
```

```

<hostname> </hostname>
<portnumber> </portnumber>
<servername> </servername>
<username> </username>
<password> </password>
<domainname> </domainname>
<adminemail> </adminemail>
</AdminServer>
<ManagedServer>
<protocol> </protocol>
<hostname> </hostname>
<portnumber> </portnumber>
<servername> </servername>
<username> </username>
<password> </password>
</ManagedServer>
<mdsconfig>
<mdsdbusername> </mdsdbusername>
<mdsdbuserpassword> </mdsdbuserpassword>
<mdsdbhostname> </mdsdbhostname>
<mdsdbportnumber> </mdsdbportnumber>
<mdsdbsid> </mdsdbsid>
</mdsconfig>
<JMS>
<serverName>OTSSPSRMJMSServer</serverName>
<ModuleName>OTSSPSRMJMSModule</ModuleName>
<SubDeploymentName>OTSSPSRMSubDeployment</SubDeploymentName>
<TargetServerName>soa_server1</TargetServerName>
<PersistantStoreName>OTSSPSRMFileStore</PersistantStoreName>
<PersistantStoreType>FileStores</PersistantStoreType>
<PersistantStoreFilename> </PersistantStoreFilename>
</JMS>
</SOA>
<UCM>
<ManagedServer>
<protocol> </protocol>
<hostname> </hostname>
<portnumber> </portnumber>
<servername> </servername>
<username> </username>
<password> </password>
</ManagedServer>
</UCM>
<BI>
<ManagedServer>
<protocol> </protocol>
<hostname> </hostname>
<portnumber> </portnumber>
<username> </username>
<password> </password>
<reportLocation> </reportLocation>
</ManagedServer>
</BI>
<DS>
<dba.dbusername> </dba.dbusername>
<dba.dbuserpassword> </dba.dbuserpassword>
<dbusername> </dbusername>
<dbuserpassword> </dbuserpassword>
<dbuser.createflag>true</dbuser.createflag>
<dbhostname> </dbhostname>
<dbportnumber> </dbportnumber>
<dbsid>
</dbsid>
</DS>
<USR>
<dba.dbusername> </dba.dbusername>
<dba.dbuserpassword> </dba.dbuserpassword>
<dbusername> </dbusername>

```

```

<dbuserpassword> </dbuserpassword>
<dbuser.createflag>true</dbuser.createflag>
<dbhostname> </dbhostname>
<dbportnumber> </dbportnumber>
<dbsid> </dbsid>
</USR>
</config>

```

InstallProperties Descriptions and Examples

Security Values denote values that should be changed when in production.

Property	Description	Example
<config>		
<modulename>	Name of the integration module	Default: OTSS-PSRM Do not change this value.
<PSRM>		
<AdminServer>	Currently not used; leave subelements blank	
<protocol>	The protocol of the application (https or http)	
<hostname>	Host name of the server in which the PSRM admin server is installed	
<portnumber>	PSRM port number the admin server is listening to	
<servername>	Admin PSRM server name	
<username>	User name used to log in as an Admin server administrator	
<appcontextroot>	Context root of the PSRM Application	ouaf
<password>	Password used to log in as an Admin server administrator. Note: This is a Security Value.	
<ManagedServer>		
<hostname>	Currently not used; leave this and subelement blank	
<portnumber>	Currently not used; leave this and subelement blank	
<servername>	Currently not used; leave this and subelement blank	
<username>	Currently not used; leave this and subelement blank	
<password>	Currently not used; leave this and subelement blank	
<Workflow.Notification>		
<from.emailid>	Email ID which should be set in the "From" property of Workflow Notification bean	admin@oracle.com
<SOA>		
<protocol>	Currently not used; leave this as http	http

Property	Description	Example
<hostname>	Host name of the server where admin server hosting SOA suite is installed.	soaadmin.oracle.com
<portnumber>	Port number the admin server (hosting SOA suite) is listening to.	7001
<servername>	Admin server name (hosting SOA suite)	AdminServer
<username>	User name used to log in as an Admin server (hosting SOA suite) administrator.	weblogic
<password>	Password used to log in as an Admin server (hosting SOA suite) administrator. Note: This is a Security Value.	
<domainname>	WebLogic domain name hosting SOA suite.	soa_domain
<adminemail>	Admin Email Address for OPC Security Note: When integrating between PSRMSS and OPC, it is not mandatory to use a secured connection configuration (SSL). It is recommended, however, to use a secured connection whenever possible, and the user should inquire about this option with Official Payment Corporation when implementing the integration with this payment processing vendor.	
<ManagedServer>		
<protocol>	Currently not used; leave this as http	http
<hostname>	Host name of the server where managed server (hosting SOA suite) is installed.	managedserver.oracle.com
<portnumber>	Port number the managed server (hosting SOA suite) is listening to.	8001
<servername>	Managed server name (hosting SOA suite)	soa-server1
<username>	User name used to log in to managed server (hosting SOA suite) as an administrator.	weblogic
<password>	Password used to log in to managed server (hosting SOA suite) as an administrator. Note: This is a Security Value.	
<mdsconfig>		
<mdsdbusername>	User name used to log in to MDS schema.	DEV_MDS
<mdsdbuserpassword>	Password used to log in to MDS schema. Note: This is a Security Value.	
<mdsdbhostname>	Host name of the server hosting the database containing MDS schema	
<mdsdbportnumber>	Port number of the database containing MDS schema.	1521
<mdsdbsid>	SID of the database containing MDS schema	
<JMS>		
<serverName>	Server name hosting the JMS queue.	OTSSETPMJMServer

Property	Description	Example
	Note: Queues are hosted and targeted on a WebLogic domain hosting SOA suite, do not change this value	
<ModuleName>	Module name hosting the JMS queue.	OTSSETPMJMSModule
<SubDeploymentName>	Sub deployment name for JMS queues	OTSSETPMSubDeployment
<TargetServerName>	WebLogic managed server name.	soa-server1
<PersistentStoreName>	JMS persistent store name	OTSSETPMFileStore
<PersistentStoreType>	JMS persistent store name	FileStores
<PersistentStoreFilename>	JMS persistent store type (FileStores) This value should be pointing to directory that exists and is accessible.	/psrmss/filestore
<UCM>		
<protocol>	The protocol of the application (https or http).	
<hostname>	Host name of the server on which the managed server (hosting UCM Server) is installed.	
<portnumber>	Port number on which the managed UCM server is listening.	
<servername>	Managed server name for UCM_server1.	
<username>	User name used to log in to UCM; used to create the UCM Key.	
<password>	Password used to log in to UCM; used to create the UCM Key. Note: This is a Security Value.	
<BI>		
<protocol>	The protocol of the application (https or http).	
<hostname>	Host name of the server on which the managed server (hosting BI Server) is installed.	
<portnumber>	Port number on which the managed BI server is listening.	
<username>	User name used to log in to BI; used to create the connection to BI.	
<password>	User name used to log in to BI; used to create the connection to BI. Note: This is a Security Value.	
<reportLocation>	This value should be set to the report folder location in BI Publisher. Example value: /~weblogic/Drafts/	
<DS>		
<dba.dbusername>	User name used to log in as a database administrator (DBA).	system

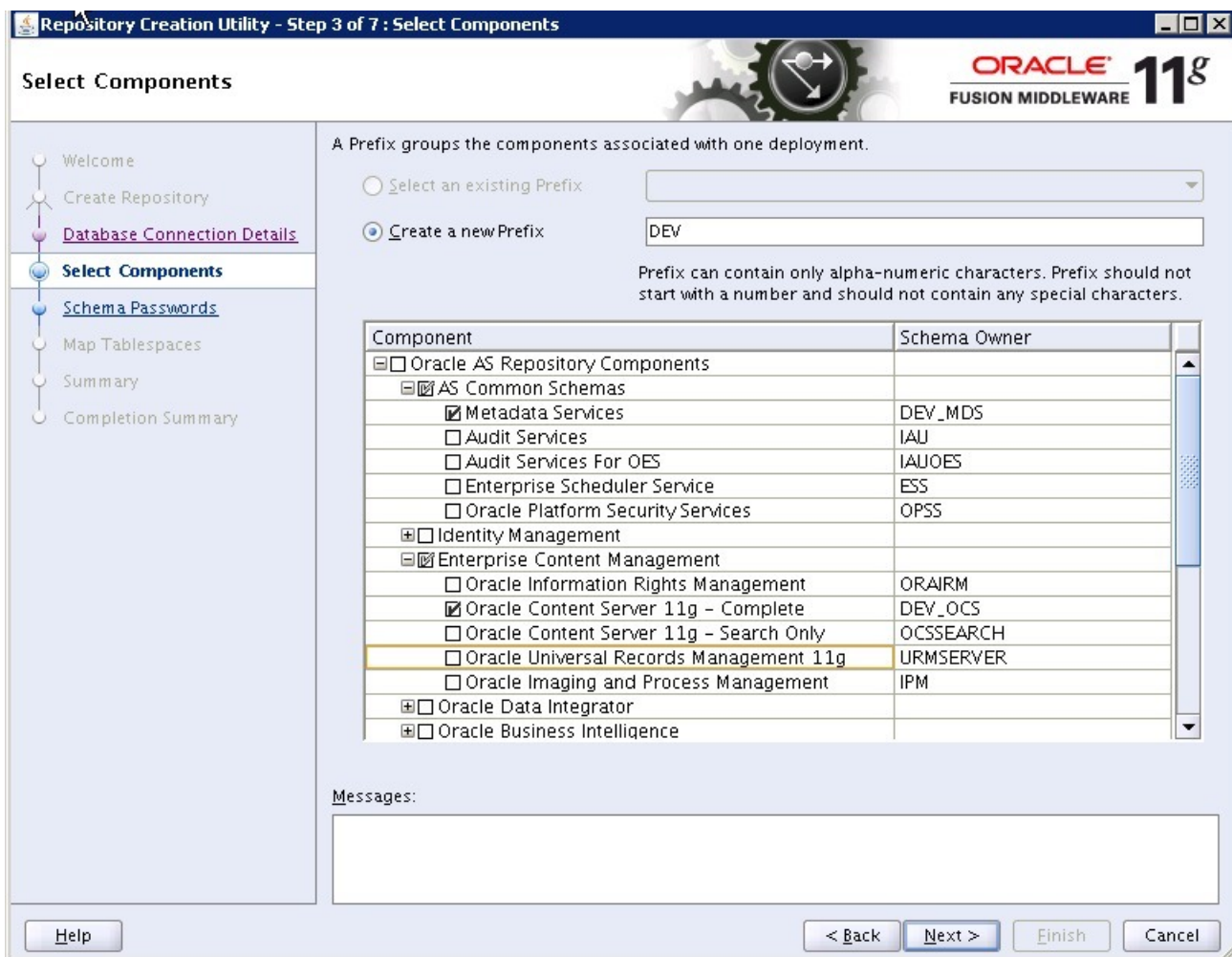
Property	Description	Example
	This database hosts the schema required for the PSRMSS Direct Flows Integration	
<dba.dbuserpassword>	Password used to log in as a database administrator (DBA). Note: This is a Security Value.	
<dbusername>	User name used to log in to OTSSBPEL schema for PSRMSS Direct Flows integration. This user can be automatically created by the install (set dbuser.createflag to true) or manually outside the install process.	
<dbuserpassword>	Password used to log in to PSRMSSBPEL schema for PSRMSS Direct Flows Integration. Note: This is a Security Value.	
<dbuser.createflag>	Flag specifying whether to create a new schema or use the existing schema for PSRMSS Direct Flows Integration. If the schema is created manually outside of the installation process, then set this value to "false". Otherwise, set the value to "true", if the installation script should automatically create the schema. Valid values: <i>true</i> or <i>false</i> (case sensitive)	true
<dbhostname>	Database host name used for PSRMSS Direct Flows Integration.	Database.us.oracle.com
<dbportnumber>	Database port number used for PSRMSS Direct Flows Integration.	1521
<dbsid>	Database SID used for PSRMSS Direct Flows Integration.	SID
<USR>		
<dba.dbusername>	User name used to log in as a database administrator (DBA). This database hosts the schema required for the User Enrollment Integration.	
<dba.dbuserpassword>	Password used to log in as a database administrator (DBA). Note: This is a Security Value	
<dbusername>	User name used to log in to User Enrollment schema for PSRMSS Direct Flows integration. This user can be automatically created by the install (set <i>dbuser.createflag</i> to true) or can be created manually outside of the install process.	
<dbuserpassword>	Password used to log in to users schema for User Enrollment. Note: This is a Security Value.	

Property	Description	Example
<dbuser.createflag>	<p>Flag specifying whether to create a new schema or use the existing schema for Users schema.</p> <p>If the schema is created manually outside of the installation process, then set this value to "false". Otherwise, set the value to "true" if the installation script should automatically create the schema.</p> <p>Valid values: <i>true</i> or <i>false</i> (case sensitive).</p>	true
<XdbhostnameXX>	Database host name used User Enrollment.	database.us.oracle.com
<dbportnumber>	Database port number used for User Enrollment.	1521
<dbsid>	Database SID used for User Enrollment. This stores information about different users of the Self Service Application, you may want to consider placing this User Schema in a different database than in the PSRMSS Direct Flows Integration.	SID

Appendix B

RCU Database Creation (Sample)

When creating the RCU database you should configure the following components.



Repository Creation Utility - Step 3 of 7 : Select Components

Select Components

ORACLE FUSION MIDDLEWARE 11g

Welcome
Create Repository
Database Connection Details
Select Components
Schema Passwords
Map Tablespaces
Summary
Completion Summary

A Prefix groups the components associated with one deployment.

☐ Select an existing Prefix

☒ Create a new Prefix

DEV

Prefix can contain only alpha-numeric characters. Prefix should not start with a number and should not contain any special characters.

Component	Schema Owner
<input type="checkbox"/> Oracle Universal Records Management 11g	URMSERVER
<input type="checkbox"/> Oracle Imaging and Process Management	IPM
<input checked="" type="checkbox"/> Oracle Data Integrator	
<input checked="" type="checkbox"/> Oracle Business Intelligence	
<input checked="" type="checkbox"/> WebLogic Communication Services	
<input checked="" type="checkbox"/> SOA and BPM Infrastructure	
<input checked="" type="checkbox"/> SOA Infrastructure	DEV_SOAINFRA
<input type="checkbox"/> Business Activity Monitoring	ORABAM
<input checked="" type="checkbox"/> User Messaging Service	DEV_ORASDPM
<input checked="" type="checkbox"/> Webcenter Suite	
<input checked="" type="checkbox"/> WebCenter Spaces	DEV_WEBCENTER
<input checked="" type="checkbox"/> Portlet Producers	DEV_PORTLET
<input checked="" type="checkbox"/> Activity Graph and Analytics	DEV_ACTIVITIES
<input type="checkbox"/> Discussions	DISCUSSIONS
<input checked="" type="checkbox"/> Portal and BI	
<input checked="" type="checkbox"/> Enterprise Performance Management	

Messages:

Help < Back Next > Finish Cancel

Required RCU Components	Schema Owner
Metadata Services	<PREFIX>_MDS
Oracle Content Server 11g - Complete	<PREFIX>_OCS
SOA Infrastructure	<PREFIX>_SOAINFRA
User Messaging Service	<PREFIX>_ORASDPM
WebCenter Spaces	<PREFIX>_WEBCENTER
Portlet Producers	<PREFIX>_PORTLET
Activity Graph and Analytic	<PREFIX>_ACTIVITIES

You will also need to create a separate MDS schema in the database for the PSRMSS application.

Repository Creation Utility - Step 3 of 7 : Select Components

ORACLE 11g

FUSION MIDDLEWARE

Select Components

Welcome

Create Repository

Database Connection Details

Select Components

Schema Passwords

Map Tablespace

Summary

Completion Summary

A Prefix groups the components associated with one deployment.

Select an existing Prefix

DEV

Create a new Prefix

OTSS

Prefix can contain only alpha-numeric characters. Prefix should not start with a number and should not contain any special characters.

Component	Schema Owner
<input type="checkbox"/> Oracle AS Repository Components	
<input checked="" type="checkbox"/> AS Common Schemas	
<input checked="" type="checkbox"/> Metadata Services	OTSS_MDS
<input type="checkbox"/> Audit Services	IAU
<input type="checkbox"/> Audit Services For OES	IAUOES
<input type="checkbox"/> Enterprise Scheduler Service	ESS
<input type="checkbox"/> Oracle Platform Security Services	OPSS
<input type="checkbox"/> Identity Management	
<input type="checkbox"/> Enterprise Content Management	
<input type="checkbox"/> Oracle Data Integrator	
<input type="checkbox"/> Oracle Business Intelligence	
<input type="checkbox"/> WebLogic Communication Services	
<input type="checkbox"/> SOA and BPM Infrastructure	
<input type="checkbox"/> Webcenter Suite	
<input type="checkbox"/> Portal and BI	
<input type="checkbox"/> Enterprise Performance Management	

Messages:

Help

< Back

Next >

Finish

Cancel

Required RCU Components

Schema Owner

Metadata Services

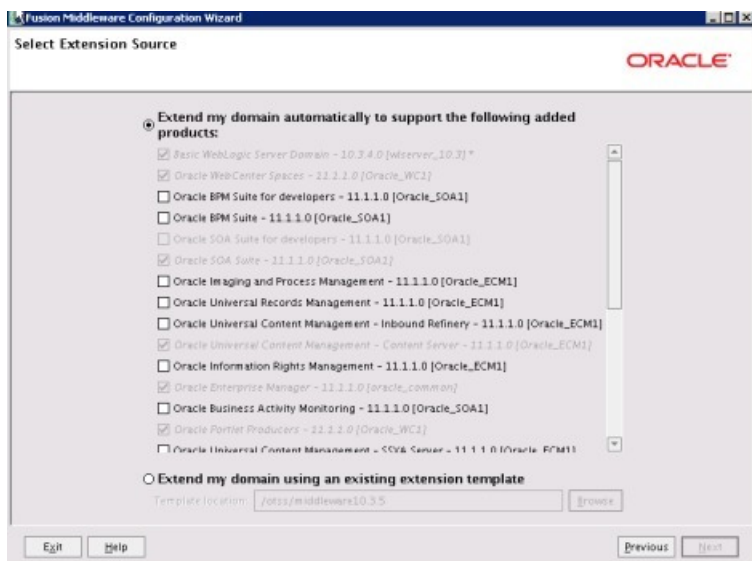
<PREFIX>_MDS

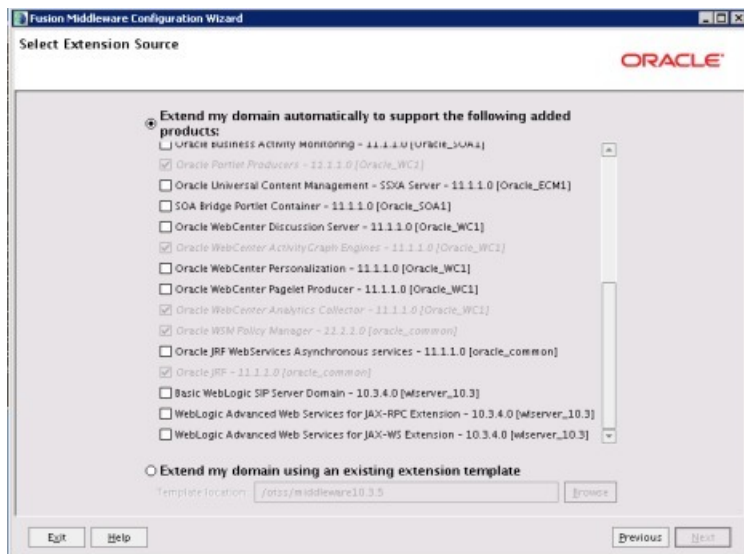
Oracle Public Sector Revenue Management Self Service Installation Guide • 48

Appendix C

PSRMSS Sample Domain Creation

The following is a sample of the extension that will be needed to be installed prior to installing PSRMSS.





The following components need to be selected for the domain:

- Basic WebLogic Server Domain
- Oracle WebCenter Spaces
- Oracle Portlet Producers
- Oracle Enterprise Manager
- Oracle SOA Suite
- Oracle WebCenter Activities Graph Engine
- Oracle WebCenter Spaces
- Oracle Universal Content Management
- Oracle WebCenter Analytics Collector
- Oracle WSM Policy Manager
- Oracle JRF

In the configure JDBC Component Schema screen, you should see following Components if the correct extensions are selected in the previous steps of the domain creation.

Fusion Middleware Configuration Wizard

Configure JDBC Component Schema

ORACLE

Note: Change only the input fields below that you wish to modify and values will be applied to all selected rows.

Vendor: DBMS/Service:

Driver: Host Name:

Schema Owner: Port:

Schema Password:

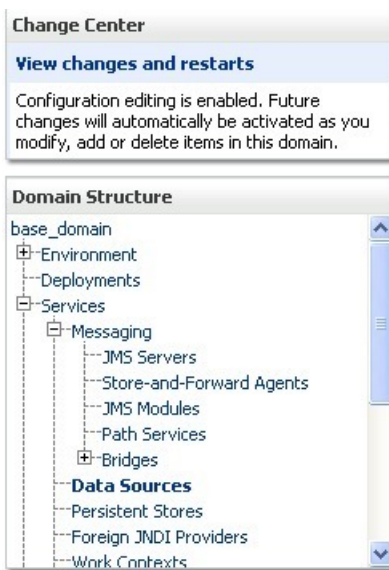
☐ Configure selected component schemas as RAC multi data source schemas in the next panel

	Component Schema	DBMS/Service	Host Name	Port	Schema Owner	Schema Password
<input checked="" type="checkbox"/>	ActivitiesDS Schema	orcl	dbhost.example.com	1521	DEV_ACTIVITIES	
<input checked="" type="checkbox"/>	UCM Schema	service_name	dbhost.example.com	1521	DEV_OCS	
<input checked="" type="checkbox"/>	SOA Infrastructure	orcl	dbhost.example.com	1521	DEV_SOAINFRA	
<input checked="" type="checkbox"/>	User Messaging Service	orcl	dbhost.example.com	1521	DEV_ORASDPM	
<input checked="" type="checkbox"/>	PortletDS Schema	orcl	dbhost.example.com	1521	DEV_PORTLET	
<input checked="" type="checkbox"/>	WebCenterDS Schema	orcl	dbhost.example.com	1521	DEV_WEBCENTER	
<input checked="" type="checkbox"/>	WebCenter MDS Schema	orcl	dbhost.example.com	1521	DEV_MDS	
<input checked="" type="checkbox"/>	OWSM MDS Schema	orcl	dbhost.example.com	1521	DEV_MDS	
<input checked="" type="checkbox"/>	SOA MDS Schema	orcl	dbhost.example.com	1521	DEV_MDS	

Appendix D

Sample Oracle WebLogic Data Sources

The following are the sample layout of the data sources that should be present in your domain when working with PSRMSS:



Data Sources (Filtered - More Columns Exist)

New ▾

Delete

Showing 1 to 12 of 12 Previous | Next

<input type="checkbox"/>	Name ↕	Type	JNDI Name	Targets
<input type="checkbox"/>	ActivitiesDS	Generic	jdbc/ActivitiesDS	WC_Uilities, WC_Spaces
<input type="checkbox"/>	CSDS	Generic	CSDS	UCM_server1
<input type="checkbox"/>	EDNDataSource	Generic	jdbc/EDNDataSource	soa_server1
<input type="checkbox"/>	EDNLocalTxDataSource	Generic	jdbc/EDNLocalTxDataSource	soa_server1
<input type="checkbox"/>	mds-owsm	Generic	jdbc/mds/owsm	AdminServer, WC_Portlet, soa_server1, WC_Spaces
<input type="checkbox"/>	mds-soa	Generic	jdbc/mds/MD5_LocalTxDataSource	AdminServer, soa_server1
<input type="checkbox"/>	mds-SpacesDS	Generic	jdbc/mds/SpacesDS	AdminServer, WC_Spaces
<input type="checkbox"/>	OraSDPMDDataSource	Generic	jdbc/OraSDPMDDataSource	soa_server1
<input type="checkbox"/>	PortletDS	Generic	jdbc/portletPrefs	WC_Portlet
<input type="checkbox"/>	SOADataSource	Generic	jdbc/SOADataSource	soa_server1
<input type="checkbox"/>	SOALocalTxDataSource	Generic	jdbc/SOALocalTxDataSource	soa_server1
<input type="checkbox"/>	WebCenterDS	Generic	jdbc/WebCenterDS	WC_Spaces

New ▾

Delete

Showing 1 to 12 of 12 Previous | Next

Appendix E

Sample Summary of Servers

The following are the servers that need to be installed into the domain prior to installing PSRMSS.

Summary of Servers

ConfigurationControl

A server is an instance of WebLogic Server that runs in its own Java Virtual Machine (JVM) and has its own configuration.

This page summarizes each server that has been configured in the current WebLogic Server domain.

Customize this table

Servers (Filtered - More Columns Exist)

NewCloneDeleteShowing 1 to 6 of 6PreviousNext

<input type="checkbox"/>	Name	Cluster	Machine	State	Health	Listen Port
<input type="checkbox"/>	AdminServer(admin)		initialInstall	RUNNING	OK	6001
<input type="checkbox"/>	soa_server1		initialInstall	SHUTDOWN		11001
<input type="checkbox"/>	UCM_server1		initialInstall	SHUTDOWN		17200
<input type="checkbox"/>	WC_Portlet		initialInstall	SHUTDOWN		9889
<input type="checkbox"/>	WC_Spaces		initialInstall	SHUTDOWN		9888
<input type="checkbox"/>	WC_Uilities		initialInstall	SHUTDOWN		9891

NewCloneDeleteShowing 1 to 6 of 6PreviousNext

Appendix F

Installation Properties

The following listing shows the structure and sample data contained in PSRM-SS-InstallProperties.xml file.

Security Note: After a successful installation it is recommended that the PSRM-SS-InstallProperties.xml file be moved to a secured location. It is also recommended that passwords supplied in the PSRM-SS-InstallProperties.xml file be changed. The values that should be changed are marked with "Security Value" in the description fields in the table that follows the file listing.

```
<?xml version="1.0" standalone="yes"?>
<config>
<WSS>
<modulename>PSRM-SS-APPLICATION</modulename>
<otss>
<username> </username>
<password> </password>
<AdminServer>
<protocol>t3</protocol>
<hostname> </hostname>
<portnumber> </portnumber>
<servername>AdminServer</servername>
<usekeyfile>>false</usekeyfile>
<username> </username>
<password> </password>
<userconfigfile> </userconfigfile>
<userkeyfile> </userkeyfile>
<domainname> </domainname>
<realmName> </realmName>
</AdminServer>
<ManagedServer>
<hostname> </hostname>
<portnumber> </portnumber>
<servername>psrmss_server1</servername>
<machine> </machine>
<clustername></clustername>
</ManagedServer>
<DB>
```

```

<dba.dbusername> </dba.dbusername>
<dba.dbuserpassword> </dba.dbuserpassword>
<dbusername> </dbusername>
<dbuserpassword> </dbuserpassword>
<dbuser.createflag>true</dbuser.createflag>
<dbhostname> </dbhostname>
<dbportnumber> </dbportnumber>
<dbsid> </dbsid>
<script>select 1 from dual</script>
</DB>
<mdsconfig>
<mdsdbusername> </mdsdbusername>
<mdsdbuserpassword> </mdsdbuserpassword>
<mdsdbhostname> </mdsdbhostname>
<mdsdbportnumber> </mdsdbportnumber>
<mdsdbsid> </mdsdbsid>
</mdsconfig>
</otss>
<UCM>
<hostnamejcr> </hostnamejcr>
<portnumberjcr> </portnumberjcr>
</UCM>
<SOA>
<ManagedServer>
<hostname> </hostname>
<portnumber> </portnumber>
<servername>soa_server1</servername>
<createbpelmap>true</createbpelmap>
<adminusername> </adminusername>
<adminpassword> </adminpassword>
<protocol>http</protocol>
</ManagedServer>
</SOA>
</WSS>
</config>

```

PSRM-SS-InstallProperties.xml Descriptions and Examples

Security Note: Security values denote values that should be changed when in production.

XPath	Description	Example
Modulename	ModuleName for which this installation property is used. Not used by installation framework. Hardcoded to "PSRM-SS-APPLICATION".	
/config/otss/username	The username used to access the PSRMSS Application. This will be created during the installation.	
/config/otss/password	The password that will be used to access the PSRMSS Application. This will be the password of the user that will create during the application. The password needs to be at least eight characters long. Note: This is a Security Value.	
/config/otss/AdminServer/protocol	The protocol to access the admin console Leave the default of t3; this will be used in future releases.	t3
/config/otss//AdminServer/ hostname	Hostname of Admin Server of WebLogic domain hosting the PSRMSS application	PSRM-SS-hostname.oracle.com

XPath	Description	Example
/config/otss/AdminServer/portnumber	Port Number of Admin Server of WebLogic domain hosting the PSRMSS application	7001
/config/otss/AdminServer/servername	Managed server name for the Admin Server hosting server.	AdminServer
/config/otss/AdminServer/userkeyfile	When this value is set to <i>true</i> , the userconfigfile and userkeyfile are used to connect to the server.	false
/config/otss/AdminServer/username	Admin Username which should be used to access the Admin Server.	weblogic
/config/otss/AdminServer/password	Admin Password which should be used to access the Admin Server Note: This is a Security Value.	WLSAdminPasswd
/config/otss/AdminServer/userconfigfile	This value should be set to the location of the user configuration file.	The value does not need to be set unless you are using the user store configuration.
/config/otss/AdminServer/userkeyfile	This value should be set to the location of the user key file.	The value does not need to be set unless you are using the user store configuration.
/config/otss/AdminServer/domainname	WebLogic domain name hosting the PSRMSS managed server.	base_domain
/config/otss/AdminServer/realmname	Realm name of the embedded WebLogic LDAP configured for WebLogic domain hosting PSRMSS	myrealm
/config/otss/ManagedServer/hostname	Hostname of Managed server hosting PSRMSS. Note: This is used during the installation process.	PSRM-SS-hostname.oracle.com
/config/otss/ManagedServer/portnumber	Managed server port number. Note: This is used during the installation process. The port number should not be in use by a different process on the server.	
/config/otss/ManagedServer/servername	Managed server name hosting PSRMSS. Note: This is created during the installation process.	psrmss_server1
/config/otss/ManagedServer/machinename	Machine name to associate with the managed server name hosting PSRMSS Note: The Administration Server uses the machine definition in conjunction with Node Manager to start remote servers during the installation process.	Qa
/config/otss/DB/dba.dbusername	Sys user to connect to DB which will host WSS-specific DB objects.	system Note: If using sys user then use "sys as sysdba".
/config/otss/DB/dba.dbuserpassword	sys user password. Note: This is a Security Value.	
/config/otss/DB/dbusername	Database username which will host PSRMSS specific DB objects.	WSSADM

XPath	Description	Example
/config/otss//DB/dbuserpassword	Password of DB username which will host PSRMSS specific DB objects. Note: This is a Security Value.	
/config/otss//DB/dbuser.createflag	Flag to state whether to create database user or specify if user already exists. Valid values: true – Create user during the installation of PSRMSS.	true
/config/otss//DB/dbhostname	Hostname to connect to Databases	databaseserver.oracle.com
/config/otss//DB/dbportnumber	Port Number to connect to Database	1521
/config/otss//DB/dbsid	SID/service name to connect to database	DBSID
/config/otss/mdsconfig/mdsdbusername	Username of schema hosting MDS for WSS application. Note: This should be the user that was created for the for the empty MDS Schema.	PSRMSS_MDS
/config/otss/mdsconfig/mdsdbuserpassword	Password to connect to the schema. Note: This is a Security Value.	
/config/otss/mdsconfig/mdsdbhostname	Hostname to connect to Database	databaseserver.oracle.com
/config/otss/mdsconfig/mdsdbportnumber	Port Number to connect to DB	1521
/config/otss/mdsconfig/mdsdbsid	SID/service name to connect to schema	DBSID
/config/otss/UCM/hostnamejcr	Hostname of the UCM Server	UCM-HostName.oracle.com
/config/otss/UCM/portnumberjcr	JCR Port Number of the UCM Server.	
/config/otss/SOA/hostname	Hostname of the SOA Server	SOA-HostName.oracle.com
/config/otss/SOA/portnumber	SOA Port Number of the SOA Server	8001
/config/otss/SOA/servername	SOA Server Name	soa_server1
/config/otss/SOA/createbpelmap	This value specifies whether to create the Map for the connection between PSRMSS and the SOA endpoints.	true
/config/otss/SOA/adminuser	This username is used to create the map for the connection between PSRMSS and the SOA endpoints.	weblogic
/config/otss/SOA/adminpassword	This value of password is used to create the map for the connection between PSRMSS and the SOA end points. Note: This is a Security Value.	
/config/otss/SOA/protocol	The protocol to access the SOA Server (https or http) Note: This is a Security Value; it is recommended that the connection between the Portal Application and the SOA server be SSL-enabled.	http

Appendix G

Installer Utility Overview

The installation utility has several different input options that can be passed in as input. The following table contains the available options:

Table 1: Installation Options

Option	Description	Tasks Performed
i	Full installation of PSRMSS	<ul style="list-style-type: none">• Creates a WebLogic managed server• Links needed Libraries and applications to the WebLogic managed server• Creates a MetaData Repository mds-PSRMSS_MDS• Creates a Database Source WSSDS• Deploys PSRMSS shared library• Configures and Deploys PSRMSS ear File• Creates and Installs a Database Schema for PSRMSS
d	Full uninstallation of PSRMSS	<ul style="list-style-type: none">• Removes a WebLogic managed server• Removes a MetaData Repository mds-PSRMSS_MDS• Removes a Database Source WSSDS• Undeploys PSRMSS ear File• Undeploys PSRMSS shared library• Drops a Database Schema for PSRMSS
r	Redeployment of PSRMSS components	<ul style="list-style-type: none">• Undeploys PSRMSS Application ear• Deploys PSRMSS Application ear• Undeploys PSRMSS shared library

Option	Description	Tasks Performed
		<ul style="list-style-type: none"> Deploys PSRMSS shared library

The installer will continue with the installation should a task fail. Failures will be listed on the screen as a summary at the end of the installation, along with the install.log file. You can rerun the installer after corrective action is taken.

Appendix H

URL Examples

Component	URL Syntax
WebLogic EM Console	http://<weblogicHost>:<webLogicPortNumber>/em
WebLogic Console	http://<weblogicHost>:<webLogicPortNumber>/console
SOA Composer	http://<SOAHost>:<SOAPPortNumber>/soa/composer
UCM Console	http://<UCMHost>:<UCMPortNumber>/cs

Appendix I

Integration Environment Settings Example

The following is an example of setting the needed environment variables for the PSRMSS-PSRM Integration.

On Linux:

```
PRODUCT_HOME=/ouaf/versions/Releases/PSRMSS/BPEL-Release-V1.1.0-InitialInstall/OTSS-PSRM/;
export PRODUCT_HOME
WL_HOME=/PSRM-SS/qa2_middleware1035/; export WL_HOME
SOA_HOME=PSRM-SS/qa2_middleware1035/Oracle_SOA1; export SOA_HOME
ORACLE_HOME=/PSRM-SS/qa2_middleware1035/Oracle_SOA1; export ORACLE_HOME
source "${WL_HOME}/wlserver_10.3/server/bin/setWLSEnv.sh"

cd $PRODUCT_HOME/bin
```

On Windows:

```
SET PRODUCT_HOME=C:\download\Release\PSRM-SS\OTSS-Release-V1.1.0-Initialinstall\OTSS-PSRM
SET WL_HOME=C:\PSRM-ss\middleware10.3.6;
SET SOA_HOME=C:\PSRM-ss\middleware10.3.6\Oracle_SOA1
SET ORACLE_HOME=C:\PSRM-ss\middleware10.3.6\Oracle_SOA1;
run C:\PSRM-ss\middleware10.3.6\wlserver_10.3\server\bin\setWLSEnv.cmd

cd %PRODUCT_HOME%\bin
```

For additional details, see *Appendix A*.

Appendix J

PSRMSS Environment Settings Example

The following is an example of setting the needed environment variables for the installation of PSRMSS.

On Linux:

```
PRODUCT_HOME=/PSRM-ss/version/PSRMSS-Release-V1.1.0-Initialinstall/; export PRODUCT_HOME
WL_HOME=/ PSRM-ss /middleware10.3.6; export WL_HOME
SOA_HOME=/ PSRM-ss /middleware10.3.6/Oracle_SOA1; export SOA_HOME
ORACLE_HOME=/ PSRM-ss /middleware10.3.6/Oracle_SOA1; export ORACLE_HOME
source "${WL_HOME}/wlserver_10.3/server/bin/setWLSEnv.sh"
cd $PRODUCT_HOME/bin
```

On Windows:

```
SET PRODUCT_HOME=C:\download\Release\PSRM-SS\PSRMSS-Release-V1.1.0-Initialinstall\
SET WL_HOME=C:\PSRM-SS\middleware10.3.6;
SET SOA_HOME=C:\PSRM-SS\middleware10.3.6\Oracle_SOA1
SET ORACLE_HOME=C:\PSRM-SS\middleware10.3.6\Oracle_SOA1;
run C:\PSRM-SS\middleware10.3.6\wlserver_10.3\server\bin\setWLSEnv.cmd

cd %PRODUCT_HOME%\bin
```

Appendix K

Security Notes

The following documents provide additional information on securing the application.

Configuring SSL on a WebLogic server:

- http://docs.oracle.com/cd/E23943_01/web.1111/e13707/ssl.htm

WebLogic Security:

- http://docs.oracle.com/cd/E23943_01/web.1111/e13711/thin_client.htm

Securing SOA (BPEL):

- http://docs.oracle.com/cd/E17904_01/integration.1111/e10226/soacompapp_secure.htm

Securing UCM:

- http://docs.oracle.com/cd/E14571_01/doc.1111/e10792/c03_security002.htm

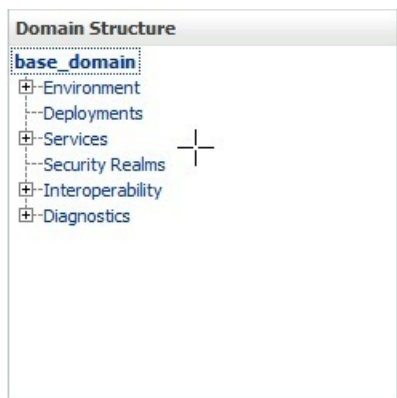
Appendix L

Sample: Reassociating the Identity Store with an External LDAP (OUD)

This appendix describes how to configure the identity store to use an external LDAP server, such as an Oracle Unified Directory, rather than the default embedded LDAP.

To reassociate the identity store:

- Log in to the WebLogic Administration Console.
- Navigate to the Domain Structure.



The Summary of Security Realms pane displays:

Summary of Security Realms

A security realm is a container for the mechanisms—including users, groups, security roles, security policies, and security providers—that are used to protect WebLogic resources. You can have multiple security realms in a WebLogic Server domain, but only one can be set as the default (active) realm.

This Security Realms page lists each security realm that has been configured in this WebLogic Server domain. Click the name of the realm to explore and configure that realm.

[Customize this table](#)

Realms (Filtered - More Columns Exist)

Click the **Lock & Edit** button in the Change Center to activate all the buttons on this page.

Name	Default Realm
myrealm	true

Showing 1 to 1 of 1 Previous | Next

In the **Name** column, click the realm for which you want to reassociate the identity store.

The Realm Settings pane displays:

Settings for myrealm

Configuration Users and Groups Roles and Policies Credential Mappings Providers Migration

General RDBMS Security Store User Lockout Performance

Click the **Lock & Edit** button in the Change Center to modify the settings on this page.

Save

Use this page to configure the general behavior of this security realm.

Note:
If you are implementing security using JACC (Java Authorization Contract for Containers as defined in JSR 115), you must use the DD Only security model. Other WebLogic Server models are not available and the security functions for Web applications and EJBs in the Administration Console are disabled.

Name: myrealm The name of this security realm. [More Info...](#)

Security Model Default: DD Only Specifies the default security model for Web applications or EJBs that are secured by this security realm. You can override this default during deployment. [More Info...](#)

☒ **Combined Role Mapping Enabled** Determines how the role mappings in the Enterprise Application, Web application, and EJB containers interact. This setting is valid only for Web applications and EJBs that use the Advanced security model and that initialize roles from deployment descriptors. [More Info...](#)

☐ **Use Authorization Providers to Protect JMX Access** Configures the WebLogic Server MBean servers to use the security realm's Authorization providers to determine whether a JMX client has permission to access an MBean attribute or invoke an MBean operation. [More Info...](#)

Advanced

Save

Click the **Lock & Edit** button in the Change Center to modify the settings on this page.

- Open the **Providers** tab.

The Providers Settings pane displays:

Settings Pane - Providers

Settings for myrealm

Configuration Users and Groups Roles and Policies Credential Mappings **Providers** Migration

Authentication Password Validation Authorization Adjudication Role Mapping Auditing Credential Mapping Certification Path Keystores

An Authentication provider allows WebLogic Server to establish trust by validating a user. You must have one Authentication provider in a security realm, and you can configure multiple Authentication providers in a security realm. Different types of Authentication providers are designed to access different data stores, such as LDAP servers or DBMS. You can also configure a Realm Adapter Authentication provider that allows you to work with users and groups from previous releases of WebLogic Server.

[Customize this table](#)

Authentication Providers

Click the **Lock & Edit** button in the Change Center to activate all the buttons on this page.

New Delete Reorder Showing 1 to 2 of 2 Previous | Next

Name	Description	Version
DefaultAuthenticator	WebLogic Authentication Provider	1.0
DefaultIdentityAsserter	WebLogic Identity Assertion provider	1.0

New Delete Reorder Showing 1 to 2 of 2 Previous | Next

- Click **New** to add a new provider.

The Create a New Authentication Provider pane displays:

Create a New Authentication Provider

OK Cancel

Create a new Authentication Provider

The following properties will be used to identify your new Authentication Provider.

* Indicates required fields

The name of the authentication provider.

* Name: OUDAuthenticator

This is the type of authentication provider you wish to create.

Type: OpenLDAPAuthenticator

OK Cancel

Enter a name for the provider (for example OUDAuthenticator for a provider that will authenticate the user for the Oracle Unified Directory).

Select the authenticator appropriate for your LDAP directory from the list of authenticators.

Be sure to select the authenticator associated with the LDAP you are configuring rather than choosing the generic DefaultAuthenticator. For example, for OUD select **OpenLDAPAuthenticator**, or for OID select **OracleInternetDirectoryAuthenticator**.

- Click **OK** to save your settings.
- The Settings pane displays with the new authentication provider

Settings for myrealm

Configuration Users and Groups Roles and Policies Credential Mappings **Providers** Migration

Authentication Password Validation Authorization Adjudication Role Mapping Auditing Credential Mapping Certification Path Keystores

An Authentication provider allows WebLogic Server to establish trust by validating a user. You must have one Authentication provider in a security realm, and you can configure multiple Authentication providers in a security realm. Different types of Authentication providers are designed to access different data stores, such as LDAP servers or DBMS. You can also configure a Realm Adapter Authentication provider that allows you to work with users and groups from previous releases of WebLogic Server.

[Customize this table](#)

Authentication Providers

New Delete Reorder Showing 1 to 3 of 3 Previous | Next

Name	Description	Version
DefaultAuthenticator	WebLogic Authentication Provider	1.0
DefaultIdentityAsserter	WebLogic Identity Assertion provider	1.0
OUDAuthenticator	Provider that performs LDAP authentication	1.0

New Delete Reorder Showing 1 to 3 of 3 Previous | Next

- In the list of Authentication Providers, click the newly created provider.

The Settings Pane for the new authentication provider displays.

Settings Pane for Authenticator:

The screenshot shows the 'Settings for OUD-OIM-LDAP' configuration pane. The 'Common' tab is selected. At the top, there are tabs for 'Configuration' and 'Performance', and sub-tabs for 'Common' and 'Provider Specific'. A 'Save' button is located below the sub-tabs. A message states: 'This page displays basic information about this Open LDAP Authentication provider. You can also use this page to set the JAAS Control Flag to control how this provider is used in the login sequence.' Below this, there are four rows of configuration items:

Property	Value	Description
Name	OUD-OIM-LDAP	The name of this Open LDAP Authentication provider. More Info...
Description	Provider that performs LDAP authentication	A short description of this Open LDAP Authentication provider. More Info...
Version	1.0	The version number of this Open LDAP Authentication provider. More Info...
Control Flag	SUFFICIENT	Specifies how this Open LDAP Authentication provider fits into the login sequence. More Info...

A 'Save' button is located at the bottom of the configuration area.

- Set the Control Flag to **SUFFICIENT**.

Setting the Control Flag to SUFFICIENT indicates that if a user can be authenticated successfully by this authenticator, then the authentication provider should accept that authentication and should not invoke any additional authenticators.

Note: If the authentication fails, it will fall through to the next authenticator in the chain. Therefore, be sure all subsequent authenticators also have their control flag set to SUFFICIENT.

- Click **Save** to save this setting.
- Open the **Provider Specific** tab to enter the details for the LDAP server.

The screenshot shows the 'Settings for OUDAuthenticator' configuration pane. The 'Provider Specific' tab is selected. At the top, there are tabs for 'Configuration' and 'Performance', and sub-tabs for 'Common' and 'Provider Specific'. A 'Save' button is located below the sub-tabs. A message states: 'Use this page to define the provider specific configuration for this Open LDAP Authentication provider.' Below this, there are two main sections: 'Connection' and 'Users'.

Connection

Property	Value	Description
Host	localhost	The host name or IP address of the LDAP server. More Info...
Port	389	The port number on which the LDAP server is listening. More Info...
Principal		The Distinguished Name (DN) of the LDAP user that WebLogic Server should use to connect to the LDAP server. More Info...
Credential		The credential (usually a password) used to connect to the LDAP server. More Info...
Confirm Credential		
SSL Enabled	<input type="checkbox"/>	Specifies whether the SSL protocol should be used when connecting to the LDAP server. More Info...

Users

Property	Value	Description
User Base DN	ou=people, dc=examp	The base distinguished name (DN) of the tree in the LDAP directory that contains users. More Info...
All Users Filter		If the attribute (user object class) is not specified (that is, if the attribute is null or empty), a default search filter is created based on the user schema. More Info...
User From Name Filter	(&(cn=%u)(objectclass	If the attribute (user name attribute and user object class) is not specified (that is, if the attribute is null or empty), a default search filter is created based on the user schema. More Info...

- Enter the details specific to your LDAP server.

Parameter	Value	Description
Host:		The LDAP server's server ID (for example, <ldap_host>example.com)
Port:		The LDAP server's port number (for example, 1389)
Principal:		The LDAP user DN used to connect to the LDAP server (for example, cn=Directory Manager)
Credential:		The password used to connect to the LDAP server
User Base DN:		Specify the DN under which your Users start (for example, cn=users,dc=example,dc=com)
User From Name Filter:		Specify User From name Filter (for example &(uid=%u)(objectclass=person)))
User Search Scope:		Specify User Search Scope (for example subtree))
User Name Attribute		Enter User Name Attribute (for example uid)
User Object Class		Enter User Object Class (for example person)
Group Base DN		Specify the DN that points to your Groups node (for example, cn=groups,dc=example,dc=com)
Group From Name Filter		Enter Group From Name Filter (for example ((&(cn=%g) (objectclass=groupofUniqueNames)) (&(cn=%g)(objectclass=groupOfURLs))))
Group Search Scope		Enter Group Search Scope (for example subtree)
Group Membership Searching		Enter Group Membership Searching (for example Unlimited)
Static Group Name Attribute		Enter Static Group Name Attribute (for example cn)
Static Group Object Class		Enter Static Group Object Class (for example groupofuniquenames)
Static Member DNAttribute		Enter Static Member DNAttribute (for example uniquemember)
Static Group DN sfrom Member DNFilter		Enter Static Group DN sfrom Member DNFilter (for example (&(uniquemember=%M)(objectclass=groupofuniquenames)))

Parameter	Value	Description
Dynamic Group Name Attribute		Enter Dynamic Group Name Attribute (for example cn)
Dynamic Group Object Class		Enter Dynamic Group Object Class (for example groupofURLs)
Dynamic Member URLAttribute		Enter Dynamic Member URLAttribute (for example memberURL)
Use Retrieved User Name as Principal	Checked	Must be turned on
All Users Filter:	(&(uid=*)(objectclass=person))	Search to find all users under the User Base DN
User From Name Filter:	(&(uid=%u)(objectclass=person))	
User Name Attribute:	uid	

- Click **Save**.
- Return to the **Providers** tab and reorder the providers so that the new authentication provider is on top, followed by any other authenticators with the DefaultAuthenticator placed at the end of the list.

All should have their Control Flags set to SUFFICIENT so that subsequent authenticators can authenticate identities that fall through from the new provider all the way through to the DefaultAuthenticator (which is used only for the default file-based embedded LDAP). For example, logins such as the default administrator account are not typically created in the LDAP directory, but still need to be authenticated to start up the server. Unless identities are allowed to fall through to the DefaultAuthenticator, the default administrator account will not be authenticated.

- Restart the Administration Server and the managed servers for the changes to take effect.

The following users will need to be seeded in the external LDAP Repository (these users must be added to be able to access the WebCenter Portal Administration Console):

User: contentadmin

Administration Console

Home Log Out Preferences Record Help

Welcome, weblogic Connected to: base_domain

Home > Summary of Security Realms > myrealm > Users and Groups > myrealm > Users and Groups > contentadmin > Users and Groups > contentadmin

Settings for contentadmin

General Passwords Groups

Use this page to change the description for the selected user.

Name: contentadmin The login name of this user. [More Info...](#)

Description: (No value specified) A short description of this user. For example, the user's full name. [More Info...](#)

This user should be a member of the **Administrators** group:

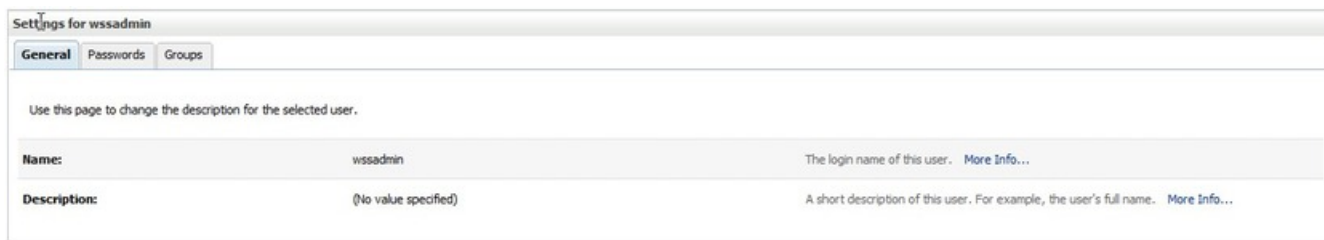
Settings for contentadmin

General Passwords Groups

Use this page to configure group membership for this user.

Parent Groups: Administrators This user can be a member of any of these parent groups. [More Info...](#)

User: wssadmin



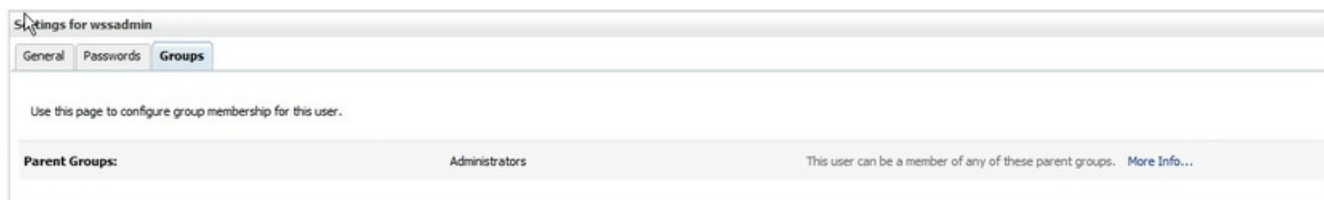
Settings for wssadmin

General Passwords Groups

Use this page to change the description for the selected user.

Name:	wssadmin	The login name of this user. More Info...
Description:	(No value specified)	A short description of this user. For example, the user's full name. More Info...

This user should be a member of the **Administrators** group:



Settings for wssadmin

General Passwords Groups

Use this page to configure group membership for this user.

Parent Groups:	Administrators	This user can be a member of any of these parent groups. More Info...
----------------	----------------	---

References

OOD:

<http://www.oracle.com/technetwork/middleware/id-mgmt/documentation/index.html>

WebCenter:

http://docs.oracle.com/cd/E12839_01/webcenter.1111/e12405/wcadm_security.htm

http://docs.oracle.com/cd/E12839_01/webcenter.1111/e12405/wcadm_security.htm#BGBHHGEH

Appendix M

Updating BPEL/SOA Configuration Settings (ConfigurationProperties.xml)

The following section describes how to update the MDS repository after the installation has been completed.

Linux/Unix file location:

`$PRODUCT_HOME/MDS-Artifacts/OTSS-ETPM/AIAMetaData/config`

Windows file location:

`%PRODUCT_HOME%/MDS-Artifacts/OTSS-ETPM/AIAMetaData/config`

Once the proper updates are completed, upload the changes to the MDS.

The following are the steps to upload the MDS from the delivered utilities.

You will need to set the following variables:

Variable	Example
SOA_HOME	<BEA_HOME>/>Oracle_SOA1
ORACLE_HOME	<BEA_HOME>/>Oracle_SOA1
MW_HOME	<WebLogic_HOME>/Middleware
WL_HOME	<BEA_HOME>/wls_server_10.3
PRODUCT_HOME	<p>This is the BPEL OTSS-ETPM product installation home.</p> <p>Linux Example:</p> <p><code>PRODUCT_HOME=/psrmss/PSRM-SS/BPEL-Release-V1.1.0.0.0-Release-InitialInstall/OTSS-ETPM</code></p> <p>Windows Example:</p> <p><code>PRODUCT_HOME=D:\psrmss\PSRM-SS\BPEL-Release-V1.1.0.0.0-Release-InitialInstall\OTSS-ETPM</code></p>

On UNIX/Linux:

```
cd $PRODUCT_HOME/bin
```

```
./install.sh -deployMDS
```

Note: The following ant command should be entered on one line **On Windows:**

```
cd %PRODUCT_HOME%\bin
```

```
ant -f=%PRODUCT_HOME%\bin\DeployUndeployUtility.xml
```

```
-DInstallProperties==%PRODUCT_HOME%\config\InstallProperties.xml DeployMDS
```

You will need to restart the SOA server to activate the updates for MDS.

Appendix N

UCM and Configuration.Properties

For the link from PSRM to UCM to work (using the setup for the property below), the uploaded documents need to be uploaded into a UCM FOLDER.

This is done by setting the **UploadFolderID** property in the Configuration.Properties file.

Note: See *Appendix M*, "Updating BPEL/SOA Configuration Settings".

Configuration.Properties file Description for UCM Properties.

The example values specified are only examples, and will need to be updated to your implementation of UCM.

Property	Value
FileUpload.UCM.Endpoint.URL	Example Value: https://ucm_server:ucm_port/idcws/GenericSoapPort</Property> Note: This value is detokenized with the installation with the value entered in the installProperties.xml. This value may need to be updated depending on your implementation of UCM.
FileUpload.UCM.User	This value should be the user to connect to UCM Value for user of the document that will be uploaded Example Value: weblogic
FileUpload.UCM.DocumentType	Value for document type of the document that will be uploaded. Example Value: Document
FileUpload.UCM.SecurityGroup	Value for security group of the document that will be uploaded Example Value: Secure
FileUpload.UCM.DocumentAuthor	Value for author of the document that will be uploaded. Example Value: weblogic

Property	Value
FileUpload.UCM.DocumentAccount	Xpath containing the value of the account of the document that will be uploaded. Xpath is relative to head element. Example Value: webUserId
FileUpload.UCM.UploadFolderID	Content ID of the UCM file upload folder. This is used in case FileUpload.UCM.UploadFolderName is not specified. Example Value: The steps to locate this valued are describe below.
FileUpload.UCM.UploadFolderName	Content Name of the UCM file upload folder
FileUpload.UCM.UploadFolderWebLocation	Web folder location of the uploaded file. This is concatenated with the uploaded filename to generate the complete path to the file. Example Value: http://ucm_host:ucm_port/cs/Contribution%20Folders/
FileUpload.RetainContent	Flag to determine whether uploaded file contents should be forwarded to the back-end system Example Value: true

```

<Property name="FileUpload.UCM.Endpoint.URL">http://<yourSecuredUCMServer>:<port>/idcws/GenericSoapPort</
Property>
<!-- Value for user of the document that will be uploaded. -->
<Property name="FileUpload.UCM.User">yourSecuredUCMUserID</Property>
<!-- Value for document type of the document that will be uploaded. -->
<Property name="FileUpload.UCM.DocumentType">Document</Property>
<!-- Value for security group of the document that will be uploaded. -->
<Property name="FileUpload.UCM.SecurityGroup">yourUCMSecurityGroupName</Property>
<!-- Value for author of the document that will be uploaded. -->
<Property name="FileUpload.UCM.DocumentAuthor">yourUploadedDocumentAuthorName</Property>
<!-- Xpath containing the value of the account of the document that will be uploaded. Xpath is relative to head element. -->
<Property name="FileUpload.UCM.DocumentAccount">webUserId</Property>
<!-- Content ID of the UCM file upload folder. This is used in case FileUpload.UCM.UploadFolderName is not specified. --
>
<Property name="FileUpload.UCM.UploadFolderID">yourUCMUploadFolderID</Property>
<!-- Content Name of the UCM file upload folder. -->
<Property name="FileUpload.UCM.UploadFolderName">yourUCMUploadFolderName</Property>
<!-- Web folder location of the uploaded file. This is concatenated with the uploaded filename to generate the complete path
to the file. -->
<Property
name="FileUpload.UCM.UploadFolderWebLocation">yourSecuredUCMWebFolderMappingForUploadDocuments</
Property>
<!-- Flag to determine whether uploaded file contents should be forwarded to the back-end system -->
<Property name="FileUpload.RetainContent">false</Property>

```

The following section describes the needed configuration and values that are needed for this functionality to work properly:
The UploadFolderWebLocation depends on the configuration in UCM the default configuration is described in the following section.

The UploadFolderName is optional.

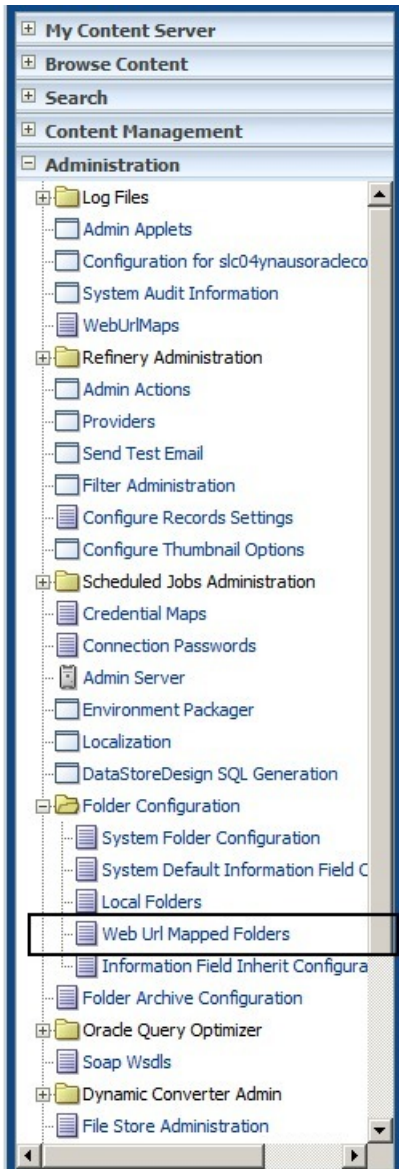
The UploadFolderID has to be specified and it has to be a Folder ID of a UCM folder created for that environment.

Property: FileUpload.UCM.UploadFolderWebLocation

Log in to the Oracle UCM admin console using the following URL:

http://ucm_host:ucm_port/cs/

Log in as an administrator and go to Administration -> Folder Configuration -> Web Url Mapped Folders.



Enter Folder

Enter URL Mapping

Example Values:

Click Add.

Property: FileUpload.UCM.UploadFolderID

Log in to the Oracle UCM admin console using the following URL:

http://ucm_host:ucm_port/cs/

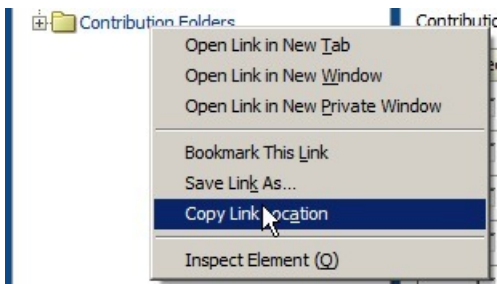
Log in as an administrator and go to Browse Content -> Contribution Folders

Note: This example uses the Contribution Folders, which was created in the previous section.

To check the folder's ID, you can simply place your mouse over the link to the particular folder to get its ID. It will be identified as **CollectionID** in the URL. Do this on both the source and target instances.

The following is a different mechanism to retrieve the Folder ID:

Right click on the Contribution Folders folder (left side):



In Internet Explorer, use the Copy Shortcut option (standard right click context menu, example for IE).

Paste the shortcut into a text editor and you should see something similar to the following:

```
http://ucm_host:ucm_port/cs/idcplg?IdcService=COLLECTION_DISPLAY&
hasCollectionID=true&dCollectionID=825638308519000001
```

Note: Collection ID is another name for Folder ID in UCM.

Appendix O

Configuring WebLogic storeUserConfig

For information on setting up and configuring a userConfigFile and a userKeyFile when using this option for the installation of PSRMSS, see the [WLST Command and Variable Reference](http://docs.oracle.com/cd/E11035_01/wls100/config_scripting/reference.html) (http://docs.oracle.com/cd/E11035_01/wls100/config_scripting/reference.html).

Appendix P

Oracle Policy Automation

Oracle Policy Automation (10.4.4.21) incorporates your business policies into business processes that deliver accurate, consistent, and auditable outcomes.

The product can be downloaded from the Oracle Tech Network site at:

<http://www.oracle.com/technetwork/apps-tech/policy-automation/downloads/index.html>

Refer to the Oracle Policy Automation Installation Guide for detailed instructions to install and deploy Oracle Determinations Server for Java.

Note:

More current releases of OPA may be available; please check with Oracle Support with compatibility of versions other than the one specified above.

Appendix Q

Installation Troubleshooting

Troubleshooting Tip 1: The ADF Connection strings are not properly configured.

When processing transactions in the ADF Portal Application that have an Integrated flow, and you receive a 401 message, this is an indicator that the ADF Connection strings are not properly configured.

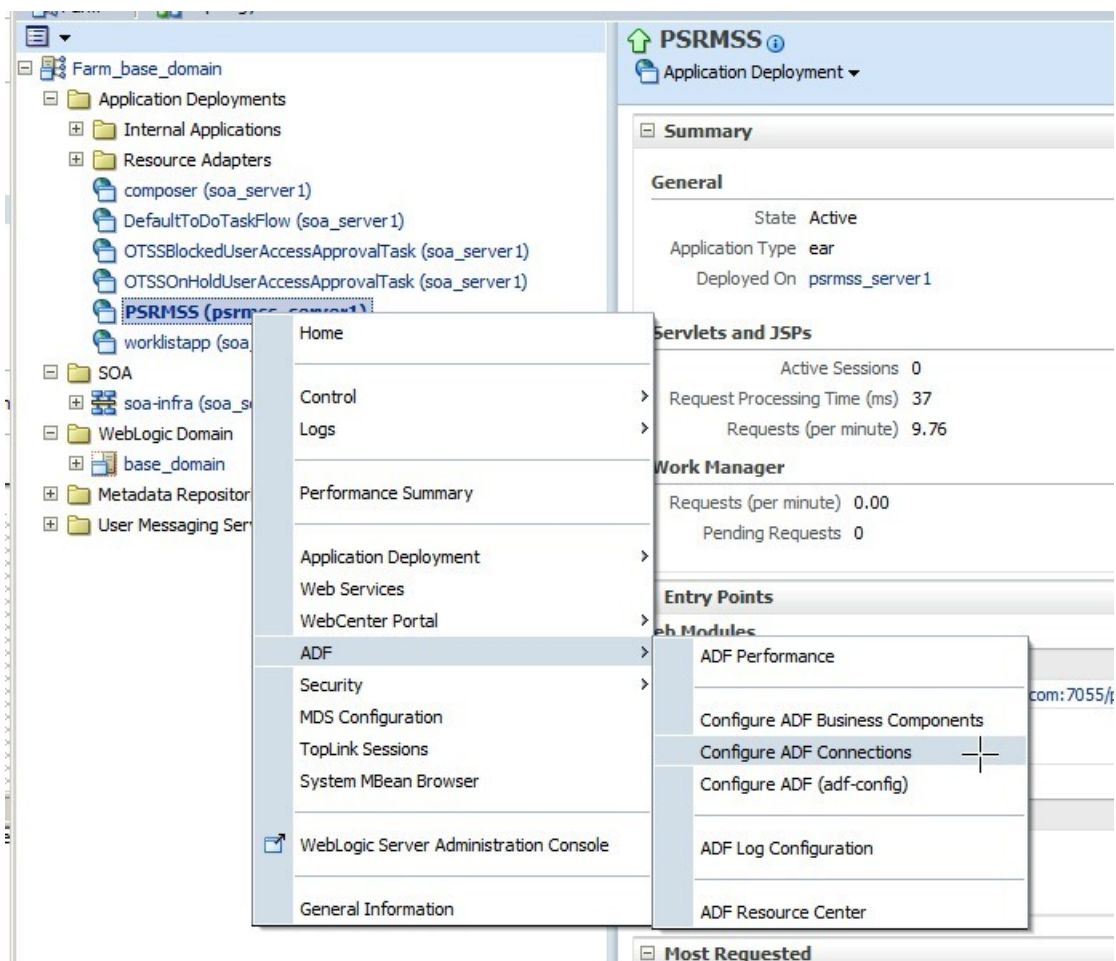
You will need to set the environment variables for the PRODUCT_HOME for the PSRMSS and execute the following command:

```
./install.sh -k
```

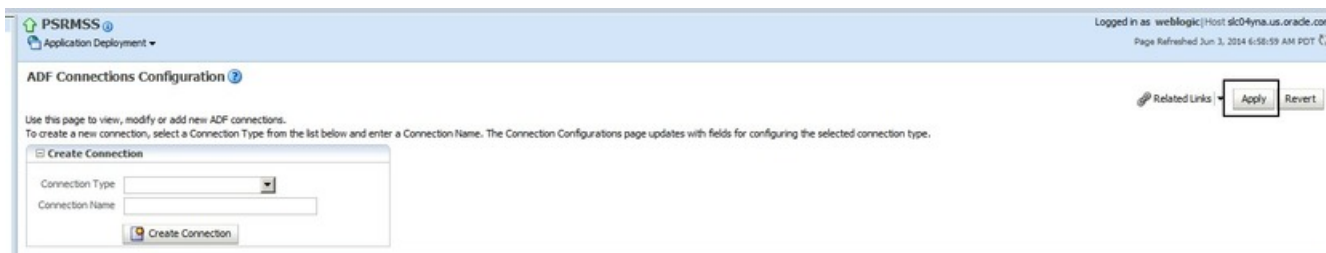
Note: This option will attempt to link the Web Service Connection with the policies and csf-keys.

Log in into the Oracle Enterprise Manager console at <http://WLSAdminHost:WLSAdminServerPort/em> with your *wlsadminuser/wlsadminpasswd* credentials.

Select Application Deployments, choose PSRMSS, then right-click and choose ADF > Configure ADF Connections from the context menu:



Click Apply.



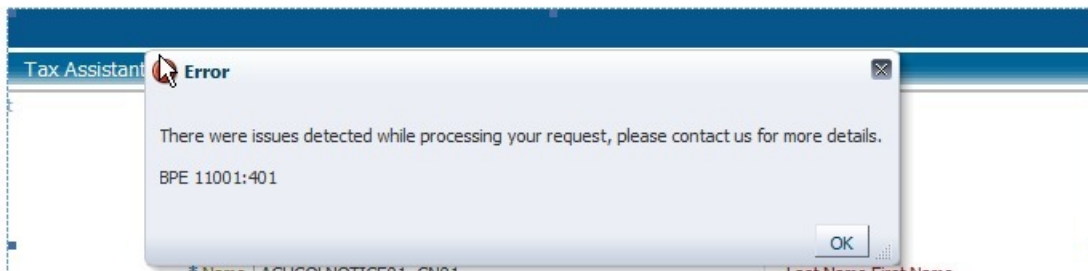
Troubleshooting Tip 2: In the SOA Server log file you receive the following alert:

[2014-05-19T14:52:00.310-07:00] [soa_server1] [NOTIFICATION] [] [oracle.soa.adapter] [tid: Workmanager: , Version: 0, Scheduled=false, Started=false, Wait time: 0 ms\n] [ecid: 0000KOLVr7vBX7KLIU5Eif1JUzpA000002,0] [APP: soa-infra] File Adapter OTSSReportReconciliationRequestEBF Recovery still not possible after 270 attempts due to BINDING.JCA-11001[[

Invalid Input Directory.

To resolve this issue, see [Post-Installation Steps for Integration](#) section in this document.

Troubleshooting Tip 3: When navigating in the ADF Application you receive the following message:



"There were issues detected while processing your request; please contact us for more details."

The following will be seen in the ADF log file:

```
[2014-05-12T12:06:29.421-07:00] [psrmss_server1] [ERROR] [] [oracle.apps.otss.base.service.util.ServiceUtil]
[tid: [ACTIVE].ExecuteThread: '0' for queue: 'weblogic.kernel.Default (self-tuning)'] [userId: anonymous] [ecid:
0000KNlp3eIBX7KLIU5Eif1JSHbu00000V,0] [APP: PSRMSS] [ETPM-SS] getMessageString: Error while attempting to
get sequence. JBO-25058: Definition sequence of type Attribute is not found in ViewDeferrorMessage28_655.
```

```
[2014-05-12T12:06:29.428-07:00] [psrmss_server1] [ERROR] []
[oracle.apps.otss.serviceRequest.common.ui.bean.IdentificationFormBean] [tid: [ACTIVE].ExecuteThread: '0' for queue:
'weblogic.kernel.Default (self-tuning)'] [userId: anonymous] [ecid: 0000KNlp3eIBX7KLIU5Eif1JSHbu00000V,0] [APP:
PSRMSS] [ETPM-SS] submitAction: ERROR OCCURRED - <html> <body><p>There were issues detected while
processing your request, please contact us for more details.</p><p>BPE 11001:401</p></body> </html>
```

To resolve this issue, check to see if the MDS (DVM) is up to date with the PSRM application.

Troubleshooting Tip 4:

For general troubleshooting information for WebCenter Components, see [Troubleshooting Oracle WebCenter Portal](#) in the documentation section of the Oracle Technology Network.