

Oracle Access Manager  
Oracle FLEXCUBE Universal Banking  
Release 12.0.3.0.0  
[April] [2014]



---

# Table of Contents

<b>1.</b>	<b>INTRODUCTION .....</b>	<b>1-1</b>
<b>2.</b>	<b>BACKGROUND AND PREREQUISITES .....</b>	<b>2-1</b>
2.1	PRE-REQUISITES .....	2-1
2.1.1	<i>Software Requirements .....</i>	<i>2-1</i>
2.2	BACKGROUND OF SSO RELATED COMPONENTS .....	2-1
2.2.1	<i>Oracle Access Manager (OAM).....</i>	<i>2-1</i>
2.2.2	<i>LDAP Directory Server.....</i>	<i>2-2</i>
2.2.3	<i>WebGate/AccessGate.....</i>	<i>2-2</i>
2.2.4	<i>Identity Asserter.....</i>	<i>2-2</i>
<b>3.</b>	<b>CONFIGURATION.....</b>	<b>3-1</b>
3.1	PRE-REQUISITES .....	3-1
3.2	CHANGE THE WEB.XML FILE .....	3-1
3.3	CONFIGURING SSO IN OAM CONSOLE.....	3-1
3.4	FIRST LAUNCH OF FLEXCUBE AFTER INSTALLATION .....	3-18
3.4.1	<i>Bank Parameter Maintenance .....</i>	<i>3-18</i>
3.4.2	<i>SSO Parameters.....</i>	<i>3-18</i>
3.4.3	<i>Maintaining Branch Level DN Template (Branch Maintenance).....</i>	<i>3-19</i>
3.4.4	<i>Maintaining LDAP DN for FCUBS Users .....</i>	<i>3-20</i>
3.4.5	<i>Launching FLEXCUBE .....</i>	<i>3-21</i>
3.4.6	<i>Signoff in a SSO Situation.....</i>	<i>3-23</i>

---

# 1. Introduction

For the purpose of single sign-on FLEXCUBE UBS is qualified with Oracle Identity Management 11.1.1 (Fusion Middleware 11gR1) – specifically using the Access Manager component of Oracle Identity Management. This feature is available in the releases FC UBS V.UM 7.3.0.0.0.0 and onwards of FLEXCUBE UBS.

This document is expected to provide an understanding as to how single sign-on can be enabled for a FLEXCUBE UBS deployment using Oracle Fusion Middleware 11g.

In addition to providing a background to the various components of the deployment, this document also talks about Configuration in FLEXCUBE and Oracle Access Manager to enable single sign-on using Oracle Internet Directory as a LDAP server.

---

## 2. Background and Prerequisites

### 2.1 Pre-Requisites

The following are the pre-requisites for Oracle Access Manager (OAM) and LDAP Directory Server.

#### 2.1.1 Software Requirements

1. Oracle Access Manager – OAM (11.1.1.5)
  - Access Server
  - Webtier Utilities 11.1.1.5
  - Web Gate 11.1.1.5
  - Http Server
2. LDAP Directory Server

Please make sure that the LDAP which is been used for Flexcube Single Signon deployment is certified to work with OAM.

List of few LDAP Directory servers supported as per OAM document (note – this is an indicative list. The conclusive list can be obtained from the Oracle Access Manager documentation):

- Oracle Internet Directory
  - Active Directory
  - ADAM
  - ADSI
  - Data Anywhere (Oracle Virtual Directory)
  - IBM Directory Server
  - NDS
  - Sun Directory Server
3. Web Logic(10.3.5)

For the purpose of achieving single sign on for FCUBS in FMW 11gR1, it is necessary for the weblogic instance to have an explicit Oracle HTTP server (OHS).

### 2.2 Background of SSO related components

#### 2.2.1 Oracle Access Manager (OAM)

Oracle Access Manager consists of the Access System, and the Identity System. The Access System secures applications by providing centralized authentication, authorization and auditing to enable single sign-on and secure access control across enterprise resources. The Identity System manages information about individuals, groups and organizations. It enables delegated administration of users, as well as self-registration interfaces with approval workflows. These systems integrate seamlessly.

The backend repository for the Access Manager is an LDAP-based directory service that can be a combination of a multiple directory servers, which is leveraged for two main purposes:

- As the store for policy, configuration and workflow related data, which is used and managed by the Access and Identity Systems
- As the identity store, containing the user, group and organization data that is managed through the Identity System and is used by the Access System to evaluate access policies.

### **2.2.2 LDAP Directory Server**

To integrate Flexcube with OAM to achieve Single Sign-on feature, Flexcube's password policy management, like password syntax and password7 expiry parameters can no longer be handled by Flexcube. Instead, the password policy management can be delegated to the Directory Server. All password policy enforcements would be on the LDAP user id's password and NOT Flexcube application users' passwords.

### **2.2.3 WebGate/AccessGate**

A WebGate is a Web server plug-in that is shipped out-of-the-box with Oracle Access Manager. The WebGate intercepts HTTP requests from users for Web resources and forwards it to the Access Server for authentication and authorization.

Whether you need a WebGate or an AccessGate depends on your use of the Oracle Access Manager Authentication provider. For instance, the:

Identity Asserter for Single Sign-On: Requires a separate WebGate and configuration profile for each application to define perimeter authentication. Ensure that the Access Management Service is On.

Authenticator or Oracle Web Services Manager: Requires a separate AccessGate and configuration profile for each application. Ensure that the Access Management Service is On.

### **2.2.4 Identity Asserter**

Identity Asserter uses Oracle Access Manager Authentication services and also validates already-authenticated Oracle Access Manager Users through the ObSSOCookie and creates a WebLogic-authenticated session. It also provides single sign-on between WebGates and portals. We can get more details on Identity asserter [HERE](#)



This document contains the configuration of Oracle Internet Directory as LDAP server and its configuration in weblogic. This document will not discuss the configuring and setting up of OAM and LDAP directory server of other LDAP servers. This will be provided by the corresponding Software provider.

## 3. Configuration

### 3.1 Pre-Requisites

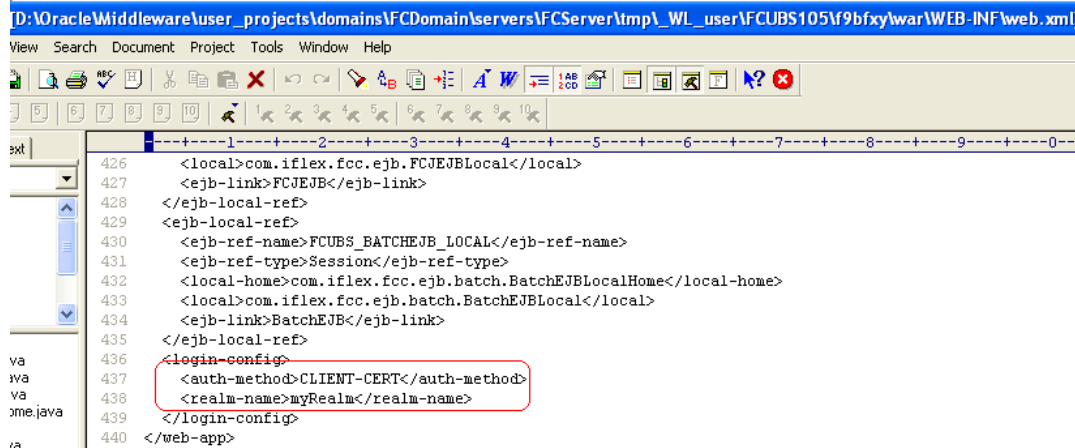
The steps provided below assume that FLEXCUBE has already been deployed and is working (without single sign-on)

The provided below steps assume that Oracle Access Manager and the LDAP server have been installed already and the requisite setup already done with respect to connecting the two along Weblogic's Identity Asserter.

### 3.2 Change the web.xml file

1. Locate the web.xml file in the application (FCUBS) EAR file
2. Add the following lines under login-config.

```
<login-config>
  <auth-method>CLIENT-CERT</auth-method>
  <realm-name>myRealm</realm-name>
</login-config>
```



The screenshot shows a text editor window titled "D:\Oracle\middleware\user\_projects\domains\FCDomain\servers\FCServer\tmp\WL\_user\FCUBS105\9bfxy\war\WEB-INF\web.xml". The editor displays XML code for a web application. The following lines are highlighted with a red box:

```
436 <login-config>
437   <auth-method>CLIENT-CERT</auth-method>
438   <realm-name>myRealm</realm-name>
439 </login-config>
```

3. Save the file and redeploy and restart the application.

### 3.3 Configuring SSO in OAM Console

After installing OAM, Webtier Utilities and Webgate, extend the weblogic domain to create OAM server.

Follow the post installation scripts deployWebGate and EditHttpConf as provided in [http://docs.oracle.com/cd/E17904\\_01/install.1111/e12002/webgate004.htm](http://docs.oracle.com/cd/E17904_01/install.1111/e12002/webgate004.htm)

## 1. Identity Store Creation

To create new User Identity Store, Login to OAM Console and navigate to System Configuration>>Common configuration>>Data Sources>> User Identity Store.

### 2. Input below information in the User Identity Store.

Choose Store Type as Oracle Internet Directory.

Location:

LDAP server Host name and Port Number in <HOSTNAME>:PORT format

Bind DN:

User name to connect the LDAP Server

Password:

Password to connect the LDAP Server

User Name Attribute:

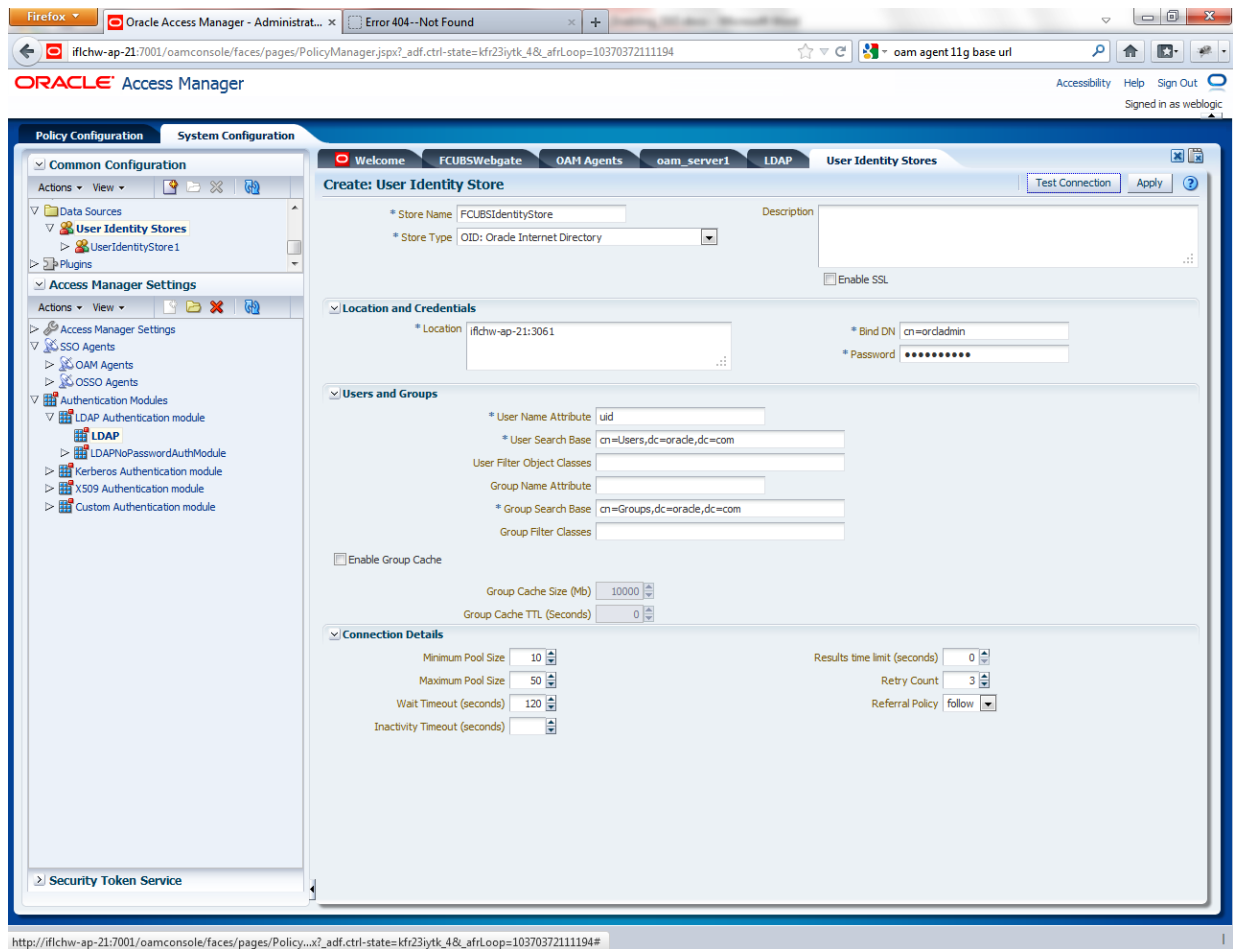
The attribute created in LDAP, which will be the User Name for the other application (here it will be treated as the FCUBS Username)

User Search Base:

The container of the User Name in the LDAP server.

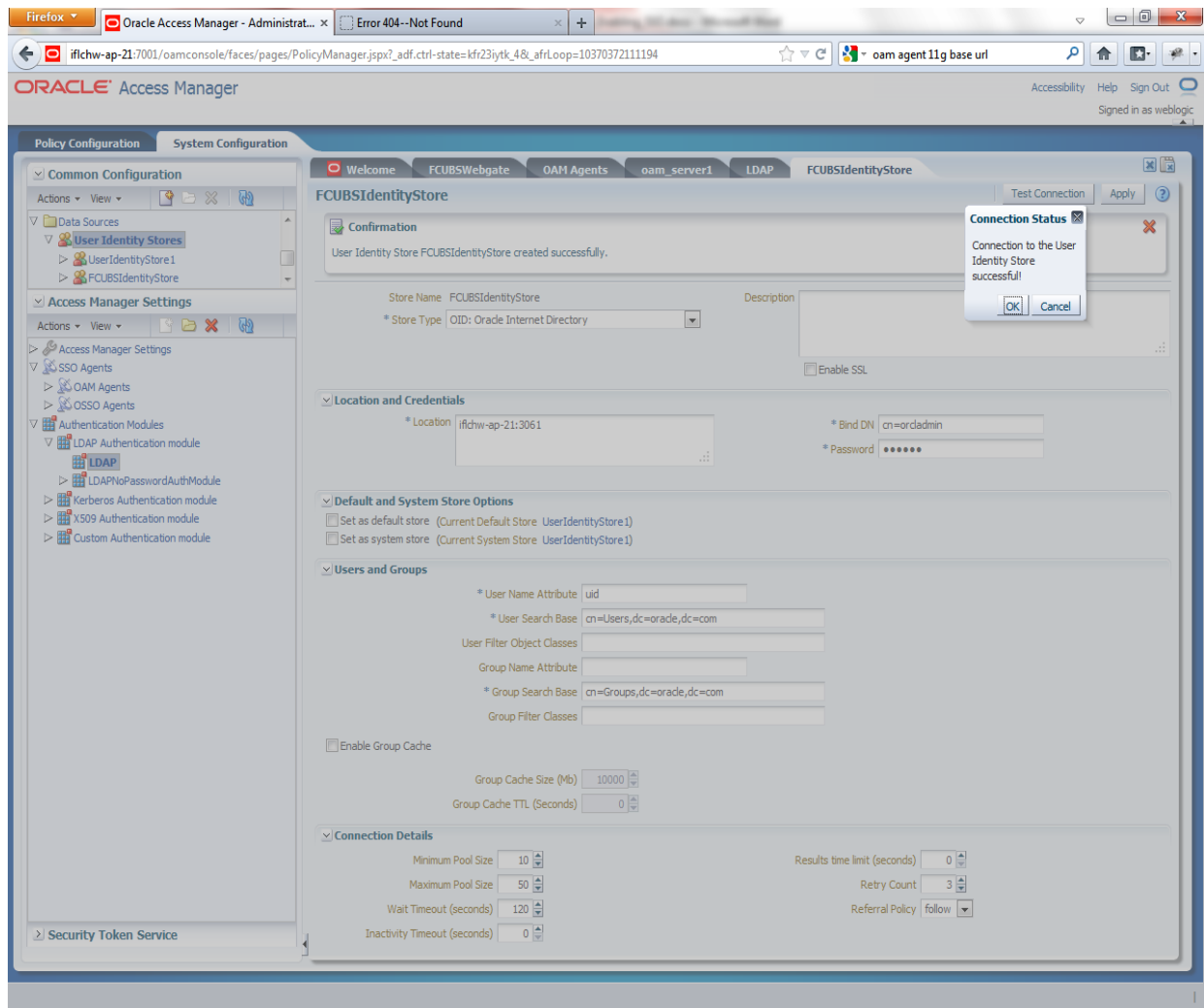
Group Search Base:

The container of the Group Name in the LDAP server.



3. After input of the above information click on Apply button. On Successful creation, click test connection button to verify whether the LDAP connection is working fine.

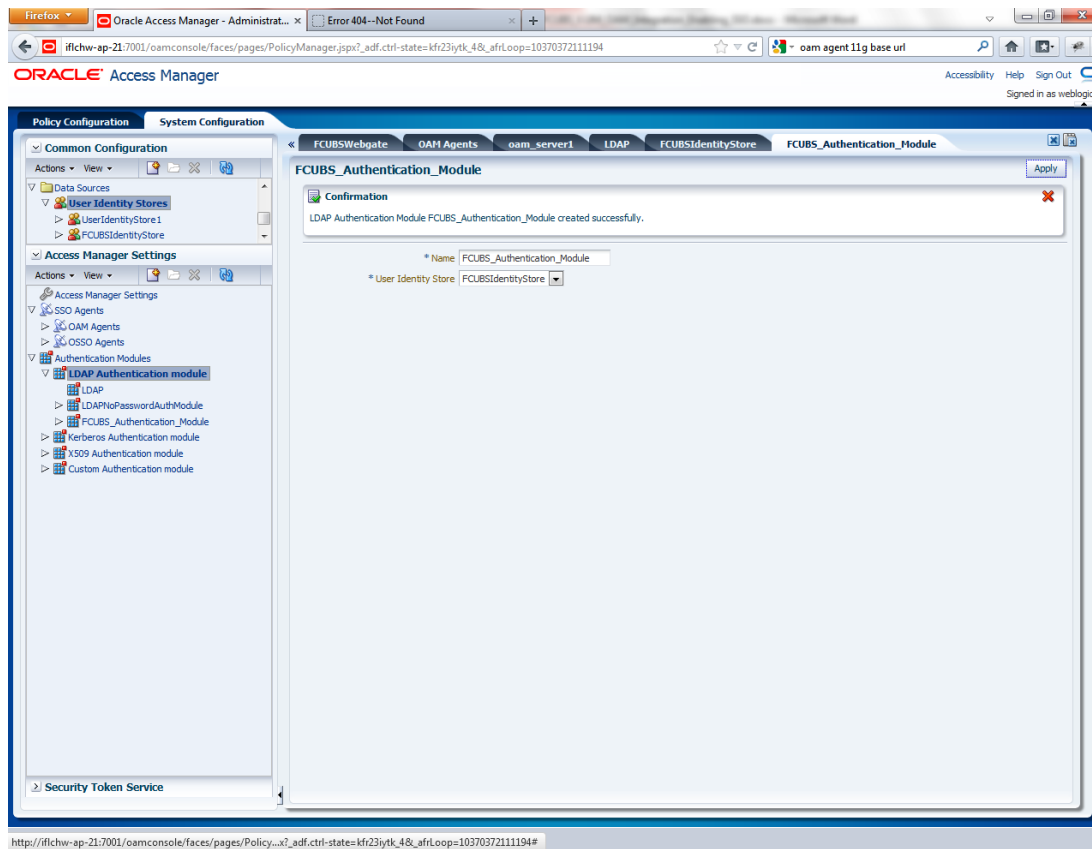




#### 4. Creating Authentication Module

Navigate to System Configuration >> Access Manager Settings >> Authentication Modules >> LDAP Authentication Module.

Click New Button to create new Authentication Module. Input the Name of the authentication module and choose the User Identity Store we created in step 1.

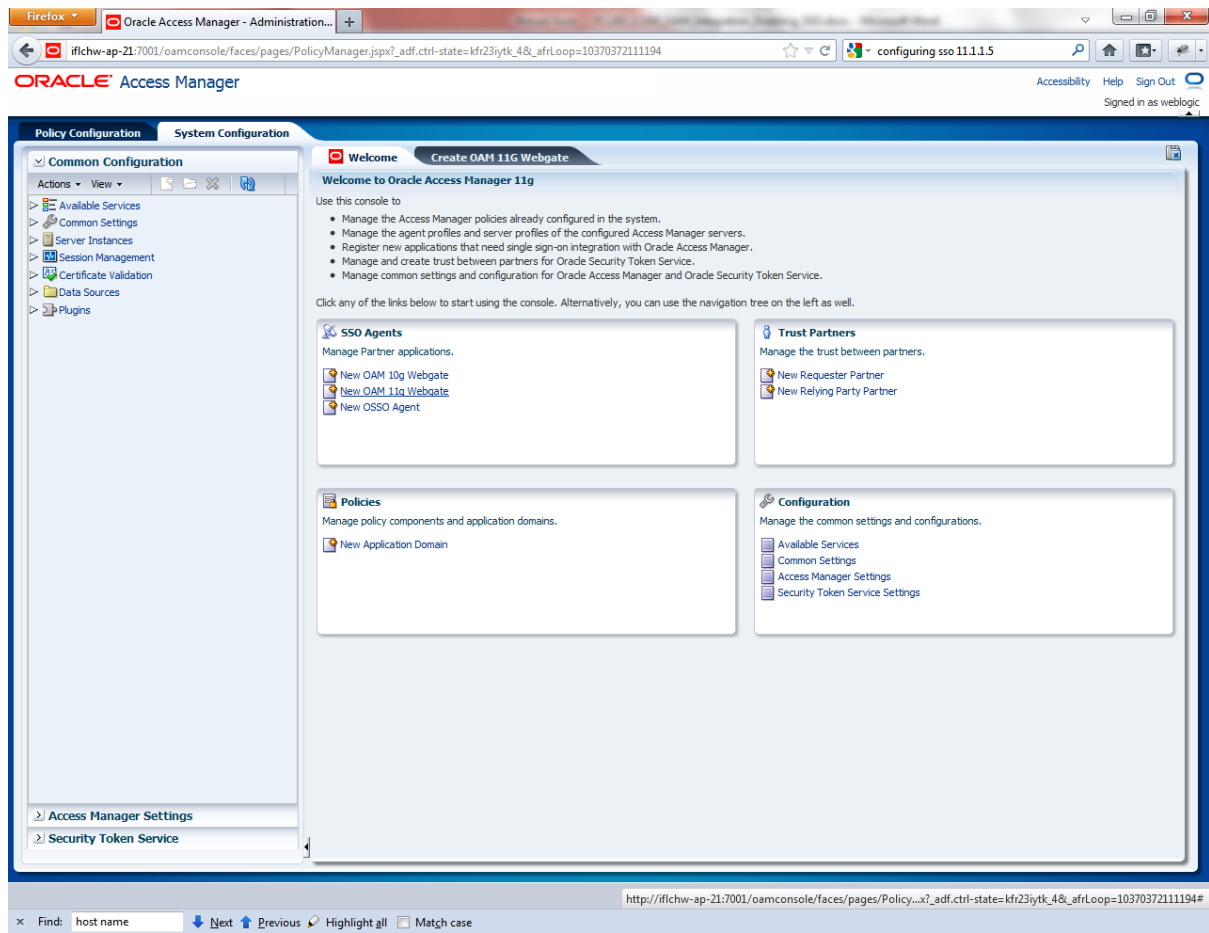


## 5. Creating OAM 11g Webgate

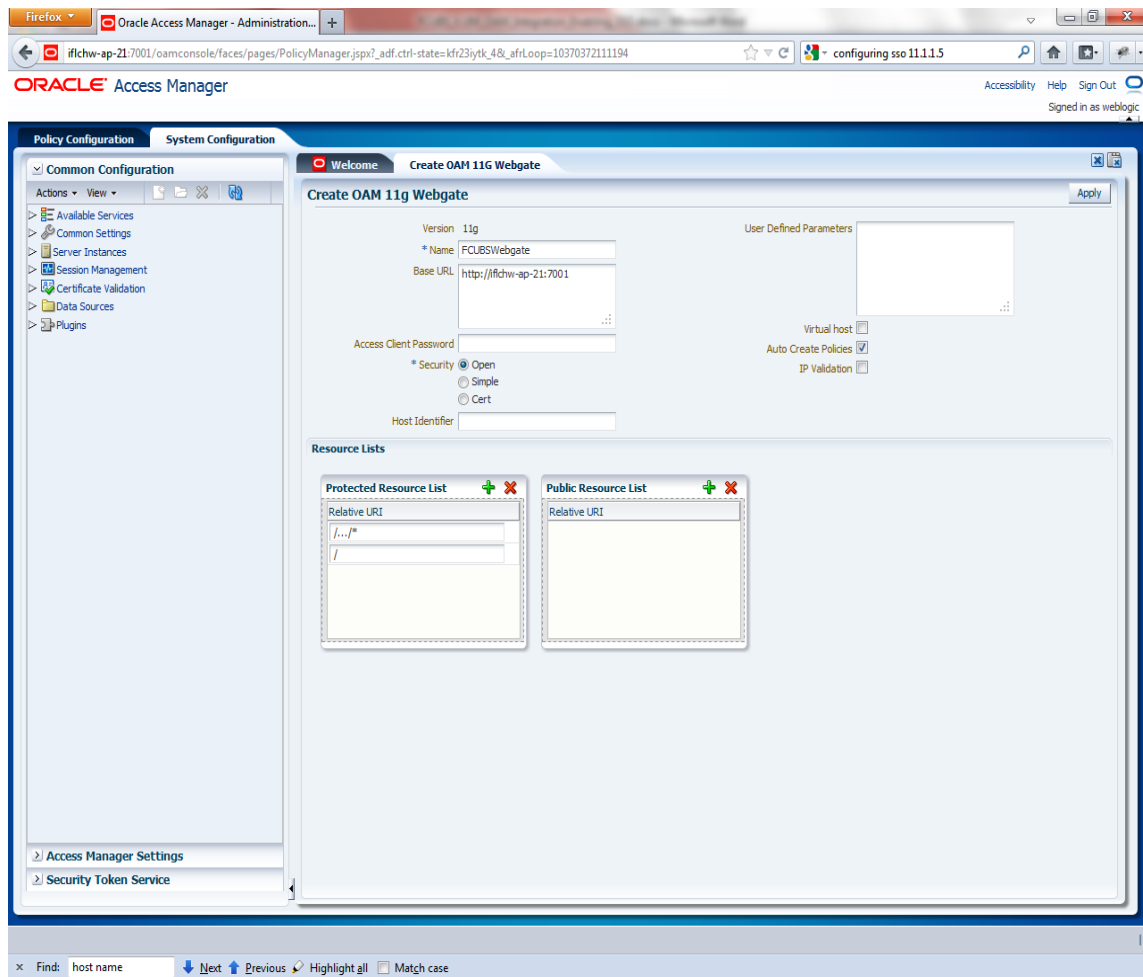
Navigate to System Configuration>>Access Manager Settings>>SSo Agents>>OAM Agents.

Click on Create 11g webgate button

or Click on New OAM 11g Webgate link available in welcome page.

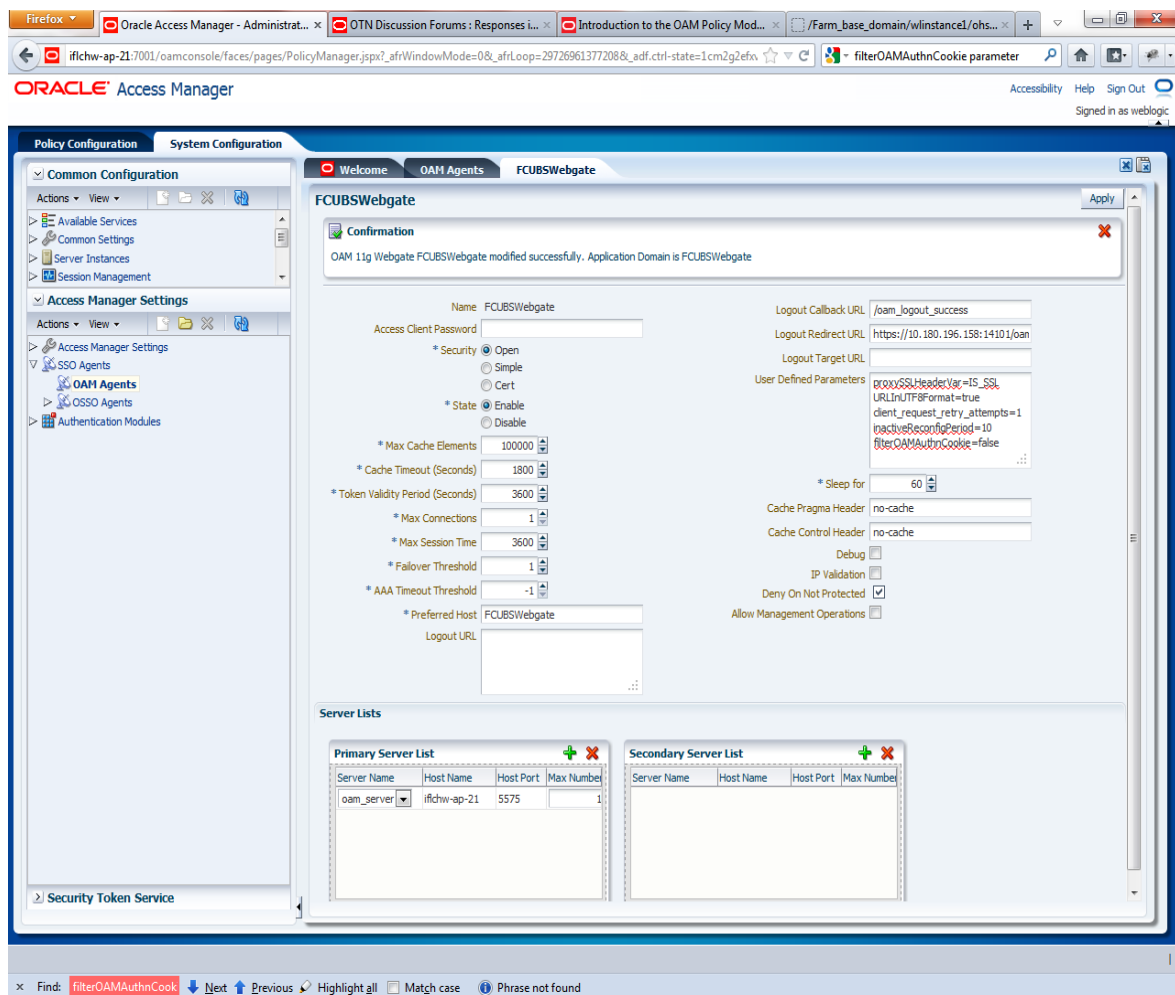


Enter any name for Webgate and Base URL (The host and port of the computer on which the Web server for the Webgate is installed) and click on apply.



Once the OAM 11g Webgate created, add filterOAMAuthnCookie=false parameter along with default parameters in User Defined Parameters.

Click apply button to save the changes.



## 6. Post OAM Webgate 11g Creation Steps

Perform the following steps to copy the artifacts to the Webgate installation directory:

- On the Oracle Access Manager Console host, locate the updated OAM Agent ObAccessClient.xml configuration file (and any certificate artifacts). For example:

\$DOMAIN\_HOME/output/\$Agent\_Name/ObAccessClient.xml

- On the OAM Agent host, copy artifacts (to the following Webgate directory path). For example:

11gWebgate\_instance\_dir/webgate/config/ObAccessClient.xml  
 (for instance WebTier\_Middleware\_Home/Oracle\_WT1/instances/instance1/config/OHS/ohs1/webgate/config/ObAccessClient.xml)

## 7. Creating Authentication Scheme

To create Authentication Scheme navigate to Policy Configuration >> Authentication Schemes

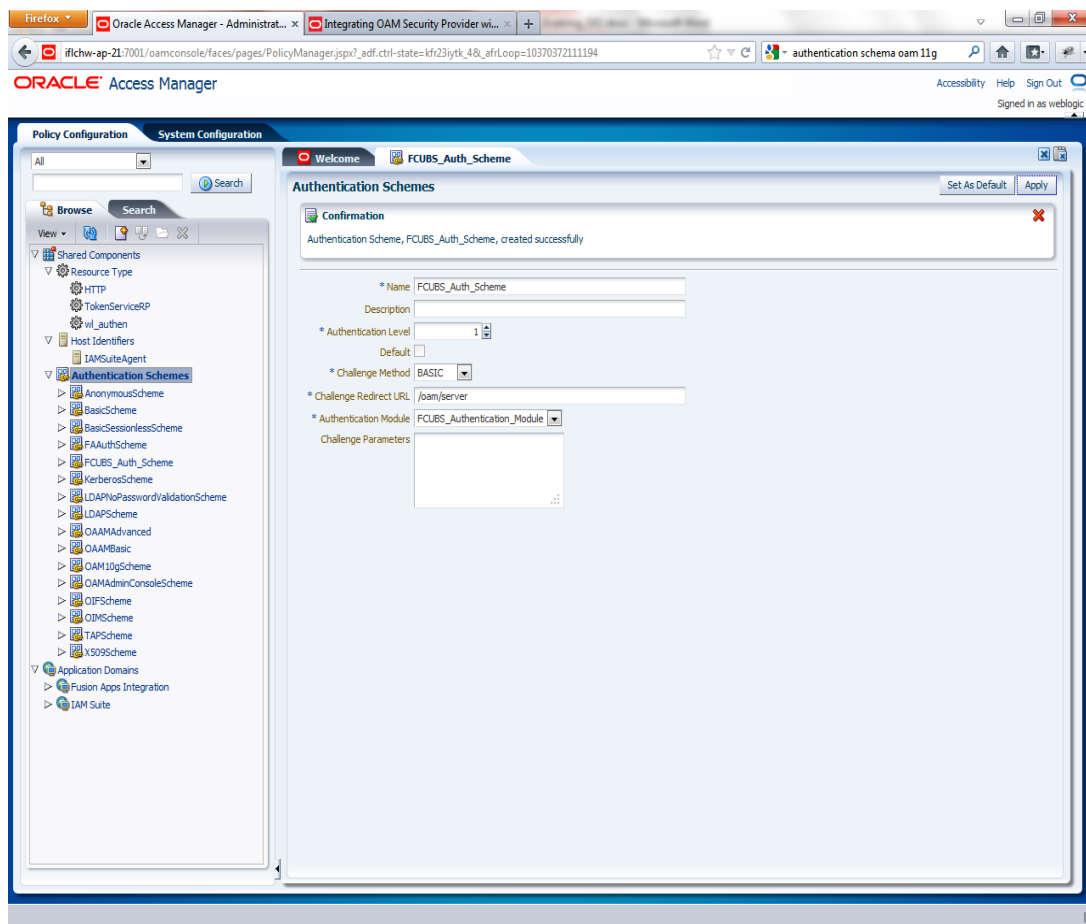
Click on Create button to create new Authentication Scheme.

Name : Any name to identify Authentication Scheme

Challenge Method : BASIC

Challenge Redirect URL : /oam/server

Authentication Module : Choose the authentication module created in step 2.



If it is a basic authentication scheme, we need to add the 'enforce-valid-basic-auth-credentials' tag to the config.xml file located under /user\_projects/domains/<MyDomain>/config/. The tag must be inserted within the <security-configuration> tag as follows: [Just before the end of security configuration tag]

```
<enforce-valid-basic-auth-credentials>false</enforce-valid-basic-auth-credentials>
```

```
</security-configuration>
```

## 8. Creating Authentication Scheme

To create authentication policy, navigate to Policy Configuration >> Application Domains >> [Webgate agent name] >> Authentication Policies.

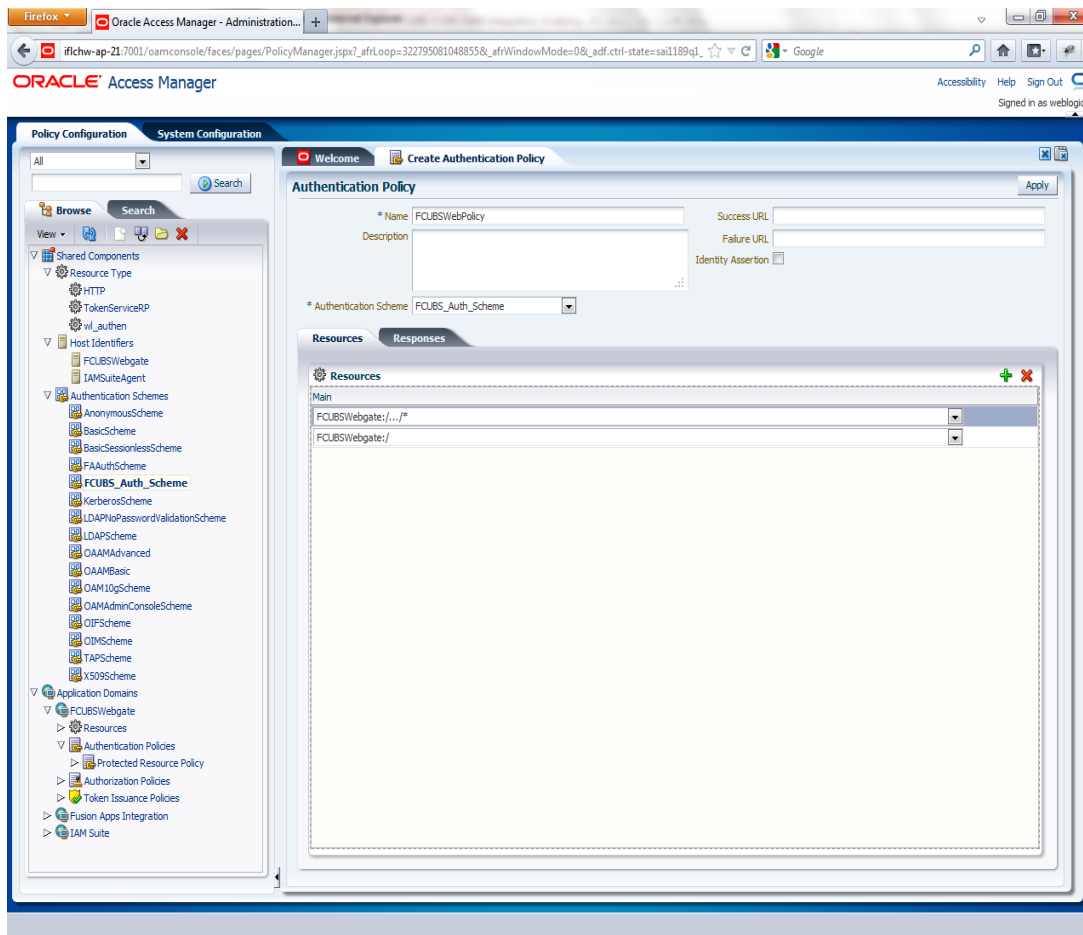
Click new button and input the below information

Name : Enter any name to identify the Authentication Policy (eg. FCUBSWebPolicy)

Authentication Scheme: Choose the authentication scheme created in step 5.

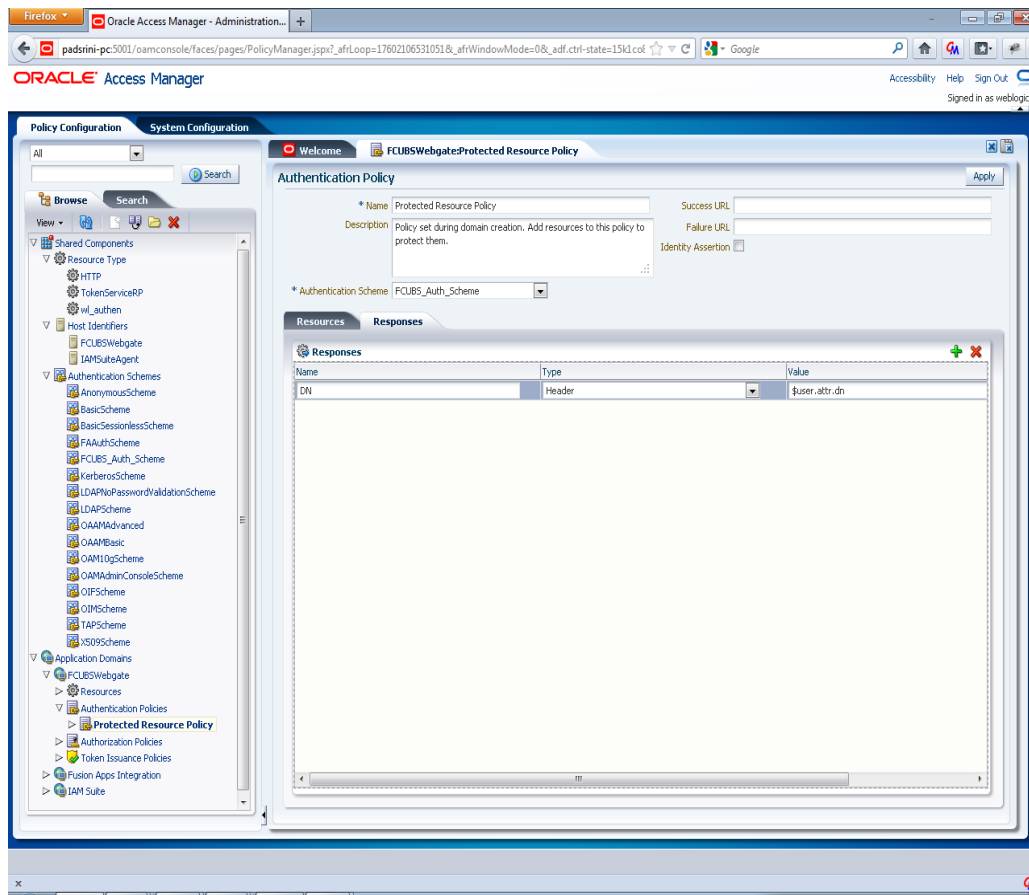
Resources:

Add the resources which are all need to be protected. If <WebgateName>:!/.../ and <WebgateName>:/ are added in the resources then all the sources are protected.



Add DN in the Responses section. Enter the value as ***\$user.attr.dn***. The responses maintained in the tab will be added in the response header during the authentication.

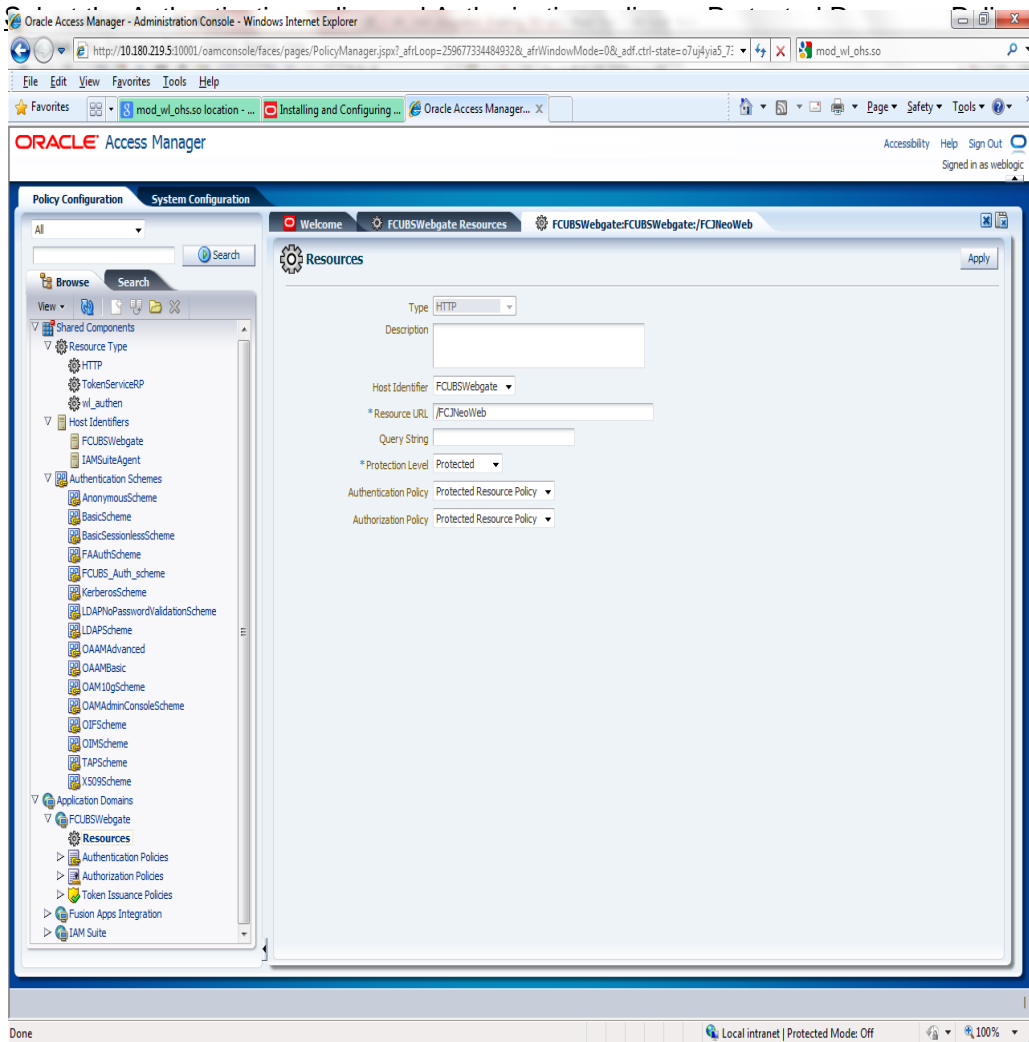




## 9. Adding Resources

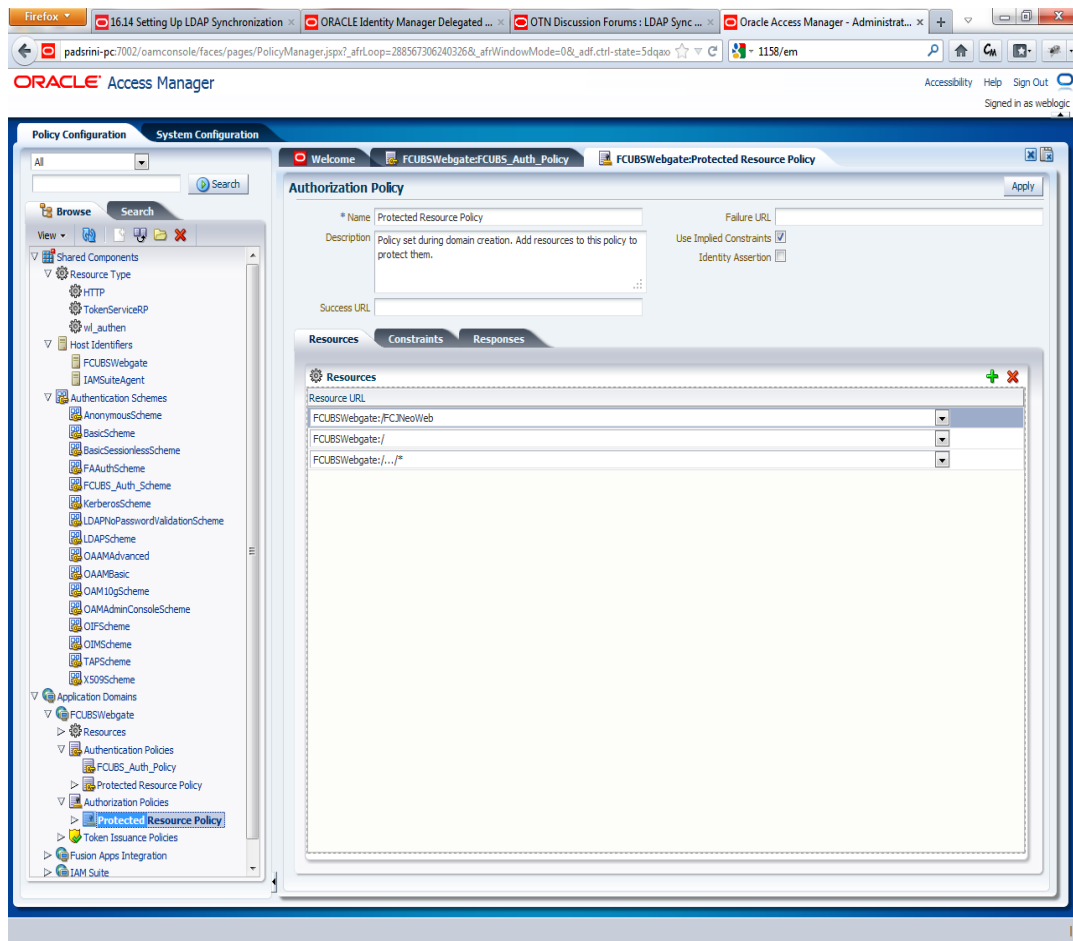
Navigate to Policy Configuration >>Application Domains >>FCUBSWebgate >>Resources .

- Click on Create New Resource button .
- Select the type as HTTP.
- Select the Host Identifier as FCUBSWebgate
- Enter the resource URL as /FCJNeoWeb
- Select the protection level as Protected
- Click on apply button to update the resource added.

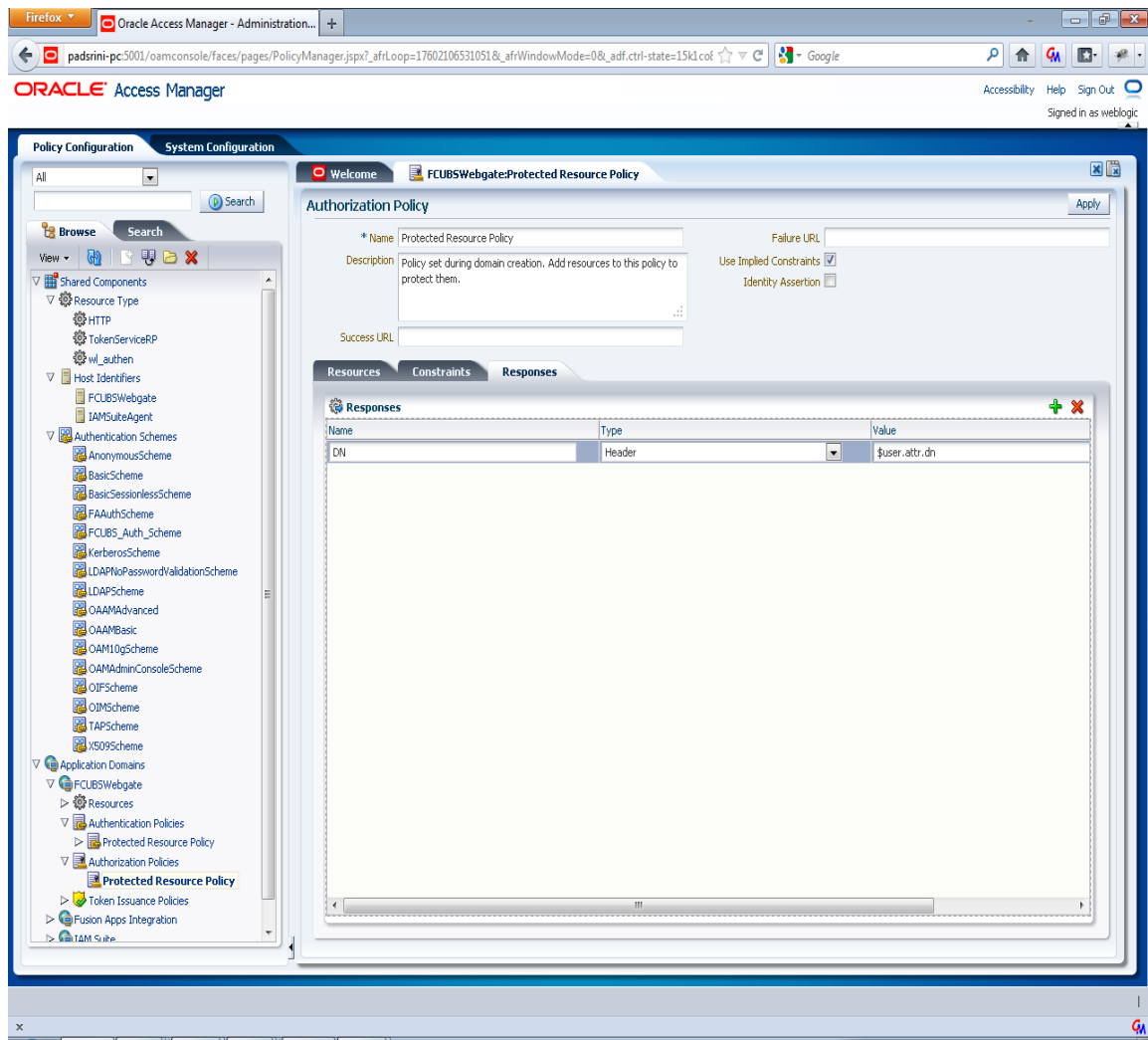


## 10. Adding Authorization Policy

Check whether the resources available in the authentication policies are available in Authorization Policy. During web gate creation these values are defaulted.



Add DN in the Responses section. Enter the value as ***\$user.attr.dn***. The responses maintained in the tab will be added in the response header during the authorization.



## 11. Configuring mod\_wl\_ohs for Oracle Weblogic server Clusters

To enable the Oracle HTTP Server instances to route to applications deployed on the Oracle Weblogic Server Clusters, add the directive shown below to the mod\_wl\_ohs.sh file available in <Weblogic Home>/Oracle\_WT1/instances/instance1/config/OHS/ohs1.

```
<Location /console>
```

```
    SetHandler weblogic-handler
```

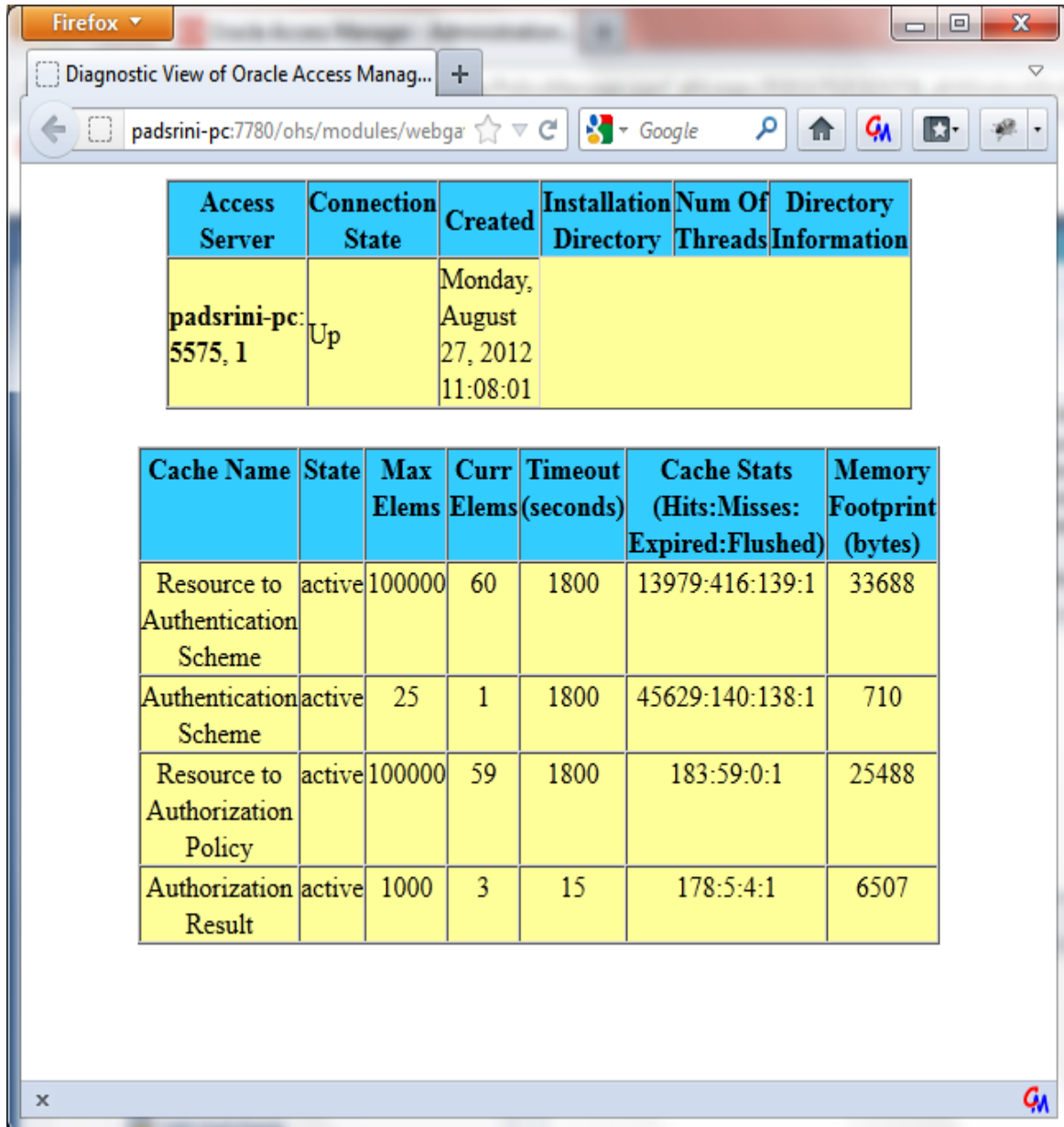
```
    WebLogicHost idmhost1.mycompany.com
```

```
    WeblogicPort 7001
```

```
</Location>
```

## 12. Checking the Webgate 11g Agent Creation

After configuration of webgate 11g agent launch the URL [http://<hostname>:<ohs\\_Port>/ohs/modules/webgate.cgi?progid=1](http://<hostname>:<ohs_Port>/ohs/modules/webgate.cgi?progid=1) to verify whether the webgate configuration is fine. If the URL launches a screen as below then the webgate configuration is working fine.

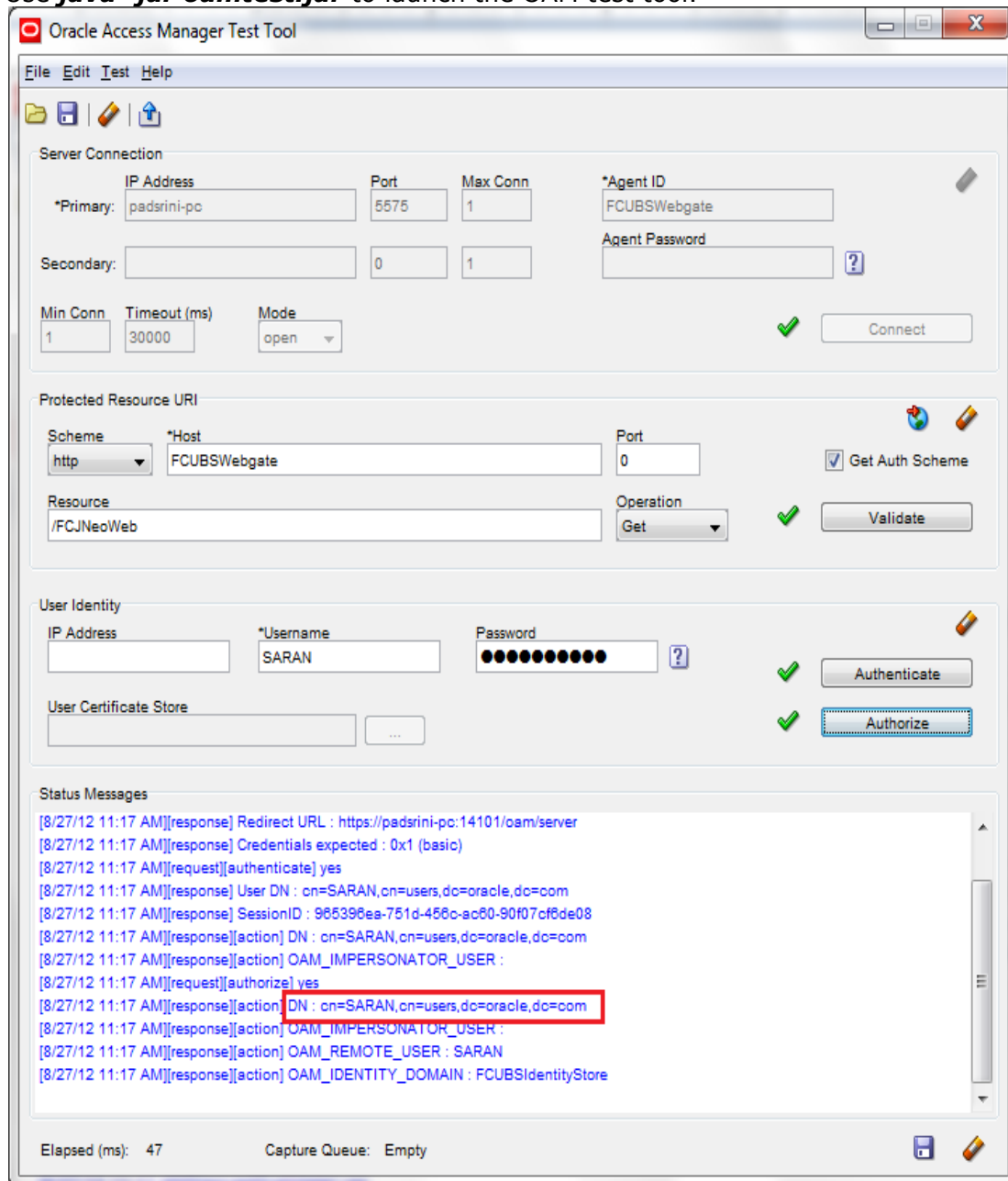


13. Using OAM Test Tool (This step is not mandatory)

There is a test tool provided in OAM software which helps us to check the response parameter values. The test tool is available in <OAM Install Dir>\oam\server\tester.

For eg. D:\weblogic\Middleware\Oracle\_IDM1\oam\server\tester

Use **java -jar oamtest.jar** to launch the OAM test tool.



### 3.4 First launch of FLEXCUBE after Installation

After installing FLEXCUBE and while launching it for first time, the normal FCUBS login screen with userid and password will appear, this is because when installing the 'sso installed' parameter will be set to 'N'.

#### 3.4.1 Bank Parameter Maintenance

To enable SSO in FLEXCUBE, login into the application and enable “SSO Enabled” Check box in “Bank Maintenance” screen.

Bank Parameters Maintenance

Bank Code \* 000 Customer Name BANK FUTURA

Head Office Branch Code \* 000 Description BANK FUTURA

Financial Preferences **General Preferences**

Format Masks Year End Profit and Loss

CIF Mask bbbnnnnnn General Ledger \* 241000801

General Ledger Mask \* nnnnnnnnn Transaction Code \* 000

Spread

Spread Application Both Leg

Spool File Purge Days 90

Inter Pay Lead days 3

General Ledger Purge Days

Auto Batch

User Restriction For Batch Number

SSO Enabled

Cheque Numbering Details

Scheme

Cheque Numbers Unique for Branch

Checksum Algorithm

Lodgment Numbers Unique For Branch

TRS Details Suspense Account

Account Mask Preferences Fields

Input By LC32702 Authorized By LC32702A03 Modification 152  Authorized

Date Time 2012-02-29 13:26:22 Date Time 2012-02-29 15:20:45 Number  Open

Ok Exit

#### 3.4.2 SSO Parameters

After enabling SSO, the parameters required for SSO should be maintained. Go to “Security Maintenance -> Sys. Administration -> SSO Maintenance”. Provide all the details like Directory Server host name, Port number, LDAP admin Userid , admin Password, LDAP base and Login time out duration (in Sec).

The screenshot shows a window titled "Single Sign On Maintenance" with the following fields:

- LDAP Host \* pdsrini-pc
- LDAP Port \* 3060
- LDAP Admin Id \* cn=orcladmin
- LDAP Password \* [masked]
- LDAP Base \* cn=Users,dc=oracle,dc=com
- Time Out Duration(Seconds) \* 600

At the bottom, there is a "Fields" section with the following information:

Input By SARAN	Authorized By SARAN	Modification Number 1	<input checked="" type="checkbox"/> Authorized
Date Time 2012-01-06 12:33:04	Date Time 2012-01-06 12:33:04		<input checked="" type="checkbox"/> Open

An "Exit" button is located in the bottom right corner.

### 3.4.3 Maintaining Branch Level DN Template (Branch Maintenance)

Go to the "Branch Maintenance" of FLEXCUBE UBS.

For each branch LDAP DN template should be maintained, which is used in the FLEXCUBE user maintenance Form to populate corresponding LDAP userid automatically from this template. Go to branch level parameter screen and Click on Preferences Icon.

E.g.: LDAP DN Template: *cn=<FCJUSR>,cn=Users,dc=i-flex,dc=com*

Here in this above template **cn=<FCJUSR>** part preferably must be there and it should not be altered, but the rest of the DN name can change based on the configuration.



**Branch Parameters Preferences**

Netting Suspense General Ledger	233200804	<b>Profit and Loss Adjustment</b>	<input type="checkbox"/> Track Previous Year Profit And Loss Adjustment
Walk In Customer	000003171	<b>Revaluation Split Details</b>	<input type="checkbox"/> Revaluation Split Required
Internal Swap Customer	000003171	<b>Suspense Product Maintenance</b>	
Clearing Account		Debit Product	
Offset Clearing Account		Description	
Weekly Holiday 1	Saturday	Credit Product	
Weekly Holiday 2	Sunday	Description	
Clearing Bank Code		<b>International Banking Account Number Masks</b>	
MIS Group For Currency	<input type="checkbox"/> Interdict Validation Required	Bank Code	aaaann
Interdict Timeout Interval		Account Number	aann
Status Processing Basis	Contract Level	<b>FGL Integration</b>	<input type="checkbox"/> FGL Handoff Required
Provisioning Frequency	Daily	<b>ELCM Integration</b>	<input checked="" type="checkbox"/> ELCM Replication
Uncollected Funds Basis	Uncollected Funds		
	<input checked="" type="checkbox"/> Deferred Statement Generation		
	<input type="checkbox"/> Enterprise General Ledger		
Minor Age Limit (Yrs)	18	<b>LDAP DN Template</b>	LDAP DN Template cn=<FCCUSR>,cn=User s,dc=oracle,dc=com
Notification Days			
Cheque Stale Days			
Limit Expiry Advice Notification Days			
<b>Back Value Details</b>	<input type="checkbox"/> Back Valued Check Required		
Back Value Days			

**LCY Message Preferences**

Ok Exit

### 3.4.4 Maintaining LDAP DN for FCUBS Users

For each user id in FCUBS a user has to be created in the LDAP.

When creating the user in LDAP ensure that the DN used is same as the LDAP DN value that will be updated in user maintenance form. Once the user is created in LDAP go to the user maintenance form in FCUBS. If the FCUBS user already exists then unlock the user and update the LDAP DN value which was set when creating the user in LDAP. Click on Validate button to check whether any other user is having the same LDAP DN value.

**User Maintenance**

**User Details**

User Identification \* FCUBSUSER  
 Name \* FCUBS User  
 User Reference \_\_\_\_\_  
 Language \* ENG  
 Home Branch \* 004  
 Customer No \_\_\_\_\_  
 Department Code \_\_\_\_\_  
 Department Description \_\_\_\_\_  
 Tax Identifier \_\_\_\_\_  
 LDAP DN FCUBSUSER  
 Time Level \* 9  
 Amount Format \_\_\_\_\_  
 Date Format \_\_\_\_\_  
 Auto Authorization

User Status  Enabled  
 Hold  
 Disabled  
 Locked  
 Classification  Staff  
 Branch  
 Status Changed On \_\_\_\_\_  
 Last Signed On \_\_\_\_\_  
 Staff Customer Restriction Required  
 ELCM User ID \_\_\_\_\_  
 Multi Branch Access

**User Password**

Password .....  
 Password Changed On 2012-01-06 11:01:33  
 Email \_\_\_\_\_  
 Start Date \* 2012-01-06  
 End Date \_\_\_\_\_

**Invalid Logins**

Cumulative \_\_\_\_\_  
 Successive \_\_\_\_\_

Restricted Password	Roles	Rights	Functions	Tills	Account Classes	General Ledgers	Limits	Branches	Products
Disallowed Functions	Users Holiday	Fields	Group Restriction	Centralized Role					

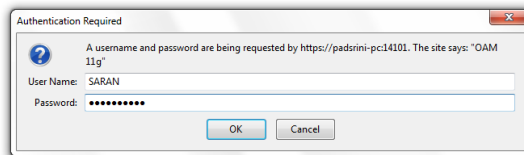
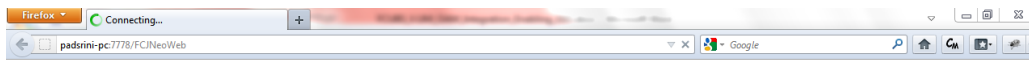
Maker KANNAN1 Date Time: 2012-01-06 13:29:56 Mod No 3  
 Checker SARAN Date Time: 2012-01-06 13:34:26 Record Status Closed  
 Authorization Status Authorized

### 3.4.5 Launching FLEXCUBE

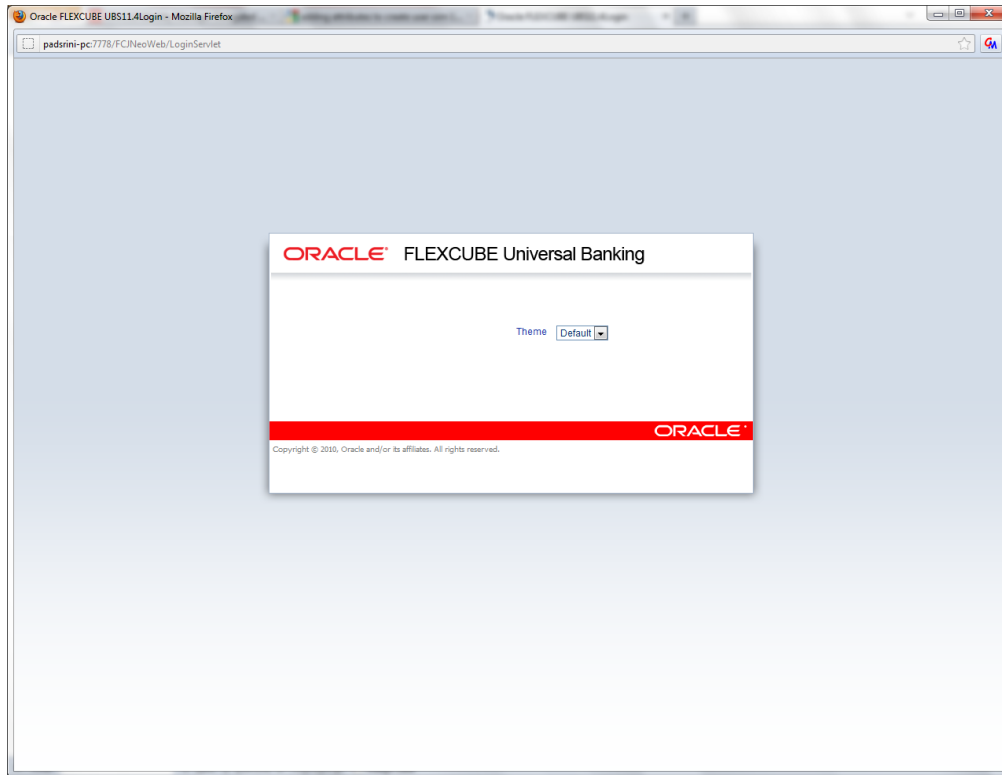
After setting up FLEXCUBE to work on Single Sign on mode, navigate to the interim servlet URL from your browser.

For e.g.: http://<hostname>:[port]/FCJNeoWeb

Since the resource is protected, the WebGate challenges the user for credentials as shown below.



Once the user is authenticated and authorized to access the resource, the servlet gets redirected to normal FLEXCUBE application server URL and now the new signon form will appear as below. The application will automatically redirect FLEXCUBE home page.



### **3.4.6 Signoff in a SSO Situation**

FLEXCUBE does not provide for single signoff currently, i.e., when a user signs off in FLEXCUBE, the session established with Oracle Access Manager by the user will not be modified in any manner.

In a SSO situation the “Exit” and “Logoff” actions in FLEXCUBE will function as “Exit”, i.e., on clicking these, the user will “exit” FLEXCUBE and will need to re-launch FLEXCUBE using the FLEXCUBE launch URL.



Oracle Access Manager  
[April] [2014]  
Version 12.0.3.0.0

Oracle Financial Services Software Limited  
Oracle Park  
Off Western Express Highway  
Goregaon (East)  
Mumbai, Maharashtra 400 063  
India

Worldwide Inquiries:  
Phone: +91 22 6718 3000  
Fax: +91 22 6718 3001  
[www.oracle.com/financialservices/](http://www.oracle.com/financialservices/)

Copyright © [2007], [2014], Oracle and/or its affiliates. All rights reserved.

Oracle and Java are registered trademarks of Oracle and/or its affiliates. Other names may be trademarks of their respective owners.

**U.S. GOVERNMENT END USERS:** Oracle programs, including any operating system, integrated software, any programs installed on the hardware, and/or documentation, delivered to U.S. Government end users are "commercial computer software" pursuant to the applicable Federal Acquisition Regulation and agency-specific supplemental regulations. As such, use, duplication, disclosure, modification, and adaptation of the programs, including any operating system, integrated software, any programs installed on the hardware, and/or documentation, shall be subject to license terms and license restrictions applicable to the programs. No other rights are granted to the U.S. Government.

This software or hardware is developed for general use in a variety of information management applications. It is not developed or intended for use in any inherently dangerous applications, including applications that may create a risk of personal injury. If you use this software or hardware in dangerous applications, then you shall be responsible to take all appropriate failsafe, backup, redundancy, and other measures to ensure its safe use. Oracle Corporation and its affiliates disclaim any liability for any damages caused by use of this software or hardware in dangerous applications.

This software and related documentation are provided under a license agreement containing restrictions on use and disclosure and are protected by intellectual property laws. Except as expressly permitted in your license agreement or allowed by law, you may not use, copy, reproduce, translate, broadcast, modify, license, transmit, distribute, exhibit, perform, publish or display any part, in any form, or by any means. Reverse engineering, disassembly, or decompilation of this software, unless required by law for interoperability, is prohibited.

The information contained herein is subject to change without notice and is not warranted to be error-free. If you find any errors, please report them to us in writing.

This software or hardware and documentation may provide access to or information on content, products and services from third parties. Oracle Corporation and its affiliates are not responsible for and expressly disclaim all warranties of any kind with respect to third-party content, products, and services. Oracle Corporation and its affiliates will not be responsible for any loss, costs, or damages incurred due to your access to or use of third-party content, products, or services.