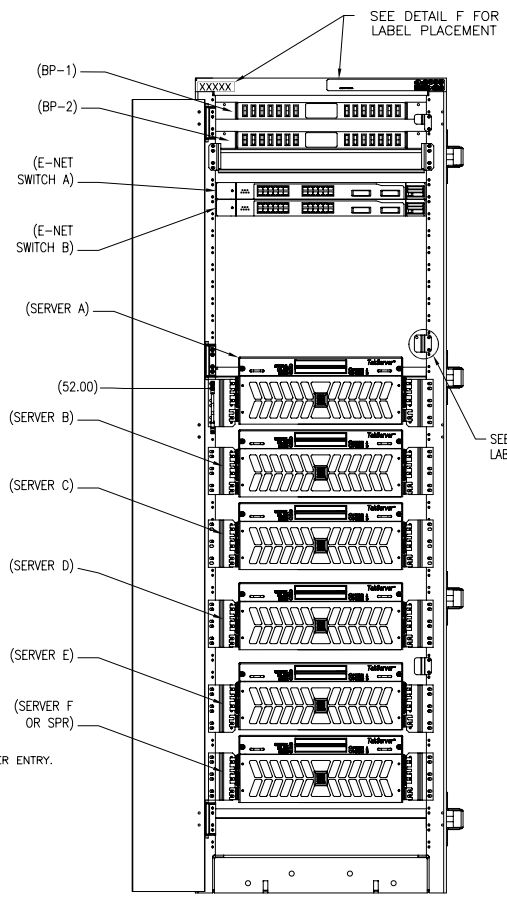


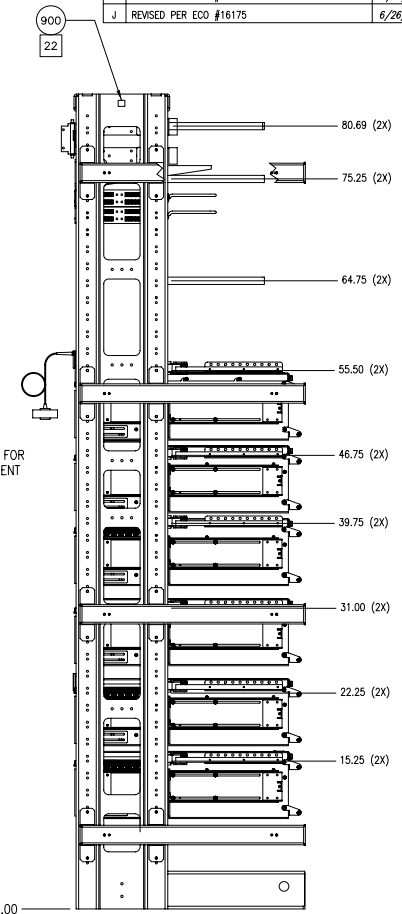
8 7 6 5 4 3 2 1

NOTES: UNLESS OTHERWISE SPECIFIED

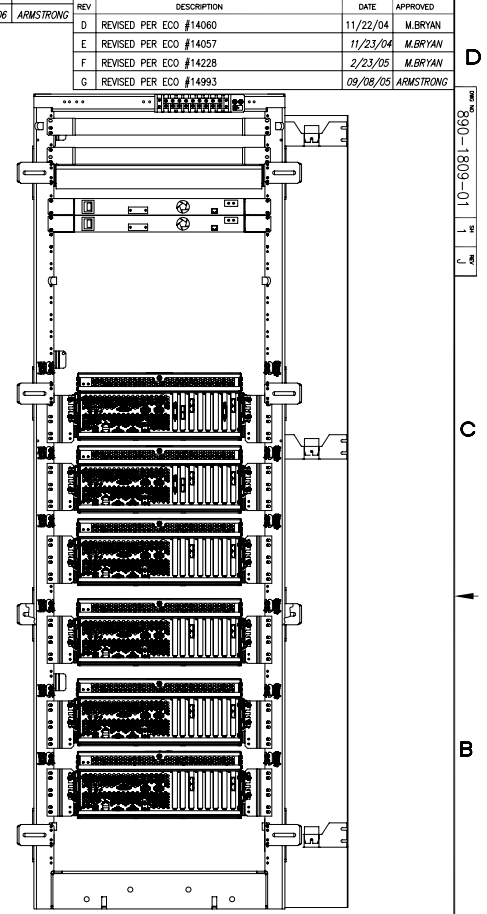
- 1) NO ADDITIONS, DELETIONS, SUBSTITUTIONS OR MODIFICATIONS WITHOUT PRIOR WRITTEN TEKELEC APPROVAL.
- 2) TORQUE ALL FASTENERS IN ACCORDANCE WITH TEKELEC SPECIFICATION 906-0008-01.
- 3) REFER TO INTERCONNECT DIAGRAM (ITEM 36) FOR CABLE CONNECTIONS.
- 4) FOR LOCATING INDIVIDUAL PARTS, USE DIMENSION SHOWN.
- 5) DO NOT INSTALL. SHIP UNASSEMBLED AND PACKED WITH UNIT.
- 6) LABEL SHOWN IS HALF OF BREAKER ID. POSITION HORIZONTALLY AS SHOWN.
- 7) UNLESS OTHERWISE SPECIFIED, ITEMS NOT SHOWN TO BE SHIPPED PACKED WITH UNIT.
- 8) LOCATE APPROXIMATELY AS SHOWN.
- 9) A QUANTITY OF 6 SCREWS (ITEM 3) ARE NEEDED TO ATTACH THE CIRCUIT BREAKER GROUND CABLES AND SWITCH GROUND CABLES. THESE SCREWS ARE NOT SHOWN.
- 10) MOUNTING SCREWS ARE PART OF SLIDE MOUNTING KIT (P/N 804-1706-01).
- 11) MOUNTED ON TOP OF BREAKER PANEL (ITEM 31) AT THIS POSITION.
- 12) INSTALL OPTIONAL COMPONENTS AS REQUIRED.
- 13) DELETED
- 14) ATTACH CHASSIS GROUND CABLE WITH SUPPLIED NUTS AND 2 SCREWS (ITEM 3), BOTH NOT SHOWN.
- 15) RACK DOLLY, FOR SHIPPING ONLY. TO BE REMOVED DURING INSTALLATION.
- 16) SERVER TO BE MOUNTED ALIGNED WITH THE TOP OF THE SLIDE ADAPTER BRACKETS AS SHOWN.
- 17) INSTALL "NOT USED" LABELS (PART OF ITEM 41) AS REQ'D OVER POSITIONS ON BREAKER PANEL LABEL WHERE EQUIPMENT IS NOT INSTALLED. SINGLE LABEL SHOWN.
- 18) REMOVE ADHESIVE BACKING AND ATTACH LABEL IN RECESSED AREA.
- 19) OPERATING KEY (ITEM 49) NOT SHOWN. KEY TO BE PACKAGED AND SHIPPED WITH ASSEMBLY.
- 20) PRODUCT LABEL, CONFIGURABLE ITEM TO BE CHOSEN AT ORDER ENTRY.
- 21) SERVER C'S SLIDE MOUNTING BRACKETS ARE ATTACHED OFFSET ON THE FRAME MOUNTING HOLES.
- 22) LOCATE APPROXIMATELY AS SHOWN.



FRONT VIEW



RIGHT SIDE VIEW



REAR VIEW

FINAL ASSEMBLY DRAWING
 MAXIMUM CONFIGURATION
 SEE SEPARATE PARTS LIST

REV		DESCRIPTION	DATE	APPROVED
H	REVISED PER ECO #15668		4/12/06	ARMSTRONG
J	REVISED PER ECO #16175		6/26/06	ARMSTRONG
D	REVISED PER ECO #14060		11/22/04	M.BRYAN
E	REVISED PER ECO #14057		11/23/04	M.BRYAN
F	REVISED PER ECO #14228		2/23/05	M.BRYAN
G	REVISED PER ECO #14993		09/08/05	ARMSTRONG

DOCUMENT CONTROL
 PRODUCTION RELEASED

UNLESS OTHERWISE SPECIFIED:
 DO NOT SCALE DRAWINGS.
 DIMENSIONS ARE IN INCHES.
 INTERPRET DIMENSIONS IN ACCORDANCE WITH ASME Y14.5M-1994.
 DRAWINGS TO CONFORM TO TEKELEC SPECIFICATION 907-0169-01.
 DEBURR AND BREAK SHARP EDGES AND CORNERS .005-.015.
 MACHINED SURFACE FINISH: R_a
 DECIMAL TOLERANCES:
 .XX" = ±.02 .XXX" = ±.005
 ANGLE TOLERANCE: ± 1°

APPROVALS	DATE
DRAWN BY J. MYERS	7/30/03
CHECKED S. LYTLE	8/14/03
APPROVED D. GRIFFITH	8/14/03
FINISH	MATERIAL

THIS DOCUMENT AND THE DATA DISCLOSED HEREIN OR HEREWITH IS PROPRIETARY AND IS NOT TO BE REPRODUCED, USED OR DISCLOSED IN WHOLE OR PART TO ANYONE WITHOUT THE WRITTEN PERMISSION OF TEKELEC. COPYRIGHT TEKELEC 2006.

TEKELEC 5200 PARAMOUNT PKWY
 MORRISVILLE, NC 27560

DWG_GENERIC_
 TEKWARE NETWORK ELEMENT

SIZE	DIVISION	DRAWING NO.	REV.
D	NSD	890-1809-01	J

SCALE: 1/6 FILE NAME: 890-1809-01.J.DWG SHEET 1 OF 4