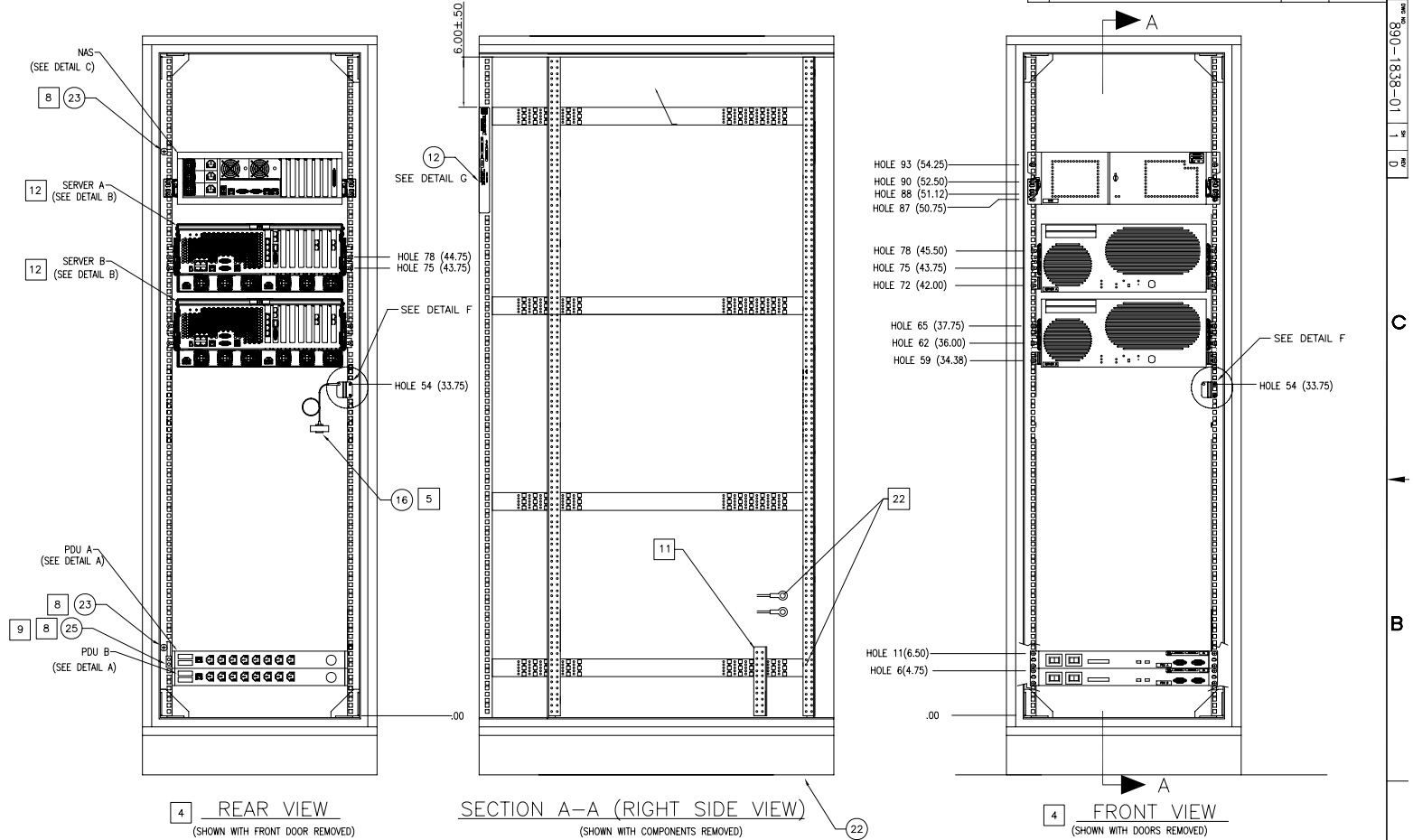


NOTES: UNLESS OTHERWISE SPECIFIED

- 1) NO ADDITIONS, DELETIONS, SUBSTITUTIONS OR MODIFICATIONS WITHOUT PRIOR WRITTEN TEKELEC APPROVAL.
- 2) TORQUE ALL FASTENERS IN ACCORDANCE WITH TEKELEC SPECIFICATION 906-0008-01.
- 3) REFER TO INTERCONNECT DIAGRAM (ITEM 15) FOR CABLE CONNECTIONS.
- 4) FOR LOCATING INDIVIDUAL PARTS, USE DIMENSION SHOWN.
- 5) DO NOT INSTALL. SHIP UNASSEMBLED AND PACKED WITH UNIT.
- 6) LABEL SHOWN IS PART OF ITEM 15. POSITION AS SHOWN.
- 7) UNLESS OTHERWISE SPECIFIED, ITEMS NOT SHOWN TO BE SHIPPED PACKED WITH UNIT.
- 8) LOCATE APPROXIMATELY AS SHOWN.
- 9) CABINET MOUNTING HARDWARE IS SUPPLIED WITH CABINET (ITEM 22). THERE IS A QUANTITY OF 50 CAPTIVE NUTS (6mm) AND 100 PHILLIPS PAN HEAD SCREWS 6mm x 16mm. THE CAPTIVE NUTS SHOULD BE INSTALLED FROM THE INSIDE OF THE CABINET AND ARE USED TO SECURE ALL COMPONENTS AND ASSOCIATED HARDWARE TO THE VERTICAL MOUNTING RAILS AS SHOWN IN DETAIL D. SHIP UNUSED NUTS AND SCREWS WITH UNIT.
- 10) USING BLANK LABEL PN 903-0122-01 ADD THE FOLLOWING PRINTING TO THE LABEL: (SEE DETAIL K) AND INSTALL IT OVER EXISTING TEXT ON LABEL.  
3600 WATTS
- 11) INTERMEDIATE VERTICAL RAIL IS FOR MOUNTING PDU UNITS.
- 12) INSTALL OPTIONAL COMPONENTS AS REQUIRED.
- 13) REMOVE AND DISCARD TAB SUPPLIED WITH WRIST STRAP GROUND POINT (NOT SHOWN).
- 14) ATTACH CHASSIS GROUND CABLE WITH MOUNTING HARDWARE SUPPLIED WITH CABINET TWO NUTS AND TWO SCREWS, BOTH NOT SHOWN.
- 15) RACK DOLLY, FOR SHIPPING ONLY, TO BE REMOVED DURING INSTALLATION.
- 16) USING BLANK LABEL PN 617-0011-01 ADD THE FOLLOWING PRINTING TO THE LABEL: (SEE DETAIL J) AND INSTALL IT OVER EXISTING TEXT ON LABEL.  
220 - 240 VAC  
47-63 HZ
- 17) ITEM 6 IS USED TO LABEL CABLES. SEE SYSTEM INTERCONNECT FOR INFORMATION TO PRINT LABELS.
- 18) OPERATING KEYS FOR SERVERS, NAS AND CABINET NOT SHOWN. KEYS TO BE PACKAGED AND SHIPPED WITH ASSEMBLY AND LABELED.
- 19) THIS IS A CONFIGURABLE SYSTEM THE SALES ORDER WILL SPECIFY THE PART NUMBER'S AND QUANTITIES MAX CONFIGURATION AS SHOWN. (SEE SYSTEM INTERCONNECT FOR ADDITIONAL DETAILS)
- 20) INSTALL LOGIC GROUND TERMINAL BLOCK USING 2 (ITEM 28) 601-0010-01 SCREWS. INSTALL TERMINAL BLOCK WITH MOUNTING SCREWS THROUGH THE TOP HOLES OF THE TERMINAL BLOCK AND THROUGH THE VERTICAL RAIL THROUGH HOLES APPROX AS SHOWN.
- 21) INSTALLATION MOUNTING KIT ITEM 29 NOT SHOWN TO BE PACKAGED AND SHIPPED WITH CABINET.
- 22) REMOVE RAIL MOUNTING SCREW AND SECURE THE FRAME GROUND CABLES FROM PDU A AND B.

REVISIONS			
REV	DESCRIPTION	DATE	APPROVED
A	RELEASE PER ECN #14089	XXXX	ARMSTRONG
B	REVISED PER ECO #14156	12/09/04	ARMSTRONG
C	REVISED PER ECO #14749	06/20/05	ARMSTRONG
D	REVISED PER ECO #15984	07/07/06	ARMSTRONG



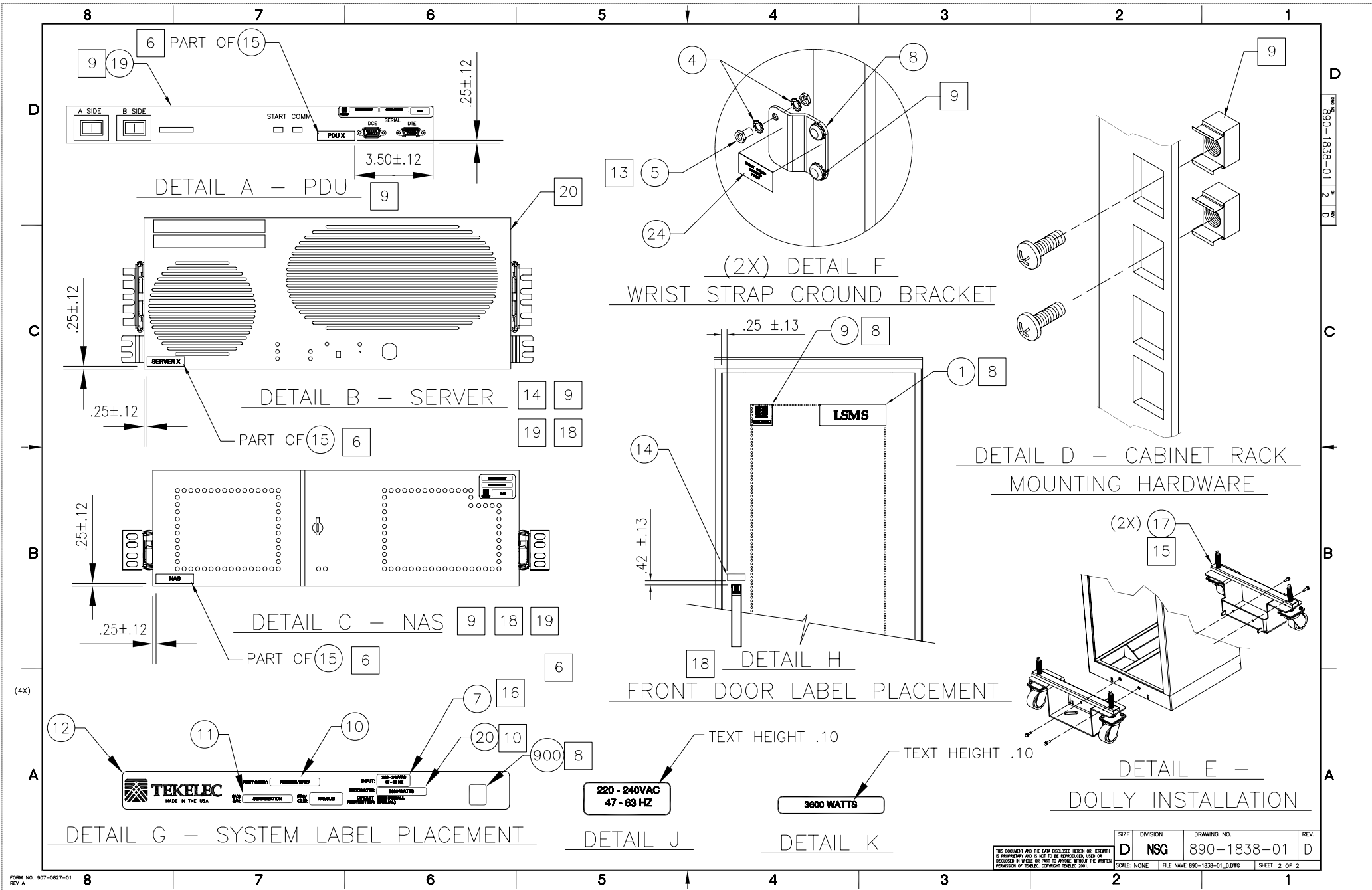
DESCRIPTION	BOM PART NO.
LSMS_TKSERVER AC_FRAME ASSY	890-1836-01

**BOM TABLE**

UNLESS OTHERWISE SPECIFIED: DO NOT SCALE DRAWING. DIMENSIONS ARE IN INCHES. INTERPRET DIMENSIONS IN ACCORDANCE WITH ASME Y14.5M-1994. DRAWING TO CONFORM TO TEKELEC SPECIFICATION 907-0169-01. DEBURR AND BREAK SHARP EDGES AND CORNERS 0.05-0.15". MACHINED SURFACE FINISH $\sqrt{R}$ DECIMAL TOLERANCES: XXX* ±.02 XXXX* ±0.01 ANGLE TOLERANCE: ± 1°		THIS DOCUMENT AND THE DATA DISCLOSED HEREIN OR HEREON IS PROPRIETARY AND IS NOT TO BE REPRODUCED, USED OR DISCLOSED IN WHOLE OR PART TO ANYONE WITHOUT THE WRITTEN PERMISSION OF TEKELEC. COPYRIGHT TEKELEC 2001.	
APPROVALS	DATE	APPROVED	
DRAWN BY M. BRYAN	11/4/04	DATE	
CHECKED Beauchamp	11/24/04	APPROVED J.ARMSTRONG	
NEXT ASSY	USED ON	MATERIAL	
APPLICATION	FINISH	MATERIAL	

MAXIMUM CONFIGURATION  
SEE SEPARATE PARTS LIST

<b>TEKELEC</b>		26580 W. Agoura Road, Calabasas, California 91302	
ROHS_DWG_GEN_LSMS_ TEKSERVER AC FRAME ASSY			
SIZE	DIVISION	DRAWING NO.	REV.
D	NSG	890-1838-01	D
SCALE: 1/1		FILE NAME: 890-1838-01_DWG	SHEET 1 OF 2



SIZE	DIVISION	DRAWING NO.	REV.
D	NSG	890-1838-01	D
SCALE: NONE		FILE NAME: 890-1838-01_D.DWG	SHEET 2 OF 2

THIS DOCUMENT AND THE DATA DISCLOSED HEREIN OR HERETOBY IS PROPRIETARY AND IS NOT TO BE REPRODUCED, USED OR DISCLOSED IN WHOLE OR PART TO ANYONE WITHOUT THE WRITTEN PERMISSION OF TELELEC. COPYRIGHT TELELEC 2001.