

Oracle Insurance

**Data Capture
Recommended
Operating
Environments**

Release 5.2

October 2014

CONTENTS

STATEMENT OF PURPOSE	3
OIDC Hardware Configuration Example	4
OIDC Workflow Example	5
QUICK VIEW	7
Software Platform.....	7
Requirements Table	8
HARDWARE / SOFTWARE REQUIREMENTS	9
Application Server Hardware	9
Application Server Software.....	10
Database Server Hardware	11
Database Server Software	11
CLIENT	12

Oracle Insurance Data Capture Recommended Operating Environments

STATEMENT OF PURPOSE

This document describes the preferred operating environments and system requirements needed for the Oracle Insurance Data Capture (OIDC) system version 5.2.

Two of the main considerations to keep in mind when selecting a setup are:

- **Performance** – If the ability to return results quickly with minimal lag time is the main consideration, the requirements should depend upon usage.
- **Resources** – If resources are the main consideration, the configuration you choose will depend upon the setup you currently running, the available space you have, the existing equipment that you own, and the usage that you anticipate.

NOTE: *Oracle Insurance Data Capture Palette must be on a Microsoft Windows platform.*

When selecting a system, the requirements should be based on transactional and/or batch needs as well as the physical requirements to be made on the hardware. A low number of users that processes large files may benefit from a more powerful hardware environment. Likewise, a low number of users with smaller transaction/batch needs may be able to use the minimum.

Other considerations that may influence your selection of hardware may be:

- The resources you have to work with
- Your space requirements
- Utilizing the existing equipment that you already own

Another factor to consider is the number of environments that you want to create. It is recommended that at least three environments be setup, one for development, one for testing and one for production. Each environment has hardware and software requirements.

NOTE: *It is possible to have applications and databases reside on the same server. This configuration is not recommended due to security and performance issues.*

Additional Information

For further assistance, please contact an Oracle Insurance Data Capture sales representative.

NOTE: *Requirements may change without notice. The requirements listed in this document are current as of the publication date found on the first and last pages of this document.*

OIDC HARDWARE CONFIGURATION EXAMPLE

The number of environments may determine the number of servers you will need. Prior to installation, you should have some idea of the type of setup you want to create. You can utilize three environments or four environments. You can build a simple environment with two servers or a more complex environment with 6 servers. What you choose may depend on what you have available and how complex you want to make it.

The simplest setup is a two server environment. This would be a Windows only environment where WebLogic is installed on a Windows 2012 server with IIS and the two databases reside on a second Windows server.

A common setup would require more servers but create a clear and defined break between development and QA and production. Two servers would be needed for development and two more would be used for QA and production. The development environment would again be a Windows only environment where WebLogic is installed on a Windows 2012 server with IIS. The development environment would also share a Windows server where both databases are loaded. The QA and production environments could be Windows or Java.

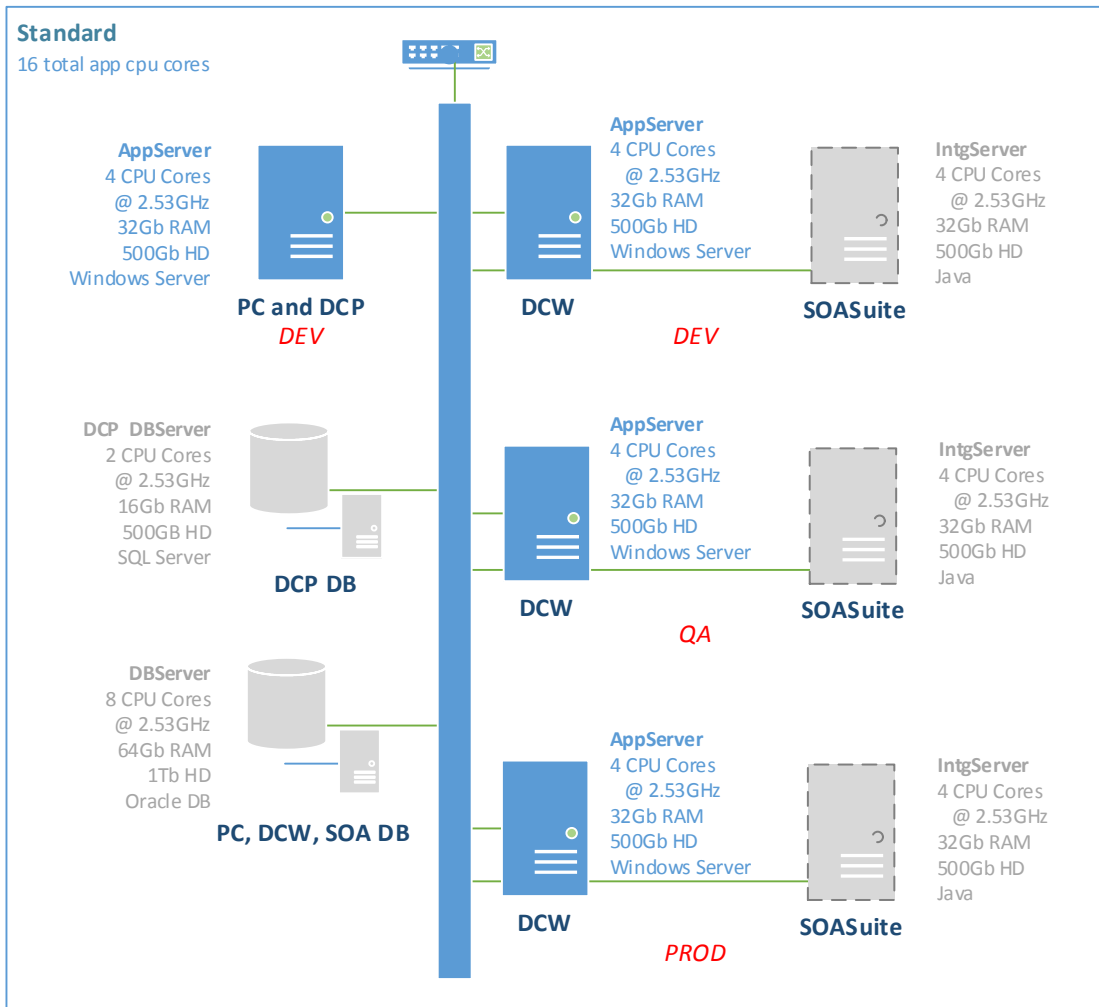


Figure 1 Example Hardware Configuration Using 4 Servers

No matter how simple or complex, each environment that you create will have hardware and software requirements. You can utilize existing hardware. Palette can be a tenant in a larger machine setup. Palette uses the default IIS port. If this presents a conflict, an alternate port can be assigned. The Worksite database can be a tenant in a larger setup.

If you do not have everything completely planned out, you can still proceed. Environments and machines can be removed or added later on.

OIDC WORKFLOW EXAMPLE

OIDC can be configured in a variety of ways using various environment setups. For release 5.2, publishing to another environment will have to be performed via backups and restores. There needs to be clear boundaries between environments to prevent tested files from being used in an environment where they were not intended to be used. This means that files modified and tested in the development environment are only tested, and not modified, in the QA environment. If updates are needed, the updates should be performed in the development environment. The updated files should be restored to the QA environment for retesting.

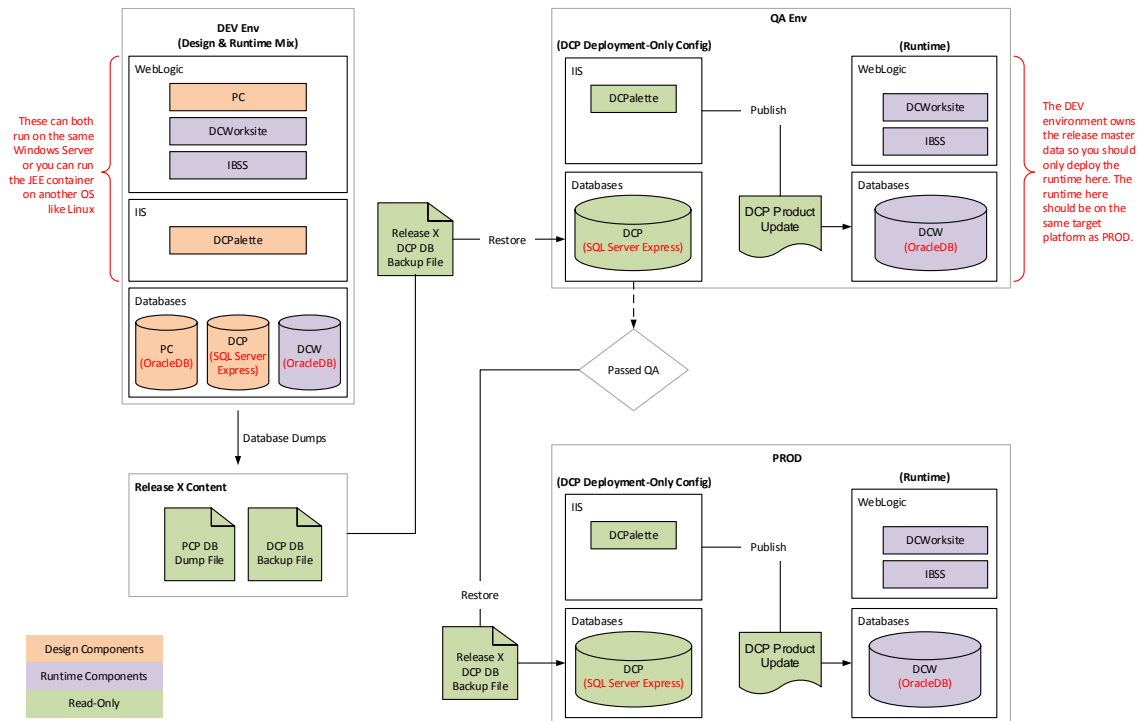


Figure 2 OIDC Example Environments

Figure 1 shows an example of how environments may be created in OIDC. There are three environments that are being used:

- The development environment is where the actual product creation takes place. The release files are restored to the QA environment.
- The QA environment contains a “read-only” Palette. This Palette is required to publish to Worksite. No changes to the questionnaire should be made in this environment. For true

QA standards, the QA environment and the production environment must be mirror images. Restored files that pass QA can be restored to a production environment.

- The production environment contains a “read-only” Palette as well. This Palette is required to publish to Worksite. No changes to the questionnaire should be made in this environment.

QUICK VIEW

The table below shows at a glance, what operating systems, application server platforms, and databases can be utilized with OI DC.

System Component	Operating System	Application Server	Database
PC		Oracle WebLogic Release 12c (12.1.2.0)*	Oracle DB 12c (12.1.0.2)
Palette	Microsoft Windows Server 2012, Standard	IIS 8.0	SQL Server 2012 SQL Server Express 2012
Worksite		Oracle WebLogic Release 12c (12.1.2.0)*	Oracle DB 12c (12.1.0.2)

NOTE: * WebLogic operates in a variety of environments. As long as the application server is compatible with the operating system, then PC, Worksite and IBSS also will be compatible. PC, Worksite and IBSS are installed and function within the application server. The external resources that the application server resides in will not affect PC, Worksite or IBSS.

SOFTWARE PLATFORM

- Fusion Middleware 12c (12.1.2.0)
- ADF 12c (12.1.2) ([Runtime Installation](#))
- JSF 2.0
- Java 1.7
- Oracle WebLogic 12c (12.1.2.0)
- Oracle Database 12c (12.1.0.2)
- Insbridge IBSS 4.7 for WebLogic

Requirements Table

The table shows at a glance, what operating systems, application server platforms, and databases can be utilized with the IBRU system.

	Product Configuration		Palette		Worksite
Operating Systems					
Microsoft Windows Server 2012, Standard (64 bit)	S		S		S
Microsoft Windows Server 2012 R2, Standard (64 bit)	S		S		S
Application Server					
IIS 8.0			S		
Oracle WebLogic 12c (release 12.1.2.0)*	S				S
Database					
MS SQL Server 2012 (11.0.2100.60)			S		
MS SQL Server Express 2012 with Microsoft SQL Server Management Studio			S		
Oracle DB 12c (12.1.0.2)	S				S

Where S = Supported

OIDC supports 64-bit machines.

NOTE: *WebLogic operates in a variety of environments. As long as the application server is compatible with the operating system, then PC, Worksite and IBSS also will be compatible. PC, Worksite and IBSS are installed and function within the application server. The external resources that the application server resides in will not affect PC, Worksite or IBSS.

HARDWARE / SOFTWARE REQUIREMENTS

The primary focus of the following hardware recommendations is performance. The hardware requirements for Windows based machines are divided according to the usage that has the least effect on performance:

- **Minimum** – a minimum configuration may work best in an environment with a low number of users. The minimum operating environment recommendations for OI DC is a general guideline with the assumption of a no more than 10 users.
- **Standard** – a standard configuration may be required when the number of users goes beyond 10. The standard operating environment recommendations for OI DC are a general guideline with the assumption of a more than 10 users and average demands placed on the machine.
- **Optimal** – an optimal configuration may suit a larger company or a company that handles commercial lines. Commercial lines may require more processor time and have larger data files than non-commercial lines and may benefit from having an optimal system configuration. The optimal operating environment recommendations for OI DC are a general guideline with the assumption of more than 10 users and heavy demand on the machine.

APPLICATION SERVER HARDWARE

The primary focus of the following hardware recommendations is usage. The hardware requirements are divided by the components that are most affected by usage; processor, memory and hard drive. Each component has the minimum requirement recommended.

Processor:	Minimum:	2 Core 2.53 GHz
	Standard:	4 Core 2.53 GHz
	Optimal:	8 Core 2.53 GHz

Memory:	Minimum:	16 GB RAM
	Standard:	32 GB RAM
	Optimal:	64 GB RAM

Hard Drive:	Minimum:	100 GB, RAID or greater
	Standard:	500 GB, RAID 0+1
	Optimal:	1.5 TB, RAID 0+1

All hardware for the IBRU system has a standard minimum requirement for graphics and network.

Graphics:	1280 x 1024 or greater
Network:	1000b T NIC or greater

APPLICATION SERVER SOFTWARE

The software requirements are standard for any OIDC configuration, regardless of whether you are running a minimum configuration, standard configuration or an optimal configuration.

Palette Server Required Software	
Microsoft:	Microsoft Windows Server 2012, Standard 64-bit
	Microsoft IIS 8.0
	Microsoft .NET Framework 4.5

PC Server Software	
Microsoft and/or Oracle:	Oracle WebLogic 12c (12.1.2.0) Non-root user
	ADF Runtime 12c (12.1.2)
	Java Runtime 1.7

Worksite Server Software	
Microsoft and/or Oracle:	Oracle WebLogic 12c (12.1.2.0) Non-root user
	ADF 12c (12.1.2)
	Java Runtime 1.7
	Oracle Insurance Insbridge IBSS Release 4.7

DATABASE SERVER HARDWARE

The primary focus of the following hardware recommendations is usage. The hardware requirements are divided by the components that are most affected by usage; processor, memory and hard drive. Each component has the minimum requirement recommended.

Processor:	Minimum:	2 Core 2.53 GHz
	Standard:	4 Core 2.53 GHz
	Optimal:	8 Core 2.53 GHz

Memory:	Minimum:	16 GB RAM
	Standard:	32 GB RAM
	Optimal:	64 GB RAM

Hard Drive:	Minimum:	100 GB, RAID or greater
	Standard:	500 GB, RAID 0+1
	Optimal:	1.5 TB, RAID 0+1

All hardware for the IBRU system has a standard minimum requirement for graphics and network.

Graphics:	1280 x 1024 or greater
Network:	1000b T NIC or greater

DATABASE SERVER SOFTWARE

Palette requires a MS SQL Server database instance. A properly configured network connection from the web server front end to MS SQL Server must exist.

PC and Worksite require an Oracle 12c database. A properly configured network connection from the web server front end to the Oracle database must exist.

Palette Server Required Software	
Microsoft:	MS SQL Server 2012 (11.0.2100.60) or Microsoft SQL Server 2012 Express with SQL Server Management Studio

PC and Worksite Server Software	
Oracle:	Oracle Database 12 c (12.1.0.2)

CLIENT

Below is a listing of the minimum operating environment recommended for OIDC clients. These are general guidelines with the assumption that the client machine is under normal working conditions and not performing multiple high use tasks. Client machines with greater demands will require increased computing power.

HARDWARE – Client	
The following hardware configuration is recommended for average client usage.	
Processor:	Pentium 3 GHz or greater
Memory:	4 GB RAM or greater
Hard Drive:	50 GB open hard drive space or more
Graphics:	1280x1024 minimum resolution or higher
Network:	100b T or 1000b T NIC or greater
SOFTWARE – Client	
The following software is recommended for clients.	
Microsoft:	Microsoft Windows 7 (Home, Office or Pro) or later
	Internet Explorer 9.0 or 10.0

NOTE: *OIDC requires Microsoft Internet Explorer. Other browsers are not compatible at this time.*



Oracle Insurance Data Capture Recommended Operating Environments

October 2014

Author: Mary Elizabeth Wiger

Contributing Authors:

Part # E56148-01

Library# E56152-01

Oracle Corporation
World Headquarters
500 Oracle Parkway
Redwood Shores, CA 94065
U.S.A.

Worldwide Inquiries:

Phone: +1.650.506.7000

Fax: +1.650.506.7200

oracle.com

Copyright © 2010 - 2014, Oracle and/or its affiliates. All rights reserved.

This document is provided for information purposes only and the contents hereof are subject to change without notice.

This document is not warranted to be error-free, nor subject to any other warranties or conditions, whether expressed orally or implied in law, including implied warranties and conditions of merchantability or fitness for a particular purpose. We specifically disclaim any liability with respect to this document and no contractual obligations are formed either directly or indirectly by this document. This document may not be reproduced or transmitted in any form or by any means, electronic or mechanical, for any purpose, without our prior written permission.

Oracle and Java are registered trademarks of Oracle Corporation and/or its affiliates. Other names may be trademarks of their respective owners.