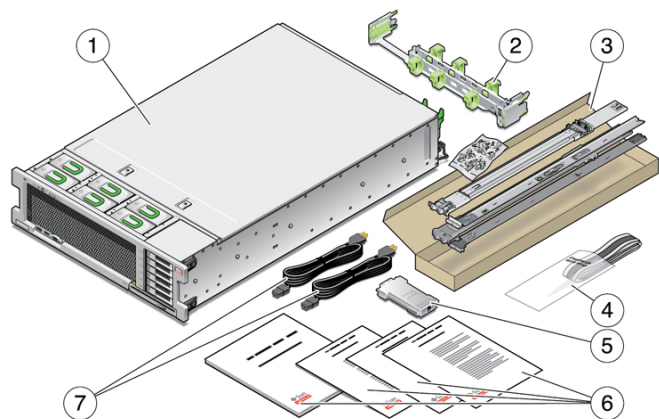


# Oracle Server X5-4 Getting Started Guide

This document describes the basic steps to install an Oracle Server X5-4. For more detailed information, refer to the *Oracle Server X5-4 Installation Guide*.

## Step 1: Check the Contents of the Ship Kit

The following illustration and table show the items that are included in the server ship kit.



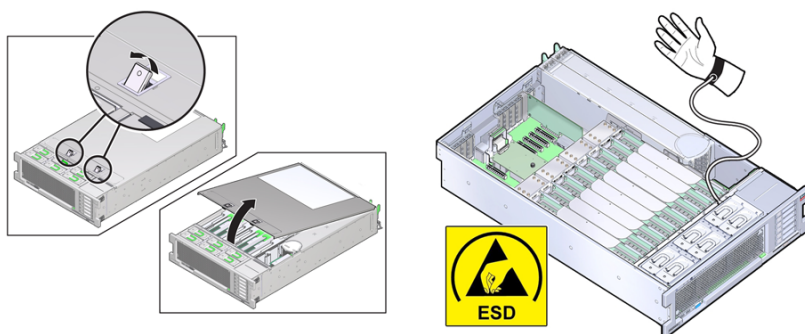
1	Server	5	RJ-45 to DB-9 crossover adapter
2	Cable management assembly (CMA)	6	Printed documents
3	Rackmounting kit	7	AC power cords (2)
4	Antistatic wrist strap		

## Step 2: Inspect the Server and Install Optional Components

1. **Remove the server cover and ensure that replaceable components and cables are properly connected and secured.** For more information, see [“Replaceable Components” on page 5](#).



**Caution** - Component damage from electrostatic discharge (ESD). Components inside the server are sensitive to ESD. Use an antistatic mat and wear an antistatic wrist strap when handling components and working inside the server.



2. **Before installing the server in the rack, install any optional components (such as DIMMs or PCIe cards).**  
For component installation procedures, refer to the *Oracle Server X5-4 Service Manual*.

---

**Note** - Optional components might be packaged and shipped separately from the server.

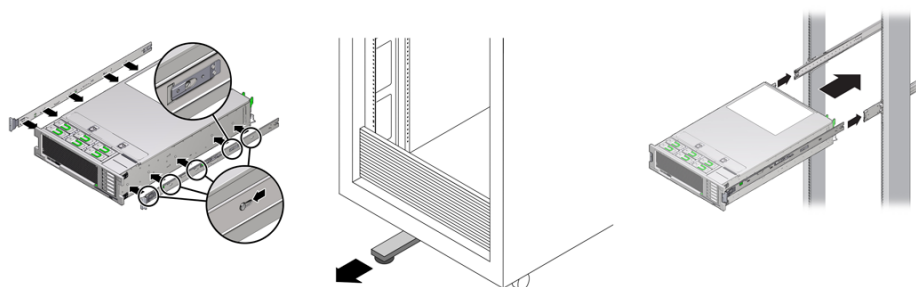
---

## Step 3: Install the Server in the Rack



**Caution** - Bodily injury and equipment damage. The server is heavy. Do not attempt to lift the server without the assistance of a mechanical device.

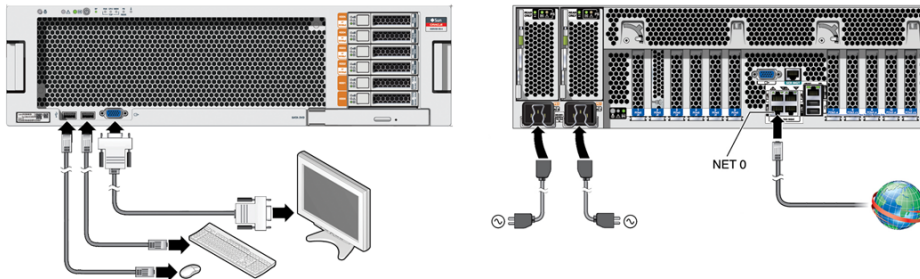
For rackmounting instructions, refer to the documents included with the rail kit, the service label attached to the server, or the *Oracle Server X5-4 Installation Guide*.



## Step 4: Connect Cables and Devices to the Server

Connect cables and devices to the server, so you can power on the server, connect it to your network, and access Oracle System Assistant. Oracle System Assistant helps you set up the server and install an operating system (OS).

1. **Connect a VGA monitor to the VGA connector on the front of the server.**

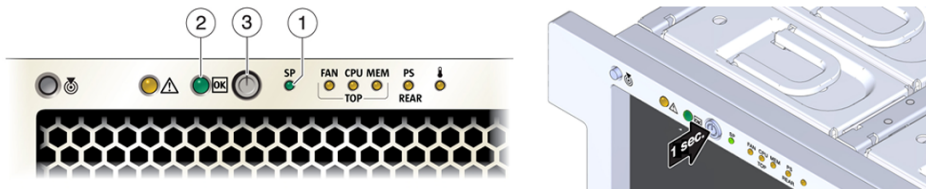


2. **Connect a USB keyboard and mouse to the USB ports.**
3. **For network access, connect an Ethernet cable to a NET port (NET 0-3) on the server back panel.**
4. **Connect the power cords to the two server power supplies (PSUs).**

The power for each PSU must come from separate sources. For power specifications, see *Oracle Server X5-4 Installation Guide*.

## Power Modes

When active AC power cables are connected to the server PSUs, the server boots to standby power mode. While booting, the service processor (SP) indicator [1] blinks at the fast blink rate. Once the server enters standby power mode, the SP indicator is on steady, and the OK indicator [2] blinks at the slow blink rate. To power on the server to full power mode, press and release the Power button [3].



## Step 5: Start Oracle System Assistant and Set Up the Server

Use Oracle System Assistant to set up the server and install an OS. The attached monitor, keyboard, and mouse allow you to respond to system prompts and navigate the Oracle System Assistant interface.

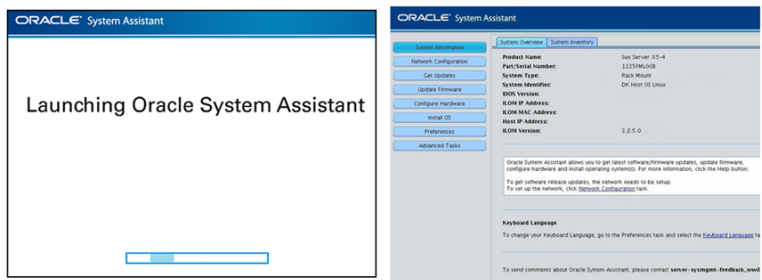
1. **To power on the server to full power mode, press and release the front panel Power button.**

The front panel OK indicator blinks at the fast blink rate, and BIOS boot messages appear on the monitor.

2. **To start Oracle System Assistant, watch the monitor for the following message and when it appears, press the F9 key:**

Press F9 to start Oracle System Assistant (CTRL + 0 on serial keyboard)

The Oracle System Assistant application launches. When it starts, the System Overview screen appears.



3. **To set up the server, perform the tasks in the order shown in the following table.**

To do this task	Click this button
Set up the server's network connection.	Configure Network
Download the latest server firmware and software.	Get Updates
Update the Oracle ILOM, BIOS, host bus adapter (HBA), and PCIe card firmware on the server.	Update Firmware
Configure Oracle ILOM.	Configure Hardware > Service Processor Configuration
Configure drives into RAID volumes. <sup>†</sup> (If the server has a preinstalled OS, skip this task.)	Configure Hardware > RAID Configuration

<sup>†</sup>For information about drive configuration, refer to the *Oracle Server X5-4 Installation Guide*.

4. **To install an OS, do one of the following:**

**Note** - For minimum supported OS version information, refer to the *Oracle Server X5-4 Product Notes*.

- For servers with a preinstalled OS, refer to the *Oracle Server X5-4 Installation Guide*.
- For servers without a preinstalled OS, do one of the following:
  - For automated updates and assisted OS installation, use Oracle System Assistant (recommended).
  - For unassisted manual installation, refer to the *Installation Guide* for the OS.

## System Management Options



Oracle System Assistant allows you to set up the server, install the OS, and update server and component firmware.

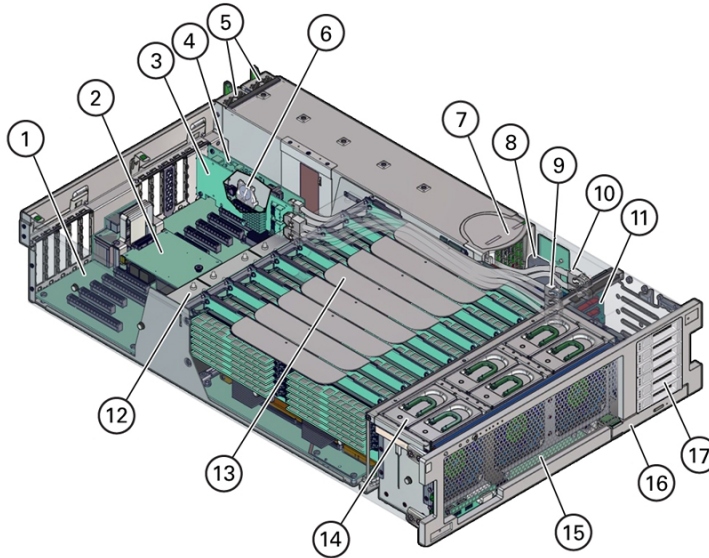


Oracle ILOM enables full out-of-band management with remote access capability and server configuration and set-up options.



Oracle Hardware Management Pack provides cross-platform tools to help you manage and configure Oracle servers from the OS level.

## Replaceable Components



1	Motherboard	10	HBA SAS cables (2)
2	SP card	11	Storage drive backplane board
3	HBA card	12	Heatsinks and CPUs (2 or 4)
4	PCIe NVMe switch card	13	Memory riser cards (4 or 8)
5	Power supplies (2)	14	Fan modules (6)
6	System battery	15	Fan board
7	Power supply backplane	16	DVD Drive
8	ESM	17	Storage drive slots (6)
9	NVMe cables (4)		

---

# Product Documentation Library

The following documentation and other resources for this product are available at:

<http://www.oracle.com/goto/x5-4/docs-videos>.

Document	Description
<i>Oracle Server X5-4 Safety and Compliance Guide</i>	Online compliance document.
<i>Important Safety Information for Oracle's Hardware Systems</i>	Safety document. Included in the ship kit.
<i>Oracle Server X5-4 Product Notes</i>	Issues and announcements for supported software and hardware.
<i>Oracle Server X5-4 Installation Guide</i>	Set up and prepare the server to install an OS.
<i>Oracle Server X5-4 OS installation guides</i>	Install a supported OS.
<i>Oracle Server X5-4 Service Manual</i>	Troubleshoot the server and install and replace hardware components.
<i>Oracle X5 Series Servers Administration Guide</i>	Server management tools and procedures.
<i>Oracle x86 Server Diagnostics, Applications, and Utilities Guide</i>	Server diagnostic information.
<i>Oracle Integrated Lights Out Manager (ILOM) Documentation Collection</i>	Perform server monitoring and administration tasks using Oracle ILOM.

## Documentation Accessibility

For information about Oracle's commitment to accessibility, visit the Oracle Accessibility Program web site at <http://www.oracle.com/pls/topic/lookup?ctx=acc&id=docacc>.

## Access to Oracle Support

Oracle customers who have purchased support have access to electronic support through My Oracle Support. For information, visit <http://www.oracle.com/pls/topic/lookup?ctx=acc&id=info> or visit <http://www.oracle.com/pls/topic/lookup?ctx=acc&id=trs> if you are hearing impaired.

## Feedback

Provide feedback on documents at <http://www.oracle.com/goto/docfeedback>.

Copyright © 2015, Oracle and/or its affiliates. All rights reserved.

Copyright © 2015, Oracle et/ou ses affiliés. Tous droits réservés.

**ORACLE®**

Part No: E56390-01

Mfg. No: 7098517

June 2015

