

**Oracle® Hyperion Enterprise Performance Management
Architect**

File Generator User's Guide

Release 11.1.2.4

Updated: March 2015

Performance Management Architect File Generator User's Guide, 11.1.2.4

Copyright © 2006, 2015, Oracle and/or its affiliates. All rights reserved.

Authors: EPM Information Development Team

This software and related documentation are provided under a license agreement containing restrictions on use and disclosure and are protected by intellectual property laws. Except as expressly permitted in your license agreement or allowed by law, you may not use, copy, reproduce, translate, broadcast, modify, license, transmit, distribute, exhibit, perform, publish, or display any part, in any form, or by any means. Reverse engineering, disassembly, or decompilation of this software, unless required by law for interoperability, is prohibited.

The information contained herein is subject to change without notice and is not warranted to be error-free. If you find any errors, please report them to us in writing.

If this is software or related documentation that is delivered to the U.S. Government or anyone licensing it on behalf of the U.S. Government, then the following notice is applicable:

U.S. GOVERNMENT END USERS:

Oracle programs, including any operating system, integrated software, any programs installed on the hardware, and/or documentation, delivered to U.S. Government end users are "commercial computer software" pursuant to the applicable Federal Acquisition Regulation and agency-specific supplemental regulations. As such, use, duplication, disclosure, modification, and adaptation of the programs, including any operating system, integrated software, any programs installed on the hardware, and/or documentation, shall be subject to license terms and license restrictions applicable to the programs. No other rights are granted to the U.S. Government.

This software or hardware is developed for general use in a variety of information management applications. It is not developed or intended for use in any inherently dangerous applications, including applications that may create a risk of personal injury. If you use this software or hardware in dangerous applications, then you shall be responsible to take all appropriate fail-safe, backup, redundancy, and other measures to ensure its safe use. Oracle Corporation and its affiliates disclaim any liability for any damages caused by use of this software or hardware in dangerous applications.

Oracle and Java are registered trademarks of Oracle and/or its affiliates. Other names may be trademarks of their respective owners.

Intel and Intel Xeon are trademarks or registered trademarks of Intel Corporation. All SPARC trademarks are used under license and are trademarks or registered trademarks of SPARC International, Inc. AMD, Opteron, the AMD logo, and the AMD Opteron logo are trademarks or registered trademarks of Advanced Micro Devices. UNIX is a registered trademark of The Open Group.

This software or hardware and documentation may provide access to or information about content, products, and services from third parties. Oracle Corporation and its affiliates are not responsible for and expressly disclaim all warranties of any kind with respect to third-party content, products, and services unless otherwise set forth in an applicable agreement between you and Oracle. Oracle Corporation and its affiliates will not be responsible for any loss, costs, or damages incurred due to your access to or use of third-party content, products, or services, except as set forth in an applicable agreement between you and Oracle.

Contents

Documentation Accessibility	5
Documentation Feedback	7
Chapter 1. Installing Performance Management Architect File Generator	9
Chapter 2. Generating Performance Management Architect Import Files	11
From Financial Management Files	11
From Financial Management Applications	12
From Planning Applications	13
From Performance Management Architect, Profitability and Cost Management, Essbase (ASO) and Essbase (BSO) Applications	15
Generating From Microsoft Excel	16
Financial Management Dimension Associations	20
Deleting Dimensions	21
Closing the File Generator	21

Documentation Accessibility

For information about Oracle's commitment to accessibility, visit the Oracle Accessibility Program website at <http://www.oracle.com/pls/topic/lookup?ctx=acc&id=docacc>.

Access to Oracle Support

Oracle customers that have purchased support have access to electronic support through My Oracle Support. For information, visit <http://www.oracle.com/pls/topic/lookup?ctx=acc&id=info> or visit <http://www.oracle.com/pls/topic/lookup?ctx=acc&id=trs> if you are hearing impaired.

Documentation Feedback

Send feedback on this documentation to: epmdoc_ww@oracle.com

Follow EPM Information Development on these social media sites:

LinkedIn - http://www.linkedin.com/groups?gid=3127051&goback=.gmp_3127051

Twitter - <http://twitter.com/hyperionepminfo>

Facebook - <http://www.facebook.com/pages/Hyperion-EPM-Info/102682103112642>

Google+ - <https://plus.google.com/106915048672979407731/#106915048672979407731/posts>

YouTube - <http://www.youtube.com/user/OracleEPMWebcasts>

1

Installing Performance Management Architect File Generator

The Oracle Hyperion EPM Architect File Generator can create import files from the following sources:

- Existing Oracle Hyperion Financial Management files such as .PER, .SEC and .XML metadata files
- Note:** Only Financial Management .XML format metadata files are supported. The .APP format is not directly supported but users can extract metadata from the system in the XML format to use the converter.
- Existing Financial Management applications
 - Existing Oracle Hyperion Planning applications
 - Existing Performance Management Architect applications (Consolidation, Planning, Generic, Essbase (ASO), Essbase (BSO), and Profitability and Cost Management Standard and Detailed application types)
 - Microsoft Excel files

The Microsoft .NET Framework version 2.0 is required to use the Performance Management Architect File Generator. It can be downloaded from <http://msdn.microsoft.com/downloads>.

To install Performance Management Architect File Generator, use the Oracle Hyperion Enterprise Performance Management System Installer.

See the *Oracle Hyperion Enterprise Performance Management System Installation and Configuration Guide*.

2

Generating Performance Management Architect Import Files

In This Chapter

From Financial Management Files.....	11
From Financial Management Applications.....	12
From Planning Applications.....	13
From Performance Management Architect, Profitability and Cost Management, Essbase (ASO) and Essbase (BSO) Applications.....	15
Generating From Microsoft Excel.....	16
Financial Management Dimension Associations.....	20
Deleting Dimensions.....	21
Closing the File Generator.....	21

To open the Performance Management Architect File Generator utility, select **Start, Programs, Oracle EPM System, Foundation Services, Performance Management Architect, Start EPMA File Generator**.

Tip: Click Help to access the *Oracle Hyperion Enterprise Performance Management Architect File Generator User's Guide*.

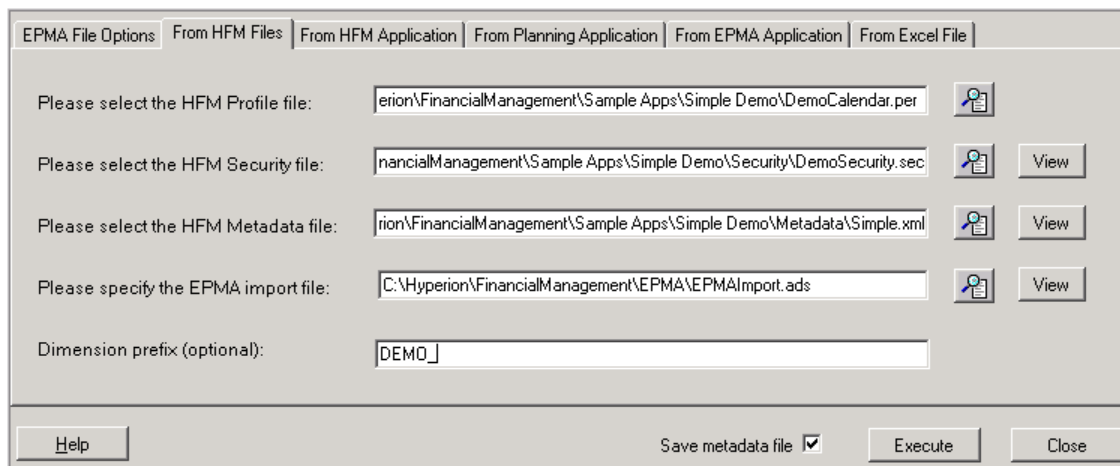
From Financial Management Files

The following Financial Management file types are required to create an import profile:

- Application profile file (.PER)
- Security file (.SEC)
- Metadata file (.XML)

➤ To create an import file from existing Financial Management files:

- 1 Click **From HFM Files**.



- 2 Browse to select a profile file (.PER), security file (.SEC), and metadata (.XML) file.
- 3 Specify the name for the EPMA import file or browse to find an existing file to over write.
- 4 **Optional:** To view the import file in a text editor, click **View**.
- 5 **Optional:** Enter a prefix for the dimensions.
- 6 **Optional:** Select **Save metadata file**.

When Performance Management Architect imports an application, it is imported as an .xml file (metadata.xml). Performance Management Architect runs the transformation and creates an .ads file from the metadata.xml file. Typically, this file is used for troubleshooting purposes. For extremely large applications, we recommend that you do *not* select this option.

- 7 Click **Execute**.

From Financial Management Applications

You can create an import file from an existing Financial Management application.

Note: In order to create an import file for an application, you must have the appropriate security privileges. For more information, see *Oracle Enterprise Performance Management System User Security Administration Guide*.

- To create an import file from an existing Financial Management application:
 - 1 Click **From HFM Application**.

2 Enter the following information:

- User name and password
- Workspace URL
- Financial Management Web URL
- Financial Management application name
- Cluster name

3 Specify the name for the EPMA import file or browse to find an existing file to overwrite.

4 Optional: To view the import file in a text editor, click **View**.

5 Optional: Enter a prefix for the dimensions.

6 Optional: Select **Save metadata file**.

When Performance Management Architect imports an application, it is imported as an .xml file (metadata.xml). Performance Management Architect runs the transformation and creates an .ads file from the metadata.xml file. Typically, this file is used for troubleshooting purposes. For extremely large applications, we recommend that you do *not* select this option.

7 Click **Execute.**

Note: If you are working in a Secure Sockets Layer (SSL) Offloader environment, and you are having trouble generating an .ads import file, import root=ca.crt into the Trusted Root Certification Authorities store where File Generator is installed.

From Planning Applications

You can create an import file from an existing Oracle Hyperion Planning application.

Note: In order to create an import file for an application, you must have the appropriate security privileges. For more information, see *Oracle Enterprise Performance Management System User Security Administration Guide*.

► To create an import file from an existing Planning application:

1 Click From Planning Application.

The screenshot shows a dialog box titled 'EPMA File Options' with several tabs: 'EPMA File Options', 'From HFM Files', 'From HFM Application', 'From Planning Application' (selected), 'From EPMA Application', and 'From Excel File'. The dialog contains the following fields and controls:

- 'Please enter the User Name:' with a text box containing 'admin' and a 'Password:' field with a masked password '*****'.
- 'Please enter the Workspace URL:' with a text box containing 'http://localhost:19000/workspace'.
- 'Please enter the Planning Web URL:' with a text box containing 'http://localhost:8300/HyperionPlanning'.
- 'Please enter the Planning Application name:' with a text box containing 'PL1' and an 'Application Server:' field containing 'MyPLApps'.
- 'Please specify the EPMA import file:' with a text box containing 'C:\Documents and Settings\Administrator\Desktop\ADS\Talleyrand_SP1\' and a 'View' button.
- 'Dimension prefix (optional):' with a text box containing 'DEMO_PL_'.

At the bottom, there is a 'Help' button, a 'Save metadata file' checkbox which is checked, and 'Execute' and 'Close' buttons.

2 Enter the following information:

- User name and password
- Workspace URL
- Planning Web URL
- Planning application name
- Application server name (The Application server name is the cluster name.)

3 Specify the name for the EPMA import file or browse to find an existing file to over write.

4 Optional: To view the import file in a text editor, click View.

5 Optional: Enter a prefix for the dimensions.

6 Optional: Select Save metadata file.

When Performance Management Architect imports an application, it is imported as an .xml file (metadata.xml). Performance Management Architect runs the transformation and creates an .ads file from the metadata.xml file. Typically, this file is used for troubleshooting purposes. For extremely large applications, we recommend that you do *not* select this option.

7 Click Execute.

Note: If you are working in a Secure Sockets Layer (SSL) Offloader environment, and you are having trouble generating an ads import file, import root=ca.crt from <http://certreq.us.oracle.com/epmq-ca.zip> into the Trusted Root Certification Authorities store where File Generator is installed.

From Performance Management Architect, Profitability and Cost Management, Essbase (ASO) and Essbase (BSO) Applications

You can create an import file from Performance Management Architect (Generic, Consolidation, or Planning), Oracle Hyperion Profitability and Cost Management (Standard or Detail), Essbase (ASO), or Essbase (BSO) applications.

Note: In order to create an import file for an application, you must have the appropriate security privileges. For more information, see *Oracle Enterprise Performance Management System User Security Administration Guide*.

- To create an import file for a Performance Management Architect (Generic, Planning, or Consolidation), Profitability and Cost Management (Standard or Detailed), Essbase (ASO), or Essbase (BSO) application:

1 Click From EPMA Application.

The screenshot shows a dialog box titled "EPMA File Options" with several tabs: "From HFM Files", "From HFM Application", "From Planning Application", "From EPMA Application" (selected), and "From EXCEL File". The "From EPMA Application" tab contains the following fields and controls:

- "Please enter the User Name:" with a text box containing "admin" and a "Password:" field with "password".
- "Please enter the EPMA Web Services URL:" with a text box containing "http://localhost/hyperion-bpma-server".
- "Please enter the EPMA Application name:" with a text box containing "rwpdm".
- "Please specify the EPMA import file:" with a text box containing "C:\Documents and Settings\Administrator\My Documents\test.ads" and a "View" button.
- "Dimension prefix (optional):" with an empty text box.

At the bottom of the dialog, there are buttons for "Help", "Save metadata file" (checked), "Execute", and "Close". Below the dialog is a "Status" window with a table:

Step	Status	Processing Item	Details
1	Progress bar	Generating EPMA file	Generating the EPMA import file completed!

2 Enter the following information:

- The user name and password to log in to Oracle Hyperion Enterprise Performance Management Workspace
- The Performance Management Architect Web Services URL
- The Performance Management Architect (Generic, Consolidation, or Planning), Oracle Hyperion Profitability and Cost Management (Standard or Detailed), Essbase (ASO), or Essbase (BSO) application name

Note: You can enter a specific application to extract, or you can extract the entire Shared Library. To extract the entire Shared Library, enter "Master" in the field where you specify the application name.

- 3 Specify the name for the EPMA import file or browse to find an existing file to over write.
- 4 **Optional:** Enter a prefix for the dimensions.
- 5 **Optional:** To view the import file in a text editor, click **View**.
- 6 **Optional:** Select **Save metadata file**.

When Performance Management Architect imports an application, it is imported as an .xml file (metadata.xml). Performance Management Architect runs the transformation and creates an .ads file from the metadata.xml file. Typically, this file is used for troubleshooting purposes. For extremely large applications, we recommend that you do *not* select this option.

- 7 Click **Execute**.

The .ads file is created, using the application as the source. A successful message is displayed under Status.

Generating From Microsoft Excel

You can create an import file from a Microsoft Excel file. In the Excel file, you can create new dimensions and edit dimension and member properties

► To create an import file from a Microsoft Excel file:

- 1 **Select From Excel File.**

2 Click , enter a location and file name for the Excel file to create, and click **Save**.

- 3 **Optional:** Select **Save metadata file**.

When Performance Management Architect imports an application, it is imported as an .xml file (metadata.xml). Performance Management Architect runs the transformation and creates an .ads file from the metadata.xml file. Typically, this file is used for troubleshooting purposes. For extremely large applications, we recommend that you do *not* select this option.

- 4 Click **Execute** to launch Excel and open the file.

Note: When you open the file, you must enable macros.

The Excel workbook is created with two existing sheets – Alias and Dimension Association. For each workbook there can be only one sheet for Alias and one sheet for Dimension Association.

- 5 On the Alias sheet, enter the language aliases to be used.

Name	DimensionClass
Alias	Alias
Parent	Name
#root	English
#root	French
#root	Spanish
#root	German
#root	Japanese

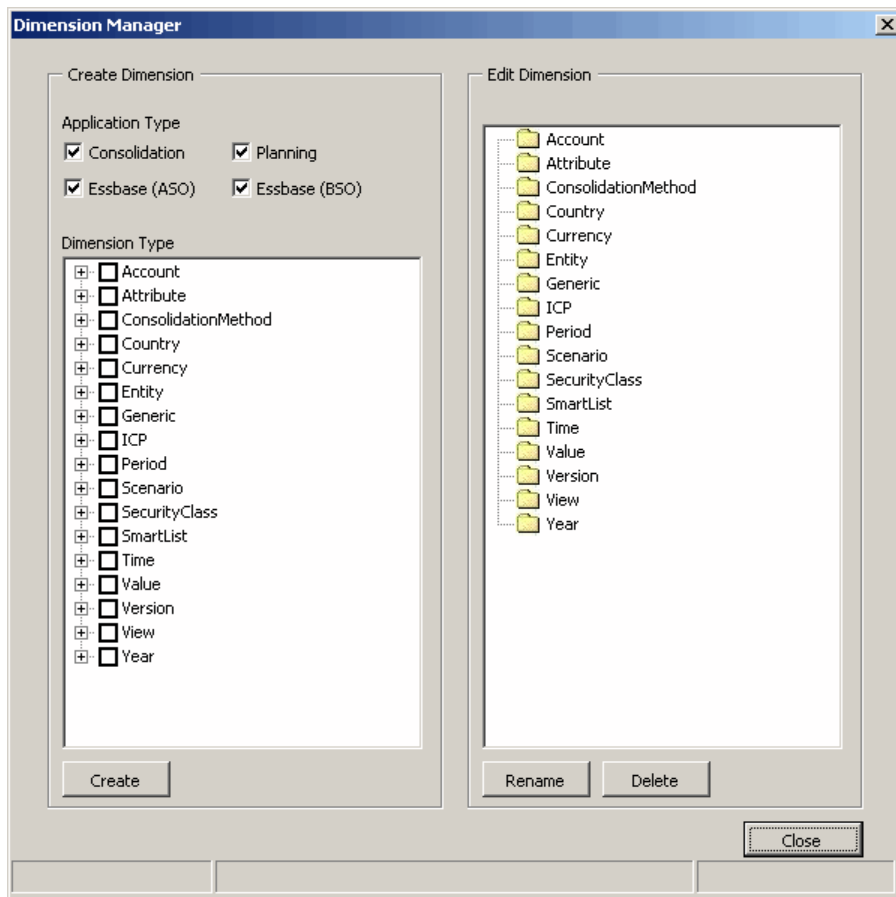
Note: It is important to enter the languages in the Alias sheet before creating dimensions in the workbook because the utility automatically creates extra columns in the dimension sheet so you can enter the aliases for members in the same row. If you add languages after creating dimensions, you will need to manually add extra columns for member aliases.

Tip: To generate an *.ads file with aliases, for each dimension sheet, change the Alias column header from "Alias" to "Default" (do not include quotes). Then, modify any additional aliases at the end of the columns by adding new ones in the format Alias=English, Alias=French (each in a separate column). It is important that all aliases are referenced in the Alias sheet. After the members have been entered for each dimension and association entered, use the File Generator to generate the *.ads flat file. Once generated, make sure that all aliases are represented as entered in the Excel worksheet.

6 Select EPMA Utilities, Manage Dimensions.

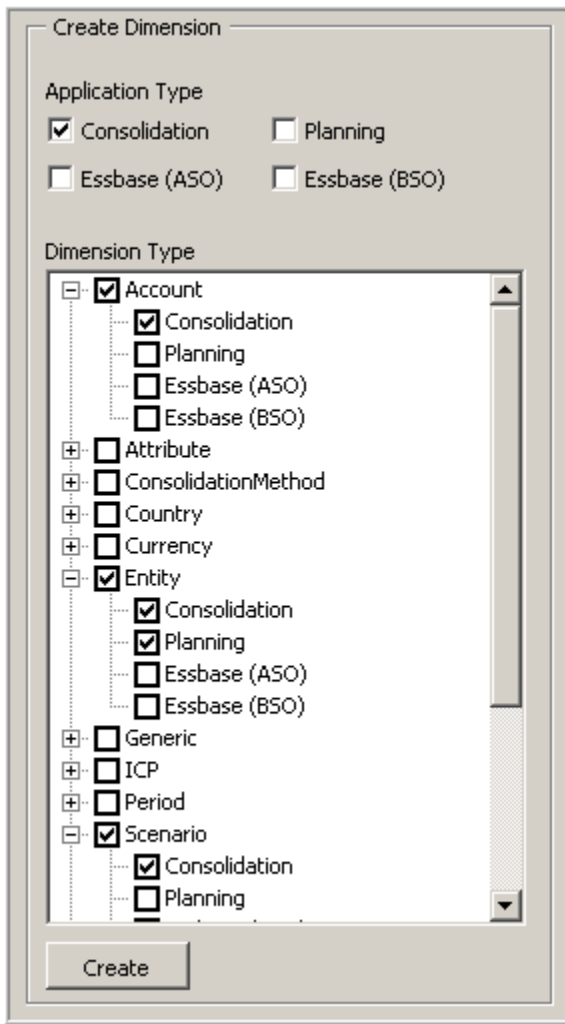
Tip: In Excel 2007, you may need to click Add-Ins to access EPMA Utilities.

7 In the Dimension Manager, select one or more application types for which to create dimensions.



Note: Selecting the application type determines what member properties display in the columns of the dimension sheet. If you select Consolidation, only member properties from the consolidation category display. If you select all application types, all member properties from all categories display.

- 8 Select the dimensions that you want to create.



Note: You can add application types on a dimension by dimension basis.

9 Click Create.

For each dimension that you create, a sheet is added to the Excel workbook.

For each dimension sheet, column headers in Row 1 of the sheet are dimension properties.

Column headers in Row 3 of the sheet are member properties.

1	Name	DimensionClass	DimensionAlias	AllowDuplicatesInDimension	CommentDuplicate	ConsolidationDuplicate	DataStorageDuplicate
2	Scenario	Scenario					
3	Parent	Name	Description	Alias	ConsolidateYTD	DefaultFrequency	DefaultParent
4	#root	Actual	Actual		N	MTD	#root
5	#root	Budget	Budget		N	MTD	#root

10 Enter dimension members and member properties for each dimension.

You enter dimension members in the parent and name columns. For the top-level member of a dimension, enter #root in the parent column.

To modify properties, click in the cell to display a drop-down list from which you can select a property value or enter information in the cell.

ConsolidateYTD	DefaultFrequency
N	MTD
N	TD
Y	
N	

11 Select EPMA Utilities, Dimension Association.

Note: For information on dimension associations, see [“Financial Management Dimension Associations” on page 20.](#)

12 In the Target Dimension column, select the cell, and from the drop-down list, select the dimension.

13 Select EPMA Utilities, Generate Flat File.

14 Select the type of file delimiter to use in the file.

15 Click Generate Flat File.

16 Click Save Flat File to save the file in .ADS format.

Financial Management Dimension Associations

In Oracle Hyperion Financial Management you must associate some dimensions with other dimensions. The following table shows the source dimension, property name and the target dimension with which it is associated.

Table 1 Financial Management Associations

Dimension (Source)	Property Name	Dimension (Target)
Account	Plug Account	Account
	Alias	Alias
	Custom Top Member	Custom
	Security Class	Security Class
	ICP Top Member	ICP
Consolidation Method	Alias	Alias
Currency	Alias	Alias
Custom	Alias	Alias
	Security Class	Security Class
Entity	Alias	Alias
	Currency	Currency
	Holding Company	Entity
	Security Class	Security Class

Dimension (Source)	Property Name	Dimension (Target)
	Security As Partner	Security Class
ICP	Alias	Alias
	Security Class	Security Class
Period	Alias	Alias
Scenario	Alias	Alias
	Security Class	Security Class
	Default Frequency	View
	Default Frequency for IC Transactions	View
Value	Alias	Alias
View	Alias	Alias
Year	Alias	Alias

Deleting Dimensions

► To delete dimensions:

- 1 Select the dimension worksheet in Excel and select **EPMA Utilities, Delete Dimension**.
- 2 Select the dimension to delete.
- 3 Click **Delete** to delete the dimension.

Note: You cannot delete the Alias or Dimension Association worksheets.

Closing the File Generator

To close the Oracle Hyperion EPM Architect File Generator, click the **Close** button.

