

Oracle FLEXCUBE Core Banking

Branch Addition Configuration in
Registry User Guide

Release 5.1.0.0.0

Part No. E57304-01

September 2014

ORACLE®

Oracle FLEXCUBE Core Banking Branch Addition Configuration in Registry User Guide

September 2014

Oracle Financial Services Software Limited
Oracle Park
Off Western Express Highway
Goregaon (East)
Mumbai, Maharashtra 400 063
India

Worldwide Inquiries:

Phone: +91 22 6718 3000

Fax: +91 22 6718 3001

www.oracle.com/financialservices/

Copyright © 2014, Oracle and/or its affiliates. All rights reserved.

Oracle and Java are registered trademarks of Oracle and/or its affiliates. Other names may be trademarks of their respective owners.

U.S. GOVERNMENT END USERS: Oracle programs, including any operating system, integrated software, any programs installed on the hardware, and/or documentation, delivered to U.S. Government end users are “commercial computer software” pursuant to the applicable Federal Acquisition Regulation and agency-specific supplemental regulations. As such, use, duplication, disclosure, modification, and adaptation of the programs, including any operating system, integrated software, any programs installed on the hardware, and/or documentation, shall be subject to license terms and license restrictions applicable to the programs. No other rights are granted to the U.S. Government.

This software or hardware is developed for general use in a variety of information management applications. It is not developed or intended for use in any inherently dangerous applications, including applications that may create a risk of personal injury. If you use this software or hardware in dangerous applications, then you shall be responsible to take all appropriate failsafe, backup, redundancy, and other measures to ensure its safe use. Oracle Corporation and its affiliates disclaim any liability for any damages caused by use of this software or hardware in dangerous applications.

This software and related documentation are provided under a license agreement containing restrictions on use and disclosure and are protected by intellectual property laws. Except as expressly permitted in your license agreement or allowed by law, you may not use, copy, reproduce, translate, broadcast, modify, license, transmit, distribute, exhibit, perform, publish or display any part, in any form, or by any means. Reverse engineering, disassembly, or decompilation of this software, unless required by law for interoperability, is prohibited.

The information contained herein is subject to change without notice and is not warranted to be error-free. If you find any errors, please report them to us in writing.

This software or hardware and documentation may provide access to or information on content, products and services from third parties. Oracle Corporation and its affiliates are not responsible for and expressly disclaim all warranties of any kind with respect to third-party content, products, and services. Oracle Corporation and its affiliates will not be responsible for any loss, costs, or damages incurred due to your access to or use of third-party content, products, or services.

Contents

- 1. Preface..... 4
- 2. ADDING BRANCHES IN REGISTRY 5

1. Preface

1.1. Intended Audience

This document is intended for the following audience:

- Customers
- Partners
- Third Party Vendors

1.2. Documentation Accessibility

For information about Oracle's commitment to accessibility, visit the Oracle Accessibility Program website at <http://www.oracle.com/pls/topic/lookup?ctx=acc&id=docacc>.

1.3. Access to OFSS Support

<https://support.us.oracle.com>

1.4. Structure

This manual is organized into the following categories:

Preface gives information on the intended audience. It also describes the overall structure of the User Guide

Chapter is dedicated to the processes to build the setup for adding branches.

1.5. Related Information Sources

Not Applicable

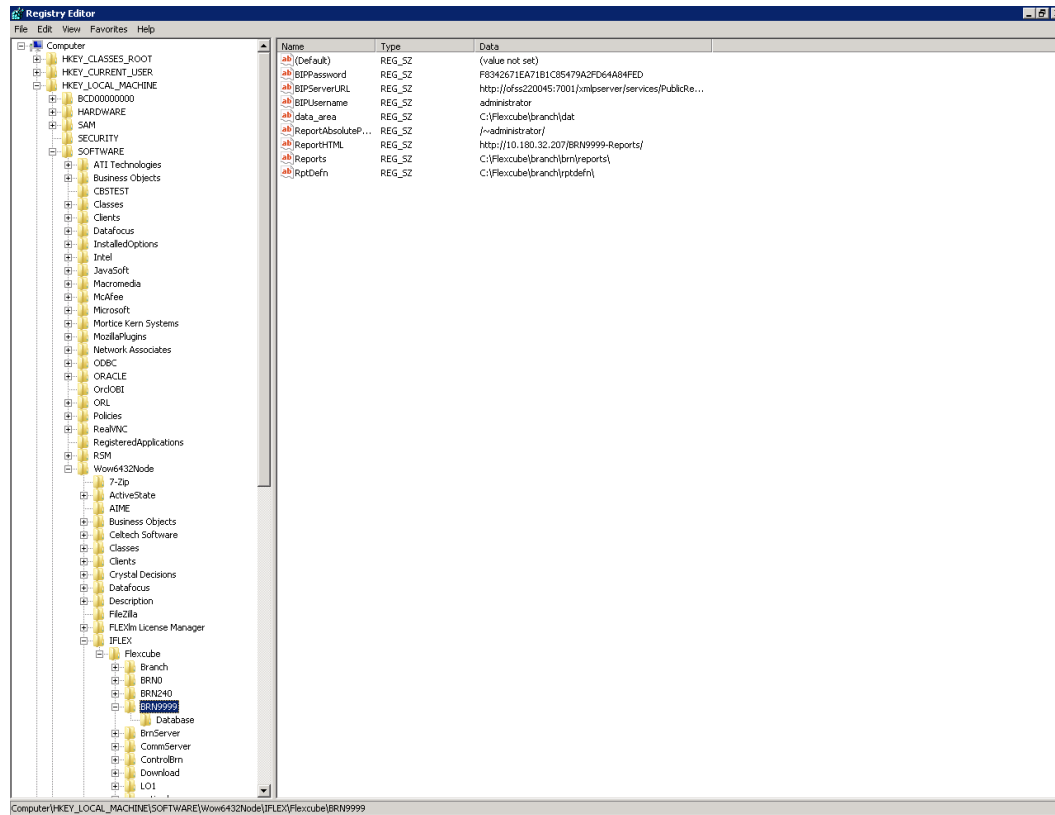
2. ADDING BRANCHES IN REGISTRY

Initially when branch setup is done via OUI , only the default branch 'BRN9999' is created in registry.

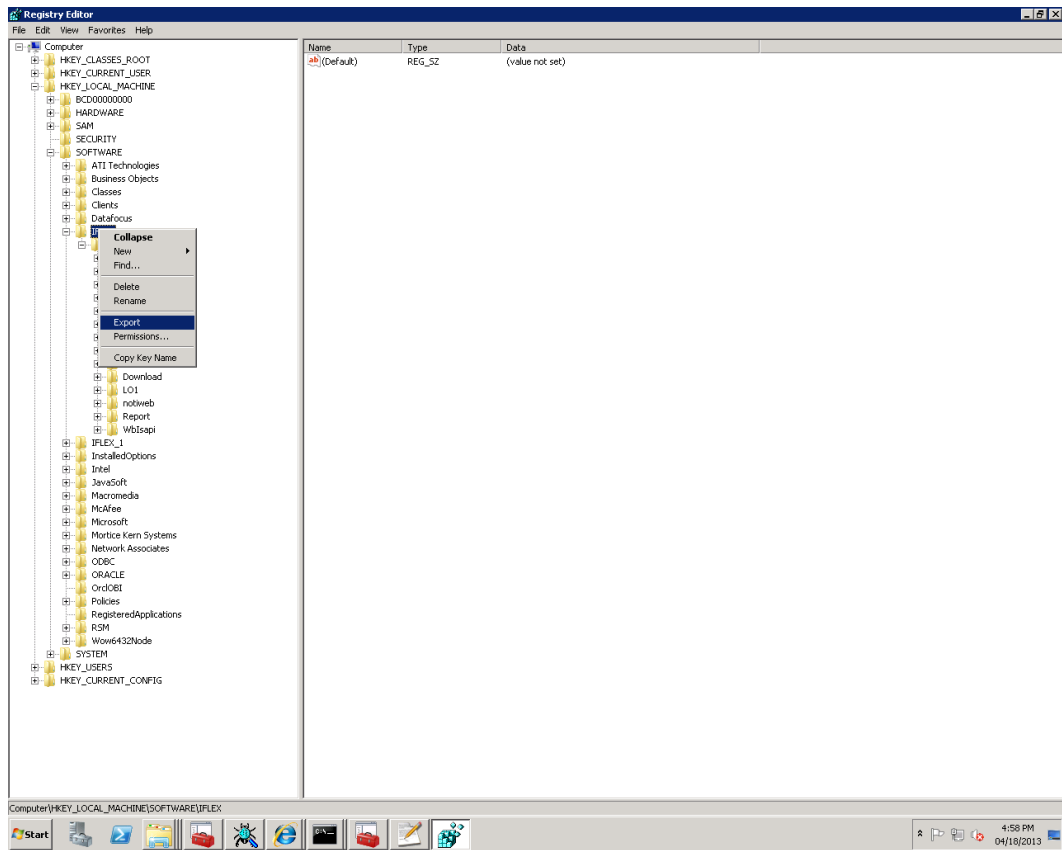
To check this, type regedit in run.

Goto : Regedit>> computer>>HEY_LOCAL_MACHINE>>SOFTWARE>>wow6432Node>>IFLEX

Here, you will be able to see the entries for BRN9999.

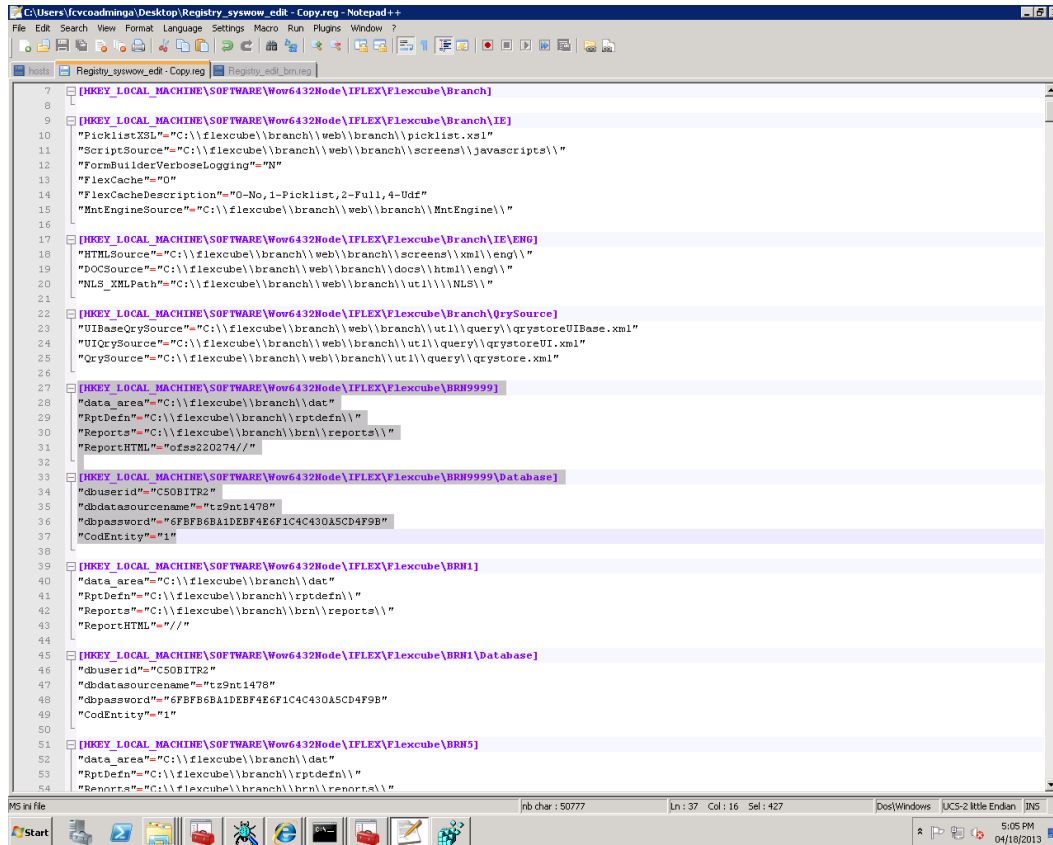


For adding more branches initially we have to export the IFLEX folder in registry as shown below.



Then save it in any location for backup.

Open the registry with notepad++



Any registry entries which are under a key specific to 'BRN9999' or '9999' need to be recreated with the new branch code and copied under the entry for 9999.

The entries which need to be recreated are given below :

1.)

```
[HKEY_LOCAL_MACHINE\SOFTWARE\Wow6432Node\IFLEX\Flexcube\BRN9999]
```

```
"data_area"="C:\\Flexcube\\branch\\dat"
```

```
"RptDefn"="C:\\Flexcube\\branch\\rptdefn\\"
```

```
"Reports"="C:\\Flexcube\\branch\\reports\\"
```

```
"ReportHTML"="flexcube_user"
```

```
[HKEY_LOCAL_MACHINE\SOFTWARE\Wow6432Node\IFLEX\Flexcube\BRN9999\Database]
```

```
"dbuserid"="fcrb51"
```

```
"dbdatasourcename"="flexcn51"
```

```
"dbpassword"="E4CBC33CA96CA63839E2E2E0A437F332"
```

```
"CodEntity"="1"
```

2.)

```
[HKEY_LOCAL_MACHINE\SOFTWARE\Wow6432Node\IFLEX\Flexcube\BrnServer\9999]
```

[HKEY_LOCAL_MACHINE\SOFTWARE\Wow6432Node\FLEX\Flexcube\BrnServer\9999\Appls]

[HKEY_LOCAL_MACHINE\SOFTWARE\Wow6432Node\FLEX\Flexcube\BrnServer\9999\Appls\0]

"ClientCode"=dword:00000001

"ServerCode"=dword:00000001

"MsgTimeOut"=dword:00000000

"ApplCode"=dword:00000001

"CLSIDString"="{3C622470-3D65-11D4-93F0-0090278E3867}"

"IIDString"="{3C62246F-3D65-11D4-93F0-0090278E3867}"

[HKEY_LOCAL_MACHINE\SOFTWARE\Wow6432Node\FLEX\Flexcube\BrnServer\9999\Services]

[HKEY_LOCAL_MACHINE\SOFTWARE\Wow6432Node\FLEX\Flexcube\BrnServer\9999\Services\0]

"flg_auto_start"=dword:00000001

"num_min_appl_wrk_thrds"=dword:00000001

"num_max_appl_wrk_thrds"=dword:00000001

"num_min_client_intf_thrds"=dword:00000001

"num_max_client_intf_thrds"=dword:00000001

"num_min_server_intf_thrds"=dword:00000001

"num_max_server_intf_thrds"=dword:00000001

"appl_name"="CONSOLE"

"msg_time_out"=dword:00000000

"appl_code"=dword:00000000

[HKEY_LOCAL_MACHINE\SOFTWARE\Wow6432Node\FLEX\Flexcube\BrnServer\9999\Services\1]

"appl_code"=dword:00000001

"flg_auto_start"=dword:00000001

"num_min_appl_wrk_thrds"=dword:00000004

"num_max_appl_wrk_thrds"=dword:00000005

"num_min_client_intf_thrds"=dword:00000001

"num_max_client_intf_thrds"=dword:00000005

"num_min_server_intf_thrds"=dword:00000001

"num_max_server_intf_thrds"=dword:00000005

"appl_name"="TP"
"msg_time_out"=dword:00000000
"flg_compress"=dword:00000001
"host_connect"="HTTP"

[HKEY_LOCAL_MACHINE\SOFTWARE\Wow6432Node\FLEX\Flexcube\BrnServer\9999\Services\1\client]

"code"=dword:00000001
"name"="webbranch isapi"
"transport_layer"="socket"

[HKEY_LOCAL_MACHINE\SOFTWARE\Wow6432Node\FLEX\Flexcube\BrnServer\9999\Services\1\client\socket]

"ip_addr"="127.0.0.1"
"port"=dword:00061a76
"protocol"=dword:00000002
"lnk_down_tm"=dword:00000000

[HKEY_LOCAL_MACHINE\SOFTWARE\Wow6432Node\FLEX\Flexcube\BrnServer\9999\Services\1\server]

"code"=dword:00000003
"name"="mqserver"
"transport_layer"="mq"

[HKEY_LOCAL_MACHINE\SOFTWARE\Wow6432Node\FLEX\Flexcube\BrnServer\9999\Services\1\server\HTTPServer]

"HTTPServer1"="http://ofss3131523:7302/fcrjpaymentsweb/PaymentServlet"
"OLTPHTTP"="http://ofss3131523:7302/FCRJOLTPWeb/OLTPListener"

[HKEY_LOCAL_MACHINE\SOFTWARE\Wow6432Node\FLEX\Flexcube\BrnServer\9999\Services\1\server\mq]

"que_manager"="FCBOltpQM"
"server_conn_chanel"="SERVERCH"
"lnk_down_tm"=dword:000000b4
"lnk_down_retry_tm"=dword:000000b4
"port"=dword:0000058c
"ip_addr"="DUMMYIP"
"protocol"=dword:00000002
"initial_pool_sz"=dword:0000000a

"max_pool_sz"=dword:00000014
"Server_trace_area"=""
"Server_trace_enabled"=dword:00000000
"CipherSpec"="RC4_SHA_US"
"SSLKEYR"="SSLKEYPATH"
"res_que"="OLTPRESQ"
"req_que"="OLTPREQQ"
"flg_ssl"=dword:00000000

[HKEY_LOCAL_MACHINE\SOFTWARE\Wow6432Node\FLEX\Flexcube\BrnServer\9999\Services\1\server\socket]

"protocol"=dword:00000002
"lnk_down_tm"=dword:0000001e
"lnk_down_retry_tm"=dword:0000000a
"port"=dword:000493d6
"ip_addr"="ofss3131523"

[HKEY_LOCAL_MACHINE\SOFTWARE\Wow6432Node\FLEX\Flexcube\BrnServer\9999\Services\2]

"appl_code"=dword:00000002
"appl_name"="TF"
"flg_auto_start"=dword:00000001
"msg_time_out"=dword:00000000
"num_max_appl_wrk_thrds"=dword:00000001
"num_min_appl_wrk_thrds"=dword:00000001
"num_max_client_intf_thrds"=dword:00000000
"num_min_client_intf_thrds"=dword:00000000
"num_max_server_intf_thrds"=dword:00000001
"num_min_server_intf_thrds"=dword:00000001
"flg_compress"=dword:00000001

[HKEY_LOCAL_MACHINE\SOFTWARE\Wow6432Node\FLEX\Flexcube\BrnServer\9999\Services\2\clients]

"tank_tm"=dword:0000001e
"recovery_tm"=dword:0000001e

[HKEY_LOCAL_MACHINE\SOFTWARE\Wow6432Node\FLEX\Flexcube\BrnServer\9999\Services\2\clients\9999]

[HKEY_LOCAL_MACHINE\SOFTWARE\Wow6432Node\FLEX\Flexcube\BrnServer\9999\Services\2\server]

"code"=dword:00000003

"name"="mqserver"

"transport_layer"="mq"

[HKEY_LOCAL_MACHINE\SOFTWARE\Wow6432Node\FLEX\Flexcube\BrnServer\9999\Services\2\server\mq]

"que_manager"="FCBOltpQM"

"server_conn_chanel"="SERVERCH"

"lnk_down_tm"=dword:000000b4

"lnk_down_retry_tm"=dword:000000b4

"port"=dword:0000058c

"ip_addr"="DUMMYIP"

"protocol"=dword:00000002

"initial_pool_sz"=dword:0000000a

"max_pool_sz"=dword:00000014

"Server_trace_area"=""

"Server_trace_enabled"=dword:00000000

"CipherSpec"="RC4_SHA_US"

"SSLKEYR"="SSLKEYPATH"

"res_que"="OLTPRESQ"

"req_que"="OLTPREQQ"

"flg_ssl"=dword:00000000

[HKEY_LOCAL_MACHINE\SOFTWARE\Wow6432Node\FLEX\Flexcube\BrnServer\9999\Services\2\server\socket]

"protocol"=dword:00000002

"lnk_down_tm"=dword:0000001e

"lnk_down_retry_tm"=dword:0000000a

"port"=dword:000493d6

"ip_addr"="ofss3131523"

3.)

[HKEY_LOCAL_MACHINE\SOFTWARE\Wow6432Node\FLEX\Flexcube\CommServer\9999]

[HKEY_LOCAL_MACHINE\SOFTWARE\Wow6432Node\FLEX\Flexcube\CommServer\9999\CS
Parameters]

"cs_ip_addr"="ofss3131523"
"cs_port_no"=dword:000493d6
"cs_lnk_down_tm"=dword:00000000
"host_ip_addr"="ofss3131523"
"host_dh_port_no"=dword:00001866
"host_fts_port_no"=dword:00001867
"host_dh_lnk_down_tm"=dword:0000001e
"host_fts_lnk_down_tm"=dword:0000001e
"host_lnk_down_retry_tm"=dword:0000000a
"wsi_port_no"=dword:000493d7
"wsi_stats_tm"=dword:0000003c
"gwi_port_no"=dword:000493d8
"gwi_stats_tm"=dword:0000003c
"fts_port_no"=dword:000493d9
"fts_stats_tm"=dword:0000003c
"recovery_flag"=dword:00000001
"tank_flush_tm"=dword:00000005
"trace_flag"=dword:00000000
"msg_time_out"=dword:0000003c
"cs_area"="C:\\Flexcube\\branch\\log"
"fts_keep_alive_flag"=dword:00000000
"fts_keep_alive_tm"=dword:00000000
"branch_name"="demo"
"cons_port_no"=dword:000493da
"host_device_code"="9999"
"ENCRYPTION_ON"=dword:00000000
"host_name"=""

[HKEY_LOCAL_MACHINE\SOFTWARE\Wow6432Node\FLEX\Flexcube\CommServer\9999\CS
Services]

[HKEY_LOCAL_MACHINE\SOFTWARE\Wow6432Node\FLEX\Flexcube\CommServer\9999\CS
Services\0]

"appl_code"=dword:00000000
"appl_name"="WSI"
"flg_auto_start"=dword:00000001

"num_max_appl_wrk_thrds"=dword:00000004
"num_max_tcpip_wrk_thrds"=dword:00000001
"num_min_tcpip_wrk_thrds"=dword:00000001
"num_min_appl_wrk_thrds"=dword:00000004

[HKEY_LOCAL_MACHINE\SOFTWARE\Wow6432Node\FLEX\Flexcube\CommServer\9999\CS
Services\1]

"appl_code"=dword:00000001
"appl_name"="GWI"
"flg_auto_start"=dword:00000001
"num_max_appl_wrk_thrds"=dword:00000004
"num_max_tcpip_wrk_thrds"=dword:00000001
"num_min_tcpip_wrk_thrds"=dword:00000001
"num_min_appl_wrk_thrds"=dword:00000001

[HKEY_LOCAL_MACHINE\SOFTWARE\Wow6432Node\FLEX\Flexcube\CommServer\9999\CS
Services\2]

"appl_code"=dword:00000002
"appl_name"="FTS"
"flg_auto_start"=dword:00000001
"num_max_appl_wrk_thrds"=dword:00000004
"num_max_tcpip_wrk_thrds"=dword:00000001
"num_min_tcpip_wrk_thrds"=dword:00000001
"num_min_appl_wrk_thrds"=dword:00000002

[HKEY_LOCAL_MACHINE\SOFTWARE\Wow6432Node\FLEX\Flexcube\CommServer\9999\CS
Services\3]

"appl_code"=dword:00000003
"appl_name"="CONS"
"flg_auto_start"=dword:00000001
"num_max_appl_wrk_thrds"=dword:00000001
"num_max_tcpip_wrk_thrds"=dword:00000001
"num_min_tcpip_wrk_thrds"=dword:00000001
"num_min_appl_wrk_thrds"=dword:00000001

4.)

[HKEY_LOCAL_MACHINE\SOFTWARE\Wow6432Node\FLEX\Flexcube\Download\DL1\Storage
\BRN9999]

"CLSID"="{EBDF5EFA-E206-4819-A027-435794E30CEB}"

"IID"="{22AAFFA6-E0F0-4160-8912-86C29C8B94EA}"

[HKEY_LOCAL_MACHINE\SOFTWARE\Wow6432Node\FLEX\Flexcube\Download\DL1\Storage\BRN9999\interface]

"Dsn"="flexcn51"

"Password"="E4CBC33CA96CA63839E2E2E0A437F332"

"UserId"="fcrb51"

"TemplateURI"="C:\\Flexcube\\branch\\tb\\"

"DataSetURI"="C:\\Flexcube\\branch\\dataseturi\\"

"CodEntity"="1"

5.)

[HKEY_LOCAL_MACHINE\SOFTWARE\Wow6432Node\FLEX\Flexcube\Report\BRN9999]

"dbuserid"="fcrb51"

"dbdatasourcename"="flexcn51"

"dbpassword"="E4CBC33CA96CA63839E2E2E0A437F332"

"CodEntity"="1"

"CPDbDataSourceName"="flexcn51"

"CPDbPassword"="E4CBC33CA96CA63839E2E2E0A437F332"

"CPDbUserId"="fcrb51"

"CRDbDataSourceName"="flexcn51"

"CRDbPassword"="E4CBC33CA96CA63839E2E2E0A437F332"

"CRDbUserId"="fcrb51"

In the above 5 registry sections, replace '9999' with the branch code which is to be added. Then copy the changed sections (with new branch code) above or below the 9999 sections at the appropriate place in the registry.

The below given example is for the addition of branch code '1' in the registry.

The entries in red are the entries for the branch to be added , i.e. '1'.

Eg.

1.)

```
[HKEY_LOCAL_MACHINE\SOFTWARE\Wow6432Node\FLEX\Flexcube\BRN9999]
```

```
"data_area"="C:\\Flexcube\\branch\\dat"
```

```
"RptDefn"="C:\\Flexcube\\branch\\rptdefn\\"
```

```
"Reports"="C:\\Flexcube\\branch\\reports\\"
```

```
"ReportHTML"="flexcube_user"
```

```
[HKEY_LOCAL_MACHINE\SOFTWARE\Wow6432Node\FLEX\Flexcube\BRN9999\Database]
```

```
"dbuserid"="fcrb51"
```

```
"dbdatasourcename"="flexcn51"
```

```
"dbpassword"="E4CBC33CA96CA63839E2E2E0A437F332"
```

```
"CodEntity"="1"
```

```
[HKEY_LOCAL_MACHINE\SOFTWARE\Wow6432Node\FLEX\Flexcube\BRN1]
```

```
"data_area"="C:\\Flexcube\\branch\\dat"
```

```
"RptDefn"="C:\\Flexcube\\branch\\rptdefn\\"
```

```
"Reports"="C:\\Flexcube\\branch\\reports\\"
```

```
"ReportHTML"="flexcube_user"
```

```
[HKEY_LOCAL_MACHINE\SOFTWARE\Wow6432Node\FLEX\Flexcube\BRN1\Database]
```

```
"dbuserid"="fcrb51"
```

```
"dbdatasourcename"="flexcn51"
```

```
"dbpassword"="E4CBC33CA96CA63839E2E2E0A437F332"
```

```
"CodEntity"="1"
```

2.)

```
[HKEY_LOCAL_MACHINE\SOFTWARE\Wow6432Node\FLEX\Flexcube\BrnServer\9999]
```

```
[HKEY_LOCAL_MACHINE\SOFTWARE\Wow6432Node\FLEX\Flexcube\BrnServer\9999\Appls]
```

```
[HKEY_LOCAL_MACHINE\SOFTWARE\Wow6432Node\FLEX\Flexcube\BrnServer\9999\Appls\0]
```

```
"ClientCode"=dword:00000001
```

```
"ServerCode"=dword:00000001
```

```
"MsgTimeOut"=dword:00000000
```

```
"ApplCode"=dword:00000001
```

```
"CLSIDString"="{3C622470-3D65-11D4-93F0-0090278E3867}"
```

```
"IIDString"="{3C62246F-3D65-11D4-93F0-0090278E3867}"
```

[HKEY_LOCAL_MACHINE\SOFTWARE\Wow6432Node\FLEX\Flexcube\BrnServer\9999\Services]

[HKEY_LOCAL_MACHINE\SOFTWARE\Wow6432Node\FLEX\Flexcube\BrnServer\9999\Services\0]

"flg_auto_start"=dword:00000001
"num_min_appl_wrk_thrds"=dword:00000001
"num_max_appl_wrk_thrds"=dword:00000001
"num_min_client_intf_thrds"=dword:00000001
"num_max_client_intf_thrds"=dword:00000001
"num_min_server_intf_thrds"=dword:00000001
"num_max_server_intf_thrds"=dword:00000001
"appl_name"="CONSOLE"
"msg_time_out"=dword:00000000
"appl_code"=dword:00000000

[HKEY_LOCAL_MACHINE\SOFTWARE\Wow6432Node\FLEX\Flexcube\BrnServer\9999\Services\1]

"appl_code"=dword:00000001
"flg_auto_start"=dword:00000001
"num_min_appl_wrk_thrds"=dword:00000004
"num_max_appl_wrk_thrds"=dword:00000005
"num_min_client_intf_thrds"=dword:00000001
"num_max_client_intf_thrds"=dword:00000005
"num_min_server_intf_thrds"=dword:00000001
"num_max_server_intf_thrds"=dword:00000005
"appl_name"="TP"
"msg_time_out"=dword:00000000
"flg_compress"=dword:00000001
"host_connect"="HTTP"

[HKEY_LOCAL_MACHINE\SOFTWARE\Wow6432Node\FLEX\Flexcube\BrnServer\9999\Services\1\client]

"code"=dword:00000001
"name"="webbranch isapi"
"transport_layer"="socket"

[HKEY_LOCAL_MACHINE\SOFTWARE\Wow6432Node\IFLEX\Flexcube\BrnServer\9999\Services\1\client\socket]

"ip_addr"="127.0.0.1"
"port"=dword:00061a76
"protocol"=dword:00000002
"lnk_down_tm"=dword:00000000

[HKEY_LOCAL_MACHINE\SOFTWARE\Wow6432Node\IFLEX\Flexcube\BrnServer\9999\Services\1\server]

"code"=dword:00000003
"name"="mqserver"
"transport_layer"="mq"

[HKEY_LOCAL_MACHINE\SOFTWARE\Wow6432Node\IFLEX\Flexcube\BrnServer\9999\Services\1\server\HTTPServer]

"HTTPServer1"="http://ofss3131523:7302/fcrjpaymentsweb/PaymentServlet"
"OLTPHTTP"="http://ofss3131523:7302/FCRJOLTPWeb/OLTPListener"

[HKEY_LOCAL_MACHINE\SOFTWARE\Wow6432Node\IFLEX\Flexcube\BrnServer\9999\Services\1\server\mq]

"que_manager"="FCBOltpQM"
"server_conn_chanel"="SERVERCH"
"lnk_down_tm"=dword:000000b4
"lnk_down_retry_tm"=dword:000000b4
"port"=dword:0000058c
"ip_addr"="DUMMYIP"
"protocol"=dword:00000002
"initial_pool_sz"=dword:0000000a
"max_pool_sz"=dword:00000014
"Server_trace_area"=""
"Server_trace_enabled"=dword:00000000
"CipherSpec"="RC4_SHA_US"
"SSLKEYR"="SSLKEYPATH"
"res_que"="OLTPRESQ"
"req_que"="OLTPREQQ"
"flg_ssl"=dword:00000000

[HKEY_LOCAL_MACHINE\SOFTWARE\Wow6432Node\IFLEX\Flexcube\BrnServer\9999\Services\1\server\socket]

"protocol"=dword:00000002
"lnk_down_tm"=dword:0000001e
"lnk_down_retry_tm"=dword:0000000a
"port"=dword:000493d6
"ip_addr"="ofss3131523"

[HKEY_LOCAL_MACHINE\SOFTWARE\Wow6432Node\FLEX\Flexcube\BrnServer\9999\Services\2]

"appl_code"=dword:00000002
"appl_name"="TF"
"flg_auto_start"=dword:00000001
"msg_time_out"=dword:00000000
"num_max_appl_wrk_thrds"=dword:00000001
"num_min_appl_wrk_thrds"=dword:00000001
"num_max_client_intf_thrds"=dword:00000000
"num_min_client_intf_thrds"=dword:00000000
"num_max_server_intf_thrds"=dword:00000001
"num_min_server_intf_thrds"=dword:00000001
"flg_compress"=dword:00000001

[HKEY_LOCAL_MACHINE\SOFTWARE\Wow6432Node\FLEX\Flexcube\BrnServer\9999\Services\2\clients]

"tank_tm"=dword:0000001e
"recovery_tm"=dword:0000001e

[HKEY_LOCAL_MACHINE\SOFTWARE\Wow6432Node\FLEX\Flexcube\BrnServer\9999\Services\2\clients\9999]

[HKEY_LOCAL_MACHINE\SOFTWARE\Wow6432Node\FLEX\Flexcube\BrnServer\9999\Services\2\server]

"code"=dword:00000003
"name"="mqserver"
"transport_layer"="mq"

[HKEY_LOCAL_MACHINE\SOFTWARE\Wow6432Node\FLEX\Flexcube\BrnServer\9999\Services\2\server\mq]

"que_manager"="FCBOltpQM"
"server_conn_chanel"="SERVERCH"
"lnk_down_tm"=dword:000000b4

"lnk_down_retry_tm"=dword:000000b4
"port"=dword:0000058c
"ip_addr"="DUMMYIP"
"protocol"=dword:00000002
"initial_pool_sz"=dword:0000000a
"max_pool_sz"=dword:00000014
"Server_trace_area"=""
"Server_trace_enabled"=dword:00000000
"CipherSpec"="RC4_SHA_US"
"SSLKEYR"="SSLKEYPATH"
"res_que"="OLTPRESQ"
"req_que"="OLTPREQQ"
"flg_ssl"=dword:00000000

[HKEY_LOCAL_MACHINE\SOFTWARE\Wow6432Node\FLEX\Flexcube\BrnServer\9999\Services\2\server\socket]

"protocol"=dword:00000002
"lnk_down_tm"=dword:0000001e
"lnk_down_retry_tm"=dword:0000000a
"port"=dword:000493d6
"ip_addr"="ofss3131523"

[HKEY_LOCAL_MACHINE\SOFTWARE\Wow6432Node\FLEX\Flexcube\BrnServer\1]

[HKEY_LOCAL_MACHINE\SOFTWARE\Wow6432Node\FLEX\Flexcube\BrnServer\1\Appls]

[HKEY_LOCAL_MACHINE\SOFTWARE\Wow6432Node\FLEX\Flexcube\BrnServer\1\Appls\0]

"ClientCode"=dword:00000001
"ServerCode"=dword:00000001
"MsgTimeOut"=dword:00000000
"ApplCode"=dword:00000001
"CLSIDString"="{3C622470-3D65-11D4-93F0-0090278E3867}"
"IIDString"="{3C62246F-3D65-11D4-93F0-0090278E3867}"

[HKEY_LOCAL_MACHINE\SOFTWARE\Wow6432Node\FLEX\Flexcube\BrnServer\1\Services]

[HKEY_LOCAL_MACHINE\SOFTWARE\Wow6432Node\FLEX\Flexcube\BrnServer\1\Services\0
]

"flg_auto_start"=dword:00000001

"num_min_appl_wrk_thrds"=dword:00000001
"num_max_appl_wrk_thrds"=dword:00000001
"num_min_client_intf_thrds"=dword:00000001
"num_max_client_intf_thrds"=dword:00000001
"num_min_server_intf_thrds"=dword:00000001
"num_max_server_intf_thrds"=dword:00000001
"appl_name"="CONSOLE"
"msg_time_out"=dword:00000000
"appl_code"=dword:00000000

[HKEY_LOCAL_MACHINE\SOFTWARE\Wow6432Node\FLEX\Flexcube\BrnServer\1\Services\1
]

"appl_code"=dword:00000001
"flg_auto_start"=dword:00000001
"num_min_appl_wrk_thrds"=dword:00000004
"num_max_appl_wrk_thrds"=dword:00000005
"num_min_client_intf_thrds"=dword:00000001
"num_max_client_intf_thrds"=dword:00000005
"num_min_server_intf_thrds"=dword:00000001
"num_max_server_intf_thrds"=dword:00000005
"appl_name"="TP"
"msg_time_out"=dword:00000000
"flg_compress"=dword:00000001
"host_connect"="HTTP"

[HKEY_LOCAL_MACHINE\SOFTWARE\Wow6432Node\FLEX\Flexcube\BrnServer\1\Services\1
\client]

"code"=dword:00000001
"name"="webbranch isapi"
"transport_layer"="socket"

[HKEY_LOCAL_MACHINE\SOFTWARE\Wow6432Node\FLEX\Flexcube\BrnServer\1\Services\1
\client\socket]

"ip_addr"="127.0.0.1"
"port"=dword:00061a76
"protocol"=dword:00000002
"lnk_down_tm"=dword:00000000

[HKEY_LOCAL_MACHINE\SOFTWARE\Wow6432Node\FLEX\Flexcube\BrnServer\1\Services\1\server]

"code"=dword:00000003

"name"="mqserver"

"transport_layer"="mq"

[HKEY_LOCAL_MACHINE\SOFTWARE\Wow6432Node\FLEX\Flexcube\BrnServer\1\Services\1\server\HTTPServer]

"HTTPServer1"="http://ofss3131523:7302/fcrjpaymentsweb/PaymentServlet"

"OLTPHTTP"="http://ofss3131523:7302/FCRJOLTPWeb/OLTPListener"

[HKEY_LOCAL_MACHINE\SOFTWARE\Wow6432Node\FLEX\Flexcube\BrnServer\1\Services\1\server\mq]

"que_manager"="FCBOItpQM"

"server_conn_chanel"="SERVERCH"

"lnk_down_tm"=dword:000000b4

"lnk_down_retry_tm"=dword:000000b4

"port"=dword:0000058c

"ip_addr"="DUMMYIP"

"protocol"=dword:00000002

"initial_pool_sz"=dword:0000000a

"max_pool_sz"=dword:00000014

"Server_trace_area"=""

"Server_trace_enabled"=dword:00000000

"CipherSpec"="RC4_SHA_US"

"SSLKEYR"="SSLKEYPATH"

"res_que"="OLTPRESQ"

"req_que"="OLTPREQQ"

"flg_ssl"=dword:00000000

[HKEY_LOCAL_MACHINE\SOFTWARE\Wow6432Node\FLEX\Flexcube\BrnServer\1\Services\1\server\socket]

"protocol"=dword:00000002

"lnk_down_tm"=dword:0000001e

"lnk_down_retry_tm"=dword:0000000a

"port"=dword:000493d6

"ip_addr"="ofss3131523"

[HKEY_LOCAL_MACHINE\SOFTWARE\Wow6432Node\IFLEX\Flexcube\BrnServer\1\Services\2
]

"appl_code"=dword:00000002
"appl_name"="TF"
"flg_auto_start"=dword:00000001
"msg_time_out"=dword:00000000
"num_max_appl_wrk_thrds"=dword:00000001
"num_min_appl_wrk_thrds"=dword:00000001
"num_max_client_intf_thrds"=dword:00000000
"num_min_client_intf_thrds"=dword:00000000
"num_max_server_intf_thrds"=dword:00000001
"num_min_server_intf_thrds"=dword:00000001
"flg_compress"=dword:00000001

[HKEY_LOCAL_MACHINE\SOFTWARE\Wow6432Node\IFLEX\Flexcube\BrnServer\1\Services\2
\clients]

"tank_tm"=dword:0000001e
"recovery_tm"=dword:0000001e

[HKEY_LOCAL_MACHINE\SOFTWARE\Wow6432Node\IFLEX\Flexcube\BrnServer\1\Services\2
\clients\1]

[HKEY_LOCAL_MACHINE\SOFTWARE\Wow6432Node\IFLEX\Flexcube\BrnServer\1\Services\2
\server]

"code"=dword:00000003
"name"="mqserver"
"transport_layer"="mq"

[HKEY_LOCAL_MACHINE\SOFTWARE\Wow6432Node\IFLEX\Flexcube\BrnServer\1\Services\2
\server\mq]

"que_manager"="FCBOltpQM"
"server_conn_chanel"="SERVERCH"
"lnk_down_tm"=dword:000000b4
"lnk_down_retry_tm"=dword:000000b4
"port"=dword:0000058c
"ip_addr"="DUMMYIP"
"protocol"=dword:00000002
"initial_pool_sz"=dword:0000000a
"max_pool_sz"=dword:00000014

"Server_trace_area"=""
"Server_trace_enabled"=dword:00000000
"CipherSpec"="RC4_SHA_US"
"SSLKEYR"="SSLKEYPATH"
"res_que"="OLTPRESQ"
"req_que"="OLTPREQQ"
"flg_ssl"=dword:00000000

[HKEY_LOCAL_MACHINE\SOFTWARE\Wow6432Node\FLEX\Flexcube\BrnServer\1\Services\2
\server\socket]

"protocol"=dword:00000002
"lnk_down_tm"=dword:0000001e
"lnk_down_retry_tm"=dword:0000000a
"port"=dword:000493d6
"ip_addr"="ofss3131523"

3.)

[HKEY_LOCAL_MACHINE\SOFTWARE\Wow6432Node\FLEX\Flexcube\CommServer\9999]

[HKEY_LOCAL_MACHINE\SOFTWARE\Wow6432Node\FLEX\Flexcube\CommServer\9999\CS
Parameters]

"cs_ip_addr"="ofss3131523"
"cs_port_no"=dword:000493d6
"cs_lnk_down_tm"=dword:00000000
"host_ip_addr"="ofss3131523"
"host_dh_port_no"=dword:00001866
"host_fts_port_no"=dword:00001867
"host_dh_lnk_down_tm"=dword:0000001e
"host_fts_lnk_down_tm"=dword:0000001e
"host_lnk_down_retry_tm"=dword:0000000a
"wsi_port_no"=dword:000493d7
"wsi_stats_tm"=dword:0000003c
"gwi_port_no"=dword:000493d8
"gwi_stats_tm"=dword:0000003c
"fts_port_no"=dword:000493d9
"fts_stats_tm"=dword:0000003c
"recovery_flag"=dword:00000001

"tank_flush_tm"=dword:00000005
"trace_flag"=dword:00000000
"msg_time_out"=dword:0000003c
"cs_area"="C:\\Flexcube\\branch\\log"
"fts_keep_alive_flag"=dword:00000000
"fts_keep_alive_tm"=dword:00000000
"branch_name"="demo"
"cons_port_no"=dword:000493da
"host_device_code"="9999"
"ENCRYPTION_ON"=dword:00000000
"host_name"=""

[HKEY_LOCAL_MACHINE\SOFTWARE\Wow6432Node\FLEX\Flexcube\CommServer\9999\CS
Services]

[HKEY_LOCAL_MACHINE\SOFTWARE\Wow6432Node\FLEX\Flexcube\CommServer\9999\CS
Services\0]

"appl_code"=dword:00000000
"appl_name"="WSI"
"flg_auto_start"=dword:00000001
"num_max_appl_wrk_thrds"=dword:00000004
"num_max_tcpip_wrk_thrds"=dword:00000001
"num_min_tcpip_wrk_thrds"=dword:00000001
"num_min_appl_wrk_thrds"=dword:00000004

[HKEY_LOCAL_MACHINE\SOFTWARE\Wow6432Node\FLEX\Flexcube\CommServer\9999\CS
Services\1]

"appl_code"=dword:00000001
"appl_name"="GWI"
"flg_auto_start"=dword:00000001
"num_max_appl_wrk_thrds"=dword:00000004
"num_max_tcpip_wrk_thrds"=dword:00000001
"num_min_tcpip_wrk_thrds"=dword:00000001
"num_min_appl_wrk_thrds"=dword:00000001

[HKEY_LOCAL_MACHINE\SOFTWARE\Wow6432Node\FLEX\Flexcube\CommServer\9999\CS
Services\2]

"appl_code"=dword:00000002

"appl_name"="FTS"
"flg_auto_start"=dword:00000001
"num_max_appl_wrk_thrds"=dword:00000004
"num_max_tcpip_wrk_thrds"=dword:00000001
"num_min_tcpip_wrk_thrds"=dword:00000001
"num_min_appl_wrk_thrds"=dword:00000002

[HKEY_LOCAL_MACHINE\SOFTWARE\Wow6432Node\FLEX\Flexcube\CommServer\9999\CS Services\3]

"appl_code"=dword:00000003
"appl_name"="CONS"
"flg_auto_start"=dword:00000001
"num_max_appl_wrk_thrds"=dword:00000001
"num_max_tcpip_wrk_thrds"=dword:00000001
"num_min_tcpip_wrk_thrds"=dword:00000001
"num_min_appl_wrk_thrds"=dword:00000001

[HKEY_LOCAL_MACHINE\SOFTWARE\Wow6432Node\FLEX\Flexcube\CommServer\1]

[HKEY_LOCAL_MACHINE\SOFTWARE\Wow6432Node\FLEX\Flexcube\CommServer\1\CS Parameters]

"cs_ip_addr"="ofss3131523"
"cs_port_no"=dword:000493d6
"cs_lnk_down_tm"=dword:00000000
"host_ip_addr"="ofss3131523"
"host_dh_port_no"=dword:00001866
"host_fts_port_no"=dword:00001867
"host_dh_lnk_down_tm"=dword:0000001e
"host_fts_lnk_down_tm"=dword:0000001e
"host_lnk_down_retry_tm"=dword:0000000a
"wsi_port_no"=dword:000493d7
"wsi_stats_tm"=dword:0000003c
"gwi_port_no"=dword:000493d8
"gwi_stats_tm"=dword:0000003c
"fts_port_no"=dword:000493d9
"fts_stats_tm"=dword:0000003c
"recovery_flag"=dword:00000001
"tank_flush_tm"=dword:00000005
"trace_flag"=dword:00000000

```
"msg_time_out"=dword:0000003c
"cs_area"="C:\\Flexcube\\branch\\log"
"fts_keep_alive_flag"=dword:00000000
"fts_keep_alive_tm"=dword:00000000
"branch_name"="demo"
"cons_port_no"=dword:000493da
"host_device_code"="1"
"ENCRYPTION_ON"=dword:00000000
"host_name"=""
```

```
[HKEY_LOCAL_MACHINE\SOFTWARE\Wow6432Node\FLEX\Flexcube\CommServer\1\CS
Services]
```

```
[HKEY_LOCAL_MACHINE\SOFTWARE\Wow6432Node\FLEX\Flexcube\CommServer\1\CS
Services\0]
```

```
"appl_code"=dword:00000000
"appl_name"="WSI"
"flg_auto_start"=dword:00000001
"num_max_appl_wrk_thrds"=dword:00000004
"num_max_tcpip_wrk_thrds"=dword:00000001
"num_min_tcpip_wrk_thrds"=dword:00000001
"num_min_appl_wrk_thrds"=dword:00000004
```

```
[HKEY_LOCAL_MACHINE\SOFTWARE\Wow6432Node\FLEX\Flexcube\CommServer\1\CS
Services\1]
```

```
"appl_code"=dword:00000001
"appl_name"="GWI"
"flg_auto_start"=dword:00000001
"num_max_appl_wrk_thrds"=dword:00000004
"num_max_tcpip_wrk_thrds"=dword:00000001
"num_min_tcpip_wrk_thrds"=dword:00000001
"num_min_appl_wrk_thrds"=dword:00000001
```

```
[HKEY_LOCAL_MACHINE\SOFTWARE\Wow6432Node\FLEX\Flexcube\CommServer\1\CS
Services\2]
```

```
"appl_code"=dword:00000002
"appl_name"="FTS"
"flg_auto_start"=dword:00000001
```

"num_max_appl_wrk_thrds"=dword:00000004
"num_max_tcpip_wrk_thrds"=dword:00000001
"num_min_tcpip_wrk_thrds"=dword:00000001
"num_min_appl_wrk_thrds"=dword:00000002

[HKEY_LOCAL_MACHINE\SOFTWARE\Wow6432Node\FLEX\Flexcube\CommServer\1\CS
Services\3]

"appl_code"=dword:00000003
"appl_name"="CONS"
"flg_auto_start"=dword:00000001
"num_max_appl_wrk_thrds"=dword:00000001
"num_max_tcpip_wrk_thrds"=dword:00000001
"num_min_tcpip_wrk_thrds"=dword:00000001
"num_min_appl_wrk_thrds"=dword:00000001

4.)

[HKEY_LOCAL_MACHINE\SOFTWARE\Wow6432Node\FLEX\Flexcube\Download\DL1\Storage
\BRN9999]

"CLSID"="{EBDF5EFA-E206-4819-A027-435794E30CEB}"
"IID"="{22AAFFA6-E0F0-4160-8912-86C29C8B94EA}"

[HKEY_LOCAL_MACHINE\SOFTWARE\Wow6432Node\FLEX\Flexcube\Download\DL1\Storage
\BRN9999\interface]

"Dsn"="flexcn51"
"Password"="E4CBC33CA96CA63839E2E2E0A437F332"
"UserId"="fcrb51"
"TemplateURI"="C:\\Flexcube\\branch\\tb\\"
"DataSetURI"="C:\\Flexcube\\branch\\dataseturi\\"
"CodEntity"="1"

[HKEY_LOCAL_MACHINE\SOFTWARE\Wow6432Node\FLEX\Flexcube\Download\DL1\Storage
\BRN1]

"CLSID"="{EBDF5EFA-E206-4819-A027-435794E30CEB}"
"IID"="{22AAFFA6-E0F0-4160-8912-86C29C8B94EA}"

[HKEY_LOCAL_MACHINE\SOFTWARE\Wow6432Node\FLEX\Flexcube\Download\DL1\Storage
\BRN1\interface]

"Dsn"="flexcn51"
"Password"="E4CBC33CA96CA63839E2E2E0A437F332"

```
"UserId"="fcrb51"  
"TemplateURI"="C:\\Flexcube\\branch\\tb\\"  
"DataSetURI"="C:\\Flexcube\\branch\\dataseturi\\"  
"CodEntity"="1"
```

5.)

```
[HKEY_LOCAL_MACHINE\\SOFTWARE\\Wow6432Node\\IFLEX\\Flexcube\\Report\\BRN9999]
```

```
"dbuserid"="fcrb51"  
"dbdatasourcename"="flexcn51"  
"dbpassword"="E4CBC33CA96CA63839E2E2E0A437F332"  
"CodEntity"="1"  
"CPDbDataSourceName"="flexcn51"  
"CPDbPassword"="E4CBC33CA96CA63839E2E2E0A437F332"  
"CPDbUserId"="fcrb51"  
"CRDbDataSourceName"="flexcn51"  
"CRDbPassword"="E4CBC33CA96CA63839E2E2E0A437F332"  
"CRDbUserId"="fcrb51"
```

```
[HKEY_LOCAL_MACHINE\\SOFTWARE\\Wow6432Node\\IFLEX\\Flexcube\\Report\\BRN1]
```

```
"dbuserid"="fcrb51"  
"dbdatasourcename"="flexcn51"  
"dbpassword"="E4CBC33CA96CA63839E2E2E0A437F332"  
"CodEntity"="1"  
"CPDbDataSourceName"="flexcn51"  
"CPDbPassword"="E4CBC33CA96CA63839E2E2E0A437F332"  
"CPDbUserId"="fcrb51"  
"CRDbDataSourceName"="flexcn51"  
"CRDbPassword"="E4CBC33CA96CA63839E2E2E0A437F332"  
"CRDbUserId"="fcrb51"
```

Similarly, we have to recreate the registry entries for other branches to be added.

Once all the changes are done ,save the file as a registry on any path and open the saved file with the registry editor. The changes will be applied in the registry.

NOTE: After applying all the changes please restart the branch services ,IIS and do a task kill(type "taskkill /f /im dllhost.exe" in command prompt) , only after which will the changes be reflected in the registry , as shown below :

