

Oracle FLEXCUBE Core Banking

Branch Installation Guide (*Windows
Server*)

Release 5.1.0.0.0

Part No. E57304-01

September 2014

ORACLE®

Oracle FLEXCUBE Core Banking Branch Installation Guide (Windows Server)

September 2014

Oracle Financial Services Software Limited
Oracle Park
Off Western Express Highway
Goregaon (East)
Mumbai, Maharashtra 400 063
India

Worldwide Inquiries:

Phone: +91 22 6718 3000

Fax: +91 22 6718 3001

www.oracle.com/financialservices/

Copyright © 2014, Oracle and/or its affiliates. All rights reserved.

Oracle and Java are registered trademarks of Oracle and/or its affiliates. Other names may be trademarks of their respective owners.

U.S. GOVERNMENT END USERS: Oracle programs, including any operating system, integrated software, any programs installed on the hardware, and/or documentation, delivered to U.S. Government end users are “commercial computer software” pursuant to the applicable Federal Acquisition Regulation and agency-specific supplemental regulations. As such, use, duplication, disclosure, modification, and adaptation of the programs, including any operating system, integrated software, any programs installed on the hardware, and/or documentation, shall be subject to license terms and license restrictions applicable to the programs. No other rights are granted to the U.S. Government.

This software or hardware is developed for general use in a variety of information management applications. It is not developed or intended for use in any inherently dangerous applications, including applications that may create a risk of personal injury. If you use this software or hardware in dangerous applications, then you shall be responsible to take all appropriate failsafe, backup, redundancy, and other measures to ensure its safe use. Oracle Corporation and its affiliates disclaim any liability for any damages caused by use of this software or hardware in dangerous applications.

This software and related documentation are provided under a license agreement containing restrictions on use and disclosure and are protected by intellectual property laws. Except as expressly permitted in your license agreement or allowed by law, you may not use, copy, reproduce, translate, broadcast, modify, license, transmit, distribute, exhibit, perform, publish or display any part, in any form, or by any means. Reverse engineering, disassembly, or decompilation of this software, unless required by law for interoperability, is prohibited.

The information contained herein is subject to change without notice and is not warranted to be error-free. If you find any errors, please report them to us in writing.

This software or hardware and documentation may provide access to or information on content, products and services from third parties. Oracle Corporation and its affiliates are not responsible for and expressly disclaim all warranties of any kind with respect to third-party content, products, and services. Oracle Corporation and its affiliates will not be responsible for any loss, costs, or damages incurred due to your access to or use of third-party content, products, or services.

Contents

1. Preface	4
2. Introduction	5
3. Base System Configurations	6
3.1. Hardware	6
4. Prerequisites	7
4.1. Windows Administrator	7
4.2. Oracle Database 11g Administrator Client	7
4.3. Internet Information Services (IIS)	19
4.4. Windows Server 2008	19
5. Branch Installation	31
5.1. Acquire FLEXCUBE Branch Installer Distribution	31
5.2. Launch Installer	31
6. Post Installation	45
6.1. Changes in system settings	45
6.2. Launch FLEXCUBE Branch web page	55
7. Chinese Localization	56
7.1. Install Chinese language package	56
7.2. Confirm installation of Chinese language package	56
7.3. Set Chinese Localization	57
7.4. Set Chinese Localization	59

1. Preface

1.1. Intended Audience

This document is intended for the following audience:

- Customers
- Partners
- Third Party Vendors

1.2. Documentation Accessibility

For information about Oracle's commitment to accessibility, visit the Oracle Accessibility Program website at <http://www.oracle.com/pls/topic/lookup?ctx=acc&id=docacc>.

1.3. Access to OFSS Support

<https://support.us.oracle.com>

1.4. Structure

This manual is organized into the following categories:

Preface gives information on the intended audience. It also describes the overall structure of the User Guide

Introduction provides brief information on the purpose of the User Guide

Chapters are dedicated to processes for initial setup of FLEXCUBE Core Branch environment on windows server machine.

1.5. Related Information Sources

Not Applicable

2. Introduction

This guide is helpful for initial setup of FLEXCUBE CORE Branch environment on windows server machine.

3. Base System Configurations

3.1. Hardware

Here we strongly suggest you to verify your target installation machine's environment and make sure it meets the minimum hardware as below

CPU: Intel Duo Core 2.0 GHz

Hard Disk: 10GB free space

Memory: 1GB

Network: 100M Ethernet connection

3.2. Operating Systems

FLEXCUBE Branch application supports windows server family. You can run it on

Windows Server 2008 R2

4. Prerequisites

4.1. Windows Administrator

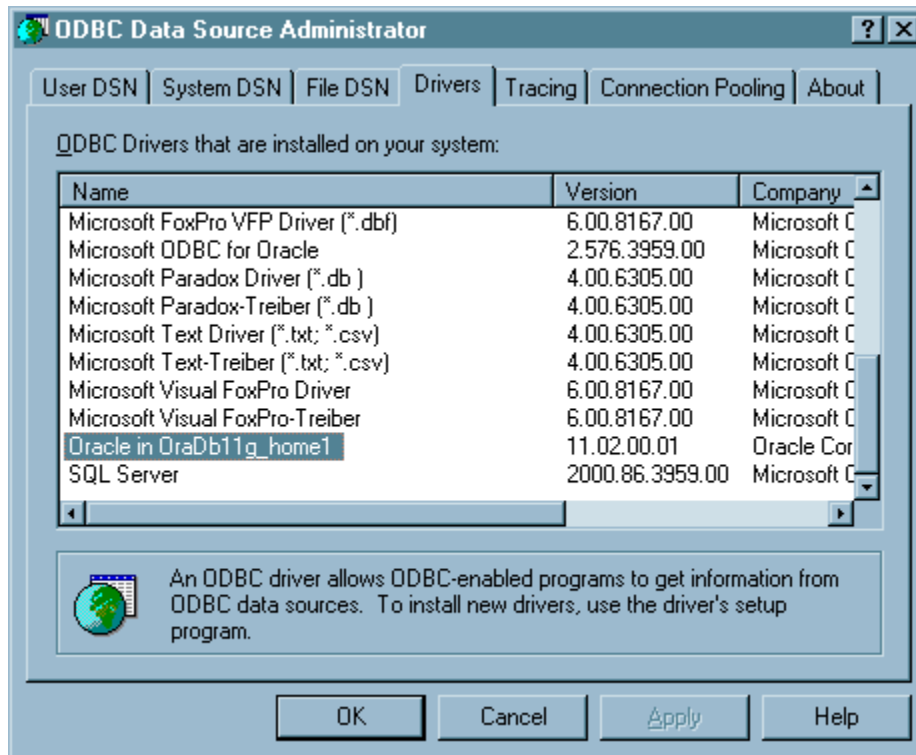
We suggest that you install the FLEXCUBE Branch with the administrator user on windows server. So please log into the windows server as administrator and proceed with the installation.

4.2. Oracle Database 11g Administrator Client

FLEXCUBE Branch requires oracle database driver on the windows server to connect to Oracle database server. If your machine already has oracle 11g driver installed, you can check the ODBC Data Source configuration.

Follow these steps:

1. Goto C:\Windows\SysWOW64 and click on odbcad32.exe
2. Click the Drivers tab, check if there is oracle 11g driver in the list.



If not, there is no Oracle driver installed on your machine. Then you should install the driver by the following steps below.

1. Download Oracle administrator client
2. Please download **oracle 11g instant client (32 bit)** from Oracle website. Then unzip it to your windows server machine folder.

Please contact your system administrator before downloading software.

Note: Before launching the installer , make sure to shorten the PATH attribute in the environment variables present in the Advanced system properties of the computer , removing all unnecessary attributes.

3. Launch the instant client installer
4. Open the client installer folder,e.g. **win32_11gR1_client**. Launch it by clicking setup.exe



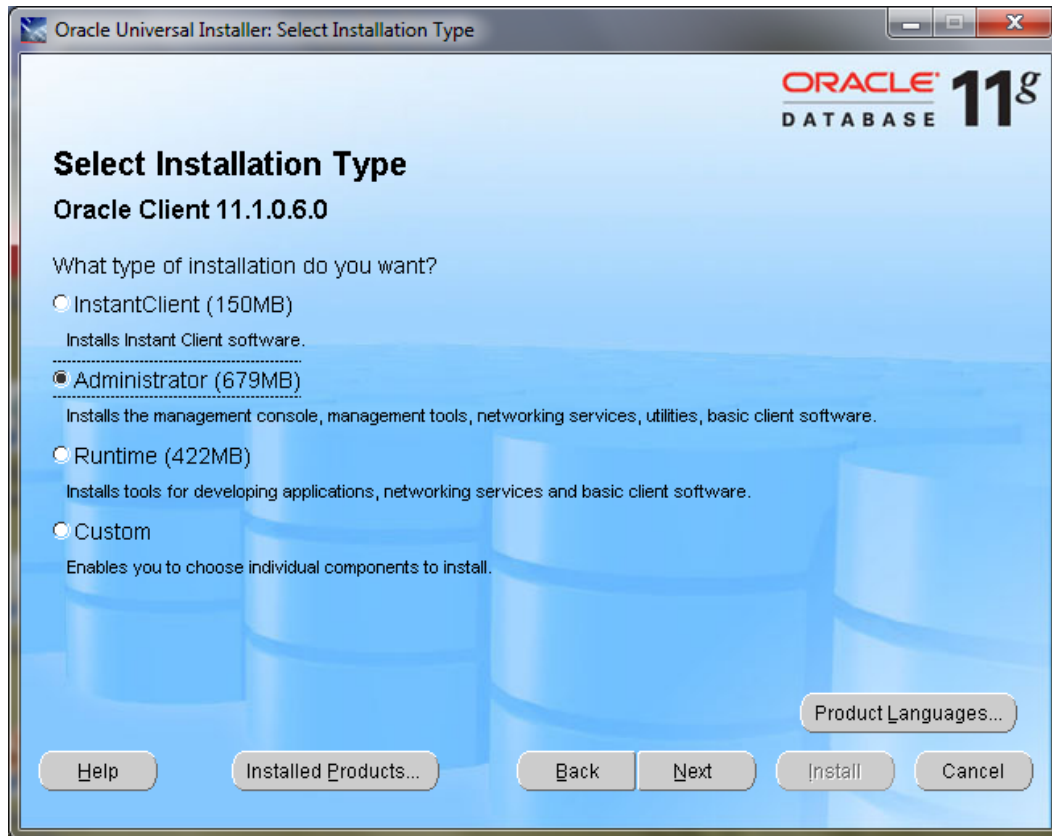
Specify Inventory directory



5. Just click **Next**.

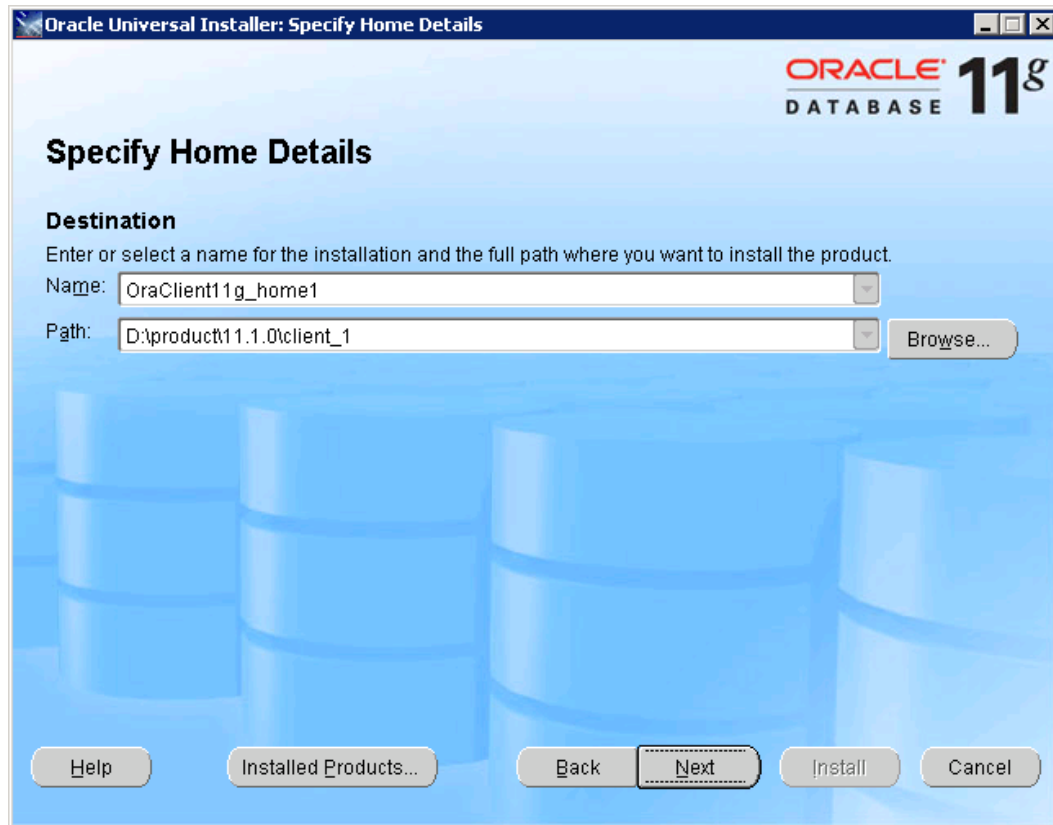
Select Installation Type

By default, **InstantClient** is checked. Please go with **Administrator** option.



6. Click **Next** to continue.

Specify Home Details



The image shows a screenshot of the 'Oracle Universal Installer: Specify Home Details' window. The window has a blue header bar with the title 'Oracle Universal Installer: Specify Home Details' and standard window controls. In the top right corner, the 'ORACLE 11g DATABASE' logo is displayed. The main title 'Specify Home Details' is centered. Below it, the 'Destination' section contains instructions: 'Enter or select a name for the installation and the full path where you want to install the product.' There are two input fields: 'Name:' with the value 'OraClient11g_home1' and 'Path:' with the value 'D:\product\11.1.0\client_1'. A 'Browse...' button is next to the path field. At the bottom, there are several buttons: 'Help', 'Installed Products...', 'Back', 'Next' (which is highlighted with a dashed border), 'Install', and 'Cancel'. The background of the window features a faint image of blue database cylinders.

Oracle Universal Installer: Specify Home Details

ORACLE 11g DATABASE

Specify Home Details

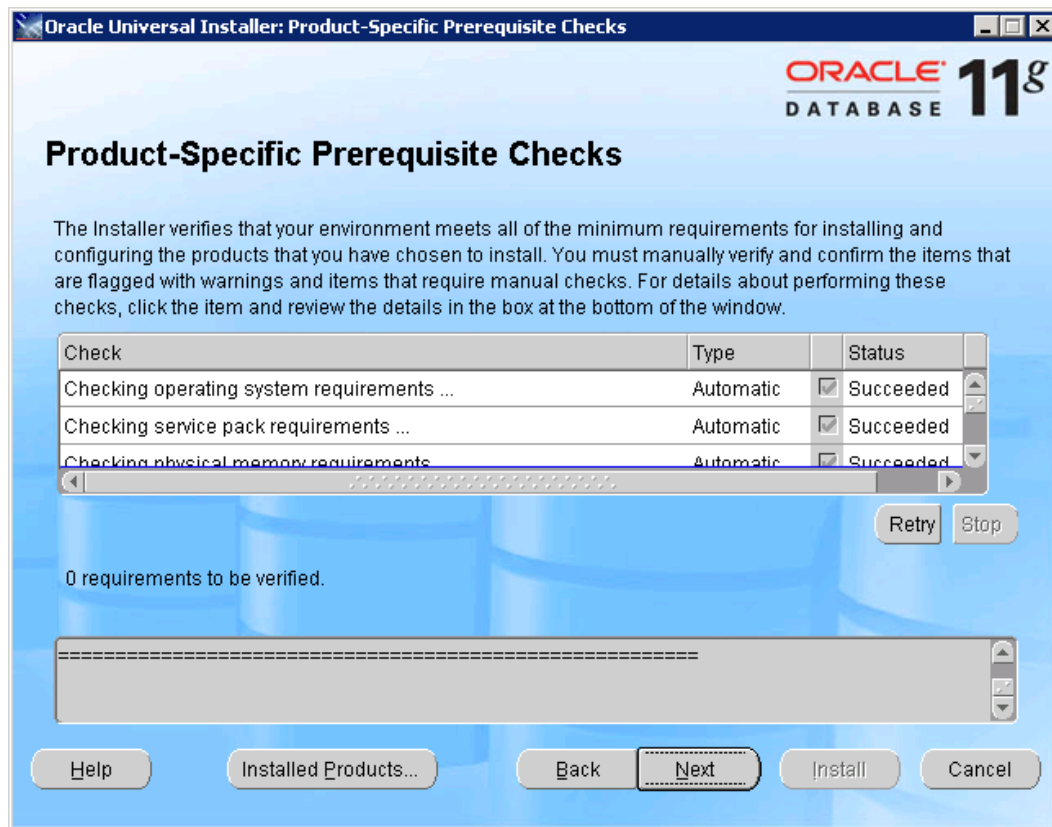
Destination
Enter or select a name for the installation and the full path where you want to install the product.

Name:

Path:

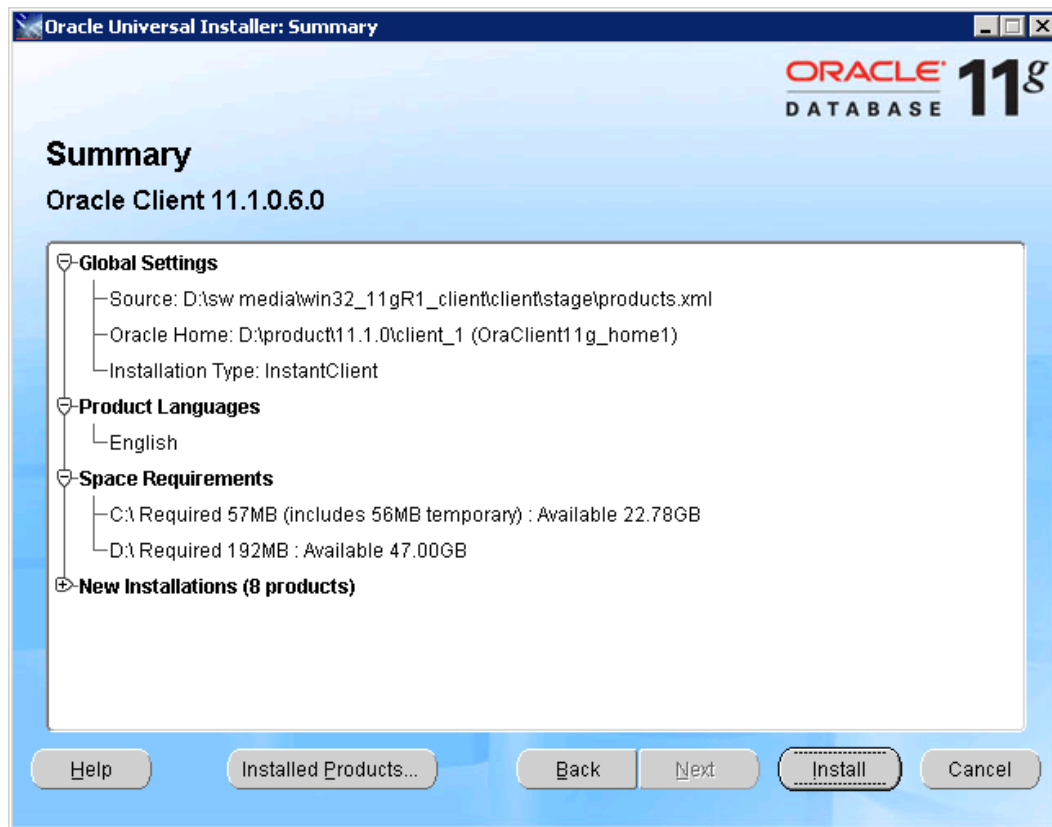
7. Just click **Next**.

Product-Specific Prerequisite Checks



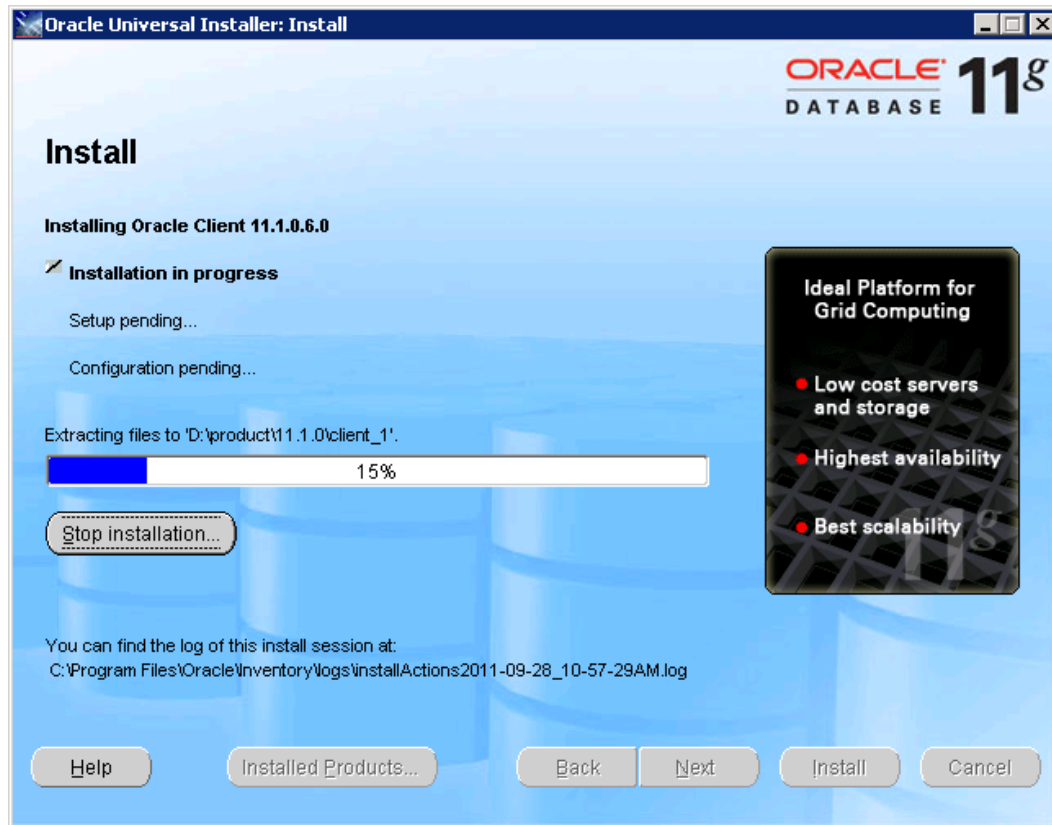
8. Click Next.

Summary



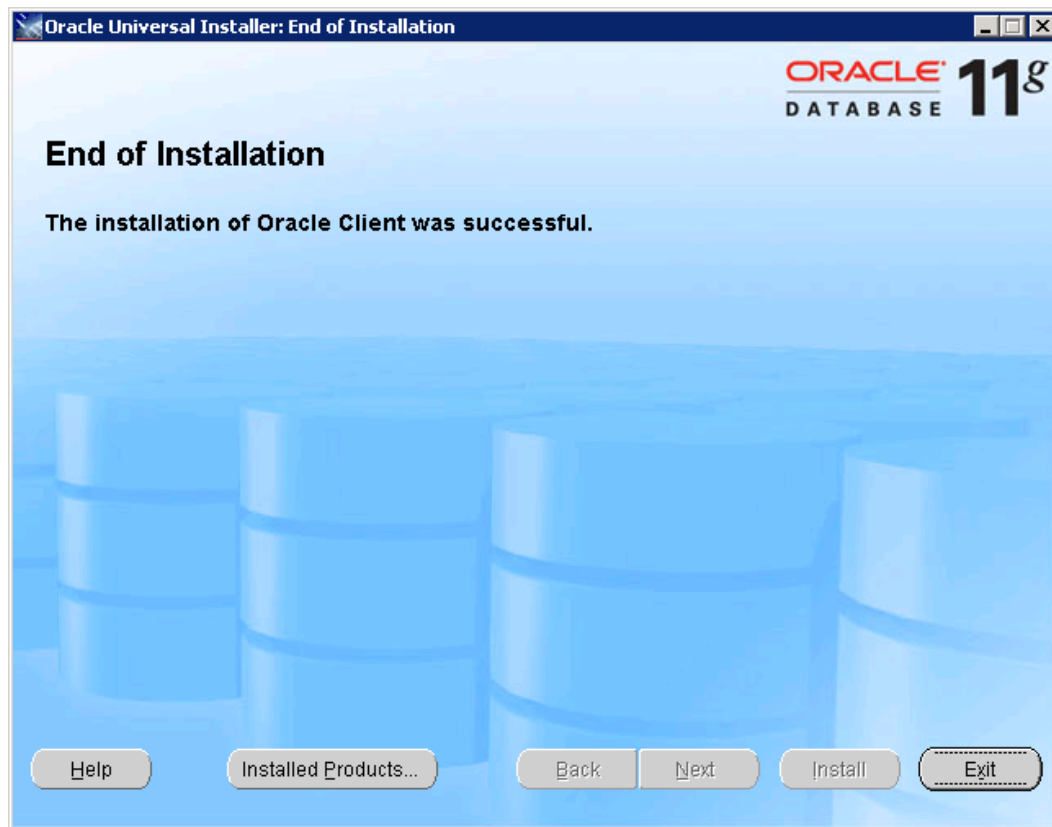
9. Click Install.

Install



10. Wait till installation to process completely

End of Installation



11. Click **Exit** to finish.

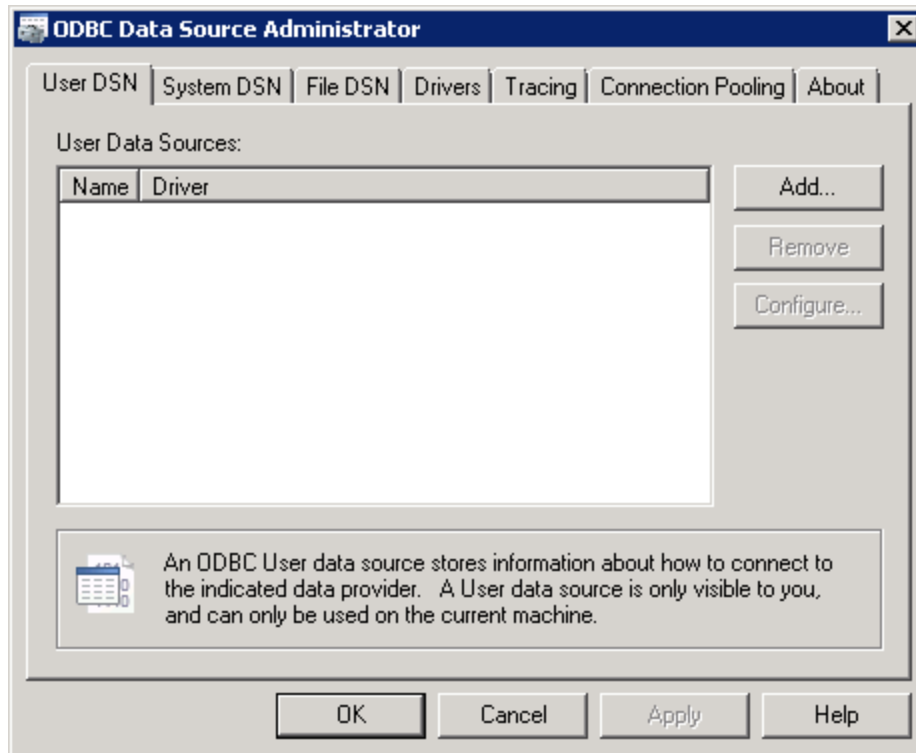
When you completed oracle 11g administrator client installation, you should see oracle database driver is available in the list under **Drivers** tab in **ODBC Data Sources**

Note: Tnsnames.ora needs to be copied at in the admin path of oracle home on windows machine.

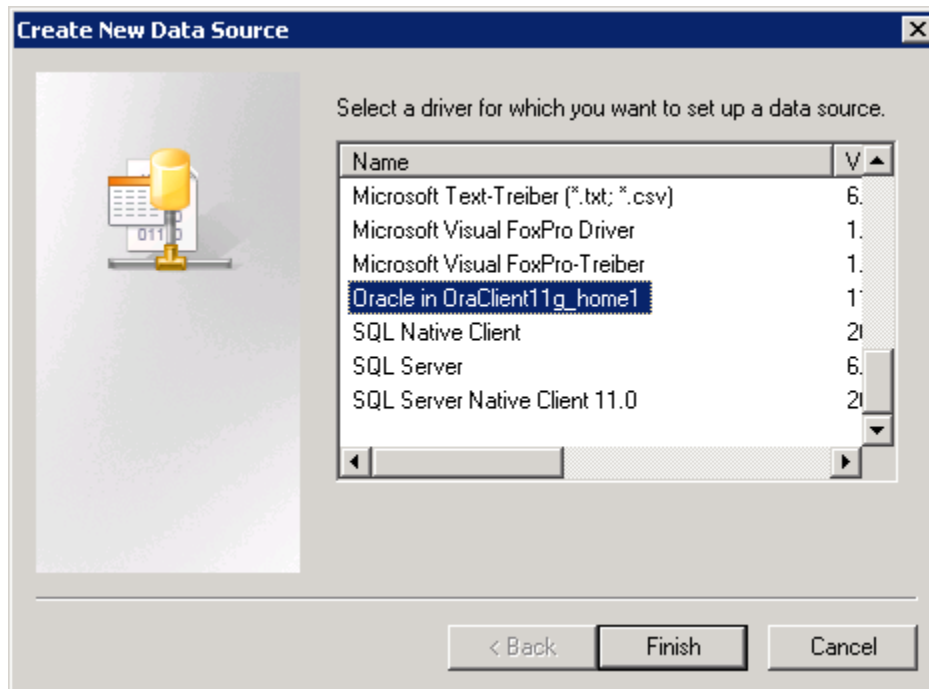
Now a DSN needs to be created.

For this,

1. Go to the path C:\Windows\SysWOW64 on branch machine.
2. Double click on odbcad32.exe .



3. Go to system DSN. Click on Add.
4. Select Oracle 11g driver from the list drivers as shown below.

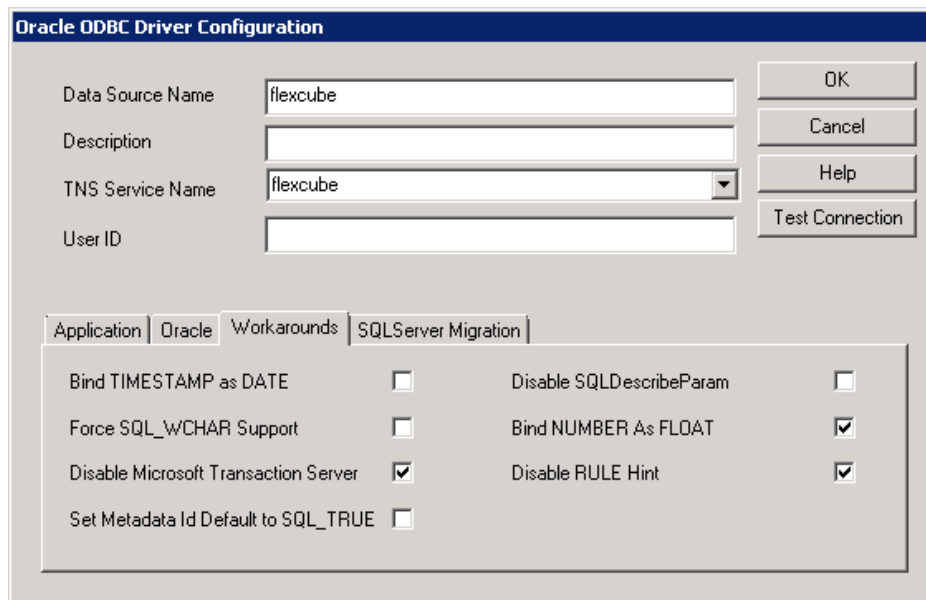


5. Click Finish.

In the configuration screen that comes up, add the datasource name that is to be created.

6. Then add the TNS service name ,as mentioned in the tnsnames.ora , from the dropdown. [Please contact your system administrator for details.](#)

7. Now click on the Workarounds tab ,and check the 'Bind number as float' option, while keeping the rest of the check boxes in their original state.



Oracle ODBC Driver Configuration

Data Source Name: flexcube

Description:

TNS Service Name: flexcube

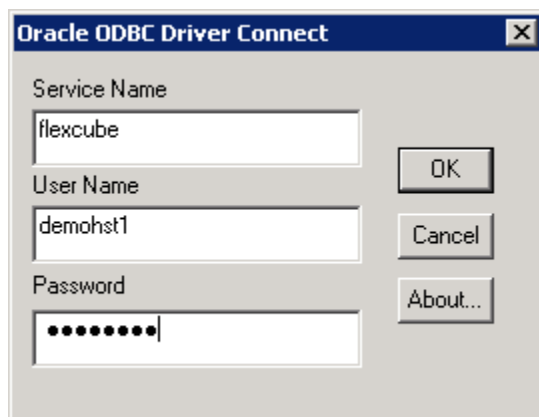
User ID:

Buttons: OK, Cancel, Help, Test Connection

Application | Oracle | Workarounds | SQLServer Migration

Bind TIMESTAMP as DATE	<input type="checkbox"/>	Disable SQLDescribeParam	<input type="checkbox"/>
Force SQL_WCHAR Support	<input type="checkbox"/>	Bind NUMBER As FLOAT	<input checked="" type="checkbox"/>
Disable Microsoft Transaction Server	<input checked="" type="checkbox"/>	Disable RULE Hint	<input checked="" type="checkbox"/>
Set Metadata Id Default to SQL_TRUE	<input type="checkbox"/>		

8. Click test connection.
9. Enter the service name , Username and password.



Oracle ODBC Driver Connect

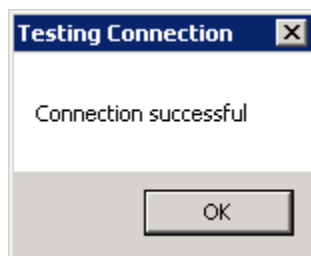
Service Name: flexcube

User Name: demohst1

Password:

Buttons: OK, Cancel, About...

10. Click OK. The connection successful message should appear.



Testing Connection

Connection successful

Button: OK

4.3. Internet Information Services (IIS)

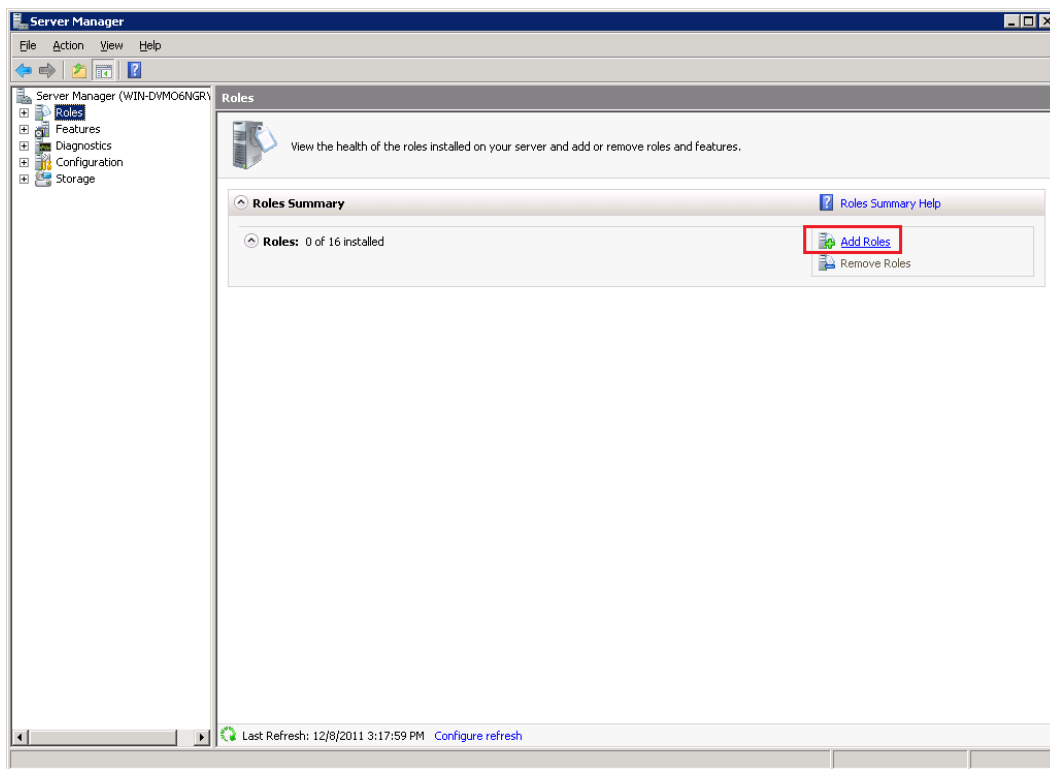
As FLEXCUBE Branch system runs on Microsoft IIS, you need to install and configure IIS before you proceed branch installation. In addition, you need administrator login on windows server and the OS installation CD.

Note: IIS 7.0 is a part of the Windows 2008 R2 enterprise OS.

4.4. Windows Server 2008

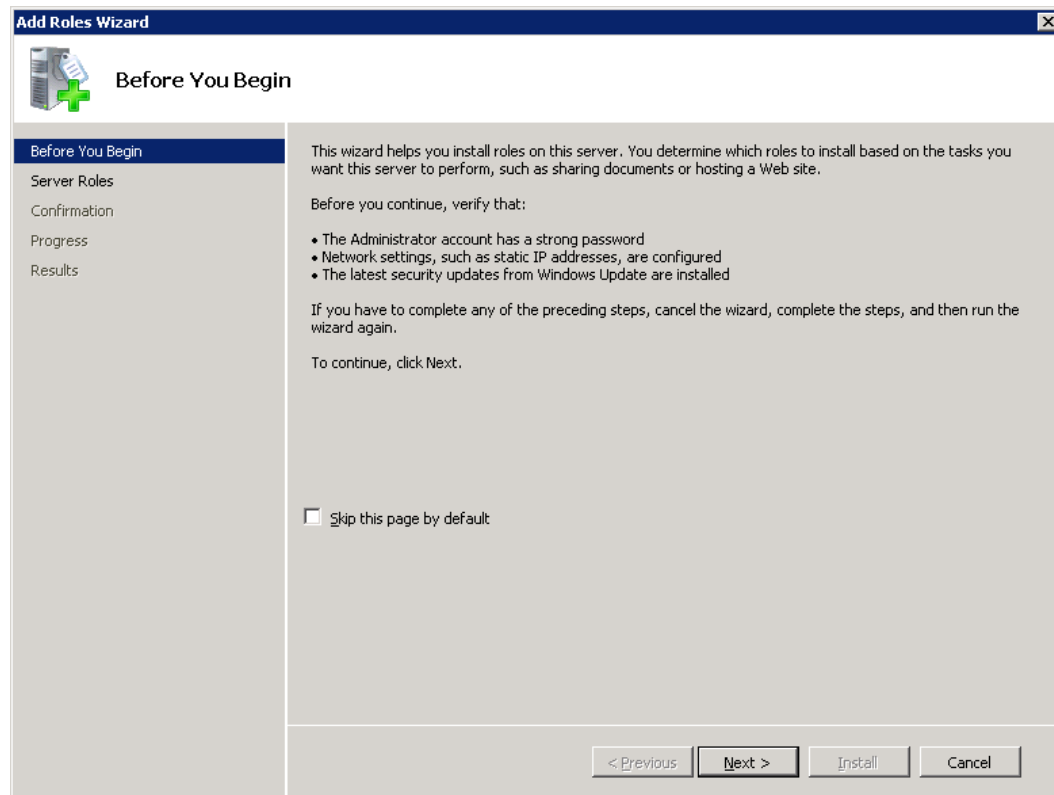
Here are steps to enable IIS and relative services on **windows server 2008**

1. Launch Windows Server Manager on your desktop.
2. In Server Manager screen, navigate to >Roles>**Add Roles**



Then you will see **Add Role Wizard**

3. Click **Next**.



Select Server Roles

Add Roles Wizard

Select Server Roles

Before You Begin

Server Roles

Web Server (IIS)

Role Services

Confirmation

Progress

Results

Select one or more roles to install on this server.

Roles:

- ☐ Active Directory Certificate Services
- ☐ Active Directory Domain Services
- ☐ Active Directory Federation Services
- ☐ Active Directory Lightweight Directory Services
- ☐ Active Directory Rights Management Services
- ☐ Application Server
- ☐ DHCP Server
- ☐ DNS Server
- ☐ Fax Server
- ☐ File Services
- ☐ Network Policy and Access Services
- ☐ Print Services
- ☐ Terminal Services
- ☐ UDDI Services
- ☒ **Web Server (IIS)**
- ☐ Windows Deployment Services

Description:

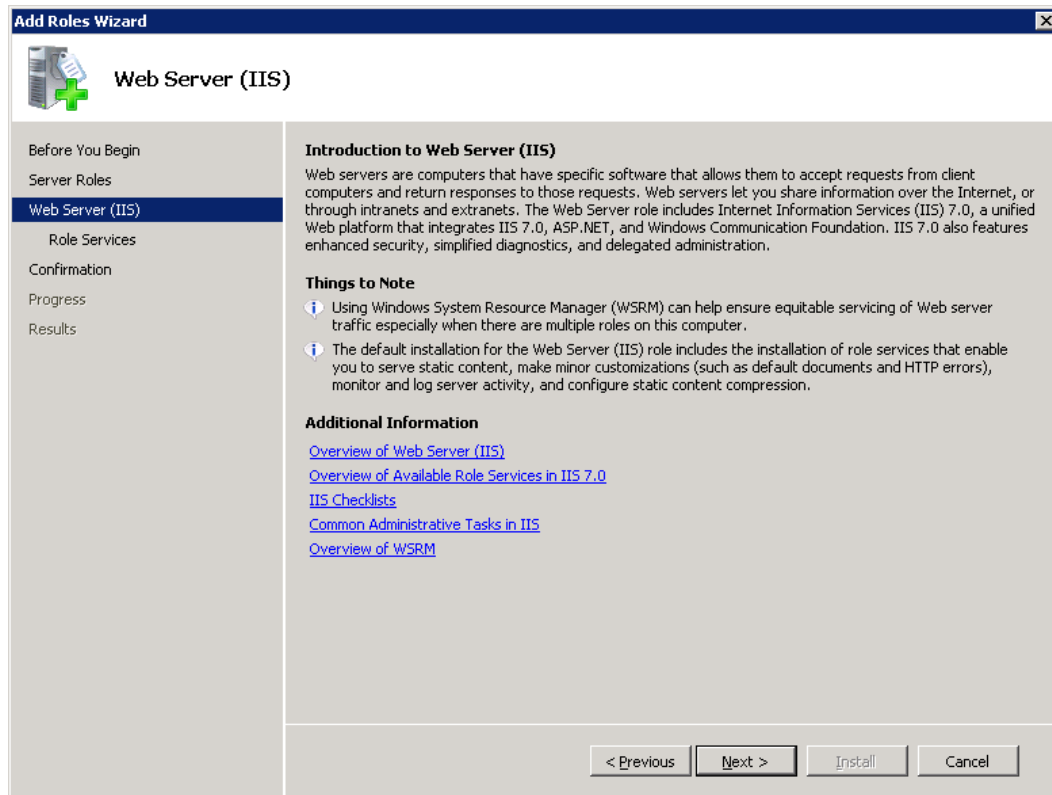
[Web Server \(IIS\)](#) provides a reliable, manageable, and scalable Web application infrastructure.

[More about server roles](#)

< Previous Next > Install Cancel

4. Choose **Web Server (IIS)** option in the list of roles. Click **Next**.

Web Server (IIS)

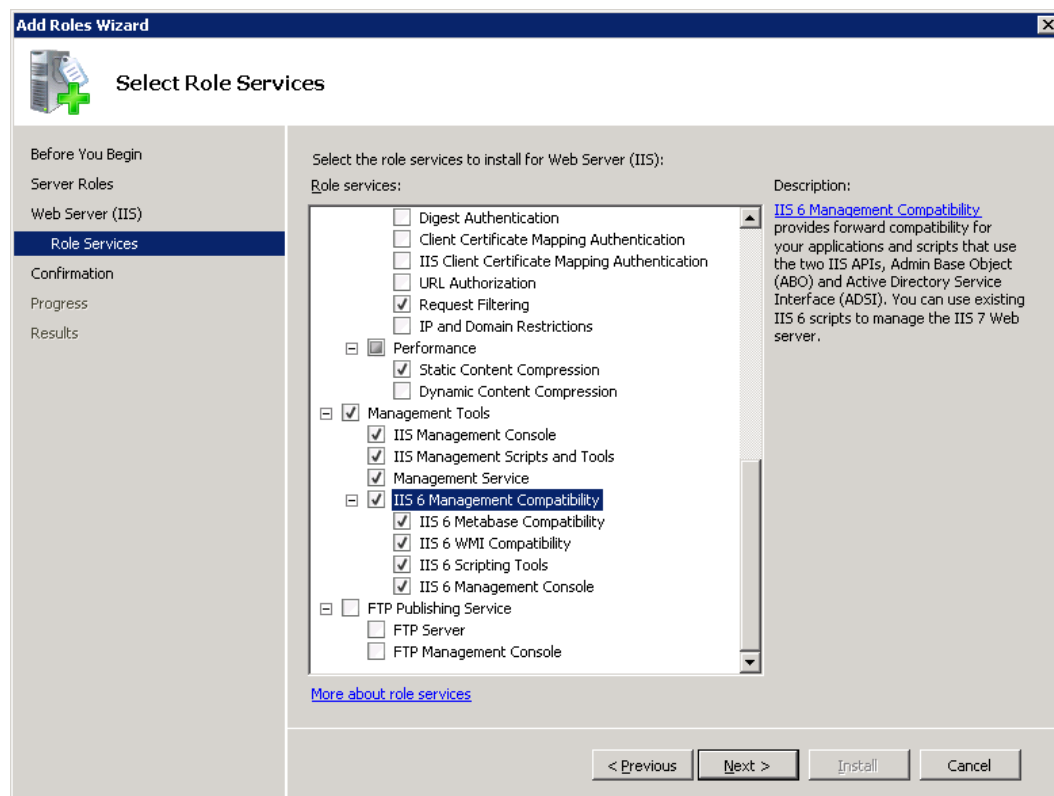
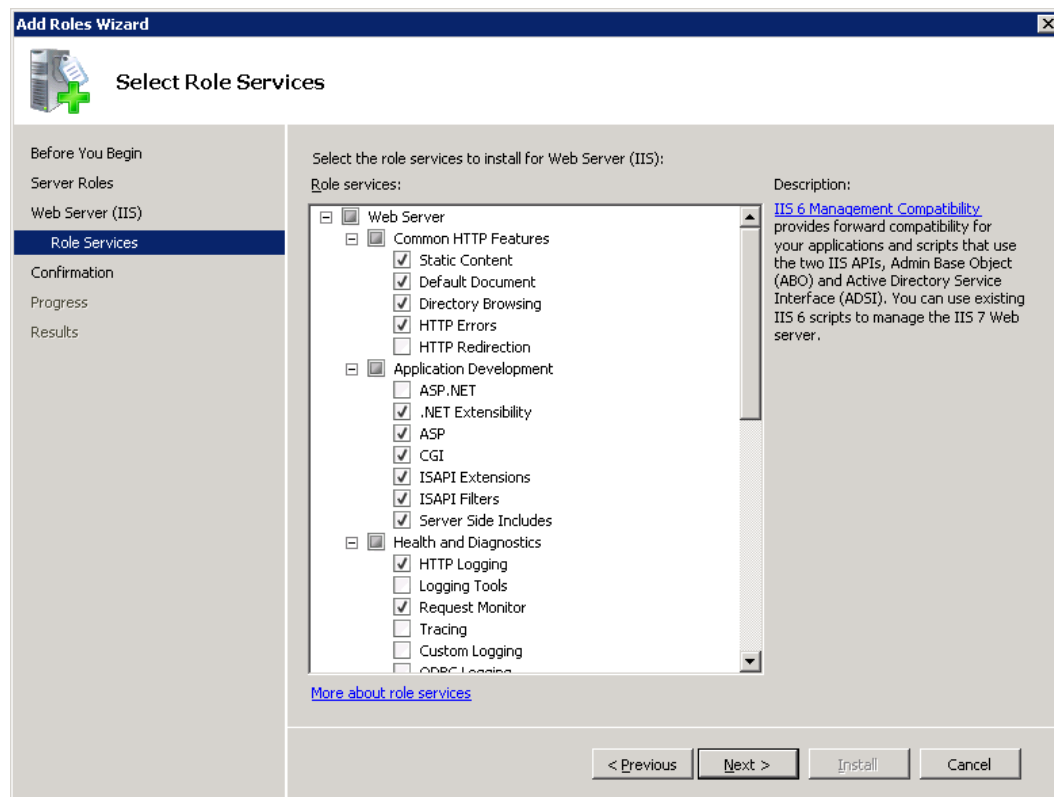


5. Click **Next**.
6. Select the required role services as given below :
 - Common Http Features
 - Static Content
 - Default Document
 - Directory Browsing
 - Http Errors
 - Http Redirection
 - Application Development
 - ASP.NET
 - .Net Extensibility
 - ASP
 - CGI
 - ISAPI Extensions
 - ISAPI Filters
 - Server Side Includes

- Health and Diagnostics
 - Http Logging
 - Logging Tools
 - Request Monitor
 - Tracing
- Security
 - Basic Authentication
 - Windows Authentication
 - Client Certificate Mapping Authentication
 - IIS Client Certificate Mapping Authentication
 - URL Authorization
 - Request Filtering
- Performance
 - Static Content Compression
- Management Tools
 - IIS Management Console
 - IIS Management Scripts and Tools
 - Management Service
- IIS 6 management compatibility
 - IIS 6 Metabase Compatibility
 - IIS 6 WMI Compatibility
 - IIS 6 Scripting Tools
 - IIS 6 Management Console

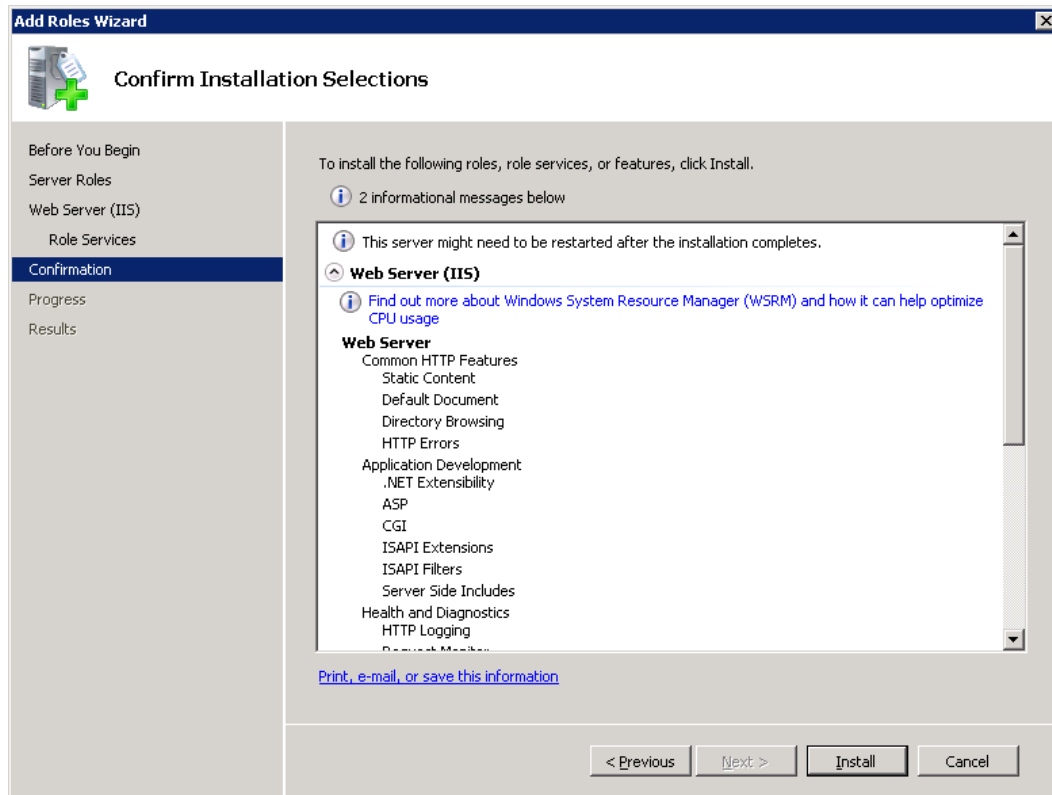
Note: It might be possible that any feature listed above is already installed so simply ignore it.)

7. Now Click Next. Now install option in “Confirm Installation Selections”. Following screen will appear.



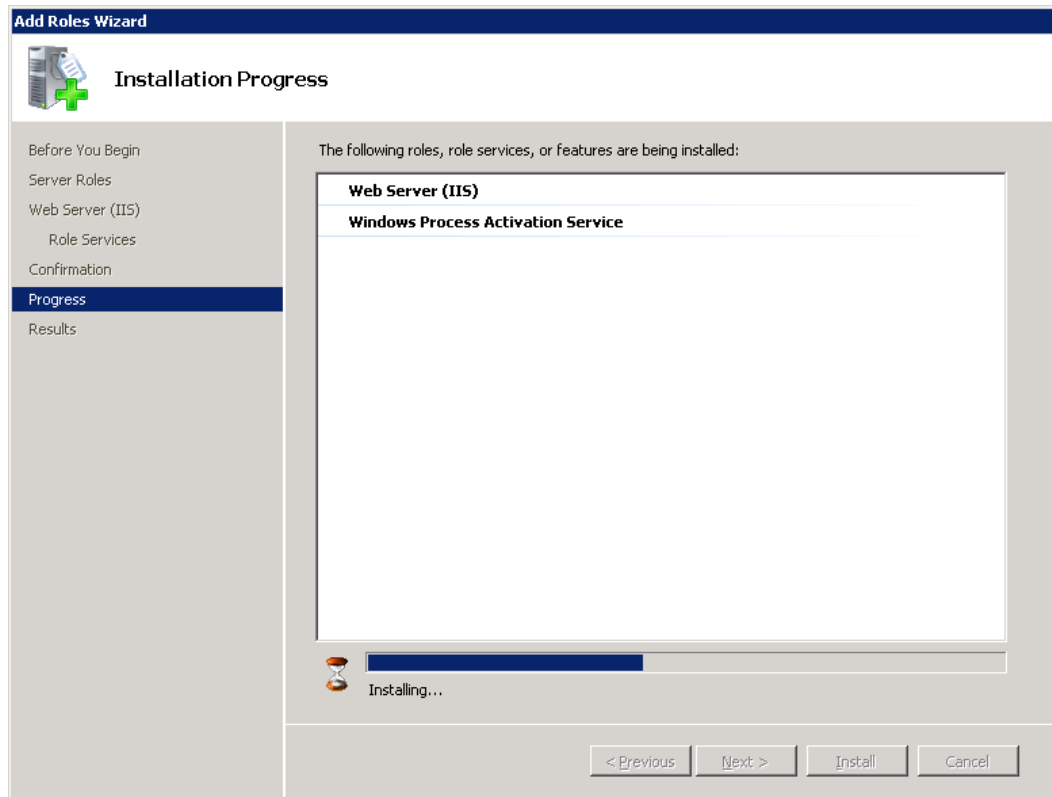
8. Click **Next**.

Confirm Installation Selections



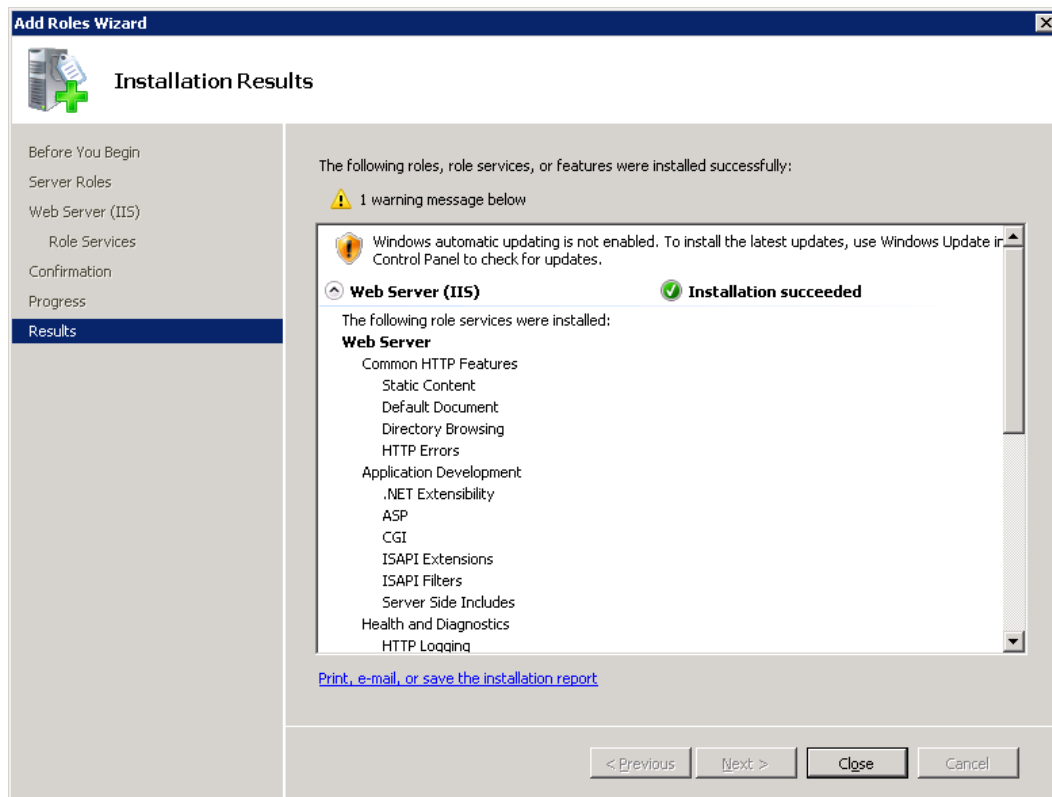
9. Click **Install** to proceed.

Installation Progress



10. Wait till installation progress is completed

Installation Results



If installation is successful, click **Close** to finish.

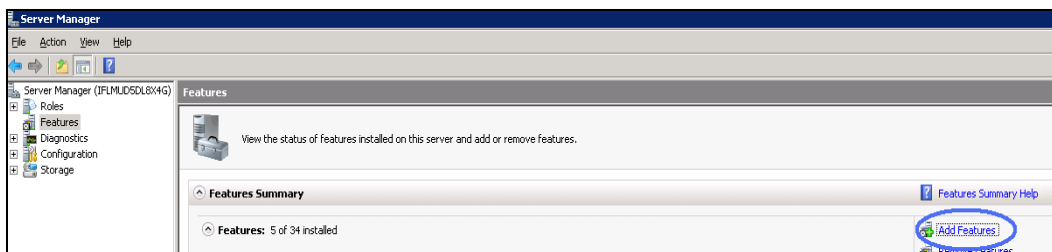
Additional Steps:

1. Go to Control Panel - > Right Click on "Server Manager"->Select "Run As Administrator" option.

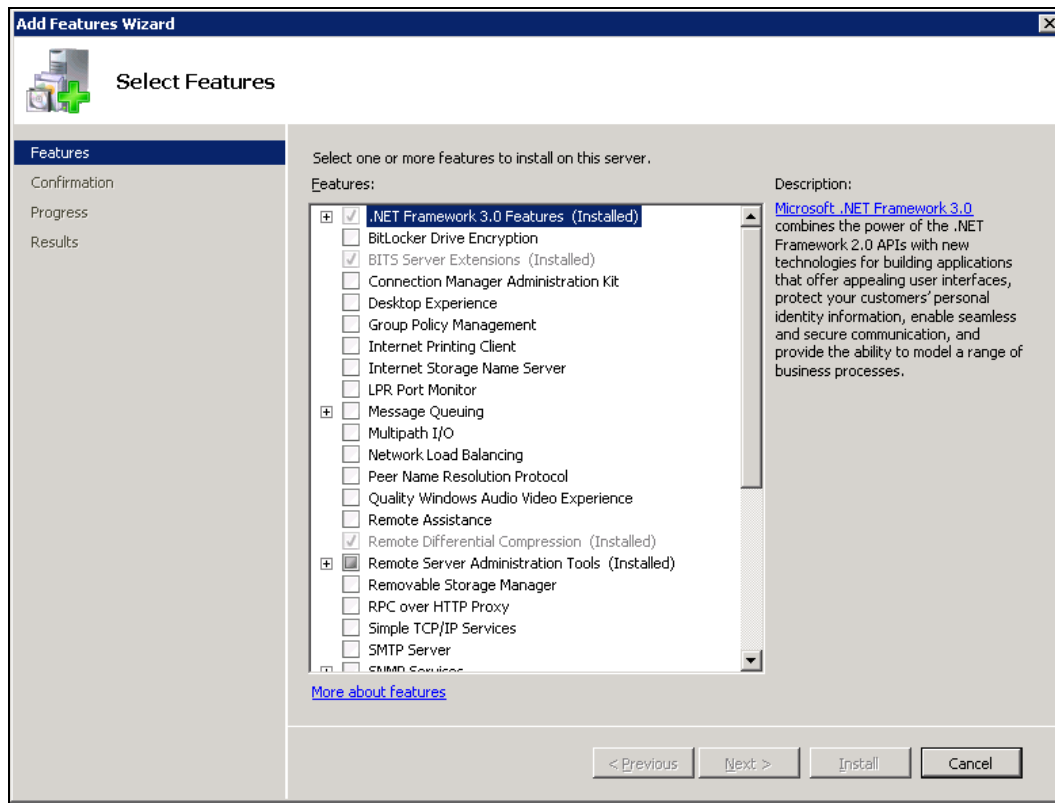
(Windows Server 2008 Server Manager is a new console that will put all the snap-ins you need to manage your server in a single place, making it easier and faster for administrators to manage Windows 2008 Servers.)

->Features

2. Now select Features option under Server Manager



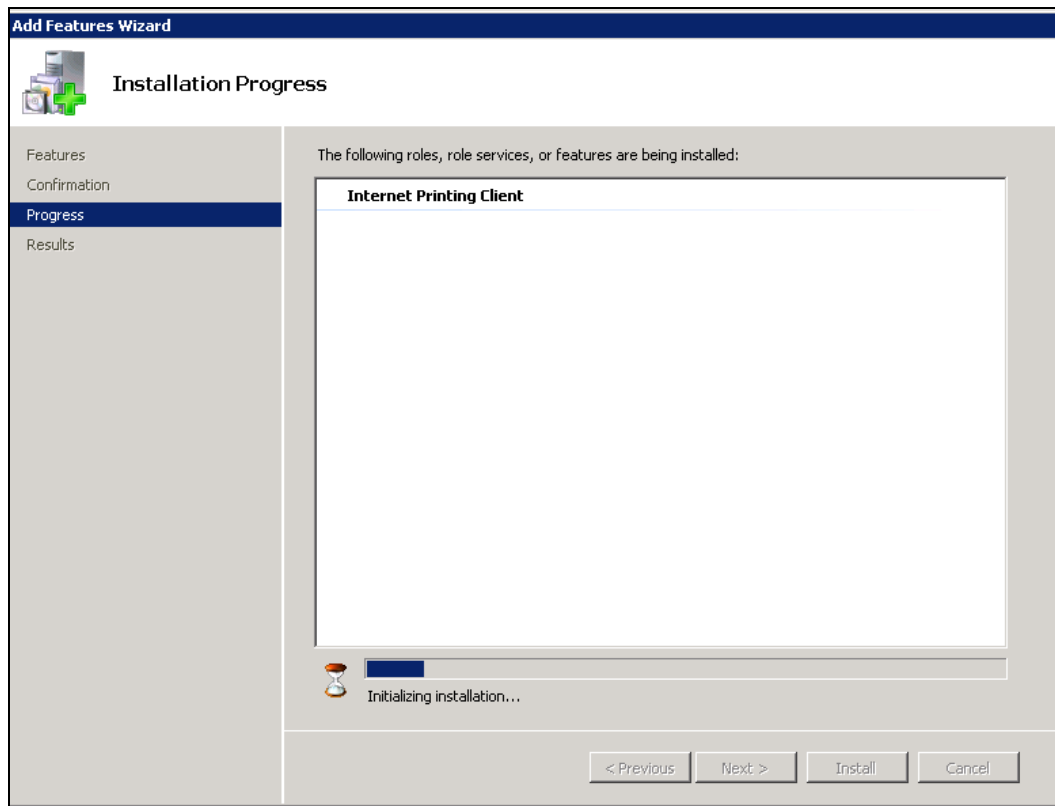
3. Select Add Features



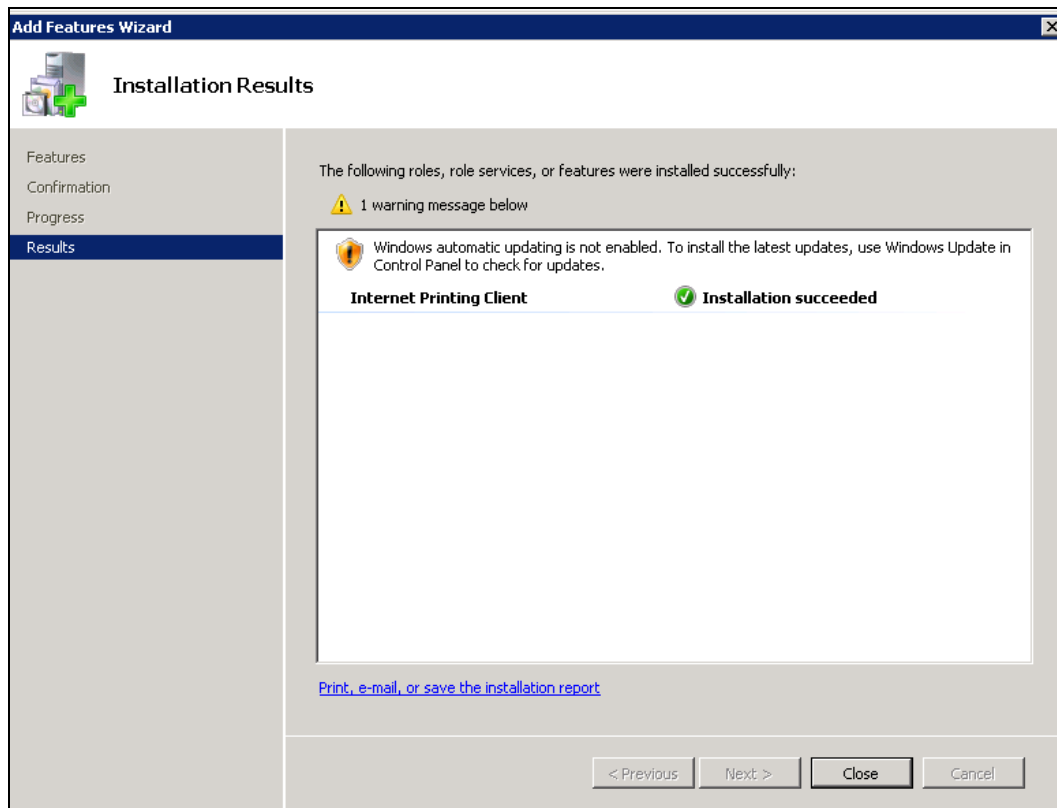
4. Select following options.
 - .Net Framework 3.0Features
 - .Net Framework 3.0
 - XPS Viewer
 - WCF Authentication
 - HTTP Activations
 - Non-Http Activations
 - Bits Server Extensions
 - Remote Differential Compression
 - Windows Process Activation Service
 - Process Model
 - .Net Environment
 - Configuration API's

Note: If any of the features listed above is already installed then ignore the same.

5. Click Next ->Next screen will be the “Conform Installation Selections”
6. Click “Install” option.



This will take few minutes.



7. Click Close on "Installation Result" window.
8. Restart your computer now

5. Branch Installation

5.1. Acquire FLEXCUBE Branch Installer Distribution

You can get the FC CORE Branch installer distributed version over the network or a CD/DVD. When you install FC CORE Branch from a CD/DVD, please make sure your target installation system has a CD/DVD ROM equipment.

Please make sure you acquire correct installation version for your operation system. Now FLEXCUBE branch installer supports the following OS

Windows Server 2008 R2

The OUI folder (oui_win32) needs to be copied onto the windows machine and has to be executed from that machine only.

The OUI is present at the following path within Relarea_Encrypted inside the Installation zip:

Relarea_Encrypted\flexcube\install\OUI\Branch\oui_win32

The installer should only be run via a user having admin rights on the machine, and same should be given in OUI when entry for Branch Administrator is asked.

5.2. Launch Installer

Once you have the FLEXCUBE Branch installer, you can launch the start up screen with the following steps:

1. Log into windows server with admin user
2. Go into branch installer, under **../oui_win32/install** directory, then click Setup.exe

Just wait for a while, the intallation wizard appears and it will guide you through all steps to install FLEXCUBE Branch on your machine.

Welcome screen

3. You should see the welcome message on first screen. Just click **Next**



Select Home Details

Oracle Universal Installer: Specify Home Details

Specify Home Details

Destination
Enter or select a name for the installation and the full path where you want to install the product.

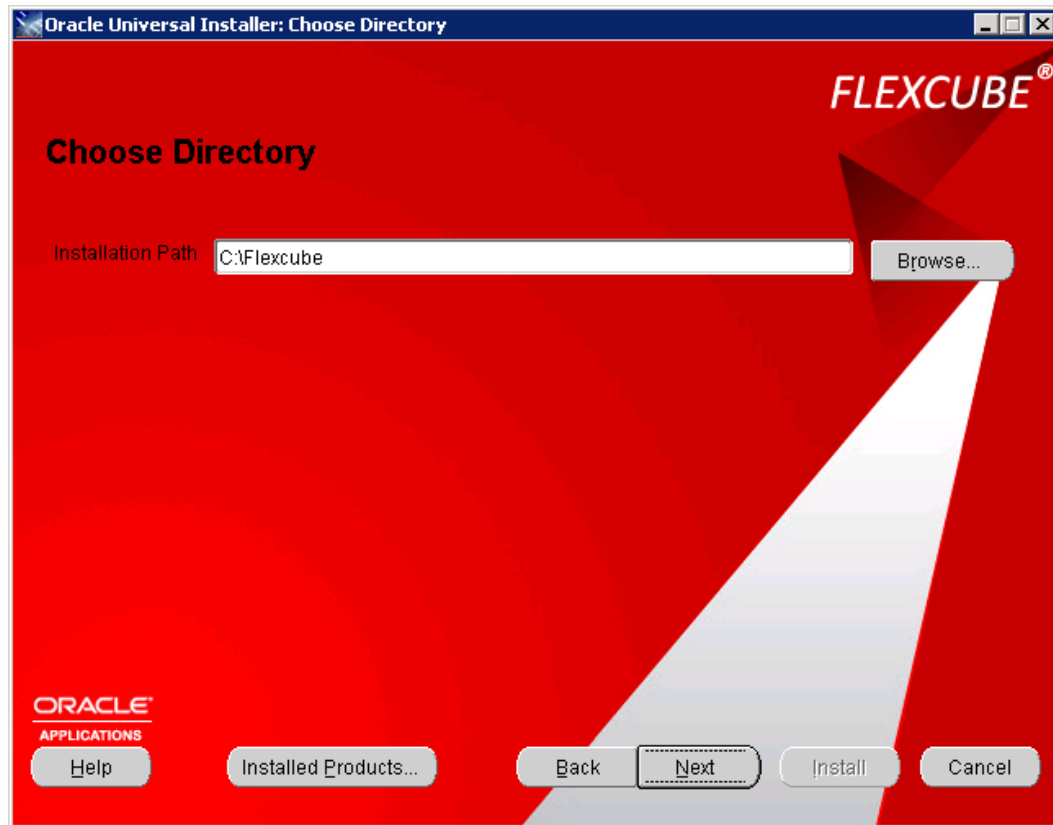
Name:

Path:

ORACLE
APPLICATIONS

4. Keep the default settings. Click **Next**.

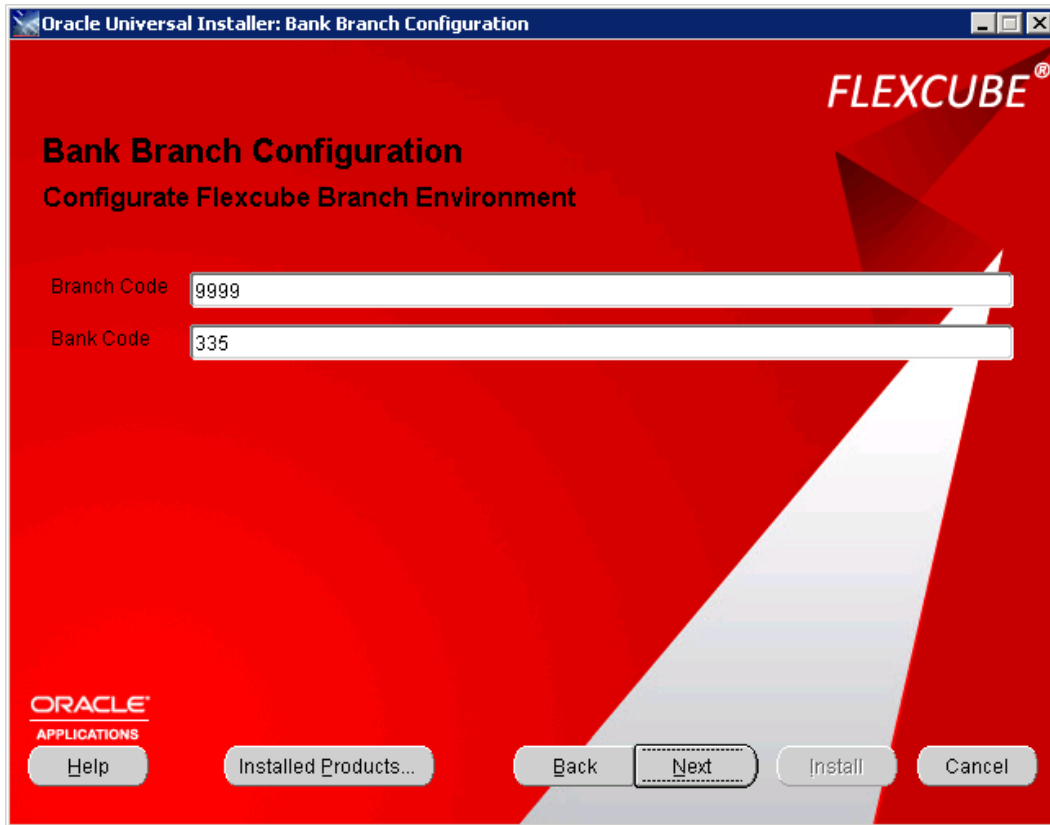
Choose Directory



5. Set FLEXCUBE Branch Installation path here. Click **Next**.

Bank Branch Configuration

6. You can specify FLEXCUBE bank & branch code respectively



The image shows a screenshot of the 'Oracle Universal Installer: Bank Branch Configuration' window. The window has a red background with a white diagonal stripe. The title bar reads 'Oracle Universal Installer: Bank Branch Configuration'. The main heading is 'Bank Branch Configuration' with the subtitle 'Configure Flexcube Branch Environment'. The 'FLEXCUBE' logo is in the top right corner. Below the heading, there are two input fields: 'Branch Code' with the value '9999' and 'Bank Code' with the value '335'. At the bottom left is the 'ORACLE APPLICATIONS' logo. At the bottom right are five buttons: 'Help', 'Installed Products...', 'Back', 'Next' (which is highlighted with a dashed border), 'Install', and 'Cancel'.

Please contact your supervisor for Bank code and Branch Code details. These details should be same as those provided while running the RCU for DB creation.

7. Click Next.

Branch Database Configuration

8. Please specify FLEXCUBE branch database connection parameters

Oracle Universal Installer: Branch Database Configuration

Branch Database Configuration
Configure your Flexcube Branch database connection

ODBC Source Name: FCRDB01

TNS Service Name: FCRDB01

User ID: C50BITR2_DAY7

Password: *****

DB Server IP: infbjvm2.cn.oracle.com

DB Server Port: 1521

Oracle SID: FCRDB02

ORACLE APPLICATIONS

Help Installed Products... Back Next Install Cancel

There must existing DB info in tnsnames.ora file.

From the below example, please note the corresponding info in the tns entry for the screen inputs.

FCR =

(DESCRIPTION =

(ADDRESS = (PROTOCOL = TCP)(HOST = 10.184.132.87)(PORT = 1521))

(CONNECT_DATA =

(SERVER = DEDICATED)

(SERVICE_NAME = fcr)

)

ODBC Source Name : FCR

TNS Service Name : fcr

DB Server ip : 10.184.132.87

DB server port : 1521

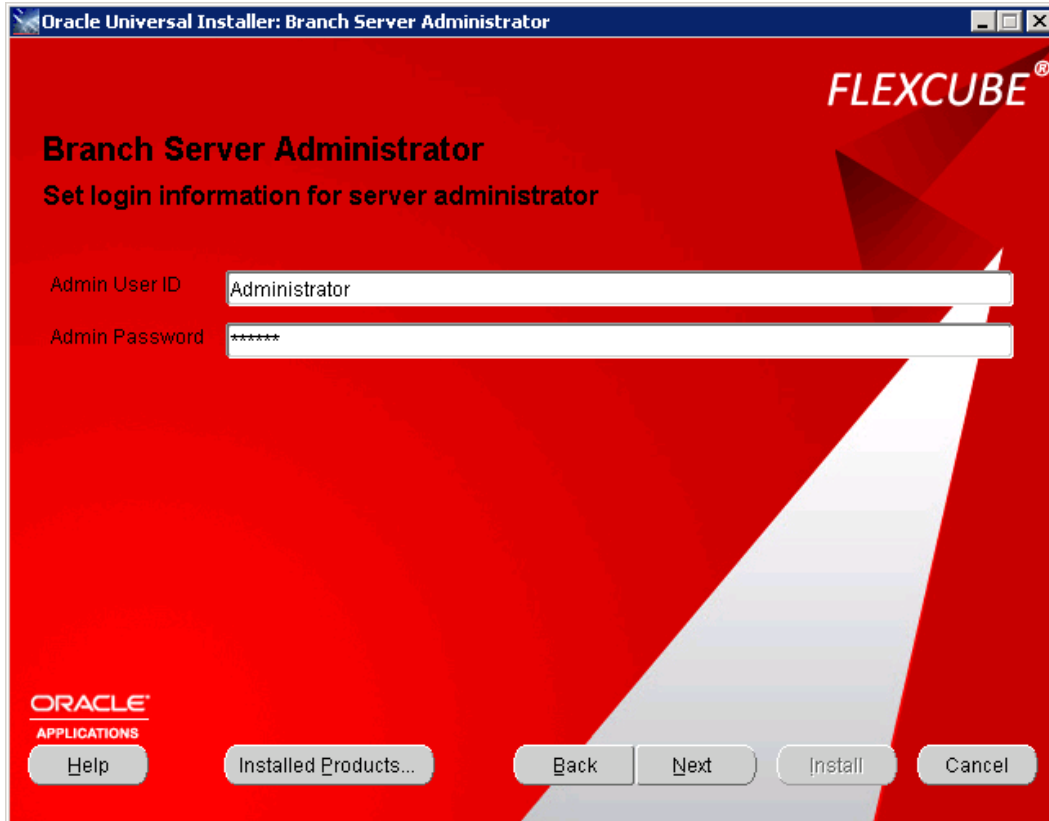
Oracle SID : fcr

Note : DB Server IP can either be in form of ip as '10.184.132.87' or 'infbjvm2.cn.oracle.com'
Please contact with your system administrator for 'User Id' and 'Password' details.

9. Click **Next**.

Branch Server Administrator

10. Type in the Windows server Administrator User name and password.



11. Click **Next**.

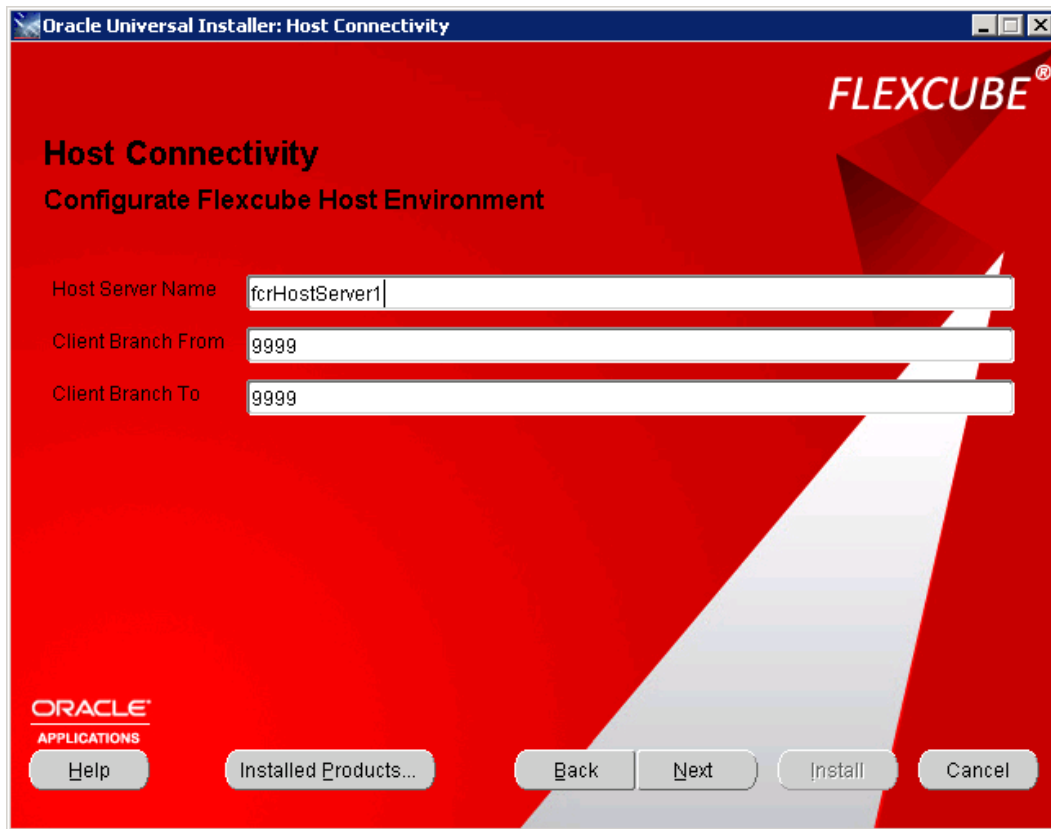
Host Connectivity

12. Specify FLEXCUBE host connection here.

This refers to the hostname(alias) for the host machine. You can also specify the host machine ip here.

Note : For the Host server name, you can log into host server and type following Unix/Linux command to check : `$hostname`

Donot alter the default values for Client Branch From and Client Branch To .



13. Click **Next**.

Host Database

14. Specify FLEXCUBE host database connection here.

Oracle Universal Installer: Host Database

FLEXCUBE®

Host Database
Configure Flexcube Host Database

ODBC Source Name: FCRDB01

Host DB User: C50HITR2_DAY7

Host DB Password: *****

DB Server IP: infbjm2.cn.oracle.com

DB Server Port: 1521

Oracle SID: FCRDB02

ORACLE APPLICATIONS

Help Installed Products... Back Next Install Cancel

There must existing DB info in tnsnames.ora file.

From the below example, please note the corresponding info in the tns entry for the screen inputs.

FCR =

(DESCRIPTION =

(ADDRESS = (PROTOCOL = TCP)(HOST = 10.184.132.87)(PORT = 1521))

(CONNECT_DATA =

(SERVER = DEDICATED)

(SERVICE_NAME = fcr)

)

ODBC Source Name : FCR

TNS Service Name : fcr

DB Server ip : 10.184.132.87

DB server port : 1521

Oracle SID : fcr

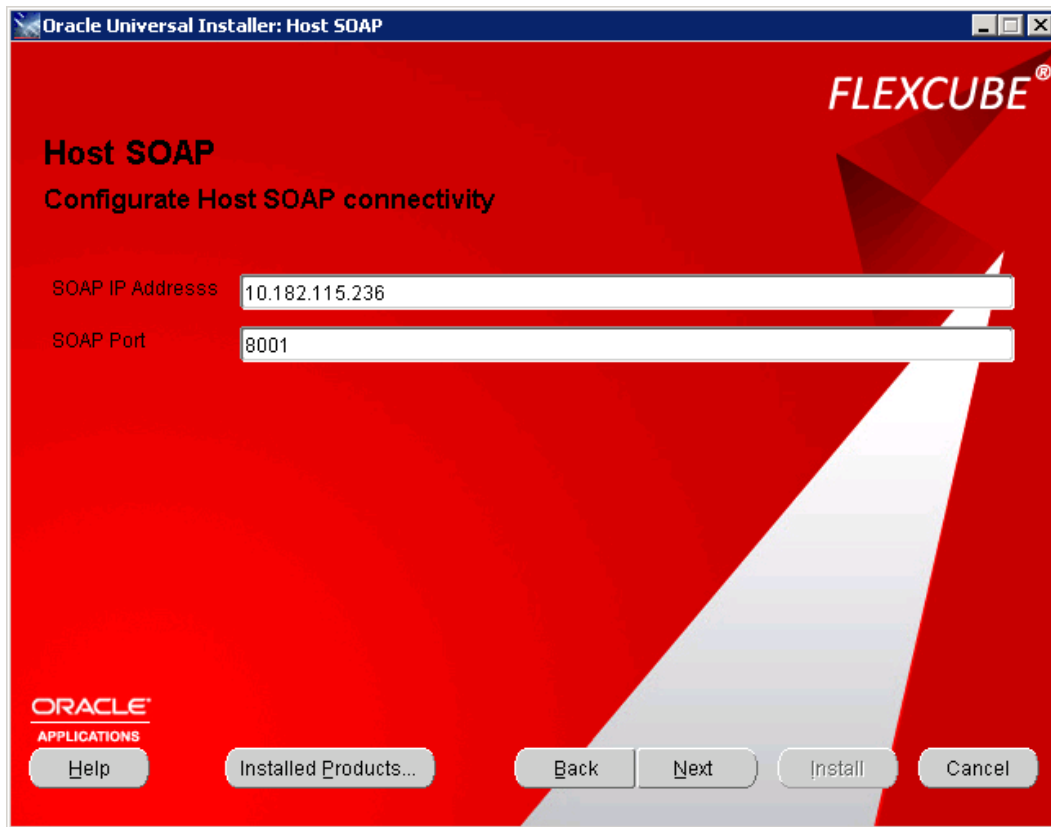
Note : DB Server IP can either be in form of ip as '10.184.132.87' or 'infbjvm2.cn.oracle.com'
Please contact with your system administrator for 'User Id' and 'Password' details.

15. Click **Next**.

Host SOAP

16. Set host SOAP IP address and port number.

Soap IP is the host machine ip and soap port is the FLEXCUBE Manage Server port(Defined at time of host installation).



17. Click **Next**.

FLEXCUBE Chinese Localization

18. If you want add native language, please select “Yes”. And you just want to use English language, please select “No”.



Summary

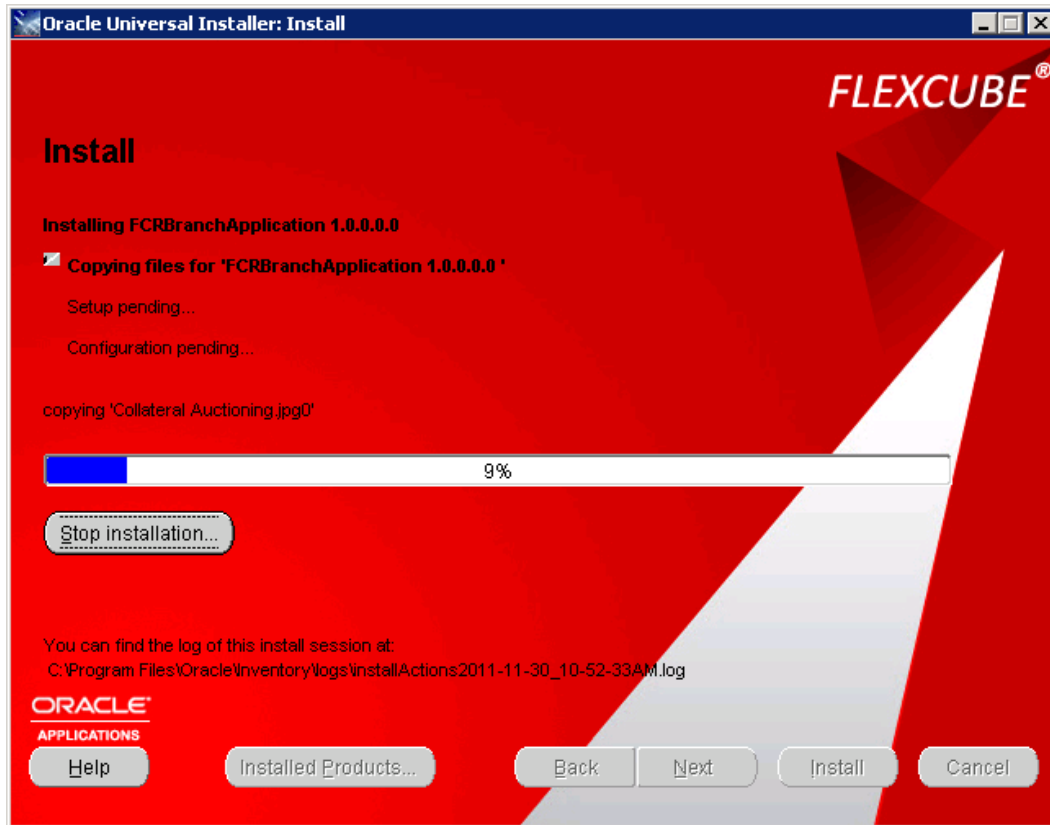


19. Click **Install** to proceed installation.

Install

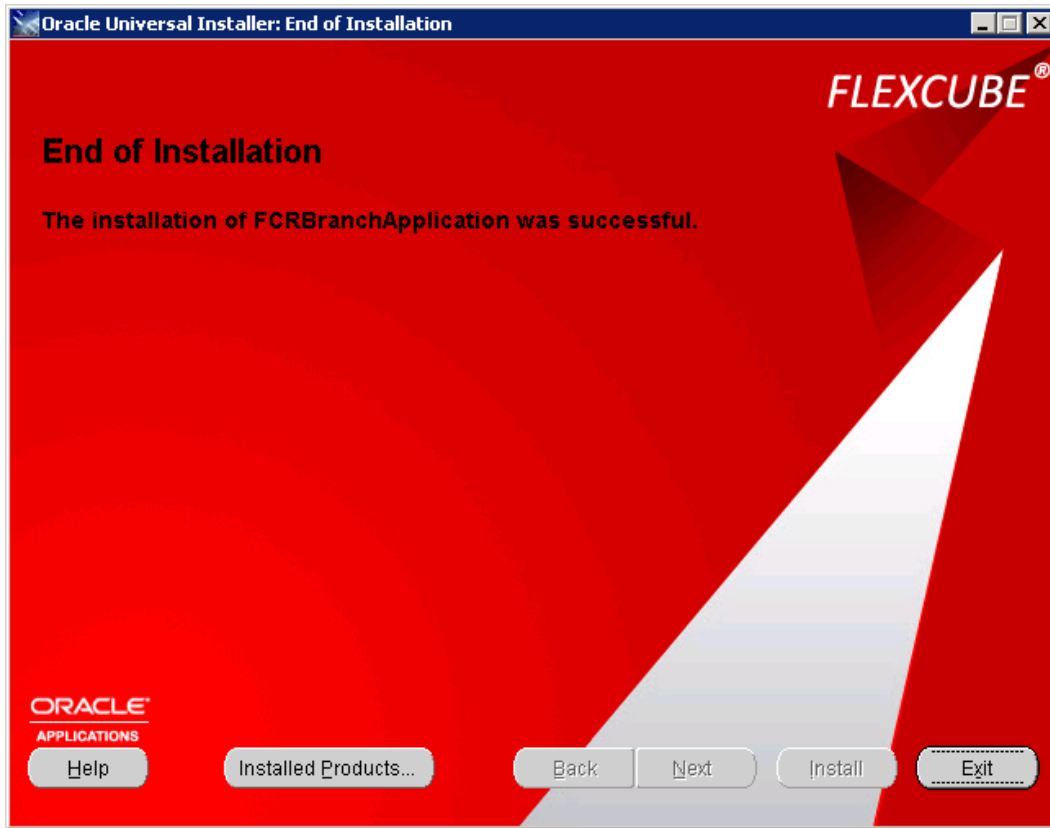
Wait for a while, depends on your machine's performance. The branch installation will be finish shortly. You can click "**Stop installation...**" button to terminate anytime.

Please note that during branch installation proceeding, you may see some popup screen to install depending third party applications, please follow wizards to install all of them.



End of Installation

20. Just click **Exit** to finish.

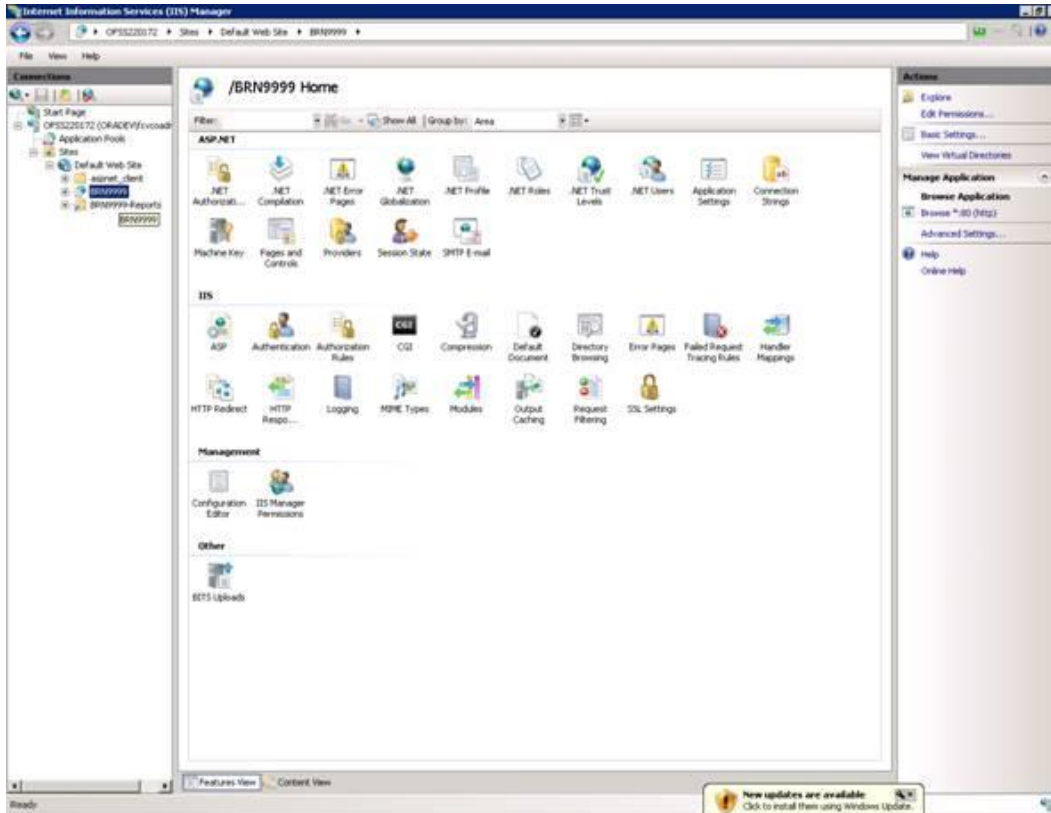


6. Post Installation

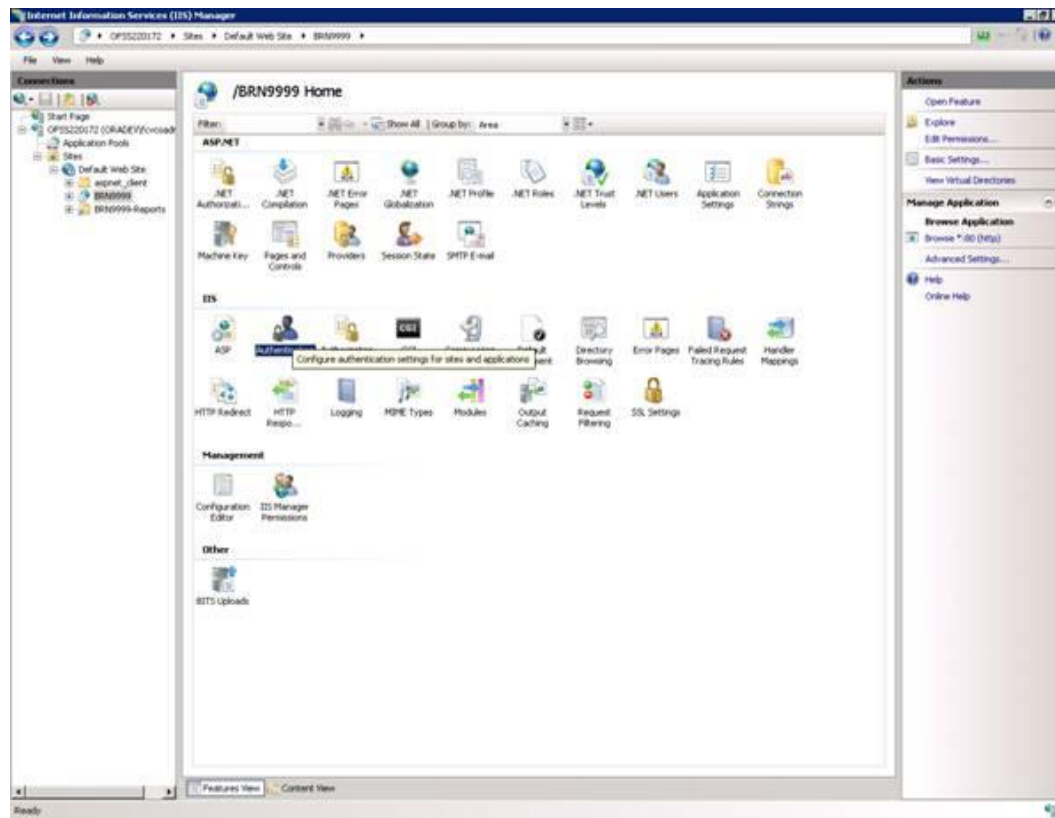
6.1. Changes in system settings

a.)Change in IIS :

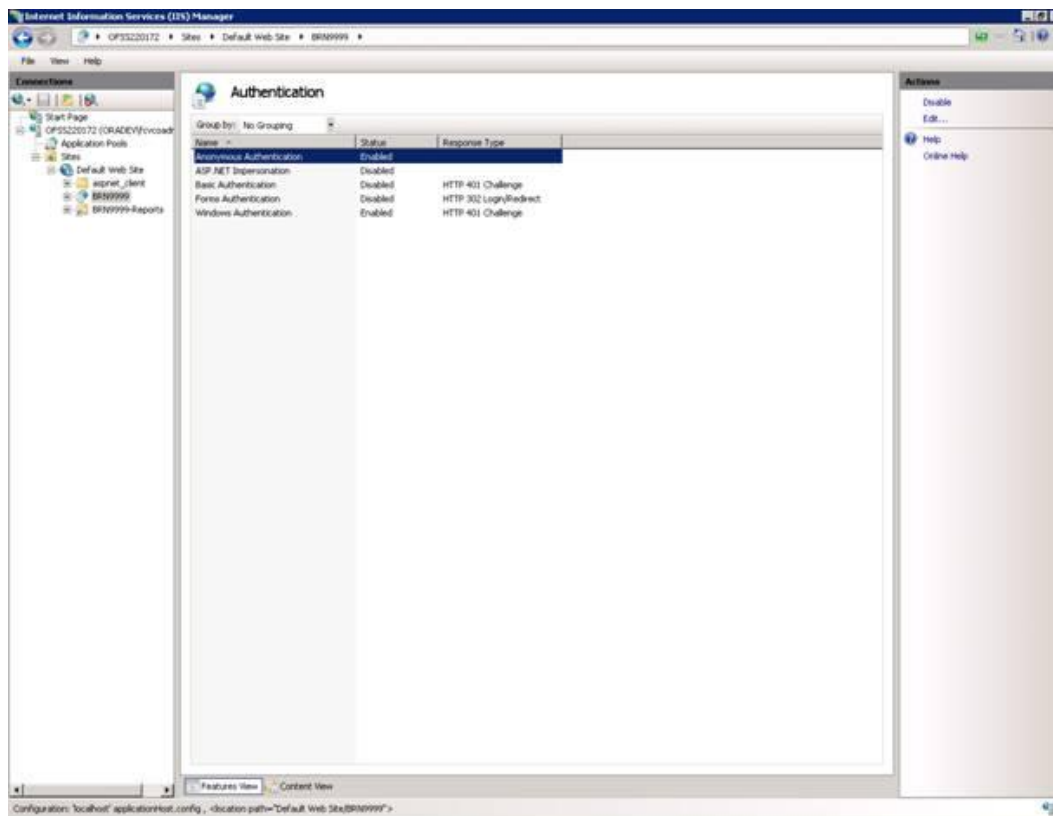
1. Go to Start—> Administrative Tools→IIS Manager. Click on machine name→default web site→BRN9999



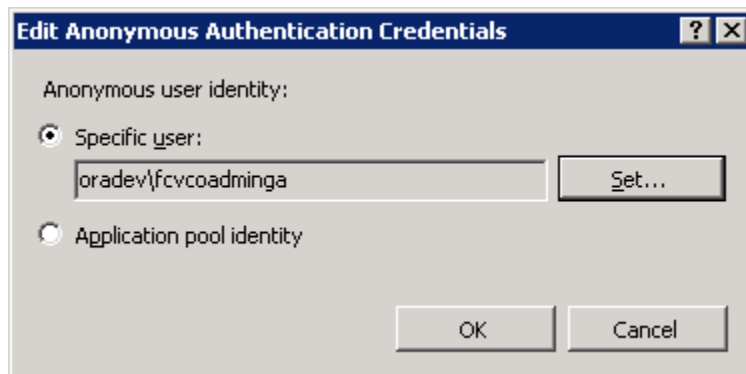
2. Double-click on Authentication



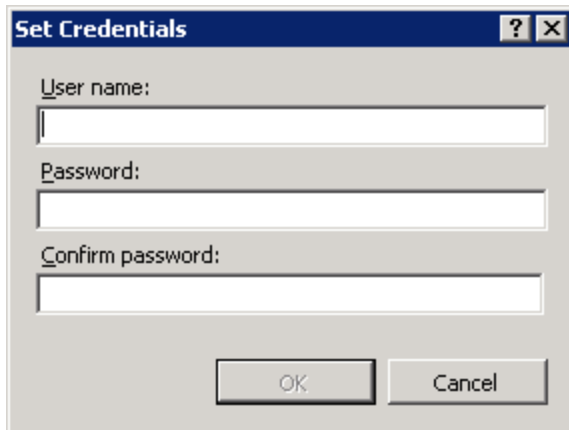
3. Click on Anonymous Authentication and click Edit.



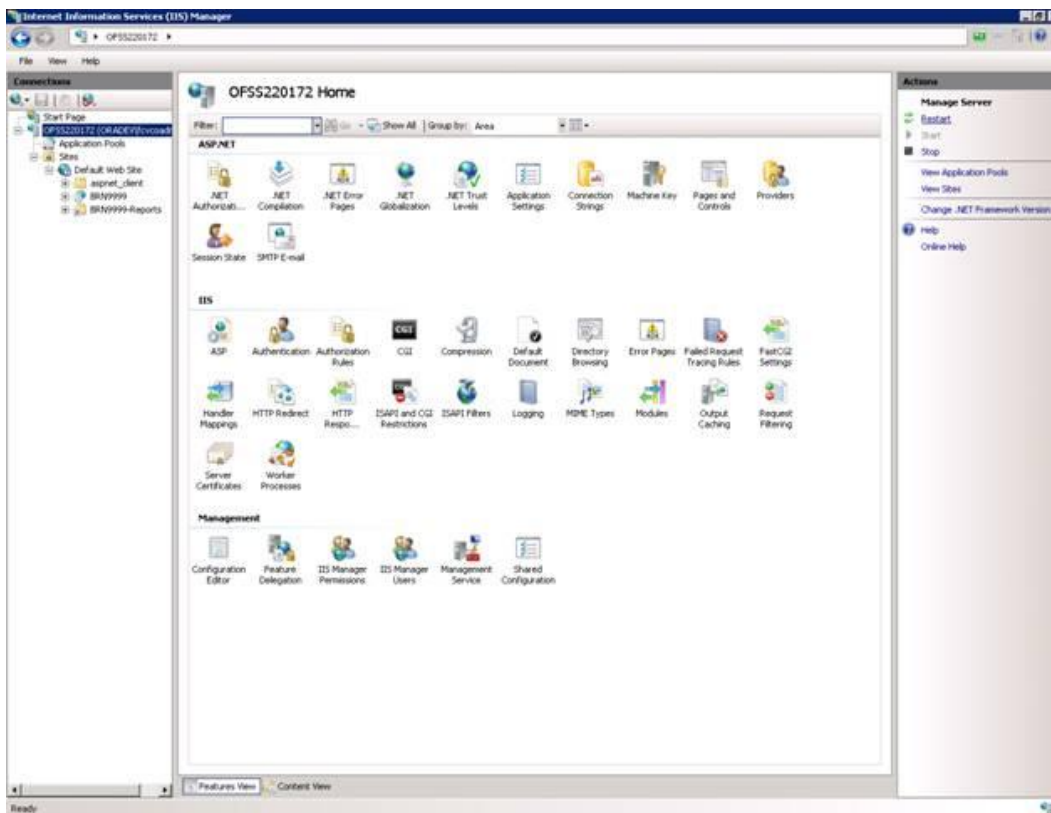
4. Click Set and enter the credentials for your administrator user you had entered during installation.



Please contact your system administrator for User details.

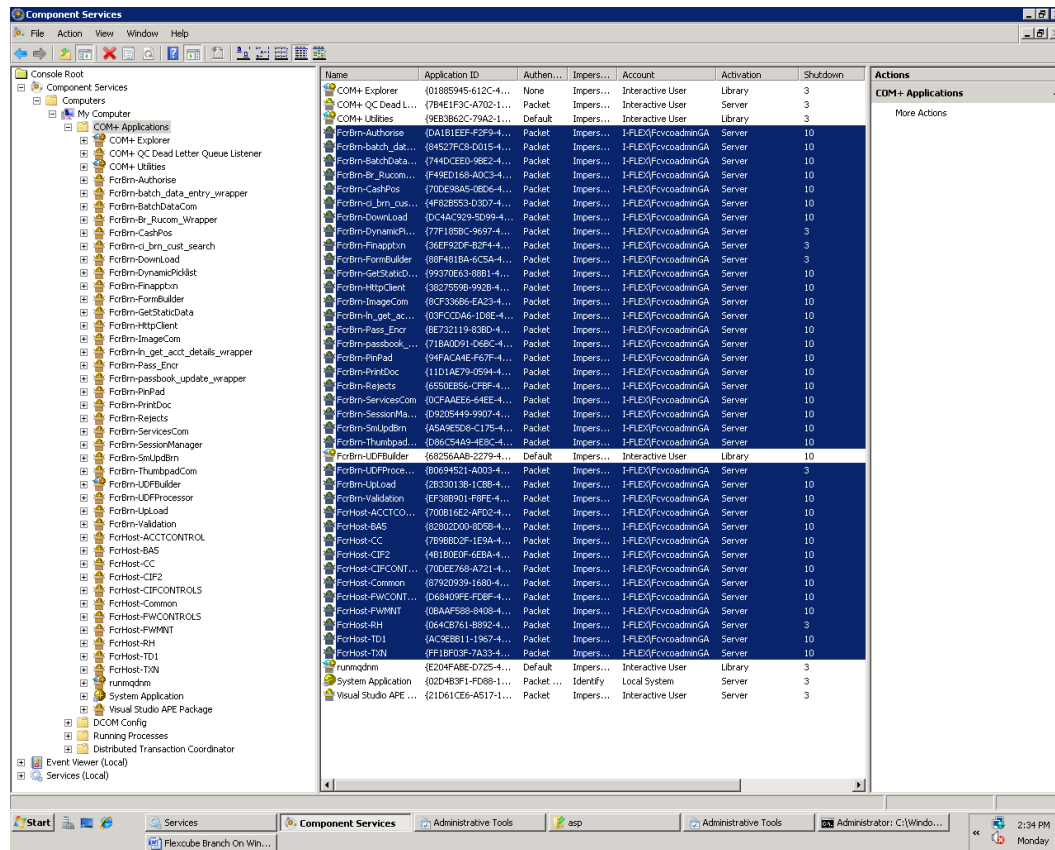


5. Click OK.
6. Restart the IIS server and try to open login page again.

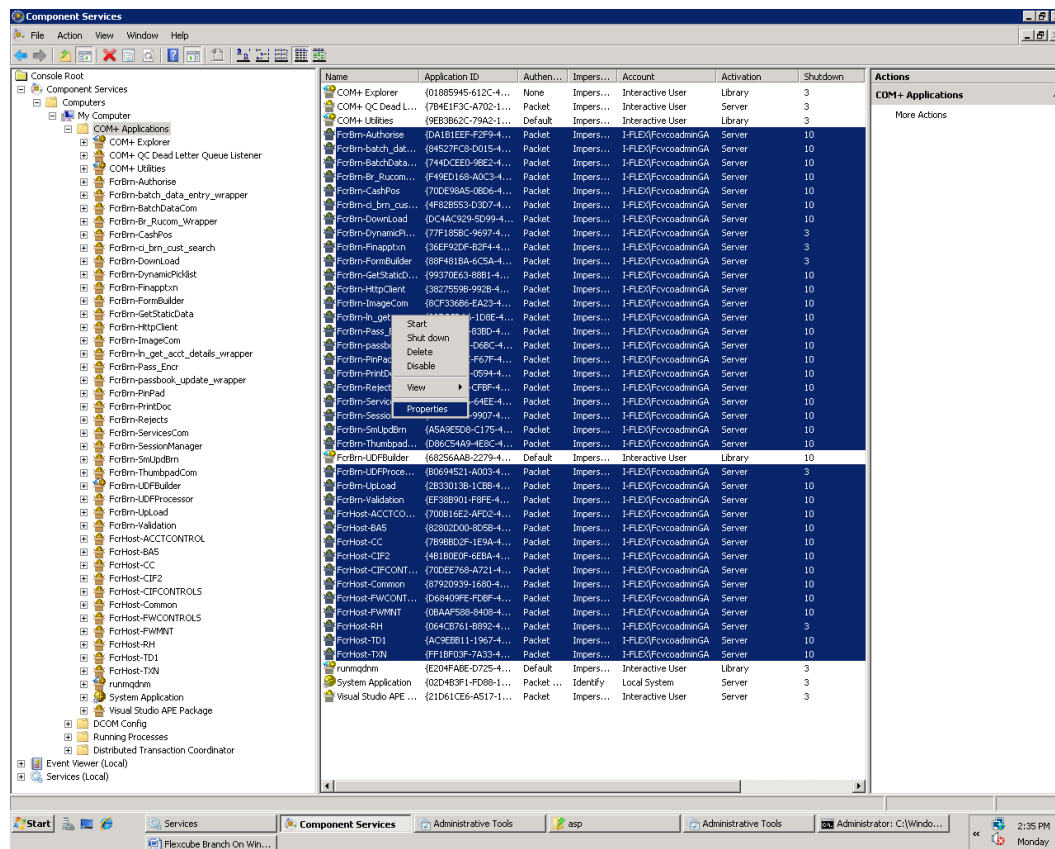


b.)Change in component services

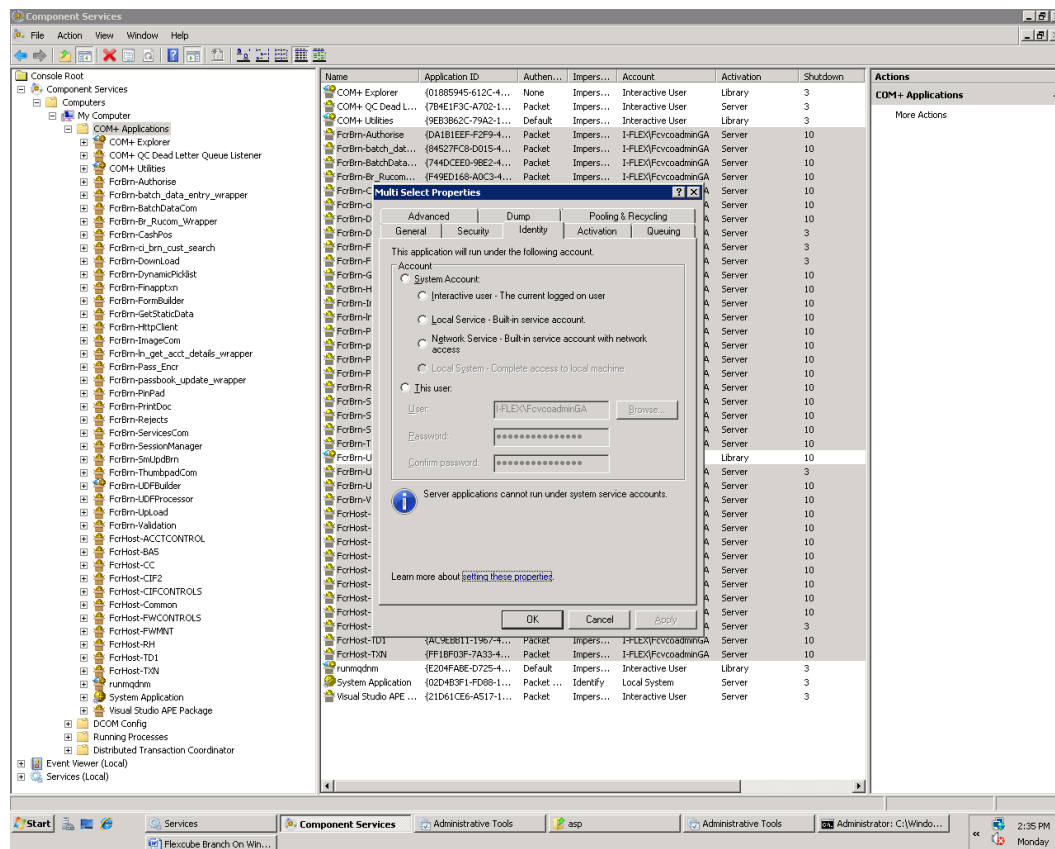
1. Go to Start -> Setting ->Control Panel ->Administrative Tools ->Component Services
2. Select allFC COREComponents under MTS except FcrBrn-UDFBuilder.



3. Right click and goto properties.



4. Goto the identity tab.



5. Select 'This User' and give the windows id and password of the machine.
6. Click apply and OK

c.) Implementing self signed certificate SSL on branch:

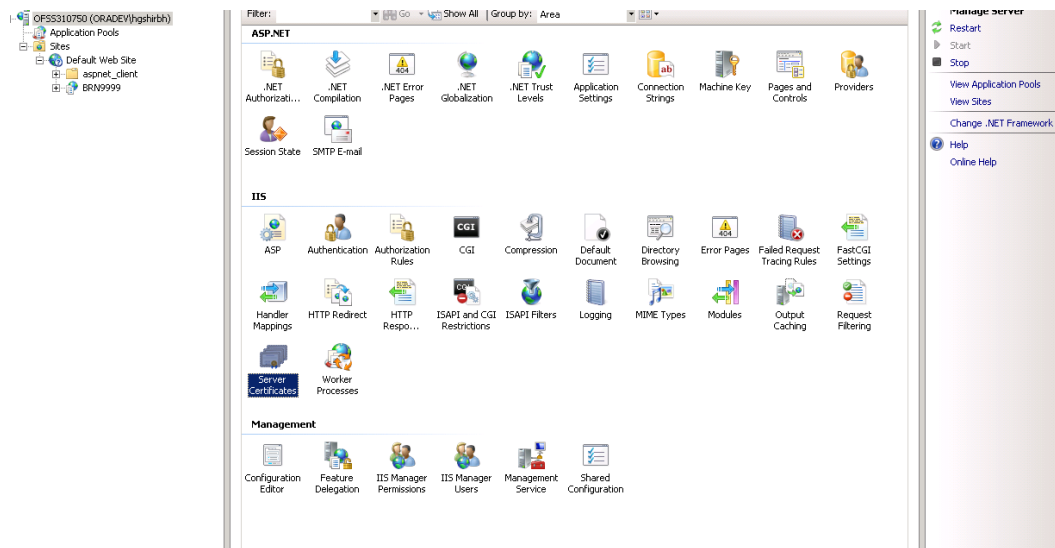
Note: This step is to be done only to check implementation of SSL on branch in the absence of an official SSL certificate(to be provided by bank).

Please contact system administrator for the SSL certificate details.

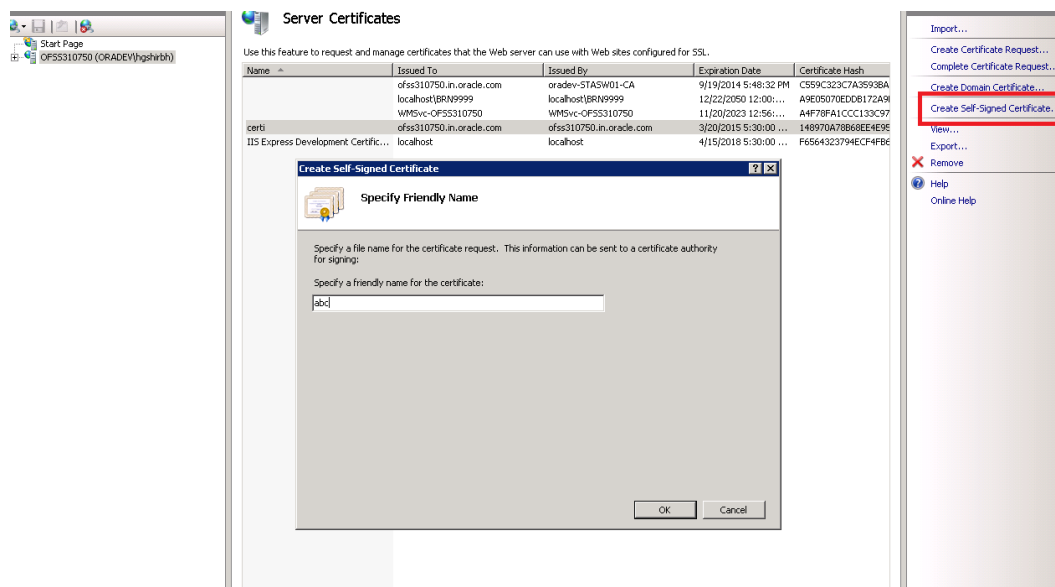
To implement SSL via an official certificate obtained from Certificate Authorities , please follow the below mentioned doc in the encrypted relarea :

Oracle_FLEXCUBE_Core_Banking_5.1.0.0.0.zip\Relarea_Encrypted\flexcube\install\Docs\Branch\PDF\SSL Configuration - 2008_v1.pdf

1. Create a self signed certificate. Open IIS Server and click on Server Certificate....

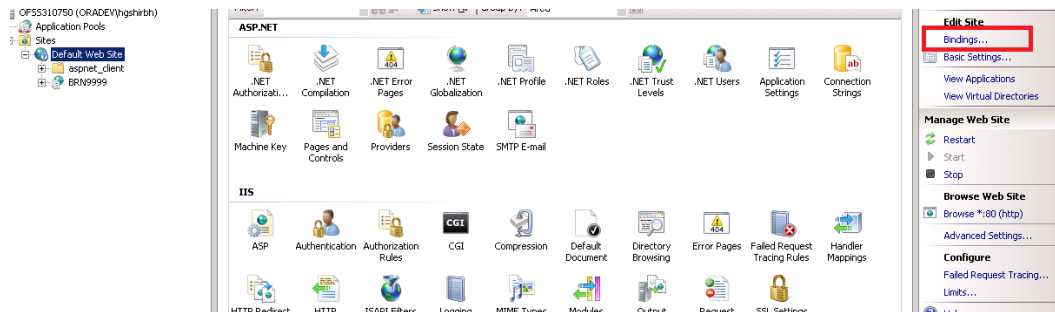


2. Click on create self-signed certificate on right-up corner.

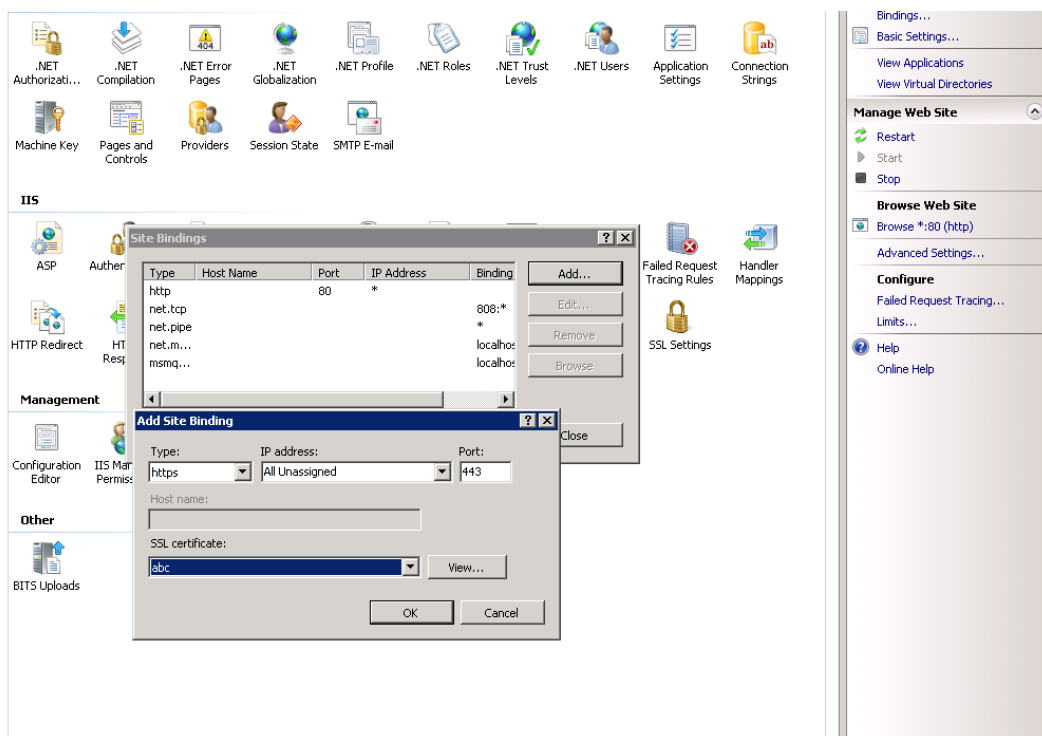


Name	Issued To	Issued By	Expiration Date	Certificate Hash
IIS Express Development Certific...	localhost	localhost	4/15/2018 5:30:00 AM	F6564323794
	localhost\BRN9999	localhost\BRN9999	12/22/2050 12:00:00 AM	A9E05070ED0
	ofss310750.in.oracle.com	oradev-STASW01-CA	9/19/2014 5:48:32 PM	C559C323C7
certi	ofss310750.in.oracle.com	ofss310750.in.oracle.com	3/20/2015 5:30:00 AM	148970A78B6
abc	ofss310750.in.oracle.com	ofss310750.in.oracle.com	3/24/2015 5:30:00 AM	EC1B2302244
	WMSvc-OFSS310750	WMSvc-OFSS310750	11/20/2023 12:56:28 PM	A4F78FA1CC

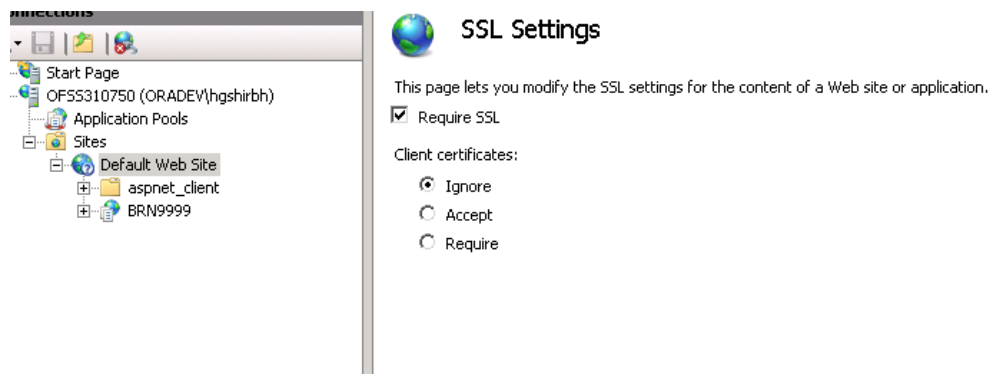
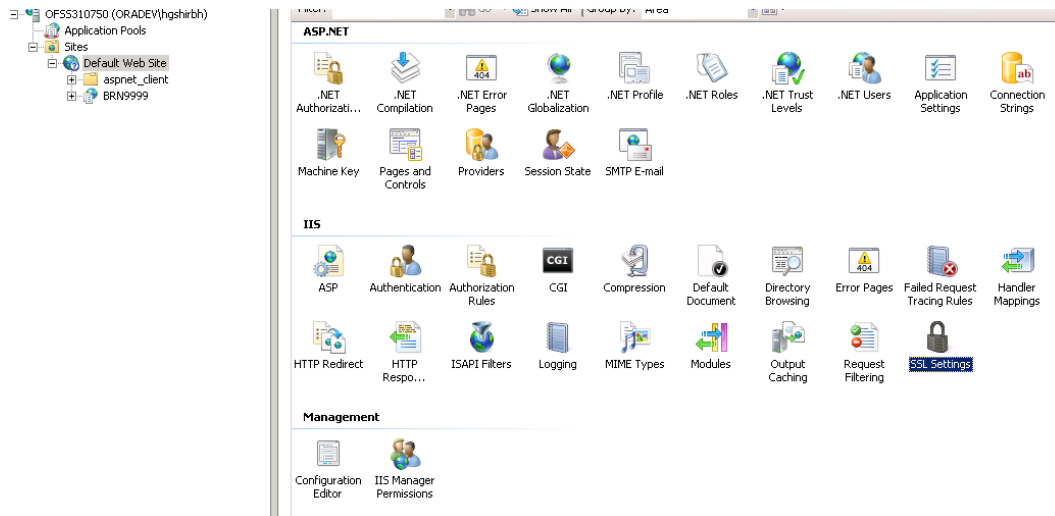
3. Bindings: Click on Default Web site and the click on bindings on right-up corner.



4. Then open the popup, select the https type..



5. Select Default Web site the click on SSL Settings...



6. Open a web browser and type following URL in the address bar.

E.g. <https://localhost/BRN9999>

Just a while, you should see the login screen.

d.)Adding additional branches in the registry :

By default, only 1 branch(9999) gets created in the branch registry via the OUI.

Other necessary branches need to be created manually .

The steps to do the same are listed in the following doc:

Oracle_FLEXCUBE_Core_Banking_5.1.0.0.0.zip\Relarea_Encrypted\flexcube\install\Docs\Branch\PDF\ Oracle FLEXCUBE Core 5.1.0.0.0 Branch Addition Configuration in Registry.pdf

6.2. Launch FLEXCUBE Branch web page

1. Open a web browser and type following URL in the address bar.

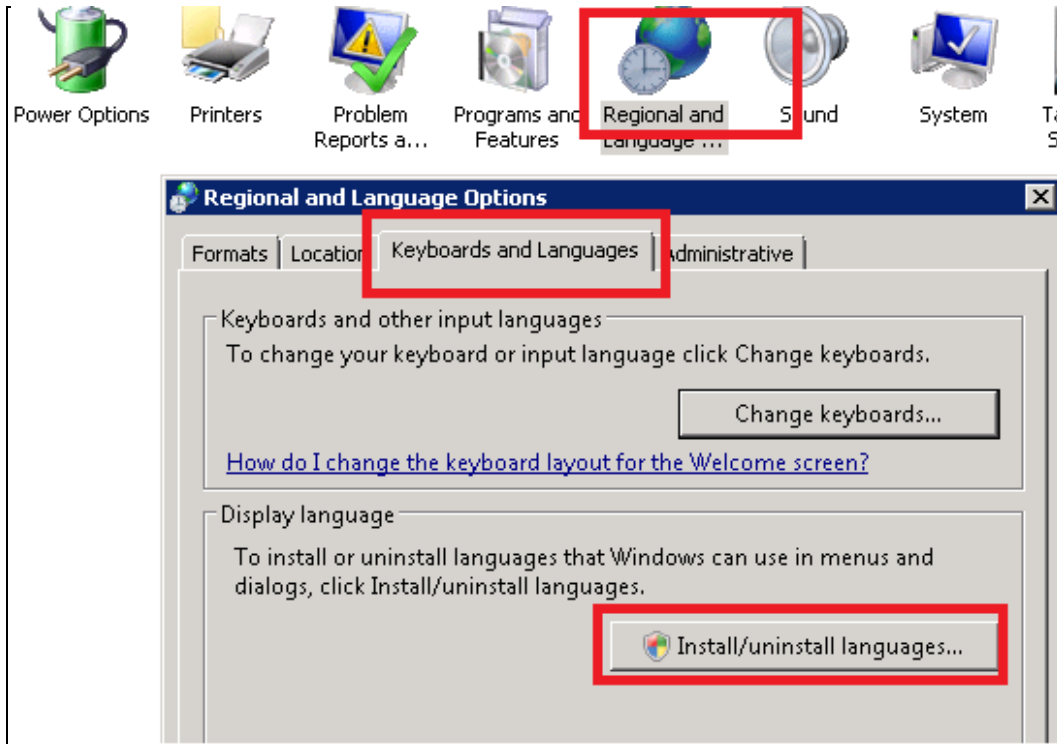
E.g. <http://localhost/BRN9999> or <https://localhost/BRN9999>(if ssl is implemented)

Just a while, you should see the login screen.

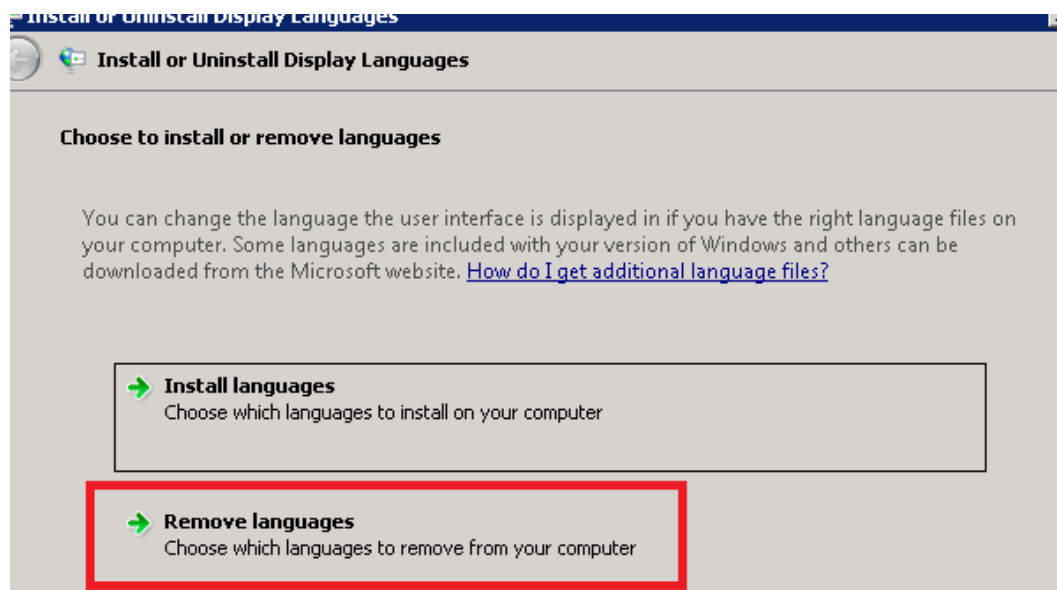
7. Chinese Localization

Note: These settings would be performed via OUI itself. Please verify all the settings given below.

7.1. Install Chinese language package



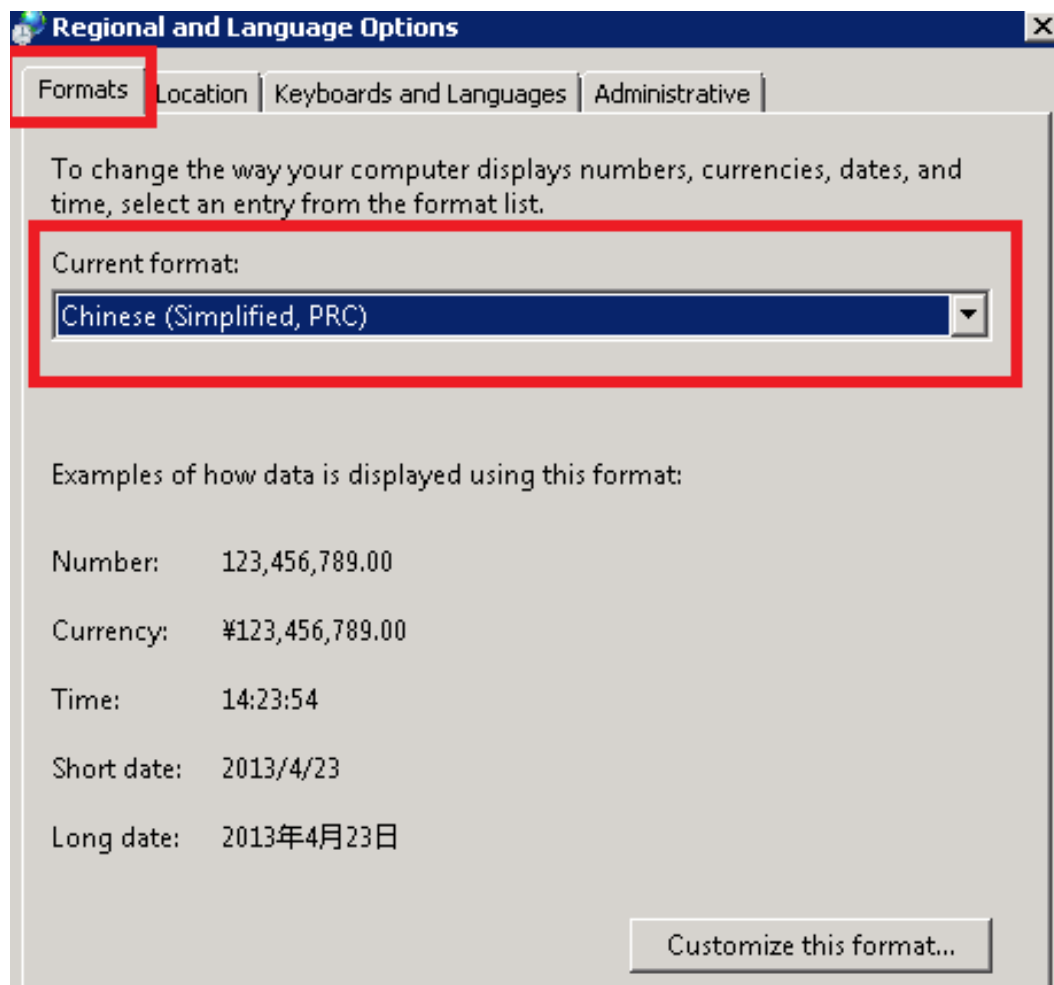
7.2. Confirm installation of Chinese language package

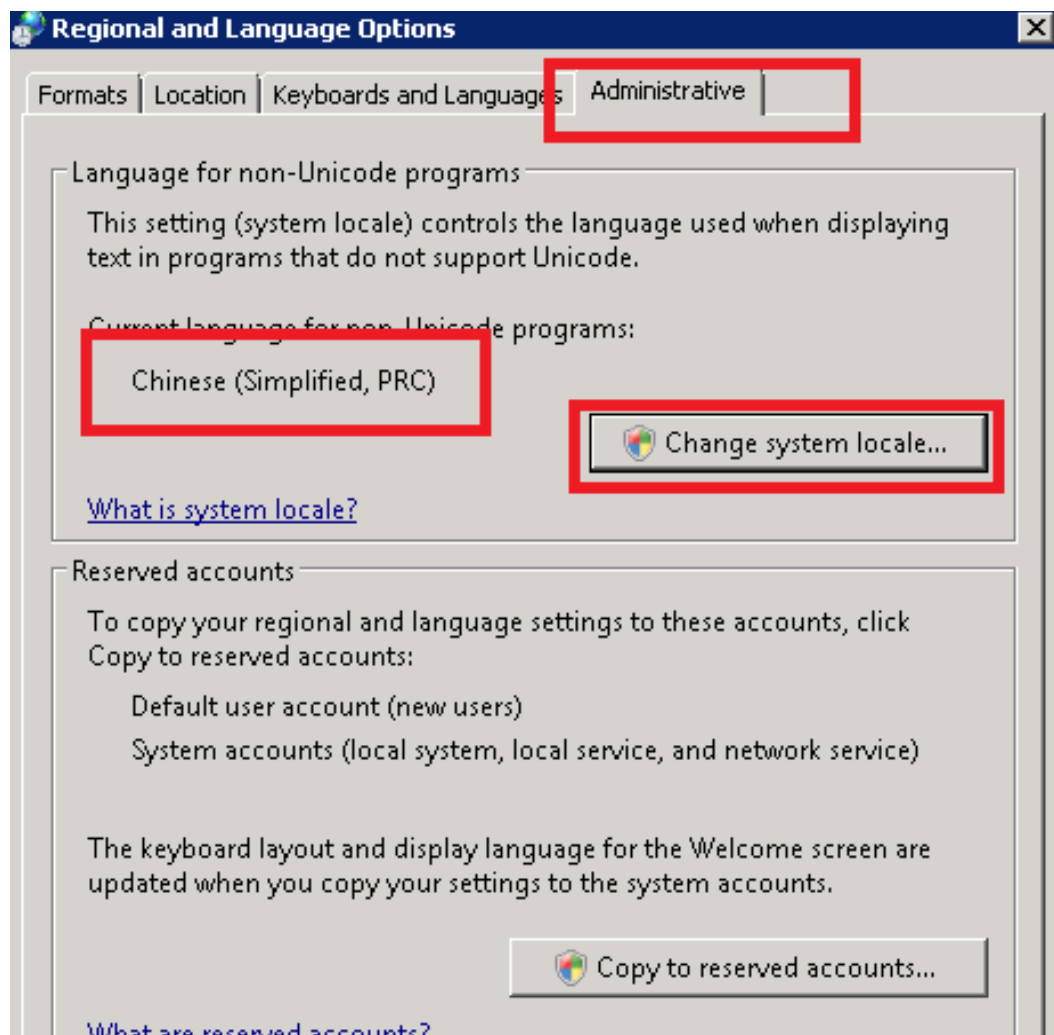
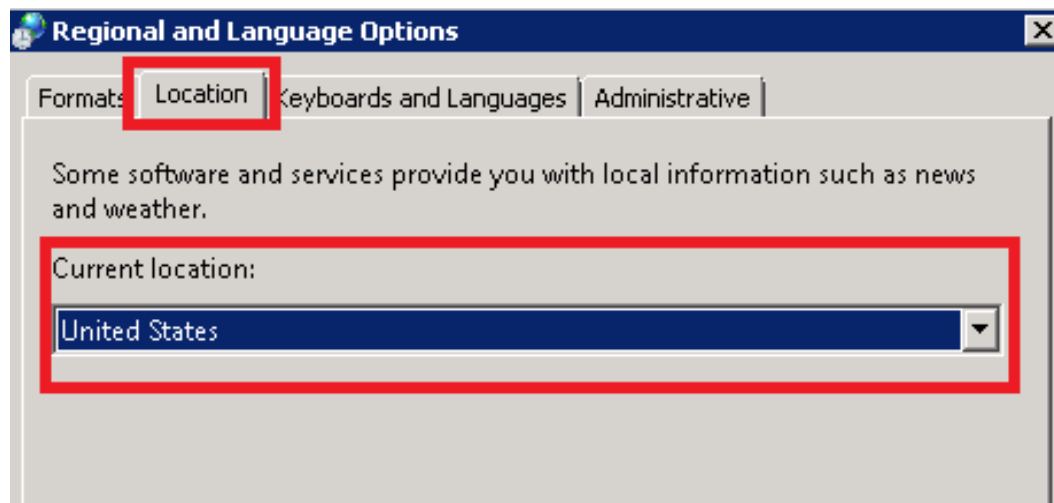


Notice: There must existing Chinese and English.



7.3. Set Chinese Localization





7.4. Set Chinese Localization

Notice: After installation by Branch OUI and select install Chinese localization, you could begin check below regedit info.

a)

```
[HKEY_LOCAL_MACHINE\SYSTEM\CurrentControlSet\Control\Session Manager\Environment]
"MQCCSID"="1208"
```

```
reg add "HKEY_LOCAL_MACHINE\SYSTEM\CurrentControlSet\Control\Session Manager\Environment" /v MQCCSID /t REG_SZ /d 1208 /f
```

b)

```
[HKEY_LOCAL_MACHINE\SOFTWARE\IFLEX\Flexcube\Branch\IE\CHN]
"HTMLSource"="C:\\Flexcube\\branch\\web\\branch\\screens\\xml\\chn\\"
"DOCSource"="C:\\Flexcube\\branch\\web\\branch\\docs\\html\\chn\\"
"NLS_XMLPath"="C:\\Flexcube\\branch\\web\\branch\\utl\\NLS\\"

[HKEY_LOCAL_MACHINE\SOFTWARE\IFLEX\Flexcube\Branch\IE\CHN]
"HTMLSource"="C:\\Flexcube\\branch\\web\\branch\\screens\\xml\\chn\\"
"DOCSource"="C:\\Flexcube\\branch\\web\\branch\\docs\\html\\chn\\"
"NLS_XMLPath"="C:\\Flexcube\\branch\\web\\branch\\utl\\NLS\\"
```

c)

```
[HKEY_LOCAL_MACHINE\SOFTWARE\IFLEX\Flexcube\ControlBrn\Resources\TP]
"ENG"="MsgEng.dll"
"JAP"="MsgJap.dll"
"CHN"="MsgChn.dll"

[HKEY_LOCAL_MACHINE\SOFTWARE\IFLEX\Flexcube\ControlBrn\Resources\TP]
"ENG"="MsgEng.dll"
"JAP"="MsgJap.dll"
"CHN"="MsgChn.dll"
```

d)

```
[HKEY_LOCAL_MACHINE\SOFTWARE\ORACLE\KEY_OraClient11g_home1]
"ORACLE_HOME"="C:\\app\\fcvcoadminga\\product\\11.2.0\\client_1"
"ORACLE_HOME_NAME"="OraClient11g_home1"
"ORACLE_GROUP_NAME"="Oracle - OraClient11g_home1"
"ORACLE_BUNDLE_NAME"="Enterprise"
"NLS_LANG"="AMERICAN AMERICA.ZHS16GBK"
"OLEDB"="C:\\app\\fcvcoadminga\\product\\11.2.0\\client_1\\oledb\\msg"
"OO4O"="C:\\app\\fcvcoadminga\\product\\11.2.0\\client_1\\oo4o\\msg"
"ORACLE_HOME_KEY"="SOFTWARE\\ORACLE\\KEY_OraClient11g_home1"
"MSHELP_TOOLS"="C:\\app\\fcvcoadminga\\product\\11.2.0\\client_1\\MSHELP"
"SQLPATH"="C:\\app\\fcvcoadminga\\product\\11.2.0\\client_1\\dbs"
"NLS_LANG_en"="AMERICAN_AMERICA.WE8MSWIN1252"
"NLS_NUMERIC_CHARACTERS"="., "
"NLS_DATE_FORMAT"="DD-MON-YYYY"
"NLS_SORT"="BINARY"
"NLS_TERRITORY"="AMERICA"
"NLS_DATE_LANGUAGE"="AMERICAN"
```

```
reg add "HKEY_LOCAL_MACHINE\SOFTWARE\ORACLE\KEY_OraClient11g_home1" /v NLS_LANG /t REG_SZ /d
AMERICAN_AMERICA.ZHS16GBK /f
reg add "HKEY_LOCAL_MACHINE\SOFTWARE\ORACLE\KEY_OraClient11g_home1" /v NLS_LANG_en /t REG_SZ /d
AMERICAN_AMERICA.WE8MSWIN1252 /f
reg add "HKEY_LOCAL_MACHINE\SOFTWARE\ORACLE\KEY_OraClient11g_home1" /v NLS_NUMERIC_CHARACTERS /t
REG_SZ /d ., /f
reg add "HKEY_LOCAL_MACHINE\SOFTWARE\ORACLE\KEY_OraClient11g_home1" /v NLS_DATE_FORMAT /t REG_SZ /d DD-
MON-YYYY /f
reg add "HKEY_LOCAL_MACHINE\SOFTWARE\ORACLE\KEY_OraClient11g_home1" /v NLS_SORT /t REG_SZ /d BINARY /f
reg add "HKEY_LOCAL_MACHINE\SOFTWARE\ORACLE\KEY_OraClient11g_home1" /v NLS_TERRITORY /t REG_SZ /d
AMERICA /f
reg add "HKEY_LOCAL_MACHINE\SOFTWARE\ORACLE\KEY_OraClient11g_home1" /v NLS_DATE_LANGUAGE /t REG_SZ /d
AMERICAN /f
```

FAQ

Decrypt Branch of Regedit

1. Goto the encrypt folder

C:\Flexcube\install\Cmd\flexadm\Debug

2. Confirm the password is correct in setDBPass.cmd

Red is host user password, **blue** is branch user password

```
encrypt2 r HIUT502R1N SOFTWARE\IFLEX\Flexcube\Download\DL1\Storage\LO1\interface
Password
encrypt2 r HIUT502R1N SOFTWARE\IFLEX\Flexcube\LO1 DbPassword
encrypt2 r BIUT502R1N SOFTWARE\IFLEX\Flexcube\Report\BRN9999 dbpassword
encrypt2 r BIUT502R1N SOFTWARE\IFLEX\Flexcube\Report\BRN9999 CPDbPassword
encrypt2 r BIUT502R1N SOFTWARE\IFLEX\Flexcube\Report\BRN9999 CRDbPassword
encrypt2 r BIUT502R1N
SOFTWARE\IFLEX\Flexcube\Download\DL1\Storage\BRN9999\interface Password
encrypt2 r BIUT502R1N SOFTWARE\IFLEX\Flexcube\Download\DL1\Parameters\Db
Password
encrypt2 r BIUT502R1N SOFTWARE\IFLEX\Flexcube\BRN9999\Database dbpassword
encrypt2 r BIUT502R1N SOFTWARE\IFLEX\Flexcube\BRN0\Database dbpassword
```

execute this setDBPass.cmd

3. If you want to modify other branch password

Please modify setDBPassForSepcialBranch.cmd.

Red is branch code which you want to modify, **blue** is branch user password

```
encrypt2 r BIUT502R1N SOFTWARE\IFLEX\Flexcube\Report\BRN11 dbpassword
encrypt2 r BIUT502R1N SOFTWARE\IFLEX\Flexcube\Report\BRN11 CPDbPassword
encrypt2 r BIUT502R1N SOFTWARE\IFLEX\Flexcube\Report\BRN11 CRDbPassword
encrypt2 r BIUT502R1N
SOFTWARE\IFLEX\Flexcube\Download\DL1\Storage\BRN11\interface Password
encrypt2 r BIUT502R1N SOFTWARE\IFLEX\Flexcube\BRN11\Database dbpassword
```

execute this setDBPassForSepcialBranch.cmd