

# **Oracle FLEXCUBE Core Banking**

RCU Installation Guide

Release 5.1.0.0.0

**Part No. E57304-01**

September 2014

**ORACLE®**

## Oracle FLEXCUBE Core Banking RCU Installation Guide

September 2014

Oracle Financial Services Software Limited  
Oracle Park  
Off Western Express Highway  
Goregaon (East)  
Mumbai, Maharashtra 400 063  
India

Worldwide Inquiries:

Phone: +91 22 6718 3000

Fax: +91 22 6718 3001

[www.oracle.com/financialservices/](http://www.oracle.com/financialservices/)

Copyright © 2014, Oracle and/or its affiliates. All rights reserved.

Oracle and Java are registered trademarks of Oracle and/or its affiliates. Other names may be trademarks of their respective owners.

U.S. GOVERNMENT END USERS: Oracle programs, including any operating system, integrated software, any programs installed on the hardware, and/or documentation, delivered to U.S. Government end users are “commercial computer software” pursuant to the applicable Federal Acquisition Regulation and agency-specific supplemental regulations. As such, use, duplication, disclosure, modification, and adaptation of the programs, including any operating system, integrated software, any programs installed on the hardware, and/or documentation, shall be subject to license terms and license restrictions applicable to the programs. No other rights are granted to the U.S. Government.

This software or hardware is developed for general use in a variety of information management applications. It is not developed or intended for use in any inherently dangerous applications, including applications that may create a risk of personal injury. If you use this software or hardware in dangerous applications, then you shall be responsible to take all appropriate failsafe, backup, redundancy, and other measures to ensure its safe use. Oracle Corporation and its affiliates disclaim any liability for any damages caused by use of this software or hardware in dangerous applications.

This software and related documentation are provided under a license agreement containing restrictions on use and disclosure and are protected by intellectual property laws. Except as expressly permitted in your license agreement or allowed by law, you may not use, copy, reproduce, translate, broadcast, modify, license, transmit, distribute, exhibit, perform, publish or display any part, in any form, or by any means. Reverse engineering, disassembly, or decompilation of this software, unless required by law for interoperability, is prohibited.

The information contained herein is subject to change without notice and is not warranted to be error-free. If you find any errors, please report them to us in writing.

This software or hardware and documentation may provide access to or information on content, products and services from third parties. Oracle Corporation and its affiliates are not responsible for and expressly disclaim all warranties of any kind with respect to third-party content, products, and services. Oracle Corporation and its affiliates will not be responsible for any loss, costs, or damages incurred due to your access to or use of third-party content, products, or services.

## Contents

<b>1. Preface.....</b>	<b>4</b>
<b>2. Introduction.....</b>	<b>5</b>
<b>3. Pre-requisites.....</b>	<b>6</b>
<b>4. RCU Setup.....</b>	<b>7</b>
<b>5. Running RCU .....</b>	<b>8</b>
5.1. Welcome Screen .....	8
5.2. Create/Drop Repository .....	9
5.3. Database Connection Details.....	10
5.4. Checking Prerequisites at the DB level.....	11
5.5. Select Components .....	12
5.6. Checking Prerequisites at the component level.....	13
5.7. Schema Password Screen .....	14
5.8. Custom Variables .....	15
5.9. Map Table Spaces .....	19
5.10. Summary Screen.....	21
5.11. Completion Summary Screen .....	22

# 1. Preface

## 1.1. Intended Audience

This document is intended for the following audience:

- Customers
- Partners
- Third Party Vendors

## 1.2. Documentation Accessibility

For information about Oracle's commitment to accessibility, visit the Oracle Accessibility Program website at <http://www.oracle.com/pls/topic/lookup?ctx=acc&id=docacc>.

## 1.3. Access to OFSS Support

<https://support.us.oracle.com>

## 1.4. Structure

This manual is organized into the following categories:

**Preface** gives information on the intended audience. It also describes the overall structure of the User Guide

**Introduction** provides brief information on the purpose of the User Guide

**Chapters** are dedicated to processes for setup a centralized repository or database for all the bank data.

## 1.5. Related Information Sources

Not Applicable

## 2. Introduction

This is the first step in installation of Oracle FLEXCUBE5.1.0.0.0 release. Here we use Oracle 12C (version 12.1.0.1.0) Database server to setup a centralized repository for all the bank data. This database is updated online and real time by all the delivery channels such as ATM, Telebanking, Bank Teller etc. This database is the key to “Any time, Anywhere Banking”.

This document is logically split in following Sections –

- Pre-requisites
- RCU Setup
- Run RCU

### 3. Pre-requisites

---

**Note:** This document is to be used to load FLEXCUBE database objects into the Oracle Database. This script has to be run from a windows operating system with a client installation of Oracle 12c (based on the installation) present.

---

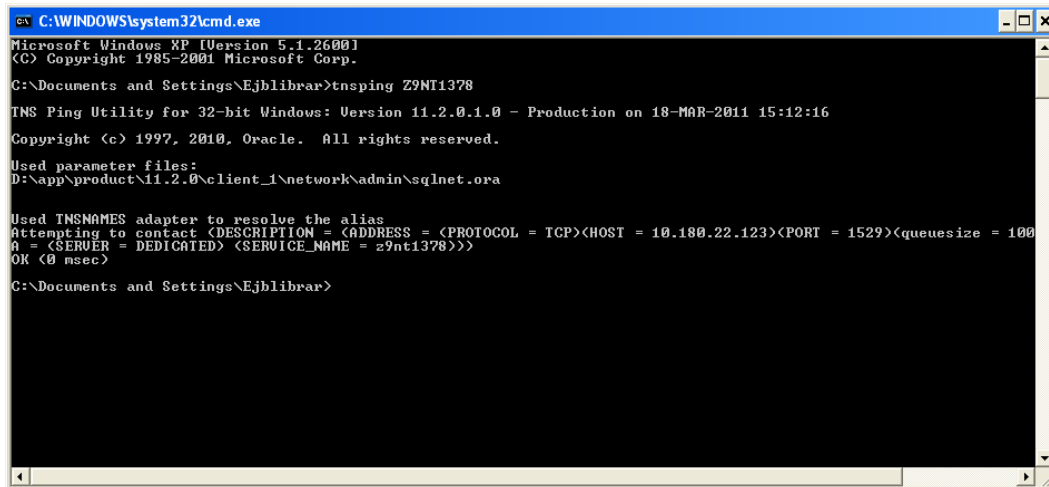
- Before running RCU (Repository Creation Utility) please make sure Database should be installed on Linux server with specific user, which have all required rights, where you want create the schemas.
- Please take the path of dbf file location.

**Please contact of system administrator for above point.**

---

Before starting this process, make sure that tnsnames.ora of the client installation has an entry for the DB Server on which objects are to be created; and you are able to “**tnsping**” that database server from the client machine.

---



```
C:\WINDOWS\system32\cmd.exe
Microsoft Windows XP [Version 5.1.2600]
(C) Copyright 1985-2001 Microsoft Corp.

C:\Documents and Settings\Ejblibrar>tnsping Z9NT1378

TNS Ping Utility for 32-bit Windows: Version 11.2.0.1.0 - Production on 18-MAR-2011 15:12:16
Copyright (c) 1997, 2010, Oracle. All rights reserved.

Used parameter files:
D:\app\product\11.2.0\client_1\network\admin\sqlnet.ora

Used TNSNAMES adapter to resolve the alias
Attempting to contact (DESCRIPTION = (ADDRESS = (PROTOCOL = TCP)(HOST = 10.180.22.123)(PORT = 1529)(queue_size = 100)
A = (SERVER = DEDICATED) (SERVICE_NAME = z9nt1378)))
OK (0 msec)

C:\Documents and Settings\Ejblibrar>
```

## 4. RCU Setup

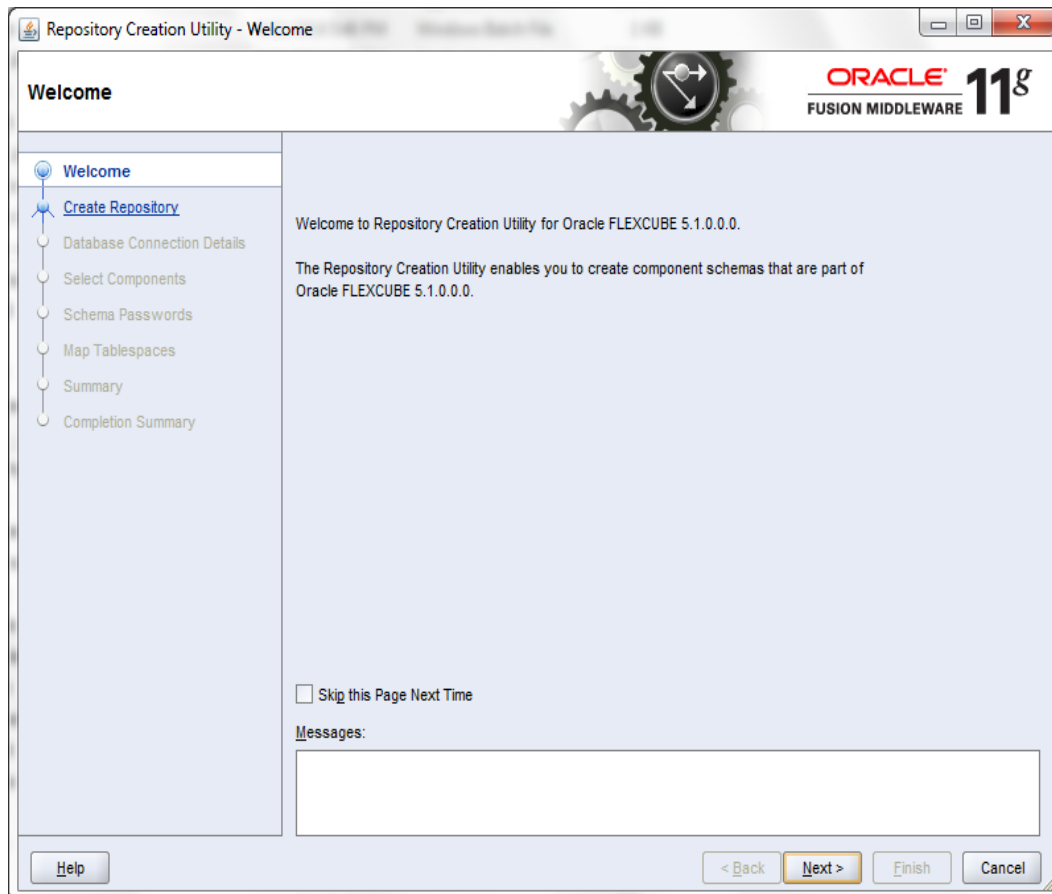
1. Copy the contents from the Oracle\_FLEXCUBE\_Core\_Banking\_5.1.0.0.0.zip file in to C or D drive (root Folder) on the computer. Right click on this file and select option to unzip the file with option as 'Extract Here'. This will create a new folder 'Relarea\_Encrypted' and extract the files under this folder.
2. Go to the path  
"Oracle\_FLEXCUBE\_Core\_Banking\_5.1.0.0.0\Relarea\_Encrypted\flexcube\install\RCU\", and select file 'FLEXCUBE\_RCU.zip'. Right click on this file and select option to unzip the file with option as 'Extract Here'. This will create a new folder 'RCU\_HOME' and extract the files under this folder.
3. Run the MoveFolders.bat from the  
"Oracle\_FLEXCUBE\_Core\_Banking\_5.1.0.0.0\Relarea\_Encrypted\flexcube\install\RCU\".
4. This bat file move the DB object from Relarea\_Encrypted\flexcube to the RCU\_HOME corresponding directory, where RCU pickups the files.

## 5. Running RCU

1. Run Rcu.bat from “Oracle\_FLEXCUBE\_Core\_Banking\_5.1.0.0.0\Relarea\_Encrypted\flexcube\install\RCU\RCU\RCU\_HOME\BIN\”.

This will pop up a RCU Welcome Screen. Please follow the instructions as given below.

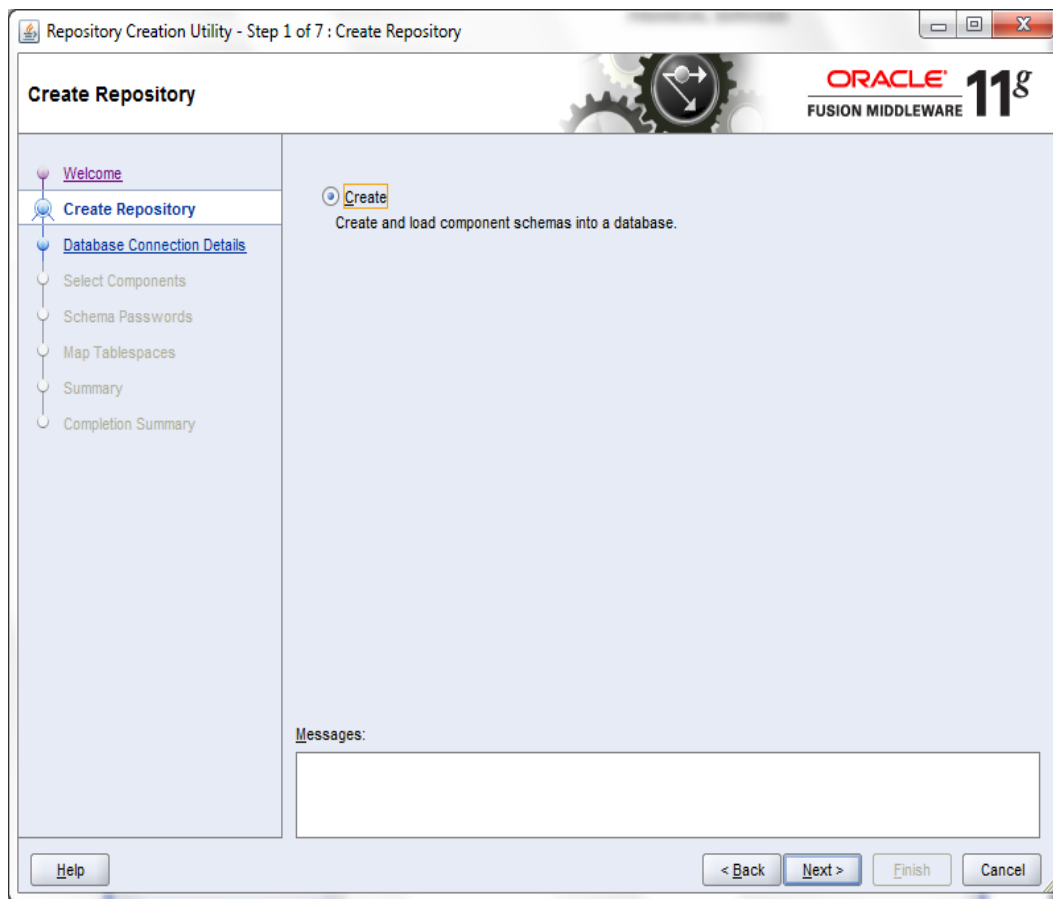
### 5.1. Welcome Screen



2. Click on '**Next**' button



## 5.2. Create/Drop Repository



### Create –To create a FLEXCUBE Single Schema

3. Click on 'Next' button

## 5.3. Database Connection Details

4. Enter here DB Connection details.

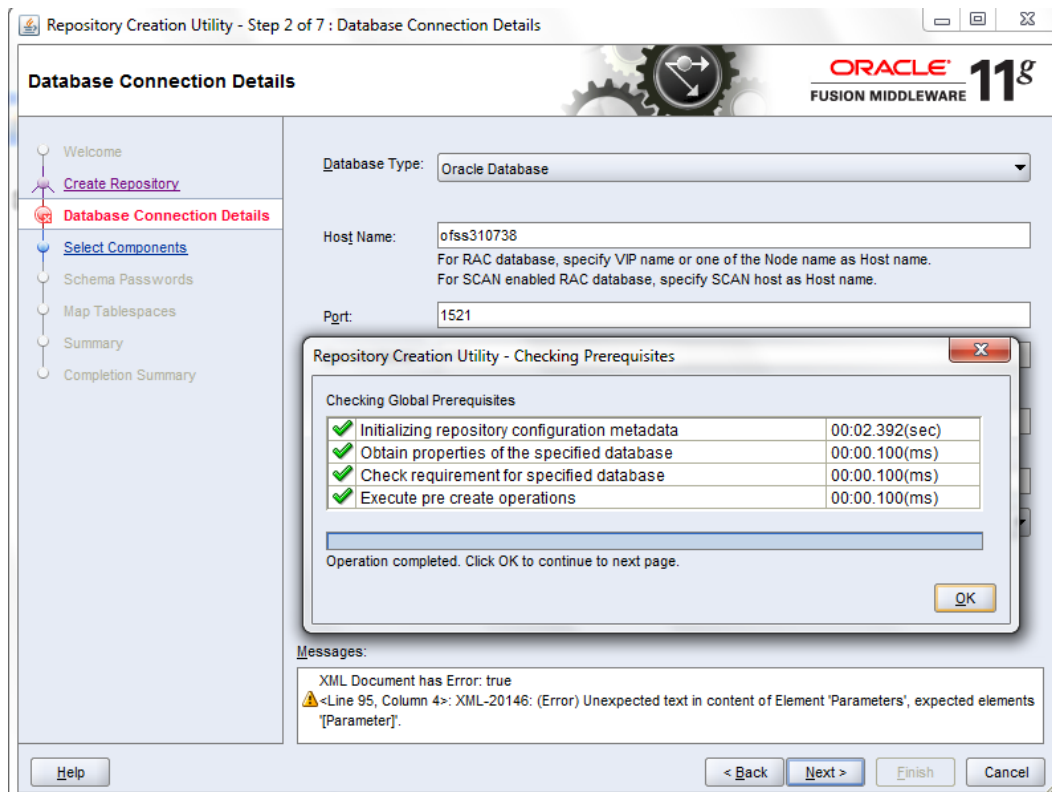
Please contact with system administrator for the input values.

The screenshot shows the 'Repository Creation Utility - Step 2 of 7: Database Connection Details' window. The window has a title bar with standard OS controls. On the left is a navigation pane with a tree view containing: 'Welcome', 'Create Repository', 'Database Connection Details' (highlighted), 'Select Components', 'Schema Passwords', 'Map Tablespaces', 'Summary', and 'Completion Summary'. The main area is titled 'Database Connection Details' and features the Oracle 11g Fusion Middleware logo. It contains several input fields: 'Database Type' (a dropdown menu set to 'Oracle Database'), 'Host Name' (text field with 'ofss310738' and explanatory text for RAC and SCAN), 'Port' (text field with '1521'), 'Service Name' (text field with 'orcl'), 'Username' (text field with 'sys' and explanatory text), 'Password' (password field with masked characters), and 'Role' (a dropdown menu set to 'SYSDBA' with explanatory text). At the bottom, there is a 'Messages' label above a large empty text area, and a row of buttons: 'Help', '< Back', 'Next >', 'Finish', and 'Cancel'.

\*The username field should have a user with DBA or SYSDBA privileges.

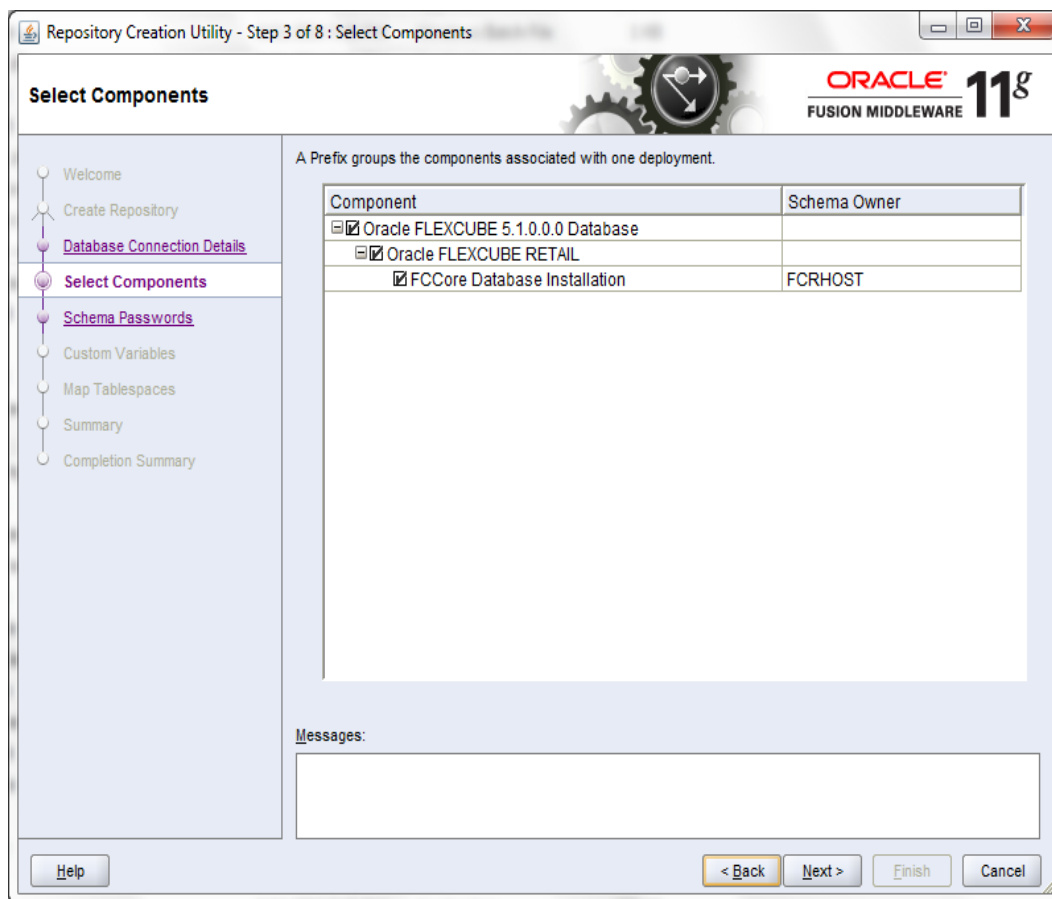
5. Click on '**Next**' button

## 5.4. Checking Prerequisites at the DB level



6. Click on 'OK' button

## 5.5. Select Components



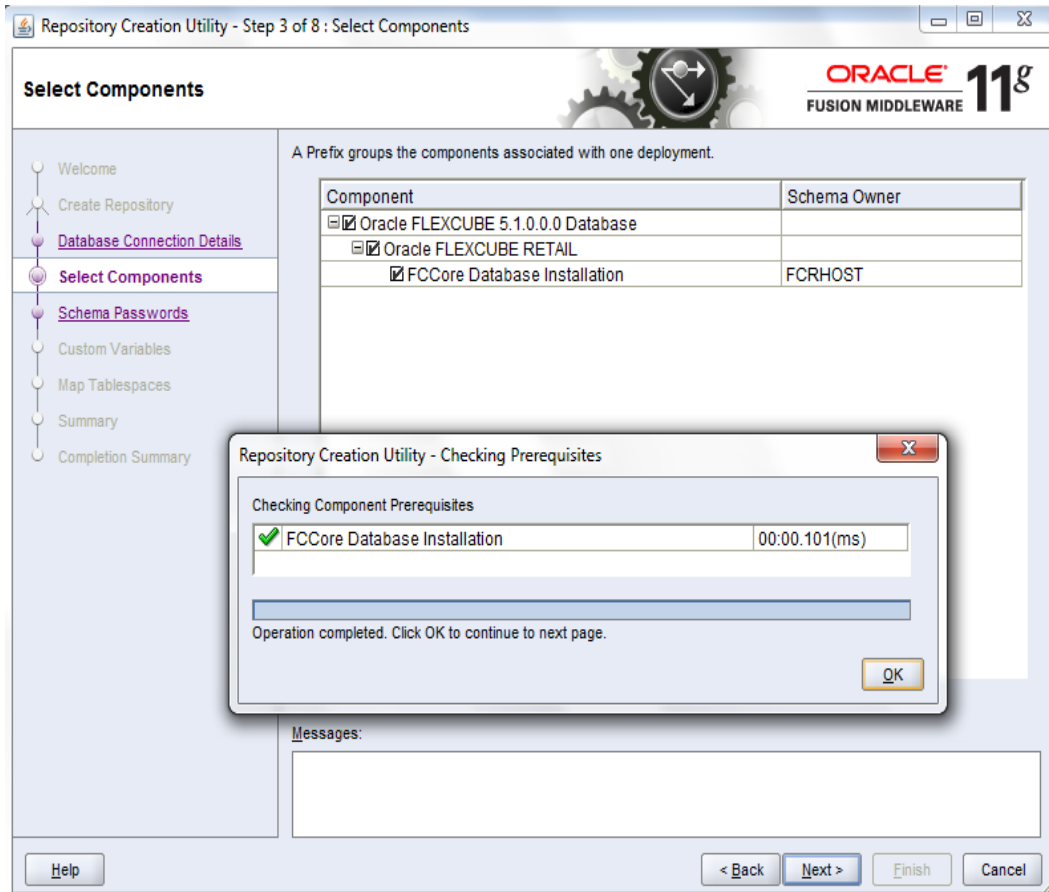
Please follow below.

- Select checkbox 'Oracle FLEXCUBE 5.1.0.0.0 Database'.
- Select checkbox 'Oracle FLEXCUBE RETAIL'.
- Select checkbox 'FCCORE Database Installation'.
- Please input Host Schema name against field 'FCCORE Database Installation' under column Schema Owner.

\* For FCR HOST Schema name please contact you r system administrator.

7. Click on '**Next**' button

## 5.6. Checking Prerequisites at the component level



If the following component level pre-requisites are met, RCU progresses to the next screen.

It then checks if the Initial parameters at the instance (SYS) level meets the expected value.

Then checks if the Schema Owner entered by the USER is existing. If existing schema owner is present then RCU will prompt the USER that the SCHEMA exists. The user can ignore the message if he wishes to continue with the existing SCHEMA or you create put new schema name here.

8. Click on 'OK' button

## 5.7. Schema Password Screen

The screenshot shows the 'Schema Passwords' step of the Oracle 11g Repository Creation Utility. The window title is 'Repository Creation Utility - Step 4 of 8 : Schema Passwords'. The Oracle 11g logo is in the top right. A left-hand navigation pane lists steps: Welcome, Create Repository, Database Connection Details, Select Components, Schema Passwords (highlighted), Custom Variables, Map Tablespaces, Summary, and Completion Summary. The main area contains instructions: 'Please enter the passwords for the main and additional (auxiliary) schema users. Password can contain alphabets, numbers and the following special characters: \$, #, \_ . Password should not start with a number or a special character.' There are three radio button options: 'Use same passwords for all schemas' (selected), 'Use main schema passwords for auxiliary schemas', and 'Specify different passwords for all schemas'. Below these are two password input fields labeled 'Password' and 'Confirm Password', both showing masked characters. A table is present with the following structure:

Component	Schema Owner	Schema Password	Confirm Password
Host Single Schema Service	FCRHOST		

Below the table is a 'Messages:' section with a text area. At the bottom, there are buttons for 'Help', '< Back', 'Next >', 'Finish', and 'Cancel'.

Please select option 'use same passwords for all schemas' and enter the desired password for new FC CORE Host Schema that has to be created. Please refer to previous screen (point 4.6) for Host Schema name.

If user is using an existing Schema then enter the valid password of that Schema.

Please contact your system administrator for Password details

9. Click on '**Next**' button

## 5.8. Custom Variables

Repository Creation Utility - Step 5 of 8 : Custom Variables

**Custom Variables**

Enter value for the following custom variables.

Component	Custom Variable	Value
FCCore Database Installation	BRANCH Connect String	
	FCR Branch DB Server IP	
	FCR Branch DB Server PORT	1521
	Branch User Name	
	Branch Password	
	Confirm Branch Password	
	Entity Code	
	Bank Code	
	Bank Name	
	Bank Short Name	
	Bank IC Code	
	Branch Code	
	Currency Code	
	Currency Name	
	Bank Address 1	
	Bank Address 2	
	Bank Address 3	
	Bank City Name	
	Bank State Name	
	Bank Zip Code	

Messages:

Help < Back Next > Finish Cancel

10. Please contact your system administrator/ supervisor for required details

Repository Creation Utility - Step 5 of 8 : Custom Variables

**Custom Variables**

Enter value for the following custom variables.

Component	Custom Variable	Value
	Bank Name	
	Bank Short Name	
	Bank IC Code	
	Branch Code	
	Currency Code	
	Currency Name	
	Bank Address 1	
	Bank Address 2	
	Bank Address 3	
	Bank City Name	
	Bank State Name	
	Bank Zip Code	
	Bank Country Name	
	SMS User	
	Password for SMS User	
	Confirm Password for SMS User	
	SMS Authorizer	
	Password for SMS Authorizer	
	Confirm Password for SMS Authorizer	
	Datafile Location	

Messages:

Help < Back Next > Finish Cancel

11. Please enter the appropriate details against each field. For example given below

**Branch User Name:** Please put the Branch Schema Name here.

e.g. FCRBRANCH

**Branch Password:** Please put the Branch Schema Password here.

**Confirm Branch Password:** Please put the Branch Schema Password here.

**Branch Connection String:** Please put the Branch Connect String here.

e.g. ORCL

**Branch DB Server IP:** Please put the Host name of Branch Machine here.

e.g. ofss310738



**Branch DB Server port:** Please put the port Number of Branch database here.

e.g. 1521

**Entity Code:** Please put the Entity Code. (Numeric, 3)

e.g. 1

**Bank Code:** Please put the Bank Code. (Numeric, 5)

e.g. 1

**Bank Name:** Please put the Bank Name. (Alphabate,120)

e.g. DEMO BANK OF CHINA

**Bank Short Name:** Please put the Bank Short. (Alphabet, 60)

e.g. DEMO BANK

**Bank ID Code:** Please put the Bank IC Code. (Numeric, 5)

e.g. 1

**Currency Code:** Please put the Currency Code.(Numeric, 5)

**Currency Name:** Please put the Currency Code.( Alphanumeric, 120)

**Bank Address1:** Please put the Bank Address 1. (Alphanumeric, 105)

**Bank Address2:** Please put the Bank Address 2. (Alphanumeric, 105)

**Bank Address3:** Please put the Bank Address 3. (Alphanumeric, 105)

**Bank City Name:** Please put the Bank City Name. (Alphanumeric, 105)

**Bank State Name:** Please put the Bank State Name. (Alphabet, 105)

**Bank Zip Code:** Please put the Bank Zip Code. Alphanumeric105)

**Bank Country Name:** Please put the Bank Country Name. (Alphabate,105)

**SMS User:** Please put the System userID here. (Alphabate,36) provide constraint for min/max value.

e.g. SYSUSER01

**Password for SMS User:** Please put the password for teller userID here provide constraint for min/max value,special character as per SMS Password policy.

e.g. QUALITY123

**Confirm Password for SMS User:** Please put the confirm password for teller userID here.

e.g. QUALITY123

**SMS Authorizer:** Please put the authorizer userID here.

e.g. SYSUSER02

**Password for SMS Authorizer:** Please put the password for authorizer userID here.

e.g. QUALITY123

**Confirm Password for SMS Authorizer:** Please put the confirm password for authorizer userID here.

e.g. QUALITY123

The SMS User and Authorizer will be used to create other user id's

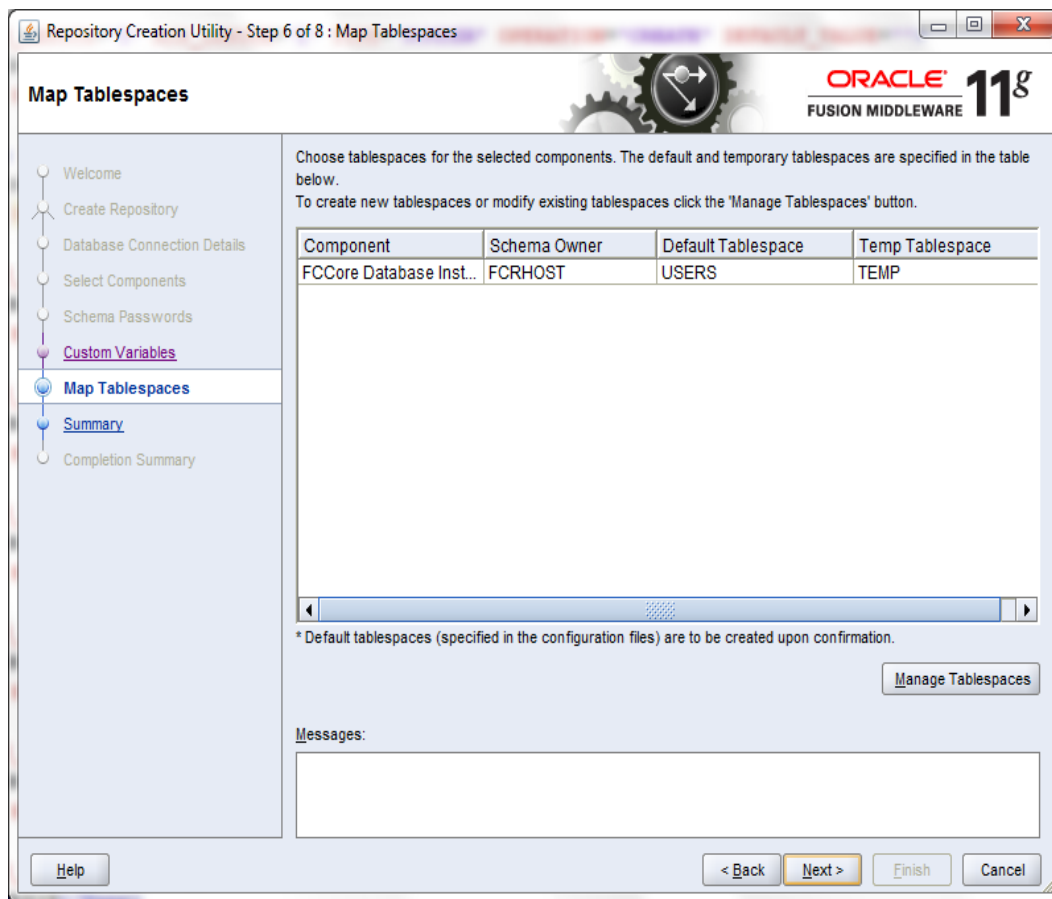
While logging for the 1<sup>st</sup> time into FCCORE, system will prompt user to change the password.

**Datafile Location :** Please specify the datafile location present in the db machine where oracle home is present. (Please contact your system administrator/ supervisor for Data file location path )

Eg. /scratch/home/ora11/app/ora11/product

12. Click on **next** button to proceed.

## 5.9. Map Table Spaces

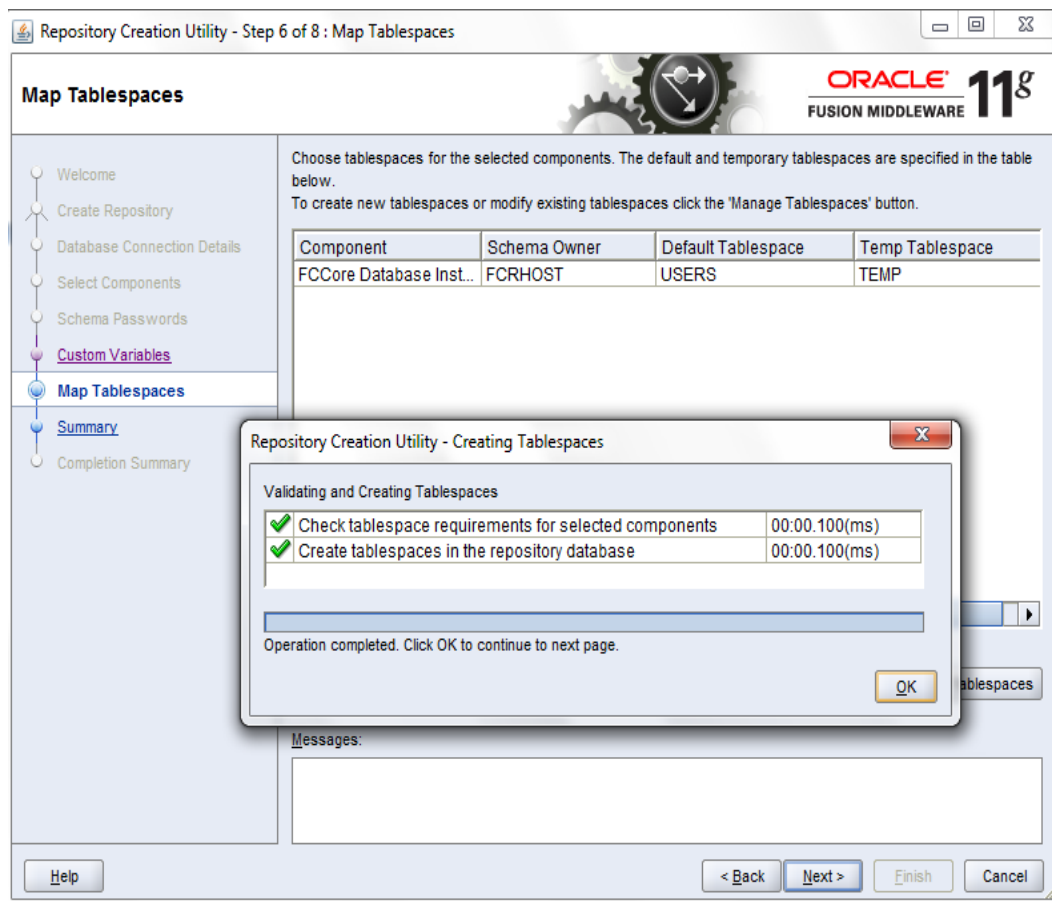


\*Manage Tablespaces allows the user to change the name, size of the data files.

13. Click on “Manage Tablespaces” to modify the name and size of the data files corresponding to the table spaces.

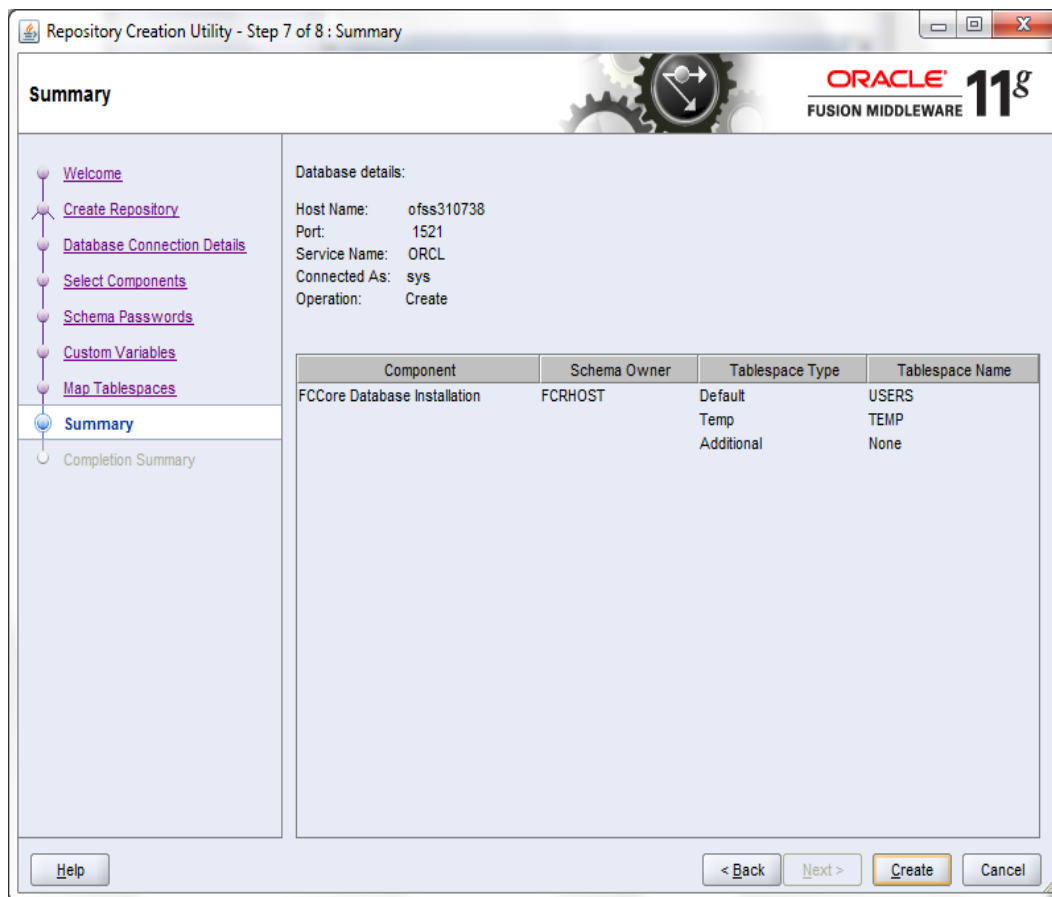
14. Click on Next button.

***This will create tablespaces.***



15. Click on Ok button to continue to next page.

## 5.10. Summary Screen



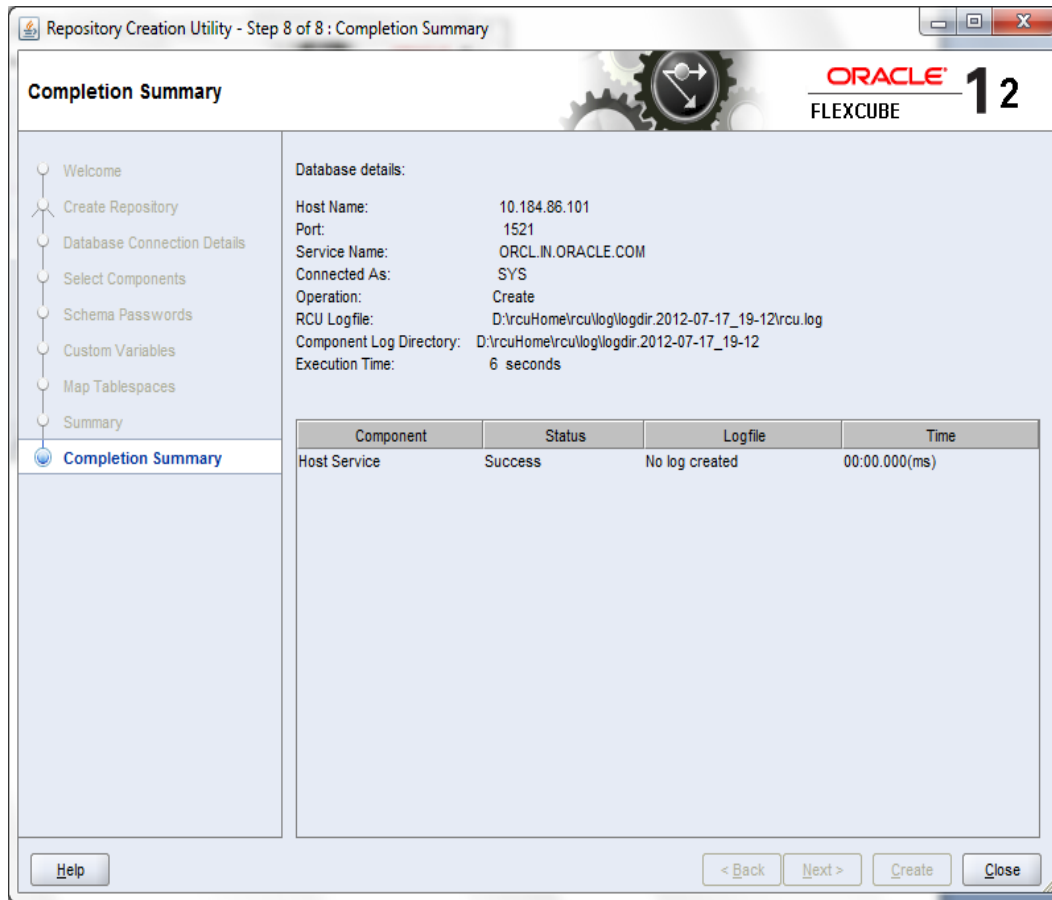
16. \*Click on “Create” to start the FLEXCUBE Database Schema installation.

---

Note: You may get some pop-ups , regarding ROLE\_FINWARE or some other object-specific popups. Please ignore them and move on with the RCU run, as if these are not ignored , then RCU is stuck at the point of pop-up.

---

## 5.11. Completion Summary Screen



17. \*Click on “Close” to exit RCU successfully.

---

**Note:** Once RCU run is complete, based on the data requirement on installation, you need to run bootstrap on the newly created database.

---

On running this utility, pre-determined data will get loaded into the product specific tables. Please make sure to choose **Product Only** option while running it.

The bootstrap folder is present at the following path within Relarea\_Encrypted(inside Installation zip) :

Relarea\_Encrypted\flexcube\install\Utils\CommonSetup

The Doc to run bootstrap is present at the below path:

Relarea\_Encrypted\flexcube\install\Utils\CommonSetup\others\documents\FLEXCUBE Common Setup & Extract User Guide.doc