

Oracle® Documaker

Docupresentation
Installation Guide

version 2.7

Part number: E57338_01

January 2015

Copyright © 2009, 2015, Oracle and/or its affiliates. All rights reserved.

The Programs (which include both the software and documentation) contain proprietary information; they are provided under a license agreement containing restrictions on use and disclosure and are also protected by copyright, patent, and other intellectual and industrial property laws. Reverse engineering, disassembly, or decompilation of the Programs, except to the extent required to obtain interoperability with other independently created software or as specified by law, is prohibited.

The information contained in this document is subject to change without notice. If you find any problems in the documentation, please report them to us in writing. This document is not warranted to be error-free. Except as may be expressly permitted in your license agreement for these Programs, no part of these Programs may be reproduced or transmitted in any form or by any means, electronic or mechanical, for any purpose.

If the Programs are delivered to the United States Government or anyone licensing or using the Programs on behalf of the United States Government, the following notice is applicable:

U.S. GOVERNMENT RIGHTS

Programs, software, databases, and related documentation and technical data delivered to U.S. Government customers are "commercial computer software" or "commercial technical data" pursuant to the applicable Federal Acquisition Regulation and agency-specific supplemental regulations. As such, use, duplication, disclosure, modification, and adaptation of the Programs, including documentation and technical data, shall be subject to the licensing restrictions set forth in the applicable Oracle license agreement, and, to the extent applicable, the additional rights set forth in FAR 52.227-19, Commercial Computer Software--Restricted Rights (June 1987). Oracle USA, Inc., 500 Oracle Parkway, Redwood City, CA 94065.

The Programs are not intended for use in any nuclear, aviation, mass transit, medical, or other inherently dangerous applications. It shall be the licensee's responsibility to take all appropriate fail-safe, backup, redundancy and other measures to ensure the safe use of such applications if the Programs are used for such purposes, and we disclaim liability for any damages caused by such use of the Programs.

The Programs may provide links to Web sites and access to content, products, and services from third parties. Oracle is not responsible for the availability of, or any content provided on, third-party Web sites. You bear all risks associated with the use of such content. If you choose to purchase any products or services from a third party, the relationship is directly between you and the third party. Oracle is not responsible for: (a) the quality of third-party products or services; or (b) fulfilling any of the terms of the agreement with the third party, including delivery of products or services and warranty obligations related to purchased products or services. Oracle is not responsible for any loss or damage of any sort that you may incur from dealing with any third party.

Oracle, JD Edwards, and PeopleSoft are registered trademarks of Oracle Corporation and/or its affiliates. Other names may be trademarks of their respective owners.

THIRD PARTY SOFTWARE NOTICES

This product includes software developed by Apache Software Foundation (<http://www.apache.org/>).

THIS SOFTWARE IS PROVIDED "AS IS" AND ANY EXPRESS OR IMPLIED WARRANTIES, INCLUDING, BUT NOT LIMITED TO, THE IMPLIED WARRANTIES OF MERCHANTABILITY AND FITNESS FOR A PARTICULAR PURPOSE ARE DISCLAIMED. IN NO EVENT SHALL THE AUTHOR OR CONTRIBUTORS BE LIABLE FOR ANY DIRECT, INDIRECT, INCIDENTAL, SPECIAL, EXEMPLARY, OR CONSEQUENTIAL DAMAGES (INCLUDING, BUT NOT LIMITED TO, PROCUREMENT OF SUBSTITUTE GOODS OR SERVICES; LOSS OF USE, DATA, OR PROFITS; OR BUSINESS INTERRUPTION) HOWEVER CAUSED AND ON ANY THEORY OF LIABILITY, WHETHER IN CONTRACT, STRICT LIABILITY, OR TORT (INCLUDING NEGLIGENCE OR OTHERWISE) ARISING IN ANY WAY OUT OF THE USE OF THIS SOFTWARE, EVEN IF ADVISED OF THE POSSIBILITY OF SUCH DAMAGE.

Copyright © 2000-2009 The Apache Software Foundation. All rights reserved.

This product includes software distributed via the Berkeley Software Distribution (BSD) and licensed for binary distribution under the Generic BSD license.

THIS SOFTWARE IS PROVIDED BY THE COPYRIGHT HOLDERS AND CONTRIBUTORS "AS IS" AND ANY EXPRESS OR IMPLIED WARRANTIES, INCLUDING, BUT NOT LIMITED TO, THE IMPLIED WARRANTIES OF MERCHANTABILITY AND FITNESS FOR A PARTICULAR PURPOSE ARE DISCLAIMED. IN NO EVENT SHALL THE COPYRIGHT OWNER OR CONTRIBUTORS BE LIABLE FOR ANY DIRECT, INDIRECT, INCIDENTAL, SPECIAL, EXEMPLARY, OR CONSEQUENTIAL DAMAGES (INCLUDING, BUT NOT LIMITED TO, PROCUREMENT OF SUBSTITUTE GOODS OR SERVICES; LOSS OF USE, DATA, OR PROFITS; OR BUSINESS INTERRUPTION) HOWEVER CAUSED AND ON ANY THEORY OF LIABILITY, WHETHER IN CONTRACT, STRICT LIABILITY, OR TORT (INCLUDING NEGLIGENCE OR OTHERWISE) ARISING IN ANY WAY OUT OF THE USE OF THIS SOFTWARE, EVEN IF ADVISED OF THE POSSIBILITY OF SUCH DAMAGE.

Copyright © 2009, Berkeley Software Distribution (BSD)

This product includes software developed by the JDOM Project (<http://www.jdom.org/>).

THIS SOFTWARE IS PROVIDED "AS IS" AND ANY EXPRESSED OR IMPLIED WARRANTIES, INCLUDING, BUT NOT LIMITED TO, THE IMPLIED WARRANTIES OF MERCHANTABILITY AND FITNESS FOR A PARTICULAR PURPOSE ARE DISCLAIMED. IN NO EVENT SHALL THE JDOM AUTHORS OR THE PROJECT CONTRIBUTORS BE LIABLE FOR ANY DIRECT, INDIRECT, INCIDENTAL, SPECIAL, EXEMPLARY, OR CONSEQUENTIAL DAMAGES (INCLUDING, BUT NOT LIMITED TO, PROCUREMENT OF SUBSTITUTE GOODS OR SERVICES; LOSS OF USE, DATA, OR PROFITS; OR BUSINESS INTERRUPTION) HOWEVER CAUSED AND ON ANY THEORY OF LIABILITY, WHETHER IN CONTRACT, STRICT LIABILITY, OR TORT (INCLUDING NEGLIGENCE OR OTHERWISE) ARISING IN ANY WAY OUT OF THE USE OF THIS SOFTWARE, EVEN IF ADVISED OF THE POSSIBILITY OF SUCH DAMAGE.

Copyright (C) 2000-2004 Jason Hunter & Brett McLaughlin. All rights reserved.

This product includes software developed by the Massachusetts Institute of Technology (MIT).

THE SOFTWARE IS PROVIDED "AS IS", WITHOUT WARRANTY OF ANY KIND, EXPRESS OR IMPLIED, INCLUDING BUT NOT LIMITED TO THE WARRANTIES OF MERCHANTABILITY, FITNESS FOR A PARTICULAR PURPOSE AND NONINFRINGEMENT. IN NO EVENT SHALL THE AUTHORS OR COPYRIGHT HOLDERS BE LIABLE FOR ANY CLAIM, DAMAGES OR OTHER LIABILITY, WHETHER IN AN ACTION OF CONTRACT, TORT OR OTHERWISE, ARISING FROM, OUT OF OR IN CONNECTION WITH THE SOFTWARE OR THE USE OR OTHER DEALINGS IN THE SOFTWARE.

Copyright © 2009 MIT

This product includes software developed by Jean-loup Gailly and Mark Adler. This software is provided 'as-is', without any express or implied warranty. In no event will the authors be held liable for any damages arising from the use of this software.

Copyright (c) 1995-2005 Jean-loup Gailly and Mark Adler

This software is based in part on the work of the Independent JPEG Group (<http://www.ijg.org/>).

This product includes software developed by the Dojo Foundation (<http://dojotoolkit.org>).

THIS SOFTWARE IS PROVIDED BY THE COPYRIGHT HOLDERS AND CONTRIBUTORS "AS IS" AND ANY EXPRESS OR IMPLIED WARRANTIES, INCLUDING, BUT NOT LIMITED TO, THE IMPLIED WARRANTIES OF MERCHANTABILITY AND FITNESS FOR A PARTICULAR PURPOSE ARE DISCLAIMED. IN NO EVENT SHALL THE COPYRIGHT OWNER OR CONTRIBUTORS BE LIABLE FOR ANY DIRECT, INDIRECT, INCIDENTAL, SPECIAL, EXEMPLARY, OR CONSEQUENTIAL DAMAGES (INCLUDING, BUT NOT LIMITED TO, PROCUREMENT OF SUBSTITUTE GOODS OR SERVICES; LOSS OF USE, DATA, OR PROFITS; OR BUSINESS INTERRUPTION) HOWEVER CAUSED AND ON ANY THEORY OF LIABILITY, WHETHER IN CONTRACT, STRICT LIABILITY, OR TORT (INCLUDING NEGLIGENCE OR OTHERWISE) ARISING IN ANY WAY OUT OF THE USE OF THIS SOFTWARE, EVEN IF ADVISED OF THE POSSIBILITY OF SUCH DAMAGE.

Copyright (c) 2005-2009, The Dojo Foundation. All rights reserved.

This product includes software developed by W3C.

Copyright © 2009 World Wide Web Consortium, (Massachusetts Institute of Technology, Institut National de Recherche en Informatique et en Automatique, Keio University). All Rights Reserved. (<http://www.w3.org/Consortium/Legal/>)

This product includes software developed by Mathew R. Miller (<http://www.bluecreststudios.com>).

Copyright (c) 1999-2002 ComputerSmarts. All rights reserved.

This product includes software developed by Shaun Wilde and distributed via Code Project Open License (<http://www.codeproject.com>).

THIS WORK IS PROVIDED "AS IS", "WHERE IS" AND "AS AVAILABLE", WITHOUT ANY EXPRESS OR IMPLIED WARRANTIES OR CONDITIONS OR GUARANTEES. YOU, THE USER, ASSUME ALL RISK IN ITS USE, INCLUDING COPYRIGHT INFRINGEMENT, PATENT INFRINGEMENT, SUITABILITY, ETC. AUTHOR EXPRESSLY DISCLAIMS ALL EXPRESS, IMPLIED OR STATUTORY WARRANTIES OR CONDITIONS, INCLUDING WITHOUT LIMITATION, WARRANTIES OR CONDITIONS OF MERCHANTABILITY, MERCHANTABLE QUALITY OR FITNESS FOR A PARTICULAR PURPOSE, OR ANY WARRANTY OF TITLE OR NON-INFRINGEMENT, OR THAT THE WORK (OR ANY PORTION THEREOF) IS CORRECT, USEFUL, BUG-FREE OR FREE OF VIRUSES. YOU MUST PASS THIS DISCLAIMER ON WHENEVER YOU DISTRIBUTE THE WORK OR DERIVATIVE WORKS.

This product includes software developed by Chris Maunder and distributed via Code Project Open License (<http://www.codeproject.com>).

THIS WORK IS PROVIDED "AS IS", "WHERE IS" AND "AS AVAILABLE", WITHOUT ANY EXPRESS OR IMPLIED WARRANTIES OR CONDITIONS OR GUARANTEES. YOU, THE USER, ASSUME ALL RISK IN ITS USE, INCLUDING COPYRIGHT INFRINGEMENT, PATENT INFRINGEMENT, SUITABILITY, ETC. AUTHOR EXPRESSLY DISCLAIMS ALL EXPRESS, IMPLIED OR STATUTORY WARRANTIES OR CONDITIONS, INCLUDING WITHOUT LIMITATION, WARRANTIES OR CONDITIONS OF MERCHANTABILITY, MERCHANTABLE QUALITY OR FITNESS FOR A PARTICULAR PURPOSE, OR ANY WARRANTY OF TITLE OR NON-INFRINGEMENT, OR THAT THE WORK (OR ANY PORTION THEREOF) IS CORRECT, USEFUL, BUG-FREE OR FREE OF VIRUSES. YOU MUST PASS THIS DISCLAIMER ON WHENEVER YOU DISTRIBUTE THE WORK OR DERIVATIVE WORKS.

This product includes software developed by PJ Arends and distributed via Code Project Open License (<http://www.codeproject.com>).

THIS WORK IS PROVIDED "AS IS", "WHERE IS" AND "AS AVAILABLE", WITHOUT ANY EXPRESS OR IMPLIED WARRANTIES OR CONDITIONS OR GUARANTEES. YOU, THE USER, ASSUME ALL RISK IN ITS USE, INCLUDING COPYRIGHT INFRINGEMENT, PATENT INFRINGEMENT, SUITABILITY, ETC. AUTHOR EXPRESSLY DISCLAIMS ALL EXPRESS, IMPLIED OR STATUTORY WARRANTIES OR CONDITIONS, INCLUDING WITHOUT LIMITATION, WARRANTIES OR CONDITIONS OF MERCHANTABILITY, MERCHANTABLE QUALITY OR FITNESS FOR A PARTICULAR PURPOSE, OR ANY WARRANTY OF TITLE OR NON-INFRINGEMENT, OR THAT THE WORK (OR ANY PORTION THEREOF) IS CORRECT, USEFUL, BUG-FREE OR FREE OF VIRUSES. YOU MUST PASS THIS DISCLAIMER ON WHENEVER YOU DISTRIBUTE THE WORK OR DERIVATIVE WORKS.

This product includes software developed by Erwin Tratar. This source code and all accompanying material is copyright (c) 1998-1999 Erwin Tratar. All rights reserved.

THIS SOFTWARE IS PROVIDED "AS IS" WITHOUT EXPRESS OR IMPLIED WARRANTY. USE IT AT YOUR OWN RISK! THE AUTHOR ACCEPTS NO LIABILITY FOR ANY DAMAGE/LOSS OF BUSINESS THAT THIS PRODUCT MAY CAUSE.

This product includes software developed by Sam Leffler of Silicon Graphics.

THE SOFTWARE IS PROVIDED "AS-IS" AND WITHOUT WARRANTY OF ANY KIND, EXPRESS, IMPLIED OR OTHERWISE, INCLUDING WITHOUT LIMITATION, ANY WARRANTY OF MERCHANTABILITY OR FITNESS FOR A PARTICULAR PURPOSE.

IN NO EVENT SHALL SAM LEFFLER OR SILICON GRAPHICS BE LIABLE FOR ANY SPECIAL, INCIDENTAL, INDIRECT OR CONSEQUENTIAL DAMAGES OF ANY KIND, OR ANY DAMAGES WHATSOEVER RESULTING FROM LOSS OF USE, DATA OR PROFITS, WHETHER OR NOT ADVISED OF THE POSSIBILITY OF DAMAGE, AND ON ANY THEORY OF LIABILITY, ARISING OUT OF OR IN CONNECTION WITH THE USE OR PERFORMANCE OF THIS SOFTWARE

Copyright (c) 1988-1997 Sam Leffler

Copyright (c) 1991-1997 Silicon Graphics, Inc.

This product includes software developed by Guy Eric Schalnat, Andreas Dilger, Glenn Randers-Pehrson (current maintainer), and others. (<http://www.libpng.org>)

The PNG Reference Library is supplied "AS IS". The Contributing Authors and Group 42, Inc. disclaim all warranties, expressed or implied, including, without limitation, the warranties of merchantability and of fitness for any purpose. The Contributing Authors and Group 42, Inc. assume no liability for direct, indirect, incidental, special, exemplary, or consequential damages, which may result from the use of the PNG Reference Library, even if advised of the possibility of such damage.

This product includes software components distributed by the Cryptix Foundation.

THIS SOFTWARE IS PROVIDED BY THE CRYPTIX FOUNDATION LIMITED AND CONTRIBUTORS "AS IS" AND ANY EXPRESS OR IMPLIED WARRANTIES, INCLUDING, BUT NOT LIMITED TO, THE IMPLIED WARRANTIES OF MERCHANTABILITY AND FITNESS FOR A PARTICULAR PURPOSE ARE DISCLAIMED. IN NO EVENT SHALL THE CRYPTIX FOUNDATION LIMITED OR CONTRIBUTORS BE LIABLE FOR ANY DIRECT, INDIRECT, INCIDENTAL, SPECIAL, EXEMPLARY, OR CONSEQUENTIAL DAMAGES (INCLUDING, BUT NOT LIMITED TO, PROCUREMENT OF SUBSTITUTE GOODS OR SERVICES; LOSS OF USE, DATA, OR PROFITS; OR BUSINESS INTERRUPTION) HOWEVER CAUSED AND ON ANY THEORY OF LIABILITY, WHETHER IN CONTRACT, STRICT LIABILITY, OR TORT (INCLUDING NEGLIGENCE OR OTHERWISE) ARISING IN ANY WAY OUT OF THE USE OF THIS SOFTWARE, EVEN IF ADVISED OF THE POSSIBILITY OF SUCH DAMAGE

Copyright © 1995-2005 The Cryptix Foundation Limited. All rights reserved.

This product includes software components distributed by Sun Microsystems.

This software is provided "AS IS," without a warranty of any kind. ALL EXPRESS OR IMPLIED CONDITIONS, REPRESENTATIONS AND WARRANTIES, INCLUDING ANY IMPLIED WARRANTY OF MERCHANTABILITY, FITNESS FOR A PARTICULAR PURPOSE OR NON-INFRINGEMENT, ARE HEREBY EXCLUDED. SUN AND ITS LICENSORS SHALL NOT BE LIABLE FOR ANY DAMAGES SUFFERED BY LICENSEE AS A RESULT OF USING, MODIFYING OR DISTRIBUTING THE SOFTWARE OR ITS DERIVATIVES. IN NO EVENT WILL SUN OR ITS LICENSORS BE LIABLE FOR ANY LOST REVENUE, PROFIT OR DATA, OR FOR DIRECT, INDIRECT, SPECIAL, CONSEQUENTIAL, INCIDENTAL OR PUNITIVE DAMAGES, HOWEVER CAUSED AND REGARDLESS OF THE THEORY OF LIABILITY, ARISING OUT OF THE USE OF OR INABILITY TO USE SOFTWARE, EVEN IF SUN HAS BEEN ADVISED OF THE POSSIBILITY OF SUCH DAMAGES.

Copyright (c) 1998 Sun Microsystems, Inc. All Rights Reserved.

This product includes software components distributed by Dennis M. Sosnoski.

THIS SOFTWARE IS PROVIDED BY THE COPYRIGHT HOLDERS AND CONTRIBUTORS "AS IS" AND ANY EXPRESS OR IMPLIED WARRANTIES, INCLUDING, BUT NOT LIMITED TO, THE IMPLIED WARRANTIES OF MERCHANTABILITY AND FITNESS FOR A PARTICULAR PURPOSE ARE DISCLAIMED. IN NO EVENT SHALL THE COPYRIGHT OWNER OR CONTRIBUTORS BE LIABLE FOR ANY DIRECT, INDIRECT, INCIDENTAL, SPECIAL, EXEMPLARY, OR CONSEQUENTIAL DAMAGES (INCLUDING, BUT NOT LIMITED TO, PROCUREMENT OF SUBSTITUTE GOODS OR SERVICES; LOSS OF USE, DATA, OR PROFITS; OR BUSINESS INTERRUPTION) HOWEVER CAUSED AND ON ANY THEORY OF LIABILITY, WHETHER IN CONTRACT, STRICT LIABILITY, OR TORT (INCLUDING NEGLIGENCE OR OTHERWISE) ARISING IN ANY WAY OUT OF THE USE OF THIS SOFTWARE, EVEN IF ADVISED OF THE POSSIBILITY OF SUCH DAMAGE.

Copyright © 2003-2007 Dennis M. Sosnoski. All Rights Reserved

It also includes materials licensed under Apache 1.1 and the following XPP3 license

THIS SOFTWARE IS PROVIDED "AS IS" AND ANY EXPRESSED OR IMPLIED WARRANTIES, INCLUDING, BUT NOT LIMITED TO, THE IMPLIED WARRANTIES OF MERCHANTABILITY AND FITNESS FOR A PARTICULAR PURPOSE ARE DISCLAIMED. IN NO EVENT SHALL THE COPYRIGHT OWNER OR CONTRIBUTORS BE LIABLE FOR ANY DIRECT, INDIRECT, INCIDENTAL, SPECIAL, EXEMPLARY, OR CONSEQUENTIAL DAMAGES (INCLUDING, BUT NOT LIMITED TO, PROCUREMENT OF SUBSTITUTE GOODS OR SERVICES; LOSS OF USE, DATA, OR PROFITS; OR BUSINESS INTERRUPTION) HOWEVER CAUSED AND ON ANY THEORY OF LIABILITY, WHETHER IN CONTRACT, STRICT LIABILITY, OR TORT (INCLUDING NEGLIGENCE OR OTHERWISE) ARISING IN ANY WAY OUT OF THE USE OF THIS SOFTWARE, EVEN IF ADVISED OF THE POSSIBILITY OF SUCH DAMAGE.

Copyright © 2002 Extreme! Lab, Indiana University. All Rights Reserved

This product includes software components distributed by CodeProject. This software contains material that is © 1994-2005 The Ultimate Toolbox, all rights reserved.

This product includes software components distributed by Geir Landro.

Copyright © 2001-2003 Geir Landro (drop@destroydrop.com) JavaScript Tree - www.destroydrop.com/hjjavascripts/tree/version 0.96

This product includes software components distributed by the Hypersonic SQL Group.

THIS SOFTWARE IS PROVIDED BY THE COPYRIGHT HOLDERS AND CONTRIBUTORS "AS IS" AND ANY EXPRESS OR IMPLIED WARRANTIES, INCLUDING, BUT NOT LIMITED TO, THE IMPLIED WARRANTIES OF MERCHANTABILITY AND FITNESS FOR A PARTICULAR PURPOSE ARE DISCLAIMED. IN NO EVENT SHALL THE COPYRIGHT OWNER OR CONTRIBUTORS BE LIABLE FOR ANY DIRECT, INDIRECT, INCIDENTAL, SPECIAL, EXEMPLARY, OR CONSEQUENTIAL DAMAGES (INCLUDING, BUT NOT LIMITED TO, PROCUREMENT OF SUBSTITUTE GOODS OR SERVICES; LOSS OF USE, DATA, OR PROFITS; OR BUSINESS INTERRUPTION) HOWEVER CAUSED AND ON ANY THEORY OF LIABILITY, WHETHER IN CONTRACT, STRICT LIABILITY, OR TORT (INCLUDING NEGLIGENCE OR OTHERWISE) ARISING IN ANY WAY OUT OF THE USE OF THIS SOFTWARE, EVEN IF ADVISED OF THE POSSIBILITY OF SUCH DAMAGE

Copyright © 1995-2000 by the Hypersonic SQL Group. All Rights Reserved

This product includes software components distributed by the International Business Machines Corporation and others.

THE SOFTWARE IS PROVIDED "AS IS", WITHOUT WARRANTY OF ANY KIND, EXPRESS OR IMPLIED, INCLUDING BUT NOT LIMITED TO THE WARRANTIES OF MERCHANTABILITY, FITNESS FOR A PARTICULAR PURPOSE AND NONINFRINGEMENT. IN NO EVENT SHALL THE AUTHORS OR COPYRIGHT HOLDERS BE LIABLE FOR ANY CLAIM, DAMAGES OR OTHER LIABILITY, WHETHER IN AN ACTION OF CONTRACT, TORT OR OTHERWISE, ARISING FROM, OUT OF OR IN CONNECTION WITH THE SOFTWARE OR THE USE OR OTHER DEALINGS IN THE SOFTWARE.

Copyright (c) 1995-2009 International Business Machines Corporation and others. All rights reserved.

This product includes software components distributed by the University of Coimbra.

University of Coimbra distributes this software in the hope that it will be useful but DISCLAIMS ALL WARRANTIES WITH REGARD TO IT, including all implied warranties of MERCHANTABILITY or FITNESS FOR A PARTICULAR PURPOSE. In no event shall University of Coimbra be liable for any special, indirect or consequential damages (or any damages whatsoever) resulting from loss of use, data or profits, whether in an action of contract, negligence or other tortious action, arising out of or in connection with the use or performance of this software.

Copyright (c) 2000 University of Coimbra, Portugal. All Rights Reserved.

This product includes software components distributed by Steve Souza.

THIS SOFTWARE IS PROVIDED BY THE AUTHOR AND CONTRIBUTORS "AS IS" AND ANY EXPRESS OR IMPLIED WARRANTIES, INCLUDING, BUT NOT LIMITED TO, THE IMPLIED WARRANTIES OF MERCHANTABILITY AND FITNESS FOR A PARTICULAR PURPOSE ARE DISCLAIMED. IN NO EVENT SHALL THE COPYRIGHT OWNER OR CONTRIBUTORS BE LIABLE FOR ANY DIRECT, INDIRECT, INCIDENTAL, SPECIAL, EXEMPLARY, OR CONSEQUENTIAL DAMAGES (INCLUDING, BUT NOT LIMITED TO, PROCUREMENT OF SUBSTITUTE GOODS OR SERVICES; LOSS OF USE, DATA, OR PROFITS; OR BUSINESS INTERRUPTION) HOWEVER CAUSED AND ON ANY THEORY OF LIABILITY, WHETHER IN CONTRACT, STRICT LIABILITY, OR TORT (INCLUDING NEGLIGENCE OR OTHERWISE) ARISING IN ANY WAY OUT OF THE USE OF THIS SOFTWARE, EVEN IF ADVISED OF THE POSSIBILITY OF SUCH DAMAGE.

Copyright © 2002, Steve Souza (admin@jamonapi.com). All Rights Reserved.

This product includes software developed by the OpenSymphony Group (<http://www.opensymphony.com/>.)"

Copyright © 2001-2004 The OpenSymphony Group. All Rights Reserved.

PANTONE (R) Colors displayed in the software application or in the user documentation may not match PANTONE-identified standards. Consult current PANTONE Color Publications for accurate color. PANTONE(R) and other Pantone LLC trademarks are the property of Pantone LLC. (C) Pantone LLC, 2011.

Pantone LLC is the copyright owner of color data and/or software which are licensed to Oracle to distribute for use only in combination with Oracle Documaker. PANTONE Color Data and/or Software shall not be copied onto another disk or into memory unless part of the execution of Oracle Documaker.

This product includes software developed by Dave Gamble and distributed via SourceForge.net (<http://sourceforge.net/projects/cjson>)

THE SOFTWARE IS PROVIDED "AS IS", WITHOUT WARRANTY OF ANY KIND, EXPRESS OR IMPLIED, INCLUDING BUT NOT LIMITED TO THE WARRANTIES OF MERCHANTABILITY, FITNESS FOR A PARTICULAR PURPOSE AND NONINFRINGEMENT. IN NO EVENT SHALL THE AUTHORS OR COPYRIGHT HOLDERS BE LIABLE FOR ANY CLAIM, DAMAGES OR OTHER LIABILITY, WHETHER IN AN ACTION OF CONTRACT, TORT OR OTHERWISE, ARISING FROM, OUT OF OR IN CONNECTION WITH THE SOFTWARE OR THE USE OR OTHER DEALINGS IN THE SOFTWARE.

Copyright (c) 2009 Dave Gamble

Contents

Preface 11

- Audience 11
- Documentation Accessibility 11
- Related Documents 13
- Conventions 13

Installing Docupresentment on UNIX 15

Overview 16

Downloading the Software 18

- Using the Oracle Software Delivery Cloud 18

Installing a New System 20

Scenario 1: New Installation of Version 2.7 21

- Installing Docupresentment 2.7 RTE 21
- Installing the Documaker Bridge Shared Objects RTE 23

Scenario 2: Upgrading From a Version 1.x Environment (overlay) 24

- Installing the Docupresentment 2.7 RTE 24

Scenario 3: Upgrading from Version 2.4 to Version 2.7 28

- Installing the Docupresentment 2.7 RTE 28

Scenario 4: Modified Upgrade from Version 1.x 32

- Installing Docupresentment 2.7 RTE 32
- Installing Documaker Bridge Shared Objects 34
- Testing Your System 34
- Customizing Your Docupresentment 2.7 Environment 35

Scenario 5: Modified Upgrade from Version 2.x 36

- Installing Docupresentment 2.7 RTE 36
- Installing Documaker Bridge Shared Objects 38
- Testing Your System 38
- Customizing Your Docupresentment 2.7 Environment 39

Scenario 6: Patch Upgrade of a Version 2.7 Environment 40

Testing the Installation 41

Uninstalling the System 45

Installing Docupresentment on Windows 47

Overview 48

Downloading the Software 49

Using the Oracle Software Delivery Cloud 49

Installing the Docupresentation Server 51**Installing Shared Objects 55****Installing the Docupresentation Client 57**

Selecting a queuing Method 59

Testing Your Installation 65**Setting Up the System as a Service 68**

Verifying Docupresentation was Installed as a Service 69

Uninstalling Docupresentation as a Service 71

Uninstalling the System 72**Troubleshooting the Client 73****Installing the Docupresentation with a Response File 76**

Preface

Oracle has Internet solutions for managing your documents. Docupresentment helps manage the flow of your documents. Docupresentment lets you access your documents with a web browser from your intranet or the Internet. The standard web browser interface includes security features, document database lookup, and document viewing in PDF format using the Adobe Acrobat Reader.

AUDIENCE

This document is designed for system supervisors and is intended to help you install and set up Oracle Documaker's Docupresentment (previously known as Internet Document Server).

DOCUMENTATION ACCESSIBILITY

Accessibility of Links to External Web Sites in Documentation

This documentation may contain links to Web sites of other companies or organizations that Oracle does not own or control. Oracle neither evaluates nor makes any representations regarding the accessibility of these Web sites.

Oracle Support

If you have any questions about the installation or use of our products, please call +1.800.223.1711 or visit the My Oracle Support website:

<http://www.oracle.com/us/support/index.html>

Go to My Oracle Support to find answers in the Oracle Support Knowledge Base, submit, update or review your Service Requests, engage the My Oracle Support Community, download software updates, and tap into Oracle proactive support tools and best practices.

Hearing impaired customers in the U.S. who need to speak with an Oracle Support representative may use a telecommunications relay service (TRS); information about TRS is available at <http://www.fcc.gov/cgb/consumerfacts/trs.html>, and a list of phone numbers is available at <http://www.fcc.gov/cgb/dro/trsphonebk.html>. International hearing impaired customers should use the TRS at 1.605.224.1837.

Contact

USA:+1.800.223.1711

Canada: 1.800.668.8921 or +1.905.890.6690

Latin America: 877.767.2253

For other regions including Latin America, Europe, Middle East, Africa, and Asia Pacific regions: Visit- <http://www.oracle.com/us/support/contact/index.html>

Copyright ©2015 Oracle and/or its affiliates. All rights reserved.

RELATED DOCUMENTS

For more information, refer to the following Oracle resources:

- Documaker Administration Guide
- Output Management Guide
- Docupresentment SDK Reference

CONVENTIONS

The following text conventions are used in this document:

Convention	Description
bold	Indicates information you enter.
<i>italic</i>	Italic type indicates book titles, emphasis, or placeholder variables for which you supply particular values.
monospace	Monospace type indicates commands, URLs, code in examples, and text that appears on the screen.

Chapter 1

Installing Docupresentation on UNIX

This chapter provides information on installing Docupresentation on UNIX-based machines, such as those running AIX, Linux, and Solaris.

You will find this information:

- *Overview* on page 16
- *Downloading the Software* on page 18
- *Installing a New System* on page 20
- *Scenario 1: New Installation of Version 2.7* on page 21
- *Scenario 2: Upgrading From a Version 1.x Environment (overlay)* on page 24
- *Scenario 3: Upgrading from Version 2.4 to Version 2.7* on page 28
- *Scenario 4: Modified Upgrade from Version 1.x* on page 32
- *Scenario 5: Modified Upgrade from Version 2.x* on page 36
- *Scenario 6: Patch Upgrade of a Version 2.7 Environment* on page 40
- *Testing the Installation* on page 41
- *Uninstalling the System* on page 45

OVERVIEW

This topic describes how to install Docupresentation version 2.7 with shared objects using the default installation options. The steps in this topic tell you how to:

- Set up the basic infrastructure to support Docupresentation 2.7
- Install Docupresentation 2.7
- Make sure the system is working correctly

Docupresentation 2.7 is designed to work with third party applications, such as WebSphere Application Server, Apache, or Tomcat, and queuing managers such as WebSphere MQ. This topic does not provide installation instructions on non-Oracle products. Please consult the specific product manuals for installation and configuration instructions for your particular UNIX environment.

Docupresentation version 2.7 and Shared Objects - Documaker Bridge 12.4 (or higher) are packaged as installation scripts in the UNIX/Linux environments. Typically, the file suffix identifies the target OS of the installer. For example, a script with an extension of *lnx* is for the Linux operating system.

After you get the appropriate installation scripts, make sure the scripts have the *execute* permission on the file. The files must be installed as a *user* — not as *root*.

Hardware Test Environments

Docupresentation 2.7 was tested on various UNIX/Linux platforms. This table lists the configurations that have been tested.

AIX systems

Model*	pSeries p650
CPU	6 x 1.45GHz Power4+ processors
Memory*	12GB
Hard disk**	Two 36.4GB 10,000RPM Ultra3 SCSI drives

*Additional memory and a faster CPU are not required, but will improve performance.

** Additional space required for your customized forms.

Linux systems

Model*	Dell PWS450
CPU	2 x 12.22.40GHz Xeon processors2.5
Memory*	3GB2.52.5
Hard disk**	70GB SCSI drive

*Additional memory and a faster 2.5 CPU are not required, but will improve performance.

** Additional space required for your customized forms.

Solaris systems

Model*	Enterprise 250
CPU	2 x 400MHz UltraSPARC-II processors
Memory*	2GB
Hard disk**	Four 36GB SCSI drives

*Additional memory and a faster CPU are not required, but will improve performance.

** Additional space required for your customized forms.

Checking the Software Requirements

Docupresentment 2.7 requires JRE 1.7 for Linux, Solaris and AIX. Check the server's installed Java version by typing the following command in a terminal window:

```
java -version
```

If you see an error, check your PATH environment variable to see if Java is in your path. You can use the *which java* command to see if Java is installed.

Note Docupresentment 2.7 supports the 32-bit version of Java. Docupresentment 2.7 does not operate properly in 64-bit versions of the JRE.

Creating the Required User and Directories

Oracle recommends that you install and run Docupresentment as a *user* — not as *root*. Create the user account you will use to run Docupresentment 2.7.

When you execute the installation script, it prompts you for a directory location for the full installation. Typically, Docupresentment is installed in the home directory of the user you created.

DOWNLOADING THE SOFTWARE

Docupresentation is available for download via the Oracle Software Delivery Cloud web site. The installation contains the server (including the SDK), bridges, and client.

You can pick Documaker component version separately from Docupresentation after having the separate installations for the required components. The latest version of Documaker is version 12.4. Generally, you would want the latest version and patch level of the software. You will find links to the latest patch levels of previous versions of Documaker at the My Oracle Support web site:

<https://support.oracle.com>

Installing the correct version of Shared Objects - Documaker Bridge is especially important if you plan to use Docupresentation to run Documaker. The installation of other bridges, such as the Documanager Bridge, is optional.

USING THE ORACLE SOFTWARE DELIVERY CLOUD

Oracle applications are available for download at the [Oracle Software Delivery Cloud](#) web site. The process includes:

- Logging in and agreeing to the terms and restrictions
- Searching for the applications you want to download
- Downloading those applications

Note To download the latest patches for the Oracle software you have already installed, visit the [My Oracle Support site](#) at this web address:

<https://support.oracle.com>

To download the latest documentation, visit the Oracle Technology Network (OTN) web site at this web address:

<http://www.oracle.com/technetwork/index.html>

Before you begin

The [Oracle Software Delivery Cloud](#) site lets you download versions of Oracle applications. Files on the Oracle Software Delivery Cloud are available in ZIP format. Once you download the files you need, extract the files in the ZIP file to proceed with the software installation.

Note You can download the corresponding product documentation from the Oracle Technology Network (OTN) site:

<http://www.oracle.com/technetwork/documentation/insurance-097481.html>

You will need Acrobat Reader or a similar program to view the PDF documentation. You can download Acrobat Reader at Adobe's site (www.adobe.com).

Follow these instructions to download Oracle applications:

1. First, go to the Oracle Software Delivery Cloud web site:

<https://edelivery.oracle.com>

2. Sign in with your Oracle account. If you do not have an Oracle account, you can register for an account [here](#).
3. Review and accept the Terms and Restrictions.
4. Select Oracle Applications from the Product Pack list or you can search the Product.
5. Once you have selected the desired program, select the desired platform.
6. The selected products are then listed. To remove them, click the X (cross) which is adjacent to the product.
7. Once you have selected the desired product and platform, click Continue to proceed.
8. License agreement is displayed. Once you are ready to proceed, check the checkbox, then click Continue.
9. Installations are displayed. To individually download files click on the filename, to download all files click on the 'Download All' button.
10. The Oracle Software Delivery Cloud prompts you to open or save the zipped file and then starts the download.

While you can save the file on any machine you choose, we recommend you save the file onto the machine where you plan to run it. You must unzip the file on the platform for which it was intended. The length of time it takes to download an application depends on the size of the download, your connection speed, and the amount of traffic on the site.

11. Click Sign Out when you finish downloading the files you need.

INSTALLING A NEW SYSTEM

There are several installation and upgrade scenarios for Docupresentment version 2.7

If you...	Follow...
Are installing Docupresentment for the first time	<i>Scenario 1: New Installation of Version 2.7</i> on page 21
Have Docupresentment 1.x installed	Either: <i>Scenario 2: Upgrading From a Version 1.x Environment (overlay)</i> on page 24 or <i>Scenario 4: Modified Upgrade from Version 1.x</i> on page 32
Have Docupresentment 2.4 installed and would like to upgrade to version 2.7	<i>Scenario 6: Patch Upgrade of a Version 2.7 Environment</i> on page 40
Have Docupresentment 2.7 installed and would like to perform a patch upgrade	<i>Scenario 6: Patch Upgrade of a Version 2.7 Environment</i> on page 40

Note If you are using WebSphere MQ (MQ Series) or ActiveMQ for the queuing method, you must make the WebSphere MQ or ActiveMQ jar files available to Docupresentment. See the “Installing Third-Party Jar Files” section of the [Docupresentment Guide](#) for more information.

SCENARIO 1: NEW INSTALLATION OF VERSION 2.7

Installing the system for the first time involves these tasks:

- *Installing Docupresentation 2.7 RTE* on page 21
- *Installing the Documaker Bridge Shared Objects RTE* on page 23

INSTALLING DOCUPRESENTMENT 2.7 RTE

Follow these steps to install Docupresentation 2.7 RTE:

1. Download the Docupresentation 2.7 RTE and the Shared Objects - Documaker Bridge 12.4 installation scripts from the Oracle Software Delivery Cloud site to a directory where you have execute permissions.
2. Execute the Docupresentation 2.7 RTE installation script.

Enter the installation path. Either override the default installation directory location or press Enter to accept the default of `/home/userid/docupresentation`.

Note The following example screens show what you would see if you logged in as *userid* and were installing Docupresentation version 2.7

```
*** Docupresentation 2.7(Type RTE) Installation/Update ***
Loading, Please Wait ...

Please select an Installation/Update Directory:
Press <Enter> to accept default: </home/userid/docupresentation>
{y or n}?>y
```

3. Confirm the installation directory or correct it if a mistake was made when overriding the default.

```
Install Docupresentation 2.7(RTE) to </home/userid/docupresentation>?
{y or n}?>y

Install/Update in progress. Please wait...
Updated Base Components ...
```

4. Define the path of the 32-bit JRE directory (64 bit JRE systems will not correctly install) or accept the default detected by the installation:

```
Where is your 32-bit Java Run-time (JRE) Location?
(Example: /usr/jdk/jdk1.6.0_24/jre)
JRE Version=java version "1.7.0"
```

Setting up error email notifications

- The installation script asks if you want to set up Watchdog error SMTP email notifications.

```
Option for WatchDog Error SMTP Email Notifications:
Do you want to configure this option now?
(Note: You can manually configure it later in the log4j logconf.xml file)
{y or n}?>
```

- If you enter yes, the SMTP setup prompts appear:

```
SMTP Server ?>
SMTP User Account ?>
SMTP Password ?>
Send emails FROM user ?>
Send emails TO user(s)
(Note: Can be a semicolon delimited list of email addresses)
?>
Send emails CC user(s)
(Note: Can be a semicolon delimited list of email addresses)
?>
Send emails to BCC user(s)
(Note: Can be a semicolon delimited list of email addresses)
?>
```

Make the appropriate entries, as described in this table:

For this prompt	Enter...
SMTP Server	Enter the name of the SMTP server.
SMTP User Account	Enter the user ID for the SMTP account.
SMTP Password	Enter the password for the user ID you set up as the SMTP User Account.
Send emails FROM user	Enter the email address from which the email will be sent.
Send emails TO user(s)	Enter the email addresses of the recipients you want to receive emails. Separate the email addresses with semicolons.
Send emails CC user(s)	Enter the email addresses of the recipients you want to receive courtesy copies (CC) of the emails. Separate the email addresses with semicolons.
Send emails to BCC user(s)	Enter the email addresses of the recipients you want to receive blind courtesy copies (BCC) of the emails. Separate the email addresses with semicolons.

After you answer the prompts or if you enter no to indicate you do not want to set up the error email notifications, the installation script finishes.

```
Installing Setup Files ...
Please Wait ...
New Installation Components Installed ...
RTE Installation Complete.
```

INSTALLING THE DOCUMAKER BRIDGE SHARED OBJECTS RTE

Follow these steps to install the Documaker Bridge shared objects:

1. Enter the installation path. Either override the default installation directory or press ENTER to accept the default of `</home/userid/docupresentment/docserv>`. Please note that you must enter the same path (through the `.../docserv` level) that was supplied during the Docupresentment 2.7 RTE installation. For this example, use Shared Objects - Documaker Bridge 12.4.

```

*** Documaker RP Shared Objects Bridge 12.4 Installation/Update ***
Loading, Please Wait ...

Please identify your Docupresentment Installation/Update
Directory: Note: Docupresentment directory must already exist.
Press <Enter> to accept default:
</home/userid/docupresentment/docserv>
?>

```

2. Confirm the installation directory path or correct, if necessary.

```

Install Documaker RP Shared Objects Bridge 12.4 to
</home/userid/docupresentment/docserv>?
{y or n}?>y

```

```

Installation/Update in progress. Please wait...
Updated Base Components ...

```

```

Installing Setup Files ...
Please Wait ...

```

```

New Documaker RP Shared Objects Installation Components Installed ...

```

```

Setting up docserv.xml to use jre located at </usr/java6/jre> ...

```

```

Installation Complete.

```

Docupresentment installs the base system with default HTTP queues. The system should function without additional modification.

Please see *Testing the Installation* on page 41 for instructions to test a simple request using the base Docupresentment system.

SCENARIO 2: UPGRADING FROM A VERSION 1.X ENVIRONMENT (OVERLAY)

When planning a Docupresentment 2.7 upgrade it is important to note the path name to the installation. If the previous version included *int024*, */home/userid/docupresentment* or some other semblance of a version number in the path, you must decide to keep the naming convention same or rename the directory to */home/userid/docupresentment* or some similar name.

Docupresentment 2.7 will correctly run in a directory path with a prior version name, such as */home/userid/int024* or */home/userid/docupresentment*. However, accepting this naming convention could cause confusion during future support calls, so be sure to properly report your current version, revision, and patch level during conversations with support.

If you decide to modify the installation path, such as to */home/userid/docupresentment*, you must modify the following INI files in the *docserv* directory to reflect the new naming convention:

- *Docserv.xml* (any request types that might call attachments)
- Bridge configuration INI and/or XML files (Documanager bridge configuration files such as *dmg_brs.ini*)
- Documaker Bridge and Documaker Server RPDRunRP configuration files such as *dap.ini*, *rpex1.ini*, *rpex1rpd.ini*, and RPDRunRP *fsiuser* and *fsisys* INI files)
- Any client specific INI or XML (*docclnt.ini*, *docclient.xml*, *dsi.ini*) files which reference the directory location.

INSTALLING THE DOCUPRESENTMENT 2.7 RTE

1. Download the Docupresentment 2.7 RTE and the Shared Objects - Documaker Bridge 12.4 installation scripts from the Oracle Software Delivery Cloud site to a directory where you have execute permissions.

Note The Shared Objects - Documaker Bridge version must match the Documaker Server system installed on the host system in both version and patch level.

2. Execute the Docupresentment 2.7 RTE installation script.

Enter the installation path. You must point the installation to the existing *int0xx* directory or the user-specified directory name.

```
*** Docupresentment 2.7(Type RTE) Installation/Update ***  
Loading, Please Wait ...
```

```
Please select an Installation/Update Directory:  
Press <Enter> to accept default:  
</home/userid/docupresentment>  
?>
```


- The system detects that a previous version of Docupresentment is resident. You must choose to back up and upgrade or quit. Oracle highly recommends that you choose option 1 for back up and upgrade. When doing so, the installation script will create a backup directory under the docserv directory.

```
Docupresentment installation </home/userid/docupresentment>
for version <1.8> already exist.

Please select a upgrade type
1 = Backup and Upgrade Installation
2 = Upgrade Installation
3 = Quit
?>1
```

- Confirm the chosen path or edit if necessary. Once correct, enter **Y** to complete the installation:

```
Install Docupresentment 2.7 (RTE) to
</home/userid/docupresentment>?
{y or n}?>y

Upgrade in progress. Please wait...
Updated Base Components ...
```

- Define the path of the 32-bit JRE directory (64-bit JRE systems will not correctly install) or accept the default that is detected by the installation:

```
Where is your 32-bit Java Run-time (JRE) Location?
Press <Enter> to accept default: </usr/java6/jre>
?>

JRE Version=java version "1.7.x"
Installing Setup Files ...
Please Wait ...
New Installation Components Installed ...
```

Setting up error email notifications

- The installation script asks if you want to set up Watchdog error SMTP email notifications.

```
Option for WatchDog Error SMTP Email Notifications:
Do you want to configure this option now?
(Note: You can manually configure it later in the log4j logconf.xml file)
{y or n}?>
```

- If you enter Yes, the SMTP setup prompts appear:

```
SMTP Server ?>
SMTP User Account ?>
SMTP Password ?>
Send emails FROM user ?>
Send emails TO user(s)
(Note: Can be a semicolon delimited list of email addresses)
?>
Send emails CC user(s)
(Note: Can be a semicolon delimited list of email addresses)
?>
Send emails to BCC user(s)
(Note: Can be a semicolon delimited list of email addresses)
?>
```

Make the appropriate entries, as described in this table:

For this prompt	Enter...
SMTP Server	Enter the name of the SMTP server.
SMTP User Account	Enter the user ID for the SMTP account.
SMTP Password	Enter the password for the user ID you set up as the SMTP User Account.
Send emails FROM user	Enter the email address from which the email will be sent.
Send emails TO user(s)	Enter the email addresses of the recipients you want to receive emails. Separate the email addresses with semicolons.
Send emails CC user(s)	Enter the email addresses of the recipients you want to receive courtesy copies (CC) of the emails. Separate the email addresses with semicolons.
Send emails to BCC user(s)	Enter the email addresses of the recipients you want to receive blind courtesy copies (BCC) of the emails. Separate the email addresses with semicolons.

After you answer the prompts or if you enter no to indicate you do not want to set up the error email notifications, the installation script finishes.

```
Installing Setup Files ...
Please Wait ...
mv: 0653-401 Cannot rename docserver.sh to docserver.sh_20080416114612:
    A file or directory in the path name does not exist.
mv: 0653-401 Cannot rename docserver_simple.sh to docserver_simple.sh_20080416114612:
    A file or directory in the path name does not exist.
New Installation Components Installed ...

RTE Installation Complete.
```

Note The errors shown in this step occur because the version 1.8 installation does not include the two version 2.x files the system is trying to rename. You can ignore these error messages.

Docupresentment installs the base system with default HTTP queues. The system should function without additional modification.

Please see *Testing the Installation* on page 41 for instructions to test a simple request using the base Docupresentment system.

SCENARIO 3: UPGRADING FROM VERSION 2.4 TO VERSION 2.7

When planning a Docupresentment 2.7 upgrade it is important to note the path name to the installation. If the previous version included *int024*, */home/userid/docupresentment* or some other semblance of a version number in the path, you must decide to keep the naming convention same or rename the directory to */home/userid/docupresentment* or some similar name.

Docupresentment 2.7 will correctly run in a directory path with a prior version name, such as */home/userid/int024* or */home/userid/docupresentment*. However, accepting this naming convention could cause confusion during future support calls, so be sure to properly report your current version, revision, and patch level during conversations with support.

If you decide to modify the installation path, such as to */home/userid/docupresentment*, you must modify the following INI files in the docserv directory to reflect the new naming convention:

- Docserv.xml (any request types that might call attachments)
- Bridge configuration INI and/or XML files (Documanager bridge configuration files such as *dmg_brs.ini*)
- Documaker Bridge and Documaker Server RPDRunRP configuration files such as *dap.ini*, *rpex1.ini*, *rpex1rpd.ini*, and *RPDRunRP fsiuser.ini* and *fsisys.ini* files)
- Any client specific INI or XML (*docclnt.ini*, *docclient.xml*, *dsi.ini*) files which reference the directory location.

INSTALLING THE DOCUPRESENTMENT 2.7 RTE

1. Download the Docupresentment 2.7 RTE and the Shared Objects - Documaker Bridge 12.4 installation scripts from the Oracle Software Delivery Cloud site to a directory where you have execute permissions.

Note The Documaker Bridge Shared Objects version should match the Documaker Server system installed on the host system in both version and patch level.

2. Execute the Docupresentment 2.7 RTE installation script.

Enter the installation path. You must point the installation to the existing *int0xx* directory or the user-specified directory name.

```
*** Docupresentment 2.7 (Type RTE) Installation/Update ***
Loading, Please Wait ...

Please select an Installation/Update Directory:
Press <Enter> to accept default: </home/userid/docupresentment>
?>
```

3. The system detects that a previous version of Docupresentment is resident. You must choose to back up and upgrade, or quit. Oracle highly recommends that you choose option 1 for back up and upgrade. When doing so, the installation script will create a backup directory under the docserv directory.

```
Docupresentment installation </home/userid/docupresentment> for version <2.2> already exist.

Please select a upgrade type
 1 = Backup and Upgrade Installation
 2 = Upgrade Installation
 3 = Quit
?>2
```

4. Confirm the chosen path or edit if necessary. Once correct, enter **Y** to complete the installation:

```
Install Docupresentment 2.7 (RTE) to </home/userid/docupresentment>?
{y or n}?>y

Upgrade in progress. Please wait...
Updated Base Components...
```

5. Define the path of the 32-bit JRE directory (64-bit JRE systems will not correctly install) or accept the default that is detected by the installation:

```
Where is your 32-bit Java Run-time (JRE) Location?
Press <Enter> to accept default: </usr/java6/jre>
?>/usr/java6/jre
JRE Version=java version "1.7.x"
```

Setting up error email notifications

6. The installation script asks if you want to set up Watchdog error SMTP email notifications.

```
Option for WatchDog Error SMTP Email Notifications:
Do you want to configure this option now?
(Note: You can manually configure it later in the log4j logconf.xml file)
{y or n}?>
```

7. If you enter yes, the SMTP setup prompts appear:

```
SMTP Server ?>
SMTP User Account ?>
SMTP Password ?>
Send emails FROM user ?>
Send emails TO user(s)
  (Note: Can be a semicolon delimited list of email addresses)
?>
Send emails CC user(s)
  (Note: Can be a semicolon delimited list of email addresses)
?>
Send emails to BCC user(s)
  (Note: Can be a semicolon delimited list of email addresses)
?>
```

Make the appropriate entries, as described in this table:

For this prompt	Enter...
SMTP Server	Enter the name of the SMTP server.
SMTP User Account	Enter the user ID for the SMTP account.
SMTP Password	Enter the password for the user ID you set up as the SMTP User Account.
Send emails FROM user	Enter the email address from which the email will be sent.
Send emails TO user(s)	Enter the email addresses of the recipients you want to receive emails. Separate the email addresses with semicolons.
Send emails CC user(s)	Enter the email addresses of the recipients you want to receive courtesy copies (CC) of the emails. Separate the email addresses with semicolons.
Send emails to BCC user(s)	Enter the email addresses of the recipients you want to receive blind courtesy copies (BCC) of the emails. Separate the email addresses with semicolons.

After you answer the prompts or if you enter no to indicate you do not want to set up the error email notifications, the installation script finishes.

Installing Setup Files ... Please Wait ... New Installation Components Installed ...
--

Docupresentment installs the base system with default HTTP queues. The system should function without additional modification.

Please see *Testing the Installation* on page 41 for instructions to test a simple request using the base Docupresentment system.

SCENARIO 4: MODIFIED UPGRADE FROM VERSION 1.X

This scenario assumes the following criteria:

- You have an existing implementation of Docupresentment installed and configured on the host system.
- Docupresentment 2.7 will be installed into a fresh installation directory and you will manually move any existing INI files and custom code specific to your installation to the Docupresentment 2.7 installation directory.
- If you are using Docupresentment IDSRunRP functionality, this scenario also assumes that Documaker Server is installed and configured on the host system.

To perform a modified upgrade from Docupresentment version 1.x, you will complete these tasks:

- *Installing Docupresentment 2.7 RTE* on page 32
- *Installing Documaker Bridge Shared Objects* on page 34
- *Testing Your System* on page 34
- *Customizing Your Docupresentment 2.7 Environment* on page 35

INSTALLING DOCUPRESENTMENT 2.7 RTE

Follow these steps to install Docupresentment 2.7 RTE:

1. Download the Docupresentment 2.7 RTE and the Shared Objects - Documaker Bridge 12.4 installation scripts from the Oracle Software Delivery Cloud site to a directory where you have execute permissions.

Note The Shared Objects - Documaker Bridge version must match the Documaker Server system installed on the host system in both version and patch level.

2. Execute the Docupresentment 2.7 RTE installation script.

Enter the installation path by either overriding the default installation directory location or pressing Enter to accept the default (`/home/userid/docupresentment`).

```
*** Docupresentment 2.7 (Type RTE) Installation/Update ***
Loading, Please Wait ...

Please select an Installation/Update Directory:
Press <Enter> to accept default:
</home/userid/docupresentment>
?>
```


3. Confirm the installation directory or correct it if a mistake was made when overriding the default.

```
Install Docupresentation 2.7 (RTE) to
</home/userid/docupresentation>?
{y or n}?>y

Install/Update in progress. Please wait..

Updated Base Components ...
```

4. Define the path of the 32-bit JRE directory (currently Docupresentation Bridges will not run correctly with a 64-bit JRE). Accept the default detected by the installation:

```
Where is your 32-bit Java Run-time (JRE) Location?
(Example: /usr/jdk/jdk1.6.0_24/jre)
JRE Version=java version "1.7"
Installing Setup Files ...
Please Wait ...
New Installation Components Installed ...
RTE Installation Complete
```

INSTALLING DOCUMAKER BRIDGE SHARED OBJECTS

Follow these steps to install the Documaker Bridge shared objects:

1. Enter the installation path. Either override the default installation directory or press Enter to accept the default (</home/userid/docupresentation/docserv>). Please note you must enter the same path (through the.../docserv level) that was supplied during the Docupresentation 2.7 RTE installation. For this example, use Shared Objects - Documaker Bridge 12.4

```
*** Documaker RP Shared Objects Bridge 12.4 Installation/Update ***
Loading, Please Wait ...

Please identify your Docupresentation Installation/Update
Directory: Note: Docupresentation directory must already exist.
Press <Enter> to accept default:
</home/userid/docupresentation/docserv>
?>
```

2. Confirm the installation directory path or correct, if necessary.

```
Install Documaker RP Shared Objects Bridge 12.4 to
</home/userid/docupresentation/docserv>?
{y or n}?>y

Installation/Update in progress. Please wait...
Updated Base Components ...

Installing Setup Files ...
Please Wait ...
New Documaker RP Shared Objects Bridge Installation Components Installed ...

Setting up docserv.xml to use jre located at </usr/java6/jre> ...

Installation Complete.
```

TESTING YOUR SYSTEM

Docupresentation installs the base system with default HTTP queues. The system should function without additional modification.

Please see *Testing the Installation* on page 41 for instructions to test a simple request using the base Docupresentation system.

CUSTOMIZING YOUR DOCUPRESENTMENT 2.7 ENVIRONMENT

Once the base system has been installed and tested, you can begin the process of moving customizations from the existing Docupresentation installation to the Docupresentation 2.7 directories.

Note Client customizations and configurations can vary greatly in both complexity and degree of customization. Therefore, it is highly recommended that you contact your Consulting Services representative for help in planning the transition properly. The following steps deal with the basic INI and XML configuration files that are shared among all client installations.

1. Rename or move the following INI and XML files in the new installation's docserv directory. These are the base Docupresentation files and will be replaced with the client configuration files: dap.ini, dsi.ini, docclnt.ini, docserv.ini, docclient.xml, and docserv.xml.
2. Copy the following files from the existing installation's docserv directory to the new installation's docserv directory: dap.ini, dsi.ini, docclnt.ini, docserv.ini, and any client specific INI files.
3. Modify any directory references in the copied INI files to correctly reference the new Docupresentation installation location.
4. Copy the client MRL to the new installation. Typically, the client MRL will be located in the docserv/mstrres directory.
5. Create the docserv.xml and docclient.xml files using the iniconvert.sh utility. The following are the steps to perform the conversion:

- At the docserv directory of the new installation, enter:

```
./iniconvert.sh docserv.ini DocumentServerConvert.xml Docserv.xml
```

- At the docserv directory of the new installation, enter:

```
./iniconvert.sh dsi.ini DocumentClientConvert.xml Docclient.xml
```

These steps create the docserv.xml and docclient.xml files that Docupresentation 2.7 uses for processing. These files replace the docserv.ini and the docclient.ini files used in previous versions of Docupresentation.

Once you move all client components to the new installation directories, see *Testing the Installation* on page 41 to test the installation again.

SCENARIO 5: MODIFIED UPGRADE FROM VERSION 2.X

This scenario assumes the following criteria:

- You have an existing implementation of Docupresentment installed and configured on the host system.
- Docupresentment 2.7 will be installed into a fresh installation directory and you will manually move any existing INI files and custom code specific to your installation to the Docupresentment 2.7 installation directory.
- If you are using Docupresentment IDSRunRP functionality, this scenario also assumes that Documaker Server is installed and configured on the host system.

To perform a modified upgrade from Docupresentment version 2.x, you will complete these tasks:

- *Installing Docupresentment 2.7 RTE* on page 36
- *Installing Documaker Bridge Shared Objects* on page 38
- *Testing Your System* on page 38
- *Customizing Your Docupresentment 2.7 Environment* on page 39

INSTALLING DOCUPRESENTMENT 2.7 RTE

Follow these steps to install Docupresentment 2.7 RTE:

1. Download the Docupresentment 2.7 RTE and the Shared Objects - Documaker Bridge 12.4 installation scripts from the Oracle Software Delivery Cloud site to a directory where you have execute permissions.

Note The Shared Objects - Documaker Bridge version must match the Documaker Server system installed on the host system in both version and patch level.

2. Execute the Docupresentment 2.7 RTE installation script.

Enter the installation path by either overriding the default installation directory location or pressing Enter to accept the default (/home/userid/docupresentment).

```
*** Docupresentment 2.7 (Type RTE) Installation/Update ***
Loading, Please Wait ...

Please select an Installation/Update Directory:
Press <Enter> to accept default:
</home/userid/docupresentment>
?>
```

3. Confirm the installation directory or correct it if a mistake was made when overriding the default.

```
Install Docupresentment 2.7 (RTE) to  
</home/userid/docupresentment>?  
{y or n}?>y
```

Install/Update in progress. Please wait...

Updated Base Components ...

4. Define the path of the 32-bit JRE directory (currently Docupresentment Bridges will not run correctly with a 64-bit JRE). Accept the default detected by the installation:

```
Where is your 32-bit Java Run-time (JRE) Location?  
(Example: /usr/jdk/jdk1.6.0_24/jre)  
JRE Version=java version "1.7"  
Installing Setup Files ...  
Please Wait ...  
New Installation Components Installed ...  
RTE Installation Complete
```

INSTALLING DOCUMAKER BRIDGE SHARED OBJECTS

Follow these steps to install the Documaker Bridge shared objects:

1. Enter the installation path. Either override the default installation directory or press Enter to accept the default (</home/userid/docupresentation/docserv>). Please note you must enter the same path (through the.../docserv level) that was supplied during the Docupresentation 2.7 RTE installation. For this example, use Shared Objects - Documaker Bridge 12.4.

```
*** Documaker RP Shared Objects Bridge 12.4 Installation/Update ***
Loading, Please Wait ...

Please identify your Docupresentation Installation/Update
Directory: Note: Docupresentation directory must already exist.
Press <Enter> to accept default:
</home/userid/docupresentation >
?>
```

2. Confirm the installation directory path or correct, if necessary.

```
Install Documaker RP Shared Objects Bridge 12.4 to
</home/userid/docupresentation >?
{y or n}?>y

Installation/Update in progress. Please wait...
Updated Base Components ...

Installing Setup Files ...
Please Wait ...
New Documaker RP Shared Objects Bridge Installation Components Installed ...

Setting up docserv.xml to use jre located at </usr/java6/jre> ...

Installation Complete.
```

TESTING YOUR SYSTEM

Docupresentation installs the base system with default HTTP queues. The system should function without additional modification.

Please see *Testing the Installation* on page 41 for instructions to test a simple request using the base Docupresentation system.

CUSTOMIZING YOUR DOCUPRESENTMENT 2.7 ENVIRONMENT

Once the base system has been installed and tested, you can begin the process of moving customizations from the existing Docupresentation installation to the Docupresentation 2.7 directories.

Note Client customizations and configurations can vary greatly in both complexity and degree of customization. Therefore, it is highly recommended that you contact your Consulting Services representative for help in planning the transition and executing the migration.

These steps deal with the basic XML configuration files that are shared by all client installations:

1. Create a backup copy of the following INI and XML files in the new installation's docserv directory (these are the base Docupresentation files and will be modified): dap.ini, dsi.ini, docclient.xml, and docserv.xml.
2. Modify any directory references in these INI and XML files to correctly reference the new Docupresentation installation location.
3. Copy the client MRL to the new installation. Typically, the client MRL will be located in the docserv/mstres directory.
4. Modify the base Docupresentation 2.7 docserv.xml and docclient.xml files to include these changes:
 - Queuing systems. Modify the existing queuing settings to use the queuing methodology your environment uses. Also modify the dsi.ini file to include the queuing changes.
 - Customized client request types. The base Docupresentation system includes only base client request types. Client specific customized request types should be copied and pasted to the new docserv.xml file. If any of the request types include a path that includes the new Docupresentation installation path, be sure to modify those paths in the request types.
 - Configurations. You can copy the dap.ini file from your existing Docupresentation 2.x environment to the newly-created Docupresentation 2.7 environment (be sure to create a backup copy first in the docserv directory). This makes sure the configuration information is available to the Docupresentation 2.7 installation.

Once you move all client components to the new installation directories, see *Testing the Installation* on page 41 to test the installation again.

SCENARIO 6: PATCH UPGRADE OF A VERSION 2.7 ENVIRONMENT

Follow these steps to apply a patch to an Docupresentment 2.7 installation:

1. Download the Docupresentment 2.7 RTE script to a directory where you have execute permissions.
2. Execute the Docupresentment 2.7 RTE installation script.

Enter the installation path: You must point the installation to the existing directory or the user-specified directory name.

```
*** Docupresentment 2.7 (Type RTE) Installation/Update ***
Loading, Please Wait ...

Please select an Installation/Update Directory:
Press <Enter> to accept default:
</home/userid/docupresentment>
?>
```

3. The system detects that a previous version of Docupresentment is resident. You must choose to back up and update, or quit. Oracle highly recommends that you choose option 1 for back up and update. When doing so, the installation script will create a back up directory under the docserv directory.

```
Docupresentment installation </home/userid/docupresentment>
for version <2.7> already exist.

Please select a upgrade type
1 = Backup and Upgrade Installation
2 = Upgrade Installation
3 = Quit
?>1
```

4. Confirm the chosen path or edit if necessary. Once correct, enter **Y** to complete the installation:

```
Update Docupresentment 2.7 (RTE) to
</home/userid/docupresentment>?
{y or n}?>y

Install/Update in progress. Please wait...
Updated Base Components ...

RTE Installation Complete
```

Docupresentment installs the base system with default HTTP queues. The system should function without additional modification.

Please see *Testing the Installation* on page 41 for instructions to test a simple request using the base Docupresentment system.

TESTING THE INSTALLATION

Follow these steps to test your installation:

1. Start the Docupresentment 2.7 sever by navigating to the `./docserv` directory for the installation and enter:

```
./docserver.sh start
```

Note Note that the shell script to start Docupresentment changed from `docserv.sh` to `docserver.sh`. There are also additional use suffixes of: `start`, `stop`, and `status` that must be appended to the end of the `docserver.sh` script commands.

Previously, to stop the Docupresentment server, you would issue the `Ctrl+C` command. Beginning with version 2.7, you must issue the command `docserver.sh stop` to end the session.

2. Enter this command:

```
./threads.sh display=yes reqtype=SSS
```

3. The following output should be directed to the Docupresentment console screen. The error count should be zero (0) and the results variable should be SUCCESS:

```
./threads.sh display=yes reqtype=sss
<?xml version="1.0" encoding="UTF-8"?>
<SOAP-ENV:Envelope xmlns:SOAP-ENV="http://schemas.xmlsoap.org/soap/
envelope/">
  <SOAP-ENV:Body>
    <DSIMSG VERSION="100.025.0-2.5.0.1268">
      <CTLBLOCK>
        <UNIQUE_ID>0EE5C3F8-108A-18CF-8347-720ACB23</UNIQUE_ID>
        <REQTYPE>sss</REQTYPE>
      </CTLBLOCK>
      <MSGVARS>
        <VAR NAME="ERRORCOUNT">0</VAR>
        <VAR NAME="IDSGUID">9F7A5823-727C-F6A6-BD66-
8F12D8482F1E</VAR>
        <VAR NAME="IDSHOSTNAME">slc03dtm.us.oracle.com</VAR>
        <VAR NAME="LASTRESTART">Nov 30, 2014 8:39:39 PM UTC</VAR>
        <VAR NAME="RESTARTCOUNT">0</VAR>
        <VAR NAME="RESULTS">SUCCESS</VAR>
        <VAR NAME="SERVERTIMESPENT">0.011</VAR>
        <VAR NAME="SUCCESSCOUNT">8</VAR>
        <VAR NAME="UPTIME">Nov 30, 2014 8:39:39 PM UTC</VAR>
        <VAR NAME="WARNINGCOUNT">0</VAR>
        <ROWSET NAME="LIBRARIES">
          <ROW NUM="1">
            <VAR NAME="DATE">Nov 30 2014</VAR>
            <VAR NAME="NAME">dsicrule</VAR>
            <VAR NAME="TIME">02:46:57</VAR>
            <VAR NAME="VERSION">200.025.001</VAR>
          </ROW>
          <ROW NUM="2">
            <VAR NAME="DATE">Nov 30 2014</VAR>
            <VAR NAME="NAME">DSIOS2</VAR>
            <VAR NAME="TIME">02:47:00</VAR>
            <VAR NAME="VERSION">200.025.002</VAR>
          </ROW>
          <ROW NUM="3">
            <VAR NAME="DATE">Nov 30 20142014</VAR>
            <VAR NAME="NAME">dsijava</VAR>
            <VAR NAME="TIME">02:47:05</VAR>
```

```
<VAR NAME="VERSION">200.025.001</VAR>
</ROW>
<ROW NUM="4">
  <VAR NAME="DATE">Nov 30 2014</VAR>
  <VAR NAME="NAME">jexec</VAR>
  <VAR NAME="TIME">02:47:06</VAR>
  <VAR NAME="VERSION">200.025.001</VAR>
</ROW>
<ROW NUM="5">
  <VAR NAME="DATE">Nov 30 2014</VAR>
  <VAR NAME="NAME">ARC</VAR>
  <VAR NAME="TIME">12:20:09</VAR>
  <VAR NAME="VERSION">12,2,0,19054</VAR>
</ROW>
<ROW NUM="6">
  <VAR NAME="DATE">Nov 30 2014</VAR>
  <VAR NAME="NAME">CAR</VAR>
  <VAR NAME="TIME">12:13:22</VAR>
  <VAR NAME="VERSION">12,2,0,19054</VAR>
</ROW>
<ROW NUM="7">
  <VAR NAME="DATE">Nov 30 2014</VAR>
  <VAR NAME="NAME">DAL</VAR>
  <VAR NAME="TIME">12:20:45</VAR>
  <VAR NAME="VERSION">12,2,0,19054</VAR>
</ROW>
<ROW NUM="8">
  <VAR NAME="DATE">Nov 30 2014</VAR>
  <VAR NAME="NAME">DB5</VAR>
  <VAR NAME="TIME">12:13:36</VAR>
  <VAR NAME="VERSION">12,2,0,19054</VAR>
</ROW>
<ROW NUM="9">
  <VAR NAME="DATE">Nov 30 2014</VAR>
  <VAR NAME="NAME">DB</VAR>
  <VAR NAME="TIME">12:12:14</VAR>
  <VAR NAME="VERSION">12,2,0,19054</VAR>
</ROW>
<ROW NUM="10">
  <VAR NAME="DATE">Nov 30 2014</VAR>
  <VAR NAME="NAME">DPR</VAR>
  <VAR NAME="TIME">12:25:45</VAR>
  <VAR NAME="VERSION">12,2,0,19054</VAR>
</ROW>
<ROW NUM="11">
  <VAR NAME="DATE">Nov 30 2014</VAR>
  <VAR NAME="NAME">DS</VAR>
  <VAR NAME="TIME">12:12:36</VAR>
  <VAR NAME="VERSION">12,2,0,19054</VAR>
</ROW>
<ROW NUM="12">
  <VAR NAME="DATE">Nov 30 2014</VAR>
  <VAR NAME="NAME">DXM</VAR>
  <VAR NAME="TIME">12:10:35</VAR>
  <VAR NAME="VERSION">12,2,0,19054</VAR>
</ROW>
<ROW NUM="13">
  <VAR NAME="DATE">Nov 30 2014</VAR>
  <VAR NAME="NAME">FAP</VAR>
  <VAR NAME="TIME">12:11:01</VAR>
  <VAR NAME="VERSION">12,2,0,19054</VAR>
</ROW>
<ROW NUM="14">
  <VAR NAME="DATE">Nov 30 2014</VAR>
```

```
<VAR NAME="NAME">FNT</VAR>
<VAR NAME="TIME">12:16:33</VAR>
<VAR NAME="VERSION">12,2,0,19054</VAR>
</ROW>
<ROW NUM="15">
  <VAR NAME="DATE">Nov 30 2014</VAR>
  <VAR NAME="NAME">GRF</VAR>
  <VAR NAME="TIME">12:13:27</VAR>
  <VAR NAME="VERSION">12,2,0,19054</VAR>
</ROW>
<ROW NUM="16">
  <VAR NAME="DATE">Nov 30 2014</VAR>
  <VAR NAME="NAME">INI</VAR>
  <VAR NAME="TIME">12:10:08</VAR>
  <VAR NAME="VERSION">12,2,0,19054</VAR>
</ROW>
<ROW NUM="17">
  <VAR NAME="DATE">Nov 30 2014</VAR>
  <VAR NAME="NAME">LBY</VAR>
  <VAR NAME="TIME">12:20:59</VAR>
  <VAR NAME="VERSION">12,2,0,19054</VAR>
</ROW>
<ROW NUM="18">
  <VAR NAME="DATE">Nov 30 2014</VAR>
  <VAR NAME="NAME">LOG</VAR>
  <VAR NAME="TIME">12:14:57</VAR>
  <VAR NAME="VERSION">12,2,0,19054</VAR>
</ROW>
<ROW NUM="19">
  <VAR NAME="DATE">Nov 30 2014</VAR>
  <VAR NAME="NAME">MTC</VAR>
  <VAR NAME="TIME">12:26:41</VAR>
  <VAR NAME="VERSION">12,2,0,19054</VAR>
</ROW>
<ROW NUM="20">
  <VAR NAME="DATE">Nov 30 2014</VAR>
  <VAR NAME="NAME">PDF</VAR>
  <VAR NAME="TIME">12:18:04</VAR>
  <VAR NAME="VERSION">12,2,0,19054</VAR>
</ROW>
<ROW NUM="21">
  <VAR NAME="DATE">Nov 30 2014</VAR>
  <VAR NAME="NAME">PRT</VAR>
  <VAR NAME="TIME">12:13:06</VAR>
  <VAR NAME="VERSION">12,2,0,19054</VAR>
</ROW>
<ROW NUM="22">
  <VAR NAME="DATE">Nov 30 2014</VAR>
  <VAR NAME="NAME">TIF</VAR>
  <VAR NAME="TIME">12:13:51</VAR>
  <VAR NAME="VERSION">12,2,0,19054</VAR>
</ROW>
<ROW NUM="23">
  <VAR NAME="DATE">Nov 30 2014</VAR>
  <VAR NAME="NAME">USR</VAR>
  <VAR NAME="TIME">12:20:14</VAR>
  <VAR NAME="VERSION">12,2,0,19054</VAR>
</ROW>
<ROW NUM="24">
  <VAR NAME="DATE">Nov 30 2014</VAR>
  <VAR NAME="NAME">UTL</VAR>
  <VAR NAME="TIME">12:10:31</VAR>
  <VAR NAME="VERSION">12,2,0,19054</VAR>
</ROW>
```

```
<ROW NUM="25">
  <VAR NAME="DATE">Nov 30 2014</VAR>
  <VAR NAME="NAME">VMM</VAR>
  <VAR NAME="TIME">12:09:55</VAR>
  <VAR NAME="VERSION">12,2,0,19054</VAR>
</ROW>
<ROW NUM="26">
  <VAR NAME="DATE">Nov 30 2014</VAR>
  <VAR NAME="NAME">XER</VAR>
  <VAR NAME="TIME">12:17:42</VAR>
  <VAR NAME="VERSION">12,2,0,19054</VAR>
</ROW>
<ROW NUM="27">
  <VAR NAME="DATE">Nov 30 2014</VAR>
  <VAR NAME="NAME">XMC</VAR>
  <VAR NAME="TIME">12:16:06</VAR>
  <VAR NAME="VERSION">12,2,0,19054</VAR>
</ROW>
</ROWSET>
</MSGVARS>
</DSIMSG>
</SOAP-ENV:Body>
</SOAP-ENV:Envelope>
```

```
Total test time=522 ms.
Transactions run <1>
Success count <1>
Error count <0>
```

UNINSTALLING THE SYSTEM

To uninstall Docupresentation on UNIX/Linux, just remove the base installation directory and all its sub-directories. It may also be necessary to remove any HTML and CGI-BIN directories if they are external to the base installation directory.

Chapter 2

Installing Docupresentation on Windows

This chapter provides information on installing Docupresentation on Windows-based machines.

You will find this information:

- *Overview* on page 48
- *Downloading the Software* on page 49
- *Installing Shared Objects* on page 55
- *Installing the Docupresentation Client* on page 57
- *Testing Your Installation* on page 65
- *Setting Up the System as a Service* on page 68
- *Uninstalling the System* on page 72
- *Troubleshooting the Client* on page 73
- *Installing the Docupresentation with a Response File* on page 76

Note For information on system requirements, see [System Requirements Guide](#)

OVERVIEW

The files that make up Docupresentment and its bridges include:

- Java programs executed by a Java Runtime for your operating system
- Dynamically Shared Objects (DSOs)

In Windows environments, DSOs are typically named **.dll*. In UNIX environments, DSOs are often named *lib*.so* or *lib*.sl*.

- HTML content pages
- HTML templates

There are several Java components that run on a server machine, including a server that handles back-end processing and communicates with installed bridge products from Documaker. Java client components that can be run from a J2EE application server, and a CGI client for older clients. The bridge products let you...

- Read Documaker archives
- Search and retrieve documents from Documanager via the Internet
- Convert Metacode and AFP print streams created by the Documerge and Documaker systems and stored in a Documanager database into PDF files
- Use Docuflex as a composition engine for Docupresentment on Windows

Enterprise Web Processing Services

Docupresentment version 2.7 for Windows includes Enterprise Web Processing Services (EWPS). EWPS makes it easier to integrate applications, providing a set of web services for accessing the Documaker forms library and initiating real-time publishing operations. This helps you deliver the information requested by your clients, prospects, employees, and business partners.

When you install Docupresentment on Windows, the installation routine creates the following directory and copies into it the `ewps-axis2.war` file:

```
..\docserv\webservices  
ewps-axis2.war
```

See [EWPS Guide](#) for more information.

DOWNLOADING THE SOFTWARE

Docupresentation is available for download via the Oracle Software Delivery Cloud web site. The installation contains the server (including the SDK), bridges, and client.

Having separate installations for the required components lets you pick the version of Documaker components separately from Docupresentation. The latest version of Documaker is version 12.4. Generally, you would want the latest version and patch level of the software. You will find links to the latest patch levels of previous versions of Documaker at the My Oracle Support web site:

<https://support.oracle.com>

Installing the correct version of Shared Objects - Documaker Bridge is especially important if you plan to use Docupresentation to run Documaker. The installation of other bridges, such as the Documanager Bridge, is optional.

Note If you do not already have a JRE (JRE 1.7 for Linux, Solaris and AIX) already installed, JRE 1.7 is installed with Docupresentation Server 2.7. After installing the J2SE Java Runtime Environment (JRE) version 1.7 and Docupresentation, you will need to install a version of Shared Objects - Documaker Bridge.

USING THE ORACLE SOFTWARE DELIVERY CLOUD

Oracle applications are available for download at the Oracle Software Delivery Cloud web site. The process includes:

- Logging in and agreeing to the terms and restrictions
- Searching for the applications you want to download
- Downloading those applications

Note To download the latest patches for the Oracle software you have already installed, visit the My Oracle Support site at this web address:

<https://support.oracle.com>

To download the latest documentation, visit the Oracle Technology Network (OTN) web site at this web address:

<http://www.oracle.com/technetwork/index.html>

Before you begin

The Oracle Software Delivery Cloud site lets you download versions of Oracle applications. Files on the Oracle Software Delivery Cloud are available in ZIP format. Once you download the files you need, extract the files in the ZIP file to proceed with the software installation.

Note You can download the corresponding product documentation from the Oracle Technology Network (OTN) site:

<http://www.oracle.com/technetwork/documentation/insurance-097481.html>

You will need Acrobat Reader or a similar program to view the PDF documentation. You can download Acrobat Reader at Adobe's site (www.adobe.com).

Follow these instructions to download Oracle applications:

1. First, go to the Oracle Software Delivery Cloud web site:

<https://edelivery.oracle.com>

2. Sign in with your Oracle account. If you do not have an Oracle account, you can register for an account [here](#).
3. Review and accept the Terms and Restrictions.
4. Select Oracle Applications from the Product Pack list or you can search the Product.
5. Once you have selected the desired program, select the desired platform.
6. The selected products are then listed. To remove them, click the X (cross) which is adjacent to the product.
7. Once you have selected the desired product and platform, click Continue to proceed.
8. License agreement is displayed. Once you are ready to proceed, check the checkbox, then click Continue.
9. Installations are displayed. To individually download files click on the filename, to download all files click on the Download All button.
10. The Oracle Software Delivery Cloud prompts you to open or save the zipped file and then starts the download.

While you can save the file on any machine you choose, we recommend you save the file onto the machine where you plan to run it. You must unzip the file on the platform for which it was intended. The length of time it takes to download an application depends on the size of the download, your connection speed, and the amount of traffic on the site.

11. Click Sign Out when you finish downloading the files you need.

INSTALLING THE DOCUPRESENTMENT SERVER

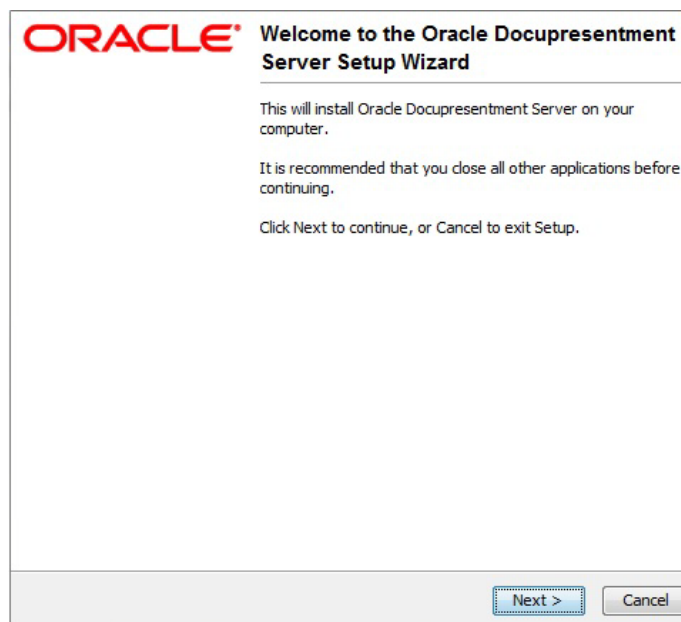
Before you start the installation...

- Be familiar with how your web server is set up. You will need to know if the Docupresentation site uses Secured Socket Layer (SSL) and the IP address of the client PC
- Exit all programs currently running. The setup routine also lets you install various other components required to run the Docupresentation. If these files are already installed *and in use* when the setup routine runs, conflicts will arise.

Note Be aware that when you update an existing installation, your existing configuration files *are not* changed. This lets you preserve any customizations you have made in those files. Furthermore, keep in mind that if you uninstall the system, *all* configuration files are removed.

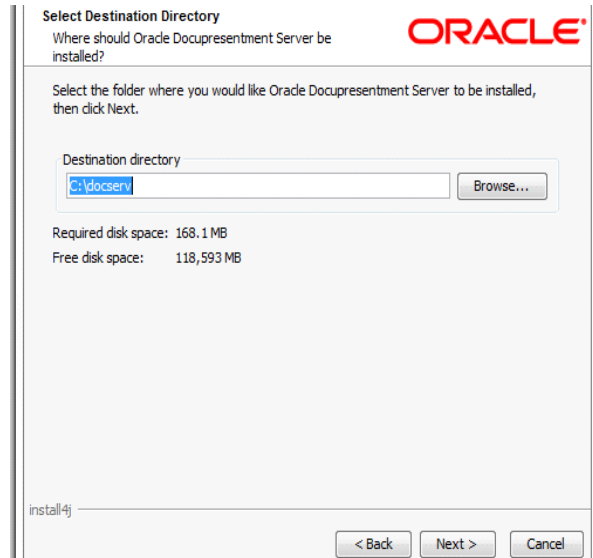
After you download and save the Docupresentation installation to the proper location, start the Docupresentation Server setup wizard ODDS2.7.00.b#####W32.exe (where b##### represents the build number) as that is the name of the installer.).

Once the setup routine starts, follow the instructions which appear on your screen.

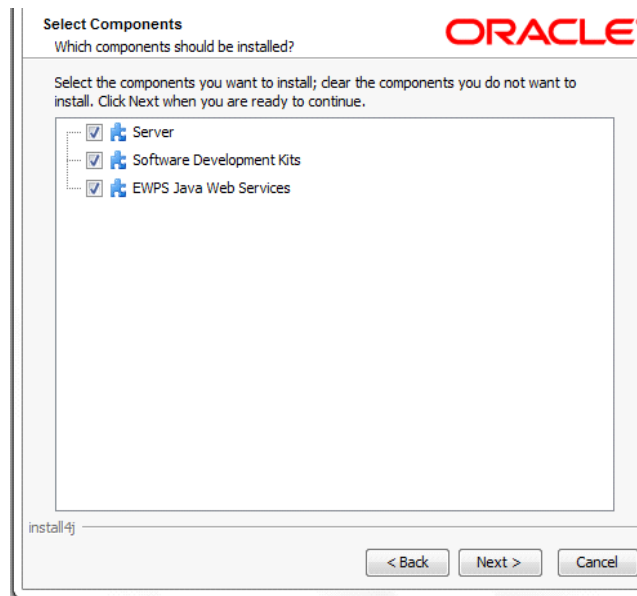


1. Close all open applications then click Next to continue. The Select Destination Directory window appears.

2. Click Browse to select the directory into which you want to install Docupresentation. Click Next to continue.



3. The Select Components window appears.



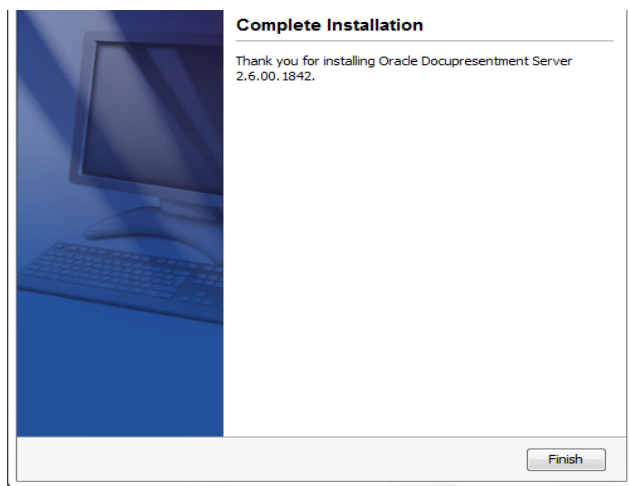
4. Choose the components you want to install. Click Next to continue. The Select Start Menu Folder window appears. The Select Additional Tasks window appears.

5. Use the Select Additional Tasks window to optionally configure your Watchdog SMTP email settings. Click Next to continue when you are finished. The Installing window appears. This window tracks the setup wizard's progress as it installs Docupresentation on your computer.
6. Once the basic installation finishes, the Docupresentation Server setup wizard asks if you want to configure Docupresentation Server as a service.

Click the Start Docupresentation Server as a Service option and enter a name for the service or accept the default name.

Click Next. The Complete Installation window appears.

7. Click Finish to complete the installation process.



Congratulations, you have installed Docupresentment Server. Now proceed to the next topic, *Installing Shared Objects* on page 55.

INSTALLING SHARED OBJECTS

As mentioned above, installation of the Shared Objects - Documaker Bridge component is required to install Documaker Server components, even if your installation does not use Documaker Bridge.

To download shared objects from the Internet, go to the Oracle Software Delivery Cloud site at:

<http://edelivery.oracle.com/>

After you download and save the shared objects installation to the proper location, start the shared objects installation routine by clicking Start, Run and entering this command:

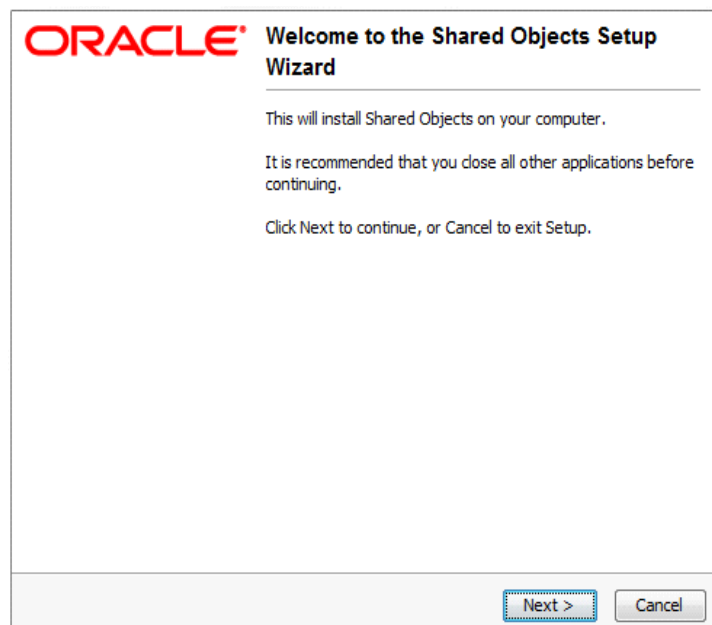
```
(drive letter): ODSO12.4.00.xxxxxW32.exe
```

where *vvv* is the version number, such as 124 for version 12.4 and 00 is the patch number.

The Setup wizard starts.

Using the Setup wizard

Follow these steps to install shared objects using the Setup wizard



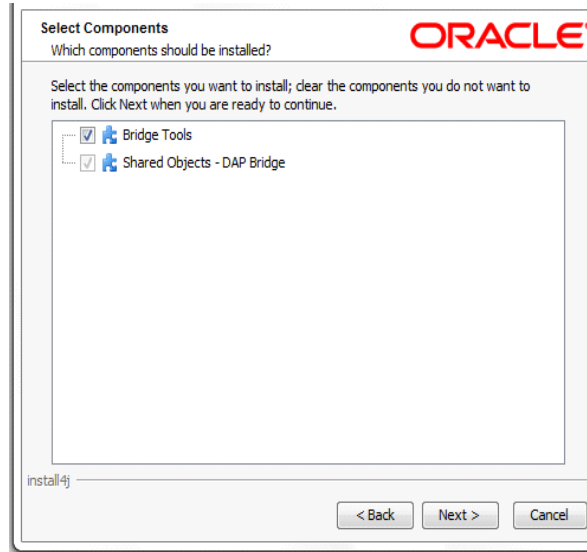
1. Once the Setup wizard starts, click Next to continue.

The Choose Docupresentation Installation Path window appears.

2. Click Browse to specify the directory path of the Docupresentation installation to which you want to add Shared Objects and click Next to continue.

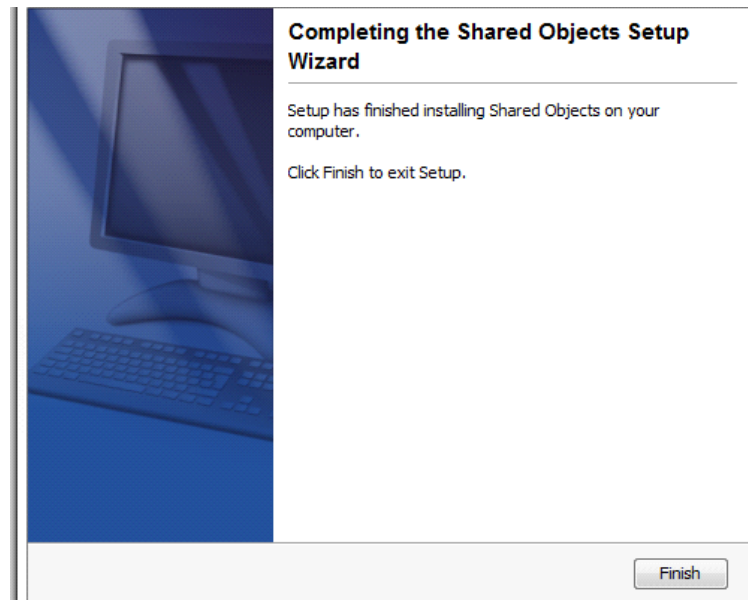
The Select Components window appears.

3. Choose the components you want to install.



Click Next to continue. The Installing window appears. This window tracks the setup wizard's progress as it installs the Shared Objects you selected on your computer.

4. Click Finish to exit the setup wizard once the installation finishes.



Congratulations, you have installed the Docupresentment and the Shared Objects. Now proceed to the next topic, *Installing the Docupresentment Client*.

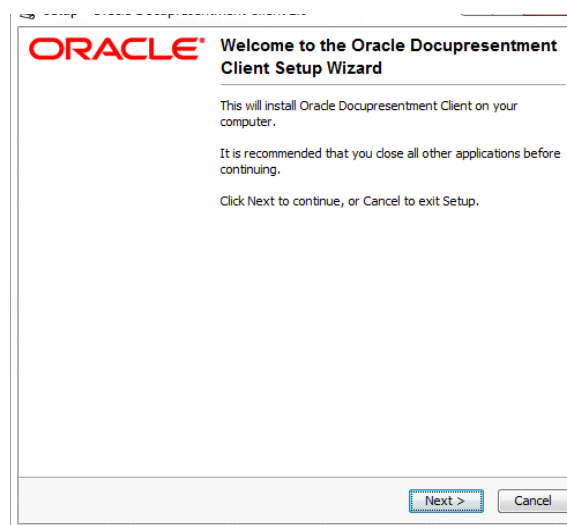
INSTALLING THE DOCUPRESENTMENT CLIENT

You can install the Docupresentation Client on Windows by downloading it from the Internet. To download shared objects from the Internet, go to the Oracle Software Delivery Cloud site at:

<http://edelivery.oracle.com/>

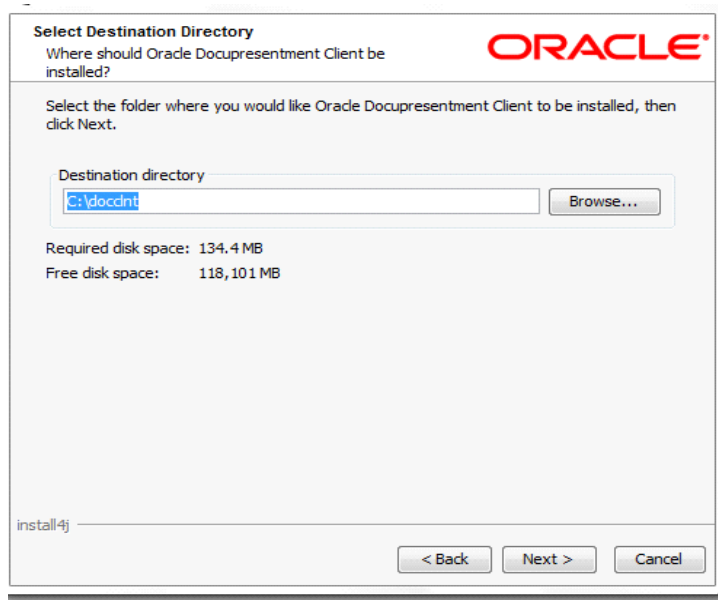
After you download and save the Docupresentation Client installation to the proper location, start the Docupresentation Client setup wizard ODDS2.7.00.b####W32.exe (where b#### represents the build number) as that is the name of the installer.

1. Once the setup routine starts, follow the instructions which appear on your screen.

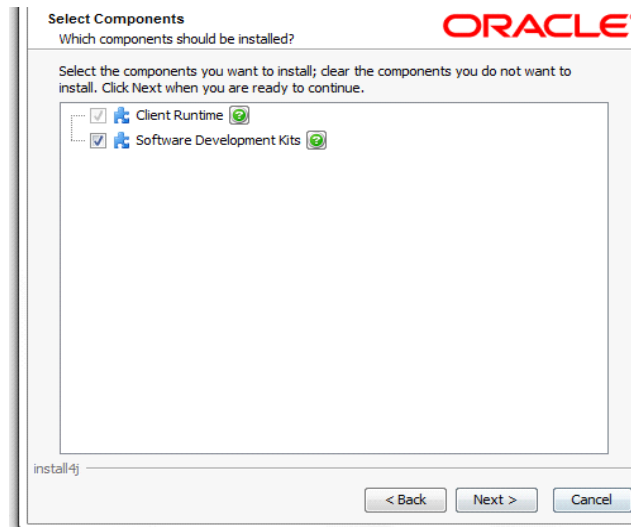


2. Close all open applications then click Next to continue. The Select Destination Directory window appears.
3. Click Browse to select the directory into which you want to install the Docupresentation Client and click Next to continue.

The Select Components window appears.



4. Choose the components you want to install and click Next to continue.



The installation routine installs the Docupresentation Client, then shows the Select queuing System window. See *Selecting a queuing Method* on page 59 for more information.

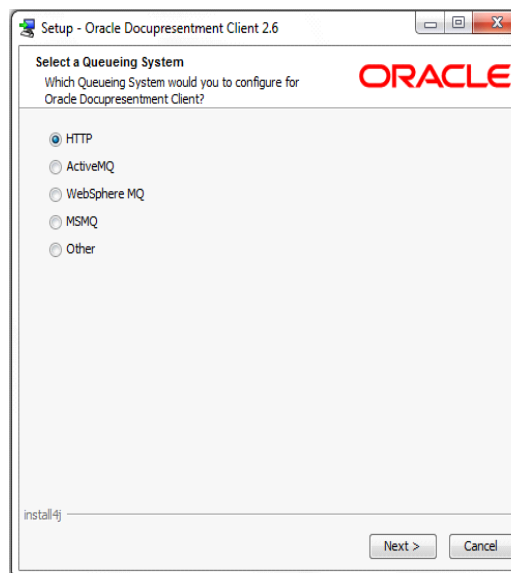
SELECTING A QUEUING METHOD

Use the Select a queuing System window to optionally configure your Docupresentation Client queuing method. The wizard modifies the Docupresentation Client to communicate with one of these queuing systems:

- HTTP
- ActiveMQ
- WebSphere MQ
- MSMQ

Note You can also choose to set up a queuing system other than the ones pre-defined in the installer. Be aware that if you choose this option, you must make sure the queuing system is accessible by the Docupresentation Client.

Choose the queuing method you want to use on the Select a queuing System window:



Click Next.

A configuration wizard lets you enter queue-specific information for each queuing method. The default queue is HTTP.

Using HTTP

If chose HTTP queues, the Configure the HTTP queuing System window appears:

Configure the HTTP Queueing System
Please configure the HTTP Queueing System

ORACLE

Please enter the following information to configure Oracle Docupresentation Client for your chosen Queuing Manager:

Server Address: localhost

Port: 39152 Default

install-tj

< Back Next > Cancel

For HTTP queues, enter the Server Address and Port Number of the Docupresentation Server and click Next.

Using ActiveMQ

If you chose ActiveMQ, the Configure the ActiveMQ queuing System window appears:

Configure the ActiveMQ Queueing System
Please configure the ActiveMQ Queueing System

ORACLE

Please enter the following information to configure Oracle Docupresentation Client for your chosen Queuing Manager:

Server Address: localhost

Port: 39152 Default

Input Queue:

Output Queue:

install-tj

< Back Next > Cancel

For ActiveMQ queues, enter the Input Queue and Output Queue for the ActiveMQ Server and click Next.

Using WebSphere MQ

If you chose WebSphere MQ, the Configure the WebSphere MQ queuing System window appears:

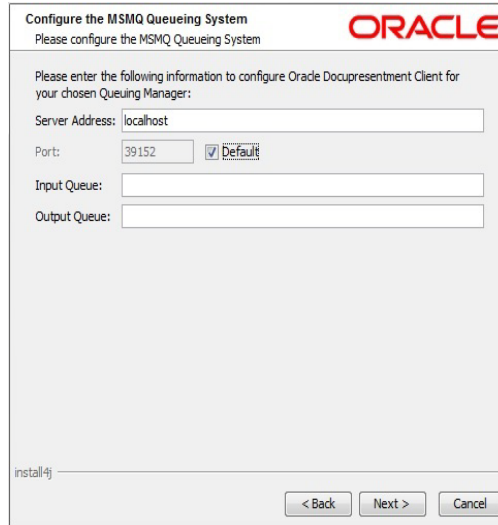
For WebSphere MQ queues, you can choose to use Bindings Mode.

To	Then
Use Bindings Mode	Make sure the Bindings Mode field is checked, then specify the Input Queue, Output Queue, and the Queue Manager for the WebSphere MQ Server.
Not use Bindings Mode	Uncheck the Bindings Mode field and specify the Server Address, Port, Queue Channel, Input Queue, Output Queue, and the Queue Manager for the WebSphere MQ Server.

When finished entering the necessary fields, click Next.

Using MSMQ

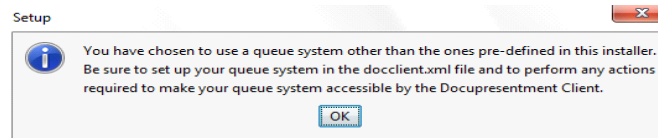
If you chose MSMQ, the Configure the MSMQ queuing System window appears:



For MSMQ queues, enter the Input Queue and Output Queue for the MSMQ Server and click Next.

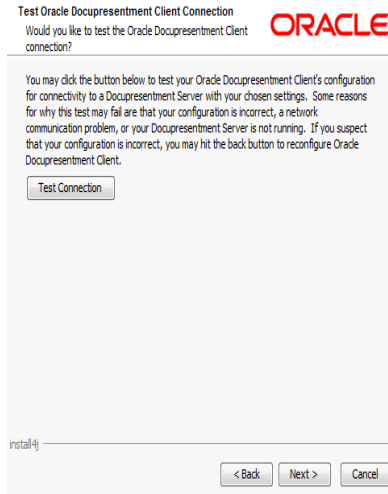
Setting up another queue

If you choose to set up another queuing system, the following message appears to remind you to take the steps necessary to make your queuing system accessible by the Docupresentation Client.



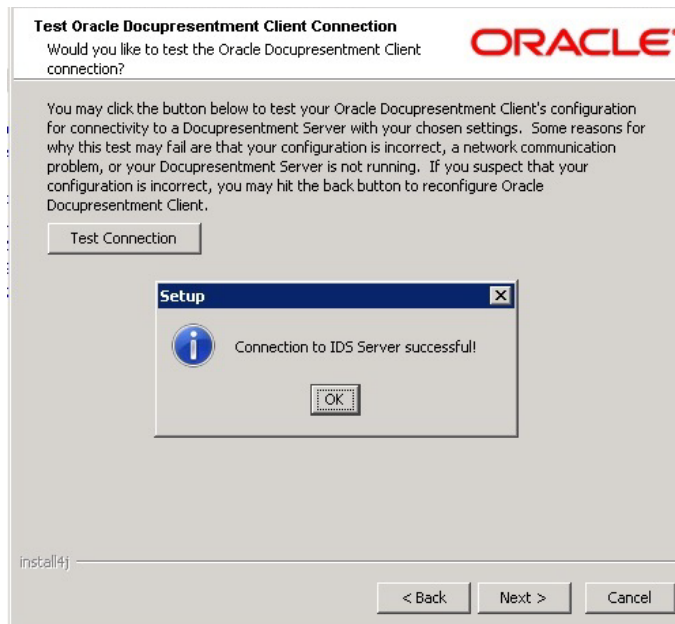
Testing Your Connection

To make sure the Docupresentation Client can connect to the Docupresentation Server, click the Test Connection button.



Note Docupresentation Server and the queuing system you chose have to be running to test the Docupresentation Client.

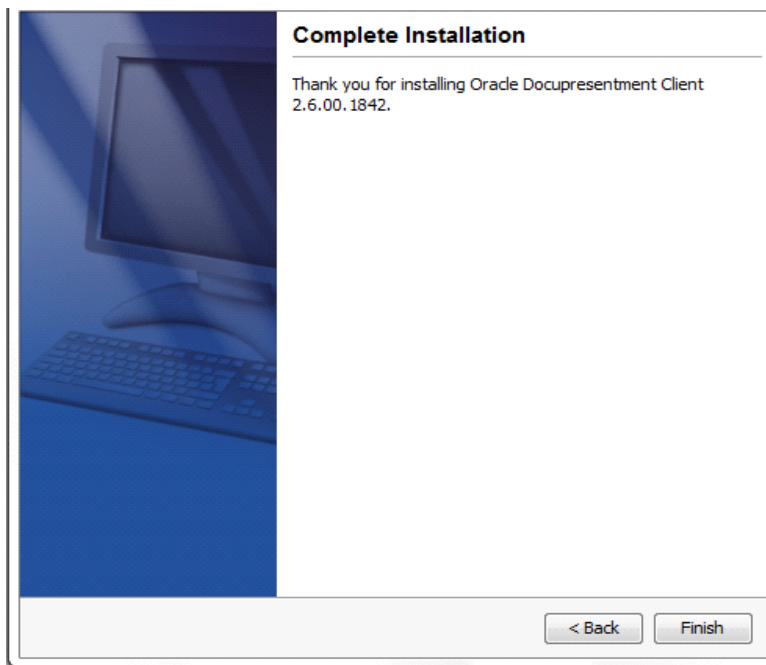
If the test is successful, the below message appears “connection to Docupresentation Server Successful”.



This window indicates that the Docupresentation Client is configured correctly and is successfully communicating with the Docupresentation Server. Click Ok, then click Next.

The Complete Installation window appears. Click Finish to complete the installation.

Congratulations, you have installed the Docupresentation Server, Shared Objects, and Docupresentation Client Now proceed to the next topic, *Testing Your Installation*.



TESTING YOUR INSTALLATION

To test your Docupresentation installation, open a command window and follow these steps.

1. Start Docupresentation Server by entering this command in the c:\docserv directory:

```
docserver.bat
```

You should now see a window similar to the following window:

```
2014-09-12 14:24:21,190- INFO-[WD-Watchdog-main]-[??:?]-com.docucorp.watchdog.Wat
chdog.watch: Running Java version 1.7.0_13-b20 from Oracle Corporation on Window
s 7 6.1 with 4 processors.
2014-09-12 14:24:23,129- INFO-[WD-Watchdog-main]-[??:?]-com.docucorp.watchdog.Wat
chdog.watch: Watchdog Server Ready
2014-09-12 14:24:24,953 INFO [IDS-1-DocumentServer-main] - Set up logging using
logconf.xml
2014-09-12 14:24:25,016 INFO [IDS-2-DocumentServer-main] - Set up logging using
logconf.xml
2014-09-12 14:24:25,088 INFO [Router] - Set up logging using logconf.xml
2014-09-12 14:24:25,101 INFO [Router] - Oracle Docupresentation Router.
2014-09-12 14:24:25,103 INFO [Router] - Running Java version 1.7.0_13-b20 from
Oracle Corporation
2014-09-12 14:24:25,615 INFO [IDS-2-BLP1] - Oracle Docupresentation.
2014-09-12 14:24:25,617 INFO [IDS-2-BLP1] - Version 100.025-2.7.0.2361
2014-09-12 14:24:25,618 INFO [IDS-2-BLP1] - Running Java version 1.7.0_13-b20 fr
om Oracle Corporation on Windows 7 6.1 with 4 processors.
2014-09-12 14:24:25,615 INFO [IDS-1-BLP1] - Oracle Docupresentation.
2014-09-12 14:24:25,617 INFO [IDS-1-BLP1] - Version 100.025-2.7.0.2361
2014-09-12 14:24:25,618 INFO [IDS-1-BLP1] - Running Java version 1.7.0_13-b20 fr
om Oracle Corporation on Windows 7 6.1 with 4 processors.
2014-09-12 14:24:27,951 INFO [IDS-1-BLP1] - Business Logic Processor started
2014-09-12 14:24:27,951 INFO [IDS-2-BLP1] - Business Logic Processor started
DocuMaker shared objects version 12,4,0,24760
DocuMaker shared objects version 12,4,0,24760
```

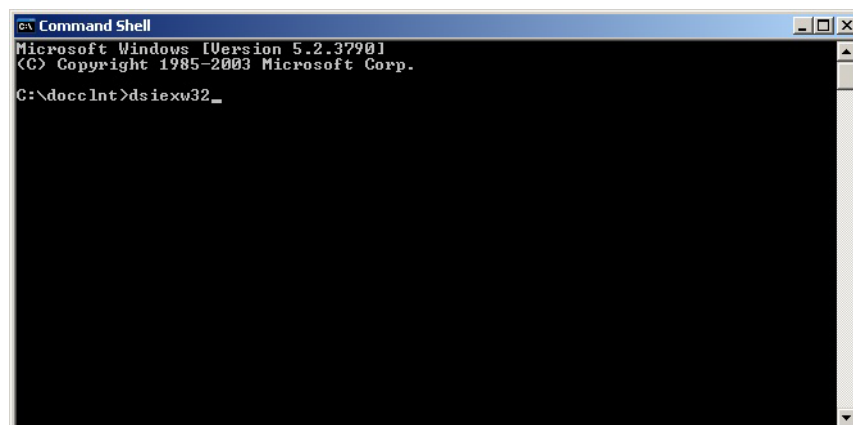
Docupresentation Server has started when you see the following:

```
Business Logic Processor started
Documaker shared objects version 12.4.xxxxx
```

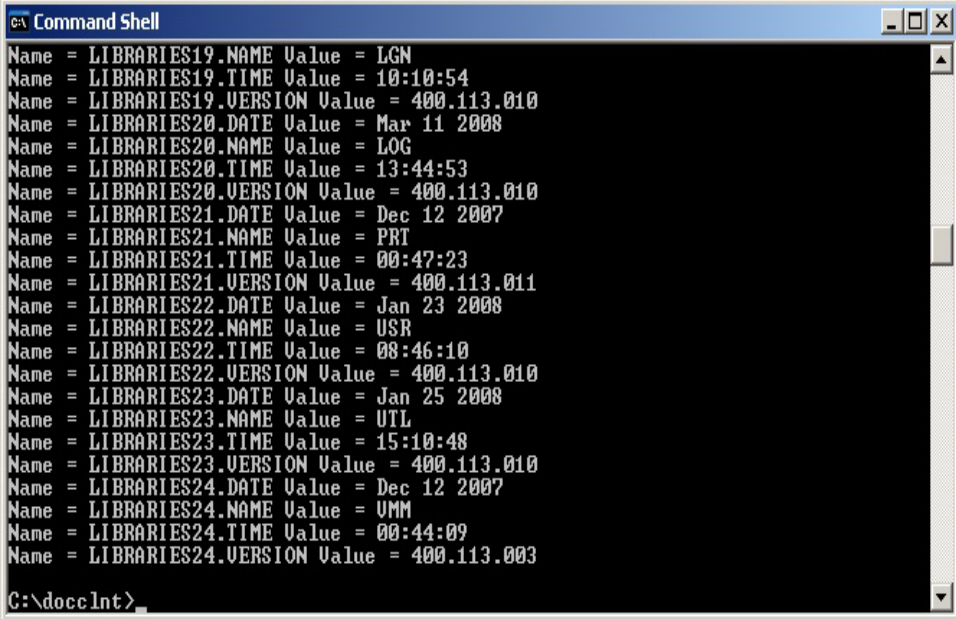
Note xxxxx refers to the build number.

2. By default, two instances of Docupresentation Server 2.7 will start. Go to the Docupresentation Client Box open a command prompt. Then go to the Docupresentation Client directory, such as c:\docclnt, and enter this command:

```
dsiexw32.exe
```



3. You should now see a window similar to the following window:

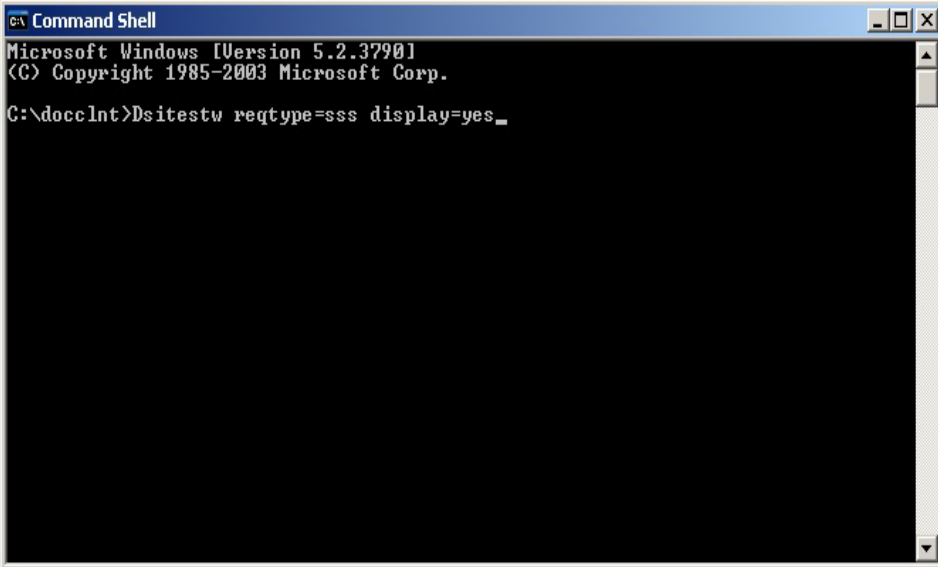


```
C:\ Command Shell
Name = LIBRARIES19.NAME Value = LGN
Name = LIBRARIES19.TIME Value = 10:10:54
Name = LIBRARIES19.VERSION Value = 400.113.010
Name = LIBRARIES20.DATE Value = Mar 11 2008
Name = LIBRARIES20.NAME Value = LOG
Name = LIBRARIES20.TIME Value = 13:44:53
Name = LIBRARIES20.VERSION Value = 400.113.010
Name = LIBRARIES21.DATE Value = Dec 12 2007
Name = LIBRARIES21.NAME Value = PRI
Name = LIBRARIES21.TIME Value = 00:47:23
Name = LIBRARIES21.VERSION Value = 400.113.011
Name = LIBRARIES22.DATE Value = Jan 23 2008
Name = LIBRARIES22.NAME Value = USR
Name = LIBRARIES22.TIME Value = 08:46:10
Name = LIBRARIES22.VERSION Value = 400.113.010
Name = LIBRARIES23.DATE Value = Jan 25 2008
Name = LIBRARIES23.NAME Value = UTL
Name = LIBRARIES23.TIME Value = 15:10:48
Name = LIBRARIES23.VERSION Value = 400.113.010
Name = LIBRARIES24.DATE Value = Dec 12 2007
Name = LIBRARIES24.NAME Value = UMM
Name = LIBRARIES24.TIME Value = 00:44:09
Name = LIBRARIES24.VERSION Value = 400.113.003
C:\docclnt>
```

If you receive these results, Docupresentment is installed and running properly.

4. You can run another verification test using threads.bat by typing the following command at the command prompt:

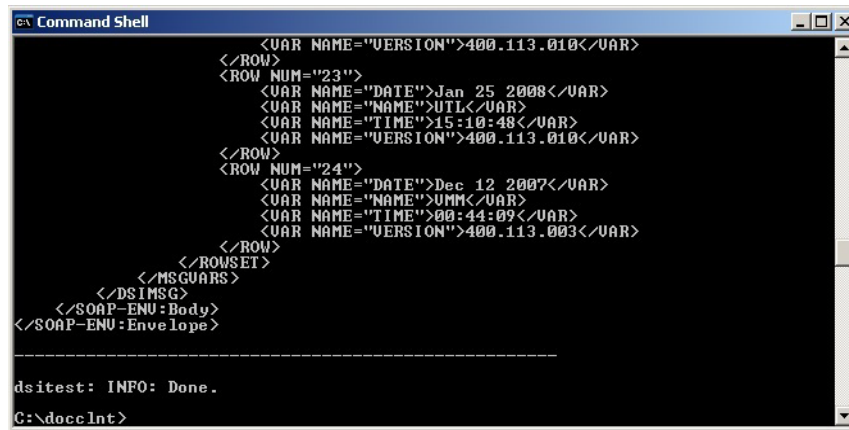
```
threads.bat reqtype=sss display=yes
```



```
C:\ Command Shell
Microsoft Windows [Version 5.2.3790]
(C) Copyright 1985-2003 Microsoft Corp.

C:\docclnt>Dsitestw reqtype=sss display=yes_
```

You should now see a window similar to the following window:



```
Command Shell
<VAR NAME="VERSION">400.113.010</VAR>
</ROW>
<ROW NUM="23">
  <VAR NAME="DATE">Jan 25 2008</VAR>
  <VAR NAME="NAME">UTIL</VAR>
  <VAR NAME="TIME">15:10:48</VAR>
  <VAR NAME="VERSION">400.113.010</VAR>
</ROW>
<ROW NUM="24">
  <VAR NAME="DATE">Dec 12 2007</VAR>
  <VAR NAME="NAME">UMM</VAR>
  <VAR NAME="TIME">00:44:09</VAR>
  <VAR NAME="VERSION">400.113.003</VAR>
</ROW>
</ROWSSET>
</DSIMSG>
</SOAP-ENV:Body>
</SOAP-ENV:Envelope>

-----
dsitest: INFO: Done.
C:\docInt>
```

If you receive these results, Docupresentation is communicating via HTTP queues and the system is able to process request types successfully.

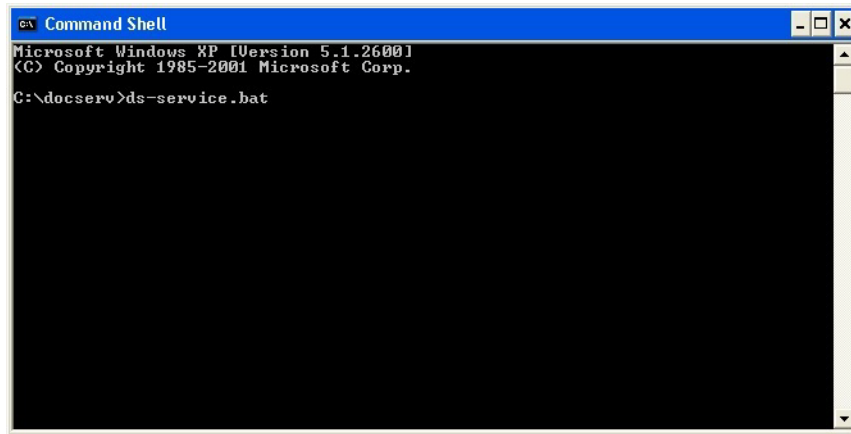
SETTING UP THE SYSTEM AS A SERVICE

Note You cannot run Docupresentation version 2.7 as a service using HTTP queues. To run Docupresentation as a service, you must use WebSphere MQ, ActiveMQ, or MSMQ.

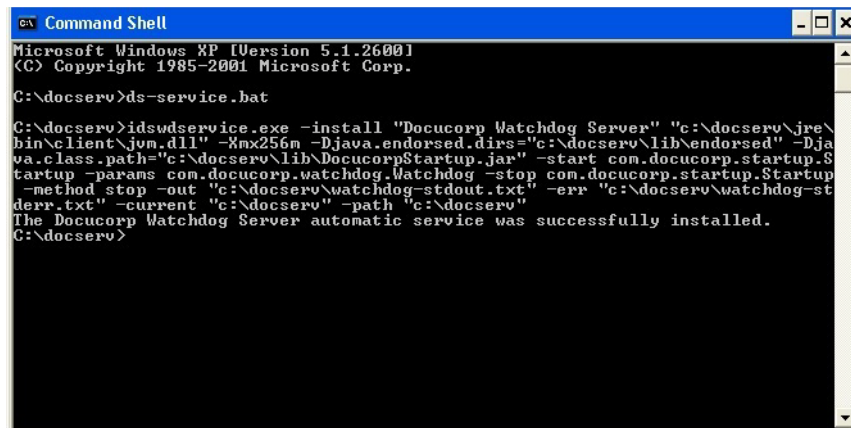
To install Docupresentation as a service, open a command shell window and go to the directory into which you installed Docupresentation, such as `c:\docserv`.

Next, enter this command in the `c:\docserv` directory:

```
Ds-service.bat
```



You should now see a window similar to the following window:



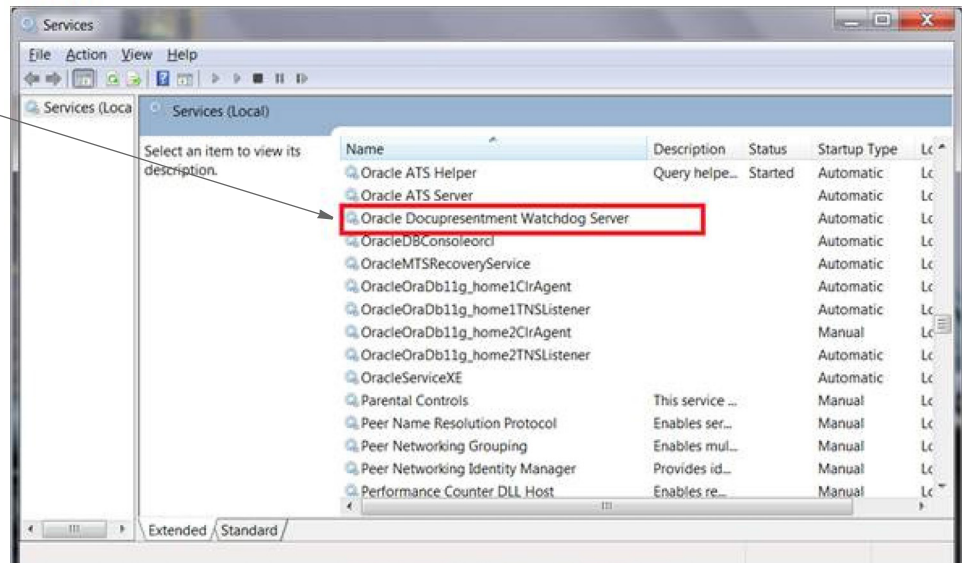
Docupresentation has been installed as a service on Windows when you see this message:

```
The Docucorp Watchdog Server automatic service was successfully installed
```

VERIFYING DOCUPRESENTMENT WAS INSTALLED AS A SERVICE

1. Open Control Panel and choose Administrative Tools. Then choose Services to open the Services Console.

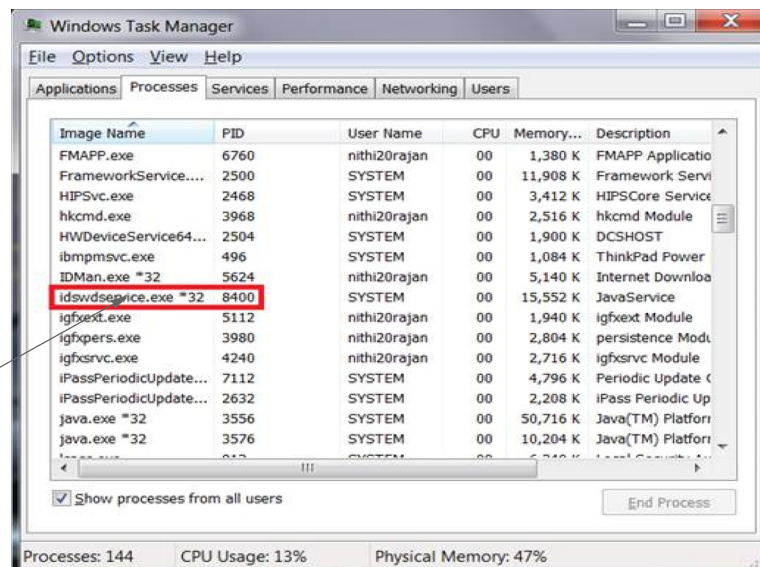
The Docupresentation watchdog service is listed as Docucorp Watchdog Server.



The Services Console lets you start and stop Docupresentation as a service.

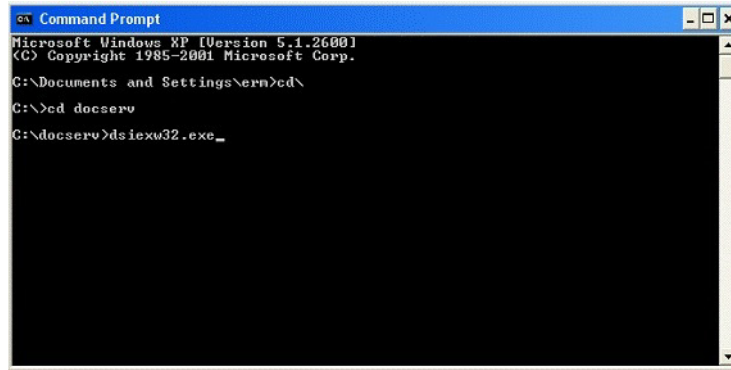
2. When you start Docupresentation via the Services Console, you can make sure the service is running by going to Task Manager.

Here is the Docupresentation watchdog service in the Processes list.



3. Open another command prompt and go to the installation directory, such as c:\docserv, and enter this command:

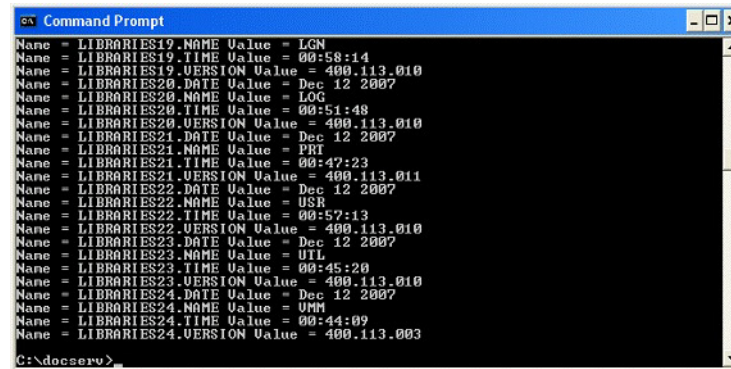
```
dsiexw32.exe
```



```
Command Prompt
Microsoft Windows XP [Version 5.1.2600]
(C) Copyright 1985-2001 Microsoft Corp.

C:\Documents and Settings\ern>cd\
C:\>cd docserv
C:\docserv>dsicw32.exe_
```

You should now see a window similar to the following window:



```
Command Prompt
Name = LIBRARIES19.NAME Value = LCN
Name = LIBRARIES19.TIME Value = 00:58:14
Name = LIBRARIES19.VERS ION Value = 400.113.010
Name = LIBRARIES20.DATE Value = Dec 12 2007
Name = LIBRARIES20.NAME Value = LOG
Name = LIBRARIES20.TIME Value = 00:51:48
Name = LIBRARIES20.VERS ION Value = 400.113.010
Name = LIBRARIES21.DATE Value = Dec 12 2007
Name = LIBRARIES21.NAME Value = PRI
Name = LIBRARIES21.TIME Value = 00:47:23
Name = LIBRARIES21.VERS ION Value = 400.113.011
Name = LIBRARIES22.DATE Value = Dec 12 2007
Name = LIBRARIES22.NAME Value = USB
Name = LIBRARIES22.TIME Value = 00:57:13
Name = LIBRARIES22.VERS ION Value = 400.113.010
Name = LIBRARIES23.DATE Value = Dec 12 2007
Name = LIBRARIES23.NAME Value = UTL
Name = LIBRARIES23.TIME Value = 00:45:20
Name = LIBRARIES23.VERS ION Value = 400.113.010
Name = LIBRARIES24.DATE Value = Dec 12 2007
Name = LIBRARIES24.NAME Value = UMM
Name = LIBRARIES24.TIME Value = 00:44:09
Name = LIBRARIES24.VERS ION Value = 400.113.003

C:\docserv>
```

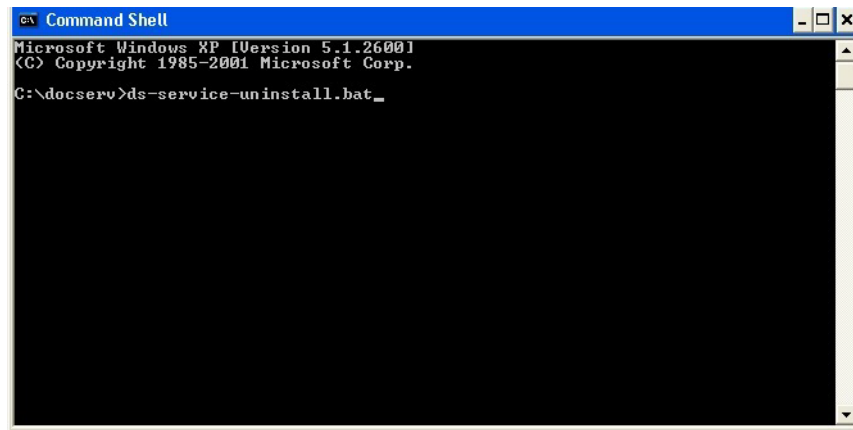
If you receive these results, Docupresentment is installed and running properly as a service.

UNINSTALLING DOCUPRESENTMENT AS A SERVICE

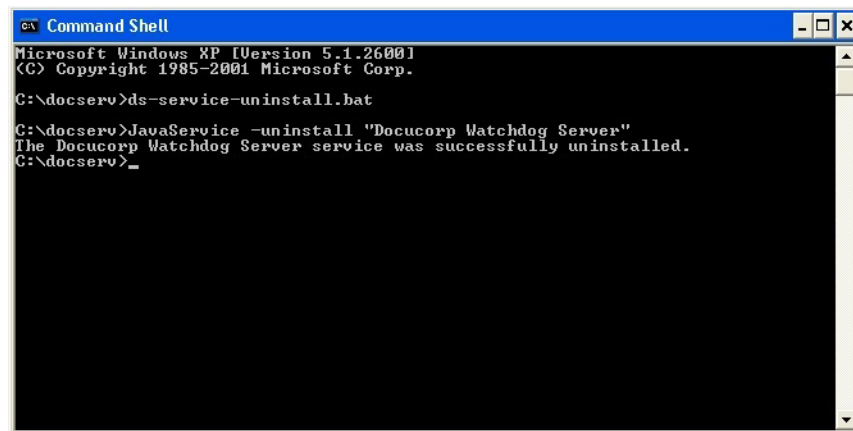
To uninstall Docupresentment as a service, open a command window and go to the directory into which you installed Docupresentment, such as `c:\docserv`.

Next, enter this command in the `c:\docserv` directory:

```
Ds-service-uninstall.bat
```



You should see a window similar to this one:



Docupresentment has been uninstalled as a service on Windows when you see this message:

```
The Docucorp Watchdog Server automatic service was successfully uninstalled
```

The *Docucorp Watchdog Server* entry will no longer appear in the Services Console. The Docupresentment watchdog service has been uninstalled.

UNINSTALLING THE SYSTEM

Before uninstalling Docupresentment Server, you will need to stop Oracle Docupresentment Watchdog service (idswdservice.exe). Go to the Control Panel- Services or Windows Task Manager, Processes and this option removes Docupresentment, the various bridges, and sample files.

Data files saved after you installed Docupresentment are preserved.

If necessary, you must remove the required Microsoft components separately.

TROUBLESHOOTING THE CLIENT

Here are some things to check if the Docupresentation Client is not communicating with Docupresentation Server.

Note: The test connection from client to server will fail if the port numbers are not valid. Use unused port numbers to avoid this issue.

Checking the DOCCLIENT.XML File

First, make sure the docclient.xml file is set up correctly. Here is an example docclient.xml file, including all of the queue sections with ActiveMQ active:

```
<?xml version="1.0" encoding="UTF-8"?>
<configuration>
  <section name="DocumentClient" version="2.7">
    <section name="messaging">
      <!--JMS / ActiveMQ Section-->
      <!--Remove 'DISABLE-' to enable this section. Only one
queue section can exist at a time.-->
      <section name="queue">
        <entry
name="marshaller.class">com.docucorp.messaging.data.marshaller.SOAPM
IMEDSIMessageMarshaller</entry>
        <entry
name="queuefactory.class">com.docucorp.messaging.jms.DSIJMSJNDIMessa
geQueueFactory</entry>
        <entry name="jms.inputqueue.connectstring">resultq</
entry>
        <entry name="jms.outputqueue.connectstring">requestq</
entry>
        <entry name="jms.qcf.name">queueConnectionFactory</
entry>
        <entry
name="jms.initial.context.factory">org.apache.activemq.jndi.ActiveMQ
InitialContextFactory</entry>
      </section>
      <!--HTTP Section-->
      <!--Remove 'DISABLE-' to enable this section. Only one
queue section can exist at a time.-->
      <section name="DISABLE-queue">
        <entry
name="marshaller.class">com.docucorp.messaging.data.marshaller.SOAPM
IMEDSIMessageMarshaller</entry>
        <entry
name="queuefactory.class">com.docucorp.messaging.http.DSIHTTPMessage
QueueFactory</entry>
        <entry name="http.url">http://localhost:49352</entry>
        <entry name="http.reuse.ports">15</entry>
        <entry name="inputqueue.maxwaitseconds">30</entry>
      </section>
      <!--MQSeries Section-->
      <!--Remove 'DISABLE-' to enable this section. Only one
queue section can exist at a time.-->
      <section name="DISABLE-queue">
        <entry
name="marshaller.class">com.docucorp.messaging.data.marshaller.SOAPM
IMEDSIMessageMarshaller</entry>
        <entry
name="queuefactory.class">com.docucorp.messaging.mqseries.DSIMQMessag
eQueueFactory</entry>
        <entry name="mq.queue.manager"></entry>
      </section>
    </section>
  </section>
</configuration>
```

```

        <entry name="mq.inputqueue.name">RESULTQ</entry>
        <entry name="mq.inputqueue.maxwaitseconds">5</entry>
        <entry name="mq.outputqueue.name">REQUESTQ</entry>
        <!-- Remove 'DISABLE-' from the following line to use
in TCP/IP 'client' mode. -->
        <!-- Leave disabled to use in 'bindings' mode. -->
        <entry name="DISABLE-mq.tcpip.host">127.0.0.1</entry>
        <entry name="mq.queue.channel">SYSTEM.DEF.SVRCONN</
entry>
        <entry name="mq.tcpip.port">1414</entry>
    </section>
    <!--MSMQ Section-->
    <!--Remove 'DISABLE-' to enable this section. Only one
queue section can exist at a time.-->
    <section name="DISABLE-queue">
        <entry
name="marshaller.class">com.docucorp.messaging.data.marshaller.SOAPM
IMEDSIMessageMarshaller</entry>
        <entry
name="queuefactory.class">com.docucorp.messaging.msmsg.DSIMSMQMessage
QueueFactory</entry>
        <entry name="msmq.server.name">localhost</entry>
        <entry name="msmq.inputqueue.name">private$\RESULTQ</
entry>
        <entry name="msmq.outputqueue.name">private$\REQUESTQ</
entry>
        <entry name="msmq.timeout">30000</entry>
        <entry name="msmq.expiry">1800000</entry>
    </section>
</section>
<!-- messaging section -->
</section>
<!-- DocumentClient -->
</configuration>

```

Checking the CLASSPATH and other Environment Variables

The following values are added to the CLASSPATH variable when you install the Docupresentation Client:

```

CLASSPATH=C:\docclnt\clientlib\DocucorpMsg.jar;C:\docclnt\clientlib\
DocumentServer.jar;C:\docclnt\clientlib\commons-
collections.jar;C:\docclnt\clientlib\commons-
fileupload.jar;C:\docclnt\clientlib\commons-
pool.jar;C:\docclnt\clientlib\DocuCorpUtil.jar;C:\docclnt\clientlib\
DSIJavaMsg.jar;C:\docclnt\clientlib\IDSJSP.jar;C:\docclnt\clientlib\
jdom.jar;C:\docclnt\clientlib\xerces.jar;C:\docclnt\clientlib\log4j.
jar;

```

The following values are added to the PATH variable when you install the Docupresentation Client:

```

PATH=C:\docclnt;C:\docclnt\jre\bin\client;C:\docclnt\jre\bin;e:\docc
lnt\.\.install4j

```

These values are added to the following variables when you install the Docupresentation Client:

```

ids_client_configuration=C:\docclnt\docclient.xml
java_endorsed_dirs=C:\docclnt\clientlib\endorsed
logging_client_configuration=C:\docclnt\logclientconf.xml

```

Installing Third-Party JAR Files

Note If you are using WebSphere MQ (MQ Series) or ActiveMQ for the queuing method, you must make the WebSphere MQ or ActiveMQ jar files available to Docupresentment. See the “Installing Third-Party Jar Files” section of the [Docupresentment Guide](#) for more information.

INSTALLING THE DOCUPRESENTMENT WITH A RESPONSE FILE

You can run the Docupresentation in unattended mode from the command line. To do this you must create a response file to provide the information the installer needs. A response file is a text file which contains the information a user would typically provide while running the Setup wizard or responding to command-line prompts. This information is in name=value format.

To create a response file that contains the necessary data, first run the command-line installer in one of these ways:

- Using default mode, with no arguments. After the installation finishes, the installer creates a response file named *response.varfile*.
- Using the command-line installation with the *-console* parameter. This lets you specify the name you want to assign to the response file.

After the installation finishes, the installer creates the response file and stores it in the *.install4j* directory. This file contains name=value data captured during the installation process. You can edit this file if necessary to modify the values. Here is an example:

```
#install4j response file for (application/version)
#Wed Mar 16 16:53:12 EDT 2011
sys.languageId=en
sys.installationDir=d:\ (application/version)
```

You can then pass this response file to the installer using the *-varfile* parameter. For example, to run the installer in unattended mode using a response file, include these parameters:

```
-q -console -c -varfile varfilename
```

Parameter	Description
-q	Runs the installer in unattended mode.
-console	If the installer is executed in unattended installation mode (-q) and you include -console as the second parameter, a console is allocated on Windows that displays the output of the installer.
-c	Runs the installer in the console mode.
-varfile	<i>Varfilename</i> specifies the name of the response.varfile to use. You can include a full path.

Note For more information about response files and install4j installations, go to this web site:
<http://resources.ej-technologies.com/install4j/help/doc/>

Here is an example:

```
(application/version).exe -q -console -c -varfile
response.varfile
```

Here is an example of the output you will see:

```
Extracting files...
Downloading ...
Extracting files...
Finishing installation..
```