

Oracle® Documaker

**Using the Documaker
XTension with QuarkXPress**

version 12m R1 (12.4.0)

Part number: E57338-01

January 2015

Copyright © 2009, 2015, Oracle and/or its affiliates. All rights reserved.

The Programs (which include both the software and documentation) contain proprietary information; they are provided under a license agreement containing restrictions on use and disclosure and are also protected by copyright, patent, and other intellectual and industrial property laws. Reverse engineering, disassembly, or decompilation of the Programs, except to the extent required to obtain interoperability with other independently created software or as specified by law, is prohibited.

The information contained in this document is subject to change without notice. If you find any problems in the documentation, please report them to us in writing. This document is not warranted to be error-free. Except as may be expressly permitted in your license agreement for these Programs, no part of these Programs may be reproduced or transmitted in any form or by any means, electronic or mechanical, for any purpose.

If the Programs are delivered to the United States Government or anyone licensing or using the Programs on behalf of the United States Government, the following notice is applicable:

U.S. GOVERNMENT RIGHTS

Programs, software, databases, and related documentation and technical data delivered to U.S. Government customers are "commercial computer software" or "commercial technical data" pursuant to the applicable Federal Acquisition Regulation and agency-specific supplemental regulations. As such, use, duplication, disclosure, modification, and adaptation of the Programs, including documentation and technical data, shall be subject to the licensing restrictions set forth in the applicable Oracle license agreement, and, to the extent applicable, the additional rights set forth in FAR 52.227-19, Commercial Computer Software--Restricted Rights (June 1987). Oracle USA, Inc., 500 Oracle Parkway, Redwood City, CA 94065.

The Programs are not intended for use in any nuclear, aviation, mass transit, medical, or other inherently dangerous applications. It shall be the licensee's responsibility to take all appropriate fail-safe, backup, redundancy and other measures to ensure the safe use of such applications if the Programs are used for such purposes, and we disclaim liability for any damages caused by such use of the Programs.

The Programs may provide links to Web sites and access to content, products, and services from third parties. Oracle is not responsible for the availability of, or any content provided on, third-party Web sites. You bear all risks associated with the use of such content. If you choose to purchase any products or services from a third party, the relationship is directly between you and the third party. Oracle is not responsible for: (a) the quality of third-party products or services; or (b) fulfilling any of the terms of the agreement with the third party, including delivery of products or services and warranty obligations related to purchased products or services. Oracle is not responsible for any loss or damage of any sort that you may incur from dealing with any third party.

Oracle, JD Edwards, and PeopleSoft are registered trademarks of Oracle Corporation and/or its affiliates. Other names may be trademarks of their respective owners.

PLEASE NOTE

THIS SOFTWARE PACKAGE HAS NOT BEEN WRITTEN, REVIEWED OR TESTED BY QUARK, THE QUARK AFFILIATED COMPANIES OR THEIR LICENSORS. QUARK, THE QUARK AFFILIATED COMPANIES AND THEIR LICENSORS MAKE NO WARRANTIES, EITHER EXPRESS OR IMPLIED, REGARDING THE ENCLOSED SOFTWARE PACKAGE, ITS MERCHANTABILITY, OR ITS FITNESS FOR ANY PARTICULAR PURPOSE. QUARK, THE QUARK AFFILIATED COMPANIES AND THEIR LICENSORS DISCLAIM ALL WARRANTIES RELATING TO THE ENCLOSED SOFTWARE PACKAGE. ALL OTHER WARRANTIES AND CONDITIONS, WHETHER EXPRESS, IMPLIED, OR COLLATERAL, AND WHETHER MADE BY THE DISTRIBUTORS, SYSTEMS INTEGRATORS, RETAILERS OR DEVELOPERS OF THE ENCLOSED SOFTWARE ARE DISCLAIMED BY QUARK, THE QUARK AFFILIATED COMPANIES AND THEIR LICENSORS, INCLUDING, WITHOUT LIMITATION, ANY WARRANTY OF NON-INFRINGEMENT, COMPATIBILITY, OR THAT THE SOFTWARE IS ERROR-FREE OR THAT ERRORS CAN OR WILL BE CORRECTED. Some jurisdictions, states or provinces do not allow limitations on implied warranties, so the above limitation may not apply to particular users.

IN NO EVENT SHALL QUARK, THE QUARK AFFILIATED COMPANIES OR THEIR LICENSORS BE LIABLE FOR ANY SPECIAL, INDIRECT, INCIDENTAL, CONSEQUENTIAL OR PUNITIVE DAMAGES, INCLUDING, BUT NOT LIMITED TO, ANY LOST PROFITS, LOST TIME, LOST SAVINGS, LOST DATA, LOST FEES, OR EXPENSES OF ANY KIND ARISING FROM INSTALLATION OR USE OF THE SOFTWARE OR ACCOMPANYING DOCUMENTATION IN ANY MANNER, HOWEVER CAUSED AND ON ANY THEORY OF LIABILITY. IF, NOTWITHSTANDING THE FOREGOING, QUARK, THE QUARK AFFILIATED COMPANIES AND/OR THEIR LICENSORS ARE FOUND SUCH LIABILITY SHALL BE LIMITED TO THE AMOUNT PAID BY USER TO QUARK WITHIN THE THREE YEAR PERIOD PRECEDING THE CLAIM, IF ANY, FOR THE LICENSE OF THE SPECIFIC QUARK PRODUCTS (EXCLUDING ANY THIRD-PARTY COMPONENTS ADDED BY END USER OR ANY THIRD PARTY, INCLUDING A DEVELOPER OR INTEGRATOR), OR THE LOWEST AMOUNT UNDER APPLICABLE LAW, WHICHEVER IS LESS. THESE LIMITATIONS WILL APPLY EVEN IF QUARK, THE QUARK AFFILIATED COMPANIES AND/OR THEIR LICENSORS HAVE BEEN ADVISED OF SUCH POSSIBLE DAMAGES. Some jurisdictions, states or provinces do not allow the exclusion or limitation of incidental or consequential damages, so this limitation or exclusion may not apply. All other limitations provided under applicable law, including Statutes of Limitation, shall continue to apply.

Contents

iii Please Note

Using QuarkXPress to Create Resources for Documaker

- 2 Installing the Documaker XTension
- 5 Customizing the Documaker XTension
- 6 Using the Documaker XTension
 - 7 Creating Documaker Resources
- 9 For Best Results
- 11 Limitations

13 Index

Using QuarkXPress to Create Resources for Documaker

You can use the Documaker XTension with QuarkXPress to create Documaker resources from Quark files.

NOTE: The Documaker XTension can only be used with a valid, registered copy of QuarkXPress.

You can then open these resources in Documaker Studio to create your Documaker forms and form sets.

QuarkXPress is a page layout application typically used for designing magazines and brochures. Plug-ins designed for QuarkXPress are called *XTensions*. To use the XTension to export FAP files, you must have QuarkXPress version 8.01, 8.02, or 9.x

NOTE: The following information reflects changes made to the Documaker XTension in Oracle Documaker version 11.5/12.0 and Documaker version 12.1. These changes allow the Documaker XTension to work with QuarkXPress version 8.01, 8.02, or 9.x.

INSTALLING THE DOCUMAKER XTENSION

The Documaker XTension module is packaged as a DLL file with these names:

For Quark version Use this XTension file

| | |
|-----|-----------------|
| 9.x | v9Documaker.XNT |
|-----|-----------------|

Keep in mind these requirements:

| Documaker | Includes these XTensions | And requires these DLL files |
|----------------------|--------------------------------------------------------------------|---------------------------------------------------------------------------------|
| 11.4 | QuarkToFAP.XNT v7Docucorp.XNT v8Skywire.XNT | ICUDT36.DLL ICUUC36.DLL LIBGFL254.DLL |
| 11.5 12.0 | QuarkToFAP.XNT v7Docucorp.XNT v8Skywire.XNT | Only requires that the full Documaker installation be in the user's path. |
| 12.1 12.2 12.3 | QuarkToFAP.XNT v7Docucorp.XNT v8Skywire.XNT v9Skywire.XNT | Only requires that the full Documaker installation be in the user's path. |
| 12.4 | v9Skywire.XNT | Only requires that the full Documaker installation be in the user's path. |

CUSTOMIZING THE DOCUMAKER XTENSION

Use these options in your FSISYS.INI, FSIUSER.INI, or FAPCOMP.INI file to customize how the Documaker XTension works:

```
< MasterResource >
  DefLib = .\deflib\
  FormLib = .\forms\
  XRFFile = rel121
```

| Option | Description |
|----------|--------------------------------------------------------------------------------------------------------------------------------------------------------------------|
| DefLib | This option is used to locate system files, such as font cross-reference files (*.FXR). |
| FormLib | This option is used by the export process to save bitmaps. |
| XrffFile | The font cross-reference file. This file contains information that allows the Documaker XTension to match Documaker fonts to those used in the QuarkXPress layout. |

NOTE: Lower level functions called by the export procedures may use other INI settings.

USING THE DOCUMAKER XTENSION

Here is an overview of the steps you would take to create Documaker resources from QuarkXPress files. Keep in mind that some QuarkXPress features have no equivalents in Documaker software. Also keep in mind that the consistency of your QuarkXPress layouts plays a part in the fidelity of your results.

- Generate a font report and make sure the required fonts are available in your font cross-reference (FXR) file. Use Documaker Studio's Font manager to import missing fonts into the FXR file. For more information, see [Optimize font selection on page 9](#).
- In QuarkXPress, remove tracking and kerning. Removing these attributes from the layout will cause QuarkXPress to reflow the document and allow the Documaker XTension to export a more suitable document.
- In QuarkXPress, make sure the layout contains the correct path to all of the required images. For more information, see [Verify picture locations on page 9](#).
- Generate an export file. See [Creating Documaker Resources on page 7](#) for more information.

NOTE: For the first attempt, make sure the Generate Font Report option is selected. When the report appears displayed, make sure the font substitutions match your expectations.

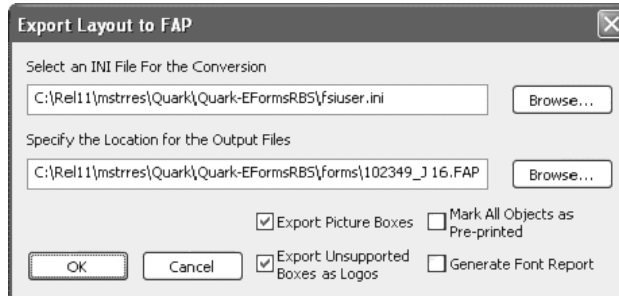
- Open the output, which will be a FAP file, in Documaker Studio. View the graphics to make sure they are correct. Graphics that are not created from disk files are of lower quality. Also look at the graphic's properties.
 - The names assigned to graphics from disk files will look like *MyLogo.log* or *MyLogo640x480.log*, where *640x480* is replaced by the actual dimensions of the graphics file.
 - The names assigned to graphics which are not from disk files are based on the name of the layout, with a numerical sequence appended, as in *MyLayout0001.log*.
- Review the [Limitations on page 11](#) and inspect the FAP file to see if it is affected by any of these limitations. If it does exhibit one of these problems, you may need to modify the layout in QuarkXPress.

If you do make changes to the layout, run the export again and test the result. When you are satisfied with the results, make any necessary changes to all of your QuarkXPress files, run the export again, and open the results in Documaker Studio.

CREATING DOCUMAKER RESOURCES

To create Documaker resources from a QuarkXPress layout, follow these steps:

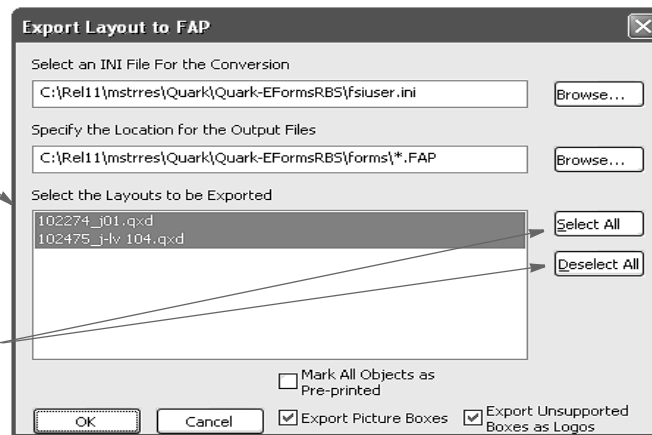
- 1 Open the file in QuarkXPress.
- 2 Select File, Export. Then select the As FAP option. The Export Layout to FAP window appears which lets you choose a Documaker INI file and specify the location of the output file.



Make the appropriate entries in the fields on this window. If multiple layouts are open, the window shown here appears instead, so you can select multiple layouts to export.

Here you see all open layouts.

Use these buttons to select all or no layouts.



| Field | Description |
|-------------------------------------------|------------------------------------------------------------------------------------------------------------------------------------------------------------------------------------------------------------------------------------------------------------------------------------------------------------------------------------------------------------------------------------------------------------------------------------------------------------------------------------------------------------------------------------------------------------------------------------------------------------------------------------------------------------------------------------------------------------------------------------------------------------------------------------------------------------------------------------------------------------------------------------------------------------------------------------------------------------------------------------|
| Select an INI File for the Conversion | Enter the name of the INI file you want to use. The default is the most recently used INI file. |
| Specify the Location for the Output Files | Enter the path where you want the exported file to reside and a name for this file. If you omit the name, the Documaker XTension assigns a <i>.FAP</i> extension to the name of the QuarkXPress layout. Click Browse to choose a location from the File window. If multiple layouts are open, the File window lets you choose a directory. The XTension remembers the last location used for an export and displays it as a default. |
| Export Picture Boxes | If there are pictures in the layout that do not exist on disk, click this field to create Documaker graphics (LOG) files for these pictures. If, for example, a picture overlaps a text object, you may prefer to uncheck this box to see just the text object. |
| Export Unsupported Boxes as Logos | Click this field to turn off the default behavior in which QuarkXPress objects that do not convert well into Documaker objects are exported as Documaker graphics (LOG) files. For instance, Documaker only lets you rotate text in increments of 90 degrees, while QuarkXPress lets you rotate text by any amount. |
| Mark All Objects Pre-printed | Use this option to tell the XTension to set the pre-printed flag on every object (boxes, bitmaps, vectors, text areas, and text labels) it creates. Having the pre-printed flag set on an object can be useful during forms creation or when test printing your forms, such as when you are using letterhead or special paper with the company name or graphics embossed on the paper. Inserting a text label or graphic on your form in the same location as the company name or graphics helps make sure the space is not inadvertently written over by other objects. These objects would reserve that space on the form. You may want to include pre-printed objects when test printing the form to compare against your special paper to make sure there is enough space on the special paper for the non pre-printed objects. By default, the Print window does not display a Pre-printed option. Any objects flagged as pre-printed will not print on the form. |
| Generate Font Report | Click this field if you want the Documaker XTension to display a list of all fonts used in the layout after it finishes the export. The list shows you both the original fonts used in the layout and the FAP fonts that were substituted for them. See Optimize font selection on page 9 for more information. This is only available when you are exporting a single layout. |

When handling pictures that are loaded from disk, the Documaker XTension exports one picture for each size used in Documaker graphics (LOG) format. These files are named by appending the image size (width x height) to the original image name.

Before exporting, the Documaker XTension checks to see if the FAP file already exists. If it does, variable fields on the existing FAP file are preserved in the resulting document so you do not have to edit the output FAP file to reinsert fields.

FOR BEST RESULTS

Here are some tips on how you can get the best results from of the Documaker XTension:

Verify picture locations

QuarkXPress can display a picture even if the original image is no longer on disk, or is in a different location on disk. If this is the case, the Documaker XTension can only retrieve a 96 DPI capture of the image. If you make sure the picture locations are correct in the layout, using the Usage option on the Utilities menu, the Documaker XTension can create a full-resolution Documaker graphics (LOG) file.

Optimize font selection

The Documaker XTension matches the fonts in the QuarkXpress layout to those in your FXR file to minimize any differences in word wrapping, line heights, and appearance. When the layout specifies a font, the Documaker XTension looks at each font in your FXR file and assigns it a score based upon several criteria, including...

- How closely the family and face names match those given by the layout
- How closely the size matches that specified in the layout
- Whether it is a symbol font
- Whether its type style — bold, italic, or Roman — matches that of the layout
- Whether its spacing type — proportional or fixed — matches that of the layout

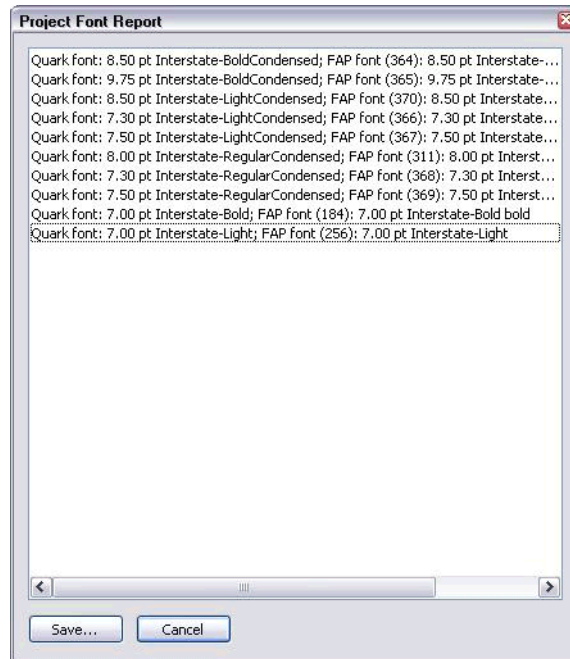
Additionally, if the font has a substitute listed in the Window32Subs control group, the Documaker XTension uses the specified substitute. For example, if your INI file contains this option:

```
< Window32Subs >
    Albany MT = Arial
```

and the QuarkXPress layout specifies that Arial should be used, the Documaker XTension will substitute the Albany MT font.

In addition to using the Window32Subs control group, there are other ways you can configure the system to choose the best fonts possible.

- Use Documaker Studio's Font manager to import the fonts used by the QuarkXPress layouts into a Documaker FXR file. The font scoring system will add additional points if the name in the layout exactly matches that in the FXR file.
- Use the Generate Font Report field. After the export is complete, the following window appears:



Review the report and note any discrepancies between the original font and its substitute. Look specifically at the criteria mentioned previously. Do the sizes match? If not, use Documaker Studio's Font manager to import the needed size into your FXR file.

Make sure symbolic fonts are not being substituted for a non-symbolic font. Make sure the font you want is in your FXR file. You may want to use the Window32Subs control group to specify the font you want substituted.

The Documaker XTension tries to determine whether the font being requested is bold or italicized. This is not always possible because sometimes bold, italic, or oblique are characteristics of the font itself and the corresponding style is not set.

LIMITATIONS

Keep in mind these limitations:

- QuarkXPress lets you lay out text along an arbitrary path. This feature has no equivalent in Documaker software. Boxes that contain text that is not placed normally or rotated in increments of 90 degrees are exported as graphics if the option to Export Unsupported Boxes as Logos is turned on.
- The Documaker XTension does not support these QuarkXPress features:
 - Paragraph rules — lines above or below the paragraph.
 - Vertical text alignment in a text area.
 - Font scaling.
 - *Z-ordering*, in which objects can cover other objects. In Documaker applications, underlying objects remain visible.
- In QuarkXPress, pressing SHIFT+TAB overrides existing tab stops and creates a right-justified tab at the right edge of the current text box. This behavior is a result of an attribute given the tab character itself; emulation of the behavior using only tab stops is likely to result in unpredictable formatting. Therefore, the Documaker XTension converts the SHIFT+TAB combination into a simple tab.
- QuarkXPress' runaround feature lets information flow around an object, such as an illustration. This feature is not supported by the Documaker XTension. If you are exporting layouts that use runaround, be sure to check for and correct any overlapping objects.
- QuarkXPress' tracking feature lets you adjust the horizontal spacing between letters. Tracking is not a part of the Documaker system and is ignored by the Documaker XTension. If there are big differences in where lines wrap, or in the way text flows in the output FAP file, this may be a result of tracking.

For best results, before you do the export select all of the affected text, then select the Track option from the QuarkXPress Style menu. When the window appears, enter zero (0) in the Track Amount field, and click Ok.

- In QuarkXPress, pressing CTRL+\ inserts an *Indent Here* character, which tells QuarkXPress to indent each subsequent line to the location of that character until the next paragraph marker. This feature is not a part of the Documaker system and is ignored by the Documaker XTension. Text affected by the Indent Here character in Quark will flow within previously set margins after the export.
- When exporting picture boxes and unsupported boxes as graphics, turn off guides for best results. To turn off guides, select the View, Hide Guides option from the QuarkXPress menu.
- Suppose a QuarkXPress layout uses two coincident boxes, one that can be exported fully and one that must be exported as a bitmap. Since there is no way for the Documaker XTension to understand the intent of the layout geometry, both boxes are exported with a result similar to that shown below. Experiment with the Export Picture Boxes and Export Unsupported Boxes as Logos fields on the Export Layout to FAP window to get the best results.

Index

A

AFPL Ghostscript 4

D

DefLib option 5

Documaker Studio 6

Documaker XTension

 customizing 5

 installing 3

E

Encapsulated PostScript (EPS)

 exporting 4

ESP Ghostscript 4

Export Layout to FAP window 7

Export Picture Boxes field 8

Export Unsupported Boxes as Logos field 8, 11

F

font cross-reference file

 font report 6

 XrffFile option 5

Font Manager
importing fonts 9
font report 10
generating 6
fonts
converting 9
scaling 11
FormLib option 5

G

Generate Font Report field 6, 8, 9
Ghostscript 4
GNU Ghostscript 4
GPL Ghostscript 4
graphics
exporting 4
naming 6
guides 11

I

Indent Here character 11
INI file 8

K

kerning 6

L

logos
picture boxes 8

M

Mark All Objects Pre-printed field 8

P

paragraph rules 11
pictures
exporting 8
resolution 9
verifying locations 9
pre-printed objects 8

Q

QuarkXPress 1, 7

R

runaround 11

S

Select an INI File for the Conversion field
8
Specify the Location for the Output Files
field 8
symbolic fonts 10

T

tab stops 11
text alignment 11
Track Amount field 11

tracking 6, 11

V

vertical text alignment 11

W

Window32Subs control group 9, 10

X

XrfFile option 5

XTensions 1

Z

z-ordering 11

