

Function ID Development II
Oracle FLEXCUBE Investor Servicing
Release 12.0.4.0.0
[September] [2014]
Part No. E57474-01



Table of Contents

- 1. PREFACE 1-1**
 - 1.1 AUDIENCE 1-1
 - 1.2 RELATED DOCUMENTS..... 1-1
 - 1.3 CONVENTIONS 1-1
 - 1.4 PRE-REQUEST 1-2

- 2. INTRODUCTION 2-1**
 - 2.1 HOW TO USE THIS GUIDE 2-1

- 3. MANUAL STATIC DATA POPULATION..... 3-1**
 - 3.1 PRE CREATION OF OPEN DEVELOPMENT ACTIVITY..... 3-1
 - 3.1.1 *CSTB_DATA_DICTIONARY* maintenance 3-1
 - 3.1.2 *CSTB_ITEM_DESC* maintenance 3-1
 - 3.1.3 *STTB_PK_COLS* maintenance 3-1
 - 3.2 POST CREATION OF OPEN DEVELOPMENT ACTIVITY 3-2

- 4. HEADER INFORMATION –BASIC INFORMATION ABOUT THE SCREEN 4-1**
 - 4.1 SCHEMA NAME..... 4-2
 - 4.2 ACTION..... 4-2
 - 4.3 FUNCTION ID..... 4-2
 - 4.4 SCREEN TYPE 4-2
 - 4.5 LANGUAGE 4-2
 - 4.6 FILE SAVE PATH..... 4-2

- 5. DATA SOURCES 5-1**

- 6. LIST OF VALUES (LOV) 6-1**

- 7. SCREEN LAYOUT 7-1**

- 8. DATA BLOCK 8-1**

- 9. FIELD SETS 9-1**

- 10. CALL FORMS..... 10-1**

- 11. ACTIONS..... 11-1**

- 12. SUMMARY..... 12-1**

- 13. NON EXTENSIBLE OPEN DEVELOPMENT FILE GENERATION 13-3**

1. Preface

This document describes the concepts and helps reader to create screens using non extensible Open Development tool, to develop FLEXCUBE user interface screens.

1.1 Audience

The Non extensible Open Development Function ID Development book is intended for the FLEXCUBE Application Developers who perform the following tasks with Non Extensible Open Development tool:

- Develop the new screen (also called as function ID)
- To modify the existing screen
- Bug Fixing the existing screen

To Use this manual, you need conceptual and working knowledge of the below:

Proficiency	Resources
FLEXCUBE IS Development overview	Development Overview Guide
Open Development Tool function ID development getting started	Getting Started
Open Development Tool Reference	Reference
Open Development Tool installation and setup guide	Installation and Setup

1.2 Related documents

For more information on Function ID Development, see these resources:


- Development Overview Guide
- Reference

1.3 Conventions

The following text conventions are used in this document:

Convention Meaning

boldface	Boldface type indicates graphical user interface elements (for example, menus and menu items, buttons, tabs, dialog controls), including options that you select.
<i>italic</i>	italic type indicates book titles, emphasis, or placeholder variables for which you supply particular values.
monospace	Monospace type indicates language and syntax elements, directory and File name, URLs, text that appears on the screen, or text that

	you enter.
	Indicates important information

1.4 Pre-request

- Target FLEXCUBE IS environment
- Non extensible Open Development environment with designated project and release details

2. Introduction

2.1 How to use this Guide

The information in this guide includes:

- [Chapter 2, “Introduction”](#)
This is introduction section.
- [Chapter 3, “Manual Static data population”](#)
This section describes the prerequisites before creating a Function ID.
- [Chapter 4, “Header Information”](#)
This section describes the Header Credentials in detail.
- [Chapter 5, “Datasources”](#)
This section describes the steps required to get started with Function Creation.
- [Chapter 6, “List of Values”](#)
This section describes steps to add List Of Values definitions.
- [Chapter 7, “Screen Layout Design”](#)
This section describes the actions to be performed after adding Datasources.
- [Chapter 8, “Data Blocks”](#)
This section describes the steps required to design the Screen Layout.
- [Chapter 9, “Fieldsets”](#)
This section describes the steps required to map the Fields to specific locations in the Screen.
- [Chapter 10, “Callform”](#)
This section describes the callform details.
- [Chapter 11, “Actions”](#)
This section describes the amendable.
- [Chapter 12, “Summary”](#)
This section describes the steps to design the Summary Screen.
- [Chapter 13, “Open Development Tool Files Generation”](#)
This section describes steps to generate and deploy Open Development Tool Files.

3. Manual Static data population

- This section explains the data base tables that need to be manually populated to start the Open Development screen development. Developer has to add data manually in the below tables.

3.1 Pre creation of Open Development Activity

Following tables need to be populated

3.1.1 CSTB DATA DICTIONARY maintenance

Add rows in CSTB_DATA_DICTIONARY for Table/View and columns.

Column Name	Data Type	Data Length	Constraints
TABLE_NAME	VARCHAR2	50	PRIMARY
COLUMN_NAME	VARCHAR2	50	PRIMARY
LABEL_CODE	VARCHAR2	255	
FIELD_NAME	VARCHAR2	255	

3.1.2 CSTB ITEM DESC maintenance

Add rows in CSTB_ITEM_DESC for all label code required.

Column Name	Data Type	Data Length	Constraints
LABEL_CODE	VARCHAR2	255	PRIMARY
LANGUAGE_CODE	VARCHAR2	3	
LABEL_TYPE	VARCHAR2	20	
LABEL_DESCRIPTION	VARCHAR2	4000	

3.1.3 STTB PK COLS maintenance

Add rows in STTB_PK_COLS for tables that are part of data sources.

Column Name	Data Type	Data Length	Constraints
TABLE_NAME	VARCHAR2	30	PRIMARY
COLUMN_LIST	VARCHAR2	300	
DATA_TYPE_LIST	VARCHAR2	300	
DATA_LENGTH_LIST	VARCHAR2	100	

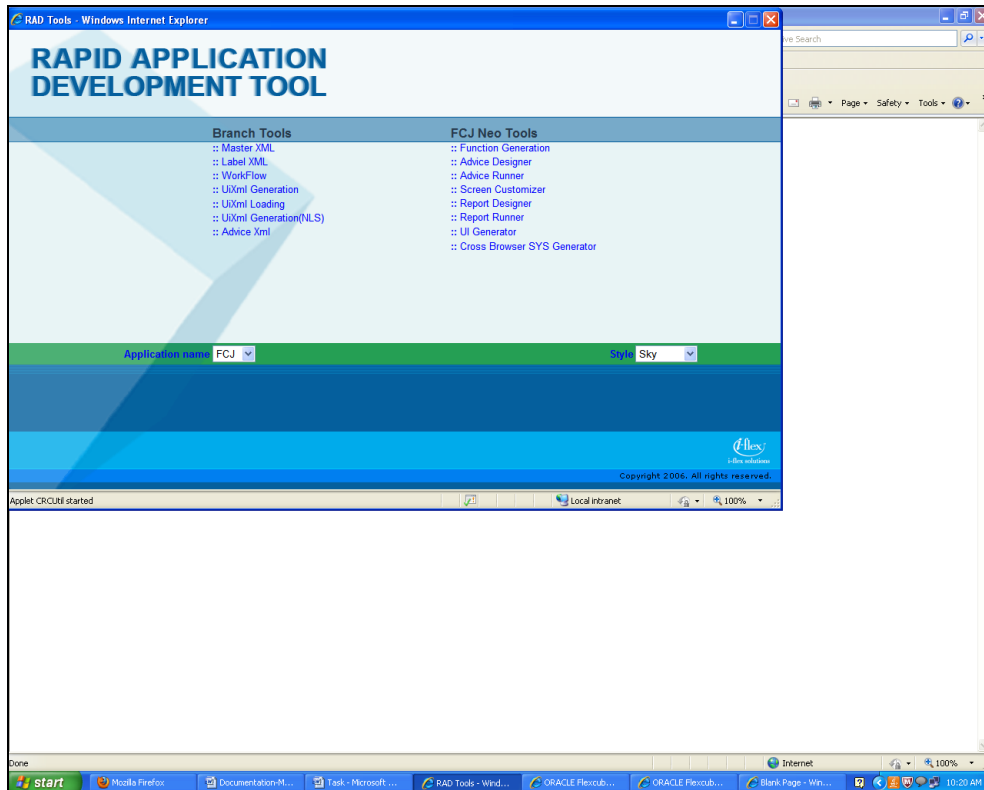
3.2 **Post creation of Open Development activity**

Following tables need to be populated:

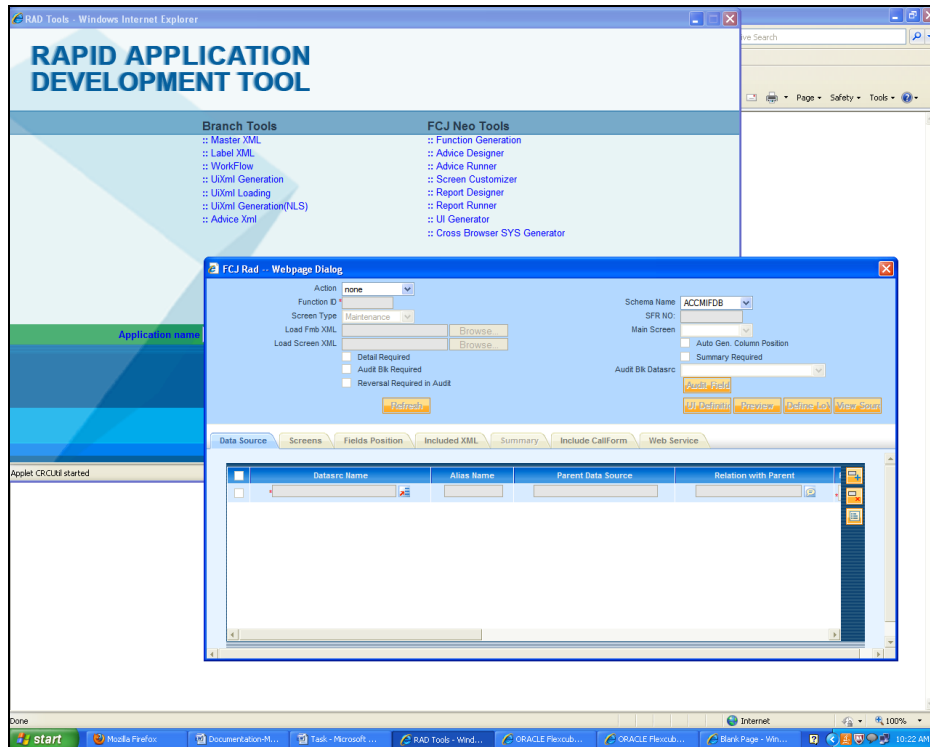
- SMTB_FUNCTION_DESCRIPTION
- SMTB_MENU,
- SMTB_ROLE_DETAIL
- SMTB_FCC_FCJ_MAPPING

4. Header Information –Basic Information about the Screen

Open the Non extensible Open Development Tool.



- Click on *Function Generator* shown above and the below screen will appear.



4.1 Schema Name

Developer has to select the appropriate schema in which he wants to develop the screen.

4.2 Action

Select *New* if you want to develop a new screen and *load* for modification of existing screen.

4.3 Function ID

The name of function Id has to be defined according to standard conventions .

4.4 Screen Type

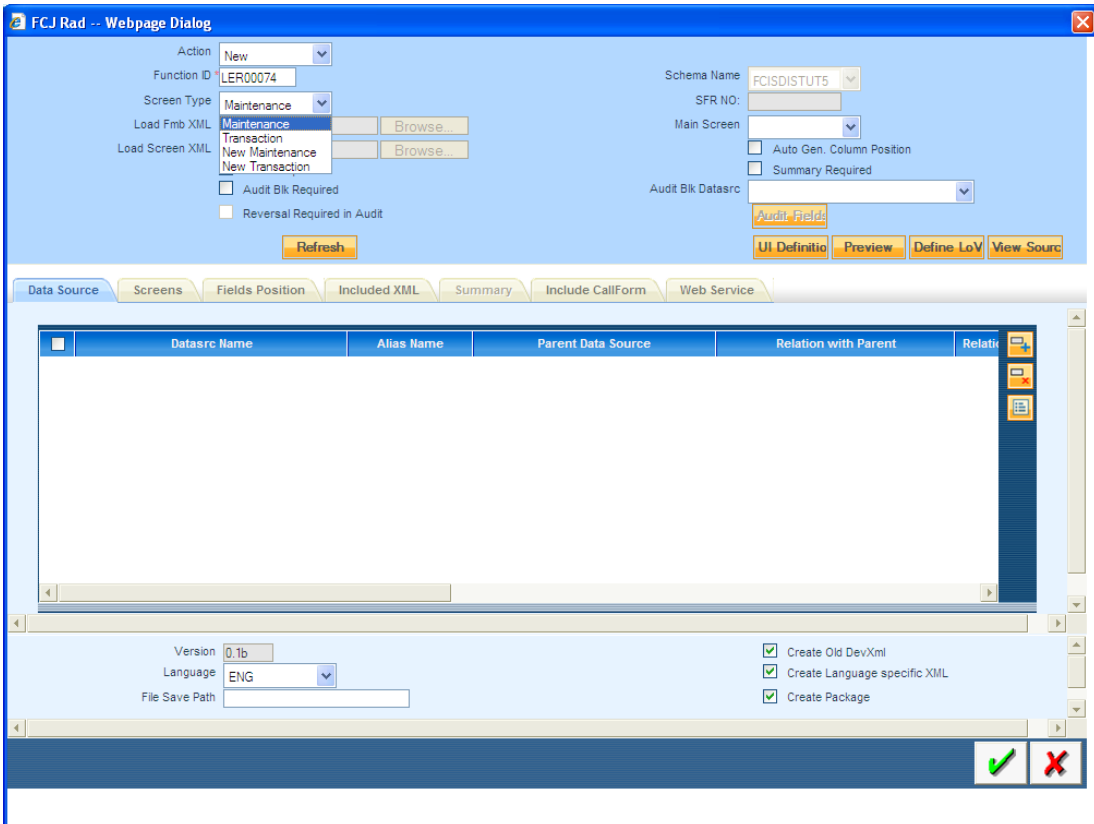
This can be either *Maintenance* or *Transaction* based on the Function ID being developed.

4.5 Language

This should be selected based on the language in which the screen is to be developed. Developer has to ensure that the Label information in the selected language is available in the selected schema.

4.6 File Save Path

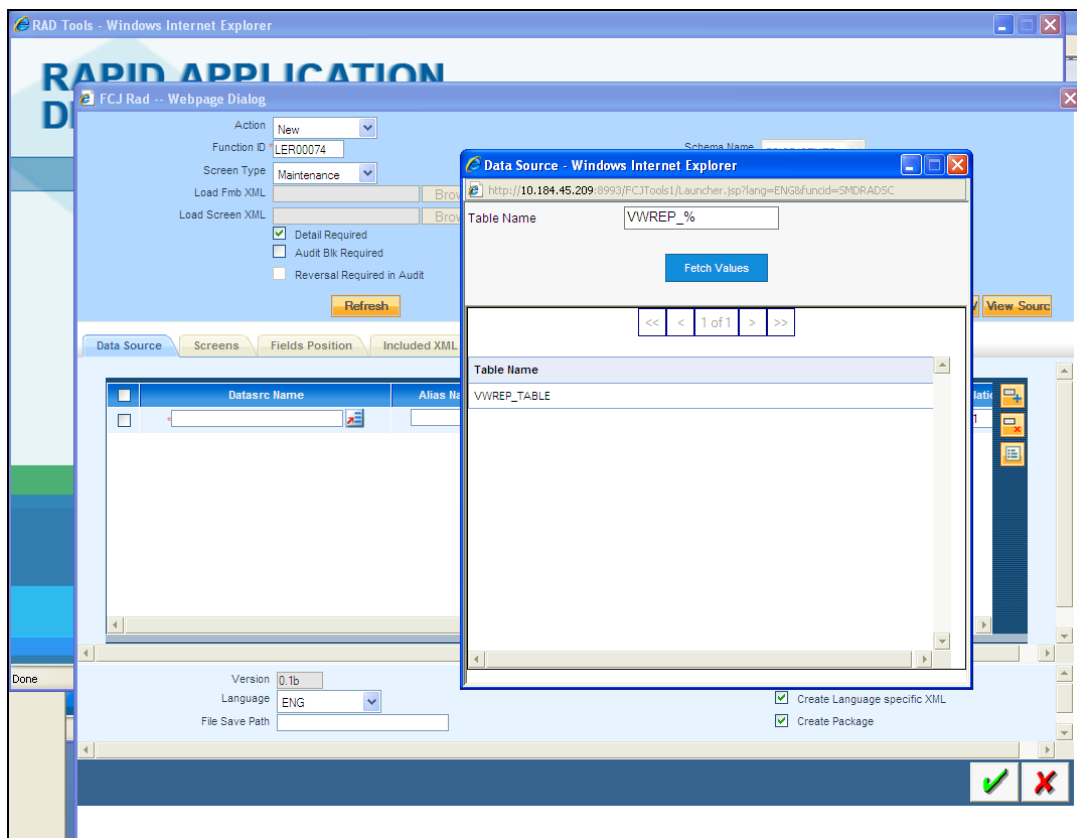
Developer has to specify the location where he wants to save the file.



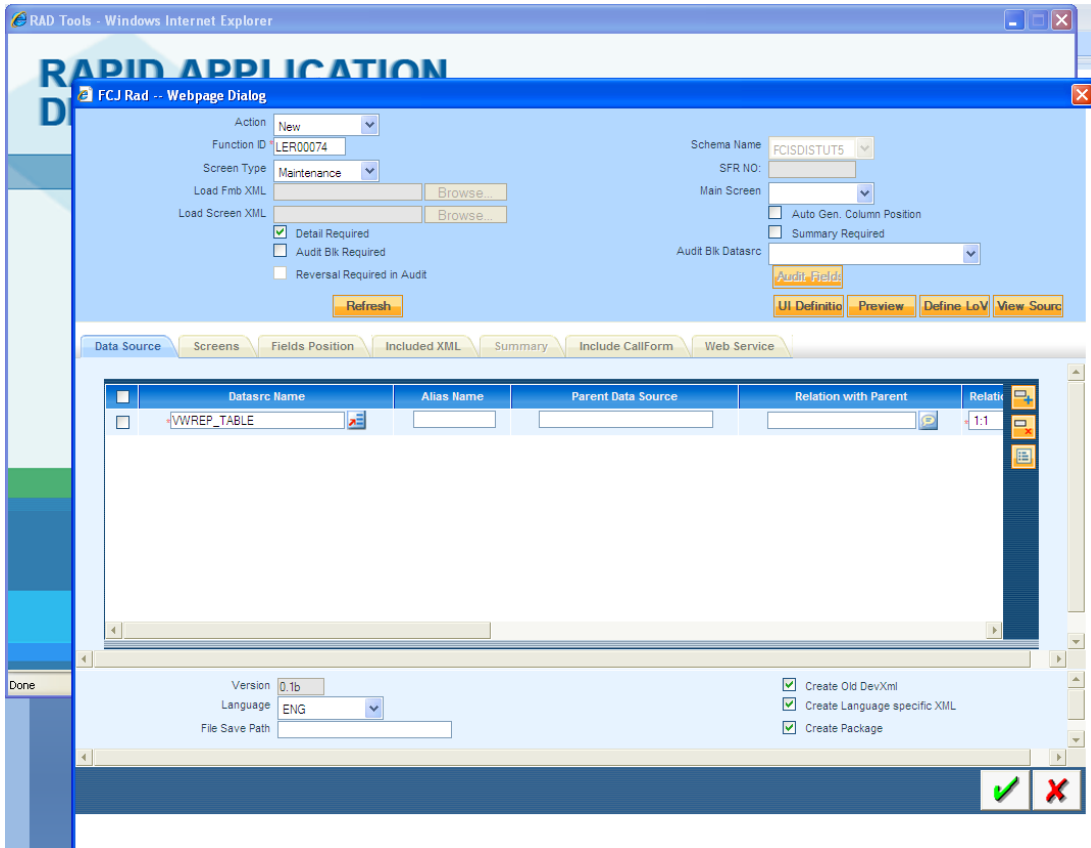
- If the summary screen is required for the function id, then the Summary Required check box should be checked.
- If the audit block has to get displayed for the detailed screen, then the Audit Blk Required check box should be checked.
- If the generation of the packages is not required, then the Create Package checkbox can be unchecked.
- Main screen tab has to be selected.

5. Data Sources

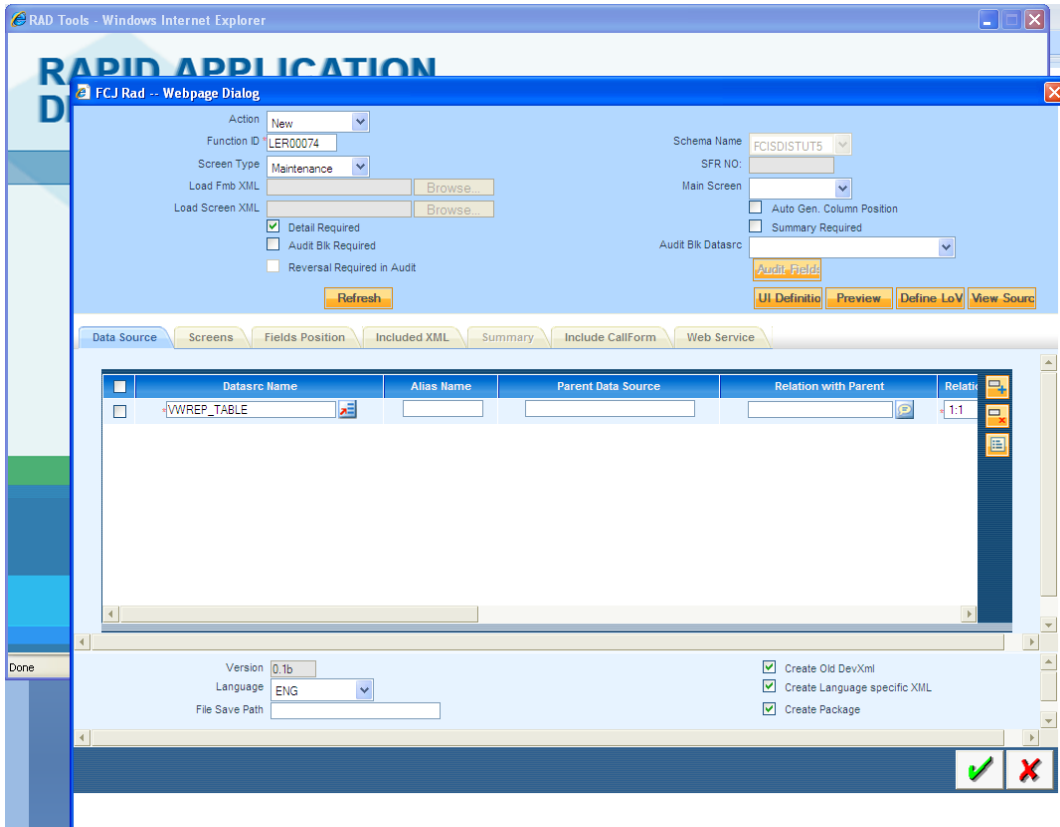
- Click on the *data source* tab.
- You can add one-one, one –many, query and view type data source by clicking on the plus button on the top right corner of screen.
- You have to mention the *Parent / Master* data source.
- For rest child data source you have to give the parent as well as relation with parent along with relation type depending on type of datasource.
- Add the default clause where needed.
- For query data source you need to tick the corresponding query checkbox. This type of datasource is required when description has to be added for fields.
- For *Summary data source* you need to tick the corresponding checkbox too. This type of datasource is required when you have *Summary* screen.
- Selecting Data Source



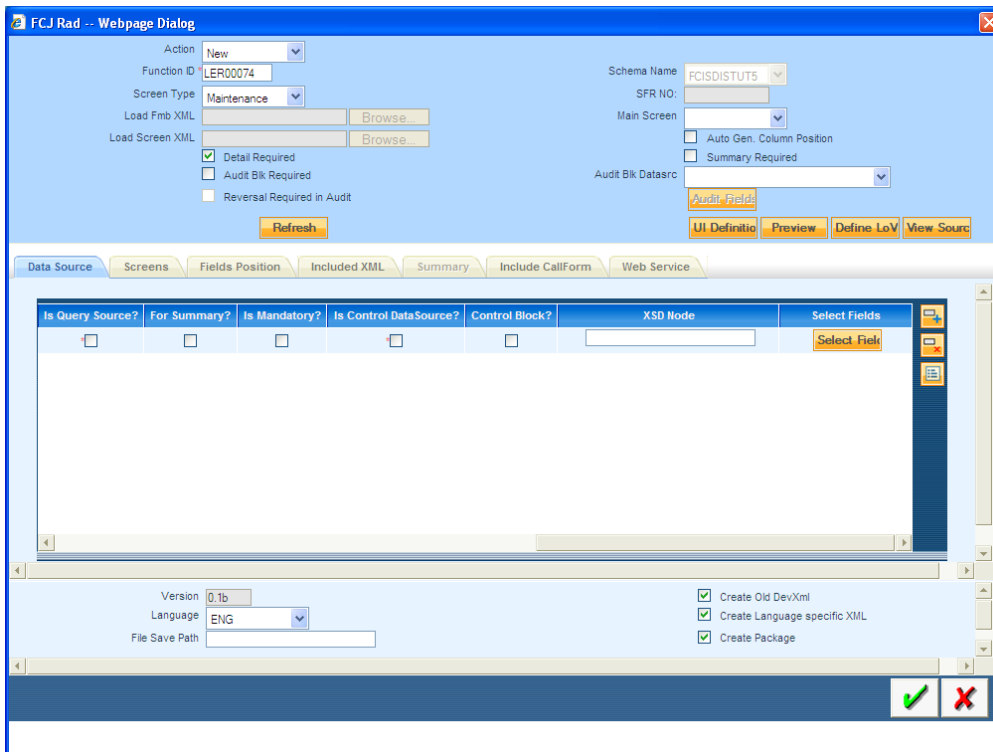
- Data Source Added



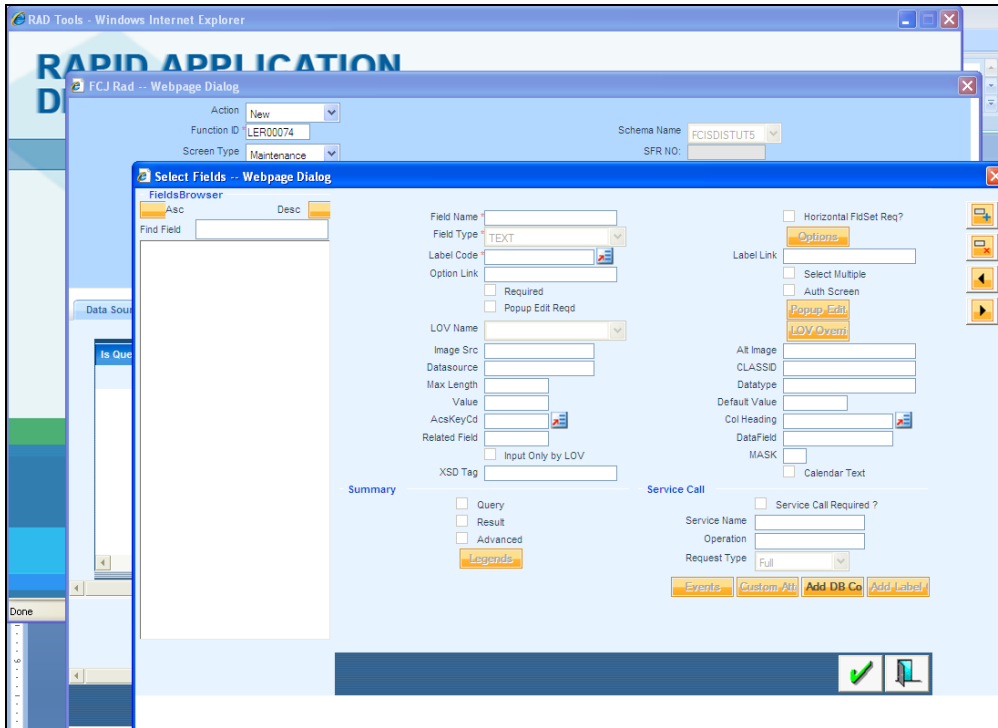
- Supposedly you need to access same fields of one datasource twice, than you need to create an *alias* of that data source. This is done by adding the same datasource again along with that you need to add a name in the alias column for that data source. In this way you can access those fields twice.
- For Alias Datasource



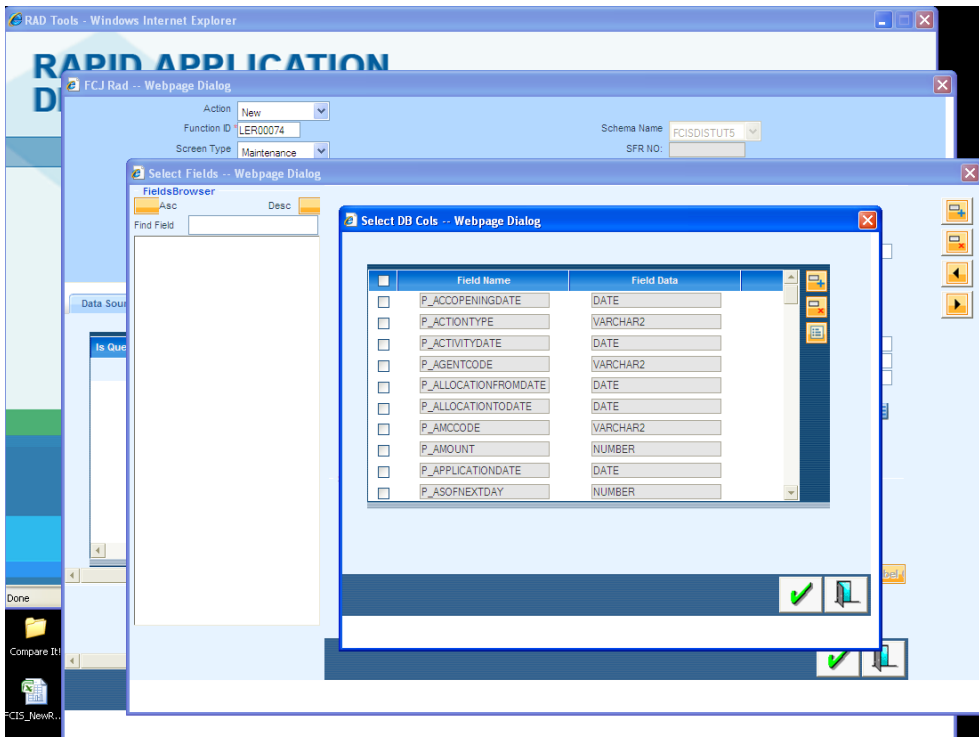
- The required fields in each datasource are added by clicking the *Select Field* button present at the right corner of the *datasource* tab.



- For adding Fields click *Add DB Cc*

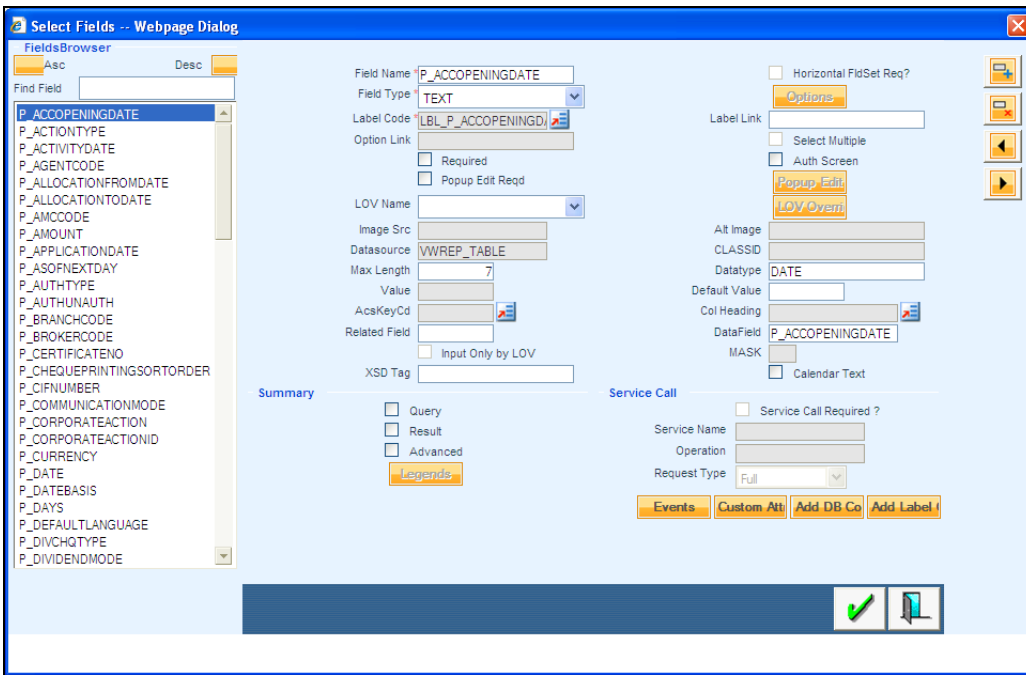


- Select the required fields from the list

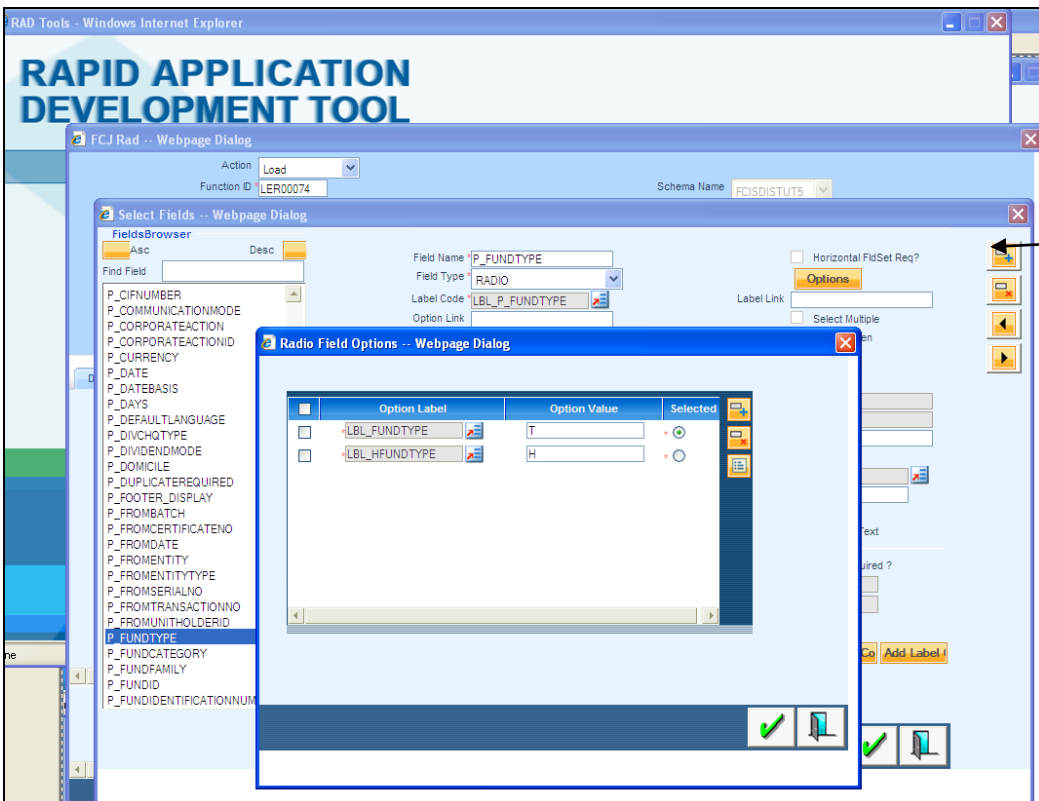


- You need to define their properties like field type, label, required and popup edit.
- If that field should also come in *Summary* screen than you need to tick the check boxes under summary heading. Query checkbox if you want that field to be used as query in summary. Result and Advanced when you want the field to be just present in summary screen.

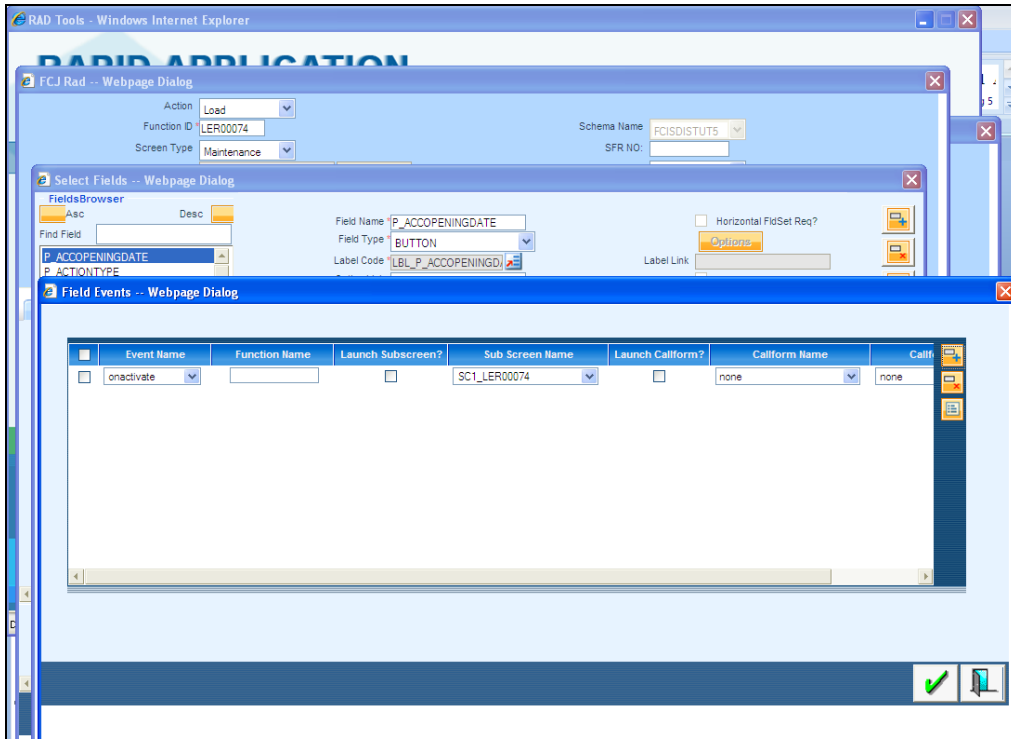
- For creating a *fieldset* you need to click on plus button on the right corner of screen and give all details like name of field set and its location on screen. Please refer the “Fieldset” section for more details.



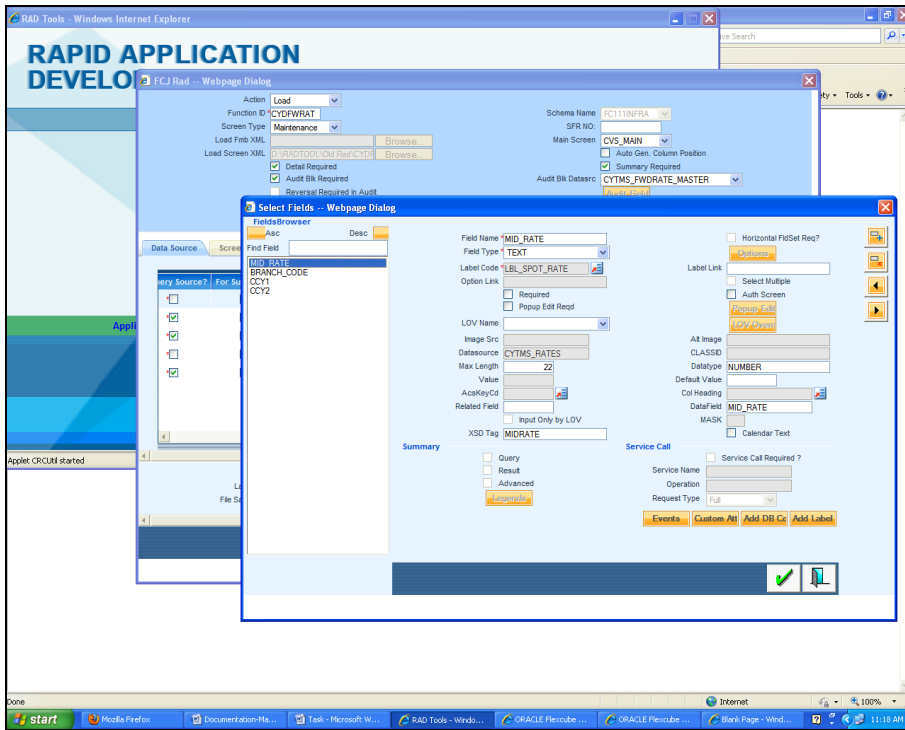
- If the field type is *SELECT* or *RADIO* than you need to click on options button. Following screen will popup where you need to add the sub-fields



- If the field type is *Button* than you need to click on plus button on the right top corner of screen to add a button and give all details. After that click on *events* button on lower right corner and add the description like Event Name , Function Name, Sub screen Name. These Buttons are created for *Sub Screen* and *query* buttons.



- Also, some *UI fields* such as Description may be required. In case of Query Data sources having some visible components (for example-MIDRATE below) as shown below, a UI field can be defined for the same by first clicking on the plus button on the right corner of screen and than giving the details. Generally UI Fields are not added in Non extensible Open Development since addition of query datasource is allowed in Non Extensible Open Development.



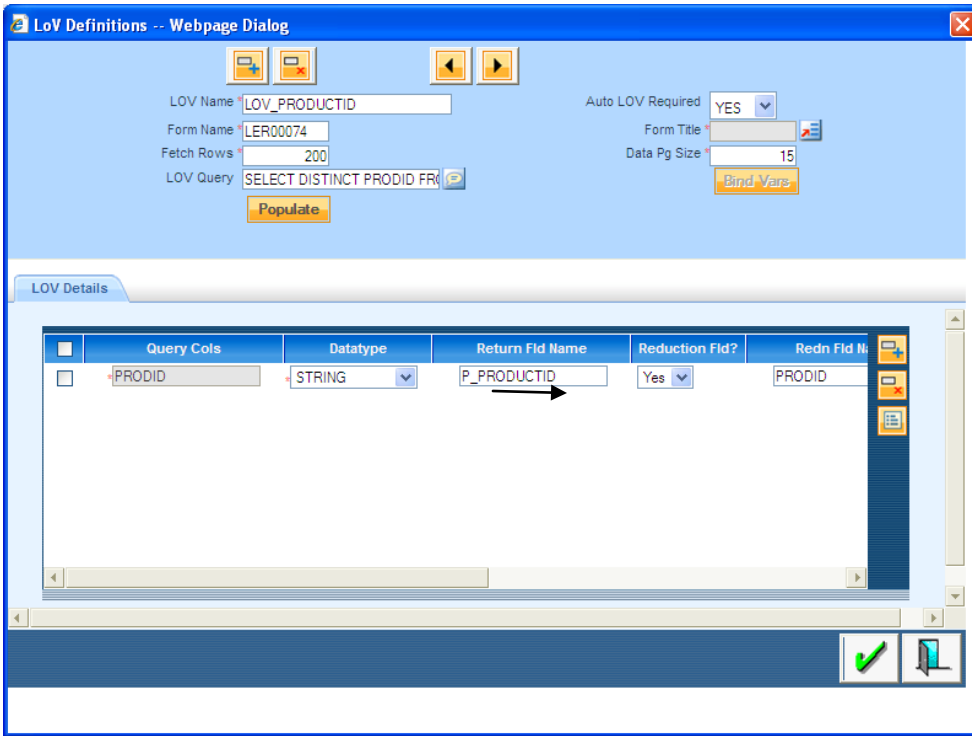
- The above step has to be followed for every datasource and its fields.

6. List Of Values (Lov)

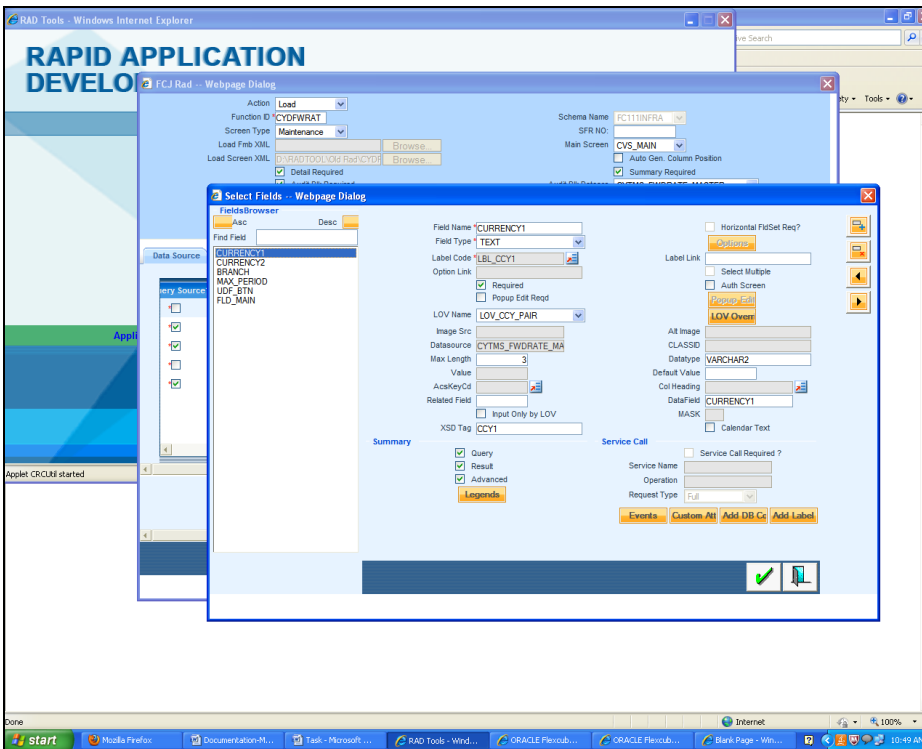
- Click on the *Define LOV* option and another screen will popup.

The screenshot shows the 'FCJ Rad -- Webpage Dialog' window. The top section contains configuration fields: Action (Load), Function ID (LER00074), Screen Type (Maintenance), Load Fmb XML (D:\Projects\1440\Ver00074\LB), Load Screen XML (D:\Projects\1440\Ver00074\LB), Schema Name (FCISDISTUT5), SFR NO., Main Screen (SC1_LER00074), Audit Bik Datasrc (VWREP_TABLE), and checkboxes for Detail Required, Audit Bik Required, and Reversal Required in Audit. A 'Refresh' button is present. The middle section has tabs for Data Source, Screens, Fields Position, Included XML, Summary, Include CallForm, and Web Service. The 'Fields Position' tab is active, showing a table with columns: Is Query Source?, For Summary?, Is Mandatory?, Is Control DataSource?, Control Block?, XSD Node, and Select Fields. The 'Control Block?' column has a checked checkbox. The 'Select Fields' column has a 'Select Field' button. The bottom section contains Version (0.1b), Language (ENG), File Save Path (D:\Projects\1440\Ver00074\), and checkboxes for Create Old DevXml, Create Language specific XML, and Create Package. A green checkmark and a red X button are at the bottom right.

- There you need to enter Lov Name , Lov Query and after entering the details you need to click the *populate* button. There you need to add all the LOv details for the populated fields. You need to even add *Bind Variables* for Lov .



- Similarly you have to add all the Lov which you have. The various LOV entries in the Open Development can be added by using the arrow keys present on the top of the screen shown below.
- After adding the Lovs you need to again go to data source tab and click on field button for each datasource . There you need to add Lov name for fields which are defined as Lov.



Select Fields -- Webpage Dialog

FieldsBrowser

Asc Desc

Find Field

- P_FUNDFAMILY
- P_FUNDID
- P_FUNDIDENTIFICATIONNUMBER
- P_HEADER_DISPLAY
- P_HOLIDAYRULE
- P_ID
- P_INVESTORCATEGORY
- P_INVESTORSTATUS
- P_ISSUEID
- P_LAG
- P_LAGTYPE
- P_LEVELNUMBER
- P_LOADID
- P_LOISTATUS
- P_MARGIN
- P_MARKETVAULE
- P_MESSAGE
- P_MODULEID
- P_NUMBEROFDAYS
- P_NUMBEROFUNITS
- P_PAID
- P_PAYMENTDATE
- P_PAYMENTMODE
- P_PAYMENTNUMBER
- P_POLICYNUMBER
- P_PRODUCTID**
- P_PROJECTIONTYPE

Field Name: P_PRODUCTID

Field Type: TEXT

Label Code: LBL_P_PRODUCTID

Option Link

Required

Popup Edit Req

LOV Name: LOV_PRODUCTID

Image Src

Datasource: VWREP_TABLE

Max Length: 10

Value

AcsKeyCd

Related Field

Input Only by LOV

XSD Tag

Horizontal FidSet Req?

Options

Label Link

Select Multiple

Auth Screen

Popup Edit

LOV Over

Alt Image

CLASSID

Datatype: VARCHAR2

Default Value

Col Heading

DataField: P_PRODUCTID

MASK

Calendar Text

Summary

Query

Result

Advanced

Legends

Service Call

Service Call Required?

Service Name

Operation

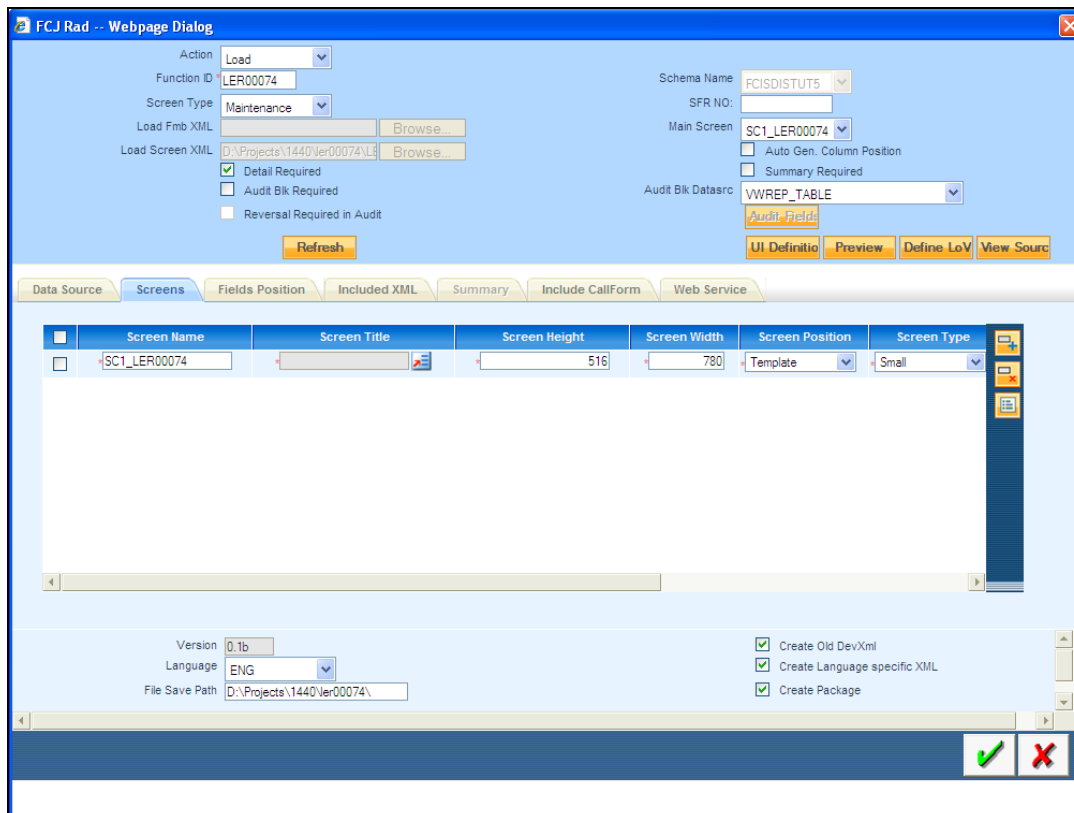
Request Type: Full

Events Custom Att Add DB Co Add Label

✓

7. Screen Layout

- You need to add screen name and its properties under this tab. Different type of possible screens are *main* screen , *summary* screen and *sub* screens.



Click on Tab button on the screen tab to define the sections and partitions required for a screen.

- Section* : horizontal division of screen.
- Partition* : Vertical division of screen.

Tab Type :

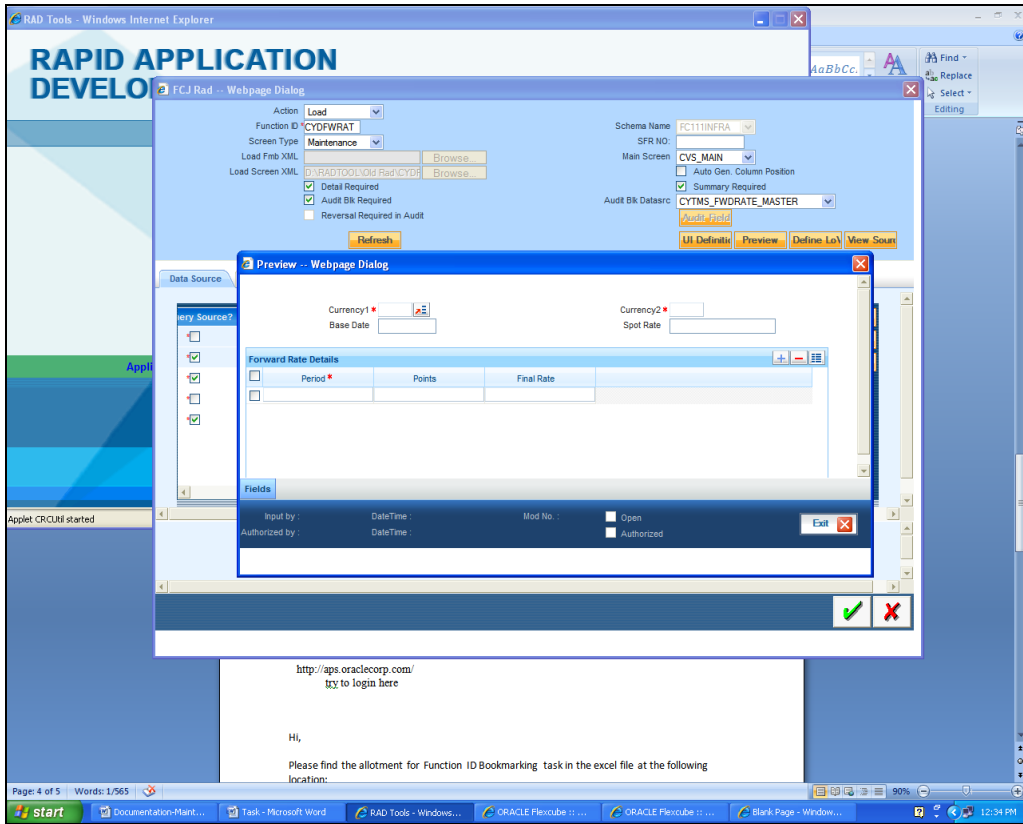
- Normal: For centre portion of screen.
- Header: For Upper portion of screen.
- Footer: For lower portion of screen.

If you are not going for default *Tab* populated than we need to add at least two tabs -Header and Normal .

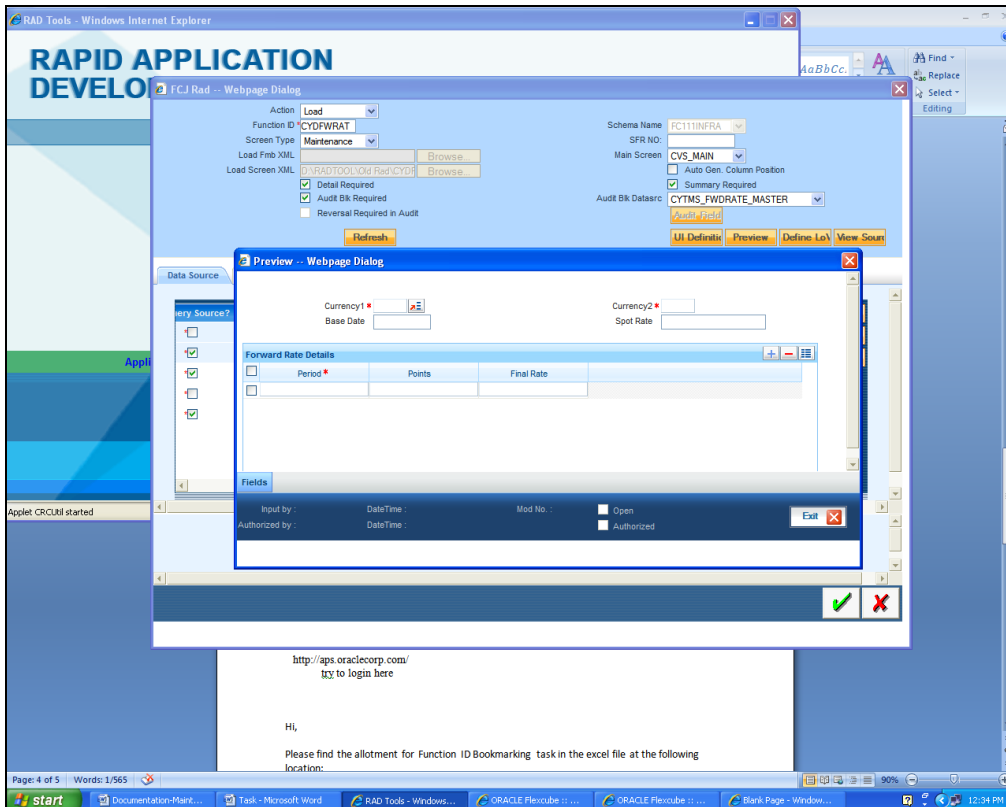
Screen Position:

- Template: For *Main* and *Sub* screens.
- Absolute: Only For *Summary* Screen.

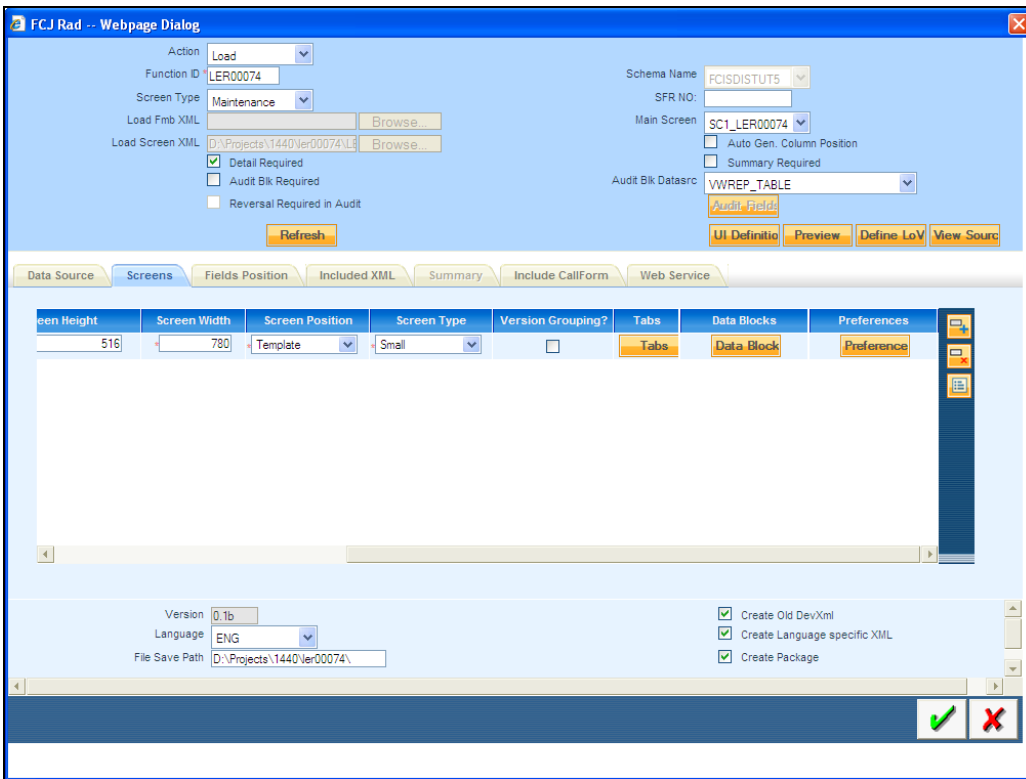
In order to design the screen, we require the addition of sections. It can be seen from the preview below that we require two *sections* for this screen indicated in parenthesis.



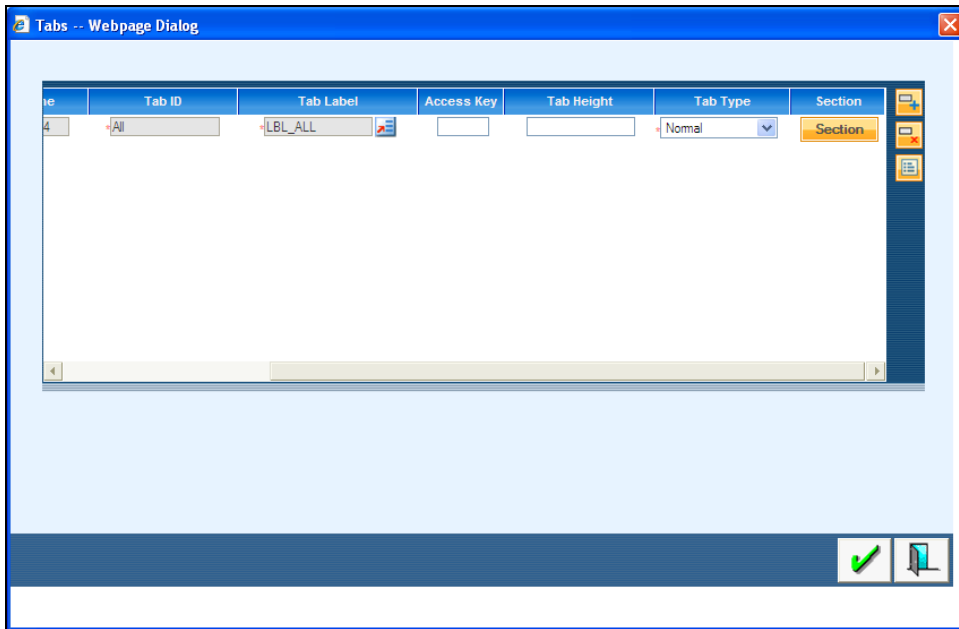
- We also require two *partitions* for the first section as indicated by the arrows.



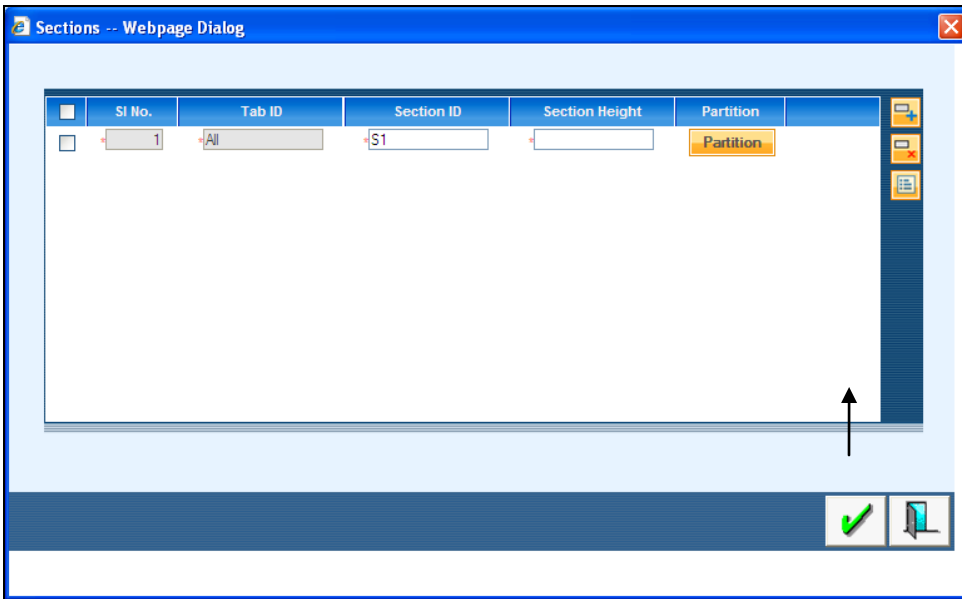
- The above information about screen layout can also be designed in the Open Development Tool by going to the screens tab and clicking on the “*Tab*s” button which is described further.



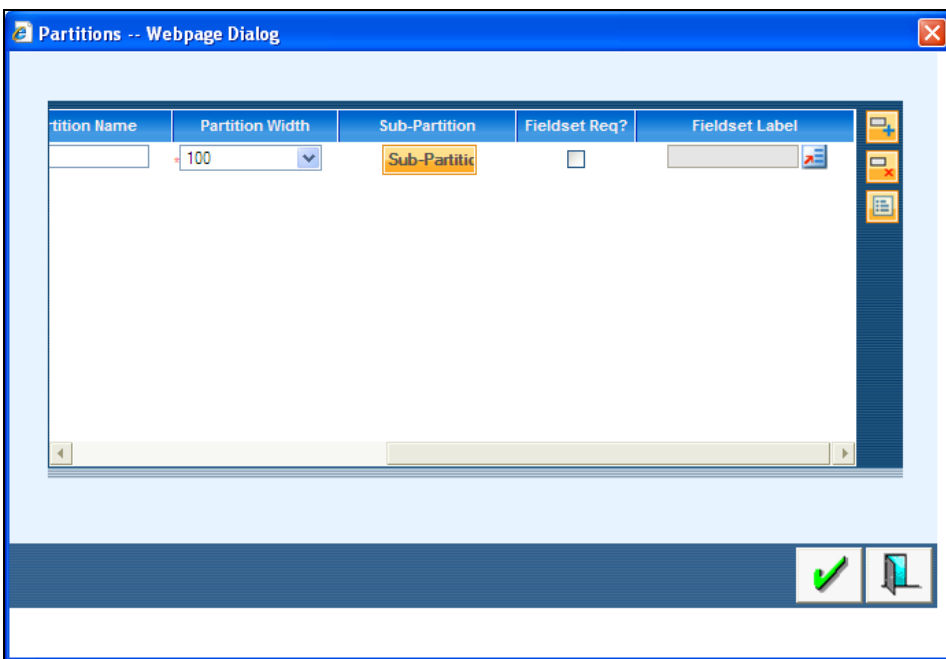
- Add Details of the Tab Added and after that click on *sections*.



- Add Number of Sections and after that click on *Partition* button.



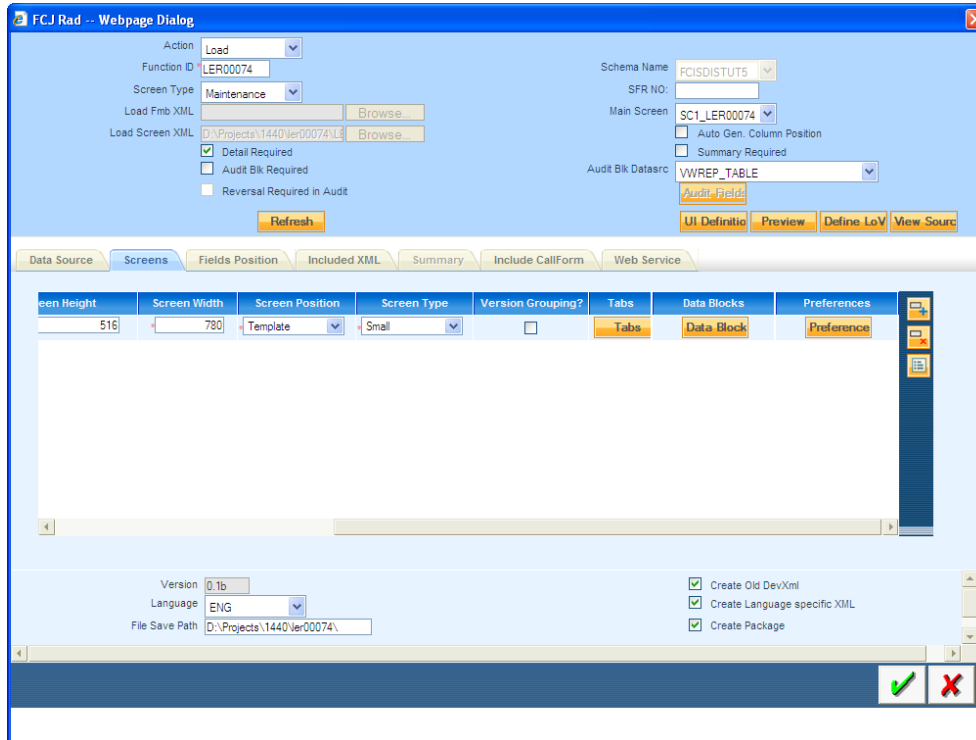
- Add Number of Partition and after that click on *Sub Partition* Button.



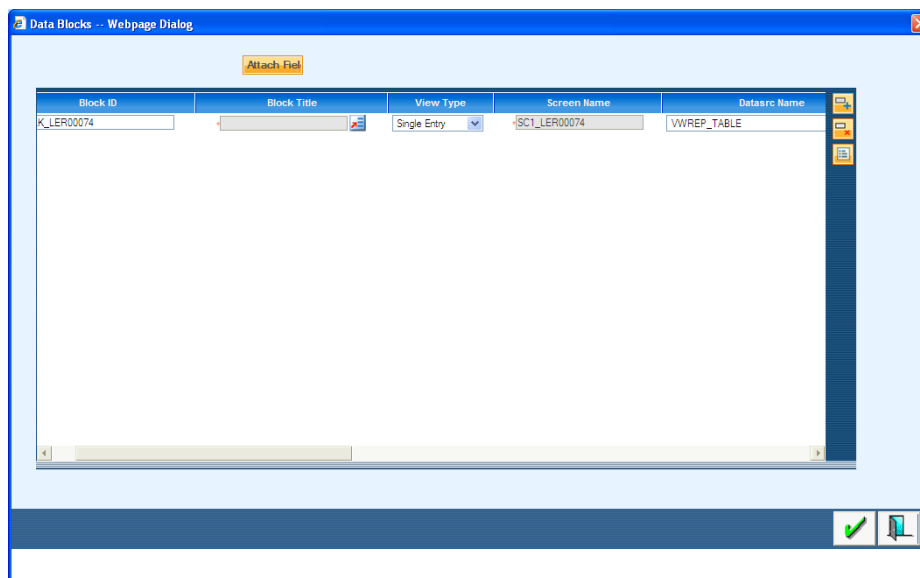
- Layout of screen is designed.
- Same steps has to be carried out for designing layout of all screens.

8. Data Block

- Click on The *data block* button under screen tab.



- Define *data blocks* and all its details and add the corresponding datasource for data block, view type, screen name and give the tab name, section , partition for the required fields.

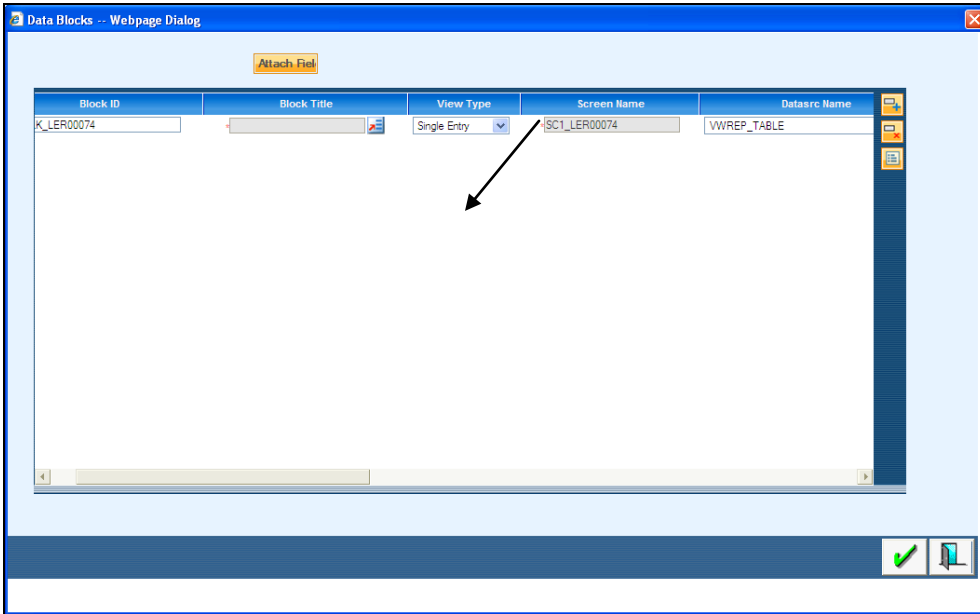


View Type:

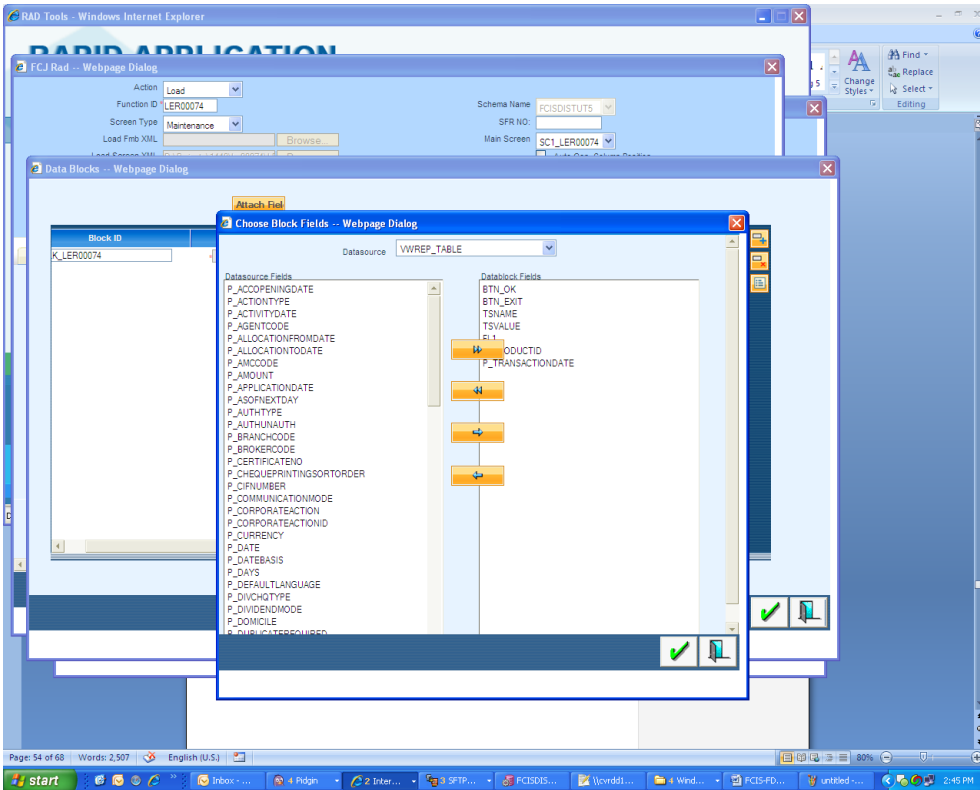
- Single Entry : For One –One Datasources

- Multiple entry : For One-Many Datasources.

Click on *Attach field* button to add fields to the data block



- From the list of fields you can select the required fields for data blocks.



- After that click on *field properties* button to add details .

- Give Tab name, Section, Partition and Sub partition for all fields. You need to also tick the check boxes like Amendable, Read only, Upper case depending on your requirement for all fields. Field size and Max Length also has to be given.

The screenshot displays the 'Block Fields -- Webpage Dialog' window. On the left, the 'FieldsBrowser' shows a list of fields with 'BTN_OK' selected. The main configuration area includes the following fields and options:

- Field Name:** BTN_OK
- Field Type:** BUTTON
- Tab Name:** All
- Section Name:** S1
- SubPartition Name:** (empty)
- Disabled?:**
- Upper Case:**
- Height:** (empty)
- Field Size:** (empty)
- Query Col:** (empty)
- Show In:** (empty)
- Img Src:** Images/Ok.gif
- TxtArea Rows:** (empty)
- Field Row:** (empty)
- Position:** Bottom
- Amendable?:**
- Label Code:** (empty)
- Label Link:** (empty)
- TAB INDEX:** (empty)
- Partition Name:** S1_P1
- AcsKeyCd:** (empty)
- Read Only?:**
- Checked?:**
- Width:** (empty)
- Abs Pos:** (empty)
- Max Length:** (empty)
- Result Col:** (empty)
- Alt Img:** (empty)
- TxtArea Cols:** (empty)
- Field Col:** (empty)
- Alignment:** Right
- Subsystem Depend?:**

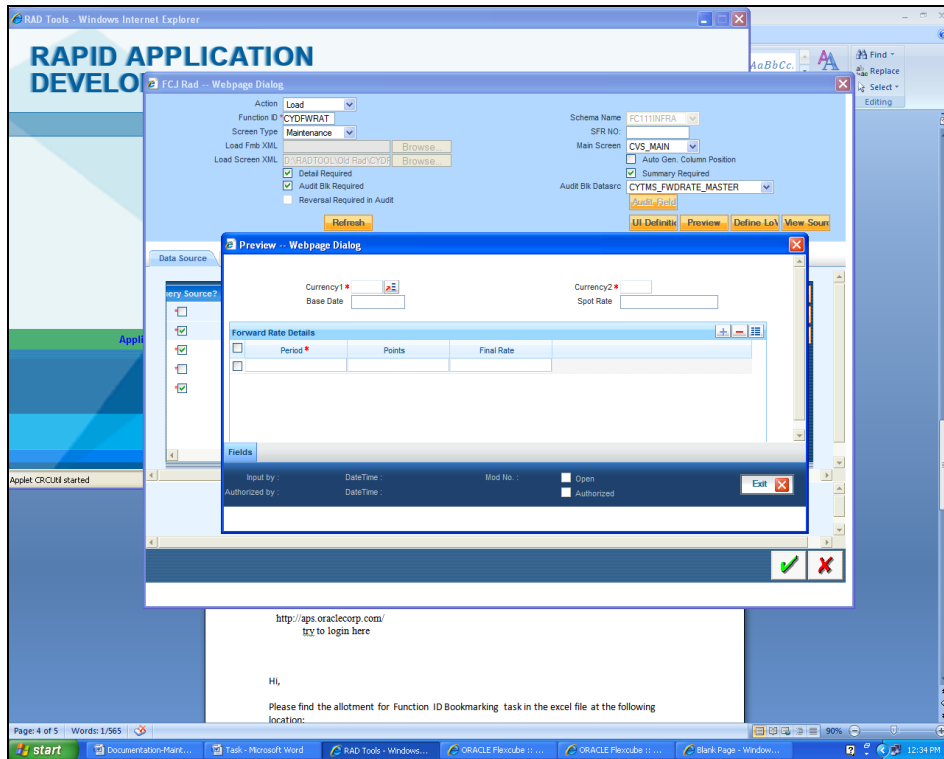
At the bottom, the 'Amount/Number Field Preferences' section includes:

- Min. Val:** (empty)
- Max. Val:** (empty)
- Related Field:** (empty)
- Max. Decimals:** (empty)

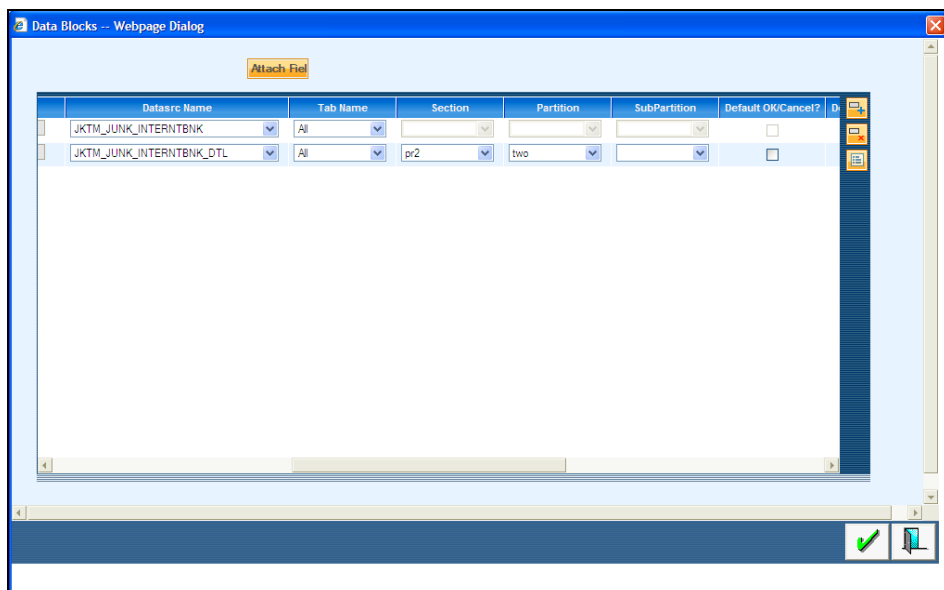
An 'Add Fields' button is located at the bottom right of the dialog.

9. Field Sets

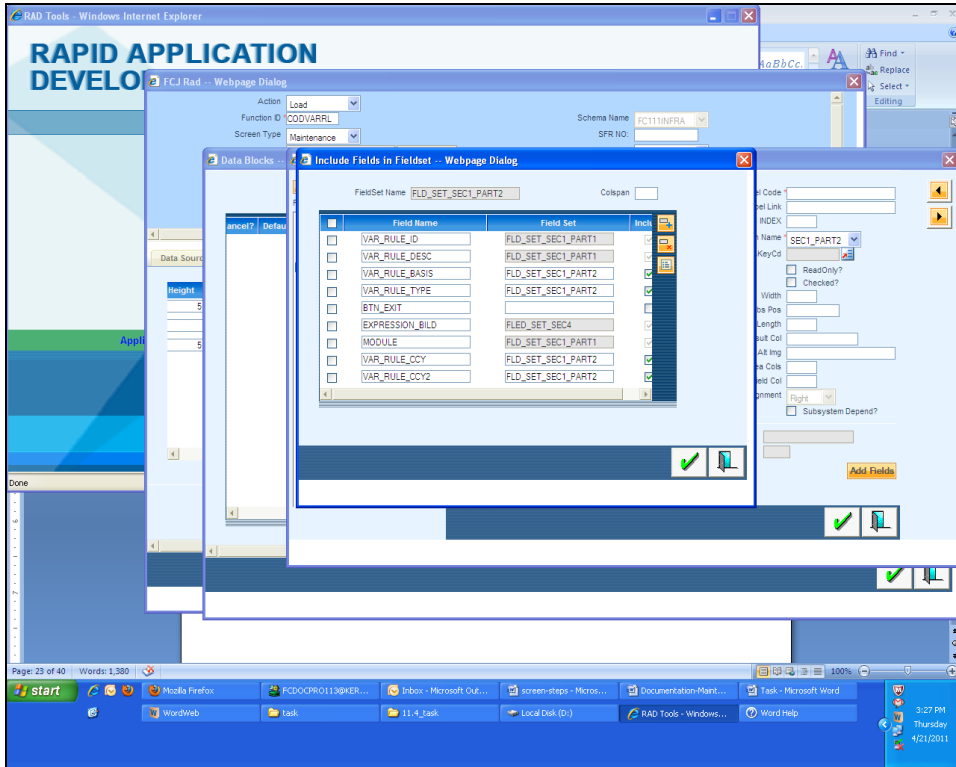
- The various *fieldsets* that are required have been pointed out in the screen below. For this example, we require three fieldsets named FST_1, FST_2 and FST_3.



- Fieldsets has to created only for one-one datasource. Fieldsets are not required for one-many datasource.
- For one-many you need to give the tab, section, partition and sub partition details in the block screen itself.

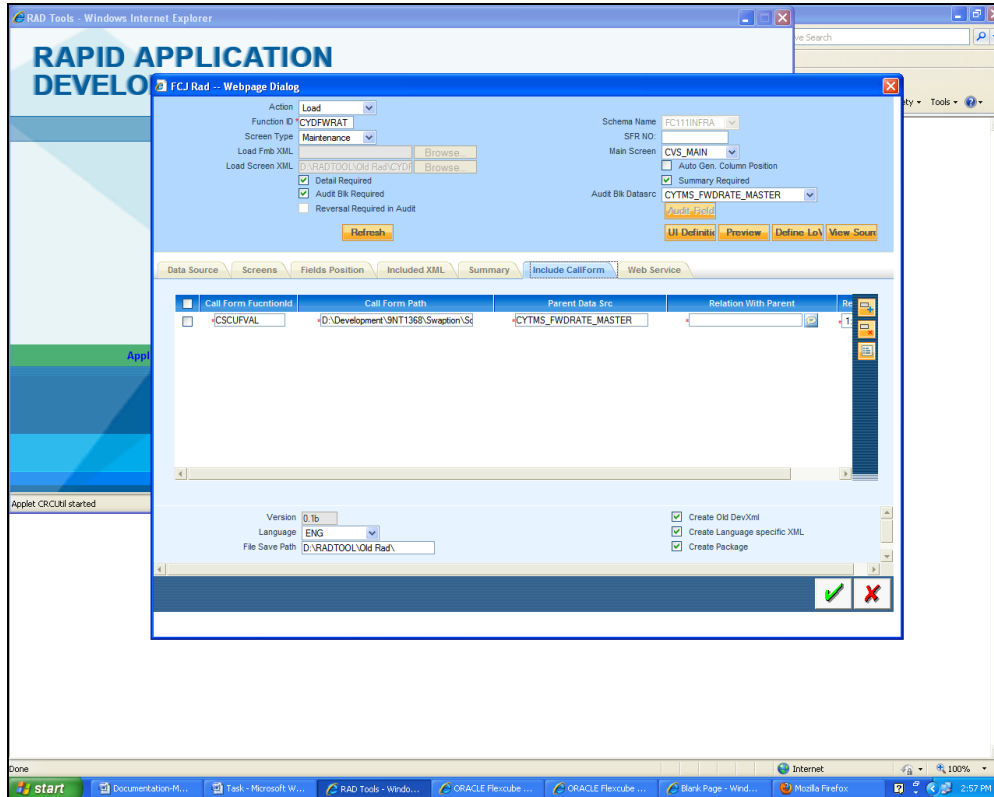


- Click Add fields on the lower right corner of screen and than a window will popup where you can add those columns which you want to group together in one field set, keeping in mind the vertical order in which they will appear on screen.
- You need to add Tab name, Section Name, Partition Name for 1-1 type of datasources fields inside the datablocks .



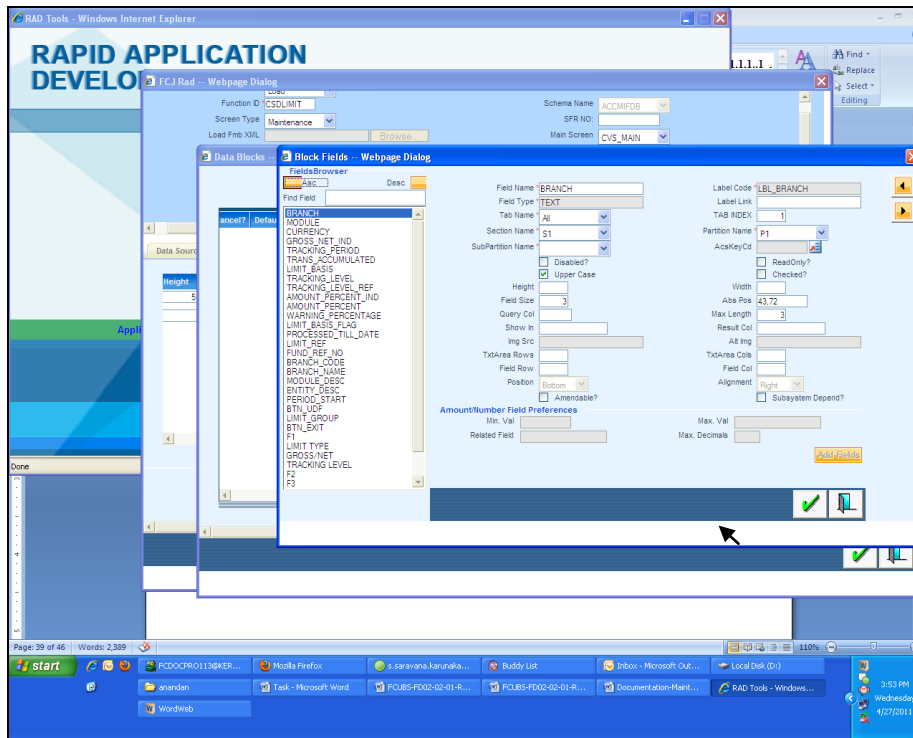
10. Call Forms

- The field button that appears on the lower left corner of preview screen is *callform*. Add the details of callform under this tab.

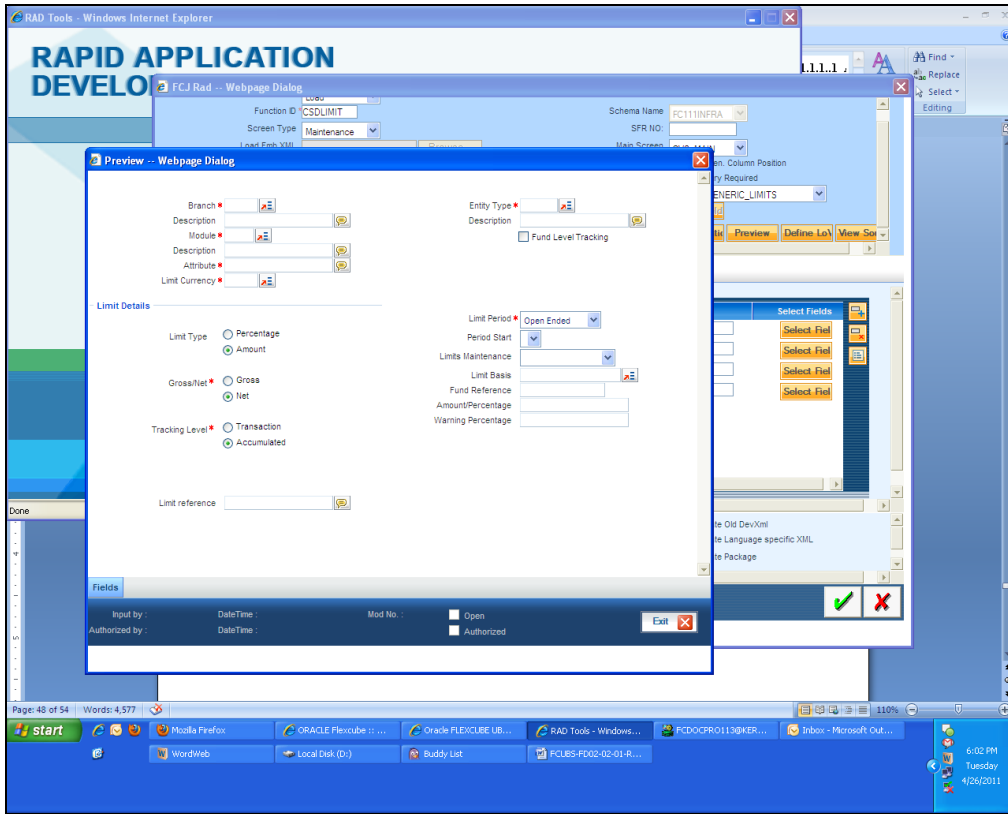


11. Actions

- In Non Extensible Open Development for actions when you go to datablock fields there you need to check the box of *Amendable*.

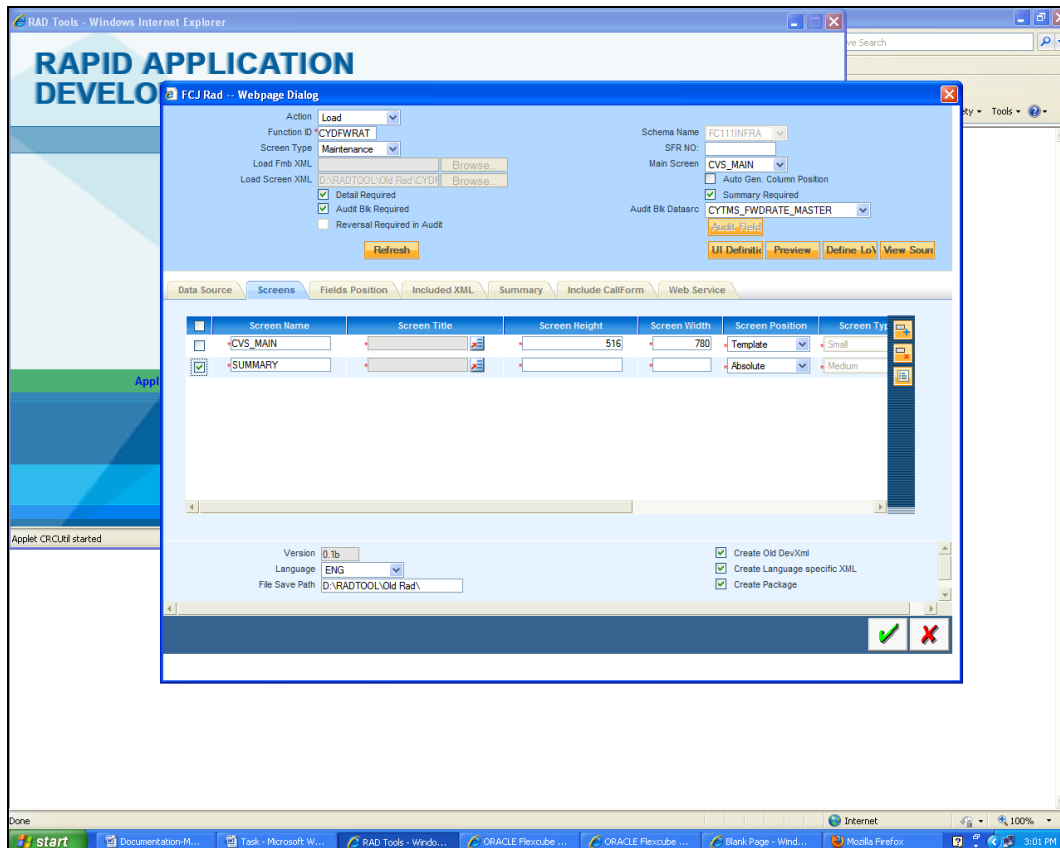


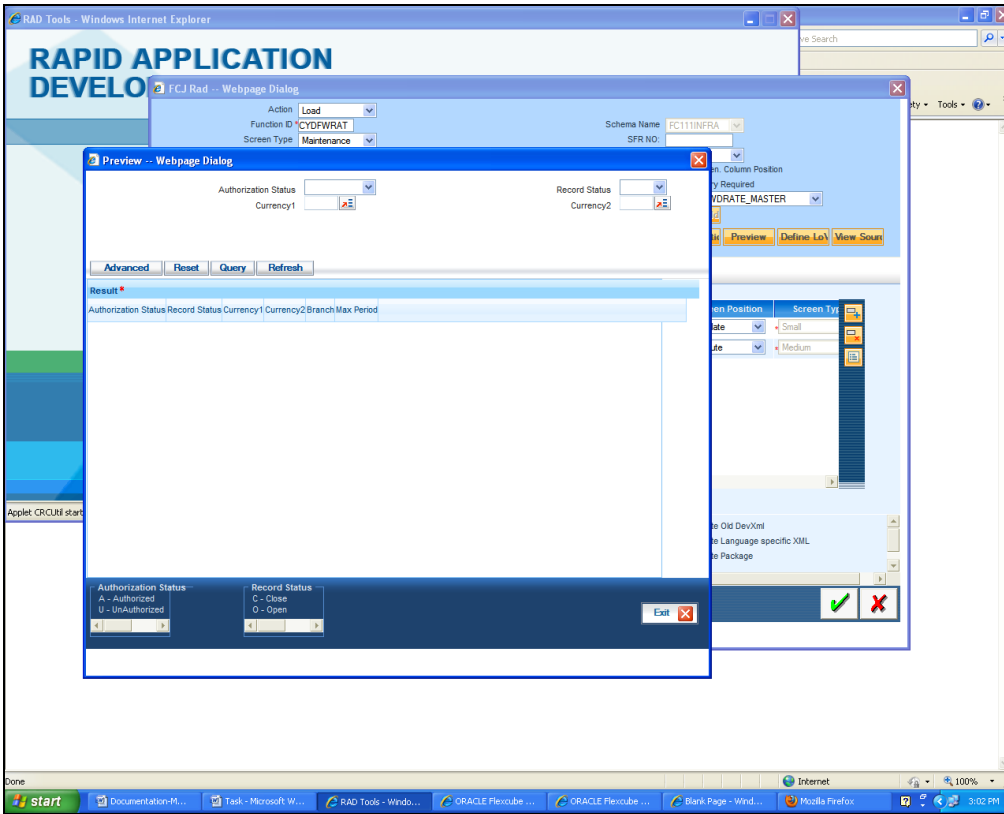
- This is the final preview of required screen.



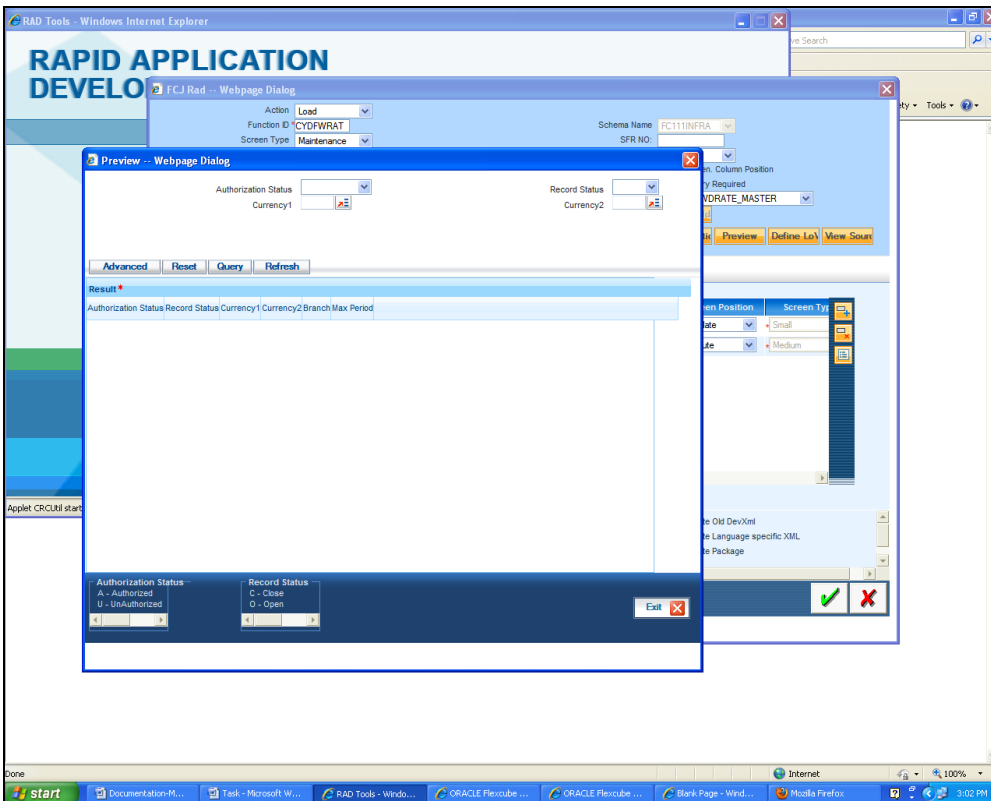
12. Summary

- The *summary* screen present in the Open Development can be accessed and selected through the Screens tab and then previewed using the Preview button.



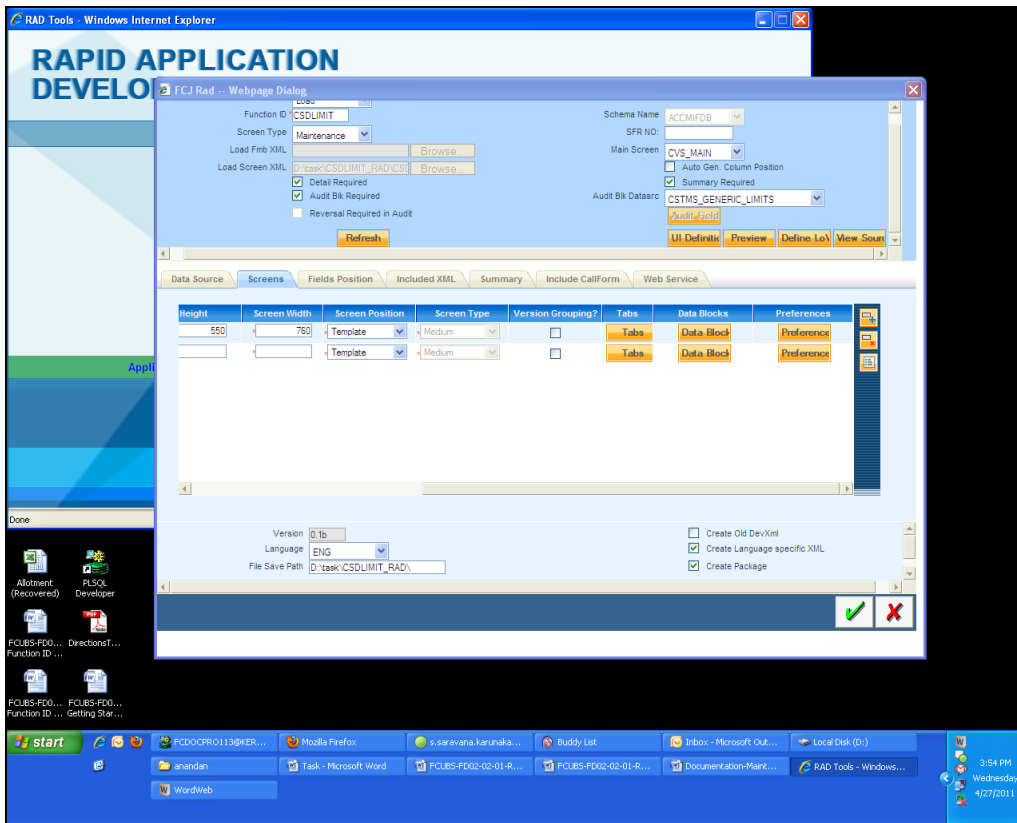


- Note that the fields indicated in the summary preview below are *query* fields and have been indicated in the screen below.



13. Non extensible Open Development File Generation

- Click on the green tick button on the bottom to *save and generate* the files.



Following files will be generated:

- SPC
- SQL
- Inc
- JS
- UIXML



Notification Development

September [2014]
Version 12.0.3.0.0

Oracle Financial Services Software Limited
Oracle Park
Off Western Express Highway
Goregaon (East)
Mumbai, Maharashtra 400 063
India

Worldwide Inquiries:
Phone: +91 22 6718 3000
Fax:+91 22 6718 3001
www.oracle.com/financialservices/

Copyright © [2007], [2014], Oracle and/or its affiliates. All rights reserved.

Oracle and Java are registered trademarks of Oracle and/or its affiliates. Other names may be trademarks of their respective owners.

U.S. GOVERNMENT END USERS: Oracle programs, including any operating system, integrated software, any programs installed on the hardware, and/or documentation, delivered to U.S. Government end users are "commercial computer software" pursuant to the applicable Federal Acquisition Regulation and agency-specific supplemental regulations. As such, use, duplication, disclosure, modification, and adaptation of the programs, including any operating system, integrated software, any programs installed on the hardware, and/or documentation, shall be subject to license terms and license restrictions applicable to the programs. No other rights are granted to the U.S. Government.

This software or hardware is developed for general use in a variety of information management applications. It is not developed or intended for use in any inherently dangerous applications, including applications that may create a risk of personal injury. If you use this software or hardware in dangerous applications, then you shall be responsible to take all appropriate failsafe, backup, redundancy, and other measures to ensure its safe use. Oracle Corporation and its affiliates disclaim any liability for any damages caused by use of this software or hardware in dangerous applications.

This software and related documentation are provided under a license agreement containing restrictions on use and disclosure and are protected by intellectual property laws. Except as expressly permitted in your license agreement or allowed by law, you may not use, copy, reproduce, translate, broadcast, modify, license, transmit, distribute, exhibit, perform, publish or display any part, in any form, or by any means. Reverse engineering, disassembly, or decompilation of this software, unless required by law for interoperability, is prohibited.

The information contained herein is subject to change without notice and is not warranted to be error-free. If you find any errors, please report them to us in writing.

This software or hardware and documentation may provide access to or information on content, products and services from third parties. Oracle Corporation and its affiliates are not responsible for and expressly disclaim all warranties of any kind with respect to third-party content, products, and services. Oracle Corporation and its affiliates will not be responsible for any loss, costs, or damages incurred due to your access to or use of third-party content, products, or services.