

Oracle Utilities Mobile Workforce Management

Map Editor Installation Guide

Release 2.2.0 Service Pack 1 for Windows
E50640-02

October 2014

Copyright © 2000, 2014 Oracle and/or its affiliates. All rights reserved.

This software and related documentation are provided under a license agreement containing restrictions on use and disclosure and are protected by intellectual property laws. Except as expressly permitted in your license agreement or allowed by law, you may not use, copy, reproduce, translate, broadcast, modify, license, transmit, distribute, exhibit, perform, publish, or display any part, in any form, or by any means. Reverse engineering, disassembly, or decompilation of this software, unless required by law for interoperability, is prohibited.

The information contained herein is subject to change without notice and is not warranted to be error-free. If you find any errors, please report them to us in writing.

If this software or related documentation is delivered to the U.S. Government or anyone licensing it on behalf of the U.S. Government, the following notice is applicable:

U.S. GOVERNMENT RIGHTS

Programs, software, databases, and related documentation and technical data delivered to U.S. Government customers are "commercial computer software" or "commercial technical data" pursuant to the applicable Federal Acquisition Regulation and agency-specific supplemental regulations. As such, the use, duplication, disclosure, modification, and adaptation shall be subject to the restrictions and license terms set forth in the applicable Government contract, and, to the extent applicable by the terms of the Government contract, the additional rights set forth in FAR 52.227-19, Commercial Computer Software License (December 2007). Oracle USA, Inc., 500 Oracle Parkway, Redwood City, CA 94065.

This software is developed for general use in a variety of information management applications. It is not developed or intended for use in any inherently dangerous applications, including applications which may create a risk of personal injury. If you use this software in dangerous applications, then you shall be responsible to take all appropriate fail-safe, backup, redundancy, and other measures to ensure the safe use of this software. Oracle Corporation and its affiliates disclaim any liability for any damages caused by use of this software in dangerous applications.

Oracle is a registered trademark of Oracle Corporation and/or its affiliates. Other names may be trademarks of their respective owners.

This software and documentation may provide access to or information on content, products, and services from third parties. Oracle Corporation and its affiliates are not responsible for and expressly disclaim all warranties of any kind with respect to third-party content, products, and services. Oracle Corporation and its affiliates will not be responsible for any loss, costs, or damages incurred due to your access to or use of third-party content, products, or services.

Contents

Chapter 1

Installing the Map Editor	1-1
Overview	1-2
Component	1-2
Component Release Version	1-2
Installing the Map Editor	1-3
Map Editor Installation	1-3
Starting the Map Editor.....	1-4

Chapter 1

Installing the Map Editor

The Map Editor is a utility that enables reading third-party vector mapping data, allows selection of geographic areas-of-interest and production of map files.

This guide provides information on how to install the Oracle Utilities Mobile Workforce Management Map Editor in a Windows environment.

This includes:

- [Overview](#)
 - [Component](#)
 - [Component Release Version](#)
- [Installing the Map Editor](#)
 - [Map Editor Installation](#)
 - [Starting the Map Editor](#)

Overview

The Oracle Utilities Mobile Workforce Management Map Editor is pre-configured to work straight out-of-the-box with minimal configuration changes. Please read through this document thoroughly before beginning your product installation. The information provided in this document is here to guide you through a successful product install. Please complete these tasks in the required order before proceeding to any post-installation steps.

Component

The Oracle Utilities Mobile Workforce Management Map Editor system consists of a single component: The Map Editor.

Component Release Version

The Oracle Utilities Mobile Workforce Management Map Editor components release versions is: Map Editor-2.1.8.

Installing the Map Editor

To ensure your success in installing or upgrading the Oracle Utilities Mobile Workforce Management Map Editor, follow the instructions in the following sections and execute the instructions in each section in order.

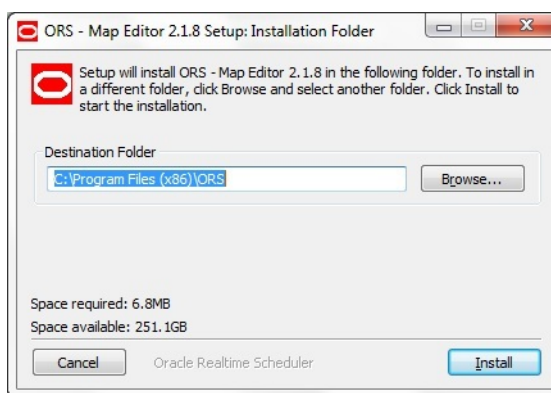
Installation of the Oracle Utilities Mobile Workforce Management Map Editor involves the following steps:

1. Downloading the Map Editor installer
2. Running the installer

Map Editor Installation

Use the following procedure to install the Map Editor on each client workstation.

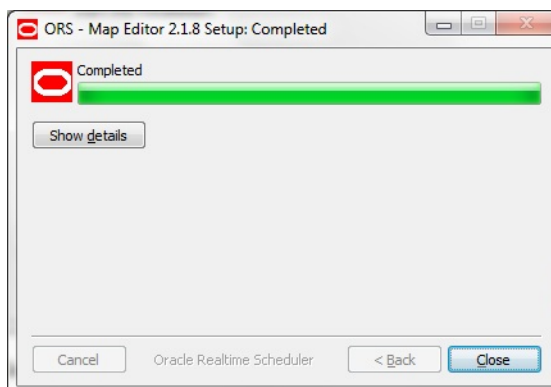
1. Download the Oracle Utilities Mobile Workforce Management V2.2.0.0 MapEditor installation package from Oracle Software Delivery Cloud.
2. Copy the Map Editor installer (map_editor-2.1.8-WIN64.exe) from the installation package and place it in your hard drive or on any appropriate media.
3. Double-click the executable.
4. Select the destination folder where the setup must install the Map Editor..



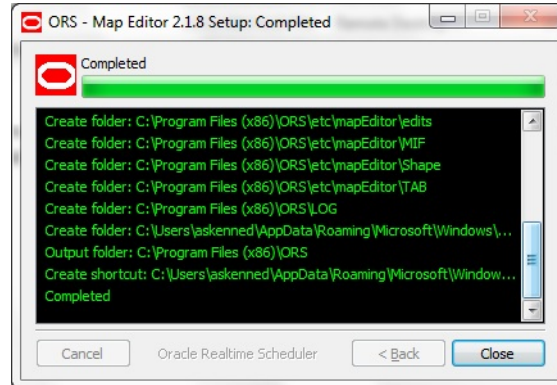
By default the Map Editor is installed under “C:\Program Files (x86)\ORS” directory.

5. You may specify a different location by typing in the exact location or by navigating to the location using the **Browse** button.
6. Click **Install**.

Once set up is complete, the Map Editor 2.1.8 Setup: Completed dialog launches.



- To check the status and the location of the sub-directories and files installed as part of this setup, click **Show details**. The details are displayed as below.

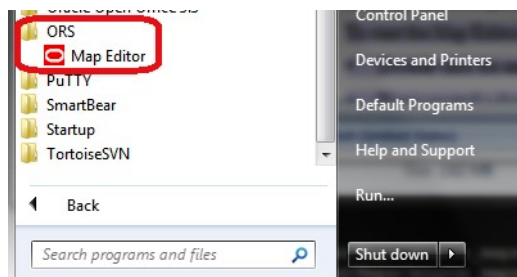


The Map Editor installation is now complete.

Starting the Map Editor

The Map Editor requires no configuration prior to starting the application.

The installer creates a desktop application shortcut to the mapEditor.exe file, under the **Start Menu->ORS** (sub-menu).



To start the Map Editor application:

- Select **Start->ORS->Map Editor**.

The Map Editor launches.