

DIH 1.2

ProPerf Configuration User Guide

910-6513-001 Revision A

August 2012



**Copyright 2011 – 2012 Tekelec. All Rights Reserved. Printed in USA.
Legal Information can be accessed from the Main Menu of the optical disc or on the
Tekelec Customer Support web site in the *Legal Information* folder of the *Product Support* tab.**

Table of Contents

Chapter 1: About Online Help.....	5
Overview.....	6
Scope and Audience.....	6
About the Diameter Intelligence Hub (DIH).....	6
Setting User Preferences.....	7
Customer Care Center.....	14
DIH Documentation Library.....	16
Locate Product Documentation on the Customer Support Site.....	17
Diameter Intelligent Hub (DIH) - Copyright, Notice, Trademarks, and Patents.....	17
Chapter 2: Understanding ProPerf Configuration.....	19
Overview.....	20
Accessing and Logging into the NSP Portal.....	20
ProPerf Configuration’s Functionality.....	20
Opening ProPerf Configuration.....	21
The ProPerf Screen.....	21
Page Layout.....	22
Dashboard Layout.....	22
Dashboard Display.....	22
ProPerf Configuration Screen.....	23
Panel List Display.....	23
Chapter 3: Using ProPerf Configuration.....	25
Overview.....	26
Working with Dashboards.....	26
Creating a Dashboard.....	26
Modifying a Dashboard.....	27
Deleting a Dashboard.....	27
Using the Dashboard Toolbar.....	27
Working with Panels.....	31
Panel display List.....	31
Creating legend Items.....	39

List of Figures

Figure 1: Time Formatting Page.....8

Figure 2: Directory Page.....9

Figure 3: Mapping Page.....10

Figure 4: Point Code Tab.....11

Figure 5: CIC Page.....12

Figure 6: Alarms Page.....13

Figure 7: Privacy Page.....14

Figure 8: ProPerf Main Page.....21

Figure 9: Dashboard Screen With 2,1 Configuration23

Figure 10: Panel List Page.....23

Figure 11: Parent/Child Tables.....24

Figure 13: Add Dashboard Screen.....28

Figure 13: Add Dashboard Screen.....28

Figure 20: Datasource Panel Screen.....33

Figure 21: Selected Datasource (xDR Session).....33

Figure 22: Values Screen Showing Columns For Table.....34

Figure 17: Selected Dashboard.....31

Figure 18: Panel List Page.....32

Figure 19: Panel Settings Screen-General Tab.....32

Figure 20: Datasource Panel Screen.....33

Figure 21: Selected Datasource (xDR Session).....33

Figure 22: Values Screen Showing Columns For Table.....34

Figure 23: Child Records List Screen.....39

Figure 24: KPI Configuration Screen.....40

Figure 25: Graphical Properties Tab.....41

Figure 26: Panel Settings Screen.....42

List of Tables

Table 1: Y-Axis Attribute Descriptions.....	35
Table 2: xDR Configuration Settings.....	40
Table 3: Attribute Descriptions.....	41

Chapter 1

About Online Help

Topics:

- *Overview.....6*
- *Scope and Audience.....6*
- *About the Diameter Intelligence Hub (DIH).....6*
- *Customer Care Center.....14*
- *DIH Documentation Library.....16*
- *Locate Product Documentation on the Customer Support Site.....17*
- *Diameter Intelligent Hub (DIH) - Copyright, Notice, Trademarks, and Patents.....17*

Overview

ProPerf Configuration is a specific-purpose application, that is part of DIH. The ProPerf Configuration application enables operators to view performance and quality indicators in real-time or using historical data, with a dynamic display of curves and graphs.

Performance or quality indicators, calculated with xDRs, are provided by the probes and/or defined with the ProTraQ application. The data is stored into statistical sessions within remote applications such as IXP and managed using Centralized Configuration Manager (CCM). The following indicators can be displayed in ProPerf Configuration:

- Real-time indicators based on Traffic or IP service Quality monitoring

Using ProPerf Configuration enables you to see failures and overloads instantly. In addition, trends can be easily estimated according to the shape of the curve.

Scope and Audience

This online help provides information about the ProPerf Configuration application. This online help is designed around performing common tasks such as:

- Understanding ProPerf dashboard and panel layouts to create statistical sessions
- Working with dashboards and panels
- Creating line charts, pie charts and bar graphs
- Modifying privacy settings to share information with other users (execute and read-only capability)

About the Diameter Intelligence Hub (DIH)

The Diameter Intelligent Hub (DIH) is used to monitor a LTE network. DIH also creates a small hardware "footprint" for customers who administer 3G and 4G diameter networks. The DIH:

- Is a single blade server and storage blade collocated within a single or dual Diameter Signaling Router (DSR) enclosure(s).
- Provides filtering, data feed, tracing, decoding, and SNMP functions.
- Enables the selective collection and storage of diameter traffic within one or more instances of PMF and IXP.
- Provides nodal diameter troubleshooting.
- Provides data export for diameter messages.
- Supports both IPv4 and IPv6 traffic simultaneously.
- Provides KPI tracking using ProTrace application as well as viewing KPIs in graphic format using ProPerf dashboard configured at installation.
- Provides filtering for alarms using ProTraQ Cell filter (see system alarms online help).
- Uses diameter protocol exclusively.

Note: The DIH system can use other protocols if the Diameter mode has not been selected and system is in Standard mode. (Default setting is Standard mode. For more information on selecting Diameter mode, see Centralized Configuration Manager Administration online help, "Setting System to Diameter Mode."

The Diameter Protocol

The diameter protocol has evolved from the Radius protocol and enables diameter applications to extend the base protocol by adding new commands and/or attributes, such as those for use of the Extensible Authentication Protocol (EAP).

The diameter protocol provides for an Authentication, Authorization, and Accounting (AAA) framework that overcomes the limitations of RADIUS, (a protocol that handles AAA and EAP), which cannot effectively deal well with remote access, IP mobility and policy control. The Diameter protocol defines a policy protocol used by clients to perform Policy, AAA and Resource Control. This allows a single server to handle policies for many services.

As mentioned above, Diameter protocol provides AAA functionality, but in addition it is made more reliable by using TCP and SCTP instead of UDP. The Diameter protocol is further enhanced by the development of the 3rd Generation Partnership Project (3GPP) IP Multimedia Subsystem (IMS). Through the use of extensions, the protocol was designed to be extensible to support Proxies, Brokers, Strong Security, Mobile-IP, Network Access Servers (NASREQ), Accounting and Resource Management.

Setting User Preferences

Users can set certain User Preferences that apply to the following NSP applications:

- Alarm Forwarding
- Audit Viewer
- ProAlarm Configuration
- ProAlarm Viewer
- ProPerf
- ProPerf Configuration
- ProTraQ
- Security
- System Alarms

These User Preferences include

- Time specifications (date format, time zone, etc.)
- Directory names (for exporting, uploading, and downloading)
- Enumeration values (numerals vs. text)
- Node name and node link display
- Point code specifications
- CIC specifications
- Default alarm colors
- Default object privacy privileges

Setting Time Format

Follow these steps to set the time format:

1. Click **User Preferences** on the Application board.
The User Preferences page is displayed.
2. Click the **Time** tab.
The Time page is displayed. The red asterisk denotes a required field.

Note: Use the tips on the page to help you configure the time format.

The screenshot shows the 'User preferences' dialog box with the 'Time' tab selected. The 'time related displays' section contains the following fields:

- Date format:** Input field with 'dd/MM/yyyy' and a red asterisk.
- Time format:** Input field with 'HH:mm:ss' and a red asterisk.
- Date and time fields:** Input field with 'dd/MM/yyyy HH:mm:ss' and a red asterisk.
- Duration fields:** Drop-down menu with 'hh:mm:ss.ms' selected.
- Time zone:** Drop-down menu with '(GMT-05:00) America/New_York' selected.

Below the fields is a 'Reset for Time' button. At the bottom of the dialog are 'Reset', 'Save as default', 'Apply', and 'Cancel' buttons.

Tips: above fields represents the format that will be applied to different types of fields. Here is an help about authorized values and their meanings. Separators are allowed, and will be restituted "as is". Please note that these formats are case sensitive.

yy or yyyy: Year (number)
dd: Day in month (number)
EEE: Day in week (string)
MM or MMMM: Month in year (respectively number or string)
aa: AM/PM marker (string)
HH: Hour in day (0-23)
hh: Hour in AM/PM (1-12)
mm: Minute in hour (number)
ss: Second in minute (number)

Figure 1: Time Formatting Page

3. Enter the format for these time-related displays.
 - **Date format**
 - **Time format**
 - **Date and time fields**
4. Select the formats for these time-related displays by using the drop-down arrow.
 - **Duration fields**
 - **Time zone**

Note: You must choose your time zone to get local time.
5. If you want to reset the time-related displays to default settings, click **Reset for Time**. (The bottom **Reset** button resets all the tabbed pages to default settings.)
6. Click **Apply** to save settings.

Setting Directory Preferences

Use the User Preferences feature to set the Export, Upload and Download directory paths for your system. These paths define where xDR's, dictionary files and other elements are stored.

Follow these steps to set the directory preferences.

1. Click **User Preferences** on the Application board.
The User Preferences page is displayed.
2. Click the **Directory** tab.
The Directory page is displayed. The red asterisk denotes a required field.

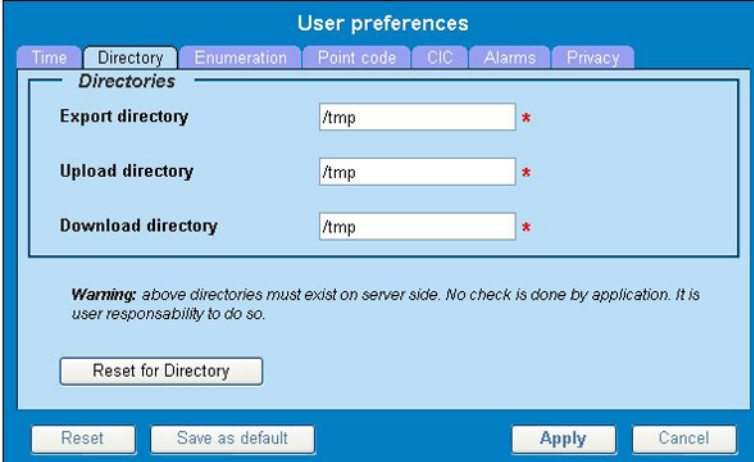


Figure 2: Directory Page

3. Type in the following:
 - **Export directory**
 - **Upload directory**
 - **Download directory**
4. If you want to reset the directories to default settings, click **Reset for Directory**. (The bottom **Reset** button resets all the tabbed pages to default settings.)
5. Click **Apply** to save your settings.

Setting Mapping Preferences

You can set the Mapping settings using the User Preferences feature.

Follow these steps to set Mapping preferences.

1. Click **User Preferences** in the Application board.
The User Preferences page is displayed.
2. Click the **Mapping** tab.
The Mapping page is displayed.

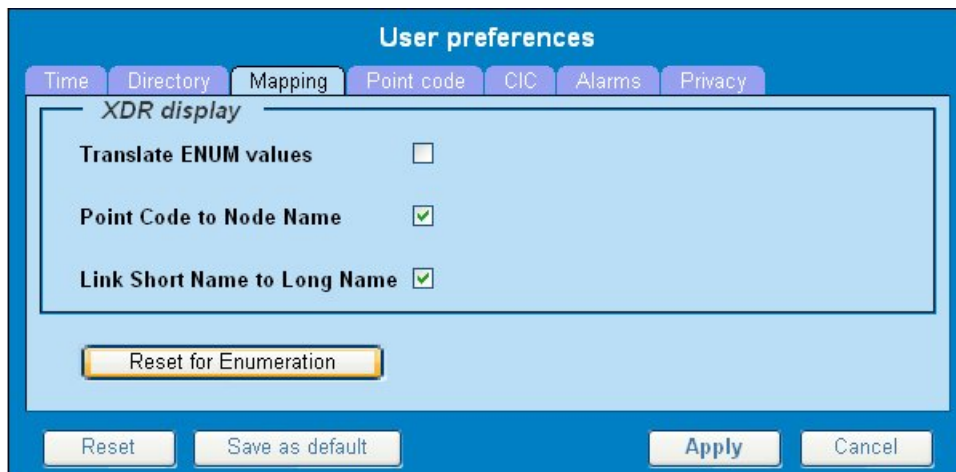


Figure 3: Mapping Page

3. Check **Translate ENUM values** to display text instead of numerals.
Enumeration is used by xDRs to display text values instead of numeric. (For example, rather than showing the numeral for Alarm Severity, the user interface will show the actual word, such as "Major" or "Critical.")
4. Check **Point Code to Node Name** to display the custom (user-defined) name of the node. Otherwise, the Point Code value is displayed.
5. Check **Link Short Name to Long Name** to display the custom (user-defined) link name or the Eagle link name. Otherwise, the short name is displayed, which is the name that begins with an asterisk (*).
6. To reset the Mapping values to the default, click **Reset for Enumeration**. (The bottom **Reset** button resets all the tabbed pages to default settings.)
7. Click **Apply** to save the changes.

Setting Point Code Preferences

The User Preferences feature enables you to set the Point Code preferences for your system. A Point Code is a unique address for a node (Signaling Point), used to identify the destination of a message signal unit (MSU).

Follow these steps to set the Point Code preferences.

1. Click **User Preferences** in the Application board.
The User Preferences page is displayed.
2. Click the **Point Code** tab.
The Point Code page is displayed. The red asterisk denotes a required field.

Figure 4: Point Code Tab

3. Select either **Hexadecimal display** or **Decimal display**.
4. Select or de-select **Split format**.
If **Split format** is checked, the Bit groups settings in the box below are active. If **Split format** is not checked, Bit groups settings are not applicable.
5. If you selected Split format above, go to the next step. If you did not select Split format, go to step [Step 8](#).
6. In the Bit groups panel, use the drop-down box to select the **Separation** type .
7. Type in values for **Groups 0-3**.
8. To reset the point code preferences to default settings, click **Reset for Point code**. (The bottom **Reset** button resets all the tabbed pages to default settings.)
9. Click **Apply** to save your settings.

Setting CIC Preferences

The Circuit Identification Code (CIC) provides a way to identify which circuit is used by the Message Signaling Unit (MSU). This is important in ProTrace applications. Use the User Preferences feature to set the CIC settings for your system.

Complete these steps to set the CIC preferences:

1. Click **User Preferences** in the Application board.
The User preferences page is displayed.
2. Click the **CIC** tab.
The CIC page is displayed. The red asterisk denotes a required field.

Figure 5: CIC Page

3. Select either **Hexadecimal display** or **Decimal display**.
4. Select or de-select **Split format**.
If **Split format** is checked, the Bit groups settings in the box below are active. If **Split format** is not checked, Bit groups settings are not applicable.
5. If you selected Split format above, go to the next step. If you did not select Split format, go to step [Step 8](#).
6. In the Bit groups panel, use the drop-down box to select **Separation** type..
7. Type in values for **Group 0** and **Group 1**.
8. If you want to reset CIC preferences to the default, click **Reset for CIC**. (The bottom **Reset** button resets all the tabbed pages to default settings.)
9. Click **Apply** to save your settings.

Setting Alarms Preferences

Use the Alarms tab in User Preferences to define the default colors that indicate alarm severity. The colors are displayed in the Perceived Severity column of alarms tables and on object icons in maps.

Follow these steps to modify alarm status colors.

1. Click **User Preferences** in the Application board.
The User preferences page is displayed.
2. Click the **Alarms** tab.
The Alarms page is displayed. The red asterisk denotes a required field.

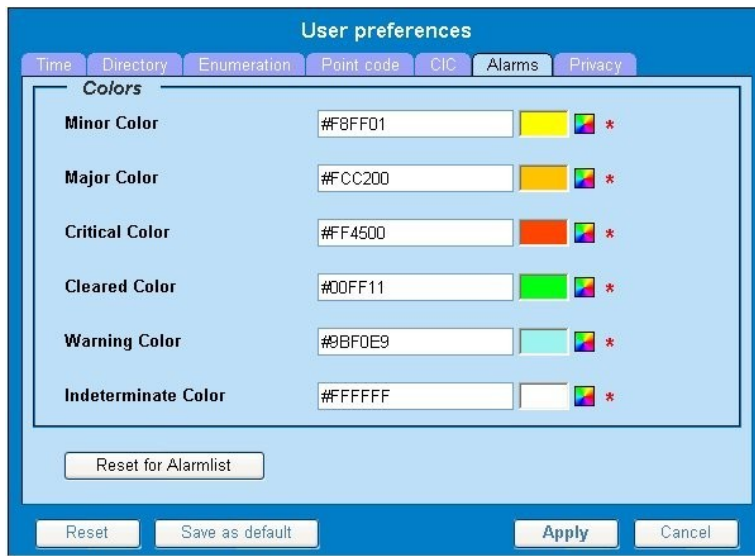


Figure 6: Alarms Page

3. Click the color palette (icon on the right side of the screen) associated with the alarm status color(s) you want to modify.
A pop-up palette window is displayed.
4. Click the color you want for the type of alarm.
The color palette pop-up is closed and the color box for the alarm displays the selected color. The number for the color is also displayed.
5. If you want to reset the Alarm preferences to the default, click **Reset for Alarmlist**. (The bottom **Reset** button resets all the tabbed pages to default settings.)
6. Click **Apply** .
The changes do not take effect until you log out of and in again to NSP.

Setting Default Object Privacy

All NSP users can set default access privileges for Objects (data) they create in NSP applications. An owner has full rights to modify or delete the object . Other users are assigned to a Profile and have access to these Objects through that Profile's associated Privacy Roles.

To enter the default Object Privacy (data) settings, follow these steps:

1. Click **User preferences** in the Application board menu.
The User Preferences window is displayed. The **Time** tab is active by default.
2. Click the **Privacy** tab .
The Privacy page is displayed.

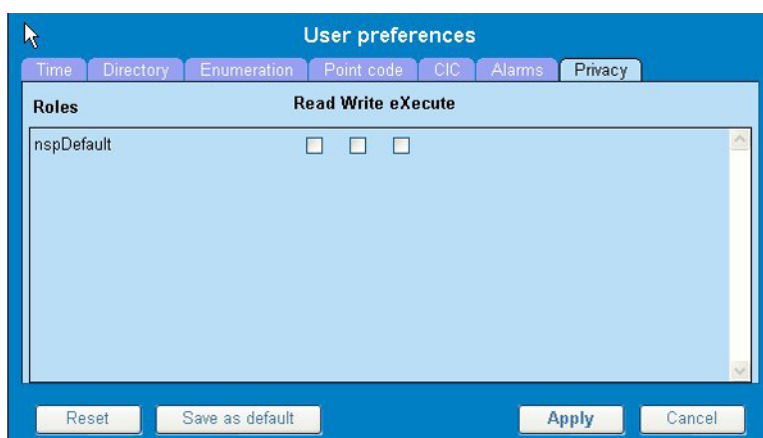


Figure 7: Privacy Page

3. Click the appropriate box to select **Read**, **Write**, or **eXecute**. If you want the role to have no access to the selected object(s), ensure that no box is checked.
4. Click **Save as default**.
5. To reset all the tabbed pages to default settings, click **Reset**.
6. Click **Apply**.
The settings are saved.

Customer Care Center

The Tekelec Customer Care Center is your initial point of contact for all product support needs. A representative takes your call or email, creates a Customer Service Request (CSR) and directs your requests to the Tekelec Technical Assistance Center (TAC). Each CSR includes an individual tracking number. Together with TAC Engineers, the representative will help you resolve your request.

The Customer Care Center is available 24 hours a day, 7 days a week, 365 days a year, and is linked to TAC Engineers around the globe.

Tekelec TAC Engineers are available to provide solutions to your technical questions and issues 7 days a week, 24 hours a day. After a CSR is issued, the TAC Engineer determines the classification of the trouble. If a critical problem exists, emergency procedures are initiated. If the problem is not critical, normal support procedures apply. A primary Technical Engineer is assigned to work on the CSR and provide a solution to the problem. The CSR is closed when the problem is resolved.

Tekelec Technical Assistance Centers are located around the globe in the following locations:

Tekelec - Global

Email (All Regions): support@tekelec.com

- **USA and Canada**

Phone:

1-888-FOR-TKLC or 1-888-367-8552 (toll-free, within continental USA and Canada)

1-919-460-2150 (outside continental USA and Canada)

TAC Regional Support Office Hours:

8:00 a.m. through 5:00 p.m. (GMT minus 5 hours), Monday through Friday, excluding holidays

- **Caribbean and Latin America (CALA)**

Phone:

USA access code +1-800-658-5454, then 1-888-FOR-TKLC or 1-888-367-8552 (toll-free)

TAC Regional Support Office Hours (except Brazil):

10:00 a.m. through 7:00 p.m. (GMT minus 6 hours), Monday through Friday, excluding holidays

- **Argentina**

Phone:

0-800-555-5246 (toll-free)

- **Brazil**

Phone:

0-800-891-4341 (toll-free)

TAC Regional Support Office Hours:

8:00 a.m. through 5:48 p.m. (GMT minus 3 hours), Monday through Friday, excluding holidays

- **Chile**

Phone:

1230-020-555-5468

- **Colombia**

Phone:

01-800-912-0537

- **Dominican Republic**

Phone:

1-888-367-8552

- **Mexico**

Phone:

001-888-367-8552

- **Peru**

Phone:

0800-53-087

- **Puerto Rico**

Phone:

1-888-367-8552 (1-888-FOR-TKLC)

- **Venezuela**

Phone:

0800-176-6497

- **Europe, Middle East, and Africa**

Regional Office Hours:

8:30 a.m. through 5:00 p.m. (GMT), Monday through Friday, excluding holidays

- **Signaling**

Phone:

+44 1784 467 804 (within UK)

- **Software Solutions**

Phone:

+33 3 89 33 54 00

- **Asia**

- **India**

Phone:

+91 124 436 8552 or +91 124 436 8553

TAC Regional Support Office Hours:

10:00 a.m. through 7:00 p.m. (GMT plus 5 1/2 hours), Monday through Saturday, excluding holidays

- **Singapore**

Phone:

+65 6796 2288

TAC Regional Support Office Hours:

9:00 a.m. through 6:00 p.m. (GMT plus 8 hours), Monday through Friday, excluding holidays

DIH Documentation Library

DIH customer documentation and online help are created whenever significant changes are made that affect system operation or configuration. Revised editions of the documentation and online help are distributed and installed on the customer system. Consult your NSP Installation Manual for details on how to update user documentation. Additionally, a Release Notice is distributed on the Tekelec Customer Support site along with each new release of software. A Release Notice lists the PRs that have been resolved in the current release and the PRs that are known to exist in the current release.

Listed is the entire DIH documentation library of online help.

- Centralized Configuration Manager Administration Online Help
- Alarm Forwarding Administration Online Help

- Diagnostic Utility Administration Online Help
- ProTrace Online Help
- System Alarms Online Help
- ProPerf Online Help
- ProTraq Configuration Online Help
- Data Feed Export Online Help
- Quick Start Online Help
- System Alarms Online Help

Locate Product Documentation on the Customer Support Site

Access to Tekelec's Customer Support site is restricted to current Tekelec customers only. This section describes how to log into the Tekelec Customer Support site and locate a document. Viewing the document requires Adobe Acrobat Reader, which can be downloaded at www.adobe.com.

1. Log into the [Tekelec Customer Support](#) site.

Note: If you have not registered for this new site, click the **Register Here** link. Have your customer number available. The response time for registration requests is 24 to 48 hours.

2. Click the **Product Support** tab.
3. Use the Search field to locate a document by its part number, release number, document name, or document type. The Search field accepts both full and partial entries.
4. Click a subject folder to browse through a list of related files.
5. To download a file to your location, right-click the file name and select **Save Target As**.

Diameter Intelligent Hub (DIH) - Copyright, Notice, Trademarks, and Patents

© 2012 Tekelec

All Rights Reserved

Printed in U.S.A.

Notice

Information in this documentation is subject to change without notice. Unauthorized use, copying, or translation of this documentation can result in civil or criminal penalties.

Any export of Tekelec products is subject to the export controls of the United States and the other countries where Tekelec has operations.

No part of this documentation may be reproduced, translated, or transmitted in any form or by any means, electronic or mechanical, including photocopying or recording, for any purpose without the express written permission of an authorized representative of Tekelec.

Other product names used herein are for identification purposes only, and may be trademarks of their respective companies.

RoHS 5/6 - As of July 1, 2006, all products that comprise new installations shipped to European Union member countries will comply with the EU Directive 2002/95/EC "RoHS" (Restriction of Hazardous Substances). The exemption for lead-based solder described in the Annex will be exercised. RoHS 5/6 compliant components will have unique part numbers as reflected in the associated hardware and installation manuals.

WEEE - All products shipped to European Union member countries comply with the EU Directive 2002/96/EC, Waste Electronic and Electrical Equipment. All components that are WEEE compliant will be appropriately marked. For more information regarding Tekelec's WEEE program, contact your sales representative.

Trademarks

TEKELEC, EAGLE, G-Flex, G-Port, and CAMIANT are registered trademarks of Tekelec. The Tekelec logo, A-Port, EAGLE 5, EAGLE 5 ISS, IP7, IP7 Secure Gateway, V-Flex, ngHLR, BLUESLICE, and Subscriber Data Server (SDS) are trademarks of Tekelec. All other trademarks are the property of their respective owners.

Patents

This product may be covered by one or more of the following U.S. and foreign patents:

U.S. Patent Numbers:

6,456,845; 6,765,990; 6,968,048; 7,043,001; 7,155,512; 7,206,394; 7,215,748; 7,231,024; 7,286,516; 7,286,647; 7,401,360; 7,706,343; 7,844,033; 7,860,799;

Foreign Patent Numbers:

None.

Chapter 2

Understanding ProPerf Configuration

Topics:

- *Overview.....20*
- *Accessing and Logging into the NSP Portal.....20*
- *ProPerf Configuration's Functionality.....20*
- *Opening ProPerf Configuration.....21*
- *The ProPerf Screen.....21*
- *ProPerf Configuration Screen.....23*

Overview

ProPerf Configuration is a specific-purpose application that is part of DIH.

This application is an administrative application designed for managing performance indicators in real-time and from historical data with a display of curves and graphs to be viewed by users using the ProPerf application. These indicators, calculated with message-based counters are provided by the probes and/or defined by the ProTraq application.

Data is stored in statistical sessions organized as matrix of column and line filter results. This matrix defines cells named KPI (Key Performance Indicators).

ProPerf Configuration is based on a dashboard concept, that is, a single-page display of multiple KPIs in associated charts and tables (set up in Panels), determined according to defined layouts. ProPerf Configuration offers two main dashboard functions:

- Dashboard Editing - Allows you to configure a dashboard to display as an independent page and automatically refresh it in real-time.
- Dashboard Display - Allows you to use global settings to display a dashboard, to specific properties of the KPIs used.

Accessing and Logging into the NSP Portal

To access and log into NSP, follow these steps:

1. Open your Web browser.
2. In the Address bar, type the following **Uniform Resource Locator (URL)** for NSP:
http://nspserver/nsp, where the nspserver is the IP address of NSP.

Note: NSP only supports versions of IE 7.0 or later and Firefox 3.6 or later. Before using NSP, turn off the browser pop up blocker for the NSP site.

The NSP login screen opens.

Note: Before you can start NSP, you must first have a userid and password assigned to you by your NSP system administrator.

3. Type your **username** assigned to you in the *Username* field.
4. Type your **password** in the *Password* field.
5. Click **OK**.
The *NSP Application Board* opens.
6. Click on the *ProPerf Configuration* icon to open the application.

ProPerf Configuration's Functionality

ProPerf Configuration application has two major functions.

- Editing - enables you to perform the following procedures:
 - Use the filter on the dashboard to view specific sessions
 - View a pre-configured panel (line chart, bar chart, pie chart or table)
 - Define xDRs/KPIs to be displayed
 - data source as source session, column and line
 - display properties for a chart, like color, symbols, etc.
- Display - enables you to perform the following:
 - Leave a dashboard in a new page
 - Print or save a dashboard page
 - Zoom in or out to change the Reference Duration of the current view
 - View historical data for a given date and time
 - View the dashboard in real-time

Opening ProPerf Configuration

ProPerf Configuration is an administrative application that belongs to NSP and is opened from the Application Board.

Note: To log into ProPerf Configuration, you must first have a Network Software Platform (NSP) userid and password. For more information contact your NSP administrator.

Once you have logged into NSP , the NSP Application Board opens.

The ProPerf Configuration application is located in the Configuration section on the Application Board, the ProPerf Configuration application is designed for creating and configuring dashboards.

To configure or create a dashboard click the **ProPerf Configuration** icon under the Configuration heading. The ProPerf Main page opens displaying the Dashboard list.

Note: ProPerf and ProPerf Configuration applications share the same dashboard.

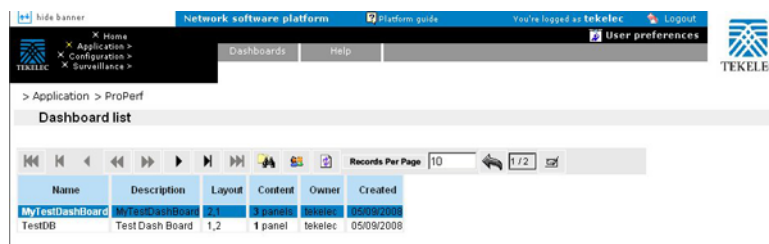


Figure 8: ProPerf Main Page

The ProPerf Screen

ProPerf has the same look and similar functionality as all applications in DIH.

Note: Do not use the Function Keys (F1 through F12) when using the NSP. Function keys work in unexpected ways. For example, the F1 key will not open NSP help but will open help for the browser in use. The F5 key will not refresh a specific screen, but will refresh the entire session and will result in a loss of any entered information.

Page Layout

The page is divided into the following:

Links to applications, configuration applications and surveillance - located in the top left-hand corner.

Menu bar - contains two menus:

- Your Dashboard - that shows dashboards that you have been given access to.
- Help - has two options
 - Help - that provides an online help system for ProPerf
 - About - that provides basic information about the current ProPerf release.

Toolbar - that provides navigation and function buttons.

Dashboard list - a table that lists the configured xDR sessions (in panels).

Dashboard Layout

Dashboards are presented in table format. The table has seven columns.

Dashboard Columns

Name - shows the name of the dashboard

Description - shows the description, (if any), of the dashboard

Layout - shows the panel configuration in *columns* and *rows*, for example, 1x3 means one column and three row layout. 1,2 means one row has one column and the second row has two columns. There are eight possible configurations.

Content - shows how many panels are presently in the dashboard configuration

Owner - shows who created the dashboard

Created - shows when the dashboard was created

Dashboard and Panel Links

The Name and Panel columns are links. Clicking on these links opens the Dashboard configuration and Panel List pages respectively.

Dashboard Display

Note: You can only view dashboards that you are authorized to view. For more information see the chapters on Privacy in the NSP Security online help.

To display a dashboard click the **Name**. The *Dashboard* opens in a separate page. An example of a dashboard with a 2,1 configuration is shown in this figure.

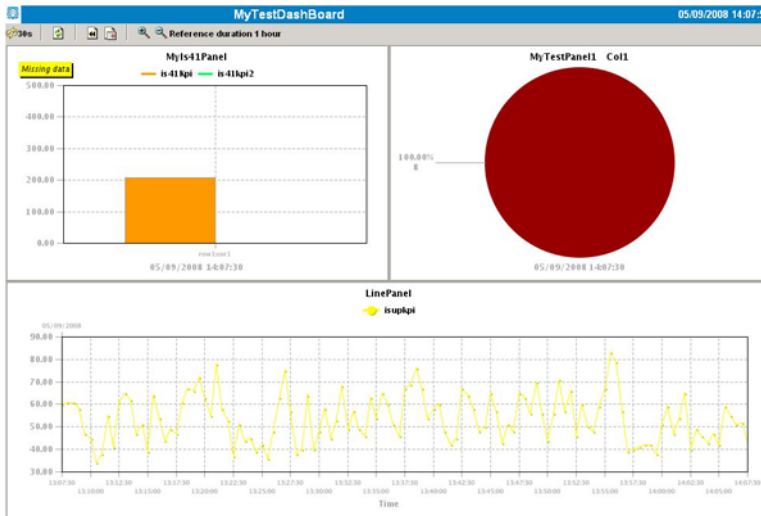


Figure 9: Dashboard Screen With 2,1 Configuration

Note: Real-time dashboards are automatically refreshed according to default settings.

Note: Resulting graph displays an exact value as tool tips when cursor is on a point of a curve.

ProPerf Configuration Screen

The ProPerf Configuration GUI has all of the functionality of the ProPerf application (viewing dashboards) as well as the dashboard configuration and panel functionality.

Panel List Display

The panel list page also has a GUI and table format similar to the *Dashboard* page shown in [Figure 10: Panel List Page](#).

Note: The Panel List display can only be accessed using the ProPerf Configuration application.

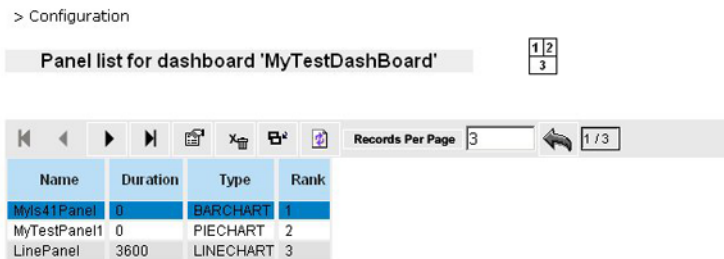


Figure 10: Panel List Page

Panel list configuration Symbol

The *Panel list* page shows the current panel configuration in the upper right half of the page. This icon will change if the panel configuration changes.

View children Button



The *Panel list* toolbar has a **View Children** button that opens the sessions that belong to a record. [Figure 11: Parent/Child Tables](#) shows an example of the *Panel list* page with *Parent/Child* tables.

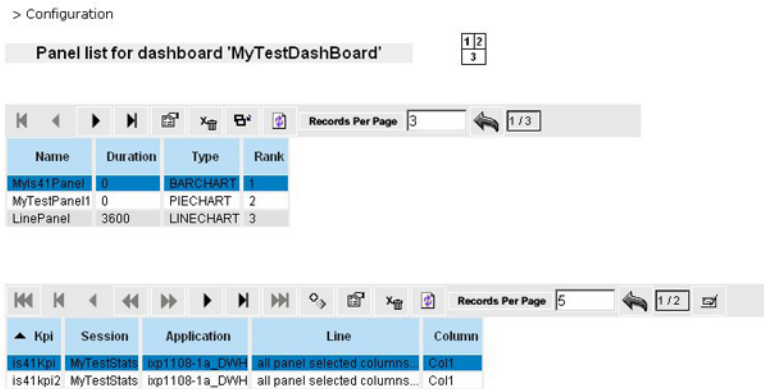


Figure 11: Parent/Child Tables

Panel List Table Layout

There are four columns in the *Panel* table.

Name - that shows the name of the panel.

Duration - shows the time that will be measured.

Type - shows the layout (table, line chart, bar chart, pie chart).

Rank - will show what order the panel is in the whole configuration.

Chapter 3

Using ProPerf Configuration

Topics:

- *Overview.....26*
- *Working with Dashboards.....26*
- *Working with Panels.....31*

Overview

This section describes the procedures used in *ProPerf* Configuration . These descriptions include:

- Create, modify and delete Dashboards
- Create, modify and delete Panel records
- View Children of Panel records

Working with Dashboards

This section describes the procedures used in creating, modifying and deleting *ProPerf* dashboards.

Creating a Dashboard

To create a new dashboard follow these steps:

1. In the dashboard list toolbar, click **Add record**.

The *Add dashboard* screen opens shown in [Figure 12: Add Dashboard Screen](#).

The screenshot shows a 'Dashboard settings' dialog box with the following elements:

- Title:** A text input field containing 'NewDashboard' with a red asterisk indicating it is required.
- Description:** A large text area for entering a description.
- Layout:** A section titled 'Layout' showing various grid templates. A 2x2 grid template is highlighted in yellow.
- Buttons:** 'Reset', 'Apply', and 'Cancel' buttons are located at the bottom of the dialog.

Figure 12: Add Dashboard Screen

The following table describes the attributes you choose on the Dashboard settings page.

2. Type in the **Name** of the dashboard.

Note: Special character are not allowed for title. Use only standard alphanumerical characters and “-”, “_” and “.”

3. (Optional) Type in a **Description** of the dashboard.
4. Select the **Layout**.
5. Click **Apply**.
The dashboard record appears in the *Dashboard* page.

Modifying a Dashboard

Follow these steps to modify an existing dashboard.

1. Select the **dashboard** to be modified.
2. Click **Name** to open the Dashboard Settings screen.
3. Make the necessary modifications.
4. Click **Apply**.

The changes are saved to the system.

Note: To view the changes in the table, click the **Refresh** button.

Deleting a Dashboard

Follow these steps to delete an existing dashboard.

1. Select the **dashboard** to be deleted.
2. Click **Delete**.
3. Click **OK** at the prompt.

The dashboard and all panels associated with that dashboard are deleted.

Using the Dashboard Toolbar

You can use the dashboard toolbar to zoom in and out (to change the reference duration), choose the display date, view previous and next time periods in historical data, and chose the real-time or historical view.

Creating a Dashboard

To create a new dashboard follow these steps:

1. In the dashboard list toolbar, click **Add record**.

The *Add dashboard* screen opens shown in [Figure 12: Add Dashboard Screen](#).

Dashboard settings

Title *

Name of the dashboard.

Description

A short description for the dashboard.

Layout

The way to layout the panels on the dashboard.

Reset Apply Cancel

Figure 13: Add Dashboard Screen

The following table describes the attributes you choose on the Dashboard settings page.

2. Type in the **Name** of the dashboard.

Note: Special character are not allowed for title. Use only standard alphanumerical characters and "-", "_", "."

3. (Optional) Type in a **Description** of the dashboard.
4. Select the **Layout**.
5. Click **Apply**.

The dashboard record appears in the *Dashboard* page.

Modifying a Dashboard

Follow these steps to modify an existing dashboard.

1. Select the **dashboard** to be modified.
2. Click **Name** to open the Dashboard Settings screen.
3. Make the necessary modifications.
4. Click **Apply**.

The changes are saved to the system.

Note: To view the changes in the table, click the **Refresh** button.

Deleting a Dashboard

Follow these steps to delete an existing dashboard.

1. Select the **dashboard** to be deleted.
2. Click **Delete**.
3. Click **OK** at the prompt.

The dashboard and all panels associated with that dashboard are deleted.

Adding a Table Panel

Follow these steps to add a table panel record.

1. In the Dashboard screen, select the **record** that needs a table panel.
2. Click the **Panel** link in the Content Column to open the Panel Settings screen.
3. Type in the **Name**.
4. Select the graphic outlay to **Table**.

In this example, table is selected.

5. Select the **Rank**.
This is the position where the Panel is located in the dashboard.
6. Select the **Offset** time.
This option is used to compare current data to past data in another panel.
7. Click **Continue**.

The screen changes to show the *Datasource* tab. This screen has the xDR sessions that have been discovered using the Centralized Configuration Manager (CCM) and listed in ProTraQ. For more information on discovering xDR sessions see Centralized Configuration Manager Online Help.

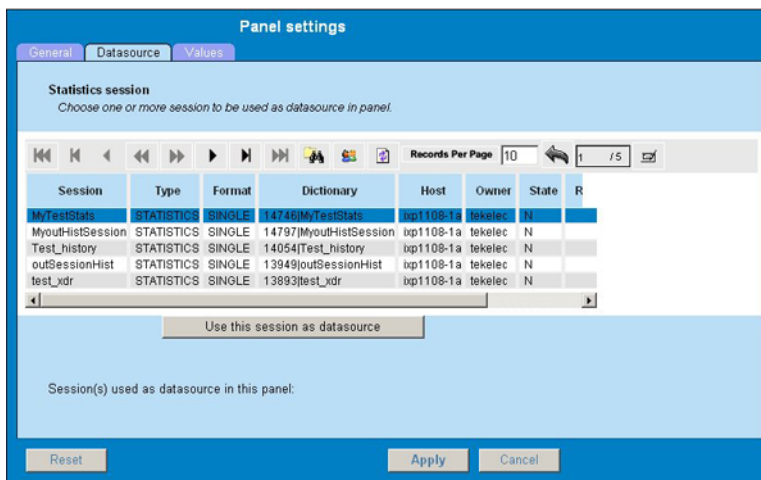


Figure 14: Datasource Panel Screen

8. Select the **session** to be used.
9. Click **Use this session as datasource**.

The screen changes to show the datasource on the bottom on the screen.

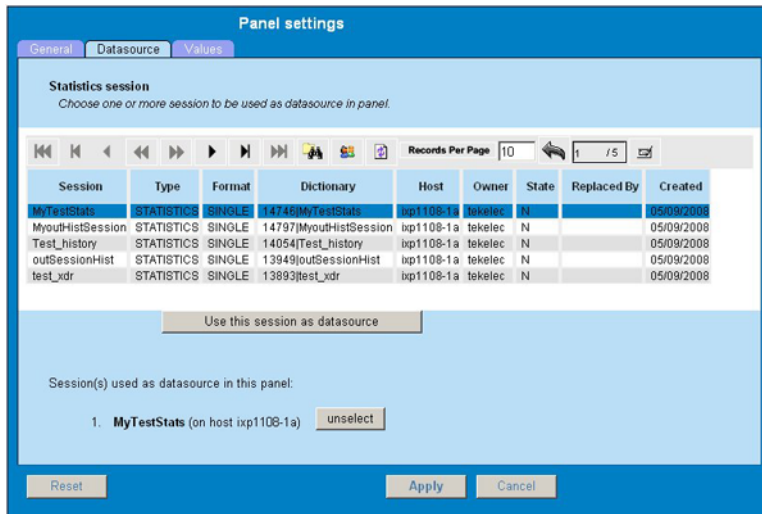


Figure 15: Selected Datasource (xDR Session)

- To add more sessions, repeat steps 6-7.
- Select the **Values** tab.

The screen changes to show the columns for the panel.

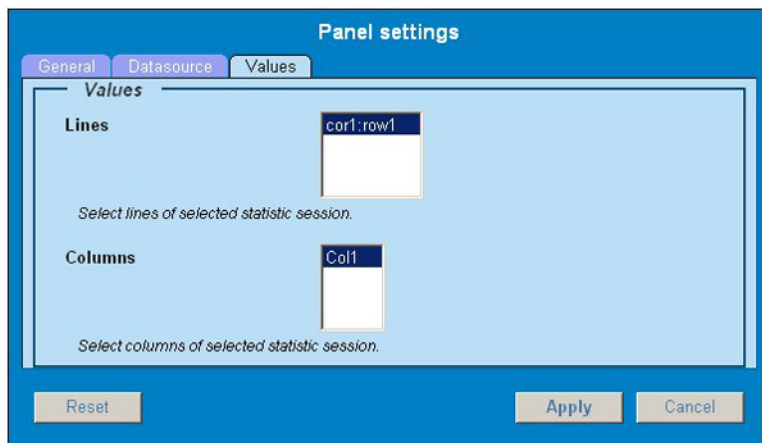


Figure 16: Values Screen Showing Columns For Table

- Select the **Lines** for the *statistics* session.
- Note:** Lines are the fields that ProPerf uses in the statistical session.
- Select the **Columns** for the session.
 - To save the panel, click **Apply**. In the Dashboard screen, the Content column of the specific dashboard record shows that the new panel has been added.

Working with Panels

Panel display List

Once you have created a dashboard, you can create panels to obtain the information from *xDR sessions*.

Note: xDR sessions are discovered using CCM. Refer to the *Centralized Configuration Manager User's Guide* for information on managing xDR sessions.

These panels will supply the data for you to view, organize, and report.

Note: Statistics sessions must already be created in ProTraq. Refer to the ProTraq User's Guide for information on managing statistics sessions.

Panels are the basic component of a dashboard. There are three types of panels available in *ProPerf*:

- Line charts (multiple session allowed)
- Bar chart (one session only)
- Pie chart (one session only)

Follow these steps to display a panel.

1. Select the **dashboard** that will have the panel(s).

Figure 17: Selected Dashboard shows a dashboard page with a dashboard selected.

Note: New dashboards show "No Panel" in content column

> Configuration > ProPerf

Dashboard list

Name	Description	Layout	Content	Owner	Created
MyTestDashboard	MyTestDashboard	2,1	3 panels	tekaltec	05/09/2008
NewDashboard		2,1	No panel	tekaltec	05/09/2008
TestDB	Test Dash Board	1,2	1 panel	tekaltec	05/09/2008

Figure 17: Selected Dashboard

2. Click the **content link** in the *Content* column.

The *Panel List* page opens shown in *Figure 18: Panel List Page*.

> Configuration

Panel list for dashboard 'NewDashboard'

1	2
3	



Figure 18: Panel List Page

3. Click Add.

The *Panel Settings* screen opens shown in Figure 3-4.

Figure 19: Panel Settings Screen-General Tab

In this step you can begin to add panel records with different graphic layouts.

Adding a Table Panel

Follow these steps to add a table panel record.

1. In the Dashboard screen, select the **record** that needs a table panel.
2. Click the **Panel** link in the Content Column to open the Panel Settings screen.
3. Type in the **Name**.
4. Select the graphic outlay to **Table**.

In this example, table is selected.

5. Select the **Rank**.
This is the position where the Panel is located in the dashboard.
6. Select the **Offset** time.
This option is used to compare current data to past data in another panel.
7. Click **Continue**.

The screen changes to show the *Datasource* tab. This screen has the xDR sessions that have been discovered using the Centralized Configuration Manager (CCM) and listed in ProTraQ. For more information on discovering xDR sessions see Centralized Configuration Manager Online Help.

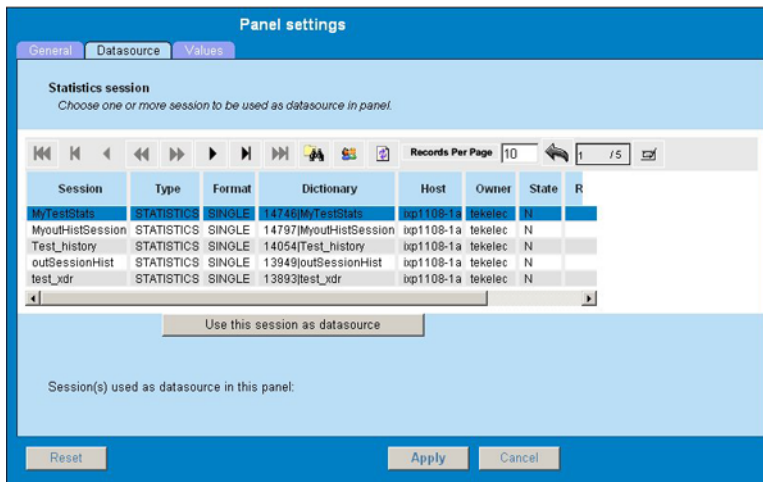


Figure 20: Datasource Panel Screen

8. Select the **session** to be used.
9. Click **Use this session as datasource**.

The screen changes to show the datasource on the bottom on the screen.

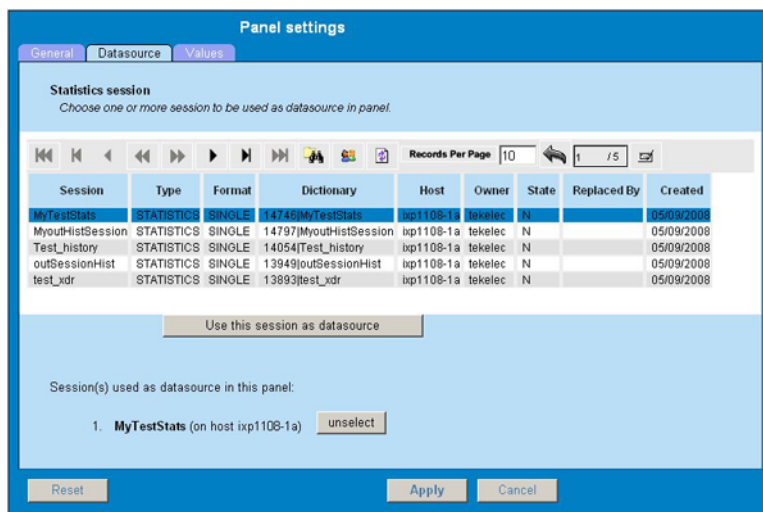


Figure 21: Selected Datasource (xDR Session)

10. To add more sessions, repeat steps 6-7.
11. Select the **Values** tab.

The screen changes to show the columns for the panel.

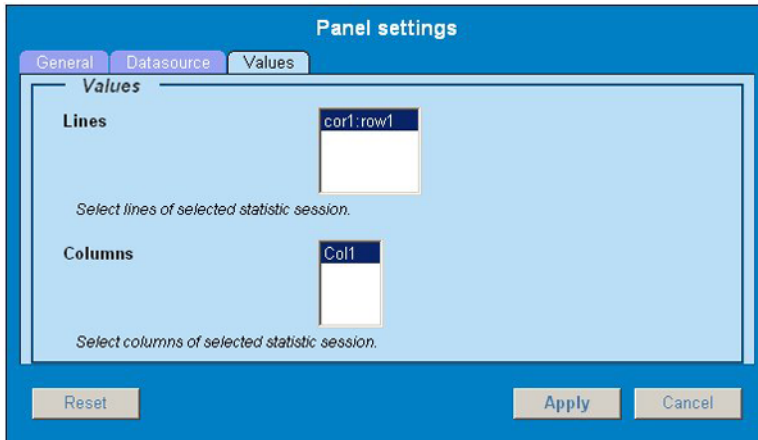


Figure 22: Values Screen Showing Columns For Table

12. Select the **Lines** for the *statistics* session.
 - Note:** Lines are the fields that ProPerf uses in the statistical session.
13. Select the **Columns** for the session.
14. To save the panel, click **Apply**. In the Dashboard screen, the Content column of the specific dashboard record shows that the new panel has been added.

Adding a Line Chart Pane

Follow these steps to add a table panel record.

1. In the Dashboard screen, select the **record** that needs a table panel.
2. Click the **Panel** link in the Content Column to open the Panel Settings screen.
3. Type in the **Name**.
4. Select the graphic outlay to **Line Chart**.
5. Select the **Rank**.
 - This is the position where the Panel is located in the dashboard.
6. Select the **Offset** time.
 - This option is used to compare current data to past data in another panel.
7. Click **Continue**.

The screen changes to show the Datasource tab. This screen has the xDR sessions that have been discovered using the Centralized Configuration Manager (CCM) and queried in ProTraQ. For more information on discovering xDR sessions see Centralized Configuration Manager and ProTraQ Online Help.

8. Select the **session**.
9. Click **Use this session as datasource**.

The screen changes to show the datasource on the bottom on the screen.

10. Select the X-axis tab.

The screen displays the x-axis parameters.

- a) Select the **X grid** (vertical grid).
- b) Select the **Time scale** (X duration).

Defines the time range of X-Axis for a line chart. Last date/time or Current date/time will be selected. The duration unit is one hours.

11. Click the Y Axis tab to open the Y Axis screen.

12. Set the attributes on the Y axis tab of the line chart panel configuration window.

Table 1: Y-Axis Attribute Descriptions

Attribute	Description
Y-grid	Displays a horizontal grid if checked
Scale name	Displays a title for the default (left) y-axis, and selects a scale by name if an optional scale is defined (default is "left")
Auto scale	Allows the software to calculate the default (left) y-axis range. Otherwise, minimum and maximum values should be filled in.
Minimum scale value	Defines the minimum value of the default (left) y-axis range.
Maximum scale value	Defines the maximum value of the default (left) y-axis range.
Second scale	Displays an optional right y-axis in the chart
Second scale name	Displays a title for the optional right y-axis and selects a scale by name (default is "right")
Auto scale	Allows the software to calculate the optional right y-axis range. Otherwise, minimum and maximum values should be filled in.
Minimum second scale value	Defines the minimum value of the optional right y-axis range.
Maximum second scale value	Defines the maximum value of the optional right y-axis range.

13. Click the Labels tab to apply a label to the session. Labels are available if the session contains additional text fields for ProTraQ TOP.

14. Select the appropriate data columns and enter the formatting string that specifies how the values will be separated. The recommended syntax for the formatting string is %n\$s and an invalid syntax may lead to no displayed values. If the formatting syntax is not defined, the values will be separated by spaces.

When entering the formatting string, use the syntax `%[col_index$][width][.precision]conversion` where:

- The optional `col_index` is a decimal integer indicating the position of the argument in the selected column list. The first column is referenced by "1\$", the second by "2\$", and so on.
- The optional `width` is a non-negative decimal integer indicating the minimum number of characters to be written to the output.
- The optional `precision` is a non-negative decimal integer usually used to restrict the number of characters.
- The required `conversion` is a character indicating how the argument should be formatted. A lowercase "s" returns the string as it is and an uppercase "S" returns the string in upper case letters.

15. Click **Apply** to save changes. The panel appear in the *Panel list*.

Adding a Bar Chart Pane

To set the display parameters for a bar chart, follow these steps:

1. In the Dashboard screen, select the **record** that needs a table panel.
2. Click the **Panel** link in the Content Column to open the Panel Settings screen.
3. Type in the **Name**.
4. Select the graphic outlay to **Bar Chart**.
5. Select the **Rank**.

This is the position where the Panel is located in the dashboard.

6. Select the **Offsettime**.

This option is used to compare current data to past data in another panel.

7. Click **Continue**.

The screen changes to show the Datasource tab. This screen has the discovered xDR sessions that have been discovered using the Centralized Configuration Manager (CCM) and queried in ProTraq.

8. Select the **session**.
9. Click **Use this session as datasource**.

The screen changes to show the datasource on the bottom on the screen.

10. To add more sessions, repeat steps 6-7.
11. Click the **X-Axis** tab to open the *Panel Settings* screen.
12. Set the **X-grid** attributes on the screen.

- a) Select **x grid**.

If selected a vertical grid is displayed.

13. Select Values

- a) Select **Lines** (fields) that display the X-Axis values as the line selection in the statistics session.
- b) Select **Columns** that display the X-Axis values as the column selection in the statistics session-with simple count

Note: The X axis selections are defined in discrete values. The legend items are applied to each value in the selection.

14. Click the **Y-Axis** tab to open the attribute screen.
15. Select the **attributes** for the Y-axis.
16. Click the **Labels** tab to apply a label to the session. Labels are available if the session contains additional text fields for ProTraQ TOP.
17. Select the appropriate **data columns** and enter the **formatting string** that specifies how the values will be separated. The recommended syntax for the formatting string is `%n$s` and an invalid syntax may lead to no displayed values. If the formatting syntax is not defined, the values will be separated by spaces.

When entering the formatting string, use the syntax `%[col_index$][width][.precision]conversion` where:

- The optional `col_index` is a decimal integer indicating the position of the argument in the selected column list. The first column is referenced by "1\$", the second by "2\$", and so on.
- The optional `width` is a non-negative decimal integer indicating the minimum number of characters to be written to the output.
- The optional `precision` is a non-negative decimal integer usually used to restrict the number of characters.
- The required `conversion` is a character indicating how the argument should be formatted. A lowercase "s" returns the string as it is and an uppercase "S" returns the string in upper case letters.

18. Click **Apply** to save your settings. The panel record for that dashboard is saved to show a bar chart.

Setting Pie Chart Parameters

To set the display parameters for a bar chart, follow these steps:

1. In the Dashboard screen, select the **record** that needs a pie chart panel.
2. Click the **Panel** link in the Content Column to open the Panel Settings screen.
3. Click **Add** in the *Panel List* page.
4. Type in the **Name**.
5. Select the graphic outlay **Pie** as the type.
6. Select the **Rank**.

This is the position where the Panel is located in the dashboard.

7. Select the **Offsettime**.
This option is used to compare current data to past data in another panel.
8. Click **Continue**.

The screen changes to show the *Datasource* tab. This screen has the discovered xDR sessions that have been discovered using the Centralized Configuration Manager (CCM) and queried in ProTraQ.

9. Select the **session**.
10. Click **Use this session as datasource**.

The screen changes to show the datasource on the bottom on the screen.

11. To add more sessions, repeat steps 7-8.
12. Select the **Values** tab.

The screen changes to show the columns for the panel.

13. Set the **line** or **column** values.
 - a) Line values defines the pie slices as columns for a line to be selected in the line list of the statistics session.
 - b) Column values defines pie slices as lines for a column to be selected in the column list of the statistics session.
14. Click the **Labels** tab to apply a label to the session. Labels are available if the session contains additional text fields for ProTraq TOP.
15. Select the appropriate **data columns** and enter the **formatting string** that specifies how the values will be separated. The recommended syntax for the formatting string is `%n$s` and an invalid syntax may lead to no displayed values. If the formatting syntax is not defined, the values will be separated by spaces.

When entering the formatting string, use the syntax `%[col_index$][width][.precision]conversion` where:

- The optional `col_index` is a decimal integer indicating the position of the argument in the selected column list. The first column is referenced by "1\$", the second by "2\$", and so on.
- The optional `width` is a non-negative decimal integer indicating the minimum number of characters to be written to the output.
- The optional `precision` is a non-negative decimal integer usually used to restrict the number of characters.
- The required `conversion` is a character indicating how the argument should be formatted. A lowercase "s" returns the string as it is and an uppercase "S" returns the string in upper case letters.

16. Click **Apply**.

The settings are saved to the panel list.

Unselecting (deleting) Data Sources

You can *unselect* an *xDR session* in a Panel record by follow these steps.

1. Select the **Panel record** to be modified.
2. Click **Modify**.
3. Click the **Datasource** tab.
4. Click **unselect** but the *xDR session* you want to delete.
5. Click **Apply**.

The changes are saved to the system.

Modifying a Panel Record

Follow these steps to modify a panel record.

1. Select the **Panel record** to be modified.
2. Click **Modify**.
3. Make the appropriate changes.

4. Click **Apply**.

The changes are saved to the system.

Deleting a Panel Record

Follow these steps to delete a panel record.

1. Select the **Panel record** to be modified.
2. Click **Delete**.
3. Click **OK** at the prompt.

The record is deleted.

Creating legend Items

For a charting panel, some legend items need to be defined in order to apply graphic properties specific to that item, such as color, symbol, etc.

These properties are applied to these two items:

- A precise KPI (line chart or pie chart) - which is a key point indicator identified by a column and a line in the selected statistics session (in panel definition)
- A KPI set (bar chart) - which are *key point indicators* identified by a line or a column and respectively selected columns or lines of a session (in panel definition)

Displaying a Legend Item List

Each charting panel has children records associated with it. To display an item list, follow these steps:

1. Select the **record** that will have the item list.
2. Click **Show child** to open the child list screen.

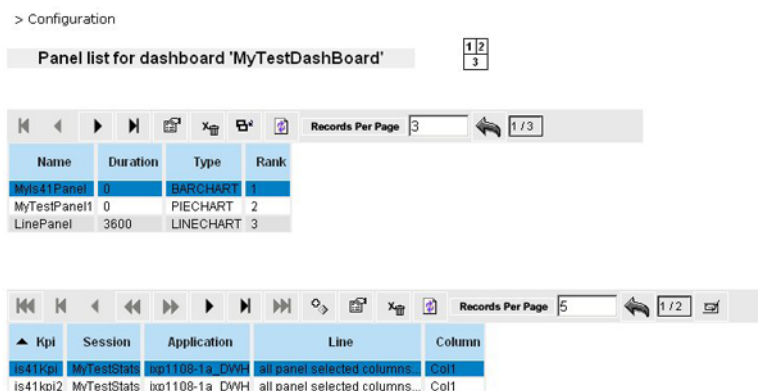


Figure 23: Child Records List Screen

Defining KPI Data Sources

Follow these steps to define a KPI data source.

1. In a child record, click **Add record** to open the *KPI configuration* screen.

Figure 24: KPI Configuration Screen

2. Select the **Datasource** tab and set the following attributes that are described in this table.

Table 2: xDR Configuration Settings

Attribute	Description
Name	Name to be displayed in the legend for this KPI
Statistical Session	Selects a statistical session if multiple sessions have been selected in the panel settings (only for a line chart)
Line	Selects a line in the statistical session. This attribute does not appear for bar charts or pie charts if the line values have been defined in the panel settings.
Column	Selects a column in the statistical session. This attribute does not appear for bar charts or pie charts if the column values have been defined in the panel settings

Note: Special character are not allowed for name. Use only standard alphanumerical characters and “-”, “_” and “.”

3. Select **Graphical properties** tab to open this screen.

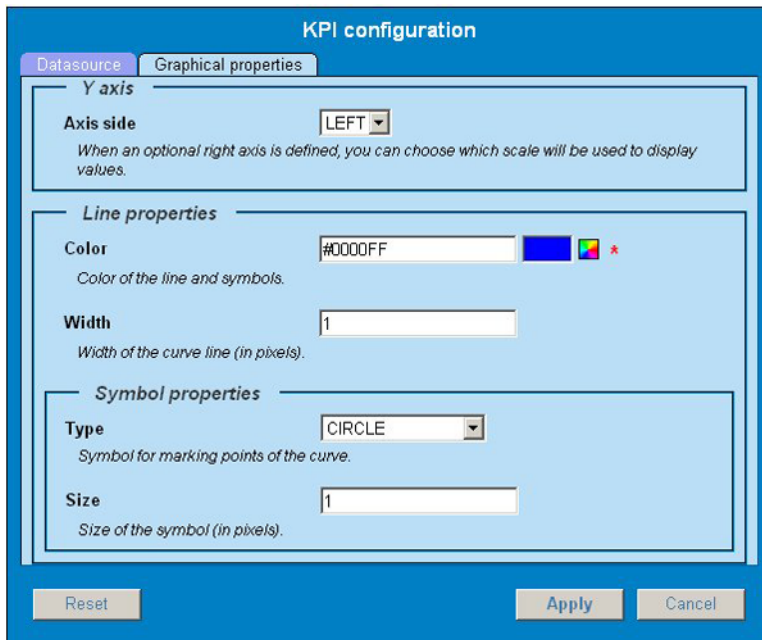


Figure 25: Graphical Properties Tab

4. Select the **graphic attributes** for the datasource described in this table.

Table 3: Attribute Descriptions

Attribute	Description
Axis side	If an optional second Y axis has been defined (only for bar charts or line charts), you may select which axis to use.
Color	Selects color
Width	Defines line thickness (only for line charts)
Symbol type	Defines the symbol used at the value location
Symbol size	Defines the symbol size in pixels

5. Click **Apply** to save the new settings.

Modifying the Panel Order

If you would like the information of a specific record organized differently, you can modify the panel order. In this way the most pertinent information is presented first. To change the panel order, follow these steps.

1. Select the **record** you want by using the Navigation buttons on the tool bar.
Note: The example presented here uses a Table type, but Rank is functional will all graph types.
2. Click **Edit record** to open the panel.

Panel settings

General Datasource Values

Title *

Name displayed at the top of the panel.

Type

Panel type choice allows to select graphical properties to be set.

Rank

Rank order of panel into dashboard.

Offset

Offset is used to shift panel datetime from current time. It permits to compare old data to realtime data displayed in another panel.

Reset Apply Cancel

Figure 26: Panel Settings Screen

3. Select the new position the panel in the **Rank** field.
4. Click **Apply** to save your settings.

Note: If the new rank is below the old one, every panel in between will be automatically shifted up. Otherwise, panels between these ranks will be automatically shift down.

Modifying Privacy Settings

In order to modify access rights of a dashboard, follow these steps:

1. Select the **record** you want by using the *Navigation* buttons.
2. Click **Roles**, the *Change Privacy* page opens.
3. Give the following **access privileges** according registered roles.
 - a) x : allows to display dashboard
 - b) w : allows to modify settings
 - c) r: allows to view dashboard in list and corresponding settings lists

Note: A user belongs to one or more groups, each of these being mapped to one or more roles (by default one group=one role).

Printing the Dashboard

To print dashboard:

1. Select the web browser **Print menu** (right click for context menu).
2. Follow the web browser standard instructions for printing a document.